

2561]



VICTORIA
GOVERNMENT GAZETTE.

Published by Authority.

[Registered at the General Post Office, Melbourne, for transmission by post as a newspaper.]

No. 96.]

MONDAY, JULY 8.

[1912.

CONTRACTS ACCEPTED.

(SERIES 1912-13.)

SUPPLY OF PROVISIONS

FROM

1st JULY, 1912, TO 30th JUNE, 1913.

CONTRACTS ACCEPTED.—(Series 1912-13.)

No. of Contract.	Particulars of each Tender Accepted.	Amount.	Name of Contractor.	Charged against Vote Fund.
PROVISIONS— Supply of Provisions for General Stores in such quantities as may be ordered from 1st July, 1912, to 30th June, 1913.				
Melbourne District—				
338	Beer and spirits	Rates as per annex	R. G. Wilson and Co.	
339	Bread, Kew Asylum	Ditto	B. E. Johnson	
340	Bread, Yarra Bend Asylum	Ditto	J. N. Hennessy	
341	Bread, Schools, Royal Park; Receiving Depot, Royal Park; Police Lock-ups, Police Depot, &c.	Ditto	J. N. Hennessy	
342	Butter, cheese, and eggs	Ditto	H. McDonough	
343	Flour and maize meal	Ditto	T. R. Rush	
344	Groceries	Ditto	J. D. Howie	
345	Jams	Ditto	Cunliff and Paterson Ppy. Ltd.	
346	Meat, Kgw Asylum	Ditto	G. R. McKelvey and Co. Ppy. Ltd.	
347	Meat, Yarra Bend Asylum	Ditto	W. Angliss and Co. Ppy. Ltd. ...	
348	Meat, Pentridge Penal Establishment	Ditto	T. K. Bennett and Woolcock ...	
349	Meat, Melbourne Gaol, &c.	Ditto	T. K. Bennett and Woolcock ...	
350	Milk, Melbourne Gaol	Ditto	J. Murphy	
351	Milk, Pentridge Penal Establishment	Ditto	J. Murphy	
352	Potatoes	Ditto	W. H. Maine & Co. Pty. Ltd.	
353	Sugar	Ditto	J. D. Howie	
354	Tea	Ditto	Donald Robinson	
355	Tobacco	Ditto	Dudgeon and Arnell E. L. ...	
Williamstown—For s.s. Lady Loch and Albert.				
356	Breadstuffs	Ditto	W. J. Elsum	
357	Butter	Ditto	J. Rice and Sons	
358	Groceries	Ditto	J. Rice and Sons	
359	Candles, soap, and soda	Ditto	James Rice and Sons	
360	Meat	Ditto	G. R. McKelvey and Co. Ppy. Ltd.	
361	Vegetables	Ditto	G. Hosking	
Ararat District—				
362	Breadstuffs	Ditto	Wm. Bates	
363	Butter and cheese	Ditto	H. McDonough	
364	Groceries	Ditto	J. D. Howie	
365	Jams	Ditto	Ballarat Jam Co. Ppy. Ltd. ...	
366	Meat	Ditto	Arthur Murphy	
367	Potatoes	Ditto	Flattely and Lewis	
368	Sugar	Ditto	J. D. Howie	
369	Tea	Ditto	J. D. Howie	
Beechworth District—				
370	Breadstuffs	Ditto	A. Trim	
371	Butter and cheese	Ditto	H. McDonough	
372	Groceries	Ditto	John Clements	
373	Meat	Ditto	J. R. Newey, jun.	
374	Potatoes	Ditto	W. H. Maine & Co. Pty. Ltd.	
375	Sugar	Ditto	J. D. Howie	
376	Tea	Ditto	John Clements	
Ballarat District—				
377	Breadstuffs	Ditto	John Davies	
378	Butter and cheese	Ditto	H. McDonough	
379	Groceries	Ditto	Moran and Cato	
380	Jams	Ditto	The Ballarat Jam Co. P. L. ...	
381	Meat	Ditto	H. J. Symons	
382	Potatoes	Ditto	W. H. Maine & Co. Pty. Ltd.	
Geelong District—				
383	Breadstuffs	Ditto	W. H. Marshall	
384	Groceries	Ditto	Moran and Cato	
385	Meat	Ditto	J. W. Branch	
386	Milk	Ditto	Thomas Warren	
387	Potatoes	Ditto	W. H. Maine & Co. Pty. Ltd.	
Lara—				
388	Breadstuffs	Ditto	E. G. Loft	
389	Butter and Cheese	Ditto	H. Lloyd and Sons	
390	Groceries	Ditto	R. G. Wilson and Co.	
391	Jams	Ditto	Cunliff and Paterson Ppy. Ltd.	
392	Meat	Ditto	W. H. Maine & Co. Pty. Ltd.	
393	Potatoes	Ditto	W. H. Maine & Co. Pty. Ltd.	
Sunbury District—				
394	Breadstuffs	Ditto	Thomas Clyne and Son	
395	Butter, Cheese, and Bacon	Ditto	H. McDonough	
396	Groceries	Ditto	J. D. Howie	
397	Jams	Ditto	Cunliff and Paterson Ppy. Ltd.	
398	Meat	Ditto	C. M. Starkie	
399	Rabbits	Ditto	W. Angliss and Co. Ppy. Ltd. ...	
400	Potatoes	Ditto	W. H. Maine & Co. Pty. Ltd.	
401	Sugar	Ditto	J. D. Howie	
402	Tea	Ditto	J. D. Howie	
Bendigo District—				
403	Bread	Ditto	Wm. Beischer	
404	Groceries and potatoes	Ditto	Moran and Cato	
405	Meat	Ditto	Sprenger and Unmack	
Castlemaine District—				
406	Bread	Ditto	M. Van Heurck	
407	Groceries and potatoes	Ditto	Mary Frances Elvish	
408	Meat	Ditto	James Williamson	
Sale District—				
409	Bread	Ditto	Wm. Hawkins	
410	Groceries and potatoes	Ditto	Purchase as required	
410	Meat	Ditto	E. Cleaver	

Contingencies, 1912-13.

CONTRACTS ACCEPTED.—(Series 1912-13.)—continued.

No. of Contract.	Particulars of each Tender Accepted.	Amount.	Name of Contractor.	Charged against Vote or Fund.
PROVISIONS— Supply of Provisions for General Stores in such quantities as may be ordered from 1st July, 1912, to 30th June, 1913.				
Mont Park—				
411	Breadstuffs	Rates as per annex	B. E. Johnson	Contingencies, 1912-13.
412	Butter, Cheese, and Bacon	Ditto	H. McDonough	
413	Groceries	Ditto	J. D. Howie	
414	Jams	Ditto	Geelong and Western District Preserving Co. Ltd.	
415	Meat	Ditto	W. Angliss and Co. Pty. Ltd.	
416	Potato	Ditto	H. McDonough	
417	Sugar	Ditto	J. D. Howie	
418	Tea	Ditto	J. D. Howie	

Approved.—W. A. WATT Treasurer. 20.6.1912.

STIPULATIONS FOR SUPPLIES OF PROVISIONS.

(Where practicable, all items must be manufactured or prepared within the Commonwealth.)

Under all Sub-schedules particular attention is drawn to Clause 1 of the Condition as to quality.

BEER AND SPIRITS.

For brandy, whisky, and rum, porter in bulk, and for Guinness' porter in case, delivery will be taken at and from the bond, the contractor paying cost of re-gauging when required, and all other charges.

The contractor will be bound to supply such of the brands named in the tender as the departments may order. In cases where delivery from the bond is taken by the Government, the contractor will be required to hand to the secretary to the Tender Board the bond certificate and the locker's order and a copy of the entry, and pay all charges, including re-gauging, before delivery is taken.

English ale, brandy, whisky, and Guinness' porter in case must be delivered as imported; if bottled in the State it will not be accepted.

BREAD.

Samples of the best ordinarily retailed to the public will be considered as test loaves for first quality for fine wheaten and pure wheaten Meal Bread. Third quality (that issued to prisoners of the Crown) to be made of flour, fine sharps, the produce of prime, strong, thin-skinned, good-colored wheat, to be perfectly free from coarse pollard or other offal. Pure wheaten Meal Bread of first quality may be substituted, wholly or in part, for fine wheaten Bread at such times and in such quantities as in the opinion of the Medical Superintendent may be deemed necessary, and the contractor will be required to supply such Bread at the contract rate. Reasonable notice, however, of the intention to substitute wheaten Meal Bread must be given to the contractor by the officer ordering the supply. Bread may be baked at any Government establishment without infringing these contracts. At the Gaols, Beechworth, Ballarat, Geelong, Bendigo, Castlemaine, and Sale, if required, bread must be supplied one day old, due notice to be given to the contractor of such requirement.

Under sub-schedules for Bread no subletting will be allowed; all work must be carried out by the contractor; every person engaged in the manufacture, preparation, or the delivery of the bread tendered for in these sub-schedules shall be paid such wages and shall be employed subject to such conditions as are or may be determined by the Bread or Bread Carter's Board or by the Court of Industrial Appeals, as the case may be, under the provisions of the Factories and Shops Acts; should however, the determinations of the aforesaid Boards or Courts not apply to the district covered by this particular schedule, then those determinations shall for the purpose of these contracts be taken as defining the rate of wages which shall be paid, and the conditions of employment in respect thereto; and a copy of these conditions shall be kept conspicuously and continually posted in legible Roman characters in the factory or shop (and in each part of the factory or shop where several rooms are in use) in which bread is prepared or manufactured under these contracts. Any infringement of these conditions, or breach of the said determination, in the opinion of the Treasurer, will subject the contractor, upon report from the Tender Board, to such muilt, not exceeding Fifty pounds (£50), as the Treasurer may direct, and the amount will be deducted from the contractor's account or from the security money, and the Treasurer's decision shall be binding, final, and conclusive as to the fact of infringement, and in all other respects.

In the event of bread being made at any Government establishment in the Melbourne District, during the currency of these contracts, the flour required will be drawn under the flour and maize meal sub-schedule. The maize meal for all the country gaols is included in the sub-schedule for flour and maize meal, and delivery of same will be required to be made at the Victorian Railways, Spencer-street.

Should a supply of any article which may be reasonably included in a Baker's Price List, and which is not included in the schedule hereunder, be required for the use of attendants and nurses resident at the Hospitals for the Insane during the currency of the contract, the contractor shall supply any such article at the current list rates at which it is retailed by the contractor to the public.

GROCERIES, CANDLES, SOAP, TEA, ETC.

Should the supply of any article which may be reasonably included in a Grocer's Price List, and which is not included in the schedule hereunder, be required for the use of

the attendants and nurses resident at the Hospitals for the Insane during the currency of the contract, the contractor shall with the exception of Ballarat, supply such article at the current list rates at which it is retailed by the contractor to the public.

Candles, except those for prison cells, must be supplied in 1-lb. packets. Candles for prison cells must be delivered in boxes containing from 25 to 50 lbs. per box, the boxes for which must be legibly stencilled on one end, showing the estimated burning time and the gross, tare, and net weight of contents. The soap supplied must be hard throughout, ready for immediate use without waste. Soap for Lunatic Asylums is not included in these contracts. When the quantity admits, tea must be supplied in original and unopened packages, labelled, as landed.

For s.s. *Lady Lock* and *Albert* a certain quantity of Biscuits and Preserved Meat are sometimes required in lieu of fresh meat and fresh bread, and are included to meet such contingency only.

The contracts are not to be considered broken, infringed, or vitiated by purchase of sugar from any Government Institution at any time during the currency of this contract.

BUTTER AND JAMS.

Butter is to be delivered to the s.s. *Lady Lock* and *Albert* in such quantities as may be ordered, and no excess over the quantity ordered will be received.

All Butter supplied, as well as the cases in which it is packed, must bear the impress stamp of the creamery manufacturing the Butter, otherwise it will be rejected. The Butter supplied may be tested at any time by the Government Dairy expert if considered by the officer ordering that the supply is not up to standard quality. The cheese must be fairly matured and packed in boxes for transport.

As regards butter for Ararat, Ballarat, Beechworth, Lara, Sunbury, all supplies delivered from Melbourne must be submitted by the contractor to the Government Dairy Expert in Melbourne for test as to standard quality, and, if found to be satisfactory, shall be forwarded by that officer direct to the Institution ordering, the cost of freight being borne by the contractor in the usual way.

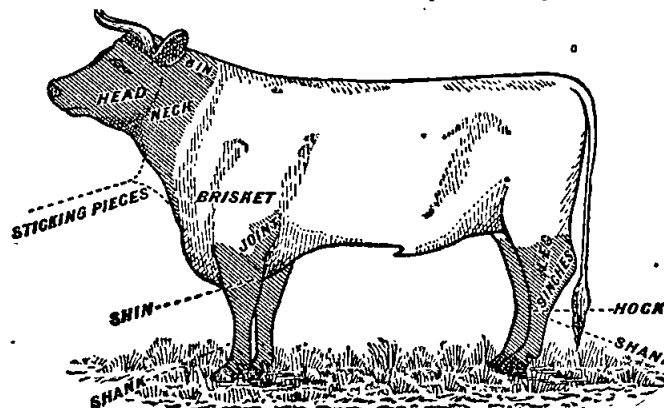
In the case of contracts for jam no subletting will be allowed; all work must be carried out by the contractor; every person engaged in the manufacture of the jam tendered for in this schedule shall be paid such wages and shall be employed subject to such conditions as are or may be determined by the Jam Trade Board under the Factories and Shops Acts; should, however, the determinations of the aforesaid Board not apply to the district covered by this particular schedule, that determination shall for the purpose of this contract be taken as defining the rate of wages which shall be paid, and the conditions of employment in respect thereto; and a copy of these conditions shall be kept conspicuously and continually posted in legible Roman characters in the factory or shop (and in each part of the factory or shop where several rooms are in use) in which jam is prepared under this contract. Any infringement of these conditions, or any breach of the said determination, in the opinion of the Treasurer, will subject the contractor, upon report from the Tender Board, to such muilt, not exceeding Fifty pounds (£50), as the Treasurer may direct, and the amount will be deducted from the contractor's account or from the security money, and the Treasurer's decision shall be binding, final, and conclusive as to the fact of infringement, and in all other respects.

N. B.—Jams.—The weight stamped on the tins in accordance with the regulations under the Commerce Act, as indicating the minimum net quantity that each tin contains, shall for the purpose of this contract be taken as the actual contents when computing the quantity supplied.

When Jam is supplied in jars the jars remain the property of the contractor, and must be removed by the contractor at his own expense when empty.

MEAT.

When fore and hind-quarters of beef are ordered for Hospitals for the Insane they must be supplied in the proportion of two of the former to one of the latter, and must be delivered as a whole respectively, also extra buttocks separately when ordered. Meat for other institutions must be supplied as ordered. Where hind-quarters or buttocks are ordered, 9 inches must be cut off from the end of the leg from the hock upwards, i.e., the end of the leg from which the shank has been removed at the abattoirs; and when fore-quarters form a portion of the supply, 6 inches from the



end of the neck and the whole of the shin at the clodbone joint must be removed. The sticking pieces also must be trimmed off, and the point and end of the brisket rendered free from blood and blood stains.

Fore and hind-quarters, for convenience of handling, may be cut into two parts, but each part is to bear evidence of having been cut from the same beast.

Corned beef, rolled or round, as ordered, must be supplied without bone or cartilage and will be received, whether pumped or prepared in the ordinary way by pickling, but in the former case must have been soaked after pumping for at least 48 hours, in a good pickle, and then thoroughly drained before supply. No flank, chuck, sticking piece, shin, leg of beef, or piece under 7 lbs. will be received.

Should the local supply of fresh meat become scarce, or the price of same become abnormally high, frozen or chilled meat may, with the consent of the Tender Board on the recommendation of the head of the Department, be supplied.

In cases of emergency, or on such other occasions as in the opinion of the Inspector-General of the Insane may seem advisable, other forms of meat such as rabbits, tinned meats, &c., may be purchased apart from the contract for Hospitals for the Insane, in lieu of the meat mentioned in the schedule, and substituted therefor, provided 24 hours' notice (except in cases of emergency) be given to the contractor of such intention.

The parts to be removed by the contractor are indicated by the shaded portions of the annexed diagram.

As regards supplies for s.s. *Lady Loch* and *Albert*, all Meat must be of prime quality, and must be supplied in equal quantities from ribs, sirloin, and thick flanks; mutton to be delivered in sides; all kidney fat to be removed; meat containing an undue proportion of fat will not be accepted.

Should a supply of any article which may be reasonably included in a Butcher's Small Goods List, and which is not included in the schedule hereunder, be required for the use of attendants and nurses resident at the Hospitals for the Insane during the currency of the contract, the contractor shall supply such article at the current list rates at which it is retailed by the contractor to the public.

Under sub-schedules for Meat no subletting will be allowed; no delivery of meat shall be made on Sundays*; all work must be carried out by the contractor; every person engaged in the cutting up, preparation, or delivery of the meat tendered for in these sub-schedules, shall be paid such wages, and shall be employed subject to such conditions as are or may be determined by the Butchers Board under the provisions of the Factories and Shops Acts; should, however, the determination of the aforesaid Board not apply to the district covered by the particular schedule, that determination shall, for the purpose of these contracts, be taken as defining the rate of wages which shall be paid, and the conditions of employment in respect thereto; and a copy of these conditions shall be kept conspicuously and continually posted in legible Roman characters in the factory or shop (and in each part of the factory or shop where several rooms are in use) in which meat is prepared under these contracts. Any infringement of these conditions, or any breach of the said determination, in the opinion of the Treasurer, will subject the contractor, upon report from the Tender Board, to such mulct, not exceeding Fifty pounds (£50), as the Treasurer may direct, and the amount will be deducted from the contractor's account or from the security money, and the Treasurer's decision shall be binding, final, and conclusive as to the fact of infringement, and in all other respects.

MILK.

The milk must be fresh, pure, and of the best quality, and subject to test when required by the department. Should the supply prove to be not of contract quality it will be rejected, and any expense incurred will be charged to the contractor.

Except when ordered for s.s. *Lady Loch* in cases of emergency only.

Under sub-schedules for Milk no subletting will be allowed; all work must be carried out by the contractor; the hours of employment of any person engaged in the preparation or the delivery of the milk tendered for in these schedules shall not exceed 60 hours per week, and every such person, except carters, shall be paid at a minimum wage of not less than £1 17s. 6d. per week, or £1 2s. 6d. per week with board and lodging, unless other wages may be determined by any Special Board under the Factories and Shops Acts during the currency of the contract, when every such person shall be paid such wages and shall be employed subject to such conditions as may then be determined. Carters shall be paid such wages and shall be employed subject to such conditions as are or may be determined by the Carters Board. Should, however, the determination of the aforesaid Board not apply to this district covered by this particular schedule, that determination for carters, or the determination of such other Board as may be appointed for other employes during the currency of this contract shall, for the purpose of this contract, be taken as defining the rate of wages which shall be paid, and the conditions of employment in respect thereto; and a copy of these conditions shall be kept conspicuously and continually posted in legible Roman characters in the factory or dairy (and in each part of the factory or dairy where several rooms are in use) in which milk is prepared under these contracts. Any infringement of these conditions, in the opinion of the Treasurer, will subject the contractor, upon report from the Tender Board, to such mulct, not exceeding Fifty pounds (£50), as the Treasurer may direct, and the amount will be deducted from the contractor's account or from the security money, and the Treasurer's decision shall be binding, final, and conclusive as to the fact of infringement, and in all other respects.

POTATOES AND VEGETABLES.

(Potatoes to be dry and free from dirt. Contractor to supply 105 lbs. of potatoes for each cental credited to him, and, in addition, to take back all rejected before being cooked.)

If the price of potatoes becomes abnormally high, the heads of the various departments concerned may, if they think fit, cause rice or any other suitable food to be occasionally substituted in lieu thereof. As regards vegetables for s.s. *Lady Loch* and *Albert*, no subletting will be allowed. Cabbage to be free from outside leaves and stalks.

TOBACCO.

Tobacco for country Hospitals for the Insane is included in the sub-schedule for tobacco, and delivery of same will be required to be made at Spencer-street.

Tobacco for country Gaols is not included in this contract.

No subletting will be allowed; all work must be carried out by the contractor; the hours of employment of any person engaged in the preparation or manufacture of the Tobacco tendered for in this sub-schedule shall not exceed 48 hours per week, and every such person shall be paid at a minimum wage of not less than £2 8s. per week for a man and £1 per week for a woman respectively; and a copy of these conditions shall be kept conspicuously and continually posted in legible Roman characters in the factory (and in each part of the factory where several rooms are in use) in which tobacco is prepared under this contract. Any infringement of these conditions, in the opinion of the Treasurer, will subject the contractor, upon report from the Tender Board, to such mulct, not exceeding Fifty pounds (£50), as the Treasurer may direct, and the amount will be deducted from the contractor's account or from the security money, and the Treasurer's decision shall be binding, final, and conclusive as to the fact of infringement, and in all other respects.

Under sub-schedules for Bread, Meat, Milk, and Tobacco, the contractor shall, before any account is passed for payment for services rendered, furnish a statutory declaration that all the workmen under this contract have been employed in accordance with the above clause of these conditions, and have been paid not less than the minimum rate of wages for such workmen as is provided for under that clause.

Schedule No. 1.
PROVISIONS—MELBOURNE DISTRICT.

Period of Contract—From 1st July 1912, to 30th June, 1913.

CONTRACT No. 1912/338.

R. G. Wilson and Co., 21 Swanston-street, Melbourne.

Sub-schedule No. 1.

BEER AND SPIRITS.

Security, £50.

		£	s.	d.
1. Ale (pints), English	per doz.	0	7	0
2. " Colonial draught	per gal.			
3. Brandy, Australian, Standard, pure grape, of proof strength, and of approved brand (Joshua Standard)	per liq. gal.	0	19	6
4. " bottled—Hennessy's Three Star, as imported	per bottle	0	6	6
5. Whisky, of proof strength—Loch Dhu, Scotch Cream, or any other brand of equal quality	per liq. gal.	0	18	6
6. Porter—"Guinness," bottled (quarts)	per doz.	0	10	6
7. " "Guinness," bottled (pints)	do.	0	6	9

CONTRACT No. 1912/339.

B. E. Johnson, Northcote.

Sub-schedule 2.

BREAD FOR HOSPITALS FOR THE INSANE AT KEW.

Security, £100.

		£	s.	d.
1. Bread—Fine wheaten, first quality	per cental	0	0	8 $\frac{3}{4}$

CONTRACT No. 1912/340.

J. N. Hennessy, 55 Sydney-road, Brunswick.

Sub-schedule 3.

BREAD FOR HOSPITALS FOR THE INSANE AT YARRA BEND.

Security, £100.

		£	s.	d.
1. Bread—Fine wheaten, first quality	per cental	0	8	2 $\frac{1}{2}$

CONTRACT No. 1912/341.

J. N. Hennessy, 55 Sydney-road, Brunswick.

Sub-schedule 4.

BREAD FOR DEPARTMENT OF NEGLECTED CHILDREN AND REFORMATORY SCHOOLS, ROYAL PARK; RECEIVING HOUSE AND MENTAL HOSPITAL, ROYAL PARK; POLICE LOCK-UPS; POLICE DEPOT, ETC.

Security, £50.

		£	s.	d.
1. Bread—Fine wheaten, first quality	per cental	0	8	3 $\frac{1}{2}$
2. " Wheaten, third quality	do.	0	8	3 $\frac{1}{2}$

CONTRACT No. 1912/342.

H. McDonough, Flinders-st., Melbourne.

Sub-schedule 5.

BUTTER, CHEESE, AND EGGS.

Security, £120.

		£	s.	d.
1. Butter—First Grade Creamery, to score not less than 92 points Government grade, Commerce Regulations standard	per cwt.	5	7	4
2. Cheese—First Class quality	do.	3	14	8
3. Eggs—Fresh, new laid	per doz.	0	1	3

CONTRACT No. 1912/343.

T. R. Rush, 407 Collins-street, Melbourne.

Sub-schedule 6.

FLOUR AND MAIZE MEAL.

Security, £100.

		£	s.	d.
1. Flour—Roller, first quality, to sample	per cental	0	9	0
2. " Sharps, to sample	do.	0	7	11
3. Maize meal	do.	0	10	5

CONTRACT No. 1912/344.

J. D. Howie, 299 Smith-street, Fitzroy.

Sub-schedule 7.

GROCERIES, ETC.

Security, £100.

		£	s.	d.
1. Arrowroot—Queensland	per lb.	0	0	4
2. Bicarbonate of Soda	do.	0	0	1 $\frac{1}{2}$
3. Blue—Of any brand ordered	do.	0	0	6 $\frac{1}{2}$
4. Candles—Full weights, Kitchen's "Petrolines," Apollo Co.'s "Apollo," or other make of equal quality, to be supplied in 1-lb. packets, to sample	do.	0	0	6 $\frac{1}{2}$

GROCERIES, ETC.—continued.

		£	s.	d.
5. Candles—Kitchen's "Petrolines," Apollo Co.'s "Apollo," or other make of equal quality, for use in prison cells, to burn for 1, 1 $\frac{1}{2}$, 2, 2 $\frac{1}{2}$, and 3 hours respectively, as ordered, to sample for quality and size, to be supplied in candle boxes, containing from 25 to 50 lbs. per box	per lb.	0	0	6 $\frac{1}{2}$
6. " Carriage, equal to Kitchen's No. 8, in 1-lb. packets	do.	0	0	7
7. " Paraffine	do.	0	0	5
8. Cocoa—In original $\frac{1}{2}$ -lb. packets, of any brand ordered	do.	0	1	0
9. Coffee—Fresh roasted and whole, beans to be thoroughly sound, to sample	do.	0	1	3
10. " Pure, fresh roasted and ground, to sample	do.	0	1	3
11. Cornina	do.	0	0	5
12. Cream of Tartar	do.	0	1	0
13. Currants	do.	0	0	6
14. Essence of Lemon	per bottle	0	6	0
15. Golden Syrup, in 7-lb. tins	per tin	0	1	5
16. Lemon Peel	per lb.	0	0	6 $\frac{1}{2}$
17. Maizena—Duryea's	do.	0	0	6 $\frac{1}{2}$
18. Mustard—"Double Superfine," of any Commonwealth manufacture ordered	do.	0	1	4
19. Nutmegs	do.	0	1	0
20. Oatmeal—Of any brand ordered	per cwt.	0	19	6
21. Pearl barley	do.	0	19	6
22. Pease—Split	do.	0	16	0
23. Pepper—Black, ground	per lb.	0	0	9 $\frac{1}{2}$
24. Pipes—Tobacco, clay	per doz.	0	0	4
25. Raisins—Sultana (Mildura)	per lb.	0	0	6 $\frac{1}{2}$
26. Rice—Dressed, to sample	per cwt.	1	0	6
27. Seed Tapioca (Sago), to sample	do.	1	0	0
28. Salt—Fine	do.	0	3	6
29. " Rock	do.	0	4	0
30. Soap, Toilet—Brown Windsor, in tablets, to sample	per lb.	0	0	5
31. " Carbolic, in half-pound bars, to sample	do.	0	0	5
32. " Glycerine, in tablets, to sample	do.	0	0	5
33. " Sunlight, in tablets	do.	0	0	6
34. " Magic	do.	0	0	3
35. " Velvet	do.	0	0	4
36. Soap—Extract of, Hudson's, "Best," in 14-lb. boxes	per box	0	4	3
37. Soda—Washing	per cwt.	0	4	9
38. Starch—Of any brand ordered, to sample	per lb.	0	0	4 $\frac{1}{2}$
39. Treacle, in 7-lb. tins	per tin	0	1	2
40. Vinegar	per quart	0	3	0
41. Lime Water	"	0	0	6
42. Tapioca (Pearl)	per lb.	0	0	2 $\frac{1}{2}$
43. Tomato Sauce (pints)	per bottle	0	0	5 $\frac{1}{2}$

CONTRACT No. 1912/345.

Cunliff and Paterson Pty. Ltd., 402-10 Swanston-street, Melbourne.

Sub-schedule 8.

JAMS FOR HOSPITALS FOR THE INSANE.

(Including Receiving House, Royal Park.)

Security, £20.

£ s. d.

		per lb.	actual net weight	£	s.	d.
1. Jams—Assorted, of approved kinds, in the proportion of half seed and half stone, of the best quality, in tins, as required				0	0	4 $\frac{1}{2}$

CONTRACT No. 1912/346.

G. R. McKelvey and Co., Pty. Ltd., 323 Elizabeth-street, Melbourne.

Sub-schedule 9.

MEAT FOR HOSPITALS FOR THE INSANE, KEW.

Security, £150.

£ s. d.

		per cental	£	s.	d.
1. Fresh Beef—Fore-quarters		0	19	5	
2. " Hind-quarters		0	19	5	
3. " Buttock		0	19	5	
4. " Mutton		0	19	5	
5. Corned Beef, rolled or round, as ordered, without bone or cartilage		0	19	5	
6. Fresh Suet—Kidney		1	2	11	

CONTRACT No. 1912/347.

Wm. Anglias and Co. Pty. Ltd., 44-46 Bourke-street, Melbourne.

Sub-schedule 10.

MEAT FOR HOSPITALS FOR THE INSANE, YARRA BEND.

Security, £120.

£ s. d.

		per cental	£	s.	d.
1. Fresh Beef—Fore-quarters		0	19	9	
2. " Hind-quarters		0	19	9	
3. " Buttock		0	19	9	
4. " Mutton		0	19	9	
5. Corned Beef, rolled or round, as ordered, without bone or cartilage		0	19	9	
6. Fresh Suet—Kidney		1	5	0	

CONTRACT No. 1912/348.

T. K. Bennett and Woolcock, 534 Collins-street, Melbourne.

Sub-schedule 11.

MEAT FOR PENAL ESTABLISHMENT, PENTRIDGE.

	Security, £100.	£	s.	d.
1. Fresh Beef	per cental	0	19	4
2. " Buttock	do.	0	19	4
3. Corned Beef	do.	0	19	4
4. Fresh Mutton	do.	0	19	4
5. Dripping	do.	1	13	4

CONTRACT No. 1912/349.

T. K. Bennett and Woolcock, 534 Collins-street, Melbourne.

Sub-schedule 12.

MEAT FOR MELBOURNE GAOL; POLICE BARRACKS, ST. KILDA-ROAD; DEPARTMENT FOR NEGLECTED CHILDREN AND REFORMATORY SCHOOLS, ROYAL PARK; AND RECEIVING HOUSE, AND MENTAL HOSPITAL, ROYAL PARK.

	Security, £50.	£	s.	d.
1. Fresh Beef	per cental	0	19	6
2. " Buttock	do.	0	19	6
3. " Mutton	do.	0	19	6
4. Corned Beef, rolled or round, as ordered, without bone or cartilage	do.	0	19	6
5. Fresh Suet—Kidney	do.	1	5	0

CONTRACT No. 1912/350.

J. Murphy, Geake-st., Coburg.

Sub-schedule 13.

MILK FOR MELBOURNE GAOL; AND RECEIVING HOUSE, AND MENTAL HOSPITAL, ROYAL PARK.

	Security, £10.	£	s.	d.
1. Milk—Fresh and pure	per gal.	0	1	0

CONTRACT No. 1912/351.

J. Murphy, Geake-st., Coburg.

Sub-schedule 14.

MILK FOR PENAL ESTABLISHMENT, PENTRIDGE.

	Security £10.	£	s.	d.
1. Milk—Fresh and pure	per gal.	0	1	0

CONTRACT No. 1912/352.

W. H. Maine & Co. Pty. Ltd., 452 Flinders-st., Melbourne.

Sub-schedule 15.

POTATOES.

	Security, £100.	£	s.	d.
1. Potatoes	per cental	0	6	6

CONTRACT No. 1912/353.

J. D. Howie, 299 Smith-street, Fitzroy.

Sub-schedule 16.

SUGAR.

	Security, £100.	£	s.	d.
1. Sugar—White, to sample	per cwt.	1	3	6
2. " Ration "	do.	1	0	0

CONTRACT No. 1912/354.

Donald Robinson, Sturt-street, Ballarat.

Sub-schedule 17.

TEA.

	Security, £60.	£	s.	d.
1. Tea—Best Congou, to sample	per lb.	0	0	8
2. " Ration, to sample	do.	0	0	5

CONTRACT No. 1912/355.

Dudgeon and Arnell, 524 Lonsdale-street, Melbourne.

Sub-schedule 18.

TOBACCO.

	Security, £20.	£	s.	d.
1. Tobacco, in 1-oz. plugs, for gaols—"Star-light," or other make of equal quality, to sample	per lb.	0	2	8
2. Tobacco twist, 21 plugs to the pound, for Hospitals for the Insane, to sample	do.	0	2	8½

Schedule No. 2.

PROVISIONS AT WILLIAMSTOWN.

(For s.s. Lady Loch and Albert.)

(Including Candles, Soap, and Soda for Dockyard.)

(Supplies for Naval Forces are not included in this Schedule.)

(Supplies to be delivered on board the Vessels.)

CONTRACT No. 1912/356.

W. J. Elsom, Williamstown.

Sub-schedule 1.

BREADSTUFFS.

	Security, £10.	£	s.	d.
1. Bread—Fine wheatan, first quality	per cental	0	10	5
2. Flour—First quality	do.	0	9	6

CONTRACT No. 1912/357.

Jas. Rice and Son, Williamstown.

Sub-schedule 2.

BUTTER.

	Security, £5.	£	s.	d.
1. Butter—First-class Creamery, to score not less than 92 points Government grade, Commerce Regulations standard	per lb.	0	1	2

CONTRACT No. 1912/358.

Jas. Rice and Son, 215 Nelson-place, Williamstown.

Sub-schedule 3.

GROCERIES.

	Security, £10.	£	s.	d.
1. Chocolate, of any brand ordered	per lb.	0	1	0½
2. Coffee—Fresh roasted and ground, to sample	do.	0	0	11½
3. Currants	do.	0	0	5½
4. Flour—Self-raising	do.	0	0	1½
5. Milk—Condensed, of any brand ordered	per tin	0	0	6½
6. Mustard—double superfine, of any brand ordered	per lb.	0	1	3
7. Oatmeal	per cwt.	0	18	6½
8. Pearl barley	do.	0	18	5½
9. Peaso—Split	do.	0	18	5½
10. Pepper—White, ground	per lb.	0	0	11½
11. Raisins—Sultana, Mildura	do.	0	0	5½
12. Salt—Fine, to sample	do.	0	0	0½
13. Sugar—White, to sample	per cwt.	1	4	3
14. Tea—Best Congou, special sample	per lb.	0	0	9
15. " Ceylon "	do.	0	1	0
16. Vinegar—Champion's, or other approved brand	per quart	0	0	3
17. Biscuits, kinds as ordered	per lb.	0	0	3
18. Meat—Preserved	do.	0	0	4½

CONTRACT No. 1912/359.

Jas. Rice and Sons, 215 Nelson-place, Williamstown.

Sub-schedule 4.

CANDLES, SOAP, AND SODA FOR DOCKYARD.

	Security, £5.	£	s.	d.
1. Candles—(full weights) Kitchen's "Petrolines," Apollo Co.'s "Apollo," or other make of equal quality, to be supplied in 1-lb. packets	per lb.	0	0	6½
2. Soap—Household, yellow, dry, to sample	do.	0	0	2½
3. Soda—Washing	do.	0	0	1½

CONTRACT No. 1912/360.

G. R. McKelvey and Co. Pty. Ltd., 323 Elizabeth-street, Melbourne.

Sub-schedule 5.

MEAT.

	Security, £10.	£	s.	d.
1. Fresh Beef	per cental	1	17	6
2. " Mutton	do.	1	17	6
3. " Suet	per lb.	0	0	4

CONTRACT No. 1912/361.

G. Hosking, 157 Nelson-place, Williamstown.

Sub-schedule 6.

VEGETABLES.

	Security, £5.	£	s.	d.
1. Potatoes	per cental	0	7	7
2. Onions	do.	0	10	5
3. Other vegetables, including cauliflowers, carrots, cabbages, turnips, and parsnips, as required	do.	0	12	6

Schedule No. 3. PROVISIONS—ARARAT DISTRICT.

Period of Contract—From 1st July, 1912, to 30th June, 1913.

CONTRACT No. 1912/362.

William Bates, Ararat.

Sub-schedule 1.

BREADSTUFFS.

Security, £100.

Table with 3 columns: Item description, unit, price (£ s. d.). Includes Bread—Fine wheaten, first quality; Wheat, third quality; Flour—First quality.

CONTRACT No. 1912/363.

H. McDonough, Flinders-st., Melbourne.

Sub-schedule No. 2.

BUTTER AND CHEESE.

Security, £30.

Table with 3 columns: Item description, unit, price (£ s. d.). Includes Butter—First Grade Creamery; Cheese—First-class quality.

CONTRACT No. 1912/364.

J. D. Howie, 299 Smith-street, Fitzroy.

Sub-schedule No. 3.

GROCERIES.

Security, £30.

Table with 3 columns: Item description, unit, price (£ s. d.). Includes Blue—Of any brand ordered; Candles; Coffee; Golden Syrup; Mustard; Oatmeal; Pease; Pepper; Pipes; Raisins; Rice; Seed Tapioca; Soda; Starch; Tartar; Vinegar.

CONTRACT No. 1912/365.

Ballarat Jam Co., Sebastopol, Ballarat.

Sub-schedule No. 4.

JAMS.

(For Hospitals for the Insane.)

Security, £10.

Table with 3 columns: Item description, unit, price (£ s. d.). Includes Jams, assorted, of approved kinds.

CONTRACT No. 1912/366.

Arthur Murphy, Barkly-street, Ararat.

Sub-schedule No. 5.

MEAT.

Preliminary deposit, £10. Security, £100.

Table with 3 columns: Item description, unit, price (£ s. d.). Includes Fresh beef—Fore-quarters; hind-quarters; buttocks; mutton; Corned beef; Fresh suet—Kidney.

CONTRACT No. 1912/367.

Flattely and Lewis, Ararat.

Sub-schedule No. 6.

POTATOES.

Security, £30.

Table with 3 columns: Item description, unit, price (£ s. d.). Includes Potatoes.

CONTRACT No. 1912/368.

J. D. Howie, 299 Smith-street, Fitzroy.

Sub-schedule No. 7.

SUGAR.

Preliminary deposit, £3. Security, £30.

Table with 3 columns: Item description, unit, price (£ s. d.). Includes Sugar—White, to sample.

CONTRACT No. 1912/369.

J. D. Howie, 299 Smith-street, Fitzroy.

Sub-schedule No. 8.

TEA.

Security, £20.

Table with 3 columns: Item description, unit, price (£ s. d.). Includes Tea—Best Congou, to sample.

Schedule No. 4.

PROVISIONS—BEECHWORTH DISTRICT.

Period of Contract—From 1st July, 1912, to 30th June, 1913.

CONTRACT No. 1912/370.

A. Trim, Beechworth.

Sub-schedule No. 1.

BREADSTUFFS.

Security, £100.

Table with 3 columns: Item description, unit, price (£ s. d.). Includes Bread—Fine wheaten, first quality; Wheat, third quality; Flour—First quality.

CONTRACT No. 1912/371.

H. McDonough, Flinders-st., Melbourne.

Sub-schedule No. 2.

BUTTER AND CHEESE.

Security, £30.

Table with 3 columns: Item description, unit, price (£ s. d.). Includes Butter—First-grade Creamery; Cheese—First-class quality.

CONTRACT No. 1912/372.

John Clements, Beechworth.

Sub-schedule No. 3.

GROCERIES.

Security, £30.

Table with 3 columns: Item description, unit, price (£ s. d.). Includes Blue—Of any brand required; Candles; Coffee; Golden Syrup; Mustard; Oatmeal; Pearl Barley; Pease; Pepper; Pipes; Raisins; Rice; Seed Tapioca; Soda; Starch; Tartar; Vinegar.

CONTRACT No. 1912/373.

J. R. Newey, jr., Ford-street, Beechworth.

Sub-schedule No. 4.

MEAT.

Security, £100.

Table with 3 columns: Item description, unit, price (£ s. d.). Includes Fresh beef, fore-quarters; hind-quarters; buttocks; mutton; Corned beef; Fresh suet—Kidney.

CONTRACT No. 1912/374.

W. H. Maine & Co. Pty. Ltd., Flinders-st., Melbourne.

Sub-schedule No. 5.

POTATOES.

Security, £30.

Table with 3 columns: Item description, unit, price (£ s. d.). Includes Potatoes.

CONTRACT No. 1912/375.

John D. Howie, 299 Smith-street, Fitzroy.

Sub-schedule No. 6.

SUGAR.

Preliminary deposit, £3.	Security, £30.	£	s.	d.
1. Sugar—White, to sample	... per cwt.	1	5	0
2. " Ration	... do.	1	0	0

CONTRACT No. 1912/376.

John Clements, Beechworth.

Sub-schedule No. 7.

TEA.

Security, £20.	£	s.	d.	
1. Tea—Best Congou, to sample	... per lb.	0	0	9
2. " Ration, to sample	... do.	0	0	3

Schedule No. 5.

PROVISIONS AT BALLARAT.

CONTRACT No. 1912/377.

John Davies, 47 Eureka-street, Ballarat East.

Sub-schedule No. 1.

BREADSTUFFS.

Security, £50.	£	s.	d.	
1. Bread—Fine wheaten, first quality	... per cental	0	8	0 $\frac{1}{2}$
2. " Wheaten, third quality	... do.	0	7	3 $\frac{1}{2}$
3. Flour—First quality	... do.	0	9	3

CONTRACT No. 1912/378.

H. McDonough, Flinders-st., Melbourne.

Sub-schedule No. 2.

BUTTER AND CHEESE.

Security, £30.	£	s.	d.	
1. Butter—First-grade Creamery, to score not less than 92 points, Government grade, Commerce Regulations standard	... per cwt.	5	9	8
2. Cheese—First-class quality	... do.	3	17	0

CONTRACT No. 1912/379.

Moran and Cato, Collins and King Streets.

Sub-schedule No. 3.

GROCERIES.

Security, £30.	£	s.	d.	
1. Barley—Pearl	... per lb.	0	0	2 $\frac{1}{2}$
2. Blue—Of any brand required	... do.	0	0	6 $\frac{1}{2}$
3. Candles (full weights)—Kitchen's "Petro-lines," Apollo Co.'s "Apollo," or other make of equal quality, to sample, to be supplied in 1-lb. packets	... do.	0	0	6 $\frac{1}{2}$
4. Coffee—Fresh roasted and whole, beans to be thoroughly sound, to sample	... do.	0	1	4
5. Cornina	... do.	0	0	5
6. Currants	... do.	0	0	6
7. Ginger—Ground	... do.	0	1	0
8. Golden syrup, in 7-lb. tins	... per tin	0	1	6
9. Maizena—Duryea's	... per lb.	0	0	6 $\frac{1}{2}$
10. Milk—Fresh and pure	... per quart	0	0	5
11. Mustard—Double superfine, of any Commonwealth manufacture ordered	... per lb.	0	1	4
12. Oatmeal—Of any brand ordered	... per cwt.	1	1	0
13. Pease—Split	... do.	0	18	0
14. Pepper—Black, ground	... per lb.	0	10	0
15. Pipes—Tobacco, clay	... per doz.	0	0	4 $\frac{1}{2}$
16. Raisins—Sultana (Mildura)	... per lb.	0	0	6 $\frac{1}{2}$
17. Rice—Dressed, to sample	... per cwt.	1	0	0
18. Seed Tapioca, Sago—To sample	... per lb.	1	1	6
19. Salt—Fine	... per cwt.	0	4	6
20. Soap—(Household), carbolic, dry, to sample	... per lb.	0	0	3
21. Soap—(Household), yellow, dry, to sample	... do.	0	0	3
22. Soda—Carbonate of	... do.	0	0	1 $\frac{1}{2}$
23. " Washing	... per cwt.	0	5	0
24. Spice—Mixed, in 1-oz. packets	... per doz. pkts.	0	0	9
25. Starch—Of any brand ordered, to sample	... per lb.	0	0	4 $\frac{1}{2}$
26. Sugar—White, to sample	... per cwt.	1	4	6
27. " Ration	... per lb.	0	18	6
28. Tartar—Cream of	... do.	0	0	11
29. Tea—Best Congou, to sample	... do.	0	0	8 $\frac{1}{2}$
30. " Ration	... do.	0	0	6
31. Tobacco—"Starlight," or other make of equal quality, as ordered	... do.	0	2	8
32. Vinegar	... per pint	0	0	3
33. Whiting	... per lb.	0	0	0 $\frac{1}{2}$

CONTRACT No. 1912/380.

Ballarat Jam Co. Pty. Ltd., Sebastopol, Ballarat.

Sub-schedule No. 4.

JAMS.

(For Hospitals for the Inane.)

Security, £10.	£	s.	d.	
1. Jams—Assorted, of approved kinds in proportion of half seed and half stone, actual net of the best quality, in tins as required	... weight	0	0	3 $\frac{1}{2}$

CONTRACT No. 1912/381.

H. J. Symons, 1015 Macarthur-street, Ballarat.

Sub-schedule No. 5.

MEAT.

Security, £50.	£	s.	d.	
1. Fresh beef—Fore-quarters	... per cental	1	2	0
2. " " Hind-quarters	... do.	1	2	0
3. " " Buttocks	... do.	1	2	0
4. " mutton	... do.	1	0	6
5. Corned beef, rolled or round, as ordered, without bone or cartilage	... do.	1	4	0
6. Fresh suet—Kidney	... per lb.	1	5	0

CONTRACT No. 1912/382.

W. H. Maine & Co., Pty. Ltd., Flinders-st., Melbourne.

Sub-schedule No. 6.

POTATOES.

Security, £20.	£	s.	d.	
1. Potatoes	... per cental	0	7	0

Schedule No. 6.

PROVISIONS AT GEELONG.

CONTRACT No. 1912/383.

W. Marshall, 138 Malop-street, Geelong.

Sub-schedule No. 1.

BREADSTUFFS.

Security, £20.	£	s.	d.	
1. Bread—Fine wheaten, first quality	... per cental	0	8	10 $\frac{1}{2}$
2. " Wheaten, third quality	... do.	0	8	10 $\frac{1}{2}$

CONTRACT No. 1912/384.

Moran and Cato, King and Collins streets, Melbourne.

Sub-schedule No. 2.

GROCERIES.

The Soap supplied must be hard throughout, ready for immediate use without waste. When the quantity admits, Tea must be supplied in original and unopened packages, labelled, as landed. Sugar may be purchased from a Government institution without infringing this Contract.

Security, £20.	£	s.	d.	
1. Arrowroot—Queensland	... per lb.	0	0	5
2. Candles (full weights)—Kitchen's "Petro-lines," Apollo Co.'s "Apollo," or other make of equal quality, to sample, to be supplied in 1-lb. packets	... do.	0	0	6
3. Barley—Pearl	... do.	0	0	6
4. Currants	... do.	0	0	6
5. Eggs—Fresh	... per doz.	0	1	2
6. Mustard—"Double Superfine," of any Commonwealth manufacture ordered	... per lb.	0	1	3
7. Oatmeal—Of any brand ordered	... per cwt.	1	1	6
8. Pepper—Black, ground	... per lb.	0	10	0
9. Pipes—Tobacco, clay	... per doz.	0	0	4 $\frac{1}{2}$
10. Raisins—Sultana (Mildura)	... per lb.	0	0	7
11. Rice—Dressed, to sample	... per cwt.	1	0	0
12. Seed Tapioca—To sample	... per lb.	0	0	2 $\frac{1}{2}$
13. Salt—Fine	... do.	0	0	0 $\frac{1}{2}$
14. Soap—(Household) Carbolic, dry, to sample	... do.	0	0	2 $\frac{1}{2}$
15. Soap—(Household) Yellow, dry, to sample	... per cwt.	1	4	0
16. Soda—Washing	... do.	0	5	6
17. Sugar—Ration, to sample	... do.	0	19	0
18. Tea—Ration	... per lb.	0	0	8
19. Tobacco—"Starlight," or other make of equal quality, as ordered	... do.	0	2	8

CONTRACT No. 1912/385.

J. W. Branch, Autumn-street, Geelong West.

Sub-schedule No. 3.

MEAT.

Security, £20.	£	s.	d.	
1. Fresh beef	... per cental	1	0	10
2. " buttocks	... do.	1	0	10
3. " mutton	... do.	1	0	10

CONTRACT No. 1912/386.

Thomas Warren, East Geelong Post Office.

Sub-schedule No. 4.

MILK.

Security, £5.	£	s.	d.	
1. Milk—Fresh and pure	... per gallon	0	1	2

CONTRACT No. 1912/387.

W. H. Maine & Co., Pty. Ltd., Flinders-st., Melbourne.

Sub-schedule No. 5.

POTATOES.

Security, £5.	£	s.	d.	
1. Potatoes	... per cental	0	7	6

Schedule No. 7.
PROVISIONS AT LARA.

(Delivery at Inebriates' Retreat.)
CONTRACT No. 1912/388.
E. G. Loft, Lara Lake Post Office.

Sub-schedule No. 1.

BREADSTUFFS.

	Security, £20.	£	s.	d.
1. Bread—Fine wheaten, first quality ... per cental	0 10 5	0	10	5
2. Flour—First quality ... do.	0 10 5	0	10	5

CONTRACT No. 1912/389.

H. Lloyd & Sons, 141 Exhibition-st., Melbourne.

Sub-schedule No. 2.

BUTTER AND CHEESE.

	Security, £10.	£	s.	d.
1. Butter—First Grade Creamery, to score not less than 92 points Government grade, Commerce Regulations standard ... per cwt.	6 1 4	6	1	4
2. Cheese—First-class quality ... do.	3 14 8	3	14	8

CONTRACT No. 1912/390.

R. G. Wilson and Co., 21 Swanston-street, Melbourne.

Sub-schedule No. 3.

GROCERIES.

	Preliminary Deposit, £2.	Security, £20.	£	s.	d.
1. Arrowroot—Queensland ... per lb.	0 0 4½		0	0	4½
2. Bacon, Farmer's or Hutton's, by the side or other approved brand ... do.	0 0 8½		0	0	8½
3. Barley—Pearl ... do.	0 0 2½		0	0	2½
4. Blue—Of any brand ordered ... do.	0 0 6½		0	0	6½
5. Candles—(Full weights) Kitchen's "Petrolines," Apollo Co.'s "Apollo," or other make of equal quality, to sample, to be supplied in 1-lb. packets ... do.	0 0 6½		0	0	6½
6. Cocoa—McKenzie's, or other brand of equal quality ... do.	0 1 0		0	1	0
7. Coffee—Fresh roasted and whole beans, to be thoroughly sound, to sample ... do.	0 1 4½		0	1	4½
8. Currants ... do.	0 0 6½		0	0	6½
9. Mustard—Double Superfine, of any Commonwealth manufacture ordered ... do.	0 1 4		0	1	4
10. Oatmeal—Of any brand ordered ... per cwt.	1 1 6		1	1	6
11. Pease—Split ... per lb.	0 0 1½		0	0	1½
12. Pepper—Black, ground ... do.	0 0 10		0	0	10
13. Raisins—Sultana (Mildura) ... do.	0 0 7½		0	0	7½
14. Rice—Dressed, to sample ... do.	0 0 2½		0	0	2½
15. Seed Tapioca, Sago—To sample ... do.	0 0 2½		0	0	2½
16. Salmon—Fresh, Brand, as ordered, talls —1-lb. tins ... per tin.	0 9½		0	9	½
17. Salt—Fine ... per lb.	0 0 0½		0	0	0½
18. Soap—Household) Yellow, dry, to sample ... do.	0 0 2½		0	0	2½
19. Soap—Toilet, Glycerine, in tablets, to sample ... do.	0 0 5		0	0	5
20. Soda—Washing ... do.	0 0 ½		0	0	½
21. Sugar, White, to sample ... per cwt.	1 4 6		1	4	6
22. Tea, Best Congou " ... per lb.	0 0 9		0	0	9

CONTRACT No. 1912/391.

Cuntiff and Paterson, Pty. Ltd., 402-10 Swanston-street, Melbourne.

Sub-schedule No. 4.

JAMS.

	Security, £5.	£	s.	d.
1. Jams, assorted, of approved kinds in the proportion of half seed and half stone, of the best quality, in tins containing 27 oz. net ... per doz.	0 7 2	0	7	2

CONTRACT No. 1912/392.

Sub-schedule No. 5.

MEAT.

	Security, £20.	£	s.	d.
1. Fresh Beef ... per cental				
2. " Mutton ... do.				
3. " Tripe, Sausages, Kidneys, and Liver, as ordered ... do.				

CONTRACT No. 1912/393.

W. H. Maine & Co. Pty. Ltd., Flinders-st., Melbourne.

Sub-schedule No. 6.

POTATOES.

	Security, £5.	£	s.	d.
1. Potatoes ... per cental	0 7 9	0	7	9

Schedule No. 8.
PROVISIONS—SUNBURY DISTRICT.

CONTRACT No. 1912/394.

T. Glyn and Son, Sunbury.

Sub-schedule No. 1.

BREADSTUFFS.

	Security, £100.	£	s.	d.
1. Bread—Fine wheaten, first quality ... per cental	0 8 10	0	8	10
2. Flour—First quality ... do.	0 9 3	0	9	3

CONTRACT No. 1912/395.

H. McDonough, Flinders-st., Melbourne.

Sub-schedule No. 2.

BUTTER, CHEESE, AND BACON.

	Security, £40.	£	s.	d.
1. Butter—First Grade Creamery, to score not less than 92 points Government grade, Commerce Regulations standard ... per cwt.	5 9 8	5	9	8
2. Cheese—First-class quality ... do.	3 17 0	3	17	0
3. Bacon—Shoulders ... do.	3 5 4	3	5	4

CONTRACT No. 1912/396.

J. D. Howie, 299 Smith-street, Fitzroy.

Sub-schedule No. 3.

GROCERIES.

	Security, £20.	£	s.	d.
1. Blue—Of any brand ordered ... per lb.	0 0 6½	0	0	6½
2. Candles—(Full weights) Kitchen's "Petrolines," Apollo Co.'s "Apollo," or other make of equal quality, to sample, to be supplied in 1-lb. packets ... do.	0 0 6½	0	0	6½
3. Coffee—Fresh roasted and whole—Beans to be thoroughly sound, to sample ... do.	0 1 3½	0	1	3½
4. Cornina ... do.	0 0 5	0	0	5
5. Currants ... do.	0 0 6½	0	0	6½
6. Golden Syrup, in 56-lb. tins ... per tin	0 9 9	0	9	9
7. Maizena—Duryea's ... per lb.	0 0 6½	0	0	6½
8. Mustard—Double superfine, of any Commonwealth manufacture ordered ... do.	0 1 6	0	1	6
9. Oatmeal—Of any brand ordered ... per cwt.	1 0 0	1	0	0
10. Pease—Split ... do.	0 16 8	0	16	8
11. Pepper—Black, ground ... per lb.	0 0 9½	0	0	9½
12. Pipes—Tobacco, clay ... per doz.	0 0 4½	0	0	4½
13. Raisins—Sultana (Mildura) ... per lb.	0 0 6½	0	0	6½
14. Rice, dressed, to sample ... per cwt.	1 1 2	1	1	2
15. Seed Tapioca (Sago)—To sample ... do.	1 1 0	1	1	0
16. Salt—Fine ... do.	0 1 0	0	1	0
17. Soda—Washing ... do.	0 5 4	0	5	4
18. Starch—Of any brand ordered, to sample ... per lb.	0 0 4½	0	0	4½
19. Tartar—Cream of ... do.	0 1 0	0	1	0
20. Vinegar ... per pint	0 0 3	0	0	3

CONTRACT No. 1912/397.

Cuntiff and Paterson Pty. Ltd., Swanston-street, Melbourne.

Sub-schedule No. 4.

JAMS.

(For Hospitals for the Insane.)

	Security, £10.	£	s.	d.
1. Jams—Assorted, of approved kinds in the proportion of half seed and half stone, of the best quality, in tins as required ... per lb. actual net weight	0 0 4½	0	0	4½

CONTRACT No. 1912/398.

Catherine M. Starkie, Sunbury.

Sub-schedule No. 5.

MEAT, ETC.

	Security, £80.	£	s.	d.
1. Fresh Beef—Fore-quarters ... per cental	0 19 4½	0	19	4½
2. " " Hind-quarters ... do.	0 19 4½	0	19	4½
3. " " Buttocks ... do.	0 19 4½	0	19	4½
4. " Mutton ... do.	0 19 4½	0	19	4½
5. Corned Beef—Rolled or round, as ordered, without bone or cartilage ... do.	0 19 4½	0	19	4½
6. Fresh Beef Sust—Kidney ... do.	0 19 4½	0	19	4½

CONTRACT No. 1912/399.

W. Angless and Co. Pty. Ltd., 44-46 Bourke-street, Melbourne.

Sub-Schedule 5A.

RABBITS.

	Security, £5.	£	s.	d.
7. Rabbits—Not less than 3½ lbs. per pair per doz. prs.	0 12 10	0	12	10

CONTRACT No. 1912/400.

W. H. Maine & Co. Pty. Ltd., Flinders-st., Melbourne.

Sub-Schedule No. 6.

POTATOES.

	Security, £30.	£	s.	d.
1. Potatoes ... per cental	0 7 0	0	7	0

CONTRACT No. 1912/401.
J. D. Howie, 299 Smith-street, Fitzroy.
 Sub-Schedule No. 7.

SUGAR.

	Security, £20.	£	s.	d.
1. Sugar—White, to sample	... per cwt.	1	4	1

CONTRACT No. 1912/402.
J. D. Howie, 299 Smith-street, Fitzroy.
 Sub-Schedule No. 8.

TEA.

	Security, £20.	£	s.	d.
1. Tea—Best Congou, to sample	... per lb.	0	0	9½

PROVISIONS—BENDIGO DISTRICT.

CONTRACT No. 1912/403.
Wm. Beischer.
 Sub-schedule No. 1.

BREAD.

	Security, £5.	£	s.	d.
1. Bread—Wheaten, third quality	... per cental			

CONTRACT No. 1912/404.
Moran and Cato, Collins and King streets, Melbourne.
 Sub-schedule No. 2.

GROCERIES AND POTATOES.

	Security, £5.	£	s.	d.
1. Candles—(full weights) Kitchen's "Petro- lines," Apollo Co.'s "Apollo," or other make of equal quality, to sample, to be supplied in 1-lb. packets	... per lb.	0	0	6½
2. Milk—Fresh and pure	... per quart	0	0	4½
3. Oatmeal—Of any brand ordered	... per lb.	0	0	2½
4. Rice, dressed, to sample	... do.	0	0	2½
5. Salt—Fine	... do.	0	0	0½
6. Soap—Yellow (Household), dry, to sample	... do.	0	0	2½
7. " Carbolic "	... do.	0	0	3
8. Soda—Washing	... do.	0	0	0½
9. Sugar—Ration, to sample	... do.	0	0	2½
10. " White "	... do.	0	0	2½
11. Tea—Best Congou, to sample	... do.	0	1	0
12. " Ration, to sample	... do.	0	0	10
13. Tobacco—"Starlight," or other make of equal quality, as ordered	... do.	0	2	8
14. Whiting	... do.	0	0	0½

CONTRACT No. 1912/405.
Sprenger & Unmack, Bendigo.
 Sub-schedule 3.

MEAT.

	Security, £5.	£	s.	d.
1. Fresh beef	... per cental	1	17	6

PROVISIONS—CASTLEMAINE DISTRICT.

CONTRACT No. 1912/406.
M. Van Heurck, Castlemaine.
 Sub-schedule 1.

BREAD.

	Security, £5.	£	s.	d.
1. Bread—Wheaten, third quality	... per cental	0	10	5

CONTRACT No. 1912/407.
Mary F. Elvish, Market Square, Castlemaine.
 Sub-schedule 2.

GROCERIES AND POTATOES.

	Security, £5.	£	s.	d.
1. Candles—(full weights), Kitchen's "Petro-lines," Apollo Co.'s "Apollo," or other make of equal quality, to sample, to be supplied in 1-lb. packets	... per lb.	0	0	9
2. Milk—Fresh and pure	... per quart	0	0	5
3. Salt—Fine	... per lb.	0	0	1
4. Soap—Yellow (household), dry, to sample	... do.	0	0	4
5. Soda—Washing	... do.	0	0	1
6. Sugar—Ration, to sample	... do.	0	0	3
7. Tea—Ration	... do.	0	1	3

CONTRACT No. 1912/408.
Jas. Williamson, Mostyn-street, Castlemaine.
 Sub-schedule 3.

MEAT.

	Security, £5.	£	s.	d.
1. Fresh Beef	... per lb.	0	0	3½
2. " Mutton	... do.	0	0	3½

Schedule No. 11.
 PROVISIONS AT SALE.

CONTRACT No. 1912/109.
Wm. Hawkins, Raymond-street, Sale.
 Sub-schedule 1.

BREAD.

	Security, £5.	£	s.	d.
1. Bread—Wheaten, third quality	... per lb.	0	0	1½

Sub-schedule 2.
 GROCERIES AND POTATOES.

	£	s.	d.
1. Milk—Fresh and pure	... per quart		
2. Potatoes	... per cental		
3. Rice, dressed, to sample	... per lb.		
4. Salt—Fine	... do.		
5. Soap, yellow (household), dry, to sample	... do.		
6. Soda—Washing	... do.		
7. Sugar—Ration, to sample	... do.		
8. Tea " "	... do.		
9. Whiting	... do.		

CONTRACT No. 1912/410.
E. Cleaver, Raymond-street, Sale.
 Sub-schedule 3.

MEAT

	Security, £5.	£	s.	d.
1. Fresh beef	... per lb.	0	0	4

Schedule No. 18.
 PROVISIONS—MONT PARK.

(Delivery at the Hospital for Insane.)

CONTRACT No. 1912/411.
B. E. Johnson, Northcote.
 Sub-schedule No. 1.

BREADSTUFFS.

	Security, £30.	£	s.	d.
1. Bread—Fine Wheaten, First quality	... per cental	0	8	11½
2. Flour—First quality	... "	0	9	0

CONTRACT No. 1912/412.
H. McDonough, Flinders-street, Melbourne.
 Sub-schedule No. 2.

BUTTER, CHEESE, AND BACON.

	Security, £10.	£	s.	d.
1. Butter—First grade Creamery, to score not less than 92 points Government grade, Commerce Regulations standard per cwt.		5	12	0
2. Cheese—First-class quality	... "	3	19	4

CONTRACT No. 1912/413.
J. D. Howie, 299 Smith-street, Fitzroy.
 Sub-schedule No. 3.

GROCERIES.

	Security, £10.	£	s.	d.
1. Blue—Of any brand ordered	... per lb.	0	0	6½
2. Candles (full weights)—Kitchen's "Petro- lines," Apollo Co.'s "Apollo," or other make of equal quality, to sample, to be supplied in 1-lb. packets	... "	0	0	6½
3. Coffee—Fresh roasted and Whole—Beans to be thoroughly sound, to sample	... "	0	1	3
4. Cornina	... "	0	0	5
5. Currants	... "	0	0	6½
6. Golden Syrup, in 7-lb. tins	... per tin	0	1	5
7. Maizena—Duryea's	... per lb.	0	0	6½
8. Mustard—"Double Superfine," of any Commonwealth manufacture ordered	... "	0	1	4
9. Oatmeal—Of any brand ordered	... per cwt.	1	0	0
10. Pease—Split	... "	0	16	0
11. Pepper—Black, Ground	... per lb.	0	0	9½
12. Pipes—Tobacco, Clay	... per doz.	0	0	4½
13. Raisins—Sultana (Mildura)	... per lb.	0	0	7
14. Rice—Dressed, to sample	... per cwt.	1	0	6
15. Seed Tapioca (Sago)—To sample	... per lb.	0	0	2½
16. Salt—Fine	... per cwt.	0	3	9
17. Soda—Washing	... "	0	5	3
18. Starch—Of any brand ordered to sample	... per lb.	0	0	4½
19. Tartar—Cream of	... "	0	1	0
20. Vinegar	... per pint	0	0	2

CONTRACT No. 1912/414.
Geelong and Western District Preserving Co. Ltd., 98 Victoria
Parade, Geelong.

Sub-schedule No. 4.

JAMS.

(For Hospitals for the Insane.)

	Security, £10.	£	s.	d.
1.	Jams, assorted, of approved kinds in proportion of half seed and half stone, of actual net the best quality, in tins as required weight.	per lb.	0	0 4½

CONTRACT No. 1912/415.

W. Angliss and Co., 44-46 Bourke-street, Melbourne.

Sub-schedule No. 5.

MEAT, ETC.

	Security, £30.	£	s.	d.
1.	Fresh Beef, Forequarters	per cental	0	19 9
2.	" " Hindquarters	"	0	19 9
3.	" " Buttocks	"	0	19 9
4.	" Mutton	"	0	19 9
5.	Corned Beef—Rolled or Round, as ordered, without bone or cartilage	"	0	19 9
6.	Fresh Beef Suet—Kidney	"	1	5 0

CONTRACT No. 1912/416.

H. McDonough, Flinders-street, Melbourne.

Sub-schedule No. 6.

POTATOES.

	Security, £20.	£	s.	d.
1.	Potatoes	per cental	0	6 6

CONTRACT No. 1912/417.

J. D. Howie, 299 Smith-street, Fitzroy.

Sub-schedule No. 7.

SUGAR.

	Security, £10.	£	s.	d.
1.	Sugar—White, to sample	per cwt.	1	4 1

CONTRACT No. 1912/418.

J. D. Howie, 299 Smith-street, Fitzroy.

Sub-schedule No. 8.

TEA.

	Security, £10.	£	s.	d.
1.	Tea—Best Congou, to sample	per lb.	0	0 9½

CONTRACTS ACCEPTED.—(Series 1912-13.)

Serial No.	Particulars.	Amount.	Name of Contractor.	Charged against Vote or Fund.
	PROVISIONS.—SUPPLY OF PROVISIONS FOR THE UNDERMENTIONED PLACES AS MAY BE REQUIRED FROM 1ST JULY, 1912, TO 30TH JUNE, 1913.			
419	WYUNA— Groceries	Rates as per annex	Wm. Pratt	Contingencies, 1912-13.
420	WAHGUNYAH— Bread	"	Geo. G. Haig	
421	Groceries	"	Geo. G. Haig	
422	RUTHERGLEN— Bread	"	P. O'Keefe	
423	Groceries	"	R. Henderson	

Approved.—W. A. WATT, Treasurer. 19.6.1912.

PROVISIONS AT WYUNA.

(For the Wyuna Irrigation Farm. Delivery at the Farm.)

CONTRACT No. 1912/419.

William Pratt, Kyabram.

Sub-schedule No. 2.

GROCERIES, ETC.

Security, £10.

Table with 4 columns: Item description, Unit, and Price (£ s. d.). Includes items like Arrowroot, Baking Powder, Bacon, Blacking, Barley, Pearl, Candles, Caraway Seeds, Cinnamon, Coffee, Cocoa, Cornina, Cream of Tartar, Currants, Curry Powder, Essence of Lemon, Fish, Flour, Fruits, Ginger, Golden Syrup, Honey, Isinglass, Jams, Jellies, Meat, Macaroni, Mustard, Oatmeal, Onions, Pearleens, Peas, Peel, Pepper, Pickles, Pollard, Potatoes, Raisins, Rice, Seed Tapioca, Salt, Sauces, Soap, Soda, Spices, Starch, Sugar, Tapioca, Tea, Treacle, and Vinegar.

Schedule No. 13.

PROVISIONS AT WAHGUNYAH

FOR STUDENTS AT WAHGUNYAH VINE NURSERY.

(Delivery at Nursery.)

Period of Contract—From 1st July, 1912, to 30th June, 1913.

Particular attention is drawn to Clause 1 of the Conditions as to quality.

Where practicable all items must be manufactured or prepared within the Commonwealt.

CONTRACT No. 1912/420.

George G. Haig, Wahgunyah.

Sub-schedule No. 1.

BREAD.

Preliminary Deposit, £2. Security, £5.

No subletting will be allowed; all work must be carried out by the Contractor. Every person engaged in the manufacture, preparation, or delivery of the Bread tendered for in this Schedule shall be paid such wages and shall be employed

subject to such conditions as are or may be determined by the Bread or Bread Carters Board, or by the Court of Industrial Appeals, as the case may be, under the provisions of the Factories and Shops Acts; should, however, the determinations of the aforesaid Boards or Court not apply to the particular district covered by this Schedule, those determinations shall, for the purpose of this contract, be taken as defining the rate of wages which shall be paid and the conditions of employment in respect thereto; and a copy of these conditions shall be kept conspicuously and continually posted in legible Roman characters in the factory or shop (and in each part of the factory or shop where several rooms are in use) in which bread is prepared or manufactured under this contract.

The contractor shall, before any account is passed for payment, furnish a statutory declaration that all the workmen under this contract have been employed in accordance with the above clause of these conditions, and have been paid not less than the minimum rate of wages for such workmen as is provided for under that clause.

Pure Wheaten Meal Bread of first quality may be substituted, wholly or in part, for fine Wheaten Bread at such times as may be deemed necessary, and the contractor will be required to supply such bread at the contract rate. Reasonable notice, however, of the intention to substitute Wheaten Meal Bread must be given to the contractor by the officer ordering the supply.

Samples of the best ordinary retailed to the public will be considered as test loaves for first quality.

Table with 3 columns: Item description, Unit, and Price (£ s. d.). Includes Bread—Fine Wheaten, first quality per cental 0 12 6.

CONTRACT No. 1912/421.

George G. Haig, Wahgunyah.

Sub-schedule No. 2.

GROCERIES, ETC.

Preliminary Deposit, £2. Security, £10.

Table with 4 columns: Item description, Unit, and Price (£ s. d.). Includes items like Arrowroot, Blue, Baking Powder, Baking Soda, Bacon, Blacking, Black Lead, Barley, Pearl, Candles, Cocoa, Cream of Tartar, Curry Powder, Essence of Lemon, Fish, Flour, Fruits, Ginger, Golden Syrup, Honey, Isinglass, Jams, Jellies, Meat, Macaroni, Mustard, Oatmeal, Onions, Pearleens, Peas, Peel, Pepper, Pickles, Pollard, Potatoes, Raisins, Rice, Seed Tapioca, Salt, Sauces, Soap, Soda, Spices, Starch, Sugar, Tapioca, Tea, Treacle, and Vinegar.

	£	s.	d.
42. Soap—Magic
43. Soda—Washing
44. Spices, mixed, in 1-oz. packets
45. Starch—To sample
46. Sugar—White, to sample
47. Tapioca—Pearl
48. Tea—Best Congou, to sample
49. Treacle, in 7-lb. tins
50. Vinegar, of approved brand

Pure Wheaten Meal Bread of first quality may be substituted, wholly or in part, for fine Wheaten Bread at such times as may be deemed necessary, and the contractor will be required to supply such bread at the contract rate. Reasonable notice, however, of the intention to substitute Wheaten Meal Bread must be given to the contractor by the officer ordering the supply.

Samples of the best ordinary retailed to the public will be considered as test loaves for first quality.

1. Bread—Fine Wheaten, first quality	per cental	0	11	9
---	------------	---	----	---

Schedule No. 12.

PROVISIONS AT RUTHERGLEN.

(For Students at Viticultural College. Delivery at the College).

Period of Contract—From 1st July, 1912, to 30th June, 1913.

Any sub-schedule may be tendered for, and may be accepted or rejected separately. In the event of tenderers withdrawing their tenders before notification of acceptance of same, or failing to take up their accepted tenders within the prescribed period after notification of acceptance, the preliminary deposit will be forfeited, and in addition they may be disqualified from tendering or holding any future contracts for Government supplies for a period of twelve months, such disqualification to date from the notification of acceptance of tender.

Particular attention is drawn to Clause 1 of the Conditions as to quality.

Where practicable, all items must be manufactured or prepared within the Commonwealth.

CONTRACT No. 1912/423.

Patrick O'Keefe, Great Southern, Rutherglen.

Sub-schedule No. 1.

BREAD.

Preliminary deposit, £2. Security, £5.

No subletting will be allowed; all work must be carried out by the contractor. Every person engaged in the manufacture, preparation, or delivery of the bread tendered for in this sub-schedule shall be paid such wages and shall be employed subject to such conditions as are or may be determined by the Bread or Bread Carters' Board, or by the Court of Industrial Appeals, as the case may be, under the provisions of the Factories and Shops Acts; should, however, the determination of the aforesaid Boards or Court not apply to the district covered by this particular schedule, those determinations shall, for the purpose of this contract, be taken as defining the rate of wages which shall be paid and the conditions of employment in respect thereto; and a copy of these conditions shall be kept conspicuously and continually posted in legible Roman characters or in the factory shop (and in each part of the factory or shop where several rooms are in use) in which bread is prepared or manufactured under this contract. Any infringement of these conditions, or any breach of the said determinations, in the opinion of the Treasurer, will subject the contractor, upon report from the Tender Board, to such mulct not exceeding Fifty pounds (£50), as the Treasurer may direct, and the amount will be deducted from the contractor's account or from the security money, and the Treasurer's decision shall be binding, final, and conclusive as to the fact of infringement, and in all other respects.

The contractor shall, before any account is passed for payment, furnish a statutory declaration that all the workmen under this contract have been employed in accordance with the above clause of these Conditions, and have been paid not less than the minimum rate of wages for such workmen as is provided for under that clause.

CONTRACT No. 1912/423.

R. Henderson, Main-street, Rutherglen.

Sub-schedule No. 2.

GROCERIES, ETC.

Preliminary deposit, £2. Security, £10.

	£	s.	d.
1. Arrowroot	per lb.	0	0 6½
2. Blue	do.	0	0 7
3. Baking Powder, in 1-lb. tins	per tin	0	0 9
4. Baking Soda	per lb.	0	0 2
5. Bacon, best cured	do.	0	0 10
6. Blacking	per cake	0	0 0½
7. Blacklead	do.	0	0 0½
8. Barley, Pearl	per lb.	0	0 3
9. Candles (full weights) Kitchen's "Petro-lines," Apollo Co.'s "Apollo," or other make of equal quality, to be supplied in 1-lb. packets	do.	0	0 8
10. Coffee—Whole—Beans to be thoroughly sound, to sample	do.	0	1 8
11. Coffee Essence, 10-oz., of any brand ordered	per bottle	0	1 6
12. Cocoa Essence, 10-oz., of any brand ordered	per lb.	0	3 0
13. Cream of Tartar	do.	0	1 2
14. Currants	do.	0	0 7½
15. Curry Powder... ..	do.	0	1 3
16. Essence of Lemon, 1-oz. bottles	per bottle	0	0 4½
17. Fish, preserved, Salmon, Fresh Herrings, Herrings in Tomato, as ordered, in 1-lb. tins	per tin	0	0 10
18. Flour, Best Roller	per cental	0	11 6
19. Fruits, preserved, assorted, of approved brand, in 1-lb. tins	per tin	0	0 6
20. Ginger—Ground or Whole	per lb.	0	0 11
21. Golden Syrup, in 2-lb. tins	per tin	0	0 7
22. Jams, assorted, any brand ordered, in 2-lb. tins	do.	0	0 7
23. Maizena—Duryea's	per lb.	0	0 7½
24. Meat, preserved, of approved brand, in 2-lb. tins	per tin	0	0 10
25. Macaroni, or Vermicelli, as ordered	per lb.	0	0 3½
26. Mustard, Double Superfine, of any brand ordered	do.	0	1 8
27. Oatmeal—Flaked or other, of any brand ordered	per cwt.	1	12 8
28. Onions	do.	0	11 8
29. Peel, Mixed	per lb.	0	0 10
30. Pepper—Black or White, ground	do.	0	1 2
31. Pickles, of approved brand	per bottle	0	0 7
32. Potatoes	per cwt.	0	8 0
33. Raisins—Sultana (Mildura)	per lb.	0	0 8½
34. Rice—dressed, to sample	per cwt.	1	5 8
35. Seed Tapioca (Sago), to sample... ..	per lb.	0	0 3½
36. Salt, Coarse	do.	0	0 0½
37. " Fine	per cwt.	0	6 6
38. Sauces—Worcester, Tomato, or Chutney, any brand ordered	per bottle	0	0 10½
39. Soap, Household, yellow, to sample	per lb.	0	0 2½
40. " Glycerine Tablets	do.	0	0 10
41. " Sand	do.	0	0 3½
42. " Magic	do.	0	0 3½
43. Soda—Washing	do.	0	0 1
44. Spices, mixed, in 1-oz. packets	per packet	0	0 1
45. Starch, to sample	per lb.	0	0 6
46. Sugar—White, to sample	per cwt.	1	8 0
47. Tapioca, Pearl	per lb.	0	0 3½
48. Tea—Best Congou, to sample	do.	0	1 0
49. Treacle, in 7-lb. tins	per tin	0	1 6
50. Vinegar, of approved brand	per quart	0	0 4½

CONTRACTS ACCEPTED.—(Series 1912-13.)

Serial No.	Particulars.	Amount.	Name of Contractor.	Charged against Vote or Fund.
	SUPPLY OF PROVISIONS, AT SANATORIUM AT GREENVALE, FROM 1ST JULY, 1912, TO 30TH JUNE, 1913—			
424	Breadstuffs	Per annex	John Anderson	Contingencies, 1912-13
425	Butter, &c.	"	Moran and Cato	
426	Groceries	"	Moran and Cato	

Approved.—W. A. WATT, Treasurer. 20.6.1912.

Schedule No. 17.

PROVISIONS AT GREENVALE.

(Delivery at the Sanatorium.)

Period of Contract—From 1st July, 1912, to 30th June, 1913.

CONTRACT No. 1912/424.

John Anderson, Broadmeadows.

Sub-schedule No. 1.

BREADSTUFFS.

Security, £20.

1. Bread—Fine Wheaten, first quality	... per cental	0	12	0
--------------------------------------	----------------	---	----	---

CONTRACT No. 1912/425.

H. Lloyd & Sons, 141 Exhibition-st., Melbourne.

Sub-schedule No. 2.

BUTTER, CHEESE, AND BACON.

Security, £10.

1. Butter—First Grade Creamery, to score not less than 92 points, Government grade, Commerce Regulations standard	per cwt.	6	1	4
2. Cheese—First-class quality	... per lb.	0	0	8½
3. Bacon—sides	... per cwt.	3	19	4

CONTRACT No. 1912/426.

Moran and Cato, corner Collins and King streets, Melbourne.

Sub-schedule No. 3.

GROCERIES.

Preliminary Deposit, £2. Security, £20. £ s. d.

1. Apricots—Dried, Mildura	... per lb.	0	0	8
2. Blue—Of any brand ordered	... do.	0	0	6½
3. Candles—(Full weights) Kitchen's "Petrolines," Apollo Co.'s "Apollo," or other make of equal quality, to sample, to be supplied in 1-lb. packets	... do.	0	0	6½

GROCERIES—continued.

£ s. d.

4. Candles—Carriage, equal to Kitchen's No. 8, in 1-lb. packets	... per lb.	0	0	7
5. Chickory—Fresh ground	... do.	0	0	5
6. Cocoa—in ¼-lb. packets, of any brand ordered	... do.	0	1	2
7. Coffee—Fresh roasted and whole, beans to be thoroughly sound	... per lb.	0	1	4
8. Cornina	... do.	0	0	6
9. Currants	... do.	0	0	6
10. Curry Powder	... do.	0	1	2
11. Essence of Lemon—In full 1-oz. bottles, of any brand ordered	... per doz. bots.	0	0	6
12. Flour—Self-raising, of any brand ordered	per lb.	0	0	1½
13. Golden syrup, in 7-lb. tins	... per tin	0	1	6
14. Honey—Prime garden	... per lb.	0	0	4
15. Jams—Assorted, in 2-lb. tins	per doz. tins	0	6	9
16. Lem on peel	... per lb.	0	0	6½
17. Meal—Digestive	... per cwt.	0	18	0
18. Milk—Condensed, 1-lb. tins	... per tin	0	0	6½
19. Mustard—Double Superfine, of any Commonwealth manufacture ordered	... per lb.	0	1	5
20. Oatmeal—Flaked or Plain, of any brand ordered	... per cwt.	0	22	3
21. Pearl barley	... do.	1	2	0
22. Pease—Split	... do.	0	18	0
23. Pepper—White, ground	... per lb.	0	1	0
24. Powder—Baking, of any brand ordered, in 1-lb. tins	... per tin	0	0	8
25. Raisins—Sultana (Mildura)	... per lb.	0	0	7
26. Rice, dressed, to sample	... per cwt.	1	1	0
27. Seed Tapioca (Sago)—To sample	... do.	1	2	6
28. Salmon—Fresh, in 1-lb. tins, Talls, of any brand ordered	... per tin	0	0	10½
29. Salt—Fine	... per cwt.	0	4	8
30. Sardines—A's	... per tin	0	0	5½
31. Sauce—Tomato, pints, any brand ordered	per bot.	0	0	5
32. Soda—Washing	... per cwt.	0	0	7
33. Starch—Of any brand ordered, to sample	per lb.	0	0	4½
34. Sugar—White, to sample	... per cwt.	1	4	6
35. Tapioca—Pearl	... do.	1	3	6
36. Tea—Ceylon, special, to sample	... per lb.	0	1	0
37. " Congou, " " "	... do.	0	0	9
38. Treacle, in 7-lb. tins	... do.	0	0	2½
39. Vinegar	... per quart	0	0	3

CONTRACTS ACCEPTED.—(Series 1912-13.)

Serial No.	Purpose, No. of Tenders, and Particulars of Contract.	Amount.	Name of Contractor.	Charged against Vote or Fund.	Authorized according to Regulations on the date stated.
427	<p>PROVISIONS (SUPPLEMENTARY)— Supply of Provisions, as may be required, from 1st July, 1912, to 30th June, 1913, for Officers, Crew, and Trainees of V.T.S. John Murray, as per Schedule No. 16—</p> <p>Groceries</p>	Rates as per Annex	Moran and Cato	Contingencies, 1912-13	Treasurer, 20.6.1912.

Melbourne, 8th July, 1912.

Schedule No. 16.

PROVISIONS — FOR OFFICERS, CREW, AND TRAINEES OF THE VICTORIAN TRAINING SHIP "JOHN MURRAY" AT HER ORDINARY MOORINGS AT PORT MELBOURNE.

Supplies to be delivered at the Port Melbourne Railway Pier as (required by the Secretary to the Committee of Management.)

Period of Contract—From 1st July, 1912, to 30th June, 1913.

These supplies are for the vessel when at her ordinary moorings. Should the vessel be away from its moorings for a period of two months or more, the supplies required will be obtained at the port of call without infringing this Contract.

Particular attention is drawn to clause 1 of the conditions as to quality.

Where practicable all items must be manufactured and prepared within the Commonwealth.

CONTRACT No. 1912/427.

Moran and Cato, Collins and King-streets, Melbourne.

GROCERIES.

Preliminary Deposit, £3. Security, £30.

The soap supplied must be hard throughout, ready for immediate use without waste. When the quantity admits, the tea must be supplied in original and unopened packages, labelled, as landed. Sugar may be obtained from any Government establishment without infringing this contract.

	£	s.	d.
1. Bacon—Farmer's or Hutton's, by the side	per lb.	0	0 10
2. Baking powder, in 1-lb. tins, net	per doz. tins	0	6 9
3. Barley, Pearl	per cwt.	1	1 0
4. Beans, Haricot	per bush.	0	10 0
5. Biscuits, Cabin	per cental	1	4 0
6. " Pilot Bread	"	0	16 3
7. Chutney, in pint bottles	per bottle	0	0 6
8. Cocoa, in 4-lb packets of any brand ordered	per lb.	0	0 11½

9. Coffee—Fresh roasted and ground, pure, to sample	per lb.	£	s.	d.
10. Cornflour	do.	0	1	0
11. Currants	do.	0	0	4
12. Curry powder, in 1-lb tins, net	per doz. tins	0	10	6½
13. Essences	per lb.	0	4	6
14. Jams, in 27-oz. net tins	per doz. tins	0	6	6
15. Jelly Crystals	per doz. pkts.	0	0	10
16. Lime Juice (Board of Trade), in quart bottles	per quart.	0	0	11
17. Marmalade, in 27-oz. net tins,	per doz. tins	0	6	9
18. Macaroni	per lb.	0	0	2½
19. Meat—Preserved, of approved brands, in 2-lb. tins, net	per doz. tins	0	9	9
20. Mustard—Double superfine, in 1-lb. tins	do.	0	16	0
21. Oatmeal—Of any brand ordered	per cwt.	1	0	6
22. Olive Oil, in 13-oz. bottles, Mildura or S.A.	per bottle	0	1	4
23. Onions	per cwt.	0	10	0
24. Pease—Blue	per bush.	0	8	0
25. Pease—Split	per cwt.	0	17	0
26. Pepper—White, ground	per lb.	0	1	0
27. Peel—Lemon	do.	0	0	6
28. Pickles, of approved brand, equal to Ham's Head	per doz. bottles	0	5	3
29. Raisins—Sultana, Mildura	per lb.	0	0	7
30. Rice—Dressed, to sample, of any brand ordered	per cwt.	1	0	0
31. Seed Tapioca (Sago), to sample	do.	1	1	0
32. Salt—Fine, to sample	do.	0	3	9
33. Sauces—Tomato (pints)	per bottle	0	0	1½
34. Soap (Household)—Yellow, dry, to sample,	per cwt.	1	4	0
35. " Glycerine, to sample	per lb.	0	1	3
36. Spices, mixed, in 1-oz. packets	do.	0	1	0
37. Sugar—White, to sample	per cwt.	1	4	0
38. Soda—Washing Crystals	do.	0	5	0
39. Tea—Best Congou, special sample	per lb.	0	0	9
40. " " Ceylon, " "	do.	0	0	11
41. Treacle, in 7-lb. tins	per tin	0	1	2
42. Vinegar—Champion's, or other approved brand	per quart	0	0	3

CONTRACTS ACCEPTED.—(Series 1912-13).

Serial No.	Particulars.	Amount.	Name for Approval.	Charge against Vote or Fund.
	PROVISIONS—			
	Supply of Provisions in such quantities as may be ordered for the use of the Commonwealth Naval Forces from time to time, from 1st July, 1912, to 30th June, 1913			
428	Breadstuffs	Rates as per Annex	W. M. Hennessy	Contingencies, 1912-13.
429	Butter	Ditto	R. L. Doig	
430	Groceries	Ditto	Moran and Cato	
431	Meat	Ditto	G. A. Watkins	
432	Milk	Ditto	Purchase	
433	Vegetables	Ditto	Geo. Hosking	
434	Fish	Ditto	J. Hill and Sons	

Approved—W. A. WATT, Treasurer. 20.6.1912.

Schedule No. 20.

PROVISIONS—FOR NAVAL FORCES AT WILLIAMSTOWN.

Period of Contract—From 1st July, 1912, to 30th June, 1913.

Any sub-schedule may be tendered for, and may be accepted or rejected separately. In the event of tenderers withdrawing their tenders before notification of acceptance of same, or failing to take up their accepted tenders within the prescribed period after notification of acceptance, the preliminary deposit will be forfeited, and in addition they may be disqualified from tendering or holding any future contracts for Government supplies for a period of twelve months, such disqualification to date from the notification of acceptance of tender.

Supplies must be delivered when ordered, and in case of emergency on Sunday (unless otherwise specified), holidays, or half-holidays as required.

Particular attention is drawn to clause 1 of the conditions as to quality.

Where practicable, all items must be manufactured or prepared within the Commonwealth.

(Supplies to be delivered on board H.M.A. ships in Hobson's Bay, or at H.M.A. Naval Depot, Williamstown, as ordered.)

CONTRACT No. 1912/428.

W. M. Hennessy, 127 Grey-street, St. Kilda.

Sub-schedule No. 1.

BREADSTUFFS.

Preliminary Deposit, £5. Security, £50.

No subletting will be allowed; all work must be carried out by the contractor. Every person engaged in the manufacture, preparation, or delivery of the bread tendered

for in this sub-schedule shall be paid such wages and shall be employed subject to such conditions as are or may be determined by the Bread or Bread Carters Board, or by the Court of Industrial Appeals, as the case may be, under the provisions of the Factories and Shops Acts; should, however, the determinations of the aforesaid Boards or Court not apply to the district covered by this particular schedule, those determinations shall, for the purpose of this contract, be taken as defining the rate of wages which shall be paid and the conditions of employment in respect thereto; and a copy of these conditions shall be kept conspicuously and continually posted in legible Roman characters in the factory or shop (and in each part of the factory or shop where several rooms are in use) in which bread is prepared or manufactured under this contract. Any infringement of these conditions, or any breach of the said determination, in the opinion of the Treasurer, will subject the contractor, upon report from the Tender Board, to such mulct, not exceeding Fifty pounds (£50), as the Treasurer may direct, and the amount will be deducted from the contractor's account or from the security money, and the Treasurer's decision shall be binding, final, and conclusive as to the fact of infringement, and in all other respects.

The contractor shall, before any account is passed for payment for services rendered, furnish a statutory declaration that all the workmen under this contract have been employed in accordance with the above clause of these conditions, and have been paid not less than the minimum rate of wages for such workmen as is provided for under that clause.

A sample of the best ordinary retailed to the public will be considered as a test loaf for first quality.

1. Bread—Fine Wheaten, first quality, in 2-lb. loaves	per cental	£	s.	d.
2. Flour—First quality	do.	0	9	6

CONTRACT No. 1912/429.

R. L. Doig, Williamstown.

Sub-schedule No. 2.

BUTTER.

Preliminary Deposit, £2. Security, £20.

NOTE.—All butter supplied, as well as the packages in which it is packed for transit, must bear the impress stamp of the creamery manufacturing the butter, otherwise it will be rejected. Any butter supplied may be tested at any time by the Government Dairy Expert if it is considered by the officer ordering that the supply is not up to standard quality. Butter is to be delivered to each vessel twice weekly, in such quantities as may be ordered, and no excess over the quantity ordered will be received.

1. Butter—Best, Fresh Factory, First-class superfine creamery, to score from 94 to 100 points Government grade Commerce Regulations standard, in ½-lb. prints, wrapped in best quality butter paper branded with name of factory ... per lb. £ s. d. 0 1 3½
2. Eggs—Fresh, guaranteed ... per doz. Purchase

CONTRACT No. 1912/430.

Moran and Cato, corner of King and Collins streets, Melbourne

Sub-schedule No. 3.

GROCERIES.

Preliminary Deposit, £5. Security, £50.

Candles must be supplied in 1-lb. packets. The soap supplied must be hard throughout, ready for immediate use without waste. When the quantity admits, tea must be supplied in original and unopened packages, labelled, as landed.

1. Bacon (Hutton or Farmer's) ... Per lb. £ s. d. 0 0 9
2. Candles (Full weights) Kitchen's "Petrolines," Apollo Co.'s "Apollo," or other brands ordered, in 1-lb. packets, to sample ... do. 0 0 6½
3. Candles—Carriage, equal to Kitchen's No. 8, in 1-lb. packets ... do. 0 0 7
4. Chocolate—Of any brand ordered ... do. 0 1 0
5. Cheese (Matured Victorian) ... do. 0 0 11½
6. Coffee—Fresh roasted and ground, pure, to sample ... do. 0 0 11
7. Curry Powder, any brand ordered ... Per lb. 0 1 1
8. Findon Haddocks (1-lb. tins), Morton's Per doz. 0 8 0
9. Herrings, fresh " " do. 0 4 10
10. Herrings, kippered, " " do. 0 6 4
11. Jam (assorted), "Taama" (2-lb. tins) ... do. 0 6 6
12. Mustard—Colman's double superfine, in 1-lb. tins ... Per lb. 0 1 4
13. Oatmeal—O any brand ordered ... Per cwt. 1 1 0
14. Pease—Split ... do. 0 17 0
15. Pepper—White, ground ... Per lb. 0 1 0
16. Raisins—Sultana (Mildura) ... do. 0 0 6½
17. Rice—Japan, dressed, to sample, of any brand ordered ... per cwt. 1 1 0
18. Salt—Fine, to sample ... do. 0 3 9
19. Soap—(Household), yellow, dry, to sample, special ... do. 1 4 0
20. Soap—Yellow, special, to sample, in 1-lb. bars wrapped in paper ... do. 1 5 0
21. Sugar—White, to sample ... do. 1 4 0
22. Soapers' Lees ... per gal. 0 1 9
23. Soda—Washing Crystals ... per cwt. 0 5 0
24. Sardines—Quarters ... per doz. 0 2 9
25. Salmon (1-lb. tins), any brand ordered ... do. 0 9 0
26. Salt Ling ... per lb. 0 0 5½
27. Tea—Best Congou, special sample ... do. 0 0 8
28. Tea—Best Ceylon, " " do. 0 0 11
29. Vinegar—Champion's, or other approved brand ... per quart 0 0 3
30. Whiting ... per lb. 0 0 0½

CONTRACT No. 1912/431.

J. Hill and Sons

Sub-schedule No. 4.

FISH (fresh and smoked).

Preliminary Deposit, £1. Security, £5.

1. Fresh Barracouta ... per lb. £ s. d. 0 0 3
2. Groper ... do. 0 0 5
3. Salmon Trout ... do. 0 0 4
4. Murray Cod ... do. 0 0 6
5. Smoked Barracouta ... do. 0 0 4

CONTRACT No. 1912/432.

G. A. Watkins, 312 Moray-street, South Melbourne.

Sub-schedule No. 5.

MEAT.

Preliminary Deposit, £5. Security, £50.

No subletting will be allowed; no delivery of meat shall be made on Sundays; all work must be carried out by the contractor. Every person engaged in the cutting up, preparation, or delivery of the meat tendered for in this schedule, shall be paid such wages and shall be employed subject to such conditions as are or may be determined by the Butchers Board under the provisions of the Factories and Shops Acts; should, however, the determination of the aforesaid Board not apply to the district covered by this particular schedule, that determination shall, for the purpose of this contract, be taken as defining 8175.—2.

the rate of wages which shall be paid and the conditions of employment in respect thereto; and a copy of these conditions shall be kept conspicuously and continually posted in legible Roman characters in the factory or shop (and in each part of the factory or shop where several rooms are in use) in which meat is prepared under this contract. Any infringement of these conditions, or any breach of the said determination, in the opinion of the Treasurer, will subject the contractor, upon report from the Tender Board, to such mulct, not exceeding Fifty pounds (£50), as the Treasurer may direct, and the amount will be deducted from the contractor's account or from the security money, and the Treasurer's decision shall be binding, final, and conclusive as to the fact of infringement, and in all other respects.

If required, the contractor shall, before any account is passed for payment for services rendered, furnish a statutory declaration that all the workmen under this contract have been employed in accordance with the above clause of these conditions, and have been paid not less than the minimum rate of wages for such workmen as is provided for under that clause.

Fresh beef must be supplied in equal quantities from prime ribs, sirloin, and thick flanks; ribs of beef to be cut clear of the plate bone, and sirloin to be cut clear of the wing ribs; mutton to be delivered in sides; all kidney fat to be removed. Meat containing an undue proportion of fat will not be accepted. Corned beef is to be supplied in equal quantities from silverside (round) and brisket. Head, hand and spring, to be removed from all fresh pork delivered.

- | | £ | s. | d. |
|--|------------|----|------|
| 1. Corned Beef | per cental | 1 | 15 0 |
| 2. Corned Pork | per lb. | 0 | 0 6½ |
| 3. Fresh Beef | per cental | 2 | 1 6 |
| 4. Fresh Mutton | do. | 1 | 10 0 |
| 5. Fresh suet—Beef, kidney | per lb. | 0 | 0 4 |
| 6. German Sausages | do. | 0 | 0 5 |
| 7. Mixed Sausages | do. | 0 | 0 4 |
| 8. Ox Liver | do. | 0 | 0 4 |
| 9. Ox Tongues | each | 0 | 2 6 |
| 10. Ox Tail | do. | 0 | 0 9 |
| 11. Ox Kidneys | per doz. | 0 | 6 0 |
| 12. Pork Sausages | per lb. | 0 | 0 6 |
| 13. Roast Pork | do. | 0 | 0 6½ |
| 14. Rabbits (large size, skinned) | per pair | 0 | 0 7 |
| 15. Sheep's Frys | per doz. | 0 | 3 0 |
| 16. Soup Meat | per lb. | 0 | 0 1½ |
| 17. Tripe | do. | 0 | 0 4 |
| 18. Veal | do. | 0 | 0 4 |

CONTRACT No. 1912/433.

Sub-schedule No. 6.

MILK.

Preliminary Deposit, £1. Security, £5.

No subletting will be allowed; all work must be carried out by the contractor; the hours of employment of any person engaged in the preparation or delivery of the milk tendered for in this schedule shall not exceed 60 hours per week, and every such person shall be paid at a minimum wage of not less than £1 15s. per week or £1 with board and lodging; and a copy of these conditions shall be kept conspicuously and continually posted in legible Roman characters in the factory or dairy (and in each part of the factory or dairy where several rooms are in use) in which milk is prepared under this contract. Any infringement of these conditions, in the opinion of the Treasurer, will subject the contractor, upon report from the Tender Board, to such mulct, not exceeding Fifty pounds (£50), as the Treasurer may direct, and the amount will be deducted from the contractor's account or from the security money; and the Treasurer's decision shall be binding, final, and conclusive as to the fact of infringement, and in all other respects.

If required, the contractor shall, before any account is passed for payment, furnish a statutory declaration that all the workmen under this contract have been employed in accordance with the above clause of these conditions, and have been paid not less than the minimum rate of wages for such workmen as is provided for under that clause.

The milk must be fresh, pure, and of the best quality, and subject to test when required by the Department. Should the supply prove to be not of contract quality it will be rejected, and any expense incurred will be charged to the contractor.

- | | £ | s. | d. |
|-------------------------------|-----------|----|-----|
| 1. Milk—Fresh and pure | per quart | 0 | 0 0 |

CONTRACT No. 1912/434.

George Hosking, 157 Nelson-place, Williamstown.

Sub-schedule No. 7.

VEGETABLES.

Preliminary Deposit, £1. Security, £5.

No subletting will be allowed. Cabbage to be free from outside leaves and stalks, and to weigh not less than 3 lbs. weight each.

Potatoes to be dry and free from dirt. Contractor to supply 105 lbs. of potatoes for each cental credited to him, and, in addition, to take back all rejected before being cooked. New potatoes to be supplied from 15th November.

- | | £ | s. | d. |
|--|------------|----|------|
| 1. Potatoes | per cental | 0 | 7 7 |
| 2. Cabbages or Cauliflowers, as ordered | per doz. | 0 | 3 9 |
| 3. Mixed Vegetables, consisting of the following as may be ordered—
Tarrinis, Carrots, Parsnips, Marrow, Pumpkins, Leeks } free from all tops | per pound | 0 | 12 6 |
| 4. Green Peas, in season | per pound | 0 | 0 2½ |
| 5. French Beans, in season | do. | 0 | 0 2½ |
| 6. Onions | do. | 0 | 0 1 |

PROVISIONS FOR ABORIGINES AT THE UNDERMENTIONED STATIONS.

CONTRACTS ACCEPTED.--(Series 1912-13.)

Period of Contract--From 1st July, 1912, to 30th June, 1913.

Serial No.	Particulars.	Amount.	Name of Contractor.	Charged against Vote or Fund.
	PROVISIONS--			
	Supply of Provisions for Aborigines at the undermentioned Stations as may be required from 1st July, 1912, to 30th June, 1913:--			
435	Coranderk--			
	Bread	Rates as per Annex	Alexr. Schmidt	Contingencies, 1912-13.
436	Groceries	Ditto	W. J. Dawborn	
	Lake Tyers--			
	Bread	Ditto	Purchase	
437	Groceries	Ditto	Williams and Currey... ..	
438	Lake Condah--			
	Bread	Ditto	Joseph Brown	
439	Groceries	Ditto	E. S. Collins	

Approved.--W. A. WATT, Treasurer. 20.6.1912.

1912-13.

Schedule No. 15.

PROVISIONS FOR ABORIGINES AT THE UNDERMENTIONED STATIONS.

Period of Contract--From 1st July, 1912, to 30th June, 1913.

Particular attention is drawn to clause 1 of the conditions as to quality.

Where practicable, all items must be manufactured and prepared within the Commonwealth.

Sub-schedule No. 1.

BREAD.

Contract No. 1912/435.--Coranderk--Alexr. Schmidt, Healesville ... Security, £2.

Lake Tyers--Purchase.

Contract No. 1912/438.--Lake Condah--Joseph Brown, Portland ... Security, £2.

No subletting will be allowed; all work must be carried out by the contractor; every person engaged in the manufacture, preparation, or delivery of the bread tendered for in this sub-schedule shall be paid such wages and shall be employed subject to such conditions as are or may be determined by the Bread or Bread Carters Board, or by the Court of Industrial Appeals, as the case may be, under the provisions of the Factories and Shops Acts. Should, however, the determinations of the aforesaid Boards or Court not apply to the district covered by this particular schedule, then those determinations shall, for the purpose of these contracts, be taken as defining the rate of wages which shall be paid and the conditions of employment in respect thereto; and a copy of these conditions shall be kept conspicuously and continually posted in legible Roman characters in the factory or shop (and in each part of the factory or shop where several rooms are in use) in which bread is prepared or manufactured under this contract. Any infringement of these conditions, or any breach of the said determination, in the opinion of the Treasurer, will subject the contractor, upon report from the Tender Board, to such mulct, not exceeding Fifty pounds (£50), as the Treasurer may direct, and the amount will be deducted from the contractor's account or from the security money, and the Treasurer's decision shall be binding, final, and conclusive as to the fact of infringement, and in all other respects.

The contractor shall, before any account is passed for payment, furnish a statutory declaration that all the workmen under this contract have been employed in accordance with the above clause of these conditions, and have been paid not less than the minimum rate of wages for such workmen as is provided under that clause.

Samples of the best ordinary, retailed to the public will be considered as test loaves for first quality.

Serial No.	Article.	Contract No. 435. Alexr. Schmidt, Coranderk (Healesville).	Lake Tyers (Cunninghame).	Contract No. 438. Joseph Brown, Lake Condah (Miltown).
1	Bread--Fine Wheaten, first quality per cental	£ s. d. 0 9 4½	Purchase	£ s. d. 0 11 11½

Sub-schedule No. 3.

GROCERIES.

Contract No. 1912/436.—Coranderrk—W. J. Dawborn, Healesville ... Security, £2.
 " " 1912/437.—Lake Tyers—Williams and Currey ... " £2.
 " " 1912/439.—Lake Condah—E. S. Collins, Myamyn ... " £2.

Serial No.	Article.	Contract No. 436.	Contract No. 437.	Contract No. 439.
		W. J. Dawborn. Coranderrk.	Williams and Currey. Lake Tyers.	E. S. Collins. Lake Condah.
		£ s. d.	£ s. d.	£ s. d.
1	Baking Powder, Snowflake, in 1-lb. tins per lb.	0 0 9	0 0 8½	0 0 10
2	Candles—(Full weights) Kitchen's "Petrolines," Apollo Co.'s "Apollo," or other make of equal quality, to sample, to be supplied in 1-lb. packets "	0 0 7½	0 0 7	0 0 7½
3	Coffee—Fresh roasted and whole—Beans to be thoroughly sound; to sample "	0 1 6	0 1 5	0 1 7
4	Cocoa "	0 1 0	0 0 9	0 2 8
5	Cornina "	0 0 6½	0 0 6½	0 0 7
6	Currants "	0 0 7	0 0 6½	0 0 7
7	Flour—Best roller per cental	0 10 6	0 11 6	0 10 9
8	Mustard—Double superfine per lb.	0 1 0	0 0 10	0 1 8
9	Oatmeal—Of any brand ordered "	0 0 2½	0 0 2½	0 0 3
10	Pearl Barley "	0 0 3	0 0 2½	0 0 3
11	Pepper—Black, ground, in ¼-lb. tins per tin	0 0 4	0 0 4	0 0 4
12	Raisins—Sultana (Mildura) per lb.	0 0 8	0 0 7	0 0 8
13	Rice—Dressed, to sample "	0 0 2½	0 0 2½	0 0 3
14	Seed Tapioca (Sago), to sample "	0 0 3	0 0 2½	0 0 3
15	Salt—Coarse "	0 0 0½	0 0 0½	0 0 0½
16	" Fine "	0 0 0½	0 0 0½	0 0 0½
17	Soda—Washing "	0 0 0½	0 0 0½	0 0 1½
18	Sugar—White, to sample per cwt.	1 5 0	1 5 6	1 4 0
19	Tea—Best Congou, to sample per lb.	0 0 8½	0 0 10	0 0 11
20	Tobacco—Twist, to sample "	0 3 3	0 3 0	0 3 0
21	Treacle, in 7-lb. tins per tin	0 1 4	0 1 4	0 1 7
22	Vinegar per quart	0 0 4	0 0 4	0 0 6

