

[ 2777 ]



# VICTORIA GOVERNMENT GAZETTE.

Published by Authority.

*[Registered at the General Post Office, Melbourne, for transmission by post as a newspaper.]*

---

No. 99.]

THURSDAY, JULY 9.

[1914.

---

CONTRACTS ACCEPTED.

(SERIES 1914-15.)

---

SUPPLY OF PROVISIONS

FROM

1st JULY, 1914, TO 30th JUNE, 1915.

No. 99.—JULY 9, 1914.—7715.

## CONTRACTS ACCEPTED.—(Series 1914-15.)

No. of Contract.	Particulars of each Tender Accepted.	Amount.	Name of Contractor.	Charged against Vote or Fund.
	<b>PROVISIONS—</b>			
	Supply of Provisions for General Stores in such quantities as may be ordered from 1st July, 1914, to 30th June, 1915.			
	<b>Melbourne District—</b>			
12	Beer and spirits ... ..	Rates as per annex	R. G. Wilson & Co. ... ..	
13	Bread, Kew Asylum ... ..	Ditto ... ..	B. E. Johnson ... ..	
14	Bread, Yarra Bend Asylum ... ..	Ditto ... ..	J. N. Hennessy ... ..	
15	Bread, Melbourne ... ..	Ditto ... ..	J. N. Hennessy ... ..	
16	Butter, cheese, and eggs ... ..	Ditto ... ..	P. Sheahan and Co. ... ..	
17	Flour and maize meal ... ..	Ditto ... ..	H. R. Rush ... ..	
18	Groceries ... ..	Ditto ... ..	J. D. Howie ... ..	
19	Oatmeal, rice, &c. ... ..	Ditto ... ..	J. D. Howie ... ..	
20	Jams ... ..	Ditto ... ..	J. D. Howie ... ..	
21	Meat, Kew Asylum ... ..	Ditto ... ..	W. Angliss and Co. Ppy. Ltd. ... ..	
22	Meat, Yarra Bend Asylum ... ..	Ditto ... ..	W. Angliss and Co. Ppy. Ltd. ... ..	
23	Meat, Pentridge Penal Establishment ... ..	Ditto ... ..	T. K. Bennet and Woolcock Ppy. Ltd. ... ..	
24	Meat, Melbourne Gaol, &c. ... ..	Ditto ... ..	T. K. Bennet and Woolcock Ppy. Ltd. ... ..	
25	Milk, Melbourne Gaol ... ..	Ditto ... ..	J. Murphy ... ..	
26	Milk, Pentridge Penal Establishment ... ..	Ditto ... ..	J. Murphy ... ..	
27	Potatoes ... ..	Ditto ... ..	Shea, Hood and Co. P. L. ... ..	
28	Tea ... ..	Ditto ... ..	Moran and Cato Ppy. Ltd. ... ..	
29	Tobacco ... ..	Ditto ... ..	Dudgeon and Arnall Ppy. Ltd. ... ..	
	<b>Williamstown—For s.s. <i>Lady Loch</i> and <i>Albert</i>.</b>			
30	Breadstuffs ... ..	Ditto ... ..	W. J. Elsum ... ..	
31	Butter ... ..	Ditto ... ..	Moran and Cato Ppy. Ltd. ... ..	
32	Groceries ... ..	Ditto ... ..	Moran and Cato Ppy. Ltd. ... ..	
33	Meat ... ..	Ditto ... ..	Wm. Angliss and Co. Ppy. Ltd. ... ..	
34	Vegetables ... ..	Ditto ... ..	Moran and Cato Ppy. Ltd. ... ..	
	<b>Ararat District—</b>			
35	Breadstuffs ... ..	Ditto ... ..	Wm. Bates ... ..	
36	Butter and cheese ... ..	Ditto ... ..	J. D. Howie ... ..	
37	Groceries ... ..	Ditto ... ..	J. D. Howie ... ..	
38	Jams ... ..	Ditto ... ..	Ballarat Jam Co. Ppy. Ltd. ... ..	
39	Meat ... ..	Ditto ... ..	Arthur Murphy ... ..	
40	Potatoes ... ..	Ditto ... ..	Shea, Hood and Co. P. L. ... ..	
41	Tea ... ..	Ditto ... ..	Moran and Cato Ppy. Ltd. ... ..	
	<b>Beechworth District—</b>			
42	Breadstuffs ... ..	Ditto ... ..	Wm. Price, jun. ... ..	
43	Butter and cheese ... ..	Ditto ... ..	J. D. Howie ... ..	
44	Groceries ... ..	Ditto ... ..	J. D. Howie ... ..	
45	Meat ... ..	Ditto ... ..	W. H. Morton ... ..	
46	Potatoes ... ..	Ditto ... ..	H. McDonough ... ..	
47	Tea ... ..	Ditto ... ..	J. D. Howie ... ..	
	<b>Ballarat District—</b>			
48	Breadstuffs ... ..	Ditto ... ..	John Davies ... ..	
49	Butter and cheese ... ..	Ditto ... ..	Donald Robinson ... ..	
50	Groceries ... ..	Ditto ... ..	J. D. Howie ... ..	
51	Jams ... ..	Ditto ... ..	The Ballarat Jam Co. Ppy. Ltd. ... ..	
52	Meat ... ..	Ditto ... ..	H. J. Symons ... ..	
53	Potatoes ... ..	Ditto ... ..	Shea, Hood and Co. P. L. ... ..	
	<b>Geelong District—</b>			
54	Breadstuffs ... ..	Ditto ... ..	W. Marshall ... ..	
55	Groceries ... ..	Ditto ... ..	Moran and Cato Ppy. Ltd. ... ..	
56	Meat ... ..	Ditto ... ..	M. McCarlin and Sons ... ..	
57	Milk ... ..	Ditto ... ..	Thomas Warren ... ..	
58	Potatoes ... ..	Ditto ... ..	W. H. Maine & Co. Pty. Ltd. ... ..	
	<b>Lara—</b>			
59	Breadstuffs ... ..	Ditto ... ..	F. Samblebe ... ..	
60	Butter and cheese ... ..	Ditto ... ..	J. D. Howie ... ..	
61	Groceries ... ..	Ditto ... ..	A. V. Strong ... ..	
62	Jams ... ..	Ditto ... ..	J. D. Howie ... ..	
63	Meat ... ..	Ditto ... ..	W. Angliss and Co. Ppy. Ltd. ... ..	
64	Potatoes ... ..	Ditto ... ..	Shea, Hood and Co. P. L. ... ..	
	<b>Sunbury District—</b>			
65	Breadstuffs ... ..	Ditto ... ..	Thomas Clyne and Son ... ..	
66	Butter, cheese, and bacon ... ..	Ditto ... ..	J. D. Howie ... ..	
67	Groceries ... ..	Ditto ... ..	J. D. Howie ... ..	
68	Jams ... ..	Ditto ... ..	J. D. Howie ... ..	
69	Meat ... ..	Ditto ... ..	S. J. Starkie ... ..	
70	Rabbits ... ..	Ditto ... ..	W. Angliss and Co. Ppy. Ltd. ... ..	
71	Potatoes ... ..	Ditto ... ..	Shea, Hood and Co. P. L. ... ..	
72	Tea ... ..	Ditto ... ..	J. D. Howie ... ..	
	<b>Bendigo District—</b>			
73	Bread ... ..	Ditto ... ..	L. J. Anderson ... ..	
74	Groceries and potatoes ... ..	Ditto ... ..	James Richardson ... ..	
75	Meat ... ..	Ditto ... ..	Ewing and Kronk ... ..	
	<b>Castlemaine District—</b>			
76	Bread ... ..	Ditto ... ..	M. Van Heurck ... ..	
77	Groceries and potatoes ... ..	Ditto ... ..	Moran and Cato Ppy. Ltd. ... ..	
78	Meat ... ..	Ditto ... ..	Jane Williamson ... ..	
	<b>Sale District—</b>			
79	Bread ... ..	Ditto ... ..	Caddy and Smith ... ..	
...	Groceries and potatoes ... ..	Ditto ... ..	Purchase as required ... ..	
80	Meat ... ..	Ditto ... ..	E. Cleaver ... ..	

Contingencies,  
1914-15.

## CONTRACTS ACCEPTED.—(Series 1914-15.)—continued.

No. of Contract.	Particulars of each Tender Accepted.	Amount.	Name of Contractor.	Charged against Vote or Fund.
81	Mont Park—			
	Breadstuffs ... ..	Rates as per annex	B. E. Johnson ... ..	Contingencies, 1914-15.
82	Butter, Cheese, and Bacon ... ..	Ditto ... ..	P. Sheahan and Co. ... ..	
83	Groceries ... ..	Ditto ... ..	J. D. Howie ... ..	
84	Jams ... ..	Ditto ... ..	J. D. Howie ... ..	
85	Meat ... ..	Ditto ... ..	W. Angliss and Co. Ppy. Ltd. ... ..	
86	Potatoes ... ..	Ditto ... ..	Shea, Hood, and Co. P. L. ... ..	
87	Tea ... ..	Ditto ... ..	J. D. Howie ... ..	

Approved.—W. A. WATT, Treasurer. 16.6.1914.

## STIPULATIONS FOR SUPPLIES OF PROVISIONS.

(Where practicable, all items must be manufactured or prepared within the Commonwealth.)

*Under all Sub-schedules particular attention is drawn to Clause 1 of the Condition as to quality.*

## BEER AND SPIRITS.

For brandy, whisky, and for Guinness' porter in case, delivery will be taken at and from the bond.

The contractor will be bound to supply such of the brands named in the tender as the departments may order. In cases where delivery from the bond is taken by the Government, the contractor will be required to hand to the secretary to the Tender Board the bond certificate and the locker's order and a copy of the entry, and pay all charges, including re-gauging, before delivery is taken.

English ale, brandy, whisky, and Guinness' porter in case must be delivered as imported; if bottled in the State it will not be accepted.

## BREAD.

Samples of the best ordinarily retailed to the public will be considered as test loaves for first quality for fine wheaten and pure wheaten Meal Bread. Third quality (that issued to prisoners of the Crown) to be made of flour, fine sharps, the produce of prime, strong, thin-skinned, good-coloured wheat, to be perfectly free from coarse pollard or other offal. *Pure wheaten Meal Bread of first quality may be substituted, wholly or in part, for fine wheaten Bread at such times and in such quantities as in the opinion of the Medical Superintendent may be deemed necessary, and the contractor will be required to supply such Bread at the contract rate.* Reasonable notice, however, of the intention to substitute wheaten Meal Bread must be given to the contractor by the officer ordering the supply. Bread may be baked at any Government establishment without infringing these contracts. At the Gaols, Beechworth, Ballarat, Geelong, Castlemaine, and Sale, if required, bread must be supplied one day old, due notice to be given to the contractor of such requirement.

Under sub-schedules for Bread no subletting will be allowed; all work must be carried out by the contractor; every person engaged in the manufacture, preparation, or the delivery of the bread tendered for in these sub-schedules shall be paid such wages and shall be employed subject to such conditions as are or may be determined by the Bread or Bread Carter's Board or by the Court of Industrial Appeals, as the case may be, under the provisions of the Factories and Shops Acts; should however, the determinations of the aforesaid Boards or Court not apply to the district covered by this particular schedule, then those determinations shall for the purpose of these contracts be taken as defining the rate of wages which shall be paid, and the conditions of employment in respect thereto; and a copy of these conditions shall be kept conspicuously and continually posted in legible Roman characters in the factory or shop (and in each part of the factory or shop where several rooms are in use) in which bread is prepared or manufactured under these contracts. Any infringement of these conditions, or breach of the said determination, in the opinion of the Treasurer, will subject the contractor, upon report from the Tender Board, to such mulct, not exceeding Fifty pounds (£50), as the Treasurer may direct, and the amount will be deducted from the contractor's account or from the security money, and the Treasurer's decision shall be binding, final, and conclusive as to the fact of infringement, and in all other respects.

In the event of bread being made at any Government establishment in the Melbourne District, during the currency of these contracts, the flour required will be drawn under the flour and maize meal sub-schedule. The maize meal for all the country gaols is included in the sub-schedule for flour and maize meal, Melbourne District, and delivery of same will be required to be made at the Victorian Railways, Spencer-street.

Should a supply of any article which may be reasonably included in a Baker's Price List, and which is not included in the schedule hereunder, be required for the use of attendants and nurses resident at the Hospitals for the Insane or for inmates of any Government institution drawing supplies under sub-schedules for Bread during the currency of the contract, the contractor shall supply any such article at the current list rates at which it is retailed by the contractor to the public.

## GROCERIES, CANDLES, SOAP, TEA, ETC.

Should the supply of any article which may be reasonably included in a Grocer's Price List, and which is not included in the schedule hereunder, be required for the use of the attendants and nurses resident at the Hospitals for the Insane or for inmates of any Government institution drawing

supplies under sub-schedules for Groceries during the currency of the contract, the contractor shall with the exception of Ballarat, supply such article at the current list rates at which it is retailed by the contractor to the public.

Rice must be supplied in bags branded "Rice dressed No. 1 Java," with the manufacturer's name stencilled thereon.

Candles, except those for prison cells, must be supplied in 1-lb. packets. Candles for prison cells must be delivered in boxes containing from 25 to 50 lbs. per box, the boxes for which must be legibly stencilled on one end, showing the estimated burning time and the gross, tare, and net weight of contents. The soap supplied must be hard throughout, ready for immediate use without waste. Soap for Lunatic Asylums is not included in these contracts. When the quantity admits, tea must be supplied in original and unopened packages, labelled, as landed.

Raisins and currants must, where the quantity admits, be supplied in original boxes labelled 3 crowns.

For s.s. *Lady Loch* and *Albert* a certain quantity of Biscuits and Preserved Meat are sometimes required in lieu of fresh meat and fresh bread, and are included to meet such contingency only.

The contracts are not to be considered broken, infringed, or vitiated by purchase of sugar from any Government Institution at any time during the currency of this contract.

## BUTTER AND JAMS.

Butter is to be delivered to the s.s. *Lady Loch* and *Albert*, in 1 lb. pats, in such quantities as may be ordered, and no excess over the quantity ordered will be received.

All Butter supplied, as well as the cases in which it is packed, must bear the impress stamp of the creamery manufacturing the Butter, otherwise it will be rejected. The Butter supplied may be tested at any time by the Government Dairy expert if it is considered by the officer ordering that the supply is not up to standard quality. The cheese must be fairly matured and packed in boxes for transport.

As regards butter for Ararat, Ballarat, Beechworth, Lara, Sunbury, and Mont Park all supplies delivered from Melbourne must be submitted by the contractor to the Government Dairy Expert in Melbourne for test as to standard quality, and, if found to be satisfactory, shall be forwarded by that officer direct to the Institution ordering, the cost of freight being borne by the contractor in the usual way.

N.B.—Jams.—The weight stamped on the tins in accordance with the regulations under the Commerce Act, as indicating the minimum net quantity that each tin contains, shall for the purpose of this contract be taken as the actual contents when computing the quantity supplied.

When Jam is supplied in jars the jars remain the property of the contractor, and must be removed by the contractor at his own expense when empty.

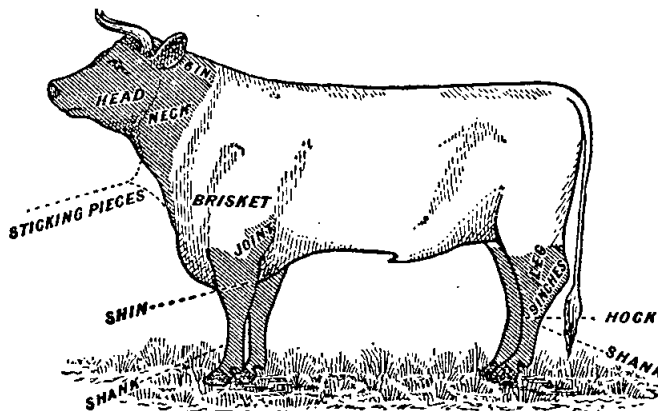
## MEAT.

When fore and hind-quarters of beef are ordered for Hospitals for the Insane they must be supplied in the proportion of two of the former to one of the latter, and must be delivered as a whole respectively, also extra buttocks separately when ordered. Meat for other institutions must be supplied as ordered. Where hind-quarters or buttocks are ordered, 9 inches must be cut off from the end of the leg from the hock upwards, i.e., the end of the leg from which the shank has been removed at the abattoirs; and when fore-quarters form a portion of the supply, 6 inches from the end of the neck and the whole of the shin at the clodbone joint must be removed. The sticking pieces also must be trimmed off, and the point and end of the brisket rendered free from blood and blood stains.

Fore and hind-quarters, for convenience of handling, may be cut into two parts, but each part is to bear evidence of having been cut from the same beast.

Corned beef, rolled or round, as ordered, must be supplied without bone or cartilage and will be received, whether pumped or prepared in the ordinary way by pickling, but in the former case must have been soaked after pumping for at least 48 hours, in a good pickle, and then thoroughly drained before supply. No flank, chuck, sticking piece, shin, leg of beef, or piece under 7 lbs. will be received.

Should the local supply of fresh meat become scarce, or the price of same become abnormally high, frozen or chilled meat may, with the consent of the Tender Board on the recommendation of the head of the Department, be supplied.



In cases of emergency, or on such other occasions as in the opinion of the Inspector-General of the Insane may seem advisable, other forms of meat such as rabbits, tinned meats, &c., may be purchased apart from the contract for Hospitals for the Insane, in lieu of the meat mentioned in the schedule, and substituted therefor, provided 24 hours' notice (except in cases of emergency) be given to the contractor of such intention.

The parts to be removed by the contractor are indicated by the shaded portions of the annexed diagram.

As regards supplies for s.s. *Lady Loch* and *Albert*, all Meat must be of prime quality, and must be supplied in equal quantities from ribs, sirloin, and thick flanks; mutton to be delivered in sides; all kidney fat to be removed; meat containing an undue proportion of fat will not be accepted. Chuck ribs will not be accepted in lieu of prime ribs. Live sheep to be supplied when required.

Should a supply of any article which may be reasonably included in a Butcher's Small Goods List, and which is not included in the schedule hereunder, be required for the use of attendants and nurses resident at the Hospitals for the Insane or for inmates of any Government Institution drawing supplies under sub-schedules for Meat during the currency of the contract, the contractor shall supply such article at the current list rates at which it is retailed by the contractor to the public.

Under sub-schedules for Meat no subletting will be allowed; no delivery of meat shall be made on Sundays\*; all work must be carried out by the contractor; every person engaged in the cutting up, preparation, or delivery of the meat tendered for in these sub-schedules, shall be paid such wages, and shall be employed subject to such conditions as are or may be determined by the Butchers Board under the provisions of the Factories and Shops Acts; should, however, the determination of the aforesaid Board not apply to the district covered by any particular schedule; that determination shall, for the purpose of these contracts, be taken as defining the rate of wages which shall be paid, and the conditions of employment in respect thereto; and a copy of these conditions shall be kept conspicuously and continually posted in legible Roman characters in the factory or shop (and in each part of the factory or shop where several rooms are in use) in which meat is prepared under these contracts. Any infringement of these conditions, or any breach of the said determination, in the opinion of the Treasurer, will subject the contractor, upon report from the Tender Board, to such mulct, not exceeding Fifty pounds (£50), as the Treasurer may direct, and the amount will be deducted from the contractor's account or from the security money, and the Treasurer's decision shall be binding, final, and conclusive as to the fact of infringement, and in all other respects.

#### MILK.

The milk must be fresh, pure, and of the best quality, and subject to test when required by the Department, and supplied

at such times as the Department may require. Should the contractor fail to supply at the time specified in the order or at such times as may be indicated in any general notice to the contractor his contract may be cancelled forthwith and his security forfeited, or should the supply prove to be not of contract quality it will be rejected, and any expense incurred will be charged to the contractor.

Under sub-schedules for Milk no subletting will be allowed; all work must be carried out by the contractor; the hours of employment of any person engaged in the preparation or the delivery of the milk tendered for in these schedules shall not exceed 60 hours per week, and every such person, except carters, shall be paid at a minimum wage of not less than £1 17s. 6d. per week, or £1 2s. 6d. per week with board and lodging, unless other wages may be determined by any Special Board under the Factories and Shops Acts during the currency of the contract, when every such person shall be paid such wages and shall be employed subject to such conditions as may thus be determined. Carters shall be paid such wages and shall be employed subject to such conditions as are or may be determined by the Carters Board under the Factories and Shops Acts. Should, however, the determination of the aforesaid Board not apply to the district covered by any particular schedule, that determination for carters, or the determination of such other Board as may be appointed for other employes during the currency of this contract shall, for the purpose of this contract, be taken as defining the rate of wages which shall be paid, and the conditions of employment in respect thereto; and a copy of these conditions shall be kept conspicuously and continually posted in legible Roman characters in the factory or dairy (and in each part of the factory or dairy where several rooms are in use) in which milk is prepared under these contracts. Any infringement of these conditions, in the opinion of the Treasurer, will subject the contractor, upon report from the Tender Board, to such mulct, not exceeding Fifty pounds (£50), as the Treasurer may direct, and the amount will be deducted from the contractor's account or from the security money, and the Treasurer's decision shall be binding, final, and conclusive as to the fact of infringement, and in all other respects.

#### POTATOES AND VEGETABLES.

(Potatoes to be dry and free from dirt. Contractor to supply 105 lbs. of potatoes for each cental credited to him, and, in addition, to take back all rejected before being cooked.)

If the price of potatoes becomes abnormally high, the heads of the various departments concerned may, if they think fit, cause rice or any other suitable food to be occasionally substituted in lieu thereof. As regards vegetables for s.s. *Lady Loch* and *Albert*, no subletting will be allowed. Cabbage to be free from outside leaves and stalks.

#### TOBACCO.

Tobacco for country Hospitals for the Insane is included in the contract for Melbourne District, and delivery of same will be required to be made at Spencer-street.

Tobacco for country Gaols is not included in the contract for Melbourne District.

\* Except when ordered for s.s. *Lady Loch* in cases of emergency only.

Schedule No. 1.  
**PROVISIONS—MELBOURNE  
DISTRICT.**

ANNEX TO CONTRACT No. 1914/12.

*R. G. Wilson and Co., Seanston-street, Melbourne.*

Sub-schedule No. 1.

BEER AND SPIRITS.

Security, £10.

		£	s.	d.
1. Ale (pints), English	per doz.	0	7	9
2. Brandy, Australian, Standard, pure grape, of proof strength, and of approved brand (Joshua's old)	per liq. gal.	1	0	0
3. " bottled—Hennessy's Three Star, as imported	per bottle	0	6	6
4. Lime Juice (Imperial quart bottles), Board of Trade Standard	per doz.	1	11	0
5. Whisky, of proof strength—Loch Dhu, Scotch Cream, or any other brand of equal quality	per liq. gal.	0	19	0
6. Porter—"Guinness," bottled (quarts) Boar's Head	per doz.	0	10	7½
7. " "Guinness," bottled (pints) Boar's Head	do.	0	7	3

ANNEX TO CONTRACT No. 1914/13.

*B. E. Johnson, Northcote.*

Sub-schedule 2.

BREAD FOR HOSPITALS FOR THE INSANE AT KEW.

Security, £100.

		£	s.	d.
1. Bread—Fine wheaten, first quality	per cental	0	8	8½

ANNEX TO CONTRACT No. 1914/14.

*J. N. Hennessy, 55 Sydney-road, Brunswick.*

Sub-schedule 3.

BREAD FOR HOSPITALS FOR THE INSANE AT YARRA BEND.

Security, £100.

		£	s.	d.
1. Bread—Fine wheaten, first quality	per cental	0	8	6

ANNEX TO CONTRACT No. 1914/15.

*J. N. Hennessy, Sydney-road, Brunswick.*

Sub-schedule 4.

BREAD FOR DEPARTMENT OF NEGLECTED CHILDREN AND REFORMATORY SCHOOLS, ROYAL PARK; REORIVING HOUSE AND MENTAL HOSPITAL, ROYAL PARK; POLICE LOCK-UPS; POLICE DEPOT; RICHMOND HOUSE, RICHMOND, ETC.

Security, £50.

		£	s.	d.
1. Bread—Fine wheaten, first quality	per cental	0	9	0
2. " Wheat, third quality	do.	0	8	10

ANNEX TO CONTRACT No. 1914/16.

*P. Sheahan and Co., 453 Little Flinders-street.*

Sub-schedule 5.

BUTTER, CHEESE, AND EGGS.

Security, £120.

		£	s.	d.
1. Butter—First Grade Creamery, to score not less than 92 points Government grade, Commerce Regulations standard	per cwt.	5	12	0
2. Cheese—First Class quality	do.	2	16	0
3. Eggs—Fresh, new laid	per doz.	0	1	0

ANNEX TO CONTRACT No. 1914/17.

*Henry R. Rush, 407 Collins-street, Melbourne.*

Sub-schedule 6.

FLOUR AND MAIZE MEAL.

Security, £100.

		£	s.	d.
1. Flour—Roller, first quality, to sample	per cental	0	8	3
2. " Sharps, to sample	do.	0	6	6
3. Maize meal	do.	0	9	7

ANNEX TO CONTRACT No. 1914/18.

*John D. Howie, 299 Smith-street, Fitzroy.*

Sub-schedule 7.

GROCERIES, ETC.

Security, £40.

		£	s.	d.
1. Arrowroot—Queensland	per lb.	0	0	4
2. Bicarbonate of Soda	do.	0	0	1½
3. Blue—Of any brand ordered	do.	0	0	6½
4. Candles—Full weights, Kitchen's "Petrolines," Apollo Co.'s "Apollo," or other make of equal quality, to be supplied in 1-lb. packets to sample	do.	0	0	6½
5. " Kitchen's "Petrolines," Apollo Co.'s "Apollo," or other make of equal quality, for use in prison cells, to burn for 1, 1½, 2, 2½, and 3 hours respectively, as ordered, to sample for quality and size, to be supplied in candle boxes, containing from 25 to 50 lbs. per box	do.	0	0	6½
6. " "Sapon," in boxes of 100 lbs.	do.	0	0	1½
7. " Carriage, equal to Kitchen's No. 8, in 1-lb. packets	do.	0	0	7
8. " Paraffine	do.	0	0	6½
9. Cocoa—Homeopathic, in ½-lb. packets, of any Commonwealth manufacture ordered	do.	0	1	0
10. " Homeopathic, in 7-lb. cartoons, of any Commonwealth manufacture ordered	do.	0	0	11½
11. Coffee—Fresh roasted and whole, beans to be thoroughly sound, Neilgherry A or equal thereto, to sample	do.	0	1	3
12. " Pure, fresh roasted and ground, to sample	do.	0	1	3
13. Cornina	do.	0	0	5
14. Cornflour	do.	0	0	4
15. Cream of Tartar	do.	0	1	0
16. Currants, 3 Crowns	do.	0	0	4½
17. Essence of Lemon, 1-oz. bottles	per bottle	0	0	6
18. Golden Syrup, in 7-lb. tins	per tin	0	1	5
19. Lemon Peel	per lb.	0	0	6½
20. Maizeflour—Duryea's	do.	0	0	6½
21. Mustard—"Double Superfine," of any Commonwealth manufacture ordered	do.	0	1	4
22. Nutmegs	do.	0	1	0
23. Pearl barley	per cwt.	0	18	6
24. Pease—Split	do.	0	17	0
25. Pepper—Black, ground	per lb.	0	0	9
26. Pipes—Tobacco, clay	per doz.	0	0	4
27. Raisins—Sultana (Mildura), 3 Crowns	per lb.	0	0	6½
28. Salt—Fine	per cwt.	0	3	9
29. " Rock	do.	0	4	6
30. Soap, Toilet—Brown Windsor, in tablets, to sample	per lb.	0	0	4½
31. " Carbolic, in half-pound bars, to sample	do.	0	0	4½
32. " Glycerine, in tablets, to sample	do.	0	0	4½
33. " Sunlight, in doublets	per dbt.	0	0	3½
34. " Magic	per lb.	0	0	3
35. " Velvet	per dbt.	0	0	2½
36. Soap—Extract of, Hudson's, No. 8a, in 14-lb. boxes	per box	0	4	3
37. Soda—Washing	per cwt.	0	4	9
38. Starch—Of any brand ordered, to sample	per lb.	0	0	4
39. Treacle, in 7-lb. tins	per tin	0	1	2
40. Vinegar	per quart	0	0	3
41. Lime Water	do.	0	0	6
42. Tapioca (Pearl)	per lb.	0	0	2
43. Tomato Sauce (pints)	per bottle	0	0	5½

ANNEX TO CONTRACT No. 1914/19.

*J. D. Howie, 299 Smith-street, Fitzroy.*

Sub-schedule 8.

OATMEAL, RICE, AND SEED TAPIOCA.

Security, £80.

		£	s.	d.
1. Oatmeal—Of any brand ordered	per cwt.	0	14	0
2. Rice—Dressed, No. 1 Java, to sample	do.	1	0	9
3. Seed Tapioca (Sago), to sample	do.	0	12	6

ANNEX TO CONTRACT No. 1914/20.

*J. D. Howie, 299 Smith-street, Fitzroy.*

Sub-schedule 9.

JAMS FOR HOSPITALS FOR THE INSANE.

(Of Commonwealth Manufacture.)

(Including Receiving House, Royal Park.)

Security, £20.

		£	s.	d.
1. Jams—Assorted, of approved kinds, in the proportion of half seed and half stone, of the best quality, in tins, as required	per lb. actual net weight	0	0	4

## ANNEX TO CONTRACT No. 1914/21.

Wm. Angliss and Co. Ppy. Ltd., Bourke-street, Melbourne.  
Sub-schedule No. 10.

## MEAT FOR HOSPITALS FOR THE INSANE, KEW.

Security, £150.			£	s.	d.
1. Fresh Beef—Fore-quarters	... per cental	1	5	10	
2. " " Hind-quarters	... do.	1	5	10	
3. " Buttock	... do.	1	5	10	
4. " Mutton	... do.	1	5	10	
5. Corned Beef, rolled or round, as ordered, without bone or cartilage	... do.	1	5	10	
6. Fresh Suet—Kidney	... do.	2	1	8	

## ANNEX TO CONTRACT No. 1914/22.

Wm. Angliss and Co. Ppy. Ltd., Bourke-street, Melbourne.  
Sub-schedule No. 11.

## MEAT FOR HOSPITALS FOR THE INSANE, YARRA BEND.

Security, £120.			£	s.	d.
1. Fresh Beef—Fore-quarters	... per cental	1	5	10	
2. " " Hind-quarters	... do.	1	5	10	
3. " Buttock	... do.	1	5	10	
4. " Mutton	... do.	1	5	10	
5. Corned Beef, rolled or round, as ordered, without bone or cartilage	... do.	1	5	10	
6. Fresh Suet—Kidney	... do.	2	1	8	

## ANNEX TO CONTRACT No. 1914/23

T. K. Bennet and Woolcock Ppy. Ltd., Bourke-street, Melbourne.  
Sub-schedule No. 12.

## MEAT FOR PENAL ESTABLISHMENT, PENTRIDGE.

Security, £100.			£	s.	d.
1. Fresh Beef	... per cental	1	6	0	
2. " Buttock	... do.	1	6	0	
3. Corned Beef	... do.	1	6	0	
4. Fresh Mutton	... do.	1	6	0	
5. Dripping	... do.	2	1	8	

## ANNEX TO CONTRACT No. 1914/24.

T. K. Bennet and Woolcock Ppy. Ltd., Bourke-street, Melbourne.  
Sub-schedule No. 13.

## MEAT FOR MELBOURNE GAOL; POLICE BARRACKS, ST. KILDA ROAD; DEPARTMENT FOR NEGLECTED CHILDREN AND REFORMATORY SCHOOLS, ROYAL PARK; RECEIVING HOUSE, AND MENTAL HOSPITAL, ROYAL PARK; AND RICHMOND HOUSE, RICHMOND.

Security, £50.			£	s.	d.
1. Fresh Beef	... per cental	1	6	0	
2. " Buttock	... do.	1	6	0	
3. " Mutton	... do.	1	6	0	
4. Corned Beef, rolled or round, as ordered, without bone or cartilage	... do.	1	6	0	
5. Fresh Suet—Kidney	... do.	2	1	8	

## ANNEX TO CONTRACT No. 1914/25.

James Murphy, Geake-street, Coburg.

## Sub-schedule No. 14.

## MILK FOR MELBOURNE GAOL; MENTAL HOSPITAL, ROYAL PARK; AND RICHMOND HOUSE, RICHMOND, ETC.

Security, £10.			£	s.	d.
1. Milk—Fresh and pure	... per gal.	0	1	1	

## ANNEX TO CONTRACT No. 1914/26.

James Murphy, Geake-street, Coburg.

## Sub-schedule No. 15.

## MILK FOR PENAL ESTABLISHMENT, PENTRIDGE.

Security, £10.			£	s.	d.
1. Milk—Fresh and pure	... per gal.	0	1	1	

## ANNEX TO CONTRACT No. 1914/27.

Shea, Hood, and Co. Ppy., 312 Flinders-street, Melbourne.

## Sub-schedule No. 15.

## POTATOES.

Security, £100.			£	s.	d.
1. " " "	... per cental	0	3	9	

## ANNEX TO CONTRACT No. 1914/28.

Moran and Cato Ppy. Ltd., Brunswick-street, Fitzroy.  
Sub-schedule No. 18.

## TEA.

Security, £60.			£	s.	d.
1. Tea—Best Congou, to sample	... per lb.	0	0	8½	
2. " Ration, to sample	... do.	0	0	8½	

## ANNEX TO CONTRACT No. 1914/29.

Dudgeon and Arnell, 524 Lonsdale-street, Melbourne.  
Sub-schedule No. 19.

## TOBACCO.

(Of Commonwealth Manufacture.)

Security, £20.			£	s.	d.
1. Tobacco, in 1-oz. plugs, for gaols—"Starlight," or other make of equal quality, to sample	... per lb.	0	2	8	
2. Tobacco, 21 plugs to the pound, for Hospitals for the Insane, to sample	... do.	0	2	8½	

## Schedule No. 2.

## PROVISIONS AT WILLIAMSTOWN.

(For s.s. *Lady Loch* and *Albert*.)

(Including Candles, Soap, and Soda for Dockyards.)

(Supplies for Naval Forces are not included in this Schedule.)  
(Supplies to be delivered on board the Vessels.)

## ANNEX TO CONTRACT No. 1914/30.

W. G. Elsum, Stevedore-street, North Williamstown.  
Sub-schedule No. 1.

## BREADSTUFFS.

Security, £10.			£	s.	d.
1. Bread—Fine wheaten, first quality	... per cental	0	10	5	
2. Flour—First quality	... do.	0	9	6	

## ANNEX TO CONTRACT No. 1914/31.

Moran and Cato Ppy. Ltd., Brunswick-street, Fitzroy.  
Sub-schedule No. 2.

## BUTTER.

Security, £5.			£	s.	d.
1. Butter—First-class Creamery, to score not less than 92 points Government grade, Commerce Regulations standard	... per lb.	0	1	1	

## ANNEX TO CONTRACT No. 1914/32.

Moran and Cato, Ppy. Ltd., Brunswick-street, Fitzroy.  
Sub-schedule No. 3.

## GROCERIES.

Security, £10.			£	s.	d.
1. Candles—(full weights) Kitchen's "Petrolines," Apollo Co.'s "Apollo," or other make of equal quality, to be supplied in 1-lb. packets	... per lb.	0	0	6½	
2. Chocolate, of any brand ordered	... do.	0	1	0	
3. Coffee—Fresh roasted and ground, to sample	... do.	0	1	1	
4. Currants—3 Crowns	... do.	0	0	4½	
5. Flour—Self-raising	... do.	0	0	2	
6. Milk—Condensed, of any brand ordered	... per tin	0	0	6½	
7. Mustard—double superfine, of any brand ordered	... per lb.	0	1	9	
8. Oatmeal	... per cwt.	0	15	0	
9. Pearl barley	... do.	0	15	0	
10. Pease—Split	... do.	0	17	0	
11. Pepper—White, ground	... per lb.	0	1	2	
12. Raisins—Sultana, Mildura—3 Crowns	... do.	0	0	0½	
13. Salt—Fine, to sample	... do.	0	0	2½	
14. Soap—Household, yellow, dry, to sample	... per cwt.	1	0	0	
15. Sugar—White, to sample	... per lb.	0	0	10½	
16. Tea—Best Congou, special sample	... do.	0	0	11	
17. " " Ceylon	... do.	0	0	11	
18. Vinegar—Champion's, or other approved brand	... per quart	0	0	3	
19. Biscuits, kinds as ordered	... per lb.	0	0	3½	
20. Meat—Preserved	... do.	0	0	5	
21. Soda—Washing	... per cwt.	0	5	6	

## ANNEX TO CONTRACT No. 1914/33.

Wm. Angliss and Co. Ppy. Ltd., Bourke-street Melbourne.  
Sub-schedule No. 5.

## MEAT.

Security, £10.			£	s.	d.
1. Fresh Beef	... per cental	1	19	4	
2. " Mutton	... do.	1	19	4	
3. " Suet	... per lb.	0	0	5	





ANNEX TO CONTRACT No. 1914/46.  
H. McDonough, Flinders-street, Melbourne.  
Sub-schedule No. 5.

POTATOES.		Security, £30.		£	s.	d.
1. Potatoes	per cental	0	4	6		

ANNEX TO CONTRACT No. 1914/47.  
John D. Howie, Smith-street, Fitzroy.  
Sub-schedule No. 7.

TEA.		Security, £20.		£	s.	d.
1. Tea—Best Congou, to sample	per lb.	0	0	8½		
2. " Ration, to sample	do.	0	0	6		

## Schedule No. 5.

## PROVISIONS AT BALLARAT.

ANNEX TO CONTRACT No. 1914/48.  
John Davies, Ballarat.  
Sub-schedule No. 1.

BREADSTUFFS.		Security, £60.		£	s.	d.
1. Bread—Fine Wheaten, first quality	per cental	0	9	4½		
2. " Wheaten, third quality	do.	0	9	4½		
3. Flour—First quality	do.	0	9	6		

ANNEX TO CONTRACT No. 1914/49.  
Donald Robinson, Sturt-street, Ballarat.  
Sub-schedule No. 2.

BUTTER AND CHEESE.		Security, £30.		£	s.	d.
1. Butter—First-grade Creamery, to score not less than 92 points, Government grade, Commerce Regulations standard	per cwt.	5	6	8		
2. Cheese—First-class quality	do.	3	7	8		

ANNEX TO CONTRACT No. 1914/50.  
John D. Howie, Smith-street, Fitzroy.  
Sub-schedule No. 3.

GROCERIES.		Security, £30.		£	s.	d.
1. Barley—Pearl	per lb.	0	0	2		
2. Blue—Of any brand required	do.	0	0	6½		
3. Candles (full weights)—Kitchen's "Petrolines," Apollo Co.'s "Apollo," or other make of equal quality, to be supplied in 1-lb. packets	do.	0	0	6½		
4. Coffee—"Neigherry A" or equal thereto. Fresh roasted and whole, beans to be thoroughly sound, to sample	do.	0	1	2½		
5. Cornina	do.	0	0	5		
6. Currants, 3 crowns	do.	0	0	4½		
7. Ginger—Ground	do.	0	0	10		
8. Golden Syrup, in 7-lb. tins	per tin	0	1	6		
9. Maizena—Duryea's	per lb.	0	0	6½		
10. Milk—Fresh and pure	per quart	0	0	5		
11. Mustard—"Double superfine," of any Commonwealth manufacture ordered	per lb.	0	1	4		
12. Oatmeal—Of any brand ordered	per cwt.	0	14	6		
13. Pease—Split	do.	0	18	0		
14. Pepper—Black, ground	per lb.	0	0	10		
15. Pipes—Tobacco, clay	per doz.	0	0	4½		
16. Raisins—Sultana (Mildura), 3 crowns	per lb.	0	0	6½		
17. Rice—Dressed, No. 1 Java, to sample	per cwt.	1	1	6		
18. Seed Tapioca (Sago), to sample	do.	0	15	0		
19. Salt—Fine	do.	0	4	11		
20. Soap—(Household), Carbolic, dry, to sample	per lb.	0	0	3		
21. Soap—(Household), Yellow, dry, to sample	do.	0	0	3		
22. Soda—Carbonate of	do.	0	0	1½		
23. " Washing	per cwt.	0	6	0		
24. Spice—Mixed, in 1-oz. packets	per doz. pkts.	0	0	9		
25. Starch—Of any brand ordered, to sample	per lb.	0	0	4½		
26. Sugar—White, to sample	per cwt.	1	2	6		
27. " Ration	per lb.	0	0	3		
28. Tartar—Cream of	do.	0	1	0		
29. Tea—Best Congou, to sample	do.	0	0	8½		
30. " Ration	do.	0	0	6		
31. Tobacco—"Starlight," or other make of equal quality, as ordered	do.	0	2	8		
32. Vinegar	per pint	0	0	3		
33. Whiting	per lb.	0	0	0½		

ANNEX TO CONTRACT No. 1914/51.  
The Ballarat Jam Co. P.L., Davey-street, Ballarat.  
Sub-schedule No. 4.

JAMS.		Security, £10.		£	s.	d.
1. Jams—Assorted, of approved kinds in proportion of half seed and half stone, actual net of the best quality, in tins as required	per lb. weight	0	0	3½		

ANNEX TO CONTRACT No. 1914/52.  
H. J. Symons, Macarthur-street, Ballarat.  
Sub-schedule No. 5.

MEAT.		Security, £60.		£	s.	d.
1. Fresh Beef—Fore-quarters	per cental	1	7	0		
2. " " Hind-quarters	do.	1	7	0		
3. " " Buttocks	do.	1	7	0		
4. " Mutton	do.	1	9	0		
5. Corned Beef, rolled or round, as ordered, without bone or cartilage	do.	1	7	0		
6. Fresh Suet—Kidney	do.	1	5	0		

## ANNEX TO CONTRACT No. 1914/53.

Shea, Hood, and Co. P.L., 512 Flinders-street, Melbourne.  
Sub-schedule No. 6.

POTATOES.		Security, £20.		£	s.	d.
1. Potatoes	per cental	0	4	3		

## Schedule No. 6.

## PROVISIONS AT GEELONG.

ANNEX TO CONTRACT No. 1914/54.  
W. Marshall, 138 Malop-street, Geelong.  
Sub-schedule No. 1.

BREADSTUFFS.		Security, £20.		£	s.	d.
1. Bread—Fine Wheaten, first quality	per cental	0	8	4		
2. " Wheaten, third quality	do.	0	8	4		

## ANNEX TO CONTRACT No. 1914/55.

Moran and Cato, Pty. Ltd., Brunswick-street, Fitzroy.  
Sub-schedule No. 2.

GROCERIES.		Security, £20.		£	s.	d.
1. Arrowroot—Queensland	per lb.	0	0	5½		
2. Candles (full weights)—Kitchen's "Petrolines," or other make of equal quality, to sample, to be supplied in 1-lb. packets	do.	0	0	7		
3. Barley—Pearl	do.	0	0	1½		
4. Currants, 3 crown	do.	0	0	5		
5. Eggs—Fresh	per doz.	0	1	4		
6. Mustard—"Double Superfine," of any Commonwealth manufacture ordered	per lb.	0	1	4		
7. Oatmeal—Of any brand ordered	per cwt.	0	15	0		
8. Pepper—Black, ground	per lb.	0	0	10		
9. Pipes—Tobacco, clay	per doz.	0	0	4½		
10. Raisins—Sultana (Mildura), 3 crown	per lb.	0	0	7½		
11. Rice—Dressed, No. 1, Java, to sample	per cwt.	1	2	0		
12. Seed Tapioca (Sago), to sample	per lb.	0	0	1½		
13. Salt—Fine	do.	0	0	0½		
14. Soap—(Household) Carbolic, dry, to sample	do.	0	0	2½		
15. Soap—(Household) Yellow, dry, to sample	per cwt.	1	4	0		
16. Soda—Washing	do.	0	5	9		
17. Sugar—Ration, to sample	do.	0	19	6		
18. Tea—Ration	per lb.	0	0	8		
19. Tobacco—"Starlight," or other make of equal quality, as ordered	do.	0	2	8		

ANNEX TO CONTRACT No. 1914/56.  
M. McCartin and Sons, Moorabool-street, Geelong.  
Sub-schedule No. 3.

MEAT.		Security, £20.		£	s.	d.
1. Fresh Beef	per cental	1	6	0½		
2. " Buttocks	do.	1	16	11½		
3. " Mutton	do.	1	7	1		

ANNEX TO CONTRACT No. 1914/57.  
Thomas Warren, East Geelong.  
Sub-schedule No. 4.

MILK.		Security, £5.		£	s.	d.
1. Milk—Fresh and pure	per gallon	0	1	0		

## ANNEX TO CONTRACT No. 1914/58.

W. H. Maine & Co. Pty. Ltd., 452 Flinders-street, Melbourne.  
Sub-schedule No. 5.

## POTATOES.

Security, £5. £ s. d.

1. Potatoes	per cental	0	6	1
-------------	------------	---	---	---

## Schedule No. 7

## PROVISIONS AT LARA.

(Delivery at the Inebriates' Retreat.)

ANNEX TO CONTRACT No. 1914/59.

F. Sombébe, Lara.

Sub-schedule No. 1.

## BREADSTUFFS.

Security, £20. £ s. d.

1. Bread—Fine Wheaten, first quality	per cental	0	9	0
2. Flour—First quality	do.	0	9	0

## ANNEX TO CONTRACT No. 1914/60.

John D. Howie, 299 Smith-street, Fitzroy.

Sub-schedule No. 2.

## BUTTER AND CHEESE.

Security, £10. £ s. d.

1. Butter—First Grade Creamery, to score not less than 92 points Government grade, Commerce Regulations standard	per cwt.	5	16	8
2. Cheese—First-class quality	do.	3	14	0

## ANNEX TO CONTRACT No. 1914/61.

A. V. Strong, Lara.

Sub-schedule No. 3.

## GROCERIES.

Security, £20. £ s. d.

1. Arrowroot—Queensland	per lb.	0	0	3
2. Bacon. Farmer's or Hutton's (or other approved brand) by the side	do.	0	0	10½
3. Barley—Pearl	do.	0	0	1¼
4. Blue—Of any brand ordered	do.	0	0	6
5. Candles—(Full weights) Kitchen's "Petrolines," or other make of equal quality, to be supplied in 1-lb. packets	do.	0	0	6½
6. Cocoa—(Homeopathic)—McKenzie's, or other brand of equal quality	do.	0	0	11½
7. Coffee—"Neilgherry A," or equal thereto, Fresh roasted and whole—Beans to be thoroughly sound, to sample	do.	0	1	5½
8. Currants—3 Crowns	do.	0	0	4½
9. Mustard—Double Superfine, of any Commonwealth manufacture ordered	do.	0	1	0
10. Oatmeal—Of any brand ordered	per cwt.	0	17	0
11. Pease—Split	per lb.	0	0	2½
12. Pepper—Black, ground	do.	0	0	10
13. Raisins—Sultana (Mildura), 3 Crowns	do.	0	0	6½
14. Rice—Dressed, No. 1 Java, to sample	do.	0	0	2½
15. Seed Tapioca (Sago), to sample	do.	0	0	1½
16. Salmon—Fresh, brand, as ordered, tins—1-lb. tins	per tin.	0	0	8½
17. Salt—Fine	per lb.	0	0	0½
18. Soap—(Household) Yellow, dry, to sample	do.	0	0	2½
19. Soap—Toilet, Glycerine, in tablets, to sample	do.	0	0	6
20. Soda—Washing	do.	0	0	6½
21. Sugar, White, to sample	per cwt.	1	2	9
22. Tea, Best Ceylon, special sample	per lb.	0	1	0

## ANNEX TO CONTRACT No. 1914/62.

John D. Howie, Smith-street, Fitzroy.

Sub-schedule No. 4.

## JAMS.

(Of Commonwealth Manufacture.)

Security, £5. £ s. d.

1. Jams: Assorted, of approved kinds in the proportion of half seed and half stone, of the best quality, in tins containing 27 ozs. net	per doz. tins	0	7	1½
---	---------------	---	---	----

## ANNEX TO CONTRACT No. 1914/63.

W. Anglin &amp; Co. Pty. Ltd., Bourke-street, Melbourne.

Sub-schedule No. 5.

## MEAT.

Security, £20. £ s. d.

1. Fresh Beef	per cental	2	1	8
2. " Mutton	do.	2	1	8
3. " Tripe, Sausages, Kidneys, and Liver, as ordered	do.	2	1	8

## ANNEX TO CONTRACT No. 1914/64.

Sheu, Hood, and Co. Pty. Ltd., 312 Flinders-street, Melbourne.  
Sub-schedule No. 6.

## POTATOES.

Security, £5. £ s. d.

1. Potatoes	per cental	0	4	6
-------------	------------	---	---	---

## Schedule No. 8.

## PROVISIONS—SUNBURY DISTRICT.

## ANNEX TO CONTRACT No. 1914/65.

Thomas Clyne and Son, Sunbury.

Sub-schedule No. 1.

## BREADSTUFFS.

Security, £100. £ s. d.

1. Bread—Fine Wheaten, first quality	per cental	0	8	4
2. Flour—First quality	do.	0	8	9

## ANNEX TO CONTRACT No. 1914/66.

John D. Howie, Smith-street, Fitzroy.

Sub-schedule No. 2.

## BUTTER, CHEESE, AND BACON.

Security, £40. £ s. d.

1. Butter—First Grade Creamery, to score not less than 92 points Government grade, Commerce Regulations standard	per cwt.	5	12	6
2. Cheese—First-class quality	do.	3	11	0
3. Bacon—Shoulders	do.	2	16	0

## ANNEX TO CONTRACT No. 1914/67.

John D. Howie, Smith-street, Fitzroy.

Sub-schedule No. 3.

## GROCERIES.

Security, £20. £ s. d.

1. Blue—Of any brand ordered	per lb.	0	0	6½
2. Candles—(Full weights) Kitchen's "Petrolines," or other make of equal quality, to sample, to be supplied in 1-lb. packets	do.	0	0	6½
3. Coffee—"Neilgherry A," or equal thereto, Fresh roasted and whole—Beans to be thoroughly sound, to sample	do.	0	1	2½
4. Cornina	do.	0	0	5
5. Currants—3 Crowns	do.	0	0	4½
6. Curry Powder	do.	0	0	9
7. Ginger—Ground	do.	0	0	10
8. Golden Syrup, in 56-lb. tins	per tin	0	9	9
9. Haricot Beans	per bshl. of 60 lbs.	0	8	6
10. Maizena—Duryea's	per lb.	0	0	6½
11. Mustard—Double superfine, of any Commonwealth manufacture ordered	do.	0	1	6
12. Oatmeal—Of any brand ordered	per cwt.	0	14	6
13. Pearl Barley	do.	0	13	6
14. Pease—Split	do.	0	16	0
15. Pepper—Black, ground	per lb.	0	0	9½
16. Pipes—Tobacco, clay	per doz.	0	0	4½
17. Raisins—Sultana (Mildura), 3 Crowns	per lb.	0	0	6½
18. Rice—Dressed, No. 1 Java, to sample	per cwt.	1	0	8
19. Seed Tapioca (Sago), to sample	do.	0	13	0
20. Salt—Fine	do.	0	4	4
21. Soda—Washing	do.	0	5	4
22. Starch—Of any brand ordered, to sample	per lb.	0	0	4½
23. Tartar—Cream of	do.	0	1	0
24. Vinegar	per pint	0	0	3

## ANNEX TO CONTRACT No. 1914/68.

John D. Howie, Smith-street, Fitzroy.

Sub-schedule No. 4.

## JAMS.

(Manufactured within the Commonwealth.)

Security, £10. £ s. d.

1. Jams—Assorted, of approved kinds in the proportion of half seed and half stone, of the best quality, in tins as required	per lb. actual net weight	0	0	4
---	---------------------------	---	---	---

## ANNEX TO CONTRACT No. 1914/69.

S. J. Sturkie, Sunbury.

Sub-schedule No. 5.

## MEAT, ETC.

Security, £80. £ s. d.

1. Fresh Beef—Fore-quarters	per cental	1	6	0
2. " " Hind-quarters	do.	1	6	0
3. " " Buttocks	do.	1	6	0
4. " Mutton	do.	1	6	0
5. Corned Beef—Rolled or round, as ordered, without bone or cartilage	do.	1	6	0
6. Fresh Beef Suet—Kidney	do.	2	1	8

## ANNEX TO CONTRACT No. 1914/70.

W. Angliss and Co. Pty. Ltd., Bourke-street, Melbourne.

## Sub-schedule No. 5A.

## RABBIT.

	Security, £10.	£	s.	d.
1. Rabbits—Not less than 3½ lbs. per pair	per doz. prs.	0	6	3
2. " " 2½ " "	"	0	5	3

## ANNEX TO CONTRACT No. 1914/71.

Shea, Hood, and Co. Pty. Ltd., 512 Flinders-street, Melbourne.

## Sub-schedule No. 6.

## POTATOES.

	Security, £30.	£	s.	d.
1. Potatoes	per cental	0	4	1

## ANNEX TO CONTRACT No. 1914/72.

J. D. Howie, Smith-street, Fitzroy.

## Sub-schedule No. 8.

## TEA.

	Security, £20.	£	s.	d.
1. Tea—Best Congou, to sample	per lb.	0	0	8½

## Schedule No. 9.

## PROVISIONS—BENDIGO DISTRICT.

## ANNEX TO CONTRACT No. 1914/73.

L. J. Anderson, Williamson-street, Bendigo.

## Sub-schedule No. 1.

## BREAD.

	Security, £5.	£	s.	d.
1. Bread—Wheaten, third quality	per cental	0	9	4½

## ANNEX TO CONTRACT No. 1914/74.

James Richardson, Pall Mall, Bendigo.

## Sub-schedule No. 2.

## GROCERIES AND POTATOES.

	Security, £5.	£	s.	d.
1. Candles—(full weights) Kitchen's "Petro-lines," or other make of equal quality, to sample, to be supplied in 1-lb. packets	per lb.	0	0	6½
2. Milk—Fresh and pure	per quart	0	0	4½
3. Oatmeal—Of any brand ordered	per lb.	0	0	2
4. Potatoes	per cental	0	6	0
5. Rice, dressed, No. 1 Java, to sample	per lb.	0	0	2½
6. Salt—Fine	do.	0	0	0½
7. Soap—Yellow (Household), dry, to sample	do.	0	0	2½
8. " Carbolic	do.	0	0	3
9. Soda—Washing	do.	0	0	0½
10. Sugar—Ration, to sample	do.	0	0	2
11. " White	do.	0	0	2½
12. Tea—Best Congou, to sample	do.	0	1	0
13. " Ration, to sample	do.	0	0	10
14. Tobacco—"Starlight," or other make of equal quality, as ordered	do.	0	2	7½
15. Whiting	do.	0	0	0½

## ANNEX TO CONTRACT No. 1914/75.

Ewing and Kronk, Williamson-street, Bendigo.

## Sub-schedule No. 3.

## MEAT.

	Security, £5.	£	s.	d.
1. Fresh Beef	per cental	1	12	6

## Schedule No. 10.

## PROVISIONS—CASTLEMAINE DISTRICT.

## ANNEX TO CONTRACT No. 1914/76.

M. Van Heurck, Duke-street, Castlemaine.

## Sub-schedule No. 1.

## BREAD.

	Security, £5	£	s.	d.
1. Bread—Wheaten, third quality	per cental	0	12	6

## ANNEX TO CONTRACT No. 1914/77.

Moran and Cato, Brunswick-street, Fitzroy.

## Sub-schedule No. 2.

## GROCERIES AND POTATOES.

	Security, £5.	£	s.	d.
1. Candles—(full weights), Kitchen's "Petro-lines," Apollo Co.'s "Apollo," or other make of equal quality, to sample, to be supplied in 1-lb. packets	per lb.	0	0	8½
2. Milk—Fresh and pure	per quart	0	0	5
3. Oatmeal	per cwt.	0	18	6
4. Potatoes	per cental	0	7	0
5. Rice, Dressed, No. 1 Java, to sample	per cwt.	1	4	0
6. Salt—Fine	per lb.	0	0	1
7. Soap—Yellow (household), dry, to sample	do.	0	0	4
8. Soda—Washing	do.	0	0	1
9. Sugar—Ration, to sample	do.	0	0	3
10. Tea	do.	0	1	0

## ANNEX TO CONTRACT No. 1914/78.

Jane Williamson, Mostyn-street, Castlemaine.

## Sub-schedule No. 3.

## MEAT.

	Security, £5.	£	s.	d.
1. Fresh Beef	per lb.	0	0	3
2. " Mutton	do.	0	0	3

## Schedule No. 11.

## PROVISIONS AT SALE.

## ANNEX TO CONTRACT No. 1914/79.

Caddy and Smith, Raymond-street, Sale.

## Sub-schedule No. 1.

## BREAD.

	Security, £5.	£	s.	d.
1. Bread—Wheaten, third quality	per lb.	0	12	6

## Sub-schedule No. 2.

## GROCERIES AND POTATOES.

	Security, £5.	£	s.	d.
1. Milk—Fresh and pure	per quart	0	0	4½
2. Potatoes	per cental	0	6	0
3. Rice, dressed, to sample	per lb.	0	0	2½
4. Salt—Fine	do.	0	0	0½
5. Soap, yellow (household), dry, to sample	do.	0	0	2½
6. Soda—Washing	do.	0	0	1
7. Sugar—Ration, to sample	do.	0	0	10
8. Tea	do.	0	2	7½
9. Whiting	do.	0	0	0½

## ANNEX TO CONTRACT No. 1914/80.

Edward Cleaver, Raymond-street, Sale.

## Sub-schedule No. 3.

## MEAT.

	Security, £5.	£	s.	d.
1. Fresh Beef	per lb.	0	0	3

## Schedule No. 18.

## PROVISIONS—MONT PARK.

(Delivery at the Hospital for Insane.)

## ANNEX TO CONTRACT No. 1914/81.

H. E. Johnson, Northcote.

## Sub-schedule No. 1.

## BREADSTUFFS.

	Security, £30.	£	s.	d.
1. Bread—Fine Wheaten, first quality	per cental	0	9	9½
2. Flour—First quality	"	0	9	0

## ANNEX TO CONTRACT No. 1914/82.

P. Sheahan and Co. 453 Flinders-lane, Melbourne.

## Sub-schedule No. 2.

## BUTTER AND CHEESE.

## Security, £10.

1. Butter—First Grade Creamery, to score not less than 92 points Government grade, Commerce Regulations standard per cwt.	5	12	0
2. Cheese—First-class quality	3	5	4

## ANNEX TO CONTRACT No. 1914/83.

John D. Howie, Brunswick-street, Fitzroy.

## Sub-schedule No. 3.

## GROCERIES.

## Security, £10.

1. Blue—Of any brand ordered	per lb.	0	0	6½
2. Candles (full weights)—Kitchen's "Petrolines," or other make of equal quality, to be supplied in 1-lb. packets	"	0	0	6½
3. Coffee—"Nailgherry A" or or equal thereto—Fresh roasted and Whole—Beans to be thoroughly sound, to sample	"	0	1	2½
4. Cornina	"	0	0	5
5. Currants, 3 Crowns	"	0	0	4½
6. Golden Syrup, in 7-lb. tins	per tin	0	1	5
7. Maizena—Duryea's	per lb.	0	0	6½
8. Mustard—"Double Superfine," of any Commonwealth manufacture ordered	"	0	1	4
9. Oatmeal—Of any brand ordered	per cwt.	0	14	3
10. Pease—Split	"	0	17	0
11. Pepper—Black, Ground	per lb.	0	0	9½
12. Pipes—Tobacco, Clay	per doz.	0	0	4½
13. Raisins—Sultana (Mildura), 3 Crowns	per lb.	0	0	6½
14. Rice—Dressed, No. 1 Java, to sample	per cwt.	1	0	0
15. Seed Tapioca (Sago)—To sample	per lb.	0	0	2
16. Salt—Fine	per cwt.	0	3	9
17. Soda—Washing	"	0	5	0
18. Starch—Of any brand ordered to sample	per lb.	0	0	4½
19. Tartar—Cream of	"	0	1	0
20. Vinegar	per pint	0	0	2

July 9, 1914

2788

Victoria Gazette

ANNEX TO CONTRACT No. 1914/84.

John D. Howie, Smith-street, Fitzroy.

Sub-schedule No. 4.

JAMS FOR HOSPITALS FOR THE INSANE.

(Of Commonwealth Manufacture.)

Security £10.

	£	s.	d.
1. Jams, assorted, of approved kinds in the proportion of half seed and half stone, of the best quality, in tins as required	0	0	4½

ANNEX TO CONTRACT No. 1914/85.

Wm. Angliss and Co. Pty Ltd., Bourke-street, Melbourne.

Sub-schedule No. 5.

MEAT, ETC.

Security, £30

	£	s.	d.
1. Fresh Beef, Fore-quarters ... per cental	1	5	10
2. " " Hind-quarters ... "	1	5	10
3. " " Buttocks ... "	1	5	10
4. " Mutton ... "	1	5	10
5. Corned Beef—Rolled or Round, as ordered, without bone or cartilage ...	1	5	10
6. Fresh Beef Suet—Kidney ...	2	1	8

ANNEX TO CONTRACT No. 1914/86.

Shca, Hood, and Co. Pty. Ltd., 512 Flinders-street, Melbourne.

Sub-schedule No. 6.

POTATOES.

Security, £20

	£	s.	d.
1. Potatoes ... per cental	0	4	1

ANNEX TO CONTRACT No. 1914/87.

John D. Howie, Smith-street, Fitzroy.

Sub-schedule No. 8.

TEA.

Security, £10.

	£	s.	d.
1. Tea—Best Congou, to sample ... per lb.	0	0	9

CONTRACTS ACCEPTED.—(Series 1914-15.)

Serial No.	Particulars.	Amount.	Name for Approval.	Charge against Vote or Fund.
	<b>PROVISIONS—</b> Supply of Provisions in such quantities as may be ordered for the use of the Students School of Forestry, Creswick, from 1st July, 1914, to 30th June, 1915—			
88	Breadstuffs ...	Rates as per annex	C. C. Bowley ...	Contingencies, 1914-15.
89	Butter and Cheese ...	Ditto ...	John Tait and Son ...	
90	Groceries ...	Ditto ...	John Tait and Son ...	
91	Meat ...	Ditto ...	Wood Bros. ...	
92	Milk ...	Ditto ...	Annie Armstrong ...	
...	Potatoes ...	Ditto ...	Purchase ...	

Approved—A. J. PRACOCK, Treasurer. 22.6.1914.

Schedule No. 19.

PROVISIONS AT CRESWICK FOR STUDENTS AT THE SCHOOL OF FORESTRY.

(Delivery at the School.)

Particular attention is drawn to Clause 1 of the Conditions as to quality.

Where practicable all items must be manufactured or prepared within the Commonwealth.

ANNEX TO CONTRACT No. 1914/88.

C. C. Bowley, Creswick.

Sub-schedule No. 1.

BREADSTUFFS.

Security, £10.

No subletting will be allowed; all work must be carried out by the contractor. Every person engaged in the manufacture, preparation, or delivery of the bread tendered for in this sub-schedule shall be paid such wages and shall be employed subject to such conditions as are or may be determined by the Bread or Bread Carters Board, or by the Court of Industrial Appeals, as the case may be, under the provisions of the Factories and Shops Acts; should, however, the determinations of the aforesaid Boards or Court not apply to the district covered by this particular schedule, those determinations shall, for the purpose of this contract, be taken as defining the rate of wages which shall be paid and the conditions of employment in respect thereto; and a copy of these conditions shall be kept conspicuously and continually posted in legible Roman characters in the factory or shop (and in each part of the factory or shop where several rooms are in use) in which bread is prepared or manufactured under this contract. Any infringement of these conditions, or any breach of the said determination, in the opinion of the Treasurer, will subject the contractor, upon report from the Tender Board, to such mulct, not exceeding Fifty pounds (£50), as the Treasurer may direct, and the amount will be deducted from the contractor's account or from the security money, and the Treasurer's decision shall be binding, final, and conclusive as to the fact of infringement, and in all other respects. The contractor shall, before any account is passed for payment, furnish a statutory declaration that all the workmen under this

contract have been employed in accordance with the above clause of these conditions, and have been paid not less than the minimum rate of wages for such workmen as is provided for under that clause.

Pure wheaten meal bread of first quality may be substituted, wholly or in part, for fine wheaten bread at such times as may be deemed necessary, and the contractor will be required to supply such bread at the contract rate. Reasonable notice, however, of the intention to substitute wheaten meal bread must be given to the contractor by the officer ordering the supply.

Samples of the best ordinarily retailed to the public will be considered as test loaves for first quality.

	£	s.	d.
1. Bread—Fine Wheaten, first quality ... per cental	0	13	6
2. Flour—First quality ... do.	0	9	9

ANNEX TO CONTRACT No. 1914/89.

John Tait and Son, Creswick.

Sub-schedule No. 2.

BUTTER AND CHEESE.

Security, £5.

All butter supplied, as well as the boxes in which it is packed for transit, must bear the impress stamp of the creamery manufacturing the butter, otherwise it will be rejected. The cheese supplied must be fairly matured, and packed in boxes for transport.

In the event of butter being supplied under this contract from Melbourne, all such butter shall be submitted by the contractor to the Government Dairy Expert in Melbourne for test as to standard quality, and, if found to be satisfactory, shall be forwarded by that officer direct to the institution ordering, the cost of freight being borne by the contractor in the usual way.

	£	s.	d.
1. Butter—First Grade Creamery, to score not less than 92 points, Government Grade, Commerce Regulations standard ... per lb.	0	1	0½
2. Cheese—First-class quality, matured (Victorian) ... do.	0	0	8
3. Eggs, new laid ... per doz.	0	1	1

## ANNEX TO CONTRACT No. 1914/90.

John Tait and Son, Creswick.

## Sub-schedule No. 3.

## GROCERIES.

Security, £10.

The soap supplied must be hard throughout, ready for immediate use without waste. Soap for the Lunatic Asylum is not included in this contract.

When the quantity admits, tea must be supplied in original and unopened packages, labelled, as landed.

Should any article or articles which may be reasonably included in a grocer's price list, and which is or are not included in the schedule hereunder, be required during the currency of the contract, the contractor shall supply any such article or articles at the current list rates at which such articles are retailed by the contractor to the public.

		£	s.	d.
1. Barley—Pearl	per lb.	0	0	2
2. Blue—Of any brand required	do.	0	0	6½
3. Candles (full weights) Kitchen's "Petrolines," Apollo Co.'s "Apollo," or other make of equal quality, to be supplied in 1-lb. packets	do.	0	0	7
4. Coffee—Fresh roasted and whole—Beans to be thoroughly sound, to sample	do.	0	1	4½
5. Cornina	do.	0	0	6
6. Currants—3 Crowns	do.	0	0	5
7. Ginger—Ground (Jamaica)	do.	0	0	9
8. Golden Syrup, in 7-lb. tins	per tin	0	1	6½
9. Jams, assorted, any brand ordered, in 2-lb. tins, in the proportion of half seed and half stone	per lb. net	0	0	4½
10. Maizena—Duryea's	per lb.	0	0	7
11. Mustard—Double superfine, of any brand ordered	do.	0	1	0
12. Oatmeal—O; any brand ordered	do.	0	0	2
13. Pease—Split	do.	0	0	2
14. Pepper—Black, ground	do.	0	0	10½
15. Raisins—Sultana (Mildura), 3 Crowns	do.	0	0	7
16. Rice—Dressed, No. 1 Java, to sample	do.	0	0	2½
17. Seed Tapioca—Sago, to sample	do.	0	0	2
18. Salt—Fine	do.	0	0	0½
19. Soap (Household)—Lever Bros. "Vet. vet"	do.	0	0	6½
20. Soap (Household)—Yellow, dry, to sample	do.	0	0	3
21. Carbolic Sand Soap	do.	0	0	3½
22. Soda—Carbonate of	do.	0	0	2
23. " Washing	do.	0	0	0½
24. Spice—Mixed, in 1-oz. packets	per pkt.	0	0	1
25. Starch, of any brand ordered, to sample	per lb.	0	0	5½
26. Sugar—White, to sample	per cwt.	1	4	3
27. " Ration	per lb.	0	0	2½
28. Tartar—Cream of	do.	0	1	0
29. Tea—Best Ceylon, to sample	do.	0	1	1½
30. Vin-gar	per pint	0	0	2
31. Whiting	per lb.	0	0	0½
32. Red Ochre	do.	0	0	2

## ANNEX TO CONTRACT No. 1914/91.

Wood Bros., Creswick.

## Sub-schedule No. 4.

## MEAT.

Security, £10.

No subletting will be allowed; no delivery of meat shall be made on Sundays; all work must be carried out by the contractor. Every person engaged in the cutting-up, preparation, or delivery of the meat tendered for in this sub-schedule shall be paid such wages and shall be employed subject to such conditions as are or may be determined by the Butchers Board under the provisions of the Factories and Shops Acts; should, however, the determination of the aforesaid Board not apply to the district covered by this particular Schedule, that determination shall, for the purpose of this contract, be taken as defining the rate of wages which shall be paid and the conditions of employment in respect thereto; and a copy of these conditions shall be kept conspicuously and continually posted in legible Roman characters in the factory or shop (and in each part of the factory or shop where several rooms are in use) in which meat is

prepared under this contract. Any infringement of these conditions, or any breach of the said determination, in the opinion of the Treasurer, will subject the contractor, upon report from the Tender Board, to such mulct, not exceeding Fifty pounds (£50), as the Treasurer may direct, and the amount will be deducted from the contractor's account or from the security money, and the Treasurer's decision shall be binding, final, and conclusive as to the fact of infringement and in all other respects.

The contractor shall, before any account is passed for payment, furnish a statutory declaration that all the workmen under this contract have been employed in accordance with the above clause of these conditions, and have been paid not less than the minimum rate of wages for such workmen as is provided for under that clause.

When fore and hind quarters of beef are ordered for Hospitals for the Insane they must be supplied in the proportion of two of the former to one of the latter, and must be delivered as a whole respectively, also extra buttocks separately when ordered. Meat for other institutions must be supplied as ordered. Where hindquarters or buttocks are ordered, 9 inches must be cut off from the end of the leg from the hock upwards, i.e., the end of the leg from which the shank has been removed at the abattoirs; and when forequarters form a portion of the supply, 6 inches from the end of the neck and the whole of the shin at the clodbone joint must be removed. The sticking pieces also must be trimmed off, and the point and end of the brisket ended free from blood and blood stains.

Fore and hind quarters, for convenience of handling, may be cut in two parts, but each part is to bear evidence of having been cut from the same beast.

Corned beef (rolled or round as ordered) must be supplied without bone or cartilage, and will be received, whether pumped or prepared in the ordinary way by pickling, but in the formed case must have been soaked, after pumping, for at least 48 hours in a good pickle, and then thoroughly drained before supply. No flank, chuck, sticking piece, shin, leg of beef, or piece under 7 lbs. will be received.

Should the local supply of fresh meat become scarce, or the price of same become abnormally high, frozen or chilled meat may, with the consent of the Tender Board on the recommendation of the head of the Department, be supplied.

In cases of emergency, or on such other occasions as in the opinion of the Superintendent may seem advisable, other forms of meat, such as rabbits, tinned meats, &c., may be purchased apart from the contract in lieu of the meat mentioned in the Schedule, and substituted therefor, provided 24 hours' notice—except in cases of emergency—be given to the contractor of such intention.

The parts to be removed by the contractor are indicated by the shaded portions of the annexed diagram.

		£	s.	d.
1. Fresh Beef—Forequarter	per lb.	0	0	6½
2. " " Hindquarter	do.	0	0	7½
3. " " Buttocks	do.	0	0	7
4. " " Mutton	do.	0	0	5½
5. Corned Beef, rolled or round, as ordered without bone or cartilage	do.	0	0	7
6. Pork (Leg)	do.	0	0	8
7. Fresh Suet—Kidney	do.	0	0	6

## ANNEX TO CONTRACT No. 1914/92.

Annie Armstrong, Creswick.

## Sub-schedule No. 5.

## MILK.

Security, £5.

		£	s.	d.
1. Milk—Fresh and pure	per quart	0	0	3

## Sub-schedule No. 6.

## POTATOES.

Potatoes to be dry and free from dirt. Contractor to supply 105 lbs. of potatoes for each cental credited to him, and, in addition, to take back all rejected before being cooked.

If the price of potatoes becomes abnormally high, the heads of the various Departments concerned may, if they think fit, cause rice or any other suitable food to be occasionally substituted in lieu thereof.

1. Potatoes	per cental	Purchase as required
-------------	------------	----------------------

## PROVISIONS FOR ABORIGINES AT THE UNDERMENTIONED STATIONS.

CONTRACTS ACCEPTED.—(Series 1914-15.)

Serial No.	Particulars.	Amount.	Name of Contractor.	Charged against Vote or Fund.
	PROVISIONS— Supply of Provisions for Aborigines at the undermentioned Stations as may be required from 1st July, 1914, to 30th June, 1915:—			
93	Coranderrk— Bread	Rates as per Annex	Alexr. Schmidt	Contingencies 1914-15
94	Groceries	Ditto	Moran and Cato Pty. Ltd.	
95	Lake Tyers— Bread	Ditto	John Rule	
96	Groceries	Ditto	Williams and Currey	
97	Lake Condah— Bread	Ditto	S. J. Treloar	
98	Groceries	Ditto	Righetti Bros.	

Approved.—A. J. PRACOCK, Treasurer. 22.6.1914.

1914-15.

Schedule No. 15.

## PROVISIONS FOR ABORIGINES AT THE UNDERMENTIONED STATIONS.

Period of Contract—From 1st July, 1914, to 30th June, 1915.

Particular attention is drawn to clause 1 of the conditions as to quality.

Where practicable, all items must be manufactured and prepared within the Commonwealth.

## Sub-schedule No. 1.

## BREAD.

Contract No. 1914/93.—Coranderk—Alexr. Schmidt, Healesville	...	Security, £2.
" " 1914/95.—Lake Tyers—John Rule, Nowa Nowa	...	" £2.
" " 1914/97.—Lake Condah—S. J. Treloar, Portland	...	" £2.

No subletting will be allowed; all work must be carried out by the contractor; every person engaged in the manufacture, preparation, or delivery of the bread tendered for in this sub-schedule shall be paid such wages and shall be employed subject to such conditions as are or may be determined by the Bread or Bread Carters Board, or by the Court of Industrial Appeals, as the case may be, under the provisions of the Factories and Shops Acts. Should, however, the determinations of the aforesaid Boards or Court not apply to the district covered by this particular schedule, then those determinations shall, for the purpose of these contracts, be taken as defining the rate of wages which shall be paid and the conditions of employment in respect thereto; and a copy of these conditions shall be kept conspicuously and continually posted in legible Roman characters in the factory or shop (and in each part of the factory or shop where several rooms are in use) in which bread is prepared or manufactured under this contract. Any infringement of these conditions, or any breach of the said determination, in the opinion of the Treasurer, will subject the contractor, upon report from the Tender Board, to such mulct, not exceeding Fifty pounds (£50), as the Treasurer may direct, and the amount will be deducted from the contractor's account or from the security money, and the Treasurer's decision shall be binding, final, and conclusive as to the fact of infringement, and in all other respects.

The contractor shall, before any account is passed for payment, furnish a statutory declaration that all the workmen under this contract have been employed in accordance with the above clause of these conditions, and have been paid not less than the minimum rate of wages for such workmen as is provided under that clause.

Samples of the best ordinary retailed to the public will be considered as test loaves for first quality.

Serial No.	Article.	Contract No. 93. Alexr. Schmidt, Coranderk (Healesville).	Contract No. 95. John Rule, Lake Tyers (Cunningham).	Contract No. 97. S. J. Treloar, Portland, Lake Con- dah (Milltown).
		£ s. d.	£ s. d.	£ s. d.
1	Bread—Fine Wheaten, first, quality ... .. per cental	0 9 4½	0 16 8	0 13 0½

## Sub-schedule No. 3.

## GROCERIES.

Contract No. 1914/94.—Coranderk—Moran and Cato Pty. Ltd., Melbourne	...	Security, £2.
" " 1914/96.—Lake Tyers—Williams and Currey	...	" £2.
" " 1914/98.—Lake Condah—Righetti and Co., Heywood	...	" £2.

Serial No.	Article.	Contract No. 94. Moran and Cato, Pty. Ltd., Coranderk.	Contract No. 96. Williams and Currey, Lake Tyers.	Contract No. 98. Righetti and Co., Lake Condah.
		£ s. d.	£ s. d.	£ s. d.
1	Baking Powder, Snowflake, in 1-lb. tins ... .. per lb.	0 0 8½	0 0 8	0 0 9
2	Candles—(Full weights) Kitchen's "Petroline," Apollo Co.'s "Apollo," or other make of equal quality, to be supplied in 1-lb. packets ... .. "	0 0 6½	0 0 7	0 0 7½
3	Coffee—Fresh roasted and whole—Beans to be thoroughly sound, to sample ... .. "	0 1 6	0 1 5	0 1 3
4	Cocoa ... .. "	0 1 6	0 0 9	0 0 10
5	Cornflour ... .. "	0 0 6½	0 0 6½	0 0 5½
6	Curries ... .. "	0 0 5½	0 0 6	0 0 5
7	Flour—Best roller ... .. per cental	0 10 0	0 10 6	0 9 3
8	Mustard—Double superfine ... .. per lb.	0 1 0	0 0 1½	0 1 9
9	Oatmeal—Of any brand ordered ... .. "	0 0 1½	0 0 2	0 0 2½
10	Pearl Barley ... .. "	0 0 2	0 0 2	0 0 2½
11	Pepper—Black, ground, in ½-lb. tins ... .. per tin	0 0 5	0 0 3½	0 0 3
12	Raisins—Sultana (Mildura) ... .. per lb.	0 0 8	0 0 7	0 0 5½
13	Rice—Dressed, No. 1 Java, to sample ... .. "	0 0 2½	0 0 2½	0 0 2½
14	Seed Tapioca (Sago), to sample ... .. "	0 0 2	0 0 2	0 0 2½
15	Salt—Coarse ... .. "	0 0 0½	0 0 0½	0 0 0½
16	" Fine ... .. "	0 0 0½	0 0 0½	0 0 0½
17	Soda—Washing ... .. "	0 0 0½	0 0 0½	0 0 1
18	Sugar—White, to sample ... .. per cwt.	1 2 9	1 4 3	1 4 3
19	Tea—Best Congou, to sample ... .. per lb.	0 0 8½	0 0 9½	0 0 10
20	Tobacco—Twist, to sample ... .. "	0 3 2	0 3 0	0 3 3
21	Treacle, in 7-lb. tins ... .. per tin	0 1 4	0 1 4	0 1 3
22	Vinegar ... .. per quart	0 0 4	0 0 3½	0 0 6

## CONTRACTS ACCEPTED.—(Series 1914-15.)

Serial No.	Particulars.	Amount.	Name of Contractor.	Charged against Vote or Fund.
	SUPPLY OF PROVISIONS, AT SANATORIUM AT GREEN- VALE, FROM 1ST JULY, 1914, TO 30TH JUNE, 1915.			
99	Breadstuffs ... ..	Per annex	John Anderson ...	Contingencies, 1914-15.
100	Butter, &c. ... ..	"	J. D. Howie ...	
101	Groceries ... ..	"	J. D. Howie ...	
102	Meat ... ..	"	R. Cargill ...	

Approved.—A. J. PRACOCK, Treasurer. 22.6.1914

## Schedule No. 17.

**PROVISIONS AT GREENVALE.**

(Delivery at the Sanatorium.)

Particular attention is drawn to clause 1 of the conditions as to quality.

Where practicable, all items must be manufactured or prepared within the Commonwealth.

ANNEX TO CONTRACT No. 1914/99.

John Anderson, Broadmeadows.

Sub-schedule No. 1.

BREADSTUFFS.

Security, £20.

No subletting will be allowed; all work must be carried out by the contractor; every person engaged in the manufacture, preparation, or delivery of the bread tendered for in this sub-schedule shall be paid such wages and shall be employed subject to such conditions as are or may be determined by the Bread or Bread Carters Board, or by the Court of Industrial Appeals, as the case may be, under the provisions of the Factories and Shops Acts. Should, however, the determination of the aforesaid Boards or Court not apply to the district covered by this particular schedule, those determinations shall, for the purpose of this contract, be taken as defining the rate of wages which shall be paid and the conditions of employment in respect thereto; and a copy of these conditions shall be kept conspicuously and continually posted in legible Roman characters in the factory or shop (and in each part of the factory or shop where several rooms are in use) in which bread is prepared or manufactured under this contract. Any infringement of these conditions, or any breach of the said determinations, in the opinion of the Treasurer, will subject the contractor, upon report from the Tender Board, to such mulct, not exceeding Fifty pounds (£50), as the Treasurer may direct, and the amount will be deducted from the contractor's account or from the security money, and the Treasurer's decision shall be binding, final, and conclusive as to the fact of infringement, and in all other respects.

The contractor shall, before any account is passed for payment for services rendered, furnish a statutory declaration that all the workmen under this contract have been employed in accordance with the above clause of these conditions, and have been paid not less than the minimum rate of wages for such workmen as is provided for under that clause.

Samples of the best ordinary retailed to the public will be considered as test loaves for first quality.

Pure wheaten meal bread of first quality may be substituted wholly or in part for fine wheaten bread at such times and in such quantities as in the opinion of the Medical Superintendent may be deemed necessary, and the contractor will be required to supply such bread at the contract rate. Reasonable notice, however, of the intention to substitute wheaten meal bread must be given to the contractor by the officer ordering the supply.

	£	s.	d.
1. Bread—Fine Wheaten, first quality	per	cental	0 12 6

ANNEX TO CONTRACT No. 1914/100.

J. D. Howie, Smith-street, Fitzroy.

Sub-schedule No. 2.

BUTTER, CHEESE, AND BACON.

Security, £10.

All butter supplied, as well as the cases in which it is packed for transit under this schedule, must bear the impress stamp of the creamery manufacturing the butter, otherwise it will be rejected. The cheese supplied must be fairly matured and packed in boxes for transport. In the event of butter being supplied under this contract from Melbourne all such butter shall be submitted by the contractor to the Government Dairy Expert in Melbourne for test as to standard quality, and if found to be satisfactory shall be forwarded by that officer direct to the institution ordering, the cost of freight being borne by the contractor in the usual way. This contract is not to be considered as being broken, infringed, or vitiated, by the use of butter, &c., produced at the Sanatorium during the currency of same.

	£	s.	d.
1. Butter—First Grade Creamery, to score not less than 92 points, Government grade, Commerce Regulations standard	per	cwt.	5 12 6
2. Cheese—First-class quality	per	lb.	0 0 9
3. Bacon—sides, Farmer's, Hutton's, or Cation and Hilton's, as ordered	per	cwt.	5 2 8

ANNEX TO CONTRACT No. 1914/101.

J. D. Howie, Smith-street, Fitzroy.

Sub-schedule No. 3.

GROCERIES.

Security, £20.

	£	s.	d.
1. Apricots—Dried, Mildura	per	lb.	0 0 9
2. Blue—Of any brand ordered	do.		0 0 6½
3. Candles—(Full weights) Kitchen's "Petroline," Apollo Co.'s "Apollo," or other make of equal quality, to be supplied in 1-lb. packets	do.		0 0 6½
4. Candles—Carriage, equal to Kitchen's No. 8, in 1-lb. packets	do.		0 0 7
5. Chickory—Fresh ground	do.		0 0 5
6. Cocoa—In ½-lb. packets, of any brand ordered	do.		0 1 0

## GROCERIES—continued.

£ s. d.

7. Coffee—"Neilgherry A", or equal thereto, Fresh roasted and whole, beans to be thoroughly sound	per	lb.	0 1 4
8. Cornina	do.		0 0 6
9. Currants, 3 Crowns	do.		0 0 4½
10. Curry Powder	do.		0 0 11
11. Essence of Lemon—In full 1 oz. bottles, of any brand ordered	per	doz. bot.	0 3 6
12. Flour—Self-raising, of any brand ordered	per	lb.	0 0 2
13. Golden syrup, in 7-lb. tins	per	tin	0 1 7
14. Honey—Prime garden	per	lb.	0 0 3½
15. Jams—Assorted, in 2-lb. tins in the proportion of half seed and half stone	per	doz. tins	0 7 3
16. Lemon peel	per	lb.	0 0 6½
17. Meal—Digestive	per	cwt.	0 18 0
18. Milk—Condensed, 1-lb. tins	per	tin	0 0 6
19. Mustard—Double Superfine, of any Commonwealth manufacture ordered	per	lb.	0 1 6
20. Oatmeal—Flaked or Plain, of any brand ordered	per	cwt.	0 17 0
21. Pearl barley	do.		0 14 6
22. Pease—Split	do.		0 17 0
23. Pepper—White, ground	per	lb.	0 1 0
24. Powder—Baking, of any brand ordered, in 1-lb. tins	per	tin	0 0 8
25. Raisins—Sultana (Mildura), 3 Crowns	per	lb.	0 0 6½
26. Rice, dressed, No. 1 Java, to sample	per	cwt.	1 3 0
27. Seed Tapioca (Sago)—To sample	do.		0 14 0
28. Salmon—Fresh, in 1-lb. tins, Tails, of any brand ordered	per	tin	0 0 9
29. Salt—Fine	per	cwt.	0 4 11
30. Sardines—½'s	per	tin	0 0 4½
31. Sauce—Tomato, pints, any brand ordered	per	bot.	0 0 5
32. Soda—Washing	per	cwt.	0 6 0
33. Starch—Of any brand ordered, to sample	per	lb.	0 0 4½
34. Sugar—White, to sample	per	cwt.	1 3 0
35. Tapioc—Pearl	do.		0 15 0
36. Tea—Ceylon, to sample	per	lb.	0 1 0
37. " Congou, " "	do.		0 0 9
38. Treacle, in 7-lb. tins	per	tin	0 1 3½
39. Vinegar	per	quart	0 0 3

ANNEX TO CONTRACT No. 1914/102.

R. Cargill, Broadmeadows.

Sub-schedule No. 4.

MEAT.

Security, £20.

No subletting will be allowed; no delivery of meat shall be made on Sundays; all work must be carried out by the contractor. Every person engaged in the cutting up, preparation, or delivery of the meat tendered for in this sub-schedule shall be paid such wages and shall be employed subject to such conditions as are or may be determined by the Butchers Board under the provisions of the Factories and Shops Acts; should, however, the determination of the aforesaid Board not apply to the district covered by this particular schedule, that determination shall, for the purpose of this contract, be taken as defining the rate of wages which shall be paid and the conditions of employment in respect thereto; and a copy of these conditions shall be kept conspicuously and continually posted in legible Roman characters in the factory or shop (and in each part of the factory or shop where several rooms are in use) in which meat is prepared under this contract. Any infringement of these conditions, or any breach of the said determination, in the opinion of the Treasurer, will subject the contractor, upon report from the Tender Board, to such mulct, not exceeding Fifty pounds (£50), as the Treasurer may direct, and the amount will be deducted from the contractor's account or from the security money; and the Treasurer's decision shall be binding, final, and conclusive as to the fact of infringement, and in all other respects.

The contractor shall, before any account is passed for payment, furnish a statutory declaration that all the workmen under this contract have been employed in accordance with the above clause of these conditions, and have been paid not less than the minimum rate of wages for such workmen as is provided for under that clause.

Fresh beef must be supplied in equal quantities from prime ribs, or sirloin, ribs of beef to be cut clear of the plate bone, and sirloin to be cut clear of the wing ribs; excess of brisket or flank will be rejected, mutton to be delivered in sides; all kidney fat to be removed. Meat containing an undue proportion of fat will not be accepted. Corned beef to be supplied in equal quantities from silverside (round) and brisket. Cow beef or frozen or chilled beef will be absolutely rejected, pickled pork must be supplied from pigs weighing not more than 80 lbs. dressed weight. This contract is not to be considered broken, infringed, or vitiated by the use of meat obtained from stock grown at the Sanatorium during currency of same.

	£	s.	d.
1. Fresh Ox Beef—Roast	per	cental	2 6 0
2. " " Steak, for frying—Buttock and blade in equal proportions	do.		2 1 0
3. Fresh Ox Beef Steak—Stewing	do.		1 17 0
4. Corned Ox Beef—Rolled or round, as ordered, without bone or cartilage	do.		2 1 0
5. Tripe, Ox	per	lb.	0 0 4½
6. Pork—Pickled	do.		0 0 7½
7. Fresh Beef Suet—Kidney	do.		0 0 4
8. Sausages—Beef	do.		0 0 4

## CONTRACTS ACCEPTED.—(Series 1914-15.)

Serial No.	Purpose, No. of Tenders, and Particulars of Contract.	Amount.	Name of Contractor.	Charged against Vote or Fund.	Authorized according to Regulations on the date stated.
	<b>PROVISIONS (SUPPLEMENTARY)—</b> Supply of Provisions, as may be required, from 1st July, 1914, to 30th June, 1915, for Officers, Crew, and Trainees of V.T.S. <i>John Murray</i> , as per Schedule No. 16—				
103	Groceries ... ..	Rates as per annex	J. D. Howie ...	Contingencies, 1914-15	A. J. Peacock, Treasurer, 22.6.1914.

Melbourne, 8th July, 1913.

## Schedule No. 16.

**PROVISIONS — FOR OFFICERS, CREW, AND TRAINEES OF THE VICTORIAN TRAINING SHIP "JOHN MURRAY" AT HER ORDINARY MOORINGS AT PORT MELBOURNE.**

(Supplies to be delivered at the Port Melbourne Railway Pier as (required by the Secretary to the Committee of Management.)

ANNEX TO CONTRACT No. 1914/103.

J. D. Howie, Smith-street, Fitzroy.

## GROCERIES.

Security, £30.

Particular attention is drawn to Clause 1 of the Conditions as to quality.

Where practicable all items must be manufactured and prepared within the Commonwealth.

The soap supplied must be hard throughout, ready for immediate use without waste. When the quantity admits, the tea and raisins must be supplied in original and unopened packages; in the case of tea, such packages must be labelled as landed. Sugar may be obtained from any Government establishment without infringing this contract. Rice must be supplied in bags branded "Rice, Dressed—No. 1 Java," with the manufacturer's name stencilled thereon.

		£	s.	d.
1.	Bacon—Farmer's or Hutton's, by the side ... ..	per lb.	0	0 10½
2.	Baking powder, in 1-lb. tins, net ... ..	per doz. tins	0	7 0
3.	Barley, Pearl ... ..	per cwt.	0	14 0
4.	Beans, Haricot ... ..	per bush.	0	7 6
5.	Biscuits, Cabin ... ..	per cental	1	7 9
6.	" Pilot Bread ... ..	"	0	15 9
7.	Butter—First grade Creamery ... ..	per lb.	0	1 1
8.	Chutney, in pint bottles ... ..	per bottle	0	0 6
9.	Cheese—Matured—Victorian ... ..	per lb.	0	0 8½
10.	Cocoa—McKenzie's Houseopathic ... ..	do.	0	0 11
11.	Coffee—Fresh roasted and ground, pure, to sample ... ..	do.	0	1 0
12.	Cornflour ... ..	do.	0	0 4
13.	Currants ... ..	do.	0	0 4½
14.	Curry powder, in 1-lb. tins, net ... ..	per doz. tins	0	10 6
15.	Eggs—Fresh, guaranteed ... ..	per doz.	0	1 4
16.	Essences ... ..	per lb.	0	4 6

## GROCERIES—continued.

		£	s.	d.
17.	Herrings—Fresh, in 1-lb. tins, "Morton's" ... ..	per doz. tins	0	5 1½
18.	Jams, in 27-oz. net tins, in proportion of half seed and half stone ... ..	"	0	6 9
19.	Jelly Crystals (pints) ... ..	per doz. pkts.	0	2 3
20.	Ling fish, salted ... ..	per lb.	0	0 5½
21.	Marmalade, in 27-oz. net tins ... ..	per doz. tins	0	7 0
22.	Macaroni ... ..	per lb.	0	0 3
23.	Meat—Preserved, of approved brands, in 2-lb. tins, net ... ..	per doz. tins	0	14 0
24.	Milk—Condensed, in 1-lb. tins, "Cressbrook" ... ..	do.	0	6 3
25.	Mustard—Double superfine, in 1-lb. tins ... ..	do.	0	16 0
26.	Oatmeal—Of any brand ordered ... ..	per cwt.	0	14 6
27.	Olive Oil, in 13-oz. bottles, Mildura or S.A. ... ..	per bottle	0	1 4
28.	Onions ... ..	per cwt.	0	8 6
29.	Pease—Blue ... ..	per bush.	0	5 0
30.	Pease—Split ... ..	per cwt.	0	17 0
31.	Pepper—White, ground ... ..	per lb.	0	1 0
32.	Peel—Lemon ... ..	do.	0	0 6½
33.	Pickles, of approved brand, equal to Ram's Head ... ..	per doz. bottles	0	6 0
34.	Raisins—Sultana, Mildura, 3 Crowns ... ..	per lb.	0	0 ½
35.	Rice—Dressed, No. 1 Java, to sample, of any brand ordered ... ..	per cwt.	1	0 6
36.	Seed Tapioca (Sago), to sample ... ..	per lb.	0	0 1½
37.	Salt—Fine, to sample ... ..	per cwt.	0	3 9
38.	Sardines—Quarters ... ..	per doz.	0	3 3
39.	Sauce—Tomato (pints) ... ..	do.	0	4 3
40.	" Worcester (Holbrook's), pts. ... ..	do.	0	16 0
41.	Soap (Household)—Yellow, dry, to sample, ... ..	per cwt.	1	3 0
42.	Soap, Glycerine, to sample ... ..	per lb.	0	0 5
43.	Spices, mixed, in 1-oz. packets ... ..	do.	0	1 2
44.	Sugar—White, to sample ... ..	per cwt.	1	2 0
45.	Soda—Washing Crystals ... ..	do.	0	5 6
46.	Tea—Best Congou, special sample ... ..	per lb.	0	0 8½
47.	" Ceylon, " ... ..	do.	0	1 0½
48.	Golden Syrup, in 7-lb. tins ... ..	per tin	0	1 5
49.	Vermicelli ... ..	per lb.	0	0 3½
50.	Vinegar—Champion's, or other approved brand ... ..	per quart	0	0 3

## CONTRACTS ACCEPTED.—(Series 1914-15.)

Serial No.	Particulars.	Amount.	Name of Contractor.	Charged against Vote or Fund.
	<b>PROVISIONS.—SUPPLY OF PROVISIONS FOR THE UNDERMENTIONED PLACES AS MAY BE REQUIRED FROM 1ST JULY, 1914, TO 30TH JUNE, 1915.</b>			
	<b>RUTHERGLEN—</b>			
104	Bread ... ..	Rates as per annex	C. Hubs ...	Contingencies, 1914-15.
105	Groceries ... ..		R. Henderson ...	
	<b>WAHGUNYAH—</b>			
106	Bread ... ..	"	Geo. G. Haig ...	
107	Groceries ... ..	"	W. Burch ...	
...	Meat ... ..	"	Purchase ...	
	<b>WYUNA—</b>			
108	Bread ... ..	"	J. C. Mathews ...	
109	Groceries ... ..	"	Wm. Goods ...	
110	Meat ... ..	"	Reidell Bros ...	

Approved.—A. J. PEACOCK, Treasurer. 22.6.1914.



## Schedule No. 12.

## PROVISIONS AT RUTHERGLEN.

(For Students at Viticultural College. Delivery at the College).

Particular attention is drawn to clause 1 of the conditions as to quality.

Where practicable, all items must be manufactured or prepared within the Commonwealth.

ANNEX TO CONTRACT No. 1914/104.

(Conrad Huks, Rutherglen.

Sub-schedule No. 1.

## BREAD.

Security, £5.

No subletting will be allowed; all work must be carried out by the contractor. Every person engaged in the manufacture, preparation, or delivery of the bread tendered for in this sub-schedule shall be paid such wages and shall be employed subject to such conditions as are or may be determined by the Bread or Bread Carters' Board, or by the Court of Industrial Appeals, as the case may be, under the provisions of the aforesaid Boards Acts; should, however, the determination of the aforesaid Boards or Court not apply to the district covered by this particular schedule, those determinations shall, for the purpose of this contract, be taken as defining the rate of wages which shall be paid and the conditions of employment in respect thereto; and a copy of these conditions shall be kept conspicuously and continually posted in legible Roman characters in the factory or shop (and in each part of the factory or shop where several rooms are in use) in which bread is prepared or manufactured under this contract. Any infringement of these conditions, or any breach of the said determinations, in the opinion of the Treasurer, will subject the contractor, upon report from the Tender Board, to such mulct not exceeding Fifty pounds (£50), as the Treasurer may direct, and the amount will be deducted from the contractor's account or from the security money, and the Treasurer's decision shall be binding, final, and conclusive as to the fact of infringement, and in all other respects.

The contractor shall, before any account is passed for payment, furnish a statutory declaration that all the workmen under this contract have been employed in accordance with the above clause of these Conditions, and have been paid not less than the minimum rate of wages for such workmen as is provided for under that clause.

Pure Wheaten Meal Bread of first quality may be substituted, wholly or in part, for fine Wheaten Bread at such times as may be deemed necessary, and the contractor will be required to supply such bread at the contract rate. Reasonable notice, however, of the intention to substitute Wheaten Meal Bread must be given to the contractor by the officer ordering the supply.

Samples of the best ordinary retailed to the public will be considered as test loaves for first quality.

	£ s. d.
1. Bread—Fine Wheaten, first quality ... per cental	0 10 6

ANNEX TO CONTRACT No. 1914/105.

R. Henderson, Rutherglen.

Sub-schedule No. 2.

## GROCERIES, ETC.

Security, £10.

	£ s. d.
1. Arrowroot ... .. per lb.	0 0 6½
2. Blue ... .. do.	0 0 8
3. Baking Powder, in 1-lb tins ... .. per tin	0 0 11
4. Baking Soda ... .. per lb.	0 0 3
5. Bacon, best cured ... .. do.	0 0 11
6. Blacking ... .. per cake	0 0 0½
7. Blacklead ... .. do.	0 0 1
8. Barley, Pearl ... .. per lb.	0 0 3
9. Candles (full weights) Kitchen's "Petrolines," or other make of equal quality, to be supplied in 1-lb. packets ... .. do.	0 0 8
10. Coffee—Whole—Beans to be thoroughly sound, to sample ... .. do.	0 1 7
11. Coffee Essence, 10-oz., of any brand ordered ... .. per bottle	0 1 7
12. Cocoa Essence, 10-oz., of any brand ordered ... .. per lb.	0 3 2
13. Cream of Tartar ... .. do.	0 1 1
14. Currants, 3 Crowns ... .. do.	0 0 6
15. Curry Powder ... .. per bottle	0 0 4½
16. Essence of Lemon, 1-oz. bottles ... .. do.	0 0 1
17. Fish, preserved, Salmon, Fresh Herrings, Herrings in Tomato, as ordered, in 1-lb tins ... .. per tin	0 0 10
18. Flour, Best Roller ... .. per cental	0 10 6
19. Fruits, preserved, assorted, of approved brand, in 2-lb. tins ... .. per tin	0 0 10
20. Ginger—Ground or Whole, Jamaica ... .. per lb.	0 0 11
21. Golden Syrup, in 2-lb. tins ... .. per tin	0 0 7
22. Jams, assorted, any brand ordered, in 2-lb. tins, in the proportion of half seed and half stone ... .. do.	0 0 9

7715.--2.

## GROCERIES, ETC.—continued.

	£ s. d.
23. Maizena—Duryea's ... .. per lb.	0 0 7½
24. Meat, preserved, of approved brand, in 2-lb. tins ... .. per tin	0 0 7
25. Macaroni, or Vermicelli, as ordered ... .. per lb.	0 0 3½
26. Mustard, Double Superfine, of any brand ordered ... .. do.	0 1 9
27. Oatmeal—Flaked or other, of any brand ordered ... .. per cwt.	1 4 0
28. Onions ... .. do.	0 9 0
29. Peel, Mixed ... .. per lb.	0 1 0
30. Pepper—Black or White, ground ... .. do.	0 1 4
31. Pickles, of approved brand ... .. per bottle	0 0 8
32. Potatoes ... .. per lb.	0 0 7½
33. Raisins—Sultana (Mildura), 3 Crowns ... .. per cwt.	1 3 4
34. Rice—dressed, "No. 1, Java," to sample ... .. per lb.	0 0 3
35. Seed Tapioca (Sago), to sample ... .. do.	0 0 1
36. Salt, Coarse ... .. per cwt.	0 6 6
37. " Fine ... .. do.	0 1 0
38. Sauces—Worcester, Tomato, or Chutney, reputed pints, any brand ordered ... .. per lb.	0 0 3½
39. Soap, Household, yellow, to sample ... .. do.	0 0 7½
40. " Glycerine Tablets, to sample ... .. do.	0 0 3½
41. " Sand ... .. do.	0 0 3½
42. " Magic ... .. do.	0 0 1
43. Soda—Washing ... .. per packet	0 0 1
44. Spices, mixed, in 1-oz. packets ... .. per lb.	0 0 6
45. Starch, to sample ... .. per cwt.	1 8 0
46. Sugar—White, to sample ... .. per lb.	0 0 3
47. Tapioca, Pearl ... .. do.	0 1 0
48. Tea—Best Ceylon, to sample ... .. per tin	0 1 8
49. Treacle, in 7-lb. tins ... .. per quart	0 0 4½
50. Vinegar, of approved brand ... .. do.	0 0 4½

## Schedule No. 13.

## PROVISIONS AT WAHGUNYAH.

FOR STUDENTS AT WAHGUNYAH VINE NURSERY

(Delivery at Nursery.)

Particular attention is drawn to Clause 1 of the Conditions as to quality.

Where practicable all items must be manufactured or prepared within the Commonwealth.

ANNEX TO CONTRACT No. 1914/106.

G. G. Haig, Wahgunyah.

Sub-schedule No. 1.

## BREAD.

Security, £5.

No subletting will be allowed; all work must be carried out by the Contractor. Every person engaged in the manufacture, preparation, or delivery of the Bread tendered for in this Schedule shall be paid such wages and shall be employed subject to such conditions as are or may be determined by the Bread or Bread Carters Board, or by the Court of Industrial Appeals, as the case may be, under the provisions of the aforesaid Boards Acts; should, however, the determinations of the aforesaid Boards or Court not apply to the particular district covered by this Schedule, those determinations shall, for the purpose of this contract, be taken as defining the rate of wages which shall be paid and the conditions of employment which shall be paid and the conditions of employment kept conspicuously and continually posted in legible Roman characters in the factory or shop (and in each part of the factory or shop where several rooms are in use) in which bread is prepared or manufactured under this contract. Any infringement of these conditions, or any breach of the said determinations, in the opinion of the Treasurer, will subject the contractor, upon report from the Tender Board, to such mulct, not exceeding Fifty pounds (£50), as the Treasurer may direct, and the amount will be deducted from the contractor's account or from the security money, and the Treasurer's decision shall be binding, final, and conclusive as to the fact of infringement, and in all other respects.

The contractor shall, before any account is passed for payment, furnish a statutory declaration that all the workmen under this contract have been employed in accordance with the above clause of these conditions, and have been paid not less than the minimum rate of wages for such workmen as is provided for under that clause.

Pure Wheaten Meal Bread of first quality may be substituted, wholly or in part, for fine Wheaten Bread at such times as may be deemed necessary, and the contractor will be required to supply such bread at the contract rate. Reasonable notice, however, of the intention to substitute Wheaten Meal Bread must be given to the contractor by the officer ordering the supply.

Samples of the best ordinary retailed to the public will be considered as test loaves for first quality.

	£ s. d.
1. Bread—Fine Wheaten, first quality ... per cental	0 12

## Security, £10.

MEAT.

Purchase as required.

BREAD.

Security, £5.

Security, £10.

1. Arrowroot	...	...	...	per lb.	0	0	4
2. Blue	...	...	...	do.	0	0	7
3. Baking Powder, in 1-lb. tins	...	...	...	do.	0	1	0
4. Baking Soda	...	...	...	do.	0	0	12
5. Bacon, best cured	...	...	...	do.	0	0	11
6. Blacking	...	...	...	per cake	0	0	0
7. Blacklead	...	...	...	per doz.	0	0	6

## GROCERIES, ETC.—continued.

		£	s.	d.
8. Barley, Pearl	per lb.	0	0	2½
9. Candles—(Full weights) Kitchen's "Electrine," or other make of equal quality, to be supplied in 1-lb. packets	do.	0	0	8
10. Candles—Carriage "Electrine"	do.	0	0	8
11. Caraway Seeds	do.	0	0	10
12. Cheese—Matured Victorian	do.	0	0	9½
13. Cinnamon—Ground	do.	0	1	4
14. Coffee—Pure—Ground, to sample	do.	0	1	6
15. Coffee—Essence, McKenzie's or equal thereto	per bottle	0	0	7½
16. Cocoa Essence	per lb.	0	1	0
17. Cornina	do.	0	0	6
18. Cream of Tartar	do.	0	1	1
19. Currants	do.	0	0	5½
20. Curry Powder	do.	0	1	3
21. Essence of Lemon, 1-oz. bottle	per bottle	0	0	4
22. Fish, Preserved, Salmon, best red tails, in 1-lb. tins	per tin	0	0	8½
23. Fish, Preserved Herrings, Morton's, in 1-lb. tins	do.	0	0	6½
24. Fish, Preserved Herrings, in tomato sauce	do.	0	0	8
25. Flour, best Roller	per cwt.	0	10	0
26. Fruits, Preserved, assorted, of approved brand, in 2-lb. tins	per tin	0	0	10½
27. Ginger—Ground or Whole—Jamaica	per lb.	0	1	0
28. Golden Syrup, in 7-lb. tins	per tin	0	1	8
29. Honey	per lb.	0	0	3½
30. Isinglass	do.	0	0	6
31. Jams, assorted, any brand ordered, in 2-lb. tins, in proportion of half seed and half stone	per lb. net	0	0	4½
32. Jellies (pints)	per packet	0	0	4½
33. Meat—Preserved, of approved brand, in 2-lb. tins	per tin	0	1	3
34. Macaroni or Vermicelli, as ordered	per lb.	0	0	4
35. Mustard—Double Superfine, of any brand ordered	do.	0	1	10
36. Oatmeal—Flaked or other, of any brand ordered	do.	0	0	2½
37. Pearleen	per packet	0	0	4
38. Peas—Split	per lb.	0	0	2½
39. Peel—Mixed	do.	0	0	11
40. Pepper—Black or White, Ground	do.	0	1	3
41. Pickles, Sutherland's ram's head	per bottle	0	0	7½
42. Pollard	per cwt.	0	5	9
43. Raisins—Sultana (Mildura), 3 Crowns	per lb.	0	0	8
44. Rice—No. 1 Java, Dressed, to sample	do.	0	0	3
45. Seed Tapioca (Sago)—To sample	do.	0	0	2
46. Salt—Coarse	do.	0	0	0½
47. " Fine	do.	0	0	0½
48. Sauces, Worcester, Holbrook's (reputed pints)	per bottle	0	0	9
49. Sauces, Chutney, best Commonwealth (reputed pints)	per bottle	0	0	7½
50. Soap—Household, yellow, to sample	per lb.	0	0	4
51. " Sand	do.	0	0	4
52. " Soft	do.	0	0	5
53. " Velvet, 4 large tabs	per bar	0	0	9
54. Soda—Washing	per lb.	0	0	1
55. Spices, mixed, in 1-oz. packets	per packet	0	0	1
56. Starch, to sample	per lb.	0	0	5½
57. Sugar—White, to sample	per cwt.	1	4	0
58. Tapioca—Pearl	per lb.	0	0	2
59. Tea—Best Ceylon, Special, to sample	do.	0	1	2½
60. Treacle, in 7-lb. tins	per tin	0	1	5
61. Vinegar, Sutherland's best	per quart	0	0	4½

## ANNEX TO CONTRACT NO. 1914/110.

Riedell Bros., Tongala.

Sub-schedule No. 3.

## MEAT.

Security, £5.

No subletting will be allowed; no delivery of Meat shall be made on Sundays; all work must be carried out by the Contractor. Every person engaged in the cutting-up, preparation,

or delivery of the Meat tendered for in the Sub-schedule shall be paid such wages and shall be employed subject to such conditions as are or may be determined by the Butchers Board under the provisions of the Factories and Shops Acts; should, however, the determination of the aforesaid Board not apply to the district covered by this particular Schedule, that determination shall, for the purpose of this contract, be taken as defining the rate of wages which shall be paid and the conditions of employment in respect thereto; and a copy of these conditions shall be kept conspicuously and continually posted in legible Roman characters in the factory or shop (and in each part of the factory or shop where several rooms are in use) in which Meat is prepared under this contract. Any infringement of these conditions, or any breach of the said determination, in the opinion of the Treasurer, will subject the Contractor, upon report from the Tender Board, to such mulct, not exceeding Fifty pounds (£50), as the Treasurer may direct, and the amount will be deducted from the Contractor's account or from the security money, and the Treasurer's decision shall be binding, final, and conclusive as to the fact of infringement, and in all other respects.

The Contractor shall, before any account is passed for payment, furnish a statutory declaration that all the workmen under this contract have been employed in accordance with the above clause of these conditions, and have been paid not less than the minimum rate of wages for such workmen as is provided for under that clause.

When fore and hindquarters of beef are ordered for Hospitals for the Insane they must be supplied in the proportion of two of the former to one of the latter, and must be delivered as a whole respectively, also extra buttocks separately when ordered. Meat for other institutions must be supplied as ordered. Where hindquarters or buttocks are ordered, 9 inches must be cut off from the end of the leg from the hock upwards, i.e., the end of the leg from which the shank has been removed at the abattoirs; and when forequarters form a portion of the supply, 6 inches from the end of the neck and the whole of the shin clodbone joint must be removed. The sticking pieces also must be trimmed off, and the point and end of the brisket rendered free from blood and blood stains.

Fore and hindquarters, for convenience of handling, may be cut into two parts, but each part is to bear evidence of having been cut from the same beast.

Corned Beef (rolled or round as ordered) must be supplied without bone or cartilage, and will be received, whether pumped or prepared in the ordinary way of pickling, but in the former case must have been soaked after pumping, for at least 48 hours, in a good pickle, and then thoroughly drained before supply. No flank, chuck, sticking-piece, shin, leg of beef, or piece under 7 lbs. will be received.

Should the local supply of Fresh Meat become scarce, or the price of same become abnormally high, Frozen or Chilled Meat, with the consent of the Tender Board on the recommendation of the head of the Department, be supplied.

In cases of emergency, or on such other occasions as in the opinion of the Superintendent may seem advisable, other forms of Meat, such as Rabbits, Tinned Meats, &c., may be purchased, apart from the contract in lieu of the Meat mentioned in the Schedule, and substituted therefor provided 24 hours' notice—except in cases of emergency—be given to the Contractor of such intention.

The parts to be removed by the contractor are indicated by the shaded portions of the annexed diagram.

	£	s.	d.
1. Beef—Fresh	per cwt.	2	10 0
2. Sausages	per lb.	0	0 6
3. Tongues—Ox	each	0	2 6
4. Tails—Ox	do.	0	0 6
5. Kidneys—Ox	do.	0	0 6
6. Shins—Ox	do.	0	1 0
7. Liver, Ox	per lb.	0	0 1

