



VICTORIA
GOVERNMENT GAZETTE.

Published by Authority.

[Registered at the General Post Office, Melbourne, for transmission by post as a newspaper.]

No. 144.]

THURSDAY, JULY 20.

[1916.

CONTRACTS. ACCEPTED.

(SERIES 1916-17.)

SUPPLY OF PROVISIONS

FROM

1st JULY, 1916, TO 30th JUNE, 1917.

CONTRACTS ACCEPTED.—(Series 1916-17.)

No. of Contract.	Particulars of each Tender Accepted.	Amount.	Name of Contractor.	Charged against Vote or Fund.
PROVISIONS—				
Supply of Provisions for General Stores in such quantities as may be ordered from 1st July, 1916, to 30th June, 1917, except when otherwise mentioned:—				
Melbourne District—				
...	Beer and spirits	Rates as per annex	Purchase	
438	Bread, Kew Asylum	Ditto	A. Simpson	
439	Bread, Yarra Bend Asylum	Ditto	P. Willett	
440	Bread, Melbourne	Ditto	P. Willett	
441	Butter	Ditto	J. D. Howie	
442	Cheese and eggs	Ditto	P. Sheahan and Co.	
443	Flour and maize meal	Ditto	B. E. Johnson and Co.	
444	Groceries	Ditto	J. D. Howie	
445	Oatmeal, rice, &c.	Ditto	J. D. Howie	
446	Jams	Ditto	J. D. Howie	
447	Meat, Kew Asylum	Ditto	W. Angliss and Co. Ppy. Ltd.	
448	Meat, Yarra Bend Asylum	Ditto	W. Angliss and Co. Ppy. Ltd.	
449	Meat, Pentridge Penal Establishment	Ditto	F. Watkins Ppy. Ltd.	
450	Meat, Melbourne Gaol, &c.	Ditto	F. Watkins Ppy. Ltd.	
451	Milk, Melbourne Gaol	Ditto	J. Henderson	
...	Milk, Richmond House	Ditto	Purchase	
...	Milk, Pentridge Penal Establishment	Ditto	Purchase	
452	Potatoes	Ditto	H. McDonough	
453	Tea	Ditto	Moran and Co. Ppy. Ltd.	
454	Tobacco	Ditto	Dudgeon and Arnell Ppy. Ltd.	
Williamstown—For s.s. Lady Loch and Albert.				
455	Breadstuffs	Ditto	W. J. Elsum	
...	Butter	Ditto	Purchase	
456	Groceries	Ditto	Moran and Cato Ppy. Ltd.	
457	Meat	Ditto	Wm. Angliss and Co. Ppy. Ltd.	
458	Vegetables	Ditto	Doig, Hall and Coy.	
Ararat District—				
459	Breadstuffs	Ditto	Wm. Bates	
460	Butter	Ditto	Wallace, Millbrook, and District Butter Factory and Creamery Co. Ltd.	
461	Cheese	Ditto	P. Sheahan and Co.	
462	Groceries	Ditto	J. D. Howie	
463	Jams	Ditto	Ballararat Jam Co. Ppy. Ltd.	
464	Meat	Ditto	A. Murphy	
465	Potatoes	Ditto	H. McDonough	
466	Tea	Ditto	Moran and Cato Ppy. Ltd.	
Beechworth District—				
467	Breadstuffs	Ditto	W. Price	
468	Butter	Ditto	J. D. Howie	
469	Cheese	Ditto	P. Sheahan and Co.	
470	Groceries	Ditto	J. D. Howie	
471	Meat	Ditto	W. H. Morton	
472	Potatoes	Ditto	H. McDonough	
473	Tea	Ditto	Moran and Cato Ppy. Ltd.	
Ballararat District—				
474	Breadstuffs	Ditto	W. E. Longhurst	
475	Butter	Ditto	Wallace, Millbrook, and District Butter Factory and Creamery Co. Ltd.	
476	Cheese	Ditto	P. Sheahan and Co.	
477	Groceries	Ditto	J. D. Howie	
478	Jams	Ditto	The Ballararat Jam Co. Ppy. Ltd.	
479	Meat	Ditto	H. J. Symons	
480	Potatoes	Ditto	H. McDonough	
Geelong District—				
481	Breadstuffs	Ditto	W. Marshall	
482	Groceries	Ditto	Moran and Cato Ppy. Ltd.	
483	Meat	Ditto	M. McCartin and Sons	
484	Milk	Ditto	S. H. Warren	
...	Potatoes	Ditto	Purchase	
Lara—				
485	Breadstuffs	Ditto	F. Samblebe	
486	Butter	Ditto	J. D. Howie	
487	Cheese	Ditto	J. D. Howie	
488	Groceries	Ditto	J. D. Howie	
489	Jams	Ditto	Cunliff and Paterson Ppy. Ltd.	
490	Meat	Ditto	W. Angliss and Co. Ppy. Ltd.	
491	Potatoes	Ditto	H. McDonough	
Sunbury District—				
492	Breadstuffs	Ditto	Thomas Clyne and Son	
493	Butter	Ditto	J. D. Howie	
494	Cheese and bacon	Ditto	P. Sheahan and Co.	
495	Groceries	Ditto	J. D. Howie	
496	Jams	Ditto	J. D. Howie	
497	Meat	Ditto	S. J. Starkie	
...	Rabbits	Ditto	Purchase	
498	Potatoes	Ditto	H. McDonough	
499	Tea	Ditto	Moran and Cato Ppy. Ltd.	

Contingencies, 1916-17.

CONTRACTS ACCEPTED.—(Series 1916-17.)—continued.

No. of Contract.	Particulars of each Tender Accepted.	Amount.	Name of Contractor.	Charged against Vote or Fund.
PROVISIONS—continued.				
Supply of Provisions for General Stores in such quantities as may be ordered from 1st July, 1916, to 30th June, 1917, except when otherwise mentioned:—				
Bendigo District—				
500	Bread	Rates as per annex	F. W. Beischer	
501	Groceries and potatoes	Ditto	Moran and Cato Ppy. Ltd.	
502	Meat	Ditto	Ewing and Kronk	
Castlemaine District—				
503	Bread	Ditto	Morton Van Heurck	
504	Groceries and potatoes	Ditto	Moran and Cato Ppy. Ltd.	
505	Meat	Ditto	Jane Williamson	
Sale District—				
506	Bread	Ditto	M. Keily	
...	Groceries and potatoes	Ditto	Purchase	
507	Meat	Ditto	E. Cleaver	Contingencies, 1916-17.
Mont Park—				
508	Breadstuffs	Ditto	W. Debenham	
509	Butter	Ditto	J. D. Howie	
510	Cheese	Ditto	P. Sheahan and Co.	
511	Groceries	Ditto	J. D. Howie	
512	Jams	Ditto	J. D. Howie	
513	Meat	Ditto	W. Angliss and Co. Ppy. Ltd.	
514	Potatoes	Ditto	H. McDonough	
515	Tea	Ditto	Moran and Cato Ppy. Ltd.	

Approved—A. J. PEACOCK, Treasurer. 28.6.1916.

STIPULATIONS FOR SUPPLIES OF PROVISIONS.

(Where practicable, all items must be manufactured or prepared within the Commonwealth.)

Under all Sub-schedules particular attention is drawn to Clause 1 of the Condition as to quality.

BEER AND SPIRITS.

For brandy, whisky, and for Guinness' porter in case, delivery will be taken at and from the bond.

The contractor will be bound to supply such of the brands named in the tender as the departments may order. In cases where delivery from the bond is taken by the Government, the contractor will be required to hand to the secretary to the Tender Board the bond certificate and the locker's order and a copy of the entry, and pay all charges, including re-gauging, before delivery is taken.

English ale, brandy, whisky, and Guinness' porter in case must be delivered as imported; if bottled in the State it will not be accepted.

BREAD.

Samples of the best ordinarily retailed to the public will be considered as test loaves for first quality for fine wheaten and pure wheaten Meal Bread. Third quality (that issued to prisoners of the Crown) to be made of flour, fine sharps, the produce of prime, strong, thin-skinned, good-coloured wheat, to be perfectly free from coarse pollard or other offal. *Pure wheaten Meal Bread of first quality may be substituted, wholly or in part, for fine wheaten Bread at such times and in such quantities as in the opinion of the Medical Superintendent may be deemed necessary, and the contractor will be required to supply such Bread at the contract rate. Reasonable notice, however, of the intention to substitute wheaten Meal Bread must be given to the contractor by the officer ordering the supply.* Bread may be baked at any Government establishment without infringing these contracts. At the Gaols, Beechworth, Ballarat, Geelong, Bendigo, Castlemaine, and Sale, if required, bread must be supplied one day old, due notice to be given to the contractor of such requirement.

Under sub-schedules for Bread no subletting will be allowed; all work must be carried out by the contractor; every person engaged in the manufacture, preparation, or delivery of the bread tendered for in this sub-schedule shall be paid such wages and shall be employed subject to such conditions as are or may be determined by any Wages Board under the provisions of the Factories and Shops Acts to which such persons are subject as employees; and a copy of these conditions shall be kept conspicuously and continually posted in legible Roman characters in the factory or shop (and in each part of the factory or shop where several rooms are in use) in which bread is prepared or manufactured under this contract. Any infringement of these conditions, or any breach of the said determinations, in the opinion of the Treasurer, will subject the contractor, upon report from the Tender Board, to such mulet, not exceeding Fifty pounds (£50), as the Treasurer may direct, and the amount will be deducted from the contractor's account or from the security money, and the Treasurer's decision shall be binding, final, and conclusive as to the fact of infringement, and in all other respects.

In the event of bread being made at any Government establishment in the Melbourne District, during the currency of these contracts, the flour required will be drawn under the flour and maize meal sub-schedule. The maize meal for all the country gaols is included in the sub-schedule for flour and maize meal, Melbourne District, and delivery of same will be required to be made at the Victorian Railways, Spencer-street.

Should a supply of any article which may be reasonably included in a Baker's Price List, and which is not included in the schedule hereunder, be required for the use of attendants and nurses resident at the Hospitals for the Insane or for inmates of any Government institution drawing supplies under sub-schedules for Bread during the currency of the contract, the contractor shall, with the exception of Ararat, Ballarat, and Beechworth, supply any such article at the current list rates at which it is retailed by the contractor to the public.

GROCERIES, CANDLES, SOAP, TEA, ETC.

Should the supply of any article which may be reasonably included in a Grocer's Price List, and which is not included in the schedule hereunder, be required for the use of the attendants and nurses resident at the Hospitals for the Insane or for inmates of any Government institution drawing supplies under sub-schedules for Groceries during the currency of the contract, the contractor shall with the exception of Ararat, Ballarat, and Beechworth, supply such article at the current list rates at which it is retailed by the contractor to the public.

Rice, when ordered in quantities of 56 lbs. and over, must be supplied in the original bags, and must be of the brand ordered. Bags containing same must be branded "Rice—Dressed, Best Java," and must be stencilled with the manufacturer's or dresser's name, the country of origin, and the brand of the respective manufacturer or dresser, as a guarantee of origin and quality. Supplies not in conformity with the foregoing conditions will be absolutely rejected.

Candles, except those for prison cells, must be supplied in 1-lb. packets. Candles for prison cells must be delivered in boxes containing from 25 to 50 lbs. per box, the boxes for which must be legibly stencilled on one end, showing the estimated burning time and the gross, tare, and net weight of contents. The soap supplied must be hard throughout, ready for immediate use without waste. Soap for Lunatic Asylums is not included in these contracts. When the quantity admits, tea must be supplied in original and unopened packages, labelled, as landed.

Raisins and currants must, where the quantity admits, be supplied in original boxes labelled 3 crowns.

For s.s. *Lady Loch* and *Alberta* a certain quantity of Biscuits and Preserved Meat are sometimes required in lieu of fresh meat and fresh bread, and are included to meet such contingency only.

The contracts are not to be considered broken, infringed, or vitiated by purchase of sugar from any Government Institution at any time during the currency of this contract.

BUTTER AND JAMS.

Butter is to be delivered to the s.s. *Lady Loch* and *Alberta*, in 1 lb. pats, in such quantities as may be ordered, and no excess over the quantity ordered will be received.

All Butter supplied, as well as the cases in which it is packed, must bear the impress stamp of the creamery manufacturing the Butter, otherwise it will be rejected. The Butter supplied may be tested at any time by the Government Dairy expert if it is considered by the officer ordering that the supply is not up to standard quality. The cheese must be fairly matured and packed in boxes for transport.

As regards butter for Ararat, Ballarat, Beechworth, Lara, Sunbury, and Mont Park all supplies delivered from Melbourne must be submitted by the contractor to the Government Dairy Expert in Melbourne for test as to standard quality, and, if found to be satisfactory, shall be forwarded by that officer direct to the Institution ordering, the cost of freight being borne by the contractor in the usual way.

N.B.—Jams.—The weight stamped on the tins in accordance with the regulations under the Commerce Act, as indicating the minimum net quantity that each tin contains, shall for the purpose of this contract be taken as the actual contents when computing the quantity supplied.

When Jam is supplied in jars the jars remain the property of the contractor, and must be removed by the contractor at his own expense when empty.

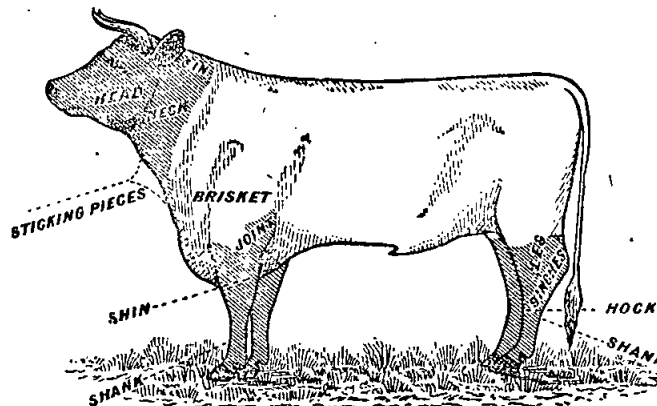
MEAT.

When fore and hind-quarters of beef are ordered for Hospitals for the Insane they must be supplied in the proportion of two of the former to one of the latter, and must be delivered as a whole respectively, also extra buttocks separately when ordered. Meat for other institutions must be supplied as ordered. Where hind-quarters or buttocks are ordered, 9 inches must be cut off from the end of the leg from the hock upwards, i.e., the end of the leg from which the shank has been removed at the abattoirs; and when fore-quarters form a portion of the supply, 4 inches from the end of the neck and the whole of the shin at the clodbone joint must be removed. The sticking pieces also must be trimmed off, and the point and end of the brisket rendered free from blood and blood stains.

Fore and hind-quarters, for convenience of handling, may be cut into two parts, but each part is to bear evidence of having been cut from the same beast.

Corned beef, rolled or round, as ordered, must be supplied without bone or cartilage and will be received, whether pumped or prepared in the ordinary way by pickling, but in the former case must have been soaked after pumping for at least 48 hours, in a good pickle, and then thoroughly drained before supply. No flank, chuck, sticking pieces, shin, leg of beef, or piece under 7 lbs. will be received.

Should the local supply of fresh meat become scarce, or the price of same become abnormally high, frozen or chilled meat may, with the consent of the Tender Board on the recommendation of the head of the Department, be supplied.



In cases of emergency, or on such other occasions as in the opinion of the Inspector-General of the Insane may seem advisable, other forms of meat such as rabbits, tinned meats, &c., may be purchased apart from the contract for Hospitals for the Insane, in lieu of the meat mentioned in the schedule, and substituted therefor, provided 24 hours' notice (except in cases of emergency) be given to the contractor of such intention.

The parts to be removed by the contractor are indicated by the shaded portions of the annexed diagram.

As regards supplies for s.s. *Lady Loch* and *Albert*, all Meat must be of prime quality, and must be supplied in equal quantities from ribs, sirloin, and thick flanks; mutton to be delivered in sides; all kidney fat to be removed; meat containing an undue proportion of fat will not be accepted. Chuck ribs will not be accepted in lieu of prime ribs. Live sheep to be supplied when required.

Should a supply of any article which may be reasonably included in a Butcher's Small Goods List, and which is not included in the schedule hereunder, be required for the use of attendants and nurses resident at the Hospitals for the Insane or for Inmates of any Government Institution drawing supplies under sub-schedules for Meat during the currency of the contract, the contractor shall, with the exception of Ararat and Ballarat, supply such article at the current list rates at which it is retailed by the contractor to the public.

Under sub-schedules for Meat no subletting will be allowed; no delivery of meat shall be made on Sundays; all work must be carried out by the contractor. Every person engaged in the slaughtering and cutting up, preparation, or delivery of the meat tendered for in this sub-schedule, shall be paid such wages and shall be employed subject to such conditions as are or may be determined by any Wages Board under the provisions of the Factories and Shops Acts to which such persons are subject as employees; and a copy of these conditions shall be kept conspicuously and continually posted in legible Roman characters in the factory or shop (and in each part of the factory or shop where several rooms are in use) in which Meat is prepared under this contract. Any infringement of these conditions, or any breach of the said determination, in the opinion of the Treasurer, will subject the contractor, upon report from the Tender Board, to such mulct, not exceeding Fifty pounds (£50), as the Treasurer may direct, and the amount will be deducted from the contractor's account or from the security money, and the Treasurer's decision shall be binding, final, and conclusive as to the fact of infringement, and in all other respects.

MILK.

The milk must be fresh, pure, and of the best quality, and subject to test when required by the Department, and supplied at such times as the Department may require. Should the contractor fail to supply at the time specified in the order or at such times as may be indicated in any general notice to the

contractor his contract may be cancelled forthwith and his security forfeited, or should the supply prove to be not of contract quality it will be rejected, and any expense incurred will be charged to the contractor.

Under sub-schedules for Milk no subletting will be allowed; all work must be carried out by the contractor; the hours of employment of any person engaged in the preparation or the delivery of the milk tendered for in these schedules shall not exceed 60 hours per week, and every such person, except carters, shall be paid at a minimum wage of not less than £1 17s. 6d. per week, or £1 2s. 6d. per week with board and lodging, unless other wages may be determined by any Special Board under the Factories and Shops Acts during the currency of the contract, when every such person shall be paid such wages and shall be employed subject to such conditions as may thus be determined. Carters shall be paid such wages and shall be employed subject to such conditions as are or may be determined by the Carters Board under the Factories and Shops Acts. Should, however, the determination of the aforesaid Board not apply to the district covered by any particular schedule, that determination for carters, or the determination of such other Board as may be appointed for other employees during the currency of this contract shall, for the purpose of this contract, be taken as defining the rate of wages which shall be paid, and the conditions of employment in respect thereto; and a copy of these conditions shall be kept conspicuously and continually posted in legible Roman characters in the factory or dairy (and in each part of the factory or dairy where several rooms are in use) in which milk is prepared under these contracts. Any infringement of these conditions, in the opinion of the Treasurer, will subject the contractor, upon report from the Tender Board, to such mulct, not exceeding Fifty pounds (£50), as the Treasurer may direct, and the amount will be deducted from the contractor's account or from the security money, and the Treasurer's decision shall be binding, final, and conclusive as to the fact of infringement, and in all other respects.

POTATOES AND VEGETABLES.

(Potatoes to be dry and free from dirt. Contractor to supply 105 lbs. of potatoes for each cental credited to him, and, in addition, to take back all rejected before being cooked.)

If the price of potatoes becomes abnormally high, the heads of the various departments concerned may, if they think fit, cause rice or any other suitable food to be occasionally substituted in lieu thereof. As regards vegetables for s.s. *Lady Loch* and *Albert*, no subletting will be allowed. Cabbage to be free from outside leaves and stalks.

TOBACCO.

Tobacco for country Hospitals for the Insane is included in the contract for Melbourne District, and delivery of same will be required to be made at Spencer-street.

Tobacco for country Gaols is not included in the contract for Melbourne District.

Schedule No. 1.
PROVISIONS—MELBOURNE DISTRICT.

Sub-schedule No. 1.

BEER AND SPIRITS.

Purchase as required.

1. Ale (pints), English	per doz.	Purchase
2. Brandy, Australian Standard, pure grape, of proof strength, and of approved brand...	per liq. gal.	
3. " bottled—Hennessy's Three Star, as imported	per bottle	
4. Lime Juice (Imperial quart bottles), Board of Trade Standard	per doz.	
5. Whisky, of proof strength—Loch Dhu, Scotch Cream, or any other brand of equal quality	per liq. gal.	
6. Porter—"Guinness," bottled (quarts)	per doz.	
7. " "Guinness," bottled (pints)	do.	

ANNEX TO CONTRACT No. 1916/438.

Alexander Simpson, 201 Elizabeth-street, North Richmond.

(From 1st July, 1916, to 30th June, 1917.)

Sub-schedule 2.

BREAD FOR HOSPITALS FOR THE INSANE AT KEW.

Security, £100.

1. Bread—Fine wheaten, first quality	per cental	£ s. d.
		0 11 5

ANNEX TO CONTRACT No. 1916/439.

P. Willett, 689 Malvern-road, Toorak.

(From 1st July, 1916, to 30th June, 1917.)

Sub-schedule 3.

BREAD FOR HOSPITALS FOR THE INSANE AT YARRA BEND.

Security, £100.

1. Bread—Fine wheaten, first quality	per cental	£ s. d.
		0 11 5½

ANNEX TO CONTRACT No. 1916/440.

P. Willett, 689 Malvern-road, Toorak.

(From 1st July, 1916, to 30th June, 1917.)

Sub-schedule 4.

BREAD FOR DEPARTMENT OF NEGLECTED CHILDREN AND REFORMATORY SCHOOLS, ROYAL PARK; RECEIVING HOUSE AND MENTAL HOSPITAL, ROYAL PARK; POLICE LOCK-UPS; POLICE DEPÔT; RICHMOND HOUSE, RICHMOND, ETC.

Security, £50.

1. Bread—Fine wheaten, first quality	per cental	£ s. d.
2. " Wheaten, third quality	do.	0 11 5½

ANNEX TO CONTRACT No. 1916/441.

J. D. Howie, Smith-street, Fitzroy.

(From 1st July, 1916, to 30th September, 1916.)

Sub-schedule 5.

BUTTER.

Security, £30.

1. Butter—First Grade Creamery, to score not less than 90 points Government grade, Commerce Regulations standard	per cwt.	£ s. d.
		9 15 0

ANNEX TO CONTRACT No. 1916/442.

P. Sheahan and Co., 453 Flinders-lane, Melbourne.

(From 1st July, 1916, to 30th June, 1917.)

Sub-schedule 5.

CHEESE AND EGGS.

Security, £10.

2. Cheese—First Class quality	per cwt.	£ s. d.
3. Eggs—Fresh, new-laid	per doz.	0 1 3

ANNEX TO CONTRACT No. 1916/443.

B. E. Johnson and Co., 534 Bridge-road, Richmond.

(From 1st July, 1916, to 30th June, 1917.)

Sub-schedule 6.

FLOUR AND MAIZE MEAL.

Security, £100.

1. Flour—Roller, first quality, to sample	per cental	£ s. d.
2. " Sharps, to sample	do.	0 11 0
3. Maize meal	do.	0 12 9

ANNEX TO CONTRACT No. 1916/444.

J. D. Howie, Smith-street, Fitzroy.

(From 1st July, 1916, to 30th June, 1917.)

Sub-schedule 7.

GROCERIES, ETC.

Security, £40.

1. Arrowroot—Queensland	per lb.	£ s. d.
2. Bicarbonate of Soda	do.	0 0 2
3. Blue—Of any brand ordered	do.	0 0 8
4. Candles—Full weights, Kitchen's "Petrolines," Apollo Co.'s "Apollo," or other make of equal quality, to be supplied in 1-lb. packets to sample	do.	0 0 8½
5. " Kitchen's "Petrolines," Apollo Co.'s "Apollo," or other make of equal quality, for use in prison cells, to burn for 1, 1½, 2, 2½, and 3 hours respectively, as ordered, to sample for quality and size, to be supplied in candle boxes, containing from 25 to 50 lbs. per box	do.	0 0 8
6. " "Sapon," in boxes of 100 lbs.	do.	0 0 8½
7. " Carriage, equal to Kitchen's No. 8, in 1-lb. packets	do.	0 0 8½
8. " Paraffine	do.	0 0 8½
9. Cocoa—Homeopathic, in ¼-lb. packets, of any Commonwealth manufacture ordered	do.	0 1 3
10. " Homeopathic, in 7-lb. cartons, of any Commonwealth manufacture ordered	do.	0 1 3
11. Coffee—Fresh roasted and whole, beans to be thoroughly sound, Neilgherry A or equal thereto, to sample	do.	0 1 1½
12. " Pure, fresh roasted and ground, to sample	do.	0 1 3
13. Cornina	do.	0 0 5
14. Cornflour	do.	0 0 5
15. Cream of Tartar	do.	0 2 4½
16. Currants, 3 Crowns	do.	0 0 6½
17. Essence of Lemon, 1-oz. bottles	per bottle	0 0 6
18. Golden Syrup, in 7-lb. tins	per tin	0 1 10
19. Lemon Peel	per lb.	0 0 8½
20. Maizena—Duryea's	do.	0 0 6½
21. Mustard—"Double Superfine," of any Commonwealth manufacture ordered	do.	0 1 8
22. Nutmegs	do.	0 1 4
23. Pearl barley	per cwt.	0 16 0
24. Pease—Split	do.	1 2 0
25. Pepper—Black, ground	per lb.	0 0 11
26. Pipes—Tobacco, clay	per doz.	0 0 5½
27. Raisins—Sultana (Mildura), 3 Crowns	per lb.	0 0 7½
28. Salt—Fine	per cwt.	0 4 3
29. " Rock	do.	0 6 6
30. Soap, Toilet—Brown Windsor, in tablets, to sample	per lb.	0 0 5½
31. " Carbolic, in half-pound bars, to sample	do.	0 0 6
32. " Glycerine, in tablets, to sample	do.	0 0 6
33. " Sunlight, in doublets	per dbl.	0 0 3½
34. " Magic	per lb.	0 0 5
35. " Velvet	per dbl.	0 0 3
36. Soap—Extract of, Hudson's, No. 8a, in 14-lb. boxes	per box	0 4 3
37. Soda—Washing	per cwt.	0 7 3
38. Starch—Of any brand ordered, to sample	per lb.	0 0 3
39. Treacle, in 7-lb. tins	per tin	0 1 6
40. Vinegar	per quart	0 0 3
41. Lime Water	do.	0 0 6
42. Tapioca (Pearl)	per lb.	0 0 3½
43. Tomato Sauce (pints)	per bottle	0 0 6

ANNEX TO CONTRACT No. 1916/445.

J. D. Howie, Smith-street, Fitzroy.

(From 1st July, 1916, to 30th June, 1917.)

Sub-schedule 8.

OATMEAL, RICE, AND SEED TAPIOCA.

Security, £30.

1. Oatmeal—Of any brand ordered	per cwt.	£ s. d.
2. Rice—Dressed, Best Java, of any brand ordered, to sample	do.	1 2 6
3. Seed Tapioca (Sago), to sample	do.	1 4 0

ANNEX TO CONTRACT No. 1916/446.

J. D. Howie, Smith-street, Fitzroy.

(From 1st July, 1916, to 30th June, 1917.)

Sub-schedule 9.

JAMS (of Commonwealth Manufacture) FOR HOSPITALS FOR THE INSANE.

(Including Receiving House, Royal Park.)

Security, £20. £ s. d.

1. Jams—Assorted, of approved kinds, in per lb.
the proportion of half seed and actual net
half stone, of the best quality, weight 0 0 4½
in tins, as required

ANNEX TO CONTRACT No. 1916/447.

Wm. Angliss and Co. Ppy. Ltd., 44 Bourke-street, Melbourne.

(From 1st July, 1916, to 30th June, 1917.)

Sub-schedule No. 10.

MEAT (FRESHLY KILLED), FOR HOSPITALS FOR THE INSANE, KEW.

Security, £150.

- | | | | | |
|----|--|-----|-----|------------------|
| | | £ | s. | d. |
| 1. | Fresh Beef—Fore-quarters | ... | ... | per cental 2 8 6 |
| 2. | " " Hind-quarters | ... | ... | do. 2 8 6 |
| 3. | " Buttock | ... | ... | do. 2 8 6 |
| 4. | " Mutton | ... | ... | do. 2 8 6 |
| 5. | Corned Beef, rolled or round, as ordered,
without bone or cartilage | ... | ... | do. 2 8 6 |
| 6. | Fresh Suet—Kidney | ... | ... | do. 2 10 0 |

MEAT (FROZEN) FOR HOSPITALS FOR INSANE, KEW.

- | | | | | |
|----|--|-----|-----|------------------|
| | | £ | s. | d. |
| 1. | Fresh Beef—Fore-quarters | ... | ... | per cental 2 6 0 |
| 2. | " " Hind-quarters | ... | ... | do. 2 6 0 |
| 3. | " Buttock | ... | ... | do. 2 6 0 |
| 4. | " Mutton | ... | ... | do. 2 6 0 |
| 5. | Corned Beef, rolled or round, as ordered,
without bone or cartilage | ... | ... | do. 2 6 0 |
| 6. | Fresh Suet—Kidney | ... | ... | do. 2 10 0 |

ANNEX TO CONTRACT No. 1916/448.

Wm. Angliss and Co. Ppy. Ltd., 44 Bourke-street, Melbourne.

(From 1st July, 1916, to 30th June, 1917.)

Sub-schedule No. 11.

MEAT (FRESHLY KILLED), FOR HOSPITALS FOR THE INSANE, YARRA BEND.

Security, £120.

- | | | | | |
|----|--|-----|-----|------------------|
| | | £ | s. | d. |
| 1. | Fresh Beef—Fore-quarters | ... | ... | per cental 2 8 6 |
| 2. | " " Hind-quarters | ... | ... | do. 2 8 6 |
| 3. | " Buttock | ... | ... | do. 2 8 6 |
| 4. | " Mutton | ... | ... | do. 2 8 6 |
| 5. | Corned Beef, rolled or round, as ordered,
without bone or cartilage | ... | ... | do. 2 8 6 |
| 6. | Fresh Suet—Kidney | ... | ... | do. 2 10 0 |

MEAT (FROZEN) FOR HOSPITALS FOR THE INSANE, YARRA BEND.

- | | | | | |
|----|--|-----|-----|------------------|
| | | £ | s. | d. |
| 1. | Fresh Beef—Fore-quarters | ... | ... | per cental 2 6 0 |
| 2. | " " Hind-quarters | ... | ... | do. 2 6 0 |
| 3. | " Buttock | ... | ... | do. 2 6 0 |
| 4. | " Mutton | ... | ... | do. 2 6 0 |
| 5. | Corned Beef, rolled or round, as ordered,
without bone or cartilage | ... | ... | do. 2 6 0 |
| 6. | Fresh Suet—Kidney | ... | ... | do. 2 10 0 |

ANNEX TO CONTRACT No. 1916/449.

F. Watkins Pty. Ltd., 316 Moray-street, South Melbourne.

(From 1st July, 1916, to 30th June, 1917.)

Sub-schedule No. 12.

MEAT (FRESHLY KILLED), FOR PENAL ESTABLISHMENT, PENTRIDGE.

Security, £100.

- | | | | | |
|----|--------------|-----|-----|------------------|
| | | £ | s. | d. |
| 1. | Fresh Beef | ... | ... | per cental 2 9 6 |
| 2. | " Buttock | ... | ... | do. 2 9 6 |
| 3. | Corned Beef | ... | ... | do. 2 9 6 |
| 4. | Fresh Mutton | ... | ... | do. 2 9 6 |
| 5. | Dripping | ... | ... | do. 2 9 6 |

ANNEX TO CONTRACT No. 1916/450.

F. Watkins Pty. Ltd., 316 Moray-street, South Melbourne.

(From 1st July, 1916, to 30th June, 1917.)

Sub-schedule No. 13.

MEAT (FRESHLY KILLED), FOR MELBOURNE GAOL; POLICE BARRACKS, ST. KILDA-ROAD; DEPARTMENT FOR NEGLECTED CHILDREN AND REFORMATORY SCHOOLS, ROYAL PARK; RECEIVING HOUSE, AND MENTAL HOSPITAL, ROYAL PARK; AND RICHMOND HOUSE, RICHMOND.

Security, £50.

- | | | | | |
|----|--|-----|-----|-------------------|
| | | £ | s. | d. |
| 1. | Fresh Beef | ... | ... | per cental 2 10 0 |
| 2. | " Buttock | ... | ... | do. 2 10 0 |
| 3. | " Mutton | ... | ... | do. 2 10 0 |
| 4. | Corned Beef, rolled or round, as ordered,
without bone or cartilage | ... | ... | do. 2 10 0 |
| 5. | Fresh Suet—Kidney | ... | ... | do. 2 10 0 |

ANNEX TO CONTRACT No. 1916/451.

J. Henderson, 183 Macpherson-street, North Carlton.

(From 1st July, 1916, to 30th June, 1917.)

Sub-schedule No. 14.

MILK FOR MELBOURNE GAOL, AND MENTAL HOSPITAL, ROYAL PARK.

Security £10. £ s. d.

1. Milk—Fresh and pure, July 1916, May and June, 1917 ... per gal. 0 1 8
August, 1916, to April, 1917 ... do. 0 1 4

Sub-schedule 15.

MILK FOR RICHMOND HOUSE, RICHMOND.

1. Milk—Fresh and pure... per gal. Purchase

Sub-schedule No. 16.

MILK FOR PENAL ESTABLISHMENT, PENTRIDGE.

1. Milk—Fresh and pure ... per gal. Purchase

ANNEX TO CONTRACT No. 1916/452.

H. McDonough, Flinders-street, Melbourne.

(From 1st July, 1916, to 30th June, 1917.)

Sub-schedule No. 17.

POTATOES.

Security, £100. £ s. d.

1. Potatoes ... per cental 0 6 4½

Sub-schedule 18.

SUGAR.

Security, £100.

1. Sugar—White, to sample ... per cwt. { Purchase from Maffra
2. " Ration " ... do. }

ANNEX TO CONTRACT No. 1916/453.

Moran and Cato Pty. Ltd., Brunswick-street, Fitzroy.

(From 1st July, 1916, to 30th June, 1917.)

Sub-schedule No. 19.

TEA.

Security, £60. £ s. d.

1. Tea—Best Congou, to sample ... per lb. 0 0 11½
2. " Ration, to sample ... do. 0 0 8½

ANNEX TO CONTRACT No. 1916/454.

Dudgson and Arnell Pty. Ltd., 524 Lonsdale-street, Melbourne.

(From 1st July, 1916, to 30th June, 1917.)

Sub-schedule No. 20.

TOBACCO.

(Of Commonwealth Manufacture.)

Security, £20. £ s. d.

1. Tobacco, in 1-oz. plugs, for gaols—"Starlight," or other make of equal quality, to sample ... per lb. 0 2 8
2. Tobacco, 21 plugs to the pound, for Hospitals for the Insane, to sample ... do. 0 2 8½

Schedule No. 2.

PROVISIONS AT WILLIAMSTOWN.

(For s.s. Lady Loch and Albert.)

(Including Candles, Soap, and Soda for Dockyards.)

(Supplies to be delivered on board the Vessels.)

ANNEX TO CONTRACT No. 1916/455.

W. J. Elsum, 162 Stevedore-street, North Williamstown.

(From 1st July, 1916, to 30th June, 1917.)

Sub-schedule No. 1.

BREADSTUFFS.

Security, £10. £ s. d.

1. Bread—Fine wheaten, first quality per cental 0 13 6½
2. Flour—First quality ... do. 0 11 6

(From 1st July, 1916, to 30th September, 1916.)

Sub-schedule No. 2.

BUTTER.

1. Butter—First-class Creamery, to score not less than 90 points Government grade, Commerce Regulations standard ... per lb. Purchase

ANNEX TO CONTRACT No. 1916/456.
Moran and Cato Pty. Ltd., Brunswick-street, Fitzroy.
 (From 1st July, 1916, to 30th June, 1917.)

Sub-schedule No. 3.

GROCERIES.

	Security, £10.	£	s.	d.
1. Candles—(full weights) Kitchen's "Petrolines," Apollo Co.'s "Apollo," or other make of equal quality, to be supplied in 1-lb. packets ...	per lb.	0	0	8½
2. Cocoa, of any brand ordered ...	do.	0	1	1
3. Coffee—Fresh roasted and ground, to sample ...	do.	0	0	11½
4. Currants—3 Crowns ...	do.	0	0	6½
5. Flour—Self-raising ...	do.	0	0	5
6. Jams—Assorted, of approved kinds, in proportion of half seed and half stone, of best quality, in 14-lb. tins ...	per tin	0	6	0
7. Milk—Condensed, of any brand ordered ...	do.	0	0	7½
8. Mustard—double superfine, of any brand ordered ...	per lb.	0	1	7½
9. Oatmeal ...	per cwt.	0	18	6
10. Pearl barley ...	do.	0	17	0
11. Pease—Split ...	do.	1	4	0
12. Pepper—White, ground ...	per lb.	0	1	2
13. Raisins—Sultana, Mildura—3 Crowns ...	do.	0	0	7½
14. Salt—Fine, to sample ...	do.	0	0	0½
15. Soap—Household, yellow, dry, to sample ...	do.	0	0	2½
16. Tea—Best Congou, special sample ...	do.	0	0	11½
17. " " Ceylon ...	do.	0	0	1
18. Vinegar—Champion's, or other approved brand ...	per quart	0	0	3
19. Biscuits, kinds as ordered ...	per lb.	0	0	4
20. Meat—Preserved ...	do.	0	0	2½
21. Soda—Washing ...	per cwt.	0	9	0

ANNEX TO CONTRACT No. 1916/457.

Wm. Angliss and Co. Pty. Ltd., 44 Bourke-street, Melbourne.
 (From 1st July, 1916, to 30th June, 1917.)

Sub-schedule No. 4.

MEAT (FRESHLY-KILLED).

	Security, £10.	£	s.	d.
1. Fresh Beef ...	per cental	2	10	0
2. " Mutton ...	do.	2	10	0
3. " Suet ...	per lb.	0	0	6

ANNEX TO CONTRACT No. 1916/458.

Doig, Hall, and Co., Nelson-place, Williamstown.
 (From 1st July, 1916, to 30th June, 1917.)

Sub-schedule No. 5.

VEGETABLES.

Security, £5.

	Security, £5.	£	s.	d.
1. Potatoes ...	per cental	0	10	0
2. Onions ...	do.	0	7	6
3. Other vegetables, including cauliflower, carrots, cabbages, turnips, and parsnips, as required ...	do.	0	12	6

Schedule No. 3.

PROVISIONS—ARARAT DISTRICT.

ANNEX TO CONTRACT No. 1916/459.

Wm. Bates, Ararat.
 (From 1st July, 1916, to 30th June, 1917.)

Sub-schedule No. 1.

BREADSTUFFS.

Security, £100.

	Security, £100.	£	s.	d.
1. Bread—Fine wheat, first quality ...	per cental	0	10	4½
2. " Wheat, third quality ...	do.	0	10	4
3. Flour—First quality ...	do.	0	11	0

ANNEX TO CONTRACT No. 1916/460.

The Wallace, Millbrook, and District Butter Factory and Creamery Co. Ltd.
 (From 1st July, 1916, to 30th September, 1916.)

Sub-schedule No. 2.

BUTTER.

Security, £20.

	Security, £20.	£	s.	d.
1. Butter—First Grade Creamery, to score not less than 90 points Government grade, Commerce Regulations standard ...	per cwt.	9	4	4

ANNEX TO CONTRACT No. 1916/461.

P. Sheahan and Co., Flinders-lane, Melbourne.
 (From 1st July, 1916, to 30th June, 1917.)

Sub-schedule No. 2.

CHEESE.

Security, £5.

	Security, £5.	£	s.	d.
2. Cheese—First-class quality ...	per cwt.	5	2	8

ANNEX TO CONTRACT No. 1916/462.

J. D. Howie, Smith-street, Fitzroy.

(From 1st July, 1916, to 30th June, 1917.)

Sub-schedule No. 3.

GROCERIES.

Security, £30.

	Security, £30.	£	s.	d.
1. Blue—Of any brand ordered ...	per lb.	0	0	8½
2. Candles (full weights) — Kitchen's "Petrolines," or other make of equal quality, to be supplied in 1-lb. packets ...	do.	0	0	8½
3. Coffee—"Neilgherry A," or equal thereto — Fresh roasted and whole—Beans to be thoroughly sound, to sample ...	do.	0	1	1½
4. Curry Powder ...	do.	0	1	0
5. Golden Syrup, in 56-lb. tins ...	per tin	0	13	0
6. Mustard—"Double Superfine," of any Commonwealth manufacture ordered ...	per lb.	0	1	6
7. Oatmeal—Of any brand ordered ...	per cwt.	0	18	0
8. Pease—Split ...	do.	1	2	0
9. Pepper—Black, ground ...	per lb.	0	0	11½
10. Pipes—Tobacco, clay ...	per doz.	0	0	6
11. Raisins—Sultana (Mildura), 3 crowns ...	per lb.	0	0	7½
12. Rice—Dressed, Best Java, of any brand ordered, to sample ...	per cwt.	1	4	0
13. Seed Tapioca (Sago)—To sample ...	do.	1	5	0
14. Salt—Fine ...	do.	0	5	6
15. Soda—Carbonate of ...	per lb.	0	0	2
16. Soda—Washing ...	per cwt.	0	9	0
17. Starch—Of any brand ordered, to sample ...	per lb.	0	0	4½
18. Tartar—Cream of ...	do.	0	2	6
19. Vinegar ...	per pint	0	0	3

ANNEX TO CONTRACT No. 1916/463.

The Ballarat Jam Co. Pty. Ltd., Ballarat.
 (From 1st July, 1916, to 30th June, 1917.)

Sub-schedule No. 4.

JAMS.

(For Hospitals for the Insane.)

Security, £10.

	Security, £10.	£	s.	d.
1. Jams, assorted, of approved kinds in the proportions of half seed and half stone, of the best quality, in tins as required ...	per lb. actual net weight	0	0	4½

ANNEX TO CONTRACT No. 1916/464.

Arthur Murphy, Barkly-street, Ararat.
 (From 1st July, 1916, to 30th June, 1917.)

Sub-schedule No. 5.

MEAT (FRESHLY KILLED).

Security, £100.

	Security, £100.	£	s.	d.
1. Fresh Beef—Fore-quarters ...	per cental	1	17	6
2. " " Hind-quarters ...	do.	2	0	0
3. " " Buttocks ...	do.	2	2	0
4. " Mutton ...	do.	1	19	7
5. Corned Beef—Rolled or round, as ordered, without bone or cartilage ...	do.	1	17	6
6. Fresh Suet—Kidney ...	do.	1	13	4

ANNEX TO CONTRACT No. 1916/465.

H. McDonough, Flinders-street, Melbourne.
 (From 1st July, 1916, to 30th June, 1917.)

Sub-schedule No. 6.

POTATOES.

Security, £30.

	Security, £30.	£	s.	d.
1. Potatoes ...	per cental	0	6	4½

Sub-schedule No. 7.

SUGAR.

1. Sugar, white, to sample ...	per cwt.	Purchase from Maffra
--------------------------------	----------	----------------------

ANNEX TO CONTRACT No. 1916/466.

Moran and Cato Pty. Ltd., Brunswick-street, Fitzroy.
 (From 1st July, 1916, to 30th June, 1917.)

Sub-schedule No. 8.

TEA.

Security, £20.

	Security, £20.	£	s.	d.
1. Tea—Best Congou, to sample ...	per lb.	0	0	11½

Schedule No. 4.
PROVISIONS—BEECHWORTH DISTRICT.

ANNEX TO CONTRACT No. 1916/467.

W. Price, Newtown, Beechworth.

(From 1st July, 1916, to 30th June, 1917.)

Sub-schedule No. 1.

BREADSTUFFS.

	Security, £100.	£	s.	d.
1. Bread—Fine wheaten, first quality	per cental	0	10	6
2. " Wheaten, third quality	do.	0	10	0
3. Flour—First quality	do.	0	11	0

ANNEX TO CONTRACT No. 1916/468.

J. D. Howie, Smith-street, Fitzroy.

(From 1st July, 1916, to 30th September, 1916.)

Sub-schedule No. 2.

BUTTER.

	Security, £20.	£	s.	d.
1. Butter—First Grade Creamery, to score not less than 90 points, Government grade, Commerce Regulations standard	per cwt.	9	17	0

ANNEX TO CONTRACT No. 1916/469.

P. Sheahan & Co., Flinders-lane, Melbourne.

(From 1st July, 1916, to 30th June, 1917.)

Sub-schedule No. 2.

CHEESE.

	Security, £6.	£	s.	d.
2. Cheese—First-class quality	per cwt.	5	2	8

ANNEX TO CONTRACT No. 1916/470.

J. D. Howie, Brunswick-street, Fitzroy.

(From 1st July, 1916, to 30th June, 1917.)

Sub-schedule No. 3.

GROCERIES.

	Security, £30.	£	s.	d.
1. Arrowroot	per lb.	0	0	6½
2. Blue—Of any brand required	do.	0	0	8½
3. Candles (full weights)—Kitchen's "Petrolines," Apollo Co.'s "Apollo," or other make of equal quality, to be supplied in 1-lb. packets	do.	0	0	8½
4. Coffee—"Neigherry A," fresh roasted and whole, beans to be thoroughly sound, to sample	do.	0	1	1
5. Coffee—Fresh roasted and ground, to sample	do.	0	1	3
6. Golden Syrup (in 7-lb. tins)	per tin	0	2	0
7. Maizena	per lb.	0	0	6½
8. Mustard—"Double superfine," of any Commonwealth manufacture ordered	do.	0	1	10
9. Oatmeal—Of any brand ordered	per cwt.	0	18	0
10. Pearl Barley	do.	0	17	6
11. Pease—Split	do.	1	3	0
12. Pepper—Black, ground	per lb.	0	0	11½
13. Pipes—Tobacco, clay	per doz.	0	0	6
14. Raisins—Sultana (Mildura), 3 crowns, to be supplied in original boxes, labelled as packed, where quantity admits	per lb.	0	0	7½
15. Rice—Dressed, Best Java, of any brand ordered, to sample	per cwt.	1	3	0
16. Seed Tapioca (Sago)—To sample	do.	1	5	6
17. Salt—Fine	do.	0	5	0
18. Soap—Household, carbolic, dry, to sample	per lb.	0	0	3
19. Soap—Household, yellow, dry, to sample	do.	0	0	3
20. Soda—Carbonate of	do.	0	0	2
21. " Washing	per cwt.	0	9	6
22. Starch—Of any brand ordered, to sample	per lb.	0	0	4
23. Tartar—Cream of	do.	0	2	6
24. Vinegar	per pint	0	0	3

ANNEX TO CONTRACT No. 1916/471.

W. H. Morton, One Mile, Beechworth.

(From 1st July, 1916, to 30th June, 1917.)

Sub-schedule No. 4.

MEAT (FRESHLY KILLED).

	Security, £100.	£	s.	d.
1. Fresh Beef, Fore-quarters	per cental	2	9	0
2. " " Hind-quarters	do.	2	9	0
3. " " Buttocks	do.	2	9	0
4. " " Mutton	do.	2	9	0
5. Corned Beef—rolled or round, as ordered, without bone or cartilage	do.	2	9	0
6. Fresh Suet—Kidney	per lb.	0	0	6

ANNEX TO CONTRACT No. 1916/472.

H. McDonough, Flinders-street, Melbourne.

(From 1st July, 1916, to 30th June, 1917.)

Sub-schedule No. 5.

POTATOES.

	Security, £30.	£	s.	d.
1. Potatoes	per cental	0	6	4½

Sub-schedule No. 6.

SUGAR.

	per cwt.	£	s.	d.
1. Sugar, white, to sample
2. " Ration, to sample	do.

Purchase from Maffra

ANNEX TO CONTRACT No. 1916/473.

Moran and Cato Pty. Ltd., Brunswick-street, Fitzroy.

(From 1st July, 1916, to 30th June, 1917.)

Sub-schedule No. 7.

TEA.

	Security, £20.	£	s.	d.
1. Tea—Best Congou, to sample	per lb.	0	0	11½
2. " Ration, to sample	do.	0	0	8

Schedule No. 5.

PROVISIONS AT BALLARAT.

ANNEX TO CONTRACT No. 1916/474.

W. E. Longhurst, 406 Mair-street, Ballarat.

(From 1st July, 1916, to 30th June, 1917.)

Sub-schedule No. 1.

BREADSTUFFS.

	Security, £60.	£	s.	d.
1. Bread—Fine Wheaten, first quality	per cental	0	10	11
2. " Wheaten, third quality	do.	0	10	11
3. Flour—First quality	do.	0	11	0

ANNEX TO CONTRACT No. 1916/475.

The Wallace, Millbrook and District Butter Factory and Creamery Co., Ltd.

(From 1st July, 1916, to 30th September, 1916.)

Sub-schedule No. 2.

BUTTER.

	Security, £30.	£	s.	d.
1. Butter—First Grade Creamery, to score not less than 90 points, Government grade, Commerce Regulations standard	per cwt.	9	4	0

ANNEX TO CONTRACT No. 1916/476.

P. Sheahan & Co., Flinders-lane, Melbourne.

(From 1st July, 1916, to 30th June, 1917.)

Sub-schedule No. 2.

CHEESE.

	Security £3.	£	s.	d.
2. Cheese—First-class quality	per cwt.	5	2	8

ANNEX TO CONTRACT No. 1916/477.

J. D. Howie, Brunswick-street, Fitzroy.

(From 1st July, 1916, to 30th June, 1917.)

Sub-schedule No. 3.

GROCERIES.

	Security, £30.	£	s.	d.
1. Barley—Pearl	per lb.	0	0	2½
2. Blue—Of any brand required	do.	0	0	8½
3. Candles (full weights)—Kitchen's "Petrolines," Apollo Co.'s "Apollo," or other make of equal quality, to be supplied in 1-lb. packets	do.	0	0	9
4. Coffee—"Neigherry A" or equal thereto. Fresh roasted and whole, beans to be thoroughly sound, to sample	do.	0	1	2½
5. Cornina	do.	0	0	5
6. Currants, 3 crowns	do.	0	0	7½
7. Ginger—Ground	do.	0	1	0
8. Golden Syrup, in 7-lb. tins	per tin	0	1	11
9. Maizena—Duryea's	per lb.	0	0	7
10. Milk—Fresh and pure	per quart	0	0	6
11. Mustard—Double superfine, of any Commonwealth manufacture ordered	per lb.	0	1	8
12. Oatmeal—Of any brand ordered	per cwt.	0	18	0
13. Pease—Split	do.	1	5	6
14. Pepper—Black, ground	per lb.	0	0	11½
15. Pipes—Tobacco, clay	per doz.	0	0	6
16. Raisins—Sultana (Mildura), 3 crowns	per lb.	0	0	7½
17. Rice—Dressed, best Java, of any brand ordered, to sample	per cwt.	1	3	0
18. Seed Tapioca (Sago), to sample	do.	1	4	0
19. Salt—Fine	do.	0	5	6

GROCERIES—continued.

	£	s.	d.
20. Soap—(Household), Carbolic, dry, to sample ... per lb.	0	0	3
21. Soap—(Household), Yellow, dry, to sample do.	0	0	3
22. Soda—Carbonate of ... do.	0	0	2
23. " Washing ... per cwt.	0	8	6
24. Spice—Mixed, in 1-oz. packets... per doz. pkts.	0	0	10
25. Starch—Of any brand ordered, to sample per lb.	0	0	4½
26. Tartar—Cream of ... do.	0	2	6
27. Tea—Best Congou, to sample ... do.	0	1	0
28. " Ration " ... do.	0	0	10
29. Tobacco—"Starlight," or other make of equal quality, as ordered ... do.	0	2	8
30. Vinegar ... per pint	0	0	3
31. Whiting ... per lb.	0	0	0½
32. Haricot Beans ... per cwt.	1	8	9
33. Macaroni ... do.	1	17	4

ANNEX TO CONTRACT No. 1916/478.
Bullarat Jam Co. Pty. Ltd., Ballarat.
(From 1st July, 1916, to 30th June, 1917.)

Sub-schedule No. 4.

JAMS.

(For Hospitals for the Insane.)

Security, £10.

	£	s.	d.
1. Jams—Assorted, of approved kinds in proportion of half seed and half stone, actual net weight of the best quality, in tins as required	0	0	3½

ANNEX TO CONTRACT No. 1916/479.
H. J. Symons, Macarthur-street, Ballarat.
(From 1st July, 1916, to 30th June, 1917.)

Sub-schedule No. 5.

MEAT (FRESHLY KILLED).

Security, £60.

	£	s.	d.
1. Fresh Beef—Fore-quarters ... per cental	2	8	6
2. " " Hind-quarters ... do.	2	8	6
3. " " Buttocks ... do.	2	8	6
4. " " Mutton ... do.	2	8	6
5. Corned Beef, rolled or round, as ordered, without bone or cartilage ... do.	2	8	6
6. Fresh Suet—Kidney ... do.	2	8	6

ANNEX TO CONTRACT 1916/480.
H. McDonough, Flinders-street, Melbourne.
(From 1st July, 1916, to 30th June, 1917.)

Sub-schedule No. 6.

POTATOES.

Security, £20.

	£	s.	d.
1. Potatoes ... per cental	0	6	3

Schedule No. 6.

PROVISIONS AT GEELONG.

ANNEX TO CONTRACT No. 1916/481.
W. Marshall, 150 Malop-street, Geelong.
(From 1st July, 1916, to 30th June, 1917.)

Sub-schedule No. 1.

BREADSTUFFS.

Security, £20.

	£	s.	d.
1. Bread—Fine Wheaten, first quality ... per cental	0	11	5½
2. " " Wheaten, third quality ... do.	0	11	5½

ANNEX TO CONTRACT No. 1916/482.

Moran and Cato Pty. Ltd., Brunswick-street, Fitzroy.
(From 1st July, 1916, to 30th June, 1917.)

Sub-schedule No. 2.

GROCERIES.

Security, £20.

	£	s.	d.
1. Arrowroot—Queensland ... per lb.	0	0	6½
2. Candles (full weights)—Kitchen's "Petrolines," or other make of equal quality, to sample, to be supplied in 1-lb. packets ... do.	0	0	8½
3. Barley—Pearl ... do.	0	0	2
4. Currants, 3 crown ... do.	0	0	6½
5. Eggs—Fresh ... per doz.	0	1	9
6. Mustard—"Double Superfine," of any Commonwealth manufacture ordered ... per lb.	0	1	7
7. Oatmeal—Of any brand ordered ... per cwt.	6	18	6
8. Pepper—Black, ground ... per lb.	0	0	11
9. Pipes—Tobacco, clay ... per doz.	0	0	4½
10. Raisins—Sultana (Mildura), 3 crown ... per lb.	0	0	7½
11. Rice—Dressed, Best Java, of any brand ordered, to sample ... per cwt.	1	2	2
12. Seed Tapioca (Sago), to sample ... per lb.	0	0	3
13. Salt—Fine ... do.	0	0	0½
14. Soap—(Household) Carbolic, dry, to sample ... do.	0	0	3
15. Soap—(Household) Yellow, dry, to sample per cwt.	1	8	0
16. Soda—Washing ... do.	0	8	6
17. Sugar—Ration, to sample ... do.	1	8	0
18. Tea—Ration ... per lb.	0	0	9
19. Tobacco—"Starlight," or other make of equal quality, as ordered ... do.	0	2	10

ANNEX TO CONTRACT No. 1916/483.

M. McCartin and Sons, Moorabool-street, Geelong.

(From 1st July, 1916, to 30th June, 1917.)

Sub-schedule No. 3.

MEAT (FRESHLY KILLED).

Security, £20.

	£	s.	d.
1. Fresh Beef ... per cental	2	10	0
2. " " Buttocks ... do.	3	2	6
3. " " Mutton ... do.	2	10	0

ANNEX TO CONTRACT 1916/484.

S. H. Warren, East Geelong P.O.

(From 1st July, 1916, to 30th June, 1917.)

Sub-schedule No. 4.

MILK.

Security, £5.

	£	s.	d.
1. Milk—Fresh and pure ... per gallon	0	1	4

(From 1st July, 1916, to 30th June, 1917.)

Sub-schedule No. 5.

POTATOES.

1. Potatoes ... per cental Purchase			
-------------------------------------	--	--	--

Schedule No. 7.

PROVISIONS AT LARA.

(Delivery at the Inebriates' Retreat.)

ANNEX TO CONTRACT No. 1916/485.

F. Sombke, Lara.

(From 1st July, 1916, to 30th June, 1917.)

Sub-schedule No. 1.

BREADSTUFFS.

Security, £20.

	£	s.	d.
1. Bread—Fine Wheaten, first quality ... per cental	0	14	0
2. Flour—First quality ... do.	0	11	6

ANNEX TO CONTRACT 1916/486.

J. D. Howie, Smith-street, Fitzroy.

(From 1st July, 1916, to 30th September, 1916.)

Sub-schedule No. 2.

BUTTER.

Security, £5.

	£	s.	d.
1. Butter—First-grade Creamery, to score not less than 90 points, Government grade, Commerce Regulations standard ... per cwt.	9	17	0

ANNEX TO CONTRACT No. 1916/487.

J. D. Howie, Smith-street, Fitzroy.

(From 1st July, 1916, to 30th June, 1917.)

Sub-schedule No. 2.

2. Cheese—First-class quality ... per cwt.	5	11	4
--	---	----	---

ANNEX TO CONTRACT No. 1916/488.

J. D. Howie, Smith-street, Fitzroy.

(From 1st July, 1916, to 30th June, 1917.)

Sub-schedule No. 3.

GROCERIES.

Security, £20.

	£	s.	d.
1. Arrowroot—Queensland ... per lb.	0	0	6½
2. Bacon, Farmer's or Hutton's (or other approved brand) by the side ... do.	0	1	2
3. Barley—Pearl ... do.	0	0	2½
4. Blue—Of any brand ordered ... do.	0	0	8
5. Candles—(Full weights) Kitchen's "Petrolines," or other make of equal quality, to be supplied in 1-lb. packets ... do.	0	0	8½
6. Cocoa—(Homeopathic)—McKenzie's, or other brand of equal quality ... do.	0	0	11
7. Coffee—"Neigherry A," or equal thereto, Fresh roasted and whole—Beans to be thoroughly sound, to sample ... do.	0	1	1
8. Currants—3 Crowns ... do.	0	0	7
9. Mustard—"Double Superfine," of any Commonwealth manufacture ordered ... do.	0	1	8
10. Oatmeal—Of any brand ordered ... per cwt.	0	19	0
11. Pease—Split ... per lb.	0	0	3
12. Pepper—Black, ground ... do.	0	1	0
13. Raisins—Sultana (Mildura), 3 Crowns ... do.	0	0	8
14. Rice—Dressed, Best Java, of any brand ordered, to sample ... do.	0	0	3
15. Seed Tapioca (Sago), to sample ... do.	0	0	2½
16. Salmon—Fresh, brand as ordered, talls 1-lb. tins ... per tin.	0	0	10
17. Salt—Fine ... per lb.	0	0	0½
18. Soap—(Household) Yellow, dry, to sample ... do.	0	0	2½
19. Soap—Toilet, Glycerine, in tablets, to sample ... do.	0	0	5
20. Soda—Washing ... do.	0	0	1
21. Tea, Best Ceylon, special sample ... per lb.	0	1	3

ANNEX TO CONTRACT No. 1916/489.

Cunliff and Paterson Pty. Ltd., 410 Swanston-street, Melbourne.
(From 1st July, 1916, to 30th June, 1917.)

Sub-schedule No. 4.

JAMS.

Security, £5.

£ s. d.

- | | | |
|---|--------------|-------|
| 1. Jams, Assorted, of approved kinds in the proportion of half seed and half stone, of the best quality, in tins containing 27 ozs. net | per doz tins | 0 8 0 |
|---|--------------|-------|

ANNEX TO CONTRACT No. 1916/490.

W. Angliss and Co. Pty. Ltd., 44 Bourke-street, Melbourne.
(From 1st July, 1916, to 30th June, 1917.)

Sub-schedule No. 5.

MEAT (FRESHLY KILLED).

Security, £20.

£ s. d.

- | | | |
|--|------------|--------|
| 1. Fresh Beef | per cental | 2 15 4 |
| 2. " Mutton | do. | 2 14 2 |
| 3. " Tripe, Sausages, Kidneys, and Liver, as ordered | do. | 2 14 2 |

ANNEX TO CONTRACT No. 1916/491.

H. McDonough, Flinders-street, Melbourne.
(From 1st July, 1916, to 30th June, 1917.)

Sub-schedule No. 6.

POTATOES.

Security, £5.

£ s. d.

- | | | |
|----------|------------|-------|
| Potatoes | per cental | 0 6 6 |
|----------|------------|-------|

Schedule No. 8.

PROVISIONS—SUNBURY DISTRICT.

ANNEX TO CONTRACT No. 1916/492.

T. Clyne and Son, Sunbury.
(From 1st July, 1916, to 30th June, 1917.)

Sub-schedule No. 1.

BREADSTUFFS.

Security, £100.

£ s. d.

- | | | |
|-----------------------------------|------------|----------|
| Bread—Fine Wheaten, first quality | per cental | 0 10 11½ |
| Flour—First quality | do. | 0 11 3 |

ANNEX TO CONTRACT No. 1916/493.

J. D. Howie, Smith-street, Fitzroy.
(From 1st July, 1916, to 30th September, 1916.)

Sub-schedule No. 2.

BUTTER.

Security, £10.

£ s. d.

- | | | |
|--|----------|--------|
| 1. Butter—First Grade Creamery, to score not less than 90 points Government grade, Commerce Regulations standard | per cwt. | 9 13 0 |
|--|----------|--------|

ANNEX TO CONTRACT No. 1916/494.

P. Sheahan and Co., Flinders-lane, Melbourne.
(From 1st July, 1916, to 30th June, 1917.)

Sub-schedule No. 2.

CHEESE AND BACON.

Security, £4.

£ s. d.

- | | | |
|-------------------------------|----------|--------|
| 2. Cheese—First-class quality | per cwt. | 4 13 4 |
| 3. Bacon—Shoulders | do. | 5 12 0 |

ANNEX TO CONTRACT No. 1916/495.

J. D. Howie, Smith-street, Fitzroy.
(From 1st July, 1916, to 30th June, 1917.)

Sub-schedule No. 3.

GROCERIES.

Security, £20.

£ s. d.

- | | | |
|--|---------|---------|
| 1. Blue—Of any brand ordered | per lb. | 0 0 8½ |
| 2. Candles—(Full weights) Kitchen's "Petrolines," or other make of equal quality, to sample, to be supplied in 1-lb. packets | do. | 0 0 8½ |
| 3. Coffee—"Neigcherry A," or equal thereto, fresh roasted and whole—Beans to be thoroughly sound, to sample | do. | 0 1 1½ |
| 4. Cornflour | do. | 0 0 5 |
| 5. Currants—3 Crowns | do. | 0 0 6½ |
| 6. Curry Powder | do. | 0 1 0 |
| 7. Ginger—Ground | do. | 0 0 10 |
| 8. Golden Syrup, in 56-lb. tins | per tin | 0 12 7½ |
| 9. Maizena—Duryea's | per lb. | 0 0 6½ |
| 10. Mustard—Double superfine, of any Commonwealth manufacture ordered | do. | 0 1 9 |

GROCERIES—continued.

£ s. d.

- | | | |
|--|----------|---------|
| 11. Oatmeal—Of any brand ordered | per cwt. | 0 18 0 |
| 12. Pearl Barley | do. | 0 16 6 |
| 13. Pease—Split | do. | 1 2 0 |
| 14. Pepper—Black, ground | per lb. | 0 0 11½ |
| 15. Pipes—Tobacco, clay | per doz. | 0 0 6 |
| 16. Raisins—Sultana (Mildura), 3 Crowns | per lb. | 0 0 7½ |
| 17. Rice—Dressed, Best Java, of any brand ordered, to sample | per cwt. | 1 2 0 |
| 18. Seed Tapioca (Sago), to sample | do. | 1 4 0 |
| 19. Salt—Fine | do. | 0 4 10 |
| 20. Soda—Washing | do. | 0 7 10 |
| 21. Starch—Of any brand ordered, to sample | per lb. | 0 0 3 |
| 22. Tartar—Cream of | do. | 0 2 6 |
| 23. Vinegar | per pint | 0 0 3 |

ANNEX TO CONTRACT No. 1916/496.

J. D. Howie, Smith-street, Fitzroy.

(From 1st July, 1916, to 30th June, 1917.)

Sub-schedule No. 4.

JAMS.

(FOR HOSPITALS FOR THE INSANE.)

Security, £10.

£ s. d.

- | | | |
|---|---------------------------|--------|
| 1. Jams—Assorted, of approved kinds in the proportion of half seed and half stone, of the best quality, in tins as required | per lb. actual net weight | 0 6 4½ |
|---|---------------------------|--------|

ANNEX TO CONTRACT No. 1916/497.

S. J. Starkie, Sunbury.

(From 1st July, 1916, to 30th June, 1917.)

Sub-schedule No. 5.

MEAT (FRESHLY KILLED).

Security, £50.

£ s. d.

- | | | |
|---|------------|--------|
| 1. Fresh Beef—Fore-quarters | per cental | 2 15 0 |
| 2. " " Hind-quarters | do. | 2 15 0 |
| 3. " " Buttocks | do. | 2 15 0 |
| 4. " Mutton | do. | 2 15 0 |
| 5. Corned Beef—Rolled or round, as ordered, without bone or cartilage | do. | 2 15 0 |

MEAT (FROZEN).

- | | | |
|---|------------|--------|
| 1. Fresh Beef—Fore-quarters | per cental | 2 12 6 |
| 2. " " Hind-quarters | do. | 2 12 6 |
| 3. " " Buttocks | do. | 2 15 0 |
| 4. " Mutton | do. | 2 12 6 |
| 5. Corned Beef—Rolled or round, as ordered, without bone or cartilage | do. | 2 15 0 |

(From 1st July, 1916, to 30th June, 1917.)

Sub-schedule No. 6.

RABBITS (FRESHLY KILLED).

- | | | |
|---|--------------|-------------------------------|
| 1. Rabbits—Not less than 3½ lbs. per pair | per dz. prs. | } Purchase
from
Maffra. |
| 2. " " Not less than 2½ lbs. " " | " " | |

ANNEX TO CONTRACT No. 1916/498.

H. McDonough, Flinders-street, Melbourne.
(From 1st July, 1916, to 30th June, 1917.)

Sub-schedule No. 7.

POTATOES.

Security, £30.

£ s. d.

- | | | |
|-------------|------------|--------|
| 1. Potatoes | per cental | 0 5 11 |
|-------------|------------|--------|

Sub-schedule No. 8.

SUGAR.

- | | | |
|---------------------------|----------|-----------------------|
| 1. Sugar—White, to sample | per cwt. | Purchase from Maffra. |
|---------------------------|----------|-----------------------|

ANNEX TO CONTRACT No. 1916/499.

Moran and Cato, Pty. Ltd., Smith-street, Fitzroy.
(From 1st July, 1916, to 30th June, 1917.)

Sub-schedule No. 9.

TEA.

Security, £20.

£ s. d.

- | | | |
|-------------------------------|---------|---------|
| 1. Tea—Best Congou, to sample | per lb. | 0 0 11½ |
|-------------------------------|---------|---------|

Schedule No. 9.
PROVISIONS—BENDIGO DISTRICT.

ANNEX TO CONTRACT No. 1916/500.

F. W. Beischer, Bridge-street, Bendigo.

(From 1st July, 1916, to 30th June, 1917.)

Sub-schedule No. 1.

BREAD.

Security, £5. £ s. d.

1. Bread—Wheaten, third quality ... per cental 0 13 6

ANNEX TO CONTRACT No. 1916/501.

Moran and Cato Pty. Ltd., Brunswick-street, Fitzroy.

(From 1st July, 1916, to 30th June, 1917.)

Sub-schedule No. 2.

GROCERIES AND POTATOES.

Security, £5. £ s. d.

1. Candles—(full weights) Kitchen's "Petrolines," or other make of equal quality, to sample, to be supplied in 1-lb. packets per lb. 0 0 9½
2. Milk—Fresh and pure ... per quart 0 0 7
3. Oatmeal—Of any brand ordered ... per lb. 0 0 3
4. Potatoes ... per cental 0 7 6
5. Rice, dressed, Best Java, to sample ... per lb. 0 0 3
6. Salt—Fine ... do. 0 0 1
7. Soap—Yellow (Household), dry, to sample do. 0 0 3½
8. " Carbolic " " do. 0 0 3½
9. Soda—Washing ... do. 0 0 1½
10. Tea—Best Congou, to sample ... do. 0 1 0
11. " Ration, to sample ... do. 0 0 11½
12. Tobacco—"Starlight," or other make of equal quality, as ordered ... do. 0 2 10
13. Whiting ... do. 0 0 1½

ANNEX TO CONTRACT No. 1916/502.

Ewing and Kronk, Williamson-street, Bendigo.

(From 1st July, 1916, to 30th June, 1917.)

Sub-schedule No. 3.

MEAT.

Security, £5. £ s. d.

1. Fresh Beef ... per cental 2 18 4

Schedule No. 10.

PROVISIONS—CASTLEMAINE DISTRICT.

ANNEX TO CONTRACT 1916/503.

Morton Van Heurck, Castlemaine.

(From 1st July, 1916, to 30th June, 1917.)

Sub-schedule No. 1.

BREAD.

Security, £5. £ s. d.

1. Bread—Wheaten, third quality ... per cental 0 12 6

ANNEX TO CONTRACT No. 1916/504.

Moran and Cato Pty. Ltd., Brunswick-street, Fitzroy.

(From 1st July, 1916, to 30th June, 1917.)

Sub-schedule No. 2.

GROCERIES AND POTATOES.

Security, £5. £ s. d.

1. Candles—(full weights) Kitchen's "Petrolines," Apollo Co.'s "Apollo," or other make of equal quality, to sample, to be supplied in 1-lb. packets per lb. 0 0 9½
2. Milk—Fresh and pure ... per quart 0 0 6
3. Oatmeal ... per cwt. 1 1 0
4. Potatoes ... per cental 0 7 6
5. Rice, Dressed, No. 1 Java, to sample ... per cwt. 1 3 6
6. Salt—Fine ... per lb. 0 0 0½
7. Soap—Yellow (household), dry, to sample do. 0 0 3½
8. Soda—Washing ... do. 0 0 1½
9. Sugar—Ration, to sample ... do. 0 0 3½
10. Tea ... do. 0 1 3

ANNEX TO CONTRACT No. 1916/505.

June Williamson, Bendigo.

(From 1st July, 1916, to 30th June, 1917.)

Sub-schedule No. 3.

MEAT.

Security, £5. £ s. d.

1. Fresh Beef ... per lb. 0 0 5½

Schedule No. 11.

PROVISIONS AT SALE.

ANNEX TO CONTRACT No. 1916/506.

Michael Kaily, Raymond-street, Sale.

(From 1st July, 1916, to 30th June, 1917.)

Sub-schedule No. 1.

BREAD.

Security, £5.

1. Bread—Wheaten, third quality ... per lb. 0 0 1½

(From 1st July, 1916, to 30th June, 1917.)

Sub-schedule No. 2.

GROCERIES AND POTATOES.

1. Milk—Fresh and pure ... per quart
2. Potatoes ... do.
3. Rice, dressed, Best Java, to sample ... per lb.
4. Salt—Fine ... do.
5. Soap, yellow (household), dry, to sample do. } Purchase
6. Soda—Washing ... do.
7. Sugar—Ration, to sample ... do.
8. Tea " " ... do.
9. Whiting " " ... do.

ANNEX TO CONTRACT No. 1916/507.

E. Cleaver, Raymond-street, Sale.

(From 1st July, 1916, to 30th June, 1917.)

Sub-schedule No. 3.

MEAT.

Security, £5. £ s. d.

1. Fresh Beef ... per lb. 0 0 6

Schedule No. 18.

PROVISIONS—MONT PARK.

(Delivery at the Hospital for Insane.)

ANNEX TO CONTRACT No. 1916/508.

W. Debenham, Greensborough.

(From 1st July, 1916, to 30th June, 1917.)

Sub-schedule No. 1.

BREAD.

Security, £30. £ s. d.

1. Bread—Fine Wheaten, first quality ... per cental 0 11 5½
2. Flour—First quality ... do. 0 13 0

ANNEX TO CONTRACT No. 1916/509.

J. D. Howie, Smith-street, Fitzroy.

(From 1st July, 1916, to 30th September, 1916.)

Sub-schedule No. 2.

BUTTER.

Security, £5. £ s. d.

1. Butter—First Grade Creamery, to score not less than 90 points Government grade, Commerce Regulations standard per cwt. 9 15 0

ANNEX TO CONTRACT No. 1916/510.

P. Sheahan and Co. 453 Flinders-lane, Melbourne

(From 1st July, 1916, to 30th June, 1917.)

Sub-schedule No. 2.

CHEESE.

Security, £2. £ s. d.

2. Cheese—First-class quality... per cwt. 4 13 4

ANNEX TO CONTRACT No. 1916/511.

J. D. Howie, Brunswick-street, Fitzroy.

(From 1st July, 1916, to 30th June, 1917.)

Sub-schedule No. 3.

GROCERIES.

Security, £10.

		£	s.	d.
1. Blue—Of any brand ordered	per lb.	0	0	8
2. Candles (full weights)—Kitchen's "Petrolines," or other make of equal quality, to be supplied in 1-lb. packets	do.	0	0	8½
3. Coffee—"Neigherry A" or equal thereto—Fresh roasted and Whole—Beans to be thoroughly sound, to sample	do.	0	1	1
4. Cornina	do.	0	0	6½
5. Currants, 3 Crowns	do.	0	0	5
6. Golden Syrup, in 7-lb. tins	per tin	0	1	10
7. Maizena—Duryea's	per lb.	0	0	6½
8. Mustard—"Double Superfine," of any Commonwealth manufacture ordered	do.	0	1	8
9. Oatmeal—Of any brand ordered	per cwt.	0	18	0
10. Pease—Split	do.	1	3	0
11. Pepper—Black, Ground	per lb.	0	0	11½
12. Pipes—Tobacco, Clay	per doz.	0	0	6
13. Raisins—Sultana (Mildura), 3 Crowns	per lb.	0	0	7½
14. Rice—Dressed, Best Java, of any brand ordered, to sample	per cwt.	1	2	0
15. Seed Tapioca (Sago)—To sample	per lb.	0	0	3½
16. Salt—Fine	per cwt.	0	4	3
17. Soda—Washing	do.	0	7	3
18. Starch—Of any brand ordered to sample	per lb.	0	0	3
19. Tartar—Cream of	do.	0	2	6
20. Vinegar	per pint	0	0	3

ANNEX TO CONTRACT No. 1916/512.

J. D. Howie, Smith-street, Fitzroy.

(From 1st July, 1916, to 30th June, 1917.)

Sub-schedule No. 4.

JAMS (FOR HOSPITALS FOR THE INSANE).

Security, £10.

		£	s.	d.
1. Jams—Assorted, of approved kinds in the proportion of half seed and half actual net stone, of the best quality, in tins as required	per lb. weight	0	0	4½

ANNEX TO CONTRACT No. 1916/513.

W. Angliss and Co. Pty. Ltd., 44 Bourke-street, Melbourne.

(From 1st July, 1916, to 30th June, 1917.)

Sub-schedule No. 5.

Security, £30.

£ s. d.

MEAT (FRESHLY KILLED.)

1. Fresh Beef—Fore-quarters	per cental	2	10	0
2. " " Hind-quarters	do.	2	10	0
3. " " Buttocks	do.	2	10	0
4. " Mutton	do.	2	10	0
5. Corned Beef—Rolled or round as ordered, without bone or cartilage	do.	2	10	0
6. Fresh Beef Suet—Kidney	do.	2	12	0

MEAT (FROZEN).

1. Fresh Beef—Fore-quarters	per cental	2	7	6
2. " " Hind-quarters	do.	2	7	6
3. " " Buttocks	do.	2	7	6
4. " Mutton	do.	2	7	6
5. Corned Beef—Rolled or round, as ordered, without bone or cartilage	do.	2	7	6
6. Fresh Beef Suet—Kidney	do.	2	10	0

ANNEX TO CONTRACT No. 1916/514.

H. McDonough, Flinders-street, Melbourne.

(From 1st July, 1916, to 30th January, 1917.)

Sub-schedule No. 6.

POTATOES.

Security, £20.

£ s. d.

1. Potatoes	per cental	0	5	11
-------------	------------	---	---	----

Sub-schedule No. 7.

SUGAR.

1. Sugar—White, to sample	per cwt.	Purchase from Maffra
---------------------------	----------	----------------------

ANNEX TO CONTRACT No. 1916/515.

Moran and Cato Pty. Ltd., Brunswick-street, Fitzroy.

(From 1st July, 1916, to 30th June, 1917.)

Sub-schedule No. 8.

TEA.

Security, £10.

£ s. d.

1. Tea—Best Congou, to sample	per lb.	0	0	11½
-------------------------------	---------	---	---	-----

CONTRACTS ACCEPTED.—(Series 1916-17.)

Serial No.	Particulars.	Amount.	Name for Approval.	Charge against Vote or Fund.
	PROVISIONS— Supply of Provisions in such quantities as may be ordered for the use of the Students' School of Forestry, Creswick, from 1st July, 1916, to 30th June, 1917—			
...	Breadstuffs	Rates as per annex	Purchase	Contingencies 1916-17.
...	Butter and Cheese	Ditto	Purchase	
516	Groceries	Ditto	John Tait and Son	
...	Meat	Ditto	Purchase	
517	Milk	Ditto	Annie Armstrong	
...	Potatoes	Ditto	Purchase	

Approved—A. J. PEACOCK, Treasurer. 28.6.1916.

Schedule No. 19.

PROVISIONS AT CRESWICK FOR STUDENTS AT THE SCHOOL OF FORESTRY.

(Delivery at the School.)

(From 1st July, 1916, to 30th June, 1917.)

Sub-schedule No. 1.

BREADSTUFFS.

Particular attention is drawn to Clause 1 of the Conditions as to quality.

Where practicable all items must be manufactured or prepared within the Commonwealth.

No subletting will be allowed; all work must be carried out by the contractor. Every person engaged in the manufacture, preparation, or delivery of the bread tendered for in this sub-schedule shall be paid such wages and shall be employed subject to such conditions as are or may be determined by any Wages Board under the provisions of the Factories and Shops Acts, to which such persons are subject

as employees; and a copy of these conditions shall be kept conspicuously and continually posted in legible Roman characters in the factory or shop (and in each part of the factory or shop where several rooms are in use) in which bread is prepared or manufactured under this contract. Any infringement of these conditions, or any breach of the said determinations, in the opinion of the Treasurer, will subject the contractor, upon report from the Tender Board, to such mulct, not exceeding Fifty pounds (£50), as the Treasurer may direct, and the amount will be deducted from the contractor's account or from the security money, and the Treasurer's decision shall be binding, final, and conclusive as to the fact of infringement, and in all other respects. Pure wheaten meal bread of first quality may be substituted, wholly or in part, for fine wheaten bread at such times as may be deemed necessary, and the contractor will be required to supply such bread at the contract rate. Reasonable notice, however, of the intention to substitute wheaten meal bread must be given to the contractor by the officer ordering the supply. Samples of the best ordinarily retailed to the public will be considered as test loaves for first quality.

1. Bread—Fine Wheaten, first quality	per cental	Purchase
2. Flour—First quality	do.	

(From 1st July, 1916, to 30th September, 1916.)

(From 1st July, 1916, to 30th June, 1917.)

Sub-schedule No. 2.

BUTTER, CHEESE AND EGGS.

All butter supplied, as well as the boxes in which it is packed for transit, must bear the impress stamp of the creamery manufacturing the butter, otherwise it will be rejected. The cheese supplied must be fairly matured, and packed in boxes for transport.

In the event of butter being supplied under this contract from Melbourne, all such butter shall be submitted by the contractor to the Government Dairy Expert in Melbourne for test as to standard quality, and, if found to be satisfactory, shall be forwarded by that officer direct to the institution ordering, the cost of freight being borne by the contractor in the usual way.

1. Butter—First Grade Creamery, to score not less than 92 points, Government Grade, Commerce Regulations standard ...	per lb.	} Purchase
2. Cheese—First-class quality, matured (Victorian) ...	do.	
3. Eggs, new laid ...	per doz.	

ANNEX TO CONTRACT No. 1916/516.

John Tait and Son, Creswick.

(From 1st July, 1916, to 30th June, 1917.)

Sub-schedule No. 3.

GROCERIES.

Security, £10.

The soap supplied must be hard throughout, ready for immediate use without waste. Soap for the Lunatic Asylum is not included in this contract.

When the quantity admits, tea must be supplied in original and unopened packages, labelled, as landed.

Should any article or articles which may be reasonably included in a grocer's price list, and which is or are not included in the schedule hereunder, be required during the currency of the contract, the contractor shall supply any such article or articles at the current list rates at which such articles are retailed by the contractor to the public.

	£	s.	d.
1. Barley—Pearl ...	per lb.	0	0 2½
2. Blue—Of any brand required ...	do.	0	0 8
3. Candles (full weights) Kitchen's "Petrolines," Apollo Co.'s "Apollo," or other make of equal quality, to be supplied in 1-lb. packets ...	do.	0	0 8
4. Coffee—Fresh roasted and whole—Beans to be thoroughly sound, to sample ...	do.	0	1 4½
5. Cornina ...	do.	0	0 6
6. Currants—3 Crowns ...	do.	0	0 7
7. Ginger—Ground (Jamaica) ...	do.	0	0 11
8. Golden Syrup, in 7-lb. tins ...	per tin	0	1 11
9. Jams, assorted, any brand ordered, in 2-lb. tins, in the proportion of half seed and half stone ...	per lb. net	0	0 4½
10. Maizena—Duryea's ...	per lb.	0	0 7
11. Mustard—Double superfine, of any brand ordered ...	do.	0	1 9
12. Oatmeal—Of any brand ordered ...	do.	0	0 3
13. Pease—Split ...	do.	0	0 2½
14. Pepper—Black, ground ...	do.	0	0 11
15. Raisins—Sultana (Mildura), 3 Crowns ...	do.	0	0 8
16. Rice—Dressed, Best Java, to sample ...	do.	0	0 2½
17. Seed Tapioca—Sago, to sample ...	do.	0	0 2½
18. Salt—Fine ...	do.	0	0 0½
19. Soap (Household)—Lever Bros. "Velvet" ...	do.	0	0 6½
20. Soap (Household)—Yellow, dry, to sample ...	do.	0	0 3½
21. Carbolic Sand Soap ...	do.	0	0 4
22. Soda—Carbonate of ...	do.	0	0 2½
23. " Washing ...	do.	0	0 1
24. Spice—Mixed, in 1-oz. packets ...	per pkt.	0	0 1
25. Starch, of any brand ordered, to sample ...	per lb.	0	0 6½
26. Sugar—White, to sample ...	per cwt.	1	11 0
27. " Ration ...	per lb.	0	0 3
28. Tartar—Cream of ...	do.	0	2 2
29. Tea—Best Ceylon, to sample ...	do.	0	1 3
30. Vinegar ...	per pint	0	0 2

Sub-schedule No. 3.

MEAT (FRESHLY KILLED).

No subletting will be allowed; no delivery of meat shall be made on Sundays; all work must be carried out by the contractor. Every person engaged in the slaughtering and cutting-up, preparation, or delivery of the meat tendered for in this sub-schedule shall be paid such wages and shall be employed subject to such conditions as are or may be determined by any Wages Board under the provisions of the Factories and Shops Acts, to which such persons are subject as employees; and a copy of these conditions shall be kept conspicuously and continually posted in legible Roman characters in the factory or shop (and in each part of the factory or shop where several rooms are in use) in which meat is prepared under this contract. Any infringement of these conditions, or any breach of the said determination, in the opinion of the Treasurer, will subject the contractor, upon report from the Tender Board, to such mulct, not exceeding Fifty pounds (£50), as the Treasurer may direct, and the amount will be deducted from the contractor's account or from the security money, and the Treasurer's decision shall be binding, final, and conclusive as to the fact of infringement and in all other respects.

When fore and hind-quarters of beef are ordered for Hospitals for the Insane they must be supplied in the proportion of two of the former to one of the latter, and must be delivered as a whole respectively, also extra buttocks separately when ordered. Meat for other institutions must be supplied as ordered. Where hind-quarters or buttocks are ordered, 9 inches must be cut off from the end of the leg from the hock upwards, i.e., the end of the leg from which the shank has been removed at the abattoirs; and when fore-quarters form a portion of the supply, 6 inches from the end of the neck and the whole of the shiu at the club joint must be removed. The sticking pieces also must be trimmed off, and the point and end of the brisket rendered free from blood and blood stains.

Fore and hind-quarters, for convenience of handling, may be cut into two parts, but each part is to bear evidence of having been cut from the same beast.

Corned beef (rolled or round as ordered) must be supplied without bone or cartilage, and will be received, whether pumped or prepared in the ordinary way by pickling, but in the former case must have been soaked, after pumping, for at least 48 hours in a good pickle, and then thoroughly drained before supply. No flank, chuck, sticking-piece, shin, leg of beef, or piece under 7 lbs. will be received.

Should the local supply of fresh meat become scarce, or the price of same become abnormally high, frozen or chilled meat may, with the consent of the Tender Board on the recommendation of the head of the Department, be supplied.

In cases of emergency, or on such other occasions as in the opinion of the Superintendent may seem advisable, other forms of meat, such as rabbits, tinned meats, &c., may be purchased apart from the contract in lieu of the meat mentioned in the Schedule, and substituted therefor, provided 24 hours' notice—except in cases of emergency—be given to the contractor of such intention.

The parts to be removed by the contractor are indicated by the shaded portions of the annexed diagram.

1. Fresh Beef—Fore-quarter ...	per lb.	} Purchase
2. " " Hind-quarter ...	do.	
3. " " Buttocks ...	do.	
4. " Mutton ...	do.	
5. Corned Beef, rolled or round, as ordered without bone or cartilage ...	do.	
6. Pork (Leg) ...	do.	
7. Fresh Suet—Kidney ...	do.	

ANNEX TO CONTRACT No. 1916/517.

Annie Armstrong, Broomfield.

(From 1st July, 1916, to 30th June, 1917.)

Sub-schedule No. 5.

MILK.

Security, £5.

1. Milk—Fresh and pure ...	per quart	0	0	5½
----------------------------	-----------	---	---	----

Sub-schedule No. 6.

POTATOES.

Potatoes to be dry and free from dirt. Contractor to supply 105 lbs. of potatoes for each cental credited to him, and, in addition, to take back all rejected before being cooked.

If the price of potatoes becomes abnormally high, the heads of the various Departments concerned may, if they think fit, cause rice or any other suitable food to be occasionally substituted in lieu thereof.

1. Potatoes ...	per cental	Purchase
-----------------	------------	----------

PROVISIONS FOR ABORIGINES AT THE UNDERMENTIONED STATIONS.
CONTRACTS ACCEPTED.—(Series 1916-17.)

Serial No.	Particulars.	Amount.	Name of Contractor.	Charged against Vote or Fund.	
PROVISIONS— Supply of Provisions for Aborigines at the undermentioned Stations as may be required from 1st July, 1916, to 30th June, 1917:—					
Coranderk—					
518	Bread	Rates as per Annex	A. Smith	Contingencies 1916-17.	
519	Groceries	Ditto	Moran and Cato Pty. Ltd.		
Lake Tyers—					
...	Bread	Ditto	Purchase		
520	Groceries	Ditto	Moran and Cato Pty. Ltd.		
Lake Condah—					
521	Bread	Ditto	S. J. Treloar		
522	Groceries	Ditto	E. S. Collins		

Approved.—A. J. PEACOCK, Treasurer. 28.6.1916.

1916-17.

Schedule No. 15.

PROVISIONS FOR ABORIGINES AT THE UNDERMENTIONED STATIONS.

Particular attention is drawn to clause 1 of the conditions as to quality. Where practicable, all items must be manufactured and prepared within the Commonwealth.

Sub-schedule No. 1.

BREAD.

(From 1st July, 1916, to 30th June, 1917.)

Contract No. 1916/518.—Coranderk—Alexr. Smith, Healesville ... Security, £2.
—Lake Tyers—Purchase.

" " 1916/521.—Lake Condah—S. J. Treloar, Portland ... Security, £2.

No subletting will be allowed; all work must be carried out by the contractor; every person engaged in the manufacture, preparation, or delivery of the bread tendered for in this sub-schedule shall be paid such wages and shall be employed subject to such conditions as are or may be determined by the Bread or Bread Carters Board, or by the Court of Industrial Appeals, as the case may be, under the provisions of the Factories and Shops Acts. Should, however, the determinations of the aforesaid Boards or Court not apply to the district covered by this particular schedule, then those determinations shall, for the purpose of these contracts, be taken as defining the rate of wages which shall be paid and the conditions of employment in respect thereto; and a copy of these conditions shall be kept conspicuously and continually posted in legible Roman characters in the factory or shop (and in each part of the factory or shop where several rooms are in use) in which bread is prepared or manufactured under this contract. Any infringement of these conditions, or any breach of the said determination, in the opinion of the Treasurer, will subject the contractor, upon report from the Tender Board, to such mulct, not exceeding Fifty pounds (£50), as the Treasurer may direct, and the amount will be deducted from the contractor's account or from the security money, and the Treasurer's decision shall be binding, final, and conclusive as to the fact of infringement, and in all other respects.

The contractor shall, before any account is passed for payment, furnish a statutory declaration that all the workmen under this contract have been employed in accordance with the above clause of these conditions, and have been paid not less than the minimum rate of wages for such workmen as is provided under that clause.

Samples of the best ordinary retailed to the public will be considered as test loaves for first quality.

Item No.	Article.	Contract No. 518. Alexr. Smith, Coranderk (Healesville).	Lake Tyers, Purchase.	Contract No. 521. S. J. Treloar, Portland, Lake Con- dah (Milltown).
1	Bread—Fine Wheaten, first quality ... per cental	£ s. d. 0 13 0	...	£ s. d. 0 13 6½

Sub-schedule No. 3.

GROCERIES.

(From 1st July, 1916, to 30th June, 1917.)

Contract No. 1916/519.—Coranderk—Moran and Cato Pty. Ltd., Melbourne Security, £2.
" " 1916/520.—Lake Tyers—Moran and Cato Pty. Ltd., Melbourne " £2.
" " 1916/522.—Lake Condah—E. S. Collins, Lake Condah ... £2.

Item No.	Article.	Contract No. 519. Moran and Cato, Pty. Ltd., Coranderk.	Contract No. 520. Moran and Cato Pty. Ltd., Lake Tyers.	Contract No. 522. E. S. Collins, Lake Condah.
1	Baking Powder, Snowflake, in 1-lb. tins ... per lb.	£ s. d. 0 1 4	£ s. d. 0 1 4½	£ s. d. 0 1 4
2	Candles—(Full weights) Kitchen's "Petrolines," Apollo Co.'s "Apollo," or other make of equal quality, to be supplied in 1-lb. packets ... "	0 0 8½	0 0 9½	0 0 9
3	Coffee—Fresh roasted and whole—Beans to be thoroughly sound, to sample ... "	0 1 6	0 1 6	0 2 0
4	Cocoa—McKenzie's, or other brand of equal quality ... "	0 1 1	0 0 11	0 2 0
5	Cornina ... "	0 0 6½	0 0 6½	0 0 7
6	Currants—3 Crowns ... "	0 0 8	0 0 8½	0 0 10
7	Flour—Best roller ... per cental	0 13 6	0 14 0	0 12 8
8	Mustard—Double superfine, of any Commonwealth manufacture ordered ... per lb.	0 1 0	0 2 0	0 2 2
9	Oatmeal—Of any brand ordered ... "	0 0 2½	0 0 2½	0 0 3½
10	Pearl Barley ... "	0 0 2½	0 0 3	0 0 4
11	Pepper—Black, ground, in ¼-lb. tins ... per tin	0 0 5	0 0 5½	0 0 6
12	Raisins—Sultana (Mildura)—3 Crowns ... per lb.	0 0 8½	0 0 8½	0 0 9
13	Rice—Dressed, Best Java, any brand ordered to sample ... "	0 0 2½	0 0 2½	0 0 3
14	Seed Tapioca (Sago), to sample ... "	0 0 3	0 0 3	0 0 3½
15	Salt—Coarse ... "	0 0 0½	0 0 1	0 0 1
16	" Fine ... "	0 0 0½	0 0 1	0 0 1
17	Soda—Washing ... "	0 0 1½	0 0 1½	0 0 1½
18	Tea—Best Congou, to sample ... "	0 0 11½	0 1 0	0 1 2
19	Tobacco—Twist, to sample ... "	0 3 2	0 3 3	0 3 6
20	Treacle, in 7-lb. tins ... per tin	0 1 11	0 1 11	0 1 7
21	Vinegar—Orient, bulk ... per quart	0 0 4	0 0 6	0 0 6

CONTRACTS ACCEPTED.—(Series 1916-17.)

Serial No.	Particulars.	Amount.	Name of Contractor.	Charged against Vote or Fund.
	SUPPLY OF PROVISIONS, AT SANATORIUM AT GREENVALE, FROM 1ST JULY, 1916, TO 30TH JUNE, 1917:—			
523	Breadstuffs	Rates as per annex	John Anderson ...	Contingencies, 1916-17.
524	Butter, &c.	"	J. D. Howie ...	
525	Cheese and Bacon	"	J. D. Howie ...	
526	Groceries	"	J. D. Howie ...	
527	Meat	"	R. Cargill ...	

Approved.—A. J. PRACOCK, Treasurer. 28.6.1916.

Schedule No. 17.

PROVISIONS AT GREENVALE.

(Delivery at the Sanatorium.)

Particular attention is drawn to clause 1 of the conditions as to quality.

Where practicable, all items must be manufactured or prepared within the Commonwealth.

All Foodstuffs sent by train shall be forwarded to Broadmeadows per passenger train, and from thence to the Sanatorium without delay. Delay in this respect will subject the contractor to such fine as the Board may recommend, under the conditions of contract.

ANNEX TO CONTRACT No. 1916/523.

J. Anderson, Broadmeadows.

(From 1st July, 1916, to 31st December, 1916.)

Sub-schedule No. 1.

BREADSTUFFS.

Security, £20.

No subletting will be allowed; all work must be carried out by the contractor; every person engaged in the manufacture, preparation, or delivery of the bread tendered for in this sub-schedule shall be paid such wages and shall be employed subject to such conditions as are or may be determined by any Wages Board, as the case may be, under the provisions of the Factories and Shops Acts, to which such persons are subject as employees; and a copy of these conditions shall be kept conspicuously and continually posted in legible Roman characters in the factory or shop (and in each part of the factory or shop where several rooms are in use) in which bread is prepared or manufactured under this contract. Any infringement of these conditions, or any breach of the said determinations, in the opinion of the Treasurer, will subject the contractor, upon report from the Tender Board, to such mulct, not exceeding Fifty pounds (£50), as the Treasurer may direct, and the amount will be deducted from the contractor's account or from the security money, and the Treasurer's decision shall be binding, final, and conclusive as to the fact of infringement, and in all other respects.

Samples of the best ordinary retailed to the public will be considered as test loaves for first quality.

Pure wheaten meal bread of first quality may be substituted wholly or in part for fine wheaten bread at such times and in such quantities as in the opinion of the Medical Superintendent may be deemed necessary, and the contractor will be required to supply such bread at the contract rate. Reasonable notice, however, of the intention to substitute wheaten meal bread must be given to the contractor by the officer ordering the supply.

£ s. d.

- 1. Bread—Fine Wheaten, first quality ... per cental 0 14 7

ANNEX TO CONTRACT No. 1916/524.

J. D. Howie, Smith-street, Fitzroy.

(From 1st July, 1916, to 30th September, 1916.)

Sub-schedule No. 2.

BUTTER.

Security, £5.

All butter supplied, as well as the cases in which it is packed for transit, under this schedule, must bear the impress stamp of the creamery manufacturing the butter, otherwise it will be rejected. The cheese supplied must be fairly matured and packed in boxes for transport. In the event of butter being supplied under this contract from Melbourne, all such butter shall be submitted by the contractor to the Government Dairy Expert in Melbourne for test as to standard quality, and if found to be satisfactory shall be forwarded by that officer direct to the institution ordering, the cost of freight being borne by the contractor in the usual way. This contract is not to be considered as being broken, infringed, or vitiated, by the use of butter, &c., produced at the Sanatorium during the currency of same.

£ s. d.

- 1. Butter—First Grade Creamery, to score not less than 90 points, Government grade, Commerce Regulations standard... .. per cwt. 9 16 0

ANNEX TO CONTRACT No. 1916/525.

J. D. Howie, Smith-street, Fitzroy

(From 1st July, 1916, to 30th June, 1917.)

Sub-schedule No. 2.

CHEESE AND BACON.

£ s. d.

- 1. Cheese—First-class quality ... per lb. 0 1 2
- 2. Bacon—sides, Farmer's, Hutton's, or Cation and Hilton's, as ordered ... per cwt. 6 10 8

ANNEX TO CONTRACT No. 1916/526.

J. D. Howie, Smith-street, Fitzroy.

(From 1st July, 1916, to 30th June, 1917.)

Sub-schedule No. 3.

GROCERIES.

Security, £20.

Rice, when ordered in quantities of 56 lb^s and over, must be supplied in the original bags and must be of any brand ordered. Bags containing same must be branded "Rice, dressed, Best Java," and must be stencilled with the manufacturer's or dresser's name, the country of origin, and the brand of the respective dresser, as a guarantee of origin and quality. Supplies not in conformity with the foregoing conditions will be absolutely rejected.

£ s. d.

- 1. Apples—Dried ... per lb. 0 0 6
- 2. Apricots—Dried, Mildura ... do. 0 1 2
- 3. Biscuits—Coffee ... do. 0 0 8
- 4. Blue—Of any brand ordered ... do. 0 0 8
- 5. Candles—(Full weights) Kitchen's "Petrolines," Apollo Co.'s "Apollo," or other make of equal quality, to be supplied in 1-lb. packets ... do. 0 0 8
- 6. Candles—Carriage, equal to Kitchen's No. 8, in 1-lb. packets ... do. 0 0 8
- 7. Chickory—Fresh ground ... do. 0 0 8
- 8. Cocoa—In 1-lb. packets, of any brand ordered ... do. 0 1 0
- 9. Coffee—"Nailberry A," or equal thereto, Fresh roasted and whole, beans to be thoroughly sound ... do. 0 1 6
- 10. Cornina ... do. 0 0 6
- 11. Currants, 3 Crowns ... do. 0 0 7
- 12. Curry Powder ... do. 0 1 0
- 13. Essence of Lemon—In full 1 oz. bottles, of any brand ordered ... per bot. 0 0 6
- 14. Flour—Self-raising, of any brand ordered ... per lb. 0 0 3
- 15. Golden syrup, in 7-lb. tins ... per tin 0 1 10
- 16. Honey—Prime garden ... per lb. 0 0 6
- 17. Jams—Assorted, in 2-lb. tins in the proportion of half plum and half assorted quince, peach, black currant, and raspberry ... per doz. tins 0 6 9
- 18. Lemon peel ... per lb. 0 0 8
- 19. Meal—Digestive ... per cwt. 0 18 6
- 20. Milk—Condensed, 1-lb. tins ... per tin 0 0 8
- 21. Mustard—Double Superfine, of any Commonwealth manufacture ordered ... per lb. 0 1 10
- 22. Oatmeal—Flaked or Plain, of any brand ordered ... per cwt. 0 18 0
- 23. Pearl barley ... do. 0 16 0
- 24. Pease—Split ... do. 1 4 0
- 25. Pepper—White, ground ... per lb. 0 1 4
- 26. Pickles—Picallilli ... per bottle 0 0 7
- 27. Powder—Baking, of any brand ordered, in 1-lb. tins ... per tin 0 1 0
- 28. Raisins—Sultana (Mildura), 3 Crowns ... per lb. 0 0 7

GROCERIES—continued.

	£	s.	d.
29. Rice, dressed, Best Java, of any brand ordered to sample	per cwt.	1	6 0
30. Seed Tapioca (Sago)—To sample	do.	1	8 0
31. Salmon—Fresh, in 1-lb. tins, Talls, of any brand ordered	per tin	0	0 10
32. Salt—Fine	per cwt.	0	5 3
33. Sardines— $\frac{1}{2}$	per tin	0	0 6 $\frac{1}{2}$
34. Pickled Salmon	per lb.	0	0 9
35. Sauce—Tomato, pints, any brand ordered per bot.	0	0	6
36. Soda—Washing	per cwt.	0	8 0
37. Starch—Of any brand ordered, to sample per lb.	0	0	4 $\frac{1}{2}$
38. Tapioca—Pearl	per cwt.	1	8 0
39. Tea—Ceylon, to sample	per lb.	0	1 3
40. Treacle, in 7-lb. tins	do.	0	0 2 $\frac{1}{2}$
41. Vinegar	per quart	0	0 3

ANNEX TO CONTRACT No. 1916/527.

R. Cargill, Broadmeadows.

(From 1st July, 1916, to 30th June, 1917.)

Sub-schedule No. 4.

MEAT (FRESHLY KILLED).

Security, £20.

No subletting will be allowed; no delivery of meat shall be made on Sundays; all work must be carried out by the contractor. Every person engaged in the cutting up, preparation, or delivery of the meat tendered for in this sub-schedule shall be paid such wages and shall be employed subject to such conditions as are or may be determined by any Wages Board under the provisions of the Factories and Shops Acts, to which such persons are subject as employees; and a copy of these conditions shall be kept conspicuously and continually posted in legible Roman characters in the factory or shop (and in each part of the factory or shop where several rooms are in use) in which meat is

prepared under this contract. Any infringement of these conditions, or any breach of the said determination, in the opinion of the Treasurer, will subject the contractor, upon report from the Tender Board, to such mulct, not exceeding Fifty pounds (£50), as the Treasurer may direct, and the amount will be deducted from the contractor's account or from the security money; and the Treasurer's decision shall be binding, final, and conclusive as to the fact of infringement, and in all other respects.

The contractor shall, before any account is passed for payment, furnish a statutory declaration that all the workmen under this contract have been employed in accordance with the above clause of these conditions, and have been paid not less than the minimum rate of wages for such workmen as is provided for under that clause.

Fresh beef must be supplied in equal quantities from prime ribs, or sirloin, ribs of beef to be cut clear of the plate bone, and sirloin to be cut clear of the wing ribs; excess of brisket or flank will be rejected, mutton to be delivered in sides; all kidney fat to be removed. Meat containing an undue proportion of fat will not be accepted. Corned beef to be supplied in equal quantities from silverside (round) and brisket; cow beef or frozen or chilled beef will be absolutely rejected; pickled pork must be supplied from pigs weighing not more than 80 lbs. dressed weight. This contract is not to be considered broken, infringed, or violated by the use of meat obtained from stock grown at the Sanatorium during currency of same.

	£	s.	d.
1. Fresh Ox Beef—Roast	per cental	3	2 0
2. " " Steak, for frying—Buttock and blade in equal proportions	do.	3	2 0
3. Fresh Ox Beef Steak—Stewing	do.	2	10 0
4. Corned Ox Beef—Rolled or round, as ordered, without bone or cartilage	do.	3	0 0
5. Tripe, Ox (during winter)	per lb.	0	0 5 $\frac{1}{2}$
6. Pork—Pickled	do.	0	0 10
7. Fresh Beef Suet—Kidney	do.	0	0 6
8. Sausages—Beef (during winter)	do.	0	0 5
9. " " Belgium (during summer)	do.	0	0 9

CONTRACTS ACCEPTED.—(Series 1916-17.)

Serial No.	Purpose, No. of Tenders, and Particulars of Contract.	Amount.	Name of Contractor.	Charged against Vote or Fund.	Authorized according to Regulations on the date stated.
	PROVISIONS (SUPPLEMENTARY)— Supply of Provisions, as may be required, from 1st July, 1916, to 30th June, 1917, for Officers, Crew, and Trainees of V.T.S. <i>John Murray—</i>				
528	Groceries	Rates as per annex	J. D. Howie	Contingencies, 1916-17	A. J. Peacock, Treasurer, 28.6.1916.

Schedule No. 16.

PROVISIONS—FOR OFFICERS, CREW, AND TRAINEES OF THE VICTORIAN TRAINING SHIP "JOHN MURRAY" AT HER ORDINARY MOORINGS AT PORT MELBOURNE.

(Supplies to be delivered at the Dockward, Williamstown, as required by the Secretary to the Committee of Management.)

ANNEX TO CONTRACT No. 1916/528.

(From 1st July, 1916, to 30th June, 1917.)

J. D. Howie, Smith-street, Fitzroy.

GROCERIES.

Security, £30.

These supplies are for the vessel when at her ordinary moorings. Should the vessel be away from her moorings for a period of 2 months or more, the supplies required will be obtained at the port of call without infringing this Contract.

In the event of Tenderers withdrawing their tenders before notification of acceptance or failing to take up their accepted tenders within the prescribed period after notification of acceptance, the preliminary deposit will be forfeited, and, in addition, they may be disqualified from tendering or holding any future contracts for Government supplies for a period of twelve months, such disqualification to date from the notification of acceptance of tender.

Particular attention is drawn to Clause 1 of the Conditions as to quality.

Where practicable all items must be manufactured and prepared within the Commonwealth.

The soap supplied must be hard throughout, ready for immediate use without waste. When the quantity admits, the tea and raisins must be supplied in original and unopened packages; in the case of tea, such packages must be labelled as handed. Sugar may be obtained from any Government establishment without infringing this contract. Rice must be supplied in bags branded "Rice, Dressed—No. 1 Java," with the manufacturer's name stencilled thereon.

Rice, when ordered in quantities of 50 lbs. and over, must be supplied in the original bags and must be of any brand ordered. Bags containing same must be branded "Rice, Dressed, Best

Java," and must be stencilled with the Manufacturer's or Dresser's name, the country of origin, and the brand of the respective Manufacturer or Dresser ordered, as a guarantee of origin and quality. Supplies not in conformity with the foregoing conditions will be absolutely rejected.

	£	s.	d.
1. Bacon—Farmer's or Hutton's, by the side	per lb.	0	1 1
2. Baking powder, in 1-lb. tins, net	per doz. tins	0	12 0
3. Barley, Pearl	per cwt.	0	16 0
4. Beans, Haricot	per bush.	0	9 0
5. Biscuits, Cabin	per cental	2	1 8
6. " Pilot Bread	do.	1	8 0
7. Butter—First grade Creamery	per lb.	0	1 5
8. Chutney, in pin bottles	per bottle	0	0 6
9. Cheese—Matured—Victorian	per lb.	0	1 2
10. Cocoa—McKenzie's Homeopathic	do.	0	0 11
11. Coffee—Fresh roasted and ground, pure, to sample	do.	0	1 0
12. Cornflour	do.	0	0 4
13. Currant, 3 Crown	do.	0	0 6 $\frac{1}{2}$
14. Curry powder, in 1-lb. tins, net	per doz. tins	0	10 6
15. Eggs—Fresh, guaranteed	per doz.	0	1 6
16. Essences	per lb.	0	4 6
17. Herrings—Fresh, in 1-lb. tins, "Morton's"	per doz. tins	0	9 6
18. Jams, in 27-oz. net tins, in proportion of half seed and half stone	do.	0	8 0
19. Jelly Crystals (pints)	per doz. pkts.	0	3 6
20. Ling fish, salted	per lb.	0	0 11
21. Marmalade, in 27-oz. net tins	per doz. tins	0	8 3
22. Macaroni	per lb.	0	0 4
23. Meat—Preserved, of approved brands, in 2-lb. tins, net	per doz. tins	1	3 0
24. Milk—Condensed, in 1-lb. tins, "Cresbrook"	do.	0	8 0
25. Mustard—Double superfine, in 1-lb. tins	do.	0	16 0
26. Oatmeal—Of any brand ordered	per cwt.	0	18 0
27. Olive Oil, in 13-oz. bottles, Mildura or S.A.	per bottle	0	1 6

GROCERIES—continued.

		£	s.	d.
28. Onions	per cwt.	0	5	0
29. Pease—Blue	per bush.	0	8	0
30. " Split	per cwt.	1	4	0
31. Pepper—White, ground	per lb.	0	1	4
32. Peel—Lemon	do.	0	0	8
33. Pickles, of approved brand, equal to Ram's Head	per doz. bottles	0	7	0
34. Raisins—Sultana, Mildura, 3 Crowns	per lb.	0	0	7½
35. Rice—Dressed, Best Java, to sample, of any brand ordered	per cwt.	1	3	0
36. Seed Tapioca (Sago), to sample	per lb.	0	0	3
37. Salt—Fine, to sample	per cwt.	0	4	3
38. Sardines—Quarters	per doz.	0	4	6

GROCERIES—continued.

		£	s.	d.
39. Sauce—Tomato (pints)	per doz.	0	4	6
40. " Worcester (Holbrook's), pts.	do.	1	0	0
41. Soap (Household)—Yellow, dry, to sample	per cwt.	1	3	0
42. Soap, Glycerine, to sample	per lb.	0	0	6
43. Spices, mixed, in 1-oz. packets	do.	0	1	2
44. Soda—Washing Crystals	do.	0	7	6
45. Tea—Best Congou, special sample	per lb.	0	1	0
46. " " Ceylon " "	do.	0	1	3
47. Golden Syrup, in 7-lb. tins	per tin	0	1	10
48. Vermicelli	per lb.	0	0	4½
49. Vinegar—Champion's, or other approved brand	per quart	0	0	3

CONTRACTS ACCEPTED.—(Series 1916-17.)

Serial No.	Particulars.	Amount.	Name of Contractor.	Charged against Vote or Fund.
PROVISIONS.—SUPPLY OF PROVISIONS FOR THE UNDERMENTIONED PLACES AS MAY BE REQUIRED FROM 1ST JULY, 1916, TO 30TH JUNE, 1917.				
529	RUTHERGLEN—Bread	Rates as per annex	Purchase ...	Contingencies, 1916-17.
	Groceries	"	Moran and Cato Pty. Ltd.	
	WAHGUNYAH—Bread	"	Purchase ...	
530	Groceries	"	R. Henderson	
	Meat	"	Purchase ...	
	WYUNA—Bread	"	Purchase ...	
531	Groceries	"	T. M. Knight	
	Meat	"	Purchase ...	

Approved.—A. J. PRACOCK, Treasurer. 28.6.1916.

Schedule No. 12.

PROVISIONS AT RUTHERGLEN.

(For Students at Vitiocultural College. Delivery at the College.)

(From 1st July, 1916, to 30th June, 1917.)

Sub-schedule No. 1.

BREAD.

Particular attention is drawn to Clause 1 of the conditions as to quality.

Where practicable all items must be manufactured or prepared within the Commonwealth

No subletting will be allowed; all work must be carried out by the Contractor. Every person engaged in the manufacture, preparation, or delivery of the Bread tendered for in this Sub-schedule shall be paid such wages and shall be employed subject to such conditions as are or may be determined by any Wages Board, under the provisions of the Factories and Shops Acts to which such persons are subject as employees; and a copy of these conditions shall be kept conspicuously and continually posted in legible Roman characters in the factory or shop (and in each part of the factory or shop where several rooms are in use) in which Bread is prepared or manufactured under this contract. Any infringement of these conditions, or any breach of the said determination, in the opinion of the Treasurer, will subject the Contractor, upon report from the Tender Board, to such mulet not exceeding Fifty pounds (£50), as the Treasurer may direct, and the amount will be deducted from the Contractor's account or from the security money; and the Treasurer's decision shall be binding, final, and conclusive as to the fact of infringement, and in all other respects.

Pure Wheaten Meal Bread of first quality may be substituted, wholly or in part, for fine Wheaten Bread at such times as may be deemed necessary, and the contractor will be required to supply such bread at the Contract rate. Reasonable notice, however, of the intention to substitute Wheaten Meal Bread must be given to the Contractor by the officer ordering the supply.

Samples of the best ordinarily retailed to the public will be considered as test loaves for first quality.

1. Bread—Fine Wheaten, first quality ... per cental Purchase

ANNEX TO CONTRACT NO. 1916/529.

Moran and Cato Pty. Ltd., Brunswick-street, Fitzroy.

Sub-schedule No. 2.

GROCERIES, ETC.

		£	s.	d.
1. Arrowroot	per lb.	0	0	7½
2. Blue	do.	0	0	9
3. Baking Powder, in 1-lb. tins	per tin	0	1	3
4. Baking Soda	per lb.	0	0	3
5. Bacon, best cured	do.	0	1	4½

GROCERIES, ETC.—continued.

		£	s.	d.
6. Blacking	per cake	0	0	0½
7. Blacklead	do.	0	0	0½
8. Barley, Pearl	per lb.	0	0	3
9. Candles—(Full weights) Kitchen's "Petrolines," or other make of equal quality, to be supplied in 1-lb. packets	do.	0	0	9
10. Coffee—Whole—Beans to be thoroughly ground, to sample	do.	0	1	4
11. Coffee Essence, 10-oz., of any brand ordered	per bottle	0	2	0
12. Cocoa, of any brand ordered	per lb.	0	3	4
13. Cream of Tartar	do.	0	2	6
14. Currants	do.	0	0	7½
15. Curry Powder	do.	0	1	6
16. Essence of Lemon, 1-oz. bottles	per bottle	0	0	6
17. Fish, Preserved, Salmon, Fresh Herrings, Herrings in Tomato, as ordered, in 1-lb. tins	per tin	0	1	0
18. Flour, best Roller	per cental	0	16	6
19. Fruits, Preserved, assorted, of approved brand, in 2-lb. tins	per tin	0	0	10
20. Ginger—Ground or Whole—Jamaica	per lb.	0	0	11
21. Golden Syrup, in 2-lb. tins	per tin	0	0	8½
22. Jams, assorted, any brand ordered, in 2-lb. tins, in proportion of half seed and half stone	do.	0	0	9½
23. Maizena—Duryea's	per lb.	0	0	7½
24. Meat—Preserved, of approved brand, in 2-lb. tins	per tin	0	1	0
25. Macaroni or Vermicelli, as ordered	per lb.	0	0	5½
26. Mustard—Double Superfine, of any brand ordered	do.	0	2	0
27. Oatmeal—Flaked or other, of any brand ordered	per cwt.	1	5	0
28. Onions	do.	0	7	6
29. Peel—Mixed	per lb.	0	1	0
30. Pepper—Black or White, Ground	do.	0	1	4
31. Pickles, of approved brand	per bottle	0	0	8½
32. Potatoes	per cwt.	0	7	6
33. Raisins—Sultana, Mildura, 3 Crowns	per lb.	0	0	8½
34. Rice—Dressed, best Java, to sample	per cwt.	1	6	0
35. Seed Tapioca (Sago)—To sample	per lb.	0	0	3
36. Salt—Coarse	do.	0	0	1
37. " Fine	per cwt.	0	9	0
38. Sauces, Worcester, Tomato, or Chutney, reputed pints, any brand ordered	per bottle	0	0	9
39. Soap—Household, yellow, to sample	per lb.	0	0	3½
40. " Glycerine Tablets	do.	0	0	7½
41. " Sand	do.	0	0	3½
42. " Magic	do.	0	0	3½
43. Soda—Washing	do.	0	0	1½
44. Spices, mixed, in 1-oz. packets	per packet	0	0	1
45. Starch, to sample	per lb.	0	0	6½
46. Tapioca—Pearl	do.	0	0	3
47. Tea—Best Ceylon, to sample	do.	0	1	3
48. Treacle, in 7-lb. tins	per tin	0	1	11
49. Vinegar, of approved brand	per quart	0	0	4½

Schedule No. 13.

PROVISIONS AT WAHGUNYAH.
FOR STUDENTS AT WAHGUNYAH VINE NURSERY.

(Delivery at Nursery.)

(From 1st July, 1916, to 30th June, 1917.)

Sub-schedule No. 1.

BREAD.

Particular attention is drawn to Clause 1 of the Conditions as to quality.

Where practicable all items must be manufactured or prepared within the Commonwealth.

No subletting will be allowed; all work must be carried out by the Contractor. Every person engaged in the manufacture, preparation, or delivery of the Bread tendered for in this Schedule shall be paid such wages and shall be employed subject to such conditions as are or may be determined by any Board under the provisions of the Factories and Shops Acts to which such persons are subject as employees; and a copy of these conditions shall be kept conspicuously and continually posted in legible Roman characters in the factory or shop (and in each part of the factory or shop where several rooms are in use) in which bread is prepared or manufactured under this contract. Any infringement of these conditions, or any breach of the said determinations, in the opinion of the Treasurer, will subject the contractor, upon report from the Tender Board, to such mulct, not exceeding Fifty pounds (£50), as the Treasurer may direct, and the amount will be deducted from the contractor's account or from the security money, and the Treasurer's decision shall be binding, final, and conclusive as to the fact of infringement, and in all other respects.

Pure Wheaten Meal Bread of first quality may be substituted, wholly or in part, for fine Wheaten Bread at such times as may be deemed necessary, and the contractor will be required to supply such bread at the contract rate. Reasonable notice, however, of the intention to substitute Wheaten Meal Bread must be given to the contractor by the officer ordering the supply.

Samples of the best ordinarily retailed to the public will be considered as test loaves for first quality.

1. Bread—Fine Wheaten, first quality ... per cental Purchase

ANNEX TO CONTRACT No. 1916/530.

R. Henderson, Main-street, Rutherglen.

(From 1st July, 1916, to 30th June, 1917.)

Sub-schedule No. 2.

GROCERIES, ETC.

Security, £10.

	£	s.	d.
1. Arrowroot	per lb.	0	0 9
2. Blue	do.	0	0 11
3. Baking Powder, in 1-lb. tins...	do.	0	1 4
4. Baking Soda	do.	0	0 3
5. Bacon, best cured	do.	0	1 2
6. Blacking	per doz. cakes	0	0 6
7. Black Lead	do.	0	1 0
8. Barley, Pearl	per lb.	0	0 4
9. Candles—(Full weights) Kitchen's "Petrolines," Apollo Co.'s "Apollo," or other make of equal quality, to be supplied in 1-lb. packets	do.	0	0 10
10. Coffee—Whole—Beans to be thoroughly sound, to sample	do.	0	1 8
11. Coffee Essence, of any brand ordered ... per bottle	0	1	9
12. Cocoa " " " "	per lb.	0	3 6
13. Cream of Tartar	do.	0	2 9
14. Currants, 3 Crowns	do.	0	0 8½
15. Curry Powder	do.	0	1 9
16. Essence of Lemon, 1-oz. bottles ... per bottle	0	0	5
17. Fish, Preserved, Salmon, Fresh Herrings, Herrings in Tomato, as ordered, in 1-lb. tins	per tin	0	1 0
18. Flour, Best Roller	per cental	0	14 6
19. Fruits, Preserved, assorted, of approved brand, in 2-lb. tins	per tin	0	1 0
20. Ginger—Ground or Whole	per lb.	0	1 9
21. Golden Syrup, in 2-lb. tins	per tin	0	0 9
22. Jams, assorted, any brand ordered, in 2-lb. tins, in the proportion of half seed and half stone	do.	0	1 0
23. Maizena—Duryea's	per lb.	0	0 9½
24. Meat—Preserved, of approved brand, in 2-lb. tins	per tin	0	1 9
25. Macaroni or Vermicelli, as ordered ... per lb.	0	0	6
26. Mustard—Double Superfine, of any brand ordered	do.	0	1 9
27. Oatmeal—Flaked or Other, of any brand ordered	do.	0	0 3
28. Onions	per cwt.	0	9 4
29. Peel—Mixed	per lb.	0	1 0
30. Pepper—Black or White, Ground ... do.	0	1	11
31. Pickles, of approved brand	per bottle	0	0 9
32. Potatoes	per cwt.	0	9 6
33. Raisins—Sultana (Mildura), 3 Crowns ... per lb.	0	0	10
34. Rice—Dressed, Best Java, to sample ... per cwt.	1	8	0

GROCERIES—continued.

	£	s.	d.
35. Seed Tapioca (Sago)—To sample ... per lb.	0	0	3½
36. Salt—Coarse	do.	0	0 1
37. Salt—Fine	do.	0	0 1
38. Sauces—Worcester, Tomato, or Chutney, any brand ordered, in reputed pints ... per bottle	0	0	10
39. Soap—Household, yellow, to sample ... per lb.	0	0	4½
40. Soap—Glycerine Tablets "	do.	0	0 10
41. Soap—Sand	do.	0	0 3½
42. Soap—Magic	do.	0	0 4½
43. Soda—Washing	do.	0	0 1½
44. Spices, mixed, in 1-oz. packets ... per packet	0	0	1
45. Starch—To sample	per lb.	0	0 7½
46. Tapioca—Pearl	do.	0	0 3½
47. Tea—Best Congou, to sample	do.	0	1 3
48. Treacle, in 7-lb. tins	per tin	0	2 0
49. Vinegar, of approved brand	per quart	0	0 4½

Schedule No. 14.

PROVISIONS AT WYUNA.

(For the Wyuna Irrigation Farm. Delivery at the Farm.)

(From 1st July, 1916, to 30th June, 1917.)

Particular attention is drawn to clause 1 of the conditions as to quality.

Where practicable, all items must be manufactured or prepared within the Commonwealth.

No subletting will be allowed; all work must be carried out by the contractor. Every person engaged in the manufacture, preparation, or delivery of the bread tendered for in this sub-schedule shall be paid such wages and shall be employed subject to such conditions as are or may be determined by any Board under the provisions of the Factories and Shops Acts, to which such persons are subject as employees; and a copy of these conditions shall be kept conspicuously and continually posted in legible Roman characters in the factory or shop (and in each part of the factory or shop where several rooms are in use) in which bread is prepared or manufactured under this contract. Any infringement of these conditions, or any breach of the said determinations, in the opinion of the Treasurer, will subject the contractor, upon report from the Tender Board, to such mulct not exceeding Fifty pounds (£50), as the Treasurer may direct, and the amount will be deducted from the contractor's account or from the security money, and the Treasurer's decision shall be binding, final, and conclusive as to the fact of infringement, and in all other respects.

The Contractor shall, before any account is passed for payment, furnish a statutory declaration that all the workmen under this contract have been employed in accordance with the above clause of these conditions, and have been paid not less than the minimum rate of wages for such workmen as is provided for under that clause.

Pure Wheaten Meal Bread of first quality may be substituted, wholly or in part, for fine Wheaten Bread at such times as may be deemed necessary, and the contractor will be required to supply such bread at the contract rate. Reasonable notice, however, of the intention to substitute Wheaten Meal Bread must be given to the contractor by the officer ordering the supply.

Samples of the best ordinarily retailed to the public will be considered as a loaf for first quality.

Sub-schedule No. 1.

BREAD.

Security, £10.

1. Bread—Fine Wheaten, first quality ... per cental Purchase

ANNEX TO CONTRACT No. 1916/531.

T. M. Knight, Kyabram.

(From 1st July, 1916, to 30th June, 1917.)

Sub-schedule No. 2.

GROCERIES, ETC.

Security, £10.

	£	s.	d.
1. Arrowroot	per lb.	0	0 8
2. Blue	do.	0	0 10
3. Baking Powder, in 1-lb. tins	per tin	0	1 3
4. Baking Soda	per lb.	0	0 3
5. Bacon, best cured	do.	0	1 2
6. Blacking	per cake	0	0 1
7. Blacklead	per doz.	0	10
8. Barley, Pearl	per lb.	0	0 3
9. Candles (full weights) Kitchen's "Electrics," or other make of equal quality, to be supplied in 1-lb. packets	do.	0	0 8½
10. Candles, Carriage, "Electrine"	do.	0	0 9
11. Caraway Seeds	do.	0	1 0
12. Cheese—Matured Victorian	do.	0	1 0
13. Cinnamon—Ground	do.	0	1 9
14. Coffee—Pure—Ground, to sample	do.	0	1 9
15. Coffee Essence, McKenzie's, or equal thereto	per bottle	0	1 0
16. Cocoa Essence	per lb.	0	3 0
17. Cornina	do.	0	0 6
18. Cream of Tartar	do.	0	2 4
19. Currants	do.	0	0 7½
20. Curry Powder	do.	0	1 3

GROCERIES—continued.

	£	s.	d.
21. Essence of Lemon, 1-oz. bottles ...	per bottle	0	0 6
22. Fish—Preserved Salmon, best red tails, in 1-lb. tins...	per tin	0	0 11
23. Fish—Preserved Herrings, Morton's, in 1-lb. tins ...	do.	0	0 10½
24. Fish—Preserved Herrings in Tomato Sauce ...	do.	0	0 11
25. Flour, Best Roller ...	per cental	0	11 0
26. Fruits, preserved, assorted, of approved brand, in 2-lb. tins ...	per tin	0	0 9
27. Ginger—Ground or Whole, Jamaica ...	per lb.	0	1 3
28. Golden Syrup, in 7-lb. tins ...	per tin	0	2 0
29. Honey ...	per lb.	0	0 5
30. Isinglass ...	do.	0	3 0
31. Jams, assorted, any brand ordered, in 2-lb. tins, in the proportion of half seed and half stone ...	per lb. net	0	0 5
32. Jellies (pints) ...	per pkt.	0	0 3½
33. Meat, preserved, of approved brand, in 2-lb. tins ...	per tin	0	1 6
34. Macaroni, or Vermicelli, as ordered ...	per lb.	0	0 6
35. Mustard, Double Superfine, of any brand ordered ...	do.	0	1 11
36. Oatmeal—Flaked or other, of any brand ordered ...	do.	0	0 3
37. Paricleen ...	per packet	0	0 2½
38. Pease—Split ...	per lb.	0	0 3
39. Peel, Mixed ...	do.	0	0 9
40. Pepper—Black or White, ground ...	do.	0	1 3
41. Pickles, Sutherland's Ram's Head ...	per bottle	0	0 8
42. Pollard ...	per cental	0	7 0
43. Raisins—Sultana (Mildura), 3 Crowns ...	per lb.	0	0 8
44. Rice—dressed, Best Java, to sample ...	do.	0	0 3
45. Seed Tapioca (Sago), to sample...	do.	0	0 3
46. Salt, Coarse ...	do.	0	0 0 ½
47. " Fine ...	do.	0	0 1
48. Sauces—Worcester, Holbrook's, reputed pints ...	per bottle	0	0 10½
49. Sauces—Chutney, best Commonwealth, reputed pints ...	do.	0	0 6
50. Soap, Household, yellow, to sample ...	per lb.	0	0 3
51. " Sand ...	do.	0	0 2½
52. " Soft ...	do.	0	0 6
53. " Velvet, 4 large tabs ...	per bar	0	0 9
54. Soda—Washing ...	per lb.	0	0 1
55. Spices, mixed, in 1-oz. packets ...	per packet	0	0 1
56. Starch, to sample ...	per lb.	0	0 5½
57. Sugar—White, to sample ...	per cwt.	1	12 6
58. Tapioca, Pearl ...	per lb.	0	0 3
59. Tea—Best Ceylon, Special, to sample ...	do.	0	1 6
60. Treacle, in 7-lb. tins ...	per tin	0	1 10
61. Vinegar, Sutherland's best ...	per quart	0	0 6

Sub-schedule No. 3.

(From 1st July, 1916, to 30th June, 1917.)

MEAT.

No subletting will be allowed; no delivery of Meat shall be made on Sundays; all work must be carried out by the Contractor. Every person engaged in the slaughtering and cutting-up, preparation or delivery of the Meat tendered for in this Sub-schedule shall be paid such wages and shall be employed subject to such conditions as are or may be determined by any Wages Board under the provisions of the Factories and Shops

Acts, to which such persons are subject as employees; and a copy of these conditions shall be kept conspicuously and continually posted in legible Roman characters in the factory or shop (and in each part of the factory or shop where several rooms are in use) in which Meat is prepared under this contract. Any infringement of these conditions, or any breach of the said determination, in the opinion of the Treasurer, will subject the Contractor, upon report from the Tender Board, to such mulct, not exceeding Fifty pounds (£50), as the Treasurer may direct, and the amount will be deducted from the Contractor's account or from the security money, and the Treasurer's decision shall be binding, final, and conclusive as to the fact of infringement, and in all other respects.

The Contractor shall, before any account is passed for payment, furnish a statutory declaration that all the workmen under this contract have been employed in accordance with the above clause of these conditions, and have been paid not less than the minimum rate of wages for such workmen as is provided for under that clause.

When fore or hind-quarters of beef are ordered for Hospitals for the Insane they must be supplied in the proportion of two of the former to one of the latter, and must be delivered as a whole respectively, also extra buttocks separately when ordered. Meat for other institutions must be supplied as ordered. Where hind-quarters or buttocks are ordered, 9 inches must be cut off from the end of the leg from the hock upwards, i.e., the end of the leg from which the shank has been removed at the abattoirs; and when fore-quarters form a portion of the supply, 6 inches from the end of the neck and the whole of the shin at the clod-bone joint must be removed. The sticking pieces also must be trimmed off, and the point and end of the brisket rendered free from blood and blood stains.

Fore and hind-quarters, for convenience of handling, may be cut into two parts, but each part is to bear evidence of having been cut from the same beast.

Corned Beef (rolled or round as ordered) must be supplied without bone or cartilage, and will be received, whether pumped or prepared in the ordinary way of pickling, but in the former case must have been soaked after pumping, for at least 48 hours, in a good pickle, and then thoroughly drained before supply. No flank, chuck, sticking-piece, shin, leg of beef, or piece under 7 lbs. will be received.

Should the local supply of Fresh Meat become scarce, or the price of same become abnormally high, Frozen or Chilled Meat may, with the consent of the Tender Board on the recommendation of the head of the Department, be supplied.

In cases of emergency, or on such other occasions as in the opinion of the Superintendent may seem advisable, other forms of Meat, such as Rabbits, Tinned Meats, &c., may be purchased apart from the contract in lieu of the Meat mentioned in the Schedule, and substituted therefor provided 24 hours' notice—except in cases of emergency—be given to the Contractor of such intention.

The parts to be removed by the contractor are indicated by the shaded portions of the annexed diagram.

MEAT (FRESHLY KILLED).

1. Beef—Fresh ...	per cental	Purchase
2. Sausages ...	per lb.	
3. Tongues—Ox ...	do.	
4. Tails—Ox ...	each	
5. Kidneys—Ox ...	do.	
6. Shins—Ox ...	do.	
7. Liver—Ox, averaging 7 lbs. to 8 lbs. each ...	do.	