

[2387]



VICTORIA
GOVERNMENT GAZETTE.

Published by Authority.

[Registered at the General Post Office, Melbourne, for transmission by post as a newspaper.]

No. 146.]

WEDNESDAY, JULY 14.

[1920.]

CONTRACTS ACCEPTED.

(SERIES 1920-21.)

SUPPLY OF PROVISIONS

FROM

1ST JULY, 1920, TO 30TH JUNE, 1921, OR AS STATED.

J. G. WHITE,
Secretary Tender Board.

CONTRACTS ACCEPTED.—(Series 1920-21.)

No. of Contract.	Particulars of each Tender Accepted.	Amount.	Name of Contractor.	Charged against Vote or Fund.
PROVISIONS—				
Supply of Provisions, in such quantities as may be ordered, from 1st July, 1920, to 30th June, 1921, or as otherwise stated:—				
Supplies for Butter, Cheese, and Potatoes are for the period ending 30th September, 1920, only.				
Butter (Greenvale), and Meat (Ararat), are for supplies for six months only.				
Melbourne District—				
...	Beer and spirits	Rates as per annex	Purchase	
134	Bread, Kew Asylum	Ditto	S. G. Hewitt	
135	Bread, Yarra Bend Asylum	Ditto	A. P. Davidson	
136	Bread, Melbourne	Ditto	J. N. Hennessy	
137	Butter and Margarine	Ditto	J. D. Howie	
138	Cheese	Ditto	J. D. Howie	
139	Flour and maize meal	Ditto	H. R. Rush	
140	Groceries	Ditto	Moran and Cato Pty. Ltd.	
141	Oatmeal, rice, &c.	Ditto	Moran and Cato Pty. Ltd.	
142	Jams	Ditto	Ballarat Jam Co. Pty. Ltd.	
143	Meat, Kew Asylum	Ditto	W. Angliss and Co. Pty. Ltd.	
144	Meat, Yarra Bend Asylum	Ditto	W. Angliss and Co. Pty. Ltd.	
145	Meat, Pentridge Penal Establishment	Ditto	F. Watkins Pty. Ltd.	
146	Meat, Melbourne Gaol, &c.	Ditto	F. Watkins Pty. Ltd.	
...	Milk, Melbourne Gaol	Ditto	Purchase	
147	Milk, Pentridge Penal Establishment	Ditto	J. F. Murphy	
148	Potatoes	Ditto	Shea, Hood, and Co. Pty. Ltd.	
149	Soap	Ditto	J. D. Howie	
150	Tea	Ditto	J. D. Howie	
151	Tobacco	Ditto	Dudgeon and Arnell Pty. Ltd.	
Greenvale—				
...	Bread	Ditto	Purchase	
152	Butter	Ditto	J. D. Howie	
153	Cheese and bacon	Ditto	J. D. Howie	
154	Groceries	Ditto	Moran and Cato Pty. Ltd.	
155	Meat	Ditto	F. Watkins Pty. Ltd.	
Mont Park—				
156	Breadstuffs	Ditto	Lees and Urban	
157	Butter and Margarine	Ditto	J. D. Howie	
158	Cheese	Ditto	J. D. Howie	
159	Groceries	Ditto	J. D. Howie	
160	Jams	Ditto	Ballarat Jam Co. Pty. Ltd.	
161	Meat	Ditto	W. Angliss and Co. Pty. Ltd.	
162	Potatoes	Ditto	Shea, Hood, and Co. Pty. Ltd.	
163	Tea	Ditto	J. D. Howie	
Williamstown District—				
...	Breadstuffs	Ditto	Purchase	
164	Butter	Ditto	Moran and Cato Pty. Ltd.	
165	Groceries	Ditto	Moran and Cato Pty. Ltd.	
166	Meat	Ditto	W. Angliss and Co. Pty. Ltd.	
...	Vegetables	Ditto	Purchase	
Ararat District—				
167	Breadstuffs	Ditto	C. Freund	
168	Butter and Margarine	Ditto	Ararat and District Co-operative Butter Co., Ararat	
169	Cheese	Ditto	J. D. Howie	
170	Groceries	Ditto	Moran and Cato Pty. Ltd.	
171	Jams	Ditto	Ballarat Jam Co. Pty. Ltd.	
172	Meat	Ditto	A. Murphy	
173	Potatoes	Ditto	Shea, Hood, and Co. Pty. Ltd.	
174	Tea	Ditto	J. D. Howie	
Beechworth District—				
175	Breadstuffs	Ditto	W. Price	
176	Butter and Margarine	Ditto	J. D. Howie	
177	Cheese	Ditto	J. D. Howie	
178	Groceries	Ditto	J. D. Howie	
179	Meat	Ditto	W. H. Morton	
180	Potatoes	Ditto	Shea, Hood, and Co. Pty. Ltd.	
181	Tea	Ditto	J. D. Howie	
Ballarat District—				
182	Breadstuffs	Ditto	John Davies	
183	Butter and Margarine	Ditto	J. D. Howie	
184	Cheese	Ditto	J. D. Howie	
185	Groceries	Ditto	Moran and Cato Pty. Ltd.	
186	Jams	Ditto	Ballarat Jam Co. Pty. Ltd.	
187	Meat	Ditto	H. J. Symons	
188	Potatoes	Ditto	Shea, Hood, and Co. Pty. Ltd.	
189	Tea	Ditto	J. D. Howie	
Geelong District—				
190	Breadstuffs	Ditto	W. Marshall	
191	Groceries	Ditto	W. T. Brennan	
192	Meat	Ditto	M. G. O'Brien	
193	Milk	Ditto	S. H. Warren	
...	Potatoes	Ditto	Purchase	
Lara—				
194	Breadstuffs	Ditto	F. Samblebe	
195	Butter	Ditto	J. D. Howie	

Contingencies,
1920-21.

CONTRACTS ACCEPTED.—(Series 1920-21)—continued.

No. of Contract	Particulars of each Tender Accepted.	Amount.	Name of Contractor.	Charged against Vote or Fund.
	PROVISIONS—continued.			
	Supply of Provisions, in such quantities as may be ordered, from 1st July, 1920, to 30th June, 1921, or as otherwise stated :—			
	Lara—continued—			
196	Cheese	Rates as per annex	J. D. Howie	
197	Groceries	Ditto	Moran and Cato Pty. Ltd.	
198	Jams	Ditto	J. D. Howie	
199	Meat	Ditto	W. Angliss and Co. Pty. Ltd.	
200	Potatoes	Ditto	Shea, Hood, and Co. Pty. Ltd.	
	Sunbury District—			
201	Breadstuffs	Ditto	T. Clyne and Son	
202	Butter and Margarine	Ditto	J. D. Howie	
203	Cheese	Ditto	J. D. Howie	
204	Groceries	Ditto	Moran and Cato Pty. Ltd.	
205	Jams	Ditto	Ballarat Jam Co. Pty. Ltd.	
206	Meat	Ditto	S. J. Starkie	
207	Potatoes	Ditto	Shea, Hood, and Co. Pty. Ltd.	
208	Tea	Ditto	J. D. Howie	
	Bendigo District—			
209	Bread	Ditto	F. W. Beischer	
210	Groceries and potatoes	Ditto	Moran and Cato Pty. Ltd.	
211	Meat	Ditto	H. Gittens	
	Castlemaine District—			
212	Bread	Ditto	M. V. Heurek	
213	Groceries and potatoes	Ditto	Moran and Cato Pty. Ltd.	
214	Meat	Ditto	J. Williamsón	
	Sale District—			
215	Bread	Ditto	M. Kiely	
216	Groceries and potatoes	Ditto	Purchase	
216	Meat	Ditto	A. Wray	
	Rutherglen—			
217	Bread	Ditto	Cooper and Owen	
218	Groceries	Ditto	Moran and Cato Pty. Ltd.	
	Wahgunyah—			
219	Bread	Ditto	G. G. Haig	
220	Groceries	Ditto	Moran and Cato Pty. Ltd.	
...	Meat	Ditto	Purchase	
	School of Forestry, Creswick—			
221	Bread	Ditto	C. C. Bowley	
...	Butter and cheese	Ditto	Purchase	
222	Groceries	Ditto	J. Tait and Son	
223	Meat	Ditto	J. J. Bennett	
224	Milk	Ditto	E. E. Pollard	
...	Potatoes	Ditto	Purchase	
	McLeod Settlement, French Island—			
225	Bread	Ditto	H. L. Dainty	
...	Butter	Ditto	Purchase	
...	Groceries	Ditto	Purchase	
...	Meat	Ditto	Purchase	
...	Milk	Ditto	Purchase	
...	Potatoes	Ditto	Purchase	
	Aborigines (Coranderk)—			
226	Bread	Ditto	J. Lockhart	
227	Groceries	Ditto	Moran and Cato Pty. Ltd.	
	Aborigines (Lake Tyers)—			
228	Bread	Ditto	F. Manners	
229	Groceries	Ditto	Moran and Cato Pty. Ltd.	

Contingencies,
1920-21.

Approved—H. S. W. LAWSON, for Treasurer. 18.6.1920.

STIPULATIONS FOR SUPPLIES OF PROVISIONS.

Special attention is drawn to note *re* Bread, Flour, Butter, Cheese, and Potatoes *re* varying rates from time to time.

(Where practicable, all items must be manufactured or prepared within the Commonwealth.)

Under all Sub-schedules particular attention is drawn to Clause 1 of the Condition as to quality.

Supplies for Emergency and Influenza Hospitals under Government control in the Metropolitan area are included under these contracts for such quantities and for such time as supplies may be required during the currency of the contracts.

BEER AND SPIRITS.

For brandy, whisky, and for Guinness' porter in case, delivery will be taken at and from the bond.

The contractor will be bound to supply such of the brands named in the tender as the departments may order. In cases where delivery from the bond is taken by the Government, the contractor will be required to hand to the secretary to the Tender Board the bond certificate and the locker's order and a copy of the entry, and pay all charges, including re-auging, before delivery is taken.

English ale, brandy, whisky, and Guinness' porter in case must be delivered as imported; if bottled in the State it will not be accepted.

BREAD.

In the event of any increase in the price of Flour, consequent upon the increase in the price of Wheat and proportionate thereto, between the date fixed for receiving Tenders and the termination of the Contract period, an allowance will be made—

a—In the case of Bread, at the rate of 9d. per cental for each £1 per ton increase in the price of Flour;

b—In the case of Flour, equal to the increase in the market rate.

Should a decrease take place in the price of Flour, corresponding deductions will be made in the payments for Bread and Flour.

Samples of the best ordinarily retailed to the public will be considered as test loaves for first quality for fine wheaten and pure wheaten Meal Bread. Third quality (that issued to prisoners of the Crown) to be made of flour, fine sharps, the produce of prime, strong, thin-skinned, good-coloured wheat, to be perfectly free from coarse pollard or other offal. Pure wheaten Meal Bread of first quality may be substituted, wholly or in part, for fine wheaten Bread at such times and in such quantities as in the opinion of the Medical Superintendent may be deemed necessary, and the contractor will be required to supply such Bread at the contract rate. Reasonable notice, however, of the intention to substitute wheaten Meal Bread must be given to the contractor by the officer ordering the supply. Bread may be baked at any Government establishment without infringing these contracts. At the Gaols, Beechworth, Ballarat, Geelong, Bendigo, Castlemaine, and Sale, if required, bread must be supplied one day old, due notice to be given to the contractor of such requirement.

Under sub-schedules for Bread no subletting will be allowed; all work must be carried out by the contractor; every person engaged in the manufacture, preparation, or delivery of the bread tendered for in these sub-schedules shall be paid such wages and shall be employed subject to such conditions as are or may be determined by any Wages Board under the provisions of the Factories and Shops Acts to which such persons are subject as employees; and a copy of these conditions shall be kept conspicuously and continually posted in legible Roman characters in the factory or shop (and in each part of the factory or shop where several rooms are in use) in which bread is prepared or manufactured under this contract. Any infringement of these conditions, or any breach of the said determinations, in the opinion of the Treasurer, will subject the contractor, upon report from the Tender Board, to such mulet, not exceeding Fifty pounds (£50), as the Treasurer may direct, and the amount will be deducted from the contractor's account or from the security money, and the Treasurer's decision shall be binding, final, and conclusive as to the fact of infringement, and in all other respects.

In the event of bread being made at any Government establishment in the Melbourne District, during the currency of these contracts, the flour required will be drawn under the flour and maize meal sub-schedule. The maize meal for all the country gaols is included in the sub-schedule for flour and maize meal, Melbourne District, and delivery of same will be required to be made at the Victorian Railways, Spencer-street.

Should a supply of any article which may be reasonably included in a Baker's Price List, and which is not included in the schedule hereunder, be required for the use of attendants and nurses resident at the Hospitals for the Insane or for inmates of any Government Institution drawing supplies under sub-schedules for Bread during the currency of the contract, the contractor shall, with the exception of Ararat, Ballarat, and Beechworth, supply any such article at the current list rates at which it is retailed by the contractor to the public.

GROCERIES, CANDLES, SOAP, TEA, ETC.

Should the supply of any article which may be reasonably included in a Grocer's Price List, and which is not included in the schedule hereunder, be required for the use of the attendants and nurses resident at the Hospitals for the Insane or for inmates of any Government Institution drawing supplies under sub-schedules for Groceries during the currency of the contract, the contractor shall, with the exception of Ararat and Ballarat, supply such article at the current list rates at which it is retailed by the contractor to the public.

As a guarantee of quality, Rice, when ordered in quantities of 56 lbs. and over, must be supplied in original bags as delivered by the miller or dresser. Such bags must be branded "Rice, Dressed," and shall also have stencilled thereon the miller or dresser's name. The bags thus stencilled shall contain Rice milled or dressed by the miller or dresser whose name appears thereon. Supplies not in conformity with the foregoing conditions will be absolutely rejected. Oatmeal must be supplied in original bags as delivered by millers.

Candles, except those for prison cells, must be supplied in 1-lb. packets. Candles for prison cells must be delivered in boxes containing from 25 to 50 lbs. per box, the boxes for which must be legibly stencilled on one end, showing the estimated burning time and the gross, tare, and net weight of contents. The soap supplied must be hard throughout, ready for immediate use without waste. Soap for Lunatic Asylums is not included in these contracts. When the quantity admits, tea must be supplied in original and unopened packages, labelled, as landed.

Raisins and currants must be present season's, and where the quantity admits, be supplied in original boxes labelled 3 crowns. For *s.s. Lady Loch* and *Rip* a certain quantity of Biscuits and Preserved Meat are sometimes required in lieu of fresh meat and fresh bread, and are included to meet such contingency only.

The contracts are not to be considered broken, infringed, or vitiated by purchase of sugar from any Government Institution at any time during the currency of this contract.

BUTTER, CHEESE, AND JAMS.

Butter is to be delivered to the *s.s. Lady Loch* and *Rip*, in 1 lb. pats, in such quantities as may be ordered, and no excess over the quantity ordered will be received.

All Butter supplied, as well as the cases in which it is packed, must bear the impress stamp of the creamery manufacturing the Butter, otherwise it will be rejected. The Butter supplied may be tested at any time by the Government Dairy expert if it is considered by the officer ordering that the supply is not up to standard quality. The cheese must be fairly matured and packed in boxes for transport.

As regards butter for Ararat, Ballarat, Beechworth, Lara, Sunbury, and Mont Park all supplies delivered from Melbourne must be submitted by the contractor to the Government Dairy Expert in Melbourne for test as to standard quality, and, if found to be satisfactory, shall be forwarded by that officer direct to the Institution ordering, the cost of freight being borne by the contractor in the usual way.

N.B.—Jams.—The weight stamped on the tins in accordance with the regulations under the Commerce Act, as indicating the minimum net quantity that each tin contains, shall for the purpose of this contract be taken as the actual contents when computing the quantity supplied.

When Jam is supplied in jars the jars remain the property of the contractor, and must be removed by the contractor at his own expense when empty.

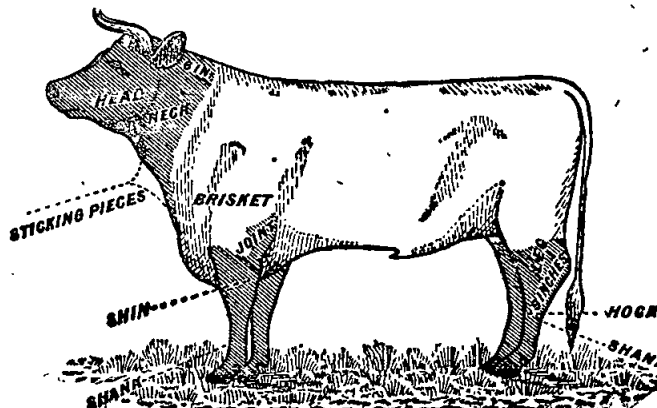
The prices quoted in the *Government Gazette* each week shall be taken as the ruling market rates for supplies for Butter and Cheese for the week ending Saturday immediately preceding publication of same—

Butter, No. 1 Grade.

Cheese, Large, Matured.

MEAT.

When fore and hind-quarters of beef are ordered for Hospitals for the Insane they must be supplied in the proportion of two of the former to one of the latter, and must be delivered as a whole respectively, also extra buttocks separately when ordered. Meat for other institutions must be supplied as ordered. Where hind-quarters or buttocks are ordered, 9 inches must be cut off from the end of the leg from the hock upwards, *i.e.*, the end of the leg



from which the shank has been removed at the abattoirs; and when fore-quarters form a portion of the supply, 6 inches from the end of the neck and the whole of the shin at the clodbone joint must be removed. The sticking pieces also must be trimmed off, and the point and end of the brisket rendered free from blood and blood stains.

Fore and hind-quarters, for convenience of handling, may be cut into two parts, but each part is to bear evidence of having been cut from the same beast.

Corned beef, rolled or round, as ordered, must be supplied without bone or cartilage and will be received, whether pumped or prepared in the ordinary way by pickling, but in the former case must have been soaked after pumping for at least 48 hours, in a good pickle, and then thoroughly drained before supply. No flank, chuck, sticking piece, shin, leg of beef, or piece under 7 lbs. will be received.

Should the local supply of fresh meat become scarce, or the price of same become abnormally high, frozen or chilled meat may, with the consent of the Tender Board on the recommendation of the head of the Department, be supplied.

In cases of emergency, or on such other occasions as in the opinion of the Inspector-General of the Insane may seem advisable, other forms of meat such as rabbits, tinned meats, &c., may be purchased apart from the contract for Hospitals for the Insane, in lieu of the meat mentioned in the schedule, and substituted therefor, provided 24 hours' notice (except in cases of emergency) be given to the contractor of such intention.

The parts to be removed by the contractor are indicated by the shaded portions of the annexed diagram.

For Beechworth samples (corresponding to the description given in the schedule) of meat ordinarily retailed to the public will be considered as a test for quality.

As regards supplies for *s.s. Lady Loch* and *Rip*, all Meat must be of prime quality, and must be supplied in equal quantities from ribs, sirloin, and thick flanks; mutton to be delivered in sides; all kidney fat to be removed; meat containing an undue proportion of fat will not be accepted. Chuck ribs will not be accepted in lieu of prime ribs. Live sheep to be supplied when required.

Should a supply of any article which may be reasonably included in a Butcher's Small Goods List, and which is not included in the schedule hereunder, be required for the use of attendants and nurses resident at the Hospitals for the Insane or for inmates of any Government Institution drawing supplies under sub-schedules for Meat during the currency of the contract, the contractor shall, with the exception of Ararat and Ballarat, supply such article at the current list rates at which it is retailed by the contractor to the public.

Under sub-schedules for Meat no subletting will be allowed, no delivery of meat shall be made on Sundays; all work must be carried out by the contractor. Every person engaged in the slaughtering and cutting up, preparation, or delivery of the meat tendered for in this sub-schedule, shall be paid such wages and shall be employed subject to such conditions as are or may be determined by any Wages Board under the provisions of the Factories and Shops Acts to which such persons are subject as employees; and a copy of these conditions shall be kept conspicuously and continually posted in legible Roman characters in the factory or shop (and in each part of the factory or shop where several rooms are in use) in which Meat is prepared under this contract. Any infringement of these conditions, or any breach of the said determination, in the opinion of the Treasurer, will subject the contractor, upon report from the Tender Board, to such mulct, not exceeding Fifty pounds (£50), as the Treasurer may direct, and the amount will be deducted from the contractor's account or from the security money, and the Treasurer's decision shall be binding, final, and conclusive as to the fact of infringement, and in all other respects.

MILK.

The milk must be fresh, pure, and of the best quality, and subject to test when required by the Department, and supplied at such times as the Department may require. Should the contractor fail to supply at the time specified in the order or at such times as may be indicated in any general notice to the contractor his contract may be cancelled forthwith and his security forfeited, or should the supply prove to be not of contract quality it will be rejected, and any expense incurred will be charged to the contractor.

Under sub-schedules for Milk no subletting will be allowed; all work must be carried out by the contractor; the hours of employment of any person engaged in the preparation or the delivery of the milk tendered for in these sub-schedules shall not exceed 60 hours per week, and every such person, except carters, shall be paid at a minimum wage of not less than £1 17s. 6d. per week for juveniles, less deduction of 15s. per week for board and lodging, and not less than £2 14s. per week for adults, less deduction of 15s. per week for board and lodging, unless other wages may be determined by any Special Board under the Factories and Shops Acts during the currency of the contract, when every such person shall be paid such wages and shall be employed subject to such conditions as may thus be determined. Carters shall be paid such wages and shall be employed subject to such conditions as are or may be determined by the Carters Board under the Factories and Shops Acts. Should, however, the determination of the aforesaid Board not apply to the district covered by any particular schedule, that determination for carters, or the determination of such other Board as may be appointed for other employees during the currency of this contract shall, for the purpose of this contract, be taken as defining the rate of wages which shall be paid, and the conditions of employment in respect thereto; and a copy of these conditions shall be kept conspicuously and continually posted in legible Roman characters in the factory or dairy (and in each part of the factory or dairy where several rooms are in use) in which milk is prepared under these contracts. Any infringement of these conditions, in the opinion of the Treasurer, will subject the contractor, upon report from the Tender Board, to such mulct, not exceeding Fifty pounds (£50), as the Treasurer may direct, and the amount will be deducted from the contractor's account or from the security money, and the Treasurer's decision shall be binding, final, and conclusive as to the fact of infringement, and in all other respects.

POTATOES AND VEGETABLES.

(Potatoes to be dry and free from dirt. Contractor to supply 105 lbs. of potatoes for each cental credited to him, and, in addition, to take back all rejected before being cooked.)

If the price of potatoes becomes abnormally high, the heads of the various departments concerned may, if they think fit, cause rice or any other suitable food to be occasionally substituted in lieu thereof. As regards vegetables for *s.s. Lady Loch* and *Rip*, no subletting will be allowed. Cabbage to be free from outside leaves and stalks.

The price quoted for potatoes in the *Government Gazette* for prime Carmens each week shall be taken as the ruling market rates for supplies made during the week ending Saturday immediately preceding publication of same.

TOBACCO.

Tobacco for country Hospitals for the Insane is included in the contract for Melbourne District, and delivery of same will be required to be made at Spencer-street.

Tobacco for country Gaols is not included in the contract for Melbourne District.

Schedule No. 1.
**PROVISIONS—MELBOURNE
DISTRICT.**

Sub-schedule No. 1.
BEER AND SPIRITS.

1. Ale (pints), English	per doz.	Purchase
2. Brandy, Australian, Standard, pure grape, of proof strength, and of approved brand (Manufacturer to be named)	per liq. gal.	
3. " bottled—Hennessy's Three Star, as imported	per bottle	
4. Lime Juice (Imperial quart bottles), Board of Trade Standard	per doz.	
5. Whisky, of proof strength—Loch Duu, Scotch Cream, or any other brand of equal quality	per liq. gal.	
6. Porter—"Guinness," bottled (quarts) (Bottler to be named)	per doz.	
7. " "Guinness," bottled (pints) (Bottler to be named)	do.	

ANNEX TO CONTRACT No. 1920/134.

S. G. Hewitt, 131 Church-street, Richmond.

Sub-schedule No. 2.

BREAD FOR THE INSANE AT KEW (AND FOR HOSPITAL, STUDLEY HALL, IF REQUIRED).

1. Bread—Fine wheaten, first quality	per cental	£ s. d.
See note bread and flour, page 2390.		0 17 8½

ANNEX TO CONTRACT No. 1920/135.

A. P. Davidson, 12 Victoria-street, Richmond.

Sub-schedule No. 3.

BREAD FOR HOSPITALS FOR THE INSANE AT YARRA BEND.

1. Bread—Fine wheaten, first quality	per cental	£ s. d.
See note bread and flour, page 2390.		0 18 4½

ANNEX TO CONTRACT No. 1920/136.

J. N. Hennessy, 55 Sydney-road, Brunswick.

Sub-schedule No. 4.

BREAD FOR DEPARTMENT OF NEGLECTED CHILDREN AND REFORMATORY SCHOOLS, ROYAL PARK; RECEIVING HOUSE AND MENTAL HOSPITAL, ROYAL PARK; POLICE DEPÔT; AND HOSPITAL AT EXHIBITION BUILDING, IF REQUIRED.

1. Bread—Fine wheaten, first quality	per cental	£ s. d.
See note bread and flour, page 2390.		1 0 0

ANNEX TO CONTRACT No. 1920/137.

J. D. Howie, Smith-street, Fitzroy.

Sub-schedule No. 5.

BUTTER.

Security, £20.

1. Butter—First Grade Creamery, to score not less than 90 points Government grade, Commerce Regulations standard	5 per cent. above ruling market rate.	Purchase
2. Margarine	per cwt.	
See note butter and cheese, page 2390.		7 0 0

ANNEX TO CONTRACT No. 1920/138.

J. D. Howie, Smith-street, Fitzroy.

Sub-schedule No. 6.

CHEESE AND EGGS.

Security, £10.

1. Cheese—First Class quality	6 per cent. below ruling market rate.	Purchase
2. Eggs—Fresh, new laid	per cwt.	
See note butter and cheese, page 2390.		

ANNEX TO CONTRACT No. 1920/139.

H. R. Rush, 407 Collins-street, Melbourne.

Sub-schedule No. 7.

FLOUR AND MAIZE MEAL.

Security, £100.

1. Flour—Roller, first quality, to sample	per cental	£ s. d.
2. " Sharps, to sample	do.	0 17 3
3. Maize meal	do.	1 2 3

See note bread and flour, page 2390.

ANNEX TO CONTRACT No. 1920/140.

Moran and Cato, 277 to 285 Brunswick-street, Fitzroy.

Sub-schedule No. 8.

GROCERIES, ETC.

Security, £40.

1. Arrowroot—Queensland	per lb.	£ s. d.
2. Bicarbonate of Soda	do.	0 0 7
3. Blue—Of any brand ordered	do.	0 0 3
4. Candles—Full weights, Kitchen's "Petrolines" or other make of equal quality, to be supplied in 1-lb. packets to sample	do.	0 1 1½
5. " Kitchen's "Petrolines" or other make of equal quality, for use in prison cells, to burn for 1, 1½, 2, 2½, and 3 hours respectively, as ordered, to sample for quality and size, to be supplied in candle boxes, containing from 25 to 50 lbs. per box	do.	0 1 3
6. " Carriage, equal to Kitchen's No. 8, in 1-lb. packets	do.	0 1 4
7. " Paraffine	do.	0 1 3
8. Cocoa—Homeopathic, in 1-lb. packets, of any Commonwealth manufacture ordered	do.	0 1 0
9. " Homeopathic, in 7-lb. cartons, of any Commonwealth manufacture ordered	do.	0 1 9
10. Coffee—Fresh roasted and whole, beans to be thoroughly sound, Neilgherry A, to sample	do.	0 1 8
11. " Pure, fresh roasted and ground, to sample	do.	0 2 5
12. Cornina	do.	0 2 5
13. Cream of Tartar (substitute)	do.	0 2 8½
14. Currants, 3 crowns, present season's	do.	0 1 9
15. Essence of Lemon, 1-oz. bottles	per bottle	0 0 8½
16. Golden Syrup (in 7-lb. tins)	per tin	0 0 7½
17. Lemon Peel	per lb.	0 2 9
18. Maizena	do.	0 1 4½
19. Mustard—"Double Superfine," of any Commonwealth manufacture ordered	do.	0 0 8½
20. Nutmegs	do.	0 2 9
21. Pearl barley	do.	0 2 3
22. Pease—Split	per cwt.	1 12 6
23. Pepper—Black, ground	do.	1 17 0
24. Pipes—Tobacco, clay	per lb.	0 1 3
25. Raisins—Sultana, 3 crowns, present season's	per doz.	0 1 1½
26. Salt—Fine	per lb.	0 0 10½
27. " Rock	per cwt.	0 5 10½
28. Soap, Toilet—Brown Windsor, in tablets, to sample	do.	0 13 6
29. " Carbolic, in half-pound bars, to sample	per lb.	0 1 0
30. " Glycerine, in tablets, to sample	do.	0 0 11
31. " Sunlight, in doublets	do.	0 1 3½
32. " Magic	per dblt.	0 0 6½
33. " Velvet	per lb.	0 0 8
34. Soap—Extract of, Hudson's, No. 8a, in 14-lb. boxes	per dblt.	0 0 5½
35. Soda—Washing	per box	0 6 3
36. Starch—Of any brand ordered, to sample	per cwt.	0 11 0
37. Treacle, in 7-lb. tins	per lb.	0 0 9
38. Vinegar	per tin	0 2 5
39. Lime Water	per quart	0 0 3
40. Tapioca (Pearl)	do.	0 0 6
41. Tomato Sauce (pints)	per lb.	0 0 5
	per bottle	0 0 10

ANNEX TO CONTRACT No. 1920/141.

Moran and Cato, 277 to 285 Brunswick-street, Fitzroy.

Sub-schedule No. 9.

OATMEAL, RICE, AND SEED TAPIOCA.

Security, £80.

1. Oatmeal—Of any brand ordered	per cwt.	£ s. d.
2. Rice—Dressed, to sample	do.	1 15 0
3. Seed Tapioca (Sago), to sample	do.	2 18 6
	do.	1 14 0

ANNEX TO CONTRACT No. 1920/142.

Ballarat Jam Co. Pty. Ltd., Davey-street, Ballarat.

Sub-schedule No. 10.

JAMS (of Commonwealth Manufacture) FOR HOSPITALS FOR THE INSANE.

(Including Receiving House, Royal Park.)

Security, £20.

1. Jams—Assorted, of approved kinds, in the proportion of half seed and half stone, of the best quality, in tins	per lb.	£ s. d.
	actual net weight	0 0 5½

ANNEX TO CONTRACT No. 1920/143.

W. Angliss and Co. Pty. Ltd., 42 Bourke-street, Melbourne.

Sub-schedule No. 11.

MEAT (FRESHLY KILLED), FOR HOSPITALS FOR THE INSANE, KEW.
Security, £150.

		£	s.	d.
1. Fresh Beef—Fore-quarters	... per cental	2	16	6
2. " " Hind-quarters	... do.	2	16	6
3. " Buttock	... do.	2	16	6
4. " Mutton	... do.	2	14	0
5. Corned Beef, rolled or round, as ordered, without bone or cartilage	... do.	2	16	6
6. Fresh Suet—Kidney	... do.	3	0	0

ANNEX TO CONTRACT No. 1920/144.

W. Angliss and Co. Pty. Ltd., 42 Bourke-street, Melbourne.

Sub-schedule No. 12.

MEAT (FRESHLY KILLED), FOR HOSPITALS FOR THE INSANE, YARRA BEND.
Security, £120.

		£	s.	d.
1. Fresh Beef—Fore-quarters	... per cental	2	16	6
2. " " Hind-quarters	... do.	2	16	6
3. " Buttock	... do.	2	16	6
4. " Mutton	... do.	2	14	0
5. Corned Beef, rolled or round, as ordered, without bone or cartilage	... do.	2	16	6
6. Fresh Suet—Kidney	... do.	3	0	0

ANNEX TO CONTRACT No. 1920/145.

F. Watkins Pty. Ltd. 316 Moray-street, South Melbourne.

Sub-schedule No. 13.

MEAT (FRESHLY KILLED), FOR PENAL ESTABLISHMENT, PENTRIDGE.
Security, £100.

		£	s.	d.
1. Fresh Beef	... per cental	2	10	0
2. " Buttock	... do.	2	10	0
3. Corned Beef	... do.	2	10	0
4. Fresh Mutton	... do.	2	10	0
5. Dripping	... do.	2	10	0

ANNEX TO CONTRACT No. 1920/146.

F. Watkins Pty. Ltd., 316 Moray-street, South Melbourne.

Sub-schedule No. 14.

MEAT (FRESHLY KILLED), FOR MELBOURNE GAOL; POLICE BARRACKS, ST. KILDA ROAD; DEPARTMENT FOR NEGLECTED CHILDREN AND REFORMATORY SCHOOLS, ROYAL PARK; RECEIVING HOUSE AND MENTAL HOSPITAL, ROYAL PARK; AND HOSPITAL AT EXHIBITION BUILDING AND STUDLEY HALL, IF REQUIRED.
Security, £500.

		£	s.	d.
1. Fresh Beef, as ordered	... per cental	2	15	0
2. " Buttock	... do.	2	15	0
3. " Mutton	... do.	2	15	0
4. Corned Beef, rolled or round, as ordered, without bone or cartilage	... do.	2	15	0
5. Fresh Suet—Kidney	... do.	2	15	0

Sub-schedule No. 15.

MILK FOR MELBOURNE GAOL.

1. Milk—Fresh and pure Purchase
------------------------	--------	--------------

ANNEX TO CONTRACT No. 1920/147.

J. F. Murphy, 25 Mayfield-street, Coburg.

Sub-schedule 16.

MILK FOR PENAL ESTABLISHMENT, PENTRIDGE.
Security, £10.

		£	s.	d.
1. Milk—Fresh and pure	... per gal.	0	2	6

ANNEX TO CONTRACT No. 1920/148.

Shea, Hood, and Co. Pty. Ltd., Flinders-street.

Sub-schedule No. 17.

POTATOES.

Security, £20.

1. Potatoes at ruling market rates, delivered
-------------	--------	---------------------------------------

See note potatoes, page 2391.

Sub-schedule 18.

SUGAR.

1. Sugar—White, to sample	... per owt.	{ Purchase from Maffra
2. " Ration	... do.	

ANNEX TO CONTRACT No. 1920/149.

J. D. Howie, Smith-street, Fitzroy.

Sub-schedule No. 19.

SOAP.

Security, £10.

		£	s.	d.
1. Soap (household)—Yellow, dry, to sample, equal to Kitchen & Son's "Best Brown"	per cwt.	2	8	0
2. Soap (household)—Carbolic, dry, to sample	"	3	7	0

ANNEX TO CONTRACT No. 1920/150.

J. D. Howie, 299 Smith-street, Fitzroy.

Sub-schedule No. 20.

TEA.

Security, £60.

		£	s.	d.
1. Tea—Best Ceylon, to sample	... per lb.	0	1	4½
2. " Ration, to sample	... do.	0	1	2

ANNEX TO CONTRACT No. 1920/151.

Dudgeon and Arnell Pty. Ltd., 524 Lonsdale-street, Melbourne.

Sub-schedule No. 21.

TOBACCO.

Security, £20.

		£	s.	d.
1. Tobacco, in 1-oz. plugs, for gaols—"Starlight," or other make of equal quality, to sample	... per lb.	0	4	7
2. Tobacco, 21 plugs to the pound, for Hospitals for the Insane, to sample	... do.	0	4	9

Schedule No. 17.

PROVISIONS AT GREENVALE.

(Delivery at the Sanatorium.)

Sub-schedule No. 1.

BREAD.

1. Bread—Fine Wheaton, first quality Purchase
--------------------------------------	--------	--------------

ANNEX TO CONTRACT No. 1920/152.

J. D. Howie, 299 Smith-street, Fitzroy.

Sub-schedule No. 2.

BUTTER.

Security, £10.

		£	s.	d.
1. Butter—First Grade Creamery, to score not less than 90 points, Government grade, Commerce Regulations standard...	... at per cwt.	13	10	0

ANNEX TO CONTRACT No. 1920/153.

J. D. Howie, 299 Smith-street, Fitzroy.

Sub-schedule No. 3.

CHEESE AND BACON.

Security, £10.

		£	s.	d.
1. Cheese—First Class quality	... per lb.	0	1	3
2. Bacon—sides, Farmer's, Hutton's, or Cation and Hilton's, as ordered	... per cwt.	8	8	0

ANNEX TO CONTRACT No. 1920/154.

Moran and Cato Pty. Ltd. Brunswick-street, Fitzroy.

Sub-schedule No. 4.

GROCERIES.

Security, £20.

		£	s.	d.
1. Apples—Dried	... per lb.	0	1	0
2. Apricots—Dried, Mildura	... do.	0	1	8
3. Biscuits—Coffee	... do.	0	0	9½
4. Blue—Of any brand ordered	... do.	0	1	3
5. Candles—(Full weights) Kitchen's "Petro-lines," or other make of equal quality, to be supplied in 1-lb. packets	... do.	0	1	1
6. Candles—Carriage, equal to Kitchen's No. 8, in 1-lb. packets	... do.	0	1	3½
7. Chicory—Fresh ground	... do.	0	0	9
8. Cocoa—In ½-lb. packets, of any brand ordered	... do.	0	2	0
9. Coffee—"Neik cherry A", to sample—Fresh roasted and whole, beans to be thoroughly sound	... do.	0	2	7

GROCERIES—continued.

	£	s.	d.
10. Cornina	...	per lb.	0 0 9
11. Currants, 3 crowns (present season's)	...	do.	0 0 9
12. Curry Powder	...	do.	0 1 3
13. Essence of Lemon—In full 1-oz. bottles, of any brand ordered	...	per bot.	0 0 8
14. Flour—Self-raising, of any brand ordered	...	per lb.	0 0 4½
15. Golden syrup, in 7-lb. tins	...	per tin	0 3 3
16. Honey—Prime garden	...	per lb.	0 0 10
17. Jams—Assorted, in 2-lb. tins in the proportion of half plum and half assorted quince, peach, black currant, and raspberry	...	per doz. tins	0 15 0
18. Lemon peel	...	per lb.	0 1 5
19. Meal—Digestive	...	per cwt.	1 8 0
20. Milk—Condensed, 1-lb. tins	...	per tin	0 1 1½
21. Mustard—Double Superfine, of any Commonwealth manufacture ordered	...	per lb.	0 2 9
22. Oatmeal—Flaked or Plain, of any brand ordered	...	per cwt.	1 17 6
23. Pearl barley	...	do.	1 12 6
24. Pease—Split	...	do.	1 17 6
25. Pepper—White, ground	...	per lb.	0 2 1
26. Pickles—Piccalilli	...	per bot.	0 0 11
27. Powder—Baking, of any brand ordered, in 1-lb. tins	...	per tin	0 2 0
28. Raisins—Sultana, 3 crowns (present season's)	...	per lb.	0 0 10½
29. Rice—Dressed, to sample	...	per cwt.	3 4 0
30. Seed Tapioca (Sago)—To sample	...	do.	1 17 0
31. Salmon—Fresh, in 1-lb. tins, of any brand ordered	...	per tin	0 1 9
32. Salt—Fine	...	per cwt.	0 7 0
33. Sardines—Y's	...	per tin	0 1 3
34. Pickled Salmon	...	per lb.	0 1 0
35. Sauces—Tomato, pinks, any brand ordered	...	per bot.	0 0 10
36. Soda—Washing	...	per cwt.	0 13 0
37. Starch—Of any brand ordered, to sample	...	per lb.	0 0 9
38. Tapioca—Pearl	...	per cwt.	1 17 6
39. Tea—Ceylon, to sample	...	per lb.	0 1 6
40. Treacle, in 7-lb. tins	...	per tin	0 2 9
41. Vinegar	...	per quart	0 0 6

ANNEX TO CONTRACT No. 1920/155.

F. Watkins Pty. Ltd., 316 Moray-street, South Melbourne.

Sub-schedule No. 5.

MEAT (FRESHLY KILLED.)

	£	s.	d.
Security, £20.	...	per cental	3 6 8
1. Fresh Ox Beef—Roast	...	do.	3 12 11
2. Fresh Ox Beef Steak, for frying—Buttock and Blade in equal proportions	...	do.	3 6 8
3. Fresh Ox Beef Steak—Stewing	...	do.	3 12 11
4. Corned Ox Beef—Rolled or Round, as ordered, without bone or cartilage	...	do.	2 18 4
5. Mutton—Fresh, in carcass	...	do.	0 0 7
6. Tripe, Ox (during winter)	...	per lb.	0 0 7
7. Pork—Pickled	...	do.	0 1 0
8. Fresh Beef Suet—Kidney	...	do.	0 0 9
9. Sausages—Beef (during winter)	...	do.	0 0 7
10. " Belgium (during summer)	...	do.	0 0 10

Schedule No. 18.

PROVISIONS—MONT PARK.

(Delivery at the Hospital for Insane.)

ANNEX TO CONTRACT No. 1920/156.

Lees and Urban, Eastment-street, Northcote.

Sub-schedule No. 1.

BREADSTUFFS.

	£	s.	d.
Security, £30.	...	per cental	0 19 9
1. Bread—Fine Wheaten, first quality	...	do.	1 0 0
2. Flour—First quality	...	do.	1 0 0

See note bread and flour, page 2390.

ANNEX TO CONTRACT No. 1920/157.

J. D. Howie, 299 Smith-street, Fitzroy.

Sub-schedule No. 2.

BUTTER AND MARGARINE.

Security, £20.

1. Butter—First Grade Creamery, to score not less than 90 points Government grade, Commerce Regulations standard at 5 per cent. above ruling market rates	...	per cwt.	7 0 3
2. Margarine—Best quality	...	per cwt.	7 0 3

See note butter and cheese, page 2390.

ANNEX TO CONTRACT No. 1920/158.

J. D. Howie, Smith-street, Fitzroy.

Sub-schedule No. 3.

CHEESE.

	£	s.	d.
Security, £10.	...	at 6 per cent. below ruling market rates	...
1. Cheese—First Class quality	...	per lb.	0 1 4½

See note butter and cheese, page 2390.

ANNEX TO CONTRACT No. 1920/159.

J. D. Howie, 299 Smith-street, Fitzroy.

Sub-schedule No. 4.

GROCERIES.

Security, £10.

	£	s.	d.
1. Blue—Of any brand ordered	...	per lb.	0 1 2
2. Candles (full weights)—Kitchen's "Petrolines," or other make of equal quality, to be supplied in 1-lb. packets	...	do.	0 1 4
3. Coffee—"Neigherry A"—Fresh roasted and Whole—Beans to be thoroughly sound, to sample	...	do.	0 2 0
4. Cornina	...	do.	0 0 9
5. Currants, 3 Crowns (present season's)	...	do.	0 0 8½
6. Curry Powder	...	do.	0 1 3
7. Ginger—Ground	...	do.	0 1 6
8. Golden Syrup, in 7-lb. tins	...	per tin	0 2 9
9. Haricot Beans	...	per lb.	0 0 5
10. Mustard—"Double Superfine," of any Commonwealth manufacture ordered	...	do.	0 2 9
11. Oatmeal—Of any brand ordered	...	per cwt.	1 16 0
12. Pease—Split	...	do.	1 15 0
13. Pepper—Black, Ground	...	per lb.	0 1 9
14. Pipes—Tobacco, Clay	...	per doz.	0 1 6
15. Raisins—Sultana 3 Crowns (present season's)	...	per lb.	0 0 11
16. Rice—Dressed, to sample	...	per cwt.	3 3 0
17. Seed Tapioca (Sago)—To sample	...	per lb.	0 0 4
18. Salt—Fine	...	per cwt.	0 6 0
19. Soap—Hudson's Extract	...	per box	0 6 6
20. Soda—Carbonate of	...	per lb.	0 0 3½
21. Soda—Washing	...	per cwt.	0 14 0
22. Spice	...	per lb.	0 1 6
23. Starch—Of any brand ordered, to sample	...	do.	0 0 11
24. Tartar—Cream of (substitute)	...	do.	0 1 9
25. Treacle, in 7-lb. tins	...	per tin	0 2 4
26. Vinegar	...	per pint	0 0 3

ANNEX TO CONTRACT No. 1920/160.

Ballarat Jam Co. Pty. Ltd., Ballarat.

Sub-schedule No. 5.

JAMS.

(FOR HOSPITALS FOR THE INSANE).

Security, £10.

	£	s.	d.
1. Jams—Assorted, of approved kinds in the proportion of half seed and half actual net stone, of the best quality, in tins	...	weight	0 0 5½

ANNEX TO CONTRACT No. 1920/161.

W. Angliss and Co. Pty. Ltd., 42 Bourke-street, Melbourne.

Sub-schedule No. 6.

MEAT (FRESHLY KILLED.)

Security, £30.

	£	s.	d.
1. Fresh Beef—Fore-quarters (February to June)	...	per cental	2 19 6
2. Fresh Beef—Hind-quarters (February to June)	...	do.	2 19 6
3. Fresh Beef—Buttocks (February to June)	...	do.	2 19 6
4. Fresh Mutton (July to November and March to June)	...	do.	2 17 0
5. Corned Beef—Rolled or round as ordered, without bone or cartilage	...	do.	2 19 6
6. Fresh Beef Suet—Kidney (December, April, May, June)	...	do.	3 0 0

ANNEX TO CONTRACT No. 1920/162.

Shea, Hood, and Co. Pty. Ltd., Flinders-street.

Sub-schedule No. 7.

POTATOES.

Security, £20.

	£	s.	d.
1. Potatoes	...	at ruling market rates	...

See note potatoes, page 2391.

Sub-schedule No. 8.

SUGAR.

1. Sugar—White, to sample	...	per cwt.	Purchase from Maffra
---------------------------	-----	----------	----------------------

ANNEX TO CONTRACT No. 1920/163.

J. D. Howie, 299 Smith-street, Fitzroy.

Sub-schedule No. 9.

TEA.

Security, £10.

	£	s.	d.
1. Tea—Best Ceylon, to sample	...	per lb.	0 1 4½

Schedule No. 2. PROVISIONS AT WILLIAMSTOWN.

(For s.s. *Lady Loch* and *Rip*.)

(Supplies for Naval Forces are not included in this Schedule.)
(Supplies for the "*Lady Loch*" to be delivered on board the vessel, and supplies for the "*Rip*" to be delivered at Dredging Depot, Footscray-road.)

Sub-schedule No. 1.

BREADSTUFFS.

Security, £10.

- | | | |
|--------------------------------------|------------|----------|
| 1. Bread—Fine wheaten, first quality | per cental | Purchase |
| 2. Flour—First quality | do. | do. |

ANNEX TO CONTRACT No. 1920/164.

Moran and Cato, Pty. Ltd., Brunswick-street, Fitzroy.

Sub-schedule No. 2.

BUTTER.

Security, £5.

- | | |
|--|----------------|
| 1. Butter—First Class Creamery, to score not less than 90 points Government grade, Commerce Regulations standard | £ s. d. |
| ... | per lb. 0 2 6½ |

ANNEX TO CONTRACT No. 1920/165.

Moran and Cato, Fitzroy.

Sub-schedule No. 3.

GROCERIES.

Security, £10.

- | | | |
|---|-----------|--------|
| 1. Candles—(full weights) Kitchen's "Petrolines," or other make of equal quality, to be supplied in 1-lb. packets | per lb. | 0 1 3 |
| 2. Chocolate, of any brand ordered | do. | 0 2 0 |
| 3. Coffee—Fresh roasted and ground, to sample | do. | 0 1 11 |
| 4. Currants—3 crowns, present season's | do. | 0 0 9 |
| 5. Flour—Self-raising | do. | 0 0 5 |
| 6. Jams—Assorted, of approved kinds, in proportion of half seed and half stone, of best quality (in 2-lb. tins) | per tin | 0 1 3 |
| 7. Milk—Condensed, of any brand ordered | do. | 0 1 0 |
| 8. Mustard—double superfine, of any brand ordered | per lb. | 0 2 9 |
| 9. Oatmeal | per cwt. | 1 17 0 |
| 10. Pearl barley | do. | 1 12 0 |
| 11. Pease—Split | do. | 1 17 0 |
| 12. Pepper—White, ground | per lb. | 0 2 2 |
| 13. Raisins—Sultana, 3 crowns, present season's | do. | 0 0 11 |
| 14. Rice—Dressed, to sample | do. | 0 0 6½ |
| 15. Salt—Fine, to sample | do. | 0 0 1 |
| 16. Soap—Household, yellow, dry, to sample | do. | 0 0 6 |
| 17. Sugar—White, to sample | per cwt. | 2 9 0 |
| 18. Tea—Best Ceylon, special sample | per lb. | 0 1 6½ |
| 19. Vinegar—Champion's, or other approved brand | per quart | 0 0 4 |
| 20. Biscuits, kinds as ordered | per lb. | 0 0 8 |
| 21. Soda—Washing | per cwt. | 0 12 0 |

ANNEX TO CONTRACT No. 1920/166.

Wm. Angliss and Co. Pty. Ltd., 43 Bourke-street, Melbourne.

Sub-schedule No. 4.

MEAT (FRESHLY KILLED).

Security, £10.

- | | | |
|----------------------|------------|--------|
| 1. Fresh Beef—Joints | per cental | 3 4 7 |
| 2. " Mutton " | do. | 2 18 4 |
| 3. " Suet " | per lb. | 0 0 7½ |

Sub-schedule No. 5.

VEGETABLES.

Security, £5.

- | | | |
|--|------------|----------|
| 1. Potatoes | per cental | Purchase |
| 2. Onions | do. | |
| 3. Other vegetables, including cauliflowers, carrots, cabbages, turnips, and parsnips, as required | do. | |

Schedule No. 3.

PROVISIONS—ARARAT DISTRICT.

ANNEX TO CONTRACT No. 1920/167.

C. Freund, Ararat.

Sub-schedule No. 1.

BREADSTUFFS.

Security, £100.

- | | | |
|--------------------------------------|------------|--------|
| 1. Bread—Fine wheaten, first quality | per cental | 0 15 6 |
| 2. " Wheaten, third quality | do. | 0 15 6 |
| 3. Flour—First quality | do. | 0 18 4 |

See note bread and flour, page 2390.

ANNEX TO CONTRACT No. 1920/168.

The Ararat and District Co-operative Butter Co., Ararat.

Sub-schedule No. 2.

BUTTER.

Security, £20.

- | | | |
|--|---|--|
| 1. Butter—First Grade Creamery, to score not less than 90 points Government grade, Commerce Regulations standard | At ruling market rate plus ¼d. per lb. for delivery | £ s. d.
7 9 4 |
| 2. Margarine—First quality | per cwt. | See note butter and cheese, page 2390. |

ANNEX TO CONTRACT No. 1920/169.

J. D. Howie, 299 Smith-street, Fitzroy.

Sub-schedule No. 3.

CHEESE.

Security, £10.

- | | |
|--|---|
| Cheese—First Class quality | At 5 per cent. below ruling market rate |
| See note butter and cheese, page 2390. | |

ANNEX TO CONTRACT No. 1920/170.

Moran and Cato, Fitzroy.

Sub-schedule No. 4.

GROCERIES.

Security, £30.

- | | | |
|---|----------|-------------------|
| 1. Blue—Of any brand ordered | per lb. | £ s. d.
0 1 3½ |
| 2. Candles (full weights) — Kitchen's "Petrolines," or other make of equal quality, to be supplied in 1-lb. packets | do. | 0 1 3½ |
| 3. Coffee—"Neigherry A"—Fresh roasted and whole—Beans to be thoroughly sound, to sample | do. | 0 2 6 |
| 4. Curry | do. | 0 1 3 |
| 5. Golden Syrup (in 56-lb. tins) | per tin | 1 1 6 |
| 6. Mustard—"Double Superfine," of any Commonwealth manufacture ordered | per lb. | 0 2 9 |
| 7. Oatmeal—Of any brand ordered | per cwt. | 1 18 6 |
| 8. Pease—Split | do. | 1 18 6 |
| 9. Pepper—Black, ground | per lb. | 0 1 4 |
| 10. Pipes—Tobacco, clay | per doz. | 0 1 2 |
| 11. Raisins—Sultana, 3 crowns, present season's | per lb. | 0 0 10½ |
| 12. Rice—Dressed, to sample | per cwt. | 3 1 9 |
| 13. Seed Tapioca (Sago)—To sample | do. | 1 17 6 |
| 14. Salt—Fine | do. | 0 8 0 |
| 15. Soda—Carbonate of | per lb. | 0 0 3½ |
| 16. Soda—Washing | per cwt. | 0 14 6 |
| 17. Starch—Of any brand ordered, to sample | per lb. | 0 0 9 |
| 18. Tartar—Cream of (substitute)... | do. | 0 1 9 |
| 19. Vinegar | per pint | 0 0 3 |

ANNEX TO CONTRACT No. 1920/171.

The Ballarat Jam Co. Pty. Ltd., Davey-street, Ballarat.

Sub-schedule No. 5.

JAMS.

Security, £10.

- | | | |
|---|---------------------------|-------------------|
| 1. Jams, assorted, of approved kinds in the proportions of half seed and half stone, of the best quality, in tins | per lb. actual net weight | £ s. d.
0 0 5½ |
|---|---------------------------|-------------------|

ANNEX TO CONTRACT No. 1920/172.

Arthur Murphy, Barkly-street, Ararat.

Sub-schedule No. 6 (from 1.7.20 to 31.12.20).

MEAT (FRESHLY KILLED).

Security, £100.

- | | | |
|---|------------|--------------------|
| 1. Fresh Beef—Fore-quarters | per cental | £ s. d.
3 12 11 |
| 2. " " Hind-quarters | do. | 3 12 11 |
| 3. " " Buttocks | do. | 3 12 11 |
| 4. " Mutton | do. | 3 0 5 |
| 5. Corned Beef—Rolled or round, as ordered, without bone or cartilage | do. | 3 12 11 |
| 6. Fresh Suet—Kidney | do. | 3 12 11 |

ANNEX TO CONTRACT No. 1920/173.

Shas, Hood, and Co., Pty. Ltd., Flinders-street, Melbourne.

Sub-schedule No. 7.

POTATOES.

Security, £20.

- | | |
|--|-------------------------------|
| 1. Potatoes at ruling market rates f.o.r. Spencer-street | See note potatoes, page 2391. |
|--|-------------------------------|

Sub-schedule No. 8.

SUGAR.

- | | | |
|----------------------------|----------|----------------------|
| 1. Sugar, white, to sample | per cwt. | Purchase from Maffra |
|----------------------------|----------|----------------------|

ANNEX TO CONTRACT No. 1920/174.

J. D. Howie, 299 Smith-street, Fitzroy.

Sub-schedule No. 9.

TEA.

Security, £20.

- | | | |
|-------------------------------|---------|-------------------|
| 1. Tea—Best Ceylon, to sample | per lb. | £ s. d.
0 1 5½ |
|-------------------------------|---------|-------------------|

Schedule No. 4.
PROVISIONS—BEECHWORTH DISTRICT.

ANNEX TO CONTRACT No. 1920/175.
William Price, Newtown, Beechworth.

Sub-schedule No. 1.

BREADSTUFFS.		£	s.	d.
Security, £100.		1	0	0
1. Bread—Fine wheaten, first quality	per cental	1	0	0
2. Flour—First quality	do.	0	18	0

See note bread and flour, page 2390.

ANNEX TO CONTRACT No. 1920/176.
J. D. Howie, Smith-street, Fitzroy.

Sub-schedule No. 2.

BUTTER.		£	s.	d.
Security, £10.		7	0	0
1. Butter—First Grade Creamery, to score not less than 90 points, Government grade, Commerce Regulations standard	6 per cent. above ruling market rate			
2. Margarine—Best quality	per cwt.	7	0	0

See note butter and cheese, page 2390.

ANNEX TO CONTRACT No. 1920/177.
J. D. Howie, Smith-street, Fitzroy.

Sub-schedule No. 3.

CHEESE.		£	s.	d.
Security, £10.		5	0	0
1. Cheese—First Class quality	at 5 per cent. below ruling market rate			

See note butter and cheese, page 2390.

ANNEX TO CONTRACT No. 1920/178.
J. D. Howie, 299 Smith-street, Fitzroy.

Sub-schedule No. 4.

GROCERIES.		£	s.	d.
Security, £30.		0	0	9
1. Arrowroot	per lb.	0	0	9
2. Blue—Of any brand required	do.	0	1	4
3. Candles (full weights)—Kitchen's "Petro-lines," or other make of equal quality, to be supplied in 1-lb. packets	do.	0	1	4
4. Coffee—"Neigherry A," fresh roasted and whole, beans to be thoroughly sound, to sample	do.	0	2	0
5. Coffee—Fresh roasted and ground, to sample	do.	0	2	0
6. Golden Syrup (in 7-lb. tins)	per tin	0	2	9
7. Maizena	per lb.	0	0	9
8. Mustard—"Double superfine," of any Commonwealth manufacture ordered	do.	0	3	0
9. Oatmeal—Of any brand ordered	per cwt.	1	16	0
10. Pearl Barley	do.	1	12	0
11. Pease—Split	do.	1	16	0
12. Pepper—Black, ground	per lb.	0	2	0
13. Pipes—Tobacco, clay	per doz.	0	1	6
14. Raisins—Sultana, 3 crowns, present season's	per lb.	0	0	11½
15. Rice—Dressed, to sample	per cwt.	3	5	0
16. Seed Tapioca (Sago)—To sample	do.	1	12	0
17. Salt—Fine	do.	0	8	0
18. Soap—Household, carbolic, dry, to sample	per lb.	0	0	6
19. Soap—Household, yellow, dry, to sample	do.	0	0	6
20. Soda—Carbonate of	do.	0	0	4
21. " Washing	per cwt.	0	14	0
22. Starch—Of any brand ordered, to sample	per lb.	0	0	11
23. Tartar—Cream of (substitute)...	do.	0	1	9
24. Vinegar	per pint	0	0	3

ANNEX TO CONTRACT No. 1920/179.
W. H. Morton, One Mile, Beechworth.

Sub-schedule No. 5.

MEAT (FRESHLY KILLED).		£	s.	d.
Security, £100.		2	16	10
1. Fresh Beef—Fore-quarters	per cental	2	16	10
2. " Hind-quarters	do.	2	16	10
3. " Buttocks	do.	2	16	10
4. " Mutton	do.	2	16	10
5. Corned Beef—rolled or round, as ordered, without bone or cartilage	do.	3	15	0
6. Fresh Suet—Kidney (2 months only)	per lb.	0	0	6

ANNEX TO CONTRACT No. 1920/180.
Shea, Hood, and Co. Pty. Ltd., Flinders-street, Melbourne.

Sub-schedule No. 6.

POTATOES.		£	s.	d.
Security, £20.				
1. Potatoes at ruling market rates f.o.r. Spencer-st.	See note potatoes, page 2391.			
SUGAR.		£	s.	d.
1. Sugar, white, to sample	per cwt.			

{ Purchase from Maffra

ANNEX TO CONTRACT No. 1920/181.

J. D. Howie, 299 Smith-street, Fitzroy.

Sub-schedule No. 8.

TEA.

Security, £20.		£	s.	d.
1. Tea—Best Ceylon, to sample	per lb.	0	1	5½

Schedule No. 5.

PROVISIONS AT BALLARAT.

ANNEX TO CONTRACT No. 1920/182.

John Davis, 47 Eureka-street, Ballarat East.

Sub-schedule No. 1.

BREADSTUFFS.		£	s.	d.
Security, £60.		0	19	8
1. Bread—Fine Wheaten, first quality	per cental	0	19	8
2. " Wheaten, third quality	do.	0	19	8
3. Flour—First quality	do.	0	18	0

See note bread and flour, page 2390.

ANNEX TO CONTRACT No. 1920/183.

J. D. Howie, 299 Smith-street, Fitzroy.

Sub-schedule No. 2.

BUTTER.		£	s.	d.
Security, £20.				
1. Butter—First Grade Creamery, to score not less than 90 points, Government grade, Commerce Regulations standard	At 6 per cent. above ruling market rate			
2. Margarine—Best quality	per cwt.	7	0	0

See note butter and cheese, page 2390.

ANNEX TO CONTRACT No. 1920/184.

J. D. Howie, Smith-street, Fitzroy.

Sub-schedule No. 3.

CHEESE.		£	s.	d.
Security £10.		5	0	0
1. Cheese—First Class quality	at 5 per cent. below ruling market rate			

See note butter and cheese, page 2390.

ANNEX TO CONTRACT No. 1920/185.

Moran and Cato, Fitzroy.

Sub-schedule No. 4.

GROCERIES.		£	s.	d.
Security, £30.		0	0	3½
1. Barley—Pearl	per lb.	0	0	3½
2. Blue—Of any brand required	do.	0	1	1½
3. Candles (full weights)—Kitchen's "Petro-lines," or other make of equal quality, to be supplied in 1-lb. packets	do.	0	1	3½
4. Coffee—"Neigherry A," Fresh roasted and whole, beans to be thoroughly sound, to sample	do.	0	2	6
5. Cornina	do.	0	0	8½
6. Currants, 3 crowns, present season's	do.	0	0	8½
7. Ginger—Ground	do.	0	1	9
8. Golden Syrup (in 7-lb. tins)	per tin	0	3	0
9. Milk—Fresh and pure	per quart	0	0	10
10. Mustard—Double superfine, of any Commonwealth manufacture ordered	per lb.	0	2	9
11. Oatmeal—Of any brand ordered	per cwt.	1	16	6
12. Pease—Split	do.	1	16	6
13. Pepper—Black, ground	per lb.	0	1	3
14. Pipes—Tobacco, clay	per doz.	0	1	2
15. Raisins—Sultana, 3 crowns, present season's	per lb.	0	0	10½
16. Rice—Dressed, to sample	per cwt.	3	1	0
17. Seed Tapioca (Sago), to sample	do.	1	15	6
18. Salt—Fine	do.	0	7	6
19. Soap—(Household), Carbolic, dry to sample	per lb.	0	0	7½
20. Soap—(Household), Yellow, dry, to sample	do.	0	0	6
21. Soda—Carbonate of	do.	0	0	3½
22. " Washing	per cwt.	0	12	6
23. Spice—Mixed, in 1-oz. packets	per doz. pkts.	0	1	6
24. Starch—Of any brand ordered, to sample	per lb.	0	0	9
25. Tartar—Cream of (substitute)	do.	0	1	9
26. Tobacco—"Starlight," or other make of equal quality, as ordered	do.	0	4	10
27. Vinegar	per pint	0	0	3

ANNEX TO CONTRACT No. 1920/186.

The Ballarat Jam Co. Pty. Ltd., Davey-street, Ballarat.

Sub-schedule No. 5.

JAMS.

(For Hospitals for the Insane.)

Security, £10.		£	s.	d.
1. Jams—Assorted, of approved kinds in proportion of half seed and half stone, of the best quality, in tins as required	per lb. actual net weight	0	0	6½

ANNEX TO CONTRACT No. 1920/187.

H. J. Symons, Macarthur-street, Ballarat.

Sub-schedule No. 6.

MEAT (FRESHLY KILLED).

	Security, £20.	£	s.	d.
1. Fresh Beef—Fore-quarters ...	per cental	3	4	6
2. " " Hind-quarters ...	do.	3	4	6
3. " " Buttocks ...	do.	3	4	6
4. " Mutton ...	do.	3	4	6
5. Corned Beef, rolled or round, as ordered, without bone or cartilage ...	do.	3	4	6
6. Fresh Suet—Kidney ...	do.	3	4	6

ANNEX TO CONTRACT No. 1920/188.

Shea, Hood, and Co. Pty. Ltd., Flinders-street.

Sub-schedule No. 2391.

POTATOES.

Security, £20.

1. Potatoes at ruling market rates f.o.p. Spencer-street.
See note potatoes, page 2391.

ANNEX TO CONTRACT No. 1920/189.

J. D. Howie, 299 Smith-street, Fitzroy.

Sub-schedule No. 8.

TEA.

Security, £20.

- | | | | | |
|-----------------------------------|---------|---|----|----|
| 1. Tea—Best Ceylon, to sample ... | per lb. | £ | s. | d. |
| 2. " Ration ... | do. | 0 | 1 | 4½ |
| | | 0 | 1 | 3 |

Schedule No. 6.

PROVISIONS AT GEELONG.

ANNEX TO CONTRACT No. 1920/190.

William Marshall, 150 Malop-street, Geelong.

Sub-schedule No. 1.

BREADSTUFFS.

Security, £20.

- | | | | | |
|--|------------|---|----|----|
| 1. Bread—Fine Wheaten, first quality ... | per cental | £ | s. | d. |
| 2. " Wheaten, third quality ... | do. | 0 | 15 | 0 |
| | | 0 | 14 | 0 |

See note bread and flour, page 2390.

ANNEX TO CONTRACT No. 1920/191.

W. T. Brennan, Ryrie-street, Geelong.

Sub-schedule No. 2.

GROCERIES.

Security, £20.

- | | | | | |
|--|----------|---|----|-----|
| 1. Arrowroot—Queensland ... | per lb. | £ | s. | d. |
| 2. Candles (full weights)—Kitchen's "Petrolines," or other make of equal quality, to sample, to be supplied in 1-lb. packets ... | do. | 0 | 1 | 1 |
| 3. Barley—Pearl ... | do. | 0 | 0 | 3½ |
| 4. Currants, 8 crowns, present season's ... | do. | 0 | 0 | 10 |
| 5. Eggs—Fresh ... | per doz. | 0 | 1 | 8 |
| 6. Mustard—"Double Superfine," of any Commonwealth manufacture ordered ... | per lb. | 0 | 3 | 3 |
| 7. Oatmeal—Of any brand ordered ... | per cwt. | 2 | 0 | 0 |
| 8. Pepper—Black, ground ... | per lb. | 0 | 1 | 9 |
| 9. Pipes—Tobacco, clay ... | per doz. | 0 | 1 | 9 |
| 10. Raisins—Sultana, 3 crowns, present season's ... | per lb. | 0 | 1 | 0 |
| 11. Rice—Dressed, to sample ... | per cwt. | 3 | 7 | 6 |
| 12. Seed Tapioca (Sago), to sample ... | per lb. | 0 | 0 | 5½ |
| 13. Salt—Fine ... | do. | 0 | 0 | 1 |
| 14. Soap—(Household) Carbolic, dry, to sample ... | do. | 0 | 0 | 8 |
| 15. Soap—(Household) Yellow, dry, to sample ... | per cwt. | 3 | 3 | 0 |
| 16. Soda—Washing ... | do. | 0 | 14 | 6 |
| 17. Sugar—Ration, to sample ... | per lb. | 0 | 0 | 5 |
| 18. Tea—Ration ... | do. | 0 | 1 | 10½ |
| 19. Tobacco—"Starlight," or other make of equal quality, as ordered ... | do. | 0 | 5 | 2 |

ANNEX TO CONTRACT No. 1920/192.

M. G. O'Brien, Moorabool-street, Geelong South.

Sub-schedule No. 3.

MEAT (FRESHLY KILLED).

Security, £20.

- | | | | | |
|-------------------|------------|---|----|----|
| 1. Fresh Beef ... | per cental | £ | s. | d. |
| 2. " Buttocks ... | do. | 2 | 5 | 0 |
| 3. " Mutton ... | do. | 2 | 16 | 0 |
| | | 1 | 19 | 0 |

ANNEX TO CONTRACT No. 1920/193.

S. H. Warren, East Geelong.

Sub-schedule No. 4.

MILK.

Security, £5.

- | | | | | |
|----------------------------|------------|---|----|----|
| 1. Milk—Fresh and pure ... | per gallon | £ | s. | d. |
| | | 0 | 2 | 0 |

Sub-schedule No. 5.

POTATOES.

- | | | |
|-----------------|------------|----------|
| 1. Potatoes ... | per cental | Purchase |
|-----------------|------------|----------|

Schedule No. 7.

PROVISIONS AT LARA.

(Delivery at the Inebriates' Retreat.)

ANNEX TO CONTRACT No. 1920/194.

F. Samblebe, Lara.

Sub-schedule No. 1.

BREADSTUFFS.

Security, £20.

- | | | | | |
|--|------------|---|----|----|
| 1. Bread—Fine Wheaten, first quality ... | per cental | £ | s. | d. |
| 2. Flour—First quality ... | do. | 1 | 0 | 0 |
| | | 0 | 18 | 6 |

See note bread and flour, page 2390.

ANNEX TO CONTRACT 1920/195.

John D. Howie, 299 Smith-street, Fitzroy.

Sub-schedule No. 2.

BUTTER.

Security, £20.

- | | | | | |
|---|---|---|----|----|
| 1. Butter—First-grade Creamery, to score not less than 90 points, Government grade, Commerce Regulations standard ... | at 8 per cent. above ruling market rates. | £ | s. | d. |
|---|---|---|----|----|

See note butter and cheese, page 2390.

ANNEX TO CONTRACT No. 1920/196.

John D. Howie, 299 Smith-street, Fitzroy.

Sub-schedule No. 3.

CHEESE.

Security, £10.

- | | | | | |
|-----------------------------------|--|---|----|----|
| 1. Cheese—First Class quality ... | at 4 per cent. below ruling market rates | £ | s. | d. |
|-----------------------------------|--|---|----|----|

See note butter and cheese, page 2390.

ANNEX TO CONTRACT No. 1920/197.

Moran and Cato, Fitzroy.

Sub-schedule No. 4.

GROCERIES.

Security, £20.

- | | | | | |
|---|----------|---|----|-----|
| 1. Arrowroot—Queensland ... | per lb. | £ | s. | d. |
| 2. Bacon, Farmer's or Hutton's, by the side (or other approved brand) ... | do. | 0 | 1 | 6 |
| 3. Barley—Pearl ... | do. | 0 | 0 | 3½ |
| 4. Blue—Of any brand ordered ... | do. | 0 | 1 | 1½ |
| 5. Candles—(Full weights) Kitchen's "Petrolines," or other make of equal quality, to be supplied in 1-lb. packets ... | do. | 0 | 1 | 3 |
| 6. Cocoa—(Homœopathic)—McKenzie's, or other brand of equal quality ... | do. | 0 | 1 | 6 |
| 7. Coffee—"Neigherry A." Fresh roasted and whole—Beans to be thoroughly sound, to sample ... | do. | 0 | 2 | 6 |
| 8. Currants—3 crowns, present season's ... | do. | 0 | 0 | 8½ |
| 9. Mustard—Double Superfine, of any Commonwealth manufacture ordered ... | do. | 0 | 2 | 9 |
| 10. Oatmeal—Of any brand ordered ... | per cwt. | 1 | 16 | 6 |
| 11. Peas—Split ... | per lb. | 0 | 0 | 4 |
| 12. Pepper—Black, ground ... | do. | 0 | 1 | 3 |
| 13. Raisins—Sultana, 3 crowns, present season's ... | do. | 0 | 0 | 10½ |
| 14. Rice—Dressed, to sample ... | do. | 0 | 0 | 7 |
| 15. Seed Tapioca (Sago), to sample ... | do. | 0 | 0 | 4 |
| 16. Salmon—Fresh, brand as ordered, talls (1-lb. tins) ... | per tin | 0 | 1 | 8 |
| 17. Salt—Fine ... | do. | 0 | 0 | 0½ |
| 18. Soap—(Household) Yellow, dry, to sample ... | do. | 0 | 0 | 6 |
| 19. Soap—Toilet, Glycerine, in tablets, to sample ... | do. | 0 | 1 | 5½ |
| 20. Soda—Washing ... | do. | 0 | 0 | 1½ |
| 21. Tea—Best Ceylon, to sample ... | do. | 0 | 1 | 6 |

ANNEX TO CONTRACT No. 1920/198.

John D. Howie, 299 Smith-street, Fitzroy.

Sub-schedule No. 5.

JAMS.

Security, £5.

- | | | | | |
|---|---------------|---|----|----|
| 1. Jams, Assorted, of approved kinds in the proportion of half seed and half stone, of the best quality, in tins containing 27 ozs. net ... | per doz. tins | £ | s. | d. |
| | | 0 | 15 | 6 |

Schedule No. 10.
PROVISIONS—CASTLEMAINE DISTRICT.

ANNEX TO CONTRACT 1920/212.

M. Van Heurck, Castlemaine.

Sub-schedule No. 1.

BREAD.

	Security, £5.	per cental	£ s. d.
1. Bread—Wheaten, third quality	1 2 11

See note bread and flour, page 2390.

ANNEX TO CONTRACT No. 1920/213.

Moran and Cato Pty. Ltd., Brunswick, Fitzroy.

Sub-schedule No. 2.

GROCERIES AND POTATOES.

	Security, £5.	per lb.	£ s. d.
1. Candles—(full weights), Kitchen's "Petrolines," Apollo Co.'s "Apollo," or other make of equal quality, to sample, to be supplied in 1-lb. packets	0 1 4
2. Milk—Fresh and pure	...	per quart	0 1 0
3. Oatmeal	...	per cwt.	2 5 0
4. Potatoes	...	per cental	0 17 6
5. Rice, Dressed, Best, to sample	...	per cwt.	3 16 0
6. Salt—Fine	...	per lb.	0 0 2
7. Soap—Yellow (household), dry, to sample	...	do.	0 0 7½
8. Soda—Washing	...	do.	0 0 3
9. Sugar—Ration	...	do.	0 0 5½
10. Tea	...	do.	0 1 6

ANNEX TO CONTRACT No. 1920/214.

John Williamson, Mostyn-street, Castlemaine.

Sub-schedule No. 3.

MEAT.

	Security, £5.	per lb.	£ s. d.
1. Fresh Beef	0 0 6½
2. " Mutton	...	do.	0 0 6½

Schedule No. 11.

PROVISIONS AT SALE.

ANNEX TO CONTRACT No. 1920/215.

Michael Keily, Raymond-street, Sale.

Sub-schedule No. 1.

BREAD.

	Security, £5.	per lb.	£ s. d.
1. Bread—Wheaten, third quality	0 0 2½

See note bread and flour, page 2390.

Sub-schedule No. 2.

GROCERIES AND POTATOES.

	per quart	per cental	per lb.	do.	do.	do.
1. Milk—Fresh and pure
2. Potatoes
3. Rice, dressed, Best, to sample
4. Salt—Fine
5. Soap, yellow (household), dry, to sample
6. Soda—Washing
7. Tea—Ration, to sample
8. Whiting

Purchase

ANNEX TO CONTRACT No. 1920/216.

Alfred Wray, Raymond-street, Sale.

Sub-schedule No. 3.

MEAT.

	Security, £5.	per lb.	£ s. d.
1. Fresh Beef	0 0 7

Schedule No. 12.

PROVISIONS AT RUTHERGLEN.

(For Students at Viticultural College. Delivery at the College.)

ANNEX TO CONTRACT No. 1920/217.

Cooper and Owen, Chiltern Valley No. 2.

Sub-schedule No. 1.

BREAD.

	Security, £5.	per cental	£ s. d.
1. Bread—Fine Wheaten, first quality	1 0 10

See note bread and flour, page 2390.

ANNEX TO CONTRACT No. 1920/218.

Moran and Cato, Brunswick-street, Fitzroy.

Sub-schedule No. 2.

GROCERIES, ETC.

	Security, £10.	per lb.	£ s. d.
1. Arrowroot	0 0 7½
2. Blue	...	do.	0 1 4
3. Baking Powder, in 1-lb. tins	...	per tin	0 2 0
4. Baking Soda	...	per lb.	0 0 3½
5. Bacon, best cured	...	per lb.	0 1 6½

GROCERIES, ETC.—continued.

	per tin	£ s. d.
6. Blacking	...	0 0 3
7. Blacklead	...	0 0 1
8. Barley, Pearl	...	0 0 4½
9. Candles—(Full weights) Kitchen's "Petrolines," or other make of equal quality, to be supplied in 1-lb. packets	do.	0 1 4
10. Coffee—Whole—Beans to be thoroughly sound, to sample	do.	0 2 7
11. Coffee Essence, 10-oz., of any brand ordered	per bottle	0 1 3
12. Cocoa, of any brand ordered	per lb.	0 2 3
13. Cream of Tartar (substitute)	per lb.	0 1 9
14. Currants, 3 crown (present season's)	do.	0 0 9
15. Curry Powder	do.	0 1 3
16. Essence of Lemon, 1-oz. bottles	per bottle	0 0 8
17. Fish, Preserved, Salmon, Fresh Herrings, Herrings in Tomato, as ordered, in 1-lb. tins	per tin	0 1 6
18. Flour, best Roller	per cental	1 2 0
19. Fruits, Preserved, assorted, of approved brand, in 2-lb. tins	per tin	0 1 5
20. Ginger—Ground or Whole—Jamaica	per lb.	0 1 9
21. Golden Syrup, in 2-lb. tins	per tin	0 0 10½
22. Jams, assorted, any brand ordered, in 2-lb. tins, in proportion of half seed and half stone	do.	0 1 4
23. Maizena—Duryea's	per lb.	0 0 10
24. Meat—Preserved, of approved brand, in 2-lb. tins	per tin	0 2 9
25. Macaroni or Vermicelli, as ordered	per lb.	0 0 6½
26. Mustard—Double Superfine, of any brand ordered	do.	0 3 0
27. Oatmeal—Flaked or other, of any brand ordered	per cwt.	1 19 0
28. Onions	do.	0 18 0
29. Peel—Mixed	per lb.	0 1 5
30. Pepper—Black or White, Ground	do.	0 1 4
31. Pickles, of approved brand	per bottle	0 0 11
32. Potatoes	per cwt.	0 17 6
33. Raisins—Sultana, Mildura, 3 Crown	per lb.	0 0 11
34. Rice—Dressed, to sample	per cwt.	3 4 0
35. Seed Tapioca (Sago)—To sample	per lb.	0 0 4½
36. Salt—Coarse	do.	0 0 1
37. " Fine	per cwt.	0 8 0
38. Sauces, Worcester, Tomato, or Chutney, reputed pints, any brand ordered	per bottle	0 0 10½
39. Soap—Household, yellow, to sample	per lb.	0 0 7½
40. " Glycerine Tablets	do.	0 1 5
41. " Sand	do.	0 0 5
42. " Magic	do.	0 0 7½
43. Soda—Washing	do.	0 0 3
44. Spices, mixed, in 1-oz. packets	per packet	0 0 2
45. Starch, to sample	per lb.	0 0 9½
46. Tapioca—Pearl	do.	0 0 5
47. Tea—Best Ceylon, to sample	do.	0 1 6½
48. Treacle, in 7-lb. tins	per tin	0 2 8
49. Vinegar, of approved brand	per quart	0 0 6

Schedule No. 13.

PROVISIONS AT WAHGUNYAH.

(For Students at Wahgunyah Vine Nursery. Delivery at Nursery.)

ANNEX TO CONTRACT No. 1920/219.

G. G. Haig, Wahgunyah.

Sub-schedule No. 1.

BREAD.

Security, £5.

	per cental	£ s. d.
1. Bread—Fine Wheaten, first quality	...	1 5 0

See note bread and flour, page 4.

ANNEX TO CONTRACT No. 1920/220.

Moran and Cato, Brunswick-street, Fitzroy.

Sub-schedule No. 2.

GROCERIES, ETC.

Security, £10.

	per lb.	£ s. d.
1. Arrowroot	...	0 0 9
2. Blue	...	0 1 3
3. Baking Powder, in 1-lb. tins	...	0 2 3
4. Baking Soda	...	0 0 3½
5. Bacon, best cured	...	0 1 9
6. Blacking	per doz. cakes	0 0 5½
7. Black Lead	...	0 0 7½
8. Barley, Pearl	per lb.	0 0 4½
9. Candles—(Full weights) Kitchen's "Petrolines," Apollo Co.'s "Apollo," or other make of equal quality, to be supplied in 1-lb. packets	do.	0 1 3
10. Coffee—Whole—Beans to be thoroughly sound, to sample	do.	0 2 9
11. Coffee Essence, of any brand ordered	per bottle	0 1 4
12. Cocoa	per lb.	0 1 6
13. Cream of Tartar (substitute)	do.	0 1 9
14. Currants, 3 Crowns	do.	0 0 10
15. Curry Powder	do.	0 1 3
16. Essence of Lemon, 1-oz. bottles	per bottle	0 0 8
17. Fish, Preserved, Salmon, Fresh Herrings, Herrings in Tomato, as ordered, in 1-lb. tins	per tin	0 1 6

GROCERIES, ETC.—continued.		£	s.	d.
18. Flour, Best Roller	per cental	1	1	0
19. Fruits, Preserved, assorted, of approved brand, in 2-lb. tins	per tin	0	1	6
20. Ginger—Ground or Whole	per lb.	0	1	9
21. Golden Syrup, in 2-lb. tins	per tin	0	0	10½
22. Jam, assorted, any brand ordered, in 2-lb. tins, in the proportion of half seed and half stone	do.	0	1	5
23. Maizena—Duryea's	per lb.	0	0	11
24. Meat—Preserved, of approved brand, in 2-lb. tins	per tin	0	3	3
25. Macaroni or Vermicelli, as ordered	per lb.	0	0	7½
26. Mustard—Double Superfine, of any brand ordered	do.	0	2	9
27. Oatmeal—Flaked or Other, of any brand ordered	do.	0	0	5½
28. Onions	per cwt.	0	17	6
29. Peel—Mixed	per lb.	0	1	5
30. Pepper—Black or White, Ground	do.	0	1	9
31. Pickles, of approved brand	per bottle	0	1	0
32. Potatoes	per cwt.	0	17	6
33. Raisins—Sultana (Mildura), 3 Crowns	per lb.	0	0	11
34. Rice—Dressed, to sample	do.	0	0	8½
35. Seed Tapioca (Sago)—To sample	do.	0	0	5
36. Salt—Coarse	do.	0	0	1
37. Salt—Fine	do.	0	0	1
38. Sauces—Worcester, Tomato, or Chutney, any brand ordered, in reputed pints	per bottle	0	1	0
39. Soap—Household, yellow, to sample	per lb.	0	0	7½
40. Soap—Glycerine Tablets	do.	0	1	6
41. Soap—Sand	do.	0	0	5
42. Soap—Magic	do.	0	0	7½
43. Soda—Washing	do.	0	0	2½
44. Spices, mixed, in 1-oz. packets	per packet	0	0	9½
45. Starch—To sample	per lb.	0	0	6½
46. Tapioca—Pearl	do.	0	0	6
47. Tea—Best Ceylon, to sample	do.	0	1	7
48. Treacle, in 7-lb. tins	per tin	0	2	8
49. Vinegar, of approved brand	per quart	0	0	4

Sub-schedule No. 3.

MEAT.

Security, £10.

1. Beef—Fresh (side of)	per lb.	Purchase
2. Beef—Fresh	do.	
3. Mutton	do.	
4. Sausages	do.	
5. Pork—Fresh	do.	
6. Tongues—Ox	each	
7. " Sheep	per dozen	
8. Tails—Ox	each	
9. Kidneys—Ox	do.	
10. Shins—Ox	do.	
11. Lambs' fries	do.	

Schedule No. 19.

PROVISIONS AT CRESWICK.

FOR STUDENTS AT THE SCHOOL OF FORESTRY.

(Delivery at the School.)

ANNEX TO CONTRACT No. 1920/221.

C. C. Bowley, Albert-street, Creswick.

Sub-schedule No. 1.

BREADSTUFFS.

Security, £10.

1. Bread—Fine Wheaten, first quality	per cental	£	s.	d.
2. Flour—First-quality	do.	1	3	0
		0	18	6

See note bread and flour, page 2390.

Sub-schedule No. 2.

BUTTER AND CHEESE.

1. Butter—First Grade Creamery, to score not less than 92 points, Government Grade, Commerce Regulations standard	per lb.	Purchase
2. Cheese—First-class quality, matured (Victorian)	do.	
3. Eggs, new laid	per doz.	

ANNEX TO CONTRACT No. 1920/222.

J. Tait and Son, Albert street, Creswick.

Sub-schedule No. 3.

GROCERIES.

Security, £10.

1. Barley—Pearl	per lb.	£	s.	d.
2. Blue—Of any brand required	do.	0	0	2
3. Candles (full weights) Kitchen's "Petrolines," Apollo Co.'s "Apollo," or other make of equal quality, to be supplied in 1-lb. packets	do.	0	1	1½

GROCERIES—continued.		£	s.	d.
4. Coffee—Fresh roasted and whole—Beans to be thoroughly sound, to sample	per lb.	0	2	0
5. Cornina	do.	0	0	8½
6. Currants—3 Crowns	do.	0	0	10½
7. Ginger—Ground (Jamaica)	do.	0	1	4
8. Golden Syrup, in 7-lb. tins	per tin	0	2	7
9. Jams, assorted, any brand ordered, in 2-lb. tins, in the proportion of half seed and half stone	per lb. net	0	0	9
10. Maizena—Duryea's	per lb.	0	0	9
11. Mustard—Double superfine, of any brand ordered	do.	0	3	6
12. Outmeal—Of any brand ordered	do.	0	0	5
13. Pease—Split	do.	0	0	4
14. Pepper—Black, ground	do.	0	1	3
15. Raisins—Sultana (Mildura), 3 Crowns	do.	0	1	0
16. Rice—Dressed, to sample	do.	0	0	8
17. Seed Tapioca—Sago, to sample	do.	0	0	5
18. Salt—Fine	do.	0	0	1
19. Soap (Household)—Lever Bros. "Velvet"	do.	0	0	8
20. Soap (Household)—Yellow, dry, to sample	do.	0	0	6
21. Carbolic Sand Soap	do.	0	0	4
22. Soda—Carbonate of	do.	0	0	3
23. " Washing	do.	0	0	2
24. Spice—Mixed, in 1-oz. packets	per pkt.	0	0	1½
25. Starch, of any brand ordered, to sample	per lb.	0	0	9½
26. Tartar—Cream of	do.	0	3	3
27. Tea—Best Ceylon, to sample	do.	0	1	11
28. Vinegar	per pint	0	0	3

ANNEX TO CONTRACT No. 1920/223.

John James Bennett, Albert-street, Creswick.

Sub-schedule No. 4.

MEAT (FRESHLY KILLED).

£ s. d.

Security, £10.

1. Fresh Beef—Fore-quarter	per lb.	0	0	8½
2. " " Hind-quarter	do.	0	0	9
3. " " Buttocks	do.	0	0	9
4. " Mutton	do.	0	0	7
5. Corned Beef, rolled or round, as ordered without bone or cartilage	do.	0	0	9
6. Pork (Leg)	do.	0	0	10
7. Fresh Suet—Kidney	do.	0	0	6

ANNEX TO CONTRACT No. 1920/224.

E. Pollard, Eastern Hill, Creswick.

Sub-schedule No. 5.

MILK.

Security, £5.

£ s. d.

1. Milk—Fresh and pure	per quart	0	0	7
------------------------	-----------	---	---	---

Sub-schedule No. 6.

POTATOES.

1. Potatoes	per cental	Purchase
-------------	------------	----------

Schedule No. 20.

PROVISIONS AT McLEOD SETTLEMENT, FRENCH ISLAND.

Delivery to be made at Lang Lang Jetty.

ANNEX TO CONTRACT No. 1920/225.

H. L. Dainty, Lang Lang.

Sub-schedule No. 1.

BREAD.

Security, £5.

1. Bread—Fine, Wheaten, first quality	per cental	£	s.	d.
		1	2	11

See note bread and flour, page 2390.

Sub-schedule No. 2.

BUTTER.

1. Butter—First Class Creamery, to score not less than 92 points Government grade, Commerce Regulations standard	per lb.	Purchase
--	---------	----------

Sub-schedule No. 3.

GROCERIES.

1. Cheese	per lb.
2. Jams—Assorted, of approved kinds, in proportion of half seed and half stone, of best quality, in 2-lb. tins ...	per tin
3. Mustard—Double Superfine, of any Commonwealth manufacture ordered ...	per lb.
4. Milk—Condensed, nominal 1-lb. tins ...	per tin
5. Oatmeal—Of any brand ordered ...	per cwt.
6. Pepper—Black, ground	per lb.
7. Rice—Dressed, best, to sample ...	"
8. Salt—Fine	"
9. Soap—Toilet, brown Windsor, in tablets, to sample	"
10. Soap—Household, yellow, dry, to sample	"
11. Soda—Washing	"
12. Tea—Best Ceylon	"
13. Tea—Ration	"
14. Tobacco—"Starlight," or other make of equal quality, as ordered ...	"

Purchase

Sub-schedule No. 4.

MEAT (FRESHLY KILLED.)

Security, £20.

1. Fresh Beef—Forequarters ...	per cental
2. " Hindquarters ...	do.
3. " Buttock
4. " Mutton ...	per cental
5. Corned Beef, Rolled or Round, as ordered, without bone or cartilago ...	do.
6. Fresh Suet—Kidney ...	per lb.
7. Dripping—Fresh, free from objectionable smell ...	do.

Purchase

Sub-schedule No. 5.

MILK

1. Milk—Fresh and pure ...	per gal.
----------------------------	----------

Sub-schedule No. 6.

POTATOES.

1. Potatoes... ..	per cental
-------------------	------------

1920-21.

Schedule No. 15.

PROVISIONS FOR ABORIGINES AT THE UNDERMENTIONED STATIONS.

Sub-schedule No. 1.

BREAD.

See note bread and flour, page 2390.

Contract No. 1920/226.—Coranderrk—James Lockhart, Healesville ...	Security, £2.
" " 1920/228.—Lake Tyers—F. Manners, Nowa Nowa ...	" £2.

Item No.	Article.	Contract No. 226. James Lockhart, Coranderrk (Healesville).	Contract No. 228. F. Manners, Lake Tyers.
1	Bread—Fine Wheaten, first quality per cental	£ s. d. 1 0 0	s. d. per lb. 0 2½

Sub-schedule No. 2.

GROCERIES.

Contract No. 1920/227.—Coranderrk—Moran and Cato Pty. Ltd., Melbourne ...	Security, £2.
" " 1920/229.—Lake Tyers—Moran and Cato Pty. Ltd., Melbourne ...	" £2.

Item No.	Article.	Contract No. 227. Moran and Cato Pty. Ltd., Coranderrk.	Contract No. 229. Moran and Cato Pty. Ltd., Lake Tyers.
1	Baking Powder, Snowflake, in 1-lb. tins per lb.	£ s. d. 0 2 3	£ s. d. 0 2 3
2	Candles—(Full weights) Kitchen's "Petrolines," Apollo Co.'s "Apollo," or other make of equal quality, to be supplied in 1-lb. packets ...	"	"
3	Coffee—Fresh roasted and whole—Beans to be thoroughly sound, to sample	0 1 1	0 1 1
4	Cocoa, in ½-lb. packets	0 2 6	0 2 6
5	Cornina	0 1 6	0 1 6
6	Corrains—3 crowns	0 0 9½	0 0 9½
7	Curry Powder	0 0 10½	0 0 10½
8	Flour—Best roller	0 1 6	0 1 8
9	Mustard—Double superfine, of any Commonwealth manufacture ordered per cental	1 2 0	1 4 0
10	Oatmeal—Of any brand ordered	0 3 0	0 3 1
11	Pease, Split	0 0 6	0 0 6½
12	Pearl Barley	0 0 4½	0 0 5
13	Pepper—Black, ground, in ½-lb. tins per tin	0 0 4	0 0 4½
14	Rai-ins—Sultana (Mildura)—3 C Fowns per lb.	0 0 9	0 0 9
15	Rice—Dressed, to sample	0 0 11½	0 1 0
16	Seed Tapioca (Sago), to sample	0 0 8	0 0 8½
17	Salt—Coarse	0 0 5	0 0 5½
18	" Fine	0 0 1	0 0 1½
19	Soap—Household, yellow, to sample	0 0 1½	0 0 1½
20	Soda—Ricarbonate	0 0 7	0 0 7½
21	" Washing	0 0 4	0 0 4½
22	Tartar, Cream of (substitute)	0 0 3	0 0 3½
23	Tea—Best Ceylon, to sample	0 1 9	0 1 9
24	Tobacco—Twist, to sample	0 1 7	0 1 8
25	Treacle, in 7-lb. tins per tin	0 5 1	0 5 3
26	Vinegar per quart	0 2 8	0 2 8
		0 0 4½	0 0 4½



VICTORIA GOVERNMENT GAZETTE.

Published by Authority.

[Registered at the General Post Office, Melbourne, for transmission by post as a newspaper.]

No. 147.]

WEDNESDAY, JULY 14.

[1920.

Factories and Shops Acts.

DETERMINATION OF THE PROVINCIAL PRINTERS BOARD.

NOTE.—This Determination on the 23rd July, 1920, applied to the following parts of Victoria, namely:—The cities of Ballarat, Bendigo, Geelong, and Warrnambool; the town of Ballarat East; and the boroughs of Eaglehawk, Geelong West, Newtown and Chilwell, and Sebastopol.

IN accordance with the provisions of the Factories and Shops Acts, the Wages Board appointed to determine the lowest prices or rates which may be paid to any person or persons or classes of persons (other than persons subject to the Determinations of the Printers Board or the Country Printers Board) employed in the process, trade, or business of—

- (a) Printing (including bookbinding);
- (b) Stereotyping;
- (c) Preparing printed matter for sale or distribution, including preparing wrappers or labels, folding, inseting, stapling, counting, wrapping, tying, labelling, carrying, or despatching

has made the following Determination, namely:—

(1) That on the 23rd July, 1920, the last previous Determination of this Board shall be revoked and replaced by this Determination.

(2)

During—	Apprentices and Improvers.		Number (in any factory).	Number (in any factory).
	Males.	Females.		
	Wages per week of 48 hours.*	Wages per week of 48 hours.*		
	s. d.	s. d.		
1st. year ..	12 6	12 6	MALE APPRENTICES. One male apprentice to one or two and thereafter one additional male apprentice to each additional three or fraction of three	MALE IMPROVERS. One male improver to every fifteen journeymen receiving not less than 90s. per week of 48 hours.
2nd. „ ..	15 0	16 0		
3rd. „ ..	20 0	20 0		
4th. „ ..	30 0	27 6		
5th. „ ..	35 0	35 0		
6th. „ ..	40 0	..	FEMALE APPRENTICES. One female apprentice to every three or fraction of three female workers receiving not less than 42s. 6d. per week of 48 hours. An amended indenture of apprenticeship has been prescribed.	FEMALE IMPROVERS. <i>Bookbinding.</i> Two female improvers to every female worker receiving not less than 42s. 6d. per week of 48 hours. <i>Any other Branch.</i> One female improver to every twenty female workers receiving not less than 42s. 6d. per week of 48 hours.

* While employed on hand bronzing, 6d. per hour extra.

Juvenile Workers, i.e., Persons under 21 years of age (other than Apprentices or Improvers) employed as—	Per week of—	WAGES.*				
		Years of Age.				
		Under 17.	17 to 18.	18 to 19.	19 to 21.	
		s. d.	s. d.	s. d.	s. d.	
<i>In Daily Newspaper Offices—</i>						
Copy-holders	42 hours	25 0	30 0	35 0	40 0	
Galley boys	42 "	20 0	25 0	30 0	40 0	
Juveniles in machine or stereo. rooms	42 "	25 0	30 0	35 0	40 0	
Attendants on slug-casting machines—						
Between 6 p.m. and 8 a.m.	42 "	25 0	30 0	35 0	40 0	
Not being more than 18 Years of Age.						
		1st Year.	2nd Year.	3rd Year.	4th Year.	Over 18 and under 21 Years of Age.
		s. d.	s. d.	s. d.	s. d.	s. d.
Between 8 a.m. and 6 p.m.	48 "	15 0	20 0	25 0	30 0	40 0
<i>In any other place—</i>						
Attendants on slug-casting machines	48 "	15 0.	20 0	25 0	30 0	40 0
<i>In any place—</i>						
Operators of addressograph machines, feeders (not being persons in charge of cylinder machines), flyers employed on platen or cylinder machines, varnishers, machine bronzers, stone polishers, label punchers, quarter binders, or gluers for quarter-bound work cut flush turned-in paper sides, or all flush work not turned in, tin plate carriers or cleaners off, packers or persons preparing printed matter for sale or distribution, including preparing wrappers or labels, folding, insetting, stapling, counting, wrapping, tying, labelling, carrying, or despatching:—						
Males	48 "	15 0	20 0	25 0	30 0	40 0
Females	48 "	12 6	16 0	20 0	27 6	35 0
Labourers, reader boys, or roller boys	48 "	15 0	20 0	25 0	30 0	40 0
Juveniles on monotype casting machines	42 "	16 0	25 0	30 0	35 0	45 0
Years of Age.						
		Under 17.	17 or over.			
		s. d.	s. d.			
Message boys	48 "	12 6	17 6			

* While employed on hand bronzing, 6d. per hour extra.

* While employed on hand bronzing, 6d. per hour extra.

Other Employees.	WAGES.	
	Between 8 a.m. and 6 p.m.	Between 6 p.m. and 8 a.m.
	Per week of 42 hours.	Per week of 42 hours.
	s. d.	s. d.
IN DAILY NEWSPAPER OFFICES.		
Compositors, sluggers, bulk hands, makers-up, readers, or adults (other than apprentices or improvers), learning composition on slug-casting machine, during three months' probation	87 6	94 6
Male copy-holders	72 0	75 0
Persons in charge of slug-casting machines	90 0	94 6
Attendants or cleaners on slug-casting machines	72 0	75 0
s. d.		
Man in charge of rotary machines and stereotyping	115 0	per week of 42 hours
Man in charge of rotary machine	100 0	" "
Man in charge of flat-bed machines	94 6	" "
First assistants on rotary machines	84 0	" "
Stereotyper in charge	94 6	" "
All other adult males in daily newspaper offices	72 0	" "
Between 7 a.m. and 6 p.m.		
Between 6 p.m. and 7 a.m.		
Per week of 42 hours.		
s. d.		
Persons (other than apprentices or improvers) composing on slug-casting machines or monotype keyboards (including cleaning or remedying defective working of the machine)—	72 0	110 0
During first three months' experience	100 0	110 0
Thereafter		

Compositors, sluggers, bulk hands, makers-up, stereotypers, electrotypers, letterpress men, letterpress machinists, or persons in charge of cylinder machines (including time occupied in feeding) ..	s. d.	90	0	per week of 48 hours
Proof readers or revisers ..	96	0	"	"
All other adult males ..	72	0	"	"

IN ANY PLACE.

Lithographers employed on rotary machines ..	s. d.	96	0	per week of 48 hours
All other lithographers ..	90	0	"	"
Tin printers ..	96	0	"	"
Stone polishers ..	72	0	"	"
Bookbinders or vellum binders for turned-in work (excepting persons only employed on quarter-bound work cut flush turned-in paper sides), marblers, finishers, paper-rulers, blockers (except for blind blocking), guillotine machine cutters, gilders, leather cutters, pocket-book makers, or hand indexers ..	90	0	"	"
Book-binding forewomen who supervise or are responsible for the work of 3 or more employees ..	50	0	"	"
All other adult females ..	42	6	"	"

(3) CASUAL LABOUR.—That casual workers (i.e., persons employed during any week for not more than one-half the maximum number of hours fixed as a week's work) shall be paid 3d. an hour in addition to the rates fixed.

(4) TIMES OF BEGINNING AND ENDING WORK.—The times of beginning and ending work (except in daily newspaper offices) for any person (other than those composing on slug-casting machines or monotype keyboards) shall be:—

Time of Beginning.	Time of Ending.
8 a.m. ..	12.30 p.m. on Saturday, or the day on which the half-holiday is locally observed, and 6 p.m. on the other working days of the week.

(5) OVERTIME.—The following rates shall be paid for work done during the times specified hereunder, viz.:—

In Daily Newspaper Offices.

By any person (except those composing) in excess of the maximum number of hours fixed for a week's work .. Time and one-third

In any other Place.

Composing on slug-casting machines or monotype keyboards—
In excess of 42 hours in any week .. Time and one-third.

Any other work—

Within the times of beginning and ending work as specified above in excess of the maximum number of hours fixed for a week's work ..	Time and one-third.
Between 6 p.m. and 10 p.m. on any of the ordinary working days of the week ..	
Later than 12.30 p.m. or earlier than 8 a.m. on Saturday, or the day on which the half-holiday is locally observed ..	Time and a half.
Later than 10 p.m. or earlier than 8 a.m. on any other working day ..	

(6) SPECIAL RATES.—Double time shall be the special rate of payment payable to any person (except those employed in daily newspaper offices) for all work done on (a) Sunday; (b) on the undermentioned public holidays (that is to say):—Good Friday, New Year's Day, Foundation Day, Easter Monday, Boxing Day, 21st day of April (Eight Hours Day), Christmas Day; but if any other day be by Act of Parliament or Proclamation substituted for any of the above-named holidays, the special rate shall only be payable for work done on the day so substituted.

PIECE-WORK PRICES.

(7) That the lowest piece-work prices payable for the following kinds of work shall be:—

Work.	Where Performed.	Schedule to which Subject.	Between 8 a.m. and 6 p.m. Per 1,000 ens.	Between 6 p.m. and 8 a.m. Per 1,000 ens.
Slug-casting machine work ..	In daily newspaper offices ..	Third ..	3½d.	4d.
" " " ..	" " " ..	Second ..	4½d.	4½d.
			Between 7 a.m. and 6 p.m. Per 1,000 ens.	Between 6 p.m. and 7 a.m. Per 1,000 ens.
Slug-casting machine work ..	In any other place ..	Second ..	4½d.	4½d.
Slug-casting machine work—slugs over 10 point ..	In any place ..	Second ..	4½d.	5d.
For all kinds of English composition—				
From ruby to pica inclusive ..	In any other place ..	First ..	1s. 5d. per 1,000 ens	
Above pica and below ruby ..	In any other place ..	First ..	1s. 7d. per 1,000 ens	

SCHEDULES REFERRED TO.

FIRST SCHEDULE.

Hand Composition Scale.

1. All kinds of composition entirely in a foreign language shall be done on time, unless compositors are employed of the same nationality as the language in which the work is composed.
2. All kinds of music composition, Greek, Hebrew, or dead languages, shall be done only on time.
3. Alterations from copy to be done by the "house," or charged for every line passing through the stick, and all marks in revises not appearing in the first proof to be corrected by the "house."
4. All kinds of composition in the English language shall be cast up at the standard rate per 1,000 en quads; where the twenty-six lower-case letters are less than the twenty-six en quads the cast up shall be by the lower-case letters; a thick space to be considered as an en quad in width. Em and en quads, or whatever may be used at the beginning or end of lines, to be reckoned in the width. Bastard founts to be cast up to the width of the smaller body of the founts to which they belong.
5. All persons employed on column or tabular matter, with or without headings or rules:—Two columns—two justifications or arrangements to constitute half-measure—1s. 11d. per 1,000 ens. Three columns—three justifications or arrangements—2s. 1½d. per 1,000 ens. Four columns—four or more justifications or arrangements—2s. 10d. per 1,000 ens. In all cases where braces are to be pieced each brace shall constitute a column.

FIRST SCHEDULE—*continued.*

6. Tabular or column matter with headings in smaller type than the body is to be cast up at the relative value of the two bodies.

7. Introductory lines or footnotes attached to table matter not exceeding six lines each to be charged as part of the table.

8. Matter consisting of subscribers' names, with the sums of money run out to the end of the line; names of horses, with st. and lb. run out; measurements of land, with acres, roods, and perches run out take no extra charge; but where there are two columns of such figures brought into the same width, 1s. 11d. per 1,000 ens; three columns, 2s. 1½d. per 1,000 ens; four or more columns, 2s. 10d. per 1,000 ens. In all matter which requires casting-off to ascertain proper widths for the purpose of ranging (whether such matter consists of words or figures) each width or ranging shall be considered a column—with or without rules or headings.

9. Run-on matter, such as is shown in Appendix B, and other matter of a similar character, causing extra delay and trouble to the compositor, 1s. 11d. per 1,000 ens.

10. Takings composed with ancient spelling, or dialect, 2s. 1½d. per 1,000 ens.

11. All matter with a border round, whether formed of rules, letters, or otherwise, 2s. 10d. per 1,000 ens.

12. Algebraical workings to be charged 2s. 10d. per 1,000 ens; matter interspersed with algebraical signs, 2s. 1½d. per 1,000 ens.

13. Narrow measures (other than tabular):—Ten ems pica and over, at 1s. 5d. per 1,000 ens; eight ems and under ten, 1s. 9½d. per 1,000 ens; four ems and under eight, 2s. 1½d. per 1,000 ens; under four ems, 2s. 10d. per 1,000 ens.

14. All lines composed away from the frame, 2s. 10d. per 1,000 ens.

[NOTE.—1s. 9½d. = 1½; 1s. 11d. = 1½; 2s. 1½d. = 1½; 2s. 10d. = double.]

SECOND SCHEDULE.

Linotype and Monotype Work.

1. All kinds of composition in the English language shall be cast up at the standard rate per 1,000 en quads; a thick space over to be considered as an en quad in width. Em and en quads, or whatever may be used at the beginning or end of lines, to be reckoned in the width. Bastard founts to be cast up to the width of the smaller body of the founts to which they belong. Provided that multipliers shall not be less than in Appendix D.

2. All persons employed on column or tabular matter cast on one bar:—Two columns—two justifications or arrangements to constitute half measure—5½d. per 1,000 ens. Three columns—three justifications or arrangements—6¾d. per 1,000 ens. Four columns—four or more justifications or arrangements—8½d. per 1,000 ens. (The above charges are to be made whether the matter is with or without headings or rules.)

3. Matter requiring two bars to complete one measure (not being tabular matter), 5½d. per 1,000 ens; three, 6¾d. per 1,000 ens; four or more, 8½d. per 1,000 ens.

4. All lines cast by the machine shall be charged as full lines, except when the vyce-jaw is reduced, when the full measure will be charged only for the first twenty lines.

5. Run-on figure matter (such as timber and wool sales and similar matter), 5½d. per 1,000 ens. (See Appendix B for sample.)

6. All matter with a border round, whether formed of rules, letters, or otherwise, 8½d. per 1,000 ens.

7. Matter of and above four lines composed in other than ordinary English (e.g., dialects), 6¾d. per 1,000 ens; and foreign languages, 8½d. per 1,000 ens.

8. One line extra shall be charged for each word of small caps, italic, clarendon, fed in by hand, but where such words are set on the keyboard one line extra shall be charged for each line containing such words, excepting small caps, which shall be charged one line extra for each word. When double-letter matrices are used, matter set on the upper tier amounting to over twenty-five continuous lines shall be charged 6¾d. per 1,000 ens, and matter comprising twenty-five lines or under shall be charged 8½d. per 1,000 ens.

9. Matter having to be transposed by the operator (i.e., which is not set up in the order in which it appears in copy), 5½d. per 1,000 ens. Illegible or indistinct copy, 5½d. per 1,000 ens.

10. All first-proof and revise corrections (marks left undone in the first proof) to be done by the operator. "House" marks to be charged 8½d. per 1,000 ens if done by the operator. All "slugging" to be done by the "house."

11. All types above 10 point in size shall be charged ½d. per 1,000 ens extra, and 14-point type shall be charged by the 10-point multiple in addition.

12. All matter set from books or copy that will not go in the copy-tray, 5½d. per 1,000 ens.

13. Alterations from copy in the first proof to be charged at the rate of 8½d. per 1,000 ens for every line affected by such alterations. Authors' proofs to be charged at the same rate, but not less than twelve lines to be charged for any author's proof. The "house" shall be entitled to correct all revises or authors' marks on time.

14. Twelve lines of 16 ems pica or less, or their equivalent in wider measure, shall constitute a machine "take" of copy.

15. Matrices coming down wrong channel, transposition of matrices, repeated missing of matrices, matrices repeating of their own accord, space bands transposing, and sunken letters shall constitute machine errors, and shall be charged as "house" marks, provided that the attention of the engineer shall have been called to such defect, and he shall have failed to remedy the matter.

16. Changing or altering mould in linotype machine, 5d.; changing magazine, 5d.; emptying and refilling magazine, 1s. 3d. Mergenthaler models Nos. 8 and 9 to be excepted in so far as changing magazine only is concerned.

SECOND SCHEDULE—*continued.*

17. Changing or altering mould in monoline machine, 6d. ; changing magazine, 3½d. ; emptying and refilling magazine, 1s. 3d.

18. Slugs of 26 ems pica and over set in six point or smaller to be charged ½d. per 1,000 ems extra ; measures of 27 ems pica and over set in type larger than six point to be charged ½d. per 1,000 ems extra.

19. Balance-sheets to be charged not less than one-third extra.

[Note.—5½d. = 1½ ; 6½d. = 1½ ; 8½d. = double.]

THIRD SCHEDULE.

Linotype or Monoline Work in the Offices of Daily (Morning or Evening) Newspapers, and Weekly or other Newspapers connected therewith.

1. All kinds of composition in the English language shall be cast up at the standard rate per 1,000 en quads. Where the twenty-six lower-case letters are less than the twenty-six en quads the cast-up shall be by the lower-case letters ; a thick space to be considered as an en quad in the width. Em and en quads, or whatever may be used at the beginning or end of lines, to be reckoned in the width. Bastard founts to be cast up to the width of the smaller body of the founts to which they belong.

2. Matter consisting of subscribers' names, with the sums of money run out to the end of the line ; names of horses, with st. and lb. run out ; measurements of land, with acres, roods, and perches run out, and matter of a similar nature (see Appendix A), take no extra charge ; but where there are two columns of such figures brought into the same width, one-third extra to be charged ; three columns, one-half ; four or more columns, double. Other matter which requires casting off for the purposes of ascertaining proper widths for the purposes of ranging (whether such matter consists of words or figures) each width or ranging to be considered a column, whether with or without rules or headings.

3. Run-on figure-matter, that is to say, matter corresponding with specimens (see Appendix B), shall take a charge of one-third extra.

4. All matter with a border round, whether formed of rules, letters, or otherwise, to be charged double if set on the machine.

5. Piece hands kept waiting for copy shall charge at the ordinary time rate. Under four minutes at any time not charged ; four minutes or over to be cumulative during the shift ; time thus accumulated to be charged as follows :—Eight minutes, quarter of an hour ; twenty-five minutes, half-an-hour ; thirty-five minutes three-quarters of an hour ; fifty minutes, one hour.

6. Illegible or indistinct copy is to be charged one-third extra, subject to the approval of the Printer. Instructions as to type, leads, &c., to be written on the first slip of copy.

7. All advertisements set in type larger than the standard shall be charged by depth according to the standard type of the advertisement columns.

8. Tabular or column matter, with headings in smaller type than the body, is to be cast up according to the relative value of the two bodies.

9. Introductory lines or footnotes attached to tabular matter not exceeding six lines each to be charged as part of the table.

10. All leads, other than those used in making up, to be charged by the compositor or operator ; but if matter composed solid shall be afterwards leaded by the "house," the value of the leads shall be the property of the piece companionship.

11. All appearing lines to be charged.

12. Compositors or operators called on time for any description of "house" work to charge not less than one hour, beyond that the fractional parts of an hour to be charged at the ordinary time rate.

13. Men employed on morning papers brought in to produce extra issues on Saturdays or on Sundays before the usual hour for taking up copy shall be paid double rates for a minimum shift of three hours. When brought in for extra issues before the time fixed for taking up copy at other times, a minimum of three hours at ordinary rates shall be paid. Men employed on evening papers brought in to produce extra issues on Saturday nights or on Sundays shall be paid double rates for a minimum shift of three hours. When brought in on other nights for extra issues, a minimum of three hours at ordinary rates shall be paid. Men brought in for extra issues shall not be required to set stock copy, but will be required to do any work necessary for the production of the issue.

14. All stoppages of five minutes and upwards on morning, evening, and weekly papers connected therewith, to be cumulative, and are to be charged at the ordinary time rate of the office, provided the machine stoppage is not caused by the fault of the operator.

15. The following are the extra charges to be made for column or tabular matter cast on one bar :—Two columns—two justifications or arrangements—to constitute half measure, one-third extra. Three columns—three justifications or arrangements—to take the charge of one-half extra. Four columns—four or more justifications or arrangements—to be charged double. (The above charges are to be made whether the matter is with or without headings or rules.) For specimens of the above see Appendix C.

16. All lines cast on the machine shall be charged as full lines.

17. Matter requiring two bars of the ordinary measure of the papers to complete one measure (not being tabular matter) to be charged one-third extra ; three, one-half extra ; four or more, double.

18. One line extra shall be charged for each word of small caps, italics, clarendon, &c., fed in by hand ; but where such words are set on the keyboard one line extra shall be charged for each line containing such words, excepting small caps, which shall be charged one line extra for each word.

19. Where advertisement dividing rules do not appear, one line shall be allowed for every advertisement that might carry the rule.

20. Matter having to be transposed by the operator (i.e., which is not set up in the order in which it appears in copy) shall be charged one-third extra.

21. All first-proof and revise corrections (marks left undone in the first proof) to be done by the operator. "House" marks to be charged double if done by the operator. All "slugging" to be done by the "house." The "house" shall be entitled to correct all revises or authors' proofs on time.

THIRD SCHEDULE—continued.

22. All matter set from books or copy that will not go on the copy tray to be charged one-third extra.

23. Twelve lines of 13-ems pica or less, or their equivalent in wider measure, to constitute a machine "take" of copy. Copy given out at one time, whether referring to different articles or not, shall constitute one "take."

24. That matrices coming down wrong channel, repeated transposition of matrices, repeated missing of matrices, matrices repeating of their own accord, space bands transposing, and sunken letters shall constitute machine errors, and shall be charged as "house" marks provided they are not caused by fault of operator. The attention of the engineer shall immediately be called to such defect.

25. All displayed advertisements to be charged at movable piece rate. The "house" shall have the option of composing same on time, the matter afterwards to be charged by the piece companionship at machine rates.

26. Operators shall complete all "takes" as far as possible on machine, but where such "take" requires type heading, leads, rules, rules to advertisements, whiting, cutting, fitting, or extension of any kind, all such work required to complete "take" shall be done by the "house," the completed "take" as appearing to be charged by the operator. Leads cast on the bar shall be charged by the operator.

27. No charge for standing time shall be made for the first change of magazine during the night or day's work, but for any subsequent change standing time shall be charged.

28. If a machine is changed by order to a different type, the operator shall not be required to change it again to make corrections, which shall be done by the operator on a vacant machine.

29. Any machine hand required to go upon time to be paid at the ordinary time rate. The same rate of payment to apply to any case hand sent temporarily to machine, and to any machine hand sent temporarily to case.

30. Matter of and above four lines composed in other than ordinary English (e.g., dialects) to be charged one-half extra, and foreign languages double for each line.

31. All block headings, let-in or other blocks in news or advertisements shall be charged by the operator. In permanently illustrated papers the "house" shall be entitled to all blocks, illustrations, &c., except in advertisements, blocks in which shall be charged by the operator.

32. Alterations from copy in the first proof to be charged at the rate of two lines for every line affected by such alterations. Authors' proofs to be charged at the same rate, but not less than 12 lines to be charged for any number of authors' proof or copy given out at one time. The "house" shall be entitled to correct all revises or author's marks on time.

33. Standing advertisements are the property of the employer until they are given out for distribution. Alterations in standing advertisements must be charged at the rate of two lines for each line "set." Where such alterations affect more than half the length of the advertisement, if 12 inches or under, or three-fourths if above 12 inches, the whole to be given out as ordinary copy. All extensions to standing advertisements, whether by "leading" or "whiting out," to be charged in lines by the operators.

34. If any difficult matter should in the opinion of the Printer take an extra charge, the same shall be granted by the "house," and the charge settled by the specimens mutually agreed to.

35. All newspapers composed on the piece system shall be given out to the piece hands in their entirety. No undue advantage shall be permitted to one hand over another, and all advantageous matter shall be equitably divided in such manner as the piece hands may decide.

APPENDIX A.

Common and Cut-in Matter.

				£	s.	d.
Mrs. Jones, N. Melbourne	10	5	0
Mr. Hammond, Richmond	5	5	0
Miss Hemingway, Carlton	0	2	6
				£15	12	6

Benevolent Asylum:—

General Expenses	£2,377	2	9
Interest on moneys borrowed	396	4	1
Principal repaid	800	0	0
			<hr/>		
			£3,573	6	10

Alfred Hospital:—

Current expenses	£25	5	0
Medicines	90	11	6
Spirits, &c.	40	15	8
				£156	12 2
Less various deductions	10	4	6
				£146	7 8

[The first portion of the preceding specimen is plain matter, but the cut-in matter in the second portion takes a charge of one-third extra; and that in the third portion of one-half extra.]

APPENDIX B.

MINING QUOTATIONS.—Tuesday's sales and quotations :—War Loan Bonds, £100 12/6, £10 Bonds, £10 1/. Melbourne Electric, 30/4½, New wheat scrip, 7d. S.A. Brewing, 11/7½, Hampden, 25/4½, b. 25/, s. 25/6. Mt. Lyell, b. 28/3, s. 29/3. Wallaroo, b. 55/, s. 55/3. Block 10, b. 24/3, s. 25/. Block 14, ord., 9/6.

TIMBER AND WOOL SALES.—Timber.—Retail prices for kauri pine are as follows :—Flooring and lining at per 100 feet lineal :—Finished size : 4 x ½, T. and G. (V.J. or Bd.), 14/, 11/9, and 9/6 ; 4 x ¾, do., 14/9, 12/6, and 10/6 ; 4 x 1, 17/6, 15/, and 12/3 ; 4 x 1½, 17/9, 15/, and 12/6 ; 4 x 2, 21/3, 18/.

PAWNBROKERS' SALES.—S.S. Key, Watch, 4/2/17 ; ½-h. dia. and saph., r., 4/2/17 ; 15-c. g. bangle, 5/2/17 ; 15-c. g. Walt. watch, 6/2/17 ; E.P. cruet and stand, 7/2/17 ; 18-c. dia. and turq. r., 8/2/17.

LAWN TENNIS.—Schools Combined Doubles.—R. C. Tuck (Wesley) and Miss Boyd (P.L.C.) beat J. R. Aitken (S.C.) and Miss N. Grant (Clyde), 5—6, 6—5 ; C. Fitts (C.E.G.S.) and Miss S. Shuter (Toorak Col.) beat G. Whitmore (S.C.) and Miss Wright (P.L.C.).

UNIVERSITY EXAMINATIONS.—Surveying, Part I.—Honor Candidates.—Obtained Honors : No. 1249, 1254, 1258. The following candidates have passed :—No. 1244, 1245, 1246, 1247, 1250, 1257. Pass Candidates.—Passed ; No. 1248, 1253, 1256, 1260.

EGG LAYING COMPETITION.—Section "B."—Individual Birds.—Class 2 (Leghorns, Dry Mash).—Izard and Tierney (White Leghorns), 168 ; A. Chung (White Leghorns), 165 ; T. A. Pettigrove (White Leghorns), 163.

DOUBLE CHARGE.—CANDIDATES.—PASSES : Nos. 20, 25, 34, 92, 120, 138, 170, 172, 178, 209, 214, 226, 228, 235, 265, 292, 307, 345, 359, 361, 443, 447, 451, 467, 480, 497, 515, 517, 526, 539, 642, 752, 760, 793.

APPENDIX C.

Two Columns—One-third Extra.

London (Euston Station), Newcastle, Durham	£6 10 0	£5 5 0
Edinburgh, Glasgow, Hull, Bristol, Carlisle, Darlington, Scarborough	6 6 0	5 5 0
Worcester, Cheltenham, Gloucester, Ox- ford	5 15 0	4 15 0
Birmingham, Rugby, Leamington, Co- ventry	5 5 6	4 5 6

Contents for June :

- I. Birds of Prey. A Novel. By the Author of "Lady Audley's Secret," &c. Illustrated by M. Ellen Edwards.
 II. The Dinner at Richmond. Illustrated by Alfred Thomson.
 III. Brio-a-Brac Hunting. By Major Byng Hall.

THEATRICAL.

NELLIE STEWART. THIRD WEEK
 NELLIE STEWART. of
 NELLIE STEWART. Overflowing. Intelligent.
 NELLIE STEWART. Laughing. Screaming.

Three Columns—One-half Extra.

INTEREST ALLOWED ON DEPOSITS.

7 per cent. per annum for 3 years
 7 " " 12 months
 6 " " 6 months
 5 " " shorter terms

	s.	d.	s.	d.	
Bronze Lamps, full size	10	0	to	20	0
Porcelain, plain and ornamented	16	0	to	25	0
Crystal, richly cut	25	0	to	45	0
Bronze Pillar Lamps, full size	12	6	to	21	0

	£	s.	d.	Date.
Acadia Catherine	0	0	5	Nov. 16
Broken Hill	1	0	0	Nov. 24

	1902.	1903.
	Carcasses.	Carcasses.
Australia	111,745	95,051
New Zealand	412,349	492,269

To-day's quotations, ex granary, are as follow :—

	Per 496 lb.
Australian Wheat	35/ to 35/6
New Zealand, long-berried, fine	34/ " 34/6
" " medium	33/6 " 34/6
" " inferior	— " —
" short-berried, fine	33/ " 34/

TWO LONDON SUCCESSES.

THE MERRY WIDOW and CATCH OF THE SEASON
 THE MERRY WIDOW CATCH OF THE SEASON
 THE MERRY WIDOW CATCH OF THE SEASON

Washed combing merino	2d.	to	2½d.	per lb.
do. clothing do.	2½d.	to	3d.	"
Scoured combing "	2½d.	to	3½d.	"
do. clothing do.	2d.	to	2½d.	"

	Age.	st.	lb.
Mouser	3	5	12
Kidnapped	3	5	12
Shakespeare	3	5	12

APPENDIX C.—continued.

Order of Merit.	Marks.
21. Knox, J. M.	1595
22. Craig, R. M.	1565
23. McRobin, A. A.	1565
No.	Votes.
1. Bentley, Edwin Thomas	217
19. Wills, Thos. Wm.	192

Four Columns or More—Double.

	For Length of Ear.	Length.	Width.	Age.
				m. d.
Mr. Beere's blue and white doe	20½ in.	5½ in.	7	6
Mr. Beere's black doe	1½ ft.	5½ in.	7	6
Despatch Boxes, fitted, complete	18s. 6d.	28s. 6d.	14s.	9d.
Writing Cases, portable, leather	4s. 6d.	7s. 6d.	19s.	6d.

	No.	Amount.	Premiums Received.	Income.
		£ s. d.	£ s. d.	£ s. d.
Proposals received	37	11,169 6 10	—	—
Proposals completed and policies issued ..	27	7,536 12 10	151 5 5	351 14 5
Mr. Barnett	4	7 7 0 7 9 9	4 4 9 9 4 4 9	13
Mr. Pope	7	7 8 8 8 9 7 6	4 4 4 4 4 4 4	26
Names.			Birds.	Total.
Captain Geo. Cozens	1	0 0 1 0 1 0	1 0 1 0	ret.—4
Marquis of Belmont	1	0 0 0 0 1 0 1 1	1 0 1 1	—5
Bonds—Nos. Forfeited.				
12,578	3,786	2,876	1,284	
3,669	5,941	341	3,796	
Benevolent				
	Fund.	Foundation.	Annual.	
	£ s. d.	£ s. d.	£ s. d.	
J. Smith	10 7 6	16 0 0	5 0 0	
H. Thompson	100 0 0	—	10 10 6	
Sir J. Harriott	—	20 3 6	2 2 0	
The Stationers' Coy.	10 6 0	20 0 0	—	

APPENDIX D.

LINOTYPE MULTIPLES.

Measure.	Nonp. or 6 pt.	Brev. or 8 pt.	L. P. or 10 pt.	S. Pica or 11 pt.	Pica or 12 pt.	English or 14 pt.
12 ems and under ..	52	40	40	—	—	40
13 ..	52	40	40	—	—	40
14 ..	56	43	40	—	—	40
15 ..	60	47	40	—	—	40
16 ..	64	50	42	40	42	42
17 ..	68	53	45	40	—	45
18 ..	72	56	48	41	42	48
19 ..	76	59	50	43	—	50
20 ..	80	62	53	47	42	53
21 ..	84	65	55	49	42	55
22 ..	88	68	58	51	44	58
23 ..	92	71	60	53	—	60
24 ..	96	74	64	55	48	64
25 ..	—	77	66	58	—	66
26 ..	—	80	69	60	52	69
27 ..	—	83	71	63	—	71
28 ..	—	86	74	65	56	74
29 ..	—	89	77	67	—	77
30 ..	—	92	80	70	60	80

E. NOTLEY MOORE, P.M.,
Chairman.

Melbourne, 22nd June, 1920.