

VICTORIA GOVERNMENT GAZETTE

Published by Authority.

[Registered at the General Post Office, Melbourne, for transmission by post as a newspaper.]

No. 79.]

MONDAY, JULY 10.

[1922.

CONTRACTS ACCEPTED.

(SERIES 1922-23.)

SUPPLY OF PROVISIONS

FROM

1st JULY, 1922, TO 30th JUNE, 1923, OR AS STATED.

J. G. WHITE,
Secretary Tender Board,

No. 79.—5142.

CONTRACTS ACCEPTED.—(Series 1922-23.)

No. of Contract.	Particulars of each Tender Accepted.	Amount.	Name of Contractor.	Charged against Vote or Fund.
	PROVISIONS—			
	Supply of Provisions, in such quantities as may be ordered, from 1st July, 1922, to 30th June, 1923. (For Butter and Cheese see <i>Government Gazette</i> of 8th March, 1922, pages 733 and 734.)			
	Melbourne District—			
...	Beer and spirits	Rates as per annex	Purchase	
113	Bread, Kew Asylum	Ditto	J. N. Hennessy	
114	Bread, Yarra Bend Asylum	Ditto	J. N. Hennessy	
115	Bread, Melbourne	Ditto	J. N. Hennessy	
116	Flour and maize meal	Ditto	H. R. Rush	
117	Groceries	Ditto	Moran and Cato Pty. Ltd.	
118	Oatmeal, rice, &c.	Ditto	Moran and Cato Pty. Ltd.	
119	Jams	Ditto	Moran and Cato Pty. Ltd.	
120	Meat, Kew Asylum	Ditto	F. Watkins Pty. Ltd.	
121	Meat, Yarra Bend Asylum	Ditto	F. Watkins Pty. Ltd.	
122	Meat, Pentridge Penal Establishment	Ditto	J. H. Cook, jun.	
123	Meat, Melbourne Gaol, &c.	Ditto	J. H. Cook, jun.	
...	Milk, Melbourne Gaol and Richmond House	Ditto	Purchase	
124	Potatoes	Ditto	H. McDonough	
125	Soap	Ditto	Moran and Cato Pty. Ltd.	
126	Tea	Ditto	Henry Berry and Co. Pty. Ltd.	
127	Tobacco	Ditto	Dudgeon and Arnell Pty. Ltd.	
	Greenvale—			
...	Bread	Ditto	Purchase	
128	Groceries	Ditto	Moran and Cato Pty. Ltd.	
129	Meat	Ditto	W. Angliss and Co. Pty. Ltd.	
	Mont Park—			
130	Breadstuffs	Ditto	Langridge Bros.	
131	Groceries	Ditto	Henry Berry and Co. Pty. Ltd.	
132	Jams	Ditto	Moran and Cato Pty. Ltd.	
133	Meat	Ditto	F. Watkins Pty. Ltd.	
134	Potatoes	Ditto	H. McDonough	
135	Tea	Ditto	Henry Berry and Co. Pty. Ltd.	
	s.s. Rip and Dredges—			
...	Breadstuffs	Ditto	Purchase	
136	Groceries	Ditto	Moran and Cato Pty. Ltd.	
137	Meat	Ditto	W. Angliss and Co. Pty. Ltd.	
...	Vegetables	Ditto	Purchase	
	Ararat District—			
138	Breadstuffs	Ditto	Wm. Bates	
139	Groceries	Ditto	Henry Berry and Co. Pty. Ltd.	
140	Jams	Ditto	Ballarat Jam Co. Pty. Ltd.	
141	Meat	Ditto	A. Murphy	
142	Potatoes	Ditto	J. Gunn and Co.	
143	Tea	Ditto	Henry Berry and Co. Pty. Ltd.	
	Beechworth District—			
144	Breadstuffs	Ditto	W. Price	
145	Groceries	Ditto	Moran and Cato Pty. Ltd.	
146	Meat	Ditto	J. R. Newey, jun.	
147	Potatoes	Ditto	H. McDonough	
148	Tea	Ditto	Henry Berry and Co. Pty. Ltd.	
	Ballarat District—			
149	Breadstuffs	Ditto	Ballarat Co-operative Distribution Society Ltd.	
150	Groceries	Ditto	Moran and Cato Pty. Ltd.	
151	Jams	Ditto	Ballarat Jam Co. Pty. Ltd.	
152	Meat	Ditto	W. Angliss and Co. Pty. Ltd.	
153	Potatoes	Ditto	Gunn and Co.	
154	Tea	Ditto	Henry Berry and Co. Pty. Ltd.	
	Geelong District—			
155	Breadstuffs	Ditto	N. Brownbill and Co.	
156	Groceries	Ditto	Corio Stores	
157	Meat	Ditto	M. G. O'Brien	
158	Milk	Ditto	S. H. Warren	
	Lara—			
159	Breadstuffs	Ditto	F. Samblebe	
160	Groceries	Ditto	Moran and Cato Pty. Ltd.	
161	Jams	Ditto	Moran and Cato Pty. Ltd.	
162	Meat	Ditto	W. Angliss and Co. Pty. Ltd.	
163	Potatoes	Ditto	H. McDonough	
	Sunbury District—			
164	Breadstuffs	Ditto	T. Clyne and Son	
165	Groceries	Ditto	Henry Berry and Co. Pty. Ltd.	
166	Jams	Ditto	Moran and Cato Pty. Ltd.	
167	Meat	Ditto	F. Watkins Pty. Ltd.	
168	Potatoes	Ditto	H. McDonough	
169	Tea	Ditto	Henry Berry and Co. Pty. Ltd.	
	Bendigo District—			
170	Bread	Ditto	F. W. Beischer	
171	Groceries and potatoes	Ditto	Moran and Cato Pty. Ltd.	
172	Meat	Ditto	H. Gittens	

Contingencies,
1922-23.

CONTRACTS ACCEPTED.—(Series 1922-23)—continued.

No. of Contract.	Particulars of each Tender Accepted.	Amount.	Name of Contractor.	Charged against Vote or Fund.
	PROVISIONS—continued.			
	Supply of Provisions, in such quantities as may be ordered, from 1st July, 1922, to 30th June, 1923:—			
	Castlemaine District—			
173	Bread	Rates as per annex	M. Van Heurck	
174	Groceries and potatoes	Ditto	Moran and Cato Pty. Ltd.	
175	Meat	Ditto	J. Williamson	
	Sale District—			
	Bread	Ditto	Purchase	
	Groceries and potatoes	Ditto	Purchase	
176	Meat	Ditto	Ronchi Bros.	
	Rutherglen—			
177	Bread	Ditto	E. E. King	
178	Groceries	Ditto	Moran and Cato Pty. Ltd.	
	Wahgunyah—			
	Bread	Ditto	Purchase	
179	Groceries	Ditto	J. C. Parsons	
180	Meat	Ditto	D. Innes	
	School of Forestry, Creswick—			
181	Bread	Ditto	C. C. Bowley	
182	Groceries	Ditto	J. Tait and Son	
183	Meat	Ditto	H. H. Wood	
184	Milk	Ditto	E. E. Pollard	
	McLeod Settlement, French Island—			
185	Bread	Ditto	E. C. Spalding	
	Groceries	Ditto	Purchase	
186	Meat	Ditto	E. W. Missen	
	Aborigines (Coranderrk)—			
187	Bread	Ditto	J. Roy	
188	Groceries	Ditto	Moran and Cato Pty. Ltd.	
	Aborigines (Lake Tyers)—			
189	Bread	Ditto	F. Manners	
190	Groceries	Ditto	L. T. Freeman	

Contingencies,
1922-23.

Approved—W. M. McPHERSON Treasurer.

STIPULATIONS FOR SUPPLIES OF PROVISIONS.

Special attention is drawn to note *re* Bread, Flour, Butter, Cheese, and Potatoes *re* varying rates from time to time.

(Where practicable, all items must be manufactured or prepared within the Commonwealth.)

Under all Sub-schedules particular attention is drawn to Clause 1 of the Condition as to quality.

BEER AND SPIRITS.

For brandy, whisky, and for Guinness' porter in case, delivery will be taken at and from the bond.

The contractor will be bound to supply such of the brands named in the tender as the departments may order. In cases where delivery from the bond is taken by the Government, the contractor will be required to hand to the secretary to the Tender Board the bond certificate and the locker's order and a copy of the entry, and pay all charges, including re-auging, before delivery is taken.

English ale, brandy, whisky, and Guinness' porter in case must be delivered as imported; if bottled in the State it will not be accepted.

BREAD.

Attention is directed to the following copy of section 8 of the *Bakers and Millers Act 1915*—"All bread except rolls as hereinafter provided shall be sold by the several bakers or sellers of Bread respectively in loaves of one pound, two pounds or four pounds weight, and not otherwise."

In the event of any increase in the price of Flour, consequent upon the increase in the price of Wheat and proportionate thereto, between the date fixed for receiving Tenders and the termination of the Contract period, an allowance will be made—

A—In the case of Bread, at the rate of 9d. per cental for each £1 per ton increase in the price of Flour;

B—In the case of Flour, equal to the increase in the market rate.

The prices for Bread are based on the Ruling Rate of £13 2s. 6d. per ton.

Should a decrease take place in the price of Flour, corresponding deductions will be made in the payments for Bread and Flour.

Samples of the best ordinarily retailed to the public will be considered as test loaves for first quality for fine wheaten and pure wheaten Meal Bread. Third quality (that issued to prisoners of the Crown) to be made of flour, fine sharps, the produce of prime, strong, thin-skinned, good-coloured wheat, to be perfectly free from coarse pollard or other offal. *Pure wheaten Meal Bread of first quality may be substituted, wholly or in part, for fine wheaten Bread at such times and in such quantities as in the opinion of the Medical Superintendent may be deemed necessary, and the contractor will be required to supply such Bread at the contract rate.* Reasonable notice, however, of the intention to substitute wheaten Meal Bread must be given to the contractor by the officer ordering the supply. Bread may be baked at any Government establishment without infringing these contracts. At the Gaols, Ballarat, Geelong, Bendigo, Castlemaine, and Sale, if required, bread must be supplied one day old, due notice to be given to the contractor of such requirement.

Under sub-schedules for Bread no unbletting will be allowed; all work must be carried out by the contractor; every person engaged in the manufacture, preparation, or delivery of the bread tendered for in these sub-schedules shall be paid such wages and shall be employed subject to such conditions as are or may be determined by any Wages Board under the provisions of the Factories and Shops Acts to which such persons are subject as employees; and a copy of these conditions shall be kept conspicuously and continually posted in legible Roman characters in the factory or shop (and in each part of the factory or shop where several rooms are in use) in which bread is prepared or manufactured under this contract. Any infringement of these conditions, or any breach of the said determinations, in the opinion of the Treasurer, will subject the contractor, upon report from the Tender Board, to such mulct, not exceeding Fifty pounds (£50), as the Treasurer may direct, and the amount will be deducted from the contractor's account or from the security money, and the Treasurer's decision shall be binding, final, and conclusive as to the fact of infringement, and in all other respects.

In the event of bread being made at any Government establishment in the Melbourne District, during the currency of these contracts, the flour required will be drawn under the flour and maize meal sub-schedule. The maize meal for all the country gaols is included in the sub-schedule for flour and maize meal, Melbourne District, and delivery of same will be required to be made at the Victorian Railways, Spencer-street.

Should a supply of any article which may be reasonably included in a Baker's Price List, and which is not included in the schedule hereunder, be required for the use of attendants and nurses resident at the Hospitals for the Insane or for inmates of any Government institution drawing supplies under sub-schedules for Bread during the currency of the contract, the contractor shall, with the exception of Ararat, Ballarat, and Beechworth, supply any such article at the current list rates at which it is retailed by the contractor to the public.

GROCERIES, CANDLES, SOAP, TEA, ETC.

Should the supply of any article which may be reasonably included in a Grocer's Price List, and which is not included in the schedule hereunder, be required for the use of the attendants and nurses resident at the Hospitals for the Insane or for inmates of any Government institution drawing supplies under sub-schedules for Groceries during the currency of the contract, the contractor shall, with the exception of Ararat and Ballarat, supply such article at the current list rates at which it is retailed by the contractor to the public.

As a guarantee of quality, Rice, when ordered in quantities of 50 lbs. and over, must be supplied in original bags as delivered by the miller or dresser. Such bags must be branded "Rice, Dressed," and shall also have stencilled thereon the miller or dresser's name. The bags thus stencilled shall contain Rice milled or dressed by the miller or dresser whose name appears thereon. Supplies not in conformity with the foregoing conditions will be absolutely rejected. Oatmeal must be supplied in original bags as delivered by millers.

Candles, except those for prison cells, must be supplied in 1-lb. packets. Candles for prison cells must be delivered in boxes containing from 25 to 50 lbs. per box, the boxes for which must be legibly stencilled on one end, showing the estimated burning time and the gross, tare, and net weight of contents. The soap supplied must be hard throughout, ready for immediate use without waste. Soap for Lunatic Asylums is not included in these contracts. When the quantity admits, tea must be supplied in original and unopened packages, labelled, as landed.

Raisins and currants must be present season's, and where the quantity admits, be supplied in original boxes labelled 3 crowns.

For s.s. *Rip* a certain quantity of Biscuits and Preserved Meat are sometimes required in lieu of fresh meat and fresh bread, and are included to meet such contingency only.

The contracts are not to be considered broken, infringed, or vitiated by purchase of sugar from any Government Institution at any time during the currency of this contract.

BUTTER, CHEESE, AND JAMS.

Butter is to be delivered to the s.s. *Rip* in 1-lb. pats, in such quantities as may be ordered, and no excess over the quantity ordered will be received.

All Butter supplied, as well as the cases in which it is packed, must bear the impress stamp of the creamery manufacturing the Butter, otherwise it will be rejected. The Butter supplied may be tested at any time by the Government Dairy expert if it is considered by the officer ordering that the supply is not up to standard quality. The cheese must be fairly matured and packed in boxes for transport.

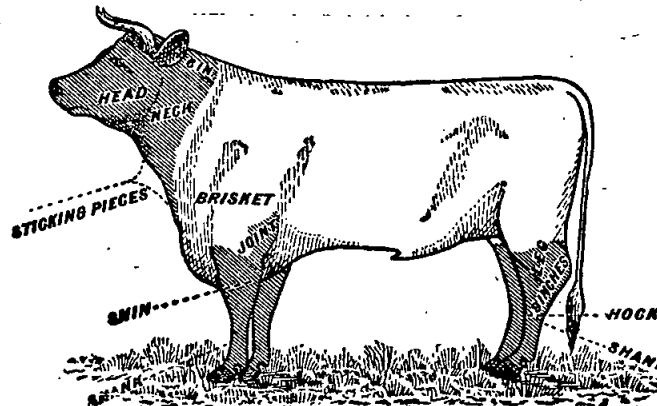
As regards butter for Ararat, Ballarat, Beechworth, Lara, Sunbury, and Mont Park all supplies delivered from Melbourne must be submitted by the contractor to the Government Dairy Expert in Melbourne for test as to standard quality, and, if found to be satisfactory, shall be forwarded by that officer direct to the Institution ordering, the cost of freight being borne by the contractor in the usual way.

N.B.—Jams.—The weight stamped on the tins in accordance with the regulations under the Commerce Act, as indicating the minimum net quantity that each tin contains, shall for the purpose of this contract be taken as the actual contents when computing the quantity supplied.

When Jam is supplied in jars the jars remain the property of the contractor, and must be removed by the contractor at his own expense when empty.

MEAT.

When fore and hind-quarters of beef are ordered for Hospitals for the Insane they must be supplied in the proportion of two of the former to one of the latter, and must be delivered as a whole



respectively, also extra buttocks separately when ordered. Meat for other institutions must be supplied as ordered. Where hind-quarters or buttocks are ordered, 9 inches must be cut off from the end of the leg from the hock upwards, i.e., the end of the leg from which the shank has been removed at the abattoirs; and when fore-quarters form a portion of the supply, 6 inches from the end of the neck and the whole of the shin at the clodbone joint must be removed. The sticking pieces also must be trimmed off, and the point and end of the brisket rendered free from blood and blood stains.

Fore and hind-quarters, for convenience of handling, may be cut into two parts, but each part is to bear evidence of having been cut from the same beast.

Corned beef, rolled or round, as ordered, must be supplied without bone or cartilage and will be received, whether pumped or prepared in the ordinary way by pickling, but in the former case must have been soaked after pumping for at least 48 hours, in a good pickle, and then thoroughly drained before supply. No flank, chuck, sticking piece, shin, leg of beef, or piece under 7 lbs. will be received.

Should the local supply of fresh meat become scarce, or the price of same become abnormally high, frozen or chilled meat may, with the consent of the Tender Board on the recommendation of the head of the Department, be supplied.

In cases of emergency, or on such other occasions as in the opinion of the Inspector-General of the Insane may seem advisable, other forms of meat such as rabbits, tinned meats, &c., may be purchased apart from the contract for Hospitals for the Insane, in lieu of the meat mentioned in the schedule, and substituted therefor, provided 24 hours' notice (except in cases of emergency) be given to the contractor of such intention.

The parts to be removed by the contractor are indicated by the shaded portions of the annexed diagram.

For Beachworth samples (corresponding to the description given in the schedule) of meat ordinarily retailed to the public will be considered as a test for quality.

As regards supplies for s.s. *Rip*, all Meat must be of prime quality, and must be supplied in equal quantities from ribs, sirloin, and thick flanks; mutton to be delivered in sides; all kidney fat to be removed; meat containing an undue proportion of fat will not be accepted. Chuck ribs will not be accepted in lieu of prime ribs. Live sheep to be supplied when required.

Should a supply of any article which may be reasonably included in a Butcher's Small Goods List, and which is not included in the schedule hereunder, be required for the use of attendants and nurses resident at the Hospitals for the Insane or for inmates of any Government Institution drawing supplies under sub-schedules for Meat during the currency of the contract, the contractor shall, with the exception of Ararat and Ballarat, supply such article at the current list rates at which it is retailed by the contractor to the public.

Under sub-schedules for Meat no subletting will be allowed, no delivery of meat shall be made on Sundays; all work must be carried out by the contractor. Every person engaged in the slaughtering and cutting up, preparation, or delivery of the meat tendered for in this sub-schedule, shall be paid such wages and shall be employed subject to such conditions as are or may be determined by any Wages Board under the provisions of the Factories and Shops Acts to which such persons are subject as employees; and a copy of these conditions shall be kept conspicuously and continually posted in legible Roman characters in the factory or shop (and in each part of the factory or shop where several rooms are in use) in which Meat is prepared under this contract. Any infringement of these conditions, or any breach of the said determination, in the opinion of the Treasurer, will sub-

ject the contractor, upon report from the Tender Board, to such mulct, not exceeding Fifty pounds (£50), as the Treasurer may direct, and the amount will be deducted from the contractor's account or from the security money, and the Treasurer's decision shall be binding, final, and conclusive as to the fact of infringement, and in all other respects.

MILK.

The milk must be fresh, pure, and of the best quality, and subject to test when required by the Department, and supplied at such times as the Department may require. Should the contractor fail to supply at the time specified in the order or at such times as may be indicated in any general notice to the contractor his contract may be cancelled forthwith and his security forfeited, or should the supply prove to be not of contract quality it will be rejected, and any expense incurred will be charged to the contractor.

Under sub-schedules for Milk no subletting will be allowed; all work must be carried out by the contractor; the hours of employment of any person engaged in the preparation or the delivery of the milk tendered for in these sub-schedules shall not exceed 60 hours per week, and every such person, except carters, shall be paid at a minimum wage of not less than £2 per week for juveniles, less deduction of 15s. per week for board and lodging, and not less than £4 per week for adults, less deduction of £1 per week for board and lodging, unless other wages may be determined by any Special Board under the Factories and Shops Acts during the currency of the contract, when every such person shall be paid such wages and shall be employed subject to such conditions as may thus be determined. Carters shall be paid such wages and shall be employed subject to such conditions as are or may be determined by the Carters Board under the Factories and Shops Acts. Should, however, the determination of the aforesaid Board not apply to the district covered by any particular schedule, that determination for carters, or the determination of such other Board as may be appointed for other employees during the currency of this contract shall, for the purpose of this contract, be taken as defining the rate of wages which shall be paid, and the conditions of employment in respect thereto; and a copy of these conditions shall be kept conspicuously and continually posted in legible Roman characters in the factory or dairy (and in each part of the factory or dairy where several rooms are in use) in which milk is prepared under these contracts. Any infringement of these conditions, in the opinion of the Treasurer, will subject the contractor, upon report from the Tender Board, to such mulct, not exceeding Fifty pounds (£50), as the Treasurer may direct, and the amount will be deducted from the contractor's account or from the security money, and the Treasurer's decision shall be binding, final, and conclusive as to the fact of infringement, and in all other respects.

POTATOES.

(Potatoes to be dry and free from dirt. Contractors to supply 117 lbs. of potatoes for each cwt. credited to him, and, in addition, to take back all rejected before being cooked.)

If the price of potatoes becomes abnormally high, the heads of the various departments concerned may, if they think fit, cause rice or any other suitable food to be occasionally substituted in lieu thereof.

TOBACCO.

Tobacco for country Hospitals for the Insane is included in the contract for Melbourne District, and delivery of same will be required to be made at Spencer-street.

Tobacco for country Gaols is not included in the contract for Melbourne District.

Schedule No. 1.

PROVISIONS—MELBOURNE
DISTRICT.

Sub-schedule No. 1.

BEER AND SPIRITS.

1. Ale (pints), English	per doz.	
2. Brandy, Australian, Standard, pure grape, of proof strength, and of approved brand (Manufacturer to be named)	per liq. gal.	
3. " bottled—Hennessy's Three Star, as imported	per bottle	
4. Lime Juice (Imperial quart bottles). Board of Trade Standard	per doz.	Purchase
5. Whisky, of proof strength—Loch Dhu, Scotch Cream, or any other brand of equal quality	per liq. gal.	
6. Porter—"Guinness," bottled (quarts) (Bottler to be named)	per doz.	
7. " "Guinness," bottled (pints) (Bottler to be named)	do.	

ANNEX TO CONTRACT NO. 1922/113.

J. N. Hennessy, 55 Sydney-road, Brunswick.

Sub-schedule No. 2.

BREAD FOR THE INSANE AT KEW (AND FOR HOSPITAL, STUDLEY HALL, IF REQUIRED).

Security, £100.

1. Bread—Fine wheaten, first quality	per cental	£ s. d.
		0 13 11

See note bread and flour.

ANNEX TO CONTRACT NO. 1922/114.

J. N. Hennessy, 55 Sydney-road, Brunswick.

Sub-schedule No. 3.

BREAD FOR HOSPITALS FOR THE INSANE AT YARRA BEND.

Security, £100.

1. Bread—Fine wheaten, first quality	per cental	£ s. d.
		0 13 11

See note bread and flour.

ANNEX TO CONTRACT NO. 1922/115.

J. N. Hennessy, 55 Sydney-road, Brunswick.

Sub-schedule No. 4.

BREAD FOR DEPARTMENT OF NEGLECTED CHILDREN AND REFORMATORY SCHOOLS, ROYAL PARK; RECEIVING HOUSE AND MENTAL HOSPITAL, ROYAL PARK; POLICE DEPÔT.

Security, £50.

1. Bread—Fine wheaten, first quality	per cental	£ s. d.
		0 13 7

See note bread and flour.

ANNEX TO CONTRACT NO. 1922/116.

H. R. Rush, 407 Collins-street, Melbourne.

Sub-schedule No. 7.

FLOUR AND MAIZE MEAL.

Security, £100.

1. Flour—Roller, first quality, to sample	per cental	£ s. d.
2. " Sharps, to sample	do.	0 13 7½
3. Maize Meal, to sample	do.	0 12 4½

See note bread and flour.

ANNEX TO CONTRACT NO. 1922/117.

Moran & Cato Pty. Ltd., Brunswick-street, Fitzroy.

Sub-schedule No. 8.

GROCERIES, ETC.

Security, £40.

1. Arrowroot—Queensland	per lb.	£ s. d.
2. Bicarbonate of Soda	do.	0 0 4
3. Blue—Of any brand ordered	do.	0 0 2½
4. Candles—Full weights, Kitchen's "Petrolines" or other make of equal quality, to be supplied in 1-lb. packets to sample	do.	0 0 10½
5. " Kitchen's "Petrolines" or other make of equal quality, for use in prison cells, to burn for 1, 1½, 2, 2½, and 3 hours respectively, as ordered, to sample for quality and size, to be supplied in candle boxes, containing from 25 to 50 lbs. per box	do.	0 0 9

GROCERIES—continued.

6. Candles—Carriage, equal to Kitchen's No. 8, in 1-lb. packets	per lb.	£ s. d.
7. " Paraffine	do.	0 0 7
8. Cocoa—Homeopathic, in ½-lb. packets, of any Commonwealth manufacture ordered	do.	0 1 3
9. " Homeopathic, in 7-lb. cartons, of any Commonwealth manufacture ordered	do.	0 0 9
10. Coffee—Fresh roasted and whole, beans to be thoroughly sound, Neilgherry A, to sample	do.	0 1 7
11. " Pure, fresh roasted and ground, to sample	do.	0 1 7½
12. Cornina	do.	0 0 7½
13. Cream of Tartar (substitute)	do.	0 1 5
14. Currants, 3 crowns, present season's	do.	0 0 8½
15. Essence of Lemon, 1-oz. bottles	per bottle	0 0 6½
16. Golden Syrup (in 7-lb. tins)	per tin	0 2 4
17. Lemon Peel	per lb.	0 0 10
18. Maizena (Australian)	do.	0 0 6
19. Mustard—"Double Superfine," of any Commonwealth manufacture ordered	do.	0 2 4½
20. Nutmegs	do.	0 1 3
21. Pearl barley	per cwt.	0 15 6
22. Pease—Split	do.	1 6 6
23. Pepper—Black, ground	per lb.	0 0 10
24. Pipes—Tobacco, clay	per doz.	0 1 2
25. Raisins—Sultana, 3 crowns, present season's	per lb.	0 0 10½
26. Salt—Fine	per cwt.	0 6 0
27. " Rock	do.	0 9 8
28. Soap, Toilet—Brown Windsor, in tablets, to sample	per lb.	0 1 0
29. " Carbollic, in half-pound bars, to sample	do.	0 0 9
30. " Glycerine, in tablets, to sample	do.	0 1 0
31. " Sunlight, in doublets	per dbt.	0 0 5
32. " Magic	per lb.	0 0 4
33. " Velvet	per dbt.	0 0 3½
34. Soap—Extract of, Hudson's, No. 8a, in 14-lb. boxes	per box	0 6 6
35. Soda—Washing	per cwt.	0 8 0
36. Starch—Of any brand ordered, to sample	per lb.	0 0 7
37. Treacle, in 7-lb. tins	per tin	0 2 1
38. Vinegar	per quart	0 0 3½
39. Lime Water	do.	0 0 6
40. Tapioca (Pearl)	per lb.	0 0 3½
41. Tomato Sauce (pints)	per bottle	0 0 8½

ANNEX TO CONTRACT NO. 1922/118.

Moran & Cato Pty. Ltd., Brunswick-street, Fitzroy.

Sub-schedule No. 9.

OATMEAL, RICE, AND SEED TAPIOCA.

Security, £80.

1. Oatmeal—Of any brand ordered	per cwt.	£ s. d.
2. Rice—Dressed, to sample	do.	1 4 6
3. Seed Tapioca (Sago), to sample	do.	1 4 0

ANNEX TO CONTRACT NO. 1922/119.

Moran & Cato Pty. Ltd., Brunswick-street, Fitzroy.

Sub-schedule No. 10.

JAMS (of Commonwealth Manufacture) FOR HOSPITALS FOR THE INSANE.
(Including Receiving House, Royal Park.)

Security, £20.

1. Jams—Assorted, of approved kinds, in the proportion of half seed and half stone, of the best quality, in tins	per lb. actual net weight	£ s. d.
		0 0 5½

ANNEX TO CONTRACT NO. 1922/120.

F. Watkins Pty. Ltd., 184 Bourke-street, Melbourne.

Sub-schedule No. 11.

MEAT (FRESHLY KILLED), FOR HOSPITALS FOR THE INSANE, KEW.

Security, £150.

1. Fresh Beef—Fore-quarters	per cental	£ s. d.
2. " " Hind-quarters	do.	0 17 6
3. " Buttock	do.	0 17 6
4. " Mutton	do.	0 17 6
5. Corned Beef, rolled or round, as ordered, without bone or cartilage	do.	0 17 6
6. Fresh Suet—Kidney	do.	2 1 8

ANNEX TO CONTRACT No. 1922/121.

F. Watkins Pty. Ltd., 184 Bourke-street, Melbourne.

Sub-schedule No. 12.

MEAT (FRESHLY KILLED), FOR HOSPITALS FOR THE INSANE,
YARRA BEND.

Security, £120.		£	s.	d.
1. Fresh Beef—Fore-quarters	... per cental	0	17	6
2. " " Hind-quarters	... do.	0	17	6
3. " Buttock	... do.	0	17	6
4. " Mutton	... do.	0	17	6
5. Corned Beef, rolled or round, as ordered, without bone or cartilage	... do.	0	17	6
6. Fresh Suet—Kidney	... do.	2	1	8

ANNEX TO CONTRACT No. 1922/122.

J. H. Cooke, junr., 378 Queen's Parade, Clifton Hill.

Sub-schedule No. 13.

MEAT (FRESHLY KILLED), FOR PENAL ESTABLISHMENT,
PENTRIDGE.

Security, £100.		£	s.	d.
1. Fresh Beef	... per cental	0	17	6
2. " Buttock	... do.	0	17	6
3. Corned Beef	... do.	0	17	6
4. Fresh Mutton	... do.	1	7	6
5. Dripping	... do.	0	17	6

ANNEX TO CONTRACT No. 1922/123.

J. H. Cooke, junr., 378 Queen's Parade, Clifton Hill.

Sub-schedule No. 14.

MEAT (FRESHLY KILLED), FOR MELBOURNE GAOL; POLICE BARRACKS,
ST. KILDA-ROAD; DEPARTMENT FOR NEGLECTED CHILDREN AND
REFORMATORY SCHOOLS, ROYAL PARK; RECEIVING HOUSE AND
MENTAL HOSPITAL, ROYAL PARK.

Security, £50.		£	s.	d.
1. Fresh Beef, as ordered	... per cental	0	19	0
2. " Buttock	... do.	0	19	0
3. " Mutton	... do.	1	9	0
4. Corned Beef, rolled or round, as ordered, without bone or cartilage	... do.	0	19	0
5. Fresh Suet—Kidney	... do.	0	19	0

Sub-schedule No. 15.

MILK FOR MELBOURNE GAOL.

1. Milk—Fresh and pure	... Purchase			
------------------------	--------------	--	--	--

ANNEX TO CONTRACT No. 1922/124.

H. McDonough, 518 Flinders-street, Melbourne.

Sub-schedule No. 17.

POTATOES.

Security, £100.

		£	s.	d.
1. Potatoes	... per cwt.	0	5	3

See note potatoes, page

Sub-schedule 18.

SUGAR.

1. Sugar—White, to sample	... per cwt.	{ Purchase from Maffra
2. " Ration	... do.	

ANNEX TO CONTRACT No. 1922/125.

Moran and Cato, Pty. Ltd., Brunswick-street, Fitzroy.

Sub-schedule No. 19.

SOAP.

Security, £10.

		£	s.	d.
1. Soap (household)—Yellow, dry, to sample, equal to Kitchen & Son's "Best Brown" per cwt.	1	12	0	
2. Soap (household)—Carbolic, dry, to sample	"	1	16	9

ANNEX TO CONTRACT No. 1922/126.

Henry Berry and Co., Pty. Ltd., 558 Collins-street, Melbourne.

Sub-schedule No. 20.

TEA.

Security, £60.

		£	s.	d.
1. Tea—Best Ceylon, to sample	... per lb.	0	1	4
2. " Ration, to sample	... do.	0	0	11

ANNEX TO CONTRACT No. 1922/127.

Dudgeon and Arnell Pty. Ltd., 524 Lonsdale-street, Melbourne.

Sub-schedule No. 21.

TOBACCO.

Security, £20.

£ s. d.

1. Tobacco, in 1-oz. plugs, for gaols—"Star-light" or other make of equal quality, to sample	... per lb.	0	5	3
2. Tobacco, 21 plugs to the pound, for Hos- pitals for the Insane, to sample	... do.	0	5	5

Schedule No. 15.

PROVISIONS AT GREENVALE.

(Delivery at the Sanatorium.)

Sub-schedule No. 1.

BREAD.

1. Bread—Fine Wheat, first quality	... Purchase			
------------------------------------	--------------	--	--	--

ANNEX TO CONTRACT No. 1922/128.

Moran and Cato, Pty. Ltd., Brunswick-street, Fitzroy.

Sub-schedule No. 4.

GROCERIES.

Security, £20.

£ s. d.

1. Apricots—Dried Mildura	... per lb.	0	1	7
2. Biscuits—Coffee	... do.	0	0	10
3. Blue—Of any brand ordered	... do.	0	0	11½
5. Candles—(Full weights) Kitchen's "Petro- lines," or other make of equal quality, to be supplied in 1-lb. packets	... do.	0	0	10
7. Chicory—Fresh ground	... do.	0	1	0
8. Cocoa—In ½-lb. packets, of any brand ordered	... do.	0	1	6
9. Coffee—"Neigherry A", to sample— Fresh roasted and whole, beans to be thoroughly sound	... do.	0	1	8
10. Cornina	... do.	0	0	0
11. Currants, 3 crowns (present season's)	... do.	0	0	9
12. Curry Powder	... do.	0	1	3
13. Essence of Lemon—In full 1-oz. bottles, of any brand ordered	... per bot.	0	0	8
14. Golden syrup, in 7-lb. tins	... per tin	0	2	9
16. Jams—Assorted, in 2-lb. tins in the pro- portion of half plum and half assorted quince, peach, black currant, and rasp- berry	... per doz. tins	0	11	6
17. Lemon peel	... per lb.	0	0	10½
18. Milk—Condensed, 1-lb. tins	... per tin	0	1	0
19. Mustard—Double Superfine, of any Com- monwealth manufacture ordered	... per lb.	0	3	0
20. Oatmeal—Flaked or Plain, of any brand ordered	... per cwt.	1	6	0
21. Pearl barley	... do.	1	0	0
22. Pease—Split	... per lb.	0	0	3
23. Pepper—White, ground	... do.	0	1	3
24. Pickles—Piccalilli	... per bot.	0	1	0
25. Powder—Baking, of any brand ordered, in 1-lb. tins	... per tin	0	1	9
26. Raisins—Sultana, 3 crowns (present season's)	... per lb.	0	0	11½
27. Rice—Dressed, to sample	... per cwt.	1	5	0
28. Seed Tapioca (Sago)—To sample	... do.	1	5	0
29. Salmon—Fresh, in 1-lb. tins, Talls, of any brand ordered	... per tin	0	1	9
30. Salt—Fine	... per cwt.	0	7	0
31. Sardines—½'s	... per tin	0	0	8½
32. Sauce—Tomato, pints, any brand ordered	per bot.	0	0	9
33. Soda—Washing	... per cwt.	0	9	6
34. Starch—Of any brand ordered, to sample	per lb.	0	0	9
5. Tapioca—Pearl	... do.	0	0	3
6. Tea—Ceylon, to sample	... per lb.	0	1	5
37. Vinegar	... per quart	0	0	6

ANNEX TO CONTRACT No. 1922/129.

W. Anglias and Co. Pty. Ltd., 42 Bourke-street, Melbourne.

Sub-schedule No. 5.

MEAT (FRESHLY KILLED.)

Security, £20.

£ s. d.

1. Fresh Ox Beef—Roast	... per cental	1	13	4
2. Fresh Ox Beef Steak—Stewing	... do.	1	5	0
3. Corned Ox Beef—Rolled or Round, as ordered, without bone or cartilage	... do.	1	13	4
4. Mutton—Fresh, in carcasses	... do.	1	15	5
5. Tripe, Ox (during winter)	... per lb.	0	0	4½
6. Sausages—Beef (during winter)	... do.	0	0	4

Schedule No. 18.

PROVISIONS—MONT PARK.

(Delivery at the Hospital for Insane.)

ANNEX TO CONTRACT No. 1922/130.

Langridge Bros., 2 Esmond-street, Northcote.

Sub-schedule No. 1.

BREADSTUFFS.

Security, £30.

		£	s.	d.
1. Bread—Fine Wheaten, first quality	per cental	0	14	5½
2. Flour—First quality	do.	0	12	8

See note bread and flour.

ANNEX TO CONTRACT No. 1922/131.

Henry Berry and Co. Pty. Ltd., 568 Collins-street, Melbourne.

Sub-schedule No. 4.

GROCERIES.

Security, £10.

		£	s.	d.
1. Blue—Of any brand ordered	per lb.	0	0	11½
2. Candles (full weights)—Kitchen's "Patrolines," or other make of equal quality, to be supplied in 1-lb. packets	do.	0	0	9½
3. Coffee—"Neigherry A"—Fresh roasted and Whole Beans to be thoroughly sound, to sample	do.	0	1	8
4. Corns	do.	0	0	8
5. Currants, 3 Crowns (present season's)	do.	0	0	9
6. Curry Powder	do.	0	1	5
7. Ginger—Ground	do.	0	0	11
8. Golden Syrup, in 7-lb. tins	per tin	0	2	3
9. Haricot Beans	per lb.	0	0	2½
10. Maizena	do.	0	0	6½
11. Mustard—"Double Superfine," of any Commonwealth manufacture ordered	do.	0	2	0
12. Oatmeal—Of any brand ordered	per cwt.	1	3	6
13. Pease—Split	do.	1	9	6
14. Pepper—Black, Ground	per lb.	0	0	8
15. Pipes—Tobacco, Clay	per doz.	0	0	10
16. Raisins—Sultana 3 Crowns (present season's)	per lb.	0	0	11
17. Rice—Dressed, to sample	per cwt.	1	4	0
18. Seed Tapioca (Sago)—To sample	per lb.	0	0	3
19. Salt—Fine	per cwt.	0	7	3
20. Soap—Hudson's Extract	per box	0	6	3
21. Soda—Carbonate of	per lb.	0	0	2
22. Soda—Washing	per cwt.	0	9	6
23. Spice	per lb.	0	1	2
24. Starch—Of any brand ordered, to sample	do.	0	0	9
25. Tartar—Cream of (substitute)	do.	0	1	5½
26. Treacle, in 7-lb. tins	per tin	0	2	2
27. Vinegar	per pint	0	0	3

ANNEX TO CONTRACT No. 1922/132.

Moran and Cato Pty. Ltd., Brunswick-street, Fitzroy.

Sub-schedule No. 5.

JAMS.

(FOR HOSPITALS FOR THE INSANE.)

Security, £10.

		£	s.	d.
1. Jams—Assorted, of approved kinds in the proportion of half seed and half actual net stone, of the best quality, in tins	per lb.	0	0	6½

ANNEX TO CONTRACT No. 1922/133.

W. Watkins Pty. Ltd., 164 Bourke-street, Melbourne.

Sub-schedule No. 6.

MEAT (FRESHLY KILLED).

Security, £30.

		£	s.	d.
1. Fresh Beef—Fore-quarters	per cental	0	19	6
2. Fresh Beef—Hind-quarters	do.	0	19	6
3. Fresh Beef—Buttocks	do.	0	19	6
4. Fresh Mutton	do.	0	19	6
5. Corned Beef—Rolled or round as ordered, without bone or cartilage	do.	0	19	6
6. Fresh Beef Suet (Kidney)	do.	2	1	8

ANNEX TO CONTRACT No. 1922/134.

H. McDonough, Flinders-street, Melbourne.

Sub-schedule No. 7.

POTATOES.

Security, £20.

		£	s.	d.
1. Potatoes	per cwt.	0	5	9

See note potatoes.

Sub-schedule No. 8.

SUGAR.

1. Sugar—White, to sample	per cwt.	Purchase from
		Maffra

ANNEX TO CONTRACT No. 1922/135.

Henry Berry and Co. Pty. Ltd. 568 Collins-street, Melbourne.

Sub-schedule No. 9.

TEA.

Security, £10.

		£	s.	d.
Tea—Best Ceylon, to sample	per lb.	0	1	4

Schedule No. 2.

PROVISIONS FOR S.S. RIP AND DREDGES.

Sub-schedule No. 1.

BREADSTUFFS.

		per cental	Purchase
1. Bread—Fine wheaten, first quality	do.		
2. Flour—First quality	do.		

ANNEX TO CONTRACT No. 1922/136.

Moran and Cato Pty. Ltd., Brunswick-street, Fitzroy.

Sub-schedule No. 3.

GROCERIES.

Security, £10.

		£	s.	d.
1. Biscuits—Kinds as ordered	per lb.	0	0	6
2. Butter—First Class Creamery, to score not less than 90 points Government grade, Commerce Regulations standard	do.	0	1	7
3. Chocolate, of any brand ordered	do.	0	1	8
4. Coffee—Fresh roasted and ground, to sample	do.	0	1	4
5. Currants—3 crowns, present season's	do.	0	0	6½
6. Flour—Self-raising	do.	0	0	4
7. Jams—Assorted, of approved kinds, in proportion of half seed and half stone, of best quality (in 2-lb. tins)	per tin	0	1	1
8. Milk—Condensed, of any brand ordered	do.	0	0	11
9. Mustard—double superfine, of any brand ordered	per lb.	0	2	6
10. Oatmeal	per cwt.	1	4	0
11. Pearl barley	do.	0	17	6
12. Pease—Split	do.	1	7	6
13. Pepper—White, ground	per lb.	0	1	3
14. Pickles—Assorted	per bot.	0	0	10
15. Raisins—Sultana, 3 crowns, present season's	per lb.	0	0	10½
16. Rice—Dressed, to sample	do.	0	0	2½
17. Salt—Fine, to sample	do.	0	0	0½
18. Sauce—Tomato	per bot.	0	0	8
19. Sauce—Worcester	do.	0	0	6
20. Tea—Best Ceylon, special sample	per lb.	0	1	4
21. Vinegar—Champion's, or other approved brand	per quart	0	0	4

ANNEX TO CONTRACT No. 1922/137.

Wm. Angliss and Co. Pty. Ltd., 42 Bourke-street, Melbourne.

Sub-schedule No. 4.

MEAT (FRESHLY KILLED).

Security, £10.

		£	s.	d.
1. Fresh Beef—Joists	per cental	1	9	0
2. " Mutton "	do.	1	13	4
3. " Suet	do.	1	13	4

Sub-schedule No. 5.

VEGETABLES.

		per cwt.	Purchase
1. Potatoes	do.		
2. Onions	do.		
3. Other vegetables, including cauliflower, carrots, cabbages, turnips, and parsnips, as required	do.		

Schedule No. 3.

PROVISIONS—ARARAT DISTRICT.

ANNEX TO CONTRACT No. 1922/138.

Wm. Bates, Ararat.

Sub-schedule No. 1.

BREADSTUFFS.

Security, £100.

		£	s.	d.
1. Bread—Fine wheaten, first quality	per cental	0	17	8½
2. Flour—First quality	do.	0	14	0

See note bread and flour.

ANNEX TO CONTRACT No. 1922/139.

Henry Berry and Co. Pty. Ltd., 568 Collins-street, Melbourne.

Sub-schedule No. 4.

GROCERIES.

Security, £30.

		£	s.	d.
1. Blue—Of any brand ordered	per lb.	0	1	0
2. Candles (full weights), — Kitchen's "Petrolines," or other make of equal quality, to be supplied in 1-lb. packets	do.	0	0	11
3. Coffee—"Neilgherry A"—Fresh roasted and whole—Beans to be thoroughly sound, to sample	do.	0	1	8
4. Curry	do.	0	1	4
5. Golden Syrup (in 56-lb. tins)	per tin	0	17	6
6. Mustard—"Double Superfine," of any Commonwealth manufacture ordered	per lb.	0	2	1
7. Oatmeal—Of any brand ordered	per cwt.	1	5	0
8. Pease—Split	do.	1	12	0
9. Pepper—Black, ground	per lb.	0	0	8
10. Pipes—Tobacco, clay	per doz.	0	0	10½
11. Raisins—Sultana, 3 crowns, present season's	per lb.	0	0	11
12. Rice—Dressed, to sample	per cwt.	1	8	6
13. Seed Tapioca (Sago)—To sample	do.	1	9	0
14. Salt—Fine	per lb.	0	0	2½
15. Soda—Carbonate of	per cwt.	0	11	0
16. Soda—Washing	per cwt.	0	11	0
17. Starch—Of any brand ordered, to sample	per lb.	0	0	10
18. Tartar—Cream of (substitute)...	do.	0	1	5½
19. Vinegar	per pint	0	0	4

ANNEX TO CONTRACT No. 1922/140.

The Ballarat Jam Co. Pty. Ltd., Davey-street, Ballarat.

Sub-schedule No. 5.

JAMS.

Security, £10.

		£	s.	d.
1. Jams, assorted, of approved kinds in the proportions of half seed and half stone, of the best quality, in tins	per lb. actual net weight	0	0	4½

ANNEX TO CONTRACT No. 1922/141.

Arthur Murphy, Ararat.

Sub-schedule No. 6.

MEAT (FRESHLY KILLED).

Security, £100.

		£	s.	d.
1. Fresh Beef—Fore-quarters	per cental	1	1	0
2. " " Hind-quarters	do.	1	13	0
3. " " Buttocks	do.	1	7	6
4. " Mutton	do.	1	17	6
5. Corned Beef—Rolled or round, as ordered, without bone or cartilage	do.	1	2	0
6. Fresh Suet—Kidney	do.	1	13	4

ANNEX TO CONTRACT No. 1922/142.

J. Gunn and Co., 30 Main-street, Ballarat.

Sub-schedule No. 7.

POTATOES.

Security, £30.

		£	s.	d.
1. Potatoes	per cwt.	0	5	6

See note potatoes.

Sub-schedule No. 8.

SUGAR.

		£	s.	d.
1. Sugar, white, to sample	per cwt.	{ Purchase from Maffra		

ANNEX TO CONTRACT No. 1922/143.

Henry Berry and Co. Pty. Ltd., 568 Collins-street, Melbourne.

Sub-schedule No. 9.

TEA.

Security, £20.

		£	s.	d.
1. Tea—Best Ceylon, to sample	per lb.	0	1	4

Schedule No. 4.

PROVISIONS—BEECHWORTH DISTRICT.

ANNEX TO CONTRACT No. 1922/144.

William Price, Newtown, Beechworth.

Sub-schedule No. 1.

BREADSTUFFS.

Security, £100.

		£	s.	d.
1. Bread—Fine wheaten, first quality	per cental	0	16	6
2. Flour—First quality	do.	0	15	

See note bread and flour.

- No. 79.—8142.—2.

ANNEX TO CONTRACT No. 1922/145.

Moran and Cato Pty. Ltd., Brunswick-street, Fitzroy.

Sub-schedule No. 4.

GROCERIES.

Security, £30.

		£	s.	d.
1. Arrowroot	per lb.	0	0	6
2. Blue—Of any brand required	do.	0	0	11½
3. Candles (full weights)—Kitchen's "Petrolines," or other make of equal quality, to be supplied in 1-lb. packets	do.	0	0	10
4. Coffee—"Neilgherry A," fresh roasted and whole, beans to be thoroughly sound, to sample	do.	0	1	8
5. Coffee—Fresh roasted and ground, to sample	do.	0	1	8
6. Golden Syrup (in 7-lb. tins)	per tin	0	2	9
7. Maizena	per lb.	0	0	7
8. Mustard—"Double superfine," of any Commonwealth manufacture ordered	do.	0	2	9
9. Oatmeal—Of any brand ordered	per cwt.	1	5	0
10. Pearl Barley	do.	1	1	0
11. Pease—Split	do.	1	9	0
12. Pepper—Black, ground	per lb.	0	0	11½
13. Pipes—Tobacco, clay	per doz.	0	1	2
14. Raisins—Sultana, 3 crowns, present season's	per lb.	0	0	10½
15. Rice—Dressed, to sample	per cwt.	1	7	0
16. Seed Tapioca (Sago)—To sample	do.	1	6	0
17. Salt—Fine	do.	0	9	0
18. Soda—Carbonate of	per lb.	0	0	3
19. " Washing	per cwt.	0	12	0
20. Starch—Of any brand ordered, to sample	per lb.	0	0	8½
21. Tartar—Cream of (substitute)...	do.	0	1	9
22. Vinegar	per pint	0	0	3

ANNEX TO CONTRACT No. 1922/146.

J. R. Newey, Ford-street, Beechworth.

Sub-schedule No. 5.

MEAT (FRESHLY KILLED).

Security, £100.

		£	s.	d.
1. Fresh Beef—Fore-quarters	per cental	1	9	0
2. " " Hind-quarters	do.	1	9	0
3. " " Buttocks	do.	1	9	0
4. " Mutton	do.	1	9	0
5. Corned Beef—rolled or round, as ordered, without bone or cartilage	do.	2	10	0
6. Fresh Suet—Kidney (2 months only)	per lb.	0	0	8

ANNEX TO CONTRACT No. 1922/147.

H. McDonough, Flinders-street, Melbourne.

Sub-schedule No. 6.

POTATOES.

Security, £30.

		£	s.	d.
1. Potatoes	per cwt.	0	6	0

Sub-schedule No. 7.

SUGAR.

Sugar, white, to sample	per cwt.	{ Purchase from Maffra
-------------------------	----------	------------------------

ANNEX TO CONTRACT No. 1922/148.

Henry Berry and Co. Pty. Ltd., 568 Collins-street, Melbourne.

Sub-schedule No. 8.

TEA.

Security, £20.

		£	s.	d.
1. Tea—Best Ceylon, to sample	per lb.	0	1	4

Schedule No. 5.

PROVISIONS AT BALLARAT.

ANNEX TO CONTRACT No. 1922/149.

Ballarat Co-operative Distribution Society Ltd., Ballarat.

Sub-schedule No. 1.

BREADSTUFFS.

Security, £60.

		£	s.	d.
1. Bread—Fine Wheaten, first quality	per cental	0	13	11
2. Flour—First quality	do.	0	14	0

See note bread and flour.

ANNEX TO CONTRACT No. 1922/150.

Moran and Cato Pty. Ltd., Brunswick-street, Fitzroy.

Sub-schedule No. 4.

GROCERIES.

Security, £30.

		£	s.	d.
1. Barley—Pearl	per lb.	0	0	2½
2. Blue—Of any brand required	do.	0	0	11½
3. Candles (full weights)—Kitchen's "Petrolines," or other make of equal quality, to be supplied in 1-lb. packets	do.	0	0	9½

GROCERIES—continued.

£ s. d.

4. Coffee—"Neilgherry A." Fresh roasted and whole, beans to be thoroughly sound, to sample ...	per lb.	0	1	9
5. Cornine ...	do.	0	0	8
6. Currants, 3 crowns, present season's ...	do.	0	0	8½
7. Ginger—Ground ...	do.	0	1	6
8. Golden Syrup (in 7-lb. tins) ...	per tin	0	2	9
9. Mustard—Double superfine, of any Commonwealth manufacture ordered ...	per lb.	0	2	6
10. Oatmeal—Of any brand ordered ...	per cwt.	1	4	6
11. Pease—Split ...	do.	1	3	6
12. Pepper—Black, ground ...	per lb.	0	0	11
13. Pipes—Tobacco, clay ...	per doz.	0	1	2
14. Raisins—Sultana, 3 crowns, present season's ...	per lb.	0	0	10½
15. Rice—Dressed, to sample ...	per cwt.	1	0	0
16. Seed Tapioca (Sago), to sample ...	do.	1	0	0
17. Salt—Fine ...	do.	0	8	0
18. Soap—(Household), Carbolio, dry to sample ...	per lb.	0	0	5
19. Soap—(Household), Yellow, dry, to sample ...	do.	0	0	5
20. Soda—Carbonate of ...	do.	0	0	2½
21. " Washing ...	per cwt.	0	10	0
22. Spice—Mixed, in 1-oz. packets ...	per doz.	0	1	0
23. Starch—Of any brand ordered, to sample ...	per lb.	0	0	8
24. Sugar—White ...	do.	0	0	6
25. Tartar—Cream of (substitute) ...	do.	0	1	9
26. Tobacco—"Starlight," or other make of equal quality, as ordered ...	do.	0	5	9
27. Vinegar ...	per pint	0	0	3

ANNEX TO CONTRACT No. 1922/151.

Ballarat Jam Co. Pty. Ltd., Davey-street, Ballarat.

Sub-schedule No. 5.

JAMS.

(For Hospitals for the Injane.)

Security, £10.

£ s. d.

1. Jams—Assorted, of approved kinds in proportion of half seed and half stone, of the best quality, in tins as required ...	per lb.	0	0	4½
---	---------	---	---	----

ANNEX TO CONTRACT No. 1922/152.

W. Angliss and Co. Pty. Ltd., 42 Bourke-street, Melbourne.

Sub-schedule No. 6.

MEAT (FRESHLY KILLED).

Security, £30.

£ s. d.

1. Fresh Beef—Fore-quarters ...	per cental	1	0	0
2. " Hind-quarters ...	do.	1	12	0
3. " Buttocks ...	do.	1	7	6
4. " Mutton ...	do.	1	16	0
5. Corned Beef, rolled or round, as ordered, without bone or cartilage ...	do.	1	2	C
6. Fresh Suet—Kidney ...	do.	1	13	4

ANNEX TO CONTRACT No. 1922/153.

J. Gunn and Co., Main-street, Ballarat.

Sub-schedule No. 7.

POTATOES.

Security, £20.

£ s. d.

1. Potatoes ...	per cwt.	0	5	0
-----------------	----------	---	---	---

See note potatoes.

ANNEX TO CONTRACT No. 1922/154.

Henry Berry and Co. Pty. Ltd., 568 Collins-street, Melbourne.

Sub-schedule No. 8.

TEA.

Security, £20.

£ s. d.

1. Tea—Best Ceylon, to sample ...	per lb.	0	1	4
2. " Ration ...	do.	0	0	11

Schedule No. 6.

PROVISIONS AT GEELONG.

ANNEX TO CONTRACT No. 1922/155.

N. Brownbill and Co., 150. Malop-street, Geelong.

Sub-schedule No. 1.

BREADSTUFFS.

Security, £20.

£ s. d.

1 Bread—Fine Wheat, first quality ...	per cental	0	13	0
2 " Wheat, third quality, ...	do.	0	12	6

See note bread and flour.

ANNEX TO CONTRACT No. 1922/156.

The Corio Store, Ryrie-street, Geelong.

Sub-schedule No. 2.

GROCERIES.

Security, £20.

£ s. d.

1. Arrowroot—Queensland ...	per lb.	0	0	6
2. Candles (full weights)—Kitchen's "Petrolines," or other make of equal quality, to sample, to be supplied in 1-lb. packets ...	do.	0	0	10
3. Barley—Pearl ...	do.	0	0	2½
4. Currants, 3 crowns, present season's ...	do.	0	0	7½
5. Eggs—Fresh ...	per doz.	0	1	6
6. Mustard—"Double Superfine," of any Commonwealth manufacture ordered ...	per lb.	0	2	4
7. Oatmeal—Of any brand ordered ...	per cwt.	1	0	0
8. Potatoes ...	do.	0	5	0
9. Pepper—Black, ground ...	per lb.	0	0	10
10. Pipes—Tobacco, clay ...	per doz.	0	1	6
11. Raisins—Sultana, 3 crowns, present season's ...	per lb.	0	1	0
12. Rice—Dressed, to sample ...	per cwt.	1	0	0
13. Seed Tapioca (Sago), to sample ...	per lb.	0	0	3
14. Salt—Fine ...	do.	0	0	0½
15. Soap—(Household) Carbolio, dry, to sample ...	do.	0	0	4½
16. Soap—(Household) Yellow, dry, to sample ...	per cwt.	1	17	0
17. Soda—Washing ...	do.	0	11	6
18. Sugar—Ration, to sample ...	per cwt.	2	10	0
19. Tea—Ration ...	per lb.	0	1	1
20. Tobacco—"Starlight," or other make of equal quality, as ordered ...	do.	0	5	6

ANNEX TO CONTRACT No. 1922/157.

M. G. O'Brien, 491 Moorabool-street, South Geelong.

Sub-schedule No. 3.

MEAT (FRESHLY KILLED).

Security, £20.

£ s. d.

1. Fresh Beef ...	per cental	1	5	0
2. " Buttocks ...	do.	2	0	0
3. " Mutton ...	do.	1	5	0

ANNEX TO CONTRACT No. 1922/158.

S. H. Warren, Moolep West P.O.

Sub-schedule No. 4.

MILK.

Security, £5.

£ s. d.

1. Milk—Fresh and pure ...	per gallon	0	1	8
----------------------------	------------	---	---	---

Schedule No. 7.

PROVISIONS AT LARA.

(Delivery at the Inebriates' Retreat.)

ANNEX TO CONTRACT No. 1922/159.

F. Samblome, Lara Lake.

Sub-schedule No. 1.

BREADSTUFFS.

Security, £20.

£ s. d.

1. Bread—Fine Wheat, first quality ...	per cental	0	17	8
2. Flour—First quality ...	do.	0	14	4

See note bread and flour.

ANNEX TO CONTRACT No. 1922/160.

Moran and Cato Pty. Ltd., Brunswick-street, Fitzroy.

Sub-schedule No. 4.

GROCERIES.

Security, £20.

£ s. d.

1. Arrowroot—Queensland ...	per lb.	0	0	5
2. Bacon, Farmer's or Hutton's, by the side (or other approved brand) ...	do.	0	1	4
3. Barley—Pearl ...	do.	0	0	2½
4. Blue—Of any brand ordered ...	do.	0	1	0
5. Candles—(Full weights) Kitchen's "Petrolines," or other make of equal quality, to be supplied in 1-lb. packets ...	do.	0	0	9½
6. Cocoa—(Homoeopathic)—McKenzie's, or other brand of equal quality ...	do.	0	0	10
7. Coffee—"Neilgherry A." Fresh roasted and whole—Beans to be thoroughly sound, to sample ...	do.	0	1	6
8. Currants—3 crowns, present season's ...	do.	0	0	9
9. Mustard—Double Superfine, of any Commonwealth manufacture ordered ...	do.	0	2	6
10. Oatmeal—Of any brand ordered ...	per cwt.	1	4	6
11. Peas—Split ...	per lb.	0	0	3
12. Pepper—Black, ground ...	do.	0	0	11
13. Raisins—Sultana, 3 crowns, present season's ...	do.	0	0	11½
14. Rice—Dressed, to sample ...	do.	0	0	3
15. Seed Tapioca (Sago), to sample ...	do.	0	0	3
16. Salmon—Fresh, brand as ordered, talls (1-lb. tins) ...	per tin	0	1	2

GROCERIES—continued			£	s.	d.
17. Salt—Fine	... per lb.	0	0	1	
18. Soap—(Household) Yellow, dry, to sample	... do.	0	0	4½	
19. Soap—Toilet, Glycerine, in tablets, to sample	... do.	0	1	4	
20. Soda—Washing	... do.	0	0	1½	
21. Tea—Best Ceylon, to sample	... do.	0	1	6	

ANNEX TO CONTRACT No. 1922/161.

Moran and Cato Pty. Ltd., Brunswick-street, Fitzroy.

Sub-schedule No. 5.

JAMS.

Security, £5.			£	s.	d.
1. Jams, Assorted, of approved kinds in the proportion of half seed and half stone, of the best quality, in tins containing 27 ozs. net	... per doz. tins	0	13	6	

ANNEX TO CONTRACT No. 1922/162.

W. Angliss and Co. Pty. Ltd., 42 Bourke-street, Melbourne.

Sub-schedule No. 6.

MEAT (FRESHLY KILLED).

Security, £20.			£	s.	d.
1. Fresh Beef Joints	... per cental	1	17	6	
2. " Mutton Joints	... do.	1	17	6	
3. " Tripe, Sausages, and Liver, as ordered	... do.	1	17	6	

ANNEX TO CONTRACT No. 1922/163.

H. McDonough, Flinders-street, Melbourne.

Sub-schedule No. 7.

POTATOES.

Security, £5.			£	s.	d.
1. Potatoes	... per cwt.	0	6	6	

See note potatoes.

Schedule No. 8.

PROVISIONS—SUNBURY DISTRICT.

ANNEX TO CONTRACT No. 1922/164.

Thos. Clyne and Son, Sunbury.

Sub-schedule No. 1.

BREADSTUFFS.

Security, £100.			£	s.	d.
1. Bread—Fine Wheat, first quality	... per cental	0	13	7	
2. Flour—First quality	... do.	0	13	9	

See note bread and flour.

ANNEX TO CONTRACT No. 1922/165.

Henry Berry and Co. Pty. Ltd.

Sub-schedule No. 4.

GROCERIES.

Security, £20.			£	s.	d.
Blue—Of any brand ordered	... per lb.	0	0	11½	
2. Candles—(Full weights) Kitchen's "Petrolines," or other make of equal quality, to sample, to be supplied in 1-lb. packets	... do.	0	0	10	
3. Coffee—"Neigherry A."—Fresh roasted and whole—Beans to be thoroughly sound, to sample	... do.	0	1	8	
4. Cornina	... do.	0	0	7½	
5. Cream of Tartar	... do.	0	1	5½	
6. Currants—3 crowns, present season's	... do.	0	0	9	
7. Curry Powder	... do.	0	1	4	
8. Ginger—Ground	... do.	0	0	11	
9. Golden Syrup, in 56-lb. tins	... per tin	0	16	0	
10. Lemon Peel	... per lb.	0	0	11	
11. Maizena—Duryea's	... do.	0	0	9	
12. Mustard—Double superfine, of any Commonwealth manufacture ordered	... do.	0	2	0	

No. 79.—8442.—3.

GROCERIES—continued.			£	s.	d.
13. Oatmeal—Of any brand ordered	... per cwt.	1	4	0	
14. Pearl Barley	... do.	0	18	6	
15. Pease—Split	... do.	1	9	6	
16. Pepper—Black, ground	... per lb.	0	0	8	
17. Pipes—Tobacco, clay	... per doz.	0	0	10	
18. Raisins—Sultana, 3 crowns, present season's	... per lb.	0	0	11	
19. Rice—Dressed, to sample	... per cwt.	1	5	0	
20. Seed Tapioca (Sago), to sample	... do.	1	6	0	
21. Salt—Fine	... do.	0	6	9	
22. Soda—Bicarbonate of	... per lb.	0	0	2½	
23. " Washing	... per cwt.	0	9	6	
24. Starch—Of any brand ordered, to sample	... per lb.	0	0	9½	
26. Vinegar	... per pint	0	0	5	

ANNEX TO CONTRACT No. 1922/166.

Moran and Cato Pty. Ltd., Brunswick-street, Fitzroy.

Sub-schedule No. 5.

JAMS.

(FOR HOSPITALS FOR THE INSANE.)

Security, £10.			£	s.	d.
1. Jams—Assorted, of approved kinds in the proportion of half seed and half stone, of the best quality, in tins	... per lb. actual net weight	0	0	6½	

ANNEX TO CONTRACT No. 1922/167.

F. Watkins Pty. Ltd., Bourke-street, Melbourne.

Sub-schedule No. 6.

MEAT (FRESHLY KILLED).

Security, £30.			£	s.	d.
1. Fresh Beef—Fore-quarters	... per cental	1	8	0	
2. " " Hind-quarters	... do.	1	8	0	
3. " " Buttocks	... do.	1	8	0	
4. " Mutton	... do.	1	8	0	
5. Corned Beef—Rolled or round, as ordered, without bone or cartilage	... do.	1	8	0	

Sub-schedule No. 7.

RABBITS (FRESHLY KILLED).

(September to April.)

Security, £5.

1. Rabbits—Not less than 2½ lbs. per pair...per dz. prs. Purchase					
---	--	--	--	--	--

ANNEX TO CONTRACT No. 1922/168.

H. McDonough, Flinders-street, Melbourne.

Sub-schedule No. 8.

POTATOES.

Security, £30.			£	s.	d.
1. Potatoes	... per cwt.	0	5	9	

See note potatoes.

Sub-schedule No. 9.

SUGAR.

1. Sugar—White, to sample	... per cwt.	Purchase from Maffra.			
---------------------------	--------------	-----------------------	--	--	--

ANNEX TO CONTRACT No. 1922/169.

Henry Berry and Co. Pty. Ltd., 563 Collins-street, Melbourne.

Sub-schedule No. 10.

TEA.

Security, £20.			£	s.	d.
Tea—Best Ceylon, to sample	... per lb.	0	1	4	

Schedule No. 9.

PROVISIONS—BENDIGO DISTRICT.

ANNEX TO CONTRACT No. 1922/170.

F. W. Beischer, Bridge-street, Bendigo.

Sub-schedule No. 1.

BREAD.

Security, £5.			£	s.	d.
1. Bread—Wheat, third quality	... per cental	1	1	9	

See note bread and flour.

ANNEX TO CONTRACT No. 1922/171.

Moran and Cato Pty. Ltd., Brunswick-street, Fitzroy.

Sub-schedule No. 2.

GROCERIES AND POTATOES.

Security, £5.

£ s. d.

1. Candles—(full weights) Kitchen's "Petrolines," or other make of equal quality, to sample, to be supplied in 1-lb. packets per lb. 0 0 11
2. Milk—Fresh and pure ... per quart 0 1 0
3. Oatmeal—Of any brand ordered ... per lb. 0 0 4
4. Potatoes ... per cwt. 0 10 6
5. Rice, dressed, to sample ... per lb. 0 0 4
6. Salt—Fine ... do. 0 0 2
7. Soap—Yellow (Household), dry, to sample do. 0 0 6
8. " Carbolic " " do. 0 0 6
9. Soda—Washing " " do. 0 0 2½
10. Tea—Best Ceylon, to sample ... do. 0 1 9
11. " Ration " " do. 0 1 4
12. Tobacco—"Starlight," or other make of equal quality, as ordered ... do. 0 5 6
13. Whiting ... do. 0 0 2

ANNEX TO CONTRACT No. 1922/172.

H. Gittens, 350 Hargreaves-street, Bendigo.

Sub-schedule No. 3.

MEAT (FRESHLY KILLED).

Security, £5.

£ s. d.

1. Fresh Beef ... per cental 1 13 4

Schedule No. 10.

PROVISIONS—CASTLEMAINE DISTRICT.

ANNEX TO CONTRACT 1922/173.

M. Van Heurck, Castlemaine.

Sub-schedule No. 1.

BREAD.

Security, £5.

£ s. d.

1. Bread—Wheaten, third quality ... per cental 1 2 11
- See note bread and flour.

ANNEX TO CONTRACT No. 1922/174.

Moran and Cato Pty. Ltd., Brunswick-street, Fitzroy.

Sub-schedule No. 2.

GROCERIES AND POTATOES.

Security, £5.

£ s. d.

1. Candles—(full weights), Kitchen's "Petrolines," Apollo Co.'s "Apollo," or other make of equal quality, to sample, to be supplied in 1-lb. packets per lb. 0 1 0
2. Oatmeal ... do. 0 0 4½
3. Potatoes ... per cwt. 0 10 6
4. Rice, Dressed, Best, to sample ... per lb. 0 0 5
5. Salt—Fine ... do. 0 0 2
6. Soap—Yellow (household), dry, to sample do. 0 0 6½
7. Soda—Washing " " do. 0 0 2½
8. Sugar—Ration " " do. 0 0 6
9. Tea " " do. 0 1 4

ANNEX TO CONTRACT No. 1922/175.

John Williamson, Mostyn-street, Castlemaine.

Sub-schedule No. 3.

MEAT (FRESHLY KILLED).

Security, £5.

£ s. d.

1. Fresh Beef ... per lb. 0 0 3
2. " Mutton ... do. 0 0 3

Schedule No. 11.

PROVISIONS AT SALE.

Sub-schedule No. 1.

BREAD.

1. Bread—Wheaten, third quality ... per lb. Purchase

Sub-schedule No. 2.

GROCERIES AND POTATOES.

1. Potatoes ... per cwt. } Purchase
2. Rice, dressed, Best, to sample ... per lb. }
3. Salt—Fine ... do. }
4. Soap, yellow (household), dry, to sample do. }
5. Soda—Washing ... do. }
6. Tea—Ration, to sample ... do. }
7. Whiting ... do. }

ANNEX TO CONTRACT No. 1922/176.

Ronchi Bros., Sale.

Sub-schedule No. 3.

MEAT (FRESHLY KILLED).

Security, £5.

£ s. d.

1. Fresh Beef ... per lb. 0 0 4½

Schedule No. 12.

PROVISIONS AT RUTHERGLEN.

(For Students at Viticultural College. Delivery at the College.)

ANNEX TO CONTRACT No. 1922/177.

E. E. King, Main-street, Rutherglen.

Sub-schedule No. 1.

BREAD.

Security £5.

£ s. d.

1. Bread—Fine Wheaten, first quality ... per cental 1 4 0
- See note bread and flour.

ANNEX TO CONTRACT No. 1922/178.

Moran and Cato Pty. Ltd., Brunswick-street, Fitzroy.

Sub-schedule No. 2.

GROCERIES, ETC.

Security, £10.

£ s. d.

1. Arrowroot ... per lb. 0 0 5½
2. Blue ... do. 0 0 11½
3. Baking Powder, in 1-lb. tins ... per tin 0 1 9
4. Baking Soda ... per lb. 0 0 3
5. Bacon, best cured ... do. 0 1 10
6. Blacking ... per tin 0 0 3
7. Blacklead ... per cake 0 0 1
8. Barley, Pearl ... per lb. 0 0 3
9. Candles—(Full weights) Kitchen's "Petrolines," or other make of equal quality, to be supplied in 1-lb. packets do. 0 0 10½
10. Coffee—Whole—Beans to be thoroughly sound, to sample ... do. 0 1 10
11. Coffee Essence, 10-oz., of any brand ordered ... per bottle 0 1 4
12. Cocoa, of any brand ordered ... per lb. 0 1 9
13. Cream of Tartar (substitute) ... do. 0 1 9
14. Currants, 3 crown (present season's) ... do. 0 0 9½
15. Curry Powder ... do. 0 1 5
16. Essence of Lemon, 1-oz. bottles ... per bottle 0 0 8
17. Fish, Preserved, Salmon, Fresh Herrings, Herrings in Tomato, as ordered, in 1-lb. tins ... per tin 0 1 0
18. Flour, best Roller ... per cental 1 0 0
19. Fruits, Preserved, assorted, of approved brand, in 2-lb. tins ... per tin 0 1 1
20. Ginger—Ground or Whole—Jamaica ... per lb. 0 1 2
21. Golden Syrup, in 2-lb. tins ... per tin 0 0 9½
22. Jams, assorted, any brand ordered, in 2-lb. tins, in proportion of half seed and half stone ... do. 0 1 1
23. Maizena—Duryea's ... per lb. 0 0 9
24. Meat—Preserved, of approved brand, in 2-lb. tins ... per tin 0 1 9
25. Macaroni or Vermicelli, as ordered ... per lb. 0 0 6
26. Mustard—Double Superfine, of any brand ordered ... do. 0 3 0
27. Oatmeal—Flaked or other, of any brand ordered ... per cwt. 1 6 0
28. Onions ... do. 0 8 0
29. Peel—Mixed ... per lb. 0 1 0
30. Pepper—Black or White, Ground ... do. 0 1 3
31. Pickles, of approved brand ... per bottle 0 0 10½
32. Potatoes ... per cwt. 0 9 0
33. Raisins—Sultana, Mildura, 3 crown ... per lb. 0 0 11½
34. Rice—Dressed, to sample ... per cwt. 1 7 6
35. Seed Tapioca (Sago)—To sample ... per lb. 0 0 3
36. Salt—Coarse ... do. 0 0 1
37. " Fine ... per cwt. 0 9 4
38. Sauces, Worcester, Tomato, or Chutney, reputed pints, any brand ordered ... per bottle 0 0 10½
39. Soap—Household, yellow, to sample ... per lb. 0 0 4
40. " Glycerine Tablets " do. 0 1 4
41. " Sand " do. 0 0 5
42. " Magic " do. 0 0 2
43. Soda—Washing ... per packet 0 0 2
44. Spices, mixed, in 1-oz. packets ... per lb. 0 0 9
45. Starch, to sample ... do. 0 0 4
46. Tapioca—Pearl ... do. 0 0 4
47. Tea—Best Ceylon, to sample ... do. 0 1 5
48. Treacle, in 7-lb. tins ... per tin 0 2 9
49. Vinegar, of approved brand ... per quart 0 0 6

Schedule No. 18.

PROVISIONS AT WAHGUNYAH.

(For Students at Wahgunyah Vine Nursery.
Delivery at Nursery.)

Sub-schedule No. 1.

BREAD.

1. Bread—Fine Wheaten, first quality ... Purchase
See note bread and flour.

ANNEX TO CONTRACT No. 1922/179.

C. Parsons, Foord-street, Wahgunyah.

Sub-schedule No. 2.

GROCERIES, ETC.

Security, £10.

		£	s.	d.
1. Arrowroot ...	per lb.	0	0	7
2. Blue ...	do.	0	1	0
3. Baking Powder, 1-lb. tins ...	do.	0	2	0
4. Baking Soda ...	do.	0	0	3½
5. Bacon, best cured ...	do.	0	1	6
6. Blacking ...	per doz. cakes	0	0	4
7. Black Lead ...	do.	0	0	7½
8. Barley, Pearl ...	per lb.	0	0	4
9. Candles—(Full weights) Kitchen's "Petrolines," Apollo Co.'s "Apollo," or other make of equal quality, to be supplied in 1-lb. packets ...	do.	0	0	11
10. Coffee—Whole—Beans to be thoroughly sound to sample ...	do.	0	2	7
11. Coffee Essence, of any brand ordered ...	per bottle	0	1	3
12. Cocoa ...	per lb.	0	2	0
13. Cream of Tartar (substitute) ...	do.	0	1	10
14. Currants, 3 crowns ...	do.	0	0	9
15. Curry Powder ...	do.	0	2	0
16. Essence of Lemon, 1-oz. bottle ...	per bottle	0	0	7
17. Fish, Preserved, Salmon, Fresh Herrings, Herrings in Tomato, as ordered, in 1-lb. tins ...	per tin	0	1	3
18. Flour, Best Roller ...	per cental	0	14	6
19. Fruits, Preserved, assorted, of approved brand, in 2-lb. tins ...	per tin	0	1	5
20. Ginger—Ground or Whole ...	per lb.	0	1	4
21. Golden Syrup, in 2-lb. tins ...	per tin	0	0	10½
22. Jams, assorted, any brand ordered, in 2-lb. tins, in the proportion of half seed and half stone ...	do.	0	1	4
23. Maizena—Duryea's ...	per lb.	0	0	6
24. Meat—Preserved, of approved brand, in 2-lb. tins ...	per tin	0	1	6
25. Macaroni or Vermicelli, as ordered ...	per lb.	0	0	5
26. Mustard—Double Superfine, of any brand ordered ...	do.	0	2	0
27. Oatmeal—Flaked or Other, of any brand ordered ...	do.	0	0	4
28. Onions ...	per cwt.	0	8	0
29. Peel—Mixed ...	per lb.	0	1	2
30. Pepper—Black or White, Ground ...	do.	0	1	3
31. Pickles, of approved brand ...	per bottle	0	1	0
32. Potatoes ...	per cwt.	0	6	6
33. Raisins—Sultana (Mildura), 3 Crowns ...	per lb.	0	1	0
34. Rice—Dressed, to sample ...	do.	0	0	4
35. Seed Tapioca (Sago)—To sample ...	do.	0	0	4
36. Salt—Coarse ...	do.	0	0	1
37. " Fine ...	do.	0	0	1
38. Sauces—Worcester, Tomato, or Chutney, any brand ordered, in reputed pints ...	per bottle	0	0	10
39. Soap—Household, yellow, to sample ...	per lb.	0	0	5
40. " Glycerine Tablets ...	do.	0	1	0
41. " Sand ...	do.	0	0	4
42. " Magic ...	do.	0	0	7
43. Soda—Washing ...	do.	0	0	2
44. Spices, mixed, in 1-oz. packets ...	per packet	0	0	2
45. Starch—To sample ...	per lb.	0	0	6
46. Tapioca—Pearl ...	do.	0	0	4
47. Tea—Best Ceylon, to sample ...	do.	0	1	6
48. Treacle, in 7-lb. tins ...	per tin	0	2	8
49. Vinegar, of approved brand ...	per quart	0	0	6

ANNEX TO CONTRACT No. 1922/180.

Duncan Innes, Wahgunyah.

Sub-schedule No. 3.

MEAT (FRESHLY KILLED).

Security, £10.

		£	s.	d.
1. Beef—Fresh ...	per lb.	0	0	7
2. Pork—Fresh ...	do.	0	0	7
3. Sausages ...	do.	0	0	7
4. Tongues—Ox ...	do.	0	0	7
5. " Sheep ...	do.	0	0	7
6. Tails—Ox ...	do.	0	0	7
7. Kidneys—Ox ...	do.	0	0	7
8. Shins—Ox ...	do.	0	0	7
9. Lambs' fries ...	do.	0	0	7

Schedule No. 17.

PROVISIONS AT CRESWICK.

FOR STUDENTS AT THE SCHOOL OF FORESTRY.

(Delivery at the School.)

ANNEX TO CONTRACT No. 1922/181.

C. C. Bouley, Albert-street, Creswick.

Sub-schedule No. 1.

BREADSTUFFS.

Security, £10.

1. Bread—Fine Wheaten, first quality ... per cental 1 1 10
2. Flour—First quality ... do. 0 16 8
See note bread and flour.

ANNEX TO CONTRACT No. 1922/182.

J. Tait and Son, Albert-street, Creswick.

Sub-schedule No. 3.

GROCERIES.

Security, £10.

		£	s.	d.
1. Barley—Pearl ...	per lb.	0	0	2½
2. Blue—Of any brand required ...	do.	0	1	1
3. Butter ...	do.	0	1	7
4. Cheese ...	do.	0	1	0
5. Candles (full weights) Kitchen's "Petrolines," Apollo Co.'s "Apollo," or other make of equal quality, to be supplied in 1-lb. packets ...	do.	0	0	9½
6. Coffee—Fresh roasted and whole—Beans to be thoroughly sound, to sample ...	do.	0	1	6
7. Cornina ...	do.	0	0	8
8. Currants—3 Crowns ...	do.	0	0	9½
9. Ginger—Ground (Jamaica) ...	do.	0	0	11
10. Golden Syrup, in 7-lb. tins ...	per tin	0	2	6
11. Jams, assorted, any brand ordered, in 2-lb. tins, in the proportion of half seed and half stone ...	per lb. net	0	0	8
12. Maizena—Duryea's ...	per lb.	0	0	7
13. Mustard—Double superfine, of any brand ordered ...	do.	0	4	3
14. Oatmeal—Of any brand ordered ...	do.	0	0	3½
15. Pease—Split ...	do.	0	0	3½
16. Pepper—Black, ground ...	do.	0	0	10
17. Raisins—Sultana (Mildura), 3 Crowns ...	do.	0	1	0
18. Rice—Dressed, to sample ...	do.	0	0	3
19. Seed Tapioca—Sago, to sample ...	do.	0	0	3½
20. Salt—Fine ...	do.	0	0	1
21. Soap (Household)—Lever Bros. "Vet" ...	do.	0	0	6½
22. Soap (Household)—Yellow, dry, to sample ...	do.	0	0	4½
23. Carbolic Sand Soap ...	do.	0	0	3½
24. Soda—Carbonate of ...	do.	0	0	2½
25. " Washing ...	do.	0	0	1½
26. Spice—Mixed, in 1-oz. packets ...	per pkt.	0	0	1½
27. Starch, of any brand ordered, to sample ...	per lb.	0	0	9
28. Tartar—Cream of ...	do.	0	1	6½
29. Tea—Best Ceylon, to sample ...	do.	0	1	6
30. Vinegar ...	per pint	0	0	2
31. Potatoes ...	per cwt.	0	6	0

ANNEX TO CONTRACT No. 1922/183.

H. H. Wood, Albert-street, Creswick.

Sub-schedule No. 4.

MEAT (FRESHLY KILLED).

Security, £10.

		£	s.	d.
1. Fresh Beef—Fore-quarter ...	per lb.	0	0	5½
2. " Hind-quarter ...	do.	0	0	6½
3. " Buttocks ...	do.	0	0	6
4. " Mutton ...	do.	0	0	6
5. Corned Beef, rolled or round, as ordered without bone or cartilage ...	do.	0	0	7
6. Pork (Leg) ...	do.	0	0	7
7. Fresh Suet—Kidney ...	do.	0	0	2

ANNEX TO CONTRACT No. 1922/184.

E. Pollard, Eastern Hill, Creswick.

Sub-schedule No. 5.

MILK.

Security, £5.

		£	s.	d.
1. Milk—Fresh and pure ...	per quart	0	0	6

Sub-schedule No. 6.

POTATOES.

1. Potatoes ... Purchase

Schedule No. 18.

PROVISIONS AT McLEOD SETTLEMENT, FRENCH ISLAND.

Delivery to be made at Lang Lang Jetty.

ANNEX TO CONTRACT NO. 1922/185.

E. C. Spalding, Lang Lang.

Sub-schedule No. 1.

BREAD.

Security, £5.

- | | |
|--|---------|
| 1. Bread—Fine, Wheaten, first quality ... per cental | £ s. d. |
| | 1 2 11 |
- See note bread and flour.

Sub-schedule No. 3.

GROCERIES.

- | | |
|--|----------|
| 1. Cheese ... per lb. | Purchase |
| 2. Jams—Assorted, of approved kinds, in proportion of half seed and half stone, of best quality, in 2-lb. tins ... per tin | |
| 3. Mustard—Double Superfine, of any Commonwealth manufacture ordered ... per lb. | |
| 4. Milk—Condensed, nominal 1-lb. tins ... per tin | |
| 5. Oatmeal—Of any brand ordered ... per cwt. | |

GROCERIES—continued.

- | | |
|---|----------|
| 6. Pepper—Black, ground ... per lb. | Purchase |
| 7. Rice—Dressed, best, to sample ... " | |
| 8. Salt—Fine ... " | |
| 9. Soap—Toilet, brown Windsor, in tablets, to sample ... " | |
| 10. Soap—Household, yellow, dry, to sample ... " | |
| 11. Soda—Washing ... " | |
| 12. Tea—Best Ceylon ... " | |
| 13. " Ration ... " | Purchase |
| 14. Tobacco—"Starlight," or other make of equal quality, as ordered ... " | |

ANNEX TO CONTRACT NO. 1922/186.

Edward W. Misen, Lang Lang.

Sub-schedule No. 4.

MEAT (FRESHLY KILLED).

Security, £20.

- | | | |
|--|---------|----------|
| 1. Fresh Beef—Forequarters ... per cental | £ s. d. | |
| 2. " Hindquarters ... do. | 2 1 8 | |
| 3. " Buttock ... do. | 2 10 0 | Purchase |
| 4. " Mutton ... per cental | 2 10 0 | |
| 5. Corned Beef, Rolled or Round, as ordered, without bone or cartilage ... do. | | Purchase |
| 6. Fresh Suet—Kidney ... per lb. | | Purchase |
| 7. Dripping—Fresh, free from objectionable smell ... do. | | Purchase |

Sub-schedule No. 5.

MILK.

- | | |
|-------------------------------------|----------|
| 1. Milk—Fresh and pure ... per gal. | Purchase |
|-------------------------------------|----------|

Sub-schedule No. 6.

POTATOES.

- | | |
|--------------------------|----------|
| 1. Potatoes ... per cwt. | Purchase |
|--------------------------|----------|

1922-23.

Schedule No. 14.

PROVISIONS FOR ABORIGINES AT THE UNDERMENTIONED STATIONS.

Sub-schedule No. 1.

BREAD.

See note bread and flour.

Contract No. 1922/187.—Coranderrk—John Roy, Healesville ... Security, £2.
 " " 1922/189.—Lake Tyers—F. Manners, Nowa Nowa ... " £2.

Item No.	Article.	Contract No. 187.	Contract No. 189.
		John Roy, Coranderrk.	F. Manners, Lake Tyers.
		£ s. d.	£ s. d.
1	Bread—Fine Wheaten, first quality ... per cental	1 0 10	per cental 0 18 2½

Sub-schedule No. 2.

GROCERIES.

Contract No. 1922/188.—Coranderrk—Moran and Cato Pty. Ltd., Brunswick-street, Fitzroy ... Security, £2.
 " " 1922/190.—Lake Tyers—L. T. Freeman, Lakes Entrance ... " £2.

Item No.	Article.	Contract No. 188.	Contract No. 190.
		Moran and Cato Pty. Ltd., Coranderrk.	L. T. Freeman, Lake Tyers.
		£ s. d.	£ s. d.
1	Baking Powder, Snowflake, in 1-lb. tins ... per lb.	0 1 9	0 1 7
2	Candles—(Full weights) Kitchen's "Petrolines," Apollo Co.'s "Apollo," or other make of equal quality, to be supplied in 1-lb. packets ... "	0 0 10	0 0 9½
3	Coffee—Fresh roasted and whole—Beans to be thoroughly sound, to sample ... "	0 1 5	0 1 5
4	Cocos, in ½-lb. packets ... "	0 1 0	0 1 3
5	Cornina ... "	0 0 8½	0 0 8½
6	Currants—3 crowns ... "	0 0 10½	0 0 10½
7	Curry Powder ... "	0 1 5	0 1 5
8	Flour—Best roller ... per cental	1 0 0	0 16 0
9	Mustard—Double superfine, of any Commonwealth manufacture ordered ... per lb.	0 2 6	0 2 3
10	Oatmeal—Of any brand ordered ... "	0 0 3½	0 0 3
11	Pease, Split ... "	0 0 4	0 0 3½
12	Pearl Barley ... "	0 0 3	0 0 2½
13	Pepper—Black, ground, in ½-lb. tins ... per tin	0 0 6	0 0 4½
14	Raisins—Sultana (Mildura)—3 crowns ... per lb.	0 0 11½	0 1 0
15	Rice—Dressed, to sample ... "	0 0 3½	0 0 3½
16	Seed Tapioca (Sago), to sample ... "	0 0 1	0 0 0½
17	Salt—Coarse ... "	0 0 1½	0 0 1
18	" Fine ... "	0 0 5	0 0 4½
19	Soap—Household, yellow, to sample ... "	0 0 4	0 0 2½
20	Soda—Bicarbonate ... "	0 0 2	0 0 1½
21	" Washing ... "	0 2 0	0 1 9
22	Tartar, Cream of (substitute) ... "	0 1 5	0 1 4
23	Tea—Best Ceylon, to sample ... "	0 5 1	0 6 0
24	Tobacco—Twist, to sample ... "	0 2 5	0 2 4
25	Treacle, in 7-lb. tins ... per tin	0 0 6	0 0 5½
26	Vinegar ... per quart		