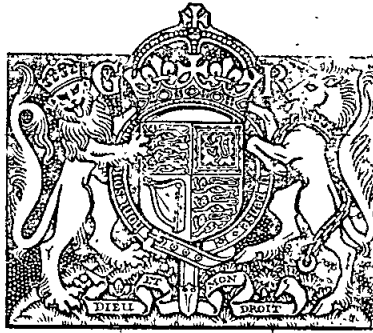


[2405]



VICTORIA  
GOVERNMENT GAZETTE

Published by Authority.

[Registered at the General Post Office, Melbourne, for transmission by post as a newspaper.]

No. 98.]

FRIDAY, JULY 10.

[1925.

CONTRACTS ACCEPTED.

(SERIES 1925-26.)

SUPPLY OF PROVISIONS

FROM

1<sup>ST</sup> JULY, 1925, TO 30<sup>TH</sup> JUNE, 1926, OR AS STATED.

J. G. WHITE,  
Secretary, Tender Board.

CONTRACTS ACCEPTED.—(Series 1925-26.)

No. of Contract.	Particulars of each Tender Accepted.	Amount.	Name of Contractor.	Charged against Vote or Fund.
<b>PROVISIONS—</b>				
Supply of Provisions, in such quantities as may be ordered, from 1st July, 1925, to 30th June, 1926. (For Contracts for Cheese and Butter at Melbourne, Mont Park, Ararat, Beechworth, Ballarat, Sunbury, and Lara, and for Butter at Greenvale, see <i>Gazette</i> of 9th January, 1924, pp. 39 and 40.)				
<b>Melbourne District—</b>				
...	Beer and spirits ... ..	Rates as per annex	Purchase ... ..	
415	Bread, Kew Asylum ... ..	Ditto ... ..	W. Johnson ... ..	
416	Bread, Melbourne ... ..	Ditto ... ..	J. N. Hennessy ... ..	
417	Flour and maize meal, &c. ... ..	Ditto ... ..	H. R. Rush ... ..	
418	Groceries ... ..	Ditto ... ..	Moran and Cato Pty. Ltd. ... ..	
419	Oatmeal, rice, &c. ... ..	Ditto ... ..	Moran and Cato Pty. Ltd. ... ..	
420	Jams ... ..	Ditto ... ..	G. A. Hardham ... ..	
421	Meat, Kew Asylum ... ..	Ditto ... ..	W. Angliss and Co. Pty. Ltd. ... ..	
422	Meat, Pantridge Penal Establishment ... ..	Ditto ... ..	J. H. Cooke, jun. ... ..	
423	Meat, Children's Welfare Department, Royal Park, and Police Dépôt ... ..	Ditto ... ..	J. H. Cooke, jun. ... ..	
424	Meat, Royal Park Mental Hospital and Receiving House ... ..	Ditto ... ..	W. Angliss and Co. Pty. Ltd. ... ..	
425	Potatoes ... ..	Ditto ... ..	Maine Bros. Pty. Ltd. ... ..	
426	Soap ... ..	Ditto ... ..	Moran and Cato Pty. Ltd. ... ..	
427	Tea ... ..	Ditto ... ..	Henry Berry and Co. Pty. Ltd. ... ..	
428	Tobacco ... ..	Ditto ... ..	Dudgeon and Arnoll Pty. Ltd. ... ..	
<b>Greenvale—</b>				
...	Bread ... ..	Ditto ... ..	Purchase ... ..	
429	Groceries ... ..	Ditto ... ..	Moran and Cato Pty. Ltd. ... ..	
430	Meat ... ..	Ditto ... ..	W. Angliss and Co. Pty. Ltd. ... ..	
431	Potatoes ... ..	Ditto ... ..	Maine Bros. Pty. Ltd. ... ..	
<b>Mont Park—</b>				
432	Breadstuffs ... ..	Ditto ... ..	Langridge Bros. ... ..	
433	Groceries ... ..	Ditto ... ..	Moran and Cato Pty. Ltd. ... ..	
434	Jams ... ..	Ditto ... ..	G. A. Hardham ... ..	
435	Meat ... ..	Ditto ... ..	F. Wackins Pty. Ltd. ... ..	
436	Potatoes ... ..	Ditto ... ..	Maine Bros. Pty. Ltd. ... ..	
437	Tea ... ..	Ditto ... ..	Henry Berry and Co. Pty. Ltd. ... ..	
<b>s.s. Rip and Dredges—</b>				
...	Breadstuffs ... ..	Ditto ... ..	Purchase ... ..	
438	Groceries ... ..	Ditto ... ..	G. A. Hardham ... ..	
439	Meat ... ..	Ditto ... ..	W. Angliss and Co. Pty. Ltd. ... ..	
...	Vegetables ... ..	Ditto ... ..	Purchase ... ..	
<b>Ararat District—</b>				
440	Breadstuffs ... ..	Ditto ... ..	Wm. Bates ... ..	
441	Groceries ... ..	Ditto ... ..	Moran and Cato Pty. Ltd. ... ..	
442	Jams ... ..	Ditto ... ..	Fruitgrowers' Preserving Co. Pty. Ltd. ... ..	
443	Meat ... ..	Ditto ... ..	A. Murphy ... ..	
444	Potatoes ... ..	Ditto ... ..	Maine Bros. Pty. Ltd. ... ..	
445	Tea ... ..	Ditto ... ..	Henry Berry and Co. Pty. Ltd. ... ..	
<b>Beechworth District—</b>				
446	Breadstuffs ... ..	Ditto ... ..	Wm. Price ... ..	
447	Groceries ... ..	Ditto ... ..	Moran and Cato Pty. Ltd. ... ..	
448	Meat ... ..	Ditto ... ..	J. R. Newey, jun. ... ..	
449	Potatoes ... ..	Ditto ... ..	W. H. Collins ... ..	
450	Tea ... ..	Ditto ... ..	Henry Berry and Co. Pty. Ltd. ... ..	
<b>Ballarat District—</b>				
...	Breadstuffs ... ..	Ditto ... ..	See <i>Gazette</i> , 21.9.24, p. 3064! ... ..	
451	Groceries ... ..	Ditto ... ..	Moran and Cato Pty. Ltd. ... ..	
452	Jams ... ..	Ditto ... ..	Fruitgrowers' Preserving Co. Pty. Ltd. ... ..	
453	Meat ... ..	Ditto ... ..	W. Angliss and Co. Pty. Ltd. ... ..	
454	Potatoes ... ..	Ditto ... ..	Maine Bros. Pty. Ltd. ... ..	
455	Tea ... ..	Ditto ... ..	Henry Berry and Co. Pty. Ltd. ... ..	
<b>Geelong District—</b>				
456	Breadstuffs ... ..	Ditto ... ..	W. and W. Podbury ... ..	
457	Groceries ... ..	Ditto ... ..	Moran and Cato Pty. Ltd. ... ..	
458	Meat ... ..	Ditto ... ..	M. G. O'Brien ... ..	
459	Milk ... ..	Ditto ... ..	S. H. Warren ... ..	
<b>Lara—</b>				
460	Breadstuffs ... ..	Ditto ... ..	H. P. Ryan ... ..	
461	Groceries ... ..	Ditto ... ..	Moran and Cato Pty. Ltd. ... ..	
462	Jams ... ..	Ditto ... ..	Shepparton Fruit Preserving Co. Pty. Ltd. ... ..	
463	Meat ... ..	Ditto ... ..	W. Angliss and Co. Pty. Ltd. ... ..	
464	Potatoes ... ..	Ditto ... ..	Maine Bros. Pty. Ltd. ... ..	
<b>Sunbury District—</b>				
465	Breadstuffs ... ..	Ditto ... ..	T. Clyne and Son ... ..	
466	Groceries ... ..	Ditto ... ..	Moran and Cato Pty. Ltd. ... ..	
467	Jams ... ..	Ditto ... ..	E. Synot ... ..	
468	Meat ... ..	Ditto ... ..	S. J. Starkie ... ..	
469	Potatoes ... ..	Ditto ... ..	Maine Bros. Pty. Ltd. ... ..	
470	Tea ... ..	Ditto ... ..	Henry Berry and Co. Pty. Ltd. ... ..	
<b>Bendigo District—</b>				
471	Bread ... ..	Ditto ... ..	F. W. Boisicher ... ..	
472	Groceries and potatoes ... ..	Ditto ... ..	Moran and Cato Pty. Ltd. ... ..	
473	Meat ... ..	Ditto ... ..	H. Gittens ... ..	

Contingencies, 1925-26.

CONTRACTS ACCEPTED.—(Series 1925-26)—continued.

No. of Contract.	Particulars of each Tender Accepted.	Amount.	Name of Contractor.	Charged against Vote or Fund.
<b>PROVISIONS—continued.</b>				
Supply of Provisions, in such quantities as may be ordered, from 1st July, 1925, to 30th June, 1926:—				
<b>Castlemaine District—</b>				
474	Bread ... ..	Rates as per annex	McCallum and Millar ... ..	
475	Groceries and potatoes ... ..	Ditto ... ..	Moran and Cato Pty. Ltd. ... ..	
476	Meat ... ..	Ditto ... ..	J. Williamson ... ..	
<b>Sale District—</b>				
...	Bread ... ..	Ditto ... ..	Purchase ... ..	
477	Groceries and potatoes ... ..	Ditto ... ..	D. H. Howard ... ..	
478	Meat ... ..	Ditto ... ..	Ronchi Bros. ... ..	
<b>Rutherglen—</b>				
479	Bread ... ..	Ditto ... ..	Rutherglen Co-operative Distribution Society Ltd. ... ..	
480	Groceries ... ..	Ditto ... ..	Moran and Cato Pty. Ltd. ... ..	
<b>Wahgunyah—</b>				
481	Bread ... ..	Ditto ... ..	G. C. Haig ... ..	
482	Groceries ... ..	Ditto ... ..	J. A. Haig and Co. ... ..	
483	Meat ... ..	Ditto ... ..	F. Pickles ... ..	Contingencies 1925-26.
<b>School of Forestry, Creswick—</b>				
484	Bread ... ..	Ditto ... ..	C. C. Bowley ... ..	
485	Groceries ... ..	Ditto ... ..	G. Tait and Son ... ..	
486	Meat ... ..	Ditto ... ..	H. H. Wood ... ..	
487	Milk ... ..	Ditto ... ..	E. E. Pollard ... ..	
<b>McLeod Settlement, French Island—</b>				
488	Bread ... ..	Ditto ... ..	E. W. Perkin ... ..	
489	Groceries ... ..	Ditto ... ..	A. G. Glasscock ... ..	
490	Meat ... ..	Ditto ... ..	E. W. Mussen ... ..	
<b>Aborigines (Lake Tyers)—</b>				
491	Bread ... ..	Ditto ... ..	J. Rule ... ..	
492	Groceries ... ..	Ditto ... ..	Moran and Cato Pty. Ltd. ... ..	

Approved—A. J. PEACOCK, Treasurer, 30.6.25.

## STIPULATIONS FOR SUPPLIES OF PROVISIONS.

(Where practicable, all items must be manufactured or prepared within the Commonwealth.)

No sub-letting allowed.

*Under all Sub-schedules particular attention is drawn to Clause 1 of the Condition as to quality.*

## BEER AND SPIRITS.

For brandy, whisky, and for Guinness's porter in case, delivery will be taken at and from the bond.

The contractor will be bound to supply such of the brands named in the tender as the departments may order. In cases where delivery from the bond is taken by the Government, the contractor will be required to hand to the Secretary to the Tender Board the bond certificates and the locker's order and a copy of the entry, and pay all charges, including re-gauging, before delivery is taken.

English ale, brandy, whisky, and Guinness's porter in case must be delivered as imported; if bottled in the State it will not be accepted.

## BREAD.

Samples of the best ordinarily retailed to the public will be considered as test loaves for first quality for fine wheaten and pure wheaten Meal Bread. Third quality (that issued to prisoners of the Crown) to be made of flour, fine sharps, the produce of prime, thin skinned, good-coloured wheat, to be perfectly free from coarse pollard or other offal. *Pure wheaten Meal Bread of first quality may be substituted, wholly or in part, for fine wheaten Bread at such times and in such quantities as in the opinion of the Medical Superintendent may be deemed necessary, and the contractor will be required to supply such Bread at the contract rate. Reasonable notice, however, of the intention to substitute wheaten Meal Bread must be given to the contractor by the officer ordering the supply.* Bread may be baked at any Government establishment without infringing these contracts. At the Gaols, Ballarat, Geelong, Bendigo, Castlemaine, and Sale, if required, bread must be supplied one day old, due notice to be given to the contractor of such requirement.

In the event of bread being made at any Government establishment in the Melbourne District during the currency of these contracts, the flour required will be drawn under the flour and maize meal sub-schedule. The maize meal for all the country gaols is included in the sub-schedule for flour and maize meal, Melbourne District, and delivery of same will be required to be made at the Victorian Railway, Spencer-street.

Should a supply of any article which may be reasonably included in a Baker's Price List, and which is not included in the schedule hereunder, be required for the use of attendants and nurses resident at the Hospitals for the Insane or for inmates of any Government institution drawing supplies under sub-schedules for Bread during the currency of the contract, the contractor shall, with the exception of Ararat, Ballarat, and Beechworth, supply any such article at the current list rates at which it is retailed by the contractor to the public.

## GROCERIES, CANDLES, SOAP, TEA, ETC.

Should the supply of any article which may be reasonably included in a Grocer's Price List, and which is not included in the schedule hereunder, be required for the use of the attendants and nurses resident at the Hospitals for the Insane or for inmates of any Government institution drawing supplies under sub-schedules for Groceries during the currency of the contract, the contractor shall, with the exception of Ararat and Ballarat, supply such article at the current list rates at which it is retailed by the contractor to the public.

As a guarantee of quality, Rice, when ordered in quantities of 56 lb. and over, must be supplied in original bags as delivered by the miller or dresser. Such bags must be branded "Rice, Dressed," and shall also have stencilled thereon the miller or dresser's name. The bags thus stencilled shall contain Rice milled or dressed by the miller or dresser whose name appears thereon. Supplies not in conformity with the foregoing conditions will be absolutely rejected. Oatmeal must be supplied in original bags as delivered by millers.

Candles, except those for prison cells, must be supplied in 1-lb. packets. Candles for prison cells must be delivered in boxes containing from 25 to 50 lb. per box, the boxes for which must be legibly stencilled on one end, showing the estimated burning time and the gross, tare, and net weight of contents. The soap supplied must be hard throughout, ready for immediate use without waste. Soap for Hospitals for the Insane is not included in these contracts. When the quantity admits, Tea must be supplied in original and unopened packages, labelled, as landed.

Raisins and currants must be present season's, and where the quantity admits, be supplied in original boxes labelled 3 crowns.

For s.s. *Rip* a certain quantity of Biscuits are sometimes required in lieu of fresh bread, and are included to meet such contingency only.

The contracts are not to be considered broken, infringed, or vitiated by purchase of sugar from any Government Institution at any time during the currency of this contract.

## BUTTER, CHEESE, AND JAMS.

Butter is to be delivered to the s.s. *Rip* in 1-lb. pats, in such quantities as may be ordered, and no excess over the quantity ordered will be received.

All Butter supplied, as well as the cases in which it is packed, must bear the impress stamp of the creamery manufacturing the Butter, otherwise it will be rejected. The Butter supplied may be tested at any time by the Government Dairy expert if it is considered by the officer ordering that the supply is not up to standard quality. The cheese must be fairly matured and packed in boxes for transport.

As regards butter for Ararat, Ballarat, Beechworth, Lara, Sunbury, and Mont Park, all supplies delivered from Melbourne must be submitted by the contractor to the Government Dairy Expert in Melbourne for test as to standard quality, and if found to be satisfactory, shall be forwarded by that officer direct to the Institution ordering, the cost of freight being borne by the contractor in the usual way.

N.B.—Jams.—The weight stamped on the tins in accordance with the regulations under the Commerce Act, as indicating the minimum net quantity that each tin contains, shall for the purpose of this contract be taken as the actual contents when computing the quantity supplied.

When Jam is supplied in jars the jars remain the property of the contractor, and must be removed by the contractor at his own expense when empty.

## MEAT.

Fore and hind quarters of beef for Hospitals for the Insane are to be supplied in equal proportions of each, and must be delivered as a whole respectively, also extra buttocks separately when ordered. Meat for other institutions must be supplied as ordered. Where hind-quarters or buttocks are ordered, 9 inches must be cut off from the end of the leg from the hock upwards, i.e., the end of the leg from which the shank has been removed at the abattoirs; and when fore-quarters form a portion of the supply, 6 inches from the end of the neck and the whole of the shin at the clodbone joint must be removed. The sticking pieces also must be trimmed off, and the point and end of the brisket rendered free from blood and blood stains.

Fore and hind quarters, for convenience of handling, may be cut into two parts, but each part is to bear evidence of having been cut from the same beast.

Corned beef, rolled or round, as ordered, must be supplied without bone or cartilage and will be received, whether pumped or prepared in the ordinary way by pickling, but in the former case must have been soaked after pumping for at least 48 hours, in a good pickle, and then thoroughly drained before supply. No flank, chuck, sticking piece, shin, leg of beef, or piece under 7 lb. will be received.

Should the local supply of fresh meat become scarce, or the price of same become abnormally high, frozen meat may, with the consent of the Tender Board, on the recommendation of the head of the Department, be supplied.

All meat shall be well fed, good, sound, sweet, and wholesome.

In cases of emergency, or on such other occasions as in the opinion of the Inspector-General of the Insane may seem advisable, other forms of meat such as rabbits, tinned meats, &c., may be purchased apart from the contract for Hospitals for the Insane, in lieu of the meat mentioned in the schedule, and substituted therefor, provided 24 hours' notice (except in cases of emergency) be given to the contractor of such intention.

**Meat derived from the carcasses of Bulls, Stags, or Rams will not be received, and shall not be tendered for delivery.**

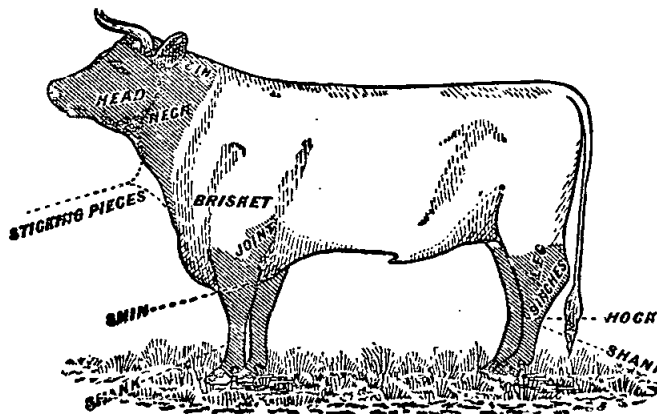
For Sub-schedules 11 and 12, in the Melbourne District, in addition the following clauses apply:—

The beef must be supplied in quantities as ordered from Ribs, Sirlain, and Thick Flanks. Chuck Ribs, i.e., the first to fourth inclusive, will not be accepted.

Mutton must be delivered in sides. All kidney fat to be removed.

Meat containing an undue proportion of bone or fat will not be accepted.

The parts to be removed by the contractor are indicated by the shaded portions of the annexed diagram.



For Beechworth samples (corresponding to the description given in the schedule) of meat ordinarily retailed to the public will be considered as a test for quality.

As regards supplies for s.s. *Rip*, all Meat must be of prime quality, and must be supplied in equal quantities from ribs, sirloin, and thick flanks; mutton to be delivered in sides; all kidney fat to be removed; meat containing an undue proportion of fat will not be accepted. Chuck ribs will not be accepted in lieu of prime ribs. Live sheep to be supplied when required.

Should a supply of any article which may be reasonably included in a Butcher's Small Goods List, and which is not included in the schedule hereunder, be required for the use of attendants and nurses resident at the Hospitals for the Insane or for Inmates of any Government Institution drawing supplies under sub-schedules for Meat during the currency of the contract, the contractor shall, with the exception of Ararat and Ballarat, supply such article at the current list rates at which it is retailed by the contractor to the public.

#### MILK.

The milk must be fresh, pure, and of the best quality, and subject to test when required by the Department, and supplied at such times as the Department may require. Should the contractor fail to supply

at the time specified in the order or at such times as may be indicated in any general notice to the contractor his contract may be cancelled forthwith and his security forfeited, or should the supply prove to be not of contract quality it will be rejected, and any expense incurred will be charged to the contractor.

#### POTATOES.

(Potatoes to be dry and free from dirt. Contractors to supply 117 lbs. of potatoes for each cwt. credited to them, and, in addition, to take back all rejected before being cooked.)

If the price of potatoes becomes abnormally high, the heads of the various departments concerned may, if they think fit, cause rice or any other suitable food to be occasionally substituted in lieu thereof.

#### TOBACCO.

Tobacco for country Hospitals for the Insane is included in the contract for Melbourne District, and delivery of same will be required to be made at Spencer-street.

Tobacco for country Gaols is not included in the contract for Melbourne District.

Schedule No. 1.  
**PROVISIONS—MELBOURNE DISTRICT.**

Sub-schedule No. 1.

BEER AND SPIRITS.

1. Ale (pints), English	per doz.	Purchase
2. Ale (quarts), Commonwealth (Manufacturer to be named)	do.	
3. Brandy, Australian, Standard, pure grape, of proof strength, and of approved brand (Manufacturer to be named)	per liq. gal.	
4. " bottled—Hennessy's Three Star, as imported	per bottle	
5. Lime Juice (Imperial quart bottles), Board of Trade Standard	per doz.	
6. Whisky, of proof strength—Loch Dhu, Scotch Cream, or any other brand of equal quality	per liq. gal.	
7. Porter—"Guinness," bottled (quarts) (Bottler to be named)	per doz.	
8. " "Guinness," bottled (pints) (Bottler to be named)	do.	

ANNEX TO CONTRACT No. 1925/415.

*W. Johnson, Bay View-street, Northcote.*

Sub-schedule No. 2.

BREAD FOR HOSPITALS FOR THE INSANE AT KRW.

Security, £120.

1. Bread—Fine wheaten, first quality	per cental	£ s. d.
		0 16 1

ANNEX TO CONTRACT No. 1925/416.

*J. N. Hennessy, Sydney-road, Brunswick.*

Sub-schedule No. 3.

BREAD FOR CHILDREN'S WELFARE DEPARTMENT, ROYAL PARK; RECEIVING HOUSE AND MENTAL HOSPITAL, ROYAL PARK; POLICE DEPÔT; RICHMOND HOUSE, RICHMOND, IF REQUIRED.

Security, £50.

1. Bread—Fine wheaten, first quality	per cental	£ s. d.
		0 16 7

ANNEX TO CONTRACT No. 1925/417.

*H. R. Rush, 386 Flinders-street, Melbourne.*

Sub-schedule No. 5.

FLOUR AND MAIZE MEAL.

Security, £100.

1. Flour—Roller, first quality, to sample	per cental	£ s. d.
		0 14 9
2. " Sharps, to sample	do.	0 12 9
3. Maize Meal, to sample	do.	0 14 9

ANNEX TO CONTRACT No. 1925/418.

*Moran & Cato Pty. Ltd., 277 Brunswick-street, Fitzroy.*

Sub-schedule No. 6.

GROCERIES, ETC.

Security, £50.

1. Bicarbonate of Soda	per lb.	£ s. d.
		0 0 2
2. Blue—Of any brand ordered	do.	0 0 10½
3. Candles—Full weights, Kitchen's "Petrolines" or other make of equal quality, to be supplied in 1-lb. packets to sample	do.	0 0 9
4. " Kitchen's "Petrolines" or other make of equal quality, for use in prison cells, to burn for 1, 1½, 2, 2½, and 3 hours respectively, as ordered, to sample for quality and size, to be supplied in candle boxes, containing from 25 to 50 lbs. per box	do.	0 0 10½
5. " Paraffine	do.	0 0 8½
6. Cocoa—Homœopathic, in ¼-lb. packets, of any Commonwealth manufacture ordered	do.	0 1 1

GROCERIES—continued.

7. Cocoa—Homœopathic, in 7-lb. cartons, of any Commonwealth manufacture ordered	per lb.	£ s. d.
		0 0 6
8. Coffee—Fresh roasted and whole, beans to be thoroughly sound, Neighgherry A, to sample	do.	0 1 10
9. " Pure, fresh roasted and ground, to sample	do.	0 1 10
10. Cornina	do.	0 0 7½
11. Cream of Tartar	do.	0 1 0
12. Currants, 3 crowns, present season's	do.	0 0 7½
13. Curry Powder	do.	0 0 11½
14. Essence of Lemon, 1-oz. bottles	per bottle	0 0 5
15. Ginger—Ground	per lb.	0 1 8
16. Golden Syrup (in 7-lb. tins)	per tin	0 2 7½
17. Lemon Peel	per lb.	0 0 11
18. Maizena	do.	0 1 0
19. Mustard—"Double Superfine," of any Commonwealth manufacture ordered	do.	0 2 4
20. Nutmegs	do.	0 2 4
21. Pearl barley	per cwt.	1 0 6
22. Pease—Split	do.	1 1 5
23. Pepper—Black, ground	per lb.	0 1 0
24. Pipes—Tobacco, clay	per doz.	0 0 9½
25. Raisins—Sultana, 3 crowns, present season's	per lb.	0 0 9
26. Salt—Fine	per cwt.	0 5 9
27. " Rock	do.	0 9 0
28. Soap, Toilet—Brown Windsor, in tablets, to sample	per lb.	0 0 8
29. " Carbolic, in half-pound bars, to sample	do.	0 0 8
30. " Glycerine, in tablets, to sample	do.	0 0 4
31. " Magic	per lb.	0 0 6
32. " Velvet	per dbit.	0 0 6½
33. Soap—Extract of, Hudson's, No. 8a, in ¼-lb. boxes	per box	0 8 0
34. Soda—Washing	per cwt.	0 8 6
35. Spice—Mixed, in 1-oz. packets	per pkt.	0 0 3
36. Starch—Of any brand ordered, to sample	per lb.	0 0 9
37. Treacle, in 7-lb. tins	per tin	0 2 9
38. Vinegar	per quart	0 0 4½
39. Tapioca (Pearl)	per lb.	0 0 3½
40. Tomato Sauce (pints)	per bottle	0 1 0

ANNEX TO CONTRACT No. 1925/419.

*Moran & Cato Pty. Ltd., Brunswick-street, Fitzroy.*

Sub-schedule No. 7.

OATMEAL, RICE, AND SEED TAPIOCA.

Security, £50.

1. Oatmeal—Of any brand ordered	per cwt.	£ s. d.
		1 2 10
2. Rice—Dressed, to sample	do.	1 1 3
3. Seed Tapioca (Sago), to sample	do.	0 19 0

ANNEX TO CONTRACT No. 1925/420.

*G. A. Hardham, Glenferrie-road, Malvern.*

Sub-schedule No. 8.

JAMS (of Commonwealth Manufacture) FOR HOSPITALS FOR THE INSANE.

(Including Receiving House, Royal Park.)

Security, £20.

1. Jams—Assorted, of approved kinds, in the proportion of half seed and half stone, of the best quality, in tins, as required	per lb. actual net weight	£ s. d.
		0 0 4½

ANNEX TO CONTRACT No. 1925/421.

*W. Angliss & Co. Pty. Ltd., Bourke-street, Melbourne.*

Sub-schedule No. 9.

MEAT FOR HOSPITALS FOR THE INSANE, KRW.

Security, £150.

1. Fresh Beef—Fore-quarters	per cental	£ s. d.
		1 14 9
2. " " Hind-quarters	do.	1 14 9
3. " " Buttock	do.	1 14 9
4. " Mutton	do.	2 8 6
5. Corned Beef, rolled or round, as ordered, without bone or cartilage	do.	1 14 9
6. Fresh Suet—Kidney	do.	2 10 0

ANNEX TO CONTRACT No. 1925/422. J. H. Cooke, jun., 378 Queen's-parade, Clifton Hill. Sub-schedule No. 10.

MEAT FOR PENAL ESTABLISHMENT (PENTRIDGE) AND METROPOLITAN GAOL. Security, £100. £ s. d. 1. Fresh Beef ... per cental 1 14 0

ANNEX TO CONTRACT No. 1925/428. Dudgeon and Arnell Pty. Ltd., Lonsdale-street, Melbourne. Sub-schedule No. 17. TOBACCO. (Of Commonwealth Manufacture.) Security, £50. £ s. d.

1. Tobacco, in 2-oz. plugs, for gaols—"Starlight," or other make of equal quality, to sample ... per lb. 0 4 10

Schedule No. 15. PROVISIONS AT GREENVALE. Sub-schedule No. 1. BREAD.

1. Bread—Fine Wheaton, first quality ... per cental Purchase

ANNEX TO CONTRACT No. 1925/423. J. H. Cooke, jun., 378 Queen's-parade, Clifton Hill. Sub-schedule No. 11. MEAT FOR POLICE BARRACKS, ST. KILDA-ROAD; CHILDREN'S WELFARE DEPARTMENT, ROYAL PARK; RICHMOND HOUSE, RICHMOND, IF REQUIRED. Security, £50. £ s. d.

1. Fresh Beef ... per cental 1 18 0 2. " " Buttock ... do. 1 18 0 3. " Mutton ... do. 2 8 0

ANNEX TO CONTRACT No. 1925/424. W. Angliss and Co. Pty. Ltd., Bourke-street, Melbourne. Sub-schedule No. 12. MEAT FOR REEIVING HOUSE AND MENTAL HOSPITAL, ROYAL PARK. Security, £50. £ s. d.

1. Fresh Beef ... per cental 2 7 0 2. " " Buttock ... do. 2 7 0 3. " Mutton ... do. 2 7 0

ANNEX TO CONTRACT No. 1925/425. Maine Bros. Pty. Ltd., 434 Collins-street, Melbourne. Sub-schedule No. 13. POTATOES. Security £100. £ s. d.

1. Potatoes ... per cwt. 0 7 9

Sub-schedule No. 14. SUGAR. 1. Sugar—White, to sample ... per cwt. {Purchase from Maffra 2. " Ration " ... do. {

ANNEX TO CONTRACT No. 1925/426. Moran and Cato Pty. Ltd., Brunswick-street, Fitz-roy. Sub-schedule No. 15. SOAP. (Of Commonwealth Manufacture.) Security, £10. £ s. d.

1. Soap (household)—Yellow, dry, to sample, equal to Kitchen & Son's "Best Brown" ... per cwt. 1 9 0 2. Soap (household)—Carbolic, dry, to sample " 1 13 0

ANNEX TO CONTRACT No. 1925/427. Henry Berry and Co., Pty. Ltd., 568 Collins-street, Melbourne. Sub-schedule No. 16. TEA. Security, £60. £ s. d.

1. Tea—Best Ceylon, to sample ... per lb. 0 1 5 1/2 2. " Ration, to sample ... do. 0 1 0

ANNEX TO CONTRACT No. 1925/429. Moran and Cato. Pty. Ltd., Brunswick-street, Fitz-roy. Sub-schedule No. 2. GROCERIES. Security, £20. £ s. d.

1. Apricots—Dried Mildura ... per lb. 0 0 10 2. Biscuits—Coffee ... do. 0 0 9 3. Beans—Haricot ... do. 0 0 2 4. Candles—(Full weights) Kitchen's "Petro-lines," or other make of equal quality, to be supplied in 1-lb. packets ... do. 0 0 8

ANNEX TO CONTRACT No. 1925/430. W. Angliss and Co. Pty. Ltd., Bourke-street, Melbourne. Sub-schedule No. 3. MEAT. Security, £20. £ s. d.

1. Fresh Ox Beef—Roast ... per cental 2 8 0 2. Fresh Ox Beef Steak—Stewing ... do. 2 8 0 3. Corned Ox Beef—Rolled or Round, as ordered, without bone or cartilage ... do. 2 8 0

ANNEX TO CONTRACT No. 1925/431. Maine Bros. Pty. Ltd., 434 Collins-street, Melbourne. Sub-schedule No. 4. POTATOES. Security, £20. £ s. d.

1. Potatoes ... per cwt. 0 9 0

Schedule No. 16.  
**PROVISIONS—MONT PARK.**

ANNEX TO CONTRACT No. 1925/432.  
*Langridge Bros., Eastment-street, Northcote.*

Sub-schedule No. 1.

BREADSTUFFS.

(Including supplies required at the Repatriation Mental Hospital, Bundoora.)

	Security, £100.	£	s.	d.
1. Bread—Fine Wheaten, first quality	... per cental	0	14	10½
2. Bread—Raisin	... do.	0	17	2
3. Flour—First quality	... do.	0	14	11

ANNEX TO CONTRACT No. 1925/433.

*Moran and Cato Pty. Ltd., Brunswick-street, Fitzroy.*

Sub-schedule No. 3.

GROCERIES.

	Security, £30.	£	s.	d.
2. Blue—Of any brand ordered	... per lb.	0	0	10½
3. Candles (full weights)—Kitchen's "Petrolines," or other make of equal quality, to be supplied in 1-lb. packets	... do.	0	0	9½
4. Cocoa	... do.	0	0	6½
5. Coffee—"Neilgherry A"—Fresh roasted and Whole—Beans to be thoroughly sound, to sample	... do.	0	1	6
6. Currants, 3 Crowns (present season's, 6 months)	... do.	0	0	7½
7. Curry Powder	... do.	0	0	10
8. Gustard Powder, 16-oz. pkts.	... per pkt.	0	0	3½
9. Dates	... per lb.	0	0	4½
10. Ginger—Ground	... do.	0	1	6
11. Golden Syrup, in 7-lb. tins	... per tin	0	2	1
12. Macaroni	... per lb.	0	0	4½
13. Maizena	... do.	0	0	6½
14. Mustard—"Double Superfine," of any Commonwealth manufacture ordered	... do.	0	2	4
15. Oatmeal—Of any brand ordered	... per cwt.	1	1	0
16. Pearl Barley	... per lb.	0	0	4
17. Pease—Split	... per cwt.	1	0	0
18. Pepper—Black, Ground	... per lb.	0	0	11
20. Pipes—Tobacco, Clay	... per doz.	0	0	9½
21. Prunes—Dried	... per lb.	0	0	7½
22. Raisins—Sultana, 3 Crowns (present season's, 6 months)	... do.	0	0	9½
23. Rice—Dressed, to sample	... per cwt.	1	2	0
24. Sauce—Tomato (in reputed pints)	... per doz.	0	8	6
26. Seed Tapioca (Sago)—To sample	... per lb.	0	0	2½
27. Salt—Fine	... per cwt.	0	6	3
28. Soap—Hudson's Extract	... per box	0	6	3
29. Soda—Carbonate of	... per lb.	0	0	2
30. Soda—Washing	... per cwt.	0	8	0
31. Spice	... per lb.	0	1	3
32. Starch—Of any brand ordered, to sample	... do.	0	0	8
33. Tartar—Cream of	... do.	0	1	2
34. Treacle, in 7-lb. tins (6 months)	... per tin	0	1	8
35. Vinegar	... per pint	0	0	2

ANNEX TO CONTRACT No. 1925/434.

*G. A. Hardham, Glenferrie-road, Malvern.*

Sub-schedule No. 4.

JAMS.

Of Commonwealth Manufacture.

	Security, £10.	£	s.	d.
1. Jams—Assorted, of approved kinds, in the proportion of half seed and half stone, of the best quality, in tins, actual net as required	... per lb.	0	0	4½

ANNEX TO CONTRACT No. 1925/435.

*F. Watkins Pty. Ltd., 184—186 Bourke-street, Melbourne.*

Sub-schedule No. 5.

MEAT.

	Security, £80.	£	s.	d.
1. Fresh Beef—Fore-quarters	... per cental	1	17	9
2. " " Hind-quarters	... do.	1	17	9
3. " " Buttocks	... do.	1	17	9
4. " Mutton	... do.	2	11	9
5. Corned Beef—Rolled or round as ordered, without bone or cartilage	... do.	1	17	9
6. Fresh Beef Suet (Kidney)	... do.	2	10	0
7. Tripe	... per lb.	0	0	5

ANNEX TO CONTRACT No. 1925/436.

Sub-schedule No. 6.

POTATOES.

*Maine Bros. Pty. Ltd., 46 Market-street, Melbourne.*

Security, £20. £ s. d.

1. Potatoes	... per cwt.	0	8	3
-------------	--------------	---	---	---

Sub-schedule No. 7.

SUGAR.

1. Sugar—White, to sample	... per cwt.	Purchase from Maffra

ANNEX TO CONTRACT No. 1925/437.

*Henry Berry and Co. Pty. Ltd., 563 Collins-street, Melbourne*

Sub-schedule No. 8.

TEA.

	Security, £10.	£	s.	d.
Tea—Best Ceylon, to sample	... per lb.	0	1	6

Schedule No. 2.

**PROVISIONS FOR S.S. RIP AND DREDGES.**

Supplies to be delivered to Dredging Dépôt, Footscray-road, Victoria Dock, or River Yarra Wharfs, as ordered.

Sub-schedule No. 1.

BREADSTUFFS.

1. Bread—Fine wheaten, first quality	... per cental	Purchase
2. Flour—First quality	... do.	

ANNEX TO CONTRACT No. 1925/438.

*G. A. Hardham, Glenferrie-road, Malvern.*

Sub-schedule No. 2.

GROCERIES.

	Security, £10.	£	s.	d.
1. Biscuits—Kinds as ordered	... per lb.	0	0	4
2. Butter—First class creamery, to score not less than 90 points, Government grade, commerce regulations standard	... do.	0	1	5
3. Chocolate, of any brand ordered	... do.	0	1	8
4. Coffee—Fresh roasted and ground, to sample	... do.	0	1	7
5. Currants—3 crowns, present season's	... do.	0	0	6½
6. Flour—Self-raising	... do.	0	0	3½
7. Jams—Assorted, of approved kinds, in proportion of half seed and half stone, of best quality (in 1½-lb. tins)	... per tin	0	0	9½
8. Milk—Condensed, of any brand ordered	... do.	0	0	9
9. Mustard—double superfine, of any brand ordered	... per lb.	0	2	4
10. Oatmeal	... per cwt.	1	2	6
11. Pearl barley	... do.	0	19	6
12. Pease—Split	... do.	1	1	6
13. Pepper—White, ground	... per lb.	0	1	2½
14. Pickles—Assorted	... per bot.	0	0	9½
15. Raisins—Sultana, 3 crowns, present season's	... per lb.	0	0	8½
16. Rice—Dressed, to sample	... do.	0	0	2½
17. Salt—Fine, to sample	... do.	0	0	0½
18. Sauce—Tomato	... per bot.	0	0	7
19. " Worcester	... do.	0	0	5
20. Tea—Best Ceylon, special sample	... per lb.	0	1	7
21. Vinegar—Champion's, or other approved brand	... per quart	0	0	6

ANNEX TO CONTRACT No. 1925/439.

*Wm. Angliss and Co. Pty. Ltd., 42 Bourke-street, Melbourne.*

Sub-schedule No. 3.

MEAT.

	Security, £10.	£	s.	d.
1. Fresh Beef	... per cental	2	12	0
2. " Mutton	... do.	2	12	0
3. " Suet	... do.	2	12	0

Sub-schedule No. 4.

VEGETABLES.

1. Potatoes	... per cwt.	Purchase
2. Onions	... do.	
3. Other vegetables, including cauliflower, carrots, cabbages, turnips, and parsnips, as required	... do.	



PROVISIONS—ARARAT DISTRICT.

ANNEX TO CONTRACT No. 1925/440.

Wm. Bates, Ararat.

Sub-schedule No. 1.

BREADSTUFFS.

Security, £100. £ s. d.

- 1. Bread—Fine wheaten, first quality ... per cental 0 18 2
- 2. Flour—First quality ... do. 0 14 6

ANNEX TO CONTRACT No. 1925/441.

Moran and Cato Pty. Ltd., Brunswick-street, Fitzroy.

Sub-schedule No. 3.

GROCERIES.

Security, £30. £ s. d.

- 1. Blue—Of any brand ordered ... per lb. 0 0 11
- 2. Candles (full weights) — Kitchen's "Petrolines," or other make of equal quality, to be supplied in 1-lb. packets do. 0 0 9½
- 3. Coffee—"Neilgherry A."—Fresh roasted and whole—Beans to be thoroughly sound, to sample ... do. 0 1 9
- 4. Curry ... do. 0 1 2
- 5. Golden Syrup (in 56-lb. tins) ... per tin 0 17 6
- 6. Mustard—"Double Superfine," of any Commonwealth manufacture ordered per lb. 0 2 4
- 7. Oatmeal—Of any brand ordered ... per cwt. 1 5 4
- 8. Peas—Split ... do. 1 4 5
- 9. Pepper—Black, ground ... per lb. 0 1 0½
- 10. Pipes—Tobacco, clay ... per doz. 0 0 10
- 11. Raisins—Sultana, 3 crowns, present season's ... per lb. 0 0 9½
- 12. Rice—Dressed, to sample ... per cwt. 1 5 6
- 13. Seed Tapioca (Sago)—To sample ... do. 1 4 6
- 14. Salt—Fine ... do. 0 8 6
- 15. Soda—Carbonate of ... per lb. 0 0 2½
- 16. " Washing ... per cwt. 0 10 6
- 17. Starch—Of any brand ordered, to sample ... per lb. 0 0 7½
- 18. Tartar—Cream of ... do. 0 1 1½
- 19. Vinegar ... per pint 0 0 4

ANNEX TO CONTRACT No. 1925/442.

The Fruitgrowers' Preserving Co. Pty. Ltd., Davey-Street, Ballarat.

Sub-schedule No. 4.

JAMS.

Security, £10. £ s. d.

- Jams, assorted, of approved kinds in the proportion of half seed and half stone, of the best quality, in tins, actual net as required ... weight 0 0 4½

ANNEX TO CONTRACT No. 1925/443.

A. Murphy, Barkly-street, Ararat.

Sub-schedule No. 5.

MEAT.

Security, £100. £ s. d.

- 1. Fresh Beef—Fore-quarters ... per cental 1 9 8½
- 2. " " Hind-quarters ... do. 1 9 8½
- 3. " " Buttocks ... do. 1 9 8½
- 4. " Mutton ... do. 2 5 10
- 5. Corned Beef—Rolled or round, as ordered, without bone or cartilage ... do. 1 9 8½
- 6. Fresh Suet—Kidney ... do. 1 13 4

ANNEX TO CONTRACT No. 1925/444.

Maine Bros. Pty. Ltd., 434 Collins-street, Melbourne.

Sub-schedule No. 6.

POTATOES.

Security, £30. £ s. d.

- 1. Potatoes ... per cwt. 0 7 0

Sub-schedule No. 7.

SUGAR.

- 1. Sugar, white, to sample ... per cwt. { Purchase from Maffra

ANNEX TO CONTRACT No. 1925/445.

Henry Berry and Co. Pty. Ltd., 568 Collins-street, Melbourne.

Sub-schedule No. 8.

TEA.

Security, £20. £ s. d.

- 1. Tea—Best Ceylon, to sample ... per lb. 0 1 6½

PROVISIONS—BEECHWORTH DISTRICT.

ANNEX TO CONTRACT No. 1925/446.

Wm. Price, Newtown, Beechworth.

Sub-schedule No. 1.

BREADSTUFFS.

Security, £100. £ s. d.

- 1. Bread—Fine wheaten, first quality ... per cental 0 19 3
- 2. Flour—First quality ... do. 1 0 0

ANNEX TO CONTRACT No. 1925/447.

Moran and Cato Pty. Ltd., Brunswick-street, Fitzroy.

Sub-schedule No. 3.

GROCERIES.

Security, £30. £ s. d.

- 1. Arrowroot ... per lb. 0 0 8
- 2. Blue—Of any brand required ... do. 0 0 11
- 3. Candles (full weights)—Kitchen's "Petrolines," or other make of equal quality, to be supplied in 1-lb. packets do. 0 0 10
- 4. Coffee—"Neilgherry A," fresh roasted and whole, beans to be thoroughly sound, to sample ... do. 0 1 9
- 5. Coffee—Fresh roasted and ground, to sample ... do. 0 1 9
- 6. Golden Syrup (in 7-lb. tins) ... per tin 0 2 3
- 7. Maizena ... per lb. 0 0 7
- 8. Mustard—"Double superfine," of any Commonwealth manufacture ordered do. 0 2 1
- 9. Oatmeal—Of any brand ordered ... per cwt. 1 6 4
- 10. Pearl Barley ... do. 1 4 0
- 11. Pease—Split ... do. 1 5 5
- 12. Pepper—Black, ground ... per lb. 0 1 0½
- 13. Pipes—Tobacco, clay ... per doz. 0 0 10
- 14. Raisins—Sultana, 3 crowns, present season's, to be supplied in original boxes, labelled as packed, where quantity admits ... per lb. 0 0 9½
- 15. Rice—Dressed, to sample ... per cwt. 1 7 0
- 16. Seed Tapioca (Sago)—To sample ... do. 1 5 6
- 17. Salt—Fine ... do. 0 10 0
- 18. Soda—Carbonate of ... per lb. 0 0 3
- 19. " Washing ... per cwt. 0 11 6
- 20. Starch—Of any brand ordered, to sample ... per lb. 0 0 9
- 21. Tartar—Cream of ... do. 0 1 2
- 22. Vinegar ... per pint 0 0 3

ANNEX TO CONTRACT No. 1925/448.

J. R. Newey, jun., Ford-street, Beechworth.

Sub-schedule No. 4.

MEAT.

Security, £100. £ s. d.

- 1. Fresh Beef—Fore-quarters ... per cental 1 9 6½
- 2. " " Hind-quarters ... do. 1 9 6½
- 3. " " Buttocks ... do. 1 9 6½
- 4. " Mutton ... do. 1 9 6½
- 5. Corned Beef—rolled or round, as ordered, without bone or cartilage ... do. 3 15 0
- 6. Fresh Suet—Kidney (2 months only) ... per lb. 0 0 6

ANNEX TO CONTRACT No. 1925/449.

W. H. Collins, Stanley, via Beechworth.

Sub-schedule No. 5.

POTATOES.

Security, £30. £ s. d.

- 1. Potatoes ... per cwt. 0 7 3

Sub-schedule No. 6.

SUGAR.

- 1. Sugar, white, to sample ... per cwt. { Purchase from Maffra

ANNEX TO CONTRACT No. 1925/450.

Henry Berry and Co. Pty. Ltd., 568 Collins-street, Melbourne.

Sub-schedule No. 7.

TEA.

Security, £20. £ s. d.

- 1. Tea—Best Ceylon, to sample ... per lb. 0 1 6½

Schedule No. 5.

PROVISIONS AT BALLARAT.

Sub-schedule No. 1.

BREADSTUFFS.

1. Bread—Fine Wheaten, first quality	per cental	See Gazette
2. " " Wheaton, third quality	do.	21.9.1924.
3. Flour—First quality ...	do.	p. 3064.

ANNEX TO CONTRACT No. 1925/451.

Moran and Cato Pty. Ltd., Brunswick-street, Fitzroy.

Sub-schedule No. 3.

GROCERIES.

	Security, £30.	£	s.	d.
1. Barley—Pearl	... per lb.	0	0	2
2. Blue—Of any brand required	... do.	0	0	10½
3. Candles (full weights)—Kitchen's "Petrolines," or other make of equal quality, to be supplied in 1-lb. packets	... do.	0	0	10
4. Coffee—"Neigherry A." Fresh roasted and whole, beans to be thoroughly sound, to sample	... do.	0	1	9
5. Cornua	... do.	0	0	8½
6. Currants, 3 crowns, present season's	... do.	0	0	7½
7. Ginger—Ground	... do.	0	1	6
8. Golden Syrup (in 7-lb. tins)	... per tin	0	2	3
9. Mustard—Double superfine, of any Commonwealth manufacture ordered	... per lb.	0	2	3
10. Oatmeal—Of any brand ordered	... per cwt.	1	3	7
11. Peas—Split	... do.	1	2	0
12. Pepper—Black, ground	... per lb.	0	1	0
13. Pipes—Tobacco, clay	... per doz.	0	0	11
14. Raisins—Sultana, 3 crowns, present season's	... per lb.	0	0	9½
15. Rice—Dressed, to sample	... per cwt.	1	4	0
16. Seed Tapioca (Sago), to sample	... do.	1	3	0
17. Salt—Fine	... do.	0	8	0
18. Soap—(Household), Carbolic, dry to sample	... per lb.	0	0	4½
19. Soap—(Household), Yellow, dry, to sample	... do.	0	0	4½
20. Soda—Carbonate of	... do.	0	0	2½
21. " Washing	... per cwt.	0	9	6
22. Spice—Mixed, in 1-oz. packets	... per doz. pkts.	0	1	1
23. Starch—Of any brand ordered, to sample	... per lb.	0	0	7
24. Tartar—Cream of	... do.	0	1	1
25. Tobacco—"Starlight," or other make of equal quality, as ordered	... do.	0	5	9
26. Vinegar	... per pint	0	0	3

ANNEX TO CONTRACT No. 1925/452.

The Fruitgrowers' Preserving Co. Pty. Ltd., Darcy-street, Ballarat.

Sub-schedule No. 4.

JAMS.

(For Hospitals for the Insane.)

Security, £10.

£ s. d.

1. Jams—Assorted, of approved kinds in proportion of half seed and half stone, of the best quality, packed in 56-lb. tins	per lb. actual net weight	0	0	3½
---	---------------------------	---	---	----

ANNEX TO CONTRACT No. 1925/453.

W. Angliss and Co. Pty. Ltd., 42 Bourke-street, Melbourne.

Sub-schedule No. 5.

MEAT.

Security, £50.

£ s. d.

1. Fresh Beef—Fore-quarters	... per cental	1	15	0
2. " " Hind-quarters	... do.	1	15	0
3. " " Buttocks	... do.	1	15	0
4. " Mutton	... do.	2	9	0
5. Corned Beef, rolled or round, as ordered, without bone or cartilage	... do.	1	15	0
6. Fresh Suet—Kidney	... do.	2	10	0

ANNEX TO CONTRACT No. 1925/454.

Maine Bros. Pty. Ltd., 434 Collins-street, Melbourne.

Sub-schedule No. 6.

POTATOES.

Security £20.

£ s. d.

1. Potatoes	... per cwt.	0	7	0
-------------	--------------	---	---	---

ANNEX TO CONTRACT No. 1925/455.

Henry Berry and Co. Pty. Ltd., 568 Collins-street, Melbourne.

Sub-schedule No. 7.

TEA.

Security, £20.

£ s. d.

1. Tea—Best Ceylon, to sample	... per lb.	0	1	6½
2. " Ration	... do.	0	1	1

Schedule No. 6.

PROVISIONS AT GEELONG.

ANNEX TO CONTRACT No. 1925/456.

W. and W. Podbury, 47 Little Myers-street, Geelong.

Sub-schedule No. 1.

BREADSTUFFS.

Security, £20.

£ s. d.

1. Bread—Fine Wheaten, first quality	... per cental	6	14	6
2. " Wheaton, third quality	... do.	0	14	6

ANNEX TO CONTRACT No. 1925/457.

Moran and Cato Pty. Ltd., Brunswick-street, Fitzroy.

Sub-schedule No. 2.

GROCERIES.

Security, £20.

£ s. d.

1. Arrowroot—Queensland	... per lb.	0	0	8
2. Candles (full weights)—Kitchen's "Petrolines," or other make of equal quality, to sample, to be supplied in 1-lb. packets	... do.	0	0	10
3. Barley—Pearl	... do.	0	0	2½
4. Currants, 3 crowns, present season's	... do.	0	0	7½
5. Eggs—Fresh	... per doz.	0	2	0
6. Oatmeal—Of any brand ordered	... per cwt.	1	2	10
7. Potatoes	... do.	0	10	0
8. Pepper—Black, ground	... per lb.	0	1	0
9. Pipes—Tobacco, clay	... per doz.	0	1	0
10. Raisins—Sultana, 3 crowns, present season's	... per lb.	0	0	9½
11. Rice—Dressed, to sample	... per cwt.	1	4	6
12. Seed Tapioca (Sago), to sample	... per lb.	0	0	3
13. Salt—Fine	... do.	0	0	0½
14. Soap—(Household) Carbolic, dry, to sample	... do.	0	0	4½
15. Soap—(Household) Yellow, dry, to sample	per cwt.	1	12	6
16. Soda—Washing	... do.	0	9	0
17. Sugar—Ration, to sample	... do.	1	8	0
18. Tea—Ration	... per lb.	0	1	1½
19. Tobacco—"Starlight," or other make of equal quality, as ordered	... do.	0	5	6

ANNEX TO CONTRACT No. 1925/458.

M. G. O'Brien, 491 Moorabool-street, South Geelong.

Sub-schedule No. 3.

MEAT.

Security, £20.

£ s. d.

1. Fresh Beef	... per cental	1	0	0
2. " Buttocks	... do.	1	10	0
3. " Mutton	... do.	1	4	0

ANNEX TO CONTRACT No. 1925/459.

S. H. Warren, Moolap West.

Sub-schedule No. 4.

MILK.

Security, £5.

£ s. d.

1. Milk—Fresh and pure	... per gallon	0	1	8
------------------------	----------------	---	---	---

Schedule No. 7.

PROVISIONS AT LARA.

ANNEX TO CONTRACT No. 1925/460.

H. P. Ryan, Forrest-road, Lara.

Sub-schedule No. 1.

BREADSTUFFS.

Security, £20.

£ s. d.

1. Bread—Fine Wheaten, first quality	... per cental	0	10	8
2. Flour—First quality	... do.	0	13	8

ANNEX TO CONTRACT No. 1925/461.  
 Moran and Cato Pty. Ltd., Brunswick-street, Fitzroy.  
 Sub-schedule No. 3.

GROCERIES.  
 Security, £20. £ s. d.

1. Arrowroot—Queensland ... per lb. 0 0 7
2. Bacon, Farmer's or Hutton's, by the side (or other approved brand) ... do. 0 1 2
3. Barley—Pearl... .. do. 0 0 2½
4. Blue—Of any brand ordered ... do. 0 1 0
5. Candles—(Full weights) Kitchen's "Petrolines," or other make of equal quality, to be supplied in 1-lb. packets ... do. 0 0 10
6. Cocoa—(Homœopathic)—McKenzie's, or other brand of equal quality ... do. 0 0 8
7. Coffee—"Neilgherry A." Fresh roasted and whole—Beans to be thoroughly sound, to sample ... do. 0 1 8
8. Currants—3 crowns, present season's ... do. 0 0 7½
9. Mustard—Double Superfine, of any Commonwealth manufacture ordered ... do. 0 2 4½
10. Oatmeal—Of any brand ordered ... per cwt. 1 3 0
11. Pease—Split ... .. do. 0 0 2½
12. Pepper—Black, ground ... .. do. 0 1 0
13. Raisins—Sultana, 3 crowns, present season's ... .. do. 0 0 9½
14. Rice—Dressed, to sample ... .. do. 0 0 2½
15. Seed Tapioca (Sago), to sample ... .. do. 0 0 3
16. Salmon—Fresh, brand as ordered, talls (1-lb. tins) ... .. per tin 0 1 2
17. Salt—Fine ... .. per lb. 0 0 1
18. Soap—(Household) Yellow, dry, to sample ... .. do. 0 0 4
19. Soap—Toilet, Glycerine, in tablets, to sample ... .. do. 0 0 7½
20. Soda—Washing ... .. do. 0 0 1½
21. Tea—Best Ceylon, to sample ... .. do. 0 1 6½

ANNEX TO CONTRACT No. 1925/462.  
 Shepparton Fruit Preserving Co. Ltd., 529A Collins-street, Melbourne.

Sub-schedule No. 4.  
 JAMS.  
 (Of Commonwealth Manufacture.)  
 Security, £5. £ s. d.

1. Jams, Assorted, of approved kinds in the proportion of half seed and half stone, of the best quality, in tins containing 27 oz. net ... doz. tins 0 9 10½

ANNEX TO CONTRACT No. 1925/463.  
 W. Angliss and Co. Pty. Ltd., 42 Bourke-street, Melbourne.

Sub-schedule No. 5.  
 MEAT.  
 Security, £20. £ s. d.

1. Fresh Beef ... .. per cental 2 8 0
2. " Mutton ... .. do. 2 8 0
3. " Tripe, Sausages, Kidneys, and Liver, as ordered ... .. do. 2 8 0

ANNEX TO CONTRACT No. 1925/464.  
 Maine Bros. Pty. Ltd., 424 Collins-street, Melbourne.

Sub-schedule No. 6.  
 POTATOES.  
 Security, £5. £ s. d.

1. Potatoes ... .. per cwt. 0 9 0

Schedule No. 8.

PROVISIONS—SUNBURY DISTRICT.

ANNEX TO CONTRACT No. 1925/465.  
 T. Clyne and Son, Sunbury.  
 Sub-schedule No. 1.

BREADSTUFFS.  
 Security, £100. £ s. d.

1. Bread—Fine Wheaten, first quality ... per cental 0 17 2
2. Flour—First quality ... .. do. 0 15 0

ANNEX TO CONTRACT No. 1925/466.  
 Moran and Cato Pty. Ltd., Brunswick-street, Fitzroy.

Sub-schedule No. 3.  
 GROCERIES.  
 Security, £20. £ s. d.

1. Blue—Of any brand ordered ... .. per lb. 0 0 10½
2. Candles—(Full weights) Kitchen's "Petrolines," or other make of equal quality, to be supplied in 1-lb. packets ... .. do. 0 0 9½
3. Cocoa ... .. do. 0 0 7

GROCERIES—continued. £ s. d.

4. Coffee—"Neilgherry A."—Fresh roasted and whole—Beans to be thoroughly sound, to sample ... .. per lb. 0 1 8
5. Cornina ... .. do. 0 0 8
6. Currants—3 crowns, present season's ... do. 0 0 7½
7. Curry Powder ... .. do. 0 1 0
8. Ginger—Ground ... .. do. 0 1 4
9. Golden Syrup, in 7-lb. tins ... .. per tin 0 2 2
10. Lemon Peel ... .. per lb. 0 1 0
11. Mustard—Double superfine, of any Commonwealth manufacture ordered ... do. 0 2 4
12. Oatmeal—Of any brand ordered ... per cwt. 1 1 0
13. Pearl Barley ... .. do. 1 0 6
14. Pease—Split ... .. do. 1 2 0
15. Pepper—Black, ground ... .. per lb. 0 1 0
16. Pipes—Tobacco, clay ... .. per doz. 0 0 10½
17. Raisins—Sultana, 3 crowns, present season's ... .. per lb. 0 0 9½
18. Rice—Dressed, to sample ... .. per cwt. 1 3 0
19. Seed Tapioca (Sago), to sample ... .. do. 1 2 0
20. Salt—Fine ... .. do. 0 6 9
21. Soap—Soft ... .. per lb. 0 0 2
22. Soda—Bicarbonate of ... .. do. 0 0 2
23. " Washing ... .. per cwt. 0 9 0
24. Spice ... .. per lb. 0 1 3
25. Starch—Of any brand ordered, to sample ... .. do. 0 0 8½
26. Tartar—Cream of ... .. do. 0 1 2
27. Vinegar ... .. per pint 0 0 2

ANNEX TO CONTRACT No. 1925/467.  
 E. Synot, 4 Wharf-road, Melbourne.

Sub-schedule No. 4.  
 JAMS.  
 (Manufactured within the Commonwealth.)  
 Security, £10. £ s. d.

1. Jams—Assorted, of approved kinds, in the proportion of half seed and half stone, of the best quality, in tins as required ... .. per lb. actual net weight 0 0 4½

ANNEX TO CONTRACT No. 1925/468.  
 S. J. Starkie, Sunbury.

Sub-schedule No. 5.  
 MEAT.  
 Security, £30. £ s. d.

1. Fresh Beef—Fore-quarters ... .. per cental 1 16 0
2. " " Hind-quarters ... .. do. 1 16 0
3. " " Buttocks ... .. do. 1 16 0
4. " Mutton ... .. do. 2 9 0
5. Corned Beef—Rolled or round, as ordered, without bone or cartilage ... .. do. 1 16 0

ANNEX TO CONTRACT No. 1925/469.  
 Maine Bros. Pty. Ltd., 46 Market-street, Melbourne.

Sub-schedule No. 6.  
 POTATOES.  
 Security £30. £ s. d.

1. Potatoes ... .. per cwt. 0 8 6

Sub-schedule No. 7.  
 SUGAR.  
 Security, £20. £ s. d.

1. Sugar—White, to sample ... .. per cwt. Purchase from Maffra.

ANNEX TO CONTRACT No. 1925/470.  
 Henry Berry and Co. Pty. Ltd., 568 Collins-street, Melbourne.

Sub-schedule No. 8.  
 TEA.  
 Security, £20. £ s. d.

1. Tea—Best Ceylon, to sample ... .. per lb. 0 1 5½

Schedule No. 9.

PROVISIONS—BENDIGO DISTRICT.

ANNEX TO CONTRACT No. 1925/471.  
 F. W. Beischer, Bridge-street, Bendigo.

Sub-schedule No. 1.  
 BREAD.  
 Security, £5. £ s. d.

1. Bread—Wheaten, third quality ... per cental 1 2 9

ANNEX TO CONTRACT No. 1925/472.

Moran and Cato Pty. Ltd., Brunswick-street, Fitzroy.

Sub-schedule No. 2.

GROCERIES AND POTATOES.

	Security, £5.	£	s.	d.
1. Candles—(full weights) Kitchen's "Petrolines," or other make of equal quality, to sample, to be supplied in 1-lb. packets per lb.	0	0	11	
2. Milk—Fresh and pure ... per quart	0	1	0	
3. Oatmeal—Of any brand ordered ... per lb.	0	0	4	
4. Potatoes ... per cwt.	0	15	0	
5. Rice, dressed, to sample ... per lb.	0	0	4	
6. Salt—Fine ... do.	0	0	2	
7. Soap—Yellow (Household), dry, to sample do.	0	0	6	
8. " Carbolic " do.	0	0	6	
9. Soda—Washing " do.	0	0	3	
10. Tea Ration ... do.	0	1	6	
11. Tobacco—"Starlight," or other make of equal quality, as ordered ... do.	0	5	6	
12. Whiting ... do.	0	0	2	

ANNEX TO CONTRACT No. 1925/473.

H. Güttens, 350 Hargreaves-street, Bendigo.

Sub-schedule No. 3.

MEAT.

	Security, £5.	£	s.	d.
1. Fresh Beef ... per cental	1	13	4	

Schedule No. 10.

PROVISIONS—CASTLEMAINE DISTRICT.

ANNEX TO CONTRACT 1925/474.

McCallum and Millar, Barker-street, Castlemaine.

Sub-schedule No. 1.

BREAD.

	Security, £5.	£	s.	d.
1. Bread—Wheaten, third quality ... per cental	0	12	6	

ANNEX TO CONTRACT No. 1925/475.

Moran and Cato Pty. Ltd., Brunswick-street, Fitzroy.

Sub-schedule No. 2.

GROCERIES AND POTATOES.

	Security, £5.	£	s.	d.
1. Candles—(full weights), Kitchen's "Petrolines," Apollo Co.'s "Apollo," or other make of equal quality, to sample, to be supplied in 1-lb. packets per lb.	0	1	0	
2. Oatmeal ... do.	0	0	4½	
3. Potatoes ... per cwt.	0	15	0	
4. Rice, Dressed, to sample ... per lb.	0	0	5	
5. Salt—Fine ... do.	0	0	2	
6. Soap—Yellow (household), dry, to sample do.	0	0	6½	
7. Soda—Washing " do.	0	0	3	
8. Sugar—Ration ... do.	0	0	6	
9. Tea " do.	0	1	5	

ANNEX TO CONTRACT No. 1925/476.

John Williamson, Mostyn-street, Castlemaine.

Sub-schedule No. 3.

MEAT.

	Security, £5.	£	s.	d.
1. Fresh Beef ... per lb.	0	0	3½	
2. " Mutton ... do.	0	0	3½	

Schedule No. 11.

PROVISIONS AT SALE.

Sub-schedule No. 1.

BREAD.

1. Bread—Wheaten, third quality ... per lb.	Purchase, Clause 4,
---	---------------------

ANNEX TO CONTRACT No. 1925/477.

D. H. Howard, Raymond-street, Sale.

Sub-schedule No. 2.

GROCERIES AND POTATOES.

	Security, £5.	£	s.	d.
1. Potatoes ... per cwt.	0	15	0	
2. Rice, dressed, to sample ... per lb.	0	0	3½	
3. Salt—Fine ... do.	0	0	1	
4. Soap, yellow (household), dry, to sample per cwt.	2	2	6	
5. Soda—Washing ... per lb.	0	0	13	
6. Tea—Ration, to sample ... do.	0	2	0	

ANNEX TO CONTRACT No. 1925/478.

Ronchi Bros., Sale.

Sub-schedule No. 3.

MEAT.

	Security, £5.	£	s.	d.
1. Fresh Beef ... per lb.	0	0	5	

Schedule No. 12.

PROVISIONS AT RUTHERGLEN.

(For Students at Viticultural College.)

ANNEX TO CONTRACT No. 1925/479.

Rutherglen Co-operative Distribution Society Ltd., Rutherglen.

Sub-schedule No. 1.

BREAD.

	Security, £5.	£	s.	d.
1. Bread—Fine Wheaten, first quality ... per cental	1	3	0	

ANNEX TO CONTRACT No. 1925/480.

Moran and Cato Pty. Ltd., Brunswick-street, Fitzroy.

Sub-schedule No. 2.

GROCERIES, ETC.

	Security, £10.	£	s.	d.
1. Arrowroot ... per lb.	0	0	9	
2. Blue ... do.	0	1	0	
3. Baking Powder, in 1-lb. tins ... per tin	0	1	5	
4. Baking Soda ... per lb.	0	0	3	
5. Bacon, best cured ... do.	0	1	5	
6. Blacking ... per tin	0	0	3	
7. Blacklead ... per cake	0	0	1	
8. Barley, Pearl ... per lb.	0	0	3	
9. Candles—(Full weights) Kitchen's "Petrolines," or other make of equal quality, to be supplied in 1-lb. packets do.	0	0	10½	
10. Coffee—Whole—Beans to be thoroughly ground, to sample ... do.	0	1	10	
11. Coffee Essence, 10-oz., of any brand ordered ... per bottle	0	1	5	
12. Cocoa, of any brand ordered ... per lb.	0	1	9	
13. Cream of Tartar ... do.	0	1	4	
14. Currants, 3 crown (present season's) ... do.	0	0	8	
15. Gurry Powder ... do.	0	1	4	
16. Essence of Lemon, 1-oz. bottles ... per bottle	0	0	8	
17. Fish, Preserved, Salmon, Fresh Herrings, Herrings in Tomato, as ordered, in 1-lb. tins ... per tin	0	1	0	
18. Flour, best Roller ... per cental	1	0	0	
19. Fruits, Preserved, assorted, of approved brand, in 2-lb. tins ... per tin	0	1	0	
20. Ginger—Ground or Whole—Jamaica ... per lb.	0	1	6	
21. Golden Syrup, in 2-lb. tins ... per tin	0	0	9½	
22. Jam, assorted, any brand ordered, in 2-lb. tins, in proportion of half seed and half stone ... do.	0	1	0	
23. Maizena—Duryea's ... per lb.	0	0	10	
24. Meat—Preserved, of approved brand, in 2-lb. tins ... per tin	0	1	6	
25. Macaroni or Vermicelli, as ordered ... per lb.	0	0	5½	
26. Mustard—Double Superfine, of any brand ordered ... do.	0	3	9	
27. Oatmeal—Flaked or other, of any brand ordered ... per cwt.	1	8	0	
28. Onions ... do.	0	19	0	
29. Peel—Mixed ... per lb.	0	1	0	
30. Pepper—Black or White, Ground ... do.	0	1	3	
31. Pickles, of approved brand ... per bottle	0	0	10½	
32. Potatoes ... per cwt.	0	15	0	
33. Raisins—Sultana, Mildura, 3 crown ... per lb.	0	0	9½	
34. Rice—Dressed, to sample ... per cwt.	1	7	6	
35. Seed Tapioca (Sago)—To sample ... per lb.	0	0	4	
36. Salt—Coarse ... do.	0	0	1	
37. " Fine ... per cwt.	0	10	6	
38. Sauces, Worcester, Tomato, or Chutney, reputed pints, any brand ordered ... per bottle	0	0	10½	
39. Soap—Household, yellow, to sample ... per lb.	0	0	4½	
40. " Glycerine Tablets " do.	0	0	11	
41. " Sand ... do.	0	0	4	
42. " Magic ... do.	0	0	5	
43. Soda—Washing ... do.	0	0	2	
44. Spices, mixed, in 1-oz. packets ... per packet	0	0	2	
45. Starch, to sample ... per lb.	0	0	9½	
46. Tapioca—Pearl ... do.	0	0	4½	
47. Tea—Best Ceylon, to sample ... do.	0	1	7½	
48. Treacle, in 7-lb. tins ... per tin	0	2	9	
49. Vinegar, of approved brand ... per quart	0	0	6	

Schedule No. 13.

**PROVISIONS AT WAHGUNYAH.**  
FOR STUDENTS AT WAHGUNYAH VINE NURSERY.  
(Delivery at Nursery.)

ANNEX TO CONTRACT No. 1925/481.  
*G. C. Haig, Wahgunyah.*  
Sub-schedule No. 1.

BREAD.

	Security, £5.	£ s. d.
1. Bread—Fine Wheaten, first quality ... per cental		0 18 9

ANNEX TO CONTRACT No. 1925/482.  
*J. A Haig and Co., Wahgunyah.*  
Sub-schedule No. 2.

GROCERIES, ETC.

	Security, £10.	£ s. d.
1. Arrowroot ... .. per lb.		0 0 10
2. Blue ... .. do.		0 1 3
3. Baking Powder, 1-lb. tins ... .. do.		0 1 10
4. Baking Soda ... .. do.		0 0 3
5. Bacon, best cured ... .. do.		0 1 3
6. Blacking ... .. per doz. cakes		0 0 6
7. Black Lead ... .. do.		0 0 9
8. Barley, Pearl ... .. per lb.		0 0 3
9. Candles—(Full weights) Kitchen's "Petrolines," Apollo Co.'s "Apollo," or other make of equal quality, to be supplied in 1-lb. packets ... .. do.		0 1 0
10. Coffee—Whole—Beans to be thoroughly sound, to sample ... .. do.		0 1 11
11. Coffee Essence, of any brand ordered ... per bottle		0 1 6
12. Cocoa ... .. per lb.		0 1 0
13. Cream of Tartar ... .. do.		0 1 6
14. Currants, 3 crowns ... .. do.		0 0 9
15. Curry Powder ... .. do.		0 1 3
16. Essence of Lemon, 1-oz. bottle ... per bottle		0 0 8
17. Fish, Preserved, Salmon, Fresh Herrings, Herrings in Tomato, as ordered, in 1-lb. tins ... .. per tin		0 1 3
18. Flour, Best Roller ... .. per cental		0 17 9
19. Fruits, Preserved, assorted, of approved brand, in 2-lb. tins ... .. per tin		0 1 1
20. Ginger—Ground or Whole ... .. per lb.		0 1 8
21. Golden Syrup, in 2-lb. tins ... .. per tin		0 0 11
22. Jams, assorted, any brand ordered, in 2-lb. tins, in the proportion of half seed and half stone ... .. do.		0 1 2
23. Maizena—Duryea's ... .. per lb.		0 0 10
24. Meat—Preserved, of approved brand, in 2-lb. tins ... .. per tin		0 1 6
25. Macaroni or Vermicelli, as ordered ... per lb.		0 0 7½
26. Mustard—Double Superfine, of any brand ordered ... .. do.		0 3 0
27. Oatmeal—Flaked or Other, of any brand ordered ... .. do.		0 0 3½
28. Onions ... .. per cwt.		0 16 0
29. Peel—Mixed ... .. per lb.		0 1 2
30. Pepper—Black or White, Ground ... do.		0 1 6
31. Pickles, of approved brand ... .. per bottle		0 1 2
32. Potatoes ... .. per cwt.		0 11 0
33. Raisins—Sultana (Mildura), 3 Crowns per lb.		0 0 11
34. Rice—Dressed, to sample ... .. do.		0 0 3½
35. Seed Tapioca (Sago)—To sample ... do.		0 0 3½
36. Salt—Coarse ... .. do.		0 0 1
37. " Fine ... .. do.		0 0 1½
38. Sauces—Worcester, Tomato, or Chutney, any brand ordered, in reputed pints ... .. per bottle		0 1 0
39. Soap—Household, yellow, to sample ... per lb.		0 0 5
40. " Glycerine Tablets " ... .. do.		0 0 6
41. " Sand ... .. do.		0 0 4
42. " Magic ... .. do.		0 0 5
43. Soda—Washing ... .. do.		0 0 1½
44. Spices, mixed, in 1-oz. packets ... per packet		0 0 2
45. Starch—To sample ... .. per lb.		0 0 9
46. Tapioca—Pearl ... .. do.		0 0 3
47. Tea—Best Ceylon, to sample ... .. do.		0 1 11
48. Treacle, in 7-lb. tins ... .. per tin		0 2 10
49. Vinegar, of approved brand ... .. per quart		0 0 8

ANNEX TO CONTRACT No. 1925/483.  
*F. Pickles, Foord-street, Wahgunyah.*  
Sub-schedule No. 3.

MEAT.

	Security, £10.	£ s. d.
1. Beef—Fresh ... .. per lb.		0 0 8
2. Pork—Fresh ... .. do.		0 0 8
3. Sausages ... .. do.		0 0 8
4. Tongues—Ox ... .. do.		0 0 6
5. " Sheep ... .. per doz.		0 1 6
6. Tails—Ox ... .. each		0 0 6
7. Kidneys—Ox ... .. do.		0 0 6
8. Shins—Ox ... .. do.		0 0 3
9. Lambs' fries ... .. do.		0 0 3

Schedule No. 17.

**PROVISIONS AT CRESWICK.**  
FOR STUDENTS AT THE SCHOOL OF FORESTRY.

ANNEX TO CONTRACT No. 1925/484.  
*C. C. Bowley, Albert-street, Creswick.*  
Sub-schedule No. 1.

BREADSTUFFS.

	Security, £10.	£ s. d.
1. Bread—Fine Wheaten, first quality ... per cental		1 4 0
2. Flour—First quality ... .. do.		0 17 6

ANNEX TO CONTRACT No. 1925/485.  
*G. Tai and Son, Creswick.*  
Sub-schedule No. 2.

GROCERIES.

	Security, £10.	£ s. d.
1. Barley—Pearl ... .. per lb.		0 0 3
2. Blue—Of any brand required ... .. do.		0 1 1
3. Butter—First grade creamery, to score not less than 83 points, Government grade, commerce regulations standard grade, commerce regulations standard grade, matured ... .. do.		0 1 4
4. Cheese—First-class quality, matured (Victorian) ... .. do.		0 0 11
5. Candles (Full weights)—Kitchen's "Petrolines," Apollo Co.'s "Apollo," or other make of equal quality, to be supplied in 1-lb. packets ... .. do.		0 0 11
6. Coffee—Fresh Roasted and Whole—Beans to be thoroughly sound, to sample ... .. do.		0 1 5
7. Cornina ... .. do.		0 0 8
8. Currants—3 Crowns ... .. do.		0 0 8
9. Eggs ... .. per doz.		0 1 2
10. Ginger—Ground (Jamaica) ... .. per lb.		0 1 5
11. Golden Syrup, in 7-lb. tins ... .. per tin		0 2 6
12. Jams, assorted, any brand ordered, in 2-lb. tins, in the proportion of half seed and half stone ... .. per lb. net		0 0 8
13. Mustard—Double Superfine, of any brand ordered ... .. per lb.		0 4 0
14. Oatmeal—Of any brand ordered ... .. do.		0 0 3½
15. Peas—Split ... .. do.		0 0 3½
16. Pepper—Black, ground ... .. do.		0 0 11
17. Raisins—Sultana (Mildura), 3 Crowns ... do.		0 0 10
18. Rice—Dressed, to sample ... .. do.		0 0 3
19. Seed Tapioca (Sago)—To sample ... .. do.		0 0 3
20. Salt—Fine ... .. do.		0 0 1
21. Soap (Household)—Lever Bros.' "Vet" ... .. do.		0 0 6½
22. Soap (Household)—Yellow, dry, to sample ... do.		0 0 4½
23. Carbolic Sand Soap ... .. do.		0 0 3½
24. Soda—Carbonate of ... .. do.		0 0 2
25. Soda—Washing ... .. do.		0 0 1½
26. Spices—Mixed, in 1-oz. packets ... per pkt.		0 0 1½
27. Starch—Of any brand ordered, to sample per lb.		0 0 10
28. Tartar—Cream of ... .. do.		0 1 3½
29. Tea—Best Ceylon, to sample ... .. do.		0 1 11
30. Vinegar ... .. per pint		0 0 2
31. Potatoes ... .. per cwt.		0 7 6

ANNEX TO CONTRACT No. 1925/486.  
*H. H. Wood, Albert-street, Creswick.*  
Sub-schedule No. 3.

MEAT.

	Security, £10.	£ s. d.
1. Fresh Beef—Fore-quarter ... .. per lb.		0 0 4
2. " " Hind-quarter ... .. do.		0 0 5
3. " " Buttocks ... .. do.		0 0 6
4. " Mutton ... .. do.		0 0 5
5. Corned Beef, rolled or round, as ordered, without bone or cartilage ... .. do.		0 0 5
6. Pork (Leg) ... .. do.		0 0 5
7. Fresh Suet—Kidney ... .. do.		0 0 1

ANNEX TO CONTRACT No. 1925/487.  
*E. E. Pollard, Eastern Hill, Creswick.*  
Sub-schedule No. 4.

MILK.

	Security, £5.	£ s. d.
1. Milk—Fresh and pure ... .. per quart		0 0 6

Schedule No. 18.  
**PROVISIONS AT McLEOD SETTLEMENT, FRENCH ISLAND.**

ANNEX TO CONTRACT No. 1925/488.

*E. W. Perkin, Lang Lang.*

Sub-schedule No. 1.

BREAD.

Security £5. £ s. d.

1. Bread—Fine Wheaten, first quality ... per cental 1 1 10

GROCERIES—continued.

£ s. d.

5. Mustard—Double Superfine, of any Commonwealth manufacture ordered per lb. 0 2 6  
 6. Oatmeal—Of any brand ordered ... per cwt. 1 4 6  
 7. Potatoes ... do. 0 6 9  
 8. Rice—Dressed, to sample ... per lb. 0 0 3  
 9. Salt—Fine ... do. 0 0 1  
 10. Soap—Toilet, brown Windsor, in tablets, to sample ... do. 0 1 3  
 11. Soda—Washing ... do. 0 0 1½  
 12. Tea—Best Ceylon ... do. 0 2 0  
 13. " Ration ... do. 0 1 3  
 14. Tobacco—"Starlight," or other make of equal quality, as ordered ... do. 0 5 4

ANNEX TO CONTRACT No. 1925/489.

*A. G. Glasscock, Lang Lang.*

Sub-schedule No. 2.

GROCERIES.

Security, £10. £ s. d.

1. Butter—First class creamery, to score not less than 92 points, Government grade per lb. 0 1 8  
 2. Candles—(Full weights) Kitchen's "Petrolines," or other make of equal quality, to sample, to be supplied in 1-lb. packets ... do. 0 0 10  
 3. Cheese ... do. 0 1 3  
 4. Jams—Assorted, of approved kinds, in proportion of half seed and half stone, of best quality, in 2-lb. tins ... per tin 0 1 3

ANNEX TO CONTRACT No. 1925/490.

*E. W. Missen, Lang Lang.*

Sub-schedule No. 3.

MEAT.

Security, £20. £ s. d.

1. Fresh Beef—Forequarters ... per cental 2 10 0  
 2. " " Hindquarters ... do. 2 18 4  
 3. " " Buttock ... Purchase  
 4. " Mutton ... per cental 3 8 8  
 5. Corned Beef, Rolled or Round, as ordered, without bone or cartilage do. 2 18 4  
 6. Fresh Suet—Kidney ... per lb. 0 0 7  
 7. Dripping—Fresh, free from objectionable smell ... do. 0 0 8

Schedule No. 14.

**PROVISIONS FOR ABORIGINES AT LAKE TYERS.**

(Delivery at Lake Tyers Station.)

Sub-schedule No. 1.

BREAD. (See note bread and flour.)

Contract No. 1925/491.—Lake Tyers—J. Rule ... Security, £2.

Item No.	Article.	Contract No. J. Rule.
1	Bread—Fine Wheaten, first quality ... per cental	£ s. d. 0 19 9½

Sub-schedule No. 2.

GROCERIES.

Contract No. 1925/492.—Lake Tyers.—Moran and Cato Pty. Ltd., Brunswick-street, Fitzroy ... Security, £2.

Item No.	Article.	Contract No. L. T. Freeman, Lake Tyers.
1	Baking Powder, Snowflake, in 1-lb. tins ... per lb.	£ s. d. 0 1 3
2	Candles—(Full weights) Kitchen's "Petrolines," or other make of equal quality, to be supplied in 1-lb. packets ... "	0 0 10
3	Coffee—Fresh roasted and whole—Beans to be thoroughly sound, to sample ... "	0 1 8
4	Cocoa, in ¼-lb. packets ... "	0 0 9
5	Cornina ... "	0 0 8½
6	Currants—3 crowns ... "	0 0 7¾
7	Curry Powder ... "	0 1 2
8	Flour—Best roller ... per cental	0 16 0
9	Mustard—Double superfine, of any Commonwealth manufacture ordered ... per lb.	0 2 4
10	Oatmeal—Of any brand ordered ... "	0 0 3
11	Pease, Split ... "	0 0 3
12	Pearl Barley ... "	0 0 2½
13	Pepper—Black, ground, in ¼-lb. tins ... per tin	0 0 4½
14	Raisins—Sultana (Mildura)—3 crowns ... per lb.	0 0 9½
15	Rice—Dressed, to sample ... "	0 0 3½
16	Seed Tapioca (Sago), to sample ... "	0 0 3
17	Salt—Coarse ... "	0 0 0½
18	" Fine ... "	0 0 1
19	Soap—Household, yellow, to sample ... "	0 0 3½
20	Soda—Bicarbonate ... "	0 0 2
21	" Washing ... "	0 0 1½
22	Tartar, Cream of ... "	0 1 2
23	Tea—Best Ceylon, to sample ... "	0 1 6
24	Tobacco—Twist, to sample ... "	0 5 6
25	Treacle, in 7-lb. tins ... per tin	0 2 4
26	Vinegar ... per quart	0 0 5½

## Conditions of Contract for Provisions, 1925-6, &c.

1. All the articles are to be of the best quality of the several kinds, in the best condition, and in conformity with the Pure Food Act, and to be delivered in sound packages, free from all charges for cartage, freight, &c. The goods shall be delivered as may be directed by the officer ordering the supply.
2. As the exact quantity of any article which may be required cannot be stated, the estimate being approximate only, the Government will not be bound by the quantity stated in the schedule, but will be at liberty to order more or less, according to circumstances, and the contractor will be bound to supply the same as ordered.
3. Supplies for country districts for which no local contract may have been taken, or for which the contract has been terminated, may be ordered under the Melbourne contract.
4. The Melbourne District will include places within a radius of 6 miles from the General Post Office, with the exception of places for which separate contracts are provided; supplies for a.s. Rip are to be delivered to the Dredging Depot, Footscray-road, Victoria Dock, or River Yarra Wharf, as ordered; the Ararat, Beechworth, and Ballarat Districts will include the Hospitals for the Insane, Gaols, and Police Gaols at these places; and the Geelong District embraces a radius of 2 miles from the Post Office; Lara, the Inebriates Retreat; Greenvale, the Sanatorium; Rutherglen, the Viticultural College; Wahgunyah, the Vine Nursery; and the Creswick School of Forestry. Delivery must be made at the places, institutions, &c., named in the schedules.
5. Packages suitable for transport of goods supplied must be provided by the contractor free of expense, and the value of these packages, whether in bulk or otherwise, is to be included in the price demanded, except brandy casks, porter cases, hogsheads, butter firkins or boxes, and soap boxes (not including fancy soaps), jam jars, flour, meal, and potato bags, which will remain the property of the contractor, and only the actual net weight or quantity received will be paid for. The empties to be removed from the place of delivery at the contractor's expense.
6. The meat supplied under these conditions must, if practicable, be slaughtered at abattoirs which are under proper authorized inspection and supervision. Any infringement of this condition will subject the contractor, on report from the Tender Board, to such mulct, not exceeding Fifty pounds, as the Treasurer may direct, and the amount will be deducted from the contractor's account, or from the security money.
7. The supplies coming under the head of Rations and Medical Comforts are to be delivered direct to the establishment entitled thereto on the written order of the officer in charge. All other supplies will be ordered by the head of the Department concerned or any officer authorized by him.
8. At the time of delivering the supplies, the contractor shall produce the order for the same to the officer authorized to accept delivery, and such officer shall acknowledge thereon the receipt of the stores accepted, and shall return the order to the contractor, and the account is to be rendered as soon as possible after the delivery of the supplies, accompanied by the receipted delivery order. The rates or quantities quoted in the orders cannot be exceeded.
9. For the supplies coming under the head of Rations and Medical Comforts (except for the gaols) the account is to be rendered monthly for such quantities only as are issued, the difference between the supply and issue to be kept at the contractor's credit. Supplies not issued at the termination of the contract to be removed by the contractor.
10. When a contractor is required to make delivery of goods at a railway station for transmission by rail, he shall obtain a receipt for the goods in duplicate on the Stores and Transport consignment note, at the same time handing, in a triplicate of the form as an authority for the carriers to act as agent for, and charge the freight to, the Stores and Transport Department. He shall as soon as possible, and not later than twenty-four hours thereafter, deliver at the Tender Board Offices the original, the duplicate to be retained by himself. Should the goods thus forwarded be rejected, the contractor must bear the cost of replacing such goods, for which services the departmental consignment note is not to be used. Any infringement of this condition may subject the contractor to such mulct as the Tender Board may recommend under clause 19 of these conditions.
11. Should the contractor fail to supply any articles at the time mentioned in the order, they or any like supplies suitable for the service will be otherwise procured, and the expense over and above the contract price will be deducted from his account or from the security money.
12. The acceptance of the supplies shall be subject to the approval of the officer authorized to take delivery of the stores, or such other officer as shall be named in the conditions. If, after the delivery of the supplies has been taken, any deficiency or defect is discovered therein, such stores may be returned to the contractor.
13. If the officer in charge of stores be not satisfied as to the quantity or quality of the stores, or if, after taking delivery of any stores or material, he shall discover any deficiency or defect therein, he may return such deficient or defective stores or material to the contractor, and shall report the same to the head of his Department and to the Tender Board.
14. In the event of a difference of opinion between the contractor and the officer receiving the supplies as to the quality, the same is to be decided, in cases where the article is not of a perishable nature, by a Board of Survey composed of persons named by the Treasurer of the State for the time being; and the decision of the Board is to be considered final. In the event of the decision being against the contractor, the survey fees and expenses (if any) will be deducted as in clause 11.
15. In cases where the article is of a perishable nature, or when from some other cause injury would be sustained either by the persons to whom the rations or stores are due or to the contractor in waiting for a Board to survey, the head of the Department or officer authorized to take delivery will have power to reject such article or articles as are obviously of inferior quality, it being understood that he will be responsible to the Government for so doing, and that the contractor must take back the rejected article and supply good in its stead; failing which, it or any like supply suitable for the service, will be obtained by the officer requiring it as in clause 11. In case of the rejection or return of any supplies, the contractor shall bear the whole cost of replacing the supplies so rejected or returned.
16. If the Board shall decide that the article is not of proper quality it must be immediately replaced by the contractor; failing which, it or any like supply suitable for the service will be procured by the officer requiring it, and the expense charged as in clause 11.
17. In the case of supplies for Hospitals for the Insane, it will be competent for a Board of Survey, consisting of the medical superintendent (or, in his absence, of the medical officer) and any two officers named by him, to examine and reject any supplies that may be objected to. It must be distinctly understood, however, that the contractor will have a right of appeal to the Treasurer of the State for the time being; but, pending such appeal, he must take back the rejected articles and at once supply others of approved quality; failing which, the supplies required or any like supplies suitable for the service may be obtained by the officer concerned, and the expense charged to the contractor.
18. In the case of supplies for Hospitals for the Insane, it will also be competent for two or more of the official visitors, in conjunction with the medical superintendent, to reject any supplies that they may consider not in accordance with contract; and in such cases the reference to a Board of Survey will not be deemed to be necessary on the part of the contractor.
19. A refusal to execute orders, irregularity in the quantity or quality of the supplies, or delay in delivering or replacing them when required, will subject the contractor, upon report from the Tender Board, to such mulct, not exceeding Fifty pounds, as the said Treasurer may direct, and the amount may be deducted as in clause 11. It will also be in the power of the said Treasurer, upon such refusal, irregularity, or delay, to terminate the contract forthwith, and forfeit the whole or any part of the security money.
20. Contractors are not at liberty to transfer their contracts under cover of power of attorney, coupled with an interest or otherwise, and no such transfer will be recognised by the Government. *If it is found during the currency of the contract that the contractor has not conformed to the condition of advertisement—which stipulates that if a tenderer be a member of a firm and such firm be interested in the contract, then the tender is to be in the name of the firm and not in that of the individual—then the Honorable the Treasurer may determine the contract, and forfeit the security money.*
21. It will be competent for the Tender Board to terminate the contract, without notice, should there be reason to know that the contractor takes advantage of his contract to communicate with a prisoner.

22. The contracts entered into under this notice are not to be considered as being broken, infringed, or vitiated by the importation of stores for the Government service, or by any contracts or purchases made by the Imperial Commissariat, or by the consumption of the produce or surplus stock of any Government establishment, or by any article being made at and supplied for the use of any Government establishment.

23. For the purpose of the contracts entered into under these conditions, it is hereby expressly provided that in the event of any alteration in the Tariff affecting any of the items included in these contracts, the Government or the contractor (as the case may be) may give two months' notice, through the Secretary to the Tender Board, of the termination of the contract for the particular item or items so affected to the opposite party, it being understood that such notice can only be given from the first day of the month, and within the period

for which the contract is made. The contract for the unaffected items to remain in full force and effect. Any notice to be served under this condition shall be deemed to have been duly served if sent to the contractor in a registered letter at his last-known place of business or abode.

24. Under no circumstances other than those mentioned in clause 23 will a contractor be permitted to abandon his contract. In the event of the contractor failing to carry on the contract, the contract security money will in that case be absolutely forfeited; and, in addition, the contractor will be held liable for any loss which the Government may sustain in consequence of such failure.

25. For the purposes of these contracts the word Government shall mean the Government of the State of Victoria, and the word Treasurer shall mean Treasurer of the said State.