

[2185]



VICTORIA
GOVERNMENT GAZETTE

Published by Authority.

[Registered at the General Post Office, Melbourne, for transmission by post as a newspaper.]

No. 98.]

WEDNESDAY, JULY 14.

[1926.

CONTRACTS ACCEPTED.

(SERIES 1926-27.)

SUPPLY OF PROVISIONS

FROM

1ST JULY, 1926, TO 30TH JUNE, 1927, OR AS STATED.

J. G. WHITE,
Secretary, Tender Board.

CONTRACTS ACCEPTED.—(Series 1926-27.)

No. of Contract.	Particulars of each Tender Accepted.	Amount.	Name of Contractor.	Charged against Vote or Fund.
PROVISIONS—				
Supply of Provisions, in such quantities as may be ordered, from 1st July, 1926, to 30th June, 1927. For contracts for Cheese and Butter at Melbourne, Mont Park, Ararat, Beechworth, Ballarat, Sunbury, and Lara, and for Butter at Greenvale, see <i>Gazette</i> of 21st October, 1925, pp. 3335 and 3336.				
Melbourne District—				
542	Bread, Kew Asylum	Rates as per annex	W. Johnson	
543	Bread, Melbourne	Ditto	J. N. Hennessy	
544	Flour and maize meal, &c.	Ditto	H. R. Rush	
545	Groceries	Ditto	Moran and Cato Pty. Ltd.	
546	Oatmeal, rice, &c.	Ditto	Moran and Cato Pty. Ltd.	
547	Jams	Ditto	Moran and Cato Pty. Ltd.	
548	Meat, Kew Asylum	Ditto	W. Anglias and Co. Pty. Ltd.	
549	Meat, Pentridge Penal Establishment	Ditto	J. H. Cooke, jun.	
550	Meat, Children's Welfare Department, Royal Park, Police Dépôt and Richmond House, etc.	Ditto	J. H. Cooke, jun.	
551	Meat, Royal Park Mental Hospital and Receiving House	Ditto	W. Anglias and Co. Pty. Ltd.	
552	Potatoes	Ditto	Purchase Clause 4 until further notice	
553	Soap	Ditto	Moran and Cato Pty. Ltd.	
554	Tea	Ditto	Moran and Cato Pty. Ltd.	
554	Tobacco	Ditto	Dudgeon and Arnell Pty. Ltd.	
Greenvale—				
555	Bread	Ditto	Purchase	
556	Groceries	Ditto	Moran and Cato Pty. Ltd.	
556	Meat	Ditto	W. Anglias and Co. Pty. Ltd.	
556	Potatoes	Ditto	Purchase Clause 4 until further notice	
Mont Park—				
557	Breadstuffs	Ditto	J. N. Hennessy	
558	Groceries	Ditto	Moran and Cato Pty. Ltd.	
559	Jams	Ditto	Moran and Cato Pty. Ltd.	
560	Meat	Ditto	F. Watkins Pty. Ltd.	
561	Potatoes	Ditto	Purchase Clause 4 until further notice	
561	Tea	Ditto	Moran and Cato Pty. Ltd.	
s.s. Rip and Dredges—				
562	Breadstuffs	Ditto	Purchase	
563	Groceries	Ditto	Moran and Cato Pty. Ltd.	
563	Meat	Ditto	W. Anglias and Co. Pty. Ltd.	
563	Vegetables	Ditto	Purchase	
Ararat District—				
564	Breadstuffs	Ditto	Wm. Bates	
565	Groceries	Ditto	Moran and Cato Pty. Ltd.	
566	Jams	Ditto	Fruitgrowers' Preserving Co. Pty. Ltd.	
567	Meat	Ditto	A. Murphy	
568	Potatoes	Ditto	Purchase Clause 4 until further notice	
568	Tea	Ditto	Moran and Cato Pty. Ltd.	
Beechworth District—				
569	Breadstuffs	Ditto	Wm. Price	
570	Groceries	Ditto	Moran and Cato Pty. Ltd.	
571	Meat	Ditto	J. R. Newey, jun.	
572	Potatoes	Ditto	W. H. Collins	
573	Tea	Ditto	Moran and Cato Pty. Ltd.	
Ballarat District—				
574	Breadstuffs	Ditto	Wm. Haymes	
575	Groceries	Ditto	Moran and Cato Pty. Ltd.	
576	Jams	Ditto	Fruitgrowers' Preserving Co. Pty. Ltd.	
577	Meat	Ditto	H. J. Symons	
578	Potatoes	Ditto	Purchase Clause 4 until further notice	
578	Tea	Ditto	Moran and Cato Pty. Ltd.	
Geelong District—				
579	Breadstuffs	Ditto	Podbury Bros.	
580	Groceries	Ditto	Moran and Cato Pty. Ltd.	
581	Meat	Ditto	M. G. O'Brien	
582	Milk	Ditto	S. H. Warren	
Lara—				
583	Breadstuffs	Ditto	H. Wood	
584	Groceries	Ditto	Moran and Cato Pty. Ltd.	
585	Jams	Ditto	G. A. Hardham	
586	Meat	Ditto	W. Anglias and Co. Pty. Ltd.	
586	Potatoes	Ditto	Purchase Clause 4 until further notice	
Sunbury District—				
587	Breadstuffs	Ditto	T. Glyne and Son	
588	Groceries	Ditto	Moran and Cato Pty. Ltd.	
589	Jams	Ditto	Moran and Cato Pty. Ltd.	
590	Meat	Ditto	S. J. Starkie	
590	Potatoes	Ditto	Purchase Clause 4 until further notice	
591	Tea	Ditto	Moran and Cato Pty. Ltd.	
Bendigo District—				
592	Bread	Ditto	F. W. Beischer	
593	Groceries and potatoes	Ditto	Moran and Cato Pty. Ltd.	
594	Meat	Ditto	H. Gittens	

Contingencies, 1926-27.

CONTRACTS ACCEPTED.—(Series 1926-27)—continued.

No. of Contract.	Particulars of each Tender Accepted.	Amount.	Name of Contractor.	Charged against Vote or Fund.
PROVISIONS—continued.				
Supply of Provisions, in such quantities as may be ordered, from 1st July, 1926, to 30th June, 1927. For contracts for Cheese and Butter at Melbourne, Mont Park, Ararat, Beechworth, Ballarat, Sunbury, and Lara, and for Butter at Groenvale, see Gazette of 21st October, 1925, pp. 3335 and 3336—continued.				
Castlemaine District—				
595	Bread	Rates as per annex	Purchase	
596	Groceries and potatoes	Ditto	Moran and Cato Pty. Ltd.	
	Meat	Ditto	J. Williamson	
Sale District—				
597	Bread	Ditto	Purchase	
598	Groceries and potatoes	Ditto	Moran and Cato Pty. Ltd.	
	Meat	Ditto	Ronchi Bros.	
Rutherglen—				
599	Bread	Ditto	E. E. King	
600	Groceries	Ditto	Moran and Cato Pty. Ltd.	
Wahgunyah—				
601	Bread	Ditto	G. C. Haig	
602	Groceries	Ditto	Moran and Cato Pty. Ltd.	Contingencies, 1926-27.
603	Meat	Ditto	Keegan and Keegan	
School of Forestry, Creswick—				
604	Bread	Ditto	C. C. Bowley	
605	Groceries	Ditto	G. Tait and Son	
	Meat	Ditto	Purchase	
606	Milk	Ditto	E. E. Pollard	
McLeod Settlement, French Island—				
607	Bread	Ditto	J. Jackson	
608	Groceries	Ditto	A. G. Glasscock	
609	Meat	Ditto	E. W. Misson	
Aborigines (Lake Tyers)—				
610	Bread	Ditto	J. Rule	
611	Groceries	Ditto	Moran and Cato Pty. Ltd.	

Approved—A. J. PRACOCK, Treasurer. 30.6.1926.

STIPULATIONS FOR SUPPLIES OF PROVISIONS.

(Where practicable, all items must be manufactured or prepared within the Commonwealth.)
No sub-letting allowed.

Under all Sub-schedules particular attention is drawn to Clause 1 of the Condition as to quality.

BEER AND SPIRITS.

For brandy, whisky, and for Guinness's porter in case, delivery will be taken at and from the bond.

The contractor will be bound to supply such of the brands named in the tender as the departments may order. In cases where delivery from the bond is taken by the Government, the contractor will be required to hand to the Secretary to the Tender Board the bond certificates and the locker's order and a copy of the entry, and pay all charges, including re-gauging, before delivery is taken.

English ale, brandy, whisky, and Guinness's porter in case must be delivered as imported; if bottled in the State it will not be accepted.

BREAD.

No sub-letting allowed.

Samples of the best ordinarily retailed to the public will be considered as test loaves for first quality for fine wheat and pure wheat Meal Bread. Third quality (that issued to prisoners of the Crown) to be made of flour, fine sharps, the produce of prime, strong, thin-skinne, good-coloured wheat, to be perfectly free from coarse pollard or other offal. Pure wheat Meal Bread of first quality may be substituted, wholly or in part, for fine wheat Bread at such times and in such quantities as in the opinion of the Medical Superintendent may be deemed necessary, and the contractor will be required to supply such Bread at the contract rate. Reasonable notice, however, of the intention to substitute wheat Meal Bread must be given to the contractor by the officer ordering the supply. Bread may be baked at any Government establishment without infringing these contracts. At the Gaols, Ballarat, Geelong, Bendigo, Castlemaine, and Sale, if required, bread must be supplied one day old, due notice to be given to the contractor of such requirement.

In the event of bread being made at any Government establishment in the Melbourne District during the currency of these contracts, the flour required will be drawn under the flour and maize meal sub-schedule. The maize meal for all the country gaols is included in the sub-schedule for flour and maize meal, Melbourne District, and delivery of same will be required to be made at the Victorian Railways, Spencer-street.

Should a supply of any article which may be reasonably included in a Baker's Price List, and which is not included in the schedule hereunder, be required for the use of attendants and nurses resident at the Hospitals for the Insane or for inmates of any Government institution drawing supplies under sub-schedules for Bread during the currency of the contract, the contractor shall, with the exception of Ararat, Ballarat, and Beechworth, supply any such article at the current list rates at which it is retailed by the contractor to the public.

GROCERIES, CANDLES, SOAP, TEA, ETC.

Should the supply of any article which may be reasonably included in a Grocer's Price List, and which is not included in the schedule hereunder, be required for the use of the attendants and nurses resident at the Hospitals for the Insane or for inmates of any Government institution drawing supplies under sub-schedules for Groceries during the currency of the contract, the contractor shall, with the exception of Ararat and Ballarat, supply such article at the current list rates at which it is retailed by the contractor to the public.

As a guarantee of quality, Rice, when ordered in quantities of 56 lb. and over, must be supplied in original bags as delivered by the miller or dresser. Such bags must be branded "Rice, Dressed," and shall also have stencilled thereon the miller or dresser's name. The bags thus stencilled shall contain Rice milled or dressed by the miller or dresser whose name appears thereon. Supplies not in conformity with the foregoing conditions will be absolutely rejected. Oatmeal must be supplied in original bags as delivered by millers.

Candles, except those for prison cells, must be supplied in 1-lb. packets. Candles for prison cells must be delivered in boxes containing from 25 to 50 lb. per box, the boxes for which must be legibly stencilled on one end, showing the estimated burning time and the gross, tare, and net weight of contents. The soap supplied must be hard throughout, ready for immediate use without waste. Soap for Hospitals for the Insane is not included in these contracts. When the quantity admits, Tea must be supplied in original and unopened packages, labelled, as landed.

Raisins and currants must be present season's, and where the quantity admits, be supplied in original boxes labelled 3 crowns.

For s.s. Rip a certain quantity of Biscuits are sometimes required in lieu of fresh bread, and are included to meet such contingency only.

The contracts are not to be considered broken, infringed, or vitiated by purchase of sugar from any Government Institution at any time during the currency of this contract.

BUTTER, CHEESE, AND JAMS.

Butter is to be delivered to the s.s. Rip in 1-lb. pats, in such quantities as may be ordered, and no excess over the quantity ordered will be received.

All Butter supplied, as well as the cases in which it is packed, must bear the impress stamp of the creamery manufacturing the Butter, otherwise it will be rejected. The Butter supplied may be tested at any time by the Government Dairy expert if it is considered by the officer ordering that the supply is not up to standard quality. The cheese must be fairly matured and packed in boxes for transport.

As regards butter for Ararat, Ballarat, Beechworth, Lara, Sunbury, and Mont Park, all supplies delivered from Melbourne must be submitted by the contractor to the Government Dairy Expert in Melbourne for test as to standard quality, and if found to be satisfactory, shall be forwarded by that officer direct to the Institution ordering, the cost of freight being borne by the contractor in the usual way.

N.B.—Jams.—The weight stamped on the tins in accordance with the regulations under the Commerce Act, as indicating the minimum net quantity that each tin contains, shall for the purpose of this contract be taken as the actual contents when computing the quantity supplied.

When Jam is supplied in jars, the jars remain the property of the contractor, and must be removed by the contractor at his own expense when empty.

MEAT.

Fore and hind quarters of beef for Hospitals for the Insane are to be supplied in equal proportions of each, and must be delivered as a whole respectively, also extra buttocks separately when ordered. Meat for other institutions must be supplied as ordered. Where hind-quarters or buttocks are ordered, 9 inches must be cut off from the end of the leg from the hock upwards, i.e., the end of the leg from which the shank has been removed at the abattoirs; and when fore-quarters form a portion of the supply, 6 inches from the end of the neck and the whole of the shin at the clodbone joint must be removed. The sticking pieces also must be trimmed off, and the point and end of the brisket rendered free from blood and blood stains.

Fore and hind quarters, for convenience of handling, may be cut into two parts, but each part is to bear evidence of having been cut from the same beast.

Corned beef, rolled or round, as ordered, must be supplied without bone or cartilage and will be received, whether pumped or prepared in the ordinary way by pickling, but in the former case must have been soaked after pumping for at least 48 hours, in a good pickle, and then thoroughly drained before supply. No flank, chuck, sticking piece, shin, leg of beef, or piece under 7 lb. will be received.

Should the local supply of fresh meat become scarce, or the price of same become abnormally high, frozen meat may, with the consent of the Tender Board, on the recommendation of the head of the Department, be supplied.

All meat shall be well fed, good, sound, sweet, and wholesome.

In cases of emergency, or on such other occasions as in the opinion of the Inspector-General of the Insane may seem advisable, other forms of meat such as rabbits, tinned meats, &c., may be purchased apart from the contract for Hospitals for the Insane, in lieu of the meat mentioned in the schedule, and substituted therefor, provided 24 hours' notice (except in cases of emergency) be given to the contractor of such intention.

No sub-letting allowed.

Meat derived from the carcasses of Bulls, Stags, or Rams will not be received, and shall not be tendered for delivery.

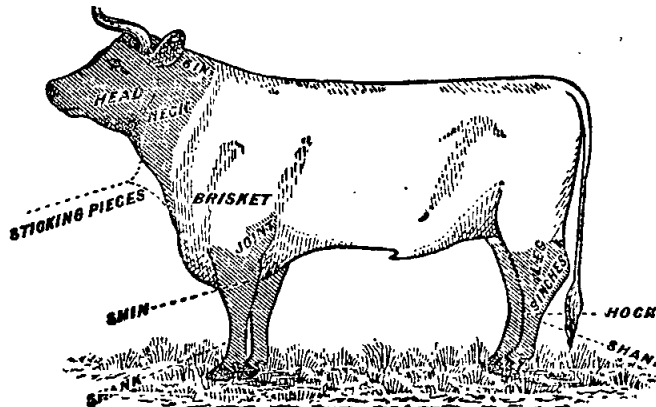
For Sub-schedules 11 and 12, in the Melbourne District, in addition the following clauses apply:—

The beef must be supplied in quantities as ordered from Ribs, Sirloln, and Thick Flanks. Chuck Ribs, i.e., the first to fourth inclusive, will not be accepted.

Mutton must be delivered in sides. All kidney fat to be removed.

Meat containing an undue proportion of bone or fat will not be accepted.

The parts to be removed by the contractor are indicated by the shaded portions of the annexed diagram.



For Beechworth samples (corresponding to the description given in the schedule) of meat ordinarily retailed to the public will be considered as a test for quality.

As regards supplies for s.s. *Rip*, all Meat must be of prime quality, and must be supplied in equal quantities from ribs, sirloin, and thick flanks; mutton to be delivered in sides; all kidney fat to be removed; meat containing an undus proportion of fat will not be accepted. Chuck ribs will not be accepted in lieu of prime ribs. Live sheep to be supplied when required.

Should a supply of any article which may be reasonably included in a Butcher's Small Goods List, and which is not included in the schedule hereunder, be required for the use of attendants and nurses resident at the Hospitals for the Insane or for Inmates of any Government Institution drawing supplies under sub-schedules for Meat during the currency of the contract, the contractor shall, with the exception of Ararat and Ballarat, supply such article at the current list rates at which it is retailed by the contractor to the public.

MILK.

The milk must be fresh, pure, and of the best quality, and subject to test when required by the Department, and supplied at such times as the Department may require. Should the contractor fail to supply

at the time specified in the order or at such times as may be indicated in any general notice to the contractor his contract may be cancelled forthwith and his security forfeited, or should the supply prove to be not of contract quality it will be rejected, and any expense incurred will be charged to the contractor.

POTATOES.

(Potatoes to be dry and free from dirt. Contractors to supply 117 lbs. of potatoes for each cwt. credited to them, and, in addition, to take back all rejected before being cooked.)

If the price of potatoes becomes abnormally high, the heads of the various departments concerned may, if they think fit, cause rice or any other suitable food to be occasionally substituted in lieu thereof.

TOBACCO.

Tobacco for country Hospitals for the Insane is included in the contract for Melbourne District, and delivery of same will be required to be made at Spencer-street.

Tobacco for country Gaols is not included in the contract for Melbourne District.

Schedule No. 1.
**PROVISIONS—MELBOURNE
DISTRICT.**

ANNEX TO CONTRACT No. 1926/542.

W. Johnson, 102 Scotchmer-street, North Fitzroy.
Sub-schedule No. 1.

BREAD FOR HOSPITALS FOR THE INSANE AT ERW.

	Security, £120.	£	s.	d.
1. Bread—Fine wheaten, first quality	per cental	0	13	9

ANNEX TO CONTRACT No. 1926/543.

J. N. Hennessy, Sydney-road, Brunswick.
Sub-schedule No. 2.

BREAD FOR CHILDREN'S WELFARE DEPARTMENT, ROYAL PARK;
RECEIVING HOUSE AND MENTAL HOSPITAL, ROYAL PARK;
POLICE DEPÔT; RICHMOND HOUSE, RICHMOND, IF REQUIRED.

	Security, £50.	£	s.	d.
1. Bread—Fine wheaten, first quality	...per cental	0	13	11½

ANNEX TO CONTRACT No. 1926/544.

H. R. Rush, 386 Flinders-lane, Melbourne.
Sub-schedule No. 3.

FLOUR AND MAIZE MEAL.

	Security, £100.	£	s.	d.
1. Flour—Roller, first quality, to sample	...per cental	0	13	10½
2. " Sharps, to sample	... do.	0	11	10½
3. Maize Meal, to sample	... do.	0	14	9

ANNEX TO CONTRACT No. 1926/545.

Moran & Cato Pty. Ltd., 277 Brunswick-street, Fitzroy.
Sub-schedule No. 4.

GROCERIES, ETC.

	Security, £80.	£	s.	d.
1. Bicarbonate of Soda	... per lb.	0	0	13
2. Blue—Of any brand ordered	... do.	0	0	9½
3. Candles—Full weights, Kitchen's "Petrolines" or other make of equal quality, to be supplied in 1-lb. packets to sample	... do.	0	0	7½
4. " Kitchen's "Petrolines" or other make of equal quality, for use in prison cells, to burn for 1, 1½, 2, 2½, and 3 hours respectively, as ordered, to sample for quality and size, to be supplied in candle boxes, containing from 25 to 50 lbs. per box	... do.	0	0	8½
5. Cocoa—Homeopathic, in ½-lb. packets, of any Commonwealth manufacture ordered	... do.	0	0	10
6. Coffee—Fresh roasted and whole, beans to be thoroughly sound, Neilgherry A, to sample	... do.	0	1	9
7. " Pure, fresh roasted and ground, to sample	... do.	0	1	9
8. Cornina—Corn or maize flour, in packets of 1-lb. net	... do.	0	0	8½
9. Cream of Tartar	... do.	0	1	0
10. Currants, 3 crowns, present season's	... do.	0	0	6½
11. Curry Powder	... do.	0	0	9
12. Eggs—Fresh, new-laid	... per doz.	0	2	6
13. Essence of Lemon, 1-oz. bottles	... per bottle	0	0	3½
14. Ginger—Ground	... per lb.	0	1	0
15. Golden Syrup (in 7-lb. tins)	... per tin	0	2	6
16. Lemon Peel	... per lb.	0	0	9
17. Marmite—In 1-lb. jars	... per jar	0	5	3
18. Mustard—"Double Superfine," of any Commonwealth manufacture ordered	... per lb.	0	2	3
19. Nutmegs	... do.	0	1	6
20. Pearl barley	... per cwt.	0	19	0
21. Pease—Split	... do.	1	4	0
22. Pepper—Black, ground	... per lb.	0	1	0½
23. Pipes—Tobacco, clay	... per doz.	0	0	9½
24. Raisins—Sultana, 3 crowns, present season's	... per lb.	0	0	9½

GROCERIES—continued.

		£	s.	d.
25. Salt—Fine	... per cwt.	0	6	3
26. " Rock	... do.	0	10	6
27. Soap, Toilet—Brown Windsor, in tablets, to sample	... per lb.	0	0	8½
28. " Carbolic, in half-pound bars, to sample	... do.	0	0	8
29. " Glycerine, in tablets, to sample	... do.	0	0	4
30. " Velvet	... per dbtl.	0	0	3½
31. Soap—Extract of, Kitchen's, in 13-lb. boxes containing 56 small packets	... per box	0	4	3
32. Soda—Washing	... per cwt.	0	6	3
33. Spice—Mixed, in 1-oz. packets	... per pkt.	0	0	1
34. Starch—Of any brand ordered, to sample	per lb.	0	0	9½
35. Treacle, in 7-lb. tins	... per tin	0	1	8½
36. Vinegar	... per quart	0	0	3½
37. Tapioca (Pearl)	... per lb.	0	0	2
38. Tomato Sauce (pints)	... per bottle	0	0	7

ANNEX TO CONTRACT No. 1926/546.

Moran & Cato Pty. Ltd., Brunswick-street, Fitzroy.
Sub-schedule No. 5.

OATMEAL, RICE, AND SEED TAPIOCA.

	Security, £80.	£	s.	d.
1. Oatmeal—Of any brand ordered	... per cwt.	1	5	0
2. Rice—Dressed, to sample	... do.	1	1	6
3. Seed Tapioca (Sago), to sample	... do.	0	18	6

ANNEX TO CONTRACT No. 1926/547.

Moran & Cato Pty. Ltd., Brunswick-street, Fitzroy.
Sub-schedule No. 6.

JAMS (of Commonwealth Manufacture) FOR HOSPITALS FOR THE INSANE.
(Including Receiving House, Royal Park.)

	Security, £20.	£	s.	d.
1. Jams—Assorted, of approved kinds, in the proportion of half seed and half stone, of the best quality, in tins, as required...	... per lb.			
	actual net weight	0	0	4½
2. " " " " in 24-oz. tins.	... per tin	0	0	8½

ANNEX TO CONTRACT No. 1926/548.

W. Angliss & Co. Pty. Ltd., Bourke-street, Melbourne.
Sub-schedule No. 7.

MEAT FOR HOSPITALS FOR THE INSANE, ERW.

	Security, £150.	£	s.	d.
1. Fresh Beef—Fore-quarters	... per cental	1	19	7
2. " " Hind-quarters	... do.	1	19	7
3. " " Buttock	... do.	1	19	7
4. " Mutton	... do.	1	19	7
5. Corned Beef, rolled or round, as ordered, without bone or cartilage	... do.	1	19	7
6. Fresh Suet—Kidney	... do.	2	10	0

ANNEX TO CONTRACT No. 1926/549.

J. H. Cooke Pty. Ltd., 378 Queen's-parade, Clifton Hill.
Sub-schedule No. 8.

MEAT FOR PENAL ESTABLISHMENT (PENTRIDGE) AND METROPOLITAN GAOL.

	Security, £100.	£	s.	d.
1. Fresh Beef	... per cental	1	15	0
2. " " Buttock	... do.	1	15	0
3. Corned Beef, rolled or round, as ordered, without bone or cartilage	... do.	1	15	0
4. Fresh Mutton	... do.	2	0	0
5. Dripping	... do.	1	15	0

ANNEX TO CONTRACT No. 1926/550.

J. H. Cooke Pty. Ltd., 378 Queen's-parade, Clifton Hill.
Sub-schedule No. 9.

MEAT FOR POLICE BARRACKS, ST. KILDA-ROAD; CHILDREN'S WELFARE DEPARTMENT, ROYAL PARK; RICHMOND HOUSE, RICHMOND, IF REQUIRED.

	Security, £50.	£	s.	d.
1. Fresh Beef	per cental	2	3	0
2. " " Buttock	do.	2	3	0
3. " Mutton	do.	2	8	0
4. Corned Beef, rolled or round, as ordered, without bone or cartilage	do.	2	3	0
5. Fresh Suet—Kidney	do.	2	3	0

ANNEX TO CONTRACT No. 1926/551.

W. Angliss and Co. Pty. Ltd., Bourke-street, Melbourne.
Sub-schedule No. 10.

MEAT FOR RECEIVING HOUSE AND MENTAL HOSPITAL, ROYAL PARK.

	Security, £50.	£	s.	d.
1. Fresh Beef	per cental	2	8	0
2. " " Buttock	do.	2	8	0
3. " Mutton	do.	2	8	0
4. Corned Beef, rolled or round, as ordered, without bone or cartilage	do.	2	8	0
5. Fresh Suet—Kidney	do.	2	10	0

Sub-schedule No. 11.

POTATOES.

1. Potatoes	per cwt.	Purchase (Clause 4).

ANNEX TO CONTRACT No. 1926/552.

Moran and Cato Pty. Ltd., Brunswick-street, Fitzroy.
Sub-schedule No. 12.

SOAP.
(Of Commonwealth Manufacture.)
Security, £10.

	Security, £10.	£	s.	d.
1. Soap (household)—Yellow, dry, to sample, equal to Kitchen & Son's "Best Brown"	per cwt.	1	8	0
2. Soap (household)—Carbolic, dry, to sample	"	1	12	0

ANNEX TO CONTRACT No. 1926/553.

Moran and Cato Pty. Ltd., Brunswick-street, Fitzroy.
Sub-schedule No. 13.

TEA.

	Security, £60.	£	s.	d.
1. Tea—Best Ceylon, to sample	per lb.	0	1	7
2. " Ration, to sample	do.	0	0	11½

ANNEX TO CONTRACT No. 1926/554.

Dudgeon and Arnell Pty. Ltd., Lonsdale-street, Melbourne.
Sub-schedule No. 14.

TOBACCO.

(Of Commonwealth Manufacture.)
Security, £50.

	Security, £50.	£	s.	d.
1. Tobacco, in 2-oz. plugs, for gaols—"Starlight," or other make of equal quality, to sample	per lb.	0	4	10
2. Tobacco, 11 plugs to the lb., for Hospitals for the Insane, to sample	do.	0	5	2

Schedule No. 15.

PROVISIONS AT GREENVALE.

Sub-schedule No. 1.

BREAD.

1. Bread—Fine Wheaton, first quality	per cental	Purchase

ANNEX TO CONTRACT No. 1926/555.

Moran and Cato Pty. Ltd., Brunswick-street, Fitzroy.
Sub-schedule No. 2.

GROCERIES.

Security, £20.

	Security, £20.	£	s.	d.
1. Apricots—Dried Mildura	per lb.	0	1	3
2. Arrowroot	do.	0	0	8
3. Biscuits—Coffee	do.	0	0	8½
4. Beans—Haricot	do.	0	0	2½
5. Blue	do.	0	0	9½
6. Candles—(Fullweights) Kitchen's "Petrolines," or other make of equal quality, to be supplied in 1-lb. packets	do.	0	0	9
7. Cheese	do.	0	0	7
8. Cocoa—In ¼-lb. packets, of any brand ordered	do.	0	0	6
9. Coconut—Desiccated	do.	0	0	9½
10. Coffee—"Neigherry A," to sample—Beans to be thoroughly sound, fresh roasted, and whole	dq.	0	1	9½
11. Corns (Corn or Maize Flour), in packets of 1-lb. net	do.	0	0	7
12. Currants, 3 crowns (present season's)	do.	0	0	7
13. Custard Powders, in 1-lb. packets	per pkt.	0	0	10
14. Essence of Lemon—In full 1-oz. bottles, of any brand ordered	per bot.	0	0	4½
15. Flour—Roller	per cental	0	10	0
16. Ginger—Ground	per lb.	0	1	0
17. Golden Syrup, in 7-lb. tins	per tin	0	1	9
18. Jams—Assorted, in 24-oz. tins in the proportion of half plum and half assorted quince, peach, black currant, and raspberry	per doz. tins	0	10	0
19. Jelly Crystals, in 4-oz. packets	per doz. pkts.	0	3	6
20. Lemon Peel	per lb.	0	0	10
21. Mustard—Double Superfine, of any Commonwealth manufacture ordered	do.	0	2	4
22. Oatmeal—Flaked or Plain, of any brand ordered	per cwt.	1	11	0
23. Pearl Barley	per lb.	0	0	2½
24. Peas—Split	do.	0	0	2½
25. Pepper—White, ground	do.	0	1	7½
26. Pickles—Picallili	per bot.	0	0	8
27. Powder—Baking, of any brand ordered, in 1-lb. tins	per tin	0	1	1
28. Prunes—Dried	per lb.	0	0	9½
29. Raisins—Sultana, 3 crowns (present season's)	do.	0	0	9½
30. Rice—Dressed, to sample	per cwt.	1	4	0
31. Sago (Seed Tapioca)	do.	0	19	0
32. Salmon—Fresh, in 1-lb. tins, Talls, of any brand ordered	per tin	0	1	3
33. Salt—Fine	per cwt.	0	6	6
34. Sardines—½'s	per tin	0	0	8
35. Sauce—Worcestershire, 10-oz. bottles	per bot.	0	0	6
36. Sauce—Tomato, pints, any brand ordered	do.	0	0	10½
37. Soda—Carbonate of	per lb.	0	0	2
38. Soda—Washing	per cwt.	0	7	6
39. Spice—Mixed, in 1-oz. packets	per pkt.	0	0	1
40. Starch—Of any brand ordered, to sample	per lb.	0	0	8
41. Tartar—Cream of	do.	0	1	2
42. Tea—Ceylon, to sample	do.	0	1	7½
43. Treacle, in 7-lb. tins	per tin	0	2	0
44. Vinegar	per pint	0	0	3

ANNEX TO CONTRACT No. 1926/556.

W. Angliss and Co. Pty. Ltd., Bourke-street, Melbourne.
Sub-schedule No. 3.

MEAT.

Security, £20.

	Security, £20.	£	s.	d.
1. Fresh Ox Beef—Roast	per cental	2	10	0
2. Fresh Ox Beef Steak—Stewing	do.	2	10	0
3. Corned Ox Beef—Rolled or Round, as ordered, without bone or cartilage	do.	2	8	0
4. Tripe, Ox (during winter)	per lb.	0	0	6
5. Sausages—Beef (during winter)	do.	0	0	6
6. " Preserved	do.	0	0	6

Sub-schedule No. 4.

POTATOES.

1. Potatoes	per cwt.	Purchase (Clause 4).

Schedule No. 16.

PROVISIONS—MONT PARK.

ANNEX TO CONTRACT NO. 1926/557.

J. N. Hennessy, Sydney-road, Brunswick.

Sub-schedule No. 1.

BREADSTUFFS.

(Including supplies required at the Repatriation Mental Hospital, Bundoora.)

	Security, £100.	£	s.	d.
1. Bread—Fine Wheaten, first quality	per cental	0	13	11½
2. Bread—Raisin	do.	0	16	8
3. Flour—First quality	do.	0	14	3

ANNEX TO CONTRACT NO. 1926/558.

Moran and Cato Pty. Ltd., Brunswick-street, Fitzroy.

Sub-schedule No. 2.

GROCERIES.

	Security, £30.	£	s.	d.
1. Blue—Of any brand ordered	per lb.	0	0	9½
2. Candles (full weights)—Kitchen's "Petrolines," or other make of equal quality, to be supplied in 1-lb. packets	do.	0	0	8½
3. Cocoa	do.	0	0	3½
4. Coffee—"Neigherry A"—Fresh roasted and Whole—Beans to be thoroughly sound, to sample	do.	0	1	5½
5. Corns (Corn or Maize Flour) in packets of 1-lb. net	do.	0	0	6½
6. Currants, 3 Crowns (present season's, 6 months)	do.	0	0	6½
7. Curry Powder	do.	0	0	11
8. Castard Powder, 16-oz. pkts.	per pkt.	0	0	9
9. Dates	per lb.	0	0	4
10. Ginger—Ground	do.	0	1	0
11. Golden Syrup, in 7-lb. tins	per tin	0	1	9
12. Macaroni	per lb.	0	0	4½
13. Mustard—"Double Superfine," of any Commonwealth manufacture ordered	do.	0	2	4
14. Oatmeal—Of any brand ordered	per cwt.	1	2	6
15. Pearl Barley	per lb.	0	0	2½
16. Pease—Split	per cwt.	1	5	0
17. Pepper—Black, Ground	per lb.	0	1	1
18. Pipes—Tobacco, Clay	per doz.	0	0	8½
19. Prunes—Dried	per lb.	0	0	8
20. Raisins—Sultana, 3 Crowns (present season's, 6 months)	do.	0	0	9½
21. Rice—Dressed, to sample	per cwt.	1	2	0
22. Sauce—Tomato (in reputed pints)	per doz.	0	8	6
23. Seed Tapioca (Sago)—To sample	per lb.	0	0	2½
24. Salt—Fine	per cwt.	0	6	0
25. Soap—Hudson's Extract	per box	0	5	9
26. Soda—Carbonate of	per lb.	0	0	1½
27. Soda—Washing	per cwt.	0	7	0
28. Spices	per lb.	0	1	0
29. Starch—Of any brand ordered, to sample	do.	0	0	8½
30. Tartar—Cream of	do.	0	1	3
31. Treacle, in 7-lb. tins (6 months)	per tin	0	1	9
32. Vinegar	per pint	0	0	1½

ANNEX TO CONTRACT NO. 1926/559.

Moran and Cato Pty. Ltd., Brunswick-street, Fitzroy.

Sub-schedule No. 3.

JAMS.

Of Commonwealth Manufacture.

	Security, £10.	£	s.	d.
1. Jams—Assorted, of approved kinds, in the proportion of half seed and half stone, of the best quality, in tins, actual net as required	per lb.	0	0	4½

ANNEX TO CONTRACT NO. 1926/560.

F. Watkins Pty. Ltd., 184-186 Bourke-street, Melbourne.

Sub-schedule No. 4.

MEAT.

	Security, £30.	£	s.	d.
1. Fresh Beef—Fore-quarters	per cental	2	4	0
2. " " Hind-quarters	do.	2	4	0
3. " " Buttocks	do.	2	4	0
4. " Mutton	do.	2	4	0
5. Corned Beef—Rolled or round as ordered, without bone or cartilage...	do.	2	4	0
6. Fresh Beef Suet (Kidney)	do.	2	4	0
7. Tripe	do.	2	4	0

Sub-schedule No. 5.

POTATOES.

1. Potatoes	per cwt.	Purchase (Clause 4).
-------------	----------	----------------------

ANNEX TO CONTRACT NO. 1926/561.

Moran and Cato Pty. Ltd., Brunswick-street, Fitzroy.

Sub-schedule No. 6.

TEA.

	Security, £10.	£	s.	d.
Tea—Best Ceylon, to sample	per lb.	0	1	7

Schedule No. 2.

PROVISIONS FOR S.S. RIP AND DREDGES.

Supplies to be delivered to Dredging Dépôt, Footscray-road, Victoria Dock, or River Yarra Wharfs, as ordered.

Sub-schedule No. 1.

BREADSTUFFS.

1. Bread—Fine wheaten, first quality	per cental	Purchase
2. Flour—First quality	do.	

ANNEX TO CONTRACT NO. 1926/562.

Moran and Cato Pty. Ltd., Brunswick-street, Fitzroy.

Sub-schedule No. 2.

GROCERIES.

	Security, £10.	£	s.	d.
1. Biscuits—Kinds as ordered	per lb.	0	0	4
2. Butter—First class creamery, to score not less than 90 points, Government grade, commerce regulations standard	do.	0	1	7
3. Chocolate, of any brand ordered	do.	0	1	6
4. Coffee—Fresh roasted and ground, to sample	do.	0	1	7
5. Currants—3 crowns, present season's	do.	0	0	6½
6. Flour—Self-raising	do.	0	0	3
7. Jams—Assorted, of approved kinds, in proportion of half seed and half stone, of best quality (in 1½-lb. tins)	per tin	0	0	10
8. Milk—Condensed, of any brand ordered	do.	0	0	8½
9. Mustard—double superfine, of any brand ordered	per lb.	0	2	4
10. Oatmeal	per cwt.	1	6	0
11. Pearl barley	do.	0	19	6
12. Pease—Split	do.	1	5	0
13. Pepper—White, ground	per lb.	0	1	8
14. Pickles—Assorted	per bot.	0	0	9½
15. Raisins—Sultana, 3 crowns, present season's	per lb.	0	0	9½
16. Rice—Dressed, to sample	do.	0	0	3
17. Salt—Fine, to sample	do.	0	0	0½
18. Sauce—Tomato, reputed pints	per bot.	0	0	6½
19. " Worcester, 10-oz. bots.	do.	0	0	4½
20. Tea—Best Ceylon	per lb.	0	1	7
21. Vinegar—Champion's, or other approved brand	per quart	0	0	3½

ANNEX TO CONTRACT NO. 1926/563.

Wm. Angliss and Co. Pty. Ltd., 42 Bourke-street, Melbourne

Sub-schedule No. 3.

MEAT.

	Security, £10.	£	s.	d.
1. Fresh Beef	per cental	2	10	0
2. " Mutton	do.	2	10	0
3. " Suet	do.	2	10	0

Sub-schedule No. 4.

VEGETABLES.

1. Potatoes	per cwt.	Purchase
2. Onions	do.	
3. Other vegetables, including cauliflowers, carrots, cabbages, turnips, and parsnips, as required	do.	

Schedule No. 3.
PROVISIONS—ARARAT DISTRICT.

ANNEX TO CONTRACT No. 1926/564.

Wm. Bates, Ararat.

Sub-schedule No. 1.

BREADSTUFFS.

Security, £100. £ s. d.

- | | | |
|--|------------|---------|
| 1. Bread—Fine wheaten, first quality ... | per cental | 0 17 8½ |
| 2. Flour—First quality ... | do. | 0 15 0 |

ANNEX TO CONTRACT No. 1926/565.

Moran and Cato Pty. Ltd., Brunswick-street, Fitzroy.

Sub-schedule No. 2.

GROCERIES.

Security, £30. £ s. d.

- | | | |
|---|----------|---------|
| 1. Blue—Of any brand ordered ... | per lb. | 0 0 10½ |
| 2. Candles (full weights) — Kitchen's "Petrolines," or other make of equal quality, to be supplied in 1-lb. packets and whole—Beans to be thoroughly sound, to sample ... | do. | 0 0 9½ |
| 3. Coffee—"Neigherry A"—Fresh roasted and whole—Beans to be thoroughly sound, to sample ... | do. | 0 1 9½ |
| 4. Cornina (Corn or Maize Flour), in packets of 1-lb. net... .. | do. | 0 0 7 |
| 5. Curry | do. | 0 1 1 |
| 6. Golden Syrup (in 56-lb. tins) ... | per tin | 0 15 0 |
| 7. Mustard—"Double Superfine," of any Commonwealth manufacture ordered ... | do. | 0 2 4 |
| 8. Oatmeal—Of any brand ordered ... | per cwt. | 1 7 6 |
| 9. Peas—Split | per lb. | 0 0 3½ |
| 10. Pepper—Black, ground | do. | 0 1 2 |
| 11. Pipes—Tobacco, clay | per doz. | 0 0 10½ |
| 12. Raisins—Sultana, 3 crowns, present season's | per lb. | 0 0 9½ |
| 13. Rice—Dressed, to sample | per cwt. | 1 5 6 |
| 14. Seed Tapioca (Sago)—To sample ... | do. | 1 2 0 |
| 15. Salt—Fine | do. | 0 8 6 |
| 16. Soda—Carbonate of | per lb. | 0 0 2½ |
| 17. " Washing | per cwt. | 0 10 0 |
| 18. Starch—Of any brand ordered, to sample | per lb. | 0 0 7½ |
| 19. Tartar—Cream of | do. | 0 1 1½ |
| 20. Vinegar | per pint | 0 0 4 |

ANNEX TO CONTRACT No. 1926/566.

The Fruitgrowers' Preserving Co. Pty. Ltd., Davey-street, Ballarat.

Sub-schedule No. 3.

JAMS.

Security, £10. £ s. d.

- | | | |
|--|---------|--------|
| Jams, assorted, of approved kinds in the proportion of half seed and half stone, of the best quality, in tins, actual net as required | per lb. | 0 0 4½ |
|--|---------|--------|

ANNEX TO CONTRACT No. 1926/567.

A. Murphy, Barkly-street, Ararat.

Sub-schedule No. 4.

MEAT.

Security, £100. £ s. d.

- | | | |
|--|------------|--------|
| 1. Fresh Beef—Fore-quarters | per cental | 1 9 8½ |
| 2. " " Hind-quarters | do. | 1 9 8½ |
| 3. " " Buttocks | do. | 1 9 8½ |
| 4. " Mutton | do. | 2 1 8 |
| 5. Corned Beef—Rolled or round, as ordered, without bone or cartilage | do. | 1 9 8½ |
| 6. Fresh Suet—Kidney | do. | 1 13 4 |

Sub-schedule No. 5.

POTATOES.

- | | | |
|--------------------|----------|---------------------|
| 1. Potatoes | per cwt. | Purchase (Clause 4) |
|--------------------|----------|---------------------|

ANNEX TO CONTRACT No. 1926/568

Moran and Cato Pty. Ltd., Brunswick-street, Fitzroy.

Sub-schedule No. 6.

TEA.

Security, £20. £ s. d.

- | | | |
|--------------------------------------|---------|--------|
| 1. Tea—Best Ceylon, to sample | per lb. | 0 1 7½ |
|--------------------------------------|---------|--------|

Schedule No. 4.
PROVISIONS—BEECHWORTH DISTRICT.

ANNEX TO CONTRACT No. 1926/569.

Wm. Price, Newtown, Beechworth.

Sub-schedule No. 1.

BREADSTUFFS.

Security, £100. £ s. d.

- | | | |
|--|------------|--------|
| 1. Bread—Fine wheaten, first quality ... | per cental | 0 19 3 |
| 2. Flour—First quality | do. | 0 19 0 |

ANNEX TO CONTRACT No. 1926/570.

Moran and Cato Pty. Ltd., Brunswick-street, Fitzroy.

Sub-schedule No. 2.

GROCERIES.

Security, £30. £ s. d.

- | | | |
|---|----------|---------|
| 1. Arrowroot | per lb. | 0 0 7½ |
| 2. Blue—Of any brand required | do. | 0 0 10½ |
| 3. Candles (full weights)—Kitchen's "Petrolines," or other make of equal quality, to be supplied in 1-lb. packets ... | do. | 0 0 9½ |
| 4. Coffee—"Neigherry A," fresh roasted and whole, beans to be thoroughly sound, to sample | do. | 0 1 9½ |
| 5. Coffee—Fresh roasted and ground, to sample | do. | 0 1 9 |
| 6. Cornina or Maize Flour, in packets of 1-lb. net | do. | 0 0 8 |
| 7. Golden Syrup (in 7-lb. tins) | per tin | 0 2 1½ |
| 8. Mustard—"Double superfine," of any Commonwealth manufacture ordered ... | per lb. | 0 2 3 |
| 9. Oatmeal—Of any brand ordered | per cwt. | 1 8 0 |
| 10. Pearl Barley | do. | 1 4 6 |
| 11. Pease—Split | do. | 1 16 0 |
| 12. Pepper—Black, ground | per lb. | 0 1 2 |
| 13. Pipes—Tobacco, clay | per doz. | 0 0 9 |
| 14. Raisins—Sultana, 3 crowns, present season's, to be supplied in original boxes, labelled as packed, where quantity admits | per lb. | 0 0 9½ |
| 15. Rice—Dressed, to sample | per cwt. | 1 7 0 |
| 16. Seed Tapioca (Sago)—To sample ... | do. | 1 3 6 |
| 17. Salt—Fine | do. | 0 10 0 |
| 18. Soda—Carbonate of | per lb. | 0 0 2 |
| 19. " Washing | per cwt. | 0 10 0 |
| 20. Starch—Of any brand ordered, to sample | per lb. | 0 0 9 |
| 21. Tartar—Cream of | do. | 0 1 1 |
| 22. Vinegar | per pint | 0 0 2 |

ANNEX TO CONTRACT No. 1926/571.

J. R. Newey, jun., Ford-street, Beechworth.

Sub-schedule No. 3.

MEAT.

Security, £100. £ s. d.

- | | | |
|--|------------|----------|
| 1. Fresh Beef—Fore-quarters | per cental | 1 14 10½ |
| 2. " " Hind-quarters | do. | 1 14 10½ |
| 3. " " Buttocks | do. | 1 14 10½ |
| 4. " Mutton | do. | 1 14 10½ |
| 5. Corned Beef—rolled or round, as ordered, without bone or cartilage | do. | 1 14 10½ |
| 6. Fresh Suet—Kidney (2 months only) ... | per lb. | 0 0 6 |

ANNEX TO CONTRACT No. 1926/572.

W. H. Collins, Stanley, via Beechworth.

Sub-schedule No. 4.

POTATOES.

Security, £30. £ s. d.

- | | | |
|--------------------|----------|-------|
| 1. Potatoes | per cwt. | 0 8 6 |
|--------------------|----------|-------|

ANNEX TO CONTRACT No. 1926/573.

Moran and Cato Pty. Ltd., Brunswick-street, Fitzroy.

Sub-schedule No. 5.

TEA.

Security, £20. £ s. d.

- | | | |
|--------------------------------------|---------|--------|
| 1. Tea—Best Ceylon, to sample | per lb. | 0 1 7½ |
|--------------------------------------|---------|--------|

Schedule No. 5.
PROVISIONS AT BALLARAT.

ANNEX TO CONTRACT No. 1926/574.

Wm. Haynes, 196 Humffray-street, Ballarat.

Sub-schedule No. 1.

BREADSTUFFS.

	Security £60.	£	s.	d.
1. Bread—Fine Wheaten, first quality	... per cental	0	13	6½
2. " " Wheaten, third quality	... do.	0	13	6½
3. Flour—First quality	... do.	0	14	4

ANNEX TO CONTRACT No. 1926/575.

Moran and Cato Pty. Ltd., Brunswick-street, Fitzroy.

Sub-schedule No. 2.

GROCERIES.

	Security, £30.	£	s.	d.
1. Barley—Pearl	... per lb.	0	0	2½
2. Blue—Of any brand required	... do.	0	0	9½
3. Candles (full weights)—Kitchen's "Petrolines," or other make of equal quality, to be supplied in 1-lb. packets	... do.	0	0	9½
4. Coffee—"Neighery A." Fresh roasted and whole, beans to be thoroughly sound, to sample	... do.	0	1	9
5. Cornina—(Corn or maize flour), in packets of 1-lb. net	... do.	0	0	6½
6. Currants, 3 crowns, present season's	... do.	0	0	6½
7. Ginger—Ground	... do.	0	1	3
8. Golden Syrup (in 7-lb. tins)	... per tin	0	1	11
9. Mustard—Double superfine, of any Commonwealth manufacture ordered	... per lb.	0	2	3
10. Oatmeal—Of any brand ordered	... per cwt.	1	5	0
11. Pease—Split	... do.	1	6	6
12. Pepper—Black, ground	... per lb.	0	1	1½
13. Pipes—Tobacco, clay	... per doz.	0	10	0
14. Raisins—Sultana, 3 crowns, present season's	... per lb.	0	0	9½
15. Rice—Dressed, to sample	... per cwt.	1	4	0
16. Seed Tapioca (Sago), to sample	... do.	1	0	6
17. Salt—Fine	... do.	0	7	6
18. Soap—(Household), Carbolie, dry to sample	... per lb.	0	0	4½
19. Soap—(Household), Yellow, dry, to sample	... do.	0	0	3½
20. Soda—Carbonate of	... do.	0	0	2
21. " Washing	... per cwt.	0	7	6
22. Spice—Mixed, in 1-oz. packets	... per doz. pkts.	0	1	1
23. Starch—Of any brand ordered, to sample	... per lb.	0	0	7
24. Tartar—Cream of	... do.	0	1	1
25. Tobacco—"Starlight," or other make of equal quality, as ordered	... do.	0	5	6
26. Vinegar	... per pint	0	0	3

ANNEX TO CONTRACT No. 1926/576.

The Fruitgrowers' Preserving Co. Pty. Ltd., Davey-street, Ballarat.

Sub-schedule No. 3.

JAMS.

(For Hospitals for the Insane.)

	Security, £10.	£	s.	d.
1. Jams—Assorted, of approved kinds in proportion of half seed and half stone, of the best quality, packed in actual net 56-lb. tins	... per lb. weight	0	0	3½

ANNEX TO CONTRACT No. 1926/577.

H. J. Symons, Macarthur-street, Ballarat.

Sub-schedule No. 4.

MEAT.

	Security, £60.	£	s.	d.
1. Fresh Beef—Fore-quarters	... per cental	1	17	6
2. " " Hind-quarters	... do.	1	17	6
3. " " Buttocks	... do.	1	17	6
4. " " Mutton	... do.	1	17	6
5. Corned Beef, rolled or round, as ordered, without bone or cartilage	... do.	1	17	6
6. Fresh Suet—Kidney	... do.	1	17	6

Sub-schedule No. 5.

POTATOES.

1. Potatoes	... per cwt.	Purchase (clause 4)
-------------	--------------	---------------------

ANNEX TO CONTRACT No. 1926/578.

Moran & Cato Pty. Ltd., Brunswick-street, Fitzroy.

Sub-schedule No. 6.

TEA.

	Security, £20.	£	s.	d.
1. Tea—Best Ceylon, to sample	... per lb.	0	1	7½
2. " Ration	... do.	0	1	0½

Schedule No. 6.

PROVISIONS AT GEELONG.

ANNEX TO CONTRACT No. 1926/579.

Podbury Bros., 47 Little Myers-street, Geelong.

Sub-schedule No. 1.

BREADSTUFFS.

	Security, £20.	£	s.	d.
1. Bread—Fine Wheaten, first quality	... per cental	0	16	0
2. " " Wheaten, third quality	... do.	0	16	0

ANNEX TO CONTRACT No. 1926/580.

Moran and Cato Pty. Ltd., Brunswick-street, Fitzroy.

Sub-schedule No. 2.

GROCERIES.

	Security, £20.	£	s.	d.
1. Arrowroot—Queensland	... per lb.	0	0	6
2. Candles (full weights)—Kitchen's "Petrolines," or other make of equal quality, to sample, to be supplied in 1-lb. packets	... do.	0	0	9
3. Barley—Pearl	... do.	0	0	2½
4. Currants, 3 crowns, present season's	... do.	0	0	6½
5. Eggs—Fresh	... per doz.	0	2	6
6. Oatmeal—Of any brand ordered	... per cwt.	1	4	6
7. Potatoes	... per lb.	0	12	0
8. Pepper—Black, ground	... per lb.	0	1	1
9. Pipes—Tobacco, clay	... per doz.	0	1	0
10. Raisins—Sultana, 3 crowns, present season's	... per lb.	0	0	9½
11. Rice—Dressed, to sample	... per cwt.	1	4	6
12. Seed Tapioca (Sago), to sample	... per lb.	0	0	2½
13. Salt—Fine	... do.	0	0	0½
14. Soap—(Household) Carbolie, dry, to sample	... do.	0	0	3½
15. Soap—(Household) Yellow, dry, to sample	... per cwt.	1	15	0
16. Soda—Washing	... do.	0	10	0
17. Tea—Ration	... per lb.	0	1	0½
18. Tobacco—"Starlight," or other make of equal quality, as ordered	... do.	0	5	6

ANNEX TO CONTRACT No. 1926/581.

M. G. O'Brien, 491 Moorabool-street, South Geelong.

Sub-schedule No. 3.

MEAT.

	Security, £20.	£	s.	d.
1. Fresh Beef	... per cental	1	0	0
2. " Buttocks	... do.	2	0	0
3. " Mutton	... do.	1	10	0
4. Corned Beef—Rolled, without bone or cartilage	... do.	2	0	0

ANNEX TO CONTRACT No. 1926/582.

S. H. Warren, Moolap West.

Sub-schedule No. 4.

MILK.

	Security, £5.	£	s.	d.
1. Milk—Fresh and pure	... per gallon	0	1	8

Schedule No. 7.

PROVISIONS AT LARA.

ANNEX TO CONTRACT No. 1926/583.

H. Wood, Lara.

Sub-schedule No. 1.

BREADSTUFFS.

	Security, £20.	£	s.	d.
1. Bread—Fine Wheaten, first quality	... per cental	0	18	0
2. Flour—First quality	... do.	0	16	0

ANNEX TO CONTRACT No. 1926/584.

Moran and Cato Pty. Ltd., Brunswick-street, Fitzroy.
Sub-schedule No. 2.

GROCERIES.		Security, £20.		£	s.	d.
1. Arrowroot—Queensland	per lb.	0	0	7		
2. Bacon, Farmer's or Hutton's, by the side (or other approved brand)	do.	0	1	3		
3. Barley—Pearl	do.	0	0	2½		
4. Blue—Of any brand ordered	do.	0	0	10		
5. Candles—(Full weights) Kitchen's "Petrolines," or other make of equal quality, to be supplied in 1-lb. packets	do.	0	0	9		
6. Cocoa—(Homeopathic)—McKenzie's, or other brand of equal quality	do.	0	0	5		
7. Coffee—"Neilgherry A." Fresh roasted and whole—Beans to be thoroughly sound, to sample	do.	0	1	8		
8. Currants—3 crowns, present season's	do.	0	0	6½		
9. Mustard—Double Superfine, of any Commonwealth manufacture ordered	do.	0	2	4		
10. Oatmeal—Of any brand ordered	per cwt.	1	5	0		
11. Pease—Split	per lb.	0	0	3		
12. Pepper—Black, ground	do.	0	1	2		
13. Raisins—Sultana, 3 crowns, present season's	do.	0	0	9½		
14. Rice—Dressed, to sample	do.	0	0	2½		
15. Seed Tapioca (Sago), to sample	do.	0	0	2½		
16. Salmon—Fresh, brand as ordered, tins (1-lb. tins)	per tin	0	1	3		
17. Salt—Fine	per lb.	0	0	1		
18. Soap—(Household) Yellow, dry, to sample	do.	0	0	3½		
19. Soap—Toilet, Glycerine, in tablets, to sample	do.	0	0	8		
20. Soda—Washing	do.	0	0	1		
21. Tea—Best Ceylon, to sample	do.	0	1	7½		

ANNEX TO CONTRACT No. 1926/585.

G. A. Hardham, Glenferrie-road, Malvern.

Sub-schedule No. 3.

JAMS.		Security, £5.		£	s.	d.
1. Jams, Assorted, of approved kinds in the proportion of half seed and half stone, of the best quality, in tins containing 24 oz. net	per doz. tins	0	9	4½		

ANNEX TO CONTRACT No. 1926/586.

W. Anglies and Co. Pty. Ltd., 42 Bourke-street, Melbourne.

Sub-schedule No. 4.

MEAT.		Security, £20.		£	s.	d.
1. Fresh Beef	per cental	2	10	0		
2. " Mutton	do.	2	5	0		
3. " Tripe, Sausages, Kidneys, and Liver, as ordered	do.	2	10	0		

Sub-schedule No. 5.

POTATOES.		Purchase (Clause 4)	
1. Potatoes	per cwt.		

Schedule No. 3.

PROVISIONS—SUNBURY DISTRICT.

ANNEX TO CONTRACT No. 1926/587.

T. Clyde and Son, Sunbury.

Sub-schedule No. 1.

BREADSTUFFS.		Security, £100.		£	s.	d.
1. Bread—Fine Wheaten, first quality	per cental	0	16	1		
2. Flour—First quality	do.	0	14	0		

ANNEX TO CONTRACT No. 1926/588.

Moran and Cato Pty. Ltd., Brunswick-street, Fitzroy.

Sub-schedule No. 2.

GROCERIES.		Security, £20.		£	s.	d.
1. Blue—Of any brand ordered	per lb.	0	0	9½		
2. Candles—(Full weights) Kitchen's "Petrolines" or other make of equal quality, to sample, to be supplied in 1-lb. packets	do.	0	0	9		
3. Cocoa	do.	0	0	4½		

GROCERIES—continued.

		Security, £20.		£	s.	d.
4. Coffee—"Neilgherry A."—Fresh roasted and whole—Beans to be thoroughly sound, to sample	per lb.	0	1	3½		
5. Cornina (Corn or Maize Flour), in packets of 1-lb. net	do.	0	0	6½		
6. Currants—3 crowns, present season's	do.	0	0	6½		
7. Curry Powder	do.	0	0	11		
8. Ginger—Ground	do.	0	1	0		
9. Golden Syrup, in 7-lb. tins	per tin	0	1	9		
10. Lemon Peel	per lb.	0	0	9		
11. Mustard—Double superfine, of any Commonwealth manufacture ordered	do.	0	2	4		
12. Oatmeal—Of any brand ordered	per cwt.	1	3	6		
13. Pearl Barley	do.	1	0	0		
14. Pease—Split	do.	1	5	6		
15. Pepper—Black, ground	per lb.	0	1	1		
16. Pipes—Tobacco, clay	per doz.	0	0	10		
17. Raisins—Sultana, 3 crowns, present season's	per lb.	0	0	9½		
18. Rice—Dressed, to sample	per cwt.	1	2	6		
19. Seed Tapioca (Sago), to sample	do.	0	19	6		
20. Salt—Fine	do.	0	6	3		
21. Soap—Soft	per lb.	0	0	2		
22. Soda—Bicarbonate of	do.	0	0	1½		
23. " Washing	per cwt.	0	7	0		
24. Spice	per lb.	0	1	3		
25. Starch—Of any brand ordered, to sample	do.	0	0	8½		
26. Tartar—Cream of	do.	0	1	1		
27. Vinegar	per pint	0	0	1½		

ANNEX TO CONTRACT No. 1926/589.

Moran and Cato Pty. Ltd., Brunswick-street, Fitzroy.

Sub-schedule No. 3.

JAMS.

(Manufactured within the Commonwealth.)

Security, £10.		£	s.	d.
1. Jams—Assorted, of approved kinds, in the proportion of half seed and half stone, of the best quality, in tins as required	per lb. actual net weight	0	0	4½

ANNEX TO CONTRACT No. 1926/590.

S. J. Starkie, Sunbury.

Sub-schedule No. 4.

MEAT.

Security, £30.		£	s.	d.
1. Fresh Beef—Fore-quarters	per cental	2	0	0
2. " " Hind-quarters	do.	2	0	0
3. " " Buttocks	do.	2	0	0
4. " Mutton	do.	2	0	0
5. Corned Beef—Rolled or round, as ordered, without bone or cartilage	do.	2	0	0

Sub-schedule No. 5.

POTATOES.		Purchase (Clause 4)	
1. Potatoes	per cwt.		

ANNEX TO CONTRACT No. 1926/591.

Moran and Cato Pty. Ltd., Brunswick-street, Fitzroy.

Sub-schedule No. 6.

TEA.

Security, £20.		£	s.	d.
1. Tea—Best Ceylon, to sample	per lb.	0	1	6½

Schedule No. 9.

PROVISIONS—BENDIGO DISTRICT.

ANNEX TO CONTRACT No. 1926/592.

F. W. Beischer, Bridge-street, Bendigo.

Sub-schedule No. 1.

BREAD.

Security, £5.		£	s.	d.
1. Bread—Wheaten, third quality	per cental	0	19	9

ANNEX TO CONTRACT No. 1926/593.

Moran and Cato Pty. Ltd., Brunswick-street, Fitzroy.

Sub-schedule No. 2.

GROCCRIES AND POTATOES.

Security, £5.		£	s.	d.
1. Candles—(full weights) Kitchen's "Petrolines," or other make of equal quality, to sample, to be supplied in 1-lb. packets per lb.	0	0	11	
2. Milk—Fresh and pure ... per quart	0	1	0	
3. Oatmeal—Of any brand ordered ... per lb.	0	0	4	
4. Potatoes ... per cwt.	0	15	0	
5. Rice, dressed, to sample ... per lb.	0	0	4	
6. Salt—Fine ... do.	0	0	2	
7. Soap—Yellow (Household), dry, to sample do.	0	0	6	
8. " Carbolic " " " do.	0	0	3	
9. Soda—Washing " " " do.	0	1	6	
10. Tea—Ration " " " do.	0	5	6	
11. Tobacco—" Starlight," or other make of equal quality, as ordered ... do.	0	0	2	
12. Whiting " " " do.	0	0	2	

ANNEX TO CONTRACT No. 1926/594.

H. Gittens, 350 Hargreaves-street, Bendigo.

Sub-schedule No. 3.

MEAT.

Security, £5.		£	s.	d.
1. Fresh Beef ... per cental	2	0	0	

Schedule No. 10.

PROVISIONS—CASTLEMAINE DISTRICT.

Sub-schedule No. 1.

BREAD.

		£	s.	d.
1. Bread—Wheaten, third quality ... per cental	Purchase			

ANNEX TO CONTRACT No. 1926/595.

Moran and Cato Pty. Ltd., Brunswick-street, Fitzroy.

Sub-schedule No. 2.

GROCCRIES AND POTATOES.

Security, £5.		£	s.	d.
1. Candles—(full weights), Kitchen's "Petrolines," Apollo Co.'s "Apollo," or other make of equal quality, to sample, to be supplied in 1-lb. packets per lb.	0	1	0	
2. Oatmeal ... do.	0	0	4	
3. Potatoes ... per cwt.	0	15	0	
4. Rice, Dressed, to sample ... per lb.	0	0	5	
5. Salt—Fine ... do.	0	0	2	
6. Soap—Yellow (household), dry, to sample do.	0	0	6	
7. Soda—Washing " " " do.	0	0	3	
8. Tea—Ration " " " do.	0	1	6	

ANNEX TO CONTRACT No. 1926/596.

John Williamson, Mostyn-street, Castlemaine.

Sub-schedule No. 3.

MEAT.

Security, £5.		£	s.	d.
1. Fresh Beef ... per lb.	1	9	2	
2. " Mutton " " " do.	1	9	2	
3. Corned Beef—rolled without bone or cartilage ... do.	1	9	2	

Schedule No. 11.

PROVISIONS AT SALE.

Sub-schedule No. 1.

BREAD.

1. Bread—Wheaten, third quality ... per lb.	Purchase			
---	----------	--	--	--

ANNEX TO CONTRACT No. 1926/597.

Moran and Cato Pty. Ltd., Brunswick-street, Fitzroy.

Sub-schedule No. 2.

GROCCRIES AND POTATOES.

Security, £5.		£	s.	d.
1. Potatoes ... per cwt.	0	15	0	
2. Rice, dressed, to sample ... per lb.	0	0	3	
3. Salt—Fine ... do.	0	0	1	
4. Soap, yellow (household), dry, to sample do.	0	0	4	
5. Soda—Washing " " " do.	0	0	1	
6. Tea—Ration, to sample ... do.	0	1	11	

ANNEX TO CONTRACT No. 1926/598

Ronchi Bros., Sale.

Sub-schedule No. 3.

MEAT.

Security, £5.		£	s.	d.
1. Fresh Beef ... per lb.	0	0	5	
2. Fresh Beef—Buttocks ... do.	0	0	5	
3. Corned Beef, rolled or round as ordered, without bone or cartilage ... do.	0	0	5	

Schedule No. 13.

PROVISIONS AT RUTHERGLEN.

(For Students at Viticultural College.)

ANNEX TO CONTRACT No. 1926/599.

E. E. King, Rutherglen.

Sub-schedule No. 1.

BREAD.

Security £5.		£	s.	d.
1. Bread—Fine Wheaten, first quality ... per cental	1	2	0	

ANNEX TO CONTRACT No. 1926/600.

Moran and Cato Pty. Ltd., Brunswick-street, Fitzroy.

Sub-schedule No. 2.

GROCCRIES, ETC.

Security, £10.		£	s.	d.
1. Arrowroot ... per lb.	0	0	9	
2. Blue ... do.	0	0	11	
3. Baking Powder, in 1-lb. tins ... per tin	0	1	4	
4. Baking Soda ... per lb.	0	0	3	
5. Bacon, best cured ... do.	0	1	3	
6. Blacking ... per tin	0	0	2	
7. Blacklead ... per cake	0	0	1	
8. Barley, Pearl ... per lb.	0	0	3	
9. Candles—(Full weights) Kitchen's "Petrolines," or other make of equal quality, to be supplied in 1-lb. packets do.	0	0	10	
10. Coffee—Whole—Beans to be thoroughly sound, to sample ... do.	0	1	7	
11. Coffee Essence, 10-oz., of any brand ordered ... per bottle	0	1	5	
12. Cocoa, of any brand ordered ... per lb.	0	1	9	
13. Cream of Tartar ... do.	0	1	5	
14. Currants, 3 crown (present season's) ... do.	0	0	8	
15. Curry Powder ... do.	0	1	2	
16. Essence of Lemon, 1-oz. bottles ... per bottle	0	0	7	
17. Fish, Preserved, Salmon, Fresh Herrings, Herrings in Tomato, as ordered, in 1-lb. tins ... per tin	0	1	2	
18. Flour, best Roller ... per cental	1	0	0	
19. Fruits, Preserved, assorted, of approved brand, in 2-lb. tins ... per tin	0	1	0	
20. Ginger—Ground or Whole—Jamaica ... per lb.	0	1	5	
21. Golden Syrup, in 2-lb. tins ... per tin	0	0	8	
22. Jams, assorted, any brand ordered, in 24-oz. tins, in proportion of half seed and half stone ... do.	0	1	0	
23. Cornflour (Corn or Maize Flour) ... per lb.	0	0	8	
24. Meat—Preserved, of approved brand, in 2-lb. tins ... per tin	0	1	7	
25. Macaroni or Vermicelli, as ordered ... per lb.	0	0	5	
26. Mustard—Double Superfine, of any brand ordered ... do.	0	3	6	
27. Oatmeal—Flaked or other, of any brand ordered ... per cwt.	1	12	6	
28. Onions ... do.	0	19	0	
29. Peel—Mixed ... per lb.	0	1	0	
30. Pepper—Black or White, Ground ... do.	0	1	6	
31. Pickles, of approved brand ... per bottle	0	10	10	
32. Potatoes ... per cwt.	0	14	0	
33. Raisins—Sultana, Mildura, 3 crown ... per lb.	0	0	10	
34. Rice—Dressed, to sample ... per cwt.	1	6	6	
35. Seed Tapioca (Sago)—To sample ... per lb.	0	0	3	
36. Salt—Coarse ... do.	0	0	0	
37. " Fine ... per cwt.	0	10	6	
38. Sauces, Worcester, Tomato, or Chutney, reputed pints, any brand ordered ... per bottle	0	1	0	
39. Soap—Household, yellow, to sample ... per lb.	0	0	5	
40. " Glycerine Tablets " " do.	0	0	11	
41. " Sand " " " do.	0	0	5	
42. " Magic " " " do.	0	0	5	
43. Soda—Washing " " " do.	0	0	2	
44. Spices, mixed, in 1-oz. packets ... per packet	0	0	1	
45. Starch, to sample ... per lb.	0	0	9	
46. Tapioca—Pearl ... do.	0	0	3	
47. Tea—Best Ceylon, to sample ... do.	0	1	8	
48. Treacle, in 7-lb. tins ... per tin	0	2	3	
49. Vinegar, of approved brand ... per quart	0	0	6	

Schedule No. 13.
PROVISIONS AT WAHGUNYAH.
 FOR STUDENTS AT WAHGUNYAH VINE NURSERY.
 (Delivery at Nursery.)

ANNEX TO CONTRACT No. 1926/601.

G. C. Haig, Wahgunyah.

Sub-schedule No. 1.

BREAD.

	Security, £5.	£	s.	d.
1. Bread—Fine Wheaten, first quality ... per cental		0	18	9

ANNEX TO CONTRACT No. 1926/602.

Moran and Cato Pty. Ltd., Brunswick-street, Fitzroy.

Sub-schedule No. 2.

GROCERIES, ETC.

Security, £10.

		£	s.	d.
1. Arrowroot per lb.		0	0	9
2. Blue do.		0	1	0
3. Baking Powder, 1-lb. tins do.		0	1	6
4. Baking Soda do.		0	0	3
5. Bacon, best cured do.		0	1	3
6. Blacking per doz. cakes		0	0	5
7. Black Lead do.		0	0	7½
8. Barley, Pearl per lb.		0	0	3½
9. Candles—(Full weights)—Kitchen's "Petrolines," Apollo Co.'s "Apollo," or other make of equal quality, to be supplied in 1-lb. packets do.		0	0	11
10. Coffee—Whole—Beans to be thoroughly sound, to sample do.		0	1	10½
11. Coffee Essence, of any brand ordered ... per bottle		0	1	5
12. Cocoa per lb.		0	0	7½
13. Cornina (Corn or Maize Flour), in packets of 1-lb. net do.		0	0	7½
14. Cream of Tartar do.		0	1	3
15. Currants, 3 crowns do.		0	0	8½
16. Curry Powder do.		0	1	3
17. Essence of Lemon, 1-oz. bottle ... per bottle		0	0	7½
18. Fish, Preserved, Salmon, Fresh Herrings, Herrings in Tomato, as ordered, in 1-lb. tins per tin		0	1	1
19. Flour, Best Roller per cental		1	0	0
20. Fruits, Preserved, assorted, of approved brand, in 2-lb. tins per tin		0	1	0
21. Ginger—Ground or Whole per lb.		0	1	6
22. Golden Syrup, in 2 lb. tins per tin		0	0	9½
23. Jams, assorted, any brand ordered, in 24-oz. tins, in the proportion of half seed and half stone do.		0	1	0
24. Meat—Preserved, of approved brand, in 2 lb. tins per tin		0	1	6
25. Macaroni or Vermicelli, as ordered ... per lb.		0	0	7
26. Mustard—Double Superfine, of any brand ordered do.		0	2	6
27. Oatmeal—Flaked or Other, of any brand ordered do.		0	0	3½
28. Onions per cwt.		0	19	0
29. Peel—Mixed per lb.		0	1	0
30. Pepper—Black or White, Ground ... do.		0	1	9
31. Pickles, of approved brand per bottle		0	0	11
32. Potatoes per cwt.		0	15	0
33. Raisins—Sultana (Mildura), 3 Crowns per lb.		0	0	10½
34. Rice—Dressed, to sample do.		0	0	3½
35. Seed Tapioca (Sago)—To sample ... do.		0	0	3½
36. Salt—Coarse do.		0	0	1
37. " Fine do.		0	0	1½
38. Sauces—Worcester, Tomato, or Chutney, any brand ordered, in reputed pints per bottle		0	1	0
39. Soap—Household, yellow, to sample ... per lb.		0	0	4½
40. " Glycerine Tablets do.		0	0	9
41. " Sand do.		0	0	4
42. " Magic do.		0	0	5
43. Soda—Washing do.		0	0	1½
44. Spices, mixed, in 1-oz. packets ... per packet		0	0	1½
45. Starch—To sample per lb.		0	0	9
46. Tapioca—Pearl do.		0	0	3½
47. Tea—Best Ceylon, to sample do.		0	1	8
48. Treacle, in 7-lb. tins per tin		0	2	6
49. Vinegar, of approved brand per quart		0	0	8

ANNEX TO CONTRACT No. 1926/603.

Keegan and Keegan, Wahgunyah.

Sub-schedule No. 3.

MEAT.

Security, £10.

		£	s.	d.
1. Beef—Fresh per lb.		0	0	9
2. Pork—Fresh do.		0	0	9
3. Sausages do.		0	0	6
4. Tongues—Ox do.		0	0	6
5. " Sheep do.		0	0	9
6. Tails—Ox each		0	0	6
7. Kidneys—Ox do.		0	0	9
8. Shins—Ox per lb.		0	0	6
9. Lambs' fries each		0	0	3

Schedule No. 17.

PROVISIONS AT CRESWICK.
 FOR STUDENTS AT THE SCHOOL OF FORESTRY.

ANNEX TO CONTRACT No. 1926/604.

C. C. Bowley, Albert-street, Creswick.

Sub-schedule No. 1.

BREADSTUFFS.

Security, £10.

		£	s.	d.
1. Bread—Fine Wheaten, first quality ... per cental		1	4	0
2. Flour—First quality do.		0	17	6

ANNEX TO CONTRACT No. 1926/605.

G. Tait and Sons, Creswick.

Sub-schedule No. 2.

GROCERIES.

Security, £10.

		£	s.	d.
1. Barley—Pearl per lb.		0	0	3
2. Blue—Of any brand required do.		0	1	0
3. Butter—First grade creamery, to score not less than 92 points, Government grade, commerce regulations standard do.		0	1	6
4. Cheese—First-class quality, matured (Victorian) do.		0	1	0
5. Candles (Full weights)—Kitchen's "Petrolines," Apollo Co.'s "Apollo," or other make of equal quality, to be supplied in 1-lb. packets do.		0	0	11
6. Coffee—Fresh Roasted and Whole—Beans to be thoroughly sound, to sample do.		0	1	6
7. Cornina (Corn or Maize Flour), in packets of 1-lb. net do.		0	0	8
8. Currants—3 Crowns do.		0	0	7½
9. Eggs per doz.		0	1	3
10. Ginger—Ground (Jamaica) per lb.		0	1	8
11. Golden Syrup, in 7-lb. tins per tin		0	2	2
12. Jams, assorted, any brand ordered, in 24-oz. tins, in the proportion of half seed and half stone per lb. net		0	0	8
13. Mustard—Double Superfine, of any brand ordered per lb.		0	4	0
14. Oatmeal—Of any brand ordered do.		0	0	4
15. Peas—Split do.		0	0	3½
16. Pepper—Black, ground do.		0	1	6
17. Raisins—Sultana (Mildura), 3 Crowns ... do.		0	0	10
18. Rice—Dressed, to sample do.		0	0	3
19. Seed Tapioca (Sago)—To sample do.		0	0	3
20. Salt—Fine do.		0	0	1
21. Soap (Household)—Lever Bros.' "Velvet" do.		0	0	6½
22. Soap (Household)—Yellow, dry, to sample do.		0	0	4½
23. Carbolic Sand Soap do.		0	0	3½
24. Soda—Carbonate of do.		0	0	2
25. Soda—Washing do.		0	0	1½
26. Spices—Mixed, in 1-oz. packets ... per pkt.		0	0	1½
27. Starch—Of any brand ordered, to sample per lb.		0	0	10
28. Tartar—Cream of do.		0	1	3
29. Tea—Best Ceylon, to sample do.		0	1	11
30. Vinegar per pint		0	0	2
31. Potatoes per cwt.		0	9	6

Sub-schedule No. 3.

MEAT.

1. Fresh Beef—Fore-quarter per lb.	Purchase
2. " " Hind-quarter do.	
3. " " Buttocks do.	
4. " Mutton do.	
5. Corned Beef, rolled or round, as ordered, without bone or cartilage do.	
6. Pork (Leg) do.	
7. Fresh Suet—Kidney do.	

ANNEX TO CONTRACT No. 1926/606.

E. E. Pollard, Eastern Hill, Creswick.

Sub-schedule No. 4.

MILK.

Security, £5.

		£	s.	d.
1. Milk—Fresh and pure per quart		0	0	6

Schedule No. 15.

PROVISIONS AT McLEOD SETTLEMENT, FRENCH ISLAND.

ANNEX TO CONTRACT No. 1926/607.

J. Jackson, Lang Lang.

Sub-schedule No. 1.

BREAD.

Security £5. £ s. d.

L Bread—Fine Wheaten, first quality... per cental 1 1 10

GROCERIES—continued.

£ s. d.

5. Mustard—Double Superfine, of any Commonwealth manufacture ordered	per lb.	0 2 3
6. Oatmeal—Of any brand ordered	per cwt.	1 7 6
7. Potatoes	do.	0 9 6
8. Rice—Dressed, to sample	per lb.	0 0 3
9. Salt—Fine	do.	0 0 1
10. Soap—Toilet, brown Windsor, in tablets, to sample	do.	0 1 3
11. Soda—Washing	do.	0 0 1½
12. Tea—Best Ceylon	do.	0 2 0
13. " Ration	do.	0 1 3
14. Tobacco—"Starlight," or other make of equal quality, as ordered	do.	0 5 4

ANNEX TO CONTRACT No 1926/608.

A. G. Glasscock, Lang Lang.

Sub-schedule No. 2.

GROCERIES.

Security, £10. £ s. d.

1. Butter—Frist class creamery, to score not less than 92 points, Government grade	per lb.	0 1 9
2. Candles—(Full weights) Kitchen's "Petrolines," or other make of equal quality, to sample, to be supplied in 1-lb. packets	do.	0 0 10
3. Cheese	do.	0 1 3
4. Jams—Assorted, of approved kinds, in proportion of half seed and half stone, of best quality, in 24-oz. tins...	per tin	0 0 11

ANNEX TO CONTRACT No. 1926/609.

E. W. Missen, Lang Lang.

Sub-schedule No. 3.

MEAT.

Security, £20. £ s. d.

1. Fresh Beef—Forequarters	per cental	2 10 0
2. " " Hindquarters	do.	2 18 4
3. " " Buttock	per cental	3 8 8
4. " Matton	do.	0 0 7
5. Corned Beef, Rolled or Round, as ordered, without bone or cartilage	per lb.	0 0 7
6. Fresh Suet—Kidney	do.	0 0 8
7. Dripping—Fresh, free from objectionable smell	do.	0 0 8

Schedule No. 14.

PROVISIONS FOR ABORIGINES AT LAKE TYERS

(Delivery at Lake Tyers Station.)

Sub-schedule No. 1.

BREAD. (See note bread and flour.)

Contract No. 1926/610.—Lake Tyers—J. Rule ... Security, £2.

Item No.	Article.	Contract No. 610. J. Rule.
1	Bread—Fine Wheaten, first quality ... per cental	£ s. d. 0 19 9½

Sub-schedule No. 2.

GROCERIES.

Contract No. 1926/611.—Lake Tyers.—Moran and Cato Pty. Ltd., Brunswick-street, Fitzroy ... Security, £2.

Item No.	Article.	Contract No. 611. L. T. Freeman, Lake Tyers.
1	Baking Powder, Snowflake, in 1-lb. tins ... per lb.	£ s. d. 0 1 3
2	Candles—(Full weights) Kitchen's "Petrolines," or other make of equal quality, to be supplied in 1-lb. packets	0 0 10
3	Coffee—Fresh roasted and whole—Beans to be thoroughly sound, to sample	" 1 8
4	Cocoa, in ½-lb. packets	0 0 9
5	Cornina (Corn or Maize Flour)	0 0 8½
6	Currauts—3 crowns	0 0 7½
7	Curry Powder	0 1 2
8	Flour—Best roller	0 17 6
9	Jams, assorted, in 24-oz. tins	0 0 16½
10	Mustard—Double superfine, of any Commonwealth manufacture ordered	0 2 4
11	Oatmeal—Of any brand ordered	0 0 3
12	Pease, Split	0 0 3½
13	Pearl Barley	0 0 2½
14	Pepper—Black, ground, in ½-lb. tins	0 0 5
15	Raisins—Sultana (Mildura)—3 crowns	0 0 10
16	Rice—Dressed, to sample	0 0 3½
17	Seed Tapioca (Sago), to sample	0 0 2½
18	Salt—Coarse	0 0 0½
19	" Fine	0 0 1½
20	Soap—Household, yellow, to sample	0 0 3½
21	Soda—Bicarbonate	0 0 3½
22	" Washing	0 0 1½
23	Tartar, Cream of	0 1 1
24	Tea—Best Ceylon, to sample	0 1 6½
25	Tobacco—Twist, to sample	0 5 3
26	Treacle, in 7-lb. tins	0 2 0
27	Vinegar	0 0 4½

Conditions of Contract for Provisions, 1926-7, &c.

1. All the articles are to be of the best quality of the several kinds, in the best condition, and in conformity with the *Health Act 1919*, and to be delivered in sound packages, free from all charges for cartage, freight, &c. The goods shall be delivered as may be directed by the officer ordering the supply.
2. As the exact quantity of any article which may be required cannot be stated, the estimate being approximate only, the Government will not be bound by the quantity stated in the schedule, but will be at liberty to order more or less, according to circumstances, and the contractor will be bound to supply the same as ordered.
3. Supplies for country districts for which no local contract may have been taken, or for which the contract has been terminated, may be ordered under the Melbourne contract.
4. The Melbourne District will include places within a radius of 6 miles from the General Post Office, with the exception of places for which separate contracts are provided; supplies for s.s. *Rip* and dredges are to be delivered to the Dredging Dépôt, Footscray-road, Victoria Dock, or River Yarra Wharf, as ordered; the Ararat, Beechworth, and Ballarat Districts will include the Hospitals for the Insane, Gaols, and Police Gaols at these places; and the Geelong District embraces a radius of 2 miles from the Post Office; Lara, the Inebriates Retreat; Greenvale, the Sanatorium; Rutherglen, the Viticultural College; Wahgunyah, the Vine Nursery; and the Creswick School of Forestry. Delivery must be made at the places, institutions, &c., named in the schedules.
5. Packages suitable for transport of goods supplied must be provided by the contractor free of expense, and the value of these packages, whether in bulk or otherwise, is to be included in the price demanded, except brandy casks, porter cases, hogs-heads, butter firkins or boxes, and soap boxes (not including fancy soaps), jam jars, flour, meal, and potato bags, which will remain the property of the contractor, and only the actual net weight or quantity received will be paid for. The empties to be removed from the place of delivery at the contractor's expense.
6. The meat supplied under these conditions must, if practicable, be slaughtered at abattoirs which are under proper authorized inspection and supervision. Any infringement of this condition will subject the contractor, on report from the Tender Board, to such mulct, not exceeding Fifty pounds, as the Treasurer may direct, and the amount will be deducted from the contractor's account, or from the security money.
7. The supplies coming under the head of Rations and Medical Comforts are to be delivered direct to the establishment entitled thereto on the written order of the officer in charge. All other supplies will be ordered by the head of the Department concerned or any officer authorized by him.
8. At the time of delivering the supplies, the contractor shall produce the order for the same to the officer authorized to accept delivery, and such officer shall acknowledge thereon the receipt of the stores accepted, and shall return the order to the contractor, and the account is to be rendered as soon as possible after the delivery of the supplies, accompanied by the receipted delivery order. The rates or quantities quoted in the orders cannot be exceeded.
9. For the supplies coming under the head of Rations and Medical Comforts (except for the gaols) the account is to be rendered monthly for such quantities only as are issued, the difference between the supply and issue to be kept at the contractor's credit. Supplies not issued at the termination of the contract to be removed by the contractor.
10. When a contractor is required to make delivery of goods at a railway station for transmission by rail, he shall obtain a receipt for the goods in duplicate on the Stores and Transport consignment note, at the same time handing in a triplicate of the form as an authority for the carriers to act as agent for, and charge the freight to, the Stores and Transport Department. He shall as soon as possible, and not later than twenty-four hours thereafter, deliver at the Tender Board Offices the original, the duplicate to be retained by himself. Should the goods thus forwarded be rejected, the contractor must bear the cost of replacing such goods, for which services the departmental consignment note is not to be used. Any infringement of this condition may subject the contractor to such mulct as the Tender Board may recommend under clause 10 of these conditions.
11. Should the contractor fail to supply any articles at the time mentioned in the order, they or any like supplies suitable for the service will be otherwise procured, and the expense over and above the contract price will be deducted from his account or from the security money.
12. The acceptance of the supplies shall be subject to the approval of the officer authorized to take delivery of the stores, or such other officer as shall be named in the conditions. If, after the delivery of the supplies has been taken, any deficiency or defect is discovered therein, such stores may be returned to the contractor.
13. If the officer in charge of stores be not satisfied as to the quantity or quality of the stores, or if, after taking delivery of any stores or material, he shall discover any deficiency or defect therein, he may return such deficient or defective stores or material to the contractor, and shall report the same to the head of his Department and to the Tender Board.
14. In the event of a difference of opinion between the contractor and the officer receiving the supplies as to the quality, the same is to be decided, in cases where the article is not of a perishable nature, by a Board of Survey composed of persons named by the Treasurer of the State for the time being; and the decision of the Board is to be considered final. In the event of the decision being against the contractor, the survey fees and expenses (if any) will be deducted as in clause 11.
15. In cases where the article is of a perishable nature, or when from some other cause injury would be sustained either by the persons to whom the rations or stores are due or to the contractor in waiting for a Board to survey, the head of the Department or officer authorized to take delivery will have power to reject such article or articles as are obviously of inferior quality, it being understood that he will be responsible to the Government for so doing, and that the contractor must take back the rejected article and supply good in its stead; failing which, it or any like supply suitable for the service, will be obtained by the officer requiring it as in clause 11. In case of the rejection or return of any supplies, the contractor shall bear the whole cost of replacing the supplies so rejected or returned.
16. If the Board shall decide that the article is not of proper quality it must be immediately replaced by the contractor; failing which, it or any like supply suitable for the service will be procured by the officer requiring it, and the expense charged as in clause 11.
17. In the case of supplies for Hospitals for the Insane, it will be competent for a Board of Survey, consisting of the medical superintendent (or, in his absence, of the medical officer) and any two officers named by him, to examine and reject any supplies that may be objected to. It must be distinctly understood, however, that the contractor will have a right of appeal to the Treasurer of the State for the time being; but, pending such appeal, he must take back the rejected articles and at once supply others of approved quality; failing which, the supplies required or any like supplies suitable for the service may be obtained by the officer concerned, and the expense charged to the contractor.
18. In the case of supplies for Hospitals for the Insane, it will also be competent for two or more of the official visitors, in conjunction with the medical superintendent, to reject any supplies that they may consider not in accordance with contract; and in such cases the reference to a Board of Survey will not be deemed to be necessary on the part of the contractor.
19. A refusal to execute orders, irregularity in the quantity or quality of the supplies, or delay in delivering or replacing them when required, will subject the contractor, upon report from the Tender Board, to such mulct, not exceeding Fifty pounds, as the said Treasurer may direct, and the amount may be deducted as in clause 11. It will also be in the power of the said Treasurer, upon such refusal, irregularity, or delay, to terminate the contract forthwith, and forfeit the whole or any part of the security money.
20. Contractors are not at liberty to transfer their contracts under cover of power of attorney, coupled with an interest or otherwise, and no such transfer will be recognised by the Government. *If it is found during the currency of the contract that the contractor has not conformed to the condition of advertisement—which stipulates that if a tenderer be a member of a firm and such firm be interested in the contract, then the tender is to be in the name of the firm and not in that of the individual—then the Honorable the Treasurer may determine the contract, and forfeit the security money.*
21. It will be competent for the Tender Board to terminate the contract, without notice, should there be reason to know that the contractor takes advantage of his contract to communicate with a prisoner.

22. The contracts entered into under this notice are not to be considered as being broken, infringed, or vitiated by the importation of stores for the Government service, or by any contracts or purchases made by the Imperial Commissariat, or by the consumption of the produce or surplus stock of any Government establishment; or by any article being made at and applied for the use of any Government establishment.

23. Notwithstanding anything contained to the contrary in section 152 of the *Customs Act 1901-24*, it is hereby expressly provided that upon any alteration of the duty collected affecting the goods included in this contract, the contract price shall not be altered, and the contract may be terminated at the option of either party by two months' notice in writing from the first day of the calendar month next ensuing, and within the period for which the contract is made. The contract for the unaffected

items shall remain in full force and effect. Any notice to be served under this condition shall be deemed to have been duly served if sent to the contractor in a registered letter to his last-known place of business or abode.

24. Under no circumstances other than those mentioned in clause 23 will a contractor be permitted to abandon his contract. In the event of the contractor failing to carry on the contract, the contract security money will in that case be absolutely forfeited; and, in addition, the contractor will be held liable for any loss which the Government may sustain in consequence of such failure.

25. For the purposes of these contracts the word Government shall mean the Government of the State of Victoria, and the word Treasurer shall mean Treasurer of the said State.