

[1985]



VICTORIA
GOVERNMENT GAZETTE.

Published by Authority.

[Registered at the General Post Office, Melbourne, for transmission by post as a newspaper.]

No. 103.]

TUESDAY, JULY 24.

[1928.

CONTRACTS ACCEPTED.

(SERIES 1928-29)

SUPPLY OF PROVISIONS

FROM

1st JULY, 1928, TO 30th JUNE, 1929, OR AS STATED

A. B. STANHOPE,
Secretary, Tender Board.

No. 103.—8065.

CONTRACTS ACCEPTED.—(Series 1928-29).

No. of Contract.	Particulars of each Tender Accepted.	Amount.	Name of Contractor.	Charged against Vote or Fund.
PROVISIONS—				
Supply of Provisions, in such quantities as may be ordered, from 1st July, 1928, to 30th June, 1929. For contracts for Cheese and Butter at Melbourne, Mont Park, Ararat, Beechworth, Ballarat, Sunbury, and Lara, and for Butter at Greenvale, see <i>Gazette</i> of 28th September, 1927, pages 2919 to 2923.				
Melbourne District—				
248	Broad, Kow Asylum	Rates as per annex	W. Johnson	
249	Broad, Melbourne, Children's Welfare Dept., &c.	Ditto	W. Johnson	
250	Flour and maize meal, &c.	Ditto	H. R. Rush	
251	Groceries	Ditto	Moran and Cato Pty. Ltd.	
..	Eggs	Ditto	Purchase by agreement	
252	Oatmeal, rice, &c.	Ditto	Moran and Cato Pty. Ltd.	
253	Jams	Ditto	G. A. Hardham	
254	Meat, Kow Asylum	Ditto	W. Angliss and Co. Pty. Ltd.	
255	Meat, Pentridge Penal Establishment	Ditto	J. H. Cooke Pty. Ltd.	
256	Meat, Children's Welfare Depot, Royal Park, and Police Depot	Ditto	J. H. Cooke Pty. Ltd.	
257	Meat, Royal Park Mental Hospital and Receiving House	Ditto	W. Angliss and Co. Pty. Ltd.	
258	Potatoes	Ditto	Pirrie Bros.	
259	Soap	Ditto	Moran and Cato Pty. Ltd.	
260	Tea	Ditto	H. Berry and Co. Pty. Ltd.	
261	Tobacco	Ditto	Dudgeon and Arnell Pty. Ltd.	
Mont Park—				
262	Breadstuffs	Ditto	E. J. Callander	
263	Groceries	Ditto	Moran and Cato Pty. Ltd.	
264	Jams	Ditto	G. A. Hardham	
265	Meat	Ditto	F. Watkins Pty. Ltd.	
266	Potatoes	Ditto	Shea, Hood, and Co. Pty. Ltd.	
267	Tea	Ditto	H. Berry and Co. Pty. Ltd.	
Ararat—				
268	Breadstuffs	Ditto	Wm. Bates	
269	Groceries	Ditto	Moran and Cato Pty. Ltd.	
270	Jams	Ditto	Fruitgrowers' Preserving Co. Pty. Ltd.	
271	Meat	Ditto	A. Murphy	
272	Potatoes	Ditto	Shea, Hood, and Co. Pty. Ltd.	
273	Tea	Ditto	H. Berry and Co. Pty. Ltd.	
Ballarat—				
274	Breadstuffs	Ditto	Wm. Haymes	
275	Groceries	Ditto	Moran and Cato Pty. Ltd.	
276	Jams	Ditto	Fruitgrowers' Preserving Co. Pty. Ltd.	
277	Meat	Ditto	H. J. Symons	
278	Potatoes	Ditto	J. Gunn and Co.	
279	Tea	Ditto	H. Berry and Co. Pty. Ltd.	
Beechworth—				
280	Breadstuffs	Ditto	Wm. Price	
281	Groceries	Ditto	Moran and Cato Pty. Ltd.	
282	Meat	Ditto	J. R. Neway, jun.	
283	Potatoes	Ditto	W. H. Collins	
284	Tea	Ditto	H. Berry and Co. Pty. Ltd.	
Sunbury—				
285	Breadstuffs	Ditto	T. Clyne and Son	
286	Groceries	Ditto	Moran and Cato Pty. Ltd.	
287	Jams	Ditto	G. A. Hardham	
288	Meat	Ditto	S. J. Starkie	
289	Potatoes	Ditto	Pirrie Bros.	
290	Tea	Ditto	H. Berry and Co. Pty. Ltd.	
Bendigo—				
291	Bread	Ditto	W. Allpress	
292	Groceries and potatoes	Ditto	Moran and Cato Pty. Ltd.	
293	Meat	Ditto	Ewing and Walsh	
Castlemaine—				
294	Bread	Ditto	Rasmussen Bros.	
295	Groceries and potatoes	Ditto	G. A. Hardham	
296	Meat	Ditto	J. Williamson	
Geelong—				
297	Breadstuffs	Ditto	J. A. Fitzgerald	
298	Groceries	Ditto	Moran and Cato Pty. Ltd.	
299	Meat	Ditto	M. G. O'Brien	
300	Milk	Ditto	S. H. Warren	
McLeod Settlement, French Island—				
301	Bread	Ditto	J. Jackson	
302	Groceries	Ditto	Moran and Cato Pty. Ltd.	
303	Meat	Ditto	E. W. Misson	

Contingencies, 1928-9

CONTRACTS ACCEPTED.—(Series 1928-29)—continued.

No. of Contract.	Particulars of each Tender Accepted.	Amount.	Name of Contractor.	Charged against Vote or Fund.
<i>PROVISIONS—continued.</i>				
<i>Sale—</i>				
304	Bread	Rates as per annex	Purchase	
305	Groceries and potatoes	Ditto	W. D. Leslie Pty. Ltd.	
305	Meat	Ditto	Ronchi Bros.	
<i>Creswick—</i>				
306	Bread	Ditto	C. C. Bowley	
307	Groceries	Ditto	G. Tait and Sons	
308	Meat	Ditto	J. J. Bennett	
309	Milk	Ditto	E. E. Pollard	
<i>Greenvale—</i>				
310	Bread	Ditto	C. E. Marshall	
311	Groceries	Ditto	Moran and Cato Pty. Ltd.	
312	Meat	Ditto	W. Angliss and Co. Pty. Ltd.	
313	Potatoes	Ditto	Pirrie Bros.	
<i>Lara—</i>				
314	Bread	Ditto	A. Footo	
315	Groceries	Ditto	Moran and Cato Pty. Ltd.	
316	Jam	Ditto	Moran and Cato Pty. Ltd.	
317	Meat	Ditto	W. Angliss and Co. Pty. Ltd.	
318	Potatoes	Ditto	Pirrie Bros.	
<i>Rutherglen—</i>				
319	Bread	Ditto	E. E. King	
320	Groceries	Ditto	G. A. Hardham	
<i>Wahgunyah—</i>				
321	Bread	Ditto	Purchase	
321	Groceries	Ditto	G. A. Hardham	
322	Meat	Ditto	R. Warren and Son	
<i>s.s. Rip and Dredges—</i>				
323	Breadstuffs	Ditto	Purchase	
324	Groceries	Ditto	G. A. Hardham	
324	Meat	Ditto	W. Angliss and Co. Pty. Ltd.	
325	Vegetables	Ditto	Pirrie Bros.	
<i>Aborigines (Lake Tyers)—</i>				
326	Bread	Ditto	J. Rule	
327	Groceries	Ditto	Moran and Cato Pty. Ltd.	

Contingencies,
1928-29

Approved—E. J. HOGAN, Treasurer. 30.6.1928.

STIPULATIONS FOR SUPPLIES OF PROVISIONS.

(Where practicable, all items must be manufactured or prepared within the Commonwealth.)

No sub-letting allowed.

Under all Sub-schedules particular attention is drawn to Clause 1 of the Conditions of Contract as to quality.

BREAD.

A sample of the best ordinarily retailed to the public will be considered as a test loaf for first quality for fine wheaten and pure wheaten Meal Bread. Third quality (that issued to prisoners of the Crown) to be made of flour, fine sharps, the produce of prime, strong, thin-skinned, good-coloured wheat, to be perfectly free from coarse pollard or other offal. *Pure wheaten Meal Bread of first quality may be substituted, wholly or in part, for fine wheaten Bread at such times and in such quantities as, in the opinion of the Medical Superintendent, may be deemed necessary, and the contractor will be required to supply such Bread at the contract rate. Reasonable notice, however, of the intention to substitute wheaten Meal Bread must be given to the contractor by the officer ordering the supply.* Bread may be baked at any Government establishment without infringing these contracts. At the Gaols, Ballarat, Beechworth, Geelong, Castlemaine, and Sale, if required, bread must be supplied one day old, due notice to be given to the contractor of such requirement.

In the event of bread being made at any Government establishment in the Melbourne District during the currency of these contracts, the flour required will be drawn under the flour and maize meal sub-schedule. The maize meal for all the country gaols is included in the sub-schedule for flour and maize meal, Melbourne District, and delivery of same will be required to be made at the Victorian Railways, Spencer-street.

Should a supply of any article which may be reasonably included in a Baker's Price List, and which is not included in the schedule herein, be required for the use of resident officers at or for inmates of any Government institution during the currency of the contract, the contractor shall, with the exception of Ararat, Ballarat, and Beechworth, supply any such article at a price not in excess of the current list rates at which it is retailed by the contractor to the public.

GROCERIES, CANDLES, SOAP, TEA, ETC.

Should the supply of any article which may be reasonably included in a Grocer's Price List, and which is not included in the schedule herein, be required for the use of resident officers at or for inmates of any Government institution under sub-schedules for Groceries, during the currency of the contract, the contractor shall, with the exception of Ararat, Ballarat, and Beechworth, supply such article at a price not in excess of the current list rate at which it is retailed by the contractor to the public.

As a guarantee of quality, Rice, when ordered in quantities of 56 lb. and over, must be supplied in original bags as delivered by the miller or dresser. Such bags must be branded "Rice, Dressed," and shall also have stencilled thereon the miller or dresser's name and the distinguishing mark indicative of the quality or grade. The bags thus stencilled shall contain Rice milled or dressed by the miller or dresser whose name appears thereon. Supplies not in conformity with the foregoing condition will be rejected. Oatmeal must be supplied in original bags as delivered by millers.

Candles, except those for prison cells, must be supplied in 1-lb. packets. Candles for prison cells must be delivered in boxes containing from 25 to 50 lb. per box, the boxes for which must be legibly stencilled on one end, showing the estimated burning time and the gross, tare, and net weight of contents.

The soap supplied must be hard throughout, ready for immediate use without waste. Soap for Hospitals for the Insane is not included in these contracts.

When the quantity admits, Tea must be supplied in original and unopened packages, labelled, as landed.

Raisins and currants must be present season's, and where the quantity admits, be supplied in original boxes labelled 3 crowns.

For s.s. *Rip* a certain quantity of Biscuits and Preserved Meats are sometimes required in lieu of fresh bread and fresh meat, and are included to meet such contingency only.

BUTTER, CHEESE, AND JAMS.

No Butter or Cheese that is produced or manufactured elsewhere than in the Commonwealth shall be accepted without the approval of the Tender Board.

Butter is to be delivered to the s.s. *Rip* in 1-lb. pats, in such quantities as may be ordered, and no excess over the quantity ordered will be received.

All supplies of 56 lb., or multiples of 56 lb., must be supplied in boxes as originally packed. The butter as well as the boxes in which it is packed must bear the impress stamp of the creamery where produced, otherwise it will not be accepted.

Where the Store or Butter Factory of the Contractor is situated in the Metropolitan area all Butter to the quantity of 56 lb. and over to be supplied in any one consignment under this contract shall before despatch from the Store or Factory be first examined and passed by the Government Butter Grader, for and on behalf of the officer authorized to accept delivery. The boxes containing butter so examined and found satisfactory in quality and description will be stamped by the Government Butter Grader. No butter from a contractor located in the Metropolitan Area shall be accepted unless the boxes bear the stamp of the Grader. For the purposes of the foregoing condition the Metropolitan Area is defined as being not outside the radius visited by the Government Grader.

No Butter ex Cool Store will be examined by the Grader until thermally it is in suitable condition therefor.

Where the Store or Factory from which the Butter is despatched is not within the area visited by the Grader a sample of any supplies may be forwarded to the Government Butter Grader for examination, should the supply be considered by the officer authorized to accept delivery as not being equal in quality or description to that contracted for.

The Cheese supplied to be fairly or fully matured, as ordered, and, if the quantity admits, boxed for transport.

Jams.—The weight stamped on the tins in accordance with the regulations under the Commerce Act, as indicating the minimum net quantity that each tin contains, shall for the purpose of this contract be taken as the actual contents when computing the quantity supplied.

When Jam is supplied in jars the jars remain the property of the contractor, and must be removed by the contractor at his own expense when empty.

MEAT.

Fore and hind quarters of beef for Hospitals for the Insane are to be supplied in equal proportions of each, and must be delivered as a whole respectively, also extra buttocks separately when ordered. Meat for other institutions must be supplied as ordered. Where hind-quarters or buttocks are ordered, 9 inches must be cut off from the end of the leg from the hock upwards, i.e., the end of the leg from which the shank has been removed at the abattoirs; and when fore-quarters form a portion of the supply, 6 inches from the end of the neck and the whole of the shin at the clodbone joint must be removed. The sticking pieces also must be trimmed off, and the point and end of the brisket rendered free from blood and blood stains.

Fore and hind quarters of beef, for convenience of handling, may be cut into two parts, but each part is to bear evidence of having been cut from the same fore or hind quarter.

Corned beef, rolled or round, as ordered, must be supplied without bone or cartilage and will be received, whether pumped or prepared in the ordinary way by pickling, but in the former case must have been soaked after pumping for at least 48 hours, in a good pickle, and then thoroughly drained before supply. No flank, chuck, sticking piece, shin, leg of beef, or piece under 7 lb. will be received.

Should the local supply of fresh meat become scarce, or the price of same become abnormally high, chilled meat may, with the consent of the Tender Board, on the recommendation of the head of the Department, be supplied.

All meat shall be well fed, good, sound, sweet, and wholesome.

In cases of emergency, or on such other occasions as in the opinion of the Inspector-General of the Insane may seem advisable, other forms of meat such as rabbits, tinned meats, &c., may be purchased apart from the contract for Hospitals for the Insane, in lieu of the meat mentioned in the schedule, and substituted therefor, provided 24 hours' notice (except in cases of emergency) be given to the contractor of such intention.

Meat derived from the carcasses of Bulls, Stags, or Rams will not be received, and shall not be tendered for delivery.

For Sub-schedules 10 and 11, in the Melbourne District, in addition, the following clauses apply:—

The beef must be supplied in quantities as ordered from Ribs, Sirlon, and Thick Flanks. Chuck Ribs, i.e., the first to fourth inclusive, will not be accepted.

Mutton must be delivered in sides. All kidney fat to be removed.

Meat containing an undue proportion of bone or fat will not be accepted.

The parts to be removed by the contractor are indicated by the shaded portions of the annexed diagram.

For Beechworth samples (corresponding to the description given in the schedule) of meat ordinarily retailed to the public will be considered as a test for quality.

As regards supplies for s.s. Rip, all meat must be of prime quality, and must be supplied in equal quantities from ribs, sirlon, and thick flanks; mutton to be delivered in sides; all kidney fat to be removed; meat containing an undue proportion of fat will not be accepted. Chuck ribs will not be accepted in lieu of prime ribs. Live sheep to be supplied when required.

Should a supply of any article which may be reasonably included in a Butcher's Small Goods List, and which is not included in the schedule herein, be required for the use of resident officers at or for inmates of any Government Institution drawing supplies under sub-schedules for Meat during the currency of the contract, the contractor shall, with the exception of Ararat, Ballarat, and Beechworth, supply such article at a price not in excess of the current list rates at which it is retailed by the contractor to the public.

MILK.

The milk must be fresh, pure, and of the best quality, and subject to test when required by the Department, and supplied at such times as the Department may require. Should the contractor fail to supply at the time specified in the order or at such times as may be indicated in any general notice to the contractor his contract may be cancelled forthwith and his security forfeited, or should the supply prove to be not of contract quality it will be rejected, and any expense incurred will be charged to the contractor.

POTATOES.

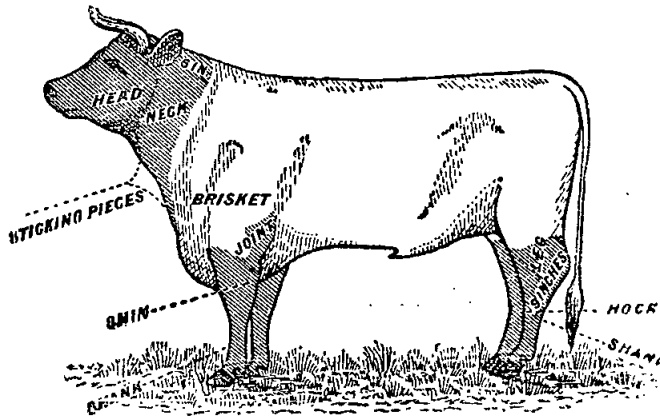
Potatoes to be dry and free from dirt. Contractors to supply 117 lb. of potatoes for each cwt. credited to them, and, in addition, to take back all rejected before being cooked.

If the price of potatoes becomes abnormally high, the heads of the various departments concerned may, if they think fit, cause rice or any other suitable food to be occasionally substituted in lieu thereof.

TOBACCO.

Tobacco for country Hospitals for the Insane is included in the contract for Melbourne District, and delivery of same will be required to be made at Victorian Railways, Spencer-street.

Tobacco for Country Gaols is not included in the contract for Melbourne District.



Schedule No. 1.
PROVISIONS—MELBOURNE DISTRICT.

ANNEX TO CONTRACT No. 1928/248.

W. Johnson, Scotchmer-street, North Fitzroy.

Sub-schedule No. 1.

BREAD FOR HOSPITALS FOR THE INSANE AT KEW.

	Security, £120.	£ s. d.
1. Bread—Fine wheaten, first quality	per cental	0 12 8½

ANNEX TO CONTRACT No. 1928/249.

W. Johnson, Scotchmer-street, North Fitzroy.

Sub-schedule No. 2.

BREAD FOR CHILDREN'S WELFARE DEPOT, ROYAL PARK RECREATING HOUSE AND MENTAL HOSPITAL, ROYAL PARK AND POLICE DEPOT.

	Security, £50.	£ s. d.
1. Bread—Fine wheaten, first quality	per cental	0 13 0

ANNEX TO CONTRACT No. 1928/250.

H. R. Rush, 386 Flinders-lane, Melbourne.

Sub-schedule No. 3.

FLOUR AND MAIZE MEAL.

	Security, £100.	£ s. d.
1. Flour—Roller, first quality, to sample	per cental	0 13 6
2. " Sharps, to sample	do.	0 11 6
3. Maize Meal, to sample	do.	0 13 0

ANNEX TO CONTRACT No. 1928/251.

Moran & Cato Pty. Ltd., Brunswick-street, Fitzroy

Sub-schedule No. 4.

GROCERIES, ETC.

	Security, £20.	£ s. d.
1. Biscuits, Coffee, Malt or Milk Arrow-root, as ordered	per lb.	0 0 8½
2. Blue—Of any brand ordered	do.	0 0 8
3. Candles—Full weights, Kitchen's "Electrics" or other make of equal quality, to be supplied in 1-lb. packets	do.	0 0 8½
4. " Kitchen's "Electrics," or other make of equal quality, for use in prison cells, to burn for 1, 1½, 2, 2½, and 3 hours respectively, as ordered, to be supplied in boxes, containing from 25 to 50 lb. per box	do.	0 0 8½
5. Cocoa—in ½-lb. tins or packets	do.	0 0 10
6. Coffee—Fresh roasted and whole, beans to be thoroughly sound, Neilgherry A, to sample	do.	0 1 7
7. " Pure, fresh roasted and ground, to sample	do.	0 1 7
8. Cornina (Corn or Maize Flour), in packets of 1-lb. net	do.	0 0 6½
9. Cream of Tartar	do.	0 1 2½
10. Currants, 3 crowns, present season's	do.	0 0 7½
11. Curry Powder	do.	0 0 9
12. Essence of Lemon, 1-oz. bottles	per bottle	0 0 3½
13. Ginger—Ground	per lb.	0 0 9
14. Golden Syrup (in 7-lb. tins)	per tin	0 1 9
15. Lemon Peel	per lb.	0 0 9
16. Mustard—Double Superfine	do.	0 2 2
17. Nutmegs	do.	0 1 6
18. Pearl barley	per cwt.	0 19 0
19. Pease—Split	do.	1 3 10
20. Pepper—Black, ground	per lb.	0 1 5
21. Pipes—Tobacco, clay	per doz.	0 0 9
22. Raisins—Sultana, 3 crowns, present season's	per lb.	0 0 9½

GROCERIES—continued.

	£ s. d.
23. Salt—Fine	per cwt. 0 5 0
24. " Rock	do. 0 7 6
25. Soda—Washing	do. 0 7 0
26. " Bicarbonate of	per lb. 0 0 1½
27. Spice—Mixed, in 1-oz. packets	per pkt. 0 0 1
28. Starch	per lb. 0 0 6
29. Treacle, in 7-lb. tins	per tin 0 1 8½
30. Vinegar (malt)	per quart 0 0 3
31. Tapioca (Pearl)	per lb. 0 0 2½
32. Tomato Sauce (13-oz. bottles)	per bottle 0 0 7

Sub-schedule 5.

EGGS, NEW LAID.

1. Eggs	per doz.	{ Purchase.
---------	----------	-------------

ANNEX TO CONTRACT No. 1928/252.

Moran & Cato Pty. Ltd., Brunswick-street, Fitzroy.

Sub-schedule No. 6.

OATMEAL, RICE, AND SEED TAPIOCA.

	Security, £20.	£ s. d.
1. Oatmeal	per cwt.	1 3 6
2. Rice—Dressed, to sample	do.	1 5 6
3. Seed Tapioca (Sago), to sample	do.	0 19 0

ANNEX TO CONTRACT No. 1928/253.

G. A. Hardham, Glenferrie-road, Malvern.

Sub-schedule No. 7.

JAMS.

	Security, £20.	£ s. d.
1. Jams—Assorted, in bulk, of approved kinds, in the proportion of half seed and half stone, of the best quality, in tins, as required	per lb. actual net weight	0 0 4½
2. " " " " in 24-oz. tins	per tin	0 0 8½

ANNEX TO CONTRACT No. 1928/254.

W. Anglist & Co. Pty. Ltd., Bourke-street, Melbourne

Sub-schedule No. 8.

MEAT FOR HOSPITAL FOR THE INSANE, KEW.

	Security, £150.	£ s. d.
1. Fresh Beef—Fore-quarters	per cental	1 12 6
2. " " Hind-quarters	do.	1 12 6
3. " " Buttocks	do.	1 12 6
4. " Mutton	do.	1 12 0
5. Corned Beef, rolled or round, as ordered, without bone or cartilage	do.	1 12 6
6. Fresh Suet—Kidney	do.	2 10 0

ANNEX TO CONTRACT No. 1928/255.

J. H. Cooke Pty. Ltd., Queen's-parade, Clifton Hill.

Sub-schedule No. 9.

MEAT FOR PENAL ESTABLISHMENT (PENITENTIARY), FEMALE PENITENTIARY, AND METROPOLITAN GAOL (COBURG).

	Security, £100.	£ s. d.
1. Fresh Beef	per cental	1 9 0
2. " " Buttocks	do.	1 9 0
3. Corned Beef, rolled or round, as ordered, without bone or cartilage	do.	1 9 0
4. Fresh Mutton	do.	1 9 0
5. Dripping	do.	1 9 0
6. Suet—Beef—Fresh, Kidney	per lb.	0 0 5

ANNEX TO CONTRACT No. 1928/256.

J. H. Cooke Pty. Ltd., Queen's-parade, Clifton Hill.

Sub-schedule No. 10.

MEAT FOR POLICE DEPOT, ST. KILDA-ROAD, AND CHILDREN'S WELFARE DEPOT, ROYAL PARK.

	Security, £50.	£	s.	d.
1. Fresh Beef	per cental	2	0	0
2. " Mutton	do.	1	13	0
3. Corned Beef, rolled or round, as ordered, without bone or cartilage	do.	2	0	0
4. Fresh Suet—Kidney	per lb.	0	0	5

ANNEX TO CONTRACT No. 1928/257.

W. Anjlias and Co. Pty. Ltd., Bourke-street, Melbourne.

Sub-schedule No. 11.

MEAT FOR REORIVING HOUSE AND MENTAL HOSPITAL, ROYAL PARK.

	Security, £50.	£	s.	d.
1. Fresh Beef	per cental	2	1	0
2. " " Buttocks	do.	2	1	0
3. " Mutton	do.	1	13	0
4. Corned Beef, rolled or round, as ordered, without bone or cartilage	do.	2	1	0
5. Fresh Suet—Kidney	do.	2	10	0

ANNEX TO CONTRACT No. 1928/258.

Pririe Bros., Exhibition-street, Melbourne.

Sub-schedule No. 12.

POTATOES.

Security £100.

	Security, £100.	£	s.	d.
1. Potatoes	per cwt.	0	5	10½
2. Turnips—Swede	do.	0	6	0

ANNEX TO CONTRACT No. 1928/259.

Moran and Cato Pty. Ltd., Brunswick-street, Fitzroy.

Sub-schedule No. 13.

SOAP MIXTURES.

(Of Commonwealth Manufacture.)

Security, £20.

	Security, £20.	£	s.	d.
1. Antiseptic, Liquid, of approved make, in 4 gal. tins	at per gallon	0	2	6
2. Extract of—Kitchen's, or equal thereto, in boxes of 13 lb., containing 56 packets	per box	0	4	3
3* Household, dry, equal to Kitchen's "Best Brown"	per cwt.	1	6	0
4* Household, Carbolic, dry	do.	1	9	0
5. "Lux" or "Merino," as ordered, in bulk	per lb.	0	1	0
6. "Monkey Brand," or equal thereto, in packets of 5-oz. each	per doz.	0	2	0
7. Sand—Carbolic or Borax, as ordered, 12-oz. blocks, of approved brand	per doz.	0	1	10½
8. Soft, Genuine Potash, Best Amber, in bulk	per cwt.	1	13	0
9. Solvol, or other approved brand, in 6-oz. tablets	per doz.	0	3	6
10* Toilet, Brown Windsor, 7 tablets to lb., Kitchen's, or equal thereto	do.	0	1	3
11* Toilet, "Bath," in 4½-oz. tablets, Kitchen's, or equal thereto	do.	0	1	10½
12* Toilet Carbolic, in 4-oz. tablets, Kitchen's, or equal thereto	do.	0	2	0
13* Toilet, Castilo, in 6-oz. tablets, Kitchen's, or equal thereto	do.	0	2	8½
14. "Velvet," or equal thereto	per d'blet	0	0	5

ANNEX TO CONTRACT No. 1928/260.

H. Berry & Co. Pty. Ltd., Collins-street, Melbourne.

Sub-schedule No. 14.

TEA.

	Security, £60.	£	s.	d.
1. Tea—Ceylon, to sample	per lb.	0	1	4
2. " Ration, to sample	do.	0	0	10½

ANNEX TO CONTRACT No. 1928/261.

Dudgeon and Arnell Pty. Ltd., 52A Lonsdale-street, Melbourne.

Sub-schedule No. 15.

TOBACCO.

Security, £50.

	Security, £50.	£	s.	d.
1. Tobacco, in 2-oz. plugs, for gaols—"Star-light," or other make of equal quality, to sample	per lb.	0	4	10
2. Tobacco, 11 plugs to the lb., for Hospitals for the Insane, to sample	do.	6	5	2

Schedule No. 2.

PROVISIONS—MONT PARK.

(Delivery at the Hospital for Insane, Mont Park, to depots as required, and at the Repatriation Mental Hospital, Bundoora.)

ANNEX TO CONTRACT No. 1928/262.

E. J. Callander, 519 High-street, Preston.

Sub-schedule No. 1.

BREADSTUFFS.

	Security, £100.	£	s.	d.
1. Bread—Fine Wheaten, first quality	per cental	0	12	9½
2. Bread—Raisin	do.	0	15	6
3. Flour—First quality	do.	0	12	8

ANNEX TO CONTRACT No. 1928/263.

Moran and Cato Pty. Ltd., Brunswick-street, Fitzroy.

Sub-schedule No. 2.

GROCERIES.

Security, £30.

	Security, £30.	£	s.	d.
1. Blue	per lb.	0	0	9
2. Candles (full weights)—Kitchen's "Electrics," or other make of equal quality, in 1-lb. packets	do.	0	0	3½
3. Cocoa, in 1-lb. packets	do.	0	0	5½
4. Coffee—"Neigherry A"—Fresh roasted and Whole—Beans to be thoroughly sound, to sample	do.	0	1	4½
5. Cornina (Corn or Maize Flour) in packets of 1-lb. net (6 months)	do.	0	0	5½
6. Currants, 3 Crowns (present season's)	do.	0	0	7½
7. Curry Powder	do.	0	0	10
8. Custard Powder, 1-lb. pkts.	do.	0	0	8½
9. Ginger—Ground	do.	0	0	10
10. Golden Syrup, in 7-lb. tins	per tin	0	1	9
11. Mustard—Double Superfine, of any Commonwealth manufacture ordered	per lb.	0	2	4
12. Oatmeal	per cwt.	1	2	0
13. Pearl Barley	per lb.	0	0	2½
14. Peas—Split	per cwt.	1	4	0
15. Pepper—Black, Ground	per lb.	0	1	9
16. Pipes—Tobacco, Clay	per doz.	0	0	9
17. Prunes—Dried	per lb.	0	0	7
18. Raisins—Sultana, 3 Crowns (present season's)	do.	0	0	9½
19. Rice—Dressed, to sample	per cwt.	1	5	6
20. Sauce—Tomato, in 13-oz. bottles	per doz.	0	7	6
21. Seed Tapioca (Sago)—To sample	per lb.	0	0	2
22. Salt—Fine	per cwt.	0	5	3
23. Soap—Extract of, Kitchen's, in 13-lb. boxes containing 56 packets	per box	0	4	6
24. Soda—Carbonate of	per lb.	0	0	1½
25. Soda—Washing	per cwt.	0	6	9
26. Spice—mixed, in 1-oz. packets	per lb.	0	1	3
27. Starch	do.	0	0	6½
28. Tartar—Cream of	do.	0	1	2½
29. Vinegar—Malt	per pint	0	0	1½

ANNEX TO CONTRACT No. 1928/264.

G. A. Hardham, Glenferrie-road, Malvern.

Sub-schedule No. 3.

JAMS.

Security, £10.

	Security, £10.	£	s.	d.
1. Jams—Assorted, in bulk, of approved kinds, in the proportion of half seed and half stone, of the best quality, actual net in tins, as required	per lb. weight	0	0	4½

ANNEX TO CONTRACT No. 1928/265.

F. Watkins Pty. Ltd., Bourke-street, Melbourne.

Sub-schedule No. 4.

MEAT.

Security, £80.

	Security, £80.	£	s.	d.
1. Fresh Beef—Fore-quarters	per cental	1	16	6
2. " " Hind-quarters	do.	1	16	6
3. " " Buttocks	do.	1	16	6
4. " Mutton	do.	1	16	6
5. Corned Beef—Rolled or round as ordered, without bone or cartilage	do.	1	16	6
6. Fresh Beef Suet (Kidney)	do.	2	10	0
7. Tripe	per lb.	0	0	6

ANNEX TO CONTRACT No. 1928/266. Shea, Hood, and Co. Pty. Ltd., 529 Flinders-lane, Melbourne. Sub-schedule No. 5.

POTATOES. Security, £20. 1. Potatoes ... per cwt. £ s. d. 0 6 6

ANNEX TO CONTRACT No. 1928/267. H. Berry and Co. Pty. Ltd., Collins-street, Melbourne. Sub-schedule No. 6.

TEA. Security, £10. 1. Tea—Best Ceylon, to sample ... per lb. 0 1 4 1/2

Schedule No. 3. PROVISIONS—ARARAT DISTRICT.

ANNEX TO CONTRACT No. 1928/263. Wm. Bates, Ararat. Sub-schedule No. 1.

BREADSTUFFS. Security, £100. 1. Bread—Fine wheaton, first quality ... per cental 0 17 3/4 2. Flour—First quality ... do. 0 14 0

ANNEX TO CONTRACT No. 1928/269. Moran and Cato Pty. Ltd., Brunswick-street, Fitzroy. Sub-schedule No. 2.

GROCKRIES. Security, £30. 1. Blue ... per lb. 0 0 10 2. Candles (full weights) — Kitchen's "Electrines," or other make of equal quality, to be supplied in 1-lb. packets ... do. 0 0 9 1/2

ANNEX TO CONTRACT No. 1928/270. The Fruitgrowers' Preserving Co. Pty. Ltd., Davey-street, Ballarat.

JAMS. Security, £10. 1. Jams, assorted, of approved kinds in the proportion of half seed and half stone, of the best quality, in tins, actual net as required ... weight 0 0 4 1/2

ANNEX TO CONTRACT No. 1928/271. A. Murphy, Ararat. Sub-schedule No. 4.

MEAT. Security, £100. 1. Fresh Beef—Fore-quarters ... per cental 1 19 7 2. " " Hind-quarters ... do. 1 19 7

ANNEX TO CONTRACT No. 1928/272. Shea, Hood & Co. Pty. Ltd., 529 Flinders Lane, Melbourne. Sub-schedule No. 5.

POTATOES. Security, £30. 1. Potatoes ... per cwt. 0 6 6

ANNEX TO CONTRACT No. 1928/273. H. Berry & Co. Pty. Ltd., Collins street, Melbourne. Sub-schedule No. 6.

TEA. Security, £20. 1. Tea—Best Ceylon, to sample ... per lb. 0 1 4 1/2

Schedule No. 4. PROVISIONS AT BALLARAT.

ANNEX TO CONTRACT No. 1928/274. Wm. Haynes, 291 Humffray-street, Ballarat. Sub-schedule No. 1.

BREADSTUFFS. Security £60. 1. Bread—Fine Wheaton, first quality ... per cental 0 13 6 1/2 2. " " Wheaton, third quality ... do. 0 13 6 1/2 3. Flour—First quality ... do. 0 15 0

ANNEX TO CONTRACT No. 1928/275. Moran and Cato Pty. Ltd., Brunswick-street, Fitzroy. Sub-schedule No. 2.

GROCKRIES. Security, £30. 1. Barley—Pearl ... per lb. 0 0 2 1/2 2. Blue ... do. 0 0 9 1/2 3. Candles (full weights)—Kitchen's "Electrines," or other make of equal quality, in 1-lb. packets ... do. 0 0 9

ANNEX TO CONTRACT No. 1928/276. The Fruitgrowers' Preserving Co. Pty. Ltd., Davey-street, Ballarat. Sub-schedule No. 3.

JAMS. Security, £10. 1. Jams—Assorted, in bulk, of approved kinds, in proportion of half seed and half stone, of the best quality, in actual net tins as required ... weight 0 4 0

ANNEX TO CONTRACT No. 1928/277. H. J. Symons, Macarthur-street, Ballarat. Sub-schedule No. 4.

MEAT. Security, £60. 1. Fresh Beef—Fore-quarters ... per cental 1 14 0 2. " " Hind-quarters ... do. 1 14 0

ANNEX TO CONTRACT No. 1928/278. J. Gunn & Co., Ballarat. Sub-schedule No. 5.

POTATOES. Security, £20. 1. Potatoes ... per cwt. 0 5 6

ANNEX TO CONTRACT No. 1928/279.
H. Berry & Co. Pty. Ltd., Collins-street, Melbourne.
Sub-schedule No. 6.

TEA.

	Security, £20.	£	s.	d.
1. Tea—Ceylon, to sample	per lb.	0	1	4 $\frac{1}{2}$
2. " Ration	do.	0	0	11

Schedule No. 5.

PROVISIONS—BEECHWORTH DISTRICT.

ANNEX TO CONTRACT No. 1928/280.
Wm. Price, Newtown, Beechworth.
Sub-schedule No. 1.

BREADSTUFFS.

	Security, £100.	£	s.	d.
1. Bread—Fine wheaten, first quality	per cental	0	18	0
2. Flour—First quality	do.	0	17	0

ANNEX TO CONTRACT No. 1928/281.

Moran and Cato Pty. Ltd., Brunswick-street, Fitzroy.
Sub-schedule No. 2.

GROCERIES.

	Security, £30.	£	s.	d.
1. Blue	per lb.	0	0	10
2. Candles (full weights)—Kitchen's "Electrines," or other make of equal quality, 1-lb. packets	do.	0	0	9
3. Coffee—"Neigherry A," fresh roasted and whole, beans to be thoroughly sound, to sample	do.	0	1	8
4. Cornina (Corn or Maize Flour), in packets of 1-lb. net	do.	0	0	7
5. Golden Syrup, in 7-lb. tins	per tin	0	2	1 $\frac{1}{2}$
6. Mustard, Double Superfine	per lb.	0	2	4
7. Oatmeal	per cwt.	1	6	0
8. Pearl Barley	do.	1	3	6
9. Pepper—Black, ground	per lb.	0	1	9 $\frac{1}{2}$
10. Pipes—Tobacco, clay	per doz.	0	0	9
11. Raisins—Sultana, 3 crowns, present season's	per lb.	0	0	9 $\frac{1}{2}$
12. Rice—Dressed, to sample	per cwt.	1	10	6
13. Seed Tapioca (Sago)—To sample	do.	1	4	6
14. Salt—Fine	do.	0	9	9
15. Soda—Carbonate of	per lb.	0	0	2 $\frac{1}{2}$
16. " Washing	per cwt.	0	11	0
17. Starch	per lb.	0	0	7 $\frac{1}{2}$
18. Tartar—Cream of	do.	0	1	3
19. Vinegar—Malt	per qt.	0	0	4

ANNEX TO CONTRACT No. 1928/282.

J. R. Newey, jun., Ford-street, Beechworth.
Sub-schedule No. 3.

MEAT.

	Security, £100.	£	s.	d.
1. Fresh Beef—Fore-quarters	per cental	2	1	5
2. " " Hind-quarters	do.	2	1	8
3. " " Buttocks	do.	2	1	8
4. " Mutton	do.	2	1	8
5. Corned Beef—rolled or round, as ordered, without bone or cartilage	do.	2	1	8
6. Fresh Suet—Kidney (2 months only)	per lb.	0	0	6

ANNEX TO CONTRACT No. 1928/283.

W. H. Collins, Stanley, via Beechworth.
Sub-schedule No. 4.

POTATOES.

	Security, £30.	£	s.	d.
1. Potatoes	per cwt.	0	4	9

ANNEX TO CONTRACT No. 1928/284.

H. Berry & Co. Pty. Ltd., Collins-street, Melbourne.
Sub-schedule No. 5.

TEA.

	Security, £20.	£	s.	d.
1. Tea—Ceylon, to sample	per lb.	0	1	4 $\frac{1}{2}$

Schedule No. 6.
PROVISIONS—SUNBURY DISTRICT.

ANNEX TO CONTRACT No. 1928/285.
T. Clyne and Son, Sunbury.

Sub-schedule No. 1.

BREADSTUFFS.

	Security, £100.	£	s.	d.
1. Bread—Fine Wheaten, first quality	per cental	0	15	0
2. Flour—First quality	do.	0	12	9

ANNEX TO CONTRACT No. 1928/286.

Moran and Cato Pty. Ltd., Brunswick-street, Fitzroy.
Sub-schedule No. 2.

GROCERIES.

	Security, £20.	£	s.	d.
1. Blue	per lb.	0	0	9 $\frac{1}{2}$
2. Candles—(Full weights) Kitchen's "Electrines" or other make of equal quality, to be supplied in 1-lb. packets	do.	0	0	8 $\frac{1}{2}$
3. Cocoa, Commonwealth, in 1-lb. packets	do.	0	0	9
4. Coffee—"Neigherry A"—Fresh roasted and whole—Beans to be thoroughly sound, to sample	do.	0	1	7 $\frac{1}{2}$
5. Cornina (Corn or Maize Flour), in packets of 1-lb. net	do.	0	0	6 $\frac{1}{2}$
6. Currants—3 crowns, present season's	do.	0	0	8
7. Curry Powder	do.	0	0	10 $\frac{1}{2}$
8. Ginger—Ground	do.	0	0	9 $\frac{1}{2}$
9. Golden Syrup, in 7-lb. tins	per tin	0	1	9
10. Lemon Peel	per lb.	0	0	10
11. Mustard—Double Superfine	do.	0	2	4
12. Oatmeal	per cwt.	1	2	0
13. Pearl Barley	do.	0	18	9
14. Peas—Split	do.	1	3	9
15. Pepper—Black, ground	per lb.	0	1	9
16. Pipes—Tobacco, clay	per doz.	0	0	9
17. Raisins—Sultana, 3 crowns, present season's	per lb.	0	0	9 $\frac{1}{2}$
18. Rice—Dressed, to sample	per cwt.	1	5	6
19. Seed Tapioca (Sago), to sample	do.	0	19	6
20. Salt—Fine	do.	0	5	9
21. Sauce, Tomato, 13 oz. bottles	per doz.	0	7	3
22. Soda—Bicarbonate of	per lb.	0	0	1 $\frac{1}{2}$
23. " Washing	per cwt.	0	7	0
24. Spice—Mixed	per lb.	0	1	3
25. Starch, "Preservene" or "Dandy"	do.	0	0	6 $\frac{1}{2}$
26. Tartar—Cream of	do.	0	1	3
27. Vinegar—Malt	per pint	0	0	1 $\frac{1}{2}$

ANNEX TO CONTRACT No. 1928/287.

G. A. Hardham, Glenferrie-road, Malvern.
Sub-schedule No. 3.

JAMS.

	Security, £10.	£	s.	d.
1. Jams—Assorted, of approved kinds, in the proportion of half seed and half stone, of the best quality, in tins as required	per lb. actual net weight	0	0	4 $\frac{1}{2}$

ANNEX TO CONTRACT No. 1928/288.

S. J. Starkie, Sunbury.
Sub-schedule No. 4.

MEAT.

	Security, £30.	£	s.	d.
1. Fresh Beef—Fore-quarters	per cental	1	17	6
2. " " Hind-quarters	do.	1	17	6
3. " " Buttocks	do.	1	17	6
4. " Mutton	do.	1	16	9
5. Corned Beef—Rolled or round, as ordered, without bone or cartilage	do.	1	17	6

ANNEX TO CONTRACT No. 1928/289.

Pirie Bros., Exhibition-street, Melbourne.
Sub-schedule No. 5.

POTATOES.

	Security, £30.	£	s.	d.
1. Potatoes	per cwt.	0	6	6

ANNEX TO CONTRACT No. 1928/290.

H. Berry and Co. Pty. Ltd., Collins-street, Melbourne.
Sub-schedule No. 6.

TEA.

	Security, £20.	£	s.	d.
1. Tea—Best Ceylon, to sample	per lb.	0	1	4 $\frac{1}{2}$

Schedule No. 7.
PROVISIONS—BENDIGO DISTRICT.

ANNEX TO CONTRACT No. 1928/291.

W. Allpress, Long Gully.

Sub-schedule No. 1.

BREAD.

	Security, £s.	£	s.	d.
1. Bread—Wheaten, third quality	... per cental	0	16	8

ANNEX TO CONTRACT No. 1928/292.

Moran and Cato Pty. Ltd., Brunswick-street, Fitzroy.

Sub-schedule No. 2.

GROCERIES AND POTATOES.

	Security, £s.	£	s.	d.
1. Oatmeal	... per lb.	0	0	4
2. Potatoes	... per cwt.	0	12	6
3. Rice, dressed, to sample	... per lb.	0	0	4
4. Salt—Fine	... do.	0	0	2
5. Soap—Yellow (household), dry, to sample	do.	0	0	6
6. " Carbolie	do.	0	0	6
7. Soda—Washing	do.	0	0	3
8. Tea—Ration, to sample	do.	0	1	6
9. Tobacco—"Starlight," or other make of equal quality, as ordered	do.	0	5	6

ANNEX TO CONTRACT No. 1928/293.

Ewing and Walsh, 102 Williamson-street, Bendigo.

Sub-schedule No. 3.

MEAT.

	Security, £s.	£	s.	d.
1. Fresh Beef	... per cental	1	17	6
2. " Mutton	... per lb.	0	0	5½
3. Corned Beef, rolled or round as ordered, without bone or cartilage	do.	0	0	6

Schedule No. 8.

PROVISIONS—CASTLEMAINE DISTRICT.

ANNEX TO CONTRACT No. 1928/294.

Rasmussen Bros., Johnston-street, Castlemaine.

Sub-schedule No. 1.

BREAD.

	Security, £s.	£	s.	d.
1. Bread—Wheaten, third quality	... per cental	0	19	9½

ANNEX TO CONTRACT No. 1928/295.

G. A. Hardham, Glenferrie-road, Malvern.

Sub-schedule No. 2.

GROCERIES AND POTATOES.

	Security, £s.	£	s.	d.
1. Candles—(full weights), Kitchen's "Electrines," or other make of equal quality, in 1-lb. packets	... per lb.	0	0	11
2. Oatmeal	do.	0	0	3½
3. Potatoes	... per cwt.	0	10	0
4. Rice, Dressed, to sample	... per lb.	0	0	44
5. Salt—Fine	do.	0	0	2
6. Soap—Yellow (household), dry, to sample	do.	0	0	5½
7. Tea—Ration, to sample	do.	0	1	3

ANNEX TO CONTRACT No. 1928/296.

John Williamson, Mostyn-street, Castlemaine.

Sub-schedule No. 3.

MEAT.

	Security, £s.	£	s.	d.
1. Fresh Beef	... per cental	1	13	4
2. Corned Beef, rolled or round as ordered, without bone or cartilage	do.	1	13	4

Schedule No. 9.
PROVISIONS AT GEELONG.

ANNEX TO CONTRACT No. 1928/297.

J. Fitzgerald, 150 Malop-street, Geelong.

Sub-schedule No. 1.

BREADSTUFFS.

	Security, £20.	£	s.	d.
1. Bread—Fine Wheaten, first quality	... per cental	0	14	7

ANNEX TO CONTRACT No. 1928/298.

Moran and Cato Pty. Ltd., Brunswick-street, Fitzroy.

Sub-schedule No. 2.

GROCERIES.

	Security, £20.	£	s.	d.
1. Barley—Pearl	... per lb.	0	0	2½
2. Eggs—Fresh	... per doz.	0	2	6
3. Oatmeal	... per cwt.	1	3	0
4. Potatoes	do.	0	8	0
5. Rice—Dressed, to sample	do.	1	8	0
6. Seed Tapioca (Sago), to sample	per lb.	0	0	2½
7. Salt—Fine	do.	0	0	0½
8. Soap—(Household) Yellow, dry, to sample	do.	0	0	3½
9. Tea—Ration, to sample	do.	0	1	0
10. Tobacco—"Starlight," or other make of equal quality, as ordered	do.	0	5	3

ANNEX TO CONTRACT No. 1928/299.

M. G. O'Brien, 491 Moorabool-street, Geelong.

Sub-schedule No. 3.

MEAT.

	Security, £20.	£	s.	d.
1. Fresh Beef	... per cental	1	13	0
2. " Buttocks	do.	1	13	0
3. " Mutton	do.	1	8	0
4. Corned Beef—Rolled or round, without bone or cartilage	do.	1	13	0

ANNEX TO CONTRACT No. 1928/300.

S. H. Warren, West Moalup P.O.

Sub-schedule No. 4.

MILK.

	Security, £5.	£	s.	d.
1. Milk—Fresh and pure	... per gallon	0	1	8

Schedule No. 10.

PROVISIONS AT McLEOD SETTLEMENT, FRENCH ISLAND.

DELIVERY TO BE MADE AT LANG LANG JETTY.

ANNEX TO CONTRACT No. 1928/301.

J. Jackson, Westernport-road, Lang Lang.

Sub-schedule No. 1.

BREAD.

	Security £10.	£	s.	d.
1. Bread—Fine, Wheaten, first quality	... per cental	1	1	10½

ANNEX TO CONTRACT No. 1928/302.

Moran and Cato Pty. Ltd., Brunswick-street, Fitzroy.

Sub-schedule No. 2.

GROCERIES.

	Security, £10.	£	s.	d.
1. Butter—First grade creamery, to score not less than 90 points, Government grade	per lb.	0	1	9
2. Cheese—Matured	do.	0	1	2
3. Jams—Assorted, in proportion of half seed and half stone, of best quality, in 24-oz. tins	... per tin	0	0	8½
4. Mustard—Double Superfine	... per lb.	0	2	6
5. Oatmeal	... per cwt.	1	5	0
6. Potatoes—Dry and free from dirt	do.	0	6	0
7. Rice—Dressed, to sample	... per lb.	0	0	3
8. Salt—Fine	do.	0	0	1
9. Soap—Toilet, brown Windsor, in tablets, to sample	do.	0	1	0
10. Soda—Washing	do.	0	0	1½
11. Tea—Ceylon, to sample	do.	0	1	9
12. " Ration	do.	0	1	1
13. Tobacco—"Starlight," or other make of equal quality, as ordered	do.	0	5	4

ANNEX TO CONTRACT No. 1928/303.

E. W. Mason, Lang Lang,

Sub-schedule No. 3.

MEAT.

Security £20.

£ s. d.

1. Fresh Beef—Forequarters	per cental	2 10 0
2. " " Hindquarters	do.	2 18 4
3. " Mutton	do.	2 18 4

Schedule No. 11.

PROVISIONS AT SALE.

Sub-schedule No. 1.

BREAD.

1. Bread—Wheaten, third quality	per lb.	Purchase
---------------------------------	---------	----------

ANNEX TO CONTRACT No. 1928/304.

W. D. Leslie Pty. Ltd., Sale.

Sub-schedule No. 2.

GROCERIES AND POTATOES.

Security, £5.

£ s. d.

1. Potatoes	per cwt.	0 9 0
2. Rice, dressed, to sample	per lb.	0 0 3½
3. Salt—Fine	do.	0 0 1
4. Soap, yellow (household), dry, to sample	per cwt.	2 0 0
5. Soda—Washing	per lb.	0 0 14
6. Tea—Ration, to sample	do.	0 1 9

ANNEX TO CONTRACT No. 1928/305.

Ronchi Bros., Raymond-street, Sale.

Sub-schedule No. 3.

MEAT.

Security, £5.

£ s. d.

1. Fresh Beef	per lb.	0 0 5
2. Corned Beef, rolled or round as ordered, without bone or cartilage	do.	0 0 5

Schedule No. 12.

PROVISIONS AT CRESWICK.

FOR STUDENTS AT THE SCHOOL OF FORESTRY.

(Delivery at the School.)

ANNEX TO CONTRACT No. 1928/306.

C. C. Bouclé, Albert-street, Creswick.

Sub-schedule No. 1.

BREADSTUFFS.

Security, £10.

£ s. d.

1. Bread—Fine Wheaten, first quality	per cental	1 2 11
2. Flour—First quality	do.	0 18 0

ANNEX TO CONTRACT No. 1928/307.

O. Tait and Sons, Albert-street, Creswick.

Sub-schedule No. 2.

GROCERIES.

Security, £10.

£ s. d.

1. Barley—Pearl	per lb.	0 0 2½
2. Blue	do.	0 0 11
3. Butter—First grade creamery, to sample not less than 90 points, Government grade, commerce regulations standard	do.	0 1 6½
4. Cheese—First-class quality, matured	do.	0 0 11
5. Candles (Full weights) — Kitchen's "Electrics," or other make of equal quality, in 1-lb. packets	do.	0 0 10½
6. Coffee—Fresh Roasted and Whole—Beans to be thoroughly sound, to sample	do.	0 1 5
7. Cornina (Corn or Maize Flour), in packets of 1-lb. net	do.	0 0 7½
8. Currants—3 Crowns, present season's	do.	0 0 8
9. Eggs, new laid	per doz.	0 1 4
10. Ginger—Ground	per lb.	0 0 11
11. Golden Syrup, in 7-lb. tins	per tin	0 2 1
12. Jams, assorted, in 24-oz. tins, nett, in the proportion of half seed and half stone	per lb.	0 0 7½
13. Mustard—Double Superfine	do.	0 3 10

GROCERIES—continued.

£ s. d.

14. Oatmeal	per lb.	0 0 3½
15. Peas—Split	do.	0 0 8½
16. Pepper—Black, ground	do.	0 1 6
17. Raisins—Sultana, 3 Crowns, present season's	do.	0 0 10
18. Rice—Dressed, to sample	do.	0 0 3½
19. Sæd Tapioca (Sago)—To sample	do.	0 0 2½
20. Salt—Fine	do.	0 0 1
21. Soap—Household, yellow, dry, and hard, to sample	do.	0 0 4½
22. Soap—Sand, Carbolic, in 12-oz. blocks	each	0 0 3½
23. Soda—Carbonate of	per lb.	0 0 2
24. Soda—Washing	do.	0 0 1
25. Spices—Mixed, in 1-oz. packets	per pkt.	0 0 1½
26. Starch	per lb.	0 0 10
27. Tartar—Cream of	do.	0 1 5
28. Tea—Ceylon, to sample	do.	0 1 10
29. Vinegar—Malt	per pint	0 0 2
30. Potatoes	per cwt	0 5 0

ANNEX TO CONTRACT No. 1928/308.

J. J. Bennett, Albert-street, Creswick.

Sub-schedule No. 3.

MEAT.

Security, £10.

£ s. d.

1. Fresh Beef—Fore-quarter	per lb.	0 0 5
2. " " Hind-quarter	do.	0 0 5
3. " " Buttocks	do.	0 0 5
4. " Mutton	do.	0 0 5
5. Corned Beef, rolled or round, as ordered, without bone or cartilage	do.	0 0 5
6. Pork (Leg)	do.	0 0 10
7. Fresh Suet—Kidney	do.	0 0 6

ANNEX TO CONTRACT No. 1928/309.

E. E. Pollard, Eastern Hill, Creswick.

Sub-schedule No. 4.

MILK.

Security, £5.

£ s. d.

1. Milk—Fresh and pure	per quart	0 6 6
------------------------	-----------	-------

Schedule No. 13.

PROVISIONS AT GREENVALE.

(DELIVERY AT THE SANATORIUM.)

ANNEX TO CONTRACT No. 1928/310.

G. E. Marshall, Broadmeadows.

Sub-schedule No. 1.

BREAD.

Security, £20.

£ s. d.

1. Bread—Fine Wheaten, first quality	per cental	1 0 10
--------------------------------------	------------	--------

ANNEX TO CONTRACT No. 1928/311.

Moran and Cato. Pty. Ltd., Brunswick-street, Fitzroy.

Sub-schedule No. 2.

GROCERIES.

Security, £20.

£ s. d.

1. Apricots—Dried	per lb.	0 1 3
2. Arrowroot, in 1-lb. packets	do.	0 0 6
3. Biscuits—Kinds as ordered	do.	0 0 9½
4. Beans—Haricot	do.	0 0 2
5. Blue—Washing	do.	0 0 9½
6. Candles—(Full weights) Kitchen's "Electrics," or other make of equal quality, to be supplied in 1-lb. packets	do.	0 0 8½
7. Cheese—Matured, in 5-lb. loaves	do.	0 1 0
8. Cocoa—In ½-lb. packets	do.	0 0 6
9. Coconut—Desiccated	do.	0 0 9½
10. Coffee—"Nailberry A," to sample—Beans to be thoroughly sound, fresh roasted, and whole	do.	0 1 8½
11. Cornina (Corn or Maize Flour), in packets of 1-lb. net	do.	0 0 7
12. Currants, 3 crowns (present season's)	do.	0 0 8
13. Custard Powders, in 1-lb. packets	per pkt.	0 0 8½
14. Essence of Lemon—In full 16 oz. bottles, per bot.	0 3 6	
15. Flour—Best Roller	per cental	0 15 0
16. Fruits—Preserved, in 30-oz. tins	per tin	0 0 9½
17. Ginger—Ground	per lb.	0 0 9
18. Golden Syrup, in 7-lb. tins	per tin	0 1 9
19. Jams—Assorted, in 14-lb. tins in the proportion of half seed and half stone	do.	0 6 5
20. Jelly Crystals, in 4-oz. packets	per doz. pkts.	0 3 0
21. Lemon Peel	per lb.	0 0 10
22. Mustard—Double Superfine	do.	0 2 4
23. Oatmeal—Flaked or Plain, of any Commonwealth brand ordered	per cwt.	1 8 0

GROCERIES—continued. £ s. d.

24. Pearl Barley per lb.	0	0	2½
25. Peas—Split do.	0	0	2½
26. Pepper—White, ground do.	0	2	10
27. Pickles—Assorted, 20-oz. bottles ... per bot.	0	8	½
28. Powder—Baking, in 1-lb. tins ... per tin	0	1	0
29. Prunes—Dried per lb.	0	0	6½
30. Raisins—Sultana, 3 crowns (present season's) do.	0	0	9½
31. Rice—Dressed, to sample do.	0	0	2½
32. Sago (Seed Tapioca)—to sample do.	0	0	2½
33. Salmon—Fresh, in ½-lb. tins, "Sockeye" per tin	0	1	2
34. Salt—Fine per cwt.	0	6	0
35. Sardines—½'s Portuguese per tin	0	0	10½
36. Sauce—Worcestershire, 10-oz. bottles, Newman's per bot.	0	0	8½
37. Sauce—Tomato, 13-oz. bottles, Rosella ... do.	0	0	19
38. Soda—Carbonate of per lb.	0	0	2
39. Soda—Washing per cwt.	0	7	0
40. Spice—Mixed, in 1-oz. packets ... per pkt.	0	0	1
41. Starch per lb.	0	0	7
42. Tartar—Cream of do.	0	1	3
43. Tea—Ceylon, to sample, in 25-lb. tins ... do.	0	1	6½
44. Treacle, in 7-lb. tins per tin	0	2	0
45. Vinegar, Malt per pint	0	0	3

ANNEX TO CONTRACT No. 1928/312.
W. Angliss and Co. Pty. Ltd., Bourke-street, Melbourne.
 Sub-schedule No. 3.

MEAT.
 Security, £20. £ s. d.

1. Fresh Ox Beef—Roast per cental	2	5	0
2. Fresh Ox Beef Steak—Stewing do.	2	5	0
3. Corned Ox Beef—Rolled or Round, as ordered, without bone or cartilage ... do.	2	5	0
4. Tripe, Ox (during winter) per lb.	0	0	6
5. Sausages—Mixed do.	0	0	6
6. " Preserved do.	0	0	6

ANNEX TO CONTRACT No. 1928/313.
Pirrie Bros., Exhibition-street, Melbourne.

POTATOES.
 Security, £20. £ s. d.

1. Potatoes per cwt.	0	7	0
-----------------------------	---	---	---

Schedule No. 14.

PROVISIONS AT LARA.

DELIVERY AT THE INEBRIATES' INSTITUTION.

ANNEX TO CONTRACT No. 1928/314.
A. Foote, Lara Lake.

Sub-schedule No. 1.
 BREADSTUFFS.
 Security, £20. £ s. d.

1. Bread—Fine Wheaten, first quality ... per cental	0	18	9
2. Flour—First quality do.	0	14	7

ANNEX TO CONTRACT No. 1928/315.
Moran and Cato Pty. Ltd., Brunswick-street, Fitzroy.
 Sub-schedule No. 2.

GROCERIES.
 Security, £20. £ s. d.

1. Arrowroot—Queensland per lb.	0	0	5½
2. Bacon.—By the side, Farmer's or Hut-ton's (or other approved brand) ... do.	0	1	2
3. Barley—Pearl do.	0	0	2½
4. Blue do.	0	0	9½
5. Candles—(Full weights) Kitchen's "Elec-trines," or other make of equal quality, in 1-lb. packets ... do.	0	0	8½
6. Cocoa—Of any Commonwealth brand ordered do.	0	0	5½
7. Coffee—"Neilgherry A." Fresh roasted and whole—Beans to be thoroughly sound, to sample do.	0	1	5
8. Currants—3 crowns, present season's ... do.	0	0	8
9. Mustard—Double Superfine do.	0	2	4
10. Oatmeal do.	0	0	2½
11. Peas—Split do.	0	0	2½
12. Pepper—Black, ground do.	0	1	9
13. Raisins—Sultana, 3 crowns, present season's do.	0	0	9½
14. Rice—Dressed, to sample do.	0	0	2½
15. Seed Tapioca (Sago), to sample do.	0	0	2½
16. Salmon—Fresh, Pink, brand as ordered, talls (1-lb. tins) per tin	0	0	8
17. Salt—Fine per lb.	0	0	0½
18. Soap—(Household) Yellow, dry, to sample do.	0	0	3
19. Soap—Toilet, "Bath," in 4½-oz. tablets, to sample, Kitchen's or equal thereto per doz.	0	2	1½
20. Soda—Washing per lb.	0	0	0½
21. Tea—Ceylon, to sample do.	0	1	6

ANNEX TO CONTRACT No. 1928/316.
Moran and Cato Pty. Ltd., Brunswick-street, Fitzroy.

Sub-schedule No. 3.
 JAMS.
 (Of Commonwealth Manufacture.)
 Security, £5. £ s. d.

1. Jams, Assorted, of approved kinds in the proportion of half seed and half stone, of the best quality, in tins containing 2½ oz. net ... per doz. tins	0	8	6
--	---	---	---

ANNEX TO CONTRACT No. 1928/317.
W. Angliss and Co. Pty. Ltd., 42 Bourke-street, Melbourne.

Sub-schedule No. 4.
 MEAT.
 Security, £20. £ s. d.

1. Fresh Beef per cental	2	5	0
2. " Mutton do.	1	15	0
3. " Tripe, Sausages, Kidneys, and Liver, as ordered do.	2	5	0

ANNEX TO CONTRACT No. 1928/318.
Pirrie Bros., Exhibition-street, Melbourne.
 Sub-schedule No. 5.

POTATOES.
 Security, £5. £ s. d.

1. Potatoes per cwt.	0	7	0
-----------------------------	---	---	---

Schedule No. 15.

PROVISIONS AT RUTHERGLEN.

(For Students at Viticultural College.)
 DELIVERY AT THE COLLEGE.
 ANNEX TO CONTRACT No. 1928/319.
E. E. King, Main-street, Rutherglen.

Sub-schedule No. 1.
 BREAD.
 Security, £5. £ s. d.

1. Bread—Fine Wheaten, first quality ... per cental	1	2	0
---	---	---	---

ANNEX TO CONTRACT No. 1928/320.
G. A. Hardham, Glenferrie-road, Malvern.
 Sub-schedule No. 2.

GROCERIES, ETC.
 Security, £10. £ s. d.

1. Blue per lb.	0	0	9½
2. Baking Powder, in 1-lb. tins per tin	0	1	4
3. Bacon, best cured per lb.	0	1	4
4. Barley, Pearl per lb.	0	0	3
5. Candles—(Full weights) Kitchen's "Electrines," or other make of equal quality, in 1-lb. packets do.	0	0	9½
6. Coffee Essence, 10-oz. bottles per bottle	0	1	2
7. Cocoa—Commonwealth per lb.	0	0	8
8. Cream of Tartar do.	0	1	4½
9. Currants, 3 Crown (present season's) ... do.	0	0	8½
10. Curry Powder do.	0	0	1
11. Essence of Lemon, 1-oz. bottles ... per bottle	0	0	6
12. Fish, Preserved, Salmon, Fresh Her-rings, Herrings in Tomato, as ordered, in 1-lb. tins per tin	0	1	1
13. Flour, best Roller per cental	1	0	0
14. Fruits, Preserved, assorted, in 30-oz. tins per tin	0	0	11½
15. Golden Syrup, in 2-lb. tins do.	0	0	8½
16. Jams, assorted, in 2½-oz. tins, in the proportion of half seed and half stone do.	0	0	11
17. Cornina (Corn or Maize Flour), in 1-lb. packets per lb.	0	0	8
18. Macaroni or Vermicelli, as ordered ... do.	0	0	5½
19. Mustard—Double Superfine do.	0	2	6
20. Oatmeal—Flaked or other do.	0	0	3½
21. Onions, sound and free from dirt ... per cwt.	0	12	6
22. Pepper—Black or White, Ground ... per bottle	0	2	9
23. Pickles, 20-oz. bottles per bottle	0	0	10
24. Potatoes, dry and free from dirt ... per cwt.	0	8	6
25. Raisins—Sultana, 3 Crown, present season's per lb.	0	0	10
26. Rice—Dressed, to sample do.	0	0	3
27. Salt—Fine do.	0	0	1½
28. Sauce—Chutney, 13-oz. bottles ... per bottle	0	1	0
29. " Tomato, 13-oz. bottles do.	0	0	10
30. " Worcester, 10-oz. bottles do.	0	0	9
31. Soap—Household, yellow, to sample ... per lb.	0	0	4½
32. " Toilet, "Bath," in 4½-oz. tablets, to sample, Kitchen's, or equal thereto per doz.	0	2	3
33. " Sand, in 12-oz. blocks do.	0	4	0
34. Soda—Bicarbonate per lb.	0	0	3
35. " Washing do.	0	0	2
36. Starch per lb.	0	0	8
37. Tea—Ceylon, to sample do.	0	1	6

Schedule No. 16.

PROVISIONS AT WAHGUNYAH.
FOR STUDENTS AT WAHGUNYAH VINE NURSERY.

(Delivery at Nursery.)

Sub-schedule No. 1.

BREAD.

Security, £5.

1. Bread—Fine Wheaten, first quality ... per cental. Purchase

ANNEX TO CONTRACT No. 1928/321.

G. A. Hardham, Glenferrie-road, Malvern.

Sub-schedule No. 2.

GROCERIES, ETC.

Security, £10.

- | | £ | s. | d. |
|--|---|----|-----|
| 1. Black Lead (1-oz. cakes) ... per doz. cakes | 0 | 0 | 7½ |
| 2. Barley, Pearl ... per lb. | 0 | 0 | 3 |
| 3. Candles (Full weights) — Kitchen's "Electrine," or other make of equal quality, 1-lb. packets ... do. | 0 | 0 | 10½ |
| 4. Coffee Essence, 10-oz. bottles ... per bottle | 0 | 1 | 3 |
| 5. Cornina (Corn or Maize Flour), in packets of 1-lb. net ... per lb. | 0 | 0 | 7½ |
| 6. Cream of Tartar ... do. | 0 | 1 | 4½ |
| 7. Currants, 3 crowns, present season's ... do. | 0 | 0 | 8½ |
| 8. Fish, Preserved, Salmon, Fresh Herrings, Herrings in Tomato, as required, in 1-lb. tins ... per tin | 0 | 1 | 1 |
| 9. Flour, Best Roller ... per cental | 0 | 19 | 0 |
| 10. Fruits, Preserved, assorted, in 30-oz. tins ... per tin | 0 | 1 | 0 |
| 11. Ginger—Ground or Whole ... per lb. | 0 | 1 | 3 |
| 12. Golden Syrup, in 2 lb. tins ... per tin | 0 | 0 | 9 |
| 13. Jams, assorted, in 24-oz. tins, in the proportion of half seed and half stone ... do. | 0 | 0 | 10½ |
| 14. Macaroni or Vermicelli, as ordered ... per lb. | 0 | 0 | 6 |
| 15. Mustard—Double Superfine, 1-lb. tin ... per tin | 0 | 2 | 10 |
| 16. Oatmeal—Flaked or Other ... per lb. | 0 | 0 | 3½ |
| 17. Onions, sound, and free from dirt ... do. | 0 | 0 | 2 |
| 18. Peel—Mixed ... do. | 0 | 1 | 0 |
| 19. Pepper—Black or White, Ground ... do. | 0 | 3 | 0 |
| 20. Potatoes, dry, and free from dirt ... per cwt. | 0 | 10 | 0 |
| 21. Raisins—Sultana, 3 Crowns, present season's ... per lb. | 0 | 0 | 10 |
| 22. Rice—Dressed, to sample ... do. | 0 | 0 | 3½ |
| 23. Seed Tapioca (Sago)—To sample ... do. | 0 | 0 | 3½ |
| 24. Salt—Fine ... do. | 0 | 0 | 1½ |
| 25. Sauce—Chutney, 13-oz. bottles ... per bottle | 0 | 1 | 0 |
| 26. " Tomato, 13-oz. bottles ... do. | 0 | 0 | 10 |
| 27. " Worcester, 10-oz. bottles ... do. | 0 | 0 | 9 |
| 28. Soap—Household, yellow, to sample ... per lb. | 0 | 0 | 4½ |
| 29. " Sand, in 12-oz. blocks ... each | 0 | 0 | 4 |
| 30. Soda—Bicarbonate ... per lb. | 0 | 0 | 3 |
| 31. " Washing ... do. | 0 | 0 | 1½ |
| 32. Spices, mixed, in 1-oz. packets ... per packet | 0 | 0 | 1½ |
| 33. Tea—Ceylon, to sample ... per lb. | 0 | 1 | 6½ |

ANNEX TO CONTRACT No. 1928/322.

R. Warren and Son, Main-street, Wahgunyah.

Sub-schedule No. 3.

MEAT (FRESHLY KILLED).

Security, £10.

- | | £ | s. | d. |
|---------------------------|---|----|----|
| 1. Beef—Fresh ... per lb. | 0 | 0 | 8 |
| 2. Mutton—Fresh ... do. | 0 | 0 | 8 |

Schedule No. 17.

PROVISIONS FOR S.S. R/P AND DREDGES.

Supplies to be delivered to Dredging Depot, Williamstown, Victoria Dock, or River Yarra Wharfs, as ordered.
(Supplies for Naval Forces are not include 1 in this schedule.)

Sub-schedule No. 1.

BREADSTUFFS.

Security, £10.

- | | |
|---|------------|
| 1. Bread—Fine wheaten, first quality ... per cental | } Purchase |
| 2. Flour—First quality ... do. | |

ANNEX TO CONTRACT No. 1928/323.

G. A. Hardham, Glenferrie-road, Malvern.

Sub-schedule No. 2.

GROCERIES.

Security, £10.

£ s. d.

- | | | | |
|---|---|---|----|
| 1. Biscuits—Cabin Bread or the like ... per lb. | 0 | 0 | 3 |
| 2. Butter—First class creamery, to score not less than 90 points, Government grade, commerce regulations standard ... do. | 0 | 1 | 6 |
| 3. Coffee—"Neigherry," fresh roasted and ground, to sample ... do. | 0 | 1 | 6 |
| 4. Currants—3 crowns, present season's ... do. | 0 | 0 | 7½ |
| 5. Flour—Self-raising ... do. | 0 | 0 | 3 |
| 6. Jams—Assorted, of approved kinds, in proportion of half seed and half stone, in 24-oz. tins ... per tin | 0 | 0 | 8½ |
| 7. Meat—Preserved, beef or mutton, in 1-lb. tins ... do. | 0 | 0 | 8 |
| 8. Milk—Condensed ... do. | 0 | 0 | 7½ |
| 9. Mustard—Double Superfine ... per lb. | 0 | 2 | 0 |
| 10. Oatmeal ... do. | 0 | 0 | 2½ |
| 11. Pearl barley ... do. | 0 | 0 | 2 |
| 12. Peas—Split ... do. | 0 | 0 | 3 |
| 13. Pepper—White, ground ... do. | 0 | 2 | 4½ |
| 14. Pickles—Assorted, 20-oz. bottles ... per bot. | 0 | 0 | 8½ |
| 15. Raisins—Sultana, 3 crowns, present season's ... per lb. | 0 | 0 | 9 |
| 16. Rice—Dressed, to sample ... do. | 0 | 0 | 2½ |
| 17. Salt—Fine ... do. | 0 | 0 | 6½ |
| 18. Sauce—Tomato, 13-oz. bottles ... per bot. | 0 | 0 | 6½ |
| 19. " Worcester, 10-oz. bottles ... do. | 0 | 0 | 4 |
| 20. Tea—Ceylon, to sample ... per lb. | 0 | 1 | 5 |
| 21. Vinegar—Malt ... per quart | 0 | 0 | 3½ |

ANNEX TO CONTRACT No. 1928/324.

Wm. Angliss and Co. Pty. Ltd., Bourke-street, Melbourne.

Sub-schedule No. 3.

MEAT.

Security, £10.

£ s. d.

- | | | | |
|---------------------------|---|---|----|
| 1. Fresh Beef ... per lb. | 0 | 0 | 5½ |
| 2. " Mutton ... do. | 0 | 0 | 5½ |
| 3. " Suet ... do. | 0 | 0 | 6 |

ANNEX TO CONTRACT No. 1928/325.

Pirrie Bros., Exhibition-street, Melbourne.

Sub-schedule No. 4.

VEGETABLES.

Security, £5.

£ s. d.

- | | | |
|---|---|----|
| 1. Potatoes ... per cwt. | 0 | 6 |
| 2. Onions ... do. | 0 | 13 |
| 3. Other vegetables, including cauliflowers, carrots, cabbages, turriips, and parsnips, as required ... do. | 1 | 10 |

Schedule No. 18.

PROVISIONS FOR ABORIGINES AT LAKE TYERS.

(Delivery at Lake Tyers Station.)

ANNEX TO CONTRACT No. 1928/326.

J. Rule, Nowa Nowa.

Sub-schedule No. 1.

BREAD.

Security, £2.

Item No.	Article.	£	s.	d.
1	Bread—Fine Wheaten, first quality ... per cental	0	18	9

Sub-schedule No. 2.
ANNEX TO CONTRACT-NO. 1928/327.
Moran and Cato Pty. Ltd., Brunswick-street, Fitzroy.
GROCERIES. Security, £2.

Item No.	Article.		£	s.	d.
1	Baking Powder, Snowflake, in 1-lb. tins ...	per lb.	0	1	2
2	Candles—(Full weights) Kitchen's "Electrines," or other make of equal quality, in 1-lb. packets	"	0	0	9
3	Coffee—Fresh roasted and whole—Beans to be thoroughly sound, to sample ...	"	0	1	8
4	Cocoa, in ½-lb. packets ...	"	0	0	8
5	Cornina (Corn or Maize Flour), in 1-lb. packets ...	"	0	0	8
6	Currants—3 crowns (present season's) ...	"	0	0	8
7	Curry Powder ...	"	0	1	2
8	Flour—Best roller ...	per cental	0	15	6
9	Jams, assorted, in 24-oz. tins (in the proportion of half seed, half stone) ...	per tin	0	0	9½
10	Mustard—Double Superfine ...	per lb.	0	2	2
11	Oatmeal ...	"	0	0	2½
12	Peas, Split ...	"	0	0	3½
13	Pearl Barley ...	"	0	0	2½
14	Peel—Mixed ...	"	0	0	11
15	Pepper—Black, ground, in ½-lb. tins ...	per tin	0	0	7½
16	Raisins—Sultana, 3 crowns (present season's) ...	per lb.	0	0	9½
17	Rice—Dressed, to sample ...	"	0	0	3
18	Seed Tapioca (Sago), to sample ...	"	0	0	2½
19	Salt—Coarse ...	"	0	0	0½
20	" Fine ...	"	0	0	1½
21	Soap—Household, hard and dry, to sample ...	"	0	0	2½
22	Soda—Bicarbonate ...	"	0	0	2
23	" Washing ...	"	0	0	1½
24	Tartar, Cream of ...	"	0	1	3
25	Tea—Ceylon, to sample ...	"	0	1	7
26	Tobacco—Twist, to sample ...	"	0	5	3
27	Treacle, in 7-lb. tins ...	per tin	0	2	0
28	Vinegar—Malt ...	per quart	0	0	4½