

[1639]



VICTORIA  
GOVERNMENT GAZETTE.

Published by Authority.

[Registered at the General Post Office, Melbourne, for transmission by post as a newspaper]

No. 119]

TUESDAY, JUNE 22.

[1937

CONTRACTS ACCEPTED.

(SERIES 1937-38.)

SUPPLY OF PROVISIONS

FOR

STATE DEPARTMENTS

FROM

1st JULY, 1937, to 30th JUNE, 1938.

Conditions of Contract and Stipulations are shown herein for the guidance  
of Officers ordering and receiving supplies.

21st June, 1937.  
No. 119.—6730.

H. E. JOHNSON,  
*Secretary to the Tender Board.*

CONTRACTS ACCEPTED.—(Series 1937-38.)

PROVISIONS.

No. of Contract.	Particulars of each Tender Accepted.	Amount.	Name of Contractor.	Charged against Vote or Fund.
<b>PROVISIONS—</b> Supply of Provisions, in such quantities as may be ordered, from 1st July, 1937, to 30th June, 1938.				
<b>Schedule No. 1.—Melbourne District—</b>				
1	Bread, Kew Mental Hospital .. .. .	Rates as per annex	Walter Johnson .. .. .	
2	Bread, Melbourne, Royal Park, Teachers' College, Carlton, &c. .. .. .	Ditto .. .. .	J. N. Hennessy Pty. Ltd. .. .. .	
3	Flour .. .. .	Ditto .. .. .	Pirrie Bros. .. .. .	
4	Sharps .. .. .	Ditto .. .. .	Jas. Minifie and Co. .. .. .	
5	Groceries, &c. .. .. .	Ditto .. .. .	Moran and Cato Pty. Ltd. .. .. .	
6	Oatmeal, Rice, &c. .. .. .	Ditto .. .. .	Moran and Cato Pty. Ltd. .. .. .	
7	Jams .. .. .	Ditto .. .. .	Moran and Cato Pty. Ltd. .. .. .	
8	Meat, Kew Mental Hospital .. .. .	Ditto .. .. .	W. Angliss and Co. (Aust.) Pty. Ltd. .. .. .	
9	Meat, Pentridge Penal Establishment .. .. .	Ditto .. .. .	W. E. Glendonning .. .. .	
10	Meat, Children's Welfare Depot, Royal Park, and Police Hospital .. .. .	Ditto .. .. .	J. H. Cooke Pty. Ltd. .. .. .	
11	Meat, Royal Park Mental Hospital and Receiving House .. .. .	Ditto .. .. .	J. H. Cooke Pty. Ltd. .. .. .	
..	Potatoes .. .. .	.. .. .	.. .. .	Board
12	Soap Mixtures .. .. .	Rates as per annex	Moran and Cato Pty. Ltd. .. .. .	
13	Tea .. .. .	Ditto .. .. .	H. Berry and Co. Pty. Ltd. .. .. .	
14	Coffee .. .. .	Ditto .. .. .	Moran and Cato Pty. Ltd. .. .. .	
<b>Schedule No. 2.—Mont Park; Sanatorium, Greswell, &amp;c.—</b>				
15	Breadstuffs .. .. .	Rates as per annex	J. N. Hennessy Pty. Ltd. .. .. .	
16	Groceries .. .. .	Ditto .. .. .	G. A. Hardham .. .. .	
17	Jams .. .. .	Ditto .. .. .	Moran and Cato Pty. Ltd. .. .. .	
18	Meat .. .. .	Ditto .. .. .	F. Watkins Pty. Ltd. .. .. .	
..	Potatoes .. .. .	.. .. .	.. .. .	Board
<b>Schedule No. 3.—SS. Rip and Dredges—</b>				
19	Bread .. .. .	.. .. .	Purchase by Agreement .. .. .	
20	Groceries .. .. .	Rates as per annex	G. A. Hardham .. .. .	
21	Meat .. .. .	Ditto .. .. .	W. E. Glendonning .. .. .	
21	Vegetables .. .. .	Ditto .. .. .	G. A. Hardham .. .. .	
<b>Schedule No. 4.—Teachers' College, Carlton—</b>				
22	Groceries .. .. .	Rates as per annex	G. A. Hardham .. .. .	
23	Meat .. .. .	Ditto .. .. .	B. Hosking .. .. .	
24	Jams .. .. .	Ditto .. .. .	G. A. Hardham .. .. .	
..	Potatoes .. .. .	.. .. .	.. .. .	Board
<b>Schedule No. 5.—Ararat District—</b>				
25	Breadstuffs .. .. .	Rates as per annex	Wm. Bates .. .. .	
26	Groceries .. .. .	Ditto .. .. .	Moran and Cato Pty. Ltd. .. .. .	
27	Jams .. .. .	Ditto .. .. .	Moran and Cato Pty. Ltd. .. .. .	
28	Meat .. .. .	Ditto .. .. .	H. T. Impey .. .. .	
..	Potatoes .. .. .	.. .. .	.. .. .	Board
<b>Schedule No. 6.—Ballarat District—</b>				
29	Breadstuffs .. .. .	Rates as per annex	Brogden Bros. .. .. .	
30	Groceries .. .. .	Ditto .. .. .	Moran and Cato Pty. Ltd. .. .. .	
31	Jams .. .. .	Ditto .. .. .	Moran and Cato Pty. Ltd. .. .. .	
32	Meat .. .. .	Ditto .. .. .	H. J. Symons Pty. Ltd. .. .. .	
..	Potatoes .. .. .	.. .. .	.. .. .	Board
<b>Schedule No. 7.—Beechworth District—</b>				
33	Breadstuffs .. .. .	Rates as per annex	Wm. Price .. .. .	
34	Groceries .. .. .	Ditto .. .. .	Moran and Cato Pty. Ltd. .. .. .	
35	Jams .. .. .	Ditto .. .. .	Moran and Cato Pty. Ltd. .. .. .	
36	Meat .. .. .	Ditto .. .. .	Molony Bros. .. .. .	
..	Potatoes .. .. .	.. .. .	.. .. .	Board
<b>Schedule No. 8.—Bendigo District—</b>				
37	Bread .. .. .	Rates as per annex	T. J. Schulz and Sons Pty. Ltd. .. .. .	
38	Meat .. .. .	Ditto .. .. .	H. Gittins .. .. .	
..	Potatoes .. .. .	.. .. .	.. .. .	Board
<b>Schedule No. 9.—Castlemaine District—</b>				
39	Bread .. .. .	Rates as per annex	Rasmussen Bros. .. .. .	
40	Meat .. .. .	Ditto .. .. .	F. L. Gill .. .. .	
..	Potatoes .. .. .	.. .. .	.. .. .	Board

Contingencies, 1937-38

CONTRACTS ACCEPTED.—(Series 1937-38)—continued.

PROVISIONS—continued.

No. of Contract.	Particulars of each Tender Accepted.	Amount.	Name of Contractor.	Charged against Vote or Fund.
PROVISIONS—continued.				
Schedule No. 10.—School of Forestry, Creswick—				
41	Breadstuffs .. .. .	Rates as per annex	Charles C. Bowley .. .. .	
42	Groceries .. .. .	Ditto .. .. .	J. Tait and Son .. .. .	
43	Meat .. .. .	Ditto .. .. .	Eric Coughlan .. .. .	
44	Milk .. .. .	Ditto .. .. .	Emma E. Pollard .. .. .	
..	Potatoes .. .. .	.. .. .	Purchase under Tender Board quotations	
Schedule No. 11.—McLeod Settlement, French Island—				
45	Bread .. .. .	Rates as per annex	James Jackson .. .. .	
46	Groceries .. .. .	Ditto .. .. .	A. G. Glascock .. .. .	
47	Meat .. .. .	Ditto .. .. .	E. W. Misson .. .. .	
..	Potatoes .. .. .	.. .. .	Purchase under Tender Board quotations	
Schedule No. 12.—Geelong District—				
48	Bread .. .. .	Rates as per annex	Podbury Bros. .. .. .	
49	Meat .. .. .	Ditto .. .. .	Mary G. O'Brien .. .. .	
50	Milk .. .. .	Ditto .. .. .	E. F. Mayes .. .. .	
..	Potatoes .. .. .	.. .. .	Purchase under Tender Board quotations	
Schedule No. 13.—Sanatorium, Greenvale—				
51	Breadstuffs .. .. .	Rates as per annex	David Bignell .. .. .	
52	Groceries .. .. .	Ditto .. .. .	G. A. Hardham .. .. .	
53	Meat .. .. .	Ditto .. .. .	J. H. Cooke Pty. Ltd. .. .. .	
..	Potatoes .. .. .	.. .. .	Purchase under Tender Board quotations	
Schedule No. 14.—Aboriginal Station, Lake Tyers—				
54	Breadstuffs .. .. .	Rates as per annex	L. T. Freeman .. .. .	Contingencies, 1937-38
55	Groceries .. .. .	Ditto .. .. .	L. T. Freeman .. .. .	
56	Jams .. .. .	Ditto .. .. .	L. T. Freeman .. .. .	
Schedule No. 15.—Viticultural College, Rutherglen—				
57	Breadstuffs .. .. .	Rates as per annex	J. E. Thomas .. .. .	
58	Groceries .. .. .	Ditto .. .. .	Moran and Cato Pty. Ltd. .. .. .	
Schedule No. 16.—Sale Gaol—				
59	Bread .. .. .	Rates as per annex	M. Keily .. .. .	
..	Meat .. .. .	.. .. .	Purchase by Agreement .. .. .	
Schedule No. 17.—Pleasant Creek Special School, Stawell—				
60	Breadstuffs .. .. .	Rates as per annex	A. N. Crean .. .. .	
61	Groceries .. .. .	Ditto .. .. .	Moran and Cato Pty. Ltd. .. .. .	
62	Meat .. .. .	Ditto .. .. .	Ada J. West .. .. .	
63	Milk .. .. .	Ditto .. .. .	S. C. Maddison .. .. .	
..	Potatoes .. .. .	.. .. .	Purchase under Tender Board quotations	
Schedule No. 18.—Sunbury District—				
64	Breadstuffs .. .. .	Rates as per annex	R. C. Clyne .. .. .	
65	Groceries .. .. .	Ditto .. .. .	A. C. Schill .. .. .	
66	Jam .. .. .	Ditto .. .. .	A. C. Schill .. .. .	
67	Meat .. .. .	Ditto .. .. .	S. J. Starkie .. .. .	
..	Potatoes .. .. .	.. .. .	Purchase under Tender Board quotations	

Approved—F. E. OLD, Acting Treasurer. 4.6.1937.

### CONDITIONS OF CONTRACT FOR PROVISIONS, 1937-38, ETC.

1. All the articles are to be of the best quality of the several kinds, in the best condition, and in conformity with the Health Acts, and to be delivered in sound packages, free from all charges for cartage, freight, &c. The goods shall be delivered as may be directed by the officer ordering the supply.

2. As the exact quantity of any article which may be required cannot be stated, the estimate being approximate only, the Government will not be bound by the quantity stated in the schedule, but will be at liberty to order more or less, according to circumstances, and the contractor will be bound to supply the same as ordered.

3. Supplies for country districts for which no local contract may have been taken, or for which the contract has been terminated, may be ordered under the Melbourne contract.

4. The Melbourne District will include places within a radius of 6 miles from the Elizabeth-street Post Office, with the exception of places for which separate contracts are provided; the Ararat, Beechworth, and Ballarat Districts will include the Mental Hospitals, Gaols, and Police Gaols at those places; and the Bendigo and Castlemaine Districts will include the Gaols. The Geelong District embraces a radius of 2 miles from the Geelong Post Office. Delivery must be made at the places, institutions, &c., named in the schedules, or as directed by the officer ordering the supply.

5. Packages suitable for transport of goods supplied must be provided by the contractor free of expense, and the value of these packages, whether in bulk or otherwise, is to be included in the price demanded, except butter boxes and soap boxes (not including fancy soaps), jam jars, flour, meal, and potato bags, which will remain the property of the contractor, and only the actual net weight or quantity received will be paid for; the empties to be removed from the place of delivery at the contractor's expense.

6. The meat supplied under these conditions must, if practicable, be slaughtered at abattoirs which are under authorized inspection and supervision. Any infringement of this condition will subject the contractor, on report from the Tender Board, to such mulct, not exceeding Fifty pounds, as the Treasurer may direct, and the amount will be deducted from the contractor's account, or from the security money.

7. The supplies coming under the head of Rations and Medical Comforts are to be delivered direct to the establishment entitled thereto on the written order of the officer in charge. All other supplies will be ordered by the head of the Department concerned or any officer authorized by him, and shall be delivered as may be directed by the officer ordering the supply.

8. At the time of delivering the supplies, the contractor shall produce the order for the same to the officer authorized to accept delivery, and such officer shall acknowledge thereon the receipt of the stores accepted, and shall return the order to the contractor, who shall render his account as soon as possible after the delivery of the supplies, accompanied by the receipted delivery order. The rates or quantities quoted in the orders cannot be exceeded.

9. Where practicable, the contractor shall use the Railways for the transport of the goods. When a contractor is required to make delivery of goods at a railway station for transmission by rail, except for Commonwealth Departments, he shall obtain a receipt for the goods in duplicate on the Stores and Transport consignment note, at the same time handing in the triplicate and quadruplicate of the form as an authority for the Railways to act as agent for, and charge the freight to, the Stores and Transport Office. He shall as soon as possible, and not later than twenty-four hours thereafter, deliver at the Tender Board Offices the original, the duplicate to be forwarded to the consignee and the quintuplicate retained by himself. Should the goods thus forwarded be rejected, the contractor must bear the cost of replacing such goods, for which services the departmental consignment note is not to be used. Any infringement of this condition may subject the contractor to such mulct as the Tender Board may recommend under clause 18 of these conditions.

10. Should the contractor fail to supply any articles at the time mentioned in the order, they or any like supplies suitable for the Service will be otherwise procured, and the expense over and above the contract price will be deducted from his account of from the security money.

11. The acceptance of the supplies shall be subject to the approval of the officer authorized to take delivery of the stores, or such other officer as shall be named in the conditions.

12. If the officer in charge of stores be not satisfied as to the quantity or quality of the stores, or if, after taking delivery of any stores or material, he shall discover any deficiency or defect therein, he may return such deficient or defective stores or material to the contractor, and shall report the same to the head of his department and to the Tender Board.

13. In the event of a difference of opinion between the contractor and the officer receiving the supplies as to the quality, the same is to be decided, in cases where the article is not of a perishable nature, by a Board of Survey composed of persons named by the Treasurer of the State for the time being; and the decision of the Board is to be considered final. In the event of the decision being against the contractor, the survey fees and expenses (if any) will be deducted as in clause 10.

14. In cases where the article is of a perishable nature, or when from some other cause injury would be sustained either by the person to whom the rations or stores are due or by the contractor in waiting for a Board to survey, the head of the Department or officer authorized to take delivery will have power to reject such article or articles as are obviously of inferior quality, it being understood that he will be responsible to the Government for so doing, and that the contractor must take back the rejected article and supply good in its stead; failing which it, or any like supply suitable for the Service, will be obtained by the officer requiring it as in clause 10. In case of the rejection or return of any supplies, the contractor shall bear the whole cost of replacing the supplies so rejected or returned.

15. If the Board shall decide that the article is not of proper quality it must be immediately replaced by the contractor; failing which it, or any like supply suitable for the Service, will be procured by the officer requiring it, and the expense charged as in clause 10.

16. In the case of supplies for Mental Hospitals, it will be competent for a Board of Survey, consisting of the medical superintendent (or, in his absence, of the medical officer) and any two officers named by him, to examine and reject any supplies that may be objected to. It must be distinctly understood, however, that the contractor will have a right of appeal to the Treasurer of the State for the time being, such appeal to be made in writing within 24 hours of the rejection; but, pending such appeal, he must at once supply others of approved quality; failing which, the supplies required, or any like supplies suitable for the Service, may be obtained by the officer concerned, and the expense charged as in clause 10.

17. In the case of supplies for Mental Hospitals, it will also be competent for two or more of the official visitors, in conjunction with the medical superintendent, to reject any supplies that they may consider not in accordance with contract; and in such cases the reference to a Board of Survey will not be deemed to be necessary.

18. A refusal to execute orders, irregularity in the quantity or quality of the supplies, or delay in delivering or replacing them when required, will subject the contractor, upon report from the Tender Board, to such mulct, not exceeding Fifty pounds, as the said Treasurer may direct, and the amount may be deducted as in clause 10. It will also be in the power of the said Treasurer, upon such refusal, irregularity, or delay, to terminate the contract forthwith, and forfeit the whole or any part of the security money.

19. Contractors are not at liberty to transfer their contracts under cover of power of attorney, coupled with an interest or otherwise, and no such transfer will be recognized by the Government. *If it is found during the currency of the contract that the contractor has not conformed to the condition of advertisement—which stipulates that if a tenderer be a member of a firm and such firm be interested in the contract, the tender shall be in the name of the firm and not in that of the individual—then the Treasurer may, on the recommendation of the Tender Board, determine the contract, and forfeit the security money.*

20. It will be competent for the Tender Board to terminate the contract, without notice, should there be reason to know that the contractor takes advantage of his contract to communicate with a prisoner.

21. The contract entered into under these conditions is not to be considered as being broken, infringed, or vitiated by the importation of stores for the Government service, or by any contracts or purchases made by the Imperial Commissariat; or by the consumption of the produce or surplus stock of any Government establishment, or by any article being made at and supplied for the use of any Government establishment.

22. Notwithstanding anything contained to the contrary in section 152 of the *Customs Act* 1901-36, it is hereby expressly provided that upon any alteration of the duty collected affecting the goods included in this contract, the contract price shall not be altered, and the contract may be terminated at the option of either party by two months' notice in writing from the first day of the calendar month next ensuing, and within the period for which the contract is made. The

contract for the unaffected items shall remain in full force and effect. Any notice to be served under this condition shall be deemed to have been duly served if sent to the contractor in a registered letter to his last-known place of business or abode.

23. Under no circumstances other than those mentioned in clause 22 will a contractor be permitted to abandon his contract. In the event of the contractor failing to carry on the contract, the contract security money will in that case be absolutely forfeited; and, in addition, the contractor will be held liable for any loss which the Government may sustain in consequence of such failure.

24. For the purposes of these contracts the word "Government" shall mean the Government of the State of Victoria; and the word "Treasurer" shall mean the Treasurer of the said State.

## STIPULATIONS FOR SUPPLIES OF PROVISIONS.

### SUPPLIES GENERALLY.

For supplies under all sub-schedules, particular attention is drawn to clause 1 of the Conditions of Contract as to quality.

No sub-letting is allowed, and all work must be carried out by the contractor.

Where practicable, all items must be manufactured or prepared within the Commonwealth.

Where no brand of Commonwealth manufacture or production is specifically set out in the respective sub-schedules, such Commonwealth brand as may be ordered must be supplied.

For Schedule No. 3 supplies must be delivered when ordered and, in cases of emergency, on Sundays, holidays, or half-holidays, as required.

### BREAD.

A sample of the best ordinarily retailed to the public will be considered as a test loaf for first quality for fine wheaten and pure wheaten Meal Bread. *Pure wheaten Meal Bread of first quality may be substituted, wholly or in part, for fine wheaten Bread at such times and in such quantities as, in the opinion of the Medical Superintendent, may be deemed necessary, and the contractor will be required to supply such Bread at the contract rate. Reasonable notice, however, of the intention to substitute wheaten Meal Bread must be given to the contractor by the officer ordering the supply.* Bread may be baked at any Government establishment without infringing these contracts. At the Gaols, Ballarat, Beechworth, Geelong, Bendigo, Castlemaine, and Sale, if required, bread must be supplied one day old, due notice to be given to the contractor of such requirement.

In the event of bread being made at any Government establishment in the Melbourne District during the currency of these contracts, the flour required will be drawn under the flour and sharps sub-schedule. The sharps for all the country gaols is included in the sub-schedule for flour and sharps, Melbourne District, and delivery of same will be required to be made Melbourne, f.o.r.

### GROCERIES.

As a guarantee of quality, Rice, when ordered in quantities of 56 lb. and over, must be supplied in original bags as delivered by the miller or dresser. Such bags must be branded "Rice, Dressed" or "Unpolished," and shall also have stencilled thereon the miller or dresser's name and the distinguishing mark indicative of the quality or grade. The bags thus stencilled shall contain Rice milled or dressed by the miller or dresser whose name appears thereon. Supplies not in conformity with the foregoing condition will be rejected.

Oatmeal must be supplied in original bags as delivered by millers.

Candles, except those for prison cells, must be supplied in 1-lb. packets. Candles for prison cells must be delivered in boxes containing from 25 to 50 lb. per box, the boxes for which must be legibly stencilled on one end, showing the estimated burning time and the gross, tare, and net weight of contents.

The soap supplied must be hard throughout, ready for immediate use without waste, and shall have been manufactured at least seven weeks before leaving contractor's hands.

When the quantity admits, Tea must be supplied in original and unopened packages, labelled, as landed.

Raisins and currants must be present season's, and where the quantity admits, be supplied in original boxes labelled as packed.

For Schedule No. 3 a certain quantity of Biscuits and Preserved Meats are sometimes required in lieu of fresh bread and fresh meat, and are included to meet such contingency only.

### BUTTER, CHEESE, AND JAMS.

Butter is to be delivered to the s.s. *Rip* in 1-lb. pats, in such quantities as may be ordered, and no excess over the quantity ordered will be received.

All supplies of 56 lb. or multiples of 56 lb. must be supplied in boxes as originally packed. The boxes must bear the impress stamp of the creamery where the butter is produced; otherwise it will not be accepted. All supplies must be in new boxes.

Where the Store or Butter Factory of the Contractor is situated in the Metropolitan area all Butter to the quantity of 56 lb. and over to be supplied in any one consignment under this contract shall before despatch from the Store or Factory be first examined and passed by the Government Butter Grader, for and on behalf of the officer authorized to accept delivery. The boxes containing butter so examined and found satisfactory in quality and description will be stamped by the Government Butter Grader and the date of such examination marked thereon. No butter from a contractor located in the Metropolitan Area will be accepted unless the boxes bear the stamp of the Grader. For the purposes of the foregoing condition the Metropolitan Area is defined as being not outside the radius visited by the Government Grader. The officer authorized to accept delivery may, within 48 hours of the receipt of any supply, require the Contractor to have same re-examined by the Grader, and, if not passed by him, it shall be returned to the Contractor, who shall forthwith replace the same with freshly-examined butter.

No Butter *ex Cool Store* will be examined by the Grader until thermally it is in suitable condition thereof.

Where the Store or Factory from which the Butter is despatched is not within the area visited by the Grader a sample of any supplies may be forwarded to the Government Butter Grader for examination, should the supply be considered by the Officer authorized to accept delivery as not being equal in quality or description to that contracted for.

The Cheese supplied to be fairly or fully matured, as ordered, and, if the quantity admits, boxed for transport.

Jams.—The weight stamped on the tins in accordance with the regulations under the Commerce Act, as indicating the *minimum* net quantity that each tin contains, shall for the purpose of this contract be taken as the actual contents when computing the quantity supplied.

When Jam is supplied in jars the jars remain the property of the contractor, and must be removed by the contractor at his own expense when empty.

### MEAT.

Fore and hind quarters of beef for Mental Hospitals are to be supplied in equal proportions of each, and must be delivered as a whole respectively, also extra buttocks separately when ordered. Meat for other institutions must be supplied as ordered. Where hind-quarters or buttocks are ordered, 9 inches must be cut off from the end of the leg from the hock upwards, i.e., the end of the leg from which the shank has been removed at the abattoirs; and when fore-quarters form a portion of the supply, 6 inches from the end of the neck and the whole of the shin at the clodbone joint must be removed. The sticking pieces also must be trimmed off, and the point and end of the brisket rendered free from blood and blood stains.

Fore and hind quarters of beef, for convenience of handling, may be cut into two parts, but each part is to bear evidence of having been cut from the same carcass.

Corned beef, rolled or round, as ordered, must be supplied without bone or cartilage and will be received, whether pumped or prepared in the ordinary way by pickling, but in the former case must have been soaked after pumping for at least 48 hours, in a good pickle, and then thoroughly drained before supply. No flank, chuck, sticking piece, shin, leg of beef, or piece under 7 lb. will be received.

All meat shall have been slaughtered in Victoria, freshly killed, and shall be well fed, good, sound, sweet, and wholesome.

Should the local supply of fresh meat become scarce or the market prices of same rise by not less than 25 per cent. above those ruling at the date of closing of tenders, chilled meat may, on the recommendation of the Permanent Head of the Department concerned and subject to the consent of the Tender Board being obtained, be supplied by the contractor in lieu of fresh meat on such occasions or during such periods as the Tender Board may determine. "Market prices" shall mean the prices ruling at the Metropolitan Meat Market as published in the *Argus* newspaper.

In cases of emergency, or on such other occasions as in the opinion of the Director of Mental Hygiene, or Heads of other institutions, may seem advisable, other forms of meat such as rabbits, tinned meats, &c., may be purchased apart from the contract in lieu of the meat mentioned in the schedule, and substituted therefor, provided 24 hours' notice (except in cases of emergency) be given to the contractor of such intention.

**Meat derived from the carcasses of Bulls, Stags, or Rams, or Mutton weighing more than 70 lbs. in the carcass, will not be received, and shall not be tendered for delivery.**

Meat containing an undue proportion of bone or fat will not be accepted.

The parts to be removed by the contractor are indicated by the shaded portions of the annexed diagram. This work must be carried out in the factory or shop of the contractor, excepting those parts usually removed at the abattoirs.

With respect to the schedules enumerated hereunder, the following stipulations shall also apply:—

For sub-schedules 9 and 10 of Schedule No. 1, the Beef must be supplied in quantities as ordered from Ribs, Sirloin, and thick Flanks. Where the quantity permits, mutton must be delivered in sides; all kidney fat to be removed.

For Schedules Nos. 1 (sub-schedules 9 and 10), 3, 4, 8, 10, 13, 16 and 17, chuck ribs of Beef, i.e., 1st to 4th inclusive, will not be accepted.

For Schedule No. 3, fresh Beef must be supplied in equal quantities from prime ribs or sirloin; ribs of Beef to be cut clear of the plate bone, and sirloin to be cut clear of the wing ribs; excess of brisket or flank will be rejected; Mutton to be delivered in sides; all kidney fat to be removed; Corned Beef to be supplied in equal quantities from silverside (round) and brisket; cow, bull, or stag beef or frozen or chilled meat will not be accepted and must not be tendered for delivery.

For Schedule No. 4, fresh Beef must be supplied from prime ribs or sirloin; ribs of Beef to be cut clear of the plate bone, and sirloin to be cut clear of the wing ribs; excess of brisket or flank will be rejected. Corned beef to be supplied from silverside (round) and brisket; cow, bull, or stag beef, or frozen or chilled meat, or Mutton derived from the carcasses of rams will not be accepted and must not be tendered for delivery. All surplus bone and fat must be removed by the contractor prior to delivery and only net weights will be paid for.

For Schedule No. 7, samples (corresponding to the description given in the schedule) of meat ordinarily retailed to the public will be considered as a test for quality.

For Schedule No. 3, all meat must be supplied in equal quantities from ribs, sirloin, and thick flanks; mutton to be delivered in sides; all kidney fat to be removed. Live sheep to be supplied when required.

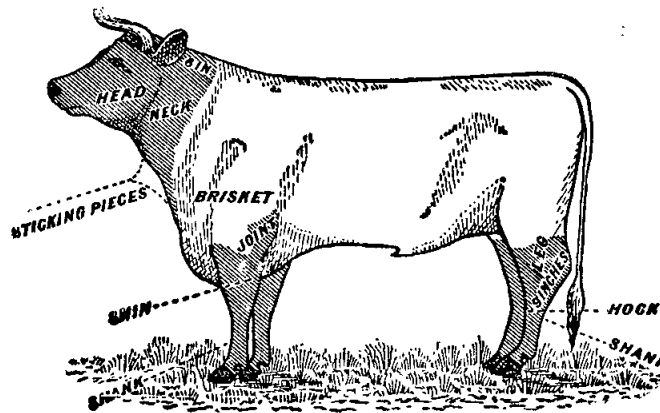
**MILK.**

The milk must be fresh, pure, and of the best quality, and subject to test when required by the Department, and supplied at such times as the Department may require. Should the contractor fail to supply at the time specified in the order or at such times as may be indicated in any general notice to the contractor his contract may be cancelled forthwith and his security forfeited, or should the supply prove to be not of contract quality it will be rejected, and any expense incurred will be charged to the contractor.

**POTATOES.**

Potatoes to be dry and free from dirt. Contractors to take back all rejected before being cooked. Bags to remain the property of the contractor. Weight of bags (approx. 2½ lb.) to be deducted.

If the price of potatoes becomes abnormally high, the heads of the various departments concerned may, if they think fit, cause rice or any other suitable food to be occasionally substituted in lieu thereof.



## ANNEX TO CONTRACTS.

Schedule No. 1.

### PROVISIONS—MELBOURNE DISTRICT.

ANNEX TO CONTRACT No. 1937/1.

*Walter Johnson, 102 Scotchmer-street, North Fitzroy, N.7.*

Sub-schedule No. 1.

BREAD FOR MENTAL HOSPITAL AT KEW.

Security, £125. £ s. d.

- |                                      |            |        |
|--------------------------------------|------------|--------|
| 1. Bread—Fine wheaten, first quality | per cental | 0 12 4 |
|--------------------------------------|------------|--------|

ANNEX TO CONTRACT No. 1937/2.

*J. N. Hennessy Pty. Ltd., 55 Sydney-road, Brunswick, N.10.*

Sub-schedule No. 2.

BREAD FOR CHILDREN'S WELFARE DEPOT, ROYAL PARK, RECEIVING HOUSE AND MENTAL HOSPITAL, ROYAL PARK, POLICE HOSPITAL, TRAVANCORE SPECIAL SCHOOL, FLEMINGTON, AND TEACHERS' COLLEGE CARLTON.

Security, £40. £ s. d.

- |                                            |               |         |
|--------------------------------------------|---------------|---------|
| 1. Bread—Fine wheaten, first quality       | ...per cental | 0 12 10 |
| 2. " Brown, first quality                  | ... do.       | 0 12 10 |
| 3. " Raisin                                | ... per lb.   | 0 0 2½  |
| 4. " Vienna (quarter loaves) first quality | ... .. do.    | 0 0 2½  |

ANNEX TO CONTRACT No. 1937/3.

*Pirrie Bros., 136 Exhibition-street, Melbourne, C.1.*

Sub-schedule No. 3.

FLOUR.

Security, £72. £ s. d.

- |                                           |               |        |
|-------------------------------------------|---------------|--------|
| 1. Flour—Roller, first quality, to sample | ...per cental | 0 11 6 |
|-------------------------------------------|---------------|--------|

ANNEX TO CONTRACT No. 1936/4.

*Jas. Minife & Co., 422 Collins-street, Melbourne, C.1.*

SHARPS.

Security, £18. £ s. d.

- |                            |        |       |
|----------------------------|--------|-------|
| 2. Flour Sharps, to sample | ... .. | 0 9 6 |
|----------------------------|--------|-------|

ANNEX TO CONTRACT No. 1937/5.

*Moran & Cato Pty. Ltd., 277 Brunswick-street, Fitzroy, N.6.*

Sub-schedule No. 4.

GROCERIES, ETC.

Security, £65. £ s. d.

- |                                                                                                                                                                                                                     |                 |        |
|---------------------------------------------------------------------------------------------------------------------------------------------------------------------------------------------------------------------|-----------------|--------|
| 1. Biscuits, Coffee, Malt or Milk Arrow-root, as ordered                                                                                                                                                            | ... .. per lb.  | 0 0 8½ |
| 2. Blue—Washing                                                                                                                                                                                                     | ... .. do.      | 0 0 8½ |
| 3. Breakfast Food—"Pipers"                                                                                                                                                                                          | ... .. do.      | 0 0 5½ |
| 4. Candles—Full weights, Kitchen's "Electrines," or other make of equal quality, to be supplied in 1-lb. packets                                                                                                    | ... .. do.      | 0 0 8½ |
| 5. " Kitchen's "Electrines," or other make of equal quality, for use in prison cells, to burn for 1, 1½, 2, 2½, and 3 hours respectively, as ordered, to be supplied in boxes, containing from 25 to 50 lb. per box | ... .. do.      | 0 1 0½ |
| 6. Cocoa—in 1-lb. cardboard cartons                                                                                                                                                                                 | ... .. do.      | 0 0 5  |
| 7. Corn or Maize Flour, in packets of 1 lb. net                                                                                                                                                                     | ... .. do.      | 0 0 5  |
| 8. Cream of Tartar                                                                                                                                                                                                  | ... .. do.      | 0 1 3  |
| 9. Currants, 3 Crowns (present season's)                                                                                                                                                                            | ... .. do.      | 0 0 6½ |
| 10. Curry Powder                                                                                                                                                                                                    | ... .. do.      | 0 0 7½ |
| 11. Essence of Lemon, 1-oz. bottles                                                                                                                                                                                 | ... .. per bot. | 0 0 2½ |
| 12. Ginger—Ground                                                                                                                                                                                                   | ... .. per lb.  | 0 0 11 |
| 13. Golden Syrup (in 7-lb. tins)                                                                                                                                                                                    | ... .. per tin  | 0 1 8½ |
| 14. Honey—First quality                                                                                                                                                                                             | ... .. per lb.  | 0 0 3½ |
| 15. Lemon Peel                                                                                                                                                                                                      | ... .. do.      | 0 0 6½ |
| 16. Mustard—Double Superfine                                                                                                                                                                                        | ... .. do.      | 0 1 7½ |
| 17. Oatmeal—Flaked                                                                                                                                                                                                  | ... .. per cwt. | 0 19 3 |
| 18. Pepper—Black, ground                                                                                                                                                                                            | ... .. per lb.  | 0 0 7  |
| 19. Pipes—Tobacco, clay                                                                                                                                                                                             | ... .. per doz. | 0 0 10 |
| 20. Prunes—50-60's (present season's)                                                                                                                                                                               | ... .. per lb.  | 0 0 6½ |
| 21. Raisins—Sultana, 3 Crowns (present season's)                                                                                                                                                                    | ... .. do.      | 0 0 6½ |
| 22. Rice—Ground                                                                                                                                                                                                     | ... .. do.      | 0 0 2½ |
| 23. Salt—Fine                                                                                                                                                                                                       | ... .. per cwt. | 0 3 7  |
| 24. " Rock                                                                                                                                                                                                          | ... .. per lb.  | 0 0 1  |
| 25. Soda—Washing                                                                                                                                                                                                    | ... .. do.      | 0 0 0½ |
| 26. " Bicarbonate of                                                                                                                                                                                                | ... .. do.      | 0 0 1½ |

GROCERIES—continued.

£ s. d.

- |                                                    |                   |        |
|----------------------------------------------------|-------------------|--------|
| 27. Spice—Mixed, in 1-oz. packets                  | ... .. per pkt.   | 0 0 1  |
| 28. Starch—"Preservene"                            | ... .. per lb.    | 0 0 5½ |
| 29. Treacle, in 7-lb. tins                         | ... .. per tin    | 0 1 7  |
| 30. Vinegar (malt)                                 | ... .. per quart  | 0 0 3  |
| 31. Tomato Sauce (13-oz. bottles), "Clipper" brand | ... .. per bottle | 0 0 6  |

ANNEX TO CONTRACT No. 1937/6.

*Moran & Cato Pty. Ltd., 277 Brunswick-street, Fitzroy, N.6.*

Sub-schedule No. 5.

OATMEAL, RICE, AND SEED TAPIOCA, ETC.

Security, £88. £ s. d.

- |                                   |                 |          |
|-----------------------------------|-----------------|----------|
| 1. Oatmeal                        | ... .. per cwt. | 0 17 3   |
| 2. Rice, Dressed                  | ... .. do.      | 1 1 6    |
| 3. " Unpolished                   | ... .. do.      | 1 1 6    |
| 4. Seed Tapioca (Sago), to sample | ... .. do.      | 0 19 10½ |
| 5. Pearl barley                   | ... .. do.      | 0 18 6   |
| 6. Peas—Split                     | ... .. do.      | 0 18 6   |

ANNEX TO CONTRACT No. 1937/7.

*Moran & Cato Pty. Ltd., 277 Brunswick-street, Fitzroy, N.6.*

Sub-schedule No. 6.

JAMS.

Security, £20. £ s. d.

- |                                                                                                                                                             |                                  |          |
|-------------------------------------------------------------------------------------------------------------------------------------------------------------|----------------------------------|----------|
| 1. Jams—Assorted, in bulk, of approved kinds, in the proportion of half seed and half stone, of the best quality, in tins, as required—Brand "Blue Bird"... | ... .. per lb. actual net weight | 0 0 4 ½* |
| 2. " Brand "Blue Bell" and "Poplar"                                                                                                                         | ... .. per tin                   | 0 0 7½   |

\* Rate shown is for Kerosene tin size. Half size tins ½d. per lb. extra. Quarter size tins ¼d. per lb. extra.

ANNEX TO CONTRACT No. 1937/8.

*W. Angliss and Co., Pty. Ltd., 42 Bourke-street, Melbourne, C.1.*

Sub-schedule No. 7.

MEAT FOR MENTAL HOSPITAL, KEW.

Security, £125.

£ s. d.

- |                                                                        |                   |        |
|------------------------------------------------------------------------|-------------------|--------|
| 1. Fresh Beef—Fore-quarters                                            | ... .. per cental | 1 5 6  |
| 2. " " Hind-quarters                                                   | ... .. do.        | 1 5 6  |
| 3. " " Buttocks                                                        | ... .. per lb.    | 0 0 3½ |
| 4. " Mutton                                                            | ... .. do.        | 0 0 3½ |
| 5. Corned Beef, rolled or round, as ordered, without bone or cartilage | ... .. do.        | 0 0 3½ |
| 6. Fresh Suet—Kidney                                                   | ... .. do.        | 0 0 4  |
| 7. Sausage Meat: } Winter months only                                  | per cental        | 1 9 2  |
| 8. Rabbits—Fresh                                                       | ... .. do.        | 1 13 4 |

ANNEX TO CONTRACT No. 1937/9.

*W. E. Glendenning, 560 Flinders-street, Melbourne, C.1.*

Sub-schedule No. 8.

MEAT FOR PENAL ESTABLISHMENT (PENTRIDGE), FEMALE PENITENTIARY, AND METROPOLITAN GAOL (COBURG).

Security, £115.

£ s. d.

- |                                                                        |                   |        |
|------------------------------------------------------------------------|-------------------|--------|
| 1. Fresh Beef (forequarters)                                           | ... .. per cental | 0 18 0 |
| 2. Corned Beef, rolled or round, as ordered, without bone or cartilage | ... .. per lb.    | 0 0 4½ |
| 3. Fresh Mutton                                                        | ... .. do.        | 0 0 3½ |
| 4. Dripping                                                            | ... .. do.        | 0 0 3½ |
| 5. Fresh Suet—Kidney                                                   | ... .. do.        | 0 0 3  |

ANNEX TO CONTRACT No. 1937/10.

*J. H. Cooke Pty. Ltd., 378 Queens-parade, Clifton Hill, N.8.*

Sub-schedule No. 9.

MEAT FOR POLICE HOSPITAL, ST. KILDA-ROAD, CHILDREN'S WELFARE DEPOT, ROYAL PARK.

Security, £30.

£ s. d.

- |                                                                      |                   |        |
|----------------------------------------------------------------------|-------------------|--------|
| 1. Fresh Beef                                                        | ... .. per cental | 1 7 1  |
| 2. Corned Beef, rolled or round as ordered without bone or cartilage | ... .. per lb.    | 0 0 4  |
| 3. Fresh Mutton                                                      | ... .. do.        | 0 0 3½ |
| 4. Sausages—Mixed                                                    | ... .. do.        | 0 0 4  |
| 5. Fresh Suet—Kidney                                                 | ... .. do.        | 0 0 4  |
| 6. Tripe—Fresh                                                       | ... .. do.        | 0 0 4  |
| 7. Steak—Rump                                                        | ... .. do.        | 0 0 10 |
| 8. Brains                                                            | ... .. per set    | 0 0 2  |
| 9. Chops—Mid Loin                                                    | ... .. per lb.    | 0 0 6  |
| 10. Rabbits—Fresh                                                    | ... .. per pair   | 0 1 2  |
| 11. Ice                                                              | ... .. per cwt.   | 0 2 0  |
| 12. Fresh Mutton—Loin                                                | ... .. per lb.    | 0 0 5  |
| 13. " " Leg                                                          | ... .. do.        | 0 0 5  |

ANNEX TO CONTRACT No. 1937/11.

J. H. Cooke Pty. Ltd., 378 Queens-parade, Clifton Hill, N.8.

Sub-schedule No. 10.

MEAT FOR RECEIVING HOUSE AND MENTAL HOSPITAL, ROYAL PARK.

Security, £35.

	£	s.	d.
1. Fresh Beef ... .. per cental	1	7	1
2. " " Buttocks ... .. do.	1	7	1
3. " " Mutton ... .. per lb.	0	0	3½
4. Corned Beef, rolled or round, as ordered, without bone or cartilage ... .. do.	0	0	4
5. Fresh Suet—Kidney ... .. do.	0	0	4
6. Ice ... .. per cwt.	0	2	0

ANNEX TO CONTRACT No. 1937/12.

Moran & Cato Pty. Ltd., 277 Brunswick-street, Fitzroy, N.6.

Sub-schedule No. 11.

SOAP MIXTURES.

(Of Commonwealth Manufacture.)

Security, £50.

	£	s.	d.
1. Antiseptic, Liquid, of approved make, in 4-gal. tins ... .. at per gallon	0	2	5
2. Extract of—Kitchen's, or equal thereto, in lb. packets ... .. per lb.	0	0	2½
3* Household, dry, equal to Kitchen's "Best Brown" Brand ... .. per cwt.	1	3	6
4. "Lux" or "Merino," as ordered, in bulk ... .. per lb.	0	0	8½
5. "Monkey Brand," or equal thereto, in tablets of 5-oz. each ... .. per doz.	0	1	11
6. Sand—Carbolic or Borax, as ordered, 12-oz. blocks, of approved brand ... .. per doz.	0	1	3
7. Soft, Genuins Potash, Best Amber ... .. per lb.	0	0	7½
8* Toilet, Brown Windsor, 7 tablets to lb., Kitchen's, or equal thereto ... .. per doz.	0	1	3
9* Toilet, "Bath," in 4½-oz. tablets, Kitchen's, or equal thereto ... .. do.	0	1	11½
10* Toilet, Carbolic, in 4-oz. tablets, Kitchen's, or equal thereto ... .. do.	0	1	10½
11* Toilet, "Castola," in 6-oz. tablets, Kitchen's, or equal thereto ... .. do.	0	2	5½
12. "Velvet," or equal thereto ... .. per d'blet	0	0	3

ANNEX TO CONTRACT No. 1937/13.

H. Berry and Co. Pty. Ltd., 580 Collins-street, Melbourne, C.1.

Sub-schedule No. 12.

TEA.

Security, £196.

	£	s.	d.
1. Tea—To sample ... .. per lb.	0	1	7½
2. " " Ration, to sample ... .. do.	0	1	4½

ANNEX TO CONTRACT No. 1937/14.

Moran & Cato Pty. Ltd., 277 Brunswick-street, Fitzroy, N.6.

COFFEE.

Security, £44.

	£	s.	d.
3. Coffee—Fresh roasted and whole—To sample ... .. per lb.	0	1	3½

Schedule No. 2.

PROVISIONS—MONT PARK, SANATORIUM, GRESWELL, &C.

(Delivery at the Mental Hospital, Mont Park, to depots as required, the Repatriation Mental Hospital, Bundoora; the Home for Mental Defectives, Janefield, and Sanatorium, Greswell.)

ANNEX TO CONTRACT No. 1937/15.

J. N. Hennessy Pty. Ltd., 55 Sydney-road, Brunswick, N.10

Sub-schedule No. 1.

BREADSTUFFS.

Security, £187.

	£	s.	d.
1. Bread - Fine wheaten, first quality ... .. per cental	0	13	2½
2. Bread—Raisin ... .. do.	0	19	0
3. Flour—First quality ... .. do.	0	14	3

ANNEX TO CONTRACT No. 1937/16.

G. A. Hardham, 36 Glenferrie-road, Malvern, S.E.A.

Sub-schedule No. 2.

GROCERIES.

Security, £65.

	£	s.	d.
1. Blue—Washing ... .. per lb.	0	0	8½
2. Biscuits—kinds as ordered ... .. do.	0	0	9
3. Candles (fullweights)—Kitchen's "Electrics," or other make of equal quality, in 1-lb. packets ... .. do.	0	0	8½
4. Cinnamon ... .. do.	0	0	7
5. Cocoa, in 1-lb. packets ... .. do.	0	0	4½
6. Coconut—Desiccated ... .. do.	0	0	7
7. Coffee Essence, Brand, "Golden Bean" per bot.	0	0	8½
8. Cornina (Maize or Corn Flour) in 1 lb. packets, Brand "Clifford Love" ... .. per lb.	0	0	5
9. Currants, 3 Crowns (present season's) ... .. do.	0	0	7
10. Curry Powder ... .. do.	0	0	8
11. Custard Powder, 1-lb. pkts. ... .. per pkt.	0	0	7½
12. Dates—Fresh, loose ... .. per lb.	0	0	5
13. Essence of Vanilla, in full 16-oz. bottles per bot.	0	2	6
14. Flour—Self-raising, Brand "Cockwell" ... .. per centl.	1	0	0
15. Herrings—Fresh and in Tomato Sauce, Brand "Marshall's" ... .. per tin	0	0	8½
16. Fruits—Preserved, Assorted—in 1-lb. 14-oz. tins ... .. do.	0	0	8½
17. Gelatine—Ground ... .. per lb.	0	2	0
18. Ginger—Ground ... .. do.	0	1	0
19. Golden Syrup, in 7-lb. tins ... .. per tin	0	1	8½
20. Honey ... .. per lb.	0	0	3½
21. Jelly Crystals, in 4-oz. packets ... .. per doz.	0	2	6
22. Lemon Peel—Cut ... .. per lb.	0	0	6
23. Macaroni ... .. do.	0	0	2½
24. Mustard—"Double Superfine" ... .. per lb.	0	1	8
25. Nutmeg—Ground ... .. per oz.	0	0	1½
26. Pepper—White, Ground ... .. do.	0	0	9½
27. Pickles—Assorted, 20-oz. bottles, Brand "Roberts" ... .. per bot.	0	0	7½
28. Pipes—Tobacco, Clay ... .. per doz.	0	0	10
29. Prunes—Dried 50-60's (present season's) per lb.	0	0	6
30. Raisins—Lexia's, 3 Crowns (present season's) ... .. do.	0	0	5½
31. Raisins—Sultana, 3 Crowns (present season's) ... .. do.	0	0	7
32. Rice—Dressed ... .. per cwt.	1	1	0
33. Rice—Ground ... .. per lb.	0	0	2½
34. Rice—Unpolished ... .. per cwt.	1	1	6
35. Salmon—Fresh, in ½-lb. tins, "Red" ... .. per tin	0	0	8½
36. Salt—Fine ... .. per cwt.	0	3	9
37. Sauce—"Worcestershire," in 10-oz. bottles, Brand "Williams & Sons" per bot.	0	0	5
38. Sauce—Tomato, in 13-oz. bottles, Brand "Clegg & Kemp's" or "Harding's" ... .. per doz.	0	5	6
39. Soda—Bicarbonate of ... .. per lb.	0	0	1½
40. Soda—Washing ... .. per cwt.	0	6	6
41. Spice—Mixed, in 1-oz. packets ... .. per pkt.	0	0	1
42. Starch (Rice), Brand "Preservens" ... .. per lb.	0	0	5½
43. Sugar—Castor ... .. do.	0	0	4½
44. Tartar—Cream of ... .. do.	0	1	3
45. Treacle, in 7-lb. Tins ... .. per tin	0	1	7½
46. Vermicelli ... .. per lb.	0	0	4
47. Vinegar—Malt ... .. per pint	0	0	1½
48. "Granbits," 14-oz. packets ... .. per pkt.	0	0	7

ANNEX TO CONTRACT No. 1937/17.

Moran & Cato Pty. Ltd., 277 Brunswick-street, Fitzroy, N.6.

Sub-schedule No. 3.

JAMS.

Security, £23.

	£	s.	d.
1. Jams—Assorted, in bulk, of approved kinds, in the proportion of half seed and half stone, of the best quality, in tins, as required, Brand "Blue Bird" ... .. weight	0	0	4½
2. Jams—Assorted, in 5-lb. tins, in the proportion of half seed and half stone of the best quality, Brand "Moran and Catos" ... .. per tin	0	2	1
3. Jam—Marmalade, in 5-lb. tins, Brand "Moran and Cato" ... .. do.	0	2	2½

Rate shown is for Kerosene tin size. Half size tins ½d. per lb. extra. Quarter size tins ¼d. per lb. extra.



ANNEX TO CONTRACT No. 1937/18.

F. Watkins Pty. Ltd., 184 Bourke-street, Melbourne, C.I.  
Sub-schedule No. 4.

MEAT.

Security, £253.

	£	s.	d.
1. Fresh Beef—Fore-quarters ... .. per cental	1	5	0
2. " " Hind-quarters ... .. do.	1	5	0
3. " " Buttocks ... .. per lb.	0	0	3½
4. " " Roast, rolled ribs ... .. do.	0	0	4½
5. " " Rump ... .. do.	0	0	10
6. " " Topside ... .. do.	0	0	5
7. " " Sirloin ... .. do.	0	0	5½
8. Beef, Corned—Rolled or round as ordered, without bone or cartilage... .. do.	0	0	4
9. Mutton, fresh—Sides ... .. do.	0	0	3½
10. Tripe—Ox ... .. do.	0	0	4
11. Brawn, fresh and pure ... .. do.	0	0	8
12. Brains—Sheep's ... .. per set	0	0	2
13. Chops—Loin ... .. per lb.	0	0	5
14. Chops—Forequarters ... .. do.	0	0	4
15. Frys—Lamb ... .. do.	0	0	4
16. Pork—Loin ... .. do.	0	0	7½
17. Sausage Meat ... .. do.	0	0	3½
18. Sausage—Pork ... .. do.	0	0	7
19. Steak—Minced ... .. do.	0	0	4
20. Fresh Suet—Kidney ... .. do.	0	0	4
21. Livers—Calves' ... .. do.	0	0	4
22. Pork German ... .. do.	0	0	8
23. Pig's Cheek ... .. do.	0	0	3
24. Mutton, Fresh—Legs ... .. do.	0	0	5
25. Kidneys—Ox ... .. each	0	0	8

ANNEX TO CONTRACT No. 1937/20.

W. E. Glendinning, 560 Flinders-street, Melbourne, C.I.  
Sub-schedule No. 3.

MEAT.

Security, £16.

	£	s.	d.
1. Fresh Beef ... .. per cental	1	13	0
2. " " Silverside ... .. do.	2	1	8
3. " " Mutton ... .. per lb.	0	0	3½
4. " " Legs ... .. do.	0	0	5½
5. " " Chops—Forequarter ... .. do.	0	0	3½
6. " " Suet—Kidney ... .. do.	0	0	3
7. Sausages ... .. do.	0	0	4½
8. Pork—Leg ... .. do.	0	0	7½
9. Frys—Lamb ... .. do.	0	0	3½
10. Ice ... .. per cwt.	0	2	0
11. Steak—Frying ... .. per lb.	0	0	5½

ANNEX TO CONTRACT No. 1937/21.

G. A. Hardham, 36 Glenferrie-road, Malvern, S.E. 4.

Sub-schedule No. 4.

VEGETABLES.

Security, £3

	£	s.	d.
1. Potatoes ... .. per cwt.	0	5	0
2. Onions ... .. do.	0	9	6
3. Other vegetables, including cauliflower, carrots, cabbages, turnips, parsnips, swedes, and pumpkin, as required ... .. do.	0	7	0

Schedule No. 4.

PROVISIONS AT TEACHERS' COLLEGE, CARLTON.

(Delivery at the College.)

ANNEX TO CONTRACT No. 1937/22.

G. A. Hardham, 36 Glenferrie-road, Malvern, S.E. 4.

Sub-schedule No. 1.

GROCERIES.

Security, £10.

	£	s.	d.
1. Barley ... .. per lb.	0	0	2½
2. Beans—Haricot ... .. do.	0	0	2
3. Candles—(Full weights) Kitchen's "Electrics" or other make of equal quality, in 1-lb. packets ... .. do.	0	0	8½
4. Castor Sugar ... .. do.	0	0	4½
5. Cheese—Kraft ... .. do.	0	1	2
6. Corn or Maize Flour, in 1-lb. packets ... .. do.	0	0	5
7. Currants—3 Crowns (present season's) ... .. do.	0	0	7
8. Custard Powder, in 1-lb. packets ... .. do.	0	0	7½
9. Dried Fruits—Asstd. (present season's) ... .. do.	0	0	10
10. Essences—Assorted, in 8-oz. bottles ... .. per bot.	0	1	4
11. Fish—Salmon, in 1-lb. tins, tails, red (Brand—"Blue Water") ... .. per tin	0	1	2
12. Fish—Sardine ... .. do.	0	0	3
13. Flour—Self-raising (Brand—"Cookwell") ... .. per lb.	0	0	2½
14. Fruit—Preserved; Assorted, in 2-lb. tins ... .. per tin	0	0	8½
15. Ginger—Ground ... .. per lb.	0	0	10
16. Golden Syrup, in 7-lb. tins ... .. per tin	0	1	8½
17. Honey ... .. per lb.	0	0	3½
18. Jelly Crystals, loose ... .. do.	0	0	10
19. Mustard—Double Superfine ... .. do.	0	1	8
20. Macaroni ... .. do.	0	0	3
21. Oatmeal—Flaked ... .. do.	0	0	2½
22. Pepper—White, Ground ... .. do.	0	0	9½
23. Pickles—Assorted, in 20-oz. bottles (Brand—"Roberts") ... .. per bot.	0	0	7½
24. Raisins—Sultana, 3 Crowns (present season's) ... .. per lb.	0	0	7
25. Rice—Dressed to sample ... .. do.	0	0	2½
26. Salt—Fine ... .. do.	0	0	0½
27. Sauce—Tomato, in 26-oz. bottles (Brand—"Williams" or "Clegg and Kemp") ... .. per bot.	0	1	0½
28. Sauce—Worcestershire, loose (Brand—"Brooks") ... .. per qt.	0	0	10½
29. Soda—Bicarbonate of ... .. per lb.	0	0	1½
30. Soda—Washing ... .. do.	0	0	0½
31. Spaghetti ... .. per pkt.	0	0	5
32. Spice—Mixed, loose ... .. per lb.	0	1	0
33. Starch—Rice (Brand—"Preservene") ... .. do.	0	0	5½
34. Tartar—Cream of ... .. do.	0	0	1 4
35. Tomatoes—Tinned—"Jones Millers" or "A.J.C." ... .. per tin	0	0	6½
36. Vinegar—Malt ... .. per gal.	0	1	0
37. "Pipers", in 24-oz. packets ... .. per pkt.	0	0	9
38. Weetbix—Large ... .. " " " " " "	0	0	10½
39. Puffed Wheat—Large ... .. per pkt.	0	0	3½

Schedule No. 3.  
PROVISIONS FOR S.S. RIP AND DREDGES.

Supplies to be delivered to Dredging Depot, Williamstown, Victoria Dock, or River Yarra Wharfs, as ordered.  
(Supplies for Naval Forces are not included in this schedule.)

Sub-schedule No. 1.

BREAD.

	per cental	Purchase by agreement.
1. Bread—Fine wheat, first quality ... ..		

ANNEX TO CONTRACT No. 1937/19.

G. A. Hardham, 36 Glenferrie-road, Malvern, S.E. 4.

Sub-schedule No. 2.

GROCERIES.

Security, £20.

	£	s.	d.
1. Bacon Rashers, Farmer's or Hutton's or equal thereto ... .. per lb.	0	0	11
2. Biscuits—Cabin Bred or the like ... .. do.	0	0	5
3. Butter—First class creamery, to score not less than 91 points, Government grade, commerce regulations standard ... .. do.	0	1	3
4. Coffee—fresh roasted and ground, to sample ... .. do.	0	1	0
5. Currants—3 Crowns (present season's) ... .. do.	0	0	4
6. Eggs—New Laid ... .. per doz.	"	"	"
7. Flour—First quality ... .. per lb.	0	0	1½
8. Flour—Self-raising ... .. do.	0	0	2
9. Janis—Assorted, of approved kinds, in proportion of half seed and half stone, in 24-oz. tins—"Williams and Sons" ... .. per tin	0	0	7
10. Meat—Preserved, beef or mutton, in 1-lb. tins ... .. do.	0	0	4½
11. Milk—Condensed, "Full Cream" ... .. do.	0	0	6½
12. Mustard—Double Superfine ... .. per lb.	0	1	8
13. Oatmeal ... .. do.	0	0	2
14. Oatmeal—Flaked ... .. do.	0	0	2
15. Pearl barley ... .. do.	0	0	2
16. Peas—Split ... .. do.	0	0	2
17. Pepper—White, ground ... .. do.	0	0	9
18. Pickles—Assorted, 20-oz. bottles ... .. per bot.	0	0	7½
19. Raisins—Sultana, 3 Crowns (present season's) ... .. per lb.	0	0	4
20. Rice—Dressed, to sample ... .. do.	0	0	2½
21. Salt—Fine ... .. do.	0	0	0½
22. Sauce—Tomato, 13-oz. bottles—"Clegg & Kemp's" or "Harding's" ... .. per bot.	0	0	5
23. Sauce—Worcester, 10-oz. bottles—"Williams & Sons" ... .. do.	0	0	5
24. Tea, to sample ... .. per lb.	0	1	5
25. Vinegar—Malt ... .. per gal.	0	1	0

\* At Market Rates as published in Argus on Wednesdays.

ANNEX TO CONTRACT No. 1937/23.  
B. Hosking, 429 High-street, Northcote, N.16.  
Sub-schedule No. 2.

**MEAT.**  
Security, £25.

ALSO TRAVANCORE SPECIAL SCHOOL, FLEMINGTON.

		£	s.	d.
1. Fresh Beef—Prime Ribs .. ..	per lb.	0	0	5
2. Beef—Silverside—Corned .. ..	do.	0	0	5½
3. Fresh Beef Shin—Meat and Bone ..	do.	0	0	2½
4. " " Sirloin .. ..	do.	0	0	6½
5. " " " Rump .. ..	do.	0	0	11
6. " " " Round or Topside Steak	do.	0	0	5½
7. " " " Stewing (when required Minced)	do.	0	0	4
8. " " Silver Side .. ..	do.	0	0	5½
9. " " Mutton—Chops (leg) .. ..	do.	0	0	5½
10. " " " (loin) .. ..	do.	0	0	5½
11. " " " (cutlets) .. ..	do.	0	0	5½
12. " " Leg .. ..	do.	0	0	5½
13. " " Loin .. ..	do.	0	0	5
14. " " In sides .. ..	do.	0	0	3½
15. " " Lamb—Cutlets .. ..	do.	0	0	9
16. " " Leg .. ..	do.	0	0	7½
17. " " Loin .. ..	do.	0	0	8½
18. Pork—Leg .. ..	do.	0	0	8½
19. " Chop .. ..	do.	0	0	9
20. " Pickled .. ..	do.	0	0	8
21. Veal—Cutlets and Leg .. ..	do.	0	0	6
22. " Fillet .. ..	do.	0	0	6
23. Fry—Lamb's .. ..	do.	0	0	3½
24. Kidneys—Sheep's .. ..	each	0	0	1
25. Sausages—Best (Pork or Beef-mixed)	per lb.	0	0	6
26. Sausage Meat .. ..	do.	0	0	3
27. Fresh Suet—Kidney .. ..	do.	0	0	3
28. Tripe .. ..	do.	0	0	3
29. Ice .. ..	per cwt.	0	2	3

ANNEX TO CONTRACT No. 1937/24.  
G. A. Hardham, 36 Glenferrie-road, Malvern, S.E.4.  
Sub-schedule No. 3.

**JAMS.**  
Security, £10.

		£	s.	d.
1. Jams—Assorted, of approved kinds, in the proportion of half seed and half stone, of the best quality, in 5-lb. tins— Brand "A.J.C." .. ..	per tin	0	2	1

Schedule No. 5.  
**PROVISIONS—ARARAT DISTRICT.**

ANNEX TO CONTRACT No. 1937/25.  
W. Bates, Ararat.  
Sub-schedule No. 1.

**BREADSTUFFS.**  
Security, £75.

		£	s.	d.
1. Bread—Fine wheaten, first quality ..	per cental	0	14	0½
2. Flour—First quality .. ..	do.	0	14	0

ANNEX TO CONTRACT No. 1937/26.  
Moran and Cato Pty. Ltd., 277 Brunswick-street, Fitzroy, N.6.  
Sub-schedule No. 2.

**GROCERIES.**  
Security, £20.

		£	s.	d.
1. Beans—Haricot—Fresh and clean ..	per cwt.	0	18	6
2. Blue—Washing .. ..	per lb.	0	0	8½
3. Candles (full weights)—Kitchen's "Electrines," or other make of equal quality, to be supplied in 1-lb. packets	do.	0	0	9½
4. Cocoa—in 1 lb. tins or cardboard cartons	do.	0	0	5½
5. Corn or Maize Flour, in packets of 1 lb. net .. ..	do.	0	0	5½
6. Curry Powder .. ..	do.	0	0	8½
7. Golden Syrup (in 56-lb. tins) .. ..	per tin	0	14	3
8. Mustard—Double Superfine .. ..	per lb.	0	2	0
9. Pepper—Black, ground .. ..	do.	0	0	9½
10. Pipes—Tobacco, clay .. ..	per doz.	0	0	10½
11. Raisins—Sultana, 3 Crowns (present season's) .. ..	per lb.	0	0	7
12. Rice—dressed, to sample .. ..	per cwt.	1	4	3
13. Salt—Fine .. ..	do.	0	6	6
14. Soda—Bicarbonate of .. ..	per lb.	0	0	2½
15. " Washing .. ..	per cwt.	0	8	9
16. Starch (Rice)—"Preservene" .. ..	per lb.	0	0	6
17. Tartar—Cream of .. ..	do.	0	1	3½

ANNEX TO CONTRACT No. 1937/27.  
Moran and Cato Pty. Ltd., 277 Brunswick-street, Fitzroy, N.6.  
Sub-schedule No. 3.

**JAMS.**  
Security, £6.

		£	s.	d.
1. Jams, assorted, of approved kinds in the proportion of half seed and half stone, of the best quality, in bulk, as required—"Blue Bird" .. ..	per lb. actual net weight	0	0	4½

Rate shown is for Kerosene Tin size, Half size tins  
½d. per lb. extra, Quarter size tins ¼d. per lb. extra.

ANNEX TO CONTRACT No. 1937/28.  
H. T. Impey, 139 Barkly-street, Ararat.  
Sub-schedule No. 4.

**MEAT.**  
Security, £100.

		£	s.	d.
1. Fresh Beef—Fore-quarters .. ..	per cental	0	17	6
2. " " Hind-quarters .. ..	do.	1	3	6
3. " " Buttocks .. ..	do.	1	3	6
4. " Mutton .. ..	do.	0	19	10
5. Corned Beef—Rolled or round, as ordered, without bone or cartilage .. ..	do.	0	18	6

Schedule No. 6.  
**PROVISIONS—BALLARAT DISTRICT.**

ANNEX TO CONTRACT No. 1937/29.  
Brogden Bros., Lal Lal-street, Ballarat.  
Sub-schedule No. 1.

**BREADSTUFFS.**  
Security, £75.

		£	s.	d.
1. Bread—Fine wheaten, first quality ..	per cental	0	11	3½
2. Flour—First quality .. ..	do.	0	13	0

ANNEX TO CONTRACT No. 1937/30.  
Moran and Cato Pty. Ltd., 277 Brunswick-street, Fitzroy, N.6.  
Sub-schedule No. 2.

**GROCERIES.**  
Security, £20.

		£	s.	d.
1. Blue—Washing .. ..	per lb.	0	0	8½
2. Candles (full weights)—Kitchen's "Electrines," in 1-lb. packets .. ..	do.	0	0	9½
3. Corn or Maize Flour, in packets of 1 lb. net .. ..	do.	0	0	5½
4. Currants, 3 Crowns (present season's) .. ..	do.	0	0	6½
5. Curry Powder .. ..	do.	0	0	8
6. Golden Syrup (in 7-lb. tins) .. ..	per tin	0	1	9
7. Mustard—Double Superfine .. ..	per lb.	0	2	0
8. Pepper—Black, ground .. ..	do.	0	0	7½
9. Pipes—Tobacco, clay .. ..	per doz.	0	0	11½
10. Raisins—Sultana, 3 Crowns (present season's) .. ..	per lb.	0	0	6½
11. Rice—dressed, to sample .. ..	per cwt.	1	3	0
12. Salt—Fine .. ..	do.	0	4	6
13. Soda—Bicarbonate of .. ..	per lb.	0	0	1½
14. " Washing .. ..	per cwt.	0	8	0
15. Spice—Mixed, in 1-oz. packets .. ..	per doz. pkts.	0	1	0
16. Starch (Rice)—"Preservene" .. ..	per lb.	0	0	6
17. Tartar—Cream of .. ..	do.	0	1	4
18. Vinegar—Malt .. ..	per qt.	0	0	3

ANNEX TO CONTRACT No. 1937/31.  
Moran and Cato Pty. Ltd., 277 Brunswick-street, Fitzroy, N.6.  
Sub-schedule No. 3.

**JAMS.**  
Security, £8.

		£	s.	d.
1. Jams—Assorted, in bulk, of approved kinds, in proportion of half seed and half stone, of the best quality, in tins as required. Brand "Blue Bird" .. ..	per lb. actual net weight	0	0	4½
2. Jams—Assorted, in 24-oz. tins, in the proportion of half seed and half stone, of the best quality. Brand "Blue Bell," and "Poplar" .. ..	per tin	0	0	7½
3. Jams—Assorted, in 5-lb. tins, in the proportion of half seed and half stone, of the best quality. Brand "Blue Bell" .. ..	per tin	0	2	0½

Rate shown is for Kerosene Tin size. Half size tins, ½d. per lb. extra. Quarter size tins, ¼d. per lb. extra.

ANNEX TO CONTRACT No. 1937/32.

*H. J. Symons Pty. Ltd., 1015 Macarthur-street, Ballarat.*

Sub-schedule No. 4.

MEAT.		Security, £125.	£	s.	d.
1.	Fresh Beef—Fore-quarters	... per cental	1	2	0
2.	" " Hind-quarters	... do.	1	2	0
3.	" " Buttocks	... do.	1	8	0
4.	" Mutton	... do.	1	7	0
5.	Corned Beef, rolled or round, as ordered, without bone or cartilage	... do.	1	6	0
6.	Fresh Suet—Kidney	... do.	1	2	0

Schedule No. 7.

**PROVISIONS—BEECHWORTH DISTRICT.**

ANNEX TO CONTRACT No. 1937/33.

*Wm. Price, Newtown, Beechworth.*

Sub-schedule No. 1.

BREADSTUFFS.		Security, £100.	£	s.	d.
1.	Bread—Fine wheaten, first quality	... per cental	0	16	8
2.	Flour—First quality	... do.	0	15	0

ANNEX TO CONTRACT No. 1937/34.

*Moran and Cato Pty. Ltd., 277 Brunswick-street, Fitzroy, N.6.*

Sub-schedule No. 2.

GROCERIES.		Security, £15.	£	s.	d.
1.	Blue—Washing	... per lb.	0	0	8 $\frac{3}{4}$
2.	Candles (full weights)—Kitchen's "Electrines," or other make of equal quality, 1 lb. packets	... do.	0	0	9 $\frac{1}{2}$
3.	Cocoa, in 1 lb. cardboard cartons	... per lb.	0	0	6
4.	Corn or Maize Flour, in packets of 1 lb. net	... do.	0	0	5 $\frac{1}{2}$
5.	Golden Syrup, in 7-lb. tins	... per tin	0	2	0
6.	Mustard, Double Superfine	... per lb.	0	2	0
7.	Pepper—Black, ground	... per lb.	0	0	8 $\frac{1}{2}$
8.	Pipes—Tobacco, clay	... per doz.	0	0	11
9.	Raisins—Sultana, 3 Crowns (present season's)	... per lb.	0	0	7
10.	Salt—Fine	... per cwt.	0	7	0
11.	Soap—"Monkey Brand," or equal thereto—in 5-oz. tablets	... per tab.	0	0	2 $\frac{1}{2}$
12.	Soap—Sand, Carbolic, or Borax, in 12-oz. blocks	... per block	0	0	2 $\frac{1}{2}$
13.	Soda—Bicarbonate of	... per lb.	0	0	2
14.	" Washing	... per cwt.	0	9	0
15.	Solvol, in 6-oz. tablets	... per tab.	0	0	4 $\frac{1}{2}$
16.	Starch (Rice)—"Preservene"	... per lb.	0	0	6 $\frac{1}{2}$
17.	Tartar—Cream of	... do.	0	1	4
18.	Vinegar—Malt	... per qt.	0	0	4 $\frac{1}{2}$
19.	Rice—Dressed	... per cwt.	1	4	0

ANNEX TO CONTRACT No. 1937/35.

*Moran and Cato Pty. Ltd., 277 Brunswick-street, Fitzroy, N.6.*

Sub-schedule No. 3.

JAMS.		Security, £8.	£	s.	d.
1.	Jams - Assorted, in bulk, of approved kinds in the proportion of half seed and half stone, of the best quality, in tins as required actual net Brand "Blue Bird"	... weight	0	0	4 $\frac{1}{2}$

Rate shown is for Kerosene Tin size. Half size tins  $\frac{1}{2}$ d. per lb. extra. Quarter size tins  $\frac{1}{4}$ d. per lb. extra.

Sub-schedule No. 4.

ANNEX TO CONTRACT No. 1937/36.

*Molony Bros., 59 Rowan-street, Wangaratta.*

MEAT.		Security £90.	£	s.	d.
1.	Fresh Beef—Fore quarters	} per cental	1	2	2 $\frac{1}{2}$
2.	" " Hind-quarters				
3.	" " Buttocks				
4.	" Mutton				

Schedule No. 8.

**PROVISIONS—BENDIGO DISTRICT.**

ANNEX TO CONTRACT No. 1937/37.

*T. J. Schulz and Sons Pty. Ltd., 158 High-street, Bendigo.*

Sub-schedule No. 1.

BREAD.		Security, £3.	£	s.	d.
1.	Bread—Fine Wheaten, first quality	... per cental	0	13	6

ANNEX TO CONTRACT No. 1937/38.

*H. Gillins, 350 Hargreaves-street, Bendigo.*

Sub-schedule No. 2.

MEAT.		Security, £28.	£	s.	d.
1.	Fresh Beef	... per cental	1	4	

Schedule No. 9.

**PROVISIONS—CASTLEMAINE DISTRICT.**

ANNEX TO CONTRACT No. 1937/39.

*Rasmussen Bros., Johnston-street, Castlemaine.*

Sub-schedule No. 1.

BREAD.		Security, £14.	£	s.	d.
1.	Bread—Fine Wheaten, first quality	... per cental	0	18	9

ANNEX TO CONTRACT No. 1937/40.

*P. L. Gill, Castlemaine.*

Sub-schedule No. 2.

MEAT.		Security, £16.	£	s.	d.
1.	Fresh Beef	... per cental	1	6	9

Schedule No. 10.

**PROVISIONS—SCHOOL OF FORESTRY, CRESWICK.**

FOR STUDENTS AT THE SCHOOL OF FORESTRY.  
(Delivery at the School.)

ANNEX TO CONTRACT No. 1937/41.

*C. C. Bowley, Albert-street, Creswick*

Sub-schedule No. 1.

BREADSTUFFS.		Security, £3.	£	s.	d.
1.	Bread—Fine wheaten, first quality	... per cental	1	1	10 $\frac{1}{2}$
2.	Flour—First quality	... per lb.	0	0	2 $\frac{1}{2}$

ANNEX TO CONTRACT NO. 1937/42.  
**J. Tait & Son, Albert-street, Creswick.**  
 Sub-schedule No. 2.

GROCCRIES.

Security, £5. £ s. d.

1. Barley—Pearl ... .. per lb. 0 0 2½
2. Blue—Washing ... .. do. 0 0 9½
3. Butter—First grade creamery, to score not less than 91 points, Government grade, commerce regulations standard do. 0 1 4
4. Cheese—First-class quality, matured ... do. 0 0 10½
5. Coffee—Fresh Roasted and Whole—Beans to be thoroughly sound, to sample do. 0 1 5
6. Corn or Maize Flour, in packets of 1 lb. net ... .. do. 0 0 7
7. Eggs, new laid ... .. per doz. 0 0 10
8. Ginger—Ground ... .. per lb. 0 1 1
9. Golden Syrup, in 7-lb. tins ... .. per tin 0 1 10
10. Jams, assorted, in 5-lb. tins, not, in the proportion of half seed and half stone—Brand "Red Feather" ... do. 0 2 1
11. Mustard—Double Superfine ... .. do. 0 2 0
12. Oatmeal ... .. do. 0 0 2½
13. Peas—Split ... .. do. 0 0 2½
14. Pepper—Black, ground ... .. do. 0 0 8
15. Raisins—Sultana, 3 Crowns (present season's) ... .. do. 0 0 7
16. Rice—Dressed, to sample ... .. do. 0 0 2½
17. Salt—Fine ... .. do. 0 0 0½
18. Soap—Household, yellow, dry, and hard, to sample ... .. do. 0 0 3
19. Soap—Sand, Carbolic, in 12-oz. blocks ... each 0 0 1½
20. Soda—Bicarbonate of ... .. per lb. 0 0 1½
21. Soda—Washing ... .. do. 0 0 1
22. Starch (Rice)—Brand "Preservene" ... do. 0 0 6
23. Tartar—Cream of ... .. do. 0 1 3
24. Tea—"No. 2 Robur" ... .. do. 0 2 1
25. Vinegar—Malt ... .. per pint 0 0 1½
26. Potatoes ... .. per cwt. 0 6 0

ANNEX TO CONTRACT NO. 1937/43.  
**Eric Coughlan, Albert-street, Creswick.**  
 Sub-schedule No. 3.

MEAT.

Security, £4. £ s. d.

1. Fresh Beef—Fore-quarter ... .. per lb. 0 0 4½
2. " Mutton ... .. do. 0 0 6
3. Corned Beef, rolled or round, as ordered, without bone or cartilage ... .. do. 0 0 5
4. Pork (Leg) ... .. do. 0 0 6
5. Fresh Suet—Kidney ... .. do. 0 0 2

ANNEX TO CONTRACT NO. 1937/44.  
**Emma E. Polbard, Eastern Hill, Creswick.**  
 Sub-schedule No. 4.

MILK.

Security, £3. £ s. d.

1. Milk—Fresh and pure ... .. per quart 0 0 5

Schedule No. 11.  
**PROVISIONS—McLEOD SETTLEMENT, FRENCH ISLAND.**

DELIVERY TO BE MADE AT LANG LANG JETTY.

ANNEX TO CONTRACT NO. 1937/45.  
**Janies Jackson, Lang Lang.**  
 Sub-schedule No. 1.

BREAD.

Security, £12. £ s. d.

1. Bread—Fine, Wheaten, first quality ... per cental 0 18 9

ANNEX TO CONTRACT NO. 1937/46.  
**A. G. Glasscock, Lang Lang.**  
 Sub-schedule No. 2.

GROCCRIES.

Security, £5. £ s. d.

1. Butter—First grade creamery, to score not less than 91 points, Government grade ... per lb. 0 1 3
2. Cheese—Matured ... .. do. 0 0 10
3. Jams—Assorted, in proportion of half seed and half stone, of best quality, in 24-oz. tins, "Henry Williams" ... per tin 0 0 8
4. Oatmeal ... .. per cwt 0 18 6
5. Rice—Dressed, to sample ... .. per lb. 0 0 2½
6. Salt—Fine ... .. do. 0 0 0½
7. Soda—Washing ... .. do. 0 0 0½
8. Tea—To sample ... .. do. 0 1 8.
9. " Ration, to sample ... .. do. 0 1 4½

ANNEX TO CONTRACT NO. 1937/47.  
**E. W. Mission, Lang Lang.**

Sub-schedule No. 3.  
 MEAT.  
 Security £20. £ s. d.

1. Fresh Beef—Hind-quarters ... .. per cental 2 1 8
2. " Mutton ... .. per lb 0 0 5
3. Corned Beef, rolled or round as ordered, without bone or cartilage ... .. do. 0 0 4

Schedule No. 12.  
**PROVISIONS—GEELONG DISTRICT.**

ANNEX TO CONTRACT NO. 1937/48  
**Podbury Bros., 47 Little Myers-street, Geelong.**  
 Sub-schedule No. 1.

BREAD.

Security, £25. £ s. d.

1. Bread—Fine Wheaten, first quality ... per cental 0 17 8½

ANNEX TO CONTRACT NO. 1937/49.  
**Mary G. O'Brien, 491 Moorabool-street, South Geelong.**  
 Sub-schedule No. 2.

MEAT.

Security, £40. £ s. d.

1. Fresh Beef ... .. per cental 1 6 0
2. " Buttocks ... .. do. 1 6 0
3. Corned Beef—Rolled or round, without bone or cartilage ... .. do. 1 6 0

ANNEX TO CONTRACT NO. 1937/50.  
**E. P. Mayes, 47 Little Ryrie-street, Geelong.**  
 Sub-schedule No. 3.

MILK.

Security, £3. £ s. d.

- Milk—Fresh and pure ... .. per gallon 0 1 2

Schedule No. 13.  
**PROVISIONS—SANATORIUM, GREENVALE.**  
 (DELIVERY AT THE SANATORIUM.)

ANNEX TO CONTRACT NO. 1937/51.  
**David Bignell, Campbellfield.**  
 Sub-schedule No. 1.

BREADSTUFFS.

Security, £7 £ s. d.

1. Bread—Fine wheaten, first quality ...per cental 0 15 6
2. Flour—First quality ... .. do. 0 13 0
3. " Wholemeal ... .. per lb. 0 0 1½
4. " Wheatmeal ... .. do. 0 0 1½

ANNEX TO CONTRACT NO. 1937/52.  
**G. A. Hardham, 36 Glenferrie-road, Malvern, S.E.A.**  
 Sub-schedule No. 2.

GROCCRIES.

Security, £5. £ s. d.

1. Beans—Lima ... .. per lb. 0 0 3½
2. Biscuits—Kinds as ordered, in 3-lb. tins... per tin 0 2 3
3. Blue—Washing ... .. per lb. 0 0 9
4. Borax ... .. do. 0 0 3
5. Cheese—Matured, in 10-lb. loaves ... .. do. 0 0 11
6. Cocoa—In 1-lb. packets ... .. do. 0 0 5
7. Coconut—Desiccated ... .. do. 0 0 7
8. Cornina (Maize or Corn Flour) in packets of 1 lb. net ... .. do. 0 0 5
9. Curry Powder ... .. do. 0 0 8
10. Currants—3 Crowns (present season's) ... do. 0 0 7
11. Custard Powders, in 1-lb. packets ... per pkt. 0 0 7½
12. Dates ... .. per lb. 0 0 5
13. Essence of Lemon—In full 8 oz. bottles per bot. 0 1 3
14. Essence of Vanilla, in full 8-oz. bottles do. 0 1 3
15. Flour—Self raising brand "Cookwell" ... per lb. 0 0 2½
16. { Fruit—Dried, Pears ... .. do. 0 0 7½
- " " Peaches ... .. do. 0 0 10
- " " Apricots ... .. do. 0 1 2
- " " Apples ... .. do. 0 0 8
17. Fruits—Preserved ... .. per tin 0 0 8½
18. Gelatine—Powdered ... .. per lb. 0 2 3
19. Ginger—Ground ... .. per lb. 0 1 0
20. Golden Syrup, in 7-lb. tins ... .. per tin 0 1 8½
21. Jams—Assorted, in 5-lb. tins in the proportion of half seed and half stone, Brand "A.J.C." or "Williams & Son" do 0 2 1
22. Jelly Crystals, loose ... .. per lb. 0 0 10
23. Lemon Peel ... .. do. 0 0 6
24. Macaroni ... .. do. 0 0 3
25. Mustard—"Double Superfine" ... .. do. 0 1 8
26. Nutmeg—Ground ... .. do. 0 1 9

Sub-schedule No. 2—continued.  
GROCERIES—continued.

		£	s.	d.	
27.	Spice—Mixed, in 1-oz packets ... ..	per pkt.	0	0	1
28.	Pepper—White, ground ... ..	dc.	0	0	8
29.	Powder—Baking, in 1-lb. tins ... ..	per tin	0	1	0
30.	Prunes—Dried 50-60's (present season's) per lb.		0	0	6
31.	Raisins, 3 Crowns (present season's) ... ..	do.	0	0	7
32.	Raisins—Sultana, 3 Crowns (present season's) ... ..	do.	0	0	7
33.	Rice—Dressed, to sample ... ..	do.	0	0	2½
34.	Rice—Ground ... ..	do.	0	0	2½
35.	Salmon—Fresh, in ½-lb. tins—Red ... ..	per tin	0	0	8
36.	Salt—Fine ... ..	per lb.	0	0	0½
37.	Sauce—"Worcestershire," 10-oz. bottles Brand "Willains & Son" ... ..	per bot.	0	0	5
38.	Sauce—Tomato, 13-oz. bottles—Brand "Harding's" or "Clegg & Kemp's" ... ..	do.	0	0	5½
39.	Soda—Bicarbonate of ... ..	per lb.	0	0	1½
40.	Soda—Washing ... ..	per cwt.	0	6	6
41.	Spaghetti ... ..	per lb.	0	0	4½
42.	Starch—Rice "Preservene" ... ..	per lb.	0	0	5½
43.	Sugar—Castor ... ..	do.	0	0	4
44.	Tartar—Cream of ... ..	per lb.	0	1	3
45.	Tomatoes—preserved, in 2-lb. tins ... ..	per tin	0	0	6½
46.	Treacle, in 7-lb. tins ... ..	do.	0	1	7½
47.	Vermicelli ... ..	do.	0	0	4½
48.	Vinegar, Malt ... ..	per pint	0	"	1½
49.	"Pipers," or equal thereto, in 21-oz. packets ... ..	per pkt.	0	0	8½

ANNEX TO CONTRACT No. 1937/53.

J. H. Cooke Pty. Ltd., 378 Queens-parade, Clifton Hill, N.8.

Sub-schedule No. 3.

MEAT.

Security, £20. £ s. d.

1.	Beef, Fresh—Roast ... ..	per cental	1	17	6
2.	" " " " Topside ... ..	per lb.	0	0	5
3.	" " " " Corned ... ..	do.	0	0	4
4.	Mutton, Fresh (sides) ... ..	do.	0	0	4
5.	Tripe, Ox (during winter) ... ..	do.	0	0	4
6.	Sausages—Mixed ... ..	do.	0	0	4
7.	Steak—Minced ... ..	do.	0	0	4
8.	Frys—Lambs' ... ..	do.	0	0	4
9.	Brains—Sheep's ... ..	per set	0	0	2
10.	Chops—Loin ... ..	per lb.	0	0	6
11.	Pork—Loin ... ..	do.	0	0	8
12.	Suet Kidney—Fresh ... ..	do.	0	0	4
13.	Saveloys ... ..	per doz.	0	1	0
14.	Veal ... ..	per lb.	0	0	4
15.	Kidneys—Ox ... ..	each	0	0	8

Schedule No. 14.

PROVISIONS—ABORIGINAL STATION, LAKE TYERS.

(Delivery at Lake Tyers Station.)

ANNEX TO CONTRACT No. 1937/54.

L. T. Freeman, Lakes Entrance.

Sub-schedule No. 1.

BREADSTUFFS.

Security, £25.

Item No.	Article.	—			
		£ s. d.			
1	Bread—Fine wheaten, first quality ... ..	per cental	0	14	7
2	Flour—First quality ... ..	"	0	15	6

Sub-schedule No. 2.

ANNEX TO CONTRACT No. 1937/55.

L. T. Freeman, Lakes Entrance.

GROCERIES.

Security, £14.

Item No.	Article.	—			
		£ s. d.			
1	Baking Powder, Snowflake, in 1-lb. tins ... ..	per lb.	0	0	10
2	Candles—(Full weights) Kitchen's "Electrines," or other make of equal quality, in 1-lb. packets	"	0	0	9½
3	Coffee, Fresh, roasted and whole. Beans to be thoroughly sound—to sample ... ..	"	0	1	4
4	Cocoa, in 1-lb. tins or cardboard cartons ... ..	"	0	0	6
5	Corn or Maize Flour, in 1-lb. packets ... ..	"	0	0	6
6	Currants—3 Crowns (present season's) ... ..	"	0	0	7½
7	Curry Powder ... ..	"	0	1	0
8	Matches, Safety—60 in a box ... ..	per gross	0	5	3
9	Mustard—Double Superfine ... ..	per lb.	0	1	9
10	Pepper—Black, ground, in ½-lb. tins ... ..	per tin	0	0	4
11	Raisins—Sultana, 3 Crowns (present season's) ... ..	per lb.	0	0	7½
12	Rice—Dressed—to sample ... ..	per cwt.	1	4	6
13	Salt—Coarse ... ..	"	0	7	0
14	" Fine ... ..	"	0	7	0
15	Soap—Household, hard and dry, to sample ... ..	"	1	5	6
16	Soda—Bicarbonate ... ..	per lb.	0	0	2
17	" Washing ... ..	"	0	0	1½
18	Tartar, Cream of ... ..	"	0	1	3
19	Treacle, in 7-lb. tins ... ..	per tin	0	1	11
20	Vinegar—Malt ... ..	per quart	0	0	4½

ANNEX TO CONTRACT No. 1937/56.

L. T. Freeman, Lakes Entrance.

Sub-schedule No. 3.

JAMS.

Security, £3.

1	Jams, assorted, in 24-oz. tins (in the proportion of half seed, half stone)—Brand "O.K." ... ..	per tin	0	0	9
---	-------------------------------------------------------------------------------------------------	---------	---	---	---

Schedule No. 15.

PROVISIONS AT RUTHERGLEN.

(For Students at Viticultural College.)

DELIVERY AT THE COLLEGE.

ANNEX TO CONTRACT No. 1937/57.

J. E. Thomas, Main-street, Rutherglen.

Sub-schedule No. 1.

BREADSTUFFS.

	£	s.	d.
1. Bread—Fine wheaten, first quality ... per cental	1	0	3 $\frac{3}{4}$
2. Flour—First quality... .. do. Purchase by agreement.			

ANNEX TO CONTRACT No. 1937/58.

Moran and Cato Pty. Ltd., 277 Brunswick-street, Fitzroy, N.6.

Sub-schedule No. 2.

GROCERIES, ETC.

	£	s.	d.
1. Candles—(Full weights) Kitchen's "Electrics," or other make of equal quality, in 1-lb. packets ... per lb.	0	0	9 $\frac{3}{4}$
2. Corn or Maize Flour, in packets of 1-lb. net ... .. do.	0	0	6
3. Coconut—Desiccated ... .. do.	0	0	7
4. Currants—3 Crowns (present season's) ... .. do.	0	0	7 $\frac{1}{2}$
5. Fish, Preserved, Salmon, Fresh Herrings, as required, in 1-lb. tins ... per tin	0	0	9
6. Fruits, Preserved, assorted, in 2-lb. tins (not including Pineapple) ... do.	0	0	9 $\frac{3}{4}$
7. Macaroni or Vermicelli, as ordered ... per lb.	0	0	4
8. Matches—Safety ... .. per pkt.	0	0	5
9. Oatmeal—Flaked or other ... .. per lb.	0	0	2 $\frac{1}{2}$
10. Pepper—Black or White, ground ... .. do.	0	0	10 $\frac{1}{2}$
11. Potatoes, dry and free from dirt ... per cwt.	0	12	6
12. Raisins—Sultana, 3 Crowns (present season's) ... .. per lb.	0	0	7 $\frac{1}{2}$
13. Rice—Dressed, to sample ... .. do.	0	0	3
14. Salt—Fine ... .. do.	0	0	1 $\frac{1}{2}$
15. Sauce, Tomato, "Clipper," 13-oz. bottles per bot.	0	0	7
16. Soap—Household, yellow, to sample ... per lb.	0	0	3 $\frac{1}{2}$
17. " " "Monkey Brand," or equal thereto, in 5-oz. tablets ... per tab.	0	0	2 $\frac{1}{2}$
18. " " Toilet, "Bath," in 4 $\frac{1}{2}$ -oz. tablets, to sample, Kitchen's, or equal thereto ... .. per doz.	0	3	0
19. " " Sand, in 12-oz. blocks ... .. per block	0	0	1 $\frac{1}{2}$
20. Soda—Washing ... .. per lb.	0	0	1 $\frac{1}{2}$
21. Sugar—Icing ... .. do.	0	0	1 $\frac{1}{2}$
22. Tea, to sample ... .. do.	0	1	8

Sub-schedule No. 3.

MEAT.

	£	s.	d.
1. Beef—Fresh ... .. per cental			

Schedule No. 16.

PROVISIONS AT SALE.

(Delivery at the Gaol.)

ANNEX TO CONTRACT No. 1937/59.

M. Keily, 102 Raymond-street, Sale.

Sub-schedule No. 1.

BREAD.

	£	s.	d.
1. Bread—Fine Wheaten, First Quality... per cental	0	16	8

Sub-schedule No. 2.

MEAT.

1. Fresh Beef—Stewing ... .. per lb.	} Purchase by agreement
2. " Mutton ... .. do.	

Schedule No. 17.

PROVISIONS—PLEASANT CREEK STATE SCHOOL, STAWELL.

(Delivery at the School.)

ANNEX TO CONTRACT No. 1937/60.

A. N. Crean, Main-street, Stawell.

Sub-schedule No. 1.

BREADSTUFFS.

	£	s.	d.
1. Bread—Fine Wheaten, First quality ... per cental	0	14	0
2. Flour, First quality ... .. do.	0	16	0

ANNEX TO CONTRACT No. 1937/61.

Moran and Cato Pty. Ltd., 277 Brunswick-street,

Fitzroy, N.6.

Sub-schedule No. 2.

GROCERIES.

	£	s.	d.
1. Barley—Pearl ... .. per lb.	0	0	2 $\frac{1}{2}$
2. Blue—Washing ... .. do.	0	0	9
3. Cheese—Matured ... .. do.	0	1	3
4. Cocoa—In 1-lb. tins or cardboard cartons ... do.	0	0	5 $\frac{1}{2}$
5. Coffee—Ground, to sample ... .. do.	0	1	4
6. Cornina (Maize or Cornflour) in 1-lb. packets ... .. do.	0	0	6
7. Curry Powder ... .. do.	0	0	8 $\frac{1}{2}$
8. Ginger—Ground ... .. do.	0	0	11 $\frac{1}{2}$
9. Golden Syrup, in 7-lb. tins ... .. per tin	0	1	10
10. Honey ... .. per lb.	0	0	4
11. Jams—Assorted, of approved kinds, in proportion of half seed and half stone, in tins containing 24 oz. net—Brand "Blue Bell" and "Poplar" ... per tin	0	0	7 $\frac{1}{2}$
12. Lemon Peel ... .. per lb.	0	0	7
13. Oatmeal ... .. do.	0	0	2
14. Peas—Split ... .. do.	0	0	2 $\frac{1}{2}$
15. Pepper—Black, Ground ... .. do.	0	0	9
16. Prunes—Dried, 50-60's—Present season's ... .. do.	0	0	7
17. Raisins—Sultana, 3 Crowns, present season's ... .. do.	0	0	7 $\frac{1}{2}$
18. Rice—Dressed to sample ... .. per cwt.	1	3	9
19. Salt—Fine ... .. do.	0	0	6
20. Sauce—Tomato, in 13-oz. bottles—Brand "Clipper" ... .. per bot.	0	0	7 $\frac{1}{2}$
21. Seed Tapioca—Sago, to sample ... .. per cwt.	1	2	3
22. Soap—Extract of—Kitchen's, or equal thereto ... .. per lb.	0	0	3 $\frac{1}{2}$
23. Soap—"Monkey" Brand, or equal thereto, in 5-oz. tablets ... .. per tab.	0	0	2 $\frac{1}{2}$
24. Soap—Sand, in 12-oz. blocks ... .. per block	0	0	1 $\frac{1}{2}$
25. Soap—"Velvet," or equal thereto ... .. per dlt.	0	0	3 $\frac{1}{2}$
26. Soda—Bi-carbonate of ... .. per lb.	0	0	2
27. Soda—Washing ... .. per cwt.	0	8	3
28. Spice—Mixed, in 1-oz. packets ... .. per pkt.	0	0	1
29. Starch (Rice)—Brand "Preservene" ... per lb.	0	0	6
30. Tartar—Cream of ... .. do.	0	1	3
31. Tea to sample ... .. do.	0	1	9
32. Treacle—in 7-lb. tins ... .. per tin	0	1	9
33. Vinegar—Malt ... .. per pint	0	1	2

ANNEX TO CONTRACT No. 1937/62.

Ada J. West, Main-street, Stawell.

Sub-schedule No. 3.

MEAT.

Security, £15.

	£	s.	d.
1. Fresh Beef—Prime Ribs ... .. per lb.	0	0	5 $\frac{1}{2}$
2. " " Shin—Meat and Bone ... .. do.	0	0	3
3. " " Sirloin ... .. do.	0	0	7
4. " " " Stewing (Minced when required) ... .. do.	0	0	5
5. " " Silverside ... .. do.	0	0	7
6. " Mutton—Chops (loin) ... .. do.	0	0	5 $\frac{1}{2}$
7. " " Leg ... .. do.	0	0	6
8. " " In sides ... .. do.	0	0	4 $\frac{1}{2}$
9. Frys—Lamb's ... .. each	0	0	2
10. Kidneys—Sheep's ... .. do.	0	0	0 $\frac{1}{2}$
11. Sausages—Best (Pork or Beef-mixed) ... per lb.	0	0	4
12. Tripe ... .. do.	0	0	6

ANNEX TO CONTRACT No. 1937/63.

S. C. Maddison, Stawell.

Sub-schedule No. 4.

MILK.

	£	s.	d.
1. Milk—Fresh and Pure ... .. per gal.	0	1	8

Schedule No. 18.  
**PROVISIONS—SUNBURY DISTRICT.**

ANNEX TO CONTRACT No. 1937/64.  
*R. C. Clyne, Sunbury.*  
 Sub-schedule No. 1.

BEADSTUFFS.

	Security, £112.	£	s.	d.
1. Bread—Fine wheaten, first quality ... per cantal		0	12	11
2. Flour—First quality ... do.		0	12	9

ANNEX TO CONTRACT No. 1937/65.  
*A. C. Shill, Sunbury.*  
 Sub-schedule No. 2.

GROCERIES.

	Security, £28.	£	s.	d.
1. Blue—Washing ... per lb.		0	0	8 $\frac{3}{4}$
2. Beans—Haricot ... per cwt.		0	16	0
3. Candles — (Full weights) Kitchen's "Electrines," or other make of equal quality, to be supplied in 1-lb. packets ... per lb.		0	0	6
4. Cocoa, in 1-lb. tins or cardboard cartons ... do.		0	0	3
5. Corn or Maize Flour, in packets of 1 lb. net ... do.		0	0	4
6. Currants—3 Crowns (present season's) ... do.		0	0	6 $\frac{1}{4}$
7. Curry Powder ... do.		0	0	8
8. Ginger—Ground ... do.		0	0	11
9. Golden Syrup, in 7-lb. tins ... per tin		0	1	8 $\frac{1}{2}$
10. Lemon Peel ... per lb.		0	1	6
11. Mustard—Double Superfine ... do.		0	1	6
12. Pepper—Black, ground ... do.		0	0	5 $\frac{1}{2}$
13. Pipes—Tobacco, clay ... per doz.		0	0	9
14. Raisins—Sultana, 3 crowns, present season's ... per lb.		0	0	6 $\frac{1}{2}$
15. Rice—Dressed, to sample ... per cwt.		1	0	9
16. Salt—Fine ... do.		0	3	6
17. Soap—Soft—Genuine Amber ... per lb.		0	0	3
18. Soda—Bicarbonate of ... do.		0	0	1 $\frac{1}{2}$
19. " Washing ... per cwt.		0	6	3
20. Spice—Mixed, in 1-oz. packets ... per lb.		0	0	10
21. Starch (Rice)—"Preservene" ... do.		0	0	5 $\frac{1}{2}$
22. Tartar—Cream of ... do.		0	1	1 $\frac{1}{2}$
23. Vinegar—Malt ... per pint		0	0	1 $\frac{1}{2}$

ANNEX TO CONTRACT No. 1937/66.

*A. C. Shill, Sunbury.*

Sub-schedule No. 3.

JAMS.

	Security, £13.	£	s.	d.
1. Jams—Assorted, in bulk, of approved kinds, in the proportion of half seed and half stone, of the best quality, in tins as required. Brand "Victoree" ... per lb. actual net weight		0	0	4 $\frac{1}{4}$

ANNEX TO CONTRACT No. 1937/67.

*S. J. Starkie, O'Shunnassy-street, Sunbury.*

Sub-schedule No. 4.

MEAT.

	Security, £150.	£	s.	d.
1. Fresh Beef—Fore-quarters ... per cental		1	6	6
2. " " Hind-quarters ... do.		1	6	0
3. " " Buttocks ... per lb.		0	0	3 $\frac{1}{2}$
4. " Mutton ... do.		0	0	3 $\frac{1}{2}$
5. Corned Beef—Rolled or round, as ordered, without bone or cartilage ... do.		0	0	3 $\frac{1}{2}$

[The page contains extremely faint and illegible text, likely bleed-through from the reverse side of the document. No specific content can be transcribed.]