

[1707]



VICTORIA  
GOVERNMENT GAZETTE.

Published by Authority.

[Registered at the General Post Office, Melbourne, for transmission by post as a newspaper.]

No. 135]

FRIDAY, JULY 16.

[1943

SENATE ELECTION.

NOTICE is hereby given that His Excellency the Governor of Victoria has this day issued a writ for the Election of three Senators for the State of Victoria to serve in the Parliament of the Commonwealth of Australia, and the following arrangements have been made, viz. :—

Date of Nomination ...	...	...	...	...	Friday, 30th July, 1943.
Date of Polling ...	...	...	...	...	Saturday, 21st August, 1943.
Return of Writ ...	...	...	...	...	On or before Saturday, 25th September, 1943.

By His Excellency's Command,

C. W. KINSMAN,  
Official Secretary.

The Governor's Office,  
Melbourne, 16th July, 1943.

By Authority: H. E. Daw, Government Printer, Melbourne.

No. 135.—7699/43.



[1709]



# VICTORIA GOVERNMENT GAZETTE.

Published by Authority.

*[Registered at the General Post Office, Melbourne, for transmission by post as a newspaper.]*

---

No. 136]

FRIDAY, JULY 16.

[1943

---

CONTRACTS ACCEPTED.

(SERIES 1943-44.)

---

SUPPLY OF PROVISIONS

FOR

STATE DEPARTMENTS

FROM

1st JULY, 1943 to 30th JUNE 1944,  
or as stated.

Conditions of Contract and Stipulations are shown herein for the guidance  
of Officers ordering and receiving supplies.

H. E. JOHNSON,  
*Secretary to the Tender Board.*

## CONTRACTS ACCEPTED—(Series 1943-44.)

## PROVISIONS.

No. of Contract.	Particulars of each Tender Accepted.	Amount.	Name of Contractor or Supplier.	Charge against Vote or Fund.
	<b>PROVISIONS—</b> Supply of Provisions, in such quantities as may be ordered, from 1st July, 1943, to 30th June, 1944, or as stated.			
	<b>Schedule No. 1.—Melbourne District—</b>			
117	Bread, Kew Mental Hospital .. .. .	Rates as per annex	Jellis Bakeries Ltd. .. .. .	
118	Bread, Melbourne, Royal Park, Teachers' College, and Hostel, Carlton, &c. .. .. .	Ditto .. .. .	Cahill and Quin .. .. .	
119	Flour and Sharps .. .. .	Ditto .. .. .	Pirrie Bros. .. .. .	
..	Groceries, &c. .. .. .	Ditto .. .. .	<i>Moran and Cato Pty. Ltd. (A)</i> .. .. .	
..	Cereals .. .. .	.. .. .	Purchase under Tender Board quotations	
120	Jams .. .. .	Rates as per annex	Model Preserving Co. Pty. Ltd. .. .. .	
121	†Meat, Kew Mental Hospital .. .. .	Ditto .. .. .	F. Watkins Pty. Ltd. .. .. .	
122	†Meat, Pentridge Penal Establishment .. .. .	Ditto .. .. .	F. Watkins Pty. Ltd. .. .. .	
123	†Meat, Children's Welfare Depot, Royal Park, and Police Hospital .. .. .	Ditto .. .. .	J. H. Cooke Pty. Ltd. .. .. .	
124	†Meat, Royal Park Mental Hospital and Receiving House .. .. .	Ditto .. .. .	J. H. Cooke Pty. Ltd. .. .. .	
..	Soap Mixtures .. .. .	Ditto .. .. .	<i>Moran and Cato Pty. Ltd. (A)</i> .. .. .	
..	Tea, Ration Tea, and Coffee .. .. .	Ditto .. .. .	<i>Henry Berry and Co. (A'sia.) Ltd. (A)</i> .. .. .	
..	Potatoes .. .. .	.. .. .	Purchase under Tender Board quotations	
	<b>Schedule No. 2.—Mont Park; Sanatorium, Greeswell, &amp;c.—</b>			
125	Bread .. .. .	Rates as per annex	E. J. Callander .. .. .	
..	Groceries .. .. .	Ditto .. .. .	<i>Henry Berry and Co. (A'sia.) Ltd. (A)</i> .. .. .	
126	Jams .. .. .	Ditto .. .. .	Model Preserving Co. Pty. Ltd. .. .. .	
127	†Meat .. .. .	Ditto .. .. .	W. Anglias and Co. (Aust.) Pty. Ltd. .. .. .	
..	Potatoes .. .. .	.. .. .	Purchase under Tender Board quotations	
	<b>Schedule No. 3.—SS. Rip and Dredges—</b>			
..	Bread .. .. .	.. .. .	Purchase by agreement .. .. .	
..	Groceries .. .. .	Rates as per annex	<i>Henry Berry and Co. (A'sia.) Ltd. (A)</i> .. .. .	
128	†Meat .. .. .	Ditto .. .. .	J. H. Cooke Pty. Ltd. .. .. .	
..	Vegetables .. .. .	.. .. .	Purchase by agreement .. .. .	
..	Potatoes .. .. .	.. .. .	Purchase under Tender Board quotations	
	<b>Schedule No. 4.—Teachers' College, Carlton—</b>			
..	Groceries .. .. .	Rates as per annex	<i>Moran and Cato Pty. Ltd. (A)</i> .. .. .	
129	†Meat .. .. .	Ditto .. .. .	J. H. Cooke Pty. Ltd. .. .. .	
130	Jams .. .. .	Ditto .. .. .	Model Preserving Co. Pty. Ltd. .. .. .	
..	Potatoes .. .. .	.. .. .	Purchase under Tender Board quotations	
	<b>Schedule No. 5.—Ararat District—</b>			
131	Breadstuffs .. .. .	Rates as per annex	Mark Forsyth Pty. Ltd. .. .. .	
..	Groceries .. .. .	Ditto .. .. .	<i>John MacLeod and Co. Pty. Ltd. (A)</i> .. .. .	
..	Jams .. .. .	Ditto .. .. .	<i>John MacLeod and Co. Pty. Ltd. (A)</i> .. .. .	
132	†Meat .. .. .	Ditto .. .. .	Jas. H. McDonald .. .. .	
..	Potatoes .. .. .	.. .. .	Purchase under Tender Board quotations	
	<b>Schedule No. 6.—Ballarat District—</b>			
133	Breadstuffs .. .. .	Rates as per annex	Brogden Bros. .. .. .	
..	Groceries .. .. .	Ditto .. .. .	<i>John MacLeod and Co. Pty. Ltd. (A)</i> .. .. .	
..	Jams .. .. .	Ditto .. .. .	<i>John MacLeod and Co. Pty. Ltd. (A)</i> .. .. .	
134	†Meat .. .. .	Ditto .. .. .	H. J. Symons Pty. Ltd. .. .. .	
..	Potatoes .. .. .	.. .. .	Purchase under Tender Board quotations	
	<b>Schedule No. 7.—Beechworth District—</b>			
135	Breadstuffs .. .. .	Rates as per annex	P. A. Taylor .. .. .	
..	Groceries .. .. .	Ditto .. .. .	<i>Moran and Cato Pty. Ltd. (A)</i> .. .. .	
..	Jams .. .. .	Ditto .. .. .	<i>Moran and Cato Pty. Ltd. (A)</i> .. .. .	
136	†Meat .. .. .	Ditto .. .. .	E. Spencer .. .. .	
..	Potatoes .. .. .	.. .. .	Purchase under Tender Board quotations	

Names shown in italics denote Suppliers under agreement.

† Contract for period 1st July, 1943, to 30th September, 1943, only.

Contingencies,  
1943-44

## CONTRACTS ACCEPTED.—(Series 1943-44)—continued.

## PROVISIONS—continued.

No. of Contract.	Particulars of each Tender Accepted.	Amount.	Name of Contractor or Supplier.	Charge against Vote or Fund.
	PROVISIONS—continued.			
	Schedule No. 8.—Castlemaine District—			
137	Bread .. .. .	Rates as per annex	Rasmussen Bros. .. .. .	
138	†Meat .. .. .	Ditto .. .. .	H. J. Robertson .. .. .	
	Potatoes .. .. .		Purchase under Tender Board quotations	
	Schedule No. 9.—School of Forestry, Creswick—			
139	Breadstuffs .. .. .	Rates as per annex	R. C. Bowley .. .. .	
140	Groceries .. .. .	Ditto .. .. .	J. Tait and Son (A) .. .. .	
141	†Meat .. .. .	Ditto .. .. .	Eric Coughlan .. .. .	
	Milk .. .. .	Ditto .. .. .	E. J. Keen .. .. .	
	Schedule No. 10.—McLeod Settlement, French Island—			
142	Bread .. .. .	Rates as per annex	James Jackson .. .. .	
143	Groceries .. .. .	Ditto .. .. .	A. G. Glasscock (A) .. .. .	
	†Meat .. .. .	Ditto .. .. .	W. F. Misson .. .. .	
	Potatoes .. .. .		Purchase under Tender Board quotations	
	Schedule No. 11.—Travancore Developmental Centre, Hepburn Springs—			
144	Breadstuffs .. .. .	Rates as per annex	Vanzetta Bros. .. .. .	
145	Groceries .. .. .	Ditto .. .. .	John MacLeod and Co. Pty. Ltd. (A) .. .. .	
146	†Meat .. .. .	Ditto .. .. .	F. J. Boddy .. .. .	
	Milk .. .. .	Ditto .. .. .	Eric S. B. Mead .. .. .	
	Potatoes .. .. .		Purchase under Tender Board quotations	
	Schedule No. 12.—Sanatorium, Greenvale—			
147	Breadstuffs .. .. .	Rates as per annex	Walter Norris, trading as Bignell's Bakery	
	Groceries .. .. .	Ditto .. .. .	Henry Berry and Co. (A'sia.) Ltd. (A) .. .. .	
148	†Meat .. .. .	Ditto .. .. .	F. Watkins Pty. Ltd. .. .. .	
	Potatoes .. .. .		Purchase under Tender Board quotations	
	Schedule No. 13.—Coorimungie Prison Camp, Heytesbury Forest—			
	Bread .. .. .	Rates as per annex	H. and C. Thorne and Co. (A) .. .. .	
149	Groceries .. .. .	Ditto .. .. .	G. Waterfall and Son .. .. .	
	†Meat .. .. .	Ditto .. .. .		
	Schedule No. 14.—Aboriginal Station, Lake Tyers—			
150	Breadstuffs .. .. .	Rates as per annex	Coate and Symmons Pty. Ltd. .. .. .	
	Groceries .. .. .	Ditto .. .. .	Coate and Symmons Pty. Ltd. (A) .. .. .	
	Jams .. .. .	Ditto .. .. .		
	Schedule No. 15.—Experiment Farm, Rutherglen—			
151	Bread .. .. .	Rates as per annex	A. F. Parrott .. .. .	
	Groceries .. .. .	Ditto .. .. .	Moran and Cato Pty. Ltd. (A) .. .. .	
	Schedule No. 16.—Sale Gaol—			
152	Bread .. .. .	Rates as per annex	Robert McGowan .. .. .	
153	†Meat .. .. .	Ditto .. .. .	Stan L. Ryder .. .. .	
	Schedule No. 17.—Pleasant Creek Special School, Stawell—			
154	Breadstuffs .. .. .	Rates as per annex	A. R. Bushick .. .. .	
155	Groceries .. .. .	Ditto .. .. .	John MacLeod and Co. Pty. Ltd. (A) .. .. .	
156	†Meat .. .. .	Ditto .. .. .	Newton Bros. .. .. .	
	Milk .. .. .	Ditto .. .. .	R. S. Andrews .. .. .	
	Potatoes .. .. .		Purchase under Tender Board quotations	
	Schedule No. 18.—Sunbury District—			
157	Breadstuffs .. .. .	Rates as per annex	J. N. Hennessy Pty. Ltd. .. .. .	
	Groceries .. .. .	Ditto .. .. .	A. C. Shill (A) .. .. .	
	Cereals .. .. .		Purchase under Tender Board quotations	
158	Jams .. .. .	Rates as per annex	A. C. Shill (A) .. .. .	
	†Meat .. .. .	Ditto .. .. .	F. Watkins Pty. Ltd. .. .. .	
	Potatoes .. .. .		Purchase under Tender Board quotations	

Contingencies,  
1943-44

Names shown in italics denote Suppliers under agreement.

† Contract for period 1st July, 1943, to 30th September, 1943, only.

Approved—A. A. DUNSTAN, Treasurer. 17.6.1943.

## CONDITIONS OF CONTRACT FOR PROVISIONS, 1943-44, ETC.

(Published in the *Victoria Government Gazette* No. 90, dated 5th May, 1943, pages 1163 and 1165.)

1. All the articles are to be of the best quality of the several kinds, in the best condition, and in conformity with the Health Acts, and to be delivered in sound packages, free from all charges for cartage, freight, &c. The goods shall be delivered as may be directed by the officer ordering the supply.

2. As the exact quantity of any article which may be required cannot be stated, the estimate being approximate only, the Government will not be bound by the quantity stated in the schedule, but will be at liberty to order more or less, according to circumstances, and the contractor will be bound to supply the same as ordered.

The Government reserves the right to purchase otherwise than from the contractor any of the articles specified in the schedule in the event of emergency due to the war.

3. Supplies for country districts for which no local contract may have been taken, or for which the contract has been terminated, may be ordered under the Melbourne contract.

4. The Melbourne District will include places within a radius of 6 miles from the Elizabeth-street Post Office, with the exception of places for which separate contracts are provided; the Ararat, Ballarat, Beechworth, and Sunbury Districts will include the Mental Hospitals, Gaols, and Police Gaols at those places; and the Castlemaine District will include the Gaol. Delivery must be made at the places institutions, &c., named in the schedules, or as directed by the officer ordering the supply.

5. Packages suitable for transport of goods supplied must be provided by the contractor free of expense, and the value of these packages, whether in bulk or otherwise, is to be included in the rate tendered, except butter boxes and soap boxes (not including fancy soaps), jam jars, flour, meal, and potato bags, which will remain the property of the contractor, and only the actual net weight or quantity received will be paid for; the empties to be removed from the place of delivery at the contractor's expense.

6. The meat supplied under these conditions must, if practicable, be slaughtered at abattoirs which are under authorized inspection and supervision. Any infringement of this condition will subject the contractor, on report from the Tender Board, to such mulct, not exceeding Fifty pounds, as the Treasurer may direct, and the amount will be deducted from the contractor's account, or from the security money.

7. The supplies coming under the head of Rations and Medical Comforts are to be delivered direct to the establishment entitled thereto on the written order of the officer in charge. All other supplies will be ordered by the head of the Department concerned or any officer authorized by him, and shall be delivered as may be directed by the officer ordering the supply.

8. At the time of delivering the supplies, the contractor shall produce the order for the same to the officer authorized to accept delivery, and such officer shall acknowledge thereon the receipt of the stores accepted, and shall return the order to the contractor, who shall render his account as soon as possible after the delivery of the supplies, accompanied by the receipted delivery order. The rates or quantities quoted in the orders cannot be exceeded.

9. Where practicable, the contractor shall use the Railways for the transport of the goods. When a contractor is required to make delivery of goods at a railway station for transmission by rail, except for Commonwealth Departments, he shall obtain a receipt for the goods in duplicate on the Stores and Transport consignment note, at the same time handing in the triplicate and quadruplicate of the form as an authority for the Railways to act as agent for, and charge the freight to, the Stores and Transport Office. He shall as soon as possible, and not later than twenty-four hours thereafter, deliver at the Tender Board Offices the original, the duplicate to be forwarded to the consignee and the quintuplicate retained by himself. Should the goods thus forwarded be rejected, the contractor must bear the cost of replacing such goods, for which services the departmental consignment note is not to be used. Any infringement of this condition may subject the contractor to such mulct as the Tender Board may recommend under clause 18 of these conditions.

10. Orders must receive prompt execution; in the event of the goods not being delivered at the time mentioned in the order or within such other time as the officer ordering the supply may specify for delivery, it will be competent for such officer, or the head of the Department to whom the goods are to be supplied, on giving the contractor twenty-four hours' notice, to purchase the supplies, or any like supplies that are suitable for the service, at the contractor's risk, and the extra expense incurred over and above the contract price (if any)

will be deducted from the contractor's account or from the security money.

11. The acceptance of the supplies shall be subject to the approval of the officer authorized to take delivery of the stores, or such other officer as shall be named in the conditions.

12. If the officer in charge of stores be not satisfied as to the quantity or quality of the stores, or if, after taking delivery of any stores or material, he shall discover any deficiency or defect therein, he may return such deficient or defective stores or material to the contractor, and shall report the same to the head of his Department and to the Tender Board.

13. In the event of a difference of opinion between the contractor and the officer receiving the supplies as to the quality, the same is to be decided, in cases where the article is not of a perishable nature, by a Board of Survey composed of persons named by the Treasurer of the State for the time being; and the decision of the Board is to be considered final. In the event of the decision being against the contractor, the survey fees and expenses (if any) will be deducted as in clause 10.

14. In cases where the article is of a perishable nature, or when from some other cause injury would be sustained either by the person to whom the rations or stores are due or by the contractor in waiting for a Board to survey, the head of the Department or officer authorized to take delivery will have power to reject such article or articles as are obviously of inferior quality, it being understood that he will be responsible to the Government for so doing, and that the contractor must take back the rejected article and supply good in its stead; failing which it, or any like supply suitable for the Service, will be obtained by the officer requiring it as in clause 10. In case of the rejection or return of any supplies, the contractor shall bear the whole cost of replacing the supplies so rejected or returned.

15. If the Board shall decide that the article is not of proper quality it must be immediately replaced by the contractor; failing which it, or any like supply suitable for the Service, will be procured by the officer requiring it, and the expense charged as in clause 10.

16. In the case of supplies for Mental Hospitals, it will be competent for a Board of Survey, consisting of the medical superintendent (or, in his absence, of the medical officer) and any two officers named by him, to examine and reject any supplies that may be objected to. It must be distinctly understood, however, that the contractor will have a right of appeal to the Treasurer of the State for the time being, such appeal to be made in writing within 24 hours of the rejection; but, pending such appeal, he must at once supply others of approved quality; failing which, the supplies required, or any like supplies suitable for the Service, may be obtained by the officer concerned, and the expense charged as in clause 10.

17. In the case of supplies for Mental Hospitals, it will also be competent for two or more of the official visitors, in conjunction with the medical superintendent, to reject any supplies that they may consider not in accordance with contract; and in such cases the reference to a Board of Survey will not be deemed to be necessary.

18. A refusal to execute orders, irregularity in the quantity or quality of the supplies, or delay in delivering or replacing them when required, will subject the contractor, upon report from the Tender Board, to such mulct, not exceeding Fifty pounds, as the said Treasurer may direct, and the amount may be deducted as in clause 10. It will also be in the power of the said Treasurer, upon such refusal, irregularity, or delay, to terminate the contract forthwith, and forfeit the whole or any part of the security money; and, in addition, the contractor will be disqualified from tendering or holding any future contract or contracts for a period of twelve months from the date of such disqualification.

19. Contractors are not at liberty to transfer their contracts under cover of power of attorney, coupled with an interest or otherwise, and no such transfer will be recognized by the Government. *If it is found during the currency of the contract that the contractor has not conformed to the condition of advertisement—which stipulates that if a tenderer be a member of a firm and such firm be interested in the contract, the tender shall be in the name of the firm and not in that of the individual—then the Treasurer may, on the recommendation of the Tender Board, determine the contract, and forfeit the security money.*

20. It will be competent for the Tender Board to terminate the contract, without notice, should there be reason to know

that the contractor takes advantage of his contract to communicate with a prisoner.

21. The contract entered into under these conditions is not to be considered as being broken, infringed, or vitiated by the importation of stores for the Government service, or by any contracts or purchases made by the Imperial Commissariat; or by the consumption of the produce or surplus stock of any Government establishment, or by any article being made at and supplied for the use of any Government establishment.

22. Notwithstanding anything contained to the contrary in section 152 of the *Customs Act* 1901-36, it is hereby expressly provided that upon any alteration of the duty collected affecting the goods included in this contract, the contract price shall not be altered, and the contract may be terminated at the option of either party by two months' notice in writing from the first day of the calendar month next ensuing,

and within the period for which the contract is made. The contract for the unaffected items shall remain in full force and effect. Any notice to be served under this condition shall be deemed to have been duly served if sent to the contractor in a registered letter to his last-known place of business or abode.

23. Under no circumstances other than those mentioned in clause 22 will a contractor be permitted to abandon his contract. In the event of the contractor failing to carry on the contract, the contract security money will in that case be absolutely forfeited; and, in addition, the contractor will be held liable for any loss which the Government may sustain in consequence of such failure.

24. For the purposes of these contracts the word "Government" shall mean the Government of the State of Victoria; and the word "Treasurer" shall mean the Treasurer of the said State.

## STIPULATIONS FOR SUPPLIES OF PROVISIONS.

### SUPPLIES GENERALLY.

For supplies under all sub-schedules, particular attention is drawn to clause 1 of the Conditions of Contract as to quality.

No sub-letting is allowed, and all work must be carried out by the contractor.

Where practicable, all items must be manufactured or prepared within the Commonwealth.

Where no brand of Commonwealth manufacture or production is specifically set out in the respective sub-schedules, such Commonwealth brand as may be ordered must be supplied.

For Schedule No. 3 supplies must be delivered when ordered and, in cases of emergency, on Sundays, holidays, or half-holidays, as required.

### BREAD AND FLOUR.

A sample of the best ordinarily retailed to the public will be considered as a test loaf for first quality for fine wheaten and pure wheaten Meal Bread. *Pure wheaten Meal Bread of first quality may be substituted, wholly or in part, for fine wheaten Bread at such times and in such quantities as, in the opinion of the Medical Superintendent, may be deemed necessary, and the contractor will be required to supply such Bread at the contract rate. Reasonable notice, however, of the intention to substitute wheaten Meal Bread must be given to the contractor by the officer ordering the supply.* Bread may be baked at any Government establishment without infringing these contracts. At the Gaols, Ballarat, Beechworth, Castlemaine, and Sale, and the Corrie-mungle Prison Camp, if required, bread must be supplied one day old, due notice to be given to the contractor of such requirement.

In the event of bread being made at any Government establishment in the Melbourne District during the currency of these contracts, the flour required will be drawn under the flour and sharps sub-schedule. The sharps for all the country gaols is included in the sub-schedule for flour and sharps, Melbourne District, and delivery of same will be required to be made f.o.r. Melbourne.

Flour for Districts for which no local contracts have been taken may be ordered under the Melbourne District contract, for delivery f.o.r. Melbourne.

### GROCERIES.

As a guarantee of quality, Rice, when ordered in quantities of 56 lb. and over, must be supplied in original bags as delivered by the miller or dresser. Such bags must be branded "Rice, Dressed" or "Unpolished," and shall also have stencilled thereon the miller or dresser's name and the distinguishing mark indicative of the quality or grade. The bags thus stencilled shall contain Rice milled or dressed by the miller or dresser whose name appears thereon. Supplies not in conformity with the foregoing condition will be rejected.

Oatmeal must be supplied in original bags as delivered by millers.

Candles, except those for prison cells, must be supplied in 1-lb. packets. Candles for prison cells must be delivered in boxes containing from 25 to 50 lb. per box, the boxes for which must be legibly stencilled on one end showing the estimated burning time and the gross, tare, and net weight of contents.

The soap supplied must be hard throughout, ready for immediate use without waste, and shall have been manufactured at least seven weeks before leaving contractor's hands.

Raisins and currants must be present season's, and where the quantity admits, be supplied in original and unopened boxes, labelled as packed.

For Schedule No. 3 a certain quantity of Biscuits and Preserved Meats are sometimes required in lieu of fresh bread and fresh meat, and are included to meet such contingency only.

### OATMEAL, RICE, SEED TAPIOCA, ETC.

Supplies of these items for Districts for which no local contracts have been taken may be ordered under the Melbourne District contract, for delivery f.o.r. Melbourne.

### BUTTER AND CHEESE.

All supplies of 56 lb. or multiples of 56 lb. must be supplied in boxes as originally packed. The boxes must bear the impress stamp of the creamery where the butter is produced, otherwise it will not be accepted. All supplies must be in new boxes.

Where the Store or Butter Factory of the Contractor is situated in the Metropolitan area all Butter to the quantity of 56 lb. and over to be supplied in any one consignment under this contract shall before despatch from the Store or Factory be first examined and passed by the Government Butter Grader, for and on behalf of the officer authorized to accept delivery. The boxes containing butter so examined and found satisfactory in quality and description will be stamped by the Government Butter Grader and the date of such examination marked thereon. No butter from a contractor located in the Metropolitan Area will be accepted unless the boxes bear the stamp of the Grader. For the purposes of the foregoing condition the Metropolitan Area is defined as being not outside the radius visited by the Government Grader. The officer authorized to accept delivery may, within 48 hours of the receipt of any supply, require the Contractor to have same re-examined by the Grader, and, if not passed by him, it shall be returned to the Contractor, who shall forthwith replace the same with freshly-examined butter.

No Butter ex Cool Store will be examined by the Grader until thermally it is in suitable condition therefor.

Where the Store or Factory from which the Butter is despatched is not within the area visited by the Grader a sample of any supplies may be forwarded to the Government Butter Grader for examination, should the supply be considered by the Officer authorized to accept delivery as not being equal in quality or description to that contracted for.

The Cheese supplied must be first-class quality, semi or fully matured, as ordered, and not less than 3 months old. If the quantity admits, it shall be boxed for transport.

### JAMS.

The weight stamped on the tins in accordance with the regulations under the Commerce Act, as indicating the minimum net quantity that each tin contains, shall for the purpose of this contract be taken as the actual contents when computing the quantity supplied.

When Jam is supplied in jars the jars remain the property of the contractor, and must be removed by the contractor at his own expense when empty.

### SOAP AND SOAP MIXTURES.

Supplies of these items for Districts for which no local contracts have been taken may be ordered under the Melbourne District contract, for delivery f.o.r. Melbourne.

### MEAT.

All meat supplied under this contract shall have been slaughtered in Victoria and shall be freshly killed, well-conditioned, of good quality, healthy, clean, wholesome, free from bone-taint, putrefaction or fly larvae, and shall not have been frozen.

The beef shall be of ox not under three nor more than six years old or heifer or cow not under three nor more than five years old. Carcass beef for Mental Hospitals shall be delivered in quarters of equal proportions of hinds and fores and the corresponding hinds and fores must be supplied, also extra buttocks separately when ordered. Meat for other Institutions shall be supplied as ordered. Where hindquarters or buttocks are ordered 9 inches shall be cut off from the end of the leg

from the hock upwards, i.e., the end of the leg from which the shank has been removed at the abattoirs; when forequarters form a portion of the supply, 6 inches from the end of the neck and the whole of the shin at the clodbone joint shall be removed. The sticking pieces also shall be trimmed off and the point and end of the brisket rendered free from blood and blood stains.

The mutton shall be wether or maiden ewe not more than four years old and the weight of a carcass shall be not less than 40 lb. nor more than 60 lb. The mutton shall be delivered in sides when so ordered.

Corned Beef (rolled or round as ordered) shall be supplied without bone or cartilage and will be received whether pumped or prepared in the ordinary way of pickling but, in the former case, it shall have been soaked, after pumping, for at least 48 hours in a good pickle and then thoroughly drained before supply. No flank, chuck, sticking-piece, shin, leg of beef, or piece under 7 lb. will be received.

Meat derived from the carcasses of Bulls, Stags or Rams or meat containing an undue proportion of bone or fat will not be received and shall not be tendered for delivery. Net weight only will be paid for.

In cases of emergency, or on such other occasions as in the opinion of the Director of Mental Hygiene or Heads of other Institutions may seem advisable, other forms of meat, such as Rabbits, Tinned Meats, &c., may be purchased, apart from the contract, in lieu of the meat specified in the Schedule, and substituted therefor, provided 24 hours' notice—except in cases of emergency—be given to the Contractor of such intention.

The parts to be removed by the contractor are indicated in the shaded portion of the annexed diagram. This work shall be carried out in the factory or shop of the Contractor, except those parts usually removed at the abattoirs.

With respect to the schedules enumerated hereunder, the following stipulations shall also apply:—

For sub-schedules 9 and 10 of Schedule No. 1, fresh beef shall be supplied, as ordered, from ribs, sirloin, and thick flanks and for Schedule No. 2, from prime ribs, sirloin, and

thick flanks; ribs of beef to be cut clear of the plate bone, and sirloin to be cut clear of the wing ribs; excess of brisket or thin flank will be rejected. Mutton must be delivered in sides when so ordered; all kidney fat to be removed.

For Schedules Nos. 1 (sub-schedules 9 and 10) 3, 4, 9, 11, 12, 13 and 17, chuck ribs of Beef, i.e., 1st to 4th inclusive will not be accepted.

For Schedules Nos. 4, 11, 12 and 17, fresh Beef must be supplied, as ordered, from prime ribs or sirloin; ribs of Beef to be cut clear of the plate bone, and sirloin to be cut clear of the wing ribs; excess of brisket or flank will be rejected.

#### TEA AND COFFEE.

Tea and Coffee for Districts for which no local contracts have been taken may be ordered under the Melbourne District contract, for delivery f.o.r. Melbourne.

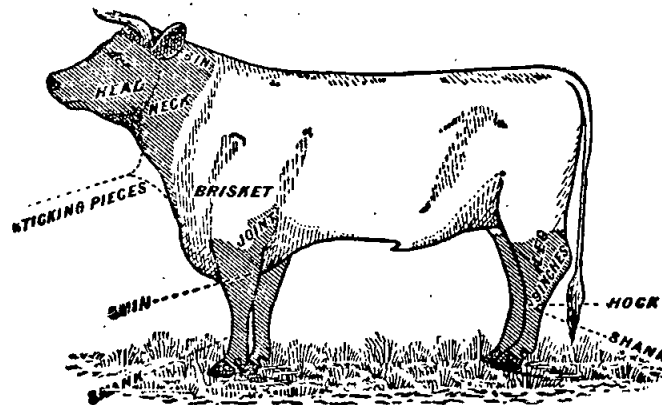
#### MILK.

The milk must be fresh, pure, and of the best quality, and subject to test when required by the Department, and supplied at such times as the Department may require. Should the contractor fail to supply at the time specified in the order or at such times as may be indicated in any general notice to the contractor his contract may be cancelled forthwith and his security forfeited, or should the supply prove to be not of contract quality it will be rejected, and any expense incurred will be charged to the contractor.

#### POTATOES.

Potatoes to be dry and free from dirt. Contractors to take back all rejected before being cooked. Bags to remain the property of the contractor. Weight of bags (approx. 2½ lb.) to be deducted.

If the price of potatoes becomes abnormally high, the heads of the various departments concerned may, if they think fit, cause rice or any other suitable food to be occasionally substituted in lieu thereof.





## ANNEX TO CONTRACTS.

## FLOUR AND BREAD.

The contract rates shown are subject to adjustment for any variation in the proclaimed price of flour.

## MEAT.

Contracts marked † operate for the period 1st July, 1943, to 30th September, 1943, only.

## AGREEMENTS.

For the Sub-schedules marked (Agreement), no contract has been let nor security lodged. Requirements thereunder are to be purchased from the suppliers named, under Tender Board Agreement. The rates shown are subject to variation from time to time, particulars of which will be gazetted as required. In all cases, supply is subject to stocks being available.

## AVAILABILITY OF SUPPLIES.

Owing to existing difficulties in obtaining supplies of various items, due to the War, the penal provisions of Clause 10 of the Conditions of Contract are not to be enforced without reference to the Tender Board.

### SCHEDULE No. 1. PROVISIONS—MELBOURNE DISTRICT.

ANNEX TO CONTRACT NO. 1943/117.

*Jellis Bakeries Ltd., 1 Princess-street, Kew.*

#### Sub-schedule No. 1.

BREAD FOR MENTAL HOSPITAL AT KEW.

Security, £125.

	£	s.	d.
1. Bread—Fine wheaten, first quality .. per cwtl.	0	14	6

ANNEX TO CONTRACT NO. 1943/118:

*Cahill and Quin, 285 High-street, Northcote.*

#### Sub-schedule No. 2.

BREAD FOR CHILDREN'S WELFARE DEPOT, ROYAL PARK, RECEIVING HOUSE AND MENTAL HOSPITAL, ROYAL PARK, POLICE HOSPITAL, AND TEACHERS' COLLEGE AND HOSTEL, CARLTON.

Security, £40.

	£	s.	d.
1. Bread—Fine wheaten, first quality ... per cwtl.	0	16	0

ANNEX TO CONTRACT NO. 1943/119.

*Pirie Bros., 136 Exhibition-street, Melbourne, C.I.*

#### Sub-schedule No. 3.

FLOUR.

Security, £90.

	£	s.	d.
1. Flour—Roller, first quality .. per cwtl.	0	11	5
2. „ Sharps' .. do.	0	11	0

(AGREEMENT.)

*Moran and Oato Pty. Ltd., 271 Brunswick-street, Fitzroy, N.6.*

#### Sub-schedule No. 4.

GROCERIES, ETC.

	£	s.	d.
1. Bacon, Rashers, Middle—Huttons .. per lb.	0	1	9
2. Biscuits—Coffee, Malt, or Milk Arrowroot, as ordered .. do.	0	0	9½
3. Blue—Washing, powdered, in 7-lb. pkts. .. do.	0	0	10½
4. Candles—Full weights, Kitchen's "Electrines," or other make of equal quality, to be supplied in 1-lb. packets .. do.	0	0	8½
5. „ Kitchen's "Electrines," or other make of equal quality, for use in prison cells, to burn for 1, 1½, 2, 2½, and 3 hours respectively, as ordered, to be supplied in boxes, containing from 25 to 50 lb. per box .. do.	0	1	1
6. Cereal—"Pipers," in 24-oz. pkts. .. per pkt.	0	0	10
7. Cocoa—Bulk .. per lb.	0	0	5½
8. Corn or Maize Flour—in packets of 1 lb. net .. do.	0	0	7½
9. Currants—2 Crowns (present season's) .. per lb.	0	0	8½
10. Curry Powder—Bulk .. do.	0	1	0½
11. Essence of Lemon—8-oz. bottles (Pure) .. per bot.	0	4	2

\* Supplies not available.

† Also 22-lb. boxes; Per box, 7/9.

#### Sub-schedule No. 4—continued.

GROCERIES, ETC.—continued

£ s. d.

12. Essence of Vanilla—1-oz. bottles (Imitation) .. per bot.	0	0	4½
13. Fruits—Dried (present season's), apples .. per lb.	††		
14. „ „ „ „ „ peaches .. do.	††		
15. Ginger—Ground .. do.	††		
16. Golden Syrup—in 2-lb. tins .. per tin	0	0	6½
17. Honey—First quality—in 60-lb. tins only .. per lb.	0	0	8
18. Jelly Crystals, 4-oz. packets, ... per doz.	0	3	6
19. Lemon Peel (cut) .. per lb.	0	0	8
20. Macaroni (bulk) .. do.	0	0	3½†
21. Mustard .. do.	0	2	5½
22. Oatmeal—Flaked .. per cwt.	1	1	6
23. Pepper—Black, ground .. per lb.	0	1	2
24. Pipes—Tobacco, clay .. per doz.	0	1	4½
25. Prunes—Dried, 50-60's (present season's) .. per lb.	††		
26. Raisins—Sultana, 3 Crowns (present season's) .. do.	0	0	8½
27. Rice—Ground (16-oz. packets) .. do.	0	0	4½
28. Salt—Fine .. per cwt.	0	5	1
29. Sauce—Tomato—20-oz. bottles—"Dyason's" .. per doz.	0	11	4
30. Soda—Bicarbonate of .. per lb.	0	0	2½
31. „ Washing .. do.	0	0	1½
32. Soup—Tomato—in 1-lb. tins— .. per tin	*		
33. Spaghetti .. per lb.	0	0	4½
34. Spice—Mixed, in 1-oz. packets .. per pkt.	0	0	1½
35. Starch "Crystal" .. per lb.	0	0	4½
36. Tartar—Cream of—Substitute (Calcium Phosphate) .. do.	0	0	10½
37. Treacle—in 2-lb. tins .. per tin	0	0	6
38. Vinegar (Malt) .. per quart	0	0	3½

#### Sub-schedule No. 5.

CEREALS.

£ s. d.

1. Oatmeal .. per cwt.	Purchase
2. Rice—Dressed .. do.	under
3. „ Unpolished .. do.	Tender
4. Seed Tapioca (Sago) .. do.	Board
5. Pearl Barley .. do.	Quota-
6. Peas—Split .. do.	tions.

ANNEX TO CONTRACT NO. 1943/120.

*Model Preserving Co. Pty. Ltd., cr. Campbell and Perry streets, Collingwood, N.6.*

#### Sub-schedule No. 6.

JAMS.

Security, £20.

	£	s.	d.
1. Jams—Assorted, in bulk, of approved kinds, in the proportion of half actual net seed and half stone, of the best quality, in tins, as required—Brand "M.P." .. per lb.	0	0	5½
2. „ Assorted, in bulk, of approved kinds, in the proportion of half seed and half stone, of the best quality, in 24-oz. tins—Brand "M.P." .. per doz.	0	10	9

†† Apply Tender Board.

## ANNEX TO CONTRACT No. 1943/121.†

F. Watkins Pty. Ltd., 184 Bourke-street, Melbourne, C.1.

## Sub-schedule No. 7.

MEAT FOR MENTAL HOSPITAL, KEW.

Security, £35.

		£	s.	d.
1. Fresh Beef—Fore-quarters	.. .. per cwtl.	2	7	11
2. " " Hind-quarters	.. .. do.	2	7	11
3. " " Buttocks	.. .. per lb.	0	0	6
4. Corned Beef—Rolled or round, as ordered, without bone or cartilage	.. .. do.	0	0	6½
5. " Mutton	.. .. do.	0	0	5½
6. " " Leg	.. .. do.	0	0	7½
7. Fresh Suet—Kidney	.. .. do.	0	0	4
8. Sausage Meat	.. .. do.	0	0	5
9. Liver—Calves	.. .. do.	0	0	6
10. Brains	.. .. per set	0	0	2

## ANNEX TO CONTRACT No. 1943/122.†

F. Watkins Pty. Ltd., 184 Bourke-street, Melbourne, C.1.

## Sub-schedule No. 8.

MEAT FOR PENAL ESTABLISHMENT (PENTRIDGE), FEMALE PENITENTIARY, AND METROPOLITAN GAOL (GOBURG).

Security, £35.

		£	s.	d.
1. Fresh Beef—Fore-quarters	.. .. per cwtl.	1	17	6
2. Fresh Mutton (whole sheep)	.. .. per lb.	0	0	5½
3. Sausages—Mixed	.. .. do.	0	0	7
4. Kidneys—Ox	.. .. do.	0	1	0
5. Fresh Suet—Kidney	.. .. do.	0	0	4
6. Tripe—Fresh	.. .. do.	0	0	4
7. Rabbits—Fresh	.. .. per pair	0	2	0

## ANNEX TO CONTRACT No. 1943/123.†

J. H. Cooke Pty. Ltd., 378 Queens-parade, Clifton Hill, N.8.

## Sub-schedule No. 9.

MEAT FOR POLICE HOSPITAL, ST. KILDA-ROAD, CHILDREN'S WELFARE DEPOT, ROYAL PARK.

Security, £8.

		£	s.	d.
1. Fresh Beef	.. .. per cwtl.	3	0	5
2. Corned Beef—Rolled or round, as ordered, without bone or cartilage	.. .. per lb.	0	0	6½
3. Fresh Mutton	.. .. do.	0	0	5½
4. " " Loin	.. .. do.	0	0	6½
5. " " Leg	.. .. do.	0	0	8½
6. Cutlets	.. .. do.	0	0	10
7. Sausages—Mixed	.. .. do.	0	0	6
8. Tripe—Fresh	.. .. do.	0	0	5
9. Steak—Rump	.. .. do.	0	1	3
10. Brains	.. .. per set	0	0	2
11. Chops—Mid Loin	.. .. per lb.	0	0	8
12. Rabbits—Fresh	.. .. per pair	0	2	0
13. Ice	.. .. per cwt.	0	2	6

## ANNEX TO CONTRACT No. 1943/124.†

J. H. Cooke Pty. Ltd., 378 Queens-parade, Clifton Hill, N.8.

## Sub-schedule No. 10.

MEAT FOR RECEIVING HOUSE AND MENTAL HOSPITAL, ROYAL PARK.

Security, £10.

		£	s.	d.
1. Fresh Beef	.. .. per cwtl.	3	0	5
2. " " Buttocks	.. .. do.	3	0	5
3. " Mutton	.. .. per lb.	0	0	5½
4. Corned Beef—Rolled or round, as ordered, without bone or cartilage	.. .. do.	0	0	6½
5. Fresh Suet—Kidney	.. .. do.	0	0	3½
6. Ice	.. .. per cwt.	0	2	6

(AGREEMENT.)

Moran and Cato Pty. Ltd., 277 Brunswick-street, Fitzroy, N.6.

## Sub-schedule No. 11.

SOAP MIXTURES.

(Of Commonwealth Manufacture.)

		£	s.	d.
1. Antiseptic—Liquid, of approved make, in 4-gal. tins	.. .. per gal.	0	2	8
2. Extract of—Kitchen's—Bulk (½ cwt. and 1 cwt. bags	.. .. per lb.	0	0	2½
3. Household—Dry, equal to Kitchen's "Best Brown" Brand	.. .. per cwt.	1	9	7½
4. Lifebuoy	.. .. per doz.	0	2	11
5. "Lux" or "Morino," as ordered, in bulk	.. .. per lb.	0	0	8½
6. "Monkey Brand"—or equal thereto, in tablets of 5 oz. each	.. .. per doz.	0	2	0½
7. Sand—Borax, 12-oz. blocks, of approved brand	.. .. per doz.			*

\* Supplies not available. †† Bag, 150-lb.

## Sub-schedule No. 11—continued.

SOAP MIXTURES—continued.

		£	s.	d.
8. Sand—Carbolic, 12-oz. blocks, of approved brand	.. .. per doz.	0	1	10
9. Soft—Genuine Potash, best amber, in bulk	.. .. per lb.	0	0	6½
10. Toilet—"Bath," in 4-oz. tablets, Kitchen's, or equal thereto	.. .. per doz.	0	1	8½
11. Toilet—Carbolic, in 4-oz. tablets, Kitchen's, or equal thereto	.. .. do.	0	1	10½
12. Toilet—"Castola," in 6-oz. tablets, Kitchen's, or equal thereto	.. .. do.			*
13. "Velvet"—or equal thereto	.. .. per doz.	0	3	1½

(AGREEMENT.)

Henry Berry and Co. (A/asia) Ltd., 568 Collins-street, Melbourne, C.1.

## Sub-schedule No. 12.

TEA AND COFFEE.

		£	s.	d.
1. Tea, Blended, 1st Grade	.. .. per lb.	0	2	9½
2. Tea, Blended, 2nd Grade (Ration)	.. .. do.	0	2	5½
3. Coffee—Fresh roasted, and whole, beans to be thoroughly sound	.. .. per lb.	0	1	8½

§ Less 2½ per cent. discount, payment 30 days.

## SCHEDULE No. 2.

## PROVISIONS—MONT PARK, SANATORIUM, GRESSWELL, ETC.

(Delivery at the Mental Hospital, Mont Park, to depots as required, the Repatriation Mental Hospital, Bundoora, Janefeld Colony and Sanatorium, Gresswell.

## ANNEX TO CONTRACT No. 1943/125.

E. J. Callander, 597 High-street, Preston, N.18.

## Sub-schedule No. 1.

BREADSTUFFS.

Security, £190.

		£	s.	d.
1. Bread—Fine wheaten, first quality	.. .. per cwtl.	0	16	7
2. " Raisin, " "	.. .. do.	1	13	4
3. Flour—First quality	.. .. do.			¶

¶ Order under Melbourne District Contract.

(AGREEMENT.)

Henry Berry and Co. (A/asia) Ltd., 568 Collins-street, Melbourne, C.1.

## Sub-schedule No. 2.

GROCERIES.†

		£	s.	d.
1. Bacon—In sides	.. .. per lb.	0	1	4½
2. Beans—Haricot	.. .. do.			*
3. " Butter	.. .. do.			*
4. Blue—Washing	.. .. do.	0	0	11
5. Biscuits—Coffee, Malt, Milk Arrowroot, or equal, as ordered	.. .. do.	0	0	11
6. Camp Pie—in 1-lb. tins, "Paragon"	.. .. per doz.	0	8	11
7. Candles (full weights)—Kitchen's "Electrinos," or other make of equal quality in 1-lb. packets	.. .. per lb.	0	0	9½
8. Cereal, in 24-oz. packets, "Trumpeter"	.. .. per pkt.	0	0	10
9. Cinnamon	.. .. per lb.	0	2	6
10. Cocoa, in 1-lb. cardboard cartons	.. .. do.	0	1	4
11. Coconut—Desiccated	.. .. do.			*
12. Coffee Essence in 8oz. bots.—Brand, "Bluestripe"	.. .. per bot.	0	0	11½
13. Corn or Maize Flour—in 1-lb. packets, Brand, "Kream"	.. .. per lb.	0	0	7½
14. Currants—2 Crowns (present season's)	.. .. do.	0	0	8½
15. Curry Powder—Brand, "Atlas"	.. .. do.	0	1	2
16. Custard Powder—1-lb. packets	.. .. per pkt.	0	0	8½
17. Dates—Fresh, loose	.. .. per lb.			*
18. Essence of Vanilla—in full 20-oz. bottles	.. .. per bot.	0	8	9
19. Flour—Self-raising, Brand, "Cookwell"	.. .. per bag	1	11	6½
20. Fruits, Dried (present season's)	.. .. do.			††
21. Fruits—Preserved, assorted, in 1-lb. 14-oz. tins (excluding Pines)	.. .. per tin			††
22. Gelatine—Ground	.. .. per lb.			*
23. Ginger—Ground	.. .. do.			*
24. Golden Syrup—in 2-lb. tins	.. .. per ctn.	0	12	6½
25. Herrings—Fresh, and in Tomato Sauce, 14-oz. tins, Brand	.. .. per tin			*
26. Honey, first quality	.. .. per lb.			*
27. Jelly Crystals—in 4-oz. packets "Invicta"	.. .. per gross	1	19	3

§ Carton, 2 dozen 2-lb. tins.

†† Apply Tender Board.

## Sub-schedule No. 2—continued.

## GROCERIES—continued.

		£	s.	d.
28. Junket Tablets .. .. .	per tube	0	0	7½
29. Lemon Peel—cut .. .. .	per lb.	0	0	10½
30. Macaroni .. .. .	do.	0	0	4½
31. Mustard— .. .. .	do.	0	2	5
32. Nutmeg—Whole .. .. .	per oz.	*		
33. Pepper—Black, ground .. .. .	per lb.	0	1	2
34. Pickles—Assorted, 20-oz. bottles .. .. .	per bot.	*		
35. Pipes—Tobacco, clay .. .. .	per doz.	*		
36. Prunes—Dried, 50-60's (present season's) .. .. .	per lb.	½		
37. Raisins—Lexias, 4 Crowns (present season's) .. .. .	do.	0	0	7½
38. „ Sultana, 3 Crowns (present season's) .. .. .	do.	0	0	9½
39. Rice—Ground .. .. .	do.	*		
40. Salmon—Fresh, in 14½-oz. tins, tall, fancy pink .. .. .	per tin	*		
41. Salt—Fine .. .. .	per cwt.	0	6	11
42. Sauce—Tomato, in 26-oz. bottles, Brand, "Victoree" .. .. .	per doz.	0	17	0
43. Soda—Bicarbonate of .. .. .	per lb.	0	0	3
44. „ Washing .. .. .	per cwt.	0	11	3
45. Spice—Mixed, loose .. .. .	per lb.	0	1	10
46. Starch (Rice)—Brand, "Silver Star" .. .. .	per lb.	0	0	9
47. Sugar—Castor .. .. .	do.	0	0	4½
48. „ Icing .. .. .	do.	0	0	4½
49. Tartar—Cream of—Substitute—Sodium Phosphate—Brand, "Aercreme" .. .. .	do.	0	1	½
50. Treacle—in 2-lb. tins .. .. .	per ctn.	0	11	8½
51. Vermicelli—in 16-oz. packets .. .. .	per pkt.	0	0	4½
52. Vinegar—Malt .. .. .	per gall.	0	1	0

## ANNEX TO CONTRACT No. 1943/126.

Model Preserving Co. Pty. Ltd., cr Campbell and Perry streets, Col-  
lingwood, N.5.

## Sub-schedule No. 3.

## JAMS.

## Security, £23.

		£	s.	d.
1. Jams—Assorted, in bulk, of approved kinds, in the proportion of half actual net seed and half stone, of the best quality, in tins, as required, Brand, "M.P." .. .. .	per tin	0	0	5½
2. „ Assorted, in 5-lb. tins, in the proportion of half seed and half stone, of the best quality, Brand, "M.P." .. .. .	per tin	0	3	0½
3. „ Marmalade, in 5-lb. tins, Brand, "M.P." .. .. .	do.	0	2	11

## ANNEX TO CONTRACT No. 1943/127.†

W. Angliss &amp; Co. (Aust.) Pty. Ltd., 42 Bourke St., Melbourne, C.1

## Sub-schedule No. 4.

## MEAT.

## Security, £50.

		£	s.	d.
1. Fresh Beef—Fore-quarters .. .. .	per cwt.	1	18	0
2. „ „ Hind-quarters .. .. .	do.	1	18	0
3. „ „ Buttocks .. .. .	per lb.	0	0	6½
4. „ „ Roast, rolled ribs .. .. .	do.	0	0	10
5. „ „ Rump .. .. .	do.	0	0	10
6. „ „ Thick flank .. .. .	do.	0	0	11½
7. Beef, Corned—Rolled or round, as ordered, without bone or cartilage .. .. .	do.	0	0	9½
8. Mutton, Fresh .. .. .	do.	0	0	5
9. „ „ Sides .. .. .	do.	0	0	5
10. Tripe—Ox .. .. .	do.	0	0	3½
11. Brains—Sheepe' .. .. .	per set	0	0	2
12. Chops—Loin .. .. .	per lb.	0	0	10
13. „ „ Forequarters .. .. .	do.	0	0	8
14. „ „ Outlet .. .. .	do.	0	0	1
15. Frys—Lambs' .. .. .	do.	0	0	4
16. Pork—Loin .. .. .	do.	0	1	4½
17. Steak—Minced .. .. .	do.	0	0	4
18. Livers—Calves' .. .. .	do.	0	0	4
19. Pork German .. .. .	do.	0	0	11
20. Kidneys—Ox .. .. .	each	0	0	10
21. Shanks—Sheepe' .. .. .	do.	0	0	3
22. Saveloys .. .. .	per doz.	0	1	3
23. Rabbits—Fresh .. .. .	per pair	0	2	4

\* Supplies not available.

†† Apply Tender Board.

§ Less 2½ per cent. discount, payment 30 days.

## SCHEDULE No. 3.

## PROVISIONS FOR S.S. RIP AND DREDGES.

## Sub-schedule No. 1.

## BREAD.

1. Bread—Fine wheaten, first quality .. .. .	Purchase by agree- ment
--	----------------------------

## (AGREEMENT.)

Henry Berry and Co. (A/asia) Ltd., 668 Collins-street, Melbourne, C.1.

## Sub-schedule No. 2.

## GROCERIES.

		£	s.	d.
1. Bacon Rashers .. .. .	per lb.	0	1	4½
2. Beans—Butter .. .. .	do.	*		
3. „ Haricot .. .. .	do.	*		
4. Biscuits—Coffee, Marie, Malt .. .. .	do.	0	0	11
5. „ Thin Captains .. .. .	do.	0	0	9½
6. Bisto—in 4-oz. packets .. .. .	per pkt.	*		
7. Chutney—"Crownall" .. .. .	per doz.	*		
8. Cocoa—in 1-lb. tins or cartons .. .. .	per doz.	0	16	0
9. Coconut—Desiccated .. .. .	do.	*		
10. Coffee—Fresh Roasted and Ground .. .. .	do.	1	8	½
11. Corn or Maize Flour in 1-lb. packets, Brand, "Kream" .. .. .	do.	0	0	7½
12. Currants—2 crowns (present season's) .. .. .	per lb.	0	0	9
13. Custard Powder—in 1-lb. packets, Brand, "Dainty Maid" .. .. .	per pkt.	0	0	8½
14. Dates .. .. .	per lb.	*		
15. Eggs, New Laid .. .. .	per doz.	*		
16. Essence—Vanilla, in 20-oz. bottles .. .. .	per bot.	0	8	9
17. „ „ Cochineal, in 1-oz. bottles .. .. .	per doz.	0	7	0
18. Fish—Herrings, Fresh, and in Tomato Sauce, in 14-oz. tins .. .. .	per tin	*		
19. „ „ Salmon, Fresh, in 14½-oz. tins, pink .. .. .	do.	*		
20. „ „ Sardines, in ½ tins, Brand .. .. .	do.	*		
21. Flour—First quality .. .. .	per lb.	0	0	1½
22. „ „ Self-raising, Brand, "Cookwell" .. .. .	per bag	1	11	6½
23. Fruits—Preserved, in 1-lb. 14-oz. tins .. .. .	per doz.	½		
24. „ „ Preserved, pines, in 1-lb. 14-oz. tins .. .. .	do.	½		
25. Gelatine—Ground .. .. .	per lb.	*		
26. Golden Syrup—in 2-lb. tins .. .. .	per ctn.	0	12	6½
27. Honey, in 7-lb. tins .. .. .	per tin	*		
28. Jams—Assorted kinds, "Victoree" in 24-oz. tins .. .. .	per doz.	½		
29. Jelly Crystals in 4-oz. packets .. .. .	per gross	1	19	3
30. Lemon Peel—Cut .. .. .	per lb.	0	0	10½
31. Macaroni .. .. .	do.	0	0	4½
32. Margarine—Cooking Quality .. .. .	do.	*		
33. Meat—Preserved, Beef or Mutton, in 1-lb. tins .. .. .	per doz.	*		
34. Milk—Dried, Skim, in 1-lb. tins .. .. .	do.	0	10	9
35. „ „ Condensed, full cream, 14-oz. tins .. .. .	per tin	0	0	8½
36. Mustard— .. .. .	per lb.	0	2	5
37. Nutmeg—Whole .. .. .	per oz.	*		
38. Oatmeal—Flaked .. .. .	per lb.	0	0	2½
39. Pearl Barley .. .. .	do.	0	0	2½
40. Peas—Split .. .. .	do.	0	0	4
41. Pepper—Black, ground .. .. .	do.	0	1	2
42. Pickles—Assorted, in 20-oz. bottles .. .. .	per bot.	*		
43. Prunes—Dried (present season's) .. .. .	per lb.	*		
44. Raisins—Lexias, 4 Crowns (present season's) .. .. .	do.	0	0	7½
45. Raisins—Sultana, 3 Crowns (present season's) .. .. .	do.	0	0	9½
46. Rice—Dressed .. .. .	do.	*		
47. Salt—Fine (minimum delivery—1 cwt.) .. .. .	per cwt.	0	6	11
48. Sauce—Mustard, in 10-oz. bottles .. .. .	per bot.	*		
49. „ „ Tomato, in 26-oz. bottles, Brand, "Victoree" .. .. .	per doz.	0	17	0
50. „ „ Worcestershire, in 10-oz. bottles, "Greigs" .. .. .	per doz.	0	8	0
51. Soda—Bicarbonate of .. .. .	per lb.	0	0	3
52. Spice—Mixed, loose .. .. .	per lb.	0	1	10
53. Sugar—Brown .. .. .	per lb.	0	0	3½
54. „ „ Castor .. .. .	do.	0	0	4½
55. „ „ Icing .. .. .	do.	0	0	4½
56. Vinegar—Malt .. .. .	per gal.	0	1	½
57. Yolkova—in 4-oz. bottles .. .. .	per bot.	0	1	9

¶ Carton, 2-doz. 2-lb. Tins.

§§ Bag-150-lb.

## ANNEX TO CONTRACT No. 1943/128†

J. H. Cooke Pty. Ltd., 378 Queen's-parade, Clifton Hill, N.8.

## Sub-schedule No. 3.

## MEAT.

(Delivery at River Yarra Wharfs.)

Security, £5.

		£	s.	d.
1. Fresh Beef—Roast, rolled ribs	per lb.	0	0	7
2. Beef, Corned—Silverside	do.	0	0	9
2. " " Rolled or Round, as ordered, without bone or cartilage	do.	0	0	6
4. Fresh Mutton—Shoulder	do.	0	0	5
5. " " Legs	do.	0	0	8
6. " " Loin	do.	0	0	7
7. " " Chops, Forequarter	do.	0	0	6
8. " " Loin	do.	0	0	7
9. " " Suet—Kidney	do.	0	0	3½
10. Sausages—Mixed	do.	0	0	6
11. " " Pork	do.	0	0	6½
12. Pork—Loin	do.	0	1	2
13. " " Leg	do.	0	1	2
14. Tripe	do.	0	0	5
15. Frys—Lambs'	do.	0	0	4
16. Steak—Stewing	do.	0	0	6
17. " " Topside	do.	0	0	8
18. " " Rump	do.	0	0	13
19. Rabbits—Fresh	per pr.	0	2	0
20. Ice	per cwt.	0	2	6

## Sub-schedule No. 4.

## VEGETABLES.

1. Onions
2. Other vegetables, including beetroot, cauliflowers, carrots, cabbages, turnips, parsnips, rhubarb, swedes, and pumpkin, as required
- Purchase by agreement

## SCHEDULE No. 4.

## PROVISIONS—TEACHERS' COLLEGE, CARLTON.

(Delivery at the College.)

(AGREEMENT.)

Moran and Cato Pty. Ltd., 277 Brunswick-street, Fitzroy, N.6.

## Sub-schedule No. 1.

## GROCERIES.

		£	s.	d.
1. Barley	per lb.	0	0	2½
2. Beans—Haricot	do.	*		
3. Cereal—"Piper's," in 24-oz. packets	per pkt.	0	0	10
4. " " Weetbix," large	do.	0	0	11
5. Cheese—Kraft, 8-oz. packets, 5-lb. loaves	per lb.	0	1	4
6. Custard Powder—in 1-lb. packets	per pkt.	0	0	8
7. Essence—in 8-oz. bottles, Lemon pure	per bot.	0	4	2
8. Flour—Self-raising, Brand, "Rono"	per lb.	0	0	2½
9. Fruit—Preserved, assorted, in 1-lb. 14-oz. tins (excluding Pines)	per tin	††		
10. Golden Syrup—in 2-lb. tins	do.	0	0	6½
11. Honey, first quality—in 60-lb. tins only	per lb.	0	0	8
12. Jelly Crystals—4-oz packets	per pkt.	0	0	3½
13. Mustard	per lb.	0	2	5½
14. Macaroni	do.	0	0	4½
15. Pepper—Black, ground	do.	0	1	2
16. Pickles—Assorted, in 20-oz. bottles	per bot.	*		
17. Raisins—Sultana, 3 Crowns (present season's)	per lb.	0	0	8½
18. Rice—Dressed	do.	*		
19. Salmon—Fresh, in 14½-oz. tins, talls	per tin	*		
20. Salt—Fine	per cwt.	0	5	1
21. Sauce—Tomato, in 20-oz. bottles, Brand, "Dyason's"	per doz.	0	11	4
22. " " Worcestershire, in 10-oz. bottles, Brand, "Hardings"	per bot.	0	0	8½
23. Soda—Bicarbonate of	per lb.	0	0	2½
24. " " Washing	do.	0	0	1½
25. Spaghetti	per pkt.	0	0	4½
26. Spice—Mixed, in 1-oz. pkts.	do.	0	0	1½
27. Starch—Rice, Brand, "Crystal"	per lb.	0	0	4½
28. Sugar—Caster	do.	0	0	4
29. Tartar—Cream of—Substitute—Calcium Phosphate	do.	0	0	10½
30. Tomatoes—Tinned	per doz.	*		
31. Vinegar—Malt	per gal.	0	1	1

\* Supplies not available.

†† Apply Tender Board.

## ANNEX TO CONTRACT No. 1943/129†.

J. H. Cooke Pty. Ltd., 378 Queen's-parade, Clifton Hill, N.8.

## Sub-schedule No. 2.

## MEAT.

Security, £5.

		£	s.	d.
1. Fresh Beef—Sirloin	per lb.	0	1	0
2. " " " Round or Topside Steak	do.	0	0	10
3. " " " Stewing (when required, minced)	do.	0	0	9
4. Beef—Corned, Silverside	do.	0	0	10
5. Fresh Mutton—Chops (leg)	do.	0	0	9
6. " " " Leg	do.	0	0	7½
7. Frys—Lambs'	do.	0	0	4
8. Kidneys—Sheep's	each	0	0	2
9. Sausages—Best (Pork or Beef-mixed)	per lb.	0	0	6
10. Sausage Meat	do.	0	0	3½

## ANNEX TO CONTRACT No. 1943/130.

Model Preserving Co. Pty. Ltd., cr. Campbell and Perry streets, Collingwood, N.6.

## Sub-schedule No. 3.

## JAMS.

Security, £10.

1. Jams—Assorted, of approved kinds, in the proportion of half seed and half stone, of the best quality, in 5-lb. tins, Brand, "M.P."
- per tin 0 3 0½

## SCHEDULE No. 5.

## PROVISIONS—ARARAT DISTRICT.

(Delivery into Institutions.)

ANNEX TO CONTRACT No. 1943/131.

Mark Forsyth Pty. Ltd., 274 Barkly-street, Ararat.

## Sub-schedule No. 1.

## BREADSTUFFS.

Security, £75.

1. Bread—Fine wheaten, first quality per cntl. | 0 | 12 | 4 |

2. Flour—First quality do. | 0 | 12 | 10 |

(AGREEMENT.)

John MacLeod and Co. Pty. Ltd., 122 Lydiard-street, Ballarat.

## Sub-schedule No. 2.

## GROCERIES.

		£	s.	d.
1. Beans—Haricot	per lb.	0	0	5
2. Blue—Washing	do.	0	0	11
3. Candles—(full weights) Kitchen's "Electrics," or other make of equal quality, to be supplied in 1-lb. packets	do.	0	0	9½
4. Cocoa—in 1-lb. tins or cardboard cartons "Gold Seal"	do.	0	1	7
5. Corn or Maize Flour—in packets of 1 lb. net "Kream"	do.	0	0	8
6. Curry Powder, "Gold Seal," loose	do.	0	1	4
7. Golden Syrup in 2-lb. tins	per doz.	0	6	11
8. Mustard	per lb.	0	2	6
9. Pepper—Black, ground	do.	0	1	5½
10. Pipes—Tobacco, clay	per doz.	0	1	3
11. Raisins—Sultana, 3 Crowns (present season's)	per lb.	0	0	9
12. Salt—Fine—Corio	per cwt.	0	7	8
13. Soda—Bicarbonate of	per lb.	0	0	3½
14. " " Washing	per cwt.	0	12	6
15. Starch (Rice)—"Silver Star"	per lb.	0	0	9
16. Tartar—Cream of—Substitute—"Actorise"	do.	0	0	11½

## (AGREEMENT.)

John MacLeod and Co. Pty. Ltd., 122 Lydiard-street, Ballarat.

## Sub-schedule No. 3.

## JAMS.

	£	s.	d.
1. Jams—Assorted, in bulk, of approved kinds, in the proportion of half seed and half stone, of the best quality, in tins, as required, Brand, "J. MacLeod and Co. Pty. Ltd."	per lb.	0	0 6

ANNEX TO CONTRACT No. 1943/132.†

Jas. H. McDonald, 114 Barkly-street, Ararat.

## Sub-schedule No. 4.

## MEAT.

Security, £30.

	£	s.	d.
1. Fresh Beef—Fore-quarters ..	per cntl.	2	0 0
2. " " Hind-quarters ..	do.	2	0 0
3. " " Buttocks ..	do.	2	2 6
4. " " Mutton ..	do.	1	17 6
5. Corned Beef—Rolled or round, as ordered, without bone or cartilage	do.	2	10 0

## SCHEDULE No. 6.

## PROVISIONS—BALLARAT DISTRICT.

(Delivery into Institutions.)

ANNEX TO CONTRACT No. 1943/133.

Brogden Bros., 15 Lal Lal-street, Ballarat.

## Sub-schedule No. 1.

## BREADSTUFFS.

Security, £75.

	£	s.	d.
1. Bread—Fine wheaten, first quality ..	per cntl.	0	12 11
2. Flour—First quality ..	do.	0	13 6

## (AGREEMENT.)

John MacLeod and Co. Pty. Ltd., 122 Lydiard-street, Ballarat.

## Sub-schedule No. 2.

## GROCERIES.

	£	s.	d.
1. Blue—Washing ..	per lb.	0	0 11
2. Candles (full weights)—Kitchen's "Electrics," or other make of equal quality, in 1-lb. packets ..	do.	0	0 9½
3. Corn or Maize Flour—in packets of 1 lb. net ..	do.	0	0 7½
4. Currants—2 Crowns (present season's) ..	do.	0	0 8½
5. Curry Powder—"Gold Seal"—loose ..	do.	0	1 4
6. Golden Syrup—in 2-lb. tins ..	per doz.	0	6 7
7. Mustard ..	per lb.	0	2 5½
8. Pepper—Black, ground ..	do.	0	1 5½
9. Pipes—Tobacco, clay ..	per doz.	0	1 3
10. Raisins—Sultana, 3 Crowns (present season's) ..	per lb.	0	0 8½
11. Salt—Fine ..	per cwt.	0	8 6
12. Soda—Bicarbonate of ..	per lb.	0	0 3½
13. " Washing ..	per cwt.	0	11 6
14. Spice—Mixed, in 1-oz. packets ..	per pkt.	0	0 2½
15. Starch (Rice) "Silver Star" ..	per lb.	0	0 9
16. Tartar—Cream of—Substitute—"Actorise" ..	do.	0	0 11½
17. Vinegar—Malt ..	per quart	0	0 3½

## (AGREEMENT.)

John MacLeod and Co. Pty. Ltd., 122 Lydiard-street, Ballarat.

## Sub-schedule No. 3.

## JAMS.

	£	s.	d.
1. Jams—Assorted, in bulk, of approved kinds, in proportion of half seed actual net and half stone, of the best quality, in tins as required, Brand, "J. MacLeod and Co. Pty. Ltd."	per lb.	0	0 5½
2. " Assorted, in 24-oz. tins, in the proportion of half seed and half stone, of the best quality, Brand, "Victoree"	per tin	0	1 1
3. Assorted, in 5-lb. tins, in the proportion of half seed and half stone, of the best quality, Brand, "Victoree"	do.	*	

## ANNEX TO CONTRACT No. 1943/134.†

H. J. Symons Pty. Ltd., 1015 Macarthur-street, Ballarat.

## Sub-schedule No. 4.

## MEAT.

Security, £35.

	£	s.	d.
1. Fresh Beef—Fore-quarters ..	per cntl.	2	12 6
2. " " Hind-quarters ..	do.	2	12 6
3. " " Buttocks ..	do.	2	18 0
4. " " Mutton ..	do.	2	12 0
5. Corned Beef—Rolled or round, as ordered, without bone or cartilage	do.	2	12 0
6. Fresh Suet—Kidney ..	do.	2	12 0

## SCHEDULE No. 7.

## PROVISIONS—BEECHWORTH DISTRICT.

(Delivery into Institutions.)

ANNEX TO CONTRACT No. 1943/135.

P. A. Taylor, Camp-street, Beechworth.

## Sub-schedule No. 1.

## BREADSTUFFS.

Security, £100.

	£	s.	d.
1. Bread—Fine wheaten, first quality ..	per cntl.	0	16 0
2. Flour—First quality ..	do.	0	15 0

## (AGREEMENT.)

Moran and Cato Pty. Ltd., 277 Brunswick-street, Fitzroy, N.6.

## Sub-schedule No. 2.

## GROCERIES.

	£	s.	d.
1. Blue—Washing, powdered in 7-lb. pkts. ..	per lb.	0	0 11½
2. Cocoa—Bulk ..	do.	*	
3. Corn or Maize Flour—in packets of 1 lb. net ..	do.	0	0 8½
4. Golden Syrup—in 2-lb. tins ..	per tin	0	0 7½
5. Jelly Crystals in 4-oz. Pkts. ..	per doz.	0	3 10½
6. Mustard ..	per lb.	0	2 6½
7. Pepper—Black, ground ..	do.	0	1 3½
8. Pipes—Tobacco, clay ..	per doz.	0	1 5½
9. Raisins—Sultana, 3 Crowns (present season's) ..	per lb.	0	0 9½
10. Salt—Fine ..	per cwt.	0	8 10
11. Soap—"Monkey Brand," or equal thereto, in 5-oz. tablets ..	per tab.	0	0 2½
12. " Sand, Carbollic, in 12-oz. blocks ..	per blk.	0	0 2½
13. Soda—Bicarbonate of ..	per lb.	0	0 3½
14. " Washing ..	per cwt.	0	12 6
15. Starch—"Crystal" ..	per lb.	0	0 5½
16. Tartar—Cream of—Substitute—Calcium Phosphate ..	do.	0	0 11½
17. Vinegar—Malt ..	per qt.	0	0 5

## (AGREEMENT.)

Moran and Cato Pty. Ltd., 277 Brunswick-street, Fitzroy, N.6.

## Sub-schedule No. 3.

## JAMS.

	£	s.	d.
1. Jams—Assorted, in bulk—Apricot ..	per lb.	0	0 7
" Peach ..	actual	0	0 7
" Apple & Rasp. flavour ..	net weight	0	0 6½
" Dark Plum ..	do.	0	0 6½

ANNEX TO CONTRACT No. 1943/136.†

E. Spencer, Camp-street, Beechworth.

## Sub-schedule No. 4.

## MEAT.

Security, £30.

	£	s.	d.
1. Fresh Beef—Fore-quarters ..	per cntl.	2	10 0
2. " " Hind-quarters ..	do.	2	10 0
3. " " Minced, without bone ..	per lb.	0	0 6½
4. " " Mutton ..	do.	0	0 6

\* Supplies not available.

### SCHEDULE No. 8. PROVISIONS—CASTLEMAINE DISTRICT.

(Delivery into Institutions.)

ANNEX TO CONTRACT No. 1943/137.

*Rasmussen Bros., Johnston-street, Castlemaine.*

## Sub-schedule No. 1.

BREAD.

1. Bread—Fine wheaten, first quality	per cntl.	£ s. d.
	0 18 9	

ANNEX TO CONTRACT No. 1943/138.†

*H. J. Robertson, 91 Mostyn-street, Castlemaine.*

## Sub-schedule No. 2.

MEAT.

Security, £5.

1. Fresh Beef	per cntl.	£ s. d.
	2 18 4	
2. Corned Beef—Rolled or Round, as ordered, without bone or cartilage	do.	2 18 3

### SCHEDULE No. 9. PROVISIONS—SCHOOL OF FORESTRY, CRESWICK.

(Delivery at the School.)

ANNEX TO CONTRACT No. 1943/139.

*R. C. Bowley, Albert-street, Creswick.*

## Sub-schedule No. 1.

BREADSTUFFS.

Security, £3.

1. Bread—Fine wheaten, first quality	per cntl.	£ s. d.
	1 2 11	
2. Flour—First quality	per lb.	2½

(AGREEMENT.)

*J. Tait and Son, Albert-street, Creswick.*

## Sub-schedule No. 2.

GROCERIES.

1. Barley—Pearl	per lb.	£ s. d.
	0 0 2½	
2. Blue—Washing	do.	0 0 11
3. Butter—First grade creamery, to score not less than 91 points, Government grade, Commerce Regulations Standard	do.	0 1 6½
4. Cheese—First-class quality, matured	do.	0 1 4
5. Coffee—Fresh roasted and whole, beans to be thoroughly sound	do.	0 2 0
6. Corn or Maize Flour—in packets of 1 lb. net	per lb.	0 0 6½
7. Eggs—New laid	per doz.	0 1 6
8. Ginger—Ground	per lb.	*
9. Golden Syrup—in 2-lb. tins	per tin	0 0 7
10. Jams—Assorted, in 5-lb. tins, net, in the proportion of half seed and half stone, Brand, "Red Feather"	do.	0 3 3
11. Mustard—"Double Superfine"	per lb.	*
12. Oatmeal	do.	0 0 2½
13. Peas—Split	do.	0 0 4
14. Pepper—Black, ground	do.	0 1 6
15. Potatoes—Dry and free from dirt	per cwt.	0 14 0
16. Raisins—Sultana, 3 Crowns (present season's)	per lb.	0 0 9½
17. Rice—Dressed	do.	*
18. Salt—Fine	do.	0 0 0½
19. Soap—Household, yellow, dry, and hard, to sample	do.	0 0 3½
20. " Sand, Carbolic, in 12-oz. blocks	each	0 0 1½
21. Soda—Bicarbonate of	per lb.	0 0 3
22. " Washing	do.	0 0 1½
23. Starch (Rice)—Brand, "Preservene"	do.	0 0 7½
24. Tartar — Cream of — Substitute — "Calcium Phosphate"	do.	0 1 2
25. Tea	do.	0 3 2
26. Vinegar—Malt	per pint	0 0 3

ANNEX TO CONTRACT No. 1943/140.†

*Eric Coughlan, Albert-street, Creswick.*

## Sub-schedule No. 3.

MEAT.

Security, £3.

1. Fresh Beef—Fore-quarters	per lb.	£ s. d.
	0 0 8	
2. " Mutton	do.	0 0 7
3. Corned Beef—Rolled or round, as ordered, without bone or cartilage	do.	0 0 9
4. Steak—Minced	do.	0 0 6
5. Pork—Leg	do.	0 0 10
6. Fresh Suet—Kidney	do.	0 0 1

ANNEX TO CONTRACT No. 1943/141.

*E. J. Keen, Jory-street, North Creswick.*

## Sub-schedule No. 4.

MILK.

Security, £3.

1. Milk—Fresh and pure	per qt.	£ s. d.
	0 0 7	

### SCHEDULE No. 10. PROVISIONS—MCLEOD SETTLEMENT, FRENCH ISLAND.

(Delivery to be made at Lang Lang Jetty.)

ANNEX TO CONTRACT No. 1943/142.

*James Jackson, Lang Lang.*

## Sub-schedule No. 1.

BREAD.

Security, £12.

1. Bread—Fine wheaten, first quality	per cntl.	£ s. d.
	1 0 10	

(AGREEMENT.)

*A. G. Glascock, Lang Lang.*

## Sub-schedule No. 2.

GROCERIES.

1. Butter—First grade creamery, to score not less than 91 points, Government grade, Commerce Regulations Standard	per lb.	£ s. d.
	0 1 8	
2. Cheese—Matured	do.	0 1 3
3. Jams—Assorted, in proportion of half seed and half stone, of best quality, in 24-oz. tins, "Victoree"	per tin	0 1 2

ANNEX TO CONTRACT No. 1943/143.†

*W. F. Mison, Lang Lang.*

## Sub-schedule No. 3.

MEAT.

Security, £5.

1. Fresh Beef—Hind-quarters	per cntl.	£ s. d.
	2 18 4	
2. " Mutton	per lb.	0 0 6

### SCHEDULE No. 11. PROVISIONS—TRAVANCORE DEVELOP- MENTAL CENTRE, HEPBURN SPRINGS.

(Delivery at the Centre.)

ANNEX TO CONTRACT No. 1943/144.

*Vanzetta Bros., Hepburn, via Daylesford.*

## Sub-schedule No. 1.

BREADSTUFFS.

Security, £5.

1. Bread—Fine wheaten, first quality	per cntl.	£ s. d.
	1 0 10	
2. Flour—First quality	per lb.	0 0 1½

(AGREEMENT.)

*John Macleod and Co. Pty. Ltd., 122 Lydiard-street, Ballarat.*

## Sub-schedule No. 2.

GROCERIES.

1. Barley—Pearl	per lb.	£ s. d.
	0 0 2½	
2. Blue—Washing, Powdered	do.	0 0 11
3. Butter—First Grade Creamery, to score not less than 91 points, Government Grade, Commerce Regulations Standard	do.	0 1 7
4. Cereal—"Trumpeter" Flakes, in 24-oz. pkts.	per pkt.	0 0 10½
5. Cheese—First-class quality, matured	per lb.	0 1 5
6. Coffee and Chicory	do.	0 1 6
7. Cocoa—in 1-lb. cardboard cartons, "Gold Seal"	do.	0 1 7
8. Corn or maize flour—in packets of 1 lb. net	do.	0 0 8
9. Eggs—new laid	per doz.	0 2 2
10. Ginger—Ground	per lb.	*
11. Golden Syrup, in 2-lb. tins	per doz.	0 6 11
12. Honey—First quality	per lb.	0 0 8½
13. Jams, assorted, in 24-oz. tins, net, in the proportion of half seed and half stone—"Victoree"	per tin	0 1 1
14. Oatmeal	per lb.	0 0 2½
15. Peas—Split	do.	0 0 4½
16. Pepper—Black, Ground	do.	0 1 5½
17. Raisins—Sultana, 3 crowns, present season's	do.	0 0 9
18. Rice—Dressed	do.	*

\* Supplies not available.

## Sub-schedule No. 2—continued.

## GROCERIES—continued.

GROCERIES—continued.		£	s.	d.
19.	Salt—Fine .. .. .	per lb.	0	0 1
20.	Sauce—Tomato, 26-oz. bottles .. .. .	per bot.	0	1 8
21.	Pearl Tapioca .. .. .	per lb.	*	
22.	Soap—Extract of Kitchen's, or equal thereto, in 1-lb. packets .. .. .	do.	0	0 3½
23.	„ "Monkey Brand," or equal thereto, in tablets of 5 oz. each .. .. .	per doz. pkts.	0	3 0
24.	„ Sand, Carbolic, in 12-oz. blocks of approved brand .. .. .	per block	0	0 2½
25.	„ "Velvet," or equal thereto .. .. .	per twin.	0	0 3½
26.	Soda—Bicarbonate of .. .. .	per lb.	0	0 3½
27.	„ Washing .. .. .	do.	0	0 1½
28.	Spaghetti .. .. .	do.	0	0 5
29.	Spice—Mixed, in 1-oz. packets .. .. .	per pkt.	0	0 2½
30.	Starch (Rice)—"Silver Star" .. .. .	per lb.	0	0 0
31.	Tartar—Cream-of-Substitute, "Actorise" .. .. .	do.	0	0 11½
32.	Tea .. .. .	do.	0	3 1
33.	Treacle, in 2-lb. tins .. .. .	per doz.	0	6 6
34.	Vinegar—Malt .. .. .	per pint	0	4 ½
35.	Potatoes—Dry and free from dirt .. .. .	per cwt.	0	15 0

ANNEX TO CONTRACT No. 1943/145.†

*F. J. Boddy, Vincent-street, Daylesford.*

**Sub-schedule No. 3.**

**MEAT.**

Security, £3.

			f.	s.	d.
1.	Fresh Beef—Prime Ribs .. .. .	per lb.	0	0	8
2.	" " Stewing (when required, minced) .. .. .	do.	0	0	6
3.	Fresh Mutton—Forequarter .. .. .	do.	0	0	5
4.	" " in sides .. .. .	do.	0	0	5½
5.	Corned Beef—Silverside .. .. .	do.	0	0	9
6.	Pork—Pickled .. .. .	do.	0	0	9
7.	Frys—Lambs' .. .. .	do.	0	0	4
8.	Kidneys—Sheeps' .. .. .	each	0	0	1
9.	Sausages—Best (Pork or Beef-mixed) .. .. .	per lb.	0	0	5
10.	Liver—Calves' .. .. .	do.	0	0	2
11.	Tripe—Fresh .. .. .	do.	0	0	5
12.	Black Puddings .. .. .	do.	0	0	3

ANNEX TO CONTRACT No. 1943/146.

*Eric S. B. Mead, Hepburn Springs.*

**Sub-schedule No. 4.**

**MILK.**

Security, £10.

Milk—Fresh and pure	..	..	..	per qt.	£	s.	d.
					0	0	6

**SCHEDULE No. 12.**

PROVISIONS—SANATORIUM, GREEN-  
VALE.

(Delivery at the Sanatorium.)

ANNEX TO CONTRACT No. 1943/147.

Walter Norris, trading as Bignell's Bakery, Sydney-road, Campbellfield.

**Sub-schedule No. 1.**

## BREADSTUFFS

Security, £7.

		£	s.	d.
1. Bread—Fine wheaten, first quality	.. per cwtl.	0	17	2½
2. Flour—First quality .. ..	.. do.	0	12	11
3. „ Wheatmeal .. ..	.. per lb.	0	0	1½

(AGREEMENT.)

*Henry Berry and Co. (Asia) Ltd., 568 Collins-street, Melbourne.*

**Sub-schedule No. 2.**

**GROCERIES.**

		£	s.	d.
1.	Bacon—in sides .. .. .	per lb.	0	1 4
2.	Beans—Lima .. .. .	do.	*	
3.	Biscuits—Malt, Milk Arrowroot, Coffee— as ordered, in approximately 7-lb. tins	do.	0	0 11
4.	Blue—Washing .. .. .	do.	0	0 11
5.	Borax .. .. .	do.	*	
6.	Camp Pie—1-lb. tins .. .. .	per doz.	0	8 11
7.	Capers—in 16-oz. bottles .. .. .	per bot.	*	
8.	Cheese—Semi-matured, in 20-lb. loaves ..	per lb.	0	1 5
9.	Cinnamon: .. .. .	do.	0	2 6
10.	Cocoa—in 1-lb. cardboard cartons .. ..	do.	0	1 4
11.	Coconut—Desiccated .. .. .	do.	*	
12.	Corn or Maize Flour—in packets of 1 lb. net—	do.	0	0 7

## Sub-schedule No. 3—continued.

GROCERIES—*continued.*

GROCERIES—continued.		£	s.	d.
13.	Curry Powder—"Atlas" ..	per lb.	0	1 2
14.	Currants—2 Crowns (present season's) ..	do.	0	0 8½
15.	Custard Powder—in 1-lb. packets— "Dainty Maid" ..	per pkt.	0	0 8½
16.	Dates ..	per lb.	*	
17.	Essence of Lemon—in 18-oz. bottles ..	per bot.	0	10 8
18.	"Vanilla—in 20-oz. bottles ..	do.	0	8 9
19.	Fish—Sardine, 1-lb. tins ..	per tin	*	
20.	Fish—Herrings in Sauce, 14-oz. tins—	per tin	*	
21.	Flour—Self-raising—"Cookwell" ..	per bag	1	11 6½
22.	Fruits—Dried (present season's)— Apples and Peaches ..	do.	††	
23.	"Preserved (excluding Pines) ..	per tin	*	
24.	Gelatine—Powdered ..	per lb.	*	
25.	Ginger—Ground ..	do.	*	
26.	Golden Syrup—in 2-lb. tins ..	per ctn.	0	12 6½
27.	Honey—First quality ..	per lb.	*	
28.	Jams—Assorted, in 24-oz. tins, Brand, "Victoree" ..	per tin	††	
29.	Jelly Crystals—in 7-lb. packets ..	per pkt.	0	7 8½
30.	Junket Tablets ..	per doz.	0	7 3
	tubes			
31.	Lemon Peel—Cut ..	per lb.	0	0 10½
32.	Macaroni ..	do.	0	0 4½
33.	Mustard ..	do.	0	2 5
34.	Nutmeg—Ground ..	do.	*	
35.	Oatmeal—Flaked ..	do.	0	0 2½
36.	Spice—Loose ..	per lb.	0	1 10
37.	Pepper—Ground ..	per lb.	0	1 2
38.	Pickles—Assorted, in 20-oz. bottles,	per bot.	*	
39.	Prunes—Dried, 50-60's (present season's)	per lb.	††	
40.	Raisins — 4 Crowns (present season's)	do.	0	0 7½
41.	"Sultana, 3 Crowns (present season's)	do.	0	0 9½
42.	Rice—Dressed ..	do.	*	
43.	Salmon—Fresh in 1-lb. tins ..	per tin	*	
44.	Salt—Fine ..	per cwt.	0	6 11
45.	Sauce—Worcestershire, 10-oz. bottles, Brand, "Greig's" ..	per doz.	0	8 0
46.	"—Tomato, 26-oz. bottles, Brand, "Victoree" ..	do.	0	17 0
47.	Soda—Bicarbonate of ..	per lb.	0	0 3
48.	"Washing ..	per cwt.	0	11 3
49.	Spaghetti ..	per lb.	0	0 5
50.	Starch (Rice)—"Silver Star" ..	do.	0	0 9
51.	Sugar—Castor ..	do.	0	0 4½
52.	Tapioca—Pearl ..	do.	*	
53.	"Seed (Sago) ..	do.	*	
54.	Tartar—Cream of—Substitute "Aerocrema"	do.	0	1 1½
55.	Tomatoes—Preserved, in 2-lb. tins ..	per tin	*	
56.	Treacle—in 2-lb. tins ..	per ctn.	0	11 8½
57.	Vermicelli ..	per pkt.	0	0 4½
58.	Vinegar—Malt ..	per gal.	0	1 0
59.	Cereal—"Wooties," in 24-oz. packets	per pkt.	0	0 10½

ANNEX TO CONTRACT NO. 1943/148.†

*F. Watkins Pty. Ltd., 184 Bourke-street, Melbourne, C.I.*

**Sub-schedule No. 3.**

## MEAT, (cuts as ordered.)

Security, £7.

			£	s.	d.
1.	Beef, Fresh—Roast .. ..	per cwt.	3	2	6
2.	" " " Topside .. ..	per lb.	0	0	9
3.	" " " Rump .. ..	do.	0	1	3
4.	" " " Corned, Silverside .. ..	do.	0	0	9
5.	Mutton—Fresh (sides) .. ..	do.	0	0	5½
6.	Tripe—Ox (during winter) .. ..	do.	0	0	4
7.	Sausages—Mixed .. ..	do.	0	0	7
8.	" " " Pork .. ..	do.	0	0	9
9.	Steak—Minced .. ..	do.	0	0	7
10.	Mince Meat .. ..	do.	0	0	5
11.	Frys—Lambs' .. ..	do.	0	0	6
12.	Chops—Mid Loin .. ..	do.	0	0	8
13.	" " " Cutlet .. ..	do.	0	0	9
14.	" " " Leg .. ..	do.	0	0	7½
15.	Pork—Loin, fresh or pickled .. ..	do.	0	1	3
16.	Suet—Kidney, fresh .. ..	do.	0	0	4
17.	Veal—Cutlets .. ..	do.	0	0	8
18.	Veal—Leg, boned .. ..	do.	0	0	8
19.	Kidneys—Ox .. ..	each	0	1	0
20.	Ox Tails .. ..	do.	0	1	3
21.	Tongues—Ox .. ..	do.	0	3	6
22.	" " " Sheep .. ..	per doz.	0	2	0
23.	Saveloys .. ..	do.	0	1	0
24.	Brains .. ..	per set.	0	0	2
25.	Pork German .. ..	per lb.	0	0	9
26.	Rabbits—Fresh .. ..	per pair	0	2	0
27.	Poultry—First Quality .. ..	do.	0	9	0

\* Supplies not available. †† Bag—150lb. § Cartons—2 doz. 2-lb. tins. ‡‡ Apply Tender Board.

## SCHEDULE No. 13.

PROVISIONS—COORIE MUNGLE PRISON  
CAMP, HEYTESBURY FOREST.

(Delivery to be made at the Camp.)

(AGREEMENT.)

*H. and C. Thorne and Co., Timboon.*

## Sub-schedule No. 1.

## BREAD.

	£	s.	d.
1. Bread—Fine Wheaten, first quality .. per cwtl.	1	2	11

(AGREEMENT.)

*H. and C. Thorne and Co., Timboon.*

## Sub-schedule No. 2.

## GROCERIES.

	£	s.	d.
1. Jams—Assorted, in bulk, of approved kinds, in the proportion of half seed and half stone, of the best quality, in tins as required. .. per lb.	0	0	9½
2. Oatmeal .. .. do.	0	0	4
3. Rice—Dressed .. .. do.	0	0	8½
4. Salt—Fine .. .. per lb.	0	0	1½

ANNEX TO CONTRACT No. 1943/149.†

*G. Waterfall & Son, Timboon.*

## Sub-schedule No. 3.

## MEAT.

Security, £4.

	£	s.	d.
1. Fresh Beef—Ribs .. .. per lb.	0	0	9½
2. " Mutton—Legs .. .. do.	0	0	8½
3. Corned Beef—Without bone or cartilage, rolled or round .. .. do.	0	0	8½
4. Dripping .. .. do.	0	0	2

## SCHEDULE No. 14.

PROVISIONS—ABORIGINAL STATION,  
LAKE TYERS.

(Delivery at Lake Tyers Station.)

ANNEX TO CONTRACT No. 1943/150.

*Coate and Symmons Pty. Ltd., Lakes Entrance.*

## Sub-schedule No. 1.

## BREADSTUFFS.

Security, £25.

	£	s.	d.
1. Bread—Fine wheaten, first quality .. per cwtl.	1	2	11
2. Flour—First quality .. .. do.	0	14	6

(AGREEMENT.)

*Coate and Symmons Pty. Ltd., Lakes Entrance.*

## Sub-schedule No. 2.

## GROCERIES.

	£	s.	d.
1. Baking Powder—Snowflake, or equal thereto, in 1-lb. tins .. per lb.	0	0	1½
2. Candles (full weights)—Kitchen's "Electrics," or other make of equal quality, in 1-lb. packets .. do.	0	0	1½
3. Coffee—Fresh roasted, and whole, beans to be thoroughly sound .. do.	0	0	1½
4. Cocoa—in 1-lb. cardboard cartons .. do.	0	0	1½
5. Corn or Maize Flour—in 1-lb. packets .. do.	0	0	1½
6. Currants—2 Crowns (present season's) .. do.	0	0	1½
7. Curry Powder—bulk .. do.	0	0	1½
8. Matches—Safety, 60 in a box, "Yacht" .. per gross	0	0	1½
9. Mustard—"Double Superfine" .. per lb.	0	0	1½
10. Pepper—Black, ground, in ½-lb. tins .. per tin	0	0	1½
11. Raisins—Sultana, 3 Crowns (present season's) .. per lb.	0	0	1½
12. Salt—Coarse .. .. per cwt.	0	0	1½
13. " Fine .. .. do.	0	0	1½
14. Soap—Household, hard and dry, to sample .. do.	0	0	1½
15. Soda—Bicarbonate of .. .. per lb.	0	0	1½
16. " Washing .. .. do.	0	0	1½
17. Tartar—Cream of—Substitute—Calcium Phosphate .. do.	0	0	1½
18. Treacle—in 7-lb. tins .. .. per tin	0	0	1½
19. Vinegar—Malt .. .. per qt.	0	0	1½

§ Order under Schedule No. 1, Sub-schedule No. 6.

(AGREEMENT.)

*Coate and Symmons Pty. Ltd., Lakes Entrance.*

## Sub-schedule No. 3.

## JAMS.

	£	s.	d.
1. Jams—Assorted, in 24-oz. tins, in the proportion of half seed and half stone, Brand .. per tin	0	0	1½

\*\* The rates to be paid for all items under these Sub-schedules shall be the wholesale prices charged to the contractor, plus 12½ per cent. Wholesaler's invoices to be submitted with contractor's accounts.

## SCHEDULE No. 15.

PROVISIONS—EXPERIMENT FARM,  
RUTHERGLEN.

(Delivery at the Farm.)

ANNEX TO CONTRACT No. 1943/151.

*A. F. Parrott, Main-street, Rutherglen.*

## Sub-schedule No. 1.

## BREAD.

Security, £3.

	£	s.	d.
1. Bread—Fine wheaten, first quality .. per cwtl.	1	2	11

(AGREEMENT.)

*Moran and Cato Pty. Ltd., 277 Brunswick-street, Fitzroy, N.6.*

## Sub-schedule No. 2.

## GROCERIES, ETC.

	£	s.	d.
1. Biscuits—Marie .. .. per lb.	0	1	0
2. Blue—Washing, Powdered, 7-lb. parcels .. do.	0	0	11½
3. Candles (full weights)—Kitchen's "Electrics," or other make of equal quality, in 1-lb. packets .. do.	0	0	9½
4. Cornflakes—"Kellogg's," in 16-oz. packets .. per pkt.	0	0	8½
5. Corn or Maize Flour—in packets of 1-lb. net .. per lb.	0	0	8½
6. Coconut—Desiccated .. .. do.	0	0	8½
7. Currants—2 Crowns (present season's) .. do.	0	0	8½
8. Fish—Salmon, in ½-lb. tins .. per tin	0	0	8½
9. Fruits—Preserved, assorted, in 1-lb. 14-oz. tins (excluding Pineapple) .. do.	0	0	11½
10. Jams—Assorted, of approved kinds, in proportion of half seed and half stone, in 24-oz. tins, Brand, "Blue Bell" .. do.	0	0	11½
11. " Assorted, of approved kinds, in proportion of half seed and half stone, in 5-lb. tins, Brand, "Blue Bell" .. do.	0	0	11½
12. Jelly Crystals—in 4-oz. packets .. per pkt.	0	0	4
13. Macaroni or Vermicelli—as ordered .. per lb.	0	0	4
14. Matches—Safety .. .. per gross	0	14	1½
15. Oatmeal—Flaked .. .. per lb.	0	0	2½
16. Pepper—Black, ground .. .. do.	0	1	4
17. Potatoes—Dry and free from dirt .. per cwt.	18	6	
18. Raisins—5 crown (present season's) lexias .. do.	0	0	9½
19. " Sultana, 3 crown (present season's) .. per lb.	0	0	9½
20. Rice—Dressed .. .. per lb.	0	0	1½
21. Salt—Fine .. .. do.	0	0	1½
22. Sauce—Tomato, "Dysons," 20-oz. bottles .. per doz.	0	13	4
23. Soap—Household, yellow, to sample .. per cwt.	1	17	5½
24. " "Monkey Brand," or equal thereto, in 5-oz. tablets .. per tab.	0	0	2½
25. " Sand, in 12-oz. blocks .. .. per doz.	0	2	4
26. " Toilet, "Bath," in 5½-oz. tablets, to sample, Kitchen's, or equal thereto .. per doz.	0	1	9½
27. Soda—Washing .. .. per lb.	0	0	1½
28. Tea—1st Grade .. .. do.	0	3	0½

## SCHEDULE No. 16.

## PROVISIONS AT SALE.

(Delivery at the Gaol.)

ANNEX TO CONTRACT No. 1943/152.

*Robert McGowan, 70 Raymond-street, Sale.*

## Sub-schedule No. 1.

## BREAD.

Security, £3.

	£	s.	d.
1. Bread—Fine wheaten, first quality .. per cwtl.	0	19	0

\* Supplies not available.

†† Apply Tender Board.



ANNEX TO CONTRACT No. 1943/153.†  
Stan. Ryder, 99B Raymond-street, Sale.

## Sub-schedule No. 2.

## MEAT.

Security, £3.

		£	s.	d.
1. Fresh Beef—Stewing .. .. .	per lb.	0	0	5½
2. " Mutton .. .. .	do.	0	0	5½
3. Corned Beef—Rolled or round, as ordered, without bone or cartilage .. .. .	do.	0	0	5½

## SCHEDULE No. 17.

PROVISIONS—PLEASANT CREEK  
SPECIAL SCHOOL, STAWELL.

(Delivery at the School.)

ANNEX TO CONTRACT No. 1943/154.

A. R. Bushick, 3 Ligar-street, Stawell.

## Sub-schedule No. 1.

## BREADSTUFFS.

Security, £10.

		£	s.	d.
1. Bread—Fine wheaten, first quality .. .. .	per cntl.	0	19	9½
2. Flour—First quality .. .. .	do.	0	14	7
3. Flour—Wheatmeal .. .. .	per lb.	0	0	1

(AGREEMENT.)

John MacLeod and Co. Pty. Ltd., 122 Lydiard-street, Ballarat.

## Sub-schedule No. 2.

## GROCERIES.

		£	s.	d.
1. Baking Powder .. .. .	per lb.	0	1	8
2. Barley—Pearl .. .. .	do.	0	0	2½
3. Blue—Washing .. .. .	do.	0	0	11
4. Cereal—"Trumpeter," large .. .. .	per pkt.	0	0	10½
5. Cheese—Matured .. .. .	per lb.	0	1	5
6. Cocoa—in 1-lb. tins, "Gold Seal" .. .. .	do.	0	1	7
7. Coffee and Chicory .. .. .	do.	0	1	6
8. Corn or Maize Flour—in 1-lb. packets .. .. .	do.	0	0	8
9. Curry Powder—"Gold Seal"—Loose .. .. .	do.	0	1	4
10. Dates .. .. .	do.	*		
11. Ginger—Ground .. .. .	do.	*		
12. Golden Syrup—in 2-lb. tins .. .. .	per doz.	0	6	11
13. Honey, first quality .. .. .	per lb.	0	0	8½
14. Jams—Assorted, of approved kinds, in proportion of half seed and half stone, in tins containing 24 oz. net, Brand, "Victoree." .. .. .	per tin	0	1	1
15. Peel—Cut, Mixed .. .. .	per lb.	0	0	11
16. Oatmeal .. .. .	do.	0	0	2½
17. Pepper—Black, ground .. .. .	do.	0	1	5½
18. Prunes—Dried, 50-60's (present season's) .. .. .	do.	0	0	11½
19. Raisins—Sultana, 3 Crowns (present season's) .. .. .	do.	0	0	9
20. Rice—Dressed .. .. .	per cwt.	*		
21. Salt—Fine .. .. .	do.	0	7	9
22. Pearl Tapioca .. .. .	do.	*		
23. Soap—Extract of, Kitchen's, or equal thereto .. .. .	per lb.	0	0	3½
24. " "Bodyguard," or equal thereto .. .. .	per cake	0	0	3
25. " "Monkey" Brand, or equal thereto, in 5-oz. tablets .. .. .	per tab.	0	0	3
26. " Sand, in 12-oz. blocks .. .. .	per block	0	0	2½
27. " "Velvet," or equal thereto .. .. .	per twin	0	0	3½
28. Soda—Bicarbonate of .. .. .	per lb.	0	0	3½
29. " Washing .. .. .	per cwt.	0	12	6
30. Starch (Rice)—Brand, "Silver Star" .. .. .	per lb.	0	0	9
31. Tartar—Cream of—Substitute—"Actorise" .. .. .	do.	0	0	11½
32. Tea .. .. .	do.	0	3	1
33. Treacle—in 2-lb. tins .. .. .	per doz.	0	6	6

ANNEX TO CONTRACT No. 1943/155.†  
Newton Bros., 29 Patrick-street, Stawell.

## Sub-schedule No. 3.

## MEAT.

Security, £3.

		£	s.	d.
1. Fresh Beef—Prime ribs .. .. .	per lb.	0	0	7
2. " " Sirloin .. .. .	do.	0	0	7
3. " " Stewing (minced when required) .. .. .	do.	0	0	7
4. Beef—Corned, Silverside .. .. .	do.	0	0	7
5. Fresh Mutton—Chops (loin) .. .. .	do.	0	0	6
6. " " in sides .. .. .	do.	0	0	4½
7. Sausages—Mixed .. .. .	do.	0	0	5
8. Frys—Lambs' .. .. .	each	0	0	2
9. Saveloys .. .. .	per doz.	0	0	7

\* Supplies not available.

ANNEX TO CONTRACT No. 1943/156.

R. S. Andrews, Stawell.

## Sub-schedule No. 4.

## MILK.

Security, £10.

		£	s.	d.
1. Milk—Fresh and pure .. .. .	per gal.	0	1	9

## SCHEDULE No. 18.

## PROVISIONS—SUNBURY DISTRICT.

(Delivery into Institutions.)

ANNEX TO CONTRACT No. 1943/157.

J. N. Hennessy Pty. Ltd., 55 Sydney-road, Brunswick, N.10.

## Sub-schedule No. 1.

## BREADSTUFFS.

Security, £112.

		£	s.	d.
1. Bread—Fine wheaten, first quality .. .. .	per cntl.	0	16	1
2. Flour—First quality .. .. .	do.	0	13	0

(AGREEMENT.)

A. C. Skill, Sunbury.

## Sub-schedule No. 2.

## GROCERIES.

		£	s.	d.
1. Blue—Washing .. .. .	per lb.	0	0	9
2. Beans—Haricot .. .. .	do.	*		
3. Candles—Full weight, in 1-lb. packets, Kitchen's "Electrines", or equal thereto .. .. .	per lb.	0	0	9
4. Cocoa—in 1-lb. tins or cardboard cartons .. .. .	do.	0	0	5
5. Corn or Maize Flour—in packets of 1-lb. net .. .. .	do.	0	0	5
6. Currants—2 Crowns (present season's) .. .. .	do.	0	0	8½
7. Curry Powder .. .. .	do.	0	1	5
8. Ginger—Ground .. .. .	do.	*		
9. Golden Syrup—in 7-lb. tins .. .. .	per tin	0	1	8½
10. Lemon Peel .. .. .	per lb.	1	3	
11. Mustard .. .. .	do.	2	6	
12. Pepper—Black, ground .. .. .	do.	0	1	6
13. Pipes—Tobacco, clay .. .. .	per doz.	0	1	3
14. Raisins—Sultana, 3 Crowns (present season's) .. .. .	per lb.	0	0	9
15. Salt—Fine .. .. .	per cwt.	0	6	6
16. Soda—Bicarbonate of .. .. .	per lb.	0	0	3
17. " Washing .. .. .	per cwt.	0	12	0
18. Spice—Mixed, loose .. .. .	per lb.	0	1	3
19. Starch (Rice)—"Preservene" .. .. .	do.	0	0	6½
20. Tartar—Cream of—Substitute, "Antelope" .. .. .	do.	0	1	2
21. Vinegar—Malt .. .. .	per pint	0	0	1½
22. Yolking .. .. .	per lb.	2	9	

## Sub-schedule No. 3.

## CEREALS.

		per cwt.	Purchase under Melbourne District quotations.
1. Oatmeal .. .. .	per cwt.		
2. Rice—Dressed to sample .. .. .	do.		
3. Rice—Unpolished .. .. .	do.		
4. Seed Tapioca—(Sago), to sample .. .. .	do.		
5. Pearl Barley .. .. .	do.		
6. Peas—Split .. .. .	do.		

(AGREEMENT.)

A. C. Skill, Sunbury.

## Sub-schedule No. 4.

## JAMS.

		£	s.	d.
1. Jams—Assorted, in bulk, of approved kinds, in the proportion of half seed and half stone, of the best quality, in tins as required, Brand, "Blue Bird" .. .. .	per lb. actual net weight	0	0	5½

ANNEX TO CONTRACT No. 1943/158.†

F. Watkins Pty. Ltd., 184 Bourke-street, Melbourne, C.1.

## Sub-schedule No. 5.

## MEAT.

Security, £40.

		£	s.	d.
1. Fresh Beef—Fore-quarters .. .. .	per cntl.	2	10	0
2. " " Hindquarters .. .. .	do.	2	10	0
3. " " Buttocks .. .. .	per lb.	0	0	6
4. " Mutton .. .. .	do.	0	0	5½
5. Corned Beef—Rolled or round, as ordered, without bone or cartilage .. .. .	do.	0	0	6½





# VICTORIA GOVERNMENT GAZETTE.

Published by Authority.

[Registered at the General Post Office, Melbourne, for transmission by post as a newspaper.]

No. 137]

FRIDAY, JULY 16.

[1943

## COMMONWEALTH NATIONAL SECURITY (GENERAL) REGULATIONS.

STATE OF VICTORIA.

### LIGHTING RESTRICTION ORDER.

ORDER No. 49.

WHEREAS it is provided by Regulation 35A of the Commonwealth National Security (General) Regulations that the Premier of any State may, after consultation with the Minister of State for Home Security or an officer of the Department of Home Security authorized by that Minister to act on his behalf and with the Commander of a Lines of Communication Area or an officer authorized by the Minister of State for the Army to act on behalf of such Commander, by Order—

(a) direct any total or partial "black-out" and may prohibit or regulate the display of lights of any description within the State; and

(b) make such provision as he deems necessary to protect the persons and property of the civil population in that State or any part thereof in case of emergency,

and that all persons within such State or area (as the case may be) to which any such Order applies shall comply with the requirements of that Order:

Now therefore I, Albert Arthur Dunstan, Premier of the State of Victoria, having duly held such consultations, do hereby make the following Order:—

1. This Order may be cited as the Lighting Restriction Order Citation. (Victoria) No. 7.

2. The Lighting Restriction Order (Victoria) No. 5, as amended by the Lighting Restriction Order (Victoria) No. 6, is amended—

(a) by omitting clause 4 and inserting in its stead the following clauses:—

"4. (1) (a) The provisions of this clause and of clause 25 but of no other clause in this Part of this Order shall apply with respect to vehicles in Victoria during the continuance in operation of this clause.

Amendments  
of Lighting  
Restriction  
Order  
(Victoria)  
No. 5.

Clause 4.  
Lighting  
restrictions  
applicable to  
vehicles.

(b) This clause shall continue in operation until such time as the Premier by direction declares that the clause is no longer in operation and the provisions of clause 23 of this Order shall apply with respect to any such direction:

Provided that in the event of the First signal within the meaning of the Air Raid Warning System Order (Victoria) being sounded in any area this clause shall be deemed to have ceased to operate in that area until the sounding of the Second signal within the meaning of that Order.

(2) A person in charge of any vehicle shall not leave that vehicle stationary or allow it to remain stationary if any lights (except normal tail or rear lights) are between sunset and sunrise visible from the sea along the ocean coast-line of the State of Victoria.

4A. Upon the sounding of the First signal within the meaning of the Air Raid Warning System Order (Victoria) in any area the driver or person in charge of any motor vehicle shall immediately mask or cover the head lamps on the motor vehicle so that while such motor vehicle is being driven either no light is displayed from any such head lamp or the intensity of the illumination from any such head lamp on a vertical surface at any point 10 feet from the head lamp does not exceed 2.5 foot candles and shall keep such head lamps so masked or covered until the sounding of the Second signal within the meaning of that Order.”;

(b) by inserting after clause 26 the following clause:—

“26A. (1) (a) The provisions of this clause and of clauses 31, 35, 36 and 37 but of no other clause in this Part of this Order shall apply during the continuance in operation of this clause.

(b) This clause shall continue in operation until such time as the Premier by direction declares that the clause is no longer in operation and the provisions of clause 23 of this Order shall apply with respect to any such direction:

Provided that in the event of the First signal being sounded in any area this clause shall be deemed to have ceased to operate in that area until the sounding of the Second signal.

(2) (a) A person shall not cause or allow any light to be emitted from or by any fire lamp sign or other device so that such light is between sunset and sunrise visible from the sea along the ocean coast-line of the State of Victoria.

(b) This sub-clause shall not apply with respect to lights on vehicles.

(3) Any undertaker council or other public statutory corporation and The Victorian Railways Commissioners shall not be under any liability by reason of or arising out of the fact that the lighting provided or controlled or light used by such undertaker council public statutory corporation or Commissioners continues, after this clause comes into operation, to be reduced or modified in accordance with the requirements of, or instructions given under, this Part of this Order as theretofore in operation until such undertaker council public statutory corporation or Commissioners is able to restore such lighting to the extent permitted by the foregoing provisions of this clause.”

A. A. DUNSTAN,

Premier of the State of Victoria.

Dated this 15th day of July, 1943.

No. 159.

By Authority: H. E. DAW, Government Printer, Melbourne.

Head lamps on moving motor vehicles to be masked or covered during air raids.

New clause 26A. General lighting restrictions.