

[1709]



VICTORIA
GOVERNMENT GAZETTE.

Published by Authority.

[Registered at the General Post Office, Melbourne, for transmission by post as a newspaper.]

No. 136]

FRIDAY, JULY 16.

[1943

CONTRACTS ACCEPTED.

(SERIES 1943-44.)

SUPPLY OF PROVISIONS

FOR

STATE DEPARTMENTS

FROM

1st JULY, 1943 to 30th JUNE 1944,
or as stated.

Conditions of Contract and Stipulations are shown herein for the guidance
of Officers ordering and receiving supplies.

H. E. JOHNSON,
Secretary to the Tender Board.

CONTRACTS ACCEPTED—(Series 1943-44.)

PROVISIONS.

No. of Contract.	Particulars of each Tender Accepted.	Amount.	Name of Contractor or Supplier.	Charge against Vote or Fund.
PROVISIONS— Supply of Provisions, in such quantities as may be ordered, from 1st July, 1943, to 30th June, 1944, or as stated.				
Schedule No. 1.—Melbourne District—				
117	Bread, Kew Mental Hospital	Rates as per annex	Jellis Bakeries Ltd.	
118	Bread, Melbourne, Royal Park, Teachers' College, and Hostel, Carlton, &c.	Ditto	Cahill and Quin	
119	Flour and Sharps	Ditto	Pirie Bros.	
..	Groceries, &c.	Ditto	<i>Moran and Cato Pty. Ltd. (A)</i>	
..	Cereals	Purchase under Tender Board quotations	
120	Jams	Rates as per annex	Model Preserving Co. Pty. Ltd.	
121	†Meat, Kew Mental Hospital	Ditto	F. Watkins Pty. Ltd.	
122	†Meat, Pentridge Penal Establishment	Ditto	F. Watkins Pty. Ltd.	
123	†Meat, Children's Welfare Depot, Royal Park, and Police Hospital	Ditto	J. H. Cooke Pty. Ltd.	
124	†Meat, Royal Park Mental Hospital and Receiving House	Ditto	J. H. Cooke Pty. Ltd.	
..	Soap Mixtures	Ditto	<i>Moran and Cato Pty. Ltd. (A)</i>	
..	Tea, Ration Tea, and Coffee	Ditto	<i>Henry Berry and Co. (A'sia.) Ltd. (A)</i>	
..	Potatoes	Purchase under Tender Board quotations	
Schedule No. 2.—Mont Park; Sanatorium, Greswell, &c.—				
125	Bread	Rates as per annex	E. J. Callander	
..	Groceries	Ditto	<i>Henry Berry and Co. (A'sia.) Ltd. (A)</i>	
126	Jams	Ditto	Model Preserving Co. Pty. Ltd.	
127	†Meat	Ditto	W. Anglias and Co. (Aust.) Pty. Ltd.	
..	Potatoes	Purchase under Tender Board quotations	
Schedule No. 3.—SS. Rip and Dredges—				
..	Bread	Purchase by agreement	
..	Groceries	Rates as per annex	<i>Henry Berry and Co. (A'sia.) Ltd. (A)</i>	
128	†Meat	Ditto	J. H. Cooke Pty. Ltd.	Contingencies, 1943-44
..	Vegetables	Purchase by agreement	
..	Potatoes	Purchase under Tender Board quotations	
Schedule No. 4.—Teachers' College, Carlton—				
..	Groceries	Rates as per annex	<i>Moran and Cato Pty. Ltd. (A)</i>	
129	†Meat	Ditto	J. H. Cooke Pty. Ltd.	
130	Jams	Ditto	Model Preserving Co. Pty. Ltd.	
..	Potatoes	Purchase under Tender Board quotations	
Schedule No. 5.—Ararat District—				
131	Breadstuffs	Rates as per annex	Mark Forsyth Pty. Ltd.	
..	Groceries	Ditto	} <i>John MacLeod and Co. Pty. Ltd. (A)</i>	
..	Jams	Ditto	}	
132	†Meat	Ditto	Jas. H. McDonald	
..	Potatoes	Purchase under Tender Board quotations	
Schedule No. 6.—Ballarat District—				
133	Breadstuffs	Rates as per annex	Brogden Bros.	
..	Groceries	Ditto	} <i>John MacLeod and Co. Pty. Ltd. (A)</i>	
..	Jams	Ditto	}	
134	†Meat	Ditto	H. J. Symons Pty. Ltd.	
..	Potatoes	Purchase under Tender Board quotations	
Schedule No. 7.—Beechworth District—				
135	Breadstuffs	Rates as per annex	P. A. Taylor	
..	Groceries	Ditto	} <i>Moran and Cato Pty. Ltd. (A)</i>	
..	Jams	Ditto	}	
136	†Meat	Ditto	E. Spencer	
..	Potatoes	Purchase under Tender Board quotations	

Names shown in italics denote Suppliers under agreement.
 † Contract for period 1st July, 1943, to 30th September, 1943, only.

CONTRACTS ACCEPTED.—(Series 1943-44)—continued.

PROVISIONS—continued.

No. of Contract.	Particulars of each Tender Accepted.	Amount.	Name of Contractor or Supplier.	Charge against Vote or Fund.
PROVISIONS—continued.				
Schedule No. 8.—Castlemaine District—				
137	Bread	Rates as per annex	Rasmussen Bros.	
138	†Meat	Ditto	H. J. Robertson	
..	Potatoes	Purchase under Tender Board quotations	
Schedule No. 9.—School of Forestry, Creswick—				
139	Breadstuffs	Rates as per annex	R. C. Bowley	
..	Groceries	Ditto	<i>J. Tail and Son (A)</i>	
140	†Meat	Ditto	Eric Coughlan	
141	Milk	Ditto	E. J. Keen	
Schedule No. 10.—McLeod Settlement, French Island—				
142	Bread	Rates as per annex	James Jackson	
..	Groceries	Ditto	<i>A. G. Glasscock (A)</i>	
143	†Meat	Ditto	W. F. Misson	
..	Potatoes	Purchase under Tender Board quotations	
Schedule No. 11.—Travancore Developmental Centre, Hepburn Springs—				
144	Breadstuffs	Rates as per annex	Vanzetta Bros.	
..	Groceries	Ditto	<i>John MacLeod and Co. Pty. Ltd. (A)</i>	
145	†Meat	Ditto	F. J. Boddy	
146	Milk	Ditto	Eric S. B. Mead	
..	Potatoes	Purchase under Tender Board quotations	
Schedule No. 12.—Sanatorium, Greenvale—				
147	Breadstuffs	Rates as per annex	Walter Norris, trading as Bignell's Bakery	
..	Groceries	Ditto	<i>Henry Berry and Co. (A'sia.) Ltd. (A)</i>	
148	†Meat	Ditto	F. Watkins Pty. Ltd.	
..	Potatoes	Purchase under Tender Board quotations	
Schedule No. 13.—Coorimungle Prison Camp, Heytesbury Forest—				
..	Bread	Rates as per annex	} <i>H. and C. Thorne and Co. (A)</i>	
..	Groceries	Ditto		
149	†Meat	Ditto		G. Waterfall and Son
Schedule No. 14.—Aboriginal Station, Lake Tyers—				
150	Breadstuffs	Rates as per annex	} Coate and Symmons Pty. Ltd.	
..	Groceries	Ditto		
..	Jams	Ditto		<i>Coate and Symmons Pty. Ltd. (A)</i>
Schedule No. 15.—Experiment Farm, Rutherglen—				
151	Bread	Rates as per annex	A. F. Parrott	
..	Groceries	Ditto	<i>Moran and Cato Pty. Ltd. (A)</i>	
Schedule No. 16.—Sale Gaol—				
152	Bread	Rates as per annex	Robert McGowan	
153	†Meat	Ditto	Stan L. Ryder	
Schedule No. 17.—Pleasant Creek Special School, Stawell—				
154	Breadstuffs	Rates as per annex	A. R. Bushick	
..	Groceries	Ditto	<i>John MacLeod and Co. Pty. Ltd. (A)</i>	
155	†Meat	Ditto	Newton Bros.	
156	Milk	Ditto	R. S. Andrews	
..	Potatoes	Purchase under Tender Board quotations	
Schedule No. 18.—Sunbury District—				
157	Breadstuffs	Rates as per annex	J. N. Hennessy Pty. Ltd.	
..	Groceries	Ditto	<i>A. C. Shill (A)</i>	
..	Cereals	Purchase under Tender Board quotations	
158	Jams	Rates as per annex	<i>A. C. Shill (A)</i>	
..	†Meat	Ditto	F. Watkins Pty. Ltd.	
..	Potatoes	Purchase under Tender Board quotations	

Contingencies, 1943-44

Names shown in italics denote Suppliers under agreement.
 † Contract for period 1st July, 1943, to 30th September, 1943, only.

CONDITIONS OF CONTRACT FOR PROVISIONS, 1943-44, ETC.

(Published in the *Victoria Government Gazette* No. 90, dated 5th May, 1943, pages 1163 and 1165.)

1. All the articles are to be of the best quality of the several kinds, in the best condition, and in conformity with the Health Acts, and to be delivered in sound packages, free from all charges for cartage, freight, &c. The goods shall be delivered as may be directed by the officer ordering the supply.

2. As the exact quantity of any article which may be required cannot be stated, the estimate being approximate only, the Government will not be bound by the quantity stated in the schedule, but will be at liberty to order more or less, according to circumstances, and the contractor will be bound to supply the same as ordered.

The Government reserves the right to purchase otherwise than from the contractor any of the articles specified in the schedule in the event of emergency due to the war.

3. Supplies for country districts for which no local contract may have been taken, or for which the contract has been terminated, may be ordered under the Melbourne contract.

4. The Melbourne District will include places within a radius of 6 miles from the Elizabeth-street Post Office, with the exception of places for which separate contracts are provided; the Ararat, Ballarat, Beechworth, and Sunbury Districts will include the Mental Hospitals, Gaols, and Police Gaols at those places; and the Castlemaine District will include the Gaol. Delivery must be made at the places institutions, &c., named in the schedules, or as directed by the officer ordering the supply.

5. Packages suitable for transport of goods supplied must be provided by the contractor free of expense, and the value of these packages, whether in bulk or otherwise, is to be included in the rate tendered, except butter boxes and soap boxes (not including fancy soaps), jam jars, flour, meal, and potato bags, which will remain the property of the contractor, and only the actual net weight or quantity received will be paid for; the empties to be removed from the place of delivery at the contractor's expense.

6. The meat supplied under these conditions must, if practicable, be slaughtered at abattoirs which are under authorized inspection and supervision. Any infringement of this condition will subject the contractor, on report from the Tender Board, to such mulct, not exceeding Fifty pounds, as the Treasurer may direct, and the amount will be deducted from the contractor's account, or from the security money.

7. The supplies coming under the head of Rations and Medical Comforts are to be delivered direct to the establishment entitled thereto on the written order of the officer in charge. All other supplies will be ordered by the head of the Department concerned or any officer authorized by him, and shall be delivered as may be directed by the officer ordering the supply.

8. At the time of delivering the supplies, the contractor shall produce the order for the same to the officer authorized to accept delivery, and such officer shall acknowledge thereon the receipt of the stores accepted, and shall return the order to the contractor, who shall render his account as soon as possible after the delivery of the supplies, accompanied by the receipted delivery order. The rates or quantities quoted in the orders cannot be exceeded.

9. Where practicable, the contractor shall use the Railways for the transport of the goods. When a contractor is required to make delivery of goods at a railway station for transmission by rail, except for Commonwealth Departments, he shall obtain a receipt for the goods in duplicate on the Stores and Transport consignment note, at the same time handing in the triplicate and quadruplicate of the form as an authority for the Railways to act as agent for, and charge the freight to, the Stores and Transport Office. He shall as soon as possible, and not later than twenty-four hours thereafter, deliver at the Tender Board Offices the original, the duplicate to be forwarded to the consignee and the quintuplicate retained by himself. Should the goods thus forwarded be rejected, the contractor must bear the cost of replacing such goods, for which services the departmental consignment note is not to be used. Any infringement of this condition may subject the contractor to such mulct as the Tender Board may recommend under clause 18 of these conditions.

10. Orders must receive prompt execution; in the event of the goods not being delivered at the time mentioned in the order or within such other time as the officer ordering the supply may specify for delivery, it will be competent for such officer, or the head of the Department to whom the goods are to be supplied, on giving the contractor twenty-four hours' notice, to purchase the supplies, or any like supplies that are suitable for the service, at the contractor's risk, and the extra expense incurred over and above the contract price (if any)

will be deducted from the contractor's account or from the security money.

11. The acceptance of the supplies shall be subject to the approval of the officer authorized to take delivery of the stores, or such other officer as shall be named in the conditions.

12. If the officer in charge of stores be not satisfied as to the quantity or quality of the stores, or if, after taking delivery of any stores or material, he shall discover any deficiency or defect therein, he may return such deficient or defective stores or material to the contractor, and shall report the same to the head of his Department and to the Tender Board.

13. In the event of a difference of opinion between the contractor and the officer receiving the supplies as to the quality, the same is to be decided, in cases where the article is not of a perishable nature, by a Board of Survey composed of persons named by the Treasurer of the State for the time being; and the decision of the Board is to be considered final. In the event of the decision being against the contractor, the survey fees and expenses (if any) will be deducted as in clause 10.

14. In cases where the article is of a perishable nature, or when from some other cause injury would be sustained either by the person to whom the rations or stores are due or by the contractor in waiting for a Board to survey, the head of the Department or officer authorized to take delivery will have power to reject such article or articles as are obviously of inferior quality, it being understood that he will be responsible to the Government for so doing, and that the contractor must take back the rejected article and supply good in its stead; failing which it, or any like supply suitable for the Service, will be obtained by the officer requiring it as in clause 10. In case of the rejection or return of any supplies, the contractor shall bear the whole cost of replacing the supplies so rejected or returned.

15. If the Board shall decide that the article is not of proper quality it must be immediately replaced by the contractor; failing which it, or any like supply suitable for the Service, will be procured by the officer requiring it, and the expense charged as in clause 10.

16. In the case of supplies for Mental Hospitals, it will be competent for a Board of Survey, consisting of the medical superintendent (or, in his absence, of the medical officer) and any two officers named by him, to examine and reject any supplies that may be objected to. It must be distinctly understood, however, that the contractor will have a right of appeal to the Treasurer of the State for the time being, such appeal to be made in writing within 24 hours of the rejection; but, pending such appeal, he must at once supply others of approved quality; failing which, the supplies required, or any like supplies suitable for the Service, may be obtained by the officer concerned, and the expense charged as in clause 10.

17. In the case of supplies for Mental Hospitals, it will also be competent for two or more of the official visitors, in conjunction with the medical superintendent, to reject any supplies that they may consider not in accordance with contract; and in such cases the reference to a Board of Survey will not be deemed to be necessary.

18. A refusal to execute orders, irregularity in the quantity or quality of the supplies, or delay in delivering or replacing them when required, will subject the contractor, upon report from the Tender Board, to such mulct, not exceeding Fifty pounds, as the said Treasurer may direct, and the amount may be deducted as in clause 10. It will also be in the power of the said Treasurer, upon such refusal, irregularity, or delay, to terminate the contract forthwith, and forfeit the whole or any part of the security money; and, in addition, the contractor will be disqualified from tendering or holding any future contract or contracts for a period of twelve months from the date of such disqualification.

19. Contractors are not at liberty to transfer their contracts under cover of power of attorney, coupled with an interest or otherwise, and no such transfer will be recognized by the Government. *If it is found during the currency of the contract that the contractor has not conformed to the condition of advertisement—which stipulates that if a tenderer be a member of a firm and such firm be interested in the contract, the tender shall be in the name of the firm and not in that of the individual—then the Treasurer may, on the recommendation of the Tender Board, determine the contract, and forfeit the security money.*

20. It will be competent for the Tender Board to terminate the contract, without notice, should there be reason to know

that the contractor takes advantage of his contract to communicate with a prisoner.

21. The contract entered into under these conditions is not to be considered as being broken, infringed, or vitiated by the importation of stores for the Government service, or by any contracts or purchases made by the Imperial Commissariat; or by the consumption of the produce or surplus stock of any Government establishment, or by any article being made at and supplied for the use of any Government establishment.

22. Notwithstanding anything contained to the contrary in section 152 of the *Customs Act 1901-36*, it is hereby expressly provided that upon any alteration of the duty collected, affecting the goods included in this contract, the contract price shall not be altered, and the contract may be terminated at the option of either party by two months' notice in writing from the first day of the calendar month next ensuing,

and within the period for which the contract is made. The contract for the unaffected items shall remain in full force and effect. Any notice to be served under this condition shall be deemed to have been duly served if sent to the contractor in a registered letter to his last-known place of business or abode.

23. Under no circumstances other than those mentioned in clause 22 will a contractor be permitted to abandon his contract. In the event of the contractor failing to carry on the contract, the contract security money will in that case be absolutely forfeited; and, in addition, the contractor will be held liable for any loss which the Government may sustain in consequence of such failure.

24. For the purposes of these contracts the word "Government" shall mean the Government of the State of Victoria; and the word "Treasurer" shall mean the Treasurer of the said State.

STIPULATIONS FOR SUPPLIES OF PROVISIONS.

SUPPLIES GENERALLY.

For supplies under all sub-schedules, particular attention is drawn to clause 1 of the Conditions of Contract as to quality. No sub-letting is allowed, and all work must be carried out by the contractor.

Where practicable, all items must be manufactured or prepared within the Commonwealth.

Where no brand of Commonwealth manufacture or production is specifically set out in the respective sub-schedules, such Commonwealth brand as may be ordered must be supplied.

For Schedule No. 3 supplies must be delivered when ordered and, in cases of emergency, on Sundays, holidays, or half-holidays, as required.

BREAD AND FLOUR.

A sample of the best ordinarily retailed to the public will be considered as a test loaf for first quality for fine wheaten and pure wheaten Meal Bread. *Pure wheaten Meal Bread of first quality may be substituted, wholly or in part, for fine wheaten Bread at such times and in such quantities as, in the opinion of the Medical Superintendent, may be deemed necessary, and the contractor will be required to supply such Bread at the contract rate. Reasonable notice, however, of the intention to substitute wheaten Meal Bread must be given to the contractor by the officer ordering the supply.* Bread may be baked at any Government establishment without infringing these contracts. At the Gaols, Ballarat, Beechworth, Castlemaine, and Sale, and the Coorie-mungle Prison Camp, if required, bread must be supplied one day old, due notice to be given to the contractor of such requirement.

In the event of bread being made at any Government establishment in the Melbourne District during the currency of these contracts, the flour required will be drawn under the flour and sharps sub-schedule. The sharps for all the country gaols is included in the sub-schedule for flour and sharps, Melbourne District, and delivery of same will be required to be made f.o.r. Melbourne.

Flour for Districts for which no local contracts have been taken may be ordered under the Melbourne District contract, for delivery f.o.r. Melbourne.

GROCERIES.

As a guarantee of quality, Rice, when ordered in quantities of 56 lb. and over, must be supplied in original bags as delivered by the miller or dresser. Such bags must be branded "Rice, Dressed" or "Unpolished," and shall also have stencilled thereon the miller or dresser's name and the distinguishing mark indicative of the quality or grade. The bags thus stencilled shall contain Rice milled or dressed by the miller or dresser whose name appears thereon. Supplies not in conformity with the foregoing condition will be rejected.

Oatmeal must be supplied in original bags as delivered by millers.

Candles, except those for prison cells, must be supplied in 1-lb. packets. Candles for prison cells must be delivered in boxes containing from 25 to 50 lb. per box, the boxes for which must be legibly stencilled on one end showing the estimated burning time and the gross, tare, and net weight of contents.

The soap supplied must be hard throughout, ready for immediate use without waste, and shall have been manufactured at least seven weeks before leaving contractor's hands.

Raisins and currants must be present season's, and where the quantity admits, be supplied in original and unopened boxes, labelled as packed.

For Schedule No. 3 a certain quantity of Biscuits and Preserved Meats are sometimes required in lieu of fresh bread and fresh meat, and are included to meet such contingency only.

OATMEAL, RICE, SEED TAPIOCA, ETC.

Supplies of these items for Districts for which no local contracts have been taken may be ordered under the Melbourne District contract, for delivery f.o.r. Melbourne.

BUTTER AND CHEESE.

All supplies of 56 lb. or multiples of 56 lb. must be supplied in boxes as originally packed. The boxes must bear the impress stamp of the creamery where the butter is produced, otherwise it will not be accepted. All supplies must be in new boxes.

Where the Store or Butter Factory of the Contractor is situated in the Metropolitan area all Butter to the quantity of 56 lb. and over to be supplied in any one consignment under this contract shall before despatch from the Store or Factory be first examined and passed by the Government Butter Grader, for and on behalf of the officer authorized to accept delivery. The boxes containing butter so examined and found satisfactory in quality and description will be stamped by the Government Butter Grader and the date of such examination marked thereon. No butter from a contractor located in the Metropolitan Area will be accepted unless the boxes bear the stamp of the Grader. For the purposes of the foregoing condition the Metropolitan Area is defined as being not outside the radius visited by the Government Grader. The officer authorized to accept delivery may, within 48 hours of the receipt of any supply, require the Contractor to have same re-examined by the Grader, and, if not passed by him, it shall be returned to the Contractor, who shall forthwith replace the same with freshly-examined butter.

No Butter *ex Cool Store* will be examined by the Grader until thermally it is in suitable condition therefor.

Where the Store or Factory from which the Butter is despatched is not within the area visited by the Grader a sample of any supplies may be forwarded to the Government Butter Grader for examination, should the supply be considered by the Officer authorized to accept delivery as not being equal in quality or description to that contracted for.

The Cheese supplied must be first-class quality, semi or fully matured, as ordered, and not less than 3 months old. If the quantity admits, it shall be boxed for transport.

JAMS.

The weight stamped on the tins in accordance with the regulations under the Commerce Act, as indicating the minimum net quantity that each tin contains, shall for the purpose of this contract be taken as the actual contents when computing the quantity supplied.

When Jam is supplied in jars the jars remain the property of the contractor, and must be removed by the contractor at his own expense when empty.

SOAP AND SOAP MIXTURES.

Supplies of these items for Districts for which no local contracts have been taken may be ordered under the Melbourne District contract, for delivery f.o.r. Melbourne.

MEAT.

All meat supplied under this contract shall have been slaughtered in Victoria and shall be freshly killed, well-conditioned, of good quality, healthy, clean, wholesome, free from bone-taint, putrefaction or fly larvae, and shall not have been frozen.

The beef shall be of ox not under three nor more than six years old or heifer or cow not under three nor more than five years old. Carcass beef for Mental Hospitals shall be delivered in quarters of equal proportions of hinds and fores and the corresponding hinds and fores must be supplied, also extra buttocks separately when ordered. Meat for other Institutions shall be supplied as ordered. Where hindquarters or buttocks are ordered 9 inches shall be cut off from the end of the leg

from the hock upwards, i.e., the end of the leg from which the shank has been removed at the abattoirs; when forequarters form a portion of the supply, 6 inches from the end of the neck and the whole of the shin at the clodbone joint shall be removed. The sticking pieces also shall be trimmed off and the point and end of the brisket rendered free from blood and blood stains.

The mutton shall be wether or maiden ewe not more than four years old and the weight of a carcass shall be not less than 40 lb. nor more than 60 lb. The mutton shall be delivered in sides when so ordered.

Corned Beef (rolled or round as ordered) shall be supplied without bone or cartilage and will be received whether pumped or prepared in the ordinary way of pickling but, in the former case, it shall have been soaked, after pumping, for at least 48 hours in a good pickle and then thoroughly drained before supply. No flank, chuck, sticking-piece, shin, leg of beef, or piece under 7 lb. will be received.

Meat derived from the carcasses of Bulls, Stags or Rams or meat containing an undue proportion of bone or fat will not be received and shall not be tendered for delivery. Net weight only will be paid for.

In cases of emergency, or on such other occasions as in the opinion of the Director of Mental Hygiene or Heads of other Institutions may seem advisable, other forms of meat, such as Rabbits, Tinned Meats, &c., may be purchased, apart from the contract, in lieu of the meat specified in the Schedule, and substituted therefor, provided 24 hours' notice—except in cases of emergency—be given to the Contractor of such intention.

The parts to be removed by the contractor are indicated in the shaded portion of the annexed diagram. This work shall be carried out in the factory or shop of the Contractor, except those parts usually removed at the abattoirs.

With respect to the schedules enumerated hereunder, the following stipulations shall also apply:—

For sub-schedules 9 and 10 of Schedule No. 1, fresh beef shall be supplied, as ordered, from ribs, sirloin, and thick flanks and for Schedule No. 2, from prime ribs, sirloin, and

thick flanks; ribs of beef to be cut clear of the plate bone, and sirloin to be cut clear of the wing ribs; excess of brisket or thin flank will be rejected. Mutton must be delivered in sides when so ordered; all kidney fat to be removed.

For Schedules Nos. 1 (sub-schedules 9 and 10) 3, 4, 9, 11, 12, 13 and 17, chuck ribs of Beef, i.e., 1st to 4th inclusive will not be accepted.

For Schedules Nos. 4, 11, 12 and 17, fresh Beef must be supplied, as ordered, from prime ribs or sirloin; ribs of Beef to be cut clear of the plate bone, and sirloin to be cut clear of the wing ribs; excess of brisket or flank will be rejected.

TEA AND COFFEE.

Tea and Coffee for Districts for which no local contracts have been taken may be ordered under the Melbourne District contract, for delivery f.o.r. Melbourne.

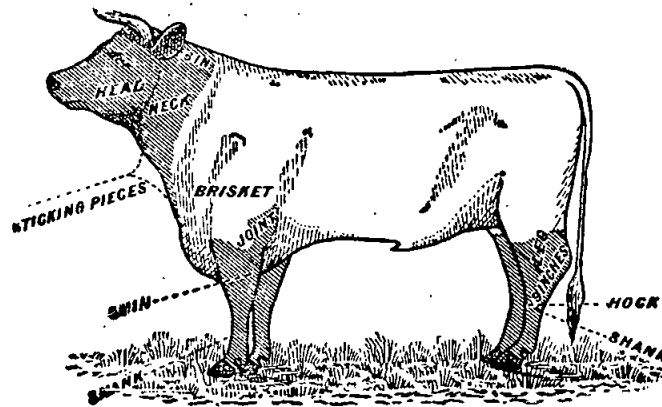
MILK.

The milk must be fresh, pure, and of the best quality, and subject to test when required by the Department, and supplied at such times as the Department may require. Should the contractor fail to supply at the time specified in the order or at such times as may be indicated in any general notice to the contractor his contract may be cancelled forthwith and his security forfeited, or should the supply prove to be not of contract quality it will be rejected, and any expense incurred will be charged to the contractor.

POTATOES.

Potatoes to be dry and free from dirt. Contractors to take back all rejected before being cooked. Bags to remain the property of the contractor. Weight of bags (approx. 2½ lb.) to be deducted.

If the price of potatoes becomes abnormally high, the heads of the various departments concerned may, if they think fit, cause rice or any other suitable food to be occasionally substituted in lieu thereof.



ANNEX TO CONTRACTS.

FLOUR AND BREAD.

The contract rates shown are subject to adjustment for any variation in the proclaimed price of flour.

MEAT.

Contracts marked † operate for the period 1st July, 1943, to 30th September, 1943, only.

AGREEMENTS.

For the Sub-schedules marked (Agreement), no contract has been let nor security lodged. Requirements thereunder are to be purchased from the suppliers named, under Tender Board Agreement. The rates shown are subject to variation from time to time, particulars of which will be gazetted as required. In all cases, supply is subject to stocks being available.

AVAILABILITY OF SUPPLIES.

Owing to existing difficulties in obtaining supplies of various items, due to the War, the penal provisions of Clause 10 of the Conditions of Contract are not to be enforced without reference to the Tender Board.

SCHEDULE No. 1.
PROVISIONS—MELBOURNE DISTRICT.

ANNEX TO CONTRACT NO. 1943/117.

Jellis Bakeries Ltd., 1 Princess-street, Kew.

Sub-schedule No. 1.

BREAD FOR MENTAL HOSPITAL AT KEW.
Security, £125.

	£	s.	d.
1. Bread—Fine wheaten, first quality .. per cwtl.	0	14	6

ANNEX TO CONTRACT NO. 1943/118:

Cahill and Quin, 285 High-street, Northcote.

Sub-schedule No. 2.

BREAD FOR CHILDREN'S WELFARE DEPOT, ROYAL PARK, RECEIVING HOUSE AND MENTAL HOSPITAL, ROYAL PARK, POLICE HOSPITAL, AND TEACHERS' COLLEGE AND HOSTEL, CARLTON.
Security, £40.

	£	s.	d.
1. Bread—Fine wheaten, first quality ... per cwtl.	0	16	0

ANNEX TO CONTRACT NO. 1943/119.

Pirrie Bros., 136 Exhibition-street, Melbourne, C.I.

Sub-schedule No. 3.

FLOUR.

Security, £90.

	£	s.	d.
1. Flour—Roller, first quality per cwtl.	0	11	5
2. „ Sharps' do.	0	11	0

(AGREEMENT.)

Moran and Cato Pty. Ltd., 277 Brunswick-street, Fitzroy, N.6.

Sub-schedule No. 4.

GROCERIES, ETC.

	£	s.	d.
1. Bacon, Rashers, Middle—Huttons .. per lb.	0	1	9
2. Biscuits—Coffee, Malt, or Milk Arrowroot, as ordered .. do.	0	0	9½
3. Blue—Washing, powdered, in 7-lb. pkts. .. do.	0	0	10½
4. Candles—Full weights, Kitchen's "Electrines," or other make of equal quality, to be supplied in 1-lb. packets .. do.	0	0	8½
5. „ Kitchen's "Electrines," or other make of equal quality, for use in prison cells, to burn for 1, 1½, 2, 2½, and 3 hours respectively, as ordered, to be supplied in boxes, containing from 25 to 50 lb. per box .. do.	0	1	1
6. Cereal—"Pipers," in 24-oz. pkts. .. per pkt.	0	0	10
7. Cocoa—Bulk per lb.	0	0	5½
8. Corn or Maize Flour—in packets of 1 lb. net .. do.	0	0	7½
9. Currants—2 Crowns (present season's) .. per lb.	0	0	8½
10. Curry Powder—Bulk do.	0	1	0½
11. Essence of Lemon—8-oz. bottles (Pure) .. per bot.	0	4	2

* Supplies not available.

† Also 22-lb. boxes; Per box, 7/9.

Sub-schedule No. 4—continued.

GROCERIES, ETC.—continued

£ s. d.

12. Essence of Vanilla—1-oz. bottles (Imitation) .. per bot.	0	0	4½
13. Fruits—Dried (present season's), apples .. per lb.	††		
14. „ „ „ „ „ peaches .. do.	††		
15. Ginger—Ground do.	*		
16. Golden Syrup—in 2-lb. tins per tin	0	0	6½
17. Honey—First quality—in 60-lb. tins only .. per lb.	0	0	8
18. Jelly Crystals, 4-oz. packets, per doz.	0	3	6
			packets
19. Lemon Peel (cut) per lb.	0	0	8
20. Macaroni (bulk) do.	0	0	3½†
21. Mustard do.	0	2	5½
22. Oatmeal—Flaked per cwt.	1	1	6
23. Pepper—Black, ground per lb.	0	1	2
24. Pipes—Tobacco, clay per doz.	0	1	4½
25. Prunes—Dried, 50-60's (present season's) .. per lb.	††		
26. Raisins—Sultana, 3 Crowns (present season's) .. do.	0	0	8½
27. Rice—Ground (16-oz. packets) do.	0	0	4½
28. Salt—Fine per cwt.	0	5	1
29. Sauce—Tomato—20-oz. bottles— "Dyason's" .. per doz.	0	11	4
30. Soda—Bicarbonate of per lb.	0	0	2½
31. „ Washing do.	0	0	1½
32. Soup—Tomato—in 1-lb. tins— .. per tin	*		
33. Spaghetti per lb.	0	0	4½
34. Spice—Mixed, in 1-oz. packets per pkt.	0	0	1½
35. Starch "Crystal" per lb.	0	0	4½
36. Tartar—Cream of—Substitute (Calcium Phosphate) .. do.	0	0	10½
37. Treacle—in 2-lb. tins per tin	0	0	6
38. Vinegar (Malt) per quart	0	0	3½

Sub-schedule No. 5.

CEREALS.

£ s. d.

1. Oatmeal per cwt.	Purchase under Tender Board Quotations.
2. Rice—Dressed do.	
3. „ Unpolished do.	
4. Seed Tapioca (Sago) do.	
5. Pearl Barley do.	
6. Peas—Split do.	

ANNEX TO CONTRACT NO. 1943/120.

Model Preserving Co. Pty. Ltd., cr. Campbell and Perry streets, Collingwood, N.6.

Sub-schedule No. 6.

JAMS.

Security, £20.

	£	s.	d.
1. Jams—Assorted, in bulk, of approved kinds, in the proportion of half actual net seed and half stone, of the best weight quality, in tins, as required—Brand "M.P." .. per lb.	0	0	5½
2. „ Assorted, in bulk, of approved kinds, in the proportion of half seed and half stone, of the best quality, in 24-oz. tins—Brand "M.P." .. per doz.	0	10	9

†† Apply Tender Board.

ANNEX TO CONTRACT No. 1943/121.†

F. Watkins Pty. Ltd., 184 Bourke-street, Melbourne, C.1.

Sub-schedule No. 7.

MEAT FOR MENTAL HOSPITAL, KEW.

Security, £35.

		£	s.	d.
1. Fresh Beef—Fore-quarters	per cwt.	2	7	11
2. " " Hind-quarters	do.	2	7	11
3. " " Buttocks	per lb.	0	0	6
4. Corned Beef—Rolled or round, as ordered, without bone or cartilage	do.	0	0	6½
5. " Mutton	do.	0	0	5½
6. " " Leg	do.	0	0	7½
7. Fresh Suet—Kidney	do.	0	0	4
8. Sausage Meat	do.	0	0	5
9. Liver—Calves	do.	0	0	6
10. Brains	per set	0	0	2

ANNEX TO CONTRACT No. 1943/122.†

F. Watkins Pty. Ltd., 184 Bourke-street, Melbourne, C.1.

Sub-schedule No. 8.

MEAT FOR PENAL ESTABLISHMENT (PENTRIDGE), FEMALE PENITENTIARY, AND METROPOLITAN GAOL (GOBURG).

Security, £35.

		£	s.	d.
1. Fresh Beef—Fore-quarters	per cwt.	1	17	6
2. Fresh Mutton (whole sheep)	per lb.	0	0	5½
3. Sausages—Mixed	do.	0	0	7
4. Kidneys—Ox	do.	0	1	0
5. Fresh Suet—Kidney	do.	0	0	4
6. Tripe—Fresh	do.	0	0	4
7. Rabbits—Fresh	per pair	0	2	0

ANNEX TO CONTRACT No. 1943/123.†

J. H. Cooke Pty. Ltd., 378 Queens-parade, Clifton Hill, N.8.

Sub-schedule No. 9.

MEAT FOR POLICE HOSPITAL, ST. KILDA-ROAD, CHILDREN'S WELFARE DEPOT, ROYAL PARK.

Security, £8.

		£	s.	d.
1. Fresh Beef	per cwt.	3	0	5
2. Corned Beef—Rolled or round, as ordered, without bone or cartilage	per lb.	0	0	6½
3. Fresh Mutton	do.	0	0	5½
4. " " Loin	do.	0	0	6½
5. " " Leg	do.	0	0	8½
6. Cutlets	do.	0	0	10
7. Sausages—Mixed	do.	0	0	6
8. Tripe—Fresh	do.	0	0	5
9. Steak—Rump	do.	0	1	3
10. Brains	per set	0	0	2
11. Chop—Mid Loin	per lb.	0	0	8
12. Rabbits—Fresh	per pair	0	2	0
13. Ice	per cwt.	0	2	6

ANNEX TO CONTRACT No. 1943/124.†

J. H. Cooke Pty. Ltd., 378 Queens-parade, Clifton Hill, N.8.

Sub-schedule No. 10.

MEAT FOR RECEIVING HOUSE AND MENTAL HOSPITAL, ROYAL PARK.

Security, £10.

		£	s.	d.
1. Fresh Beef	per cwt.	3	0	5
2. " " Buttocks	do.	3	0	5
3. " " Mutton	per lb.	0	0	5½
4. Corned Beef—Rolled or round, as ordered, without bone or cartilage	do.	0	0	6½
5. Fresh Suet—Kidney	do.	0	0	3½
6. Ice	per cwt.	0	2	6

(AGREEMENT.)

Moran and Cato Pty. Ltd., 277 Brunswick-street, Fitzroy, N.6.

Sub-schedule No. 11.

SOAP MIXTURES.

(Of Commonwealth Manufacture.)

		£	s.	d.
1. Antiseptic—Liquid, of approved make, in 4-gal. tins	per gal.	0	2	8
2. Extract of—Kitchen's—Bulk (½ cwt. and 1 cwt. bags)	per lb.	0	0	2½
3. Household—Dry, equal to Kitchen's "Best Brown" Brand	per cwt.	1	9	7½
4. Lifebuoy	per doz.	0	2	11
5. "Lux" or "Merino," as ordered, in bulk	per lb.	0	0	8½
6. "Monkey Brand"—or equal thereto, in tablets of 5 oz. each	per doz. packets	0	2	0½
7. Sand—Borax, 12-oz. blocks, of approved brand	per doz.	*		

* Supplies not available.

†† Bag, 150-lb.

‡ Carton, 2 dozen 2-lb. tins.

††† Apply Tender Board.

Sub-schedule No. 11—continued.

SOAP MIXTURES—continued.

£ s. d.

8. Sand—Carbolic, 12-oz. blocks, of approved brand	per doz.	0	1	10
9. Soft—Genuine Potash, best amber, in bulk	per lb.	0	0	6½
10. Toilet—"Bath," in 4-oz. tablets, Kitchen's, or equal thereto	per doz.	0	1	8½
11. Toilet—Carbolic, in 4-oz. tablets, Kitchen's, or equal thereto	do.	0	1	10½
12. Toilet—"Castola," in 6-oz. tablets, Kitchen's, or equal thereto	do.	*		
13. "Velvet"—or equal thereto	per doz. twin	0	3	1½

(AGREEMENT.)

Henry Berry and Co. (Asia) Ltd., 568 Collins-street, Melbourne, C.1.

Sub-schedule No. 12.

TEA AND COFFEE.

£ s. d.

1. Tea, Blended, 1st Grade	per lb.	0	2	9½
2. Tea, Blended, 2nd Grade (Ration)	do.	0	2	5½
3. Coffee—Fresh roasted, and whole, beans to be thoroughly sound	per lb.	0	1	8½

‡ Less 2½ per cent. discount, payment 30 days.

SCHEDULE No. 2.

PROVISIONS—MONT PARK, SANATORIUM, GRESSWELL, ETC.

(Delivery at the Mental Hospital, Mont Park, to depots as required, the Repatriation Mental Hospital, Bundoora, Janefeld Colony and Sanatorium, Gresswell.)

ANNEX TO CONTRACT No. 1943/125.

E. J. Callander, 597 High-street, Preston, N.18.

Sub-schedule No. 1.

BREADSTUFFS.

Security, £190.

£ s. d.

1. Bread—Fine wheaten, first quality	per cwt.	0	16	7
2. " " Raisin, " "	do.	1	13	4
3. Flour—First quality	do.	¶		

¶ Order under Melbourne District Contract.

(AGREEMENT.)

Henry Berry and Co. (Asia) Ltd., 568 Collins-street, Melbourne, C.1.

Sub-schedule No. 2.

GROCERIES.†

£ s. d.

1. Bacon—In sides	per lb.	0	1	4½
2. Beans—Haricot	do.	*		
3. " " Batter	do.	*		
4. Blue—Washing	do.	0	0	11
5. Biscuits—Coffee, Malt, Milk Arrowroot, or equal, as ordered	do.	0	0	11
6. Camp Pie—in 1-lb. tins, "Paragon"	per doz.	0	8	11
7. Candles (full weights)—Kitchen's "Electrinos," or other make of equal quality in 1-lb. packets	per lb.	0	0	9½
8. Cereal, in 24-oz. packets, "Trumpeter"	per pkt.	0	0	10
9. Cinnamon	per lb.	0	2	6
10. Cocoa, in 1-lb. cardboard cartons	do.	0	1	4
11. Coconut—Desiccated	do.	*		
12. Coffee Essence in 8oz. bots.—Brand, "Bluestripe"	per bot.	0	0	11½
13. Corn or Maize Flour—in 1-lb. packets, Brand, "Kream"	per lb.	0	0	7½
14. Currants—2 Crowns (present season's)	do.	0	0	8½
15. Curry Powder—Brand, "Atlas"	do.	0	1	2
16. Custard Powder—1-lb. packets	per pkt.	0	0	8½
17. Dates—Fresh, loose	per lb.	*		
18. Essence of Vanilla—in full 20-oz. bottles	per bot.	0	8	9
19. Flour—Self-raising, Brand, "Cookwell"	per bag	1	11	6††
20. Fruits, Dried (present season's)	do.	††		
21. Fruits—Preserved, assorted, in 1-lb. 14-oz. tins (excluding Pines)	per tin			
22. Gelatine—Ground	per lb.	*		
23. Ginger—Ground	do.	*		
24. Golden Syrup—in 2-lb. tins	per ctn.	0	12	6‡
25. Herrings—Fresh, and in Tomato Sauce, 14-oz. tins, Brand	per tin	*		
26. Honey, first quality	per lb.	*		
27. Jelly Crystals—in 4-oz. packets "Invicta"	per gross packets	1	19	3

Sub-schedule No. 2—continued.

GROCERIES—continued.

		£	s.	d.
28. Junket Tablets	per tube	0	0	7½
29. Lemon Peel—cut	per lb.	0	0	10½
30. Macaroni	do.	0	0	4½
31. Mustard—	do.	0	2	5
32. Nutmeg—Whole	per oz.	*		
33. Pepper—Black, ground	per lb.	0	1	2
34. Pickles—Assorted, 20-oz. bottles	per bot.	*		
35. Pipes—Tobacco, clay	per doz.	*		
36. Prunes—Dried, 50-60's (present season's)	per lb.	††		
37. Raisins—Lexias, 4 Crowns (present season's)	do.	0	0	7½
38. " Sultana, 3 Crowns (present season's)	do.	0	0	9½
39. Rice—Ground	do.	*		
40. Salmon—Fresh, in 14½-oz. tins, tall, fancy pink	per tin	*		
41. Salt—Fine	per cwt.	0	6	11
42. Sauce—Tomato, in 26-oz. bottles, Brand, "Victoree"	per doz.	0	17	0
43. Soda—Bicarbonate of	per lb.	0	0	3
44. " Washing	per cwt.	0	11	3
45. Spice—Mixed, loose	per lb.	0	1	10
46. Starch (Rice)—Brand, "Silver Star"	per lb.	0	0	9
47. Sugar—Castor	do.	0	0	4½
48. " Icing	do.	0	0	4½
49. Tartar—Cream of—Substitute—Sodium Phosphate—Brand, "Aercreme"	do.	0	1	1½
50. Treacle—in 2-lb. tins	per ctn.	0	11	8½
51. Vermicelli—in 16-oz. packets	per pkt.	0	0	4½
52. Vinegar—Malt	per gall.	0	1	0

ANNEX TO CONTRACT No. 1943/126.

Model Preserving Co. Pty. Ltd, cr' Campbell and Perry streets, Col-
lingwood, N.5.

Sub-schedule No. 3.

JAMS.

Security, £23.

		£	s.	d.
1. Jams—Assorted, in bulk, of approved kinds, in the proportion of half actual seed and half stone, of the best quality, in tins, as required, Brand, "M.P."	per lb.	0	0	5½
2. " Assorted, in 5-lb. tins, in the proportion of half seed and half stone, of the best quality, Brand, "M.P."	per tin	0	3	0½
3. " Marmalade, in 5-lb. tins, Brand, "M.P."	do.	0	2	11

ANNEX TO CONTRACT No. 1943/127.†

W. Angliss & Co. (Aust.) Pty. Ltd., 42 Bourke St., Melbourne, C.1

Sub-schedule No. 4.

MEAT.

Security, £50.

		£	s.	d.
1. Fresh Beef—Fore-quarters	per cntl.	1	18	0
2. " " Hind-quarters	do.	1	18	0
3. " " Buttocks	per lb.	0	0	6½
4. " " Roast, rolled ribs	do.	0	0	10
5. " " Rump	do.	0	0	10
6. " " Thick flank	do.	0	0	11½
7. Beef, Corned—Rolled or round, as ordered, without bone or cartilage	do.	0	0	9½
8. Mutton, Fresh	do.	0	0	5
9. " " Sides	do.	0	0	5
10. Tripe—Ox	do.	0	0	3½
11. Brains—Sheeps'	per set	0	0	2
12. Chops—Loin	per lb.	0	0	10
13. " Forequarters	do.	0	0	8
14. " Outlet	do.	0	0	1
15. Frys—Lamb's	do.	0	0	4
16. Pork—Loin	do.	0	0	6½
17. Steak—Minced	do.	0	0	4
18. Livers—Calves'	do.	0	0	4
19. Pork German	do.	0	0	11
20. Kidneys—Ox	each	0	0	10
21. Shanks—Sheeps'	do.	0	0	3
22. Saveloys	per doz.	0	1	3
23. Rabbits—Fresh	per pair	0	2	4

* Supplies not available. †† Apply Tender Board.
‡ Less 2½ per cent. discount, payment 30 days.

SCHEDULE No. 3.

PROVISIONS FOR S.S. RIP AND DREDGES.

Sub-schedule No. 1.

BREAD.

1. Bread—Fine wheaten, first quality	..	Purchase by agree- ment
--------------------------------------	----	----------------------------

(AGREEMENT.)

Henry Berry and Co. (A/asia) Ltd., 668 Collins-street, Melbourne, C.1.

Sub-schedule No. 2.

GROCERIES.

		£	s.	d.
1. Bacon Rashers	per lb.	0	1	4½
2. Beans—Butter	do.	*		
3. " Haricot	do.	*		
4. Biscuits—Coffee, Marie, Malt	do.	0	0	11
5. " Thin Captains	do.	0	0	9½
6. Bisto—in 4-oz. packets	per pkt.	*		
7. Chutney—"Crownall"	per doz. bot.	*		
8. Cocoa—in 1-lb. tins or cartons	per doz.	0	16	0
9. Coconut—Desiccated	do.	*		
10. Coffee—Fresh Roasted and Ground	do.	1	8	§
11. Corn or Maize Flour in 1-lb. packets, Brand, "Kream"	do.	0	0	7½
12. Currants—2 crowns (present season's)	per lb.	0	0	9
13. Custard Powder—in 1-lb. packets, Brand, "Dainty Maid"	per pkt.	0	0	8½
14. Dates	per lb.	*		
15. Eggs, New Laid	per doz.	*		
16. Essence—Vanilla, in 20-oz. bottles	per bot.	0	8	9
17. " Cochineal, in 1-oz. bottles	per doz.	0	7	0
18. Fish—Herrings, Fresh, and in Tomato Sauce, in 14-oz. tins	per tin	*		
19. " Salmon, Fresh, in 14½-oz. tins, pink	do.	*		
20. " Sardines, in ½ tins, Brand	do.	*		
21. Flour—First quality	per lb.	0	0	1½
22. " Self-raising, Brand, "Cookwell"	per bag	1	11	6§§
23. Fruits—Preserved, in 1-lb. 14-oz. tins	per doz.	††		
24. " Preserved, pines, in 1-lb. 14-oz. tins	do.	††		
25. Gelatine—Ground	per lb.	*		
26. Golden Syrup—in 2-lb. tins	per ctn.	0	12	6½
27. Honey, in 7-lb. tins	per tin	*		
28. Jams—Assorted kinds, "Victoree" in 24-oz. tins	per doz.	††		
29. Jelly Crystals in 4-oz. packets	per gross pkts.	1	19	3
30. Lemon Peel—Cut	per lb.	0	0	10½
31. Macaroni	do.	0	0	4½
32. Margarine—Cooking Quality	do.	*		
33. Meat—Preserved, Beef or Mutton, in 1-lb. tins	per doz.	*		
34. Milk—Dried, Skim, in 1-lb. tins	do.	0	10	9
35. " Condensed, full cream, 14-oz. tins	per tin	0	0	8½
36. Mustard—	per lb.	0	2	8
37. Nutmeg—Whole	per oz.	*		
38. Oatmeal—Flaked	per lb.	0	0	2½
39. Pearl Barley	do.	0	0	2½
40. Peas—Split	do.	0	0	4
41. Pepper—Black, ground	do.	0	1	2
42. Pickles—Assorted, in 20-oz. bottles	per bot.	*		
43. Prunes—Dried (present season's)	per lb.	*		
44. Raisins—Lexias, 4 Crowns (present season's)	do.	0	0	7½
45. Raisins—Sultana, 3 Crowns (present season's)	do.	0	0	9½
46. Rice—Dressed	do.	*		
47. Salt—Fine (minimum delivery—1 cwt.)	per cwt.	0	6	11
48. Sauce—Mustard, in 10-oz. bottles	per bot.	*		
49. " Tomato, in 26-oz. bottles, Brand, "Victoree"	per doz. bota.	0	17	0
50. " Worcestershire, in 10-oz. bottles, "Greigs"	per doz.	0	8	0
51. Soda—Bicarbonate of	per lb.	0	0	3
52. Spice—Mixed, loose	per lb.	0	1	10
53. Sugar—Brown	per lb.	0	0	3½
54. " Castor	do.	0	0	4½
55. " Icing	do.	0	0	4½
56. Vinegar—Malt	per gal.	0	1	1½
57. Yolkova—in 4-oz. bottles	per bot.	0	1	9

¶ Carton, 2-doz. 2-lb. Tins.
§§ Bag-150-lb.

ANNEX TO CONTRACT No. 1943/128†

J. H. Cooke Pty. Ltd., 378 Queen's-parade, Clifton Hill, N.8.

Sub-schedule No. 3.

MEAT.

(Delivery at River Yarra Wharfs.)

Security, £5.

		£	s.	d.
1. Fresh Beef—Roast, rolled ribs	per lb.	0	0	7
2. Beef, Corned—Silverside	do.	0	0	9
2. " " " " Rolled or Round, as ordered, without bone or cartilage	do.	0	0	6
4. Fresh Mutton—Shoulder	do.	0	0	5
5. " " " " Legs	do.	0	0	8
6. " " " " Loin	do.	0	0	7
7. " " " " Chops, Forequarter	do.	0	0	6
8. " " " " Loin	do.	0	0	7
9. " " " " Suet—Kidney	do.	0	0	3½
10. Sausages—Mixed	do.	0	0	6
11. " " " " Pork	do.	0	0	6½
12. Pork—Loin	do.	0	1	2
13. " " " " Leg	do.	0	1	2
14. Tripe	do.	0	0	5
15. Frys—Lamb's	do.	0	0	4
16. Steak—Stewing	do.	0	0	6
17. " " " " Topside	do.	0	0	8
18. " " " " Rump	do.	0	1	3
19. Rabbits—Fresh	per pr.	0	2	0
20. Ice	per cwt.	0	2	6

Sub-schedule No. 4.

VEGETABLES.

1. Onions				
2. Other vegetables, including beetroot, cauliflowers, carrots, cabbages, turnips, parsnips, rhubarb, swedes, and pumpkin, as required	Purchase by agreement			

SCHEDULE No. 4.

PROVISIONS—TEACHERS' COLLEGE, CARLTON.

(Delivery at the College.)

(AGREEMENT.)

Moran and Cato Pty. Ltd., 277 Brunswick-street, Fitzroy, N.6.

Sub-schedule No. 1.

GROCERIES.

		£	s.	d.
1. Barley	per lb.	0	0	2½
2. Beans—Haricot	do.	*		
3. Cereal—"Piper's," in 24-oz. packets	per pkt.	0	0	10
4. " " " " "Weetbix," large	do.	0	0	11
5. Cheese—Kraft, 8-oz. packets, 5-lb. loaves,	per lb.	0	1	4
6. Custard Powder—in 1-lb. packets	per pkt.	0	0	8
7. Essence—in 8-oz. bottles, Lemon pure	per bot.	0	4	2
8. Flour—Self-raising, Brand, "Rono"	per lb.	0	0	2½
9. Fruit—Preserved, assorted, in 1-lb. 14-oz. tins (excluding Pines)	per tin	††		
10. Golden Syrup—in 2-lb. tins	do.	0	0	6½
11. Honey, first quality—in 60-lb. tins only	per lb.	0	0	8
12. Jelly Crystals—4-oz. packets	per pkt.	0	0	3½
13. Mustard	per lb.	0	2	5½
14. Macaroni	do.	0	0	4½
15. Pepper—Black, ground	do.	0	1	2
16. Pickles—Assorted, in 20-oz. bottles,	per bot.	*		
17. Raisins—Sultana, 3 Crowns (present season's)	per lb.	0	0	8½
18. Rice—Dressed	do.	*		
19. Salmon—Fresh, in 14½-oz. tins, talls,	per tin	*		
20. Salt—Fine	per cwt.	0	5	1
21. Sauce—Tomato, in 20-oz. bottles, Brand, "Dyason's"	per doz.	0	11	4
22. " " Worcestershire, in 10-oz. bottles, Brand, "Hardings"	per bot.	0	0	8½
23. Soda—Bicarbonate of	per lb.	0	0	2½
24. " " Washing	do.	0	0	1½
25. Spaghetti	per pkt.	0	0	4½
26. Spice—Mixed, in 1-oz. pkts.	do.	0	0	1½
27. Starch—Rice, Brand, "Crystal"	per lb.	0	0	4½
28. Sugar—Caster	do.	0	0	4
29. Tartar—Cream of—Substitute—Calcium Phosphate	do.	0	0	10½
30. Tomatoes—Tinned	per doz.	*		
31. Vinegar—Malt	per gal.	0	1	1

* Supplies not available.

ANNEX TO CONTRACT No. 1943/129†.

J. H. Cooke Pty. Ltd., 378 Queen's-parade, Clifton Hill, N.8.

Sub-schedule No. 2.

MEAT.

Security, £5.

		£	s.	d.
1. Fresh Beef—Sirloin	per lb.	0	1	0
2. " " " " Round or Topside Steak	do.	0	0	10
3. " " " " Stewing (when required, minced)	do.	0	0	9
4. Beef—Corned, Silverside	do.	0	0	10
5. Fresh Mutton—Chops (leg)	do.	0	0	9
6. " " " " Leg	do.	0	0	7½
7. Frys—Lamb's	do.	0	0	4
8. Kidneys—Sheep's	each	0	0	2
9. Sausages—Best (Pork or Beef-mixed)	per lb.	0	0	6
10. Sausage Meat	do.	0	0	3½

ANNEX TO CONTRACT No. 1943/130.

Model Preserving Co. Pty. Ltd., cr. Campbell and Perry streets, Collingwood, N.6.

Sub-schedule No. 3.

JAMS.

Security, £10.

		£	s.	d.
1. Jams—Assorted, of approved kinds, in the proportion of half seed and half stone, of the best quality, in 5-lb. tins, Brand, "M.P."	per tin	0	3	0½

SCHEDULE No. 5.

PROVISIONS—ARARAT DISTRICT.

(Delivery into Institutions.)

ANNEX TO CONTRACT No. 1943/131.

Mark Forsyth Pty. Ltd., 274 Barkly-street, Ararat.

Sub-schedule No. 1.

BREADSTUFFS.

Security, £75.

		£	s.	d.
1. Bread—Fine wheaten, first quality	per cwt.	0	12	4
2. Flour—First quality	do.	0	12	10

(AGREEMENT.)

John MacLeod and Co. Pty. Ltd., 122 Lydiard-street, Ballarat.

Sub-schedule No. 2.

GROCERIES.

		£	s.	d.
1. Beans—Haricot	per lb.	0	0	5
2. Blue—Washing	do.	0	0	11
3. Candles—(full weights) Kitchen's "Electrines," or other make of equal quality, to be supplied in 1-lb. packets	do.	0	0	9½
4. Cocoa—in 1-lb. tins or cardboard cartons "Gold Seal"	do.	0	1	7
5. Corn or Maize Flour—in packets of 1 lb. net "Kream"	do.	0	0	8
6. Curry Powder, "Gold Seal," loose	do.	0	1	4
7. Golden Syrup in 2-lb. tins	per doz.	0	6	11
8. Mustard	per lb.	0	2	6
9. Pepper—Black, ground	do.	0	1	5½
10. Pipes—Tobacco, clay	per doz.	0	1	3
11. Raisins—Sultana, 3 Crowns (present season's)	per lb.	0	0	9
12. Salt—Fine—Corio	per cwt.	0	7	8
13. Soda—Bicarbonate of	per lb.	0	0	3½
14. " " Washing	per cwt.	0	12	6
15. Starch (Rice)—"Silver Star"	per lb.	0	0	9
16. Tartar—Cream of—Substitute—"Actorise"	do.	0	0	11½

†† Apply Tender Board.

(AGREEMENT.)

John MacLeod and Co. Pty. Ltd., 122 Lydiard-street, Ballarat.

Sub-schedule No. 3.

JAMS.

	£	s.	d.
1. Jams—Assorted, in bulk, of approved kinds, in the proportion of half seed and half stone, of the best quality, in tins, as required, Brand, "J. MacLeod and Co. Pty. Ltd."	0	0	6

ANNEX TO CONTRACT No. 1943/132.†

Jas. H. McDonald, 114 Barkly-street, Ararat.

Sub-schedule No. 4.

MEAT.

Security, £30.

	£	s.	d.
1. Fresh Beef—Fore-quarters .. per cntl.	2	0	0
2. " " Hind-quarters .. do.	2	0	0
3. " " Buttocks .. do.	2	2	6
4. " Mutton .. do.	1	17	6
5. Corned Beef—Rolled or round, as ordered, without bone or cartilage .. do.	2	10	0

SCHEDULE No. 6.

PROVISIONS—BALLARAT DISTRICT.

(Delivery into Institutions.)

ANNEX TO CONTRACT No. 1943/133.

Brogden Bros., 15 Lal Lal-street, Ballarat.

Sub-schedule No. 1.

BREADSTUFFS.

Security, £75.

	£	s.	d.
1. Bread—Fine wheaten; first quality .. per cntl.	0	12	11
2. Flour—First quality .. do.	0	13	6

(AGREEMENT.)

John MacLeod and Co. Pty. Ltd., 122 Lydiard-street, Ballarat.

Sub-schedule No. 2.

GROCERIES.

	£	s.	d.
1. Blue—Washing .. per lb.	0	0	11
2. Candles (full weights)—Kitchen's "Electrines," or other make of equal quality, in 1-lb. packets .. do.	0	0	9½
3. Corn or Maize Flour—in packets of 1 lb. net .. do.	0	0	7½
4. Currants—2 Crowns (present season's) .. do.	0	0	8½
5. Curry Powder—"Gold Seal"—loose .. do.	0	1	4
6. Golden Syrup—in 2-lb. tins .. per doz.	0	6	7
7. Mustard .. per lb.	0	2	5½
8. Pepper—Black, ground .. do.	0	1	5½
9. Pipes—Tobacco, clay .. per doz.	0	1	3
10. Raisins—Sultana, 3 Crowns (present season's) .. per lb.	0	0	8½
11. Salt—Fine .. per cwt.	0	8	6
12. Soda—Bicarbonate of .. per lb.	0	0	3½
13. " Washing .. per cwt.	0	11	6
14. Spice—Mixed, in 1-oz. packets .. per pkt.	0	0	2½
15. Starch (Rice) "Silver Star" .. per lb.	0	0	9
16. Tartar—Cream of—Substitute—"Actorise" .. do.	0	0	11½
17. Vinegar—Malt .. per quart	0	0	3½

(AGREEMENT.)

John MacLeod and Co. Pty. Ltd., 122 Lydiard-street, Ballarat.

Sub-schedule No. 3.

JAMS.

	£	s.	d.
1. Jams—Assorted, in bulk, of approved kinds, in proportion of half seed actual net and half stone, of the best quality, in tins as required, Brand, "J. MacLeod and Co. Pty. Ltd."	0	0	5½
2. " Assorted, in 24-oz. tins, in the proportion of half seed and half stone, of the best quality, Brand, "Victoree"	0	1	1
3. Assorted, in 5-lb. tins, in the proportion of half seed and half stone, of the best quality, Brand, "Victoree"	do.	*	

ANNEX TO CONTRACT No. 1943/134.†

H. J. Symons Pty. Ltd., 1015 Macarthur-street, Ballarat.

Sub-schedule No. 4.

MEAT.

Security, £35.

	£	s.	d.
1. Fresh Beef—Fore-quarters .. per cntl.	2	12	6
2. " " Hind-quarters .. do.	2	12	6
3. " " Buttocks .. do.	2	18	0
4. " Mutton .. do.	2	12	0
5. Corned Beef—Rolled or round, as ordered, without bone or cartilage .. do.	2	12	0
6. Fresh Suet—Kidney .. do.	2	12	0

SCHEDULE No. 7.

PROVISIONS—BEECHWORTH DISTRICT.

(Delivery into Institutions.)

ANNEX TO CONTRACT No. 1943/135.

P. A. Taylor, Camp-street, Beechworth.

Sub-schedule No. 1.

BREADSTUFFS.

Security, £100.

	£	s.	d.
1. Bread—Fine wheaten, first quality .. per cntl.	0	16	0
2. Flour—First quality .. do.	0	15	0

(AGREEMENT.)

Moran and Cato Pty. Ltd., 277 Brunswick-street, Fitzroy, N.6.

Sub-schedule No. 2.

GROCERIES.

	£	s.	d.
1. Blue—Washing, powdered in 7-lb. pkts. .. per lb.	0	0	11½
2. Cocoa—Bulk .. do.	*		
3. Corn or Maize Flour—in packets of 1 lb. net .. do.	0	0	8½
4. Golden Syrup—in 2-lb. tins .. per tin	0	0	7½
5. Jelly Crystals in 4-oz. Pkts. .. per doz.	0	3	10½
6. Mustard .. per lb.	0	2	6½
7. Pepper—Black, ground .. do.	0	1	3½
8. Pipes—Tobacco, clay .. per doz.	0	1	5½
9. Raisins—Sultana, 3 Crowns (present season's) .. per lb.	0	0	9½
10. Salt—Fine .. per cwt.	0	8	10
11. Soap—"Monkey Brand," or equal thereto, in 5-oz. tablets .. per tab.	0	0	2½
12. " Sand, Carbolic, in 12-oz. blocks .. per blk.	0	0	2½
13. Soda—Bicarbonate of .. per lb.	0	0	3½
14. " Washing .. per cwt.	0	12	6
15. Starch—"Crystal" .. per lb.	0	0	5½
16. Tartar—Cream of—Substitute—Calcium Phosphate .. do.	0	0	11½
17. Vinegar—Malt .. per qt.	0	0	5

(AGREEMENT.)

Moran and Cato Pty. Ltd., 277 Brunswick-street, Fitzroy, N.6.

Sub-schedule No. 3.

JAMS.

	£	s.	d.
1. Jams—Assorted, in bulk—Apricot .. per lb.	0	0	7
Peach .. actual	0	0	7
Apple & Rasp. net	0	0	6½
flavour weight			
Dark Plum ..	0	0	6½

ANNEX TO CONTRACT No. 1943/136.†

E. Spencer, Camp-street, Beechworth.

Sub-schedule No. 4.

MEAT.

Security, £30.

	£	s.	d.
1. Fresh Beef—Fore-quarters .. per cntl.	2	10	0
2. " " Hind-quarters .. do.	2	10	0
3. " " Minced, without bone .. per lb.	0	0	6½
4. " Mutton .. do.	0	0	6

* Supplies not available.

SCHEDULE No. 8.
PROVISIONS—CASTLEMAINE DISTRICT.

(Delivery into Institutions.)

ANNEX TO CONTRACT No. 1943/137.

Rasmussen Bros., Johnston-street, Castlemaine.

Sub-schedule No. 1.

BREAD.

	Security, £14.	£ s. d.
1. Bread—Fine wheaten, first quality	.. per cntl.	0 18 9

ANNEX TO CONTRACT No. 1943/138.†

H. J. Robertson, 91 Mostyn-street, Castlemaine.

Sub-schedule No. 2.

MEAT.

Security, £5.

	£ s. d.
1. Fresh Beef	.. per cntl. 2 18 4
2. Corned Beef—Rolled or Round, as ordered, without bone or cartilage	do. 2 18 3

SCHEDULE No. 9.

PROVISIONS—SCHOOL OF FORESTRY, CRESWICK.

(Delivery at the School.)

ANNEX TO CONTRACT No. 1943/139.

R. C. Bowley, Albert-street, Creswick.

Sub-schedule No. 1.

BREADSTUFFS.

Security, £3.

	£ s. d.
1. Bread—Fine wheaten, first quality	.. per cntl. 1 2 11
2. Flour—First quality	.. per lb. 2 ½

(AGREEMENT.)

J. Tait and Son, Albert-street, Creswick.

Sub-schedule No. 2.

GROCERIES.

	£ s. d.
1. Barley—Pearl	.. per lb. 0 0 2½
2. Blue—Washing	.. do. 0 0 11
3. Butter—First grade creamery, to score not less than 91 points, Government grade, Commerce Regulations Standard	do. 0 1 6½
4. Cheese—First-class quality, matured	.. do. 0 1 4
5. Coffee—Fresh roasted and whole, beans to be thoroughly sound	do. 0 2 0
6. Corn or Maize Flour—in packets of 1 lb. net	per lb. 0 0 6½
7. Eggs—New laid	.. per doz. 0 1 6
8. Ginger—Ground	.. per lb. *
9. Golden Syrup—in 2-lb. tins	.. per tin 0 0 7
10. Jams—Assorted, in 5-lb. tins, net, in the proportion of half seed and half stone, Brand, "Red Feather"	do. 0 3 3
11. Mustard—"Double Superfine"	.. per lb. *
12. Oatmeal	.. do. 0 0 2½
13. Peas—Split	.. do. 0 0 4
14. Pepper—Black, ground	.. do. 0 1 6
15. Potatoes—Dry and free from dirt	.. per cwt. 0 14 0
16. Raisins—Sultana, 3 Crowns (present season's)	per lb. 0 0 9½
17. Rice—Dressed	.. do. *
18. Salt—Fine	.. do. 0 0 0½
19. Soap—Household, yellow, dry, and hard, to sample	do. 0 0 3½
20. " Sand, Carbolic, in 12-oz. blocks	.. each 0 0 1½
21. Soda—Bicarbonate of	.. per lb. 0 0 3
22. " Washing	.. do. 0 0 1½
23. Starch (Rice)—Brand, "Preservene"	.. do. 0 0 7½
24. Tartar—Cream of—Substitute—"Calcium Phosphate"	.. do. 0 1 2
25. Tea	.. do. 0 3 2
26. Vinegar—Malt	.. per pint 0 0 3

ANNEX TO CONTRACT No. 1943/140.†

Eric Coughlan, Albert-street, Creswick.

Sub-schedule No. 3.

MEAT.

Security, £3.

	£ s. d.
1. Fresh Beef—Fore-quarters	.. per lb. 0 0 8
2. " Mutton	.. do. 0 0 7
3. Corned Beef—Rolled or round, as ordered, without bone or cartilage	do. 0 0 9
4. Steak—Minced	.. do. 0 0 6
5. Pork—Leg	.. do. 0 0 10
6. Fresh Suet—Kidney	.. do. 0 0 1

ANNEX TO CONTRACT No. 1943/141.

E. J. Keen, Jory-street, North Creswick.

Sub-schedule No. 4.

MILK.

Security, £3.

	£ s. d.
1. Milk—Fresh and pure	.. per qt. 0 0 7

SCHEDULE No. 10.

PROVISIONS—MCLEOD SETTLEMENT, FRENCH ISLAND.

(Delivery to be made at Lang Lang Jetty.)

ANNEX TO CONTRACT No. 1943/142.

James Jackson, Lang Lang.

Sub-schedule No. 1.

BREAD.

Security, £12.

	£ s. d.
1. Bread—Fine wheaten, first quality	.. per cntl. 1 0 10

(AGREEMENT.)

A. G. Glascock, Lang Lang.

Sub-schedule No. 2.

GROCERIES.

	£ s. d.
1. Butter—First grade creamery, to score not less than 91 points, Government grade, Commerce Regulations Standard	per lb. 0 1 8
2. Cheese—Matured	.. do. 0 1 3
3. Jams—Assorted, in proportion of half seed and half stone, of best quality, in 24-oz. tins, "Victoree"	per tin 0 1 2

ANNEX TO CONTRACT No. 1943/143.†

W. F. Misson, Lang Lang.

Sub-schedule No. 3.

MEAT.

Security, £5.

	£ s. d.
1. Fresh Beef—Hind-quarters	.. per cntl. 2 18 4
2. " Mutton	.. per lb. 0 0 6

SCHEDULE No. 11.

PROVISIONS—TRAVANCORE DEVELOPMENTAL CENTRE, HEPBURN SPRINGS.

(Delivery at the Centre.)

ANNEX TO CONTRACT No. 1943/144.

Vanzetta Bros., Hepburn, via Daylesford.

Sub-schedule No. 1.

BREADSTUFFS.

Security, £5.

	£ s. d.
1. Bread—Fine wheaten, first quality	.. per cntl. 1 0 10
2. Flour—First quality	.. per lb. 0 0 1½

(AGREEMENT.)

John Macleod and Co. Pty. Ltd., 122 Lydiard-street, Ballarat.

Sub-schedule No. 2.

GROCERIES.

	£ s. d.
1. Barley—Pearl	.. per lb. 0 0 2½
2. Blue—Washing, Powdered	.. do. 0 0 11
3. Butter—First Grade Creamery, to score not less than 91 points, Government Grade, Commerce Regulations Standard	do. 0 1 7
4. Cereal—"Trumpeter" Flakes, in 24-oz. pkts.	per pkt. 0 0 10½
5. Cheese—First-class quality, matured	.. per lb. 0 1 5
6. Coffee and Chicory	.. do. 0 1 6
7. Cocoa—in 1-lb. cardboard cartons, "Gold Seal"	do. 0 1 7
8. Corn or maize flour—in packets of 1 lb. net	do. 0 0 8
9. Eggs—new laid	.. per doz. 0 2 2
10. Ginger—Ground	.. per lb. *
11. Golden Syrup, in 2-lb. tins	.. per doz. 0 6 11
12. Honey—First quality	.. per lb. 0 0 8½
13. Jams, assorted, in 24-oz. tins, net, in the proportion of half seed and half stone—"Victoree"	per tin 0 1 1
14. Oatmeal	.. per lb. 0 0 2½
15. Peas—Split	.. do. 0 0 4½
16. Pepper—Black, Ground	.. do. 0 1 5½
17. Raisins—Sultana, 3 crowns, present season's	do. 0 0 9
18. Rice—Dressed	.. do. *

* Supplies not available.

Sub-schedule No. 2—continued.

GROCERIES—continued.		£	s.	d.
19. Salt—Fine	per lb.	0	0	1
20. Sauce—Tomato, 26-oz. bottles	per bot.	0	1	8
21. Pearl Tapioca	per lb.	*		
22. Soap—Extract of Kitchen's, or equal thereto, in 1-lb. packets	do.	0	0	3½
23. " " "Monkey Brand," or equal thereto, in tablets of 5 oz. each	per doz. pkts.	0	3	0
24. " " Sand, Carbolec, in 12-oz. blocks of approved brand	per block	0	0	2½
25. " " "Velvet," or equal thereto	per twin.	0	0	3½
26. Soda—Bicarbonate of	per lb.	0	0	3½
27. " " Washing	do.	0	0	1½
28. Spaghetti	do.	0	0	5½
29. Spice—Mixed, in 1-oz. packets	per pkt.	0	0	2½
30. Starch (Rice)—"Silver Star"	per lb.	0	0	9
31. Tartar—Cream of—Substitute, "Actorise"	do.	0	0	11½
32. Tea	do.	0	3	1
33. Treacle, in 2-lb. tins	per doz.	0	6	6
34. Vinegar—Malt	per pint	0	0	4½
35. Potatoes—Dry and free from dirt	per cwt.	0	15	0

ANNEX TO CONTRACT NO. 1943/145.†

F. J. Boddy, Vincent-street, Daylesford.

Sub-schedule No. 3.

MEAT.

Security, £3.

	£	s.	d.
1. Fresh Beef—Prime Ribs	per lb.	0	0 8
2. " " Stewing (when required, minced)	do.	0	0 6
3. Fresh Mutton—Forequarter	do.	0	0 5
4. " " in sides	do.	0	0 5½
5. Corned Beef—Silverside	do.	0	0 9
6. Pork—Pickled	do.	0	0 9
7. Frys—Lamb's	do.	0	0 4
8. Kidneys—Sheep's	each	0	0 1
9. Sausages—Best (Pork or Beef-mixed)	per lb.	0	0 5
10. Liver—Calves	do.	0	0 2
11. Tripe—Fresh	do.	0	0 5
12. Black Puddings	do.	0	0 3

ANNEX TO CONTRACT NO. 1943/146.

Eric S. B. Mead, Hepburn Springs.

Sub-schedule No. 4.

MILK.

Security, £10.

	£	s.	d.
Milk—Fresh and pure	per qt.	0	0 6

SCHEDULE No. 12.

PROVISIONS—SANATORIUM, GREEN-VALE.

(Delivery at the Sanatorium.)

ANNEX TO CONTRACT NO. 1943/147.

Walter Norris, trading as Bignell's Bakery, Sydney-road, Campbellfield.

Sub-schedule No. 1.

BREADSTUFFS.

Security, £7.

	£	s.	d.
1. Bread—Fine wheaten, first quality	per cntl.	0	17 2½
2. Flour—First quality	do.	0	12 11
3. " " Whesimeal	per lb.	0	0 1½

(AGREEMENT.)

Henry Berry and Co. (Asia) Ltd., 568 Collins-street, Melbourne.

Sub-schedule No. 2.

GROCERIES.

	£	s.	d.
1. Bacon—in sides	per lb.	0	1 4½
2. Beans—Lima	do.	*	
3. Biscuits—Malt, Milk Arrowroot, Coffee—as ordered, in approximately 7-lb. tins	do.	0	0 11
4. Blue—Washing	do.	0	0 11
5. Borax	do.	*	
6. Camp Pie—1-lb. tins	per doz.	0	8 11
7. Capers—in 16-oz. bottles	per bot.	0	*
8. Cheese—Semi-matured, in 20-lb. loaves	per lb.	0	1 5
9. Cinnamon	do.	0	2 6
10. Cocoa—in 1-lb. cardboard cartons	do.	0	1 4
11. Coconut—Desiccated	do.	*	
12. Corn or Maize Flour—in packets of 1 lb. net—	do.	0	0 7½

Sub-schedule No. 3—continued.

GROCERIES—continued.

	£	s.	d.
13. Curry Powder—"Atlas"	per lb.	0	1 2
14. Currants—2 Crowns (present season's)	do.	0	0 8½
15. Custard Powder—in 1-lb. packets—"Dainty Maid"	per pkt.	0	0 8½
16. Dates	per lb.	*	
17. Essence of Lemon—in 18-oz. bottles	per bot.	0	10 8
18. " " Vanilla—in 20-oz. bottles	do.	0	8 9
19. Fish—Sardine, 1-lb. tins	per tin	*	
20. Fish—Herrings in Sauce, 14-oz. tins	per tin	*	
21. Flour—Self-raising—"Cookwell"	per bag	1	11 6½
22. Fruits—Dried (present season's)—Apples and Peaches	do.	††	
23. " " Preserved (excluding Pines)	per tin	*	
24. Gelatine—Powdered	per lb.	*	
25. Ginger—Ground	do.	*	
26. Golden Syrup—in 2-lb. tins	per ctn.	0	12 6§
27. Honey—First quality	per lb.	*	
28. Jams—Assorted, in 24-oz. tins, Brand, "Victoree"	per tin	††	
29. Jolly Crystals—in 7-lb. packets	per pkt.	0	7 8½
30. Junket Tablets	per doz. tubes	0	7 3
31. Lemon Peel—Cut	per lb.	0	0 10½
32. Macaroni	do.	0	0 4½
33. Mustard	do.	0	2 5
34. Nutmeg—Ground	do.	*	
35. Oatmeal—Flaked	do.	0	0 2½
36. Spice—Loose	per lb.	0	1 10
37. Pepper—Ground	per lb.	0	1 2
38. Pickles—Assorted, in 20-oz. bottles	per bot.	*	
39. Prunes—Dried, 50-60's (present season's)	per lb.	††	
40. Raisins—4 Crowns (present season's)	do.	0	0 7½
41. " " Sultana, 3 Crowns (present season's)	do.	0	0 9½
42. Rice—Dressed	do.	*	
43. Salmon—Fresh in 1-lb. tins	per tin	*	
44. Salt—Fine	per cwt.	0	6 11
45. Sauce—Worcestershire, 10-oz. bottles, Brand, "Greig's"	per doz.	0	8 0
46. " " —Tomato, 26-oz. bottles, Brand, "Victoree"	do.	0	17 0
47. Soda—Bicarbonate of	per lb.	0	0 3
48. " " Washing	per cwt.	0	11 3
49. Spaghetti	per lb.	0	0 5
50. Starch (Rice)—"Silver Star"	do.	0	0 9
51. Sugar—Castor	do.	0	0 4½
52. Tapioca—Pearl	do.	*	
53. " " Seed (Sago)	do.	*	
54. Tartar—Cream of—Substitute "Aercremc"	do.	0	1 1½
55. Tomatoes—Preserved, in 2-lb. tins	per tin	*	
56. Treacle—in 2-lb. tins	per ctn.	0	11 8§
57. Vermicelli	per pkt.	0	0 4½
58. Vinegar—Malt	per gal.	0	1 0
59. Cereal—"Wooties," in 24-oz. packets	per pkt.	0	0 10½

ANNEX TO CONTRACT NO. 1943/148.†

F. Watkins Pty. Ltd., 184 Bourke-street, Melbourne, C.1.

Sub-schedule No. 3.

MEAT, (cuts as ordered.)

Security, £7.

	£	s.	d.
1. Beef, Fresh—Roast	per cntl.	3	2 6
2. " " Topside	per lb.	0	0 9
3. " " Rump	do.	0	1 3
4. " " Corned, Silverside	do.	0	0 9
5. Mutton—Fresh (sides)	do.	0	0 5½
6. Tripe—Ox (during winter)	do.	0	0 4
7. Sausages—Mixed	do.	0	0 7
8. " " Pork	do.	0	0 9
9. Steak—Minced	do.	0	0 7
10. Mince Meat	do.	0	0 5
11. Frys—Lamb's	do.	0	0 6
12. Chops—Mid Loin	do.	0	0 8
13. " " Cutlet	do.	0	0 9
14. " " Leg	do.	0	0 7½
15. Pork—Loin, fresh or pickled	do.	0	1 3
16. Suet—Kidney, fresh	do.	0	0 4
17. Veal—Cutlets	do.	0	0 8
18. Veal—Leg, boned	do.	0	0 8
19. Kidneys—Ox	each	0	1 0
20. Ox Tails	do.	0	1 3
21. Tongues—Ox	do.	0	3 6
22. " " Sheep	per doz.	0	2 0
23. Saveloys	do.	0	1 0
24. Brains	per set,	0	0 2
25. Pork German	per lb.	0	0 9
26. Rabbits—Fresh	per pair	0	2 0
27. Poultry—First Quality	do.	0	9 0

* Supplies not available. †† Bag—150lb. § Cartons—2 doz. 2-lb. tins. ††† Apply Tender Board.

SCHEDULE No. 13.

PROVISIONS—COORIE MUNGLE PRISON CAMP, HEYTESBURY FOREST.

(Delivery to be made at the Camp.)

(AGREEMENT.)

H. and C. Thorne and Co., Timboon.

Sub-schedule No. 1.

BREAD.

1. Bread—Fine Wheaten, first quality	per cntl.	£	s.	d.
		1	2	11

(AGREEMENT.)

H. and C. Thorne and Co., Timboon.

Sub-schedule No. 2.

GROCERIES.

1. Jams—Assorted, in bulk, of approved kinds, in the proportion of half seed and half stone, of the best quality, in tins as required.	per lb.	£	s.	d.
2. Oatmeal	do.	0	0	4
3. Rice—Dressed	do.	*		
4. Salt—Fine	per lb.	0	0	1½

ANNEX TO CONTRACT No. 1943/149.†

G. Waterfall & Son, Timboon.

Sub-schedule No. 3.

MEAT.

Security, £4.

1. Fresh Beef—Ribs	per lb.	£	s.	d.
2. " Mutton—Legs	do.	0	0	9½
3. Corned Beef—Without bone or cartilage, rolled or round	do.	0	0	8½
4. Dripping	do.	0	0	2

SCHEDULE No. 14.

PROVISIONS—ABORIGINAL STATION, LAKE TYERS.

(Delivery at Lake Tyers Station.)

ANNEX TO CONTRACT No. 1943/150.

Coate and Symmons Pty. Ltd., Lakes Entrance.

Sub-schedule No. 1.

BREADSTUFFS.

Security, £25.

1. Bread—Fine wheaten, first quality	per cntl.	£	s.	d.
2. Flour—First quality	do.	0	14	6

(AGREEMENT.)

Coate and Symmons Pty. Ltd., Lakes Entrance.

Sub-schedule No. 2.

GROCERIES.

1. Baking Powder—Snowflake, or equal thereto, in 1-lb. tins	per lb.	£	s.	d.
2. Candles (full weights)—Kitchen's "Electrics," or other make of equal quality, in 1-lb. packets	do.			
3. Coffee—Fresh roasted, and whole, beans to be thoroughly sound	do.			
4. Cocoa—in 1-lb. cardboard cartons	do.			
5. Corn or Maize Flour—in 1-lb. packets	do.			
6. Currants—2 Crowns (present season's)	do.			
7. Curry Powder—bulk	do.			
8. Matches—Safety, 60 in a box, "Yacht"	per gross			
9. Mustard—"Double Superfine"	per lb.			
10. Pepper—Black, ground, in ¼-lb. tins	per tin			
11. Raisins—Sultana, 3 Crowns (present season's)	per lb.			
12. Salt—Coarse	per cwt.			
13. " Fine	do.			
14. Soap—Household, hard and dry, to sample	do.			
15. Soda—Bicarbonate of	per lb.			
16. " Washing	do.			
17. Tartar—Cream of—Substitute—Calcium Phosphate	do.			
18. Treacle—in 7-lb. tins	per tin			
19. Vinegar—Malt	per qt.			

§ Order under Schedule No. 1, Sub-schedule No. 6.

(AGREEMENT.)

Coate and Symmons Pty. Ltd., Lakes Entrance.

Sub-schedule No. 3.

JAMS.

1. Jams—Assorted, in 24-oz. tins, in the proportion of half seed and half stone, Brand	per tin	£	s.	d.
		**		

** The rates to be paid for all items under these Sub-schedules shall be the wholesale prices charged to the contractor, plus 12½ per cent. Wholesaler's invoices to be submitted with contractor's accounts.

SCHEDULE No. 15.

PROVISIONS—EXPERIMENT FARM, RUTHERGLEN.

(Delivery at the Farm.)

ANNEX TO CONTRACT No. 1943/151.

A. F. Parrott, Main-street, Rutherglen.

Sub-schedule No. 1.

BREAD.

Security, £3.

1. Bread—Fine wheaten, first quality	per cntl.	£	s.	d.
		1	2	11

(AGREEMENT.)

Moran and Cato Pty. Ltd., 277 Brunswick-street, Fitzroy, N.6.

Sub-schedule No. 2.

GROCERIES, ETC.

1. Biscuits—Marie	per lb.	£	s.	d.
2. Blue—Washing, Powdered, 7-lb. parcels	do.	0	0	11½
3. Candles (full weights)—Kitchen's "Electrics," or other make of equal quality, in 1-lb. packets	do.	0	0	9½
4. Cornflakes—"Kellogg's," in 16-oz. packets	per pkt.	*		
5. Corn or Maize Flour—in packets of 1-lb. net	per lb.	0	0	8½
6. Coconut—Desiccated	do.	*		
7. Currants—2 Crowns (present season's)	do.	0	0	8½
8. Fish—Salmon, in ¼-lb. tins	per tin	*		
9. Fruits—Preserved, assorted, in 1-lb. 14-oz. tins (excluding Pineapple)	do.	††		
10. Jams—Assorted, of approved kinds, in proportion of half seed and half stone, in 24-oz. tins, Brand, "Blue Bell"	do.	0	0	11½
11. " Assorted, of approved kinds, in proportion of half seed and half stone, in 5-lb. tins, Brand, "Blue Bell"	do.	*		
12. Jelly Crystals—in 4-oz. packets	per pkt.	0	0	4
13. Macaroni or Vermicelli—as ordered	per lb.	0	0	4
14. Matches—Safety	per gross	0	14	1½
15. Oatmeal—Flaked	per lb.	0	0	2½
16. Pepper—Black, ground	do.	0	1	4
17. Potatoes—Dry and free from dirt	per cwt.	18	6	
18. Raisins—5 crown (present season's) lexias	do.	*		
19. " Sultana, 3 crown (present season's)	per lb.	0	0	9½
20. Rice—Dressed	per lb.	*		
21. Salt—Fine	do.	0	0	1½
22. Sauce—Tomato, "Dyasons," 20-oz. bottles	per doz.	0	13	4
23. Soap—Household, yellow, to sample	per cwt.	1	17	5½
24. " "Monkey Brand," or equal thereto, in 5-oz. tablets	per tab.	0	0	2½
25. " Sand, in 12-oz. blocks	per doz.	0	2	4
26. " Toilet, "Bath," in 5½-oz. tablets, to sample, Kitchen's, or equal thereto	per doz.	0	1	9½
27. Soda—Washing	per lb.	0	0	1½
28. Tea—1st Grade	do.	0	3	0½

SCHEDULE No. 16.

PROVISIONS AT SALE.

(Delivery at the Gaol.)

ANNEX TO CONTRACT No. 1943/152.

Robert McGowan, 70 Raymond-street, Sale.

Sub-schedule No. 1.

BREAD.

Security, £3.

1. Bread—Fine wheaten, first quality	per cntl.	£	s.	d.
		0	19	0

* Supplies not available.

†† Apply Tender Board.

ANNEX TO CONTRACT No. 1943/153. †
Stan. Ryder, 99B Raymond-street, Sale.

Sub-schedule No. 2.

MEAT.

Security, £3.

		£	s.	d.
1. Fresh Beef—Stewing	per lb.	0	0	5½
2. " Mutton	do.	0	0	5½
3. Corned Beef—Rolled or round, as ordered, without bone or cartilage	do.	0	0	5½

SCHEDULE No. 17.

**PROVISIONS—PLEASANT CREEK
SPECIAL SCHOOL, STAWELL.**

(Delivery at the School.)

ANNEX TO CONTRACT No. 1943/154.

A. R. Bushick, 3 Ligar-street, Stawell.

Sub-schedule No. 1.

BREADSTUFFS.

Security, £10.

		£	s.	d.
1. Bread—Fine wheaten, first quality	per cntl.	0	19	9½
2. Flour—First quality	do.	0	14	7
3. Flour—Wheatmeal	per lb.	0	0	1

(AGREEMENT.)

John MacLeod and Co. Pty. Ltd., 122 Lydiard-street, Ballarat.

Sub-schedule No. 2.

GROCERIES.

		£	s.	d.
1. Baking Powder	per lb.	0	1	8
2. Barley—Pearl	do.	0	0	2½
3. Blue—Washing	do.	0	0	11
4. Cereal—"Trumpeter," large	per pkt.	0	0	10½
5. Cheese—Matured	per lb.	0	1	5
6. Cocoa—in 1-lb. tins, "Gold Seal"	do.	0	1	7
7. Coffee and Chicory	do.	0	1	6
8. Corn or Maize Flour—in 1-lb. packets	do.	0	0	8
9. Curry Powder—"Gold Seal"—Loose	do.	0	1	4
10. Dates	do.	*		
11. Ginger—Ground	do.	*		
12. Golden Syrup—in 2-lb. tins	per doz.	0	6	11
13. Honey, first quality	per lb.	0	0	8½
14. Jams—Assorted, of approved kinds, in proportion of half seed and half stone, in tins containing 24 oz. net, Brand, "Victoree,"	per tin	0	1	1
15. Peel—Cut, Mixed	per lb.	0	0	11
16. Oatmeal	do.	0	0	2½
17. Pepper—Black, ground	do.	0	1	5½
18. Prunes—Dried, 50-60's (present season's)	do.	0	0	11½
19. Raisins—Sultana, 3 Crowns (present season's)	do.	0	0	9
20. Rice—Dressed	per cwt.	*		
21. Salt—Fine	do.	0	7	9
22. Pearl Tapioca	do.	*		
23. Soap—Extract of, Kitchen's, or equal thereto	per lb.	0	0	3½
24. " "Bodyguard," or equal thereto	per cake	0	0	3
25. " "Monkey" Brand, or equal thereto, in 5-oz. tablets	per tab.	0	0	3
26. " Sand, in 12-oz. blocks	per block	0	0	2½
27. " "Velvet," or equal thereto	per twin	0	0	3½
28. Soda—Bicarbonate of	per lb.	0	0	3½
29. " Washing	per cwt.	0	12	6
30. Starch (Rice)—Brand, "Silver Star"	per lb.	0	0	9
31. Tartar—Cream of—Substitute—"Actorise"	do.	0	0	11½
32. Tea	do.	0	0	3
33. Treacle—in 2-lb. tins	per doz.	0	6	6

ANNEX TO CONTRACT No. 1943/155. †
Newton Bros., 29 Patrick-street, Stawell.

Sub-schedule No. 3.

MEAT.

Security, £3.

		£	s.	d.
1. Fresh Beef—Prime ribs	per lb.	0	0	7
2. " " Sirloin	do.	0	0	7
3. " " Stewing (minced when required)	do.	0	0	7
4. Beef—Corned, Silverside	do.	0	0	7
5. Fresh Mutton—Chops (loin)	do.	0	0	6
6. " " in sides	do.	0	0	4½
7. Sausages—Mixed	do.	0	0	5
8. Frys—Lamb's	each	0	0	2
9. Saveloys	per doz.	0	0	7

ANNEX TO CONTRACT No. 1943/156.

R. S. Andrews, Stawell.

Sub-schedule No. 4.

MILK.

Security, £10.

		£	s.	d.
1. Milk—Fresh and pure	per gal.	0	1	9

SCHEDULE No. 18.

PROVISIONS—SUNBURY DISTRICT.

(Delivery into Institutions.)

ANNEX TO CONTRACT No. 1943/157.

J. N. Hennessy Pty. Ltd., 55 Sydney-road, Brunswick, N.10.

Sub-schedule No. 1.

BREADSTUFFS.

Security, £112.

		£	s.	d.
1. Bread—Fine wheaten, first quality	per cntl.	0	16	1
2. Flour—First quality	do.	0	13	0

(AGREEMENT.)

A. C. Skill, Sunbury.

Sub-schedule No. 2.

GROCERIES.

		£	s.	d.
1. Blue—Washing	per lb.	0	0	9
2. Beans—Haricot	do.	*		
3. Candles—Full weight, in 1-lb. packets, Kitchen's "Electrics", or equal thereto	per lb.	0	0	9
4. Cocoa—in 1-lb. tins or cardboard cartons	do.	0	0	5
5. Corn or Maize Flour—in packets of 1-lb. net	do.	0	0	5
6. Currants—2 Crowns (present season's)	do.	0	0	8½
7. Curry Powder	do.	0	0	1 5
8. Ginger—Ground	do.	*		
9. Golden Syrup—in 7-lb. tins	per tin	0	1	8½
10. Lemon Peel	per lb.	1	3	
11. Mustard	do.	2	6	
12. Pepper—Black, ground	do.	0	1	6
13. Pipes—Tobacco, clay	per doz.	0	1	3
14. Raisins—Sultana, 3 Crowns (present season's)	per lb.	0	0	9
15. Salt—Fine	per cwt.	0	6	6
16. Soda—Bicarbonate of	per lb.	0	0	3
17. " Washing	per cwt.	0	12	0
18. Spice—Mixed, loose	per lb.	0	1	3
19. Starch (Rice)—"Preservene"	do.	0	0	6½
20. Tartar—Cream of—Substitute, "Antelope"	do.	0	1	2
21. Vinegar—Malt	per pint	0	0	1½
22. Yolking	per lb.	2	9	

Sub-schedule No. 3.

CEREALS.

1. Oatmeal	per cwt.	Purchase under Melbourne District quotations.
2. Rice—Dressed to sample	do.	
3. Rice—Unpolished	do.	
4. Seed Tapioca—(Sago), to sample	do.	
5. Pearl Barley	do.	
6. Peas—Split	do.	

(AGREEMENT.)

A. C. Skill, Sunbury.

Sub-schedule No. 4.

JAMS.

		£	s.	d.
1. Jams—Assorted, in bulk, of approved kinds, in the proportion of half seed and half stone, of the best quality, in tins as required, Brand, "Blue Bird"	per lb. actual net weight	0	0	5½

ANNEX TO CONTRACT No. 1943/158. †

F. Watkins Pty. Ltd., 184 Bourke-street, Melbourne, C.1.

Sub-schedule No. 5.

MEAT.

Security, £40.

		£	s.	d.
1. Fresh Beef—Fore-quarters	per cntl.	2	10	0
2. " " Hindquarters	do.	2	10	0
3. " " Buttocks	per lb.	0	0	6
4. " Mutton	do.	0	0	5½
5. Corned Beef—Rolled or round, as ordered, without bone or cartilage	do.	0	0	6½

* Supplies not available.





VICTORIA
GOVERNMENT GAZETTE.

Published by Authority.

[Registered at the General Post Office, Melbourne, for transmission by post as a newspaper.]

No. 137]

FRIDAY, JULY 16.

[1943

COMMONWEALTH NATIONAL SECURITY (GENERAL)
REGULATIONS.

STATE OF VICTORIA.

LIGHTING RESTRICTION ORDER.

ORDER No. 49.

WHEREAS it is provided by Regulation 35A of the Commonwealth National Security (General) Regulations that the Premier of any State may, after consultation with the Minister of State for Home Security or an officer of the Department of Home Security authorized by that Minister to act on his behalf and with the Commander of a Lines of Communication Area or an officer authorized by the Minister of State for the Army to act on behalf of such Commander, by Order—

- (a) direct any total or partial "black-out" and may prohibit or regulate the display of lights of any description within the State; and
- (b) make such provision as he deems necessary to protect the persons and property of the civil population in that State or any part thereof in case of emergency,

and that all persons within such State or area (as the case may be) to which any such Order applies shall comply with the requirements of that Order:

Now therefore I, Albert Arthur Dunstan, Premier of the State of Victoria, having duly held such consultations, do hereby make the following Order:—

1. This Order may be cited as the Lighting Restriction Order (Victoria) No. 7.
2. The Lighting Restriction Order (Victoria) No. 5, as amended by the Lighting Restriction Order (Victoria) No. 6, is amended—
 - (a) by omitting clause 4 and inserting in its stead the following clauses:—
 - "4. (1) (a) The provisions of this clause and of clause 25 but of no other clause in this Part of this Order shall apply with respect to vehicles in Victoria during the continuance in operation of this clause.

Amendments
of Lighting
Restriction
Order
(Victoria)
No. 5.

Clause 4.
Lighting
restrictions
applicable to
vehicles.

(b) This clause shall continue in operation until such time as the Premier by direction declares that the clause is no longer in operation and the provisions of clause 23 of this Order shall apply with respect to any such direction:

Provided that in the event of the First signal within the meaning of the Air Raid Warning System Order (Victoria) being sounded in any area this clause shall be deemed to have ceased to operate in that area until the sounding of the Second signal within the meaning of that Order.

(2) A person in charge of any vehicle shall not leave that vehicle stationary or allow it to remain stationary if any lights (except normal tail or rear lights) are between sunset and sunrise visible from the sea along the ocean coast-line of the State of Victoria.

4A. Upon the sounding of the First signal within the meaning of the Air Raid Warning System Order (Victoria) in any area the driver or person in charge of any motor vehicle shall immediately mask or cover the head lamps on the motor vehicle so that while such motor vehicle is being driven either no light is displayed from any such head lamp or the intensity of the illumination from any such head lamp on a vertical surface at any point 10 feet from the head lamp does not exceed 2.5 foot candles and shall keep such head lamps so masked or covered until the sounding of the Second signal within the meaning of that Order.”;

(b) by inserting after clause 26 the following clause:—

“26A. (1) (a) The provisions of this clause and of clauses 31, 35, 36 and 37 but of no other clause in this Part of this Order shall apply during the continuance in operation of this clause.

(b) This clause shall continue in operation until such time as the Premier by direction declares that the clause is no longer in operation and the provisions of clause 23 of this Order shall apply with respect to any such direction:

Provided that in the event of the First signal being sounded in any area this clause shall be deemed to have ceased to operate in that area until the sounding of the Second signal.

(2) (a) A person shall not cause or allow any light to be emitted from or by any fire lamp sign or other device so that such light is between sunset and sunrise visible from the sea along the ocean coast-line of the State of Victoria.

(b) This sub-clause shall not apply with respect to lights on vehicles.

(3) Any undertaker council or other public statutory corporation and The Victorian Railways Commissioners shall not be under any liability by reason of or arising out of the fact that the lighting provided or controlled or light used by such undertaker council public statutory corporation or Commissioners continues, after this clause comes into operation, to be reduced or modified in accordance with the requirements of, or instructions given under, this Part of this Order as theretofore in operation until such undertaker council public statutory corporation or Commissioners is able to restore such lighting to the extent permitted by the foregoing provisions of this clause.”

A. A. DUNSTAN,

Premier of the State of Victoria.

Dated this 15th day of July, 1943.

No. 159.

By Authority: H. E. DAW, Government Printer, Melbourne.

Head lamps on moving motor vehicles to be masked or covered during air raids.

New clause 26A. General lighting restrictions.



VICTORIA
GOVERNMENT GAZETTE.

Published by Authority.

[Registered at the General Post Office, Melbourne, for transmission by post as a newspaper.]

No. 138]

FRIDAY, JULY 16.

[1943

Factories and Shops Acts.

DETERMINATION OF THE WOOLLEN AND COTTON TRADE BOARD.

NOTE.—This Determination applies to the whole of the State of Victoria.

IN accordance with the provisions of the Factories and Shops Acts the Wages Board which since 1st December, 1931, has had the power to "determine the lowest prices or rates which may be paid to any person or persons or classes of persons employed in the trade of:—

- (a) manufacturing woollen, worsted or cotton woven material or wool tops;
(b) spinning textile yarns (but not spinning or preparing silk yarn)"—

has made the following Determination, namely:—

(1) That as from the beginning of the first pay period to commence on or after the 14th June, 1943, the adjusted Determination which came into force as from the beginning of the first pay period to commence in February, 1943, shall be revoked and replaced by this Determination.

(2) (a)

JUNIORS;

WAGES PER WEEK OF 44 HOURS.

MALES.				FEMALES.											
				£	s.	d.									
Under 16 years of age	1	6	0	Under 16 years of age	1	5	6
16 years of age	1	8	6	At 16 years of age	1	8	6
16½	"	"	1	17	6	At 16½	"	"	1	11	6
17	"	"	2	2	6	At 17	"	"	1	14	6
17½	"	"	2	7	0	At 17½	"	"	1	17	6
18	"	"	2	11	6	At 18	"	"	2	0	6
18½	"	"	3	1	0	At 18½	"	"	2	3	6
19	"	"	3	6	6	At 19	"	"	2	7	0
19½	"	"	3	15	6	At 19½	"	"	2	9	6
20	"	"	4	0	0	At 20	"	"	2	12	6
20½	"	"	4	9	6	At 20½	"	"	2	16	0

PROPORTION (within any factory).

The proportion of juniors employed shall not exceed two to each employee receiving not less than the minimum adult rate. In determining the proportion of juniors to employees receiving the adult rate each shift shall be taken into account separately.

(b) Changes in rates to be effective from the beginning of the first pay period to commence after the attainment of the prescribed age.

(c) A junior female, after four years' experience in the industry, shall be paid the rates prescribed for an adult female in the classification in which she is employed.

(d)

OTHER EMPLOYEES.
WAGES PER WEEK OF 44 HOURS.
Woolen and Worsted Section.

ADULT MALES.

	£	s.	d.
Assistant foreman and/or overlooker	6	0	6
Wool Sorting and Wool Scouring and Carbonizing Department—			
Wool sorters	6	4	0
Wool scourers and/or carbonizers (other than foremen) responsible for mixing of liquor and the working of bowls	5	13	0
Truckers, pressers, and/or storemen (substantially employed as such)	5	7	0
All other machine operators and/or attendants	5	7	0
Dye House—			
Leading hands employed on dye machines or vats	5	11	0
Men on wet crabbers	5	9	0
All other machine operators and/or attendants	5	7	0
Wiley House—			
Leading hand (where more than 4 hands are employed)	5	13	0
Leading hand (where 3 or 4 hands are employed)	5	10	6
Operators and/or attendants	5	7	0
Waste Room—			
Operators and/or attendants	5	7	0
Carding Department—			
Head fettler (leading hand in carding room)	5	12	0
Card fettler	5	8	0
All other machine operators and/or attendants	5	6	0
Woolen Spinning Department—			
Man in charge of one pair of spinning mules	5	8	0
All other machine operators and/or attendants	5	6	0
Worsted Department—			
Jobber in charge and/or comb mechanic in charge	5	18	0
Jobber and/or comb mechanic	5	8	0
All other machine operators and/or attendants	5	6	0
Pin Setting Department—			
Pinsetter—			
First year's experience	5	8	0
Second year's experience	5	13	0
Thereafter			
Faller pinsetter	5	18	0
Comb circle and French comb cylinder setter	6	4	0
Roller coverer—			
First year's experience	5	7	0
Second year's experience	6	11	0
Thereafter	5	19	0
Gill Box Reducing—Intermediate Roving and Spinning Departments—			
Man in charge of one set of spinning mules	5	8	0
All other machine operators and/or attendants	5	6	0
Winding, Warping, and Twisting Department—			
Warpers	5	8	0
Sizé machine hands	5	7	0
All other machine operators and/or attendants	5	6	0
Weaving Department—			
Twisters in and/or warp drawers in—			
First year's experience	5	6	0
Second year's experience	5	11	0
Thereafter	5	16	0
Warp tiers	5	6	0
Box loom tuners—			
First year's experience	5	9	0
Second year's experience	5	15	0
Thereafter	6	4	0
Plain loom tuners—			
First year's experience	5	7	0
Second year's experience	5	13	0
Thereafter	5	18	0
Oilers and cleaners	5	6	0
Card and/or chain makers	5	8	0
Weavers	5	9	0
Perchers	5	6	0
Finishing Department—			
Men in charge of milling, scouring and/or washing machines (where milling and scouring foreman is not employed)	5	10	6
Sulphur house hands (for time in sulphur house work)	5	13	0
Examiner of finished cloth	5	11	0
Piece carbonizers	5	9	0
Men engaged on unshrinkable finishing processes	5	9	0
Operators and/or attendants	5	6	0
Warehouse (Yarn and/or Cloth)—			
Leading hand in warehouse where warehouse foreman is not employed	5	10	6
Operators and/or attendants	5	6	0
General—			
Recorders	5	8	0
Yarn storemen	5	6	0
All adult males (in any section) not elsewhere specified	5	0	0

WAGES PER WEEK OF 44 HOURS.
OTHER EMPLOYEES—continued.
Woolen and Worsted Section—continued.
ADULT FEMALES.

	First Three Months' Experience.	Second Three Months' Experience.	There- after.
	£ s. d.	£ s. d.	£ s. d.
Assistant forewoman and/or overlooker	3 10 0	3 10 0	3 10 0
Worsted Department—Combing Section—			
All machine operators and/or attendants	2 18 0	3 1 6	3 5 0
Other female employees not elsewhere specified	2 18 0	2 18 0	2 18 0
Gill Box, Reducing, Intermediate, Roving, and Spinning Departments—			
All machine operators and/or attendants	2 18 0	3 1 6	3 5 0
Other female employees not elsewhere specified	2 18 0	2 18 0	2 18 0
Woolen and Worsted Operations—Winding, Warping, and Twisting Department—			
Warpers	2 18 0	3 2 6	3 7 0
All machine operators and/or attendants	2 18 0	3 1 6	3 5 0
Other female employees not elsewhere specified	2 18 0	2 18 0	2 18 0
Weaving Department—			
Weavers	2 18 0	3 3 0	3 8 0
Other female employees not elsewhere specified	2 18 0	2 18 0	2 18 0
Mending and Darning Department—			
Worsted menders and darners	3 5 0	3 5 0	3 11 0
Other menders and darners (except flannel and blanket menders)	3 4 0	3 4 0	3 7 0
Examiners and/or passers of pieces after mending	2 18 0	3 5 6	3 13 0
Other examiners and passers	2 18 0	3 2 0	3 6 0
Whipping machinists	2 18 0	3 1 6	3 5 0
Knotters and burlers	2 18 0	3 1 6	3 5 0
Other female employees not elsewhere specified	2 18 0	2 18 0	2 18 0
Warehouse (Yarn and/or Cloth)—			
Yarn warehouse employees	2 18 0	3 0 0	3 1 6
Other female employees not elsewhere specified	2 18 0	2 18 0	2 18 0
General—			
Recorders	2 18 0	3 2 6	3 7 0
Other female employees not elsewhere specified	2 18 0	2 18 0	2 18 0

Cotton Section.
ADULT MALES.

Assistant foreman and/or overlooker when or where employed			6 0 6
Dye House and Bleach Croft—			
Leading hand employed on dye or bleaching machines or vats			5 11 0
All other machine operators and/or attendants			5 7 0
Waste Department—			
Leading hand in waste department where more than 4 hands engaged			5 13 0
Leading hand in waste department where 3 or 4 hands engaged			5 10 6
Scutching machine hand			5 9 0
All other machine operators and/or attendants			5 6 0
Blowing Room—			
Blow-room major and/or leading hand			5 13 0
Scutching machine hand			5 9 0
All other machine operators and/or attendants			5 7 0
Carding Department—			
Head stripper and grinder (leading hand in carding-room)			5 12 0
Stripper and grinder			5 9 0
All other machine operators and/or attendants			5 7 0
Combing Department—			
Jobber in charge and/or comb mechanic in charge			5 18 0
Jobber and/or comb mechanic			5 10 6
All other machine operators and/or attendants			5 7 0
Pin Setting Department—			
First year's experience			5 8 0
Second year's experience			5 13 0
Thereafter			6 4 0
Roller Coverer—			
First year's experience			5 7 0
Second year's experience			5 11 0
Thereafter			5 19 0
Drawing, Slubbing, Intermediate, Roving, and Spinning Departments—			
Ring jobber			5 18 0
All machine operators and/or attendants			5 6 0
Mulo Spinning Department—			
Man in charge of one pair of spinning mules			5 8 0
All other machine operators and/or attendants			5 6 0
Twisting, Winding, Reeling, and Warping Departments—			
Warpers			5 8 0
Slasher sizer hand			5 7 0
All other machine operators and/or attendants			5 6 0
Weaving Department—			
Twisters in and/or warp drawers in—			
First year's experience			5 6 0
Second year's experience			5 11 0
Thereafter			5 16 0
Warp tiers			5 6 0
Box loom tuners—			
First year's experience			5 9 0
Second year's experience			5 15 0
Thereafter			6 4 0
Plain loom tuners—			
First year's experience			5 7 0
Second year's experience			5 13 0
Thereafter			5 18 0
Card and/or chain makers			5 8 0
Weavers			5 9 0
Perchers			5 6 0
Oilers and cleaners			5 6 0

WAGES PER WEEK OF 44 HOURS.

OTHER EMPLOYEES—ADULT MALES—continued.

Cotton Section—continued.		£	s.	d.
Finishing Department—				
Man in charge of finishing machines	5	10	6
Man examining finished cloth	5	11	0
All other machine operators and/or attendants	5	6	0
Warehouse (Yarn and/or Cloth)—				
Leading hand in warehouse where warehouse foreman is not employed	5	10	6
Operators and/or attendants	5	6	0
General—				
Recorders	5	8	0
Yarn storemen	5	6	0
Adult males (in any section) not elsewhere specified	5	0	0

ADULT FEMALES.

	First	Second	There-
	Three	Three	after.
	Months	Months	
	Experience.	Experience.	
	£	£	£
	s.	s.	s.
	d.	d.	d.
Assistant forewoman and/or overlooker	3	3	3
Combing, Drawing, Slubbing, Intermediate, Roving, and Spinning			
Departments—			
All machine operators and/or attendants	2	3	3
Other female employees not elsewhere specified	2	2	2
Twisting, Winding, Reeling, and Warping Departments—			
Warpers	2	3	3
All machine operators and/or attendants	2	3	3
Other female employees not elsewhere specified	2	2	2
Weaving Department—			
Weavers	2	3	3
Other female employees not elsewhere specified	2	2	2
Mending and Darning Department—			
Menders and darners	3	3	3
Examiners and/or passers of pieces after mending	2	3	3
Other examiners and passers	2	3	3
Other female employees not elsewhere specified	2	2	2
Warehouse (Yarn and/or Cloth)—			
Yarn warehouse employees	2	3	3
Other female employees not elsewhere specified	2	2	2
General—			
Recorders	2	3	3
Other female employees not elsewhere specified	2	2	2

(3) ADDITIONAL PAYMENTS.—(a) An employee who is employed as first-aid man or woman and who holds a first-aid certificate shall be paid 5s. per week extra.

(b) An employee required to clean wool scouring pits which are in an unusually dirty or offensive condition shall be paid at double ordinary rate whilst employed in the cleaning of the pits.

(c) For picking over bales of wool waste or rags which are in an offensive or obnoxious condition an employee shall be paid 1s. per bale, in addition to his ordinary pay.

(4) PIECE-WORK.—(a) Any employer may fix piece-work prices for any process provided such prices enable adult employees of average capacity to earn at least the minimum weekly rate prescribed for their respective classes with the addition of 15 per cent. A schedule of such piece-work prices shall be posted in the mill or factory and a copy thereof forwarded to the secretary of the local branch of the union.

(b) Piece-work prices now paid may be re-adjusted by employers to meet new circumstances created by this Determination before the expiry of six months from the date on which this Determination comes into force, but thereafter such prices shall not be altered except by mutual agreement between the employer and piece-workers concerned or by authority of the Secretary for Labour.

(c) Effect shall be given in piece-work earnings to alterations of the needs basic wage, and the minimum wage for adult females made in accordance with the provisions of clause (28) of this Determination. For that purpose, an employer may alter his piece-work rates in accordance with paragraph (b) of this clause, or he may observe the following provisions:—

At the end of each working week, the aggregate earnings of each piece-worker for such week shall be ascertained, and where such piece-worker has worked on each and every day ordinarily worked in such week, such aggregate earnings shall be increased or decreased—

(i) In the case of males, by the sum by which the needs basic wage has been increased or decreased in accordance with the provisions of clause (28); and

(ii) in the case of females by the sum by which the minimum wage for adult females in accordance with the provisions of clause (28),

but where the piece-worker has not worked on each and every day ordinarily worked in such week, then the aggregate earnings shall be increased or decreased by a part of such sum proportionate to the number of days worked, calculated to the nearest penny.

(d) If any groups of employees in any factory are dissatisfied with alternations made in piece-work rates, they shall have the right to refer the matter to the Secretary for Labour for investigation.

(e) Where an employee has worked part of the week on piece-work he or she shall be entitled to his or her earnings in full for the actual time worked on piece-work if the earnings are higher than the minimum rate for such time.

(f) Adults and juniors doing the same operations shall be paid the same piece-work prices.

(g) As far as practicable, different grades of work shall be equitably divided between piece-workers.

(h) A piece-worker who also instructs learners shall receive 10s. per week in addition to piece-work earnings for the first week, 7s. 6d. for the second week, and 5s. for the third week, but at the end of the third week, shall not be called upon to continue instructing a learner unless paid 5s. per week in addition to the piece-work earnings.

(i) Weavers on commencing a warp shall be provided with a ticket on which shall be entered particulars of class of work, the number of picks per inch, length of cut, speed of loom, and price per cut.

(j) A piece-worker (adult or junior) called upon to perform work before the usual starting time or after the usual finishing time on any day Monday to Saturday (inclusive), shall be paid, in addition to his or her normal piece-work price—

(i) for the first three hours on any one of such days—at a rate per hour equivalent to 1/88th of the weekly rate prescribed for an adult employee of the same sex employed on the same work; and

(ii) for any overtime extending beyond such three hours—at a rate per hour equivalent to 1/44th of the weekly rate prescribed for an adult employee of the same sex employed on the same work.

Youths under 18 years of age and females who work overtime extending over ten hours in any week shall for any overtime beyond such ten hours be paid the rate prescribed by paragraph (ii) above. Provided that in mills or factories where 44 hours are worked in five days Monday to Friday (inclusive), the maximum daily hours under this sub-clause for Saturday shall be four hours, before the increased overtime rate prescribed by paragraph (ii) shall operate.

(k) Piece-workers on the employer's premises, at the employer's request, ready and willing to work, shall for each pay period, receive at least the time rate prescribed for their occupations.

(5) BONUS PAYMENTS.—(a) In all establishments in which tasks are set and employees are paid for extra production, the tasks shall be so set as to permit adults of average capacity and juniors of average capacity in receipt of wages in excess of 25s. per week to earn at least 15 per cent. above the rates prescribed for their occupations or so as to permit juniors of average capacity in receipt of wages between 17s. and 25s. per week to earn at least 20 per cent. in addition to the rates prescribed for their occupations.

(b) Particulars of the basis of bonus rates shall be supplied to the secretary of the local branch of the Union upon request being made to the employer for same.

(c) Adjustments of the bases of bonus rates shall be subject to mutual agreement between the employer and the bonus workers concerned, and if challenged, they may be reviewed by the Secretary for Labour.

(d) If the Union claims that any employer has wrongly based a bonus rate on the time rate for juniors, it may submit such claim to the Secretary for Labour.

(6) MIXED FUNCTIONS.—An employee engaged for more than half of one day or shift on duties carrying a higher rate than his or her classification shall be paid the higher rate for such day or shift. If for less than half of one day or shift, he or she shall be paid the higher rate for the time so worked.

(7) HOURS.—Forty-four hours shall constitute a week's work.

(8) OVERTIME.—(a) Overtime shall be paid for work performed before the usual starting time and after the usual finishing time of each shift, or after any employee has completed the ordinary hours of duty at time and a half for the first three hours on any one day, Monday to Saturday inclusive, and double time thereafter:

Provided, however, that in mills or factories where the 44 hours are worked in five days, Monday to Friday inclusive, time worked on Saturday shall be paid for at time and a half for the first four hours and double time thereafter.

(b) The usual starting and/or finishing time in any factory or part thereof shall not be altered, except on seven days' notice to the union.

(c) Employees required to work overtime for more than one hour without being notified the day immediately before that they will be required to work shall either be supplied with a meal by the employer or paid 1s. 6d. each. If the notice is given and overtime is not worked (except as a result of a breakdown in machinery or plant) the tea money prescribed herein shall be paid.

(d) Juniors under eighteen years of age for each period of overtime worked shall be paid 6d. up to two hours and 3d. for each additional hour or part of an hour in addition to their overtime earnings and any tea money to which they might be entitled.

Provided that the said sums of 6d. and 3d. shall not be payable to piece-workers working overtime.

(e) Youths under eighteen years of age and females required to work overtime shall be paid overtime at the rate of time and a half to a maximum of three hours in any one day, Monday to Saturday inclusive, and ten hours in one week, and double time thereafter:

Provided that in mills or factories where the 44 hours are worked in five days, Monday to Friday inclusive, the maximum daily hours under this sub-clause for Saturday shall be four.

(9) SHIFTS.—Shifts as hereunder set forth may be worked in the industry:—

(a) A day shift shall be a shift worked between the hours of 7 a.m. and 7 p.m. on Monday to Friday inclusive, and between the hours of 7 a.m. and noon on Saturday.

(b) A night shift shall be a shift worked between the hours of 7 p.m. and 7 a.m. on Monday to Saturday inclusive.

(c) By mutual arrangement between an employer and his employees, and, with the concurrence of the Union, the hours of duty prescribed herein for night-shift workers may be worked in four shifts without payment of overtime.

Under any such arrangement all hours of duty beyond ten hours, even if they come within the starting and finishing times of a shift, shall be paid for at overtime rates.

(d) Subject to the emergency provisions hereafter appearing, females shall be prohibited from working between the hours of 9 p.m. and 7 a.m. Male juniors under 18 years of age are prohibited from working after 9 p.m. Provided that for the duration of the war the following provisions shall apply:—

Female employees and male juniors under 18 years may be required to work between the hours of 6 a.m. and 10 p.m., subject to the following conditions:—

(i) 1s. per shift extra shall be paid for each short shift.

(ii) An additional 6d. per shift shall be paid for each shift commencing before 7 a.m.

(iii) Time and a half shall be paid for all time worked after noon on Saturday.

(iv) No employee under the age of 16 years shall be employed before 7 a.m., provided that employees under 16 years of age at present employed may continue to be so employed.

(v) (1) No short shift of females under these emergency provisions shall be substituted for any existing afternoon or night shift carried on by male labour.

(2) Where two shifts of females are employed by virtue of these provisions as well as a night shift of males, at least one shift of females shall be dispensed with, if and when it is desired to work only two shifts.

(e) Except in the case of employees employed under the provisions of sub-clause (d) of this clause, shift-workers (adult and junior), whilst working intermediate or night shifts, shall for such shifts be paid at the rate of 10s. per week in addition to the rates payable to day shift workers.

(f) Short shifts of male employees over 17 years of age may be worked at the discretion of the employer. For work done on such shifts (other than between noon on Saturday and midnight on Sunday), payment shall be made at the rate of 10s. per week of 44 hours in addition to the rates payable to day shift workers.

(g) As far as practicable employees shall work shifts in rotation.

(h) Subject to the provisions of sub-clause (d) of this clause and except in the case of employees working in a continuous process in the production of wool tops, for all work done by a shift worker on Saturday afternoon, time and a half shall be paid until 5 p.m., and thereafter double time.

(i) An employee who is required to change from one shift to another without two days' notice of such change of shifts, shall be paid 3s. extra as compensation for change.

(j) Shift workers may be required to work until the completion of their shifts on holidays without the payment of holiday rates, provided they are not required to work on the night shift commencing on a holiday.

Where a holiday prescribed by this Determination is observed on a Monday, shift-workers may be given time off on the shift commencing on the Sunday night preceding a holiday, and in such event shall be required to work on the usual night shift commencing on the holiday, without additional pay.

Provided that where an employee works two complete shifts on a holiday, both shifts shall be paid for as holiday shifts.

(10) **TERMS OF ENGAGEMENT.**—(a) Engagement in the industry shall be on an hourly basis except that notice equivalent to 44 working hours shall be given on either side to terminate employment. Such notice may be given at any time. This shall not affect the right of the employer to stand down employees at any time when no work is offering, or to dismiss any employee without notice for malingering, inefficiency, neglect of duty or misconduct (in which case wages shall be paid up to the time of dismissal only), or to deduct payment for any day the employee cannot usefully be employed because of any strike by the Union or any other union, or through any breakdown of machinery, or any stoppage of work, or any cause for which the employer cannot reasonably be held responsible.

(b) In lieu of such 44 working hours' notice, except under circumstances referred to in sub-clause (a) hereof, the employer may pay 44 hours' wages, and vice versa, the employee leaving his or her employment without notice shall forfeit 44 hours' wages, which may be deducted from any wages due.

(c) Where the employer terminates the employment of an employee within two weeks prior to a day on which a holiday occurs, and such employee is re-engaged within a period of two weeks after such holiday or holidays, the employee shall be paid for such holiday or holidays prescribed by this Determination, provided that such employee has been employed by the employer for a period of at least two weeks prior to the termination of employment.

(d) Subject to the continuance of existing practices of the Weaving Section of the industry, an employee starting work shall be entitled to at least half a day's pay if ready and willing to work for same.

(11) **MEAL HOURS.**—(a) A meal interval of not less than 45 minutes and not more than one hour shall be allowed each day, provided that by mutual arrangement between the employees and the employer a shorter meal time may be fixed, in which case it shall not be less than 30 minutes.

(b) Time and a half rates shall be paid to any employee required to work during his meal hour. No employee shall be compelled to work more than five hours without a break for a meal.

Provided, however, that where three shifts are worked in a continuous process, and it is mutually arranged, there shall be no break for meals, but employees may take their meals in the employer's time as opportunity offers.

(c) An employee engaged in the maintenance of plant shall, when breakdowns occur, work meal hours at the ordinary rates herein prescribed whenever instructed so to do.

(d) Meal intervals, having been fixed, shall not be altered, except on seven days' notice to the Union.

(12) **HOLIDAYS AND SUNDAY WORK.**—(a) Subject to the limitations mentioned hereinafter, the following days shall be regarded as public holidays under this Determination:—New Year's Day, Good Friday, Easter Saturday (in establishments working a six-day week), Australia Day, Easter Monday, Eight Hours Day, King's Birthday, Anzac Day, Christmas Day, and Boxing Day, or any other day observed in lieu thereof, or observed by local custom, and substituted for one of the days hereinbefore mentioned, with the consent of the appropriate branch of the Union. In the Metropolitan District of Melbourne, Melbourne Cup Day shall be substituted for King's Birthday.

(b) Employees shall be paid for any of such holidays as fall on an ordinary working day of their employer's establishment, such payment to be to the full extent of the ordinary daily wage.

(c) Piece-workers shall be paid for such holidays, even though not worked, at the ordinary rates payable to employees on time work doing the same class of work.

(d) Where an employee is absent from his or her employment on the working day, or part of the working day, before or after a holiday without reasonable excuse, or without the employer's consent, the employee shall not be entitled to payment for such holiday.

(e) When an employee is absent through illness or other reasonable cause from his or her employment for a period exceeding fourteen days the employee shall not be entitled to payment for any holidays occurring during such period of absence.

Provided that where an employer consents to an employee having leave beyond the fourteen days abovementioned, payment shall be made for such holiday or holidays occurring in the period of absence.

(f) Production work in any factory is prohibited on Sundays unless in extraordinary circumstances, and then only with the consent of the Secretary for Labour. Provided that this sub-clause shall not apply to employees engaged in the production of wool tops.

(g) All work done by time-workers on the holidays prescribed in sub-clause (a) hereof, and all work done by time-workers on Sundays, shall be paid for at the rate of ordinary time in addition to the ordinary rate; all such work done by piece-workers shall be paid for at the ordinary rate payable to employees on time work doing the same class of work in addition to such piece-work earnings. Provided that in respect of work done in or in connexion with the production of wool tops payment shall be at half ordinary time rates in addition to the ordinary rate, and in the case of piece-workers at half the ordinary time rate in addition to piece-work earnings.

(h) All employees engaged on repairs or renewals of the employer's plant or machinery necessary for the resumption of work the next following working day, or for maintaining the continuity of electric light and power (not including the installation of new machinery) shall, if worked on holidays and Sundays, be paid at the rate of time and a half.

(13) **SICK LEAVE.**—(a) An employee who is absent from work on account of personal illness, or on account of injury by accident arising out of and in the course of his employment, shall be entitled to leave of absence, without deduction of pay, subject to the following conditions and limitations:—

(i) he shall not be entitled to paid leave of absence unless he has been in the service of the employer concerned for at least three months immediately prior to such absence;

(ii) he shall not be entitled to paid leave of absence for any period in respect of which he is entitled to workers' compensation;

(iii) he shall within 24 hours of the commencement of such absence inform the employer of his inability to attend for duty, and, as far as practicable, state the nature of the injury or illness and the estimated duration of the absence;

(iv) he shall prove to the satisfaction of the employer (or in the event of dispute to the Secretary for Labour) that he was unable on account of such illness or injury to attend for duty on the day or days for which sick leave is claimed. For such purpose, the employer may require an employee to make a statutory declaration verifying the cause of his absence;

(v) he shall not be entitled in any year to leave in excess of 44 hours of working time, nor to payment in excess of 44 hours at ordinary rates, nor, in the case of an employee working short shift, payment in excess of a week's wages for such shift.

(b) A piece-worker entitled to paid leave of absence under this clause shall be paid at the time-work rate applicable to his classification.

(c) For the purpose of sub-clause (a) of this clause, an employer may arrange with the secretary of the local branch of the Union for the recognition of a specified date as the commencing date of each year; and, when so arranged, such date shall be binding for that purpose on the Union, that employer and all his employees. In the absence of any such arrangement, "year" for the purpose of sub-clause (a) of this clause shall mean:—

(i) In the case of an employee in the service of an employer on the 1st May, 1943, a year of service commencing on that date; except in a case where the employer has before that date allowed paid sick leave, when it shall mean the year of service then current;

(ii) In other cases, a year of service in the employ of the employer concerned.

(14) **ANNUAL LEAVE.**—(a) A period of seven consecutive days' leave shall be allowed annually to all employees after twelve months' continuous service (less the period of annual leave) in any one or more of the occupations to which this Determination applies. In addition to the leave hereinbefore prescribed, seven-day shift-workers, that is shift-workers who are rostered to work regularly on Sundays and holidays, shall be allowed seven consecutive days' leave including non-working days.

(b) Annual leave shall be given at a time fixed by the employer within a period not exceeding six months from the date when the right thereto accrued, and after not less than one week's notice to the employee: Provided that the giving of annual leave may, with the consent of the Secretary for Labour, be postponed for a period to be specified in cases wherein the exigencies of the war render it impracticable to give it within the said period of six months.

(c) An employer may allow annual leave to an employee before the right thereto has accrued due, but where leave is taken in such a case a further period of annual leave shall not commence to accrue until after the expiration of the twelve months in respect of which annual leave had been taken before it accrued.

(d) Where leave has been granted to an employee pursuant to sub-clause (c) hereof before the right thereto has accrued due, and the employee subsequently leaves or is discharged from the service of the employer before completing the twelve months' continuous service in respect of which the leave was granted, the employer may for each two complete months of the qualifying period of twelve months not served by the employee, deduct from whatever remuneration is payable upon the termination of the employment one-sixth of the amount of wage paid on account of the annual leave, which amount shall not include any sums paid for any of the holidays prescribed by clause (12) of this Determination.

(e) If, after six months' continuous service in any qualifying twelve-monthly period an employee leaves his employment, or his employment is terminated by the employer through no fault of the employee, the employee shall be paid one-sixth of a week's wage in respect of each complete two months of continuous service in respect of which leave has not been granted hereunder.

(f) Each employee before going on leave shall be paid a week's wages, except a seven-day shift-worker, who shall be paid for the period of annual leave allowed; in his case, the amount of wages he would have received for that period if he had not been on such leave. For the purpose of this sub-clause and sub-clause (e) hereof, the week's wage shall be at the rate prescribed by clause 2 of this Determination for the occupation in which the employee was ordinarily employed immediately prior to the commencement of his leave or the termination of his employment, as the case may be. Payment in the case of employees employed on piece-work on bonus work, or any other system of payment by results, shall be at time rates.

(g) The annual leave provided for by this clause shall be allowed, and shall be taken, and, except as provided by sub-clause (e) hereof, payment shall not be made or accepted in lieu of annual leave.

(h) Service after the 1st January, 1943, only shall be taken into consideration for the purpose of calculating annual leave.

(i) For the purposes of this clause, service shall be deemed to be continuous, notwithstanding:—

(i) Any interruption or determination of the employment by the employer if such interruption or determination has been made merely with the intention of avoiding obligations hereunder in respect of leave of absence;

(ii) any absence from work on account of sickness or accident, and, in calculating the period of twelve months' continuous service, absence on account of sickness or accident to the extent of fourteen days in any twelve months shall be deemed to be part of the period of continuous service.

(j) The annual leave prescribed by this clause shall be exclusive of any of the holidays prescribed by clause (12) of this Determination, and if any such holiday falls within an employee's period of annual leave there shall be added to that period one day for each such holiday falling as aforesaid.

(k) For the purpose of this clause a month shall be reckoned as commencing with the beginning of the first day of the employment or period of employment in question, and as ending at the beginning of the day which, in the latest month in question, has the same date number as that which the commencing day had in its month, and if there be no such day in such subsequent month, shall be reckoned as ending at the end of such subsequent month.

(l) Where the employer is a successor or assignee or transmittee of a business, if an employee was in the employment of the employer's predecessor at the time when he became such successor or assignee or transmittee, the employee in respect of the period during which he was in the service of the predecessor shall, for the purpose of this clause, be deemed to have been in the service of the employer.

(m) Notwithstanding anything elsewhere contained in this Determination, an employer who closes down his plant for the purpose of allowing the annual leave to which employees are entitled under this clause may, at his option, either:—

(i) stand off without pay during such close-down any employee who has not then qualified for such leave;

(ii) stand off during such close-down any employee who has not then qualified for a week's leave and pay him pro rata for the leave for which he has then qualified, on the basis of one-sixth of a week's wages in respect of each completed two months of continuous service during his current qualifying twelve-monthly period; or

(iii) allow such employee annual leave in advance under the provisions of sub-clause (c) of this clause.

(15) LIMITATIONS.—(a) Where practicable, each machine must be stopped when being cleaned. The cleaning to be done in his or her working hours by the employee whose duty it is to do so.

(b) No female shall be required to lift or carry any article or goods weighing more than 30 lb., without one assistant for every 30 lb. weight.

(c) The occupations in which females are employed at the time of the making of this Determination shall not be extended in any factory without the consent of the Secretary for Labour.

(d) No male employee under 18 years of age shall be permitted to operate the rotary hydros and milling machines in the finishing department.

(e) Work in the dye house and bleach house shall be confined to adult male employees, except where, with the consent of the Union or the approval of the Secretary for Labour, juniors are employed there for training purposes; but this clause shall not prevent the continued employment of juniors already employed on such work.

(f) To each pair of mules in the spinning department, one adult shall be employed as "in charge" thereof.

(16) GENERAL.—(a) Hot Water.—Employees shall be provided by the employer with hot water, free of charge.

(b) Seats for Female Employees.—When requested by employees, and where practicable, suitable seats shall be provided by the employer for female employees in positions handy to their work.

(c) Rest Room.—In factories where ten or more female employees are employed, a properly ventilated rest room shall be provided by the employer for the use of such female employees. It shall contain a suitable couch, two easy chairs, and a rubber hot-water bag.

(d) Dining Room.—Proper dining-room accommodation shall be provided by the employer when requested to do so by a majority of his employees.

(e) First Aid.—In each mill or establishment, the employer shall provide a properly equipped first-aid chest at a place or places reasonably accessible to all employees. Such chest shall, as to its contents, comply with the requirements of the Factories and Shops Acts.

(f) Clothing.—When requested by the representative of the Union, the employer shall provide employees working in the wool scouring, dye house, wiley house, milling and scouring, yarn dyeing, and piece carbonizing (except piece dyeing) departments with suitable protective clothing, such as gloves and top boots or clogs and (when working with acids) aprons. Employees shall take reasonable care of clothing so provided.

(g) Tools of Trade.—All materials and appliances required for the cleaning of machinery shall be supplied by the employer free of charge.

(h) Changing Accommodation.—Separate dressing accommodation shall be provided by the employer for male and female employees.

(i) Tea Break.—Female employees shall be allowed a period of not less than ten minutes for rest and refreshment during each day or shift, to be taken at times to be mutually arranged; reasonable facilities shall be provided by the employer for female employees to have refreshments during such interval, if they so desire, provided—

(i) that such period shall not be allowed within one hour of commencing, or finishing work for the day or for a meal break; and

(ii) this sub-clause shall not apply to employees working a short shift who are allowed crib time without deduction of pay ; and

(iii) that employees shall conform to such arrangements as the employer may make to ensure the continuity of machine operations.

(j) *Floor Coverings.*—Where practicable, suitable floor coverings shall be placed before machines, and no employee shall be called upon to stand on a bare concrete or brick or stone floor when operating or attending to a machine.

(k) *Respirators.*—Respirators and goggles shall be supplied for the use of employees when cleaning out dust tower pit in cotton mills.

(l) *Vacuum System.*—A vacuum system of card stripping or an individual unit system of dust extraction shall be installed and kept working in all card-rooms in the cotton section. For hand stripping, 6d. per complete set shall be paid in addition to an employee's ordinary rate of pay.

(17) *PAYMENT OF WAGES.*—Wages shall be paid weekly, not later than Friday.

Wages shall be paid during working hours, and any employee kept waiting for his or her wages beyond the ordinary working hours shall be paid at overtime rates for such waiting time.

Where the services of an employee are dispensed with, wages shall be paid to him on the day of dismissal or forwarded to him by post on the day following.

Not more than two days' pay of each employee shall be kept in hand by an employer.

(18) *NOTICE BOARDS.*—The employer shall permit a notice board to be erected in a prominent position in his establishment, upon which representatives of the Union shall be allowed to post notices in connexion with Union meetings or other legitimate business of the Union, provided such notices are not objected to by the management. In the event of a conflict of opinion as to whether a notice is objectionable, the matter shall be referred to the Secretary for Labour.

(19) *POSTING OF DETERMINATION.*—A copy of this Determination shall be posted by each employer in a prominent and accessible place in his establishment.

(20) *SHOP STEWARDS.*—Shop stewards to the number of one in each department shall be recognized by the employer, and not more than three of such shop stewards shall be allowed time off during working hours to interview the employer if there is any legitimate complaint.

(21) *RIGHT OF ENTRY.*—The secretary or branch secretary of the Union, or any person authorized by the Union, shall have the right to enter any factory or workshop for the purpose of interviewing and conversing with employees during the lunch hour or non-working time.

If any official so authorized makes himself objectionable during any such visit, his right to visit may be determined by the employer affected. The official shall have the right to bring such refusal before the Secretary for Labour.

(22) *CERTIFICATE OF SERVICE.*—An employee, if he or she asks for it, shall be entitled on termination of service to a certificate of length of service with an employer, and the nature of the work he or she was employed upon.

(23) *TIME AND WAGES BOOK.*—(a) An employer shall keep a time and wages book or record in English, showing the name of each employee, the age and/or experience of each employee paid as a junior under clause (2) hereof, the occupation of each employee, the hours worked each day or each week and the wages and/or allowances paid each week.

(b) (i) When any junior employee is engaged the employer shall obtain and file in his records a certificate or declaration as to the age and experience of such junior employee, which shall be open for inspection as provided herein.

(ii) Any employee giving misleading or false information as to his or her experience and/or age shall be liable to penalties for breach of this Determination.

(c) The time occupied by an employee in filling in time books or in the making of records shall be treated as time of duty, but this does not apply to checking in or out at the beginning or end of duty.

(d) The time and wages book or record shall be open for inspection to a duly accredited official of the Union during the usual office hours at the employer's office or other convenient place, provided that no inspection shall be demanded unless the secretary of the Union or the branch secretary or organizer of any division suspects that a breach of this Determination is being, or has been, committed. Provided also that only one demand for such inspection shall be made in any one fortnight at the same establishment.

(24) *OUTSIDE WORKERS.*—(a) No work of any description or class covered by this Determination shall be done or performed except in the factory or workshop of an employer affected by this Determination unless a permit has been given to an employee by the Secretary for Labour to work outside such factory or workshop.

(b) An employer shall not have more than one outside worker for every twenty indoor workers or fraction thereof.

(c) An outside worker shall be deemed to be a person who works by himself or herself and is not employed in a workshop or factory.

(d) The outside worker shall not work during any part of the day inside a workshop or factory.

(e) Outside workers shall be paid the rates prescribed in this Determination.

(f) Outside workers shall be provided free of charge with all yarn and/or other materials used in connexion with their work.

(g) Where an employer delivers and/or collects the work of such outside workers, the outside workers shall not be charged for such delivery and/or collection.

(h) Outside workers shall not employ any labour whatever except members of their own families.

(i) *Record Book.*—An employer who has work done elsewhere than in his factory or workshop shall keep a record book in English which shall contain a correct account written in ink as follows :—

(i) The name and address of the outside worker.

(ii) The number of articles and description of the work given out.

(iii) The price paid for such outside work.

(iv) The record book shall be signed each week by each outside worker verifying the accuracy of the amount of wages received.

(v) The record book shall be open for inspection at any time by any authorized officer of the Department of Labour.

(j) No employer shall, except as provided herein, require or cause to be performed or contract for the performance of work of any class covered by or referred to in this Determination (including the work of preparing any material for manufacture or materials so prepared)—

(i) in any place other than his usual workshop or factory ; and/or

(ii) by any person or persons other than his employees usually employed at such workshop or factory.

(k) Nothing herein contained shall affect the right of an employer affected by this Determination to contract, sub-contract, let or sub-let to any person employed not less than four persons, exclusive of members of his own family, who conducts a workshop or factory, and is affected by this Determination.

(25) *LIMITATION OF EMPLOYER'S LIABILITY.*—Where an employer affected by this Determination has made a payment to an employee bound by this Determination which payment purports to be a payment of the wages payable under this Determination to the employee for any period such employee shall not recover from his employer any further sums prescribed by this Determination in respect of any services rendered to such employer during such period, unless within a period of three calendar months after the last day of such period a demand in writing of such further sum claimed has been given to the employer by the employee.

(26) DEFINITIONS.—(a) (i) "An assistant foreman and/or overlooker" is a male employee who, under the direction of the management, supervises the work of eight or more other employees.

(ii) "An assistant forewoman and/or overlooker" is a female employee who, under the direction of the management, supervises the work of eight or more other employees where no assistant foreman and/or male overlooker is employed.

(iii) A leading hand is an employee who, under the direction of the management, supervises the work of a shift or gang of other employees, not exceeding seven in number.

(b) Union means the Victorian Branch of the Australian Textile Workers' Union.

(c) "Machine operator and/or attendant" means an employee who, in the course of his duty, is called upon to operate a machine, and does not include an employee whose sole duty is carrying material to and from a machine.

(d) "Continuous process" means (i) in the case of employees engaged in or in connexion with the production of wool tops, the working of three or four shifts per day for six or seven days per week; and (ii) in other cases the working of three shifts per day between midnight on Sunday and noon on the following Saturday.

(e) "Experience," for the purpose of calculating margins or rates under clause (2) of this Determination shall include all experience in the classification concerned, whether as a junior or an adult.

(f) "Yarn Storeman" means an adult employee in a yarn store engaged in handling or receiving or distributing yarn, but does not include a wheeler.

(27) PERIODICAL ADJUSTMENT OF WAGES.—(a) *Adult Males*.—The wages rates for adult males, set out in clause (2), are based upon the following basic wage, and, pursuant to the provisions of section 21 of the *Factories and Shops Act 1934*, the Board determines that such rates shall be automatically increased or decreased by the same amounts and at the same time as such basic wage.

The basic wage shown hereunder shall be adjusted as prescribed in clause (28).

Place.	Needs Basic Wage (Adjustable).	Constant Loading.	Total Basic Wage for Males.	Index Number Set Assigned.						
	£ s. d.	s. d.	£ s. d.							
Within the area to which this Determination applies	4 12 0	5 0	4 17 0	<table border="0"> <tr> <td rowspan="5">} Weighted average</td> <td>Sydney ..</td> </tr> <tr> <td>Melbourne ..</td> </tr> <tr> <td>Adelaide ..</td> </tr> <tr> <td>Perth ..</td> </tr> <tr> <td>Hobart ..</td> </tr> </table>	} Weighted average	Sydney ..	Melbourne ..	Adelaide ..	Perth ..	Hobart ..
} Weighted average	Sydney ..									
	Melbourne ..									
	Adelaide ..									
	Perth ..									
	Hobart ..									

(b) *Adult Females*.—The minimum wage for adult females shall be sixty per centum of the needs basic wage and constant loading for males, calculations to be made to the nearest sixpence. Any exact threepence in the result to be reckoned as sixpence.

(c) *Margins—Adult Males*.—To adult male employees of the undermentioned classes there shall be paid the total basic wage referred to in Clause (27), hereof, with the addition of the marginal additions set opposite such classes respectively.

Woollen and Worsted Section.

	Margin.
	£ s. d.
Assistant foreman and/or overlooker	1 3 6
Wool Sorting and Wool Scouring and Carbonizing Department—	
Wool sorters	1 7 0
Wool scourers and/or carbonizers (other than foremen) responsible for mixing of liquor and the working of bowls	0 16 0
Truckers, pressers, and/or storemen (substantially employed as such)	0 10 0
All other machine operators and/or attendants	0 10 0
Dye House—	
Leading hands employed on dye machines or vats	0 14 0
Men on wet crabbers	0 12 0
All other machine operators and/or attendants	0 10 0
Willey House—	
Leading hand (where more than 4 hands are employed)	0 16 0
Leading hand (where 3 or 4 hands are employed)	0 13 6
Operators and/or attendants	0 10 0
Waste Room—	
Operators and/or attendants	0 10 0
Carding Department—	
Head fettler (leading hand in carding room)	0 15 0
Card fettler	0 11 0
All other machine operators and/or attendants	0 9 0
Woollen Spinning Department—	
Men in charge of one pair of spinning mules	0 11 0
All other machine operators and/or attendants	0 9 0
Worsted Department—	
Jobber in charge and/or comb mechanic in charge	1 1 0
Jobber and/or comb mechanic	0 11 0
All other machine operators and/or attendants	0 9 0
Pin Setting Department—	
Pin setter—	
First year's experience	0 11 0
Second year's experience	0 16 0
Thereafter—	
Faller pin setter	1 1 0
Comb circle and French comb cylinder setter	1 7 0
Roller coverer—	
First year's experience	0 10 0
Second year's experience	0 14 0
Thereafter	1 2 0
Gill Box Reducing—Intermediate Roving and Spinning Departments—	
Man in charge of one set of spinning mules	0 11 0
All other machine operators and/or attendants	0 9 0
Winding, Warping, and Twisting Department—	
Warpers	0 11 0
Size machine hands	0 10 0
All other machine operators and/or attendants	0 9 0

Woolen and Worsted Section—continued.

	Margin.
	£ s. d.
Weaving Department—	
Twisters in and/or warp drawers in—	
First year's experience	0 9 0
Second year's experience	0 14 0
Thereafter	0 19 0
Warp tiers	0 9 0
Box loom tuners—	
First year's experience	0 12 0
Second year's experience	0 18 0
Thereafter	1 7 0
Plain loom tuners—	
First year's experience	0 10 0
Second year's experience	0 16 0
Thereafter	1 1 0
Oilers and cleaners	0 9 0
Card and/or chain makers	0 11 0
Weavers	0 12 0
Perchers	0 9 0
Finishing Department—	
Men in charge of milling, scouring and/or washing machines (where milling and scouring foreman is not employed)	
Sulphur house hands (for time in sulphur house work)	0 13 6
Examiners of finished cloth	0 16 0
Piece carbonizers	0 14 0
Men engaged on unshrinkable finishing process	0 12 0
Operators and/or attendants	0 9 0
Warehouse (Yarn and/or Cloth)—	
Leading hand in warehouse where warehouse foreman is not employed	0 13 6
Operators and/or attendants	0 9 0
General—	
Recorders	0 11 0
Yarn storemen	0 9 0
All adult males (in any section) not elsewhere specified	0 3 0
<i>Cotton Section.</i>	
Assistant foreman and/or overlooker when or where employed	1 3 6
Dye House and Bleach Croft—	
Leading hand employed on dye or bleaching machines or vats	0 14 0
All other machine operators and/or attendants	0 10 0
Waste Department—	
Leading hand in waste department where more than 4 hands engaged	0 16 0
Leading hand in waste department where 3 or 4 hands engaged	0 13 6
Scutching machine hand	0 12 0
All other machine operators and/or attendants	0 9 0
Blowing Room—	
Blow room major and/or leading hand	0 16 0
Scutching machine hand	0 12 0
All other machine operators and/or attendants	0 10 0
Carding Department—	
Head stripper and grinder (leading hand in carding room)	0 15 0
Stripper and grinder	0 12 0
All other machine operators and/or attendants	0 10 0
Combing Department—	
Jobber in charge and/or comb mechanic in charge	1 1 0
Jobber and/or comb mechanic	0 13 6
All other machine operators and/or attendants	0 10 0
Pin Setting Department—	
Pin setter—	
First year's experience	0 11 0
Second year's experience	0 16 0
Thereafter	1 7 0
Roller coverer—	
First year's experience	0 10 0
Second year's experience	0 14 0
Thereafter	1 2 0
Drawing, Slubbing, Intermediate, Roving and Spinning Departments—	
Ring jobber	1 1 0
All machine operators and/or attendants	0 9 0
Mule Spinning Department—	
Man in charge of one pair of spinning mules	0 11 0
All other machine operators and/or attendants	0 9 0
Twisting, Winding, Reeling, and Warping Departments—	
Warpers	0 11 0
Slasher sizer hand	0 10 0
All other machine operators and/or attendants	0 9 0

Cotton Section—continued.

		Margin.	
		£	s. d.
Weaving Department—			
Twisters in and/or warp drawers in—			
First year's experience	0	9 0
Second year's experience	0	14 0
Thereafter	0	19 0
Warp tiers	0	9 0
Box loom tuners—			
First year's experience	0	12 0
Second year's experience	0	18 0
Thereafter	1	7 0
Plain loom tuners—			
First year's experience	0	10 0
Second year's experience	0	16 0
Thereafter	1	1 0
Card and/or chain makers	0	11 0
Weavers	0	12 0
Perchers	0	9 0
Oilers and cleaners	0	9 0
Finishing Department—			
Man in charge of finishing machines'	0	13 6
Man-examining finished cloth	0	14 0
All other machine operators and/or attendants	0	9 0
Warehouse (Yarn and/or Cloth)—			
Leading hand in warehouse where warehouse foreman is not employed	0	13 6
Operators and/or attendants	0	9 0
General—			
Recorders	0	11 0
Yarn storemen	0	9 0
Adult males (in any section) not elsewhere specified	0	3 9

(d) Junior Rates.—The minimum rates to be paid to junior employees shall be as follows:—

(i) Junior Males—

Age.	Percentage of Needs Basic Wage.	Constant Loading Per Week.
Under 16 years of age	27½	s. d. 0 6
16 years of age	30	0 9
16½ years of age	40	0 9
17 years of age	45	1 0
17½ years of age	50	1 0
18 years of age	55	1 0
18½ years of age	65	1 0
19 years of age	70	2 0
19½ years of age	80	2 0
20 years of age	85	2 0
20½ years of age	95	2 0

(ii) Junior Females—

Age.	Percentage of Needs Basic Wage.
Under 16 years of age	27½
At 16 years of age	31
At 16½ years of age	34
At 17 years of age	37½
At 17½ years of age	41
At 18 years of age	44
At 18½ years of age	47½
At 19 years of age	51
At 19½ years of age	54
At 20 years of age	57
At 20½ years of age	61

(iii) The total wage to be calculated to the nearest sixpence, any exact threepence in the result to be reckoned as sixpence.

(28) (i) ADJUSTMENT OF BASIC WAGE.—(a) Until the beginning of the first pay period to commence in August, 1943, the amounts of the basic wage shall be as prescribed in clause 27 (a).

(b) During each future period of or near a quarter beginning with the first pay period to commence in an August, a November, a February, or a May, the amounts of the basic wage shall be adjusted by the following method according to the position and fluctuations (if any) of the Commonwealth Statistician's "All Items" Retail Price Index Numbers.

For the purposes of this Determination, the expression "Commonwealth Statistician's Retail Price Index Numbers" or any like expression means the numbers stated to be such Index Numbers in any document-purporting, and not proved to be wrongly so purporting, to be printed by the Commonwealth Government Printer or to be signed by or on behalf of the Commonwealth Statistician:—

(1) The Index Number set to be applied to a place is that assigned thereto in clause (27).

(2) The Index Number for the calendar quarter next preceding the period of or near a quarter for which the adjustment is made is to be ascertained.

- (3) The amounts assigned in the following table (or any extension thereof) to the Index Number Division comprising that Number are to be ascertained.
 (4) The basic wage shall be of that assigned amount during such successive period of or near a quarter.

Table.

Index Number Divisions.	Needs Basic Wage (Adjustable).	Loading Constant.	Total Basic Wage.	
			£ s. d.	£ s. d.
994-1006	4 1 0	5 0	4 6 0	
1007-1018	4 2 0		4 7 0	
1019-1030	4 3 0		4 8 0	
1031-1043	4 4 0		4 9 0	
1044-1055	4 5 0		4 10 0	
1056-1067	4 6 0		4 11 0	
1068-1080	4 7 0		4 12 0	
1081-1092	4 8 0		4 13 0	
1093-1104	4 9 0		4 14 0	
1105-1117	4 10 0		4 15 0	
1118-1129	4 11 0		4 16 0	
1130-1141	4 12 0		4 17 0	
1142-1154	4 13 0		4 18 0	
1155-1166	4 14 0		4 19 0	
1167-1179	4 15 0		5 0 0	
1180-1191	4 16 0	5 1 0		
1192-1203	4 17 0	5 2 0		
1204-1216	4 18 0	5 3 0		
1217-1228	4 19 0	5 4 0		
1229-1240	5 0 0	5 5 0		

Any extension of this table must be of the same construction as the table.

(ii) ADJUSTMENT OF WAGES OF ADULT FEMALES.—(a) For work done by adult female employees until the beginning of the first pay period to commence in August, 1943, the amounts of wage rates prescribed for them by clause (2) hereof shall be paid.

(b) Thereafter the amounts of wage rates prescribed for them by clause (2) hereof shall be increased or decreased (as the case may be) whenever and wherever there is any alteration in the minimum wage for adult females calculated in accordance with clause (27) hereof and by the amount of the relevant alteration in such minimum wage.

P. A. RANDLES, J.P., Chairman.

J. V. WILLOX, Secretary.

Melbourne, 14th July, 1943.