

[1535]



VICTORIA
GOVERNMENT GAZETTE.

Published by Authority.

[Registered at the General Post Office, Melbourne, for transmission by post as a newspaper.]

No. 84.]

MONDAY, JUNE 25.

[1945

CONTRACTS ACCEPTED:

(SERIES 1945-46.)

SUPPLY OF PROVISIONS

FOR

STATE DEPARTMENTS

FROM

1st JULY, 1945 to 30th JUNE 1946,
or as stated.

Conditions of Contract and Stipulations are shown herein for the guidance
of Officers ordering and receiving supplies.

W. H. RUTHERFORD,
Secretary to the Tender Board.

CONTRACTS ACCEPTED—(Series 1945-46.)

PROVISIONS.

No. of Contract.	Particulars of each Tender Accepted.	Amount.	Name of Contractor or Supplier.	Charge against Vote or Fund.	
PROVISIONS—					
Supply of Provisions, in such quantities as may be ordered, from 1st July, 1945, to 30th June, 1946, or as stated.					
Schedule No. 1.—Melbourne District—					
1480	Bread, Kew Mental Hospital	Rates as per annex	The Northcote Vienna Bakery Pty. Ltd.	} Contingencies, 1945-46	
1481	Bread, Melbourne, Royal Park, and Travancore Developmental Centre, Flemington	Ditto	D. H. E. Bessell		
1482	Bread, Teachers' College, and Hostel, Carlton ..	Ditto	Pirrie Bros.		
1483	Flour and Sharps	Ditto			<i>Moran and Cato Pty. Ltd.</i> (A)
..	Groceries	Ditto	Purchase under Tender Board quotations		
..	Cereals	Model Preserving Co. Pty. Ltd.		
1484	Jams	Rates as per annex	F. Watkins Pty. Ltd.		
1485	†Meat, Kew Mental Hospital	Ditto	F. Watkins Pty. Ltd.		
1486	†Meat, Pentridge Penal Establishment	Ditto	J. H. Cooke Pty. Ltd.		
1487	†Meat, Children's Welfare Depot, Royal Park, and Police Hospital	Ditto	J. H. Cooke Pty. Ltd.		
1488	†Meat, Royal Park Mental Hospital and Receiving House	Ditto	J. H. Cooke Pty. Ltd.		
..	Soap Mixtures	Ditto	<i>Moran and Cato Pty. Ltd.</i> (A)		
..	Tea and Coffee	Ditto	<i>Henry Berry and Co. (A'ia.) Ltd.</i> (A)		
..	Potatoes	Purchase under Tender Board quotations		
Schedule No. 2.—Mont Park; Sanatorium, Greenvell, &c.—					
1489	Bread	Rates as per annex	E. J. Callander		
..	Groceries	Ditto	<i>Henry Berry and Co. (A'ia.) Ltd.</i> (A)		
1490	Jams	Ditto	Model Preserving Co. Pty. Ltd.		
1491	†Meat	Ditto	W. Angliss and Co. (Aust.) Pty. Ltd.		
..	Potatoes	Purchase under Tender Board quotations		
Schedule No. 3.—SS. Rip and Dredges—					
..	Bread	Purchase by agreement		
..	Groceries	Rates as per annex	<i>Henry Berry and Co. (A'ia.) Ltd.</i> (A)		
1492	†Meat	Ditto	J. H. Cooke Pty. Ltd.		
..	Vegetables	Purchase by agreement		
..	Potatoes	Purchase under Tender Board quotations		
Schedule No. 4.—Teachers' College, Carlton—					
..	Groceries	Rates as per annex	<i>Moran and Cato Pty. Ltd.</i> (A)		
1493	Jams	Ditto	Model Preserving Co. Pty. Ltd.		
1494	†Meat (also for Travancore Developmental Centre, Flemington)	Ditto	J. H. Cooke Pty. Ltd.		
..	Potatoes	Purchase under Tender Board quotations		
Schedule No. 5.—Ararat District—					
1495	Breadstuffs	Rates as per annex	M. L. Bates		
..	Groceries	Ditto	<i>John MacLeod and Co. Pty. Ltd.</i> (A)		
..	Jams	Ditto			
1496	†Meat	Ditto	Winston Newsome		
..	Potatoes	Purchase under Tender Board quotations		
Schedule No. 6.—Ballarat District—					
1497	Breadstuffs	Rates as per annex	Fred. T. Davies		
..	Groceries	Ditto	<i>John MacLeod and Co. Pty. Ltd.</i> (A)		
..	Jams	Ditto			
1498	†Meat	Ditto	H. J. Symons Pty. Ltd.		
..	Potatoes	Purchase under Tender Board quotations		
Schedule No. 7.—Beechworth District—					
1499	Breadstuffs	Rates as per annex	P. A. Taylor		
..	Groceries	Ditto	<i>Moran and Cato Pty. Ltd.</i> (A)		
..	Jams	Ditto			
1500	†Meat	Ditto	E. Spencer		
..	Potatoes	Purchase under Tender Board quotations		

Names shown in italics denote Suppliers under agreement.

† Contract for period 1st July, 1945, to 30th September, 1945, only.

CONTRACTS ACCEPTED.—(Series 1945-46)—continued.

PROVISIONS—continued.

No. of Contract.	Particulars of each Tender Accepted.	Amount.	Name of Contractor or Supplier.	Charge against Vote or Fund.
PROVISIONS—continued.				
Schedule No. 8.—Castlemaine District—				
1501	Bread	Rates as per annex	Rasmussen Bros.	
1502	†Meat	Ditto	H. J. Robertson	
..	Potatoes	Purchase under Tender Board quotations	
Schedule No. 9.—School of Forestry, Creswick—				
1503	Breadstuffs	Rates as per annex	R. C. Bowley	
..	Groceries	Ditto	<i>J. Tait and Son (A)</i>	
1504	Milk	Ditto	E. J. Keen	
1505	†Meat	Ditto	H. J. Symons Pty. Ltd.	
Schedule No. 10.—McLeod Settlement, French Island—				
1506	Bread	Rates as per annex	James Jackson	
..	Groceries	Ditto	<i>A. G. Glasscock (A)</i>	
1507	†Meat	Ditto	W. F. Misson	
..	Potatoes	Purchase under Tender Board quotations	
Schedule No. 11.—Heatherton Sanatorium, Cheltenham—				
1508	Bread	Rates as per annex	Cormick Bros.	
..	Groceries	Ditto	<i>Moran & Cato Pty. Ltd. (A)</i>	
1509	†Meat	Ditto	W. Angliss & Co. (Aust. Pty. Ltd.)	
Schedule No. 12.—Sanatorium, Greenvale—				
1510	Breadstuffs	Rates as per annex	Walter Norris, trading as Bignell's Bakery	
..	Groceries	Ditto	<i>Henry Berry and Co. (A'sia.) Ltd. (A)</i>	
1511	†Meat	Ditto	F. Watkins Pty. Ltd.	
..	Potatoes	Purchase under Tender Board quotations	
Schedule No. 13.—Coorremungle Prison Camp, Heytesbury Forest—				
..	Bread	Rates as per annex	} <i>F. Webster and Co. (A)</i>	
..	Groceries		
1512	†Meat	Rates as per annex	S. M. Hunt	
Schedule No. 14.—Aboriginal Station, Lake Tyers—				
1513	Breadstuffs	Rates as per annex	Coate and Symmons Pty. Ltd.	
..	Groceries	Ditto	} <i>Coate and Symmons Pty. Ltd. (A)</i>	
..	Jams	Ditto		
Schedule No. 15.—Experiment Farm, Rutherglen—				
1514	Bread	Rates as per annex	A. F. Parrott	
..	Groceries	Ditto	<i>Moran and Cato Pty. Ltd. (A)</i>	
Schedule No. 16.—Sale Gaol—				
1515	Bread	Rates as per annex	F. J. Hennessy	
1516	†Meat	Ditto	H. L. G. Laws	
Schedule No. 17.—Pleasant Creek Special School, Stawell—				
1517	Breadstuffs	Rates as per annex	S. Welsh	
..	Groceries	Ditto	<i>John MacLeod and Co. Pty. Ltd. (A)</i>	
1518	Milk	Ditto	G. A. Waldron and Son	
1519	†Meat	Ditto	Ada J. West	
..	Potatoes	Purchase under Tender Board quotations	
Schedule No. 18.—Sunbury District—				
1520	Breadstuffs	Rates as per annex	J. N. Hennessy Pty. Ltd.	
..	Groceries	Ditto	<i>A. C. Shill (A)</i>	
..	Cereals	Purchase under Tender Board quotations	
..	Jams	Rates as per annex	<i>A. C. Shill (A)</i>	
1521	†Meat	Ditto	F. Watkins Pty. Ltd.	
..	Potatoes	Purchase under Tender Board quotations	
Schedule No. 19.—Agricultural College, Longerenong—				
1522	Breadstuffs	Rates as per annex	} Ray Emanuel, trading as Perring's	
1523	Groceries	Ditto		
1524	Jam	Ditto		} <i>J. Langlands & Sons Pty. Ltd.</i>
Schedule No. 20.—Agricultural College, Dookie—				
1525	Breadstuffs	Rates as per annex	Major Co-operative Society Ltd.	
1526	Groceries	Ditto	} W. A. Thompson	
1527	Jam	Ditto		

Contingencies, 1945-46

Names shown in italics denote Suppliers under agreement.
 † Contract for period 1st July, 1945, to 30th September, 1945, only.
 Approved—A. A. DUNSTAN, Treasurer. 19.6.1945.

CONDITIONS OF CONTRACT FOR PROVISIONS, 1945-46, ETC.

(Published in the *Victoria Government Gazette* No. 56, dated 2nd May, 1945, pages 1209 and 1210.)

1. All the articles are to be of the best quality of the several kinds, in the best condition, and in conformity with the Health Acts, and to be delivered in sound packages, free from all charges for cartage, freight, &c. The goods shall be delivered as may be directed by the officer ordering the supply.

2. As the exact quantity of any article which may be required cannot be stated, the estimate being approximate only, the Government will not be bound by the quantity stated in the schedule, but will be at liberty to order more or less, according to circumstances, and the contractor will be bound to supply the same as ordered.

The Government reserves the right to purchase otherwise than from the contractor any of the articles specified in the schedule in the event of emergency due to the war.

3. Supplies for country districts for which no local contract may have been taken, or for which the contract has been terminated, may be ordered under the Melbourne contract.

4. The Melbourne District will include places within a radius of 6 miles from the Elizabeth-street Post Office, with the exception of places for which separate contracts are provided; the Mont Park District will include the Mental Hospitals, Janefield Colony, and the Sanatorium. Gresswell; the Ararat, Ballarat, Beechworth, and Sunbury Districts will include the Mental Hospitals, Gaols, and Police Gaols at those places; and the Castlemaine District will include the Reformatory Prison. Delivery must be made at the places, institutions, &c., named in the schedules, or as directed by the officer ordering the supply.

5. Packages suitable for transport of goods supplied must be provided by the contractor free of expense, and the value of these packages, whether in bulk or otherwise, is to be included in the rate tendered, except butter boxes and soap boxes (not including fancy soaps), jam jars, flour, meal, and potato bags, which will remain the property of the contractor, and only the actual net weight or quantity received will be paid for; the empties to be removed from the place of delivery at the contractor's expense.

6. The meat supplied under these conditions must, if practicable, be slaughtered at abattoirs which are under authorized inspection and supervision. Any infringement of this condition will subject the contractor, on report from the Tender Board, to such mulct, not exceeding Fifty pounds, as the Treasurer may direct, and the amount will be deducted from the contractor's account, or from the security money.

7. The supplies coming under the head of Rations and Medical Comforts are to be delivered direct to the establishment entitled thereto on the written order of the officer in charge. All other supplies will be ordered by the head of the Department concerned or any officer authorized by him, and shall be delivered as may be directed by the officer ordering the supply.

8. At the time of delivering the supplies, the contractor shall produce the order for the same to the officer authorized to accept delivery, and such officer shall acknowledge thereon the receipt of the stores accepted, and shall return the order to the contractor, who shall render his account as soon as possible after the delivery of the supplies, accompanied by the receipted delivery order. The rates or quantities quoted in the orders cannot be exceeded.

9. Where practicable, the contractor shall use the Railways for the transport of the goods. When a contractor is required to make delivery of goods at a railway station for transmission by rail, except for Commonwealth Departments, he shall obtain a receipt for the goods in duplicate on the Stores and Transport consignment note, at the same time handing in the triplicate and quadruplicate of the form as an authority for the Railways to act as agent for, and charge the freight to, the Stores and Transport Office. He shall as soon as possible, and not later than twenty-four hours thereafter, deliver at the Tender Board Offices the original, the duplicate to be forwarded to the consignee and the quintuplicate retained by himself. Should the goods thus forwarded be rejected, the contractor must bear the cost of replacing such goods, for which services the departmental consignment note is not to be used. Any infringement of this condition may subject the contractor to such mulct as the Tender Board may recommend under clause 18 of these conditions.

10. Orders must receive prompt execution; in the event of the goods not being delivered at the time mentioned in the order or within such other time as the officer ordering the supply may specify for delivery, it will be competent for such officer, or the head of the Department to whom the goods are to be supplied, on giving the contractor twenty-four hours' notice, to purchase the supplies, or any like supplies that are suitable for the service, at the contractor's risk, and the extra expense incurred over and above the contract price (if any)

will be deducted from the contractor's account or from the security money.

11. The acceptance of the supplies shall be subject to the approval of the officer authorized to take delivery of the stores, or such other officer as shall be named in the conditions.

12. If the officer in charge of stores be not satisfied as to the quantity or quality of the stores, or if, after taking delivery of any stores or material, he shall discover any deficiency or defect therein, he may return such deficient or defective stores or material to the contractor, and shall report the same to the head of his Department and to the Tender Board.

13. In the event of a difference of opinion between the contractor and the officer receiving the supplies as to the quality, the same is to be decided, in cases where the article is not of a perishable nature, by a Board of Survey composed of persons named by the Treasurer of the State for the time being; and the decision of the Board is to be considered final. In the event of the decision being against the contractor, the survey fees and expenses (if any) will be deducted as in clause 10.

14. In cases where the article is of a perishable nature, or when from some other cause injury would be sustained either by the person to whom the rations or stores are due or by the contractor in waiting for a Board to survey, the head of the Department or officer authorized to take delivery will have power to reject such article or articles as are obviously of inferior quality, it being understood that he will be responsible to the Government for so doing, and that the contractor must take back the rejected article and supply good in its stead; failing which it, or any like supply suitable for the Service, will be obtained by the officer requiring it as in clause 10. In case of the rejection or return of any supplies, the contractor shall bear the whole cost of replacing the supplies so rejected or returned.

15. If the Board shall decide that the article is not of proper quality it must be immediately replaced by the contractor; failing which it, or any like supply suitable for the Service, will be procured by the officer requiring it, and the expense charged as in clause 10.

16. In the case of supplies for Mental Hospitals, it will be competent for a Board of Survey, consisting of the medical superintendent (or, in his absence, of the medical officer) and any two officers named by him, to examine and reject any supplies that may be objected to. It must be distinctly understood, however, that the contractor will have a right of appeal to the Treasurer of the State for the time being, such appeal to be made in writing within 24 hours of the rejection; but, pending such appeal, he must at once supply others of approved quality; failing which, the supplies required, or any like supplies suitable for the Service, may be obtained by the officer concerned, and the expense charged as in clause 10.

17. In the case of supplies for Mental Hospitals, it will also be competent for two or more of the official visitors, in conjunction with the medical superintendent, to reject any supplies that they may consider not in accordance with contract; and in such cases the reference to a Board of Survey will not be deemed to be necessary.

18. A refusal to execute orders, irregularity in the quantity or quality of the supplies, or delay in delivering or replacing them when required, will subject the contractor, upon report from the Tender Board, to such mulct, not exceeding Fifty pounds, as the said Treasurer may direct, and the amount may be deducted as in clause 10. It will also be in the power of the said Treasurer, upon such refusal, irregularity, or delay, to terminate the contract forthwith, and forfeit the whole or any part of the security money; and, in addition, the contractor will be disqualified from tendering or holding any future contract or contracts for a period of twelve months from the date of such disqualification.

19. Contractors are not at liberty to transfer their contracts under cover of power of attorney, coupled with an interest or otherwise, and no such transfer will be recognized by the Government. *If it is found during the currency of the contract that the contractor has not conformed to the condition of advertisement—which stipulates that if a tenderer be a member of a firm and such firm be interested in the contract, the tender shall be in the name of the firm and not in that of the individual—then the Treasurer may, on the recommendation of the Tender Board, determine the contract, and forfeit the security money.*

20. It will be competent for the Tender Board to terminate the contract, without notice, should there be reason to know

that the contractor takes advantage of his contract to communicate with a prisoner.

21. The contract entered into under these conditions is not to be considered as being broken, infringed, or vitiated by the importation of stores for the Government service, or by any contracts or purchases made by the Imperial Commissariat; or by the consumption of the produce or surplus stock of any Government establishment, or by any article being made at and supplied for the use of any Government establishment.

22. Notwithstanding anything contained to the contrary in section 152 of the *Customs Act 1901-36*, it is hereby expressly provided that upon any alteration of the duty collected affecting the goods included in this contract, the contract price shall not be altered, and the contract may be terminated at the option of either party by two months' notice in writing from the first day of the calendar month next ensuing,

and within the period for which the contract is made. The contract for the unaffected items shall remain in full force and effect. Any notice to be served under this condition shall be deemed to have been duly served if sent to the contractor in a registered letter to his last-known place of business or abode.

23. Under no circumstances other than those mentioned in clause 22 will a contractor be permitted to abandon his contract. In the event of the contractor failing to carry on the contract, the contract security money will in that case be absolutely forfeited; and, in addition, the contractor will be held liable for any loss which the Government may sustain in consequence of such failure.

24. For the purposes of these contracts the word "Government" shall mean the Government of the State of Victoria; and the word "Treasurer" shall mean the Treasurer of the said State.

STIPULATIONS FOR SUPPLIES OF PROVISIONS.

SUPPLIES GENERALLY.

For supplies under all sub-schedules, particular attention is drawn to clause 1 of the Conditions of Contract as to quality. No sub-letting is allowed, and all work must be carried out by the contractor.

Where practicable, all items must be manufactured or prepared within the Commonwealth.

Where no brand of Commonwealth manufacture or production is specifically set out in the respective sub-schedules, such Commonwealth brand as may be ordered must be supplied.

For Schedule No. 3 supplies must be delivered when ordered and, in cases of emergency, on Sundays, holidays, or half-holidays, as required.

BREAD AND FLOUR.

A sample of the best ordinarily retailed to the public will be considered as a test loaf for first quality for fine wheaten and pure wheaten Meal Bread. *Pure wheaten Meal Bread of first quality may be substituted, wholly or in part, for fine wheaten Bread at such times and in such quantities as, in the opinion of the Medical Superintendent, may be deemed necessary, and the contractor will be required to supply such Bread at the contract rate. Reasonable notice, however, of the intention to substitute wheaten Meal Bread must be given to the contractor by the officer ordering the supply.* Bread may be baked at any Government establishment without infringing these contracts. At the Gaols, Ballarat, Beechworth, Castlemaine, and Sale, and the Coorimungie Prison Camp, if required, bread must be supplied one day old, due notice to be given to the contractor of such requirement.

In the event of bread being made at any Government establishment in the Melbourne District during the currency of these contracts, the flour required will be drawn under the flour and sharps sub-schedule. The sharps for all the country gaols is included in the sub-schedule for flour and sharps, Melbourne District, and delivery of same will be required to be made f.o.r. Melbourne.

Flour for Districts for which no local contracts have been taken may be ordered under the Melbourne District contract, for delivery f.o.r. Melbourne.

GROCERIES.

As a guarantee of quality, Rice, when ordered in quantities of 56 lb. and over, must be supplied in original bags as delivered by the miller or dresser. Such bags must be branded "Rice, Dressed" or "Unpolished," and shall also have stencilled thereon the miller or dresser's name and the distinguishing mark indicative of the quality or grade. The bags thus stencilled shall contain Rice milled or dressed by the miller or dresser whose name appears thereon. Supplies not in conformity with the foregoing condition will be rejected.

Oatmeal must be supplied in original bags as delivered by miller.

Candles, except those for prison cells, must be supplied in 1-lb. packets. Candles for prison cells must be delivered in boxes containing from 25 to 50 lb. per box, the boxes for which must be legibly stencilled on one end showing the estimated burning time and the gross, tare, and net weight of contents.

The soap supplied must be hard throughout, ready for immediate use without waste, and shall have been manufactured at least seven weeks before leaving contractor's hands.

Raisins and currants must be present season's, and where the quantity admits, be supplied in original and unopened boxes, labelled as packed.

For Schedule No. 3 a certain quantity of Biscuits and Preserved Meats are sometimes required in lieu of fresh bread and fresh meat, and are included to meet such contingency only.

OATMEAL, RICE, SEED TAPIOCA, ETC.

Supplies of these items for Districts for which no local contracts have been taken may be ordered under the Melbourne District contract, for delivery f.o.r. Melbourne.

BUTTER AND CHEESE.

All supplies of 56 lb. or multiples of 56 lb. must be supplied in boxes as originally packed. The boxes must bear the impress stamp of the creamery where the butter is produced, otherwise it will not be accepted. All supplies must be in new boxes.

Where the Store or Butter Factory of the Contractor is situated in the Metropolitan area all Butter to the quantity of 56 lb. and over to be supplied in any one consignment under this contract shall before despatch from the Store or Factory be first examined and passed by the Government Butter Grader, for and on behalf of the officer authorized to accept delivery. The boxes containing butter so examined and found satisfactory in quality and description will be stamped by the Government Butter Grader and the date of such examination marked thereon. No butter from a contractor located in the Metropolitan Area will be accepted unless the boxes bear the stamp of the Grader. For the purposes of the foregoing condition the Metropolitan Area is defined as being not outside the radius visited by the Government Grader. The officer authorized to accept delivery may, within 48 hours of the receipt of any supply, require the Contractor to have same re-examined by the Grader, and, if not passed by him, it shall be returned to the Contractor, who shall forthwith replace the same with freshly-examined butter.

No Butter *ex Cool Store* will be examined by the Grader until thermally it is in suitable condition therefor.

Where the Store or Factory from which the Butter is despatched is not within the area visited by the Grader a sample of any supplies may be forwarded to the Government Butter Grader for examination, should the supply be considered by the Officer authorized to accept delivery as not being equal in quality or description to that contracted for.

The Cheese supplied must be first-class quality, semi or fully matured, as ordered, and not less than 3 months old. If the quantity admits, it shall be boxed for transport.

JAM.

The weight stamped on the tins in accordance with the regulations under the Commerce Act, as indicating the minimum net quantity that each tin contains, shall for the purpose of this contract be taken as the actual contents when computing the quantity supplied.

When Jam is supplied in jars the jars remain the property of the contractor, and must be removed by the contractor at his own expense when empty.

SOAP AND SOAP MIXTURES.

Supplies of these items for Districts for which no local contracts have been taken may be ordered under the Melbourne District contract, for delivery f.o.r. Melbourne.

MEAT.

All meat supplied under this contract shall have been slaughtered in Victoria and shall be freshly killed, well-conditioned, of good quality, healthy, clean, wholesome, free from bone-taint, putrefaction or fly larvae, and shall not have been frozen.

The beef shall be of ox not under three nor more than six years old or heifer or cow not under three nor more than five years old. Carcass beef for Mental Hospitals shall be delivered in quarters of equal proportions of hinds and fores and the corresponding hinds and fores must be supplied, also extra buttocks separately when ordered. Meat for other Institutions shall be supplied as ordered. Where hindquarters or buttocks are ordered 9 inches shall be cut off from the end of the leg

from the hock upwards, i.e., the end of the leg from which the shank has been removed at the abattoirs; when forequarters form a portion of the supply, 6 inches from the end of the neck and the whole of the shin at the clodbone joint shall be removed. The sticking pieces also shall be trimmed off and the point and end of the brisket rendered free from blood and blood stains.

The mutton shall be wether or maiden ewe not more than four years old and the weight of a carcass shall be not less than 40 lb. nor more than 60 lb. The mutton shall be delivered in sides when so ordered.

Corned Beef (rolled or round as ordered) shall be supplied without bone or cartilage and will be received whether pumped or prepared in the ordinary way of pickling but, in the former case, it shall have been soaked, after pumping, for at least 48 hours in a good pickle and then thoroughly drained before supply. No flank, chuck, sticking-piece, shin, leg of beef, or piece under 7 lb. will be received.

Meat derived from the carcasses of Bulls, Stags or Rams or meat containing an undue proportion of bone or fat will not be received and shall not be tendered for delivery. Net weight only will be paid for.

In cases of emergency, or on such other occasions as in the opinion of the Director of Mental Hygiene or Heads of other Institutions may seem advisable, other forms of meat, such as Rabbits, Tinned Meats, &c., may be purchased, apart from the contract, in lieu of the meat specified in the Schedule, and substituted therefor, provided 24 hours' notice—except in cases of emergency—be given to the Contractor of such intention.

The parts to be removed by the contractor are indicated in the shaded portion of the annexed diagram. This work shall be carried out in the factory or shop of the Contractor, except those parts usually removed at the abattoirs.

With respect to the schedules enumerated hereunder, the following stipulations shall also apply:—

For sub-schedules 9 and 10 of Schedule No. 1, fresh beef shall be supplied, as ordered, from ribs, sirloin, and thick flanks and for Schedule No. 2, from prime ribs, sirloin, and

thick flanks; ribs of beef to be cut clear of the plate bone, and sirloin to be cut clear of the wing ribs; excess of brisket or thin flank will be rejected. Mutton must be delivered in sides when so ordered; all kidney fat to be removed.

For Schedules Nos. 1 (sub-schedules 9 and 10) 3, 4, 9, 11, 12, 13 and 17, chuck ribs of Beef, i.e., 1st to 4th inclusive will not be accepted.

For Schedules Nos. 4, 11, 12 and 17, fresh Beef must be supplied, as ordered, from prime ribs or sirloin; ribs of Beef to be cut clear of the plate bone, and sirloin to be cut clear of the wing ribs; excess of brisket or flank will be rejected.

TEA AND COFFEE.

Tea and Coffee for Districts for which no local contracts have been taken may be ordered under the Melbourne District contract, for delivery f.o.r. Melbourne.

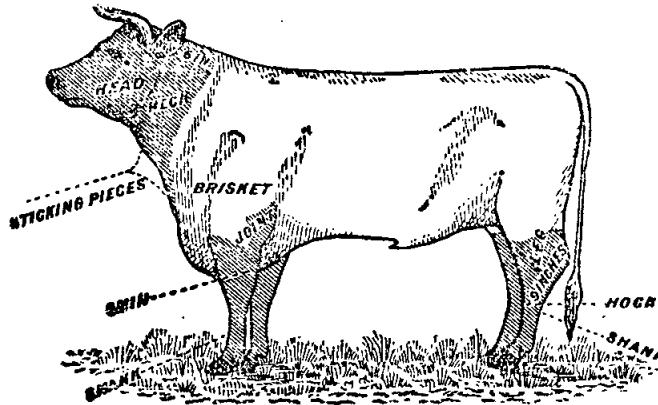
MILK.

The milk must be fresh, pure, and of the best quality, and subject to test when required by the Department, and supplied at such times as the Department may require. Should the contractor fail to supply at the time specified in the order or at such times as may be indicated in any general notice to the contractor his contract may be cancelled forthwith and his security forfeited, or should the supply prove to be not of contract quality it will be rejected, and any expense incurred will be charged to the contractor.

POTATOES.

Potatoes to be dry and free from dirt. Contractors to take back all rejected before being cooked. Bags to remain the property of the contractor. Weight of bags (approx. 2½ lb.) to be deducted.

If the price of potatoes becomes abnormally high, the heads of the various departments concerned may, if they think fit, cause rice or any other suitable food to be occasionally substituted in lieu thereof.



ANNEX TO CONTRACTS.

FLOUR AND BREAD.

The contract rates shown are subject to adjustment for any variation in the proclaimed price of flour.

MEAT.

Contracts marked † operate for the period 1st July, 1945, to 30th September, 1945, only.

AGREEMENTS.

For the Sub-schedules marked (Agreement), no contract has been let nor security lodged. Requirements thereunder are to be purchased from the suppliers named, under Tender Board Agreement. The rates shown are subject to variation from time to time, particulars of which will be gazetted as required. In all cases, supply is subject to stocks being available.

AVAILABILITY OF SUPPLIES.

Owing to existing difficulties in obtaining supplies of various items, due to the War, the penal provisions of Clause 10 of the Conditions of Contract are not to be enforced without reference to the Tender Board.

SCHEDULE No. 1. PROVISIONS—MELBOURNE DISTRICT.

ANNEX TO CONTRACT No. 1945/1480.
*The Northcote Vienna Bakery Pty. Ltd., 24 Clarke-street,
Northcote, N.16.*

Sub-schedule No. 1.

BREAD FOR MENTAL HOSPITAL AT KEW.

Security, £125.

	£	s.	d.
1. Bread—Fine wheaten, first quality .. per cwtl.	0	14	3

ANNEX TO CONTRACT No. 1945/1481.

D. H. E. Bessell, 275 Buckley-street, Essendon, W.5.

Sub-schedule No. 2.

BREAD FOR CHILDREN'S WELFARE DEPOT, ROYAL PARK, RECEIVING HOUSE AND MENTAL HOSPITAL, ROYAL PARK, AND TRAVANCORE DEVELOPMENTAL CENTRE, FLEMINGTON.

Security, £35.

	£	s.	d.
1. Bread—Fine wheaten, first quality .. per cwtl.	0	12	9

ANNEX TO CONTRACT No. 1945/1482.

D. H. E. Bessell, 275 Buckley-street, Essendon, W.5.

Sub-schedule No. 2a.

TEACHERS' COLLEGE, AND HOSTEL, CARLTON.

Security, £5.

	£	s.	d.
1. Bread—Fine wheaten, first quality .. per cwtl.	0	14	7

ANNEX TO CONTRACT No. 1945/1483.

Pirrie Bros., 136 Exhibition-street, Melbourne, C.1.

Sub-schedule No. 3.

FLOUR.

Security, £90.

	£	s.	d.
1. Flour—Roller, first quality per cwtl.	0	11	6
2. " Sharps' do.	0	11	3

(AGREEMENT.)

Moran and Cato Pty. Ltd., 277 Brunswick-street, Fitzroy, N.6.

Sub-schedule No. 4.

GROCERIES.

	£	s.	d.
1. Bacon, Rashers, Middle—Huttons .. per lb.	0	1	9
2. Biscuits—Coffee, Malt, or Milk Arrowroot, as ordered .. do.	0	0	9½
3. Blue—Washing, powdered, in 7-lb. pkts. .. do.	0	0	10½
4. Candles—Full weights, Kitchen's "Electrines," or other make of equal quality, to be supplied in 1-lb. packets .. do.	0	0	8½
5. " Kitchen's "Electrines," or other make of equal quality, for use in prison cells, to burn for 1, 1½, 2, 2½, and 3 hours respectively, as ordered, to be supplied in boxes, containing from 25 to 50 lb. per box .. do.	0	1	1
6. Cereal—"Pipers," in 24-oz. pkts. .. per pkt.	0	0	10

* Supplies not available.

Sub-schedule No. 4—continued.

GROCERIES—continued

	£	s.	d.
7. Cocoa—Bulk per lb.	0	0	6½
8. Corn or Maize Flour—in packets of 1 lb. net "Fielder's" .. do.	0	0	6½
9. Currants—2 Crowns (present season's) .. per lb.	0	0	8½
10. Curry Powder—Bulk do.	0	1	0½
11. Essence of Lemon—8-oz. bottles (Pure) .. per bot.	0	4	2
12. Essence of Vanilla—8-oz. bottles .. do.	0	5	3
13. Fruits—Dried (present season's), apples .. per lb.	††		
14. " " " " peaches .. do.	††		
15. Ginger—Ground do.	*		
16. Golden Syrup—in 2-lb. tins .. per tin	0	0	6½
17. Honey—First quality—in 60-lb. tins only .. per lb.	0	0	8
18. Jelly Crystals, 4-oz. packets, per doz.	0	3	6
19. Orange Peel (cut) per lb.	0	0	10
20. Macaroni (bulk) do.	0	0	3½
21. Mustard do.	0	2	9½
22. Oatmeal—Flaked per cwt.	*		
23. Pepper—Black, ground per lb.	0	1	5½
24. Pipes—Tobacco, clay per doz.	*		
25. Prunes—Dried, 50-60's (present season's) .. per lb.	††		
26. Raisins—Sultana, 3 Crowns (present season's) .. do.	0	0	8½
27. Rice—Ground (16-oz. packets) do.	0	0	4½
28. Salt—Fine per cwt.	0	6	5½
29. Sauce—Tomato, 20-oz. bottles, "Dyason's" .. per doz.	0	11	4
30. Soda—Bicarbonate of per lb.	0	14	6½
31. " Washing do.	0	0	1½
32. Soup—Tomato—in 1-lb. tins— .. per tin	*		
33. Spaghetti per lb.	0	0	4½
34. Spice—Mixed, in 1-oz. packets .. per pkt.	0	0	1½
35. Starch "Lilley's Powder" per lb.	0	0	6½
36. Tartar—Cream of—Substitute (Calcium Phosphate) .. do.	0	0	10½
37. Treacle—in 2-lb. tins per tin	0	0	6
38. Vinegar (Malt) per quart	0	0	3½

Sub-schedule No. 5

CEREALS.

	£	s.	d.
1. Oatmeal per cwt.	Purchase under Tender Board Quotations.		
2. Rice—Dressed do.			
3. " Unpolished do.			
4. Seed Tapioca (Sago) do.			
5. Pearl Barley do.			
6. Peas—Split do.			

ANNEX TO CONTRACT No. 1945/1484.

Model Preserving Co. Pty. Ltd., cr. Campbell and Perry streets, Collingwood, N.5.

Sub-schedule No. 6.

JAMS.

Security, £20.

	£	s.	d.
1. Jams—Assorted, in bulk, of approved kinds, in the proportion of half actual net seed and half stone, of the best quality, in tins, as required—Brand "M.P." .. per lb.	0	0	5½
2. " Assorted, in bulk, of approved kinds, in the proportion of half seed and half stone, of the best quality, in 24-oz. tins—Brand "M.P." .. per tin	0	0	11

†† Apply Tender Board.

ANNEX TO CONTRACT No. 1945/1485.†
F. Watkins Pty. Ltd., 184 Bourke-street, Melbourne, C.1.

Sub-schedule No. 7.

MEAT FOR MENTAL HOSPITAL, KEW.
Security, £35.

	£	s.	d.	
1. Fresh Beef—Fore-quarters	per cntl.	2	14	2
2. " " Hind-quarters	do.	2	14	2
3. " " Buttocks	per lb.	0	0	9
4. Corned Beef—Rolled or round, as ordered, without bone or cartilage	do.	0	0	8
5. " Mutton	do.	0	0	5½
6. Fresh Suet—Kidney	do.	0	0	4
7. Sausage Meat	do.	0	0	5
8. Liver—Calves	do.	0	0	6
9. Brains	per set	0	0	2
10. Sausages—Mixed	per lb.	0	0	7
11. Tripe—Fresh	do.	0	0	5½

ANNEX TO CONTRACT No. 1945/1486.†
F. Watkins Pty. Ltd., 184 Bourke-street, Melbourne, C.1.

Sub-schedule No. 8.

MEAT FOR PENAL ESTABLISHMENT (PENTRIDGE), FEMALE PENITENTIARY, AND METROPOLITAN GAOL (COBURG).
Security, £35.

	£	s.	d.	
1. Fresh Beef—Fore-quarters	per cntl.	2	7	11
2. Fresh Mutton (whole sheep)	per lb.	0	0	5½
3. Sausages—Mixed	do.	0	0	7
4. Liver—Calves	do.	0	0	6
5. Fresh Suet—Kidney	do.	0	0	4
6. Dripping—Beef	do.	0	0	7
7. Rabbits—Fresh	per pair	0	2	4

ANNEX TO CONTRACT No. 1945/1487.†
J. H. Cooke Pty. Ltd., 378 Queens-parade, Clifton Hill, N.S.

Sub-schedule No. 9.

MEAT FOR POLICE HOSPITAL, ST. KILDA-ROAD, CHILDREN'S WELFARE DEPOT, ROYAL PARK.
Security, £8.

	£	s.	d.	
1. Fresh Beef	per cntl.	2	8	0
2. " Mutton	do.	2	3	9
3. Steak—Rump	per lb.	0	1	6
4. " Stewing	do.	0	0	7
5. Beef—Corned Silverside	do.	0	0	10
6. " Rib	do.	0	0	7
7. Fresh Mutton—Loin	do.	0	0	8
8. " " Leg	do.	0	0	10
9. " " Cutlets	do.	0	0	11
10. Chops—Mid. Loin	do.	0	0	9
11. Shanks—Sheep's	do.	0	0	5
12. Sausages—Mixed	do.	0	0	7
13. Tripe—Fresh	do.	0	0	6
14. Frys—Lamb's	do.	0	0	6
15. Ox Tails	do.	0	0	8
16. Sausages—Beef, German	do.	0	0	8
17. " Strasburg, Pork	do.	0	1	0
18. Rabbits—Fresh	per pair	0	2	6
19. Frankfurts	per bdl.	0	0	9
20. Ice	per cwt.	0	3	0

ANNEX TO CONTRACT No. 1945/1488.†
J. H. Cooke Pty. Ltd., 378 Queens-parade, Clifton Hill, N.S.

Sub-schedule No. 10.

MEAT FOR RECEIVING HOUSE AND MENTAL HOSPITAL, ROYAL PARK.
Security, £10.

	£	s.	d.	
1. Fresh Beef	per cntl.	2	8	0
2. " Buttocks	do.	2	8	0
3. " Mutton	per lb.	0	0	5½
4. Corned Beef—Rolled or round, as ordered, without bone or cartilage	do.	0	0	8
5. Fresh Suet—Kidney	do.	0	0	5
6. Sausages—Mixed	do.	0	0	7
7. Tripe—Fresh	do.	0	0	5
8. Ice	per cwt.	0	3	0

(AGREEMENT.)

Moran and Cato Pty. Ltd., 277 Brunswick-street, Fitzroy, N.6.

Sub-schedule No. 11.

SOAP MIXTURES.
(Of Commonwealth Manufacture.)

	£	s.	d.	
1. Antiseptic—Liquid, of approved make, in 4-gal. tins	per gal.	0	2	8
2. Extract of—Kitchen's—or equal, Bulk ½ cwt. and 1 cwt. bags	per lb.	0	0	2½
3. Household—Dry, equal to Kitchen's "Best Brown" Brand	per cwt.	1	9	7½

* Supplies not available. †† Bag, 150-lb. § Carton, 2 dozen 2-lb. tins. ††† Apply Tender Board.
φ Market rates, plus 2d. per lb. ‡ In the event of tripo not being available, quantities of fore and hind quarters will be increased.

Sub-schedule No. 11—continued.

SOAP MIXTURES—continued.

	£	s.	d.	
4. Lifebuoy	per doz.	0	2	11
5. "Lux" or "Merino," as ordered, in bulk	per lb.	0	0	8½
6. "Monkey Brand"—or equal thereto, in tablets of 5 oz. each	per doz.	0	2	0½
7. Sand—Borax, 12-oz. blocks, of approved brand	per doz.	*		
8. Sand—Carbolic, 12-oz. blocks, of approved brand	per doz.	0	1	10
9. Soft—Genuine Potash, best amber, in bulk	per lb.	0	0	6½
10. Toilet—"Bath," in Kitchen's, or equal thereto	per doz.	0	1	8½
11. Toilet—Carbolic, in Kitchen's, or equal thereto	do.	0	1	10½
12. Toilet—"Astola," in Kitchen's, or equal thereto	do.	0	2	9
13. "Velvet"—or equal thereto	per doz.	0	3	1½

(AGREEMENT.)

Henry Berry and Co. (A/asia) Ltd., 568 Collins-street, Melbourne, C.1.

Sub-schedule No. 12.

TEA AND COFFEE.

	£	s.	d.	
1. Tea, Blended, 1st Grade	per lb.	0	2	9½
2. Coffee—Fresh roasted, and whole, beans to be thoroughly sound	per lb.	0	1	8½

‡ Less 2½ per cent. discount, payment 30 days.

SCHEDULE No. 2.

PROVISIONS—MONT PARK, SANATORIUM, GRESSWELL, ETC.

(Delivery at the Mental Hospital, Mont Park, to depots as required, the Repatriation Mental Hospital, Bundoora, Janefield Colony and Sanatorium, Gresswell.)

ANNEX TO CONTRACT No. 1945/1489.

E. J. Callander, 597 High-street, Preston, N.18.

Sub-schedule No. 1.

BREADSTUFFS.

Security, £190.

	£	s.	d.	
1. Bread—Fine wheaten, first quality	per cntl.	0	17	3
2. " Raisin,	do.	1	13	4
3. Flour—First quality	do.			¶

¶ Order under Melbourne District Contract.

(AGREEMENT.)

Henry Berry and Co. (A/asia) Ltd., 568 Collins-street, Melbourne, C.1.

Sub-schedule No. 2.

GROCERIES.

	£	s.	d.	
1. Bacon—In sides	per lb.	φ	*	
2. Beans—Haricot	do.	*	*	
3. " Butter	do.	*	*	
4. Blue—Washing—1 oz. Knobs	per gross	0	7	6
5. Biscuits—Coffee, Malt, Milk Arrowroot, or equal, as ordered	do.	0	0	11
6. Camp Pie—in 12-oz. tins	per doz.	0	7	6
7. Candles (full weights)—Kitchen's "Electrics," or other make of equal quality in 1-lb. packets	per lb.	0	0	9½
8. Cereal, in 24-oz. packets, "Malties"	per pkt.	0	0	10½
9. Cinnamon	per lb.	0	2	6
10. Cocoa, in 1-lb. cardboard cartons	do.	0	1	4
11. Coconut—Desiccated	do.	*	*	
12. Coffee Essence in 8oz. bots.—Brand, "Bluestripe"	per bot.	0	0	11½
13. Corn or Maize Flour—in 1-lb. packets, Brand, "Kroam"	per lb.	0	0	7½
13A. Corn or Maize Flour, loose	per lb.	0	0	6
14. Currants—2 Crowns (present season's)	do.	0	0	8½
15. Curry Powder—Brand, "Atlas"	do.	0	1	2
16. Custard Powder—1-lb. packets	per pkt.	0	0	8½
17. Dates—Fresh, loose	per lb.	*	*	
18. Essence of Vanilla—in full 16-oz. bottles	per bot.	0	7	0
19. Flour—Self-raising, Brand, "Cookwell"	per bag	1	11	6½
20. Fruits, Dried (present season's)	do.			††
21. Fruits—Preserved, assorted, in 1-lb. 14-oz. tins (excluding Pines)	per tin	††		
22. Gelatine—Ground	per lb.	*	*	
23. Ginger—Ground	do.	*	*	
24. Golden Syrup—in 2-lb. tins	per ctn.	0	12	6½
25. Herrings—Fresh, and in Tomato Sauce, 14-oz. tins, Brand	per tin	*	*	
26. Honey, first quality	per lb.	*	*	
27. Jelly Crystals—in 4-oz. packets "Invicta"	per gross	1	19	3

Sub-schedule No. 2—continued.

GROCERIES—continued.		£	s.	d.
28. Junket Tablets	per tube	0	0	7½
29. Lemon Peel—cut	per lb.	0	0	10
30. Macaroni	do.	0	0	4½
31. Mustard—	do.	*		
32. Nutmeg—Whole	per oz.	*		
33. Pepper—Black, ground	per lb.	*		
34. Pickles—Assorted, 20-oz. bottles	per doz.	0	11	6
35. Pipes—Tobacco, clay	do.	*		
36. Prunes—Dried, 50–60's (present season's)	per lb.	††		
37. Raisins—Lexias, 4 Crowns (present season's)	do.	0	0	7½
38. „ Sultana, 3 Crowns (present season's)	do.	0	0	9½
39. Rice—Ground	do.	*		
40. Salmon—Fresh, in 14½-oz. tins, tall, fancy pink	per tin	*		
41. Salt—Fine	per cwt.	0	7	4
42. Sauce—Tomato, in 26-oz. bottles, Brand, "Victoree"	per doz. bottles	0	18	0
43. Soda—Bicarbonate of	per lb.	0	0	3
44. „ Washing	per cwt.	0	11	3
45. Spice—Mixed, loose	per lb.	0	1	10
46. Starch (Rice)—Brand, "Silver Star"	per caso	2	0	0
47. Sugar—Castor	do.	0	0	4½
48. „ Icing	do.	0	0	4½
49. Tartar—Cream of—Substituto—Sodium Phosphate—Brand, "Antelope"	do.	0	1	0½
50. Treacle—in 2-lb. tins	per ctn.	0	11	8½
51. Vermicelli—in 16-oz. packets	per pkt.	0	0	4½
52. Vinegar—Malt	per gall.	0	1	1½

ANNEX TO CONTRACT No. 1945/1490.

Model Preserving Co. Pty. Ltd., cr Campbell and Perry streets, Colingwood, N.5.

Sub-schedule No. 3.

JAMS.

Security, £23.

	£	s.	d.
1. Jams—Assorted, in bulk, of approved kinds, in the proportion of half actual net seed and half stone, of the best quality, in tins, as required, Brand, "M.P."	per lb.	0	0 5½
2. „ Assorted, in 5-lb. tins, in the proportion of half seed and half stone, of the best quality, Brand, "M.P."	per tin	0	3 1
3. „ Marmalade, in 5-lb. tins, Brand, "M.P."	do.	0	3 0

ANNEX TO CONTRACT No. 1945/1491.†

W. Angliss & Co. (Aust.) Pty. Ltd., 42 Bourke St., Melbourne, C.1

Sub-schedule No. 4.

MEAT. φ

Security, £50.

	£	s.	d.
1. Fresh Beef, Forequarters	per cwt.	2	2 3
2. „ „ Hindquarters	do.	3	2 3
3. „ „ Buttocks	per lb.	0	0 8
4. „ „ Roast	do.	0	0 8½
5. Beef, Corned—Rolled or round, as ordered, without bone or cartilage	do.	0	0 9½
6. Mutton, Fresh	do.	0	0 5½
7. Chops—Forequarter	do.	0	0 7
8. Lamb—Sides	do.	0	0 9½
9. Veal—Leg	do.	0	0 9
10. Steak—Thick Flank	do.	0	0 11½
11. „ Minced	do.	0	0 7½
12. Sausage—Meat	do.	0	0 5½
13. Sausages—Mixed	do.	0	0 6½
14. Shanks—Sheep's	each	0	0 5
15. Tripe—Fresh	per lb.	0	0 3½
16. Brains—Sheep's	per set	0	0 3
17. Frys—Lambs'	each	0	0 6
18. Kidneys—Ox	per lb.	0	0 11
19. Livers—Calves	do.	0	0 9½
20. Sausage—Beef, German	do.	0	0 8
21. „ Strasburg, Pork	do.	0	0 11
22. Rabbits—Fresh	per pair	0	2 4
23. Saveloys	per doz.	0	1 3

* Supplies not available.

†† Apply Tender Board.

¶ Carton, 2-doz. 2-lb. Tins.

§ Less 2½ per cent. discount, payment 30 days.

§§ Bag-150-lb.

‡ Market rate plus 2d. per lb.

φ Rates subject to variation in accordance with Determinations of Prices Commissioner.

SCHEDULE No. 3.

PROVISIONS FOR S.S. RIP AND DREDGES.

Sub-schedule No. 1.

BREAD.

1. Bread—Fine wheaten, first quality	Purchase by agreement
--	-----------------------

(AGREEMENT.)

Henry Berry and Co. (A/asia) Ltd., 568 Collins-street, Melbourne, C.1

Sub-schedule No. 2.

GROCERIES.

	£	s.	d.
1. Bacon Rashers	per lb.	†	
2. Beans—Butter	do.	*	
3. „ Haricot	do.	*	
4. Biscuits—Coffee, Marie, Malt	do.	0	0 11
5. „ Thin Captains	do.	0	0 9½
6. Bisto—in 4-oz. packets	per pkt.	*	
7. Chutney—in 20-oz. bottles	per doz. bot.	0	14 6
8. Cocoa—in 1-lb. tins or cartons	per doz.	0	16 0
9. Coconut—Desiccated	per lb.	*	
10. Coffee—Fresh Roasted and Ground	do.	1	8½
11. Corn or Maize Flour in 1-lb. packets, Brand, "Kream"	do.	0	0 7½
11A Corn or Maize Flour, loose	do.	0	0 6
12. Currants—2 crowns (present season's)	do.	0	0 9
13. Custard Powder—in 1-lb. packets, Brand, "Dainty Maid"	per pkt.	0	0 8½
14. Dates	per lb.	*	
15. Eggs, New Laid	per doz.	*	
16. Essence—Vanilla, in 16-oz. bottles	per bot.	0	7 0
17. „ Cochineal, in 1-oz. bottles	per doz.	0	7 0
18. Fish—Herrings, Fresh, and in Tomato Sauce, in 14-oz. tins	per tin	*	
19. „ Salmon, Fresh, in 14½-oz. tins, pink	do.	*	
20. „ Sardines, in ½ tins, Brand	do.	*	
21. Flour—First quality	per lb.	0	0 1½
22. „ Self-raising, Brand, "Cookwell"	per bag	1	11 6½
23. Fruits—Preserved, in 1-lb. 14-oz. tins	per doz. Pears	†††	
24. „ Preserved, pines, in 1-lb. 14-oz. tins	per doz. Peaches	†††	
25. Gelatine—Ground	per lb.	*	
26. Golden Syrup—in 2-lb. tins	per ctn.	0	12 6½
27. Honey, in 7-lb. tins	per tin	*	
28. Jams—Assorted kinds, "Victoree" in 24-oz. tins	per doz. tins	0	12 0
29. Jelly Crystals in 4-oz. packets	per gross pkts.	1	19 3
30. Lemon Peel—Cut	per lb.	0	0 10
31. Macaroni	do.	0	0 4½
32. Margarine—Cooking Quality	do.	*	
33. Meat—Preserved, Beef or Mutton, in 1-lb. tins	per doz. tins	*	
34. Milk—Dried, Skim, in 1-lb. tins	do.	*	
35. „ Condensed, full cream, 14-oz. tins	per tin	*	
36. Mustard—	per lb.	*	
37. Nutmeg—Whole	per oz.	*	
38. Oatmeal—Flaked	per lb.	*	
39. Pearl Barley	do.	0	0 2½
40. Peas—Split	do.	*	
41. Pepper—Black, ground	do.	*	
42. Pickles—Assorted, in 20-oz. bottles	per doz.	0	11 6
43. Prunes—Dried (present season's)	per lb.	*	
44. Raisins—Lexias, 4 Crowns (present season's)	do.	0	0 7½
45. Raisins—Sultana, 3 Crowns (present season's)	do.	0	0 9½
46. Rice—Dressed	do.	*	
47. Salt—Fine (minimum delivery—1 cwt.)	per cwt.	0	7 4
48. Sauce—Mustard, in 10-oz. bottles	per bot.	*	
49. „ Tomato, in 26-oz. bottles, Brand, "Victoree"	per doz. bots.	0	18 0
50. „ Worcestershire, in 10-oz. bottles, "Greigs"	per doz.	0	8 0
51. Soda—Bicarbonate of	per lb.	0	0 3
52. Spice—Mixed, loose	per lb.	0	1 10
53. Sugar—Brown	per lb.	0	0 3½
54. „ Castor	do.	0	0 4½
55. „ Icing	do.	0	0 4½
56. Vinegar—Malt	per gal.	0	1 1½
57. Yolkova—in 4-oz. bottles	per bot.	0	1 9

ANNEX TO CONTRACT No. 1945/1492.†

J. H. Cooke Pty. Ltd., 378 Queen's-parade, Clifton Hill, N.S.

Sub-schedule No. 3.

MEAT.

(Delivery at River Yarra Wharfs.)

Security, £5.

		£	s.	d.
1. Fresh Beef—Roast	per lb.	0	0	9
2. Beef, Corned—Silverside	do.	0	0	11
3. " " Rolled	do.	0	0	8
4. Fresh Mutton—Forequarter	do.	0	0	7
5. " " Legs	do.	0	0	10
6. Chops—Forequarter	do.	0	0	8
7. " Loin	do.	0	0	9
8. Steak—Rump	do.	0	1	6
9. " Stewing	do.	0	0	9
10. " Topside	do.	0	0	11
11. Sausages—Mixed	do.	0	0	7
12. Tripe—Fresh	do.	0	0	6
13. Frys—Lamb	do.	0	0	6
14. Suet—Kidney	do.	0	0	5
15. Rabbits—Fresh	per pair	0	2	6
16. Ice	per cwt.	0	3	0

Sub-schedule No. 4.

VEGETABLES.

1. Onions
2. Other vegetables, including beetroot, cauliflowers, carrots, cabbages, turnips, parsnips, rhubarb, swedes, and pumpkin, as required
- Purchase by agreement

SCHEDULE No. 4.

PROVISIONS—TEACHERS' COLLEGE, CARLTON.

(Delivery at the College.)

(AGREEMENT.)

Moran and Cato Pty. Ltd., 277 Brunswick-street, Fitzroy, N.S.

Sub-schedule No. 1.

GROCERIES.

		£	s.	d.
1. Barley	per lb.	0	0	2½
2. Beans—Haricot	do.	*		
3. Cereal—"Piper's," in 24-oz. packets	per pkt.	0	0	10
4. " "Weetbix," large	do.	0	0	11
5. Cheese—Kraft, 8-oz. packets, 5-lb. loaves	per lb.	0	1	4
6. Custard Powder—in 1-lb. packets	per pkt.	0	0	8½
7. Essence—in 8-oz. bottles, Lemon pure	per bot.	0	4	2
8. Flour—Self-raising, Brand, "Rono"	per lb.	0	0	2½
9. Fruit—Preserved, assorted, in 1-lb. 14-oz. tins (excluding Pines)	per tin	††		
10. Golden Syrup—in 2-lb. tins	do.	0	0	6½
11. Honey, first quality—in 60-lb. tins only	per lb.	0	0	8
12. Jelly Crystals—4-oz. packets	per pkt.	0	0	3½
13. Mustard	per lb.	0	2	9½
14. Macaroni	do.	0	0	4½
15. Pepper—Black, ground	do.	0	1	5½
16. Pickles—Assorted, in 20-oz. bottles, per doz.	0	11	6	
17. Raisins—Sultana, 3 Crowns (present season's)	per lb.	0	0	8½
18. Rice—Dressed	do.	*		
19. Salmon—Fresh, in 14½-oz. tins, talls, per tin	do.	*		
20. Salt—Fine	per cwt.	0	6	5½
21. Sauce, Tomato, in 20-oz. bots. "Dyason's"	per doz.	0	11	4
22. " " Worcestershire, in 10-oz. bottles, Brand, "Hardings"	per bot.	0	0	8½
23. Soda—Bicarbonate of	per lb.	0	0	2½
24. " Washing	do.	0	0	1½
25. Spaghetti	per pkt.	0	0	4½
26. Spice—Mixed, in 1-oz. pkts.	do.	0	0	1½
27. Starch—Brand, "Lilley's Powder"	per lb.	0	0	0½
28. Sugar—Castor	do.	0	0	4
29. Tartar—Cream of—Substitute—Calcium Phosphate	do.	0	0	10½
30. Tomatoes—Canned	per doz.	*		
31. Vinegar—Malt	per gal.	0	1	1

* Supplies not available. † Or 14 oz. packets ‡ per dozen †† Apply Tender Board.

ANNEX TO CONTRACT No. 1945/1493.

Model Preserving Co. Pty. Ltd., cr. Campbell and Perry streets, Collingwood, N.S.

Sub-schedule No. 2.

JAM.

Security, £10.

1. Jam—Assorted, of approved kinds, in the proportion of half seed and half stone, of the best quality, in 5-lb. tins, Brand, "M.P." per tin 0 3 1

ANNEX TO CONTRACT No. 1945/1494.†

J. H. Cooke Pty. Ltd., 378 Queen's-parade, Clifton Hill, N.S.

Sub-schedule No. 3.

MEAT.

(Also for delivery to Travancore Developmental Centre, Flemington.)

Security, £8.

		£	s.	d.
1. Fresh Beef—Sirloin	per lb.	0	0	10
2. Fresh Mutton—Forequarter	do.	0	0	4
3. " " Cutlets	do.	0	0	10
4. " " Chops—Mid. Loin	do.	0	0	8
5. " " Forequarter	do.	0	0	7
6. " " Shoulder, boned	do.	0	0	5
7. " " Legs	do.	0	0	9
8. Beef—Corned—Silverside	do.	0	0	10
9. Veal—Shoulder, Boned	do.	0	0	6
10. Steak—Blade	do.	0	0	8
11. " (when required, minced)	do.	0	0	7
12. Mince Meat	do.	0	0	7
13. Sausages—Mixed	do.	0	0	7
14. Sausage Meat	do.	0	0	4
15. " Beef, German	do.	0	0	9
16. Kidneys—Ox	do.	0	0	10
17. Tongues—Ox	do.	0	0	8
18. Cheeks—Ox	do.	0	0	3
19. " Pigs'	do.	0	0	4
20. Frys—Lamb	per lb.	0	0	6
21. Tripe—Fresh	do.	0	0	5
22. Suet—Kidney	do.	0	0	5
23. Bones—Soup	do.	0	0	1
24. Frankfurts	per bble.	0	0	9
25. Rabbits—Fresh	per pair	0	2	6
26. Black Puddings	per lb.	0	0	4

SCHEDULE No. 5.

PROVISIONS—ARARAT DISTRICT.

(Delivery into Institutions.)

ANNEX TO CONTRACT No. 1945/1495.

M. L. Bates, 256 Barkly-street, Ararat.

Sub-schedule No. 1.

BREADSTUFFS.

Security, £75.

1. Bread—Fine wheaten, first quality per cntl. 0 16 2½
2. Flour—First quality do. 0 12 2

(AGREEMENT.)

John McLeod and Co. Pty. Ltd., 122 Lydiard-street, Ballarat.

Sub-schedule No. 2.

GROCERIES.

		£	s.	d.
1. Beans—Navy (60 lb.)	per bush.	1	1	8
2. Blue—Washing	per lb.	0	0	11
3. Candles—(full weights) Kitchen's "Eloc-trines," or other make of equal quality, to be supplied in 1-lb. packets	do.	0	0	9½
4. Cocoa—in 1-lb. tins or cardboard cartons "Gold Seal"	do.	0	1	7
5. Corn or Maize Flour—in packets of 1 lb. net "Kream"	do.	0	0	8
6. Curry Powder, "Gold Seal," loose	do.	0	1	4
7. Golden Syrup in 2-lb. tins	per doz.	0	6	11
8. Mustard	per lb.	*		
9. Peas—Blue Boiling	per bush.	1	4	0
10. Pepper—Black, ground	per lb.	0	1	6½
11. Pipes—Tobacco, clay	per doz.	0	1	3
12. Raisins—Sultana, 3 Crowns (present season's)	per lb.	0	0	9
13. Salt—Fine—Imperial	per cwt.	0	8	11
14. Soda—Bicarbonate of	per lb.	0	0	3
15. " Washing	per cwt.	0	12	6
16. Starch (Rice)—"Silver Star," loose	per lb.	0	0	9½
17. Tartar—Cream of—Substitute—"Actorise"	dc.	0	0	10½

(AGREEMENT.)

John MacLeod and Co. Pty. Ltd., 122 Lydiard-street, Ballarat.

Sub-schedule No. 3.

JAMS.

	£	s.	d.
1. Jams—Assorted, in bulk, of approved kinds, in the proportion of half seed and half stone, of the best quality, in tins, as required, Brand, "J. MacLeod and Co. Pty. Ltd."	0	0	6½

ANNEX TO CONTRACT No. 1945/1496.†

Winton Newsome, 139 Barkly-street, Ararat.

Sub-schedule No. 4.

MEAT.

Security, £30.

	£	s.	d.
1. Fresh Beef—Fore-quarters per centl.	2	12	1
2. " " Hind-quarters do.	2	12	1
3. " " Buttocks do.	3	8	9
4. " Mutton do.	2	11	0
5. Corned Beef—Rolled or round, as ordered, without bone or cartilage do.	1	15	0

SCHEDULE No. 6.

PROVISIONS—BALLARAT DISTRICT.

(Delivery into Institutions.)

ANNEX TO CONTRACT No. 1945/1497.

Fred T. Davies, 47 Eureka-street, Ballarat.

Sub-schedule No. 1.

BREADSTUFFS.

Security, £75.

	£	s.	d.
1. Bread—Fine wheaten, first quality per centl.	0	13	0
2. Flour—First quality do.	0	12	0

(AGREEMENT.)

John MacLeod and Co. Pty. Ltd., 122 Lydiard-street, Ballarat.

Sub-schedule No. 2.

GROCERIES.

	£	s.	d.
1. Blue—Washing per lb.	0	0	11
2. Candles (full weights)—Kitchen's "Eloc-trines," or other make of equal quality, in 1-lb. packets do.	0	0	9½
3. Corn or Maize Flour—in packets of 1 lb. net do.	0	0	7½
4. Currants—2 Crowns (present season's) do.	0	0	8½
5. Curry Powder—"Gold Seal"—loose do.	0	1	4
6. Golden Syrup—in 2-lb. tins per doz.	0	0	7
7. Mustard per lb.	*		
8. Pepper—Black, ground do.	0	1	6½
9. Pipes—Tobacco, clay per doz.	0	1	3
10. Raisins—Sultana, 3 Crowns (present season's) per lb.	0	0	8½
11. Salt—Fine "Imperial" per cwt.	0	7	11
12. Soda—Bicarbonate of per lb.	0	0	2½
13. " Washing per cwt.	0	11	6
14. Spice—Mixed, in 1-oz. packets per pkt.	0	0	2½
15. Starch (Rice) "Silver Star", loose per lb.	0	0	9½
16. Tartar—Cream of—Substitute—"Actorise" do.	0	0	10
17. Vinegar—Malt per quart	0	0	3½

(AGREEMENT.)

John MacLeod and Co. Pty. Ltd., 122 Lydiard-street, Ballarat.

Sub-schedule No. 3.

JAMS.

	£	s.	d.
1. Jams—Assorted, in bulk, of approved kinds, in proportion of half seed and half stone, of the best quality, in tins as required, Brand, "J. MacLeod and Co. Pty. Ltd."	0	0	6
2. " Assorted, in 24-oz. tins, in the proportion of half seed and half stone, of the best quality, Brand, "Victoree"	0	1	1
3. " Assorted, in 5-lb. tins, in the pro- portion of half seed and half stone, of the best quality, Brand, "Victoree"	do.	*	

* Supplies not available. † Or 14-oz. packets 9s. per dozen.

ANNEX TO CONTRACT No. 1945/1498.†

H. J. Symons Pty. Ltd., 1015 Macarthur-street, Ballarat.

Sub-schedule No. 4.

MEAT.

Security, £35.

	£	s.	d.
1. Fresh Beef—Forequarters per centl.	3	3	0
2. " " Hindquarters do.	3	3	0
3. " " Buttocks do.	3	17	0
4. " Mutton per lb.	0	0	7
5. Mince Meat do.	0	0	7
6. Sausage—Beef, German do.	0	0	8
7. Tripe—Fresh (alternative) do.	0	0	5
8. Fresh Suet—Kidney do.	0	0	7
9. Sausages—Mixed do.	0	0	8
10. Black Puddings do.	0	0	6
11. Saveloy per doz.	0	1	0

SCHEDULE No. 7.

PROVISIONS—BEECHWORTH DISTRICT.

(Delivery into Institutions.)

ANNEX TO CONTRACT No. 1945/1499.

P. A. Taylor, Camp-street, Beechworth.

Sub-schedule No. 1.

BREADSTUFFS.

Security, £100.

	£	s.	d.
1. Bread—Fine wheaten, first quality per centl.	0	16	0
2. Flour—First quality do.	0	15	0

(AGREEMENT.)

Moran and Cato Pty. Ltd., 277 Brunswick-street, Fitzroy, N.6.

Sub-schedule No. 2.

GROCERIES.

	£	s.	d.
1. Blue—Washing, powdered in 7-lb. pkts. ... per lb.	0	0	11½
2. Cocoa—Bulk do.	0	7	½
3. Corn or Maize Flour—in packets of 1 lb. net "Fielder's" do.	0	0	7½
4. Golden Syrup—in 2-lb. tins per tin	0	0	7½
5. Jelly Crystals in 4-oz. Pkts. "White Crow" per doz.	0	3	10½
6. Mustard per lb.	0	2	10½
7. Pepper—Black, ground do.	0	1	7
8. Pipes—Tobacco, clay per doz.	*		
9. Raisins—Sultana, 3 Crowns (present season's) per lb.	0	0	9½
10. Salt—Fine per cwt.	0	10	2½
11. Soap—"Monkey Brand," or equal thereto, in 5-oz. tablets per tab.	0	0	2½
12. " Sand, Carbolic, in 12-oz. blocks per blk.	0	0	2½
13. Soda—Bicarbonate of per lb.	0	0	3½
14. " Washing per cwt.	0	12	6
15. Starch—"Lilley's Powder" per lb.	0	0	7½
16. Tartar—Cream of—Substitute—Calcium Phosphate do.	0	0	11½
17. Vinegar—Malt per qt.	0	0	5

(AGREEMENT.)

Moran and Cato Pty. Ltd., 277 Brunswick-street, Fitzroy, N.6.

Sub-schedule No. 3.

JAMS.

	£	s.	d.
1. Jams—Assorted, in bulk—Apricot per lb.	0	0	7
Peach actual	0	0	7
Apple & Rasp. net	0	0	6½
flavour weight			
Dark Plum	0	0	6½

ANNEX TO CONTRACT No. 1945/1500.†

E. Spencer, Camp-street, Beechworth.

Sub-schedule No. 4.

MEAT.

Security, £30.

	£	s.	d.
1. Fresh Beef—Roast per centl.	2	14	2
2. " " (Group D) per lb.	0	0	6½
3. " Mutton do.	0	0	6½
4. " " (Group D) do.	0	0	6½
5. Minced Meat do.	0	0	7½
6. Sausages, Mixed do.	0	0	7½
7. Sausage Meat do.	0	0	7
8. Sausage—Beef, German do.	0	0	10
9. Dripping, Beef do.	0	0	6
10. Saveloy (alternative) per doz.	0	1	0

SCHEDULE No. 8.
PROVISIONS—CASTLEMAINE DISTRICT.

(Delivery into Institutions.)

ANNEX TO CONTRACT No. 1945/1501.

Rasmussen Bros., Johnston-street, Castlemaine.

Sub-schedule No. 1.

BREAD.

	Security, £14.	£	s.	d.
1. Bread—Fine wheaten, first quality	.. per cntl.	0	18	9

ANNEX TO CONTRACT No. 1945/1502.†

H. J. Robertson, 91 Mostyn-street, Castlemaine.

Sub-schedule No. 2.

MEAT.

Security, £5.

		£	s.	d.
1. Fresh Beef	.. per cntl.	3	15	0
2. Corned Beef—Rolled or Round, as ordered, without bone or cartilage	.. per lb.	0	0	8½
3. Fresh Mutton (Group D)	.. do.	0	0	8
4. Sausages—Mixed	.. do.	0	0	7
5. Sausage—Meat	.. do.	0	0	6

SCHEDULE No. 9.

PROVISIONS—SCHOOL OF FORESTRY, CRESWICK.

(Delivery at the School.)

ANNEX TO CONTRACT No. 1945/1503.

R. C. Bowley, Albert-street, Creswick.

Sub-schedule No. 1.

BREADSTUFFS.

Security, £3.

		£	s.	d.
1. Bread—Fine wheaten, first quality	.. per cntl.	1	2	11
2. Flour—First quality	.. per lb.	0	0	2½

(AGREEMENT.)

J. Tail and Son, Albert-street, Creswick.

Sub-schedule No. 2.

GROCERIES.

		£	s.	d.
1. Barley—Pearl	.. per lb.	0	0	2½
2. Blue—Washing	.. do.	0	0	11
3. Butter—First grade creamery, to score not less than 91 points, Government grade, Commerce Regulations Standard	.. do.	0	1	7
4. Cheese—First-class quality, matured	.. do.	0	1	4
5. Coffee—Fresh roasted and whole, beans to be thoroughly sound	.. do.	0	2	0
6. Corn or Maize Flour—in packets of 1 lb. net	.. per lb.	0	0	7½
7. Eggs—New laid	.. per doz.	0	1	6
8. Ginger—Ground	.. per lb.	*		
9. Golden Syrup—in 2-lb. tins	.. per tin	0	0	7
10. Jams—Assorted, in 5-lb. tins, net, in the proportion of half seed and half stone, Brand, "Red Feather"	.. do.	0	3	3
11. Mustard—"Double Superfine"	.. per lb.	*		
12. Oatmeal	.. do.	*		
13. Peas—Split	.. do.	0	0	4
14. Pepper—Black, ground	.. do.	0	1	6
15. Potatoes—Dry and free from dirt	.. per cwt.	0	11	0
16. Raisins—Sultana, 3 Crowns (present season's)	.. per lb.	0	0	9½
17. Rice—Dressed	.. do.	*		
18. Salt—Fine	.. do.	0	0	0½
19. Soap—Household, yellow, dry, and hard, to sample	.. do.	0	0	3½
20. " Sand, Carbolic, in 12-oz. blocks	.. each	0	0	2
21. Soda—Bicarbonate of	.. per lb.	0	0	3
22. " Washing	.. do.	0	0	1½
23. Starch (Rico)—Brand, "Proservene"	.. do.	0	0	7½
24. Tartar — Cream of — Substitute — "Calcium Phosphate"	.. do.	0	1	2
25. Tea—1st Grade	.. do.	0	2	1
26. Vinegar—Malt	.. per pint	0	0	3

* Supplies not available

ANNEX TO CONTRACT No. 1945/1504.

E. J. Keen, Jory-street, North Creswick.

Sub-schedule No. 3.

MILK.

Security, £3.

		£	s.	d.
1. Milk—Fresh and pure	.. per qt.	0	0	7

ANNEX TO CONTRACT No. 1945/1505.†

H. J. Symons, Pty. Ltd., 1015 Macarthur-street, Ballarat.

Sub-schedule No. 4.

MEAT.

Security, £3.

		£	s.	d.
1. Fresh Beef—Fore-quarters	.. per lb.	0	0	11
2. " Mutton	.. do.	0	0	10
3. Veal (Leg or Loin)	.. do.	0	0	10
4. Sausages—Mixed	.. do.	0	0	8½
5. Steak—Minced	.. do.	0	0	8½
6. Frys—Lambs'	.. do.	0	0	6
7. Fresh Suet—Kidney	.. do.	0	0	6
8. Hearts—Ox	.. do.	0	0	5
7. Tongues—Ox	.. do.	0	0	9
10. Tails—Ox	.. do.	0	0	9
11. Dripping—Beef	.. do.	0	0	6

SCHEDULE No. 10.

PROVISIONS—MCLEOD SETTLEMENT, FRENCH ISLAND.

(Delivery to be made at Lang Lang Jetty.)

ANNEX TO CONTRACT No. 1945/1506.

James Jackson, Lang Lang.

Sub-schedule No. 1.

BREAD.

Security, £12.

		£	s.	d.
1. Bread—Fine wheaten, first quality	.. per cntl.	1	0	10

(AGREEMENT.)

A. G. Glasscock, Lang Lang.

Sub-schedule No. 2.

GROCERIES.

		£	s.	d.
1. Butter—First grade creamery, to score not less than 91 points, Government grade, Commerce Regulations Standard	.. per lb.	0	1	8
2. Cheese—Matured	.. do.	0	1	3
3. Jams—Assorted, in proportion of half seed and half stone, of best quality, in 24-oz. tins, "Victoree"	.. per tin	0	1	2

ANNEX TO CONTRACT No. 1945/1507.†

W. F. Misson, Lang Lang.

Sub-schedule No. 3.

MEAT.

Security, £5.

		£	s.	d.
1. Fresh Beef	.. per cntl.	3	6	8
2. " Mutton (Group D)	.. per lb.	0	0	7
3. Sausages—Mixed	.. do.	0	0	8

SCHEDULE No. 11.

PROVISIONS—HEATHERTON SANATORIUM, CHELTENHAM.

(Delivery at the Sanatorium.)

ANNEX TO CONTRACT No. 1945/1508.

Cornick Bros., Pty. Ltd., 585 Centre-road, Bentleigh, S.E.15.

Sub-schedule No. 1.

BREAD.

Security, £3.

		£	s.	d.
1. Bread—Fine wheaten, first quality	.. per centl.	0	16	8

(AGREEMENT.)

Moran and Cato Pty. Ltd., 277 Brunswick-street, Fitzroy, N.6.

Sub-schedule No. 2.

GROCERIES.

		£	s.	d.
1. Bacon, Rashers, Middle—	per lb.	0	1	10
2. Blue—Washing, powdered in 7 lb. packets	do.	0	0	10½
3. Biscuits—Coffee, Malt, Milk Arrowroot, as ordered	do.	0	0	9½
4. Candles (full weight)—Kitchen's Electrines, in 1-lb. packets	do.	0	0	9½
6. Cereal—Malties (or equal thereto) in 24-oz. packets "Pipers"	per pkt.	0	0	10
7. Cocoa—Bulk	per lb.	0	0	6½
8. Corn or Maize Flour—in 1-lb. packets "Fielders"	do.	0	0	6½
9. Currants—2 Crown (present season's)	do.	0	0	8½
10. Custard Powder—1-lb. packets "Rono"	do.	0	0	8½
11. Dates—Fresh, loose	do.			*
12. Essence of Vanilla—in 16-oz. bottles	per bot.	0	11	0
13. Flour—Self-raising—Brand "Rono"	per lb.	0	0	2½
14. Fruit—Dried (present season's)				
Pears	do.			††
Peaches	do.			††
15. " Preserved—in 30-oz. tins (excluding pines)	per tin			††
16. Golden Syrup—in 2-lb. tins	do.	0	0	6½
17. Herrings—Fresh, and in Tomato Sauce, 14-oz. tins	do.			*
18. Honey—First quality in 60-lb tins	per lb.	0	0	8
19. Jams—Assorted, in 5-lb. tins, in the proportion of half seed and half stone of the best quality—Brand "M.P."	per tin	0	2	11
20. " Marmalade, in 5-lb. tins—Brand "M.P."	do.	0	3	1
21. Jelly Crystals—in 4-oz. packets	per doz.	0	3	6
22. Junket Tablets "Summergold"	per tube	0	0	4½
23. Orange Peel—cut	per lb.	0	0	10
24. Macaroni	do.	0	0	4½
25. Mustard	do.	0	2	11
26. Nutmeg—Whole	do.			*
27. Pepper—Black, ground	do.	0	1	5½
28. Pickles—Assorted, in 20-oz. bottles	per bot.	0	0	11½
29. Prunes—Dried, 50-60's (present season's)	per lb.			††
30. Raisins—Lexias, 4 Crowns (present season's)	do.			*
31. " Sultana, 3 Crowns (present season's)	do.	0	0	8½
32. Rice—Ground	do.	0	0	4½
33. Salmon—Fresh, in 14½-oz. tins, tall—Fancy Pink	per tin	*		
Pink	do.	*		
34. Salt—Fine	per cwt.	0	7	1½
35. Sauce—Tomato, in 26-oz. bottles—Brand, "M.P."	per bot.	0	1	2½
36. Soda—Bicarbonate of	per lb.	0	0	3
37. " Washing	per cwt.	0	10	6
38. Spice—Mixed, in 1-oz. packets	per pkt.	0	0	1½
39. Starch—Loose—Brand, "Lilley's"	per lb.	0	0	7½
40. Sugar—Caster	do.	0	0	4
41. " Icing	do.	0	0	4½
42. Tartar—Cream of—Substitute Brand, "Mono"	do.	0	0	10½
43. Treacle—in 2-lb. tins	per tin	0	0	6
44. Vermicelli—in 16-oz. packets	per lb.	0	0	4½
45. Vinegar—Malt	per gal.	0	1	3

ANNEX TO CONTRACT No. 1945/1509.†

W. Angliss and Co. (Aust.), Pty. Ltd., 42 Bourke-street, Melbourne, C.1.

Sub-schedule No. 3.

MEAT. φ

Security, £5.

		£	s.	d.
1. Fresh Beef, Roast	per lb.	0	0	8½
2. Beef, Corned—Rolled or Round, as ordered, without bone or cartilage	do.	0	0	9½
3. Mutton, Fresh	do.	0	0	5½
4. Chops—Forequarter	do.	0	0	7
5. Veal—Leg	do.	0	0	9
6. Steak—Blade Bone	do.	0	0	11½
7. " Minced	do.	0	0	7½
8. Sausage—Meat	do.	0	0	5½
9. Sausages—Mixed	do.	0	0	6½
10. Tripe—Fresh	do.	0	0	3½
11. Brains—Sheep's	per set	0	0	3
12. Frys—Lamb's	each	0	0	6
13. Kidneys—Ox	per lb.	0	0	11
14. Sausage—Beef, German	do.	0	0	8
15. " Strasburg, Pork	do.	0	0	11
16. Rabbits—Fresh	per pair	0	2	4
17. Saveloys	per doz.	0	1	3

* Supplies not available. †† Bag—150lb. § Cartons—2 doz. 2-lb. tins. ††† Apply Tender Board. † Market rate plus 2d. per lb. φ Rates subject to variation in accordance with Determinations of Prices Commissioner.

SCHEDULE No. 12.

PROVISIONS—SANATORIUM, GREEN-VALE.

(Delivery at the Sanatorium.)

ANNEX TO CONTRACT No. 1945/1510.

Waller Norris, trading as Bignell's Bakery, Sydney-road, Campbellfield.

Sub-schedule No. 1.

BREADSTUFFS.
Security, £7.

		£	s.	d.
1. Bread—Fine wheaton, first quality	per cwt.	0	17	2½
2. Flour—First quality	do.	0	12	11
3. " Wheatmeal	per lb.	0	0	1½

(AGREEMENT.)

Henry Berry and Co. (Asia) Ltd., 568 Collins-street, Melbourne.

Sub-schedule No. 2.

GROCERIES.

		£	s.	d.
1. Bacon—in sides	per lb.			†
2. Beans—Lima	do.			†
3. Biscuits—Malt, Milk Arrowroot, Coffee—as ordered, in approximately 7-lb. tins	do.	0	0	11
4. Blue—Washing, 1-oz. knobs	per gross	0	7	6
5. Borax	per lb.			*
6. Camp Pie—1-lb. tins	per doz.			*
7. Capers—in 16-oz. bottles	per bot.			*
8. Cheese—Semi-matured, in 20-lb. loaves	per lb.	0	1	5
9. Cinnamon	do.	0	2	6
10. Cocoa—in 1-lb. cardboard cartons	do.	0	1	4
11. Coconut—Desiccated	do.			*
12. Corn or Maize Flour—in packets of 1 lb. net—	do.	0	0	7½
13A. Corn or Maize Flour, loose	do.	0	0	6
13. Curry Powder—"Atlas"	per lb.	0	1	2
14. Currants—2 Crowns (present season's)	do.	0	0	8½
15. Custard Powder—in 1-lb. packets—"Dainty Maid"	per pkt.	0	0	8½
16. Dates	per lb.			*
17. Essence of Lemon—in 18-oz. bottles	per bot.	0	10	2
18. " Vanilla—in 16-oz. bottles	do.	0	7	0
19. Fish—Sardine, 1-lb. tins	per tin			*
20. Fish—Herrings in Sauce, 14-oz. tins	per tin			*
21. Flour—Self-raising—"Cookwell"	per bag	1	11	6††
22. Fruits—Dried (present season's)—Apples and Peaches	do.			††
Preserved (excluding Pines)	per tin			††
23. Gelatine—Powdered	per lb.			*
25. Ginger—Ground	do.			*
26. Golden Syrup—in 2-lb. tins	per ctn.	0	12	6§
27. Honey—First quality	per lb.			*
28. Jams—Assorted, in 24-oz. tins, Brand, "Victoree"	per tin	0	12	0
29. Jelly Crystals—in 7-lb. packets	per pkt.	0	7	8½
30. Junket Tablets	per doz.	0	7	3
31. Lemon Peel—Cut	per lb.	0	0	10
32. Macaroni	do.			*
33. Mustard	do.			*
34. Nutmeg—Ground	do.			*
35. Oatmeal—Flaked	do.			*
36. Spice—Loose	per lb.	0	1	10
37. Pepper—Ground	per lb.			*
38. Pickles—Assorted, in 20-oz. bottles	per bot.	0	0	11½
39. Prunes—Dried, 50-60's (present season's)	per lb.			††
40. Raisins—4 Crowns (present season's)	do.	0	0	7½
41. " Sultana, 3 Crowns (present season's)	do.	0	0	9½
42. Rice—Dressed	do.			*
43. Salmon—Fresh in 1-lb. tins	per tin			*
44. Salt—Fine	per cwt.	0	7	4
45. Sauce—Worcestershire, 10-oz. bottles, Brand, "Greig's"	per doz.	0	8	0
46. " —Tomato, 26-oz. bottles, Brand, "Victoree"	do.	0	18	0
47. Soda—Bicarbonate of	per lb.	0	0	3
48. " Washing	per cwt.	0	11	3
49. Spaghetti	per lb.	0	0	5
50. Starch (Rice)—"Silver Star"	per case	2	0	0
51. Sugar—Caster	per lb.	0	0	4½
52. Tapioca—Pearl	do.			*
53. " Seed (Sago)	do.			*
54. Tartar—Cream of—Substitute "Antelope"	do.	0	1	0½
55. Tomatoes—Preserved, in 2-lb. tins	per tin			*
56. Treacle—in 2-lb. tins	per ctn.	0	11	8§
57. Vermicelli	per pkt.	0	0	4½
58. Vinegar—Malt	per gal.	0	1	1½
59. Cereal—"Wecties," in 24-oz. packets	per pkt.	0	0	10½

ANNEX TO CONTRACT No. 1945/1511.†
F. Watkins Pty. Ltd., 184 Bourke-street, Melbourne, C.1.

Sub-schedule No. 3.
MEAT (cuts as ordered).
 Security, £7.

	£	s.	d.	
1. Beef, Fresh—Roast	per lb.	0	0	9
2. " " Topside	do.	0	0	10
3. " " Rump	do.	0	1	6
4. " " Corned, Silverside	do.	0	0	10
5. Mutton, Fresh—Sides	do.	0	0	6
6. Cutlets—Mutton	per lb.	0	0	10
7. " Veal	do.	0	0	9
8. Chops—Mid. Loin	do.	0	0	9
9. " Leg	do.	0	0	8
10. Steak—Minced	do.	0	0	8
11. Minced Meat	do.	0	0	5
12. Frys—Lambs'	do.	0	0	6
13. Pork, Fresh—Loin	do.	0	1	3
14. Pork, Pickled—Loin	do.	0	1	3
15. Veal—Legs, boned	do.	0	0	9
16. Tripe, Fresh—Ox	do.	0	0	5
17. Tails—Ox	each	0	1	3
18. Tongues—Ox	do.	0	3	6
19. " Sheep	per doz.	0	3	0
20. Sausages—Mixed	per lb.	0	0	7
21. " Pork	do.	0	0	10
22. Sausage—Strasbourg, Pork	do.	0	0	11
23. Suet, Fresh—Kidney	do.	0	0	4
24. Kidneys—Ox	do.	0	1	0
25. Brains	per set	0	0	2
26. Rabbits—Fresh	per pair	0	2	6
27. Poultry—First Quality	do.	0	15	0
28. Frankfurts	per bdle.	0	2	0
29. Saveloys	per doz.	0	1	0

† This item is subject to reduction by half if Pork is available.

SCHEDULE No. 13.

PROVISIONS—COORIEMUNGLE PRISON CAMP, HEYTESBURY FOREST.

(Delivery to be made at the Camp.)

(AGREEMENT.)

F. Webster and Co., Timboon.

Sub-schedule No. 1.

BREAD.

	£	s.	d.	
1. Bread—Fine Wheaten, first quality	per cntl.	1	2	11

(AGREEMENT.)

F. Webster and Co., Timboon.

Sub-schedule No. 2.

GROCERIES.

	£	s.	d.	
1. Oatmeal	per lb.	0	0	4
2. Rice—Dressed	do.	0	0	4
3. Salt—Fine	do.	0	0	1½
4. Tea	do.	0	2	4

ANNEX TO CONTRACT No. 1945/1512.†

S. M. Hunt, Timboon.

Sub-schedule No. 3.

MEAT.

Security, £4.

	£	s.	d.	
1. Fresh Beef	per lb.	0	0	11
2. " Mutton	do.	0	0	11
3. Corned Beef—Without bone or cartilage, rolled or round	do.	0	1	9
4. Meat—Minced	do.	0	0	8
5. Sausages—Mixed	do.	0	0	8
6. Sausages—Meat	do.	0	0	6
7. Tripe—Fresh	do.	0	0	10
8. Frys—Lambs'	do.	0	0	4
9. Dripping—Beef	do.	0	0	6
10. Tongues—Ox	each	0	0	10

SCHEDULE No. 14.

PROVISIONS—ABORIGINAL STATION, LAKE TYERS.

(Delivery at Lake Tyers Station.)

ANNEX TO CONTRACT No. 1945/1513.

Coate and Symmons Pty. Ltd., Lakes Entrance.

Sub-schedule No. 1.

BREADSTUFFS.
 Security, £25.

	£	s.	d.	
1. Bread—Fine wheaten, first quality	per cntl.	1	2	11
2. Flour—First quality	do.	0	15	0

(AGREEMENT.)

Coate and Symmons Pty. Ltd., Lakes Entrance.

Sub-schedule No. 2

GROCERIES.

	£	s.	d.
1. Baking Powder—Snowflake, or equal thereto, in 1-lb. tins	per lb.		
2. Candles (full weights)—Kitchen's "Electrics," or other make of equal quality, in 1-lb. packets	do.		
3. Coffee—Fresh roasted, and whole, beans to be thoroughly sound	do.		
4. Cocoa—Bulk	do.		
5. Corn or Maize Flour—in 1-lb. packets	do.		
6. Currants—2 Crowns (present season's)	do.		
7. Curry Powder—bulk	do.		
8. Matches—Safety, 60 in a box, "Yacht"	per gross		
9. Mustard—"Double Superfine"	per lb.		
10. Pepper—Black, ground, in 2-oz. tins	per tin		
11. Raisins—Sultana, 3 Crowns (present season's)	per lb.		
12. Salt—Coarse	per cwt.		
13. " Fine	do.		
14. Soap—Household, hard and dry, to sample	do.		
15. Soda—Bicarbonate of	per lb.		
16. " Washing	do.		
17. Tartar—Cream of—Substitute—Calcium Phosphate	do.		
18. Treacle—in 2-lb. tins	per tin		
19. Vinegar—Malt	per qt.		

(AGREEMENT.)

Coate and Symmons Pty. Ltd., Lakes Entrance.

Sub-schedule No. 3.

JAMS.

	£	s.	d.
1. Jams—Assorted, in 24-oz. tins, Brand in the proportion of half seed and half stone	per tin		**

** The rates to be paid for all items under these Sub-schedules shall be the wholesale prices charged to the contractor, plus 12½ per cent. Wholesaler's invoices to be submitted with contractor's accounts.

SCHEDULE No. 15.

PROVISIONS—EXPERIMENT FARM, RUTHERGLEN.

(Delivery at the Farm.)

ANNEX TO CONTRACT No. 1945/1514.

A. F. Parrott, Main-street, Rutherglen.

Sub-schedule No. 1.

BREAD.

Security, £3.

	£	s.	d.	
1. Bread—Fine wheaten, first quality	per cntl.	1	2	11

(AGREEMENT.)

Moran and Co. Pty. Ltd., 277 Brunswick-street, Fitzroy, N.6.

Sub-schedule No. 2.

GROCERIES, ETC.

	£	s.	d.	
1. Biscuits—Marie	per lb.	0	1	0
2. Blue—Washing, Powdered, 7-lb. parcels	do.	0	0	11½
3. Candles (full weights)—Kitchen's "Electrics," or other make of equal quality, in 1-lb. packets	do.	0	0	9½
4. Cornflakes—"Kellogg's," in 16-oz. packets	per pkt.		*	
5. Corn or Maize Flour—in packets of 1-lb. not "Fielder's"	per lb.	0	0	7½
6. Coconut—Desiccated	do.		*	
7. Currants—2 Crowns (present season's)	do.	0	0	8½
8. Fish—Salmon, in ½-lb. tins	per tin		*	
9. Fruits—Preserved, assorted, in 1-lb. 14-oz. tins (excluding Pineapple)	do.		*	
10. Jams—Assorted, of approved kinds, in proportion of half seed and half stone, in 24-oz. tins, Brand, "M.P."	do.	0	0	11½

* Supplies not available.

Sub-schedule No. 2.—continued.
GROCERIES, ETC.—continued.

	£	s.	d.
11. Jams—Assorted, of approved kinds, in proportion of half seed and half stone, in 5-lb. tins, Brand, "M. P."	per tin	3	1
12. Jelly Crystals—in 4-oz. packets	per pkt.	0	4
13. Macaroni or Vermicelli—as ordered	per lb.	0	4½
14. Matches—Safety	per gross	0	14 ½
15. Oatmeal—Flaked	per lb.	*	
16. Pepper—Black, ground	do.	0	1 7½
17. Potatoes—Dry and free from dirt	per cwt.	*	
18. Raisins—5 crown (present season's)	per lb.	0	7½
19. " Sultana, 3 crown (present season's)	do.	0	0 9½
20. Rice—Dressed	per lb.	*	
21. Salt—Fine	do.	0	0 1½
22. Sauce—Tomato, "Dyasons," 20-oz. bottles	per doz.	0	13 4
	26-oz. "	0	16 6½
23. Soap—Household, yellow	per cwt.	1	17 5½
24. " "Monkey Brand," or equal thereto, in 5-oz. tablets	per tab.	0	0 2½
25. " Sand, in 12-oz. blocks	per doz.	0	2 4
26. " Toilet, "Bath," in 4-oz. tablets, to sample, Kitchen's, or equal thereto	per doz.	0	1 9½
27. Soda—Washing	per lb.	0	0 1½
28. Tea—1st Grade	do.	0	2 10½

SCHEDULE No. 16.
PROVISIONS AT SALE.

(Delivery at the Gaol.)
ANNEX TO CONTRACT No. 1945/1515.
F. J. Hennessy, 102 Raymond-street, Sale.

Sub-schedule No. 1.

BREAD.

Security, £3.

	£	s.	d.
1. Bread—Fine wheaten, first quality	per cntl.	1	5 0

ANNEX TO CONTRACT No. 1945/1516. †
H. L. G. Laws, 111 Raymond-street, Sale.

Sub-schedule No. 2.

MEAT.

Security, £3.

	£	s.	d.
1. Fresh Beef—Stewing	per lb.	0	0 6½
2. Fresh Mutton	do.	0	0 6½
3. Sausages—Mixed	do.	0	0 6½
4. Sausage Meat (alternative)	do.	0	0 6½
5. Tripe—Fresh	do.	0	0 6½
6. Frys—Lambe'	do.	0	0 6½
7. Livers—Calves' (alternative)	do.	0	0 6½

SCHEDULE No. 17.
PROVISIONS—PLEASANT CREEK
SPECIAL SCHOOL, STAWELL.

(Delivery at the School.)
ANNEX TO CONTRACT No. 1945/1517.
S. Welsh, 23 Patrick-street, Stawell.

Sub-schedule No. 1.

BREADSTUFFS.

Security, £10.

	£	s.	d.
1. Bread—Fine wheaten, first quality	per cntl.	1	2 11
2. Flour—First quality	do.	0	18 6
3. Flour—Wheatmeal	per lb.	0	0 2

(AGREEMENT.)

John MacLeod and Co. Pty. Ltd., 122 Lydiard-street, Ballarat.

Sub-schedule No. 2.

GROCERIES.

	£	s.	d.
1. Baking Powder	per lb.	0	1 8
2. Barley—Pearl	do.	1	5 3
3. Blue—Washing	do.	0	0 11

* Supplies not available.

Sub-schedule No. 2.—continued.

GROCERIES—continued.

4. Cereal—"Wheat flakes," in 24 oz. packets	per pkt.	0	0 10½
5. Cheese—Matured	per lb.	0	1 5
6. Cocoa—in 1-lb. tins, "Gold Seal"	do.	0	1 7
7. Coffee and Chicory No. 1	do.	0	1 6
8. Corn or Maize Flour—in 1-lb. packets	do.	0	0 8
9. Curry Powder—Loose "Gold Seal"	do.	0	1 4
10. Dates	do.	*	
11. Ginger—Ground	do.	*	
12. Golden Syrup—in 2-lb. tins	per doz.	0	6 11
13. Honey, first quality	per lb.	*	
14. Jams—Assorted, of approved kinds, in proportion of half seed and half stone, in tins containing 24 oz. net, Brand, "Victoree."	per tin	0	1 1
15. Peel—Cut, Mixed	per lb.	0	0 11
16. Oatmeal	do.	*	
17. Pepper—Black, ground	do.	0	1 6½
18. Prunes—Dried, 50-60's (present season's)	do.	0	0 11½
19. Raisins—Sultana, 3 Crowns (present season's)	do.	0	0 9
20. Rice—Dressed	per cwt.	*	
21. Salt—Fine "Imperial"	do.	0	9 2
22. Pearl Tapioca	per doz.	*	
23. Soap—Preservene Foam, or equal thereto	per doz. pkts.	0	5 3
24. " "Bodyguard," or equal thereto	per cake	0	0 3
25. " "Monkey" Brand, or equal thereto, in 5-oz. tablets	per tab.	0	0 3
26. " Sand, "Pearsons"	per cake	0	0 3½
27. " "Velvet," or equal thereto	per doz. quints.	0	15 0
28. Soda—Bicarbonate of	per lb.	0	0 3
29. " Washing	per cwt.	0	12 6
30. Starch (Rice)—Brand, "Silver Star", loose	per lb.	0	0 9½
31. Tartar—Cream of—Substitute—"Actorise"	do.	0	0 10½
32. Tea—First Grade	do.	0	2 11½
33. Treacle—in 2-lb. tins	per doz.	0	6 6

ANNEX TO CONTRACT No. 1945/1518.

G. A. Waldron and Son, Hall's Gap-road, Stawell West.

Sub-schedule No. 3.

MILK.

Security, £10.

	£	s.	d.
1. Milk—Fresh and pure	per gal.	0	2 1

ANNEX TO CONTRACT No. 1945/1519. †

Ads J. West, 65 Main-street, Stawell.

Sub-schedule No. 4.

MEAT.

Security, £3.

	£	s.	d.
1. Fresh Beef—Prime ribs	per lb.	0	0 7
2. " " Sirloin	do.	0	0 8
3. " " Stewing (minced when required)	do.	0	0 6
4. Beef—Corned, Silverside	do.	0	0 7
5. Fresh Mutton—Chops (loin)	do.	0	0 7
6. " " in sides	do.	0	0 5
7. Sausages—Mixed	do.	0	0 5½
8. Frys—Lambe'	each	0	0 3
9. Tripe—Fresh	per lb.	0	0 5
10. Saveloys	per doz.	0	1 4½
11. Tongues—Ox	per lb.	0	0 7

SCHEDULE No. 18.

PROVISIONS—SUNBURY DISTRICT.

(Delivery into Institutions.)

ANNEX TO CONTRACT No. 1945/1520.

J. N. Hennessy Pty. Ltd., 55 Sydney-road, Brunswick, N.10.

Sub-schedule No. 1.

BREADSTUFFS.

Security, £112.

	£	s.	d.
1. Bread—Fine wheaten, first quality	per cntl.	0	18 0
2. Flour—First quality	do.	0	13 6

† Or 14-oz. packets, 9s. per doz.

(AGREEMENT.)
A. C. Skill, Sunbury.

Sub-schedule No. 2.

GROCERIES.

		£	s.	d.
1. Blue—Washing	per lb.	0	0	10
2. Beans—Haricot	do.	*		
3. Candles—Full weight, in 1-lb. packets, Kitchen's "Electrines", or equal thereto	per lb.	0	0	9
4. Cocoa—in 1-lb. tins or cardboard cartons	do.	0	1	0
5. Corn or Maize Flour—in packets of 1-lb. net	do.	0	0	6
6. Currants—2 Crowns (present season's)	do.	0	0	8½
7. Curry Powder	do.	0	1	5
8. Ginger—Ground	do.	*		
9. Golden Syrup—in 2-lb. tins	per tin	0	0	6½
10. Lemon Peel	per lb.	1		6
11. Mustard	do.	*		
12. Pepper—Black, ground	do.	1		6
13. Pipes—Tobacco, clay	per doz.	*		
14. Raisins—Sultana, 3 Crowns (present season's)	per lb.	0	0	9
15. Salt—Fine	per cwt.	0	6	11
16. Soda—Bicarbonate of	per lb.	0	0	3
17. " Washing	per cwt.	0	12	0
18. Spice—Mixed, loose	per lb.	0	2	0
19. Starch (Rice)—"Silver Star", loose	do.	0	0	9
20. Tartar—Cream of—Substitute, "Antelope"	do.	0	1	2
21. Vinegar—Malt	per pint	0	0	1½

Sub-schedule No. 3.

CEREALS.

1. Oatmeal	per cwt.	Purchase under Tender Board quotations.
2. Rice—Dressed to sample	do.	
3. Rice—Unpolished	do.	
4. Seed Tapioca—(Sago), to sample	do.	
5. Pearl Barley	do.	
6. Peas—Split	do.	

(AGREEMENT.)

A. C. Skill, Sunbury.

Sub-schedule No. 4.

JAMS.

		£	s.	d.
1. Jams—Assorted, in bulk, of approved kinds, in the proportion of half seed and half stone, of the best quality, in tins as required, Brand, "M.P."	per lb. actual gross weight	0	0	5½

ANNEX TO CONTRACT No. 1945/1521. †

F. Watkins Pty. Ltd., 184 Bourke-street, Melbourne, C.I.

Sub-schedule No. 5.

MEAT.

Security, £40.

		£	s.	d.
1. Fresh Beef, Forequarters	per cwt.	2	10	0
2. " Buttocks	per lb.	0	0	9
3. " Mutton	do.	0	0	6
4. Corned Beef—Rolled or Round, as ordered, without bone or cartilage	do.	0	0	8
5. Sausages—Mixed	do.	0	0	7
6. Sausage—Mince	do.	0	0	6
7. Tripe—Fresh	do.	0	0	5

SCHEDULE No. 19.

PROVISIONS—AGRICULTURE COLLEGE, LONGERENONG.

(Delivery at the College.)

ANNEX TO CONTRACT No. 1945/1522.

Ray Emanuel, trading as Perring's, 90 Firebrace-street, Horsham.

Sub-schedule No. 1.

BREADSTUFFS.

Security, £5.

		£	s.	d.
1. Bread—Fine wheaten, first quality	per centl.	1	2	11
2. Flour—First quality	do.	††		

* Supplies not available.

†† Apply Tender Board.

|| Or 22s. 6d. per cwt, in 5-cwt. drums, drums returnable.

ANNEX TO CONTRACTS No. 1945/1523.

J. Langlands and Sons Pty. Ltd., Box 42, Horsham.

Sub-schedule No. 2.

GROCERIES.

Security, £15.

		£	s.	d.
1. Bacon, Rashers, Middle—Brand, "Farmer's"	per lb.	0	1	7
2. Beans—Lima	do.	*		
3. Biscuits—Coffee, Malt or Milk Arrowroot, as ordered	do.	0	1	2
4. Blue—Washing, powdered, loose	do.	0	1	1
5. Candles—Full weight, Kitchen's "Electrines", in 1-lb. packets	do.	0	1	1
6. Cereal—"Weeties" (or equal thereto) in 24-oz. packets	per pkt.	0	0	11½
7. Cheese	per lb.	0	1	3
8. Chutney—13-oz. bottles—Brand, "Rosella"	per bot.	0	1	3
9. Cloves—Loose	per lb.	0	3	3
10. Cocoa—Bulk	do.	0	0	9
11. Coconut—Dessicated	do.	0	1	9
12. Corn or Maize Flour—Bulk	do.	0	0	9½
13. Custard Powder, in 1-lb. packets	do.	0	1	0
14. Currants—2 Crown (present season's)	do.	0	0	10
15. Curry Powder—Bulk—"Vent's"	do.	0	3	0
16. Essence—Lemon—in 8-oz. bottles	per bot.	0	5	0
17. " Vanilla—in 8-oz. bottles	do.	0	5	0
18. Flour—Self-raising Brand—in 7-lb. packets—"McAlpin's"	per pkt.	0	2	0
19. Fruits—Preserved, in 30-oz. tins (excluding Pines)—"S.P.C."	per tin	0	1	1½
20. Fish—Salmon—Fresh, in 14½-oz. tins, tall— Fancy Pink	do.	*		
Pink	do.	*		
21. Gelatine—Ground—"Davis"	per lb.	0	3	6
22. Ginger—Ground	do.	0	3	6
23. Golden Syrup, in 2-lb. tins	per tin	0	0	8
24. Honey, first quality, in 60-lb. tins	do.	2	0	0
25. Jelly Crystals, in 7-lb. packets	per pkt.	0	1	3
26. Junket Tablets	per tube	0	1	0
27. Peel—Cut, mixed	per lb.	0	1	6
28. Macaroni—bulk	do.	0	0	6
29. Matches—Safety (60 in a box)	per pkt.	0	1	6
30. Mustard	per lb.	0	3	0
31. Mustard Pickles, 20-oz. bottles—Brand, "Leggo's"	per bot.	0	1	4
32. Oatmeal—Flaked—Bulk	per lb.	*		
33. Pepper—Black, ground	do.	*		
34. Prunes—Dried, 50-60's (present seasons)	do.	0	1	2
35. Raisins—Sultanas, 3 crowns (present seasons)	do.	0	0	11
36. Rice—Ground—in lb. packet	do.	0	0	6
37. Salt—fine	do.	0	0	0½
38. " table	do.	0	0	0½
39. Sauce—Tomato—in 26-oz. bottles—Brand, "All Gold"	per bot.	0	1	11
40. Soda—Bicarbonate of	per lb.	0	0	3½
41. " Caustic	do.	0	1	3
42. " Washing	per cwt.	0	16	0
43. Soup—Tomato—in 1-lb. tins	per tin	0	1	0
44. Spaghetti	per lb.	0	0	7
45. Spice—Mixed—in ¼-lb. packets	do.	0	1	0
46. Starch—Brand, "Silver Star"	do.	0	1	0
47. Sugar—Icing	do.	0	0	6
48. Tartar—Cream of—Substitute Brand, "Antelope"	do.	0	1	3
49. Treacle—in 2-lb. tins	per tin	0	0	7½
50. Vermicelli—in 1-lb. packets	per lb.	0	0	6
51. Vinegar—Malt	per gal.	0	2	0
52. Yolking Essence (or equal thereto)—in 20-oz. bottles	per bot.	0	4	6

† Peaches, Pears, Apricots.

ANNEX TO CONTRACT No. 1945/1524.

J. Langlands and Sons Pty. Ltd., Box 42, Horsham.

Sub-schedule No. 3.

JAM.

Security, £10.

		£	s.	d.
1. Jam—Assorted, of approved kinds, in the proportion of half seed and half stone, of the best quality, in 5-lb. tins—Brand, "All Gold"	per tin	†		

See list attached.

†† Order under Melbourne District Contract.

SCHEDULE No. 20.
PROVISIONS—AGRICULTURAL COLLEGE,
DOOKIE.

(Delivery at the College.)

ANNEX TO CONTRACT No. 1945/1525.

Major Co-operative Society Ltd., Dookie.

Sub-schedule No. 1.

BREADSTUFFS.

Security, £15.

		£	s.	d.
1. Bread—Fine wheaten, first quality	per centl.	0	17	3½
2. Flour—First quality	do.	0	13	0

ANNEX TO CONTRACT 1945/1526.

W. A. Thompson, 192 High-street, Shepparton.

Sub-schedule No. 2.

GROCERIES.

(Delivery "F.O.R." Shepparton.)

Security £15.

		£	s.	d.
1. Bacon, Rashers, Middle	per lb.	0	*	
2. Baking Powder "McKenzies"	do.	0	1	6
3. Biscuits, Coffee, Malt or Milk Arrowroot, as ordered	do.	0	1	0½
4. Bon Ami—as ordered—in 12 oz. tins or cakes	per tin or cake	0	0	8
5. Blue—Washing, powdered, in 7-lb. bag	per bag	0	5	3
6. Camp Pie—in 12-oz. tins	per doz.	0	7	6
7. Candles—Full weight, Kitchen's Electrics, in 1-lb. packets	per pkt.	0	0	9½
8. Cereal—"Pipers" (or equal thereto) in 24-oz. packets	per doz.	0	10	0
9. Cinnamon	per lb.	0	2	6
10. Chutney—13-oz. bottles—Brand "Rosella"	per bot.	0	0	11
11. Cocoa—Bulk	per lb.	0	0	6½
12. Coffee Essence—in 1-gal. jar	per gal.	0	12	3½
13. Corn or Maize Flour—in 1-lb. packets	per pkt.	0	0	7½
14. Currants—2 Crowns (present season's)	per lb.	0	0	8½
15. Curry Powder—Bulk	do.	0	2	3
16. Custard Powder—in 1-lb. packets	do.	0	0	9½
17. Essence—Almond—8-oz. bottles	per bot.	0	4	2
18. " Cochineal—4-oz. bottles	do.	0	2	6
19. " Lemon—8-oz. bottle	do.	0	4	1
20. " Vanilla—8-oz. bottles	do.	0	3	6½
21. Fruits—Dried (present season's)	per lb.			*
22. " Preserved, 30-oz. tins—Peaches	per doz.	0	10	2
23. " Pears and Apricots	do.	0	10	7
24. Flour—Self Raising—Bulk	per bag	1	14	4½
25. Gravox—in 1-lb. tins	per tin	0	1	1
26. Gelatine—Ground	per lb.	0	2	9
27. Ginger—Ground	do.	0	2	0
28. Golden Syrup—in 2-lb. tins	per tin	0	0	6½

* Supplies not available.

† Containers charged for as follows:—Items 3—tins, 2s.; items 12, 48, 49, and 59, 3s. each; item 48A, 3/- per dozen; item, 59A, £3.0.0 each. Also 5s. on crates covering items 12, 48, 49, and 59. All containers credited on return in good order and condition.

Sub-schedule No. 2—continued.

GROCERIES—continued.

		£	s.	d.
29. Honey—First quality—in 60-lb. tins	per tin			*
30. Jelly Crystals—in 7-lb. pkts.	per pkt.	0	8	2
30A. Jelly Crystals in 4-oz. packets, Brand "McKenzie's"	per doz. pkts.	0	3	5
31. Junket Tablets—"Viking"	per doz. tubes	0	8	6
32. Lemon Peel—Cut	per lb.	0	1	0
33. Macaroni—Bulk, in 22-lb. boxes	per box	0	8	6
34. Margarine—Cake	per lb.	0	0	7½
35. Matches—Safoty (60 in a box)	per pkt.	0	1	2½
36. Milk—Condensed, full cream, 14-oz. tins	per doz.	0	8	6
37. Mustard	per lb.	0	2	11
38. Oatmeal—Flaked—Bulk	do.			*
39. Pepper—Black, ground	do.	0	2	0
40. Parsil—in 8-oz. pkts.	per pkt.	0	0	4½
41. Pickles—Assorted, in 20-oz. bottles	per bot.	0	0	11
42. Prunes—Dried 50-60's (present season's)	per lb.	0	1	0
43. Raisins—Sultana, 3 crowns (present season's)	per lb.	0	0	9½
44. " Seeded	do.	0	0	10½
45. Rinso—in 17-oz. pkts.	per pkt.	0	0	8½
46. Salt—Table	per lb.	0	0	2½
47. " Fine	per bag	0	8	6
48. Sauce—Tomato, in 1-gal. jars	per gal.	0	6	6½
48A. " Tomato, in 20-oz. bots., "Reeds"	per doz.	0	9	3½
49. " Worcester, in 1-gal. jars	do.	0	5	10½
50. Soda—Bicarbonate of	per lb.	0	0	2½
51. " Washing	per cwt.	0	12	6
52. Soap Flakes—in 28-lb. bags—Brand, "Sterling"	per bag	0	8	3
53. Soup—Tomato, in 20-oz. tins	per tin			*
54. Spaghetti—in 1-lb. packets	per pkt.	0	0	5
55. Spice—in ¼-lb. packets	do.	0	0	9
56. Starch—Brand, "Silver Star"	per lb.	0	0	6½
57. Tartar—Cream of—Substitute Brand, "Actorise"	do.	0	0	11
58. Treacle—in 2-lb. tins	per tin	0	0	6½
59. Vinegar—Malt	per gal.	0	1	9½
59A. " Malt, Bulk	do.	0	1	3½
60. Yolking Essence (or equal thereto)—in 8-oz. bottles	per bot.	0	1	6

ANNEX TO CONTRACT No. 1945/1527.

W. A. Thompson, 192 High-street, Shepparton.

Sub-schedule No. 3.

JAM.

Delivery "F.O.R." Shepparton

Security, £15.

1. Jam—Assorted, of approved kinds, in the proportion of half seed and half stone, of the best quality, in 5-lb. tins—Brands, "Golden Bells," "Golden Bar," or "S.P.C."	per tin	0	2	11½
---	---------	---	---	-----

.....

.....

.....

.....

.....

.....

.....

.....

.....

.....

.....

.....

.....

.....

.....

.....

.....

.....

.....

.....

.....

.....

.....

.....

.....

.....

.....

.....

.....

.....

.....

.....

.....

.....

.....

.....

.....

.....

.....

.....

.....

.....

.....

.....

.....

.....

.....

.....

.....

.....

.....

.....

.....

.....

.....

.....

.....

.....

.....

.....

.....

.....

.....

.....

.....

.....

.....

.....

.....

.....

.....

.....

.....

.....

.....

.....

.....

.....

.....

.....

.....

.....

.....

.....

.....

.....

.....

.....

.....

.....

.....

.....

.....

.....

.....

.....

.....

.....

.....

.....

.....

.....

.....

.....

.....

.....

.....