

[4251]



VICTORIA
GOVERNMENT GAZETTE.

Published by Authority.

[Registered at the General Post Office, Melbourne, for transmission by post as a newspaper.]

No. 679]

WEDNESDAY, JUNE 30.

[1948

CONTRACTS ACCEPTED.

(SERIES 1948-49.)

SUPPLY OF PROVISIONS

FOR

STATE DEPARTMENTS

FROM

1st JULY, 1948, to 30th JUNE, 1949,
or as stated.

Conditions of Contract and Stipulations are shown herein for the guidance
of Officers ordering and receiving supplies.

W. H. RUTHERFORD,
Secretary to the Tender Board.

CONTRACTS ACCEPTED—(Series 1948-49.)

PROVISIONS.

No. of Contract.	Particulars of each Tender Accepted.	Amount.	Name of Contractor or Supplier.	Charge against Vote or Fund.
PROVISIONS—				
Supply of Provisions, in such quantities as may be ordered, from 1st July, 1948, to 30th June, 1949, or as stated.				
Schedule No. 1.—Melbourne District—				
1	Bread, Kew Mental Hospital	Rates as per annex	The Northcote Vienna Bakery Pty. Ltd.	
2	Bread, Melbourne, Royal Park, and Travancore Developmental Centre, Flemington	Ditto	D. H. E. Bessell	
3	Bread, Teachers' College, and Hostel, Carlton	Ditto	O. H. Tuck	
4	Flour	Ditto	Pirrie Bros.	
..	Groceries	Ditto	<i>Moran and Cato Pty. Ltd. (A)</i>	
..	Cereals	Purchase under Tender Board quotations	
5	Jams	Rates as per annex	Model Preserving Co. Pty. Ltd.	
6	†Meat, Kew Mental Hospital	Ditto	F. Watkins Pty. Ltd.	
7	†Meat, Pentridge Penal Establishment	Ditto	F. Watkins Pty. Ltd.	
8	†Meat, Children's Welfare Depot, Royal Park, and Police Hospital	Ditto	J. H. Cooke Pty. Ltd.	
9	†Meat, Royal Park Mental Hospital and Receiving House	Ditto	J. H. Cooke Pty. Ltd.	
..	Soap Mixtures	Ditto	<i>Moran and Cato Pty. Ltd. (A)</i>	
10	Tea and Coffee	Ditto	Henry Berry and Co. (A'sia.) Ltd.	
..	Potatoes	Purchase under Tender Board quotations	
Schedule No. 2.—Mont Park; Sanatorium, Groswell, &c.—				
11	Bread	Rates as per annex	E. J. Callander	
..	Groceries	Ditto	<i>Henry Berry and Co. (A'sia.) Ltd. (A)</i>	
12	Jams	Ditto	Model Preserving Co. Pty. Ltd.	
13	†Meat	Ditto	W. Angliss and Co. (Aust.) Pty. Ltd.	
..	Potatoes	Purchase under Tender Board quotations	
Schedule No. 3.—SS. Rip and Dredges—				
..	Bread	Purchase by agreement	
..	Groceries	Rates as per annex	<i>Henry Berry and Co. (A'sia.) Ltd. (A)</i>	
14	†Meat	Ditto	J. H. Cooke Pty. Ltd.	
..	Vegetables	Purchase by agreement	
..	Potatoes	Purchase under Tender Board quotations	
Schedule No. 4.—Teachers' College, Carlton—				
..	Groceries	Rates as per annex	<i>Moran and Cato Pty. Ltd. (A)</i>	
15	Jams	Ditto	Model Preserving Co. Pty. Ltd.	
16	†Meat (also for Travancore Developmental Centre, Flemington)	Ditto	J. H. Cooke Pty. Ltd.	
..	Potatoes	Purchase under Tender Board quotations	
Schedule No. 5.—Ararat District—				
17	Breadstuffs	Rates as per annex	Mark Forsyth Pty. Ltd.	
..	Groceries	Ditto	Ditto	
..	Jams	Ditto	} <i>John MacLeod and Co. Pty. Ltd. (A)</i>	
18	Meat	Ditto	A. I. Ahpee	
..	Potatoes	Purchase under Tender Board quotations	
Schedule No. 6.—Ballarat District—				
19	Breadstuffs	Rates as per annex	Brogden Bros.	
..	Groceries	Ditto	Ditto	
..	Jams	Ditto	} <i>John MacLeod and Co. Pty. Ltd. (A)</i>	
20	†Meat	Ditto	H. J. Symons Pty. Ltd.	
..	Potatoes	Purchase under Tender Board quotations	
Schedule No. 7.—Beechworth District—				
21	Bread	Rates as per annex	P. A. Taylor	
..	Groceries	Ditto	Ditto	
..	Jams	Ditto	} <i>Moran and Cato Pty. Ltd. (A)</i>	
22	†Meat	Ditto	E. Spencer	
..	Potatoes	Purchase under Tender Board quotations	

Contingencies, 1948-49

Names shown in italics denote Suppliers under agreement. † Contract for period 1st July, 1948, to 30th September, 1948, only.

CONTRACTS ACCEPTED—(Series 1948-49)—continued.

PROVISIONS—continued.

No. of Contract.	Particulars of each Tender Accepted.	Amount.	Name of Contractor or Supplier.	Charge against Vote or Fund.
<i>PROVISIONS—continued.</i>				
Schedule No. 8.—Castlemaine District—				
23	Bread	Rates as per annex	Rasmussen Bros.	
24	†Meat	Ditto	Ewings, "W.K. & H.S."	
..	Potatoes	Purchase under Tender Board quotations	
Schedule No. 9.—School of Forestry, Creswick—				
25	Breadstuffs	Rates as per annex	R. C. Bowley	
..	Groceries	Ditto	<i>J. Tait and Son (A)</i>	
26	Milk	Ditto	E. J. Keen	
27	†Meat	Ditto	H. J. Symons Pty. Ltd.	
Schedule No. 10.—McLeod Settlement, French Island—				
28	Bread	Rates as per annex	H. H. Bird	
..	Groceries	Ditto	<i>A. G. Glasscock (A)</i>	
29	†Meat	Ditto	L. G. Male	
..	Potatoes	Purchase under Tender Board quotations	
Schedule No. 11.—Heatherton Sanatorium, Cheltenham—				
30	Bread	Rates as per annex	Cormick Bros.	
..	Groceries	Ditto	<i>Moran and Cato Pty. Ltd. (A)</i>	
31	†Meat	Ditto	W. Angliss and Co. (Aust.) Pty. Ltd.	
32	Milk	Ditto	Moule's Model Dairy	
Schedule No. 12.—Sanatorium, Greenvale—				
33	Breadstuffs	Rates as per annex	D. H. E. Bessell	
..	Groceries	Ditto	<i>Henry Berry and Co. (A'sia.) Ltd. (A)</i>	
34	†Meat	Ditto	F. Watkins Pty. Ltd.	
..	Potatoes	Purchase under Tender Board quotations	
Schedule No. 13.—Cooriemungle Prison Camp Heytesbury Forest—				
..	Bread	Rates as per annex	<i>Steele and Webster (A)</i>	
..	Groceries	<i>M. L. Hose (A)</i>	
35	†Meat	Rates as per annex	S. G. and R. J. Lambert	
Schedule No. 14.—Aboriginal Station, Lake Tyers—				
36	Breadstuffs	Rates as per annex	R. Hodder	
..	Groceries	Ditto	} <i>R. Hodder (A)</i>	Contingencies, 1948-49.
..	Jams	Ditto	
Schedule No. 15.—Experiment Farm, Rutherglen—				
37	Bread	Rates as per annex	A. F. Parrott	
..	Groceries	Ditto	<i>Aitken and Fullerton (A)</i>	
Schedule No. 16.—Sale Gaol—				
38	Bread	Rates as per annex	F. J. Hennessy	
39	†Meat	Ditto	H. L. G. Laws	
Schedule No. 17.—Pleasant Creek Special School, Stawell—				
40	Breadstuffs	Rates as per annex	E. J. and R. Welsh	
..	Groceries	Ditto	<i>John MacLeod and Co. Pty. Ltd. (A)</i>	
41	Milk	Ditto	G. A. Waldron and Son	
42	†Meat	Ditto	Ada J. West	
..	Potatoes	Purchase under Tender Board quotations	
Schedule No. 18.—Sunbury District—				
43	Breadstuffs	Rates as per annex	D. H. E. Bessell	
..	Groceries	Ditto	<i>J. E. Marks (A)</i>	
..	Cereals	Purchase under Tender Board quotations	
..	Jams	Rates as per annex	<i>J. E. Marks (A)</i>	
44	†Meat	Ditto	F. Watkins Pty. Ltd.	
..	Potatoes	Purchase under Tender Board quotations	
Schedule No. 19.—Agricultural College, Longerenong—				
45	Breadstuffs	Rates as per annex	Omant Bros.	
..	Groceries	Ditto	} <i>J. Langlands and Sons Pty. Ltd. (A)</i>	
..	Jam	Ditto	
..	Potatoes	Purchase under Tender Board quotations	
Schedule No. 20.—Agricultural College, Dookie—				
46	Breadstuffs	Rates as per annex	L. G. Clark	
..	Groceries	Ditto	} <i>W. A. Thompson (A)</i>	
..	Jam	Ditto	
Schedule No. 21.—Geelong District—				
47	Bread	Rates as per annex	J. A. Fitzgerald	
48	†Meat	Ditto	O'Brien's Butchery	

Names shown in italics denote Suppliers under agreement. † Contract for period 1st July, 1948, to 30th September, 1948, only.

Approved—T. T. HOLLWAY, Treasurer, 24/6/1948.

CONDITIONS OF CONTRACT FOR PROVISIONS, 1948-49, ETC.

(Published in the *Victoria Government Gazette* No. 406, dated 5th May, 1948, pages 2882 to 2884.)

1. All the articles are to be of the best quality of the several kinds, in the best condition, and in conformity with the Health Acts, and to be delivered in sound packages, free from all charges for cartage, freight, &c. The goods shall be delivered as may be directed by the officer ordering the supply.
2. As the exact quantity of any article which may be required cannot be stated, the estimate being approximate only, the Government will not be bound by the quantity stated in the schedule, but will be at liberty to order more or less, according to circumstances, and the contractor will be bound to supply the same as ordered.
The Government reserves the right to purchase otherwise than from the contractor any of the articles specified in the schedule in the event of emergency due to the war.
3. Supplies for country districts for which no local contract may have been taken, or for which the contract has been terminated, may be ordered under the Melbourne contract.
4. The Melbourne District will include places within a radius of 6 miles from the Elizabeth-street Post Office, with the exception of places for which separate contracts are provided; the Mont Park District will include the Mental Hospitals, Janefeld Colony, and the Sanatorium, Gresswell; the Ararat, Ballarat, Beechworth, and Sunbury Districts will include the Mental Hospitals, Gaols, and Police Gaols at those places; and the Castlemaine District will include the Reformatory Prison. Delivery must be made at the places, institutions, &c., named in the schedules, or as directed by the officer ordering the supply.
5. Packages suitable for transport of goods supplied must be provided by the contractor free of expense, and the value of these packages, whether in bulk or otherwise, is to be included in the rate tendered, except butter boxes and soap boxes (not including fancy soaps), jam jars, flour, meal, and potato bags, which will remain the property of the contractor, and only the actual net weight or quantity received will be paid for; the empties to be removed from the place of delivery at the contractor's expense.
6. The meat supplied under these conditions must, if practicable, be slaughtered at abattoirs which are under authorized inspection and supervision. Any infringement of this condition will subject the contractor, on report from the Tender Board, to such mulct, not exceeding Fifty pounds, as the Treasurer may direct, and the amount will be deducted from the contractor's account, or from the security money.
7. The supplies coming under the head of Rations and Medical Comforts are to be delivered direct to the establishment entitled thereto on the written order of the officer in charge. All other supplies will be ordered by the head of the Department concerned or any officer authorized by him, and shall be delivered as may be directed by the officer ordering the supply.
8. At the time of delivering the supplies, the contractor shall produce the order for the same to the officer authorized to accept delivery, and such officer shall acknowledge thereon the receipt of the stores accepted, and shall return the order to the contractor, who shall render his account as soon as possible after the delivery of the supplies, accompanied by the receipted delivery order. The rates or quantities quoted in the orders cannot be exceeded.
9. Where practicable, the contractor shall use the Railways for the transport of the goods. When a contractor is required to make delivery of goods at a railway station for transmission by rail, except for Commonwealth Departments, he shall obtain a receipt for the goods in duplicate on the Stores and Transport consignment note, at the same time handing in the triplicate and quadruplicate of the form as an authority for the Railways to act as agent for, and charge the freight to, the Stores and Transport Office. He shall as soon as possible, and not later than twenty-four hours thereafter, deliver at the Tender Board Offices the original, the duplicate to be forwarded to the consignee and the quintuplicate retained by himself. Should the goods thus forwarded be rejected, the contractor must bear the cost of replacing such goods, for which services the departmental consignment note is not to be used. Any infringement of this condition may subject the contractor to such mulct as the Tender Board may recommend under clause 18 of these conditions.
10. Orders must receive prompt execution; in the event of the goods not being delivered at the time mentioned in the order or within such other time as the officer ordering the supply may specify for delivery, it will be competent for such officer, or the head of the Department to whom the goods are to be supplied, on giving the contractor twenty-four hours' notice, to purchase the supplies, or any like supplies that are suitable for the service, at the contractor's risk, and the extra expense incurred over and above the contract price (if any) will be deducted from the contractor's account or from the security money.
11. The acceptance of the supplies shall be subject to the approval of the officer authorized to take delivery of the stores, or such other officer as shall be named in the conditions.
12. If the officer in charge of stores be not satisfied as to the quantity or quality of the stores, or if, after taking delivery of any stores or material, he shall discover any deficiency or defect therein, he may return such deficient or defective stores or material to the contractor, and shall report the same to the head of his Department and to the Tender Board.
13. In the event of a difference of opinion between the contractor and the officer receiving the supplies as to the quality, the same is to be decided, in cases where the article is not of a perishable nature, by a Board of Survey composed of persons named by the Treasurer of the State for the time being; and the decision of the Board is to be considered final. In the event of the decision being against the contractor, the survey fees and expenses (if any) will be deducted as in clause 10.
14. In cases where the article is of a perishable nature, or when from some other cause injury would be sustained either by the person to whom the rations or stores are due or by the contractor in waiting for a Board to survey, the head of the Department or officer authorized to take delivery will have power to reject such article or articles as are obviously of inferior quality, it being understood that he will be responsible to the Government for so doing, and that the contractor must take back the rejected article and supply good in its stead; failing which it, or any like supply suitable for the Service, will be obtained by the officer requiring it as in clause 10. In case of the rejection or return of any supplies, the contractor shall bear the whole cost of replacing the supplies so rejected or returned.
15. If the Board shall decide that the article is not of proper quality it must be immediately replaced by the contractor; failing which it, or any like supply suitable for the Service, will be procured by the officer requiring it, and the expense charged as in clause 10.
16. In the case of supplies for Mental Hospitals, it will be competent for a Board of Survey, consisting of the medical superintendent (or, in his absence, of the medical officer) and any two officers named by him, to examine and reject any supplies that may be objected to. It must be distinctly understood, however, that the contractor will have a right of appeal to the Treasurer of the State for the time being, such appeal to be made in writing within 24 hours of the rejection; but, pending such appeal, he must at once supply others of approved quality; failing which, the supplies required, or any like supplies suitable for the Service, may be obtained by the officer concerned, and the expense charged as in clause 10.
17. In the case of supplies for Mental Hospitals, it will also be competent for two or more of the official visitors, in conjunction with the medical superintendent, to reject any supplies that they may consider not in accordance with contract; and in such cases the reference to a Board of Survey will not be deemed to be necessary.
18. A refusal to execute orders, irregularity in the quantity or quality of the supplies, or delay in delivering or replacing them when required, will subject the contractor, upon report from the Tender Board, to such mulct, not exceeding Fifty pounds, as the said Treasurer may direct, and the amount may be deducted as in clause 10. It will also be in the power of the said Treasurer, upon such refusal, irregularity, or delay, to terminate the contract forthwith, and forfeit the whole or any part of the security money; and, in addition, the contractor will be disqualified from tendering or holding any future contract or contracts for a period of twelve months from the date of such disqualification.
19. Contractors are not at liberty to transfer their contracts under cover of power of attorney, coupled with an interest or otherwise, and no such transfer will be recognized by the Government. *If it is found during the currency of the contract that the contractor has not conformed to the condition of advertisement—which stipulates that if a tenderer be a member of a firm and such firm be interested in the contract, the tender shall be in the name of the firm and not in that of the individual—then the Treasurer may, on the recommendation of the Tender Board, determine the contract, and forfeit the security money.*
20. It will be competent for the Tender Board to terminate the contract, without notice, should there be reason to know

that the contractor takes advantage of his contract to communicate with a prisoner.

21. The contract entered into under these conditions is not to be considered as being broken, infringed, or vitiated by the importation of stores for the Government service, or by any contracts or purchases made by the Imperial Commissariat; or by the consumption of the produce or surplus stock of any Government establishment, or by any article being made at and supplied for the use of any Government establishment.

22. Notwithstanding anything contained to the contrary in section 152 of the *Customs Act* 1901-36, it is hereby expressly provided that upon any alteration of the duty collected affecting the goods included in this contract, the contract price shall not be altered, and the contract may be terminated at the option of either party by two months' notice in writing from the first day of the calendar month next ensuing,

and within the period for which the contract is made. The contract for the unaffected items shall remain in full force and effect. Any notice to be served under this condition shall be deemed to have been duly served if sent to the contractor in a registered letter to his last-known place of business or abode.

23. Under no circumstances other than those mentioned in clause 22 will a contractor be permitted to abandon his contract. In the event of the contractor failing to carry on the contract, the contract security money will in that case be absolutely forfeited; and, in addition, the contractor will be held liable for any loss which the Government may sustain in consequence of such failure.

24. For the purposes of these contracts the word "Government" shall mean the Government of the State of Victoria; and the word "Treasurer" shall mean the Treasurer of the said State.

STIPULATIONS FOR SUPPLIES OF PROVISIONS.

SUPPLIES GENERALLY.

For supplies under all sub-schedules, particular attention is drawn to clause 1 of the Conditions of Contract as to quality.

No sub-letting is allowed, and all work must be carried out by the contractor.

Where practicable, all items must be manufactured or prepared within the Commonwealth.

Where no brand of Commonwealth manufacture or production is specifically set out in the respective sub-schedules, such Commonwealth brand as may be ordered must be supplied.

For Schedule No. 3 supplies must be delivered when ordered and, in cases of emergency, on Sundays, holidays, or half-holidays, as required.

BREAD AND FLOUR.

A sample of the best ordinarily retailed to the public will be considered as a test loaf for first quality for fine wheaten and pure wheaten Meal Bread. *Pure wheaten Meal Bread of first quality may be substituted, wholly or in part, for fine wheaten Bread at such times and in such quantities as, in the opinion of the Medical Superintendent, may be deemed necessary, and the contractor will be required to supply such Bread at the contract rate. Reasonable notice, however, of the intention to substitute wheaten Meal Bread must be given to the contractor by the officer ordering the supply.* Bread may be baked at any Government establishment without infringing these contracts. At the Gaols, Ballarat, Beechworth, Castlemaine, and Sale, and the Coorie-mungle Prison Camp, if required, bread must be supplied one day old, due notice to be given to the contractor of such requirement.

In the event of bread being made at any Government establishment in the Melbourne District during the currency of these contracts, the flour required will be drawn under the flour sub-schedule.

Flour for Districts for which no local contracts have been taken may be ordered under the Melbourne District contract, for delivery f.o.r. Melbourne.

GROCERIES.

As a guarantee of quality, Rice, when ordered in quantities of 50 lb. and over, must be supplied in original bags as delivered by the miller or dresser. Such bags must be branded "Rice, Dressed" or "Unpolished," and shall also have stencilled thereon the miller or dresser's name and the distinguishing mark indicative of the quality or grade. The bags thus stencilled shall contain Rice milled or dressed by the miller or dresser whose name appears thereon. Supplies not in conformity with the foregoing condition will be rejected.

Oatmeal must be supplied in original bags as delivered by millers.

Candles, except those for prison cells, must be supplied in 1-lb. packets. Candles for prison cells must be delivered in boxes containing from 25 to 50 lb. per box, the boxes for which must be legibly stencilled on one end showing the estimated burning time and the gross, tare, and net weight of contents.

The soap supplied must be hard throughout, ready for immediate use without waste, and shall have been manufactured at least seven weeks before leaving contractor's hands.

Raisins and currants must be present season's, and where the quantity admits, be supplied in original and unopened boxes, labelled as packed.

For Schedule No. 3 a certain quantity of Biscuits and Preserved Meats are sometimes required in lieu of fresh bread and fresh meat, and are included to meet such contingency only.

OATMEAL, RICE, SEED TAPIOCA, ETC.

Supplies of these items for Districts for which no local contracts have been taken may be ordered under the Melbourne District contract, for delivery f.o.r. Melbourne.

BUTTER AND CHEESE.

All supplies of 50 lb. or multiples of 50 lb. must be supplied in boxes as originally packed. The boxes must bear the impress stamp of the creamery where the butter is produced, otherwise it will not be accepted. All supplies must be in new boxes.

Where the Store or Butter Factory of the Contractor is situated in the Metropolitan area all Butter to the quantity of 50 lb. and over to be supplied in any one consignment under this contract shall before despatch from the Store or Factory be first examined and passed by the Government Butter Grader, for and on behalf of the officer authorized to accept delivery. The boxes containing butter so examined and found satisfactory in quality and description will be stamped by the Government Butter Grader and the date of such examination marked thereon. No butter from a contractor located in the Metropolitan Area will be accepted unless the boxes bear the stamp of the Grader. For the purposes of the foregoing condition the Metropolitan Area is defined as being not outside the radius visited by the Government Grader. The officer authorized to accept delivery may, within 48 hours of the receipt of any supply, require the Contractor to have same re-examined by the Grader, and, if not passed by him, it shall be returned to the Contractor, who shall forthwith replace the same with freshly-examined butter.

No Butter *ex Cool Store* will be examined by the Grader until thermally it is in suitable condition therefor.

Where the Store or Factory from which the Butter is despatched is not within the area visited by the Grader a sample of any supplies may be forwarded to the Government Butter Grader for examination, should the supply be considered by the Officer authorized to accept delivery as not being equal in quality or description to that contracted for.

The Cheese supplied must be first-class quality, semi or fully matured, as ordered, and not less than 3 months old. If the quantity admits, it shall be boxed for transport.

JAM.

The weight stamped on the tins in accordance with the regulations under the Commerce Act, as indicating the *minimum* net quantity that each tin contains, shall for the purpose of this contract be taken as the actual contents when computing the quantity supplied.

When Jam is supplied in jars the jars remain the property of the contractor, and must be removed by the contractor at his own expense when empty.

SOAP AND SOAP MIXTURES.

Supplies of these items for Districts for which no local contracts have been taken may be ordered under the Melbourne District contract, for delivery f.o.r. Melbourne.

MEAT.

All meat supplied under this contract shall have been slaughtered in Victoria and shall be freshly killed, well-conditioned, of good quality, healthy, clean, wholesome, free from bone-taint, putrefaction or fly larvae, and shall not have been frozen.

The beef shall be of ox not under three nor more than six years old or heifer or cow not under three nor more than five years old. Carcass beef for Mental Hospitals shall be delivered in quarters of equal proportions of hinds and fores and the corresponding hinds and fores must be supplied, also extra buttocks separately when ordered. Meat for other Institutions shall be supplied as ordered. Where hindquarters or buttocks are ordered 9 inches shall be cut off from the end of the leg

from the hock upwards, i.e., the end of the leg from which the shank has been removed at the abattoirs; when forequarters form a portion of the supply, 8 inches from the end of the neck and the whole of the shin at the clodbone joint shall be removed. The sticking pieces also shall be trimmed off and the point and end of the brisket rendered free from blood and blood stains.

The mutton shall be wether or maiden ewe not more than four years old and the weight of a carcass shall be not less than 40 lb. nor more than 60 lb. The mutton shall be delivered in sides when so ordered.

Corned Beef (rolled or round as ordered) shall be supplied without bone or cartilage and will be received whether pumped or prepared in the ordinary way of pickling but, in the former case, it shall have been soaked, after pumping, for at least 48 hours in a good pickle and then thoroughly drained before supply. No flank, chuck, sticking-piece, shin, leg of beef, or piece under 7 lb. will be received.

Meat derived from the carcasses of Bulls, Stags or Rams or meat containing an undue proportion of bone or fat will not be received and shall not be tendered for delivery. Net weight only will be paid for.

In cases of emergency, or on such other occasions as in the opinion of the Director of Mental Hygiene or Heads of other Institutions may seem advisable, other forms of meat, such as Rabbits, Tinned Meats, &c., may be purchased, apart from the contract, in lieu of the meat specified in the Schedule, and substituted therefor, provided 24 hours' notice—except in cases of emergency—be given to the Contractor of such intention.

The parts to be removed by the contractor are indicated in the shaded portion of the annexed diagram. This work shall be carried out in the factory or shop of the Contractor, except those parts usually removed at the abattoirs.

With respect to the schedules enumerated hereunder, the following stipulations shall also apply:—

For sub-schedules 9 and 10 of Schedule No. 1, fresh beef shall be supplied, as ordered, from ribs, sirloin, and thick flanks and for Schedule No. 2, from prime ribs, sirloin, and

thick flanks; ribs of beef to be cut clear of the plate bone, and sirloin to be cut clear of the wing ribs; excess of brisket or thin flank will be rejected. Mutton must be delivered in sides when so ordered; all kidney fat to be removed.

For Schedules Nos. 1 (sub-schedules 9 and 10) 3, 4, 9, 11, 12, 13 and 17, chuck ribs of Beef, i.e., 1st to 4th inclusive will not be accepted.

For Schedules Nos. 4, 11, 12 and 17, fresh Beef must be supplied, as ordered, from prime ribs or sirloin; ribs of Beef to be cut clear of the plate bone, and sirloin to be cut clear of the wing ribs; excess of brisket or flank will be rejected.

TEA AND COFFEE.

Tea and Coffee for Districts for which no local contracts have been taken may be ordered under the Melbourne District contract, for delivery f.o.r. Melbourne.

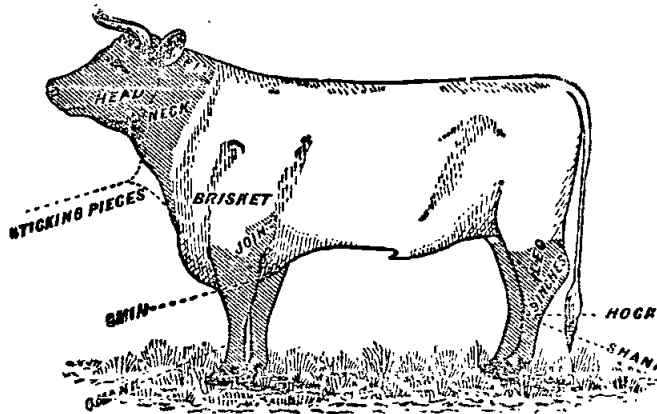
MILK.

The milk must be fresh, pure, and of the best quality, and subject to test when required by the Department, and supplied at such times as the Department may require. Should the contractor fail to supply at the time specified in the order or at such times as may be indicated in any general notice to the contractor his contract may be cancelled forthwith and his security forfeited, or should the supply prove to be not of contract quality it will be rejected, and any expense incurred will be charged to the contractor.

POTATOES.

Potatoes to be dry and free from dirt. Contractors to take back all rejected before being cooked. Bags to remain the property of the contractor. Weight of bags (approx. 2½ lb.) to be deducted.

If the price of potatoes becomes abnormally high, the heads of the various departments concerned may, if they think fit, cause rice or any other suitable food to be occasionally substituted in lieu thereof.



ANNEX TO CONTRACT No. 1948/8.†

F. Watkins Pty. Ltd., 184 Bourke-street, Melbourne, C.I.

Sub-schedule No. 7.

MEAT FOR MENTAL HOSPITAL, KEW.
Security, £35.

			£	s.	d.
1. Fresh Beef—Fore-quarters	per lb.	0	0	5½
2. " " Buttocks	do.	0	0	8
3. Corned Beef—Rolled or round, as ordered, without bone or cartilage	do.	0	0	10
4. Fresh Mutton	do.	0	0	6
5. " " Suet—Kidney	do.	0	0	5
6. Sausage Meat	do.	0	0	5½
7. Brains	per set	0	0	3
8. Sausages—Mixed	per lb.	0	0	8
9. Tripe—Fresh	do.	0	0	4

ANNEX TO CONTRACT No. 1948/7.†

F. Watkins Pty. Ltd., 184 Bourke-street, Melbourne, C.I.

Sub-schedule No. 8.

MEAT FOR PENAL ESTABLISHMENT (PENTRIDGE), FEMALE PENITENTIARY, AND METROPOLITAN GAOL (OOBURG).
Security, £35.

			£	s.	d.
1. Fresh Beef—Fore-quarters	per lb.	0	0	5½
2. Fresh Mutton (whole sheep)	do.	0	0	6½
3. Sausages—Mixed	do.	0	0	8
4. Liver—Calves	do.	0	0	5
5. Fresh Suet—Kidney	do.	0	0	5
6. Dripping—Beef	do.	0	0	6
7. Sausage Meat	do.	0	0	5
8. Tripe—Fresh	do.	0	0	4
9. Beef—Minced	do.	0	0	7

ANNEX TO CONTRACT No. 1948/8.†

J. H. Cooke Pty. Ltd., 378 Queen's-parade, Clifton Hill.

Sub-schedule No. 9.

MEAT FOR POLICE HOSPITAL, ST. KILDA-ROAD, CHILDREN'S WELFARE DEPOT, ROYAL PARK.
Security, £3.

			£	s.	d.
1. Fresh Beef	per cwt.	3	2	6
2. " " Mutton	do.	2	14	2
3. Steak—Rump	per lb.	0	1	8
4. " " Stewing	do.	0	0	10
5. Beef—Corned Silverside	do.	0	1	0
6. Fresh Mutton—Loin	do.	0	0	11
7. " " Leg	do.	0	0	10
8. " " Cutlets	do.	0	1	0
9. Chops—Mid. Loin	do.	0	1	0
10. Shanks—Sheep's	do.	0	0	5
11. Sausages—Mixed	do.	0	0	8
12. Tripe—Fresh	do.	0	0	5
13. Frye—Lambs'	do.	0	0	6
14. Ox Tails	do.	0	0	8
15. Sausages—Beef, German	do.	0	0	8
16. " " Strasburg, Pork	do.	0	1	0
17. Rabbits—Fresh	do.	0	0	9½
18. Frankfurts	per bdl.	0	0	10

ANNEX TO CONTRACT No. 1948/9.†

J. H. Cooke Pty. Ltd., 378 Queen's-parade, Clifton Hill.

Sub-schedule No. 10.

MEAT FOR RECEIVING HOUSE AND MENTAL HOSPITAL, ROYAL PARK.
Security, £10.

			£	s.	d.
1. Fresh Beef	per cwt.	3	2	6
2. " " Buttocks	do.	3	2	6
3. " " Mutton	per lb.	0	0	6½
4. Corned Beef—Rolled or round, as ordered, without bone or cartilage	do.	0	0	7½
5. Fresh Suet—Kidney	do.	0	0	5
6. Sausages—Mixed	do.	0	0	8

(AGREEMENT.)

Moran and Cato Pty. Ltd., 277 Brunswick-street, Fitzroy, N.6.

Sub-schedule No. 11.

SOAP MIXTURES.
(Of Commonwealth Manufacture.)

			£	s.	d.
1. Antiseptic—Liquid, of approved make, in 4-gal. tins	per gal.	0	2	9
2. Extract of—Kitchen's—or equal, Bulk	per lb.	*		
3. Household—Dry, equal to Kitchen's "Best Brown" Brand	per cwt.	*		
4. Lifebuoy	per doz.	0	3	4
5. "Lux" or "Merino," as ordered, in bulk	per lb.	*		

* Supplies not available.

†† Bag, 150-lb.

φ Market rates, plus 1d. per lb.

††† Apply Tender Board.

§ Charge for tins, 4s. each

⊙ Charge for tins 2s. 0d. each.

|| Charge for jars 1s. each.

Sub-schedule No. 11—continued.

SOAP MIXTURES—continued.

			£	s.	d.
6. "Monkey Brand"—or equal thereto, in tablets of 5 oz. each	per doz.	0	3	4
7. Sand—Borax, 12-oz. blocks, of approved brand	per doz.	*		
8. Sand—Carbolic, 12-oz. blocks,—unwrapped "Letric"	per doz.	0	2	9
9. Soft—Genuine Potash, best amber, 40-lb. tins	per tin	1	2	6
10. Toilet—"Bath," in 4-oz. tablets, Kitchen's, or equal thereto	per doz.	0	2	7½
11. Toilet—Carbolic, in 4-oz. tablets, Kitchen's, or equal thereto	do.	*		
12. Toilet—"Astola," in 6-oz. tablets, Kitchen's, or equal thereto	do.	0	3	5½
13. "Velvet"—or equal thereto	per doz.	0	4	6½

ANNEX TO CONTRACT No. 1948/10.

Henry Berry and Co. (A/asia) Ltd., 568 Collins-street, Melbourne, C.I.

Sub-schedule No. 12.

TEA AND COFFEE.

Security, £250.

			£	s.	d.
1. Tea—To sample	per lb.	0	4	7½
2. Coffee—Fresh roasted, and whole, beans to be thoroughly sound—To sample	do.	0	1	10

SCHEDULE No. 2.

PROVISIONS—MONT PARK, SANATORIUM, GRESSWELL, ETC.

(Delivery at the Mental Hospital, Mont Park, to depots as required, the Repatriation Mental Hospital, Bundoora, Janefield Colony and Sanatorium, Gresswell.)

ANNEX TO CONTRACT No. 1948/11.

E. J. Callander, 597 High-street, Preston, N.18.

Sub-schedule No. 1.

BREADSTUFFS.

Security, £190.

			£	s.	d.
1. Bread—Fine wheaton, first quality	per cwt.	1	2	11
2. " " Raisin, " "	do.	2	2	8½
3. Flour—First quality	do.	φ		

¶ Order under Melbourne District Contract.

(AGREEMENT.)

Henry Berry and Co. (A/asia) Ltd., 568 Collins-street, Melbourne, C.I.

Sub-schedule No. 2.

GROCERIES.

			£	s.	d.
1. Bacon—In sides	per lb.	φ		
2. Beans—Haricot	do.	0	0	9
3. " " Butter	do.	0	0	9½
4. Blue—Washing—1 oz. Knobs "Reckitts"	per doz.	0	1	1
5. Biscuits—Coffee, Malt, Milk Arrowroot, or equal, as ordered	per lb.	0	1	0
6. Camp Pie—in 12-oz. tins	per doz.	0	8	4
7. Candles (full weights)—Kitchen's "Electrics," or other make of equal quality in 1-lb. packets	per lb.	0	1	0½
8. Cereal, in 24-oz. packets, "Malties"	per pkt.	0	0	11½
9. Cinnamon	per lb.	0	2	6
10. Cocoa, in 1-lb. cardboard cartons	do.	0	1	8
11. Coconut—Desiccated	do.	0	2	7½
12. Coffee Essence—Brand, "Bluestripes"— { in 8oz. bots. per bot. 0 0 11½ { in ½-gal. jars per jar 0 5 6	per lb.	0	0	7½
13. Corn or Maize Flour—in 1-lb. packets, Brand, "Kream"	per lb.	0	0	6
13A. Corn or Maize Flour, loose	do.	0	0	9½
14. Currants—2 Crowns (present season's)	do.	0	1	2
15. Curry Powder—Brand, "Atlas"	per doz.	0	9	8
16. Custard Powder—1-lb. packets	per doz.	0	9	8
17. Dates—Fresh, loose	per lb.	*		
18. Essence of Vanilla—in full 20-oz. bottles	do.	0	7	0
19. Flour—Self-raising, Brand, "Cookwell"	per bag	1	16	2½
20. Fruits, Dried (present season's)	do.	††		
21. Fruits—Preserved, assorted, in 1-lb. 14-oz. tins (excluding Pines)	per tin	††		
22. Gelatine—Ground	per lb.	0	2	7½

Sub-schedule No. 2—continued.

GROCERIES—continued.		£	s.	d.
23. Ginger—Ground	per lb.	0	1	9
24. Golden Syrup—in 2-lb. tins	per ctn.	0	14	0½
25. Herrings } 14-oz. tins, Fresh	per doz.	0	19	8½
	tins			
in Tomato Sauce	do.	1	0	1
26. Honey, first quality	per lb.	*		
27. Jelly Crystals—in 4-oz. packets "Invicta"	per gross	2	5	0
	packets			
28. Junket Tablets, "Berry's"	per tube	0	0	6½
29. Lemon Peel—cut	per lb.	0	0	10½
30. Macaroni in 22-lb. boxes	per box	0	8	10
31. Mustard	per lb.	0	2	6
32. Nutmeg—Whole	do.	0	4	2
33. Pepper—Black, ground	do.	0	3	1
34. Pickles—Assorted, 20-oz. bottles	per doz.	0	12	9
35. Pipes—Tobacco, clay	do.			*
36. Prunes—Dried, 50-60's (present season's)	per lb.	0	0	11½
37. Raisins—Lexias, 4 Crowns (present season's)	do.	0	0	8½
38. " Sultana, 3 Crowns (present season's)	do.	0	0	10½
39. Rice—Ground	do.	*		
40. Salmon—Fresh, in 14½-oz. tins, tall, fancy pink	per tin	*		
41. Salt—Fine	per cwt.	0	8	4
42. Sauce—Tomato } in 26-oz. bottles	per doz.	0	18	9
	bottles			
in 1-gal. jars	per gal.	0	7	7
43. Soda—Bicarbonate of	per lb.	0	0	3
44. " Washing	per cwt.	0	15	0
45. Spice—Mixed, loose	per lb.	0	2	0
46. Starch (Rice)—Brand, "Silver Star"	per pkt.	0	0	9
47. Sugar—Castor	per cwt.	2	1	9
48. " Icing	do.	2	1	9
49. Tartar—Cream of—Substitute—Sodium Phosphate—Brand, "Antelope"	do.	0	1	3
50. Treacle—in 2-lb. tins	per ctn.	0	13	2½
in 16-oz. packets	per doz.	0	6	2
51. Vermicelli } in 22-lb. boxes	per box	0	9	7
52. Vinegar—Malt	per gall.	0	1	1½

ANNEX TO CONTRACT No. 1948/12.

Model Preserving Co. Pty. Ltd., or Campbell and Perry streets, Colingwood, N.5.

Sub-schedule No. 3.

JAMS.		£	s.	d.
Security, £23.				
1. Jams—Assorted, in bulk, of approved kinds, in the proportion of half seed and half stone, of the best quality, in tins, as required, Brand, "M.P."	per lb.	0	0	8
2. " Assorted, in 5-lb. tins, in the proportion of half seed and half stone, of the best quality, Brand, "M.P."	per tin	0	3	11
3. " Marmalade, in 5-lb. tins, Brand, "M.P."	do.	0	3	10½

ANNEX TO CONTRACT No. 1948/13.†

W. Angliss & Co. (Aust.) Pty. Ltd., 42 Bourke St., Melbourne, C.I.

Sub-schedule No. 4.

MEAT. φ		£	s.	d.
Security, £50.				
1. Fresh Beef, Forequarters	per cent.	2	7	4
2. " " Hindquarters	do.	3	7	4
3. " " Buttocks	per lb.	0	0	8½
4. " " Roast	do.	0	0	10
5. Beef, Corned—Rolled or round, as ordered, without bone or cartilage	do.	0	0	11
6. Mutton, Fresh	do.	0	0	7
7. Chops—Forequarter	do.	0	0	7½
8. " " Loin	do.	0	0	11
9. Suet—Beef	do.	0	0	3½
10. Veal—Leg	do.	0	0	9½
11. Steak—Thick Flank	do.	0	0	9½
12. " " Rump	do.	0	1	11
13. " " Minced	do.	0	0	8½
14. Sausage—Meat	do.	0	0	6
15. Sausages—Mixed	do.	0	0	7½
16. Shanks—Sheep's	do.	0	0	6
17. Tripe—Fresh	do.	0	0	3½
18. Brains—Sheep's	per set	0	0	2½
19. Kidneys—Sheep's	per doz.	0	2	0
20. Kidneys—Ox	per lb.	0	0	11
21. Livers—Calves'	do.	0	0	4
22. Sausage—Beef, German	do.	0	0	9
23. " " Strasburg, Pork	do.	0	1	1
24. Rabbits—Fresh	do.	0	0	9½

* Supplies not available. †† Apply Tender Board.

‡ Charge for tins 2s. each.

φ Rates subject to variation in accordance with

Sub-schedule No. 4—continued.

MEAT—continued.		£	s.	d.
25. Saveloys	per doz.	0	1	5
26. Tongues—Ox	per lb.	0	0	8
27. Ham Loaf	do.	0	1	4
28. Pressed Veal and Pork Loaf	do.	0	1	6
29. Frys—Lambs'	do.	0	0	6

SCHEDULE No. 3.

PROVISIONS FOR S.S. RIP AND DREDGES.

Sub-schedule No. 1.

BREAD.		£	s.	d.
1. Bread—Fine wheaten, first quality	..			
	Purchase by agreement			

(AGREEMENT.)

Henry Berry and Co. (A/asia) Ltd., 568 Collins-street, Melbourne, C.I.

Sub-schedule No. 2.

GROCERIES.		£	s.	d.
1. Bacon Rashers	per lb.	†		
2. Beans—Butter	do.	0	0	9½
3. " " Haricot	do.	0	0	9
4. Biscuits—Coffee, Marie, Malt	do.	0	1	0
5. " " Thin Captains	do.	0	0	11½
6. Bisto—in 4-oz. packets	per doz.	0	6	3
	pkts.			
7. Chutney—in 20-oz. bottles	per doz.	0	14	4½
	bot.			
8. Cocoa—in 1-lb. tins or cartons	per doz.	1	0	0
9. Coconut—Desiccated	per lb.	0	2	7½
10. Coffee—Fresh Roasted and Ground	do.	1	1	10
11. Corn or Maize Flour in 1-lb. packets, Brand, "Kream" or "Berrys"	do.	0	0	7½
11A Corn or Maize Flour, loose	do.	0	0	6
12. Currants—2 crowns (present season's)	do.	0	0	9½
13. Custard Powder—in 1-lb. packets, Brand, "Dainty Maid"	per doz.	0	9	8
	pkt.			
14. Dates	per lb.	*		
15. Eggs, New Laid	per doz.	○		
16. Essence—Vanilla, in 20-oz. bottles	per lb.	0	7	0
17. " " Cochineal, in 1-oz. bottles	per doz.	0	7	0
18. Fish } Herrings, in 14-oz. tins, Fresh	per doz.	0	19	8½
	tin			
Herrings, in Tomato Sauce	do.	1	0	1
19. " " Salmon, Fresh, in 14½-oz. tins, pink	do.	*		
20. " " Sardines, in ¼ tins, Brand	per doz.	0	13	9½
	tins			
21. Flour—First quality	per bag.	1	4	11½
22. " " Self-raising, Brand, "Cookwell"	per bag	1	16	2½
23. Fruits—Preserved, in 1-lb. 14-oz. } Pears	per doz.	††		
	tin	††		
24. " " Preserved, pines, in 1-lb. 14-oz. } Peaches	per doz.	††		
	tin	††		
25. Gelatine—Ground	per lb.	0	2	7½
26. Golden Syrup—in 2-lb. tins	per ctn.	0	14	0½
27. Honey, in 7-lb. tins	per tin	*		
28. Jams—Assorted kinds, "A.J.C." in 24-oz. tins	per doz.	0	16	0
29. Jelly Crystals in 4-oz. packets	per gross	2	5	0
	pkts.			
30. Lemon Peel—Cut	per lb.	0	0	10½
31. Macaroni—in 22-lb. boxes	per box	0	8	10
32. Margarine—Cooking Quality	do.	*		
33. Meat—Preserved, Beef or Mutton, in 1-lb. tins	per doz.	0	13	0
34. Milk—Dried, Skim, in 1-lb. tins	do.	0	16	0
35. " " Condensed, full cream, 14-oz. tins	do.	0	10	1½
36. Mustard	per lb.	0	2	6
37. Nutmeg—Whole	do.	0	4	2
38. Oatmeal—Flaked	per cwt.	1	16	6
39. Pearl Barley	per lb.	0	0	3½
40. Peas—Split	per lb.	2	18	0
41. Pepper—Black, ground	do.	0	3	1
42. Pickles—Assorted, in 20-oz. bottles	per doz.	0	12	9
43. Prunes—Dried (present season's) 90/100 basis	per lb.	0	0	9½
44. Raisins—Lexias, 4 Crowns (present season's)	do.	0	0	8½
45. Raisins—Sultana, 3 Crowns (present season's)	do.	0	0	10½
46. Rice—Dressed	do.	0	0	4½
47. Salt—Fine (minimum delivery—1 cwt.)	per cwt.	0	8	4
48. Sauce—Mustard, in 10-oz. bottles	per doz.	0	10	9
49. " " Tomato, in 26-oz. bottles, Brand, "Victoree"	do.	0	18	9
50. " " Worcestershire, in 10-oz. bottles, "Greigs"	do.	0	8	6
51. Soda—Bicarbonate of	per lb.	0	0	3
52. Spice—Mixed, loose	per lb.	0	2	0
53. Sugar—Brown	per cwt.	1	15	7
54. " " Castor	do.	2	1	9
55. " " Icing	do.	2	1	9
56. Vinegar—Malt	per doz.	0	13	3
	gal.			
57. Yolkova—in 4-oz. bottles	per bot.			

|| Carton, 2-doz. 2-lb. Tins.

† Market rate plus 1d. per lb.

‡ Market rate plus 1d. per doz.

§ Bag-150-lb.

Determinations of Prices Commissioner.

(AGREEMENT.)

John MacLeod and Co. Pty. Ltd., 122 Lydiard-street, Ballarat.

Sub-schedule No. 3.

JAMS.

	per lb.	£	s.	d.
1. Jams—Assorted, in bulk, of approved kinds, in the proportion of half seed and actual net half stone, of the best quality, in tins, as required, Brand, "J. MacLeod and Co. Pty. Ltd."		0	0	9½

ANNEX TO CONTRACT No. 1948/18.†

A. I. Aphee, 172 Barkly-street, Ararat.

Sub-schedule No. 4.

MEAT.

Security, £30.

	per cwt.	£	s.	d.
1. Fresh Beef—Fore-quarters	2	18	0	
2. " " Hind-quarters	2	18	0	
3. " " Buttocks	0	0	8	
4. " " Mutton	0	0	9	
5. Corned Beef—Rolled or round, as ordered, without bone or cartilage	2	18	0	

SCHEDULE No. 6.

PROVISIONS—BALLARAT DISTRICT.

(Delivery into Institutions.)

ANNEX TO CONTRACT No. 1948/19.

Brogden Bros, Lal Lal-street, Ballarat.

Sub-schedule No. 1.

BREADSTUFFS.

Security, £75.

	per cwt.	£	s.	d.
1. Bread—Fine wheaten, first quality	0	17	8	
2. Flour—First quality	0	17	3	

(AGREEMENT.)

John MacLeod and Co. Pty. Ltd., 122 Lydiard-street, Ballarat.

Sub-schedule No. 2.

GROCERIES.

	per lb.	£	s.	d.
1. Blue—Washing (Helmet Square)	0	0	10½	
2. Candles (full weights)—Kitchen's "Electrines," or other make of equal quality, in 1-lb. packets	0	1	0½	
3. Corn or Maize Flour—in packets of 1 lb. net	0	0	8	
4. Currants—2 Crowns (present season's)	0	0	9½	
5. Curry Powder—"Gold Seal"—loose	0	1	4	
6. Golden Syrup—in { 2-lb. tins .. per doz. 0 7 5 56-lb. tins or drums †† per cwt. 1 9 0				
7. Mustard	0	2	5½	
8. Pepper—Black, ground	0	3	0	
9. Pipes—Tobacco, clay	*			
10. Raisins—Sultana, 3 Crowns (present season's)	0	0	10½	
11. Salt—Fine "Imperial"	0	9	0	
12. Soda—Bicarbonate of	0	0	3½	
13. " Washing	0	16	0	
14. Spice—Mixed, in 1-oz. packets	0	0	2½	
15. Starch (Rice) "Silver Star", loose	0	0	9½	
16. Tartar—Cream of—Substitute—do. "Antelope"	0	1	2½	
17. Vinegar—Malt	0	0	4½	

(AGREEMENT.)

John MacLeod and Co. Pty. Ltd., 122 Lydiard-street, Ballarat.

Sub-schedule No. 3.

JAMS.

	per lb.	£	s.	d.
1. Jams—Assorted, in bulk, of approved kinds, in proportion of half seed actual net and half stone, of the best quality, in tins as required, Brand, "J. MacLeod and Co. Pty. Ltd."	0	0	9	
2. " Assorted, in 24-oz. tins, in the proportion of half seed and half stone, of the best quality, Brand, "Victoree"	0	1	5	
3. " Assorted, in 5-lb. tins, in the proportion of half seed and half stone, of the best quality, Brand, "Victoree"	do.	*		

* Supplies not available. † Or 14-oz. packets 9s. per dozen or "Modern", loose £2 18s. 4d. per cwt. †† Charge for drums if not returned.

ANNEX TO CONTRACT No. 1948./02†

H. J. Symons Pty. Ltd., 1015 Macarthur-street, Ballarat.

Sub-schedule No. 4.

MEAT.

Security, £35.

	per cwt.	£	s.	d.
1. Fresh Beef—Forequarters	3	3	0	
2. " " Buttocks	3	17	0	
3. " " Mutton	0	0	8	
4. Mince Meat	0	0	7	
5. Sausage—Beef, German	0	0	10	
6. Tripe—Fresh (alternative)	0	0	5	
7. Fresh Suet—Kidney	0	0	7	
8. Black Puddings	0	0	6	

SCHEDULE No. 7.

PROVISIONS—BEECHWORTH DISTRICT.

(Delivery into Institutions.)

ANNEX TO CONTRACT No. 1948/21.

P. A. Taylor, Camp-street, Beechworth.

Sub-schedule No. 1.

BREADSTUFFS.

Security, £100.

	per cwt.	£	s.	d.
1. Bread—Fine wheaten, first quality	0	19	9	
2. Flour—First quality	do.	¶		

¶ Order under Melbourne District contract.

(AGREEMENT.)

Moran and Cato Pty. Ltd., 277 Brunswick-street, Fitzroy, N.6.

Sub-schedule No. 2.

GROCERIES.

	per lb.	£	s.	d.
1. Blue—Washing, powdered in 7-lb. pkts.	0	0	11½	
2. Cocoa—Bulk	0	11½		
3. Corn or Maize Flour—in packets of 1 lb. net { "Filder's" .. do. 0 0 7½ "Kream" .. do. 0 0 8½				
4. Curry Powder	0	1	4½	
5. Custard Powder	0	0	9½	
6. Dried Fruits { Apricots .. do. 0 1 10½ Pears .. do. 0 1 5				
7. Golden Syrup—in 2-lb. tins	0	8		
8. Jelly Crystals in 4-oz. Pkts. { "Whites" .. per doz. 0 4 6 "Sparkling" .. pkts. 0 3 3				
9. Jelly Crystals—in 7-lb. packets	0	1	0½	
10. Macaroni—in 22-lb. boxes	0	10	6	
11. Mustard	0	2	11½	
12. Pepper—Black, ground	0	3	1½	
13. Pipes—Tobacco, clay	*			
14. Raisins—Sultana, 2 Crowns (present season's)	0	0	11	
15. Salt—Fine	0	11	4	
16. Sauce—Tomato—26-oz. bottles	0	1	7½	
17. Soap—"Monkey Brand," or equal thereto, in 5-oz. tablets	0	3	9½	
18. " Sand, Carbolie, in 12-oz. blocks, "Letvio"	0	2	11½	
19. Soda—Bicarbonate of	0	0	3½	
20. " Washing	0	17	7	
21. Spice—Mixed	0	2	8½	
22. Starch—"Lilley's Powder"	0	0	7½	
23. Tartar—Cream of—Substitute—"Aerophos"	0	1	3	
24. Vinegar—Malt	0	0	5½	

(AGREEMENT.)

Moran and Cato Pty. Ltd., 277 Brunswick-street, Fitzroy, N.6.

Sub-schedule No. 3.

JAMS.

	per lb.	£	s.	d.
1. Jams—Assorted, in bulk—Apricot	0	0	9½	
" Peach	0	0	10	
" Apple & Rasp. flavour	0	0	9½	
" Dark Plum	0	0	9	
2. " Assorted, in 5-lb. tins, in the proportion of half seed and half stone, of the best quality, Brand, "Victoree"	0	4	7	

Charge for cases 2s., if not returned.

ANNEX TO CONTRACT No. 1948./22†

E. Spencer, Camp-street, Beechworth.

Sub-schedule No. 4.

MEAT.

Security, £30.

	per cwt.	£	s.	d.
1. Fresh Beef—Roast	3	15	0	
2. " " Mutton	0	0	9	
3. Minced Meat	0	0	7½	
4. Sausages, Mixed	0	0	8	
5. Sausage Meat	0	0	8	
6. Sausage—Beef, German	0	1	0	
7. Suet, Kidney	0	0	6	
8. Dripping Beef	0	0	7	
9. Frye—Lambs.	0	0	3½	
10. Tripe—Fresh	0	0	8	

SCHEDULE No. 8.
PROVISIONS—CASTLEMAINE DISTRICT.

(Delivery into Institutions.)

ANNEX TO CONTRACT No. 1948/23.

Rasmussen Bros., Johnston-street, Castlemaine.

Sub-schedule No. 1.

BREAD.

	Security, £14.	£	s.	d.
1. Bread—Fine wheaten, first quality	.. per cwt.	1	5	0

ANNEX TO CONTRACT No. 1948/24.†

Ewings, "W. K. & H. S.," 91 Mostyn-street, Castlemaine.

Sub-schedule No. 2.

MEAT.

	Security, £5.	£	s.	d.
1. Fresh Beef per lb.	0	0	9
2. Corned Beef—Rolled or Round, as ordered, without bone or cartilage	.. do.	0	0	9
3. Fresh Mutton do.	0	0	8
4. Sausages—Mixed do.	0	0	10
5. Sausage—Meat do.	0	0	6

SCHEDULE No. 9.

PROVISIONS—SCHOOL OF FORESTRY, CRESWICK.

(Delivery at the School.)

ANNEX TO CONTRACT No. 1948/25.

R. C. Bouley, Albert-street, Creswick.

Sub-schedule No. 1.

BREADSTUFFS.

	Security, £3.	£	s.	d.
1. Bread—Fine wheaten, first quality	.. per cwt.	1	9	2
2. Flour—First quality per lb.	0	0	2½

(AGREEMENT.)

J. Tail and Son, Albert-street, Creswick.

Sub-schedule No. 2.

GROCERIES.

		£	s.	d.
1. Barley—Pearl per lb.	0	0	3
2. Blue—Washing do.	0	0	11
3. Butter—First grade creamery, to score not less than 91 points, Government grade, Commerce Regulations Standard	.. do.	0	1	10
4. Cheese—First-class quality, matured do.	0	1	5
5. Coffee—Fresh roasted and whole, beans to be thoroughly sound	.. do.	0	2	0
6. Corn or Maize Flour—in packets of 1 lb. net	.. do.	0	0	7½
7. Eggs—New laid per doz.	0	2	0
8. Ginger—Ground per lb.	0	2	9
9. Golden Syrup—in 2-lb. tins per tin	0	0	7½
10. Jams—Assorted, in 5-lb. tins, net, in the proportion of half seed and half stone, Brand, "Red Feather"	.. do.	0	3	9
11. Mustard—"Double Superfine" per lb.	0	3	0
12. Oatmeal do.	0	0	4
13. Peas—Split do.	0	0	7
14. Pepper—Black, ground do.	0	3	1
15. Potatoes—Dry and free from dirt per cwt.	0	13	0
16. Raisins—Sultana, 3 Crowns (present season's)	.. per lb.	0	0	9½
17. Rice—Dressed do.	*		
18. Salt—Fine do.	0	0	1
19. Soap—Household, yellow, dry, and hard, to sample	.. do.	0	0	5
20. .. Sand, Carbolic, in 12-oz. blocks each	0	0	3
21. Soda—Bicarbonate of per lb.	0	0	3
22. .. Washing do.	0	0	1½
23. Starch (Rice)—Brand, "Preservone" do.	0	0	9
24. Tartar—Cream of—Substitute—"Calcium Phosphate"	.. do.	0	2	9
25. Tea—1st Grade per pint	0	0	1½
26. Vinegar—Malt per lb.	0	0	8½
27. Honey—Yellow Box do.	0	0	3½
28. Flour—Self Raising do.	0	0	3½

* Supplies not available.

ANNEX TO CONTRACT No. 1948/26.

E. J. Keen, Jory-street, North Creswick.

Sub-schedule No. 3.

MILK.

Security, £3.

1. Milk—Fresh and pure	per qt.	£	s.	d.
			0	0	7

ANNEX TO CONTRACT No. 1948/27.†

H. J. Symons, Pty. Ltd., 1015 Macarthur-street, Ballarat.

Sub-schedule No. 4.

MEAT.

Security, £3.

		£	s.	d.
1. Fresh Beef—Fore-quarters per lb.	0	1	0
2. " Mutton do.	0	0	11
3. Sausages—Mixed do.	0	0	10
4. Steak—Minced do.	0	0	8½
5. Frys—Lambs' do.	0	0	6
6. Tongues—Ox do.	0	0	9
7. Dripping—Beef do.	0	0	7

SCHEDULE No. 10.

PROVISIONS—MCLEOD SETTLEMENT, FRENCH ISLAND.

(Delivery to be made at Corinella Jetty.)

ANNEX TO CONTRACT No. 1948/28.

H. H. Bird, Grantville.

Sub-schedule No. 1.

BREAD.

Security, £12.

1. Bread—Fine wheaten, first quality	.. per cwt.	£	s.	d.
		1	5	0

(AGREEMENT.)

A. G. Glasscock, Lang Lang.

Sub-schedule No. 2.

GROCERIES.

		£	s.	d.
1. Butter—First grade creamery, to score not less than 91 points, Government grade, Commerce Regulations Standard	per lb.	0	1	11
2. Cheese—Matured do.	0	1	5
3. Jams—Assorted, in proportion of half seed and half stone, of best quality, in 24-oz. tins, "Victories"	per tin	0	1	4

ANNEX TO CONTRACT No. 1948/29.†

L. G. Male, Lang Lang.

Sub-schedule No. 3.

MEAT.

Security, £5

		£	s.	d.
1. Fresh Beef per cwt.	3	6	8
2. " Mutton (Group D) per lb.	0	0	7

SCHEDULE No. 11.

PROVISIONS—HEATHERTON SANATORIUM, CHELTENHAM.

(Delivery at the Sanatorium.)

ANNEX TO CONTRACT No. 1948/30.

Cormick Bros., Pty. Ltd., 585 Centre-road, Bentleigh, S.E.15.

Sub-schedule No. 1.

BREAD.

Security, £3.

1. Bread—Fine wheaten, first quality	.. per cwt.	£	s.	d.
		1	0	3½

(AGREEMENT.)
Moran and Cato Pty. Ltd., 277 Brunswick-street, Fitzroy, N.6.

Sub-schedule No. 2.
GROCERIES.

		£	s.	d.	
1. Bacon	{ Rashers, Middle—	per lb.	0	2 0½	
	{ Sides	do.	0	1 9	
2. Blue-Washing, powdered in 7 lb. packets	do.	0	0	10½	
3. Biscuits—Coffee, Malt, Milk Arrowroot, as ordered— "Sunshine"	do.	0	0	11½	
4. Candles (full weight)—Kitchen's Electrines, in 1-lb. packets	do.	0	1	0	
6. Cereal—Malties (or equal thereto) in 24-oz. "Pipers"	per pkt.	0	0	11½	
7. Cocos—Bulk	per lb.	0	0	10½	
8. Corn or Maize Flour—in 1-lb. packets— { "Fielder's"	do.	0	0	6½	
	{ "Kream"	do.	0	0	7½
9. Currants—1 Crown (present season's)	do.	0	0	9½	
10. Custard Powder—1-lb. packets "Clipper"	do.	0	0	9	
11. Dates—Fresh, loose	do.	0	1	0½	
12. Essence of Vanilla—in 16-oz. bottles	per bot.	0	10	3	
13. Flour—Self-raising—Brand "M & C"	per lb.	0	0	3½	
14. Fruit—Dried (present season's) Pears	do.	0	1	4	
	Peaches	do.	0	1	6½
15. " Preserved—in 30-oz. tins (excluding pines)	per tin	0	1	2½	
16. Golden Syrup—in 2-lb. tins	do.	0	0	7	
17. Herrings—Fresh, and in Tomato Sauce, 14-oz. tins	do.	*			
18. Honey—First quality in 60-lb tins	per lb.	0	0	8	
19. Jams—Assorted, in 5-lb. tins, in the proportion of half seed and half stone, of the best quality—Brand "M.P."	per tin	0	4	1	
20. " Marmalade, in 5-lb. tins—Brand "M.P."	do.	0	3	9½	
21. Jelly Crystals—in 4-oz. packets { "Whites"	per doz.	0	4	3	
	{ "Sparkling"	pkts.	0	3	0
22. Junket Tablets	per tube	0	0	6½	
23. Orange Peel—cut	per lb.	*			
24. Macaroni—1lb. packets	do.	0	0	5	
25. Mustard	do.	0	2	10½	
26. Nutmeg—Whole	do.	0	3	7½	
27. Pepper—Black, ground	do.	0	3	0	
28. Pickles—Assorted, in 20-oz. bottles	per bot.	0	0	11½	
29. Prunes—Dried, 50-60's (present season's)	per lb.	0	0	11½	
30. Raisins—Lexias, 4 Crowns (present season's)	do.	0	0	8½	
31. " Sultana, 2 Crowns (present season's)	do.	0	0	10	
32. Rice—Ground	do.	0	0	4½	
33. Salmon—Fresh, in 14½-oz. tins, tall— Fancy Pink	per tin	*			
	Australian	do.	0	2	0
34. Salt—Fine	per cwt.	0	8	3½	
35. Sauce—Tomato, in 26-oz. bottles— Brand, "Raleigh"	per bot.	0	1	5½	
36. Soda—Bicarbonate of	per lb.	0	0	3½	
37. " Washing	per cwt.	0	16	1	
38. Spice—Mixed, in 1-oz. packets	per doz.	0	2	7½	
39. Starch—Loose—Brand, "Lilley's"	per lb.	0	0	6½	
40. Sugar—Castor	do.	0	0	4½	
41. " Icing	do.	0	0	4½	
42. Tartar—Cream of—Substitute Brand, "Aerophos"	do.	0	1	2	
43. Treacle—in 2-lb. tins	per tin	0	0	6½	
44. Vermicelli—in 16-oz. packets	per lb.	0	0	6	
45. Vinegar—Malt	per gl.	0	1	3½	

ANNEX TO CONTRACT No. 1948/31.†
W. Anglies and Co. (Aust.), Pty. Ltd., 42 Bourke-street, Melbourne, C.1.

Sub-schedule No. 3.
MEAT. Security, £5.

		£	s.	d.
1. Beef, Fresh—Roast	per lb.	0	0	11
2. " " Topside	do.	0	0	10½
3. " " Rump	do.	0	0	11½
4. " " Corned—Rolled or Round as ordered, without bone or cartilage	do.	0	0	10
5. Mutton, Fresh	do.	0	0	6
6. Chops—Forequarter	do.	0	0	7½
7. " Middle loin	do.	0	0	11
8. Cutlets—Mutton	do.	0	1	1
9. " Veal	do.	0	1	0
10. Veal—Leg	do.	0	0	10½
11. Pork, Fresh—Loin	do.	0	1	6
12. " Pickled—Belly	do.	0	0	11
13. Steak—Rump	do.	0	2	0
14. " Blade Bone	do.	0	0	11½
15. " Minced	do.	0	0	8
16. " Thick Flank	do.	0	0	11
17. " Topside	do.	0	1	2½
18. Tripe—Fresh	do.	0	0	3½
19. Frys—Lamb's	each	0	0	4
20. Sausage—Meat	per lb.	0	0	5

* Supplies not available. † Bag—150lb. ‡ Cartons—2 doz. 2-lb. tins. †† Apply Tender Board. ‡ Market rate plus 1d. per lb. § Rates subject to variation in accordance with Determinations of Prices Commissioner. || Charge for tins 2s. each if not returned. ○ Rates less 2½ per cent discount, 30 days.

Sub-schedule No. 3.—continued.

MEAT. Security, £5.

		£	s.	d.
21. Sausages—Mixed	per lb.	0	0	7
22. Kidneys—Ox	do.	0	0	11
23. Tails—Ox	do.	0	0	8
24. Tongues—Ox	do.	0	0	8
25. " Sheep's	each	0	0	2½
26. Sheep's Heads	do.	0	0	6
27. Brains—Sheep's	per set	0	0	2
28. Suet—Fresh Kidney	per lb.	0	0	3½
29. " Fresh Beef	do.	0	0	3½
30. Ham—Loaf	do.	0	1	4
31. Pressed Veal and Pork Loaf	do.	0	1	6
32. Sausage—Beef, German	do.	0	0	9
33. " Strasburg, Pork,	do.	0	0	11
34. Poultry—First Quality	per pair	0	5	10
35. Frankfurts	per lb.	0	1	4

ANNEX TO CONTRACT No. 1948/32.
Moule's, Model Dairy, Station-street, Cheltenham.

Sub-schedule No. 4.
MILK. Security, £3.

		£	s.	d.
1. Milk—Fresh and pure	per gal.	0	2	3½

SCHEDULE No. 12.
PROVISIONS—SANATORIUM, GREEN-VALE.

(Delivery at the Sanatorium.)
ANNEX TO CONTRACT No. 1948/33.
D. H. E. Bessell, 275 Buckley-street, Essendon.

Sub-schedule No. 1.
BREADSTUFFS. Security, £7.

		£	s.	d.
1. Bread—Fine wheaton, first quality	per cntl.	1	0	10
2. Flour—First quality	per doz.	0	16	8
3. " Wheatmeal	per lb.	0	0	2½

(AGREEMENT.)
Henry Berry and Co. (A/asia) Ltd., 568 Collins-street, Melbourne.

Sub-schedule No. 2.
GROCERIES.

		£	s.	d.
1. Bacon—in sides and middle	per lb.	†		
2. Beans—Lima	do.	0	0	10½
3. Biscuits {Malt, Milk Arrowroot, Coffee Thin Capstan}	do.	0	1	0
	do.	0	0	11½
	as ordered, in approximately 7-lb. tins			
4. Blue—Washing, 1-oz. knobs "Reckitts"	per doz.	0	1	1
5. Borax	per lb.	0	0	5
6. Camp Pie—12 oz. tins	per doz.	0	8	4
7. Capers—in 16-oz. bottles	per bot.	*		
8. Cheese—Semi-matured, in 10-lb. loaves	per lb.	0	1	4½
9. Cinnamon	do.	0	2	6
10. Cocoa—in 1-lb. cardboard cartons	do.	0	1	8
11. Coconut—Desiccated	do.	0	2	7½
12. Corn or Maize Flour—in packets of 1 lb.	do.	0	0	7½
12A. Corn or Maize Flour, loose	do.	0	0	6
13. Curry Powder—"Atlas"	per lb.	0	1	2
14. Currants—2 Crowns (present season's)	do.	0	0	9½
15. Custard Powder—in 1-lb. packets— "Dainty Maid"	per doz.	0	9	8
16. Dates	per lb.	*		
17. Essence of Lemon—in 18-oz. bottles	do.	0	9	0
18. " " Vanilla—in 20-oz. bottles	do.	0	7	0
18A. " " Parisian	do.	0	1	0
19. Fish—Sardine, 4-oz. tins	per doz.	0	13	9½
	tin			
20. Fish—Herrings in Sauce, 14-oz. tins—	do.	1	0	1
21. Flour—Self-raising—"Cookwell"	per bag	1	16	2½
22. Fruits—Dried (present season's)— Apples and Peaches	do.	††		
	Preserved (excluding Pines)	per tin	††	
24. Gelatine—Powdered	per lb.	0	2	7½
25. Ginger—Ground	do.	0	1	9
26. Golden Syrup—in 2-lb. tins	per carton	0	14	0½
27. Honey—First quality	per lb.	*		
28. Jams—Assorted, in 24-oz. tins, Brand, "A.J.C."	per doz.	0	16	0
29. Jelly Crystals—in 7-lb. packets	per pkt.	0	7	8½
29A. " " 4-oz. " in 2 doz. cartons	per gross	2	5	0
30. Junket Tablets "Invicta"	per doz.	0	6	9
	tubes			
31. Lemon Peel—Cut	per lb.	0	0	10½
32. Macaroni—in 22-lb. boxes	per box	0	8	10
33. Mustard	per lb.	0	2	6
34. Nutmeg—Ground	do.	0	4	6½
35. Oatmeal—Flaked	per cwt.	1	6	6
36. Spice—Loose	per lb.	0	2	0
37. Pepper—Ground, Black	do.	0	3	1

* Supplies not available. † Bag—150lb. ‡ Cartons—2 doz. 2-lb. tins. †† Apply Tender Board. ‡ Market rate plus 1d. per lb. § Rates subject to variation in accordance with Determinations of Prices Commissioner. || Charge for tins 2s. each if not returned. ○ Rates less 2½ per cent discount, 30 days.

Sub-schedule No. 2—continued.

GROCERIES—continued.

	£	s.	d.
38. Pickles—Assorted, in 20-oz. bottles .. per doz.	0	12	9
39. Prunes—Dried, 50-60's (present season's) .. per lb.	0	0	11½
40. Raisins—4 Crowns (present season's) .. do.	0	0	11
41. Raisins—Sultana, 3 Crowns (present season's) .. do.	0	0	10½
42. Rice—Dressed do.	*		
43. Salmon—Fresh in 1-lb. tins .. per tin	*		
44. Salt—Fine per cwt.	0	8	4
45. Sauce—Worcestershire, 10-oz. bottles, Brand, "Greig's" .. per doz.	0	8	6
46. "—Tomato, 26-oz. bottles, Brand, "Victories" .. do.	0	18	9
46A. " Tomato in gallon jars .. per jar	0	7	7
47. Soda—Bicarbonate of .. per lb.	0	0	3
48. " Washing .. per cwt.	0	15	0
49. Spaghetti—in 22-lb. boxes .. per box	0	9	7
50. Starch (Rice)—"Silver Star"—14-oz. packets .. per doz.	0	9	0
51. Sugar—Caster .. per cwt.	2	1	9
52. Tapioca—Pearl .. per lb.	0	1	1
53. " Seed (Sago) .. do.	0	1	0½
54. Tartar—Cream of—Substitute "Antelope" .. per lb.	0	1	3
55. Tomatoes—Preserved, in 30-oz. tins .. per doz.	0	15	10
56. Treacle—in 2-lb. tins (24 tins in box) .. per box	0	13	2
57. Vermicelli—in 22-lb. boxes .. do.	0	9	7
58. Vinegar—Malt .. per doz.	0	13	3
59. Cereal—"Weeties," in 24-oz. packets .. per pkt.	0	0	11½
60. Asparagus Tips—10-oz. tins .. per doz.	0	18	9½
61. Full Cream Powdered Milk "Sunshine"— .. do.	0	16	0
62. Whitebait—12-oz. tins .. do.	2	7	6

ANNEX TO CONTRACT No. 1948/34.†

F. Watkins Pty. Ltd., 184 Bourke-street, Melbourne, C.I.

Sub-schedule No. 3.

MEAT (cuts as ordered).

Security, £7.

	£	s.	d.
1. Beef, Fresh—Roast .. per lb.	0	0	10
2. " " Topside .. do.	0	1	0
3. " " Rump .. do.	0	0	6
4. " " Corned, Silverside .. do.	0	0	11
5. Mutton, Fresh—Sides .. do.	0	0	7
6. Cutlets—Mutton .. do.	0	0	10
7. "—Veal .. do.	0	1	0
8. Chops—Mid. Loin .. do.	0	0	11
9. " Leg .. do.	0	0	11
10. " Forequarter .. do.	0	0	7½
11. Steak—Minced .. do.	0	0	8
12. Minced Meat .. do.	0	0	6
13. Frys—Lambs' .. do.	0	0	6
14. Pork, Fresh—Loin .. do.	0	1	6
15. Pork, Pickled—Belly .. do.	0	1	0
16. Veal—Legs, boned .. do.	0	0	10
17. Tripe, Fresh—Ox .. do.	0	0	5
18. Tails—Ox .. do.	0	0	9
19. Tongues—Ox .. do.	0	0	8
20. " Sheep .. each	0	2	6
21. Shanks—sheep's .. do.	0	0	6
22. Sausages—Mixed .. per lb.	0	0	9
23. " Pork .. do.	0	1	0
24. Sausage—Strasburg, Pork .. do.	0	1	2
25. Shins—Beef .. do.	0	0	4
26. Suet, Fresh—Kidney .. do.	0	0	6
27. Kidneys—Ox .. do.	0	0	11
28. " Sheep's .. per doz.	0	2	0
29. Brains .. per set	0	0	3
30. Rabbits—Fresh .. per lb.	0	0	9½
31. Poultry—First Quality .. per pair	0	15	0
32. Frankfurts .. per bdle.	0	1	6

SCHEDULE No. 13.

PROVISIONS—COORIE MUNGLE PRISON CAMP, HEYTESBURY FOREST.

(Delivery to be made at the Camp.)

(AGREEMENT.)

Steel and Webster, Timboon.

Sub-schedule No. 1.

BREAD.

	£	s.	d.
1. Bread—Fine Wheaten, first quality .. per cntl.	1	7	1

(AGREEMENT.)

M. L. Hoss, Timboon.

Sub-schedule No. 2.

GROCERIES.

	£	s.	d.
1. Oatmeal .. per lb.	0	0	5
2. Rice—Dressed .. do.	*		
3. Salt—Fine .. do.	0	0	1

* Supplies not available.

ANNEX TO CONTRACT No. 1948/35.†

G. and R. Lambert, Timboon.

Sub-schedule No. 3.

MEAT.

Security, £4.

	£	s.	d.
1. Fresh Beef .. per lb.	0	0	11
2. " Mutton .. do.	0	0	11½
3. Dripping—Beef .. do.	0	0	6
4. Corned Beef—Rolled or round, as ordered without bone or cartilage .. do.	0	0	11
5. Minced Meat .. do.	0	0	11

SCHEDULE No. 14.

PROVISIONS—ABORIGINAL STATION, LAKE TYERS.

(Delivery at Lake Tyers Station.)

ANNEX TO CONTRACT No. 1948/36.

R. Hodder, Nowa Nowa.

Sub-schedule No. 1.

BREADSTUFFS.

Security, £25.

	£	s.	d.
1. Bread—Fine wheaten, first quality .. per cntl.	1	2	6
2. Flour—First quality .. do.	0	18	6

(AGREEMENT.)

R. Hodder, Nowa Nowa.

Sub-schedule No. 2

GROCERIES.

	£	s.	d.
1. Baking Powder—Snowflake, or equal thereto, in 1-lb. tins .. per lb.			
2. Candles (full weights)—Kitchen's "Electrines," or other make of equal quality, in 1-lb. packets .. do.			
3. Coffee—Fresh roasted, and whole, beans to be thoroughly sound .. do.			
4. Cocoa—Bulk .. do.			
5. Corn or Maize Flour—in 1-lb. packets .. do.			
6. Currants—2 Crowns (present season's) .. do.			
7. Curry Powder—bulk .. do.			
8. Matches—Safety, 60 in a box, "Yacht" .. per gross			
9. Mustard—"Double Superfine" .. per lb.			
10. Pepper—Black, ground, in 2-oz. tins .. per tin			
11. Raisins—Sultana, 3 Crowns (present season's) .. do.			
12. Salt—Coarse .. per cwt.			
13. " Fine .. do.			
14. Soap—Household, hard and dry, to sample .. do.			
15. Soda—Bicarbonate of .. per lb.			
16. " Washing .. do.			
17. Tartar—Cream of—Substitute—Calcium Phosphate .. do.			
18. Treacle—in 2-lb. tins .. per tin			
19. Vinegar—Malt .. per qt.			

(AGREEMENT.)

R. Hodder, Nowa Nowa.

Sub-schedule No. 3.

JAMS.

	£	s.	d.
1. Jams—Assorted, in 24-oz. tins, Brand in the proportion of half seed and half stone .. per tin			**

** The rates to be paid for all items under these Sub-schedules shall be the wholesale prices charged to the contractor, plus 12½ per cent. Wholesaler's invoices to be submitted with contractors' accounts.

SCHEDULE No. 15.

PROVISIONS—EXPERIMENT FARM, RUTHERGLEN.

(Delivery at the Farm.)

ANNEX TO CONTRACT No. 1948/37.

A. F. Parrott, Main-street, Rutherglen.

Sub-schedule No. 1.

BREAD.

Security, £3.

	£	s.	d.
1. Bread—Fine wheaten, first quality .. per cntl.	1	8	1

(AGREEMENT.)

Aitken and Fullerton, Rutherglen.

Sub-schedule No. 2.

GROCERIES, ETC.

	£	s.	d.
1. Biscuits—Marie	per lb.	0	1 2
2. Blue—Washing, 1-oz. knobs ..	each	0	0 1½
3. Candles (full weights)—Kitchen's "Electrics," or other make of equal quality, in 1-lb. packets	per lb.	0	1 4
4. Cornflakes—"Kellogg's," in 16-oz. packets	per pkt.	0	1 3
5. Corn or Maize Flour—in packets of 1-lb. net "Fielder's"	per lb.	0	0 10½
6. Coconut—Desiccated	do.	0	3 0
7. Currants—2 Crowns (present season's)	do.	0	0 11
8. Fish—Salmon, in ½-lb. tins ..	per tin	*	
9. Fruits—Preserved, assorted, in 1-lb. 14-oz. tins (excluding Pineapple)	do.	0	1 6
10. Jams—Assorted, of approved kinds, in proportion of half seed and half stone, in 24-oz. tins, Brand, "M.P."	do.	0	1 6†
11. Jams—Assorted, of approved kinds, in proportion of half seed and half stone, in 5-lb. tins, Brand, "M.P."	per tin	4	6†
12. Jelly Crystals—in 4-oz. packets ..	per pkt.	0	0 4½
13. Macaroni or Vermicelli—as ordered ..	per lb.	0	0 6
14. Matches—Safety	per pkt.	0	1 6
15. Oatmeal—Flaked	per lb.	0	0 5
16. Pepper—Black, ground	per oz.	0	0 3
17. Potatoes—Dry and free from dirt ..	per cwt	0	13 0
18. Raisins—5 crown (present season's) lexias	per lb.	0	0 9
19. " Sultana, 3 crown (present season's)	do.	0	1 1
20. Rice—Dressed	per lb.	*	
21. Salt—Fine	do.	0	0 1½
22. Sauce—Tomato, "Dyasons," 13-oz. bottles	per bot.	0	1 1
23. Soap—Household, yellow	per lb.	0	0 10
24. " " "Monkey Brand," or equal thereto, in 5-oz. tablets	per tab.	0	0 2½
25. " Sand, in 16-oz. blocks	per block	0	0 6
26. " Toilet, "Bath," in 4-oz. tablets, to sample, Kitchen's, or equal thereto	per doz.	0	4 0
27. Soda—Washing	per lb.	0	0 2½
28. Tea—1st Grade	do.	0	2 9

SCHEDULE No. 16.

PROVISIONS AT SALE.

(Delivery at the Gaol.)

ANNEX TO CONTRACT No. 1948/38.

F. J. Hennessy, 102 Raymond-street, Sale.

Sub-schedule No. 1.

BREAD.

Security, £3.

	£	s.	d.
1. Bread—Fine wheaten, first quality ..	per cntl.	1	5 0

ANNEX TO CONTRACT No. 1948/39. †

H. L. G. Laws, 111 Raymond-street, Sale.

Sub-schedule No. 2.

MEAT.

Security, £3.

	£	s.	d.
1. Fresh Beef—Stewing	per lb.	0	0 10
2. Fresh Mutton	do.	0	0 10
3. Corned Beef—Rolled or Round as ordered, without bone or cartilage	do.	0	0 10

SCHEDULE No. 17.

PROVISIONS—PLEASANT CREEK SPECIAL SCHOOL, STAWELL.

(Delivery at the School.)

ANNEX TO CONTRACT No. 1948/40.

E. J. and R. Welsh, 23 Patrick-street, Stawell.

Sub-schedule No. 1.

BREADSTUFFS.

Security, £10.

	£	s.	d.
1. Bread—Fine wheaten, first quality ..	per cntl.	1	11 3
2. Flour—First quality	do.	0	17 0
3. Flour—Wheatmeal	per lb.	0	0 2½

* Supplies not available.

† No seed available.

Sub-schedule No. 2—continued.

(AGREEMENT.)

John MacLeod and Co. Pty. Ltd., 122 Lydiard-street, Ballarat.

Sub-schedule No. 2.

GROCERIES.

	£	s.	d.
1. Baking Powder—"Excelsior"	per lb.	0	1 8
2. Barley—Pearl	per cwt.	1	11 9
3. Blue—Washing, "Helmet Square" ..	per lb.	0	0 10½
4. Cereal—"Wheat flakes," in 24 oz. packets	per pkt.	0	0 11½
5. Cheese—Matured	per lb.	0	1 6
6. Cocoa—in 28-lb. bags	do.	0	1 0
7. Coffee and Chicory No. 1	do.	0	1 11
8. Corn or Maize Flour—in 1-lb. packets ..	do.	0	0 8½
9. Curry Powder—Loose "Gold Seal" ..	do.	0	1 4
10. Dates	do.	*	
11. Ginger—Ground	do.	*	
12. Golden Syrup—in 2-lb. tins	per doz.	0	7 11
13. Honey, first quality	per lb.	*	
14. Jams—Assorted, of approved kinds, in proportion of half seed and half stone, in tins containing 24 oz. net, Brand, "Victoiree."	per tin	0	1 5
15. Peel—Cut, Mixed	per lb.	0	0 11
16. Oatmeal	do.	*	
17. Pepper—Black, ground	do.	0	3 0½
18. Prunes—Dried, 50-60's (present season's)	do.	0	0 11½
19. Raisins—Sultana, 3 Crowns (present season's)	do.	0	0 10½
20. Rice—Dressed	per cwt.	*	
21. Salt—Fine "Imperial"	do.	0	11 0
22. Pearl Tapioca	do.	*	
23. Soap—Preservene Foam, or equal thereto	per doz.	0	6 6
24. " " "Lifebuoy," or equal thereto	per cake	0	0 4
25. " " "Monkey" Brand, or equal thereto, in 5-oz. tablets	per tab.	0	0 3½
26. " " "Guardian"	do.	0	0 3½
27. " Sand, "Pearsons"	per cake	0	0 4
28. " " "Velvet," or equal thereto	per doz.	0	4 9
29. Soda—Bicarbonate of	per lb.	0	0 3½
30. " Washing	per cwt.	0	18 0
31. Starch (Rice)—Brand "Silver Star," loose	per lb.	0	0 9½
32. Tartar—Cream of—Substitute—"Antelope"	do.	0	1 3
33. Tea—First Grade	do.	0	4 8
34. Treacle—in 2-lb. tins	per doz.	0	7 6½

ANNEX TO CONTRACT No. 1948/41.

G. A. Waldron and Son, Hall's Gap-road, Stawell West.

Sub-schedule No. 3.

MILK.

Security, £10.

	£	s.	d.
1. Milk—Fresh and pure	per gal.	0	2 1

ANNEX TO CONTRACT No. 1948/42. †

Ada J. West, 65 Main-street, Stawell.

Sub-schedule No. 4.

MEAT.

Security, £3.

	£	s.	d.
1. Fresh Beef—Prime ribs	per lb.	0	0 10
2. " " Sirloin	do.	0	0 10
3. " " " Stewing (minced when required)	do.	0	0 9
4. Beef—Corned, Silverside	do.	0	0 10
5. Fresh Mutton—Chops (loin)	do.	0	0 7½
6. " " in sides	do.	0	0 6½
7. Sausages—Mixed	do.	0	0 7
8. Frys—Lambs'	each	0	0 4
9. Tripe—Fresh	per lb.	0	0 8½
10. Saveloys	per doz.	0	1 3
11. Tongues—Ox	per lb.	0	0 9

SCHEDULE No. 18.

PROVISIONS—SUNBURY DISTRICT.

(Delivery into Institutions.)

ANNEX TO CONTRACT No. 1948/43.

D. H. E. Bessell, 275 Buckley-street, Essendon.

Sub-schedule No. 1.

BREADSTUFFS.

Security, £112.

	£	s.	d.
1. Bread—Fine wheaten, first quality ..	per cntl.	1	0 6½
2. Flour—First quality	do.	0	16 8

† Or 14-oz. packets, 9s. 3d. per doz.

(AGREEMENT.)

J. E. Marks, Sunbury.

Sub-schedule No. 2.

GROCERIES.

		£	s.	d.
1. Blue—Washing	per lb.	0	0	10
2. Beans—Haricot	do.	*		
3. Candles—Full weight, in 1-lb. packets, Kitchen's "Electrines", or equal thereto	do.	0	1	2
4. Cocoa—in 1-lb. tins or cardboard cartons	do.	0	1	0½
5. Corn or Maize Flour—in packets of 1-lb. net	do.	0	0	6
6. Currants—2 Crowns (present season's) ..	do.	0	0	10½
7. Curry Powder	do.	0	1	5
8. Ginger—Ground	do.	0	2	6
9. Golden Syrup—in 2-lb. tins	per tin	0	0	7½
10. Jelly Crystals—in 4-oz. packets	per doz.	0	5	6
11. Lemon Peel	per lb.	*		
12. Mustard	do.	0	2	6
13. Pepper—Black, ground	do.	0	3	6
14. Pipes—Tobacco, clay	per doz.	*		
15. Raisins—Sultana, 3 Crowns (present season's)	per lb.	0	0	11
16. Salt—Fine	per cwt.	0	7	11
17. Soda—Bicarbonate of	per lb.	0	0	4
18. " Washing	per cwt.	*		
19. Spice—Mixed, loose	per lb.	0	2	2
20. Starch (Rice)—"Silver Star", loose	do.	0	0	9
21. Tartar—Cream of—Substitute, "Antelope" ..	do.	0	1	3
22. Vinegar—Malt	per gal.	0	1	3½

Sub-schedule No. 3.

CEREALS.

1. Oatmeal	per cwt.	Purchase under Tender Board quotations.
2. Rice—Dressed to sample	do.	
3. Rice—Unpolished	do.	
4. Seed Tapioca (Sago), to sample	do.	
5. Pearl Barley	do.	
6. Peas—Split	do.	

(AGREEMENT.)

J. E. Marks, Sunbury.

Sub-schedule No. 4.

JAMS.

		£	s.	d.
1. Jams—Assorted, in bulk, of approved kinds, in the proportion of half seed and half stone, of the best quality, in tins as required, Brand, "M.P." ..	per lb.	0	0	8½

ANNEX TO CONTRACT No. 1948/44. †

F. Watkins Pty. Ltd., 184 Bourke-street, Melbourne, C.1.

Sub-schedule No. 5.

MEAT.

Security, £40.

		£	s.	d.
1. Fresh Beef, Forequarters	per cntl.	2	4	0
2. " " Buttocks	per lb.	0	0	8½
3. " Mutton	do.	0	0	6½
4. Corned Beef—Rolled or Round, as ordered, without bone or cartilage	do.	0	0	10
5. Sausages, mixed	do.	0	0	8

SCHEDULE No. 19.

PROVISIONS—AGRICULTURE COLLEGE, LONGERENONG.

(Delivery at the College.)

ANNEX TO CONTRACT No. 1948/45.

Orant Bros., 20 Firebrace-street, Horsham.

Sub-schedule No. 1.

BREADSTUFFS.

Security, £5.

		£	s.	d.
1. Bread—Fine wheaten, first quality	per centl.	1	7	7½
2. Flour—First quality	do.	††		

* Supplies not available.

†† Or 23s. 0d. per owt, in 5-cwt. drums, drums returnable.

(AGREEMENT.)

J. Langlands and Sons Pty. Ltd., 122 Firebrace Street, Horsham.

Sub-schedule No. 2.

GROCERIES.

		£	s.	d.
1. Bacon, Rashers, Middle—Brand, "Farmer's"	per lb.	0	2	1
2. Beans—Lima	do.	0	0	11
3. Biscuits—Coffee, Malt or Milk Arrowroot, as ordered	do.	0	1	2½
4. Blue—Washing, powdered, loose	do.	0	1	0
5. Candles—Full weight, Kitchen's Electricines, in 1-lb. packets	do.	0	1	4
6. Cereal—"Weeties" (or equal thereto) in 24-oz. packets	per pkt.	0	1	0
7. Cheese—"Glenburnie"	per lb.	0	1	3
8. Chutney—13-oz. bottles—Brand, "Rosella"	per bot.	0	1	3
9. Cloves—Loose	per lb.	0	3	3
10. Cocoa—Bulk	do.	0	0	9
11. Coconut—Dessicated	do.	0	3	6
12. Corn or Maize Flour—Bulk	do.	0	0	10
13. Custard Powder, in 1-lb. packets, "Parson's"	do.	0	1	1
14. Currants, 2 Crown (present season's), "S.&A."	do.	0	1	0
15. Curry Powder—Bulk—"Vent's"	do.	0	3	0
16. Essence—Lemon—in 8-oz. bottles, "Leggo's"	per bot.	0	5	0
17. " Vanilla—in 8-oz. bottles, "Leggo's"	do.	0	5	0
18. Flour—Self-raising Brand—in 28-lb. bags—"McAlpin's"	per bag	0	9	0
19. Fruits—Preserved, in 30-oz. tins (excluding Pines)—"S.P.C."	per tin	0	1	6
20. Fish—Salmon—Fresh, in 14½-oz. tins, tall—				
Fancy Pink	do.	*		
Household	do.	*		
21. Gelatine—Ground—"Davis"	per lb.	0	6	0
22. Ginger—Ground	do.	0	3	0
23. Golden Syrup, in 2-lb. tins	per tin	0	0	9
24. Honey, first quality, in 60-lb. tins	do.	1	17	6
25. Jelly Crystals, in 12-lb. packets	per pkt.	0	16	0
26. Junket Tablets, "Bungalow"	per tube	0	1	0
27. Peel, Lemon—Cut, "Brookes"	per lb.	0	1	6
28. Macaroni—"Rinoldi"—1-lb. packets	do.	0	0	8
29. Matches—Safety (60 in a box)	per pkt.	0	1	6
30. Mustard	per lb.	0	3	6
31. Mustard Pickles, 20-oz. bottles—Brand, "Leggo's"	per bot.	0	1	3
32. Oatmeal—Flaked—Bulk McKenzies	per lb.	0	0	4½
33. Pepper—Black, ground	do.	0	3	0
34. Prunes—Dried, 50-60's (present seasons)	do.	0	1	4
35. Raisins—Sultanas, 3 crowns (present seasons)	do.	0	1	1
36. Rice—Ground—in lb. packet	do.	0	0	6
37. Salt—fine, in bags	per cwt.	0	13	0
38. " table, "Mermaid"	per lb.	0	0	3½
39. Sauce—Tomato—in 26-oz. bottles—Brand, "A.J.C."	per bot.	0	2	1
40. Soda—Bicarbonate of	per lb.	0	0	4
41. " Caustic, in 2-lb. tins	per tin	0	2	2
42. " Washing	per cwt.	1	4	0
43. Soup—Tomato—in 20-oz. tins	per tin	0	1	2
44. Spaghetti, "Rinoldi"	per lb.	0	0	8
45. Spice—Mixed—in 1-oz. packets	per oz.	0	0	3
46. Starch—Brand, "Silver Star"	per lb.	0	1	0
47. Sugar—Icing	do.	0	0	6
48. Tartar—Cream of—Substitute Brand, "Antelope"	do.	0	1	4
49. Treacle—in 2-lb. tins	per tin	0	0	8
50. Vermicelli—in 1-lb. packets	per lb.	0	0	8
51. Vinegar—Malt	per gal.	0	2	3
52. Yolking Essence (or equal thereto)—in 20-oz. bottles	per bot.	0	5	3

(AGREEMENT.)

J. Langlands and Sons Pty. Ltd., 122 Firebrace Street, Horsham.

Sub-schedule No. 3.

JAM.

		£	s.	d.
1. Jam—Assorted, of approved kinds, in the proportion of half seed and half stone, of the best quality, in 5-lb. tins—Brand, "All Gold"	per tin			

†† Order under Melbourne District Contract.

SCHEDULE No. 20.

PROVISIONS—AGRICULTURAL COLLEGE,
DOOKIE.

(Delivery at the College.)

ANNEX TO CONTRACT No. 1948/46.

L. G. Clark, Mary-street, Dookie.

Sub-schedule No. 1.

BREADSTUFFS.

Security, £15.

	£	s.	d.
1. Bread—Fine wheaten, first quality .. per centl.	1	2	11
2. Flour—First quality do.	0	16	6

AGREEMENT.

W. A. Thompson, 192 High-street, Shepparton.

Sub-schedule No. 2.

GROCERIES.φ

(Delivery "F.O.R." Shepparton.)

	£	s.	d.
1. Baking Powder—1-lb. tins per doz.	0	18	0
2. Beans—Lima per lb.	⊙		
3. " Haricot do.	⊙		
4. Biscuits—Coffee, Malt or Arrowroot (as ordered)	per lb.	10	1 0½
5. Blue—Washing, powdered in 8-lb. parcels	do.	0	0 11
6. Candles—full weight, Kitchen's Electrines in lots of 25—loose	per lot	0	1 11½
7. Cereal—Piper's (or equal thereto) in 24-oz. packets	per doz.	0	11 7
8. Cinnamon per lb.	⊙		
9. Chutney—13-oz. bottles per doz.	0	11	9
10. Cocoa—bulk per lb.	*		
11. Coconut—desiccated do.	0	2	11
12. Coffee—Ground do.	0	1	8½
13. Coffee Essence—in 1-gal. jars per gal.	10	14	6
14. Cordial—Lemon in 1-gal. jars do.	10	9	3
15. Corn or Maize Flour—in 1-lb. packets .. per doz.	0	7	3
16. Currants—2 Crowns (present season) .. per lb.	⊙		
17. Curry Powder—bulk do.	0	0	10½
18. Custard Powder in 1-lb. packets .. per doz.	0	9	3
19. Essence—Almond, 8-oz. bottles do.	2	9	0
20. " Cochineal—4-oz. bottles do.	2	9	0
21. " Lemon—8-oz. bottles do.	2	9	0
22. " Vanilla—8-oz. bottles do.	2	9	0
23. Fish—tinned, Herrings in sauce, 14-oz. tins	do.	⊙	
24. Fish—tinned, Salmon, 2-lb. tins do.	*		
25. Fish—tinned, Sardines, 4-oz. tins do.	*		
26. Flour—Self-raising—150 lb. bags .. per bag	1	10	10
27. Fruits—Dried (present season) do.	⊙		
28. " Preserved, 30-oz. tins—Peaches .. per doz.	⊙		
29. " Preserved, 30-oz. tins—Pears, Apricots	do.	⊙	
30. " Preserved—6-lb. tins—Apples .. per tin	⊙		
31. " Preserved, 7-lb. tins—Blackberries, Blackcurrants, Gooseberries, and Raspberries	do.	*	
32. Gelatine—Ground per lb.	⊙		
33. Ginger—Ground do.	⊙		
34. Golden Syrup—in 2-lb. tins per doz.	⊙		
35. Gravox—in 1-lb. tins do.	0	13	0
36. Herbs—mixed—in 2-oz. pkts. do.	0	2	6
37. Honey—first quality—80-lb. tins .. per tin	5		
38. Jelly Crystals—in 7-lb. packets .. per lb.	⊙		
39. Junket Tablets per doz.	0	9	0
40. Lemon Peel—Cut per lb.	0	1	0
41. Macaroni—Bulk, in 22-lb. boxes .. per box	⊙		
42. Margarino—Cake per lb.	0	0	10½

* Supplies not available.

† Containers charged for as follows:—Items 4—3s.; items 12 and 63—3s. 6d.; 13 and 64—4s. Crates, items 63 and 64—4s. and 5s. each, and Casks, item 81—£3 each respectively. All containers credited on return in good order and condition.

φ Rates subject to adjustment.

⊙ Ruling rates.

§ Market rate.

Sub-schedule No. 2—continued.

GROCERIES—continued.

£ s. d.

43. Matches—Safety (60 in a box) .. per gross	0	14	11
44. Meat Extract—"Bonox", "Beefine", per jar &c., in 2-lb. jars	*		
45. Meat—tinned—Camp Pic—12-oz. tins .. per doz.	0	8	4
46. " " Meat and Veggies—16-oz. tins .. do.	0	12	9
47. " " Hampe—12-oz. tins do.	0	14	3
48. " " Sausages—16-oz. tins do.	0	16	9
49. " " Steak and Kidney—16-oz. tins	do.	0	13 0
50. Milk—Condensed, full cream, 14-oz. tins .. do.	0	10	3
51. Mustard per lb.	0	2	8
52. Oatmeal, flaked, bulk per cwt.	⊙		
53. Pastes—Marmite, 4-oz. jars per doz.	0	17	7
54. " Salmon and Shrimp, 4-oz. jars .. do.	*		
55. " Bloater, 4-oz. jars do.	*		
56. Peas, Green, boiling per lb.	*		
57. " Green, tinned, 14-lb. tins per tin	*		
58. Pepper, black, ground per lb.	⊙		
59. Pickles—Assorted, in 20-oz. bottles .. per doz.	0	11	6
60. Prunes—Dried 50-60's (present season) .. per lb.	⊙		
61. Prunes } Dried 50-60's (present season)— loose	per lb.	⊙	
62. Raisins—Sultana, 3 crowns (present season's)	in 7-lb. tins	per tin	⊙
63. " Seeded do.	do.	⊙	
64. Rice—ground do.	0	4	8
65. Salt—Table (16-oz. packets) per doz.	0	2	9
66. " Fine per cwt.	0	9	11
67. Sauce—Tomato, in 1-gal. jars per gal.	0	7	9
68. " Worcester, in 1-gal. jars do.	0	5	3
69. Soap—"Bon Ami," in 12-oz. tins or cakes as ordered	per doz.	0	8 0
70. " flakes, in 28 lb. bags per cwt.	⊙		
71. " "Lux" { Packets per doz.	0	7	0
72. " "Lux" { Cakes do.	0	3	6
73. " Palmolive do.	0	3	7
74. " Persil," in 8-oz. packets do.	0	5	1
75. " Rinso," in 17-oz. packets do.	0	9	11
76. Soda—Bicarbonate of per cwt.	1	12	2
77. " Washing do.	⊙		
78. Soup—Tomato, in 20-oz. tins per doz.	*		
79. Spaghetti, in 1-lb. packets do.	0	6	5
80. Spice, in ¼-lb. packets do.	⊙		
81. Starch—"Dandy" (14-oz. pkts.) .. per doz.	0	8	3
82. Sugar—Caster per cwt.	⊙		
83. " Icing do.	⊙		
84. Tartar—Cream of per lb.	0	4	6
85. Treacle—in 2-lb. tins per doz.	⊙		
86. Vinegar—Malt, bulk per gal.	0	1	6
87. Yolking,—Essence (or equal thereto) in 8-oz. bottles	per doz.	2	9 0

AGREEMENT.

W. A. Thompson, 192 High-street, Shepparton.

Sub-schedule No. 3.

JAM.

(Delivery "F.O.R." Shepparton) £ s. d.

1. Jam—Assorted, of approved kinds, in the proportion of half seed and half stone, of the best quality, in 5-lb. tins—Brands, "Golden Bells," "Golden Bar," or "S.P.C."	per doz.	2	6	1
2. Jam—Assorted, of approved kinds, in the proportion of half seed and half stone, of the best quality, in 32-lb. tins	per lb.	0	0	8½

SCHEDULE No. 21.

PROVISIONS—GEELONG.

(Delivery at the Gaol.)

ANNEX TO CONTRACT No. 1948/47.

J. A. Fitzgerald, 150 Malop Street, Geelong.

Sub-schedule No. 1.

BREAD.

Security, £s.

	£	s.	d.
1. Bread—Fine Wheaten, First quality .. per cental	1	0	0

ANNEX TO CONTRACT No. 1948/48.†

O'Brien's Butchery, 491 Moorabool-street, Geelong.

Sub-schedule No. 2.

MEAT.

Security £10.

	£	s.	d.
1. Fresh Beef per cental	2	18	4
2. Corned Beef, Rolled or Round, without bone on cartilage per lb.	0	0	7
3. Fresh mutton do.	0	0	7