

[4559]



VICTORIA
GOVERNMENT GAZETTE.

Published by Authority.

[Registered at the General Post Office, Melbourne, for transmission by post as a newspaper.]

No. 671]

MONDAY, JULY 9.

[1951

CONTRACTS ACCEPTED.

(SERIES 1951-52.)

SUPPLY OF PROVISIONS

FOR

STATE DEPARTMENTS

FROM

1st JULY, 1951, to 30th JUNE, 1952,
or as stated.

Conditions of Contract and Stipulations are shown herein for the guidance
of Officers ordering and receiving supplies.

W. H. RUTHERFORD,
Secretary to the Tender Board.

CONTRACTS ACCEPTED—(Series 1951-52.)

PROVISIONS.

No. of Contract.	Particulars of each Tender Accepted.	Amount.	Name of Contractor or Supplier.	Charge against Vote or Fund.	
PROVISIONS—					
Supply of Provisions, in such quantities as may be ordered, from 1st July, 1951, to 30th June, 1952, or as stated.					
Schedule No. 1.—Melbourne District—					
19	Bread, Kew Mental Hospital	Rates as per annex	Capitol Bakeries Pty. Ltd.	} Contingencies, 1951-52	
20	Bread, Melbourne, Royal Park, and Travancore Developmental Centre, Flemington	Ditto	Dorrier's Hygienic Bakery		
21	Bread, Teachers' College, and Hostel, Carlton	Ditto	O. H. Tuck		
22	Flour	Ditto	Pirrie Bros.		
..	Groceries	Ditto	<i>Moran and Cato Pty. Ltd. (A)</i>		
..	Cereals	Purchase under Tender Board quotations		
23	Jams	Rates as per annex	W. H. Johnsons Jams Pty. Ltd.		
24	†Meat, Kew Mental Hospital	Ditto	F. Watkins Pty. Ltd.		
25	†Meat, Pontridge Penal Establishment	Ditto	F. Watkins Pty. Ltd.		
26	†Meat, Children's Welfare Depot, Royal Park, and Police Hospital	Ditto	J. H. Cooke Pty. Ltd.		
27	†Meat, Royal Park Mental Hospital and Receiving House	Ditto	J. H. Cooke Pty. Ltd.		
..	Soap Mixtures	Ditto	<i>Moran and Cato Pty. Ltd. (A)</i>		
28	Tea and Coffee	Ditto	Henry Berry and Co. (A'sia.) Ltd.		
..	Potatoes	Purchase under Tender Board quotations		
Schedule No. 2.—Mont Park: Sanatorium, Greswell, &c.—					
29	Bread	Rates as per annex	E. J. Callander		
..	Groceries	Ditto	<i>Henry Berry and Co. (A'sia.) Ltd. (A)</i>		
30	Jams	Ditto	W. H. Johnsons Jams Pty. Ltd.		
31	†Meat	Ditto	W. Angliss and Co. (Aust.) Pty. Ltd.		
..	Potatoes	Purchase under Tender Board quotations		
Schedule No. 3.—SS. Rip and Dredges—					
..	Bread	Purchase by agreement		
..	Groceries	Rates as per annex	<i>Moran and Cato Pty. Ltd. (A)</i>		
32	†Meat	Ditto	J. H. Cooke Pty. Ltd.		
..	Vegetables	Purchase by agreement		
..	Potatoes	Purchase under Tender Board quotations		
Schedule No. 4.—Teachers' College, Carlton—					
..	Groceries	Rates as per annex	<i>Moran and Cato Pty. Ltd. (A)</i>		
33	Jams	Ditto	W. H. Johnsons Jams Pty. Ltd.		
34	†Meat (also for Travancore Developmental Centre, Flemington)	Ditto	J. H. Cooke Pty. Ltd.		
..	Potatoes	Purchase under Tender Board quotations		
Schedule No. 5.—Ararat District—					
35	Breadstuffs	Rates as per annex	Rita M. and Major L. Bates		
..	Groceries	Ditto	} <i>John MacLeod and Co. Pty. Ltd. (A)</i>		
..	Jams	Ditto			
36	†Meat	Ditto	A. I. Ahpee		
..	Potatoes	Purchase under Tender Board quotations		
Schedule No. 6.—Ballarat District—					
37	Breadstuffs	Rates as per annex	Brogden Bros.		
..	Groceries	Ditto	} <i>John MacLeod and Co. Pty. Ltd. (A)</i>		
..	Jams	Ditto			
38	†Meat	Ditto	H. J. Symons Pty. Ltd.		
..	Potatoes	Purchase under Tender Board quotations		
Schedule No. 7.—Beechworth District—					
39	Bread	Rates as per annex	P. A. Taylor		
..	Groceries	Ditto	} <i>Moran and Cato Pty. Ltd. (A)</i>		
..	Jams	Ditto			
40	†Meat	Ditto	E. Spencer		
..	Potatoes	Purchase under Tender Board quotations		

Names shown in italics denote suppliers under agreement. † Contract for period 1st July, 1951, to 30th September, 1951, only.

CONTRACTS ACCEPTED—(Series 1951-52)—continued.

PROVISIONS—continued.

No. of Contract.	Particulars of each Tender Accepted.	Amount.	Name of Contractor or Supplier.	Charge against Vote or Fund.
PROVISIONS—continued.				
Schedule No. 8.—Langi Kal Kal Training Centre—				
41	Bread	Rates as per annex	O. Nichols and W. J. Hoskin ..	
42	†Meat	Ditto	H. T. Slee	
..	Potatoes	Purchase under Tender Board quotations	
Schedule No. 9.—School of Forestry, Creswick—				
43	Breadstuffs	Rates as per annex	R. C. Bowley	
..	Groceries	Ditto	<i>J. Tail and Son (A)</i>	
44	Milk	Ditto	E. J. Keen	
45	†Meat	Ditto	H. J. Symons Pty. Ltd.	
Schedule No. 10.—MoLeod Settlement, French Island—				
46	Bread	Rates as per annex	H. H. Bird	
..	Groceries	Ditto	<i>E. V. Peters (A)</i>	
47	†Meat	Ditto	Dureau and Hardie	
..	Potatoes	Purchase under Tender Board quotations	
Schedule No. 11.—Heatherton Sanatorium, Cheltenham—				
48	Bread	Rates as per annex	T. D. Callander Pty. Ltd.	
..	Groceries	Ditto	<i>Moran and Cato Pty. Ltd. (A)</i>	
49	†Meat	Ditto	W. Angliss and Co. (Aust.) Pty. Ltd. ..	
50	Milk	Ditto	Moule's Model Dairy	
Schedule No. 12.—Sanatorium, Groenvale—				
51	Breadstuffs	Rates as per annex	Bignell's Bakery	
..	Groceries	Ditto	<i>Henry Berry and Co. (A'sia.) Ltd. (A)</i> ..	
52	†Meat	Ditto	F. Watkins Pty. Ltd.	
..	Potatoes	Purchase under Tender Board quotations	
Schedule No. 13.—Coorimungle Prison Camp Heytesbury Forest—				
..	Bread	Rates as per annex	<i>E. L. McDowall (A)</i>	
..	Groceries	<i>M. L. Hose (A)</i>	
53	†Meat	Rates as per annex	Heytesbury Butchery	
Schedule No. 14.—Aboriginal Station, Lake Tyers—				
54	Breadstuffs	Rates as per annex	R. Hodder	
..	Groceries	Ditto	} <i>R. Hodder (A)</i>	Contingencies, 1951-52.
..	Jams	Ditto		
Schedule No. 15.—Research Station, Rutherglen—				
55	Bread	Rates as per annex	A. F. Parrott	
..	Groceries	Ditto	<i>Aiken and Fullerton (A)</i>	
Schedule No. 16.—Sale Gaol—				
56	Bread	Rates as per annex	F. J. Hennessy	
57	†Meat	Ditto	H. L. G. Laws	
Schedule No. 17.—Pleasant Creek Special School, Stawell—				
58	Breadstuffs	Rates as per annex	A. R. Bushick	
..	Groceries	Ditto	<i>John MacLeod and Co. Pty. Ltd. (A)</i> ..	
59	Milk	Ditto	E. G. Waldron	
60	†Meat	Ditto	Newton Bros.	
..	Potatoes	Purchase under Tender Board quotations	
Schedule No. 18.—Sunbury District—				
61	Breadstuffs	Rates as per annex	J. N. Hennessy Pty. Ltd.	
..	Groceries	Ditto	<i>K. N. Tidswell (A)</i>	
..	Cereals	Purchase under Tender Board quotations	
..	Jams	Rates as per annex	<i>K. N. Tidswell (A)</i>	
62	†Meat	Ditto	F. Watkins Pty. Ltd.	
..	Potatoes	Purchase under Tender Board quotations	
Schedule No. 19.—Agricultural College, Dookie—				
63	Breadstuffs	Rates as per annex	L. G. Clark	
..	Groceries	Ditto	} <i>W. A. Thompson (A)</i>	
..	Jam	Ditto		
Schedule No. 20.—Agricultural College, Longrenong—				
64	Breadstuffs	Rates as per annex	Omant Bros.	
..	Groceries	Ditto	} <i>J. Langlands and Sons Pty. Ltd. (A)</i> ..	
..	Jam	Ditto		
..	Potatoes		Purchase under Tender Board quotations
Schedule No. 21.—Geelong District—				
65	Bread	Rates as per annex	J. A. Fitzgerald	
66	†Meat	Ditto	O'Brien's Butchery	

Names shown in italics denote suppliers under agreement. † Contract for period 1st July, 1951, to 30th September, 1951, only.

Approved—J. G. B. McDONALD, Treasurer, 2.7.1951.

CONDITIONS OF CONTRACT FOR PROVISIONS, 1951-52, ETC.

(Published in the *Victoria Government Gazette* No. 436, dated 27th April, 1951, pages 3053 to 3055.)

1. All the articles are to be of the best quality of the several kinds, in the best condition, and in conformity with the Health Acts, and to be delivered in sound packages, free from all charges for cartage, freight, &c. The goods shall be delivered as may be directed by the officer ordering the supply.

2. As the exact quantity of any article which may be required cannot be stated, the estimate being approximate only, the Government will not be bound by the quantity stated in the schedule, but will be at liberty to order more or less, according to circumstances, and the contractor will be bound to supply the same as ordered.

The Government reserves the right to purchase otherwise than from the contractor any of the articles specified in the schedule in the event of emergency due to the war.

3. Supplies for country districts for which no local contract may have been taken, or for which the contract has been terminated, may be ordered under the Melbourne contract.

4. The Melbourne District will include places within a radius of 6 miles from the Elizabeth-street Post Office, with the exception of places for which separate contracts are provided; the Mont Park District will include the Mental Hospitals, Janefield Colony, and the Sanatorium, Gresswell; the Ararat, Ballarat, Beechworth, and Sunbury Districts will include the Mental Hospitals, Gaols, and Police Gaols at those places; and the Castlemaine District will include the Reformatory Prison. Delivery must be made at the places, institutions, &c., named in the schedules, or as directed by the officer ordering the supply.

5. Packages suitable for transport of goods supplied must be provided by the contractor free of expense, and the value of these packages, whether in bulk or otherwise, is to be included in the rate tendered, except butter boxes and soap boxes (not including fancy soaps), jam jars, flour, meal, and potato bags, which will remain the property of the contractor, and only the actual net weight or quantity received will be paid for; the empties to be removed from the place of delivery at the contractor's expense.

6. The meat supplied under these conditions must, if practicable, be slaughtered at abattoirs which are under authorized inspection and supervision. Any infringement of this condition will subject the contractor, on report from the Tender Board, to such mulct, not exceeding Fifty pounds, as the Treasurer may direct, and the amount will be deducted from the contractor's account, or from the security money.

7. The supplies coming under the head of Rations and Medical Comforts are to be delivered direct to the establishment entitled thereto on the written order of the officer in charge. All other supplies will be ordered by the head of the Department concerned or any officer authorized by him, and shall be delivered as may be directed by the officer ordering the supply.

8. At the time of delivering the supplies, the contractor shall produce the order for the same to the officer authorized to accept delivery, and such officer shall acknowledge thereon the receipt of the stores accepted, and shall return the order to the contractor, who shall render his account as soon as possible after the delivery of the supplies, accompanied by the receipted delivery order. The rates or quantities quoted in the orders cannot be exceeded.

9. Where practicable, the contractor shall use the Railways for the transport of the goods. When a contractor is required to make delivery of goods at a railway station for transmission by rail, except for Commonwealth Departments, he shall obtain a receipt for the goods in duplicate on the Stores and Transport consignment note, at the same time handing in the triplicate and quadruplicate of the form as an authority for the Railways to act as agent for, and charge the freight to, the Stores and Transport Office. He shall as soon as possible, and not later than twenty-four hours thereafter, deliver at the Tender Board Offices the original, the duplicate to be forwarded to the consignee and the quintuplicate retained by himself. Should the goods thus forwarded be rejected, the contractor must bear the cost of replacing such goods, for which services the departmental consignment note is not to be used. Any infringement of this condition may subject the contractor to such mulct as the Tender Board may recommend under clause 18 of these conditions.

10. Orders must receive prompt execution; in the event of the goods not being delivered at the time mentioned in the order or within such other time as the officer ordering the supply may specify for delivery, it will be competent for such officer, or the head of the Department to whom the goods are to be supplied, on giving the contractor twenty-four hours' notice, to purchase the supplies, or any like supplies that are suitable for the service, at the contractor's risk, and the extra expense incurred over and above the contract price (if any)

will be deducted from the contractor's account or from the security money.

11. The acceptance of the supplies shall be subject to the approval of the officer authorized to take delivery of the stores, or such other officer as shall be named in the conditions.

12. If the officer in charge of stores be not satisfied as to the quantity or quality of the stores, or if, after taking delivery of any stores or material, he shall discover any deficiency or defect therein, he may return such deficient or defective stores or material to the contractor, and shall report the same to the head of his Department and to the Tender Board.

13. In the event of a difference of opinion between the contractor and the officer receiving the supplies as to the quality, the same is to be decided, in cases where the article is not of a perishable nature, by a Board of Survey composed of persons named by the Treasurer of the State for the time being; and the decision of the Board is to be considered final. In the event of the decision being against the contractor, the survey fees and expenses (if any) will be deducted as in clause 10.

14. In cases where the article is of a perishable nature, or when from some other cause injury would be sustained either by the person to whom the rations or stores are due or by the contractor in waiting for a Board to survey, the head of the Department or officer authorized to take delivery will have power to reject such article or articles as are obviously of inferior quality, it being understood that he will be responsible to the Government for so doing, and that the contractor must take back the rejected article and supply good in its stead; failing which it, or any like supply suitable for the Service, will be obtained by the officer requiring it as in clause 10. In case of the rejection or return of any supplies, the contractor shall bear the whole cost of replacing the supplies so rejected or returned.

15. If the Board shall decide that the article is not of proper quality it must be immediately replaced by the contractor; failing which it, or any like supply suitable for the Service, will be procured by the officer requiring it, and the expense charged as in clause 10.

16. In the case of supplies for Mental Hospitals, it will be competent for a Board of Survey, consisting of the medical superintendent (or, in his absence, of the medical officer) and any two officers named by him, to examine and reject any supplies that may be objected to. It must be distinctly understood, however, that the contractor will have a right of appeal to the Treasurer of the State for the time being, such appeal to be made in writing within 24 hours of the rejection; but, pending such appeal, he must at once supply others of approved quality; failing which, the supplies required, or any like supplies suitable for the Service, may be obtained by the officer concerned, and the expense charged as in clause 10.

17. In the case of supplies for Mental Hospitals, it will also be competent for two or more of the official visitors, in conjunction with the medical superintendent, to reject any supplies that they may consider not in accordance with contract; and in such cases the reference to a Board of Survey will not be deemed to be necessary.

18. A refusal to execute orders, irregularity in the quantity or quality of the supplies, or delay in delivering or replacing them when required, will subject the contractor, upon report from the Tender Board, to such mulct, not exceeding Fifty pounds, as the said Treasurer may direct, and the amount may be deducted as in clause 10. It will also be in the power of the said Treasurer, upon such refusal, irregularity, or delay, to terminate the contract forthwith, and forfeit the whole or any part of the security money; and, in addition, the contractor will be disqualified from tendering or holding any future contract or contracts for a period of twelve months from the date of such disqualification.

19. Contractors are not at liberty to transfer their contracts under cover of power of attorney, coupled with an interest or otherwise, and no such transfer will be recognized by the Government. *If it is found during the currency of the contract that the contractor has not conformed to the condition of advertisement—which stipulates that if a tenderer be a member of a firm and such firm be interested in the contract, the tender shall be in the name of the firm and not in that of the individual—then the Treasurer may, on the recommendation of the Tender Board, determine the contract, and forfeit the security money.*

20. It will be competent for the Tender Board to terminate the contract, without notice, should there be reason to know

that the contractor takes advantage of his contract to communicate with a prisoner.

21. The contract entered into under these conditions is not to be considered as being broken, infringed, or vitiated by the importation of stores for the Government service, or by any contracts or purchases made by the Imperial Commissariat; or by the consumption of the produce or surplus stock of any Government establishment, or by any article being made at and supplied for the use of any Government establishment.

22. Notwithstanding anything contained to the contrary in section 152 of the *Customs Act 1901-36*, it is hereby expressly provided that upon any alteration of the duty collected affecting the goods included in this contract, the contract price shall not be altered, and the contract may be terminated at the option of either party by two months' notice in writing from the first day of the calendar month next ensuing,

and within the period for which the contract is made. The contract for the unaffected items shall remain in full force and effect. Any notice to be served under this condition shall be deemed to have been duly served if sent to the contractor in a registered letter to his last-known place of business or abode.

23. Under no circumstances other than those mentioned in clause 22 will a contractor be permitted to abandon his contract. In the event of the contractor failing to carry on the contract, the contract security money will in that case be absolutely forfeited; and, in addition, the contractor will be held liable for any loss which the Government may sustain in consequence of such failure.

24. For the purposes of these contracts the word "Government" shall mean the Government of the State of Victoria; and the word "Treasurer" shall mean the Treasurer of the said State.

STIPULATIONS FOR SUPPLIES OF PROVISIONS.

SUPPLIES GENERALLY.

For supplies under all sub-schedules, particular attention is drawn to clause 1 of the Conditions of Contract as to quality. No sub-letting is allowed, and all work must be carried out by the contractor.

Where practicable, all items must be manufactured or prepared within the Commonwealth.

Where no brand of Commonwealth manufacture or production is specifically set out in the respective sub-schedules, such Commonwealth brand as may be ordered must be supplied.

For Schedule No. 3 supplies must be delivered when ordered and, in cases of emergency, on Sundays, holidays, or half-holidays, as required.

BREAD AND FLOUR.

A sample of the best ordinarily retailed to the public will be considered as a test loaf for first quality for fine wheaten and pure wheaten Meal Bread. *Pure wheaten Meal Bread of first quality may be substituted, wholly or in part, for fine wheaten Bread at such times and in such quantities as, in the opinion of the Medical Superintendent, may be deemed necessary, and the contractor will be required to supply such Bread at the contract rate. Reasonable notice, however, of the intention to substitute wheaten Meal Bread must be given to the contractor by the officer ordering the supply.* Bread may be baked at any Government establishment without infringing these contracts. At the Gaols, Ballarat, Beechworth, Castlemaine, and Sale, and the Coorie-mungie Prison Camp, if required, bread must be supplied one day old, due notice to be given to the contractor of such requirement.

In the event of bread being made at any Government establishment in the Melbourne District during the currency of these contracts, the flour required will be drawn under the flour sub-schedule.

Flour for Districts for which no local contracts have been taken may be ordered under the Melbourne District contract, for delivery f.o.r. Melbourne.

GROCERIES.

As a guarantee of quality, Rice, when ordered in quantities of 56 lb. and over, must be supplied in original bags as delivered by the miller or dresser. Such bags must be branded "Rice, Dressed" or "Unpolished," and shall also have stencilled thereon the miller or dresser's name and the distinguishing mark indicative of the quality or grade. The bags thus stencilled shall contain Rice milled or dressed by the miller or dresser whose name appears thereon. Supplies not in conformity with the foregoing condition will be rejected.

Oatmeal must be supplied in original bags as delivered by millers.

Candles, except those for prison cells, must be supplied in 1-lb. packets. Candles for prison cells must be delivered in boxes containing from 25 to 50 lb. per box, the boxes for which must be legibly stencilled on one end showing the estimated burning time and the gross, tare, and net weight of contents.

The soap supplied must be hard throughout, ready for immediate use without waste, and shall have been manufactured at least seven weeks before leaving contractor's hands.

Raisins and currants must be present season's, and where the quantity admits, be supplied in original and unopened boxes, labelled as packed.

For Schedule No. 3 a certain quantity of Biscuits and Preserved Meats are sometimes required in lieu of fresh bread and fresh meat, and are included to meet such contingency only.

OATMEAL, RICE, SEED TAPIOCA, ETC.

Supplies of these items for Districts for which no local contracts have been taken may be ordered under the Melbourne District contract, for delivery f.o.r. Melbourne.

BUTTER AND CHEESE.

All supplies of 56 lb. or multiples of 56 lb. must be supplied in boxes as originally packed. The boxes must bear the impress stamp of the creamery where the butter is produced, otherwise it will not be accepted. All supplies must be in new boxes.

Where the Store or Butter Factory of the Contractor is situated in the Metropolitan area all Butter to the quantity of 56 lb. and over to be supplied in any one consignment under this contract shall before despatch from the Store or Factory be first examined and passed by the Government Butter Grader, for and on behalf of the officer authorized to accept delivery. The boxes containing butter so examined and found satisfactory in quality and description will be stamped by the Government Butter Grader and the date of such examination marked thereon. No butter from a contractor located in the Metropolitan Area will be accepted unless the boxes bear the stamp of the Grader. For the purposes of the foregoing condition the Metropolitan Area is defined as being not outside the radius visited by the Government Grader. The officer authorized to accept delivery may, within 48 hours of the receipt of any supply, require the Contractor to have same re-examined by the Grader, and, if not passed by him, it shall be returned to the Contractor, who shall forthwith replace the same with freshly-examined butter.

No Butter or Cool Store will be examined by the Grader until thermally it is in suitable condition therefor.

Where the Store or Factory from which the Butter is despatched is not within the area visited by the Grader a sample of any supplies may be forwarded to the Government Butter Grader for examination, should the supply be considered by the Officer authorized to accept delivery as not being equal in quality or description to that contracted for.

The Cheese supplied must be first-class quality, semi or fully matured, as ordered, and not less than 3 months old. If the quantity admits, it shall be boxed for transport.

JAM.

The weight stamped on the tins in accordance with the regulations under the Commerce Act, as indicating the minimum net quantity that each tin contains, shall for the purpose of this contract be taken as the actual contents when computing the quantity supplied.

When Jam is supplied in jars the jars remain the property of the contractor, and must be removed by the contractor at his own expense when empty.

SOAP AND SOAP MIXTURES.

Supplies of these items for Districts for which no local contracts have been taken may be ordered under the Melbourne District contract, for delivery f.o.r. Melbourne.

MEAT.

All meat supplied under this contract shall have been slaughtered in Victoria and shall be freshly killed, well-conditioned, of good quality, healthy, clean, wholesome, free from bone-taint, putrefaction or fly larvae, and shall not have been frozen.

The beef shall be of ox not under three nor more than six years old or heifer or cow not under three nor more than five years old. Carcass beef for Mental Hospitals shall be delivered in quarters of equal proportions of hinds and fores and the corresponding hinds and fores must be supplied, also extra buttocks separately when ordered. Meat for other Institutions shall be supplied as ordered. Where hindquarters or buttocks are ordered 9 inches shall be cut off from the end of the leg

from the hock upwards, i.e. the end of the leg from which the shank has been removed at the abattoirs; when forequarters form a portion of the supply, 6 inches from the end of the neck and the whole of the shin at the clodbone joint shall be removed. The sticking pieces also shall be trimmed off and the point and end of the brisket rendered free from blood and blood stains.

The mutton shall be wether or maiden ewe not more than four years old and the weight of a carcass shall be not less than 40 lb. nor more than 60 lb. The mutton shall be delivered in sides when so ordered.

Corned Beef (rolled or round as ordered) shall be supplied without bone or cartilage and will be received whether pumped or prepared in the ordinary way of pickling but, in the former case, it shall have been soaked, after pumping, for at least 48 hours in a good pickle and then thoroughly drained before supply. No flank, chuck, sticking-piece, shin, leg of beef, or piece under 7 lb. will be received.

Meat derived from the carcasses of Bulls, Stags or Rams or meat containing an undue proportion of bone or fat will not be received and shall not be tendered for delivery. Net weight only will be paid for.

In cases of emergency, or on such other occasions as in the opinion of the Director of Mental Hygiene or Heads of other Institutions may seem advisable, other forms of meat, such as Rabbits, Tinned Meats, &c., may be purchased, apart from the contract, in lieu of the meat specified in the Schedule, and substituted therefor, provided 24 hours' notice—except in cases of emergency—be given to the Contractor of such intention.

The parts to be removed by the contractor are indicated in the shaded portion of the annexed diagram. This work shall be carried out in the factory or shop of the Contractor, except those parts usually removed at the abattoirs.

With respect to the schedules enumerated hereunder, the following stipulations shall also apply:—

For sub-schedules 9 and 10 of Schedule No. 1, fresh beef shall be supplied, as ordered, from ribs, sirloin, and thick flanks and for Schedule No. 2, from prime ribs, sirloin, and

thick flanks; ribs of beef to be cut clear of the plate bone, and sirloin to be cut clear of the wing ribs; excess of brisket or thin flank will be rejected. Mutton must be delivered in sides when so ordered; all kidney fat to be removed.

For Schedules Nos. 1 (sub-schedules 9 and 10) 3, 4, 9, 11, 12, 13 and 17, chuck ribs of Beef, i.e., 1st to 4th inclusive will not be accepted.

For Schedules Nos. 4, 11, 12 and 17, fresh Beef must be supplied, as ordered, from prime ribs or sirloin; ribs of Beef to be cut clear of the plate bone, and sirloin to be cut clear of the wing ribs; excess of brisket or flank will be rejected.

TEA AND COFFEE.

Tea and Coffee for Districts for which no local contracts have been taken may be ordered under the Melbourne District contract, for delivery f.o.r. Melbourne.

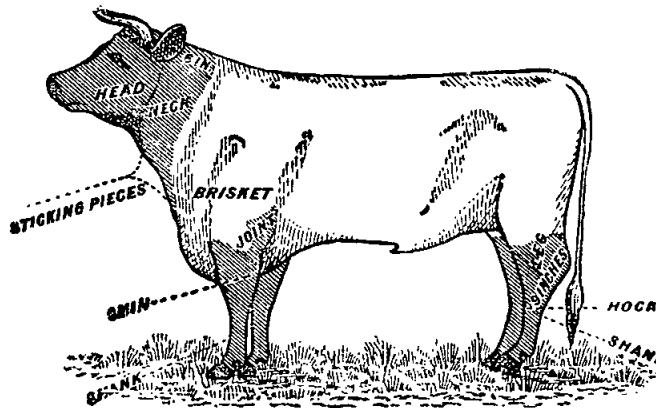
MILK.

The milk must be fresh, pure, and of the best quality, and subject to test when required by the Department, and supplied at such times as the Department may require. Should the contractor fail to supply at the time specified in the order or at such times as may be indicated in any general notice to the contractor his contract may be cancelled forthwith and his security forfeited, or should the supply prove to be not of contract quality it will be rejected, and any expense incurred will be charged to the contractor.

POTATOES.

Potatoes to be dry and free from dirt. Contractors to take back all rejected before being cooked. Bags to remain the property of the contractor. Weight of bags (approx. 2½ lb.) to be deducted.

If the price of potatoes becomes abnormally high, the heads of the various departments concerned may, if they think fit, cause rice or any other suitable food to be occasionally substituted in lieu thereof.



ANNEX TO CONTRACTS.

FLOUR AND BREAD.

The contract rates shown are subject to adjustment for any variation in the proclaimed price of flour.

MEAT.

Contracts marked † operate for the period 1st July, 1951, to 30th September, 1951, only.

AGREEMENTS.

For the Sub-schedules marked (Agreement), no contract has been let nor security lodged. Requirements thereunder are to be purchased from the suppliers named, under Tender Board Agreement. The rates shown are subject to variation from time to time, particulars of which will be gazetted as required. In all cases, supply is subject to stocks being available.

AVAILABILITY OF SUPPLIES.

Owing to existing difficulties in obtaining supplies of various items, the penal provisions of Clause 10 of the Conditions of Contract are not to be enforced without reference to the Tender Board.

SCHEDULE No. 1. PROVISIONS—MELBOURNE DISTRICT.

ANNEX TO CONTRACT No. 1951/19.
*Capitol Bakeries Pty. Ltd., 257 Toorak-road,
South Yarra.*

Sub-schedule No. 1.
BREAD FOR MENTAL HOSPITAL AT KEW.

	£	s.	d.
1. Bread—Fine wheaten, first quality .. per cwtl.	1	3	11½

ANNEX TO CONTRACT No. 1951/20.
*Dorfler's Hygienic Bakery, 146 Melville-road, Pascoe Vale
South.*

Sub-schedule No. 2.
BREAD FOR CHILDREN'S WELFARE DEPOT, ROYAL PARK, RECEIVING HOUSE AND MENTAL HOSPITAL, ROYAL PARK, AND TRAVANCORE DEVELOPMENTAL CENTRE, FLEMINGTON.

	£	s.	d.
1. Bread—Fine wheaten, first quality .. per cwtl.	1	9	8½

ANNEX TO CONTRACT No. 1951/21.
O. H. Tuck, 20 Grattan-street, Carlton.

Sub-schedule No. 2a.
TEACHERS' COLLEGE, AND HOSTEL, CARLTON.

	£	s.	d.
1. Bread—Fine wheaten, first quality .. per cwtl.	1	8	1½

ANNEX TO CONTRACT No. 1951/22.
Pirrie Bros., 136 Exhibition-street, Melbourne, C.1.

Sub-schedule No. 3.
FLOUR.

	£	s.	d.
1. Flour—Roller, first quality per cwtl.	0	18	0

(AGREEMENT.)
Moran and Cato Pty. Ltd., 277 Brunswick-street, Fitzroy, N.6.

Sub-schedule No. 4.
GROCERIES.

	£	s.	d.
1. Bacon—Sides per lb.	0	2	9
2. " Rashers, Middle—Huttons .. do.	0	3	6
3. Biscuits—Coffee, Malt or Milk Arrowroot .. do.	0	1	2½
4. " Dry do.	0	1	2½
5. Blue—Washing, powdered in 7-lb. packets .. do.	0	0	11½
6. Cereal—Pipers, or equal 24-oz. packets .. per pkt.	0	1	4½
7. " Biscuit—Weat Biks, or equal 24-oz. packets .. do.	0	1	4½
8. Cocoa—" Bournville " do.	0	3	0½
9. Corn Flour—{ "Kream" do.	0	1	1½
{ "Fielders" do.	0	0	7½
{ Loose do.	0	0	6½
10. Curry Powder—Bulk do.	0	2	6½
11. Custard Powder—{ Loose do.	0	0	9½
{ "Clipper" do.	0	0	11½
12. Coffee (Essence) 8-oz. bottles "M & C" .. per bot.	0	2	0
13. " 40-oz. bottles "M & C" .. do.	0	8	3
14. Essence—Lemon—8-oz. bottles—"Sumna Gold" .. do.	0	3	9
15. " Vanilla—8-oz. bottles—"Allens" .. do.	0	6	1½
16. Fish—Tinned Herrings—14-oz.—Fresh .. per tin	0	1	9
17. " " " " in Tomato Sauce—14-oz. .. do.	0	1	10
18. Flour—Self-raising per lb.	0	0	4
19. Fruit—Dried—apples do.	0	2	8½
20. " " apricots—3 crown do.	0	2	10½

* Supplies not available. † 12-oz. tins, £1 3s. 2d. per oz.
‡ 22-lb. boxes, 16s. 10d. each. || 6-lb. tins—Slicing Beef, 11s. 10d. each.

Sub-schedule No. 4—continued.

GROCERIES—continued.

	£	s.	d.
21. Fruit—Dried—peaches—2 crown .. per lb.	0	2	1½
22. " " pears—2 crown .. do.	0	1	9½
23. " " prunes—50-60's—7-lb. tins .. do.	0	1	11
24. " " currants—2 crown .. do.	0	1	3½
25. " " raisins—lexias—2 crown .. do.	0	1	3½
26. " " sultanas—2 crown .. do.	0	1	4
27. Fruit—Tinned—assorted—30-oz. tins .. per tin	0	1	9½
28. " " apricot—4-gal. tins .. do.	*	*	*
29. " " peaches—4-gal. tins .. do.	*	*	*
30. " " pie apple—6½-lb. tins .. do.	0	7	7
31. " " tomato pulp—4-gal. tins (Fowlers) .. do.	1	3	0
32. " " tomatoes—30-oz. tins .. do.	0	1	11½
33. " " 4-gal. tins .. do.	*	*	*
34. Golden Syrup—2-lb. tins .. do.	0	0	7½
35. Honey—60-lb. tins .. per lb.	0	0	8½
36. Jelly Crystals—4-oz. packets—"Sparkling" .. each	0	0	4
37. Junket Tablets—Tubes—"Merry Widow" .. do.	0	0	9½
38. Macaroni—56-lb. bags—"Rinoldi" .. per lb.	0	0	8½
39. Meat—Tinned—Camp Pie—16-oz. tins .. per tin	0	1	4½
40. " " Beef—6-lb. tins .. do.	0	14	9½
41. Milk—Dried—3-lb. tins—"Trufood" .. do.	0	6	11½
42. Mustard—Bulk .. per lb.	0	3	2
43. Peel—Mixed—cut .. do.	0	1	1½
44. Pepper—Black—ground .. do.	1	1	11
45. Pickles—Assorted—20-oz. bottles .. per bot.	0	1	3½
46. Pipes—Clay .. per doz.	*	*	*
47. Salt—Fine—"Imperial" .. per cwt.	0	12	0
48. Sauces—Tomato—26-oz. bottles—"Raleigh" .. per bot.	0	2	2½
49. " " 1-gal. jars—"Raleigh" .. per jar	0	9	0½
50. " Worcestershire—10-oz. bottles—"Hardings" .. per bot.	0	1	2½
51. Soda—Bi-carbonate .. per lb.	0	0	5
52. " Washing .. do.	0	0	3½
53. Spice—Mixed—loose .. do.	0	2	1
54. Tartar—Cream of .. do.	0	4	4½
55. Treacle—2-lb. tins .. per tin	0	0	7½
56. Vermicelli—22-lb. boxes .. per box	0	18	0
57. Vinegar (Malt) .. per quart	0	0	5

Sub-schedule No. 5.

CEREALS.

1. Oatmeal per cwt.			Purchase
2. Rice—Dressed do.			under
3. " Unpolished do.			Tender
4. Seed Tapioca (Sago) do.			Board
5. Pearl Barley do.			Quota-
6. Peas—Split do.			tions.

ANNEX TO CONTRACT No. 1951/23.
*W. H. Johnsons Jams Pty. Ltd., 42 Meaden-street, South Melbourne,
S.C.5.*

Sub-schedule No. 6.

JAMS.
Security, £20.

	£	s.	d.
1. Jams—Assorted, in bulk, of approved kinds, in the proportion of half seed and half stone, of the best quality, in tins .. per lb.	0	0	7½
2. " Assorted, in bulk, of approved kinds, in the proportion of half seed and half stone, of the best quality, in 24-oz. tins .. per tin	0	1	5½
3. " Assorted, in 5-lb. tins, in the proportion of half seed and half stone of the best quality .. per tin	0	4	5

ANNEX TO CONTRACT No. 1951/24.†
F. Watkins Pty. Ltd., 184 Bourke-street, Melbourne, C.1.

Sub-schedule No. 7.

MEAT FOR MENTAL HOSPITAL, KEW. ††
Security, £35.

	per cntl.	per lb.	per doz.	per set	per lb.
1. Fresh Beef—Rolled Ribs, boneless	8 6 8				
2. " " Steak, Stewing	0 1 6				
3. " " Minced	0 1 5				
4. Corned Beef—Rolled or Round, as ordered without bone or cartilage	0 1 7				
5. Fresh Mutton—(Whole Sheep)	0 0 11				
6. Saveloys	0 1 6				
7. Sausages—Mixed	0 1 3				
8. Sausage—Belgium	0 1 8				
9. Beef Loaf	0 2 4				
10. Ham Loaf	0 2 4				
11. Veal Loaf	0 2 4				
12. Tripe, Fresh	0 0 7½				
13. Livers, Sheeps'	0 0 9				
14. Livers, Ox	0 1 1				
15. Brains, Sheeps'	0 0 4				
16. Rabbits, Fresh	0 1 7				

ANNEX TO CONTRACT No. 1951/25.†
F. Watkins Pty. Ltd., 184 Bourke-street, Melbourne, C.1.

Sub-schedule No. 8.

MEAT FOR PENAL ESTABLISHMENT (PENTRIDGE), FEMALE PENITENTIARY, AND METROPOLITAN GAOL (COBURG). ††
Security, £35.

	per lb.	per doz.	per set
1. Fresh Beef—Fore-quarters	0 0 11½		
2. Fresh Mutton (whole sheep)	0 0 11		
3. Sausages—Mixed	0 1 3		
4. Liver—Calves	0 1 6		
5. Fresh Suet—Kidney	0 0 7		
6. Dripping—Beef	0 0 7		
7. Sausage Meat	0 0 11		
8. Tripe—Fresh	0 0 7½		
9. Beef—Minced	0 1 5		

ANNEX TO CONTRACT No. 1951/26.†
J. H. Cooke Pty. Ltd., 378 Queen's-parade, Clifton Hill.

Sub-schedule No. 9.

MEAT FOR POLICE HOSPITAL, ST. KILDA-ROAD, CHILDREN'S WELFARE DEPOT, ROYAL PARK.
Security, £8.

	per cntl.	per lb.	per doz.	per set
1. Fresh Beef	6 5 0			
2. " Mutton	5 0 0			
3. Steak—Rump	0 2 8			
4. " Stewing	0 1 6			
5. Beef—Corned Silverside	0 1 10½			
6. Fresh Mutton—Loin	0 1 2½			
7. " " Leg	0 1 4½			
8. " " Outlets	0 1 5½			
9. Chops—Middle Loin	0 1 3½			
10. Shanks—Sheeps'	0 0 7½			
11. Sausages—Mixed	0 1 3			
12. Tripe—Fresh	0 0 7½			
13. Fry—Lamb's	0 0 9			
14. Liver—Calves'	0 0 9			
15. Sausage—Beef, German	0 1 5			
16. " Strasberg, Pork	0 1 9			
17. Rabbits—Fresh	0 1 9			
18. Frankfurts	0 1 9			
19. Brains—Sheeps'	0 0 4			
20. Kidneys—Sheeps'	0 3 0			

ANNEX TO CONTRACT No. 1951/27.†
J. H. Cooke Pty. Ltd., 378 Queen's-parade, Clifton Hill.

Sub-schedule No. 10.

MEAT FOR RECEIVING HOUSE AND MENTAL HOSPITAL, ROYAL PARK.
Security, £10.

	per cntl.	per lb.	per doz.
1. Fresh Beef	6 5 0		
2. " Buttocks	6 5 0		
3. " Mutton	0 1 0		
4. Corned Beef—Rolled or round, as ordered, without bone or cartilage	0 1 4		
5. Fresh Suet—Kidney	0 0 5		
6. Sausages—Mixed	0 1 3		

(AGREEMENT.)

Moran and Cato Pty. Ltd., 277 Brunswick-street, Fitzroy, N.6.

Sub-schedule No. 11.

SOAP MIXTURES.
(Of Commonwealth Manufacture.)

	per gal.
1. Antiseptic—Liquid, of approved make, in 4-gal. tins—Pinex Floor Wash	0 6 6

* Supplies not available. † Market rates, plus 1d. per lb.
‡ Charge for jars 3s. 6d. each. § As supply of 20-oz. bottles is irregular rate is shown on per lb. basis.
†† Rates subject to variation in accordance with determinations of Prices Decontrol Commissioner.

Sub-schedule No. 11—continued.

SOAP MIXTURES—continued.

	per case	per doz.	per tin	per doz.	per doz.
2. Extract of—Kitchen's—or equal, Bulk bags, per "Hydrox" cwt.	2 9 3				
3. Household—Dry, Brand, "Marnockvale" 35 2-lb. bars to case	1 14 2				
4. Lithobuy	0 3 9½				
5. "Lux" or "Morino," as ordered, in bulk	*				
6. "Monkey Brand"—or equal thereto, in tablets of 5 oz. each	*				
7. Sand—Borax, 12-oz. blocks, of approved brand	*				
8. Sand—Carbolic, 12-oz. blocks—wrapped "Letric"	0 3 6				
9. Soft—Genuine Potash, best ambor, 40-lb. tins	1 3 4				
10. Toilet—"Bath," in 4-oz. tablets, Kitchen's, or equal thereto	0 2 11				
11. Toilet—Carbolic, in 4-oz. tablets, Kitchen's, or equal thereto	*				
12. Toilet—"Astola," in 6-oz. tablets, Kitchen's, or equal thereto	*				
13. "Velvet"—or equal thereto	0 5 10½				

ANNEX TO CONTRACT No. 1951/28.

Henry Berry and Co. (A/asia) Ltd., 568 Collins-street, Melbourne, C.1.

Sub-schedule No. 12.

TEA AND COFFEE.

Security, £250.

	per lb.	per doz.
1. Tea, Ceylon—To sample	0 3 1½	
2. Coffee—Fresh roasted, and whole, beans to be thoroughly sound—To sample	0 5 4	
3. Coffee and Chicory—60/40	0 3 11	

SCHEDULE No. 2.

PROVISIONS—MONT PARK, SANATORIUM, GRESSWELL, ETC.

(Delivery at the Mental Hospital, Mont Park, to depots as required, the Repatriation Mental Hospital, Bundoora, Janefield Colony and Sanatorium, Gresswell.)

ANNEX TO CONTRACT No. 1951/29.

E. J. Callander, 597 High-street, Preston, N.18.

Sub-schedule No. 1.

BREADSTUFFS.

Security, £190.

	per cntl.	per doz.
1. Bread—Fine wheaten, first quality	1 13 3	
2. " Raisin, " "	2 16 3	
3. Flour—First quality	††	

†† Order under Melbourne District Contract.

(AGREEMENT.)

Henry Berry and Co. (A/asia) Ltd., 568 Collins-street, Melbourne, C.1.

Sub-schedule No. 2.

GROCERIES.

	per lb.	per doz.	per pkt.	per jar	per doz.	per doz.
1. Bacon—In sides	φ					
2. Beans—Haricot	0 1 2					
3. " Butter	*					
4. Blue—Washing—1 oz. Knobs "Reckitts"	0 2 0					
5. Biscuits—Coffee, Malt, Milk Arrowroot, or equal, as ordered	0 1 2½					
6. Camp Pie—in 12-oz. tins	0 16 3					
7. Candles (full weights)—Kitchen's "Electrics," or other make of equal quality in 1-lb. packets	0 1 3½					
8. Cereal, in 24-oz. packets, "Malties"	0 1 5					
9. Cinnamon	0 1 4					
10. Cocoa { in 1-lb. cardboard cartons, "Tulip" or "Table Talk"	0 3 2					
Loose	0 2 7					
11. Coconut—Desiccated	0 2 3					
12. Coffee Essence—Brand, "Club"—in 8-oz. bots.	0 1 11					
in 1-gal. jars	1 5 0					
13. Corn or Maize Flour—in 1-lb. packets, per lb. Brand, "Kraam"	0 1 5½					
14. Currants—2 Crowns (present season's)	0 1 3½					
15. Curry Powder—Brand, "Atlas"	0 2 9					
16. Custard Powder—1-lb. packets	0 12 9					
17. Dates—Fresh, loose	0 1 1½					
18. Essence of Vanille—in full 20-oz. bottles	0 8 0					
19. Flour—Self-raising, Brand, "Cookwell" per bag	2 8 3½					

φ Charge for tins, 6s. each. © Charge for tins 3s. 0d. each.
§ Bag-150-lb. † Case lots, 1s. 1d. per lb.

Sub-schedule No. 2—continued.

GROCERIES—continued.		£	s.	d.
20. Fruits, Dried (present season's)	per bag	11	11	
21. Fruits—Preserved, assorted, in 1-lb. 14-oz. tins (excluding Pines)	per tin	11		
22. Gelatine—Ground	per lb.	0	4	10½
23. Ginger—Ground	do.	0	5	0
24. Golden Syrup—in 2-lb. tin	per ctn.	0	15	6×
25. Herrings { 14-oz. tins, Fresh	per doz.	1	0	10
in Tomato Sauce	do.	1	1	6
26. Honey, first quality	per lb.	0	0	10½
27. Jelly Crystals—in 4-oz. packets "Invicta"	per gross packets	3	13	0
28. Junket Tablets, "Viking"	per tube	0	0	9½
29. Lemon Peel—cut	per lb.	0	1	2½
30. Macaroni in 22-lb. boxes	per box	0	17	3½
31. Margarine { Cake	per lb.	0	0	10½
{ Pastry	do.	0	0	10½
32. Meat—Tinned—Beef Luncheon, 12-oz. tins	per doz.	0	17	9
33. Milk—Dried, Full Cream—				
"Sunshine" { 12-oz. tins—3 doz.	per case	3	14	3
{ 3-lb. "—1 doz.	do.	4	10	0
"Trufood" { 12-oz. tins—3 doz.	do.	3	10	6
{ 3-lb. "—1 doz.	do.	4	5	9
34. Mustard—"Colonial"	per lb.	0	3	6
35. Nutmeg—Whole	do.	0	6	0
36. Pepper—Black, ground	do.	1	3	0
37. Pickles—Assorted, 20-oz. bottles	per doz.	0	15	6
38. Pipes—Tobacco, clay	do.	*		
39. Prunes—Dried, 50-60's (present season's)	per lb.	1		
40. Raisins—Lexias, 4 Crowns (present season's)	do.	1		
41. " Sultana, 3 Crowns (present season's)	do.	1		
42. Rice—Ground—1-lb. packets	do.	0	0	6
43. Salmon—Fresh, in 14½-oz. tins, tall, fancy pink	per tin	*		
44. Salt—Fine	per cwt.	0	12	3
45. Sauce—Tomato { in 26-oz. bottles	per doz.	1	11	0
in 1-gal. jars φ	per gal.	0	10	6
46. Soda—Bicarbonate of	per lb.	0	0	5½
47. " Washing	per cwt.	1	14	0
48. Spice—Mixed, loose	per lb.	0	3	0
49. Starch (Rice)—Brand, "Silver Star"	per pkt.	*		
50. Sugar—Castor	per cwt.	2	7	3
51. " Icing	do.	2	7	3
52. Tartar—Cream of—Substitute—Sodium Phosphate—Brand, "Antelope"	per lb.	0	1	9½
53. Treacle—in 2-lb. tins	per ctn.	0	14	8×
in 16-oz. packets	per doz. pkt.	0	10	6
54. Vermicelli { in 22-lb. cartons	per carton	0	17	6
in 22-lb. boxes	per box	0	18	6
55. Vinegar—Malt { in gallon jars φ	per gall.	0	1	9
in 9 gallon kgs†††	do.	0	1	7½

ANNEX TO CONTRACT NO 1951/30.

W. H. Johnsons Jams Pty. Ltd., 42 Meaden-street, South Melbourne, S.C.5.

Sub-schedule No 3.

JAMS.		£	s.	d.
1. Jams—Assorted, in bulk, of approved kinds, in the proportion of half actual net seed and half stone, of the best quality, in tins.	per lb.	0	0	7½
2. " Assorted, in 5-lb. tins, in the proportion of half seed and half stone, of the best quality.	per tin	0	4	5
3. " Marmalade, in 5-lb. tins	do.	0	4	5

ANNEX TO CONTRACT NO. 1951/31.†

W. Angliss and Co. (Aust.) Pty. Ltd., 42 Bourke-street, Melbourne.

Sub-schedule No. 4.‡

MEAT.		£	s.	d.
Security, £50.				
1. Fresh Beef, Forequarters	per ontl.	4	17	5
2. " " Hindquarters	do.	6	4	0
3. " " Buttocks	per lb.	0	1	2½
4. " " Roast	do.	0	1	4
5. Beef, Corned—Rolled or Round, as ordered, without bone or cartilage	do.	0	1	6
6. " " Silverside (Gresswell Sanatorium)	do.	0	1	9
7. Mutton, Fresh	do.	0	0	10½
8. Chops—Forequarter	do.	0	0	8
9. " Loin	do.	0	1	3
10. Steak—Thick Flank	do.	0	1	9
11. " Rump	do.	0	2	3

* Supplies not available. †† Apply Tender Board. ‡ Charge for tins 3s. each.
 § Cartons, 16s. 3d. each. † Australian Dried Fruits Association rates. ‡ Charge for jars 3s. 6d. each.
 ¶ Rates subject to variation in accordance with determinations of Prices Decontrol Commissioner.
 × Carton 2 dozen 21b. tins. ††† Charge for kegs £3 each.

Sub-schedule No. 4—continued.

MEAT—continued.		£	s.	d.
12. Steak—Minced	per lb.	0	1	4
13. Sausage Meat	do.	0	0	10
14. Sausages—Mixed	do.	0	1	0
15. Shanks—Sheep's	each	0	0	6
16. Tripe—Fresh	per lb.	0	0	6
17. Brains—Sheep's	per set	0	0	4
18. Kidneys—Ox	per lb.	0	1	2
19. Frys—Lamb's	each	0	0	9
20. Livers—Calves	do.	0	0	9
21. Sausage—Strasberg, Pork	do.	0	1	9
22. Rabbits—Fresh	do.	0	1	6
23. Saveloys	per doz.	0	2	7
24. Tongues—Ox	per lb.	0	0	8
25. Ham Loaf	do.	0	2	0
26. Pressed Veal and Pork Loaf	do.	0	3	0
27. " Shoulder Ham	do.	0	3	9
28. Potted Meat	do.	0	1	6

SCHEDULE No. 3.

PROVISIONS FOR S.S. RIP AND DREDGES.

Sub-schedule No. 1.

BREAD.		
1. Bread—Fine wheaten, first quality	..	Purchase by agreement

(AGREEMENT.)

Moran and Cato Pty. Ltd., Nelson-place, Williamstown, or 285 Bay-street, Port Melbourne.

Sub-schedule No. 2.

GROCERIES.		£	s.	d.
1. Bacon Rashers	per lb.	0	3	9
2. Beans—Butter	do.	0	0	10½
3. " Haricot	do.	0	1	1½
4. Biscuits—Coffee, Marie, Malt	do.	0	1	4½
5. " Dry	do.	0	1	4½
6. Gravox { in 4-oz. packets	per doz.	0	5	6
{ in 8-oz. pkts.	0	10	10½	
7. Chutney—in 13-oz. bottles "Rosella"	per doz. bot.	0	17	10½
8. Cocoa—in 1-lb. tins or cartons, "Bourneville"	per doz.	2	0	10½
9. Coconut—Desiccated	per lb.	0	3	0
10. Coffee—Fresh Roasted and Ground	do.	0	6	7
11. Corn or Maize Flour in 1-lb. packets, "Parsons"	per doz.	0	12	4½
11A Corn or Maize Flour, loose, "Effront"	per lb.	0	0	6
12. Currants—1 crown (present season's)	do.	0	1	5
13. Custard Powder—in 1-lb. packets, Brand, "Clipper"	per doz. pkt.	0	12	7½
14. Dates	per lb.	0	1	3½
15. Eggs, New Laid	per doz.	0	4	5
16. Essence—Vanilla, in 16-oz. bottles	per bot.	0	10	11½
17. " Cochineal, in 1-oz. bottles	do.	0	0	9½
18. Fish { Herrings, in 14-oz. tins, Fresh	per doz. tins	1	2	7½
{ "Tyne	do.	1	3	0
{ Herrings, in Tomato Sauce, "Tyne"	do.	1	3	0
19. " Salmon, Fresh, in 16-oz. tins, King Sound	do.	1	11	7½
20. " Sardines, in ½ tins, "Norwegian Pack"	per doz. tins	0	14	6
21. Flour—First quality	per bag.	1	12	3½
22. " Self-raising, Brand, "M & C"	per bag	2	9	3½
23. Fruits—Preserved, in 1-lb. 14-oz. tins { Pears	per doz. tins	1	6	0
{ Peaches	do.	1	6	0
{ Apricots	do.	1	6	0
24. " Preserved, pines, in 1-lb. tins	do.	1	11	0
{ 8-oz. pkts. ...	per doz. pkts.	1	12	6
25. Gelatine—Ground { 16-oz. pkts.	do.	3	2	6
26. Golden Syrup—in 2-lb. tins	per doz.	0	8	10½
27. Honey, in 20-oz. jars "Clipper"	do.	1	4	10½
28. Jams—Assorted kinds, in 24-oz. tins	per doz. tins	as	per list	
29. Jelly Crystals in 4-oz. packets	per doz. pkts.	0	6	9
30. Lemon Peel—Cut	per lb.	0	1	2½
in 22-lb. boxes	per box	0	19	0
31. Macaroni { in 22-lb. cartons	per carton	0	17	10½
32. Margarine—Cooking Quality	per lb.	0	1	11
33. Meat—Preserved, 12-oz. tins— Camp Pie	per doz.	0	16	6
Wham	do.	1	1	3
Braised Steak and Vegetables	do.	1	3	10½
Braised Steak and Onions	do.	1	0	10½
34. Milk—Dried, Full Cream, in 12-oz. tins	do.	1	6	9
35. " Condensed, full cream, 14-oz. tins	do.	0	15	6
36. Mustard—Loose, "McKenzies"	per lb.	0	3	4½

Sub-schedule No. 2—continued.
GROCERIES—continued.

11. Peas—Blue Boiling	per bush.	2 6 8
12. Pepper—Black, ground	per lb.	1 1 9
13. Pipes—Tobacco, clay	per doz.	*
14. Raisins—Sultana (present season's)—		
Plain	per lb.	0 1 3½
1 Crowns	do.	0 1 3½
2 "	do.	0 1 4
3 "	do.	0 1 4½
15. Salt—Fine—Imperial	per cwt.	0 15 10½
16. Sauce—Tomato—1-gallon jars	per gal.	0 10 10½
17. Soda—Bicarbonate of	per lb.	0 0 5½
18. " Washing	per cwt.	1 8 6
19. Starch (Rice)—"Silver Star" 14-oz. packets per doz. 0 15 7½	pkts.	
20. Tartar—Cream of—Substitute—"Antelope"	per lb.	0 1 8½

(AGREEMENT.)

John MacLeod and Co. Pty. Ltd., 122 Lydiard-street, Ballarat.

Sub-schedule No. 3.

JAMS.		£ s. d.
1. Jams—Assorted, in bulk, of approved kinds, in the proportion of half seed and actual net half stone, of the best quality, in tins, as required. Brand, "J. MacLeod and Co. Pty. Ltd."	per lb.	0 0 9½

ANNEX TO CONTRACT No. 1951/36.†

A. I. Ahpee, 172 Barkly-street, Ararat.

Sub-schedule No. 4.

MEAT. †		Security, £30.	£ s. d.
1. Fresh Beef—Fore-quarters	per cntl.	6 0 0	
2. " " Hind-quarters	do.	6 0 0	
3. " " Buttocks	do.	6 0 0	
4. " Mutton	do.	7 1 8	
5. Corned Beef—Rolled or round, as ordered, without bone or cartilage	do.	6 0 0	
6. Sausages—Mixed (summer months)	per lb.	0 1 3	
7. Sausage—Beef German (summer months)	do.	0 1 6	
8. Saveloys (winter months)	per doz.	0 2 0	

SCHEDULE No. 6.

PROVISIONS—BALLARAT DISTRICT.

(Delivery into Institutions.)

ANNEX TO CONTRACT No. 1951/37.

Brogden Bros., Lal Lal-street, Ballarat.

Sub-schedule No. 1.

BREADSTUFFS.		Security, £75.	£ s. d.
1. Bread—Fine wheaten, first quality	per cntl.	1 7 0	
2. Flour—First quality	do.	1 0 0	

(AGREEMENT.)

John MacLeod and Co. Pty. Ltd., 122 Lydiard-street, Ballarat.

Sub-schedule No. 2.

GROCERIES.		£ s. d.
1. Blue—Washing (Reck Square)	per gross	1 2 11
2. Candles (full weights)—Kitchen's "Electrics," or other make of equal quality, in 1-lb. packets	per lb.	0 1 4½
3. Cocoa—Loose—28-lb. bags	do.	*
4. Corn Flour—in packets of 1 lb. net—"Kream"	do.	0 1 5½
5. Currants—		
M.F. (present season's)	do.	0 1 2½
1 Crown	do.	0 1 2½
2 "	do.	0 1 3½
3 "	do.	0 1 3½
6. Curry Powder—"Gold Seal"—loose	do.	0 2 6
7. Golden Syrup—in { 2-lb. tins	per doz.	0 8 5
{ 56-lb. tins or drums ††	each	0 17 9
8. Jelly Crystals—"Gold Seal"—in 4-oz. pkts.	per doz.	0 5 11
9. Macaroni—Bulk, 56-lb. bags	per lb.	0 0 8½
10. Meats—Tinned—		
{ Sausages and Vege-	per doz.	0 19 4
{ tables	tins	
" Champion,"	do.	0 19 4
{ 16-oz. tins	do.	0 19 4
{ Lamb and Green	do.	0 19 4
{ Peas	do.	0 19 4

* Supplies not available.

†† Charge for drums if not returned.

‡ Rates subject to variation in accordance with determinations of Prices Decontrol Commissioner.

Sub-schedule No. 2—continued.
GROCERIES—continued.

Meats—Tinned—continued.		£ s. d.
"Imperial,"	Beef Steak Pudding	per doz. 0 19 6
{ 16-oz. tins	tins	
"Smorgan's,"	Minced Beef	do. 0 11 6
{ 12-oz. tins		
"Champion,"	Camp Pie	do. 0 16 3
{ 12-oz. tins	Beef Loaf	do. 0 17 9
11. Milk—Full Cream Powdered Milk—"Sunshine"—3-lb. tins	do.	4 5 6
12. Mustard—Loose	per lb.	0 2 6
13. Pepper—Black, ground	do.	1 1 9
14. Pipes—Tobacco, clay	per doz.	*
15. Raisins—Sultana (present season's)—		
Plain	per lb.	0 1 3½
1 Crown	do.	0 1 3½
2 "	do.	0 1 3½
3 "	do.	0 1 4
16. Salt—Fine "Imperial"	per cwt.	0 13 7½
17. Soda—Bicarbonate of	per lb.	0 0 5½
18. " Washing	per cwt.	1 6 0
19. Spaghetti—Bulk { 22-lb. cases { No. 1	each	0 19 2
{ No. 2	do.	0 19 8
{ 22-lb. cartons { No. 1	do.	0 18 2
{ No. 2	do.	0 18 8
20. Spice—Mixed, in 1-oz. packets	per pkt.	0 0 3
21. Starch (Rice) "Silver Star", 14-oz.	per doz.	0 15 3
22. Tartar—Cream of—Substitute—"Antelope"	do.	0 1 8½
23. Vinegar—Malt	per quart	0 0 6

(AGREEMENT.)

John MacLeod and Co. Pty. Ltd., 122 Lydiard-street, Ballarat.

Sub-schedule No. 3.

JAMS.		£ s. d.
1. Jams—Assorted, in bulk, of approved kinds, in proportion of half seed actual net and half stone, of the best quality, in tins as required. Brand, "J. MacLeod and Co. Pty. Ltd."	per lb.	0 0 9
2. " Assorted, in 24-oz. tins, in the proportion of half seed and half stone, of the best quality, Brand, "Victoree"	per doz.	1 0 0
3. " Assorted, in 5-lb. tins, in the proportion of half seed and half stone, of the best quality, Brand, "Victoree"	do.	*

ANNEX TO CONTRACT No. 1951/38.†

H. J. Symons Pty. Ltd., 1015 Macarthur-street, Ballarat.

Sub-schedule No. 4.

MEAT. †		Security, £35.	£ s. d.
1. Fresh Beef, Forequarters	per cntl.	5 8 4	
2. " " Hindquarters	do.	6 5 0	
3. " " Buttocks	do.	6 9 2	
4. Beef, Corned	do.	6 13 4	
5. Mutton, Fresh	do.	6 5 0	
6. Mincedmeat	per lb.	0 0 10½	
7. Sausages	do.	0 1 3	
8. Sausage, Beef, German	do.	0 1 6	
9. Saveloys (April to September)	per doz.	0 2 8	
10. Suet, Beef	per lb.	0 0 9	
11. Tripe	do.	*	
12. Ham Loaf (October to March)	do.	..	
13. Black Puddings	do.	0 0 9	
14. Frys—Lambs'	do.	0 0 9	

SCHEDULE No. 7.

PROVISIONS—BEECHWORTH DISTRICT.

(Delivery into Institutions.)

ANNEX TO CONTRACT No. 1951/39.

P. A. Taylor, Camp-street, Beechworth.

Sub-schedule No. 1.

BREADSTUFFS.		Security, £100.	£ s. d.
1. Bread—Fine Wheaten, first quality	per cntl.	1 17 0	
2. " Raisin	do.	2 2 6	
3. Flour—First quality	do.	1 1 0	
4. Meat Pies	per doz.	0 4 9	

(AGREEMENT.)

Moran and Cato Pty. Ltd., 277 Brunswick-street, Fitzroy, N.6.

Sub-schedule No. 2.

GROCERIES.		£	s.	d.
1. Biscuit—Cereal "Vitabrit"—24-oz.	per pkt.	0	1	6
2. Blue—Washing, powdered in 7-lb. pkts.	do.	0	1	0½
3. Cocoa { "Bournville"—in 1-lb. pkts	do.	0	3	1½
	Loose	0	2	11
4. Corn or Maize Flour—in packets of 1 lb.				
net { "Fielder's"	per pkt.	0	0	8½
"Kream"	do.	0	1	2½
5. Curry Powder	per lb.	0	2	7½
6. Custard Powder—Loose	do.	0	0	10½
7. Dried Fruits { Apricots—3 Crown	do.	0	2	11½
"Pears—3 Crown	do.	0	1	7½
8. Fish—Cape Cod or Shredded	do.	*		
9. Fruit Juices—16-oz. tins, Orange and Grapefruit, Mildura	per doz.	0	17	0
10. Golden Syrup—in 2-lb. tins	per tin	0	0	9
11. Jelly Crystals—in 7-lb. packets	per lb.	0	1	6½
12. Macaroni { in 22-lb. boxes	per box	0	18	8
" in 56-lb. bags	per bag	2	3	2
13. Milk—Powdered—3-lb. tins	per doz.	4	0	9
" " —12-oz. tins—"Trufood"	do.	1	4	9
14. Mustard	per lb.	0	3	3
15. Pepper—Black, ground	do.	1	2	0
16. Raisins—Sultana, 2 Crowns (present season's)	per lb.	0	1	5
17. Salt—Fine	per cwt.	0	15	6
18. Sauce—Tomato—26-oz. bottles "Raleigh"	per doz.	1	7	9
19. Soap—"Monkey Brand," or equal thereto, in 5-oz. tablets	per doz.	*		
20. " Sand, Carbolec, in 12-oz. blocks, "Lectric"	per doz.	0	3	7
21. " Lifebuoy	do.	0	3	10
22. Soda—Bicarbonate of	per lb.	0	0	6
23. " Washing	per cwt.	1	10	6
24. Spaghetti—22-lb. boxes—"Rinoldi"—No. 1	per box	0	19	10
No. 2	do.	1	0	4
25. Spice—Mixed, "Parsons"	per doz.	0	2	4
26. Starch—"Lustre"	pkts.	0	0	8
27. Tartar—Cream of—Substitute—"Aerophos"	do.	0	1	8
28. Tomatoes—tinned, 28-oz. tins	per doz.	1	5	3
29. Vinegar—Malt	per qt.	0	0	6½

(AGREEMENT.)

Moran and Cato Pty. Ltd., 277 Brunswick-street, Fitzroy, N.6.

Sub-schedule No. 3.

JAMS.		£	s.	d.
1. Jams—Assorted, in bulk—Apricot	per lb.	0	0	10
Peach	actual	0	0	10½
Apple & Rasp. flavour	net	0	0	9½
Dark Plum	weight	0	0	9½
2. " Assorted, in 5-lb. tins, in the proportion of half seed and half stone, of the best quality, Brand, "M.P."	per tin	0	6	0

Charge for cases 2s., if not returned.

ANNEX TO CONTRACT No. 1951/40.†

E. Spencer, Camp-street, Beechworth.

Sub-schedule No. 4

MEAT.		£	s.	d.
Security, £30.				
1. Fresh Beef, Roast	per cntl.	5	12	6
2. Corned Beef, Rolled	do.	5	12	6
3. Mutton, Fresh	per lb.	0	1	1
4. Minced Meat	do.	0	1	1
5. Sausages, Mixed	do.	0	1	1
6. Sausage Meat	do.	0	1	0
7. Sausage—Beef, German	do.	0	1	3½
8. Frys—Lambs'	do.	0	0	0
9. Dripping—Beef	do.	0	0	9
10. Ham and Beef Loaf	do.	0	2	3
11. Saveloys	per doz.	0	2	3

* Supplies not available

SCHEDULE No. 8.
PROVISIONS—LANGI KAL KAL
TRAINING CENTRE.

ANNEX TO CONTRACT No. 1951/41.

O. Nicholls and W. J. Hoskin, Neil-street, Beaufort.

Sub-schedule No. 1.

BREAD.		£	s.	d.
Security, £3.				
1. Bread—Fine wheaten, first quality	per cntl.	2	1	8

ANNEX TO CONTRACT No. 1951/42.†

H. T. Slee, Laurence-street, Beaufort.

Sub-schedule No. 2.

MEAT.		£	s.	d.
Security, £3.				
1. Fresh Beef—Boneless	per cntl.	11	5	0
2. Sausages—Mixed	per lb.	0	1	3
3. Sausage—Meat	do.	0	1	0

SCHEDULE No. 9.

PROVISIONS—SCHOOL OF FORESTRY,
CRESWICK.

(Delivery at the School.)

ANNEX TO CONTRACT No. 1951/43.

R. C. Bowley, Albert-street, Creswick.

Sub-schedule No. 1.

BREADSTUFFS.		£	s.	d.
Security, £3.				
1. Bread—Fine wheaten, first quality	per cntl.	2	3	9
2. Flour—First quality	per lb.	0	0	3

(AGREEMENT.)

J. Tail and Son, Albert-street, Creswick.

Sub-schedule No. 2.

GROCERIES.		£	s.	d.
1. Barley—Pearl	per lb.	0	0	4
2. Blue—Washing	do.	0	1	6
3. Butter—First grade creamery, to score not less than 91 points, Government grade, Commerce Regulations Standard	do.	0	2	0½
4. Cheese—First-class quality, matured	do.	0	1	8
5. Coffee—Fresh roasted and whole, beans to be thoroughly sound	do.	0	6	0
6. Corn or Maize Flour—in packets of 1 lb. net	do.	0	1	2
7. Eggs—New laid	per doz.	0	2	9
8. Ginger—Ground	per lb.	0	5	3
9. Golden Syrup—in 2-lb. tins	per tin	0	0	8½
10. Jams—Assorted, in 5-lb. tins, net, in the proportion of half seed and half stone, Brand, "Red Feather"	do.	0	4	11
11. Mustard—"Double Superfine"	per lb.	0	3	0
12. Oatmeal	do.	0	0	8½
13. Peas—Split	do.	0	0	8½
14. Pepper—Black, ground	do.	1	5	6
15. Potatoes—Dry and free from dirt	per cwt.	0		
16. Raisins—Sultana, 3 Crowns (present season's)	per lb.	0	1	5½
17. Rice—Dressed	do.	*		
18. Salt—Fine	do.	0	0	2
19. Soap—"Velvet," yellow, dry, and hard, to sample	per doz.	0	15	0
20. " Sand, Carbolec, in 12-oz. blocks	each	0	0	5½
21. Soda—Bicarbonate of	per lb.	0	0	5
22. " Washing	do.	0	0	3
23. Starch (Rice)—Brand, "Preservene"	do.	0	1	2
24. Tartar—Cream of—Substitute—"Calcium Phosphate"	do.	0	1	10
25. Tea—1st Grade	do.	0	3	6
26. Vinegar—Malt	per pint	0	0	3
27. Honey—Yellow Box	per lb.	0	0	8½
28. Flour—Self Raising	do.	0	0	4½

ANNEX TO CONTRACT No. 1951/44.

E. J. Keen, Jory-street, North Creswick.

Sub-schedule No. 3.

MILK.		£	s.	d.
Security, £3.				
1. Milk—Fresh and pure	per qt.	0	0	10

○ Cost price plus 10%.

ANNEX TO CONTRACT No. 1951/45.†
H. J. Symons, Pty. Ltd., 1015 Macarthur-street, Ballarat.

Sub-schedule No. 4.

MEAT φ		Security, £3.		£	s.	d.
1. Fresh Beef—Fore-quarters	per lb.	0	1	7	
2. " Mutton	do.	0	1	5	
3. Sausages—Mixed	do.	0	1	4	
4. Steak—Minced	do.	0	1	6	
5. Frys—Lambs'	each	0	0	9	
6. Dripping—Beef	per lb.	0	0	8	

SCHEDULE No. 10.

PROVISIONS—MCLEOD SETTLEMENT, FRENCH ISLAND.

(Delivery to be made at Corinella Jetty.)
ANNEX TO CONTRACT No. 1951/46.

H. H. Bird, Grantville.

Sub-schedule No. 1.

BREAD.		Security, £12.		£	s.	d.
1. Bread—Fine wheaten, first quality	per cwt.	1	17	6	

(AGREEMENT.)

E. V. Peters, Corinella.

Sub-schedule No. 2.

GROCERIES.		Security, £12.		£	s.	d.
1. Butter—First grade creamery, to score not less than 91 points, Government grade, Commerce Regulations Standard	per lb.	0	2	0	
2. Cheese—Matured	do.	0	1	6	
3. Jams—Assorted, in proportion of half seed and half stone, of best quality, in 24-oz. tins, I.X.L., "Monbulk", or "Rago"	per doz.	1	0	0	

ANNEX TO CONTRACT No. 1951/47.†
Dureau and Hardie, Lang Lang.

Sub-schedule No. 3.

MEAT.		Security, £5		£	s.	d.
1. Fresh Beef	per lb.	0	1	3½	
2. Corned Beef	do.	0	1	4	
3. Fresh Mutton	do.	0	1	2	
4. Sausages	do.	0	1	3	
5. Mince Meat	do.	0	0	1½	

SCHEDULE No. 11.

PROVISIONS—HEATHERTON SANATORIUM, CHELTENHAM.

(Delivery at the Sanatorium.)
ANNEX TO CONTRACT No. 1951/48.
T. D. Callander Pty. Ltd., 86 Broadway-parade, Oakleigh.

Sub-schedule No. 1.

BREAD.		Security, £10.		£	s.	d.
1. Bread—Fine wheaten, first quality	per cwt.	1	4	10½	

(AGREEMENT.)

Moran and Cato Pty. Ltd., 277 Brunswick-street, Fitzroy, N.6.

Sub-schedule No. 2.

GROCERIES.		Security, £10.		£	s.	d.
1. Bacon—Sides	per lb.	0	2	9	
2. Biscuits—Coffee, Malt, Milk Arrowroot, as ordered— "Sunshine"	do.	0	1	2½	
3. Cereal—Malties (or equal thereto) in 24-oz. "Pipers"	per pkt.	0	1	4½	
4. Cocoa—"Bournville"	per lb.	0	3	0½	

φ Rates subject to variation in accordance with determinations of Prices Decontrol Commissioner.
⊙ Rate less 2½ per cent. discount, 30 days.

Sub-schedule No. 2—continued.

GROCERIES—continued.

		Security, £5.		£	s.	d.
5. Corn or Maize Flour—in 1-lb. packets— { "Fielders"	do.	0	0	7½	
{ "Kream"	do.	0	1	1½	
6. Custard Powder—1-lb. packets "Clipper"	do.	0	0	11½	
7. Essence of Vanilla—in 16-oz. bottles—"Allens"	per bot.	0	11	7	
8. Flour—Self-raising—Brand "Mac's"	per lb.	0	0	4	
9. Fruit—Preserved—in 30-oz. tins (excluding pines)	per tin	0	1	9½	
10. Herrings { Fresh	per doz.	1	1	0	
{ In Tomato Sauce, 14-oz. tins	tins	1	2	0	
11. Honey—First quality in 60-lb tins	per lb.	0	0	8½	
12. Jams—Assorted, in 5-lb. tins, in the proportion of half seed and half stone, of the best quality—Brand "M.P."	per tin	0	5	7	
13. " Marmalade, in 5-lb. tins—Brand "M.P."	do.	0	4	8	
14. Jelly Crystals—in 4-oz. packets	{ "Whites"	per doz.	0	6	9
{ "Sparkling"	pkts.	0	4	0	
15. Junket Tablets	per tube	0	0	9½	
16. Macaroni—1lb. packets, "Rinoldi"	do.	0	0	9½	
17. Mustard	do.	0	3	2	
18. Pepper—Black, ground	do.	1	1	11	
19. Pickles—Assorted, in 20-oz. bottles	per doz.	0	15	3	
20. Prunes—Dried, 50-60's (present season's)	per lb.	0	1	11	
21. Raisins—Sultana, 3 Crowns (present season's)	do.	0	1	4½	
22. Salmon—Fresh, in 1½-oz. tins, tall—Australian	do.	0	2	9	
23. Salt—Fine	per cwt.	0	12	0	
24. Sauce—Tomato, in 26-oz. bottles—Brand, "Raleigh"	per doz.	1	6	3	
25. Soda—Bicarbonate of	per lb.	0	0	5	
26. " Washing	per cwt.	1	10	0	
27. Spice—Mixed, in 1-oz. packets "Parsons"	per doz.	0	2	3	
28. Starch—Loose	per lb.	0	0	7	
29. Vinegar—Malt	per gl.	0	1	8	

ANNEX TO CONTRACT No. 1951/49.†

W. Angliss and Co. (Aust.), Pty. Ltd., 42 Bourke-street, Melbourne, C.1.

Sub-schedule No. 3.

MEAT. φ		Security, £5.		£	s.	d.
1. Beef, Fresh Roast	per lb.	0	1	4	
2. " Corned—Silverside	do.	0	1	9	
3. Mutton, Fresh	do.	0	0	7	
4. Chops—Forequarter	do.	0	0	6	
5. " Middle Loins	do.	0	1	3	
6. Veal—Leg	do.	0	0	9	
7. Pork, Fresh—Loins	do.	0	1	9	
8. Steak—Rump	do.	0	2	4	
9. " Blade Bone	do.	0	1	7	
10. " Minced	do.	0	1	3	
11. " Topside	do.	0	1	4	
12. Tripe—Fresh	do.	0	0	4	
13. Frys—Lambs'	do.	0	0	9	
14. Sausages—Mixed	do.	0	1	0	
15. Kidneys—Ox	do.	0	1	2	
16. Tails—Ox	do.	0	0	8	
17. Tongues—Ox	do.	0	0	8	
18. " Sheep's	each	0	0	3	
19. Brains—Sheep's	per set	0	0	4	
20. Ham Loaf	per lb.	0	2	0	
21. Fowls—First Quality	do.	0	4	4	

ANNEX TO CONTRACT No. 1951/50.

Moule's Model Dairy, Station-street, Cheltenham

Sub-schedule No. 4.

MILK. φ		Security, £3.		£	s.	d.
1. Milk—Fresh and pure	per gal.	3	9	0	

SCHEDULE No. 12.
PROVISIONS—SANATORIUM, GREEN-VALE.

(Delivery at the Sanatorium.)

ANNEX TO CONTRACT No. 1951/51.

Bignell's Bakery, Sydney-road, Campbellfield.

Sub-schedule No. 1.

BREADSTUFFS.

	Security, £7.	£ s. d.
1. Bread—Fine wheaten, first quality	per cwtl.	1 10 2½
2. Flour—First quality	do.	1 1 0

(AGREEMENT.)

Henry Berry and Co. (A/asia) Ltd., 568 Collins-street, Melbourne.

Sub-schedule No. 2.

GROCERIES.

	£ s. d.
1. Beetroot—30-oz. tins	per doz. *
2. Biscuits { Malt, Milk Arrowroot, Coffee { Dry	do. 0 1 2½
as ordered, in approximately 7-lb. tins	
3. Blue—Washing, 1-oz. knobs "Reckitts"	per doz. 0 1 6
4. Borax	per lb. 0 0 6½
5. Camp Pie—12 oz. tins	per doz. 0 16 3
6. Cereal—"Weeties," in 24-oz. packets	per pkt. 0 1 5
7. Cheese—Semi-matured, in 10-lb. loaves	per lb. 0 1 8
8. Cocoa { in 1-lb. cardboard cartons	do. 0 3 2
{ Loose..	do. 0 2 8
9. Coconut—Desiccated	do. 0 2 3
10. Corn or Maize Flour—in packets of 1 lb.	do. 0 1 5½
11. Corn or Maize Flour, loose	do. 0 0 6½
12. Curry Powder—"Atlas"	per lb. 0 2 9
13. Currants—2 Crowns (present season's)	do. †
14. Custard Powder—in 1-lb. packets—"Dainty Maid"	per doz. 0 12 9
15. Dates—in case lots	per lb. 0 1 1½
16. Essence of Lemon—in 18-oz. bottles	do. 0 10 0
17. " " Vanille—in 20-oz. bottles	do. 0 8 0
18. " " Parisian (Jar 3/6)	per gal. 0 16 6
19. Fish—Sardine, 4-oz. tins { single layer	per doz. 0 13 6
{ double layer	do. 0 14 6
20. Fish—Herrings in Sauce, 14-oz. tins	do. 1 1 6
21. Flour—Self-raising—"Cookwell"	per bag 2 8 3††
22. Fruits—Dried (present season's)—Apples and Peaches	do. †
23. " Preserved (excluding Pines)	per tin ††
24. Gelatine—Powdered	per lb. 0 4 10½
25. Ginger—Ground	do. 0 5 0
26. Golden Syrup—in 2-lb. tins	per carton 0 15 6§
27. Honey—First quality	per lb. 0 0 10½
28. Jams—Assorted, in 24-oz. tins, Brand, "S.P.C."	per doz. x
29. Jelly Crystals—in { 7-lb. packets	per pkt. 0 13 0
{ 4-oz. " in 2 doz. cartons	per gross 3 13 0
30. Junket Tablets "Viking"	per doz. 0 9 3
31. Lemon Peel—Cut	per lb. 0 1 2½
32. Macaroni { in 22-lb. boxes	per box 0 17 3
{ in 22-lb. cartons	per carton 0 16 3
33. Mustard	per lb. 0 3 6
34. Nutmeg—Ground	do. 0 6 3
35. Oatmeal—Flaked	per cwt. 3 8 4
36. Spice—Loose	per lb. 0 3 0
37. Pepper—Ground, Black	do. 1 3 0
38. Pickles—Assorted, in 20-oz. bottles	per doz. 0 15 6
39. Prunes—Dried, 50-60's (present season's)	per lb. †
40. Raisins—4 Crowns (present season's) (lexias)	do. †
41. Raisins—Sultana, 2 Crowns (present season's)	do. †
42. " Seeded	do. †
43. Rice—Dressed	per cwt. 2 9 0
44. Salmon—Fresh in 1-lb. tins	per tin *
45. Salt—Fine	per cwt. 0 12 3
46. Sauce—Worcestershire, 10-oz. bottles, Brand, "Hardings"	per doz. 0 14 9
47. Sauce { Tomato, 28-oz. bottles, Brand, "Victoree"	per doz. 1 11 0
{ Tomato in gallon jars	per jar 0 10 6
48. Soda—Bicarbonate of	per lb. 0 0 5½
49. " Washing	per cwt. 1 14 0

* Supplies not available. †† Bag—150lb.

|| Charge for tins 3s. each if not returned. ¶ Charge for jars 3s. 6d. if not returned.

§ As supply of 18-oz. and 20-oz. bottles is irregular rate is shown on per lb. basis.

† Australian Dried Fruits Association rates. §§ 12-oz. tins, 3 dozen per case, and 3-lb. tins, 1 dozen per case.

φ Rates subject to variation in accordance with determinations of Prices Decontrol Commissioner.

Sub-schedule No. 2—continued.

GROCERIES—continued.

	£ s. d.
50. Spaghetti { in 22-lb. boxes No. 1	per box 0 18 6
{ in 22-lb. cartons	per carton 0 17 6
51. Starch (Rice)—"Silver Star"—14-oz. packets	per doz. *
52. Sugar—Caster	per cwt. 2 7 3
53. Tapioca—Pearl	per lb. 0 1 1
54. " Seed (Sago)	do. 0 1 0½
55. Tartar—Cream of—Substitute "Antelope"	per lb. 0 1 9½
56. Tomatoes—Preserved, in 30-oz. tins	per doz. 1 4 0
57. Tomato Soup—16-oz. tins—"Victoree"	do. 0 13 0
58. Treacle—in 2-lb. tins (24 tins in box)	per box 0 14 8
59. Vermicelli { in 22-lb. boxes	do. 0 18 6
{ in 22-lb. cartons	per carton 0 17 6
60. Vinegar { Malt—9-gallon keg	per keg 3 0 0
{ " "	per gal. 0 1 9
61. Powdered Milk Full Cream "Sunshine"—12-oz. tins	per case 3 14 3§§
{ 3-lb. tins	do. 4 10 0§§
62. Whitebait—12-oz. tins	do. *
63. Asparagus Tips—10-oz. tins	each 0 1 5

ANNEX TO CONTRACT No. 1951/52.†

F. Watkins Pty. Ltd., 184 Bourke-street, Melbourne, C.1.

Sub-schedule No. 3.

MEAT (cuts as ordered). φ

	Security, £7.	£ s. d.
1. Beef, Fresh—Roast	per lb.	0 1 8½
2. " " Topside	do.	0 1 11½
3. " " Rump	do.	0 2 8
4. " "—Corned, Silverside	do.	0 1 10½
5. Mutton, Fresh—Sides	do.	0 0 11
6. Cutlets—Mutton	do.	0 1 3½
7. Chops—Middle Loin	do.	0 1 3½
8. " Leg	do.	0 1 5½
9. Steak—Minced	do.	0 1 5
10. Frys—Lamb's	do.	0 1 8
11. Pork, Fresh—Sides	do.	0 2 5
12. Tongues—Ox	do.	0 1 0
13. Sausages—Pork	do.	0 1 6
14. Sausage—Strausberg, Pork	do.	0 1 11
15. Kidneys—Ox	do.	0 1 6
16. Rabbits—Fresh	do.	0 1 7
17. Fowls—First Quality	do.	0 5 6

SCHEDULE No. 13.

PROVISIONS—COORIEMUNGLE PRISON CAMP, HEYTESBURY FOREST.

(Delivery to be made at the Camp.)

(AGREEMENT.)

E. L. McDowall, Timboon.

Sub-schedule No. 1.

BREAD.

	£ s. d.
1. Bread—Fine Wheaten, first quality	per cwtl. 2 5 10

(AGREEMENT.)

M. L. Hose, Timboon.

Sub-schedule No. 2.

GROCERIES.

	£ s. d.
1. Oatmeal	per lb. 0 0 8
2. Rice—Dressed	do. "
3. Salt—Fine	do. 0 0 2

§ Cartons—2 doz. 2-lb. tins. †† Apply Tender Board.

|| Charge for jars 3s. 6d. if not returned. ¶ Charge for jars 3s. 6d. if not returned. § As supply of 18-oz. and 20-oz. bottles is irregular rate is shown on per lb. basis.

† Australian Dried Fruits Association rates. §§ 12-oz. tins, 3 dozen per case, and 3-lb. tins, 1 dozen per case.

φ Rates subject to variation in accordance with determinations of Prices Decontrol Commissioner.

ANNEX TO CONTRACT No. 1951/53.†
Heytesbury Butchery, Timboon.

Sub-schedule No. 3.

MEAT.

		£	s.	d.
Security, £4.				
1. Fresh Beef	per lb.	0	1	9
2. „ Mutton	do.	0	1	6
3. Corned Beef—Rolled or round, as ordered without bone or cartilage	do.	0	1	6

SCHEDULE No. 14.

PROVISIONS—ABORIGINAL STATION,
LAKE TYERS.

(Delivery at Lake Tyers Station.)
ANNEX TO CONTRACT No. 1951/54.
R. Hodder, Nowa Nowa.

Sub-schedule No. 1.

BREADSTUFFS.

		£	s.	d.
Security, £25.				
1. Bread—Fine wheaten, first quality .. .	per cntl.	1	18	6½
2. Flour—First quality .. .	do.	1	3	0

(AGREEMENT.)

R. Hodder, Nowa Nowa.

Sub-schedule No. 2

GROCERIES.

		£	s.	d.
1. Baking Powder—Snowflake, or equal thereto, in 1-lb. tins	per lb.			
2. Candles (full weights)—Kitchen's "Electrines," or other make of equal quality, in 1-lb. packets	do.			
3. Coffee—Fresh roasted, and whole, beans to be thoroughly sound	do.			
4. Cocoa—Bulk .. .	do.			
5. Corn or Maize Flour—in 1-lb. packets .. .	do.			
6. Currants—2 Crowns (present season's) .. .	do.			
7. Curry Powder—bulk .. .	do.			
8. Matches—Safety, 60 in a box, "Yacht" .. .	per gross			
9. Mustard—"Double Superfine" .. .	per lb.			
10. Pepper—Black, ground, in 2-oz. tins .. .	per tin			
11. Raisins—Sultana, 3 Crowns (present season's)	per lb.			
12. Salt—Coarse .. .	per cwt.			
13. „ Fine .. .	do.			
14. Soap—Household, hard and dry, to sample	do.			
15. Soda—Bicarbonate of .. .	per lb.			
16. „ Washing .. .	do.			
17. Tartar—Cream of—Substitute—Calcium Phosphate	do.			
18. Treacle—in 2-lb. tins .. .	per tin			
19. Vinegar—Malt .. .	per qt.			

(AGREEMENT.)

R. Hodder, Nowa Nowa.

Sub-schedule No. 3.

JAMS.

		£	s.	d.
1. Jams—Assorted, in 24-oz. tins, Brand in the proportion of half seed and half stone	per tin			**

** The rates to be paid for all items under these Sub-schedules shall be the wholesale prices charged to the contractor, plus 12½ per cent. Wholesaler's invoices to be submitted with contractors' accounts.

SCHEDULE No. 15.

PROVISIONS—RESEARCH STATION,
RUTHERGLEN.

(Delivery at the Station.)

ANNEX TO CONTRACT No. 1951/55.
A. F. Parrott, Main-street, Rutherglen.

Sub-schedule No. 1.

BREAD.

		£	s.	d.
Security, £3.				
1. Bread—Fine wheaten, first quality .. .	per cntl.	1	19	7

* Supplies not available.

(AGREEMENT.)

Aitken and Fullerton, Rutherglen.

Sub-schedule No. 2.

GROCERIES, ETC.

		£	s.	d.
Security, £3.				
1. Biscuits—Marie .. .	per lb.	0	1	7
2. Cornflakes—"Kellogg's," in 16-oz. packets	per pkt.	0	1	11
3. Corn or Maize Flour—in packets of 1-lb. net "Fielder's"	per lb.	0	1	4
4. Coconut—Desiccated .. .	do.	0	2	9
5. Currants—2 Crowns (present season's) .. .	do.	0	1	6
6. Fish—Salmon, in ½-lb. tins .. .	per tin			*
7. Fruits—Preserved, assorted, in 1-lb. 14-oz. tins (excluding Pineapple)	do.	0	2	2
8. Jams—Assorted, of approved kinds, in proportion of half seed and half stone, in 24-oz. tins, Brand, "M.P."	do.	0	1	10§
9. Jelly Crystals—in 4-oz. packets .. .	per pkt.	0	0	7
10. Macaroni or Vermicelli—as ordered .. .	per lb.	0	1	1
11. Matches—Safety .. .	per pkt.	0	1	6
12. Oatmeal—Flaked "JB" .. .	per lb.	0	1	0
13. Pepper—Black, ground .. .	per oz.	0	2	0
14. Potatoes—Dry and free from dirt .. .	per cwt.	2	0	0
15. Raisins—5 crown (present season's) lexias	per lb.	0	1	7
16. „ Sultana, 3 crown (present season's)	do.	0	1	7
17. Rice—Dressed .. .	per lb.	0	0	7½
18. Salt—Fine .. .	do.	0	0	2
19. Sauce—Tomato, "Dyasons," 13-oz. bottles	per bot.	0	1	6
20. Soap—Household, yellow .. .	per lb.	0	0	11
21. „ "Monkey Brand," or equal thereto, in 5-oz. tablets	per tab.			*
22. „ Sand, in 16-oz. blocks .. .	per block	0	0	5½
23. „ Toilet, "Bath," in 4-oz. tablets, to sample, Kitchen's, or equal thereto	per doz.	0	5	0
24. Tea—1st Grade .. .	per lb.	0	3	10½

SCHEDULE No. 16.

PROVISIONS AT SALE.

(Delivery at the Gaol.)

ANNEX TO CONTRACT No. 1951/56.

F. J. Hennessy, 102 Raymond-street, Sale.

Sub-schedule No. 1.

BREAD.

		£	s.	d.
Security, £3.				
1. Bread—Fine wheaten, first quality .. .	per cntl.	1	17	6

ANNEX TO CONTRACT No. 1951/57.†

H. L. G. Laws, 111 Raymond-street, Sale.

Sub-schedule No. 2.

MEAT.

		£	s.	d.
Security, £3.				
1. Fresh Beef—Stewing .. .	per lb.	0	1	6
2. Fresh Mutton .. .	do.	0	1	6
3. Corned Beef—Rolled or Round as ordered, without bone or cartilage	do.	0	1	6
4. Sausages .. .	do.	0	1	6

SCHEDULE No. 17.

PROVISIONS—PLEASANT CREEK
SPECIAL SCHOOL, STAWELL.

(Delivery at the School.)

ANNEX TO CONTRACT No. 1951/58

Alfred R. Bushick, Star Bakery, 3 Ligar-street, Stawell.

Sub-schedule No. 1.

BREADSTUFFS.

Security, £10.

		£	s.	d.
1. Bread—Fine wheaten, first quality .. .	per cntl.	2	5	10
2. Flour—First quality .. .	do.	1	0	8
3. Flour—Wheatmeal .. .	per lb.	0	0	2

§ No seed available.

(AGREEMENT.)

John MacLeod and Co. Pty. Ltd., 122 Lydiard-street, Ballarat.

Sub-schedule No. 2.

GROCERIES.		£	s.	d.
1. Baking Powder—"Excelsior" ..	per lb.	0	1	10
2. Barley—Pearl ..	do.	0	0	4½
3. Blue—Washing, "Reck Square" ..	per gross	1	3	3
4. Cereal—"Wheat flakes," in 24 oz. packets	per pkt.	0	1	6
5. Cheese—Matured ..	per lb.	0	1	8½
6. Cocoa—in 28-lb. bags ..	do.	*		
7. Coffee and Chicory No. 1 ..	do.	0	3	10
8. Corn Flour—in 1-lb. packets "Kream"	do.	0	1	6½
9. Currants (present season's)—				
M.F. ..	do.	0	1	2½
1 Crown ..	do.	0	1	3½
2 " ..	do.	0	1	3½
3 " ..	do.	0	1	3½
10. Curry Powder—Loose "Gold Seal" ..	do.	0	2	6
11. Custard Powder (loose) ..	do.	0	1	5½
12. Dates ..	do.	0	1	2½
13. Ginger—Ground ..	do.	*		
14. Golden Syrup { in 2-lb. tins ..	per doz.	0	9	3
{ in 56-lb. ; ..	each	0	19	3
15. Gravox—1-lb. tins ..	per doz.	0	17	0
16. Honey, first quality ..	per lb.	*		
17. Jams—Assorted, of approved kinds, in	per doz.	1	0	6
proportion of half seed and half stone,	tins			
in tins containing 24 oz. net, Brand,				
"Victoree." ..				
18. Jelly Crystals "Gold Seal" ..	per doz.	0	6	1
19. Junket Tablets { "Gold Seal" ..	do.	0	5	0
{ "Merry Widow," Flavoured do.	do.	0	10	0
20. Macaroni { 22-lb. boxes ..	per box	0	18	8
{ 22-lb. cartons ..	per carton	0	17	7
21. Oatmeal ..	per lb.	*		
22. Peel—Cut, Mixed ..	do.	0	1	6½
23. Pepper—Black, ground ..	do.	1	1	9
24. Prunes—Dried, 50-60's (present season's)	do.	0	1	11
25. Raisins—Sultana (present season's)—				
Plain ..	do.	0	1	3½
1 Crown ..	do.	0	1	3½
2 " ..	do.	0	1	4
3 " ..	do.	0	1	4½
26. Rice—Dressed ..	per cwt.	*		
27. Salt—Fine "Imperial" ..	do.	0	16	6½
28. Sauce—Tomato—26-oz. bottles ..	per doz.	1	9	0
29. Soap—Preservene Foam, or equal thereto	per doz.	0	8	2
30. " "Lifebuoy," or equal thereto ..	per cake	0	0	4½
31. " "Monkey" Brand, or equal thereto,	per tab.	*		
in 5-oz. tablets ..				
32. " "Guardian" ..	do.	*		
33. " Sand, "A.H.P." ..	per cake	0	0	4½
34. " "Velvet," or equal thereto { twins	per doz.	0	6	7
{ quads ..	do.	0	15	0
{ quints. ..	do.	1	4	2
35. Soda—Bicarbonate of ..	per lb.	0	0	5½
36. " Washing ..	per cwt.	1	9	0
37. Spice—Mixed—1-oz. packets ..	per pkt.	0	0	3
38. Starch (Rice)—Brand "Silver Star"—				
14-oz. packets ..	per doz.	0	15	8
39. Tartar—Cream-of—Substitute—"Antelope"	per lb.	0	1	8½
40. Tapioca Pearl ..	per cwt.	*		
41. Tea—First Grade ..	per lb.	0	3	2½
42. Treacle—in 2-lb. tins ..	per doz.	0	8	9

ANNEX TO CONTRACT NO. 1951/59.

E. G. Waldron, Stawell.

Sub-schedule No. 3.

MILK.		£	s.	d.
Milk—Fresh and pure ..	per gal.	0	4	0

ANNEX TO CONTRACT NO. 1951/60.†

Newton Bros., 121 Main-street, Stawell.

Sub-schedule No. 4.

MEAT.		£	s.	d.
1. Fresh Beef—Prime ribs ..	per lb.	0	1	6
2. " " Sirloin ..	do.	0	1	6
3. " " Stewing (minced when	do.	0	1	6
required) ..				
4. Beef—Corned, Silverside ..	do.	0	1	6
5. Fresh Lamb—Chops (loin) ..	do.	0	2	0
6. " " in sides ..	do.	0	2	0
7. Sausages—Mixed ..	do.	0	1	3
8. Frys—Lamba' ..	each	0	0	6
9. Tripe—Fresh ..	per lb.	0	0	9
10. Saveloys ..	per doz.	0	2	0

* Supplies not available.

† Rates subject to variation in accordance with determinations of Prices Decontrol Commissioner.

SCHEDULE No. 18.

PROVISIONS—SUNBURY DISTRICT.

(Delivery into Institutions.)

ANNEX TO CONTRACT NO. 1951/61.

J. N. Hennessy Pty. Ltd., 55 Sydney-road, Brunswick.

Sub-schedule No. 1.

BREADSTUFFS.

Security, £112.

		£	s.	d.
1. Bread—Fine wheaton, first quality ..	per cntl.	16	11	
2. Flour—First quality ..	do.	1	1	9

(AGREEMENT.)

K. N. Tidswell, Sunbury.

Sub-schedule No. 2.

GROCERIES.

		£	s.	d.
1. Blue—Washing—"Reckitts" ..	per lb.	0	2	5½
2. Beans—Lima ..	do.	*		
3. Candles—Full weight, in 1-lb. packets,	do.	0	1	8
Kitchen's "Electrines", or equal thereto				
4. Cinnamon ..	do.	0	2	6
5. Cloves (whole) ..	do.	0	3	0
6. Cocoa—Loose ..	do.	*		
7. Corn or Maize Flour—in packets of 1-lb.	do.	0	1	0
net				
8. Currants—3 Crowns (present season's) ..	do.	0	1	5½
9. Curry Powder ..	do.	0	2	4½
10. Custard Powder—30-lb. tins ..	do.	0	1	2
11. Dates—Stoneless ..	do.	0	1	4
12. Ginger—Ground ..	do.	*		
13. Golden Syrup { in 5-cwt. drums ..	per cwt.	1	7	6
{ in 2-lb. tins ..	per doz.	0	8	6
14. Jelly Crystals—in 4-oz. packets. ..	do.	0	7	0
15. Lemon Peel ..	per lb.	0	1	7½
16. Macaroni ..	do.	0	0	9
17. Milk, Powdered ..	do.	0	0	10½
18. Mustard ..	do.	0	3	3
19. Nutmeg—Ground ..	do.	0	9	6
20. Pepper—Black, ground ..	do.	1	6	0
21. Pipes—Tobacco, clay ..	per doz.	*		
22. Raisins—Sultana, 3 Crowns (present	per lb.	0	1	6
season's)				
23. Salt—Fine ..	per cwt.	0	13	6
24. Sauce { Tomato—40-oz. bottles ..	per doz.	2	3	0
{ Worcestershire—20-oz. bottles ..	bottles	1	1	0
25. Soda—Bicarbonate of ..	per lb.	0	0	5½
26. " Washing ..	per cwt.	1	4	0
27. Spice—Mixed, loose ..	per lb.	0	2	2
28. Starch (Rice)—"Silver Star", loose ..	do.	0	1	4
29. Tartar—Cream-of—Substitute, "Antelope"	do.	0	1	8
30. Vermicelli ..	do.	0	0	9½
31. Vinegar—Malt ..	per gal.	0	2	2

Sub-schedule No. 3.

CEREALS.

1. Oatmeal ..	per cwt.	Purchase under Tender Board quotations.
2. Rice—Dressed to sample ..	do.	
3. Rice—Unpolished ..	do.	
4. Seed Tapioca—(Sago), to sample ..	do.	
5. Pearl Barley ..	do.	
6. Peas—Split ..	do.	

(AGREEMENT.)

K. N. Tidswell, Sunbury.

Sub-schedule No. 4.

JAMS.

		£	s.	d.
1. Jams—Assorted, in bulk, of approved	per lb.	0	0	9½
kinds, in the proportion of half seed	actual			
and half stone, of the best quality, in	gross			
tins as required, Brand, "M.P." ..	weight			

ANNEX TO CONTRACT NO. 1951/62.†

F. Watkins Pty. Ltd., 184 Bourke-street, Melbourne, C.1.

Sub-schedule No. 5.

MEAT. φ

Security, £40.

		£	s.	d.
1. Fresh Beef, Forequarters ..	per cntl.	4	15	10
2. " " Buttocks ..	per lb.	0	1	6
3. " " Mutton ..	do.	0	0	11½
4. Corned Beef—Rolled or Round, as ordered,	do.	0	1	8
without bone or cartilage				
5. Sausages, mixed ..	do.	0	1	4

SCHEDULE No. 19.

**PROVISIONS—AGRICULTURAL COLLEGE,
DOOKIE.**

(Delivery at the College.)

ANNEX TO CONTRACT No. 1951/63.

Lindsay G. Clark, Mary-street, Dookie.

Sub-schedule No. 1.

BREADSTUFFS.

Security, £15.

	£	s.	d.
1. Bread—Fine wheaten, first quality .. per centl.	1	17	6
2. Flour—First quality do.	1	1	0

(AGREEMENT.)

W. A. Thompson, 192 High-street, Shepparton.

Sub-schedule No. 2.

GROCERIES.

(Delivery "F.O.R." Shepparton.)

	£	s.	d.
1. Baking Powder—1-lb. tins per doz.			
2. Beans—Lima per lb.			
3. " Haricot do.			
4. Biscuits—Coffee, Malt or Arrowroot (as ordered) do.			
5. Blue—Washing, square—in 8-lb. parcels do.			
6. Candles—full weight, Kitchen's Electrics in lots of 30—loose do.			
7. Cereal—Piper's (or equal thereto) in 24-oz. packets per doz.			
8. Cinnamon per lb.			
9. Chutney—13-oz. bottles per doz.			
10. Cocoa—bulk per lb.			
11. Coconut—desiccated do.			
12. Coffee Essence—in 1-gal. jars per gal.			
13. Cordial—Lemon, in 1-gal. jars s.c. do.			
14. Corn or Maize Flour—in 1-lb. packets per doz.			
15. Currants—2 Crowns (present season) per lb.			
16. Curry Powder—bulk do.			
17. Custard Powder in 1-lb. packets "McK." per doz.			
18. Essence—Almond, 8-oz. bottles do.			
19. " Cochineal—8oz. bottles do.			
20. " Lemon—8-oz. bottles do.			
21. " Vanilla—8-oz. bottles do.			
22. Fish—tinned, Herrings in sauce, 14-oz. tins do.			
23. Fish—tinned, Salmon, 2-lb. tins do.			
24. Fish—tinned, Sardines, 4-oz. tins do.			
25. Flour—Self-raising—150 lb. bags per bag			
26. Fruits—Dried (present season) per lb.			
27. " Preserved, 30-oz. tins—Peaches per doz.			
28. " Preserved, 30-oz. tins—Pears, Apricots do.			
29. " Preserved—6-lb. tins—Apples per tin			
30. " Preserved, 7-lb. tins—Blackberries, Blackcurrants, Gooseberries, and Raspberries do.			
31. Gelatine—Ground per lb.			
32. Ginger—Ground do.			
33. Golden Syrup—in 2-lb. tins per doz.			
34. Gravoix—in 1-lb. tins do.			
35. Herbs—mixed—in 2-oz. pkts. do.			
36. Honey—first quality—60-lb. tins per tin			
37. Jolly Crystals—in 7-lb. packets per lb.			
38. Junket Tablets—"Hansens" per doz.			
39. Lemon Peel—Cut per lb.			
40. Macaroni—Bulk, in 22-lb. boxes per box			
41. Margarine—Cake per lb.			

Sub-schedule No. 2—continued.

GROCERIES—continued.

£ s. d.

42. Matches—Safety (60 in a box) per gross			
43. Meat Extract—"Bonox" "Beefine", in 2-lb. jars per jar			
44. Meat—tinned—Camp Pie—12-oz. tins per doz.			
45. " " Meat and Veggies—16-oz. tins do.			
46. " " Hampto—12-oz. tins do.			
47. " " Sausages—16-oz. tins do.			
48. " " Steak and Kidney—16-oz. tins do.			
49. Milk—Condensed, full cream, 14-oz. tins do.			
50. Mustard per lb.			
51. Oatmeal, flaked, bulk per cwt.			
52. Pastes—Marmite, 4-oz. jars per doz.			
53. " Salmon and Shrimp, 4-oz. jars do.			
54. " Bloater, 4-oz. jars do.			
55. Peas, Green, boiling per lb.			
56. " Green, tinned, 14-lb. tins per tin			
57. Pepper, black, ground per lb.			
58. Pickles—Assorted, in 20-oz. bottles per doz.			
59. Prunes—Dried 50-60's (present season) loose per lb.			
60. Prunes—Dried 50-60's (present season)—in 7-lb. tins per tin			
61. Raisins—Sultana, 3 crowns (present season's) per lb.			
62. " Seeded do.			
63. Rice—ground per doz. lbs.			
64. Salt—Table (16-oz. packets) per doz. pkts.			
65. " Fine per cwt.			
66. Sauce—Tomato, in 1-gal. jars—"Grannys" per gal.			
67. " Worcester, in 1-gal. jars do.			
68. Soap—"Bon Ami", in 12-oz. tins or cakes as ordered per doz.			
69. " flakes, in 28 lb. bags per cwt.			
70. " "Lux" { Packets per doz. Cakes do.			
71. " Palmolive" do.			
72. " Persil," in 8-oz. packets do.			
73. " Rinso," in 17-oz. packets do.			
74. Soda—Bicarbonate of per cwt.			
75. " Washing do.			
76. Soup—Tomato, in 20-oz. tins per doz.			
77. Spaghetti, in 1-lb. packets do.			
78. Spices, in ½-lb. packets do.			
79. Starch—"Dandy" (14-oz. pkts.) per doz. pkts.			
80. Sugar—Castor per cwt.			
81. " Icing do.			
82. Tartar—Cream of (Aust.) per lb.			
83. Treacle—in 2-lb. tins per doz.			
84. Vinogar—Malt, bulk per gal.†			
85. Yolking—Essence (or equal thereto) in 8-oz. bottles per doz.			

(AGREEMENT.)

W. A. Thompson, 192 High-street, Shepparton.

Sub-schedule No. 3.

JAM.

(Delivery "F.O.R." Shepparton) £ s. d.

1. Jam—Assorted, of approved kinds, in per doz. the proportion of half seed and half stone, of the best quality, in 5-lb. tins—Brands, "Golden Bells," "Golden Bar," or "S.P.C." per doz.			
2. Jam—Assorted, of approved kinds, in per lb. the proportion of half seed and half stone, of the best quality, in 32-lb. tins per lb.			

** The rates to be paid for all items under these Sub-schedules shall be the wholesale price ruling on the day of delivery.

SCHEDULE No. 20.

**PROVISIONS—AGRICULTURE COLLEGE,
LONGERENONG.**

(Delivery at the College.)

ANNEX TO CONTRACT No. 1951/64.

Onant Bros., 20 Firebrace-street, Horsham.

Sub-schedule No. 1.

BREADSTUFFS.

Security, £5.

		£	s.	d.
1. Bread—Fine wheaten, first quality	per cental	2	7	11
2. Flour—First quality	do.		††	

(AGREEMENT.)

J. Langlands and Sons Pty. Ltd., 122 Firebrace Street, Horsham.

Sub-schedule No. 2.

GROCERIES.

		£	s.	d.
1. Bacon, Rashers, Middle—Brand, "Kilmore"	per lb.	0	4	3
2. Beans—Lima	do.	0	2	6
3. Biscuits—Coffee, Malt or Milk Arrowroot, as ordered	do.	0	1	7
4. Cereal—"Weeties" (or equal thereto) in 24-oz. packets	per pkt.	0	1	9
5. Cheese—"Burnbank"	per lb.	0	1	8
6. Chutney—13-oz. bottles—Brand, "Ros- ella"	per bot.	0	1	9
7. Cloves—Loose	per lb.	0	7	6
8. Cocoa—"Bournville" 1-lb. pkt.	do.	0	3	10
9. Coconut—Dessicated	do.	0	3	6
10. Corn or Maize Flour—1 lb. packets	do.	0	1	4
11. Custard Powder, in 1-lb. packets, "Parson's"	do.	0	1	7
12. Currants, 2 Crown (present season's), "S.&A."	do.	0	1	6
13. Curry Powder—Bulk	do.	0	2	6
14. Essence—Lemon—in 8-oz. bottles, "Leggo's"	per bot.	0	5	6
15. "Vanilla—in 8-oz. bottles, "Leggo's"	do.	0	5	6
16. Flour—Self-raising Brand—in 28-lb. bags—"McAlpin's"	per bag	0	13	3
17. Fruits—Preserved, in 30-oz. tins (ex- cluding Pines)—"S.P.C."	per tin	0	2	4
18. Fish—Salmon—Fresh, in 16-oz. tins	do.	0	3	0
19. Gelatine—Ground—"Davis"	per lb.	0	6	6
20. Ginger—Ground	do.	0	6	0
21. Golden Syrup, in 2-lb. tins	per tin	0	0	11½
22. Honey, first quality, in 60-lb. tins, Yellow Box	do.	2	5	0
23. Jolly Crystals, in 1-lb. packets	per lb.	0	2	6
24. Junket Tablets, "Hansens"	per tube	0	1	8
25. Peel, Lemon—Cut, "Brookes"	per lb.	0	2	3
26. Macaroni—"Rinoldi"—1-lb. packets	do.	0	1	1
27. Matches—Safety (60 in a box)	per pkt.	0	1	6
28. Mustard	per lb.	0	4	6
29. Mustard Pickles, 20-oz. bottles—Brand, "Leggo's"	per bot.	0	2	3
30. Oatmeal—Flaked—Bulk McKenzies	per lb.	0	0	8
31. Pepper—White, ground	do.	1	17	6
32. Prunes—Dried, 60-70's (present seasons)	do.	0	2	3
33. Raisins—Sultanas, 3 crowns (present seasons)	do.	0	1	8
34. Rice—Ground—in lb. packet	per lb.	0	0	10
35. Salt—fine, in bags	per cwt.	0	19	3
36. "table, "Mermaid"	per lb.	0	0	6

†† Order under Melbourne District Contract.

Sub-schedule No. 2—continued.

GROCERIES—continued.

		£	s.	d.
37. Sauce—Tomato—in 26-oz. bottles— Brand, "Reeds"	per bot.	0	2	6
38. Soda—Bicarbonate of	per lb.	0	0	8
39. "Caustic, in 7-lb. tins	per tin	0	10	3
40. "Washing	per cwt.	2	3	0
41. Soup—Tomato—in 20-oz. tins, "Leggos"	per tin	0	1	4
42. Spaghetti, "Rinoldi"	per lb.	0	1	1½
43. Spice—Mixed—in 1-oz. packets	per oz.	0	0	4
44. Sugar—Icing	per lb.	0	0	8
45. Tartar { Cream of "Antelopo" (Substitute)	do.	0	2	3
46. Treacle—in 2-lb. tins	per tin	0	0	10
47. Vermicelli—in 1-lb. packets	per lb.	0	1	1½
48. Vinegar—Malt	per gal.	0	3	0
49. Yolking Essence (or equal thereto)— in 20-oz. bottles	per bot.	0	6	0

(AGREEMENT.)

J. Langlands and Sons Pty. Ltd., 122 Firebrace Street, Horsham.

Sub-schedule No. 3.

JAM.

		£	s.	d.
1. Jam—Assorted, of approved kinds, in the proportion of half seed and half stone, of the best quality, in 5-lb. tins—Brand, "All Gold"	per tin			As per List.

SCHEDULE No. 21.

PROVISIONS—GEELONG.

(Delivery at the Gaol.)

ANNEX TO CONTRACT No. 1951/65.

J. A. Fitzgerald, 150 Malop Street, Geelong.

Sub-schedule No. 1.

BREAD.

Security, £8.

		£	s.	d.
1. Bread—Fine Wheaten, First quality	per cental	1	16	5½

ANNEX TO CONTRACT No. 1951/66.†

O'Brien's Butchery, 491 Moorabool-street, Geelong.

Sub-schedule No. 2.

MEAT.

Security £10.

		£	s.	d.
1. Fresh Beef	per cental	4	3	4
2. Corned Beef, Rolled or Round, without bone on cartilage	per lb.	0	1	0
3. Fresh mutton	do.	0	0	0