



VICTORIA GOVERNMENT GAZETTE.

Published by Authority.

{Registered at the General Post Office, Melbourne, for transmission by post as a newspaper.}

No. 516]

MONDAY, JUNE 23.

[1952

CONTRACTS ACCEPTED.

(SERIES 1952-53.)

SUPPLY OF PROVISIONS

FOR

STATE DEPARTMENTS

FROM

1st JULY, 1952, to 30th JUNE, 1953,
or as stated.

Conditions of Contract and Stipulations are shown herein for the guidance
of Officers ordering and receiving supplies.

W. H. RUTHERFORD,
Secretary to the Tender Board.

CONTRACTS ACCEPTED—(Series 1952-53.)

PROVISIONS.

No. of Contract.	Particulars of each Tender Accepted.	Amount.	Name of Contractor or Supplier.	Charge against Vote or Fund.
	PROVISIONS— Supply of Provisions, in such quantities as may be ordered, from 1st July, 1952, to 30th June, 1953, or as stated.			
	Schedule No. 1.—Melbourne District—			
22	Bread, Kew Mental Hospital	Rates as per annex	The Northcote Vienna Bakery Pty. Ltd.	
23	Bread, Melbourne, Royal Park, and Travancore Developmental Centre, Flemington	Ditto	Cahill and Quin Pty. Ltd.	
24	Bread, Teachers' College, and Hostel, Carlton	Ditto	Univorsal Bakeries	
25	Flour	Ditto	Pirrie Bros.	
..	Groceries	Ditto	Moran and Cato Pty. Ltd. (A)	
..	Cereals	Purchase under Tender Board quotations	
26	Jams	Rates as per annex	W. H. Johnsons Jams Pty. Ltd. ..	
27	†Meat, Kew Mental Hospital	Ditto	F. Watkins Pty. Ltd.	
28	†Meat, Pentridge Penal Establishment ..	Ditto	F. Watkins Pty. Ltd.	
29	†Meat, Children's Welfare Depot, Royal Park, and Police Hospital	Ditto	J. H. Cooke Pty. Ltd.	
30	†Meat, Royal Park Mental Hospital and Receiving House	Ditto	J. H. Cooke Pty. Ltd.	
..	Soap Mixtures	Ditto	Moran and Cato Pty. Ltd. (A) ..	
31	Tea and Coffee	Ditto	Henry Berry and Co. (A'sia.) Ltd. ..	
..	Potatoes	Purchase under Tender Board quotations	
	Schedule No. 2.—Mont Park: Sanatorium, Greswell, &c.—			
32	Bread	Rates as per annex	E. J. Callander	
..	Groceries	Ditto	Henry Berry and Co. (A'sia.) Ltd. (A) ..	
33	Jams	Ditto	W. H. Johnsons Jams Pty. Ltd. ..	
34	†Meat	Ditto	W. Angliss and Co. (Aust.) Pty. Ltd. ..	
..	Potatoes	Purchase under Tender Board quotations	
	Schedule No. 3.—SS. Rip and Dredges—			
..	Bread	Purchase by agreement	
..	Groceries	Rates as per annex	Moran and Cato Pty. Ltd. (A) ..	
35	†Meat	Ditto	Young's Meat Emporium Pty. Ltd. ..	
..	Vegetables	Purchase by agreement	
..	Potatoes	Purchase under Tender Board quotations	
	Schedule No. 4.—Teachers' College, Carlton—			
..	Groceries	Rates as per annex	Moran and Cato Pty. Ltd. (A) ..	
36	Jams	Ditto	W. H. Johnsons Jams Pty. Ltd. ..	
37	†Meat (also for Travancore Developmental Centre, Flemington)	Ditto	J. H. Cooke Pty. Ltd.	
..	Potatoes	Purchase under Tender Board quotations	
	Schedule No. 5.—Ararat District—			
38	Breadstuffs	Rates as per annex	Mark Forsyth Pty. Ltd.	
..	Groceries	Ditto	John MacLeod and Co. Pty. Ltd. (A)	
..	Jams	Ditto	
39	†Meat	Ditto	A. I. Ahpee	
..	Potatoes	Purchase under Tender Board quotations	
	Schedule No. 6.—Ballarat District—			
40	Breadstuffs	Rates as per annex	Brogden Bros.	
..	Groceries	Ditto	John MacLeod and Co. Pty. Ltd. (A) ..	
..	Jams	Ditto	
41	†Meat	Ditto	H. J. Symons Pty. Ltd.	
..	Potatoes	Purchase under Tender Board quotations	
	Schedule No. 7.—Beechworth District—			
42	Bread	Rates as per annex	P. A. Taylor	
..	Groceries	Ditto	Moran and Cato Pty. Ltd. (A) ..	
..	Jams	Ditto	
43	†Meat	Ditto	E. Spencer	
..	Potatoes	Purchase under Tender Board quotations	

Contingencies,
1952-53

Names shown in italics denote suppliers under agreement. † Contract for period 1st July, 1952, to 30th September, 1952, only.

CONTRACTS ACCEPTED—(Series 1952-53)—continued.

PROVISIONS—continued.

No. of Contract.	Particulars of each Tender Accepted.	Amount.	Name of Contractor or Supplier.	Charge against Vote or Fund.
	PROVISIONS—continued.			
	Schedule No. 8.—Langi Kal Training Centre—			
44	Bread	Rates as per annex	O. Nicholls and W. J. Hoskin ..	
45	†Meat	Ditto	H. T. Slee	
..	Potatoes	Purchase under Tender Board quotations	
	Schedule No. 9.—School of Forestry, Creswick—			
46	Breadstuffs	Rates as per annex	R. C. Bowley	
..	Groceries	Ditto	J. Tait and Son (A)	
47	Milk	Ditto	E. J. Keen	
48	†Meat	Ditto	H. J. Symons Pty. Ltd.	
	Schedule No. 10.—McLeod Settlement, French Island—			
49	Bread	Rates as per annex	H. H. Bird	
..	Groceries	Ditto	E. V. Peters (A)	
50	†Meat	Ditto	Dureau and Hardie	
..	Potatoes	Purchase under Tender Board quotations	
	Schedule No. 11.—Heatherton Sanatorium, Cheltenham—			
51	Bread	Rates as per annex	T. D. Callander Pty. Ltd.	
..	Groceries	Ditto	Moran and Cato Pty. Ltd. (A)	
52	†Meat	Ditto	W. Angliss and Co. (Aust.) Pty. Ltd.	
53	Milk	Ditto	L. J. A. Henderson	
	Schedule No. 12.—Sanatorium, Greenvale—			
54	Breadstuffs	Rates as per annex	Bignell's Bakery	
..	Groceries	Ditto	Henry Berry and Co. (A'sia.) Ltd. (A)	
55	†Meat	Ditto	Young's Meat Emporium Pty. Ltd.	
..	Potatoes	Purchase under Tender Board quotations	
	Schedule No. 13.—Cooriemungle Prison Camp Heytesbury Forest—			
..	Bread	Rates as per annex	E. L. McDowall (A)	
..	Groceries	M. L. Hoss (A)	
56	†Meat	Rates as per annex	Heytesbury Butchery	
	Schedule No. 14.—Aboriginal Station, Lake Tyers—			
57	Breadstuffs	Rates as per annex	R. Hodder	
..	Groceries	Ditto	R. Hodder (A)	Contingencies, 1952-53.
..	Jams	Ditto	
	Schedule No. 15.—Research Station, Rutherglen—			
58	Bread	Rates as per annex	W. S. Amore	
..	Groceries	Ditto	Aitken and Fullerton (A)	
	Schedule No. 16.—Sale Gaol—			
59	Bread	Rates as per annex	F. J. Hennessy	
60	†Meat	Ditto	H. L. G. Laws	
	Schedule No. 17.—Pleasant Creek Special School, Stawell—			
61	Breadstuffs	Rates as per annex	E. J. and R. Welsh	
..	Groceries	Ditto	John MacLeod and Co. Pty. Ltd. (A)	
62	Milk	Ditto	E. G. Waldron	
63	†Meat	Ditto	Newton Bros.	
..	Potatoes	Purchase under Tender Board quotations	
	Schedule No. 18.—Sunbury District—			
64	Breadstuffs	Rates as per annex	J. N. Hennessy Pty. Ltd.	
..	Groceries	Ditto	K. N. Tidswell (A)	
..	Cereals	Purchase under Tender Board quotations	
..	Jams	Rates as per annex	K. N. Tidswell (A)	
65	†Meat	Ditto	F. Watkins Pty. Ltd.	
..	Potatoes	Purchase under Tender Board quotations	
	Schedule No. 19.—Agricultural College, Dookie—			
66	Breadstuffs	Rates as per annex	L. G. Clark	
..	Groceries	Ditto	W. A. Thompson (A)	
..	Jam	Ditto	
	Schedule No. 20.—Agricultural College, Longerenong—			
67	Breadstuffs	Rates as per annex	Omant Bros.	
..	Groceries	Ditto	J. Langlands and Sons Pty. Ltd. (A)	
..	Jam	Ditto	
..	Potatoes	Purchase under Tender Board quotations	
	Schedule No. 21.—Geelong District—			
68	Bread	Rates as per annex	J. A. Fitzgerald	
69	†Meat	Ditto	O'Brien's Butchery	

Names shown in italics denote suppliers under agreement. † Contract for period 1st July, 1952, to 30th September, 1952, only.

Approved—J. G. B. McDONALD, Treasurer, 19.6.1952.

CONDITIONS OF CONTRACT FOR PROVISIONS, 1952-53, ETC.

(Published in the *Victoria Government Gazette* No. 292, dated 23rd April, 1952, pages 1912 to 1914.)

1. All the articles are to be of the best quality of the several kinds, in the best condition, and in conformity with the Health Acts, and to be delivered in sound packages, free from all charges for cartage, freight, &c. The goods shall be delivered as may be directed by the officer ordering the supply.

2. As the exact quantity of any article which may be required cannot be stated, the estimate being approximate only, the Government will not be bound by the quantity stated in the schedule, but will be at liberty to order more or less, according to circumstances, and the contractor will be bound to supply the same as ordered.

The Government reserves the right to purchase otherwise than from the contractor any of the articles specified in the schedule in the event of emergency due to the war.

3. Supplies for country districts for which no local contract may have been taken, or for which the contract has been terminated, may be ordered under the Melbourne contract.

4. The Melbourne District will include places within a radius of 6 miles from the Elizabeth-street Post Office, with the exception of places for which separate contracts are provided; the Mont Park District will include the Mental Hospitals, Janesfield Colony, and the Sanatorium, Gresswell; the Ararat, Ballarat, Beechworth, and Sunbury Districts will include the Mental Hospitals, Gaols, and Police Gaols at those places; and the Castlemaine District will include the Reformatory Prison. Delivery must be made at the places, institutions, &c., named in the schedules, or as directed by the officer ordering the supply.

5. Packages suitable for transport of goods supplied must be provided by the contractor free of expense, and the value of these packages, whether in bulk or otherwise, is to be included in the rate tendered, except butter boxes and soap boxes (not including fancy soaps), jam jars, flour, meal, and potato bags, which will remain the property of the contractor, and only the actual net weight or quantity received will be paid for; the empties to be removed from the place of delivery at the contractor's expense.

6. The meat supplied under these conditions must, if practicable, be slaughtered at abattoirs which are under authorized inspection and supervision. Any infringement of this condition will subject the contractor, on report from the Tender Board, to such mulct, not exceeding Fifty pounds, as the Treasurer may direct, and the amount will be deducted from the contractor's account, or from the security money.

7. The supplies coming under the head of Rations and Medical Comforts are to be delivered direct to the establishment entitled thereto on the written order of the officer in charge. All other supplies will be ordered by the head of the Department concerned or any officer authorized by him, and shall be delivered as may be directed by the officer ordering the supply.

8. At the time of delivering the supplies, the contractor shall produce the order for the same to the officer authorized to accept delivery, and such officer shall acknowledge thereon the receipt of the stores accepted, and shall return the order to the contractor, who shall render his account as soon as possible after the delivery of the supplies, accompanied by the receipted delivery order. The rates or quantities quoted in the orders cannot be exceeded.

9. Where practicable, the contractor shall use the Railways for the transport of the goods. When a contractor is required to make delivery of goods at a railway station for transmission by rail, except for Commonwealth Departments, he shall obtain a receipt for the goods in duplicate on the Stores and Transport consignment note, at the same time handing in the triplicate and quadruplicate of the form as an authority for the Railways to act as agent for, and charge the freight to, the Stores and Transport Office. He shall as soon as possible, and not later than twenty-four hours thereafter, deliver at the Tender Board Offices the original, the duplicate to be forwarded to the consignee and the quintuplicate retained by himself. Should the goods thus forwarded be rejected, the contractor must bear the cost of replacing such goods, for which services the departmental consignment note is not to be used. Any infringement of this condition may subject the contractor to such mulct as the Tender Board may recommend under clause 18 of these conditions.

10. Orders must receive prompt execution; in the event of the goods not being delivered at the time mentioned in the order or within such other time as the officer ordering the supply may specify for delivery, it will be competent for such officer, or the head of the Department to whom the goods are to be supplied, on giving the contractor twenty-four hours' notice, to purchase the supplies, or any like supplies that are suitable for the service, at the contractor's risk, and the extra expense incurred over and above the contract price (if any)

will be deducted from the contractor's account or from the security money.

11. The acceptance of the supplies shall be subject to the approval of the officer authorized to take delivery of the stores, or such other officer as shall be named in the conditions.

12. If the officer in charge of stores be not satisfied as to the quantity or quality of the stores, or if, after taking delivery of any stores or material, he shall discover any deficiency or defect therein, he may return such deficient or defective stores or material to the contractor, and shall report the same to the head of his Department and to the Tender Board.

13. In the event of a difference of opinion between the contractor and the officer receiving the supplies as to the quality, the same is to be decided, in cases where the article is not of a perishable nature, by a Board of Survey composed of persons named by the Treasurer of the State for the time being; and the decision of the Board is to be considered final. In the event of the decision being against the contractor, the survey fees and expenses (if any) will be deducted as in clause 10.

14. In cases where the article is of a perishable nature, or when from some other cause injury would be sustained either by the person to whom the rations or stores are due or by the contractor in waiting for a Board to survey, the head of the Department or officer authorized to take delivery will have power to reject such article or articles as are obviously of inferior quality, it being understood that he will be responsible to the Government for so doing, and that the contractor must take back the rejected article and supply good in its stead; failing which it, or any like supply suitable for the Service, will be obtained by the officer requiring it as in clause 10. In case of the rejection or return of any supplies, the contractor shall bear the whole cost of replacing the supplies so rejected or returned.

15. If the Board shall decide that the article is not of proper quality it must be immediately replaced by the contractor; failing which it, or any like supply suitable for the Service, will be procured by the officer requiring it, and the expense charged as in clause 10.

16. In the case of supplies for Mental Hospitals, it will be competent for a Board of Survey, consisting of the medical superintendent (or, in his absence, of the medical officer) and any two officers named by him, to examine and reject any supplies that may be objected to. It must be distinctly understood, however, that the contractor will have a right of appeal to the Treasurer of the State for the time being, such appeal to be made in writing within 24 hours of the rejection; but, pending such appeal, he must at once supply others of approved quality; failing which, the supplies required, or any like supplies suitable for the Service, may be obtained by the officer concerned, and the expense charged as in clause 10.

17. In the case of supplies for Mental Hospitals, it will also be competent for two or more of the official visitors, in conjunction with the medical superintendent, to reject any supplies that they may consider not in accordance with contract; and in such cases the reference to a Board of Survey will not be deemed to be necessary.

18. A refusal to execute orders, irregularity in the quantity or quality of the supplies, or delay in delivering or replacing them when required, will subject the contractor, upon report from the Tender Board, to such mulct, not exceeding Fifty pounds, as the said Treasurer may direct, and the amount may be deducted as in clause 10. It will also be in the power of the said Treasurer, upon such refusal, irregularity, or delay, to terminate the contract forthwith, and forfeit the whole or any part of the security money; and, in addition, the contractor will be disqualified from tendering or holding any future contract or contracts for a period of twelve months from the date of such disqualification.

19. Contractors are not at liberty to transfer their contracts under cover of power of attorney, coupled with an interest or otherwise, and no such transfer will be recognized by the Government. *If it is found during the currency of the contract that the contractor has not conformed to the condition of advertisement—which stipulates that if a tenderer be a member of a firm and such firm be interested in the contract, the tender shall be in the name of the firm and not in that of the individual—then the Treasurer may, on the recommendation of the Tender Board, determine the contract, and forfeit the security money.*

20. It will be competent for the Tender Board to terminate the contract, without notice, should there be reason to know

that the contractor takes advantage of his contract to communicate with a prisoner.

21. The contract entered into under these conditions is not to be considered as being broken, infringed, or vitiated by the importation of stores for the Government service, or by any contracts or purchases made by the Imperial Commissariat; or by the consumption of the produce or surplus stock of any Government establishment, or by any article being made at and supplied for the use of any Government establishment.

22. Notwithstanding anything contained to the contrary in section 152 of the *Customs Act* 1901-36, it is hereby expressly provided that upon any alteration of the duty collected affecting the goods included in this contract, the contract price shall not be altered, and the contract may be terminated at the option of either party by two months' notice in writing from the first day of the calendar month next ensuing.

and within the period for which the contract is made. The contract for the unaffected items shall remain in full force and effect. Any notice to be served under this condition shall be deemed to have been duly served if sent to the contractor in a registered letter to his last-known place of business or abode.

23. Under no circumstances other than those mentioned in clause 22 will a contractor be permitted to abandon his contract. In the event of the contractor failing to carry on the contract, the contract security money will in that case be absolutely forfeited; and, in addition, the contractor will be held liable for any loss which the Government may sustain in consequence of such failure.

24. For the purposes of these contracts the word "Government" shall mean the Government of the State of Victoria; and the word "Treasurer" shall mean the Treasurer of the said State.

STIPULATIONS FOR SUPPLIES OF PROVISIONS.

SUPPLIES GENERALLY.

For supplies under all sub-schedules, particular attention is drawn to clause 1 of the Conditions of Contract as to quality. No sub-letting is allowed, and all work must be carried out by the contractor.

Where practicable, all items must be manufactured or prepared within the Commonwealth.

Where no brand of Commonwealth manufacture or production is specifically set out in the respective sub-schedules, such Commonwealth brand as may be ordered must be supplied.

For Schedule No. 3 supplies must be delivered when ordered and, in cases of emergency, on Sundays, holidays, or half-holidays, as required.

BREAD AND FLOUR.

A sample of the best ordinarily retailed to the public will be considered as a test loaf for first quality for fine wheaten and pure wheaten Meal Bread. *Pure wheaten Meal Bread of first quality may be substituted, wholly or in part, for fine wheaten Bread at such times and in such quantities as, in the opinion of the Medical Superintendent, may be deemed necessary, and the contractor will be required to supply such Bread at the contract rate. Reasonable notice, however, of the intention to substitute wheaten Meal Bread must be given to the contractor by the officer ordering the supply.* Bread may be baked at any Government establishment without infringing these contracts. At the Gaols, Ballarat, Beechworth, and Sale, and the Coorimungie Prison Camp, if required, bread must be supplied one day old, due notice to be given to the contractor of such requirement.

In the event of bread being made at any Government establishment in the Melbourne District during the currency of these contracts, the flour required will be drawn under the flour sub-schedule.

Flour for Districts for which no local contracts have been taken may be ordered under the Melbourne District contract, for delivery f.o.r. Melbourne.

GROCERIES.

As a guarantee of quality, Rice, when ordered in quantities of 56 lb. and over, must be supplied in original bags as delivered by the miller or dresser. Such bags must be branded "Rice, Dressed" or "Unpolished," and shall also have stencilled thereon the miller or dresser's name and the distinguishing mark indicative of the quality or grade. The bags thus stencilled shall contain Rice milled or dressed by the miller or dresser whose name appears thereon. Supplies not in conformity with the foregoing condition will be rejected.

Oatmeal must be supplied in original bags as delivered by millers.

Candles, except those for prison cells, must be supplied in 1-lb. packets. Candles for prison cells must be delivered in boxes containing from 25 to 50 lb. per box, the boxes for which must be legibly stencilled on one end showing the estimated burning time and the gross, tare, and net weight of contents.

The soap supplied must be hard throughout, ready for immediate use without waste, and shall have been manufactured at least seven weeks before leaving contractor's hands.

Raisins and currants must be present season's, and where the quantity admits, be supplied in original and unopened boxes, labelled as packed.

For Schedule No. 3 a certain quantity of Biscuits and Preserved Meats are sometimes required in lieu of fresh bread and fresh meat, and are included to meet such contingency only.

OATMEAL, RICE, SEED, TAPIOCA, ETC.

Supplies of these items for Districts for which no local contracts have been taken may be ordered under the Melbourne District contract, for delivery f.o.r. Melbourne.

BUTTER AND CHEESE.

All supplies of 56 lb. or multiples of 56 lb. must be supplied in boxes as originally packed. The boxes must bear the impress stamp of the creamery where the butter is produced, otherwise it will not be accepted. All supplies must be in new boxes.

Where the Store or Butter Factory of the Contractor is situated in the Metropolitan area all Butter to the quantity of 56 lb. and over to be supplied in any one consignment under this contract shall before despatch from the Store or Factory be first examined and passed by the Government Butter Grader, for and on behalf of the officer authorized to accept delivery. The boxes containing butter so examined and found satisfactory in quality and description will be stamped by the Government Butter Grader and the date of such examination marked thereon. No butter from a contractor located in the Metropolitan Area will be accepted unless the boxes bear the stamp of the Grader. For the purposes of the foregoing condition the Metropolitan Area is defined as being not outside the radius visited by the Government Grader. The officer authorized to accept delivery may, within 48 hours of the receipt of any supply, require the Contractor to have same re-examined by the Grader, and, if not passed by him, it shall be returned to the Contractor, who shall forthwith replace the same with freshly-examined butter.

No Butter *ex Cool Store* will be examined by the Grader until thermally it is in suitable condition therefor.

Where the Store or Factory from which the Butter is despatched is not within the area visited by the Grader a sample of any supplies may be forwarded to the Government Butter Grader for examination, should the supply be considered by the Officer authorized to accept delivery as not being equal in quality or description to that contracted for.

The Cheese supplied must be first-class quality, semi or fully matured, as ordered, and not less than 3 months old. If the quantity admits, it shall be boxed for transport.

JAM.

The weight stamped on the tins in accordance with the regulations under the Commerce Act, as indicating the minimum net quantity that each tin contains, shall for the purpose of this contract be taken as the actual contents when computing the quantity supplied.

When Jam is supplied in jars the jars remain the property of the contractor, and must be removed by the contractor at his own expense when empty.

SOAP AND SOAP MIXTURES.

Supplies of these items for Districts for which no local contracts have been taken may be ordered under the Melbourne District contract, for delivery f.o.r. Melbourne.

MEAT.

All meat supplied under this contract shall have been slaughtered in Victoria and shall be freshly killed, well-conditioned, of good quality, healthy, clean, wholesome, free from bone-taint, putrefaction or fly larvae, and shall not have been frozen.

The beef shall be of ox not under three nor more than six years old or heifer or cow not under three nor more than five years old. Carcass beef for Mental Hospitals shall be delivered in quarters of equal proportions of hinds and fores and the corresponding hinds and fores must be supplied, also extra buttocks separately when ordered. Meat for other Institutions shall be supplied as ordered. Where hindquarters or buttocks are ordered 9 inches shall be cut off from the end of the leg

from the hock upwards, i.e., the end of the leg from which the shank has been removed at the abattoirs; when forequarters form a portion of the supply, 6 inches from the end of the neck and the whole of the shin at the clodbone joint shall be removed. The sticking pieces also shall be trimmed off and the point and end of the brisket rendered free from blood and blood stains.

The mutton shall be wether or maiden ewe not more than four years old and the weight of a carcass shall be not less than 40 lb. nor more than 60 lb. The mutton shall be delivered in sides when so ordered.

Corned Beef (rolled or round as ordered) shall be supplied without bone or cartilage and will be received whether pumped or prepared in the ordinary way of pickling but, in the former case, it shall have been soaked, after pumping, for at least 48 hours in a good pickle and then thoroughly drained before supply. No flank, chuck, sticking-piece, shin, leg of beef, or piece under 7 lb. will be received.

Meat derived from the carcasses of Bulls, Stags or Rams or meat containing an undue proportion of bone or fat will not be received and shall not be tendered for delivery. Net weight only will be paid for.

In cases of emergency, or on such other occasions as in the opinion of the Director of Mental Hygiene or Heads of other Institutions may seem advisable, other forms of meat, such as Rabbits, Tinned Meats, &c., may be purchased, apart from the contract, in lieu of the meat specified in the Schedule, and substituted therefor, provided 24 hours' notice—except in cases of emergency—be given to the Contractor of such intention.

The parts to be removed by the contractor are indicated in the shaded portion of the annexed diagram. This work shall be carried out in the factory or shop of the Contractor, except those parts usually removed at the abattoirs.

With respect to the schedules enumerated hereunder, the following stipulations shall also apply:—

For sub-schedules 9 and 10 of Schedule No. 1, fresh beef shall be supplied, as ordered, from ribs, sirloin, and thick flanks and for Schedule No. 2, from prime ribs, sirloin, and

thick flanks; ribs of beef to be cut clear of the plate bone, and sirloin to be cut clear of the wing ribs; excess of brisket or thin flank will be rejected. Mutton must be delivered in sides when so ordered; all kidney fat to be removed.

For Schedules Nos. 1 (sub-schedules 9 and 10) 3, 4, 9, 11, 12, 13 and 17, chuck ribs of Beef, i.e., 1st to 4th inclusive will not be accepted.

For Schedules Nos. 4, 11, 12 and 17, fresh Beef must be supplied, as ordered, from prime ribs or sirloin; ribs of Beef to be cut clear of the plate bone, and sirloin to be cut clear of the wing ribs; excess of brisket or flank will be rejected.

TEA AND COFFEE.

Tea and Coffee for Districts for which no local contracts have been taken may be ordered under the Melbourne District contract, for delivery f.o.r. Melbourne.

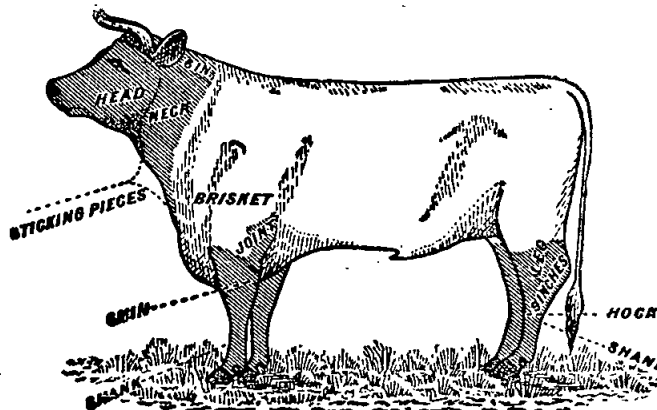
MILK.

The milk must be fresh, pure, and of the best quality, and subject to test when required by the Department, and supplied at such times as the Department may require. Should the contractor fail to supply at the time specified in the order or at such times as may be indicated in any general notice to the contractor his contract may be cancelled forthwith and his security forfeited, or should the supply prove to be not of contract quality it will be rejected, and any expense incurred will be charged to the contractor.

POTATOES.

Potatoes to be dry and free from dirt. Contractors to take back all rejected before being cooked. Bags to remain the property of the contractor. Weight of bags (approx. 2½ lb.) to be deducted.

If the price of potatoes becomes abnormally high, the heads of the various departments concerned may, if they think fit, cause rice or any other suitable food to be occasionally substituted in lieu thereof.



Sub-schedule No. 2—continued.

GROCERIES—continued.

		£	s.	d.
20. Fruits, Dried (present season's)	per lb.	11	11	
21. Fruits—Preserved, assorted, in 1-lb. 14-oz. tins (excluding Pines)	per tin	11	11	
22. Gelatine—Ground	per lb.	0	6	3
23. Ginger—Ground	do.	0	5	9
24. Golden Syrup—in 2-lb. tin	per ctn.	1	5	4
14-oz. tins, Fresh	per doz.	1	5	6
25. Herrings { in Tomato Sauce	tins	1	6	0
26. Honey, first quality	per lb.	*		
27. Jelly Crystals—in 4-oz. packets "Invicta"	per gross	4	9	0
28. Junket Tablets, "Viking"	per tube	0	0	9½
29. Mixed Peel—cut	per lb.	0	1	7
30. Macaroni in 22-lb. boxes	per box	1	0	3½
31. Margarine, Cake, Pastry	per lb.	0	1	3
32. Meat—Tinned—Beef Luncheon, 12-oz. tins	per doz.	1	9	10
33. Milk—Dried, Full Cream—				
"Sunshine" { 12-oz. tins—3 doz.	per case	4	8	0
"Trufood" { 3-lb. "—1 doz.	do.	*		
"Trufood" { 12-oz. tins—3 doz.	do.	4	4	3
"Trufood" { 3-lb. "—1 doz.	do.	*		
34. Mustard—"Colonial"	per lb.	0	4	9
35. Nutmeg—Whole	do.	0	6	6
36. Pepper—White, ground	do.	1	10	0
37. Pickles—Assorted, 20-oz. bottles	per doz.	0	19	0
38. Prunes—Dried, 50-60's (present season's)	per lb.	1		
39. Raisins—Lexias, 4 Crowns (present season's)	do.	1		
40. " Sultana, 3 Crowns (present season's)	do.	0	1	5½
41. Rice—Ground—1-lb. packets	do.	0	0	7½
42. Salmon—Fresh, in 1½-oz. tins, tall, fancy pink	per tin	*		
43. Salt—Fine (Btg—approx 1 cwt.)	per bag	0	15	10
44. Sauce—Tomato { in 26-oz. bottles, "Vic-torice"	per doz.	1	16	6
45. Soda—Bicarbonate of	per gal.	0	13	6
46. " Washing	per lb.	0	0	6
47. Spice—Mixed, loose	per cwt.	1	14	0
48. Starch—Powdered "Acme" 14-oz. pkts., 40's	per lb.	0	3	0
49. Sugar—Caster	per case	2	7	10
50. " Icing	per cwt.	3	14	6
51. Tartar—Cream of—Substitute—Sodium Phosphate—Brand, "Antelope"	per lb.	0	1	11½
52. Treacle—in 2-lb. tins	per ctn.	1	4	5×
in 16-oz. packets	per doz.	0	11	9
53. Vermicelli { in 22-lb. cartons	per	1	0	6
in 22-lb. boxes	per box	1	1	6
54. Vinegar—Malt { in gallon jars (Jars 3/6)	per gall.	0	2	3
in 9 gallon kegs (Kegs 60/-)	do.	0	2	1½

ANNEX TO CONTRACT No 1952/33.

W. H. Johnsons Jams Pty. Ltd., 42 Meaden-street, South Melbourne, S.C.5.

Sub-schedule No. 3.

JAMS.

Security, £23.

		£	s.	d.
1. Jams—Assorted, in bulk, of approved kinds, in the proportion of half actual net seed and half stone, of the best quality, in tins.	per lb.	0	0	9½
2. " Assorted, in 5-lb. tins, in the proportion of half seed and half stone, of the best quality.	per tin	0	5	4
3. " Marmalade, in 5-lb. tins.	do.	0	5	4

ANNEX TO CONTRACT No. 1952/34.

W. Angliss and Co. (Aust.) Pty. Ltd., 42 Bourke-street, Melbourne.

Sub-schedule No. 4.φ

MEAT.

Security, £50.

		£	s.	d.
1. Fresh Beef, Forequarters	per ctn.	7	17	10
2. " " Hindquarters	do.	9	16	11
3. " " Buttocks	per lb.	0	1	8½
4. " " Roast	do.	0	2	4
5. Beef, Corned—Rolled or Round, as ordered, without bone or cartilage	do.	0	2	7½
6. " " Silverside (Greenswell Sanatorium)	do.	0	3	0
7. Mutton, Fresh	do.	0	0	11½
8. Chops—Forequarter	do.	0	1	1
9. " Loin	do.	0	1	8½
10. Steak—Thick Flank	do.	0	3	0
11. " Rump	do.	0	3	6

* Supplies not available.

φ Cartons, 19s. 3d. each.

‡ Apply Tender Board.

‡ Australian Dried Fruits Association rates.

φ Rates subject to variation in accordance with determinations of Prices-Decontrol Commissioner.

× Carton 2 dozen 2lb. tins.

Sub-schedule No. 4—continued.

MEAT—continued.

		£	s.	d.
12. Steak—Minced	per lb.	0	2	5
13. Sausage Meat	do.	0	1	3
14. Sausages—Mixed	do.	0	1	5
15. Shanks—Sheep	each	0	1	0
16. Tripe—Fresh	per lb.	0	0	7
17. Brains—Sheep	per set	0	0	3½
18. Kidneys—Ox	per lb.	0	1	4
19. Livers—Sheep	do.	0	0	8
20. Livers—Calves	do.	0	1	3
21. Sausage—Strasburg, Pork	do.	0	2	8
22. Rabbits—Fresh	do.	0	1	6
23. Saveloys	per doz.	0	3	11
24. Tongues—Ox	per lb.	0	1	0½
25. Ham Loaf	do.	0	2	7½
26. Pressed Veal and Pork Loaf	do.	0	3	8
27. " Shoulder Ham	do.	0	4	0
28. Potted Meat	do.	0	1	10

SCHEDULE No. 3.

PROVISIONS FOR S.S. RIP AND DREDGES.

Sub-schedule No. 1.

BREAD.

1. Bread—Fine wheaten, first quality	Purchase by agreement
--------------------------------------	-----------------------

(AGREEMENT.)

Moran and Cato Pty. Ltd., 201 Nelson-place, Williamstown, or 285 Bay-street, Port Melbourne.

Sub-schedule No. 2.

GROCERIES.

		£	s.	d.
1. Bacon Rashers Middle	per lb.	0	5	5½
2. Beans—Butter	do.	0	1	5
3. " Haricot	do.	0	1	2½
4. Biscuits—Coffee, Marie, Malt	(Tins 3/- each)	0	1	6½
5. " Dry	do.	0	1	6½
6. Gravox { in 4-oz. packets	per doz.	0	6	3
in 8-oz. " "	pks.	0	12	7½
7. Chutney—in 13-oz. bottles "Rosella"	per doz.	1	5	6
8. Cocoa—in 1-lb. tins or cartons, "Bournville"	per doz.	2	17	0
9. Coconut—Desiccated	per lb.	0	2	4½
10. Coffee—Fresh Roasted and Ground	do.	0	8	3½
11. Corn or Maize Flour in 1-lb. packets, per doz. "Parsons"	do.	0	18	7½
11A Corn or Maize Flour, loose	per lb.	0	0	8½
12. Currants—1 crown (present season's)	do.	0	1	6
13. Custard Powder—in 1-lb. packets, Brand, "Clipper"	per doz.	0	16	1½
14. Dates	per lb.	0	1	4
15. Eggs, New Laid	per doz.	0	5	8
16. Essence—Vanilla, in 16-oz. bottles	per bot.	0	10	11½
17. " Cochineal, in 1-oz. bottles	do.	0	0	11½
18. Fish { Herrings, in 14-oz. tins, Fresh,	per doz.	1	6	7½
"Tyne" " "	tins	1	6	7½
Herrings, in Tomato Sauce,	do.	1	7	0
"Tyne" " "	do.	1	6	4½
19. " Salmon, Fresh, in 16-oz. tins, "King Sound"	do.	1	16	4½
20. " Sardines, in ½ tins, "Norwegian Pack"	per doz.	0	15	6
21. Flour—First quality—150-lb.	per bag	2	4	3
22. " Self-raising, Brand, "M & C" 150-lb.	per bag	2	12	9
23. Fruits—Preserved, in 1-lb. 14-oz. { Pears	per doz.	1	13	0
tins	tins	1	11	6
Apricots	do.	1	14	0
24. " Preserved, pines, in 1-lb. tins	do.	1	11	0
8-oz. pkts.	per doz.	2	2	9
25. Gelatine—Ground	pkts.	3	15	3
26. Golden Syrup—in 2-lb. tins	per doz.	0	14	6
27. Honey, in 20-oz. jars "Clipper"	do.	1	14	3
28. Jams—Assorted kinds, in 24-oz. tins	per doz.	as per list		
29. Jelly Crystals in 4-oz. packets	per doz.	0	9	1½
30. Mixed Peel—Cut	per lb.	0	1	7½
31. Macaroni { in 22-lb. boxes	per box	1	2	3
in 22-lb. cartons	per	1	1	3
32. Margarine—Cooking Quality	per lb.	0	1	6½
33. Meat—Preserved, 12-oz. tins—Camp Pie	per doz.	1	1	7½
Sausages and vegetables	do.	1	4	10½
Irish Stew	do.	1	8	3
Steak and Kidney Pudding	do.	1	10	0
34. Milk—Dried, Full Cream, in 12-oz. tins	do.	1	11	10½
35. " Condensed, full cream, 14-oz. tins	do.	0	18	3
36. Mustard—Loose, "McKenzies"	per lb.	0	5	1

Sub-schedule No. 2—continued.

GROCERIES—continued.		£	s.	d.
37. Nutmeg—Whole	per lb.	0	8	5
38. Oatmeal—Flaked	per cwt.	4	17	0
39. Pearl Barley	per lb.	0	0	5½
40. Peas—Split	per cwt.	6	5	3
41. Pepper—Black, ground	do.	1	5	2
42. " White, ground	do.	2	1	11
43. Pickles—Mustard, in 20-oz. bottles, "Blue Ribbon"	per doz.	1	0	10½
44. Prunes—Dried (present season's), 50/60	per lb.	0	2	11
45. Raisins—Seeded (present season's) "M & C" or "Summagold" 1-lb. packets	per doz.	1	8	3
46. Raisins—Sultana, 2 Crowns (present season's)	per lb.	0	1	6½
47. Rice—Dressed	do.	0	0	6½
48. Salt—Fine	per cwt.	0	16	10
49. Sauce—Mustard, in 8-oz. bottles, "Holbrook's"	per doz.	1	0	3
50. " Tomato, in 26-oz. bottles, "Brookes"	do.	2	0	1½
51. " Worcestershire, in 10-oz. bottles, "Brookes"	do.	0	16	3
52. Soda—Bi-carbonate of	per lb.	0	0	6½
53. Spice—Mixed, 1-oz. packets—"Rono"	per doz.	0	3	9
54. Sugar—{ Brown	per cwt.	3	0	6
55. " { White } 70-lb. bags	per bag	2	4	2
56. " Castor,	do.	2	10	9
57. " Icing	per cwt.	4	4	9
58. Vinegar—Malt, 26-oz. "Clipper"	per doz.	0	13	6
59. Yolking—in 4-oz. bottles	do.	0	12	10½

ANNEX TO CONTRACT No. 1952/35.†

Young's Meat Emporium Pty. Ltd., 316 Victoria-street,
North Melbourne.

Sub-schedule No. 3.φ

MEAT.

(Delivery at River Yarra Wharfs.)

Security, £5.		£	s.	d.
1. Fresh Beef—Roast	per lb.	0	2	9
2. Beef, Corned—Silverside	do.	0	2	10
3. " Rolled	do.	0	2	3
4. Fresh Mutton—Forequarter	do.	0	1	2
5. " Legs	do.	0	1	9
6. Chops—Forequarter	do.	0	1	2½
7. " Loin	do.	0	1	9
8. Steak—Rump	do.	0	3	5
9. " Stewing	do.	0	2	6
10. " Topside	do.	0	2	11
11. Sausages—Mixed	do.	0	1	8
12. Tripe—Fresh	do.	0	0	7½
13. Livers—Sheep	do.	0	0	11
14. Suet—Kidney	do.	0	0	4
15. Rabbits—Fresh	do.	0	1	9
16. Ice	per cwt.	0	4	6

Sub-schedule No. 4.

VEGETABLES.

1. Onions
2. Other vegetables, including beetroot, cauliflower, carrots, cabbages, turnips, parsnips, rhubarb, swedes, and pumpkin, as required
- } Purchase by agreement

SCHEDULE No. 4.

PROVISIONS—TEACHERS' COLLEGE,
CARLTON.

(Delivery at the College.)

(AGREEMENT.)

Moran and Cato Pty. Ltd., 277 Brunswick-street, Fitzroy, N.6.

Sub-schedule No. 1.

GROCERIES.		£	s.	d.
1. Barley	per lb.	0	0	5½
2. Cereal—"Piper's," in 24-oz. packets	per pkt.	0	1	8
3. " "Weetbix," large	do.	0	1	8½
4. Cheese—Kraft, 5-lb. loaves	per lb.	0	3	0
5. Custard Powder { in "Clipper"	per pkt.	0	1	4
6. " loose	per lb.	0	1	0½
7. Essence—in 8-oz. bottles, Lemon pure	per bot.	0	5	2
8. Flour—Self-raising, Brand, "Mac's"	per lb.	0	0	5
9. Fruit—Preserved, assorted, in 1-lb. 14-oz. tins (excluding Pines)	per tin	0	2	4½
10. Golden Syrup—in 2-lb. tins	per doz.	0	12	8
11. Honey, first quality—in 60-lb. tins only	per lb.	0	1	0½
12. Jelly Crystals, 7-lb. packets	do.	0	2	2½
13. Mustard	do.	0	4	9
14. Macaroni—1-lb. packets—"Rinoldi"	do.	0	0	10½
15. Pepper—Black, ground	do.	1	3	1

φ Supplies not available. Ⓞ Charge for drums if not returned. †† Small quantities at rate of 2s. 1½d. per 14 lb.

¶ Rates subject to variation in accordance with determinations of Prices Decontrol Commissioner. ¶ 12-oz. tins, £1 9s. 2d. per doz.

Sub-schedule No. 1—continued.

GROCERIES—continued.		£	s.	d.
15. Pickles—Assorted, in 20-oz. bottles, per doz.	per doz.	0	18	6
16. Raisins—Sultana, 2 Crowns (present season's)	per lb.	0	1	5
17. Salmon—Fresh, "Australian," in 14½-oz. tins, talls,	per tin	0	2	9
18. Salt—Fine ††	per cwt.	0	15	7
19. Sauce, Tomato, in 26-oz. bots. "Raleigh"	per doz.	1	16	0
20. " " 13-oz. "	do.	0	19	1
21. " Worcestershire, in 10-oz. bottles, Brand, "Hardings"	per bot.	0	1	4½
22. Soda—Bicarbonate of	per lb.	0	0	6
23. " Washing	do.	0	0	3½
24. Spaghetti—"Rinoldi"	per pkt.	0	0	11½
25. Spice—Mixed, in 1-oz. pkts.—"Parsons"	per doz.	0	3	11
26. Starch—loose	per lb.	0	0	7
27. Sugar—Castor	do.	0	0	7½
28. Vinegar—Malt	per gal.	0	2	2½

ANNEX TO CONTRACT No. 1952/36.

W. H. Johnsons Jams Pty. Ltd., 42 Meaden-street, South Melbourne,
S.C.5.

Sub-schedule No. 2.

JAM.

Security, £10.

1. Jam—Assorted, of approved kinds, in the proportion of half seed and half stone, of the best quality, in 5-lb. tins.

ANNEX TO CONTRACT No. 1952/37.†

J. H. Cooke Pty. Ltd., 378 Queen's-parade, Clifton Hill.

Sub-schedule No. 3.φ

MEAT.

(Also for delivery to Travancore Developmental Centre, Flemington.)

Security, £8.		£	s.	d.
1. Fresh Beef—Sirloin	per lb.	0	2	6
2. Fresh Mutton—Cutlets	do.	0	1	11
3. " Chops—Mid. Loin	do.	0	1	9
4. " " Forequarter	do.	0	1	0
5. " " Legs	do.	0	1	6
6. Beef—Corned—Silverside	do.	0	2	6
7. Veal—Shoulder, Boned	do.	0	1	0
8. Steak—Blade	do.	0	2	6
9. " (when required, minced)	do.	0	2	0
10. " Stewing	do.	0	2	0
11. Mince Meat	do.	0	0	10
12. Sausages—Mixed	do.	0	1	6
13. Sausage Meat	do.	0	0	10
14. " Beef, German	do.	0	2	0
15. Livers—Sheep	do.	0	0	11
16. Tripe—Fresh	do.	0	0	7½
17. Suet—Kidney	do.	0	0	5
18. Bones—Soup	do.	0	0	1
19. Frankfurts	do.	0	2	0
20. Black Puddings	do.	0	1	0

SCHEDULE No. 5.

PROVISIONS—ARARAT DISTRICT.

(Delivery into Institutions.)

ANNEX TO CONTRACT No. 1952/38.

Mark Forsyth Pty. Ltd., 274 Barkly-street, Ararat.

Sub-schedule No. 1

BREADSTUFFS.

Security, £75.

1. Bread—Fine wheaten, first quality
2. Flour—First quality

(AGREEMENT.)

John MacLeod and Co. Pty. Ltd., 122 Lydiard-street, Ballarat.

Sub-schedule No. 2.

GROCERIES.

1. Blue—Washing (Reck Square)
2. Candles—(full weights) Kitchen's "Elec. trines," or other make of equal quality, to be supplied in 1-lb. packets
3. Cocoa—in 28-lb. bags
4. Corn Flour—in packets of 1 lb. net "Kream"
5. Curry Powder, "Gold Seal," loose
6. Custard Powder—Bulk
7. Golden Syrup { 56-lb. tins or drums }
8. Jelly Crystals—"Gold Seal"
9. Milk, Powdered—"Sunshine", 3-lb. tins
10. Mustard—Loose

Sub-schedule No. 2—continued.

GROCERIES—continued		£	s.	d.
11. Peas—Blue Boiling	per bush.	2	1	0
12. Pepper—Black, ground	per lb.	1	3	0
13. Raisins—Sultana (present season's)—				
Plain	do.	0	1	4½
1 Crowns	do.	0	1	4½
2 "	do.	0	1	5
3 "	do.	0	1	5½
4 "	do.	0	1	5½
14. Salt—Fine—Imperial	per cwt.	0	19	2
15. Sauce—Tomato—1-gallon jars (Jars 5s.) ..	per gal.	0	15	6
16. Soda—Bicarbonate of	per lb.	0	0	6½
17. " Washing	per cwt.	1	11	9
18. Starch (Rice)—"Silver Star" 12-oz. packets	per doz.	0	19	1½
19. Tartar—Cream of—Substitute—"Antelope"	per lb.	0	1	10½

(AGREEMENT.)

John MacLeod and Co. Pty. Ltd., 122 Lydiard-street, Ballarat.

Sub-schedule No. 3.

JAMS.		£	s.	d.
1. Jams—Assorted, in bulk, of approved	per lb.	0	0	11½
kinds, in the proportion of half seed and actual net				
half stone, of the best quality, in tins, as weight				
required, Brand, "J. MacLeod and Co.				
Pty. Ltd."				

ANNEX TO CONTRACT No. 1952/39.†

A. I. Ahpee, 172 Barkly-street, Ararat.

Sub-schedule No. 4.φ

MEAT.		£	s.	d.
Security, £30.				
1. Fresh Beef—Fore-quarters	per cwt.	10	0	0
2. " " Hind-quarters	do.	10	0	0
3. " " Buttocks	do.	10	0	0
4. " Mutton	do.	7	10	0
5. Corned Beef—Rolled or round, as ordered,	do.	10	0	0
without bone or cartilage				
6. Sausages—Mixed (summer months) ..	per lb.	0	1	6
7. Sausage—Beef German (summer months)	do.	0	2	0
8. Saveloys (winter months)	per doz.	0	3	6

SCHEDULE No. 6.

PROVISIONS—BALLARAT DISTRICT.

(Delivery into Institutions.)

ANNEX TO CONTRACT No. 1952/40.

Brogden Bros., Lal Lal-street, Ballarat.

Sub-schedule No. 1.

BREADSTUFFS.		£	s.	d.
Security, £75.				
1. Bread—Fine wheaten, first quality ..	per cwt.	1	10	2
2. Flour—First quality	do.	1	6	0

(AGREEMENT.)

John MacLeod and Co. Pty. Ltd., 122 Lydiard-street, Ballarat.

Sub-schedule No. 2.

GROCERIES.		£	s.	d.
1. Blue—Washing (Reck Square)	per gross	1	6	8
2. Candles (full weights)—Kitchen's "Elec-	per lb.	0	1	8½
trines," or other make of equal quality,				
in 1-lb. packets				
3. Cocoa—Loose—28-lb. bags	do.	*		
4. Corn Flour—in packets of 1 lb. net—	do.	0	1	5½
"Kream"				
5. Currants—				
M.F. (present season's)	do.	0	1	3½
1 Crown	do.	0	1	3½
2 "	do.	0	1	4½
3 "	do.	0	1	4½
6. Curry Powder—"Gold Seal"—loose ..	do.	0	3	9
7. Golden Syrup—in { 2-lb. tins	per doz.	0	13	4
56-lb. tins or drums †† each				
8. Jelly Crystals—"Gold Seal"—in 4-oz. pkts.	per doz.	0	7	9
9. Macaroni—Bulk, 56-lb. bags	per lb.	0	0	10½
10. Meats—Tinned—				
"Champion," { Sausages and Vege- per doz.	tins	1	4	11
16-oz. tins { Irish Stew				
{ Lamb and Green				
{ Peas				

* Supplies not available.

†† Charge for drums if not returned.

φ Rates subject to variation in accordance with determinations of Prices Decontrol Commissioner. † 12 oz. tins; £1 7s. 11d. per doz.

Sub-schedule No. 2—continued.

GROCERIES—continued.		£	s.	d.
Meats—Tinned—continued.				
"Imperial," { Beef Steak Pudding .. per doz.	tins	*	1	3
16-oz. tins { "Smorgan's," { Minced Beef				
12-oz. tins { "Champion," { Camp Pie				
12-oz. tins { Beef Loaf				
11. Milk—Full Cream Powdered Milk—"Sun-				
shino"—3-lb. tins	do.	5	0	3½
12. Mustard—Loose	per lb.	3	11	
13. Pepper—Black, ground	do.	1	3	0
14. Raisins—Sultana (present season's)—				
Plain	do.	0	1	4½
1 Crown	do.	0	1	4½
2 "	do.	0	1	4½
3 "	do.	0	1	5
15. Salt—Fine—"Imperial"	per cwt.	0	16	7
16. Soda—Bicarbonate of	per lb.	0	0	6½
17. " Washing	per cwt.	1	9	3
18. Spaghetti—Bulk { 22-lb. cases { No. 1 .. each	22-lb. cartons	No. 2 ..	do.	1
{ No. 2				
{ No. 1				
{ No. 2				
19. Spice—Mixed, in 1-oz. packets ..	per pkt.	0	0	5½
20. Starch (Rice) "Silver Star", 14-oz. ..	per doz.	0	18	9
21. Tartar—Cream of—Substitute—"Antelope"	per lb.	0	1	10½
22. Vinegar—Malt	per quart	0	0	7½

(AGREEMENT.)

John MacLeod and Co. Pty. Ltd., 122 Lydiard-street, Ballarat.

Sub-schedule No. 3.

JAMS.		£	s.	d.
1. Jams—Assorted, in bulk, of approved	per lb.	0	0	11½
kinds, in proportion of half seed actual net				
and half stone, of the best quality				
quality, in tins as required,				
Brand, "J. MacLeod and Co.				
Pty. Ltd."				
2. " Assorted, in 24-oz. tins, in the	per doz.	1	7	5
proportion of half seed and half				
stone, of the best quality, Brand,				
"Victoree"				
3. " Assorted, in 5-lb. tins, in the	do.	*		
proportion of half seed and half				
stone, of the best quality, Brand,				
"Victoree"				

ANNEX TO CONTRACT No. 1952/41.†

H. J. Symons Pty. Ltd., 1015 Macarthur-street, Ballarat.

Sub-schedule No. 4.φ

MEAT.		£	s.	d.
Security, £35.				
1. Fresh Beef, Forequarters	per cwt.	8	4	7
2. " " Hindquarters	do.	9	1	3
3. " " Buttocks	do.	9	5	5
4. " " Roast	do.	9	1	3
5. Beef, Corned	do.	9	9	7
6. Mutton, Fresh	do.	7	1	8
7. " " Chops, Forequarter ..	per lb.	0	1	5
8. Minced meat	do.	0	1	1½
9. Sausages	do.	0	1	8
10. Sausage, Beef, German	do.	0	2	2
11. Saveloys (April to September) ..	per doz.	0	3	3
12. Tripe	per lb.	0	1	0
13. Ham Loaf (October to March) ..	do.	..		
14. Black Puddings	do.	0	1	0
15. Livers—Sheep	do.	0	1	3

SCHEDULE No. 7.

PROVISIONS—BEECHWORTH DISTRICT.

(Delivery into Institutions.)

ANNEX TO CONTRACT No. 1952/42.

P. A. Taylor, Camp-street, Beechworth.

Sub-schedule No. 1.

BREADSTUFFS.		£	s.	d.
Security, £100.				
1. Bread—Fine Wheat, first quality ..	per cwt.	2	3	9
2. " Raisin	do.	2	15	0
3. Flour—First quality	do.	1	6	0
4. Meat Pies	per doz.	0	6	0

(AGREEMENT.)

Moran and Cato Pty. Ltd., 277 Brunswick-street, Fitzroy, N.6.

Sub-schedule No. 2.

GROCERIES.		£	s.	d.
1. Biscuit—Cereal "Vitabrit"—24-oz.	per pkt.	0	1	10½
2. Blue—Washing, powdered in 7-lb. pkts.	per lb.	0	1	9½
3. Cocoa { "Bournville"—in 1½-lb. pkts.	do.	0	4	4½
Loose	do.	0	2	11
4. Corn or Maize Flour—in packets of 1 lb.				
{ "Fielders"	per pkt.	0	0	8½
{ "Kream"	do.	0	1	6½
5. Curry Powder	per lb.	0	3	0
6. Custard Powder—Loose	do.	0	1	1½
7. Dried Fruits { Apricots—3 Crown	do.	0	3	7½
Pears—2 Crown	do.	0	2	2
8. Fish—Cape Cod or Shredded	do.			*
9. Fruit Juices—16-oz. tins, Orange and Grapefruit, Mildura	per doz.	1	3	0
10. Golden Syrup—in 2-lb. tins	per tin.	0	1	2
11. Jelly Crystals—in 7-lb. packets	per lb.	0	2	3½
12. Macaroni—in 22-lb. boxes	per box	1	0	7
in 56-lb. bags	per lb.	0	10	10½
13. Milk—Powdered—3-lb. tins	per doz.	5	2	0
" " —12-oz. tins—"Trufood"	do.	1	9	0
14. Mustard	per lb.	0	4	10
15. Pepper—Black, ground	do.	1	3	2
16. Raisins—Sultana, 2 Crowns (present season's)	do.	0	1	6
17. Salt—Fine	per cwt.	0	19	1
18. Sauce—Tomato—26-oz. bottles—"Raleigh"	per doz.	1	17	6
19. Soap—"Monkey Brand," or equal thereto, in 5-oz. tablets	per doz.			*
20. " Sand, Carbolic, in 12-oz. blocks, per doz. "Lectric"	per doz.	0	4	4
21. " Lifebuoy	do.	0	4	8
22. Soda—Bicarbonate of	per lb.	0	0	7
23. " Washing	per cwt.	1	13	6
24. Spaghetti—22-lb. boxes—"Rinoldi"—No. 1.	per box	1	1	10
No. 2	do.			*
25. Spice—Mixed, "Parsons"	per doz.	0	4	0
26. Starch—"Lustre"	per lb.	0	0	8
27. Tartar—Cream of—Substitute—"Aerophos"	do.	0	1	11½
28. Tomatoes—tinned, 28-oz. tins	per doz.	1	8	3
29. Vinegar—Malt	per qt.	0	0	8½

(AGREEMENT.)

Moran and Cato Pty. Ltd., 277 Brunswick-street, Fitzroy, N.6.

Sub-schedule No. 3.

JAMS.		£	s.	d.
1. Jams—Assorted, in bulk—Apricot	per lb.	0	1	1
Peach	actual	0	1	1
Apple & Rasp.	net	0	1	0
flavour	weight			
Dark Plum		0	0	11½
2. " Assorted, in 5-lb. tins, in the proportion of half seed and half stone; of the best quality, Brand, "M.P."	per tin	0	7	8½

ANNEX TO CONTRACT No. 1952/43.†

E. Spencer, Camp-street, Beechworth.

Sub-schedule No. 4.

MEAT.		£	s.	d.
Security, £30.				
1. Fresh Beef, Roast	per cwt.	8	15	0
2. Corned Beef, Rolled	do.	8	0	8
3. Mutton, Fresh	per lb.	0	1	2
4. Minced Meat	do.	0	1	9
5. Sausages, Mixed	do.	0	1	6
6. Sausage Meat	do.	0	1	3
7. Sausage—Beef, German	do.	0	1	9
8. Ham and Beef Loaf	do.	0	2	6
Saveloys	per doz.	0	2	6

* Supplies not available

† Rates subject to variation in accordance with determinations of Prices Decontrol Commissioner.

SCHEDULE No. 8.

PROVISIONS—LANGI KAL KAL TRAINING CENTRE.

ANNEX TO CONTRACT No. 1952/44.

O. Nicholls and W. J. Hoskin, Neil-street, Beaufort.

Sub-schedule No. 1.

BREAD.

Security, £3.		£	s.	d.
1. Bread—Fine wheaten, first quality	per cwt.	2	14	2

ANNEX TO CONTRACT No. 1952/45.†

H. T. Slee, Laurence-street, Beaufort.

Sub-schedule No. 2. †

MEAT.

Security, £3.		£	s.	d.
1. Fresh Beef—Boneless	per lb.	0	3	6
2. Sausages—Mixed	do.	0	1	6
3. Sausage—Meat	do.	0	1	3

SCHEDULE No. 9.

PROVISIONS—SCHOOL OF FORESTRY, CRESWICK.

(Delivery at the School.)

ANNEX TO CONTRACT No. 1952/46.

R. C. Bowley, Albert-street, Creswick.

Sub-schedule No. 1.

BREADSTUFFS.

Security, £3.		£	s.	d.
1. Bread—Fine wheaten, first quality	per cwt.	2	12	1
2. Flour—First quality	per lb.	0	0	4

(AGREEMENT.)

J. Tait and Son, Albert-street, Creswick.

Sub-schedule No. 2.

GROCERIES.

		£	s.	d.
1. Barley—Pearl	per lb.	0	0	6
2. Blue—Washing	do.	0	2	6
3. Butter—First grade creamery, to score not less than 91 points, Government grade, Commerce Regulations Standard	do.	0	3	0½
4. Cheese—First-class quality, matured	do.	0	2	4
5. Coffee—Fresh roasted and whole, beans to be thoroughly sound	do.	0	6	0
6. Corn or Maize Flour—in packets of 1 lb. net	do.	0	1	6
7. Eggs—New laid	per doz.	0	4	0
8. Ginger—Ground	per lb.	0	5	6
9. Golden Syrup—in 2-lb. tins	per tin	0	1	1
10. Jams—Assorted, in 5-lb. tins, net, in the proportion of half seed and half stone, Brand, "Red Feather"	do.	0	6	8
11. Mustard—"Double Superfine"	per lb.	0	3	3
12. Oatmeal	do.	0	0	10½
13. Peas—Split	do.	0	1	1
14. Pepper—Black, ground	do.	1	5	6
15. Potatoes—Dry and free from dirt	per cwt.	0		0
16. Raisins—Sultana, 3 Crowns (present season's)	per lb.	0	1	7
17. Rice—Dressed	do.			*
18. Salt—Fine	do.	0	0	2
19. Soap—"Velvet," yellow, dry, and hard, to sample	per doz.	0	18	6
20. " Sand, Carbolic, in 12-oz. blocks	each	0	0	7½
21. Soda—Bicarbonate of	per lb.	0	0	7
22. " Washing	do.	0	0	4
23. Starch (Rice)—Brand, "Preservene"	do.	0	1	5
24. Tartar—Cream of—Substitute—"Calcium Phosphate"	do.	0	2	0
25. Tea—1st Grade	do.	0	3	6
26. Vinegar—Malt	per pint	0	0	4
27. Honey—Yellow Box	per lb.	0	0	9½
28. Flour—Self Raising	do.	0	0	5½

ANNEX TO CONTRACT No. 1952/47.

E. J. Keen, Jory-street, North Creswick.

Sub-schedule No. 3.

MILK.

Security, £3.		£	s.	d.
1. Milk—Fresh and pure	per qt.	0	1	0

⊙ Cost price plus 10%.

ANNEX TO CONTRACT No. 1952/48.†

H. J. Symons, Pty. Ltd., 1015 Macarthur-street, Ballarat.

Sub-schedule No. 4. ϕ

MEAT.

Security, £3.

		£	s.	d.
1. Fresh Beef—Fore-quarters per lb.	0	2	4
2. " Mutton do.	0	1	8
3. Sausages—Mixed do.	0	1	9
4. Steak—Minced do.	0	2	0
5. Livers—Sheep each	0	1	3
6. Dripping—Beef per lb.	0	1	0

SCHEDULE No. 10.

PROVISIONS—MCLEOD SETTLEMENT,
FRENCH ISLAND.

(Delivery to be made at Corinella Jetty.)

ANNEX TO CONTRACT No. 1952/49.

H. H. Bird, Grantville.

Sub-schedule No. 1.

BREAD.

Security, £12.

		£	s.	d.
1. Bread—Fine wheaten, first quality	.. per cwt.	2	5	10

(AGREEMENT.)

E. V. Peters, Corinella.

Sub-schedule No. 2.

GROCERIES.

		£	s.	d.
1. Butter—First grade creamery, to score not less than 91 points, Government grade, Commerce Regulations Standard	per lb.	0	2	11½
2. Cheese—Matured do.	0	2	0
3. Jams—Assorted, in proportion of half seed and half stone, of best quality, in 24-oz. tin tins, I.X.L., "Monbulk", or "Rago"	per doz.	1	6	0

ANNEX TO CONTRACT No. 1952/50.†

Dureau and Hardie, Lang Lang.

Sub-schedule No. 3.

MEAT.

Security, £5.

		£	s.	d.
1. Fresh Beef per lb.	0	1	6
2. Corned Beef—Rolled or Round, as ordered, without bone or cartilage do.	0	1	9
3. Sausages do.	0	1	6
4. Minco Meat do.	0	1	2

SCHEDULE No. 11.

PROVISIONS—HEATHERTON SANATOR-
IUM, CHELTENHAM.

(Delivery at the Sanatorium.)

ANNEX TO CONTRACT No. 1952/51.

T. D. Callander Pty. Ltd., 86 Broadway-parade, Oakleigh.

Sub-schedule No. 1.

BREAD.

Security, £10.

		£	s.	d.
1. Bread—Fine wheaten, first quality	.. per cent.	1	11	1½

(AGREEMENT.)

Moran and Cato Pty. Ltd., 277 Brunswick-street, Fitzroy, N.B.

Sub-schedule No. 2.

GROCERIES.

		£	s.	d.
1. Bacon—Sides per lb.	0	3	11
2. Biscuits—Coffee, Malt, Milk Arrowroot, as ordered— do.	0	1	4½
3. Cereal—Malties (or equal thereto) in 24-oz. "Pipers"	per pkt.	0	1	8
4. Cocoa—"Bournville" per lb.	0	4	3½

 ϕ Rates subject to variation in accordance with determinations of Prices Decontrol Commissioner.

Sub-schedule No. 2—continued.

GROCERIES—continued.

£ s. d.

5. Corn or Maize Flour—in 1-lb. packets—				
{ "Fielder's" do.	0	0	7½	
{ "Kream" do.	0	1	5½	
6. Custard Powder—1-lb. packets "Clipper"	do.	0	1	4
7. Essence of Vanilla—in 16-oz. bottles—	per bot.	0	11	9½
"Allens"				
8. Flour—Self-raising—Brand "Macs"	per lb.	0	0	5
9. Fruit—Preserved—in 30-oz. tins (excluding pines)	per tin	0	2	4½
10. Herrings { Fresh per doz.	1	7	6	
{ In Tomato Sauce, 14-oz. tins ..	tins	1	7	9
11. Honey—First quality in 60-lb tins	per lb.	0	1	0½
12. Jams—Assorted, in 5-lb. tins, in the proportion of half seed and half stone, of the best quality—Brand "M.P."	per tin	0	7	3½
13. " Marmalade, in 5-lb. tins—Brand "M.P."	do.	0	6	4½
14. Jelly Crystals—in 4-oz. packets ..	{ "Whites" .. per doz.	0	7	6
{ "Sparkling" pkts.	0	5	10	
15. Junket Tablets	per tube	0	0	11½
16. Macaroni—1-lb. packets, "Rinoldi"	per lb.	0	0	10½
17. Mustard do.	0	4	9
18. Pepper—Black, ground do.	1	3	1
19. Pickles—Assorted, in 20-oz. bottles	per doz.	0	18	6
20. Prunes—Dried, 70-80's (present season's)	per lb.	0	2	0
21. Raisins—Sultana, 3 Crowns (present season's)	do.	0	1	5½
22. Salmon—Fresh, in 14½-oz. tins, tall—Australian	per tin	0	2	9
23. Salt—Fine	per cwt.	0	15	7
24. Sauce—Tomato, in 26-oz. bottles—Brand, "Raleigh."	per doz.	1	16	0
25. Soda—Bicarbonate of	per lb.	0	0	6
26. " Washing	per cwt.	1	13	0
27. Spice—Mixed, in 1-oz. packets "Parsons"	per doz.	0	3	11
28. Starch—Loose	per lb.	0	0	7
29. Vinegar—Malt	per gal.	0	2	2½

ANNEX TO CONTRACT No. 1952/52.†

W. Anglias and Co. (Aust.), Pty. Ltd., 42 Bourke-street, Melbourne, C.1

Sub-schedule No. 3. ϕ

MEAT.

Security, £5.

£ s. d.

		£	s.	d.
1. Beef, Fresh Roast per lb.	0	2	4
2. " Corned—Silverside do.	0	3	1
3. Mutton, Fresh do.	0	0	9½
4. Chops—Forequarter do.	0	1	0
5. " Middle Loin do.	0	1	8½
6. Veal—Leg do.	0	0	9
7. Pork, Fresh—Loin do.	0	2	0
8. Steak—Rump do.	0	3	10
9. " Blade Bone do.	0	3	1
10. " Minced do.	0	2	8
11. " Topside do.	0	2	7
12. Tripe—Fresh do.	0	0	4
13. Livers—Sheep do.	0	0	8
14. Sausages—Mixed do.	0	1	4
15. Kidneys—Ox do.	0	1	4
16. Tails—Ox do.	0	0	10½
17. Tongues—Ox do.	0	1	0½
18. " Sheep each	0	0	4
19. Brains—Sheep	per set	0	0	3½
20. Ham Loaf	per lb.	0	2	7
21. Fowls—First Quality do.	0	4	0

ANNEX TO CONTRACT No. 1952/53.

L. J. A. Henderson, 863 Nepean Highway, Moorabbin.

Sub-schedule No. 4. ϕ

MILK.

Security, £3.

s. d.

		s.	d.
1. Milk—Fresh and pure	per gal.	4	4

SCHEDULE No. 12. **PROVISIONS—SANATORIUM, GREEN-VALE.**

(Delivery at the Sanatorium.)

ANNEX TO CONTRACT No. 1952/54.

*Bignell's Bakery, Sydney-road, Campbellfield.***Sub-schedule No. 1.****BREADSTUFFS.**

Security, £7.

		£	s.	d.
1. Bread—Fine wheaten, first quality	per cntl.	1	17	6
2. Flour—First quality	do.	1	5	0

(AGREEMENT.)

*Henry Berry and Co. (A/asia) Ltd., 563 Collins-street, Melbourne.***Sub-schedule No. 2.****GROCERIES.**

		£	s.	d.
1. Beetroot—30-oz. tins	per doz.	1	10	6
2. Biscuits { Malt, Milk Arrowroot, Coffee	per lb.	0	1	4½
as ordered, in approximately 7-lb. tins				
3. Blue—Washing, 1-oz. knobs "Reckitts"	per doz.	0	2	3
4. Borax	per lb.	0	0	7½
5. Camp Pie—12 oz. tins	per doz.	0	19	2
6. Cereal—"Weeties," in 24-oz. packets	per pkt.	0	1	8½
7. Cheese—Semi-matured, in 10-lb. loaves	per lb.	0	2	6
8. Cocoa { in 1-lb. cardboard cartons	do.	0	3	2
Loose—58-lb. bags 2s 7d. per lb.				
9. Coconut—Desiccated	do.	0	2	8
10. Corn or Maize Flour—in packets of 1 lb.	do.	0	1	5½
11. Corn or Maize Flour, loose	do.	0	0	8½
12. Curry Powder—"Atlas"	do.	0	2	9
13. Currants—2 Crowns (present season's)	do.	0	1	4½
14. Custard Powder—in 1-lb. packets—"Dainty Maid"	per doz.	0	17	6
15. Dates—in case lots	per lb.	0	1	2½
16. Essence of Lemon—in 18-oz. bottles	do.	0	12	6
17. " " Vanilex—in 20-oz. bottles	do.	0	8	0
18. " " Parisian (Jar 3/6)	per gal.	0	17	6
single layer†††				
19. Fish—Sardine, 4-oz. tins	tins	0	15	0
double layer†††				
20. Fish—Herrings in Sauce, 14-oz. tins	do.	1	6	0
21. Flour—Self-raising—"Cookwell"	per bag	2	17	0
{ 150-lb. do. 1 0 8				
{ 50-lb. do. 1 0 8				
22. Fruits—Dried (present season's)—Apples and Peaches	per lb.	††		
23. " Preserved (excluding Pines)	per tin	††		
24. Gelatine—Powdered	per lb.	0	6	3
25. Ginger—Ground	do.	0	5	9
26. Golden Syrup—in 2-lb. tins §	per carton	1	5	4
27. Honey—First quality	per lb.			*
28. Jams—Assorted, in 24-oz. tins, Brand, "S.P.C."	per doz.			×
29. Jelly Crystals—in { 7-lb. packets	per pkt.	0	16	6
{ 4-oz. " in 2 doz. per gross 4 9 0				
30. Junket Tablets "Viking"	per doz.	0	9	3
31. Mixed Peel—Cut	per lb.	0	1	7
32. Macaroni { in 22-lb. boxes	per box	1	0	3
{ in 22-lb. cartons per 0 19 3				
33. Mustard, "Colonial"	per lb.	0	4	9
34. Nutmeg—Ground	do.	0	7	0
35. Oatmeal—Flaked	per cwt.	4	5	0
36. Spice—Loose	per lb.	0	3	0
37. Pepper—Ground, White	do.	1	10	0
38. Pickles—Assorted, in 20-oz. bottles	per doz.	0	19	0
39. Prunes—Dried, 50-60's (present season's)	per lb.	†		
40. Raisins—4 Crowns (present season's) (lexias)	do.	†		
41. Raisins—Sultana, 2 Crowns (present season's)	do.	0	1	5
42. " Seeded	do.	†		
43. Rice—Dressed	per cwt.	2	14	4
44. Salmon—Fresh in 1-lb. tins	per tin	*		
45. Salt—Fine (Bags approx. 1 cwt.)	per bag	0	15	10
46. Sauce—Worcestershire, 10-oz. bottles, Brand, "Hardings"	per doz.	0	17	9
47. Sauce { Tomato, 20-oz. bottles, Brand, "Victoree"	per doz.	1	16	6
{ Tomato, in gallon jars (Jars 3/6) per jar 0 13 6				
48. Soda—Bicarbonate of	per lb.	0	0	6
49. " Washing	per cwt.	1	14	0

* Supplies not available. § Cartons—2 doz. 2-lb. tins. †† Apply Tender Board. × Assorted, £1 5s.; apricot, £1 5s.; melon, £1 2s. 6d.; marmalade, £1 3s. 9d.; blackberry, £1 8s. 9d.; peach, £1 5s.; plum £1 2s. 9d.; quince, £1 2s. 9d.; raspberry, £1 12s. 9d.; and raspberry, £1 7s. 3d. ○ As supply of 18-oz. and 20-oz. bottles is irregular rate is shown on per lb. basis.

† Australian Dried Fruits Association rates.

§ Rates subject to variation in accordance with determinations of Prices Decontrol Commissioner.

††† Cartons 8½ gross tins, single and double, 13s. 6d. and 14s. 6d. per dozen respectively.

Sub-schedule No. 2—continued.**GROCERIES—continued.**

		£	s.	d.
50. Spaghetti { in 22-lb. boxes No. 1	per box	1	1	6
{ in 22-lb. cartons per 1 0 6				
51. Starch—Powdered, "Acme"—14-oz. packets, 40's	do.	2	7	10
52. Sugar—Castor	per cwt.	3	14	6
53. Tapioca—Pearl	per lb.	0	1	4
54. " Seed (Sago)	do.	0	1	3
55. Tartar—Cream of—Substitute "Antelope"	do.	0	1	11½
56. Tomatoes—Preserved, in 30-oz. tins	per doz.	1	10	9
57. Tomato Soup—16-oz. tins	do.	0	19	0
58. Treacle—in 2-lb. tins (24 tins in box)	per box	1	4	5
{ in 22-lb. boxes do. 1 1 6				
59. Vermicelli { in 22-lb. cartons	per carton	1	0	6
{ Malt—in 9-gallon kegs (Kegs 60s.) per gal. 0 2 3				
60. Vinegar { "—in 1-gallon jars (Jars 3/6)	do.	0	2	1½
61. Powdered Milk Full Cream "Sunshine"	per case	4	8	0½
12-oz. tins	do.			*
3-lb. tins	do.			

ANNEX TO CONTRACT No. 1952/55.†*Young's Meat Emporium Pty. Ltd., 316 Victoria-street, North Melbourne.***Sub-schedule No. 3.‡****MEAT (cuts as ordered).**

Security, £7.

		£	s.	d.
1. Beef, Fresh—Roast	per lb.	0	2	6
2. " " Rump	do.	0	3	0
3. " " Corned, Silverside	do.	0	3	0
4. Mutton, Fresh—Sides	do.	0	0	10½
5. Cutlets—Veal	do.	0	2	6
6. Chops—Middle Loin	do.	0	1	9
7. " " Leg	do.	0	1	9
8. Steak—Minced	do.	0	2	3
9. Livers—Sheep	do.	0	0	11
10. Pork, Fresh—Sides	do.	0	2	9
11. Tongues—Ox	do.	0	1	0½
12. Sausages—Pork	do.	0	2	0
13. Sausage—Strasbourg, Pork	do.	0	2	6
14. Kidneys—Ox	do.	0	1	0
15. Rabbits—Fresh	do.	0	1	6
16. Fowls—First Quality	do.	0	4	6

SCHEDULE No. 13.

PROVISIONS—COORIEMUNGLE PRISON CAMP, HEYTESBURY FOREST.

(Delivery to be made at the Camp.)

(AGREEMENT.)

*E. L. McDowall, Timboon.***Sub-schedule No. 1.****BREAD.**

		£	s.	d.
1. Bread—Fine Wheaton, first quality	per cntl.	2	14	2

(AGREEMENT.)

*M. L. Hose, Timboon.***Sub-schedule No. 2.****GROCERIES.**

		£	s.	d.
1. Oatmeal	per lb.	0	0	10
2. Rice—Dressed	do.	*		
3. Salt—Fine	do.	0	0	2

ANNEX TO CONTRACT No. 1952/56.†
Heytesbury Butchery, Timboon.

Sub-schedule No. 3. φ

MEAT.

Security, £4.

		£	s.	d.
1. Fresh Beef ..	per lb.	0	2	8
2. " "—Minced ..	do.	0	1	4
3. " Mutton ..	do.	0	1	6
4. Corned Beef—Rolled or round, as ordered without bone or cartilage ..	do.	0	2	6
5. Dripping ..	do.	0	0	9

SCHEDULE No. 14.

PROVISIONS—ABORIGINAL STATION,
LAKE TYERS.

(Delivery at Lake Tyers Station.)

ANNEX TO CONTRACT No. 1952/57.

R. Hodder, Nowa Nowa.

Sub-schedule No. 1.

BREADSTUFFS.

Security, £25.

		£	s.	d.
1. Bread—Fine wheaten, first quality ..	per cwt.	2	7	11
2. Flour—First quality ..	do.	1	6	6

(AGREEMENT.)

R. Hodder, Nowa Nowa.

Sub-schedule No. 2

GROCERIES.

		£	s.	d.
1. Baking Powder—Snowflake, or equal thereto, in 1-lb. tins ..	per lb.			
2. Candles (full weights)—Kitchen's "Eloc-trines," or other make of equal quality, in 1-lb. packets ..	do.			
3. Coffee—Fresh roasted, and whole, beans to be thoroughly sound ..	do.			
4. Cocoa—Bulk ..	do.			
5. Corn or Maize Flour—in 1-lb. packets ..	do.			
6. Currants—2 Crowns (present season's) ..	do.			
7. Curry Powder—bulk ..	do.			
8. Matches—Safety, 60 in a box, "Yacht" ..	per gross			
9. Mustard—"Double Superfine" ..	per lb.			
10. Pepper—Black, ground, in 2-oz. tins ..	per tin			
11. Raisins—Sultana, 3 Crowns (present season's) ..	per lb.			
12. Salt—Coarse ..	per cwt.			
13. " Fine ..	do.			
14. Soap—Household, hard and dry, to sample ..	do.			
15. Soda—Bicarbonate of ..	per lb.			
16. " Washing ..	do.			
17. Tartar—Cream of—Substitute—Calcium Phosphate ..	do.			
18. Treacle—in 2-lb. tins ..	per tin			
19. Vinegar—Malt ..	per qt.			

(AGREEMENT.)

R. Hodder, Nowa Nowa.

Sub-schedule No. 3.

JAMS.

		£	s.	d.
1. Jams—Assorted, in 24-oz. tins, Brand in the proportion of half seed and half stone ..	per tin			

** The rates to be paid for all items under these Sub-schedules shall be the wholesale prices charged to the contractor, plus 12½ per cent. Wholesaler's invoices to be submitted with contractors' accounts.

SCHEDULE No. 15.

PROVISIONS—RESEARCH STATION,
RUTHERGLEN.

(Delivery at the Station.)

ANNEX TO CONTRACT No. 1952/58.

W. S. Amore, Main-street, Rutherglen.

Sub-schedule No. 1.

BREAD.

Security, £3.

		£	s.	d.
1. Bread—Fine wheaten, first quality ..	per cwt.	2	7	11

* Supplies not available.

§ No seed available.

(AGREEMENT.)

Aitken and Fullerton, Rutherglen.

Sub-Schedule No. 2.

GROCERIES, ETC.

		£	s.	d.
1. Biscuits—Marie ..	per lb.	0	1	10
2. Cornflakes—"Kellogg's," in 16oz. packets ..	per pkt.	0	2	10
3. Corn or Maize Flour—in packets of 1-lb. net "Fielder's" ..	per lb.	0	1	10
4. Coconut—Desiccated ..	do.	0	2	9
5. Currants—2 Crowns (present season's) ..	do.	0	1	9
6. Fish—Salmon, in ½-lb. tins ..	per tin	*		
7. Fruits—Preserved, assorted, in 1-lb. 14-oz. tins (excluding Pineapple) ..	do.	0	3	0
8. Jams—Assorted, of approved kinds, in proportion of half seed and half stone, in 24-oz. tins, Brand, "M.P." ..	do.	0	2	6½
9. Jelly Crystals—in 4-oz. packets ..	per pkt.	0	0	11
10. Macaroni or Vermicelli—as ordered ..	per lb.	0	1	3
11. Matches—Safety ..	per pkt.	0	2	1
12. Oatmeal—Flaked "JB" ..	per lb.	0	1	1
13. Pepper—Black, ground ..	per oz.	0	2	0
14. Potatoes—Dry and free from dirt ..	per cwt.	2	5	0
15. Raisins—5 crown (present season's) lexins ..	per lb.	*		
16. " Sultana, 3 crown (present season's) ..	do.	0	1	10
17. Rice—Dressed ..	do.	0	0	8
18. Salt—Fine ..	do.	0	0	2
19. Sauce—Tomato, "Dyasons," 13-oz. bottles ..	per bot.	0	2	0
20. Soap—Household, yellow ..	per lb.	0	1	0
21. " "Monkey Brand," or equal thereto, in 5-oz. tablets ..	per tab.	*		
22. " Sand, in 16-oz. blocks ..	per block	0	0	7
23. " Toilet, "Bath," in 4-oz. tablets, to sample, Kitchen's, or equal thereto ..	per doz.	0	5	6
24. Tea—1st Grade ..	per lb.	0	3	11

SCHEDULE No. 16.

PROVISIONS AT SALE.

(Delivery at the Gaol.)

ANNEX TO CONTRACT No. 1952/59.

F. J. Hennessy, 102 Raymond-street, Sale.

Sub-schedule No. 1.

BREAD.

Security, £3.

		£	s.	d.
1. Bread—Fine wheaten, first quality ..	per cwt.	2	3	9

ANNEX TO CONTRACT No. 1952/60.†

H. L. G. Laws, 111 Raymond-street, Sale.

Sub-schedule No. 2.

MEAT.

Security, £3.

		£	s.	d.
1. Fresh Beef—Stewing ..	per lb.	0	2	6
2. Fresh Mutton ..	do.	0	2	6
3. Corned Beef—Rolled or Round as ordered, without bone or cartilage ..	do.	0	2	6
4. Sausages ..	do.	0	2	6

SCHEDULE No. 17.

PROVISIONS—PLEASANT CREEK
SPECIAL SCHOOL, STAWELL.

(Delivery at the School.)

ANNEX TO CONTRACT No. 1952/61.

E. J. and R. Welsh, 23 Patrick-street, Stawell.

Sub-schedule No. 1.

BREADSTUFFS.

Security, £10.

		£	s.	d.
1. Bread—Fine wheaten, first quality ..	per cwt.	2	12	1
2. Flour—First quality ..	do.			
3. Flour—Wheatmeal ..	per lb.			

* Supplies not available.

§ No seed available.

○ Flour mill rate.

φ Rates subject to variation in accordance with determinations of Prices Decontrol Commissioner.

(AGREEMENT.)

John MacLeod and Co. Pty. Ltd., 122 Lydiard-street, Ballarat.

Sub-schedule No. 2.

GROCERIES.		£	s.	d.
1. Baking Powder—"Excelsior" ..	per lb.	0	2	1½
2. Barley—Pearl ..	do.	0	0	5½
3. Blue—Washing, "Rock Square" ..	per gross	1	6	11
4. Cereal—"Wheat flakes," in 24 oz. packets ..	per pkt.	0	1	8½
5. Cheese—Matured ..	per lb.	0	2	3½
6. Cocoa—in 28-lb. bags ..	do.	*		
7. Coffee and Chicory No. 1 ..	do.	0	5	0
8. Corn Flour—in 1-lb. packets "Kream" ..	do.	0	1	6½
9. Currants (present season's)—				
M.F. ..	do.	0	1	3½
1 Crown ..	do.	0	1	4½
2 " ..	do.	0	1	4½
3 " ..	do.	0	1	5
10. Curry Powder—Loose "Gold Seal" ..	do.	0	3	9
11. Custard Powder (loose) ..	do.	0	1	2½
12. Dates ..	do.	0	1	3½
13. Ginger—Ground ..	do.	*		
14. Golden Syrup { in 2-lb. tins ..	per doz.	0	13	10
{ in 56-lb. " ..	each	*		
15. Gravox—1-lb. tins ..	per doz.	1	0	8
16. Honey, first quality ..	per lb.	*		
17. Jams—Assorted, of approved kinds, in	per doz.	1	8	1
proportion of half seed and half stone,	tins			
in tins containing 24 oz. net, Brand,				
"Victoree." ..				
18. Jelly Crystals "Gold Seal" ..	per doz.	0	7	10
19. Junket Tablets { "Gold Seal" ..	do.	0	5	0
{ "Merry Widow," Flavoured do. ..	do.	0	11	9
20. Macaroni { 22-lb. boxes ..	per box	1	1	9
{ 22-lb. cartons ..	per carton	1	0	9
21. Oatmeal ..	per lb.	*		
22. Peel—Cut, Mixed ..	do.	0	1	6½
23. Pepper—Black, ground ..	do.	1	3	0
24. Prunes—Dried, 50-60's (present season's)	do.	0	2	8½
25. Raisins—Sultana (present season's)—				
Plain ..	do.	0	1	4½
1 Crown ..	do.	0	1	4½
2 " ..	do.	0	1	5½
3 " ..	do.	0	1	5½
26. Rice—Dressed ..	per cwt.	*		
27. Salt—Fine "Imperial" ..	do.	0	19	7
28. Sauce—Tomato—26-oz. bottles ..	per doz.	1	16	6
29. Soap—Preservene Foam, or equal thereto	per doz.	0	11	6
pkts. ..				
30. " "Lifebuoy," or equal thereto ..	per cake	0	0	5
31. " "Monkey" Brand, or equal thereto,	per tab.	*		
in 5-oz. tablets ..				
32. " "Guardian" ..	do.	*		
33. " Sand, "Pearlite" ..	per doz.	0	5	10
cakes. ..				
34. " "Velvet," or equal thereto { quads	per doz.	0	17	3
{ quints. ..	do.	1	8	3
35. Soda—Bicarbonate of ..	per lb.	0	0	6½
36. " Washing ..	per cwt.	1	12	3
37. Spice—Mixed—1-oz. packets ..	per pkt.	0	0	5½
38. Starch (Rice)—Brand "Silver Star"—				
14-oz. packets ..	per doz.	0	10	2
pkt. ..				
39. Tartar—Cream of—Substitute—"Antelope" ..	per lb.	0	1	10½
40. Tapioca Pearl ..	per cwt.	*		
41. Tea—First Grade ..	per lb.	0	3	3
42. Treacle—in 2-lb. tins ..	per doz.	0	13	4

ANNEX TO CONTRACT No. 1952/62.

E. G. Waldron, Stawell.

Sub-schedule No. 3.

MILK.

Security, £10.		£	s.	d.
Milk—Fresh and pure ..	per gal.	0	4	9

ANNEX TO CONTRACT No. 1952/63.†

Newton Bros., 121 Main-street, Stawell.

Sub-schedule No. 4.

MEAT.

Security, £3.		£	s.	d.
1. Fresh Beef—Prime ribs ..	per lb.	0	2	0
2. " " Sirloin ..	do.	0	2	0
3. " " Stewing (minced when	do.	0	2	0
required) ..				
4. Beef—Corned, Silverside ..	do.	0	2	0
5. Fresh Mutton—Chops (loin) ..	do.	0	1	6
6. " " in sides ..	do.	0	1	6
7. Sausages—Mixed ..	do.	0	1	3
8. Livers—Sheep ..	each	0	0	6
9. Tripe—Fresh ..	per lb.	0	0	9
10. Saveloys ..	per doz.	0	2	0

* Supplies not available.

Rates subject to variation in accordance with determinations of Prices Decontrol Commissioner.

SCHEDULE No. 18.

PROVISIONS—SUNBURY DISTRICT.

(Delivery into Institutions.)

ANNEX TO CONTRACT No. 1952/64.

J. N. Hennessy Pty. Ltd., 55 Sydney-road, Brunswick.

Sub-schedule No. 1.

BREADSTUFFS.

Security, £112.

		£	s.	d.
1. Bread—Fine wheaten, first quality ..	per cntl.	1	12	6
2. Flour—First quality ..	do.	1	5	0

(AGREEMENT.)

K. N. Tidswell, Sunbury.

Sub-schedule No. 2.

GROCERIES.

		£	s.	d.
1. Blue—Washing—"Rockitts" 1-oz. knobs	per gr.	1	7	0
2. Beans—Lima ..	per lb.	*		
3. Candles—Full weight, in 1-lb. packets,	do.	0	2	4
Kitchen's "Electrines", or equal thereto				
4. Cinnamon ..	do.	0	2	6
5. Cloves (whole) ..	do.	0	3	0
6. Cocoa—Loose ..	do.	*		
7. Corn or Maize Flour—in packets of 1-lb.	do.	0	1	6
net ..				
8. Currants—3 Crowns (present season's) ..	do.	0	1	6
9. Curry Powder ..	do.	0	4	6
10. Custard Powder—30-lb. tins ..	do.	0	1	3½
11. Dates—Stoneless ..	do.	0	1	4
12. Ginger—Ground ..	do.	*		
13. Golden Syrup { in 5-cwt. drums ..	per cwt.	*		
{ in 2-lb. tins ..	per doz.	0	11	3
14. Jelly Crystals—in 4-oz. packets ..	do.	0	7	10½
15. Lemon Peel ..	per lb.	0	1	7½
16. Macaroni ..	do.	0	0	11½
17. Milk, Powdered ..	do.	0	1	1½
18. Mustard ..	do.	0	3	3
19. Nutmeg—Ground ..	do.	0	9	6
20. Pepper—Black, ground ..	do.	1	6	0
21. Raisins—Sultana, 3 Crowns (present	per lb.	0	1	6½
season's) ..				
22. Salt—Fine ..	per cwt.	0	16	0
23. Sauce { Tomato—26-oz. bottles ..	per doz.	1	19	0
{ Worcestershire—20-oz. bottles ..	bottles	1	1	0
24. Soda—Bicarbonate of ..	per lb.	0	0	7
25. " Washing ..	per cwt.	1	18	6
26. Spice—Mixed, loose ..	per lb.	0	2	2
27. Starch (Rice)—"Silver Star", loose ..	do.	0	1	9½
28. Tartar—Cream of—Substitute, "Antelope" ..	do.	0	1	8
29. Vermicelli ..	do.	*		
30. Vinegar—Malt ..	per gal.	0	2	6

Sub-schedule No. 3.

CEREALS.

		per cwt.	Purchase
1. Oatmeal ..	do.		under
2. Rice—Dressed to sample ..	do.		Tender
3. Rice—Unpolished ..	do.		Board
4. Seed Tapioca—(Sago), to sample ..	do.		quotations.
5. Pearl Barley ..	do.		
6. Peas—Split ..	do.		

(AGREEMENT.)

K. N. Tidswell, Sunbury.

Sub-schedule No. 4.

JAMS.

		£	s.	d.
1. Jams—Assorted, in bulk, of approved	per lb.	0	1	1
kinds, in the proportion of half seed	actual			
and half stone, of the best quality, in	gross			
tins as required, Brand, "M.P." ..	weight			

ANNEX TO CONTRACT No. 1952/65.†

F. Watkins Pty. Ltd., 184 Bourke-street, Melbourne, C.I.

Sub-schedule No. 5.†

MEAT.

Security, £40.

		£	s.	d.
1. Fresh Beef, Forequarters ..	per cntl.	6	5	0
2. " " Buttocks ..	per lb.	0	1	7
3. " " Mutton ..	do.	0	0	10½
4. Corned Beef—Rolled or Round, as ordered,	do.	0	2	2
without bone or cartilage ..				
5. Sausages, mixed ..	do.	0	1	6

SCHEDULE No. 19.

PROVISIONS—AGRICULTURAL COLLEGE,
DOOKIE.

(Delivery at the College.)

ANNEX TO CONTRACT NO. 1952/66.

Lindsay G. Clark, Mary-street, Dookie.

Sub-schedule No. 1.

BREADSTUFFS.

Security, £15.

	£	s.	d.
1. Bread—Fine wheaten, first quality .. per centl.	2	3	6
2. Flour—First quality do.	1	8	6

(AGREEMENT.)

W. A. Thompson, 192 High-street, Shepparton.

Sub-schedule No. 2.

GROCERIES.

(Delivery "F.O.R." Shepparton.)

	£	s.	d.
1. Baking Powder—1-lb. tins per doz.			
2. Beans—Lima per lb.			
3. " Haricot do.			
4. Biscuits—Coffee, Malt or Arrowroot (as ordered) do.			
5. Blue—Washing, square—in 8-lb. parcels do.			
6. Candles—full weight, Kitchen's Electrics in lots of 30—loose do.			
7. Cereal—Piper's (or equal thereto) in 24-oz. packets per doz.			
8. Cinnamon per lb.			
9. Chutney—13-oz. bottles per doz.			
10. Cocoa—bulk per lb.			
11. Coconut-desiccated do.			
12. Coffee Essence—in 1-gal. jars per gal.			
13. Cordial—Lemon, in 1-gal. jars s.c. do.			
14. Corn or Maize Flour—in 1-lb. packets per doz.			
15. Currants—2 Crowns (present season) per lb.			
16. Curry Powder—bulk do.			
17. Custard Powder in 1-lb. packets "McK." per doz.			
18. Essence—Almond, 8-oz. bottles do.			
19. " Cochineal—8oz. bottles do.			
20. " Lemon—8-oz. bottles do.			
21. " Vanilla—8-oz. bottles do.			
22. Fish—tinned, Herrings in sauce, 14-oz. tins do.			
23. Fish—tinned, Salmon, 2-lb. tins do.			
24. Fish—tinned, Sardines, 4-oz. tins do.			
25. Flour—Self-raising—150 lb. bags per bag			
26. Fruits—Dried (present season) per lb.			
27. " Preserved, 30-oz. tins—Peaches per doz.			
28. " Preserved, 30-oz. tins—Pears, Apricots do.			
29. " Preserved—6-lb. tins—Apples per tin			
30. " Preserved, 7-lb. tins—Blackberries, Blackcurrants, Gooseberries, and Raspberries do.			
31. Gelatine—Ground per lb.			
32. Ginger—Ground do.			
33. Golden Syrup—in 2-lb. tins per doz.			
34. Gravox—in 1-lb. tins do.			
35. Herbs—mixed—in 2-oz. pkts. do.			
36. Honey—first quality—60-lb. tins per tin			
37. Jelly Crystals—in 7-lb. packets per lb.			
38. Junket Tablets—"Hansens" per doz.			
39. Lemon Peel—Cut per lb.			
40. Macaroni—Bulk, in 22-lb. boxes per box			
41. Margarine—Cake per lb.			

Sub-schedule No. 2—continued.

GROCERIES—continued.

£ s. d.

42. Matches—Safety (60 in a box) per gross			
43. Meat Extract—"Bonox" .. "Beefine", per jar &c., in 2-lb. jars per doz.			
44. Meat—tinned—Camp Pic—12-oz. tins do.			
45. " " Meat and Vogs.—16-oz. tins do.			
46. " " Hampe—12-oz. tins do.			
47. " " Sausages—16-oz. tins do.			
48. " " Steak and Kidney—16-oz. tins do.			
49. Milk—Condensed, full cream, 14-oz. tins do.			
50. Mustard per lb.			
51. Oatmeal, flaked, bulk per cwt.			
52. Pastos—Marmite, 4-oz. jars per doz.			
53. " Salmon and Shrimp, 4-oz. jars do.			
54. " Bloater, 4-oz. jars do.			
55. Peas, Green, boiling per lb.			
56. " Green, tinned, 14-lb. tins per tin			
57. Pepper, black, ground per lb.			
58. Pickles—Assorted, in 20-oz. bottles per doz.			
59. Prunes—Dried 50-60's (present season) loose per lb.			
60. Prunes—Dried 50-60's (present season)—in 7-lb. tins per tin			
61. Raisins—Sultana, 3 crowns (present season's) per lb.			
62. " Seeded do.			
63. Rice—ground per doz. lbs.			
64. Salt—Table (16-oz. packets) per doz. pkts.			
65. " Fine per cwt.			
66. Sauce—Tomato, in 1-gal. jars—"Grannys" per gal.			
67. " Worcester, in 1-gal. jars do.			
68. Soap—"Bon Ami," in 12-oz. tins or cakes as ordered per doz.			
69. " flakes, in 28 lb. bags per cwt.			
70. " "Lux" { Packets per doz.			
71. " "Cakes do.			
72. " "Palmolive" do.			
73. " "Persil," in 8-oz. packets do.			
74. " "Rinsol," in 17-oz. packets do.			
75. Soda—Bicarbonate of per cwt.			
76. " Washing do.			
77. Soup—Tomato, in 20-oz. tins per doz.			
78. Spaghetti, in 1-lb. packets do.			
79. Spico, in 1-lb. packets do.			
80. Starch—"Dandy" (14-oz. pkts.) per doz. pkts.			
81. Sugar—Castor per cwt.			
82. " Icing do.			
83. Tartar—Cream of (Aust.) per lb.			
84. Treacle—in 2-lb. tins per doz.			
85. Vinagar—Malt, bulk per gal.			
86. Yolking—Essence (or equal thereto) in 8-oz. bottles per doz.			

(AGREEMENT.)

W. A. Thompson, 192 High-street, Shepparton.

Sub-schedule No. 3.

JAM.

(Delivery "F.O.R." Shepparton) £ s. d.

1. Jam—Assorted, of approved kinds, in per doz. the proportion of half seed and half stone, of the best quality, in 5-lb. tins—Brands, "Golden Bells," "Golden Bar," or "S.P.C." per doz.			
2. Jam—Assorted, of approved kinds, in per lb. the proportion of half seed and half stone, of the best quality, in 32-lb. tins per lb.			

** The rates to be paid for all items under these Sub-schedules shall be the wholesale price ruling on the day of delivery.

SCHEDULE No. 20.

PROVISIONS—AGRICULTURE COLLEGE,
LONGERENONG.

(Delivery at the College.)

ANNEX TO CONTRACT No. 1952/67.

Omant Bros., 20 Firebrace-street, Horsham.

Sub-schedule No. 1.

BREADSTUFFS.

Security, £5.

	£	s.	d.
1. Bread—Fine wheaten, first quality .. per centl.	2	15	3
2. Flour—First quality do.	††		

(AGREEMENT.)

J. Langlands and Sons Pty. Ltd., 122 Firebrace Street, Horsham.

Sub-schedule No. 2.

GROCERIES.

	£	s.	d.
1. Bacon, Rashers, Middle—Brand, "Kilmore" .. per lb.	0	5	6
2. Beans—Haricot do.	0	1	5
3. Biscuits—Coffee, Malt or Milk Arrowroot, .. do.	0	1	11
as ordered			
4. Cereal—"Weeties" (or equal thereto) per pkt.	0	2	0
in 24-oz. packets			
5. Cheese—"Burnbank" per lb.	0	3	0
6. Chutney—13-oz. bottles—Brand, "Ros- per bot.	0	2	5
ella"			
7. Cloves—Loose per lb.	0	10	0
8. Cocoa—"Bournville" 1-lb. pkt. .. do.	0	5	3
9. Coconut—Dessicated do.	0	3	3
10. Corn or Maize Flour—1 lb. packets .. do.	0	2	2
11. Custard Powder, in 1-lb. packets, "Parson's" .. do.	0	2	3
12. Currants, 3 Crown (present season's), "S. & A." .. do.	0	1	9
13. Curry Powder—Bulk do.	0	2	9
14. Essence—Lemon—in 8-oz. bottles, "Leggo's" .. per bot.	0	7	6
15. "Vanilla—in 8-oz. bottles, "Leggo's" .. do.	0	7	6
16. Flour—Self-raising Brand—in 28-lb. per bag	0	14	9
bags—"McAlpin's"			
17. Fruits—Preserved, in 30-oz. tins (ex- per tin	0	2	10
cluding Pines)—"S.P.C."			
18. Fish—Salmon—Fresh, in 16-oz. tins .. do.	0	3	9
19. Gelatine—Ground—"Davis" per lb.	0	6	6
20. Ginger—Ground do.	0	7	0
21. Golden Syrup, in 2-lb. tins per tin	0	1	5
22. Honey, first quality, in 60-lb. tins, Yellow do.	3	5	0
Box			
23. Jelly Crystals, in 1-lb. packets .. per lb.	0	3	4
24. Junket Tablets, "Hansens" per tube	0	1	8
25. Peel, Mixed—Cut, "Brookes" per lb.	0	3	10
26. Macaroni—"Rinoldi"—1-lb. packets .. do.	0	1	4
27. Matches—Safety (60 in a box) B & M. .. per pkt.	0	2	1
28. Mustard—"Keens" Loose per lb.	0	4	9
29. Mustard Pickles, 20-oz. bottles—Brand, per bot.	0	2	10
"Leggo's"			
30. Oatmeal—Flaked—Bulk McKenzies .. per lb.	0	1	2
31. Pepper—White, ground do.	2	5	0
32. Prunes—Dried, 60-70's (present seasons) .. do.	0	2	9
33. Raisins—Sultanas, 4 crowns (present seasons) .. do.	0	1	10
34. Rice—Ground—in lb. packet do.	0	0	10
35. Salt—fine, in bags per cwt.	1	3	0
36. "table, "Mermaid" per lb.	0	0	7½

†† Order under Melbourne District Contract.

Sub-schedule No. 2—continued.

GROCERIES—continued.

	£	s.	d.
37. Sauce—Tomato—in 26-oz. bottles— per bot.	0	3	3
Brand, "Reeds"			
38. Soda—Bicarbonate of per lb.	0	0	9
39. "Washing" per lb.	0	0	6
40. Soup—Tomato—in 16-oz. tins, "Leggos" .. per tin	0	1	11
41. Spaghetti, "Rinoldi" per lb.	0	1	4
42. Spice—Mixed—in 1-oz. packets .. per oz.	0	0	6
43. Sugar—Icing per lb.	0	0	11
44. Tartar { Cream of do.	0	4	3
"Antelope" (Substitute) .. do.	0	2	6
45. Treacle—in 2-lb. tins per tin	0	1	4
46. Vermicelli—in 1-lb. packets per lb.	0	1	4
47. Vinegar—Malt per gal.	0	3	9
48. Yolkine Essence (or equal thereto)— per bot.	0	8	6
in 20-oz. bottles			

(AGREEMENT.)

J. Langlands and Sons Pty. Ltd., 122 Firebrace Street, Horsham.

Sub-schedule No. 3.

JAM.

	£	s.	d.
1. Jam—Assorted, of approved kinds, in per tin			
the proportion of half seed and half stone, of the best quality, in 5-lb. tins—Brand, "All Gold"			As per List.

SCHEDULE No. 21.

PROVISIONS—GEELONG.

(Delivery at the Gaol.)

ANNEX TO CONTRACT No. 1952/68.

J. A. Fitzgerald, 150 Malop Street, Geelong.

Sub-schedule No. 1.

BREAD.

Security, £8.

	£	s.	d.
1. Bread—Fine Wheat, First quality .. per cental	1	19	7

ANNEX TO CONTRACT No. 1952/69.†

O'Brien's Butchery, 491 Moorabool-street, Geelong.

Sub-schedule No. 2.

MEAT.

Security £10.

	£	s.	d.
1. Fresh Beef per cental	6	5	0
2. Corned Beef, Rolled or Round, without bone on cartilage .. per lb.	0	1	3
3. Fresh mutton do.	0	1	0