

[4993]



VICTORIA  
GOVERNMENT GAZETTE

Published by Authority.

[Registered at the General Post Office, Melbourne, for transmission by post as a newspaper.]

No. 677]

MONDAY, JULY 26.

[1954

CONTRACTS ACCEPTED.

(SERIES 1954-55.)

SUPPLY OF PROVISIONS

FOR

STATE DEPARTMENTS

FROM

1st JULY, 1954, to 30th JUNE, 1955,  
or as stated.

Conditions of Contract and Stipulations are shown herein for the guidance  
of Officers ordering and receiving supplies.

W. H. RUTHERFORD,  
*Secretary to the Tender Board.*

## CONTRACTS ACCEPTED—(Series 1954-55.)

## PROVISIONS.

No. of Contract.	Particulars of each Tender Accepted.	Amount.	Name of Contractor or Supplier.	Charge against Vote or Fund.
	<b>PROVISIONS—</b>			
	Supply of Provisions, in such quantities as may be ordered, from 1st July, 1954, to 30th June, 1955, or as stated.			
	<b>Schedule No. 1.—Melbourne District—</b>			
283	Bread, Kew Mental Hospital .. .. .	Rates as per annex	Capitol Bakeries Pty. Ltd. .. ..	
284	Bread, Children's Welfare Depot and Receiving House and Mental Hospital, Royal Park, and Travancore Developmental Centre, Flemington .. .. .	Ditto .. .. .	Bessell's Pty. Ltd. .. ..	
284	Bread, Teachers' College and Hostels at Grattan-street, 93 Drummond-street, and 90 Victoria-street, Carlton; 481 St. Kilda-road, Melbourne; 1 Walsh-street, South Yarra; and Frank Tate House, 373 Dandenong-road, Armadale; Henry Watson House, 260 Domain-road, South Yarra; Stonnington, 336 Glenferrie-road, Malvern; and Police Hospital, St. Kilda-road, Melbourne .. .. .	Ditto .. .. .	Capitol Bakeries Pty. Ltd. .. ..	
286	Flour .. .. .	Ditto .. .. .	Pirrie Bros. .. ..	
	Groceries .. .. .	Ditto .. .. .	<i>Moran and Cato Pty. Ltd. (A)</i> .. ..	
	Cereals .. .. .	.. .. .	Purchase under Tender Board quotations .. .. .	
287	Jams .. .. .	Rates as per annex	W. H. Johnsons Jams Pty. Ltd. .. ..	
288	†Meat, Kew Mental Hospital .. .. .	Ditto .. .. .	F. Watkins Pty. Ltd. .. ..	
289	†Meat, Pentridge Penal Establishment .. .. .	Ditto .. .. .	Jackson's United Meat Co. Pty. Ltd. .. ..	
290	†Meat, Children's Welfare Depot, Royal Park, and Travancore Developmental Centre, Flemington .. .. .	Ditto .. .. .	J. F. Clementson .. ..	
291	†Meat, Royal Park Mental Hospital and Receiving House .. .. .	Ditto .. .. .	J. F. Clementson .. ..	
292	Soap Mixtures .. .. .	Ditto .. .. .	<i>Moran and Cato Pty. Ltd. (A)</i> .. ..	
292	Tea .. .. .	Ditto .. .. .	Bushells Ltd. .. ..	
293	Coffee .. .. .	Ditto .. .. .	Henry Berry and Co. (A'sia) Ltd. .. ..	
	Potatoes .. .. .	.. .. .	Purchase under Tender Board quotations .. .. .	
	<b>Schedule No. 2.—Mont Park, Bundoora, Larundel, Janefield, Gresswell, and Pleasant View, Wood-street, Preston—</b>			
294	Bread .. .. .	Rates as per annex	E. J. Callander .. ..	
	Groceries .. .. .	Ditto .. .. .	<i>Henry Berry and Co. (A'sia) Ltd. (A)</i> .. ..	
295	Jams .. .. .	Ditto .. .. .	W. H. Johnsons Jams Pty. Ltd. .. ..	
296	†Meat—Mont Park District .. .. .	Ditto .. .. .	W. Angliss and Co. (Aust.) Pty. Ltd. .. ..	
297	†Meat—Preston .. .. .	Ditto .. .. .	W. Angliss and Co. (Aust.) Pty. Ltd. .. ..	
	Potatoes .. .. .	.. .. .	Purchase under Tender Board quotations .. .. .	
	<b>Schedule No. 3.—SS. Rip and Dredges—</b>			
298	Bread .. .. .	Rates as per annex	Capitol Bakeries Pty. Ltd. .. ..	
	Groceries .. .. .	Ditto .. .. .	<i>Moran and Cato Pty. Ltd. (A)</i> .. ..	
299	†Meat .. .. .	Ditto .. .. .	Jackson's United Meat Co. Pty. Ltd. .. ..	
	Vegetables .. .. .	.. .. .	Purchase by agreement .. .. .	
	Potatoes .. .. .	.. .. .	Purchase under Tender Board quotations .. .. .	
	<b>Schedule No. 4.—Teachers' College and Hostels at Grattan-street, 93 Drummond-street, and 90 Victoria-street, Carlton; 481 St. Kilda-road, Melbourne; 1 Walsh-street, South Yarra; and Frank Tate House, 373 Dandenong-road, Armadale; Henry Watson House, 260 Domain-road, South Yarra; Stonnington, 336 Glenferrie-road, Malvern; and Police Hospital, St. Kilda-road, Melbourne—</b>			
300	Groceries .. .. .	Rates as per annex	Order under Melbourne District .. ..	
	†Meat .. .. .	Ditto .. .. .	J. F. Clementson .. ..	
	Potatoes .. .. .	.. .. .	Purchase under Tender Board quotations .. .. .	
	<b>Schedule No. 5.—Sanatorium, Greenvale—</b>			
301	Breadstuffs .. .. .	Rates as per annex	J. N. Hennessy Pty. Ltd. .. ..	
	Groceries .. .. .	Ditto .. .. .	<i>Henry Berry and Co. (A'sia) Ltd. (A)</i> .. ..	
302	†Meat .. .. .	Ditto .. .. .	Jackson's United Meat Co. Pty. Ltd. .. ..	
	Potatoes .. .. .	.. .. .	Purchase under Tender Board quotations .. .. .	

Contingencies,  
1954-55

Names shows in italics denote suppliers under agreement.

† Contract for period 1st July, 1954, to 30th September, 1954 only.

CONTRACTS ACCEPTED—(Series 1954-55)—continued.  
PROVISIONS—continued.

No. of Contract.	Particulars of each Tender Accepted.	Amount.	Name of Contractor or Supplier.	Charge against Vote or Fund.
PROVISIONS—continued.				
Schedule No. 6.—Heatherton Sanatorium, Cheltenham—				
303	Bread .. .. .	Rates as per annex	Capitol Bakeries Pty. Ltd. .. ..	
	Groceries .. .. .	Ditto .. .. .	<i>Moran and Cato Pty. Ltd. (A)</i> .. ..	
304	†Meat .. .. .	Ditto .. .. .	W. Angliss and Co. (Aust.) Pty. Ltd.	
305	Milk .. .. .	Ditto .. .. .	Moule's Model Dairy .. ..	
Schedule No. 7.—Ararat District—				
306	Breadstuffs .. .. .	Rates as per annex	M. L. & R. M. Bates .. ..	
	Groceries .. .. .	Ditto .. .. .	} <i>McKay MacLeod Pty. Ltd. (A)</i> .. ..	
	Jams .. .. .	Ditto .. .. .		
307	†Meat .. .. .	Ditto .. .. .	H. A. Morris .. ..	
	Potatoes .. .. .	.. .. .	Purchase under Tender Board quotations	
Schedule No. 8.—Ballarat District—				
308	Breadstuffs .. .. .	Rates as per annex	Brogden Bros. .. ..	
	Groceries .. .. .	Ditto .. .. .	} <i>McKay MacLeod Pty. Ltd. (A)</i> .. ..	
	Jams .. .. .	Ditto .. .. .		
309	†Meat—Gaol and Mental Hospital ..	Ditto .. .. .	H. A. Morris .. ..	
310	†Meat—Teachers' Hostels .. .. .	Ditto .. .. .	H. A. Morris .. ..	
311	Milk—Teachers' Hostels .. .. .	Ditto .. .. .	The Ballarat Modern Dairy Pty. Ltd. ..	
	Potatoes .. .. .	.. .. .	Purchase under Tender Board quotations	
Schedule No. 9.—Beechworth District—				
312	Bread .. .. .	Rates as per annex	P. A. Taylor .. ..	
	Groceries .. .. .	Ditto .. .. .	} <i>Moran and Cato Pty. Ltd. (A)</i> .. ..	
	Jams .. .. .	Ditto .. .. .		
313	†Meat .. .. .	Ditto .. .. .	E. Spencer .. ..	
	Potatoes .. .. .	.. .. .	Purchase under Tender Board quotations	
Schedule No. 10.—Bendigo District—				
314	Bread—For Gaol .. .. .	Rates as per annex	C. H. Jeffrey Pty. Ltd. .. ..	
315	Bread—For Teachers' Hostels "Sandhurst" and "Lancewood" ..	Ditto .. .. .	A. Hardeman Pty. Ltd. .. ..	
316	Bread—For Teachers' Hostel "Comersdale" ..	Ditto .. .. .	Roy Raggatt .. ..	
	Groceries .. .. .	Ditto .. .. .	<i>Pulfer, Cox and Hargreaves, Wholesalers Ltd. (A)</i> .. ..	
317	†Meat—For Gaol .. .. .	Ditto .. .. .	Alan H. Gittins .. ..	
318	†Meat—For Teachers' Hostels .. .. .	Ditto .. .. .	Frank Wade .. ..	
	Potatoes .. .. .	.. .. .	Purchase under Tender Board quotations	
Schedule No. 11.—School of Forestry, Creswick—				
319	Breadstuffs .. .. .	Rates as per annex	R. C. Bowley .. ..	
	Groceries .. .. .	Ditto .. .. .	<i>J. Tait and Son (A)</i> .. ..	
320	Milk .. .. .	Ditto .. .. .	E. J. Keen .. ..	
321	†Meat .. .. .	Ditto .. .. .	H. J. Symons Pty. Ltd. .. ..	
Schedule No. 12.—Agricultural College, Dookie—				
322	Breadstuffs .. .. .	Rates as per annex	F. G. Dixon .. ..	
	Groceries .. .. .	Ditto .. .. .	} <i>W. A. Thompson (A)</i> .. ..	
	Jam .. .. .	Ditto .. .. .		
Schedule No. 13.—McLeod Settlement, French Island—				
323	Bread .. .. .	Rates as per annex	H. H. Bird .. ..	
	Groceries .. .. .	Ditto .. .. .	<i>E. V. Peters (A)</i> .. ..	
324	†Meat .. .. .	Ditto .. .. .	George Hayman .. ..	
	Potatoes .. .. .	.. .. .	Purchase under Tender Board quotations	
Schedule No. 14.—Geelong District—				
325	Bread .. .. .	Rates as per annex	J. A. Fitzgerald .. ..	
	Groceries .. .. .	Ditto .. .. .	<i>Beacon Trading Co., Wholesalers Ltd. (A)</i> ..	
326	†Meat—Gaol .. .. .	Ditto .. .. .	O'Brien's Butchery .. ..	
327	†Meat—Teachers' College Hostels .. ..	Ditto .. .. .	A. C. Knight .. ..	
Schedule No. 15.—Cooriemungle Prison Camp, Heytesbury Forest—				
328	Bread .. .. .	Rates as per annex	M. and J. V. Church .. ..	
	Groceries .. .. .	.. .. .	<i>M. L. Hose (A)</i> .. ..	
329	†Meat .. .. .	Rates as per annex	Heytesbury Butchery .. ..	

Contingencies,  
1954-55

Names shown in italics denote suppliers under agreement. † Contract for period 1st July, 1954, to 30th September, 1954, only.

## CONTRACTS ACCEPTED—(Series 1954-55)—continued.

## PROVISIONS—continued.

No. of Contract.	Particulars of each Tender Accepted.	Amount.	Name of Contractor or Supplier.	Charge against Vote or Fund.
	PROVISIONS—continued.			
330	Schedule No. 16.—Aboriginal Station, Lake Tyers— Breadstuffs .. .. . Groceries .. .. . Jams .. .. .	Rates as per annex Ditto .. .. . Ditto .. .. .	R. Hodder .. .. . } R. Hodder (A) .. .. .	
331	Schedule No. 17.—Langi Kal Kal Training Centre— Bread .. .. .	Rates as per annex	F. T. Davies .. .. .	
332	†Meat .. .. . Potatoes .. .. .	Ditto .. .. . .. .. .	H. T. Slee and Co. .. .. . Purchase under Tender Board quotations	
333	Schedule No. 18.—Agricultural College, Longerenong— Breadstuffs .. .. . Groceries .. .. . Jam .. .. . Potatoes .. .. .	Rates as per annex Ditto .. .. . Ditto .. .. . .. .. .	Schwarz Breads .. .. . } W. Cook and Son (A) .. .. . Purchase under Tender Board quotations	
334	Schedule No. 19.—Research Station, Rutherglen— Bread .. .. . Groceries .. .. .	Rates as per annex Ditto .. .. .	W. S. Amore .. .. . Aiken and Fullerton (A) .. .. .	Contingencies, 1954-55
335	Schedule No. 20.—Sale Gaol— Bread .. .. .	Rates as per annex	F. J. Hennessy .. .. .	
336	†Meat .. .. .	Ditto .. .. .	H. L. G. Laws .. .. .	
337	Schedule No. 21.—Pleasant Creek Special School, Stawell— Breadstuffs .. .. . Groceries .. .. .	Rates as per annex Ditto .. .. .	Keith Lawson .. .. . McKay MacLeod Pty. Ltd. (A) .. .. .	
338	Milk .. .. .	Ditto .. .. .	E. G. Waldron .. .. .	
339	†Meat .. .. . Potatoes .. .. .	Ditto .. .. . .. .. .	Newton Bros. .. .. . Purchase under Tender Board quotations	
340	Schedule No. 22.—Sunbury District— Breadstuffs .. .. . Groceries .. .. . Cereals .. .. . Jams .. .. .	Rates as per annex Ditto .. .. . .. .. . .. .. .	J. N. Hennessy Pty. Ltd. .. .. . K. N. Tidswell (A) .. .. . Purchase under Tender Board quotations	
341	†Meat .. .. . Potatoes .. .. .	Rates as per annex Ditto .. .. .	K. N. Tidswell (A) .. .. . F. Watkins Pty. Ltd. .. .. . Purchase under Tender Board quotations	

Names shown in italics denote suppliers under agreement. † Contract for period 1st July, 1954, to 30th September, 1954, only.

Approved—JOHN CAIN, Treasurer, 12.7.1954.

## CONDITIONS OF CONTRACT FOR PROVISIONS, 1954-55, ETC.

(Published in the *Victoria Government Gazette* No. 316, dated 5th May, 1954, pages 3078 to 3081.)

1. All the articles are to be of the best quality of the several kinds, in the best condition, and in conformity with the Health Acts, and to be delivered in sound packages, free from all charges for cartage, freight, &c. The goods shall be delivered as may be directed by the officer ordering the supply.

2. As the exact quantity of any article which may be required cannot be stated, the estimate being approximate only, the Government will not be bound by the quantity stated in the schedule, but will be at liberty to order more or less, according to circumstances, and the contractor will be bound to supply the same as ordered.

The Government reserves the right to purchase otherwise than from the contractor any of the articles specified in the schedule in the event of emergency.

3. Supplies for country districts for which no local contract may have been taken, or for which the contract has been terminated, may be ordered under the Melbourne contract.

4. The Melbourne District will include places within a radius of 10 miles from the Elizabeth-street Post Office, with the exception of places for which separate contracts are provided; the Mont Park District will include the Mental Hospitals, Janefield Colony, the Sanatorium, Gresswell and Pleasant View, Preston; the Ararat, Ballarat, Beechworth, and Sunbury Districts will include the Mental Hospitals, Gaols, and Police Gaols at those places; and the Bendigo District will include the Reformatory Prison. Delivery must be made at the places, institutions, &c., named in the Schedules, or as directed by the officer ordering the supply.

5. Packages suitable for transport of goods supplied must be provided by the contractor free of expense, and the value of these packages, whether in bulk or otherwise, is to be included in the rate tendered, except butter boxes and soap boxes (not including fancy soaps), jam jars, flour, meal, and potato bags, which will remain the property of the contractor, and only the actual net weight or quantity received will be paid for; the empties to be removed from the place of delivery at the contractor's expense.

6. The meat supplied under these conditions must, if practicable, be slaughtered at abattoirs which are under authorized inspection and supervision. Any infringement of this condition will subject the contractor, on report from the Tender Board, to such mulct, not exceeding Fifty pounds, as the Treasurer may direct, and the amount will be deducted from the contractor's account, or from the security money.

7. The supplies coming under the head of Rations and Medical Comforts are to be delivered direct to the establishment entitled thereto on the written order of the officer in charge. All other supplies will be ordered by the head of the Department concerned or any officer authorized by him, and shall be delivered as may be directed by the officer ordering the supply.

8. At the time of delivering the supplies, the contractor shall produce the order for the same to the officer authorized to accept delivery, and such officer shall acknowledge thereon the receipt of the stores accepted, and shall return the order to the contractor, who shall render his account as soon as possible after the delivery of the supplies, accompanied by the receipted delivery order. The rates or quantities quoted in the orders cannot be exceeded.

9. Where railway facilities are available, the contractor shall use the Railways for the transport of the goods. When a contractor is required to make delivery of goods at a railway station for transmission by rail, except for Commonwealth Departments, he shall obtain a receipt for the goods in duplicate, on the Stores and Transport consignment note, at the same time handing in the triplicate and quadruplicate of the form as an authority for the Railways to act as agent for, and charge the freight to, the Stores and Transport Office. He shall as soon as possible, and not later than twenty-four hours thereafter, deliver at the Tender Board Offices the original, the duplicate to be forwarded to the consignee and the quintuplicate retained by himself. Should the goods thus forwarded be rejected, the contractor must bear the cost of replacing such goods, for which services the departmental consignment note is not to be used. Any infringement of this condition may subject the contractor to such mulct as the Tender Board may recommend under clause 18 of these conditions.

10. Orders must receive prompt execution; in the event of the goods not being delivered at the time mentioned in the order or within such other time as the officer ordering the supply may specify for delivery, it will be competent for such officer, or the head of the Department to whom the goods are to be supplied, on giving the contractor twenty-four hours' notice, to purchase the supplies, or any like supplies that are suitable for the service, at the contractor's risk, and the extra expense incurred over and above the contract price (if any) will be deducted from the contractor's account or from the security money.

11. The acceptance of the supplies shall be subject to the approval of the officer authorized to take delivery of the stores, or such other officer as shall be named in the conditions.

12. If the officer in charge of stores be not satisfied as to the quantity or quality of the stores, or if, after taking delivery of any stores or material, he shall discover any deficiency or defect therein, he may return such deficient or defective stores or material to the contractor, and shall report the same to the head of his Department and to the Tender Board.

13. In the event of a difference of opinion between the contractor and the officer receiving the supplies as to the quality, the same is to be decided, in cases where the article is not of a perishable nature, by a Board of Survey composed of persons named by the Treasurer of the State for the time being; and the decision of the Board is to be considered final. In the event of the decision being against the contractor, the survey fees and expenses (if any) will be deducted as in clause 10.

14. In cases where the article is of a perishable nature, or when from some other cause injury would be sustained either by the person to whom the rations or stores are due or by the contractor in waiting for a Board to survey, the head of the Department or officer authorized to take delivery will have power to reject such article or articles as are obviously of inferior quality, it being understood that he will be responsible to the Government for so doing, and that the contractor must take back the rejected article and supply good in its stead; failing which it, or any like supply suitable for the Service, will be obtained by the officer requiring it as in clause 10. In case of the rejection or return of any supplies, the contractor shall bear the whole cost of replacing the supplies so rejected or returned.

15. If the Board shall decide that the article is not of proper quality it must be immediately replaced by the contractor; failing which it, or any like supply suitable for the Service, will be procured by the officer requiring it, and the expense charged as in clause 10.

16. In the case of supplies for Mental Hospitals, it will be competent for a Board of Survey, consisting of the medical superintendent (or, in his absence, of the medical officer) and any two officers named by him, to examine and reject any supplies that may be objected to. It must be distinctly understood, however, that the contractor will have a right of appeal to the Treasurer of the State for the time being, such appeal to be made in writing within 24 hours of the rejection; but, pending such appeal, he must at once supply others of approved quality; failing which, the supplies required, or any like supplies suitable for the Service, may be obtained by the officer concerned, and the expense charged as in clause 10.

17. In the case of supplies for Mental Hospitals, it will also be competent for two or more of the official visitors, in conjunction with the medical superintendent, to reject any supplies that they may consider not in accordance with contract; and in such cases the reference to a Board of Survey will not be deemed to be necessary.

18. A refusal to execute orders, irregularity in the quantity or quality of the supplies, or delay in delivering or replacing them when required, will subject the contractor, upon report from the Tender Board, to such mulct, not exceeding Fifty pounds, as the said Treasurer may direct, and the amount may be deducted as in clause 10. It will also be in the power of the said Treasurer, upon such refusal, irregularity, or delay, to terminate the contract forthwith, and forfeit the whole or any part of the security money; and, in addition, the contractor will be disqualified from tendering or holding any future contract or contracts for a period of twelve months from the date of such disqualification.

19. Contractors are not at liberty to transfer their contracts under cover of power of attorney, coupled with an interest or otherwise, and no such transfer will be recognized by the Government. *If it is found during the currency of the contract that the contractor has not conformed to the condition of advertisement—which stipulates that if a tenderer be a member of a firm and such firm be interested in the contract, the tender shall be in the name of the firm and not in that of the individual—then the Treasurer may, on the recommendation of the Tender Board, determine the contract, and forfeit the security money.*

20. It will be competent for the Tender Board to terminate the contract, without notice, should there be reason to know that the contractor takes advantage of his contract to communicate with a prisoner.

21. The contract entered into under these conditions is not to be considered as being broken, infringed, or vitiated by the importation of stores for the Government service, or by any contracts or purchases made by the Imperial Commissariat; or by the consumption of the produce or surplus stock of any Government establishment, or by any article being made at and supplied for the use of any Government establishment.

22. Notwithstanding anything contained to the contrary in section 152 of the *Customs Act* 1901-52, it is hereby expressly provided that upon any alteration of the duty collected affecting the goods included in this contract, the contract price shall not be altered, and the contract may be terminated at the option of either party by two months' notice in writing from the first day of the calendar month next ensuing, and within the period for which the contract is made. The contract for the unaffected items shall remain in full force and effect. Any notice to be served under this condition shall be deemed to have been duly served if sent to the contractor in a registered letter to his last-known place of business or abode.

23. Under no circumstances other than those mentioned in clause 22 will a contractor be permitted to abandon his contract. In the event of the contractor failing to carry on the contract, the contract security money will in that case be absolutely forfeited; and, in addition, the contractor will be held liable for any loss which the Government may sustain in consequence of such failure.

24. For the purposes of these contracts the word "Government" shall mean the Government of the State of Victoria; and the word "Treasurer" shall mean the Treasurer of the said State.

## STIPULATIONS FOR SUPPLIES OF PROVISIONS.

### SUPPLIES GENERALLY.

For supplies under all sub-schedules, particular attention is drawn to clause 1 of the Conditions of Contract as to quality.

No sub-letting is allowed, and all work must be carried out by the contractor.

Where practicable, all items must be manufactured or prepared within the Commonwealth.

Where no brand of Commonwealth manufacture or production is specifically set out in the respective sub-schedules, such Commonwealth brand as may be ordered must be supplied.

For Schedule No. 3 supplies must be delivered when ordered and, in cases of emergency, on Sundays, holidays, or half-holidays, as required.

### BREAD AND FLOUR.

A sample of the best ordinarily retailed to the public will be considered as a test loaf for first quality for fine wheaten and pure wheaten Meal Bread. *Pure wheaten Meal Bread of first quality may be substituted, wholly or in part, for fine wheaten Bread at such times and in such quantities as, in the opinion of the Medical Superintendent, may be deemed necessary, and the contractor will be required to supply such Bread at the contract rate. Reasonable notice, however, of the intention to substitute wheaten Meal Bread must be given to the contractor by the officer ordering the supply.* Bread may be baked at any Government establishment without infringing these contracts. At the Gaols, Ballarat, Beechworth, Bendigo, Geelong, and Sale, and the Coorimungle Prison Camp, McLeod Settlement, and Langi Kal Kal Training Centre, if required, bread must be supplied one day old, due notice to be given to the contractor of such requirement.

In the event of bread being made at any Government establishment in the Melbourne District during the currency of these contracts, the flour required will be drawn under the flour sub-schedule.

Flour for Districts for which no local contracts have been taken may be ordered under the Melbourne District contract, for delivery f.o.r. Melbourne.

### GROCERIES.

As a guarantee of quality, Rice, when ordered in quantities of 56 lb. and over, must be supplied in original bags as delivered by the miller or dresser. Such bags must be branded "Rice, Dressed," and shall also have stencilled thereon the miller or dresser's name and the distinguishing mark indicative of the quality or grade. The bags thus stencilled shall contain Rice milled or dressed by the miller or dresser whose name appears thereon. Supplies not in conformity with the foregoing condition will be rejected.

Oatmeal must be supplied in original bags as delivered by millers.

Candles, except those for prison cells, must be supplied in 1-lb. packets. Candles for prison cells must be delivered in boxes containing from 25 to 50 lb. per box, the boxes for which must be legibly stencilled on one end showing the estimated burning time and the gross, tare, and net weight of contents.

The soap supplied must be hard throughout, ready for immediate use without waste, and shall have been manufactured at least seven weeks before leaving contractor's hands.

Raisins and currants must be present season's, and where the quantity admits, be supplied in original and unopened boxes, labelled as packed.

### OATMEAL, RICE, BARLEY AND SPLIT PEAS.

Supplies of these items for Districts for which no local contracts have been taken may be ordered under the Melbourne District contract, for delivery f.o.r. Melbourne.

### BUTTER AND CHEESE.

All supplies of 56 lb. or multiples of 56 lb. must be supplied in boxes as originally packed. The boxes must bear the impress stamp of the creamery where the butter is produced, otherwise it will not be accepted. All supplies must be in new boxes.

Where the Store or Butter Factory of the Contractor is situated in the Metropolitan area all Butter to the quantity of 56 lb. and over to be supplied in any one consignment under this contract shall before despatch from the Store or Factory be first examined and passed by the Government Butter Grader, for and on behalf of the officer authorized to accept delivery. The boxes containing butter so examined and found satisfactory in quality and description will be stamped by the Government Butter Grader and the date of such examination marked thereon. No butter from a contractor located in the Metropolitan Area will be accepted unless the boxes bear the stamp of the Grader. For the purposes of the foregoing condition the Metropolitan Area is defined as being not outside the radius visited by the Government Grader. The officer authorized to accept delivery may, within 48 hours of the receipt of any supply, require the Contractor to have same re-examined by the Grader, and, if not passed by him, it shall be returned to the Contractor, who shall forthwith replace the same with freshly-examined butter.

No Butter *ex* Cool Store will be examined by the Grader until thermally it is in suitable condition therefor.

Where the Store or Factory from which the Butter is despatched is not within the area visited by the Grader a sample of any supplies may be forwarded to the Government Butter Grader for examination, should the supply be considered by the Officer authorized to accept delivery as not being equal in quality or description to that contracted for.

The Cheese supplied must be first-class quality, semi or fully matured, as ordered, and not less than three months old. If the quantity admits, it shall be boxed for transport.

### JAM.

The weight stamped on the tins in accordance with the regulations under the Commerce Act, as indicating the *minimum* net quantity that each tin contains, shall for the purpose of this contract be taken as the actual contents when computing the quantity supplied.

When Jam is supplied in jars the jars remain the property of the contractor, and must be removed by the contractor at his own expense when empty.

## SOAP AND SOAP MIXTURES.

Supplies of these items for Districts for which no local contracts have been taken may be ordered under the Melbourne District contract, for delivery f.o.r. Melbourne.

## MEAT.

All meat supplied under this contract shall have been slaughtered in Victoria and shall be freshly killed, well-conditioned, of good quality, healthy, clean, wholesome, free from bone-taint, putrefaction or fly larvae, and shall not have been frozen.

The beef shall be of ox not under three nor more than six years old or heifer or cow not under three nor more than five years old. Carcass beef for Mental Hospitals shall be delivered in quarters of equal proportions of hinds and fores and the corresponding hinds and fores must be supplied, also extra buttocks separately when ordered. Meat for other Institutions shall be supplied as ordered. Where hindquarters or buttocks are ordered 9 inches shall be cut off from the end of the leg from the hock upwards, i.e., the end of the leg from which the shank has been removed at the abattoirs; when fore-quarters form a portion of the supply, 6 inches from the end of the neck and the whole of the shin at the clodbone joint shall be removed. The sticking pieces also shall be trimmed off and the point and end of the brisket rendered free from blood and blood stains.

The mutton shall be wether or maiden ewe not more than four years old and the weight of a carcass shall be not less than 40 lb. nor more than 60 lb. The mutton shall be delivered in sides when so ordered. All kidney fat to be removed for Mental Hospitals.

Corned Beef (rolled or round as ordered) shall be supplied without bone or cartilage and will be received whether pumped or prepared in the ordinary way of pickling but, in the former case, it shall have been soaked, after pumping, for at least 48 hours in a good pickle and then thoroughly drained before supply. No flank, chuck, sticking-piece, shin, leg of beef, or piece under 7 lb. will be received.

Meat derived from the carcasses of Bulls, Stags or Rams or meat containing an undue proportion of bone or fat will not be received and shall not be tendered for delivery. Net weight only will be paid for.

In cases of emergency, or on such other occasions as in the opinion of the Director of Mental Hygiene or Heads of other Institutions may seem advisable, other forms of meat, such as Rabbits, Tinned Meats, &c., may be purchased, apart from the contract, in lieu of the meat specified in the Schedule, and substituted therefor, provided 24 hours' notice—except in cases of emergency—be given to the Contractor of such intention.

The parts to be removed by the contractor are indicated in the shaded portion of the annexed diagram. This work shall be carried out in the factory or shop of the Contractor, except those parts usually removed at the abattoirs.

With respect to the schedules enumerated hereunder, the following stipulations shall also apply:—

For sub-schedules 10 and 11 of Schedule No. 1, fresh beef shall be supplied, as ordered, from ribs, sirloin, and thick flanks and for Schedule No. 2, from prime ribs, sirloin, and thick flanks; ribs of beef to be cut clear of the plate bone, and sirloin to be cut clear of the wing ribs; excess of brisket or thin flank will be rejected. Mutton must be delivered in sides when so ordered.

For Schedules Nos. 1 (sub-schedules 10 and 11), 3, 4, 5, 6, 11, 15 and 21, chuck ribs of Beef, i.e., 1st to 4th inclusive will not be accepted.

For Schedules Nos. 4, 5, 6 and 21, fresh Beef must be supplied, as ordered, from prime ribs or sirloin; ribs of Beef to be cut clear of the plate bone, and sirloin to be cut clear of the wing ribs; excess of brisket or flank will be rejected.

## TEA AND COFFEE.

Tea and Coffee for Districts for which no local contracts have been taken may be ordered under the Melbourne District contract, for delivery f.o.r. Melbourne.

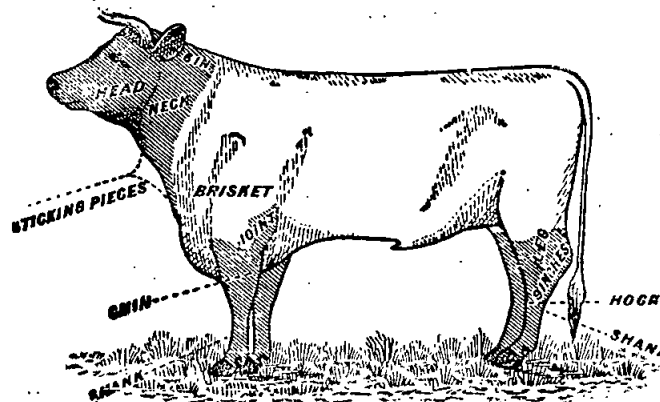
## MILK.

The milk must be fresh, pure, and of the best quality, and subject to test when required by the Department, and supplied at such times as the Department may require. Should the contractor fail to supply at the time specified in the order or at such times as may be indicated in any general notice to the contractor his contract may be cancelled forthwith and his security forfeited, or should the supply prove to be not of contract quality it will be rejected, and any expense incurred will be charged to the contractor.

## POTATOES.

Potatoes to be dry and free from dirt. Contractors to take back all rejected before being cooked. Bags to remain the property of the contractor. Weight of bags (approx. 2½ lb.) to be deducted.

If the price of potatoes becomes abnormally high, the heads of the various departments concerned may, if they think fit, cause rice or any other suitable food to be occasionally substituted in lieu thereof.



## ANNEX TO CONTRACTS.

## FLOUR AND BREAD.

The contract rates shown are subject to adjustment for any variation in the proclaimed price of flour.

## MEAT.

Contracts marked † operate for the period 1st July, 1954, to 30th September, 1954, only.

## AGREEMENTS.

For the Sub-schedules marked (Agreement), no contract has been let not security lodged. Requirements thereunder are to be purchased from the suppliers named, under Tender Board Agreement. The rates shown are subject to variation from time to time, particulars of which will be gazetted as required. In all cases, supply is subject to stocks being available.

## AVAILABILITY OF SUPPLIES.

Owing to existing difficulties in obtaining supplies of various items, the penal provisions of Clause 10 of the Conditions of Contract are not to be enforced without reference to the Tender Board.

## SCHEDULE No. 1.

## PROVISIONS—MELBOURNE DISTRICT.

ANNEX TO CONTRACT No. 1954/283.

Capitol Bakeries Pty. Ltd., 257 Toorak-road, South Yarra.

## Sub-schedule No. 1.

BREAD FOR MENTAL HOSPITAL AT KEW.

Security, £125.

	£	s.	d.
1. Bread—Fine wheaten, first quality .. per cntl.	1	12	3½

ANNEX TO CONTRACT No. 1954/284.

Bessell's Pty. Ltd., 275 Buckley-street, Essendon.

## Sub-schedule No. 2.

BREAD FOR CHILDREN'S WELFARE DEPOT, ROYAL PARK, RECEIVING HOUSE AND MENTAL HOSPITAL, ROYAL PARK, AND TRAVANCORE DEVELOPMENTAL CENTRE, FLEMINGTON.

Security, £30.

	£	s.	d.
1. Bread—Fine wheaten, first quality .. per cntl.	1	12	11

ANNEX TO CONTRACT No. 1954/285.

Capitol Bakeries Pty. Ltd., 257 Toorak-road, South Yarra.

## Sub-schedule No. 3.

TEACHERS' COLLEGE AND HOSTELS AT GRATTAN-STREET, 93 DRUMMOND-STREET, AND 90 VICTORIA-STREET, CARLTON; 481 ST. KILDA-ROAD, MELBOURNE; 1 WALSH-STREET, SOUTH YARRA; AND FRANK TATE HOUSE, 373 DANDENONG-ROAD, ARMADALE; HENRY WATSON HOUSE, 260 DOMAIN-ROAD, SOUTH YARRA; STONNINGTON, 336 GLENFERRIE-ROAD, MALVERN; AND POLICE HOSPITAL, ST. KILDA-ROAD, MELBOURNE.

Security, £20.

	£	s.	d.
1. Bread—Fine wheaten, first quality .. per cntl.	1	14	4½

ANNEX TO CONTRACT No. 1954/286.

Pirrie Bros., 136 Exhibition-street, Melbourne, C.1.

## Sub-schedule No. 4.

FLOUR.

Security, £90.

	£	s.	d.
1. Flour—Roller, first quality .. per cntl.	1	11	6

(AGREEMENT.)

Moran and Cato Pty. Ltd., 277 Brunswick-street, Fitzroy, N.6.

## Sub-schedule No. 5.

GROCERIES.

GROCERIES.						£	s.	d.
Bacon—								
1.	{	Sides	..	..	per lb.	0	4	8
		Rashers, middle	..	..	do.	0	5	7
2.		Barley—Pearl	..	..	do.	0	0	6½
Beans—								
3.		Butter	..	..	do.	0	1	4
4.		Haricot	..	..	do.	0	1	6½
5.		Lima	..	..	do.	0	1	6½
6. Biscuits (Tins 4s. each, returnable)—								
		Dry (Thin Captains, Uneda, Cenovis)	..	..	do.	0	1	4
7.		Coffee, Malt, Arrowroot, Gingernuts,	..	..	do.	0	1	7½
		Marie, Holsum, Rice, Fruit Cookies	..	..	do.	0	1	7½
8.		Assorted—Vanilla Curis, Nice, Butter	..	..	do.	0	1	8½
		Crisps, Devon Shortbreads	..	..	do.	0	1	8½
Blue—								
9.	{	1-oz. knobs, "Reckitts," paper	..	..	per doz.	0	2	2½
		7-lb. packets, bulk	..	..	per lb.	0	1	11½
10.		Borax	..	..	do.	0	0	7
11.		Cake Containers—Paper "Bakesure" 60's	..	..	per doz.	0	4	3

## Sub-schedule No. 5.—continued.

GROCERIES—continued.

£ s. d.

Cereals—			
12.	Pipers, Kornies, Weeties or equal, 24-oz. packets	per doz.	1 1 6
13.	Cornflakes or equal, "Kellogs," 16-oz. packets	do.	1 7 0
14.	Weetbix or equal, 24-oz. packets	do.	1 7 2 5
15.	All Bran or equal, "Kellogs" ..	do.	0 17 3
16.	Cheese—5-lb. boxes, "Kraft" ..	per pkt.	0 17 9
17.	Chutney—"Rosella", Fruit ..	per doz.	1 2 3
18.	Cloves—Whole ..	per lb.	0 10 4
19.	Coconut—Desiccated, "Ceylon" ..	do.	0 1 11
Coffee Essence—			
20.	{ 8-oz. bottles, "Turban" ..	per doz.	1 10 9
	{ 40-oz. jars = 1 quart, "Moran and Cato" ..	per jar	0 13 3
21.	Curry Powder—Bulk ..	per lb.	0 2 3
Custard Powder—			
22.	{ Bulk ..	do.	0 1 1
	{ 1-lb. packets, "Reno" ..	do.	0 1 6
23.	Dates ..	do.	0 1 4
Essences—			
24.	Almond, 4-oz., "Summagold" ..	per bot.	0 2 0
25.	Lemon, 8-oz., "Allens" ..	do.	0 6 7
26.	Vanilla, 8-oz., "Summagold" ..	do.	0 3 6
27.	Cochineal (red colouring), 16-oz., "Summagold" ..	do.	0 3 9
28.	Parisian, 26-oz., "Greigs" ..	do.	0 3 4
29.	Yolkine (yellow colouring), 16-oz., "Summagold" ..	do.	0 3 9
Cocoa—			
30.	{ Tins, 1-lb., "Bournville" ..	per tin	0 4 4
	{ Loose ..	per lb.	0 3 4
Extracts and Pastes, &c., or equals—			
31.	Marmite, 4-oz. jars ..	per jar	0 2 3
32.	Vegemite, 4-oz. jars ..	do.	0 2 2
33.	Peanut Butter, 12-oz. jars, "Cottees" ..	do.	0 3 5
34.	Bonox, 4-oz. jar ..	do.	0 2 8
35.	Bloater, 2½-oz. jars, "Pecks" ..	do.	0 1 5
36.	Salmon and Shrimp, 2½-oz. jars, "Pecks" ..	do.	0 1 5
Fish—Tinned (Flair or equal)—			
37.	Salmon (Aust.), 16-oz., "Kingsound" ..	per doz.	2 1 6
38.	Fish Cutlets, 16-oz., "Baas" ..	tins	1 12 0
39.	{ Herrings, in sauce, 14-oz., "Tyne" ..	do.	1 4 0
	{ Herrings, fresh, 14-oz., "Tyne" ..	do.	1 3 6
40.	Sardines (½'s) ..	do.	0 13 6
Flour—Corn or Maize—			
41.	Packets, 1-lb., "Medallion" ..	per lb.	0 1 3
42.	Bulk ..	do.	0 0 8
Flour—Self Raising—			
43.	{ 25-lb., "A.W.G." ..	per bag	0 13 9
	{ 50-lb., "A.W.G." ..	do.	1 6 9
Fruits—Dried—			
44.	Apples ..	per lb.	0 2 11
45.	Apricots, 3-crown, "Choice" ..	do.	0 3 8
46.	Peaches, 3-crown, "Choice" ..	do.	0 3 1
47.	Pears, 3-crown, "Choice" ..	do.	0 2 3
48.	Prunes, 50-60, 7-lb. tin ..	do.	0 2 6
49.	Currants, 1-crown ..	do.	0 1 5
50.	Raisins, Seeded, loose ..	do.	0 1 6
51.	Sultanas, 2-crown ..	do.	0 1 5
Fruits, in 30-oz., 4-lb., and 7-lb. tins—			
52.	Apricots, Halves, 30-oz., "Rosella" ..	per doz.	1 9 9
	"S.P.C." &c. ..		
53.	Apricots, Whole, 4-lb. tins, "Camms" ..	do.	2 2 0
54.	Peaches, Halves and Sliced, 30-oz., "Rosella", "S.P.C.", &c. ..	do.	1 9 0
55.	Pears, 30-oz., "Rosella" "S.P.C.", &c. ..	do.	1 10 6
56.	Apples, Solid Pack, 6½-lb. tins, "Pt. Huon" ..	do.	4 15 0
57.	Apricots, Solid Pack, 7-lb. tins, "Berri" ..	do.	5 0 0
58.	Peaches, Solid Pack, 7-lb. tins, "Berri" ..	do.	5 12 0
59.	Gelatine—Ground, 1-lb. packets, "Davis" ..	per lb.	0 6 1
60.	Ginger—Ground ..	do.	0 5 4
61.	Golden Syrup—2-lb. tins ..	per doz.	0 16 0



## Sub-schedule No. 5—continued.

GROCERIES—continued.		£	s.	d.
62. Gravox—1-lb. tins	per doz.	0	18	9
63. Herbs—Mixed, 1-oz. packet, "Modern"	do.	0	3	0
64. Honey—60-lb. tins	per tin	3	1	3
Jelly Crystals—				
65. 4-oz. packets, "Sparkling" or "Clipper"	per doz.	0	6	3
66. 7-lb. packets, "Sparkling" or "Clipper"	per pkt.	0	14	7
67. Junket Tablets—Flavoured, "Merry Widow"	per doz. tubes	0	14	0
68. Lentils	per lb.	0	2	1
Macaroni—				
69. 1-lb. packets, "Rinoldi"	do.	0	1	0
70. Bulk, 56-lb. bags, "Rinoldi"	do.	0	0	10½
71. Margarine—Cake, Pastry	do.	0	1	6½
72. Matches—Safety, packets	per gross	0	19	6
73. Mayonnaise—5-lb. jars, "Kraft"	per jar	0	17	0
Meat—Tinned—				
74. Beef Luncheon, 12-oz. tins, "Tom Piper"	per doz.	1	2	0
75. Beef Steak Pudding, 16-oz. tins, "Tom Piper"	do.	1	3	3
76. Camp Pic, 16-oz. tins, "Imperial"	do.	1	1	0
77. Irish Stew, 16-oz. tins, "Tom Piper"	do.	1	5	0
78. Lamb and Green Peas, 16-oz. tins, "Swifts"	do.	1	3	0
79. Sausages and Vegetables, 16-oz. tins, "Tom Piper"	do.	1	2	6
Milk—				
80. Dried, 12-oz. tins, "Sunshine"	do.	1	15	6
81. Dried, 3-lb. tins, "Sunshine"	do.	6	11	0
82. Condensed, 14-oz. tins, "Nestles"	do.	1	0	0
83. Ideal or equal, 12-oz. tins, "Ideal"	do.	0	15	6
84. Mustard—Bulk	per lb.	0	4	9
85. Nutmeg—Ground	do.	0	5	3
86. Oatmeal—Flaked	do.	0	0	7½
87. Pastry Mixture, "Maxam"	per doz.	0	13	3
88. Peel—Mixed, cut	per lb.	0	1	5½
89. Pepper—White, ground	do.	0	10	6
90. Pickles—Assorted, 20-oz. bottles, "Sutherland"	per doz.	1	1	6
Rice—				
91. Dressed	per lb.	0	0	9½
92. Ground, 1-lb. packets	do.	0	0	10½
93. Sago—(Seed Tapioca)	do.	0	0	10
Salt—				
Fine, bulk	per cwt.	0	15	9
95. Table, 1-lb. packets, "Mermaid"	per lb.	0	0	4½
Sauce—				
96. Tomato, 26-oz. bottles, "Raleigh"	per doz.	1	15	0
97. Tomato, 1-gal. jars, "Model Pres. Co." (Jars 3s. each, returnable)	per jar	0	13	3
98. Worcestershire, 10-oz. bottles, "Hardings"	per doz.	0	17	0
99. Worcestershire, 1-gal. jars, "Hardings" (Jars 3s. 6d. each, returnable)	per jar	0	10	6
100. Mustard, 8-oz. bottles, "Holbrooks"	per doz.	1	0	0
Soda—				
101. Bicarbonate of	per lb.	0	0	6
102. Washing	do.	0	0	4
Soups—Tomato—				
103. 16-oz. tins, "Model Pres. Co."	per doz.	0	15	6
104. 4-lb. tins, "Model Pres. Co."	do.	2	16	0
Spaghetti—				
105. 1-lb. packets, "No. 1 Rinoldi"	per lb.	0	1	1
106. Bulk, 22-lb. cartons, "No. 1 Rinoldi"	per ctn.	0	19	6
107. Spice—Mixed	per lb.	0	2	9
Starch—Rice—				
108. { Bulk, "Lustre"	do.	0	0	8½
{ 12-oz. packets, "Silver Star"	per pkt.	0	1	4
Sugar—				
109. Icing (56-lb. bags, 42s. 11d.)	per lb.	0	0	9½
110. Castor (70-lb. bag, 47s. 10d.)	do.	0	0	8½
111. Raw	do.	0	0	8
112. White, 70-lb. bags	per bag	2	7	4
113. Tapioca—Pearl	per pkt.	0	0	10½
114. Treacle—2-lb. tins	per doz. tins	0	15	9
Vegetables—Dried—				
115. Peas, Green, "Dewcrisp" or equal	per lb.	0	7	9
116. Peas, Split (Yellow)	do.	0	0	8
Vegetables—Tinned—				
117. Baked Beans, 16-oz., "Kia Ora"	per doz.	0	19	3
118. Baked Beans, No. 10 cans, "Kia Ora"	do.	5	10	0
119. Beans, Green, 30-oz., "Raleigh"	do.	1	10	6
120. Beetroot, 30-oz., "Raleigh"	do.	1	4	0
121. Carrots, 30-oz., "Raleigh"	do.	1	4	0
122. Peas, 80-oz., "Biddy" Processed	do.	1	3	0
123. Peas, 30-oz., "Raleigh" Garden	do.	1	13	0
124. Sweetcorn, 16-oz., "Rosella"	do.	1	2	6

## Sub-schedule No. 5—continued.

GROCERIES—continued.		£	s.	d.
125. Tomatoes, 30-oz., "Cohn"	per doz.	1	6	0
Vermicelli—				
126. { 1-lb. packets, "Rinoldi"	do.	0	13	0
{ Bulk, 22-lb. cartons, "Rinoldi"	per ctn.	0	19	6
127. Vinegar—Malt, 1-gal. jars (Jars 15s., returnable)	per gal.	0	2	6

## Sub-schedule No. 6.

CEREALS.		£	s.	d.
1. Oatmeal	per cwt.	Purchase under Tender Board Quotations.		
2. Rice—Dressed	do.			
3. Pearl Barley	do.			
4. Peas—Split	do.			

## ANNEX TO CONTRACT No. 1954/287.

W. H. Johnsons Jams Pty. Ltd., 42 Meaden-street, South Melbourne, S.C.5.

## Sub-schedule No. 7.

JAMS.		£	s.	d.
Security, £20.				
Jams—				
1. Assorted, in bulk, of approved kinds, in the proportion of half seed and half actual net stone, of the best quality, in tins	per lb.	0	0	9
2. Assorted, in bulk, of approved kinds, in the proportion of half seed and half stone, of the best quality, in 24-oz. tins	per tin	0	1	7½
3. Marmalade, 24-oz. tins	do.	0	1	7
4. Assorted, 5-lb. tins, in the proportion of half seed and half stone of the best quality	do.	0	5	1

## ANNEX TO CONTRACT No. 1954/288.†

F. Watkins Pty. Ltd., 184 Bourke-street, Melbourne, C.1.

## Sub-schedule No. 8.

MEAT FOR MENTAL HOSPITAL, KEW.		£	s.	d.
Security, £35.				
Fresh Beef—				
1. Rolled Ribs, boneless	per cwt.	7	10	0
2. Steak, Stewing	per lb.	0	1	4
3. Topside	do.	0	1	8
4. Minced	do.	0	1	4
5. Corned Beef—Rolled or Round, as ordered, without bone or cartilage	do.	0	1	7
6. Fresh Mutton—(Whole Sheep), Kidney fat to be removed	do.	0	0	8
7. Fresh Mutton—Legs	do.	0	1	6
8. Chops—Fore-quarter	do.	0	0	10½
9. Saveloys	per doz.	0	2	11
10. Sausages—Mixed	per lb.	0	1	3
11. Sausage—Belgium	do.	0	1	10
12. Beef Loaf	do.	0	1	10
13. Ham Loaf	do.	0	3	0
14. Veal Loaf	do.	0	3	0
15. Tripe, Fresh	do.	0	0	6
16. Livers—Sheep	do.	0	0	11
17. Livers—Ox	do.	0	0	11
18. Brains—Sheep	per set	0	0	3½
19. Rabbits—Fresh (Fillets)	per lb.	0	2	0
20. Gravy Beef and Shin Beef—boneless	do.	0	1	4
21. Sausage Meat	do.	0	0	11
22. Kidneys—Sheep	do.	0	1	10
23. Kidneys—Pigs	do.	0	1	10

## ANNEX TO CONTRACT No. 1954/289.†

Jackson's United Meat Co. Pty. Ltd., 546 Racecourse-road, Newmarket.

## Sub-schedule No. 9.

MEAT FOR PENAL ESTABLISHMENT (PENTRIDGE), FEMALE PENITENTIARY, AND METROPOLITAN GAOL (COBURG).		£	s.	d.
Security, £35.				
Fresh Beef—				
1. Fore-quarters	per cwt.	4	11	8
2. Minced	do.	7	10	0
3. Corned Beef—Rolled or Round, as ordered, without bone or cartilage	do.	7	10	0
4. Fresh Mutton (whole sheep)	per lb.	0	0	8½
5. Sausages—Mixed	do.	0	1	2
6. Fresh Suet—Kidney	do.	0	0	6
7. Dripping—Beef	do.	0	0	10½
8. Sausage Meat	do.	0	0	11
9. Tripe—Fresh	do.	0	0	6½
10. Saveloys	do.	0	1	6

ANNEX TO CONTRACT No. 1954/290.†  
J. F. Clementson, 436 Toorak-road, Toorak.

## Sub-schedule No. 10.

MEAT FOR CHILDREN'S WELFARE DEPOT, ROYAL PARK, AND  
TRAVANCORE DEVELOPMENTAL CENTRE, FLEMINGTON.

	Security, £8.	£	s.	d.
1. Fresh Beef .. .. .	per cntl.	5	10	0
2. Fresh Mutton .. .. .	do.	2	18	4
Steak—				
3. Rump .. .. .	per lb.	0	2	6
4. Blade .. .. .	do.	0	1	9
5. Stewing .. .. .	do.	0	1	5
6. Beef—Corned Silverside .. .. .	do.	0	2	0
Fresh Mutton—				
7. Loin .. .. .	do.	0	1	0
8. Leg .. .. .	do.	0	1	0
9. Leg, Two Tooth .. .. .	do.	0	1	3
Chops—				
10. Middle Loin .. .. .	do.	0	1	0
11. Fore-quarter .. .. .	do.	0	0	10
12. Shanks—Sheep .. .. .	each	0	0	6
13. Sausages—Mixed .. .. .	per lb.	0	1	3
14. Tripe—Fresh .. .. .	do.	0	0	6
15. Livers—Sheep .. .. .	do.	0	1	0
16. Ox Tongue .. .. .	do.	0	1	0
17. Sausage—Strasbourg, Pork .. .. .	do.	0	2	6
18. Rabbits—Fresh .. .. .	do.	0	1	6
19. Frankfurts .. .. .	do.	0	1	9
20. Brains—Sheep .. .. .	per set	0	0	3½
Kidneys—				
21. Sheep .. .. .	per lb.	0	1	10
22. Ox .. .. .	do.	0	1	4

ANNEX TO CONTRACT No. 1954/291.†  
J. F. Clementson, 436 Toorak-road, Toorak.

## Sub-schedule No. 11.

MEAT FOR RECEIVING HOUSE AND MENTAL HOSPITAL, ROYAL PARK.

	Security, £10.	£	s.	d.
Fresh Beef—				
1. Stewing Steak .. .. .	per lb.	0	1	5
2. Thick Flank .. .. .	do.	0	2	0
3. Fresh Mutton (Sides), Kidney fat to be removed .. .. .	do.	0	0	7½
4. Corned Beef—Rolled or Round, as ordered, without bone or cartilage .. .. .	do.	0	1	9
Chops—				
5. Middle Loin .. .. .	do.	0	1	0
6. Fore-quarter .. .. .	do.	0	0	10
7. Sausages—Mixed .. .. .	do.	0	1	3
8. Livers—Calves .. .. .	do.	0	1	0
9. Kidneys—Ox .. .. .	do.	0	1	4
10. Tripe—Fresh .. .. .	do.	0	0	7½
11. Rabbits—Fresh .. .. .	do.	0	1	6
12. Fresh Suet—Kidney .. .. .	do.	0	0	5

## (AGREEMENT.)

Moran and Cato Pty. Ltd., 277 Brunswick-street, Fitzroy, N.6.

## Sub-schedule No. 12.

## SOAP MIXTURES.

(Of Commonwealth Manufacture.)

	£	s.	d.
1. Extract of "Kitchens" or equal "Stella" per cwt. 3 11 0			
Soap Powder, 80-lb. bags			
2. Household—Dry, "Pental" wrapped, cases per case 1 17 0			
of 3 dozen			
3. "Lux"—Large packets .. .. .	per doz.	0	14 3
"Rinso"—			
4. { Standard packets .. .. .	do.	0	17 9
{ Economy packets .. .. .	do.	1	12 9
"Persil"—			
5. { Large packets .. .. .	do.	0	17 4
{ Giant packets .. .. .	do.	1	5 0
6. Sandsoap—"Lectric" 12-oz. blocks .. .. .	do.	0	4 11
7. Toilet Soap—"Kitchens" or equal, "Doub-lays," 3½-oz. .. .. .	do.	0	4 1
"Velvet"—			
8. "Quads," standard .. .. .	do.	1	1 6
"Quints," economy .. .. .	do.	1	14 5

ANNEX TO CONTRACT No. 1954/292.  
Bushells Ltd., 452 Flinders-street, Melbourne.

## Sub-schedule No. 13.

## TEA.

	Security, £180.	£	s.	d.
1. Tea—First Grade—To sample .. .. .	per lb.	0	3	9½
†† Cartons—2 doz. 2-lb. tins. .. .. .	do.	0	3	9½
† Bag—150-lb. bag—50-lb. bag, £1. 6s. 10d. .. .. .	do.	0	3	9½
§§ Market rates, plus 1d. per lb. .. .. .	do.	0	3	9½

© Australian Dried Fruits Association rates.

\* Supplies not available.

¶ As supply of 20-oz. bottles is irregular, rate is shown on per lb. basis.

## ANNEX TO CONTRACT No. 1954/293.

Henry Berry and Co. (A'asia) Ltd., 568 Collins-street, Melbourne, C.1.

## Sub-schedule No. 14.

## COFFEE.

	Security, £70.	£	s.	d.
1. Coffee—Fresh roasted, and whole, beans to be thoroughly sound—To sample .. .. .	per lb.	0	6	8

## SCHEDULE No. 2.

## PROVISIONS—MONT PART, ETC.

(For delivery at the Mental Hospital, Mont Park, to Depots as required, the Repatriation Mental Hospital, Bundoora, Larundel Mental Hospital, Pleasant View Receiving House, Wood-street, Preston, Janefield Colony, and the Sanatorium, Gresswell.)

## ANNEX TO CONTRACT No. 1954/294.

E. J. Callander, 597 High-street, Preston, N.18.

## Sub-schedule No. 1.

## BREADSTUFFS.

	Security, £190.	£	s.	d.
Bread—				
1. Fine wheaten, first quality .. .. .	per cntl.	2	2	4
2. Raisin, first quality .. .. .	do.	3	15	0
3. Rolls .. .. .	per doz.	0	1	8

## (AGREEMENT.)

Henry Berry and Co. (A'asia) Ltd., 568 Collins-street, Melbourne, C.1.

## Sub-schedule No. 2.

## GROCERIES.

	£	s.	d.
1. Bacon—In sides .. .. .	per lb.	£	§§
Beans—			
2. Haricot .. .. .	do.	0	1 9
3. Butter .. .. .	do.	0	1 11
4. Blue—Washing—1oz. knobs "Reckitts" .. .. .	per doz.	0	2 3½
5. Biscuits—Coffee, Malt, Milk Arrowroot, or equal, as ordered. (Tins 4s. each) .. .. .	per lb.	0	1 8
6. Camp Pie—12-oz. tins .. .. .	per doz.	0	17 6
7. Candles (full weights)—Kitchen's "Electrics," or other make of equal quality in sets of 6 .. .. .	per set	0	2 5
8. Cereal—24-oz. packets, "Malties" .. .. .	per doz.	1	2 1
9. Cinnamon .. .. .	per lb.	0	1 6
10. Cocoa—1-lb. bags .. .. .	do.	0	3 4
11. Coconut—Desiccated "Ceylon" .. .. .	do.	0	1 9½
Coffee Essence—"Club" Brand—			
12. { 8-oz. bottles .. .. .	per bot.	0	2 0½
{ 1-gal. jars (Jars 3s. 6d.) .. .. .	per jar	1	7 6
13. Corn or Maize Flour—1-lb. packets, "Kream" .. .. .	per lb.	0	1 5½
14. Currants—1-crown (present season's) .. .. .	do.	0	1 5½
15. Curry Powder—"Atlas" .. .. .	do.	0	2 11
16. Custard Powder—1-lb. packets .. .. .	per doz.	0	18 0
17. Dates—Fresh, loose—case lots .. .. .	per lb.	0	1 4½
18. Essence of Vanille—in full 20-oz. bottles ¶ .. .. .	do.	0	10 0
19. Flour—Self-raising, "Cookwell" .. .. .	per bag	3	16 2½
Fruits—			
20. Dried (present season's) .. .. .	per lb.	0	10 6
21. Preserved, assorted, { Apricots, per doz. tins .. .. .	per doz.	1	10 6
{ Peaches, " " .. .. .	do.	1	10 0
{ Pears, " " .. .. .	do.	1	11 6
{ Pines, " " .. .. .	do.	1	17 2
22. Gelatine—Ground .. .. .	per lb.	0	6 3
23. Ginger—Ground .. .. .	do.	0	4 9
24. Golden Syrup—2-lb. tins .. .. .	†† per ctn.	1	12 0
Herrings—			
25. { 14-oz. tins, Fresh .. .. .	per doz.	1	5 0
{ in Tomato Sauce .. .. .	do.	1	5 6
26. Honey—First quality .. .. .	per lb.	0	10 6
27. Jelly Crystals—4-oz. packets "Invicta" .. .. .	per gross	4	9 0
28. Junket Tablets—"Berry's" .. .. .	per tube	0	1 1
29. Mixed Peel—cut .. .. .	per lb.	0	1 7
30. Macaroni—22-lb. boxes .. .. .	per box	1	0 0
31. Margarine—Cake, Pastry .. .. .	per lb.	0	1 5½
Meat—Beef Luncheon—			
32. { 12-oz. round tins .. .. .	per doz.	1	1 6
{ 12-oz. taper tins .. .. .	do.	1	11 0
Milk—Dried, Full Cream—			
33. { 12-oz. tins, 3 dozen, "Sunshine" .. .. .	per case	5	8 0
{ 3-lb. tins, 1 dozen, "Sunshine" .. .. .	do.	6	14 6
{ 12-oz. tins, 3 dozen, "Trufood" .. .. .	do.	5	2 0
{ 3-lb. tins, 1 dozen, "Trufood" .. .. .	do.	6	10 3
34. Mustard—"Colonial" .. .. .	per lb.	0	4 9
35. Nutmeg—Ground .. .. .	do.	0	3 10½
Pepper			
36. { White, ground .. .. .	do.	0	10 6
{ Black, ground .. .. .	do.	0	9 6

## Sub-schedule No. 2—continued.

GROCERIES—continued.		£	s.	d.
37. Pickles—Assorted, 20-oz. bottles	per doz.	1	2	0
38. { Prunes—Dried, 60-70's	per lb.	0	2	4½
{ In case lots of 7lb. tins 70-80's	do.	0	2	1½
39. Raisins, Seeded { Bulk	per lb.	0	1	6½
{ 1lb. packets	per doz. pkts.	1	1	9
40. { Sultanas, 3-crown	per lb.	0	1	6½
{ (present season's) 2-crown	do.	0	1	6
41. Rice—Ground, 1-lb. packets	do.	0	0	10
42. Salmon—Fresh, 14½-oz. tins, tall, fancy pink	per tin	*		
43. Salt—Fine (Bag, approx. 1 cwt.)	per bag	0	16	1
Sauce—Tomato—				
44. { 26-oz. bottles, "Victoree" (Cartons 2s.)	per doz.	1	16	0
{ 1-gal. jars (Jars 3s. 6d.)	per gal.	0	14	6
Soda—				
45. Bicarbonate of	per lb.	0	0	6
46. Washing	per cwt.	1	15	0
47. Spice—Mixed, loose	per lb.	0	2	9
Starch—				
48. { Powdered, 14-oz. packets, "Aome" 40's	per case	2	7	10
{ Coral Rice, 14-oz. packets	per doz.	0	17	6
Sugar—				
49. Castor	per cwt.	4	2	6
50. Icing	do.	4	2	6
51. Tartar—Cream of—Substitute, Sodium	per lb.	0	2	3
Phosphate, "Antelope"				
52. Treacle—2-lb. tins	per ctn.	1	11	2½
Vermicelli—				
53. { 16-oz. packets	per doz.	0	13	0
{ 22-lb. cartons	per ctn.	1	0	0
Vinegar—Malt—				
54. { gallon jars (Jars 3s. 6d.)	per gall.	0	2	7
{ 9-gallon kegs (Kegs 60s.)	do.	0	2	5½

## ANNEX TO CONTRACT No. 1954/295.

W. H. Johnsons James Pty. Ltd., 42 Meaden-street, South Melbourne, S.C.5.

## Sub-schedule No. 3.

JAMS.		£	s.	d.
Security, £23.				
1. Assorted, in bulk, of approved kinds, in the proportion of half seed and half actual net stone, of the best quality, in tins	per lb.	0	0	9
2. Assorted, in 5-lb. tins, in the proportion of half seed and half stone, of the best quality	per tin	0	5	1
3. Marmalade, 5-lb. tins	do.	0	4	11

## ANNEX TO CONTRACT No. 1954/296.†

W. Angliss and Co. (Aust.) Pty. Ltd., 42 Bourke-street, Melbourne

## Sub-schedule No. 4.

MEAT.		£	s.	d.
(For Mont Park Mental Hospital, &c.)				
Security, £50.				
Fresh Beef—				
1. Buttocks	per cwt.	5	19	9½
2. Roast	do.	6	13	4
3. Rolled Ribs, Boneless	do.	7	10	0
Beef Corned—				
4. Rolled or Round, as ordered, without bone or cartilage	do.	7	10	0
5. Silverside (Gresswell Sanatorium)	do.	10	0	0
Mutton—Fresh—				
6. Kidney fat to be removed	do.	3	2	6
7. Legs	per lb.	0	1	0
8. Fore-quarter	do.	0	0	4
Chops—				
9. Fore-quarter	do.	0	0	9½
10. Loin	do.	0	1	2
Steak—				
11. Thick Flank	do.	0	1	9
12. Rump	do.	0	2	9
13. Minced	do.	0	1	6
14. Sausage Meat	do.	0	1	1
15. Sausages—Mixed	do.	0	1	3
16. Shanks—Sheep	each	0	0	4
17. Tripe—Fresh	per lb.	0	0	6
18. Brains—Sheep	per set	0	0	3½
19. Kidneys—Ox	per lb.	0	1	4
20. Livers—Sheep	do.	0	0	11
21. Livers—Calves	do.	0	1	0
22. Sausage—Strasbourg, Pork	do.	0	2	6
23. Rabbits—Fresh	do.	0	1	8
24. Saveloys	per doz.	0	3	0
25. Tongues—Ox	per lb.	0	1	0½
26. Ham Loaf	do.	0	2	7
27. Fillet Veal	do.	0	2	0
28. Pressed Veal and Pork Loaf	do.	0	2	6
29. Pressed Shoulder Ham	do.	0	6	0
30. Potted Meat	do.	0	1	0
31. Fowls—First Quality	do.	0	2	6

\* Supplies not available.

‡ Carton 2 dozen 2-lb. tins.

¶ Market rates plus 3d. per dozen.

§ 25-lb. bags, 13s. 9d.

## ANNEX TO CONTRACT No. 1954/297.†

W. Angliss and Co. (Aust.) Pty. Ltd., 42 Bourke-street, Melbourne.

## Sub-schedule No. 5.

## MEAT.

(For Pleasant View Receiving House, Wood-street, Preston.

Security, £5.		£	s.	d.
1. Fresh Beef—Roast, Boneless		per lb.	0	1 4
2. Corned Beef—Silverside		do.	0	2 3
3. Fresh Mutton—Legs		do.	0	1 0
Steak—				
4. Bladebone	do.	0	1	6
5. Minced	do.	0	1	0
Chops—				
6. Loin, Lamb	do.	0	2	3
7. Fore-quarter, Mutton	do.	0	0	10
8. Livers—Lambs	do.	0	1	9
9. Sausages, Pork	do.	0	1	3
10. Dripping—Beef	do.	0	0	11½
Kidneys—				
11. Ox	do.	0	1	4
12. Sheep	per doz.	0	2	6
13. Brains—Sheep	per set	0	0	3½
14. Frankfurts	per doz.	0	3	6

## SCHEDULE No. 3.

## PROVISIONS FOR S.S. RIP AND DREDGES.

## ANNEX TO CONTRACT No. 1954/298.

Capitol Bakeries Pty. Ltd., 251 Toorak-road, Toorak.

## Sub-schedule No. 1.

## BREAD.

Security, £5.		£	s.	d.
1. Bread—Fine wheaten, first quality	per cwt.	1	17	6

## (AGREEMENT.)

Moran and Cato Pty. Ltd., 277 Brunswick-street, Fitzroy, N.6

## Sub-schedule No. 2.

GROCERIES.		£	s.	d.
1. Bacon Rashers—Middle		per lb.	0	5 7
Beans—				
2. Butter	do.	0	1	4
3. Haricot	do.	0	1	6½
Biscuits—				
4. Coffee, Marie, Malt (Tins 4s. each)	do.	0	1	7½
5. Dry (Tins 4s. each)	do.	0	1	7½
Gravox—				
6. { 4-oz. packets	per doz.	0	5	9
{ 8-oz. packets	do.	0	11	4
7. Chutney—13-oz. bottles "Rosella"	do.	1	2	3
8. Cocoa—1-lb. tins or cartons, "Bournville"	do.	2	12	0
9. Coconut—Desiccated	per lb.	0	1	11
10. Coffee—Fresh Roasted and Ground	do.	0	8	0
11. Corn or Maize Flour—1-lb. packets "Medal-lion"	per doz.	0	15	3
11A Corn or Maize Flour—Loose	per lb.	0	0	8½
12. Currants—1-crown (present season's)	do.	0	1	5
13. Custard Powder—1-lb. packets, "Rono"	per doz.	0	18	6
14. Dates	per lb.	0	1	4½
15. Eggs—New Laid	per doz.			
Essence—				
16. Vanilla, 16-oz. bottles, "Summagold"	per bot.	0	6	2
17. Cochineal, Substitute—Red Colouring, 4-oz. bottles, "Summagold"	do.	0	1	3
Fish—				
18. { Herrings, 14-oz. tins, Fresh, "Tyne"	per doz.	1	3	6
{ Herrings in Tomato Sauce, "Tyne"	do.	1	4	0
19. Salmon, Fresh, 16-oz. tins, "King Sound"	do.	2	1	6
20. Sardines, ½-tins, "Norwegian Pack"	do.	0	13	6
Flour—				
21. First quality	per lb.	0	0	5
22. Self-raising, 50-lb. bag, "M & C"	per bag	1	6	9
Fruits—Preserved—30-oz. tins—				
{ Pears	per doz.	1	10	0
{ Peaches	do.	1	10	0
{ Apricots	do.	1	10	0
24. Pines	do.	1	16	0
Gelatine—Ground				
25. { 8-oz. packets	do.	1	17	6
{ 16-oz. packets	do.	3	13	0
26. Golden Syrup—2-lb. tins	do.	0	16	0
27. Honey—24-oz. jars, "Blue Ribbon"	do.	1	9	9
28. Jams—Assorted kinds, 24-oz. tins, half seed, half stone	do.	1	6	0
29. Jelly Crystals—4-oz. packets, "Clipper" or "Sparkling"	do.	0	6	3
30. Mixed Peel—Cut	per lb.	0	1	5½
31. Macaroni—22-lb. cartons	per ctn.	0	19	6
32. Margarine—Cooking Quality	per lb.	0	1	6½

## Sub-schedule No. 2—continued.

GROCERIES—continued.		£	s.	d.
Meat—Preserved—				
33.	Camp Pie, 12-oz., "Imperial" .. per doz.	0	17	3
	Sausages and Vegetables, 16-oz., do.	1	2	3
	"Rosella" .. .. .			
	Irish Stew, 16-oz., "Tom Piper" .. do.	1	5	0
	Steak and Kidney Pudding, 16-oz., "Tom Piper" .. do.	1	3	3
Milk—				
34.	Dried, Full Cream, 12-oz. tins, "Sun-shine" .. do.	1	15	6
35.	Condensed, Full Cream, 14-oz. tins .. do.	1	0	0
36.	Mustard—Loose, "McKenzies" .. per lb.	0	4	9
37.	Nutmeg—Whole .. .. .	0	5	0
38.	Oatmeal—Flaked .. .. .	per cwt.	10	0
39.	Pearl Barley .. .. .	per lb.	0	0 6½
40.	Peas—Split .. .. .	per cwt.	10	0
41.	Pepper—White, ground .. .. .	per lb.	0	10 6
42.	Pickles—Mustard, 20-oz. bottles .. per doz.	1	1	6
43.	Prunes—Dried (present season's), 50/60 .. per lb.	0	2	6½
Raisins—				
44.	Seeded (present season's), "M & C" or "Summagold", 1-lb. packets .. per doz.	1	1	3
45.	Sultana, 2-crown (present season's) .. per lb.	0	1	5½
46.	Rice—Dressed .. .. .	do.	0	0 9½
47.	Salt—Fine .. .. .	per cwt.	0	15 9
Sauce—				
48.	Mustard, 8-oz. bottles, "Holbrooks" .. per doz.	1	0	0
49.	Tomato, 26-oz. bottles, "Raleigh" .. do.	1	15	0
50.	Worcestershire, 10-oz. bottles, "Hardings" .. do.	0	17	0
51.	Soda—Bi-carbonate of .. .. .	per lb.	0	0 6
52.	Spice—Mixed, 1-oz. packets, "Parsons" .. per doz.	0	5	0
Sugar—				
53.	Brown, 160-lb. bags .. .. .	per lb.	0	0 8
	White, 70-lb. bags .. .. .	per bag	2	7 4
54.	Castor .. .. .	per lb.	0	0 8½
55.	Icing .. .. .	do.	0	0 9½
56.	Vinegar—Malt, 26-oz., "Blue Ribbon" .. per doz.	0	13	6
57.	Yolkine—4-oz. bottles (yellow colouring) .. do.	0	15	0

## ANNEX TO CONTRACT No. 1954/299.†

Jackson's United Meat Co. Pty. Ltd., 546 Racecourse-road, Newmarket.

## Sub-schedule No. 3.

MEAT.		£	s.	d.
(Delivery at River Yarra Wharfs.)				
Security, £5.				
1.	Fresh Beef—Roast .. .. .	per lb.	0	1 6
Beef—Corned—				
2.	Silverside .. .. .	do.	0	2 0
3.	Rolled .. .. .	do.	0	1 6
Fresh Mutton—				
4.	Fore-quarter .. .. .	do.	0	0 4
5.	Legs .. .. .	do.	0	1 3
Chops—				
6.	Fore-quarter .. .. .	do.	0	0 11
7.	Loin .. .. .	do.	0	1 4
Steak—				
8.	Rump .. .. .	do.	0	3 3
9.	Stewing .. .. .	do.	0	1 8
10.	Topside .. .. .	do.	0	2 0
11.	Sausages—Mixed .. .. .	do.	0	1 3
12.	Tripe—Fresh .. .. .	do.	0	0 7½
13.	Livers—Sheep .. .. .	do.	0	0 11
14.	Suet—Kidney .. .. .	do.	0	0 6
15.	Rabbits—Fresh .. .. .	do.	0	1 6
16.	Ice .. .. .	per cwt.	0	3 3

## Sub-schedule No. 4.

VEGETABLES.		Purchase
1.	Onions .. .. .	by agreement
2.	Other vegetables, including beetroot, cauliflowers, carrots, cabbages, turnips, parsnips, rhubarb, swedes, and pumpkin, as required .. .. .	

## SCHEDULE No. 4.

## PROVISIONS—TEACHERS' COLLEGE, HOSTELS, POLICE HOSPITAL, ETC.

(Delivery at Institutions.)

TEACHERS' COLLEGE AND HOSTELS AT GRATTAN-STREET, 93 DRUMMOND-STREET, AND 90 VICTORIA-STREET, CARLTON; 481 ST. KILDA-ROAD, MELBOURNE; 1 WALSH-STREET, SOUTH YARRA; AND FRANK TATE HOUSE, 373 DANDENONG-ROAD, ARMADALE; HENRY WATSON HOUSE, 260 DOMAIN-ROAD, SOUTH YARRA; STONNINGTON, 336 GLENFERRIE-ROAD, MALVERN; AND POLICE HOSPITAL, ST. KILDA-ROAD, MELBOURNE.

## GROCERIES.

Order under Melbourne District, Schedule No. 1,  
Sub-schedule No. 5.

\* Supplies not available.

## ANNEX TO CONTRACT No. 1954/300.†

J. F. Clementson, 436 Toorak-road, Toorak.

## Sub-schedule No. 2.

## MEAT.

Security, £15.		£	s.	d.
Fresh Beef—				
1.	Rolled Prime Ribs, boneless .. .. .	per lb.	0	1 9
2.	Topside .. .. .	do.	0	2 0
3.	Sirloin, boneless .. .. .	do.	0	2 0
Fresh Mutton—				
4.	Sides .. .. .	do.	0	0 7
5.	Legs .. .. .	do.	0	1 0
6.	Legs, pickled .. .. .	do.	0	1 0
7.	Sides, Two-tooth .. .. .	do.	0	1 0
8.	Legs, Two-tooth .. .. .	do.	0	1 3
9.	Loin .. .. .	do.	0	1 3
10.	Cutlets .. .. .	do.	0	1 6
11.	Chops, Middle Loin .. .. .	do.	0	1 0
12.	Chops, Fore-quarter .. .. .	do.	0	0 10
13.	Chops, Chump .. .. .	do.	0	1 0
14.	Beef—Corned, Silverside .. .. .	do.	0	2 0
Veal—				
15.	Shoulder, boned .. .. .	do.	0	1 4
16.	Fillet, boneless .. .. .	do.	0	2 0
Steak—				
17.	Blade .. .. .	do.	0	1 9
18.	Minced .. .. .	do.	0	1 4
19.	Stewing .. .. .	do.	0	1 5
20.	Rump .. .. .	do.	0	2 6
21.	Minced Steak .. .. .	do.	0	1 4
22.	Sausages—Mixed .. .. .	do.	0	1 3
Sausage—				
23.	Meat .. .. .	do.	0	0 10
24.	Beef, German .. .. .	do.	0	2 0
25.	Strasbourg .. .. .	do.	0	2 6
26.	Livers—Sheep .. .. .	do.	0	1 0
Kidneys—				
27.	Sheep .. .. .	do.	0	1 10
28.	Ox .. .. .	do.	0	1 4
29.	Tongues—Ox .. .. .	do.	0	1 0
30.	Ox Tails .. .. .	do.	0	0 10½
31.	Pigs Cheek .. .. .	do.	0	0 6
Brains—				
32.	Sheep .. .. .	do.	0	1 6
33.	Calves .. .. .	do.	0	2 0
34.	Tripe—Fresh .. .. .	do.	0	0 6
35.	Frankfurts .. .. .	do.	0	1 9
36.	Black Puddings .. .. .	do.	0	1 6
37.	Bones—Soup .. .. .	do.	0	0 1
38.	Suet—Kidney .. .. .	do.	0	0 5
39.	Rabbits—Fresh .. .. .	do.	0	1 6
40.	Fowls—First quality .. .. .	do.	0	5 0

## SCHEDULE No. 5.

## PROVISIONS—SANATORIUM, GREEN-VALE.

(Delivery at the Sanatorium.)

ANNEX TO CONTRACT No. 1954/301.

J. N. Hennessy Pty. Ltd., 55 Sydney-road, Brunswick.

## Sub-schedule No. 1.

## BREADSTUFFS.

Security, £7.		£	s.	d.
1.	Bread—Fine wheaten, first quality .. per cwt.	1	19	11
2.	Flour—First quality .. .. .	do.		§§

§§ Order under Melbourne District.

## (AGREEMENT.)

Henry Berry and Co. (A'asia) Ltd., 568 Collins-street, Melbourne

## Sub-schedule No. 2.

GROCERIES.		£	s.	d.
Beetroot—30-oz. tins—				
1.	"Victoree" .. .. .	per doz.	1	0 3
	"Heinz" .. .. .	do.	1	10 6
Biscuits—				
2.	Malt, Milk Arrowroot, Coffee .. per lb.	0	1	8
	Dry (Tins 4s.) .. .. .			
	as ordered, in approximately 7-lb. tins			
3.	Blue—Washing, 1-oz. knobs "Reckitts"††† per doz.	0	2	3
4.	Borax .. .. .	per lb.	0	0 7½
5.	Camp Pie—12-oz. tins .. .. .	per doz.	0	17 6
6.	Cereal—"Weeties," in 24-oz. packets .. do.	1	2	1
7.	Cheese—Semi-matured, 10-lb. loaves .. per lb.	*		
8.	Cocoa—1-lb. bags .. .. .	do.	0	3 4
9.	Coconut—Desiccated, Ceylon .. .. .	do.	0	1 9½
Corn or Maize Flour—				
10.	1-lb. packets .. .. .	do.	0	1 5½
11.	Loose .. .. .	do.	0	0 8½

††† 1-oz. knobs in calico, 3s. 5d. per doz.

## Sub-schedule No. 2—continued.

## GROCERIES—continued.

£ s. d.

12. Curry Powder—"Atlas" .. ..	per lb.	0 2 11
Currants—		
{ 1-crown .. ..	do.	0 1 5½
{ 2-crown (present season's) ..	do.	0 1 5½
14. Custard Powder—1-lb. packets, "Dainty Maid" .. ..	per doz.	0 18 0
15. Dates—case lots .. ..	per lb.††	0 1 4
Essence—		
16. Lemon—18-oz. bottles .. ..	do.	0 12 6
17. Vanille—20-oz. bottles .. ..	do.	0 10 0
18. Parisian (Jar 3s. 6d.) .. ..	per gal.	0 19 0
Fish—		
19. Sardines, 4-oz. tins, double layer ..	per doz.	0 14 6
20. Herrings in Sauce, 14-oz. tins ..	do.	1 5 6
Flour—Self-raising—"Cookwell"—		
{ 150-lb. bag .. ..	per bag	3 16 2
{ 50-lb. bag .. ..	do.	1 6 10
Fruits—Dried (present season's)—		
22. Apples and peaches .. ..	per lb.	¶
23. Preserved—30-oz. tins {	per doz.	1 10 6
Apricots .. ..	do.	1 10 0
Peaches .. ..	do.	1 11 6
Pears .. ..	do.	1 17 2
Pines .. ..	do.	0 6 3
24. Gelatine—Powdered .. ..	per lb.	0 4 9
25. Ginger—Ground .. ..	per ctn.	1 12 0
26. Golden Syrup—2-lb. tins§§ ..	per lb.	*
27. Honey—First quality .. ..	per doz.	§
28. Jams—Assorted, 24-oz. tins, "M.P." ..	per doz.	§
Jelly Crystals—		
29. { 7-lb. packets .. ..	per pkt.	0 16 6
{ 4-oz. packets, in 2 dozen cartons ..	per gross	4 9 0
30. Junket Tablets "Berry's" .. ..	per doz.	0 13 0
tubes		
31. Mixed Peel—Cut .. ..	per lb.	0 1 7
32. Macaroni—22-lb. cartons .. ..	per ctn.	1 0 0
33. Mustard—"Colonial" .. ..	per lb.	0 4 9
34. Nutmeg—Ground .. ..	do.	0 3 10½
35. Oatmeal—Flaked .. ..	per cwt.	3 7 0
36. Spice—Loose .. ..	per lb.	0 2 9
37. Pepper—Ground, White (Black, 9s. 6d.) ..	do.	0 10 6
38. Pickles—Assorted, 20-oz. bottles ..	per doz.	1 2 0
Prunes (cases of six 7-lb. tins)—		
39. { 60-70's .. ..	per lb.	0 2 4½
{ 70-80's .. ..	do.	0 2 1½
40. Raisins—4-crown (present season's) lexias ..	do.	0 1 2½
Raisins—		
41. Sultana { 3-crown } (present season's) ..	do.	0 1 6½
{ 2-crown } .. ..	do.	0 1 6
42. Seeded { Bulk .. ..	do.	0 1 6½
{ 1-lb. packets .. ..	per doz.	1 1 9
43. Rice—Dressed .. ..	per cwt.	4 10 0
44. Salmon—Fresh, 1-lb. tins .. ..	per tin	*
45. Salt—Fine (Bags approx. 1 cwt.) ..	per bag	0 16 1
Sauce—		
{ Worcestershire, 10-oz. bottles, "Hard-ings" ..	per doz.	0 17 9
46. { Worcestershire, 10-oz. bottles, "New-man's" ..	do.	0 15 9
{ Tomato, 26-oz. bottles, "Victoree" ..	do.	1 16 0
47. { (cartons 2s.) .. ..	do.	1 16 0
{ Tomato, gallon jars (Jars 3s. 6d.) ..	per jar	0 14 6
Soda—		
48. Bicarbonate of .. ..	per lb.	0 0 6
49. Washing .. ..	per cwt.	1 15 0
50. Spaghetti—22-lb. cartons .. ..	per ctn.	1 0 0
51. Starch—Powdered, 14-oz. packets, "Acme" ..	per ctn.	2 7 10
40's (Coral Rice, 17s. 6d. per doz.)		
52. Sugar—Castor .. ..	per cwt.	4 2 6
Tapioca—		
53. Pearl .. ..	per lb.	0 1 0½
54. Seed (Sago) .. ..	do.	0 0 11½
55. Tartar—Cream of—Substitute, "Antelope" ..	do.	0 2 3
56. Tomatoes—Preserved, 30-oz. tins "M.O.N." ..	per doz.	1 6 0
57. Tomato Soup—16-oz. tins .. ..	do.	0 17 6
58. Treacle—2-lb. tins (24 tins in box) ..	per box	1 11 2
59. Vermicelli—22-lb. cartons .. ..	per ctn.	1 0 0
Vinegar—Malt—		
60. { 9-gallon kegs (Kegs 60s.) .. ..	per gal.	0 2 5½
{ 1-gallon jars (Jars 3s. 6d.) .. ..	do.	0 2 7
Powdered Milk, Full Cream, "Sunshine"—		
61. { 12-oz. tins** .. ..	per case	5 8 0
{ 3-lb. tins** .. ..	do.	6 14 6

\* Supplies not available.    §§ Cartons—2 doz. 2-lb. tins.    § Assorted, £1 5s.; apricot, £1 4s. 9d.; melon, £1 2s. 3d.; marmalade, £1 4s. 6d.; blackberry, £1 12s.; peach, £1 4s. 9d.; plum, £1 2s. 6d.; quince, £1 2s. 6d.; raspberry, £1 12s. 6d.; and rasplum, £1 5s.    ¶ As supply of 18-oz. and 20-oz. bottles is irregular, rate is shown on per lb. basis.

¶ Australian Dried Fruits Association rates.

\*\* 12-oz. tins, 3 dozen per case, and 3-lb. tins, 1 dozen per case.

†† Lots under 1 case 1s. 4½d. per lb.

## ANNEX TO CONTRACT No. 1954/302.†

Jackson's United Meat Co. Pty. Ltd., 546 Racecourse-road, Newmarket.

## Sub-schedule No. 3.

MEAT (cuts as ordered).

	Security, £7.	£ s. d.
Beef—		
1. Fresh, Roast .. ..	per lb.	0 1 6
2. Fresh, Rump .. ..	do.	0 2 0
3. Corned, Silverside .. ..	do.	0 2 0
4. Lamb—Legs .. ..	do.	0 2 6
5. Cutlets—Veal .. ..	do.	0 3 0
Chops—		
6. Middle Loin .. ..	do.	0 1 6
7. Leg .. ..	do.	0 1 9
Steak—		
8. Minced .. ..	do.	0 1 6
9. Thick Flank .. ..	do.	0 1 10
10. Tripe—Fresh .. ..	do.	0 0 7
11. Pork, Fresh—Sides .. ..	do.	0 3 1
12. Tongues—Ox .. ..	do.	0 1 0½
13. Sausage Meat .. ..	do.	0 0 11
14. Sausages—Pork .. ..	do.	0 1 3
15. Sausage—Strasbourg, Pork .. ..	do.	0 2 8
16. Kidneys—Ox .. ..	do.	0 1 4
17. Brains—Sheep .. ..	per set	0 0 6½
18. Fowls—First quality .. ..	per lb.	0 4 6

## SCHEDULE No. 6.

## PROVISIONS—HEATHERTON SANATORIUM, CHELTENHAM.

(Delivery at the Sanatorium.)

ANNEX TO CONTRACT No. 1954/303.

Capitol Bakeries Pty. Ltd., 257 Toorak-road, South Yarra.

## Sub-schedule No. 1.

## BREAD.

	Security, £15.	£ s. d.
1. Bread—Fine wheaten, first quality ..	per cntl.	1 13 4

## (AGREEMENT.)

Moran and Cato Pty. Ltd., 277 Brunswick-street, Fitzroy, N.6.

## Sub-schedule No. 2.

## GROCERIES.

£ s. d.

1. Bacon—Sides .. ..	per lb.	0 4 8
2. Biscuits—Coffee, Malt, Milk Arrowroot, as ordered, "Sunshine" ..	do.	0 1 7½
3. Cereal—Malties (or equal thereto) 24-oz. packet, "Pipers" ..	per pkt.	0 1 9½
Cocoa—		
4. { "Bournville" .. ..	per lb.	0 4 4
{ Loose .. ..	do.	0 3 4
Corn or Maize Flour—		
5. { Loose .. ..	do.	0 0 8½
{ "Medallion" 1-lb. packets .. ..	do.	0 1 3½
6. Custard Powder—1-lb. packets, "Rono" ..	do.	0 1 6½
7. Essence of Vanilla—16-oz. bottles, "Sum-magold" ..	per bot.	0 6 2
Flour—		
8. { Self-raising—50-lb. bag .. ..	per bag	1 6 9
{ Self-raising—25-lb. bag .. ..	do.	0 13 9
9. Fruit—Preserved—30-oz. tins (excluding pines) ..	per tin	0 2 6
Herrings—		
10. { Fresh .. ..	per doz.	1 3 6
{ In Tomato Sauce, 14-oz. tins .. ..	tins	1 4 0
11. Honey—First quality, 60-lb. tins ..	per lb.	0 1 0½
Jams—		
12. Assorted, 5-lb. tins, in the proportion of half seed and half stone, of the best quality, "M.P." ..	per tin	0 7 3
13. Marmalade, 5-lb. tins, "M.P." ..	do.	0 6 1½
14. Jelly Crystals—4-oz. packets, "Clipper" or "Sparkling" ..	per doz.	0 6 3
15. Junket Tablets—"Merry Widow," flav. ..	per tube	0 1 2
16. Macaroni—1-lb. packets, "Rinoldi" ..	per lb.	0 1 0
17. Mustard .. ..	do.	0 4 9
18. Peas—Dehydrated, 22-lb. tins ..	do.	0 7 9
19. Pepper—White, ground .. ..	do.	0 10 6
20. Pickles—Assorted, 20-oz. bottles ..	per doz.	1 1 6

**Sub-schedule No. 2—continued.**

GROCERIES—continued.		£	s.	d.
21. Prunes—Dried, 50-60's (present season's)	per lb.	0	2	6½
22. Raisins—Sultana, 2-crown (present season's)	do.	0	1	5½
23. Salmon—Fresh, 16-oz. tins, tall, Australian	per tin	0	3	5½
24. Salt—Fine	per cwt.	0	15	9
25. Sauce—Tomato, 26-oz. bottles, "Raleigh"	per doz.	1	15	0
Soda—				
26. Bicarbonate of	per lb.	0	0	6
27. Washing	per cwt.	1	17	6
28. Spice—Mixed, 1-oz. packets, "Parsons"	per doz.	0	5	0
Starch—				
29. { "Silver Star" 12-oz. packets	per pkt.	0	1	4
Loose	per lb.	0	0	8½
30. Vinegar—Malt	per gal.	0	2	6

**ANNEX TO CONTRACT No. 1954/304.†**

W. Angliss and Co. (Aust.), Pty. Ltd., 42 Bourke-street, Melbourne, C.1.

**Sub-schedule No. 3.**

MEAT.		£	s.	d.
Security, £5.				
Beef—				
1. Fresh, Roast	per lb.	0	1	0
2. Corned, Silverside	do.	0	2	9
3. Mutton—Fresh	do.	0	0	4½
Chops—				
4. Fore-quarter	do.	0	0	10
5. Middle Loin	do.	0	1	3
6. Veal—Leg	do.	0	0	9
7. Pork—Fresh, Loin	do.	0	2	0
Steak—				
8. Rump	do.	0	2	10
9. Blade Bone	do.	0	2	3
10. Minced	do.	0	1	6
11. Topside	do.	0	1	9
12. Tripe—Fresh	do.	0	0	6
13. Sausages—Mixed	do.	0	1	0
14. Kidneys—Ox	do.	0	1	4
15. Tails—Ox	do.	0	0	10½
16. Brains—Sheep	per set	0	0	3½
17. Ham Loaf	per lb.	0	2	7
18. Fowls—First quality	do.	0	2	0

**ANNEX TO CONTRACT No. 1954/305.**

Moule's Model Dairy, Station-street, Cheltenham.

**Sub-schedule No. 4.**

MILK.		£	s.	d.
Security, £20.				
1. Milk—Fresh and pure	per gal.	0	4	5½

**SCHEDULE No. 7.****PROVISIONS—ARARAT DISTRICT.**

(Delivery into Institutions.)

**ANNEX TO CONTRACT No. 1954/306.**

M. L. and R. M. Bates, 52 Vincent-street, Ararat.

**Sub-schedule No. 1.**

BREADSTUFFS.		£	s.	d.
Security, £75.				
1. Bread—Fine wheaten, first quality	per cntl.	2	13	9
2. Flour—First quality	do.	1	15	2½

(AGREEMENT.)

McKay MacLeod Pty. Ltd., 122 Lydiard-street, Ballarat.

**Sub-schedule No. 2.**

GROCERIES.		£	s.	d.
1. Blue—Washing (Reek Square)	per gross	1	7	2½
2. Candles—(full weights) Kitchen's "Electrines," or other make of equal quality, to be supplied in 1-lb. packets	per lb.	0	2	2½
3. Cocoa—50-lb. bags	do.	0	3	6
4. Corn Flour—packets of 1 lb. net "Kream"	do.	0	1	6½
5. Curry Powder, loose	do.	0	4	0½
6. Custard Powder—Bulk	do.	0	1	2
Golden Syrup—				
7. { 70-lb. tins or drums†	each	2	11	5
{ 2-lb. tins	per doz.	0	18	1
8. Jelly Crystals—"Gold Seal"	do.	0	7	4
9. Milk—Powdered, "Sunshine," 3-lb. tins	do.	6	9	10½
10. Mustard—Loose	per lb.	0	4	3½
11. Peas—Blue, boiling	per bush.	2	4	6
12. Pepper—Black, ground	per lb.	0	10	6½

† Charge for drums if not returned.

**Sub-schedule No. 2—continued.**

GROCERIES—continued.		£	s.	d.
Raisins—Sultanas (present season's)—				
13. { Plain	per lb.	0	1	5½
{ 1-crown	do.	0	1	6
{ 2-crown	do.	0	1	6½
{ 3-crown	do.	0	1	6½
{ 4-crown	do.	0	1	6½
14. Salt—Fine, Imperial	per cwt.	1	2	4
15. Sauce—Tomato, 1-gallon jars (Jars 3s.)	per gal.	0	15	4½
Soda—				
16. Bicarbonate of	per lb.	0	0	6½
17. Washing	per cwt.	1	18	7½
18. Starch (Rice)—"Silver Star," 12-oz. packets	per doz.	0	17	8½
19. Tartar—Cream of, Substitute, "Antelope"	per lb.	0	2	4

(AGREEMENT.)

McKay MacLeod Pty. Ltd., 122 Lydiard-street, Ballarat.

**Sub-schedule No. 3.**

JAMS.		£	s.	d.
1. Jams—Assorted, in bulk, of approved kinds, in the proportion of half seed and half actual net stone, of the best quality, in tins, as weight required, "J. MacLeod and Co. Pty. Ltd."	per lb.	0	1	0½

**ANNEX TO CONTRACT No. 1954/307.†**

H. A. Morris, 107 Victoria-street, Ballarat.

**Sub-schedule No. 4.**

MEAT.		£	s.	d.
Security, £30.				
Fresh Beef—				
1. Fore-quarters	per cntl.	8	6	8
2. Buttocks	do.	8	6	8
3. Fresh Mutton (Kidney Fat removed)	do.	5	16	8
4. Corned Beef—Rolled or round, as ordered, without bone or cartilage	do.	8	6	8
5. Sausages—Mixed (summer months)	per lb.	0	1	6
6. Sausage—Beef German (summer months)	do.	0	2	0
7. Saveloys (winter months)	per doz.	0	3	0

**SCHEDULE No. 8.****PROVISIONS—BALLARAT DISTRICT.**

(Delivery into Institutions.)

**ANNEX TO CONTRACT No. 1954/308.**

Brogden Bros., Lal Lal-street, Ballarat.

**Sub-schedule No. 1.**

BREADSTUFFS.		£	s.	d.
Security, £100.				
1. Bread—Fine wheaten, first quality	per cntl.	1	14	10½
2. Flour—First quality	do.	1	11	9½

(AGREEMENT.)

McKay MacLeod Pty. Ltd., 122 Lydiard-street, Ballarat.

**Sub-schedule No. 2.**

GROCERIES.		£	s.	d.
Bacon—				
1. { Sides	per lb.	0	4	3
{ Rashers, Middle	do.	0	5	3
2. Barley—Pearl	do.	0	0	6½
Beans—				
3. Butter	do.	0	1	4
4. Haricot	do.	0	1	2
5. Lima	do.	0	2	4½
Biscuits—				
6. Dry	do.	0	1	9½
7. Coffee, Malt, Arrowroot	do.	0	1	6½
Blue—				
8. 1-oz. knobs, paper, "Reckitts," (calico knobs	per gross	1	6	9½
£1 19s. 4½d.)				
9. 8-lb. packets, "Reckitts," square	do.	1	6	9½
10. Borax	per lb.	0	0	7½
11. Cake Containers—paper, "Barkers" 150's	per gross	4	13	0
ppts.				
12. Candles—"Electrine"	per lb.	0	2	2

‡ 12-oz. tins, £1 14s. 9d. per doz.

## Sub-schedule No. 2—continued.

GROCERIES—continued.		£	s.	d.
Cereals—				
13.	“Pipers” .. .. .	per doz.	1	2 9
	“Kornies” .. .. .	pkts.	1	3 7
	“Cornflakes,” large .. .. .	do.	1	6 4
	“Trumpeter” .. .. .	do.	1	1 0
	“Weetbix,” 24-oz. .. .. .	do.	1	4 11
	“All-Bran” .. .. .	do.	0	16 11
Cheese—				
14.	5-lb. boxes, “Kraft” or equal .. .. .	per pkt.	0	18 0
	1-lb. packets .. .. .	per doz.	1	3 3
15.	Chutney—“Rosella,” Fruit .. .. .	do.	1	5 9
16.	Cloves .. .. .	per lb.	0	9 9
Cocoa—				
17.	1-lb. tins, “Bournville” .. .. .	per doz.	1	8 0
18.	Loose .. .. .	per lb.	0	3 5½
19.	Coconut—Desiccated .. .. .	do.	0	1 8½
Coffee and Chicory Essence—				
20.	8-oz. bottles, “See Saw” .. .. .	per doz.	1	7 6
21.	1-gallon jars (Jars 3s. each) .. .. .	per jar	1	6 6
22.	Curry Powder—Bulk .. .. .	per lb.	0	4 0
Custard Powder—				
23.	Bulk .. .. .	do.	0	1 1½
24.	1-lb. packets, “Gold Seal” .. .. .	per doz.	0	19 0
25.	Dates—1-lb. packets .. .. .	do.	1	0 0*
Essences, &c.—				
26.	Almond, 8-oz. .. .. .	per bot.	0	3 4
27.	Lemon, 8-oz. .. .. .	do.	0	6 5½
28.	Vanilla, 8-oz. .. .. .	do.	0	5 1
29.	Cochineal, 8-oz. .. .. .	do.	0	2 9
30.	Parisian 4-oz. bottles .. .. .	per doz.	0	12 3
	26-oz. bottles .. .. .	do.	2	2 0
31.	Yolkine, “Yoko” .. .. .	each	0	2 6
Extracts, Pastes, &c., or equal—				
32.	Marmite 16-oz. tin .. .. .	per tin	0	6 11
	8-oz. tin .. .. .	do.	0	4 3½
33.	Vegemite 16-oz. tin .. .. .	do.	0	6 8½
	8-oz. tin .. .. .	do.	0	3 10½
34.	Peanut Butter, 12-oz. tin, “Eta” .. .. .	do.	0	3 7½
35.	Bonox, 8-oz. tin .. .. .	do.	0	5 0
36.	Bloater, “Pecks” .. .. .	do.	0	1 4
37.	Salmon and Shrimp .. .. .	do.	0	1 6
Fish—Tinned, or equal—				
38.	“Flair,” 12-oz. tin .. .. .	per doz.	1	8 7
39.	Salmon, “King Sound,” 16-oz. tin .. .. .	do.	1	19 6
	Fresh, 7-oz. tin .. .. .	do.	0	17 1
40.	Herrings 14-oz. tin .. .. .	do.	1	5 9
	In sauce, 7-oz. tin .. .. .	do.	0	17 6
	In sauce, 14-oz. tin .. .. .	do.	1	6 0
41.	Sardines, 4-oz. tin .. .. .	do.	0	15 6
Flour—Corn or Maize—				
42.	Packets, “Kream” .. .. .	per lb.	0	1 6
43.	Bulk .. .. .	do.	0	0 10½
44.	Self-Raising 25-lb. bags, “Sirdar” .. .. .	per bag	0	14 8
	7-lb. packets, “Sirdar” .. .. .	per doz.	2	6 6
Fruits—Dried—				
45.	Apples .. .. .	per lb.	0	2 9
46.	Apricots 2-crown .. .. .	do.	0	3 3
	3-crown .. .. .	do.	0	3 6½
47.	Peaches, peeled, 3-crown .. .. .	do.	0	3 0½
48.	Pears, 3-crown .. .. .	do.	0	2 3
49.	Prunes, 80/90's .. .. .	do.	0	1 11½
	1-crown .. .. .	do.	0	1 4½
50.	Currants 2-crown .. .. .	do.	0	1 5½
	3-crown .. .. .	do.	0	1 5½
51.	Raisins Seeded, 1-lb. packets .. .. .	per doz.	1	1 9
	Loose .. .. .	per lb.	0	1 7
	1-crown .. .. .	do.	0	1 5½
52.	Sultanas 2-crown .. .. .	do.	0	1 5½
	3-crown .. .. .	do.	0	1 6
	4-crown .. .. .	do.	0	1 6½
Fruits—Tinned—				
53.	Apricots, halves, 30-oz. tin .. .. .	per doz.	1	10 3
54.	Apricots, 1-gallon tins, “S.P.C.” .. .. .	each	0	7 6
55.	Peaches, 30-oz. tin .. .. .	per doz.	1	9 9
56.	Pears, 30-oz. tin .. .. .	do.	1	11 3
57.	Mixed Fruits, “Fruit Cocktail,” 16-oz. .. .. .	do.	1	7 9
58.	Solid Pack Apples 30-oz. tin .. .. .	do.	1	16 10
	6½-lb. tin .. .. .	each	0	8 5½
59.	Solid Pack Apricots, 7-lb. tins .. .. .	do.	0	10 9
60.	Gelatine—Ground .. .. .	per lb.	0	6 4
61.	Ginger—Ground .. .. .	do.	0	4 9
62.	Golden Syrup—2-lb. tins (70-lb. drums, 48s. 3d.) .. .. .	per doz.	0	17 0
63.	Gravox—1-lb. tins .. .. .	do.	1	0 5
64.	Herbs—Mixed, packets .. .. .	do.	0	4 0
65.	Honey—60-lb. tins .. .. .	per lb.	0	1 0
Jelly Crystals—				
66.	4-oz. packets, “Gold Seal” .. .. .	per doz.	0	7 2
67.	7-lb. packets .. .. .	per lb.	0	2 1
Junket Tablets—				
68.	“Gold Seal,” tubes .. .. .	per doz.	0	5 0
	“Merry Widow,” flavoured, tubes .. .. .	do.	0	14 3

\* Case lots 1s. 3½d. and loose 1s. 4d. per lb.

## Sub-schedule No. 2—continued.

GROCERIES—continued.		£	s.	d.
69.	Lentils .. .. .	per lb.	0	2 2
Macaroni—				
70.	1-lb. packets .. .. .	per doz.	0	12 6
71.	Bulk 22-lb. cartons .. .. .	each	1	1 2
	56-lb. bags .. .. .	per lb.	0	0 11½
72.	Margarine—Cake, pastry .. .. .	do.	0	1 6½
73.	Matches—Safety, packets .. .. .	per gross	1	0 4½
74.	Mayonaisse—1-gallon jars (Jars 3s. each) .. .. .	per jar	1	1 0
Meat—Tinned, or equal—				
75.	Beef Luncheon Taper tins, “Maxam” .. .. .	per doz.	1	11 0
	Round tins, “Maxam” .. .. .	do.	1	1 6
76.	Beef Steak Pudding, “Piper” .. .. .	do.	1	5 4
77.	Camp Pie, 12-oz. tins .. .. .	do.	0	17 6
78.	Irish Stew, “Champion” .. .. .	do.	0	18 0
79.	Lamb and Green Peas .. .. .	do.	0	19 0
80.	Sausages and Vegetables, 16-oz. tin, “Piper” .. .. .	do.	1	3 5
Milk—Dried—				
81.	“Sunshine,” 12-oz. tins .. .. .	do.	1	14 2
	“Sunshine,” 3-lb. tins .. .. .	do.	6	8 0
Milk—Condensed—				
82.	“Nestles” .. .. .	do.	1	0 5
83.	“Ideal” .. .. .	do.	0	16 0
84.	Mustard—Bulk .. .. .	per lb.	0	4 3
85.	Nutmeg—Ground .. .. .	do.	0	4 9
86.	Oatmeal—Flaked, 56-lb. bags .. .. .	do.	0	0 8
87.	Pastry—Mix, 1-lb. packets, “Maxam” .. .. .	per doz.	0	13 4
88.	Peel—Mixed, cut .. .. .	per lb.	0	1 8
89.	Pepper—White, ground (Black, 10s. 6d. per lb.) .. .. .	do.	0	11 3
90.	Pickles—Assorted, 20-oz. bottles, “McKenzie” .. .. .	per doz.	1	1 9
Rice—				
91.	Dressed .. .. .	per cwt.	4	13 6
92.	Ground—1-lb. packets .. .. .	per lb.	0	0 11½
93.	Sago .. .. .	do.	0	0 9½
Salt—				
94.	Fine, bulk, “Imperial” .. .. .	per cwt.	0	17 9
95.	Table, 1-lb. packets, “I.C.I.” .. .. .	per lb.	0	0 8
Sauce—				
96.	Tomato, 26-oz. bottles .. .. .	per doz.	1	10 3
97.	Tomato, 1-gal. jars (Jars, 3s. each) .. .. .	per jar	0	14 6
98.	Worcestershire, 10-oz. bottles, “Sirdar” .. .. .	per doz.	0	16 0
99.	Worcestershire, 1-gal. jars (Jars, 3s. each) .. .. .	per jar	0	8 9
100.	Mustard, 8-oz. bottles .. .. .	per doz.	1	0 6
Soaps—				
101.	Extract of “Pental” 56-lb. bags .. .. .	per lb.	0	0 9½
102.	Household, Dry, “Pental” (cases of 36) .. .. .	per case	2	2 6
103.	“Lux,” 12-oz. packets .. .. .	per doz.	0	14 8
104.	“Rinso,” Economy packet .. .. .	do.	1	14 6
105.	“Persil,” Giant packet .. .. .	do.	1	5 8
106.	Sand soap, 12-oz. blocks, “Preservene” .. .. .	do.	0	6 5
107.	Toilet soap, 3½-oz. tabs., “Kitchens” .. .. .	do.	0	4 10
108.	“Velvet”—“Quads” .. .. .	do.	1	2 2
109.	“Velvet”—“Quints” .. .. .	do.	1	15 6
Soda—				
110.	Bicarbonate of .. .. .	per lb.	0	0 6½
111.	Washing (1-cwt. bags, 34s.) .. .. .	do.	0	0 3½
Soups—Tomato—				
112.	16-oz. tins, “Kia Ora” .. .. .	per doz.	0	19 0
113.	No. 10 tins .. .. .	each	0	8 8
Spaghetti—				
114.	1-lb. packets .. .. .	per doz.	0	13 6
115.	Bulk, 22-lb. cartons .. .. .	each	1	1 2
116.	Spice—Mixed, loose (1-oz. pkts., 5½d. each) .. .. .	per lb.	0	3 4
117.	Starch—Rice, 12-oz. pkts., “Silver Star” .. .. .	per doz.	0	17 3
Sugar—				
	Icing Mixture .. .. .	per lb.	0	0 9½
118.	Castor .. .. .	do.	0	0 9½
	Raw .. .. .	do.	0	0 8
	White (70 lb. bag) .. .. .	per bag	2	9 11
119.	Tapioca .. .. .	per lb.	0	0 9½
120.	Tartar—Cream of, “Antelope Phos. Aerator” (Cream of Tartar 3s. 1½d.) .. .. .	do.	0	2 3½
121.	Treacle—2-lb. tins .. .. .	per doz.	0	16 7
Vegetables—Dried—				
122.	Soup Vegetables 3 lb. tins .. .. .	per tin	1	3 6
	20 lb. do .. .. .	do.	6	12 0
123.	Peas, Green “Dew Crisp” in 22 lb. tins .. .. .	per lb.	0	8 1
124.	Peas—Split, yellow .. .. .	do.	0	0 8½
Vegetables—Tinned—				
125.	Baked Beans, 16-oz. tins, “Kia Ora” .. .. .	per doz.	0	19 10
126.	Baked Beans, No. 10 can .. .. .	per jar	0	9 6
127.	Beans, Green, 30-oz. tins, “Edgells” .. .. .	per doz.	1	17 6
128.	Beetroot, 30-oz. tins “Vacola” .. .. .	do.	1	10 3
129.	Carrots, 30-oz. tins, “Raleigh” .. .. .	do.	1	2 9
130.	Celery, 30-oz. tins .. .. .	do.	○	○
131.	Parsnips, 30-oz. tins .. .. .	do.	○	○
132.	Peas, 30-oz. tins, “Mortons” .. .. .	do.	1	13 3
133.	Sweetcorn, 30-oz. tins .. .. .	do.	1	3 8
134.	Tomatoes, 30-oz. tins .. .. .	do.	1	6 0
135.	Tomatoes, 4-gal. tins .. .. .	each	○	○

○ Not available.

## Sub-schedule No. 2—continued.

## GROCERIES—continued.

		£	s.	d.
Vermicelli—				
136. 1-lb. packets .. .. .	per doz.	0	13	6
137. Bulk, 22-lb. cartons .. ..	each	1	1	2
138. Vinegar—Malt—1-gal. jars ..	per jar	0	2	7

(AGREEMENT.)

McKay MacLeod Pty. Ltd., 122 Lydiard-street, Ballarat.

## Sub-schedule No. 3.

## JAMS.

		£	s.	d.
Jams—Assorted—				
1. In bulk, of approved kinds, in proportion of half seed and half stone, of the best actual net quality, in tins, as required, "J. weight MacLeod and Co. Pty. Ltd.	per lb.	0	1	0
2. 24-oz. tins, in the proportion of half seed and half stone, of the best quality, "Victoree"	per doz.	1	6	9
3. 5-lb. tins, in the proportion of half seed and half stone, of the best quality, "Victoree"	do.	4	6	4

ANNEX TO CONTRACT No. 1954/309.†

H. A. Morris, 107 Victoria-street, Ballarat.

## Sub-schedule No. 4.

## MEAT.

(For Gaol and Mental Hospital.)

		£	s.	d.
Fresh Beef—				
1. Fore-quarters .. .. .	per cntl.	7	1	8
2. Hind-quarters .. .. .	do.	7	18	4
3. Buttocks .. .. .	do.	8	6	8
4. Roast .. .. .	do.	8	6	8
5. Beef, Corned .. .. .	do.	8	6	8
Mutton—Fresh—				
6. Kidney fat removed (Mental Hospital)	do.	4	11	8
7. Chops, Fore-quarter .. ..	per lb.	0	1	2
8. Mincemeat .. .. .	do.	0	1	0
9. Sausages .. .. .	do.	0	1	5
10. Sausage, Beef, German .. ..	do.	0	2	0
11. Saveloys (April to September) ..	per doz.	0	2	9
12. Tripe .. .. .	per lb.	0	0	6½
13. Ham Loaf (October to March) ..	do.	..	..	..
14. Black Puddings .. .. .	do.	0	1	0
15. Livers—Sheep .. .. .	do.	0	0	10
16. Suet—Kidney .. .. .	do.	0	0	6

ANNEX TO CONTRACT No. 1954/310.†

H. A. Morris, 107 Victoria-street, Ballarat.

## Sub-schedule No. 5.

## MEAT.

For delivery to Teachers' College Hostels as under:—  
Beaufort House, Beaufort-avenue, Ballarat.  
1415 Sturt-street, Ballarat.  
130 Victoria-street, Ballarat.  
126 Webster-street, Ballarat.

		£	s.	d.
Fresh Beef—				
1. Rolled Roast, boneless .. ..	per lb.	0	2	6
Fresh Mutton—				
2. Fore-quarter chops .. .. .	do.	0	1	2
3. Middle Loin chops .. .. .	do.	0	1	6
4. Cutlets .. .. .	do.	0	1	9
5. Legs .. .. .	do.	0	1	8
6. Beef—Corned, Rolled .. .. .	do.	0	1	9
Steak—				
7. Blade .. .. .	do.	0	2	6
8. Minced .. .. .	do.	0	1	9
9. Stewing .. .. .	do.	0	2	3
10. Sausages—Mixed .. .. .	do.	0	1	6
Sausage—				
11. Meat .. .. .	do.	0	1	0
12. Beef German .. .. .	do.	0	2	0
13. Livers—Sheep .. .. .	do.	0	0	10
14. Bones—Soup .. .. .	do.	No		
		charge		

ANNEX TO CONTRACT No. 1954/311.

The Ballarat Modern Dairy Pty. Ltd.

## Sub-schedule No. 6.

## MILK.

For delivery to Teachers' College Hostels as under—  
Beaufort House, Beaufort-avenue, Ballarat.  
1415 Sturt-street, Ballarat.  
130 Victoria-street, Ballarat.  
126 Webster-street, Ballarat

		£	s.	d.
1. Milk—Fresh and pure .. .. .	per gal.	0	4	6

## SCHEDULE No. 9.

## PROVISIONS—BEECHWORTH DISTRICT.

ANNEX TO CONTRACT No. 1954/312.

P. A. Taylor, Camp-street, Beechworth.

(Delivery into Institutions.)

## Sub-schedule No. 1.

## BREADSTUFFS.

		£	s.	d.
Security, £100.				
1. Bread—Fine Wheaten, first quality ..	per cntl.	2	11	4
2. Yeast Buns .. .. .	per doz.	0	2	0
3. Flour—First quality .. .. .	per cntl.	1	13	7

(AGREEMENT.)

Moran and Cato Pty. Ltd., 277 Brunswick-street, Fitzroy, N.6.

## Sub-schedule No. 2.

## GROCERIES.

		£	s.	d.
1. Biscuit—Cereal "Vitabrit" 24-oz. pkt. ..	per pkt.	0	2	1½
2. Blue—Washing, powdered, 7-lb. pkts. ..	per lb.	0	2	1½
Cocoa—				
3. { 1-lb. packets, "Bournville" .. ..	do.	0	4	6
{ Loose .. .. .	do.	0	3	6
Corn or Maize Flour—				
4. { Loose .. .. .	do.	0	0	10½
{ 1-lb. packets, "Medallion" .. ..	do.	0	1	5
5. Curry Powder .. .. .	do.	0	2	5½
6. Custard Powder—Loose .. .. .	do.	0	1	2½
Dried Fruits—				
7. { Apricots, 3-crown, "Choice" .. ..	do.	0	3	9½
{ Pears, 3-crown, "Choice" .. ..	do.	0	2	5½
8. Fruit Juices—Orange and Grapefruit, 16-oz. tins, "Mildura" ..	per doz.	1	3	0
9. Golden Syrup—2-lb. tins .. .. .	per tin	0	1	7
10. Jelly Crystals—7-lb. packets .. ..	per lb.	0	2	2½
Macaroni—				
11. { 22-lb. cartons .. .. .	per ctn.	1	3	0
{ 56-lb. bags .. .. .	per lb.	0	1	0
Milk—Powdered—				
12. { 3-lb. tins, "Sunshine" .. .. .	per doz.	6	15	6
{ 12-oz. tins, "Sunshine" .. .. .	do.	1	17	0
13. Mustard .. .. .	per lb.	0	4	11
14. Peas—Dehydrated, 22-lb. tins .. ..	do.	0	7	11
15. Pepper—White, ground .. .. .	do.	0	10	8
16. Raisins—Sultana, 2-crown (present season's) ..	do.	0	1	7½
17. Salt—Fine .. .. .	per cwt.	1	2	0
18. Sauce—Tomato, 26-oz. bottles, "Raleigh" ..	per doz.	2	2	6
Soap—				
19. Sand, 12-oz. blocks, "Lectric" .. ..	do.	0	6	0
20. Lifebuoy .. .. .	do.	0	5	10
Soda—				
21. Bicarbonate of .. .. .	per lb.	0	0	8
22. Washing .. .. .	per cwt.	2	7	0
23. Spaghetti—22-lb. cartons, "Rinoldi," No. 1 ..	per ctn.	1	3	0
24. Spice—Mixed, "Parsons" .. .. .	per doz.	0	6	0
25. Starch—"Lustre" .. .. .	per lb.	0	0	10½
26. Tartar—Cream of, Substitute, "Antelope" ..	do.	0	2	3
27. Tomatoes—Tinned, 28-oz. tins, "Cohn" ..	per doz.	1	9	6
28. Vinegar—Malt .. .. .	per gal.	0	3	6

(AGREEMENT.)

Moran and Cato Pty. Ltd., 277 Brunswick-street, Fitzroy, N.6.

## Sub-schedule No. 3.

## JAMS.

		£	s.	d.
Jams—Assorted, in bulk—				
1. { Apricot .. .. .	per lb.	0	1	1½
{ Peach .. .. .	actual	0	1	1½
{ Apple and Raspberry flavour .. ..	net	0	1	1½
{ Dark Plum .. .. .	weight	0	1	0½
2. Jams—Assorted, 5-lb. tins, in the proportion of half seed and half stone, of the best quality, "M.P." ..	per tin	0	7	10½
(Charges for cases 2s., if not returned.)				



ANNEX TO CONTRACT No. 1954/313.†  
E. Spencer, Camp-street, Beechworth.

## Sub-schedule No. 4.

## MEAT.

Security, £30.

	£	s.	d.
1. Fresh Beef—Roast .. .. . per cwtl.	8	0	0
2. Corned Beef—Rolled .. .. . do.	8	0	0
3. Mutton—Fresh (Kidney fat removed— Mental Hospital) .. .. . do.	3	6	8
4. Minced Meat .. .. . per lb.	0	1	8
5. Sausages—Mixed .. .. . do.	0	1	2
6. Sausage Meat .. .. . do.	0	1	0
7. Dripping—Beef .. .. . do.	0	1	0
8. Saveloys .. .. . per doz.	0	2	9

## SCHEDULE No. 10.

## PROVISIONS—BENDIGO DISTRICT.

(For Delivery into Institutions.)

ANNEX TO CONTRACT No. 1954/314.

C. H. Jeffrey Pty. Ltd., 172 Wattle-street, Bendigo.

## Sub-schedule No. 1.

## BREAD.

For Gaol.

Security, £7.

	£	s.	d.
1. Bread—Fine Wheaten, first quality .. per cwtl.	2	1	8
2. Flour—First quality .. .. . do.	1	15	0

ANNEX TO CONTRACT No. 1954/315.

A. Hardeman Pty. Ltd., 326 Lyttleton-terrace, Bendigo.

## Sub-schedule No. 2.

## BREAD.

For Teachers' College Hostels—  
"Sandhurst" 108 Mitchell-street, Bendigo, and  
"Lancewood," McLaren-street, Bendigo.

Security, £4.

	£	s.	d.
1. Bread—Fine Wheaten, first quality .. per cwtl.	2	13	1½
2. Flour—First quality .. .. . do.	1	15	0

ANNEX TO CONTRACT No. 1954/316.

Roy Raggatt, 132 Lily-street, Bendigo.

## Sub-schedule No. 3.

## BREAD.

For Teachers' College Hostel—"Comersdale," Pantton-street,  
Golden Square, Bendigo.

Security, £3.

	£	s.	d.
1. Bread—Fine Wheaten, first quality .. per cwtl.	2	13	1½
2. Flour—First quality .. .. . do.	1	15	0

## (AGREEMENT.)

Pulfer, Coz, and Hargreaves, Wholesalers Limited, 200 Hargreaves-  
street, Bendigo.‡

## Sub-schedule No. 4.

## GROCERIES.

	£	s.	d.
Bacon—			
1. { Sides .. .. . per lb.	*		
{ Rashers, middle .. .. . do.	*		
2. Barley—Pearl, 56-lb. bags (Smaller lots per cwt. 2 18 0 7½d. per lb.)			
Beans—			
3. Butter .. .. . do.	*		
4. Haricot .. .. . per lb.	0	1	8
5. Lima .. .. . do.	0	2	3
6. Biscuits and cake—"Phoenix" or "Besta"—			
Dry .. .. . do.	†		
7. Coffee, Malt, Arrowroot .. .. . do.	†		
8. Assorted .. .. . do.	†		
Blue—			
9. { 1-oz. knobs, "Reckitts" .. .. . per gross	1	7	2
{ 7-lb. packets .. .. . per pkt.	*		
10. Borax .. .. . per lb.	0	0	8½

\* Supplies not available.

Rates, except where marked otherwise, subject to 3 %, 7 days or 2½ % monthly, settlement discount.

5918/54.—2

## Sub-schedule No. 4—continued.

## GROCERIES—continued.

£ s. d.

11. Cake Containers—Paper, "Barkers" 150's per gross	4	13	0
Cereals—			
12. "Kornies," "Weeties," packets .. per doz.	1	3	10
13. "Cornflakes," packets .. .. . do.	1	7	8
14. Biscuit—"Weetbix," "Granose," and "Vitabrita," packets .. .. . do.	1	5	3
15. "All-Bran," packets .. .. . do.	0	17	7
16. Cheese—5-lb. boxes, "Kraft" .. .. per box	0	18	4
17. Chutney—"A.J.C." .. .. . per doz.	1	3	6
18. Cloves .. .. . per lb.	0	10	7
19. Coconut—Desiccated, Ceylon .. .. do.	0	2	0
Cocoa—			
20. { 1-lb. tins, "Bournville" .. .. per doz.	2	13	10
{ Loose .. .. . per lb.	0	3	3
Coffee Essence—			
21. 8-oz. bottles, "Excelsior" .. .. per doz.	1	13	0
22. 1-gal. jars (Jars 3s.) .. .. . per jar	2	0	6
23. Curry Powder—{ "Parsons"—4-oz. pkt. per doz.	0	19	0
{ "Indian" .. .. . do.	0	19	6
Custard Powder—			
24. Bulk, 7-lb. parcels, "Beacon" .. .. per lb.	0	1	5
25. 1-lb. packets, "Parsons" .. .. per doz.	1	0	7
26. Dates—Loose .. .. . per lb.	0	1	5½
Essences, &c.—			
27. Almond { 1-oz. .. .. . per bot.	0	0	11½
{ 8-oz. .. .. . do.	0	6	5½
{ 16-oz. .. .. . do.	0	12	6
28. Lemon { 1-oz. .. .. . per bot.	0	0	11½
{ 8-oz. .. .. . do.	0	6	5½
{ 16-oz. .. .. . do.	0	12	6
29. Vanilla { 8-oz. .. .. . do.	0	7	2½
{ 16-oz. .. .. . do.	0	14	4
30. Cochineal { 1-oz. .. .. . do.	0	0	11½
{ 16-oz. .. .. . do.	0	12	6
31. Parisian, 26-oz. "Dicksons" .. .. do.	0	3	2½
32. Yorkline { 1-oz. "Rego" .. .. . do.	0	0	9½
{ 16-oz. .. .. . do.	0	9	0
Extracts and Pastes—			
33. "Marmite," 4-oz. tins .. .. per doz.	1	7	6
34. "Vegemite" { 4-oz. tin .. .. . do.	1	6	3
{ 8-oz. tin .. .. . do.	2	6	9
{ 16-oz. tin .. .. . do.	3	19	9
35. Peanut Butter { 6-oz. tin .. .. . do.	1	7	8
{ 12-oz. tin .. .. . do.	2	4	9
36. "Bonox" { 4-oz. tin .. .. . do.	1	12	9
{ 8-oz. tin .. .. . do.	3	0	1
{ 16-oz. tin .. .. . do.	5	14	2
37. Bloater, 2½-oz. tins, "Pecks" .. .. do.	0	16	0
38. Salmon and Shrimp, 2½-oz. tin .. .. do.	0	18	0
Fish—Tinned—			
39. "Flair," 12-oz. .. .. . do.	1	8	4
40. Salmon, 16-oz., "Kingsound" .. .. do.	2	3	3
41. Pilchards, 8-oz., South African .. .. do.	0	17	6
42. Herrings, 14-oz. { Fresh .. .. . do.	1	6	4
{ In sauce .. .. . do.	1	6	10
43. Sardines { 4-oz., "Commodore" .. .. do.	0	14	9
{ 8-oz., "Commodore" .. .. . do.	1	7	4
Flour—Corn or Maize—			
44. { 1-lb. packets, "Kream" .. .. do.	0	18	7
{ Bulk .. .. . per lb.	0	1	3
Flour—Self-raising—			
45. { 25-lb., "Rego" .. .. . each	0	13	9
{ 150-lb., "Rego" .. .. . do.	3	15	10
Fruits—Dried—			
46. Apples .. .. . per lb.	*		
47. Apricots .. .. . do.	0	3	10
48. Peaches .. .. . do.	*		
49. Pears .. .. . do.	*		
50. Prunes, 80/90's .. .. . do.	0	2	6
51. Currants .. .. . do.	0	1	5½
52. Raisins, Seeded { 16-oz. pkts, "Rego" per doz.	1	3	9
{ Loose .. .. . per lb.	0	1	9
53. Sultanas .. .. . do.	0	1	6½
Fruits—Tinned—			
54. Apricots { Halves, 30-oz. tins, "S.P.C." per doz.	1	10	0
{ Wholes, 30-oz. tins, "S.P.C." .. .. do.	1	8	6
55. Peaches, 30-oz. tins, "S.P.C." .. .. do.	1	9	6
56. Pears, 30-oz. tins, "S.P.C." .. .. do.	1	11	0
57. Mixed Fruits, 16-oz. tins, "Fruit Cock- tail" .. .. . do.	1	7	0
58. Solid Pack Apples { 30-oz. tins .. .. do.	1	17	0
{ 6½-lb. .. .. . each	0	8	9
59. Solid Pack Apricots .. .. . do.	*		
60. Gelatine—Ground, 16-oz. pkts, "Davis" .. per doz.	3	15	7
61. Ginger—Ground .. .. . per lb.	0	4	7
62. Golden Syrup—2-lb. tins .. .. per doz.	0	18	0
63. Gravox—1-lb. tins .. .. . do.	1	0	3
64. Herbs—Mixed, packets .. .. . do.	0	3	0
65. Honey—60-lb. tins (Return of 2s. 6d. per tin)	2	19	6

‡ List prices, wholesale rates, less 10 per cent.

## Sub-schedule No. 4—continued.

GROCERIES—continued.		£	s.	d.
66. Jams—"Rego" and "Monbulk," tins	per doz.	1	1	†
Jelly Crystals—				
67. { 4-oz. packets, "Rego" ..	per gross	4	3	0
{ 7-lb. packets ..	per lb.	0	2	4
Junket Tablets—				
68. { "Merry Widow," flavoured ..	per doz.	0	14	3
{ "Hansens," plain ..	tubes	0	19	0
69. Lentils ..	per lb.	0	10	0
Macaroni—				
70. 1-lb. packets, "Rinoldi" ..	do.	0	1	1
71. Bulk—22-lb. boxes ..	per box	1	1	6
72. Margarine—Cake, pastry, "E.O.I." ..	per lb.	0	1	5½
(Freight case, 3s. 6d.)				
73. Matches—Safety, packets ..	per gross	1	0	8
74. Mayonnaise—12-oz. jars, "Kraft" ..	per doz.	1	12	4
Meat—Tinned, or equal—				
75. Beef Luncheon { 12-oz., "Tom Piper" ..	do.	1	12	3
{ 6-lb., "Swifts" ..	each	0	18	9
76. Beef Steak Pudding, 16-oz., "Piper" ..	per doz.	1	5	1
77. Camp Pie { 12-oz., "Imperial" ..	do.	0	18	9
{ 16-oz., "Imperial" ..	do.	1	2	9
78. Irish Stew, "Tom Piper" ..	do.	1	6	7
79. Lamb and Green Peas, 16-oz., "Champion" ..	do.	0	19	11
80. Sausages and Vegetables, 16-oz., "Rosella" ..	do.	1	5	3
Milk—				
81. Dried { 12-oz. tin, "Sunshine" ..	do.	1	17	0
{ 3-lb. tins, "Sunshine" ..	do.	6	16	6
82. Condensed, cases of 4 doz., "Nestles" ..	per case	4	1	6
83. "Ideal" ..	per doz.	0	16	4
84. Mustard—Bulk, 4-lb. boxes ..	per lb.	0	5	9
85. Nutmeg—Ground ..	do.	0	5	9
86. Oatmeal—Flaked { 7-lb. bags ..	per doz.	3	4	9
{ Loose ..	per cwt.	3	12	3
87. Pastry—Mix, "Bakeo," "Maxam" ..	per doz.	0	13	10
Peel—Mixed, Cut—				
88. { 8-oz. packets, "Brookes" ..	per doz.	0	16	10
{ 7-lb., "Seppelts" ..	per lb.	0	1	10
Pepper—White, Ground—				
89. { Loose ..	do.	0	12	6
{ 2-oz. packets, "Rego" ..	per doz.	1	1	7
90. Pickles—Assorted, 20-oz. bottles, "Sutherland's" ..	do.	1	6	6
Rice—				
91. Dressed, 56-lb. bags ..	per bag	2	7	6
92. Ground, 1-lb. packets, "McKenzie's" ..	per doz.	0	11	9
93. Sago ..	per lb.	0	0	11
Salt—				
94. Fine, bulk, "Imperial" ..	per cwt.	1	0	0
95. Table { 1-lb. packets, "Mermaid" ..	per doz.	0	5	9
{ 1-lb. packets, "Saxa" ..	do.	0	8	0
Sauces—				
96. Tomato, 26-oz. bottles { "White Crow" ..	do.	1	19	0
{ "Rosella" ..	do.	2	3	10
97. Tomato, 1-gal. jars, "Leggo's" (Jars, 3s.) ..	per jar	0	13	9
Worcestershire—				
98. { 10-oz. bottles, "Holbrooks" ..	per doz.	1	4	2
{ 10-oz. bottles, "Rego" ..	do.	0	18	9
{ 26-oz. bottles, "Rego" ..	do.	1	19	0
99. Mustard—8-oz. bottles, "Holbrooks" ..	do.	1	1	11
Soaps—				
100. Extract of, "Nu-Wash," 56-lb. bags ..	per bag	2	13	0
101. Household, dry ..	per case	*		
102. "Kinsol," Economy packet ..	per doz.	1	13	0
103. "Persil," Giant packet ..	do.	1	5	6
104. "Lux," Flakes, packets ..	do.	0	14	4
105. Sand Soap—6-oz. blocks, "Preservens" ..	do.	0	6	9
106. Toilet Soap, 3½-oz. tablets, "Palmolive" ..	do.	0	5	9
107. Toilet Soap, 3½-oz. tablets, "Lux" ..	do.	0	5	5
108. "Velvet" or equal { Quads, 3-doz. ctn. ..	per ctn.	3	0	9
{ Quads, 1½-doz. ..	do.	2	16	6
Soda—				
109. Bicarbonate of ..	per lb.	0	0	6½
110. Washing ..	do.	0	0	5½
Soups—				
Tomato, 16-oz. tins { "Kia Ora" ..	per doz.	0	19	4
{ "Rego" ..	do.	0	19	4
{ "Tom Piper" ..	do.	0	18	8

† In 1½-lb. tins—Apricot, £1 6s. 2d.; Apple Jelly, £1 3s. 8d.; Blackberry, £1 13s. 6d.; Blackcurrant, £1 13s. 5d.; Gooseberry, £1 8s. 5d.; Loganberry, £1 12s. 5d.; Melon and Lemon, £1 3s. 8d.; Melon and Pineapple, £1 4s. 8d.; Dark Plum, £1 3s. 11d.; Light Plum, £1 3s. 11d.; Marmalade, £1 4s. 6d.; Peach, £1 6s. 2d.; Plum and Raspberry, £1 6s. 5d.; Quince, £1 3s. 11d.; and Raspberry, £1 13s. 11d.

In 5-lb. tins—Apricot, £4 2s. 11d.; Apple Jelly, £3 13s.; Melon and Lemon, £3 14s. 7d.; Melon and Pineapple, £3 15s. 5d.; Dark Plum, £3 15s. 5d.; Light Plum, £3 15s. 5d.; Marmalade, £3 17s. 10d.; Peach, £4 2s.; Plum and Raspberry, £4 3s. 3d.; Quince, £3 15s. 5d.; and Raspberry, £5 7s. 10d.

In 28-lb. tins—Blackberry, 1s. 1½d. per lb.

In 56-lb. tins—Apricot, 10½d. per lb.; and Plum and Raspberry, 10½d. per lb.

\* Supplies not available.

## Sub-schedule No. 4—continued.

GROCERIES—continued.		£	s.	d.
112. Tomato, 6-lb. tins, "Kia Ora" ..	each	0	8	8
113. Tomato, 1-gal. jars ..	per jar	*		
Spaghetti—				
114. 1-lb. packets, "Rinoldi" ..	per doz.	0	14	0
115. Bulk, 22-lb. boxes ..	each	1	1	6
Spice—Mixed—				
116. { 1-oz. packets ..	per doz.	0	5	0
{ Loose ..	per lb.	0	2	10
117. Starch—Rice, "Silver Star," packets 14-oz ..	per doz.	0	17	3
Sugar—				
118. Icing mixture, 56-lb. bag ..	per bag	2	5	9
119. Castor, 70-lb. bag ..	do.	2	14	6
120. Raw ..	per lb.	0	0	8½
121. White, 70-lb. bag, (net) ..	per bag	2	9	5
Tapioca—				
122. { Seed ..	per lb.	0	0	11
{ Pearl ..	do.	0	1	2
123. Tartar—Cream of ..	do.	0	3	3
124. Treacle—2-lb. tins ..	per doz.	0	17	7
Vegetables—Dried—Peas—				
125. Green, "Dew Crisp" { 8-oz. packets ..	do.	2	10	6
{ 3½-lb. packets ..	per lb.	0	8	8
116. Split (yellow) { 56-lb. bags ..	per cwt.	3	13	0
{ Broken bags ..	per lb.	0	0	9½
Vegetables—Tinned—				
127. Baked Beans, 16-oz., "Kia Ora" ..	per doz.	1	0	2
128. Baked Beans, No. 10 Can, "Kia Ora" ..	per can	0	9	9
129. Beans, green, 30-oz., "Harvest" ..	per doz.	1	8	6
130. Beetroot, 30-oz., "Aunt Mary" ..	do.	1	6	9
131. Carrots, 30-oz. ..	do.	*		
132. Celery, 30-oz. ..	do.	*		
133. Peas, 30-oz., "Harvest" ..	do.	1	15	3
{ "Biddy's" ..	do.	1	6	0
134. Sweetcorn, 16-oz., "Rosella" ..	do.	1	4	3
135. Tomatoes, 30-oz., "Rego" ..	do.	1	5	0
Vermicelli—				
136. 1-lb. packets, "Rinoldi" ..	do.	0	13	9
137. Bulk, 22-lb. boxes ..	each	1	1	6
138. Vinegar—Malt, 1-gal. jars (Jars 3s.) ..	per jar	0	2	7

## ANNEX TO CONTRACT NO. 1954/317.

Alan H. Gittins, 350 Hargreaves-street, Bendigo.

## Sub-schedule No. 5.

## MEAT.

For Gaol.

Security, £5.

1. Fresh Beef	..	..	..	per lb.	0	1	5
2. Corned Beef—Rolled, without bone or cartilage	..	..	..	do.	0	1	5
3. Fresh Mutton	..	..	..	do.	0	0	11
4. Sausages—Mixed	..	..	..	do.	0	1	3½
5. Minced meat	..	..	..	do.	0	1	0

## ANNEX TO CONTRACT NO. 1954/318.

Frank Wade, 193 Williamson-street, Bendigo.

## Sub-schedule No. 6.

## MEAT.

For Teachers' College Hostels as under—

"Sandhurst," 108 Mitchell-street, Bendigo.

"Lancewood," McLaren-street, Bendigo.

"Comersdale," Panton-street, Golden Square, Bendigo.

Security, £5.

	Security, £5.		£	s.	d.
Fresh Beef—					
1.	Sirloin .. .. .	per lb.	0	2	9
2.	Topside .. .. .	do.	0	2	9
3.	Corned Beef—Rolled or Round, as ordered, without bone or cartilage	do.	0	2	0
Fresh Mutton—					
4.	Rib chops, Two-tooth .. .. .	do.	0	1	6
5.	Chops, Middle Loin, Two-tooth .. .. .	do.	0	1	8
6.	Chops, Fore-quarter .. .. .	do.	0	1	2
7.	Legs, Two-tooth .. .. .	do.	0	1	8
Veal—					
8.	Shoulder, boned .. .. .	do.	0	2	9
9.	Legs .. .. .	do.	0	2	6

## Sub-schedule No. 6—continued.

MEAT—continued.		£	s.	d.
10. Steak—				
11. Blade .. .. .	per lb.	0	2	9
12. Blade, minced .. .. .	do.	0	2	9
12. Stewing, chuck .. .. .	do.	0	2	3
13. Thick flank .. .. .	do.	0	2	8
14. Mince Meat .. .. .	do.	0	2	2
15. Sausages—Mixed .. .. .	do.	0	1	5
16. Sausage Meat .. .. .	do.	0	1	2
17. Sausage—Beef German .. .. .	do.	0	0	0
18. Livers—Sheep .. .. .	do.	0	0	9
19. Tripe—Fresh .. .. .	do.	0	0	6
20. Suet—Kidney .. .. .	do.			
21. Bones—Soup .. .. .	do.			No charge
22. Saveloys .. .. .	do.			0
23. Frankfurts .. .. .	do.			0

## SCHEDULE No. 11.

PROVISIONS—SCHOOL OF FORESTRY,  
CRESWICK.

(Delivery at the School.)

ANNEX TO CONTRACT No. 1954/319.

R. C. Bowley, Albert-street, Creswick.

## Sub-schedule No. 1.

BREADSTUFFS.		£	s.	d.
Security, £3.				
1. Bread—Fine wheaten, first quality ..	per cntl.	3	2	6
2. Flour—First quality .. .. .	per lb.	0	0	4

(AGREEMENT.)

J. Tait and Son., Albert-street, Creswick.

## Sub-schedule No. 2.

GROCERIES.		£	s.	d.
1. Barley—Pearl .. .. .	per lb.	0	0	7
2. Blue—Washing .. .. .	do.	0	2	6
3. Butter—First grade creamery, to score not less than 91 points; Government grade, Commerce Regulations Standard .. .. .	do.	0	4	0
4. Cheese—First class quality, matured .. .. .	do.	0	2	11
5. Coffee—Fresh roasted and whole, beans to be thoroughly sound .. .. .	do.	0	6	6
6. Corn or Maize Flour—1-lb. packets .. .. .	do.	0	1	6
7. Eggs—New laid .. .. .	per doz.	0	4	0
8. Ginger—Ground .. .. .	per lb.	0	5	6
9. Golden Syrup—2-lb. tins .. .. .	per tin	0	1	6
10. Jams—Assorted, 5-lb. tins, net, in the proportion of half seed and half stone, "Red Feather" .. .. .	do.	0	6	11
11. Mustard—"Double Superfine" .. .. .	per lb.	0	4	9
12. Oatmeal .. .. .	do.	0	0	8
13. Peas—Split .. .. .	do.	0	0	10½
14. Pepper—White, ground .. .. .	do.	0	10	9
15. Potatoes—Dry and free from dirt .. .. .	per cwt.			§
16. Raisins—Sultana, 3-crown (present season's) .. .. .	per lb.	0	1	8
17. Rice—Dressed .. .. .	do.	0	0	11
18. Salt—Fine .. .. .	do.	0	0	2
19. Soap—				
19. "Velvet," yellow, dry, and hard .. .. .	per doz.	1	3	6
20. Sand, Carbolite, 12-oz. blocks .. .. .	each	0	0	7½
21. Soda—				
21. Bicarbonate of .. .. .	per lb.	0	0	7
22. Washing .. .. .	do.	0	0	4
23. Starch (Rice)—"Preservene" .. .. .	do.	0	1	5
24. Tartar—Cream of, Substitute, "Calcium Phosphate" .. .. .	do.	0	2	5
25. Tea—First grade .. .. .	do.	0	4	4
26. Vinegar—Malt .. .. .	per pint	0	0	4
27. Honey—Yellow Box .. .. .	per lb.	0	1	0
28. Flour—Self-raising .. .. .	do.	0	0	7

ANNEX TO CONTRACT No. 1954/320.

E. J. Keen, Jory-street, Creswick.

## Sub-schedule No. 3.

## MILK.

Security, £3.		£	s.	d.
1. Milk—Fresh and pure .. .. .	per qt.	0	1	3

\* The rates to be paid for all items under these Sub-schedules shall be the wholesale price ruling on the day of delivery.  
 ○ Purchase by agreement. § Cost price plus 10 per cent.

## ANNEX TO CONTRACT No. 1954/321.†

H. J. Symons Pty. Ltd., 1015 Macarthur-street, Ballarat.

## Sub-schedule No. 4.

MEAT.		£	s.	d.
Security, £3.				
Fresh Beef—				
1. Fore-quarters .. .. .	per lb.	0	2	0
2. Mutton .. .. .	do.	0	1	1
3. Sausages—Mixed .. .. .	do.	0	1	9
4. Steak—Minced .. .. .	do.	0	2	0
5. Livers—Sheep .. .. .	do.	0	1	0
6. Dripping—Beef .. .. .	do.	0	1	0

## SCHEDULE No. 12.

PROVISIONS—AGRICULTURAL COLLEGE,  
DOOKIE.

(Delivery at the College.)

ANNEX TO CONTRACT No. 1954/322.

F. G. Dixon, Mary-street, Dookie.

## Sub-schedule No. 1.

## BREADSTUFFS.

Security, £15.		£	s.	d.
1. Bread—Fine wheaten, first quality ..	per cntl.	2	18	4
2. Flour—First quality .. .. .	do.	1	19	0

(AGREEMENT.)

W. A. Thompson, 192 High-street, Shepparton.

## Sub-schedule No. 2.

## GROCERIES.

(Delivery "F.O.R." Shepparton.)

		£	s.	d.
1. Baking Powder—1-lb. tins. .. .. .	per doz.			
Beans—				
2. Lima .. .. .	per lb.			
3. Haricot .. .. .	do.			
4. Biscuits—Coffee, Malt or Arrowroot. (as ordered) .. .. .	do.			
5. Blue—Washing, square, 8-lb. parcels .. .. .	do.			
6. Candles—full weight, Kitchen's Electrics in lots of 30, loose .. .. .	do.			
7. Cereal—24-oz. packets, "Piper's" (or equal thereto) .. .. .	per doz.			
8. Cinnamon .. .. .	per lb.			
9. Chutney—13-oz. bottles .. .. .	per doz.			
10. Cocoa—Bulk .. .. .	per lb.			
11. Coconut—Dessicated .. .. .	do.			
12. Coffee Essence—1-gal. jars .. .. .	per gal			
13. Cordial—Lemon, 1-gal. jars s.c. .. .. .	do.			
14. Corn or Maize Flour—1-lb. packets .. .. .	per doz.			
15. Currants—2-crown (present season's) .. .. .	per lb.			
16. Curry Powder—Bulk .. .. .	do.			
17. Custard Powder, 1-lb. packets, "McK." Essence— .. .. .	per doz.			
18. Almond, 8-oz. bottles .. .. .	do.			
19. Cochineal, 8-oz. bottles .. .. .	do.			
20. Lemon, 8-oz. bottles .. .. .	do.			
21. Vanilla, 8-oz. bottles .. .. .	do.			
Fish—Tinned—				
22. Herrings in Sauce, 14-oz. tins .. .. .	do.			
23. Salmon, 2-lb. tins .. .. .	do.			
24. Sardines, 4-oz. tins .. .. .	do.			
25. Flour—Self-raising, 150-lb. bags .. .. .	per bag			
Fruits—				
26. Dried (present season's) .. .. .	per lb.			
27. Preserved, 30-oz. tins, Peaches .. .. .	per doz.			
28. Preserved, 30-oz. tins, Pears, Apricots .. .. .	do.			
29. Preserved, 6-lb. tins, Apples .. .. .	per tin			
30. Preserved, 7-oz. tins, Blackberries, Blackcurrants, Gooseberries, and Raspberries .. .. .	do.			
31. Gelatine—Ground .. .. .	per lb.			
32. Ginger—Ground .. .. .	do.			
33. Golden Syrup—2-lb. tins .. .. .	per doz.			
34. Gravox—1-lb. tins .. .. .	do.			
35. Herbs—Mixed, 2-oz. packets .. .. .	do.			
36. Honey—First quality, 60-lb. tins .. .. .	per tin			
37. Jelly Crystals—7-lb. packets .. .. .	per lb.			
38. Junket Tablets—"Hansens" .. .. .	per doz.			
39. Lemon Peel—Cut .. .. .	per lb.			
40. Macaroni—Bulk, 22-lb. boxes .. .. .	per box			
41. Margarine—Cake .. .. .	per lb.			



## Sub-schedule No. 3—continued.

MEAT—continued.		£	s.	d.
Steak—				
9. Chuck .. .. .	per lb.	0	2	4
10. Skirt .. .. .	do.	0	3	0
11. Bladebone .. .. .	do.	0	2	10
12. Thick Flank—sliced .. .. .	do.	0	3	0
13. Minced .. .. .	do.	0	2	3
14. Minced—for rissoles .. .. .	do.	0	2	3
15. Fillet—Veal .. .. .	do.	0	3	3
16. Livers—Sheep .. .. .	do.	0	0	11
17. Tongues—Ox .. .. .	do.	0	1	0½
18. Kidneys—Ox .. .. .	do.	0	1	4
Sausages—				
19. Mixed, thin .. .. .	do.	0	1	8
20. Pork, thick .. .. .	do.	0	2	0
21. Sausage—Pork, German .. .. .	do.	0	4	0
22. Sausage Mince .. .. .	do.	0	1	3
23. Bacon—Shoulder .. .. .	do.	0	5	6

## SCHEDULE No. 15.

PROVISIONS—COORIEMUNGLE PRISON  
CAMP, HEYTESBURY FOREST.

(Delivery to be made at the Camp.)

ANNEX TO CONTRACT No. 1954/328.

M. and J. V. Church, Rands-road, Timboon.

## Sub-schedule No. 1.

BREAD.		£	s.	d.
1. Bread—Fine wheaten, first quality ..	per cntl.	3	4	7

(AGREEMENT.)

M. L. Hose, Timboon.

## Sub-schedule No. 2.

GROCERIES.		£	s.	d.
1. Oatmeal .. .. .	per lb.	0	0	9
2. Rice—Dressed .. .. .	do.	0	1	2
3. Salt—Fine .. .. .	do.	0	0	2

ANNEX TO CONTRACT No. 1954/329.†

Heytesbury Butchery, Timboon.

## Sub-schedule No. 3.

MEAT.		£	s.	d.
Security, £4.				
1. Fresh Beef .. .. .	per lb.	0	2	8
2. Sausage Mince .. .. .	do.	0	1	4
3. Corned Beef—Rolled or Round, as ordered, without bone or cartilage .. .. .	do.	0	2	6
4. Sausages .. .. .	do.	0	1	8
5. Dripping—Beef .. .. .	do.	0	0	9

## SCHEDULE No. 16.

PROVISIONS—ABORIGINAL STATION,  
LAKE TYERS.

(Delivery at Lake Tyers Station.)

ANNEX TO CONTRACT No. 1954/330.

R. Hodder, Nowa Nowa.

## Sub-schedule No. 1.

BREADSTUFFS.		£	s.	d.
Security, £5.				
1. Bread—Fine wheaten, first quality ..	per cntl.	2	14	1
2. Flour—First quality .. .. .	do.	1	14	9

(AGREEMENT.)

R. Hodder, Nowa Nowa.

## Sub-schedule No. 2.

GROCERIES.		£	s.	d.
1. Baking Powder—"Snowflake," or equal thereto, 1-lb. tins .. .. .	per lb	}	**	
2. Candles—Full weights, Kitchen's "Electrics," or other make of equal quality, 1-lb. packets .. .. .	do.			
3. Coffee—Fresh roasted, and whole, beans to be thoroughly sound .. .. .	do.			

\*\* The rates to be paid for all items under these Sub-schedules shall be the wholesale prices charged to the contractor, plus 12½ per cent. Wholesaler's invoices to be submitted with contractors' accounts.

Order under Melbourne District Contract.

## Sub-schedule No. 2—continued.

GROCERIES—continued.					£	s.	d.			
4.	Cocoa—Bulk .. .. .	..	..	per lb.	}					
5.	Corn or Maize Flour—1-lb. packets .. .. .	..	..	do.						
6.	Currants—2-crown (present season's) .. .. .	..	..	do.						
7.	Curry Powder—Bulk .. .. .	..	..	do.						
8.	Matches—Safety, 60 per box, "Yacht" .. .. .	..	..	per gross						
9.	Mustard—"Double Superfine" .. .. .	..	..	per lb.						
10.	Pepper—Black, ground, 2-oz. tins .. .. .	..	..	per tin						
11.	Raisins—Sultans, 3-crown (present season's) .. .. .	..	..	per lb.						
Salt—										
12.	Coarse .. .. .	..	..	per cwt.						
13.	Fine .. .. .	..	..	do.						
14.	Soap—Household, hard and dry, to sample .. .. .	..	..	do.						
Soda—										
15.	Bicarbonate of .. .. .	..	..	per lb.						
16.	Washing .. .. .	..	..	do.						
17.	Tartar—Cream of, substitute, Calcium Phosphate .. .. .	..	..	do.						
18.	Treacle—2-lb. tins .. .. .	..	..	per tin						
19.	Vinegar—Malt .. .. .	..	..	per qt.						

(AGREEMENT.)

R. Hodder, Nowa Nowa.

## Sub-schedule No. 3.

JAMS.		£	s.	d.
1. Jams—Assorted, 24-oz. tins, in the proportion of half seed and half stone ..	per tin	**		

## SCHEDULE No. 17.

PROVISIONS—LANGI KAL KAL  
TRAINING CENTRE.

ANNEX TO CONTRACT No. 1954/331.

F. T. Davies, 47 Eureka-street, Ballarat.

## Sub-schedule No. 1.

BREAD.		£	s.	d.
Security, £3.				
1. Bread—Fine wheaten, first quality ..	per cntl.	2	17	3½

ANNEX TO CONTRACT No. 1954/332.†

H. T. Slee and Co., Laurence-street, Beaufort.

## Sub-schedule No. 2.

MEAT.		£	s.	d.
Security, £5.				
1. Fresh Beef—Boneless .. .. .	per lb.	0	2	9
2. Sausage Meat .. .. .	do.	0	1	3
3. Sausages—Mixed .. .. .	do.	0	1	6

## SCHEDULE No. 18.

PROVISIONS—AGRICULTURAL COLLEGE,  
LONGERENONG.

(Delivery at the College.)

ANNEX TO CONTRACT No. 1954/333.

Schwarz Breads, 58 Firebrace-street, Horsham.

## Sub-schedule No. 1.

BREADSTUFFS.		£	s.	d.
Security, £5.				
1. Bread—Fine wheaten, first quality ..	per cntl.	2	17	0
2. Flour—First quality .. .. .	do.	§		

(AGREEMENT.)

W. Cook and Son, Horsham.

## Sub-schedule No. 2.

GROCERIES.		£	s.	d.
Bacon—				
1. { Sides .. .. .	per lb.	0	4	9
2. { Rashers, middle .. .. .	do.	0	5	11
2. Barley—Pearl .. .. .	do.	0	0	8
Beans—				
3. Butter .. .. .	do.	*		
4. Haricot .. .. .	do.	0	1	9
5. Lima .. .. .	do.	0	1	11

\* Supplies not available.

## Sub-schedule No. 2—continued.

## GROCERIES—continued.

		£	s.	d.
Biscuits—				
6. Dry .. .. .	per lb.	0	1	10
7. Coffee, Malt, Arrowroot .. .. .	do.	0	1	10
8. Assorted { "A" assortment .. .. .	do.	0	2	0
{ "B" assortment .. .. .	do.	0	2	3
Blue—				
9. { 1-oz. knobs (Calico bags, 3s. doz.) .. .. .	do.	0	2	6
{ 7-lb. packets .. .. .	per pkt.	*		
10. Borax .. .. .	per lb.	0	0	10
11. Cake Containers—Paper, 200's .. .. .	per gross	4	15	0
Cereals—				
12. Cornflakes, or equals, packets .. .. .	per doz.	1	8	0
13. Biscuit, { "Weetbix" or equal, packets .. .. .	do.	1	4	0
{ "Vita Brits" .. .. .	do.	1	7	0
14. "All-Bran," or equal, packets .. .. .	do.	0	19	0
15. Cheese—5-lb. boxes, "Kraft" .. .. .	per pkt.	0	18	3
16. Chutney—"White Crow" .. .. .	per doz.	1	1	0
17. Cloves .. .. .	per lb.	0	10	6
18. Coconut—Desiccated .. .. .	do.	0	2	3
Coffee Essence—				
19. 8-oz. bottles "Melray" .. .. .	per doz.	1	13	0
20. 40-oz. jars .. .. .	per jar	0	9	6
Curry Powder—Bulk—				
21. { "Hamee" .. .. .	per lb.	0	3	6
{ "Cox" (Indian) .. .. .	do.	0	4	6
Custard Powder—				
22. Bulk { "Renown" .. .. .	do.	0	1	4
{ "Melray" .. .. .	do.	0	1	8
23. 1-lb. packets { "Renown" .. .. .	do.	0	1	5
{ "Melray" .. .. .	do.	0	1	9
Dates—				
25. { "Sair," 1-lb. packets .. .. .	do.	0	1	6½
{ "Khadrawi," 1-lb. packets .. .. .	do.	0	1	7½
Essences, &c.—				
26. Almond, 1-oz., "Triple Strength" .. .. .	per bot.	0	1	0
27. Lemon, 8-oz., "Melray" .. .. .	do.	0	6	11
28. Vanilla, 8-oz., "Melray" .. .. .	do.	0	6	11
29. Cointreau, 1-oz. .. .. .	do.	0	1	0
30. Parisian, 1-oz. .. .. .	do.	0	1	3
31. Yolking, 1-oz. .. .. .	do.	0	1	0
Cocoa—				
32. 8-oz. tins, "Bournville" .. .. .	per tin	0	2	3
33. Loose .. .. .	per lb.	0	3	0
Extracts and Pastes, &c., or equal—				
34. "Marmite," 8oz. .. .. .	per tin	0	4	9
35. "Vegemite," 8oz. .. .. .	do.	0	4	6
36. Peanut Butter, 8oz. .. .. .	do.	0	1	6
37. "Bonox," 2oz. .. .. .	per bot.	0	1	8
38. Blander .. .. .	per tin	0	0	6
39. Salmon and Shrimp .. .. .	do.	0	0	7½
Fish—Tinned—				
40. "Flair" .. .. .	per doz.	1	6	0
41. Salmon { "King Sound" .. .. .	do.	2	6	0
{ "Deep Seas" .. .. .	do.	1	19	6
42. Pilchards, 16-oz. .. .. .	do.	1	10	0
43. Herrings, 14-oz. .. .. .	do.	1	9	0
44. Sardines, 4-oz. .. .. .	do.	0	16	6
Flour—Corn or Maize—				
45. Packets .. .. .	per lb.	0	1	7
46. Bulk .. .. .	do.	0	1	2
47. Flour—Self-raising—"Crusader" or "Mo. Alps" .. .. .	do.	0	0	8½
Fruits—Dried—				
48. Apples .. .. .	do.	0	3	4
49. Apricots { 5-crown .. .. .	do.	0	4	4
{ Plain .. .. .	do.	0	3	6
50. Peaches { 4-crown .. .. .	do.	0	3	3
{ Plain .. .. .	do.	0	2	11
51. Pears { 4-crown .. .. .	do.	0	2	8
{ Plain .. .. .	do.	0	2	1
52. Prunes, 60-70's .. .. .	do.	0	2	6
53. Currants { 4-crown .. .. .	do.	0	1	10
{ Plain .. .. .	do.	0	1	8
54. Raisins—Seeded { "Melray," packets .. .. .	do.	0	2	3
{ Loose .. .. .	do.	0	1	10½
55. Sultanas { 4-crown .. .. .	do.	0	1	10
{ Plain .. .. .	do.	0	1	9
Fruits—Tinned—				
56. Apricots { Halves, 30-oz. .. .. .	per doz.	1	14	0
{ Halves, 7-lb. .. .. .	do.	5	10	0
57. Peaches { Wholes, 30-oz. .. .. .	do.	1	13	0
{ 30-oz. .. .. .	do.	1	13	0
58. Pears { 7-lb. .. .. .	do.	5	8	0
59. Mixed Fruits, 30-oz. .. .. .	do.	1	14	6
60. Solid Pack Apples { 30-oz. .. .. .	do.	5	15	0
{ 7-lb. .. .. .	do.	1	13	0
61. Solid Pack Apples { 30-oz. .. .. .	do.	1	19	0
{ 7-lb. .. .. .	do.	5	12	0
62. Solid Pack Apples { 30-oz. .. .. .	do.	1	8	0
63. Gelatine—Ground, "Davis" .. .. .	per lb.	0	6	9
64. Ginger—Ground .. .. .	do.	0	4	6
65. Golden Syrup—2-lb. tins .. .. .	per doz.	1	0	0
66. Gravox—1-lb. tins .. .. .	do.	1	2	6

## Sub-schedule No. 2—continued.

## GROCERIES—continued.

		£	s.	d.
65. Herbs—Mixed, "Melray," packets .. .. .	per doz.	0	4	0
66. Honey—60-lb. tins (less 2s. 6d. returned tins), "Yellow Box" .. .. .	per tin	3	10	0
Jelly Crystals—				
67. 4-oz. packets, "Melray" .. .. .	per doz.	0	9	6
68. 7-lb. packets, "Melray" .. .. .	per pkt.	0	17	6
69. Junket Tablets, tubes .. .. .	per doz.	0	18	0
70. Lentils .. .. .	per lb.	0	2	0
Macaroni—				
71. 1-lb. packets .. .. .	do.	0	1	4
72. Bulk, 22-lb. cartons .. .. .	each	1	3	0
73. Margarine—Cake, pastry .. .. .	per lb.	0	1	8
74. Matches—Safety, packets .. .. .	per gross	0	19	6
75. Mayonnaise—1-gal. jars, "Kraft" .. .. .	per jar	1	10	0
Meat—Tinned, or equal—				
76. Beef Luncheon .. .. .	per doz.	1	9	0
77. Beef Steak Pudding .. .. .	do.	1	4	0
78. Camp Pie .. .. .	do.	1	1	0
79. Irish Stew .. .. .	do.	1	2	0
80. Lamb and Green Peas .. .. .	do.	1	2	0
81. Minced Beef .. .. .	do.	1	0	0
82. Sausages and Vegetables .. .. .	do.	1	6	0
Milk—Tinned—				
83. Dried, "Sunshine" .. .. .	do.	1	17	6
84. Condensed .. .. .	do.	1	0	0
85. "Ideal" or equal .. .. .	do.	0	17	6
Mustard—				
86. { Bulk, "McKenzie's" .. .. .	per lb.	0	4	11
{ "Keens" .. .. .	do.	0	7	6
87. Nutmeg—Ground .. .. .	do.	0	9	3
Oatmeal—Flaked—				
88. { "Wards" (J. Bull Oats 5lb. pkt.) .. .. .	per pkt.	0	5	0
{ "Parsons" .. .. .	per lb.	0	0	9½
89. Pastry—Mix .. .. .	per pkt.	0	1	3
Peel—				
90. Mixed, cut .. .. .	per lb.	0	1	8
91. Lemon, cut .. .. .	do.	0	1	8
92. Pepper—White, ground .. .. .	do.	0	10	9
93. Pickles—Assorted, 20-oz. bottles, "Melray" .. .. .	per doz.	1	8	0
Rice—				
94. Dressed .. .. .	per lb.	0	0	11½
95. Ground, 1-lb. packets .. .. .	do.	0	1	0
96. Sago .. .. .	do.	0	0	10½
Salt—				
97. Fine, bulk, "Imperial" .. .. .	per cwt.	1	5	0
98. Table .. .. .	per lb.	0	0	6
Sauces—				
99. Tomato, 26-oz. bottles, "White Crow" .. .. .	per doz.	2	0	0
100. Tomato, 1-gal. jars, "White Crow" .. .. .	per jar	0	14	0
Worcestershire—				
101. { 10-oz. bottles, "Holbrooks" .. .. .	per doz.	1	6	0
{ 10-oz. bottles, "Bonita," .. .. .	do.	0	18	6
102. 1-gal. jars .. .. .	per jar	0	10	6
103. Mustard, 8-oz. bottles .. .. .	per doz.	1	1	0
Soaps—				
104. Extract of "Kitchens" or equal .. .. .	per lb.	0	0	7
105. Household, dry .. .. .	per case	2	2	0
106. "Lux," "Rinso," "Persil," or equal (large packets) .. .. .	per doz.	0	16	0
107. Sand Soap, 12-oz. blocks .. .. .	do.	0	7	6
108. Toilet Soap, "Kitchens" or equal, 3½-oz. tablets .. .. .	do.	0	4	0
109. "Velvet" or equal { Quads .. .. .	do.	1	2	6
{ Quints .. .. .	do.	1	17	0
Soda—				
110. Bicarbonate of .. .. .	per lb.	0	0	7
111. Washing .. .. .	do.	0	0	5
Soups—Tomato—				
112. 16-oz. tins { "Fowlers" .. .. .	per doz.	0	15	0
{ "Melray" .. .. .	do.	1	0	0
113. 6-lb. tins .. .. .	do.	3	12	0
114. 1-gal. jars .. .. .	per jar	0	10	0
Spaghetti—				
115. 1-lb. packets .. .. .	per doz.	0	16	0
116. Bulk, 22-lb. cartons .. .. .	each	1	4	0
117. Spice—Mixed .. .. .	per lb.	0	4	9
Starch—Rice—				
118. { "White Ray" .. .. .	per pkt.	0	1	4
{ "Silver Star" .. .. .	do.	0	1	8
Sugar—				
119. Icing .. .. .	per lb.	0	0	11
120. Castor .. .. .	do.	0	0	10
121. White, 70's .. .. .	per bag	2	14	0
122. Raw, 70's .. .. .	do.	2	7	9
123. Tapioca .. .. .	per lb.	0	1	0
124. Tartar—Cream of .. .. .	do.	0	3	8
125. Treacle—2-lb. tins .. .. .	per doz.	0	19	6
Vegetables—Dried—Peas—				
126. Green, "Dew Crisp" .. .. .	per lb.	0	8	3
127. Split, yellow .. .. .	do.	0	0	9
Vegetables—Tinned—				
128. Baked Beans, 16-oz. { "Robin Hood" .. .. .	per doz.	0	17	6
{ "White Crow" .. .. .	do.	1	2	0

\* Supplies not available.

## Sub-schedule No. 2—continued.

GROCERIES—continued.		£	s.	d.
128.	Baked Beans, No. 10 can { "Robinhood" .. per can	0	8	9
	.. { "Vacola" .. do.	0	10	6
129.	Beans, green, 30-oz., "Raleigh" .. per doz.	1	17	0
130.	Beetroot, 30-oz. .. do.	1	4	0
131.	Carrots, 30-oz. .. do.	0	16	0
132.	Celery, 30-oz. .. do.	1	12	0
133.	Parsnips, 30-oz. .. do.	1	5	0
134.	Peas, 30-oz., "Raleigh" .. do.	1	16	0
135.	Sweetcorn, 30-oz. .. do.	1	17	6
136.	Tomatoes, 30-oz. .. do.	1	4	0
	Vermicelli—			
137.	1-lb. packets .. do.	0	16	0
138.	22-lb. cartons .. per ctn.	1	4	0
	Vinegar—Malt—			
139.	{ 1-gal. jars, "Sutherland" .. per jar	0	3	6
	{ 1-gal. jars, "Reeds" .. do.	0	3	0

## (AGREEMENT.)

W. Cook and Son, Horsham.

## Sub-schedule No. 3.

## JAM.

1. Jams—  
Varieties available—Apricot Conserve, Apple Jelly, Blackberry, Black Currant, Gooseberry, Loganberry, Melon and Lemon, Melon and Pineapple, Dark Plum, Light Plum, Marmalade, Peach, Plum and Raspberry, Quince and Raspberry, in the proportion of half seed and half stone.

	£	s.	d.
In 24-oz. tins { "S.P.C." .. per doz.	1	4	11
.. { "White Crow" .. do.	1	10	0
In 5-lb tins { "S.P.C." .. do.	3	14	6
.. { "White Crow" .. do.	4	4	0
In Bulk .. Plum .. per lb.	0	1	1
.. Apricot .. do.	0	1	2

## SCHEDULE No. 19.

PROVISIONS—RESEARCH STATION,  
RUTHERGLEN.

(Delivery at the Station.)

ANNEX TO CONTRACT No. 1954/334.

W. S. Moore, Main-street, Rutherglen.

## Sub-schedule No. 1.

## BREAD.

	Security, £3.	£	s.	d.
1. Bread—Fine wheaten, first quality .. per cwtl.	2	18	4	

## (AGREEMENT.)

Aitken and Fullerton, Rutherglen.

## Sub-schedule No. 2.

## GROCERIES, ETC.

	£	s.	d.
1. Biscuits—Marie .. per lb.	0	2	0
2. Cornflakes—"Kellogg's," 16-oz. packets .. per pkt.	0	2	6
3. Corn or Maize Flour—1-lb. packets, net, "Fielder's" .. per lb.	0	1	8
4. Coconut—Dessicated .. do.	0	2	0
5. Currants—2-crown (present season's) .. do.	0	1	8
Fish—Salmon—			
6. { 1-lb. tins .. per tin	0	2	0
.. { 1-lb. tins .. do.	0	4	3
7. Fruits—Preserved, assorted, 1-lb., 14-oz. tins (Pineapple, 3s. 6d.) .. do.	0	2	9
Jams—			
8. { Stone, 24-oz. tins .. do.	0	2	6
.. { Seed, 24-oz. tins .. do.	0	3	2
9. Jelly Crystals—4-oz. packets .. per pkt.	0	0	9
10. Macaroni or Vermicelli, as ordered .. per lb.	0	1	3
11. Matches—Safety .. per pkt.	0	1	9
12. Oatmeal—Flaked, "John Bull" .. per lb.	0	1	0
13. Pepper—White, ground .. per oz.	0	1	3
14. Potatoes—Dry and free from dirt .. per cwt.	1	7	0
Raisins—			
15. 5-crown (present season's) lexias .. per lb.	*		
16. Sultanias, 3-crown (present season's) .. do.	0	1	8
17. Rice—Dressed .. do.	0	1	0
18. Salt—Fine .. do.	0	0	2
19. Sauce—Tomato, 13-oz. bottles .. per bot.	0	1	7
Soap—			
20. Household, yellow .. per lb.	0	1	0
21. Sand, 16-oz. blocks .. per block	0	0	6
22. Toilet, "Bath," 4-oz. tablets, to sample, per doz.	0	5	6
.. Kitchen's, or equal thereto .. per lb.	0	4	6
23. Tea—First grade ..			

\* Supplies not available.

## SCHEDULE No. 20.

## PROVISIONS AT SALE.

(Delivery at the Gaol.)

ANNEX TO CONTRACT No. 1954/335.

F. J. Hennessy, 102 Raymond-street, Sale.

## Sub-schedule No. 1.

## BREAD.

	Security, £3.	£	s.	d.
1. Bread—Fine wheaten, first quality .. per cwtl.	2	14	2	

ANNEX TO CONTRACT No. 1954/336.†

H. L. G. Laws, 111 Raymond-street, Sale.

## Sub-schedule No. 2.

## MEAT.

	Security, £3.	£	s.	d.
1. Fresh Beef—Stewing .. per lb.	0	2	0	
2. Fresh Mutton .. do.	0	1	3	
3. Corned Beef—Rolled or Round, as ordered, without bone or cartilage .. do.	0	2	0	
4. Sausages .. do.	0	1	6	

## SCHEDULE No. 21.

PROVISIONS—PLEASANT CREEK  
SPECIAL SCHOOL, STAWELL.

(Delivery at the School.)

ANNEX TO CONTRACT No. 1954/337.

Keith Lawson, 26 Main-street, Stawell.

## Sub-schedule No. 1.

## BREADSTUFFS.

	Security, £10.	£	s.	d.
1. Bread—Fine wheaten, first quality .. per cwtl.	2	9	0	
2. Flour—First quality .. do.	2	0	0	
3. Flour—Wheatmeal .. per lb.	0	0	4	

## (AGREEMENT.)

McKay MacLeod Pty. Ltd., 122 Lydiard-street, Ballarat.

## Sub-schedule No. 2.

## GROCERIES.

	£	s.	d.
1. Baking Powder—"Excelsior" .. per lb.	0	2	2½
2. Barley—Pearl .. do.	0	0	6½
3. Blue—Washing, "Reek Square" .. per gross	1	7	3½
4. Cereal—"Wheat flakes," 24-oz. packets .. per doz.	1	2	2
5. Cocoa—28-lb. bags .. per lb.	0	3	6½
6. Coffee and Chicory "Gold Seal" .. do.	0	6	1½
7. Corn Flour—1-lb. packets, "Kream" .. do.	0	1	6½
Currants (present season's)—			
.. { M.F. .. do.	0	1	5
8. { 1-crown .. do.	0	1	5½
.. { 2-crown .. do.	0	1	5½
.. { 3-crown .. do.	0	1	0½
9. Curry Powder—Loose, "Gold Seal" .. do.	0	4	0½
10. Custard Powder—Loose .. do.	0	1	2½
11. Dates .. do.	0	1	4
12. Ginger—Ground .. do.	0	4	10
Golden Syrup—			
13. { 2-lb. tins .. per doz.	0	18	4
.. { 70-lb. tins .. each	2	12	1
14. Gravox—1-lb. tins .. per doz.	1	1	1½
15. Honey—First quality .. per lb.	0	1	0½
16. Jams—Assorted, of approved kinds, in proportion of half seed and half stone, in tins containing 24 oz. net, "Victoree" .. per doz.	1	7	11
17. Jelly Crystals—in 4-oz. pkts. .. do.	0	7	4½
Junket Tablets—			
18. { "Gold Seal" .. per dz. tbs.	0	5	0
.. { "Merry Widow," flavoured .. do.	0	14	3½
19. Macaroni—22-lb. cartons .. per ctn.	1	2	4
Oatmeal—			
20. { Flake .. per lb.	0	0	8½
.. { Fine .. do.	0	0	8½
21. Peel—Cut, mixed .. do.	0	1	8½
22. Pepper—Black, ground .. do.	0	10	6½
23. Prunes—Dried, 80-90's (present season's) .. do.	0	1	11½
Raisins—Sultana (present season's)—			
24. { Plain .. do.	0	1	5½
.. { 1-crown .. do.	0	1	6½
.. { 2-crown .. do.	0	1	6½
.. { 3-crown .. do.	0	1	6½
25. Rice—Dressed .. per cwt.	4	19	1½

## Sub-schedule No. 2—continued.

GROCERIES—continued.		£	s.	d.
26. Salt—Fine "Imperial" ..	per cwt.	1	3	4
27. Sauce—Tomato, 26-oz. bottles ..	per doz.	1	13	1
Soap—				
28. Preservene Foam, or equal thereto ..	per doz.	0	14	9
29. "Lifebuoy," or equal thereto ..	per cake	0	0	5½
30. Sand, "Preservene" ..	per doz.	0	6	10½
pkts.				
31. "Velvet," or equal thereto { Quads ..	per doz.	1	3	2
Soda—				
32. Bicarbonate of ..	per lb.	0	0	6½
33. Washing ..	per cwt.	1	19	7½
34. Spice—Mixed, 1-oz. packets ..	per pkt.	0	0	5½
35. Starch—12-oz. packets, "Silver Star" ..	per doz.	0	17	10
36. Tartar—Cream of, substitute, "Antelope" ..	per lb.	0	2	4½
37. Tapioca—Pearl ..	do.	0	0	10
38. Tea—First grade, loose, special blend ..	do.	0	4	1½
39. Treacle—2-lb. tins ..	per doz.	0	17	11

ANNEX TO CONTRACT NO. 1954/338.

E. G. Waldron, Stawell.

## Sub-schedule No. 3.

MILK.		£	s.	d.
Security, £10.				
1. Milk—Fresh and pure ..	per gal.	0	5	9

ANNEX TO CONTRACT NO. 1954/339.†

Newton Bros., 121 Main-street, Stawell.

## Sub-schedule No. 4.

MEAT.		£	s.	d.
Security, £3.				
Fresh Beef—				
1. Prime Ribs ..	per lb.	0	1	9
2. Prime Stewing (minced when required) ..	do.	0	1	9
3. Beef—Corned, Silverside ..	do.	0	1	9
Fresh Mutton—				
4. Chops (loin) ..	do.	0	1	5
5. Sides (kidney fat removed) ..	do.	0	1	5
6. Sausages—Mixed ..	do.	0	1	3
7. Livers—Sheep ..	do.	0	0	4
8. Tripe—Fresh ..	do.	0	0	6
9. Saveloys ..	per doz.	0	2	6

## SCHEDULE No. 22.

## PROVISIONS—SUNBURY DISTRICT.

(Delivery into Institutions.)

ANNEX TO CONTRACT NO. 1954/340.

J. N. Hennessy Pty. Ltd., 55 Sydney-road, Brunswick.

## Sub-schedule No. 1.

BREADSTUFFS.		£	s.	d.
Security, £112.				
1. Bread—Fine wheaten, first quality ..	per cntl.	1	17	3
2. Flour—First quality ..	do.	1	14	0

(AGREEMENT.)

K. N. Tidswell, Sunbury.

## Sub-schedule No. 2.

GROCERIES.		£	s.	d.
1. Blue—Washing, 1-oz. knobs, "Reckitts" ..	per gross	1	9	6
2. Beans—Lima ..	per lb.	*		
3. Candles—Full weight, in 1-lb. packets, Kitchen's "Electrines," or equal thereto ..	do.	0	2	4
4. Cinnamon ..	do.	0	2	6
5. Cloves—Whole ..	do.	*		
6. Cocos—16-oz. packets, "Bournville" ..	do.	0	4	9
7. Corn or Maize Flour—1-lb. packets, net..	do.	0	1	6

\* Supplies not available.

## Sub-schedule No. 2—continued.

GROCERIES—continued.		£	s.	d.
8. Currants—2-crown (present season's) ..	per lb.	0	1	7½
9. Curry Powder ..	do.	0	4	6
10. Custard Powder—30-lb. tins ..	do.	0	1	4½
11. Dates—Stoneless ..	do.	0	1	6
Flour—Self-raising—				
12. { 6-lb. bags ..	each	0	4	0
25-lb. bags ..	do.	0	16	0
13. Ginger—Ground ..	do.	*		
Golden Syrup—				
14. { 5-cwt. drums ..	per cwt.	*		
2-lb. tins ..	per doz.	0	18	0
15. Jelly Crystals—4-oz. packets ..	do.	0	7	10½
16. Lemon Peel—8-oz. packets ..	per pkt.	0	1	7
17. Macaroni ..	per lb.	0	0	11½
18. Milk—Powdered ..	do.	0	1	2½
19. Mustard—Loose, "Keen's" ..	do.	0	6	6
20. Nutmeg—Ground ..	do.	0	9	6
21. Pepper—Black, ground ..	do.	0	14	6
22. Pickles—Mustard ..	per doz.	1	7	0
23. Raisins—Sultans, 2-crown (present season's) ..	per lb.	0	1	8
24. Salt—Fine ..	per cwt.	0	16	0
Sauce—				
25. { Tomato, 26-oz. bottles ..	per doz.	1	14	0
Worcestershire, 20-oz. bottles ..	do.	1	10	6
Soda—				
26. Bicarbonate of ..	per lb.	0	0	7
27. Washing ..	per cwt.	2	0	0
28. Spaghetti in Tomato Sauce—4-lb. jars ..	per doz.	3	7	0
29. Spice—Mixed, loose ..	per lb.	0	4	6
30. Starch—Loose, "Silver Star" ..	do.	0	1	9½
31. Tartar—Cream of ..	do.	0	3	7
32. Vermicelli ..	do.	0	1	1½
33. Vinegar—Malt ..	per gal.	0	2	6

## Sub-schedule No. 3.

CEREALS.		£	s.	d.
1. Oatmeal ..	per cwt.			
2. Rice—Dressed to sample ..	do.			
3. Pearl Barley ..	do.			
4. Peas—Split ..	do.			

Purchase under Tender Board quotations.

(AGREEMENT)

K. N. Tidswell, Sunbury.

## Sub-schedule No. 4.

JAMS.		£	s.	d.
1. Jams—Assorted, in bulk, of approved kinds, in the proportion of half seed and half stone, of the best quality, in tins as required, "M.P." ..	per lb.	0	0	11½

ANNEX TO CONTRACT NO. 1954/341.†

F. Watkins Pty. Ltd., 184 Bourke-street, Melbourne, C.I.

## Sub-schedule No. 5.

MEAT.		£	s.	d.
Security, £40.				
Fresh Beef—				
1. Rolled Ribs, boneless ..	per cntl.	7	10	0
2. Buttocks ..	do.	5	8	4
3. Fresh Mutton (Kidney fat to be removed) ..	do.	3	10	10
4. Fresh Mutton—Loin Chops ..	do.	6	13	4
5. Corned Beef—Rolled or Round, as ordered, without bone or cartilage ..	per lb.	0	1	7
6. Corned Mutton ..	do.	0	1	2
7. Sausages—Mixed ..	do.	0	1	3
8. Sausage—Beef, German ..	do.	0	1	11
9. Beef Loaf—October to March ..	do.	0	1	9
10. Ham Loaf ..	do.	0	2	10
11. Veal Loaf ..	do.	0	2	10
12. Tripe—Fresh ..	do.	0	0	6
13. Saveloys ..	per doz.	0	3	0