

[2273]



VICTORIA
GOVERNMENT GAZETTE

Published by Authority

[Registered at the General Post Office, Melbourne, for transmission by post as a newspaper.]

No. 204]

FRIDAY, JULY 12.

[1957

CONTRACTS ACCEPTED.

(SERIES 1957-58.)

SUPPLY OF PROVISIONS

FOR

STATE DEPARTMENTS

FROM

1st JULY, 1957, to 30th JUNE, 1958,
or as stated.

Conditions of Contract and Stipulations are shown herein for the guidance
of Officers ordering and receiving supplies.

W. H. RUTHERFORD,
Secretary to the Tender Board.

CONTRACTS ACCEPTED—(Series 1957-58.)

PROVISIONS.

No. of Contract.	Particulars of each Tender Accepted.	Amount.	Name of Contractor or Supplier.	Charge against Vote or Fund.
PROVISIONS—				
Supply of Provisions, in such quantities as may be ordered, from 1st July, 1957, to 30th June, 1958, or as stated.				
Schedule No. 1.—Melbourne District—				
17	Bread, Kew Mental Hospital	Rates as per annex	Capitol Bakeries Pty. Ltd.	
18	Bread, Children's Welfare Depot and Receiving House and Mental Hospital, Royal Park, and Travancore Developmental Centre, Flemington	Ditto	J. N. Hennessy Pty. Ltd.	
10	Bread, "Winlaton" Juvenile School, 186 Springvale-road, Nunawading	Ditto	Capitol Bakeries Pty. Ltd.	
20	Bread, Teachers' College and Hostels at Grattan-street, 93 Drummond-street, Carlton; 470 and 481 St. Kilda-road, Melbourne; 152 Toorak-road, South Yarra; and Frank Tate House, 373 Dandenong-road, Armadale; "Redcourt" 6 and "Larnook," 13 Orrong-road, Armadale; 11 Patterson-street, Hawthorn, 221 Burwood-road, Burwood and 17 Moule-avenue, Brighton; Henry Watson House, 260 Domain-road, South Yarra; and Police Hospital, St. Kilda-road, Melbourne	Ditto	Callander's Bakeries Pty. Ltd.	
21	Flour	Ditto	Pirrie Bros.	
	Groceries	Ditto	<i>Moran and Cato Pty. Ltd. (A)</i>	
	Cereals	Purchase under Tender Board quotations	
	Jams	Rates as per annex	W. H. Johnsons Jams Pty. Ltd.	
23	†Meat, Kew Mental Hospital	Ditto	F. Watkins Pty. Ltd.	
24	†Meat, Pentridge Penal Establishment and "Fairlea" Female Prison, Fairfield	Ditto	Jackson's United Meat Co. Pty. Ltd.	
25	†Meat, Children's Welfare Depot, Royal Park, and Travancore Developmental Centre, Flemington	Ditto	J. H. Cooke Pty. Ltd.	
26	†Meat, "Winlaton" Juvenile School, 186 Springvale-road, Nunawading	Ditto	J. H. Cooke Pty. Ltd.	
27	†Meat, Royal Park Mental Hospital and Receiving House	Ditto	J. H. Cooke Pty. Ltd.	
	Soap Mixtures	Ditto	<i>Moran and Cato Pty. Ltd. (A)</i>	
28	Tea	Ditto	Bushells Ltd.	
29	Coffee	Ditto	Griffiths Bros. Ltd.	
	Potatoes	Purchase under Tender Board quotations	
Schedule No. 2.—Mont Park, Bundoora, Larundel, Janefield, Gresswell, and Pleasant View, Wood-street, Preston—				
30	Bread	Rates as per annex	Northern Bakeries (Preston) Pty. Ltd.	
	Groceries	Ditto	<i>Henry Berry and Co. (A'sia) Ltd. (A)</i>	
31	Jams	Ditto	W. H. Johnsons Jams Pty. Ltd.	
32	†Meat—Mont Park District	Ditto	W. Anglias and Co. (Aust.) Pty. Ltd.	
33	†Meat—Preston	Ditto	W. Anglias and Co. (Aust.) Pty. Ltd.	
	Potatoes	Purchase under Tender Board quotations	
Schedule No. 3.—SS. Rip and Dredges—				
34	Groceries	Rates as per annex	<i>Moran and Cato Pty. Ltd. (A)</i>	
	†Meat	Ditto	Jackson's United Meat Co. Pty. Ltd.	
	Vegetables	Purchase by agreement	
	Potatoes	Purchase under Tender Board quotations	
Schedule No 4.—Teachers' College and Hostels at Grattan-street, 93 Drummond-street, Carlton; 470 and 481 St. Kilda-road, Melbourne; 152 Toorak-road South Yarra; and Frank Tate House, 373 Dandenong-road, Armadale; "Redcourt" 6 and "Larnook," 13 Orrong-road, Armadale; 11 Patterson-street, Hawthorn, 221 Burwood-road, Burwood, and 17 Moule-avenue, Brighton; Henry Watson House, 260 Domain-road, South Yarra; and Police Hospital, St. Kilda-road, Melbourne—				
35	Groceries	Rates as per annex	Order under Melbourne District	
	†Meat	Ditto	J. C. Hutton Pty. Ltd.	
	Potatoes	Purchase under Tender Board quotations	

Contingencies, 1957-58

Names shown in italics denote suppliers under agreement. † Contract for period 1st July, 1957, to 30th September, 1957 only.

CONTRACTS ACCEPTED—(Series 1957-58)—continued.
PROVISIONS—continued.

No. of Contract.	Particulars of each Tender Accepted.	Amount.	Name of Contractor or Supplier.	Charge against Vote or Fund.	
PROVISIONS—continued.					
Schedule No. 5.—Heatherton Sanatorium, Cheltenham—					
36	Bread	Rates as per annex	Charlestons Bakery Pty. Ltd.	} Contingencies. 1957-58	
	Groceries	Ditto	<i>Moran and Cato Pty. Ltd. (A)</i>		
37	†Meat	Ditto	W. Angliss and Co. (Aust.) Pty. Ltd.		
38	Milk	Ditto	Dairymen and Farmers United Milk Co. Ltd.		
Schedule No. 6.—Ararat District—					
39	Breadstuffs	Rates as per annex	Mark Forysth Pty. Ltd.		
	Groceries	Ditto	} <i>McKay MacLeod Pty. Ltd. (A)</i>		
	Jams	Ditto			
40	†Meat	Ditto	H. A. Morris		
	Potatoes	Purchase under Tender Board quotations		
Schedule No. 7.—Ballarat District—					
41	Breadstuffs	Rates as per annex	W. Dick and Sons		
	Groceries—Teachers' Hostels	Ditto	} <i>McKay MacLeod Pty. Ltd. (A)</i>		
	Groceries—Mental Hospital	Ditto			
	Jams	Ditto	} Victorian Inland Meat Authority		
42	†Meat—Gaol and Mental Hospital	Ditto		Victorian Inland Meat Authority	
43	†Meat—Teachers' Hostels	Ditto	The Ballarat Modern Dairy Pty. Ltd.		
44	Milk—Mental Hospital and Teachers' Hostels	Ditto	Purchase under Tender Board quotations		
	Potatoes		
Schedule No. 8.—Beechworth District—					
45	Bread	Rates as per annex	P. A. Taylor, Model Bakery		
	Groceries	Ditto	} <i>Moran and Cato Pty. Ltd. (A)</i>		
	Jams	Ditto			
46	†Meat	Ditto	E. Spencer		
47	Milk—Mental Hospital	Ditto	C. F. Godde		
	Potatoes	Purchase under Tender Board quotations		
Schedule No. 9.—Bendigo District—					
48	Bread—For Gaol and Mental Hygiene Training Centre	Rates as per annex	C. H. Jeffrey Pty. Ltd.		
49	Bread—For Teachers' Hostels "Sandhurst" and "Lancewood"	Ditto	A. Hardeman Pty Ltd.		
50	Bread—For Teachers' Hostel "Comersdale"	Ditto	Roy Raggatt		
	Groceries	Ditto	<i>Pulfer, Cox and Hargreaves, Wholesalers Ltd. (A)</i>		
51	†Meat—For Gaol	Ditto	Alan H. Gittins		
52	†Meat—For Mental Hygiene Training Centre	Ditto	Alan H. Gittins		
53	†Meat—For Teachers' Hostels	Ditto	Frank Wade		
	Potatoes	Purchase under Tender Board quotations		
Schedule No. 10.—Castlemaine District—					
54	Bread	Rates as per annex	Roy J. Brown		
55	†Meat	Ditto	Ewings "W. K. and H. S."		
Schedule No. 11.—School of Forestry, Creswick—					
56	Breadstuffs	Rates as per annex	D. H. Moar		
	Groceries	Ditto	<i>J. Tait and Son' (A)</i>		
57	Milk	Ditto	E. J. Keen		
58	†Meat	Ditto	H. J. Symons Pty. Ltd.		
Schedule No. 12.—Agricultural College, Dookie—					
59	Breadstuffs	Rates as per annex	F. G. Dixon		
	Groceries	Ditto	} <i>W. A. Thompson (A)</i>		
	Jam	Ditto			
Schedule No. 13.—McLeod Settlement, French Island—					
60	Bread	Rates as per annex	H. H. Bird		
	Groceries	Ditto	<i>E. V. Peters (A)</i>		
61	†Meat	Ditto	George Hayman		
	Potatoes	Purchase under Tender Board quotations		
Schedule No. 14.—Geelong District—					
62	Bread	Rates as per annex	J. A. Fitzgerald		
	Groceries	Ditto	<i>Beacon Trading Co., (Wholesalers Ltd.) (A)</i>		
63	†Meat—Gaol	Ditto	A. R. Bubbs		
64	†Meat—Teachers' College Hostels	Ditto	A. C. Knight		

Names shown in italics denote suppliers under agreement. † Contract for period 1st July, 1957, to 30th September, 1957, only.

CONTRACTS ACCEPTED—(Series 1957-58)—continued.

PROVISIONS—continued.

No. of Contract.	Particulars of each Tender Accepted.	Amount.	Name of Contractor or Supplier.	Charge against Vote or Fund.
<i>PROVISIONS—continued.</i>				
Schedule No. 15.—Cooriemungle Prison Camp, Heytesbury Forest—				
65	Bread	Rates as per annex	<i>M. and J. V. Church</i>	
66	Groceries	<i>Robert Swinton and Co. (A)</i>	
66	†Meat	Rates as per annex	Heytesbury Butchery	
Schedule No. 16.—Aboriginal Station, Lake Tyers—				
67	Breadstuffs	Rates as per annex	<i>R. Hodder</i>	
67	Groceries	Ditto	} <i>R. Hodder (A)</i>	
67	Jams	Ditto	}	
Schedule No. 17.—Langi Kal Kal Training Centre—				
68	Bread	Rates as per annex	<i>O. Nicholls and W. J. Hosken</i>	
69	†Meat	Ditto	<i>H. T. Slee and Co.</i>	
69	Potatoes	Purchase under Tender Board quotations	
Schedule No. 18.—Agricultural College, Longerenong—				
70	Breadstuffs	Rates as per annex	<i>Schwarz Breads</i>	
70	Groceries	Ditto	} <i>W. Cook and Son (A)</i>	
70	Jam	Ditto	}	
70	Potatoes	Purchase under Tender Board quotations	
Schedule No. 19.—Research Station, Rutherglen—				
71	Bread	Rates as per annex	<i>E. M. and G. A. Dwyer</i>	
71	Groceries	Ditto	<i>Aitken and Fullerton (A)</i>	
Schedule No. 20.—Sale Gaol				
72	Bread	Rates as per annex	<i>F. J. Hennessy</i>	
73	†Meat	Ditto	<i>H. L. G. Laws</i>	
Schedule No. 21.—Pleasant Creek Special School, Stawell				
74	Breadstuffs	Rates as per annex	<i>Stawell Bakeries Pty. Ltd.</i>	
75	Groceries	Ditto	<i>McKay MacLeod Pty. Ltd. (A)</i>	
75	Milk	Ditto	<i>Stawell Modern Dairy Pty. Ltd.</i>	
76	†Meat	Ditto	<i>Newton Bros.</i>	
76	Potatoes	Purchase under Tender Board quotations	
Schedule No. 22.—Sunbury District—				
77	Breadstuffs	Rates as per annex	<i>J. N. Hennessy Pty. Ltd.</i>	
77	Groceries	Ditto	<i>K. N. Tidswell (A)</i>	
77	Cereals	Purchase under Tender Board quotations	
78	Jams	Rates as per annex	<i>K. N. Tidswell (A)</i>	
78	†Meat	Ditto	<i>F. Watkins Pty. Ltd.</i>	
78	Potatoes	Purchase under Tender Board quotations	
Schedule No. 23.—Warrnambool District—				
79	Breadstuffs	Rates as per annex	<i>Ray Barns Bakery</i>	
80	Groceries	Ditto	<i>Swintons Pty. Ltd. (A)</i>	
80	Milk	Ditto	<i>Sungold Dairies Pty. Ltd.</i>	
81	†Meat	Ditto	<i>A. Struth</i>	

Contingencies, 1957-58

Names shown in italics denote suppliers under agreement. † Contract for period 1st July, 1957, to 30th September, 1957, only.

Approved—H. E. Bolte, Treasurer, 1st July, 1957.

CONDITIONS OF CONTRACT FOR PROVISIONS, 1957-58, ETC.

(Published in the *Victoria Government Gazette*, No. 158, dated 1st May, 1957, pages 1,462 to 1,464.)

1. All the articles are to be of the best quality of the several kinds, in the best condition, and in conformity with the Health Acts, and to be delivered in sound packages, free from all charges for cartage, freight, &c. The goods shall be delivered as may be directed by the officer ordering the supply.

2. As the exact quantity of any article which may be required cannot be stated, the estimate being approximate only, the Government will not be bound by the quantity stated in the schedule, but will be at liberty to order more or less, according to circumstances, and the contractor will be bound to supply the same as ordered.

The Government reserves the right to purchase otherwise than from the contractor any of the articles specified in the schedule in the event of emergency.

3. Supplies for country districts for which no local contract may have been taken, or for which the contract has been terminated, may be ordered under the Melbourne contract.

4. The Melbourne District will include places within a radius of 10 miles from the Elizabeth-street Post Office, with the exception of places for which separate contracts are provided; the Mont Park District will include the Mental Hospitals, Janefield Colony, the Sanatorium, Gresswell, and Pleasant View, Preston; the Ararat, Ballarat, Beechworth, Bendigo, Castlemaine, Geelong and Sunbury Districts will include Mental Hospitals, Penal Institutions and Teachers' Hostels at any of those places. Delivery must be made at the places, institutions, &c., named in the Schedules, or as directed by the officer ordering the supply.

5. Packages suitable for transport of goods supplied must be provided by the contractor free of expense, and the value of these packages, whether in bulk or otherwise, is to be included in the rate tendered, except butter boxes and soap boxes (not including fancy soaps), jam jars, flour, meal, and potato bags, which will remain the property of the contractor, and only the actual net weight or quantity received will be paid for; the empties to be removed from the place of delivery at the contractor's expense.

6. The meat supplied under these conditions must, if practicable, be slaughtered at abattoirs which are under authorized inspection and supervision. Any infringement of these conditions will subject the contractor, on report from the Tender Board, to such mulct, not exceeding Fifty pounds, as the Treasurer may direct, and the amount will be deducted from the contractor's account, or from the security money.

7. The supplies coming under the head of Rations and Medical Comforts are to be delivered direct to the establishment entitled thereto on the written order of the officer in charge. All other supplies will be ordered by the head of the Department concerned or any officer authorized by him, and shall be delivered as may be directed by the officer ordering the supply.

8. At the time of delivering the supplies, the contractor shall produce the order for the same to the officer authorized to accept delivery, and such officer shall acknowledge thereon the receipt of the stores accepted, and shall return the order to the contractor, who shall render his account as soon as possible after the delivery of the supplies, accompanied by the receipted delivery order. The rates or quantities quoted in the orders cannot be exceeded.

9. Where railway facilities are available, the contractor shall use the Railways for the transport of the goods. When a contractor is required to make delivery of goods at a railway station for transmission by rail, except for Commonwealth Departments, he shall obtain a receipt for the goods in duplicate on the Stores and Transport consignment note, at the same time handing in the triplicate and quadruplicate of the form as an authority for the Railways to act as agent for, and charge the freight to, the Stores and Transport Office. He shall as soon as possible, and not later than twenty-four hours thereafter, deliver at the Tender Board Offices the original, the duplicate to be forwarded to the consignee and the quintuplicate retained by himself. Should the goods thus forwarded be rejected, the contractor must bear the cost of replacing such goods, for which services the departmental consignment note is not to be used. Any infringement of this condition may subject the contractor to such mulct as the Tender Board may recommend under clause 18 of these conditions.

10. Orders must receive prompt execution; in the event of the goods not being delivered at the time mentioned in the order or within such other time as the officer ordering the supply may specify for delivery, it will be competent for such officer, or the head of the Department to whom the goods are to be supplied, on giving the contractor twenty-four hours' notice, to purchase the supplies, or any like supplies that are suitable for the service, at the contractor's risk, and the extra expense incurred over and above the contract price (if any) will be deducted from the contractor's account or from the security money.

11. The acceptance of the supplies shall be subject to the approval of the officer authorized to take delivery of the stores, or such other officer as shall be named in the conditions.

12. If the officer in charge of stores be not satisfied as to the quantity or quality of the stores, or if, after taking delivery of any stores or material, he shall discover any deficiency or defect therein, he may return such deficient or defective stores or material to the contractor, and shall report the same to the head of his Department and to the Tender Board.

13. In the event of a difference of opinion between the contractor and the officer receiving the supplies as to the quality, the same is to be decided, in cases where the article is not of a perishable nature, by a Board of Survey composed of persons named by the Treasurer of the State for the time being; and the decision of the Board is to be considered final. In the event of the decision being against the contractor, the survey fees and expenses (if any) will be deducted as in clause 10.

14. In cases where the article is of a perishable nature, or when from some other cause injury would be sustained either by the person to whom the rations or stores are due or by the contractor in waiting for a Board to survey, the head of the Department or officer authorized to take delivery will have power to reject such article or articles as are obviously of inferior quality, it being understood that he will be responsible to the Government for so doing, and that the contractor must take back the rejected article and supply good in its stead; failing which it, or any like supply suitable for the Service, will be obtained by the officer requiring it as in clause 10. In case of the rejection or return of any supplies, the contractor shall bear the whole cost of replacing the supplies so rejected or returned.

15. If the Board shall decide that the article is not of proper quality it must be immediately replaced by the contractor; failing which it, or any like supply suitable for the Service, will be procured by the officer requiring it, and the expense charged as in clause 10.

16. In the case of supplies for Mental Hospitals, it will be competent for a Board of Survey, consisting of the medical superintendent (or, in his absence, of the medical officer) and any two officers named by him, to examine and reject any supplies that may be objected to. It must be distinctly understood, however, that the contractor will have a right of appeal to the Treasurer of the State for the time being, such appeal to be made in writing within 24 hours of the rejection; but, pending such appeal, he must at once supply others of approved quality; failing which, the supplies required, or any like supplies suitable for the Service, may be obtained by the officer concerned, and the expense charged as in clause 10.

17. In the case of supplies for Mental Hospitals, it will also be competent for two or more of the official visitors, in conjunction with the medical superintendent, to reject any supplies that they may consider not in accordance with contract; and in such cases the reference to a Board of Survey will not be deemed to be necessary.

18. A refusal to execute orders, irregularity in the quantity or quality of the supplies, or delay in delivering or replacing them when required, will subject the contractor, upon report from the Tender Board, to such mulct, not exceeding Fifty pounds, as the said Treasurer may direct, and the amount may be deducted as in clause 10. It will also be in the power of the said Treasurer, upon such refusal, irregularity, or delay, to terminate the contract forthwith, and forfeit the whole or any part of the security money; and, in addition, the contractor will be disqualified from tendering or holding any future contract or contracts for a period of twelve months from the date of such disqualification.

19. Contractors are not at liberty to transfer their contracts under cover of power of attorney, coupled with an interest or otherwise, and no such transfer will be recognized by the Government. *If it is found during the currency of the contract that the contractor has not conformed to the condition of advertisement—which stipulates that if a tenderer be a member of a firm and such firm be interested in the contract, the tender shall be in the name of the firm and not in that of the individual—then the Treasurer may, on the recommendation of the Tender Board, determine the contract, and forfeit the security money.*

20. It will be competent for the Tender Board to terminate the contract, without notice, should there be reason to know that the contractor takes advantage of his contract to communicate with a prisoner.

21. The contract entered into under these conditions is not to be considered as being broken, infringed, or vitiated by the importation of stores for the Government service, or by any contracts or purchases made by the Imperial Commissariat; or by the consumption of the produce or surplus stock of any Government establishment, or by any article being made at and supplied for the use of any Government establishment.

22. Notwithstanding anything contained to the contrary in section 152 of the *Customs Act 1901-52*, it is hereby expressly provided that upon any alteration of the duty collected affecting the goods included in this contract, the contract price shall not be altered, and the contract may be terminated at the option of either party by two months' notice in writing from the first day of the calendar month next ensuing, and within the period for which the contract is made. The contract for the unaffected items shall remain in full force and effect. Any notice to be served under this condition shall be deemed to have been duly served if sent to the contractor in a registered letter to his last-known place of business or abode.

23. Under no circumstances other than those mentioned in clause 22 will a contractor be permitted to abandon his contract. In the event of the contractor failing to carry on the contract, the contract security money will in that case be absolutely forfeited; and, in addition, the contractor will be held liable for any loss which the Government may sustain in consequence of such failure.

24. For the purposes of these contracts the word "Government" shall mean the Government of the State of Victoria; and the word "Treasurer" shall mean the Treasurer of the said State.

STIPULATIONS FOR SUPPLIES OF PROVISIONS.

SUPPLIES GENERALLY.

For supplies under all sub-schedules, particular attention is drawn to clause 1 of the Conditions of Contract as to quality.

No sub-letting is allowed, and all work must be carried out by the contractor.

Where practicable, all items must be manufactured or prepared within the Commonwealth.

Where no brand of Commonwealth manufacture or production is specifically set out in the respective sub-schedules, such Commonwealth brand as may be ordered must be supplied.

For Schedule No. 3 supplies must be delivered when ordered and, in cases of emergency, on Sundays, holidays, or half-holidays, as required.

BREAD AND FLOUR.

A sample of the best ordinarily retailed to the public will be considered as a test loaf for first quality for fine wheat and pure wheat Meal Bread. *Pure wheat Meal Bread of first quality may be substituted, wholly or in part, for fine wheat Bread at such times and in such quantities as, in the opinion of the Medical Superintendent, may be deemed necessary, and the contractor will be required to supply such Bread at the contract rate. Reasonable notice, however, of the intention to substitute wheat Meal Bread must be given to the contractor by the officer ordering the supply.* Bread may be baked at any Government establishment without infringing these contracts. At the Gaols, Ballarat, Beechworth, Bendigo, Castlemaine, Geelong, and Sale, and the Cooriemungle Prison Camp, McLeod Settlement, and Langi Kal Kal Training Centre, if required, bread must be supplied one day old, due notice to be given to the contractor of such requirement.

In the event of bread being made at any Government establishment in the Melbourne District during the currency of these contracts, the flour required will be drawn under the flour sub-schedule.

Flour for Districts for which no local contracts have been taken may be ordered under the Melbourne District contract, for delivery f.o.r. Melbourne.

GROCERIES.

As a guarantee of quality, Rice, when ordered in quantities of 56 lb. and over, must be supplied in original bags as delivered by the miller or dresser. Such bags must be branded "Rice, Dressed," and shall also have stencilled thereon the miller or dresser's name and the distinguishing mark indicative of the quality or grade. The bags thus stencilled shall contain Rice milled or dressed by the miller or dresser whose name appears thereon. Supplies not in conformity with the foregoing condition will be rejected.

Oatmeal must be supplied in original bags as delivered by millers.

Candles, except those for prison cells, must be supplied in 1-lb. packets. Candles for prison cells must be delivered in boxes containing from 25 to 50 lb. per box, the boxes for which must be legibly stencilled on one end showing the estimated burning time and the gross, tare, and net weight of contents.

The soap supplied must be hard throughout, ready for immediate use without waste, and shall have been manufactured at least seven weeks before leaving contractor's hands.

Raisins and currants must be present season's, and where the quantity admits, be supplied in original and unopened boxes, labelled as packed.

BARLEY, BEANS-HARICOT, OATMEAL, PEAS-SPLIT, RICE AND SEED TAPIOCA.

Supplies of these items for Districts for which no local contracts have been taken may be ordered under the Melbourne District contract, for delivery f.o.r. Melbourne.

BUTTER AND CHEESE.

All supplies of 56 lb. or multiples of 56 lb. must be supplied in boxes as originally packed. The boxes must bear the impress stamp of the creamery where the butter is produced, otherwise it will not be accepted. All supplies must be in new boxes.

Where the Store or Butter Factory of the Contractor is situated in the Metropolitan area all Butter to the quantity of 56 lb. and over to be supplied in any one consignment under this contract shall before despatch from the Store or Factory be first examined and passed by the Government Butter Grader, for and on behalf of the officer authorized to accept delivery. The boxes containing butter so examined and found satisfactory in quality and description will be stamped by the Government Butter Grader and the date of such examination marked thereon. No butter from a contractor located in the Metropolitan Area will be accepted unless the boxes bear the stamp of the Grader. For the purposes of the foregoing condition the Metropolitan Area is defined as being not outside the radius visited by the Government Grader. The officer authorized to accept delivery may, within 48 hours of the receipt of any supply, require the Contractor to have same re-examined by the Grader, and, if not passed by him, it shall be returned to the Contractor, who shall forthwith replace the same with freshly-examined butter.

No Butter ex Cool Store will be examined by the Grader until thermally it is in suitable condition therefor.

Where the Store or Factory from which the Butter is despatched is not within the area visited by the Grader a sample of any supplies may be forwarded to the Government Butter Grader for examination, should the supply be considered by the Officer authorized to accept delivery as not being equal in quality or description to that contracted for.

The Cheese supplied must be first-class quality, semi or fully matured, as ordered, and not less than three months old. If the quantity admits, it shall be boxed for transport.

JAM.

The weight stamped on the tins in accordance with the regulations under the Commerce Act, as indicating the *minimum* net quantity that each tin contains, shall for the purpose of this contract be taken as the actual contents when computing the quantity supplied.

When Jam is supplied in jars the jars remain the property of the contractor, and must be removed by the contractor at his own expense when empty.

SOAP AND SOAP MIXTURES.

Supplies of these items for Districts for which no local contracts have been taken may be ordered under the Melbourne District contract, for delivery f.o.r. Melbourne.

MEAT.

All meat supplied under this contract shall have been slaughtered in Victoria and shall be freshly killed, well-conditioned, of good quality, healthy, clean, wholesome, free from bone-taint, putrefaction or fly larvae, and shall not have been frozen.

The beef shall be of ox not under three nor more than six years old or heifer or cow not under three nor more than five years old. Carcass beef for Mental Hospitals shall be delivered in quarters of equal proportions of hinds and fores and the corresponding hinds and fores must be supplied, also extra buttocks separately when ordered. Meat for other Institutions shall be supplied as ordered. Where hindquarters or buttocks are ordered 9 inches shall be cut off from the end of the leg from the hock upwards, i.e., the end of the leg from which the shank has been removed at the abattoirs; when fore-quarters form a portion of the supply, 6 inches from the end of the neck and the whole of the shin at the clodbone joint shall be removed. The sticking pieces also shall be trimmed off and the point and end of the brisket rendered free from blood and blood stains.

The mutton shall be wether or maiden ewe not more than four years old and the weight of a carcass shall be not less than 40 lb. nor more than 60 lb. The mutton shall be delivered in sides when so ordered. All kidney fat to be removed for Mental Hospitals.

Corned Beef (rolled or round as ordered) shall be supplied without bone or cartilage and will be received whether pumped or prepared in the ordinary way of pickling but, in the former case, it shall have been soaked, after pumping, for at least 48 hours in a good pickle and then thoroughly drained before supply. No flank, chuck, sticking-piece, shin, leg of beef, or piece under 7 lb. will be received.

Meat derived from the carcasses of Bulls, Stags or Rams or meat containing an undue proportion of bone or fat will not be received and shall not be tendered for delivery. Net weight only will be paid for.

In cases of emergency, or on such other occasions as in the opinion of the Director of Mental Hygiene or Heads of other Institutions may seem advisable, other forms of meat, such as Rabbits, Tinned Meats, &c., may be purchased, apart from the contract, in lieu of the meat specified in the Schedule, and substituted therefor, provided 24 hours' notice—except in cases of emergency—be given to the Contractor of such intention.

The parts to be removed by the contractor are indicated in the shaded portion of the annexed diagram. This work shall be carried out in the factory or shop of the Contractor, except those parts usually removed at the abattoirs.

With respect to the schedules enumerated hereunder, the following stipulations shall also apply:—

For sub-schedules 9, 11, 12 and 13 of Schedule No. 1, fresh beef shall be supplied, as ordered, from ribs, sirloin, and thick flanks and for Schedule No. 2, from prime ribs, sirloin, and thick flanks; ribs of beef to be cut clear of the plate bone, and sirloin to be cut clear of the wing ribs; excess of brisket or thin flank will be rejected. Mutton must be delivered in sides when so ordered.

For Schedules Nos. 1 (sub-schedules 9, 11, 12 and 13), 3, 4, 5, 11, 14, and 21, chuck ribs of Beef, i.e., 1st to 4th inclusive will not be accepted.

For Schedules Nos. 4, 5, and 21, fresh Beef must be supplied, as ordered, from prime ribs or sirloin; ribs of Beef to be cut clear of the plate bone, and sirloin to be cut clear of the wing ribs; excess of brisket or flank will be rejected.

TEA AND COFFEE.

Tea and Coffee for Districts for which no local contracts have been taken may be ordered under the Melbourne District contract.

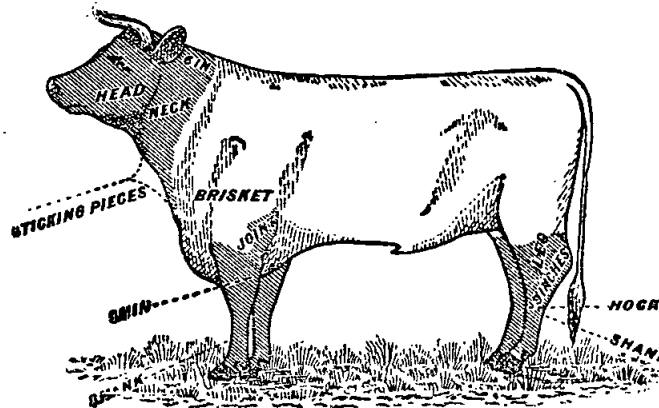
MILK.

The milk must be fresh, pure, and of the best quality, and subject to test when required by the Department, and supplied at such times as the Department may require. Should the contractor fail to supply at the time specified in the order or at such times as may be indicated in any general notice to the contractor his contract may be cancelled forthwith and his security forfeited, or should the supply prove to be not of contract quality it will be rejected, and any expense incurred will be charged to the contractor.

POTATOES.

Potatoes to be dry and free from dirt. Contractors to take back all rejected before being cooked. Bags to remain the property of the contractor. Weight of bags (approx. 2½ lb.) to be deducted.

If the price of potatoes becomes abnormally high, the heads of the various departments concerned may, if they think fit, cause rice or any other suitable food to be occasionally substituted in lieu thereof.



ANNEX TO CONTRACTS.

FLOUR AND BREAD.

The contract rates shown are subject to adjustment for any variation in the proclaimed price of flour.

MEAT.

Contracts marked † operate for the period 1st July, 1957, to 30th September, 1957, only.

AGREEMENTS.

For the Sub-schedules marked (Agreement), no contract has been let nor security lodged. Requirements thereunder are to be purchased from the suppliers named, under Tender Board Agreement. The rates shown are subject to variation from time to time, particulars of which will be gazetted as required. In all cases, supply is subject to stocks being available.

AVAILABILITY OF SUPPLIES.

Owing to existing difficulties in obtaining supplies of various items, the penal provisions of Clause 10 of the Conditions of Contract are not to be enforced without reference to the Tender Board.

SCHEDULE No. 1.

PROVISIONS—MELBOURNE DISTRICT.

ANNEX TO CONTRACT No. 1957/17.
Capitol Bakeries Pty. Ltd., 257 Toorak-road, South Yarra.

Sub-schedule No. 1.

BREAD FOR MENTAL HOSPITAL AT KEW.

	Security, £125.	£ s. d.
1. Bread—Fine wheaten, first quality	.. per cntl.	1 11 3

ANNEX TO CONTRACT No. 1957/18.
J. N. Hennessy Pty. Ltd., 55 Sydney-road, Brunswick.

Sub-schedule No. 2.

BREAD FOR CHILDREN'S WELFARE DEPOT, ROYAL PARK, RECEIVING HOUSE AND MENTAL HOSPITAL, ROYAL PARK, AND TRAVANCORE DEVELOPMENTAL CENTRE, FLEMINGTON.

	Security, £30.	£ s. d.
1. Bread—Fine wheaten, first quality	.. per cntl.	1 11 5

ANNEX TO CONTRACT No. 1957/19.

Callander's Bakeries Pty. Ltd., 86 Broadway, Oakleigh.

Sub-schedule No. 3.

BREAD FOR "WINLATON" JUVENILE SCHOOL, 186 SPRINGVALE ROAD, NUNAWADING.

	Security, £5.	£ s. d.
1. Bread—Fine Wheaten, first quality	.. per cntl.	1 13 4
2. Yeast Buns	.. per doz.	0 2 3

ANNEX TO CONTRACT No. 1957/20.

Capitol Bakeries Pty. Ltd., 257 Toorak-road, South Yarra.

Sub-schedule No. 4.

TEACHERS' COLLEGE AND HOSTELS AT GRATTAN-STREET, 93 DRUMMOND-STREET, CARLTON; 470 AND 481 ST. KILDA-ROAD, MELBOURNE; 152 TOORAK-ROAD WEST, SOUTH YARRA; AND FRANK TATE HOUSE, 373 DANDENONG-ROAD, ARMADALE; "REDCOURT" 6, AND "LARNOOK," 13 ORRONG-ROAD, ARMADALE; 11 PATTERSON-STREET, HAWTHORN; 221 BURWOOD-ROAD, BURWOOD; AND 17 MOULE-AVENUE, BRIGHTON; HENRY WATSON HOUSE, 260 DOMAIN-ROAD, SOUTH YARRA; AND POLICE HOSPITAL, ST. KILDA-ROAD, MELBOURNE—

	Security, £20.	£ s. d.
1. Bread—Fine wheaten, first quality	.. per cntl.	1 17 6

ANNEX TO CONTRACT No. 1957/21.

Pirrie Bros., 136 Exhibition-street, Melbourne.

Sub-schedule No. 5.

FLOUR.

	Security, £90.	£ s. d.
1. Flour—Roller, first quality	.. per cntl.	1 11 3

(AGREEMENT.)

Moran and Cato Pty. Ltd., 277 Brunswick-street, Fitzroy, N.6.

Sub-schedule No. 6.

GROCERIES.

		£ s. d.
Bacon—		
1. { Sides per lb.	0 5 4
{ Rashers, middle do.	0 6 2
2. Barley—Pearl do.	0 0 6½
Beans—		
3. Butter do.	*
4. Haricot do.	0 2 2½
5. Lima do.	0 2 1½

Sub-schedule No. 6.—continued.

GROCERIES—continued.

		£ s. d.
6. Biscuits (Tins 4s. each, returnable)—		
Dry (Thin Captain, Cenovia) [Unecda		
1s. 11½d.]	do.	0 1 9½
7. Coffee, Malt, Arrowroot, Gingernuts,		
Marie, Holsum	do.	0 1 9½
8. Assorted—Vanilla Curls, Nice, Rice,		
Fruit Cookies, Devon Shortbreads		
Butter Crisps	do.	0 1 10½
Blue—		
{ 1-oz. knobs, "Reckitts," paper ..	per doz.	0 2 9
{ 7-lb. packets, bulk	per lb.	0 1 11½
9. Borax	do.	0 0 8½
11. Cake Containers—Paper "Tiger" 90's	.. per doz.	0 5 10
Cereals—		
12. Pipers, Kornies, Weeties or equal, 24-oz.		
packets	do.	1 5 3
13. Cornflakes or equal, "Kellogs," 16-oz.		
packets	do.	1 12 0
14. Weetbix or equal, 24-oz. packets	.. do.	1 5 3
15. All Bran or equal, "Kellogs"	do.	1 0 6
16. Cheese—5-lb. boxes, "Kraft"	per pkt.	0 19 1
17. Chutney—"Rosella", Fruit	per doz.	1 3 0
18. Cloves—Whole	per lb.	0 5 10
19. Coconut—Desiccated, "Ceylon"	do.	0 3 2
Coffee Essence—		
20. { 8-oz. bottles, "Turban"	per doz.	1 10 6
{ 26-oz. bottles "Greigs"	do.	3 12 9
21. Curry Powder—Bulk	per lb.	0 2 4½
Custard Powder—		
{ Bulk	do.	0 1 0
{ 1-lb. packets, "Cameo"	do.	0 1 7½
23. Dates	do.	0 1 10½
Essences—		
24. Almond, 4-oz., "Summagold"	per bot.	0 1 7½
25. Lemon, 8-oz., "Summagold"	do.	0 4 4½
26. Vanilla, 8-oz., "Summagold"	do.	0 3 6½
27. Cochineal (red colouring), 16-oz., "Sum-		
magold"	do.	0 3 5½
28. Parisian, 26-oz., "Greigs"	do.	0 3 10½
29. Yolkine (yellow colouring), 16-oz.,		
"Allens"	do.	0 3 11½
Cocoa—		
30. { Tins, 1-lb., "Bournville"	per tin	0 5 2
{ Loose	per lb.	*
Extracts and Pastes, &c., or equals—		
31. Marmite, 4-oz. jars	per jar	0 2 2½
32. Vegemite, 4-oz. jars	do.	0 2 2½
33. Peanut Butter, 12-oz. jars, "Cottees"	.. do.	0 3 8½
34. Bonox, 4-oz. jar	do.	0 2 8½
35. Bloater, 2½-oz. jars, "Pecks"	do.	0 1 3½
36. Salmon and Shrimp, 2½-oz. jars, "Pecks"	.. do.	0 1 5½
Fish—Tinned (Flair or equal)—		
37. Salmon (Aust.), 16-oz., "Kingsound" ..	per doz.	2 1 9
tins		
38. Fish Cutlets, 12-oz., "Bass"	do.	1 10 6
39. { Herrings, in sauce, 14-oz., "Morton"	do.	1 8 3
{ Herrings, fresh, 14-oz., "Morton" ..	do.	1 7 9
40. Sardines (½'s)	do.	0 15 9
Flour—Corn or Maize—		
41. Packets, 1-lb., "Medallion"	per lb.	0 1 3½
42. Bulk	do.	0 0 9½
Flour—Self Raising—		
43. { 25-lb., "McAlpin"	per bag	0 15 4
{ 50-lb., "McAlpin"	do.	1 9 10
Fruits—Dried—		
44. Apples	per lb.	*
45. Apricots, 3-crown, "Choice"	do.	0 3 9
46. Nectarine, 3-crown, "Choice"	do.	*
47. Peaches, 1-crown, Unpeeled	do.	*
48. Pears, 3-crown, "Choice"	do.	*
49. Prunes, 70-80, 7-lb. tin (80-90-2/1½)	.. do.	0 2 4½
50. Currants, 1-crown	do.	0 1 6½
51. Raisins, Seeded, loose	do.	0 1 7½
52. Sultanas, 1-crown (2-crown-1/7½)	.. do.	0 1 7

* Supplies not available.

Sub-schedule No. 6—continued.

GROCERIES—continued.		£	s.	d.
Fruits, in 30-oz., 4-lb., and 7-lb. tins—				
53.	Apricots, Halves, 30-oz., "Rosella," "S.P.C." &c. per doz.	1	12	6
54.	Apricots, Whole, 4-lb. tins, "Camms" do.	*		
55.	Peaches, Halves and Sliced, 30-oz., "Rosella," "S.P.C." &c. do.	1	19	9
56.	Pears, 30-oz., "Rosella," "S.P.C." do.	1	15	6
57.	Apples, Solid Pack, 4½-lb. tins, "Camms" do.	5	1	0
58.	Apricots, Solid Pack, 7-lb. tins, "Berri" do.	5	17	6
59.	Peaches, Solid Pack, 7-lb. tins, "Berri" do.	6	2	3
60.	Gelatine—Ground, 1-lb. packets, "Davis" each	0	6	9½
61.	Ginger—Ground per lb.	0	10	8
62.	Golden Syrup—2-lb. tins per doz.	0	18	4
63.	Gravox—1-lb. tins do.	0	18	11
64.	Herbs—Mixed, 1-oz. packet, "Modern" do.	0	3	0
65.	Honey—60-lb. tins per tin	5	0	0
Jelly Crystals—				
66.	4-oz. packets, "Sparkling" per doz.	0	5	10
67.	7-lb. packets, "Sparkling" per pkt.	0	15	11
68.	Junket Tablets—Flavoured, "Merry Widow" per doz. tubes	0	15	0
69.	Lentils per lb.	0	2	4½
Macaroni—				
70.	1-lb. packets, "Rinoldi" do.	0	1	1½
71.	Bulk, 56-lb. bags, "Forex" do.	0	0	9½
72.	Margarine—Cake, Pastry do.	0	1	8½
73.	Matches—Safety, packets per gross	0	19	6
74.	Mayonnaise—5-lb. jars, "Eta" per jar	0	12	6
Meat—Tinned—				
75.	Beef Luncheon, 12-oz. tins, "Tom Piper" per doz.	1	5	9
76.	Beef Steak Pudding, 16-oz. tins, "Tom Piper" do.	1	6	9
77.	Camp Pie, 16-oz. tins, "Imperial" .. do.	1	2	4
78.	Irish Stew, 16-oz. tins, "Tom Piper" do.	1	6	9
79.	Lamb and Green Peas, 16-oz. tins, do.	*		
80.	Sausages and Vegetables, 16-oz. tins, "Tom Piper" do.	1	6	6
Milk—				
81.	Dried, 12-oz. tins, "Sunshine" .. do.	1	16	3
82.	Dried, 3-lb. tins, "Sunshine" .. do.	6	13	10
83.	Condensed, 14-oz. tins, "Nestles" .. do.	1	0	5
84.	Ideal or equal, 12-oz. tins, "Ideal" .. do.	0	15	8
85.	Mustard—Bulk per lb.	0	4	9
86.	Nutmeg—Ground do.	1	1	5
87.	Oatmeal—Flaked do.	0	0	7½
88.	Pastry Mixture, "Maxam" per doz.	0	15	3
89.	Peel—Mixed, cut per lb.	0	1	9½
90.	Pepper—White, ground do.	0	4	6½
91.	Pickles—Assorted, 20-oz. bottles, "Sutherland" per doz.	1	6	8
Rice—				
92.	Dressed per lb.	0	0	9½
93.	Ground, 1-lb. packets do.	0	1	0½
94.	Sago—(Seed Tapioca) do.	0	1	11
Salt—				
95.	Fine, bulk per cwt.	0	14	10
	Table, 1-lb. packets, "Mermaid" per lb.	0	0	5½
Sauce—				
96.	Tomato, 26-oz. bottles, "Rozella" .. per doz.	2	2	3
97.	{ Tomato, 1-gal. jars, "Tom Piper" .. per jar	0	17	0
	{ Tomato and apple, 1-gal. jars "Dollar" .. do.	0	12	2
	(Jars 3s. each, returnable)			
98.	Worcestershire, 10-oz. bottles, "Hardings" per doz.	1	0	10
99.	Worcestershire, 1-gal. jars, "Hardings" (Jars 3s. 6d. each, returnable) per jar	0	14	1
100.	Mustard, 8-oz. bottles, "Holbrooks" per doz.	1	3	3
Soda—				
101.	Bicarbonate of per lb.	0	0	6½
102.	Washing do.	0	0	4½
Soups—Tomato—				
103.	16-oz. tins, "Kia Ora" per doz.	1	1	0
104.	7-lb. tins, "Kia Ora" do.	5	18	6
Spaghetti—				
105.	1-lb. packets, "No. 1 Rinoldi" per lb.	0	1	2½
106.	Bulk, 22-lb. cartons, "No. 1 Forex" .. per ctn.	0	18	3
107.	Spice—Mixed per lb.	0	3	7
Starch—Rice—				
108.	{ Bulk, "Parsons" do.	0	0	10
	{ 12-oz. packets, "Silver Star" .. per pkt.	0	1	4½
Sugar—				
109.	Icing (56-lb. bags, 47s. 7d.) per lb.	0	0	10½
110.	Castor (70-lb. bag, 57s. 0d.) do.	0	0	10
111.	Raw do.	0	0	9
112.	White, 70-lb. bags per bag	2	12	9

* Supplies not available.

Sub-schedule No. 6—continued.

GROCERIES—continued.		£	s.	d.
113.	Tapioca—Pearl per lb.	0	1	10
114.	Treacle—2-lb. tins per doz. tins	0	17	11
Vegetables—Dried—				
115.	Peas, Green, "Dewcrisp" or equal .. per lb.	0	9	2
116.	Peas, Split (Yellow) per cwt.	4	5	0
Vegetables—Tinned—				
117.	Baked Beans, 16-oz., "Kia Ora" .. per doz.	1	2	3
118.	Baked Beans, No. 10 cans, "Kia Ora" do.	5	15	0
119.	Beans, Green, 16-oz., "Gartside" .. do.	1	4	3
120.	Beetroot, 16-oz., "Gartside" .. do.	0	18	6
121.	Carrots, 16-oz., "Fowlers" .. do.	0	15	0
122.	Peas, 30-oz., "Biddy" Processed .. do.	1	6	3
123.	Peas, 30-oz. "Harvest" Garden .. do.	1	19	9
124.	Sweetcorn, 16-oz., "Rosella" .. do.	1	8	3
125.	Tomatoes, 30-oz., "Cohn" .. do.	1	11	0
Vermicelli—				
126.	{ 1-lb. packets, "Rinoldi" .. do.	0	14	6
	{ Bulk, 22-lb., cartons, "Forex" .. per ctn.	0	18	3
127.	Vinegar—Malt, 1-gal. jars .. per gal.	0	3	6
	(Jars 3s. 6d., returnable)			

Sub-schedule No. 7.

CEREALS.		£	s.	d.
1.	Barley—pearl per cwt.			
2.	Beans, Haricot do.			
3.	Oatmeal—plain do.			
4.	Oatmeal—flaked do.			
5.	Peas, split—Yellow do.			
6.	Rice—dressed do.			
7.	Rice—unpolished do.			
8.	Seed Tapioca do.			

Purchase under Tender Board Quotations

ANNEX TO CONTRACT No. 1957/22.

W. H. Johnsons Jams Pty. Ltd., 42 Meaden-street, South Melbourne, S.C.5.

Sub-schedule No. 8.

JAMS.		£	s.	d.
Security, £20.				
Jams—				
1.	Assorted, in bulk, of approved kinds, in the proportion of half seed and half stone, of the best quality, in tins	per lb.	0	1
2.	Assorted, in bulk, of approved kinds, in the proportion of half seed and half stone, of the best quality, in 24-oz. tins	per tin	0	2
3.	Marmalade, 24-oz. tins do.	0	1	11
4.	Assorted, 5-lb. tins, in the proportion of half seed and half stone of the best quality	do.	0	6

ANNEX TO CONTRACT No. 1957/23.†

F. Walkins Pty. Ltd., 184 Bourke-street, Melbourne, C.1.

Sub-schedule No. 9.

MEAT FOR MENTAL HOSPITAL, KEW.		£	s.	d.
Security, £35.				
Fresh Beef—				
1.	Rolled Roast boneless (Brisket excluded)	per cntl.	7	10
2.	Fresh Beef—Steak, Stewing do.	7	10	0
3.	" " Minced do.	6	5	0
4.	Corned Beef—Rolled or Round, as ordered, without bone or cartilage	do.	7	10
5.	Fresh Mutton—(Whole Sheep) (Kidney fat to be removed)	do.	3	10
6.	Chops—Fore quarter do.	5	8	4
7.	Saveloys per doz.	0	3	0
8.	Sausages—Mixed per lb.	0	1	8
9.	Sausage—Belgium do.	0	2	0
10.	Beef Loaf do.	0	2	2
11.	Ham Loaf do.	0	3	0
12.	Veal Loaf do.	0	2	9
13.	Tripe, Fresh do.	0	0	8
14.	Livers—Sheep do.	0	2	6
15.	" Ox do.	0	1	0
16.	Gravy Beef and Shin Beef, boneless .. do.	0	1	3
17.	Sausage Meat do.	0	1	0
18.	Kidneys, Sheep do.	0	3	4
19.	" Pigs do.	0	1	9
20.	" Ox do.	0	3	9
21.	Veal—boned do.	0	1	8
22.	Brains—Sheep per set	0	0	8
23.	Tongues—Ox per lb.	0	1	1
24.	" Sheep do.	0	1	9
25.	Rabbit—Filets do.	0	3	3
26.	Fowls, First quality do.	0	5	3

ANNEX TO CONTRACT No. 1957/24.†
 Jackson's United Meat Co. Pty. Ltd., New Footscray-road, Footscray
Sub-schedule No. 10.

MEAT FOR FENTRIDGE PENAL ESTABLISHMENT, COBURG AND "FAIRLEA" FEMALE PRISON, FAIRFIELD.		Security, £35.	£	s.	d.
Fresh Beef—					
1.	Fore-quarters	per cwt.	3	15	0
2.	Mince	do.	7	10	0
3.	Corned Beef—Rolled or Round, as ordered, without bone or cartilage	do.	9	3	4
4.	Fresh Mutton (whole sheep)	per lb.	0	0	9
5.	Sausages—Mixed	do.	0	1	6
6.	Fresh Suet—Kidney	do.	0	0	6
7.	Saveloys	do.	0	1	6
8.	Sausage—Beef German	do.	0	2	0

ANNEX TO CONTRACT No. 1957/25.†
 J. H. Cooke Pty. Ltd., 378 Queen's-parade, Clifton Hill.
Sub-schedule No. 11.

MEAT FOR CHILDREN'S WELFARE DEPOT, ROYAL PARK, AND TRAVANCORE DEVELOPMENTAL CENTRE, FLEMINGTON.		Security, £8.	£	s.	d.
1.	Fresh Beef—Rolled Roast Sirloin—Boneless	per lb.	0	1	9
2.	Beef—Corned—Silverside	do.	0	2	3
Fresh Mutton—					
3.	Legs	do.	0	1	0
4.	Legs (Two tooth)	do.	0	1	4
5.	Chops—Mid Loin (Two tooth)	do.	0	1	6
6.	Rib Chops as Cutlets (Two tooth)	do.	0	2	0
Steak—					
7.	Rump	do.	0	3	3
8.	Blade	do.	0	2	0
9.	Mince	do.	0	1	9
10.	Skirt	do.	0	2	0
11.	Veal—Fillet, boneless	do.	0	3	6
12.	Pickled Pork	do.	0	3	6
13.	Sausages—Mixed	do.	0	1	9
14.	Sausage—Strasburg, Pork	do.	0	3	0
15.	Ham Loaf (summer months mainly)	do.	0	3	0
16.	Tripe—Fresh	do.	0	0	10
17.	Frys—Lamb	do.	0	2	6
18.	Brains—Sheep	per set	0	0	8
19.	Shanks—Sheep	each	0	0	6
20.	Ox Tongue	per lb.	0	1	6
21.	Frankfurts	do.	0	2	0
22.	Rabbits—Fresh	do.	0	2	3

ANNEX TO CONTRACT No. 1957/26.†
 J. H. Cooke Pty. Ltd. 378 Queen's-parade, Clifton Hill.
Sub-Schedule No. 12.

FOR "WINLATON" JUVENILE SCHOOL, 186 SPRINGVALE-ROAD, NUNAWADING.		Security, £5.	£	s.	d.
Fresh Beef—					
1.	Rolled Roast Sirloin, Boneless	per lb.	0	2	0
2.	Corned—Silverside	do.	0	2	3
3.	Mutton Fresh—Fore-quarters	do.	0	0	8
4.	" " Legs	do.	0	1	0
5.	" " Legs (Two tooth)	do.	0	1	4
6.	" " Chops—Mid Loin (Two tooth)	do.	0	1	4
7.	Steak—Rump	do.	0	3	3
8.	" Stewing	do.	0	2	0
9.	" Mince	do.	0	2	0
10.	Sausages—Mixed	do.	0	1	9
11.	Sausage Meat	do.	0	0	9
12.	Frys—Lamb	do.	0	2	6
13.	Veal—Fillet—Boneless	do.	0	3	6
14.	Pork—Pickled	do.	0	3	0
15.	Kidneys—Ox	do.	0	3	6
16.	Tongues—Ox	do.	0	1	6
17.	Tripe—Fresh	do.	0	0	10
18.	Brains—Sheep	do.	0	4	0
19.	Shanks—Sheep	each	0	0	6
20.	Sausage—Strasburg—Pork	per lb.	0	3	0
21.	Frankfurts	do.	0	2	0
22.	Rabbits—Fresh	do.	0	2	3

ANNEX TO CONTRACT No. 1957/27.†
 J. H. Cooke Pty. Ltd., 378 Queen's-parade, Clifton Hill.
Sub-schedule No. 13.

MEAT FOR RECEIVING HOUSE AND MENTAL HOSPITAL, ROYAL PARK		Security, £10.	£	s.	d.
Fresh Beef—					
1.	Rolled Roast, boneless (Brisket excluded)	per lb.	0	1	9
2.	Thick Flank	do.	0	1	6
3.	Topside	do.	0	2	3
4.	Fresh Mutton (Legs)	do.	0	1	0
5.	Corned Beef—Rolled or Round, as ordered, without bone or cartilage	do.	0	2	0
6.	Chops—Middle Loin	do.	0	1	4
7.	" Forequarter	do.	0	1	0
8.	Sausages—Mixed	do.	0	1	9
9.	Sausages—Mince	do.	0	0	9
10.	Veal, fillets	do.	0	3	0
11.	Livers—Calves	do.	0	1	0
12.	Tripe—Fresh	do.	0	0	10
13.	Brains—Sheep	per set	0	0	8
14.	Rabbits—Fresh	per lb.	0	2	3
15.	Fowls—First quality	do.	0	5	6

(AGREEMENT.)
 Moran and Cato Pty. Ltd., 277 Brunswick-street, Fitzroy, N.6.

Sub-schedule No. 14.

SOAP MIXTURES.		(Of Commonwealth Manufacture.)	£	s.	d.
1.	Extract of "Kitchens" or equal "Stella" Soap Powder, 80-lb. bags	per cwt.	4	2	3
2.	Household—Dry, "Pental" wrapped, cases of 3 dozen	per case	2	9	6
3.	"Lux"—Family size packets	per doz.	1	9	1
	"Rinso"—				
4.	{ Standard packets	do.	0	18	1
	{ Economy packets	do.	1	13	4
	"Persil"—				
5.	{ Large packets	do.	0	18	1
	{ Giant packets	do.	1	13	4
6.	Sandsoap—"Lectric" 12-oz. blocks	do.	0	5	5½
7.	Toilet Soap—"Kitchens" or equal, "Doublays," 3¼-oz.	do.	0	5	1
	"Velvet"—				
8.	"Quads," standard	do.	1	1	6
	"Quints," economy	do.	1	14	5

ANNEX TO CONTRACT No. 1957/28.
 Bushells Ltd., 452 Flinders-Street, Melbourne.
Sub-schedule No. 15.

TEA.		Security, £180.	£	s.	d.
1.	Tea—First Grade—To sample	per lb.	0	4	4

ANNEX TO CONTRACT No. 1957/29.
 Griffiths Bros. Ltd., 331 Hoddle-street, Collingwood.

Sub-schedule No. 16.

COFFEE.		Security, £70.	£	s.	d.
1.	Coffee—Fresh roasted, and whole, beans to be thoroughly sound—To sample	per lb.	0	4	2½

SCHEDULE No. 2.
PROVISIONS—MONT PARK, ETC.

(For delivery at the Mental Hospital, Mont Park, to Depots as required, the Repatriation Mental Hospital, Bundoora, Larundel Mental Hospital, Pleasant View Receiving House, Wood-street, Preston, Janofield Colony, and the Sanatorium, Gresswell.)

ANNEX TO CONTRACT No. 1957/30.
 Northern Bakeries (Preston) Pty. Ltd. 597 High-street, Preston.

Sub-schedule No. 1.

BREADSTUFFS.		Security, £190.	£	s.	d.
Bread—					
1.	Fine wheaten, first quality	per cwt.	1	12	6½
2.	Raisin, first quality	do.	3	19	2
3.	Rolls	per doz.	0	2	0

(AGREEMENT.)

Henry Berry and Co. (A'asia) Ltd., 212 King-street, Melbourne, C.1.

Sub-schedule No. 2.

Table listing various grocery items such as Bacon, Beans, Butter, Cereals, etc., with their respective prices in pounds, shillings, and pence.

As supply of 20-oz. bottles is irregular, rate is shown on per lb. basis.
50 lb. Bags—29s. 10d. each.
56-lb bags—1s. 1d. per lb.

ANNEX TO CONTRACT No. 1957/31.

W. H. Johnsons Jams Pty. Ltd., 42 Meaden-street, South Melbourne, S.C.5.

Sub-schedule No. 3.

Table listing Jam items under Security, £23, with prices per lb and per tin.

ANNEX TO CONTRACT No. 1957/32.†

W. Angliss and Co. (Aust.) Pty. Ltd., 42 Bourke-street, Melbourne.

Sub-schedule No. 4.

MEAT.

(For Mont Park Mental Hospital, &c.)

Table listing various meat items such as Fresh Beef, Roast, Mutton, etc., with prices per cwt, lb, or doz.

ANNEX TO CONTRACT No. 1957/33.†

W. Angliss and Co. (Aust.) Pty. Ltd., 42 Bourke-street, Melbourne.

Sub-schedule No. 5.

MEAT.

Table listing various meat items such as Fresh Beef, Corned Beef, Mutton, etc., with prices per lb and per doz.

SCHEDULE No. 3.

PROVISIONS FOR S.S. RIP AND DREDGES.

Sub-schedule No. 1.

BREAD.

Purchase by agreement.

(AGREEMENT.)

Moran and Gato Pty. Ltd., 277 Brunswick-street, Fitzroy, N.G.

Sub-schedule No. 2.

GROCERIES.

	£	s.	d.
1. Bacon Rashers—Middle	per lb.	0	6 2
Beans—			
2. Butter	do.	*	
3. Haricot	do.	0	2 2½
Biscuits—			
4. Coffee, Marie, Malt (Tins 4s. each)	do.	0	1 9½
5. Dry (Tins 4s. each) { Thin Captain,	do.	0	1 9½
{ Cenovis,	do.	0	1 9½
{ Uneeda	do.	0	1 11½
Gravox—			
6. { 4-oz. packets	per doz.	0	6 8
{ 8-oz. packets	do.	0	11 4
7. Chutney—13-oz. bottles "Rosella"	do.	1	3 0
8. Cocoa—1-lb. tins or cartons, "Bournville"	do.	3	2 0
9. Coconut—Desiccated	per lb.	0	3 2
10. Coffee—Fresh Roasted and Ground	do.	0	7 4
11. Corn or Maize Flour—1-lb. packets "Medalion"	per doz.	0	15 6
11A Corn or Maize Flour—Loose	per lb.	0	0 9½
12. Currants—1-crown (present season's)	do.	0	1 6½
13. Custard Powder—1-lb. packets, "Cameo"	per doz.	0	19 3
14. Dates	per lb.	0	1 10½
15. Eggs—New Laid	per doz.		
Essence—			
16. Vanilla, 16-oz. bottles, "Summagold"	per bot.	0	6 5
17. Cochineal, Substitute—Red Colouring, 4-oz. bottles, "Summagold"	do.	0	1 0½
Fish—			
18. { Herrings, 14-oz. tins, Fresh, "Morton"	per doz.	1	7 9
{ Herrings in Tomato Sauce, "Morton"	do.	1	8 3
19. { Salmon, Fresh, 12-oz. tins "Greenseas"	do.	1	17 0
{ Salmon, Fresh, 16 oz. tins, "Greenseas"	do.	2	1 9
20. Sardines, ½-tins, "Norwegian Pack"	do.	0	15 9
Flour—			
21. First quality	per lb.	0	0 5
22. Self-raising, 50-lb. bag, "Mac's"	per bag	¶1	9 10
Fruits—Preserved—30-oz. tins—			
23. { Pears	per doz.	1	15 6
{ Peaches	do.	1	19 9
{ Apricots	do.	1	12 6
24. Pines	do.	2	1 3
Gelatine—Ground			
25. { 8-oz. packets	do.	2	2 3
{ 16-oz. packets	do.	4	1 3
26. Golden Syrup—2-lb. tins	do.	0	18 4
27. Honey—24-oz. jars, "Greigs"	do.	2	3 6
28. Jams—Assorted kinds, 24-oz. tins	do.	†	
29. Jelly Crystals—4-oz. packets, "Sparkling"	do.	0	5 10
30. Mixed Peel—Cut	per lb.	0	1 9½
31. Macaroni—22-lb. cartons	per ctn.	0	18 3
32. Margarine—Cooking Quality	per lb.	0	1 8½
Meat—Preserved—			
33. { Camp Pie, 12-oz., "Imperial"	per doz.	0	19 3
{ Sausages and Vegetables, 16-oz., "Tom Piper"	do.	1	6 6
{ Irish Stew, 16-oz., "Tom Piper"	do.	1	6 9
{ Steak and Kidney Pudding, 16-oz., "Tom Piper"	do.	1	6 9
Milk—			
34. Dried, Full Cream, 12-oz. tins, "Sun-shine"	do.	1	16 3
35. Condensed, Full Cream, 14-oz. tins	do.	1	0 5
36. Mustard—Loose, "McKenzies"	per lb.	0	4 9
37. Nutmeg—Whole	do.	1	1 5
38. Oatmeal—Flaked	do.	0	0 7½
39. Pearl Barley	do.	0	0 6½
40. Peas—Split	per cwt.	4	5 0
41. Pepper—White, ground	per lb.	0	4 6½
42. Pickles—Mustard, 20-oz. bottles	per doz.	1	6 8
43. Prunes—Dried (present season's), 70/80 (80/90, 2/1½ per lb.—7lb. tins)	per lb.	0	2 4½

* Supplies not available.

|| Market rates plus 3d. per dozen.

¶ 25-lb. bags, 15s. 4d.

Apricot—£1 8 3, Marmalade—£1 6 3, Plum—£1 6 9, Melon & Lemon—£1 5 3, Raspberry—£2 2 3, Blackcurrant—£2 2 3.

Sub-schedule No. 2—continued.

GROCERIES—continued.

£ s. d.

Raisins—			
44. Seeded (present season's), "M & C" or "Summagold", 1-lb. packets	per doz.	1	1 0
45. Sultana, 2-crown (present season's)	per lb.	0	1 7½
46. Rice—Dressed	do.	0	0 9½
47. Salt—Fine	per cwt.	0	14 10
Sauce—			
48. Mustard, 8-oz. bottles, "Holbrooks"	per doz.	1	3 3
49. Tomato, 26-oz. bottles, "Rosella"	do.	2	2 3
50. Worcestershire, 10-oz. bottles, "Hardings"	do.	1	0 10
51. Soda—Bi-carbonate of	per lb.	0	0 6½
52. Spice—Mixed, 1-oz. packets, "Parsons"	per doz.	0	5 4
Sugar—			
53. { Brown, 160-lb. bags	per lb.	0	0 9
{ White, 70-lb. bags	per bag	2	12 9
54. Castor	per lb.	0	0 10
55. Icing	do.	0	0 10½
56. Vinegar—Malt, 24-oz., "Vines"	per doz.	0	13 1
57. Yolking—4-oz. bottles (yellow colouring)	do.	0	12 9

ANNEX TO CONTRACT No. 1957/34.†

Jackson's United Meat Co. Pty. Ltd., New Footscray-road, Footscray.

Sub-schedule No. 3.

MEAT.

(Delivery at River Yarra Wharfs.)

	£	s.	d.
Security, £5.			
1. Fresh Beef—Roast	per lb.	0	1 5
2. Beef—Corned	do.	0	2 2
3. Rolled	do.	0	1 6
Fresh Mutton—			
4. Forequarter	do.	0	0 6
5. Legs	do.	0	1 1
Chops—			
6. Fore-quarter	do.	0	0 9
7. Loin	do.	0	1 2
Steak—			
8. Rump	do.	0	3 6
9. Stewing	do.	0	1 8
10. Topside	do.	0	1 10
11. Sausages—Mixed	do.	0	1 10
12. Tripe—Fresh	do.	0	0 7
13. Livors—Sheep	do.	0	4 0
14. Suet—Kidney	do.	0	0 6
15. Rabbits—Fresh	do.	0	2 3
16. Ice	per cwt.	0	4 0

Sub-schedule No. 4.

VEGETABLES.

1. Onions	} Purchase by agreement
2. Other vegetables, including beetroot, cauliflowers, carrots, cabbages, turnips, parsnips, rhubarb, swedes, and pumpkin, as required	

SCHEDULE No. 4.

PROVISIONS—TEACHERS' COLLEGE, HOSTELS, POLICE HOSPITAL, ETC.

(Delivery at Institutions.)

TEACHERS' COLLEGE AND HOSTELS AT GRATTAN-STREET, 93 DRUMMOND-STREET, CARLTON; 470 AND 481 ST. KILDA-ROAD, MELBOURNE; 152 TOORAK-ROAD WEST, SOUTH YARRA; FRANK TATE HOUSE, 373 DANDENONG-ROAD, ARMADALE; "REDCOURT" 6 AND "LARNOOK," 13 OBRONG-ROAD, ARMADALE; 11 PATTERSON-STREET, HAWTHORN; 221 BURWOOD-ROAD, BURWOOD, AND 17 MOULE-AVENUE, BRIGTON; HENRY WATSON HOUSE, 260 DOMAIN-ROAD, SOUTH YARRA; AND POLICE HOSPITAL, ST. KILDA-ROAD, MELBOURNE—

GROCERIES.

Order under Melbourne District, Schedule No. 1, Sub-schedule No. 5.

ANNEX TO CONTRACT No. 1957/35.†

J. C. Hutton Pty. Ltd., 65 High-street, Preston.

Sub-schedule No. 2.

MEAT.

Security, £15.

£ s. d.

Fresh Beef—			
1. Rolled Primo Ribs, boneless	per lb.	0	2 6
2. Topside	do.	0	2 0
3. Sirloin, boneless	do.	0	2 6

Sub-schedule No. 2—continued.
MEAT—continued.

	£	s.	d.
Fresh Mutton—			
4. Legs	do.	0	1 3
5. Legs, pickled	do.	0	1 3
6. Sides, Two-tooth	do.	0	1 0
7. Legs, Two-tooth	do.	0	1 3
8. Cutlets	do.	0	1 6
9. Chops, Middle Loin	do.	0	1 6
10. Chops, Fore-quarter	do.	0	1 0
11. Chops, Chump	do.	0	1 6
12. Beef—Corned, Silverside	do.	0	2 0
Veal—			
13. Shoulder, boned	do.	0	3 0
14. Fillet, boneless	do.	0	3 0
Steak—			
15. Blade	do.	0	2 0
16. Minced Blade	do.	0	2 0
17. Stewing	do.	0	1 8
18. Rump	do.	0	3 0
19. Mince Steak	do.	0	1 6
20. Sausages—Mixed	do.	0	1 9
Sausage—			
21. Meat	do.	0	1 3
22. Beef, German	do.	0	2 2
23. Strasburg	do.	0	2 11
24. Livers—Sheep	do.	0	2 0
Kidneys—			
25. Sheep	do.	0	2 6
26. Ox	do.	0	2 6
27. Tongues—Ox	do.	0	1 8
28. Ox Tails	do.	0	1 8
29. Pigs Cheek	do.	0	0 9
Brains—			
30. Sheep	per set	0	0 7
31. Calves	do.	0	0 5
32. Tripe—Fresh	per lb.	0	0 8
33. Frankfurts	do.	0	2 3
34. Black Puddings	do.	0	1 8
35. Bones—Soup	do.	0	0 1
36. Suet—Kidney	do.	0	0 5
37. Rabbits—Fresh	do.	0	2 6
38. Fowls—First quality	do.	0	5 3

SCHEDULE No. 5.

PROVISIONS—HEATHERTON SANATORIJUM, CHELTENHAM.

(Delivery at the Sanatorium.)

ANNEX TO CONTRACT No. 1957/36.

Charlestons Bakery Pty. Ltd. 8 Koornang-road, Carnegie.

Sub-schedule No. 1.

BREAD.

Security, £15.

	£	s.	d.
1. Bread—Fine wheaten, first quality	per cntl.	1	12 3½

(AGREEMENT.)

Moran and Cato Pty. Ltd., 277 Brunswick-street, Fitzroy, N.6.

Sub-schedule No. 2.

GROCERIES.

	£	s.	d.
1. Bacon—Sides	per lb.	0	5 4
2. Biscuits—Coffee, Malt, Milk Arrowroot, as ordered, "Sunshine" (tins, 4s. each, returnable)	do.	0	1 9½
3. Cereal—Malties (or equal thereto) 24-oz. packet, "Pipers"	per doz.	1	5 3
Cocoa—			
4. { "Bournville"	per lb.	0	5 2
{ Loose	do.	*	
Corn or Maize Flour—			
5. { Loose	do.	0	0 9½
{ "Medallion" 1-lb. packets	do.	0	1 3½
6. Custard Powder—1-lb. packets, "Cameo"	do.	0	1 7½
7. Essence of Vanilla—16-oz. bottles, "Summagold"	per bot.	0	6 5
Flour—			
8. { Self-raising—50-lb. bag	per bag	1	9 10
{ Self-raising—25-lb. bag	do.	0	15 4
Herrings—			
9. { Fresh	per doz.	1	7 9
{ In Tomato Sauce, 14-oz. tins	tins	1	8 3
10. Honey—First quality, 60-lb. tins	per lb.	0	1 8

* Supplies not available.

† Apricot—£4 9 3, Blackcurrant—£6 8 0, Blackberry—£6 5 0, Gooseberry—£4 12 9, Melon and Lemon—£3 18 0, Loganberry—£6 0 0, Peach—£4 9 3, Quince—£3 16 6, Raspberry—£6 5 0.

‡ Rate from 1.7.57 to 4.7.57 inclusive 4s. 5½d. per gallon.

Sub-schedule No. 2—continued.
GROCERIES—continued.

	£	s.	d.
Jams—			
11. Assorted, 5-lb. tins, of the best quality, per doz. †			
" M.P."			
12. Marmalade, 5-lb. tins, "M.P."	do.	0	6 4½
13. Jelly Crystals—4-oz. packets, "Sparkling"	do.	0	5 10
14. Junket Tablets—"Merry Widow," flav.	per tube	0	1 3
15. Macaroni—1-lb. packets, "Rinoldi"	per lb.	0	1 1½
16. Mustard	do.	0	4 9
17. Peas—Dehydrated, 22-lb. tins	do.	0	9 2
18. Pepper—White, ground	do.	0	4 6½
29. Pickles—Assorted, 20-oz. bottles	per doz.	1	6 8
20. Prunes—Dried, 70-80's (present season's)	per lb.	0	2 4½
(80-90's—2/1½ per lb.—7-lb. tins.)			
21. Raisins—Sultana, 2-crown (present season's)	do.	0	1 7½
22. Salmon—Fresh, 12-oz. tins, "Greenseas"	per tin	0	3 1
23. Salt—Fine	per cwt.	0	14 10
24. Sauce—Tomato, 26-oz. bottles, "Rosella"	per doz.	2	2 3
Soda—			
25. Bicarbonate of	per lb.	0	0 6½
26. Washing	per cwt.	1	19 8
27. Spice—Mixed, 1-oz. packets, "Parsons"	per doz.	0	5 4
Starch—			
28. { "Silver Star" 12-oz. packets	per pkt.	0	1 4½
{ Loose	per lb.	0	0 10
29. Vinegar—Malt (jars 3s. 6d. each, returnable)	per gal.	0	3 6

ANNEX TO CONTRACT No. 1957/37.†

W. Angliss and Co. (Aust.), Pty. Ltd., 42 Bourke-street, Melbourne, C.1.

Sub-schedule No. 3.

MEAT.

Security, £5.

	£	s.	d.
Beef—			
1. Fresh Roast—Sirloin—Boneless	per lb.	0	2 3
2. Corned, Silverside	do.	0	2 0
Mutton—Fresh			
3. Legs	do.	0	1 3
Lamb—Fresh			
4. Legs	do.	0	2 9
Chops—			
5. Chops—Mid Loin	do.	0	2 3
6. Chops—Chump	do.	0	2 0
7. Chops—Forequarter	do.	0	1 3
8. Cutlets	do.	0	4 0
Pork—Fresh—			
9. Legs	do.	0	4 0
10. Loin	do.	0	2 0
Veal—			
11. Shoulder—Boned	do.	0	1 6
12. Cutlets	do.	0	2 3
Steak—			
13. Rump	do.	0	3 3
14. Blade	do.	0	1 10
15. Topside	do.	0	1 10
16. Minced	do.	0	1 6
17. Tripe—Fresh	do.	0	0 8
18. Brains—Sheep	per set	0	0 7
19. Livers—Sheep	per lb.	0	2 3
20. Tongues—Sheep	do.	0	0 8
21. Kidneys—Ox	do.	0	2 6
22. Tails—Ox	do.	0	1 4
23. Sausages—Mixed	do.	0	1 8
24. Frankfurts	do.	0	2 2
25. Beef German—Sausage	do.	0	2 3
26. Ham Loaf	do.	0	2 6
27. Rabbits—Fresh	do.	0	2 5
28. Fowls—First quality	do.	0	5 2

ANNEX TO CONTRACT No. 1957/38.

Dairymen and Farmers United Milk Co. Ltd., East Boundary-road, Bentleigh.

Sub-schedule No. 4.

MILK.

Security, £20.

	£	s.	d.
1. Milk—Fresh and pure	per gal.	0	4 6½

SCHEDULE No. 6.

PROVISIONS—ARARAT DISTRICT.

(Delivery into Institutions.)

ANNEX TO CONTRACT No. 1957/39.

Mark Forsyth Pty. Ltd. 49 Moore-street, Ararat.

Sub-schedule No. 1.

BREADSTUFFS.

Security, £75.

	£	s.	d.
1. Bread—Fine wheaten, first quality	per cntl.	3	0 11
2. Flour—First quality	do.	1	16 0

(AGREEMENT.)
 McKay MacLeod Pty. Ltd., 122 Lydiard-street, Ballarat.

Sub-schedule No. 2.

GROCERIES. £ s. d.

- Blue—Washing (Reck Square) .. per gross 1 10 6½
- Candles—(full weights) Kitchen's "Electrics," or other make of equal quality, to be supplied in 1-lb. packets .. per lb. 0 2 7
- Cocoa—"Bournville" 1-lb. tins, (50-lb. bags not available) .. per doz. 3 3 3
- Corn Flour—packets of 1 lb. net "Kream" .. do. 0 1 6½
- Curry Powder, loose .. do. 0 4 0½
- Custard Powder—Bulk .. do. 0 1 2½
- Golden Syrup—
 - 70-lb. tins or drums † .. each 2 16 3
 - 2-lb. tins .. per doz. 1 0 7
- Jelly Crystals—"McKays" packets .. do. 0 8 9
- Milk—Powdered, "Sunshine," 3-lb. tins .. do. 6 12 3½
- Mustard—Loose .. per lb. 0 4 9
- Peas—Blue, boiling .. per bush. 4 15 0
- Pepper—Black, ground .. per lb. 0 3 8½
- Raisins—Sultanas (present season's)—
 - Plain .. do. 0 1 8½
 - 1-crown .. do. 0 1 9
 - 2-crown .. do. 0 1 9½
 - 3-crown .. do. 0 1 9½
- Salt—Fine, Imperial .. per cwt. 1 0 1½
- Sauce—Tomato, 1-gallon jars (Jars 3s. 6d.) .. per gal. 0 18 10½
- Soap—"Pearlite" Sand .. per doz. 0 7 9
- Soda—
 - Ricarbonate of .. per lb. 0 0 6½
 - Washing .. per cwt. 1 18 7½
- Starch (Rice)—"Silver Star," 12-oz. packets .. per doz. 0 17 9
- Tartar—Cream of, Substitute, "Antelope" .. per lb. 0 2 5

(AGREEMENT.)
 McKay MacLeod Pty. Ltd., 122 Lydiard-street, Ballarat.

Sub-schedule No. 3.

JAMS. £ s. d.

- Jams—Assorted, in bulk, of approved kinds, in the proportion of half seed and half actual net stone, of the best quality, in tins, as weight required, "J. MacLeod and Co. Pty. Ltd." .. per lb. 0 1 2½

ANNEX TO CONTRACT No. 1957/40. †
 H. A. Morris, 107 Victoria-street, Ballarat.

Sub-schedule No. 4.

MEAT. Security, £30. £ s. d.

- Fresh Beef—
 - 1. Rolled Roast (Boneless, brisket excluded) .. per cwt. 7 18 4
 - 2. Buttocks .. do. 7 10 0
- Fresh Mutton—
 - 3. Kidney fat to be removed .. do. 5 0 0
 - 4. Middle Loin Chops .. do. 5 0 0
 - 5. Corned Beef—Rolled or Round as ordered, without bone or cartilage .. do. 7 18 4
6. Beef Steak .. per lb. 0 1 8
7. Kidneys—Ox .. do. 0 1 3
8. Tongues—Ox .. do. 0 0 11
9. Veal—Filletted .. do. 0 1 10
10. Sausages—Mixed .. do. 0 1 5
11. Livers—Sheep .. do. 0 0 9
12. Tripe—Fresh .. do. 0 0 6

SCHEDULE No. 7.
PROVISIONS—BALLARAT DISTRICT.

(Delivery into Institutions.)
 ANNEX TO CONTRACT No. 1957/41.
 W. Dick and Sons, 314 Drummond-street, Ballarat.

Sub-schedule No. 1.

BREADSTUFFS. Security, £100. £ s. d.

1. Bread—Fine wheaten, first quality .. per cwt. 2 11 1
2. Flour—First quality .. do. 1 15 0

(AGREEMENT.)
 McKay MacLeod Pty. Ltd., 122 Lydiard-street, Ballarat.

Sub-schedule No. 2.

GROCERIES FOR TEACHERS' COLLEGE HOSTELS. £ s. d.

Bacon—

1. Sides .. per lb. 0 4 9½
- Rashers, Middle .. do. 0 6 8
2. Barley—Pearl .. do. 0 0 6½
- Beans—
 - 3. Butter .. do. *
 - 4. Haricot .. do. *
 - 5. Lima .. do. *

Sub schedule No. 2—continued.
 GROCERIES—continued. £ s. d.

Biscuits—

6. Dry—Iva, Captain, Saybon, Uneeda, Zephyr .. do. 0 1 10
7. Coffee, Malt, Arrowroot .. do. 0 1 8½
- Blue—
 - 8. 1-oz. knobs, paper, "Reckitts," (calico £1 19s. 4½d.) .. per gross 1 10 2
 - 9. 8-lb. packets, "Reckitts," square .. do. 1 10 2
10.
 - 11. Cake Containers—paper, "Barkers" 120's .. per gross 4 13 0
 - pkts.
12. Cereals—
 - "Sunflakes" .. per doz. 1 3 3
 - "Kornies" .. pkts. 1 7 8
 - 13. "Cornflakes," large .. do. 1 10 5
 - "Weetbix," 24-oz. .. do. 1 7 8
 - "All-Bran" .. do. 0 19 0
- Cheese—
 - 14. 5-lb. boxes, "Kraft" or equal .. per pkt. 0 19 4
 - 1-lb. packets .. per doz. 1 4 11
 - 15. Chutney—"Rosella," Fruit .. do. 1 5 0
 - 16. Cloves .. per lb. 0 5 11
- Cocoa—
 - 17. ¼-lb. tins, "Bournville" (1-lb., 62s. 6d. doz.) .. per doz. 1 11 5
 - 18. Loose .. per lb. *
 - 19. Coconut—Desiccated (Ceylon) .. do. 0 2 9
 - Coffee and Chicory Essence—
 - 20. 8-oz. bottles, "McKays" .. per doz. 1 8 6
 - 21. 1-gallon jars (Jars 3s. 6d. each) .. per jar 1 13 3
 - 22. Curry Powder—Bulk .. per lb. 0 4 0
 - Custard Powder—
 - 23. Bulk .. do. 0 1 2
 - 24. 1-lb. packets "McK" .. per doz. 1 2 6
 - 25. Dates—Box lots "Sair" .. per lb. 0 1 8½
- Essences, &c.—
 - 26. Almond, 16-oz. .. per bot. 0 13 0
 - 27. Lemon, 16-oz. .. do. 0 13 0
 - 28. Vanilla, 16-oz. .. do. 0 15 6
 - 29. Cochineal, 8-oz. .. do. 0 7 0
 - 30. Parisian { 4-oz. bottles .. per doz. 0 14 0
 - 26-oz. bottles .. do. 2 5 0
 - 31. Yolking, "Yolko" .. each 0 2 6
- Extracts, Pastes, &c., or equal—
 - 32. Marmite { 16-oz. tin .. per tin 0 6 11
 - 8-oz. tin .. do. 0 4 3½
 - 16-oz. tin .. do. 0 7 2
 - 33. Vegemite { 8-oz. tin .. do. 0 3 11½
 - 34. Peanut Butter, 12-oz. tin, "Eta" .. do. 0 3 10½
 - 35. Bonox, 8-oz. tin .. do. 0 5 1½
 - 36. Bloater, "Pecks" .. do. 0 1 3½
 - 37. Salmon and Shrimp, "Pecks" .. do. 0 1 6
- Fish—Tinned
 - 38. "Bass," 12-oz. tin .. per doz. 1 11 3
 - 39. Salmon, "Green seas," 16-oz. tin .. do. 2 3 0
 - 40. Herrings { Fresh, 7-oz. tin .. do. 0 17 7
 - Fresh, 14-oz. tin .. do. 1 7 2
 - In sauce, 7-oz. tin .. do. 0 17 10
 - In sauce, 14-oz. tin .. do. 1 8 8
 - 41. Sardines, 4-oz. tin .. do. 0 16 7
 - Pilchards, (1-lb. tins) .. do. *
- Flour—Corn or Maize—
 - 42. Packets, "Kream" .. per lb. 0 1 6
 - 43. Bulk .. do. 0 0 9½
 - 44. Self-Raising { 25-lb. bags, "McKays" .. per bag 0 15 7
 - 6-lb. packets, "McKays" .. per doz. 2 8 3
- Fruits—Dried—
 - 45. Apples .. per lb. *
 - 46. Apricots { 3-crown .. do. *
 - 2-crown .. do. *
 - 47. Peaches, peeled, 3-crown, standard .. do. *
 - 48. Pears, 3-crown, standard .. do. *
 - 49. Prunes, (70/80's) .. do. 0 2 5½
 - 50. Currants, 1-crown .. do. 0 1 7½
 - 51. Raisins { Seeded, 1-lb. packets .. per doz. 1 3 6
 - Loose .. per lb. 0 1 8½
 - 52. Sultanas { 1-crown .. do. 0 1 8½
 - 2-crown .. do. 0 1 8½
 - 3-crown .. do. 0 1 9
- Fruits—Tinned—
 - 53. Apricots, 30-oz. tin .. per doz. 1 13 0
 - 54. Peaches—1 gal. tins .. do. *
 - 55. Peaches, 30-oz. tin .. do. 1 18 8
 - 56. Pears, 30-oz. tin .. do. 1 16 0
 - 56A. Pineapple, pieces, 30-oz. tins .. do. 2 0 9
 - 57. Mixed Fruits, "Fruit Cocktail," 16-oz. .. do. *
 - 58. Solid Pack Apples { 28-oz. tin .. each 0 9 9½
 - 6½-lb. tin .. do. 0 10 4
 - 59. Solid Pack Apricots, 7-lb. tins .. do. 0 10 4
 - 60. Gelatine—Ground, "Davis" .. per lb. 0 7 2
 - 61. Ginger—Ground .. do. 0 8 9
 - 62. Golden Syrup, 2-lb. tins (70-lb. drums, 53s.) .. per doz. 0 19 6

* Not available. † Charge for drums if not returned. § 12-oz. tins, £1 15s. 7d. per doz.

Sub-schedule No. 2—continued.

GROCERIES—continued.		£	s.	d.
63.	Gravox—1-lb. tins	per doz.	0	19 11
64.	Herbs—Mixed, packets	do.	0	4 0
65.	Honey—60-lb. tins	per lb.	0	1 7
Jelly Crystals—				
66.	packets, McKays	per doz.	0	8 7½
67.	7-lb. packets	per lb.	0	2 2
Junket Tablets—				
68.	{ "Gold Seal", tubes	per doz.	0	5 0
	{ "Merry Widow," flavoured, tubes	do.	0	15 6
69.	Lentils	per lb.	*	
Macaroni—				
70.	1-lb. packets	per doz.	0	14 0
71.	Bulk { 22-lb. cartons	each	1	1 0
	{ 56-lb. bags	per lb.	0	1 0
72.	Margarine—Cake, pastry	do.	0	1 7
73.	Matches—Safety, packets	per gross	1	0 4½
74.	Mayonnaise—¼-gallon jars (Jars 3s. 6d. each)	per jar	0	15 0
Meat—Tinned, or equal—				
75.	Beef Luncheon { Taper tins, "Swifts"	per doz.	1	10 6
	{ Square tins, "Piper"	do.	1	6 7
	{ Beef Steak Pudding, "Piper"	do.	1	7 8
77.	Camp Pie, 12-oz. tins, "Champion"	do.	0	19 3
78.	Irish Stew, "Piper"	do.	1	7 8
79.	Braised Beef Stew, "Imperial"	do.	1	11 7
80.	Sausages and Vegetables, 16-oz. tin. "Piper"	do.	1	7 4
Milk—Dried—				
81.	{ "Sunshine," 12-oz. tins	do.	1	15 0
	{ "Sunshine," 3-lb. tins	do.	6	10 2
Milk—Condensed—				
82.	"Nestles"	do.	1	0 2
83.	"Ideal"	do.	0	15 6
84.	Mustard—Bulk	per lb.	0	4 8½
85.	Nutmeg—Ground	do.	0	18 3
86.	Oatmeal—Flaked, 56-lb. bags	per cwt.	3	14 8
87.	Pastry—Mix, 1-lb. packets, "Maxam"	per doz.	0	15 0
88.	Peel—Mixed, cut	per lb.	0	2 0
89.	Pepper—White, ground	do.	0	4 7
90.	Pickles—Assorted, 20-oz. bottles, "McKays"	per doz.	1	6 3
Rice—				
91.	Dressed	per cwt.	4	13 6
92.	Ground—1-lb. packets	per lb.	0	1 1
93.	Sago (Seed Tapioca)	do.	0	1 11½
Salt—				
94.	Fine, bulk, "Imperial"	per cwt.	0	15 6
95.	Table, 1-lb. packets, "Mermaid"	per doz.	0	5 4
Sauce—				
96.	Tomato, 26-oz. bottles, "McK's"	do.	2	1 0
97.	Tomato, 1-gal. jars (Jars, 3s. 6d. each)	per jar	0	18 0
98.	Worcestershire, 10-oz. bottles, "Sirdar"	per doz.	0	18 0
99.	Worcestershire, 1-gal. jars (Jars, 3s. 6d. each)	per jar	0	10 6
100.	Mustard, 8-oz. bottles	per doz.	1	0 0
Soaps—				
101.	Borax (powdered)	per lb.	0	0 9½
102.	Extract of "Pental," 56-lb. bags	per cwt.	4	15 0
103.	Household Dry, "Pental" (cases of 36)	per case	2	13 2
104.	"Lux," 16-oz. packets	per doz.	1	10 3
105.	"Rinso," Economy packet	do.	1	16 5
106.	"Persil," Economy packet	do.	1	16 5
107.	Sand soap, 12-oz. blocks, "Pearlite"	do.	0	7 0
108.	Toilet soap, 3½-oz. tabs., "Palmolive"	do.	0	6 3
109.	"Velvet"—"Quads," "Standard"	do.	1	2 8
110.	"Velvet"—"Quints," "Economy"	do.	1	16 3
Soda—				
111.	Bicarbonate of	per lb.	0	0 6½
112.	Washing	per cwt.	1	14 0
Soups—Tomato—				
113.	16-oz. tins, "Kia Ora"	per doz.	1	1 7
114.	No. 10 tins	do.	6	2 7
Spaghetti—				
115.	1-lb. packets	per doz.	0	15 0
116.	Bulk, 22-lb. cartons	each	1	1 0
117.	Spice—Mixed, loose (1-oz. pkts., 5½d. each)	per lb.	0	5 3
118.	Starch—Rice, 12-oz. pkts., "Silver Star"	per doz.	0	17 3
Sugar—				
119.	{ Icing Mixture	per cwt.	5	5 0
	{ Castor	do.	5	4 0
	{ Raw	per lb.	0	0 9½
	{ White (70 lb. bag)	per bag	2	15 11
120.	Tapioca—Pearl	per lb.	*	
121.	Tartar—Cream of, "Antelope Phos. Aerator" (Cream of Tartar 3s. 1½d.)	do.	0	2 4½
122.	Treacle—2-lb. tins	per doz.	0	19 1
Vegetables—Dried—				
123.	Soup Vegetables { 3 lb. tins, "Dew Crisp"	per tin	1	7 8
	{ 20 lb. do	do.	7	19 6
124.	Peas, Green "Dew Crisp" in 22 lb. tins	per lb.	*	
125.	Peas—Split, yellow	do.	0	0 9½
Vegetables—Tinned—				
126.	Baked Beans, 16-oz. tins, "Kia Ora"	per doz.	1	2 10
127.	Baked Beans, No. 10 can	do.	5	19 1
128.	Beans, Green, 16-oz. tins, "Harvest"	do.	1	5 8

○ Jars—3s. 6d. each.

† Apricot, Bakers Raspberry, Dark Plum, Gooseberry, Quince, Loganberry, Melon & Lemon, Rasp. § Apricot, Plum, Quince, Melon & Lemon, Loganberry, Plum & Raspberry, Gooseberry.

Sub-schedule No. 2—continued.

GROCERIES—continued.		£	s.	d.
129.	Beetroot, 30-oz. tins } "Edgells"	do.	1	12 2
130.	Carrots, 30-oz. tins	do.	1	6 3
131.	Celery, 30-oz. tins	do.	*	
132.	Parasnips, 30-oz. tins	do.	*	
133.	Peas, 30-oz. tins, "Monbulk"	do.	2	3 2
134.	Sweetcorn, 16-oz. tins, "Rosella"	do.	1	9 6
135.	Tomatoes, 30-oz. tins, "McKays"	do.	1	11 6
136.	Tomatoes, 4-gal. tins	each	*	
Vermicelli—				
137.	1-lb. packets	per doz.	0	15 0
138.	Bulk, 22-lb. cartons	each	1	1 0
139.	Vinegar—Malt—1-gal. jars (Jars 3s. 6d.)	per jar	0	4 0

(AGREEMENT.)

McKay MacLeod Pty. Ltd., 122 Lydiard-street, Ballarat.

Sub-schedule No. 2a.

GROCERIES FOR MENTAL HOSPITAL.		£	s.	d.
1.	Beans—Haricot	per lb.	*	
Dry-Iva, Captain, Zephyr, Saybon, Unceada				
2.	Biscuits { Sweet-Arrowroot, Buttercrunch, Marie, Coffee	do.	0	1 10
3.	Blue (Washing), "Reckitts Square"	per gross	1	10 2
4.	Candles, "Kitchen's Electrine"	per lb.	0	2 6½
Cereals { Sunflakes				
5.	{ Crispies	per doz.	1	3 3
	{ Kornies (packets)	do.	1	7 8
6.	Cocoa, 1-lb. tins, "Bourville" (loose not available)	do.	3	2 9
Cornflour { 1-lb. packets, "Kream"				
7.	{ Bulk	per lb.	0	1 6
	{ Plain	do.	0	0 9½
8.	Currants { 1-crown	do.	0	1 7½
	{ 2-crown	do.	0	1 8
9.	Curry Powder—Bulk	do.	0	4 0
10.	Custard Powder—Bulk	do.	0	1 2
11.	Dates—Case Lots	do.	0	1 8½
12.	Essence—16-oz. Bottles { Lemon	each	0	13 0
	{ Vanilla	do.	0	15 6
13.	Flour—Self-raising 150 lb. bags	do.	4	0 6
14.	Gelatine—1-lb. packets, "Davis"	per doz.	4	6 0
15.	Golden Syrup—2-lb. tins (70-lb. tins or drums, 53s.)	do.	0	19 6
16.	Herbs—Mixed	do.	0	4 0
17.	Jelly Crystals { "McKay's Packets"	do.	0	8 7½
	{ Bulk 7 lb.	per lb.	0	2 2
18.	Macaroni—Bulk—56-lb. bags	do.	0	1 0
19.	Margarine—Cake, Pastry	do.	0	1 7
Meats (Tinned)—				
"Tom Piper"—				
20.	Sausages and Vegetables, 16-oz.	per doz.	1	7 4
	Irish Stew, 16-oz.	do.	1	7 8
	Beef Steak Pudding, 16-oz.	do.	1	7 8
	Beef Lunch, 12-oz. square	do.	1	6 7
	"Swifts"—Camp Pie, 12-oz. tins	do.	0	19 3
21.	Milk F.C. Powdered, "Sunshine" { 3-lb. tins	do.	6	10 2
	{ 12-oz. tins	do.	1	15 0
22.	Mustard—Bulk	per lb.	0	4 8½
23.	Peel—Mixed loose	do.	0	2 0
24.	Pepper—Ground, Black	do.	0	3 8
25.	Raisins—Case Lots—			
	{ Plain	do.	0	1 8½
	{ 1-crown	do.	0	1 8½
	{ 2-crown	do.	0	1 8½
	{ 3-crown	do.	0	1 9
26.	Salt—Imperial, Fine	per cwt.	0	15 6
27.	Sauce—Tomato—26-oz. bottles (Gal. Jars 18s.)	per doz.	2	1 0
28.	"Worcestershire—1-gal. jars	each	0	10 6
29.	Soda—Carbonate	per lb.	0	0 6½
30.	Soda—Washing	per cwt.	1	14 0
31.	Spaghetti—Bulk—22-lb. Cartons { No. 1	each	1	1 0
	{ No. 2	do.	1	1 0
32.	Spice, Mixed, 1-oz. packets	per pkt.	0	0 5½
33.	Starch, "Silver Star," 12-oz.	per doz.	0	17 3
34.	Icing	per cwt.	5	5 0
35.	Caster	do.	5	4 0
36.	Tartar, Cream of—Substitute "Antelope"	per lb.	0	2 4½
37.	Tomato Soup—No. 10 cans	per doz.	6	2 7
38.	Vinegar—Malt	per gal.	0	4 0

(AGREEMENT.)

McKay MacLeod Pty. Ltd., 122 Lydiard-street, Ballarat.

Sub-schedule No. 3.

JAMS FOR TEACHERS' COLLEGE HOSTELS AND MENTAL HOSPITALS.		£	s.	d.
Jams—Assorted—				
1.	In bulk, of approved kinds, in proportion of half seed and half stone, of the best actual net quality, in tins, as required, "J. weight MacLeod and Co. Pty. Ltd." †	per lb.	0	1 2
2.	24-oz. tins, in the proportion of half seed and half stone, of the best quality, "Victoree" ‡	per doz.	1	8 9
3.	5-lb. tins, in the proportion of half seed and half stone, of the best quality, "Victoree"	do.	4	16 3

* Supplies not available.

ANNEX TO CONTRACT No. 1957/42.†
Victorian Inland Meat Authority, 54 Market-street, Melbourne.

Sub-schedule No. 4.

MEAT.

(For Gaol and Mental Hospital.)

Security, £35.		£	s.	d.
Fresh Beef—				
1. Fore-quarters	per cwtl.	4	10	0
2. Buttocks	do.	7	0	0
3. Roast—Rolled (Brisket excluded) ..	do.	7	10	0
4. Beef, Corned—Rolled or Round, as ordered, without bone or cartilage	do.	7	10	0
Mutton—Fresh—				
5. Kidney fat removed (Mental Hospital)	do.	4	3	4
6. Chops, Fore-quarter	per lb.	0	1	1
7. Mince-meat	do.	0	0	11
8. Sausages	do.	0	1	5
9. Sausage, Beef, German	do.	0	1	9
10. Veal, Filletted	do.	0	2	3
11. Tripe	do.	0	0	5
12. Ham Loaf	do.	0	2	3
13. Livers—Sheep	do.	0	0	8

ANNEX TO CONTRACT No. 1957/43.†
Victorian Inland Meat Authority, 54 Market-street, Melbourne.

Sub-schedule No. 5.

MEAT.

For delivery to Teachers' College Hostels as under:—
Beaufort House, Beaufort-avenue, Ballarat.
1415 Sturt-street, Ballarat.
130 Victoria-street, Ballarat.
126 Webster-street, Ballarat.

Security, £5.		£	s.	d.
Fresh Beef—				
1. Rolled Roast, boneless (Brisket excluded)	per lb.	0	1	8
2. Topside	do.	0	2	3
3. Sirloin	do.	0	2	3
4. Beef—Corned—Silverside	do.	0	2	3
Fresh Mutton—				
5. Legs	do.	0	1	7
6. Forequarter Chops	do.	0	1	1
7. Legs Pickled	do.	0	1	8
Veal—				
8. Shoulder, Boned	do.	0	1	9
9. Fillet, Boneless	do.	0	2	9
Steak—				
10. Blade	do.	0	1	10
11. Minced	do.	0	1	7
12. Sausages—Mixed	do.	0	1	6
13. Sausage Meat	do.	0	0	11
14. Livers—Calves	do.	0	0	9
15. Kidneys—Ox	do.	0	1	3
16. Frankfurts	do.	0	1	8

ANNEX TO CONTRACT No. 1957/44.
The Ballarat Modern Dairy Pty. Ltd., 817 Sturt-street, Ballarat.

Sub-schedule No. 6.

MILK.

For delivery to Mental Hospital and Teachers' College Hostels as under—
Beaufort House, Beaufort-avenue, Ballarat.
1415 Sturt-street, Ballarat.
130 Victoria-street, Ballarat.
126 Webster-street, Ballarat.

Security, £30.		£	s.	d.
1. Milk—Fresh and pure, pasteurised ..	per gal.	0	4	6

SCHEDULE No. 8.

PROVISIONS—BEECHWORTH DISTRICT.

ANNEX TO CONTRACT No. 1957/45.
P. A. Taylor Model Bakery, Camp-street, Beechworth.
(Delivery into Institutions.)

Sub-schedule No. 1.

BREADSTUFFS.

Security, £100.		£	s.	d.
1. Bread—Fine Wheaten, first quality ..	per cwtl.	2	13	6
2. Flour—First quality	do.	1	16	0

* Supplies not available.

○ Apricot, £4/15/11; Blackcurrant, £6/14/8; Blackberry, £6/11/8; Gooseberry, £4/10/7; Melon and Lemon, £4/4/8; Loganberry, £6/6/8; Peach, £4/15/11; Quince, £4/3/2; Raspberry, £6/11/8.

(AGREEMENT.)
Moran and Cato Pty. Ltd., 277 Brunswick-street, Fitzroy, N.G.

Sub-schedule No. 2.

GROCERIES.

		£	s.	d.
1. Bean—Haricot	per lb.	0	2	3½
2. Biscuits—	Coffee, Malt, Arrowroot, Gingernut, Marie, Holsum	do.	0	1 11
	Vanilla Curls, Nice, Devon, Shortbread, Rice, Fruit Cookies	do.	0	2 0
	Butter Crisps	do.	0	2 1
	Dry—Thin Captain, Cenovis	do.	0	1 10½
3. Blue—Washing, powdered, 7-lb. pkts. ..	do.	0	2	0½
Cereals—				
4. { "Pipers," "Kornies," "Weeties," or equal	per pkt.	0	2	4
{ Vitabrit or equal—24-oz. pkts.	do.	0	2	4
Cocoa—				
5. { 1-lb. packets, "Bournville"	do.	0	5	3½
{ Loose	per lb.	*		
Corn or Maize Flour—				
6. { Loose	do.	0	0	11
{ 1-lb. packets, "Medallion"	do.	0	1	4½
7. Curry Powder	do.	0	2	5½
8. Custard Powder—Loose	do.	0	1	1½
9. Gelatine	do.	0	6	10½
10. Golden Syrup—2-lb. tins	per tin	0	1	9½
11. Jelly Crystals—7-lb. packets	per lb.	0	2	4½
Macaroni—				
12. { 22-lb. cartons	per ctn.	1	0	9
{ 56-lb. bags	per lb.	0	0	10½
13. Margarine—Cake, Pastry	do.	0	1	9½
Milk—Powdered—				
14. { 3-lb. tins, "Sunshine"	per doz.	6	18	10
{ 12-oz. tins, "Sunshine"	do.	1	17	9
15. Mustard	per lb.	0	4	10½
16. Peas—Dehydrated, 22-lb. tins	do.	0	9	4
17. Pepper—White, ground	do.	0	4	8
18. Raisins—Sultana, 1-crown (present season's)	do.	0	1	8½
19. Salt—Fine	per cwt.	1	0	9
20. Sauce—Tomato, 26-oz. bottles. "Rosella"	per doz.	2	7	0
Soap—				
21. Sand, 12-oz. blocks, "Lectric"	do.	0	6	6½
22. Lifebuoy	do.	0	6	8
Soda—				
23. Bicarbonate of	per lb.	0	0	8
24. Washing	per cwt.	2	11	4
25. Spaghetti—22-lb. cartons, "Forex," No. 1	per ctn.	1	0	9
26. Spice—Mixed, "Parsons"	per doz. pkts.	0	6	4
27. Starch—"Parsons"	per lb.	0	0	11½
28. Tartar—Cream of, Substitute, "Antelope"	do.	0	2	10½
29. Tomatoes—Tinned, 28-oz. tins, "M.O.N."	per doz.	1	13	9
30. Vegemite in 1-lb. jars	do.	4	10	0
31. Vinegar—Malt	per gal.	0	4	11

(AGREEMENT.)

Moran and Cato Pty. Ltd., 277 Brunswick-street, Fitzroy, N.G.

Sub-schedule No. 3.

JAMS.

		£	s.	d.
Jams—Assorted, in bulk—				
1. {	Apricot	per lb.	0	1 3½
	Peach	actual	0	1 3½
	Apple and Raspberry flavour	net	0	1 3
	Dark Plum	weight	0	1 2½
2. Jams—Assorted, 5-lb. tins, of the best quality, "M.P."	per doz. tins	○		

ANNEX TO CONTRACT No. 1957/46.†

E. Spencer, Camp-street, Beechworth.

Sub-schedule No. 4.

MEAT.

Security, £30.		£	s.	d.
1. Fresh Beef (Gaol)	per cwtl.	8	10	10
2. Fresh Beef—Rolled Roast, boneless, brisket excluded	do.	9	11	8
3. Corned Beef, Rolled or Round as ordered, without bone or cartilage	do.	9	7	6
4. Shins of Beef (bone in)	do.	5	0	0
5. Mutton—Fresh (kidney fat to be removed for Mental Hospitals)	do.	4	7	6
6. Beef Steak, Minced	do.	8	15	0
7. Sausage Meat	per lb.	0	1	0
8. Sausages—Mixed	do.	0	1	9

Sub-schedule No. 4—continued.

MEAT—continued.

	£	s.	d.
9. Sausage—German	per lb.	0	2 3
10. Tripe—Fresh	do.	0	0 11
11. Tongues—Sheep	do.	0	1 6
12. Dripping—Beef	do.	0	1 0
13. Veal—Boned	do.	0	2 3
14. Mutton, Minced	do.	0	1 2
15. Pork—Belly	do.	0	2 3
16. Livers—Sheep	do.	0	1 10
17. Mutton chops	do.	0	1 2
18. Saveloys	per doz.	0	3 3
19. Kidney—Ox	per lb.	0	2 0

ANNEX TO CONTRACT NO. 1957/47.
C. F. Godde, Newtown, Beechworth.

Sub-schedule No. 5.

MILK.

	£	s.	d.
Security, £12.			
1. Milk—Fresh and pure	per gal.	0	4 6

SCHEDULE No. 9.

PROVISIONS—BENDIGO DISTRICT.

(For Delivery into Institutions.)

ANNEX TO CONTRACT NO. 1957/48.
C. H. Jeffrey Pty. Ltd., 172 Wattle-street, Bendigo.

Sub-schedule No. 1.

BREAD.

For Gaol and Mental Hygiene Training Centre.

	£	s.	d.
Security, £7.			
1. Bread—Fine Wheaten, first quality .. per cwt.	2	2	8½
2. Flour—First quality	do.	1	7 6

ANNEX TO CONTRACT NO. 1957/49.

A. Hardeman Pty. Ltd., 326 Lytleton-terrace, Bendigo.

Sub-schedule No. 2.

BREAD.

For Teachers' College Hostels—
"Sandhurst," 108 Mitchell-street, Bendigo, and
"Lancewood," McLaren-street, Bendigo.

	£	s.	d.
Security, £4.			
1. Bread—Fine Wheaten, first quality .. per cwt.	3	1	5½
2. Flour—First quality	do.	1	12 8

ANNEX TO CONTRACT NO. 1957/50.

Roy Raggatt, 132 Lily-street, Bendigo.

Sub-schedule No. 3.

BREAD.

For Teachers' College Hostel—"Comersdale," Panton-street,
Golden Square, Bendigo.

	£	s.	d.
Security, £3.			
1. Bread—Fine Wheaten, first quality .. per cwt.	3	1	5½
2. Flour—First quality	do.	1	12 8

(AGREEMENT.)

Pulfer, Cox, and Hargreaves, Wholesalers Limited, 200 Hargreaves-street, Bendigo. §

Sub-schedule No. 4.

GROCERIES.

	£	s.	d.
Bacon—			
1. Sides	per lb.	*	
2. Rashers, middle	do.	*	
2. Barley—Pearl, 56-lb. bags (Smaller lots 7d. per lb.)	per cwt.	2	13 0
Beans—			
3. Butter	per lb.	*	
4. Haricot	do.	0	2 1
5. Lima	do.	0	1 10

Sub-schedule No. 4—continued.

GROCERIES—continued.

	£	s.	d.
Biscuits and cake—"Phoenix" or "Besta"—			
6. Dry	do.	+	
7. Coffee, Malt, Arrowroot	do.	+	
8. Assorted	do.	+	
Blue—			
9. { 1-oz. knobs, "Reckitts"	per gross	1	10 6
{ 7-lb. packets	per pkt.	*	
10. Borax	per lb.	0	0 9
11. Cake Containers—Paper, "Barkers" 150's per gross	4	10	0
Cereals—			
12. "Kornies," "Weeties," packets	per doz.	1	8 0
13. "Cornflakes," packets	do.	1	12 4
14. Biscuit—"Weetbix," "Granose," and "Vitabrits," packets	do.	1	8 0
15. "All-Bran," packets	do.	1	0 1
16. Cheese—5-lb. boxes, "Kraft"	per box	0	19 6
17. Chutney—"A.J.C."	per doz.	1	5 0
18. Cloves	per lb.	0	6 1
19. Coconut—Desiccated, Ceylon	do.	0	3 7
Cocoa—			
20. { 1-lb. tins, "Bourville"	per doz.	3	4 9
{ Loose	per lb.	0	4 9
Coffee Essence—			
21. 8-oz. bottles, "Excelsior"	per doz.	1	10 9
22. 1-gal. jars (Jars 3s.)	per jar	2	0 6
23. Curry Powder—"Indian"—4-oz. pkt.	per doz.	1	4 0
Custard Powder—			
24. Bulk, 7-lb. parcels, "Beacon"	per lb.	0	1 3
25. 1-lb. packets, "Parsons"	per doz.	1	0 5
26. Dates—Loose	per lb.	0	1 8½
Essences, &c.—			
27. Almond { 1-oz.	per bot.	0	0 11½
{ 8-oz.	do.	0	6 5½
{ 16-oz.	do.	0	13 0
28. Lemon { 1-oz.	do.	0	0 11½
{ 8-oz.	do.	0	6 5½
{ 16-oz.	do.	0	13 0
29. Vanilla { 8-oz.	do.	0	7 6
{ 16-oz.	do.	0	15 3
30. Cochineal { 1-oz.	do.	0	0 11½
{ 16-oz.	do.	0	13 0
31. Parisian, 26-oz. "Dicksons"	do.	0	3 4
32. Volkinge { 1-oz. "Rego"	do.	0	0 8½
{ 16-oz.	do.	0	8 6
Extracts and Pastes—			
33. "Marmite," 4-oz. tins	per doz.	1	7 9
{ 4-oz. tin	do.	1	6 9
34. "Vegemite" { 8-oz. tin	do.	2	6 9
{ 16-oz. tin	do.	4	6 0
35. Peanut Butter { 8-oz. tin	do.	1	9 0
{ 12-oz. tin	do.	2	4 6
36. "Bonox" { 4-oz. tin	do.	1	13 6
{ 8-oz. tin	do.	3	1 0
{ 16-oz. tin	do.	5	17 0
37. Blonter, 2½-oz. tins, "Pecks"	do.	0	15 10
38. Salmon and Shrimp, 2½-oz. tin	do.	0	17 10
Fish—Tinned—			
39. "Flair," 12-oz.	do.	1	11 6
40. Salmon, 16-oz., "Kingsound"	do.	2	4 8
41. Pilchards, 8-oz., South African	do.	0	18 0
42. Herrings, 14-oz. { Fresh	do.	1	7 4
{ In sauce	do.	1	7 10
43. Sardines { 4-oz., "Commodore"	do.	0	15 3
{ 8-oz., "Commodore"	do.	1	9 0
Flour—Corn or Maize—			
44. { 1-lb. packets, "Kream"	per lb.	0	18 7
{ Bulk	do.	0	1 0
Flour—Self-raising—			
45. { 25-lb., "Rego"	each	0	14 10
{ 150-lb., "Rego"	do.	3	18 6
Fruits—Dried—			
46. Apples	per lb.	*	
47. Apricots	do.	0	3 8
48. Peaches	do.	*	
49. Pears	do.	*	
50. Prunes, 60/70's	do.	0	2 7
51. Currants	do.	0	1 7½
52. Raisins, Seeded { 16-oz. pkts, "Rego"	per doz.	1	4 0
{ Loose	per lb.	0	1 9
53. Sultanias	do.	0	1 8½
Fruits—Tinned—			
54. Apricots { Halves, 30-oz. tins, "S.P.C."	per doz.	1	13 6
{ Wholes, 30-oz. tins, "S.P.C."	do.	*	
55. Peaches, 30-oz. tins, "S.P.C."	do.	1	10 6
56. Pears, 30-oz. tins, "S.P.C."	do.	1	18 0
57. Mixed Fruits, 16-oz. tins, "Fruit Cock-tail"	do.	*	
58. Solid Pack Apples { 30-oz. tins	do.	1	18 10
{ 6½-lb.	each	0	9 6
59. Solid Pack Apricots	do.	*	

* Supplies not available.

† List prices, wholesale rates, less 10 per cent.

§ Rates, except where marked otherwise, subject to 5 %, 7 days or 2½ % monthly, settlement discount.

Sub-schedule No. 4—continued.

GROCERIES—continued.		£	s.	d.	
60.	Gelatine—Ground, 16-oz. pkts, "Davis"	per doz.	4	4	0
61.	Ginger—Ground	per lb.	0	10	6
62.	Golden Syrup—2-lb. tins	per doz.	1	0	6
63.	Gravox—1-lb. tins	do.	1	0	4
64.	Herbs—Mixed, packets	do.	0	3	3
65.	Honey—60-lb. tins (Return of 2s. 6d. per tin)	per tin	4	12	3
66.	Jams—"Rego" and "Monbulk," tins	per doz.	††		
Jelly Crystals—					
67.	{ 4-oz. packets, "Rego"	per gross	4	13	0
	{ 7-lb. packets	per lb.	0	2	1
Junket Tablets—					
68.	{ "Merry Widow," flavoured	per doz.	0	15	6
	{ "Hansens," plain	tubes	1	1	6
69.	Lentils	per lb.	*		
Macaroni—					
70.	1-lb. packets, "Rinoldi"	per doz.	0	14	3
71.	Bulk—22-lb. boxes	per box	1	3	3
72.	Margarine—Cake, pastry, (net) "E.O.I." (Freight case, 3s. 6d.)	per lb.	0	1	0½
73.	Matches—Safety, packets	per gross	1	0	8
74.	Mayonnaise—12-oz. jars, "Kraft"	per doz.	1	12	4
Meat—Tinned, or equal—					
75.	Beef Luncheon { 12-oz., "Tom Piper"	do.	1	7	3
	{ 6-lb., "Swifts"	each	0	18	0
76.	Beef Steak Pudding, 16-oz., "Piper"	per doz.	1	8	3
77.	Camp Pie { 12-oz., "Imperial"	do.	1	0	6
	{ 16-oz., "Imperial"	do.	1	2	6
78.	Irish Stew, "Tom Piper"	do.	1	8	3
79.	Lamb and Green Peas, 16-oz., "Champion"	do.	1	0	2
80.	Sausages and Vegetables, 16-oz., "Rosella"	do.	1	5	8
Milk—					
81.	Dried { 12-oz. tin, "Sunshine"	do.	1	17	9
	{ 3-lb. tins, "Sunshine"	do.	6	19	0
82.	Condensed, cases of 4 doz., "Nestles"	per case	4	8	0
83.	"Ideal"	per doz.	0	16	4
84.	Mustard—Bulk, 4-lb. boxes	per lb.	0	5	0
85.	Nutmeg—Ground	do.	0	9	6
86.	Oatmeal—Flaked { 7-lb. bags	per doz.	3	11	0
	{ Loose	per cwt.	3	16	0
87.	Pastry—Mix, "Bakeo," "Maxam"	per doz.	0	15	8
Peel—Mixed, Cut—					
88.	{ 8-oz. packets, "Brookes"	per doz.	0	19	0
	{ 7-lb., "Seppelts"	per lb.	0	1	11½
Pepper—White, Ground—					
89.	{ Loose	do.	0	4	8
	{ 2-oz. packets, "Rego"	per doz.	0	11	0
90.	Pickles—Assorted, 20-oz. bottles, "Sutherland's"	do.	1	9	0
Rice—					
91.	Dressed, 56-lb. bags	per bag	2	7	6
92.	Ground, 1-lb. packets, "McKenzies"	per doz.	0	13	6
93.	Sago	per lb.	0	1	8
Salt—					
94.	Fine, bulk, "Imperial"	per cwt.	0	19	0
95.	Table { 1-lb. packets, "Mermaid"	per doz.	0	6	0
	{ 1-lb. packets, "Saxa"	do.	0	8	6
Sauces—					
96.	Tomato, 26-oz. bottles { "White Crow"	do.	2	3	0
	{ "Rosella"	do.	2	6	0
97.	Tomato, 1-gal. jars, "Leggo's" (Jars, 3s.)	per jar	0	14	0
Worcestershire—					
98.	{ 10-oz. bottles, "Holbrooks"	per doz.	1	8	0
	{ 10-oz. bottles, "Rego"	do.	1	2	6
	{ 26-oz. bottles, "Rego"	do.	1	17	0
99.	Mustard—8-oz. bottles, "Holbrooks"	do.	1	3	6
Soaps—					
100.	Extract of, "Nu-Wash," 56-lb. bags	per bag	2	16	0
101.	Household, dry	per case	*		
102.	"Rinsol," Economy packet	per doz.	1	15	6
103.	"Persil," Giant packet	do.	1	15	6
104.	"Lux," Flakes, packets, Family Size	do.	1	10	6
105.	Sand Soap—6-oz. blocks, "Preservene"	do.	0	7	0
106.	Toilet Soap, 3½-oz. tablets, "Palmolive"	do.	0	6	5
107.	Toilet Soap, 3½-oz. tablets, "Lux"	do.	0	6	3
108.	"Velvet" or equal { Quads, 3-doz. ctn.	per ctn.	3	8	5
	{ Quints, 2½-doz. ctn.	do.	4	2	6

†† In 1½-lb. tins—Apricot, £1 9s. 1d.; Apple Jelly, £1 3s. 5d.; Blackberry, £2 0s. 6d.; Blackcurrant, £2 2s. 9d.; Gooseberry, £1 8s. 6d.; Loganberry, £1 13s. 5d.; Melon and Lemon, £1 6s. 0d.; Melon and Pineapple, £1 6s. 6d.; Dark Plum, £1 9s. 8d.; Light Plum, £1 9s. 8d.; Marmalade, £1 5s. 6d.; Peach, £1 9s. 3d.; Plum and Raspberry, £1 11s. 7d.; Quince, £1 6s. 0d.; and Raspberry, £2 2s. 7d.
 In 5-lb. tins—Apricot, £4 16s. 0d.; Apple Jelly, £3 13s.; Melon and Lemon, £4 4s. 3d.; Melon and Pineapple, £4 6s. 0d.; Dark Plum, £4 15s. 0d.; Light Plum, £4 15s. 0d.; Marmalade, £3 17s. 10d.; Peach, £4 15s. 9d.; Plum and Raspberry, £5 0s. 0d.; Quince, £3 15s. 5d.; and Raspberry, £6 15s. 0d.
 In 28-lb. tins—Blackberry, 1s. 1½d. per lb.
 In 56-lb. tins—Apricot, 1s. 3½d. per lb.; and Plum and Raspberry, 1s. 2½d. per lb.

* Supplies not available. † Rates, except where marked otherwise, subject to 5%, 7 days, or 2½% monthly, settlement discount.

Sub-schedule No. 4—continued.

GROCERIES—continued.		£	s.	d.	
Soda—					
109.	Bicarbonate of	per lb.	0	0	8
110.	Washing	do.	0	0	5½
Soups—					
	Tomato, 16-oz. tins { "Kia Ora"	per doz.	1	2	3
	{ "Rego"	do.	1	2	3
	{ "Tom Piper"	do.	1	1	3
112.	Tomato, 6-lb. tins, "Kia Ora"	each	0	10	2
113.	Tomato, 1-gal. jars	per jar	*		
Spaghetti—					
114.	1-lb. packets, "Rinoldi"	per doz.	0	15	6
115.	Bulk, 22-lb. boxes	each	1	5	3
Spice—Mixed—					
116.	{ 1-oz. packets	per doz.	0	4	10
	{ Loose	per lb.	*		
117.	Starch—Rice, "Silver Star," packets 14-oz.	per doz.	0	17	3
Sugar—					
118.	Icing mixture, 56-lb. bag	per bag	2	12	0
119.	Castor, 70-lb. bag	do.	3	2	0
120.	Raw	per lb.	0	0	9½
121.	White, 70-lb. bag, (net)	per bag	2	15	0
Tapioca—					
122.	{ Seed	per lb.	0	1	8
	{ Pearl	do.	*		
123.	Tartar—Cream of	do.	0	3	6
124.	Treacle—2-lb. tins	per doz.	1	0	3
Vegetables—Dried—Peas—					
125.	Green, "Dew Crisp" { 8-oz. packets	do.	*		
	{ 3½-lb. packets	per lb.	*		
126.	Split (yellow) { 56-lb. bags	per owt.	4	17	0
	{ Broken bags	do.	0	10	0
Vegetables—Tinned—					
127.	Baked Beans, 16-oz., "Kia Ora"	per doz.	1	3	0
128.	Baked Beans, No. 10 Can, "Kia Ora"	per can	0	9	10
129.	Beans, green, 30-oz., "Harvest"	per doz.	1	14	0
130.	Beetroot, 30-oz.	do.	*		
131.	Carrots, 30-oz.	do.	*		
132.	Celery, 30-oz.	do.	*		
133.	Peas, 30-oz. { "Harvest"	do.	2	2	0
	{ "Biddy's"	do.	1	8	0
134.	Sweetcorn, 16-oz., "Rosella"	do.	1	9	5
135.	Tomatoes, 30-oz., "Rego"	do.	1	9	0
Vermicelli—					
136.	1-lb. packets, "Rinoldi"	per doz.	0	15	6
137.	Bulk, 22-lb. boxes	each	1	5	3
138.	Vinegar—Malt, 1-gal. jars (Jars 3s.)	per jar	0	3	6

ANNEX TO CONTRACT No. 1957/51.†

Alan H. Gittins, 350 Hargreaves-street, Bendigo.

Sub-schedule No. 5.

MEAT.

For Gaol.

Security, £5.

	£	s.	d.	
1. Fresh Beef	per lb.	0	1	6
2. Corned Beef—Rolled, without bone or cartilage	do.	0	1	6
3. Fresh Mutton	do.	0	0	11
4. Sausages—Mixed	do.	0	1	6
5. Mincedmeat	do.	0	1	0

ANNEX TO CONTRACT No. 1957/52.†

Alan H. Gittins, 350 Hargreaves-street, Bendigo.

Sub-schedule No. 6.

MEAT.

For Mental Hygiene Training Centre, Bendigo.

Security, £5.

	£	s.	d.	
1. Fresh Beef, Rolled Roast, boneless, brisket excluded	per lb.	0	2	8
2. Corned Beef, rolled or round, as ordered, without bone or cartilage	do.	0	2	0
Fresh Mutton—				
3. Legs	do.	0	1	11
4. Chops, Middle Loin	do.	0	2	0
Steak—				
5. Stewing	do.	0	2	0
6. Minced	do.	0	2	0
7. Livers—Sheep	do.	0	1	0

Sub-schedule No. 6—continued.

MEAT—continued.		£	s.	d.
8. Tripe—Fresh	do.	0	0	9
9. Veal—Boneless	do.	0	2	6
10. Kidney—Ox	do.	0	1	3
11. Tongues—Sheep	do.	0	0	10
12. Sausages—Mixed	do.	0	1	6
13. Rabbits, Filleted	do.	0	2	9

ANNEX TO CONTRACT No. 1957/53.
Frank Wade, 193 Williamson-street, Bendigo.

Sub-schedule No. 7.

MEAT.
For Teachers' College Hostels as under—
"Sandhurst," 108 Mitchell-street, Bendigo.
"Lancewood," McLaren-street, Bendigo.
"Comersdale," Panton-street, Golden Square, Bendigo.
Security, £5.

	£	s.	d.
Fresh Beef—			
1. Sirloin per lb.	0	2	9
2. Topside do.	0	2	9
3. Corned Beef—Rolled or Round, as ordered, without bone or cartilage do.	0	2	0
Fresh Mutton—			
4. Rib Chops—Two tooth do.	0	1	6
5. Chops—Fore-quarter do.	0	1	3
6. Legs—Two tooth do.	0	1	8
Veal—			
7. Shoulder, boned do.	0	2	9
8. Legs do.	0	2	6
Steak—			
9. Blade (Minced) do.	0	2	9
10. Stewing—Chuck do.	0	2	3
11. Sausages—Mixed do.	0	1	6
12. Sausage Meat do.	0	1	4
13. Sausage—Beef German do.	0	1	4
14. Livers—Sheep do.	0	1	4
15. Saveloys per doz.	*		

SCHEDULE No. 10.

PROVISIONS—CASTLEMAINE GAOL.

(Delivery at the Gaol.)

ANNEX TO CONTRACT No. 1957/54.
Roy J. Brown, 319 Barker-street, Castlemaine.

Sub-schedule No. 1.

BREADSTUFFS.
Security, £5.

	£	s.	d.
1. Bread—Fine wheaten, first quality .. per cntl.	2	15	2½

ANNEX TO CONTRACT No. 1957/55.†

Ewings "W. K. & H. S." 91 Mostyn-street, Castlemaine.

Sub-schedule No. 2.

MEAT.
Security, £5.

	£	s.	d.
1. Fresh Beef per lb.	0	1	9½
2. Fresh Mutton do.	0	1	4½
3. Corned Beef—Rolled or Round, as ordered, without bone or cartilage do.	0	2	3
4. Minced Meat do.	0	2	3
5. Sausage Meat do.	0	1	3
6. Dripping—Beef do.	0	0	9
7. Saveloys per doz.	0	4	6

SCHEDULE No. 11.

PROVISIONS—SCHOOL OF FORESTRY, CRESWICK.

(Delivery at the School.)

ANNEX TO CONTRACT No. 1957/56.
D. H. Moar, Albert-street, Creswick.

Sub-schedule No. 1.

BREADSTUFFS.
Security, £3.

	£	s.	d.
1. Bread—Fine wheaten, first quality .. per cntl.	3	6	8
2. Flour—First quality do.	1	19	0

* Supplies not available.

(AGREEMENT.)

J. Tait and Son., Albert-street, Creswick.

Sub-schedule No. 2.

GROCERIES.

	£	s.	d.
1. Bacon per lb.	0	5	0
2. Barley—Pearl do.	0	0	6½
3. Blue—Washing do.	0	2	6
4. Butter—First grade creamery, to score not less than 91 points, Government grade, Commerce Regulations Standard do.	0	4	3½
5. Cereals—"Weeties" per doz. pkts.	1	6	6
6. Cheese—First class quality, matured per lb.	0	3	3
7. Coffee—Fresh roasted and whole, beans to be thoroughly sound do.	0	7	6
8. Corn or Maize Flour—1-lb. packets do.	0	1	6
9. Eggs—New laid per doz.	0	4	3
10. Flour—Self-raising do.	0	0	8
11. Ginger—Ground per lb.	0	8	6
12. Golden Syrup—2-lb. tins per tin	0	1	8½
13. Honey—Yellow Box per lb.	0	1	5
14. Jams—Assorted, 5-lb. tins, net, in the proportion of half seed and half stone, "Red Feather" per tin	0	7	8
15. Mustard—"Double Superfine" per lb.	0	5	0
16. Oatmeal do.	0	0	8½
17. Peas—Split do.	0	0	9½
18. Pepper—White, ground do.	0	6	6
19. Potatoes—Dry and free from dirt per cwt.	0	1	9
20. Raisins—Sultana, 3-crown (present season's) per lb.	0	1	9
21. Rice—Dressed do.	0	0	10½
22. Salt—Fine do.	0	0	2
23. Soap—			
"Velvet," yellow, dry, and hard per doz.	1	5	6
24. Sand, Carboric, 12-oz. blocks each	0	0	8½
Soda—			
25. Bicarbonate of per lb.	0	0	8½
26. Washing do.	0	0	4½
27. Starch (Rice)—"Preservene" do.	0	1	5½
28. Tartar—Cream of, Substitute, "Calcium Phosphate" do.	0	2	6
29. Tea—First grade do.	0	6	9½
30. Vinegar—Malt per pint	0	0	5½

ANNEX TO CONTRACT No. 1957/57.

E. J. Keen, Jory-street, Creswick.

Sub-schedule No. 3.

MILK.
Security, £3.

	£	s.	d.
1. Milk—Fresh and pure per qt.	0	1	3

ANNEX TO CONTRACT No. 1957/58.†

H. J. Symons Pty. Ltd., 1015 Macarthur-street, Ballarat.

Sub-schedule No. 4.

MEAT.
Security, £3.

	£	s.	d.
1. Fresh Beef—Fore-quarters per lb.	0	1	7
2. Mutton do.	0	0	11½
3. Sausages—Mixed do.	0	1	6
4. Steak—Minced do.	0	1	8
5. Livers—Sheep do.	0	0	10

SCHEDULE No. 12.

PROVISIONS—AGRICULTURAL COLLEGE, DOOKIE.

(Delivery at the College.)

ANNEX TO CONTRACT No. 1957/59.
F. G. Dixon, Mary-street, Dookie.

Sub-schedule No. 1.

BREADSTUFFS.
Security, £15.

	£	s.	d.
1. Bread—Fine wheaten, first quality .. per cntl.	3	11	10½
2. Flour—First quality do.	2	0	0

‡ Cost plus 10%.

(AGREEMENT.)
W. A. Thompson, 192 High-street, Shepparton.
Sub-schedule No. 2.

GROCERIES.
(Delivery "F.O.R." Shepparton.)

	£	s.	d.
1. Baking Powder—1-lb. tins	per doz.		
Beans—			
2. Lima	per lb.		
3. Haricot	do.		
4. Biscuits—Coffee, Malt or Arrowroot (as ordered)	do.		
5. Blue—Washing, square, 8-lb. parcels ..	do.		
6. Candles—full weight, Kitchen's Electrics in lots of 30, loose	do.		
7. Cereal—24-oz. packets, "Piper's" (or equal thereto)	per doz.		
8. Cinnamon	per lb.		
9. Chutney—13-oz. bottles	per doz.		
10. Cocoa—Bulk	per lb.		
11. Coconut—Dessicated	do.		
12. Coffee Essence—1-gal. jars	per gal.		
13. Cordial—Lemon, 1-gal. jars s.o.	do.		
14. Corn or Maize Flour—1-lb. packets ..	per doz.		
15. Currants—2-crown (present season's) ..	per lb.		
16. Curry Powder—Bulk	do.		
17. Custard Powder, 1-lb. packets, "McK." Essence—	per doz.		
18. Almond, 8-oz. bottles	do.		
19. Cochineal, 8-oz. bottles	do.		
20. Lemon, 8-oz. bottles	do.		
21. Vanilla, 8-oz. bottles	do.		
Fish—Tinned—			
22. Herrings in Sauce, 14-oz. tins	do.		
23. Salmon, 2-lb. tins	do.		
24. Sardines, 4-oz. tins	do.		
25. Flour—Self-raising, 150-lb. bags ..	per bag		
Fruits—			
26. Dried (present season's)	per lb.		
27. Preserved, 30-oz. tins, Peaches ..	per doz.		
28. Preserved, 30-oz. tins, Pears, Apricots	do.		
29. Preserved, 6-lb. tins, Apples	per tin		
30. Preserved, 7-oz. tins, Blackberries, Blackcurrants, Gooseberries, and Raspberries	do.		
31. Gelatine—Ground	per lb.		
32. Ginger—Ground	do.		
33. Golden Syrup—2-lb. tins	per doz.		
34. Gravox—1-lb. tins	do.		
35. Herbs—Mixed, 2-oz. packets	do.		
36. Honey—First quality, 60-lb. tins ..	per tin		
37. Jelly Crystals—7-lb. packets	per lb.		
38. Junket Tablets—"Hansens"	per doz.		
39. Lemon Peel—Cut	per lb.		
40. Macaroni—Bulk, 22-lb. boxes	per box		
41. Margarine—Cake	per lb.		
42. Matches—Safety (60 in a box)	per gross		
43. Meat Extract—"Bonox," "Beefine," &c., 2-lb. jars	per jar		
Meat—Tinned—			
44. Camp Pie—12-oz. tins	per doz.		
45. Meat and Vegetables, 16-oz. tins ..	do.		
46. Hampe, 12-oz. tins	do.		
47. Sausages, 16-oz. tins	do.		
48. Steak and Kidney, 16-oz. tins	do.		
49. Milk—Condensed, full cream, 14-oz. tins	do.		
50. Mustard	per lb.		
51. Oatmeal—Flaked, bulk	per cwt.		
Pastes—			
52. Marmite, 4-oz. jars	per doz.		
53. Salmon and Shrimp, 4-oz. jars	do.		
54. Bloater, 4-oz. jars	do.		
Peas—Green—			
55. Boiling	per lb.		
56. Tinned, 14-oz. tins	per tin		
57. Pepper—Black, ground	per lb.		
58. Pickles—Assorted, 20-oz. bottles ..	per doz.		
Prunes—Dried—50-60's—			
59. Loose (present season's)	per lb.		
60. 7-lb. tins (present season's)	per tin		
Raisins—			
61. Sultana, 3-crown (present season's) ..	per lb.		
62. Seeded	do.		
63. Rice—Ground	per doz. lb.		
Salt—			
64. Table, 16-oz. packets	per doz.		
65. Fine	per cwt.		
Sauce—			
66. Tomato, 1-gal. jars, "Granny's"	per gal.		
67. Worcester, 1-gal. jars	do.		
Soap—			
68. "Bon Ami," 12-oz. tins or cakes, (as ordered)	per doz.		
69. Flakes, 23-lb. bags	per cwt.		

Sub-schedule No. 2—continued.

GROCERIES—continued.

	£	s.	d.
70. "Lux" { Packets	per doz.		
{ Cakes	do.		
71. "Palmolive"	do.		
72. "Persil," 8-oz. packets	do.		
73. "Rinso," 17-oz. packets	do.		
Soda—			
74. Bicarbonate of	per owt.		
75. Washing	do.		
76. Soup—Tomato, 20-oz. tins	per doz.		
77. Spaghetti, 1-lb. packets	do.		
78. Spice, ½-lb. packets	do.		
79. Starch—14-oz. packets, "Dandy" ..	do.		
Sugar—			
80. Castor	per owt.		
81. Icing	do.		
82. Tartar—Cream of (Aust.)	per lb.		
83. Treacle—2-lb. tins	per doz.		
84. Vinegar—Malt, bulk	per gal.		
85. Yorkline—Essence (or equal thereto) in 8-oz. bottles	per doz.		

(AGREEMENT.)
W. A. Thompson, 192 High-street, Shepparton.

Sub-schedule No. 3.

JAM.

(Delivery "F.O.R." Shepparton.) £ s. d.

Jam—

1. Assorted, of approved kinds, in the portion of half seed and half stone, of the best quality, 5-lb. tins, "Golden Bells," "Golden Bar," or "S.P.C."	per doz.		
2. Assorted, of approved kinds, in the portion of half seed and half stone, of the best quality, in 32-lb. tins	per lb.		

SCHEDULE No. 13.

PROVISIONS—MCLEOD SETTLEMENT,
FRENCH ISLAND.

(Delivery to be made at Corinella Jetty.)

ANNEX TO CONTRACT No. 1957/60.

H. H. Bird, Grantville.

Sub-schedule No. 1.

BREAD.

Security, £12.

	£	s.	d.
1. Bread—Fine wheaten, first quality ..	per cwt.	3	6

(AGREEMENT.)

E. V. Peters, Corinella.

Sub-schedule No. 2.

GROCERIES.

	£	s.	d.
1. Butter—First grade creamery, to score not less than 91 points, Government grade, Commerce Regulations Standard	per lb.	0	4
2. Cheese—Matured	do.	0	3
3. Jams—Assorted, Seed	per doz.	1	9
Stone, of best quality, in 24-oz. tins, "Monbulk" and "Rego"	do.	1	9

ANNEX TO CONTRACT No. 1957/61.†

George Hayman, Lang Lang.

Sub-schedule No. 3.

MEAT.

Security, £5.

	£	s.	d.
1. Fresh Beef	per lb.	0	2
2. Mutton	do.	0	1
3. Sausages—Mixed	do.	0	1

* The rates to be paid for all items under these Sub-schedules shall be the wholesale price ruling on the day of delivery.

SCHEDULE No. 14.

PROVISIONS—GEEELONG DISTRICT.

(Delivery into Institutions.)

ANNEX TO CONTRACT No. 1957/62.

J. A. Fitzgerald, 150 Malop-street, Geelong.

Sub-schedule No. 1.

BREAD.

	Security, £30.	£	s.	d.
1. Bread—Fine wheaten, first quality	per cntl.	2	8	11½
2. Bread—Wholemeal, first quality	do.	2	8	11½

(AGREEMENT.)

Beacon Trading Company (Wholesalers Ltd.), McKillop-street, Geelong.

Sub-schedule No. 2.

GROCERIES.

The rates to be paid under this Sub-schedule shall be the wholesale price ruling on the day of delivery, ex store, plus 5 per cent. if delivered,

ANNEX TO CONTRACT No. 1957/63.†

A. R. Bubb, 147 Moorabool-street, Geelong.

Sub-schedule No. 3.

MEAT.

For Gaol.

Security, £5.

	Security, £5.	£	s.	d.
1. Fresh Beef	per lb.	0	0	10½
2. Corned Beef—Rolled or Round, without bone or cartilage	do.	0	0	11
3. Fresh Mutton—Forquarters	do.	0	0	7½
4. " " —Legs	do.	0	1	6
5. Beef Minced	do.	0	1	5
6. Sausages Mixed	do.	0	1	4
7. Sausage Meat	do.	0	0	8

ANNEX TO CONTRACT No. 1957/64.†

A. C. Knight, 11 Melbourne-road, Drumcondra, Geelong.

Sub-schedule No. 4.

MEAT.

For delivery to Teachers' College Hostels as under—
 "Lauriston," 23 Aberdeen-street, Geelong.
 "Forty-Five," The Esplanade, Western Beach, Geelong.
 "Hawthorne," Aberdeen-street, Geelong.
 "Ariston," Packington-street, Geelong.
 "Warrain," 56 Western Beach, Geelong.

Security, £5.

	Security, £5.	£	s.	d.
1. Fresh Beef—				
Sirloin, boneless	per lb.	0	2	6
2. Topside Roast	do.	0	2	4
3. Corned Beef—Rolled or Round, as ordered, without bone or cartilage	do.	0	2	6
Mutton—				
4. Legs, Two-tooth	do.	0	1	6
5. Fore-quarters, boned, rolled, and pickled	do.	0	0	11
6. Chops, fore-quarter	do.	0	1	0
7. Rib Chops	do.	0	1	2
8. Chops, Loin	do.	0	1	8
Steak—				
9. Chuck	do.	0	1	8
10. Skirt	do.	0	1	2
11. Bladebone	do.	0	1	11
12. Thick Flank—sliced	do.	0	2	0
13. Minced	do.	0	1	8
14. Minced—for rissoles	do.	0	1	8
15. Fillet—Veal	do.	0	2	4
16. Livers—Sheep	do.	0	1	0
17. Tongues—Ox	do.	0	1	4
18. Kidneys—Ox	do.	0	1	4
Sausages—				
19. Mixed, thin	do.	0	1	4
20. Pork, thick	do.	0	1	4
21. Sausage—Pork, German	do.	0	3	6
22. Sausage Mince	do.	0	0	11
23. Bacon—Shoulder	do.	0	4	6

** The rates to be paid for all items under these Sub-schedules shall be the wholesale prices charged to the contractor, plus 12½ per cent. Wholesaler's invoices to be submitted with contractors' accounts.

SCHEDULE No. 15.

PROVISIONS—COORIEMUNGLE PRISON CAMP, HEYTESBURY FOREST.

(Delivery to be made at the Camp.)

ANNEX TO CONTRACT No. 1957/65.

M. and J. V. Church, Recreation-road, Timboon.

Sub-schedule No. 1.

BREAD.

	Security, £30.	£	s.	d.
1. Bread—Fine wheaten, first quality	per cntl.	3	16	0

(AGREEMENT.)

Robert Swinton and Co., Curdie-street, Cobden.

Sub-schedule No. 2.

GROCERIES.

	Security, £4.	£	s.	d.
1. Oatmeal	per lb.	0	0	10
2. Rice—Dressed	do.	0	1	1
3. Salt—Fine	do.	0	0	3

ANNEX TO CONTRACT No. 1957/66.†

Heytesbury Butchery, Timboon.

Sub-schedule No. 3.

MEAT.

Security, £4.

	Security, £4.	£	s.	d.
1. Fresh Beef	per lb.	0	3	0
2. Mutton Fresh	do.	0	2	2
3. Corned Beef—Rolled or Round, as ordered without bone or cartilage	do.	0	2	9
2. Sausages	do.	0	2	0
5. Sausage Mince	do.	0	1	6
6. Dripping, Beef	do.	0	1	0

SCHEDULE No. 16.

PROVISIONS—ABORIGINAL STATION, LAKE TYERS.

(Delivery at Lake Tyers Station.)

ANNEX TO CONTRACT No. 1957/67.

R. Hodder, Nova Nova.

Sub-schedule No. 1.

BREADSTUFFS.

Security, £25.

	Security, £25.	£	s.	d.
1. Bread—Fine wheaten, first quality	per cntl.	2	14	3
2. Flour—First quality	do.	1	15	0

(AGREEMENT.)

R. Hodder, Nova Nova.

Sub-schedule No. 2.

GROCERIES.

	Security, £25.	£	s.	d.
1. Baking Powder—"Snowflake," or equal thereto, 1-lb. tins	per lb.			
2. Candles—Full weights, Kitchen's "Electrics," or other make of equal quality, 1-lb. packets	do.			
3. Coffee—Fresh roasted, and whole, beans to be thoroughly sound	do.			
4. Cocoa—Bulk	per lb.			
5. Corn or Maize Flour—1-lb. packets	do.			
6. Currants—2-crown (present season's)	do.			
7. Curry Powder—Bulk	do.			
8. Matches—Safety, 60 per box, "Yacht"	per gross			
9. Mustard—"Double Superfine"	per lb.			
10. Pepper—Black, ground, 2-oz. tins	per tin			
11. Raisins—Sultans, 3-crown (present season's)	per lb.			
Salt—				
12. Coarse	per cwt.			
13. Fine	do.			
14. Soap—Household, hard and dry, to sample	do.			
Soda—				
15. Bicarbonate of	per lb.			
16. Washing	do.			
17. Tartar—Cream of, substitute, Calcium Phosphate	do.			
18. Treacle—2-lb. tins	per tin			
19. Vinegar—Malt	per qt.			

**

(AGREEMENT.)

R. Hodder, *Nova Nova.*

Sub-schedule No. 3.

JAMS.		£	s.	d.
1. Jams—Assorted, 24-oz. tins, in the proportion of half seed and half stone	per tin	**		

SCHEDULE No. 17.

PROVISIONS—LANGI KAL KAL TRAINING CENTRE.

ANNEX TO CONTRACT No. 1957/68.

O. Nicholls and W. J. Hosken, *Neil-street, Beaufort.*

Sub-schedule No. 1.

BREAD.

Security, £3.		£	s.	d.
1. Bread—Fine wheaten, first quality	per cntl.	2	16	3

ANNEX TO CONTRACT No. 1957/69.†

H. T. Slee and Co., *Laurence-street, Beaufort.*

Sub-schedule No. 2.

MEAT.

Security, £5.		£	s.	d.
1. Fresh Beef—Boneless	per lb.	0	3	0
2. Sausage Meat	do.	0	1	3
3. Sausages—Mixed	do.	0	1	10

SCHEDULE No. 18.

PROVISIONS—AGRICULTURAL COLLEGE, LONGERENONG.

(Delivery at the College.)

ANNEX TO CONTRACT No. 1957/70.

Schwarz Breads, 58 *Firebrace-street, Horsham.*

Sub-schedule No. 1.

BREADSTUFFS.

Security, £5.		£	s.	d.
1. Bread—Fine wheaten, first quality	per cntl.	3	5	0
2. Flour—First quality	do.			§

(AGREEMENT.)

W. Cook and Son, *Horsham.*

Sub-schedule No. 2.

GROCERIES.

		£	s.	d.
Bacon—				
1.	Sides	per lb.	0	4
	Rashers, middle	do.	0	5
2.	Barley—Pearl	do.	0	0
Beans—				
3.	Butter	do.	*	
4.	Haricot	do.	0	1
5.	Lima	do.	0	1
Biscuits—				
6.	Dry	do.	0	1
7.	Coffee, Malt, Arrowroot	do.	0	1
8.	Assorted { "A" assortment	do.	0	1
	{ "B" assortment	do.	0	2
Blue—				
9.	1-oz. knobs (Calico bags, 2s. 6d. doz.)	do.	0	2
	7-lb. packets	per pkt.	*	
10.	Borax	per lb.	0	10
11.	Cake Containers—Paper, 200's.	per gross	*	
Cereals—				
12.	Cornflakes, or equals, packets	per doz.	1	11
13.	Biscuit, { "Weetbix" or equal, packets	do.	1	4
	{ "Vita Brits"	do.	1	9
14.	"All-Bran," or equal, packets	do.	0	17
15.	Cheese—5-lb. boxes, "Kraft"	per pkt.	0	17
16.	Chutney—"White Crow"	per doz.	1	1
17.	Cloves	per lb.	0	9
18.	Coconut—Desiccated	do.	0	3
Coffee Essence—				
19.	8-oz. bottles "Melray"	per doz.	1	10
20.	40-oz. jars	per jar	0	8
Curry Powder—Bulk—				
21.	"Hamee"	per lb.	0	3
	"Cox" (Indian)	do.	0	4

Sub-schedule No. 2—continued.

GROCERIES—continued.

£ s. d.

Custard Powder—				
22.	Bulk { "Renown"	do.	0	1
	{ "Melray"	do.	0	1
23.	1-lb. packets { "Renown"	do.	0	1
	{ "Melray"	do.	0	1
Dates—				
24.	{ "Sair," 1-lb. packets	do.	0	1
	{ "Khadrawi," 1-lb. packets	do.	0	1
Essences, &c.—				
25.	Almond, 1-oz., "Triple Strength"	per bot.	0	1
26.	Lemon, 8-oz., "Melray" ("Burnside," 3s. 11d.)	do.	0	7
27.	Vanilla, 8-oz., "Melray" ("Burnside," 4s. 3d.)	do.	0	9
28.	Cochineal, 1-oz.	do.	0	1
29.	Parisian, 4-oz.	do.	0	1
30.	Yolkine, 1-oz.	do.	0	0
Cocoa—				
31.	8-oz. tins, "Bournville"	per tin	0	3
32.	Loose	per lb.	0	3
Extracts and Pastes, &c., or equal—				
33.	"Marmite", 8oz.	per tin	0	4
34.	"Vegemite", 8oz.	do.	0	4
35.	Peanut Butter, 8oz.	do.	0	1
36.	"Bonox", 2oz.	per bot.	0	1
37.	Bloater	per tin	0	0
38.	Salmon and Shrimp	do.	0	0
Fish—Tinned—				
39.	"Flair"	per doz.	1	4
40.	Salmon { "King Sound"	do.	2	4
	{ "Deep Seas"	do.	1	19
41.	Pilchards, 16-oz.	do.	1	3
42.	Herrings, 14-oz.	do.	1	6
43.	Sardines, 4-oz.	do.	0	14
Flour—Corn or Maize—				
44.	Packets	per lb.	0	1
45.	Bulk	do.	0	1
46.	Flour—Self-raising—"Crusader" or "McAlpins," 9d.)	do.	0	0
Fruits—Dried—				
47.	Apples	do.	0	3
48.	Apricots { 5-crown	do.	0	4
	{ Plain	do.	0	3
49.	Peaches { 4-crown	do.	0	2
	{ Plain	do.	0	2
50.	Pears { 4-crown	do.	0	2
	{ Plain	do.	0	1
51.	Prunes, 60-70's	do.	0	2
52.	Currants { 4-crown	do.	0	1
	{ Plain	do.	0	1
53.	Raisins—Seeded { "Melray," packets	do.	0	2
	{ Loose	do.	0	1
54.	Sultanas { 4-crown	do.	0	1
	{ Plain	do.	0	1
Fruits—Tinned—				
55.	Apricots { Halves, 30-oz.	per doz.	1	14
	{ Halves, 7-lb.	do.	5	2
	{ Wholes, 30-oz.	do.	1	10
56.	Peaches { 30-oz.	do.	*	
	{ 7-lb.	do.	*	
57.	Pears { 30-oz.	do.	1	15
	{ 7-lb.	do.	5	5
58.	Mixed Fruits, 30-oz.	do.	1	13
59.	Solid Pack Apples { 30-oz.	do.	1	17
	{ 7-lb.	do.	5	12
60.	Solid Pack Apricots, pie, 30-oz.	do.	1	6
61.	Gelatine—Ground, "Davis"	per lb.	0	6
62.	Ginger—Ground	do.	0	4
63.	Golden Syrup—2-lb. tins	per doz.	1	2
64.	Gravox—1-lb. tins	do.	1	2
65.	Herbs—Mixed, "Melray," packets	do.	0	3
66.	Honey—60-lb. tins (less 2s. 6d. returned tins), "Yellow Box"	per tin	4	18
Jelly Crystals—				
67.	4-oz. packets, "Melray"	per doz.	0	8
68.	7-lb. packets, "Melray"	per pkt.	0	17
69.	Junket Tablets, tubes	per doz.	0	17
70.	Lentils	per lb.	0	1
Macaroni—				
71.	1-lb. packets	do.	0	1
72.	Bulk, 22-lb. cartons	each	1	2
73.	Margarine—Cake, pastry	per lb.	0	1
74.	Matches—Safety, packets	per gross	0	19
75.	Mayonaise—1-gal. jars, "Kraft"	per jar	1	5
Meat—Tinned—				
76.	Beef Luncheon	per doz.	1	5
77.	Beef Steak Pudding	do.	1	2
78.	Camp Pie	do.	0	19
79.	Irish Stew	do.	1	1
80.	Lamb and Green Peas	do.	1	1

§ Order under Melbourne District Contract.

* Supplies not available.

** The rates to be paid for all items under these Sub-schedules shall be the wholesale prices charged to the contractor, plus 12½ per cent. Wholesaler's invoices to be submitted with contractor's accounts.

Sub-schedule No. 2—continued.

GROCERIES—continued.		£	s.	d.
81.	Minced Beef	do.	0	18 6
82.	Sausages and Vegetables	do.	1	5 0
Milk—Tinned—				
83.	Dried, "Sunshine"	do.	1	14 6
84.	Condensed, "Mont Blanc"	do.	1	0 0
85.	"Ideal" or equal	do.	0	16 6
Mustard—				
86.	{ Bulk, "McKenzies" per lb.	0	4	11
	{ "Keens" do.	0	7	8
87.	Nutmeg—Ground, 4-oz. packets	each	0	2 11
Oatmeal—Flaked—				
88.	{ "Wards," 5-lb. packets per pkt.	0	5	0
	{ "Parsons" per lb.	0	0	9½
89.	Pastry—Mix	per pkt.	0	1 1
Peel—				
90.	Mixed, cut	per lb.	0	1 8
91.	Lemon, cut	do.	0	1 8
92.	Pepper—White, ground	do.	0	6 0
93.	Pickles—Assorted, 20-oz. bottles, "Melray"	per doz.	1	4 0
Rice—				
94.	Dressed	per lb.	0	0 11
95.	Ground, 1-lb. packets	do.	0	0 11
96.	Sago	do.	0	0 9½
Salt—				
97.	Fine, bulk, "Corio"	per cwt.	1	0 0
98.	Table, bulk, "Crown"	do.	1	5 0
Sauces—				
99.	Tomato, 26-oz. bottles, "White Crow"	per doz.	2	3 0
100.	Tomato, 1-gal. jars, "White Crow"	per jar	0	14 0
Worcestershire—				
101.	{ 10-oz. bottles, "Holbrooks" per doz.	1	5	6
	{ 10-oz. bottles, "Bonita" do.	0	17	6
	{ 1-gal. jars per jar	0	12	6
102.	Mustard, 8-oz. bottles	per doz.	1	1 0
Soaps—				
103.	Extract of "Kitchens" or equal	per lb.	0	0 7
104.	Household, dry	per case	2	0 0
105.	"Lux," "Rinso," "Persil," or equal (large packets)	per doz.	0	16 0
106.	Sand Soap, 12-oz. blocks "Pearsons"	do.	0	10 6
107.	Toilet Soap, "Kitchens" or equal, 3¼-oz. tablets	do.	0	4 0
108.	"Velvet" or equal { Quads do.	1	2	6
	{ Quints do.	2	2	6
Soda—				
109.	Bicarbonate of	per lb.	0	0 7
110.	Washing	do.	0	0 5
Soups—Tomato—				
111.	16-oz. tins { "Fowlers" per doz.	0	15	0
	{ "Melray" do.	1	0	0
112.	6-lb. tins	do.	3	0 0
113.	1-gal. jars	per jar	0	10 0
Spaghetti—				
114.	1-lb. packets	per doz.	0	16 0
115.	Bulk, 22-lb. cartons	each	1	2 6
116.	Spice—Mixed	per lb.	0	4 6
Starch—Rice—				
117.	{ "White Ray" per pkt.	0	1	3
	{ "Silver Star" do.	0	1	6
Sugar—				
118.	icing	per lb.	0	0 11
119.	Castor	do.	0	0 10
120.	White, 70's	per bag	2	18 6
121.	Raw, 70's	do.	2	4 0
122.	Taploca	per lb.	0	1 0
123.	Tartar—Cream of	do.	0	3 8
124.	Treacle—2-lb. tins	per doz.	0	19 6
Vegetables—Dried—Peas—				
125.	Green, "Dew Crisp"	per lb.	0	8 3
126.	Split, yellow	do.	0	0 9
Vegetables—Tinned—				
127.	Baked Beans, 16-oz. { "Robinhood" per doz.	0	15	0
	{ "White Crow" do.	1	1	0
128.	Baked Beans, No. 10 can { "Robinhood" per can	0	8	6
	{ "Vacola" do.	0	9	6
129.	Beans, green, 30-oz., "Raleigh"	per doz.	1	17 0
130.	Beetroot, 30-oz.	do.	1	4 0
131.	Carrots, 30-oz.	do.	0	16 0
132.	Celery, 30-oz.	do.	1	12 0
133.	Parsnips, 30-oz.	do.	1	5 0
134.	Peas, 30-oz., "Raleigh"	do.	1	16 0
135.	Sweetcorn, 30-oz.	do.	1	17 6
136.	Tomatoes, 30-oz.	do.	1	6 0
Vermicelli—				
137.	1-lb. packets	do.	0	16 0
138.	22-lb. cartons	per ctn.	1	2 0
Vinegar—Malt—				
139.	{ 1-gal. jars, "Sutherland" per jar	0	4	6
	{ 1-gal. jars, "Reeds" do.	0	3	0

(AGREEMENT.)

W. Cook and Son, Horsham.

Sub-schedule No. 3.

JAM.

1. Jams—

Varieties available—Apricot Conserve, Apple Jelly, Blackberry, Black Currant, Gooseberry, Loganberry, Melon and Lemon, Melon and Pineapple, Dark Plum, Light Plum, Marmalade, Peach, Plum and Raspberry, Quince and Raspberry, in the proportion of half seed and half stone.

	£	s.	d.
In 24-oz. tin ^s { "S.P.C."	per doz.	1	4 11
{ "White Crow"	do.	1	10 0
In 5-lb tins { "S.P.C."	do.	3	14 6
{ "White Crow"	do.	4	19 0
In Bulk .. { Plum	per lb.	0	1 1
{ Apricot	do.	0	1 2

SCHEDULE No. 19.

PROVISIONS—RESEARCH STATION, RUTHERGLEN.

(Delivery ex Bakery and Grocery Store.)

ANNEX TO CONTRACT No. 1957/71.

E. M. and G. A. Dwyer, Main-street, Rutherglen.

Sub-schedule No. 1.

BREAD.

	£	s.	d.
1. Bread—Fine wheaten, first quality	per cntl.	3	5 8½

(AGREEMENT.)

Aitken and Fullerton, Rutherglen.

Sub-schedule No. 2.

GROCERIES, ETC.

	£	s.	d.
1. Biscuits { Marie, Coffee, Arrowroot per lb.	0	2	3
{ Dry do.	0	2	5
{ Sweet do.	0	2	9
2. Chutney—"Rosella"	per bot.	0	2 5
3. Cocoa—"Bournville"—1-lb. tins	each	0	6 3
4. Coconut—desiccated	per lb.	0	4 0
5. Cornflakes—"Kelloggs"	per pkt.	0	2 9
6. Cornflour	do.	0	1 8
7. Custard Powder	do.	0	2 1
8. Dried Fruits { Currants per lb.	0	1	10
{ Raisins do.	0	2	3
{ Sultanas do.	0	1	11
9. Essence of Lemon—Pure—4-oz. bottles	each	0	3 9
10. Gelatine	per lb.	0	9 6
11. Gravox (16-oz.)	each	0	2 0
12. Jams (Berries excluded) 24-oz.	per tin	0	2 8
13. Jelly Crystals	per pkt.	0	0 9½
14. Macaroni	per lb.	0	1 3
15. Matches	per pkt.	0	1 9
16. Meat—Tinned { Camp Pie per tin	0	2	8
{ Sausages and Vegetables do.	0	2	8
{ Corn Beef do.	0	2	8
{ Lamb and Green Peas do.	0	2	8
{ Irish Stew do.	0	2	8
{ Steak and Onions do.	0	2	8
17. Oatmeal—5-lb. packets	each	0	5 6
18. Pepper—2-oz. tins	do.	0	1 2
19. Pickles	per bot.	0	2 9
20. Flour { White per lb.	0	0	5
{ Self-raising—7-lb. bags each	0	5	6
21. Sauce—Tomato—"Mons." 26-oz.	each	0	3 3
22. Soup—Tomato—"Rosella" or "Kia"	per tin	0	1 11
23. Soaps { Lux, 16-oz. each	0	3	11
{ Rinso—Economy do.	0	3	8
{ Toilet per doz.	0	9	6
{ Sand do.	0	8	0
{ Velvet—"Quads" do.	1	6	0
24. Salmon—Australian, 1-lb. tins—"Greenseas"	each	0	3 10
25. Salt	per lb.	0	0 3
26. Spaghetti	do.	0	1 5
27. Sugar—70-lb. bags	per bag	2	12 9
28. Tea	per lb.	0	7 3
29. Vinegar—26-oz. bottles	per bot.	0	1 9

SCHEDULE No. 20.

PROVISIONS AT SALE.

(Delivery at the Gaol.)

ANNEX TO CONTRACT No. 1957/72.

F. J. Hennessy, 102 Raymond-street, Sale.

Sub-schedule No. 1.

BREAD.

	£	s.	d.
1. Bread—Fine wheaten, first quality	per cntl.	3	2 6

ANNEX TO CONTRACT No. 1957/73.†
H. L. G. Laws, 111 Raymond-street, Sale.

Sub-schedule No. 2.

MEAT.

	Security, £3.	£	s.	d.
1. Fresh Beef—Stewing	per lb.	0	2	3
2. Fresh Mutton	do.	0	1	3
3. Corned Beef—Rolled or Round, as ordered, without bone or cartilage	do.	0	2	3
4. Sausages	do.	0	2	0

SCHEDULE No. 21.

PROVISIONS—PLEASANT CREEK SPECIAL SCHOOL, STAWELL.

(Delivery at the School.)

ANNEX TO CONTRACT No. 1957/74.

Stawell Bakers Pty. Ltd., 26 Main-street, Stawell

Sub-schedule No. 1.

BREADSTUFFS.

	Security, £10.	£	s.	d.
1. Bread—Fine wheaten, first quality	per ontl.	3	0	5
2. Flour—First quality	do.	2	0	0
3. Flour—Wheatmeal	per lb.	0	0	4

(AGREEMENT.)

McKay MacLeod Pty. Ltd., 122 Lydiard-street, Ballarat.

Sub-schedule No. 2.

GROCERIES.

		£	s.	d.
1. Baking Powder—"Excelsior"	per lb.	0	2	9½
2. Barley—Pearl	do.	0	0	7
3. Blue—Washing, "Reck Square"	per gross	1	10	7½
4. Cereal { "Sunflakes," 24-oz. packets	per doz.	1	4	5
{ Weet Harts, 28-oz. packet	do.	1	17	6
5. Cocoa—(1-lb. "Bournville"	do.	3	3	4½
28-lb. bags *				
6. Coffee and Chicory "Gold Seal"	per lb.	0	5	0½
7. Corn Flour—1-lb. packets, "Kream"	do.	0	1	6½
Currants (present season's)—				
{ Plain	do.	0	1	7½
{ 1-crown	do.	0	1	8½
{ 2-crown	do.	0	1	8½
9. Curry Powder—Loose, "Gold Seal"	do.	0	4	0½
10. Custard Powder—Loose	do.	0	1	2½
11. Dates (under box lots, 1s. 9½d. per lb.)	do.	0	1	9½
12. Ginger—Ground	do.	0	8	9½
Golden Syrup—				
{ 2-lb. tins	per doz.	1	0	10
{ 70-lb. tins	each	2	16	10
14. Gravox—1-lb. tins	per doz.	1	0	9
15. Honey—First quality	per lb.	0	1	7½
16. Jams—Assorted, of approved kinds, in proportion of half seed and half stone, in tins containing 24 oz. net, "Victories"	per doz.	1	9	11
17. Jelly Crystals—pkts. "McKays"	do.	0	8	9½
Junket Tablets—				
{ "Gold Seal"	per dz. tbs.	0	5	0
{ "Merry Widow," flavoured	do.	0	15	7
19. Macaroni—22-lb. cartons	per ctn.	1	2	2
20. Margarine—Cake, Pastry	per lb.	0	1	7½
Oatmeal—				
{ Flake	do.	0	0	8½
{ Fine	do.	0	0	7½
22. Peel—Cut, mixed	do.	0	2	0½
23. Pepper—Black, ground	do.	0	3	8½
24. Prunes—Dried { 50-60's (present season)	do.	0	2	9½
{ 70-80's	do.	0	2	6½
Raisins—Sultans (present season's)—				
{ Plain	do.	0	1	8½
{ 1-crown	do.	0	1	9½
{ 2-crown	do.	0	1	9½
26. Rice—Dressed	per cwt.	4	10	0
27. Salt—Fine "Imperial"	do.	1	1	1½
28. Sauce—Tomato, 26-oz. bottles "McK."	per doz.	2	3	0
Soap—				
29. Preservens Foam	per doz.	0	15	6
pkts.				
30. "Lifebuoy"—Regular	per doz.	0	6	1½
cakes				
31. Sand, "Pearlite"	do.	0	7	9
32. "Velvet," or equal thereto { Quads	per doz.	1	3	7
{ Quints	do.	1	18	0
Soda—				
33. Bicarbonate of	per lb.	0	0	6½
34. Washing	per cwt.	1	19	7½

* Supplies not available.

Sub-schedule No. 2—continued.

GROCERIES—continued.

		£	s.	d.
35. Spaghetti—22-lb. cartons	per ctn.	1	2	2
36. Spice—Mixed, 1-oz. packets	per pkt.	0	0	5½
37. Starch—12-oz. packets, "Silver Star"	per doz.	0	17	11
38. Sweets, boiled	per lb.	0	1	11½
39. Tartar—Cream of, substitute, "Antelope"	do.	0	2	5½
40. Tapioca—Pearl	do.	"	"	"
41. Tea—First grade, loose, special blend	do.	0	6	6½
42. Treacle—2-lb. tins	per doz.	1	0	5
43. Vinegar, Malt, 1 gal jars (Jars 3s. 6d. each) each	do.	0	4	6

ANNEX TO CONTRACT No. 1957/75.

Stawell Modern Dairy Pty. Ltd., 7 Seaby-street, Stawell.

Sub-schedule No. 3.

MILK.

	Security, £10.	£	s.	d.
1. Milk—Fresh and pure, pasteurised	per gal.	0	5	6

ANNEX TO CONTRACT No. 1957/76.†

Newton Bros., 121 Main-street, Stawell.

Sub-schedule No. 4.

MEAT.

	Security, £3.	£	s.	d.
Fresh Beef—				
1. Rolled Roast Boneless (Brisket excluded)	per lb.	0	1	6
Steak—				
2. Topside	do.	0	1	6
3. Stewing (Minced when required)	do.	0	1	6
4. Beef, Corned Silverside	do.	0	1	6
Fresh Mutton—				
5. Forequarters	do.	0	1	0
6. Leg	do.	0	1	6
7. Loin	do.	0	1	3
Chops—				
8. Middle Loin	do.	0	1	6
9. Forequarter	do.	0	1	0
10. Frankfurts (April to September)	do.	0	1	6
Kidneys—				
11. Sheep (April to September)	each.	0	0	2
12. Ox	do.	0	1	6
13. Sausages—Mixed (April to September)	per lb.	0	1	3
14. Tripe (April to September)	do.	0	0	9
Livers—				
15. Sheep	each	0	1	0
16. Ox	per lb.	0	0	6
17. Ham and Beef Loaf (October to March)	do.			
18. Sausage—Beef—German	do.			

SCHEDULE No. 22.

PROVISIONS—SUNBURY DISTRICT.

(Delivery into Institutions.)

ANNEX TO CONTRACT No. 1957/77.

J. N. Hennessy Pty. Ltd. 55 Sydney-road, Brunswick.

Sub-schedule No. 1.

BREADSTUFFS.

	Security, £112.	£	s.	d.
1. Bread—Fine wheaten, first quality	per ontl.	1	14	2
2. Flour—First quality	do.	1	14	0

(AGREEMENT.)

K. N. Tidswell, Sunbury.

Sub-schedule No. 2.

GROCERIES.

		£	s.	d.
1. Beans—				
Haricot,	per lb.	0	1	9
Biscuits—				
2. Dry	do.	0	2	4
3. Sweet { (Tins 4/- each)	do.	0	2	4
4. Blue—Washing, 1-oz. knobs, "Reckitta"	per gross	1	15	0
5. Candles—Full weight, in 1-lb. packets, Kitchen's "Electrines," or equal thereto	do.	0	2	9½
6. Cereals—Weeties—24-oz. pkts.	per doz.	1	3	3
pkts.				
7. Cinnamon	per lb.	0	3	1
8. Cloves—Whole	do.	0	7	3
9. Cocoa—16-oz. packets, "Bournville"	do.	0	5	10
10. Cordials { 26-oz. bottles—Kia Ora	per doz.	2	1	0
{ 1-gal. jars (Jars 3/- each)	each.	0	16	6

Sub-schedule No. 2—continued.

GROCERIES—continued.		£	s.	d.
11. Corn or Maize Flour—1-lb. packets, net.	do.	0	1	6
12. Currants—2-crown (present season's)	per lb.	0	1	9½
13. Curry Powder	do.	0	4	6
14. Custard Powder—30-lb. tins	do.	0	1	4½
15. Dates—Stoneless	do.	0	1	10½
16. Essences—16-oz. {Lemon "Triangle"	each	3	13	0
	{Vanilla do.	do.	3	13
Flour—Self-raising—				
17. {6-lb. bags	do.	0	4	5
{25-lb. bags	do.	0	17	0
18. Gelatine 16 oz. pkts—"Davis"	per doz.	4	16	0
19. Ginger—Ground	do.	0	11	0
Golden Syrup—				
20. {5-cwt. drums	per cwt.	*		
{2-lb. tins	per doz.	1	0	0
21. Gravox—1-lb.	do.	1	3	0
22. Honey—Pure	per lb.	0	1	9
23. Jelly Crystals {4-oz. packets	do.	0	7	10½
{Bulk	do.	0	2	5
24. Lemon Peel—3-oz. packets	per pkt.	0	1	8
25. Macaroni	per lb.	0	0	11½
26. Margarine—Cake, Pastry	do.	0	1	9
27. Meat—Tinned {12-oz. Camp Pie "Imperial"	per doz.	1	1	0
{16-oz.	do.	1	5	6
28. Milk—Powdered	do.	0	1	3½
29. Mustard—Loose, "Keen's"	do.	0	6	6
30. Nutmeg—Ground	do.	1	1	0
31. Peel—Mixed (8-oz pkt)	each.	0	1	8
32. Pepper—Black, ground	per lb.	0	8	3
33. Pickles—Mustard	per doz.	1	12	6
34. Raisins—Sultans, 2-crown (present season's)	per lb.	0	1	9½
35. Salt—Fine	per cwt.	0	16	0
Sauce—				
36. {Tomato, 26-oz. bottles	per doz.	1	17	0
{Worcestershire, 20-oz. bottles	do.	1	10	6
Soda—				
37. Bicarbonate of	per lb.	0	0	9
38. Washing	per cwt.	2	0	0
39. Spaghetti in Tomato Sauce—4-lb. tins	per doz.	3	7	0
40. Spice—Mixed, loose	per lb.	0	4	6
41. Starch—Loose, "Silver Star"	do.	0	1	9½
42. Sugar	per bag	*		
43. Tartar—Cream of	do.	0	4	4
44. Vermicelli	do.	0	1	1
45. Vinegar—Malt	per gal.	0	5	0

Sub-schedule No. 3.

CEREALS.		£	s.	d.
1. Barley—pearl	per cwt.			
2. Beans, Haricot	do.			
3. Oatmeal—plain	do.			
4. Oatmeal—flaked	do.			
5. Peas, split—yellow	do.			
6. Rice—dressed	do.			
7. Rice—unpolished	do.			
8. Seed Tapioca	do.			

Purchase under Tender Board quotations

(AGREEMENT)

K. N. Tidswell, Sunbury.

Sub-schedule No. 4.

JAMS.		£	s.	d.
1. Jams—Assorted, in bulk, of approved kinds, in the proportion of half seed and half stone, of the best quality, in tins as required, "M.P."	per lb. actual gross weight	0	1	3½
2. Marmalade	do.	0	1	5½

ANNEX TO CONTRACT NO. 1957/78.†

F. Watkins Pty. Ltd., 184 Bourke-street, Melbourne, C.I.

Sub-schedule No. 5

MEAT.		£	s.	d.
Security, £48.				
Fresh Beef—				
1. Rolled Roast, Boneless, (Brisket excluded	per cwt.	7	10	0
2. Buttocks	do.	7	1	8
Fresh Mutton—				
3. Kidney fat to be removed	do.	3	15	0
4. Corned Beef—Rolled or Round, as ordered, without bone or cartilage	do.	7	10	0
5. Sausages—Mixed	per lb.	0	1	8
6. Sausage—Beef—German	do.	0	2	0
7. Veal Legs	do.	0	2	0
8. Tripe Fresh	do.	0	0	8
9. Livers—Sheep	do.	0	2	6
10. Ox Tails	do.	0	1	8
11. Beef Loaf	do.	0	2	3
12. Ham Loaf	do.	0	3	0
13. Veal Loaf	do.	0	2	9
14. Pickled Pork	do.	0	2	9
15. Saveloys	per doz.	0	3	2
16. Sheep Tongues	per lb.	0	1	9

* Supplies not available.

SCHEDULE No. 23.
PROVISIONS—WARRNAMBOOL DISTRICT.

(Delivery into Institution.)

ANNEX TO CONTRACT NO. 1957/79.

Ray Barns Bakery, 140 Liebig-street, Warrnambool.

Sub-schedule No. 1.

BREADSTUFFS.

Security, £5

	£	s.	d.	
1. Bread—Fine wheaten, first quality	per cwt.	3	6	8
2. Flour—First quality	do.	1	13	11

(AGREEMENT)

Swinsons Pty. Ltd., Timor-street, Warrnambool.

Sub-schedule No. 2.

GROCERIES.

	£	s.	d.	
1. Bacon Rashers, middle	per lb.	0	6	9
2. Cereals, whole	per doz.	1	7	0
3. Cloves, whole	per lb.	0	8	0
4. Custard Powder—1lb. packets, "Medallion"	per pkt.	0	1	10
5. Essence, Vanilla 1-oz. bottles, "Medallion"	per bot.	0	1	3
6. Flour—Corn or Maize—1-lb. packets, "Medallion"	per pkt.	0	1	8
7. Fruits Dried—Apricots	per lb.	0	4	3
" Currants and Sultanas	do.	0	1	11
Fruits Preserved in 30-oz. tins—				
{Apricots, halves	per tin	0	3	3
{Peaches, halves	do.	0	3	7
{Pears	do.	0	3	5
9. Gelatine, ground, 1-lb. packets—"Davis"	per lb.	0	7	9
10. Honey {2-lb. jars	per jar	0	4	3
{60-lb. tins	per lb.	0	1	8
11. Jams—24-oz. tins (Apricot, Apple Jelly, Melon "A.J.C." or "S.P.C." Plum, Peach, Quince and Marmalade)	per tin	0	2	7
12. Jelly Crystals {4-oz. packets	per pkt.	0	0	9½
{7-lb. packets	per lb.	0	2	8
13. Margarine—Table, "Eta."	do.	0	2	8
14. Meat Tinned—"Camp Pie", "Tom Piper" 16-oz. tins	per tin	0	2	0
15. Mustard "Keens"	per lb.	0	6	3
16. Pepper, white, ground	do.	0	5	9
17. Pickles, 20-oz. bottles "Leggo's"	each	0	2	5
18. Rice, dressed	per lb.	0	0	10½
19. Sago, Seed tapioca	do.	0	2	0
20. Salt, fine "Imperial"	do.	0	0	3
Sauce—				
21. {Tomato, 26-oz. bottles "A.J.C."	per bot.	0	3	11
{Tomato, 26-oz. bottles "Leggo's"	do.	0	3	11
22. Sugar, white (10½d. per lb.)	per cwt.	4	15	8
23. Vinegar	per quart	0	1	0½

ANNEX TO CONTRACT NO. 1957/80.

Sungold Dairies Pty. Ltd., 68 Kepler-street, Warrnambool.

Sub-schedule No. 3.

MILK.

Security, £3

	£	s.	d.	
1. Milk—Fresh and pure	per gal.	0	4	6

ANNEX TO CONTRACT NO. 1957/81.†

A. Struth, T. and G. Buildings, Lava-street, Warrnambool.

Sub-schedule No. 4.

MEAT.

Security, £5

	£	s.	d.	
1. Fresh Beef, rolled roast (brisket excluded)	per lb.	0	3	0
2. Corned beef, rolled or round as ordered	do.	0	2	3
3. Fresh Mutton, Forequarters	do.	0	1	9
4. " " , Legs	do.	0	2	6
5. " " , chops—Mid Loins	do.	0	2	6
6. Steak , Topside	do.	0	2	9
7. " , Stewing	do.	0	2	3
8. " , Minced	do.	0	2	3
9. Sausages, Mixed	do.	0	1	9
10. Veal boneless	do.	0	2	6
11. Livers, Sheep	do.	0	1	3
12. Tongues, Sheep	per doz.	0	4	0

† Containers charged for, credited on return.

