

[2371]



VICTORIA
GOVERNMENT GAZETTE

Published by Authority

[Registered at the General Post Office, Melbourne, for transmission by post as a newspaper.]

No. 67

THURSDAY, JULY, 14.

[1960

CONTRACTS ACCEPTED.

(SERIES 1960-61.)

SUPPLY OF PROVISIONS

FOR

STATE DEPARTMENTS

FROM

1st JULY, 1960, to 30th JUNE, 1961,
or as stated.

Conditions of Contract and Stipulations are shown herein for the guidance
of Officers ordering and receiving supplies.

W. H. RUTHERFORD,
Secretary to the Tender Board.

CONTRACTS ACCEPTED—(Series 1960-61.)

PROVISIONS.

No. of Contract.	Particulars of each Tender Accepted.	Amount.	Name of Contractor or Supplier.	Charge against Vote or Fund.
PROVISIONS—				
Supply of Provisions, in such quantities as may be ordered, from 1st July, 1960, to 30th June, 1961, or as stated.				
Schedule No. 1.—Melbourne District—				
210	Bread, Kew Mental Hospital	Rates as per annex	Capitol Bakeries Pty. Ltd.	
211	Bread, Children's Welfare Depot and Receiving House and Mental Hospital, Royal Park, and Travancore Developmental Centre, Flemington	Ditto	Johnson and Riches Pty. Ltd.	
212	Bread, "Winlton" Juvenile School, 186 Springvale-road, Nunawading	Ditto	Austral Bakeries Pty. Ltd.	
213	Bread, Teachers' College and Hostels at Grattan-street, 93 Drummond-street, Carlton; 470 and 481 St. Kilda-road, Melbourne; 19 Queens-road, Melbourne; 152 Teorak-road west, South Yarra; and Frank Tate House, 373 Dandenong-road, Armadale; "Redcourt" No. 6 and "Larnook", 13 Orrong-road, Armadale; 11 Patterson-street, Hawthorn; 174 Punt-road, Prahran; 221 Burwood-road, Burwood, and John Cannon House, 32 Belmont-avenue Kew, and 17 Moule-avenue, Brighton; and Police Hospital, St. Kilda-road, Melbourne; Mental Hygiene Clinic, 321 Glenferrie-road, Malvern	Ditto	Capitol Bakeries Pty. Ltd.	
214	Flour	Ditto	John Darling and Son Pty. Ltd.	
	Groceries	Ditto	<i>Moran and Cato Pty. Ltd. (A)</i>	
	Cereals	Ditto	Purchase under Tender Board quotations	
215	Jams	Rates as per annex	W. H. Johnsons Jams Pty. Ltd.	
216	†Meat, Kew Mental Hospital	Ditto	F. Watkins Pty. Ltd.	
217	†Meat, Pentridge Penal Establishment and "Fairlea" Female Prison, Fairfield	Ditto	Jacksons Meat Co. Pty. Ltd.	
218	†Meat, Children's Welfare Depot, Royal Park, and Travancore Developmental Centre, Flemington	Ditto	J. H. Cooke Pty. Ltd.	
219	†Meat, "Winlton" Juvenile School, 186 Springvale-road, Nunawading	Ditto	J. H. Cooke Pty. Ltd.	
220	†Meat, Royal Park Mental Hospital and Receiving House	Ditto	Jackson's Meat Co. Pty. Ltd.	
	Soap Mixtures	Ditto	<i>Moran and Cato Pty. Ltd. (A)</i>	
221	Tea	Ditto	Bushells Pty. Ltd.	
222	Coffee	Ditto	Bushells Pty. Ltd.	
	Potatoes	Ditto	Purchase under Tender Board quotations	Contingencies. 1960-61
Schedule No. 2.—Mont Park, Bundoora, Laundel. Janefield, Gresswell, and Pleasant View, Wood-street, Preston—				
223	Bread	Rates as per annex	Northern Bakeries (Preston) Pty. Ltd.	
	Groceries	Ditto	<i>Moran and Cato Pty. Ltd. (A)</i>	
224	Jams	Ditto	W. H. Johnsons Jams Pty. Ltd.	
225	†Meat—Mont Park District	Ditto	W. Angliss and Co. (Aust.) Pty. Ltd.	
226	†Meat—Preston	Ditto	W. Angliss and Co. (Aust.) Pty. Ltd.	
	Potatoes	Ditto	Purchase under Tender Board quotations	
Schedule No. 3.—SS. Rip and Dredges—				
227	Groceries	Rates as per annex	<i>Moran and Cato Pty. Ltd. (A)</i>	
	†Meat	Ditto	Jackson's Meat Co. Pty. Ltd.	
	Vegetables	Ditto	Purchase by agreement	
	Potatoes	Ditto	Purchase under Tender Board quotations	
Schedule No. 4.—Teachers' College and Hostels at Grattan-street, 93 Drummond-street, Carlton; 470 and 481 St. Kilda-road, Melbourne; 19 Queens-road, Melbourne; 152 Teorak-road west, South Yarra; Frank Tate House, 373 Dandenong-road, Armadale; "Redcourt" 6 and "Larnook", 13 Orrong-road, Armadale; 11 Patterson-street, Hawthorn; 174 Punt-road, Prahran; 221 Burwood-road, Burwood; John Cannon House, 32 Belmont-avenue, Kew; 17 Moule-avenue, Brighton; and Police Hospital, St. Kilda-road, Melbourne; Mental Hygiene Clinic, 321 Glenferrie-road, Malvern—				
228	Groceries	Rates as per annex	Order under Melbourne District	
	†Meat	Ditto	J. H. Cooke Pty. Ltd.	
	Potatoes	Ditto	Purchase under Tender Board quotations	

Names shown in italics denote suppliers under agreement. † Contract for period 1st July, 1960, to 30th September, 1960, only.

CONTRACTS ACCEPTED—(Series 1960-61)—continued.

PROVISIONS—continued.

No. of Contract.	Particulars of each Tender Accepted.	Amount.	Name of Contractor or Supplier.	Charge against Vote or Fund.
PROVISIONS—continued.				
Schedule No. 5.—Heatherton Sanatorium, Cheltenham—				
229	Bread	Rates as per annex	Charleston's Bakery Pty. Ltd.	
	Groceries	Ditto	<i>Moran and Cato Pty. Ltd. (A)</i>	
230	†Meat	Ditto	W. Angliss and Co. (Aust.) Pty. Ltd.	
231	Milk	Ditto	Dairymen and Farmers United Milk Co. Ltd.	
Schedule No. 6.—Ararat District—				
232	Breadstuffs	Rates as per annex	Bates Bros.	
	Groceries	Ditto	} <i>McKay MacLeod Pty. Ltd. (A)</i>	
	Jams	Ditto		
233	†Meat	Ditto	W. Newsome Pty. Ltd.	
	Potatoes		Purchase under Tender Board quotations	
Schedule No. 7.—Ballarat District—				
234	Breadstuffs	Rates as per annex	W. Dick and Sons	
	Groceries—Teachers' Hostels	Ditto	} <i>McKay MacLeod Pty. Ltd. (A)</i>	
	Groceries—Mental Hospital	Ditto		
	Jams	Ditto		
235	†Meat—Gaal and Mental Hospital	Ditto	Victorian Inland Meat Authority	
236	†Meat—Teachers' Hostels	Ditto	H. A. Morris	
237	Milk—Mental Hospital and Teachers' Hostels	Ditto	The Ballarat Modern Dairy Pty. Ltd.	
	Potatoes		Purchase under Tender Board quotations	
Schedule No. 8.—Beechworth District—				
238	Bread	Rates as per annex	P. A. Taylor Model Bakery	
	Groceries	Ditto	} <i>Moran and Cato Pty. Ltd. (A)</i>	
	Jams	Ditto		
239	†Meat	Ditto	E. Spencer	
240	Milk—Mental Hospital	Ditto	H. and J. Baltus	
	Potatoes		Purchase under Tender Board quotations	
Schedule No. 9.—Bendigo District—				
241	Bread—For Gaol and Sandhurst Boys' Centre and Teachers' Hostel, "Lancewood" McLaren-street	Rates as per annex	C. H. Jeffrey Pty. Ltd.	
242	Bread—For Teachers' Hostel, Pleasant Vale	Ditto	A. E. and V. B. Gane	
243	Bread—For Teachers' Hostel, "Comersdale"	Ditto	Roy Raggatt Pty. Ltd.	} Contingencies, 1960-61
	Groceries	Ditto	<i>Pulfer, Cox and Hargreaves, Wholesalers Ltd. (A)</i>	
244	†Meat—For Gaol	Ditto	Alan H. Gittins	
245	†Meat—For Sandhurst Boys' Centre	Ditto	Alan H. Gittins	
246	†Meat—For Teachers' Hostels	Ditto	M. P. and L. K. Marchioni	
	Potatoes		Purchase under Tender Board quotations	
Schedule No. 10.—Castlemaine District—				
247	Bread	Rates as per annex	T. N., M. K., and T. J. Kenyon	
248	†Meat	Ditto	McQueen Bros.	
Schedule No. 11.—School of Forestry, Creswick—				
249	Breadstuffs	Rates as per annex	M. C. and L. M. Bennett	
	Groceries	Ditto	<i>J. Tait and Son (A)</i>	
250	Milk	Ditto	E. J. Keen	
251	†Meat	Ditto	H. J. Symons Pty. Ltd.	
Schedule No. 12.—Agricultural College, Dookie—				
252	Breadstuffs	Rates as per annex	Herman and Wilson	
	Groceries	Ditto	} <i>W. A. Thompson Pty. Ltd. (A)</i>	
	Jam	Ditto		
Schedule No. 13.—McLeod Settlement, French Island—				
253	Bread	Rates as per annex	H. H. Bird	
	Groceries	Ditto	<i>E. V. Peters (A)</i>	
254	†Meat	Ditto	George Hayman	
	Potatoes		Purchase under Tender Board quotations	
Schedule No. 14.—Geelong District—				
255	Bread	Rates as per annex	J. A. Fitzgerald	
	Groceries	Ditto	<i>McKay MacLeod Pty. Ltd. (A)</i>	
256	†Meat—Gaal	Ditto	A. R. Bubb	
257	†Meat—Teachers' College Hostels	Ditto	A. C. Knight	

Names shown in italics denote suppliers under agreement. † Contract for period 1st July, 1960, to 30th September, 1960 only.

CONTRACTS ACCEPTED—(Series 1960-61)—continued.

PROVISIONS—continued.

No. of Contract.	Particulars of each Tender Accepted.	Amount.	Name of Contractor or Supplier.	Charge against Vote or Fund.
<i>PROVISIONS—continued.</i>				
Schedule No. 15.—Coorimungle Prison Camp, Heytesbury Forest—				
258	Bread	Rates as per annex	M. and J. V. Church	
259	†Meat	Rates as per annex	Heytesbury Butchery	
Schedule No. 16.—Aboriginal Station, Lake Tyers—				
260	Breadstuffs	Rates as per annex	R. Hodder	
	Groceries	Ditto	} R. Hodder (A)	
	Jams	Ditto		
Schedule No. 17.—Langi Kal Kal Training Centre—				
261	Bread	Rates as per annex	O. L. and B. M. Nicholls	
262	†Meat	Ditto	F. P. Haintz and Son	
	Potatoes	Purchase under Tender Board quotations	
Schedule No. 18.—Agricultural College, Longerenong—				
263	Breadstuffs	Rates as per annex	Schwarz Breads	
	Groceries	Ditto	} <i>Permevan Wright Ltd. (A)</i>	
	Jams	Ditto		
	Potatoes	Purchase under Tender Board quotations	Contingencies, 1960-61
Schedule No. 19.—Research Station, Rutherglen—				
264	Bread	Rates as per annex	E. M. and G. A. Dwyer	
	Groceries	Ditto	<i>Aitken and Fullerton (A)</i>	
Schedule No. 20.—Sale Gaol				
265	Bread	Rates as per annex	F. J. Hennesay Pty. Ltd.	
266	†Meat	Ditto	H. L. G. Laws	
Schedule No. 21.—Pleasant Creek Special School, Stawell				
267	Breadstuffs	Rates as per annex	Stawell Bakeries Pty. Ltd.	
	Groceries	Ditto	} <i>McKay MacLeod Pty. Ltd. (A)</i>	
268	†Meat	Ditto		H. A. Morris
	Potatoes	Purchase under Tender Board quotations	
Schedule No. 22.—Sunbury District				
269	Breadstuffs	Rates as per annex	Bessell's Pty. Ltd.	
	Groceries	Ditto	} <i>K. N. Tidswell (A)</i>	
	Cereals		Purchase under Tender Board quotations
270	†Meat	Rates as per annex	F. Watkins Pty. Ltd.	
271	Jams	Ditto	W. H. Johnsons Jams Pty. Ltd.	
	Potatoes	Purchase under Tender Board quotations	
Schedule No. 23.—Warrnambool District—				
272	Breadstuffs	Rates as per annex	Ray Barnes Bakery	
	Groceries	Ditto	} <i>Swinsons Pty. Ltd. (A)</i>	
273	Milk	Ditto		Sungold Dairies Pty. Ltd.
274	†Meat	Ditto	A. Struth.. .. .	

Names shown in italics denote suppliers under agreement. † Contract for period 1st July, 1960, to 30th September, 1960, only.

Approved—H. E. Bolte, Treasurer, 27th June, 1960.

CONDITIONS OF CONTRACT FOR PROVISIONS, 1960-61, ETC.

(Published in the *Victoria Government Gazette* No. 31, dated 22nd April, 1960, pages 1295 to 1297.)

1. All the articles are to be of the best quality of the several kinds, in the best condition, and in conformity with the Health Acts, and to be delivered in sound packages, free from all charges for cartage, freight, &c. The goods shall be delivered as may be directed by the officer ordering the supply.

2. As the exact quantity of any article which may be required cannot be stated, the estimate being approximate only, the Government will not be bound by the quantity stated in the schedule, but will be at liberty to order more or less, according to circumstances, and the contractor will be bound to supply the same as ordered.

The Government reserves the right to purchase otherwise than from the contractor any of the articles specified in the schedule in the event of emergency.

3. Supplies for country districts for which no local contract may have been taken, or for which the contract has been terminated, may be ordered under the Melbourne contract.

4. The Melbourne District will include places within a radius of 12 miles from the Elizabeth-street Post Office, with the exception of places for which separate contracts are provided; the Mont Park District will include the Mental Hospitals, Janefield Colony, the Sanatorium, Gresswell, and Pleasant View, Preston; the Ararat, Ballarat, Beechworth, Bendigo, Castlemaine, Geelong and Sunbury Districts will include Mental Hospitals, Penal Institutions and Teachers' Hostels at any of those places. Delivery must be made at the places, institutions, &c., named in the Schedules, or as directed by the officer ordering the supply.

5. Packages suitable for transport of goods supplied must be provided by the contractor free of expense, and the value of these packages, whether in bulk or otherwise, is to be included in the rate tendered, except butter boxes and soap boxes (not including fancy soaps), jam jars, flour, meal, and potato bags, which will remain the property of the contractor, and only the actual net weight or quantity received will be paid for; the empties to be removed from the place of delivery at the contractor's expense.

6. The meat supplied under these conditions must, if practicable, be slaughtered at abattoirs which are under authorized inspection and supervision. Any infringement of these conditions will subject the contractor, on report from the Tender Board, to such mulct, not exceeding Fifty pounds, as the Treasurer may direct, and the amount will be deducted from the contractor's account, or from the security money.

7. The supplies coming under the head of Rations and Medical Comforts are to be delivered direct to the establishment entitled thereto on the written order of the officer in charge. All other supplies will be ordered by the head of the Department concerned or any officer authorized by him, and shall be delivered as may be directed by the officer ordering the supply.

8. At the time of delivering the supplies, the contractor shall produce the order for the same to the officer authorized to accept delivery, and such officer shall acknowledge thereon the receipt of the stores accepted, and shall return the order to the contractor, who shall render his account as soon as possible after the delivery of the supplies, accompanied by the receipted delivery order. The rates or quantities quoted in the orders cannot be exceeded.

9. Where railway facilities are available, the contractor shall use the Railways for the transport of the goods. When a contractor is required to make delivery of goods at a railway station for transmission by rail, except for Commonwealth Departments, he shall obtain a receipt for the goods in duplicate on the Stores and Transport consignment note, at the same time handing in the triplicate and quadruplicate of the form as an authority for the Railways to act as agent for, and charge the freight to, the Stores and Transport Office. He shall as soon as possible, and not later than twenty-four hours thereafter, deliver at the Tender Board Offices the original, the duplicate to be forwarded to the consignee and the quintuplicate retained by himself. Should the goods thus forwarded be rejected, the contractor must bear the cost of replacing such goods, for which services the departmental consignment note is not to be used. Any infringement of this condition may subject the contractor to such mulct as the Tender Board may recommend under clause 18 of these conditions.

10. Orders must receive prompt execution; in the event of the goods not being delivered at the time mentioned in the order or within such other time as the officer ordering the supply may specify for delivery, it will be competent for such officer, or the head of the Department to whom the goods are to be supplied, on giving the contractor twenty-four hours' notice, to purchase the supplies, or any like supplies that are suitable for the service, at the contractor's risk, and the extra expense incurred over and above the contract price (if any) will be deducted from the contractor's account or from the security money.

11. The acceptance of the supplies shall be subject to the approval of the officer authorized to take delivery of the stores, or such other officer as shall be named in the conditions.

12. If the officer in charge of stores be not satisfied as to the quantity or quality of the stores, or if, after taking delivery of any stores or material, he shall discover any deficiency or defect therein, he may return such deficient or defective stores or material to the contractor, and shall report the same to the head of his Department and to the Tender Board.

13. In the event of a difference of opinion between the contractor and the officer receiving the supplies as to the quality, the same is to be decided, in cases where the article is not of a perishable nature, by a Board of Survey composed of persons named by the Treasurer of the State for the time being; and the decision of the Board is to be considered final. In the event of the decision being against the contractor, the survey fees and expenses (if any) will be deducted as in clause 10.

14. In cases where the article is of a perishable nature, or when from some other cause injury would be sustained either by the person to whom the rations or stores are due or by the contractor in waiting for a Board to survey, the head of the Department or officer authorized to take delivery will have power to reject such article or articles as are obviously of inferior quality, it being understood that he will be responsible to the Government for so doing, and that the contractor must take back the rejected article and supply good in its stead; failing which it, or any like supply suitable for the Service, will be obtained by the officer requiring it as in clause 10. In case of the rejection or return of any supplies, the contractor shall bear the whole cost of replacing the supplies so rejected or returned.

15. If the Board shall decide that the article is not of proper quality it must be immediately replaced by the contractor; failing which it, or any like supply suitable for the Service, will be procured by the officer requiring it, and the expense charged as in clause 10.

16. In the case of supplies for Mental Hospitals, it will be competent for a Board of Survey, consisting of the medical superintendent (or, in his absence, of the medical officer) and any two officers named by him, to examine and reject any supplies that may be objected to. It must be distinctly understood, however, that the contractor will have a right of appeal to the Treasurer of the State for the time being, such appeal to be made in writing within 24 hours of the rejection; but, pending such appeal, he must at once supply others of approved quality; failing which, the supplies required, or any like supplies suitable for the Service, may be obtained by the officer concerned, and the expense charged as in clause 10.

17. In the case of supplies for Mental Hospitals, it will also be competent for two or more of the official visitors, in conjunction with the medical superintendent, to reject any supplies that they may consider not in accordance with contract; and in such cases the reference to a Board of Survey will not be deemed to be necessary.

18. A refusal to execute orders, irregularity in the quantity or quality of the supplies, or delay in delivering or replacing them when required, will subject the contractor, upon report from the Tender Board, to such mulct, not exceeding Fifty pounds, as the said Treasurer may direct, and the amount may be deducted as in clause 10. It will also be in the power of the said Treasurer, upon such refusal, irregularity, or delay, to terminate the contract forthwith, and forfeit the whole or any part of the security money; and, in addition, the contractor will be disqualified from tendering or holding any future contract or contracts for a period of twelve months from the date of such disqualification.

19. Contractors are not at liberty to transfer their contracts under cover of power of attorney, coupled with an interest or otherwise, and no such transfer will be recognized by the Government. *If it is found during the currency of the contract that the contractor has not conformed to the condition of advertisement—which stipulates that if a tenderer be a member of a firm and such firm be interested in the contract, the tender shall be in the name of the firm and not in that of the individual—then the Treasurer may, on the recommendation of the Tender Board, determine the contract, and forfeit the security money.*

20. It will be competent for the Tender Board to terminate the contract, without notice, should there be reason to know that the contractor takes advantage of his contract to communicate with a prisoner.

21. The contract entered into under these conditions is not to be considered as being broken, infringed, or violated by the importation of stores for the Government service, or by any contracts or purchases made by the Imperial Commissariat; or by the consumption of the produce or surplus stock of any Government establishment, or by any article being made at and supplied for the use of any Government establishment.

22. Notwithstanding anything contained to the contrary in section 152 of the *Customs Act 1901-52*, it is hereby expressly provided that upon any alteration of the duty collected affecting the goods included in this contract, the contract price shall not be altered, and the contract may be terminated at the option of either party by two months' notice in writing from the first day of the calendar month next ensuing, and within the period for which the contract is made. The contract for the unaffected items shall remain in full force and effect. Any notice to be served under this condition shall be deemed to have been duly served if sent to the contractor in a registered letter to his last-known place of business or abode.

23. Under no circumstances other than those mentioned in clause 22 will a contractor be permitted to abandon his contract. In the event of the contractor failing to carry on the contract, the contract security money will in that case be absolutely forfeited; and, in addition, the contractor will be held liable for any loss which the Government may sustain in consequence of such failure.

24. For the purposes of these contracts the word "Government" shall mean the Government of the State of Victoria; and the word "Treasurer" shall mean the Treasurer of the said State.

STIPULATIONS FOR SUPPLIES OF PROVISIONS.

SUPPLIES GENERALLY.

For supplies under all sub-schedules, particular attention is drawn to clause 1 of the Conditions of Contract as to quality.

No sub-letting is allowed, and all work must be carried out by the contractor.

Where practicable, all items must be manufactured or prepared within the Commonwealth.

Where no brand of Commonwealth manufacture or production is specifically set out in the respective sub-schedules, such Commonwealth brand as may be ordered must be supplied.

For Schedule No. 3 supplies must be delivered when ordered and, in cases of emergency, on Sundays, holidays, or half-holidays, as required.

BREAD AND FLOUR.

A sample of the best ordinarily retailed to the public will be considered as a test loaf for first quality for fine wheaten and pure wheaten Meal Bread. *Pure wheaten Meal Bread of first quality may be substituted, wholly or in part, for fine wheaten Bread at such times and in such quantities as, in the opinion of the Medical Superintendent, may be deemed necessary, and the contractor will be required to supply such Bread at the contract rate. Reasonable notice, however, of the intention to substitute wheaten Meal Bread must be given to the contractor by the officer ordering the supply.* Bread may be baked at any Government establishment without infringing these contracts. At the Gaols, Ballarat, Beechworth, Bendigo, Castlemaine, Geelong, and Sale, and the Coorimungle Prison Camp, McLeod Settlement, and Langi Kal Kal Training Centre, if required, bread must be supplied one day old, due notice to be given to the contractor of such requirement.

In the event of bread being made at any Government establishment in the Melbourne District during the currency of these contracts, the flour required will be drawn under the flour sub-schedule.

Flour for Districts for which no local contracts have been taken may be ordered under the Melbourne District contract, for delivery f.o.r. Melbourne.

GROCERIES.

As a guarantee of quality, Rice, when ordered in quantities of 56 lb. and over, must be supplied in original bags as delivered by the miller or dresser. Such bags must be branded "Rice, Dressed," and shall also have stencilled thereon the miller or dresser's name and the distinguishing mark indicative of the quality or grade. The bags thus stencilled shall contain Rice milled or dressed by the miller or dresser whose name appears thereon. Supplies not in conformity with the foregoing condition will be rejected.

Oatmeal must be supplied in original bags as delivered by millers.

Candles, except those for prison cells, must be supplied in 1-lb. packets. Candles for prison cells must be delivered in boxes containing from 25 to 50 lb. per box, the boxes for which must be legibly stencilled on one end showing the estimated burning time and the gross, tare, and net weight of contents.

The soap supplied must be hard throughout, ready for immediate use without waste, and shall have been manufactured at least seven weeks before leaving contractor's hands.

Raisins and currants must be present season's, and where the quantity admits, be supplied in original and unopened boxes, labelled as packed.

BARLEY, OATMEAL, PEAS-SPLIT, RICE AND SEED TAPIOCA.

Supplies of these items for Districts for which no local contracts have been taken may be ordered under the Melbourne District contract, for delivery f.o.r. Melbourne.

BUTTER AND CHEESE.

All supplies of 56 lb. or multiples of 56 lb. must be supplied in boxes as originally packed. The boxes must bear the impress stamp of the creamery where the butter is produced, otherwise it will not be accepted. All supplies must be in new boxes.

Where the Store or Butter Factory of the Contractor is situated in the Metropolitan area all Butter to the quantity of 56 lb. and over to be supplied in any one consignment under this contract shall before despatch from the Store or Factory be first examined and passed by the Government Butter Grader, for and on behalf of the officer authorized to accept delivery. The boxes containing butter so examined and found satisfactory in quality and description will be stamped by the Government Butter Grader and the date of such examination marked thereon. No butter from a contractor located in the Metropolitan Area will be accepted unless the boxes bear the stamp of the Grader. For the purposes of the foregoing condition the Metropolitan Area is defined as being not outside the radius visited by the Government Grader. The officer authorized to accept delivery may, within 48 hours of the receipt of any supply, require the Contractor to have same re-examined by the Grader, and, if not passed by him, it shall be returned to the Contractor, who shall forthwith replace the same with freshly-examined butter.

No Butter *ex Cool Store* will be examined by the Grader until thermally it is in suitable condition therefor.

Where the Store or Factory from which the Butter is despatched is not within the area visited by the Grader a sample of any supplies may be forwarded to the Government Butter Grader for examination, should the supply be considered by the Officer authorized to accept delivery as not being equal in quality or description to that contracted for.

The Cheese supplied must be first-class quality, semi or fully matured, as ordered, and not less than three months old. If the quantity admits, it shall be boxed for transport.

JAM.

The weight stamped on the tins in accordance with the regulations under the Commerce Act, as indicating the *minimum* net quantity that each tin contains, shall for the purpose of this contract be taken as the actual contents when computing the quantity supplied.

When Jam is supplied in jars the jars remain the property of the contractor, and must be removed by the contractor at his own expense when empty.

SOAP AND SOAP MIXTURES.

Supplies of these items for Districts for which no local contracts have been taken may be ordered under the Melbourne District contract, for delivery f.o.r. Melbourne.

MEAT.

All meat supplied under this contract shall have been slaughtered in Victoria and shall be freshly killed, well-conditioned, of good quality, healthy, clean, wholesome, free from bone-taint, putrefaction or fly larvae, and shall not have been frozen.

The beef shall be of ox not under three nor more than six years old or heifer or cow not under three nor more than five years old. Carcass beef for Mental Hospitals shall be delivered in quarters of equal proportions of hinds and fores and the corresponding hinds and fores must be supplied, also extra buttocks separately when ordered. Meat for other Institutions shall be supplied as ordered. Where hindquarters or buttocks are ordered 9 inches shall be cut off from the end of the leg from the hock upwards, i.e., the end of the leg from which the shank has been removed at the abattoirs; when fore-quarters form a portion of the supply, 6 inches from the end of the neck and the whole of the shin at the clodbone joint shall be removed. The sticking pieces also shall be trimmed off and the point and end of the brisket rendered free from blood and blood stains.

The mutton shall be wether or maiden ewe not more than four years old and the weight of a carcass shall be not less than 40 lb. nor more than 60 lb. The mutton shall be delivered in sides when so ordered. All kidney fat to be removed for Mental Hospitals.

Corned Beef (rolled or round as ordered) shall be supplied without bone or cartilage and will be received whether pumped or prepared in the ordinary way of pickling but, in the former case, it shall have been soaked, after pumping, for at least 48 hours in a good pickle and then thoroughly drained before supply. No flank, chuck, sticking-piece, shin, leg of beef, or piece under 7 lb. will be received.

Meat derived from the carcasses of Bulls, Stags or Rams or meat containing an undue proportion of bone or fat will not be received and shall not be tendered for delivery. Net weight only will be paid for.

In cases of emergency, or on such other occasions as in the opinion of the Director of Mental Hygiene or Heads of other Institutions may seem advisable, other forms of meat, such as Rabbits, Tinned Meats, &c., may be purchased, apart from the contract, in lieu of the meat specified in the Schedule, and substituted therefor, provided 24 hours' notice—except in cases of emergency—be given to the Contractor of such intention.

The parts to be removed by the contractor are indicated in the shaded portion of the annexed diagram. This work shall be carried out in the factory or shop of the Contractor, except those parts usually removed at the abattoirs.

With respect to the schedules enumerated hereunder, the following stipulations shall also apply:—

For sub-schedules 9, 11, 12 and 13 of Schedule No. 1, fresh beef shall be supplied, as ordered, from ribs, sirloin, and thick flanks and for Schedule No. 2, from prime ribs, sirloin, and thick flanks; ribs of beef to be cut clear of the plate bone, and sirloin to be cut clear of the wing ribs; excess of brisket or thin flank will be rejected. Mutton must be delivered in sides when so ordered.

For Schedules Nos. 1 (sub-schedules 9, 11, 12 and 13), 3, 4, 5, 11, 14, and 21, chuck ribs of Beef, i.e., 1st to 4th inclusive will not be accepted.

For Schedules Nos. 4, 5, and 21, fresh Beef must be supplied, as ordered, from prime ribs or sirloin; ribs of Beef to be cut clear of the plate bone, and sirloin to be cut clear of the wing ribs; excess of brisket or flank will be rejected.

TEA AND COFFEE.

Tea and Coffee for Districts for which no local contracts have been taken may be ordered under the Melbourne District contract.

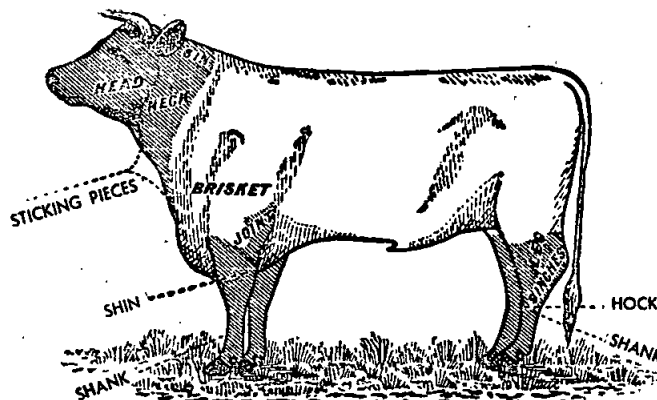
MILK.

The milk must be fresh, pure, and of the best quality, and subject to test when required by the Department, and supplied at such times as the Department may require. Should the contractor fail to supply at the time specified in the order or at such times as may be indicated in any general notice to the contractor his contract may be cancelled forthwith and his security forfeited, or should the supply prove to be not of contract quality it will be rejected, and any expense incurred will be charged to the contractor.

POTATOES.

Potatoes to be dry and free from dirt. Contractors to take back all rejected before being cooked. Bags to remain the property of the contractor. Weight of bags (approx. 2½ lb.) to be deducted.

If the price of potatoes becomes abnormally high, the heads of the various departments concerned may, if they think fit, cause rice or any other suitable food to be occasionally substituted in lieu thereof.



ANNEX TO CONTRACTS.

FLOUR AND BREAD.

The contract rates shown are subject to adjustment for any variation in the proclaimed price of flour.

MEAT.

Contracts marked † operate for the period 1st July, 1960, to 30th September, 1960, only.

AGREEMENTS.

For the Sub-schedules marked (Agreement), no contract has been let nor security lodged. Requirements thereunder are to be purchased from the suppliers named, under Tender Board Agreement. The rates shown are subject to variation from time to time, particulars of which will be gazetted as required. In all cases, supply is subject to stocks being available.

AVAILABILITY OF SUPPLIES.

Owing to existing difficulties in obtaining supplies of various items, the penal provisions of Clause 10 of the Conditions of Contract are not to be enforced without reference to the Tender Board.

SCHEDULE No. 1. PROVISIONS—MELBOURNE DISTRICT.

ANNEX TO CONTRACT No. 1960/210.

Capitol Bakeries Pty. Ltd., 257 Toorak-road, South Yarra.

Sub-schedule No. 1.

BREAD FOR MENTAL HOSPITAL AT KEW.

	£	s.	d.
Security, £125.			
1. Bread—Fine wheaten, first quality .. per cntl.	1	14	9
2. .. Special formula do.	2	5	3

ANNEX TO CONTRACT No. 1960/211.

Johnson and Riches Pty. Ltd., 469 Heidelberg-road, Fairfield.

Sub-schedule No. 2.

BREAD FOR CHILDREN'S WELFARE DEPOT, ROYAL PARK; RECEIVING HOUSE AND MENTAL HOSPITAL, ROYAL PARK; AND TRAVANCORE DEVELOPMENTAL CENTRE, FLEMINGTON.

	£	s.	d.
Security, £30.			
1. Bread—Fine wheaten, first quality .. per cntl.	1	13	2½

ANNEX TO CONTRACT No. 1960/212.

Austral Bakeries Pty. Ltd., Shelley-avenue, Kilsyth.

Sub-schedule No. 3.

BREAD FOR "WINLTON" JUVENILE SCHOOL, 186 SPRINGVALE-ROAD, NUNAWADING.

	£	s.	d.
Security, £5.			
1. Bread—Fine wheaten, first quality .. per cntl.	1	17	6
2. Bread Rolls do.	0	2	0

ANNEX TO CONTRACT No. 1960/213.

Capitol Bakeries Pty. Ltd., 257 Toorak-road, South Yarra.

Sub-schedule No. 4.

TEACHERS' COLLEGES AND HOSTELS AT GRATTAN-STREET, 93 DRUMMOND-STREET, CARLTON; 470 AND 481 ST. KILDA-ROAD, MELBOURNE; 19 QUEENS-ROAD, MELBOURNE; 152 TOORAK-ROAD WEST, SOUTH YARRA; FRANK TATE HOUSE, 373 DANDENONG-ROAD, ARMADALE; "REDCOURT" NO. 6. AND "LARNOOK" 13 ORRONG-ROAD, ARMADALE; 11 PATTERSON-STREET, HAWTHORN; 174 PUNT-ROAD, PRAHRAN; 221 BURWOOD-ROAD, BURWOOD; JOHN CANNON HOUSE, 32 BELMONT-AVENUE, KEW; 17 MOULE-AVENUE, BRIGHTON; POLICE HOSPITAL, ST. KILDA-ROAD, MELBOURNE; AND MENTAL HYGIENE CLINIC, 321 GLENFERRIE-ROAD, MALVERN—

	£	s.	d.
Security, £20.			
1. Bread—Fine wheaten, first quality .. per cntl.	2	0	5
2. .. Wholemeal, first quality do.	5	0	0
3. .. Rolls do.	0	2	6

ANNEX TO CONTRACT No. 1960/214.

John Darling and Son Pty. Ltd., 324 William-street, Melbourne.

Sub-schedule No. 5.

FLOUR.

	£	s.	d.
Security, £90.			
1. Flour—Roller, first quality per cntl.	1	12	0½

(AGREEMENT.)

Moran and Cato Pty. Ltd., 277 Brunswick-street, Fitzroy, N.6.

Sub-schedule No. 6.

GROCERIES.

	£	s.	d.
Bacon—			
1. { Sides per lb.	0	5	9
{ Rashers, middle do.	0	6	8
2. Barley—Pearl do.	0	0	6½

Sub-schedule No. 6—continued.

GROCERIES—continued.

	£	s.	d.
Beans—			
3. Butter per lb.			*
4. Haricot do.	0	1	3
5. Lima do.	0	1	7
Biscuits (Tins 4s. each, returnable)—			
6. Dry (Thin Captain) (Uneeda 2s. 4½d.) .. do.	0	1	10
7. Coffee, Malt, Arrowroot, Cenovis, Marie. Holsum .. do.	0	1	9
8. Assorted—Vanilla Curls, Nice, Rice, Fruit Cookies .. do.	0	1	10
Butter Crisps, Gingernuts do.	0	1	10½
Devon Shortbread do.	0	2	2½
Sweet Assorted do.	0	1	11
Blue—			
9. { 1-oz. knobs, "Reckitts," paper .. per doz.	0	3	0
{ 7-lb. packets, bulk per lb.	0	2	0½
10. Borax do.	0	0	8½
11. Cake Containers—Paper "Bulldog" 90's .. per doz.	0	5	10
Cereals—			
12. Pipers, Kornies, Weeties or equal, 24-oz. packets .. do.	1	7	9
13. Cornflakes or equal, "Kellogs," 16 oz. packets .. do.	1	13	8
14. Weetbix or equal, 24-oz. packets .. do.	1	7	9
15. All Bran or equal, "Kellogs" .. do.	1	1	0
16. Cheese—5-lb. boxes, "Kraft" .. per pkt.	0	19	6
17. Chutney—"Rosella," Fruit .. per doz.	1	0	0
18. Cloves—Whole .. per lb.	0	4	5
19. Coconut—Desiccated, "Ceylon" .. do.	0	2	3½
Coffee Essence—			
20. { 8-oz. bottles, "Turban" .. per doz.	1	7	0
{ 26-oz. bottles "Greigs" do.	3	12	9
21. Curry Powder—Bulk .. per lb.	0	2	2½
Custard Powder—			
22. { Bulk do.	0	1	0
{ 1-lb. packets, "Cameo" do.	0	1	7½
23. Dates do.	0	1	7½
Essences—			
24. Almond, 4-oz., "Allens" .. per bot.	0	3	3½
25. Lemon, 8-oz., "Allens" .. do.	0	6	1½
26. Vanilla, 8-oz., "Allens" .. do.	0	9	5½
27. Cochineal (red colouring), 16-oz., "Allens" .. do.	0	3	10½
28. Parisian, 26-oz., "Greigs" .. do.	0	4	3
29. Yolkine (yellow colouring), 16-oz., "Allens" .. do.	0	3	10½
Cocoa—			
30. { Tins, 14-oz., "Bournville" .. per doz.	2	17	3
{ Loose per lb.			*
Extracts and Pastes, &c., or equals—			
31. Marmite 4-oz. jars .. per jar	0	2	2
32. Vegemite, 4-oz. jars .. do.	0	2	2½
33. Peanut Butter, 12-oz. jars, "Cottees" .. do.	0	3	8½
34. Bonox, 4-oz. jar .. do.	0	2	10
35. Bloater, 2½-oz. jars, "Pecks" .. do.	0	1	4½
36. Salmon and Shrimp, 2½-oz. jars, "Pecks" .. do.	0	1	5½
Fish—Tinned—			
37. Salmon (Aust.) 16-oz., "Greenseas" .. per doz.	2	1	9
tins			
38. Fish Cutlets, 12-oz., "Perler" .. do.	1	8	3
39. { Herrings, in sauce, 14-oz., "C & B" .. do.	1	10	9
{ Herrings, fresh, 14-oz., "C & B" .. do.	1	10	6
40. Sardines (½'s) .. do.	0	15	6
Flour—Corn or Maize—			
41. Packets, 1-lb., "Medallion" .. per lb.	0	1	4½
42. Bulk do.	0	0	10½
Flour—Self Raising—			
43. { 25-lb., "McAlpin" .. per bag	0	16	9
{ 50-lb., "McAlpin" do.	0	12	8
Fruits—Dried—			
44. Apples per lb.			*

* Supplies not available.

Sub-schedule No. 6—continued.

Sub-schedule No. 6—continued.

Table with columns: Description, Unit, Price (£ s. d.). Includes items like Fruits—Dried, Apples, Peaches, Apricots, Nectarines, Pears, Prunes, Currants, Raisins, Sultanas, Peaches, Apples, Apricots, Gelatine, Ginger, Golden Syrup, Herbs, Honey, Jelly Crystals, Macaroni, Margarine, Matches, Mayonnaise, Meat—Tinned, Milk, Mustard, Nutmeg, Oatmeal, Pastry Mixture, Peel, Pepper, Pickles, Rice, Salt, Sauce, and Mustard.

Table with columns: Description, Unit, Price (£ s. d.). Includes items like Soda, Bicarbonate, Washing, Soups—Tomato, Spaghetti, Spice—Mixed, Starch—Rice, Sugar, Vegetables—Dried, Vegetables—Tinned, Vermicelli, and Vinegar.

Sub-schedule No. 7.

CEREALS.

Table with columns: Description, Unit, Price (£ s. d.). Includes items like Barley—pearl, Oatmeal—plain, Oatmeal—flaked, Peas, split—Yellow, Rice—dressed, Rice—unpolished, and Seed Tapioca.

Purchase under Tender Board Quotations

ANNEX TO CONTRACT NO. 1960/215.

W. H. Johnsons Jams Pty. Ltd., 42 Meaden-street, South Melbourne, S.C.5.

Sub-schedule No. 8.

JAMS.

Security, £20.

£ s. d.

Table with columns: Description, Unit, Price (£ s. d.). Includes items like Assorted, in bulk, of approved kinds, Marmalade, and Assorted, 5-lb. tins.

ANNEX TO CONTRACT NO. 1960/216.

F. Watkins Pty. Ltd., 184 Bourke-street, Melbourne, C.1.

Sub-schedule No. 9.

MEAT FOR MENTAL HOSPITAL, KEW.

Security, £35.

£ s. d.

Table with columns: Description, Unit, Price (£ s. d.). Includes items like Fresh Beef—Rolled Roast boneless, Buttocks, and Shin and Gravy Beef.

* Supplies not available.

Sub-schedule No. 9—continued.

MEAT—continued

	£	s.	d.
4. Corned Beef—Rolled or Round, as ordered, percent. without bone or cartilage	12	10	0
5. Fresh Mutton—(whole sheep) (Kidney fat to be removed)	do.	4	11 8
6. Veal—boned	per lb.	0	2 6
7. Sausage Meat	do.	0	1 4
8. Sausages—Mixed	do.	0	1 9
9. Livers—Sheep	do.	0	2 0
10. " Ox	do.	0	1 3
11. Kidneys, Ox	do.	0	2 10
12. " Sheep	do.	0	2 3
13. Tripe, Fresh	do.	0	0 10 1/2
14. Tongues—Ox	do.	0	1 4
15. Sausage—Belgium	do.	0	2 0
16. Beef Loaf	do.	0	2 0
17. Ham Loaf	do.	0	2 9
18. Veal Loaf	do.	0	2 9
19. Saveloys	per doz.	0	3 3
20. Brains, Sheep	per set	0	0 7
21. Fowls, First quality	per lb.	0	5 6
22. Bacon Sides	do.	0	5 4
23. Rabbit Fillets	do.	0	4 3

ANNEX TO CONTRACT No. 1960/217.†

Jackson's Meat Co. Pty. Ltd., P.O. Box 163, Footscray.

Sub-schedule No. 10.

MEAT FOR PENTRIDGE PENAL ESTABLISHMENT, COBURG; AND "FAIRLEA" FEMALE PRISON, FAIRFIELD.

Security, £35.

	£	s.	d.
Fresh Beef—			
1. Fore-quarters	per cntl.	8	10 2
2. Minced	do.	10	8 4
3. Corned Beef—Rolled or Round, as ordered, without bone or cartilage	do.	11	13 4
4. Fresh Mutton (whole sheep)	do.	4	11 8
5. Sausages—Mixed, thin	per lb.	0	1 10
6. Fresh Suet—Kidney	do.	0	0 7
7. Saveloys	do.	0	1 6
8. Sausage—Boef German	do.	0	2 0
9. Sausage Mince	do.	0	1 1
10. Dripping, Beef	do.	0	1 0
11. Frankfurts	do.	0	2 2
12. Livers—Sheep	do.	0	1 0

ANNEX TO CONTRACT No. 1960/218.†

J. H. Cooke Pty. Ltd., 378 Queens-parade, Clifton Hill.

Sub-schedule No. 11.

MEAT FOR CHILDREN'S WELFARE DEPOT, ROYAL PARK, AND TRAVANCORE DEVELOPMENTAL CENTRE, FLEMINGTON.

Security, £5.

	£	s.	d.
1. Fresh Beef—Rolled Roast Sirloin—Boneless	per lb.	0	3 0
2. Beef—Corned—Silverside	do.	0	3 4
Fresh Mutton—			
3. Legs	do.	0	1 9
4. Legs (Two tooth)	do.	0	1 10
5. Chops—Mid Loin (Two tooth)	do.	0	1 9
6. Rib Chops as Cutlets (Two tooth)	do.	0	1 8
7. Steak—Rump	do.	0	4 6
8. " Blade	do.	0	3 2
9. " Minced	do.	0	2 6
10. " Skirt	do.	0	2 9
11. Veal—Fillet, boneless	do.	0	3 9
12. Pickled Pork	do.	0	2 6
13. Sausages—Mixed	do.	0	1 10
14. Sausage—Strasbourg, Pork	do.	0	3 5
15. Tripe—Fresh	do.	0	0 10
16. Frys—Lamb	do.	0	2 0
17. Brains—Sheep	per set	0	0 6
18. Shanks—Sheep	each	0	0 6
19. Ox Tongue	per lb.	0	1 0
20. Frankfurts	do.	0	2 8
21. Rabbits—Fresh	do.	0	3 5

ANNEX TO CONTRACT No. 1960/219.†

J. H. Cooke Pty. Ltd., 378 Queens-parade, Clifton Hill.

Sub-schedule No. 12.

FOR "WINLATON" JUVENILE SCHOOL, 186 SPRINGVALE-ROAD, NUNAWADING.

Security, £5.

	£	s.	d.
Fresh Beef—			
1. Rolled Roast Sirloin, Boneless	per lb.	0	2 6
2. Beef, Corned—Silverside	do.	0	3 4
3. Mutton, Fresh—Fore-quarters	do.	0	1 0

Sub-schedule No. 12—continued.

MEAT—continued

	£	s.	d.
4. Mutton, Fresh—Legs	per lb.	0	1 9
5. " " Legs (Two tooth)	do.	0	1 10
6. " " Chops—Mid Loin (Two tooth)	do.	0	1 9
7. Steak—Rump	do.	0	3 9
8. " Stewing	do.	0	2 9
9. " Minced	do.	0	2 6
10. Sausages—Mixed	do.	0	1 11
11. Sausage Meat	do.	0	1 0
12. Frys—Lamb	do.	0	2 6
13. Veal—Fillet—Boneless	do.	0	3 10
14. Pork—Pickled	do.	0	2 0
15. Kidneys—Ox	do.	0	2 6
16. Tongues—Ox	do.	0	1 0
17. Tripe—Fresh	do.	0	0 10
18. Brains—Sheep	per set	0	0 6
19. Shanks—Sheep	each	0	0 6
20. Sausage—Strasbourg—Pork	per lb.	0	3 4
21. Frankfurts	do.	0	2 4
22. Rabbits—Fresh	do.	0	3 3

ANNEX TO CONTRACT No. 1960/220.†

Jackson's Meat Co. Pty. Ltd., P.O. Box 163, Footscray.

Sub-schedule No. 13.

MEAT FOR RECEIVING HOUSE AND MENTAL HOSPITAL, ROYAL PARK Security, £10.

	£	s.	d.
Fresh Beef—			
1. Rolled Roast, boneless (Brisket excluded)	per lb.	0	2 6
2. Thick Flank	do.	0	3 3
3. Topside	do.	0	3 9
4. Fresh Mutton (Legs)	do.	0	1 9
5. Corned Beef—Rolled or Round, as ordered, without bone or cartilage	do.	0	2 9
6. Chops—Middle Loin	do.	0	1 6
7. " Fore-quarters	do.	0	1 0
8. Sausages—Mixed	do.	0	1 10
9. Sausage—Mince	do.	0	1 0
10. Veal, fillets	do.	0	2 11
11. Livers—Calves	do.	0	1 6
12. Tripe—Fresh	do.	0	0 10
13. Rabbits—Fresh	do.	0	2 9
14. Fowls—First quality	do.	0	5 6

(AGREEMENT.)

Moran and Cato Pty. Ltd. 277 Brunswick-street, Fitzroy, N.B.

Sub-schedule No. 14.

SOAP MIXTURES.

(Of Commonwealth Manufacture.)

	£	s.	d.
1. Extract of "Kitchens" or equal "Stella" Soap Powder, 80-lb. bags	per cwt.	4	2 3
2. Household—Dry, "Pental" wrapped, cases of 3 dozen	per case	2	14 6
3. "Lux"—Family size packets	per doz.	1	11 9
"Rinso"—			
4. { Standard packets	do.	0	19 3
{ Economy packets	do.	1	15 5
"Persil"—			
5. { Standard packets	do.	0	19 3
{ Economy packets	do.	1	15 5
6. Sandsoap—"Lectric" 12-oz. blocks	do.	0	5 5 1/2
7. Toilet Soap—"Kitchens" or equal, "Doubl-lays," 3 1/2-oz.	do.	0	5 6
"Velvet"—			
8. { "Quads," standard	do.	1	3 11
{ "Quints," economy	do.	1	17 11

ANNEX TO CONTRACT No. 1960/221.

Bushells Pty. Ltd., 452 Flinders-street, Melbourne.

Sub-schedule No. 15.

TEA.

Security, £180.

	£	s.	d.
1. Tea—First Grade—To sample	per lb.	0	4 4

ANNEX TO CONTRACT No. 1960/222.

Bushells Pty. Ltd., 452 Flinders-street, Melbourne.

Sub-schedule No. 16.

COFFEE.

Security, £70.

	£	s.	d.
1. Coffee—Fresh roasted, and whole, beans to be thoroughly sound—To sample	per lb.	0	3 0

SCHEDULE No. 2.

PROVISIONS—MONT PARK, ETC.

(For delivery at the Mental Hospital, Mont Park, to Depots as required, the Repatriation Mental Hospital, Bundoora, Larundel Mental Hospital, Pleasant View Receiving House, Wood-street, Preston, Janefield Colony, and the Sanatorium, Gresswell.)

ANNEX TO CONTRACT No. 1960/223.

Northern Bakeries (Preston) Pty. Ltd. 597 High-street, Preston.

Sub-schedule No. 1.

BREADSTUFFS.

Security, £190.

	£	s.	d.
Bread—			
1. Fine wheaten, first quality	per cwt.	1	14 2
2. Raisin, first quality	do.	4	5 0

(AGREEMENT.)

Moran and Cato Pty. Ltd., 277 Brunswick-street, Fitzroy, N.6.

Sub-schedule No. 2.

GROCERIES.

	£	s.	d.
1. Bacon—middles	per lb.	0	5 10
Beans—			
2. Haricot (White Arroz)	do.	0	1 3
3. Butter	do.	*	*
4. Blue—Washing—1-oz. knobs "Reckitts"	per doz.	0	3 0
5. Biscuits—Coffee, Malt, Milk Arrowroot, or equal, as ordered (Tins 4s. each)	per lb.	0	1 9
6. Camp Pie—16-oz. tins "Imperial"	per doz.	1	2 4
7. Candles (full weights)—Kitchen's "Electrics," or other make of equal quality in sets of 6	per set	0	5 10
8. Cereal—24-oz. packets, "Malties"	per doz.	1	7 9
9. Cinnamon	per lb.	0	2 4
10. Cloves—whole	do.	0	4 5
11. Cocoa—14 ozs. "Bourville"	per doz.	2	17 3
12. Coconut—Desiccated "Ceylon"	per lb.	0	2 3½
Coffee Essence—			
13. { 8-oz. bottles "Turban"	per bot.	0	2 3
{ 1-gal. jars (Jars 4s. 0d.)	per jar	1	16 6
14. Corn or Maize Flour—1-lb. packets, "Med."	per lb.	0	1 4½
15. Currants 3-crown (case lots)	do.	0	1 9½
" 3-crown (less than case lots)	do.	0	1 9½
" 4-crown (case lots)	do.	0	1 9½
" 4-crown (less than case lots)	do.	0	1 10½
16. Curry Powder	do.	0	2 2½
17. Custard Powder—1-lb. packets	per doz.	0	19 3
(7-lb. packets 8s; 3d. each) loose	per lb.	0	1 0
18. Dates—Fresh, (case lots 1s. 7½d.) loose	do.	0	1 7½
19. Essence of Vanille—16-oz. bottles	per doz.	2	5 0
20. Essence—Lemon—4-oz. bottles "Allens"	each	0	3 3½
21. Flour—Self-raising, "McAlpins" (150 lb.)	per bag	4	6 6
22. Gelatine—Ground	per lb.	0	8 1½
23. Ginger—Ground	do.	0	4 2½
24. Golden Syrup—2-lb. tins	per doz.	1	0 0
Herrings—			
25. { 14-oz. tins, Fresh "Cross & Blackwells"	per doz.	1	10 6
{ in Tomato Sauce "Cross & Blackwells"	tins	1	10 9
{ do.	do.	1	10 9
26. Honey—First quality, 60-lb. tin	per tin	3	8 9
" " 32-oz. jars	per doz.	2	5 0
" " 5-lb. tins	each	0	8 11
27. Jelly Crystals—4-oz. packets "Spark"	per doz.	0	5 10
28. Jelly Crystals—7-lb. packets	per pkt.	0	15 10
29. Junket Tablets—"Merry Widow"	per tube	0	1 5½
30. Macaroni—22-lb. boxes "Forex"	per box	0	19 5
31. Margarine—Cake, Pastry	per lb.	0	1 7½
32. Meat—Beef Luncheon—12-oz. taper tins	per doz.	1	10 0
33. Milk, condensed, 14-oz. tins, "Nestles"	do.	1	2 0
Milk—Dried, Full Cream—			
34. { 12-oz. tins, "Sunshine"	do.	1	19 6
{ 3-lb. tins, "Sunshine"	do.	7	1 9
35. Milk—Malted "Horlicks"—1-lb. tins	do.	2	17 6
36. Mustard	per lb.	0	4 9
37. Nutmeg—Ground	do.	0	14 2
38. Peel—Mixed	do.	0	2 0½
Pepper—			
39. { White, ground	do.	0	10 1
{ Black, ground	do.	0	6 6
40. Pepper—Cayenne—1-oz. packets	per doz.	0	8 6
41. Pickles—Assorted, 20-oz. bottles	do.	1	9 6
" " ½-gall. jars (jars 5s.)	per jar	0	6 3
42. { Prunes—Dried, { 40-50's	per lb.	0	2 8
{ In case lots of 7-lb. tins { 90-100's	do.	0	2 1½
{ Bulk	do.	0	1 11
43. Raisins, Seeded {	per		
{ 1-lb. packets	doz. pkts.	1	7 0

* Supplies not available. || 1-oz. knobs; in calico 3s. 9d. per doz. ⊙ In 27-lb. tins, rate increased by 1d. per lb.

Sub-schedule No. 2.—continued.

GROCERIES—continued.

£ s. d.

Sultanas—			
44. { (present season's) 3-crown	per lb.	0	1 9½
{ 5-crown	do.	0	1 10½
45. Rice—Ground, 1-lb. packets	do.	0	1 2½
Salt—			
46. { Fine (Bag, approx. 1 cwt.)	per bag	0	17 3
{ Table "Mermaid"	per doz.	0	6 9
Sauce—Tomato—			
47. { 26-oz. bottles, "Rosella"	do.	2	1 3
{ 1-gal. jars (Jars 3s.) "Tom Piper"	each	0	11 6
Sauce—Worcestershire—			
48. { 1-gal. jars (Jars 3s. 6d.)	do.	0	15 1
{ 10-oz. "Hardings"	per doz.	1	2 4
49. Soda—Bicarbonate	per lb.	0	0 7½
50. Washing	do.	0	0 4½
51. Spaghetti—22-lb. cartons "Rinoldi"	per ctn.	0	19 5
Spice—			
52. { Mixed, loose	per lb.	0	3 10
{ 1-oz. packets	per doz.	0	5 1
53. Starch—Bulk	per lb.	0	10 1½
Sugar—			
54. Castor	do.	0	0 11
55. Icing	do.	0	0 11½
56. Tartar—Cream of—Substitute "Antelope"	do.	0	2 11
57. Treacle—2-lb. tins	per doz.	0	19 6
Vermicelli—			
58. { 16-oz. packets "Rinoldi"	do.	0	16 0
{ 22-lb. cartons "Forex"	per ctn.	0	19 5
Vinegar—Malt—			
59. { gallon jars (Jars 3s. 6d.)	per gall.	0	4 0½
{ 9-gallon kegs (Kegs £5)	do.	0	3 8

ANNEX TO CONTRACT No. 1960/224.

W. H. Johnsons Jams Pty. Ltd., 42 Meaden-street, South Melbourne, S.C.5.

Sub-schedule No. 3.

JAMS.

Security, £23.

£ s. d.

Jams—			
1. Assorted, in bulk, of approved kinds, in the proportion of half seed and half stone, of the best quality, in 54-lb. tins	per lb.	0	11 11 ⊙
2. Assorted, in 5-lb. tins, in the proportion of half seed and half stone, of the best quality	per tin	0	6 3
3. Marmalade, 5-lb. tins	do.	0	6 1

ANNEX TO CONTRACT No. 1960/225.†

W. Angliss and Co. (Aust.) Pty. Ltd., 42 Bourke-street, Melbourne

Sub-schedule No. 4.

MEAT.

(For Mont Park Mental Hospital, &c.)

Security, £50.

£ s. d.

Fresh Beef—			
1. Buttocks	per cwt.	11	17 6
2. Roast	do.	6	13 4
3. Rolled Roast—Boneless (Brisket excluded)	do.	12	18 4
Beef, Corned—			
4. Rolled or Round, as ordered, without bone or cartilage	do.	11	5 0
5. Corned—Silverside	do.	16	5 0
Mutton, Fresh—			
6. Carcass or Sides (Kidney fat to be removed)	do.	4	2 3½
7. Legs	per lb.	0	1 5
8. Fore-quarter	do.	0	0 8
Chops—			
9. Fore-quarter	do.	0	1 2
10. Loins	do.	0	1 6
Steak—			
11. Thick Flank	do.	0	3 1
12. Rump	do.	0	4 2
13. Minced	do.	0	2 3
14. Topside	do.	0	3 3
15. Sausage—Meat	do.	0	1 5
16. Sausages—Mixed	do.	0	2 1
17. Shanks—Sheep	each	0	0 6

Sub-schedule No. 4—continued.

MEAT—continued

		£	s.	d.
18. Tripe—Fresh	per lb.	0	0	8½
19. Brains—Sheep	per set	0	0	7
20. Kidneys—Ox	per lb.	0	3	0
21. Livers—Sheep	do.	0	2	3
22. Livers—Calves	do.	0	1	3
23. Sausage—Strasburg, Pork	do.	0	3	3
24. Rabbits—Fresh (Gresswell only)	do.	0	3	0
25. Saveloys	per doz.	0	4	0
26. Tongues—Ox	per lb.	0	1	6
27. Tongues—Sheep	each	0	0	6
28. Ham Loaf	per lb.	0	3	3
29. Fillet Veal	do.	0	2	6
30. Pressed Veal and Pork Loaf	do.	0	4	5
31. Pressed Shoulder Ham	do.	0	7	6
32. Fowls—First quality	do.	0	5	6
33. Lamb Chops (Gresswell only)	do.	0	4	0
34. Frankfurts (Gresswell only)	per doz.	0	4	10

ANNEX TO CONTRACT No. 1960/226.†

W. Angliss and Co. (Aust.) Pty. Ltd., 42 Bourke-street, Melbourne

Sub-schedule No. 5.

MEAT.

(For Pleasant View Receiving House, Wood-street, Preston.) ‡
Security, £5. £ s. d.

1. Fresh Beef—Roast—Boneless (Brisket excluded)	per lb.	0	4	3
2. Corned Beef—Silverside	do.	0	3	3
3. Fresh Lamb—Legs	do.	0	2	9
Steak—				
4. Buttock	do.	0	3	0
5. Fillet	do.	0	6	9
Chops—				
6. Loin—Lamb	do.	0	4	0
7. Forequarter—Lamb	do.	0	1	9
8. Livers—Lams	do.	0	2	3
9. Sausages—Pork	do.	0	2	1
10. Dripping—Beef	do.	0	1	1
11. Tongues—Ox	do.	0	1	6
12. Brains—Sheep	per set	0	0	7
13. Frankfurts	per doz.	0	4	10
14. Pork—Fresh, legs	per lb.	0	3	9
15. Sausage—Strasburg—Pork	do.	0	3	3
16. Rabbits—Fresh	do.	0	3	3
17. Capons	do.	0	6	6
18. Tripe	do.	0	0	8½
19. Ham, tinned, 2 lb. tin	do.	0	10	3
20. Bacon, boned	do.	0	5	2

SCHEDULE No. 3.

PROVISIONS FOR S.S. RIP AND DREDGES

Sub-schedule No. 1.

BREAD.

Purchase by agreement.

(AGREEMENT.)

Moran and Cato Pty. Ltd., 277 Brunswick-street, Fitzroy, N.B.

Sub-schedule No. 2.

GROCERIES.

		£	s.	d.
1. Bacon Rashers—Middle	per lb.	0	6	8
Beans—				
2. Haricot	do.	0	1	3
Biscuits—				
3. Coffee, Marie, Malt (Tins 4s. each)	do.	0	1	9
4. Dry (Tins 4s. each) { Thin Captain	do.	0	1	10
{ Cenovis	do.	0	1	9
{ Uneda	do.	0	2	4½
Gravox—				
5. { 4-oz. packets	per doz.	0	7	6
{ 8-oz. packets	do.	0	12	7
6. Chutney—16-oz. bottles "Rosella"	do.	1	0	0
7. Cocoa—14-oz. tins or cartons, "Bournville"	do.	2	17	3
8. Coconut—Desiccated	per lb.	0	2	3½
9. Coffee—Fresh Roasted and Ground	do.	0	7	2
10. Corn or Maize Flour—1-lb. packets "Medalion"	per doz.	0	16	6
11. Corn or Maize Flour—Loose	per lb.	0	0	10½
12. Currants—{ 3-crown (case lots)	do.	0	1	9½
{ 3 " (less than case lots)	do.	0	1	9½
13. Custard Powder—1-lb. packets, "Cameo"	per doz.	0	19	3
14. Dates	per lb.	0	1	7½
15. Eggs—New Laid	per doz.			

|| Market rates plus 3d. per doz.

† Apricot, £1 6s. 3d.; Marmalade, £1 6s. 6d.; Plum, £1 5s. 3d.; Melon and Lemon, £1 5s. 6d.; Raspberry, £1 18s. 6d.; Blackcurrant—£2 2s. 0d.

Sub-schedule No. 2—continued.

GROCERIES—continued.

		£	s.	d.
Essence—				
16. Vanilla, 16-oz. bottles, "Medalion"	per bot.	0	3	9
17. Cochineal, Substitute—Red Colouring, 4-oz. bottles, "Allens"	do.	0	1	4
Fish—				
18. { Herrings, 14-oz. tins, Fresh, per doz. 1 10 6				
{ "Cross & Blackwells"				
{ Herrings in Tomato Sauce, do. 1 10 9				
{ "Cross & Blackwells"				
19. Salmon, Fresh, 16-oz. tins, "Greenseas"	do.	2	1	9
20. Sardines, ½-tins, "Norwegian Pack"	do.	0	15	6
Flour—				
21. First quality—Plain "Mac's" 4-lb. packets	per pkt.	0	2	5½
22. Self-raising { 50-lb. bag, "Mac's"	per bag	1	12	8
{ 25-lb. bag, "Mac's"	do.	0	16	9
Fruits—Preserved—30-oz. tins—				
23. { Pears	per doz.	1	9	6
{ Peaches	do.	1	8	9
{ Apricots	do.	1	7	0
24. Pines	do.	1	19	9
Gelatine—Ground				
25. { 8-oz. packets	do.	2	9	6
{ 16-oz. packets	do.	4	17	3
26. Golden Syrup—2-lb. tins	do.	1	0	0
27. Honey—24-oz. jars, "Greigs"	do.	1	16	6
28. Jams—Assorted kinds, 24-oz. tins	do.	†		
29. Jelly Crystals—4-oz. packets, "Sparkling"	do.	0	5	10
30. Mixed Peel—Cut	per lb.	0	2	0½
31. Macaroni—22-lb. cartons	per ctn.	0	19	5
32. Margarine—Cooking Quality	per lb.	0	1	7½
Meat—Preserved—				
33. { Camp Pie, 12-oz., "Imperial"	per doz.	0	19	3
{ Sausages and Vegetables, 16-oz., "Tom Piper"	do.	1	7	6
{ Irish Stew, 16-oz., "Tom Piper"	do.	1	6	9
{ Steak and Kidney Pudding, 16-oz., "Tom Piper"	do.	1	12	6
Milk—				
34. Dried, Full Cream, 12-oz. tins, "Sunshine"	do.	1	19	6
35. Condensed, Full Cream, 14-oz. tins	do.	1	2	0
36. Mustard—Loose, "McKenzies"	per lb.	0	4	9
37. Nutmeg—Ground	do.	0	14	2
38. Oatmeal—Flaked	do.	0	0	7½
39. Pearl Barley	do.	0	0	6½
40. Peas—Split	per cwt.	5	11	0
41. Pepper—White, ground	per lb.	0	10	1
42. Pickles—Mustard, 20-oz. bottles	per doz.	1	9	6
43. Prunes—Dried (present season's) 40/50 (90/100, 2s. 1½d. per lb.—7-lb. tins)	per lb.	0	2	8
Raisins—				
44. Seeded (present season's), "M & C" or "Summagold", 1-lb. packets	per doz.	1	7	0
45. Sultana { 3-crown (less than case lots)	per lb.	0	1	10½
{ 3-crown (case lots)	do.	0	1	9½
46. Rice—Dressed	do.	0	0	10½
47. Salt—Fine	per cwt.	0	17	3
Sauce—				
48. Mustard, 8-oz. bottles, "Holbrooks"	per doz.	1	4	3
49. Tomato, 26-oz. bottles, "Rosella"	do.	2	1	3
50. Worcestershire, 10-oz. bottles, "Hardings"	do.	1	2	4
51. Soda—Bicarbonate	per lb.	0	0	7½
52. Spice—Mixed, 1-oz. packets, "Parsons"	per doz.	0	5	1
Sugar—				
53. { No. 3, 160-lb. bags	per lb.	0	0	10½
{ White, 70-lb. bags	per bag	2	18	0
54. Castor	per lb.	0	0	11
55. Icing	do.	0	0	11½
56. Vinogar—Malt, 26-oz., "Vines"	per doz.	0	18	3
57. Yolking—4-oz. bottles (yellow colouring)	do.	0	16	0

ANNEX TO CONTRACT No. 1960/227.†

Jackson's Meat Co. Pty. Ltd., P. O. Box 163, Footscray.

Sub-schedule No. 3.

MEAT.

(Delivery at River Yarra Wharfs.)

		£	s.	d.
Security, £5.				
1. Fresh Beef—Roast	per lb.	0	1	3
Beef—Corned—				
2. Silverside	do.	0	3	9
3. Rolled	do.	0	1	3
Fresh Mutton—				
4. Fore-quarter	do.	0	0	6
5. Legs	do.	0	1	9

Sub-schedule No. 3.—continued.

MEAT—continued.

		£	s.	d.
Chops—				
6. Fore-quarter	per lb.	0	0	6
7. Loin	do.	0	1	0
Steak—				
8. Rump	do.	0	6	9
9. Stewing	do.	0	1	9
10. Topside	do.	0	4	0
11. Sausages—Mixed	do.	0	1	10
12. Tripe—Fresh	do.	0	0	10
13. Livers—Sheep	do.	0	1	6
14. Suet—Kidney	do.	0	0	7
15. Rabbits—Fresh	do.	0	3	0
16. Ice	per cwt.	0	4	6

Sub-schedule No. 4.

VEGETABLES.

- | | |
|--|-------------------------------|
| 1. Onions | } Purchase
by
agreement |
| 2. Other vegetables, including beetroot, cauliflowers, carrots, cabbages, turnips, parsnips, rhubarb, swedes, and pumpkin, as required | |

SCHEDULE No. 4.

PROVISIONS—TEACHERS' COLLEGE, HOSTELS, POLICE HOSPITAL, ETC.

(Delivery at Institutions.)

TEACHERS' COLLEGE AND HOSTELS AT GRATTAN-STREET, 93 DRUMMOND-STREET, CARLTON; 470 AND 481 ST. KILDA-ROAD, MELBOURNE; 19 QUEENS-ROAD, MELBOURNE; 152 TOORAK-ROAD WEST, SOUTH YARRA; FRANK TATE HOUSE, 373 DANDE-NONG-ROAD, ARMADALE; "BEDCOURT" NO. 6, AND "LARNOOK," 13 ORRONG-ROAD, ARMADALE; 11 PATTERSON-STREET, HAWTHORN; 174 PUNT-ROAD, PRAHRAN; 221 BURWOOD-ROAD, BURWOOD, JOHN CANNON HOUSE, 32 BELMONT-AVENUE, KEW, 17 MOULE-AVENUE, BRIGHTON; POLICE HOSPITAL, ST. KILDA-ROAD, MELBOURNE; AND MENTAL HYGIENE CLINIC, GLENFERRIE-ROAD, MALVERN.

GROCERIES.

Order under Melbourne District, Schedule No. 1, Sub-schedule No. 6.

ANNEX TO CONTRACT No. 1960/228.†

J. H. Cooke Pty. Ltd., 378 Queens-parade, Clifton Hill.

Sub-schedule No. 2.

MEAT.

		£	s.	d.
Security, £15.				
Fresh Beef—				
1. Rolled Prime Ribs, boneless	per lb.	0	2	9
2. Topside	do.	0	3	4
3. Sirloin, boneless	do.	0	3	0
Fresh Mutton—				
4. Legs	do.	0	1	6
5. Legs, pickled	do.	0	1	6
6. Sides, Two-tooth	do.	0	1	3
7. Legs, Two-tooth	do.	0	1	9
8. Cutlets	do.	0	1	7
9. Chops, Middle Loin	do.	0	1	6
10. Chops, Fore-quarter	do.	0	1	3
11. Chops, Chump	do.	0	1	6
12. Beef—Corned, Silverside	do.	0	3	3
Veal—				
13. Shoulder, boned	do.	0	2	0
14. Fillet, boneless	do.	0	3	10
Steak—				
15. Blade	do.	0	3	0
16. Minced Blade	do.	0	2	6
17. Stewing	do.	0	2	10
18. Rump	do.	0	4	0
19. Minced Steak	do.	0	2	6
20. Sausages—Mixed	do.	0	1	10
21. Sausage—Meat	do.	0	1	0
22. " Beef, German	do.	0	2	5
23. " Strasburg	do.	0	3	3
24. Livers—Sheep	do.	0	2	3

Sub-schedule No. 2.—continued.

MEAT—continued.

		£	s.	d.
Kidneys—				
25. Sheep	per lb.	0	1	6
26. Ox	do.	0	2	6
27. Tongues—Ox	do.	0	1	3
28. Ox Tails	do.	0	1	6
Brains—				
29. Sheep	per set	0	0	4
30. Tripe—Fresh	per lb.	0	0	9
31. Frankfurts	do.	0	2	4
32. Bones—Soup	do.	No	charge	
33. Suet—Kidney	do.	0	0	6
34. Rabbits—Fresh	do.	0	3	3
35. Fowls—First quality	do.	0	5	6
36. Pork—Legs	do.	0	4	0

SCHEDULE No. 5.

PROVISIONS—HEATHERTON SANATORIUM, CHELTENHAM.

(Delivery at the Sanatorium.)

ANNEX TO CONTRACT No. 1960/229.

Charlestons Bakery Pty. Ltd., 8 Koornang-road, Carnegie.

Sub-schedule No. 1.

BREAD.

		£	s.	d.
Security, £15.				
1. Bread—Fine wheaten, first quality	per cntl.	1	14	1½

(AGREEMENT.)

Moran and Cato Pty. Ltd., 277 Brunswick-street, Fitzroy, N.6.

Sub-schedule No. 2.

GROCERIES.

		£	s.	d.
1. Bacon—Sides	per lb.	0	5	9
2. Biscuits—Coffee, Malt, Milk Arrowroot, as ordered, "Sunshine" (Tins, 4s. each, returnable)	do.	0	1	9
3. Cereal—Malties (or equal thereto) 24-oz. packet, "Pipers"	per doz.	1	7	9
Cocoa—				
4. Bournville " 14oz.	per pkt.	0	4	9½
Corn or Maize Flour—				
5. { Loose	per lb.	0	0	10½
{ "Medallion" 1-lb. packets	do.	0	1	4½
6. Custard Powder—1-lb. packets, "Cameo"	do.	0	1	7½
7. Essence of Vanilla—16-oz. bottles, "Medallion"	per bot.	0	3	9
Flour—				
8. { Self-raising—50-lb. bag	per bag	1	12	8
{ Self-raising—25-lb. bag	do.	0	16	9
Herrings—				
9. { Fresh	per doz.	1	10	6
{ In Tomato Sauce, 14-oz. tins	do.	1	10	9
10. Honey—First quality, 60-lb. tins	per lb.	0	1	1½
Jams—				
11. Assorted, 5-lb. tins, of the best quality	per doz.	†		
12. Marmalade, 5-lb. tins	do.	3	19	9
13. Jelly Crystals—4-oz. packets, "Sparkling"	do.	0	5	10
14. Junket Tablets—"Merry Widow," flav.	per tube	0	1	5½
15. Macaroni—1-lb. packets, "Rinoldi"	per lb.	0	1	4
16. Mustard	do.	0	4	9
17. Peas—Dehydrated, 21-lb. tins	do.	0	9	2
18. Pepper—White, ground	do.	0	10	1
19. Pickles—Assorted, 20-oz. bottles	per doz.	1	9	6
20. Prunes—Dried, 40-50's	per lb.	0	2	8
(90-100's—2s. 1½d. per lb.—7-lb. tins)				
21. Raisins { Sultana, 3-crown (less than case lots)	do.	0	1	10½
{ Sultana, 3-crown (case lots)	do.	0	1	9½
{ Sultana, 5-crown (" ")	do.	0	1	10½
{ Sultana, 5-crown (less than case lots)	do.	0	1	11½
22. Salmon—Fresh, 16-oz. tins, "Greenseas"	per doz.	2	1	9
23. Salt—Fine	per cwt.	0	17	3
24. Sauce—Tomato, 26-oz. bottles, "Rosella"	per doz.	2	1	3
Soda—				
25. Bicarbonate	per lb.	0	0	7½
26. Washing	per cwt.	1	15	0
27. Spice—Mixed, 1-oz. packets, "Parsons"	per doz.	0	5	1
Starch—				
28. { "Silver Star" 12-oz. packets	per pkt.	0	1	6½
{ Loose	per lb.	0	0	10½
29. Vinegar—Malt (jars 3s. 6d. each, returnable)	per gal.	0	4	0½

† Apricot, £3 19s. 0d.; Blackcurrant, £6 8s. 10d.; Blackberry, £5 14s. 6d.; Melon and Lemon, £4 1s. 6d.; Loganberry, £6 1s. 0d.; Peach, £4 3s. 0d.; Quince, £3 16s. 6d.; Raspberry, £6 1s. 0d.; Dark Plum, £3 17s. 3d.; Plum and Raspberry, £4 7s. 0d.

ANNEX TO CONTRACT No. 1960/230.†
W. Angliss and Co. (Aust.) Pty. Ltd., 42 Bourke-street, Melbourne C.1.

Sub-schedule No. 3.

MEAT.		£	s.	d.
Security, £5.				
1. Beef, Fresh Roast—Rump	per lb.	0	4	3
2. " Corned—Silverside	do.	0	3	3
3. Lamb, Fresh—Legs	do.	0	2	9
4. " " Shoulder—Rolled	do.	0	1	6
5. " " Chops Mid. Loin	do.	0	4	0
6. " " Chops Chump	do.	0	3	3
7. " " Chops, Forequarter	do.	0	1	9
8. " " Cutlets	do.	0	4	3
9. Pork, Fresh—Legs	do.	0	3	9
10. " " Chops	do.	0	4	6
11. " " Minced	do.	0	4	3
12. Veal—Shoulder—Boned	do.	0	1	6
13. " " Cutlets	do.	0	3	11
14. Steak—Rump	do.	0	4	3
15. " " Blade	do.	0	2	8
16. " " Topside	do.	0	3	3
17. " " Minced	do.	0	2	3
18. " " Porterhouse	do.	0	4	11
19. " " Fillet	do.	0	6	9
20. Tripe—Fresh	do.	0	0	8½
21. Brains—Sheep	per set	0	0	7
22. Lambs Fry	per lb.	0	2	3
23. Tongues—Sheep	do.	0	2	0
24. Kidneys—Ox	do.	0	3	0
25. Tails—Ox	do.	0	1	9
26. Sausages—Pork	do.	0	2	0
27. Frankfurts—Vienna	do.	0	3	4
28. Beef German—Sausage	do.	0	2	6
29. Ham—Loaf	do.	0	3	3
30. " " Pressed Shoulder	do.	0	7	6
31. Rabbits, Fresh	do.	0	3	0
32. Capons	do.	0	6	6

ANNEX TO CONTRACT No. 1960/231.
Dairymen and Farmers United Milk Co. Ltd., East Boundary-road, Benileigh.

Sub-schedule No. 4.

MILK.		£	s.	d.
Security, £20.				
1. Milk—Fresh and pure	per gal.	0	4	6½

SCHEDULE No. 6.

PROVISIONS—ARARAT DISTRICT.

(Delivery into Institution.)

ANNEX TO CONTRACT No. 1960/232.
Bates Bros., 52 Vincent-street, Ararat.

Sub-schedule No. 1.

BREADSTUFFS.		£	s.	d.
Security, £75.				
1. Bread—Fine wheaten, first quality	per cntl.	3	4	5
2. Flour—First quality	do.	2	1	2

(AGREEMENT.)

McKay MacLeod Pty. Ltd., 122 Lydiard-street, Ballarat.

Sub-schedule No. 2.

GROCERIES.		£	s.	d.
1. Blue—Washing (Reck. Square)	per gross	1	13	10½
2. Bonox—1-lb. jars	per doz.	5	18	0
3. Bournvita—14-oz. tins	do.	3	0	4
4. Candles—(full weights) Kitchen's "Electrines," or other make of equal quality, to be supplied in 1-lb. packets	per lb.	0	2	8½
5. Cocoa—"Bournville" 14-oz. tins	per doz.	2	16	6
6. Corn Flour—packets of 1-lb. "Kream"	per lb.	0	1	7
7. Curry Powder, Loose	do.	0	3	3
8. Custard Powder—Loose	do.	0	1	2½
9. Golden Syrup— { 70-lb. tins or drums } .. each 2 18 2 { 2-lb. tins } .. per doz. 1 1 8				
10. Jelly Crystals—"McKays" packets	do.	0	8	3½
11. Marmite—1-lb. jars	do.	4	1	8
12. Milk—Powdered, "Sunshine," 3-lb. tins	do.	6	18	4
13. Mustard—Loose	per lb.	0	4	8½
14. Peas—Blue, boiling	do.	*		
15. Pepper—Black, ground	do.	0	6	5½

† Charge for drums if not returned. § Jars 3s. 6d. each returnable. * Supplies not available.

Sub-schedule No. 2—continued.

GROCERIES—continued.

Raisins—Sultanas (present season's)—		£	s.	d.
16. { 2-crown	per lb.	0	1	10½
{ 3-crown	do.	0	1	11
{ 4-crown	do.	0	1	11½
17. Salt—Fine, Imperial	per cwt.	1	1	0
18. Sauce—Tomato, 1-gallon jars (Jars 3s. 6d.)	per gal.	0	18	4½
19. Soap—"Preservene" Sand	per doz.	0	7	11
20. Spaghetti, bulk—22-lb. cartons	per carton	1	1	6
Soda—				
21. Bicarbonate	per lb.	0	0	8½
22. Washing	per cwt.	1	17	10
23. Starch (Rice)—"Silver Star," 12-oz. pkts.	per doz.	0	18	11
24. Tartar—Cream of, substitute, "Antelope"	per lb.	0	2	6
25. Vinegar—Malt, 1-gal. jars§	per gal.	0	4	9
26. Weeties or equal—24-oz. packets	per doz.	1	9	0

(AGREEMENT.)

McKay MacLeod Pty. Ltd., 122 Lydiard-street, Ballarat.

Sub-schedule No. 3.

JAMS.		£	s.	d.
1. Jams—Assorted, in bulk, of approved kinds, in the proportion of half seed and half actual stone, of the best quality, in tins, as required, "J. MacLeod and Co. Pty. Ltd."	per lb.	0	1	3½

ANNEX TO CONTRACT No. 1960/233.†
W. Newsome Pty. Ltd., 139 Barkly-street, Ararat.

Sub-schedule No. 4.

MEAT.		£	s.	d.
Security, £30.				
Fresh Beef—				
1. Rolled Roast (boneless, brisket excluded)	per cntl.	10	0	0
2. Buttocks	do.	12	1	8
Fresh Mutton—				
3. Kidney fat to be removed	do.	5	8	4
4. Middle Loin Chops	do.	5	8	4
5. Corned Beef—Rolled or Round, as ordered, without bone or cartilage	do.	10	0	0
6. Kidneys—Ox	per lb.	0	1	3
7. Veal—Filletted	do.	0	2	0
8. Sausages—Mixed	do.	0	1	6
9. Livers—Sheep	do.	0	0	6
10. Tripe—Fresh	do.	0	0	6
11. Steak—Topside	do.	0	3	3
12. Beef Luncheon Loaf	do.	0	1	9
13. Sausage Meat	do.	0	1	0

SCHEDULE No. 7.

PROVISIONS—BALLARAT DISTRICT.

(Delivery into Institutions.)

ANNEX TO CONTRACT No. 1960/234.
W. Dick and Sons, 314 Drummond-street, Ballarat.

Sub-schedule No. 1.

BREADSTUFFS.		£	s.	d.
Security, £100.				
1. Bread—Fine wheaten, first quality	per cntl.	3	3	0½
2. Flour—First quality	do.	1	18	9

(AGREEMENT.)

McKay MacLeod Pty. Ltd., 122 Lydiard-street, Ballarat.

Sub-schedule No. 2.

GROCERIES FOR TEACHERS' COLLEGE HOSTELS.		£	s.	d.
Bacon—				
1. { Sides	per lb.	0	5	3
{ Rashers, Middle	do.	0	6	6
2. Barley—Pearl	do.	0	0	7
Beans—				
3. Haricot	do.	0	1	3
4. Lima	do.	*		
Biscuits—				
5. Dry—Salada, Savoy and Crispo	do.	0	1	11½
6. Coffee, Malt, Arrowroot, Marie	do.	0	1	9½

Sub-schedule No. 2—continued.

GROCERIES—continued.

		£	s.	d.
Blue—				
8.	1-oz. knobs, paper, "Reckitts," (calico £2 2s. 0d.)	per gross	1	13 6
	knobs		
9.	1-oz. knobs, square..	1	13 6
10.	Cake Containers—paper, "Barkers" 120's	per gross	4	11 0
	pkts.		
Cereals—				
	"Sunflakes"	per doz.	1	4 3
	"Weeties"	pkts.	1	7 8
11.	"Cornflakes," large	do.	1	9 7
	"Weetbix," 24-oz.	do.	1	7 8
	"All-Bran"	do.	0	18 8
Cheese—				
12.	{ 6-lb. boxes, "Kraft"	per pkt.	1	2 8
	{ ½-lb. packets	per doz.	1	5 2
13.	Chutney—"Rosella," Fruit	do.	1	1 6
14.	Cloves—Loose	per lb.	0	4 9
Cocoa—				
15.	14-oz. tins, "Bournville"	per doz.	2	16 0
16.	Loose	per lb.	*	
17.	Cocunut—Desiccated (loose)	do.	0	2 1
Coffee and Chicory Essence—				
18.	8-oz. bottles, "McKays"	per doz.	1	7 9
19.	1-gallon jars (Jars 3s. 6d. each)	per jar	1	13 0
20.	Curry Powder—Bulk	per lb.	0	3 2½
Custard Powder—				
21.	Bulk	do.	0	1 3
22.	¼-lb. packets "McKays"	per doz.	1	2 0
23.	Dates—Slabs, 14-lb. "Sair"	per lb.	0	1 7½
Essences, &c.—				
24.	Almond, 16-oz.	per bot.	0	9 11
25.	Lemon, 16-oz.	do.	0	12 8
26.	Vanilla, 16-oz.	do.	0	14 6
27.	Cochineal { 1-oz.	per doz.	0	15 2
	{ 16-oz.	per bot.	0	12 10
28.	Parisian { 5-oz. bottles	per doz.	0	16 0
	{ 20-oz. bottles	do.	2	5 9
29.	Yolkine, "Yolko" 16 oz.	do.	2	7 9
Extracts, Pastes, &c., or equal—				
30.	Marmite { 16-oz. jar	do.	4	0 11
	{ 8-oz. jar	do.	2	5 6
31.	Vegemite { 16-oz. jar	each	0	7 1
	{ 8-oz. jar	do.	0	3 9
32.	Peanut Butter, 12-oz., "Eta"	do.	0	3 9
33.	Bonox, 8-oz.	do.	0	5 1
34.	Bloater, "Pecks"	per doz.	0	16 7
35.	Salmon and Shrimp, "Pecks"	do.	0	18 0
Fish—Tinned—				
36.	"Flair," 12-oz. tin	per doz.	1	10 0
	{ Fresh, 7-oz. tin	do.	0	19 0
	{ Fresh, 14-oz. tin	do.	1	9 0
37.	Herrings { In sauce, 7-oz. tin	do.	0	19 0
	{ In sauce, 14-oz. tin	do.	1	9 0
38.	Sardines, 4-oz. tin, "D.L."	do.	0	17 3
Flour—Corn or Maize—				
39.	Packets, "Kream"	per lb.	0	1 6½
40.	Bulk	do.	0	0 9½
41.	Self-Raising { 25-lb. bags, "McKays"	per bag	0	16 6
	{ 6-lb. packets, "McKays"	per doz.	2	10 9
Fruits—Dried—				
42.	Apples	per lb.	*	
43.	Apricots, 3-crown	do.	*	
44.	Peaches, peeled, 2-crown, choice	do.	*	
45.	Pears, 3-crown, standard	do.	*	
46.	Prunes, (70/80's)	do.	0	2 6½
47.	Currants, 2-crown	do.	0	1 9½
48.	Raisins { Seeded, 1-lb. packets	per doz.	1	7 3
	{ Loose	per lb.	*	
49.	Sultanae { 2-crown	do.	0	1 10
	{ 3-crown	do.	0	1 10½
Fruits—Tinned—				
50.	Solid Pack Apples { 28-oz. tin	per doz.	1	19 0
	{ 6½-lb. tin	each	0	9 4½
51.	Solid Pack Apricots, 7-lb. tins	do.	0	9 9
52.	Gelatine—Ground, "Davis", loose	per lb.	0	7 6
53.	Ginger—Ground	do.	0	5 3
54.	Golden Syrup, 2-lb. tins (70-lb. drums, 55s.)†	per doz.	1	0 7
55.	Gravox—1-lb. tins	per doz.	1	1 3
56.	Herbs—Mixed, packets, 1-oz.	do.	0	3 10
57.	Honey—60-lb. tins	per lb.	0	1 1
Jelly Crystals—				
58.	4 oz. packets, "McKays"	per doz.	0	8 2
59.	7-lb. packets	per lb.	0	2 4

* Supplies not available.

Sub-schedule No. 2—continued.

GROCERIES—continued.

£ s. d.

Junket Tablets—				
60.	"Merry Widow" flavoured, tubes	per doz.	0	17 0
61.	Lentils	per lb.	0	2 1
Macaroni—				
62.	1-lb. packets	per doz.	0	16 1
63.	Bulk { 22-lb. cartons	each	1	0 6
	{ 56-lb. bags	per lb.	0	0 11½
64.	Margarine—Cake, pastry	do.	0	1 6½
65.	Matches—Safety, packets	per gross	0	19 1
66.	Mayonnaise—½-gallon jars (Jars 3s. 6d. each)	per jar	0	15 0
Meat—Tinned, or equal—				
67.	Beef Luncheon, square tins, "Piper"	per doz.	1	10 3
68.	Beef Steak Pudding, "Piper"	do.	1	12 9
69.	Camp Pie, 12-oz. tins, "Swifts"	do.	1	2 2
70.	Irish Stew, 16-oz. tins, "Piper"	do.	1	7 0
71.	Braised Steak and Vegetables, 16-oz. tins, "Piper"	do.	1	9 3
72.	Sausages and Vegetables, 16-oz. tin, "Piper"	do.	*	
Milk—Dried—				
73.	{ "Sunshine," 12-oz. tins	do.	1	17 8
	{ "Sunshine," 3-lb. tins	do.	6	16 3
Milk—Condensed—				
74.	"Nestles"	do.	1	1 8
75.	"Ideal"	do.	0	16 4
76.	Mustard—Loose	per lb.	0	4 8
77.	Nutmeg—Ground	do.	0	19 0
78.	Oatmeal—Flaked, 56-lb. bags	per cwt.	3	9 3
79.	Pastry—Mix, 1-lb. packets, "Maxam"	per doz.	0	14 0
80.	Peel—Mixed, cut, 8 oz.	do.	0	16 9
81.	Pepper—White, ground	per lb.	0	10 0
82.	Pickles—Assorted, 20-oz. bottles, "McKays"	per doz.	1	7 3
Rice—				
83.	Dressed	per cwt.	4	11 2
84.	Ground—1-lb. packets	per doz.	0	15 0
85.	Sago (Seed Tapioca)	per lb.	0	0 9½
Salt—				
86.	Fine, bulk, "Imperial"	per cwt.	0	16 4½
87.	Table, 1-lb. packets, "Mermaid"	per doz.	0	6 9
Sauce—				
88.	Tomato, 26-oz. bottles, "McKays"	do.	1	18 3
89.	Tomato, 1-gal. jar (Jars, 3s. 6d. each)	per jar	0	15 3
90.	Worcestershire, 10-oz. bottles, "Sirdar"	per doz.	0	18 0
91.	Worcestershire, 1-gal. jar (Jars, 3s. 6d. each)	per jar	0	13 2
92.	Mustard, 8-oz. bottles	per doz.	1	0 6
Soaps—				
93.	Borax (powdered)	per lb.	0	0 8½
94.	Extract of "Pental" 56-lb. bags	per cwt.	4	12 6
95.	Household, Dry, "Pental" (cases of 36)	per case	2	17 6
96.	"Lux," 16-oz. packets	per doz.	1	11 11
97.	"Rinso," Economy packet	do.	1	16 3
98.	"Persil," Economy packet	do.	1	16 3
99.	Sand soap, 12-oz. blocks, "Preservene"	do.	0	7 4
100.	Toilet soap, 3¼-oz. tabs, "Palmolive"	do.	0	7 6
101.	"Velvet"—"Quads," "Standard"	do.	1	4 3
102.	"Velvet"—"Quints," "Economy"	do.	1	18 10
Soda—				
103.	Bicarbonate	per lb.	0	0 8
104.	Washing	per cwt.	1	13 2
Soups—Tomato—				
105.	16-oz. tins, "Kia Ora"	per doz.	1	1 0
106.	No. 10 tins	do.	5	11 3
Spaghetti—				
107.	1-lb. packets	do.	0	16 2
108.	Bulk, 22-lb. cartons	each	1	0 6
109.	Spice—Mixed, loose (1-oz. pkt., 5½d. each)	per lb.	0	4 6
110.	Starch—Rice, 12-oz. pkts., "Silver Star"	per doz.	0	18 5
Sugar—				
111.	{ Icing Mixture	per cwt.	5	11 3
	{ Castor	do.	5	10 3
	{ White (70-lb. bag)	per bag	2	19 10
112.	Tapioca—Pearl	per lb.	0	0 11
113.	Tartar—Cream of, "Antelope Phos. Aerator"	do.	0	2 5½
114.	Treacle—2-lb. tins	per doz.	0	18 7
Vegetables—Dried—				
115.	Soup Vegetables { 3-lb. tins, "Dew	per tin	1	7 9
	{ Crisp	do.	7	16 6
	{ 20-lb.	do.	7	16 6

† Charge for drums if not returned.

Sub-schedule No. 2—continued.

GROCERIES—continued.

Vegetables—Dried—continued		£	s.	d.
116.	Peas, Green, "Dew Crisp" in 21-lb. tins	per tin	9	13 0
117.	Peas—Split, yellow	per lb.	0	1 1
Vegetables—Tinned—				
118.	Baked Beans, 16-oz. tins, "Kia Ora"	per doz.	1	2 3
119.	Baked Beans, No. 10 can	do.	5	16 1
120.	Beans, Green, 16-oz. tins, "Edgells"	do.	1	4 9
121.	Beetroot, 30-oz. tins, "Vacola"	do.	1	13 0
122.	Peas, 30-oz. tins, "Edgells"	do.	2	0 2
123.	Sweetcorn, 16-oz. tins, "Rosella"	do.	1	8 9
Vermicelli—				
124.	1-lb. packets	per doz.	0	16 1
125.	Bulk, 22-lb. cartons	each	1	0 6
126.	Vinegar—Malt—1-gal. jars (Jars 3s. 6d.)	per jar	0	4 2

(AGREEMENT.)

McKay MacLeod Pty. Ltd., 122 Lydiard-street, Ballarat.

Sub-schedule No. 2a.

GROCERIES FOR MENTAL HOSPITAL.

	£	s.	d.
1. Beans—Haricot	per lb.	0	1 3
2. Biscuits { Salada Crackers, Savoy Crackers, Thin Captain, Crispo Crackers, Milk Arrowroot, Malt, Marie, Coffee	do.	0	1 11½
3. Blue (Washing), "Reckitts Square"	per gross	1	13 6
4. Candles, "Kitchen's Electrine"	per lb.	0	2 7½
5. Cereals { Sunflakes, Crispies	per doz.	1	4 3
6. Cocoa, 14-oz. tins, "Bourville" (loose not available)	do.	2	16 0
7. Cornflower { 1-lb. packets, "Kream", Bulk	per lb.	0	1 6½
8. Currants { 2-crown, 3-crown	do.	0	0 9½
9. Curry Powder—Loose	do.	0	3 2½
10. Custard Powder—Loose	do.	0	1 2
11. Dates—Case Lots	do.	0	1 6½
12. Essence—16-oz. bottles { Lemon, Vanilla	each	0	12 8
13. Flour—Self-raising (150-lb. bags)	per doz.	4	4 6
14. Gelatine—1-lb. packets, "Davis" (loose 7s. 6d. per lb.)	do.	4	17 9
15. Golden Syrup—2-lb. tins (70-lb. tins or drums, 55s.)	do.	1	0 7
16. Herbs—Mixed, 1 oz. pkts.	do.	0	3 10½
17. Jelly Crystals { "McKays Packets", Bulk—7-lb.	per lb.	0	8 2
18. Macaroni—Bulk—56-lb. bags	do.	0	0 11½
19. Margarine—Cake, Pastry	do.	0	1 6½
Meats—Tinned—			
"Tom Piper"—			
Irish Stew, 16-oz.	per doz.	1	7 0
Beef Steak Pudding, 16-oz.	do.	1	12 9
Beef Lunch, 12-oz. square	do.	1	10 3
Camp Pie, 12-oz. tins	do.	1	2 2
21. Milk F.C. Powdered, "Sunshine" { 3-lb. tins, 12-oz. "	do.	6	16 3
22. Mustard—Loose	per lb.	0	4 8
23. Peel—Mixed loose	do.	0	1 11
24. Pepper—Ground, black	do.	0	6 5
25. Pickles, Mustard—20-oz. bottle	per doz.	1	7 3
26. Raisins—Case Lots—			
Sultanas { 2-crown, 3-crown, 4-crown	per lb.	0	1 10
27. Salt—Imperial, Fine	per cwt.	0	16 4½
28. Sauce—Tomato—26-oz. bottles (gal. jars 15s. 3d. Ⓞ)	per doz.	1	18 3
29. Sauce—Worcestershire—1-gal. jars Ⓞ	each	0	13 2
30. Soda—Bicarbonate	per lb.	0	0 8
31. Soda—Washing	per cwt.	1	13 2
32. Soap—Powder, "Pental", 12 oz.	per doz.	0	11 9

Ⓞ Jars—3s. 6d. each.

‡ Apricot, Bakers Raspberry, Dark Plum, Gooseberry, Quince, Loganberry, Melon and Lemon, Rasp.
 § Apricot, Plum, Quince, Melon and Lemon, Loganberry, Plum and Raspberry, Gooseberry.

Sub-schedule No. 2a—continued.

GROCERIES—continued.

	£	s.	d.
33. Spaghetti—Bulk—22-lb. cartons { No. 1, No. 2	each	1	0 6
34. Spice, Mixed, 1-oz. packets	per pkt.	0	0 5½
35. Starch, "Silver Star", 12-oz.	per doz.	0	18 5
Sugar—			
36. { Icing, Castor	per cwt.	5	11 3
37. Tapioca—Seed	per lb.	0	0 9½
38. Tartar, Cream of—Substitute "Antelope"	do.	0	2 5½
39. Tomato Soup—No. 10 cans	per doz.	5	11 3
40. Vinegar—Malt Ⓞ	per gal.	0	4 2

(AGREEMENT.)

McKay MacLeod Pty. Ltd., 122 Lydiard-street, Ballarat.

Sub-schedule No. 3.

JAMS FOR TEACHERS' COLLEGE HOSTELS AND MENTAL HOSPITALS

Jams—Assorted—	£	s.	d.
1. In bulk, of approved kinds, in proportion of half seed and half stone, of the best quality, in tins, as required †	per lb.	0	1 2½
2. 24-oz. tins, in the proportion of half seed and half stone, of the best quality ‡	per doz.	1	7 6
3. 5-lb. tins, in the proportion of half seed and half stone, of the best quality	do.	4	7 0

ANNEX TO CONTRACT No. 1960/235†.

Victorian Inland Meat Authority, 522 Little Collins-street, Melbourne.

Sub-schedule No. 4.

MEAT.

(For Gaol and Mental Hospital.)

	£	s.	d.
Security, £35.			
Fresh Beef—			
1. Buttocks	per cwt.	12	10 0
2. Roast—Rolled (Brisket excluded)	do.	10	0 0
3. Beef, Corned, Rolled or Round, as ordered, without bone or cartilage	do.	10	0 0
Mutton—Fresh—			
4. Kidney fat removed (Mental Hospital)	do.	5	8 4
5. Mince-meat	per lb.	0	1 0
6. Sausages	do.	0	1 7
7. Sausage, Beef, German	do.	0	1 8
8. Tripe	do.	0	0 6
9. Ham Loaf	do.	0	1 10
10. Saveloys	do.	0	1 7

ANNEX TO CONTRACT No. 1960/236†.

H. A. Morris, 107 Victoria-street, Ballarat.

Sub-schedule No. 5.

MEAT.

For delivery to Teachers' College Hostels as under:—
Beaufort House, Beaufort-avenue, Ballarat.
1415 Sturt-street, Ballarat.
130 Victoria-street, Ballarat.
126 Webster-street, Ballarat.

	£	s.	d.
Security, £5.			
1. Fresh Beef—Sirloin	per lb.	0	2 9
2. Beef—Corned—Silverside	do.	0	2 9
Fresh Mutton—			
3. Legs	do.	0	1 9
4. Forequarter Chops	do.	0	1 0
5. Legs Pickled	do.	0	1 9
Two Tooth—			
6. Chump Chops	do.	0	1 11
7. Mid Loins Chops	do.	0	1 9
Veal—			
8. Shoulder, Boned	do.	0	2 6
9. Fillet, Boneless	do.	0	3 0

Sub-schedule No. 5—continued.

MEAT—continued.		£	s.	d.
Steak—				
10. Blade	per lb.	0	2	6
11. Minced	do.	0	2	3
12. Sausages—Mixed	do.	0	1	9
13. Sausage Meat	do.	0	1	1
14. Livers—Calves	do.	0	0	6
15. Kidneys—Ox	do.	0	2	0
16. Frankfurts	do.	0	1	9
17. Ham Loaf	do.	0	2	10
18. Dripping—Beef	do.	0	1	0
19. Shanks—Sheep	each	0	0	6

ANNEX TO CONTRACT No. 1960/237.

The Ballarat Modern Dairy Pty. Ltd., 819 Sturt-street, Ballarat.

Sub-schedule No. 6.

MILK.

For delivery to Mental Hospital and Teachers' College Hostels as under—

- Beaufort House, Beaufort-avenue, Ballarat.
- 1415 Sturt-street, Ballarat.
- 130 Victoria-street, Ballarat.
- 126 Webster-street, Ballarat.

	Security, £30.	£	s.	d.
1. Milk—Fresh and pure, pasteurized	per gal.	0	4	6

SCHEDULE No. 8.

PROVISIONS—BEECHWORTH DISTRICT.

ANNEX TO CONTRACT No. 1960/238.

P. A. Taylor Model Bakery, Camp-street, Beechworth.

(Delivery into Institutions.)

Sub-schedule No. 1.

BREADSTUFFS.

	Security, £100.	£	s.	d.
1. Bread—Fine wheaten, first quality	per cntl.	3	10	6
2. Flour—First quality	do.	2	2	6

(AGREEMENT.)

Moran and Cato Pty. Ltd., 277 Brunswick-street, Fitzroy, N.6.

Sub-schedule No. 2.

GROCERIES.

	£	s.	d.
1. Beans—Haricot	per lb.	0	1 4½
2. Blue—Washing, powdered, 7-lb. pkts.	do.	0	2 1½
Cereals—			
3. { "Pipers," "Kornies," "Weeties," or	per doz.	1	10 6
equal	packets		
VitaBrit or equal—24-oz. pkts.	do.	1	10 6
Cocoa—			
4. 14 oz. packets, "Bournville"	each	0	4 10½
Corn or Maize Flour—			
5. { 1-lb. packets, "Medallion"	per doz.	0	18 0
Loose	per lb.	0	1 0
6. Curry Powder	do.	0	2 3½
7. Custard Powder—Loose	do.	0	1 1½
8. Dates—case lots	do.	0	1 8½
loose	do.	0	1 8½
9. Gelatine	do.	0	8 2½
10. Golden Syrup—2-lb. tins	per tin	0	1 11
11. Jelly Crystals—7-lb. packets	per lb.	0	2 4½
Macaroni—			
12. { 22-lb. cartons	per ctn.	1	1 8
56-lb. bags	per lb.	0	0 10½
13. Margarine—Cake, pastry	do.	0	1 8½
Milk—Powdered—			
14. { 3-lb. tins, "Sunshine"	per doz.	7	16 9
12-oz. tins, "Sunshine"	do.	2	1 0
15. Mustard	per lb.	0	4 10½
16. Pepper—White, ground	do.	0	10 2½

○ Apricot, £4 5s. 8d.; Blackcurrant, £6 15s. 6d.; Blackberry, £6 1s. 2d.; Melon and Lemon, £4 8s. 2d.; Loganberry, £6 7s. 8d.; Peach, £4 9s. 8d.; Quince, £4 3s. 2d.; Raspberry, £6 7s. 8d.; Dark Plum, £4 4s. 0d.; Plum and Raspberry, £4 13s. 9d.

Sub-schedule No. 2—continued.

GROCERIES—continued.

	£	s.	d.
17. Pickles—Assorted, 20-oz. bottle	per doz.	1	12 9
18. Raisins {			
	Sultana, 5-crown (case lots)	per lb.	0 2 0
Sultana, 5-crown (less than case	do.	0 2 0½	
Sultana, 3-crown (case lots)	do.	0 1 11	
	Sultana, 3-crown (less than case	do.	0 1 11½
19. Salt—Fine	per cwt.	1	6 9
20. Sauce—Tomato, 26-oz. bottles, "Rosella"	per doz.	2	6 0
Soap—			
21. Sand, 12-oz. blocks, "Lectric"	do.	0	6 6½
22. Lifebuoy	do.	0	8 2
23. Powder, "Pental" 12 oz. pkts.	do.	0	12 9
Soda—			
24. Bicarbonate	per lb.	0	0 8½
25. Washing	per cwt.	2	9 0
26. Spaghetti—22-lb. cartons, "Forex"	per ctn.	1	1 8
27. Spice—Mixed, "Parsons"	per doz.	0	6 1
28. Starch—"Parsons"	per lb.	0	0 11½
29. Tartar—Cream of, Substitute, "Antelope"	do.	0	3 0½
30. Tomatoes—Tinned, 28-oz. tins, "Cohn"	per doz.	1	10 0
31. Vegemite—1-lb. jars	do.	4	10 0
32. Vinegar—Malt (9 gal. Keg) (Kegs £5)	per gal.	0	5 5½

(AGREEMENT.)

Moran and Cato Pty. Ltd., 277 Brunswick-street, Fitzroy, N.6.

Sub-schedule No. 3.

JAMS.

	£	s.	d.
Jams—Assorted, in bulk—			
{ Apricot	per lb.	0	1 3½
{ Peach	actual	0	1 3½
1. { Dark Plum	net	0	1 3½
{ Raspapple	weight	0	1 2½
2. Jams—Assorted, 5-lb. tins, of the best per doz. quality	of the best quality tins	0	1 2½

ANNEX TO CONTRACT No. 1960/239.†

E. Spencer, Camp-street, Beechworth.

Sub-schedule No. 4.

MEAT.

	Security, £30.	£	s.	d.
1. Fresh Beef (Gaol)	per cntl.	12	18	4
2. Fresh Beef—Rolled Roast, boneless, brisket	do.	13	15	0
3. Corned Beef, Rolled or Round as ordered,	do.	13	15	0
without bone or cartilage				
4. Shins of Beef (bone in)	do.	6	5	0
5. Mutton—Fresh (kidney fat to be removed	do.	5	16	8
for Mental Hospitals)				
6. Beef Steak, minced	do.	13	15	0
7. Sausage Meat	per lb.	0	1 5	
8. Sausages—Mixed	do.	0	1 11	
9. Sausage—German	do.	0	2 9	
10. Tripe—Fresh	do.	0	1 4	
11. Veal—Boned	do.	0	2 9	
12. Livers—Sheep	do.	0	1 10	
13. Mutton Chops	do.	0	1 4	
14. Saveloys	do.	0	2 0	
15. Kidney—Ox	do.	0	2 0	
16. Dripping—Beef	do.	0	1 0	
17. Beef, Gravy	do.	0	2 9	

ANNEX TO CONTRACT No. 1960/240.

H. and J. Baltus, Ford-street, Beechworth.

Sub-schedule No. 5.

MILK.

	Security, £12.	£	s.	d.
1. Milk—Fresh and pure—pasteurized	per gal.	0	5	3

SCHEDULE No. 9.

PROVISIONS—BENDIGO DISTRICT.

(For Delivery into Institutions.)

ANNEX TO CONTRACT No. 1960/241.

C. H. Jeffrey Pty. Ltd., 172 Wattle-street, Bendigo.

Sub-schedule No. 1.

BREAD.

For Gaol and Sandhurst Boys' Centre and Teachers Hostel
"Lancewood," McLaren-street, Bendigo.

Security, £7. £ s. d.

1. Bread—Fine wheaten, first quality	.. per cntl.	2 5 10
2. Flour—First quality do.	1 19 7

ANNEX TO CONTRACT No. 1960/242.

A. E. and V. B. Gane, 56 Mt. Korong-road, Eaglehawk.

Sub-schedule No. 2.

BREAD.

For Teachers' College Hostel—
Osborne-street, Pleasant Vale, Bendigo.

Security, £4. £ s. d.

1. Bread—Fine wheaten, first quality	.. per cntl.	2 5 10
--------------------------------------	--------------	--------

ANNEX TO CONTRACT No. 1960/243.

Roy Raggatt Pty. Ltd., 132 Lily-street, Bendigo.

Sub-schedule No. 3.

BREAD.

For Teachers' College Hostel—"Comersdale," Panton-street,
Golden Square, Bendigo.

Security, £3. £ s. d.

1. Bread—Fine wheaten, first quality	.. per cntl.	3 6 8
2. Flour—First quality do.	2 1 8

(AGREEMENT.)

Pulfer, Cox, and Hargreaves, Wholesalers Limited, 200 Hargreaves street, Bendigo. §

Sub-schedule No. 4.

GROCERIES.

1. Barley—Pearl, 56-lb. bags (smaller lots 7d. per lb.)	per cwt.	3 5 4
---	----------	-------

Beans—

2. Butter per lb.	*
3. Haricot do.	0 1 9
4. Lima do.	0 1 10

Biscuits and Cake—"Phoenix"

5. Dry do.	‡
6. Coffee, Malt, Arrowroot do.	‡
7. Assorted do.	‡

Blue—

8. 1-oz. knobs, "Reckitts" per gross	2 5 9
9. Borax per lb.	0 0 9
10. Cake Containers—Paper, "Barkers" 150's	per gross	3 16 2

Cereals—

11. "Kornies," "Weeties," packets	.. per doz.	1 7 3
12. "Cornflakes," packets do.	1 9 6
13. "Weetbix," "Granose," "Vitabrits," packets do.	1 7 3

Sub-schedule No. 4—continued.

GROCERIES—continued.

14. "All-Bran," packets per doz.	0 18 8
15. Cheese—5-lb. boxes, "Kraft" per box	0 19 0
" Matured per lb.	0 3 4
16. Chutney—"A.J.C." per doz.	1 3 6
17. Cloves per lb.	0 10 6
18. Coconut—Desiccated, Ceylon do.	0 2 4
Cocoa—		
19. { 14-oz. tins, "Bournville" per doz.	3 6 3
Loose per lb.	0 4 4
Coffee Essence—		
20. 8-oz. bottles, "Excelsior" per doz.	1 8 6
21. 1-gal. jars (Jars 3s.) per jar	1 17 6
22. Curry Powder—"Indian"—4-oz. packets	per doz.	1 8 0
Custard Powder—		
23. Bulk, 7-lb. parcels, "Beacon"	.. per lb.	0 1 5
24. 1-lb. packets, "Parsons" per doz.	1 3 0
25. Dates—Loose per lb.	0 1 10
Essences, &c.—		
26. Almond { 1-oz. per doz.	0 12 9	
8-oz. do.	4 1 6	
16-oz. bot.	0 13 6	
27. Lemon { 1-oz. doz.	0 12 9	
8-oz. do.	4 1 6	
16-oz. bot.	0 13 6	
28. Vanilla { 8-oz. doz.	5 3 6	
16-oz. bot.	0 16 9	
29. Cochineal { 1-oz. doz.	0 12 9	
16-oz. bot.	0 13 6	
30. Parisian, 26-oz. "Dicksons" doz.	2 7 3
31. Yolking { 1-oz. "Rego" do.	0 9 2	
16-oz. do.	2 14 0	
Extracts and Pastes—		
32. "Marmite," 4-oz. jar per doz.	1 5 9
33. "Vegemite" { 4-oz. jar do.	1 5 7	
8-oz. jar do.	2 4 6	
16-oz. jar do.	4 2 5	
34. Peanut Butter { 6-oz. jar do.	1 8 0	
12-oz. jar do.	2 4 3	
35. "Bonox" { 4-oz. jar do.	1 12 9	
8-oz. jar do.	3 0 0	
16-oz. jar do.	5 15 0	
36. Bloater, 2½-oz. tins, "Pecks" do.	0 15 3
37. Salmon and Shrimp, 2½-oz. tin do.	0 16 6
Fish—Tinned—		
38. "Flair," 12-oz. do.	1 9 6
39. Salmon, 16-oz., "Kingsound" do.	2 2 0
40. Pilchards, 8-oz. do.	0 18 11
41. Herrings, 14-oz. { Fresh do.	1 11 0	
In sauce do.	1 11 0	
42. Sardines { 4-oz., "Commodore" do.	0 15 0	
8-oz., "Rego" do.	1 8 6	
Flour—Corn or Maize—		
43. { 1-lb. packets, "Kream" do.	1 0 3	
Bulk per lb.	0 0 11	
Flour—Self-raising—		
44. { 25-lb., "Mammy" each	0 17 0	
150-lb., "Mammy" do.	4 7 0	
Fruits—Dried—		
45. Apples per lb.	0 3 5
46. Apricots do.	4 6
47. Peaches do.	*
48. Pears do.	*
49. Prunes, 60/70's do.	0 2 7½
50. Currants do.	0 1 9
51. Raisins, Seeded { 16-oz. pkts., "Rego" per doz.	1 6 9	
Loose per lb.	0 1 11½	
52. Sultanas do.	0 1 10
53. Apricots, Halves, 30-oz. tins, "S.P.C."	per doz.	1 6 8
54. Peaches, 30-oz. tins, "S.P.C." do.	1 8 3
55. Pears, 30-oz. tins, "S.P.C." do.	1 9 0
56. Mixed Fruits, 16-oz. tins, "Fruit Cock-tail" do.	1 1 0
57. Solid Pack Apples { 30-oz. tins do.	1 15 0	
6½-lb. each	0 9 1	
58. Solid Pack Apricots do.	0 9 2
59. Gelatine—Ground, 16-oz. pkts., "Davis"	per doz.	5 7 0
60. Ginger—Ground per lb.	0 7 6
61. Golden Syrup—2-lb. tins per doz.	0 17 9
62. Gravox—1-lb. tins do.	1 3 3
63. Herbs—Mixed, packets do.	0 3 9
64. Honey—60-lb. tins (Return of 2s. 6d. per tin)	per tin	3 17 0

* Supplies not available.

‡ List prices, wholesale rates, less 10 per cent.

§ Rates except for sugar—white, are on "Pay and Pick-up Basis" at warehouse, but for delivery and credit, plus 5 per cent. surcharge. Invoices paid on delivery subject to 2½ per cent. discount and for monthly settlement by 15th of the month following delivery, prices net. Sugar prices net.

Sub-schedule No. 4—continued.

GROCERIES—continued.		£	s.	d.
65.	Jams—"Rego" and "Monbulk," tins .. per doz.	††		
	Jelly Crystals—			
66.	{ 4-oz. packets, "Rego" per gross	4	17	11
	{ 7-lb. packets per lb.	0	2	2
	Junket Tablets—			
67.	{ "Merry Widow," flavoured .. per doz.	0	18	6
	{ "Hansens," plain tubes	1	4	0
68.	Lentils per lb.	0	1	10
	Macaroni—			
69.	1-lb. packets, "Rinoldi" per doz.	0	15	6
70.	Bulk—22-lb. boxes per box	0	19	6
71.	Margarine—Cake, pastry, (net) "E.O.I." per lb.	0	1	6
	(Freight case, 3s. 6d.)			
72.	Matches—Safety, packets per gross	0	18	6
73.	Mayonnaise—10-oz. jars, "Kraft" .. per doz.	1	8	6
	Meat—Tinned—			
74.	Beef Luncheon { 12-oz., "Tom Piper" do. 1 10 0			
	{ 6-lb., "Swifts" each	1	0	6
75.	Beef Steak Pudding, 16-oz., "Tom Piper" per doz.	1	12	6
76.	Camp Pie { 12-oz., "Imperial" .. do. 1 1 0			
	{ 16-oz., "Imperial" .. do. 1 2 0			
77.	Irish Stew, "Tom Piper" .. do. 1 7 6			
78.	Lamb and Green Peas, 16-oz., do. 1 6 0			
	"Champion" do. 1 7 6			
79.	Sausages and Vegetables, 16-oz. do. 1 7 6			
	Milk—			
80.	Dried { 12-oz. tin, "Sunshine" .. do. 1 18 4			
	{ 3-lb. tins, "Sunshine" .. do. 7 0 0			
81.	Condensed, cases of 4-doz., "Nestles" per case	4	6	0
82.	"Ideal" per doz.	0	17	0
83.	Mustard—Bulk, 4-lb. boxes .. per lb.	0	5	9
84.	Nutmeg—Ground do. 1 0 0			
85.	Oatmeal—Flaked { 7-lb. bags per doz. 4 0 0			
	{ Loose per cwt. 3 12 0			
86.	Pastry—Mix, "Bakeo," "Maxam" 1-lb. pkts. per doz.	0	15	6
	Peel—Mixed, Cut—			
87.	{ 8-oz. packets, "Brookes" .. do. 0 17 6			
	{ 7-lb. "Seppelts" per lb. 0 1 10			
	Pepper—White, Ground—			
88.	{ Loose do. 1 0 0			
	{ 2-oz. packets, "Rego" per doz. 0 12 5			
89.	Pickles—Assorted, 20-oz. bottles, "Rego" do. 1 7 10			
	Rice—			
90.	Dressed, 56-lb. bags per bag	2	4	2
91.	Ground 1-lb. packets, "McKenzies" per doz.	0	10	6
92.	Sago per lb.	0	0	10
	Salt—			
93.	Fine, bulk, "Imperial" per cwt.	1	0	0
94.	Table { 1-lb. packets, "Mermaid" .. per doz. 0 6 6			
	{ 1-lb. packets, "Saxa" do. 0 10 0			
	Sauces—			
95.	Tomato, 26-oz. bottles { "White Crow" .. do. 2 1 0			
	{ "Rosella" do. 2 4 0			
96.	Tomato, 1-gal. tins, "White Crow" .. per tin	0	10	0
	Worcestershire—			
97.	{ 10-oz. bottles, "Holbrooks" .. per doz. 1 7 6			
	{ 10-oz. bottles, "Rego" do. 1 2 3			
	{ 26-oz. bottles, "Rego" do. 1 19 6			
98.	Mustard—8-oz. bottles, "Holbrooks" do. 1 4 0			
	Soaps—			
99.	Extract of, "Nu-Wash," 56-lb. bags .. per bag	2	8	6
100.	"Rinso" Economy packet per doz.	1	19	6
101.	"Persil" Giant packet do. 1 19 6			
102.	"Lux" Flakes, packets, Family Size do. 1 15 0			
103.	Sand Soap—6-oz. blocks, "Preservene" do. 0 8 5			
104.	Toilet Soap, 3½-oz. tablets, "Palm-olive" do. 0 8 2			
105.	Toilet Soap, 3½-oz. tablets "Lux" .. do. 0 8 0			
106.	"Velvet" or equal { Quads, 3-doz. ctn. per ctn. 4 0 9			
	{ Quints, 2½-doz. ctn. do. 4 16 9			

†† In 1½-lb. tins—Apricot, £1 2s. 0d.; Apple Jelly, £1 8s. 6d.; Blackberry, £1 16s. 6d.; Blackcurrant, £2 0s. 0d.; Gooseberry £1 13s. 0d.; Loganberry, £1 18s. 6d.; Melon and Lemon, £1 5s. 8d.; Melon and Pineapple, £1 6s. 8d.; Dark Plum, £1 4s. 0d.; Marmalade, £1 6s. 6d.; Peach, £1 6s. 6d.; Plum and Raspberry, £1 7s. 0d.; Quince, £1 8s. 6d.; and Raspberry, £1 19s. 0d.

In 5-lb. tins—Apricot, £4 5s. 0d.; Melon and Lemon, £3 19s. 0d.; Melon and Pineapple, £4 0s. 0d.; Dark Plum, £4 1s. 0d.; Marmalade, £4 5d. 0s.; Peach, £3 19s. 6d.; Plum and Raspberry, £4 12s. 0d.; Quince, £4 0s. 0d.; and Raspberry, £6 13s. 0d.

In 28-lb. tins—Blackberry, 1s. 10d. per lb.

In 56-lb. tins—Apricot, 1s. 4½d. per lb.; and Plum and Raspberry, 1s. 2d. per lb.

Sub-schedule No. 4—continued.

GROCERIES—continued.		£	s.	d.
	Soda—			
107.	Bicarbonate per lb.	0	0	8
108.	Washing do.	0	0	6
	Soups—			
109.	Tomato, 16-oz. tins { "Kia Ora" .. per doz. 0 19 6			
	{ "Rego" do. 0 19 6			
110.	Tomato, 6-lb. tins, "Kia Ora" .. each	0	8	9
	Spaghetti—			
111.	1-lb. packets, "Rinoldi" per doz.	0	15	6
112.	Bulk, 22-lb. boxes each	0	19	6
	Spice—Mixed—			
113.	{ 1-oz. packets per doz. 0 5 9			
	{ Loose per lb. 0 4 4			
114.	Starch—Rice, "Silver Star," packets, 14-oz. per doz.	1	0	0
	Sugar—			
115.	Icing mixture, 56-lb. bags per bag	2	8	4
116.	Castor, 70-lb. bag do.	2	18	0
117.	Raw per lb.	0	0	9½
118.	White, 70-lb. bag per bag	2	15	0
	Tapioca—			
119.	{ Seed per lb. 0 1 0			
	{ Pearl do. 0 1 1			
120.	Tartar—Cream of do. 0 3 3			
121.	Treacle—2-lb. tins per doz.	0	18	1
122.	Peas Split (yellow) { 56-lb. bags .. per cwt. 6 1 4			
	{ Broken bags per lb. 0 1 1			
	Vegetables—Tinned—			
123.	Baked Beans, 16-oz., "Kia Ora" .. per doz.	1	1	6
124.	Baked Beans, No. 10 can, "Kia Ora" .. each	0	9	4
125.	Beans, green, 30-oz., "Harvest" .. per doz.	1	15	0
126.	Beetroot, 30-oz. do.	1	11	0
127.	Peas, 30-oz. { "Harvest" .. do. 1 15 0			
	{ "Biddy's" do. 1 6 6			
128.	Sweetcorn, 16-oz., "Rosella" .. do. 1 9 0			
129.	Tomatoes, 30-oz., "Rego" do. 1 7 0			
	Vermicelli—			
130.	1-lb. packets, "Rinoldi" do. 0 15 6			
131.	Bulk, 22-lb. boxes each	0	19	6
132.	Vinegar—Malt, 1-gal. jars (Jars 3s.) .. per gal.	0	5	0

ANNEX TO CONTRACT NO. 1960/244.†
 Alan H. Gittins, 350 Hargreaves-street, Bendigo.

Sub-schedule No. 5.

MEAT.		£	s.	d.
For Gaol.				
Security, £5.				
1.	Fresh Beef per lb.	0	2	3
2.	Corned Beef—Rolled, without bone or cartilage .. do.	0	1	11
3.	Fresh Mutton do.	0	1	0
4.	Sausages—Mixed do.	0	1	9
5.	Mincemeat do.	0	1	3

ANNEX TO CONTRACT NO. 1960/245.†
 Alan H. Gittins, 350 Hargreaves-street, Bendigo.

Sub-schedule No. 6.

MEAT.		£	s.	d.
For Sandhurst Boys' Centre, Bendigo.				
Security, £5.				
1.	Fresh Beef, Rolled Roast, boneless, brisket excluded .. per lb.	0	3	0
2.	Fresh Beef, Buttocks do.	0	2	9
3.	Corned Beef, rolled or round, as ordered without bone or cartilage .. do.	0	2	6
4.	Corned, Silverside do.	0	3	0

Sub-schedule No. 6—continued.

MEAT—continued.		£	s.	d.
Fresh Mutton—				
5. Legs	per lb.	0	1	10
Chops—				
6. Middle Loin	do.	0	1	10
7. Forequarter	do.	0	1	6
8. Steak—Rump	do.	0	5	0
9. Veal—Fillet—Boneless	do.	0	3	0
10. Sausage Meat	do.	0	1	3
11. Livers—Sheep	do.	0	0	11
12. Kidney—Ox	do.	0	1	3
13. Sausages—Mixed	do.	0	1	9
14. Sausage—Beef German	do.	0	2	6
15. Saveloys	per doz.	0	3	9
16. Bacon—Rashers—Shoulder	per lb.	0	6	0
17. Dripping—Beef	do.	0	0	10

ANNEX TO CONTRACT No. 1960/246.†

M. P. and L. R. Marchioni, Killians Walk and Queen-street, Bendigo.

Sub-schedule No. 7.

MEAT.

For Teachers' College Hostels as under—
Osborne-street, Pleasant Vale, Bendigo.
"Lancewood," McLaren-street, Bendigo.
"Comersdale," Panton-street, Golden Square, Bendigo.

Security, £5.		£	s.	d.
Fresh Beef—				
1. Topside	per lb.	0	3	6
2. Corned Beef—Rolled or Round, as ordered, without bone or cartilage	do.	0	2	6
3. Corned Silverside	do.	0	3	6
4. Fresh Mutton—Carcase	do.	0	1	3
Steak—				
5. Blade (Minced)	do.	0	2	10
6. Chuck	do.	0	2	8
7. Rump	do.	0	5	6
8. Sausages—Mixed	do.	0	1	10
9. Sausage Meat	do.	0	1	6
10. Livers—Sheep	do.	0	0	9
11. Veal, Fillet—boneless	do.	0	4	6
12. Brains—Sheep	per set	0	0	6
13. Kidneys—Ox	per lb.	0	1	6
14. Ox Tails	do.	0	1	6

SCHEDULE No. 10.

PROVISIONS—CASTLEMAINE GAOL.

(Delivery at the Gaol.)

ANNEX TO CONTRACT No. 1960/247.

T. N., M. K., and T. J. Kenyon, 319 Barker-street, Castlemaine.

Sub-schedule No. 1.

BREADSTUFFS.

Security, £5.		£	s.	d.
1. Bread—Fine wheaten, first quality	per ontl.	2	19	4½

ANNEX TO CONTRACT No. 1960/248.†

McQueen Bros., Hargraves-street, Castlemaine.

Sub-schedule No. 2.

MEAT.

Security, £5.		£	s.	d.
1. Fresh Beef	per lb.	0	1	10
2. Fresh Mutton	do.	0	1	3
3. Corned Beef—Rolled or Round, as ordered, without bone or cartilage	do.	0	2	0
4. Minced Meat (Beef)	do.	0	2	0
5. Sausage Meat	do.	0	1	0
6. Sausages, mixed	do.	0	1	6
7. Saveloys	per doz.	0	4	3

SCHEDULE No. 11.

PROVISIONS—SCHOOL OF FORESTRY, CRESWICK.

(Delivery at the School.)

ANNEX TO CONTRACT No. 1960/249.

M. C. and L. M. Bennett, Albert-street, Creswick.

Sub-schedule No. 1.

BREADSTUFFS.

Security, £3.		£	s.	d.
1. Bread—Fine wheaten, first quality	per ontl.	4	1	3
2. Flour—First quality	do.	*		

* Current market price.

(AGREEMENT.)

J. Tait and Son, Albert-street, Creswick.

Sub-schedule No. 2.

GROCERIES.

Security, £3.		£	s.	d.
1. Bacon	per lb.	0	5	0
2. Barley—Pearl	do.	0	0	7½
3. Blue—Washing	do.	0	2	9
4. Butter—First grade creamery, to score not less than 91 points, Government grade, Commerce Regulations Standard	do.	0	4	5½
5. Cereals—"Weeties"	per doz. pkts.	1	6	6
6. Cheese—First class quality, matured	per lb.	0	3	3
7. Coffee—Fresh roasted and whole, beans to be thoroughly sound	do.	0	7	6
8. Corn or Maize Flour—1-lb. packets	do.	0	1	6
9. Eggs—New Laid	per doz.	0	4	3
10. Flour—Self-raising	per lb.	0	0	8½
11. Ginger—Ground	do.	0	7	6
12. Golden Syrup—2-lb. tins	per tin	0	1	8½
13. Honey—Yellow Box	per lb.	0	1	3
14. Jams—Assorted, 5-lb. tins, net, in the proportion of half seed and half stone, "Red Feather"	per tin	0	8	0
15. Mustard—"Double Superfine"	per lb.	0	5	0
16. Oatmeal	do.	0	0	9½
17. Peas—Split	do.	0	1	0
18. Pepper—White, ground	do.	0	17	6
19. Potatoes—Dry and free from dirt	per cwt.	§		
20. Raisins—Sultana, 3-crown (present season's)	per lb.	0	1	10
21. Rice—Dressed	do.	0	0	10½
22. Salt—Fine	do.	0	0	2
23. Soap— "Velvet," yellow, dry, and hard	per doz.	1	5	6
24. Sand, Carbolic, 12-oz. blocks	each	0	0	8½
Soda—				
25. Bicarbonate	per lb.	0	0	8½
26. Washing	do.	0	0	5
27. Starch (Rice)—"Preservene"	do.	0	1	5½
28. Tartar—Cream of, Substitute, "Calcium Phosphate"	do.	0	2	9
29. Tea—First grade	do.	0	6	2
30. Vinegar—Malt	per pint	0	0	5½

ANNEX TO CONTRACT No. 1960/250.

E. J. Keen, Jory-street, Creswick.

Sub-schedule No. 3.

MILK.

Security, £3.		£	s.	d.
1. Milk—Fresh and pure	per qt.	0	1	3

ANNEX TO CONTRACT No. 1960/251.†

H. J. Symons Pty. Ltd., 1015 Macarthur-street, Ballarat.

Sub-schedule No. 4.

MEAT.

Security, £3.		£	s.	d.
1. Fresh Beef—Forequarters	per lb.	0	2	4
2. Mutton	do.	0	1	2
3. Sausages—Mixed	do.	0	1	3
4. Steak—Minced	do.	0	2	0
5. Livers—Sheep	do.	0	0	6

SCHEDULE No. 12.

**PROVISIONS—AGRICULTURAL COLLEGE,
DOOKIE.**

(Delivery at the College.)

ANNEX TO CONTRACT No. 1960/252.

Herman and Wilson, Dookie.

Sub-schedule No. 1.

BREADSTUFFS.

Security, £15.

	£	s.	d.
1. Bread—Fine wheaten, first quality .. per cwt.	3	16	0½
2. Flour—First quality do.	2	2	9

(AGREEMENT.)

W. A. Thompson Pty. Ltd., Benalla-road, Shepparton.

Sub-schedule No. 2.

GROCERIES. ○

(Delivery "F.O.R." Shepparton.)

	£	s.	d.
1. Baking Powder—1-lb. tins per doz.	1	16	5
Beans—			
2. Lima per lb.	*		
3. Haricot do.	*		
4. Biscuits—Coffee, Malt or Arrowroot (as do.	0	1	10½
5. Blue—Washing, square in 1-gross bags per gross	2	2	8
(paper wrapped)			
6. Candles—full weight, Kitchen's Electrics per lb.	0	2	8½
in lots of 30, loose			
7. Cereal—24-oz. packets, "Piper's" (or equal per doz.	1	8	7
thereto)			
8. Cinnamon per lb.	*		
9. Chutney—10-oz. bottles per doz.	1	2	0
10. Cocoa—14 oz. packets do.	3	1	0
11. Coconut—Dessicated per lb.	0	2	0½
12. Coffee Essence—1-gal. jars per gal.	1	13	1
13. Cordial—Lemon, 1-gal. jars "Cohns" .. do.	0	15	6
14. Corn or Maize Flour—1-lb. packets .. per doz.	0	19	4
15. Currants—2-crown per lb.	0	2	2½
16. Curry Powder—Bulk do.	0	3	9
17. Custard Powder, 1-lb. packets, "Parsons" .. per doz.	1	2	3
Essence—			
18. Almond, 8-oz. bottles do.	3	9	11
19. Cochineal, 8-oz. bottles do.	3	9	11
20. Lemon, 8-oz. bottles do.	3	9	11
21. Vanilla, 8-oz. bottles do.	4	3	3
Fish—Tinned—			
22. Herrings in Sauce, 14-oz. tins .. do.	1	11	6
23. Sardines, 4-oz. tins do.	0	18	6
24. Flour—Self-raising, 150-lb. bags .. per bag	4	11	3
Fruits—			
25. Dried (present season's) per lb.	*		
26. Preserved, 30-oz. tins, Peaches .. per doz.	1	9	9
27. Preserved, 30-oz. tins, Apricots .. do.	1	8	0
28. Preserved, 6-lb. tins, Apples .. per tin	0	8	9
29. Preserved, 30-oz. tins, Pears .. per doz.	1	10	6
30. Gelatine—Ground—7-lb. tins .. per tin	2	19	9
31. Ginger—Ground per lb.	0	6	6
32. Golden Syrup—2-lb. tins per doz.	0	18	6
33. Gravox—1-lb. tins do.	1	1	9
34. Herbs—Mixed, 2-oz. packets do.	0	3	9
35. Honey—First quality, 60-lb. tins .. per tin	*		
36. Jelly Crystals—7-lb. packets .. per lb.	0	2	4
37. Junket Tablets—"Hansens" .. per doz.	1	3	6
38. Lemon Peel—Cut—8-oz. packets .. do.	0	16	11
39. Macaroni—Bulk, 22-lb. boxes .. per box	1	1	5
40. Margarine—Cake per lb.	0	2	10½
41. Matches—Safety per gross	0	19	3
42. Meat Extract—"Bonox," "Beefine," &c., 28-oz. jars per jar	0	15	4
Meat—Tinned—			
43. Camp Pie—12-oz. tins per doz.	1	2	0
44. Steak and Vegetables, 16-oz. tins .. do.	1	10	0
45. Steak and Kidney, 16-oz. tins .. do.	1	13	4
46. Milk—Condensed, full cream, 14-oz. tins .. do.	1	2	2
47. Mustard per lb.	0	5	0
48. Oatmeal—Flaked, bulk, 100 lb. bag .. per bag	4	0	8

○ The rates to be paid for all items under these Sub-schedules shall be the wholesale price ruling on the day of delivery; where rates are shown, they are for the wholesale rates at date of publication of this Gazette.

* Supplies not available at present.

Sub-schedule No. 2—continued.

GROCERIES—continued.

	£	s.	d.
Pastes—			
49. Marmite, 4-oz. jars per doz.	1	6	4
50. Salmon and Shrimp, 2-oz. jars .. do.	0	17	8
51. BLOATER, 2-oz. jars do.	0	16	2
Peas—Green—			
52. Boiling per lb.	0	1	0
53. Tinned—16-oz. tins per doz.	1	5	2
54. Pepper—Black, ground per lb.	0	4	6
55. Pickles—Assorted, 20-oz. bottles .. per doz.	1	9	9
Prunes—Dried—70-80's—			
56. Loose (present season's) per lb.	0	2	9
57. 7-lb. tins (present season's) .. per tin	0	19	3
Raisins—			
58. Sultana, 3-crown (present season's) .. per lb.	0	2	3½
59. Seeded, 1-lb. packets per doz.	1	9	6
60. Rice—Ground, 1-lb. packets do.	0	15	2
Salt—			
61. Table, 16-oz. packets per doz.	0	6	8
62. Fine per cwt.	0	19	6
Sauce—			
63. Tomato, 1-gal. jars, "Cohns" .. per gal.	0	16	0
64. Worcester, 1-gal. jars do.	0	13	6
Soap—			
65. "Bon Ami," 12-oz. tins or cakes, (as per doz. ordered)	0	12	6
66. "Lux" { Packets—16-oz. .. per doz.	1	12	7
{ Cakes do.	0	11	3
67. "Palmolive" do.	0	11	8
68. "Persil,"—32-oz. packets in carton .. per ctn.	2	13	3
69. "Rinso," Economy packets 24's .. do.	3	13	5
Soda—			
70. Bicarbonate per cwt.	3	2	9
71. Washing—56-lb. bags per bag	1	0	11
72. Soup—Tomato, No. 10 tins, "Cohns" .. each	0	8	6
73. Spaghetti—1-lb. packets per doz.	0	16	7
74. Spice—1-oz. packets do.	0	5	0
75. Starch—14-oz. packets, "Silver Star" .. do.	0	19	0
Sugar—			
76. Castor—70-lb. bags per bag	2	16	8
77. { Icing—56-lb. bags do.	2	12	4
{ 1A—70-lb. bags do.	2	19	11
78. Tartar—Cream of per lb.	0	3	5
79. Treacle—2-lb. tins per doz.	0	18	0
80. Vinegar—Malt, bulk per gal.	0	6	3
81. Yolkine—Essence (or equal thereto) in 8-oz. bottles .. per doz.	1	11	0

(AGREEMENT.)

W. A. Thompson Pty. Ltd., Benalla-road, Shepparton.

Sub-schedule No. 3.

JAM.

(Delivery "F.O.R." Shepparton.)

	£	s.	d.
Jam—Bulk—			
1. Assorted, of approved kinds. .. per lb.			○
2. Assorted, of approved kinds, in the portion of half seed and half stone, of the best quality, in 32-lb. tins and 54-lb. tins			○

SCHEDULE No. 13.

**PROVISIONS—MCLEOD SETTLEMENT,
FRENCH ISLAND.**

(Delivery to be made at Corinella Jetty.)

ANNEX TO CONTRACT No. 1960/253.

H. H. Bird, Grantville.

Sub-schedule No. 1.

BREAD.

Security, £12.

	£	s.	d.
1. Bread—Fine wheaten, first quality .. per cwt.	3	15	0

(AGREEMENT.)
E. V. Peters, Corinella.

Sub-schedule No. 2.

GROCERIES.		£	s.	d.
1. Butter—First grade creamery, to score not less than 91 points, Government grade, Commerce Regulations Standard	per lb.	0	4	6
2. Cheese—Matured	do.	0	3	4
3. Jams—Assorted, Seed	per doz.	1	19	0
Stone, of best quality, in 24-oz. tins, "Monbulk"	do.	1	9	9

ANNEX TO CONTRACT No. 1960/254.†
George Hayman, Lang Lang.

Sub-schedule No. 3.

MEAT.		£	s.	d.
Security £5.				
1. Fresh Beef	per lb.	0	2	6
2. Mutton	do.	0	1	3
3. Sausages—Mixed	do.	0	2	0

SCHEDULE No. 14.

PROVISIONS—GEELONG DISTRICT.

(Delivery into Institutions.)
ANNEX TO CONTRACT No. 1960/255.
J. A. Fitzgerald, 150 Malop-street, Geelong.

Sub-schedule No. 1.

BREAD.		£	s.	d.
Security, £30.				
1. Bread—Fine wheaten, first quality	per cntl.	2	14	2
2. Bread—Wholemeal, first quality	do.	2	14	2
3. " Rolls	per doz.	0	3	2

(AGREEMENT.)
McKay MacLeod Pty. Ltd., 17 Cavendish-street, Geelong.

Sub-schedule No. 2.

GROCERIES.
The rates to be paid under this Sub-schedule shall be the wholesale price ruling on the day of delivery, less 2½ per cent. net. Delivery free to hostels.

ANNEX TO CONTRACT No. 1960/256.†
A. R. Bubb, 147 Moorabool-street, Geelong.

Sub-schedule No. 3.

MEAT.		£	s.	d.
For Gaol.				
Security, £5.				
1. Fresh Beef	per lb.	0	2	0
2. Corned Beef—Rolled or Round, without bone or cartilage	do.	0	2	3
3. Fresh Mutton—Forequarters	do.	0	1	0
" " —Legs	do.	0	1	6
5. Beef—Minced	do.	0	2	2
Sausages—Mixed	do.	0	1	8
7. Sausage Meat	do.	0	0	11

ANNEX TO CONTRACT No. 1960/257.†

A. C. Knight, 11 Melbourne-road, Drumcondra, Geelong.

Sub-schedule No. 4.

MEAT.
For delivery to Teachers' College Hostels as under—
"Lauriston," 23 Aberdeen-street, Geelong.
"Forty-Five," The Esplanade, Western Beach, Geelong.
"Hawthorne," Aberdeen-street, Geelong.
"Ariston," Packington-street, Geelong.
"Warrain," 56 Western Beach, Geelong.

Security, £5.

Fresh Beef—		£	s.	d.
1. Sirloin, boneless	per lb.	0	3	6
2. Topside Roast	do.	0	3	5
3. Corned Beef—Rolled or Round, as ordered, without bone or cartilage	do.	0	3	6
Mutton—				
4. Legs, Two-tooth	do.	0	1	6
5. Forequarters, boned, rolled, and pickled	do.	0	1	1
6. Chops, Forequarter	do.	0	1	2
7. Chops, Loin	do.	0	1	10
Steak—				
8. Chuck	do.	0	3	0
9. Bladebone	do.	0	3	3
10. Minced	do.	0	2	3
11. Fillet—Veal	do.	0	2	3
12. Tongues—Ox	do.	0	1	4
13. Kidneys—Ox	do.	0	1	9
Sausages—				
14. Mixed, thin	do.	0	1	6
15. Pork, thick	do.	0	1	6
16. Sausage—Pork, German	do.	0	3	9
17. Sausage Mince	do.	0	1	0
18. Bacon—Shoulder	do.	0	4	6

SCHEDULE No. 15.

PROVISIONS—COORIE MUNGLE PRISON CAMP, HEYTESBURY FOREST.

(Delivery to be made at the Camp.)

ANNEX TO CONTRACT No. 1960/258.
M. and J. V. Church, Recreation-road, Timboon.

Sub-schedule No. 1.

BREAD.		£	s.	d.
Security, £3.				
1. Bread—Fine wheaten, first quality	per cntl.	4	5	0

ANNEX TO CONTRACT No. 1960/259.†
Heytesbury Butchery, Timboon.

Sub-schedule No. 3.

MEAT.		£	s.	d.
Security, £4.				
1. Fresh Beef	per lb.	0	4	0
2. Corned Beef—Rolled or Round, as ordered, without bone or cartilage	do.	0	3	4
3. Sausages	do.	0	2	4
4. Sausage Mince	do.	0	1	8
5. Dripping—Beef	do.	0	1	0

SCHEDULE No. 16.

**PROVISIONS—ABORIGINAL STATION,
LAKE TYERS.**

(Delivery at Lake Tyers Station.)
ANNEX TO CONTRACT No. 1960/260.
R. Hodder, Nowa Nowa.

Sub-schedule No. 1.

BREADSTUFFS.

	Security, £25.	£	s.	d.
1. Bread—Fine wheaten, first quality	.. per cntl.	2	18	3
2. Flour—First quality	.. do.	1	19	6

(AGREEMENT.)

R. Hodder, Nowa Nowa.

Sub-schedule No. 2.

GROCERIES.

	£	s.	d.
1. Baking Powder—"Snowflake," or equal thereto, 1-lb. tins	per lb.		
2. Candles—Full weights, Kitchen's "Electrines," or other make of equal quality, 1-lb. packets	do.		
3. Coffee—Fresh roasted, and whole, beans to be thoroughly sound	do.		
4. Cocoa—Bulk	per lb.		
5. Corn or Maize Flour—1-lb. packets	do.		
6. Currants—2-crown (present season's)	do.		
7. Curry Powder—Bulk	do.		
8. Matches—Safety, 60 per box, "Yacht"	per gross		
9. Mustard—"Double Superfine"	per lb.		
10. Pepper—Black, ground, 2-oz. tins	per tin		
11. Raisins—Sultanas, 3-crown, (present season's)	per lb.		
Salt—			
12. Coarse	per cwt.		
13. Fine	do.		
14. Soap—Household, hard and dry, to sample	do.		
Soda—			
15. Bicarbonate	per lb.		
16. Washing	do.		
17. Tartar—Cream of, Substitute, Calcium Phosphate	do.		
18. Treacle—2-lb. tins	per tin		
19. Vinegar—Malt	per qt.		

(AGREEMENT.)

R. Hodder, Nowa Nowa.

Sub-schedule No. 3.

JAMS.

	£	s.	d.
1. Jams—Assorted, 24-oz. tins, in the proportion of half seed and half stone	per tin	**	

SCHEDULE No. 17.

**PROVISIONS—LANGI KAL KAL
TRAINING CENTRE.**

ANNEX TO CONTRACT No. 1960/261.
O. L. and B. M. Nicholls, Neil-street, Beaufort.

Sub-schedule No. 1.

BREAD.

	Security, £3.	£	s.	d.
1. Bread—Fine wheaten, first quality	.. per cntl.	3	6	8

ANNEX TO CONTRACT No. 1960/262.†

F. P. Haintz and Son, Havelock-street, Beaufort.

Sub-schedule No. 2.

MEAT.

	Security, £5.	£	s.	d.
1. Fresh Beef—Boneless	.. per lb.	0	3	6
2. Sausages—Mixed	.. do.	0	1	8
3. Mince Meat	.. do.	0	1	4

SCHEDULE No. 18.

**PROVISIONS—AGRICULTURAL COLLEGE,
LONGERENONG.**

(Delivery at the College.)

ANNEX TO CONTRACT No. 1960/263.

Schwarz Breads, 58 Firebrace-street, Horsham.

Sub-schedule No. 1.

BREADSTUFFS.

	Security, £5.	£	s.	d.
1. Bread—Fine wheaten, first quality	.. per cntl.	3	2	6
2. Flour—First quality	.. do.	§		

(AGREEMENT.)

Permevan Wright Ltd., Horsham.

Sub-schedule No. 2.

GROCERIES.

	£	s.	d.
1. Barley—Pearl	per lb.	0	0
2. Lima Beans	do.	0	1
3. Biscuits—Coffee, Malt, Nice	do.	0	2
4. "—Assorted Creams, &c.	do.	0	2
5. Cereals—Cornflakes—"Kelloggs" 8oz.	per pkt.	0	2
6. Cheese—Bulk { Mild	per lb.	0	3
7. Coconut—Desiccated	do.	0	2
8. Coffee Essence—26-oz.—"Bushells"	per bot.	0	6
9. Curry Powder (Indian) Madras	per lb.	0	4
10. Custard Powder—7-lb. packets—"Cameo"	do.	0	1
11. Dates—"Khadrawi,"—1-lb. packets	do.	0	2
Essence—			
12. Lemon—8-oz. "Harpers" { Pure	per bot.	0	6
13. Vanilla—8-oz. "Harpers" { Pure	do.	0	2
14. Cocoa—"Bournville" 14-oz. packets	per lb.	0	5
15. Flour—1-lb. packets—"Cameo"	do.	0	1
16. Self-raising, "McAlpins or Crusader" in 25-lb. bags	do.	0	0
Fruits—Dried—			
17. Currants—"Sunray" or "Swallow and Ariel"	do.	0	2
18. Raisins—seeded—"Sunray" or "Swallow and Ariel"	do.	0	2
19. Sultanas—2-crown—"Sunray" or "Swallow and Ariel"	do.	0	2
Fruits—Tinned—			
20. Apricots—30-oz., (Halves)—"S.P.C." Kyabram	per doz.	1	12
21. Peaches—30-oz., (Halves)—"S.P.C."—Kyabram	do.	1	14
22. Pears—30-oz., (Halves)—"S.P.C."—Kyabram	do.	1	14
23. Mixed Fruits—30-oz., "S.P.C."—Kyabram	do.	1	14
24. Solid Pack Apples—7-lb.	do.	5	19
25. Gelatine—Ground "Davis", 1-lb. packets	per lb.	0	9
26. Golden Syrup—2-lb. tins	per doz.	1	2
27. Gravox—1-lb. tins	per lb.	0	2
28. Honey—60-lb. tins, Yellow Box (2nd Grade—£2 10s.)	per tin	4	12
29. Jelly Crystals, 6-lb. packets, "Renown"	per pkt.	0	15
30. Macaroni—1-lb. packets "Renoldi"	per lb.	0	1
31. Mustard—"Keens"	do.	0	6
32. Oatmeal Flaked—"Parsons" and "John Bull"—5-lb. packets	do.	0	5
Peel—Mixed—Cut—			
33. Bakers loose—(½-lb. packets—1s. 10d. each)	per lb.	0	1
34. Pepper—White, ground	do.	0	15
35. Pickles—Assorted, 20-oz. bottles, "Leggo," "Wimmera"	per doz.	1	10

§ Order under Melbourne District Contract.

** The rates to be paid for all items under these Sub-schedules shall be the wholesale prices charged to the contractor, plus 12½ per cent. Wholesaler's invoices to be submitted with contractor's accounts.

Sub-schedule No. 2.—continued.

GROCERIES—continued.		£	s.	d.
36. Rice—Dressed	per lb.	0	1	0
Salt—				
37. { Fine, bulk	do.	0	0	2½
{ Table, 1-lb. packets	per doz.	0	8	6
Sauces—Tomato—				
38. "Reeds" 26-oz. bottles	do.	2	1	0
39. Tomato—1-gal. jars—"Reeds"	per jar	0	17	4
40. Worcestershire—1-gal. jars—"Greigs"	do.	0	16	0
41. Parsil, Economy	per pkt.	0	3	7
42. Sand Soap—12-oz. blocks, "Pearsons"	per doz.	0	10	6
43. Toilet Soap—3¼-oz., "Palmolive"	do.	0	7	11
44. Velvet { Quads	do.	1	9	0
{ Quints	do.	2	7	0
45. Soup—Tomato, 60-oz. "Leggos"	per tin	0	7	0
46. Spaghetti—1-lb. packets—"Rinoldi"	per pkt.	0	1	5
Sugar—				
47. Icing	per lb.	0	1	1
48. Castor	do.	0	0	11
49. White, 70's	per bag	3	2	3
50. Treacle—2-lb. tins	per doz.	0	19	0
51. Vegetables—Tinned—Baked Beans, 30-oz. "Vacola"	per doz.	1	13	6
52. Peas, 30-oz. "Raleigh" or "Bibby"	do.	1	11	0
53. Vim Cleaner	do.	0	15	0
54. Vinegar—1-gal. jars—"Sutherland"	per gal.	0	4	9

(AGREEMENT.)

Permewan Wright Ltd., Horsham.

Sub-schedule No. 3.

JAM.

1. Jams—in 5-lbs tins—"Monbulk"—Assortment as ordered.

	£	s.	d.	
Apricot	per doz.	4	16	0
Marmalade	do.	4	10	6
Melons	do.	4	7	6
Peach	do.	4	17	6
Plum	do.	4	17	6
Plum and Raspberry	do.	5	5	0
Quince	do.	4	3	0

SCHEDULE No. 19.

PROVISIONS—RESEARCH STATION, RUTHERGLEN.

(Delivery ex Bakery and Grocery Store.)

ANNEX TO CONTRACT No. 1960/264.

E. M. and G. A. Dwyer, Main-street, Rutherglen.

Sub-schedule No. 1.

BREAD.

	£	s.	d.	
1. Bread—Fine wheaten, first quality	per cntl.	3	10	10

(AGREEMENT.)

Aitken and Fullerton, Rutherglen.

Sub-schedule No. 2.

GROCERIES.

	£	s.	d.	
1. Biscuits { Sweet—Creams	per lb.	0	3	4
{ Dry Ryethin	do.	0	3	3
{ Savoy	do.	0	2	10
{ True-Bake	do.	0	3	0
2. Cocoa—¼-lb. packets	each	0	2	11
3. Coconut—desiccated	per lb.	0	2	6
4. Cornflakes—"Kelloggs"	per pkt.	0	2	8
5. Cornflower—1-lb. packets	do.	0	1	10
6. Custard Powder—1-lb. packets	do.	0	2	1
7. Coffee { Pure	per lb.	0	6	3
{ Nescafo—¼-lb. tins	per tin	0	17	6
{ Essence	per bot.	0	2	4
8. Cheese—"Kraft"—¼-lb. packets	per pkt.	0	2	3
" Matured	per lb.	0	3	9
9. Curry Powder, Loose	do.	0	4	0
10. Dates	do.	0	2	0
11. Essences { Vanilla—4-oz. bottles	each	0	5	3
{ Lemon—4-oz. bottles	do.	0	3	6
{ Cochineal—2-oz. bottles	do.	0	1	6
Extracts and Pastes—				
12. { Marmite—16-oz.	per jar	0	6	9
{ Peanut Butter—12-oz.	do.	0	3	9
{ Bonox—16-oz.	do.	0	11	6
{ Tinned Salmon "Greenseas"	per tin	0	3	9
13. Fish { Sardines	do.	0	1	6
{ Herrings in sauce, 14 oz.	do.	0	2	10

Sub-schedule No. 2.—continued.

GROCERIES—continued.

	£	s.	d.	
14. Flour—				
{ Self-raising, 25-lb. bags, "McAlpins"	per bag	0	19	6
{ Plain	per lb.	0	0	6
Fruits—Dried—				
15. { Currants	do.	0	2	2
{ Mixed	do.	0	2	6
{ Raisins (Seeded)	do.	0	2	6
{ Sultanas	do.	0	2	3
Fruits—Preserved—30-oz. tins—				
16. { Fruit Salad	per tin	0	3	3
{ Peaches	do.	0	2	9
{ Pears	do.	0	2	9
{ Pineapple	do.	0	3	3
{ Raspberries, 1-lb. tin	do.	0	3	0
17. Gelatine	per lb.	0	9	6
18. Gravox	per lb.	0	2	2
19. Herbs—Mixed—1-oz. packets	per pkt.	0	0	5
20. Honey { Creamed, 1-lb.	per jar	0	2	9
{ Pure, 2-lb. jar	do.	0	3	9
Jams—24-oz. tins—				
21. { Apricot	per tin	0	2	6
{ Blackberry and Plum	do.	0	2	4
{ Fig	do.	0	2	9
{ Marmalade	do.	0	2	6
{ Peach	do.	0	2	7
{ Plum, dark	do.	0	2	4
{ Raspberry	do.	0	3	6
{ Raspberry and Plum	do.	0	2	9
{ Strawberry	do.	0	4	5
22. Jelly Crystals	per pkt.	0	0	9
23. Junket Tablets	do.	0	1	9
24. Lard	per lb.	0	3	0
25. Margarine	do.	0	3	1
26. Matches—Safety	per pkt.	0	1	8
27. Mayonnaise—"Kraft"	per jar	0	2	11
Meat—Tinned—				
28. { Camp Pie	per tin	0	1	10
{ Irish Stew	do.	0	2	4
{ Sausages and Vegetables	do.	0	2	8
{ Beef Steak Pudding	do.	0	2	6
29. Milk—Condensed	do.	0	1	11
30. Oatmeal { Plain—5-lb. packets	per pkt.	0	6	3
{ Creamota—2-lb. packets	do.	0	2	11
31. Pepper—White—4-oz. tins	per tin	0	4	9
32. Potatoes	per cwt.	1	16	0
33. Rice { Polished	per lb.	0	1	0
{ Ground	do.	0	1	3
34. Salt { Table	per pkt.	0	0	8
{ Cooking	per lb.	0	0	3
{ Barbecue	per bot.	0	2	0
35. Sauce { Tomato, 26 oz.	do.	0	3	3
{ Worcester, 10-oz.	per doz.	1	4	0
Soaps—				
36. { "Rinso"—Economy	per pkt.	0	3	7
{ "Lux" Flakes	do.	0	3	0
{ "Surf"	do.	0	2	6
{ Toilet	per cake	0	0	10
37. Soup—Tomato	per tin	0	1	10
38. Sugar { Icing	per lb.	0	1	0
{ Castor	do.	0	1	0
39. Tea—¼-lb. packets	per pkt.	0	3	4
Vegetables—Tinned—				
40. { Baked Beans	per tin	0	2	0
{ Sweet Corn	do.	0	2	9
{ Spaghetti in sauce	per doz.	1	3	0
41. Vinegar	per bot.	0	1	9

SCHEDULE No. 20.

PROVISIONS AT SALE.

(Delivery at the Gaol.)

ANNEX TO CONTRACT No. 1960/265.

F. J. Hennessy Pty. Ltd., 102 Raymond-street, Sale.

Sub-schedule No. 1.

BREAD.

	£	s.	d.	
1. Bread—Fine wheaten, first quality	per cntl.	3	10	10

ANNEX TO CONTRACT No. 1960/266.†

H. L. G. Laws, 111 Raymond-street, Sale.

Sub-schedule No. 2.

MEAT.

	£	s.	d.	
1. Fresh Beef—Stewing	per lb.	0	4	0
2. Fresh Mutton, Chops	do.	0	2	0
3. " " Legs	do.	0	2	6
4. Corned Beef—Rolled or Round, as ordered, without bone or cartilage	do.	0	3	6
5. Sausages	do.	0	2	6

SCHEDULE No. 21.

**PROVISIONS—PLEASANT CREEK
SPECIAL SCHOOL, STAWELL.**

(Delivery at the School.)

ANNEX TO CONTRACT No. 1960/267.

Stawell Bakeries Pty. Ltd., 26 Main-street, Stawell.

Sub-schedule No. 1.

BREADSTUFFS.

Security, £10.

		£	s.	d.
1. Bread—Fine wheaten, first quality	per cntl.	3	1	3
2. Flour—First quality	do.	2	3	3

ANNEX TO CONTRACT No. 1960/268.†

H. A. Morris, 107 Victoria-street, Ballarat

Sub-schedule No. 3.

MEAT.

Security, £3.

£ s. d.

			£	s.	d.
Steak—					
1. Topside (Grilling)	per lb.	0	3	3	
2. Stewing (Minced when required)	do.	0	2	6	
3. Beef, Corned Silverside	do.	0	3	0	
4. Fresh Mutton—Leg	do.	0	1	9	
5. Chops—Middle Loins	do.	0	1	2	
6. Kidneys—Ox	do.	0	1	9	
7. Sausages—Pork	do.	0	1	11	
8. Livers—Sheep	do.	0	1	0	
9. Sausage—Pork—German	do.	0	2	0	
10. Frankfurts—First quality	do.	0	1	10	

(AGREEMENT.)

McKay MacLeod Pty. Ltd., 122 Lydiard-street, Ballarat.

Sub-schedule No. 2.

GROCERIES.

£ s. d.

1. Baking Powder—"Excelsior" 1-lb tins	per lb.	0	2	11½
2. Barley—Pearl	do.	0	0	8
3. Blue—Washing, "Reckitts Square"	per gross	1	14	1
4. Cereal—Sunflakes, "Wheatflakes" 24-oz. packets	per doz.	1	5	8
Weet Harts, 28-oz. packets	do.	1	16	7
5. Cocoa—14-oz. "Bournville"	do.	2	16	9
6. Coffee and Chicory "Gold Seal" No. 1	per lb.	0	4	7½
7. Corn Flour—1-lb. packets, "Kream"	do.	0	1	7½
Currants (present season's)—				
2-crown	do.	0	1	10½
3-crown	do.	0	1	10½
9. Curry Powder—Loose, "Gold Seal"	do.	0	3	3½
10. Custard Powder—Loose	do.	0	1	4
11. Dates—box lots	do.	0	1	7½
12. Ginger—Ground, loose	do.	0	5	4½
Golden Syrup—				
2-lb. tins	per doz.	1	1	11
70-lb. drums	each	2	18	10
14. Gravox—1-lb. tins	per doz.	1	2	0
15. Honey—First quality—Bulk	per lb.	0	1	2
16. Jams—Assorted, of approved kinds, in proportion of half seed and half stone, in tins containing 24-oz. net	per doz.	1	8	8
17. Jelly Crystals—packets, "McKays" Junket Tablets—	do.	0	8	4
"Merry Widow" flavoured	do.	0	17	6
19. Macaroni—22-lb. cartons	per ctn.	1	1	8
20. Margarine—Cake, Pastry	per lb.	0	1	7½
Oatmeal—				
Flake	do.	0	0	8½
Fine	do.	0	0	8½
22. Peel—Cut, mixed	do.	0	1	11½
23. Pepper—Black, ground	do.	0	6	5½
Raisins—Sultana (present season's)—				
2-crown	do.	0	1	10½
3-crown	do.	0	1	11½
4-crown	do.	0	1	11½
25. Rice—Dressed	per cwt.	4	17	2
26. Salt—Fine "Imperial"	do.	1	2	6
27. Sauce—Tomato, 26-oz. bottles "McKays"	per doz.	2	1	10
Soap—				
Preservene Foam	per doz.	0	15	10
29. "Lifebuoy"—Regular	per doz.	0	7	7
cakes				
30. Sand, "Preservene"	do.	0	8	1
31. "Velvet," { Quads	per doz.	1	5	3
{ Quints	do.	2	0	7
Soda—				
Bicarbonate	per lb.	0	0	8½
Washing	per cwt.	1	19	3
34. Spaghetti—22-lb. cartons	per ctn.	1	1	8
35. Spice—Mixed, 1-oz. packets	per pkt.	0	0	5½
36. Starch—12-oz. packets, "Silver Star"	per doz.	0	19	1
37. Sweets, boiled	per lb.	0	1	11½
38. Tartar—Cream of, substitute, "Antelope"	do.	0	2	6½
39. Tapioca—Pearl	do.	0	0	11½
40. Tea—First grade	do.	0		
41. Treacle—2-lb. tins	per doz.	1	1	5
42. Vinegar—Malt—1-gallon jar (Jars 3s. 6d.)	each	0	5	0

SCHEDULE No. 22.

PROVISIONS—SUNBURY DISTRICT.

(Delivery into Institutions.)

ANNEX TO CONTRACT No. 1960/269.

Bessell's Pty. Ltd., 275 Buckley-street, Essendon.

Sub-schedule No. 1.

BREADSTUFFS.

Security, £112.

£ s. d.

1. Bread—Fine wheaten, first quality	per cntl.	1	14	9½
2. Flour—First quality	do.	1	17	11½

(AGREEMENT.)

K. N. Tidswell, Sunbury.

Sub-schedule No. 2.

GROCERIES.

£ s. d.

1. Beans—Haricot	per lb.	0	1	9
2. Blue—Washing, 1-oz. knobs, "Reckitts"	per gross	1	15	0
3. Candles—Full weight, in 1-lb. packets, Kitchen's "Electrines," or equal thereto	per pkt.	0	3	3
4. Cereals—Weeties—24-oz. packets	per doz.	1	7	6
pkts.				
5. Cinnamon	per lb.	0	3	1
6. Cloves—Whole	do.	0	7	3
7. Cocoa—14-oz. packets, "Bournville"	do.	0	6	6
8. Cordials—26-oz. bottles—"Kia Ora"	per doz.	2	1	0
1-gal. jars (Jars 3s. each)	each	0	18	0
9. Corn or Maize Flour—1-lb. packets	do.	0	1	7
10. Currants—3-crown (present season's)	per lb.	0	2	0
11. Curry Powder	do.	0	4	6
12. Custard Powder—30-lb. tins	do.	0	1	4½
13. Dates—Stoneless	do.	0	2	5
14. Essences—16-oz. { Lemon "Triangle"	per doz.	3	13	0
{ Vanilla "Triangle"	do.	3	13	0
Flour—Self-raising—				
6-lb. bags	per bag	0	4	11
25-lb. bags	do.	0	19	0
16. Gelatine—16-oz. packets, "Davis"	per doz.	5	14	0
17. Ginger—Ground	per lb.	0	11	0
Golden Syrup—				
2-lb. tins	per doz.	1	0	0
19. Gravox—1-lb.	do.	1	3	0
20. Gravy Salt—1-lb. packets	do.	0	19	0
21. Honey—Pure—60-lb tins	per lb.	0	1	9
22. Jam—Diabetic, Assorted	per doz.	1	0	0
23. Jelly Crystals { 4-oz. packets	do.	0	8	0
{ Bulk	per lb.	0	2	5
24. Jex	per doz.	0	8	0
25. Lemon Peel—8-oz. packets	per pkt.	0	1	8
26. Macaroni	per lb.	0	0	11½
27. Margarine—Cake, Pastry	do.	0	1	10
28. Meat, Tinned { 12-oz. Camp Pio "Imperial"	per doz.	1	1	0
{ 16-oz.	do.	1	5	6
29. Meat Tenderizer—2-oz. tins	do.	1	0	0
30. Milk—Powdered—28-lb bag	per lb.	0	1	3½
31. Mustard—Loose, "Keen's"	do.	0	6	6
32. Nutmeg—Ground	do.	1	1	0

Sub-schedule—continued.
GROCERIES—continued.

		£	s.	d.
34. Peel—Mixed—8-oz. packet each	0	1	8
35. Pepper—Black, ground per lb.	0	10	0
36. Pickles—Mustard per doz.	1	12	6
37. Raisins, Sultanas, 3-crown (present season's)	per lb.	0	2	1
38. Salt—Fine per cwt.	0	16	0
Sauce—				
39. { Tomato, 26-oz. bottles per doz.	1	17	0
{ Worcestershire, 20-oz. bottles do.	1	10	6
Soda—				
40. Bicarbonate per lb.	0	0	9
41. Washing per cwt.	2	0	0
42. Spice—Mixed, loose per lb.	0	4	6
43. Starch—Loose, "Silver Star" do.	0	1	9½
44. Tartar, Cream of do.	0	4	4
45. Vermicelli do.	0	1	1
46. Vinegar—Malt, 1 gal. jars per gal.	0	6	0

Sub-schedule No. 3.

CEREALS.

		£	s.	d.
1. Barley—Pearl per cwt.			
2. Oatmeal—plain do.			
3. Oatmeal—flaked do.			
4. Peas, split—yellow do.			
5. Rice—dressed do.			
6. Rice—unpolished do.			
7. Seed Tapioca do.			

} Purchase under Tender Board quotations

ANNEX TO CONTRACT No. 1960/270.†
F. Watkins Pty. Ltd., 184 Bourke-street, Melbourne, C.1.

Sub-schedule No. 5.

MEAT.

		£	s.	d.
Security, £40.				
Fresh Beef—				
1. Rolled Roast, boneless, (brisket excluded)	per cntl.	12	1	8
2. Buttocks do.	12	1	8
Fresh Mutton—				
3. Kidney fat to be removed do.	5	0	0
4. Corned Beef—Rolled or Round, as ordered, without bone or cartilage do.	12	1	8
5. Sausages—Mixed per lb.	0	1	10
6. Sausage Meat do.	0	1	4
7. Sausage—Beef—German do.	0	2	0
8. Veal—Boneless do.	0	2	6
9. Tripe—Fresh do.	0	1	0
10. Livers—Sheep do.	0	2	0
11. Ox Kidney do.	0	2	9
12. Ox Tongue do.	0	1	4
13. Saveloys per doz.	0	3	3
14. Sheep Tongues per lb.	0	1	8

ANNEX TO CONTRACT No. 1960/271.

W. H. Johnsons Jams Pty. Ltd., 42 Meaden-street, South Melbourne S.C.5.

Sub-schedule No. 6.

JAMS.

		£	s.	d.
Security, £20.				
Jams—(in 54-lb. tins)				
1. Assorted, in bulk, of approved kinds, in the proportion of half seed and half stone, of the best quality. ⊙	per lb. actual net weight	0	0	11
2. Marmalade—bulk ⊙ do.	0	0	11

⊙ For 27-lb. tins, rate increased 1d. per lb.

SCHEDULE No. 23.

PROVISIONS—WARRNAMBOOL DISTRICT.

(Delivery into Institutions.)

ANNEX TO CONTRACT No. 1960/272.

Ray Barns Bakery, 140 Liebig-street, Warrnambool.

Sub-schedule No. 1.

BREADSTUFFS.

		£	s.	d.
Security, £5.				
1. Bread—Fine wheaten, first quality	.. per cntl.	3	18	1½
2. Flour—First quality do.	2	2	4

(AGREEMENT.)

Swintons Pty. Ltd., Timor-street, Warrnambool.

Sub-schedule No. 2.

GROCERIES.

		£	s.	d.
1. Bacon Rashers, middle per lb.	0	7	2
2. Cereals, whole—Large Packets per doz.	1	9	0
3. Cloves, whole per lb.	0	8	0
4. Custard Powder—1-lb. packets, "Medallion"	per pkt.	0	1	10
5. Essence, Vanilla—1-oz. bottles, "Medallion"	per bot.	0	1	2
6. Flour—Corn or Maize—1-lb. packets, "Medallion"	per pkt.	0	1	9
Fruits—Dried—				
7. { Apricots, 3-crown per lb.	0	5	3
{ Currants and Sultanas, 3-crown do.	0	2	2
Fruits—Preserved—30-oz. tins—				
8. { Apricots, halves per tin	0	2	8
{ Peaches, halves or sliced do.	0	2	10
{ Pears, halves do.	0	2	10
{ Two fruits do.	0	2	10
9. Gelatine—Ground, 1-lb. packets, "Davis"	per lb.	0	11	0
10. Honey { 2-lb. jars per jar	0	4	1
{ 60-lb. tins per lb.	0	1	4
11. Jams—24-oz. tins "A.J.C." or "S.P.C." (Apricot, Apple Jelly, Melon, Plum, Peach, Quince and Marmalade)	per tin	0	2	5
Jelly Crystals, "Medallion" or "Harpers"				
12. { 4-oz. packets per pkt.	0	0	10
{ 7-lb. packets per lb.	0	2	11
13. Margarine { Table, "Eta" do.	0	3	2
{ Cake and Pastry, "Marville" do.	0	2	8
14. Meat, Tinned—"Camp Pie," "Tom Piper"	per tin	0	1	11
12-oz. tins				
15. Mustard—"Keens" per lb.	0	8	0
16. Pepper, White, ground do.	0	14	6
17. Pickles—20-oz. bottles "Leggos" each	0	2	8
18. Rice—Dressed per lb.	0	0	11
19. Sago, Seed Tapioca do.	0	1	1
20. Salt—Fine—"Imperial" do.	0	0	3½
21. Sauce—Tomato, 26-oz. bottles "A.J.C."	per bot.	0	3	8
22. Sugar, white (1½d. per lb.) per cwt.	5	5	0
23. Vinegar †per qt.	0	1	4

ANNEX TO CONTRACT No. 1960/273.

Sungold Dairies Pty. Ltd., 68 Kepler-street, Warrnambool.

Sub-schedule No. 3.

MILK.

		£	s.	d.
Security, £3.				
1. Milk—Fresh and pure per gal.	0	4	2

ANNEX TO CONTRACT No. 1960/274.†

A. Struth, T. and G. Buildings, Lava-street, Warrnambool.

Sub-schedule No. 4.

MEAT.

		£	s.	d.
Security, £5.				
1. Fresh Beef—Rolled Roast (brisket excluded)	per lb.	0	3	3
2. Corned Beef—Rolled or Round, as ordered do.	0	3	3
Fresh Mutton—				
3. Forequarters do.	0	1	5
4. Legs do.	0	2	2
5. Chops—Middle Loin do.	0	2	2
Steak—				
6. Topside do.	0	3	3
7. Stewing do.	0	3	0
8. Sausage—Beef German do.	0	3	9
9. Livers—Sheep do.	0	1	3
10. Sausage Meat do.	0	1	9

† Containers charged for, credited on return.



VICTORIA
GOVERNMENT GAZETTE

Published by Authority

[Registered at the General Post Office, Melbourne, for transmission by post as a newspaper.]

No. 68]

FRIDAY, JULY 15

[1960

EUROA WATERWORKS TRUST.

BY-LAW No. 2.

THE Euroa Waterworks Trust, in pursuance and exercise of the powers and authorities conferred by the Water Acts, doth hereby make the By-law following for its Waterworks District:—

PART I.—INTERPRETATION.

Definitions.

1. In this By-law, unless inconsistent with the context or subject-matter—

- "The Act" means the Water Acts.
- "Fittings" includes all appliances and things whatsoever, other than pipes, used in connexion with the conveying, supplying, storing, or regulation of the flow of water in or derived from a main pipe.
- "Main pipe" means any pipe belonging to or under the control of the Trust and used for the conveying or supplying of water.
- "Person" includes a corporation or company.
- "Private service" means and includes all pipes and fittings used in connexion with the supply of water from a main pipe to a tenement and/or in connexion with the use or consumption of such water in or on such tenement.
- "Proper Officer" means any employee of the Trust authorized to execute any function on behalf of the Trust.
- "Service pipe" means any pipe (not being a main pipe) used for the conveying or supplying of water derived from a main pipe.
- "Trust" means the Euroa Waterworks Trust.
- "Works" means works of or in connexion with the laying, constructing, altering, disconnecting, removing, repairing, renewing, or maintaining of a private service, or any part thereof.

All words used in this By-law which are also used in the Act shall have the meanings assigned to them by the Act.

No. 68.—5088/60.

PART II.—LICENSING OF PLUMBERS.

Unlicensed Persons Not to Interfere with Private Services.

2. Before any person shall affix any service pipe to any main pipe of the Trust or alter, repair, or in any manner interfere with any pipe of the Trust or any service pipe, tap, or meter or other fitting connected with the main pipes of the Trust, he shall obtain from the Trust a licence in that behalf to execute such works, and no unlicensed person shall affix, alter, repair, or in any manner interfere with any such main pipe, service pipe, tap, meter, or other fittings as aforesaid.

Period of Licences. Cancellation of Licences. Fees Payable.

3. Each licence shall be for the period ending 31st December next ensuing after the issue thereof, but may be renewed by the Trust at its discretion from time to time in each case to the following 31st December. The Trust shall have power at any time to suspend or cancel a licence in the event of the holder thereof performing his work in an unsatisfactory manner or committing any breach of the Act or of this By-law, and in such matters the Trust shall be the sole judge. For each original licence the licensee shall pay to the Trust a fee of One pound, and for each renewal Five shillings.

Proof of Fitness to be Given.

4. Before any licence shall be granted by the Trust, the person applying for such licence shall satisfy the Trust by any tests required by the Trust or by virtue of his registration by the Plumbers and Gasfitters Board of Victoria that he is a competent plumber and that he is thoroughly conversant with the provisions of the By-laws of the Trust relating to water supply and with the Act so far as it applies to town supplies. The Trust may, if it so sees fit, refuse to grant such licence.

PART III.—CONSTRUCTION AND ARRANGEMENT OF WORKS.

Notice of Works to be Given.

5. No person shall execute any works (except such works as are authorized by sections 191 and 194 of the Water Act 1928)—

- (a) without having given to the Trust not less than two days prior to the commencement of the execution of such works—

- (i) notice in writing of his intention so to do, specifying the tenement in, on or in respect of which it is proposed to execute such works and the time or

times (being between the hours of 8 a.m. and 5 p.m. on any week day except a public holiday or a Saturday) during which it is proposed to execute such works,

- (ii) a complete specification in writing of the works proposed to be done setting out the mode, form, strength, material, construction, dimensions, and arrangement of all pipes, fittings, and structures intended to be used in the execution of such works,
 - (iii) in the case of every private service containing any service pipe of diameter larger than 2 inches a properly prepared plan drawn to a scale specified thereon of the premises in, on or in respect of which it is proposed to execute the said works, showing thereon all buildings, erections and structures on the said premises and the proposed arrangement of all pipes and other works which it is proposed to lay or construct therein or thereon. Every notice specification and plan shall be signed by the licensed plumber actually engaged to carry out the works referred to in the notice, or by a licensed plumber employing another licensed plumber to carry out the work under his supervision;
- (b) contrary to or not in conformity with this By-law or such notice, specification, and plan mentioned in sub-paragraphs (i), (ii) and (iii) of paragraph (a) of this clause.

Plumbers to Report.

6. Each licensed plumber shall report to the Proper Officer of the Trust the completion of any new work, extensions or repairs in connexion with any service within 24 hours of effecting same.

Carrying Out of Plumbing Work.

7. Every licensed plumber shall in carrying out any work of water supply—

- (a) execute the work in accordance with the provisions of the Act and of the By-laws of the Trust and any special directions or orders given or

- issued thereunder by the Trust or by the Proper Officer of the Trust; and
- (b) execute the work in a thorough and expeditious manner to the satisfaction of an inspecting officer of the Trust; and
- (c) use materials of the description, quality, kind and standard prescribed by this By-law; and
- (d) employ only competent operatives and assistants; and
- (e) obtain permission, where necessary, for the execution of the work on, over or through any private property, or any street, road, park, reserve or other public place or property; and
- (f) pay all fees payable to the council of a municipality for the opening of any public road or street or otherwise in connexion with the works; and
- (g) restore upon completion of the work any part of any public road or street to the satisfaction of the municipal council or other authority having control thereof; and
- (h) except where authorized in writing by the owner or his agent to omit restoration, restore any other property interfered with by the work to the satisfaction of the Proper Officer of the Trust; and
- (i) take all proper and necessary precautions so that no accident, damage or unnecessary inconvenience may be directly or indirectly occasioned by the execution of the work; and
- (j) exercise at all times immediate supervision over the work.

8. (a) No service pipe (other than those installed for fire service purposes and sealed in accordance with the provisions of clause 34 of this By-law) which supplies water otherwise than by measure to any tenement shall have a bore exceeding $\frac{1}{2}$ inch.

(b) No person shall connect or affix to the Trust's mains any service pipe (other than those installed for fire service purposes and sealed in accordance with the provisions of clause 34 of this By-law) which has a diameter exceeding the appropriate diameter listed in the Schedule hereunder written corresponding either to the net annual valuation of the property to be served, or to the anticipated annual consumption of water at the said property as demonstrated to the satisfaction of the Proper Officer of the Trust and certified to under his hand, whichever is the larger—

Net Annual Valuation of Property.	Annual Consumption of Water.	Maximum Diameter of Service Pipes Allowed (in Inches).
Not over £150	Not over 200,000 gallons	$\frac{1}{4}$
Over £150 but not over £300	Over 200,000 gallons, but not over 500,000 gallons	1
Over £300 but not over £500	Over 500,000 gallons, but not over 800,000 gallons	1 $\frac{1}{4}$
Over £500 but not over £1,000	Over 800,000 gallons, but not over 1,500,000 gallons	1 $\frac{1}{2}$
Over £1,000 but not over £2,000	Over 1,500,000 gallons, but not over 3,000,000 gallons	2

Depth of Service Pipes.

9. No person shall lay, construct, repair or alter any private service unless every service pipe forming part thereof for such portion of its length as lies in or on private property is securely clipped to a structure or is laid and constructed in such manner that the same is at all points at a depth of not less than 12 inches below the surface of the ground. Every such service pipe for such portion of its length as lies in or on any road, street, lane or right-of-way or where it may be exposed to vehicular traffic shall be laid and constructed in such manner that the same is at all points at a depth of not less than 18 inches below the surface of the ground or at such greater depth as the council of the municipality having control of the said road, street, lane or right-of-way may require.

Access to Service Pipes.

10. No person shall—
- (a) lay, construct or alter any private service, or any part thereof,
 - (b) erect or construct any building, erection or structure—

in such place, position or manner that any part of such private service is not easily accessible for the purposes of inspection, repair and renewal unless such part is comprised of copper piping and copper fittings.

Arrangement of Stop-tap, &c.

11. Every meter, stop-tap and stop-tap ferrule shall be opposite the tenement supplied and in one line at right-

angles to the main pipe to which such stop-tap ferrule is fixed, unless such an arrangement is impracticable, in which case such services shall be provided with two high-pressure screw-down stop-taps, one of which shall be fixed opposite the stop-tap ferrule on the main pipe and the other in accordance with the provisions of clause 18 of this By-law.

Cross Connexions.

12. No person shall permit or suffer any fluid, solid or gas, which in the opinion of the Proper Officer of the Trust is capable of polluting water supplied by the Trust, to have means of access to any pipe in communication directly or indirectly with any main pipe of the Trust.

Where any service pipe is connected to any cistern, tank or receptacle used for the storage of water or fluid, there shall be an effective air gap at the outlet of such service pipe, and the said outlet shall be not less than $\frac{1}{2}$ inch above the highest possible water level in the said cistern, tank or receptacle.

Connexions to Steam Boilers.

13. Water supply connexions to steam boilers shall be made as follows:—

- (a) By direct connexion from a service pipe, in which case a screw-down high-pressure stop-tap with its spindle vertically upwards shall be fixed on the piping supplying water to a boiler; a vertically acting reflux valve shall be fixed between the stop-tap and the boiler and a $\frac{1}{2}$ -in. testing ferrule or bib-tap shall be fixed between the reflux valve and the stop tap; or

- (b) by direct connexion from a service pipe, together with an injected supply from a storage tank or condensate sump in which case, in addition to the provisions of paragraph (a) hereof, the injected water to a boiler shall be taken through a separate opening in the wall of the boiler. In no circumstances shall a connexion be permitted between any service pipe and the piping from a storage tank or condensate sump.

Water connexions may be made through the tops or sides of steam boilers.

PART IV.—MATERIALS.

Specifications for Piping and Materials.

14. No person shall use any pipe or fittings in or in connexion with a private service, unless the same shall comply in all respects with the following specifications:—

- (a) The whole of the pipes and fittings shall be of the best quality galvanized wrought-iron, copper, brass, cast-iron, welded mild steel or asbestos cement, shall be sound and free from all defects and shall comply with the relevant specifications of the Standards Association of Australia where such specifications have been issued.
- (b) All pipes and pieces shall be true in sectional form, straight longitudinally, clear in bore and (in case of wrought-iron piping) properly galvanized throughout and shall be of equal strength and thickness throughout the entire body of the same.
- (c) Only pipes and fittings which have been tested in accordance with the requirements of the specifications of the Standards Association of Australia will be permitted to be used for services whether inside or outside the tenement.
- (d) All ends of galvanized wrought-iron and brass pipes, bends and fittings shall be properly and truly threaded and capable of being screwed into thimbles, tees or fittings.
- (e) All stop-taps and bib-taps shall be screw-down high-pressure taps made of hard brass or gun-metal.
- (f) No person shall use any pipe or fittings in or in connexion with a private service unless the same shall comply in all respects with the following specifications:—

- (a) That part of any service pipe (including any bend, elbow or other fitting therefor) which extends in a thoroughfare from a water main to, and including the high pressure screw-down stop-tap required to be fixed, pursuant to clause 18 hereof, and all meter connexions shall be of the materials hereinafter set forth, that is to say:—

- (i) Where the diameter of the service pipe is two inches (2") or less—copper or brass; and
- (ii) Where the diameter of the service pipe is greater than two inches (2")—copper, brass, galvanized iron, cast iron, welded mild steel or asbestos cement.

PART V.—CONNEXIONS TO MAINS.

One Service Pipe to Each Tenement.

15. No person shall affix or connect or cause or permit to be affixed or connected to any main pipe more than one service pipe or private service for the supply of water for domestic purposes to any one tenement.

Connexion to Main Pipe.

16. No person shall affix or connect any service pipe to any main pipe save by means of a stop-tap ferrule to which a right-angle bend of copper alloy is properly and securely attached.

Size of Tappings Permitted.

17. (a) The maximum diameters of tappings that will be permitted for main pipes of the respective diameters

set out hereunder, and for cases where the tapping is made with or without a tapping saddle, are as follows:—

Maximum Diameter of Tapping in Inches.

Diameter of Main Pipe in Inches.	Without Tapping Saddle (Cast-iron Main Pipes Only).	With Tapping Saddle.
3	$\frac{1}{2}$	$1\frac{1}{2}$
4	$\frac{3}{4}$	$1\frac{1}{2}$
5	1	$1\frac{1}{2}$
6	1	$2\frac{1}{2}$
7	1	$2\frac{1}{2}$
8	$1\frac{1}{2}$	$2\frac{1}{2}$
9	$1\frac{1}{2}$	$2\frac{1}{2}$
Over 9	2	$2\frac{1}{2}$

Tapping Fees.

(b) No person shall affix or connect or cause to be affixed or connected any service pipe to any main pipe without having first paid to the Trust a tapping fee of Twenty shillings (20s.).

Position of Stop-taps.

18. A high-pressure screw-down stop-tap properly secured shall be fixed on each water service in one of the following positions:—

- (a) Between the main pipe and the building line within 6 feet of the building line, and in this case the stop-tap shall be covered by a box which shall comply with the requirements of the municipality in which the service is laid.
- (b) where a meter is fixed, between the meter and the inlet bend thereto;
- (c) where a meter is not fixed, on the service pipe above the ground in an accessible position not more than 6 feet inside the building line.

PART VI.—REPAIR.

Repair of Service Pipes.

19. Any person using any private service shall at all times keep same in proper repair.

Trust Can Repair Service Pipe in Certain Circumstances.

20. If any person refuses, neglects or delays to have any private service, or any part thereof, used by him properly repaired after having been required in writing by the Proper Officer of the Trust so to do the Trust by its Proper Officers, servants or agents may enter into or upon any premises supplied by such private service, or any part thereof, and may where necessary repair or renew such private service, or any part thereof, so as to prevent the waste of water and may charge such person with the cost and expense of such repair or renewal, and such cost and expense shall be a debt due by such person to the Trust.

PART VII.—METERS.

Meters Supplied and Maintained.

21. (a) Except as permitted in clause 34 of this By-law, no person shall use any private service save for the supply of water solely for domestic purposes, exclusive of the watering of any garden, unless the whole of the water supplied to such private service passes through a meter.

(b) Such meters will be provided and maintained by the Trust, and every person before installing a private service shall ascertain from the Trust the size of meter to be installed and shall make provision in the arrangement and construction of the private service for connexion of such meter in accordance with the following requirements:—

- (i) The meter shall be located within the property and not more than 6 feet from the building line.
- (ii) The meter shall be in an easily accessible position protected from accidental damage.
- (iii) The meter shall be properly and securely affixed to such private service or service pipe by means of connexions or quarter bends of brass, copper or copper alloy.
- (iv) The meter shall be fixed truly level on a solid foundation of brick, stone or concrete, the top of which foundation is level with or above the surface of the ground.
- (v) All washers used for connexion couplings for meters shall be made of leather.

(c) Pending connexion of the said meter the person authorized to install the service pipe shall connect a distance piece in the service pipe in place of the meter.

Restriction of Access to Meter.

22. No person shall construct, place, stack or store or permit or suffer to be constructed, placed, stacked or stored any building, erection, material or thing over or upon any meter connected or affixed to any private service or shall do or permit or suffer to be done any act, matter or thing whereby inspection of such meter shall be prevented, obstructed or in any way rendered difficult or interfered with.

Replacement and Testing of Meter.

23. (a) The Trust may at any time replace or remove for testing any meter attached to any private service.

Fees Returned in Certain Circumstances.

(b) Any consumer may at any time request the Trust, in writing, to test any meter attached to his private service and through which water supplied to him passes and shall at the time of the delivery of such request pay to the Trust the sum of One pound. The Trust shall thereupon remove and test the meter or cause the same to be tested in such manner as it thinks fit. If such meter is found to be registering correctly the Trust may retain such sum of One pound in satisfaction of the fee for testing meter hereinbefore prescribed, but if such meter is found to be registering incorrectly such sum of One pound shall be returned to such consumer.

Consumer Leaving Tenement to Notify Trust.

24. Every person who shall cease to occupy the premises on which such meter is affixed shall give to the Trust, in writing, at least six days' notice of his intention to do so.

PART VIII.—MISUSE AND WASTE.

Supply Restricted to One Tenement Only.

25. No person shall use or permit or suffer the use of any private service for the supply of water to more than one tenement.

Cisterns, Tanks and Troughs.

26. No person shall use or permit or suffer the use of any private service, or any part thereof, for the supply of water to any cistern, tank or water trough unless such cistern, tank or water trough is watertight and is provided with an equilibrium ball-valve or other mechanism efficiently regulating the flow of water thereinto in such manner that such water shall not overflow such cistern or tank. No person shall affix any overflow pipe to any cistern or tank in such manner or position that is not open to inspection. In this clause water trough means a water trough used for the supply of water to animals.

Water Closets and Urinals.

27. No person shall construct, lay or use any service pipe which communicates directly or indirectly with or supplies water to any urinal or water closet, or any part thereof, save through a cistern or tank.

Baths.

28. No person shall use or permit or suffer the use of any private service for the purpose of supplying water to any bath capable of containing more than 100 gallons of water.

No Overflow Pipe on Baths.

29. No person shall affix an overflow pipe to any bath.

Wasting of Water.

30. No person supplied with water by the Trust shall waste the same or permit or suffer the same to run to waste.

Sale of Water.

31. No person shall take or carry away or permit or suffer any other person to take or carry away any such water from any premises supplied with water by the Trust, and no person shall sell any water supplied by the Trust.

Fire Brigades.

32. No person other than a servant or agent of the Council of the municipality of Euroa or the Euroa Fire Brigade in the execution of his duty as such servant or agent shall without the written permission of the Trust open, close or otherwise interfere with any hydrant attached to any main pipe.

Taps in Parks and Reserves.

33. No person other than a servant or agent of the municipality, corporation, or body having the care and management of a public park, public garden or reserve for public purposes shall without the previous consent of the Trust open, close or otherwise interfere with any

tap, valve or other like regulator (except a drinking fountain or other tap provided for public use) in, on or connected with any service pipe used for the supply of water to such park, garden or reserve.

PART IX.—PRIVATE FIRE SERVICES.

Private Fire Services.

34. (a) Private fire services comprising pipes and fittings not exceeding 6 inches in diameter and without meters may be permitted at the expense of the owner of the premises, subject to the payment of a fee of Fifteen shillings (15s.) per annum. Every such fire service shall be sealed. Except in case of fire no person shall without the authority of the Trust wilfully break the seal affixed to any private fire service, and in the event of any such seal having been broken accidentally or otherwise the occupier of the tenement shall within 24 hours thereafter give notice, in writing, of the fact at the office of the Trust, and except in the case of a fire he shall pay a resealing fee of Fifteen shillings (15s.). No water shall be taken from any sealed portion of a private service except for the extinction of fire.

(b) Except as expressly provided in sub-clause (a) of this clause, all portions of private services installed for fire service purposes shall comply with all provisions of this By-law.

(c) Every private fire service pipe shall be laid and fixed in a conspicuous position and shall be painted with a distinguishing coating of bright-red paint, which shall be maintained at all times.

(d) Any application for a fire service shall be made by the owner of the premises and in writing to the Trust.

(e) In the event of the owner or occupier committing any offence under the Act or any breach of this By-law or permitting or suffering any such offence or breach to be committed the Trust may by notice in writing to the owner withdraw permission for the private fire service, and such service shall thereupon be disconnected.

PART X.—INSPECTIONS.

Inspections.

35. Any person authorized by the Trust in that behalf, either generally or for any class of cases or in any particular case, may at all reasonable times—

(a) enter into or upon any premises for the purpose of inspecting and may inspect any private service, or any part thereof, or any works in course of execution therein or thereon, and/or

(b) enter into or upon any premises for the purpose of superintending the execution of any works in course of execution therein or thereon and may give to the owner or occupier of such premises or any person engaged in executing any such works any directions or instructions necessary for the purpose of ensuring that all relevant provisions of this By-law shall be duly complied with and observed during and in connexion with the execution of such works,

(c) for any such purpose as aforesaid may dig or excavate in or upon any such premises.

Hindering of Inspections.

36. No person shall obstruct, hinder, impede, resist, oppose or refuse admission to any premises by the Proper Officer or any person duly authorized in that behalf by the Trust, or shall fail or neglect to carry out and observe all lawful directions and instructions given by him.

PART XI.—PENALTIES.

Penalties.

37. Any person who commits any breach of any of the provisions of this By-law shall be liable to a penalty of not more than Five pounds (£5), and in the case of a continuing offence to a further penalty not exceeding Five pounds (£5) for every day after notice of the offence from the Trust.

Passed this 5th day of April, 1960.

(SEAL) T. G. SULLIVAN, Chairman.
A. WINBURN, Commissioner.
A. BURKE, Secretary.

Approved by the Governor in Council,
7th June, 1960.

A. MAHLSTEDT,
Clerk of the Executive Council.