

[2215]



VICTORIA
GOVERNMENT GAZETTE

Published by Authority

[Registered at the General Post Office, Melbourne, for transmission by post as a newspaper.]

No. 52]

FRIDAY, JUNE 30

[1961

CONTRACTS ACCEPTED.

(SERIES 1961-62.)

SUPPLY OF PROVISIONS

FOR

STATE DEPARTMENTS

FROM

1st JULY, 1961, to 30th JUNE, 1962,

or as stated.

Conditions of Contract and Stipulations are shown herein for the guidance
of Officers ordering and receiving supplies.

H. COUTTS,
Secretary to the Tender Board.

CONTRACTS ACCEPTED—(Series 1961-62.)
PROVISIONS.

No. of Contract.	Particulars of each Tender Accepted.	Amount.	Name of Contractor or Supplier.	Charge against Vote or Fund.
PROVISIONS—				
Supply of Provisions, in such quantities as may be ordered, from 1st July, 1961, to 30th June, 1962, or as stated.				
Schedule No. 1.—Melbourne District—				
12	Bread, Kew Mental Hospital	Rates as per annex	Johnson and Riches Pty. Ltd. ..	
13	Bread, Children's Welfare Depot and Receiving House and Mental Hospital, Royal Park, and Travancore Developmental Centre, Flemington	Ditto	Johnson and Riches Pty. Ltd. ..	
14	Bread, "Winlaton" Juvenile School, 186 Springvale-road, Nunawading	Ditto	Capitol Bakeries Pty. Ltd. ..	
15	Bread, Teachers' College and Hostels at Grattan-street, 93 Drummond-street, Carlton; 470 and 481 St. Kilda-road, Melbourne; 19 Queens-road, Melbourne; 152 Toorak-road west, South Yarra; Frank Tate House, 373 Dandenong-road, Armadale; "Redcourt", No. 6 and "Larnook", 13 Orrong-road, Armadale; 11 Patterson-street, Hawthorn; 174 Punt-road, Prahran; 221 Burwood-road, Burwood, John Cannon House, 32 Belmont-avenue, Kew, and 17 Moule-avenue, Brighton; and Police Hospital, St. Kilda-road, Melbourne; Mental Hygiene Clinic, 321 Glenferrie-road, Malvern	Ditto	Capitol Bakeries Pty. Ltd. ..	
16	Flour	Ditto	Jas. Minifie and Co. Pty. Ltd. ..	
	Groceries	Ditto	Moran and Cato Pty. Ltd. (A) ..	
	Cereals	Ditto	Purchase under Tender Board quotations	
17	Jams	Rates as per annex	W. H. Johnsons Jams Pty. Ltd. ..	
18	†Meat, Kew Mental Hospital	Ditto	F. Watkins Pty. Ltd. ..	
19	†Meat, Pentridge Penal Establishment and "Fairlea" Female Prison, Fairfield ..	Ditto	Jacksons Meat Co. Pty. Ltd. ..	
20	†Meat, Children's Welfare Depot, Royal Park, and Travancore Developmental Centre, Flemington	Ditto	J. H. Cooke Pty. Ltd. ..	
21	†Meat, "Winlaton" Juvenile School, 186 Springvale-road, Nunawading	Ditto	J. H. Cooke Pty. Ltd. ..	
22	†Meat, Royal Park Mental Hospital and Receiving House	Ditto	J. H. Cooke Pty. Ltd. ..	
	Soap Mixtures	Ditto	Moran and Cato Pty. Ltd. (A) ..	
23	Tea	Ditto	Pura Tea Products Pty. Ltd. ..	
24	Coffee	Ditto	Moran and Cato Pty. Ltd. ..	
	Potatoes	Ditto	Purchase under Tender Board quotations	General Expenses 1961-62
Schedule No. 2.—Mont Park, Bundoora, Larundel, Janefield, Gresswell, and Pleasant View, Wood-street, Preston—				
25	Bread	Rates as per annex	Northern Bakeries (Preston) Pty. Ltd.	
	Groceries	Ditto	Moran and Cato Pty. Ltd. (A) ..	
26	Jams	Ditto	W. H. Johnsons Jams Pty. Ltd. ..	
27	†Meat—Mont Park District	Ditto	Ditto	
28	†Meat—Preston	Ditto	Ditto	
29	†Meat—Gresswell	Ditto	W. Angliss and Co. (Aust.) Pty. Ltd.	
	Potatoes	Ditto	Purchase under Tender Board quotations	
Schedule No. 3.—SS. Rip and Dredges—				
30	Groceries	Rates as per annex	Moran and Cato Pty. Ltd. (A) ..	
	†Meat	Ditto	Jackson's Meat Co. Pty. Ltd. ..	
	Vegetables	Ditto	Purchase by agreement	
	Potatoes	Ditto	Purchase under Tender Board quotations	
Schedule No. 4.—Teachers' College and Hostels at Grattan-street, 93 Drummond-street, Carlton; 470 and 481 St. Kilda-road, Melbourne; 19 Queens-road, Melbourne; 152 Toorak-road west, South Yarra; Frank Tate House, 373 Dandenong-road, Armadale; "Redcourt" 6 and "Larnook", 13 Orrong-road, Armadale; 11 Patterson-street, Hawthorn; 174 Punt-road, Prahran; 221 Burwood-road, Burwood; John Cannon House, 32 Belmont-avenue, Kew; 17 Moule-avenue, Brighton; and Police Hospital, St. Kilda-road, Melbourne; Mental Hygiene Clinic, 321 Glenferrie-road, Malvern—				
31	Groceries	Rates as per annex	Order under Melbourne District ..	
	†Meat	Ditto	J. H. Cooke Pty. Ltd. ..	
	Potatoes	Ditto	Purchase under Tender Board quotations	

Names shown in italics denote suppliers under agreement. † Contract for period 1st July, 1961, to 30th September, 1961, only.

CONTRACTS ACCEPTED—(Series 1961-62)—continued.

PROVISIONS—continued.

No. of Contract.	Particulars of each Tender Accepted.	Amount.	Name of Contractor or Supplier.	Charge against Vote or Fund.
PROVISIONS—continued.				
Schedule No. 5.—Heatherton Sanatorium, Cheltenham—				
32	Bread	Rates as per annex	Charlestons Bakery Pty. Ltd. ..	
	Groceries	Ditto	<i>Moran and Cato Pty. Ltd. (A)</i> ..	
33	†Meat	Ditto	W. Angliss and Co. (Aust.) Pty. Ltd. ..	
34	Milk	Ditto	Dairymen and Farmers United Milk Co. Ltd.	
Schedule No. 6.—Ararat District—				
35	Breadstuffs	Rates as per annex	Mark Forsyth and Co. Pty. Ltd. ..	
	Groceries	Ditto	} <i>McKay MacLeod Pty. Ltd. (A)</i> ..	
	Jams	Ditto		
36	†Meat	Ditto	H. A. Morris	
	Potatoes	Purchase under Tender Board quotations	
Schedule No. 7.—Ballarat District—				
37	Breadstuffs	Rates as per annex	Brogden Bros. Pty. Ltd.	
	Groceries—Teachers' Hostels	Ditto	} <i>McKay MacLeod Pty. Ltd. (A)</i> ..	
	Groceries—Mental Hospital	Ditto		
	Jams	Ditto	Victorian Inland Authority	
38	†Meat—Gael and Mental Hospital	Ditto	H. A. Morris	
39	†Meat—Teachers' Hostels	Ditto	The Ballarat Modern Dairy Pty. Ltd.	
40	Milk—Mental Hospital and Teachers' Hostels	Ditto	Purchase under Tender Board quotations	
	Potatoes	
Schedule No. 8.—Beechworth District—				
41	Bread	Rates as per annex	P. A. Taylor Model Bakery	
	Groceries	Ditto	} <i>Moran and Cato Pty. Ltd. (A)</i> ..	
	Jams	Ditto		
42	†Meat	Ditto	E. Spenoer	
43	Milk—Mental Hospital	Ditto	H. and J. Baltus	
	Potatoes	Purchase under Tender Board quotations	
Schedule No. 9.—Bendigo District—				
44	Bread—For Gael and Sandhurst Boys' Centre and Teachers' Hostel, "Lancewood", McLarenstreet	Rates as per annex	C. H. Jeffrey Pty. Ltd.	} General Expenses 1961-62
45	Bread—For Teachers' College Hostel, Osborne-street, Pleasant Vale	Rates as per annex	C. H. Jeffrey Pty. Ltd.	
46	Bread—For Teachers' Hostel, "Comersdale"	Ditto	Roy Raggatt Pty. Ltd.	
47	Milk—For Sandhurst Boys' Centre	Ditto	} Sandhurst Dairies Ltd.	
48	Milk—Teachers' Hostels	Ditto		
	Groceries	Ditto	<i>Pulfer, Cox and Hargreaves, Wholesalers Ltd. (A)</i>	
49	†Meat—For Gael	Ditto	Alan H. Gittins	
50	†Meat—For Sandhurst Boys' Centre	Ditto	Alan H. Gittins	
51	†Meat—For Teachers' Hostels	Ditto	M. P. and L. K. Marchioni	
	Potatoes	Purchase under Tender Board quotations	
Schedule No. 10.—Castlemaine District—				
52	Bread	Rates as per annex	T. N., M. K., and T. J. Kenyon ..	
53	†Meat	Ditto	McQueen Bros.	
Schedule No. 11.—School of Forestry, Creswick—				
54	Breadstuffs	Rates as per annex	M. C. and L. M. Bennett	
	Groceries	Ditto	<i>J. Tait and Son (A)</i>	
55	Milk	Ditto	E. J. Keen	
56	†Meat	Ditto	H. J. Symons Pty. Ltd.	
Schedule No. 12.—Agricultural College, Dookie—				
57	Breadstuffs	Rates as per annex	J. and A. Toohey	} <i>Cohne (Shepparton) Pty. Ltd. (A)</i> ..
	Groceries	Ditto		
	Jam	Ditto		
Schedule No. 13.—McLeod Settlement, French Island—				
58	Bread	Rates as per annex	G. A. and A. H. Van Der Craats ..	
	Groceries	Ditto	<i>E. V. Peters (A)</i>	
59	†Meat	Ditto	George Hayman	
	Potatoes	Purchase under Tender Board quotations	
Schedule No. 14.—Geelong District—				
60	Bread	Rates as per annex	J. A. Fitzgerald	
	Groceries	Ditto	<i>McKay MacLeod Pty. Ltd. (A)</i> ..	
61	†Meat—Gael	Ditto	A. R. Bubb	
62	†Meat—Teachers' College Hostels	Ditto	A. C. Knight	

Names shown in italics denote suppliers under agreement. † Contract for period 1st July, 1961, to 30th September, 1961, only.

CONTRACTS ACCEPTED—(Series 1961-62)—continued.

PROVISIONS—continued.

No. of Contract.	Particulars of each Tender Accepted.	Amount.	Name of Contractor or Supplier.	Charge against Vote or Fund.	
PROVISIONS—continued.					
Schedule No. 15.—Coorimungle Prison Camp, Heytesbury Forest—					
63	Bread	Rates as per annex	M. and J. V. Church	General Expenses 1961-62	
64	†Meat	Rates as per annex	Heytesbury Butchery		
Schedule No. 16.—Aboriginal Station, Lake Tyers—					
65	Breadstuffs	Rates as per annex	R. Hodder		
	Groceries	Ditto	} R. Hodder (A)		
	Jams	Ditto			
Schedule No. 17.—Langi Kal Kal Training Centre—					
66	Bread	Rates as per annex	O. L. and B. M. Nicholls		
67	†Meat	Ditto	F. P. Haintz and Son		
	Potatoes	Purchase under Tender Board quotations		
Schedule No. 18.—Agricultural College, Longerenong—					
68	Breadstuffs	Rates as per annex	Schwarz Breads		
	Groceries	Ditto	} A. Woolman (A)		
	Jams	Ditto			
	Potatoes	Purchase under Tender Board quotations		
Schedule No. 19.—Research Station, Rutherglen—					
69	Bread	Rates as per annex	A. F. and T. M. Landers		
	Groceries	Ditto	Aitken and Fullerton (A)		
Schedule No. 20.—Sale Gaol—					
70	Bread	Rates as per annex	F. J. Hennessy Pty. Ltd.		
71	†Meat	Ditto	Sale North Meat Supply		
Schedule No. 21.—Pleasant Creek Special School, Stawell—					
72	Breadstuffs	Rates as per annex	Stawell Bakeries Pty. Ltd.		
	Groceries	Ditto	McKay MacLeod Pty. Ltd. (A)		
73	†Meat	Ditto	A. M. Holmes		
74	Milk	Ditto	Stawell Model Dairy		
	Potatoes	Purchase under Tender Board quotations		
Schedule No. 22.—Sunbury District—					
75	Breadstuffs	Rates as per annex	Bessell's Pty. Ltd.		
	Groceries	Ditto	K. N. Tidswell (A)		
	Cereals	Purchase under Tender Board quotations		
76	†Meat	Rates as per annex	F. Watkins Pty. Ltd.		
77	Jams	Ditto	W. H. Johnsons Jams Pty. Ltd.		
	Potatoes	Purchase under Tender Board quotations		
Schedule No. 23.—Warrnambool District—					
78	Breadstuffs	Rates as per annex	Twites Bakeries Pty. Ltd.		
	Groceries	Ditto	Swintons Pty. Ltd. (A)		
79	Milk	Ditto	Eastern Dairies		
80	†Meat	Ditto	Thomas Borthwick and Sons (A/asia) Ltd.		

Names shown in italics denote suppliers under agreement. † Contract for period 1st July, 1961, to 30th September, 1961, only.

Approved—H. E. Bolte, Treasurer, 19th June, 1961.

CONDITIONS OF CONTRACT FOR PROVISIONS, 1961-62, ETC.

(Published in the Victoria Government Gazette No. 29 dated 19th April, 1961, pages 1216 to 1218.)

1. All the articles are to be of the best quality of the several kinds, in the best condition, and in conformity with the Health Acts, and to be delivered in sound packages, free from all charges for cartage, freight, &c. The goods shall be delivered as may be directed by the officer ordering the supply.
2. As the exact quantity of any article which may be required cannot be stated, the estimate being approximate only, the Government will not be bound by the quantity stated in the schedule, but will be at liberty to order more or less, according to circumstances, and the contractor will be bound to supply the same as ordered.

The Government reserves the right to purchase otherwise than from the contractor any of the articles specified in the schedule in the event of emergency.
3. Supplies for country districts for which no local contract may have been taken, or for which the contract has been terminated, may be ordered under the Melbourne contract.
4. The Melbourne District will include places within a radius of 12 miles from the Elizabeth-street Post Office, with the exception of places for which separate contracts are provided; the Mont Park District will include the Mental Hospitals, Janefield Colony, the Sanatorium, Gresswell, and Pleasant View, Preston; the Ararat, Ballarat, Beechworth, Bendigo, Castlemaine, Geelong and Sunbury Districts will include Mental Hospitals, Penal Institutions and Teachers' Hostels at any of those places. Delivery must be made at the places, institutions, &c., named in the Schedules, or as directed by the officer ordering the supply.
5. Packages suitable for transport of goods supplied must be provided by the contractor free of expense, and the value of these packages, whether in bulk or otherwise, is to be included in the rate tendered, except butter boxes and soap boxes (not including fancy soaps), jam jars, flour, meal, and potato bags, which will remain the property of the contractor, and only the actual net weight or quantity received will be paid for; the empties to be removed from the place of delivery at the contractor's expense.
6. The meat supplied under these conditions must, if practicable, be slaughtered at abattoirs which are under authorized inspection and supervision. Any infringement of these conditions will subject the contractor, on report from the Tender Board, to such mulct, not exceeding Fifty pounds, as the Treasurer may direct, and the amount will be deducted from the contractor's account, or from the security money.
7. The supplies coming under the head of Rations and Medical Comforts are to be delivered direct to the establishment entitled thereto on the written order of the officer in charge. All other supplies will be ordered by the head of the Department concerned or any officer authorized by him, and shall be delivered as may be directed by the officer ordering the supply.
8. At the time of delivering the supplies, the contractor shall produce the order for the same to the officer authorized to accept delivery, and such officer shall acknowledge thereon the receipt of the stores accepted, and shall return the order to the contractor, who shall render his account as soon as possible after the delivery of the supplies, accompanied by the receipted delivery order. The rates or quantities quoted in the orders cannot be exceeded.
9. Where railway facilities are available, the contractor shall use the Railways for the transport of the goods. When a contractor is required to make delivery of goods at a railway station for transmission by rail, except for Commonwealth Departments, he shall obtain a receipt for the goods in duplicate on the Stores and Transport consignment note, at the same time handing in the triplicate and quadruplicate of the form as an authority for the Railways to act as agent for, and charge the freight to, the Stores and Transport Office. He shall as soon as possible, and not later than twenty-four hours thereafter, deliver at the Tender Board Offices the original, the duplicate to be forwarded to the consignee and the quintuplicate retained by himself. Should the goods thus forwarded be rejected, the contractor must bear the cost of replacing such goods, for which services the departmental consignment note is not to be used. Any infringement of this condition may subject the contractor to such mulct as the Tender Board may recommend under clause 18 of these conditions.
10. Orders must receive prompt execution; in the event of the goods not being delivered at the time mentioned in the order or within such other time as the officer ordering the supply may specify for delivery, it will be competent for such officer, or the head of the Department to whom the goods are to be supplied, on giving the contractor twenty-four hours' notice, to purchase the supplies, or any like supplies that are suitable for the service, at the contractor's risk, and the extra expense incurred over and above the contract price (if any) will be deducted from the contractor's account or from the security money.
11. The acceptance of the supplies shall be subject to the approval of the officer authorized to take delivery of the stores, or such other officer as shall be named in the conditions.
12. If the officer in charge of stores be not satisfied as to the quantity or quality of the stores, or if, after taking delivery of any stores or material, he shall discover any deficiency or defect therein, he may return such deficient or defective stores or material to the contractor, and shall report the same to the head of his Department and to the Tender Board.
13. In the event of a difference of opinion between the contractor and the officer receiving the supplies as to the quality, the same is to be decided, in cases where the article is not of a perishable nature, by a Board of Survey composed of persons named by the Treasurer of the State for the time being; and the decision of the Board is to be considered final. In the event of the decision being against the contractor, the survey fees and expenses (if any) will be deducted as in clause 10.
14. In cases where the article is of a perishable nature, or when from some other cause injury would be sustained either by the person to whom the rations or stores are due or by the contractor in waiting for a Board to survey, the head of the Department or officer authorized to take delivery will have power to reject such article or articles as are obviously of inferior quality, it being understood that he will be responsible to the Government for so doing, and that the contractor must take back the rejected article and supply good in its stead; failing which it, or any like supply suitable for the Service, will be obtained by the officer requiring it as in clause 10. In case of the rejection or return of any supplies, the contractor shall bear the whole cost of replacing the supplies so rejected or returned.
15. If the Board shall decide that the article is not of proper quality it must be immediately replaced by the contractor; failing which it, or any like supply suitable for the Service, will be procured by the officer requiring it, and the expense charged as in clause 10.
16. In the case of supplies for Mental Hospitals, it will be competent for a Board of Survey, consisting of the medical superintendent (or, in his absence, of the medical officer) and any two officers named by him, to examine and reject any supplies that may be objected to. It must be distinctly understood, however, that the contractor will have a right of appeal to the Treasurer of the State for the time being, such appeal to be made in writing within 24 hours of the rejection; but, pending such appeal, he must at once supply others of approved quality; failing which, the supplies required, or any like supplies suitable for the Service, may be obtained by the officer concerned, and the expense charged as in clause 10.
17. In the case of supplies for Mental Hospitals, it will also be competent for two or more of the official visitors, in conjunction with the medical superintendent, to reject any supplies that they may consider not in accordance with contract; and in such cases the reference to a Board of Survey will not be deemed to be necessary.
18. A refusal to execute orders, irregularity in the quantity or quality of the supplies, or delay in delivering or replacing them when required, will subject the contractor, upon report from the Tender Board, to such mulct, not exceeding Fifty pounds, as the said Treasurer may direct, and the amount may be deducted as in clause 10. It will also be in the power of the said Treasurer, upon such refusal, irregularity, or delay, to terminate the contract forthwith, and forfeit the whole or any part of the security money; and, in addition, the contractor will be disqualified from tendering or holding any future contract or contracts for a period of twelve months from the date of such disqualification.

19. Contractors are not at liberty to transfer their contracts under cover of power of attorney, coupled with an interest or otherwise, and no such transfer will be recognized by the Government. *If it is found during the currency of the contract that the contractor has not conformed to the condition of advertisement—which stipulates that if a tenderer be a member of a firm and such firm be interested in the contract, the tender shall be in the name of the firm and not in that of the individual—then the Treasurer may, on the recommendation of the Tender Board, determine the contract, and forfeit the security money.*

20. It will be competent for the Tender Board to terminate the contract, without notice, should there be reason to know that the contractor takes advantage of his contract to communicate with a prisoner.

21. The contract entered into under these conditions is not to be considered as being broken, infringed, or vitiated by the importation of stores for the Government service, or by any contracts or purchases made by the Imperial Commissariat; or by the consumption of the produce or surplus stock of any Government establishment, or by any article being made at and supplied for the use of any Government establishment.

22. Notwithstanding anything contained to the contrary in section 152 of the *Customs Act 1901-52*, it is hereby expressly provided that upon any alteration of the duty collected affecting the goods included in this contract, the contract price shall not be altered, and the contract may be terminated at the option of either party by two months' notice in writing from the first day of the calendar month next ensuing, and within the period for which the contract is made. The contract for the unaffected items shall remain in full force and effect. Any notice to be served under this condition shall be deemed to have been duly served if sent to the contractor in a registered letter to his last-known place of business or abode.

23. Under no circumstances other than those mentioned in clause 22 will a contractor be permitted to abandon his contract. In the event of the contractor failing to carry on the contract, the contract security money will in that case be absolutely forfeited; and, in addition, the contractor will be held liable for any loss which the Government may sustain in consequence of such failure.

24. For the purposes of these contracts the word "Government" shall mean the Government of the State of Victoria; and the word "Treasurer" shall mean the Treasurer of the said State.

STIPULATIONS FOR SUPPLIES OF PROVISIONS.

SUPPLIES GENERALLY.

For supplies under all sub-schedules, particular attention is drawn to clause 1 of the Conditions of Contract as to quality.

No sub-letting is allowed, and all work must be carried out by the contractor.

Where practicable, all items must be manufactured or prepared within the Commonwealth.

Where no brand of Commonwealth manufacture or production is specifically set out in the respective sub-schedules, such Commonwealth brand as may be ordered must be supplied.

For Schedule No. 3 supplies must be delivered when ordered and, in cases of emergency, on Sundays, holidays, or half-holidays, as required.

BREAD AND FLOUR.

A sample of the best ordinarily retailed to the public will be considered as a test loaf for first quality for fine wheat-n and pure wheaten Meal Bread. *Pure wheaten Meal Bread of first quality may be substituted, wholly or in part, for fine wheaten Bread at such times and in such quantities as, in the opinion of the Medical Superintendent, may be deemed necessary, and the contractor will be required to supply such Bread at the contract rate. Reasonable notice, however, of the intention to substitute wheaten Meal Bread must be given to the contractor by the officer ordering the supply.* Bread may be baked at any Government establishment without infringing these contracts. At the Gaols, Ballarat, Beechworth, Bendigo, Castlemaine, Geelong, and Sale, and the Coorimungie Prison Camp, McLeod Settlement, and Langi Kal Kal Training Centre, if required, bread must be supplied one day old, due notice to be given to the contractor of such requirement.

In the event of bread being made at any Government establishment in the Melbourne District during the currency of these contracts, the flour required will be drawn under the flour sub-schedule.

Flour for Districts for which no local contracts have been taken may be ordered under the Melbourne District contract, for delivery f.o.r., Melbourne.

GROCERIES.

As a guarantee of quality, Rice, when ordered in quantities of 56 lb. and over, must be supplied in original bags as delivered by the miller or dresser. Such bags must be branded "Rice, Dressed," and shall also have stencilled thereon the miller or dresser's name and the distinguishing mark indicative of the quality or grade. The bags thus stencilled shall contain Rice milled or dressed by the miller or dresser whose name appears thereon. Supplies not in conformity with the foregoing condition will be rejected.

Oatmeal must be supplied in original bags as delivered by millers.

Candles, except those for prison cells, must be supplied in 1-lb. packets. Candles for prison cells must be delivered in boxes containing from 25 to 50 lb. per box, the boxes for which must be legibly stencilled on one end showing the estimated burning time and the gross, tare, and net weight of contents.

The soap supplied must be hard throughout, ready for immediate use without waste, and shall have been manufactured at least seven weeks before leaving contractor's hands.

Raisins and currants must be present season's, and where the quantity admits, be supplied in original and unopened boxes, labelled as packed.

BARLEY, OATMEAL, PEAS-SPLIT, RICE AND SEED TAPIOCA.

Supplies of these items for Districts for which no local contracts have been taken may be ordered under the Melbourne District contract, for delivery f.o.r., Melbourne.

BUTTER AND CHEESE.

All supplies of 56 lb. or multiples of 56 lb. must be supplied in boxes as originally packed. The boxes must bear the impress stamp of the creamery where the butter is produced, otherwise it will not be accepted. All supplies must be in new boxes.

Where the Store or Butter Factory of the contractor is situated in the Metropolitan area all Butter to the quantity of 56 lb. and over to be supplied in any one consignment under this contract shall before despatch from the Store or Factory be first examined and passed by the Government Butter Grader, for and on behalf of the officer authorized to accept delivery. The boxes containing butter so examined and found satisfactory in quality and description will be stamped by the Government Butter Grader and the date of such examination marked thereon. No butter from a contractor located in the Metropolitan area will be accepted unless the boxes bear the stamp of the Grader. For the purposes of the foregoing condition the Metropolitan Area is defined as being not outside the radius visited by the Government Grader. The officer authorized to accept delivery may, within 48 hours of the receipt of any supply, require the Contractor to have same re-examined by the Grader, and, if not passed by him, it shall be returned to the Contractor, who shall forthwith replace the same with freshly-examined butter.

No Butter *ex* Cool Store will be examined by the Grader until thermally it is in suitable condition therefor.

Where the Store or Factory from which the Butter is despatched is not within the area visited by the Grader a sample of any supplies may be forwarded to the Government Butter Grader for examination, should the supply be considered by the Officer authorized to accept delivery as not being equal in quality or description to that contracted for.

The Cheese supplied must be first-class quality, semi or fully matured, as ordered, and not less than three months old. If the quantity admits, it shall be boxed for transport.

JAM.

The weight stamped on the tins in accordance with the regulations under the Commerce Act, as indicating the *minimum* net quantity that each tin contains, shall for the purpose of this contract be taken as the actual contents when computing the quantity supplied.

When Jam is supplied in jars the jars remain the property of the contractor, and must be removed by the contractor at his own expense when empty.

SOAP AND SOAP MIXTURES.

Supplies of these items for Districts for which no local contracts have been taken may be ordered under the Melbourne District contract, for delivery f.o.r., Melbourne.

MEAT.

All meat supplied under this contract shall have been slaughtered in Victoria and shall be freshly killed, well-conditioned, of good quality, healthy, clean, wholesome, free from bone-taint, putrefaction or fly larvae, and shall not have been frozen.

The beef shall be of ox not under three nor more than six years old or heifer or cow not under three nor more than five years old. Carcass beef for Mental Hospitals shall be delivered in quarters of equal proportions of hinds and fores and the corresponding hinds and fores must be supplied, also extra buttocks separately when ordered. Meat for other Institutions shall be supplied as ordered. Where hindquarters or buttocks are ordered 9 inches shall be cut off from the end of the leg from the hock upwards, i.e., the end of the leg from which the shank has been removed at the abattoirs; when fore-quarters form a portion of the supply, 6 inches from the end of the neck and the whole of the shin at the clodbone joint shall be removed. The sticking pieces also shall be trimmed off and the point and end of the brisket rendered free from blood and blood stains.

The mutton shall be wether or maiden ewe not more than four years old and the weight of a carcass shall be not less than 40 lb. nor more than 60 lb. The mutton shall be delivered in sides when so ordered. All kidney fat to be removed for Mental Hospitals.

Corned Beef (rolled or round as ordered) shall be supplied without bone or cartilage and will be received whether pumped or prepared in the ordinary way of pickling but, in the former case, it shall have been soaked, after pumping, for at least 48 hours in a good pickle and then thoroughly drained before supply. No flank, chuck, sticking-piece, shin, leg of beef, or piece under 7 lb. will be received.

Meat derived from the carcasses of Bulls, Stags or Rams or meat containing an undue proportion of bone or fat will not be received and shall not be tendered for delivery. Net weight only will be paid for.

In cases of emergency, or on such other occasions as in the opinion of the Director of Mental Hygiene or Heads of other Institutions may seem advisable, other forms of meat, such as Rabbits, Tinned Meats, &c., may be purchased, apart from the contract, in lieu of the meat

specified in the Schedule, and substituted therefor, provided 24 hours' notice—except in cases of emergency—be given to the Contractor of such intention.

The parts to be removed by the contractor are indicated in the shaded portion of the annexed diagram. This work shall be carried out in the factory or shop of the Contractor, except those parts usually removed at the abattoirs.

With respect to the schedules enumerated hereunder, the following stipulations shall also apply:—

For sub-schedules 9, 11, 12 and 13 of Schedule No. 1, fresh beef shall be supplied, as ordered, from ribs, sirloin, and thick flanks and for Schedule No. 2, from prime ribs, sirloin, and thick flanks; ribs of beef to be cut clear of the plate bone, and sirloin to be cut clear of the wing ribs; excess of brisket or thin flank will be rejected. Mutton must be delivered in sides when so ordered.

For Schedules Nos. 1 (sub-schedules 9, 11, 12 and 13), 3, 4, 5, 11, 14, and 21, chuck ribs of Beef, i.e., 1st to 4th inclusive will not be accepted.

For Schedules Nos. 4, 5, and 21, fresh Beef must be supplied, as ordered, from prime ribs or sirloin; ribs of Beef to be cut clear of the plate bone, and sirloin to be cut clear of the wing ribs; excess of brisket or flank will be rejected.

TEA AND COFFEE.

Tea and Coffee for Districts for which no local contracts have been taken may be ordered under the Melbourne District contract.

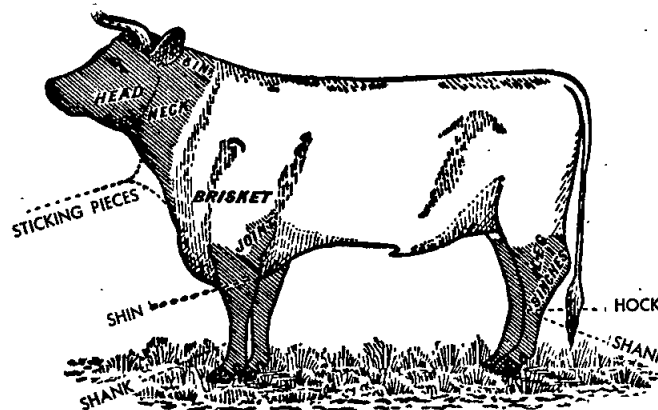
MILK.

The milk must be fresh, pure, and of the best quality, and subject to test when required by the Department, and supplied at such times as the Department may require. Should the contractor fail to supply at the time specified in the order or at such times as may be indicated in any general notice to the contractor his contract may be cancelled forthwith and his security forfeited, or should the supply prove to be not of contract quality it will be rejected, and any expense incurred will be charged to the contractor.

POTATOES.

Potatoes to be dry and free from dirt. Contractors to take back all rejected before being cooked. Bags to remain the property of the contractor. Weight of bags (approx. 2½ lb.) to be deducted.

If the price of potatoes becomes abnormally high, the heads of the various departments concerned may, if they think fit, cause rice or any other suitable food to be occasionally substituted in lieu thereof.



ANNEX TO CONTRACTS.

FLOUR AND BREAD.

The contract rates shown are subject to adjustment for any variation in the proclaimed price of flour.

MEAT.

Contracts marked † operate for the period 1st July, 1961 to 30th September, 1961 only.

AGREEMENTS.

For the Sub-schedules marked (Agreement), no contract has been let nor security lodged. Requirements thereunder are to be purchased from the suppliers named, under Tender Board Agreement. The rates shown are subject to variation from time to time. In all cases, supply is subject to stocks being available.

AVAILABILITY OF SUPPLIES.

Owing to existing difficulties in obtaining supplies of various items, the penal provisions of Clause 10 of the Conditions of Contract are not to be enforced without reference to the Tender Board.

SCHEDULE No. 1.

PROVISIONS—MELBOURNE DISTRICT

ANNEX TO CONTRACT No. 1961/12.

Johnson and Riches Pty. Ltd., 469 Heidelberg-road, Fairfield.

Sub-schedule No. 1.

BREAD FOR MENTAL HOSPITAL AT KEW.

	£	s.	d.
Security, £125.			
1. Bread—Fine wheaten, first quality .. per cntl.	1	14	10
2. „ Special formula .. do.	2	5	0

ANNEX TO CONTRACT No. 1961/13.

Johnson and Riches Pty. Ltd., 469 Heidelberg-road, Fairfield.

Sub-schedule No. 2.

BREAD FOR CHILDREN'S WELFARE DEPOT, ROYAL PARK; RECEIVING HOUSE AND MENTAL HOSPITAL, ROYAL PARK; AND TRAVANCORE DEVELOPMENTAL CENTRE, FLEMINGTON.

	£	s.	d.
Security, £30.			
1. Bread—Fine wheaten, first quality .. per cntl.	1	14	10½
2. „ Wholemeal, first quality .. do.	1	14	9½

ANNEX TO CONTRACT No. 1961/14.

Capitol Bakeries Pty. Ltd., 257 Toorak-road, South Yarra.

Sub-schedule No. 3.

BREAD FOR "WINLATON" JUVENILE SCHOOL, 186 SPRINGVALE ROAD, NUNAWADING.

	£	s.	d.
Security, £5.			
1. Bread—Fine wheaten, first quality .. per cntl.	2	1	1½
2. Bread Rolls .. per doz.	0	2	0

ANNEX TO CONTRACT No. 1961/15.

Capitol Bakeries Pty. Ltd., 257 Toorak-road, South Yarra.

Sub-schedule No. 4.

TEACHERS' COLLEGES AND HOSTELS AT GRATTAN-STREET, 93 DRUMMOND-STREET, CARLTON; 470 AND 481 ST. KILDA-ROAD, MELBOURNE; 19 QUEENS-ROAD, MELBOURNE; 152 TOORAK-ROAD WEST, SOUTH YARRA; FRANK TATE HOUSE, 373 DANDENONG-ROAD, ARMADALE; "REDCOURT" NO. 6, AND "LARNOOK" 13 ORRONG-ROAD, ARMADALE; 11 PATTERSON-STREET, HAWTHORN; 174 PUNT-ROAD, PRAHRAN; 221 BURWOOD-ROAD, BURWOOD; JOHN CANNON HOUSE, 32 BELMONT AVENUE, KEW; 17 MOULE AVENUE, BRIGHTON; POLICE HOSPITAL, ST. KILDA-ROAD, MELBOURNE; AND MENTAL HYGIENE CLINIC, 321 GLENFERRIE-ROAD, MALVERN—

	£	s.	d.
Security, £20.			
1. Bread—Fine wheaten, first quality .. per cntl.	2	1	1½
2. „ Wholemeal, first quality .. do.	5	0	0
3. „ Rolls .. per doz.	0	2	0

ANNEX TO CONTRACT No. 1961/16.

Jas. Minifie and Co. Pty. Ltd., Lennox-street, South Kensington.

Sub-schedule No. 5.

FLOUR

	£	s.	d.
Security, £90.			
1. Flour—Roller, first quality (150-lb. bag) .. per cntl.	1	13	2½
2. „ „ „ „ (50-lb. bag) .. per bag	0	17	8

(AGREEMENT)

Morgan and Cato Pty. Ltd., 277 Brunswick-street, Fitzroy, N.B.

Sub-schedule No. 6.

GROCERIES.

	£	s.	d.
1. Bacon—Sides .. per lb.	0	5	9
2. „ Rashers, middle .. do.	0	6	10
3. Baking powder—1 lb. McKenzies' .. per doz.	1	14	0
4. Barley—Pearl .. per lb.	0	0	6½
5. Beans—Haricot .. do.	0	1	4
6. „ Lima .. do.	0	1	8
Biscuits (tins 4s. returnable)—			
7. Thin Captain .. do.	0	1	10½
8. Unecda .. do.	0	2	3½
9. Rice .. do.	0	1	10½
10. Nice, Gingernuts, Vanilla Curls .. do.	0	1	10½
11. Sweet Assorted, Sunflakes .. do.	0	2	0
12. Butter Crisps .. do.	0	1	11½
13. Devon Shortbreads .. do.	0	2	4½
Blue—1-oz. knobs—			
14. "Recketts" paper .. per doz.	0	3	6
15. Bulk—7-lb. pkts. .. per lb.	0	1	10½
16. Borax .. do.	0	0	8
17. Boiled Sweets (14-lb. cartons) .. do.	0	1	10½
18. Bread Crumbs—"Golden Crust" .. per doz.	0	13	1
19. „ "Loose" .. lb.	0	0	9½
20. Cake containers—Paper "Bulldog" 90's .. per doz.	0	5	6
Cereals—			
21. Kormics, Weeties or equal—24 oz. .. do.	1	8	3
22. Cornflakes or equal—18 oz. .. do.	1	12	6
23. Weet Hearts—24 oz. .. do.	1	15	9
24. Weetbix or equal—24 oz. .. do.	1	8	3
25. Allbran or equal .. do.	1	0	4
Cheese—Kraft—			
26. 5-lb. boxes .. per box	0	19	9
27. 8-oz. pkts. .. per doz.	1	5	10
28. Matured—Tasty .. per lb.	0	3	8
29. Chutney—Fruit—"Rosella" .. per doz.	1	0	8
30. Cloves—Whole .. per lb.	0	4	3½
31. Cocoa—Loose, 28-lb. bags .. do.	0	3	8
32. „ 14-oz. packets—Bournville .. per doz.	2	16	0
33. Coconut—Desiccated—"Ceylon" .. per lb.	0	1	7
Coffee Essence—			
34. 8-oz., "Turban" .. per doz.	1	6	3
35. 26-oz., "Greigs" .. do.	3	10	0
36. Nescafe—1-lb. tin .. per lb.	1	8	0
37. Curry Powder—Bulk .. do.	0	2	1
38. Custard Powder—Bulk .. per lb.	0	0	11½
49. „ 1-lb., "Cameo" .. per doz.	0	17	0
40. Cream of Tartar—Loose .. per lb.	0	3	3
41. Eggs—New laid, large .. *			
Essences, &c.—			
42. Almond, 4-oz., "Allens" .. per bot.	0	2	4
43. Cochineal, 16-oz. .. do.	0	3	6
44. Lemon, 8-oz. .. do.	0	3	7
45. Parisian 26-oz., "Greigs" .. do.	0	4	1½
46. Vanilla, 8-oz. .. do.	0	5	4
47. Yolking, 16-oz., "Allens" .. do.	0	3	6
Extracts and Pastes—			
48. Gravox, 1-lb. packets .. per doz.	1	0	9
49. Marmite, 4-oz. .. per jar	0	2	2
50. Vegemite, 4-oz. .. do.	0	2	2½
51. „ 16-oz. .. do.	0	7	1
52. „ 2-lb. .. do.	0	13	1
53. Peanut Butter, 12-oz. .. do.	0	3	7½
54. Bonox, 4 oz. .. do.	0	2	10
55. Bloater, 2½ oz. .. do.	0	1	5
56. Salmon and Shrimp, 2½-oz. jars .. do.	0	1	6½
Fish—Tinned—			
57. Salmon, 16 oz., "Greenseas" .. per doz.	2	1	3
58. Cutlets, 12 oz., "Perler" .. do.	1	7	6
59. Herrings in Sauce, 14 oz. .. do.	1	7	9
60. Herrings—Fresh, 14 oz. .. do.	1	8	3
61. Sardines—1½'s, Norwegian .. do.	0	13	0

* V.E.B. market rates plus 3d. per doz.

Sub-schedule No. 6—continued.

GROCERIES—continued.		£	s.	d.
Flour—Corn or Maize—				
62.	1-lb. packets, "Medallion" ..	per doz.	0 16	6
63.	Bulk ..	per lb.	0 0	10
64.	Self raising—25-lb. bag, "McAlpin" ..	per bag	0 17	7
65.	" 50-lb. bag, "McAlpin" ..	do.	1 14	4
Fruits—Dried—				
66.	Apricots—3-crown, case lots ..	per lb.	0 4	1½
67.	" less than case lots ..	do.	0 4	2
68.	Peaches—3-crown ..	do.	0 3	0
69.	" less than case lots ..	do.	0 3	0½
70.	Pears—3-crown, less than case lots ..	do.	0 2	3½
71.	Prunes—40-50, 7-lb. tins ..	do.	0 2	7½
72.	Currants—3-crown, case lots ..	do.	0 1	9½
73.	" less than case lots ..	do.	0 1	9½
74.	Raisins—Seeded, case lots ..	do.	0 1	11
75.	" less than case lots ..	do.	0 1	11½
76.	Sultanas—5-crown, case lots ..	do.	0 1	10½
77.	" less than case lots ..	do.	0 1	11½
78.	Dates—Case lots ..	do.	0 1	6½
79.	" less than case lots ..	do.	0 1	6½
Fruits—Preserved, 30-oz. tins—				
80.	Apricots—Halves ..	per doz.	1 12	3
81.	Peaches—Halves and sliced ..	do.	1 11	9
82.	Pears—Halves ..	do.	1 10	0
83.	Fruit Salad ..	do.	1 17	9
84.	Pineapple Pieces ..	do.	1 15	6
Fruits—Solid Pack—				
85.	Apples, 6½-lb. tins, "Camms" ..	do.	4 19	0
86.	Apricots, 7-lb. tins, "Camms" ..	do.	6 11	0
87.	Peaches, 7-lb. tins, "Berri" ..	do.	5 7	6
88.	Gelatine—Ground, 1-lb. packets ..	per lb.	0 8	1
89.	Ginger—Ground ..	do.	0 4	4½
90.	Golden Syrup, 2-lb. tins ..	per doz.	0 19	6
91.	Herbs—Mixed, loose ..	per lb.	0 2	10½
92.	" 1-oz. packets ..	per doz.	0 2	9
93.	Honey, 60-lb. tins ..	per tin	3 2	6
94.	" 5-lb. tins ..	do.	0 9	9
95.	" 2-lb. jars, "Greigs" ..	each	0 3	7
Jelly Crystals—				
96.	4-oz. packets ..	per doz.	0 5	6
97.	7-lb. packets ..	per pkt.	0 15	7
98.	Junket Tablets — "Merry Widow", flavoured, tubes ..	per doz.	0 18	3
99.	Lentils ..	per lb.	0 1	10½
100.	Macaroni, 1-lb. packets, "Rinaldi" ..	do.	0 1	3½
101.	" Bulk, 56-lb. bags, "Forex" ..	do.	0 0	9½
102.	Margarine—Cake or Pastry ..	do.	0 1	9½
103.	Matches—Safety, dozens ..	per gross	0 18	8
104.	Mayonnaise, 5-lb. jars, "Eta"†	per jar	0 11	6
Meat—tinned—				
105.	Beef Luncheon, 12-oz. tins, "T.P." ..	per doz.	1 9	9
106.	Beef Steak Pudding, 16-oz. tins, "T.P." ..	do.	1 13	9
107.	Camp Pie—16-oz. tins, "Imp." ..	do.	1 4	6
108.	Irish Stew, 16-oz. tins, "T.P." ..	do.	1 6	0
109.	Sausages and Vegetables, 16-oz. tins, "T.P." ..	do.	1 7	0
Milk—				
110.	Dried, 12-oz. tins, "Sunshine" ..	do.	2 0	9
111.	Dried, 3-lb. tins, "Sunshine" ..	do.	7 3	0
112.	Condensed, 14-oz. tins, "Nestles" ..	do.	1 2	0
113.	Condensed, 12-oz. tins, "Ideal" ..	do.	0 16	4
114.	Mustard—Loose ..	per lb.	0 4	6½
115.	Oatmeal—Flaked ..	do.	0 0	7½
116.	Pastry Mix—"Swifts" ..	per doz.	0 13	6
117.	Sponge Mix—"McAlpines" ..	do.	0 14	6
118.	Peel—Mixed, cut ..	per lb.	0 1	11½
119.	Pepper—White, ground ..	do.	0 7	2
120.	Pickles—Assorted, 20-oz. ..	per doz.	1 8	0
121.	Rice—Dressed ..	per lb.	0 0	10½
122.	" Ground, 1-lb. packet ..	do.	0 1	2½
123.	Sago—Seed Tapioca ..	do.	0 0	9½
124.	Salt—Fine, bulk ..	per cwt.	0 15	9
125.	" Table, 1-lb. packets, "Mermaid" ..	per doz.	0 6	6
126.	Sauce—Tomato, 26-oz., "Rosella" ..	do.	2 3	3
127.	" 1-gal. jars, "Tom Piper"†	per gal.	0 16	0
128.	" Tomato and Apple, 1-gal. jars†	do.	0 13	9
129.	" Worcestershire, 10-oz. ..	per doz.	1 1	8
130.	" 1-gal. jars†	per gal.	0 14	7
131.	" Mustard, 8-oz., "Holbrooks" ..	per doz.	1 4	0
132.	Soda—Bicarbonate ..	per lb.	0 0	7
133.	" Washing, 1-cwt. bags ..	per cwt.	1 11	3
134.	" loose ..	per lb.	0 0	4
135.	Soups—Tomato, 16-oz., "K.O." ..	per doz.	1 0	0
136.	" 5-lb., "Maggi" ..	per tin	1 16	0
137.	" 7-lb., "Kia Ora" ..	per doz.	5 4	6
138.	" Chicken Noodle, packets ..	do.	0 14	5
139.	" Cream of Chicken, 5-lb., "Maggi" ..	per tin	2 2	0
130.	" Vegetable, 7-lb., "K.O." ..	per doz.	5 8	0
141.	Spaghetti, 1-lb. packets, No. 1 "Rinaldi" ..	per lb.	0 1	3½
142.	" Bulk, 22-lb., "Forex" ..	per carton	0 19	0

† Jars, 3s. each, returnable. ‡ Jars, 3/6 each, returnable § Jars, 6s. each, returnable.

Sub-schedule No. 6—continued.

GROCERIES—continued.		£	s.	d.
Spices, &c.—				
143.	Mixed ..	per lb.	0 3	8½
144.	Cinnamon ..	do.	0 2	0
145.	Bay Leaves ..	do.	0 2	7
146.	Nutmeg—ground ..	do.	0 12	7
147.	Arrowroot, 12-oz., "Parsons" ..	per pkt.	0 1	10½
148.	Starch—Rice, bulk, "Parsons" ..	per lb.	0 0	8½
149.	" Silver Star, 12-oz. ..	per doz.	0 18	3
150.	Sugar—Icing ..	per lb.	0 0	11½
151.	" Castor ..	do.	0 0	10½
152.	" No. 3, Brown ..	do.	0 0	10½
153.	" White, 70-lb. bags ..	per bag	2 18	0
Sweet Toppings—				
154.	Chocolate, 13-oz., "Cottees" ..	per doz.	1 9	3
155.	Raspberry, 13-oz., "Cottees" ..	do.	1 9	3
156.	Strawberry, 13-oz., "Cottees" ..	do.	1 9	3
157.	Tapioca—Pearl ..	per lb.	0 0	9½
158.	Treacle, 2-lb. tins ..	per doz.	0 19	1
Vegetables—Dried—				
159.	Peas—Green, "Dowerisp", 21-lb. tins ..	per tin	0 9	6
160.	" Split, yellow ..	per cwt.	4 0	9
Vegetables—Tinned—				
161.	Baked Beans, 16-oz. ..	per doz.	1 1	8
162.	" No. 10 cans ..	do.	5 12	3
163.	Beans—Green, 16-oz., "Gartside" ..	do.	1 3	3
164.	Beetroot, 12-oz., "Harvest" ..	do.	0 16	10
165.	Carrots, 16-oz., "Gartside" ..	do.	0 16	6
166.	Peas—"Biddy", 30-oz. ..	do.	1 5	3
167.	" "Harvest", 30-oz. ..	do.	1 17	9
168.	Sweetcorn, 16-oz., "Rosella" ..	do.	1 5	6
169.	Tomatoes, 30-oz., "Cohn" ..	do.	1 10	3
170.	Vermicelli, 1-lb., "Rinaldi" ..	per doz.	0 15	6
171.	" Bulk, 22-lb., "Forex" ..	per carton	0 19	0
Vinegar—Malt—				
172.	26-oz. bottles, "Vines" ..	per doz.	0 12	6
173.	1-gal. jars § ..	per gal.	0 4	0

Sub-schedule No. 7.

CEREALS.

1. Barley—pearl ..	per cwt.	Purchase under Tender Board Quotations
2. Oatmeal—Plain ..	do.	
3. Oatmeal—Flaked ..	do.	
4. Peas, split—Yellow ..	do.	
5. Rice—Dressed ..	do.	
6. Rice—Unpolished ..	do.	
7. Seed Tapioca ..	do.	

ANNEX TO CONTRACT No. 1961/17.

W. H. Johnsons Jams Pty. Ltd., 42 Meaden-street, South Melbourne, S.C.5.

Sub-schedule No. 8.

JAMS.

Security, £20.

£ s. d.

Jams—		
1. Assorted, in bulk, of approved kinds, in the proportion of half seed and half stone, of the best quality, in 54-lb. tins	per lb.	0 0 11½
2. Assorted, of approved kinds, in the proportion of half seed and half stone, of the best quality, in 24-oz. tins	per tin	0 2 0
3. Marmalade, 24-oz tins	do.	0 1 10½
4. Assorted, 5-lb. tins, in the proportion of half seed and half stone of the best quality	do.	0 6 7

○ In 27-lb. tins, rate increased by 1d. per lb.

ANNEX TO CONTRACT No. 1961/18.†

F. Watkins Pty. Ltd., 150 Lonsdale-street, Melbourne, C.1.

Sub-schedule No. 9.

MEAT FOR MENTAL HOSPITAL, KEW.

Security, £35.

£ s. d.

Fresh Beef—		
1. Rolled Roast boneless (Brisket excluded)	per cwt.	13 6 8
2. Buttocks ..	do.	12 1 8
3. Shin and Gravy Beef (boneless) ..	do.	11 13 4

Sub-schedule No. 9—continued.

MEAT—continued.		£	s.	d.
4. Corned Beef—Rolled or Round, as ordered, per cwt. without bone or cartilage		12	10	0
5. Fresh Mutton—(whole sheep) (Kidney fat to be removed)	do.	5	8	4
6. Veal—boned	per lb.	0	2	10
7. Sausage Meat	do.	0	1	5
8. Sausages—Mixed	do.	0	1	10
9. Livers—Sheep	do.	0	2	3
10. " Ox	do.	0	1	8
11. Kidney—Ox	do.	0	2	10
12. " Sheep	do.	0	2	2
13. Tripe, Fresh	do.	0	1	3
14. Tongues—Ox	do.	0	1	10
15. " Sheep	each	0	0	10
16. Sausage—Belgium	per lb.	0	2	4
17. Beef Loaf	do.	0	2	6
18. Ham Loaf	do.	0	3	3
19. Veal Loaf	do.	0	3	3
20. Saveloys	per doz.	0	3	6
21. Brains, Sheep	per set	0	0	7
22. Fowls, first quality	per lb.	0	5	6
23. Bacon Sides	do.	0	5	4
24. Rabbit Fillets	do.	0	4	0

ANNEX TO CONTRACT No. 1961/19.†

Jackson's Meat Co. Pty. Ltd., P.O. Box 163, Footscray.

Sub-schedule No. 10.

MEAT FOR PENTRIDGE PENAL ESTABLISHMENT, COBURG; AND "FAIRLEA" FEMALE PRISON, FAIRFIELD.

Security, £35.		£	s.	d.
Fresh Beef—				
1. Fore-quarters	per cwt.	8	15	0
2. Minced	do.	11	13	4
3. Corned Beef—Rolled or Round, as ordered, without bone or cartilage	do.	12	10	0
4. Fresh Mutton (whole sheep)	do.	5	16	8
5. Sausages—Mixed, thin	per lb.	0	1	9
6. Fresh Suet—Kidney	do.	0	0	7
7. Saveloys	do.	0	1	10
8. Sausage—Beef German	do.	0	2	2
9. Sausage Mince	do.	0	1	1
10. Dripping, Beef	do.	0	1	2
11. Frankfurts	do.	0	2	4
12. Livers—Sheep	do.	0	1	6
13. Ham Loaf	do.	0	3	0

ANNEX TO CONTRACT No. 1961/20.†

J. H. Cooke Pty. Ltd., 378 Queens-parade, Clifton Hill.

Sub-schedule No. 11.

MEAT FOR CHILDREN'S WELFARE DEPOT, ROYAL PARK, AND TRAVANCORE DEVELOPMENTAL CENTRE, FLEMINGTON.

Security, £8.		£	s.	d.
1. Fresh Beef—Rolled Roast Sirloin—Boneless	per lb.	0	2	11
2. Beef—Corned—Silverside	do.	0	3	5
Fresh Mutton—				
3. Legs	do.	0	1	9
4. Legs (Two tooth)	do.	0	1	10
5. Chops—Mid Loin (Two tooth)	do.	0	1	6
6. Rib Chops as Outlets (Two tooth)	do.	0	1	8
7. Steak—Rump	do.	0	4	0
8. " Blade	do.	0	3	4
9. " Minced	do.	0	2	3
10. Veal—Fillet, boneless	do.	0	3	9
11. Pickled Pork	do.	0	2	0
12. Sausages—Mixed	do.	0	1	11
13. Sausage—Strasburg, Pork	do.	0	3	4
14. Tripe—Fresh	do.	0	0	9
15. Frys—Lamb	do.	0	2	0
16. Ox Tongue	per lb.	0	1	6
17. Frankfurts	do.	0	2	6
18. Rabbits—Fresh	do.	0	3	0

ANNEX TO CONTRACT No. 1960/21.†

J. H. Cooke Pty. Ltd., 378 Queens-parade, Clifton Hill.

Sub-schedule No. 12.

FOR "WINLATON" JUVENILE SCHOOL, 186 SPRINGVALE-ROAD, NUNAWADING.

Security, £5.		£	s.	d.
1. Fresh Beef—Rolled Roast, Sirloin, Boneless	per lb.	0	2	6
2. Beef—Corned—Silverside	do.	0	3	5
3. Mutton—Fresh—Fore-quarters (Two tooth)	do.	0	0	11
4. " " Legs	do.	0	1	11
5. " " Chops—Mid Loin	do.	0	1	9
6. " " Forequarter	do.	0	1	0
7. Steak—Topside	do.	0	3	5
8. " Rump	do.	0	4	6
9. " Stewing	do.	0	3	0
10. " Minced	do.	0	2	6
11. " Blade	do.	0	3	0

Sub-schedule No. 12—continued.

MEAT—continued.		£	s.	d.
12. Sausages—Mixed	do.	0	1	11
13. Sausage Meat	do.	0	1	0
14. Frys—Lamb	do.	0	2	6
15. Veal—Fillet—Boneless	do.	0	3	6
16. " T-bone	do.	0	3	0
17. " Leg, Boned	do.	0	3	0
18. Pork—Pickled	do.	0	2	0
19. Pressed Ham Loaf	do.	0	7	6
20. Tongues—Ox	do.	0	1	6
21. Dripping—Beef	do.	0	1	3
22. Brains—Sheep	per set	0	0	5
23. Sausage—Strasburg—Pork	per lb.	0	3	2
24. Frankfurts	do.	0	2	3
25. Rabbits—Fresh	do.	0	3	3

ANNEXE TO CONTRACT No. 1961/22.†

J. H. Cooke Pty. Ltd., 378 Queens-parade, Clifton Hill.

Sub-schedule No. 13.

MEAT FOR RECEIVING HOUSE AND MENTAL HOSPITAL, ROYAL PARK.

Security, £10.		£	s.	d.
Fresh Beef—				
1. Rolled Roast, boneless (Brisket excluded)	per lb.	0	2	11
2. Thick Flank	do.	0	2	11
3. Topside	do.	0	2	11
4. Fresh Mutton (legs)	do.	0	1	10
5. Corned Beef—Rolled or Round, as ordered, without bone or cartilage	do.	0	3	0
6. Chops—Middle Loin	do.	0	1	3
7. " Fore-quarter	do.	0	1	0
8. Sausages—Mixed	do.	0	1	9
9. Sausage—Mince	do.	0	1	0
10. Veal, fillets	do.	0	2	6
11. Livers—Calves	do.	0	1	0
12. Tripe—Fresh	do.	0	0	8
13. Rabbits—Fresh	do.	0	3	3
14. Fowls—First quality	do.	0	5	5

(AGREEMENT.)

Moran and Cato Pty. Ltd., 277 Brunswick-street, Fitzroy, N.6.

Sub-schedule No. 14.

SOAP MIXTURES.

(Of Commonwealth Manufacture.)

Security, £150.		£	s.	d.
1. Extract of "Kitchens" or equal "Stella" Soap Powder, 80-lb. bags	per cwt.	4	0	0
2. Household—Dry, "Pental" wrapped, cases of 3 dozen	per case	2	14	6
3. "Lux"—Family size packets	per doz.	1	12	9
4. "Rinso"—				
{ Standard packets	do.	1	0	6
{ Economy packets	do.	1	17	3
5. "Persil"—				
{ Standard packets	do.	1	0	6
{ Economy packets	do.	1	17	3
6. Sandsoap—"Leotric", 12-oz. blocks	do.	0	5	0
7. Toilet Soap—"Kitchens" or equal, "Doublays", 3½-oz.	do.	0	5	2
8. Toilet Soap—"Lifebuoy" cakes	do.	0	7	7
9. Soap—"Solvol"	do.	0	11	2
10. "Velvet"—				
{ "Quads," standard	do.	1	6	3
{ "Quints," economy	do.	2	1	9
11. Washing Soda, 1-cwt. bags	per cwt.	1	11	3

ANNEX TO CONTRACT No. 1961/23.

Pura Tea Products Pty. Ltd., 202 Toorak Road, Hartwell.

Sub-schedule No. 15.

TEA.

Security, £150.		£	s.	d.
1. Tea—First Grade—To sample	per lb.	0	4	6

ANNEX TO CONTRACT No. 1961/24.

Moran and Cato Pty. Ltd., 277 Brunswick-street, Fitzroy.

Sub-schedule No. 16.

COFFEE.

Security, £100.		£	s.	d.
1. Coffee—Fresh roasted, and whole, beans to be thoroughly sound—To sample	per lb.	0	3	1½
2. Coffee—Fresh roasted, beans to be thoroughly sound—To sample—Ground	do.	0	3	1½

SCHEDULE No. 2.

PROVISIONS—MONT PARK, ETC.

(For delivery at the Mental Hospital, Mont Park, to Depots as required, the Repatriation Mental Hospital, Bundoora, Larundel Mental Hospital, Pleasant View Receiving House, Wood-street, Preston, Janefield Colony, and the Sanatorium, Gresswell,

ANNEX TO CONTRACT NO. 1961/25.

Northern Bakeries (Preston) Pty. Ltd., 597 High-street, Preston.

Sub-schedule No. 1.

BREADSTUFFS.

Security, £190. £ s. d.

Bread—	
1. Fine wheaten, first quality	per cwt. 2 7 1
2. Raisin, first quality	do. 5 0 0

(AGREEMENT.)

Moran and Cato Pty. Ltd., 271 Brunswick-street, Fitzroy, N.6.

Sub-schedule No. 2.

GROCERIES.

£ s. d.

1. Bacon—Middles	per lb. 0 6 0
2. Baking Powder, 1-lb., "McKenzie's"	do. 0 2 10
3. Beans—Haricot	do. 0 1 3
4. Blue—Washing, 1-oz., paper, "Reckitts"	per doz. 0 3 6
5. " Bulk, 7-lb., packets	per lb. 0 1 10½
6. Candles, full weight, "Electrine"	per doz. 0 5 2
7. Cereals—Malties, &c., 24-oz.	do. 1 7 9
8. Cocoa, 14-oz., "Bourville"	do. 2 16 0
9. Coconut—Dessicated, "Ceylon"	per lb. 0 1 7
10. Coffee Essence, 8-oz., "Turban"	per doz. 1 6 3
11. " 1-gal. jars (jars 4s.)	per gal. 1 8 6
12. Curry Powder	per lb. 0 2 1
13. Custard Powder—1-lb. packets, "Cameo"	do. 0 1 5
14. " Loose (7-lb.)	do. 0 0 11½
Essences, &c.—	
15. Cochineal, 16-oz., "Allens"	per bot. 0 3 6
16. Lemon, 4-oz., "Allens"	do. 0 2 4
17. " 16-oz., "Allens"	do. 0 6 10½
18. Parisian, 26-oz., "Greigs"	do. 0 4 1½
19. Vanilla, 16-oz., "Medallion"	do. 0 3 7
20. Yolkine, 16-oz., "Allens"	do. 0 3 6
Extracts and Pastes—	
21. Gravoil, 1-lb.	per doz. 1 0 9
22. Anchovy, 2-oz., "Pecks"	do. 1 2 3
23. Peanut Butter, 12-oz., "Cottees"	do. 2 3 3
24. Vegemite, 4-oz.	do. 1 6 6
" 16-oz.	do. 4 5 0
Fish—Tinned—	
25. Salmon, 16-oz., "Greenseas"	do. 2 1 3
26. Sardines, 4-oz., Norwegian	do. 0 13 0
27. Herrings—Fresh, 14-oz., "Marshalls"	do. 1 8 3
28. " In tomato sauce, 14-oz.	do. 1 7 9
29. Flour—Corn or Maize, 1-lb., "Medallion"	per lb. 0 1 4½
30. " Bulk	do. 0 0 10
31. " Self-raising, "McAlpins", 50-lb.	per bag 1 14 4
32. " " " 150-lb.	do. 4 10 0
Fruits—Dried—	
33. Currants—3-crown (case lots)	per lb. 0 1 9½
34. " (less than case lots)	do. 0 1 9½
35. Cherries—Crystallized	do. 0 4 6
36. Sultanas—5-crown (case lots)	do. 0 1 10½
37. " (less than case lots)	do. 0 1 11½
38. Prunes, 40/50, 7-lb. tins (less than case lots)	do. 0 2 7½
39. Dates—Loose	do. 0 1 0½
40. Raisins—Seeded (case lots)	do. 0 1 11
41. " 1-lb. packets	per doz. 1 7 0
42. Gelatine—Ground, 16-oz., "Davis"	per lb. 0 8 1
43. Ginger—Ground	do. 0 4 4½
44. Golden Syrup, 2-lb.	per doz. 0 19 6
45. Herbs—Mixed, 1-oz. packets	do. 0 2 9
46. " Loose	per lb. 0 2 10½
47. Honey—First quality, 60-lb. tins	per tin 3 2 6
48. " 5-lb. tins	do. 0 9 9
49. " 32-oz. jars, "Greigs"	per doz. 2 3 0
50. Jelly Crystals, 4-oz. packets	do. 0 5 6
51. " 7-lb. packets	per pkt. 0 15 7
52. Junket Tablets—Tubes, "Merry Widow"	per doz. 0 18 3
Flavoured	
53. Matches (1-doz. packets)	per gross 0 18 8
54. Macaroni, 22-lb. cartons, "Forex"	per carton 0 19 0
55. Margarine—cake or Pastry	per lb. 0 1 9½
56. Meat—Tinned—Beef luncheon, 12-oz., T.P.	per doz. 1 9 9
57. " " Camp Pie, 16-oz., "Imperial"	do. 1 4 6
58. Milk—Dried, full cream, "Sunshine", 12-oz.	do. 2 0 9

⊙ In 27-lb. tins, rate increased by 1d. per lb.

Sub-schedule No. 2—continued.

GROCERIES—continued.

£ s. d.

59. Milk—Dried, full cream, "Sunshine", per doz. 3-lb.	7 3 0
60. Milk—Condensed, 14-oz., "Nestles"	do. 1 2 0
61. Milk—Malted, 1-lb., "Horlicks"	do. 2 16 0
62. Mustard—Loose	per lb. 0 4 6½
63. Peel—Mixed, cut	do. 0 1 11½
64. Pepper—Ground—White	do. 0 7 2
65. " Black	do. 0 5 5½
66. " Cayenne, 1-oz.	per doz. 0 8 6
67. Pickles—20-oz. bottles, "Sutherlands"	do. 1 8 0
68. " ½ gal. jars (jars 5s.)	per jar 0 6 2
69. Rice—Ground, 1 lb. packets	per doz. 0 14 6
70. Salt—Fine	per cwt. 0 15 9
71. " Table, 1 lb., "Mermaid"	per doz. 0 6 6
72. Sauce—Tomato, 26-oz., "Rosella"	do. 2 3 3
73. " 1-gal. jar (jars 3s.)	per gal. 0 16 0
74. " Worcestershire, 10-oz., "Hardings"	per doz. 1 1 8
75. " 1-gal. jars (jars 3s. 6d.)	per gal. 0 14 7
76. Soda—Bicarbonate	per lb. 0 0 7
77. " Washing	per cwt. 1 11 3
78. Soups—Asparagus, 16-oz., "K.O."	per doz. 1 0 0
79. " Tomato, 16-oz., "K.O."	do. 1 0 0
80. Spaghetti, 22-lb. carton, "Forex"	per carton 0 19 0
81. Spices—Mixed—Loose	per lb. 0 3 8½
82. " 1-oz. packets	per doz. 0 5 0
83. " Nutmeg, ground	per lb. 0 12 7
84. " Gloves, whole	do. 0 4 3½
85. " Cinnamon	do. 0 2 0
86. " Paprika, 1½-oz., "Mackenzies"	per doz. 0 19 0
87. Starch—Loose, "Parsons"	per lb. 0 0 8½
88. Sugar—Castor, 70-lb. bag	per bag 3 0 6
89. " Icing, 56-lb. bag	do. 2 11 3
90. " White, 70-lb. bag	do. 2 18 0
91. Tartar—Cream of, substitute	per lb. 0 2 9½
92. Treacle, 2-lb. tin	per doz. 0 19 1
93. Vegetables—Tinned—Asparagus, 16-oz.	do. 2 3 3
94. " Baked Beans, 16-oz., "K.O."	do. 1 1 8
95. " Sliced Beans, 30-oz., "Harvest"	do. 1 17 9
96. " Beetroot, 16-oz.	do. 0 19 6
97. " Tomatoes, 30-oz., "Cohn"	do. 1 10 3
98. " Sweet Corn, 16-oz., "Rosella"	do. 1 5 6
99. " Gherkin, Sweet, 6-oz.	do. 1 4 9
100. Vermicelli, 16-oz., "Rinoldi"	per doz. 0 15 6
101. " 22-lb., "Forex"	per carton 0 19 0
102. Vinegar, 1-gal. (jars 6s.)	per gal. 0 4 0
103. " 9-gal. kegs (kegs £5)	do. 0 3 7

ANNEX TO CONTRACT NO. 1961/26.

W. H. Johnsons Jams Pty. Ltd., 42 Meaden-street, South Melbourne, S.C.5.

Sub-schedule No. 3.

JAMS.

Security, £23. £ s. d.

1. Assorted, in bulk, of approved kinds, in the proportion of half seed and half actual stone, of the best quality, in 54-lb. net tins	per lb. 0 0 11½⊙
2. Assorted, in 5-lb. tins, in the proportion of half seed and half stone, of the best quality	per tin 0 6 7
3. Marmalade, 5-lb. tins	do. 0 6 1

ANNEX TO CONTRACT NO. 1961/27.†

W. Angliss and Co. (Aust.) Pty. Ltd., 42 Bourke-street, Melbourne.

Sub-schedule No. 4.

MEAT.

(For Mont Park Mental Hospital, &c.)

Security, £50. £ s. d.

Fresh Beef—	
1. Buttocks	per cwt. 11 13 4
2. Roast	do. 6 13 ½
3. Rolled Roast—Boneless (Brisket excluded)	do. 12 18 4
Beef, Corned—	
4. Rolled or Round, as ordered, without bone or cartilage	do. 11 5 0
5. Corned—Silverside	do. 17 10 0

Sub-schedule No. 4—continued.

MEAT—continued.

	£	s.	d.
Mutton, Fresh—			
6. Carcass or Sides (Kidney fat to be removed)	5	8	4
7. Legs	0	1	6
Chops—			
9. Fore-quarter	0	1	2
10. Loin	0	1	6
Steak—			
11. Thick Flank	0	3	6
12. Rump	0	4	3
13. Minced	0	2	6
14. Topside	0	3	6
15. Sausage—Meat	0	1	5
16. Sausages—Mixed	0	2	0
17. Shanks—Sheep	0	0	6
18. Tripe—Fresh	0	0	8½
19. Brains—Sheep	0	0	7
20. Kidneys—Ox	0	3	0
21. Livers—Sheep	0	2	3
22. Livers—Calves	0	1	3
23. Sausage—Strasbourg, Pork	0	3	4
24. Beef German	0	2	6
25. Rabbits—Fresh	0	3	3
26. Saveloys	0	4	0
27. Ham Loaf	0	3	3
28. Fillet Veal	0	2	6
29. Fowls—First quality	0	5	6
30. Lamb Chops	0	3	3
31. Pork—Fresh—Legs	0	4	0
32. Bones—Beef	0	0	0½

Sub-schedule No. 6—continued.

MEAT—continued.

	£	s.	d.
22. Brains—Sheep	0	0	7
23. Fowls—First quality	0	5	3
24. Frankfurts	0	2	6
25. Ham Loaf	0	3	3
26. " Pressed Leg	0	9	3
27. " Pressed Shoulder	0	7	6
28. Kidneys—Ox	0	3	0
29. " Sheep	0	2	6
30. Livers—Sheep	0	2	0
31. " Lamb	0	2	0
32. " Calves	0	1	0
33. Rabbits—Fresh	0	3	3
34. Sausages—Mixed	0	2	1
35. " Pork	0	2	3
36. Sausage Meat	0	1	5
37. " Strasbourg—Pork	0	3	4
38. Shanks—Sheep	0	0	6
39. Tripe—Fresh	0	0	8½
40. Tongues—Ox	0	1	7
41. " Sheep	0	1	0
42. Veal and Pork Loaf—Pressed	0	3	3
43. Savoury Loaf—Pressed	0	3	3
44. Ham—Leg—Raw	0	7	0

ANNEX TO CONTRACT No. 1961/28.†

Anglies and Co. (Aust.) Pty. Ltd., 42 Bourke-street, Melbourne.

Sub-schedule No. 5.

MEAT.

(For Pleasant View Receiving House, Wood-street, Preston.)

	Security, £5.	£	s.	d.
1. Fresh Beef—Roast—Boneless (Brisket excluded)	per lb.	0	3	6
2. Corned Beef—Silverside	do.	0	3	3
3. Fresh Lamb—Legs	do.	0	3	5
Chops—				
4. Loin—Lamb	do.	0	4	6
5. Fore-quarter—Lamb	do.	0	1	3
6. Livers—Lambs	do.	0	2	0
7. Sausages—Pork	do.	0	2	1
8. Dripping—Beef	do.	0	1	3
9. Tongues—Sheep	do.	0	1	10
10. Brains—Sheep	per set	0	0	7
11. Frankfurts	per doz.	0	5	0
12. Sausage—Strasbourg—Pork	per lb.	0	3	4
13. Rabbits—Fresh	do.	0	3	0
14. Capons—First quality	do.	0	5	0
15. Tripe	do.	0	0	9
16. Ham, tinned, 2-lb. tin.	do.	0	10	0
17. Bacon, boned	do.	0	5	6

ANNEX TO CONTRACT No. 1961/29.

W. Anglies and Co. (Aust.) Pty. Ltd., 42 Bourke-street, Melbourne.

Sub-schedule No. 6.

MEAT.

(For Greeswell Sanatorium.)

	Security, £15.	£	s.	d.
1. Fresh Beef—Rolled Roast Sirloin (Boneless)	per lb.	0	4	0
2. Beef—Corned, Silverside	do.	0	3	3
3. Lamb—Fresh, Legs	do.	0	3	0
4. " Chops, Mid-loin	do.	0	3	6
5. " " Chump	do.	0	3	0
6. " " Fore-quarter	do.	0	1	6
7. " " Cutlets	do.	0	3	6
8. " " Rolled	do.	0	2	3
9. Pork—Fresh, Legs	do.	0	4	0
10. " " Chops	do.	0	4	6
11. " " Pickled	do.	0	3	0
12. Mutton—Leg Chops	do.	0	2	0
13. Veal—Fresh, Shoulder	do.	0	1	3
14. " " Cutlets	do.	0	3	6
15. " " Fillet	do.	0	2	6
16. Steak—Rump	do.	0	4	3
17. " " Topside	do.	0	3	6
18. " " Blade	do.	0	3	0
19. " " Porterhouse	do.	0	4	6
20. " " Fillet	do.	0	6	0
21. " " Minced	do.	0	2	6

SCHEDULE No. 3.

PROVISIONS FOR S.S. RIP AND DREDGES.

Sub-schedule No. 1.

BREAD.
Purchase by agreement.

(AGREEMENT.)

Moran and Cato Pty. Ltd., 277 Brunswick-street, Fitzroy, N.6.

Sub-schedule No. 2.

GROCERIES.

	£	s.	d.
1. Bacon Rashers—Middle	per lb.	0	6 10
Beans—			
2. Haricot	do.	0	1 4
Biscuits—			
3. Coffee, Marie, Malt (Tins 4s. each)	do.	0	1 9½
4. Dry (Tins 4s. each) { Thin Captain	do.	0	1 10½
{ Sun Flakes	do.	0	2 0
{ Unecda	do.	0	2 3½
Gravox—			
5. { 4-oz. packets	per doz.	0	7 4
{ 8-oz. packets	do.	0	12 3
6. Chutney, 16-oz. bottles, "Rosella"	do.	1	0 8
7. Cocoa, 14-oz. tins or cartons, "Bournville"	do.	2	16 0
8. Coconut—Desiccated	per lb.	0	1 7
9. Coffee—Fresh Roasted and Ground	do.	0	0
10. Corn or Maize Flour, 1-lb. packets, "Medallion"	per doz.	0	16 6
11. Corn or Maize Flour—Loose	per lb.	0	0 10
12. Currants—{ 3-crown (case lots)	do.	0	1 9½
{ 3-crown (less than case lots)	do.	0	1 9½
13. Custard Powder—1-lb. packets, "Cameo"	per doz.	0	17 0
14. Dates	per lb.	0	1 6½
15. Eggs—New Laid	per doz.		
Essence—			
16. Vanilla, 16-oz. bottles, "Medallion"	per bot.	0	3 7
17. Cochineal, Substitute—Red Colouring, 4-oz. bottles, "Allens"	per doz.	0	14 7
Fish—			
18. { Herrings, 14-oz. tins, Fresh	do.	1	8 3
{ "Marshalls"	do.	1	7 9
{ Herrings in Tomato Sauce, "Marshalls"	do.	1	7 9
19. Salmon, Fresh, 16-oz. tins, "Greenseas"	do.	2	1 3
20. Sardines, ¼-tins, "Norwegian Pack"	do.	0	13 0
Flour—			
21. First quality—Plain, "Macs", 4-lb. packets	per pkt.	0	2 7½
22. Self-raising { 50-lb. bag, "Macs"	per bag	1	14 4
{ 25-lb. bag, "Macs"	do.	0	17 7
Fruits—Preserved, 30-oz. tins—			
23. { Pears	per doz.	1	10 0
{ Peaches	do.	1	11 9
{ Apricots	do.	1	12 3
24. Pines	do.	1	15 6
Gelatine—Ground—			
25. { 8-oz. packets	do.	2	10 0
{ 16-oz. packets	do.	4	17 0

|| Market rates plus 3d. per doz. ○ Order under Melbourne District contract.

Sub-schedule No. 2—continued.

GROCERIES—continued.

		£	s.	d.
26. Golden Syrup, 2-lb. tins	per doz.	0	19	6
27. Honey, 24-oz. jars, "Greigs"	do.	1	13	9
28. Jams—Assorted kinds, 24-oz. tins	do.		†	
29. Jelly Crystals, 4-oz. packets, "Sparkling"	do.	0	5	6
30. Mixed Peel—Cut	per lb.	0	1	11½
31. Macaroni, 22-lb. cartons	per ctn.	0	19	0
32. Margarine—Cooking Quality	per lb.	0	1	9½
Meat—Preserved—				
33. { Camp Pie, 12-oz., "Imperial"	per doz.	1	0	8
{ Sausages and Vegetables, 16-oz., "Tom Piper"	do.	1	7	0
{ Irish Stew, 16-oz., "Tom Piper"	do.	1	6	0
{ Steak and Kidney Pudding, 16-oz., "Tom Piper"	do.	1	13	9
Milk—				
34. Dried, Full Cream, 12-oz. tins, "Sunshine"	do.	2	0	9
35. Condensed, Full Cream, 14-oz. tins	do.	1	2	0
36. Mustard—Loose, "McKenzies"	per lb.	0	4	6½
37. Nutmeg—Ground	do.	0	12	7
38. Oatmeal—Flaked	do.	0	0	7½
39. Pearl Barley	do.	0	0	6½
40. Peas—Split	per cwt.	4	0	9
41. Pepper—White, ground	per lb.	0	7	2
42. Pickles—Mustard, 20-oz. bottles	per doz.	1	8	0
43. Prunes—Dried (present season's) 40/50 (90/100, 2s. 0½d. per lb.—7-lb. tins)	per lb.	0	2	7½
Raisins—				
44. Seeded (present season's), "M & C" or "Sumnagold", 1-lb. packets	per doz.	1	7	0
45. Sultana { 5-crown (less than case lots)	per lb.	0	1	11½
{ 5-crown (case lots)	do.	0	1	10½
46. Rice—Dressed	do.	0	0	10½
47. Salt—Fine	per cwt.	0	15	9
Sauce—				
48. Mustard, 8-oz. bottles, "Holbrooks"	per doz.	1	4	0
49. Tomato, 26-oz. bottles, "Rosella"	do.	2	3	3
50. Worcestershire, 10-oz. bottles, "Hardings"	do.	1	1	8
51. Soda—Bicarbonate	per lb.	0	0	7
52. Spice—Mixed, 1-oz. packets, "Parsons"	per doz.	0	5	0
Sugar—				
53. { No. 3, 160-lb. bags	per lb.	0	0	10½
{ White, 70-lb. bags	per bag	2	18	0
54. Castor	per lb.	0	0	10½
55. Icing	do.	0	0	11½
56. Vinegar—Malt, 24-oz., "Vines"	per doz.	0	12	6
57. Yolking, 4-oz. bottles (yellow colouring)	do.	0	14	7

ANNEX TO CONTRACT No. 1961/30.†

Jackson's Meat Co. Pty. Ltd., P.O. Box 163, Footscray.

Sub-schedule No. 3.

MEAT.

(Delivery at River Yarra Wharfs.)

	Security, £5.	£	s.	d.
1. Fresh Beef—Roast	per lb.	0	1	6
Beef—Corned—				
2. Silverside	do.	0	4	6
3. Rolled	do.	0	1	6
Fresh Mutton—				
4. Fore-quarter	do.	0	0	6
5. Legs	do.	0	1	11
Chops—				
6. Fore-quarter	do.	0	1	0
7. Loin	do.	0	1	4
Steak—				
8. Rump	do.	0	6	9
9. Stewing	do.	0	3	6
10. Topside	do.	0	4	9
11. Sausages—Mixed	do.	0	2	0
12. Tripe—Fresh	do.	0	1	0
13. Livers—Sheep	do.	0	1	9
14. Suet—Kidney	do.	0	0	9
15. Rabbits—Fresh	do.	0	3	9
16. Ice	per cwt.	0	4	6

Sub-schedule No. 4.

VEGETABLES.

1. Onions	Purchase by agreement
2. Other vegetables, including beetroot, cauliflowers, carrots, cabbages, turnips, parsnips, rhubarb, swedes, and pumpkin, as required	

† Apricot, £1 9s. 0d.; Marmalade, £1 6s. 9d.; Plum, £1 6s. 3d.; Melon and Lemon, £1 6s. 0d.; Raspberry, £1 18s. 3d.; Blackcurrant—£2 5s. 0d.

SCHEDULE No. 4.

PROVISIONS—TEACHERS' COLLEGE, HOSTELS, POLICE HOSPITAL, ETC.

(Delivery at Institutions.)

TEACHERS' COLLEGE AND HOSTELS AT GRATTAN-STREET, 93 DRUMMOND-STREET, CARLTON; 470 and 481 ST. KILDA-ROAD, MELBOURNE; 19 QUEENS-ROAD, MELBOURNE; 152 TOORAK-ROAD WEST, SOUTH YARRA; FRANK TATE HOUSE, 373 DANDE-NONG-ROAD, ARMADALE; "REDCOURT" NO. 6, AND "LARNOOK," 13 ORBONG-ROAD, ARMADALE; 11 PATTERSON-STREET, HAWTHORN; 174 PUNT-ROAD, PRAHRAN; 221 BURWOOD-ROAD, BURWOOD; JOHN CANNON HOUSE, 32 BELMONT-AVENUE, KEW; 17 MOULE-AVENUE, BRIGHTON; POLICE HOSPITAL, ST. KILDA-ROAD, MELBOURNE; AND MENTAL HYGIENE CLINIC, GLENFERRIE-ROAD, MALVERN.

GROCERIES.

Order under Melbourne District, Schedule No. 1, Sub-schedule No. 6.

ANNEX TO CONTRACT No. 1961/31.†

J. H. Cooke Pty. Ltd., 378 Queens-parade, Clifton Hill.

Sub-schedule No. 2.

MEAT.

	Security, £15.	£	s.	d.
Fresh Beef—				
1. Rolled Prime Ribs, boneless	per lb.	0	2	9
2. Topside	do.	0	3	6
3. Sirloin, boneless	do.	0	3	0
Fresh Mutton—				
4. Legs	do.	0	1	9
5. Legs, pickled	do.	0	1	9
6. Sides, Two-tooth	do.	0	1	4
7. Legs, Two-tooth	do.	0	1	11
8. Cutlets	do.	0	1	7
9. Chops, Middle Loin	do.	0	1	6
10. Chops, Fore-quarter	do.	0	1	0
11. Chops, Chump	do.	0	1	6
12. Beef—Corned, Silverside	do.	0	3	5
Veal—				
13. Shoulder, boned	do.	0	2	3
14. Fillet, boneless	do.	0	3	9
Steak—				
15. Blade	do.	0	3	3
16. Minced	do.	0	2	6
17. Stewing	do.	0	3	0
18. Rump	do.	0	4	0
19. Fillet	do.	0	7	0
20. Sausages—Mixed	do.	0	1	10
21. Sausage—Meat	do.	0	1	0
22. " Beef, German	do.	0	2	11
23. " Strasburg	do.	0	3	0
24. Livers—Sheep	do.	0	2	0
Kidneys—				
25. Sheep	do.	0	1	6
26. Ox	do.	0	2	6
27. Tongues—Ox	do.	0	1	6
28. Ox Tails	do.	0	1	6
29. Brains—Sheep	per set	0	0	4
30. Tripe—Fresh	per lb.	0	0	8
31. Frankfurts	do.	0	2	4
32. Bones—Soup	do.	No	charge	
33. Suet—Kidney	do.	0	0	6
34. Rabbits—Fresh	do.	0	3	3
35. Fowls—First quality	do.	0	5	6
36. Pork—Legs	do.	0	4	0
37. " Loin	do.	0	4	0
38. Lamb, legs	do.	0	3	3

SCHEDULE No. 5.

PROVISIONS—HEATHERTON SANATORIUM, CHELTENHAM.

(Delivery at the Sanatorium.)

ANNEX TO CONTRACT No. 1961/32.

Charlestons Bakery Pty. Ltd., 8 Koornang Road, Carnegie.

Sub-schedule No. 1.

BREAD.

	Security, £15.	£	s.	d.
1. Bread—Fine wheat, first quality	per cwt.	1	16	0

(AGREEMENT.)

Moran and Cato Pty. Ltd., 277 Brunswick-street, Fitzroy, N.6.

Sub-schedule No. 2.

GROCERIES.		£	s.	d.
1. Asparagus, 10½-oz., "Gartsides"	per doz.	1	15	0
2. Bacon—Sides	per lb.	0	5	9
Biscuits (Tins, 4s. each, returnable)—				
3. Dry—Thin Captain	do.	0	1	10½
Unecda	do.	0	2	3½
Sunflakes	do.	0	2	0
4. Sweet—Rice	do.	0	1	10½
Nicoe, Gingernuts, Vanilla Curis	do.	0	1	10½
Butter Crisps	do.	0	1	11½
Sweet Assorted	do.	0	2	0
Devon Shortbreads	do.	0	2	4½
5. Cereals—Malties, &c., 24-oz.	per doz.	1	8	3
6. " Allbran, &c., 12-oz.	do.	1	0	4
7. " Cornflakes, &c., 16-oz.	do.	1	12	6
8. Cocoa, 14-oz., "Bournville"	do.	2	16	0
9. Chutney—Fruit, "Rosella"	do.	1	0	8
10. Coffee Essence, 8-oz., "Turban"	do.	1	6	3
11. Custard Powder, 1-lb., "Cameo"	do.	0	17	0
12. Essences—Cochineal, 16-oz.	per bot.	0	3	6
13. " Lemon, 4-oz., "Allens"	do.	0	2	4
14. " Parisian, 26-oz., "Greigs"	do.	0	4	1½
15. " Vanilla, 16-oz., "Medallion"	do.	0	3	7
16. " Yolking, 16-oz., "Allens"	do.	0	3	6
Fish—Tinned—				
17. Herrings—Fresh, 14-oz., "Marshalls"	per doz.	1	8	3
18. Herrings in Tomato Sauce, 14-oz., "Marshalls"	do.	1	7	9
19. Sardines, 4-oz., "Norwegian"	do.	0	13	0
20. Salmon, 16-oz., "Greenseas"	do.	2	1	3
21. Flour—Corn or Maize—Loose	per lb.	0	0	10
22. " " " 1-lb., "Medallion"	do.	0	1	4½
23. " Self-raising, 25-lb. bag, "McAlpines"	per bag	0	17	7
24. " " " 50-lb. bag, "McAlpines"	do.	1	14	4
Fruit—Dried—				
25. Currants, 3-crown (case lots)	per lb.	0	1	9½
26. " (less than case lots)	do.	0	1	9½
27. Sultanas, 5-crown (case lots)	do.	0	1	10½
28. " (less than case lots)	do.	0	1	11½
29. Prunes—40-50's, loose	do.	0	2	7½
30. " 90-100's, 7-lb. tins	do.	0	2	0½
31. Golden Syrup, 2-lb. tins	per doz.	0	19	6
32. Honey—First Quality, 60-lb. tins	per lb.	0	1	0½
33. " " " 32-oz. jars, "Greigs"	per doz.	2	3	0
34. Jams (See Schedule No. 1, Sub-schedule No. 8)				
35. Jelly Crystals—"Sparkling"	do.	0	5	6
36. Junket Tablets—Flavoured, tubes, "Merry Widow"	do.	0	18	3
37. Lemon Butter, 9-oz., "Alva"	do.	1	2	0
38. Macaroni, 1-lb., "Rinoldi"	do.	0	15	6
39. " 22-lb., "Forex"	per ctn.	0	19	0
40. Matches, 1-dozen packets	per gross	0	18	8
41. Mustard—Loose	per lb.	0	4	6½
42. Peas—Dehydrated, 21-lb. tins	do.	0	9	6
43. Peanut Butter, 12-oz. jars, "Cottees"	per doz.	2	3	3
44. Pepper—Ground—White	per lb.	0	7	2
45. Salt—Fine	per cwt.	0	15	9
46. " Table, 1-lb., "Mermaid"	per doz.	0	6	6
47. Sauce—Tomato, 26-oz., "Rosella"	per doz.	2	3	3
48. " " " 1-gal. jars (jar 3s.), "Tom Piper"	per gal.	0	16	0
49. " Worcestershire, 10-oz., "Hardings"	per doz.	1	1	8
50. Soda—Bicarbonate	per lb.	0	0	7
51. " Washing	per cwt.	1	11	3
52. Spaghetti, 22-lb., "Forex"	per ctn.	0	19	0
53. Spices—Mixed, 1-oz.	per doz.	0	5	0
54. Starch—Loose	per lb.	0	0	8½
55. " 12-oz., "Silver Star"	per doz.	0	18	3
56. Vermicelli, 16-oz., "Rinoldi"	do.	0	15	6
57. " 22-lb., "Forex"	per ctn.	0	19	0
58. Vinegar—Malt, 24-oz., "Vines"	per doz.	0	12	6
59. " " " 1-gal. jars (jars 6s.)	per gal.	0	4	0

ANNEX TO CONTRACT No. 1961/33.†

W. Angliss and Co. (Aust.) Pty. Ltd., 42 Bourke-street, Melbourne, C.1.

Sub-schedule No. 3.

MEAT.		£	s.	d.
Security, £5.				
1. Beef, Fresh Roast—Rump	per lb.	0	4	3
2. " Corned—Silverside	do.	0	3	6
3. Lamb, Fresh—Legs	do.	0	3	6
4. " " Shoulder—Rolled	do.	0	1	3
5. " " Chops Mid. Loin	do.	0	4	3
6. " " Chops Chump	do.	0	2	3
7. " " Chops, Forequarter	do.	0	1	4
8. " " Cutlets	do.	0	3	9

Sub-schedule No. 3—continued.

MEAT—continued.

		£	s.	d.
9. Pork, Fresh—Legs	per lb.	0	4	0
10. " " Chops	do.	0	4	6
11. " " Minced	do.	0	2	6
12. Veal—Shoulder—Boned	do.	0	1	3
13. " Cutlets	do.	0	3	3
14. Steak—Rump	do.	0	4	9
15. " Blade	do.	0	3	0
16. " Topside	do.	0	3	0
17. " Minced	do.	0	2	6
18. " Porterhouse	do.	0	4	6
19. " Fillet	do.	0	5	0
20. Mutton—Pumped leg	do.	0	2	0
21. Tripe—Fresh	do.	0	0	10
22. Brains—Sheep	per set	0	0	7
23. Lambs Fry	per lb.	0	2	3
24. Tongues—sheep	do.	0	1	10
25. Kidneys—Ox	do.	0	3	0
26. " Sheep	do.	0	2	6
27. Tails—Ox	do.	0	1	9
28. Sausages—Pork	do.	0	2	1
29. Frankfurts—Vienna	do.	0	3	4
30. Beef, German—Sausage	do.	0	2	6
31. Ham—Loaf	do.	0	3	3
32. " Pressed Shoulder	do.	0	7	6
33. Rabbits, Fresh	do.	0	3	0
34. Capons—First quality	do.	0	5	6
35. Dripping—Beef	do.	0	1	3

ANNEX TO CONTRACT No. 1961/34.

Dairymen and Farmers United Milk Co. Ltd., East Boundary-road, East Bentleigh.

Sub-schedule No. 4.

MILK.

		£	s.	d.
Security, £20.				
1. Milk—Fresh and pure (bulk)	per gal.	0	4	6½

SCHEDULE No. 6.

PROVISIONS—ARARAT DISTRICT.

(Delivery into Institution.)

ANNEX TO CONTRACT No. 1961/35.

Mark Forsyth Pty. Ltd., 49 Moore-street, Ararat.

Sub-schedule No. 1.

BREADSTUFFS.

		£	s.	d.
Security, £75.				
1. Bread—Fine wheaten, first quality	per cwt.	3	8	0
2. Flour—First quality	do.	2	3	3

(AGREEMENT.)

McKay MacLeod Pty. Ltd., 63 Mair-street, Ballarat.

Sub-schedule No. 2.

GROCERIES.

		£	s.	d.
1. Baking Powder	per lb.	0	2	11½
2. Blue—Washing, 1-oz., "Reckitts"	per gross	2	2	3½
3. Bonox, 1-lb. jars	per doz.	5	18	0
4. Bournvita, 14-oz.	do.	3	0	4
5. Candles—Full weight, "Electrine"	per lb.	0	2	8½
6. Cereals (Weeties or equal), 24-oz.	per doz.	1	9	3
7. Cocoa, 14-oz., "Bournville"	do.	2	16	6
8. Coffee Essence—8-oz. bottles	do.	1	6	0
9. " " 26-oz.	do.	4	0	6
10. Curry Powder—Loose	per lb.	0	3	3
11. Custard Powder—Loose	do.	0	1	2½
12. Essences—Cochineal, 16-oz.	per btl.	0	13	6
13. " Lemon, 4-oz.	do.	0	3	7½
14. " Parisian, 26-oz.	do.	0	4	0
15. " Vanilla, 16-oz.	do.	0	15	2
16. " Yolking, 16-oz.	do.	0	4	0½
17. Flour—Corn or Maize, 1-lb. pkts.	per doz.	0	19	0
18. " Self Raising, 25-lb. bag	per bag	0	18	3
19. Fruit—Dried—Currants, 3-crown	per lb.	0	1	10½
20. " " Sultanas, 3-crown	do.	0	1	11
21. Golden Syrup, 2-lb. tins	per doz.	1	1	8
22. " " 70-lb. drums	each	2	18	3
23. Macaroni, 1-lb., "Rinoldi"	per doz.	0	16	7
24. " 22-lb., "Forex"	per ctn.	1	1	6
25. Marmite, 1-lb. jars	per doz.	4	1	8
26. Margarine—Cake or Pastry	per lb.	0	1	9
27. Mustard—Loose	do.	0	6	9½
28. Milk—Dried—"Bonlac" (non fat), 3½ lb.	per doz.	4	2	0
29. " " "Sunshine" 3-lb.	do.	7	2	3

Sub-schedule No. 2—continued.

GROCERIES—continued.

	£	s.	d.
30. Pepper—Ground—white	per lb.	0	7 8½
31. " " " " Black	do.	0	7 6½
32. Salt—Fine	per cwt.	1	1 2
33. " Table, 1-lb., "Mermaid"	per lb.	0	0 7½
34. Sauce—Tomato, 26-oz. bottle	per doz.	2	1 4
35. " " " " 1-gal. jars (jars 3s. 6d.)	per gal.	0	17 10
36. Soap—Sand	per doz.	0	7 11
37. Spaghetti—22-lb., "Forex"	per ctn.	1	1 6
38. Spices—Mixed—1-oz.	per doz.	0	6 3
39. " " " " loose	per lb.	0	4 4½
40. Soda—Bicarbonate	do.	0	0 8½
41. " " " " Washing	per cwt.	1	17 10
42. Starch—12-oz., "Silver Star"	per doz.	0	18 11
43. " " " " Loose	per lb.	0	0 10½
44. Tartar, Cream of—Substitute, "Antelope"	per lb.	0	2 7½
45. Vinegar—malt, 1-gal. jars (jars 3s. 6d.)	per gal.	0	4 9

(AGREEMENT.)

McKay MacLeod Pty. Ltd., 63 Mair-street, Ballarat.

Sub-schedule No. 3.

JAMS.

	£	s.	d.
1. Jams—Assorted, in bulk, of approved kinds, in the proportion of half seed and half actual stone, of the best quality, in tins, as required, "J. MacLeod and Co. Pty. Ltd."	per lb.	0	1 3½

ANNEX TO CONTRACT No. 1961/36.†

H. A. Morris, 107 Victoria-street, Ballarat.

Sub-schedule No. 4.

MEAT.

	£	s.	d.
Security, £30.			
Fresh Beef—			
1. Rolled Roast (boneless, brisket excluded)	per cwt.	12	18 4
2. Buttocks	do.	12	10 0
Fresh Mutton—			
3. Kidney fat to be removed	do.	6	13 4
4. Middle Loin Chops	do.	6	13 4
5. Corned Beef—Rolled or Round, as ordered, without bone or cartilage	do.	12	18 4
6. Kidneys—Ox	per lb.	0	2 6
7. Veal—Filletted	do.	0	2 0
8. Sausages—Mixed	do.	0	2 0
9. Livers—Sheep	do.	0	1 0
10. Steak—Topside	do.	0	3 6
11. Beef Luncheon Loaf	do.	0	1 11
12. Sausage Meat	do.	0	1 4
13. Saveloys	do.	0	2 0

SCHEDULE No. 7.

PROVISIONS—BALLARAT DISTRICT.

(Delivery into Institutions.)

ANNEX TO CONTRACT No. 1961/37.

Brogden Bros. Pty. Ltd., 15 Lal-street, Ballarat.

Sub-schedule No. 1.

BREADSTUFFS.

	£	s.	d.
Security, £100.			
1. Bread—Fine wheaten, first quality	per cwt.	2	6 4½
2. Flour—First quality	do.	2	1 0

(AGREEMENT.)

McKay MacLeod Pty. Ltd., 63 Mair-street, Ballarat.

Sub-schedule No. 2.

GROCERIES FOR TEACHERS' COLLEGE HOSTELS.

	£	s.	d.
Bacon—			
1. { Sides	per lb.	0	5 3
{ Middles	do.	0	5 6
{ Rashers	do.	0	7 3
2. Barley—Pearl	do.	0	0 7½
Beans—			
3. Haricot	do.	0	1 3½
Biscuits—			
4. Dry—Salada, Savoy and Crispo	do.	0	2 1½
5. Crackers, Thin Captain	do.	0	2 0
5. Coffee, Malt, Arrowroot, Marie	do.	0	2 0

* Supplies not available.

Sub-schedule No. 2—continued.

GROCERIES—continued.

	£	s.	d.
Blue—			
6. 1-oz. knobs, paper, "Reckitts"	per gross	2	1 11
7. 1-oz. knobs, square	do.	2	1 11
8. Cake Containers—paper, "Barkers" 120's	per gross	4	11 0
Cereals—			
{ "Sunflakes"	per doz.	1	5 2
{ "Weeties"	pkts.	1	8 6
{ "Cornflakes," large	do.	1	11 3
{ "Weetbix," 24-oz.	do.	1	8 6
{ "All-Bran"	do.	0	19 6
Cheese—			
10. { 6-lb. boxes, "Kraft"	per pkt.	1	3 5
{ ½-lb. packets	per doz.	1	5 6
11. Chutney—"Rosella," Fruit	do.	1	2 0
12. Cloves—Loose	per lb.	0	4 10
Cocoa—			
13. 14-oz. tins, "Bournville"	per doz.	2	16 0
14. Loose	per lb.	*	0
15. Coconut—Desiccated (loose)	do.	0	1 8
Coffee and Chicory Essence—			
16. 8-oz. bottles, "McKays"	per doz.	1	5 7
17. 1-gallon jars (Jars 3s. 6d. each)	per jar	1	13 8
18. Curry Powder—Bulk	per lb.	0	3 2½
Custard Powder—			
19. Bulk	do.	0	1 3
20. ½-lb. packets "McKays"	per doz.	1	2 0
21. Dates—Slabs, 14-lb. "Sair"	per lb.	0	1 7½
Essences, &c.—			
22. Almond, 16-oz.	per bot.	0	9 11
23. Lemon, 16-oz.	do.	0	12 8
24. Vanilla, 16-oz.	do.	0	14 6
25. Cochineal { 1-oz.	per doz.	0	15 2
{ 16-oz.	per bot.	0	12 6
26. Parisian { 5-oz. bottles	per doz.	0	16 6
{ 26-oz. bottles	do.	2	6 9
27. Yolking, "Yolko" 16 oz.	do.	2	7 9
Extracts, Pastes, &c., or equal—			
28. Marmite { 16-oz. jar	do.	4	0 10
{ 8-oz. jar	do.	2	5 6
29. Vegemite { 16-oz. jar	do.	4	5 9
{ 8-oz. jar	do.	2	4 6
30. Peanut Butter, 12-oz., "Eta"	do.	2	5 0
31. Bonox, 8-oz.	do.	3	1 5
32. Bloater, "Pecks"	do.	0	17 9
33. Salmon and Shrimp, "Pecks"	do.	0	19 2
Fish—Tinned—			
34. "Flair," 12-oz. tin "Perler"	per doz.	1	8 3
{ Fresh, 7-oz. tin	do.	0	19 0
{ Fresh, 14-oz. tin	do.	1	9 0
35. Herrings { In sauce, 7-oz. tin	do.	0	19 0
{ In sauce, 14-oz. tin	do.	1	9 0
36. Sardines, 4-oz. tin, "D.L."	do.	0	17 3
Flour—Corn or Maize—			
37. Packets, "Kream"	per lb.	0	1 6½
38. Bulk	do.	0	0 8½
39. Self-Raising { 25-lb. bags, "McKays"	per bag	0	17 2
{ 6-lb. packets, "McKays"	per doz.	2	11 3
Fruits—Dried—			
40. Apples	per lb.	*	*
41. Apricot, 3-crown	do.	*	*
42. Peaches, peeled, 2-crown, choice	do.	*	*
43. Pears, 3-crown, standard	do.	*	*
44. Prunes (70/80's)	do.	0	2 5½
45. Currants, 2-crown	do.	0	1 9½
46. Raisins—Seeded, 1 lb. packets	per doz.	1	7 3
47. Sultanas { 2-crown	per lb.	0	1 10
{ 3-crown	do.	0	1 10½
Fruits—Tinned—			
48. Solid Pack Apples { 28-oz. tin	per doz.	1	12 10
{ 6½-lb. tin	do.	5	4 10
49. Solid Pack Apricots, 7-lb. tins	do.	*	*
50. Gelatine—Ground, "Davis", loose	per lb.	0	7 6
51. Ginger—Ground	do.	0	5 3
52. Golden Syrup, 2-lb. tins (70-lb. drums, 55s.†)	per doz.	1	0 7
53. Gravox—1-lb. tins	per doz.	1	1 3
54. Herbs—Mixed, packets, 1-oz.	do.	0	3 9
55. Honey—60-lb. tins	per lb.	0	0 11½
Jelly Crystals—			
56. 4-oz. packets, "McKays"	per doz.	0	8 2
57. 7-lb. packets	per lb.	0	2 4
Junket Tablets—			
58. "Merry Widow" flavoured, tubes	per doz.	0	19 6
59. Lentils	per lb.	0	2 1

† Charge for drums if not returned.

Sub-schedule No. 2—continued.

GROCERIES—continued.		£	s.	d.			
Macaroni—							
60.	1-lb. packets	per doz.	0	16 1			
61.	Bulk { 22-lb. cartons	each	1	0 6			
					66-lb. bags	per lb.	0 0 11½
62.	Margarine—Cake, pastry	do.	0 1 8½				
63.	Matches—Safety, packets	per gross	0 19 0				
64.	Mayonnaise—½-gallon jars (Jars 3s. 6d. each)	per jar	0 15 0				
Meat—Tinned, or equal—							
65.	Beef Luncheon, square tins, "Piper"	per doz.	1 10 3				
66.	Beef Steak Pudding, "Piper"	do.	1 14 5				
67.	Camp Pie, 12-oz. tins, "Swifts"	do.	1 3 2				
68.	Irish Stew, 16-oz. tins, "Piper"	do.	1 7 2				
69.	Braised Steak and Vegetables, 16-oz. tins, "Piper"	do.	1 9 4				
70.	Sausages and Vegetables, 16-oz. tin, "Piper"	do.	1 7 8				
Milk—Dried—							
71.	{ "Sunshine," 12-oz. tins	do.	2	0 0			
					"Sunshine," 3-lb. tins	do.	7 0 2
Milk—Condensed—							
72.	"Nestles"	do.	1 2 6				
73.	"Ideal"	do.	0 16 9				
74.	Mustard—Loose	per lb.	0 6 9				
75.	Nutmeg—Ground	do.	0 13 2				
76.	Oatmeal—Flaked, 56-lb. bags	per cwt.	3 9 3				
77.	Pastry—Mix, 1-lb. packets, "Maxam"	per doz.	0 14 3				
78.	Peel—Mixed, cut, 8 oz.	do.	0 17 9				
79.	Pepper—White, ground	per lb.	0 7 8				
80.	Pickles—Assorted, 20-oz. bottles, "McKays"	per doz.	1 7 3				
Rice—							
81.	Dressed	per cwt.	4 11 2				
82.	Ground—1 lb. packets	per doz.	0 15 7				
83.	Sago (Seed Tapioca)	per lb.	0 0 9				
Salt—							
84.	Fine, bulk, "Imperial"	per cwt.	0 16 6				
85.	Table, 1-lb. packets, "Mermaid"	per doz.	0 6 9				
Sauce—							
86.	Tomato, 26-oz. bottles, "McKays"	do.	1 19 0				
87.	Tomato, 1-gal. jar (Jars, 3s. 6d. each)	per jar	0 17 0				
88.	Worcestershire, 10-oz. bottles, "Sirdar"	per doz.	0 18 0				
89.	Worcestershire, 1-gal. jar (Jars, 3s. 6d. each)	per jar	0 13 2				
90.	Mustard, 8-oz. bottles	per doz.	0 19 6				
Soaps—							
91.	Borax (powdered)	per lb.	0 0 8½				
92.	Extract of "Pental" 56-lb. bags	per cwt.	4 12 6				
93.	Household, Dry, "Pental" (cases of 36)	per case	2 17 6				
94.	"Lux," 16-oz. packets	per doz.	1 13 6				
95.	"Rinso," Economy packet	do.	1 17 0				
96.	"Persil," Economy packet	do.	1 17 0				
97.	Sand soap, 12-oz. blocks, "Preservene"	do.	0 7 4				
98.	Toilet soap, 3½-oz. tabs., "Palmolive"	do.	0 7 6				
99.	"Velvet"—"Quads," "Standard"	do.	1 5 6				
100.	"Velvet"—"Quinta," "Economy"	do.	2 0 9				
Soda—							
101.	Bicarbonate	per lb.	0 0 8				
102.	Washing	per cwt.	1 13 2				
Soups—Tomato—							
103.	16-oz. tins, "Kia Ora"	per doz.	1 1 0				
104.	No. 10 tins	do.	5 11 3				
Spaghetti—							
105.	1-lb. packets	do.	0 16 1				
106.	Bulk, 22-lb. cartons	each	1 0 6				
107.	Spice—Mixed, loose (1-oz. pkts., 6s. 2d. doz.)	per lb.	0 4 4				
108.	Starch—Rice, 12-oz. pkts., "Silver Star"	per doz.	0 18 6				
Sugar—							
109.	{ Icing Mixture	per cwt.	5 11 3				
					Castor	do.	5 10 3
					White (70-lb. bag)	per bag	2 19 10
110.	Tapioca—Pearl	per lb.	0 0 11½				
111.	Tartar—Cream of, "Antelope Aerator"	do.	0 2 7				
112.	Tea, 1st quality, loose	per lb.	0 6 0				
113.	Treacle—2-lb. tins	per doz.	1 0 2				
Vegetables—Dried—							
114.	Soup Vegetables { 3-lb. tins, "Dew"	per tin	1 8 0				
					20-lb. "Crisp"	do.	7 16 6
115.	Peas, Green, "Dew Crisp", in 21-lb. tins	per tin	10 6 3				
116.	Peas—Split, yellow	per lb.	0 0 11				

© Jars, 3s. 6d. each.

Sub-schedule No. 2—continued.

GROCERIES—continued.		£	s.	d.
Vegetables—Tinned—				
117.	Baked Beans, 16-oz. tins, "Kia Ora"	per doz.	1 2 3	
118.	Baked Beans, No. 10 can, "Kia Ora"	do.	5 16 1	
119.	Beans, Green, 16-oz. tins, "Edgells"	do.	1 4 9	
120.	Beetroot, 30-oz. tins, "Vacola"	do.	1 14 8	
121.	Peas, 30-oz. tins, "Edgells"	do.	2 1 0	
122.	Sweetcorn, 16-oz. tins, "Rosella"	do.	1 5 11	
Vermicelli—				
123.	1-lb. packets	per doz.	0 16 1	
124.	Bulk, 22-lb. cartons	each	1 0 6	
125.	Vinegar—Malt, 1-gal. jars (Jars 3s. 6d.)	per jar	0 4 2	

(AGREEMENT.)

McKay MacLeod Pty. Ltd., 63 Mair-street, Ballarat.

Sub-schedule No. 2a.

GROCERIES FOR MENTAL HOSPITAL.		£	s.	d.			
1.	Beans—Haricot	per lb.	0 1 3				
2.	Biscuits { Salada Crackers, Savoy Crackers, Thin Captain, Crispo Crackers, Milk Arrowroot, Malt, Marie, Coffee	do.	0 2 1½				
					do.	0 2 0	
3.	Blue (Washing), "Reckitts Square"	per gross	2 1 11				
4.	Candles, "Kitchen's Electrine"	per lb.	0 2 7½				
5.	Cereals { Sunflakes	per doz.	1 5 2				
					Crispies	do.	1 8 6
6.	Cocoa, 14-oz. tins, "Bournville" (loose not available)	do.	2 16 0				
7.	Cornflower { 1-lb. packets, "Kream"	per lb.	0 1 6½				
					Bulk	do.	0 0 8½
8.	Currants { 2-crown	do.	0 1 9½				
					3-crown	do.	0 1 10
9.	Curry Powder—Loose	do.	0 3 2½				
10.	Custard Powder—Loose	do.	0 1 2				
11.	Dates—Case lots	do.	0 1 6½				
12.	Essence—16-oz. bottles { Lemon	each	0 12 8				
					Vanilla	do.	0 14 6
13.	Flour—Self-raising (150-lb. bags)	per bag	4 6 6				
14.	Gelatine—1-lb. packets, "Davis" (loose 7s. 6d. per lb.)	doz.	4 17 9				
15.	Golden Syrup—2-lb. tins (70-lb. tins or drums, 55s.)	do.	1 0 7				
16.	Herbs—Mixed, 1-oz. packets	do.	0 3 9				
17.	Jelly Crystals { "McKays Packets"	do.	0 8 2				
					Bulk, 7-lb.	per lb.	0 2 4
18.	Macaroni—Bulk, 56-lb. bags	do.	0 0 11½				
19.	Margarine—Cake, Pastry	do.	0 1 8½				
20. Meats—Tinned—							
"Tom Piper"—							
	Irish Stew, 16-oz.	per doz.	1 7 2				
	Beef Steak Pudding, 16-oz.	do.	1 14 5				
	Beef Lunch, 12-oz. square	do.	1 10 3				
	Camp Pie, 12-oz. tins	do.	1 3 2				
21.	Milk F.C. Powdered, "Sunshine" { 3-lb. tins	do.	7 0 2				
	12-oz.	do.	2 0 0				
22.	Mustard—Loose	per lb.	0 6 9				
23.	Peel—Mixed, loose	do.	0 2 0½				
24.	Pepper—Ground, black	do.	0 7 6				
25.	Pickles, Mustard—20-oz. bottle	per doz.	1 7 3				
26. Raisins—Case lots—							
	Sultanas { 2-crown	per lb.	0 1 10				
					3 crown	do.	0 1 10½
					4 crown	do.	0 1 11
27.	Salt—Imperial, Fine	per cwt.	0 16 6				
28.	Sauce—Tomato, 26-oz. bottles (gal. jars 17s.)	per doz.	1 19 0				
29.	Sauce—Worcestershire, 1-gal. jars	each	0 13 2				
30.	Soda—Bicarbonate	per lb.	0 0 8				
31.	Soda—Washing	per cwt.	1 13 2				
32.	Soap—Powder, "Pental", 12-oz.	per doz.	0 11 6				
33.	Spaghetti—Bulk, 22-lb. cartons { No. 1	each	1 0 6				
					No. 2	do.	1 0 6
34.	Spice, Mixed, 1-oz. packets	per doz.	0 6 2				
35.	Starch, "Silver Star", 12-oz.	do.	0 18 6				
Sugar—							
36.	{ Icing	per cwt.	5 11 3				
					Castor	do.	5 10 3
37.	Tapioca—Seed	per lb.	0 0 9				
38.	Tartar, Cream of—Substitute, "Antelope"	do.	0 2 7				
39.	Tomato Soup—No. 10 cans	per doz.	5 11 3				
40.	Vinegar—Malt (1 gal. jars)	per gal.	0 4 2				

© Jars, 3s. 6d. each.

(AGREEMENT.)

McKay MacLeod Pty. Ltd., 63 Mair-street, Ballarat.

Sub-schedule No. 3.

JAMS FOR TEACHERS' COLLEGE HOSTELS AND MENTAL HOSPITALS.

Jams—Assorted—		£	s.	d.
1.	In bulk, of approved kinds, in proportion of half seed and half stone, of the best quality, in tins, as required	per lb.	0	1 2½
2.	24-oz. tins, in the proportion of half seed and half stone, of the best quality	per doz.	1	8 6
3.	5-lb. tins, in the proportion of half seed and half stone, of the best quality	do.	4	13 6

ANNEX TO CONTRACT No. 1961/38†.

Victorian Inland Meat Authority, 522 Little Collins-street, Melbourne.

Sub-schedule No. 4.

MEAT.

(For Gaol and Mental Hospital.)

Security, £35.		£	s.	d.
Fresh Beef—				
1.	Buttocks	per cntl.	15	0 0
2.	Roast—Rolled (Brisket excluded)	do.	12	18 4
3.	Beef, Corned, Rolled or Round, as ordered, without bone or cartilage	do.	12	18 4
Mutton—Fresh—				
4.	Kidney fat removed (Mental Hospital)	do.	6	13 4
5.	Mince-meat	per lb.	0	1 4
6.	Sausages	do.	0	2 0
7.	Sausage, Beef, German	do.	0	2 2
8.	Tripe	do.	0	1 0
9.	Ham Loaf	do.	0	3 0
10.	Saveloys	do.	0	2 0

ANNEX TO CONTRACT No. 1961/39†

H. A. Morris, 107 Victoria-street, Ballarat.

Sub-schedule No. 5.

MEAT.

For delivery to Teachers' College Hostels as under:

College Hostel, Gillies-street, Ballarat.
Beaufort House, Beaufort-avenue, Ballarat.
1415 Sturt-street, Ballarat.
130 Victoria-street, Ballarat.
126 Webster-street, Ballarat.

Security, £5.		£	s.	d.
1.	Fresh Beef—Sirloin	per lb.	0	3 2
2.	Beef—Corned—Silverside	do.	0	4 0
Fresh Mutton—				
3.	Legs	do.	0	2 0
4.	Fore-quarter Chops	do.	0	1 4
5.	Legs Pickled	do.	0	2 0
Two-tooth—				
6.	Chump Chops	do.	0	2 0
7.	Mid Loin Chops	do.	0	1 7
Veal—				
8.	Shoulder, Boned	do.	0	2 9
9.	Fillet, Boneless	do.	0	4 0
Steak—				
10.	Blade	per lb.	0	3 2
11.	Rump	do.	0	6 6
12.	Minceed	do.	0	3 3
13.	Sausages—Mixed	do.	0	2 1
14.	Sausage Meat	do.	0	1 5
15.	Livers—Calves	do.	0	1 3
16.	Kidneys—Ox	do.	0	2 9
17.	Frankfurts	do.	0	2 1
18.	Ham Loaf	do.	0	2 9
19.	Dripping—Beef	do.	0	1 2
20.	Shanks—Sheep	each	0	0 9
21.	Beef Luncheon	per lb.	0	2 3

ANNEX TO CONTRACT No. 1961/40.

The Ballarat Modern Dairy Pty. Ltd., 819 Sturt-street, Ballarat.

Sub-schedule No. 6.

MILK.

For delivery to Mental Hospital and Teachers' College Hostels as under:—

Gillies-street, Ballarat.
Beaufort House, Beaufort-avenue, Ballarat.
1415 Sturt-street, Ballarat.
130 Victoria-street, Ballarat.
126 Webster-street, Ballarat.

Security, £30.		£	s.	d.
1.	Milk—Fresh and pure, pasteurized	per gal.	0	4 8

SCHEDULE No. 8.

PROVISIONS—BEECHWORTH DISTRICT.

ANNEX TO CONTRACT No. 1961/41.

P. A. Taylor Model Bakery, Camp-street, Beechworth.

(Delivery into Institutions.)

Sub-schedule No. 1.

BREADSTUFFS.

Security, £100.		£	s.	d.
1.	Bread—Fine wheaten, first quality	per ontl.	3	11 0
2.	Flour—First quality	do.	2	3 0

(AGREEMENT.)

Moran and Cato Pty. Ltd., 277 Brunswick-street, Fitzroy, N.6.

Sub-schedule No. 2.

GROCERIES.

		£	s.	d.
1.	Baking Powder, 1-lb., "McKenzies"	per lb.	0	2 11½
2.	Beans—Haricot	do.	0	1 5½
3.	Blue—Washing, powdered, 7-lb. packets	do.	0	2 0
Cereals—				
4.	{ "Pipers," "Kornies," "Weeties," or equal	per doz.	1	11 0
	{ Vitabrit or equal—24-oz. packets	do.	1	11 0
Cocoa.				
5.	14-oz. packets, "Bournville"	each	0	4 9½
Corn or Maize Flour—				
6.	{ 1-lb. packets, "Medallion"	per doz.	0	18 0
	{ Loose	per lb.	0	0 11½
7.	Curry Powder	do.	0	2 2½
8.	Custard Powder—Loose	do.	0	1 0½
9.	Dates—Case lots	do.	0	1 7½
	" Loose	do.	0	1 8
10.	Gelatine	do.	0	8 2½
11.	Golden Syrup, 2-lb. tins	per tin	0	1 10½
12.	Jelly Crystals, 7-lb. packets	per lb.	0	2 4½
Macaroni—				
13.	{ 22-lb. cartons	per ctn.	1	1 3
	{ 56-lb. bags	per lb.	0	0 10½
14.	Margarine—Cake, pastry	do.	0	1 10½
Milk—Powdered—				
15.	{ 3-lb. tins, "Sunshine"	per doz.	7	8 0
	{ 12-oz. tins, "Sunshine"	do.	2	2 3
16.	Mustard	per lb.	0	4 7½
17.	Pepper—White, ground	do.	0	7 3½
18.	Pickles—Assorted, 20-oz. bottle	per doz.	1	11 3
	{ Sultana, 5-crown (case lots)	per lb.	0	2 0
	{ Sultana, 5-crown (less than case lots)	do.	0	2 0½
18.	Raisins	do.	0	1 11½
	{ Sultana, 4-crown (case lots)	do.	0	1 11½
	{ Sultana, 4-crown (less than case lots)	do.	0	2 0
20.	Salt—Fine	per cwt.	1	5 3
21.	Sauce—Tomato, 26-oz. bottles, "Rosella"	per doz.	2	8 0
Soap—				
22.	Sand, 12-oz. blocks, "Lectric"	do.	0	6 1
23.	Lifebuoy	do.	0	8 8
24.	Powder, "Pental", 12-oz. packets	do.	0	12 9
Soda—				
25.	Bicarbonate	per lb.	0	0 8½
24.	Washing	per cwt.	2	3 0
27.	Spaghetti, 22-lb. cartons, "Forex"	per ctn.	1	1 3
28.	Spice—Mixed, "Parsons"	per doz.	0	6 0
		pkts.		
29.	Starch—"Parsons"	per lb.	0	0 10
30.	Tartar—Cream of, Substitute, "Antelope"	do.	0	2 10½
31.	Tomatoes—Tinned, 28-oz. tins, "Cohn"	per doz.	1	13 0
32.	Vegemite, 1-lb. jars	do.	4	8 0
33.	Vinegar—Malt (9-gal. keg), (kegs £5)	per gal.	0	5 5

(AGREEMENT.)

Moran and Cato Pty. Ltd., 277 Brunswick-street, Fitzroy, N.6.

Sub-schedule No. 3.

JAMS.		£	s.	d.
Jams—Assorted, in bulk—				
1.	Apricot	per lb.	0	1 4½
	Peach	actual	0	1 3½
	Dark Plum	net	0	1 3½
	Rasapple	weight	0	1 3
2. Jams—Assorted, 5-lb. tins, of the best quality		per doz. tins	0	

ANNEX TO CONTRACT NO. 1961/42.†

E. Spencer, Camp-street, Beechworth.

Sub-schedule No. 4.

MEAT.		£	s.	d.
Security, £30.				
1.	Fresh Beef (Gaol)	per cntl.	13	6 8
2.	Fresh Beef—Rolled Roast, boneless, brisket excluded	do.	14	3 4
3.	Corned Beef, Rolled or Round as ordered, without bone or cartilage	do.	14	3 4
4.	Mutton—Fresh (kidney fat to be removed for Mental Hospital)	do.	5	8 4
5.	Beef Steak, minced	do.	14	3 4
6.	Sausage Meat	per lb.	0	1 6
7.	Sausages—Mixed	do.	0	1 11
8.	Sausage—German	do.	0	2 9
9.	Tripe—Fresh	do.	0	1 0
10.	Veal—Boned	do.	0	3 0
11.	Livers—Sheep	do.	0	1 10
12.	Saveloys	do.	0	2 0
13.	Kidney—Ox	do.	0	2 0

ANNEX TO CONTRACT NO. 1961/43.

H. and J. Baltus, Ford-street, Beechworth.

Sub-schedule No. 5.

MILK.		£	s.	d.
Security, £12.				
1.	Milk—Fresh and pure—Pasteurized	per gal.	0	5 3

SCHEDULE No. 9.

PROVISIONS—BENDIGO DISTRICT.

(For Delivery into Institutions.)

ANNEX TO CONTRACT NO. 1961/44.

C. H. Jeffrey Pty. Ltd., 172 Wattle-street, Bendigo.

Sub-schedule No. 1.

BREAD.		£	s.	d.
For Gaol and Sandhurst Boys' Centre and Teachers Hostel "Lancewood," McLaren-street, Bendigo.				
Security, £7.				
1.	Bread—Fine wheaten, first quality	per cntl.	2	5 10
2.	Flour—First quality	do.	1	19 7

ANNEX TO CONTRACT NO. 1961/45.

C. H. Jeffrey Pty. Ltd., 172 Wattle-street, Bendigo.

Sub-schedule No. 2.

BREAD.		£	s.	d.
For Teachers' College Hostel—Osborne-street, Pleasant Vale, Bendigo.				
Security, £4.				
1.	Bread—Fine wheaten, first quality	per cntl.	2	5 10.
2.	Flour—First quality	do.	1	19 7

○ Apricot, £4 13s. 6d.; Blackcurrant, £6 19s. 2d.; Blackberry, £5 19s.; Melon and Lemon, £4, 6s. 9d.; Loganberry, £6 3s. 8d.; Peach, £4 10s. 3d.; Quince, £4 1s. 9d.; Raspberry, £6 5s.; Dark Plum, £4 8s. 6d.; Plum and Raspberry, £4 17s. 6d. 6d.; Gooseberry, £5 13s. 6d.

‡ Rates except for sugar—white, are on "Pay and Pick-up Basis" ex warehouse, but for delivery and credit, plus 5 per cent. surcharge. Invoices paid on delivery subject to 2½ per cent. discount and for monthly settlement by 15th of the month following delivery, prices net. Sugar prices net.

* Supplies not available.

‡ List prices, wholesale rates, less 10 per cent.

ANNEX TO CONTRACT NO. 1961/46.

Roy Raggatt Pty. Ltd., 132 Lily-street, Bendigo.

Sub-schedule No. 3.

BREAD.		£	s.	d.
For Teachers' College Hostel—"Comersdale," Panton-street, Golden Square, Bendigo.				
Security, £3.				
1.	Bread—Fine wheaten, first quality	per cntl.	3	6 8
2.	Flour—First quality	do.	2	1 8

ANNEX TO CONTRACT NO. 1961/47.

Sandhurst Dairies Ltd., 62 Queen-street, Bendigo.

Sub-schedule No. 4.

MILK.		£	s.	d.
For Sandhurst Boys' Centre.				
Security, £5.				
1.	Milk—Fresh and pure—Bulk	per gal.	0	4 9½
	Bottled	do.	0	5 0

ANNEX TO CONTRACT NO. 1961/48.

Sandhurst Dairies Ltd., 62 Queen-street, Bendigo.

Sub-schedule No. 5.

MILK.		£	s.	d.
For Teachers' College Hostels "Comersdale", Panton-street, Golden Square; "Lancewood", McLaren-street, Bendigo, and Osborne-street, Pleasant Vale.				
Security £5.				
1.	Milk—Fresh and pure—Bulk	per gal.	0	4 11½
	Bottled	do.	0	5 4½

(AGREEMENT.)

Pulfer, Cox, and Hargreaves, Wholesalers Limited, 200 Hargreaves-street, Bendigo. §

Sub-schedule No. 6.

GROCERIES.		£	s.	d.
1.	Barley—Pearl, 56-lb. bags (smaller lots per cwt. 7d. per lb.)	3	4	0
Beans—				
2.	Butter	per lb.	*	
3.	Haricot	do.	0	1 6
4.	Lima	do.	0	10
Biscuits and Cake—"Phoenix"				
5.	Dry	do.	‡	
6.	Coffee, Malt, Arrowroot	do.	‡	
7.	Assorted	do.	‡	
Blue—				
8.	1-oz. knobs, "Reckitts"	per gross	2	14 0
9.	Borax	per lb.	0	0 9
10.	Cake Containers—Paper, "Barkers" 150's	per gross	3	16 2
Cereals—				
11.	"Kornies," "Weeties," packets	per doz.	1	8 2
12.	"Cornflakes," packets	do.	1	11 2
13.	"Weetbix," "Granose," "Vitabrita," packets	do.	1	8 2
14.	Wheat Germ	do.	*	
15.	"All-Bran," packets	per doz.	0	19 6
16.	Cheese—5-lb. boxes, "Kraft"	per box	0	19 3
 Matured	per lb.	0	3 5
17.	Chutney—"A.J.C."	per doz.	1	3 6
18.	Cloves	per lb.	0	9 8
19.	Coconut—Desiccated, Ceylon	do.	0	1 10
Cocoa—				
20.	{ 14-oz. tins, "Bournville"	per doz.	2	16 3
	{ Loose	per lb.	0	4 6
Coffee Essence—				
21.	8-oz. bottles, "Excelsior"	per doz.	1	9 0
22.	1-gal. jars (Jars 3s.)	per jar	1	15 0
23.	Curry Powder—"Indian"—4-oz. packets	per doz.	1	13 0
Custard Powder—				
24.	Bulk, 7-lb. parcels, "Beacon"	per lb.	0	1 4
25.	1-lb. packets, "Parsons"	per doz.	1	3 0
26.	Dates—Loose	per lb.	0	1 6

§ Rates except for sugar—white, are on "Pay and Pick-up Basis" ex warehouse, but for delivery and credit, plus 5 per cent. surcharge. Invoices paid on delivery subject to 2½ per cent. discount and for monthly settlement by 15th of the month following delivery, prices net. Sugar prices net.

* Supplies not available.

‡ List prices, wholesale rates, less 10 per cent.

Sub-schedule No. 6—continued.

GROCERIES—continued.		£	s.	d.
Essences, &c.—				
27.	Almond { 1-oz. per doz.	0	11	6
	{ 8-oz. do.	2	7	0
	{ 16-oz. bot.	0	7	6
28.	Lemon { 1-oz. doz.	0	11	6
	{ 8-oz. do.	2	7	0
	{ 16-oz. bot.	0	7	6
29.	Vanilla { 8-oz. doz.	3	16	0
	{ 16-oz. bot.	0	12	0
30.	Cochineal { 1-oz. doz.	0	11	6
	{ 16-oz. bot.	0	7	6
31.	Parisian, 26-oz. "Dicksons" doz.	2	17	6
32.	Yolkine { 1-oz. do.	0	9	2
	{ 16-oz. do.	2	14	0
Extracts and Pastes—				
33.	"Marmite," 4-oz. jar per doz.	1	5	9
34.	"Vegemite" { 4-oz. jar do.	1	5	7
	{ 8-oz. jar do.	2	4	6
	{ 16-oz. jar do.	4	2	5
35.	Peanut Butter { 6-oz. jar do.	1	8	0
	{ 12-oz. jar do.	2	5	0
36.	"Bonox" { 4-oz. jar do.	1	12	9
	{ 8-oz. jar do.	3	1	6
	{ 16-oz. jar do.	5	15	0
37.	Bloater, 2½-oz. tins, "Pecks" do.	0	16	6
38.	Salmon and Shrimp, 2½-oz. tin do.	0	17	10
Fish—Tinned—				
39.	"Flair," 12-oz. do.	1	10	0
40.	Salmon, 16-oz., "Kingsound" do.	2	2	0
41.	Pilchards, 8-oz. do.	0	18	11
42.	Herrings, 14-oz. { Fresh do.	1	11	0
	{ In sauce do.	1	11	0
43.	Sardines { 4-oz., "Commodore" do.	0	15	0
	{ 8-oz., "Rego" do.	1	8	6
Flour—				
44.	Corn or Maize— { 1-lb. packets, do.	1	0	3
	{ "Kream" do.	0	11	0
45.	Plain—150 lb. bag per bag	3	2	6
Flour—Self-raising—				
46.	{ 25-lb., "Mammy" each	0	17	8
	{ 150-lb., "Mammy" do.	4	3	0
Fruits—Dried—				
47.	Apples per lb.	0	3	5
48.	Apricots do.	0	4	5
49.	Peaches do.	*		
50.	Pears do.	*		
51.	Prunes, 60/70's do.	0	2	6
52.	Currants do.	0	1	9
53.	Raisins, Seeded { 16-oz. pkts., "Rego" per doz.	1	6	9
	{ Loose per lb.	0	11	½
54.	Sultanas do.	0	1	11
55.	Apricots, Halves, 30-oz. tins, "S.P.C." per doz.	1	10	0
56.	Peaches, 30-oz. tins, "S.P.C." do.	1	10	0
57.	Pears, 30-oz. tins, "S.P.C." do.	1	10	0
58.	Mixed Fruits, 16-oz. tins, "Fruit Cock-tail" do.	1	1	0
59.	Solid Pack Apples { 30-oz. tins do.	1	18	0
	{ No. 10 can each	0	8	8
60.	Solid Pack Apricots, No. 10 can do.	0	11	3
61.	Gelatine—Ground, 16-oz. pkts., "Davis" per doz.	5	10	0
62.	Ginger—Ground per lb.	0	5	6
63.	Golden Syrup—2-lb. tins per doz.	1	0	0
64.	Gravox—1-lb. tins do.	1	3	3
65.	Herbs—Mixed, packets do.	0	3	10
66.	Honey—60-lb. tins (Return of 2s. 6d. per tin) per tin	3	17	0
67.	Jams—"Rego" and "Monbulk," tins per doz.	††		
Jelly Crystals—				
68.	{ 4-oz. packets, "Rego" per gross	4	19	0
	{ 7-lb. packets per lb.	0	2	3
Junket Tablets—				
69.	{ "Merry Widow," flavoured per doz.	1	2	0
	{ "Hansens," plain tubes	1	7	0
70.	Lentils per lb.	0	1	10
Macaroni—				
71.	1-lb. packets, "Rinoldi" per doz.	0	15	6
72.	Bulk, 22-lb. boxes per box	0	19	6
73.	Margarine—Cake, pastry (net), "E.O.I." per lb.	0	1	8
	(Freight case, 3s. 6d.)			

Sub-schedule No. 6—continued.

GROCERIES—continued.		£	s.	d.
74.	Matches—Safety, packets per gross	0	19	0
75.	Mayonnaise, 10-oz. jars, "Kraft" per doz.	1	10	0
Meat—Tinned—				
76.	Beef Luncheon { 12-oz., "Tom Piper" do.	1	10	0
	{ 6-lb., "Swifts" each	1	0	6
77.	Beef Steak Pudding, 16-oz., "Tom Piper" per doz.	1	14	6
78.	Camp Pie { 12-oz., "Imperial" do.	1	1	0
	{ 16-oz., "Imperial" do.	1	4	0
79.	Irish Stew, "Tom Piper" do.	1	7	6
80.	Lamb and Green Peas, 16-oz. "Champion" do.	1	6	0
81.	Sausages and Vegetables, 16-oz. do.	1	7	6
Milk—				
82.	Dried { 12-oz. tin, "Sunshine" do.	2	0	10
	{ 3-lb. tins, "Sunshine" do.	7	4	0
83.	Condensed, cases of 4-doz., "Nestles" per case	4	10	0
84.	"Ideal" per doz.	0	17	0
85.	Mustard, 1-lb. tin per lb.	0	5	9
86.	Nutmeg—Ground do.	1	0	0
87.	Oatmeal—Flaked { 7-lb. bags per doz.	4	9	0
	{ Loose per cwt.	3	13	0
88.	Pastry—Mix, 1-lb. packets per doz.	0	15	6
89.	Peanut Butter, 40-oz. do.	0	19	3
Peel—Mixed, Cut—				
90.	{ 8-oz. packets, "Piper" do.	0	19	0
	{ 7-lb. "Seppelts" per lb.	0	2	2
91.	Pepper—White, Ground, loose do.	0	11	3
92.	" " 2-oz. packets, "Rego" per doz.	0	12	5
93.	Pickles—Assorted, 20-oz. bottles, "Rego" do.	1	7	10
Rice—				
94.	Dressed, 56-lb. bags per bag	2	4	2
95.	Ground, 1-lb. packets, "McKenzies" per doz.	0	14	6
96.	Sago per lb.	0	10	0
Salt—				
97.	Fine, bulk, "Imperial" per cwt.	1	1	3
98.	Table { 1-lb. packets, "Mermaid" per doz.	0	7	6
	{ 1-lb. packets, "Saxa" do.	0	10	0
Sauces—				
99.	Tomato, 26-oz. bottles { "White Crow" do.	2	3	0
	{ "Rosella" do.	2	6	6
100.	Tomato, 1-gal. tins, "White Crow" per tin	0	10	4
Worcestershire—				
101.	{ 10-oz. bottles, "Holbrooks" per doz.	1	7	0
	{ 10-oz. bottles, "Rego" do.	1	1	7
	{ 26-oz. bottles, "Rego" do.	1	17	0
102.	Mustard, 8-oz. bottles, "Holbrooks" do.	1	4	0
Soaps—				
103.	Extract of, "Nu-Wash," 56-lb. bags per bag	2	8	6
104.	"Rinsol" Economy packet per doz.	2	1	0
105.	"Persil" Giant packet do.	2	1	0
106.	"Lux" Flakes, packets, Family Size do.	1	16	9
107.	Sand Soap, 6-oz. blocks, "Preservene" do.	0	8	10
108.	Toilet Soap, 3½-oz. tablets, "Palm-olive" do.	0	8	6
109.	Toilet Soap, 3½-oz. tablets, "Lux" do.	0	8	6
110.	"Velvet" or equal { Quads, 3-doz. ctn. per ctn.	5	3	6
	{ Quints, 2½-doz. ctn. do.	4	16	9
Soda—				
111.	Bicarbonate per lb.	0	0	8
112.	Washing do.	0	0	5
Soups—				
113.	Pea, No. 10 tins each	0	8	11
114.	Tomato, 16-oz. tins { "Kia Ora" per doz.	0	19	6
	{ "Rego" do.	0	19	6
115.	Tomato, 6-lb. tins, "Kia Ora" each	0	8	7
Spaghetti—				
116.	1-lb. packets, "Rinoldi" per doz.	0	15	6
117.	Bulk, 22-lb. boxes each	0	19	6
Spice—Mixed—				
118.	{ 1-oz. packets per doz.	0	5	9
	{ Loose per lb.	0	4	4
119.	Starch—Rice, "Silver Star," packets, 14-oz. per doz.	1	1	0
Sugar—				
120.	Icing mixture, 56-lb. bags per bag	2	15	0
121.	Castor, 70-lb. bag do.	3	3	0
122.	Raw per lb.	0	0	9½
123.	White, 70-lb. bag per bag	2	19	4

* Supplies not available.

†† In 1½-lb. tins—Apricot, £1 7s. 6d.; Apple Jelly, £1 8s. 6d.; Blackberry, £1 16s. 0d.; Blackcurrant, £2 3s. 6d.; Gooseberry £1 14s. 0d.; Loganberry, £1 18s. 6d.; Melon and Lemon, £1 6s. 0d.; Melon and Pineapple, £1 7s. 0d.; Dark Plum, £1 5s. 0d.; Marmalade, £1 7s. 0d.; Peach, £1 8s. 6d.; Plum and Raspberry, £1 8s. 6d.; Quince, £1 4s. 0d.; and Raspberry, £1 19s. 0d.
 In 5-lb. tins—Apricot, £4 6s. 0d.; Melon and Lemon, £4 3s. 0d.; Melon and Pineapple, £4 7s. 0d.; Dark Plum, £4 2s. 6d.; Marmalade, £4 7s. 0d.; Peach, £3 19s. 6d.; Plum and Raspberry, £4 14s. 0d.; Quince, £3 19s. 0d.; and Raspberry, £6 8s. 0d.
 In 28-lb. tins—Blackberry, 1s. 10d. per lb.
 In 56-lb. tins—Apricot, 1s. 3d. per lb.; and Plum and Raspberry, 1s. 3d. per lb.

Sub-schedule No. 6—continued.

GROCERIES—continued.

	£	s.	d.
Tapioca—			
124. {Seed	per lb.	0	0 10
{Pearl	do.	0	0 11
125. Tartar—Cream of	do.	0	3 3
126. Treacle, 2-lb. tins	per doz.	0	19 6
127. Peas, Split—(yellow) {56-lb. bags	per cwt.	2	7 0
{Broken bags	per lb.	0	0 10½
Vegetables—Tinned—			
128. Baked Beans, 16-oz., "Kia Ora"	per doz.	1	0 6
129. Baked Beans, No. 10 can, "Kia Ora"	each	0	9 4
130. Beans, green, 30-oz., "Harvest"	per doz.	2	1 0
131. Beetroot, 30-oz.	do.	1	14 6
132. Peas, 30-oz. { "Harvest"	do.	1	15 6
{ "Biddy's"	do.	1	6 6
133. Sweetcorn, 16-oz., "Rosella"	do.	1	6 6
134. Tomatoes, 30-oz., "Rego"	do.	1	9 0
Vermicelli—			
135. 1-lb. packets, "Rinoldi"	do.	0	15 6
136. Bulk, 22-lb. boxes	each	0	19 6
137. Vinegar—Malt, 1-gal. jars (jars 3s.)	per gal.	0	5 0

ANNEX TO CONTRACT No. 1961/49.†

Alan H. Gittins, 350 Hargreaves-street, Bendigo.

Sub-schedule No. 7.

MEAT.

For Gaol.

	£	s.	d.
Security, £5.			
1. Fresh Beef	per lb.	0	2 3
2. Fresh Mutton	do.	0	1 0
3. Sausages—Mixed	do.	0	1 9
4. Mince-meat	do.	0	1 3

ANNEX TO CONTRACT No. 1961/50.†

Alan H. Gittins, 350 Hargreaves-street, Bendigo.

Sub-schedule No. 8.

MEAT.

For Sandhurst Boys' Centre, Bendigo.

	£	s.	d.
Security, £5.			
1. Fresh Beef, Rolled Roast, boneless, brisket	per lb.	0	3 5
excluded			
2. Fresh Beef, Buttocks	do.	0	2 9
3. Corned Beef, rolled or round, as ordered	do.	0	2 6
without bone or cartilage			
4. Corned, Silverside	do.	0	3 5
Fresh Mutton—			
5. Legs	do.	0	1 10
Chops—			
6. Middle Loin	do.	0	1 10
7. Forequarter	do.	0	1 6
8. Steak—Rump	do.	0	5 0
9. Veal—Fillet—Boneless	do.	0	3 6
10. Sausage Meat	do.	0	1 3
11. Livers—Sheep	do.	0	0 11
12. Kidneys—Ox	do.	0	1 6
13. Sausages—Mixed	do.	0	1 9
14. Sausage—Beef German	do.	0	2 6
15. Saveloys	per doz.	0	3 9
16. Bacon—Rashers—Shoulder	per lb.	0	6 3
17. Dripping—Beef	do.	0	0 9
18. Shin Beef	do.	0	2 3

ANNEX TO CONTRACT No. 1961/51.†

M. P. and L. K. Marchioni, Killians-walk and Queen-street, Bendigo.

Sub-schedule No. 9.

MEAT.

For Teachers' College Hostels as under—
Osborne-street, Pleasant Vale, Bendigo.
"Lancewood," McLaren-street, Bendigo.
"Comersdale," Pantton-street, Golden Square, Bendigo.

	£	s.	d.
Security, £5.			
Fresh Beef—			
1. Topside	per lb.	0	3 6
2. Corned Beef—Rolled or Round, as ordered,	do.	0	2 6
without bone or cartilage			
3. Corned Silverside	do.	0	3 6
4. Fresh Mutton—Carcass	do.	0	1 3

Sub-schedule No. 9—continued.

MEAT—continued.

	£	s.	d.
Steak—			
5. Blade (Minced)	do.	0	2 10
6. Chuck	do.	0	2 8
7. Rump	do.	0	5 6
8. Sausages—Mixed	do.	0	1 10
9. Sausage Meat	do.	0	1 6
10. Livers—Sheep	do.	0	0 9
11. Veal—Fillet, boneless	do.	0	4 6
12. Brains—Sheep	per set	0	0 6
13. Kidneys—Ox	per lb.	0	1 6
14. Ox Tails	do.	0	1 6
15. Sausage, Strasburg	do.	0	3 7
16. Salad Loaf	do.	0	3 5
17. Bacon	do.	0	6 0

SCHEDULE No. 10.

PROVISIONS—CASTLEMAINE GAOL.

(Delivery at the Gaol.)

ANNEX TO CONTRACT No. 1961/52.

T. N., M. K., and T. J. Kenyon, 16 Hunter-street, Castlemaine.

Sub-schedule No. 1.

BREADSTUFFS.

	£	s.	d.
Security, £5.			
1. Bread—Fine wheaten, first quality	per cntl.	2	19 0½

ANNEX TO CONTRACT No. 1961/53.†

McQueen Bros., Hargreaves-street, Castlemaine.

Sub-schedule No. 2.

MEAT.

	£	s.	d.
Security, £5.			
1. Fresh Beef	per lb.	0	2 0
2. Fresh Mutton	do.	0	1 3
3. Corned Beef—Rolled or Round, as ordered,	do.	0	2 2
without bone or cartilage			
4. Minced Meat (Beef)	do.	0	2 3
5. Sausage Meat	do.	0	1 3
6. Saveloys	per doz.	0	4 6

SCHEDULE No. 11.

PROVISIONS—SCHOOL OF FORESTRY, CRESWICK.

(Delivery at the School.)

ANNEX TO CONTRACT No. 1961/54.

M. C. and L. M. Bennett, Albert-street, Creswick.

Sub-schedule No. 1.

BREADSTUFFS.

	£	s.	d.
Security, £3.			
1. Bread—Fine wheaten, first quality	per cntl.	4	3 4
2. Flour—First quality	do.	*	*

* Current market price.

(AGREEMENT.)

J. Tait and Son, Albert-street, Creswick.

Sub-schedule No. 2.

GROCERIES.

	£	s.	d.
1. Bacon	per lb.	0	5 9
2. Barley—Pearl	do.	0	0 7½
3. Blue—Washing	per doz.	0	3 0
4. Biscuits—Dry	per lb.	0	2 9
5. " Sweet	do.	0	2 9
6. Butter, First-grade creamery, to score not	do.	0	4 7½
less than 91 prints, Government grade,			
Commerce Regulations standard			
7. Cereals—"Weeties", 24-oz.	per doz.	1	7 6
8. Cheese—Kraft, 5-lb.	per box	0	19 6
9. " Matured	per lb.	0	3 9
10. Coffee Essence, 8-oz.	per doz.	1	7 0
11. " Beans, roasted	per lb.	0	3 0
12. Cocoa, 14-oz., "Bournville"	per doz.	3	3 0
13. Coconut—Dessicated	per lb.	0	2 0
14. Chutney—Fruit	per doz.	1	4 0
15. Custard Powder	per lb.	0	1 8

⊙ Order under Melbourne Contract.

Sub-schedule No. 2—continued.

GROCERIES—continued.

	£	s.	d.
16. Eggs—New laid	per doz.	0	4 6
17. Fish—Tinned—Herrings in Sauce, 14-oz. ..	do.	1	15 0
18. " " Sardines, 4-oz.	do.	0	15 0
19. Flour—Corn or Maize, 1-lb.	per doz.	0	18 0
20. " Self-raising, 25-lb. bag	per bag	0	18 9
Fruit—Preserved, 30-oz.—			
21. Peaches, sliced	per doz.	1	10 0
22. Pears, halves	do.	1	10 0
23. Apricots, halves	do.	1	13 0
24. Cherries, Glace, 4-oz. packet	per lb.	0	7 4
25. Fruit—Dried—Sultanas, 3-crown	do.	0	1 10½
26. Gelatine—Ground, 4-oz.	per doz.	1	10 0
27. Ginger—Ground	per lb.	0	7 6
28. Golden Syrup, 2-lb. tin	per doz.	1	0 6
29. Honey, 60-lb. tin	per tin	3	10 0
30. Jams, assorted, 5-lb. tins in the proportion of half seed and half stone	per tin	0	8 6
31. Jelly Crystals, 4-oz. packets	per doz.	0	8 6
32. Milk—Powdered, 3-lb. tins	per tin	0	12 3
33. " Condensed, "Nestles"	per doz.	1	1 0
34. Mustard	per lb.	0	5 6
35. Oatmeal—Flaked	do.	0	0 9
36. Pepper—Ground, white	do.	0	10 6
37. Potatoes—Dry and free from dirt	per cwt.	§	
38. Peanut Butter, 12-oz. jars	per doz.	2	8 0
39. Salt—Fine	per lb.	0	0 2
40. " Table, 1-lb. packets, "Mermaid"	do.	0	0 7½
41. Soap—Sand, Carbolic, 12-oz.	per doz.	0	8 6
42. " Velvet, yellow, dry and hard	do.	1	7 0
43. " Toilet, 12-oz. cakes	do.	0	8 6
44. " Rinso, large packets	do.	2	5 0
45. Sauce—Tomato, 26-oz.	do.	2	2 0
46. " Worcestershire, 26-oz.	do.	1	18 0
47. Soda—Bicarbonate	per lb.	0	0 8½
48. " Washing	do.	0	0 5
49. Starch—Rice, loose	do.	0	1 5½
50. Sugar—Castor, 70-lb. bag	per bag	3	10 0
51. " White, 70-lb. bag	do.	3	1 0
52. Tartar, Cream of, substitute	per lb.	0	2 9
53. Tea—First grade	do.	⊙	
54. Vegemite, 1-lb. jars	per doz.	4	10 0
55. Vegetables—Tinned—Baked Beans, 16-oz. ..	do.	1	2 0
56. " " Sweet Corn, 16-oz.	do.	1	10 0
57. Vinegar, Malt	per pint	0	0 5½

ANNEX TO CONTRACT No. 1961/55.

E. J. Keen, Jory-street, Crewick.

Sub-schedule No. 3.

MILK.

Security, f3.

	£	s.	d.
1. Milk—Fresh and pure	per qt.	0	1 3

ANNEX TO CONTRACT No. 1961/56.†

H. J. Symons Pty. Ltd., 1015 Macarthur-street, Ballarat.

Sub-schedule No. 4.

MEAT.

Security, £3.

	£	s.	d.
1. Fresh Beef—Topside	per lb.	0	4 6
2. " Sirloin, boneless	do.	0	4 6
3. Corned, Silverside	do.	0	4 6
4. Mutton—Fresh, sides	do.	0	1 5
5. Pork—Fresh, leg	do.	0	5 0
6. Steak—Stewing	do.	0	4 0
7. " Minced	do.	0	2 9
8. Sausages—Mixed	do.	0	2 0
9. Sausage—Beef German	do.	0	3 0
10. Kidney—Ox	do.	0	2 0
11. Liver—Sheep	do.	0	1 0
12. Saveloys	per doz.	0	4 0

§ Cost price plus 10 per cent.

⊙ Order under Melbourne District Contract.

† The rates to be paid for all items under these Sub-schedules shall be the wholesale price ruling on the day of delivery; where rates are shown, they are for the wholesale rates at date of publication of this Gazette. * Supplies not available.

SCHEDULE No. 12.

PROVISIONS—AGRICULTURAL COLLEGE, DOOKIE.

(Delivery at the College.)

ANNEX TO CONTRACT No. 1961/57.

J. and A. Toohey, Mary-street, Dookie

Sub-schedule No. 1.

BREADSTUFFS.

Security, £15.

	£	s.	d.
1. Bread—Fine wheaten, first quality	per cntl.	3	17 1
2. Flour—First quality	do.	2	0 6

(AGREEMENT.)

Cohn's (Shepparton) Pty. Ltd., Benalla-road, Shepparton.

Sub-schedule No. 2.

GROCERIES. ††

(Delivery "F.O.R." Shepparton.)

	£	s.	d.
1. Baking Powder, 1-lb. tins	per doz.	1	16 10
2. Blue—Washing, "Reckitts," paper	per gross	2	2 6
3. Candles—full weight, "Electrine"	per lb.	0	2 8½
4. Cereals, 24-oz. pkts.	per doz.	1	9 11
5. Chutney, 10-oz.	do.	1	3 3
6. Cocoa—14-oz. "Bournville"	do.	3	1 3
7. Coconut—desiccated	per lb.	0	1 10½
8. Coffee Essence—1-gal. jars (Jars 3s.)	per gal.	1	13 7
9. Cordial—Lemon, &c., 1-gal. jars (Jars 3s.) ..	do.	0	16 6
10. Curry Powder—Loose	per lb.	0	3 9
11. Custard Powder—1-lb., "Parsons"	per doz.	1	2 5
12. Essences—Cochineal, 8-oz.	do.	2	15 0
13. " Lemon, 8-oz.	do.	2	15 0
14. " Vanilla, 8-oz.	do.	3	19 3
15. Fruits—Dried—Currants, 2-crown	per 12 lb.	1	6 11
16. " " Sultanas, 3-crown	do.	1	8 5
17. " " Raisins, seeded, 1-lb.	per doz.	1	9 2
Fruits—Preserved, 30-oz. tin—			
18. Peaches—Sliced	do.	1	11 6
19. Apricots—halves	do.	1	11 6
20. Pears—halves	do.	1	11 6
21. Apples—6-lb. tins	per tin	0	8 11
22. Flour—Corn or Maize, 1-lb.	per doz.	0	19 6
23. " Self Raising, 150-lb. bags	per bag	4	16 11
24. Gelatine—Ground, 4-oz.	per doz.	1	6 6
25. Golden Syrup, 2-lb. tins	do.	1	1 2
26. Gravox, 1-lb.	do.	1	2 0
27. Herbs—Mixed, 2-oz. pkts.	do.	0	3 10
28. Jelly Crystals, 7-lb. pkts.	per lb.	0	2 4½
29. Junket Tablets—Tubes	per doz.	1	0 0
30. Margarine—Cake or Pastry	per lb.	0	2 11½
31. Marmite, 4-oz. jars	per doz.	1	7 4
32. Matches—Safety	per gross	0	19 5
33. Meat—Tinned—Camp Pie, 12 oz.	per doz.	1	4 0
34. " " Steak and Kidney, 16-oz.	do.	1	18 2
35. Milk—Powdered, 3-lb. tin	do.	7	12 8
36. Mixed Peel, 8-oz. pkts.	do.	0	18 4
37. Mustard—Loose	per lb.	0	5 0
38. Oats—rilled, 5-lb. bag	per bag	0	6 1
39. Oatmeal—flaked, 100-lb. bag	do.	4	10 4
40. Pepper—Ground, white	per lb.	0	9 6
41. Pickles—Assorted, 20-oz.	per doz.	1	10 6
42. Sago	per lb.	0	0 11
43. Salt—Fine	per cwt.	1	1 0
" table, 16-oz. pkts.	per doz.	1	2 0
45. Sauce—Tomato—26-oz. bottles	do.	1	19 6
46. " " 1-gal. jars	per gal.	1	0 0
47. " Worcestershire—10-oz.	per doz.	1	0 0
48. " " 1-gal. jars	per gal.	0	18 0
49. Soups—Tomato—No. 10 cans	per can	0	9 2
50. " " 16-oz.	per doz.	1	1 11
51. " Celery, 16-oz.	do.	1	1 11
52. " Pea, 16-oz.	do.	1	1 11
53. Soda—Bicarbonate	per lb.	0	0 8
54. " Washing, 56-lb. bag	per bag.	1	1 5
55. Spaghetti—22 lb., "Rinaldi"	per ctn.	1	1 11
56. Spices—Mixed 1 oz.	per doz.	0	5 0
57. " Cloves—Whole	per lb.	*	
58. " Nutmeg—ground, 2-oz. pkts.	per doz.	2	0 3
59. Starch—14-oz., "Silver Star"	do.	0	19 4
60. " Loose	per lb.	*	
61. Sugar—Castor, 70-lb. bags	per bag	3	3 0
62. " Icing, 56-lb. bags	do.	2	17 9
63. " White, 70-lb. bags	do.	3	1 0
64. " Brown, 70-lb. bags	do.	2	19 0

Sub-schedule No. 2—continued.

GROCERIES—continued.

	£	s.	d.
65. Soft Drinks per doz.			\$
66. Treacle, 2-lb. tins do.	1	0	8
Vegetables—Tinned—			
67. Tomatoes, 30-oz. per doz.	1	9	6
68. Beans—Baked, 16-oz. do.	1	3	3
69. " No. 10 can (Baked) each	0	9	7
70. " Green, 30-oz. tins per doz.	2	2	9
71. Peas—Green, 30-oz. tins do.	2	1	6
72. Vinegar—Malt, 1-gal. jars (Jars 3s.) per gal.	0	8	6
73. Vegemite—16-oz. jars per doz.	4	5	6

(AGREEMENT.)

Cohns (Shepparton) Pty. Ltd., Benalla-road, Shepparton.

Sub-schedule No. 3.

JAM.

(Delivery "F.O.R." Shepparton.)

	£	s.	d.
Jam—Bulk—			
1. Assorted, of approved kinds.			} ††
2. Assorted, of approved kinds, in the proportion of half seed and half stone, of the best quality, in 32-lb. tins and 54-lb. tins			

SCHEDULE No. 13.

PROVISIONS—McLEOD SETTLEMENT, FRENCH ISLAND.

(Delivery to be made at Corinella Jetty.)

ANNEX TO CONTRACT No. 1961/58.

G. A. and A. H. Van der Craats, Grantville.

Sub-schedule No. 1.

BREAD.

Security, £12.

	£	s.	d.
1. Bread—Fine wheaten, first quality .. per cntl.	3	15	0

(AGREEMENT.)

E. V. Peters, Corinella.

Sub-schedule No. 2.

GROCERIES.

	£	s.	d.	
1. Butter—First grade creamery, to score not less than 91 points, Government grade, Commerce Regulations Standard	per lb.	0	4	8
2. Cheese—Matured do.	0	3	4	
3. Jams—Assorted, Seed per doz.	1	19	9	
" " Stone, of best quality, in 24-oz tins, "Monbulk"	do.	1	11	0

ANNEX TO CONTRACT No. 1961/59.†

George Hayman, Lang Lang.

Sub-schedule No. 3.

MEAT.

Security, £5.

	£	s.	d.
1. Fresh Beef per lb.	0	2	4
2. Mutton do.	0	1	2

†† Plum and Raspberry, 1s. 4½d. per lb.; Apricot, Dark Plum, Quince, Peach and Marmalade, 1s. 2½d. per lb.; Blackberry, 1s. 6d. per lb.; Blackcurrant, 1s. 10½d. per lb. § Prices on application.

SCHEDULE No. 14.

PROVISIONS—GEELONG DISTRICT.

(Delivery into Institutions.)

ANNEX TO CONTRACT No. 1961/60.

J. A. Fitzgerald, 150 Malop-street, Geelong.

Sub-schedule No. 1.

BREAD.

Security, £30.

	£	s.	d.
1. Bread—Fine wheaten, first quality .. per cntl.	2	14	2
2. Bread—Wholemeal, first quality do.	2	14	2
3. " Rolls per doz.	0	3	2

(AGREEMENT.)

McKay MacLeod Pty. Ltd., 17 Cavendish-street, Geelong.

Sub-schedule No. 2.

GROCERIES.

The rates to be paid under this Sub-schedule shall be the wholesale price ruling on the day of delivery, less 2½ per cent. net. Delivery free to hostels.

ANNEX TO CONTRACT No. 1961/61.†

A. R. Bubb, 147 Moorabool-street, Geelong.

Sub-schedule No. 3.

MEAT.

For Gaol.

Security, £5.

	£	s.	d.	
1. Fresh Beef per lb.	0	2	3	
2. Corned Beef—Rolled or Round, without bone or cartilage	do.	0	2	6
3. Fresh Mutton—Forequarters do.	0	1	7	
4. " " Legs do.	0	1	1	
5. Beef—Minced do.	0	2	6	
6. Sausages—Mixed do.	0	1	9	
7. Sausage Meat do.	0	1	2	
8. " Beef German do.	0	2	8	
9. Dripping—Beef do.	0	0	10	

ANNEX TO CONTRACT No. 1961/62.†

A. C. Knight, 27 Melbourne-road, North Geelong.

Sub-schedule No. 4.

MEAT.

For delivery to Teachers' College Hostels as under—
 "Lauriston," 23 Aberdeen-street, Geelong.
 "Forty-Five," The Esplanade, Western Beach, Geelong.
 "Hawthorne," Aberdeen-street, Geelong.
 "Ariston," Packington-street, Geelong.
 "Warrain," 56 Western Beach, Geelong.

Security, £5.

	£	s.	d.	
Fresh Beef—				
1. Sirloin, boneless per lb.	0	3	9	
2. Topside Roast do.	0	3	8	
3. Corned Beef—Rolled or Round, as ordered, without bone or cartilage	do.	0	3	9
Mutton—				
4. Legs, Two-tooth do.	0	1	8	
5. Forequarters, boned, rolled, and pickled	do.	0	1	2
6. Chops, Forequarter do.	0	1	3	
7. Chops, Cutlets do.	0	1	10	
Steak—				
8. Chuck do.	0	3	3	
9. Bladebone do.	0	3	6	
10. Minced do.	0	2	6	
11. Tongues—Ox do.	0	1	4	
Sausages—				
12. Mixed, thin do.	0	1	8	
13. Pork, thick do.	0	1	8	
14. Sausage—Pork, German do.	0	3	9	
15. Sausage Minco do.	0	1	0	
16. Bacon—Shoulder do.	0	4	6	

SCHEDULE No. 15.

PROVISIONS—COORIEMUNGLE PRISON CAMP, HEYTESBURY FOREST.

(Delivery to be made at the Camp.)

ANNEX TO CONTRACT No. 1961/63.

M. and J. V. Church, Recreation-road, Timboon.

Sub-schedule No. 1.

BREAD.

	Security, £3.	£	s.	d.
1. Bread—Fine wheaten, first quality .. per cntl.		4	5	0

ANNEX TO CONTRACT No. 1961/64.†

Heytesbury Butchery, Timboon.

Sub-schedule No. 3.

MEAT.

	Security, £4.	£	s.	d.
1. Fresh Beef per lb.		0	4	6
2. Corned Beef—Rolled or Round, as ordered, without bone or cartilage .. do.		0	3	10
3. Sausages do.		0	2	7
4. Sausage Mince do.		0	1	11
5. Dripping—Beef do.		0	1	1

SCHEDULE No. 16.

PROVISIONS—ABORIGINAL STATION, LAKE TYERS.

(Delivery at Lake Tyers Station.)

ANNEX TO CONTRACT No. 1961/65.

R. Hodder, Noua Noua.

Sub-schedule No. 1.

BREADSTUFFS.

	Security, £25.	£	s.	d.
1. Bread—Fine wheaten, first quality .. per cntl.		2	18	3
2. Flour—First quality do.		1	19	6

(AGREEMENT.)

R. Hodder, Noua Noua.

Sub-schedule No. 2.

GROCERIES.

	£	s.	d.
1. Baking Powder—"Snowflake," or equal thereto, 1-lb. tins .. per lb.			
2. Candles—Full weights Kitchen's "Electrics," or other make of equal quality, 1-lb. packets .. do.			
3. Coffee—Fresh roasted, and whole, beans to be thoroughly sound .. do.			
4. Cocoa—Bulk per lb.			
5. Corn or Maize Flour—1-lb. packets .. do.			
6. Currants—2-crown (present season's) .. do.			
7. Curry Powder—Bulk do.			
8. Matches—Safety, 60 per box, "Yacht" .. per gross			
9. Mustard—"Double Superfine" per lb.			
10. Pepper—Black, ground, 2-oz. tins .. per tin			
11. Raisins—Sultanas, 3-crown, (present season's) .. per lb.			
Salt—			
12. Coarse per cwt.			
13. Fine do.			
14. Soap—Household, hard and dry, to sample Soda—			
15. Bicarbonate per lb.			
16. Washing do.			
17. Tartar—Cream of, Substitute, Calcium Phosphate .. do.			
18. Treacle—2-lb. tins per tin			
19. Vinegar—Malt per qt.			

(AGREEMENT.)

R. Hodder, Noua Noua.

Sub-schedule No. 3.

JAMS.

	£	s.	d.
1. Jams—Assorted, 24-oz. tins, in the proportion of half seed and half stone .. per tin			**

§ Order under Melbourne District Contract.

** The rates to be paid for all items under these Sub-schedules shall be the wholesale prices charged to the contractor, plus 12½ per cent. Wholesaler's invoices to be submitted with contractor's accounts.

SCHEDULE No. 17.

PROVISIONS—LANGI KAL KAL TRAINING CENTRE.

ANNEX TO CONTRACT No. 1961/66.

O. L. and B. M. Nicholls, Neil-street, Beaufort.

Sub-schedule No. 1.

BREAD.

	Security, £3.	£	s.	d.
1. Bread—Fine wheaten, first quality .. per cntl.		3	10	10

ANNEX TO CONTRACT No. 1961/67.†

F. P. Haintz and Son, Havelock-street, Beaufort.

Sub-schedule No. 2.

MEAT.

	Security, £5.	£	s.	d.
1. Fresh Beef—Boneless per lb.		0	4	0
2. Sausages—Mixed do.		0	2	0
3. Mince Meat do.		0	1	6

SCHEDULE No. 18.

PROVISIONS—AGRICULTURAL COLLEGE, LONGERENONG.

(Delivery at the College.)

ANNEX TO CONTRACT No. 1961/68.

Schwarz Breads, 58 Firebrace-street, Horsham.

Sub-schedule No. 1.

BREADSTUFFS.

	Security, £5.	£	s.	d.
1. Bread—Fine wheaten, first quality .. per cntl.		3	3	6
2. Flour—First quality do.				§

(AGREEMENT.)

A. Woolman, Doon.

Sub-schedule No. 2.

GROCERIES.

	£	s.	d.
1. Barley—Pearl per lb.	0	0	9
2. Lima Beans do.	0	1	8
3. Biscuits—Coffee, Malt, Nice .. do.	0	2	6
4. " Assorted Creams, &c. .. do.	0	3	6
5. Cereals—Cornflakes—"Kelloggs" 8-oz. .. per pkt.	0	2	9
6. Cheese—Bulk—			
{ Mild per lb.	0	3	6
{ Mature do.	0	3	9
7. " Kraft, 8-oz. per doz.	1	7	0
8. Cinnamon per lb.	0	5	9
9. Coconut—Desiccated do.	0	2	6
10. Coffee Essence—26-oz., "Bushells" .. per bot.	0	6	8
11. Curry Powder (Indian) Madras .. per lb.	0	4	3
12. Custard Powder—7-lb. packets "Cameo" .. do.	0	1	6½
13. Dates—"Khadravi," 1-lb. packets .. do.	0	2	0
Essence—			
14. Lemon-8-oz. "Harpers" { Pure .. per bot.	0	3	9
{ Imitation .. do.	0	2	11
15. Vanilla-8-oz. "Harpers" { Pure .. do.	0	6	9
{ Imitation .. do.	0	2	9
16. Cocoa—"Bournville" 14-oz. packets .. per pkt.	0	5	10½
17. Flour—corn, 1-lb. packets, "Cameo" .. do.	0	1	9
18. " Self-raising, "McAlpins" or "Crusador" in 25-lb. bags .. per bag	1	0	10
Fruits—Dried—			
19. Currants—"Sunray" or "Swallow and Ariel" .. per lb.	0	2	4
20. Raisins—seeded—"Sunray" or "Swallow and Ariel" .. do.	0	2	6
21. Sultanas—2-crown—"Sunray" or "Swallow and Ariel" .. do.	0	2	4
Fruits—Tinned—			
22. Apricots—30-oz., (Halves)—"S.P.C." .. per doz.	1	15	6
Kyabram do.	1	15	6
23. Peaches—30-oz., (Halves)—"S.P.C." .. do.	1	15	6
Kyabram do.	1	15	6
24. Pears—30-oz., (Halves)—"S.P.C." .. do.	1	15	6
Kyabram do.	1	15	6
25. Mixed Fruits—30-oz., "S.P.C."—Kyabram .. do.	1	15	6
26. Solid Pack Apples—7-lb. do.	6	3	6

Sub-schedule No. 2—continued.

GROCERIES—continued.		£	s.	d.
27. Gelatine—Ground "Davis", 1-lb. packets	per lb.	0	9	11
28. Ginger—Ground, 2 oz.	per tin	0	1	6
29. Golden Syrup—2-lb. tins	per doz.	1	2	0
30. Gravox—1-lb. tins	per lb.	0	2	1
31. Honey—60-lb. tins, Yellow Box	per tin	4	2	6
32. Jelly Crystals, 6-lb. packets, "Renown"	per pkt.	0	16	0
33. Macaroni—1-lb. packets "Renoldi"	per lb.	0	1	4
34. Mustard—"Keens"	do.	0	8	7
35. Nutmeg—Ground, 2-oz.	per tin	0	4	3
36. Oatmeal Flaked—"Parsons" and "John Bull," 7-lb. packets	per pkt.	0	7	4
37. Peas—Split, yellow	per lb.	0	0	10½
Peel—Mixed—Cut—				
38. Bakers loose—¼-lb. packets—1s. 10d. each	per lb.	0	1	10
39. Pepper—White, ground	do.	0	16	6
40. Pickles—Assorted, 20-oz. bottles, "Leggo," "Wimmera"	per doz.	1	12	6
41. Rice—Dressed	per lb.	0	1	1
Salt—				
42. { Fine, bulk	do.	0	0	3½
{ Table, 1-lb. packets	per doz.	0	8	6
Sauces—Tomato—				
43. "Reeds" 26-oz. bottles	do.	2	5	0
44. Tomato—1-gal. jars—"Reeds"*	per jar	0	17	6
45. Worcestershire—1-gal. jars—"Greigs"*	do.	0	16	0
46. Spice—Mixed, 1-oz.	per doz.	0	7	6
47. Parsil, Economy	per pkt.	0	3	7
48. Sand Soap—12-oz. blocks, "Pearsons"	per doz.	0	11	6
49. Toilet Soap—5-oz., "Palmolive"	do.	0	9	9
50. Velvet { Quads	do.	1	9	6
{ Quints	do.	2	6	9
51. Soup—Tomato, 60-oz. "Leggos"	per tin	0	7	0
52. Spaghetti—1-lb. packets—"Kinoldi"	per pkt.	0	1	4½
Sugar—				
53. Icing	per lb.	0	1	2
54. Castor	do.	0	1	1
55. White, 70's	per bag	3	3	3
56. Treacle—2-lb. tins	per doz.	1	0	0
57. Peas, 30-oz. "Raleigh" or "Bibby"	do.	1	15	9
58. Vim Cleaner	do.	0	17	3
59. Vinegar—1-gal. jars—"Sutherland"*	per gal.	0	5	6

(AGREEMENT.)

A. Woolman, Doon.

Sub-schedule No. 3.

JAM.

1. Jams—in 5-lb. tins—"Monbulk"—Assorted as ordered.		£	s.	d.
Apricot	per doz.	5	0	6
Marmalade	do.	4	19	3
Melon	do.	4	15	9
Peach	do.	5	7	3
Plum	do.	4	16	6
Plum and Raspberry	do.	5	9	9
Quince	do.	4	8	6

SCHEDULE No. 19.

PROVISIONS—RESEARCH STATION, RUTHERGLEN.

(Delivery ex Bakery and Grocery Store.)

ANNEX TO CONTRACT No. 1961/60.

A. F. and T. M. Landers, Main-street, Rutherglen.

Sub-schedule No. 1.

BREAD.

1. Bread—Fine wheaten, first quality		£	s.	d.
	per cwtl.	3	19	2

(AGREEMENT.)

Aitken and Fullerton, Rutherglen.

Sub-schedule No. 2.

GROCERIES.

1. Biscuits		£	s.	d.
{ Sweet—Creams	per lb.	0	4	0
{ Dry Ryethin	do.	0	3	3
{ " Savoy	do.	0	3	3
{ " True-Bake	do.	0	3	2

* Jars, 3/- each, returnable.

Sub-schedule No. 2—continued.

GROCERIES—continued.		£	s.	d.
2. Cocoa—¼-lb. packets	each.	0	2	11
3. Coconut—Desiccated	per lb.	0	2	0
4. Cornflakes—"Kelloggs"	per pkt.	0	2	8
5. Cornflower—1-lb. packets	do.	0	1	10
6. Custard Powder—1-lb. packets	do.	0	2	1
7. Coffee { Pure	per lb.	0	6	3
{ Nescafe—¼-lb. tins	per tin	0	13	0
{ Essence	per bot.	0	2	4
8. Cheese—"Kraft," ¼-lb. packets	per pkt.	0	2	4
" Matured	per lb.	0	3	9
9. Curry Powder, Loose	do.	0	4	11
10. Dates	do.	0	1	9
11. Essences { Vanilla—4-oz. bottles	each	0	5	3
{ Lemon—4-oz. bottles	do.	0	3	6
{ Cochineal—2-oz. bottles	do.	0	1	6
Extracts and Pastes—				
12. { Marmite—16-oz.	per jar	0	6	9
{ Peanut Butter—12-oz.	do.	0	3	9
{ Bonox—16-oz.	do.	0	11	6
13. Fish { Tinned Salmon "Greenseas"	per tin	0	3	9
{ Sardines	do.	0	1	6
{ Herrings in sauce, 14-oz.	do.	0	2	10
Flour—				
14. { Self-raising, 25-lb. bags, "McAlpins"	per bag	0	19	6
{ Plain	per lb.	0	0	6
Fruits—Dried—				
15. { Currants	do.	0	2	2
{ Mixed	do.	0	2	6
{ Raisins (Seeded)	do.	0	2	6
{ Sultanas	do.	0	2	3
Fruits—Preserved—30-oz. tins—				
16. { Fruit Salad	per tin	0	3	9
{ Peaches	do.	0	2	9
{ Pears	do.	0	2	9
{ Pineapple	do.	0	3	3
{ Raspberries, 1-lb. tin	do.	0	3	6
17. Gelatine	per lb.	0	9	6
18. Gravox	do.	0	2	2
19. Herbs—Mixed, 1-oz. packets	per pkt.	0	0	5
20. Honey { Creamed, 1-lb.	per jar	0	2	9
{ Pure, 2-lb. jar	do.	0	3	9
Jams—24-oz. tins—				
21. { Apricot	per doz.	1	13	0*
{ Blackberry and Plum	do.	1	16	0
{ Fig	do.	1	19	0
{ Marmalade	do.	1	15	0
{ Peach	do.	1	12	0
{ Plum, dark	do.	1	10	0
{ Raspberry	do.	2	7	0
{ Raspberry and Plum	do.	1	16	0
{ Strawberry	do.	2	16	0
22. Jelly Crystals	per pkt.	0	0	9
23. Junket Tablets	do.	0	1	9
24. Lard	per lb.	0	3	0
25. Margarine	do.	0	3	3
26. Matches—Safety	per pkt.	0	1	8
27. Mayonnaise—"Kraft"	per jar	0	2	11
Meat—Tinned—				
28. { Camp Pie	per doz.	1	4	0
{ Irish Stew	do.	1	12	0
{ Sausages and Vegetables	do.	1	12	0
{ Beef Steak Pudding	do.	1	13	0
{ Beef Luncheon	do.	1	16	0
29. Milk—Condensed	do.	1	6	0
30. Mustard—Loose	per lb.	0	5	9
31. Oatmeal { Plain—5-lb. packets, "John Bull"	per pkt.	0	6	3
{ " Creamota"—2-lb. packets	do.	0	2	11
32. Pepper—White, 4-oz. tins	per tin	0	3	6
33. Potatoes	per cwt.	2	15	0
34. Rice { Polished	per lb.	0	1	0
{ Ground	do.	0	1	3
35. Salt { Table	per pkt.	0	0	8
{ Cooking	per lb.	0	0	3
{ Barbecue	per bot.	0	2	0
36. Sauce { Tomato, 26-oz.	do.	0	3	9
{ Worcester, 10-oz.	per doz.	1	4	0
Soaps—				
37. { "Rinso"—Economy	per pkt.	0	3	7
{ "Lux" Flakes	do.	0	3	0
{ "Surf"	do.	0	2	9
{ Toilet	per cake	0	0	10
38. Soups—Tomato	per tin	0	1	10
" Chicken Noodle, packets	per doz.	0	16	0
39. Sugar { Icing	per lb.	0	1	0
{ Castor	do.	0	1	0
40. Tea—¼-lb. packets	per pkt.	0	3	4
Vegetables—Tinned—				
41. { Baked Beans	per tin	0	2	0
{ Sweet Corn	do.	0	2	11
{ Spaghetti in sauce	per doz.	1	3	0
{ Peas	do.	1	7	0
{ Sauerkraut	do.	0	18	0
42. Vinegar	per bot.	0	1	9

SCHEDULE No. 20.
PROVISIONS AT SALE.

(Delivery at the Gaol.)

ANNEX TO CONTRACT No. 1961/70.

F. J. Hennessy Pty. Ltd., 102 Raymond-street, Sale.

Sub-schedule No. 1.

BREAD.

	Security, £3.	£	s.	d.
1. Bread—Fine wheaten, first quality	.. per cwtl.	3	11	10½

ANNEX TO CONTRACT No. 1961/71.†

Sale North Meat Supply, 65A Raglan-street, Sale.

Sub-schedule No. 2.

MEAT.

	Security, £3.	£	s.	d.
1. Fresh Beef per lb.	0	4	0
2. Fresh Mutton, Chops, Forequarter .. do.		0	2	0
3. Corned Beef—Rolled or Round, as ordered, without bone or cartilage .. do.		0	3	6
4. Sausage Meat do.	0	2	0

SCHEDULE No. 21.

PROVISIONS—PLEASANT CREEK SPECIAL SCHOOL, STAWELL.

(Delivery at the School.)

ANNEX TO CONTRACT No. 1961/72.

Stawell Bakeries Pty. Ltd., 26 Main-street, Stawell.

Sub-schedule No. 1.

BREADSTUFFS.

	Security, £10.	£	s.	d.
1. Bread—Fine wheaten, first quality	.. per cwtl.	3	2	5
2. Flour—First quality	.. do.	2	5	0

(AGREEMENT.)

McKay MacLeod Pty. Ltd., 63 Mair-street, Ballarat.

Sub-schedule No. 2.

GROCERIES.

		£	s.	d.
1. Baking Powder—"Excelsior," 1-lb. tins	.. per lb.	0	2	11½
2. Barley—Pearl do.	0	0	8½
3. Blue—Washing, "Reckitts Square"	.. per gross	2	2	6
4. Cereal— "Sunflakes," "Wheatflakes," 24-oz. packets	.. per doz.	1	6	7
Weet Harts, 28-oz. packets	.. do.	1	18	0
5. Cocoa, 14-oz., "Bournville" do.	2	16	9
6. Coffee and Chicory, "Gold Seal," No. 1	.. per lb.	0	4	6½
7. Corn Flour, 1-lb. packets, "Kream"	.. do.	0	1	7½
8. Currants (present season's)— 2-crown do.	0	1	10½
3-crown do.	0	1	10½
9. Curry Powder—Loose, "Gold Seal"	.. do.	0	3	3½
10. Custard Powder—Loose do.	0	1	4
11. Dates—Box lots do.	0	1	7½
12. Ginger—Ground, loose do.	0	5	4½
13. Golden Syrup— 2-lb. tins per doz.	1	1	11
70-lb. drums each	2	18	10
14. Gravox, 1-lb. tins per doz.	1	2	0
15. Honey—First quality, bulk per lb.	0	1	0½
16. Jams—Assorted, of approved kinds, in proportion of half seed and half stone, in tins containing 24-oz. net	.. per doz.	1	9	8
17. Jelly Crystals—Packets, "McKays"	.. do.	0	8	4
18. Junket Tablets, "Merry Widow," flavoured	.. do.	0	19	9
19. Macaroni, 22-lb. cartons per ctn.	1	1	8
20. Margarine—Cake, Pastry per lb.	0	1	9½
21. Oatmeal— Flake, 56-lb. bags do.	0	0	8½
Fine do.	0	0	8½
22. Peel—Cut, mixed do.	0	2	1
23. Pepper—Black, ground do.	0	7	6½
24. Raisins—Sultana (present season's)— 2-crown do.	0	1	10½
3-crown do.	0	1	11½
4-crown do.	0	1	11½
25. Rice—Dressed per cwt.	4	17	2

Sub-schedule No. 2—continued.

GROCERIES—continued.

		£	s.	d.
26. Salt—Fine, "Imperial" per cwt.	1	2	8
27. Sauce—Tomato, 26-oz. bottles, "McKays"	.. per doz.	2	1	5
Soap— 28. Preservene Foam per doz.	0	16	8
pkts.				
29. "Lifobuoy"—Regular per doz.	0	7	11
cakes				
30. Sand, "Preservene" do.	0	8	1
31. "Velvet"— Quads per doz.	1	6	6
Quints do.	2	2	6
Soda— 32. Bicarbonate per lb.	0	0	8½
33. Washing per cwt.	1	19	3
34. Spaghetti, 22-lb. cartons per ctn.	1	1	8
35. Spice—Mixed, 1-oz. packets per doz.	0	6	3½
36. Starch, 12-oz. packets, "Silver Star"	.. do.	0	19	2
37. Tartar—Cream of, substitute, "Antelope"	.. per lb.	0	2	7½
38. Tapioca—Pearl per lb.	0	1	0½
39. Tea—First grade do.			0
40. Treacle, 2-lb. tins per doz.	1	1	5
41. Vinegar—Malt, 1-gallon jar (jars 3s. 6d.)	.. per gal.	0	5	0

ANNEX TO CONTRACT No. 1961/73.†

A. M. Holmes, 7 Ligar-street, Stawell.

Sub-schedule No. 3.

MEAT.

	Security, £3.	£	s.	d.
Steak— 1. Topside (Grilling) per lb.	0	3	3
2. Stewing (Minced when required) do.	0	2	9
3. Beef, Corned Silverside do.	0	3	8
4. Fresh Mutton—Leg do.	0	1	9
5. Chops—Middle Loin do.	0	1	3
6. Kidneys—Ox do.	0	2	1
7. Sausages—Pork do.	0	1	11
8. Livers—Sheep do.	0	0	11
9. Sausage—Pork, German do.	0	2	9
10. Frankfurts (Saveloys) do.	0	2	0

ANNEX TO CONTRACT No. 1961/74.

Stawell Modern Dairy, 7 Seaby-street, Stawell.

Sub-schedule No. 4.

MILK.

	Security, £5.	£	s.	d.
1. Milk—Fresh and pure per gal.	0	5	1

SCHEDULE No. 22.

PROVISIONS—SUNBURY DISTRICT.

(Delivery into Institutions.)

ANNEX TO CONTRACT No. 1961/75.

Bessell's Pty. Ltd., 275 Buckley-street, Essendon.

Sub-schedule No. 1.

BREADSTUFFS.

	Security, £112.	£	s.	d.
1. Bread—Fine wheaten, first quality	.. per cwtl.	1	15	6
2. Flour—First quality	.. do.	1	19	4

(AGREEMENT.)

K. N. Tidswell, Sunbury.

Sub-schedule No. 2.

GROCERIES.

		£	s.	d.
1. Beans—Haricot per lb.	0	1	9
2. Blue—Washing, 1-oz. knobs, "Reckitts"	.. per gross	2	4	0
3. Cereals—Weeties, 24 oz. packets per doz.	1	8	6
4. Coconut, desiccated per lb.	0	2	6
5. Cinnamon do.	0	3	1
6. Cloves—Whole do.	0	7	3
7. Cocoa, 14 oz. packets, "Bournville"	.. per pkt.	0	6	6
8. Corn or Maize Flour, 1 lb. packets	.. per doz.	0	19	0
9. Currants—3 crown (present season's)	.. per lb.	0	2	1½
10. Curry Powder do.	0	4	6
11. Custard Powder, 30 lb. tins do.	0	1	4½

Sub-schedule No. 2—continued.

GROCERIES—continued.

	£	s.	d.
12. Dates—Stoneless .. per lb.	0	2	0
13. Essences, 16 oz.— Lemon, "Triangle" .. per doz.	3	13	0
Vanilla, "Triangle" .. do.	3	13	0
14. Gelatine, 16 oz. packets, "Davis" .. per doz.	5	14	0
15. Golden Syrup, 2 lb. tins .. per doz.	1	0	0
16. Gravo, 1 lb. .. do.	1	3	0
17. Gravy Salt, 1 lb., packets .. do.	0	19	0
18. Herbs—Mixed, 1 oz. .. do.	0	5	0
19. Honey—Pure—60 lb. tins .. per lb.	0	1	6
20. Jam—Diabetic, assorted .. per doz.	1	2	0
21. Jelly Crystals— 4 oz. packets .. do.	0	8	0
Bulk .. per lb.	0	2	5
22. Junket Tablets—Tubes .. per doz.	1	4	0
23. Jox .. per doz.	0	8	0
24. Lemon Peel, 8 oz. packets .. per pkt.	0	1	8
25. Macaroni .. per lb.	0	0	11½
26. Margarine—Cake, Pastry .. do.	0	1	10
27. Meat, Tinned— 12 oz. Camp Pie, "Imperial" .. per doz.	1	1	0
16 oz. .. do.	1	5	6
28. Meat Tenderizer, 2 oz. tins .. do.	1	0	0
29. Milk—Powdored, 28 lb. bag .. per lb.	0	1	3½
30. Mustard—Loose, "Keen's" .. do.	0	6	6
31. Nutmeg—Ground .. do.	1	1	0
32. Peel—Mixed, 8-oz. packet .. each	0	1	8
33. Pepper—Black, ground .. per lb.	0	10	0
34. Pickles—Mustard .. per doz.	1	12	6
35. Raisins, Sultanas, 3-crown (present season's) .. per lb.	0	2	3
36. Salt—Fine .. per cwt.	0	16	0
Sauce— 37. { Tomato, 26-oz. bottles .. per doz.	1	17	0
{ Worcestershire, 20-oz. bottles .. do.	1	10	6
Soda— 38. Bicarbonate .. per lb.	0	0	9
39. Washing .. per cwt.	2	0	0
40. Spice—Mixed, loose .. per lb.	0	4	6
41. Spaghetti, 22-lb. Forex No. 2 .. per ctn.	1	3	10
42. Sugar—Icing, 60-lb bag .. per bag	3	5	0
43. Starch—Loose, "Silver Star" .. per lb.	0	1	9½
44. Tartar, Cream of .. do.	0	4	4
45. Vermicelli .. do.	0	1	1
46. Vinegar—Malt, 1 gal. jars .. per gal.	0	6	0

Sub-schedule No. 3.

CEREALS.

1. Barley—Pearl .. per cwt.	Purchase under Tender Board quotations
2. Oatmeal—Plain .. do.	
3. Oatmeal—Flaked .. do.	
4. Peas, split—yellow .. do.	
5. Rice—Dressed .. do.	
6. Rice—Unpolished .. do.	
7. Seed Tapioca .. do.	

ANNEX TO CONTRACT No. 1961/76.†

F. Watkins Pty. Ltd., 150 Lonsdale street, Melbourne, C.I.

Sub-schedule No. 5.

MEAT.

	£	s.	d.	
Security, £40.				
Fresh Beef—				
1. Rolled Roast, boneless (brisket excl ded)	per cntl.	13	6	8
2. Buttocks .. do.	12	10	0	
3. Fresh Mutton—(Kidney fat to be removed)	do.	5	16	8
4. Corned Beef—Rolled or Round, as ordered, without bone or cartilage .. per lb.	0	1	10	
5. Sausages—Mixed .. do.	0	1	5	
6. Sausage Meat .. do.	0	2	4	
7. Sausage—Beef, German .. do.	0	2	8	
8. Veal—Boneless .. do.	0	1	0	
9. Tripe—Fresh .. do.	0	2	0	
10. Livers—Sheep .. do.	0	3	0	
11. Ox Kidney .. do.	0	1	8	
12. Ox Liver .. per doz.	0	3	6	
13. Saveloys .. per lb.	0	1	8	
14. Sheep Tongues ..				

ANNEX TO CONTRACT No. 1961/77.

W. H. Johnsons Jams Pty. Ltd., 42 Meaden street, South Melbourne S.C.5.

Sub-schedule No. 6.

JAMS.

Security, £20.

	£	s.	d.	
Jams—(in 54-lb. tins)				
1. Assorted, in bulk, of approved kinds, in the proportion of half seed and half stone, of the best quality.	per lb.	0	0	11½
2. Marmalade—bulk	do.	0	0	11½

SCHEDULE No. 23.

PROVISIONS—WARRNAMBOOL DISTRICT.

(Delivery into Institutions.)

ANNEX TO CONTRACT No. 1961/78.

Twites Bakeries Pty. Ltd., 164 Timor street, Warrnambool.

Sub-schedule No. 1.

BREADSTUFFS.

Security, £5.

	£	s.	d.
1. Bread—Fine wheaten, first quality .. per entl.	3	18	1½
2. Flour—First quality .. do.	2	2	4

(AGREEMENT.)

Swintons Pty. Ltd., Timor street, Warrnambool.

Sub-schedule No. 2.

GROCERIES.

	£	s.	d.
1. Bacon Rashers—Middle .. per lb.	0	7	2
2. " Bones .. do.	0	2	0
3. Baking Powder, 1-lb. tins .. do.	0	3	3
4. Beans—Haricot .. do.	0	2	2
5. Cereals—Whole, large packets .. per doz.	1	11	0
6. Cloves—Whole .. per lb.	0	6	9
7. Cinnamon .. do.	0	3	6
8. Cocoa—"Bournville," 14-oz. .. per pkt.	0	5	3
9. Curry Powder .. per lb.	0	4	1
10. Custard Powder—1-lb. packets, "Medallion" .. do.	0	1	11
11. Essences—Vanilla, 1-oz. bottles, "Medallion" .. per bot.	0	1	2
12. " Parisian, 26-oz. bottles .. do.	0	5	0
13. " Yolking, 4-oz. bottles .. do.	0	3	0
14. Flour—Corn or Maize, 1-lb. pkts, "Medallion" .. per lb.	0	1	10
15. " Self Raising, 25-lb. bags .. per bag	1	3	0
Fruits—Dried—			
16. Apricots—3-crown, loose .. per lb.	0	5	0
17. Currants and Sultanas—3-crown, loose .. do.	0	2	4
18. Dates—Loose .. do.	0	2	0
" 1-lb. pkt. .. per pkt.	0	2	3
Fruits—Preserved, 20-oz. tins			
19. Apricots—Halves .. per tin	0	2	10½
20. Peaches—Halves or sliced .. do.	0	2	10½
21. Pears—Halves .. do.	0	2	10½
22. Two Fruits .. do.	0	2	10½
23. Gelatine—Ground, 1-lb. pkts., "Davis" .. per lb.	0	10	0
24. Golden Syrup, 2-lb. tins .. per tin	0	1	11½
25. Herbs—Mixed, 4-oz. .. each	0	1	6
26. Honey—2-lb. jars .. per jar	0	3	11½
60-lb. tins .. per lb.	0	1	4
27. Jams—24-oz. tins "A.J.C." or "S.P.C." .. per tin	0	2	6½
(Apricot, Apple Jelly, Melon, Plum, Peach, Quince and Marmalade)			
28. Jelly Crystals—"Medallion," 4-oz. pkts. .. per pkt.	0	0	9
" "Harper's," 7-lb. pkts. .. per lb.	0	2	10
29. Macaroni .. do.	0	1	7
30. Margarine—Table "Eta" .. do.	0	3	4
" Cake and Pastry "Marville" .. do.	0	2	9
31. Meat—Tinned "Camp Pic" 12-oz. tins .. per tin	0	2	2½
32. Mustard—"Keens" .. per lb.	0	7	3
33. Nutmeg .. do.	1	4	6
34. Pepper—White, ground .. do.	0	13	6
35. Pickles—20-oz. bottles, "Leggos" .. per bot.	0	2	9
36. Rice—Dressed .. per lb.	0	0	11½
37. Sago—Seed Tapioca .. do.	0	0	11
38. Salt—Fine, "Imperial" .. do.	0	0	4
39. Sauce—Tomato, 26-oz. bottles, "A.J.C." .. per bot.	0	3	10
" Worcestershire, 19-oz. bottles, .. per bot.	0	2	5

⊙ For 27-lb. tins, rate increased 1d. per lb.

Sub-schedule No. 2—continued.

GROCERIES—continued.

			£	s.	d.
40. Soda—Bicarbonate	per lb.	0	0	8	
41. Spaghetti—22-lb. carton .. .	per ctn.	1	3	0	
42. Sugar—White, 70-lb. bag .. .	per bag.	3	5	0	
43. Cream of Tartar, "Antelope" ..	per lb.	0	3	0	
44. Vegemite—6-oz. jars	per jar	0	3	3	
45. Vinegar—26-oz. bottles	per bot.	0	1	9	

ANNEX TO CONTRACT No. 1961/79.

Eastern Diaries, Allansford-road, Warrnambool.

Sub-schedule No. 3.

MILK.

			£	s.	d.
1. Milk—Fresh and pure	per gal.	0	4	1	

ANNEX TO CONTRACT No. 1961/80.†

Thomas Borthwick and Sons (Asia) Ltd., P.O., Box 150, Portland.

Sub-schedule No. 4.

MEAT.

			£	s.	d.
Security, £15.					
1. Fresh Beef—Rolled Roast (brisket excluded)	per lb.	0	3	0	
2. Corned Beef—Rolled or Round, as ordered	do.	0	2	8	
Fresh Mutton—					
3. Forequarters	do.	0	1	1	
4. Legs	do.	0	1	11	
5. Chops—Middle Loin	do.	0	1	9	
Steak—					
6. Topside	do.	0	3	10	
7. Stewing	do.	0	3	0	
8. Sausage—Beef German	do.	0	2	8	
9. Livers—Sheep	do.	0	1	4	
10. Sausage Meat	do.	0	1	9	

