

[2113]



VICTORIA  
GOVERNMENT GAZETTE

Published by Authority

[Registered at the General Post Office, Melbourne, for transmission by post as a newspaper.]

No. 62]

THURSDAY, JUNE 21

[1962

CONTRACTS ACCEPTED.

(SERIES 1962-63.)

SUPPLY OF PROVISIONS

FOR

STATE DEPARTMENTS

FROM

1st JULY, 1962, to 30th JUNE, 1963,  
or as stated.

Conditions of Contract and Stipulations are shown herein for the guidance  
of Officers ordering and receiving supplies.

H. COUTTS,  
*Secretary to the Tender Board.*

... ..

... ..

... ..

... ..

CONTRACTS ACCEPTED—(Series 1962-63.)  
PROVISIONS.

No. of Contract.	Particulars of each Tender Accepted.	Amount.	Name of Contractor or Supplier.	Charge against Vote or Fund.	
<b>PROVISIONS—</b>					
Supply of Provisions, in such quantities as may be ordered, from 1st July, 1962, to 30th June, 1963, or as stated.					
Schedule No. 1.—Melbourne District—					
1	Bread, Kew Mental Hospital .. .. .	Rates as per annex	Johnson and Riches Pty. Ltd. ..		
2	Bread, Children's Welfare Depot and Receiving House and Mental Hospital, Royal Park, and Travancore Developmental Centre, Flemington	Ditto .. .. .	Bessell's Pty. Ltd. .. .. .		
3	Bread, "Winlton" Juvenile School, 186 Springvale-road, Nunawading and "Allambie" Reception Centre, 70 Elgar-road, Burwood	Ditto .. .. .	} Capitol Bakeries Pty. Ltd. .. .. .		
4	Bread, Teachers' College and Hostels at Grattan-street, 93 Drummond-street, Carlton; 470, 481 and 572 St. Kilda-road, Melbourne; 19 Queens-road, Melbourne; 152 Toorak-road west, South Yarra; Frank Tate House, 373 Dandenong-road, Armadale; "Redcourt", No. 6, "Larnook", 13 and No. 10A Orrong-road, Armadale; 11 Patterson-street, Hawthorn; 174 Punt-road, Prahran; 221 Burwood-road, Burwood, John Cannon House, 32 Belmont-avenue, Kew, 17 Moule-avenue, Brighton, and Hastings-road, Frankston; and Police Hospital, St. Kilda-road, Melbourne; Mental Hygiene Clinic, 321 Glenferrie-road, Malvern	Ditto .. .. .			
5	Flour .. .. .	Ditto .. .. .	Jas. Minifie and Co. Pty. Ltd. ..		
	Groceries .. .. .	Ditto .. .. .	<i>Moran and Cato Pty. Ltd. (A)</i> ..		
	Cereals .. .. .	.. .. .	Purchase under Tender Board quotations		
6	Jams .. .. .	Rates as per annex	Monbulk Preserves Ltd. .. .. .		
7	†Meat, Kew Mental Hospital .. .. .	Ditto .. .. .	F. Watkins Pty. Ltd. .. .. .		
8	†Meat, Pentridge Penal Establishment and "Fairlea" Female Prison, Fairfield .. .. .	Ditto .. .. .	Oscar Mayer Pty. Ltd. .. .. .		
9	†Meat, Children's Welfare Depot, Royal Park, and Travancore Developmental Centre, Flemington	Ditto .. .. .	} G. K. and M. Reynolds Bros. Pty. Ltd.		
10	†Meat, "Winlton" Juvenile School, 186 Springvale-road, Nunawading, and "Allambie" Reception Centre, 70 Elgar-road, Burwood	Ditto .. .. .			
11	†Meat, Royal Park Mental Hospital and Receiving House	Ditto .. .. .	J. H. Cooke Pty. Ltd. .. .. .		
	Soap Mixtures .. .. .	Ditto .. .. .	<i>Moran and Cato Pty. Ltd. (A)</i> ..		
12	Tea .. .. .	Ditto .. .. .	Moran and Cato Pty. Ltd. .. .. .		
13	Coffee .. .. .	Ditto .. .. .	Henry Berry and Co. (Asia) Ltd. ..		
	Potatoes .. .. .	.. .. .	Purchase under Tender Board quotations	General Expenses 1962-63	
Schedule No. 2.—Mont Park, Bundoora, Larundel, Janefield, Gresswell, and Pleasant View, Wood-street, Preston—					
14	Bread .. .. .	Rates as per annex	Johnson and Riches Pty. Ltd. ..		
	Groceries .. .. .	Ditto .. .. .	<i>Moran and Cato Pty. Ltd. (A)</i> ..		
15	Jams .. .. .	Ditto .. .. .	Monbulk Preserves Ltd. .. .. .		
16	†Meat—Mont Park District .. .. .	Ditto .. .. .	} W. Anglias and Co. (Aust.) Pty. Ltd.		
17	†Meat—Preston .. .. .	Ditto .. .. .			
18	†Meat—Gresswell .. .. .	Ditto .. .. .			
	Potatoes .. .. .	.. .. .	Purchase under Tender Board quotations		
Schedule No. 3.—S.S. Rip and Dredges—					
19	Groceries .. .. .	Rates as per annex	<i>Moran and Cato Pty. Ltd. (A)</i> ..		
	†Meat .. .. .	Ditto .. .. .	G. K. and M. Reynolds Bros. Pty. Ltd.		
	Vegetables .. .. .	.. .. .	Purchase by agreement .. .. .		
	Potatoes .. .. .	.. .. .	Purchase under Tender Board quotations		
Schedule No. 4.—Teachers' College and Hostels at Grattan-street, 93 Drummond-street, Carlton; 470, 481 and 572 St. Kilda-road, Melbourne; 19 Queens-road, Melbourne; 152 Toorak-road west, South Yarra; Frank Tate House, 373 Dandenong-road, Armadale; "Redcourt" 6, "Larnook", 13 and No. 10A Orrong-road, Armadale; 11 Patterson-street, Hawthorn; 174 Punt-road, Prahran; 221 Burwood-road, Burwood; John Cannon House, 32 Belmont-avenue, Kew; 17 Moule-avenue, Brighton; and Hastings Road, Frankston; and Police Hospital, St. Kilda-road, Melbourne; Mental Hygiene Clinic, 321 Glenferrie-road, Malvern—					
20	Groceries .. .. .	Rates as per annex	Order under Melbourne District		
	†Meat .. .. .	Ditto .. .. .	J. H. Cooke Pty. Ltd. .. .. .		
	Potatoes .. .. .	.. .. .	Purchase under Tender Board quotations		

Names shown in italics denote suppliers under agreement. † Contract for period 1st July, 1962, to 30th September, 1962, only.

CONTRACTS ACCEPTED—(Series 1962-63)—continued.

PROVISIONS—continued.

No. of Contract.	Particulars of each Tender Accepted.	Amount.	Name of Contractor or Supplier.	Charge against Vote or Fund.	
PROVISIONS—continued.					
Schedule No. 5.—Heatherton Sanatorium, Cheltenham—					
21	Bread .. .. .	Rates as per annex	Cheltenham and District Co-Op. Society Ltd. .. .. .	General Expenses 1962-63	
22	Groceries .. .. .	Ditto .. .. .	<i>Moran and Cato Pty. Ltd. (A)</i> .. .. .		
23	†Meat .. .. .	Ditto .. .. .	W. Angliss and Co. (Aust.) Pty. Ltd. .. .. .		
	Milk .. .. .	Ditto .. .. .	Cranbourne Dairies Pty. Ltd. .. .. .		
Schedule No. 6.—Ararat District—					
24	Breadstuffs .. .. .	Rates as per annex	Forsyth's Bakery .. .. .		
	Groceries .. .. .	Ditto .. .. .	<i>McKay MacLeod Pty. Ltd. (A)</i> .. .. .		
	Jams .. .. .	Ditto .. .. .			
25	†Meat .. .. .	Ditto .. .. .	H. A. Morris .. .. .		
	Potatoes .. .. .	.. .. .	Purchase under Tender Board quotations		
Schedule No. 7.—Ballarat District—					
26	Breadstuffs .. .. .	Rates as per annex	Brogden Bros. Pty. Ltd. .. .. .		
	Groceries—Teachers' Hostels .. .. .	Ditto .. .. .	<i>McKay MacLeod Pty. Ltd. (A)</i> .. .. .		
	Groceries—Mental Hospital .. .. .	Ditto .. .. .			
	Jams .. .. .	Ditto .. .. .	H. A. Morris .. .. .		
27	†Meat—Gael and Mental Hospital .. .. .	Ditto .. .. .			
28	†Meat—Teachers' Hostels .. .. .	Ditto .. .. .	The Ballarat Modern Dairy Pty. Ltd. .. .. .		
29	Milk—Mental Hospital and Teachers' Hostels .. .. .	Ditto .. .. .			
	Potatoes .. .. .	.. .. .	Purchase under Tender Board quotations		
Schedule No. 8.—Beechworth District—					
30	Bread .. .. .	Rates as per annex	P. A. Taylor Model Bakery .. .. .		
	Groceries .. .. .	Ditto .. .. .	<i>Moran and Cato Pty. Ltd. (A)</i> .. .. .		
	Jams .. .. .	Ditto .. .. .			
31	†Meat .. .. .	Ditto .. .. .	E. Spencer .. .. .		
32	Milk—Mental Hospital .. .. .	Ditto .. .. .	Beechworth Dairy .. .. .		
	Potatoes .. .. .	.. .. .	Purchase under Tender Board quotations		
Schedule No. 9.—Bendigo District—					
33	Bread—For Gael and Sandhurst Boys' Centre and Teachers' Hostel, "Lancewood", McLarenstreet .. .. .	Rates as per annex	C. H. Jeffrey Pty. Ltd. .. .. .		
34	Bread—For Teachers' College Hostel, Osborne-street, Pleasant Vale .. .. .	Rates as per annex	C. H. Jeffrey Pty. Ltd. .. .. .		
35	Bread—For Teachers' Hostel, "Comersdale" .. .. .	Ditto .. .. .	Roy Raggatt Pty. Ltd. .. .. .		
36	Milk—For Sandhurst Boys' Centre .. .. .	Ditto .. .. .	Sandhurst Dairies Ltd. .. .. .		
37	Milk—Teachers' Hostels .. .. .	Ditto .. .. .			
	Groceries .. .. .	Ditto .. .. .	<i>Pulfer, Cox and Hargreaves, Wholesalers Ltd. (A)</i> .. .. .		
38	†Meat—For Gael .. .. .	Ditto .. .. .	Alan H. Gittins .. .. .		
39	†Meat—For Sandhurst Boys' Centre .. .. .	Ditto .. .. .	Alan H. Gittins .. .. .		
40	†Meat—For Teachers' Hostels .. .. .	Ditto .. .. .	M. P. and L. K. Marchioni .. .. .		
	Potatoes .. .. .	.. .. .	Purchase under Tender Board quotations		
Schedule No. 10.—Castlemaine District—					
41	Bread .. .. .	Rates as per annex	T. N., M. K., and T. J. Kenyon .. .. .		
42	†Meat .. .. .	Ditto .. .. .	McQueen Bros. .. .. .		
Schedule No. 11.—School of Forestry, Creswick—					
43	Breadstuffs .. .. .	Rates as per annex	M. C. Bennett .. .. .		
	Groceries .. .. .	Ditto .. .. .	<i>J. Tail and Son (A)</i> .. .. .		
44	Milk .. .. .	Ditto .. .. .	E. J. Keen .. .. .		
45	†Meat .. .. .	Ditto .. .. .	H. J. Symons Pty. Ltd. .. .. .		
Schedule No. 12.—Agricultural College, Dookie—					
46	Breadstuffs .. .. .	Rates as per annex	J. and A. Toohey .. .. .		
	Groceries .. .. .	Ditto .. .. .	<i>Cohns (Shepparton) Pty. Ltd. (A)</i> .. .. .		
	Jam .. .. .	Ditto .. .. .			
Schedule No. 13.—McLeod Settlement, French Island—					
47	Bread .. .. .	Rates as per annex	G. A. and A. H. Van Der Craats .. .. .		
	Groceries .. .. .	Ditto .. .. .	<i>E. V. Peters (A)</i> .. .. .		
48	†Meat .. .. .	Ditto .. .. .	George Hayman .. .. .		
	Potatoes .. .. .	.. .. .	Purchase under Tender Board quotations		
Schedule No. 14.—Geelong District—					
49	Bread .. .. .	Rates as per annex	Fitzgerald Geelong Bakeries Pty. Ltd. .. .. .		
	Groceries .. .. .	Ditto .. .. .	<i>McKay MacLeod Pty. Ltd. (A)</i> .. .. .		
50	†Meat—Gael .. .. .	Ditto .. .. .	W. Angliss and Co. (Aust.) Pty. Ltd. .. .. .		
51	†Meat—Teachers' College Hostels .. .. .	Ditto .. .. .	Corio Meat Supply Pty. Ltd. .. .. .		

Names shown in italics denote suppliers under agreement. † Contract for period 1st July, 1962, to 30th September, 1962, only.

CONTRACTS ACCEPTED—(Series 1962-63)—continued.

PROVISIONS—continued.

No. of Contract.	Particulars of each Tender Accepted.	Amount.	Name of Contractor or Supplier.	Charge against Vote or Fund.	
<i>PROVISIONS—continued.</i>					
Schedule No. 15.—Cooigemungle Prison Camp, Heytesbury Forest—					
52	Bread .. .. .	Rates as per annex	W. H. and A. J. Archdall .. .. .	General Expenses 1962-63	
53	†Meat .. .. .	Rates as per annex	Heytesbury Butchery .. .. .		
Schedule No. 16.—Aboriginal Station, Lake Tyers—					
54	Breadstuffs .. .. .	Rates as per annex	R. Hodder .. .. .		
	Groceries .. .. .	Ditto .. .. .	} <i>R. Hodder (A)</i> .. .. .		
	Jams .. .. .	Ditto .. .. .			
Schedule No. 17.—Langi Kal Kal Training Centre—					
55	Bread .. .. .	Rates as per annex	O. L. and B. M. Nicholls .. .. .		
56	†Meat .. .. .	Ditto .. .. .	F. P. Haintz and Son .. .. .		
	Potatoes .. .. .	.. .. .	Purchase under Tender Board quotations		
Schedule No. 18.—Agricultural College, Longerenong—					
57	Breadstuffs .. .. .	Rates as per annex	Conlan's Bakery .. .. .		
	Groceries .. .. .	Ditto .. .. .	} <i>Permevan's (Horsham) Pty. Ltd. (A)</i> .. .. .		
	Jams .. .. .	Ditto .. .. .			
	Potatoes .. .. .	.. .. .	Purchase under Tender Board quotations		
Schedule No. 19.—Research Station, Rutherglen—					
58	Bread .. .. .	Rates as per annex	A. F. and T. M. Landers .. .. .		
	Groceries .. .. .	Ditto .. .. .	<i>W. J. and A. A. Edwards (A)</i> .. .. .		
Schedule No. 20.—Sale Gaol—					
59	Bread .. .. .	Rates as per annex	F. J. Hennessy Pty. Ltd. .. .. .		
60	†Meat .. .. .	Ditto .. .. .	T. L. Webster Pty. Ltd. .. .. .		
Schedule No. 21.—Pleasant Creek Special School, Stawell—					
61	Breadstuffs .. .. .	Rates as per annex	R. J. and M. M. Wall .. .. .		
	Groceries .. .. .	Ditto .. .. .	<i>McKay MacLeod Pty. Ltd. (A)</i> .. .. .		
62	†Meat .. .. .	Ditto .. .. .	Thomas Borthwick and Sons (A/asia) Ltd. .. .. .		
63	Milk .. .. .	Ditto .. .. .	Stawell Model Dairy .. .. .		
	Potatoes .. .. .	.. .. .	Purchase under Tender Board quotations		
Schedule No. 22.—Sunbury District—					
64	Breadstuffs .. .. .	Rates as per annex	Bessell's Pty. Ltd. .. .. .		
	Groceries .. .. .	Ditto .. .. .	<i>K. N. Tidswell (A)</i> .. .. .		
	Cereals .. .. .	.. .. .	Purchase under Tender Board quotations		
65	†Meat .. .. .	Rates as per annex	F. Watkins Pty. Ltd. .. .. .		
66	Jams .. .. .	Ditto .. .. .	Monbulk Preserves Ltd. .. .. .		
	Potatoes .. .. .	.. .. .	Purchase under Tender Board quotations		
Schedule No. 23.—Warrnambool District—					
67	Breadstuffs .. .. .	Rates as per annex	Twites Bakeries Pty. Ltd. .. .. .		
	Groceries .. .. .	Ditto .. .. .	<i>Swinsons Pty. Ltd. (A)</i> .. .. .		
68	Milk .. .. .	Ditto .. .. .	Eastern Dairies .. .. .		
69	†Meat .. .. .	Ditto .. .. .	P. and L. Collins Pty. Ltd. .. .. .		

Names shown in italics denote suppliers under agreement. † Contract for period 1st July, 1962, to 30th September, 1962, only.

Approved—H. E. Bolte, Treasurer, 15th June, 1962.

## CONDITIONS OF CONTRACT FOR PROVISIONS, 1962-63, ETC.

(Published in the Victoria Government Gazette No. 41 dated 18th April, 1962, pages 1452 to 1455.)

1. All the articles are to be of the best quality of the several kinds, in the best condition, and in conformity with the Health Acts, and to be delivered in sound packages, free from all charges for cartage, freight, &c. The goods shall be delivered as may be directed by the officer ordering the supply.

2. As the exact quantity of any article which may be required cannot be stated, the estimate being approximate only, the Government will not be bound by the quantity stated in the schedule, but will be at liberty to order more or less, according to circumstances, and the contractor will be bound to supply the same as ordered.

The Government reserves the right to purchase otherwise than from the contractor any of the articles specified in the schedule in the event of emergency.

3. Supplies for country districts for which no local contract may have been taken, or for which the contract has been terminated, may be ordered under the Melbourne contract.

4. The Melbourne District will include places within a radius of 12 miles from the Elizabeth-street Post Office, with the exception of places for which separate contracts are provided; the Mont Park District will include the Mental Hospitals, Janefield Colony, the Sanatorium, Gresswell, and Pleasant View, Preston; the Ararat, Ballarat, Beechworth, Bendigo, Castlemaine, Geelong and Sunbury Districts will include Mental Hospitals, Penal Institutions and Teachers' Hostels at any of those places. Delivery must be made at the places, institutions, &c., named in the Schedules, or as directed by the officer ordering the supply.

5. Packages suitable for transport of goods supplied must be provided by the contractor free of expense, and the value of these packages, whether in bulk or otherwise, is to be included in the rate tendered, except butter boxes and soap boxes (not including fancy soaps), jam jars, flour, meal, and potato bags, which will remain the property of the contractor, and only the actual net weight or quantity received will be paid for; the empties to be removed from the place of delivery at the contractor's expense.

6. The meat supplied under these conditions must, if practicable, be slaughtered at abattoirs which are under authorized inspection and supervision. Any infringement of these conditions will subject the contractor, on report from the Tender Board, to such mulct, not exceeding Fifty pounds, as the Treasurer may direct, and the amount will be deducted from the contractor's account, or from the security money.

7. The supplies coming under the head of Rations and Medical Comforts are to be delivered direct to the establishment entitled thereto on the written order of the officer in charge. All other supplies will be ordered by the head of the Department concerned or any officer authorized by him, and shall be delivered as may be directed by the officer ordering the supply.

8. At the time of delivering the supplies, the contractor shall produce the order for the same to the officer authorized to accept delivery, and such officer shall acknowledge thereon the receipt of the stores accepted, and shall return the order to the contractor, who shall render his account as soon as possible after the delivery of the supplies, accompanied by the receipted delivery order. The rates or quantities quoted in the orders cannot be exceeded.

9. Where railway facilities are available, the contractor shall use the Railways for the transport of the goods. When a contractor is required to make delivery of goods at a railway station for transmission by rail, except for Commonwealth Departments, he shall obtain a receipt for the goods in duplicate on the Stores and Transport consignment note, at the same time handing in the triplicate and quadruplicate of the form as an authority for the Railways to act as agent for, and charge the freight to, the Stores and Transport Office. He shall as soon as possible, and not later than twenty-four hours thereafter, deliver at the Tender Board Offices the original, the duplicate to be forwarded to the consignee and the quintuplicate retained by himself. Should the goods thus forwarded be rejected, the contractor must bear the cost of replacing such goods, for which services the departmental consignment note is not to be used. Any infringement of this condition may subject the contractor to such mulct as the Tender Board may recommend under clause 18 of these conditions.

10. Orders must receive prompt execution; in the event of the goods not being delivered at the time mentioned in the order or within such other time as the officer ordering the supply may specify for delivery, it will be competent for such officer, or the head of the Department to whom the goods are to be supplied, on giving the contractor twenty-four hours' notice, to purchase the supplies, or any like supplies that are suitable for the service, at the contractor's risk, and the extra expense incurred over and above the contract price (if any) will be deducted from the contractor's account or from the security money.

11. The acceptance of the supplies shall be subject to the approval of the officer authorized to take delivery of the stores, or such other officer as shall be named in the conditions.

12. If the officer in charge of stores be not satisfied as to the quantity or quality of the stores, or if, after taking delivery of any stores or material, he shall discover any deficiency or defect therein, he may return such deficient or defective stores or material to the contractor, and shall report the same to the head of his Department and to the Tender Board.

13. In the event of a difference of opinion between the contractor and the officer receiving the supplies as to the quality, the same is to be decided, in cases where the article is not of a perishable nature, by a Board of Survey composed of persons named by the Treasurer of the State for the time being; and the decision of the Board is to be considered final. In the event of the decision being against the contractor, the survey fees and expenses (if any) will be deducted as in clause 10.

14. In cases where the article is of a perishable nature, or when from some other cause injury would be sustained either by the person to whom the rations or stores are due or by the contractor in waiting for a Board to survey, the head of the Department or officer authorized to take delivery will have power to reject such article or articles as are obviously of inferior quality, it being understood that he will be responsible to the Government for so doing, and that the contractor must take back the rejected article and supply good in its stead; failing which it, or any like supply suitable for the Service, will be obtained by the officer requiring it as in clause 10. In case of the rejection or return of any supplies, the contractor shall bear the whole cost of replacing the supplies so rejected or returned.

15. If the Board shall decide that the article is not of proper quality it must be immediately replaced by the contractor; failing which it, or any like supply suitable for the Service, will be procured by the officer requiring it, and the expense charged as in clause 10.

16. In the case of supplies for Mental Hospitals, it will be competent for a Board of Survey, consisting of the medical superintendent (or, in his absence, of the medical officer) and any two officers named by him, to examine and reject any supplies that may be objected to. It must be distinctly understood, however, that the contractor will have a right of appeal to the Treasurer of the State for the time being, such appeal to be made in writing within 24 hours of the rejection; but, pending such appeal, he must at once supply others of approved quality; failing which, the supplies required, or any like supplies suitable for the Service, may be obtained by the officer concerned, and the expense charged as in clause 10.

17. In the case of supplies for Mental Hospitals, it will also be competent for two or more of the official visitors, in conjunction with the medical superintendent, to reject any supplies that they may consider not in accordance with contract; and in such cases the reference to a Board of Survey will not be deemed to be necessary.

18. A refusal to execute orders, irregularity in the quantity or quality of the supplies, or delay in delivering or replacing them when required, will subject the contractor, upon report from the Tender Board, to such mulct, not exceeding Fifty pounds, as the said Treasurer may direct, and the amount may be deducted as in clause 10. It will also be in the power of the said Treasurer, upon such refusal, irregularity, or delay, to terminate the contract forthwith, and forfeit the whole or any part of the security money; and, in addition, the contractor will be disqualified from tendering or holding any future contract or contracts for a period of twelve months from the date of such disqualification.

19. Contractors are not at liberty to transfer their contracts under cover of power of attorney, coupled with an interest or otherwise, and no such transfer will be recognized by the Government. *If it is found during the currency of the contract that the contractor has not conformed to the condition of advertisement—which stipulates that if a tenderer be a member of a firm and such firm be interested in the contract, the tender shall be in the name of the firm and not in that of the individual—then the Treasurer may, on the recommendation of the Tender Board, determine the contract, and forfeit the security money.*

20. It will be competent for the Tender Board to terminate the contract, without notice, should there be reason to know that the contractor takes advantage of his contract to communicate with a prisoner.

21. The contract entered into under these conditions is not to be considered as being broken, infringed, or vitiated by the importation of stores for the Government service, or by any contracts or purchases made by the Imperial Commissariat; or by the consumption of the produce or surplus stock of any Government establishment, or by any article being made at and supplied for the use of any Government establishment.

22. Notwithstanding anything contained to the contrary in section 152 of the *Customs Act 1901-52*, it is hereby expressly provided that upon any alteration of the duty collected affecting the goods included in this contract, the contract price shall not be altered, and the contract may be terminated at the option of either party by two months' notice in writing from the first day of the calendar month next ensuing, and within the period for which the contract is made. The contract for the unaffected items shall remain in full force and effect. Any notice to be served under this condition shall be deemed to have been duly served if sent to the contractor in a registered letter to his last-known place of business or abode.

23. Under no circumstances other than those mentioned in clause 22 will a contractor be permitted to abandon his contract. In the event of the contractor failing to carry on the contract, the contract security money will in that case be absolutely forfeited; and, in addition, the contractor will be held liable for any loss which the Government may sustain in consequence of such failure.

24. For the purposes of these contracts the word "Government" shall mean the Government of the State of Victoria; and the word "Treasurer" shall mean the Treasurer of the said State.

## STIPULATIONS FOR SUPPLIES OF PROVISIONS.

### SUPPLIES GENERALLY.

For supplies under all sub-schedules, particular attention is drawn to clause 1 of the Conditions of Contract as to quality.

No sub-letting is allowed, and all work must be carried out by the contractor.

Where practicable, all items must be manufactured or prepared within the Commonwealth.

Where no brand of Commonwealth manufacture or production is specifically set out in the respective sub-schedules, such Commonwealth brand as may be ordered must be supplied.

For Schedule No. 3 supplies must be delivered when ordered and, in cases of emergency, on Sundays, holidays, or half-holidays, as required.

### BREAD AND FLOUR.

A sample of the best ordinarily retailed to the public will be considered as a test loaf for first quality for fine wheaten and pure wheaten Meal Bread. *Pure wheaten Meal Bread of first quality may be substituted, wholly or in part, for fine wheaten Bread at such times and in such quantities as, in the opinion of the Medical Superintendent, may be deemed necessary, and the contractor will be required to supply such Bread at the contract rate. Reasonable notice, however, of the intention to substitute wheaten Meal Bread must be given to the contractor by the officer ordering the supply.* Bread may be baked at any Government establishment without infringing these contracts. At the Gaols, Ballarat, Beechworth, Bendigo, Castlemaine, Geelong, and Sale, and the Coorimungie Prison Camp, McLeod Settlement, and Langi Kal Kal Training Centre, if required, bread must be supplied one day old, due notice to be given to the contractor of such requirement.

In the event of bread being made at any Government establishment in the Melbourne District during the currency of these contracts, the flour required will be drawn under the flour sub-schedule.

Flour for Districts for which no local contracts have been taken may be ordered under the Melbourne District contract, for delivery f.o.r., Melbourne.

### GROCERIES.

As a guarantee of quality, Rice, when ordered in quantities of 56 lb. and over, must be supplied in original bags as delivered by the miller or dresser. Such bags must be branded "Rice, Dressed," and shall also have stencilled thereon the miller or dresser's name and the distinguishing mark indicative of the quality or grade. The bags thus stencilled shall contain Rice milled or dressed by the miller or dresser whose name appears thereon. Supplies not in conformity with the foregoing condition will be rejected.

Oatmeal must be supplied in original bags as delivered by millers.

Candles, except those for prison cells, must be supplied in 1-lb. packets. Candles for prison cells must be delivered in boxes containing from 25 to 50 lb. per box, the boxes for which must be legibly stencilled on one end showing the estimated burning time and the gross, tare, and net weight of contents.

The soap supplied must be hard throughout, ready for immediate use without waste, and shall have been manufactured at least seven weeks before leaving contractor's hands.

Raisins and currants must be present season's, and where the quantity admits, be supplied in original and unopened boxes, labelled as packed.

### BARLEY, OATMEAL, PEAS-SPLIT, RICE AND SEED TAPIOCA.

Supplies of these items for Districts for which no local contracts have been taken may be ordered under the Melbourne District contract, for delivery f.o.r., Melbourne.

### BUTTER AND CHEESE.

All supplies of 56 lb. or multiples of 56 lb. must be supplied in boxes as originally packed. The boxes must bear the impress stamp of the creamery where the butter is produced, otherwise it will not be accepted. All supplies must be in new boxes.

Where the Store or Butter Factory of the contractor is situated in the Metropolitan area all Butter to the quantity of 56 lb. and over to be supplied in any one consignment under this contract shall before despatch from the Store or Factory be first examined and passed by the Government Butter Grader, for and on behalf of the officer authorized to accept delivery. The boxes containing butter so examined and found satisfactory in quality and description will be stamped by the Government Butter Grader and the date of such examination marked thereon. No butter from a contractor located in the Metropolitan area will be accepted unless the boxes bear the stamp of the Grader. For the purposes of the foregoing condition the Metropolitan Area is defined as being not outside the radius visited by the Government Grader. The officer authorized to accept delivery may, within 48 hours of the receipt of any supply, require the Contractor to have same re-examined by the Grader, and, if not passed by him, it shall be returned to the Contractor, who shall forthwith replace the same with freshly-examined butter.

No Butter ex Cool Store will be examined by the Grader until thermally it is in suitable condition therefor.

Where the Store or Factory from which the Butter is despatched is not within the area visited by the Grader a sample of any supplies may be forwarded to the Government Butter Grader for examination, should the supply be considered by the Officer authorized to accept delivery as not being equal in quality or description to that contracted for.

The Cheese supplied must be first-class quality, semi or fully matured, as ordered, and not less than three months old. If the quantity admits, it shall be boxed for transport.

### JAM.

The weight stamped on the tins in accordance with the regulations under the Commerce Act, as indicating the *minimum* net quantity that each tin contains, shall for the purpose of this contract be taken as the actual contents when computing the quantity supplied.

When Jam is supplied in jars the jars remain the property of the contractor, and must be removed by the contractor at his own expense when empty.

**SOAP AND SOAP MIXTURES.**

Supplies of these items for Districts for which no local contracts have been taken may be ordered under the Melbourne District contract, for delivery f.o.r., Melbourne.

**MEAT.**

All meat supplied under this contract shall have been slaughtered in Victoria and shall be freshly killed, well-conditioned, of good quality, healthy, clean, wholesome, free from bone-taint, putrefaction or fly larvae, and shall not have been frozen.

The beef shall be of ox not under three nor more than six years old or heifer or cow not under three nor more than five years old. Carcass beef for Mental Hospitals shall be delivered in quarters of equal proportions of hinds and fores and the corresponding hinds and fores must be supplied, also extra buttocks separately when ordered. Meat for other Institutions shall be supplied as ordered. Where hindquarters or buttocks are ordered 9 inches shall be cut off from the end of the leg from the hock upwards, i.e., the end of the leg from which the shank has been removed at the abattoirs; when fore-quarters form a portion of the supply, 6 inches from the end of the neck and the whole of the shin at the clodbone joint shall be removed. The sticking pieces also shall be trimmed off and the point and end of the brisket rendered free from blood and blood stains.

The mutton shall be wether or maiden ewe not more than four years old and the weight of a carcass shall be not less than 40 lb. nor more than 60 lb. The mutton shall be delivered in sides when so ordered. All kidney fat to be removed for Mental Hospitals.

Corned Beef (rolled or round as ordered) shall be supplied without bone or cartilage and will be received whether pumped or prepared in the ordinary way of pickling but, in the former case, it shall have been soaked, after pumping, for at least 48 hours in a good pickle and then thoroughly drained before supply. No flank, chuck, sticking-piece, shin, leg of beef, or piece under 7 lb. will be received.

Meat derived from the carcasses of Bulls, Stags or Rams or meat containing an undue proportion of bone or fat will not be received and shall not be tendered for delivery. Net weight only will be paid for.

In cases of emergency, or on such other occasions as in the opinion of the Director of Mental Hygiene or Heads of other Institutions may seem advisable, other forms of meat, such as Rabbits, Tinned Meats, &c., may be purchased, apart from the contract, in lieu of the meat

specified in the Schedule, and substituted therefor, provided 24 hours' notice—except in cases of emergency—be given to the Contractor of such intention.

The parts to be removed by the contractor are indicated in the shaded portion of the annexed diagram. This work shall be carried out in the factory or shop of the Contractor, except those parts usually removed at the abattoirs.

With respect to the schedules enumerated hereunder, the following stipulations shall also apply:—

For sub-schedules 9, 11, 12 and 13 of Schedule No. 1, fresh beef shall be supplied, as ordered, from ribs, sirloin, and thick flanks and for Schedule No. 2, from prime ribs, sirloin, and thick flanks; ribs of beef to be cut clear of the plate bone, and sirloin to be cut clear of the wing ribs; excess of brisket or thin flank will be rejected. Mutton must be delivered in sides when so ordered.

For Schedules Nos. 1 (sub-schedules 9, 11, 12 and 13), 3, 4, 5, 11, 14, and 21, chuck ribs of Beef, i.e., 1st to 4th inclusive will not be accepted.

For Schedules Nos. 4, 5, and 21, fresh Beef must be supplied, as ordered, from prime ribs or sirloin; ribs of Beef to be cut clear of the plate bone, and sirloin to be cut clear of the wing ribs; excess of brisket or flank will be rejected.

**TEA AND COFFEE.**

Tea and Coffee for Districts for which no local contracts have been taken may be ordered under the Melbourne District contract.

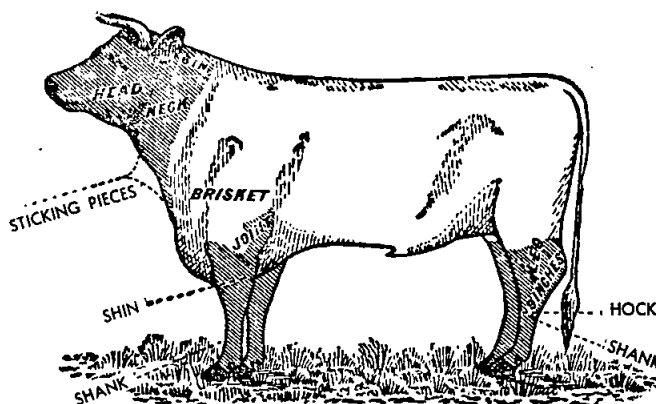
**MILK.**

The milk must be fresh, pure, and of the best quality, and subject to test when required by the Department, and supplied at such times as the Department may require. Should the contractor fail to supply at the time specified in the order or at such times as may be indicated in any general notice to the contractor his contract may be cancelled forthwith and his security forfeited, or should the supply prove to be not of contract quality it will be rejected, and any expense incurred will be charged to the contractor.

**POTATOES.**

Potatoes to be dry and free from dirt. Contractors to take back all rejected before being cooked. Bags to remain the property of the contractor. Weight of bags (approx. 2½ lb.) to be deducted.

If the price of potatoes becomes abnormally high, the heads of the various departments concerned may, if they think fit, cause rice or any other suitable food to be occasionally substituted in lieu thereof.





# ANNEX TO CONTRACTS.

## FLOUR AND BREAD.

The contract rates shown are subject to adjustment for any variation in the proclaimed price of flour.

## MEAT.

Contracts marked † operate for the period 1st July, 1962, to 30th September, 1962, only.

## AGREEMENTS.

For the Sub-schedules marked (Agreement), no contract has been let nor security lodged. Requirements thereunder are to be purchased from the suppliers named, under Tender Board Agreement. The rates shown are subject to variation from time to time. In all cases, supply is subject to stocks being available.

## AVAILABILITY OF SUPPLIES.

Owing to existing difficulties in obtaining supplies of various items, the penal provisions of Clause 10 of the Conditions of Contract are not to be enforced without reference to the Tender Board.

### SCHEDULE No. 1.

#### PROVISIONS—MELBOURNE DISTRICT

ANNEX TO CONTRACT No. 1962/1.

Johnson and Riches Pty. Ltd., 469 Heidelberg-road, Fairfield.

#### Sub-schedule No. 1.

BREAD FOR MENTAL HOSPITAL AT KEW.

Security, £125.

	per cntl.	£ s. d.
1. Bread—Fine wheaten, first quality	1 16 3	
2. " Special formula	2 5 6	

ANNEX TO CONTRACT No. 1962/2.

Bessell's Pty. Ltd., 275 Buckley-street, Essendon.

#### Sub-schedule No. 2.

BREAD FOR CHILDREN'S WELFARE DEPOT, ROYAL PARK; RECEIVING HOUSE AND MENTAL HOSPITAL, ROYAL PARK; AND TRAVANCORE DEVELOPMENTAL CENTRE, FLEMINGTON.

Security, £30.

	per cntl.	£ s. d.
1. Bread—Fine wheaten, first quality	1 15 11½	
2. " Wholemeal, first quality	1 15 11½	

ANNEX TO CONTRACT No. 1962/3.

Capitol Bakeries Pty. Ltd., 257 Toorak-road, South Yarra.

#### Sub-schedule No. 3.

BREAD FOR "WINLTON" JUVENILE SCHOOL, 186 SPRINGVALE-ROAD, NUNAWADING, AND "ALLAMBIE" RECEPTION CENTRE, 70 ELGAR-ROAD, BURWOOD.

Security, £5.

	per cntl.	£ s. d.
1. Bread—Fine wheaten, first quality	2 1 11½	
2. Bread Rolls	0 2 0	

ANNEX TO CONTRACT No. 1962/4.

Capitol Bakeries Pty. Ltd., 257 Toorak-road, South Yarra.

#### Sub-schedule No. 4.

TEACHERS' COLLEGES AND HOSTELS AT GRATTAN-STREET, 93 DRUMMOND-STREET, CARLTON; 470, 481 AND 572 ST. KILDA-ROAD, MELBOURNE; 19 QUEENS-ROAD, MELBOURNE; 152 TOORAK-ROAD WEST, SOUTH YARRA; FRANK TATE HOUSE, 373 DANDENONG-ROAD, ARMADALE; "REDCOURT" NO. 6, "LABNOOK" 13 AND NO. 10A ORRONG-ROAD, ARMADALE; 11 PATTERSON-STREET, HAWTHORN; 174 PUNT-ROAD, PRAHRAN; 221 BURWOOD-ROAD, BURWOOD; JOHN CANNON HOUSE, 32 BELMONT-AVENUE, KEW; 17 MOULE-AVENUE, BRIGHTON, AND HASTINGS-ROAD, FRANKSTON; POLICE HOSPITAL, ST. KILDA-ROAD, MELBOURNE; AND MENTAL HYGIENE CLINIC, 321 GLENFERRIE-ROAD, MALVERN—

Security, £20.

	per cntl.	£ s. d.
1. Bread—Fine wheaten, first quality	2 1 11½	
2. " Wholemeal, first quality	2 1 11½	
3. " Rolls	0 2 0	

ANNEX TO CONTRACT No. 1962/5.

Jas. Minifie and Co. Pty. Ltd., Lennox-street, South Kensington.

#### Sub-schedule No. 5.

FLOUR.

Security, £90.

	per cntl.	£ s. d.
1. Flour—Roller, first quality (150-lb. bag)	1 14 3	
2. " " " " (50-lb. bag)	0 18 2	

(AGREEMENT.)

Moran and Cato Pty. Ltd., 277 Brunswick-street, Fitzroy, N.G.

#### Sub-schedule No. 6.

GROCERIES, METROPOLITAN DISTRICTS.

		£ s. d.
1. Bacon—Sides	per lb.	0 5 3
2. " middles	do.	0 5 5
3. " Rashers, middle	do.	0 6 0
4. Baking powder—1 lb. McKenzies'	per doz.	1 13 9
5. Barley—Pearl	per lb.	0 0 6
6. " " 56-lb. bags	per cwt.	2 6 0
7. Beans—Haricot	per lb.	0 1 5½
8. " Lima	do.	0 1 11½
Biscuits (tins 4s. returnable)—		
9. Thin Captain	do.	0 1 10½
10. Unecda	do.	0 2 4
11. Rice	do.	0 1 10½
12. Nice, Gingernuts	do.	0 1 10½
13. Sweet Assorted	do.	0 2 0
14. Butter Crisps, Vanilla Curis	do.	0 1 11½
15. Devon Shortbreads	do.	0 2 5
16. Sunflakes	do.	0 1 11½
Blue—1-oz. knobs—		
17. " Ricketts" paper	per doz.	0 3 5
18. Bulk—7-lb. pkts.	per lb.	0 1 10½
19. Borax	do.	0 0 7½
20. Boiled Sweets (14-lb. cartons)	do.	0 1 10½
21. Bread Crumbs—"Golden Crust"	per doz.	0 13 0
22. " " "Loose"	per lb.	0 0 9½
23. Cake containers—Paper "Family" 120's	per doz.	0 6 3
24. Candles, Electricine	do.	0 5 2
Cereals—		
24a. Kornies, Weeties or equal—24 oz.	per doz.	1 9 0
25. Cornflakes or equal—16 oz.	do.	1 13 6
26. Weet Hearts—24 oz.	do.	1 14 9
27. Weetbix or equal—24 oz.	do.	1 9 0
28. Allbran or equal	do.	1 0 6
Cheese—Kraft—		
29. 5-lb. boxes	per box	0 19 3
30. 8-oz. pkts.	per doz.	1 5 0
31. Matured—Tasty	per lb.	0 3 7
32. Grated, 6-lb. polythene bags	do.	0 4 5
33. Chutney—Fruit—"Rosella"	per doz.	1 0 3
34. Cloves—Whole	per lb.	0 4 2
35. Cocoa—Loose, 28-lb. bags	do.	0 2 7½
36. " 14-oz. packets—Bournville	per doz.	2 12 3
37. Coconut—Desiccated—"Ceylon"	per lb.	0 1 7
Coffee Essence—		
38. 8-oz. "Turban"	per doz.	1 5 3
39. 26-oz. "Excelsior"	do.	3 12 9
40. 1-gal. "Turban"	per gal.	1 7 6
41. Nescafe—1-lb. tin	per lb.	1 7 9
42. " 2-oz. tin	per doz.	2 5 0
43. " 6-oz. tin	do.	6 7 0
44. Curry Powder—Loose	per lb.	0 2 0
45. Custard Powder—Loose (7-lb.)	do.	0 0 11
46. " " 1-lb. "Cameo"	per doz.	0 17 6
47. Cream of Tartar—Loose	per lb.	0 3 2
48. Eggs—New laid, large	V.E.B. price plus 3d. per doz.	
Essences, &c.—		
49. Almond, 4-oz. "Allens"	per bot.	0 2 2½
50. Cochineal, 16-oz. (red colouring)	do.	0 3 3½
51. Lemon, 8-oz.	do.	0 4 0½
52. Parisian 26-oz. "Greigs"	do.	0 3 11½
53. Vanilla, 8-oz. "Allens"	do.	0 5 5½
54. Yolking, 16-oz. "Allens"	do.	0 3 3½
Extracts and Pastes—		
55. Gravox, 1-lb. packets	per doz.	1 1 6
56. Marmite, 4-oz.	per jar	0 2 1½
57. Vegemite, 4-oz.	do.	0 2 1½
58. " 8-oz.	do.	0 3 9
59. " 16-oz.	do.	0 6 11



ANNEX TO CONTRACT No. 1962/6.

Monbulk Preserves Ltd., Camm's Road, Monbulk.

Sub-schedule No. 8.

JAMS.		£	s.	d.
Security, £20.				
Jams—				
1. Assorted, in bulk, of approved kinds, in the proportion of half seed and half stone, of the best quality, in 54-lb. tins	per lb.	0	0	11½
2. Assorted, of approved kinds, in the proportion of half seed and half stone, of the best quality, in 24-oz. tins	per tin	0	1	11½
3. Marmalade, 24-oz tins	do.	0	1	10½
4. Assorted, 5-lb. tins, in the proportion of half seed and half stone of the best quality	do.	0	6	6

⊙ In 27-lb. tins, rate increased by 1d. per lb.

ANNEX TO CONTRACT No. 1962/7.†

F. Watkins Pty. Ltd., 256 Russell-street, Melbourne, C.I.

Sub-schedule No. 9.

MEAT FOR MENTAL HOSPITAL, KEW.		£	s.	d.
Security, £35.				
Fresh Beef—				
1. Rolled Roast boneless (Brisket excluded)	per lb.	0	2	4
2. Buttocks	do.	0	2	2
3. Shin and Gravy Beef (boneless)	do.	0	2	2
4. Corned Beef—Rolled or Round, as ordered, without bone or cartilage to be removed	per lb.	0	2	5
5. Fresh Mutton—(whole sheep) (Kidney fat to be removed)	do.	0	0	11
6. Veal—boned	per lb.	0	2	0
7. Sausage Meat	do.	0	1	4
8. Sausages—Mixed	do.	0	1	9
9. Livers—Sheep	do.	0	2	0
10. " Ox	do.	0	1	2
11. Kidney—Ox	do.	0	2	6
12. " Sheep	do.	0	2	0
13. Tripe, Fresh	do.	0	1	0
14. Tongues—Ox	do.	0	1	6
15. " Sheep	each	0	0	6
16. Sausage—Belgium	per lb.	0	2	4
17. Beef Loaf	do.	0	2	6
18. Ham Loaf	do.	0	3	0
19. Veal Loaf	do.	0	3	0
20. Saveloys	per doz.	0	3	4
21. Brains, Sheep	per set	0	0	7
22. Fowls, first quality	per lb.	0	5	6
23. Bacon Sides	do.	0	4	6
24. Rabbit Fillets	do.	0	4	3
25. Steak—Stewing	do.	0	2	0

ANNEX TO CONTRACT No. 1962/8.†

Oscar Mayer Pty. Ltd., P.O. Box 163, Footscray.

Sub-schedule No. 10.

MEAT FOR PENTRIDGE PENAL ESTABLISHMENT, COBURG; AND "FAIRLEA" FEMALE PRISON, FAIRFIELD.		£	s.	d.
Security, £35.				
Fresh Beef—				
1. Forequarters	per lb.	0	1	3
2. Minced	do.	0	2	0
3. Corned Beef—Rolled or Round, as ordered, without bone or cartilage	do.	0	2	6
4. Fresh Mutton (whole sheep)	do.	0	0	10
5. Sausages—Mixed, thin	per lb.	0	1	6
6. Fresh Suet—Kidney	do.	0	0	7
7. Sausage—Beef German	do.	0	2	1
8. Sausage Mince	do.	0	1	1
9. Dripping, Beef	do.	0	1	2
10. Frankfurts	do.	0	1	11
11. Ham Loaf	do.	0	2	10

ANNEX TO CONTRACT No. 1962/9.†

G. K. & M. Reynolds Bros. Pty. Ltd., 4 Blackwood-street, North Melbourne.

Sub-schedule No. 11.

MEAT FOR CHILDREN'S WELFARE DEPOT, ROYAL PARK, AND TRAVANCORE DEVELOPMENTAL CENTRE, FLEMINGTON.		£	s.	d.
Security, £8.				
1. Fresh Beef—Rolled Roast Sirloin—Boneless	per lb.	0	2	7
2. Beef—Corned—Silverside	do.	0	3	2
Fresh Mutton—				
3. Legs	do.	0	1	5
4. Legs (Two-tooth)	do.	0	1	7

Sub-schedule No. 11—continued.

MEAT—continued.		£	s.	d.
Fresh Mutton—continued.				
5. Chops—Mid Loin (Two-tooth)	per lb.	0	1	4
6. Rib Chops as Cutlets (Two-tooth)	do.	0	1	5
7. Steak—Rump	do.	0	3	6
8. " Blade	do.	0	2	8
9. " Minced	do.	0	1	9½
10. " Stewing	do.	0	2	3
11. " Topside	do.	0	3	2
12. Veal—Fillet, boneless	do.	0	3	0
13. Pickled Pork	do.	0	2	0
14. Sausages—Mixed	do.	0	1	8
15. Sausage—Strasbourg, Pork	do.	0	3	1
16. " —Beef German	do.	0	2	6
17. Tripe—Fresh	do.	0	0	10
18. Frys—Lamb	do.	0	1	6
19. Shank—Sheep	do.	0	0	6
20. Ox Tongue	do.	0	1	4½
21. Frankfurts	do.	0	2	2
22. Rabbits—Fresh	do.	0	2	6

ANNEX TO CONTRACT No. 1962/10.†

G. K. & M. Reynolds Bros. Pty. Ltd., 4 Blackwood-street, North Melbourne.

Sub-schedule No. 12.

FOR "WINLATON" JUVENILE SCHOOL, 186 SPRINGVALE-ROAD, NUNAWADING AND "ALLAMBIE" RECEPTION CENTRE, 70 ELGAR-ROAD, BURWOOD.		£	s.	d.
Security, £5.				
1. Fresh Beef—Rolled Roast, Sirloin, Boneless	per lb.	0	2	6
2. Beef—Corned—Silverside	do.	0	3	2
3. Mutton—Fresh—Forequarters (Two-tooth)	do.	0	1	0
4. " " Legs	do.	0	1	6
5. " " Chops—Mid Loin	do.	0	1	6
6. " " Forequarter	do.	0	1	1
7. Steak—Topside	do.	0	3	2
8. " Rump	do.	0	3	6
9. " Stewing	do.	0	2	7
10. " Minced	do.	0	2	7
11. " Blade	do.	0	1	6
12. Sausages—Mixed	do.	0	1	0
13. Sausage Meat	do.	0	2	3
14. Frys—Lamb	do.	0	3	2
15. Veal—Fillet—Boneless	do.	0	3	2
16. " T-bone	do.	0	2	10
17. " Leg, Boned	do.	0	2	0
18. Pork—Pickled	do.	0	2	9
19. Pressed Ham Loaf	do.	0	1	4
20. Tongues—Ox	do.	0	0	11
21. Dripping—Beef	do.	0	0	11
22. Brains—Sheep	per set	0	0	4
23. Sausage—Strasbourg—Pork	per lb.	0	2	11
24. Frankfurts	do.	0	1	10½
25. Rabbits—Fresh	do.	0	2	6
26. Kidneys—Sheep	do.	0	2	2

ANNEX TO CONTRACT No. 1962/11.†

J. H. Cooke Pty. Ltd., 378 Queens-parade, Clifton Hill.

Sub-schedule No. 13.

MEAT FOR RECEIVING HOUSE AND MENTAL HOSPITAL, ROYAL PARK.		£	s.	d.
Security, £10.				
Fresh Beef—				
1. Rolled Roast, boneless (Brisket excluded)	per lb.	0	2	6
2. Thick Flank	do.	0	2	6
3. Topside	do.	0	2	9
4. Corned Beef—Rolled or Round, as ordered, without bone or cartilage	do.	0	1	0
5. Corned Silverside	do.	0	3	0
6. Fresh Mutton (legs)	do.	0	1	7
7. Chops—Forequarter	do.	0	0	11
8. Sausages—Thin	do.	0	1	8
9. Sausage—Mince	do.	0	0	9
10. Tripe—Fresh	do.	0	0	10
11. Rabbits—Fresh	do.	0	3	3
12. Fowls—First quality	do.	0	5	3
13. Saveloys	per doz.	0	3	9

(AGREEMENT.)

Moran and Cato Pty. Ltd., 277 Brunswick-street, Fitzroy, N.6.

Sub-schedule No. 14.

SOAP MIXTURES.		£	s.	d.
(Of Commonwealth Manufacture.)				
1. Extract of "Kitchens" or equal "Stella" Soap Powder, 80-lb. bags	per cwt.	3	17	9
2. Household—Dry, "Pental" wrapped, cases of 3 dozen	per case	2	14	0

**Sub-schedule No. 14—continued.**

SOAP MIXTURES—continued.		£	s.	d.
3.	"Lux"—Family size packets .. .. . per doz.	1	15	9
	"Rinso"—			
4.	{ Standard packets .. .. . do.	1	1	6
	{ Economy packets .. .. . do.	1	18	6
	"Perril"—			
5.	{ Standard packets .. .. . do.	1	1	6
	{ Economy packets .. .. . do.	1	18	6
6.	Sandsoap—"Lectric", 12-oz. blocks .. .. . do.	0	5	7
7.	Toilet Soap—"Kitchens" or equal, "Doub-lays," 3½-oz. .. .. . do.	0	5	0
8.	Toilet Soap—"Lifebuoy" cakes, regular .. .. . do.	0	7	7
9.	Soap—"Solvol" .. .. . do.	0	11	2
	"Velvet"—			
10.	{ "Quads," standard .. .. . do.	1	7	9
	{ "Quints," economy .. .. . do.	2	4	3
11.	Washing Soda, 1-cwt. bags .. .. . per cwt.	1	10	6

ANNEX TO CONTRACT NO. 1962/12.

*Moran and Cato Pty. Ltd., 277 Brunswick-street, Fitzroy, N.6.*

**Sub-schedule No. 15.**

TEA.		£	s.	d.
Security, £150.				
1.	Tea—First Grade—To sample .. .. . per lb.	0	4	3

ANNEX TO CONTRACT NO. 1962/13.

*Henry Berry and Co. (Asia) Ltd., 212 King-street, Melbourne.*

**Sub-schedule No. 16.**

COFFEE.		£	s.	d.
Security, £100.				
1.	Coffee—Fresh roasted, and whole, beans to be thoroughly sound—To sample .. .. . per lb.	0	2	10½
2.	Coffee—Fresh roasted, beans to be thoroughly sound—To sample—Ground .. .. . do.	0	2	10½

**SCHEDULE No. 2.**

**PROVISIONS—MONT PARK, ETC.**

(For delivery at the Mental Hospital, Mont Park, to Depots as required, the Repatriation Mental Hospital, Bundoora, Larundel Mental Hospital, Pleasant View Receiving House, Wood-street, Preston, Janefield Colony, and the Sanatorium, Gresswell.)

ANNEX TO CONTRACT NO. 1962/14.

*Johnson and Riches Pty. Ltd. 469 Heidelberg-road, Fairfield.*

**Sub-schedule No. 1.**

BREADSTUFFS.		£	s.	d.
Security, £190.				
Bread—				
1.	Fine wheaten, first quality .. .. . per cwt.	2	5	11
2.	Raisin, first quality .. .. . do.	5	1	0

(AGREEMENT.)

*Moran and Cato Pty. Ltd., 277 Brunswick-street, Fitzroy, N.6.*

**Sub-schedule No. 2.**

GROCERIES.		£	s.	d.
Order under Metropolitan Districts, Schedule No. 1, Sub-schedule No. 6.				

ANNEX TO CONTRACT NO. 1962/15.

*Monbulk Preserves Ltd., Camm's-road, Monbulk.*

**Sub-schedule No. 3.**

JAMS.		£	s.	d.
Security, £23.				
1.	Assorted, in bulk, of approved kinds, in the proportion of half seed and half stone, of the best quality, in 54-lb. tins .. .. . per lb.	0	0	11½
2.	Assorted, in 5-lb. tins, in the proportion of half seed and half stone, of the best quality .. .. . per tin	0	6	6
3.	Marmalade, 5-lb. tins .. .. . do.	0	6	0

⊙ In 27-lb. tins, rate increased by 1d. per lb.

ANNEX TO CONTRACT NO. 1962/16.†

*W. Angliss and Co. (Aust.) Pty. Ltd., 42 Bourke-street, Melbourne.*

**Sub-schedule No. 4.**

MEAT.

(For Mont Park Mental Hospital, &c.)

Security, £35.		£	s.	d.
Fresh Beef—				
1.	Buttocks .. .. . per lb.	0	1	11½
2.	Roast .. .. . do.	0	1	8
3.	Rolled Roast—Boneless (Brisket excluded) .. .. . do.	0	2	6
4.	Topside Pieces .. .. . do.	0	3	1
Beef, Corned—				
5.	Rolled or Round, as ordered, without bone or cartilage .. .. . do.	0	2	2
6.	Corned—Silverside .. .. . do.	0	3	2
Mutton, Fresh—				
7.	Carcass or Sides (Kidney fat to be removed) .. .. . per lb.	0	0	9½
8.	Legs .. .. . per lb.	0	1	5
Chops—				
9.	Forequarter .. .. . do.	0	1	0
10.	Loin .. .. . do.	0	1	4
11.	Lamb, Loin .. .. . do.	0	2	9
Steak—				
12.	Stewing .. .. . do.	0	2	6
13.	Rump .. .. . do.	0	3	9
14.	Minced .. .. . do.	0	2	3
15.	Buttock Sliced .. .. . do.	0	2	11
16.	Sausage—Meat .. .. . do.	0	1	2
17.	Sausages—Mixed .. .. . do.	0	1	9
18.	Shanks—Sheep .. .. . each	0	0	6
19.	Tripe—Fresh .. .. . per lb.	0	0	8½
20.	Brains—Sheep .. .. . per set	0	0	6
21.	Kidneys—Ox .. .. . per lb.	0	2	6
22.	Livers—Sheep .. .. . do.	0	1	9
23.	Livers—Calves .. .. . do.	0	1	9
24.	Frankfurts .. .. . do.	0	2	6
25.	Beef German .. .. . do.	0	2	5
26.	Rabbits—Fresh .. .. . do.	0	3	0
27.	Saveloys .. .. . per doz.	0	2	1
28.	Ham Loaf .. .. . per lb.	0	3	3
29.	Fillet Veal .. .. . do.	0	2	6
30.	Fowls—First quality .. .. . do.	0	4	3
31.	Lamb Carcass .. .. . do.	0	1	9
32.	Legs .. .. . do.	0	2	10
33.	Pork—Fresh—Legs .. .. . do.	0	3	9
34.	Chops .. .. . do.	0	3	6
35.	Bones—Beef .. .. . do.	0	0	2
36.	Bacon Sides .. .. . do.	0	4	0
37.	Sweetbreads .. .. . per box	0	3	0

ANNEX TO CONTRACT NO. 1962/17.†

*Angliss and Co. (Aust.) Pty. Ltd., 42 Bourke-street, Melbourne.*

**Sub-schedule No. 5.**

MEAT.

(For Pleasant View Receiving House, Wood-street, Preston.)

Security, £5.		£	s.	d.
1.	Fresh Beef—Roast—Boneless (Brisket excluded) .. .. . per lb.	0	3	6
2.	Corned Beef—Silverside .. .. . do.	0	3	2
3.	Steak Buttock .. .. . do.	0	2	9
4.	„ Fillet .. .. . do.	0	5	0
5.	„ Minced .. .. . do.	0	2	3
6.	Fresh Lamb—Legs .. .. . do.	0	2	10
Chops—				
7.	Loin—Lamb .. .. . do.	0	3	3
8.	Forequarter—Lamb .. .. . do.	0	1	3
9.	Livers—Lams .. .. . do.	0	2	0
10.	Sausages—Pork .. .. . do.	0	1	9
11.	Dripping—Beef .. .. . do.	0	1	0
12.	Tongues—Sheep .. .. . do.	0	1	0
13.	Brains—Sheep .. .. . per set	0	0	7
14.	Frankfurts .. .. . per doz.	0	5	0
15.	Pork, Fresh, Legs .. .. . per lb.	0	3	6
16.	Rabbits—Fresh .. .. . do.	0	3	0
17.	Capons—First quality .. .. . do.	0	4	9
18.	Tripe .. .. . do.	0	0	9
19.	Ham, tinned, 2-lb. tin .. .. . do.	0	10	0
20.	Mutton—Legs (Boiling) .. .. . do.	0	1	4
21.	Suet .. .. . per lb.	0	0	6
22.	Bones Beef .. .. . do.	0	0	2

ANNEX TO CONTRACT No. 1962/18.

W. Angliss and Co. (Aust.) Pty. Ltd., 42 Bourke-street, Melbourne.

Sub-schedule No. 6.

MEAT.

(For Greswell Sanatorium.)

Security, £15.

	per lb.	£	s.	d.
1. Fresh Beef—Rolled Roast Sirloin (Boneless)	per lb.	0	3	6
2. Beef—Corned, Silverside	do.	0	3	3
3. Lamb—Fresh, Legs	do.	0	2	8
4. " Chops, Mid-loin	do.	0	3	0
5. " " Chump	do.	0	2	3
6. " " Forequarter	do.	0	1	3
7. " " Cutlets	do.	0	3	0
8. " " Rolled	do.	0	1	0
9. Pork—Fresh, Legs	do.	0	3	9
10. " Chops	do.	0	3	6
11. " Pickled	do.	0	2	9
12. Mutton—Leg Chops	do.	0	1	6
13. Veal—Fresh, Shoulder	do.	0	1	3
14. " " Cutlets	do.	0	3	6
15. " " Fillet	do.	0	2	6
16. Steak—Rump	do.	0	3	9
17. " " Topside	do.	0	3	3
18. " " Blade	do.	0	2	3
19. " " Porterhouse	do.	0	3	9
20. " " Fillet	do.	0	5	0
21. " " Minced	do.	0	2	3
22. Brains—Sheep	per set	0	0	6
23. Fowls—First quality	per lb.	0	4	0
24. Frankfurts	do.	0	2	6
25. Ham Loaf	do.	0	3	3
26. " " Pressed Leg	do.	0	5	9
27. " " Pressed Shoulder	do.	0	5	6
28. Kidneys—Ox	do.	0	2	6
29. " " Sheep	do.	0	3	0
30. Livers—Sheep	do.	0	2	3
31. " " Lamb	do.	0	1	9
32. Rabbits—Fresh	do.	0	3	0
33. Sausages—Mixed	do.	0	1	9
34. " " Pork	do.	0	1	9
35. Sausage Meat	do.	0	1	2
36. " " Strasbourg—Pork	do.	0	3	3
37. Shanks—Sheep	each	0	0	6
38. Tripe—Fresh	per lb.	0	0	8½
39. Tongues—Ox	do.	0	1	9
40. " " Sheep	do.	0	1	0
41. Veal and Pork Loaf—Pressed	do.	0	3	3
42. Savoury—Loaf—Pressed	do.	0	3	3
43. Ham—Leg—Raw	do.	0	5	0

SCHEDULE No. 3.

PROVISIONS FOR S.S. RIP AND DREDGES.

Sub-schedule No. 1.

BREAD.

Purchase by agreement.

(AGREEMENT.)

Moran and Cato Pty. Ltd., 277 Brunswick-street, Fitzroy, N.6.

Sub-schedule No. 2.

GROCERIES.

Order under Metropolitan Districts, Schedule No. 1, Sub-schedule, No. 6.

ANNEX TO CONTRACT No. 1962/19.†

G. K. & M. Reynolds Bros. Pty. Ltd., 4 Blackwood Street, North Melbourne.

Sub-schedule No. 3.

MEAT.

(Delivery at River Yarra Wharfs.)

	per lb.	£	s.	d.
1. Fresh Beef—Roast	per lb.	0	2	0
Beef—Corned—				
2. Silverside	do.	0	3	3
3. " " Rolled	do.	0	1	10
Fresh Mutton—				
4. Forequarter	do.	0	0	8
5. Legs	do.	0	1	7
Chops—				
6. Forequarter	do.	0	0	8
7. Loin	do.	0	1	3

Sub-schedule No. 3—continued.

MEAT—continued.

£ s. d.

		per lb.	£	s.	d.
Steak—					
8. Rump	per lb.	0	4	4	
9. Stewing	do.	0	2	3	
10. Topside	do.	0	3	3	
11. Sausages—Mixed	do.	0	1	8	
12. Tripe—Fresh	do.	0	0	10	
13. Livers—Sheep	do.	0	2	0	
14. Suet—Kidney	do.	0	0	6	
15. Rabbits—Fresh	do.	0	2	3	
16. Ice	per cwt.	0	1	0	

Sub-schedule No. 4.

VEGETABLES.

1. Onions	Purchase by agreement
2. Other vegetables, including beetroot, cauliflowers, carrots, cabbages, turnips, parsnips, rhubarb, swedes, and pumpkin, as required	

SCHEDULE No. 4.

PROVISIONS—TEACHERS' COLLEGE, HOSTELS, POLICE HOSPITAL, ETC.

(Delivery at Institutions.)

TEACHERS' COLLEGE AND HOSTELS AT GRATTAN-STREET, 93 DRUMMOND-STREET, CARLTON; 470, 481 and 572 ST. KILDA-ROAD, MELBOURNE; 19 QUEENS-ROAD, MELBOURNE; 152 TOORAK-ROAD WEST, SOUTH YARRA; FRANK TATE HOUSE, 373 DANENONG-ROAD, ARMADALE; "REDCOURT" NO. 6, "LARNOOK," 13 AND NO. 10A ORRONG-ROAD, ARMADALE; 11 PATTERSON-STREET, HAWTHORN; 174 PUNT-ROAD, PRAHRAN; 221 BURWOOD-ROAD, BURWOOD; JOHN CANNON HOUSE, 32 BELMONT-AVENUE, KEW; 17 MOULE-AVENUE, BRIGHTON; AND HASTINGS-ROAD, FRANKSTON; POLICE HOSPITAL, ST. KILDA-ROAD, MELBOURNE; AND MENTAL HYGIENE CLINIC, GLENFERRIE-ROAD, MALVERN.

GROCERIES.

Order under Metropolitan District, Schedule No. 1, Sub-schedule No. 6.

ANNEX TO CONTRACT No. 1962/20.†

J. H. Cooke Pty. Ltd., 378 Queens-parade, Clifton Hill.

Sub-schedule No. 2.

MEAT.

Security, £15.

	per lb.	£	s.	d.
Fresh Beef—				
1. Rolled Prime Ribs, boneless	per lb.	0	2	6
2. Topside	do.	0	3	2
3. Sirloin, boneless	do.	0	2	8
Fresh Mutton—				
4. Legs	do.	0	1	7
5. Legs, pickled	do.	0	1	6
6. Sides, Two-tooth	do.	0	1	3
7. Legs, Two-tooth	do.	0	1	8
8. Cutlets	do.	0	1	6
9. Chops, Middle Loin	do.	0	1	3
10. Chops, Forequarter	do.	0	1	0
11. Chops, Chump	do.	0	1	3
12. Beef—Corned, Silverside	do.	0	3	0
Veal—				
13. Shoulder, boned	do.	0	1	3
14. Fillet, boneless	do.	0	3	6
Steak—				
15. Blade	do.	0	2	9
16. Minced	do.	0	1	11
17. Stewing	do.	0	2	9
18. Rump	do.	0	3	10
19. Fillet	do.	0	4	9
20. Sausages—Mixed	do.	0	1	8
21. Sausage—Meat	do.	0	0	9
22. " " Beef, German	do.	0	2	9
23. " " Strasburg	do.	0	3	2
24. Livers—Sheep	do.	0	1	9
Kidneys—				
25. Sheep	do.	0	1	6
26. Ox	do.	0	2	6
27. Tongues—Ox	do.	0	1	3
28. Ox Tails	do.	0	1	6
29. Brains—Sheep	per set	0	0	5
30. Tripe—Fresh	per lb.	0	0	9
31. Frankfurts	do.	0	2	7
32. Bones—Soup	do.	No	charge	

Sub-schedule No. 2—continued.

MEAT—continued.		£	s.	d.
33. Suet—Kidney	per lb.	0	0	4
34. Rabbits—Fresh	do.	0	3	3
35. Fowls—First quality	do.	0	5	3
36. Pork—Legs	do.	0	4	0
37. " Loin	do.	0	3	9
38. Lamb, legs	do.	0	2	9
39. Ham, pressed	do.	0	7	0
40. Dripping	do.	0	1	0

SCHEDULE No. 5.

PROVISIONS—HEATHERTON SANATORIUM, CHELTENHAM.

(Delivery at the Sanatorium.)

ANNEX TO CONTRACT No. 1962/21.

Cheltenham & Districts Co-op. Society Ltd., 1279 Nepean Highway, Cheltenham.

Sub-schedule No. 1.

BREAD.

Security, £15.		£	s.	d.
1. Bread—Fine wheaton, first quality	per cwtl.	1	15	1½

(AGREEMENT.)

Moran and Cato Pty. Ltd., 277 Brunswick-street, Fitzroy, N.6.

Sub-schedule No. 2.

GROCERIES.

Order under Metropolitan Districts Schedule No. 1, Sub-schedule No. 6.

ANNEX TO CONTRACT No. 1962/22.†

W. Angliss and Co. (Aust.) Pty. Ltd., 42 Bourke-street, Melbourne, C.1.

Sub-schedule No. 3.

MEAT.

Security, £5.		£	s.	d.
1. Beef, Fresh Roast—Rump	per lb.	0	3	9
2. " Corned—Silverside	do.	0	3	1
3. Lamb, Fresh—Legs	do.	0	2	10
4. " " Shoulder—Rolled	do.	0	1	3
5. " " Chops Mid. Loin	do.	0	3	3
6. " " Chops Chump	do.	0	2	6
7. " " Chops, Forequarter	do.	0	1	4
8. " " Cutlets	do.	0	3	3
9. Pork, Fresh—Legs	do.	0	3	9
10. " " Chops	do.	0	3	9
11. " " Minced	do.	0	2	0
12. Veal—Shoulder—Boned	do.	0	1	3
13. " " Cutlets	do.	0	3	3
14. Steak—Rump	do.	0	4	0
15. " " Blade	do.	0	2	9
16. " " Topside	do.	0	3	3
17. " " Minced	do.	0	2	3
18. " " Porterhouse	do.	0	3	6
19. " " Fillet	do.	0	5	0
20. Mutton—Pumped leg	do.	0	1	3
21. Tripe—Fresh	do.	0	0	10
22. Brains—Sheep	per set	0	0	7
23. Lams Fry	per lb.	0	1	9
24. Tongues—sheep	do.	0	1	0
25. Kidneys—Ox	do.	0	2	6
26. " " Sheep	do.	0	2	3
27. Tails—Ox	do.	0	1	9
28. Sausages—Pork	do.	0	1	9
29. Frankfurts—Vienna	do.	0	3	3
30. Beef, German—Sausage	do.	0	2	3
31. Ham—Loaf	do.	0	3	3
32. " " Pressed Shoulder	do.	0	5	6
33. Rabbits, Fresh	do.	0	3	0
34. Dripping—Beef	do.	0	1	0

ANNEX TO CONTRACT No. 1962/23.

Cranbourne Dairies Pty. Ltd., 22 Station-street, Cheltenham.

Sub-schedule No. 4.

MILK.

Security, £20.		£	s.	d.
1. Milk—Fresh and pure (bulk)	per gal.	0	4	9

SCHEDULE No. 6.

PROVISIONS—ARARAT DISTRICT.

(Delivery into Institution.)

ANNEX TO CONTRACT No. 1962/24.

Forsyth's Bakery, 49 Moore-street, Ararat.

Sub-schedule No. 1.

BREADSTUFFS.

Security, £75.		£	s.	d.
1. Bread—Fine wheaton, first quality	per cwtl.	3	10	9
2. Flour—First quality	do.	2	4	9

(AGREEMENT.)

McKay MacLeod Pty. Ltd., 63 Mair-street, Ballarat.

Sub-schedule No. 2.

GROCERIES.

		£	s.	d.
1. Baking Powder	per lb.	0	2	9½
2. Blue—Washing, 1-oz., "Rockitts"	per gross	2	9	3
3. Bonox, 1-lb. jars	per doz.	6	0	0
4. Bournvita, 14-oz.	do.	2	18	0
5. Candles—Full weight, "Electrine"	per lb.	0	2	8
6. Cereals (Weeties or equal), 24-oz.	per doz.	1	11	9
7. Cocoa, 14-oz., "Bournville"	do.	2	15	6
8. Coffee Essence—8-oz. bottles	do.	1	4	6
9. " " 28-oz.	do.	3	9	9
10. Curry Powder—Loose	per lb.	0	3	2
11. Custard Powder—Loose	do.	0	1	3½
12. Essences—Cochineal, 16-oz.	per btl.	0	13	7
13. " " Lemon, 4-oz.	per doz.	2	2	0
14. " " Parisian, 26-oz.	do.	2	6	3
15. " " Vanilla, 16-oz.	do.	9	2	0
16. " " Yorkine, 16-oz.	do.	2	9	6
17. Flour—Corn or Maize, 1-lb. pkts.	do.	1	0	0
18. " " Self Raising, 25-lb. bag	bag	0	19	3
19. Fruit—Dried—Currants, 3-crown	per lb.	0	1	10½
20. " " Sultanas, { 3-crown	do.	0	1	11
" " { 4-crown	do.	0	1	11½
21. Dates less than case lots	per lb.	0	1	7
22. Golden Syrup, 2-lb. tins	per doz.	1	0	9
23. " " 70-lb. drums	each	2	18	3
24. Jelly Crystals "McKays"	per doz.	0	8	3
25. Macaroni, 1-lb., "Rinoldi"	per doz.	0	17	0
26. " " 22-lb., "Rinoldi"	per ctn.	19	9	0
27. Marmite, 1-lb. jars	per doz.	3	19	0
28. Margarine—Cake or Pastry	per lb.	0	1	9½
29. Mustard—Loose	do.	0	6	8
30. Milk—Dried—"Bonlao" (non fat), 3½ lb.	per doz.	4	2	9
31. " " "Sunshine" 3-lb.	do.	7	4	0
32. Pepper—Ground—white	per lb.	0	6	3
33. " " Black	do.	0	5	11
34. Salt—Fine	per cwt.	1	1	9
35. " " Table, 1-lb., "Mermaid"	per lb.	0	0	8½
36. Sauce—Tomato, 26-oz. bottle	per doz.	2	0	0
37. " " 1-gal. jars (jars 3s. 6d.)	per gal.	0	18	0
Soap—				
" Sand	per doz.	0	7	9
" "Velvet" Standard	do.	1	9	9
" "Economy	do.	2	7	0
" "Solvol"	do.	11	6	½
39. Spaghetti—22-lb., "Rinoldi"	per ctn.	0	19	9
40. Spices—Mixed—1-oz.	per doz.	0	5	3
41. " " loose	per lb.	0	4	7½
42. Soda—Bicarbonate	do.	0	0	9
43. " " Washing	per cwt.	1	15	0
44. Starch—12-oz., "Silver Star"	per doz.	0	19	6
45. " " Loose	per lb.	0	0	10½
46. Tartar, Cream of—Substitute, "Antelope"	per lb.	0	2	6
47. Vinegar—malt, 1-gal. jars (jars 3s. 6d.)	per gal.	0	5	4½

(AGREEMENT.)

McKay MacLeod Pty. Ltd., 63 Mair-street, Ballarat.

Sub-schedule No. 3.

JAMS.

		£	s.	d.
1. Jams—Assorted, in bulk, of approved kinds, in the proportion of half seed and half stone, of the best quality, in tins, as required, "J. MacLeod and Co. Pty. Ltd."	per lb. actual net weight	0	1	3

ANNEX TO CONTRACT No. 1962/25.†

H. A. Morris, 107 Victoria-street, Ballarat.

Sub-schedule No. 4.

MEAT.		£	s.	d.
Security, £30.				
Fresh Beef—				
1. Rolled Roast (boneless, brisket excluded)	per lb.	0	2	0
2. Buttocks	do.	0	2	0
Fresh Mutton—				
3. Kidney fat to be removed	do.	0	0	10
4. Middle Loin Chops	do.	0	0	11½
5. Corned Beef—Rolled or Round, as ordered, without bone or cartilage	do.	0	2	0
6. Kidneys—Ox	per lb.	0	1	6
7. Veal—Filletted	do.	0	1	8
8. Sausages—Mixed	do.	0	1	10
9. Steak—Topside	do.	0	2	9
10. Sausage Meat	do.	0	1	2
11. Saveloys	do.	0	1	10
12. Tripe, Fresh	do.	0	0	10

SCHEULE No. 7.

PROVISIONS—BALLARAT DISTRICT.

(Delivery into Institutions.)

ANNEX TO CONTRACT No. 1962/26.

Brogden Bros. Pty. Ltd., 15 Lal Lal-street, Ballarat.

Sub-schedule No. 1.

BREADSTUFFS.		£	s.	d.
Security, £100.				
1. Bread—Fine wheaten, first quality	per cntl.	2	4	6
2. Flour—First quality	do.	2	2	1½

(AGREEMENT.)

McKay MacLeod Pty. Ltd., 63 Mair-street, Ballarat.

Sub-schedule No. 2.

GROCERIES FOR TEACHERS' COLLEGE HOSTELS.

		£	s.	d.
Bacon—				
1. Sides	per lb.	0	5	3
Middles	do.	0	5	2
Rashers	do.	0	7	0
2. Barley—Pearl	do.	0	0	8½
Beans—				
3. Haricot	do.	0	1	5½
Biscuits—				
4. Salada Crackers, Snowflakes	do.	0	2	2½
Thin Captain, Milk Arrowroot,	do.	0	2	1½
Savoy Crackers, Table Water,	do.	0	2	3½
Malt, Marie, Coffee	do.	0	2	1
Blue—				
5. 1-oz. knobs, paper, "Reckitta"	per gross	2	9	3
6. 1-oz. knobs, square	knobs	2	9	3
7. Cake Containers—paper, "Barkers" 120's	per doz. pkts.	0	7	0
Cereals—				
8. "Sunflakes" 24-oz.	per doz.	1	6	9
"Weeties" 24-oz.	pkts.	1	11	0
"Cornflakes," large	do.	1	14	0
"Weetbix," 24-oz.	do.	1	11	0
"All-Bran"	do.	1	1	0
Cheese—				
9. 6-lb. boxes, "Kraft"	per pkt.	1	3	6
½-lb. packets	per doz.	1	5	9
10. Chutney—"Rosella," Fruit	do.	1	2	0
Cocos—				
11. 14-oz. tins, "Bournville"	per doz.	2	15	0
12. Loose	per lb.	*		
13. Coconut—Desiccated (loose)	do.	0	1	10
Coffee and Chicory Essence—				
14. 8-oz. bottles, "McKays"	per doz.	1	3	6
15. 1-gallon jars (Jars 3s. 6d. each)	per jar	1	10	0
16. Curry Powder—Bulk	per lb.	0	3	2
Custard Powder—				
17. Bulk	do.	0	1	3
18. ½-lb. packets "McKays"	per doz.	1	2	0
19. Dates—Slabs, 14-lb. "Sair"	per lb.	0	1	7
Essences, &c.—				
20. Almond, 16-oz.	per bot.	0	10	0
21. Lemon, 16-oz.	do.	0	12	6
22. Vanilla, 16-oz.	do.	0	14	6
23. Coochineal { 1-oz.	per doz.	0	15	0
{ 16-oz.	per bot.	0	12	6

\* Supplies not available.

Sub-schedule No. 2—continued.

GROCERIES—continued.

		£	s.	d.
24. Parisian { 5-oz. bottles	per doz.	0	16	6
{ 26-oz. bottles	do.	2	6	0
25. Yolking, "Yolko" 16 oz.	do.	2	7	6
Extracts, Pastes, &c., or equal—				
26. Marmite { 16-oz. jar	do.	3	19	0
{ 8-oz. jar	do.	2	4	0
27. Vegemite { 16-oz. jar	do.	4	5	0
{ 8-oz. jar	do.	2	6	0
28. Peanut Butter, 12-oz., "Eta"	do.	2	5	6
29. Bonox, 8-oz.	do.	3	1	6
30. Bloater, "Pecks"	do.	0	18	9
31. Salmon and Shrimp, "Pecks"	do.	0	18	9
Fish—Tinned—				
32. "Flair," 12-oz. tin "Perler"	per doz.	1	7	0
{ Fresh, 7-oz. tin	do.	0	18	6
{ Fresh, 14-oz. tin	do.	1	8	0
33. Herrings { In sauce, 7-oz. tin	do.	0	18	6
{ In sauce, 14-oz. tin	do.	1	8	0
34. Sardines, 4-oz. tin, "D.L."	do.	0	16	0
Flour—Corn or Maize—				
35. Packets, "Kream"	per lb.	0	1	7½
36. Bulk	do.	0	0	9
37. Self-Raising { 25-lb. bags, "McKays"	per bag	0	18	3
{ 6-lb. packets, "McKays"	per doz.	2	11	6
Fruits—Dried—				
38. Apples	per lb.	*		
39. Apricot, 3-crown	do.	0	18	6
40. Peaches, peeled, 2-crown, choice	do.	*		
41. Pears, 3-crown, standard	do.	*		
42. Prunes (70/80's)	do.	0	2	5½
43. Currants, 2-crown	do.	0	1	9½
44. Raisins—Seeded, 1 lb. packets	per doz.	1	7	3
45. Sultanias { 2-crown	per lb.	0	1	10
{ 3-crown	do.	0	1	10½
Fruits—Tinned—				
46. Solid Pack Apples { 28-oz. tin	per doz.	1	13	0
{ 6½-lb. tin	do.	5	8	9
47. Solid Pack Apricots, 7-lb. tins	do.	6	0	0
48. Gelatine—Ground, "Davis", loose	per lb.	0	7	3
49. Ginger—Ground	do.	0	5	6
50. Golden Syrup, 2-lb. tins (70-lb. drums, per doz. 55s.†)	per doz.	1	0	0
51. Gravox—1-lb. tins	per doz.	1	2	6
52. Herbs—Mixed, packets, 1-oz.	do.	0	3	9
53. Honey—60-lb. tins	per lb.	0	0	11
Jelly Crystals—				
54. 4-oz. packets, "McKays"	per doz.	0	8	1
55. 7-lb. packets	per lb.	0	2	4
Junket Tablets—				
56. "Merry Widow" flavoured, tubes	per doz.	0	18	6
57. Lentils	per lb.	0	1	11
Macaroni—				
58. 1-lb. packets	per doz.	0	17	0
59. Bulk { 22-lb. cartons	per each	0	19	0
{ 68-lb. bags	per lb.	0	0	11½
60. Margarine—Cake, pastry	do.	0	1	9
61. Matches—Safety, packets	per gross	0	19	0
62. Mayonnaise—½-gallon jars (Jars 3s. 6d. each)	per jar	0	14	0
Meat—Tinned, or equal—				
63. Beef Luncheon, square tins, "Piper"	per doz.	1	9	9
64. Beef Steak Pudding, "Piper"	do.	1	13	9
65. Camp Pie, 12-oz. tins, "Swifts"	do.	1	2	6
66. Irish Stew, 16-oz. tins, "Piper"	do.	1	6	9
67. Braised Steak and Vegetables, 16-oz. tins, "Piper"	do.	1	9	0
68. Sausages and Vegetables, 16-oz. tin, "Piper"	do.	1	7	6
Milk—Dried—				
69. { "Sunshine," 12-oz. tins	do.	2	1	0
{ "Sunshine," 3-lb. tins	do.	7	1	6
Milk—Condensed—				
70. "Nestle"	do.	1	2	6
71. "Ideal"	do.	0	16	9
72. Mustard—Loose	per lb.	0	6	8
73. Nutmeg—Ground	do.	0	12	3
74. Oatmeal—Flaked, 56-lb. bags	per cwt.	3	7	0
75. Pastry—Mix, 1-lb. packets, "Maxam"	per doz.	0	13	6
76. Peel—Mixed, cut, 8 oz.	do.	0	17	6
77. Pepper—White, ground	per lb.	0	6	6
78. Pickles—Assorted, 20-oz. bottles, "McKays"	per doz.	1	7	0
Rice—				
79. Dressed	per cwt.	5	0	0
80. Ground—1 lb. packets	per doz.	0	12	9
81. Sago (Seed Tapioca)	per lb.	0	0	9½

† Charge for drums if not returned.

Sub-schedule No. 2—continued.

Table of grocery prices for Sub-schedule No. 2. Includes items like Salt, Sauce, Soaps, Soda, Soups, Spaghetti, Sugar, Tea, and Vegetables. Columns include item description, unit, and price in £ s. d.

(AGREEMENT.)

McKay MacLeod Pty. Ltd., 63 Mair-street, Ballarat.

Sub-schedule No. 2a.

Table of grocery prices for Sub-schedule No. 2a, specifically for the Mental Hospital. Includes items like Beans-Haricot, Biscuits, Cereals, and Dates. Columns include item description, unit, and price in £ s. d.

\* Order under Melbourne Contract.

Sub-schedule No. 2a—continued.

Table of grocery prices for Sub-schedule No. 2a, continued. Includes items like Flour, Gelatine, Golden Syrup, Herbs, Jelly, Macaroni, Margarine, Meats, Milk, Mustard, Pickles, Raisins, Sultanas, and Soap. Columns include item description, unit, and price in £ s. d.

(AGREEMENT.)

McKay MacLeod Pty. Ltd., 63 Mair-street, Ballarat.

Sub-schedule No. 3.

Table of prices for Jams for Teachers' College Hostels and Mental Hospitals. Lists various jams and their prices per lb. or doz.

ANNEX TO CONTRACT No. 1962/27†.

H. A. Morris, 107 Victoria-street, Ballarat.

Sub-schedule No. 4.

MEAT.

(For Gaol and Mental Hospital.)

Table of meat prices for Sub-schedule No. 4. Lists items like Beef, Mutton, and Kidney fat with prices in £ s. d.

† Jars, 3s. 6d. each.



ANNEX TO CONTRACT No. 1962/28.†

H. A. Morris, 107 Victoria-street, Ballarat.

Sub-schedule No. 5.

MEAT.

For delivery to Teachers' College Hostels as under:—

College Hostel, Gillies-street, Ballarat.  
Beaufort House, Beaufort-avenue, Ballarat.  
1415 Sturt-street, Ballarat.  
130 Victoria-street, Ballarat.  
126 Webster-street, Ballarat.

Security, £5.		£	s.	d.
1. Fresh Beef—Sirloin, Boneless	per lb.	0	3	9
2. Beef—Corned—Silverside	do.	0	4	3
Fresh Mutton—				
3. Legs	do.	0	2	2
4. Forequarter Chops	do.	0	1	3
5. Legs Pickled	do.	0	2	2
Two-tooth—				
6. Chump Chops	do.	0	2	3
7. Mid Loin Chops	do.	0	2	2
Veal—				
8. Shoulder, Boned	do.	0	3	3
9. Fillet, Boneless	do.	0	3	9
Steak—				
10. Blade	do.	0	3	9
11. Rump	do.	0	5	0
12. Minced	do.	0	2	6
13. Sausages—Mixed	do.	0	1	10
14. Sausage Meat	do.	0	1	3
15. Kidneys—Ox	do.	0	1	6
16. Frankfurts	do.	0	1	11
17. Dripping—Beef	do.	0	1	0
18. Shanks—Sheep	each	0	0	6
19. Beef Luncheon	per lb.	0	2	2

ANNEX TO CONTRACT No. 1962/29.

The Ballarat Modern Dairy Pty. Ltd., 819 Sturt-street, Ballarat.

Sub-schedule No. 6.

MILK.

For delivery to Mental Hospital and Teachers' College Hostels as under:—

Gillies-street, Ballarat.  
Beaufort House, Beaufort-avenue, Ballarat.  
1415 Sturt-street, Ballarat.  
130 Victoria-street, Ballarat.  
126 Webster-street, Ballarat.

Security, £30.		£	s.	d.
1. Milk—Fresh and pure, pasteurized	Bulk per gal.	0	4	10½
	Bottled do.	0	5	4½

SCHEDULE No. 8.

PROVISIONS—BEECHWORTH DISTRICT.

ANNEX TO CONTRACT No. 1962/30.

P. A. Taylor Model Bakery, Camp-street, Beechworth.

(Delivery into Institutions.)

Sub-schedule No. 1.

BREADSTUFFS.

Security, £100.		£	s.	d.
1. Bread—Fine wheat, first quality	per cwt.	3	11	10½
2. Flour—First quality	do.	2	4	1½

(AGREEMENT.)

Moran and Cato Pty. Ltd., 277 Brunswick-street, Fitzroy, N.6.

Sub-schedule No. 2.

GROCERIES.

Security, £30.		£	s.	d.
1. Baking Powder, 1-lb., "McKenzie's"	per lb.	0	2	11
2. Beans—Haricot	do.	0	1	6½
3. Blue—Washing, powdered, 7-lb. packets	do.	0	1	11½
Cereals—				
4. {"Pipers," "Kornies," "Weeties," or equal packets	per doz.	1	10	9
{ Vitabrit or equal—24-oz. packets	do.	1	10	9

○ Apricot, £4 13s. 6d.; Blackcurrant, £6 19s. 0d.; Blackberry, £5 19s.; Melon and Lemon, £4 6s. 3d.; Loganberry, £6 3s. 8d.; Peach, £4 10s. 3d.; Quince, £4 6s. 6d.; Raspberry, £6 9s. 9d.; Dark Plum, £4 8s. 6d.; Plum and Raspberry, £4 17s. 6d.

Sub-schedule No. 2—continued.

GROCERIES—continued.

£ s. d.

Cocoa—				
5. 14-oz. packets, "Bournville"	per doz.	2	13	6
Corn or Maize Flour—				
6. { 1-lb. packets, "Medallion"	per doz.	0	17	3
{ Loose	per lb.	0	0	11½
7. Curry Powder	do.	0	2	1½
8. Custard Powder—Loose	do.	0	1	0½
9. Dates—Case lots	do.	0	1	7½
{ Loose	do.	0	1	7½
10. Gelatine	do.	0	8	1
11. Golden Syrup, 2-lb. tins	per doz.	1	2	0
12. Jelly Crystals, 7-lb. packets	per lb.	0	2	1½
Macaroni—				
13. { 22-lb. cartons	per ctn.	1	1	3
{ 56-lb. bags	per lb.	0	0	10½
14. Margarine—Cake, pastry	do.	0	1	10½
Milk—Powdered—				
15. { 3-lb. tins, "Sunshine"	per doz.	7	2	0
{ 12-oz. tins, "Sunshine"	do.	2	1	0
16. Mustard	per lb.	0	4	6
17. Pepper—White, ground	do.	0	5	6½
18. Pickles—Mustard, 20-oz. bottle	per doz.	1	8	9
Raisins { Sultana, 4-crown (case lots)				
19. { Sultana, 4-crown (less than case lots)	per lb.	0	1	11½
	do.	0	2	0
20. Salt—Fine	per cwt.	1	4	6
21. Sauce—Tomato, 26-oz. bottles, "Rosella"	per doz.	2	5	3
Soap—				
22. Sand, 12-oz. blocks, "Lectric"	do.	0	6	8
23. Lifebuoy—Regular	do.	0	8	8
24. Powder, "Pental", 12-oz. packets	do.	0	12	9
Soda—				
25. Bicarbonate	per lb.	0	0	7½
26. Washing	per cwt.	2	2	3
27. Spaghetti, 22-lb. cartons, "Forex"	per ctn.	1	1	3
28. Spice—Mixed, "Parsons"	per doz.	0	5	10
	pkts.	0	0	9½
29. Starch—"Parsons"—Loose	per lb.	0	2	10½
30. Tartar—Cream of, Substitute, "Antelope"	do.	0	2	10½
31. Tomatoes—Tinned, 28-oz. tins, "Cohn"	per doz.	1	11	9
32. Vegemite, 1-lb. jars	do.	4	7	0
33. Vinegar—Malt (9-gal. keg), (kegs £5)	per gal.	0	5	10

(AGREEMENT.)

Moran and Cato Pty. Ltd., 277 Brunswick-street, Fitzroy, N.6.

Sub-schedule No. 3.

JAMS.

£ s. d.

Jams—Assorted, in bulk—				
1. { Apricot	per lb.	0	1	6
{ Peach	actual	0	1	3½
{ Dark Plum	net	0	1	3½
{ Rasapple	weight	0	1	3
2. Jams—Assorted, 5-lb. tins, of the best quality	per doz. tins	○		

ANNEX TO CONTRACT No. 1962/31.†

E. Spencer, Camp-street, Beechworth.

Sub-schedule No. 4.

MEAT.

Security, £30.		£	s.	d.
1. Fresh Beef (Gaol)	per lb.	0	2	5
2. Fresh Beef—Rolled Roast, boneless, brisket excluded	do.	0	2	7
3. Corned Beef, Rolled or Round as ordered, without bone or cartilage	do.	0	2	7
4. Mutton—Fresh (kidney fat to be removed for Mental Hospital)	do.	0	1	0
5. Beef Steak, minced	do.	0	2	6
6. Sausage Meat	do.	0	1	4
7. Sausages—Mixed	do.	0	1	10
8. Tripe—Fresh	do.	0	1	4
9. Veal—Boned	do.	0	2	6
10. Saveloys	do.	0	2	0
11. Kidney—Ox	do.	0	2	0
12. Bones—Beef	do.	0	0	2

ANNEX TO CONTRACT No. 1962/32.

*Beechworth Dairy, Ford-street, Beechworth.*

**Sub-schedule No. 5.**

MILK.

Security, £12.	£	s.	d.
1. Milk—Fresh and pure .. .. .	per gal.	0	5 3

**SCHEDULE No. 9.**

**PROVISIONS—BENDIGO DISTRICT.**

(For Delivery into Institutions.)

ANNEX TO CONTRACT No. 1962/33.

*C. H. Jeffrey Pty. Ltd., 172 Wattle-street, Bendigo.*

**Sub-schedule No. 1.**

BREAD.

For Gaol and Sandhurst Boys' Centre and Teachers Hostel  
"Lancewood," McLaren-street, Bendigo.

Security, £7.	£	s.	d.
1. Bread—Fine wheaten, first quality ..	per cntl.	2	5 10
2. Flour—First quality .. .. .	do.	2	1 0

ANNEX TO CONTRACT No. 1962/34.

*C. H. Jeffrey Pty. Ltd., 172 Wattle-street, Bendigo.*

**Sub-schedule No. 2.**

BREAD.

For Teachers' College Hostel—  
Osborne-street, Pleasant Vale, Bendigo.

Security, £4.	£	s.	d.
1. Bread—Fine wheaten, first quality ..	per cntl.	2	5 10
2. Flour—First quality .. .. .	do.	2	1 0

ANNEX TO CONTRACT No. 1962/35.

*Roy Raggatt Pty. Ltd., 132 Lily-street, Bendigo.*

**Sub-schedule No. 3.**

BREAD.

For Teachers' College Hostel—"Comersdale," Panton-street,  
Golden Square, Bendigo.

Security, £3	£	s.	d.
1. Bread—Fine wheaten, first quality ..	per cntl.	3	8 9
2. Flour—First quality .. .. .	do.	2	1 0

ANNEX TO CONTRACT No. 1962/36.

*Sandhurst Dairies Ltd., 62 Queen-street, Bendigo.*

**Sub-schedule No. 4.**

MILK.

For Sandhurst Boys' Centre.

Security, £5.	£	s.	d.
1. Milk—Fresh and pure—Bulk .. .. .	per gal.	0	4 11½
Bottled .. .. .	do.	0	5 4¼

ANNEX TO CONTRACT No. 1962/37.

*Sandhurst Dairies Ltd., 62 Queen-street, Bendigo.*

**Sub-schedule No. 5.**

MILK.

For Teachers' College Hostels "Comersdale," Panton-street,  
Golden Square; "Lancewood," McLaren-street, Bendigo,  
and Osborne-street, Pleasant Vale.

Security £5.	£	s.	d.
1. Milk—Fresh and pure—Bulk .. .. .	per gal.	0	5 3
Bottled .. .. .	do.	0	5 7½

(AGREEMENT.)

*Pulfer, Cox, and Hargreaves, Wholesalers Limited, 200 Hargreaves-street, Bendigo. §*

**Sub-schedule No. 6.**

GROCERIES.

	£	s.	d.
1. Barley—Pearl, 56-lb. bags (smaller lots per cwt. 7d. per lb.)	3	4	0
Beans—			
2. Butter .. .. .	per lb.	0	4 7½
3. Haricot .. .. .	do.	0	1 6
4. Lima .. .. .	do.	0	1 10
Biscuits and Cake—"Phoenix"			
5. Dry .. .. .	do.	‡	
6. Coffee, Malt, Arrowroot .. .. .	do.	‡	
7. Assorted .. .. .	do.	‡	
Blue—			
8. 1-oz. knobs, "Rockitts" .. .. .	per gross	2	14 0
9. Borax .. .. .	per lb.	0	0 9
10. Cake Containers—Paper, "Barkers" 150's	per gross	4	19 0
Cereals—			
11. "Kornies," "Weeties," packets ..	per doz.	1	10 6
12. "Cornflakes," packets .. .. .	do.	1	13 0
13. "Weetbix," "Granose," "Vitabrits," packets	do.	1	10 6
14. Wheat Germ .. .. .	do.	*	
15. "All-Bran," packets .. .. .	per doz.	1	0 6
16. Cheese—5-lb. boxes, "Kraft" ..	per box	0	19 3
"Matured .. .. .	per lb.	0	3 5
17. Chutney—"A.J.C." .. .. .	per doz.	1	3 6
18. Cloves .. .. .	per lb.	0	9 8
19. Coconut—Desiccated, Ceylon ..	do.	0	1 9
Cocoa—			
20. { 14-oz. tins, "Bournville" ..	per doz.	2	16 3
{ Loose .. .. .	per lb.	0	4 6
Coffee Essence—			
21. 8-oz. bottles, "Excelsior" .. ..	per doz.	1	9 0
22. 1-gal. jars (Jars 3s.) .. .. .	per jar	1	15 0
23. Curry Powder—"Indian"—4-oz. packets	per doz.	1	13 0
Custard Powder—			
24. Bulk, 7-lb. parcels, "Beacon" ..	per lb.	0	1 4
25. 1-lb. packets, "Parsons" .. ..	per doz.	1	4 0
26. Dates—Loose .. .. .	per lb.	0	1 8
Essences, &c.—			
27. Almond { 1-oz. .. .. .	per doz.	0	11 6
{ 8-oz. .. .. .	do.	2	7 0
{ 16-oz. .. .. .	bot.	0	7 6
28. Lemon { 1-oz. .. .. .	doz.	0	11 6
{ 8-oz. .. .. .	do.	2	7 0
{ 16-oz. .. .. .	bot.	0	7 6
29. Vanilla { 8-oz. .. .. .	doz.	4	0 0
{ 16-oz. .. .. .	bot.	0	12 4
30. Cochineal { 1-oz. .. .. .	doz.	0	11 6
{ 16-oz. .. .. .	bot.	0	7 6
31. Parisian, 26-oz. "Dicksons" ..	doz.	2	17 6
32. Yolkinge { 1-oz. "Rego" .. ..	do.	0	9 6
{ 16-oz. .. .. .	do.	2	9 0
Extracts and Pastes—			
33. "Marmite," 4-oz. jar .. .. .	per doz.	1	5 6
34. "Vegemite" { 8-oz. jar .. .. .	do.	2	4 6
{ 16-oz. jar .. .. .	do.	4	2 5
{ 7 lb. tin .. .. .	each	2	3 2
35. Peanut Butter { 6-oz. jar .. ..	per doz.	1	8 0
{ 12-oz. jar .. .. .	do.	2	5 0
36. "Bonox" { 4-oz. jar .. .. .	do.	1	12 9
{ 8-oz. jar .. .. .	do.	3	1 6
{ 1 lb. tin .. .. .	do.	5	15 0
37. Bloater, 2½-oz. tins, "Pecks" ..	per doz.	0	16 6
38. Salmon and Shrimp, 2½-oz. tin	do.	0	17 10
Fish—Tinned—			
39. "Flair," 12-oz. .. .. .	do.	1	10 0
40. Salmon, 16-oz., "Kingsound" ..	do.	2	5 6
41. Pilchards, 8-oz. .. .. .	do.	0	19 0
42. Herrings, 14-oz. { Fresh .. ..	do.	1	11 0
{ In sauce .. .. .	do.	1	11 0
43. Sardines { 4-oz., "Commodore" ..	do.	0	15 0
{ 8-oz. "Rego" .. .. .	do.	1	10 0
Flour—			
44. Corn or Maize—{ 1-lb. packets, do.	1	1	9
{ "Kream" .. .. .			
45. Plain—150 lb. bag .. .. .	per lb.	0	0 11
Flour—Self-raising—			
46. { 25-lb., "Mammy" .. .. .	per bag	3	4 0
{ 150-lb., "Mammy" .. .. .	do.	0	18 0
			4 3 0

§ Rates except for sugar—white, are on "Pay and Pick-up Basis" ex warehouse, but for delivery and credit, plus 5 per cent. surcharge. Invoices paid on delivery subject to 2½ per cent. discount and for monthly settlement by 15th of the month following delivery, prices net. Sugar prices net.

\* Supplies not available.

‡ List prices, wholesale rates, less 10 per cent.

Sub-schedule No. 6—continued.

Sub-schedule No. 6—continued.

Table with columns for item description, unit, and price (£ s. d.). Includes categories like Fruits—Dried, Groceries—continued, Meat—Tinned, Milk, Peel—Mixed, Cut, Rice, and Salt.

Table with columns for item description, unit, and price (£ s. d.). Includes categories like Sauces, Worcestershire, Soaps, Soda, Soups, Spaghetti, Spice—Mixed, Sugar, Tapioca, and Vegetables—Tinned.

ANNEX TO CONTRACT NO. 1962/38.†

Alan H. Gittins, 350 Hargreaves-street, Bendigo.

Sub-schedule No. 7.

MEAT.

For Gaol.

Security, £5.

£ s. d.

Table listing meat items: 1. Fresh Beef, 2. Fresh Mutton, 3. Sausages—Mixed, 4. Mince-meat with their respective prices.

\* Supplies not available.

†† In 1 1/2-lb. tins—Apricot, £1 8s. 10d.; Apple Jelly, £1 8s. 6d.; Blackberry, £1 16s. 0d.; Blackcurrant, £2 3s. 6d.; Gooseberry, £1 14s. 0d.; Loganberry, £1 18s. 6d.; Melon and Lemon, £1 6s. 0d.; Melon and Pineapple, £1 7s. 0d.; Dark Plum, £1 7s. 0d.; Marmalade, £1 7s. 0d.; Peach, £1 8s. 6d.; Plum and Raspberry, £1 9s. 10d.; Quince, £1 6s. 6d.; and Raspberry, £2 0s. 0d.

In 5-lb. tins—Apricot, £4 14s. 0d.; Melon and Lemon, £4 3s. 0d.; Melon and Pineapple, £4 7s. 0d.; Dark Plum, £4 17s. 6d.; Marmalade, £4 7s. 0d.; Peach, £4 13s. 6d.; Plum and Raspberry, £4 17s. 6d.; Quince, £4 4s. 6d.; and Raspberry, £6 12s. 6d.

In 28-lb. tins—Blackberry, 1s. 10 1/2d. per lb.

In 56-lb. tins—Apricot, 1s. 3d. per lb.; and Plum and Raspberry, 1s. 5d. per lb.

ANNEX TO CONTRACT No. 1962/39.†

Alan H. Gittins, 350 Hargreaves-street, Bendigo.

Sub-schedule No. 8.

MEAT.

For Sandhurst Boys' Centre, Bendigo.

Security, £5.		£	s.	d.
1. Fresh Beef, Rolled Roast, boneless, brisket excluded	per lb.	0	3	3
2. Fresh Beef, Buttocks .. .. .	do.	0	2	8
3. Corned Beef, rolled or round, as ordered without bone or cartilage	do.	0	2	6
4. Corned, Silverside .. .. .	do.	0	3	2
Fresh Mutton—				
5. Legs .. .. .	do.	0	1	10
Chops—				
6. Middle Loin .. .. .	do.	0	1	10
7. Forequarter .. .. .	do.	0	1	6
8. Steak—Rump .. .. .	do.	0	5	0
9. Veal—Fillet—Boneless .. .. .	do.	0	3	0
10. Sausage Meat .. .. .	do.	0	1	2
11. Livers—Sheep .. .. .	do.	0	0	11
12. Kidneys—Ox .. .. .	do.	0	1	6
13. Sausages—Mixed .. .. .	do.	0	1	9
14. Sausage—Beef German .. .. .	do.	0	2	6
15. Saveloys .. .. .	per doz.	0	3	9
16. Bacon—Rashers—Shoulder .. .. .	per lb.	0	5	9
17. Dripping—Beef .. .. .	do.	0	0	8
18. Lamb Legs .. .. .	do.	0	3	0
19. Lamb Chops .. .. .	do.	0	3	11

ANNEX TO CONTRACT No. 1962/40.†

M. P. and L. K. Marchioni, Killians-walk and Queen-street, Bendigo.

Sub-schedule No. 9.

MEAT.

For Teachers' College Hostels as under—

Osborne-street, Pleasant Vale. Bendigo.

"Lancewood," McLaren-street, Bendigo.

"Comersdale," Panton-street, Golden Square, Bendigo.

Security, £5.		£	s.	d.
Fresh Beef—				
1. Topside .. .. .	per lb.	0	3	6
2. Corned Beef—Rolled or Round, as ordered, without bone or cartilage	do.	0	2	2
3. Corned Silverside .. .. .	do.	0	3	6
4. Fresh Mutton—Carcass .. .. .	do.	0	1	0
Steak—				
5. Blade (Minced) .. .. .	do.	0	2	8
6. Chuck .. .. .	do.	0	2	8
7. Rump .. .. .	do.	0	5	6
8. Sausages—Mixed .. .. .	do.	0	1	9
9. Sausage Meat .. .. .	do.	0	1	3
10. Livers—Sheep .. .. .	do.	0	0	9
11. Veal—Fillet, boneless .. .. .	do.	0	4	6
12. Brains—Sheep .. .. .	per set	0	0	6
13. Kidneys—Ox .. .. .	per lb.	0	1	3
14. Ox Tails .. .. .	do.	0	1	6
15. Sausage, Strasburg .. .. .	do.	0	3	3
16. Salad Loaf .. .. .	do.	0	3	5
17. Bacon, middle rashers .. .. .	do.	0	6	0

SCHEDULE No. 10.

PROVISIONS—CASTLEMAINE GAOL.

(Delivery at the Gaol.)

ANNEX TO CONTRACT No. 1962/41.

T. N., M. K., and T. J. Kenyon, 16 Hunter-street, Castlemaine.

Sub-schedule No. 1.

BREADSTUFFS.

Security, £5.	£	s.	d.
1. Bread—Fine wheaten, first quality	per cntl.	3	2 6

§ Cost price plus 10 per cent.

ANNEX TO CONTRACT No. 1962/42.†

McQueen Bros., Hargreaves-street, Castlemaine.

Sub-schedule No. 2.

MEAT.

Security, £5.

	£	s.	d.
1. Fresh Beef .. .. .	per lb.	0	1 11
2. Fresh Mutton .. .. .	do.	0	1 3
3. Corned Beef—Rolled or Round, as ordered, without bone or cartilage	do.	0	2 2
4. Minced Meat (Beef) .. .. .	do.	0	2 3
5. Sausage Meat .. .. .	do.	0	1 3
6. Saveloys .. .. .	per doz.	0	4 6

SCHEDULE No. 11.

PROVISIONS—SCHOOL OF FORESTRY, CRESWICK.

(Delivery at the School.)

ANNEX TO CONTRACT No. 1962/43.

M. C. Bennett, Albert-street, Creswick.

Sub-schedule No. 1.

BREADSTUFFS.

Security, £3.

	£	s.	d.
1. Bread—Fine wheaten, first quality	per cntl.	4	3 4
2. Flour—First quality .. .. .	do.	*	*

\* Current market price.

(AGREEMENT.)

J. Tait and Son, Albert-street, Creswick.

Sub-schedule No. 2.

GROCERIES.

	£	s.	d.
1. Bacon .. .. .	per lb.	0	5 6
2. Barley—Pearl .. .. .	do.	0	0 7½
3. Blue—Washing .. .. .	per doz.	0	3 0
4. Biscuits—Dry .. .. .	per lb.	0	2 9
5. " Sweet .. .. .	do.	0	2 9
6. Butter, First-grade creamery, to score not less than 91 prints, Government grade, Commerce Regulations standard	do.	0	4 7½
7. Cereals—"Weeties", 24-oz. .. .. .	per doz.	1	8 6
8. Cheese—Kraft, 5-lb. .. .. .	per box	0	19 6
9. " Matured .. .. .	per lb.	0	3 9
10. Coffee Essence, 8-oz. .. .. .	per doz.	1	7 0
11. " Beans, roasted .. .. .	per lb.	0	7 0
12. Cocoa, 14-oz., "Bournville" .. .. .	per doz.	2	18 0
13. Coconut—Dessicated .. .. .	per lb.	0	2 0
14. Chvtney—Fruit .. .. .	per doz.	1	4 0
15. Custard Powder .. .. .	per lb.	0	1 8
16. Eggs—New laid .. .. .	per doz.	0	4 6
17. Fish—Tinned—Herrings in Sauce, 14-oz. .. .. .	do.	1	14 0
18. " Sardines, 4-oz. .. .. .	do.	0	15 0
19. Flour—Corn or Maize, 1-lb. .. .. .	per doz.	0	18 0
20. " Self-raising, 25-lb. bag .. .. .	per bag	0	18 9
Fruit—Preserved, 30-oz.—			
21. Peaches, sliced .. .. .	per doz.	1	10 0
22. Pears, halves .. .. .	do.	1	10 0
23. Apricots, halves .. .. .	do.	1	10 0
24. Cherries, Glace, 4-oz. packet .. .. .	per lb.	0	7 4
25. Fruit—Dried—Sultanas, 3-crown .. .. .	do.	0	1 10½
26. Gelatine—Ground, 4-oz .. .. .	per doz.	1	10 0
27. Ginger—Ground .. .. .	per lb.	0	7 6
28. Golden Syrup, 2-lb. tin .. .. .	per doz.	1	0 6
29. Honey, 60-lb. tin .. .. .	per tin	3	7 6
30. Jams, assorted, 5-lb. tins in the proportion of half seed and half stone	per tin	0	8 6
31. Jelly Crystals, 4-oz. packets .. .. .	per doz.	0	8 6
32. Milk—Powdered, 3-lb. tins .. .. .	per tin	0	12 3
33. " Condensed, "Nestles" .. .. .	per doz.	1	1 0
34. Mustard .. .. .	per lb.	0	5 6
35. Oatmeal—Flaked .. .. .	do.	0	0 9
36. Pepper—Ground, white .. .. .	do.	0	9 6
37. Potatoes—Dry and free from dirt .. .. .	per cwt.	2	5 0
38. Peanut Butter, 12-oz. jars .. .. .	per doz.	2	5 0
39. Salt—Fine .. .. .	per lb.	0	0 2
40. " Table, 1-lb. packets, "Mermaid" .. .. .	do.	0	0 8½

○ Order under Melbourne Contract.

Sub-schedule No. 2—continued.

GROCERIES—continued.

		£	s.	d.
41. Soap—Sand, Carbolic, 12-oz.	.. per doz.	0	8	6
42. " Velvet, yellow, dry and hard	.. do.	1	12	0
43. " Toilet, 12-oz. cakes	.. do.	0	8	6
44. " Rinso, large packets	.. do.	2	5	0
45. Sauce—Tomato, 26-oz.	.. do.	2	2	0
46. " Worcestershire, 26-oz.	.. do.	1	18	0
47. Soda—Bicarbonate	.. per lb.	0	0	8½
48. " Washing	.. do.	0	0	5
49. Starch—Rice, loose	.. do.	0	1	5½
50. Sugar—Castor, 70-lb. bag	.. per bag	3	10	0
51. " White, 70-lb. bag	.. do.	3	1	0
52. Tartar, Cream of, substitute	.. per lb.	0	2	9
53. Tea—First grade	.. do.	⊙		
54. Vegemite, 1-lb. jars	.. per doz.	4	7	0
55. Vegetables—Tinned—Baked Beans, 16-oz.	.. do.	1	1	0
56. " " Sweet Corn, 16-oz.	.. do.	1	10	0
57. Vinegar, Malt	.. per pint	0	0	5½

ANNEX TO CONTRACT No. 1962/44.

E. J. Keen, Jory-street, Creswick.

Sub-schedule No. 3.

MILK.

		£	s.	d.
1. Milk—Fresh and pure	.. per qt.	0	1	4

ANNEX TO CONTRACT No. 1962/45.†

H. J. Symons Pty. Ltd., 1015 Macarthur-street, Ballarat.

Sub-schedule No. 4.

MEAT.

		£	s.	d.
1. Fresh Beef—Topside	.. per lb.	0	4	3
2. " " Sirloin, boneless	.. do.	0	4	3
3. Corned, Silverside	.. do.	0	4	3
4. Mutton—Fresh, sides	.. do.	0	1	2
5. Pork—Fresh, leg	.. do.	0	4	6
6. Steak—Stewing	.. do.	0	3	8
7. " Minced	.. do.	0	2	6
8. Sausages—Mixed	.. do.	0	2	0
9. Sausage—Beef German	.. do.	0	3	0
10. Kidney—Ox	.. do.	0	2	0
11. Liver—Sheep	.. do.	0	1	0
12. Saveloys	.. per doz.	0	4	0

SCHEDULE No. 12.

PROVISIONS—AGRICULTURAL COLLEGE, DOOKIE.

(Delivery at the College.)

ANNEX TO CONTRACT No. 1962/46.

J. and A. Toohey, Mary-street, Dookie

Sub-schedule No. 1.

BREADSTUFFS.

		£	s.	d.
1. Bread—Fine wheaten, first quality	.. per cwt.	3	17	11
2. Flour—First quality	.. do.	2	1	2

(AGREEMENT.)

Cohn's (Shepparton) Pty. Ltd., Benalla-road, Shepparton.

Sub-schedule No. 2.

GROCERIES. ††  
(Delivery "F.O.R." Shepparton.)

		£	s.	d.
1. Baking Powder, 1-lb. tins	.. per doz.	1	16	8
2. Blue—Washing, "Reckitts," paper	.. per gross	2	2	6
3. Candles—full weight, "Electrine"	.. per lb.	0	2	8½
4. Cereals, 24-oz. pkts.	.. per doz.	1	12	0
5. Chutney, 10-oz.	.. do.	1	3	3
6. Cocon—14-oz. "Bournville"	.. do.	3	1	3
7. Coconut—desiccated	.. per lb.	0	1	9
8. Coffee Essence—1-gal. jars (Jars 3s.)	.. per gal.	1	13	7
9. Cordial—Lemon, &c., 1-gal. jars (Jars 3s.)	.. do.	0	16	6
10. Curry Powder—Loose	.. per lb.	0	3	9
11. Custard Powder—1-lb., "Parsons"	.. per doz.	1	2	5
12. Essences—Cochineal, 8-oz.	.. do.	2	11	0
13. " Lemon, 8-oz.	.. do.	2	11	0
14. " Vanilla, 8-oz.	.. do.	3	11	2
15. Fruits—Dried—Currants, 2-crown	.. per 12 lb.	1	8	11
16. " " Sultanas, 3-crown	.. do.	1	8	5
17. " " Raisins, seeded, 1-lb.	.. per doz.	1	9	2
Fruits—Preserved, 30-oz. tin—				
18. Peaches—Sliced	.. do.	1	11	6
19. Apricots—halves	.. do.	1	11	6
20. Pears—halves	.. do.	1	11	6
21. Apples—6-lb. tins	.. per tin	0	9	5
22. Flour—Corn or Maize, 1-lb.	.. per doz.	1	0	6
23. " Self Raising, 150-lb. bags	.. per bag	4	18	5
24. Gelatine—Ground, 4-oz.	.. per doz.	1	6	6
25. Golden Syrup, 2-lb. tins	.. do.	1	1	2
26. Gravox, 1-lb.	.. do.	1	3	5
27. Herbs—Mixed, 2-oz. pkts.	.. do.	0	3	10
28. Jelly Crystals, 7-lb. pkts.	.. per lb.	0	2	4½
29. Junket Tablets—Tubes	.. per doz.	1	0	0
30. Margarine—Cake or Pastry	.. per lb.	0	3	1½
31. Marmite, 4-oz. jars	.. per doz.	1	7	4
32. Matches—Safety	.. per gross	0	19	5
33. Meat—Tinned—Camp Pie, 12 oz.	.. per doz.	1	0	4
34. " " Steak and Kidney, 16-oz.	.. do.	1	16	2
35. Milk—Powdered, 3-lb. tin	.. do.	7	13	2
36. Mixed Peel, 8-oz. pkts.	.. do.	0	18	4
37. Mustard—Loose	.. per lb.	0	5	0
38. Oats—rilled, 5-lb. bag	.. per bag	0	6	6
39. Oatmeal—flaked, 100-lb. bag	.. do.	3	9	9
40. Pepper—Ground, white	.. per lb.	0	7	6
41. Pickles—Assorted, 20-oz.	.. per doz.	1	8	6
42. Sago	.. per lb.	0	0	11
43. Salt—Fine	.. per cwt.	1	1	0
" table, 16-oz. pkts. "Mermaid"	.. per doz.	0	8	9
45. Sauce—Tomato—26-oz. bottles	.. do.	1	19	0
46. " " 1-gal. jars	.. per gal.	1	0	6
47. " Worcestershire—10-oz.	.. per doz.	1	0	0
48. " " 1-gal. jars	.. per gal.	1	0	6
49. Soups—Tomato—No. 10 cans	.. per can	0	9	2
50. " " 16-oz.	.. per doz.	1	1	11
51. " Celery, 16-oz.	.. do.	1	1	11
52. " Pea, 16-oz.	.. do.	1	1	11
53. Soda—Bicarbonate	.. per lb.	0	0	8
54. " Washing, 56-lb. bag	.. per bag.	1	1	5
55. Spaghetti—22 lb., "Rinaldi"	.. per ctn.	1	1	11
56. Spices—Mixed 1 oz.	.. per doz.	0	5	0
57. " Cloves—Whole	.. per lb.	*		
58. " Nutmeg—ground, 2-oz. pkts.	.. per doz.	1	7	3
59. Starch—14-oz., "Silver Star"	.. do.	1	0	4
60. " Loose	.. per lb.	*		
61. Sugar—Castor, 70-lb. bags	.. per bag	3	3	0
62. " Icing, 56-lb. bags	.. do.	2	17	9
63. " White, 70-lb. bags	.. do.	3	1	0
64. " Brown, 70-lb. bags	.. do.	2	19	0
65. Soft Drinks	.. per doz.	§		
66. Treacle, 2-lb. tins	.. do.	1	0	8
Vegetables—Tinned—				
67. Tomatoes, 30-oz.	.. per doz.	1	9	6
68. Beans—Baked, 16-oz.	.. do.	1	3	3
69. " No. 10 can (Baked)	.. each	0	9	7
70. " Green, 30-oz. tins	.. per doz.	2	2	9
71. Peas—Green, 30-oz. tins	.. do.	2	1	6
72. Vinegar—Malt, 1-gal. jars (Jars, 3s.)	.. per gal.	0	8	6
73. Vegemite—16-oz. jars	.. per doz.	4	5	6

⊙ Order under Melbourne District Contract.

§ Prices on application.

†† The rates to be paid for all items under these Sub-schedules shall be the wholesale price ruling on the day of delivery; where rates are shown, they are for the wholesale rates at date of publication of this Gazette. \* Supplies not available.

(AGREEMENT.)

*Cohns (Shepparton) Pty. Ltd., Benalla-road, Shepparton.*

**Sub-schedule No. 3.**

JAM.

(Delivery "F.O.R." Shepparton.)

	£	s.	d.
Jam—Bulk—			
1. Assorted, of approved kinds.			per lb. } ††
2. Assorted, of approved kinds, in the proportion of half seed and half stone, of the best quality, in 32-lb. tins and 54-lb. tins			

**SCHEDULE No. 13.**

**PROVISIONS—MCLEOD SETTLEMENT, FRENCH ISLAND.**

(Delivery to be made at Corinella Jetty.)

ANNEX TO CONTRACT No. 1962/47.

*G. A. and A. H. Van der Craats, Grantville.*

**Sub-schedule No. 1.**

BREAD.

	£	s.	d.
Security, £12.			
1. Bread—Fine wheaten, first quality	..	per cntl.	3 14 0

(AGREEMENT.)

*E. V. Peters, Corinella.*

**Sub-schedule No. 2.**

GROCERIES.

	£	s.	d.
1. Butter—First grade creamery, to score not less than 91 points, Government grade, Commerce Regulations Standard	per lb.	0	4 8
2. Cheese—Matured Tasty .. .. .	do.	0	3 6
3. Jams—Assorted, Seed .. .. .	per doz.	1	19 9
"   "   Stone, of best quality, in 24-oz tins, "Monbulk"	do.	1	11 0

ANNEX TO CONTRACT No. 1962/48.†

*George Hayman, Lang Lang.*

**Sub-schedule No. 3.**

MEAT.

	£	s.	d.
Security, £5.			
1. Fresh Beef .. .. .	per lb.	0	2 5
2. Mutton .. .. .	do.	0	1 2

**SCHEDULE No. 14.**

**PROVISIONS—GEELONG DISTRICT.**

(Delivery into Institutions.)

ANNEX TO CONTRACT No. 1962/49.

*Fitzgerald Geelong Bakeries Pty. Ltd., 150 Malop-street, Geelong.*

**Sub-schedule No. 1.**

BREAD.

	£	s.	d.
Security, £30.			
1. Bread—Fine wheaten, first quality	..	per cntl.	2 16 3
2. Bread—Wholemeal, first quality	..	do.	2 16 3
3. "   "   Rolls .. .. .	..	per doz.	0 3 2

†† Plum and Raspberry, 1s. 4½d. per lb.; Apricot, Dark Plum, Quince, Peach and Marmalade, 1s. 2½d. per lb.; Blackberry, 1s. 6d. per lb.; Blackcurrant, 1s. 10½d. per lb.

(AGREEMENT.)

*McKay MacLeod Pty. Ltd., 17 Cavendish-street, Geelong.*

**Sub-schedule No. 2.**

GROCERIES.

The rates to be paid under this Sub-schedule shall be the wholesale self-service prices ruling on the day of delivery, plus 2 per cent. service charge, net. monthly. Delivery free to hostels. No surcharge on dried fruits or C.S.R., Co's Sugar.

ANNEX TO CONTRACT No. 1962/50.†

*W. Angliss & Co. (Aust.) Pty. Ltd., 29 Gheringhap-street, Geelong.*

**Sub-schedule No. 3.**

MEAT.

For Gaol.

Security, £5.

	£	s.	d.
1. Fresh Beef .. .. .	per lb.	0	1 11
2. Corned Beef—Rolled or Round, without bone or cartilage	do.	0	2 0
3. Fresh Mutton—Forequarters .. .. .	do.	0	0 10
4. "   "   Legs .. .. .	do.	0	1 3
5. Beef—Minced .. .. .	do.	0	1 9
6. Sausages—Mixed .. .. .	do.	0	1 6
7. Sausage Meat .. .. .	do.	0	0 10
8. "   "   Beef German .. .. .	do.	0	2 0
9. Dripping—Beef .. .. .	do.	0	0 10

ANNEX TO CONTRACT No. 1962/51.†

*Corio Meat Supply Pty. Ltd., P.O. Box 3, North Geelong.*

**Sub-schedule No. 4.**

MEAT.

For delivery to Teachers' College Hostels as under—

- "Lauriston," 23 Aberdeen-street, Geelong.
- "Forty-Five," The Esplanade, Western Beach, Geelong.
- "Hawthorne," Aberdeen-street, Geelong.
- "Ariston," Packington-street, Geelong.
- "Warrain," 56 Western Beach, Geelong.

Security, £5.

	£	s.	d.
Fresh Beef—			
1. Sirloin, boneless .. .. .	per lb.	0	3 0
2. Corned Beef—Rolled or Round, as ordered, without bone or cartilage	do.	0	3 3
Mutton—			
3. Legs, Two-tooth .. .. .	do.	0	1 6
4. Forequarters, boned, rolled, and pickled	do.	0	1 0
5. Chops, Forequarter .. .. .	do.	0	1 1
6. Chops, Cutlets .. .. .	do.	0	1 8
Steak—			
7. Chuck .. .. .	do.	0	2 10
8. Bladebone .. .. .	do.	0	2 11
9. Minced .. .. .	do.	0	1 10
10. Tongues—Ox .. .. .	do.	0	1 0
11. Veal—Fillet .. .. .	do.	0	2 0
Sausages—			
12. Mixed, thin .. .. .	do.	0	1 6
13. Pork, thick .. .. .	do.	0	1 6
14. Sausage—Pork, German .. .. .	do.	0	3 2
15. Sausage Mince .. .. .	do.	0	0 10
16. Bacon—Shoulder .. .. .	do.	0	4 0
17. Kidney—Ox .. .. .	do.	0	1 8

**SCHEDULE No. 15.**

**PROVISIONS—COORLEMUNGLE PRISON CAMP, HEYTESBURY FOREST.**

(Delivery to be made at the Camp.)

ANNEX TO CONTRACT No. 1962/52.

*W. H. & A. J. Archdall, Recreation-road, Timboon.*

**Sub-schedule No. 1.**

BREAD.

Security, £3.

	£	s.	d.
1. Bread—Fine wheaten, first quality	..	per cntl.	4 3 4

ANNEX TO CONTRACT No. 1962/53.†  
Heytesbury Butchery, Timboon.

**Sub-schedule No. 3.**

		MEAT.	
		Security, £4.	£ s. d.
1. Fresh Beef	per lb.	0 4 0	
2. Corned Beef—Rolled or Round, as ordered, without bone or cartilage	do.	0 3 6	
3. Sausages	do.	0 2 6	
4. Sausage Mince	do.	0 1 9	

**SCHEDULE No. 16.**

**PROVISIONS—ABORIGINAL STATION, LAKE TYERS.**

(Delivery at Lake Tyers Station.)

ANNEX TO CONTRACT No. 1962/54.

R. Hodder, Nova Nova.

**Sub-schedule No. 1.**

		BREADSTUFFS.	
		Security, £25.	£ s. d.
1. Bread—Fine wheaten, first quality	per cntl.	2 18 6	
2. Flour—First quality	do.	2 0 0	

(AGREEMENT.)

R. Hodder, Nova Nova.

**Sub-schedule No. 2.**

		GROCERIES.	
		£ s. d.	
1. Baking Powder—"Snowflake," or equal thereto, 1-lb. tins	per lb.	}	**
2. Candles—Full weights Kitchen's "Electrines," or other make of equal quality, 1-lb. packets	do.		
3. Coffee—Fresh roasted, and whole, beans to be thoroughly sound	do.		
4. Cocoa—Bulk	per lb.		
5. Corn or Maize Flour—1-lb. packets	do.		
6. Currants—2-crown (present season's)	do.		
7. Curry Powder—Bulk	do.		
8. Matches—Safety, 60 per box, "Yacht"	per gross		
9. Mustard—"Double Superfine"	per lb.		
10. Pepper—Black, ground, 2-oz. tins	per tin		
11. Raisins—Sultanas, 3-crown, (present season's)	per lb.		
12. Salt—Coarse	per cwt.		
13. Fine	do.		
14. Soap—Household, hard and dry, to sample	do.		
15. Soda—Bicarbonate	per lb.		
16. Washing	do.		
17. Tartar—Cream of, Substitute, Calcium Phosphate	do.		
18. Treacle—2-lb. tins	per tin		
19. Vinegar—Malt	per qt.		

(AGREEMENT.)

R. Hodder, Nova Nova.

**Sub-schedule No. 3.**

		JAMS.	
		£ s. d.	
1. Jams—Assorted, 24-oz. tins, in the proportion of half seed and half stone	per tin	**	

**SCHEDULE No. 17.**

**PROVISIONS—LANGI KAL KAL TRAINING CENTRE.**

ANNEX TO CONTRACT No. 1962/55.

O. L. and B. M. Nicholls, Neil-street, Beaufort.

**Sub-schedule No. 1.**

		BREAD.	
		Security, £3.	£ s. d.
1. Bread—Fine wheaten, first quality	per cntl.	3 10 10	

§ Order under Melbourne District Contract.

\*\* The rates to be paid for all items under these Sub-schedules shall be the wholesale prices charged to the contractor, plus 12½ per cent. Wholesaler's invoices to be submitted with contractor's accounts.

ANNEX TO CONTRACT No. 1962/56.†

F. P. Haintz and Son, Havelock-street, Beaufort.

**Sub-schedule No. 2.**

		MEAT.	
		Security, £5.	£ s. d.
1. Fresh Beef—Boneless	per lb.	0 4 0	
2. Sausages—Mixed	do.	0 2 0	
3. Mince Meat	do.	0 1 6	

**SCHEDULE No. 18.**

**PROVISIONS—AGRICULTURAL COLLEGE, LONGERENONG.**

(Delivery at the College.)

ANNEX TO CONTRACT No. 1962/57.

Conlans' Bakery, Staveell-road, Horsham.

**Sub-schedule No. 1.**

		BREADSTUFFS.	
		Security, £5.	£ s. d.
1. Bread—Fine wheaten, first quality	per cntl.	3 2 6	
2. Flour—First quality	do.	§	

(AGREEMENT.)

Permevans (Horsham) Pty. Ltd., 31 King-street, Melbourne.

**Sub-schedule No. 2.**

		GROCERIES.	
		£ s. d.	
1. Barley—Pearl	per lb.	0 0 8	
2. Lima Beans	do.	0 1 7	
3. Biscuits—Coffee, Malt, Nice	do.	0 2 7	
4. Assorted Creams, &c.	do.	0 3 7	
5. Cereals—Cornflakes—"Kelloggs" 16-oz.	per pkt.	0 2 11	
6. Cheese—Bulk { Mild	per lb.	0 3 3	
7. " Kraft, 8-oz.	per doz.	1 6 0	
8. Cinnamon	per lb.	0 4 6	
9. Coconut—Desiccated	do.	0 2 4	
10. Coffee Essence—26-oz., "Bushells"	per bot.	0 6 8	
11. Curry Powder (Indian) Madras	per lb.	0 4 2	
12. Custard Powder—7-lb. packets "Cameo"	do.	0 1 5	
13. Dates—"Khadrawi," 1-lb. packets	do.	0 2 0	
Essence—			
14. Lemon—8-oz. "Harpers" { Pure	per bot.	0 6 9	
15. Vanilla—8-oz. "Harpers" { Imitation	do.	0 2 10	
16. Cocoa—"Bournville" 14-oz. packets	per pkt.	0 5 3	
17. Flour—corn, 1-lb. packets, "Cameo"	do.	0 1 8	
18. " Loose	per lb.	0 1 3	
19. " Self-raising, "McAlpins" or "Crusader" in 25-lb. bags	per bag	1 2 9	
Fruits—Dried—			
19. Currants—"Sunray" or "Swallow and Ariel" 3-crown	per lb.	0 2 3	
20. Raisins—seeded—"Sunray" or "Swallow and Ariel"	do.	0 2 5	
21. Sultanas—3-crown—"Sunray" or "Swallow and Ariel"	do.	0 2 4	
Fruits—Tinned—			
22. Apricots—30-oz., (Halves)—"S.P.C." Kyabram	per doz.	1 14 9	
23. Peaches—30-oz., (Halves)—"S.P.C."—Kyabram	do.	1 14 9	
24. Pears—30-oz., (Halves)—"S.P.C."—Kyabram	do.	1 14 9	
25. Mixed Fruits—30-oz., "S.P.C."—Kyabram	do.	1 14 9	
26. Solid Pack Apples—7-lb.	do.	5 13 6	
27. Gelatine—Ground "Davis", 1-lb. packets	per lb.	0 9 8	
28. Ginger—Ground, 2 oz.	per tin	0 1 5	
29. Golden Syrup—2-lb. tins	per doz.	1 3 0	
30. Gravox—1-lb. tins	per lb.	0 2 3	
31. Honey—60-lb. tins, Yellow Box	per tin	3 19 6	
32. Jelly Crystals, 7-lb. packets, "Renown"	per pkt.	0 18 8	
33. Macaroni—1-lb. packets "Rinaldi"	per lb.	0 1 4	
34. Mustard—"Keens"	do.	0 5 9	





**SCHEDULE No. 20.**  
**PROVISIONS AT SALE.**

(Delivery at the Gaol.)

ANNEX TO CONTRACT No. 1962/59.

*F. J. Hennessy Pty. Ltd., 102 Raymond-street, Sale.*

**Sub-schedule No. 1.**

BREAD.

	Security, £3.	£	s.	d.
1. Bread—Fine wheaten, first quality	.. per cntl.	3	12	11

ANNEX TO CONTRACT No. 1962/60.†

*T. L. Webster Pty. Ltd., 80 Raymond-street, Sale.*

**Sub-schedule No. 2.**

MEAT.

	Security, £3.	£	s.	d.
1. Fresh Beef	.. per lb.	0	2	10
2. Fresh Mutton, Chops, Forequarter	.. do.	0	1	4
3. Corned Beef—Rolled or Round, as ordered, without bone or cartilage	.. do.	0	2	10
4. Sausage Meat	.. do.	0	1	6

**SCHEDULE No. 21.**

**PROVISIONS—PLEASANT CREEK  
SPECIAL SCHOOL, STAWELL.**

(Delivery at the School.)

ANNEX TO CONTRACT No. 1962/61.

*R. J. and M. M. Wall, 63 Main-street, Stawell.*

**Sub-schedule No. 1.**

BREADSTUFFS.

	Security, £10.	£	s.	d.
1. Bread—Fine wheaten, first quality	.. per cntl.	3	0	0
2. Flour—First quality	.. do.	2	2	0

(AGREEMENT.)

*McKay MacLeod Pty. Ltd., 63 Mair-street, Ballarat.*

**Sub-schedule No. 2.**

GROCERIES.

		£	s.	d.
1. Baking Powder—"Excelsior," 1-lb. tins	.. per lb.	0	2	11
2. Blue—Washing, "Reckitts Square"	.. per gross	2	9	6
3. Cereal— "Sunflakes," "Wheatflakes," 24-oz. packets	.. per doz.	1	7	10
Weet Harts, 28-oz. packets	.. do.	1	16	0
Weetios—Large	.. do.	1	11	9
4. Cocoa, 14-oz., "Bournville"	.. do.	2	15	6
5. Coffee and Chicory, "Gold Seal," No. 1	.. per lb.	0	4	6½
6. Corn Flour, 1-lb. packets, "Kream"	.. do.	0	1	7½
7. Currants (present season's)— 2-crown	.. do.	0	1	10½
3-crown	.. do.	0	1	10½
8. Curry Powder—Loose, "Gold Seal"	.. do.	0	3	3
9. Custard Powder—Loose	.. do.	0	1	4½
10. Dates—Box lots	.. do.	0	1	6½
11. Ginger—Ground, loose	.. do.	0	5	6
12. Golden Syrup— 2-lb. tins	.. per doz.	1	1	9
13. Gravox, 1-lb. tins	.. per doz.	1	3	0
14. Jams—Assorted, of approved kinds, in proportion of half seed and half stone, in tins containing 24-oz. net	in per doz.	1	11	0
15. Jelly Crystals—Packets, "McKays"	.. do.	0	8	3
16. Junket Tablets, "Merry Widow," flavoured	.. do.	0	18	6
17. Macaroni, 22-lb. cartons	.. per ctn.	1	1	0
18. Margarine—Cake, Pastry	.. per lb.	0	1	10½
19. Peel—Cut, mixed	.. do.	0	2	0
20. Pepper—Black, ground	.. do.	0	6	0
21. Sultanias (present season's)— 4-crown	.. do.	0	1	11½
22. Rice—Dressed ¼ cwt. bags	.. per cwt.	5	4	0

⊙ Order under Melbourne District Contract.

**Sub-schedule No. 2—continued.**

GROCERIES—continued.

		£	s.	d.
23. Salt—Fine, "Imperial"	.. per cwt.	1	2	6
24. Sauce—Tomato, 26-oz. bottles, "McKays"	.. per doz.	2	1	0
Soap—				
25. Preservene Foam	.. per doz.	0	17	6
26. "Lifebuoy"—Regular	.. per doz.	0	8	11
Soda—				
27. Bicarbonate	.. per lb.	0	0	9
28. Washing	.. per cwt.	1	18	0
29. Spaghetti, 22-lb. cartons	.. per ctn.	1	1	0
30. Spico—Mixed, 1-oz. packets	.. per doz.	0	5	6
31. Starch, 12-oz. packets, "Silver Star"	.. do.	0	19	6
32. Tea—First grade	.. do.	0		0
33. Vinegar—Malt, Bulk (casks £5)	.. per gal.	0	4	9

ANNEX TO CONTRACT No. 1962/62.†

*Thomas Borthwick and Sons (Asia) Ltd., P.O. Box 150, Portland.*

**Sub-schedule No. 3.**

MEAT.

	Security, £3.	£	s.	d.
1. Beef, Rolled, Roast (Brisket excluded)	per lb.	0	2	6
2. Steak, Rump	.. do.	0	4	6
3. " Stewing (Minced when required)	.. do.	0	2	3
4. Beef, Corned Silverside	.. do.	0	2	8
5. Mutton, Fresh, Leg	.. do.	0	1	5
6. " Chops, Middle Loim	.. do.	0	1	1
7. Kidney—Ox	.. do.	0	1	9
8. Sausages, Pork	.. do.	0	1	10
9. Sausage Meat	.. do.	0	1	1
10. Livers, Sheep	.. do.	0	0	6
11. Saveloys, First quality	.. do.	0	2	0
12. Tripe, Fresh	.. do.	0	1	0
13. Bacon	.. do.	0	6	6

ANNEX TO CONTRACT No. 1962/63.

*Stawell Modern Dairy, 7 Seaby-street, Stawell.*

**Sub-schedule No. 4.**

MILK.

	Security, £5.	£	s.	d.
1. Milk—Fresh and pure	.. per gal.	0	5	1

**SCHEDULE No. 22.**

**PROVISIONS—SUNBURY DISTRICT.**

(Delivery into Institutions.)

ANNEX TO CONTRACT No. 1962/64.

*Bessell's Pty. Ltd., 275 Buckley-street, Essendon.*

**Sub-schedule No. 1.**

BREADSTUFFS.

	Security, £112.	£	s.	d.
1. Bread—Fine wheaten, first quality	.. per cntl.	1	18	0
2. Flour—First quality	.. do.	2	0	5½

(AGREEMENT.)

*K. N. Tidwell, Sunbury.*

**Sub-schedule No. 2.**

GROCERIES.

		£	s.	d.
1. Beans—Haricot	.. per lb.	0	1	8
2. Blue—Washing, 1-oz. knobs, "Reckitts"	.. per gross	2	4	0
3. Cereals—Weetios, 24 oz. packets	.. per doz.	1	10	6
4. Coconut, desiccated	.. per lb.	0	2	6
5. Cinnamon	.. do.	0	3	1
6. Cloves—Whole	.. do.	0	7	3
7. Cocoa, 14 oz. packets, "Bournville"	.. per pkt.	0	5	3
8. Corn or Maize Flour, 1 lb. packets	.. per doz.	0	19	0
9. Currants—3-crown (present season's)	.. per lb.	0	2	1½
10. Curry Powder	.. do.	0	4	6
11. Custard Powder, 30 lb. tins	.. do.	0	1	4½

**Sub-schedule No. 2—continued.**

**GROCERIES—continued.**

	£	s.	d.
12. Dates—Stoneless .. .. . per lb.	0	2	0
13. Essences, 16-oz.— Lemon, "Triangle" .. .. . per doz.	3	13	0
Vanilla, "Triangle" .. .. . do.	3	13	0
14. Flour Self Raising 50-lb. bag .. .. . per bag	1	19	8
15. " " " 6-lb. packet .. .. . per pkt.	0	5	3
16. Gelatine, 16-oz. packets, "Davis" .. .. . per doz.	5	14	0
17. Golden Syrup, 2-lb. tins .. .. . per doz.	1	0	0
18. Gravoxx, 1-lb. .. .. . do.	1	3	0
19. Gravy Salt, 1-lb. packets .. .. . do.	0	19	0
20. Herbs—Mixed, 1-oz. .. .. . do.	0	5	0
21. Honey—Pure—30-lb. tins .. .. . per lb.	0	1	6
22. Jam—Diabetic, assorted .. .. . per doz.	1	2	0
23. Jelly Crystals— 4-oz. packets .. .. . do.	0	8	0
Bulk .. .. . per lb.	0	2	5
24. Junket Tablets—Tubes .. .. . per doz.	1	4	0
25. Jex .. .. . per doz.	0	8	0
26. Lemon Peel, 8-oz. packets .. .. . per pkt.	0	1	8
27. Macaroni .. .. . per lb.	0	0	11½
28. Margarine—Cake, Pastry .. .. . do.	0	1	10
29. Meat, Tinned— 12-oz. Camp Pie, "Imperial" .. .. . per doz.	1	1	0
16-oz. " " " .. .. . do.	1	5	6
30. Meat Tenderizer, 2-oz. tins .. .. . do.	1	0	0
31. Milk—Powdered, 28-lb. bag .. .. . per lb.	0	1	3½
32. Mustard—Loose, "Keen's" .. .. . do.	0	6	6
33. Nutmeg—Ground .. .. . do.	1	1	0
34. Peel—Mixed, 8-oz. packet .. .. . each	0	1	8
35. Pepper—Black, ground .. .. . per lb.	0	10	0
36. " Cayenne .. .. . do.	0	7	9
37. Pickles—Mustard .. .. . per doz.	1	12	6
38. Raisins, Sultanas, 3-crown (present season's) per lb.	0	2	3
39. Salt—Fine .. .. . per cwt.	0	16	0
Sauce— 40. { Tomato, 26-oz. bottles .. .. . per doz.	1	17	0
{ Worcestershire, 20-oz. bottles .. .. . do.	1	10	6
Soda— 41. Bicarbonate .. .. . per lb.	0	0	9
42. Washing .. .. . per cwt.	1	16	0
43. Spice—Mixed, loose .. .. . per lb.	0	4	6
44. Spaghetti, 22-lb. Forex No. 2 .. .. . per ctn.	1	3	10
45. Sugar—Icing, 60-lb bag .. .. . per bag	3	5	0
46. " Castor .. .. . per lb.	0	1	1
47. Starch—Loose, "Silver Star" .. .. . per lb.	0	1	9½
48. Tartar, Cream of .. .. . do.	0	4	4
49. Vermicelli .. .. . do.	0	1	1
50. Vinegar—Malt, 1-gal. jars .. .. . per gal.	0	6	0

**Sub-schedule No. 3.**

**CEREALS.**

1. Barley—Pearl .. .. . per cwt.	Purchase under Tender Board quotations
2. Oatmeal—Plain .. .. . do.	
3. Oatmeal—Flaked .. .. . do.	
4. Peas, split—yellow .. .. . do.	
5. Rice—Dressed .. .. . do.	
6. Rice—Unpolished .. .. . do.	
7. Seed Tapioca .. .. . do.	

**ANNEX TO CONTRACT No. 1962/65.†**

*F. Watkins Pty. Ltd., 256 Russell-street, Melbourne, C.I.*

**Sub-schedule No. 5.**

**MEAT.**

	Security, £40.	£	s.	d.
Fresh Beef— 1. Rolled Roast, boneless (brisket excluded) per lb.	0	2	6	
2. Buttocks .. .. . do.	2	3		
3. Fresh Mutton—(Kidney fat to be removed) do.	0	0	11½	
4. Corned Beef—Rolled or Round, as ordered, without bone or cartilage do.	2	6		
5. Sausages—Mixed .. .. . per lb.	0	1	10	
6. Sausage Meat .. .. . do.	0	1	4	
7. Veal—Boneless .. .. . do.	0	2	0	
8. Tripe—Fresh .. .. . do.	0	1	0	
9. Ox Kidney .. .. . do.	0	2	6	
10. Ox Liver .. .. . do.	0	1	2	
11. Saveloys .. .. . per doz.	0	3	4	

**ANNEX TO CONTRACT No. 1962/66.**

*Monbulk Preserves Ltd. Camm's-road, Monbulk.*

**Sub-schedule No. 6.**

**JAMS.**

	Security, £20.	£	s.	d.
Jams—(in 54-lb. tins) 1. Assorted, in bulk, of approved kinds, in the proportion of half seed and half stone, of the best quality. per lb.	0	0	11½	
2. Marmalade—bulk .. .. . do.	0	0	11½	

**SCHEDULE No. 23.**

**PROVISIONS—WARRNAMBOOL DISTRICT.**

(Delivery into Institutions.)

**ANNEX TO CONTRACT No. 1962/67.**

*Twites Bakeries Pty. Ltd., 164 Timor-street, Warrnambool.*

**Sub-schedule No. 1.**

**BREADSTUFFS.**

	Security, £5.	£	s.	d.
1. Bread—Fine wheaten, first quality .. .. . per cntl.	3	19	2	
2. Flour—First quality .. .. . do.	2	3	5½	

(AGREEMENT.)

*Swintons Pty. Ltd., Timor-street, Warrnambool.*

**Sub-schedule No. 2.**

**GROCERIES.**

		£	s.	d.
1. Bacon Rashers—Middle .. .. . per lb.	0	6	6	
2. " Bones (When available) .. .. . do.	0	1	3	
3. Baking Powder, 1-lb. tins .. .. . do.	0	3	3	
4. Beans—Haricot .. .. . do.	0	2	0	
5. Cereals—Whole, large packets .. .. . per doz.	1	13	0	
6. Cloves—Whole .. .. . per lb.	0	6	3	
7. Cinnamon .. .. . do.	0	3	9	
8. Cocoa—"Bourneville," 14-oz. .. .. . per pkt.	0	4	11	
9. Curry Powder .. .. . per lb.	0	4	0	
10. Custard Powder—1-lb. packets, "Medallion" do.	0	1	10½	
11. Essences—Vanilla, 1-oz. bottles, "Medallion" per bot.	0	1	2	
12. " " 16-oz. .. .. . do.	0	14	6	
13. " Parisian, 26-oz. bottles .. .. . do.	0	4	9	
14. " Yorkine, 4-oz. bottles .. .. . do.	0	3	0	
15. Flour—Corn or Maize, 1-lb. pkts, "Medallion" per lb.	0	1	10	
16. " Self Raising, 25-lb. bags .. .. . per bag	1	3	0	
Fruits—Dried— 17. Apricots—3-crown, loose .. .. . per lb.	0	5	0	
18. Currants and Sultanas—3-crown, loose do.	0	2	4½	
19. Dates—Loose .. .. . do.	0	2	0	
" 1-lb. pkt. .. .. . per pkt.	0	2	3	
20. Raisins—Seeded .. .. . per lb.	0	2	5	
Fruits—Preserved, 29-oz. tins 21. Apricots—Halves .. .. . per tin	0	2	10	
22. Peaches—Halves or sliced .. .. . do.	0	2	10	
23. Pears—Halves .. .. . do.	0	2	10	
24. Two Fruits .. .. . do.	0	2	10	
25. Gelatine—Ground, 1-lb. pkts., "Davis" per lb.	0	10	0	
26. Golden Syrup, 2-lb. tins .. .. . per tin	0	1	11½	
27. Herbs—Mixed, 4-oz. .. .. . each	0	1	6	
28. Honey—2-lb. jars .. .. . per jar	0	3	10	
29. " 60-lb. tins .. .. . per lb.	0	1	3½	
30. Jams—24-oz. tins "A.J.C." or "S.P.C." (Apricot, Apple Jelly, Melon, Plum, Peach, Quince and Marmalade) per tin	0	2	6½	
31. Jelly Crystals—"Medallion," 4-oz. pkts. per pkt.	0	0	8½	
" " "Harper's," 7-lb. pkts. .. .. . per lb.	0	2	11	
32. Macaroni .. .. . do.	0	1	6	
33. Margarine—Table "Eta" .. .. . do.	0	3	4	
" Cake and Pastry "Marville" .. .. . do.	0	2	9	
34. Meat—Tinned "Camp Pie" 12-oz. tins .. .. . per tin	0	2	0	
35. Mustard—"Keens" .. .. . per lb.	0	7	6	
36. Nutmeg .. .. . do.	1	4	6	
37. Pepper—White, ground .. .. . do.	0	13	0	
38. Pickles—20-oz. bottles, "Leggos" .. .. . per bot.	0	2	9	
39. Rice—Dressed .. .. . per lb.	0	0	11½	
40. Sago—Seed Tapioca .. .. . do.	0	0	11	
41. Salt—Fine, "Imperial" .. .. . do.	0	0	4½	
42. Sauce—Tomato, 26-oz. bottles, "A.J.C." per bot.	0	3	10	
43. " Worcestershire, 19-oz. bottles, "P.M.U." per bot.	0	2	6	

⊙ For 27-lb. tins, rate increased 1d. per lb.

**Sub-schedule No. 2—continued.**

## GROCERIES—continued.

			£	s.	d.
44. Soda—Bicarbonate .. .. .	per lb.	0	0	8	
45. Spaghetti—22-lb. carton .. .	per ctn.	1	2	0	
46. Spice, mixed .. .. .	per lb.	0	8	0	
47. Sugar—White, 70-lb. bag .. .	per bag	3	5	0	
48. Cream of Tartar, "Antelope" ..	per lb.	0	2	11	
49. Vegemite—6-oz. jars .. .. .	per jar	0	3	2	
50. Vinegar—26-oz. bottles .. .. .	per bot.	0	1	9	

## ANNEX TO CONTRACT No. 1962/68.

*Eastern Dairies, Allansford-road, Warrnambool.***Sub-schedule No. 3.**

## MILK.

			£	s.	d.
1. Milk—Fresh and pure .. .. .	per gal.	0	3	6	

## ANNEX TO CONTRACT No. 1962/69.†

*P. and L. Collins Pty. Ltd., 8 Nicholson-street, Warrnambool.***Sub-schedule No. 4.**

## MEAT.

Security, £15.

			£	s.	d.
1. Fresh Beef—Rolled Roast (brisket excluded)	per lb.	0	2	1	
2. Corned Beef—Rolled or Round, as ordered	do.	0	2	1	
Fresh Mutton—					
3. Forequarters .. .. .	do.	0	0	9	
4. Legs .. .. .	do.	0	1	1	
5. Chops—Middle Loin .. .. .	do.	0	1	1	
Steak—					
6. Stewing .. .. .	do.	0	2	1	
7. Minced .. .. .	do.	0	2	3	
8. Livers—Sheep .. .. .	do.	0	1	0	
9. Sausage Meat .. .. .	do.	0	1	3	
10. Sausages—Beef .. .. .	do.	0	2	0	
11. .. .. . Pork .. .. .	do.	0	2	2	
12. Kidneys—Ox .. .. .	do.	0	2	6	
13. Tripe—fresh .. .. .	do.	0	1	0	
14. Saveloys .. .. .	per doz.	0	4	0	

