

[2105]



VICTORIA
GOVERNMENT GAZETTE

Published by Authority

[Registered at the General Post Office, Melbourne, for transmission by post as a newspaper.]

No. 55]

FRIDAY, JUNE 26

[1964

CONTRACTS ACCEPTED.

(SERIES 1964-65.)

SUPPLY OF PROVISIONS

FOR

STATE DEPARTMENTS

FROM

1st JULY, 1964, to 30th JUNE, 1965,

or as stated.

Conditions of Contract and Stipulations are shown herein for the guidance
of Officers ordering and receiving supplies.

H. COUTTS,
Secretary to the Tender Board.

CONTRACTS ACCEPTED—(Series 1964-65.)

PROVISIONS.

| No. of Contract. | Particulars of each Tender Accepted. | Amount. | Name of Contractor or Supplier. | Charge against Vote or Fund. |
|---|---|--------------------|---|------------------------------|
| PROVISIONS— | | | | |
| Supply of Provisions, in such quantities as may be ordered, from 1st July, 1964, to 30th June, 1965, or as stated. | | | | |
| Schedule No. 1.—Melbourne District— | | | | |
| 40 | Bread, Kew Mental Hospital | Rates as per annex | } Johnson and Riches Pty. Ltd. | } |
| 41 | Bread, Children's Cottages, Kew | Ditto | | |
| 42 | Bread, "Turana" Youth Training Centre and Psychiatric Hospital, Royal Park, and Travancore Development Centre, Flemington | Ditto | } Bessell's Pty. Ltd. | |
| 43 | Bread, "Winlato" Girls' Training Centre, 186 Springvale-road, Nunawading and "Allambie" Reception Centre, 70 Elgar-road, Burwood | Ditto | } Capitol Bakeries Pty. Ltd. | |
| 44 | Bread, Teachers' College and Hostels at Grattan-street, 93 Drummond-street, Carlton; 470, 481, and 572 St. Kilda-road, Melbourne; 19 Queens-road, Melbourne, 152 Toorak-road west, South Yarra; Frank Tate House, 373 Dandenong-road, Armadale; "Redcourt", No. 6, "Larnook", 13 and No. 10A Orrong-road, Armadale; 11 Patterson-street, Hawthorn; 174 Punt-road, Prahran; 221 Burwood-road, Burwood, John Cannon House, 32 Belmont-avenue, Kew, 17 Moule-avenue, Brighton, and Hastings-road, Frankston; and Police Hospital, St. Kilda-road, Melbourne; Mental Hygiene Clinic, 321 Glenferrie-road, Malvern | Ditto | | |
| 45 | Flour | Ditto | Jas. Minifie and Co. Pty. Ltd. | |
| 46 | Groceries | Ditto | <i>Terra Self Service Pty. Ltd. (A)</i> | |
| 46 | Cereals | | Purchase under Tender Board quotations | |
| 46 | Jams | Rates as per annex | W. H. Johnson's Jams Pty. Ltd. | |
| 47 | Soap Mixtures | Ditto | <i>Terra Self Service Pty. Ltd. (A)</i> | |
| 47 | Tea | Ditto | Moran and Cato Pty. Ltd. | |
| 48 | Coffee | Ditto | Bushells Pty. Ltd. | |
| 48 | Potatoes | | Purchase under Tender Board quotations | } General Expenses 1964-65 |
| Schedule No. 2.—Mont Park, Bundoora, Larundel, Janefield, Gresswell, and Pleasant View, Wood-street, Preston— | | | | |
| 49 | Bread | Rates as per annex | Johnson and Riches Pty. Ltd. | |
| 50 | Groceries | Ditto | <i>Terra Self Service Pty. Ltd. (A)</i> | |
| 50 | Jams | Ditto | W. H. Johnson's Jams Pty. Ltd. | |
| 50 | Potatoes | | Purchase under Tender Board quotations | |
| Schedule No. 3.—S.S. Rip and Dredges— | | | | |
| 50 | Groceries | Rates as per annex | <i>Terra Self Service Pty. Ltd. (A)</i> | |
| 50 | Vegetables | | Purchase by agreement | |
| 50 | Potatoes | | Purchase under Tender Board quotations | |
| Schedule No. 4.—Teachers' College and Hostels at Grattan-street, 93 Drummond-street, Carlton; 470, 481 and 572 St. Kilda-road, Melbourne; 19 Queens-road, Melbourne; 152 Toorak-road west, South Yarra; Frank Tate House, 373 Dandenong-road, Armadale; "Redcourt" 6, "Larnook", 13 and No. 10A Orrong-road, Armadale; 11 Patterson-street, Hawthorn; 174 Punt-road, Prahran; 221 Burwood-road, Burwood; John Cannon House, 32 Belmont-avenue, Kew; 17 Moule-avenue, Brighton; and Hastings Road, Frankston; and Police Hospital, St. Kilda-road, Melbourne; Mental Hygiene Clinic, 321 Glenferrie-road, Malvern— | | | | |
| 51 | Groceries | Rates as per annex | Order under Melbourne District | |
| 51 | Potatoes | | Purchase under Tender Board quotations | |
| Schedule No. 5.—Heatherston Sanatorium, Cheltenham— | | | | |
| 51 | Bread | Rates as per annex | Cheltenham and District Co-Op. Society Ltd. | |
| 52 | Groceries | Ditto | <i>Terra Self Service Pty. Ltd. (A)</i> | |
| 52 | Milk | Ditto | Maidments Somerset Dairies | |

Names shown in italics denote suppliers under agreement.

CONTRACTS ACCEPTED—(Series 1964-65)—continued.

PROVISIONS—continued.

| No. of Contract. | Particulars of each Tender Accepted. | Amount. | Name of Contractor or Supplier. | Charge against Vote or Fund. |
|--|---|--------------------|---|------------------------------|
| <i>PROVISIONS—continued.</i> | | | | |
| <i>Schedule No. 6.—Ararat District—</i> | | | | |
| 53 | Breadstuffs | Rates as per annex | Bates Bros. | |
| | Groceries | Ditto | } <i>McKay MacLeod Pty. Ltd. (A)</i> | |
| | Jams | Ditto | | |
| | Potatoes | | Purchase under Tender Board quotations | |
| <i>Schedule No. 7.—Ballarat District—</i> | | | | |
| 54 | Breadstuffs | Rates as per annex | Wm. Dick and Sons | |
| | Groceries—Teachers' Hostels | Ditto | } <i>McKay MacLeod Pty. Ltd. (A)</i> | |
| | Groceries—Mental Hospital | Ditto | | |
| | Jams | Ditto | | |
| 55 | Milk—Mental Hospital and Teachers' Hostels | Ditto | The Ballarat Modern Dairy Pty. Ltd. | |
| | Potatoes | | Purchase under Tender Board quotations | |
| <i>Schedule No. 8.—Beechworth District—</i> | | | | |
| 56 | Bread | Rates as per annex | P. A. Taylor Model Bakery | |
| | Groceries | Ditto | <i>Terra Self Service Pty. Ltd. (A)</i> | |
| 57 | Jams | Ditto | W. H. Johnson's Jams Pty. Ltd. | |
| 58 | Milk—Mental Hospital | Ditto | Beechworth Dairy | |
| | Potatoes | | Purchase under Tender Board quotations | |
| <i>Schedule No. 9.—Bendigo District—</i> | | | | |
| 59 | Bread—For Goal and Sandhurst Boys' Centre and Teachers' Hostel, "Lancewood", McLaren-street | Rates as per annex | C. H. Jeffrey Pty. Ltd. | |
| 60 | Bread—For Teachers' College Hostel, Osborne-street, Pleasant Vale | Rates as per annex | C. H. Jeffrey Pty. Ltd. | |
| 61 | Bread—For Teachers' Hostel, "Comersdale" | Ditto | Roy Raggatt Pty. Ltd. | |
| 62 | Milk—For Sandhurst Boys' Centre | Ditto | } Sandhurst Dairies Ltd. | |
| 63 | Milk—Teachers' Hostels | Ditto | | |
| | Groceries | Ditto | <i>Wholesalers Ltd. (A)</i> | |
| | Potatoes | | Purchase under Tender Board quotations | |
| <i>Schedule No. 10.—Castlemaine District—</i> | | | | |
| 64 | Bread | Rates as per annex | Susannes Breads Pty. Ltd. | |
| <i>Schedule No. 11.—School of Forestry, Creswick—</i> | | | | |
| 65 | Breadstuffs | Rates as per annex | Creswick Bakery | |
| | Groceries | Ditto | <i>J. Tait and Son (A)</i> | |
| 66 | Milk | Ditto | E. L. and C. N. Wrigley | General Expenses 1964-65 |
| <i>Schedule No. 12.—Agricultural College, Dookie—</i> | | | | |
| 67 | Breadstuffs | Rates as per annex | K. H. K. and H. L. Hutchins | |
| | Groceries | Ditto | } <i>Cohns (Shepparton) Pty. Ltd. (A)</i> | |
| | Jam | Ditto | | |
| <i>Schedule No. 13.—McLeod Settlement, French Island—</i> | | | | |
| 68 | Bread | Rates as per annex | G. A. and A. H. Van Der Craats | |
| | Groceries | Ditto | <i>E. V. Peters (A)</i> | |
| | Potatoes | | Purchase under Tender Board quotations | |
| <i>Schedule No. 14.—Geelong District—</i> | | | | |
| 69 | Bread | Rates as per annex | Fitzgerald Sunicrust Bakeries Pty. Ltd. | |
| | Groceries | Ditto | <i>McKay MacLeod Pty. Ltd. (A)</i> | |
| <i>Schedule No. 15.—Coorimungle Prison Camp Heytesbury Forest—</i> | | | | |
| 70 | Bread | Rates as per annex | W. H. and A. J. Archdall | |
| <i>Schedule No. 16.—Aboriginal Station, Lake Tyers—</i> | | | | |
| 71 | Breadstuffs | Rates as per annex | P. and M. Velden | |
| | Groceries | Ditto | } <i>P. and M. Velden (A)</i> | |
| | Jams | Ditto | | |
| <i>Schedule No. 17.—Langi Kal Kal Training Centre—</i> | | | | |
| 72 | Bread | Rates as per annex | Wm. Dick and Sons | |
| | Potatoes | | Purchase under Tender Board quotations | |

Names shown in italics denote suppliers under agreement.

CONTRACTS ACCEPTED—(Series 1964-65)—continued.

PROVISIONS—continued.

| No. of Contract. | Particulars of each Tender Accepted. | Amount. | Name of Contractor or Supplier. | Charge against Vote or Fund. |
|------------------------------|---|---|---|------------------------------|
| <i>PROVISIONS—continued.</i> | | | | |
| 73 | Schedule No. 18.—Agricultural College, Longerenong— Breadstuffs Groceries Jams Potatoes | Rates as per annex Ditto Ditto | Conlan's Bakery <i>Permewan's (Horsham) Pty. Ltd. (A)</i> Purchase under Tender Board quotations | |
| 74 | Schedule No. 19.—Research Station, Rutherglen— Bread Groceries | Rates as per annex Ditto | Rutherglen Bakery Pty. Ltd. <i>N. P. Haberecht (A)</i> | |
| 75 | Schedule No. 20.—Sale Goal— Bread | Rates as per annex | <i>F. J. Hennessy Pty. Ltd.</i> | |
| 76 | Schedule No. 21.—Pleasant Creek Special School, Stawell— Breadstuffs Groceries | Rates as per annex Ditto | <i>Stawell Bakeries Pty. Ltd.</i> <i>McKay MacLeod Pty. Ltd. (A)</i> | General Expenses 1964-65 |
| 77 | Milk Potatoes | Ditto | <i>Stawell Model Dairy</i> Purchase under Tender Board quotations | |
| 78 | Schedule No. 22.—Sunbury District— Breadstuffs Groceries | Rates as per annex Ditto | <i>Bessell's Pty. Ltd.</i> <i>Birmingham's Food Centres Pty. Ltd. (A)</i> | |
| 79 | Cereals Jams Potatoes | Ditto | Purchase under Tender Board quotations <i>W. H. Johnson's Jams Pty. Ltd.</i> Purchase under Tender Board quotations | |
| 80 | Schedule No. 23.—Warrnambool District— Breadstuffs Groceries | Rates as per annex Ditto | <i>Twites Bakeries Pty. Ltd.</i> <i>Swintons Pty. Ltd. (A)</i> | |
| 81 | Milk | Ditto | <i>Sungold Dairies Pty. Ltd.</i> | |
| 82 | Schedule No. 24.—Hobson Park Hospital—Traralgon— Breadstuffs Groceries | | <i>Reeves Dutch Bakery Pty. Ltd.</i> <i>Terra Self Service Pty. Ltd. (A)</i> | |
| 83 | Milk | | <i>J. G. and E. McEntee</i> | |

Names shown in italics denote suppliers under agreement.

Approved—H. E. Bolte, Treasurer, 5th June, 1964.

CONDITIONS OF CONTRACT FOR PROVISIONS, 1964-65, ETC.

(Published in the *Victoria Government Gazette* No. 20, dated 25th March, 1964, pages 670-672.)

1. All the articles are to be of the best quality of the several kinds, in the best condition, and in conformity with the Health Acts, and to be delivered in sound packages, free from all charges for cartage, freight, &c. The goods shall be delivered as may be directed by the officer ordering the supply.

2. As the exact quantity of any article which may be required cannot be stated, the estimate being approximate only, the Government will not be bound by the quantity stated in the schedule, but will be at liberty to order more or less, according to circumstances, and the contractor will be bound to supply the same as ordered.

The Government reserves the right to purchase otherwise than from the contractor any of the articles specified in the schedule in the event of emergency.

3. Supplies for country districts for which no local contract may have been taken, or for which the contract has been terminated, may be ordered under the Melbourne contract.

4. The Melbourne District will include places within a radius of 12 miles from the Elizabeth-street Post Office, with the exception of places for which separate contracts are provided; the Mont Park District will include the Mental Hospitals, Janefield Colony, the Sanatorium, Gresswell, and Pleasant View, Preston; the Ararat, Ballarat, Beechworth, Bendigo, Castlemaine, Geelong and Sunbury Districts will include Mental Hospitals, Penal Institutions and Teachers' Hostels at any of those places. Delivery must be made at the places, institutions, &c., named in the schedules, or as directed by the officer ordering the supply.

5. Packages suitable for transport of goods supplied must be provided by the contractor free of expense, and the value of these packages, whether in bulk or otherwise, is to be included in the rate tendered, except butter boxes and soap boxes (not including fancy soaps), jam jars, flour, meal, and potato bags, which will remain the property of the contractor, and only the actual net weight or quantity received will be paid for; the empties to be removed from the place of delivery at the contractor's expense.

6. The meat supplied under these conditions must, if practicable, be slaughtered at abattoirs which are under authorized inspection and supervision. Any infringement of these conditions will subject the contractor, on report from the Tender Board, to such mulct, not exceeding Fifty pounds, as the Treasurer may direct, and the amount will be deducted from the contractor's account, or from the security money.

7. The supplies coming under the head of Rations and Medical Comforts are to be delivered direct to the establishment entitled thereto on the written order of the officer in charge. All other supplies will be ordered by the head of the Department concerned or any officer authorized by him, and shall be delivered as may be directed by the officer ordering the supply.

8. At the time of delivering the supplies, the contractor shall produce the order for the same to the officer authorized to accept delivery, and such officer shall acknowledge thereon the receipt of the stores accepted, and shall return the order to the contractor, who shall render his account as soon as possible after the delivery of the supplies, accompanied by the receipted delivery order. The rates or quantities quoted in the orders cannot be exceeded.

9. Where railway facilities are available, the contractor shall use the Railways for the transport of the goods. When a contractor is required to make delivery of goods at a railway station for transmission by rail, except for Commonwealth Departments, he shall obtain a receipt for the goods in duplicate on the Stores and Transport consignment note, at the same time handing in the triplicate and quadruplicate of the form as an authority for the Railways to act as agent for, and charge the freight to, the Stores and Transport Office. He shall as soon as possible, and not later than twenty-four hours thereafter, deliver at the Tender Board Offices the original, the duplicate to be forwarded to the consignee and the quintuplicate retained by himself. Should the goods thus forwarded be rejected, the contractor must bear the cost of replacing such goods, for which services the departmental consignment note is not to be used. Any infringe-

ment of this condition may subject the contractor to such mulct as the Tender Board may recommend under clause 18 of these conditions.

10. Orders must receive prompt execution; in the event of the goods not being delivered at the time mentioned in the order or within such other time as the officer ordering the supply may specify for delivery, it will be competent for such officer, or the head of the Department to whom the goods are to be supplied, on giving the contractor twenty-four hours' notice, to purchase the supplies, or any like supplies that are suitable for the service, at the contractor's risk, and the extra expense incurred over and above the contract price (if any) will be deducted from the contractor's account or from the security money.

11. The acceptance of the supplies shall be subject to the approval of the officer authorized to take delivery of the stores, or such other officer as shall be named in the conditions.

12. If the officer in charge of stores be not satisfied as to the quantity or quality of the stores, or if, after taking delivery of any stores or material, he shall discover any deficiency or defect therein, he may return such deficient or defective stores or material to the contractor, and shall report the same to the head of his Department and to the Tender Board.

13. In the event of a difference of opinion between the contractor and the officer receiving the supplies as to the quality, the same is to be decided, in cases where the article is not of a perishable nature, by a Board of Survey composed of persons named by the Treasurer of the State for the time being; and the decision of the Board is to be considered final. In the event of the decision being against the contractor, the survey fees and expenses (if any) will be deducted as in clause 10.

14. In cases where the article is of a perishable nature, or when from some other cause injury would be sustained either by the person to whom the rations or stores are due or by the contractor in waiting for a Board to survey, the head of the Department or officer authorized to take delivery will have power to reject such article or articles as are obviously of inferior quality, it being understood that he will be responsible to the Government for so doing, and that the contractor must take back the rejected article and supply good in its stead; failing which it, or any like supply suitable for the Service, will be obtained by the officer requiring it as in clause 10. In case of the rejection or return of any supplies, the contractor shall bear the whole cost of replacing the supplies so rejected or returned.

15. If the Board shall decide that the article is not of proper quality it must be immediately replaced by the contractor; failing which it, or any like supply suitable for the Service, will be procured by the officer requiring it, and the expense charged as in clause 10.

16. In the case of supplies for Mental Hospitals, it will be competent for a Board of Survey, consisting of the medical superintendent (or, in his absence, of the medical officer) and any two officers named by him, to examine and reject any supplies that may be objected to. It must be distinctly understood, however, that the contractor will have a right of appeal to the Treasurer of the State for the time being, such appeal to be made in writing within 24 hours of the rejection; but, pending such appeal, he must at once supply others of approved quality; failing which, the supplies required, or any like supplies suitable for the Service, may be obtained by the officer concerned, and the expense charged as in clause 10.

17. In the case of supplies for Mental Hospitals, it will also be competent for two or more of the official visitors, in conjunction with the medical superintendent, to reject any supplies that they may consider not in accordance with contract; and in such cases the reference to a Board of Survey will not be deemed to be necessary.

18. A refusal to execute orders, irregularity in the quantity or quality of the supplies, or delay in delivering or replacing them when required, will subject the contractor, upon report from the Tender Board, to such mulct, not exceeding Fifty pounds, as the said Treasurer may direct, and the amount may be deducted as in clause 10. It will also be in the power of the said Treasurer, upon such refusal, irregularity, or delay, to terminate the

contract forthwith, and forfeit the whole or any part of the security money; and, in addition, the contractor will be disqualified from tendering or holding any future contract or contracts for a period of twelve months from the date of such disqualification.

19. Contractors are not at liberty to transfer their contracts under cover of power of attorney, coupled with an interest or otherwise, and no such transfer will be recognized by the Government. *If it is found during the currency of the contract that the contractor has not conformed to the condition of advertisement—which stipulates that if a tenderer be a member of a firm and such firm be interested in the contract, the tender shall be in the name of the firm and not in that of the individual—then the Treasurer may, on the recommendation of the Tender Board, determine the contract, and forfeit the security money.*

20. It will be competent for the Tender Board to terminate the contract, without notice, should there be reason to know that the contractor takes advantage of his contract to communicate with a prisoner.

21. The contract entered into under these conditions is not to be considered as being broken, infringed, or vitiated by the importation of stores for the Government service, or by any contracts or purchases made by the Imperial Commissariat; or by the consumption of the produce or

surplus stock of any Government establishment, or by any article being made at and supplied for the use of any Government establishment.

22. Notwithstanding anything contained to the contrary in section 152 of the *Customs Act 1901-52*, it is hereby expressly provided that upon any alteration of the duty collected affecting the goods included in this contract, the contract price shall not be altered, and the contract may be terminated at the option of either party by two months' notice in writing from the first day of the calendar month next ensuing, and within the period for which the contract is made. The contract for the unaffected items shall remain in full force and effect. Any notice to be served under this condition shall be deemed to have been duly served if sent to the contractor in a registered letter to his last-known place of business or abode.

23. Under no circumstances other than those mentioned in clause 22 will a contractor be permitted to abandon his contract. In the event of the contractor failing to carry on the contract, the contract security money will in that case be absolutely forfeited; and, in addition, the contractor will be held liable for any loss which the Government may sustain in consequence of such failure.

24. For the purposes of these contracts the word "Government" shall mean the Government of the State of Victoria; and the word "Treasurer" shall mean the Treasurer of the said State.

STIPULATIONS FOR SUPPLIES OF PROVISIONS.

SUPPLIES GENERALLY.

For supplies under all sub-schedules, particular attention is drawn to clause 1 of the Conditions of Contract as to quality.

No sub-letting is allowed, and all work must be carried out by the contractor.

Where practicable, all items must be manufactured or prepared within the Commonwealth.

Where no brand of Commonwealth manufacture or production is specifically set out in the respective sub-schedules, such Commonwealth brand as may be ordered must be supplied.

For Schedule No. 3 supplies must be delivered when ordered and, in cases of emergency, on Sundays, holidays, or half-holidays, as required.

BREAD AND FLOUR.

A sample of the best ordinarily retailed to the public will be considered as a test loaf for first quality for fine wheat and pure wheat Meal Bread. *Pure wheat Meal Bread of first quality may be substituted, wholly or in part, for fine wheat Bread at such times and in such quantities as, in the opinion of the Medical Superintendent, may be deemed necessary, and the contractor will be required to supply such Bread at the contract rate. Reasonable notice, however, of the intention to substitute wheat Meal Bread must be given to the contractor by the officer ordering the supply. Bread may be baked at any Government establishment without infringing these contracts. At the Gaols, Ballarat, Beechworth, Bendigo, Castlemaine, Geelong, and Sale, and the Coorimungle Prison Camp, McLeod Settlement, and Langi Kal Kal Training Centre, if required, bread must be supplied one day old, due notice to be given to the contractor of such requirement.*

In the event of bread being made at any Government establishment in the Melbourne District during the currency of these contracts, the flour required will be drawn under the flour sub-schedule.

Flour for Districts for which no local contracts have been taken may be ordered under the Melbourne District contract, for delivery f.o.r., Melbourne.

GROCERIES.

As a guarantee of quality, Rice, when ordered in quantities of 56 lb. and over, must be supplied in original bags as delivered by the miller or dresser. Such bags must be branded "Rice, Dressed," and shall also have stencilled thereon the miller or dresser's name and the distinguishing mark indicative of the quality or grade. The bags thus stencilled shall contain Rice milled or dressed by the miller or dresser whose name appears thereon. Supplies not in conformity with the foregoing condition will be rejected.

Oatmeal must be supplied in original bags as delivered by millers.

Candles, except those for prison cells, must be supplied in 1-lb. packets. Candles for prison cells must be delivered in boxes containing from 25 to 50 lb. per box, the boxes for which must be legibly stencilled on one end showing the estimated burning time and the gross, tare, and net weight of contents.

The soap supplied must be hard throughout, ready for immediate use without waste, and shall have been manufactured at least seven weeks before leaving contractor's hands.

Raisins and currants must be present season's, and where the quantity admits, be supplied in original and unopened boxes, labelled as packed.

BARLEY, OATMEAL, PEAS-SPLIT, RICE AND SEED TAPIOCA.

Supplies of these items for Districts for which no local contracts have been taken may be ordered under the Melbourne District contract, for delivery f.o.r., Melbourne.

BUTTER AND CHEESE.

All supplies of 56 lb. or multiples of 56 lb. must be supplied in boxes as originally packed. The boxes must bear the impress stamp of the creamery where the butter is produced, otherwise it will not be accepted. All supplies must be in new boxes.

Where the Store or Butter Factory of the contractor is situated in the Metropolitan area all Butter to the quantity of 56 lb. and over to be supplied in any one consignment under this contract shall before despatch from the Store or Factory be first examined and passed by the Government Butter Grader, for and on behalf of the officer authorized to accept delivery. The boxes containing butter so examined and found satisfactory in quality and description will be stamped by the Government Butter Grader and the date of such examination marked thereon. No butter from a contractor located in the Metropolitan area will be accepted unless the boxes bear the stamp of the Grader. For the purposes of the foregoing condition the Metropolitan Area is defined as being not outside the radius visited by the Government Grader. The officer authorized to accept delivery may, within 48 hours of the receipt of any supply, require the Contractor to have same re-examined by the Grader, and, if not passed by him, it shall be returned to the Contractor, who shall forthwith replace the same with freshly-examined butter.

No Butter ex Cool Store will be examined by the Grader until thermally it is in suitable condition therefor.

Where the Store or Factory from which the Butter is despatched is not within the area visited by the Grader a sample of any supplies may be forwarded to the Government Butter Grader for examination, should the supply

be considered by the Officer authorized to accept delivery as not being equal in quality or description to that contracted for.

The Cheese supplied must be first-class quality, semi- or fully matured, as ordered, and not less than three months old. If the quantity admits, it shall be boxed for transport.

JAM.

The weight stamped on the tins in accordance with the regulations under the Commerce Act, as indicating the minimum net quantity that each tin contains, shall for the purpose of this contract be taken as the actual contents when computing the quantity supplied.

When Jam is supplied in jars the jars remain the property of the contractor, and must be removed by the contractor at his own expense when empty.

SOAP AND SOAP MIXTURES.

Supplies of these items for Districts for which no local contracts have been taken may be ordered under the Melbourne District contract, for delivery f.o.r., Melbourne.

MEAT.

All meat supplied under this contract shall have been slaughtered in Victoria and shall be freshly killed, well-conditioned, of good quality, healthy, clean, wholesome, free from bone-taint, putrefaction or fly larvae, and shall not have been frozen.

The beef shall be of ox not under three nor more than six years old or heifer or cow not under three nor more than five years old. Carcass beef for Mental Hospitals shall be delivered in quarters of equal proportions of hinds and fores and the corresponding hinds and fores must be supplied, also extra buttocks separately when ordered. Meat for other Institutions shall be supplied as ordered. Where hindquarters or buttocks are ordered 9 inches shall be cut off from the end of the leg from the hock upwards, i.e., the end of the leg from which the shank has been removed at the abattoirs; when fore-quarters form a portion of the supply, 6 inches from the end of the neck and the whole of the shin at the clodbone joint shall be removed. The sticking pieces also shall be trimmed off and the point and end of the brisket rendered free from blood and blood stains.

The mutton shall be wether or maiden ewe not more than four years old and the weight of a carcass shall be not less than 40 lb. nor more than 60 lb. The mutton shall be delivered in sides when so ordered. All kidney fat to be removed for Mental Hospitals.

Corned Beef (rolled or round as ordered) shall be supplied without bone or cartilage and will be received whether pumped or prepared in the ordinary way of pickling but, in the former case, it shall have been soaked, after pumping, for at least 48 hours in a good pickle and then thoroughly drained before supply. No flank, chuck, sticking-piece, shin, leg of beef, or piece under 7 lb. will be received.

Meat derived from the carcasses of Bulls, Stags or Rams or meat containing an undue proportion of bone or fat will not be received and shall not be tendered for delivery. Net weight only will be paid for.

In cases of emergency, or on such other occasions as in the opinion of the Director of Mental Hygiene or Heads of other Institutions may seem advisable, other forms of meat, such as Rabbits, Tinned Meats, &c., may be purchased, apart from the contract, in lieu of the meat specified in the Schedule, and substituted therefor, provided 24 hours' notice—except in cases of emergency—be given to the Contractor of such intention.

The parts to be removed by the contractor are indicated in the shaded portion of the annexed diagram. This work shall be carried out in the factory or shop of the Contractor, except those parts usually removed at the abattoirs.

With respect to the schedules enumerated hereunder, the following stipulations shall also apply:—

For sub-schedules 9, 11, 12 and 13 of Schedule No. 1, fresh beef shall be supplied, as ordered, from ribs, sirloin, and thick flanks and for Schedule No. 2, from prime ribs, sirloin, and thick flanks; ribs or beef to be cut clear of the plate bone, and sirloin to be cut clear of the wing ribs; excess of brisket or thin flank will be rejected. Mutton must be delivered in sides when so ordered.

For Schedules Nos. 1 (sub-schedules 9, 11, 12 and 13), 3, 4, 5, 11, 14, and 21, chuck ribs of Beef, i.e., 1st to 4th inclusive will not be accepted.

For Schedules Nos. 4, 5, and 21, fresh Beef must be supplied, as ordered, from prime ribs or sirloin; ribs of Beef to be cut clear of the plate bone, and sirloin to be cut clear of the wing ribs; excess of brisket or flank will be rejected.

TEA AND COFFEE.

Tea and Coffee for Districts for which no local contracts have been taken may be ordered under the Melbourne District contract.

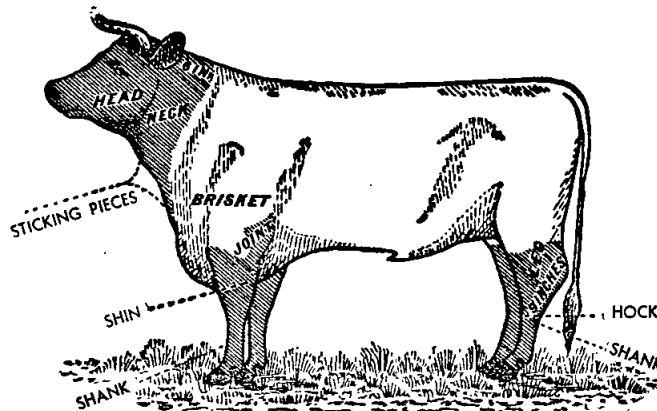
MILK.

The milk must be fresh, pure, and of the best quality, and subject to test when required by the Department, and supplied at such times as the Department may require. Should the contractor fail to supply at the time specified in the order or at such times as may be indicated in any general notice to the contractor his contract may be cancelled forthwith and his security forfeited, or should the supply prove to be not of contract quality it will be rejected, and any expense incurred will be charged to the contractor.

POTATOES.

Potatoes to be dry and free from dirt. Contractors to take back all rejected before being cooked. Bags to remain the property of the contractor. Weight of bags (approx. 2½ lb.) to be deducted.

If the price of potatoes becomes abnormally high, the heads of the various departments concerned may, if they think fit, cause rice or any other suitable food to be occasionally substituted in lieu thereof.



ANNEX TO CONTRACTS.

FLOUR AND BREAD.

The contract rates shown are subject to adjustment for any variation in the proclaimed price of flour.

AGREEMENTS.

For the Sub-schedules marked (Agreement), no contract has been let nor security lodged. Requirements thereunder are to be purchased from the suppliers named, under Tender Board Agreement. The rates shown are subject to variation from time to time. In all cases, supply is subject to stocks being available.

AVAILABILITY OF SUPPLIES.

Owing to existing difficulties in obtaining supplies of various items, the penal provisions of Clause 10 of the Conditions of Contract are not to be enforced without reference to the Tender Board.

SCHEDULE No. 1.

PROVISIONS—MELBOURNE DISTRICT

ANNEX TO CONTRACT No. 1964/40.

Johnson and Riches Pty. Ltd., 469 Heidelberg-road, Fairfield.

Sub-schedule No. 1.

BREAD FOR MENTAL HOSPITAL AT KEW.

Security, £75. £ s. d.

- | | | |
|--------------------------------------|--------------|--------|
| 1. Bread—Fine wheaten, first quality | .. per cntl. | 1 15 1 |
| 2. " " Special formula | .. do. | 2 3 2 |

ANNEX TO CONTRACT No. 1964/41.

Johnson and Riches Pty. Ltd., 469 Heidelberg-road, Fairfield.

Sub-schedule No. 2.

BREAD FOR CHILDREN'S COTTAGES, KEW.

Security, £50. £ s. d.

- | | | |
|--------------------------------------|--------------|--------|
| 1. Bread—Fine wheaten, first quality | .. per cntl. | 1 15 1 |
|--------------------------------------|--------------|--------|

ANNEX TO CONTRACT No. 1964/42.

Bessell's Pty. Ltd., 275 Buckley-street, Essendon.

Sub-schedule No. 3.

BREAD FOR "TURANA" YOUTH TRAINING CENTRE, ROYAL PARK; PSYCHIATRIC HOSPITAL, ROYAL PARK; AND TRAVANCORE DEVELOPMENTAL CENTRE, FLEMINGTON.

Security, £30. £ s. d.

- | | | |
|--------------------------------------|--------------|---------|
| 1. Bread—Fine wheaten, first quality | .. per cntl. | 1 16 5½ |
| 2. " " Wholemeal, first quality | .. do. | 1 16 5½ |

ANNEX TO CONTRACT No. 1964/43.

Capitol Bakeries Pty. Ltd., 257 Toorak-road, South Yarra.

Sub-schedule No. 4.

BREAD FOR "WINLATON" GIRL'S TRAINING CENTRE, 186 SPRINGVALE-ROAD, NUNAWADING, AND "ALLAMBIE" RECEPTION CENTRE 70 ELGAR-ROAD, BURWOOD.

Security, £5. £ s. d.

- | | | |
|--------------------------------------|--------------|-------|
| 1. Bread—Fine wheaten, first quality | .. per cntl. | 2 1 4 |
| 2. " " Wholemeal, first quality | .. do. | 2 1 4 |
| 3. " " Rolls.. | .. per doz. | 0 2 0 |

ANNEX TO CONTRACT No. 1964/44.

Capitol Bakeries Pty. Ltd., 257 Toorak-road, South Yarra.

Sub-schedule No. 5.

TEACHERS' COLLEGES AND HOSTELS AT GRATTAN-STREET, 93 DRUMMOND-STREET, CARLTON; 470, 481 AND 572 ST. KILDA-ROAD, MELBOURNE; 19 QUEENS-ROAD, MELBOURNE; 152 TOORAK-ROAD WEST, SOUTH YARRA; FRANK TATE HOUSE, 373 DANDENONG-ROAD, ARMADALE; "REDCOURT" NO. 6, "LARNOOK" 13 AND NO. 10A ORRONG-ROAD, ARMADALE; 11 PATTERSON-STREET, HAWTHORN; 174 PUNT-ROAD, PRAHRAN; 221 BURWOOD-ROAD, BURWOOD; JOHN CANNON HOUSE, 32 BELMONT-AVENUE, KEW; 17 MOULE-AVENUE, BRIGHTON, AND HASTINGS-ROAD, FRANKSTON; POLICE HOSPITAL, ST. KILDA-ROAD, MELBOURNE; AND MENTAL HYGIENE CLINIC, 321 GLENFERRIE-ROAD, MALVERN—

Security, £20. £ s. d.

- | | | |
|--------------------------------------|--------------|-------|
| 1. Bread—Fine wheaten, first quality | .. per cntl. | 2 1 4 |
| 2. " " Wholemeal, first quality | .. do. | 2 1 4 |
| 3. " " Rolls.. | .. per doz. | 0 2 0 |

ANNEX TO CONTRACT No. 1964/45.

Jas. Minifie and Co. Pty. Ltd., Lennon-street, South Kensington.

Sub-schedule No. 6.

FLOUR.

Security, £90. £ s. d.

- | | | |
|--|--------------|--------|
| 1. Flour—Roller, first quality (150-lb. bag) | .. per cntl. | 1 13 5 |
| 2. " " " " (50-lb. bag) | .. per bag | 0 18 0 |

ANNEX TO CONTRACT No. 1964/46.

W. H. Johnson's Jams Pty. Ltd., 42 Meaden-street, South Melbourne.

Sub-schedule No. 9.

JAMS.

Security, £20. £ s. d.

- | | | |
|--|---------|--------|
| Jams—"Alva" Brand | | |
| 1. Assorted, in bulk, of approved kinds, in per lb. | 0 0 11¼ | ○ |
| the proportion of half seed and half actual stone, of the best quality, in 54-lb. tins net | | |
| 2. Assorted, of approved kinds, in the weight proportion of half seed and half per tin | 0 1 11 | |
| stone, of the best quality, in 24-oz. tins | | |
| 3. Marmalade, 24-oz. tins | .. do. | 0 1 9½ |
| 4. Assorted, 5-lb. tins, in the proportion of | .. do. | 0 6 5 |
| of half seed and half stone of the best quality | | |
| ○ In 27-lb. tins, rate increased by 1d. per lb. | | |

ANNEX TO CONTRACT No. 1964/47.

Moran and Cato Pty. Ltd., 277 Brunswick-street, Fitzroy, N.6.

Sub-schedule No. 11.

TEA.

Security, £150. £ s. d.

- | | | |
|------------------------------|------------|---------|
| 1. Tea—First Grade—To sample | .. per lb. | 0 3 11½ |
|------------------------------|------------|---------|

ANNEX TO CONTRACT No. 1964/48.

Bushells Pty. Ltd., 452 Flinders-street, Melbourne.

Sub-Schedule No. 12.

COFFEE.

Security, £100. £ s. d.

- | | | |
|--|---------|-------|
| 1. Coffee—Fresh roasted, and whole, beans to be thoroughly sound—To sample | per lb. | 0 3 7 |
| 2. Coffee—Fresh roasted, beans to be thoroughly sound—To sample—Ground | do. | 0 3 7 |

Sub-schedule No. 10.

CEREALS.

- | | | | |
|-----------------------|-------|-------------|--|
| 1. Barley—pearl | | .. per cwt. | } Purchase under Tender Board Quotations |
| 2. Oatmeal—Plain | | .. do. | |
| 3. Oatmeal—Flaked | | .. do. | |
| 4. Peas, split—Yellow | | .. do. | |
| 5. Rice—Dressed | | .. do. | |
| 6. Rice—Unpolished | | .. do. | |
| 7. Seed Tapioca | | .. do. | |

(AGREEMENT.)

Terra Self Service Pty. Ltd., 42 Elizabeth-street, South Yarra.

Sub-schedule No. 7.

GROCERIES, METROPOLITAN DISTRICTS.

| | £ | s. | d. |
|--|--------------------------------|----|-------|
| 1. Bacon—Sides | per lb. | 0 | 5 4 |
| 2. " middles | do. | 0 | 5 9 |
| 3. " Rashers, middle | do. | 0 | 7 1 |
| 4. Baking powder—1 lb. McKenzies' | per doz. | 1 | 16 11 |
| 5. Barley—Pearl | per lb. | 0 | 0 5½ |
| 6. " 56-lb. bags | per cwt. | 2 | 1 6 |
| 7. Beans—Haricot | per lb. | 0 | 1 5½ |
| 8. " Lima | do. | 0 | 1 9½ |
| Biscuits (tins 4s. returnable)— | | | |
| 9. Thin Captain | do. | 0 | 2 1 |
| 10. Uneeda | do. | 0 | 2 6½ |
| 11. Rice | do. | 0 | 2 1 |
| 12. Nice | do. | 0 | 2 0 |
| 13. Sweet Assorted | do. | 0 | 2 2½ |
| 14. Butter Crisps, Vanilla Curls | do. | 0 | 2 2½ |
| 15. Shortbreads | do. | 0 | 2 1½ |
| 16. Sunflakes | do. | 0 | 2 2 |
| Blue—1-oz. knobs— | | | |
| 17. " Recketts" paper | per doz. | 0 | 3 4½ |
| 18. Bulk—7-lb. pkts. | per lb. | 0 | 1 10½ |
| 19. Borax | do. | 0 | 0 8 |
| 20. Boiled Sweeties (14-lb. cartons) | do. | 0 | 1 10½ |
| 21. Bread Crumbs—"Golden Crust" | per doz. | 0 | 12 10 |
| 22. " "Loose" | per lb. | 0 | 0 9 |
| 23. Cake containers—Paper "Family" 120's | per doz. | 0 | 6 3 |
| 24. Candles, Electricine | do. | 0 | 5 0 |
| Cereals— | | | |
| 24A. Kornies, or equal—24 oz. | do. | 1 | 6 2 |
| 25. Cornflakes or equal—16 oz. | do. | 1 | 13 3 |
| 26. Weet Hearts—24 oz. | do. | 1 | 14 6 |
| 27. Weetbix or equal—24 oz. | do. | 1 | 8 6 |
| 28. Allbran or equal | do. | 1 | 1 4 |
| 29. Rice Bubbles—8 oz. | do. | 1 | 1 4 |
| Cheese—Kraft— | | | |
| 30. 5-lb. boxes | per box | 0 | 19 3 |
| 31. 8-oz. pkts. | per doz. | 1 | 5 0 |
| 32. Matured—Tasty | per lb. | 0 | 3 7 |
| 33. Grated, 6-lb. polythene bags | do. | 0 | 4 4 |
| 34. Chutney—Fruit—"Rosella" | per doz. | 1 | 2 2 |
| 35. Cloves—Whole | per lb. | 0 | 4 9 |
| 36. Cocoa—Loose, 28-lb. bags | do. | 0 | 2 6 |
| 37. " 14-oz. packets—Bournville | per doz. | 2 | 12 0 |
| 38. Coconut—Desiccated—"Ceylon" | per lb. | 0 | 1 9 |
| Coffee Essence— | | | |
| 39. 8-oz. "Turban" | per doz. | 1 | 6 8 |
| 40. 26-oz. "Excelstor" | do. | 3 | 18 2 |
| 41. 1-gal. "Bushells", sweetened | per gal. | 1 | 13 5 |
| 42. Nescafe—1-lb. tin | per lb. | 1 | 9 1 |
| 43. " 2-oz. tin | per doz. | 2 | 7 3 |
| 44. " 6-oz. jar | do. | 6 | 13 1 |
| 45. Curry Powder—Loose | per lb. | 0 | 2 0 |
| 46. Custard Powder—Loose (7-lb.) | do. | 0 | 0 11 |
| 47. " 1-lb. "Cameo" | per doz. | 1 | 0 8 |
| 48. Cream of Tartar—Loose | per lb. | 0 | 3 2 |
| 49. Eggs—New laid, large | V.E.B. price plus 3d. per doz. | | |
| Essences, &c.— | | | |
| 50. Almond, 4-oz. "Allens" | per bot. | 0 | 2 2½ |
| 51. Cochineal, 16-oz. (red colouring) | do. | 0 | 3 3½ |
| 52. Lemon, 8-oz. "Allens" | do. | 0 | 4 1 |
| 53. Parisian 26-oz. "Greigs" | do. | 0 | 3 11½ |
| 54. Vanilla, 8-oz. "Allens" | do. | 0 | 5 6 |
| 55. Yolkine, 16-oz. "Allens" | do. | 0 | 3 3½ |
| Extracts and Pastes— | | | |
| 56. Gravox, 1-lb. packets | per doz. | 1 | 2 0 |
| 57. Marmite, 2-oz. | per jar | 0 | 1 3 |
| 58. Vegemite, 4-oz. | do. | 0 | 2 3 |
| 59. " 8-oz. | do. | 0 | 3 10½ |
| 60. " 16-oz. | do. | 0 | 7 2 |
| 61. " 7-lb. | do. | 2 | 3 3 |
| 62. Peanut Butter, 40-oz. "Eta" | do. | 0 | 9 0 |
| 63. " 12-oz. "Cottees" | do. | 0 | 3 4½ |
| 64. Bcnox, 4-oz. | do. | 0 | 2 11½ |
| 65. " 8-oz. | do. | 0 | 5 6 |
| 66. Bloater, 2½-oz. | do. | 0 | 1 6 |
| 67. Salmon and Shrimp, 2½-oz. jars | do. | 0 | 1 6 |
| 68. Anchovy, 2-oz. | per doz. | 0 | 1 6 |
| Fish—Tinned— | | | |
| 69. Salmon, 16-oz. "Greenseas" | do. | 1 | 18 2 |
| 70. Cutlets, 12-oz. "Perler" | do. | 1 | 0 9 |
| 71. Herrings in Sauce, 14-oz. | do. | 1 | 3 3 |
| 72. Herrings—Fresh, 14-oz. | do. | 1 | 3 3 |
| 73. Sardines—½'s, Norwegian | do. | 0 | 12 0 |

Sub-schedule No. 7—continued.

GROCERIES—continued.

£ s. d.

| | | | |
|---|-----------|---|-------|
| Flour—Corn or Maize— | | | |
| 74. Bulk, 140-lb. sacks | per cwt. | 3 | 19 0 |
| 75. 1-lb. packets, "Medallion" | per doz. | 0 | 14 9 |
| 76. Loose | per lb. | 0 | 0 10 |
| 77. Self raising—25-lb. bag, "McAlpin" | per bag | 0 | 17 8 |
| 78. " 50-lb. bag, "McAlpin" | do. | 1 | 14 3 |
| 79. Plain, 4-lb. | per pkt. | 0 | 2 7 |
| Fruits—Dried— | | | |
| 80. Apricots—Large, case lots | per lb. | 0 | 4 1½ |
| 81. " less than case lots | do. | 0 | 4 2 |
| 82. Peaches—Large | do. | 0 | 3 0 |
| 83. " less than case lots | do. | 0 | 3 0½ |
| 84. Pears—Large, case lots | do. | 0 | 2 3½ |
| 85. " less than case lots | do. | 0 | 2 3½ |
| 86. Cherries—Crystallized | do. | 0 | 4 0 |
| 87. Prunes—80-90's, 7-lb. tins | do. | 0 | 2 3½ |
| 88. " 40-50 | do. | 0 | 2 8½ |
| 89. Currants—3-crown, case lots | do. | 0 | 1 10½ |
| 90. " less than case lots | do. | 0 | 1 11½ |
| 91. Raisins—Seeded, case lots | do. | 0 | 2 0½ |
| 92. " less than case lots | do. | 0 | 2 1 |
| 93. " 1-lb. packets | per doz. | 1 | 8 0 |
| 94. Sultanas—5-crown, case lots | per lb. | 0 | 2 0½ |
| 95. " less than case lots | do. | 0 | 2 0½ |
| 96. Dates—Case lots | do. | 0 | 1 5 |
| 97. " less than case lots | do. | 0 | 1 6 |
| Fruits—Preserved, 29-oz. tins— | | | |
| 98. Apricots—Halves | per doz. | 1 | 8 11 |
| 99. Peaches—Halves and sliced | do. | 1 | 8 11 |
| 100. Pears—Halves | do. | 1 | 8 11 |
| 101. Fruit Salad "G.C." | do. | 1 | 16 3 |
| 102. Pineapple Pieces "G.C." | do. | 1 | 16 3 |
| Fruits—Solid Pack— | | | |
| 103. Apples, 6½-lb. tins, "Camms" | do. | 4 | 18 11 |
| 104. Apricots, 7-lb. tins, "Berri" | do. | 5 | 12 8 |
| 105. Peaches, 7-lb. tins, "Berri" | do. | 5 | 12 8 |
| 106. Gelatine—Ground, 1-lb. packets | per lb. | 0 | 8 6½ |
| 107. Ginger—Ground | do. | 0 | 6 4 |
| 108. Golden Syrup, 2-lb. tins | per doz. | 0 | 19 0 |
| 109. Herbs—Mixed, loose | per lb. | 0 | 2 7 |
| 110. " 1-oz. packets | per doz. | 0 | 2 11 |
| 111. Honey, 60-lb. tins | per tin | 4 | 15 0 |
| 112. " 5-lb. tins "Lunchtime" | do. | 0 | 10 11 |
| 113. " 2-lb. jars, "Greigs" | each | 0 | 4 6 |
| 114. Jams | | | * |
| Jelly Crystals— | | | |
| 115. 4-oz. packets "Sparkling" | per doz. | 0 | 5 5 |
| 116. 7-lb. packets | per pkt. | 0 | 14 0 |
| 117. Junket Tablets—"Merry Widow" | | | |
| flavoured, tubes | per doz. | 0 | 18 6 |
| 118. Lemon Butter "Cottees" | do. | 1 | 3 3 |
| 119. Lentils | per lb. | 0 | 1 7 |
| 120. Macaroni, 1-lb. packets, "Rinaldi" | per doz. | 0 | 18 0 |
| 121. " Bulk, 56-lb. bags, "Rinaldi" | per lb. | 0 | 0 9½ |
| 122. Margarine—Cake or Pastry "Imperial" | do. | 0 | 1 9½ |
| 123. Matches—Safety, dozens | per gross | 0 | 18 5 |
| 124. Mayonaise, 5-lb. jars, "Eta" † | per jar | 0 | 9 11 |
| Meat—tinned— | | | |
| 125. Beef Luncheon, 12-oz. tins, "T.P." | per doz. | 1 | 8 9 |
| 126. Beef Steak Pudding, 16-oz. tins, "T.P." | do. | 1 | 13 3 |
| 127. Camp Pie—16-oz. tins, "Imp." | do. | 1 | 3 11 |
| 128. Irish Stew, 16-oz. tins, "T.P." | do. | 1 | 5 8 |
| 129. Sausages and Vegetables, 16-oz. tins, "T.P." | do. | 1 | 6 6 |
| Milk— | | | |
| 130. Dried, 28-lb. tins, "Tooralac" | per tin | 4 | 6 2 |
| 131. Dried, 3-lb. tins, "Sunshine" | per doz. | 6 | 18 6 |
| 132. Condensed, 14-oz. tins, "Nestles" | do. | 1 | 2 3 |
| 133. Condensed, 12-oz. tins, "Ideal" | do. | 0 | 16 4 |
| 134. Malted, "Horlicks" | per lb. | 0 | 4 1 |
| 135. Skimmed, 12-oz. | per doz. | 1 | 0 10 |
| 136. Mustard—Loose | per lb. | 0 | 5 0 |
| 137. Oatmeal—Flaked, loose | do. | 0 | 0 7 |
| 138. Oatmeal, Flaked, 90-lb. sacks | per cwt. | 2 | 15 0 |
| 139. Pastry Mix—"Swifts" | per doz. | 0 | 13 0 |
| 140. Sponge Mix—"McAlpins" | do. | | ¶ |
| 141. Peel—Mixed, cut, loose | per lb. | 0 | 1 9 |
| 142. Pepper—White, ground | do. | 0 | 6 3 |
| 143. " Black, " | do. | 0 | 5 11 |
| 144. " Cayenne, No. 1 | per doz. | 0 | 7 4 |
| 145. Pickles—Mustard, 20-oz. "Leggo" | do. | 1 | 9 5 |
| 146. " ½-gal. jars | per jar | 0 | 6 8 |
| 147. Rice—Dressed, 56-lb. sacks | per sack | 2 | 9 9 |
| 148. " Dressed | per lb. | 0 | 0 11½ |
| 149. " Ground, 1-lb. packet | do. | 0 | 1 2 |
| 150. Sago—Seed Tapioca | do. | 0 | 0 10½ |
| 151. Salt—Fine, bulk | per cwt. | 0 | 16 6 |

* See Sub-schedule No. 9. † Jars, 3s. each. ‡ Jars, 3s. 6d. each. § Jars, 6s. each. || Jars, 5s. each. All returnable. ¶ Supplies not available.

Sub-schedule No. 7—continued.

| GROCERIES—continued. | | £ | s. | d. |
|----------------------|---|------------|----|-------|
| 152. | Salt—Table, 1-lb. packets, "Mermaid" | per doz. | 0 | 7 8 |
| 153. | Sauce—Tomato, 26-oz., "Rosella" | do. | 2 | 1 5 |
| 154. | " 1-gal. jars, "Tom Piper" † | per gal. | 0 | 15 2 |
| 155. | " Tomato and Apple, 1-gal. jars † | do. | 0 | 13 1 |
| 156. | " Worcestershire, 10-oz. "Hardings" | per doz. | 1 | 0 9 |
| 157. | " 1-gal. jars † | per gal. | 0 | 13 11 |
| 158. | " Mustard, 8-oz., "Holbrooks" | per doz. | 1 | 3 1 |
| 159. | Soda—Bicarbonate | per lb. | 0 | 0 6½ |
| 160. | " Washing, 1-cwt. bags | per cwt. | 1 | 10 0 |
| 161. | " " loose | per lb. | 0 | 0 4 |
| 162. | Soups—Asparagus, 16-oz., "K.O." | per doz. | 0 | 16 5 |
| 163. | " Tomato, 16-oz., "K.O." | do. | 0 | 16 5 |
| 164. | " " 5-lb., "Maggi" | per tin | 1 | 13 6 |
| 165. | " " 5-lb., "Continental" | do. | 1 | 13 6 |
| 166. | " " 7-lb., "Kia Ora" | per doz. | ¶ | |
| 167. | " " 9-lb., "Heinz" | do. | 4 | 16 9 |
| 168. | " Chicken Noodle, packets | do. | 0 | 13 0 |
| 169. | " Cream of Chicken, 5-lb., "Maggi" | per tin | 1 | 19 0 |
| 170. | " " 5-lb., "Continental" | do. | 2 | 4 8 |
| 171. | " Vegetable, 7-lb., "A.J.C." | per doz. | 4 | 16 0 |
| 172. | Spaghetti, 1-lb. packets, No. 1 "Rinoldi" | do. | 0 | 18 0 |
| 173. | " Bulk, 22-lb., "Rinoldi" | per carton | 0 | 17 5 |
| Spices, &c.— | | | | |
| 174. | Mixed—Loose | per lb. | 0 | 3 3 |
| 175. | " 1-oz. packets | per doz. | 0 | 4 2 |
| 176. | Cloves, whole | per lb. | 0 | 4 9 |
| 177. | Paprika | do. | 0 | 5 4 |
| 178. | Cinnamon | do. | 0 | 1 11 |
| 179. | Bay Leaves | do. | 0 | 3 0 |
| 180. | Nutmeg—ground | do. | 0 | 8 4 |
| 181. | Arrowroot, 12-oz., "Parsons" | per pkt. | 0 | 2 3 |
| 182. | Starch—Rice, bulk, "Parsons" | per lb. | 0 | 0 8 |
| 183. | " " "Silver Star", 12-oz. | per doz. | 0 | 18 6 |
| 184. | Sugar—Icing | per lb. | 0 | 1 1 |
| 185. | " Castor | do. | 0 | 0 10½ |
| 186. | " No. 3, Brown | do. | 0 | 0 10 |
| 187. | " White, 70-lb. bags | per bag | 2 | 17 10 |
| Sweet Toppings— | | | | |
| 188. | Chocolate, 13-oz., "K.O." | per doz. | 1 | 12 3 |
| 189. | Raspberry, 13-oz., "K.O." | do. | 1 | 12 3 |
| 190. | Strawberry, 13-oz., "K.O." | do. | 1 | 12 3 |
| 191. | Tapioca—Pearl | per lb. | 0 | 0 10 |
| 192. | Treacle, 2-lb. tins | per doz. | 0 | 18 4 |
| Vegetables—Dried— | | | | |
| 193. | Peas—Green, "Dewcrisp", 21-lb. tins | per tin | 10 | 1 8 |
| 194. | " Split, yellow | per cwt. | 3 | 8 11 |
| Vegetables—Tinned— | | | | |
| 195. | Asparagus Tips, "Gartsides" | per doz. | 1 | 15 9 |
| 196. | Baked Beans, 16-oz., "K.O." | do. | 0 | 17 3 |
| 197. | " " No. 10 cans "K.O." | do. | ¶ | |
| 198. | " " 16-oz., "Fowlers" | do. | 0 | 15 3 |
| 199. | " " No. 10 cans "Biddy" | do. | 5 | 1 9 |
| 200. | Beans—Green, 16-oz., "Gartside" | do. | 1 | 1 9 |
| 201. | Beetroot, 12-oz., "Gartside" | do. | 0 | 14 3 |
| 202. | Carrots, 16-oz., "Edgells" | do. | 0 | 19 1 |
| 203. | Spaghetti, 16-oz., "K.O." | do. | 0 | 17 3 |
| 204. | " 16-oz., "Fowlers" | do. | 0 | 15 3 |
| 205. | Gherkins, Sweet, 5-oz., "Holly" | do. | 1 | 3 3 |
| 206. | Peas—"Biddy", 30-oz. | do. | 1 | 3 9 |
| 207. | " "Raleigh", 28-oz. | do. | 1 | 12 11 |
| 208. | Sweetcorn, 16-oz., "Rosella" | do. | 1 | 3 2 |
| 209. | Tomatoes, 30-oz., "Berri" | do. | 1 | 9 1 |
| 210. | Vermicilli, 1-lb., "Rinoldi" | do. | 0 | 18 0 |
| 211. | " Bulk, 22-lb., "Rinoldi" | per carton | 0 | 17 5 |
| Vinegar—Malt— | | | | |
| 212. | 26-oz. bottles, "Vines" | per doz. | 0 | 14 9 |
| 213. | 1-gal. jars ‡ | per gal. | 0 | 4 4 |

(AGREEMENT.)

Terra Self Service Pty. Ltd. 42 Elizabeth-street, South Yarra.

Sub-schedule No. 8.

SOAP MIXTURES.

(Of Commonwealth Manufacture.)

| | £ | s. | d. |
|--|----------|----|-------|
| 1. Extract of "Kitchens" or equal "Stella" | per cwt. | 3 | 15 3 |
| Soap Powder, 80-lb. bags | | | |
| 2. Household—Dry, "Pental" wrapped, cases | per case | 2 | 13 3 |
| of 3 dozen | | | |
| 3. "Lux"—Economy size packets | per doz. | 1 | 15 10 |
| "Rinso"— | | | |
| 4. { Standard packets | do. | 1 | 2 11 |
| { Economy packets | do. | 2 | 1 6 |
| "Persil"— | | | |
| 5. { Standard packets | do. | 1 | 3 3 |
| { Economy packets | do. | 2 | 1 6 |

○ In 27-lb. tins, rate increased by 1d. per lb. † Jars, 3s. each. ‡ Jars, 3s. 6d. each. § Jars, 6s. each.
¶ Supplies not available.

Sub-schedule No. 8—continued.

SOAP MIXTURES—continued.

| | £ | s. | d. |
|--|----------|----|------|
| 6. Sandsoap—"Lectric", 12-oz. blocks | per doz. | 0 | 6 9 |
| 7. Toilet Soap—"Kitchens" or equal, do. | | 0 | 4 6 |
| " Doublays," 3¼-oz. | | | |
| 8. Toilet Soap—"Lifebuoy" cakes, regular | do. | 0 | 8 10 |
| 9. " " "Palmolive" | do. | 0 | 8 5 |
| 10. Soap—"Solvol" | do. | 0 | 13 6 |
| " Velvet" | | | |
| 11. { "Quads," standard | do. | 1 | 9 10 |
| { "Quints," economy | do. | 2 | 7 3 |
| 12. Washing Soda, 1-cwt. bags | per cwt. | 1 | 10 0 |

SCHEDULE No. 2.

PROVISIONS—MONT PARK, ETC.

(For delivery at the Mental Hospital, Mont Park, to Depots as required, the Repatriation Mental Hospital, Bundoora, Larundel Mental Hospital, Pleasant View Receiving House, Wood-street, Preston, Janefield Colony, and the Sanatorium, Gresswell.

ANNEX TO CONTRACT No. 1964/49.

Johnson and Riches Pty. Ltd. 469 Heidelberg-road, Fairfield.

Sub-schedule No. 1.

BREADSTUFFS.

Security, £190. £ s. d.

| | | | |
|--------------------------------|-----------|---|------|
| Bread— | | | |
| 1. Fine wheaten, first quality | per cntl. | 1 | 17 3 |
| 2. Raisin, first quality | do. | 4 | 16 0 |

(AGREEMENT.)

Terra Self Service Pty. Ltd., 42 Elizabeth-street, South Yarra.

Sub-schedule No. 2.

GROCERIES.

Order under Metropolitan Districts, Schedule No. 1, Sub-schedule No. 11.

ANNEX TO CONTRACT No. 1964/50.

W. H. Johnson's Jams Pty. Ltd., 42 Meaden-street, South Melbourne.

Sub-schedule No. 3.

JAMS.

Security, £23. £ s. d.

| | | | | |
|--|-------------------|---|-------|---|
| 1. Assorted, in bulk, of approved kinds, in the proportion of half seed and half stone, of the best quality, in 54-lb. tins "Alva" | per lb. | 0 | 0 11½ | ○ |
| | actual net weight | | | |
| 2. Assorted, in 5-lb. tins, in the proportion of half seed and half stone, of the best quality "Alva" | per tin | 0 | 6 5 | |
| 3. Marmalade, 5-lb. tins "Alva" | do. | 0 | 6 0 | |

SCHEDULE No. 3.

PROVISIONS FOR S.S. RIP AND DREDGES.

Sub-schedule No. 1.

BREAD.

Purchase by agreement.

(AGREEMENT.)

Terra Self Service Pty. Ltd., 42 Elizabeth-street, South Yarra.

Sub-schedule No. 2.

GROCERIES.

Order under Metropolitan Districts, Schedule No. 1, Sub-schedule, No. 7.

Sub-schedule No. 3.

VEGETABLES.

| | | | | | |
|--|----|----|----|----|-----------------------|
| 1. Onions | .. | .. | .. | .. | Purchase by agreement |
| 2. Other vegetables, including beetroot, cauliflowers, carrots, cabbages, turnips, parsnips, rhubarb, swedes, and pumpkin, as required | | | | | |

SCHEDULE No. 4.

PROVISIONS—TEACHERS' COLLEGE, HOSTELS, POLICE HOSPITAL, ETC.

(Delivery at Institutions.)

TEACHERS' COLLEGE AND HOSTELS AT GRATTAN-STREET, 93 DRUMMOND-STREET, CARLTON; 470, 481 and 572 ST. KILDA-ROAD, MELBOURNE; 19 QUEENS-ROAD, MELBOURNE; 152 TOORAK-ROAD WEST, SOUTH YARRA; FRANK TATE HOUSE, 373 DANDENONG-ROAD, ARMADALE; "REDCOURT" NO. 6, "LARNOOK," 13 AND NO. 10A ORRONG-ROAD, ARMADALE; 11 PATTERSON-STREET, HAWTHORN; 174 PUNT-ROAD, PRAHRAN; 221 BURWOOD-ROAD, BURWOOD; JOHN CANNON HOUSE, 32 BELMONT-AVENUE, KEW; 17 MOULE-AVENUE, BRIGHTON; AND HASTINGS-ROAD, FRANKSTON; POLICE HOSPITAL, ST. KILDA-ROAD, MELBOURNE; AND MENTAL HYGIENE CLINIC, GLENFERRIE-ROAD, MALVERN.

GROCERIES.

Order under Metropolitan District, Schedule No. 1, Sub-schedule No. 7.

SCHEDULE No. 5.

PROVISIONS—HEATHERTON SANATORIUM, CHELTENHAM.

(Delivery at the Sanatorium.)

ANNEX TO CONTRACT No. 1964/51.

Cheltenham and District Co-op. Society Ltd., 133 Mentone Parade, Mentone.

Sub-schedule No. 1.

BREAD.

| | | |
|--------------------------------------|---------------|---------|
| | Security, £15 | £ s. d. |
| 1. Bread—Fine wheaten, first quality | .. per cntl. | 1 17 6 |

(AGREEMENT.)

Terra Self Service Pty. Ltd., 42 Elizabeth-street, South Yarra.

Sub-schedule No. 2.

GROCERIES.

Order under Metropolitan Districts Schedule No. 1, Sub-schedule No. 7.

ANNEX TO CONTRACT No. 1964/52.

Maidments Somerset Dairy, 6 Cromwell-street, Caulfield.

Sub-schedule No. 3.

MILK.

| | | |
|-------------------------------|----------------|---------|
| | Security, £20. | £ s. d. |
| 1. Milk—Fresh and pure (bulk) | .. per gal. | 0 4 7 |

SCHEDULE No. 6.

PROVISIONS—ARARAT DISTRICT.

(Delivery into Institution.)

ANNEX TO CONTRACT No. 1964/53.

Bates Bros., 52 Vincent-street, Ararat.

Sub-schedule No. 1.

BREADSTUFFS.

| | | |
|--------------------------------------|----------------|---------|
| | Security, £75. | £ s. d. |
| 1. Bread—Fine wheaten, first quality | .. per cntl. | 3 11 6 |
| 2. Flour—First quality | do. | 2 4 3 |

(AGREEMENT.)

McKay MacLeod Pty. Ltd., 63 Mair-street, Ballarat.

Sub-schedule No. 2.

GROCERIES.

| | | |
|------------------------------------|----------------|---------|
| | | £ s. d. |
| 1. Baking Powder | per doz. | 1 17 6 |
| 2. Blue—Washing, 1-oz., "Reckitts" | .. per gross | 2 9 3 |
| 3. Bonox, 1-lb. jars | per doz. | 6 10 0 |
| 4. Bournvita, 14-oz. | do. | 2 18 0 |

Sub-schedule No. 2.

GROCERIES—continued.

| | | |
|--|---------------------|---------|
| | | £ s. d. |
| 5. Candles—Full weight, "Electrine" | .. per lb. | 0 2 8 |
| 6. Cereals (Weeties), 16-oz. | .. per doz. | 1 6 5 |
| 7. " (Crispies), 24-oz. | .. do. | 1 11 0 |
| 8. Cocoa, 14-oz., "Bournville" | .. do. | 2 14 0 |
| 9. Coffee Essence—8-oz. bottles | .. do. | 1 7 4 |
| 10. " " 26-oz. | .. do. | 3 15 0 |
| 11. Curry Powder—Loose | .. per lb. | 0 3 4½ |
| 12. Custard Powder—Loose | .. do. | 0 1 3½ |
| 13. Essences—Cochineal, 16-oz. | .. per btl. | 0 13 7 |
| 14. " Lemon, 4-oz. | .. per doz. | 2 0 0 |
| 15. " Parisian, 26-oz. | .. do. | 2 8 6 |
| 16. " Vanilla, 16-oz. | .. do. | 7 7 0 |
| 17. " Yorkine, 16-oz. | .. do. | 2 9 6 |
| 18. Flour—Corn or Maize, 1-lb. pkts. | .. do. | 1 1 0 |
| 19. " Self Raising, 25-lb. bag | .. bag | 0 19 0 |
| 20. Fruit—Dried—Currants, 3-crown | .. per lb. | 0 2 0 |
| 21. " " Sultanas, { 3-crown | .. do. | 0 2 0½ |
| | { 4-crown | 0 2 1 |
| 22. Dates less than case lots | .. do. | 0 1 7 |
| 23. Golden Syrup, 2-lb. tins | .. per doz. | 1 0 9 |
| 24. " " 70-lb. drums | .. each | 2 18 3 |
| 25. Jelly Crystals "McKays" | .. per doz. | 0 8 9 |
| 26. Macaroni, 1-lb., "Rinoldi" | .. do. | 0 18 8 |
| 27. " 22-lb., "Rinoldi" | .. per ctn. | 0 19 9 |
| 28. Marmite, 1-lb. jars | .. per doz. | 3 17 6 |
| 29. Margarine—Cake or Pastry | .. per lb. | 0 1 9½ |
| 30. Mustard—Loose | .. do. | 0 7 4 |
| 31. Milk—Dried—"Bonlac" (non fat), 3½ lb. | per doz. | 4 2 9 |
| 32. " " "Sunshine" 3-lb. | .. do. | 7 7 0 |
| 33. Pepper—Ground—White | .. per lb. | 0 5 10 |
| 34. " " Black | .. do. | 0 4 11 |
| 35. Salt—Fine | .. per cwt. | 1 3 3 |
| 36. " Table, 1-lb., "Mermaid" | .. per lb. | 0 0 9 |
| 37. Sauce—Tomato, 26-oz. bottle | .. per doz. | 2 0 0 |
| 38. " " 1-gal. jars (jars 3s. 6d.) | per gal. | 0 18 0 |
| Soap— | | |
| 39. { Sand | .. per doz. | 0 7 9 |
| | { "Velvet" Standard | 1 11 4 |
| | { Economy | 2 9 3 |
| | { "Solvol" | 0 14 0 |
| 40. Spaghetti—22-lb., "Rinoldi" | .. per ctn. | 0 19 9 |
| 41. Spices—Mixed—1-oz. | .. per doz. | 0 5 3 |
| 42. " " loose | .. per lb. | 0 4 6 |
| 43. Soda—Bicarbonate | .. do. | 0 0 10½ |
| 44. " Washing | .. per cwt. | 1 15 0 |
| 45. Starch—12-oz., "Silver Star" | .. per doz. | 1 1 0 |
| 46. " Loose, 56-lb. each | .. per lb. | 2 6 9 |
| 47. Tartar, Cream of—Substitute, "Antelope" | .. do. | 0 2 8 |
| 48. Vinegar—malt, 1-gal. jars (jars 3s. 6d.) | per gal. | 0 5 5 |

(AGREEMENT.)

McKay MacLeod Pty. Ltd., 63 Mair-street, Ballarat.

Sub-schedule No. 3.

JAMS.

| | | |
|---|-------------|---------|
| | | £ s. d. |
| 1. Jams—Assorted, in bulk, of approved | per lb. | 0 1 3½ |
| kinds, in the proportion of half seed | actual | |
| and half stone, of the best quality, in | net | |
| tins, as required, "J. MacLeod and | weight | |
| Co. Pty. Ltd."— | 28-lb. Tins | 2 0 2 |

Schedule No. 7.

PROVISIONS—BALLARAT DISTRICT

(Delivery into Institutions.)

ANNEX TO CONTRACT No. 1964/54.

Wm. Dick and Sons, 314 Drummond-street, Ballarat.

Sub-schedule No. 1.

BREADSTUFFS.

| | | |
|--------------------------------------|-----------------|---------|
| | Security, £100. | £ s. d. |
| 1. Bread—Fine wheaten, first quality | .. per cntl. | 1 19 7 |
| 2. Flour—First quality | .. do. | 2 0 0 |

(AGREEMENT.)

McKay MacLeod Pty. Ltd., 63 Mair-street, Ballarat.

Sub-schedule No. 2.

GROCERIES FOR TEACHERS' COLLEGE HOSTELS.

| | | |
|-----------------|------------|---------|
| | | £ s. d. |
| Bacon— | | |
| 1. { Sides | .. per lb. | 0 5 4 |
| { Middle | .. do. | 0 5 9 |
| { Rashers | .. do. | 0 8 0 |
| 2. Barley—Pearl | .. do. | 0 0 8½ |

Sub-schedule No. 2—continued.
GROCERIES—continued

| | £ | s. | d. |
|---|-----------------|----|-------|
| Beans— | | | |
| 3. Haricot | per lb. | 0 | 1 9½ |
| Biscuits— | | | |
| 4. { Trubake | do. | 0 | 2 4 |
| { Sao | do. | 0 | 2 3 |
| { Thin Captain | do. | 0 | 2 1½ |
| { Malt, Marie, Coffee | do. | 0 | 2 1 |
| Blue— | | | |
| 5. 1-oz. knobs, paper, "Reckitts" | per gross knobs | 2 | 9 3 |
| 6. 1-oz. knobs, square | do. | 2 | 9 3 |
| 7. Cake Containers—paper, "Barkers" 120's | per doz. pkts. | 0 | 7 0 |
| Cereals— | | | |
| 8. { "Sunflakes" 24-oz. | per doz. | 1 | 6 9 |
| { "Weeties" 16-oz. | pkts. | 1 | 5 8 |
| { "Cornflakes" large | do. | 1 | 14 0 |
| { "Weetbix" 24-oz. | do. | 1 | 9 9 |
| { "All-bran" | do. | 1 | 1 6 |
| Cheese— | | | |
| 9. { 6-lb. boxes, "Kraft" | per pkt. | 1 | 3 6 |
| { ½-lb. packets | per doz. | 1 | 5 9 |
| 10. Chutney—"Rosella," Fruit | do. | 1 | 3 0 |
| Cocoa— | | | |
| 11. 14-oz. tins, "Bournville" | per doz. | 2 | 13 3 |
| 12. Loose | per lb. | 1 | 5 8 |
| 13. Coconut—Desiccated (loose) | do. | 0 | 2 1½ |
| Coffee and Chicory Essence— | | | |
| 14. 8-oz. bottles, "McKays" | per doz. | 1 | 6 0 |
| 15. 1-gallon jars (Jars 3s. 6d. each) | per jar | 1 | 12 6 |
| 16. Curry Powder—Bulk | per lb. | 0 | 3 4 |
| Custard Powder— | | | |
| 17. Bulk | do. | 0 | 1 3 |
| 18. ½-lb. packets "McKays" | per doz. | 0 | 19 6 |
| 19. Dates—Slabs, 14-lb. "Sair" | per lb. | 0 | 1 8½ |
| Essences, &c.— | | | |
| 20. Almond, 16-oz. | per bot. | 0 | 10 10 |
| 21. Lemon, 16-oz. | do. | 0 | 12 2½ |
| 22. Vanilla, 16-oz. | do. | 0 | 12 2½ |
| 23. Cochineal { 1-oz. | per doz. | 0 | 15 9 |
| { 16-oz. | per bot. | 0 | 13 0 |
| 24. Parisian { 5-oz. bottles | per doz. | 0 | 17 0 |
| { 26-oz. bottles | do. | 2 | 5 6 |
| 25. Yolking, "Yolko" 16-oz. | do. | 2 | 7 6 |
| Extracts, Pastes, &c., or equal— | | | |
| 26. Marmite { 16-oz. jar | do. | 3 | 18 6 |
| { 8-oz. jar | do. | 2 | 3 0 |
| 27. Vegemite { 16-oz. jar | do. | 2 | 8 6 |
| { 8-oz. jar | do. | 2 | 5 6 |
| 28. Peanut Butter, 12-oz. "Eta" | do. | 2 | 5 6 |
| 29. Bonox, 8-oz. | do. | 3 | 6 0 |
| 30. Bloater, "Pecks" | do. | 0 | 18 6 |
| 31. Salmon and Shrimp, "Pecks" | do. | 0 | 18 6 |
| Fish—Tinned— | | | |
| 32. 12-oz. tin "Safcol" | do. | 1 | 3 0 |
| { Fresh, 7-oz. tin | do. | 0 | 19 9 |
| { Fresh, 14-oz. tin | do. | 1 | 10 6 |
| 33. Herrings { In sauce, 7-oz. tin | do. | 0 | 19 9 |
| { In sauce, 14-oz. tin | do. | 1 | 10 6 |
| 34. Sardines, 4-oz. tin, "D.L." | do. | 0 | 15 6 |
| Flour—Corn or Maize— | | | |
| 35. Packets, "Kream" | per lb. | 0 | 1 8½ |
| 36. Bulk | do. | 0 | 1 0 |
| 37. Self-Raising { 25-lb. bags, "McKays" | per bag | 0 | 18 2 |
| { 6-lb. packets, "McKays" | per doz. | 2 | 11 9 |
| Fruits—Dried— | | | |
| 38. Apples | per lb. | * | |
| 39. Apricot, 3-crown | do. | * | |
| 40. Peaches, peeled, 2-crown, choice | do. | * | |
| 41. Pears, 3-crown, standard | do. | * | |
| 42. Prunes (70/80's) | do. | 0 | 2 5½ |
| 43. Currants, 2-crown | do. | 0 | 1 11 |
| 44. Raisins—Seeded, 1-lb. packets | per doz. | 1 | 9 3 |
| 45. Sultanas—4-crown | per lb. | 0 | 2 0½ |
| { 3-crown | do. | 0 | 2 0 |
| Fruits—Tinned— | | | |
| 46. Solid Pack Peaches, 7-lb. tins | per doz. | 5 | 17 0 |
| 47. Solid Pack Apples { 28-oz. tin | do. | 1 | 18 0 |
| { 6½-lb. tin | do. | 5 | 13 0 |
| 48. Solid Pack Apricots, 7-lb. tins | do. | 7 | 0 0 |
| 49. Gelatine—Ground, "Davis", loose | per lb. | 0 | 7 5 |
| 50. Ginger—Ground | do. | 0 | 7 4 |
| 51. Golden Syrup, 2-lb. tins (70-lb. drums, 55s.) † | per doz. | 1 | 0 0 |
| 52. Gravox—1-lb. tins | do. | 1 | 3 0 |
| 53. Herbs—Mixed, packets, 1-oz. | do. | 0 | 4 0 |
| 54. Honey—60-lb. tins | per lb. | 0 | 1 3½ |

* Supplies not available.

† Charge for drums if not returned.

Sub-schedule No. 2—continued.
GROCERIES—continued.

| | £ | s. | d. |
|--|-----------|----|-------|
| Jelly Crystals— | | | |
| 55. 4-oz. packets, "McKays" | per doz. | 0 | 8 7 |
| 56. 7-lb. packets | per lb. | 0 | 2 5½ |
| Junket Tablets— | | | |
| 57. "Merry Widow" flavoured, tubes | per doz. | 0 | 18 6 |
| 58. Lentils | per lb. | 0 | 1 11 |
| Macaroni— | | | |
| 59. 1-lb. packets | per doz. | 0 | 18 2 |
| 60. Bulk { 22-lb. cartons | each | 0 | 19 0 |
| { 56-lb. bags | per lb. | 0 | 0 11½ |
| 61. Margarine { Table | do. | 0 | 3 3 |
| { Cake, pastry | do. | 0 | 1 9 |
| 62. Matches—Safety, packets | per gross | 0 | 19 0 |
| 63. Mayonnaise—½-gallon jars (Jars 3s. 6d. each) | per jar | 0 | 14 0 |
| Meat—Tinned, or equal— | | | |
| 64. Beef Luncheon, square tins, "Piper" | per doz. | 1 | 9 9 |
| 65. Beef Steak Pudding, "Piper" | do. | 1 | 13 9 |
| 66. Camp Pie, 12-oz. tins, "Piper" | do. | 1 | 1 0 |
| 67. Irish Stew, 16-oz. tins, "Piper" | do. | 1 | 6 9 |
| 68. Braised Steak and Vegetables, 16-oz. tins, "Piper" | do. | 1 | 8 6 |
| 69. Sausages and Vegetables, 16-oz. tin, "Piper" | do. | 1 | 8 0 |
| Milk—Dried— | | | |
| 70. { "Sunshine," 12-oz. tins | do. | 2 | 1 6 |
| { "Sunshine," 3-lb. tins | do. | 7 | 5 0 |
| Milk—Condensed— | | | |
| 71. "Nestles" | do. | 1 | 2 9 |
| 72. "Ideal" | do. | 0 | 17 0 |
| 73. Mustard—Loose | per lb. | 0 | 7 3 |
| 74. Nutmeg—Ground | do. | 0 | 15 3 |
| 75. Oatmeal—Flaked, 56-lb. bags | per cwt. | 3 | 8 6 |
| 76. Pastry—Mix, 1-lb. packets, "Maxam" | per doz. | 0 | 13 6 |
| 77. Peel—Mixed, cut, 8-oz. | do. | 0 | 17 6 |
| 78. Pepper—White, ground | per lb. | 0 | 5 9½ |
| 79. Pickles—Assorted, 18-oz. bottles, "McKays" | per doz. | 1 | 9 9 |
| Rice— | | | |
| 80. Dressed | per cwt. | 5 | 5 0 |
| 81. Ground—1-lb. packets | per doz. | 0 | 15 3 |
| 82. Sago (Seed Tapioca) | per lb. | 0 | 0 11 |
| Salt— | | | |
| 83. Fine, bulk, "Imperial" | per cwt. | 0 | 18 0 |
| 84. Table, 1-lb. packets, "Mermaid" | per doz. | 0 | 8 4 |
| Sauce— | | | |
| 85. Tomato, 26-oz. bottles, "McKays" | do. | 1 | 18 0 |
| 86. Tomato, 1-gal. jar (Jars, 3s. 6d. each) | per jar | 0 | 17 0 |
| 87. Worcestershire, 10-oz. bottles, "Sirdar" | per doz. | 0 | 18 0 |
| 88. Worcestershire, 1-gal. jar (Jars, 3s. 6d. each) | per jar | 0 | 13 6 |
| 89. Mustard, 8-oz. bottles | per doz. | 0 | 19 0 |
| Soaps— | | | |
| 90. Borak (powdered) | per lb. | 0 | 0 8½ |
| 91. Extract of "Pental" 56-lb. bags | per cwt. | 4 | 12 6 |
| 92. "Lux," 16-oz. packets | per doz. | 1 | 17 6 |
| 93. "Rinso," Economy packet | do. | 2 | 3 3 |
| 94. "Persil," Economy packet | do. | 2 | 3 3 |
| 95. Sand soap, 12-oz. blocks, "Preservenc" | do. | 0 | 7 3 |
| 96. Toilet soap, 3½-oz. tabs., "Palmolive" | do. | 0 | 8 6 |
| 97. "Velvet"—"Quads," "Standard" | do. | 1 | 10 7 |
| 98. "Velvet"—"Quints," "Economy" | do. | 2 | 8 6 |
| Soda— | | | |
| 99. Bicarbonate | per lb. | 0 | 0 9½ |
| 100. Washing | per cwt. | 1 | 12 0 |
| Soups—Tomato— | | | |
| 101. 16-oz. tins "Kia Ora" | per doz. | 0 | 17 2 |
| 102. No. 10 tins | do. | 5 | 9 9 |
| Spaghetti— | | | |
| 103. 1-lb. packets | do. | 0 | 18 2 |
| 104. Bulk, 22-lb. cartons | each | 0 | 19 0 |
| 105. Spice—Mixed, loose (1-oz. pkts., 5s. 3d. doz.) | per lb. | 0 | 4 6 |
| 106. Starch—Rice, 12-oz. pkts., "Silver Star" | per doz. | 1 | 0 6 |
| Sugar— | | | |
| 107. { Icing Mixture | per cwt. | 5 | 13 0 |
| { Castor | do. | 5 | 12 0 |
| { White (70-lb. bag) | per bag. | 2 | 19 10 |
| 108. Tapioca—Pearl | per lb. | 0 | 1 2½ |
| 109. Tartar—Cream of, "Antelope Phos. Aerator" | do. | 0 | 2 8 |
| 110. Tea, 1st quality, loose | per lb. | ¶ | |
| 111. Treacle—2-lb. tins | per doz. | 0 | 19 6 |

¶ Order Under Melbourne Contract.

Sub-schedule No. 2—continued.

| GROCERIES—continued. | | £ | s. | d. | |
|----------------------|--|----------|----|----|-----|
| Vegetables—Dried— | | | | | |
| 112. | Soup Vegetables { 3-lb. tins, "Dew Crisp" .. | per tin | 1 | 7 | 0 |
| | { 20-lb. .. | do. | 7 | 12 | 0 |
| 113. | Peas, Green, "Dew Crisp", in 21-lb. tins .. | per tin | 10 | 6 | 0 |
| 114. | Peas—Split, yellow .. | per lb. | 0 | 0 | 11½ |
| Vegetables—Tinned— | | | | | |
| 115. | Baked Beans, 16-oz. tins, "Kia Ora" .. | per doz. | 0 | 17 | 6 |
| 116. | Baked Beans, No. 10 can, "Kia Ora" .. | do. | 5 | 10 | 0 |
| 117. | Beans, Green, 16-oz. tins, "Edgells" .. | do. | 1 | 3 | 9 |
| 118. | Beetroot, 30-oz. tins, "V" .. | do. | 1 | 10 | 0 |
| 119. | Peas, 30-oz. tins, "Edgells" .. | do. | 1 | 19 | 6 |
| 120. | Sweetcorn, 16-oz. tins, "Rosella" .. | do. | 1 | 6 | 0 |
| Vermicelli— | | | | | |
| 121. | 1-lb. packets .. | per doz. | 0 | 18 | 2 |
| 122. | Bulk, 22-lb. cartons .. | each | 0 | 19 | 0 |
| 123. | Vinegar—Malt, 1-gal. jars (Jars 3s. 6d.) .. | per jar | 0 | 4 | 7 |

(AGREEMENT.)

McKay MacLeod Pty. Ltd., 63 Main-street, Ballarat.

Sub-schedule No. 2a.

| GROCERIES FOR MENTAL HOSPITAL. | | £ | s. | d. | |
|--------------------------------|--|-----------|----|----|-----|
| 1. | Beans—Haricot .. | per lb. | 0 | 1 | 9½ |
| Biscuits— | | | | | |
| | { Trubake .. | do. | 0 | 2 | 4 |
| | { Thin Captains, .. | do. | 0 | 2 | 14 |
| | { Sao .. | do. | 0 | 2 | 3 |
| | { Malt, Marie, Coffee .. | do. | 0 | 2 | 1 |
| 3. | Blue (Washing), "Reckitts Square" .. | per gross | 2 | 9 | 3 |
| 4. | Candles, "Kitchen's Electric" .. | per lb. | 0 | 2 | 8 |
| 5. | Cereals { Sunflakes 24-oz. .. | per doz. | 1 | 6 | 9 |
| | { Crispies 24-oz. .. | do. | 1 | 10 | 0 |
| 6. | Cocoa, 14-oz. tins, "Bourville" .. | do. | 2 | 13 | 3 |
| 7. | Cornflour { 1-lb. packets, "Kream" .. | do. | 1 | 0 | 9 |
| | { Bulk .. | per lb. | 0 | 1 | 0 |
| 8. | Currants { 2-crown .. | do. | 0 | 1 | 11 |
| | { 3-crown .. | do. | 0 | 1 | 11½ |
| 9. | Curry Powder—Loose .. | do. | 0 | 3 | 4 |
| 10. | Custard Powder—Bulk (sack lots) .. | do. | 0 | 1 | 3 |
| 11. | Dates—Case lots .. | do. | 0 | 1 | 6½ |
| 12. | Essence—16-oz. bottles { Lemon .. | each | 0 | 12 | 2½ |
| | { Vanilla .. | do. | 0 | 12 | 2½ |
| 13. | Flour—Self-raising (150-lb. bags) .. | per bag | 4 | 12 | 0 |
| 14. | Gelatine—1-lb. packets, "Davis" (loose 7s. 5d. per lb.) .. | doz. | 5 | 5 | 0 |
| 15. | Golden Syrup—2-lb. tins (70-lb. tins or drums, 55s.) .. | do. | 1 | 0 | 0 |
| 16. | Herbs—Mixed, 1-oz. packets .. | do. | 0 | 4 | 0 |
| 17. | Jelly Crystals { "McKays Packets" .. | do. | 0 | 8 | 7 |
| | { Bulk, 7-lb. .. | per lb. | 0 | 2 | 5½ |
| 18. | Macaroni—Bulk, 56-lb. bags .. | do. | 0 | 0 | 11½ |
| 19. | Margarine—Cake, Pastry .. | do. | 0 | 1 | 9 |
| 20. | Meats—Tinned— "Tom Piper"— | | | | |
| | { Irish Stew, 16-oz. .. | per doz. | 1 | 6 | 9 |
| | { Beel Steak Pudding, 16-oz. .. | do. | 1 | 13 | 9 |
| | { Beel Lunch, 12-oz. square .. | do. | 1 | 9 | 9 |
| | { Camp Pie, 12-oz. tins .. | do. | 1 | 1 | 3 |
| 21. | Milk F.C. Powdered, "Sunshine" { 3-lb. tins .. | do. | 7 | 5 | 0 |
| | { 12-oz. .. | do. | 2 | 1 | 6 |
| 22. | Mustard—Loose .. | per lb. | 0 | 7 | 3 |
| 23. | Peel—Mixed, loose .. | do. | 0 | 1 | 10 |
| 24. | Pepper—Ground, black .. | do. | 0 | 4 | 10½ |
| 25. | Pickl.s, Mustard—20-oz. bottle .. | per doz. | 1 | 9 | 9 |
| 26. | Raisins—Loose .. | per lb. | 0 | 2 | 14 |
| 27. | Sultanas { 3 crown .. | per lb. | 0 | 2 | 0 |
| | { 4 crown .. | do. | 0 | 2 | 0½ |
| 28. | Salt—Imperial, Fine .. | per cwt. | 0 | 18 | 0 |
| 29. | Sause—Tomato, 26-oz. bottles (gal. jars 17s.) .. | per doz. | 1 | 18 | 0 |
| 30. | Sauce—Worcestershire, 1-gal. jars .. | each | 0 | 13 | 6 |
| 31. | Soda—Bicarbonate .. | per lb. | 0 | 0 | 9½ |
| 32. | Soda—Washing .. | per cwt. | 1 | 12 | 0 |
| 33. | Soap—Powder, "Pental", 12-oz. .. | per doz. | 0 | 11 | 0 |
| 34. | Spagheiti—Bulk, 22-lb. cartons { No. 1 .. | each | 0 | 19 | 0 |
| | { No. 2 .. | do. | 0 | 19 | 0 |
| 35. | Spice, Mixed, 1-oz. packets .. | per doz. | 0 | 5 | 3 |
| 36. | Starch, "Silver Star", 12-oz. .. | do. | 1 | 0 | 6 |
| Sugar— | | | | | |
| 37. | { Icing .. | per cwt. | 5 | 13 | 0 |
| | { Castor .. | do. | 5 | 12 | 0 |
| 38. | Tapioca—Seed .. | per lb. | 0 | 0 | 11½ |
| 39. | Tartar, Cream of—Substitute, "Antelope" .. | do. | 0 | 2 | 8 |
| 40. | Tomato Soup—No. 10 cans .. | per doz. | 5 | 9 | 9 |
| 41. | Vinegar—Malt (1 gal. jars) .. | per gal. | 0 | 4 | 7 |

* Order under Melbourne Contract. ○ Jars, 3s. 6d. each.

○ Apricot, £4 14s. 0d.; Blackcurrant, £6 19s. 0d.; Blackberry, £6 6s. 0d.; Melon and Lemon, £4 3s. 0d.; Loganberry, £6 3s. 8d.; Peach, £4 10s. 3d.; Quince, £4 4s. 6d.; Raspberry, £6 12s. 6d.; Dark Plum, £4 7s. 6d.; Plum and Raspberry, £4 17s. 6d.

(AGREEMENT.)

McKay MacLeod Pty. Ltd., 63 Mair-street, Ballarat.

Sub-schedule No. 3.

| JAMS FOR TEACHERS' COLLEGE HOSTELS AND MENTAL HOSPITALS. | | £ | s. | d. | |
|--|---|-------------------|----|----|---|
| Jams—Assorted— | | | | | |
| 1. | In bulk, of approved kinds, in proportion of half seed and half stone, of the best quality, in tins, as required .. | per lb. | 0 | 1 | 3 |
| | | actual net weight | | | |
| | | 28lb. tins | 1 | 19 | 2 |
| 2. | 24-oz. tins, in the proportion of half seed and half stone, of the best quality .. | per doz. | 1 | 10 | 6 |
| 3. | 5-lb. tins in the proportion of half seed and half stone, of the best quality Plum and Raspberry, Apricot, Plum .. | do. | 4 | 14 | 6 |

ANNEX TO CONTRACT No. 1964/55.

The Ballarat Modern Dairy Pty. Ltd., 819 Sturt-street, Ballarat.

Sub-schedule No. 6.

MILK.

For delivery to Mental Hospital and Teachers' College Hostels as under:—

| Gillies-street, Ballarat. | | £ | s. | d. | |
|--|-------------------------------------|---------------|----|----|-----|
| Beaufort House, Beaufort-avenue, Ballarat. | | | | | |
| 1415 Sturt-street, Ballarat. | | | | | |
| 130 Victoria-street, Ballarat. | | | | | |
| 126 Webster-street, Ballarat. | | | | | |
| | Security, £30 .. | | | | |
| 1. | Milk—Fresh and pure, pasteurized .. | Bulk per gal. | 0 | 4 | 10½ |
| | | Bottled do. | 0 | 5 | 4½ |

SCHEDULE No. 8.

PROVISIONS—BEECHWORTH DISTRICT.

ANNEX TO CONTRACT No. 1964/56.

P. A. Taylor Model Bakery, Camp-street, Beechworth.

(Delivery into Institutions.)

Sub-schedule No. 1.

BREADSTUFFS.

| Security, £100. | | £ | s. | d. | |
|-----------------|--------------------------------------|-----------|----|----|----|
| 1. | Bread—Fine wheaten, first quality .. | per cntl. | 3 | 12 | 11 |
| 2. | Flour—First quality .. | do. | 2 | 3 | 9 |

(AGREEMENT.)

Terra Self Service Pty. Ltd., 42 Elizabeth-street, South Yarra.

Sub-schedule No. 2.

Order under Metropolitan Districts, Schedule No. 1 Sub-schedule No. 7.

ANNEX TO CONTRACT No. 1964/57.

W. H. Johnson's Jams Pty. Ltd., 42 Meaden-street, South Melbourne.

Sub-schedule No. 3.

Order under Melbourne District—Schedule No. 1 Sub-schedule No. 9.

ANNEX TO CONTRACT No. 1964/58.

Beechworth Dairy, Ford-street, Beechworth.

Sub-schedule No. 4.

MILK.

| Security, £12. | | £ | s. | d. | |
|----------------|------------------------|----------|----|----|---|
| 1. | Milk—Fresh and pure .. | per gal. | 0 | 5 | 3 |

SCHEDULE No. 9.

PROVISIONS—BENDIGO DISTRICT.

(For Delivery into Institutions.)

ANNEX TO CONTRACT No. 1964/59.

C. H. Jeffrey Pty. Ltd., 172 Wattle-street, Bendigo.

Sub-schedule No. 1.

BREAD.

| For Gaol and Sandhurst Boys' Centre and Teachers Hostel "Lancewood," McLaren-street, Bendigo. | | £ | s. | d. | |
|---|--------------------------------------|-----------|----|----|----|
| Security, £7. | | | | | |
| 1. | Bread—Fine wheaten, first quality .. | per cntl. | 2 | 5 | 10 |
| 2. | Flour—First quality .. | do. | 2 | 1 | 0 |

ANNEX TO CONTRACT No. 1964/60.

C. H. Jeffrey Pty. Ltd., 172 Wattle-street, Bendigo.

Sub-schedule No. 2.

BREAD.

For Teachers' College Hostel—
Osborne-street, Pleasant Vale, Bendigo.

Security, £4. £ s. d.

| | | | |
|---|---|---|----|
| 1. Bread—Fine wheaten, first quality .. per cntl. | 2 | 5 | 10 |
| 2. Flour—First quality do. | 2 | 1 | 0 |

ANNEX TO CONTRACT No. 1964/61.

Roy Raggatt Pty. Ltd., 132 Lily-street, Bendigo.

Sub-schedule No. 3.

BREAD.

For Teachers' College Hostel—"Comersdale," Panton-street,
Golden Square, Bendigo.

Security, £3. £ s. d.

| | | | |
|---|---|---|---|
| 1. Bread—Fine wheaten, first quality .. per cntl. | 3 | 8 | 9 |
| 2. Flour—First quality do. | 2 | 0 | 2 |

ANNEX TO CONTRACT No. 1964/62.

Sandhurst Dairies Ltd., P.O. Box 233, Bendigo.

Sub-schedule No. 4.

MILK.

For Sandhurst Boys' Centre.

Security, £5. £ s. d.

| | | | |
|---|---|---|-----|
| 1. Milk—Fresh and pure—Bulk .. per gal. | 0 | 4 | 11½ |
| Bottled do. | 0 | 5 | 4½ |

ANNEX TO CONTRACT No. 1964/63.

Sandhurst Dairies Ltd., P.O. Box 233, Bendigo.

Sub-schedule No. 5.

MILK.

For Teachers' College Hostels "Comersdale," Panton-street,
Golden Square; "Lancewood," McLaren-street, Bendigo,
and Osborne-street, Pleasant Vale.

Security, £5. £ s. d.

| | | | |
|---|---|---|---|
| 1. Milk—Fresh and pure—Bulk .. per gal. | 0 | 5 | 3 |
| Bottled do. | 0 | 5 | 3 |

(AGREEMENT.)

Wholesalers Limited, 200 Hargreaves-street, Bendigo. §

Sub-schedule No. 6.

GROCERIES.

| | £ | s. | d. |
|--|---|----|----|
| 1. Barley—Pearl, loose per lb. | 0 | 0 | 7 |
| Beans— | | | |
| 2. Butter per lb. | 0 | 4 | 7½ |
| 3. Haricot do. | 0 | 1 | 6 |
| 4. Lima do. | 0 | 2 | 3 |
| Biscuits and Cake—"Phoenix" | | | |
| 5. Dry do. | † | | |
| 6. Coffee, Malt, Arrowroot do. | † | | |
| 7. Assorted do. | † | | |
| Blue— | | | |
| 8. 1-oz. knobs, "Reckitts" per gross | 2 | 16 | 0 |
| 9. Borax per lb. | 0 | 0 | 9 |
| 10. Cake Containers—Paper, "Barkers" 150's .. per gross | 4 | 16 | 0 |
| Cereals— | | | |
| 11. { "Weeties," 16-oz. per doz. | 1 | 5 | 9 |
| { "Kornies," packets do. | 1 | 7 | 3 |
| 12. "Cornflakes," packets do. | 1 | 13 | 0 |
| 13. "Weetbix," "Granose," "Vitabrits," packets do. | 1 | 9 | 6 |
| 14. Wheat Germ do. | * | | |
| 15. "All-bran," packets per doz. | 1 | 1 | 6 |
| 16. Cheese—5-lb. boxes, "Kraft" Matured per box | 0 | 19 | 3 |
| "per lb. per lb. | 0 | 3 | 5 |
| 17. Chutney—"A.J.C." per doz. | 1 | 3 | 6 |
| 18. Cloves per lb. | 0 | 8 | 7 |
| 19. Coconut—Desiccated, Ceylon do. | 0 | 1 | 10 |

* Supplies not available.

† List prices, wholesale rates, less 10 per cent.

§ Rates except for sugar—white, are on "Pay and Pick-up Basis" ex warehouse, but for delivery and credit, plus 5 per cent. surcharge. Invoices paid on delivery subject to 2½ per cent. discount and for monthly settlement by 15th of the month following delivery, prices net. Sugar prices net.

†† In 1½-lb. tins—Apricot, £1 8s. 10d.; Apple Jelly, £1 8s. 6d.; Blackberry, £1 16s. 0d.; Blackcurrant, £2 3s. 6d.; Gooseberry £1 14s. 0d.; Loganberry, £1 18s. 6d.; Melon and Lemon, £1 6s. 0d.; Melon and Pineapple, £1 7s. 0d.; Dark Plum, £1 7s. 0d.; Marmalade, £1 7s. 0d.; Peach, £1 8s. 6d.; Plum and Raspberry, £1 9s. 10d.; Quince, £1 6s. 6d.; and Raspberry, £2 0s. 0d.

In 5-lb. tins—Apricot, £4 14s. 0d.; Melon and Lemon, £4 3s. 0d.; Melon and Pineapple, £4 7s. 0d.; Dark Plum, £4 7s. 6d.; Marmalade, £4 7s. 0d.; Peach, £4 13s. 6d.; Plum and Raspberry, £4 17s. 6d.; Quince, £4 4s. 6d.; and Raspberry, £6 12s. 6d.

In 28-lb. tins—Blackberry, 1s. 10½d. per lb.

In 56-lb. tins—Apricot, 1s. 3½d. per lb.; and Plum and Raspberry, 1s. 3d. per lb.

Sub-schedule No. 6.—continued.

GROCERIES—continued.

£ s. d.

| | | | |
|--|----|----|-----|
| Cocoa— | | | |
| 20. { 14-oz. tins, "Bournville" .. per doz. | 2 | 14 | 6 |
| { Loose per lb. | 0 | 4 | 6 |
| Coffee Essence— | | | |
| 21. 8-oz. bottles, "Excelsior" .. per doz. | 1 | 7 | 0 |
| 22. 1-gal. jars (Jars 3s.) .. per jar | 1 | 15 | 0 |
| 23. Curry Powder—"Indian"—4-oz. pkts. per doz. | 1 | 6 | 4 |
| Custard Powder— | | | |
| 24. Bulk, 7-lb. parcels, "Beacon" .. per lb. | 0 | 1 | 0 |
| 25. 1-lb. packets, "Parsons" .. per doz. | 1 | 0 | 6 |
| 26. Dates—Loose .. per lb. | 0 | 1 | 6½ |
| Essences, &c.— | | | |
| 27. Almond { 1-oz. per doz. | 0 | 10 | 3 |
| { 8-oz. do. | 2 | 1 | 9 |
| { 16-oz. bot. | 0 | 7 | 6 |
| 28. Lemon { 1-oz. doz. | 0 | 12 | 0 |
| { 8-oz. do. | 2 | 1 | 9 |
| { 16-oz. bot. | 0 | 7 | 6 |
| 29. Vanilla { 8-oz. doz. | 3 | 8 | 6 |
| { 16-oz. bot. | 0 | 11 | 9 |
| 30. Cochineal { 1-oz. doz. | 0 | 10 | 3 |
| { 16-oz. bot. | 0 | 7 | 6 |
| 31. Parisian, 26-oz. "Dicksons" .. doz. | 2 | 11 | 0 |
| 32. Yolking { 1-oz. "Rego" do. | 0 | 7 | 6 |
| { 16-oz. do. | 2 | 2 | 0 |
| Extracts and Pastes— | | | |
| 33. "Marmite," 4-oz. jar .. per doz. | 1 | 4 | 6 |
| "do." 8-oz. jar do. | 2 | 0 | 0 |
| 34. "Vegemite" { 16-oz. jar do. | 4 | 5 | 0 |
| { 7-lb. tin each | 2 | 3 | 2 |
| 35. Peanut Butter { 6-oz. jar .. per doz. | 1 | 8 | 0 |
| { 40-oz. jar each | 0 | 11 | 0 |
| 36. "Bonox" { 4-oz. jar .. per doz. | 1 | 12 | 9 |
| { 8-oz. jar do. | 3 | 1 | 6 |
| { 1-lb. tin do. | 5 | 15 | 0 |
| 37. Bloater, 2½-oz. tins, "Pecks" .. per doz. | 0 | 17 | 4 |
| 38. Salmon and Shrimp, 2½-oz. tin .. do. | 0 | 17 | 4 |
| Fish—Tinned— | | | |
| 39. "Flair," 12-oz. do. | 1 | 6 | 0 |
| 40. Salmon, 16-oz., "Kingsound" .. do. | 2 | 3 | 0 |
| 41. Pilchard, 8-oz. do. | 0 | 17 | 0 |
| 42. Herrings, 14-oz. { Fresh do. | 1 | 8 | 0 |
| { In sauce do. | 1 | 8 | 0 |
| 43. Sardines { 4-oz., "Commodore" .. do. | 0 | 12 | 9 |
| { 8-oz. "Rego" do. | 1 | 6 | 8 |
| Flour— | | | |
| 44. Corn or Maize { 1-lb. packets, .. do. | 0 | 19 | 8 |
| { "Kream" per lb. | 0 | 0 | 11 |
| Flour—Self-raising— | | | |
| 45. { 25-lb., "Mammy" each | 0 | 18 | 6 |
| { 150-lb., "Mammy" do. | 4 | 3 | 0 |
| Fruits—Dried— | | | |
| 46. Apples per lb. | 0 | 3 | 5 |
| 47. Apricots do. | 0 | 4 | 0 |
| 48. Peaches do. | * | | |
| 49. Pears do. | * | | |
| 50. Prunes, 60/70's do. | 0 | 2 | 6 |
| 51. Currants do. | 0 | 1 | 10½ |
| 52. Raisins, Seeded { 16-oz. pkts., "Rego" per doz. | 1 | 8 | 9 |
| { Loose per lb. | 0 | 2 | 1 |
| 53. Sultanas do. | 0 | 2 | 0 |
| 54. Apricots, Halves, 30-oz. tins, "S.P.C." per doz. | 1 | 9 | 0 |
| 55. Peaches, 30-oz. tins, "S.P.C." .. do. | 1 | 9 | 0 |
| 56. Pears, 30-oz. tins, "S.P.C." .. do. | 1 | 9 | 0 |
| 57. Mixed Fruits, 16-oz. tins "Fruit Salad" .. do. | 1 | 4 | 10 |
| 58. Solid Pack Apples { 30-oz. tins .. do. | 1 | 19 | 0 |
| { No. 10 cans each | 0 | 8 | 8 |
| 59. Solid Pack Apricots, No. 10 cans .. do. | 0 | 10 | 5 |
| 60. Gelatine—Ground, 16-oz. pkts., "Davis" per doz. | 4 | 17 | 9 |
| 61. Ginger—Ground per lb. | 0 | 5 | 10 |
| 62. Golden Syrup—2-lb. tins .. per doz. | 1 | 0 | 0 |
| 63. Gravoxy—1-lb. tins do. | 1 | 2 | 3 |
| 64. Herbs—Mixed, packets do. | 0 | 3 | 10 |
| 65. Honey—60-lb. tins (Return of 2s. 6d. per tin) | 4 | 2 | 0 |
| 66. Jams—"Rego" and "Monbulk," tins per doz. | †† | | |

Sub-schedule No. 6—continued.

| GROCERIES—continued. | | £ | s. | d. |
|----------------------|---|---|----|----|
| Jelly Crystals— | | | | |
| 67. | { 4-oz. packets, "Rego" .. per gross | 3 | 15 | 0 |
| | { 7-lb. packets per lb. | 0 | 2 | 3 |
| Junket Tablets— | | | | |
| 68. | { "Merry Widow," flavoured .. per doz. | 0 | 19 | 0 |
| | { "Hansens," plain tubes | 1 | 2 | 0 |
| 69. | Lentils per lb. | 0 | 2 | 0 |
| Macaroni— | | | | |
| 70. | 1-lb. packets, "Rinoldi" per doz. | 0 | 18 | 6 |
| 71. | Bulk, 22-lb. boxes per box | 1 | 0 | 0 |
| 72. | Margarine—Cake, pastry (net), "E.O.I." (Freight case, 3s. 6d.) .. per lb. | 0 | 1 | 9 |
| 73. | Matches—Safety, packets per gross | 0 | 19 | 0 |
| 74. | Mayonnaise, 10-oz. jars, "Kraft" .. per doz. | 1 | 10 | 0 |
| Meat—Tinned— | | | | |
| 75. | Beef Luncheon { 12-oz., "Tom Piper" do. | 1 | 9 | 0 |
| | { 6-lb., "Swifts" each | 1 | 0 | 6 |
| 76. | Beef Steak Pudding, 16-oz., "Tom Piper" .. per doz. | 1 | 14 | 6 |
| 77. | Camp Pie { 12-oz., "Imperial" .. do. | 0 | 19 | 9 |
| | { 16-oz., "Imperial" do. | 1 | 4 | 0 |
| 78. | Irish Stew, "Tom Piper" do. | 1 | 7 | 6 |
| 79. | Lamb and Green Peas, 16-oz. "Champion" do. | 1 | 7 | 6 |
| 80. | Sausages and Vegetables, 16-oz. .. do. | 1 | 7 | 6 |
| Milk— | | | | |
| 81. | Dried { 12-oz. tin, "Sunshine" .. do. | 2 | 0 | 10 |
| | { 3-lb. tins, "Sunshine" do. | 7 | 4 | 0 |
| 82. | Condensed, cases of 4-doz., "Nestles" .. per case | 4 | 10 | 0 |
| 83. | "Ideal" per doz. | 0 | 17 | 0 |
| 84. | Mustard, 1-lb. tin per lb. | 0 | 6 | 10 |
| 85. | Nutmeg—Ground do. | 0 | 8 | 6 |
| 86. | Oatmeal—Flaked { 7-lb. bags .. per doz. | 4 | 13 | 0 |
| | { Loose per cwt. | 3 | 13 | 0 |
| 87. | Pastry—Mix, 1-lb. packets per doz. | 0 | 14 | 4 |
| 88. | Peanut Butter, 40-oz. each | 0 | 11 | 0 |
| Peel—Mixed, Cut— | | | | |
| 89. | { 8-oz. packets, "Piper" per doz. | 0 | 16 | 3 |
| | { 7-lb. "Seppelts" per lb. | 0 | 2 | 3 |
| 90. | Pepper—White, Ground, loose do. | 0 | 5 | 3 |
| 91. | "2-oz. packets, "Rego" per doz. | 0 | 11 | 0 |
| 92. | Pickles—Assorted, 20-oz. bottles .. do. | 1 | 9 | 0 |
| Rice— | | | | |
| 93. | Dressed, 56-lb. bags per bag | 2 | 10 | 0 |
| 94. | Ground, 1-lb. packets "McKenzies" .. per doz. | 0 | 17 | 0 |
| 95. | Sago per lb. | 0 | 1 | 1 |
| Salt— | | | | |
| 96. | Fine, bulk, "Imperial" per cwt. | 0 | 19 | 6 |
| 97. | Table { 1-lb. packets, "Mermaid" .. per doz. | 0 | 8 | 3 |
| | { 1-lb. packets, "Saxa" do. | 0 | 9 | 3 |
| Sauces— | | | | |
| 98. | Tomato, 26-oz. bot. { "White Crow" .. per doz. | 2 | 3 | 0 |
| | { "Rosella" do. | 2 | 4 | 0 |
| 99. | Tomato, 1-gal. tins, "White Crow" .. per tin | 0 | 10 | 4 |
| Worcestershire— | | | | |
| 100. | { 10-oz. bottles, "Holbrooks" .. per doz. | 1 | 8 | 6 |
| | { 10-oz. bottles, "Rego" do. | 0 | 18 | 0 |
| | { 26-oz. bottles, "Rego" do. | 1 | 17 | 0 |
| 101. | Mustard, 8-oz. bottles, "Holbrooks" .. do. | 1 | 4 | 6 |
| Soaps— | | | | |
| 102. | Extract of, "Nu-Wash," 56-lb. bags .. per bag | 2 | 8 | 6 |
| 103. | "Rinsol" Economy packet per doz. | 2 | 8 | 0 |
| 104. | "Persil" Giant packet do. | 2 | 8 | 0 |
| 105. | "Lux" Flakes, packets, Family Size .. do. | 3 | 0 | 6 |
| 106. | Sand Soap, 6-oz. blocks, "Preservene" .. do. | 0 | 8 | 6 |
| 107. | Toilet Soap, 3½-oz. tablets, "Palm-olive" .. do. | 0 | 9 | 6 |
| 108. | Toilet Soap, 3½-oz. tablets, "Lux" .. do. | 0 | 9 | 6 |
| 109. | "Velvet" or equal { Quads, 3-doz. ctn. per ctn. | 4 | 17 | 6 |
| | { Quads, 2½-doz. do. | 5 | 14 | 9 |
| Soda— | | | | |
| 110. | Bicarbonate per lb. | 0 | 0 | 8 |
| 111. | Washing do. | 0 | 0 | 5 |
| Soups— | | | | |
| 112. | Pea, No. 10 tins each | 0 | 9 | 2 |
| 113. | Tomato, 16-oz. tins { "Kia Ora" .. per doz. | 0 | 16 | 6 |
| | { "Rego" do. | 1 | 0 | 0 |
| 114. | Tomato, 6-lb. tins, "Kia Ora" each | 0 | 8 | 9 |

Sub-schedule No. 6—continued.

| GROCERIES—continued. | | £ | s. | d. |
|----------------------|---|---|----|----|
| Spaghetti— | | | | |
| 115. | 1-lb. packets, "Rinoldi" per doz. | 0 | 18 | 6 |
| 116. | Bulk, 22-lb. boxes each | 1 | 0 | 0 |
| Spice—Mixed— | | | | |
| 117. | { 1-oz. packets per doz. | 0 | 5 | 3 |
| | { Loose per lb. | 0 | 3 | 9 |
| 118. | Starch—Rice, "Silver Star," packets, 14-oz. .. per doz. | 1 | 2 | 8 |
| Sugar— | | | | |
| 119. | Icing mixture per lb. | 0 | 1 | 0 |
| 120. | Castor do. | 0 | 1 | 0 |
| 121. | Raw do. | 0 | 0 | 9½ |
| 122. | White, 70-lb. bag per bag | 2 | 19 | 4 |
| Tapioca— | | | | |
| 123. | { Seed per lb. | 0 | 1 | 1 |
| | { Pearl do. | 0 | 1 | 1 |
| 124. | Tartar—Cream of do. | 0 | 3 | 3 |
| 125. | Treacle, 2-lb. tins per doz. | 0 | 19 | 6 |
| 126. | Peas, Split (yellow) { 56-lb. bags .. per cwt. | 3 | 16 | 0 |
| | { Broken bags per lb. | 0 | 0 | 11 |
| Vegetables—Tinned— | | | | |
| 127. | Baked Beans, 16-oz., "Kia Ora" .. per doz. | 0 | 17 | 0 |
| 128. | Baked Beans, No. 10 cans, "Kia Ora" .. each | 0 | 8 | 6 |
| 129. | Beans, green, 30-oz., "Harvest" .. per doz. | 1 | 15 | 6 |
| 130. | Beetroot, 30-oz. do. | 1 | 14 | 6 |
| 131. | Peas, 30-oz. { "Harvest" .. do. | 1 | 15 | 6 |
| | { "Biddy's" do. | 1 | 6 | 6 |
| 132. | Sweetcorn, 16-oz., "Rosella" do. | 1 | 4 | 0 |
| 133. | Tomatoes, 30-oz., do. | 1 | 8 | 6 |
| Vermicelli— | | | | |
| 134. | 1-lb. packets, "Rinoldi" do. | 0 | 18 | 6 |
| 135. | Bulk, 22-lb. boxes each | 1 | 0 | 0 |
| 136. | Vinegar—Malt, 1-gal. jars (jars 6s.) .. per gal. | 0 | 5 | 3 |

SCHEDULE No. 10.

PROVISIONS—CASTLEMAINE GAOL.

(Delivery at the Gaol.)

ANNEX TO CONTRACT No. 1964/64.

Suzannes Breads Pty. Ltd., 318 Barker-street, Castlemaine.

Sub-schedule No. 1.

BREADSTUFFS.

| | Security, £5. | £ | s. | d. |
|---|---------------|---|----|----|
| 1. Bread—Fine wheaten, first quality .. | per cntl. | 2 | 16 | 3 |

SCHEDULE No. 11.

PROVISIONS—SCHOOL OF FORESTRY, CRESWICK.

(Delivery at the School.)

ANNEX TO CONTRACT No. 1964/65.

Creswick Bakery, Albert-street, Creswick.

Sub-schedule No. 1.

BREADSTUFFS.

| | Security, £3. | £ | s. | d. |
|---|---------------|---|----|----|
| 1. Bread—Fine wheaten, first quality .. | per cntl. | 4 | 3 | 4 |
| 2. Flour—First quality do. | | * | | |

* Current market price.

(AGREEMENT.)

J. Tait and Son, Albert-street, Creswick.

Sub-schedule No. 2.

GROCERIES.

| | £ | s. | d. |
|--|---|----|----|
| 1. Bacon per lb. | 0 | 6 | 6 |
| 2. Barley—Pearl do. | 0 | 0 | 7½ |
| 3. Blue—Washing per doz. | 0 | 3 | 0 |
| 4. Biscuits—Dry per lb. | 0 | 2 | 9 |
| 5. Sweet do. | 0 | 2 | 6 |
| 6. Butter, First-grade creamery, to score not less than 91 points, Government grade, Commerce Regulations standard do. | 0 | 4 | 7½ |

Sub-schedule No. 2—continued.

GROCERIES—continued.

| | | £ | s. | d. |
|--|----------|---|----|-------|
| 7. Cereals—"Weeties", 16-oz. | per doz. | 1 | 8 | 0 |
| 8. Cheese—Kraft, 5-lb. | per box | 0 | 19 | 6 |
| 9. "Matured | per lb. | 0 | 3 | 9 |
| 10. Coffee Essence, 8-oz. | per doz. | 1 | 6 | 0 |
| 11. "Beans, roasted | per lb. | 0 | 1 | 0 |
| 12. Cocoa, 14-oz., "Bournville" | per doz. | 2 | 18 | 0 |
| 13. Coconut—Desiccated | per lb. | 0 | 2 | 0 |
| 14. Chutney—Fruit | per doz. | 1 | 4 | 0 |
| 15. Custard Powder | per lb. | 0 | 1 | 8 |
| 16. Eggs—New laid | per doz. | 0 | 4 | 3 |
| 17. Fish—Tinned—Herrings in Sauce, 14-oz. | do. | 1 | 12 | 0 |
| 18. "Sardines, 4-oz. | do. | 0 | 12 | 0 |
| 19. Flour—Corn or Maize, 1-lb. | do. | 0 | 18 | 0 |
| 20. "Self-raising, 25-lb. bag | per bag | 0 | 19 | 6 |
| Fruit—Preserved, 30-oz.— | | | | |
| 21. Peaches, sliced | per doz. | 1 | 8 | 0 |
| 22. Pears, halves | do. | 1 | 8 | 0 |
| 23. Apricots, halves | do. | 1 | 8 | 0 |
| 24. Cherries, Glace, 4-oz. packet | per lb. | 0 | 7 | 0 |
| 25. Fruit—Dried—Sultanas, 3-crown | do. | 0 | 2 | 0 1/2 |
| 26. Gelatine—Ground, 4-oz. | per doz. | 1 | 10 | 0 |
| 27. Ginger—Ground | per lb. | 0 | 7 | 6 |
| 28. Golden Syrup, 2-lb. tin | per doz. | 1 | 0 | 6 |
| 29. Honey, 60-lb. tin | per tin | 4 | 5 | 0 |
| 30. Jams, assorted, 5-lb. tins in the proportion of half seed and half stone | do. | 0 | 8 | 6 |
| 31. Jelly Crystals, 4-oz. packets | per doz. | 0 | 7 | 9 |
| 32. Milk—Powdered, 3-lb. tins | per tin | 0 | 12 | 3 |
| 33. "Condensed, "Nestles" | per doz. | 1 | 1 | 0 |
| 34. Mustard | per lb. | 0 | 6 | 6 |
| 35. Oatmeal—Flaked | do. | 0 | 0 | 8 |
| 36. Pepper—Ground, white | do. | 0 | 6 | 9 |
| 37. Potatoes—Dry and free from dirt | per cwt. | 8 | | |
| 38. Peanut Butter, 12-oz. jars | per doz. | 2 | 5 | 0 |
| 39. Salt—Fine | per lb. | 0 | 0 | 2 1/2 |
| 40. "Table, 1-lb. packets, "Mermaid" | do. | 0 | 0 | 9 1/2 |
| 41. Curry Powder | do. | 0 | 3 | 9 |
| 42. Soap—Sand, Carbolec, 12-oz. | per doz. | 0 | 8 | 6 |
| 43. "Velvet, yellow, dry and hard | do. | 1 | 11 | 6 |
| 44. "Toilet, 12-oz. cakes | do. | 0 | 13 | 3 |
| 45. "Rinso, large packets | do. | 2 | 5 | 0 |
| 46. Sauce—Tomato, 1-gal. jars | per gal. | 0 | 17 | 6 |
| 47. "Worcestershire, 26-oz. | per doz. | 1 | 16 | 0 |
| 48. Soda—Bicarbonate | per lb. | 0 | 0 | 8 1/2 |
| 49. "Washing | do. | 0 | 0 | 5 |
| 50. Starch—Rice, loose | do. | 0 | 1 | 5 1/2 |
| 51. Sugar—Castor | do. | 0 | 1 | 0 |
| 52. "White, 70-lb. bag | per bag | 3 | 1 | 0 |
| 53. Tartar, Cream of substitute | per lb. | 0 | 2 | 9 |
| 54. Tea—First grade | do. | | | 0 |
| 55. Vegemite, 1-lb. jars | per doz. | 4 | 7 | 0 |
| 56. Vegetables—Tinned—Baked Beans, 16-oz. | do. | 0 | 19 | 0 |
| 57. "Sweet Corn, 16-oz. | do. | 1 | 10 | 0 |
| 58. Vinegar, Malt | per pint | 0 | 0 | 6 |
| 59. Rice, polished | per lb. | 0 | 1 | 0 |

ANNEX TO CONTRACT No. 1964/66.

E. L. and C. N. Wrigley, Albert-street, Creswick.

Sub-schedule No. 3.

MILK.

Security, £3.

| | | £ | s. | d. |
|------------------------|---------|---|----|----|
| 1. Milk—Fresh and pure | per qt. | 0 | 1 | 4 |

SCHEDULE No. 12.

PROVISIONS—AGRICULTURAL COLLEGE, DOOKIE.

(Delivery at the College.)

ANNEX TO CONTRACT No. 1964/67.

K. H. K. and H. L. Hutchins, 130 Main-street, Mooroopna.

Sub-schedule No. 1.

BREADSTUFFS.

Security, £15.

| | | £ | s. | d. |
|--------------------------------------|-----------|---|----|-------|
| 1. Bread—Fine wheaten, first quality | per cntl. | 3 | 17 | 1 |
| 2. Flour—First quality | do. | 2 | 0 | 3 1/2 |

§ Cost price plus 10 per cent.

○ Order under Melbourne Contract.

¶ Order under agreement.

†† The rates to be paid for all items under these Sub-schedules shall be the wholesale price ruling on the day of delivery; where rates are shown, they are for the wholesale rates at date of publication of this Gazette. * Supplies not available

(AGREEMENT.)

Cohn's (Shepparton) Pty. Ltd., Benalla-road, Shepparton.

Sub-schedule No. 2.

GROCERIES. ††

(Delivery "F.O.R." Shepparton.)

| | | £ | s. | d. |
|---|------------|---|----|--------|
| 1. Baking Powder, 1-lb. tins | per doz. | 1 | 19 | 0 |
| 2. Blue—Washing, "Reckitts," paper | per gross | 2 | 10 | 10 |
| 3. Candles—full weight, "Electrine" | per lb. | 0 | 2 | 8 1/2 |
| 4. Cereals, 24-oz. pkts. | per doz. | 1 | 11 | 0 |
| 5. Chutney, 10-oz. "Rosella" | do. | 1 | 4 | 8 |
| 6. Cocoa—14-oz. "Bournville" | do. | 2 | 13 | 10 |
| 7. Coconut—desiccated | per lb. | 0 | 1 | 11 |
| 8. Coffee Essence—1-gal. jars (Jars 3s.) | per gal. | 1 | 13 | 7 |
| 9. Cordial—Lemon, &c., 1-gal. jars (Jars 3s.) | do. | 0 | 16 | 6 |
| 10. Curry Powder—Loose | per lb. | 0 | 3 | 9 |
| 11. Custard Powder—1-lb., "Parsons" | per doz. | 1 | 2 | 3 |
| 12. Essence—Cochineal, 8-oz. | do. | 2 | 11 | 0 |
| 13. "Lemon, 8-oz. | do. | 2 | 11 | 0 |
| 14. "Vanilla, 8-oz. | do. | 3 | 1 | 0 |
| 15. Fruit—Dried—Currants, 2-crown | per 12 lb. | 1 | 9 | 11 |
| 16. "Sultanas, 3-crown | do. | 1 | 11 | 6 |
| 17. "Raisins, seeded, 1-lb. | per doz. | 1 | 12 | 3 |
| Fruits—Preserved, 30-oz. tin— | | | | |
| 18. Peaches—Sliced | do. | | | ¶ |
| 19. Apricot—halves | do. | | | ¶ |
| 20. Pears—halves | do. | | | ¶ |
| 21. Apples—6-lb. tins | per tin | 0 | 9 | 5 |
| 22. Flour—Corn or Maize, 1-lb. | per doz. | 1 | 1 | 5 |
| 23. "Self Raising, 150-lb. bags | per bag | 4 | 19 | 2 |
| 24. Gelatine—Ground, 4-oz. | per doz. | 1 | 8 | 6 |
| 25. Golden Syrup, 2-lb. tins | do. | 1 | 1 | 2 |
| 26. Gravox, 1-lb. | do. | 1 | 3 | 5 |
| 27. Herbs—Mixed, 2-oz. pkts | do. | 0 | 3 | 10 |
| 28. Jelly Crystals, 7-lb. pkts | per lb. | 0 | 2 | 4 1/2 |
| 29. Junket Tablets—Tubes, "Merry Widow" | per doz. | 0 | 19 | 0 |
| 30. Margarine—Cake or Pastry "Table" | per lb. | 0 | 3 | 3 1/2 |
| 31. Marmite, 4-oz. jars | per doz. | 1 | 7 | 4 |
| 32. Matches—Safety | per gross | 0 | 19 | 5 |
| 33. Meat—Tinned—Camp Pie, 12-oz. | per doz. | 1 | 1 | 6 |
| 34. "Steak and Kidney, 16-oz. | do. | 1 | 16 | 2 |
| 35. Milk—Powdered, 3-lb. tin | do. | 7 | 9 | 8 |
| 36. Mixed Peel, 8-oz. pkts. | do. | 0 | 18 | 0 |
| 37. Mustard—Loose | per lb. | 0 | 5 | 0 |
| 38. Oats—rolled, 5-lb. bag "John Bull" | per bag | 0 | 6 | 9 |
| 39. Oatmeal—flaked, 112-lb. bag | do. | 3 | 5 | 6 |
| 40. Pepper—Ground, white | per lb. | 0 | 6 | 9 |
| 41. Pickles—Assorted, 20-oz. | per doz. | 1 | 10 | 0 |
| 42. Sago | per lb. | 0 | 0 | 11 1/2 |
| 43. Salt—Fine | per cwt. | 1 | 1 | 4 |
| 44. "taole, 16-oz. pkts. "Mermaid" | per doz. | 0 | 8 | 9 |
| 45. Sauce—Tomato—26-oz. bottles "Cohn's" | do. | 1 | 18 | 0 |
| 46. "1-gal. jars (Jars 3s.) | per gal. | 0 | 16 | 6 |
| 47. "Worcestershire—10-oz. | per doz. | 1 | 0 | 0 |
| 48. "1-gal. jars (Jars 3s.) | per gal. | 0 | 16 | 6 |
| 49. Soups—Tomato—No. 10 cans "Cohn's" | per can | 0 | 7 | 10 1/2 |
| 50. "16-oz. "Rosella" | per doz. | 1 | 0 | 3 |
| 51. "Celery, 16-oz., "Rosella" | do. | 1 | 0 | 3 |
| 52. "Pea, 16-oz., "Rosella" | do. | 1 | 0 | 3 |
| 53. Soda—Bicarbonate | per lb. | 0 | 0 | 8 |
| 54. "Washing, 56-lb. bag | per bag | 0 | 19 | 10 |
| 55. Spaghetti—22-lb., "Rinaldi" | per ctn. | 1 | 1 | 11 |
| 56. Spices Mixed 1-oz. | per doz. | 0 | 5 | 6 |
| 57. "Cloves—Whole | per lb. | * | | |
| 58. "Nutmeg—ground, 2-oz. pkts. | per doz. | 1 | 5 | 6 |
| 59. Starch—14-oz., "Silver Star" | do. | 1 | 0 | 0 |
| 60. "Loose | per lb. | * | | |
| 61. Sugar—Castor, 70-lb. bags | per bag | 3 | 3 | 0 |
| 62. "Icing, 56-lb. bags | do. | 2 | 17 | 9 |
| 63. "White, 70-lb. bags | do. | 3 | 1 | 0 |
| 64. "Brown, 70-lb. bags | do. | 2 | 19 | 0 |
| 65. Soft Drinks | per doz. | 0 | 10 | 0 |
| 66. Treacle, 2-lb. tins | do. | 1 | 0 | 8 |
| Vegetables—Tinned— | | | | |
| 67. Tomatoes, 30-oz. | do. | 1 | 9 | 0 |
| 68. Beans—Baked, 16-oz., "Kia Ora" | do. | 0 | 17 | 6 |
| 69. "No. 5 can (Baked) "Heinz" | each | 0 | 6 | 2 |
| 70. "Green, 30-oz. tins | per doz. | 2 | 2 | 9 |
| 71. "Peas—Green, 30-oz. tins | do. | 2 | 2 | 3 |
| 72. Vinegar—Malt, 1-gal. jars (Jars, 3s.) | per gal. | 0 | 8 | 3 |
| 73. Vegemite—16-oz. jars | per doz. | 4 | 9 | 0 |

(AGREEMENT.)

Cohns (Shepparton) Pty. Ltd., Benalla-road, Shepparton.

Sub-schedule No. 3.

JAM.

(Delivery "F.O.R." Shepparton.)

| | | | |
|--|----|---------|------|
| | £ | s. | d. |
| Jam—Bulk— | | | |
| 1. Assorted, of approved kinds | .. | per lb. | } †† |
| 2. Assorted, of approved kinds, in the proportion of half seed and half stone, of the best quality, in 32-lb. tins and 54-lb. tins | .. | per lb. | |

SCHEDULE No. 13.

PROVISIONS—MCLEOD SETTLEMENT, FRENCH ISLAND.

(Delivery to be made at Corinella Jetty.)

ANNEX TO CONTRACT No. 1964/68.

G. A. and A. H. Van der Craats, Grantville.

Sub-schedule No. 1.

BREAD.

| | | | |
|--------------------------------------|----|-----------|-------|
| | £ | s. | d. |
| Security, £12. | | | |
| 1. Bread—Fine wheaten, first quality | .. | per cntl. | 3 8 9 |

(AGREEMENT.)

E. V. Peters, Corinella.

Sub-schedule No. 2.

GROCERIES.

| | | | |
|---|-------------|--------|----|
| | £ | s. | d. |
| 1. Butter—First grade creamery, to score not less than 91 points, Government grade, Commence Regulations Standard | per lb. | 0 4 7½ | |
| 2. Cheese—Matured Tasty | .. do. | 0 3 6 | |
| 3. Jams—Assorted, Seed | .. per doz. | 1 19 0 | |
| " " Stone, of best quality, in 24-oz. tins, "Monbulk" | .. do. | 1 11 0 | |

SCHEDULE No. 14.

PROVISIONS—GEELONG DISTRICT.

(Delivery into Institutions.)

ANNEX TO CONTRACT No. 1964/69.

Fitzgerald Sunicrust Bakeries Pty. Ltd., Thompson-road, North Geelong.

Sub-schedule No. 1.

BREAD.

| | | | |
|--------------------------------------|----|-----------|--------|
| | £ | s. | d. |
| Security, £30. | | | |
| 1. Bread—Fine wheaten, first quality | .. | per cntl. | 2 16 3 |
| 2. Bread—Wholemeal, first quality | .. | do. | 2 16 3 |
| 3. " " Rolls | .. | per doz. | 0 3 2 |

†† Plum and Raspberry, 1s. 5½d. per lb.; Apricot, 1s. 4½d. per lb.; Dark Plum, 1s. 2½d. per lb.; Quince, 1s. 2½d. per lb.; Peach, 1s. 4½d. per lb.; Marmalade, 1s. 4½d. per lb.; Blackberry, 1s. 8½d. per lb.; Blackcurrant, 1s. 10½d. per lb. ¶ Order under agreement.

** The rates to be paid for all items under these Sub-schedules shall be the wholesale prices charged to the contractor, plus 12½ per cent. Wholesaler's invoices to be submitted with contractor's accounts. Item 2, 4, 6, 8, 11, 12, 13, 18 and Sub-Schedule No. 3 plus 2½ per cent. buying charge.

(AGREEMENT.)

McKay MacLeod Pty. Ltd., 17 Cavendish-street, Geelong.

Sub-schedule No. 2.

GROCERIES.

The rates to be paid under this Sub-schedule shall be the wholesale self-service prices ruling on the day of delivery, plus 2 per cent. service charge, net monthly. Delivery free to hostels. No. surcharge on dried fruits or C.S.R., Co's Sugar.

SCHEDULE No. 15.

PROVISIONS—COORIEMUNGLE PRISON CAMP, HEYTESBURY FOREST.

(Delivery to be made at the Camp.)

ANNEX TO CONTRACT No. 1964/70.

W. H. and A. J. Archdall, Recreation-road, Timboon.

Sub-schedule No. 1.

BREAD.

| | | | |
|--------------------------------------|----|-----------|-------|
| | £ | s. | d. |
| Security, £3. | | | |
| 1. Bread—Fine wheaten, first quality | .. | per cntl. | 4 1 3 |

SCHEDULE No. 16.

PROVISIONS—ABORIGINAL STATION, LAKE TYERS.

(Delivery at Lake Tyers Station.)

ANNEX TO CONTRACT No. 1964/71.

P. and M. Velden, Nowa Nowa.

Sub-schedule No. 1.

BREADSTUFFS.

| | | | |
|--------------------------------------|----|-----------|-------|
| | £ | s. | d. |
| Security, £25. | | | |
| 1. Bread—Fine wheaten, first quality | .. | per cntl. | 3 8 6 |
| 2. Flour—First quality | .. | do. | 2 3 0 |

(AGREEMENT.)

P. and M. Velden, Nowa Nowa.

Sub-schedule No. 2.

GROCERIES.

| | | | |
|---|-------------|----|------|
| | £ | s. | d. |
| 1. Baking Powder—"Snowflake," or equal thereto, 1-lb. tins | per lb. | | } ** |
| 2. Candles—Full weights Kitchen's "Electrines," or other make of equal quality, 1-lb. packets | do. | | |
| 3. Coffee—Fresh roasted, and whole, beans to be thoroughly sound | do. | | |
| 4. Cocoa—Bulk | .. do. | | |
| 5. Corn or Maize Flour—1-lb. packets | .. do. | | |
| 6. Currants—2-crown (present season's) | .. do. | | |
| 7. Curry Powder—Bulk | .. do. | | |
| 8. Matches—Safety, 60 per box, "Yacht" | per gross | | |
| 9. Mustard—"Double Superfine" | .. per lb. | | |
| 10. Pepper—Black, ground, 2-oz. tins | .. per tin | | |
| 11. Raisins—Sultanas, 3-crown, (present season's) | per lb. | | |
| Salt— | | | |
| 12. Coarse | .. per cwt. | | |
| 13. Fine | .. do. | | |
| 14. Soap—Household, hard and dry, to sample | to do. | | |
| Soda— | | | |
| 15. Bicarbonate | .. per lb. | | |
| 16. Washing | .. do. | | |
| 17. Tartar—Cream of, Substitute, Calcium Phosphate | do. | | |
| 18. Treacle—2-lb. tins | .. per tin | | |
| 19. Vinegar—Malt | .. per qt. | | |

(AGREEMENT.)

P. and M. Velden, Nowa Nowa.

Sub-schedule No. 3.

JAMS.

| | | | |
|--|---------|----|----|
| | £ | s. | d. |
| 1. Jams—Assorted, 24-oz. tins, in the proportion of half seed and half stone | per tin | | ** |

SCHEDULE No. 17.

PROVISIONS—LANGI KAL KAL TRAINING CENTRE.

ANNEX TO CONTRACT No. 1964/72.

Wm. Dick and Sons, 314 Drummond-street south, Ballarat.

Sub-schedule No. 1.

BREAD.

Table with 2 columns: Description and Price (£ s. d.). Includes 'Bread—Fine wheaten, first quality'.

SCHEDULE No. 18.

PROVISIONS—AGRICULTURAL COLLEGE, LONGERENONG.

(Delivery at the College.)

ANNEX TO CONTRACT No. 1964/73.

Conlan's Bakery, Stawell-road, Horsham.

Sub-schedule No. 1.

BREADSTUFFS.

Table with 2 columns: Description and Price (£ s. d.). Includes 'Bread—Fine wheaten, first quality' and 'Flour—First quality'.

(AGREEMENT.)

Permwans (Horsham) Pty. Ltd., 31 King-street, Melbourne.

Sub-schedule No. 2.

GROCERIES.

Table with 2 columns: Description and Price (£ s. d.). Includes 'Barley—Pearl', 'Baked Beans', 'Biscuits—Coffee, Malt, Nice', etc.

Essence—

Table with 2 columns: Description and Price (£ s. d.). Includes 'Lemon—8-oz.', 'Parisian—26-oz.', 'Vanilla—8-oz.', etc.

Fruits—Dried—

Table with 2 columns: Description and Price (£ s. d.). Includes 'Currants—Sunray', 'Raisins—seeded—Sunray', etc.

Fruits—Tinned—

Table with 2 columns: Description and Price (£ s. d.). Includes 'Apricots—30-oz.', 'Peaches—30-oz.', 'Pears—30-oz.', etc.

Sub-schedule No. 2—continued.

GROCERIES—continued.

Table with 2 columns: Description and Price (£ s. d.). Includes 'Ginger—Ground, 2-oz.', 'Golden Syrup—2-lb. tins', 'Gravox—1-lb. tins', etc.

(AGREEMENT.)

Permwans (Horsham) Pty. Ltd., 31 King-street, Melbourne.

Sub-schedule No. 3.

JAM.

Table with 2 columns: Description and Price (£ s. d.). Includes 'Jams—in 5-lb. tins—Monbulk', 'Apricot', 'Marmalade', etc.

SCHEDULE No. 19.

PROVISIONS—RESEARCH STATION, RUTHERGLEN.

(Delivery ex Bakery and Grocery Store.)

ANNEX TO CONTRACT No. 1964/74.

Rutherglen Bakery Pty. Ltd., Main-street, Rutherglen.

Sub-schedule No. 1.

BREAD.

Table with 2 columns: Description and Price (£ s. d.). Includes 'Bread—Fine wheaten, first quality'.

(AGREEMENT.)

N. P. Haberecht, Rutherglen.

Sub-schedule No. 2.

GROCERIES.

Table with 2 columns: Description and Price (£ s. d.). Includes 'Biscuits—Sweet—Creams', 'Dry Ryethin', 'Savoy', etc.

§ Order under Melbourne District Contract. * Jars, 3s. each, returnable. * 1-gal. jars 3s. each., credited on return.

Sub-schedule No. 2—continued.

| GROCERIES—continued. | | £ | s. | d. | |
|---|---------------------------------------|-------------|----|----|-----------------|
| 2. Cocoa— $\frac{1}{2}$ -lb. packets | .. each. | 0 | 3 | 1 | |
| 3. Coconut—Desiccated | .. per lb. | 0 | 2 | 3 | |
| 4. Cornflakes—"Kellogg's" | .. per pkt. | 0 | 3 | 6 | |
| 5. Cornflower—1-lb. packets | .. do. | 0 | 1 | 10 | |
| 6. Custard Powder—1-lb. packets | .. do. | 0 | 1 | 11 | |
| 7. Coffee | Pure | .. per lb. | 0 | 6 | 9 |
| | Nescafe— $\frac{1}{2}$ -lb. tins | .. per tin | 0 | 12 | 6 |
| 8. Cheese—"Kraft," $\frac{1}{2}$ -lb. packets | Essence | .. per bot. | 0 | 2 | 6 |
| | Matured | .. per lb. | 0 | 4 | 6 |
| 9. Curry Powder, Loose | .. do. | 0 | 4 | 0 | |
| 10. Dates | .. do. | 0 | 1 | 11 | |
| 11. Essences | Vanilla—4-oz. bottles | .. each | 0 | 4 | 9 |
| | Lemon—4-oz. bottles | .. do. | 0 | 3 | 5 |
| | Cochineal—2-oz. bottles | .. do. | 0 | 1 | 6 |
| Extracts and Pastes— | | | | | |
| 12. | Marmite—16-oz. | .. per jar | 0 | 7 | 6 |
| | Peanut Butter—12-oz. | .. do. | 0 | 3 | 11 |
| | Bonox—16-oz. | .. do. | 0 | 11 | 6 |
| 13. Fish | Tinned Salmon "Green seas" | .. per doz. | 2 | 7 | 0 |
| | Sardines | .. per tin | 0 | 1 | 0 |
| | Herrings in sauce, 14-oz. | .. do. | 0 | 2 | 10 |
| Tuna | .. per doz. | 2 | 11 | 0 | |
| Flour— | | | | | |
| 14. | Self-raising, 25-lb. bags, "McAlpins" | .. per bag | 1 | 3 | 0 |
| | Plain | .. per lb. | 0 | 0 | 6 |
| Fruits—Dried— | | | | | |
| 15. | Currants | .. do. | 0 | 2 | 5 |
| | Mixed | .. do. | 0 | 2 | 6 |
| | Raisins (Seeded) | .. do. | 0 | 2 | 9 |
| | Sultanas | .. do. | 0 | 2 | 8 |
| Fruits—Preserved—30-oz. tins— | | | | | |
| 16. | Apricot, halves | .. per tin | 0 | 2 | 8 |
| | Fruit Salad | .. do. | 0 | 3 | 6 |
| | Peaches | .. do. | 0 | 2 | 8 |
| | Pears | .. do. | 0 | 2 | 8 |
| | Pineapple | .. do. | 0 | 3 | 6 |
| Raspberries, 1-lb. tin | .. do. | 0 | 3 | 3 | |
| 17. Gelatine | .. per lb. | 0 | 9 | 6 | |
| 18. Gravox | .. do. | 0 | 2 | 5 | |
| 19. Herbs—Mixed, 1-oz. packets | .. per pkt. | 0 | 0 | 5 | |
| 20. Honey | Creamed, 1-lb. | .. per jar | 0 | 2 | 9 |
| | Pure, 2-lb. jar | .. do. | 0 | 3 | 4 |
| Jams—24-oz. tins— | | | | | |
| 21. | Apricot | .. per doz. | 1 | 15 | 0 |
| | Blackberry and Plum | .. do. | 1 | 16 | 0 |
| | Fig | .. do. | 2 | 4 | 0 |
| | Marmalade | .. do. | 1 | 13 | 0 |
| | Peach | .. do. | 1 | 15 | 0 |
| | Plum, dark | .. do. | 1 | 13 | 0 |
| | Raspberry | .. do. | 2 | 7 | 0 |
| | Raspberry and Plum | .. do. | 1 | 16 | 0 |
| Strawberry | .. do. | 2 | 16 | 0 | |
| 22. Jelly Crystals | .. per pkt. | 0 | 0 | 9 | |
| 23. Junket Tablets | .. do. | 0 | 1 | 9 | |
| 24. Lard | .. per lb. | 0 | 3 | 0 | |
| 25. Maize Oil | .. per bot. | 0 | 6 | 9 | |
| 26. Margarine | .. per lb. | 0 | 3 | 6 | |
| 27. Matches—Safety | .. per pkt. | 0 | 1 | 8 | |
| 28. Mayonnaise—"Kraft" | .. per jar | 0 | 2 | 10 | |
| Meat—Tinned— | | | | | |
| 29. | Camp Pie | .. per doz. | 1 | 1 | 0 |
| | Irish Stew | .. do. | 1 | 12 | 0 |
| | Sausages and Vegetables | .. do. | 1 | 12 | 0 |
| | Beef Steak Pudding | .. do. | 1 | 13 | 0 |
| Beef Luncheon | .. do. | 1 | 16 | 0 | |
| 30. Milk—Condensed | .. do. | 1 | 6 | 0 | |
| 31. Mustard—Loose | .. per lb. | 0 | 5 | 9 | |
| 32. Oatmeal | Plain—5-lb. packets, "John Bull" | .. per pkt. | 0 | 7 | 0 |
| | "Creamota"—2-lb. packets | .. do. | 0 | 2 | 11 |
| 33. Pepper—White, 4-oz. tins | .. per tin | 0 | 3 | 1 | |
| 34. Potatoes | .. per cwt. | 2 | 10 | 0 | |
| 35. Rice | Polished | .. per lb. | 0 | 1 | 1 |
| | Ground | .. do. | 0 | 1 | 3 |
| 36. Salt | Table | .. per pkt. | 0 | 0 | 9 $\frac{1}{2}$ |
| | Cooking | .. per lb. | 0 | 0 | 3 |
| 37. Sauce | Barbecue | .. per bot. | 0 | 2 | 0 |
| | Tomato, 26-oz. | .. do. | 0 | 3 | 8 |
| | Worcester, 10-oz. | .. per doz. | 1 | 4 | 0 |
| Soaps— | | | | | |
| 38. | "Rinso"—Economy | .. per pkt. | 0 | 4 | 0 |
| | "Lux" Flakes | .. do. | 0 | 3 | 11 |
| | "Surf" | .. do. | 0 | 3 | 0 |
| | Toilet | .. per cake | 0 | 0 | 10 |
| Soda—Washing | .. per lb. | 0 | 0 | 7 | |
| 39. Soups—Tomato | .. per tin | 0 | 1 | 9 | |
| | Chicken Noodle, packets | .. per doz. | 0 | 16 | 0 |
| 40. Sugar | Icing | .. per lb. | 0 | 1 | 0 |
| | Castor | .. do. | 0 | 1 | 1 |

Sub-schedule No. 2.—continued.

| GROCERIES—continued. | | £ | s. | d. | |
|-------------------------------------|--------------------|-------------|----|----|----|
| 41. Tea— $\frac{1}{2}$ -lb. packets | .. per pkt. | 0 | 2 | 10 | |
| Vegetables—Tinned— | | | | | |
| 42. | Baked Beans | .. per tin | 0 | 1 | 10 |
| | Sweet Corn | .. do. | 0 | 2 | 11 |
| | Spaghetti in sauce | .. per doz. | 1 | 2 | 0 |
| | Peas | .. do. | 0 | 19 | 6 |
| 43. Vinegar—Seppelts White | .. do. | 0 | 18 | 0 | |
| | Sauerkraut | .. do. | 0 | 2 | 10 |
| 44. Wheat Grist | .. per bot. | 0 | 2 | 10 | |
| | .. per pkt. | 0 | 2 | 3 | |

SCHEDULE No. 20.

PROVISIONS AT SALE.

(Delivery at the Goal.)

ANNEX TO CONTRACT NO. 1964/75.

F. J. Hennessy Pty. Ltd., 102 Raymond-street, Sale.

Sub-schedule No. 1.

BREAD.

| Security, £3. | | £ | s. | d. |
|--------------------------------------|--------------|---|----|----|
| 1. Bread—Fine wheaten, first quality | .. per cntl. | 3 | 10 | 10 |

SCHEDULE No. 21.

PROVISIONS—PLEASANT CREEK SPECIAL SCHOOL, STAWELL.

(Delivery at the School.)

ANNEX TO CONTRACT NO. 1964/76.

Stawell Bakeries Pty. Ltd., 46 Main-street, Stawell.

Sub-schedule No. 1.

BREADSTUFFS.

| Security, £10. | | £ | s. | d. |
|--------------------------------------|--------------|---|----|----|
| 1. Bread—Fine wheaten, first quality | .. per cntl. | 2 | 16 | 2 |
| 2. Flour—First quality | .. do. | 2 | 5 | 0 |

(AGREEMENT.)

McKay MacLeod Pty. Ltd., 63 Mair-street, Ballarat.

Sub-schedule No. 2.

GROCERIES.

| GROCERIES. | | £ | s. | d. |
|--|-------------|---|----|------------------|
| 1. Baking Powder—"Excelsior," 1-lb. tins | per doz. | 1 | 18 | 0 |
| 2. Blue—Washing, "Reckitts Square" | per gross | 2 | 9 | 9 |
| 3. Cherries, Crystallized | per lb. | 0 | 5 | 0 |
| Cereals— | | | | |
| 4. Cereals—"Sunflakes," "Wheatflakes," 24-oz. packets | per doz. | 1 | 7 | 10 |
| Wheat Harts, 28-oz. packets | .. do. | 1 | 18 | 6 |
| Wheaties—16-oz. | .. do. | 1 | 6 | 10 |
| 5. Coconut, Desiccated | .. per lb. | 0 | 2 | 2 $\frac{1}{2}$ |
| 6. Cocoa, 14-oz., "Bournville" | .. per doz. | 2 | 14 | 0 |
| 7. Coffee and Chicory, "Gold Seal," No. 1 | per lb. | 0 | 6 | 0 |
| 8. Corn Flour, loose | .. do. | 0 | 1 | 1 |
| Currants (present season's)— | | | | |
| 9. Currants | .. do. | 0 | 1 | 11 $\frac{1}{2}$ |
| 2-crown | .. do. | 0 | 2 | 0 $\frac{1}{2}$ |
| 3-crown | .. do. | 0 | 3 | 5 |
| 10. Curry Powder—Loose, "Gold Seal" | .. do. | 0 | 3 | 5 |
| 11. Custard Powder—Loose | .. do. | 0 | 1 | 4 $\frac{1}{2}$ |
| 12. Dates—Box lots | .. do. | 0 | 1 | 7 $\frac{1}{2}$ |
| 13. Essence of Vanilla, 4-oz. | per doz. | 2 | 0 | 3 |
| 14. Ginger—Ground, loose | .. do. | 0 | 7 | 5 |
| Golden Syrup— | | | | |
| 15. Golden Syrup—2-lb. tins | .. do. | 1 | 1 | 9 |
| 16. Gravox, 1-lb. tins | .. do. | 1 | 3 | 10 |
| 17. Herbs, Mixed, 1-oz. packets | .. do. | 0 | 4 | 1 |
| 18. Jams—Assorted, of approved kinds, in proportion of half seed and half stone, in tins containing 5-lb. net. | do. | 4 | 18 | 6 |
| 19. Jelly Crystals—Packets, "McKays" | .. do. | 0 | 8 | 9 |
| 20. Junket Tablets, "Merry Widow," flavoured | do. | 0 | 18 | 6 |
| 21. Macaroni, 22-lb. cartons | .. per ctn. | 1 | 1 | 0 |

Sub-schedule No. 2—continued.
GROCERIES—continued.

| | | £ | s. | d. |
|--|----------|---|----|-----|
| 22. Margarine—Cake, Pastry | per lb. | 0 | 1 | 10½ |
| 23. Nutmeg, Ground | do. | 0 | 15 | 6 |
| 24. Peel—Cut, mixed | do. | 0 | 1 | 11 |
| 25. Pepper—Black, ground | do. | 0 | 5 | 0 |
| 26. Sultanas (present season's) | do. | 0 | 2 | 1½ |
| 27. Rice—Dressed, ½ cwt. bags | per cwt. | 5 | 10 | 9 |
| 28. Salt—Fine, "Imperial" | do. | 1 | 4 | 0 |
| 29. Sauce—Tomato, 26-oz. bottles, "McKays" | per doz. | 2 | 1 | 0 |
| Soap— | | | | |
| 30. Preservene Foam | per doz. | 0 | 17 | 6 |
| 31. "Lifebuoy"—Regular | per doz. | 0 | 9 | 6 |
| Sugar— | | | | |
| 32. Icing | per lb. | 0 | 1 | 2½ |
| 33. White, 70-lb. bag | per bag | 3 | 4 | 6 |
| Soda— | | | | |
| 34. Bicarbonate | per lb. | 0 | 0 | 10½ |
| 35. Washing | per cwt. | 1 | 18 | 0 |
| 36. Spaghetti, 22-lb. cartons | per ctn. | 1 | 1 | 0 |
| 37. Spice—Mixed, 1-oz. packets | per doz. | 0 | 5 | 6 |
| 38. Starch, 12-oz. packets, "Silver Star" | do. | 1 | 1 | 3 |
| 39. Sweets, Boiled | per lb. | 0 | 1 | 11½ |
| 40. Syrup—Milk Flavouring, "B.C.X." | per gal. | 0 | 17 | 6 |
| 41. Tea—First grade | do. | 0 | 1 | 0 |
| 42. Vinegar—Malt, Bulk (casks £5) | per gal. | 0 | 5 | 0 |

ANNEX TO CONTRACT NO. 1964/77.

Stawell Modern Dairy, 11 Seaby-street, Stawell.

Sub-schedule No. 4.

MILK.

Security, £5.

| | | £ | s. | d. |
|--------------------------------|----------|---|----|----|
| 1. Milk—Fresh and pure | per gal. | 0 | 5 | 1 |

SCHEDULE No. 22.

PROVISIONS—SUNBURY DISTRICT.

(Delivery into Institutions.)

ANNEX TO CONTRACT NO. 1964/78.

Bessell's Pty. Ltd., 275 Buckley-street, Essendon.

Sub-schedule No. 1.

BREADSTUFFS.

Security, £112.

| | | £ | s. | d. |
|--|-----------|---|----|----|
| 1. Bread—Fine wheaten, first quality | per cntl. | 1 | 16 | 5½ |
| 2. Flour—First quality | do. | 2 | 0 | 3 |

(AGREEMENT.)

Birmingham's Food Centres Pty. Ltd., 467 Keilor-road, Niddrie.

Sub-schedule No. 2.

GROCERIES.

| | | £ | s. | d. |
|--|------------|---|----|----|
| 1. Beans—Haricot | per lb. | 0 | 1 | 9 |
| 2. Blue—Washing, 1-oz. knobs, "Reckitts" | per gross. | 2 | 6 | 6 |
| 3. Cereals—Weeties, 16-oz. packets | per doz. | 1 | 6 | 0 |
| 4. Coconut, desiccated | per lb. | 0 | 2 | 3 |
| 5. Cinnamon | do. | 0 | 2 | 9 |
| 6. Cloves—Whole | do. | 0 | 5 | 11 |
| 7. Cocoa, 14-oz. packets, "Bournville" | per pkt. | 0 | 4 | 9 |
| 8. Corn or Maize Flour, 1-lb. packets | per doz. | 0 | 16 | 0 |
| 9. Currants 4-crown (present season's) | per lb. | 0 | 2 | 6½ |
| 10. Curry Powder | do. | 0 | 3 | 9 |
| 11. Custard Powder, 30-lb. tins | do. | 0 | 1 | 3½ |
| 12. Dates—Stoneless | do. | 0 | 1 | 7 |
| 13. Essences, 16-oz.— | | | | |
| Lemon, | per doz. | 3 | 9 | 0 |
| Vanilla, | do. | 3 | 9 | 0 |
| 14. Flour Self Raising 50-lb. bag | per bag | 1 | 16 | 9 |
| 15. " " " 6-lb. packet | per pkt. | 0 | 4 | 9 |
| 16. Gelatine, 16-oz. packets, "Davis" | per doz. | 5 | 8 | 6 |
| 17. Golden Syrup, 2-lb. tins | do. | 1 | 0 | 0 |
| 18. Gravox, 1-lb. | do. | 1 | 2 | 6 |
| 19. Gravy Salt, 8-oz., packets | do. | 0 | 12 | 0 |

○ Order under Melbourne District Contract.

Sub-schedule No. 2—continued.
GROCERIES—continued.

| | | £ | s. | d. |
|---|----------|---|----|-----|
| 20. Herbs—Mixed, 1-oz. | per doz. | 0 | 4 | 9 |
| 21. Honey—Pure—30-lb. tins | per lb. | 0 | 1 | 8 |
| 22. Jam—Diabetic, assorted | per doz. | 1 | 0 | 0 |
| 23. Jelly Crystals— | | | | |
| 4-oz. packets | do. | 0 | 7 | 3 |
| Bulk | per lb. | 0 | 1 | 6 |
| 24. Junket Tablets—Tubes | per doz. | 1 | 0 | 6 |
| 25. Jex | do. | 0 | 7 | 3 |
| 26. Lemon Peel, 8-oz. packets | per pkt. | 0 | 1 | 7 |
| 27. Macaroni | per lb. | 0 | 0 | 11½ |
| 28. Margarine—Cake, Pastry | do. | 0 | 1 | 11 |
| 29. Meat, Tinned— | | | | |
| 12-oz. Camp Pie, "Imperial" | per doz. | 1 | 0 | 6 |
| 16-oz. " " " " | do. | 1 | 5 | 3 |
| 30. Meat Tenderizer, 2-oz. tins | do. | 0 | 18 | 6 |
| 31. Milk—Powdered, 56-lb. bag | per lb. | 0 | 1 | 2 |
| 32. Mustard—Loose, "Keen's" | do. | 0 | 7 | 6 |
| 33. Nutmeg—Ground | do. | 0 | 14 | 9 |
| 34. Peel—Mixed, 8-oz. packet | each | 0 | 1 | 7 |
| 35. Pepper—Black, ground | per lb. | 0 | 5 | 11 |
| 36. " Cayenne | do. | 0 | 6 | 6 |
| 37. Pickles—Mustard | per doz. | 1 | 3 | 6 |
| 38. Raisins, Sultanas, 4-crown (present season's) | per lb. | 0 | 2 | 6½ |
| 39. Salt—Fine | per cwt. | 0 | 18 | 6 |
| Sauce— | | | | |
| 40. { Tomato, 26-oz. bottles | per doz. | 1 | 14 | 0 |
| { Worcestershire, 20-oz. bottles | do. | 1 | 8 | 6 |
| Soda— | | | | |
| 41. Bicarbonate | per lb. | 0 | 0 | 8½ |
| 42. Washing | per cwt. | 1 | 18 | 6 |
| 43. Spice—Mixed, loose | per lb. | 0 | 4 | 3 |
| 44. Spaghetti, 22-lb. Forex No. 2 | per ctn. | 1 | 0 | 6 |
| 45. Sugar—Icing | per lb. | 0 | 1 | 0½ |
| 46. " Castor | do. | 0 | 1 | 0½ |
| 47. Starch—Loose, "Silver Star" | do. | 0 | 1 | 8½ |
| 48. Vinegar—Malt, 1-gal. jars | per gal. | 0 | 5 | 0 |

Sub-schedule No. 3.

CEREALS.

| | | |
|-------------------------------|----------|--|
| 1. Barley—Pearl | per cwt. | Purchase under Tender Board quotations |
| 2. Oatmeal—Plain | do. | |
| 3. Oatmeal—Flaked | do. | |
| 4. Peas, split—yellow | do. | |
| 5. Rice—Dressed | do. | |
| 6. Rice—Unpolished | do. | |
| 7. Seed Tapioca | do. | |

ANNEX TO CONTRACT NO. 1964/79.

W. H. Johnson's Jams Pty. Ltd., 42 Meaden-street, South Melbourne.

Sub-schedule No. 6.

JAMS.

Security, £20.

| | | £ | s. | d. |
|--|-----------------------|---|----|-----|
| Jams—(in 54-lb. tins) † | | | | |
| 1. Assorted—In bulk, of approved kinds, in the proportion of half seed and half stone, of the best quality | per lb. actual weight | 0 | 0 | 11½ |
| In 5-lb. tins | per tin | 0 | 6 | 5 |
| 2. Marmalade—Bulk † | per lb. actual weight | 0 | 0 | 11½ |
| In 5-lb. tins | per tin | 0 | 6 | 0 |

SCHEDULE No. 23.

PROVISIONS—WARRNAMBOOL DISTRICT

(Delivery into Institutions.)

ANNEX TO CONTRACT NO. 1964/80.

Twites Bakeries Pty. Ltd., 164 Timor-street, Warrnambool.

Sub-schedule No. 1.

BREADSTUFFS.

Security, £5.

| | | £ | s. | d. |
|--|-----------|---|----|----|
| 1. Bread—Fine wheaten, first quality | per cntl. | 3 | 12 | 11 |
| 2. Flour—First quality | do. | 2 | 2 | 0 |

† For 27-lb. tins, rate increased 1d. per lb.

(AGREEMENT.)

Swintons Pty. Ltd., Timor-street, Warrnambool.

Sub-schedule No. 2.

| GROCERIES. | | £ | s. | d. |
|--|----------|---|----|----|
| 1. Bacon Rashers—Middle | per lb. | 0 | 7 | 7 |
| 2. „ Bones (<i>When available</i>) | do. | 0 | 1 | 2 |
| 3. Baking Powder, 1-lb. tins | do. | 0 | 3 | 8 |
| 4. Beans—Haricot | do. | 0 | 1 | 10 |
| 5. Cereals—Whole, large packets | per doz. | 1 | 11 | 6 |
| 6. Cloves—Whole | per lb. | 0 | 6 | 0 |
| 7. Cinnamon | do. | 0 | 3 | 8 |
| 8. Cocoa—“Bournville,” 14-oz. | per pkt. | 0 | 4 | 9 |
| 9. Curry Powder | per lb. | 0 | 3 | 9 |
| 10. Custard Powder—1-lb. packets, “Medallion” | do. | 0 | 1 | 9 |
| 11. Essences—Vanilla, 1-oz. bottles, “Medallion” | per bot. | 0 | 1 | 2 |
| 12. „ „ 16-oz. | do. | 0 | 13 | 9 |
| 13. „ Parisian, 26-oz. bottles | do. | 0 | 4 | 8 |
| 14. „ Yorkine, 4-oz. bottles | do. | 0 | 2 | 10 |
| 15. Flour—Corn or Maize, 1-lb. pkts., “Medallion” | per lb. | 0 | 1 | 8 |
| 16. „ Self Raising, 25-lb. bags | per bag | 1 | 0 | 0 |
| Fruits—Dried— | | | | |
| 17. Apricots—3-crown, loose | per lb. | 0 | 5 | 0 |
| 18. Currants and Sultanas—3-crown | do. | 0 | 2 | 6 |
| 19. Dates—Loose | do. | 0 | 1 | 9 |
| „ 1-lb. pkt. | per pkt. | 0 | 1 | 9 |
| 20. Raisins—Seeded | per lb. | 0 | 2 | 8 |
| Fruits—Preserved, 29-oz. tins | | | | |
| 21. Apricots—Halves | per tin | 0 | 2 | 7½ |
| 22. Peaches—Halves or sliced | do. | 0 | 2 | 7½ |
| 23. Pears—Halves | do. | 0 | 2 | 7½ |
| 24. Two Fruits | do. | 0 | 2 | 7½ |
| 25. Gelatine—Ground, 1-lb. pkts., “Davis” | per lb. | 0 | 9 | 6 |
| 26. Golden Syrup, 2-lb. tins | per tin | 0 | 2 | 0 |
| 27. Herbs—Mixed, 4-oz. | each | 0 | 1 | 7 |
| 28. Honey—2-lb. jars | per jar | 0 | 4 | 8 |
| 29. „ 60-in. tins | per tin | 4 | 17 | 6 |
| 30. Jams—24-oz. tins “A.J.C.” or “S.P.C.” (Apricot, Apple Jelly, Melon, Plum, Peach, Quince, Marmalade, Plum, and Raspberry) | do. | 0 | 2 | 8 |
| 31. Jelly Crystals—“Medallion,” 4-oz. pkts. | per pkt. | 0 | 0 | 8½ |
| „ „ “Harper’s,” 7-lb. pkts. | per lb. | 0 | 2 | 11 |
| 32. Macaroni | do. | 0 | 1 | 5 |
| 33. Margarine—Table “Eta” | do. | 0 | 3 | 4 |
| „ „ Cake and Pastry “Marville” | do. | 0 | 2 | 8 |
| 34. Meat—Tinned “Camp Pie” 12-oz. tins | per tin | 0 | 1 | 9 |
| 35. Mustard—“Keens” | per lb. | 0 | 7 | 9 |
| 36. Nutmeg | do. | 0 | 16 | 0 |
| 37. Pepper—White, ground | do. | 0 | 8 | 6 |
| 38. Pickles—20-oz. bottles, “Leggos” | per bot. | 0 | 2 | 11 |
| 39. Rice—Dressed | per lb. | 0 | 1 | 1 |
| 40. Sago—Seed Tapioca | do. | 0 | 0 | 9½ |
| 41. Salt—Fine, “Cheetham” | do. | 0 | 0 | 4½ |
| 42. Sauce—Tomato, 26-oz. bottles, “Cohns” | per bot. | 0 | 3 | 5 |
| 43. „ Worcestershire, 19-oz. bottles, “P.M.U.” | do. | 0 | 2 | 7 |

Sub-schedule No. 2—continued.

| | £ | s. | d. |
|---|----------|----|-------|
| 44. Soda—Bicarbonate | per lb. | 0 | 0 7 |
| 45. Spaghetti—22-lb. carton | per ctn. | 1 | 0 6 |
| 46. Spice, mixed | per lb. | 0 | 6 0 |
| 47. Sugar—White, 70-lb. bag | per bag | 3 | 4 9 |
| 48. Cream of Tartar, “Antelope”, substitute | per lb. | 0 | 2 9 |
| 49. Vegemite—6-oz. jars | per jar | 0 | 2 11½ |
| 50. Vinegar—26-oz. bottles | per bot. | 0 | 1 9 |

ANNEX TO CONTRACT No. 1964/81.

Sungold Dairies Pty. Ltd., 68 Kepler-street, Warrnambool.

Sub-schedule No. 3.

MILK.

| | £ | s. | d. |
|-----------------------------|----------|----|-----|
| Security, £3. | | | |
| 1. Milk—Fresh and pure—Bulk | per gal. | 0 | 4 7 |

SCHEDULE No. 24.

PROVISIONS—HOBSON PARK HOSPITAL, TRARALGON.

(Delivery to Hospital.)

ANNEX TO CONTRACT No. 1964/82.

Reeves Dutch Bakery Pty. Ltd., 120 Franklin-street, Traralgon

Sub-schedule No. 1.

BREADSTUFFS.

| | £ | s. | d. |
|--------------------------------------|-----------|----|-------|
| 1. Bread—Fine Wheaten, first quality | per cntl. | 2 | 19 4½ |
| 2. Flour—First Quality | do. | 3 | 2 0 |

(AGREEMENT.)

Terra Self Service Pty. Ltd., 42 Elizabeth-street, South Yarra.

Sub-schedule No. 2.

GROCERIES.

Order under Melbourne District—Schedule No. 1.
Sub-schedule No. 7. Prices F.O.R. Melbourne.

ANNEX TO CONTRACT No. 1964/83.

J. G. and E. McEntee, 91 Hotham-street, Traralgon.

Sub-schedule No. 3.

MILK.

| | £ | s. | d. |
|------------------------------|----------|----|------|
| Security, £3. | | | |
| 1. Milk—Fresh and Pure, Bulk | per gal. | 0 | 4 8½ |
| 2. „ „ „ Bottled | do. | 0 | 5 1½ |