



VICTORIA
GOVERNMENT GAZETTE

Published by Authority

No. 43]

TUESDAY, MAY 30

[1972

CONTRACTS ACCEPTED.

(SERIES 1972-73)

SUPPLY OF PROVISIONS

FOR

STATE DEPARTMENTS

FROM

1st JULY, 1972 to 30th JUNE, 1973

or as stated.

Conditions of Contract and Stipulations are shown herein for the guidance
of Officers ordering and receiving supplies.

E. P. WATSON,
Secretary to the Tender Board.

CONTRACTS ACCEPTED—(Series 1972-73.)

PROVISIONS.

No. of Contract.	Particulars of each Tender Accepted.	Amount.	Name of Contractor or Supplier.	Charge against Vote or Fund.
	PROVISIONS—			
	Supply of Provisions, in such quantities as may be ordered, from 1st July, 1972, to 30th June, 1973, or as stated.			
	Schedule No. 1.—Melbourne and Metropolitan District—			
	Kew Mental Hospital, Children's Cottages, Kew; Children's Welfare Depot, Royal Park; Psychiatric Hospital, Royal Park; Travancore Developmental Centre, Flemington; St. Nicholas Hospital, Carlton; "Winlaton" Juvenile School, 186 Springvale-road, Nunawading and "Allambie" Reception Centre, 70 Elgar-road, Burwood; Teachers' College, Grattan-street, Carlton; Teachers' College Hostels, 93 Drummond-street, Carlton, 470, and 572 St. Kilda-road, Melbourne, 19 Queen's-road, Melbourne, 152 Toorak-road West, South Yarra; Frank Tate House, 373 Dandenong-road Armadale; "Redcourt", No. 506 "Larnook", No. 519 and 13 Orrong-road, Armadale; 11 Patterson-street, Hawthorn; 174 Punt-road, Prahran; 221 Burwood-road, Burwood; John Cannon House, 32 Belmont-avenue, Kew; 23 Moule-avenue, Brighton and Hastings-road, Frankston; Police Hospital, St. Kilda-road, Melbourne; Mental Hygiene Clinic, 321 Glenferrie-road, Malvern, Mont Park, Bundoora, Larundel, Janefield, and Sunbury Mental Hospitals; Gresswell Rehabilitation Centre and Heatherton Sanatorium, Springvale and Pentridge, Coburg.—			
40	Bread—Mental Hospital, Kew and Children's Cottages, Kew	Rates as per annex	Social Welfare Department	General Expenses 1972-73
41	Bread—Mental Hospitals Mont Park, Larundel, Repatriation Mental Hospital, Bundoora Janefield Training Centre, and Rehabilitation Centre, Gresswell	Ditto		
42	Bread—Psychiatric Hospital, Royal Park, "Travancore" Developmental Centre, Flemington and St. Nicholas Hospital, Carlton	Ditto		
43	Bread—Sunbury Mental Hospital and Training Centre	Ditto		
44	Bread—Teachers' College, Grattan-street, Carlton; Teachers' College Hostels, 93 Drummond-street, Carlton, 470, and 572 St. Kilda-road, Melbourne, 19 Queen's-road, Melbourne, 152 Toorak-road West, South Yarra; Frank Tate House, 373 Dandenong-road Armadale; "Redcourt", No. 506 "Larnook", No. 519 and 13 Orrong-road, Armadale; 11 Patterson-street, Hawthorn; 174 Punt-road, Prahran; 221 Burwood-road, Burwood; John Cannon House, 32 Belmont-avenue, Kew; 23 Moule-avenue, Brighton and Hastings-road, Frankston; Police Hospital, St. Kilda-road, Melbourne; Mental Hygiene Clinic, 321 Glenferrie-road, Malvern	Ditto		
45	Bread—Heatherton Sanatorium	Ditto		
46	Flour	Ditto		
47	Jams	Ditto		
48	Tea	Ditto		
49	Coffee	Ditto		
50	Milk—Mental Hospital, Kew and Children's Cottages, Kew	Rates as per annex	Model Dairy Pty. Ltd.	
51	Milk—Mental Hospitals Mont Park, Plenty, Larundel, Repatriation Mental Hospital, Bundoora and Rehabilitation Centre, Gresswell	Ditto		
52	Milk—Royal Park Psychiatric Hospital, "Travancore" Developmental Centre, St. Nicholas Hospital and "Turana" Youth Training Centre	Ditto	Travancore Dairies Pty. Ltd.	
53	Milk—"Winlaton" Girls Training Centre, Nunawading and "Allambie" Reception Centre, Burwood	Ditto	B. L. Coram and Sons (Milk Transport) Pty. Ltd.	

CONTRACTS ACCEPTED—(Series 1972-73)—continued.

PROVISIONS—continued.

No. of Contract.	Particulars of each Tender Accepted.	Amount.	Name of Contractor or Supplier.	Charge against Vote or Fund.
PROVISIONS—continued.				
Schedule No. 1—Melbourne and Metropolitan District—continued.				
54	Milk—Heatherton Sanatorium	Ditto	Kinross Dairy Pty. Ltd.	
Cereals—				
55	Oatmeal Plain	Ditto	Clifford Love and Co. Ltd.	
56	" Flaked	Ditto	Clifford Love and Co. Ltd.	
57	Barley, Pearl	Ditto	Ward McKenzie Pty. Ltd.	
58	Peas, split, yellow	Ditto	Waters Trading Co. Pty. Ltd.	
59	Rice, dressed	Ditto	Waters Trading Co. Pty. Ltd.	
60	Tapioca seed	Ditto	Waters Trading Co. Pty. Ltd.	
61	Potatoes and onions	Ditto	Silk Bros. (Melb.) Pty. Ltd.	
..	Groceries	Ditto	Terra (Self Service) Pty. Ltd. (A)	
..	Soap Mixtures	Ditto	Terra (Self Service) Pty. Ltd. (A)	
Schedule No. 6—Ararat District—				
62	Breadstuffs	Rates as per annex	Sunicrust Bakeries Pty. Ltd.	
..	Milk (Gaal only)	Ditto	Purchase by agreement	
63	Potatoes	Rates as per annex	Conapak Produce Co.	
..	Groceries	Ditto	McKay MacLeod Pty. Ltd. (A)	
Schedule No. 7—Ballarat District—				
64	Breadstuffs	Rates as per annex	Sunicrust Bakeries Pty. Ltd.	
65	Milk (Teachers Hostels)	Ditto	The Ballarat Modern Dairy Pty. Ltd.	
66	Potatoes and onions	Ditto	Conapak Produce Co.	
..	Groceries (Teachers Hostels)	Ditto	McKay MacLeod Pty. Ltd. (A)	
..	Groceries (Mental Hospital)	Ditto	McKay MacLeod Pty. Ltd. (A)	
Schedule No. 8—Beechworth District—				
67	Breadstuffs	Rates as per annex	West End Bakery Pty. Ltd.	
68	Milk	Ditto	C. W. and M. Millerick	
69	Potatoes and onions	Ditto	J. G. Arnold and Sons	
..	Groceries	Ditto	Sinclairs Self Service Stores (A)	
Schedule No. 9.—Bendigo District—				
70	Bread—For Gaol Bendigo Psychiatric Centre and Sandhurst Boys' Centre and Teachers' Hostels, "Lancewood", McLaren-street, Teachers' College Hostel, Osborne-street, Pleasant Vale For Teachers' Hostel, "Comersdale"	Rates as per annex	Roy Raggatt Pty. Ltd.	General Expenses 1972-73
71	Milk—For Sandhurst Boys' Centre, Bendigo Psychiatric Centre and Gaol	Ditto	Sandhurst Dairies Ltd.	
72	Milk—Teachers College Hostels	Ditto	M. and M. McNaughton	
73	Potatoes and onions	Ditto	Wholesalers Ltd. (A)	
..	Groceries	Ditto	Wholesalers Ltd. (A)	
Schedule No. 10.—Castlemaine District—				
74	Bread	Rates as per annex	Roy Raggatt Pty. Ltd.	
..	Potatoes	Ditto	Purchase by agreement	
Schedule No. 11.—School of Forestry, Creswick—				
75	Breadstuffs	Rates as per annex	"Sunicrust" Bakeries Pty. Ltd.	
..	Groceries	Ditto	E. A. Huntley and Sons (A)	
76	Milk	Ditto	C. N. and E. L. Wrigley	
Schedule No. 12.—Shepparton District—				
77	Breadstuffs	Rates as per annex	Sunicrust Bakeries Pty. Ltd.	
..	Milk	Ditto	Purchase by agreement	
78	Potatoes and onions	Rates as per annex	A. Bove	
..	Groceries	Ditto	Fair Save (A)	
..	Jams	Ditto	Fair Save (A)	
Schedule No. 13.—McLeod Settlement, French Island—				
79	Bread	Rates as per annex	Home Pride Bakeries (South Gippsland) Pty. Ltd.	
..	Potatoes	Ditto	Purchase by agreement	
..	Groceries	Rates as per annex	E. V. Peters (A)	

CONTRACTS ACCEPTED—(Series 1972-73)—continued.

PROVISIONS—continued.

No. of Contract.	Particulars of each Tender Accepted.	Amount.	Name of Contractor or Supplier.	Charge against Vote or Fund.
<i>PROVISIONS—continued.</i>				
80	Schedule No. 14—Geelong District—	Rates as per annex	Sunicrust Bakeries (Geelong) Pty. Ltd.	
..	Bread	Purchase by agreement	
..	Potatoes	<i>Wholesalers Ltd. (A)</i>	
..	Groceries	Rates as per annex		
..	Schedule No. 15.—Coorimungle Prison Camp Heytesbury Forest—			
..	Bread	} Purchase by agreement	
..	Potatoes		
81	Schedule No. 16.—Agricultural College, Glenormiston—	Rates as per annex	J. and J. Hoedemaekers	
..	Bread	Ditto	<i>The Terang and District Co-operative Society Ltd. (A)</i>	
..	Groceries			
82	Schedule No. 17.—Langi Kal Kal Training Centre—	Rates as per annex	Local Maid Bread Pty. Ltd.	
..	Bread			
83	Schedule No. 18.—Agricultural College, Longerenong—	Rates as per annex	Schwarz Breads Pty. Ltd.	
84	Breadstuffs	Ditto	Conapak Produce Co.	
..	Potatoes and onions	Ditto	} <i>Permewans (Horsham) Pty. Ltd. (A)</i>	
..	Groceries	Ditto		
..	Jams	Ditto		
85	Schedule No. 19.—Research Station, Rutherglen—	Rates as per annex	Sunicrust Bakeries Pty. Ltd.	
..	Bread	Ditto	<i>N. P. Haberecht (A)</i>	
..	Groceries			
86	Schedule No. 20.—Sale Gaol—	Rates as per annex	Yallourn Bakery Pty. Ltd.	
..	Bread	Purchase by agreement	
..	Potatoes			
87	Schedule No. 21.—Pleasant Creek Special School, Stawell—	Rates as per annex	Sunicrust Bakeries Pty. Ltd.	General Expenses 1972-73
88	Bread	Ditto	Stawell Modern Dairy	
89	Milk	Ditto	Conapak Produce Co.	
..	Potatoes	Ditto	<i>McKay MacLeod Pty. Ltd. (A)</i>	
..	Groceries	Ditto		
90	Schedule No. 22.—Sunbury District—	Rates as per annex	<i>H. and S. Paterakis (A)</i>	
..	Groceries			
91	Schedule No. 23.—Warrnambool District—	Rates as per annex	Twites Bakeries Pty. Ltd.	
..	Breadstuffs	Ditto	<i>Swintons Supermarket Pty. Ltd. (A)</i>	
..	Groceries	Ditto	Sungold Dairies Pty. Ltd.	
..	Milk			
92	Schedule No. 24.—Hobson Park Hospital—Traralgon—	Rates as per annex	Your Local Bakery (Traralgon) Pty. Ltd.	
..	Breadstuffs	Ditto	<i>Terra (Self Service) Pty. Ltd. (A)</i>	
93	Groceries	Ditto	J. G. and E. McEntee	
..	Milk			
94	Schedule No. 25.—Malmesbury—Youth Training Centre—	Rates as per annex	J. Groves	
..	Bread	Ditto	<i>F. E. and T. Steel (A)</i>	
59	Groceries	Ditto	H. Willis and Sons	
..	Milk			
96	Schedule No. 26.—Morwell River Re-forestation Prison—	Rates as per annex	Yallourn Bakery Pty. Ltd.	
..	Breadstuffs	} Purchase under agreement	
..	Milk		
..	Potatoes			
97	Schedule No. 27.—Tatura District—	Rates as per annex	C. J. Boerkamp	
..	Breadstuffs	Purchase by agreement	
..	Potatoes	Ditto	<i>A. and G. A. Ranson (A)</i>	
..	Groceries			

CONTRACTS ACCEPTED—(Series 1972-73)—continued.

PROVISIONS—continued.

No. of Contract.	Particulars of each Tender Accepted.	Amount.	Name of Contractor or Supplier.	Charge against Vote or Fund.
PROVISIONS—continued.				
Schedule No. 28.—State Research Farm, Werribee—				
..	Breadstuffs	Rates as per annex	Purchase by agreement	}
..	Groceries	Rates as per annex	Terra (Self Service) Pty. Ltd. (A)	}
..	Milk	Rates as per annex	Purchase by agreement	} General Expenses 1972-73
Schedule No. 29.—Won Wron Re-forestation Prison—				
98	Bread	Rates as per annex	Jas Wynne and Sons	}
..	Milk	Ditto	L. and M. Marshall (A)	}
..	Potatoes	Rates as per annex	Purchase by agreement	}

(A) denotes suppliers under agreement.

Approved—Henry Bolte, Treasurer, 8/5/1972.

CONDITIONS OF CONTRACT FOR PROVISIONS 1972-73 ETC.

(Published in the *Victoria Government Gazette* No. 20, dated 22nd March, 1972.)

1. For the purposes of these contracts the word "Government" shall mean the Government of the State of Victoria; and the word "Treasurer" shall mean the Treasurer of the said State.

2. All the articles are to be of the best quality of the several kinds, in the best conditions, and in conformity with the Health Acts, and to be delivered in sound packages, free from all charges for cartage, freight, &c. The goods shall be delivered as may be directed by the officer ordering the supply.

3. As the exact quantity of any article which may be required cannot be stated, the estimate being approximate only, the Government will not be bound by the quantity stated in the Schedule, but will be at liberty to order more or less, according to circumstances, and the contractor will be bound to supply the same as ordered.

4. The Government reserves the right to purchase otherwise than from the contractor any of the articles specified in the Schedule in the event of an emergency.

5. Supplies for country districts for which no local contract may have been taken, or for which the contract has been terminated, may be ordered under the Melbourne and Metropolitan contract.

6. The Melbourne and Metropolitan District will include places within a radius of 20 miles from the Elizabeth-street Post Office. Delivery must be made at the places, institutions, &c., named in the Schedules, or as directed by the officer ordering the supply.

7. Except where otherwise stated in the schedule, the value of all packages, cases, casks, &c., whether bulk be broken or not, must be included in the prices stated in the contractor's tender; all such packages, &c., shall be considered the property of the Government, and no charges or expenses whatsoever beyond the price tendered and set out in the schedule will be allowed to the contractor for any articles or packages, cases, casks, &c. The net weight or quantity only will be paid for. The contractor must provide, without extra charge, whatever labour may be required in the packing of stores. Butter boxes and soap boxes (not including fancy soaps), jam jars, flour, meal, and potato bags will remain the property of the contractor, the empty containers to be removed from the place of delivery at the contractor's expense.

8. Meat supplied under these conditions must be slaughtered and supplied in accordance with the provisions of the Health Act and Regulations. Any infringement of this condition will subject the contractor, on report from the Tender Board to such mulct, not exceeding One hundred dollars, as the Treasurer may direct, and the amount will be deducted from the contractor's account, or from the security money.

9. The supplies coming under the head of Rations and Medical Comforts are to be delivered direct to the establishment entitled thereto on the written order of the officer in charge. All other supplies will be ordered by the head of the Department concerned or any officer authorized by him, and shall be delivered as may be directed by the officer ordering the supply.

10. At the time of delivering the supplies, the contractor shall produce the order for the same to the officer authorized to accept delivery, and such officer shall acknowledge thereon the receipt of the stores accepted, and shall return the order to the contractor, who shall render his account as soon as possible after the delivery of the supplies, accompanied by the receipted delivery order. The rates or quantities quoted in the orders cannot be exceeded.

11. Where railway facilities are available, the contractor shall, except where delivery is required direct into institutions, use the Railways for the transport of the goods. When a contractor is required to make delivery of goods at a railway station for transmission by rail, except for Commonwealth Departments, he shall obtain a receipt for the goods in duplicate on the Stores and Transport consignment note at the same time handing in the triplicate and quadruplicate of the form as an authority for the Railways to act as agent for, and charge the freight to the Stores and Transport Office. He shall as soon as possible, and not later than twenty-four hours thereafter, deliver at the Tender Board Offices the original, the duplicate to be forwarded to the consignees and the quintuplicate retained

by himself. Should the goods thus forwarded be rejected, the contractor must bear the cost of replacing such goods, for which services the departmental consignment note is not to be used. Any infringement of this condition may subject the contractor to such mulct as the Tender Board may recommend under clause 20 of these conditions.

12. Orders must receive prompt execution; in the event of the goods not being delivered at the time mentioned in the order or within such other time as the officer ordering the supply may specify for delivery, it will be competent for such officer, or the head of the Department to whom the goods are to be supplied, on giving the contractor twenty-four hours' notice, to purchase the supplies, or any like supplies that are suitable for the service, at the contractor's risk, and the extra expense incurred over and above the contract price (if any) will be deducted from the contractor's account or from the security money.

13. The acceptance of the supplies shall be subject to the approval of the officer authorized to take delivery of the stores, or such other officer as shall be named in the conditions.

14. If the officer in charge of stores be not satisfied as to the quantity or quality of the stores, or if, after taking delivery of any stores or material, he shall discover any deficiency or defect therein, he may return such deficient or defective stores or material to the contractor, and shall report the same to the head of his department and to the Tender Board.

15. In the event of a difference of opinion between the contractor and the officer receiving the supplies as to the quality, the same is to be decided, in cases where the article is not of a perishable nature, by a Board of Survey composed of persons named by the Treasurer of the State for the time being; and the decision of the Board is to be considered final. In the event of the decision being against the contractor, the survey fees and expenses (if any) will be deducted as in clause 12.

16. In cases where the article is of a perishable nature, or when from some other cause injury would be sustained either by the person to whom the rations or stores are due or by the contractor in waiting for a Board to survey, the head of the Department or officer authorized to take delivery will have power to reject such article or articles as are, obviously of inferior quality, it being understood that he will be responsible to the Government for so doing, and that the contractor must take back the rejected article and supply good in its stead; failing which it, or any like supply suitable for the Service, will be obtained by the officer requiring it as in clause 12. In case of the rejection or return of any supplies, the contractor shall bear the whole cost of replacing the supplies so rejected or returned.

17. If the Board shall decide that the article is not of proper quality it must be immediately replaced by the contractor; failing which it, or any like supply suitable for the Service, will be procured by the officer requiring it, and the expense charged as in clause 12.

18. In the case of supplies for Mental Hospitals, it will be competent for a Board of Survey, consisting of the medical superintendent (or, in his absence, of the medical officer) and any two officers named by him, to examine and reject any supplies that may be objected to. It must be distinctly understood, however, that the contractor will have a right of appeal to the Treasurer of the State for the time being, such appeal to be made in writing within 24 hours of the rejection; but, pending such appeal, he must at once supply others of approved quality; failing which, the supplies required, or any like supplies suitable for the Service, may be obtained by the officer concerned, and the expense charged as in clause 12.

19. In the case of supplies for Mental Institutions, it will also be competent for two or more of the official visitors, in conjunction with the medical superintendent, to reject any supplies that they may consider not in accordance with contract; and in such cases the reference to a Board of Survey will not be deemed to be necessary.

20. A refusal to execute orders, irregularity in the quantity or quality of the supplies, or delay in delivering or replacing them when required, will subject the contractor, upon report from the Tender Board, to such mulct, not exceeding One hundred dollars, as the said Treasurer may direct, and the amount may be deducted as in clause

12. It will also be in the power of the said Treasurer, upon such refusal, irregularity or delay, to terminate the contract forthwith, and forfeit the whole or any part of the security money, and, in addition, the contractor will be disqualified from tendering or holding any future contract or contracts for a period of not less than twelve months from the date of such disqualification.

21. Contractors are not at liberty to transfer their contracts under cover of power of attorney, coupled with an interest or otherwise, and no such transfer will be recognized by the Government. *If it is found during the currency of the contract that the contractor has not conformed to the condition of advertisement—which stipulates that if a tenderer be a member of a firm and such firm be interested in the contract, the tender shall be in the name of the firm and not in that of the individual—then the Treasurer may, on the recommendation of the Tender Board, determine the contract, and forfeit the security money.*

22. It will be competent for the Tender Board to terminate the contract, without notice, should there be reason to know that the contractor takes advantage of his contract to communicate with a prisoner.

23. The contract entered into under these conditions is not to be considered as being broken, infringed, or vitiated by the importation of stores for the Government service, or by any contracts or purchases made by the Agent General for Victoria; or by the consumption of the produce or surplus stock of any Government establishment, or by any article being made at and supplied for the use of any Government establishment.

24. Notwithstanding anything contained to the contrary in section 152 of the Customs Act 1901-71, it is hereby expressly provided that upon any alteration of the duty collected affecting the goods included in this contract, the contract price shall not be altered, and the contract may be terminated at the option of either party by two months' notice in writing from the first day of the calendar month next ensuing, and within the period for which the contract is made. The contract for the unaffected items shall remain in full force and effect. Any notice to be served under this condition shall be deemed to have been duly served if sent to the contractor in a registered letter to his last known place of business or abode.

25. Under no circumstances other than those mentioned in clause 24 will a contractor be permitted to abandon his contract. In the event of the contractor failing to carry on the contract, the contract security money will in that case be absolutely forfeited and, in addition the contractor will be held liable for any loss which the Government may sustain in consequence of such failure.

26. Every person engaged in the service tendered for in the schedule shall be paid such wages and employed subject to such labour conditions as are or may be determined by any Federal Arbitration Court award or any State Wages Board determination.

27. The contractor will be held liable for any damage to Government property occasioned by the contractor or any person engaged by the contractor during the performance of any service required under the contract.

STIPULATIONS FOR SUPPLIES OF PROVISIONS.

SUPPLIES GENERALLY.

For supplies under all sub-schedules, particular attention is drawn to clause 2 of the Conditions of Contract as to quality.

No sub-letting is allowed, and all work must be carried out by the contractor.

Where practicable, all items must be manufactured or prepared within the Commonwealth.

Where no brand of Commonwealth manufacture or production is specifically set out in the respective sub-schedules, such Commonwealth brand as may be ordered must be supplied.

For Schedule No. 3 supplies must be delivered when ordered and, in cases of emergency, on Sundays, holidays, or half-holidays, as required.

BREAD AND FLOUR.

A sample of the best ordinarily retailed to the public will be considered as a test loaf for first quality for fine wheaten and pure wheaten Meal Bread. *Pure wheaten Meal Bread of first quality may be substituted, wholly or in part, for fine wheaten Bread at such times and in such quantities as, in the opinion of the Medical Superintendent, may be deemed necessary, and the contractor will be required to supply such Bread at the contract rate. Reasonable notice, however, of the intention to substitute wheaten Meal Bread must be given to the contractor by the officer ordering the supply. Bread may be baked at any Government establishment without infringing these contracts. At the Gaols, Beechworth, Bendigo, Castlemaine, Geelong, and Sale, and the Coorimungie Prison Camp, McLeod Settlement, and Langi Kal Kal Training Centre, if required, bread must be supplied one day old, due notice to be given to the contractor of such requirement.*

In the event of bread being made at any Government establishment in the Melbourne District during the currency of these contracts, the flour required will be drawn under the flour sub-schedule.

Flour for Districts for which no local contracts have been taken may be ordered under the Melbourne District contract, for delivery f.o.r., Melbourne.

GROCERIES.

As a guarantee of quality, Rice, when ordered in quantities of 56 lb. and over, must be supplied in original bags as delivered by the miller or dresser. Such bags must be branded "Rice, Dressed," and shall also have stencilled thereon the miller or dresser's name and the distinguishing mark indicative of the quality or grade. The bags thus stencilled shall contain Rice milled or dressed by the miller or dresser whose name appears thereon. Supplies not in conformity with the foregoing condition will be rejected.

Oatmeal must be supplied in original bags as delivered by millers.

Candles, except those for prison cells, must be supplied in 1-lb. packets. Candles for prison cells must be delivered in boxes containing from 25 to 50 lb. per box, the boxes for which must be legibly stencilled on one end showing the estimated burning time and the gross, tare, and net weight of contents.

The soap supplied must be hard throughout, ready for immediate use without waste, and shall have been manufactured at least seven weeks before leaving contractor's hands.

Raisins and currants must be present season's, and where the quantity admits, be supplied in original and unopened boxes, labelled as packed.

BARLEY, OATMEAL, PEAS-SPLIT, RICE AND SEED TAPIOCA.

Supplies of these items for Districts for which no local contracts have been taken may be ordered under the Melbourne District contract, for delivery f.o.r., Melbourne.

BUTTER AND CHEESE.

All supplies of 56 lb. or multiples of 56 lb. must be supplied in boxes as originally packed. The boxes must bear the impress stamp of the creamery where the butter is produced, otherwise it will not be accepted. All supplies must be in new boxes.

Where the Store or Butter Factory of the contractor is situated in the Metropolitan area all Butter to the quantity of 56 lb. and over to be supplied in any one consignment under this contract shall before despatch from the Store or Factory be first examined and passed by the Government Butter Grader, for and on behalf of the officer authorized to accept delivery. The boxes containing butter so examined and found satisfactory in quality and description will be stamped by the Government Butter Grader and the date of such examination marked thereon. No butter from a contractor located in the Metropolitan area will be accepted unless the boxes bear the stamp of the Grader. For the purposes of the foregoing condition the Metropolitan Area is defined as being not outside the radius visited by the Government Grader. The officer authorized to accept delivery may, within 48 hours of the receipt of any supply, require the Contractor to have same re-examined by the Grader, and, if not passed by him, it shall be returned to the Contractor, who shall forthwith replace the same with freshly-examined butter.

No Butter ex Cool Store will be examined by the Grader until thermally it is in suitable condition therefor.

Where the Store or Factory from which the Butter is despatched is not within the area visited by the Grader a sample of any supplies may be forwarded to the Government Butter Grader for examination should the supply

be considered by the Officer authorized to accept delivery as not being equal in quality or description to that contracted for.

The Cheese supplied must be first-class quality, semi-fully matured, as ordered, and not less than three months old. If the quantity admits, it shall be boxed for transport.

JAM.

The weight stamped on the tins in accordance with the regulations under the Commerce Act, as indicating the minimum net quantity that each tin contains, shall for the purpose of this contract be taken as the actual contents when computing the quantity supplied.

When Jam is supplied in jars the jars remain the property of the contractor, and must be removed by the contractor at his own expense when empty.

SOAP AND SOAP MIXTURES.

Supplies of these items for Districts for which no local contracts have been taken may be ordered under the Melbourne District contract, for delivery f.o.r., Melbourne.

MEAT.

All meat supplied under this contract shall have been slaughtered in Victoria and shall be freshly killed, well-conditioned, of good quality, healthy, clean, wholesome, free from bone-taint, putrefaction or fly larvae, and shall not have been frozen.

The beef shall be of ox not under three nor more than six years old or heifer or cow not under three nor more than five years old. Carcass beef for Mental Institutions shall be delivered in quarters of equal proportions of hinds and fores and the corresponding hinds and fores must be supplied, also extra buttocks separately when ordered. Meat for other Institutions shall be supplied as ordered. Where hindquarters or buttocks are ordered 9 inches shall be cut off from the end of the leg from the hock upwards, i.e., the end of the leg from which the shank has been removed at the abattoirs; when fore-quarters form a portion of the supply, 6 inches from the end of the neck and the whole of the shin at the clodbone joint shall be removed. The sticking pieces also shall be trimmed off and the point and end of the brisket rendered free from blood and blood stains.

The mutton shall be wether or maiden ewe not more than four years old and the weight of a carcass shall be not less than 40 lb. nor more than 60 lb. The mutton shall be delivered in sides when so ordered. All kidney fat to be removed for Mental Institutions.

Corned Beef (rolled or round as ordered) shall be supplied without bone or cartilage and will be received whether pumped or prepared in the ordinary way of pickling but, in the former case, it shall have been soaked,

after pumping, for at least 48 hours in a good pickle and then thoroughly drained before supply. No flank, chuck, sticking-piece, shin, leg of beef, or piece under 7 lb. will be received.

Meat derived from the Carcasses of Bulls, Stags or Rams or meat containing an undue portion of bone or fat will not be received and shall not be tendered for delivery. Net weight only will be paid for.

In cases of emergency, or on such other occasions as in the opinion of the Mental Health Authority or Heads of other Institutions may seem advisable, other forms of meat, such as Rabbits, Tinned Meats, &c., may be purchased, apart from the contract, in lieu of the meat specified in the Schedule, and substituted therefor, provided 24 hours' notice—except in cases of emergency—be given to the Contractor of such intention.

The parts to be removed by the contractor are indicated in the shaded portion of the annexed diagram. This work shall be carried out in the factory or shop of the Contractor, except those parts usually removed at the abattoirs.

TEA AND COFFEE.

Tea and Coffee for Districts for which no local contracts have been taken may be ordered under the Melbourne District contract.

MILK.

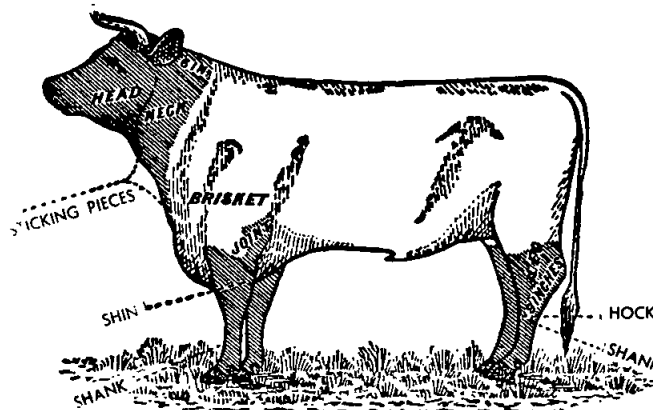
The milk must be fresh, pure, and of the best quality, and subject to test when required by the Department, and supplied at such times as the Department may require. Should the contractor fail to supply at the time specified in the order or at such times as may be indicated in any general notice to the contractor his contract may be cancelled forthwith and his security forfeited, or should the supply prove to be not of contract quality it will be rejected, and any expense incurred will be charged to the contractor.

POTATOES.

1. Supplies of potatoes are to be of "No. 1 Grade" in accordance with Regulations 25 of the Fruit and Vegetables Packing Regulations 1964 and shall consist of sound potatoes of similar varietal characteristics and having a skin which is not immature; shall be free from damage caused by the ordinary process of peeling, and shall be reasonably free from second growth, sprouting, greening from exposure, deterioration caused during storage or by any abnormal condition of growth, and each potato shall weigh no less than three (3) ounces.

2. Bags to remain the property of the contractor. Weight of bags (approx. 2½ lb.) to be deducted.

3. If the price of potatoes becomes abnormally high, the heads of the various departments concerned may, if they think fit, cause rice or any other suitable food to be occasionally substituted in lieu thereof.



ANNEX TO CONTRACTS.

FLOUR AND BREAD.

The contract rates shown are subject to adjustment for any variation in the proclaimed price of flour with the approval of the Tender Board.

AGREEMENTS.

For the Sub-schedules marked (Agreement), no contract has been let nor security lodged. Requirements thereunder are to be purchased from the suppliers named, under Tender Board Agreement. The rates shown are subject to variation from time to time. In all cases, supply is subject to stocks being available.

AVAILABILITY OF SUPPLIES.

Owing to existing difficulties in obtaining supplies of various items, the penal provisions of Clause 12 of the Conditions of Contract are not to be enforced without reference to the Tender Board.

SCHEDULE No. 1.

PROVISIONS—MELBOURNE AND METROPOLITAN DISTRICT.

(For Delivery into Institutions.)

Kew Mental Hospital, Children's Cottages, Kew; Children's Welfare Depot, Royal Park; Psychiatric Hospital, Royal Park; Travancore Developmental Centre, Flemington; St. Nicholas Hospital, Carlton; "Winlton" Juvenile School, 186 Springvale-road, Nunawading and "Allambie" Reception Centre, 70 Elgar-road, Burwood; Teachers' College, Grattan-street, Carlton; Teachers' College Hostels, 93 Drummond-street, Carlton, 470, and 572 St. Kilda-road, Melbourne, 19 Queen's-road, Melbourne, 152 Toorak-road west, South Yarra; Frank Tate House, 373 Dandenong-road, Armadale; "Redcourt", No. 506 "Larnook", No. 519 and 13 Orrong-road, Armadale; 11 Patterson-street, Hawthorn; 174 Punt-road, Prahran; 221 Burwood-road, Burwood; John Cannon House, 32 Belmont-avenue, Kew; 23 Moule-avenue, Brighton and Hastings-road, Frankston; Police Hospital, St. Kilda-road, Melbourne; Mental Hygiene Clinic, 321 Glenferrie-road, Malvern, Mont Park, Bundoora, Larundel, Janefield, and Sunbury Mental Hospitals; Gresswell Rehabilitation Centre and Heatherton Sanatorium, Springvale, and Pentridge, Coburg.

ANNEX TO CONTRACT NO. 1972/40.

Social Welfare Department, 1 Macarthur-street, Melbourne.

Sub-schedule No. 1.

BREAD.

For Mental Hospital and Children's Cottages, Kew.

1. Bread—Fine wheaten, first quality .. per cntl.	\$ 5.50
2. " Wholemeal, first quality .. do.	5.50
3. " Wrapped and sliced .. do.	6.50

ANNEX TO CONTRACT NO. 1972/41.

Social Welfare Department, 1 Macarthur-street, Melbourne.

Sub-schedule No. 2.

BREAD.

For Mental Hospital, Mont Park, to Depots as required, the Repatriation Mental Hospital, Bundoora, Larundel Mental Hospital, Janefield Training Centre and the Rehabilitation Centre, Gresswell.

1. Bread—Fine wheaten, first quality .. per cntl.	\$ 5.50
---------------------------------------------------	---------

ANNEX TO CONTRACT NO. 1972/42.

Social Welfare Department, 1 Macarthur-street, Melbourne.

Sub-schedule No. 3.

For Psychiatric Hospital, Royal Park, "Travancore" Developmental Centre, Flemington, and St. Nicholas Hospital, Carlton.

1. Bread—Fine wheaten, first quality .. per cntl.	\$ 5.50
2. " Wholemeal, first quality .. do.	5.50
3. " Rolls .. per doz.	0.15

ANNEX TO CONTRACT NO. 1972/43.

Social Welfare Department, 1 Macarthur-street, Melbourne.
Sub-schedule No. 4.

BREAD.

For Sunbury Mental Hospital and Training Centre.

1. Bread—Fine wheaten, first quality .. per cntl.	\$ 5.50
---------------------------------------------------	---------

ANNEX TO CONTRACT NO. 1972/44.

Social Welfare Department, 1 Macarthur-street, Melbourne.
Sub-schedule No. 5.

BREAD.

For Teachers' College, Grattan-street, Carlton; Teachers' College Hostels, 93 Drummond-street, Carlton, 470, and 572 St. Kilda-road, Melbourne, 19 Queen's-road, Melbourne, 152 Toorak-road west, South Yarra; Frank Tate House, 373 Dandenong-road, Armadale; "Redcourt", No. 506 "Larnook", No. 519 and 13 Orrong-road, Armadale; 11 Patterson-street, Hawthorn; 174 Punt-road, Prahran; 221 Burwood-road, Burwood; John Cannon House, 32 Belmont-avenue, Kew; 23 Moule-avenue, Brighton and Hastings-road, Frankston; Police Hospital, St. Kilda-road, Melbourne; Mental Hygiene Clinic, 321 Glenferrie-road, Malvern.

1. Bread—Fine wheaten, first quality .. per cntl.	\$ 5.50
2. " Wholemeal, first quality .. do.	5.50
3. " Wrapped and sliced .. do.	6.50
4. " Rolls .. per doz.	0.15

ANNEX TO CONTRACT NO. 1972/45.

Social Welfare Department, 1 Macarthur-street, Melbourne.
Sub-schedule No. 6.

BREAD.

For Heatherton Sanatorium.

1. Bread—Fine wheaten, first quality .. per cntl.	\$ 5.50
---------------------------------------------------	---------

ANNEX TO CONTRACT NO. 1972/46.

Bunge (Australia) Pty. Ltd., 447 Collins-street, Melbourne.
Sub-schedule No. 7.

FLOUR.

Security, \$180.

1. Flour—Roller, first quality (150-lb. bag) per cntl.	\$ 4.20
2. " " " " (50-lb. bag) per bag	2.30

ANNEX TO CONTRACT NO. 1972/47.

Brooke Bond Monbulk Ltd., Camm's-road, Monbulk.
Sub-schedule No. 8.

JAMS.

Security, \$40.

1. Jams—"Monbulk" Brand Assorted, in bulk, of approved kinds, in the proportion of half seed and half actual stone, of the best quality, in 54-lb. tins net .. per tin	\$ 6.90
2. Jams " " " 24 oz. tins .. do.	0.24
3. Jams " " " 5 lb. tins .. do.	0.75
4. Jams " " " 27 lb. tins .. do.	3.85
5. Jam—Marmalade, 24 oz. tins .. do.	0.225
6. Jam—Marmalade, in 5 lb. tins .. do.	0.68
7. Jam—Marmalade in 27 lb. tins .. do.	3.60

ANNEX TO CONTRACT NO. 1972/48.

Bushells (Pty.) Ltd., 71 Normanby-road, Notting Hill.
Sub-schedule No. 9.

TEA.

Security, \$300.

1. Tea—First Grade—To sample	per lb.	0.43
Packing-chests containing 100-lb. net or 50-lb. net.		

ANNEX TO CONTRACT NO. 1972/49.

Bushells (Pty.) Ltd., 71 Normanby-road, Notting Hill.
Sub-schedule No. 10.

COFFEE.

Security, \$200.

1. Coffee—Fresh roasted, and whole, beans	per lb.	0.48
to be thoroughly sound—To sample		
2. Coffee—Fresh roasted, beans to be	do.	0.48
thoroughly sound—To sample—Ground		
Packing-chests containing 112-lb. net or 56-lb. net.		

ANNEX TO CONTRACT NO. 1972/50.

Model Dairy Pty. Ltd., 131 Cotham-road, Kew.
Sub-schedule No. 11.

MILK.

For Mental Hospital and Children's Cottages, Kew.

Security \$200.

1. Milk—Fresh and Pure	{ Bulk	per gal.	Milk
	{ Bottles	do.	Board
			Rates

ANNEX TO CONTRACT NO. 1972/51.

Travancore Dairies Pty. Ltd., Railway-crescent, Broadmeadows.
Sub-schedule No. 12.

MILK.

For Mental Hospitals, Mont Park, Plenty, Larundel, the Repatriation Mental Hospital, Bundoora and Rehabilitation Centre, Gresswell.

Security \$200.

1. Milk—Fresh and Pure	{ Bulk	per gal.	Milk
	{ Bottles	do.	Board
			Rates.

ANNEX TO CONTRACT NO. 1972/52.

Travancore Dairies Pty. Ltd., Railway-crescent, Broadmeadows.
Sub-schedule No. 13.

MILK.

For Royal Park Psychiatric Hospital, "Travancore" Developmental Centre, St. Nicholas Hospital and "Turana" Youth Training Centre.

Security \$100.

1. Milk—Fresh and Pure	{ Bulk	per gal.	Milk
	{ Bottles	do.	Board
			Rates.

ANNEX TO CONTRACT NO. 1972/53.

B. L. Coram and Sons (Milk Transport) Pty. Ltd., 49 Kangaroo-road, Murrumbidgee.
Sub-schedule No. 14.

MILK.

For "Winlton" Girls' Training Centre, Nunawading and "Allambie" Reception Centre, Burwood

Security \$40.

1. Milk—Fresh and Pure	{ Bulk	per gal.	Milk
	{ Bottles	do.	Board
			Rates.

ANNEX TO CONTRACT NO. 1972/54.

Kinross Dairy Pty. Ltd., 282 Nepean Highway, Edithvale.
Sub-schedule No. 15.

MILK.

For Heatherton Sanatorium.

Security \$40.

1. Milk—Fresh and Pure	{ Bulk	per gal.	Milk
	{ Bottles	do.	Board
			Rates.

ANNEX TO CONTRACT NOS. 1972/55 to 1972/60.

1972/55 } Oatmeal, Plain { *Clifford Love and Co. Ltd., P.O.*
1972/56 } " Flaked { *Box 125, West Footscray*
1972/57 } Barley, pearl—*Ward McKenzie Pty. Ltd., 192–200 Arden-*
street, North Melbourne.

1972/58 } Peas, Split, yellow } *Waters Trading Co. Pty. Ltd., 45*
1972/59 } Rice, dressed } *Elizabeth-street, North Richmond*
1972/60 } Tapioca, seed }

Sub-schedule No. 16.

CEREALS.

1. Barley, pearl	per cwt.	5.75
2. Oatmeal, plain	do.	7.50
3. " flaked	do.	7.50
4. Peas, split yellow	do.	7.50
5. Rice, dressed	do.	11.00
6. Tapioca, seed	do.	9.50

ANNEX TO CONTRACT NO. 1972/61.

Silk Bros. (Melb.) Pty. Ltd., 542 Footscray-road, Footscray.

Sub-schedule No. 17.

POTATOES AND ONIONS.

Security \$200.

*Rates are to be calculated on top rates per bag lots as shown in the Department of Agriculture News Service Bulletin less discounts as stated hereunder).

1. Potatoes, No. 1 Grade	per bag	* less 20%
2. Onions	do.	* less 15%

(AGREEMENT.)

Terra (Self Service) Pty. Ltd., 42 Elizabeth-street, South Yarra.

Sub-schedule No. 18.

GROCERIES, METROPOLITAN DISTRICTS.

1. Bacon—Sides	per lb.	0.74
2. " Middles	do.	0.72
3. " Rashers, middle	do.	0.88
4. Baking powder—1-lb. McKenzies'	per doz.	6.55
5. Barley—Pearl	per lb.	0.06
6. " " 56-lb. bags	per cwt.	⊙
7. Beans—Haricot	per lb.	0.27
8. " Lima	do.	0.25
Biscuits (tins 40c returnable)—		
9. Thin Captain " Arnotts "	per tin	1.40
10. Uneda " Swallows "	do.	1.15
11. Rice	do.	□
12. Nice " Sunshine "	do.	2.06
13. Sweet Assorted " Sunshine "	do.	2.28
14. Butter Crisps, Vanilla Curls " Sunshine "	do.	□
15. Shortbreads " Arnotts "	do.	2.86
16. Sunflakes " Sunshine "	do.	□
Blue—1-oz. knobs—		
17. " Reckitts "	per doz.	0.89
18. Bulk—7-lb. pkts.	per lb.	□
19. Borax	do.	0.10
20. Boiled Sweets (14-lb. cartons)	do.	0:27
21. Bread Crumbs—" Terra "	per doz.	1:25
22. " " Loose " Tip Top ", 20 lb.	each	2.00
23. Cake containers—Paper " Family " 120's	per doz.	1.01
24. Candles, " Contos "	do.	0.55
Cereals—		
24A. Weeties, 16-oz.	do.	3.94
25. Cornflakes " Skippy "—16 oz.	do.	4.35
26. Weet Hearts—24-oz.	do.	4.45
27. Weetbix—24-oz.	do.	4.68
28. Allbran	do.	2.96
29. Rice Bubbles—8-oz.	do.	3.12
Cheese—Kraft—		
30. 5-lb. boxes	per box	2.54
31. 8-oz. pkts.	per doz.	3.24
32. Matured—Tasty, 5-lb. pkts. " Huttons "	per lb.	0.55
33. Grated, 5-lb. polythene bags " Kraft "	do.	0.78
34. Chutney—Fruit—" Rosella "	per doz.	2.99
35. Cloves—Whole	per lb.	2:16
36. Cocoa—Loose, 28-lb. bags	do.	0.375
37. " " 14-oz. packets—Bournville	per doz.	7.80
38. Coconut—Desiccated—" Ceylon "	per lb.	0.25
Coffee Essence—		
39. 8-oz. " Bushells " bottles	per doz.	3.46
40. 26-oz. " Excelsior "	per doz.	9.75
41. 1-gal. " Bushells ", sweetened	per gal.	4.34
42. Nescafe—1-lb. tin	per lb.	3.26
43. " " 2-oz. tin	per doz.	5.26
44. " " 6-oz. jar	do.	14.67
45. Curry Powder—Loose	per lb.	0.34
46. Custard Powder—Loose (7-lb.)	do.	0.11
47. " " 1-lb. " Cameo "	per doz.	2.48
48. Cream of Tartar—Loose	per lb.	0.43
49. Eggs—Large		V.E.B. price plus cartage.

* Tins 40c. each

⊙ Order under Schedule No. 10.

□ Supplies not available.

Sub-schedule No. 18—continued.

GROCERIES—continued.

		\$
Essences, &c.—		
50.	Almond, 1-oz., "Bingo"	per doz. 1.10
51.	16-oz. (red colouring)	each 0.37
52.	Lemon, 8-oz. "Stedwells"	do. 0.46
53.	Lemon, 4-oz. "Bingo"	do. 3.36
54.	Lemon, 2-oz. "Bingo"	do. 1.87
55.	Parisian 26-oz. "Havelock"	do. 0.45
56.	Vanilla, 8-oz. "Stedwells"	do. 0.59
57.	Vanilla, 4-oz. "Bingo"	do. 3.36
58.	Vanilla, 2-oz. "Bingo"	do. 1.87
59.	Yolkine, 16-oz. "Stedwells"	do. 0.37
Extracts and Pastes—		
60.	Gravox, 1-lb. packets	per doz. 3.25
61.	Marmite, 2-oz.	per jar 0.14
62.	Vegemite, 4-oz.	do. 0.27
63.	" 8-oz.	do. 0.46
64.	" 16-oz.	do. 0.82
65.	" 6½-lb.	do. 4.70
66.	Peanut Butter, 40-oz. "Sanitarium"	do. 1.60
67.	" 12-oz.	do. 0.38
68.	Bonox, 4-oz.	do. 0.34
69.	" 8-oz.	do. 0.60
70.	Bloater, 2½-oz. "Pecks"	per doz. 2.60
71.	Salmon and Shrimp, 2½-oz. jars "Pecks"	do. 2.60
72.	Anchovy, 2-oz. "Pecks"	do. 2.60
73.	Gherkin Spread, ¼ gal. jars	per jar 2.00
Fish—Tinned—		
74.	Salmon, 16-oz. "Safcol"	per doz. 4.80
75.	Cutlets, 16-oz. "Safcol"	do. 3.40
76.	Herrings in Sauce, 14-oz.	do. 3.70
77.	Herrings—Fresh, 14-oz.	do. 3.70
78.	Sardines—¼'s, Norwegian	do. 2.04
Flour—Corn or Maize—		
79.	Bulk, 50-lb. sacks	per lb. 0.085
80.	1-lb. packets "Medallion"	per doz. 2.06
81.	Loose	per lb. 0.085
82.	Self raising—25-lb. bag	per bag 2.45
83.	" 50-lb. bag	do. 4.73
84.	Plain, 4-lb. "Alpine"	per pkt. 0.36
Fruits—Dried—		
85.	Apricots—Large, case lots	per lb. 0.76
86.	" less than case lots	do. 0.755
87.	Peaches—Large, case lots	do. 0.45
88.	" less than case lots	do. 0.455
89.	Pears—Large, case lots	do. 0.65
90.	" less than case lots	do. 0.66
91.	Cherries—Crystallized	do. 0.65
92.	Prunes—7-lb. tins medium	per lb. 0.34
93.	" large	do. 0.36
94.	Currants—3-crown, case lots	per lb. 0.295
95.	" less than case lots	per lb. 0.30
96.	Raisins—Seeded, case lots	do. 0.32
97.	" less than case lots	do. 0.325
98.	" 1-lb. packets	per doz. 4.44
99.	Sultanas—5-crown, case lots	per lb. 0.31
100.	" less than case lots	do. 0.315
101.	Dates—Case Lots	do. 0.21
102.	" less than case lots	do. 0.22
Fruits—Preserved, 29-oz. tins—		
103.	Apricots—Halves "A.J.C."	per doz. 3.84
104.	Peaches—Halves and sliced "A.J.C."	do. 3.84
105.	Pears—Halves "A.J.C."	do. 3.84
106.	Fruit Salad "I.X.L."	do. 4.25
107.	Pineapple Pieces "I.X.L."	do. 3.96
Fruits—Solid Pack—		
108.	Apples, 6½-lb. tins, "A.J.C."	do. 10.70
109.	Apricots, 7-lb. tins, "Berri"	do. 15.00
110.	Peaches, 7-lb. tins, "Berri"	do. 15.00
111.	Gelatine—Ground, 1-lb. packets	per lb. 1.13
112.	Ginger—Ground	do. 0.85
113.	Golden Syrup, 2-lb. tins	per doz. 2.94
Granulated Products—		
114.	Beef Booster "Maggi" (1½-lb. tins)	per tin 2.39
115.	Chicken Booster "Maggi"	do. 1.98
116.	Herbs—Mixed, loose	per lb. 0.50
117.	" 1-oz. packets	per doz. 0.90
118.	Honey, 60-lb. tins "Archibald"	per tin 13.60
119.	" 5-lb. tins	do. 1.55
120.	" 2-lb. jars	per doz. 7.00
121.	Jams (Order Sub-Schedule No. 9)	
Jelly Crystals—		
122.	4-oz. packets "Express"	per doz. 0.79
123.	5-lb. packets	per pkt. 1.44
124.	Junket Tables—"Merry Widow", pkts.	per doz. 2.58
125.	Lemon Butter "Cottees"	do. 3.36
126.	Lentils	per lb. 0.19

Sub-schedule No. 18—continued.

GROCERIES—continued.

		\$
127.	Macaroni, 1-lb. packets, "Rinaldi"	per doz. 2.50
128.	" Bulk, 56-lb. bags, "Rinaldi"	per lb. 0.125
129.	Margarine—Cake or Pastry "Imperial"	do. 0.21
130.	Matches—Safety, dozens	per gross 2.05
131.	Mayonaise, 5-lb. jars, "Eta"	per jar 1.45
Meat—tinned—		
132.	Beef Luncheon, 12-oz. tins, "T.P."	per doz. 4.05
133.	Beef Steak Pudding, 16-oz. tins "T.P."	do. 3.65
134.	Camp Pie—12-oz., tins, "T.P."	do. 2.60
135.	Irish Stew, 16-oz. tins, "T.P."	do. 3.25
136.	Sausages and Vegetables, 16-oz. tins "T.P."	do. 3.25
Milk—		
137.	Dried, 56-lb. bag, "Tooralac"	per bag 17.00
138.	Dried, 3-lb. tins "Sunshine"	per doz. 19.00
139.	Condensed, 14-oz. tins, "Nestles"	do. 3.12
140.	Condensed, 14-oz. tins, "Ideal"	do. 2.04
141.	Milk Evaporated, 14-oz. tins	per tin 2.04
142.	Malted, "Nestles"	per doz. 5.15
143.	Skimmed, 16-oz. "Bonlac"	per doz. 4.35
144.	Monosodium Glutamate (1½ lb tins)	do. 1.98
145.	Mustard—Loose, ordinary	per lb. 0.40
146.	Oatmeal—Flaked, loose	do. 0.08
147.	Oatmeal, Flaked, 112-lb. sacks	per bag 0
Oil—		
148.	Olive	per gal 2.55
149.	Peanut	do. 3.46
150.	Pastry Mix—"Robur"	per doz. 1.58
151.	Sponge Mix—"White Wings"	do. 3.40
152.	Peel—Mixed, cut, loose "T.P."	per lb. 0.21
153.	Pepper—White, ground	do. 0.96
154.	" Black,	do. 0.81
155.	" Cayenne, No. 1	per doz. 0.82
156.	Pickles—Mustard, 18-oz. "Epicure"	do. 3.40
157.	" ¼-gal. jars 	per jar 0.99
158.	Rice—Dressed, 56-lb. sacks (Order Sub-Schedule No. 10)	
159.	" Dressed	per lb. 0.115
160.	" Ground, 12-oz. packet	do. 0.14
161.	Sago—Seed Tapioca (Order Sub-Schedule No. 10)	
162.	Salt—Fine, bulk	per cwt. 2.15
163.	Salt—Table, 1-lb. packets, "Mermaid"	per doz. 1.10
164.	Sauce—Mint	per gal. 1.42
165.	" Soya	do. 3.25
166.	" Tomato, 26-oz., "T.P."	do. 5.10
167.	" 1-gal. jars, "Harding"	per gal. 1.88
168.	" Tomato and Apple, 1-gal. jars.	do. 1.60
169.	" Worcestershire, 10-oz. "Hardings"	per doz. 2.68
170.	" 1-gal. jars "New man"	per gal. 1.50
171.	" Mustard, 8-oz., "Fountain"	per doz. 2.76
172.	Semolina	per lb. 0.07
173.	Soda—Bicarbonate	per lb. 0.07
174.	" Washing, 1-cwt. bags	per cwt. 5.05
175.	" loose	per lb. □
176.	Soups—Asparagus, 16-oz., "H2"	per doz. 2.60
177.	" Tomato, 16-oz., "K.O."	do. 1.95
178.	" 5-lb. "Maggi"	per tin 4.10
179.	" 5-lb. "Continental"	do. 3.95
180.	" 7-lb. "A.J.C."	per doz. 11.05
181.	" 7-lb. "Heinz"	do. 13.00
182.	Chicken Noodle, packets	do. 1.66
183.	Cream of Chicken, 5-lb. "Maggi"	per tin 4.10
184.	" 5-lb. "Continental"	do. 4.75
185.	Vegetable, 7-lb., "A.J.C."	per doz. 11.05
186.	Spaghetti, 1-lb. packets, No. 1 "Rinaldi"	do. 2.50
187.	" Bulk, 22-lb. "Rinaldi"	per carton 2.56
Spices, &c.—		
188.	Mixed—Loose	per lb. 0.52
189.	" 1-oz. packets	per doz. 0.57
190.	Cloves, whole	per lb. 2.16
191.	Paprika	per lb. 0.93
192.	Cinnamon	per lb. 0.43
193.	Bay Leaves	do. 0.52
194.	Nutmeg—ground	do. 0.87
195.	Arrowroot, 12-oz., "Parsons"	per pkt. 0.27
196.	Starch—Rice, bulk, "Parsons"	per lb. 0.09
197.	" "Silver Star", 12-oz.	per doz. 2.74
198.	Sugar—Icing	per lb. 0.115
199.	" Castor	do. 0.115
200.	" No. 3, Brown, 70-lb. bags	do. 0.095
201.	" White, 70-lb. bags	per bag 6.85
Sweet Toppings—		
202.	Chocolate, 13-oz., "T.P."	per doz. 2.64
203.	Raspberry, 13-oz., "T.P."	per doz. 2.64

|| Jars, 50c each. All returnable. □ Supplies not available. ○ Order under Sub-schedule No. 10.

Sub-schedule No. 18—continued.

GROCERIES—continued.

Table listing various grocery items such as Strawberries, Tapioca, Treacle, Peas, Beans, Vegetables, and more, with their respective prices per unit.

(AGREEMENT.)

Terra (Self Service) Pty. Ltd., 42 Elizabeth-street, South Yarra.

Sub-schedule No. 19.

SOAP MIXTURES.

(Of Commonwealth Manufacture.)

Table listing soap mixtures like Extract of "Kitchens", Household—Dry, Lux, Rinsol, Persil, SNO, Sandsoap, Toilet Soap, and Washing Soda, with prices.

SCHEDULE No. 6.

PROVISIONS—ARARAT DISTRICT.

(Delivery into Institution.)

ANNEX TO CONTRACT No. 1972/62.

Sunicrust Bakeries Pty. Ltd., 49 Moore-street, Ararat.

Sub-schedule No. 1.

BREADSTUFFS.

Security, \$50.

Table listing breadstuffs: Bread, Flour, etc., with prices per unit.

Sub-schedule No. 2.

MILK (GAOL).

Table listing Milk—Fresh and Pure—Bottled and bulk, with prices.

* Supplies not available.

ANNEX TO CONTRACT No. 1972/63.

Conopak Produce Co., 512 Mair-street, Ballarat.

Sub-schedule No. 3.

POTATOES.

Security, \$50.

(*Rates are to be calculated on top rates per bag lots as shown in the Department of Agriculture News Service Bulletin, less discount as stated hereunder).

Table listing Potatoes, No. 1 grade, with price per bag and a note about a 5% discount.

(AGREEMENT.)

McKay MacLeod Pty. Ltd., 63 Mair-street, Ballarat.

Sub-schedule No. 4.

GROCERIES.

Large table listing various grocery items like Barley, Baking Powder, Beetroot, Blue-Washing, Bonox, Bournvita, Candles, Cereals, Chutney, Cocoa, Coffee Essence, Curry Powder, Essences, Lemon, Parisian, Vanilla, Yorkline, Flour, Dates, Golden Syrup, Gravox, Herbs, Jelly Crystals, Macaroni, Marmite, Margarine, Mustard, Milk, Peanut Butter, Pepper, Pickles, Salt, Sauce, Soap, Spaghetti, Spices, Soda, Starch, Sultanas, Tartar, Vinegar, Mixed fruit, Sugar icing, Coconut desiccated, with prices.

(AGREEMENT.)

McKay MacLeod Pty. Ltd., 63 Mair-street, Ballarat.

Sub-schedule No. 5.

JAMS.

Table listing Jams—Assorted, in bulk, of approved kinds, with prices per tin.

‡ Charge for drums if not returned.

SCHEDULE No. 7.
PROVISIONS—BALLARAT DISTRICT.

(Delivery into Institutions.)

ANNEX TO CONTRACT NO. 1972/64.

Sunicrust Bakeries Pty. Ltd., 15-17 Lal Lal-street, Ballarat.

Sub-schedule No. 1.

BREADSTUFFS.
Security, \$200.

1. Bread—Fine wheaten, first quality	per cntl.	\$ 9.00
2. Flour—First quality	do.	4.86

ANNEX TO CONTRACT NO. 1972/65.

The Ballarat Modern Dairy Pty. Ltd., 805 Sturt-street, Ballarat.

Sub-schedule No. 2.

MILK.

For delivery to Teachers' College Hostel as under :—

Gillies-street, Ballarat.
Beaufort House, Beaufort-avenue, Ballarat.
1415 Sturt-street, Ballarat.
130 Victoria-street, Ballarat.
126 Webster-street, Ballarat.

1. Milk—Fresh and pure, pasteurized—Bulk	per gal.	Milk Board Rates
2. " " " " " —Bottled	do.	

ANNEX TO CONTRACT NO. 1972/66.

Conopak Produce Co., 512 Mair-street, Ballarat.

Sub-schedule No. 3.

POTATOES AND ONIONS.
Security, \$50.

1. Potatoes, No. 1 Grade	per bag	*Less 10%
2. Onions	do.	*Less 10%

(*Rates are to be calculated on top rates per bag lots as shown in the Department of Agriculture News Service Bulletin, less discount as stated hereunder.)

(AGREEMENT.)

McKay MacLeod Pty. Ltd., 63 Mair-street, Ballarat.

Sub-schedule No. 4.

GROCERIES FOR TEACHERS' COLLEGE HOSTELS.

		\$
Bacon—		
1. { Sides	per lb.	*
{ Middles	do.	0.75
{ Rashers	do.	0.85
2. Barley—Pearl, 14-lb. bags	each	1.28
Beans—		
3. Haricot	per lb.	0.27
Biscuits—		
4. { Sao	per tin	1.18
{ Thin Captain	do.	1.36
{ Malt	do.	2.04
{ Marie	do.	1.49
{ Coffee	do.	1.77
Blue—		
5. 1-oz. knobs, paper, "Reckitts"	per gross	10.70
6. 1-oz. knobs, square	do.	*
7. Cake Containers—paper "Barkers" 120's	per doz. pkts.	1.03
Cereals—		
8. { "Weeties", 16-oz.	per doz. pkts.	3.94
{ "Cornflakes", large	do.	4.73
{ "Weetbix", 24-oz.	do.	4.69
{ "All-bran"	do.	2.93
Cheese—		
9. { 6-lb. boxes, "Kraft"	per pkt.	3.10
{ 1-lb. packets	per doz.	3.35
10. Chutney—"Rosella", Fruit	do.	3.05
Cocoa—		
11. 14-oz. tins, "Bournville"	do.	7.82
12. Loose, 28-lb.	per bag	16.21
13. Coconut—Desiccated (loose) (7-lb.)	per lb.	0.32

* Supplies not available.

Sub-schedule No. 4—continued.

GROCERIES—continued.

\$

Coffee and Chicory Essence—		
14. 8-oz. bottles, "McKays"	per doz.	3.72
15. 1-gallon jars (jars 35c each)	per jar	4.68
16. Curry Powder—Bulk	per lb.	0.56
Custard Powder—		
17. Bulk	do.	0.17
18. 1-lb. packets, "McKays"	per doz.	2.50
19. Dates—Slabs, 14-lb.	per lb.	0.26
Essences, &c.—		
20. Almond, 16-oz.	per doz.	14.96
21. Lemon, 16-oz.	do.	14.96
22. Vanilla, 16-oz.	do.	14.96
23. Cochineal { 1-oz.	do.	2.51
{ 16-oz.	do.	23.49
24. Parisian { 5-oz. bottles	do.	2.83
{ 26-oz. bottles	do.	7.15
25. Yolking, "Yolko", 16-oz.	do.	8.32
Extracts, Pastes, &c., or equal—		
26. Marmite { 16-oz. jar	do.	9.25
{ 8-oz. jar	do.	4.72
27. Vegemite { 16-oz. jar	do.	10.04
{ 8-oz. jar	do.	5.56
28. Peanut Butter, 12-oz. "Eta"	do.	6.04
29. Bonox, 8-oz.	do.	7.22
30. Bloater, "Pecks"	do.	2.72
31. Salmon and Shrimp, "Pecks"	do.	2.72
Fish—Tinned—		
32. 16-oz. tin "Safcol" cutlets	do.	3.29
{ Fresh, 7-oz. tin	do.	2.69
33. Herrings { Fresh, 14-oz. tin	do.	4.02
{ In sauce, 7-oz. tin	do.	2.69
{ In sauce, 14-oz. tin	do.	4.02
34. Sardines, 4-oz. tin, "D.L."	do.	2:05
Flour—Corn or Maize—		
35. Packets, "Kream"	per doz.	2.66
36. Bulk—14-lb. bag	per bag	1.80
37. Self-Raising { 25-lb. bags, "McKays"	do.	2.48
{ 6-lb. packets, "McKays"	per doz.	7.45
Fruits—Dried—		
38. Apples	per lb.	*
39. Apricot, 28-lb. carton, standard large	do.	0.6543
40. Peaches, peeled, choice, 28-lb. carton large	do.	0.451
41. Pears, standard, 25-lb. carton, large	do.	0.3911
42. Prunes, 7-lb. tins choice large	per tin	2.45
43. Currants, 3-crown, 30-lb. carton	per lb.	0.2912
44. Raisins—Seeded, 1-lb. packets	per doz.	4.47
45. Sultanas—4-crown, 35-lb. carton	per lb.	0.3022
5-crown, 35-lb. carton	do.	0.3077
Fruits—Tinned—		
46. Solid Pack Peaches, 7-lb. tins	per doz.	17.22
47. Solid Pack Apples { 28-oz. tin	do.	4.02
{ 64-lb. tin	do.	11.85
48. Solid Pack Apricots, 7-lb. tins	do.	16.08
49. Gelatine—Ground, "Davis," loose (7-lb.)	each	7.13
50. Ginger—Ground	per lb.	0.81
51. Golden Syrup, 2-lb. tins (70-lb. drums, \$7.01)†	per doz.	3.05
52. Gravox—1-lb. tins	do.	3.22
53. Herbs—Mixed, packets, 1-oz.	do.	0.40
54. Honey { 60-lb. tins	each	8.68
{ 24-oz. bottles	do.	5.08
Jelly Crystals—		
55. 4-oz. packets, "McKays"	per doz.	1.13
56. 7-lb. packets	per lb.	0.34
Junket Tablets—		
57. "Merry Widow" flavoured, tubes	per doz.	2.67
58. Lentils—7-lb. bag	per bag	1.72
Macaroni—		
59. 1-lb. packets	per doz.	2.55
60. Bulk—22-lb. cartons	each	2.93
61. Margarine { Cooking	per lb.	0.41
{ Cake, pastry 56-lb. cartons	per ctn.	12.81
62. Matches—Safety, packets	per gross	2.00
63. Mayonnaise—1-gallon jars (jars 35c each)	per jar	1.68
Meat—Tinned.		
64. Beef Luncheon, square tins, "Piper"	per doz.	4.16
65. Beef Steak Pudding, "Piper"	do.	4.28
66. Camp Pie, 12-oz. tins, "Piper"	do.	2.67
67. Irish Stew, 16-oz. tins, "Piper"	do.	3.37
68. Braised Steak and Vegetables, 16-oz. tins, "Piper"	do.	3.37
69. Sausages and Vegetables, 16-oz. tin, "Piper"	do.	3.37
Milk—Dried—		
70. { "Sunshine," 12-oz. tins	do.	5.38
{ "Sunshine," 3-lb. tins	do.	19.28

† Charge for drums if not returned.

Sub-schedule No. 4—continued.
GROCERIES—continued.

			\$
Milk—Condensed—			
71. "Nestles"	do.	3.16	
72. "Ideal"	do.	2.45	
73. Mustard—Loose (4-lb.)	each	3.70	
74. Nutmeg—Ground	per lb.	0.99	
75. Oatmeal—Flaked, 50-lb. bags	per bag	4.28	
76. Pastry—Mix, 1-lb. packets, "Bakeo"	per doz.	1.65	
77. Peel—Mixed, cut, 8-oz.	do.	2.30	
78. Pepper—White, ground	per lb.	0.84	
79. Pickles—Assorted, 18-oz. bottles, "McKays"	per doz.	3.94	
Rice—			
80. Dressed (½ cwt.)	per cwt.	13.34	
81. Ground—12-oz. packets	per doz.	1.73	
82. Sago (Seed Tapioca)—7-lb. bag	per bag	1.10	
Salt—			
83. Fine, bulk, "Imperial"	per cwt.	2.38	
84. Table, 1-lb. packets, "Mermaid"	per doz.	1.18	
Sauce—			
85. Tomato, 26-oz. bottles, "McKays"	do.	5.02	
86. Tomato, 1-gal. jar (jars 35c each)	per jar	1.95	
87. Worcestershire, 10-oz. bottles	per doz.	3.13	
88. Worcestershire, 1-gal. jar	per jar	2.04	
89. Mustard, 8-oz. bottles	per doz.	*	
Soaps—			
90. Borax (powdered)	per cwt.	12.09	
91. Extract of "Pental" 56-lb. bags	per bag	6.98	
92. "Lux," Economy packets 20-oz.	per doz.	†	
93. "Rinso," Economy packet 20-oz.	do.	5.22	
94. "Persil," Economy packet 24-oz.	do.	4.66	
95. Sand soap, 12-oz. blocks, "Pearsons"	do.	1.58	
96. Toilet soap, 3½-oz. tabs., "Palmolive"	do.	1.30	
97. "Velvet"—"Standard"	do.	3.83	
98. "Velvet"—"Economy"	do.	5.35	
Soda—			
99. Bicarbonate—7-lb. bag	per bag	0.70	
100. Washing, 56-lb. bags	do.	2.91	
Soups—Tomato—			
101. 16-oz. tins, "Kia Ora"	per doz.	2.00	
102. No. 10 tins, "Rosella"	do.	14.09	
Spaghetti—			
103. 1-lb. packets	do.	2.55	
104. Bulk, 22-lb. cartons	each	2.93	
105. Spice—Mixed, loose (1-oz. pkts.,)	per lb.	0.71	
106. Starch—Rice, 12-oz. pkts., "Silver Star"	per doz.	2.55	
Sugar—			
Icing Mixture	per cwt.	13.79	
107. Castor	do.	13.79	
White (70-lb. bag)	per bag	7.11	
108. Tapioca—Pearl—7-lb. bag	do.	0.95	
109. Tartar—Cream of, "Antelope Phos. Aerator"—7-lb. bag	per lb.	0.36	
110. Tea, 1st quality, loose	do.	0.56	
111. Treacle—2-lb. tins	per doz.	2.95	
Vegetables—Dried—			
112. Soup Vegetable { 3-lb. tins, "Dew Crisp" per tin 3.37 21-lb. do. 18.43			
113. Peas, Green, "Dew Crisp", in 21-lb. tins	do.	†	
114. Peas, Split, yellow, 14-lb. bag	per bag	1.90	
Vegetable—Tinned—			
115. Baked Beans, 16-oz. tins, "Kia Ora"	per doz.	2.10	
116. Baked Beans, No. 10 can, "Rosella"	do.	13.82	
117. Beans, Green, 16-oz. tins, "Edgells"	do.	2.36	
118. Beetroot, 30-oz. tins "Edgells"	do.	2.86	
119. Peas, 30-oz. tins, "Edgells"	do.	4.24	
120. Sweetcorn, 16-oz. tins, "Rosella"	do.	3.17	
Vermicelli—			
121. 1-lb. packets	per doz.	2.55	
122. Bulk, 22-lb. cartons	each	2.93	
123. Vinegar—Malt, 1-gal. jars (jars 35c)	per jar	0.58	

(AGREEMENT.)

McKay MacLeod Pty. Ltd., 63 Mair-street, Ballarat.

Sub-schedule No. 5.

GROCERIES FOR LAKESIDE HOSPITAL.

		\$
1. "All Bran"	per doz.	2.93
2. Baking Powder, 16-oz.	do.	6.67
3. Beans Baked, No. 10	do.	13.82
4. Beans Baked, 16-oz.	do.	2.10
5. Blue (Washing), "Reckitts Square"	per gross	10.70
6. Cake Containers	per doz.	1.03

* Supplies not available.

† Charge for drums if not returned.

□ Order under Melbourne District Contract.

Sub-schedule No. 5—continued.
GROCERIES—continued.

		\$
7. Candles, "Kitchen's Electrine"	per lb.	0.335
8. Cereals—Weeties, 16-oz.	per doz.	3.94
9. Chutney, 10-oz.	do.	3.05
10. Cinnamon	per lb.	0.40
11. Cloves, 1-lb. whole	do.	3.13
12. Cocoa, ½-lb. pkts. "Bournville"	per doz.	4.75
13. Coconut	per lb.	0.32
14. Cornflour—Bulk—50-lb. bag	per bag	4.51
15. Currants { 3-crown, 30-lb. ctn. per lb. 0.2912 4-crown, 30-lb. ctn. do. 0.2967		
16. Curry Powder—Loose	do.	0.56
17. Dates—Case lots	do.	0.215
18. Essence—4-oz. bottles, Vanilla	per doz.	4.52
19. Essence, 4-oz. bottles, Lemon	do.	4.52
20. Essence, 26-oz. bottles, Parisian	do.	7.15
21. Gelatine—1-lb. packets, "Davis" (loose 7-lb., \$6.74 each) per doz. 13.90		
22. Golden Syrup—2-lb. tins (70-lb. tins or drums, \$7.01) do. 3.05		
23. Herbs—Mixed, 1-oz. packets	do.	0.39
24. Honey, 24-oz.	do.	5.07
25. Junket Tablets, "Merry Widow," flav. tubes	per doz.	2.67
26. Macaroni—22-lb. each 2.93		
Meats—Tinned—		
27. Camp Pie, 12-oz. tins	per doz.	2.67
28. Milk F. C. Powdered, "Sunshine", 12-oz. tins do. 5.38		
29. Mustard—loose—4-lb. tins	per tin	3.70
30. Nutmeg, ground	per lb.	0.99
31. Peel—Mixed, loose	per lb.	0.24
32. Pepper—Ground, black	do.	0.70
33. Pepper, cayenne—1-oz.	per doz.	0.85
34. Pickles, Mustard—18-oz. bottle	do.	3.94
35. Raisins—loose, 35-lb. carton	per lb.	0.3159
36. Sultanas { 3-crown, 35-lb. ctn. do. 0.2967 4-crown, 35-lb. ctn. do. 0.3022		
37. Salt—Imperial, Fine	per cwt.	2.38
38. Salt—Table, "Mermaid"	per doz.	1.18
39. Sauce—Worcestershire, 26-oz.	do.	4.72
40. Sauce—Worcestershire, 1-gal. jars.	each	2.04
41. Soda—Bicarbonate, 7-lb. bag	per bag	0.70
42. Soda—Washing, 56-lb. bags	do.	2.91
43. Soap—Powder, "Pental", 12-oz.	per doz.	1.73
44. Soap—Bars, "Velvet" or similar, std.	do.	3.83
45. Soup, Mushroom, 16-oz.	do.	2.59
46. Spaghetti—Bulk, 22-lb. cartons { No. 1 each 2.93 No. 2 do. 2.93		
47. Spaghetti and Tomato Sauce { No. 10 per doz. 12.61 16 oz. do. 2.10		
48. Spice, Mixed, 1-oz. packets	do.	0.71
49. Starch, "Silver Star", 12-oz.	do.	2.55
50. Sugar { Icing per cwt. 13.77 Castor do. 13.77		
51. Tartar, Cream of—Substitute, "Antelope"	per bag	2.51
52. Tomato Soup—No. 10 cans	per doz.	14.09
53. Vinegar—Malt (1 gal. jars)	per gal.	0.58
54. Wheatharts, 24-oz.	per doz.	4.57
55. Yoko, 16-oz. bottles	do.	8.32

(AGREEMENT.)

McKay MacLeod Pty. Ltd., 63 Mair-street, Ballarat.

Sub-schedule No. 6.

JAMS FOR TEACHERS' COLLEGE HOSTELS AND MENTAL HOSPITALS.

	\$
Jams—Assorted—	
1. In bulk, of approved kinds, in proportion of half seed and half stone, of the best quality, in tins, as required	
Brand—"Monbulk"	28-lb. tins 5.22
2. 24-oz. tins, in the proportion of half seed and half stone, of the best quality	per doz. 4.29
3. 5-lb. tins in the proportion of half seed and half stone, of the best quality Plum and Raspberry, Apricot, Plum	do. 13.68

SCHEDULE No. 8.

PROVISIONS—BEECHWORTH DISTRICT.

(For Delivery into Institutions.)

ANNEX TO CONTRACT No. 1972/67.

West End Bakery Pty. Ltd., 31 Muntz-street, Wangaratta.

Sub-schedule No. 1.

BREADSTUFFS.

Security, \$200.

	\$
1. Bread—Fine wheaten, first quality	per cntl. 8.00
2. Flour—First quality	do. □

ANNEX TO CONTRACT NO. 1972/68.
C. W. and M. Millerick, 29 Ford-street, Beechworth.

Sub-schedule No. 2.
MILK (GAOL ONLY).

Security, \$24.

1. Milk—Fresh and Pure	per gal.	Milk Board Rates
------------------------	----	----	----------	------------------

ANNEX TO CONTRACT NO. 1972/69.
J. G. Arnold and Sons, Box 54 P.O., Albury, N.S.W.

Sub-schedule No. 3.
POTATOES AND ONIONS.

(*Rates to be calculated on top rates per bag lots as shown in the Department of Agriculture News Service Bulletin.)

1. Potatoes—No. 1 Grade	per bag	{ *Net
2. Onions	do.	

(AGREEMENT.)

Sinclair's Self Service Stores, Ford-street, Beechworth.
Sub-schedule No. 4.

GROCERIES.

Cereals—				\$
1. Rice Bubbles, 8-oz. "Kellogs"	..	per doz.	3.02	
2. Cocoa, 14-oz. Pkts. "Bournville"	..	do.	7.56	
3. Coconut—Desiccated "Ward McKenzie"	..	per lb.	0.25	
3. Curry Powder—Loose "Ward McKenzie"	..	do.	0.33	
Essences—				
5. Parisian, 26-oz. "Havelock"	..	each	0.45	
6. Yolking, 16-oz. "Stedwells"	..	do.	0.36	
Extracts and Pastes—				
7. Gravox, 1-lb. Pkts.	..	per doz.	3.03	
Fish—Tinned—				
8. Salmon, 16-oz. "King Sound"	..	do.	4.38	
Fruits—Dried—				
9. Currants, 4 Crown, case lots	..	per lb.	0.33	
10. Sultanas, 4 Crown, case lots	..	do.	0.33	
11. Dates, case lots, "Iraq"	..	do.	0.20	
Fruits—Solid Pack—				
12. Apples, 6½-lb. Tins "AJC"	..	per doz.	10.80	
13. Gelatine—Ground, 1-lb. Pkts. "Davis"	..	per lb.	1.13	
14. Golden Syrup, 2-lb. Tins "CSR"	..	per doz.	2.93	
15. Lemon Butter, 15-oz. "Cottees"	..	do.	3.90	
16. Macaroni, Bulk, 56-lb. bags "Rinoldi"	..	per lb.	0.12	
17. Mayonaisse, 5-lb. jars "ETA"	..	per jar	1.39	
Meat—Tinned—				
18. Camp Pie, 12-oz. Tins "Tom Piper"	..	per doz.	2.49	
Milk—				
19. Condensed, 14-oz. tins "Nestles"	..	do.	3.02	
20. Mustard—Loose, Ordinary (4-lb. Barrel)	..	per brl.	3.59	
"Keens"	..	do.	0.79	
21. Pepper—White, ground "Ward McKenzie"	..	per lb.	0.79	
22. Pickles—Mustard, 18-oz. "White Crow"	..	per doz.	3.15	
23. Salt—Fine, Bulk "Imperial"	..	per cwt.	3.15	
24. "Table, 1-lb. Pkts. "Mermaid"	..	per doz.	1.07	
25. Sauce—Worcestershire, 1-gal. jars "IXL"	..	per gal.	2.03	
26. Spaghetti—Bulk, 22-lb. "Rinoldi"	..	per ctn.	2.85	
Spices &c.—				
27. Nutmeg—Ground "Ward McKenzie"	..	per lb.	0.74	
28. Baked Beans, No. 10 Cans "Tom Piper"	..	per doz.	12.56	
29. Beetroot, No. 10 Cans "Edgell"	..	do.	9.00	
30. Gherkins, Sweet, 5-oz. "Epicure"	..	do.	3.17	
Soap Mixtures—				
31. "Rinso"—Standard Packets	..	per doz.	5.72	
"Economy Packets"	..	do.	8.78	
32. Sandsoap Pearsons, 14-oz.	..	do.	1.74	

SCHEDULE No. 9.

PROVISIONS—BENDIGO DISTRICT.

(For Delivery into Institutions.)

For Gaol, Bendigo Psychiatric Centre and Sandhurst Boys' Centre and Teachers' College Hostels "Lancewood", McLaren-street, Bendigo, Osborne-street, Pleasant Vale, Bendigo and "Comersdale", Pantton-street, Golden Square, Bendigo.

ANNEX TO CONTRACT NO. 1972/70.

Roy Raggatt Pty. Ltd., 132 Lily-street, Bendigo.

Sub-schedule No. 1.

BREAD.

Security, \$28.

1. Bread—Fine wheaten, first quality	..	per cntl.	6.50	\$
2. Flour—First quality	..	do.	5.10	

ANNEX TO CONTRACT NO. 1972/71.

Sandhurst Dairies Ltd., Bannister-street, Bendigo.

Sub-schedule No. 2.

MILK.

For Sandhurst Boys' Centre, Bendigo Psychiatric Hospital and Gaol.
Security, \$10.

1. Milk—Fresh and Pure	{ Bulk	..	per gal.	Milk Board Rates
	{ Bottles	..	do.	

ANNEX TO CONTRACT NO. 1972/72.

Sandhurst Dairies Ltd., Bannister-street, Bendigo.

Sub-schedule No. 3

MILK.

For Teachers' College Hostels "Comersdale", Pantton-street, Golden Square; "Lancewood", McLaren-street, Bendigo and Osborne-street, Pleasant Vale, Bendigo.

Security, \$10.

1. Milk—Fresh and Pure	{ Bulk	..	per gal.	Milk Board Rates
	{ Bottles	..	do.	

ANNEX TO CONTRACT NO. 1972/73.

M. and M. McNaughton, 20 Russell-street, Bendigo.

Sub-schedule No. 4

POTATOES AND ONIONS.

(*Rates are to be calculated on top rates per bag lots as shown in the Department of Agriculture News Service Bulletin, less discounts as stated hereunder).

1. Potatoes—No. 1 Grade	..	per bag	*Less 5%
2. Onions	..	do.	*Less 5%

(AGREEMENT.)

Wholesale Limited, 114-126 Bridge-street, Bendigo.

Sub-Schedule No. 5

GROCERIES.

				\$
1. Barley—Pearl, loose	..	per lb.	0.08	
Beans—				
2. Butter	..	per lb.	0.53	
3. Haricot	..	do.	0.23	
4. Lima	..	do.	0.29	
Biscuits and Cake—"Phoenix"				
5. Dry "Brockhoffs Salada"	..	per tin	1.00	
6. Coffee, Malt, Arrowroot	..	do.	*	
7. Assorted	..	do.	2.46	
Blue—				
8. 1-oz. knobs, "Reckitts"	..	per gross	10.08	
9. Borax	..	per lb.	0.10	
10. Cake Containers—Paper, "Barkers" 120's	..	per gross	10.08	
Cereals—				
11. {"Weeties", 16-oz.	..	per doz.	3.84	
12. {"Kornies", packets 24-oz.	..	do.	4.14	
13. "Cornflakes", packets	..	do.	4.46	
13. "Weetbix", "Granose", "Vitabrits", packets	..	do.	4.40	
14. Wheat Germ	..	do.	*	
15. "All-bran", packets	..	per doz.	2.80	
16. Cheese—5-lb. boxes, "Kraft"	..	per box	2.46	
"Matured"	..	per lb.	0.44	
17. Chutney—"A.J.C."	..	per doz.	2.16	
18. Cloves	..	per lb.	*	
19. Coconut—Desiccated, Ceylon	..	do.	0.26	
Cocoa—				
20. {14-oz. tins, "Bournville"	..	per doz.	7.60	
{Loose	..	per lb.	0.25	
Coffee Essence—				
21. 8-oz. bottles, "Excelsior"	..	per doz.	3.50	
22. 1-gal. jars (Jars 30c)	..	per jar	4.00	
23. Curry Powder—"Indian"—4-oz. pkts.	..	per doz.	3.64	
Custard Powder—				
24. Bulk, 7-lb. parcels, "Parsons"	..	per lb.	0.12	
25. 1-lb. packets, "Parsons"	..	per doz.	2.64	
26. Dates—Loose	..	per lb.	0.21	
Essences, &c.—				
27. Almond {1-oz.	..	per doz.	1.40	
{8-oz.	..	do.	*	
{16-oz.	..	bot.	0.82	
28. Lemon {1-oz.	..	doz.	1.15	
{8-oz.	..	do.	5.20	
{16-oz.	..	bot.	0.82	

*Supplies not available.

Sub-schedule No. 5—continued.
GROCERIES—continued.

		\$
Essences, &c.—continued.		
29. Vanilla	{ 8-oz. doz.	6.52
	{ 16-oz. bot.	1.10
30. Cochineal	{ 1-oz. doz.	1.40
	{ 16-oz. bot.	0.82
31. Parisian	26-oz. "Dicksons" doz.	5.16
32. "Yolkine"	{ 1-oz. "Rego" do.	1.20
	{ 16-oz. do.	4.36
Extracts and Pastes—		
33. "Marmite"	4-oz. jar per doz.	2.36
	8-oz. jar do.	4.50
34. "Vegemite"	{ 16-oz. jar do.	9.58
	{ 6-lb. tin each	4.50
35. Peanut Butter	{ 6-oz. jar per doz.	3.52
	{ 40-oz. jar each	1.40
36. "Bonox"	{ 4-oz. jar per doz.	3.90
	{ 8-oz. jar do.	6.78
	{ 1-lb. tin each	1.06
37. Bloater	2½-oz. jars, "Pecks" per doz.	2.26
38. Salmon and Shrimp	2½-oz. jar do.	2.26
Fish—Tinned—		
39. "Flair"	12-oz. do.	*
40. Salmon	16-oz., "Kingsound" do.	4.50
41. Pilchard	8-oz. do.	*
42. Herrings	14-oz. { Fresh do.	3.14
	{ In sauce do.	3.14
43. Sardines	{ 4-oz., "Commodore" do.	1.96
	{ 8-oz., "Rego" do.	3.38
Flour—		
44. Corn or Maize	{ 1-lb. packets, "Kream" do.	2.32
	{ Bulk per lb.	0.10
Flour—Self-raising—		
45. { 25-lb., "Champion" each	2.40	
	{ 150-lb., "Champion" do.	11.40
Fruits—Dried—		
46. Apples per lb.	*	
47. Apricots do.	0.78	
48. Peaches do.	*	
49. Pears do.	*	
50. Prunes, 40/50's do.	0.36	
51. Currants do.	0.33	
52. Raisins, Seeded	{ 16-oz. pkts., "Rego" per doz.	4.46
	{ Loose per lb.	0.31
53. Sultanas do.	0.35	
54. Apricots, Halves, 30-oz. tins, "S.P.C." do.	3.64	
55. Peaches, 30-oz. tins, "S.P.C." do.	3.64	
56. Pears, 30-oz. tins, "S.P.C." do.	3.64	
57. Mixed Fruits, 16-oz. tins "Fruit Salad" per doz.	2.64	
58. Solid Pack Apples	{ 30-oz. tins do.	3.88
	{ No. 10 cans each	0.84
59. Solid Pack Apricots, No. 10 cans do.	1.24	
60. Gelatine—Ground, 16-oz. pkts., "Davis" per doz.	13.10	
61. Ginger—Ground per lb.	0.75	
62. Golden Syrup—2-lb. tins per doz.	2.86	
63. Gravox—1-lb. tins do.	3.06	
64. Herbs—Mixed, 1-oz. Packets do.	0.92	
65. Honey—60-lb. tins (Return of 25c per tin) per tin	10.00	
66. Jams—"Rego" and "Monbulk", tins per doz.	††	
Jelly Crystals—		
67. { 4-oz. packets "Parsons" per gross	12.72	
	{ 7-lb. packets per lb.	0.26
Junket Tablets—		
68. {"Merry Widow" flavoured per doz.	2.48	
	{"Hansens" plain tubes	2.30
69. Lentils per lb.	0.25	
Macaroni—		
70. 1-lb. packets "Rinoldi" per doz.	2.42	
71. Bulk 22-lb. boxes per box	2.84	
72. Margarine—Cake, pastry (net), "E.O.I." per lb.	0.22	
73. Matches—Safety, packets per gross	2.05	
74. Mayonnaise, 10-oz. jars, "Kraft" per doz.	2.80	
Meat—Tinned—		
75. Beef Luncheon	{ 12-oz., "Tom Piper" do.	3.78
	{ 6-lb., "Swifts" each	*
76. Beef Steak Pudding, 16-oz., "Tom Piper" per doz.	3.44	

Sub-schedule No. 5—continued.
GROCERIES—continued.

		\$
Meat—Tinned—continued.		
77. Camp Pie	{ 12-oz., "Tom Piper" per doz.	2.38
	{ 16-oz., "Imperial" do.	2.50
78. Irish Stew, "Tom Piper" do.	3.00	
79. Lamb and Green Peas, 16-oz. "Champion" do.	*	
80. Sausages and Vegetables, 16-oz. do.	3.00	
Milk—		
81. Dried	{ 12-oz. tin "Sunshine" do.	5.12
	{ 3-lb. tins, "Sunshine" do.	18.30
82. Condensed, cases of 4-doz., "Nestles" per case	12.00	
83. "Ideal" per doz.	2.34	
84. Mustard, 1-lb. tin per lb.	*	
85. Nutmeg—Ground do.	0.86	
86. Oatmeal—Flaked	{ 7-lb. bags per doz.	10.80
	{ Loose, 112-lb. bags each	8.90
87. Pastry—Mix, 1-lb. packets per doz.	2.62	
88. Peanut Butter, 40-oz. each	1.40	
Peel—Mixed, Cut—		
89. { 8-oz. packets, "Piper" per doz.	2.10	
	{ 7-lb., "Seppelts" per lb.	*
90. Pepper—White, Ground, loose do.	0.75	
91. "2-oz. packets, "Rego" per doz.	1.62	
92. Pickles—Assorted, 20-oz. bottles do.	3.26	
Rice—		
93. Dressed, 56-lb. bags per bag	5.90	
94. Ground, 1-lb. packets "McKenzies" per doz.	1.62	
95. Sago per lb.	0.16	
Salt—		
96. Fine, bulk, "Imperial" per cwt.	2.60	
97. Table	{ 1-lb. packets, "Mermaid" per doz.	1.12
	{ 1-lb. packets, "Saxa" do.	1.24
Sauces—		
98. Tomato, 26-oz. bot. {"White Crow" per doz.	5.16	
	{ "Rosella" do.	5.50
99. Tomato, 1-gal. Jars, "White Crow" per jar	1.85	
Worcestershire—		
100. { 10-oz. bottles, "Holbrooks" per doz.	3.46	
	{ 10-oz. bottles, "Rego" do.	*
	{ 26-oz. bottles, "Rego" do.	*
101. Mustard, 8-oz. bottles, "Holbrooks" do.	2.68	
Soaps—		
102. Extract of, "Nu-Wash", 56-lb. bags per bag	5.45	
103. "Rinso" Economy packet per doz.	5.00	
104. "Persil" Giant packet do.	*	
105. "Lux" Flakes, packets, Family size do.	5.84	
106. Sand Soap, 6-oz. blocks, "Preservene" do.	1.54	
107. Toilet Soap, 3½-oz. tablets, "Palmolive" do.	1.56	
108. Toilet Soap, 3½-oz. tablets, "Lux" do.	1.56	
109. "Velvet" or equal	{ Quads, 3-doz. ctn. per ctn.	11.28
	{ Quints, 2-doz. ctn. do.	10.16
Soda—		
110. Bicarbonate per lb.	0.08	
111. Washing do.	0.05	
Soups—		
112. Pea, No. 10 tins each	1.07	
113. Tomato, 16-oz. tins {"Kia Ora" per doz.	1.80	
	{ "Heinz" do.	2.40
114. Tomato, 6-lb. tins "Heinz" each	1.02	
Spaghetti—		
115. 1-lb. packets, "Rinoldi" per doz.	2.42	
116. Bulk, 22-lb. boxes each	2.84	
Spice—Mixed—		
117. { 1-oz. packets per doz.	0.62	
	{ Loose per lb.	0.51
118. Starch—Rice, "Silver Star," packets, 14-oz. per doz.	2.38	
Sugar—		
119. Icing mixture per lb.	0.12	
120. Castor do.	0.11	
121. Raw do.	0.10	
122. White, 70-lb. bag per bag	6.78	
Tapioca—		
123. { Seed per lb.	0.14	
	{ Pearl do.	0.14
124. Tartar—Cream of do.	0.35	
125. Treacle, 2-lb. tins per doz.	2.76	
126. Peas, Split (yellow)	{ 56-lb. bags per cwt.	9.88
	{ Broken bags per lb.	0.12

* Supplies not available.

†† In 1½-lb. tins—Apricot, \$3.94; Apple Jelly, \$3.20; Blackberry, \$5.16; Blackcurrent, \$5.48; Gooseberry, \$4.40; Loganberry, \$5.28; Melon and Lemon, \$3.54; Melon and Pineapple, \$3.64; Dark Plum, \$3.66; Marmalade, \$3.54; Peach, \$3.80; Plum and Raspberry, \$4.00; Quince, \$3.58; and Raspberry, \$5.40.

‡ In 5-lb. tins—Apricot, \$12.70; Melon and Lemon, \$10.80; Melon and Pineapple, \$11.60; Dark Plum, \$11.74; Marmalade, \$11.30; Peach, \$12.20; Plum and Raspberry, \$12.80; Quince, \$11.44; and Raspberry, \$17.32.

Sub-schedule No. 5—continued.

GROCERIES—continued.

			\$
Vegetables—Tinned—			
127.	Baked Beans, 16-oz. "Kia Ora"	per doz.	2.06
128.	Baked Beans, No. 10 cans "Kia Ora"	each	1.05
129.	Beans, green, 30-oz. "Harvest"	per doz.	3.85
130.	Beetroot, 30-oz.	do.	2.64
131.	Peas, 30-oz. { "Harvest"	do.	3.60
		{ "Bidley's"	do.
132.	Sweetcorn, 16-oz. "Rosella"	do.	3.00
133.	Tomatoes, 30-oz.	do.	3.34
Vermicelli—			
134.	1-lb. packets "Rinoldi"	do.	2.42
135.	Bulk, 22-lb. boxes	each	2.84
136.	Vinegar—Malt, 1-gal. jars	per gal.	0.88

SCHEDULE No. 10.

PROVISIONS—CASTLEMAINE GAOL.

(Delivery at the Gaol.)

ANNEX TO CONTRACT No. 1972/74.

Roy Raggart Pty. Ltd., 132 Lily-street, Bendigo.

Sub-schedule No. 1.

BREADSTUFFS.

Security, \$10.

			\$
1.	Bread—Fine wheaten, first quality	per cntl.	6.50
2.	Flour—First quality	do.	5.10

Sub-schedule No. 2.

POTATOES.

		Purchase	
		per bag	by Agreement
1.	Potatoes—No. 1 Grade	per bag	

SCHEDULE No. 11.

PROVISIONS—SCHOOL OF FORESTRY, CRESWICK.

(Delivery at the School.)

ANNEX TO CONTRACT No. 1972/75.

"Sunicrust" Bakeries Pty. Ltd., 15-17 Lal Lal-street, Ballarat.

Sub-schedule No. 1.

BREADSTUFFS.

Security, \$6.

			\$
1.	Bread—Fine wheaten, first quality	per cntl.	10.80
2.	Flour—First quality	per bag	6.08

(AGREEMENT.)

E. A. Huntley and Sons, Albert-street, Creswick.

Sub-schedule No. 2.

GROCERIES.

			\$
1.	Bacon	per lb.	0.80
2.	Barley—Pearl	do.	0.10
3.	Beans—Frozen	do.	0.35
4.	Biscuits—Dry	do.	0.40
5.	Biscuits—Sweet	do.	0.34
6.	Bread Crumbs	do.	0.18
7.	Butter, First-grade creamery, to score not less than 91 points, Government grade Commerce Regulations standard	do.	0.53
8.	Cereals—"Weeties", 16-oz.	per doz.	3.95
9.	Cheese—Kraft, 5-lb.	per box	2.50
10.	"Matured	per lb.	0.59
11.	Coffee Instant—6-oz. "Nescafe"	per doz.	13.50
12.	"Beans, roasted	per lb.	0.80
13.	Cocoa, 14-oz. "Bournville"	per doz.	7.20
14.	Coconut—Desiccated	per lb.	0.30
15.	Chutney—Fruit, 10-oz.	per doz.	3.24
16.	Custard Powder (1-lb. pkts.)	do.	2.59
17.	Curry Powder	per lb.	0.38
18.	Eggs—New laid	per doz.	□
19.	Essence, Vanilla, 4-oz.	per bot.	0.16
20.	Fish—Tinned—Herrings in Sauce, 14-oz.	per doz.	3.15
21.	"Sardines, 4-oz. "Venus"	do.	2.10
22.	"Tuna, 16-oz.	per tin	0.57

Sub-schedule No. 2—continued.

GROCERIES—continued.

			\$
23.	Fish, Frozen, Whiting	per lb.	0.38
24.	Flour—Corn or Maize, 1-lb.	per doz.	2.38
25.	"Self-raising, 25-lb. bag	per bag	2.36
Fruit—Preserved, 30-oz.—			
26.	Peaches, sliced	per doz.	3.70
27.	Pears, halves	do.	3.70
28.	Apricots, halves	do.	3.70
29.	Cherries, Glace, 4-oz. packet	per doz.	3.00
30.	Fruit—Dried—Sultanas, 3-crown	per lb.	0.35
31.	Gelatine—Ground, 4-oz.	per doz.	3.80
32.	Ginger—Ground	per lb.	0.75
33.	Golden Syrup, 2-lb. tin	per doz.	2.95
34.	Gravox	per pkt.	0.27
35.	Honey, 60-lb. tin	per tin	7.75
36.	Jams, assorted, 5-lb. tins in the proportion of half seed and half stone	do.	1.10
37.	Jelly Crystals, 4-oz. packets	per doz.	0.90
38.	Margarine	per lb.	0.28
39.	Matches	per pkt.	0.18
40.	Milk—Powdered, 3-lb. tins	per tin	1.45
41.	"Condensed, "Nestles"	per doz.	2.88
42.	Mustard, 8-oz. tins "Keens"	per tin	0.68
43.	Oatmeal—Flaked	do.	0.10
44.	Paper, Greaseproof	per lb.	0.40
45.	Peas, Split dried	do.	0.11
46.	Peas, Frozen	do.	0.29
47.	Pepper—Ground, white	do.	0.80
48.	Potatoes—Dry and free from dirt	per cwt.	*
49.	Peanut Butter, 12-oz. jars	per doz.	5.35
50.	Rice—Polished	per lb.	0.14
51.	Salt—Table, 1-lb. packets, "Mermaid"	do.	0.10
52.	"Fine	do.	0.04
53.	Soap—Sand, Carbolic, 12-oz.	per doz.	0.96
54.	Sauce—Tomato, 1-gal. jars	per gal.	2.10
55.	Worcestershire, 26-oz.	per doz.	4.75
56.	Soda—Bicarbonate	per lb.	0.11
57.	"Washing	do.	0.09
58.	Soup, Tomato, No. 10 cans	per can	1.10
59.	Spaghetti, dry	per pkt.	0.20
60.	Starch—"Silver Star", 14-oz. pkts.	per doz.	2.80
61.	Sugar—Castor	per lb.	0.15
62.	"White, 70-lb. bag	per bag	7.15
63.	"Icing	per lb.	0.15
64.	"Brown	do.	0.13
65.	Tartar, Cream of substitute	do.	0.35
66.	Tea—First grade	do.	⊙
67.	Vegemite, 1-lb. jars	per doz.	8.95
68.	Vegetables—Tinned—Baked Beans, 16-oz.	do.	2.10
69.	"Sweet Corn, 16-oz.	do.	2.65
70.	"Beetroot	per tin	0.24
71.	"Tomatoes	do.	0.34
72.	Vinegar, Malt	per pint	0.10
73.	Wheatgerm, 24-oz.	per pkt.	0.26

ANNEX TO CONTRACT No. 1972/76.

C. N. and E. L. Wrigley, Albert-street, Creswick.

Sub-schedule No. 3.

MILK.

Security, \$6.

1.	Milk—Heat Treated	per qt.	Milk Board Rates
2.	Cream—Pasteurised, ½-pint bottles	per btl.	

SCHEDULE No. 12.

PROVISIONS—SHEPPARTON DISTRICT.

Delivery at "Ambermere" and F.O.R. Shepparton for Agricultural College, Dookie.

Sub-schedule No. 1.

ANNEX TO CONTRACT No. 1972/77.

Sunicrust Bakeries Pty. Ltd., Central-avenue, Lemnos.

BREADSTUFFS.

Security, \$30.

			\$
1.	Bread—Fine wheaten, first quality	per cntl.	7.50
2.	"Wrapped and Sliced, 2-lb. loaves	do.	8.25
3.	Flour—First Quality	do.	5.05

* Cost price plus 10 per cent. □ V.E.B. price plus 3 cents per doz. ⊙ Order under Melbourne District Contract.

Sub-schedule No. 2.

MILK.

Security, \$6.

1. Milk—Fresh and Pure	per gal. by Agreement	Purchase
------------------------	-------	-----------------------	----------

ANNEX TO CONTRACT NO. 1972/78.

A. Bove, Stand 275, 276,—542 Footscray-road, Footscray.

Sub-schedule No. 3.

POTATOES AND ONIONS.

(*Rates are to be calculated on top rates per bag lots as shown in the Department of Agricultural News Service Bulletin, less discount as stated.)

1. Potatoes—No. 1 Grade	per bag	*Less† 10%
2. Onions	do.	*Less† 5%

† Rates F.O.R. Melbourne.

(AGREEMENT.)

Fair Save (a division of Cohns Industries), Benalla-road, Shepparton.

Sub-schedule No. 4.

GROCERIES.

(Delivery into institution for "Ambermere")

(Delivery F.O.R. Shepparton for College)

			\$
1. Ajax King size	per doz.	3.92
2. Baking Powder, 1-lb. tins	do.	6.50
2A. Barley (56-lb. bag)	per bag	2.96
3. Beans, Green, 16-oz.	per doz.	2.42
4. " " No. 10 cans	do.	12.89
5. Biscuits, assorted, 7-lb. tins (40c deposit returnable)	per tin	2.49
6. Blue, washing, "Reckitts" paper	per gross	5.90
7. Bon Ami, (Purchase Schedule 64)	do.
8. Candles, full weight, "Electrine"	per doz.	0.72
9. Cereals, 24-oz. packets, Weeties	do.	5.15
Weeties, 16-oz.	do.	3.70
Vita Brits, 24-oz.	do.	4.50
Corn Flakes, 24-oz. (\$11.89 carton)	do.	4.46
9A. Cheese, "Kraft", 5-lb. blocks	per block	2.57
10. Cinnamon, 2-oz.	per doz.	0.89
11. Chutney, 10-oz. "Rosella"	do.	2.98
12. Cloves, ground, 2-oz.	do.	4.27
13. Cocoa, 14-oz. "Bournville"	do.	7.59
14. Coconut, desiccated	per lb.	0.25
15. Coffee Essence, 1-gal. jars (jar included)	per gal.	3.76
16. " " 1-lb. "Nescafe"	each	2.99
17. Cordial, lemon, etc., 1-gal. jars (plastic)	per gal.	1.89
18. Curry Powder, loose	per lb.	0.36
19. Custard Powder, loose, 50-lb. bags	per bag	5.75
1-lb., "Parsons"	per doz.	2.79
21. Essence—Cochineal, 2-oz.	do.	1.97
22. " " Lemon, 8-oz.	do.	5.34
23. " " Vanilla, 8-oz.	do.	6.84
24. Fish, Salmon, 16-oz. tins (King Sound)	do.	4.70
25. Fruit, Dried—Currants, 2 crown 1-lb. pkts.	per 12-lb.	do.	4.65
26. " " Sultanas, 3 crown 1-lb. pkts.	do.	4.75
27. " " Raisins, seeded, 1-lb.	per doz.	5.69
28. " " Preserved—No. 10 cans, peaches	do.	13.46
29. " " " " No. 10 cans, pears	do.	13.46
30. " " " " No. 10 cans, apricots	do.	13.46
31. " " " " 30-oz. tins, peaches sliced	do.	3.77
32. " " " " 30-oz. tins, apricot halves	do.	3.77
33. " " " " 30-oz. tins, pear halves	do.	3.77
34. " " mixed, 12-oz. packets, Medallion	do.	3.30
35. Flour, Corn or Maize, 1-lb. Parsons	do.	2.59
36. " " Self-raising, 150-lb. bags	per bag	12.50
37. Gelatine, ground, 4-oz.	per doz.	3.45
38. " " 16-oz.	do.	12.69
39. Golden Syrup, 2-lb. tins	do.	2.70
40. Gravox, 1-lb., (Gravox 28-lb. tins \$6.09 each)	do.	3.03
41. Ground Ginger, 4-oz.	per doz.	2.72
42. Herbs, Mixed, 2-oz. pkts.	do.	1.17
43. Honey, 60-lb. tin	per tin	11.57
44. Jelly, Pkts. Cottrees	per doz.	1.16
45. " " Crystals, 10-lb. pkts. "White Wings"	each	3.08
46. Junket tablets—Tubes "Merry Widow"	per doz.	2.46
47. Margarine, Cake, 28-lb.	each	6.19
48. " " Pastry, 28-lb.	do.	6.19
49. Macaroni, 22-lb. ctns.	per ctn.	2.95

†† Plum and Raspberry, \$5.14 per tin; Apricot, \$5.42 per tin; Dark Plum, \$4.84 per tin; Quince, \$4.20 per tin; Peach, \$4.86 per tin; Marmalade, \$4.56 per tin; Blackberry, \$8.42 per tin; Apple Jelly, \$3.96 per tin.

Rates are subject to payment within 30 days except sugar for which payment within 10 days is required. A surcharge of 2½ per cent. will be added to invoices outstanding beyond these terms.

Sub-schedule No. 4—continued.

GROCERIES—continued.

			\$
50. Matches, Safety	per gross	2.03
51. Meat—Tinned, "Camp Pje", 12-oz.	per doz.	2.50
52. Milk, condensed, 12-oz. "Nestles"	do.	3.09
53. " " powdered, 12-oz. "Sunshine"	do.	5.35
54. " " 3-lb. tin "Sunshine"	do.	18.86
55. Mixed peel, 8-oz. pkts.	do.	2.20
56. Mustard—Loose, 4-lb.	each	3.24
57. Nutmeg, ground, 2-oz.	per doz.	2.09
58. Oats, rolled, 1½-lb. bag, "John Bull"	do.	3.88
59. Oatmeal, flaked, 100-lb. bags	per bag	8.19
60. Oil, 4-gal. peanut oil	per tin	12.60
61. Paper, greaseproof	per ream	3.09
61A. Apples, Solid Pack, 6¼-lb. tins	per doz.	10.74
62. Peas, green, 16-oz.	do.	2.38
63. " " No. 10 cans	do.	12.89
64. " " split, 56-lb. bags	per bag	5.32
65. Pepper, ground, white	per lb.	0.79
66. " " 2-oz. packets	per doz.	1.75
67. Pepper, Cayenne, 2-oz.	do.	1.49
68. Pickles, assorted, 20-oz. Bendigo	do.	3.24
69. " " mustard	each	1.09
70. Polish, (Purchase schedule No. 64)—			
71. Brasso	per doz.	3.43
72. Stove	do.	2.93
73. Plum Pudding, 16-oz.	per doz.	3.57
74. Prunes, 7-lb. tins	per tin	2.65
75. Rice (56-lb. bags)	per bag	6.39
76. Sago	per lb.	0.15
77. Salt—Fine	per cwt.	2.69
78. " " Table, 16-oz. pkts. "Mermaid"	per doz.	1.15
79. Sauce—Tomato, 26-oz. bottles "Cohn's"	do.	4.60
80. " " 1-gal. jars, plastic	per gal.	1.90
81. " " Worcestershire, 1-gal. jars	do.	1.98
82. Soaps—Lux Flakes, econ.	Purchase— Sub-Schedule No. 8— Schedule No. 1	per doz.
83. " " Persil, econ.		do.
84. " " Rinso, econ.		do.
85. " " Palmolive, bath size		do.
86. " " Lux, bath size	do.	1.73
87. " " Protex, bath size	do.	1.73
88. Soft Drinks, "Cohn's"	per crate	2.92
89. Soups—Tomato—No. 10 cans "Heinz"	per can	1.02
90. " " 16-oz. "Rosella"	per doz.	2.53
91. " " Celery, 16-oz. "Rosella"	do.	2.53
92. " " Pea, 16-oz. "Rosella"	do.	2.53
93. Soda Bicarbonate	per lb.	0.12
94. " " Washing, Purchase Sub-Schedule No. 8
95. Spaghetti—22-lb. "Rinoldi"	per ctn.	2.95
96. Spices, mixed, 1-oz.	per doz.	0.63
97. " " cloves, whole, 4-oz.	do.	2.65
98. Starch, 14-oz. "Silver Star"	do.	2.48
99. Sugar—Castor, 70-lb. bag	per bag	7.37
100. " " Icing, 56-lb. bag	do.	6.77
101. " " White, 70-lb. bag	do.	6.85
102. " " Brown, 70-lb. bag	do.	6.74
103. Syrup, Golden, 2-lb. tins	per doz.	2.70
104. Tomato Paste, No. 10 cans	each	1.83
105. Treacle, 2-lb. tins	per doz.	2.60
106. Vegetables—Tinned—	Tomatoes, 30-oz. No. 10 Beans baked, 16-oz. "Kia Ora"	do.	3.56
107. " " " "		do.	12.00
108. " " " "		do.	2.05
109. Vermicelli, 16-oz.	do.	2.53
110. Vegemite, 6-oz. jars	do.	4.09
111. " " 6-lb. tins	each	4.28
112. Vinegar, Malt, Plastic (\$4 deposit refunded)	per 5 gals.	6.90
113. " " White (½-gal.)	per ½ gal.	0.69

(AGREEMENT.)

Fair Save (a division of Cohns Industries), Benalla-road, Shepparton.

Sub-schedule No. 5.

JAM.

(Delivery "F.O.R." Shepparton.)

			\$
Jam—Bulk—			
1. Assorted, of approved kinds	}	per lb.	††
2. Assorted, of approved kinds, in the proportion of half seed and half stone, of the best quality, in 28-lb. tin			

SCHEDULE No. 13.
PROVISIONS—MCLEOD SETTLEMENT,
FRENCH ISLAND.

(Delivery to be made at Corinella Jetty.)

ANNEX TO CONTRACT No. 1972/79.

Home Pride Bakeries (South Gippsland) Pty. Ltd., Yarragon-road, Leongatha.

Sub-schedule No. 1.

BREAD.

Security, \$24.

1. Bread—Fine wheaten, first quality	.. per cntl.	\$ 8.00
2. Flour—First quality do.	6.00

Sub-schedule No. 2.

POTATOES.

1. Potatoes—No. 1 Grade per bag by Agreement	Purchase
-------------------------	----------------------------	----------

(AGREEMENT.)

E. V. Peters, Corinella.

Sub-schedule No. 3.

GROCERIES.

1. Butter—First grade creamery, to score not less than 91 points, Government grade, Commerce Regulations standard	per lb.	\$ 0.56
2. Cheese—Matured Tasty	.. do.	0.50
3. Jams—Assorted, Seed	.. per doz.	4.10
" " Stone, of best quality in 24-oz. tins, "Monbulk"	.. do.	3.88

SCHEDULE No. 14.

PROVISIONS—GEELONG DISTRICT.

(Delivery into Institutions.)

ANNEX TO CONTRACT No. 1972/80.

Sunicrust Bakeries Pty. Ltd., 371-3 Thompsons-road, North Geelong.

Sub-schedule No. 1.

BREAD.

Security, \$60.

1. Bread—Fine wheaten, first quality	.. per cntl.	\$ 8.00
2. " Wholemeal, first quality	.. do.	8.00
3. " Wrapped and sliced, first quality	.. do.	9.00
4. " Rolls	.. per doz.	0.30
5. Flour—First quality	.. per cntl.	5.20

Sub-schedule No. 2.

POTATOES.

1. Potatoes, No. 1 Grade per bag by Agreement	Purchase
--------------------------	----------------------------	----------

(AGREEMENT.)

Wholesalers Ltd., Baxter-road, North Geelong.

Sub-schedule No. 3.

GROCERIES.

The rates to be paid under this Sub-schedule shall be the wholesale self-service prices ruling on the day of delivery, plus 1 per cent. service charge, net monthly. Delivery free to hostels. No surcharge on dried fruits or C.S.R. Co's. sugar.

SCHEDULE No. 15.

PROVISIONS—COORIEMUNGLE PRISON CAMP, HEYTESBURY FOREST.

(Delivery to be made at the Camp.)

Sub-schedule No. 1.

BREAD.

1. Bread—Fine Wheaten, First quality	.. per cntl.	Purchase
2. Flour—First quality do.	by Agreement.

Sub-schedule No. 2.

POTATOES.

1. Potatoes, No. 1 Grade per bag by Agreement	Purchase
--------------------------	----------------------------	----------

SCHEDULE No. 16.

PROVISIONS—AGRICULTURAL COLLEGE, GLENORMISTON.

(Delivery at the College.)

ANNEX TO CONTRACT No. 1972/81.

J. and J. Holdenmaeckers, Camperdown-road, Noorat.

Sub-schedule No. 1.

BREADSTUFFS.

Security, \$10.

1. Bread—Fine wheaten, first quality	.. per cntl.	\$ 10.13
2. Bread—Wrapped and sliced, first quality	.. do.	11.25
3. Bread Rolls per doz.	0.40

(AGREEMENT.)

The Terang and District Co-operative Society. Ltd., High-street, Terang.

(Delivery at the College.)

Sub-schedule No. 2.

GROCERIES.

1. Barley—Pearl per lb.	\$ 0.08
2. Baked Beans, No. 10 cans per doz.	11.26
3. Beans—Green, No. 10 can per doz.	13.20
4. Biscuits—Coffee, Malt, Nice per lb.	0.32
5. " Dry do.	0.36
6. Cereals—Cornflakes—"Kelloggs," 16-oz.	per pkt.	0.37
7. Weeties	.. 16-oz. do.	0.31
8. Cheese—Bulk { Mild per lb.	0.40
{ Mature do.	0.50
9. Cinnamon per lb.	0.30
10. Citric Acid do.	0.40
11. Coconut—Desiccated do.	0.26
12. Coffee Essence—26-oz. "Bushells"	.. per bot.	0.49
13. Curry Powder (Indian) Madras, 4-oz.	.. per tin.	0.29
14. Custard Powder—7-lb. packets "Berry"	per lb.	0.17
15. Dates—"Khadrawi," 1-lb. packets	.. do.	0.22
Essence—		
16. Lemon—8-oz., "Berry" Pure	.. per bot.	0.55
17. Parisian—26-oz.	.. do.	0.47
18. Vanilla—8-oz., "McLintocks" Pure	.. do.	0.67
19. Cocoa—"Bournville," 14-oz. packets	.. per pkt.	0.65
20. Cordial, Lemon, 1-gal. jars*	.. per jar	1.80
21. Fish—Tinned—Salmon, 16-oz. "K Sound"	per doz.	4.08
22. Flour—corn, 1-lb. packets, "Cameo"	.. per lb.	0.19
23. " Self-raising, "McAlpins" in 25-lb. bags	per bag	2.50
Fruits—Dried—		
24. Currants—"Sunray" or "Swallow and Ariel" 3-crown	per lb.	0.31
25. Raisins—seeded—"Sunray" or "Swallow and Ariel"	do.	0.35
26. Sultanas—3-crown—"Sunray" or "Swallow and Ariel"	or do.	0.31
Fruits—Tinned—		
27. Apricots—No. 10., (Halves)—"S.P.C." Kyabram	each	1.23
28. Peaches—No. 10., (Halves)—"S.P.C." Kyabram	do.	1.23
29. Pears—No. 10., (Halves)—"S.P.C." Kyabram	do.	1.23
30. Two-Fruits—No. 10., "S.P.C."—Kyabram	do.	1.23
31. Solid Pack Apples—7-lb. "S.P.C."	per doz.	10.29
32. Solid Pack Apricots, No. 10 cans "S.P.C."	do.	13.88
33. Gelatine—Ground, "Davis," 1-lb. packets	per lb.	1.05
34. Ginger—Ground, 2-oz. "Harpers"	per tin	0.12
35. Golden Syrup—2-lb. tins	.. per doz.	2.92
36. Gravox—1-lb. tins	.. per lb.	0.27
37. Honey—60-lb. tins, Yellow Box	per tin	8.80
38. Jelly Crystals, 10-lb. packets, "Berry"	per pkt.	3.10
39. Junket Tablets, "Merry Widow"	per doz.	2.36
40. Maggi Aroma, 1-pint bottle	.. per bot.	1.17
41. Mustard—"Keens" 8-oz.	.. per tin	0.61
42. Nutmeg—Ground, 2-oz. "Harpers"	.. per tin	0.14
43. Oatmeal Flaked—"John Bull," 5-lb. packets.	per pkt.	0.71
44. Peas—Split, yellow per lb.	0.11

Sub-schedule No. 2—continued.
GROCERIES—continued.

	\$
45. Peas—Green, No. 10 cans "Edgell" .. per doz.	12.24
Peel—Mixed—Cut—	
46. Bakers loose— $\frac{1}{2}$ -lb. packets each	0.19
47. Pepper—White, ground per lb.	0.70
48. Pickles—7-lb. tins "Epicure" per tin	1.21
49. Rice—Dressed per lb.	0.13
Salt—	
50. { Fine, bulk per lb.	0.03
{ Table, 1-lb. packets "Mermaid" .. per doz.	1.07
Sauces—Tomato—	
51. Tomato—1-gal. jars—"Cohns" per jar	1.76
52. Worcestershire—1-gal. jars—"P.M.U."†	do. 1.65
53. Spaghetti in sauce, No. 10 cans per doz.	11.62
54. Spice—Mixed, 1-oz. per doz.	0.55
55. Persil, Economy per pkt.	0.42
56. Soap—5-oz. blocks, "Solvol" per doz.	1.70
57. Steel wool—1-lb. each	0.52
58. Toilet Soap—Bath, "Palmolive" .. per doz.	1.92
59. Velvet { Quads do.	4.17
{ Quints do.	5.81
60. Soup—Tomato, 112-oz., "Edgel" .. per tin	0.88
61. Spaghetti—1-lb. packets—"Rinoldi" .. per pkt.	0.20
Sugar—	
62. Icing per lb.	0.14
63. Castor do.	0.14
64. White, 70's per bag	7.30
65. Vegemite, 6-oz. per doz.	3.98
66. Vim Cleaner, 20-oz. do.	4.40
67. Vinegar—1-gal. jars—"Sutherland"†	per gal. 0.99

SCHEDULE No. 17.

PROVISIONS—LANGI KAL KAL
TRAINING CENTRE.

ANNEX TO CONTRACT No. 1972/82.
Local Maid Bread Pty. Ltd., 314 Drummond-street,
South Ballarat.

Sub-schedule No. 1.

BREAD.

Security, \$6.

	\$
1. Bread—Fine wheaten, first quality .. per cntl.	10.80

SCHEDULE No. 18.

PROVISIONS—AGRICULTURAL COLLEGE,
LONGERENONG.

(Delivery at the College.)

ANNEX TO CONTRACT No. 1972/83.
Schwarz Breads Pty. Ltd., 58 Firebrace-street, Horsham.

Sub-schedule No. 1.

BREADSTUFFS.

Security, \$10.

	\$
1. Bread—Fine wheaten, first quality .. per cntl.	11.25
2. Flour—First quality do. Purchase by Agreement	11.25

ANNEX TO CONTRACT No. 1972/84.

Conapak Produce Co., 512 Mair-street, Ballarat.

Sub-schedule No. 2.

POTATOES AND ONIONS.

(*Rates are to be calculated on top rates per bag lots as shown in the Department of Agriculture News Service Bulletin, less discounts as stated hereunder.)

1. Potatoes No. 1 Grade per bag	*Less 10%†
2. Onions do.	*Less 10%†

† Rates for Ballarat.

* Jars, 30c each, returnable.

(AGREEMENT.)

Permewans (Horsham) Pty. Ltd., Box 521, Horsham.

Sub-schedule No. 3.

GROCERIES.

	\$
1. Barley—Pearl per lb.	0.10
2. Baked Beans, No. 10 cans per doz.	13.38
3. Beans—Green, No. 10 can per doz.	14.45
4. Biscuits—Coffee, Malt, Nice per lb.	0.35
5. " Dry do.	0.42
6. Cereals—Cornflakes—"Kelloggs," 16-oz. per pkt.	0.39
7. Weeties do.	0.32
8. Cheese—Bulk { Mild per lb.	0.41
{ Mature do.	0.48
9. Cinnamon, 2-oz. tin per tin	0.10
10. Citric Acid, 1-oz. pkts. per pkt.	0.11
11. Coconut—Desiccated per tin	0.30
12. Coffee Essence—26-oz., "Bushells" .. per bot.	0.58
13. Curry Powder (Indian) Madras, 4-oz. .. per tin	0.32
14. Custard Powder—7-lb. packets "Cameo" .. per lb.	0.18
15. Dates—"Khadrawi," 1-lb. packets .. do.	0.28
Essence—	
16. Lemon—8-oz., "Harpers," Pure .. per bot.	0.59
17. Parisian—26-oz. do.	0.55
18. Vanilla—8-oz., "Harpers," Pure .. do.	0.69
19. Cocoa—"Bournville," 14-oz. packets .. per pkt.	0.68
20. Cordial, Lemon, 1-gal. jars* per jar	1.80
21. Fish—Tinned—Salmon, 16-oz. per doz.	4.89
22. Flour—corn, 1-lb. packets, "Cameo" .. per lb.	0.18
23. " Self-raising, "McAlpins" or "Crusader" in 25-lb. bags .. per bag	2.45
Fruits—Dried—	
24. Currants—"Sunray" or "Swallow and Ariel" 3-crown .. per lb.	0.37
25. Raisins—seeded—"Sunray" or "Swallow and Ariel" .. do.	0.38
26. Sultanas—3-crown—"Sunray" or "Swallow and Ariel" .. do.	0.37
Fruits—Tinned—	
27. Apricots—No. 10., (Halves)—"S.P.C." each	1.27
28. Peaches—No. 10., (Halves)—"S.P.C." do.	1.27
29. Pears—No. 10., (Halves)—"S.P.C." do.	1.27
30. Two-Fruits—No. 10., "S.P.C."—Kyabram .. do.	1.27
31. Solid Pack Apples—7-lb. per doz.	12.55
32. Solid Pack Apricots, No. 10 cans .. do.	16.20
33. Gelatine—Ground, "Davis," 1-lb. packets .. per lb.	1.15
34. Ginger—Ground, 2-oz. per tin.	0.15
35. Golden Syrup—2-lb. tins per doz.	3.24
36. Gravox—1-lb. tins per lb.	0.27
37. Honey—60-lb. tins, Yellow Box .. per tin	8.90
38. Jelly Crystals, 10-lb. packets, "Renown" .. per pkt.	3.19
39. Junket Tablets per doz.	2.76
40. Maggi Aroma, 1-pint bottle per bot.	1.30
41. Mustard—"Keens" 250 grams per tin.	0.71
42. Nutmeg—Ground, 2-oz. per tin	0.20
43. Oatmeal Flaked—"John Bull," 5-lb. packets .. per pkt.	0.80
44. Peas—Split, yellow per lb.	0.11
45. " Green, No. 10 cans per doz.	14.45
45A. Peanut Butter, 6-oz. do.	3.74
Peel—Mixed—Cut—	
46. Bakers loose— $\frac{1}{2}$ -lb. packets each	0.21
47. Pepper—White, ground per lb.	0.95
48. Pickles—7-lb. tins per tin	1.40
49. Rice—Dressed per lb.	0.13
Salt—	
50. { Fine, bulk per lb.	0.03
{ Table, 1-lb. packets per doz.	1.20
Sauces—Tomato—	
51. Tomato—1-gal. jars—"Reeds"† .. per jar	1.80
52. Worcestershire—1-gal. jars—"P.M.U."†	do. 1.80
53. Spaghetti in sauce, No. 10 cans per doz.	10.99
54. Spice—Mixed, 1-oz. per doz.	0.72
55. Persil, Economy per pkt.	0.44
56. Soap—12-oz. blocks, "Solvol" per doz.	1.80
57. Steel wool—1-lb. each	0.35
58. Toilet Soap—5-oz., "Palmolive" .. per doz.	1.24
59. Velvet { Quads do.	4.30
{ Quints do.	6.00
60. Soup—Tomato, 112-oz., "Fowlers" .. per tin	1.05
61. Spaghetti—1-lb. packets—"Rinoldi" .. per pkt.	0.22
Sugar—	
62. Icing per lb.	0.15
63. Caster do.	0.15
64. White, 70's per bag	7.15
65. Vegemite, 6-oz. per doz.	4.05
66. Vim Cleaner do.	2.40
67. Vinegar—1-gal. jars—"Sutherland"† .. per gal.	0.48

† 1-gal. jars 30c each, credited on return.

(AGREEMENT.)

Permwans (Horsham) Pty. Ltd., Box 521, Horsham.

Sub-schedule No. 4.

JAM.

1. Jams—" Monbulk "—Assorted as ordered.	in 5-lb. tins		in 56-lb. tins	
	per doz.	per lb.	per doz.	per lb.
	\$	\$		
Apricot		0.20		
Apricot and Pine		0.20		
Marmalade	11.66			
Melon		0.18		
Melon and Lemon		0.18		
Peach		0.19		
Plum		0.19		
Plum—Dark		0.19		
Plum and Raspberry		0.20		
Quince		0.19		

SCHEDULE No. 19.

PROVISIONS—RESEARCH STATION, RUTHERGLEN.

(Delivery ex Bakery and Grocery Store.)

ANNEX TO CONTRACT No. 1972/85.

Sunicrust Bakeries Pty. Ltd., Osboldstone-street, Wangaratta.

Sub-schedule No. 1.

BREAD.

Security, \$6.

1. Bread—Fine wheaten, first quality	per cntl.	\$
		7.50

(AGREEMENT.)

N. P. Haberecht, Rutherglen.

Sub-schedule No. 2.

GROCERIES.

		\$
1. Bacon	per lb.	0.90
2. Barley—Pearl	per lb.	0.11
3. Biscuits { Sweet—Creams	per lb.	0.48
{ Dry Ryethin	do.	0.39
{ Savoy	do.	0.49
4. Carbonate of Soda	per lb.	0.15
Cereals—		
5. { All Bran—" Kelloggs "	per pkt.	0.25
{ Corn Flakes—" Kelloggs "	do.	0.42
{ Kelloggs Special " K "	do.	0.37
{ Weeties " Nabisco "	do.	0.33
6. Cinnamon	per oz.	0.08
7. Cleaner " Ajax "	each	0.34
8. Cocoa—½-lb. packets	do.	0.40
9. Coconut—Desiccated	per lb.	0.36
10. Cornflakes—" Kelloggs "	per pkt.	0.42
11. Cornflower—1-lb. packets	do.	0.22
12. Custard Powder—1-lb. packets	do.	0.22
13. Coffee " Nescafe " ½-lb. tins	per tin	1.25
14. Cheese—" Kraft " ½-lb. packets	per pkt.	0.27
{ Matured	per lb.	0.60
15. Curry Powder, Loose	do.	0.40
16. Dates	do.	0.27
17. Essences { Vanilla—4-oz. bottles	each	0.48
{ Lemon—4-oz. bottles	do.	0.48
{ Cochineal—2-oz. bottles	do.	0.33
Extracts and Pastes—		
18. { Peanut Butter—12-oz.	per jar	0.49
{ Vegemite—8-oz.	do.	0.47
{ Tinned Salmon " Greenseas "	per doz.	5.28
{ Sardines	per tin	0.15
19. Fish { Herrings, in sauce, 14-oz.	do.	0.33
{ Tuna	per doz.	6.10
{ Whiting—Frozen " Sunkist," 12-oz.	per pkt.	0.55
{ Cod—smoked	do.	0.65
Flour—		
20. { Self-raising, 25-lb. bags, " McAlpins "	per bag	2.70
{ Plain	per lb.	0.10
Fruits—Dried—		
21. { Currants	per lb.	0.37
{ Mixed	do.	0.30
{ Raisins (Seeded)	do.	0.39
{ Sultanas	do.	0.37

* Market Rate.

Sub-schedule No. 2—continued.

GROCERIES—continued.

5

Fruits—Preserved—30-oz. tins—			
22. { Apricot, halves	per tin	0.33	
{ Fruit Salad	do.	0.38	
{ Peaches	do.	0.33	
{ Pears	do.	0.33	
{ Pineapple	do.	0.37	
{ Raspberries, 1-lb. tin	do.	0.35	
23. Gelatine	per lb.	1.30	
24. Ginger—Ground	per oz.	0.10	
25. Golden Syrup	per tin	0.27	
26. Gravox	per lb.	0.27	
27. Herbs—Mixed, 1-oz. packets	per pkt.	0.06	
28. Honey—Pure, 2-lb. jar	per jar	0.36	
Jams—24-oz. tins—			
29. { Apricot	per doz.	4.28	
{ Blackberry and Plum	do.	4.28	
{ Fig	do.	4.90	
{ Marmalade	do.	4.00	
{ Peach	do.	4.00	
{ Plum, dark	do.	4.00	
{ Raspberry	do.	5.72	
{ Raspberry and Plum	do.	4.28	
{ Strawberry	do.	5.90	
30. Jelly Crystals	per pkt.	0.09	
31. Junket Tablets	do.	0.20	
32. Lard	per lb.	0.30	
33. Macaroni—1-lb.	per pkt.	0.19	
34. Margarine	per lb.	0.38	
35. Matches—Safety	per pkt.	0.18	
36. Mayonnaise—" Kraft "	per jar	0.25	
Meat—Tinned—			
37. { Camp Pie	per doz.	2.45	
{ Irish Stew	do.	3.40	
{ Sausages and Vegetables	do.	3.40	
{ Beef Steak Pudding	do.	3.50	
{ Beef Luncheon	do.	3.80	
{	do.	2.88	
38. Milk—Condensed	do.	2.88	
39. Mustard—Loose, ½-lb. tin	per tin	0.72	
40. Nutmeg—Ground	per oz.	0.15	
41. Oatmeal Plain—5-lb. packets " John Bull "	per pkt.	0.74	
42. Onions	per lb.	*	
43. Peas—Split	per pkt.	0.14	
44. Peel—mixed—½-lb. pkt.	do.	0.20	
45. Pepper—White, 4-oz. tins	per tin	0.31	
46. Potatoes	per cwt.	*	
47. Rice { Polished	per lb.	0.16	
{ Ground	do.	0.16	
{ Table	per pkt.	0.12	
48. Salt { Cooking	per lb.	0.03	
{ Barbecue	per bot.	0.23	
49. Sauce { Tomato, 26-oz.	do.	0.37	
{ Worcestershire, 10-oz.	per doz.	2.70	
50. Sausages	per lb.	0.38	
Soaps—			
51. { " Rinso "—Economy	per pkt.	0.49	
{ " Surf "	do.	0.54	
{ Soda—Washing	per lb.	0.08	
{ Soups—Tomato	per tin	0.18	
52. { " Chicken Noodle, packets	per doz.	1.68	
{ Continental	per pkt.	0.13	
53. Spice—mixed	per oz.	0.08	
54. Sugar { Icing	per lb.	0.14	
{ Table " A-1 "	do.	0.11	
55. Tea—½-lb. packets	per lb.	0.66	
56. Treacle	per tin	0.27	
Vegetables—Tinned—			
57. { Baked Beans	per tin	0.19	
{ Sweet Corn	do.	0.27	
{ Spaghetti in sauce	per doz.	2.44	
{ Peas	do.	2.40	
{ Sauerkraut	do.	0.20	
58. Vinegar—Seppelts White	per bot.	0.29	

SCHEDULE No. 20.

PROVISIONS AT SALE.

(Delivery at the Gaol.)

ANNEX TO CONTRACT No. 1972/86.

Yallourn Bakery Pty. Ltd., 104 Argyle-street, Traralgon.

Sub-schedule No. 1.

BREAD.

Security, \$6.

		\$
1. Bread—Fine wheaten, first quality	per cntl.	6.75
2. Flour—First quality	do.	5.00

○ Not available.

Sub-schedule No. 2.

POTATOES.

1. Potatoes—No. 1 Grade	per bag	Purchase by Agreement	
-------------------------	---------	-----------------------	--

SCHEDULE No. 21.

PROVISIONS—PLEASANT CREEK SPECIAL SCHOOL, STAWELL.

(Delivery at the School.)

ANNEX TO CONTRACT No. 1972/87.

Sunicrust Bakeries Pty. Ltd., 49 Moore-street, Ararat.

Sub-schedule No. 1.

BREADSTUFFS.

Security, \$20.

1. Bread—Fine wheat, first quality	per cwtl.	9.11*
2. Flour—First quality	do.	5.67*

*Rates less 3½ per cent. discount—30 days.

ANNEX TO CONTRACT No. 1972/88.

Stawell Modern Dairy Pty. Ltd., 11 Seaby-street, Stawell.

Sub-schedule No. 2.

MILK.

Security, \$10.

1. Milk—Fresh and Pure, bulk	per gal.	Milk Board Rates
------------------------------	----------	------------------

ANNEX TO CONTRACT No. 1972/89.

Conapak Produce Co., 512 Mair-street, Ballarat.

Sub-schedule No. 3.

POTATOES.

(* Rates to be calculated on top rates per bag lots as shown in the Department of Agricultural News Service Bulletin, less discounts as stated hereunder.)

1. Potatoes—No. 1 Grade	per bag	*Less 10% F.O.R. Ballarat
-------------------------	---------	---------------------------

(AGREEMENT.)

McKay MacLeod Pty. Ltd., 63 Mair-street, Ballarat.

Sub-schedule No. 4.

GROCERIES.

		\$
1. Baked Beans in Tomato Sauce, No. 10 cans	per doz.	14.54
2. Baking Powder—"Excelsior", 1-lb. tins	do.	6.78
3. Blue—Washing, "Reckitts"	per gross	10.77
4. Camp Pie	per doz.	2.77
5. Cherries, Crystallized, 5-lb.	each	4.80
6. Cereals—		
Weet Harts, 24-oz. packets	per doz.	4.72
Weeties—16-oz.	do.	4.04
7. Coconut, Desiccated (7-lb.)	per lb.	0.33
8. Cocoa, 14-oz. "Bournville"	per doz.	7.92
9. Cordial	per gal.	1.93
10. Currants (present season's)—		
3-crown, 30-lb. cartons	per lb.	0.2962
4-crown, 30-lb. cartons	do.	0.3017
11. Curry Powder—Loose	do.	0.58
12. Dates—Box lots	do.	0.23
13. Essence of Vanilla, 16-oz. bottles	per doz.	15.10
14. Essence of Lemon, 16-oz. bottles	do.	15.10
15. Golden Syrup—		
2-lb. tins	do.	3.22
1-lb. tins	do.	3.32
17. Herbs, Mixed, 1-oz. packets	per doz.	0.42
18. Jelly Crystals—Packets, "McKays", 7-lb. packets	each	2.42
19. Junket Tablets, "Merry Widow" flavoured	per doz.	2.70
20. Macaroni, 22-lb. cartons	per ctn.	3.08
21. Nutmeg, Ground	per lb.	1.00
22. Peel—Cut, mixed, 8-oz.	per doz.	2.35
23. Pepper—Black, ground	per lb.	0.71
24. Raisins, bulk, 35-lb.	do.	0.3209
25. Sultanas (present season's)—		
4-crown, 35-lb. cartons	do.	0.3072
26. Salt—Fine, "Imperial"	per cwt.	3.06
27. Semolina—2-lb. packets	per pkt.	2.37
28. Sauce, Worcestershire, 26-oz. bottles	per doz.	5.00
29. Spaghetti with cheese and tomato sauce in No. 10 cans "Rosella"	do.	13.34

* Supplies not required or not available.

Sub-schedule No. 4—continued.

GROCERIES—continued.

		\$
Sugar—		
30. Icing, 6-lb. bags	per bag	0.97
Soda—		
31. Bicarbonate, 7-lb. bag	do.	0.77
32. Spaghetti, 22-lb. cartons	per ctn.	3.08
33. Spice—Mixed, 1-oz. packets	per doz.	0.73
34. Starch, 12-oz. packets, "Silver Star"	do.	2.63
35. Sweets, Boiled, 14-lb. bag	per bag	3.14
36. Syrup, Milk flavouring, "B.C.X." (jars 30c)	per gal.	2.19
37. Vinegar—Malt, Bulk Casks, \$10 Jars, 35c	do.	0.57
	do.	0.73

SCHEDULE No. 22.

PROVISIONS—SUNBURY DISTRICT.

(Delivery into Institutions.)

(AGREEMENT.)

H. & S. Paterakis, 19 O'Shanassy-street, Sunbury.

Sub-schedule No. 1.

GROCERIES.

		\$
1. Arrowroot	per pkt.	0.28
2. Bay Leaves, 1-oz. packets	do.	0.10
3. Baking Powder	per lb.	0.55
4. Blue—Washing, 1-oz. knobs, "Reckitts"	per gross	10.70
5. Chutney	per doz.	3.02
6. Coconut, desiccated	per lb.	0.28
7. Cinnamon	do.	0.39
8. Cloves—whole, 1-oz. packet	per doz.	2.29
9. Cocoa, 14-oz. packets "Bournville"	per pkt.	0.64
10. Coffee Essence, 20-oz.	per doz.	7.18
11. Cordial, 1-gal. jars	per gal.	1.60
12. Corn or Maize Flour, 1-lb. packets	per doz.	2.46
13. Currants, 4-crown (present season's)	per lb.	0.29
14. Curry Powder	do.	0.39
15. Dates—Stoneless	do.	0.26
16. Ener-tone	do.	*
17. Essences—		
Lemon, 8-oz.	per doz.	7.68
Vanilla, 8-oz.	do.	7.68
Almond, 1-oz.	do.	1.54
Raspberry, 1-oz.	do.	1.54
17A. Flour, Self-raising, 6-lb. packet	per pkt.	0.65
18. Gelatine, 16-oz. packets "Davis"	per doz.	14.40
19. Golden Syrup, 2-lb. tins	do.	3.00
20. Gravox, 1-lb.	do.	3.15
21. Gravy Salt, 8-oz. packets	do.	*
22. Herbs—Mixed, 1-oz.	do.	0.41
23. Honey—Pure—30-lb. tins	per lb.	0.23
24. Jelly Crystals—		
4-oz. packets	per doz.	1.09
25. Junket Tablets—Tubes	do.	2.74
26. Jex	do.	1.10
27. Lemon Peel, 8-oz. packets	per pkt.	0.19
28. Macaroni	per lb.	0.13
29. Marmite, 16-oz.	each	0.79
30. Milk, "Nestles", 12-oz.	per doz.	3.15
31. Milk—Powdered, 56-lb. bag	per lb.	0.17
32. Mustard—Loose, "Keens"	do.	0.85
33. Nutmeg—Ground	do.	1.00
34. Paprika	per lb.	0.84
35. Peel—Mixed, 8-oz. packet	do.	0.19
36. Pepper—Black, ground	per lb.	0.85
37. Cayenne	do.	0.67
38. Peppercorns	per pkt.	0.09
39. Pickles—Mustard, 18-oz.	per doz.	3.49
40. Raisins	per lb.	0.31
41. Salad Oil, 26-oz.	per doz.	6.26
42. Sultanas, 4 crown (present season's)	per lb.	0.31
43. Salt—Fine	per cwt.	2.29
44. Sauce, Worcestershire, 20-oz. bottles	per doz.	5.67
45. Semolina	per lb.	0.20
Soda—		
46. Bicarbonate	per lb.	0.09
47. Washing	per cwt.	5.40
48. Spice—Mixed, loose	per lb.	0.51
49. Spaghetti, 22-lb. Forex No. 2	per ctn.	2.86
50. Sugar—Icing	per lb.	0.15
51. Sugar—Castor	do.	0.15
52. Starch—Loose, "Silver Star"	do.	0.24
53. Vermicelli	per lb.	0.13
54. Vinegar—Malt, 1-gal. jars	per gal.	0.99
55. Weat-Harts	per pkt.	0.37

Sub-schedule No. 1.—continued.

GROCERIES—continued.

CEREALS.

1. Barley—Pearl	per cwt.	Purchase Schedule, I. Sub- Schedule, 16.
2. Oatmeal—Plain	do.	
3. Oatmeal—Flaked	do.	
4. Peas, split—yellow	do.	
5. Rice—Dressed	do.	
6. Rice—Unpolished	do.	
7. Seed Tapioca	do.	

SCHEDULE No. 23.

PROVISIONS—WARRNAMBOOL DISTRICT

(Delivery into Institutions.)

ANNEX TO CONTRACT No. 1972/90.

Twites Bakeries Pty. Ltd., 164 Timor-street, Warrnambool.

Sub-schedule No. 1.

BREADSTUFFS.

Security, \$10.

		\$
1. Bread—Fine wheaten, first quality ..	per cntl.	11.00
2. " " Rolls	per doz.	0.38
3. Flour—First quality	per cntl.	5.26

(AGREEMENT.)

Swintons Supermarket Pty. Ltd., Box 218, Warrnambool.

Sub-schedule No. 2.

GROCERIES.

		\$
1. Bay leaves, ¼-oz.	each	0.11
2. Bacon Rashers—Middle	per lb.	0.78
3. " " Bones (When available)	do.	0.17
4. Baking Powder, 1-lb. tins	do.	0.55
5. Beans—Haricot	do.	0.22
6. Cereals—Whole, large packets	per doz.	3.95
7. Chutney—13-oz. bot.	per bot.	0.28
8. Cinnamon	per lb.	0.49
9. Cocoa—" Bournville", 14-oz.	per pkt.	0.65
10. Curry Powder	per lb.	0.39
11. Essences—Almond, 1-oz. bots.	per bot.	0.12
12. " " Lemon, 1-oz. bots.	per bot.	0.11
13. " " " 16-oz.	do.	1.05
14. " " Parisian, 26-oz. bottles	do.	0.46
15. " " Yolkine, 4-oz. bottles	do.	0.34
Extracts—		
16. Anchovy Paste, 2-oz.	each	0.21
17. Bloater Paste, 2½ oz.	do.	0.21
18. Salmon and Shrimp Paste, 2½-oz.	do.	0.21
19. Gherkin Spread, ¼-gal.	do.	*
20. Flour—Self-raising, 25-lb. bags	per bag	2.25
Fruits—Dried—		
21. Currants and Sultanas—5-crown	per lb.	0.35
22. Dates—Loose	do.	0.22
" " 1-lb. pkt.	do.	0.22
23. Raisins—Seeded	per lb.	0.35
24. Gelatine—Ground, 1-lb. pkts., " Davis"	per lb.	1.05
25. Golden Syrup, 2-lb. tins	per tin	0.24
26. Herbs—Mixed, 1¼-oz.	each	0.12
27. Honey—2-lb. jars	per jar	0.54
28. " " 60-lb. tins	per tin	15.00
29. Macaroni	do.	0.20
30. Mustard—" Keens"	per lb.	0.85
31. Nutmeg	do.	1.95
32. Paprika, 2-oz.	each	0.13
33. Peanut Butter 12-oz. jar " Eta"	per jar	0.45
34. Pepper—White, ground	per lb.	0.96
35. Pickles—16-oz. bottles, " Leggos"	per bot.	0.34
36. Sago—Seed Tapioca	per lb.	0.12
37. Salt—Fine, " Cheetham"	do.	0.04
38. Sauce—Tomato, 26-oz. bottles, " Cohn's"	per bot.	0.40
39. " " Worcestershire, 19-oz. bottles, " P.M.U."	do.	0.35
40. Soda—Bicarbonate	per lb.	0.19
41. Spaghetti—22-lb. carton	per cnt.	2.90
42. Spice, mixed, 3-oz.	per lb.	0.29
43. Vegemite—1-lb. jars	per jar	0.84
44. Vinegar—26-oz. bottles	per bot.	0.25
45. Coconut	per lb.	0.34
46. Essence Vanilla Imitation 16-oz.	per bot.	0.47
47. " " Pure	do.	1.40
48. Lemon Peel	per pkt.	0.38
49. Tablets Junket " Merry Widow" or " Hansens" (12's)	" "	0.16

* Supplies not available.

ANNEX TO CONTRACT No. 1972/91.

Sungold Dairies Pty. Ltd., Allansford-road, Warrnambool.

Sub-schedule No. 3.

Security, \$6.

Milk—Fresh and pure—	
1. Bulk	per gal. Milk Board Rates.
2. Bottled	do.

SCHEDULE No. 24.

PROVISIONS—HOBSON PARK HOSPITAL, TRARALGON.

(Delivery to Hospital.)

ANNEX TO CONTRACT No. 1972/92.

Your Local Bakery (Traralgon) Pty. Ltd., 52 Franklin-street, Traralgon.

Sub-schedule No. 1.

BREADSTUFFS.

Security, \$10.

		\$
1. Bread—Fine Wheaten, first quality ..	per cntl.	6.86
2. " " Wrapped and Sliced	do.	6.86
3. Flour—First quality	do.	5.00

(AGREEMENT.)

Terra (Self Service) Pty. Ltd., 42 Elizabeth-street, South Yarra.

Sub-schedule No. 2.

GROCERIES.

Order under Melbourne District—Schedule No. 1.
Sub-schedule No. 18 Prices F.O.R. Melbourne.

ANNEX TO CONTRACT No. 1972/93.

J. G. and E. McEntee, 91 Hotham-street, Traralgon.

Sub-schedule No. 3.

MILK.

Security, \$6.

1. Milk—Fresh and Pure, Bulk	per gal. Milk Board Rates.
2. " " " " Bottled	do.

SCHEDULE No. 25.

PROVISIONS—MALMSBURY YOUTH TRAINING CENTRE, MALMSBURY.

ANNEX TO CONTRACT No. 1972/94.

J. Groves, High Street, Trentham.

Sub-schedule No. 1.

BREAD.

Security, \$6.

1. Bread, fine wheaten, first quality ..	per cntl.	7.70
------------------------------------------	-----------	------

(AGREEMENT.)

F. E. and T. Steel, General Store, Malmsbury.

Sub-schedule No. 2.

GROCERIES.

		\$
1. Bacon—Middles	per lb.	0.83
2. Barley—Pearl, " Parsons"	do.	0.08
Biscuits (tins 40c, returnable)—		
3. Thin Captain, " Brockhoffs"	do.	0.36
4. Nice, " Brockhoffs"	do.	0.37
5. Sweet Assorted, " Sunshine"	do.	0.37
6. Butter Crisps, Vanilla Curls	do.	0.37
7. Bread Crumbs, loose, " Tip Top"	do.	0.11
8. Weeties	per pkt.	0.31
9. Cornflakes, " Kelloggs," 16-oz.	do.	0.38
10. Cheese—" Kraft," 5-lb. boxes	per box	2.50
11. Cocoa, loose, " Cadbury-Fry" 14-oz. pkts.	per pkt.	0.59
12. Coconut, Desiccated, " Foremost"	per lb.	0.30
13. Coffee Essence, " Bushells"	per gal.	3.75
14. Cordials, " Cottees"	do.	1.75
15. Curry Powder, loose	per lb.	0.52
16. Custard Powder, " Parsons"	do.	0.17
Essences, &c.		
17. " Almond, 4-oz.	per bot.	0.42
18. " Lemon, 8-oz.	do.	0.57

Sub-schedule No. 2—continued.
GROCERIES—continued.

			\$
19.	Vanilla, 8-oz., "Medallion"	do.	0.75
20.	Yolkine, 16-oz.	do.	0.47
21.	Vegemite, 16-oz., "Kraft"	per jar	0.86
Fish—Tinned—			
22.	Salmon, 16-oz., "Green seas"	per tin	0.36
23.	Herrings in Sauce, 14-oz.	do.	0.25
Flour—corn or Maize—			
24.	Bulk, 140-lb. sacks, "McAlpin"	per cwt.	8.95
25.	Plain, 50-lb. bag, "McAlpin"	per bag	3.60
26.	Self Raising, 50-lb. bag	do.	4.60
Fruits—Dried—			
27.	Apricots, large, case lots, "Australian Sunrayset"	per lb.	0.56
28.	Currants, 3-crown, case lots, "Australian Sunrayset"	do.	0.30
29.	Raisins, seeded, case lots, "Austalian Sunrayset"	do.	0.33
30.	Sultanas, 5-crown, case lots, "Australian Sunrayset"	do.	0.30
Fruits—Solid Pack—			
31.	Apples, 6½-lb. tins	per doz.	10.20
32.	Apricots, 7-lb. tins	do.	12.50
33.	Gelatine—Ground 1-lb. pkt.	per lb.	0.95
34.	Golden Syrup, 2-lb. tins	per tin	0.27
35.	Green Peas, 7-lb. tins, "Kraft"	per doz.	14.00
36.	Herbs, mixed, loose	per lb.	0.85
37.	Honey, 5-lb. tins	per tin	1.25
38.	Jams, Assorted, 5-lb. tins	per doz.	11.50
39.	Jelly Crystals, 7-lb. pkt., "Cottees"	per pkt.	1.78
40.	Junket Tablets, flavoured, tubes, "Merry Widow"	per doz.	2.00
41.	Macaroni, 1-lb. pkt., "Rinoldi"	do.	1.95
42.	Margarine, Cake or Pastry "Fairy"	per lb.	0.30
43.	Matches, safety, dozens, "Redheads"	per gr.	1.90
44.	Milk, Condensed, 14-oz. tins, "Nestles"	per doz.	2.85
45.	Oatmeal, 110 lb. bag	per bag	9.20
46.	Peel, mixed, cut, loose, "Parsons"	per lb.	0.20
47.	Pepper, white, ground "Parsons"	do.	0.90
48.	Pickles, ½-gal. jars	per jar	1.35†
49.	Rice, 56-lb. bag	each	6.26
50.	Sago-Seed Tapioca, "Foremost"	per lb.	0.14
51.	Salt, bulk, cooking	per cwt.	2.35
52.	"table, 1-lb. pkt., "Mermaid"	per doz.	1.08
53.	Sauce, Tomato, 1-gal. jars	per gal.	2.09†
54.	Soup, Tomato, 9-lb., "A.J.C."	per doz.	10.65
55.	"Vegetable, 7-lb., "A.J.C."	do.	10.00
56.	Spaghetti, bulk, 22-lb., "Rinoldi"	per ctn.	2.65
57.	Split Peas, dried, 56-lb. bag "Foremost"	per bag	4.05
Spices, &c.—			
58.	Mixed, loose, "Parsons"	per lb.	0.38
59.	Nutmeg, ground "Parsons"	per lb.	1.55
60.	Sugar, white, 70-lb. bags	per bag	7.50
61.	Baked Beans, No. 10 cans "Tom Piper"	per doz.	10.50
62.	Sweetcorn, 16-oz. "Rosella"	do.	2.64
63.	Tomatoes, 30-oz. "Bendigo"	do.	3.45
64.	Vinegar, 1-gal. jars "Skipping Girl"	per gal.	0.60

ANNEX TO CONTRACT No. 1972/95.

H. Willis & Sons, 38 Baynton-street, Kyneton.

Sub-schedule No. 3.

MILK.

Security, \$6.

1.	Milk, fresh and pure, bulk	per gal.	Milk Board Rates
----	----------------------------	----------	------------------

SCHEDULE No. 26.

PROVISIONS—MORWELL RIVER RE-FORESTATION PRISON.

(Delivery into Institution.)

ANNEX TO CONTRACT No. 1972/96.

Yallourn Bakery Pty. Ltd., John-street, Yallourn North.

Sub-schedule No. 1.

BREADSTUFFS.

Security, \$10.

			\$
1.	Bread—Fine wheaten, first quality	per cntl.	7.70
2.	Flour—First quality	do.	5.00

† Plus 40c per jar.

Sub-schedule No. 2.

MILK.

1.	Milk—Fresh and Pure	per pint	Purchase by Agreement
----	---------------------	----------	-----------------------

Sub-schedule No. 3.

POTATOES.

1.	Potatoes—No. 1 Grade	per bag	Purchase by Agreement
----	----------------------	---------	-----------------------

SCHEDULE No. 27.

PROVISIONS—TATURA DISTRICT.

(For delivery to Horticultural Research Station, Tatura, and "Dhurringile" Rehabilitation Centre, via Murchison.)

ANNEX TO CONTRACT No. 1972/97.

C. J. Boerkamp, Murchison Bakery, Murchison.

Sub-schedule No. 1.

BREADSTUFFS.

Security, \$10.

			\$
1.	Bread—Fine wheaten, first quality	per cntl.	6.50
2.	Flour—First quality (150-lb. bags)	per bag	7.68

Sub-schedule No. 2.

POTATOES.

1.	Potatoes—No. 1 Grade	per bag	Purchase by Agreement
----	----------------------	---------	-----------------------

(AGREEMENT.)

A. and G. A. Ranson, 179 Hogan-street, Tatura.

Sub-schedule No. 3.

GROCERIES.

			\$
1.	Bacon, Rashers, middle, "Mayfair" or "Stuarts"	per lb.	0.81
2.	Baking Powder—1-lb. "Excelsior"	do.	0.55
3.	Barley—Pearl	do.	0.07
Biscuits—			
4.	Thin Captain "Sunshine"	do.	0.32
5.	Sweet Assorted "Phoenix"	do.	0.30
6.	Bread Crumbs "Golden Crust"	do.	0.11
7.	Cake Containers—Paper "Rafco 240s"	per doz.	1.49
Cereals—			
8.	Kornies or equal, 24-oz. "Weeties"	do.	4.18
9.	Cornflakes or equal, 16-oz. "Kellogs"	do.	4.54
10.	Rice Bubbles, 8-oz. "Kellogs"	do.	2.98
Cheese—Kraft—			
11.	8-oz. packets	per doz.	3.05
12.	Matured—Tasty	per lb.	0.41
13.	Chutney—Fruit "Bendigo", 10-oz.	per doz.	2.36
14.	Cloves—Whole	per lb.	1.15
15.	Cocoa, 14-oz. pkts. "Bournville"	per doz.	7.78
16.	Coconut—Desiccated	per lb.	0.29
17.	Coffee—Nescafe, 1-lb.	do.	3.31
18.	Curry Powder—Loose	do.	0.56
19.	Custard Powder, 1-lb. "Cameo"	do.	0.21
20.	Eggs—New laid, large "VEB" ruling price	per doz.	
21.	Lemon, 8-oz. "Medallion"	per bot.	0.72
22.	Vanilla, 8-oz. "Medallion"	do.	0.73
Extracts and Pastes—			
23.	Gravox, 1-lb. packets	per pkt.	0.27
24.	Vegemite, 4-oz.	per jar	0.27
25.	Peanut Butter, 12-oz. "Eta"	do.	0.44
Fish—Tinned—			
26.	Salmon, 16-oz. "King Sound Australian"	per doz.	4.92
27.	Herrings in Sauce, 14-oz. "C & B"	do.	3.06
Flour—Corn or Maize—			
28.	1-lb. pkts "Brown and Poulson"	per lb.	0.18
29.	Self-raising—25-lb. bag "Osolite" or "McA"	per bag	2.51
30.	Plain, 4-lb.	per pkt.	0.31
Fruit—Dried—			
31.	Prunes—50-70's, 7-lb. tins	per lb.	0.31
32.	Currants, less than case lots	do.	0.37
33.	Raisins, seeded, 1-lb. packets	do.	0.40
34.	Sultanas, less than case lots	do.	0.37
35.	Dates, less than case lots	do.	0.28

Sub-schedule No. 3—continued.

GROCERIES—continued.

		\$
Fruits—Preserved, 29-oz. tins—		
36.	Apricots—Halves "Ardmona" ..	per doz. 4.08
37.	Peaches—Halves and sliced "Ardmona" ..	do. 4.08
38.	Pears—Halves "Ardmona" ..	do. 4.08
39.	Fruit Salad "Ardmona" ..	do. 4.68
40.	Pineapple Pieces "Golden Circle" ..	do. 4.39
Fruits—Solid Pack—		
41.	Apples, 6½-lb. tins "A.J.C." ..	per tin 0.99
42.	Gelatine—Ground, 1-lb. packets ..	per lb. 1.19
43.	Ginger—Ground ..	do. 0.95
44.	Golden Syrup, 2-lb. tins ..	per tin 0.26
45.	Herbs—Mixed, 1-oz. packets ..	per doz. 0.46
46.	Honey, 7-lb. tins ..	per tin 1.64
47.	Jams (Order under Sub-schedule No. 9)	
48.	Jelly—Crystals, 4-oz. pkts. "Cotte's" or "Pioneer" ..	per doz. 1.04
49.	Lemon Butter "Cotte's" ..	do. 3.29
Meat—Tinned—		
50.	Beef Luncheon, 12-oz. tins "Tom Piper" ..	do. 3.99
51.	Camp Pie, 12-oz. tins ..	do. 2.65
52.	Milk—Condensed, 14-oz. tins "Nestle's" ..	do. 3.12
53.	Mustard—Loose ..	per lb. 0.80
54.	Oatmeal—Flaked, loose ..	do. 0.13
55.	Peel—Mixed, cut, loose ..	do. 0.28
56.	Pepper—White, ground ..	do. 0.97
57.	Pickles—Mustard, 18-oz. "Gold Bar" ..	per doz. 3.58
58.	Rice—Dressed "Australian" ..	per lb. 0.14
59.	Rice—Ground, 1-lb. pkt. "McKenzie's" ..	do. 0.12
60.	Sago-Seed Tapioca (Order Sub-Schedule No. 10)	
61.	Salt—Fine, bulk "Mermaid" ..	do. 0.03
62.	" Table, 1-lb. packets ..	do. 0.10
63.	Sauce—Tomato, 26-oz. "Bendigo" ..	per doz. 4.59
64.	" Worcestershire, 10-oz. "Holbrooks" ..	do. 3.72
65.	Soda—Bicarbonate ..	per lb. 0.12
66.	Soups—Asparagus, 16-oz. "Heinz" ..	per doz. 2.31
67.	" Tomato, 7-lb. "Gold Bar" ..	per tin 1.24
68.	" Chicken Noodle, packets ..	per doz. 1.44
Spices, &c.—		
69.	Mixed—1-oz. packets ..	do. 0.59
70.	Paprika ..	per lb. 0.80
71.	Cinnamon ..	do. 0.48
72.	Nutmeg—Ground ..	do. 1.20
73.	Sugar—Icing ..	do. 0.13
74.	" Castor ..	do. 0.13
75.	" No. 3 Brown ..	do. 0.12
76.	" White, 70-lb. bags ..	per bag 7.24
Sweet Toppings—		
77.	Chocolate, 13-oz. "Kia Ora" ..	per doz. 3.57
78.	Strawberry, 13-oz. ..	do. 3.57
79.	Treacle, 2-lb. tins ..	per tin 0.23
80.	Peas, Split, yellow (Order Sub-Schedule No. 10)	
Vegetables—Tinned—		
81.	Asparagus Tips "Harvest" ..	per doz. 4.99
82.	Baked Beans, 16-oz. "Kia-Ora" or "Heinz" ..	do. 1.98
83.	Beans—Green, 16-oz. "Edgell" ..	do. 2.58
84.	Beetroot, 15-oz. "Gold Coaster" or "Gluce" ..	per doz. 1.53
85.	Spaghetti, 16-oz. "Kia-Ora" or "Heinz" ..	do. 1.98
86.	Peas, 30-oz. "Edgell" ..	do. 4.25
87.	Tomatoes, 30-oz. "Bendigo" ..	do. 3.65
88.	Vermicelli, 1-lb. "Rinoldi" ..	per lb. 0.18
89.	Vinegar—Malt, 26-oz. bottles "Barnes" ..	per doz. 2.16

SCHEDULE No. 28.

PROVISIONS—STATE RESEARCH FARM, WERRIBEE.

(Delivery into Institution.)

Sub-schedule No. 1.

BREAD.

1. Bread—Fine wheaten, first quality ..	per cntl.		Purchase by Agreement.
-----------------------------------------	-----------	--	------------------------

(AGREEMENT.)

Terra (Self Service) Pty. Ltd., 42 Elizabeth-street, South Yarra

Sub-schedule No. 2.

GROCERIES.

Order under Melbourne District—Schedule No. 1. Sub-schedule No. 18.

Sub-schedule No. 3.

MILK.

1. Milk—Fresh and pure ..	per gal.		Purchase by Agreement.
---------------------------	----------	--	------------------------

SCHEDULE No. 29.

PROVISIONS—WON WRON RE-FORESTATION PRISON.

(Delivery into Institution.)

ANNEX TO CONTRACT NO. 1972/98.

Jas Wynne and Sons Pty. Ltd., Box 55, P.O. Yarram.

Sub-schedule No. 1.

BREAD.

Security \$10.			
1. Bread—Fine Wheaten, First Quality ..	per cntl.		\$ 10.50
2. Flour—First quality ..	do.		5.13

(AGREEMENT.)

L. & M. Marshall, 21 Rodgers-street, Yarram.

Sub-schedule No. 2.

MILK.

Security \$10.			
1. Milk—Fresh and Pure ..	per pint		\$ 0.11

Sub-schedule No. 3.

POTATOES.

1. Potatoes, No. 1 Grade ..	per bag		Purchase by Agreement.
-----------------------------	---------	--	------------------------

