

VICTORIA GOVERNMENT G A Z E T T E

No. G 44 Thursday 8 November 1990
By Authority L. V. North, Government Printer Melbourne

GENERAL

Gazette Services

The *Victoria Government Gazette* (VGG) is published by VGPO for the State of Victoria and is produced in three editions.

VGG General is published each Wednesday and provides information regarding Acts of Parliament and their effective date of operation; Government notices; requests for tenders; as well as contracts and contracts accepted. Private notices are also published.

VGG Special is published any day when required for urgent or special Government notices. VGG Special is made available automatically to subscribers of VGG General.

VGG Periodical is published on Monday when required and includes specialised information eg. Medical, Dental, Pharmacist's Registers, etc.

Government Advertising

Publishing Details

The following Guidelines should be followed to ensure publication of Government material in the *Victoria Government Gazette*.

- Duplicate copies should be submitted for use by the Gazette Officer.
- Material submitted to the Executive Council for gazettal will normally be published in the following week's issue.
- Where urgent gazettal is required, contact:
Gerd Gaspar
Gazette Officer
Department of the Premier and Cabinet
Ground Floor 1 Treasury Place
Melbourne 3000
Telephone inquiries (03) 651 5153
- Government advertising other than material for the consideration of the Executive Council should be forwarded to the Gazette Office no later than 9.30 am on Tuesday.
- Lengthy or complicated notices should be forwarded several days before publication.
- Proofs will be supplied only when requested or at the direction of the Gazette Officer.
- No additions or amendments to material for publication will be accepted by telephone.
- Double rates for advertising in the Special Gazette will apply.

Private Advertising

Publishing Details. Send copy to:

VGPO Coordinator
Gazette Advertising
VGPO
66-112 Macaulay Road
North Melbourne
(PO Box 203 North Melbourne 3051)
Telephone inquiries (03) 320 0100
Fax No. (03) 328 1657

Advertising Rates and Payment

Single column × cm/part cm \$4.10
Double column × cm/part cm \$8.20
Full page \$171.50

Cheques should be made payable to 'VGPO'. These rates apply to advertisements printed on or after 14 February 1990.

Advertisers should note:

- There are approximately 20 words to each column centimetre depth.
- Signatures (in particular) and proper names must also be in block letters.
- All material should be double spaced.
- Advertisements can be faxed, and a cover sheet should be used, marked to the attention of the Gazette Coordinator.
- Documents not clearly prepared and in the exact format for gazettal will be returned to the sender unpublished.
- Late copy received at VGPO after 11.00 am Tuesday will be placed in the following issue of VGG, irrespective of any date/s mentioned in the copy (unless otherwise advised).

Copy Deadline

11.00 am Tuesday

Subscriptions

VGG is available by three subscription services:

General and Special—\$118.00 each year
General, Special and Periodical—\$136.00 each year
Periodical—\$71.00 each year

Subscriptions are payable in advance and accepted for a period of one year. All subscriptions are on a firm basis and refunds for cancellations will not be given.

All payments should be made payable to VGPO.
Subscription inquiries (03) 320 0217
Bookshop inquiries (03) 651 4100
Fax (03) 651 4111

PROCLAMATIONS

Land Act 1958

PROCLAMATION OF ROADS

I, Sir John McIntosh Young, Lieutenant-Governor of Victoria acting with the advice of the Executive Council and under section 25 (3) (c) of the *Land Act 1958*, proclaim as roads the following lands:

MUNICIPAL DISTRICT OF THE SHIRE OF BRIGHT

POREPUNKAH—The land in the Parish of Porepukah shown as Crown Allotment 14D, Section 4 on Certified Plan No. 109500 lodged in the Central Plan Office—(67-4729).

MUNICIPAL DISTRICT OF THE SHIRE OF OXLEY

WABONGA SOUTH—The land in the Parish of Wabonga South shown as Crown Allotment 19B1 on Certified Plan No. 109398 lodged in the Central Plan Office—(11/8/41).

Given under my hand and the seal of Victoria on 30 October 1990

(L.S.) J. McI. YOUNG

By His Excellency's Command

S. M. CRABB

Minister for Conservation and Environment
20090

Land Act 1958

PROCLAMATION OF ROAD

I, J. Davis McCaughey, Governor of Victoria acting with the advice of the Executive Council and under section 25 (3) (c) of the *Land Act 1958*, proclaim as road the following land:

MUNICIPAL DISTRICT OF THE SHIRE OF BALLARAT

DOWLING FOREST—The road in the Parish of Dowling Forest shown as Crown Allotments 13C and 13D, Section 11 on Certified Plan No. 110260 lodged in the Central Plan Office—(GL-14304).

Given under my hand and the seal of Victoria on 7 October 1990

(L.S.) J. DAVIS McCAUGHEY

By His Excellency's Command

S. M. CRABB

Minister for Conservation and Environment
20090

GOVERNMENT NOTICES

Transport Act 1983
ROADS CORPORATION

Commercial Passenger Vehicle and Tow Truck
Applications

Notice is hereby given that the following applications will be considered by the Roads Corporation on 11 December 1990.

Notice of any objection to the granting of an application should be forwarded to reach the Manager, Vehicle Licensing Branch or any District Office of the Roads Corporation not later than 5 December 1990.

It will not be necessary for interested parties to appear on the date specified, unless advised in writing by the Corporation.

Notification of the date for consideration of applications which are objected to and which require determination by the Road Transport Licensing Tribunal will be published by further notice in this Gazette.

W. FORBES, DIAMOND CREEK.
Application for variation of the conditions of tow truck licence number 693 which authorises the licensed vehicle to be managed, controlled and operated from a depot situated at 44-46 Yarra Street, Warrandyte to change the depot address to 4-6 Elizabeth Street, Diamond Creek.

FULTONSTOCK PTY LTD, MILDURA.
Application for variation of the conditions of licence SV 1102 which authorises the licensed vehicle to operate for the carriage of passengers throughout the State of Victoria for the activities of the Sunraysia Bowls Association Inc., King Avenue Indoor Cricket Centre, Mildura Mavericks, Camerons Mildura, Sunraysia Soccer Association and Crippled Children's Association of South Australia Inc.—Mildura Auxiliary.

Note: Pick-up or set-down shall occur within a 20km radius of the Mildura Post Office.

To delete the condition that the only passengers to be carried are the specially listed clients and instead operate for the carriage of any groups.

VERMEEND & GRUMLEY PTY LTD, BALLARAT. Application to license one class 1 tow truck to be purchased to operate throughout the State of Victoria from a depot situated at Lot 2 Creswick Road, Ballarat for the purpose of lifting and carrying or towing damaged or disabled motor cars including the ability to attend the scene of a motor car accident outside the 'Controlled Area'.

WESTERNPORT ROADLINES PTY LTD, LANG LANG. Application to license two commercial passenger vehicles in respect of the following—

<i>Make</i>	<i>Year of Manufacture</i>	<i>Seating Capacity</i>
Mazda bus (Route 1)	1985	18
Toyota bus (Route 2)	1982	18

to operate for the carriage of children attending Hillcrest Christian College, McDonalds Track, Nyora to the exclusion of all other passengers excepting duly authorised teachers along the following routes:

Route 1. Bass Highway, Grantville, Bonny Drive, Almurta Road, William Road, South Gippsland Highway, Loch to Hillcrest Christian College.

Route 2. School Road, Dayles, Longwarry Road, O'Briens McClures Road, Caldermeade Road, Heads Road, Soldiers Road, Main Street, Lang Lang, McDonalds Track to Hillcrest Christian College.

Note: Service to operate under contract to Hillcrest Christian College.

Dated 7 November 1990
GEOFF S. HUGHES
20690 Manager—Vehicle Licensing

Transport Act 1983
ROAD TRANSPORT LICENSING
TRIBUNAL

Commercial Passenger Vehicle Applications

Notice is hereby given that applications by the following parties, previously gazetted and objected to, will be considered by the Road Transport Licensing Tribunal as follows:

On Wednesday, 5 December 1990 in Court 3, 55 King Street, Melbourne at 9.30 a.m.

<i>Applicant</i>	<i>Previous Gazette</i>	
	<i>No.</i>	<i>Date</i>
W. T. Gillard	G.33	22.8.1990
J. A. & J. E. Pettit	G.32	15.8.1990
D. A. Nicholson	G.30	1.8.1990
C. A. Grant	G.34	29.8.1990

P. BISHOP
20690 Registrar

Transport Act 1983
ROADS CORPORATION
Determination of Fees

I, Reg Patterson, delegate of the Roads Corporation under section 147b of the *Transport Act 1983*, determine that the following fees shall be payable under sections 140 (2), 143A (7) (b), 147A (1) and 149 (1A) (b) respectively of that Act:

Application under section 140 for a licence to operate a commercial passenger vehicle classified by the Corporation as a taxi-cab—\$121.00.

3394 G 44 8 November 1990

Application under section 143A for a licence to operate a taxi-cab within a proclaimed taxi-cab zone—\$121.00

Annual licence fee under section 147A to operate a commercial passenger vehicle classified by the Corporation as a taxi-cab—\$362.00

Application under section 149 for authority to transfer a licence to operate a commercial passenger vehicle classified by the Corporation as a taxi-cab—\$121.00

The revised fees shall take effect from 14 November 1990.

Dated November 1990

REG PATTERSON
Chief Executive

20690

Road Safety (Vehicles) Regulations 1988
GENERAL MASS PERMIT FOR VEHICLES
MAKING LOCAL DELIVERIES OF BULK
GRAIN, GRAIN LEGUMES AND OIL
SEEDS DURING THE 1990-1991 HARVEST

Regulation 724 of the Road Safety (Vehicles) Regulations 1988 empowers the Roads Corporation, by notice in the *Government Gazette*, to allow vehicles which exceed mass or dimension limits prescribed in the regulations to be used on highways.

In accordance with that regulation, I, Robin Eugene McQuillen, delegate of the Roads Corporation, allow vehicles described in Part 1 of the following Schedule to exceed the mass limits in regulations 705-713 on highways specified in Part 2, at the increased mass limits as prescribed in Part 3 of the Schedule and in compliance with the conditions in Part 4 of the Schedule.

This notice is valid from 1 November 1990 until 31 March 1991.

Dated 5 November 1990

R. E. McQUILLEN
Director—Rural Operations
Roads Corporation

THE SCHEDULE

Part 1—Permitted Vehicles

This permit applies to motor vehicles and trailers carrying bulk grain, grain legumes or oil seeds by the shortest reasonable route from the place of harvest to the nearest practicable Grain Elevators Board (GEB) local silo, GEB central receival point or other receival points approved by the Roads Corporation.

Part 2—Specified Roads

2.1 Authorised Roads

Subject to the exclusions in clause 2.2, this permit applies to vehicles travelling on a State

Victoria Government Gazette

highway, Freeway, Main Road, Tourist Road or Forest Road declared in accordance with the *Transport Act 1983* or on a road specified in Appendix A or B.

2.2 Unauthorised Roads

This permit does not authorise a vehicle which exceeds the limits in regulations 705 to 713 of the Road Safety (Vehicles) Regulations 1988 to travel on a road specified in Appendix C.

Part 3—Mass Limits

3.1 A vehicle must comply with each of the mass limits specified in this part.

Tyres

3.2 The load on a tyre must not exceed—

(a) the manufacturer's load rating for the tyre; or

(b) in the case of—

(i) a wide profile tyre (not less than 375 millimetres wide) on a non-steering single axle—3.85 tonnes; and

(ii) any other tyre—3.20 tonnes—

whichever is the lesser.

Axles and Axle Groups

3.3 The load on any axle or axle group must not exceed the limits specified by the manufacturer, or the limit referred to in clause 3.4 or 3.5, whichever is the lesser.

3.4 The load on an axle group without a load sharing suspension system (other than a twin steer axle group) or on a trailer with only a single axle or axle group (pig trailer) must not exceed the mass limits specified in regulations 705 to 713 of the Road Safety (Vehicles) Regulations 1988.

3.5 The load on an axle, or on an axle group with a load sharing suspension system, must not exceed the applicable mass limits set out in the following table.

Axle Group	Mass Limit
Single Axle	Tonnes
2 Tyres	6.0
2 Wide Profile Tyres (other than steer axles)	6.7
4 Tyres	9.0
Tandem Axle Group	
4 Tyres	11.0
4 Wide Profile Tyres	13.3
6 Tyres	13.0
8 Tyres	16.5
Tri-axle Group	20.0
Twin Steer Axle Group	
With Load Sharing Suspension	11.0
Without Load Sharing Suspension	10.0

Gross Mass

The gross mass of the vehicle and any trailer or semi-trailer which may be attached must not exceed the lesser of—

- (a) 42.5 tonnes; or
- (b) the sum of the permitted tyre, axle and axle group loadings specified above; or
- (c) any manufacturer's mass limits.

The gross mass of a trailer must not exceed the gross mass of the towing motor vehicle.

Part 4—Other Conditions

This permit does not authorise a vehicle to travel on a particular road or bridge if the vehicle exceeds the mass limits fixed for, and displayed on a sign in the vicinity of, the road or bridge.

APPENDIX A

Travel in the following municipalities is permitted up to Grain Permit loadings on all roads:

Borough of Kerang
City of Benalla

Shires of Arapiles, Ararat, Bacchus Marsh, Ballan, Benalla, Bet Bet, Birchip, Charlton, Cobram, Dunmunkle, East Loddon, Euroa, Gisborne, Goulburn, Kaniva, Kerang, Kowree, Lowan, Mansfield, Mildura, Nathalia, Newstead, Numurkah, Rodney, Rutherglen, Shepparton, Swan Hill, Tullaroop, Tungamah, Wangaratta, Wycheproof.

Rural City of Wodonga.

APPENDIX B

Travel in these municipalities is permitted up to Grain Permit limits, only on State Highways, Freeways, Main Roads, Tourist Roads, Forest Roads and the unclassified roads listed below:

Town of Kyabram

McCormick Road, Edis Street, Bolitho Road (between Edis Street and Byrneside-Kyabram Road).

APPENDIX C

Travel in these municipalities is permitted up to Grain Permit limits on all roads except those listed below:

Shire of Huntly

Elmore-Barnadown Road load limit 10 tonnes.

APPENDIX D

Travel in these municipalities is permitted up to Grain Permit limits only on the following roads:

City of Swan Hill: Murray Valley Highway, McCallum Street, (Sea Lake-Swan Hill Road), Monash Drive, Curlewis Street, Woorinen Road, Werril Street, Karinie Street. 20700

MELBOURNE AND METROPOLITAN
BOARD OF WORKS

General Notice

The Melbourne and Metropolitan Board of Works having made provision for carrying off the sewage of each and every property which or any part of which is situated in the Sewerage Area hereinafter described doth hereby declare that on and after 8 November 1990 each and every property so situated shall be deemed to be a sewered property within the meaning of the *Melbourne and Metropolitan Board of Works Act 1958*.

The Sewerage Area hereinbefore referred to is:

Sewerage Area Number 7755
(360/290/0150V)

City of Caulfield—This area comprises, portion of Caulfield Racecourse, a Recreation Reserve, portion of Crown Allotment 91 and another portion of Crown Allotment 91, Neerim Road, lots 1 to 4 on Plan of Subdivision Number 212585B and contains 6 lots.

Further particulars may be ascertained on inquiry at the Board's Southern Regional Offices.

By Order of the Board

D. ROBINSON
Regional Manager
Southern Region

20490

MELBOURNE AND METROPOLITAN
BOARD OF WORKS

General Notice

The Melbourne and Metropolitan Board of Works having made provision for carrying off the sewage of each and every property which or any part of which is situated in the Sewerage Areas hereinafter described doth hereby declare that on and after 8 November 1990 each and every property so situated shall be deemed to be a sewered property within the meaning of the *Melbourne and Metropolitan Board of Works Act 1958*.

The Sewerage Areas hereinbefore referred to are:

Sewerage Area Number 7690
(360/289/0146T)

City of Berwick—This area comprises lot 13 and a Child Care Centre in Webb Street and contains 2 lots.

Sewerage Area Number 7766
(360/290/0253L)

City of Berwick—This area comprises lot 5 and a Tree Reserve, Narre Warren North Road, lots U and V Prospect Hill Road and contains 3 lots.

3396 G 44 8 November 1990

Sewerage Area Number 7768
(360/290/0255C)

City of Berwick—This area comprises all lots in Debra Court and Venables Court, lots 1 to 7, lots 1 to 3 Centre Road, lots 4 to 6, lots 12, a Municipal Reserve, lots 20 to 23, a Municipal Reserve, lot 24, a Municipal Reserve, lots 25 to 35, lot 37 Ashfield Drive, lots 36, 96, 95 to 93, 90 Harwood Road and contains 49 lots.

Sewerage Area Number 7769
(360/290/0256A)

City of Berwick—This area comprises lots 33 to 30, a Municipal Reserve, lots 29 to 23, a Municipal Reserve, lots 22 to 7 Kirkham Court, lots 35, 34, lots 6 to 1, lot 2, 1 Inglis Road, lots 3, 4, 1, 2 Buchanan Road and contains 41 lots.

Sewerage Area Number 7775
(360/290/0272A)

City of Berwick—This area comprises all lots in Spencer Court and Hall Court, lots 176 to 189 Chirside Road, lots 304 to 314, a Municipal Reserve, lots 315 to 319 Bemersyde Drive, lot 339 Vivienne Way, lots 234 to 232, a Municipal Reserve, lots 231 to 225, lots 217 to 200, lots 266 to 263, lots 245 to 237, a Municipal Reserve, lots 236, 235 Albracht Avenue, lots 267 to 270 Belinda Court and contains 102 lots.

Sewerage Area Number 7777
(360/290/0260T)

City of Berwick—This area comprises lots 219 to 224 Avebury Drive, lots 74 to 81, lots 82 to 86 Lexcen Close, lots 62 to 67 Bertrand Close and contains 25 lots.

Sewerage Area Number 7780
(360/290/0266S)

City of Berwick—This area comprises lots 96 to 106 Feldspar Court, lots 107 to 112, lots 115 to 118, Amber Crescent, lots 125 to 123, a Reserve for Municipal Purposes, Citrine Court, lots 114, 113, 165, lots 129 to 126, lots 153, 154 Garnet Close and contains 34 lots.

Sewerage Area Number 7787
(360/290/0274S)

City of Berwick—This area comprises all lots in Julius Court, Oakhill Court, lots 1, 2, lots 1, 44, 45, 26 William Road, lots 25 to 13, a Reserve, lots 34 to 27 Hillview Place, lots 43 to 35, lots 12 to 8, a Municipal Reserve, lots 7 to 2 Vista Court, lots 1 to 4, a Municipal Reserve, lots 5 to 16, a Reserve, lots 17 to 39, lots 40 to 49, a Reserve, lots 61 to 63 Quarry Hills Drive, a Tree Reserve and a further Tree Reserve abutting Princes Highway and contains 109 lots.

Victoria Government Gazette

Sewerage Area Number 7788
(360/290/0278X)

City of Berwick—This area comprises lots 10 to 3 Brisbane Street and contains 3 lots.

Sewerage Area Number 7790
(360/290/0279T)

City of Berwick—This area comprises lots 21 to 19, lots 1, 17, 18, a Municipal Reserve and a further reserve.—Centre Road, lots 3 to 7, lots 8 to 16 Deblin Drive and contains 20 lots.

Sewerage Area Number 7791
(360/290/0282S)

City of Berwick—This area comprises lots 20 to 27 Inglis Road, lots 28 to 33, a Reserve, Lammermuir Close, lot 19, 18 Manuka Road, lots 1 to 7, a Reserve, lots 8 to 17 Gavington Place and contains 33 lots.

Sewerage Area Number 7794
(360/290/0283K)

City of Berwick—This area comprises a Reserve in Parkhill Drive, lots 1 to 9 Hessels Road, lots 73 to 82, lots 10 to 17, a Reserve, lots 57 to 62 Argyle Court, lots 49 to 56, lots 18 to 22, lots 39 to 47 Tilba Court, lots 32 to 38, lots 26 to 31 Yate Mews, lots 50, 63 to 72 Stringybark Court and contains 80 lots.

Further particulars may be ascertained on inquiry at the Board's Southern Regional Offices.

By Order of the Board

D. ROBINSON
Regional Manager
Southern Region

20490

MELBOURNE AND METROPOLITAN BOARD OF WORKS

General Notice

The Melbourne and Metropolitan Board of Works having made provision for carrying off the sewage of each and every property which or any part of which is situated in the Sewerage Areas hereinafter described doth hereby declare that on and after 8 November 1990 each and every property so situated shall be deemed to be a seweraged property within the meaning of the *Melbourne and Metropolitan Board of Works Act 1958*.

The Sewerage Areas hereinbefore referred to are:

Sewerage Area Number 7764
(360/290/0276H)

Shire of Cranbourne—This area comprises portion of Crown Allotment 70D Frankston-Dandenong Road and contains 1 lot.

Victoria Government Gazette

Sewerage Area Number 7770
(360/290/0257V)

Shire of Cranbourne—This area comprises all lots in Nicole Way, lots 22 to 25 Greens Road and contains 35 lots.

Sewerage Area Number 7774
(360/290/0261L)

Shire of Cranbourne—This area comprises all lots in Harvey Court, Erin Court, lots 581 to 565, a Reserve for Sewerage and Drainage Purposes, lots 564 to 557, lots 471 to 461, lots 485 to 481, lots 472, 539, lots 593, to 582 Meridith Crescent, lots 512 to 515 Lesley Drive, lots 486 to 491, a Reserve, lots 492 to 499, lots 500 to 506 Pauline Court, lots 507, 508, 509 Geraldine Drive, a Reserve abutting Laura Drive, a further Reserve abutting Laura Drive, a further Reserve abutting Laura Drive, a Reserve abutting Coral Drive and a further Reserve abutting Coral Drive and contains 108 lots.

Sewerage Area Number 7779
(360/290/0265V)

Shire of Cranbourne—This area comprises all lots in Bradley Court, lots 1 to 3, 15 to 11, lots 10, 9, 17, 16, 4, 25 Lauren Drive, lots 2, 3, 1, 4 to 8, 18 to 20 Tarella Street and contains 45 lots.

Sewerage Area Number 7789
(360/290/0277B)

Shire of Cranbourne—This area comprises lots 186, 185, lots 251 to 245 Strong Drive, lots 226 to 237, a Reserve, lots 238 to 244 Gandin Crescent and contains 28 lots.

Sewerage Area Number 7792
(360/290/0280A)

Shire of Cranbourne—This area comprises all lots in Gandin Court, Isaac Edey Place, Mayruck Rise, Pioneer Place, lots 316 to 296, lot Y, lots 294 to 283, lots 319 to 317 Coral Drive, lots 320 to 322, lots 271 to 273 Claude Avenue, lots 295, 174 to 169 Westminster Court, lots 144 to 139, lots 119, 118, 117, 116, 107, 106, a Reserve, lots 99 to 104 Edeys Run, lots 138 to 133, lots 122 to 120 Dairyfarm Terrace and contains 129 lots.

Sewerage Area Number 7795
(360/290/0284H)

Shire of Cranbourne—This area comprises all lots in Ridge Court, lots 181 to 209 Ormond Road, lots 28 to 31, lots 83, 82, 136 to 138 Pinnacle Way, lots 27 to 4, lots 53 to 32 Plateau Crescent, lots 1 to 3, 54 Horizon Boulevard, lots 180, 160 Summit Court, lots 100 to 104, lots 133 to 135 Dew Point Crescent, lots 127 to 132 Alpha Close, lots 105 to 108 The Spur and a reserve abutting Hallam Road and contains 109 lots.

G 44 8 November 1990 3397

Further particulars may be ascertained on inquiry at the Board's Southern Regional Offices.

By Order of the Board

D. ROBINSON
Regional Manager
Southern Region

20490

MELBOURNE AND METROPOLITAN
BOARD OF WORKS

General Notice

The Melbourne and Metropolitan Board of Works having made provision for carrying off the sewage of each and every property which or any part of which is situated in the Sewerage Areas hereinafter described doth hereby declare that on and after 8 November 1990 each and every property so situated shall be deemed to be a seweraged property within the meaning of the *Melbourne and Metropolitan Board of Works Act 1958*.

The Sewerage Areas hereinbefore referred to are:

Sewerage Area Number 7765
(360/290/0264A)

City of Springvale—This area comprises all lots in Armer Court, Batten Place, Spicer Court and Bee Teng Court, lots 215, 225 to 230, 182 to 173, 172 to 160, 205 to 214 Kearney Drive, lots 183 to 198 and a Municipal reserve in Kerr Crescent, lots 159 to 141, 45, 44, 56 to 62, a Municipal Reserve, lots 119 to 121, 199 to 204 Jacqueline Drive and lot 55 Wells Road and contains 139 lots.

Sewerage Area Number 7767
(360/290/0254J)

City of Springvale—This area comprises lots 2 to 14, 58 to 67, a Municipal Reserve, lots 44 to 35, lots 34, 48 to 45, a Municipal Reserve, lots 57 to 53, lots 38, 15, 16, 27, 28, 44 Branagan Drive, lots 29 to 35, a Municipal Reserve, lots 36 to 43 Jones Court, lots 26 to 22, lot 1, a Municipal Reserve, lots 54 to 45, lots 21 to 17 Lance Close, lot 39, lots 37 to 23, lot 1, 9, 22, 40, 47 to 52 Llewellyn Avenue, lots 10 to 16, a Municipal Reserve, lots 17 to 21 Jacinta Court, lots 41 to 44, a Municipal Reserve, lots 45 to 48 Haynes Court, lots 47, 50, 59, 20, 8, 21, 22, 25 to 33 Gilchrist Way, lots 51 to 54, a Municipal Reserve, lots 55 to 58 Yvette Court, lots 19 to 16, a Municipal Reserve, lots 15 to 9 Monique Court, lots 23, 24 Wildder Drive, lots 2 to 8, lots 1 to 7 Wells Road and a Municipal Reserve abutting a Municipal Reserve in Nunten Parade and contains 180 lots.

Sewerage Area Number 7781
(360/290/0267K)

City of Springvale—This area comprises lots 1, 2 Wells Road, lots 1 to 6, lots 12 to 15, lots 10,

3398 G 44 8 November 1990

11, lots 7 to 9 Ashley Park Drive and contains 17 lots.

Sewerage Area Number 7782
(360/290/0268H)

City of Springvale—This area comprises all lots in Blythe Court, Evelyn Court, Juan Court and Ryan Mews, lots 21, 22, 35 to 52, lots 20, 21 a Reserve, lots 44 to 51, lot 10, lots 16 to 19, lots 74 to 69, a Reserve, lot 20 Wheatland Crescent, lots 2, 1, 8, 9, 7 to 1 McClure Road, lots 22 to 26, lots 27, 28, 42, 43 Caruana Drive, lots 41, 40, 33, 32, 31 to 29 Aisha Crescent and contains 107 lots.

Sewerage Area Number 7784
(360/290/0270J)

City of Springvale—This area comprises all lots in Oploo Court and Pips Court, lots 100, 101, 109, 110, 111, 121, 122, lots 1 and 2 and a Reserve in Kingston Drive and contains 25 lots.

Sewerage Area Number 7796
(360/290/0285B)

City of Springvale—This area comprises lots 90, 91 Neptune Street, lots 92 to 106, a Reserve, lots 76 to 89 Talab Court and contains 31 lots.

Sewerage Area Number 7797
(360/290/0286X)

City of Springvale—This area comprises lots 16 to 23, a Reserve, lots 6 to 15 Keaton Way, lots 1, a Reserve, lots 3 to 5 Wells Road and contains 22 lots.

Sewerage Area Number 7798
(360/290/0287T)

City of Springvale—This area comprises lots 26 to 33, lots 34 to 41, lots 8, 9, 17 to 19 Narelle Drive, lots 43, 42, 7 to 1 Wells Road, lots 10 to 13, lots 14 to 16 Templeman Court, lots 20 to 25, a Reserve Hickman Avenue and a lot on the eastern corner of Narelle Drive and Hickman Avenue and contains 44 lots.

Further particulars may be ascertained on inquiry at the Board's Southern Regional Offices.

By Order of the Board

D. ROBINSON
Regional Manager
Southern Region

20490

MELBOURNE AND METROPOLITAN
BOARD OF WORKS

General Notice

The Melbourne and Metropolitan Board of Works having made provision for carrying off the sewage of each and every property which or any part of which is situated in the Sewerage Areas hereinafter described doth hereby declare that on and after 8 November 1990 each and

Victoria Government Gazette

every property so situated shall be deemed to be a seweraged property within the meaning of the *Melbourne and Metropolitan Board of Works Act 1958*.

The Sewerage Areas hereinbefore referred to are:

Sewerage Area Number 7568
(360/287/0263S)

City of Moorabbin—This area comprises all lots in Beryl Court, lots 81 to 77, lots 69, 68, 1, 67, 66, lots 38 to 34 Elder Street, lot 42 and Reserve in Jacqueline Court and a Reserve in Poulter Crescent and contains 23 lots.

Sewerage Area Number 7771
(360/290/0258S)

City of Moorabbin—This area comprises lot 3 Cochranes Road, lot 1 Warrigal Road and contains 2 lots.

Sewerage Area Number 7785
(360/290/0271C)

City of Moorabbin—This area comprises lot 1 Cochranes Road and contains 1 lot.

Further particulars may be ascertained on inquiry at the Board's Southern Regional Offices.

By Order of the Board

D. ROBINSON
Regional Manager
Southern Region

20490

Water Act 1958

RURAL WATER COMMISSION OF
VICTORIA

Urban District supplied with water from the Coliban System of Waterworks

Notice to owners of tenements in the undermentioned streets in the urban district supplied with water from the Coliban system of Waterworks and the private streets, lanes, courts and alleys opening thereto.

BENDIGO

Batten Street, from Hosken Street to a point opposite CA 4748 about 12 m northerly.

Benjamin Court, from Osborne Street to a point opposite Lot 20 about 200 m westerly.

Brown Street, from end of existing main opposite Lot 2, LP 90325 to Bray Street about 49 m easterly.

Colling Drive, full length.

Derwent Gully Road (west side), from end of existing main opposite Lot 1 being part of CA 601M south to unnamed road and then west to a point fronting lots 1 and 2 being part of CA 601H approximately 52 metres.

Golden Glade, full length.

Victoria Government Gazette

Rowan Street, from Violet Street to Old Violet Street.

Sovereign Court, full length.

Wood Street, from end of existing main opposite CA 457D to Thorns Lane about 50 m southerly.

Wood Street, from end of existing main opposite CA 521E to Nelson Street about 95 m north-easterly.

CASTLEMAINE

Brigade Avenue, from end of existing main opposite CA 94, Section 1B to a point opposite CA 92 about 47 m northerly.

Fenton Avenue, eastern side of the road only fronting CA 282.

GOLDEN SQUARE

Norelle Crescent, from Fordyce Court to Mistletoe Street about 116 m westerly.

Pallett Street, from end of existing main opposite Lot 1 being part of CA 2, Section 67B to a point opposite Lot 22 being part of CA 62D about 128 m westerly.

JUNORTOUN

Wilkie Road, from end of existing main opposite Lot 2 LP 110311 to a point opposite Lot 1 LP 110311 about 7 m northerly.

KANGAROO FLAT

Lauren Court, full length.

MAIDEN GULLY

Eddy Court, full length.

Higgins Hill Drive, from end of existing main opposite Lot 25 to a point opposite Lot 44 about 185 m westerly.

STRATHFIELDSAYE

Emu Creek Road, from end of existing main opposite Lot 3 LP 91448 to a point opposite Lot 2 LP 89485 about 85 m southerly.

WHITE HILLS

Andrew Street, eastern side from end of existing main, opposite Lot 1 to a point opposite Lot 3, being part of CA 4, Section 16D, Parish of Sandhurst about 117 m northerly.

The main pipe in the said streets being laid down, the owners of all tenements situated as above are hereby required on or before 5 December next to cause a proper pipe and stop-cocks to be laid so as to supply water within such tenements from the main pipe.

Dr K. J. LANGFORD
General Manager

20720 Rural Water Commission of Victoria

G 44 8 November 1990 3399

Planning and Environment Act 1987

BULLA PLANNING SCHEME

Notice of Approval of Amendment
Amendment L30

The Minister for Planning and Urban Growth has approved Amendment L30 to the Bulla Planning Scheme.

The amendment comes into operation on the date this notice is published in the *Government Gazette*.

The amendment introduces an overlay control—"Sunbury Plaza Precinct Development Area" to the existing Restricted Business zone.

A copy of the amendment can be inspected free of charge during office hours at the offices of the Shire of Bulla, Macedon Street, Sunbury and at the Department of Planning and Urban Growth, 477 Collins Street, Melbourne.

GEOFF CODE

Manager

20600 Planning Co-ordination Branch

Planning and Environment Act 1987

PRESTON PLANNING SCHEME

Notice of Approval of Amendment
Amendment L22

The Minister for Planning and Urban Growth has approved Amendment L22 to the Preston Planning Scheme.

The amendment comes into operation on the date this notice is published in the *Government Gazette*.

The amendment corrects a map anomaly by rezoning a small triangular piece of land at the south-west corner of Lot 1, LP 212519Q, Plenty Road, Reservoir from Proposed Public Open Space Reservation to Reserved Living zone.

A copy of the amendment can be inspected free of charge during office hours at the offices of the City of Preston, 350 High Street, Preston and at the Department of Planning and Urban Growth, 477 Collins Street, Melbourne.

GEOFF CODE

Manager

20600 Planning Co-ordination Branch

Planning and Environment Act 1987

BROADMEADOWS PLANNING SCHEME

Notice of Approval of Amendment
Amendment L8

The Minister for Planning and Urban Growth has approved Amendment L8 to the Broadmeadows Planning Scheme.

The amendment comes into operation on the date this notice is published in the *Government Gazette*.

3400 G 44 8 November 1990

The amendment rezones land at 1462-1464 Hume Highway, Campellfield from General Industrial to Local Business.

A copy of the amendment can be inspected free of charge during office hours at the offices of the City of Broadmeadows, Pascoe Vale Road, Broadmeadows and at the Department of Planning and Urban Growth, 477 Collins Street, Melbourne.

GEOFF CODE
Manager

20600 Planning Co-ordination Branch

Planning and Environment Act 1987
NORTHCOTE PLANNING SCHEME
Notice of Approval of Amendment
Amendment L11

The Minister for Planning and Urban Growth has approved Amendment L11 to the Northcote Planning Scheme.

The amendment comes into operation on the date this notice is published in the *Government Gazette*.

The amendment modifies the residential density provisions so that they apply to 3 or more detached houses and allows a permit to be granted for the reconstruction of a dwelling exceeding the maximum density which has been destroyed or damaged.

A copy of the amendment can be inspected free of charge during office hours at the offices of the City of Northcote, 189 High Street, Northcote and at the Department of Planning and Urban Growth, 477 Collins Street, Melbourne.

GEOFF CODE
Manager

20600 Planning Co-ordination Branch

Planning and Environment Act 1987
BULN BULN PLANNING SCHEME
Notice of Amendment
Amendment L15

The Minister for Planning and Urban Growth has prepared Amendment L15 to the Local Section of the Buln Buln Planning Scheme.

The amendment rezones 1.6 ha of land at Longwarry Road, Drouin, from Existing Railway Land to Residential A zone, and 1.8 ha at Binbeal Road, Drouin, from Existing Railway Land to Future Urban zone.

A copy of the amendment can be inspected free of charge during office hours at the offices of the Department of Planning and Urban Growth, Ground Floor, 477 Collins Street, Melbourne; the Department's Southern and Westernport office, 1st Floor, 33-39 High Street, Cranbourne

Victoria Government Gazette

and the offices of the Shire of Buln Buln, 34 Young Street, Drouin.

Submissions about the amendment must be sent to the Minister for Planning and Urban Growth, Attention: Planning Co-ordination Branch, P.O. Box 2240T, Melbourne 3001 by 10 December 1990.

GEOFF CODE
Manager

20600 Planning Co-ordination Branch

Planning and Environment Act 1987
BASS PLANNING SCHEME
Notice of Approval of Amendment
Amendment L11

The Minister for Planning and Urban Growth has approved Amendment L11 to the Local Section of the Bass Planning Scheme.

The amendment comes into operation on the date this notice is published in the *Government Gazette*.

The amendment rezones land in Emersons Road, Bass, from Existing Public Purposes 10 Reservation—Victoria Police to Residential zone.

A copy of the amendment can be inspected free of charge during office hours at the Department of Planning and Urban Growth, Ground Floor, 477 Collins Street, Melbourne and at the offices of the Shire of Bass, Shire Office, Archies Creek.

GEOFF CODE
Manager

20600 Planning Co-ordination Branch

Planning and Environment Act 1987
SUNSHINE PLANNING SCHEME
Notice of Approval of Amendment
Amendment L13 Part 2

The Minister for Planning and Urban Growth has approved Amendment L13 Part 2 to the Local Section of the Sunshine Planning Scheme.

The amendment comes into operation on the date this notice is published in the *Government Gazette*.

The amendment rezones land bounded by Lacy, Cranwell, Evans and Chewton Streets and the Maribyrnong River from General Industrial to Braybrook Commercial and Industrial zone.

A copy of the amendment can be inspected free of charge during office hours at the office of the City of Sunshine, Alexandra Avenue, Sunshine and the Department of Planning and Urban Growth, 477 Collins Street, Melbourne.

GEOFF CODE
Manager

20600 Planning Co-ordination Branch

Victoria Government Gazette

Planning and Environment Act 1987
FOOTSCRAY PLANNING SCHEME
Notice of Approval of Amendment
Amendment L8

The Minister for Planning and Urban Growth has approved the above amendment.

The amendment comes into operation on the date this notice is published in the *Government Gazette*.

The amendment introduces interim control over demolition or removal of buildings in a number of areas in the City of Footscray while the City of Footscray Urban Conservation Study is exhibited for public comment as part of Amendment L16 to the Footscray Planning Scheme.

A copy of the amendment can be inspected free of charge during office hours at the office of the City of Footscray, Cnr Napier Street and Hyde Street, Footscray and the Department of Planning and Urban Growth, 477 Collins Street, Melbourne.

GEOFF CODE
Manager

20600 Planning Co-ordination Branch

Planning and Environment Act 1987
SUNSHINE PLANNING SCHEME
Notice of Approval of Amendment
Amendment L13 Part 1

The Minister for Planning and Urban Growth has approved Amendment L13 Part 1 to the Local Section of the Sunshine Planning Scheme.

The amendment comes into operation on the date this notice is published in the *Government Gazette*.

The amendment—

rezones land bounded by Ballarat Road, Burke Street, Cranwell Street, Evans Street, Chewton Street and Ashley Street from General and Light Industrial to Braybrook Commercial and Industrial zone;

rezones land between Duke Street and Burke Street from General Industrial to Reserved Light Industrial;

introduces new controls over use and development in Braybrook Commercial and Industrial zone.

A copy of the amendment can be inspected free of charge during office hours at the office of the City of Sunshine, Alexandra Avenue, Sunshine and the Department of Planning Urban Growth, 477 Collins Street, Melbourne.

GEOFF CODE
Manager

20600 Planning Co-ordination Branch

G 44 8 November 1990 3401

Planning and Environment Act 1987
WAVERLEY PLANNING SCHEME
Notice of Approval of Amendment
Amendment L13

The Minister for Planning and Urban Growth has approved Amendment L13 to the Local Section of the Waverley Planning Scheme.

The amendment comes into operation on the date this notice is published in the *Government Gazette*.

The amendment corrects the scheme by removing five areas of proposed road widening reservation and one of Existing Main Road reservation in the vicinity of the intersection of Springvale Road and High Street Road that were inadvertently included when the current scheme maps were drafted.

A copy of the amendment can be inspected free of charge during office hours at the Department of Planning and Urban Growth, 477 Collins Street, Melbourne and at the office of the City of Waverley, 293 Springvale Road, Glen Waverley.

GEOFF CODE
Manager

20600 Planning Co-ordination Branch

Planning and Environment Act 1987
BERWICK PLANNING SCHEME
Notice of Approval of Amendment
Amendment L19

The Minister for Planning and Urban Growth has approved Amendment L19 to the Berwick Planning Scheme.

The amendment comes into operation on the date this notice is published in the *Government Gazette*.

The amendment—

makes retail plant nursery a discretionary use in the Berwick Residential—Normal Density zone, Berwick Residential—Low Density zone and Berwick Residential—Berwick Township zone;

makes petrol station a discretionary use, rather than a use not requiring a permit, in the Restricted Light Industrial zone and Restricted General Industrial zone.

A copy of the amendment can be inspected free of charge during office hours at the offices of the City of Berwick, Civic Centre, Magid Drive, Fountain Gate and at the Department of Planning and Urban Growth, 477 Collins Street, Melbourne.

GEOFF CODE
Manager

20600 Planning Co-ordination Branch

3402 G 44 8 November 1990

Planning and Environment Act 1987
BERWICK PLANNING SCHEME
Notice of Approval of Amendment
AMENDMENT RL35 PART 4

The Minister for Planning and Urban Growth has approved Amendment RL35 part 4 to the Berwick Planning Scheme.

The amendment comes into operation on the date this notice is published in the *Government Gazette*.

The amendment rezones part of Lot A, LP 200878C, Reema Boulevard, Endeavour Hills, City of Berwick from part Berwick Residential—Normal Density zone and part Proposed Primary School Reservation to Proposed Primary and Secondary School Reservation. The reservation is to provide a site for a combined Primary and Post Primary School for this area.

A copy of the amendment can be inspected free of charge during office hours at the offices of the City of Berwick, Princes Highway, Narre Warren and at the Department of Planning and Urban Growth, 477 Collins Street, Melbourne.

GEOFF CODE
Manager

20600 Planning Co-ordination Branch

Planning and Environment Act 1987
ELTHAM PLANNING SCHEME
Notice of Approval of Amendment
Amendment L9

The Minister for Planning and Urban Growth has approved Amendment L9 to the Eltham Planning Scheme.

The amendment comes into operation on the date this notice is published in the *Government Gazette*.

The amendment removes a drainage and sewerage easement affecting Lot 7, LP 22293, 57 Bible Street, Eltham.

A copy of the amendment can be inspected free of charge during office hours at the offices of the Shire of Eltham, 895 Main Road, Eltham and at the Department of Planning and Urban Growth, 477 Collins Street, Melbourne.

GEOFF CODE
Manager

20600 Planning Co-ordination Branch

Planning and Environment Act 1987
BOX HILL PLANNING SCHEME
Notice of Approval of Amendment
Amendment L8

The Minister for Planning and Urban Growth has approved Amendment L8 to the Local Section of the Box Hill Planning Scheme.

Victoria Government Gazette

The amendment comes into operation on the date this notice is published in the *Government Gazette*.

The amendment reintroduces discretion to permit office buildings in the Office Enterprise zone to be higher than 14.5 metres. It corrects an error made when the Planning Scheme was rewritten in the Plain English format.

A copy of the amendment can be inspected free of charge during office hours at the Department of Planning and Urban Growth, Ground Floor, 477 Collins Street, Melbourne and at the offices of the City of Box Hill, 1022 Whitehorse Road, Box Hill.

GEOFF CODE
Manager

20600 Planning Co-ordination Branch

Planning and Environment Act 1987
ELTHAM PLANNING SCHEME
Notice of Approval of Amendment
Amendment L6 Part 2

The Minister for Planning and Urban Growth has approved Amendment L6 Part 2 to the Eltham Planning Scheme.

The amendment comes into operation on the date this notice is published in the *Government Gazette*.

The amendment allows a permit to be granted for an extended timber yard and hardware and plumbing supplies shop at 1175-1181 Main Road, Eltham subject to restrictions on the area used for buildings and for the storage of goods.

A copy of the amendment can be inspected free of charge during office hours at the offices of the Shire of Eltham, 895 Main Road, Eltham and at the Department of Planning and Urban Growth, 477 Collins Street, Melbourne.

GEOFF CODE
Manager

20600 Planning Co-ordination Branch

**NOTICE OF APPLICATION FOR
RECOGNITION AS AN ASSOCIATION**

Notice is hereby given that The Victorian Employers Federation has filed an application to be recognised as an association under the *Industrial Relations Act 1979* with respect to the trades for which the Post-Secondary Education (TAFE) Miscellaneous Workers Conciliation and Arbitration Board has been appointed.

Pursuant to regulation 33 (5) of the Industrial Relations Regulations any recognised association or person interested may on or before 6 December 1990 file in the Registry (Level 20, Nauru House, 80 Collins Street, Melbourne) an objection to the application.

The objection shall be in, or to the effect of, Form 9 prescribed by the Regulations.

Department of Industry and Economic Planning

J. TSOUTSOULIS
Acting Deputy Registrar
Industrial Relations Commission of Victoria
21441

INTENTION TO GRANT A MINING LEASE
No. 1975; Grants Reef Mining P/L; 10 ha, Parish of Wedderburn.

Industrial Relations Act 1979

COUNTRY FIRE AUTHORITY
OPERATIONAL AND OPERATIONAL
SUPPORT CONCILIATION AND
ARBITRATION BOARD

APPLICATION FOR MINING LEASE
WITHDRAWN

Notice is hereby given that the Country Fire Authority has lodged an application to vary the jurisdiction of the Country Fire Authority Operational and Operational Support Conciliation and Arbitration Board to include the occupations of Practical Area Drill Operator and Practical Area Drill Supervisor.

Nos. 1613, 1614, 1615, 1616, 1618 and 1793; CRA Exploration P/L; 189, 134, 259, 227.5, 227 and 239 ha, Parishes of Buninyong and Yarrowee.

No. 1849; C. J. Boyd, J. D. Hall and P. White; 218.5 ha, Parish of Moliagul.

Notice is also given that this matter is listed for mention before the Industrial Relations Commission of Victoria in Full Session at 9.30 a.m. on Tuesday, 13 November 1990 at Nauru House, 80 Collins Street, Melbourne.

APPLICATION FOR MINING LEASE
TRANSFERRED

Nos. 1141 and 1169; From Kaolin Australia P/L to Jupiter Mining P/L.

J. TSOUTSOULIS
Acting Deputy Registrar
Industrial Relations Commission of Victoria
21441

MINING LEASE TRANSFERRED

No. 251; From R. Tate to Goldquest NL; 54.17 ha, Parish of Kingower.

Industrial Relations Act 1979

COUNTRY FIRE AUTHORITY
OPERATIONAL AND OPERATIONAL
SUPPORT, FIRE BRIGADES
OPERATIONAL STAFF, AND FIRE
BRIGADES SERVICE STAFF
CONCILIATION AND ARBITRATION
BOARDS

Notice is hereby given that the United Firefighters Union (Victorian Branch) has lodged an application for the abolition of the Country Fire Authority Operational and Operational Support Conciliation and Arbitration Board, Fire Brigades Operational Staff Conciliation and Arbitration Board and Fire Brigades Service Staff Conciliation and Arbitration Board and the establishment of a Conciliation and Arbitration Board to cover Operational and Operational Support Employees of the Country Fire Authority and the Metropolitan Fire Brigades Board.

MINING LEASE EXPIRED

No. 592-1; Mildura Plaster Mills P/L; 26.4766 ha, Parish of Bitterang.

No. 1208; C. and L. Warrick; 23.13 ha, Parish of Quantong.

Notice is also given that this matter is listed for mention before the Industrial Relations Commission of Victoria in Full Session at 9.30 a.m. on Tuesday, 13 November 1990 at Nauru House, 80 Collins Street, Melbourne.

MINING LEASE LABOUR COVENANT
SUSPENDED

No. 1865; Macquarie Resources Ltd; Eucambene.

APPLICATION FOR DEVELOPMENT
LEASE WITHDRAWN

No. 332; Planet Resources Group NL; 39 ha, Parish of Craigie.

No. 709; Triad Minerals NL; 52 km², Blackwood.

TAILINGS REMOVAL LICENCE GRANTED
No. 5495; Triad Minerals NL; Maldon.

INTENTION TO GRANT EXPLORATION
LICENCE

No. 2635; Peko Exploration Ltd; 170 km², Marong.

No. 2638; Aberfoyle Resources Ltd and Sandhurst Mining NL; 257 km², Warracknabeal.

EXPLORATION LICENCE GRANTED

No. 2617; CRA Exploration P/L; 326 km², Glenelg.

No. 2621; CRA Exploration P/L; 118 km², Stawell.

EXPLORATION LICENCE DECLARED
ABANDONED

No. 2601; B. Deveson; 12 km², Bet Bet.

Nos. 2603 and 2611; B. Deveson and Nominees; 21.5 and 40 km², Bet Bet.

3404 G 44 8 November 1990

**APPLICATION FOR EXPLORATION
LICENCE WITHDRAWN**

No. 2600; Flitegold P/L; 49.75 km², Avoca.
No. 2618; D. J. Harris and P. H. Turner; 171
km², Bairnsdale.

**INTENTION TO EXTEND EXPLORATION
LICENCE**

No. 1968-2; P. J. Woods; 25 km², Myrtleford.

**APPLICATION TO EXTEND
EXPLORATION LICENCE DECLARED
ABANDONED**

No. 1547-3; Eastern Gold Exploration P/L; 69
km², Castlemaine.

**APPLICATION FOR EXTENSION OF
EXPLORATION LICENCE WITHDRAWN**

No. 2274-1; Noble Resources NL; 18 km²,
Buninyong, Ballan and Bannockburn.

EXPLORATION LICENCE CANCELLED

No. 2371; New Holland Mining NL; 42 km², Bet
Bet.

The above cancelled area will become available
again for Exploration Licence on 13 March
1991.

No. 2436; Fidunu P/L; 500 km², Kaniva and
Lowan.

The above cancelled area will become available
again for Exploration Licence on 22 March
1991.

No. 2530; Western Mining Corporation Ltd; 72
km², Stawell.

The above cancelled area will become available
again for Exploration Licence on 9 April
1991.

EXPLORATION LICENCE EXPIRED

No. 1881-1; BHP Minerals Ltd; 124 km², Beulah.

The above expired area will become available
again for Exploration Licence on 26 March
1991.

No. 2057; Village Mines NL; 46.6 km², Upper
Murray.

The above expired area will become available
again for Exploration Licence on 2 January
1991.

No. 2058; Janmex P/L; 8 km², McIvor.

The above expired area will become available
again for Exploration Licence on 3 April
1991.

No. 2274; Noble Resources NL; 49 km²,
Buninyong, Ballan and Bannockburn.

The above expired area will become available
again for Exploration Licence on 14 March
1991.

No. 2421; New Holland Mining NL; 4 km²,
Waranga.

Victoria Government Gazette

The above expired area will become available
again for Exploration Licence on 19 March
1991.

**EXTRACTIVE INDUSTRY LICENCE
ASSIGNED**

No. 77-2; From Hillside Quarries to Pakenham
Blue Metal P/L.

No. 188-3; From D. E., D. R., B. A. and B. M.
Finlayson to Boral Resources (Vic.) P/L.

No. 1123-1; From D. E., D. R., B. A. and B. M.
Finlayson & Sons to Boral Resources (Vic.)
P/L.

No. 1146-1; From Anglesea Sand & Gravel P/L
to McCorkells Sand Supplies P/L.

**EXTRACTIVE INDUSTRY LICENCE
EXPIRED**

No. 214; H. G. Sadler; 2.7519 ha, Parish of
Colongulac.

No. 609; B. D. Rawson; 1.6657 ha, Parish of
Drik Drik.

DAVID WHITE

Minister for Industry and Economic Planning
20400

ADDENDA

The notice which appeared in the *Victoria
Government Gazette* dated 17 October 1990,
relating to Tailings Removal Licence No. 5499
should have appeared under the heading
"Tailings Removal Licence Refused".

Crimes (Confiscation of Profits) Act 1986

SALE OF FORFEITED PROPERTY

On 10 November 1989 an order was made in
the Bairnsdale County Court that a Ford sedan,
Registered No. LFA 606 be forfeited to the
Crown.

In accordance with a direction from the
Attorney-General's Department, pursuant to
section 8 (5) of the *Crimes (Confiscation of
Profits) Act 1986*, this vehicle will be sold by
public auction at 10 a.m. on Friday, 7 December
1990 at the Bairnsdale Police Station, 155
Nicholson Street, Bairnsdale.

The Criminal Investigations Branch at
Bairnsdale are attending to this matter.

K. GLARE

20610 Chief Commissioner

Crimes (Confiscation of Profits) Act 1986

SALE OF FORFEITED PROPERTY

On 24 April 1990 an order was made in the
Magistrates' Court at Echuca that a Ford sedan,
Registered No. (N.S.W.) OXR 159 be forfeited
to the Crown.

In accordance with a direction from the
Attorney-General's Department, pursuant to

section 8 (5) of the *Crimes (Confiscation of Profits) Act 1986*, this vehicle will be sold at public auction at 11 a.m. on Wednesday, 12 December 1990 at the Echuca Police Station, 7-11 Dickson Street, Echuca.

20610 **K. GLARE**
Chief Commissioner

Police Regulation Act 1958—Section 122
SALE OF UNCLAIMED PROPERTY

An owner is required for a six-cylinder Nissan engine No. S/N 113066A6, with a gearbox attached.

This engine came into the possession of Police on 12 October 1988, and if not claimed it will be sold by public auction at 10 a.m. on Tuesday, 27 November 1990 at the Glen Waverley Police Station, 643 Ferntree Gully Road, Glen Waverley.

20610 **K. GLARE**
Chief Commissioner

Police Regulation Act 1958—Section 122
SALE OF UNCLAIMED PROPERTY

An owner is required for an unregistered green Kawasaki KX 80 motor cycle with Engine No. KX 080DE000745.

This vehicle came into the possession of Police on 17 June 1990 and if not claimed, it will be sold by public auction at 11 a.m. on Tuesday, 18 December 1990 at the Melton Police Station, 47 Palmerston Street, Melton.

20610 **K. GLARE**
Chief Commissioner

Country Fire Authority Act 1958
DECLARATION OF FIRE DANGER
PERIOD

In pursuance of the powers conferred by section 4 of the *Country Fire Authority Act 1958*, I Kevin Patrick Shea, Chairman of the Country Fire Authority, after consultation with the Director-General of Conservation and Environment, hereby declare the following period to be the Fire Danger Period in the municipalities or parts of municipalities specified, commencing on the date shown and, unless varied by subsequent declaration, ending at 0100 hours on Wednesday, 1 May 1991.

To commence from 0100 hours on Monday, 19 November 1990:

Shire of Walpeup
Shire of Swan Hill
City of Swan Hill.

20130 **K. P. SHEA**
Chairman

Country Fire Authority Act 1958
DECLARATION OF FIRE DANGER
PERIOD

In pursuance of the powers conferred by section 4 of the *Country Fire Authority Act 1958*, I Kevin Patrick Shea, Chairman of the Country Fire Authority, after consultation with the Director-General of Conservation and Environment, hereby declare the following period to be the Fire Danger Period in the municipalities or parts of municipalities specified, commencing on the date shown and, unless varied by subsequent declaration, ending at 0100 hours on Wednesday, 1 May 1991.

To commence from 0100 hours on Monday, 12 November 1990:

Shire of Wycheproof (northern part):

Those portions north of the Woomelang-Banyan-Berriwillock Road, the western, southern and eastern boundaries of the Township of Berriwillock and the Berriwillock, Springfield and Ultima Road.

20130 **K. P. SHEA**
Chairman

Country Fire Authority Act 1958
DECLARATION OF FIRE DANGER
PERIOD

In pursuance of the powers conferred by section 4 of the *Country Fire Authority Act 1958*, I Kevin Patrick Shea, Chairman of the Country Fire Authority, after consultation with the Director-General of Conservation and Environment, hereby declare the following period to be the Fire Danger Period in the municipalities or parts of municipalities specified, commencing on the date shown and, unless varied by subsequent declaration, ending at 0100 hours on Wednesday, 1 May 1991.

To commence from 0100 hours on Monday, 12 November 1990:

Shire of Dimboola (northern part)

That part north of the wire netting fence.

20130 **K. P. SHEA**
Chairman

Country Fire Authority Act 1958
DECLARATION OF FIRE DANGER
PERIOD

In pursuance of the powers conferred by section 4 of the *Country Fire Authority Act 1958*, I, Kevin Patrick Shea, Chairman of the Country Fire Authority, after consultation with the Director-General of Conservation and Environment, hereby declare the following periods to be the Fire Danger Period in the municipalities or parts of municipalities specified, commencing on the

3406 G 44 8 November 1990

dates shown and, unless varied by subsequent declaration, ending at 0100 hours on Wednesday, 1 May 1991.

To commence from 0100 hours on Monday, 12 November 1990.

Shire of Karkaroc.

20130

K. P. SHEA
Chairman

Subordinate Legislation Act 1962
ROAD SAFETY (SIDE PROJECTION)
REGULATIONS 1990

I, Peter Spyker, Minister for Transport, give notice that after consideration of public comments and submissions received in response to the regulatory impact statement on the proposed Road Safety (Side Projection) Regulations 1990, I intend to proceed with the making of the proposed regulations with certain exemptions.

PETER SPYKER
Minister for Transport

20700

Education Act 1958

NOTICE OF THE MAKING OF AN ORDER
UNDER SECTION 13 (4) OF THE ACT

Pursuant to section 3 of the *Education Act 1958* I hereby give notice that an Order of the Lieutenant-Governor in Council was made on 30 October 1990 under sub-section (4) of the said Act amending certain provisions of the constitutions of the school councils listed below:

4836 Glen Waverley Heights Primary School Council

7885 Hamilton High School Council

4224 Manifold Heights Primary School Council.

BARRY PULLEN
Minister for Education

20160

Education Act 1958

NOTICE OF THE MAKING OF AN ORDER
UNDER SECTION 13 (4) OF THE ACT

Pursuant to section 3 of the *Education Act 1958* I hereby give notice that Orders of the Lieutenant-Governor in Council were made on 30 October 1990 under sub-section (4) of the said Act amending certain provisions of the constitutions of the school councils listed below:

1972 Millbrook Primary School Council

5198 Yuille Primary School Council

3146 Clifton Hill Primary School Council

7590 Benalla High School Council.

BARRY PULLEN
Minister for Education

20160

Victoria Government Gazette

Department of Property and Services

PUBLIC RECORD OFFICE

Notice is hereby given that the Laverton Repository and the City Search Room, 4th Floor, 318 Little Bourke Street of the Public Record Office will be closed during the period 26 November-30 November 1990 (inclusive)—in order for staff to undertake the Annual Stocktake of Records. During the stocktake (1) all facilities and services will be closed to the public and (2) no records will be issued to Government Agencies.

The Ballarat Search Room will remain open as usual.

Any inquiries with regard to the stocktake may be directed to the Corporate Manager on (03) 369 3244.

LORETTA HAMBLY
Director, Archival Heritage Program
Keeper of Public Records

20672

Transport Superannuation Act 1988

TRANSPORT SUPERANNUATION BOARD
ELECTION REGULATIONS 1988

In accordance with the provisions of the Transport Superannuation Board Election Regulations 1988, I hereby declare Kelvin Lawrence Boehm duly elected for appointment as a member of the Transport Superannuation Board under Regulation 4 (2) (a) for the period expiring on 31 March 1992.

The nomination for Kelvin Lawrence Boehm was the only nomination received at this election.

R. J. MILLAR
Returning Officer

20673

Local Government Act 1958

RURAL CITY OF BELLARINE

Vesting of Land in the Crown

I, Maureen Lyster, Minister for Local Government, being satisfied that the land hereunder has been vacant for not less than three years and that default has been made in the payment of rates on the land to the Rural City of Bellarine for not less than five years and in pursuance of the powers vested in me by section 385B of the *Local Government Act 1958*, by this Order, vest in the Crown the land described in Certificate of Title Volume 6340 Folio 929.

Dated 31 October 1990

MAUREEN LYSTER
Minister for Local Government

20460

STATE TENDER BOARD
CONTRACTS ACCEPTED
Amended

Schedule Number	Item Number	New Rate	Effective Date
		\$	
1/53	14	0.5632	23.10.90
	1	0.7072	25.10.90
	2	0.7112	
	3	0.7122	
	4	0.7162	
	5	0.7372	
	6	0.7372	
	7	0.7372	
	8	0.7372	
	9	0.7280	
	10	0.7280	
	12	0.7070	
	13	0.7120	
	1	0.6910	26.10.90
	2	0.6950	
	3	0.6960	
	4	0.7000	
	5	0.7210	
	6	0.7210	
	7	0.7210	
	8	0.7210	
	9	0.7118	
	10	0.7118	
	12	0.6908	
	13	0.6958	
1/56	72	13.58	17.11.90
	74	32.59	
	86	11.35	
	87	3.04*	
		1.48+	
		2.77#	
		2.41~	
		0.97†	
		0.97 <	
		11 841.00*	2.11.90
		12 649.00!	
		1 168.00	

* Water stop connector 12 mm hose + 12mm hose repairer/joiner
18mm hose repairer/joiner
~ 3 end coupler
† 1/4" Sprinkler adaptor
< 1 1/16" American sprinkler adaptor

Passenger Vehicles

1/58	3B	11 841.00*	2.11.90
		12 649.00!	

* Manual
! Automatic

Options Available

Air Conditioning	1 168.00
------------------	----------

Schedule Number	Item Number	New Rate	Effective Date
1/58	4A	14 170.00* 14 978.00!	2.11.90
		\$	
		* Manual ! Automatic	
		Options Available	
		Air Conditioning	1 168.00 12 557.00* 13 365.00!
		* Manual ! Automatic	
		Options Available	
		Air Conditioning	1 168.00 19 923.00
		Light Commercial Vehicles	
1/59	6.1B	10.307.00	3.11.90
	7.1A	10 894.00	
	12.1B	12 387.00	
	15.1A	14 850.00*	
		*Options Available—	
		Power Steering	STD 14 544.00*
		*Options Available—	
		Power Steering	STD 18.1B *
		*Options Available—	
		Power Steering	STD 13 987.00*
		*Options Available—	
		Power Steering	STD 20.1B *
		*Options Available—	
		Power Steering	STD 16 416.00*
		*Options Available—	
		Power Steering	STD
20790			

Building Societies Act 1986

CHANGE OF NAME OF SOCIETY

Notice is hereby given that Phoenix Permanent Building Society which was incorporated as a building society on 8 July 1957 has registered a

3408 G 44 8 November 1990

Victoria Government Gazette

change of its name and is now incorporated under the name of Port Phillip Building Society under the said Act.

Given under my hand at Melbourne 29 October 1990

DAVID LAFRANCHI

20430 Registrar of Building Societies

Co-operation Act 1981

CHANGE OF NAME OF A SOCIETY

Notice is hereby given that Geelong Regional Montessori Co-operative Limited which was

incorporated as a Community Advancement Society under the above-named Act on 12 April 1978 has registered a change of its name and is now incorporated under the name of Geelong Montessori Education Centre Co-operative Limited under the said Act.

Dated at Melbourne 10 October 1990

D. F. HENRY

Deputy Registrar of Co-operative Societies

20430

Private Agents Act 1966

NOTICE OF RECEIPT OF APPLICATIONS FOR LICENCES

Any objections to the applications below should be in accordance with the Private Agents Act 1966 s.12 and Private Agents Regulations 1988, reg. 16.

Full Name of Applicant/Nominee	Residential Address	Name of Firm or Corporation	Address for Registration	*Licence Type	Hearing Date and Court
Graham, Sandy	213 Archer St, Shepparton		213 Archer St, Shepparton	CS	16.11.90 Shepparton
Foster, Dennis James	24 Sage St, East Oakleigh	Gerhard Reiter & Assoc.	647 St Kilda Rd, Melbourne	CS	7.12.90 Prahran
Marchwicki, Henry Ray	17 Blanche St, East Brighton	" "	" " " "	CA	10.12.90 Broadmeadows
Linaardo, Julian Alexander	2 Flemming Cr, Keilor	" "	2 Flemming Cr, Keilor	CA	10.12.90 Broadmeadows

*Licence Type: CA—Commercial Agent; CS—Commercial Sub-Agent; P—Process Server; IA—Inquiry Agent; G—Guard Agent; W—Watchman

ORDERS IN COUNCIL

Public Service Act 1974

AUTHORITY TO REDEPLOY STAFF

On the recommendation of the Premier, the Administrator in Council under section 64B of the *Public Service Act 1974* authorises the employment of the class of persons specified in Schedule One of this Order in the administrative units and public statutory authorities specified in Schedule Two of this Order.

Schedule One—Class of Persons

Officers and employees of the Public Transport Corporation who—

1. hold positions of one of the following types:
 - clerical;
 - keyboard;
 - administrative;
 - skilled and unskilled labourers;
 - plant and equipment operators;
 - tradesmen;
 - base grade professional;
 - supervisory staff;
 - technicians
 - technical officers;
 - food handlers;
 - professional positions in engineering, finance, personnel and general management;
 - managerial staff;
 - operations staff.
2. become redundant within twelve months because of one of the following:
 - rationalisation of the Public Transport Corporation's freight service network;
 - adoption of new rosters;
 - elimination of restrictive work practices;
 - efficiencies from award restructuring;
 - technological change in modernisation in the freight billing and payroll systems;
 - changes in the organisation and rationalisation of the activities of railway workshops;
 - rationalisation of V/Line and MET functions and organisation structure;
 - technological changes to reduce manned safeworking requirements;
 - review of all management overheads;
 - formation of the Public Transport Corporation;
 - modernisation of signalling;
 - technological change;
 - Met ticket;

changes in the organisation and rationalisation of the activities of:

- locomotive and train maintenance;
- infrastructure maintenance;
- engineering maintenance;
- office support and administration; and
- operations planning.

Schedule Two—Administrative Units and Public Statutory Authorities

1. All administrative units and associated administrative units listed in Schedules Two, Three and Three A of the Act; and
2. the following public statutory authorities:
 - State Electricity Commission;
 - State Bank of Victoria;
 - Melbourne and Metropolitan Board of Works;
 - Gas and Fuel Corporation of Victoria;
 - Metropolitan Fire Brigade;
 - Totalizer Agency Board;
 - Country Fire Authority;
 - Transport Accident Commission;
 - Dandenong Valley Authority;
 - Harness Racing Board;
 - Local Authorities Superannuation Board;
 - Rural Finance Corporation of Victoria;
 - Port of Melbourne Authority;
 - Port of Geelong Authority;
 - Port of Portland Authority;
 - Roads Corporation;
 - Grain Elevators Board;
 - Water Boards constituted under Acts administered by the Minister for Water Resources;
 - State Public Hospitals registered under the Health Act;
 - Australian Barley Board;
 - Victorian Dairy Industry Authority;
 - Victorian Dried Fruits Board;
 - Victorian Egg Marketing Board;
 - Victorian Arts Centre Trust;
 - Legal Aid Commission;
 - Zoological Board of Victoria;
 - Council of Adult Education;
 - Institute of Educational Administration;
 - Albury Wodonga (Victoria) Corporation;
 - Coal Corporation of Victoria;
 - Geelong Regional Commission;
 - Latrobe Regional Commission;

3410 G 44 8 November 1990

Victorian Solar Energy Council;
Victorian Occupational Health and Safety
Commission;
Victoria Grants Commission;
Accident Compensation Commission;
Hospitals Superannuation Board;
Transport Superannuation Board;
Victorian Accident Rehabilitation
Council;
Building Control Accreditation Authority;
Land Conservation Council;
Metropolitan Fire Brigades Board.

Dated 8 May 1990

Responsible Minister:

JOHN CAIN

Premier

NEIL MORROW

20660 Clerk of the Executive Council

Public Service Act 1974

AUTHORITY TO REDEPLOY STAFF

On the recommendation of the Premier, the Lieutenant-Governor in Council under section 64B of the *Public Service Act 1974* authorises the employment of the class of persons specified in Schedule One of this Order in the administrative units and public statutory authorities specified in Schedule Two of this Order.

Schedule One—Class of Persons

Officers and employees of the Roads Corporation who—

1. hold positions of one of the following types:
 - clerical;
 - keyboard;
 - administrative;
 - labourers, and unskilled personnel;
 - semi-skilled labourers;
 - plant and equipment operators;
 - tradespersons;
 - base grade professional;
 - supervisory staff;
 - technicians;
 - technical officers;
 - food handlers;
 - professional positions in engineering, scientific, finance, human resources, information systems, general management;
 - personnel in enforcement, regulation and instructors and inspectors.
2. become redundant within twelve months from the date of this Order because of one or more of the following—

Victoria Government Gazette

formation of the Roads Corporation;
rationalisation of the financial,
information technology, business services,
human resources, corporate development,
design and operational functions of the
merged Road Construction and Road
Traffic Authorities;
efficiencies from award restructuring;
elimination of restrictive work practices;
introduction of quality management
procedures and practices;
technological changes in registration and
licensing, technical systems services areas,
financial and administrative functions;
changes in the Roads Corporation
organisation structure;
decentralisation of specialist services and
administrative functions to regional areas;
review of all management and corporate
overheads.

Schedule Two—Administrative Units and Public Statutory Authorities

1. All administrative units and associated administrative units listed in Schedules Two, Three and Three A of the Act; and
2. the following public statutory authorities:
 - State Electricity Commission;
 - State Bank of Victoria;
 - Melbourne and Metropolitan Board of Works;
 - Gas and Fuel Corporation;
 - Metropolitan Fire Brigade;
 - Totalizator Agency Board;
 - Country Fire Authority;
 - Transport Accident Commission;
 - Dandenong Valley Authority;
 - Harness Racing Board;
 - Local Authorities Superannuation Board;
 - Rural Finance Corporation of Victoria;
 - Port of Melbourne Authority;
 - Port of Geelong Authority;
 - Port of Portland Authority;
 - Public Transport Corporation;
 - Grain Elevators Board;
 - State Public Hospitals registered under the Health Act;
 - Victorian Dairy Industry Authority;
 - Victorian Egg Marketing Board;
 - Victorian Arts Centre Trust;
 - Legal Aid Commission;
 - Zoological Board of Victoria;
 - Council of Adult Education;

Victoria Government Gazette

Albury/Wodonga (Victoria) Corporation;
Coal Corporation of Victoria;
Geelong Regional Commission;
Latrobe Regional Commission;
Victorian Occupational Health and Safety
Commission;
Victoria Grants Commission;
Accident Compensation Commission;
Hospitals Superannuation Board;
Transport Superannuation Board;
Victorian Accident Rehabilitation
Council;
Building Control Accreditation Authority;
Land Conservation Council.

Dated 30 October 1990

Responsible Minister:

JOAN E. KIRNER
Premier

JILL BRENNAN

20660 Acting Clerk of the Executive Council

Cemeteries Act 1958

APPOINTMENT OF TRUSTEES

Under section 3 (1) of the *Cemeteries Act 1958*, and on the recommendation of the Minister for Health, the Lieutenant-Governor in Council makes the following appointments of Trustees of the following public cemeteries:

Name	Public Cemetery
Graeme JOHNSTON	Dookie East Cemetery
Barry William PENDERGAST	Benambra Cemetery
Andrew Ian NICHOLAS	Benambra Cemetery
Lyall Hardy McCLURE	Toosan Cemetery
John Francis MURNANE	Nirranda Cemetery
Desmond Patrick BRENNAN	Brighton Cemetery
Harold Leigh VENABLES	Bairnsdale Cemetery
John Henry WHADCOAT	Lakes Entrance Cemetery
John Robert ALLEN	Lakes Entrance Cemetery
Vera BENNETT	Lakes Entrance Cemetery

Dated 30 October 1990

Responsible Minister:

CAROLINE HOGG
Minister for Health

JILL BRENNAN

20370 Acting Clerk of the Executive Council

G 44 8 November 1990 3411

Cemeteries Act 1958

SCALE OF FEES

Under section 17 of the *Cemeteries Act 1958*, and on the recommendation of the Minister for Health, the Lieutenant-Governor in Council consents to the making of the attached scale of fees in respect of the following Public Cemeteries:

Cemeteries Act 1958

SCALE OF FEES OF THE COBRAM PUBLIC CEMETERY

In pursuance of the powers conferred upon them by the *Cemeteries Act* the trustees of the Cobram Public Cemetery hereby make the following scale of fees, which shall come into operation upon publication in the *Government Gazette*, and from and after such publication every scale of fees heretofore made by the said trustees shall be and is hereby rescinded to the extent to which it conflicts with this scale.

\$

Lawn Cemetery

Interment fee (including cost of monument)	708.00
Land 2.44 m x 1.22 m	262.00

General Cemetery

Private Graves

Land for private grave 2.44 m x 1.22 m	157.00
Own selection of site (extra)	58.00

Sinking Charges for Private Graves

Sinking grave 1.83 m	173.00
Each additional 0.3 m	32.00
Sinking oversize grave	47.00
Cancellation of order to sink (if commenced)	53.00
Re-opening grave (no cover)	173.00
Re-opening grave (with cover or kerb)	225.00

Miscellaneous Charges

Interment fee	53.00
Interment not in prescribed hours or without due notice	63.00
Late fee (per half or part thereof in excess of fifteen (15) minutes)	16.00
Certificate of right of burial	16.00
Number plate or brick	11.00
Annual Maintenance (optional)	53.00
Permission to erect a headstone or monument—5% of cost with a minimum of \$21.00	
Permission to construct a brick grave or to erect any stone kerb, brick tilework or concrete	32.00
Grave renovations or additional inscription	16.00
Exhuming the remains of a body (when authorised)	367.00
Interment of ashes in a private grave	37.00

<i>Vault</i>	
Land	136.00
Gravedigging	315.00
Backfilling	85.00
Interment	53.00

COUNCILLORS OF THE MUNICIPALITY
OF THE SHIRE OF COBRAM, Trustees

Cemeteries Act 1958

SCALE OF FEES OF THE MELBOURNE
CHEVRA KADISHA PUBLIC CEMETERY

In pursuance of the powers conferred upon them by the Cemeteries Act the trustees of the Melbourne Chevra Kadisha Public Cemetery hereby make the following scale of fees, which shall come into operation upon publication in the *Government Gazette*, and from and after such publication every scale of fees heretofore made by the said trustees shall be and is hereby rescinded to the extent to which it conflicts with this scale.

\$	
Standard position, new section	800.00
Preferred section	1200.00
Standard position, old section	590.00
Digging	390.00

MOSHE KANTOR, Trustee
JOSEPH MILLER, Trustee
MOSES RABI, Trustee

Cemeteries Act 1958

SCALE OF FEES OF THE SWANWATER
WEST PUBLIC CEMETERY

In pursuance of the powers conferred upon them by the Cemeteries Act the trustees of the Swanwater West Public Cemetery hereby make the following scale of fees, which shall come into operation upon publication in the *Government Gazette*, and from and after such publication every scale of fees heretofore made by the said trustees shall be and is hereby rescinded to the extent to which it conflicts with this scale.

\$	
Land 2.44 m × 1.22 m	100.00
Sinking grave 1.83 m deep—Contract price plus 10% as administrative charge	
Interment fee	50.00
Re-opening grave (no cover)	130.00
Re-opening grave (with cover)	150.00
Permission to erect a headstone or monument—10% of cost with a minimum of \$40.00	
Exhumation charge (when authorised)	400.00
Search fee per request	15.00

J. H. LEEDER, Trustee
I. E. LEEDER, Trustee
H. E. BATH, Trustee
G. COSSENS, Trustee

Cemeteries Act 1958

SCALE OF FEES OF THE CHELTENHAM
PUBLIC CEMETERY

In pursuance of the powers conferred upon them by the Cemeteries Act the trustees of the Cheltenham Public Cemetery hereby make the following scale of fees, which shall come into operation upon publication in the *Government Gazette*, and from and after such publication every scale of fees heretofore made by the said trustees shall be and is hereby rescinded to the extent to which it conflicts with this scale.

\$	
<i>Lawn Area</i>	
Land, 2.44 m × 1.22 m, at need	680.00
Land, 2.44 m × 1.22 m, pre-need	750.00
Land, 2.44 m × 1.22 m, Special position—	
On main drives, etc., at need	750.00
On main drives, etc., pre-need	800.00
Vault area, at need	1485.00
Interment fee (standard)	445.00
Sinking or re-opening grave for—	
Coffin over 70 cm at shoulder (extra)	55.00
American type casket (extra)	65.00

Monumental Area

Charges for lawn area above, plus the following where applicable:	
Removal of concrete or quartz top (extra)	55.00
Removal and replacement of ledger (extra)	65.00

Memorials for Cremated Remains

Wall niche (with standard plaque, ashes non-recoverable)	190.00
Wall niche (with standard plaque, ashes recoverable)	250.00
Ground niche	420.00
Memorial trees (from)	575.00
Memorial shrubs and roses (from)	485.00
Memorial boulders (plaque extra) (from)	420.00
Lawn positions (on drives, etc)	320.00
Interment in grave or second placement at existing memorial	125.00

Miscellaneous

Interment fee, child under 5 years or stillborn	125.00
Interment fee, child 5–12 years	200.00
Supply/construction of concrete vault	1840.00

F. W. LE PAGE, Trustee
G. P. HARPER, Trustee
C. L. SIMPSON, Trustee
G. FAGG, Secretary/Manager

Cemeteries Act 1958
SCALE OF FEES OF THE MORNINGTON
PUBLIC CEMETERY

In pursuance of the powers conferred upon them by the Cemeteries Act the trustees of the Mornington Public Cemetery hereby makes the following scale of fees, which shall come into operation upon publication in the *Government Gazette*, and from and after such publication every scale of fees heretofore made by the said trustees shall be and is hereby rescinded to the extent to which it conflicts with this scale.

Fees for Right of Burial
Denominational and Non-denominational
Areas

Children under 5 years and still-born	\$
1-22 m × 0-61 m	100.00
All others 2-44 m × 1-22 m	455.00

Lawn Areas (Plaques and Monumental)
(Fees exclude all plaques and monumental costs)

Children's area 1-22 m × 0-61 m	100.00
All others 2-51 m × 1-22 m	625.00

Interment Fees

(a) Week days	400.00
(b) Saturday mornings or Public Holidays	800.00
(c) Child under 5 years of age, including still-born (children's section only)	55.00
(d) Interment without 10 hours notice	515.00
(e) Cancellation of order to interment (if commenced)	115.00
(f) Oversized interment (extra charge)	70.00
(g) Additional depth—each additional 0-30 m (extra charge)	55.00

Exhumation Fee

When authorised	685.00
-----------------	--------

Re-opening Fees

Graves not covered	400.00
Removal of cover (extra charge)	455.00
Ashes only	115.00

Miscellaneous Charges

Copy of certificate of right of burial	23.00
Inspection of plan or register	6.00
Permission to erect headstone—5% cost of headstone with minimum charge of \$35.00	

Cremated Remains Memorials

Memorial wall (presently sold out)	140.00
3 line plaque	120.00
Extract of title	23.00

Memorials
These memorials have a tenure of 25 years from date of purchase (plaques are extra)

Garden area	230.00
Plaques for garden area (standard 5 lines)	230.00
Vase for garden area—bronze	45.00
plastic	15.00
Extract of title	23.00

COUNCILLORS FOR THE
MUNICIPALITY OF THE SHIRE OF
MORNINGTON, Trustees

Cemeteries Act 1958
SCALE OF FEES OF THE NEWSTEAD
PUBLIC CEMETERY

In pursuance of the powers conferred upon them by the Cemeteries Act the trustees of the Newstead Public Cemetery hereby make the following scale of fees, which shall come into operation upon publication in the *Government Gazette*, and from and after such publication every scale of fees heretofore made by the said trustees shall be and is hereby rescinded to the extent to which it conflicts with this scale.

Public Graves

	\$
Interment in grave without exclusive right—still-born child	60.00
Interment in grave without exclusive right—others	100.00
Number peg or label	20.00

Private Graves

Land, 2-44 m × 1-22 m	150.00
Own selection of land (extra)	75.00

Sinking Charges for Private Graves

Sinking grave 1-83 m deep—contract price plus 10%	
Each additional 0-3 m	50.00
Sinking oversize grave	50.00
Cancellation of order to sink (if commenced)	50.00
Re-opening grave (no cover)	180.00
Re-opening grave (with cover)	200.00

Miscellaneous Charges

Interment fee	70.00
Interment outside prescribed hours, or on Saturdays, Sundays or Public Holidays or without due notice	120.00
Certificate of right of burial	10.00
Number plate or brick	20.00
Permission to erect a headstone or monument	50.00
Permission to construct a brick grave or to erect any stone kerb, brick tile-work or concrete	50.00

3414 G 44 8 November 1990

Exhuming the remains of a body (when authorised)	500.00
Interment of ashes in a private grave	70.00
Memorial wall niche	100.00
Memorial wall plaque—cost plus 10%	
Search fee per request	15.00

R. L. PETERSEN, Trustee
R. C. WARD, Trustee
R. I. McNABB, Trustee
M. J. LORRAINE, Trustee

Cemeteries Act 1958

SCALE OF FEES OF THE NATHALIA
PUBLIC CEMETERY

In pursuance of the powers conferred upon them by the Cemeteries Act the trustees of the Nathalia Public Cemetery hereby make the following scale of fees, which shall come into operation upon publication in the *Government Gazette*, and from and after such publication every scale of fees heretofore made by the said trustees shall be and is hereby rescinded to the extent to which it conflicts with this scale.

Plaques (in lawn section and rose garden), including fitting—cost plus 10%

R. D. BROOKS, Trustee
J. P. DAVIS, Trustee
S. J. LIMBRICK, Trustee

Cemeteries Act 1958

SCALE OF FEES OF THE CASTLEMAINE
PUBLIC CEMETERY

In pursuance of the powers conferred upon them by the Cemeteries Act the trustees of the Castlemaine Public Cemetery hereby make the following scale of fees, which shall come into operation upon publication in the *Government Gazette*, and from and after such publication every scale of fees heretofore made by the said trustees shall be and is hereby rescinded to the extent to which it conflicts with this scale.

	\$
Land 2.44 m × 1.22 m	350.00
Sinking grave	250.00
Saturday morning burial (extra)	120.00
Interment of ashes in niche wall	100.00
Interment of ashes in rose garden	130.00
Monumental fees	40.00

G. E. SHILL, Trustee
C. KUHLE, Trustee
F. G. GILL, Trustee
J. R. HUNTER, Trustee
A. A. HALL, Trustee
J. W. HARRIS, Trustee

Victoria Government Gazette

Cemeteries Act 1958

SCALE OF FEES OF THE KIEWA PUBLIC
CEMETERY

In pursuance of the powers conferred upon them by the Cemeteries Act the trustees of the Kiewa Public Cemetery hereby make the following scale of fees, which shall come into operation upon publication in the *Government Gazette*, and from and after such publication every scale of fees heretofore made by the said trustees shall be and is hereby rescinded to the extent to which it conflicts with this scale.

	\$
Grave purchase	50.00
Burial fee	10.00
Monumental fee	10.00
Grave digging	140.00

T. HYNES, Trustee
W. T. COULSTON, Trustee
A. A. HILLAS, Trustee
F. CLAPHAM, Trustee

Cemeteries Act 1958

SCALE OF FEES OF THE KORUMBURRA
PUBLIC CEMETERY

In pursuance of the powers conferred upon them by the Cemeteries Act the trustees of the Korumburra Public Cemetery hereby make the following scale of fees, which shall come into operation upon publication in the *Government Gazette*, and from and after such publication every scale of fees heretofore made by the said trustees shall be and is hereby rescinded to the extent to which it conflicts with this scale.

Lawn Cemetery

<i>Headstone Section</i>	\$
Land	250.00
Land, including digging	450.00
Re-opening a grave	175.00

<i>Plaque Section</i>	
Land	250.00
Land, including plaque, flowerpot and digging	600.00
Second interment, including plaque and digging	350.00
Re-opening a grave	175.00

Monumental Cemetery

Land, including digging	200.00
Re-opening a grave	175.00

Miscellaneous Charges

Baby Section, including land and digging	120.00
Niche wall, plaque supplied by Trust	100.00

Niche wall, plaque supplied by family	25.00
Interment of ashes in rose garden including plaque and rose	400.00
Interment of ashes in graves	25.00

G. PETERSON, Trustee
M. FOWLES, Trustee
E. J. ALGER, Trustee

Cemeteries Act 1958

SCALE OF FEES OF THE FERNTREE
GULLY PUBLIC CEMETERY

In pursuance of the powers conferred upon them by the Cemeteries Act the trustees of the Ferntree Gully Public Cemetery hereby make the following scale of fees, which shall come into operation upon publication in the *Government Gazette*, and from and after such publication every scale of fees heretofore made by the said trustees shall be and is hereby rescinded to the extent to which it conflicts with this scale.

\$

Exhumation fee	1000.00
----------------	---------

COUNCILLORS FOR THE CITY OF
KNOX, Trustees

Cemeteries Act 1958

SCALE OF FEES OF THE WERRIBEE
PUBLIC CEMETERY

In pursuance of the powers conferred upon them by the Cemeteries Act the trustees of the Werribee Public Cemetery hereby make the following scale of fees, which shall come into operation upon publication in the *Government Gazette*, and from and after such publication every scale of fees heretofore made by the said trustees shall be and is hereby rescinded to the extent to which it conflicts with this scale.

Lawn Cemetery (Undenominational)

\$

Lawn grave 2.44 m × 1.22 m	575.00
Sinking of grave 2.13 m	350.00
Bronze plaque for each interment— 380 mm × 280 mm (single) (15" × 11")	225.00
Bronze plaque for each interment— 380 mm × 280 mm (double) (15" × 11")	275.00
Flower container	80.00
Interment fee	120.00
Detachable plate, second interment	80.00

Private Graves (Denominational)

Land 2.44 m × 1.22 m	475.00
Own selection of site (extra)	65.00
Sinking grave any depth	350.00

Cancellation of order to sink (if commenced)	150.00
Vaults	2300.00
Sealing vault	210.00

Re-opening Charges for above

Re-opening grave	350.00
Interment fee	120.00

Memorials

Niche wall	210.00
Niche plate 136 mm × 102 mm	80.00
Rose garden	270.00
Bronze plaque 203 mm × 152 mm	120.00

Extra Charges

Interment not in the prescribed hours or on Saturdays, Sundays or Public Holidays	200.00
Interment in private grave without due notice	140.00
After 4.00 p.m.—Monday to Friday	140.00

Miscellaneous Charges

Certificate of Right of Burial	12.00
Inspection of plan or register	12.00
Annual maintenance (single grave) if required by holder of right of burial	120.00
Permission to erect headstone monument—10 per cent of cost with a minimum of \$70.00	
Permission to construct a brick grave or to erect any stone kerb, brick tilework or concrete	50.00
Grave renovations or additional inscription	50.00
Exhuming the remains of a body when authorised	700.00
Interment of ashes in a private grave	180.00

COUNCILLORS OF THE MUNICIPALITY
OF THE CITY OF WERRIBEE—Trustees

Cemeteries Act 1958

SCALE OF FEES OF THE TRUGANINA
PUBLIC CEMETERY

In pursuance of the powers conferred upon them by the Cemeteries Act the trustees of the Truganina Public Cemetery hereby make the following scale of fees, which shall come into operation upon publication in the *Government Gazette*, and from and after such publication every scale of fees heretofore made by the said trustees shall be and is hereby rescinded to the extent to which it conflicts with this scale.

Private Graves

\$

Land, 2.44 m × 1.22 m	400.00
Own selection of land	65.00

3416 G 44 8 November 1990

Sinking Charges for Private Graves

Sinking grave (any depth)	350.00
Cancellation of order to sink (if commenced)	100.00

Re-opening Charges

Re-opening grave	350.00
------------------	--------

Extra Charges

Interment outside prescribed hours, or on Saturdays, Sundays or Public Holidays	200.00
Interment in a private grave without due notice	150.00

Miscellaneous Charges

Interment fee	120.00
Certificate of right of burial	12.00
Permission to erect a headstone or monument—10 per cent of cost with a minimum of \$70.00	
Permission to construct a brick grave or to erect any stone kerb, brick tile-work or concrete	50.00
Exhuming the remains of a body (when authorised)	700.00
Interment of ashes in a private grave	180.00

COUNCILLORS OF THE MUNICIPALITY OF THE CITY OF WERRIBEE—Trustees

Cemeteries Act 1958

SCALE OF FEES OF THE TYABB PUBLIC CEMETERY

In pursuance of the powers conferred upon them by the Cemeteries Act the trustees of the Tyabb Public Cemetery hereby make the following scale of fees, which shall come into operation upon publication in the *Government Gazette*, and from and after such publication every scale of fees heretofore made by the said trustees shall be and is hereby rescinded to the extent to which it conflicts with this scale.

Denominational Section

	\$
Land grave site 2.60 m × 1.28 m	
Non-exclusive right	80.00
Exclusive right	150.00
Own selection (extra)	50.00
Interment fee—including sinking to 1.83 m	240.00
Each additional 0.3 m	40.00
Second sinking—grave without cover	240.00
Second sinking—grave with cover	260.00
Interment without exclusive right (stillborn child)	100.00

Victoria Government Gazette

Miscellaneous Charges

Cancellation of order to sink (if commenced)	150.00
Sinking oversized grave (extra)	80.00
Interment outside prescribed hours or on Saturday, Sunday or Public Holiday	100.00
Interment in a grave without due notice (extra)	50.00
Certificate of right of burial	10.00
Permission to construct a headstone or monument, or construct a brick grave, or to erect any stone kerb, brick tile work or concrete—5 per cent of cost with \$10 minimum.	
Permission to make repairs or additions to monuments	5.00
Exhuming the remains of a body (when authorised)	400.00
Interment of ashes in a private grave	80.00
Standard plaque—single	120.00
Standard plaque—dual	140.00

COUNCILLORS OF THE SHIRE OF HASTINGS—Trustees

Cemeteries Act 1958

SCALE OF FEES OF THE ARARAT PUBLIC CEMETERY

In pursuance of the powers conferred upon them by the Cemeteries Act the trustees of the Ararat Public Cemetery hereby make the following scale of fees, which shall come into operation upon publication in the *Government Gazette*, and from and after such publication every scale of fees heretofore made by the said trustees shall be and is hereby rescinded to the extent to which it conflicts with this scale.

Lawn and Monumental Sections

	\$
First interment with land 2.44 m × 1.22 m	635.00
Sinking grave	165.00
Second interment	315.00
Sinking grave	135.00
Child over twelve (12) years at the above charges	

Children's Section

Child to three (3) months—including still-born	
Interment with land—includes plaque	250.00
Sinking grave	50.00
Child 4 months to 12 years	
Interment with land—includes plaque	330.00

Victoria Government Gazette

Sinking grave	70.00
Public grave	250.00
<i>Interment of Ashes</i>	
In niche wall—includes plaque	220.00
Rose garden—includes plaque	300.00
Grave	100.00
Plaques—not otherwise provided— all at cost plus ten (10) per cent	
<i>Other Charges</i>	
Search fee—minimum per grave	15.00
Reservations—minimum deposit	50.00
<i>Monumental Masons</i>	
Monumental fee—ten (10) per cent of cost—maximum	250.00

P. CASHIN, Chairman
M. U. CASTLES, Secretary
G. SCHILLING, Treasurer

Dated 30 October 1990

Responsible Minister:
CAROLINE HOGG
Minister for Health

JILL BRENNAN
20370 Acting Clerk of the Executive Council

Local Government Act 1958

**RECTIFICATION OF AN ERROR IN AN
ORDER MADE FOR THE ANNEXATION
OF THREE AREAS OF THE SHIRE OF
NARRACAN TO THE CITY OF MOE**

By an Order published in the *Government Gazette* on 21 March 1990 the Governor in Council acting under Part II of the *Local Government Act 1958* ordered, amongst other things, that a portion of the municipal district of the Shire of Narracan (identified as Portion 2) be annexed to the City of Moe.

The Governor in Council pursuant to section 28 (5) of the Act hereby rectifies an error in the said Order by substituting the following description of Portion 2.

Portion 2

Commencing in South Shire Road at the point in line with the western boundary of Lot 1 on Plan of Subdivision 86456; thence south-easterly by South Shore Road to the point in line with the western boundary of Lot 8 Plan of Subdivision 93886; thence southerly by a line and that western boundary to the southern boundary of the State Electricity Commission transmission line easement; thence westerly by that easement boundary to Links Roads; thence northerly by that road to the southern boundary of Lot 1 on Plan of Subdivision 86456; thence

G 44 8 November 1990 3417

westerly by that boundary and northerly by the western boundary of that lot, and thence further northerly by a line to the point of commencement.

Dated 7 November 1990

Responsible Minister:
MAUREEN LYSTER
Minister for Local Government

JILL BRENNAN
20460 Acting Clerk of the Executive Council

Local Government Act 1958

**FIXING THE PRESCRIBED RATE OF
INTEREST ON RATES AND OTHER
MONEYS**

The Governor in Council acting under section 386 (1) of the *Local Government Act 1958* fixes the rate of interest on rates and other moneys at twenty per centum per annum on and from 7 November 1990.

Dated 7 November 1990

Responsible Minister:
MAUREEN LYSTER
Minister for Local Government

JILL BRENNAN
20460 Acting Clerk of the Executive Council

Local Government Department

SHIRE OF ROCHESTER

Confirmation of Separate Rate

The Governor in Council acting under section 287 of the *Local Government Act 1958* confirms a separate rate made by the Council of the Shire of Rochester on 6 September 1990 for the purpose of carrying out the Muller's Creek Surface Drainage Scheme.

Dated 7 November 1990

Responsible Minister:
MAUREEN LYSTER
Minister for Local Government

JILL BRENNAN
20460 Acting Clerk of the Executive Council

Local Government Act 1958

**RESUBDIVISION OF THE MUNICIPAL
DISTRICT OF THE CITY OF PRESTON
INTO FOUR WARDS**

The Governor in Council acting under Part II of the *Local Government Act 1958*, orders and directs as follows:

1. This Order comes into operation and takes effect according to its tenor on 1 April 1991.

2. As from 1 April 1991 the municipal district of the City of Preston shall, for the purposes of the next annual election after this Order takes effect and for ensuing elections, be resubdivided into four wards.

3418 G 44 8 November 1990

3. On and after 3 August 1991, being the day of the next annual election, the number of councillors in and for the City of Preston as a result of the resubdivision shall be twelve.

4. The councillors of the City of Preston who are in office immediately before 3 August 1991 shall not all go out of office to the intent that the only councillors to go out of office on that day shall be those councillors going out of office by rotation in accordance with section 68 (1) of the *Local Government Act 1989*.

5. The names and boundaries of the wards shall be:

NORTH-EAST WARD

Previous Gazettal

1987.371

Commencing at a point on the northern boundary of the city where it is intersected by High Street; thence southerly by that street to a point thereon in line with Broadway; thence easterly by a line and the Broadway and southerly and south-easterly by Bolderwood Parade to Plenty Road; thence north-easterly by Plenty Road to Darebin Creek; thence generally south-easterly by that creek to the eastern boundary of the city; and thence generally northerly and generally westerly by the city boundary to the point of commencement.

NORTH-WEST WARD

Previous Gazettal

1987.371/2

Commencing at a point on the northern boundary of the city where it is intersected by High Street; thence southerly by that street to Powell Street; thence westerly by Powell Street, a line and Powell Street and northerly by the Right of Way at the western end of Powell Street to Pershing Street; thence westerly by Pershing Street and northerly by Gilbert Road to Bourke Street; thence westerly by Bourke Street to the western boundary of the city; and thence generally northerly and easterly by the city boundary to the point of commencement.

SOUTH-EAST WARD

Previous Gazettal

1987.372

Commencing at a point on the southern boundary of the city being the junction of Victoria Street with Dundas Street; thence northerly by Victoria Street and easterly by Bell Street to Lahinch Street; thence northerly by Lahinch Street and westerly by Opal Street to Lovelace Street; thence northerly by Lovelace Street and westerly by Gower Street to Plenty Road; thence north-easterly by Plenty Road to Murray Road; thence westerly by Murray Road to High Street; thence northerly by High Street to a point thereon

Victoria Government Gazette

in line with the Broadway; thence easterly by a line and the Broadway and southerly and south-easterly by Bolderwood Parade to Plenty Road; thence north-easterly by Plenty Road to Darebin Creek; thence generally south-easterly by that creek to the eastern boundary of the city; and thence generally southerly and westerly by the city boundary to the point of commencement.

SOUTH-WEST WARD

Previous Gazettal

1987.372

Commencing at a point on the southern boundary of the city being the junction of Victoria Street with Dundas Street; thence northerly by Victoria Street and easterly by Bell Street to Lahinch Street; thence northerly by Lahinch Street and westerly by Opal Street to Lovelace Street; thence northerly by Lovelace Street; thence northerly by Lovelace Street and westerly by Gower Street to Plenty Road; thence north-easterly by Plenty Road to Murray Road; thence westerly by Murray Road to High Street; thence northerly by High Street to Powell Street; thence westerly by Powell Street, a line and Powell Street and northerly by the Right of Way at the western end of Powell Street to Pershing Street; thence westerly by Pershing Street and northerly by Gilbert Road to Bourke Street; thence westerly by Bourke Street to the western boundary of the city; and thence generally southerly and easterly by the city boundary to the point of commencement.

Dated 7 November 1990

Responsible Minister:

MAUREEN LYSTER

Minister for Local Government

JILL BRENNAN

20460 Acting Clerk of the Executive Council

Corrections Act 1986

ADULT PAROLE BOARD

Appointment of Part-time Member

The Lieutenant-Governor in Council under section 61 of the *Corrections Act 1986* appoints John Milton Dugan as part-time member to the Adult Parole Board from 31 October 1990 to 30 October 1993 both dates inclusive at remuneration of \$4393 for the position held by John Milton Dugan.

Dated 30 October 1990

Responsible Minister:

MAL SANDON

Minister for Police and Emergency Services

JILL BRENNAN

20560 Acting Clerk of the Executive Council

Victoria Government Gazette

Crown Land (Reserves) Act 1978
**INCORPORATION OF COMMITTEE OF
MANAGEMENT OF BUNYIP
AGRICULTURAL AND RECREATION
RESERVE**

The Lieutenant-Governor in Council, under section 14A (1) of the *Crown Land (Reserves) Act 1978*, being satisfied that it is in the public interests to declare to be a corporation the Committee of Management appointed under section 14 (2) of the Act of the land described in the schedule hereunder—

- (a) declares that the Committee of Management shall be a corporation;
- (b) assigns the name "Bunyip Showgrounds Reserve Committee of Management Incorporated" to the corporation; and

under section 14B (3) of the Act, appoints George Robert Dowie to be Chairperson of the corporation.

Schedule

- (a) The land in the Township of Bunyip temporarily reserved as a site for Show Yards by Order in Council of 21 January 1902—(Rs 583).
- (b) The land in the Township of Bunyip temporarily reserved as a site for Show Yards by Order in Council of 6 June 1911—(Rs 583).
- (c) The land in the Parish of Koo-wee-rup East temporarily reserved as a site for Show Yards by Order in Council of 23 June 1925—(Rs 583).
- (d) The land in the Township of Bunyip temporarily reserved as a site for Recreation Purposes by Order in Council of 29 October 1946—(Rs 5875).
- (e) An area of 2.7 hectares, more or less, being Crown Allotment 3, Section 13, Township of Bunyip temporarily reserved for Showgrounds Purposes by Order in Council of 25 November 1986—(Rs 583).

Dated 30 October 1990

Responsible Minister:

STEVE CRABB

Minister for Conservation and Environment

JILL BRENNAN

20090 Acting Clerk of the Executive Council

Crown Land (Reserves) Act 1978

**INCORPORATION OF COMMITTEE OF
MANAGEMENT OF MEREDITH
RECREATION RESERVE**

The Lieutenant-Governor in Council, under section 14A (1) of the *Crown Land (Reserves) Act 1978*, being satisfied that it is in the public interests to declare to be a corporation the

G 44 8 November 1990 3419

Committee of Management appointed under section 14 (2) of the Act of the land described in schedule hereunder—

- (a) declares that the Committee of Management shall be a corporation;
- (b) assigns the name "Meredith Recreation Reserve Committee of Management Incorporated" to the corporation; and

under section 14B (3) of the Act, appoints Robert Deans Cooke to be Chairperson of the corporation.

Schedule

(a) The land being Crown Allotment 1, section 17, Township and Parish of Meredith temporarily reserved as a site for cricket and other purposes of public recreation by Order in Council of 19 June 1883.

(b) The land being Crown Allotment 1A, section 17, Township and Parish of Meredith temporarily reserved as a site for Public Recreation by Order in Council of 29 May 1979—(Rs 2436).

Dated 30 October 1990

Responsible Minister:

S. M. CRABB

Minister for Conservation and Environment

JILL BRENNAN

20090 Acting Clerk of the Executive Council

Crown Land (Reserves) Act 1978

**RÉVOICATION OF TEMPORARY
RESERVATION**

The Lieutenant-Governor in Council under section 10 of the *Crown Land (Reserves) Act 1978* revokes the following temporary reservation:

CODRINGTON—The temporary reservation by Order in Council of 9 February 1874 of 8094 square metres of land in the Parish of Codrington as a site for State School purposes revoked as to part by Order in Council of 8 August 1978 so far as the balance thereof containing 8082 square metres, more or less—(Rs 6995).

Dated 30 October 1990

Responsible Minister:

STEVE CRABB

Minister for Conservation and Environment

JILL BRENNAN

20090 Acting Clerk of the Executive Council

Crown Land (Reserves) Act 1978

**CROWN LANDS TEMPORARILY
RESERVED**

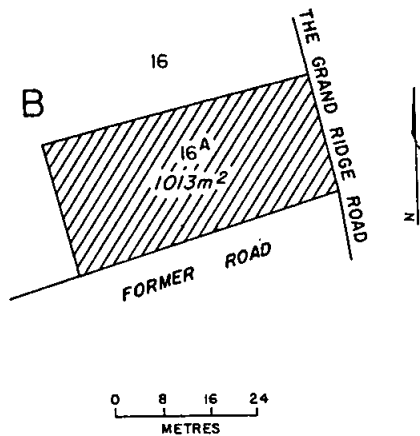
The Lieutenant-Governor in Council under sections 4 and 7 of the *Crown Land (Reserves) Act 1978* temporarily reserves for the purposes mentioned and also excepts from prospecting or

3420 G 44 8 November 1990

from occupation for mining purposes under any miners right the following Crown lands:

MUNICIPAL DISTRICT OF THE SHIRE OF TRARALGON

BULGA—Public Recreation, 1013 square metres being Crown Allotment 16A, section B, Parish of Bulga as indicated by hatching on plan hereunder—(B 714 (8)) (Rs 6186).



MUNICIPAL DISTRICT OF THE SHIRE OF ARARAT

CONCONGELLA SOUTH—Conservation of an area of natural interest, 2-762 hectares being Crown Allotment 20A, section 3, Parish of Concongella South as shown on Certified Plan No. 110201 lodged in the Central Plan Office—(Rs 14231).

Dated 30 October 1990

Responsible Minister:

S. M. CRABB

Minister for Conservation and Environment

JILL BRENNAN

20090 Acting Clerk of the Executive Council

Crown Land (Reserves) Act 1978

NOTICE OF INTENTION

The Lieutenant-Governor in Council under section 10 of the *Crown Land (Reserves) Act 1978* gives notice of intention to revoke the following temporary reservation:

WABONGA SOUTH—The temporary reservation under section 5 of the *Crown Land (Reserves) Act 1978* as a road of 3909 hectares of land being part of Crown Allotment 19, Parish of Wabonga South transferred to the Crown by transfer No. P 724370 T registered in the Land Titles Office and shown as Crown Allotment 19B1, Parish of Wabonga South on Certified Plan

Victoria Government Gazette

No. 109398 lodged in the Central Plan Office—(11/88/41).

Dated 30 October 1990

Responsible Minister:

STEVE CRABB

Minister for Conservation and Environment

JILL BRENNAN

20090 Acting Clerk of the Executive Council

Crown Land (Reserves) Act 1978

NOTICE OF INTENTION

The Governor in Council under section 10 of the *Crown Land (Reserves) Act 1978* gives notice of intention to revoke the following temporary reservation:

DROUIN—The temporary reservation by Order in Council of 23 November 1868 of the Crown lands comprised within the limits of deviation of the surveyed line of railway from Melbourne to Sale so far only as the portions containing 4649 square metres shown as Crown Allotments 22, 23, 24, 25 and 26, Township of Drouin, Parish of Drouin West as shown on Certified Plan No. 110269 lodged in the Central Plan Office—(GL/12852).

Dated 7 November 1990

Responsible Minister:

S. M. CRABB

Minister for Conservation and Environment

JILL BRENNAN

20090 Acting Clerk of the Executive Council

Land Act 1958

LAND VESTED IN SHIRE OF KARKAROOC

The Lieutenant-Governor in Council under section 22A of the *Land Act 1958* vests in the Shire of Karkaroc 2892 square metres of land in the Township of Woomelang described in an instrument of surrender dated 24 July 1990 by the Public Transport Corporation and attached to Department of Conservation and Environment correspondence No. L5-3386.

Dated 30 October 1990

Responsible Minister:

S. M. CRABB

Minister for Conservation and Environment

JILL BRENNAN

20090 Acting Clerk of the Executive Council

Land Act 1958

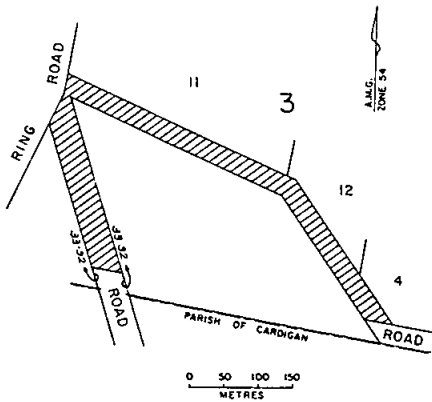
UNUSED ROADS CLOSED

The Governor in Council under section 349 of the *Land Act 1958* and with the consents in writing of the municipalities concerned and the adjoining owners closes the following unused roads:

Victoria Government Gazette

MUNICIPAL DISTRICT OF THE SHIRE OF
BALLARAT

DOWLING FOREST—The portions of roads
in the Parish of Dowling Forest as indicated by
hatching on plan hereunder—(2542) (GL/14304).



MUNICIPAL DISTRICT OF THE SHIRE OF
METCALFE

HARCOURT—The road in the Township of
Harcourt, Parish of Harcourt shown as Crown
Allotment 1A, Section 10 on Certified Plan No.
110257 lodged in the Central Plan Office—
(GL/13296).

MUNICIPAL DISTRICT OF THE SHIRE OF
SHERBROOKE

NANGANA—The road in the Parish of
Nangana shown as Crown Allotment 26B on
Certified Plan No. 110111 lodged in the Central
Plan Office—(GL/13025).

Dated 7 November 1990

Responsible Minister:

S. M. CRABB

Minister for Conservation and Environment

JILL BRENNAN

20090 Acting Clerk of the Executive Council

G 44 8 November 1990 3421

Public Park and Recreation and known as "Yarra
Bend Park"—(Rs 4368 (6)).

Dated 30 October 1990

Responsible Minister:

STEVE CRABB

Minister for Conservation and Environment

JILL BRENNAN

20090 Acting Clerk of the Executive Council

Urban Land Authority Act 1979

COOLAROO

Transfer of Land

The Lieutenant-Governor in Council under
section 19 (1) of the *Urban Land Authority Act*
1979 transfers to the Urban Land Authority the
land described in the Schedule.

Schedule

PARISH OF YUROKE

Lot 3 on Plan of Subdivision No. 145355 being
the whole of the land in Certificate of Title
Volume 9560 Folio 506.

Dated 30 October 1990

Responsible Minister:

TONY SHEEHAN

Minister for Housing and Construction

JILL BRENNAN

20870 Acting Clerk of the Executive Council

Kew and Heidelberg Lands Act 1933

APPOINTMENT OF TRUSTEE—YARRA
BEND PARK

The Lieutenant-Governor in Council under
section 6 of the *Kew and Heidelberg Lands Act*
1933 appoints John Lewis in the place of Sir
Rupert Hamer (retired) as Trustee of the balance
of the land in the Parishes of Boroondara and
Jika Jika contained in Crown Grant Volume 6443
Folio 407 and permanently reserved pursuant to
Order in Council of 26 March 1935 as a site for

TENDERS

**MINISTRY OF HOUSING AND
CONSTRUCTION, HORSHAM**

(Formerly Public Works Department)

Tenders are invited for demolition of Block 8
at Evelyn Brand Court, Horsham, Units Nos 8,
9, 10, 11.

Tender forms are available from Inspector of
Works, Ministry of Housing and Construction,
43-45 Wilson Street, Horsham 3400.

Tenders close with the Ministry of Housing
and Construction, 43-45 Wilson Street, Horsham
3400 on Wednesday, 21 November 1990 at 2
p.m.

Lowest or any tender not necessarily accepted.

Dated 31 October 1990

20390

G. RENTSCH, IOW(A)
Horsham Area Office

**PRIVATE
ADVERTISEMENTS**

Planning and Environment Act 1987
**NOTICE OF AMENDMENT TO A
PLANNING SCHEME**

The Brighton Council has prepared Amendment No. L14 to the Brighton Planning Scheme, Regional Section.

The amendment affects land at: 21 Sunlight Crescent, East Brighton.

The amendment proposes to change the Planning Scheme by the inclusion of a clause directing the removal of a restrictive covenant on the Certificate of Title of the subject land. The restrictive covenant limits development on the site to a maximum of one dwelling, specifies building materials and prevents excavation and removal of various matter. The amendment will allow development of the site for dual occupancy.

The amendment can be inspected at City of Brighton Municipal Offices, Boxshall Street, Brighton; Ministry for Planning and Environment, The Olderfleet Buildings, 477 Collins Street, Melbourne, or Ministry for Planning and Environment, Southern and Westernport Regional Office, 33-39 High Street, Cranbourne.

Submissions about the amendment must be sent to City of Brighton Municipal Offices, Boxshall Street, Brighton 3186 by 7 December 1990.

Dated 30 October 1990 R. J. COBAIN
Town Clerk

Planning and Environment Act 1987
CITY OF CROYDON

**Notice of Amendment to a Planning Scheme
Amendment L 31**

The Council of the City of Croydon has prepared Amendment L31 to the Croydon Planning Scheme.

The amendment makes a clause insertion to the Croydon Residential Low zone to direct the removal of the restrictive covenant from the title for 108-110 Bellara Drive, Croydon.

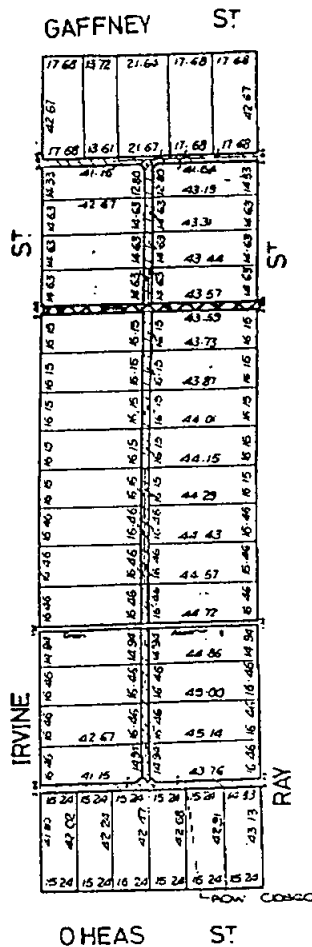
The amendment can be inspected at Municipal Office, City of Croydon, Civic Square, Croydon or Department of Planning and Urban Growth, The Olderfleet Buildings, 477 Collins Street, Melbourne.

Submissions about the amendment must be sent to City of Croydon, PO Box 206, Croydon 3136 by 10 December 1990.

Dated 30 October 1990 T. L. MAHER
Chief Executive Officer

VESTING ORDER
Vesting of Reserve

Notice of hereby given pursuant to section 589BA of the *Local Government Act 1958* (as amended) that the Council of the City of Coburg at its ordinary meeting on 15 October 1990 resolved that the drainage reserve bounded by Ray, Irvine, Gaffney and O'Hea Streets, as shown cross-hatched on the plan hereunder, be vested in Council.

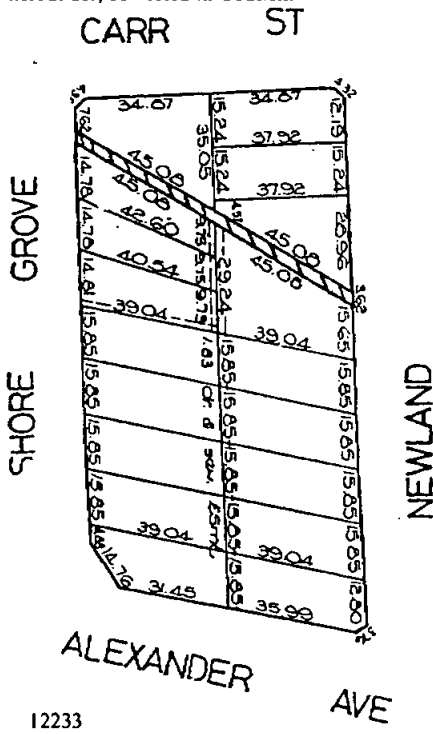


12232 J. R. DIFFEN
Chief Executive Officer

3424 G 44 8 November 1990

COBURG CITY COUNCIL
Vesting of Reserve

Notice is hereby given pursuant to section 569BA of the *Local Government Act 1958* (as amended) that the Council of the City of Coburg at its ordinary meeting on 15 October 1990, resolved that the drainage reserve bounded by Newlands Road, Shore Grove, Alexander Avenue and Carr Street, as shown hatched on the plan hereunder, be vested in Council.



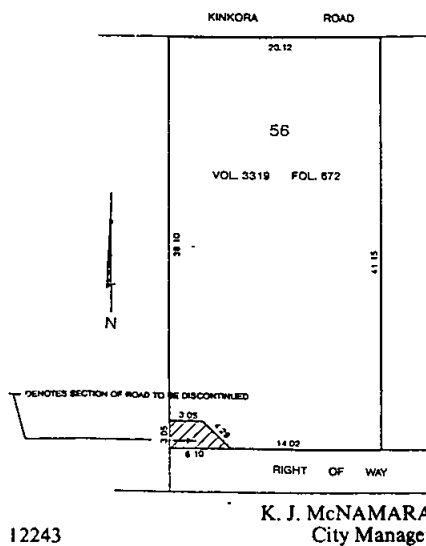
CITY OF HAWTHORN
Road Discontinuance

Pursuant to section 528 (2) of the *Local Government Act 1958*, the Council of the City of Hawthorn after consultation with the public authorities and the advertising of its intention and notification to the registered proprietor of the land and owners and occupiers of any land abutting or immediately adjacent to the road, as directed, hereby resolves as follows:

that Council being of the opinion that the road delineated and hatched on the plan shown hereunder is not reasonably required for public use, hereby directs that the road be

Victoria Government Gazette

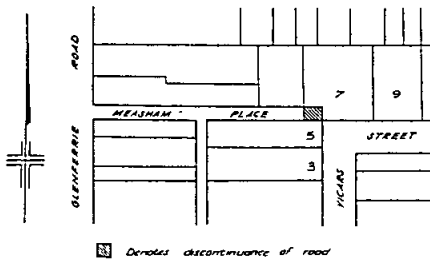
discontinued and part be sold by private treaty to the owners of Number 56 Kinkora Road.



CITY OF HAWTHORN
Road Discontinuance

Pursuant to section 528 (2) of the *Local Government Act 1958*, the Council of the City of Hawthorn after consultation with the public authorities and the advertising of its intention and notification to the registered proprietor of the land and owners and occupiers of any land abutting or immediately adjacent to the road, as directed, hereby resolves as follows:

- (a) that Council being of the opinion that the road delineated and hatched on the plan shown hereunder is not reasonably required for public use hereby directs that the road be discontinued and part be sold by private treaty to abutting owners;
- (b) notwithstanding the discontinuance of the road the City of Hawthorn and the Melbourne and Metropolitan Board of Works shall continue to have and possess the same right, title, power and authority or interest in or in relation to the road with respect to or in connection with any drains or pipes laid in or erected on or over the road for the purpose of drainage, sewerage or the supply of water or other like purposes as existed prior to the closure.
- (c) that this resolution be published in the *Government Gazette*.



12242

K. J. McNAMARA
City Manager

Planning and Environment Act 1987
KNOX PLANNING SCHEME
Notice of Amendment
Amendment L25

The City of Knox has prepared an amendment which proposes to amend the Local Section of the Knox Planning Scheme to re-zone part of Caribbean Gardens, south side of Ferntree Gully Road, Scoresby, being part of Crown Allotment 3, Parish of Scoresby, from Knox Special Uses 4 (Recreational Facilities) to Knox Special Use 8 (Trash and Treasure Market).

The amendment can be inspected at City of Knox Civic Centre, 511 Burwood Highway, Knoxfield; The Department of Planning and Urban Growth, The Olderfleet Buildings, 477 Collins Street, Melbourne

Any persons affected by the amendment may make a submission in writing, which must be sent to the City of Knox Civic Centre, 511 Burwood Highway, Knoxfield by 8 December 1990.

Dated 1 November 1990
12251

A. P. ATKINS
Town Planner

Planning and Environment Act 1987
KNOX PLANNING SCHEME
Notice of Amendment
Amendment L24

The City of Knox has prepared an amendment which proposes to amend the Local Section of Knox Planning Scheme, as follows:

Rezoning

- (i) Part of the land on the south side of Fulham Road, Rowville, comprising the Stud Park Shopping Centre, from Knox Residential Development to Restricted Business.
- (ii) Land on the south side of Fulham Road, Rowville, comprising the Rowville Community Centre, from Knox Residential Development to Public Purpose 19—Local Government.

- (iii) Land south-west of the Rowville Community Centre and Simon Avenue, from Knox Residential Development to Public Purposes—Primary School.

Ordinance Amendment

Delete an unwarranted condition of the Knox Rural Residential zone provisions in respect of the use—Detached Dwelling.

The amendment can be inspected at City of Knox Civic Centre, 511 Burwood Highway, Knoxfield; The Department of Planning and Urban Growth, The Olderfleet Buildings, 477 Collins Street, Melbourne.

Any persons affected by the amendment may make a submission in writing, which must be sent to the City of Knox Civic Centre, 511 Burwood Highway, Knoxfield by 8 December 1990.

Dated 1 November 1990

A. P. ATKINS
Town Planner

12250

Planning and Environment Act 1987
**NOTICE OF AMENDMENT TO A
PLANNING SCHEME**

The City of Mildura has prepared Amendment No. L26 to the Mildura City Planning Scheme.

The amendment affects land situated between Ruby Avenue and San Mateo Avenue, Seventh Street and Eighth Street (portion of the right-of-way).

The amendment proposes to rezone the Planning Scheme from 'Minor Road' to Residential 'A' and Commercial 'D', thus allowing abutting property owners the option to purchase the right-of-way for consolidation into their freehold titles.

The amendment can be inspected at City of Mildura, Civic Buildings, Deakin Avenue, Mildura; Ministry for Planning and Environment, The Olderfleet Buildings, 477 Collins Street, Melbourne; Regional Office, Ministry for Planning and Environment, 261 Hargreaves Street, Bendigo.

Submissions about the amendment must be sent to City of Mildura, Civic Buildings, Deakin Avenue, Mildura 3500 by 14 December 1990.

12223
WILLIAM C. GILL
Director of Planning and Development

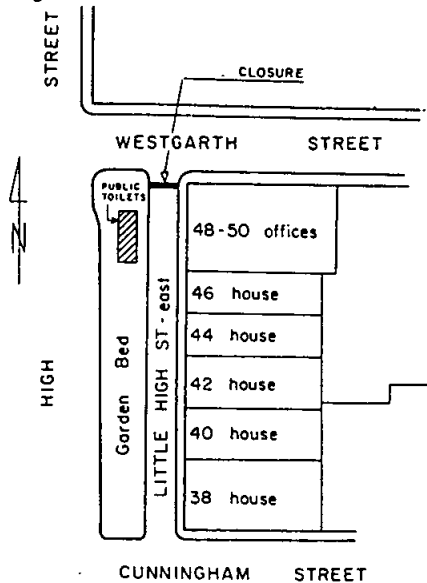
CITY OF NORTHCOTE
Street Closure

Notice is hereby given that the Council of the City of Northcote pursuant to provisions of clause 10 (a) of Schedule 11 of the *Local Government Act 1989*, on 29 October 1990 adopted by order a proposal for the closure of Little High Street (east side) at Westgarth Street, Northcote.

3426 G 44 8 November 1990

The Council has resolved that the order as adopted shall come into operation on 19 November 1990.

The location of the closure is shown in the diagram below.



12230

P. J. BLACK
Chief Executive Officer

Planning and Environment Act 1987

CITY OF PRAHRAN

Notice of Amendment to a Planning Scheme
Amendment L15

The City of Prahran has prepared Amendment L15 to the Local Section of the Planning Scheme and to the Regional of all Metropolitan Planning Schemes, and to the State section of all Victorian Planning Schemes.

The amendment affects land at the rear of Nos. 15, 15A and 23 Yarradale Road, Toorak.

The amendment proposes to change the Planning Scheme by rezoning a portion of land to the rear of Nos 15, 15A Yarradale Road and No. 23 Yarradale Road from Proposed Public Purposes 18 (MMBW) Reservation to Stream and Floodway zone and Residential C zone respectively.

The amendment can be inspected at: City of Prahran, Urban Planning Division, Town Hall, Greville Street, Prahran; Department of Planning and Urban Growth, Ground Floor, 477 Collins Street, Melbourne.

Victoria Government Gazette

Submissions about the amendment must be sent to City of Prahran, PO Box 21, Prahran 3181 by 7 December 1990.

12234

I. G. W. MacDONALD
City Engineer

Planning and Environment Act 1987

CITY OF PRAHRAN

Notice of Amendment to a Planning Scheme
Amendment L12

The City of Prahran has prepared Amendment L12 to the Local Section of the Planning Scheme.

The amendment affects the area of land on the south side of High Street, Armadale, being Nos. 924-972 High Street, bounded by the railway reservation, Morey Street and Kingsway west of the existing Restricted Business zone.

The amendment proposes to change the Planning Scheme by rezoning the subject land from Light Industrial zone to Restricted Business zone.

The amendment can be inspected at: City of Prahran, Urban Planning Division, Town Hall, Greville Street, Prahran; Department of Planning and Urban Growth, Ground Floor, 477 Collins Street, Melbourne.

Submissions about the amendment must be sent to Urban Planning Division, City of Prahran, PO Box 21, Prahran 3181 by 7 December 1990.

12235

I. G. W. MacDONALD
City Engineer

Planning and Environment Act 1987

CITY OF PRAHRAN

Notice of Amendment to a Planning Scheme
Amendment L14

The City of Prahran has prepared Amendment L14 to the Local Section of the Planning Scheme.

The amendment affects land at 739-739A High Street, Armadale, being land described on Certificates of Title Volume 8916 Folio 998 and Volume 8916 Folio 999.

The amendment proposes to change the Planning Scheme by rezoning the subject land from Residential C zone to Restricted Business zone.

The amendment can be inspected at: City of Prahran, Urban Planning Division, Town Hall, Greville Street, Prahran; Department of Planning and Urban Growth, Ground Floor, 477 Collins Street, Melbourne.

Submissions about the amendment must be sent to Urban Planning Division, City of Prahran, PO Box 21, Prahran 3181 by 7 December 1990.

12236

I. G. W. MacDONALD
City Engineer

Victoria Government Gazette

Planning and Environment Act 1987

CITY OF PRAHRAN

Notice of Amendment to a Planning Scheme
Amendment L17

The City of Prahran has prepared Amendment L17 to the Local Section of the Planning Scheme.

The amendment affects land at Nos. 296 to 390 Malvern Road, Prahran.

The amendment proposes to change the Planning Scheme by introducing a new zone to be called the Prahran Residential zone and rezoning the subject land from Residential C zone to Prahran Residential zone.

The amendment can be inspected at City of Prahran, Urban Planning Division, Town Hall, Greville Street, Prahran; Department of Planning and Urban Growth, Ground Floor, 477 Collins Street, Melbourne.

Submissions about the amendment must be sent to Urban Planning Division, City of Prahran, PO Box 21, Prahran 3181 by 7 December 1990.

I. G. W. MacDONALD
City Engineer

12237

Planning and Environment Act 1987

NOTICE OF AMENDMENT TO A
PLANNING SCHEME

The City of Whittlesea has prepared Amendment No. L27 to the Whittlesea Planning Scheme.

The amendment affects land generally known as the Township of Kalkallo bounded by the Hume Highway, Cameron Street, Donnybrook Road and Dwyer Street.

The amendment proposes to change the Planning Scheme by incorporating a Restructure Plan for the Kalkallo township into section 141 of the Whittlesea Planning Scheme.

The amendment can be inspected at the City of Whittlesea Municipal Offices, High Street, Epping, and the Ministry for Planning and Urban Growth, Ground Floor, 477 Collins Street, Melbourne.

Submissions about the amendment must be sent to the City of Whittlesea, Private Bag 1, Epping 3076 by 21 December 1990

LINDSAY ESMONDE
Chief Executive

12252

Planning and Environment Act 1987

WAVERLEY PLANNING SCHEME

Notice of Amendment

The City of Waverley has prepared Amendment No. L14 to the Waverley Planning Scheme for land on the southern side of England Road commencing 100 metres east of Blackburn

G 44 8 November 1990 3427

Road, Glen Waverley, bounded by the South-Eastern Arterial Road to the south and the reserve for the R7 Arterial Road to the east.

The amendment proposes to rezone land from Residential "C" and Main Road: Existing and Main Road: Proposed to Comprehensive Development zone (England Road) for purposes including a Community Leisure Centre, public open space, residential development, offices and associated retail and service uses.

The amendment can be inspected at City of Waverley, 293 Springvale Road, Glen Waverley; Department of Planning and Urban Growth, Suite 4, 38-40 Prospect Street, Box Hill; Department of Planning and Urban Growth, The Olderfleet Buildings, 477 Collins Street, Melbourne; Glen Waverley Library, 112 Kingsway, Glen Waverley; Mount Waverley Library, 41 Miller Crescent, Mount Waverley from 2 p.m. Monday, 12 November 1990 until 5 p.m. Friday, 14 December 1990.

Submissions must be lodged at the offices of the City of Waverley, 293 Springvale Road, Glen Waverley, P.O. Box 1, Glen Waverley 3150 by 5 p.m. 14 December 1990.

IAN WILSON
Chief Executive
City of Waverley

12238

Planning and Environment Act
NOTICE OF AMENDMENT TO A
PLANNING SCHEME

The Shire of Bacchus Marsh has prepared Amendment No. L24 to the Bacchus Marsh Planning Scheme.

The amendment affects land being—

part of Lot K, PS 303040A (being part of the Hallett subdivision—Clifton Drive);

Lot 3, LP 148996 (being located on the south-east corner of Masons Lane/Halletts Way intersection);

Lot 2, LP 148997 (being located on the south side of Masons Lane mid block between Halletts Way and Bacchus Marsh—Gisborne Road and including indentation on north boundary);

all land shown on LP 220135 (being the Glendot subdivision east of Halletts Way between Bacchus Marsh Road and Masons Lane); and

the western section of Masons Lane between the residences of F. & A. Hallett (Lots 1 and 2, LP 212049) and Halletts Way—

for which it is proposed to—

- (a) designate as Minor Road on the Scheme Maps, roads that have been approved with planning permits and plans of subdivision;

3428 G 44 8 November 1990

- (b) re-zone existing Reserved Residential zoned land to Residential A zoning; and
- (c) provide for the closure of the western section of Masons Lane.

The amendment can be inspected at the Shire Offices, Shire of Bacchus Marsh, 197 Main Street, Bacchus Marsh 3340 and the Ministry for Planning and Environment (Plan Inspection Section), The Olderfleet Buildings, 477 Collins Street, Melbourne 3000.

Submissions about the amendment must be sent to the Shire Secretary, Shire of Bacchus Marsh, PO Box 216, Bacchus Marsh 3340 by 10 December 1990.

Dated 7 November 1990

12221

D. L. MURPHY
Shire Engineer

Planning and Environment Act
NOTICE OF AMENDMENT TO A
PLANNING SCHEME

The Shire of Bacchus Marsh has prepared Amendment No. L25 to the Bacchus Marsh Planning Scheme.

The amendment affects land being—

- (a) Part of Crown Allotments 26, 37, 38, 45 and 63 and Crown Allotments 43, 44, 46-58 inclusive; 61 and 62, No Section, Parish of Parwan generally located between Parwan Creek, Kerrs Road, East Maddingley Road and Melbourne-Ballarat Railway Line; Part of Crown Allotments 8-14 inclusive; 16, 17, 18 and 26-29 inclusive; and Crown Allotments 1-7 inclusive; 19-25 inclusive; Section A, and part Crown Allotment 19, Section 1, Parish of Parwan located between existing Maddingley Residential area, Melbourne-Ballarat Railway Line, Kerrs Road and East Maddingley Road; Crown Allotments 3, 4, 8, 9, 10, 11, 12, 13 and 15, Section 1, Parish of Parwan and Crown Portion A, Township of Bacchus Marsh, Parish of Parwan located between Dog Trap Road and Werribee Vale Road west of Barry Street, Maddingley; Reservation for Minor Roads (Gaynor Street and Pearce Street west of South Maddingley Road and Finn Street and Laneways at Maddingley—

which is proposed for re-zoning to a newly created Urban Development zone.

- (b) Part of Crown Allotment 30, Section A, Parish of Parwan located between the Maddingley Cemetery and Moore Street South south of McPherson Street which is

Victoria Government Gazette

proposed for re-zoning from Reserved General Industrial to Light Industrial zoning; and

- (c) Part Crown Allotments 18, 28 and 29 and Crown Allotments 16 and 17, Section 1, Parish of Parwan located generally between Bacchus Marsh-Balling Road, Maddingley Cemetery, Melbourne-Ballarat Railway Line and Kerrs Road which is proposed for re-zoning from Reserved General Industrial to Reserved Residential zone.

The amendment can be inspected at the Shire Offices, Shire of Bacchus Marsh, 197 Main Street, Bacchus Marsh 3340 and the Ministry for Planning and Environment (Plan Inspection Section), The Olderfleet Buildings, 477 Collins Street, Melbourne 3000.

Submissions about the amendment must be sent to the Shire Secretary, Shire of Bacchus Marsh, PO Box 216, Bacchus Marsh 3340 by 10 December 1990.

Dated 7 November 1990

12222

D. L. MURPHY
Shire Engineer

Planning and Environment Act
NOTICE OF AMENDMENT TO A
PLANNING SCHEME

The Shire of Bacchus Marsh has prepared Amendment No. L26 to the Bacchus Marsh Planning Scheme.

The amendment affects land being located within the Shire of Bacchus Marsh and being defined on the Scheme Maps as—

- Rural A zoned;
- Rural B zoned;
- Rural (Reserved Mining) zoned; and
- Rural (Reserved Extractive Industry) zoned—

which consists of most of the non-urban parts of the shire and controls the subdivision of land containing flats, group houses, etc.

The amendment can be inspected at the Shire Offices, Shire of Bacchus Marsh, 197 Main Street, Bacchus Marsh 3340 and the Minister for Planning and Environment (Plan Inspection Section), The Olderfleet Buildings, 477 Collins Street, Melbourne 3000.

Submissions about the amendment must be sent to the Shire Secretary, Shire of Bacchus Marsh, PO Box 216, Bacchus Marsh 3340 by 10 December 1990.

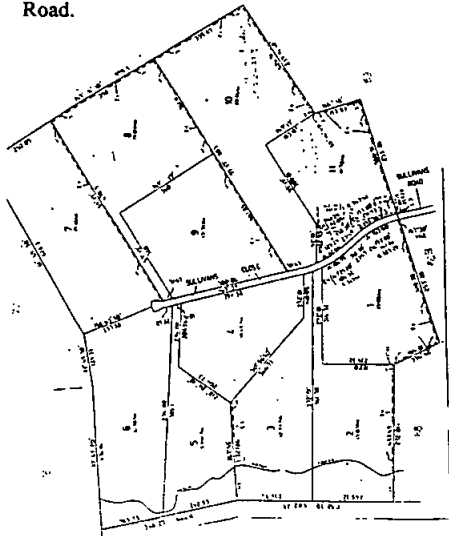
Dated 7 November 1990

12222

D. L. MURPHY
Shire Engineer

SHIRE OF BULLA
Change of Street Name

Notice is hereby given that pursuant to section 204 of the *Local Government Act 1989*, Council on 22 October 1990 resolved that Sullivans Close created on LP 202947 be renamed Sullivans Road.



12228

JOHN W. WATSON
Shire Secretary

SHIRE OF CORIO
Making of Local Law

Notice is hereby given that the Council of the Shire of Corio, at a meeting held on Wednesday, 31 October 1990, made the following Local Law:

Local Law No. 4—for the purpose of making amendments to Council's meeting procedure Local Law.

A copy of the Local Law may be inspected or purchased from the Shire Offices, "Osborne House", Swinburne Street, North Geelong.

The Local Law comes into operation on Wednesday, 7 November 1990.

12231

R. P. METCALF
Shire Secretary

Planning and Environment Act 1987

SHIRE OF HEALESVILLE

Notice of Amendment to a Planning Scheme

The Shire of Healesville has prepared Amendment No. L33 to the Healesville Planning Scheme.

The amendment affects land at Lot 19, LP 5098, Mt Riddell Road, Healesville.

The amendment proposes to provide for the extension of the Municipal Tip onto the balance of Lot 19, LP 5098. The existing municipal tip at present occupies the south-east portion of Lot 19. The amendment proposes that all of Lot 19 will be zoned PP17—Municipal Tip.

The amendment can be inspected at the Shire of Healesville, 231 Maroondah Highway, Healesville; Upper Yarra Valley and Dandenong Ranges Authority, 7 John Street, Lilydale; and Ministry for Planning and Urban Growth at Suite 4, 38-40 Prospect Street, Box Hill and at Ground Floor, 477 Collins Street, Melbourne.

Submissions about the amendment must be sent to the Shire of Healesville, Private Bag No. 3, Healesville 3777 by 10 December 1990.

12254

I. J. SHOLES
Senior Town Planner

Planning and Environment Act 1987
NOTICE OF AMENDMENT TO A
PLANNING SCHEME

The Council of the Shire of Phillip Island has prepared Amendment No. L26 to the Phillip Island Planning Scheme.

The amendment affects the land at Lot 1 LP 131701 Boys Homes Road, Newhaven.

The amendment purposes to change the Planning Scheme by rezoning the above stated land from the Special Use (3) Educational Establishment zone to the Residential A zone.

The amendment can be inspected at: Shire of Phillip Island, 91-97 Thompson Avenue, Cowes; Department of Planning and Urban Growth, The Olderfleet Buildings, 477 Collins Street, Melbourne; Regional Office, Department of Planning and Urban Growth, 33-39 High Street, Cranbourne.

Submissions about the amendment must be sent to: The Shire Town Planner, Shire of Phillip Island, PO Box 44, Cowes, and submitted by 14 December 1990.

Dated: 7 November 1990

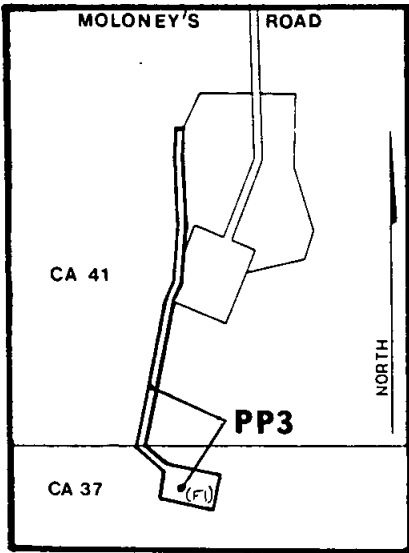
12247

AROON JOSHI
Shire Town Planner

Planning and Environment Act 1987
NOTICE OF AMENDMENT TO A
PLANNING SCHEME

The Shire of Romsey has prepared Amendment No. L16 to the Romsey Planning Scheme.

The amendment proposes to change the planning scheme by amending the zoning of the land shown outlined on the plans below from General Farming to Public Purpose—Romsey Lancefield Water Board.



The amendment can be inspected at the office of the Shire of Romsey, Main Street, Romsey and the Ministry for Planning and Urban Growth, 477 Collins Street, Melbourne.

Submissions about the amendment must be sent to the Shire of Secretary, Shire of Romsey, Main Street, Romsey by Friday, 7 December 1990.

12263 **P. R. JOHNSTON**
Shire Secretary

Planning and Environment Act 1987
Form 2.1

**NOTICE THAT A PLANNING SCHEME
AMENDMENT HAS BEEN PREPARED AND
IS AVAILABLE FOR INSPECTION**

Tambo Planning Scheme Local Section
Chapter 2—Balance of Shire
Amendment No. L41

Notice is hereby given that the Shire of Tambo in pursuance of its powers under the *Planning and Environment Act 1987*, has prepared a Site Specific Amendment to the Tambo Planning Scheme, Local Section, Chapter 2—Balance of Shire for the following:

A site specific amendment to allow, subject to a Planning Permit, an Agricultural Manufacturing Industry at Crown allotment 77A, Parish of Tambo, Omeo Highway, Mossface, situated on the south-east side of the Omeo Highway commencing approximately 4.5 kilometres south from Bruthen.

A copy of the amendment has been deposited at the Shire Offices, 55 Palmers Road, Lakes Entrance, and at the office of the Ministry for Planning and Urban Growth (Plan Inspection Section), Ground Floor, 477 Collins Street, Melbourne, and will be open for inspection during office hours by any person free of charge.

Any persons affected by the amendment are required to set forth in writing any submissions they may wish to make addressed to the Chief Executive, Shire of Tambo, PO Box 80, Lakes Entrance 3909, by 7 December 1990 and state whether you wish to be heard in respect of your submission.

12249 **W. J. HOBSON**
Chief Executive

The partnership trading as Maule James, Solicitors, from 14th Floor, 575 Bourke Street, Melbourne, was dissolved on 31 October by virtue of the retirement of Peter Moriarty as a partner of that practice. Messrs Stephen Maule, Nigel Preston and Andrew Woolfe continue to practise as Maule James from the same address from 1 November 1990. 12260

PARTNERSHIP ACT 1958

Notice is hereby given that the partnership of Susan Mary Grout and Theresa Ann Krekelberg trading as Rue 22 at 22 Church Street, Traralgon has been dissolved as and from 31 October 1990. Dated 31 October 1990

12239 **S. M. GROUT**
T. M. KREKELBERG

**NOTICE OF DISSOLUTION OF
PARTNERSHIP**

Notice is hereby given that the partnership heretofore subsisting between Garabed Meymarian and Hilary-Marie Meymarian carrying on a retail secondhand clothing, accessories and jewellery business under the business name Mortisha's Costumes from premises at Shop 11, 217-223 Chapel Street, Prahran has been dissolved as from 30 June 1989 as far as concerns Garabed Meymarian.

12241 **TRUMBLE SZANTO BRAHAM**
SINGH'S GOURMET INDIAN FOODS

Take notice that as from 28 October 1990 the partnership between Kamlesh Sondhi formerly of 31 Rosella Street, East Doncaster and now of 140 Beverley Road, Doncaster and Samsheer Singh of 1/130 Alma Road, St. Kilda in relation to the business conducted at 43 Nicholson Street, East Brunswick was dissolved and from that date the said Samsheer Singh will not be responsible for any debts incurred in relation to the said business.

12240 **ROSSI RYAN & RANIGA**

Victoria Government Gazette

Companies (Victoria) Code
Allied Brokers Australia Pty Ltd (In
Liquidation)

**NOTICE OF VOLUNTARY LIQUIDATION
SECTION 392 (2)**

At a general meeting of the abovenamed company, duly convened and held at 158A Welsford Street, Shepparton on 29 October 1990, the following Special Resolution passed:

"That the Company be wound up as Members Voluntary Liquidation and that the assets of the Company may be distributed in whole or in part to the members in specie should the liquidators so desire."

Dated 31 October 1990.

IAN A. NALDER and WILLIAM M. LEE
12264 Joint and Several Liquidators

**SALE AND DISTRICT NO. 2 CO-
OPERATIVE HOUSING SOCIETY LIMITED
(IN LIQUIDATION)**

Take notice that the affairs of the above-named Society are now fully wound up and that in pursuance of section 411 (3) of the Companies (Victoria) Code and of the *Co-operative Housing Societies Act 1958*, a general meeting of the Society will be held at the offices of Clancy Laws & Boyle Pty, 51-53 Desailly Street, Sale at 5.30 p.m. on 11 December 1990 for the purposes of:

- (i) Laying before it an account showing how the winding up has been conducted and the property of the Society disposed of and giving any explanations thereof; and
- (ii) Passing a resolution that the books and papers of the said Society and of the Liquidator relevant to the affairs of the Society be destroyed after a period of twelve months from the date of the meeting.

Dated 1 November 1990

JOHN M. LAWS
12256 Liquidator

Creditors, next of kin and others having claims in respect of the estate of Sydney Noel Heath, late of 70 Truganini Road, Carnegie in the State of Victoria, retired plasterer deceased, (who died on 28 March 1990), are required by the executor Keith Sydney Heath to send particulars to him care of the undersigned by a date not later than two months from the date of publication hereof after which date he will distribute the assets having regard only to the claims of which notice has been received.

LYTTLETONS, solicitors, 51 Marcus Road,
Dingley N/C

G 44 8 November 1990 3431

KEVIN DIGBY SHINNERS, late of Unit 4, 12
Grandview Street, Glenroy, retired deceased

Creditors, next of kin and others having claims in respect of the estate of the abovenamed deceased who died on 5 August 1990 are to send particulars of their claims to the executor Donald McGregor Digby care of the undermentioned solicitors by 11 January 1991, after which date the said executor will distribute the assets having regard only to the claims of which he then has notice.

O'BRIEN & GALANTE, solicitors, 27
Norwood Crescent, Moonee Ponds 12261

Creditors, next of kin and others having claims in respect of the estate of Sidney Joseph Wells formerly of 6 Churchill Avenue, Newtown, Geelong in the State of Victoria but late of Grace McKellar Centre, 45-95 Ballarat Road, North Geelong in the said State, pensioner, deceased who died on 14 September 1990 are required to send particulars of their claims to the executors care of the undermentioned solicitors by 8 January 1991, after which date the executors will distribute the assets having regard only to the claims for which notice has been received.

BORCHARD & MOORE, solicitors of 44
Douglas Street, Noble Park 12262

Creditors, next of kin and others having claims in respect of the estate of Elizabeth May Aickin late of 41 Marnie Street, South Yarra, widow deceased who died on 17 June 1990 are to send particulars of their claims to Elizabeth Wolton Wilkinson, Ian Geoffrey Middleton and Neville Acheson Rogers all in care of 29th Floor, 200 Queen Street, Melbourne by 9 January 1991, after which date they will distribute the assets having regard only to the claims of which they then have notice.

WESTGARTH MIDDLETONS, solicitors,
200 Queen Street, Melbourne 12257

Creditors, next of kin and others having claims in respect of the estate of Netta Newbolt Landfield late of Caulfield House, 509 Kooyong Road, Elsternwick, widow, deceased who died on 3 September 1990 are to send particulars of their claims to The Equity Trustees Executors and Agency Company Limited of 472 Bourke Street, Melbourne by 9 January 1991, after which date they will distribute the assets having regard only to the claims of which they then have notice.

WESTGARTH MIDDLETONS, solicitors,
200 Queen Street, Melbourne 12258

Creditors, next of kin and others having claims in respect of the estate of Mervyn Stanley Black late of 59 Charles Street, Richmond, retired, deceased who died on 20 July 1990 are to send particulars of their claims to Robert Daniel

3432 G 44 8 November 1990

Desmond and Ian Geoffrey Middleton of 29th Floor, 200 Queen Street, Melbourne by 9 January 1991, after which date they will distribute the assets having regard only to the claims of which they then have notice.

WESTGARTH MIDDLETONS, solicitors,
200 Queen Street, Melbourne 12259

THELMA FRANCES JANE SHAW, late of 48 Fidge Crescent, Breakwater, widow

Creditors, next of kin and others having claims in respect of the estate of the deceased, who died on 21 August 1990 are required by the executor named in the will of the deceased to whom probate was granted on 19 October 1990, ANZ Executors & Trustee Company Limited of 94 Queen Street, Melbourne to send particulars to it by 7 January 1991, after which date the executor named in the will of the deceased to whom Probate was granted on 19 October 1990 may convey or distribute the assets having regard only to the claims of which it then has notice. 12224

Creditors, next of kin and others having claims in respect of the estate of Lindsay Charles Finning late of 133 Melbourne Road, Norlane, invalid pensioner deceased who died on 10 April 1990 are to send particulars of their claims to the executors care of the undermentioned solicitors by 7 January 1991, after which date the executors will distribute the assets having regard only to the claims for which notice has been received.

McDONALD, SCOTT & WATERS, solicitors,
220 Parker Street, Castlemaine 12225

MARY CLAIRE FOGARTY, late of 66 Fitzroy Street, Kerang in the State of Victoria, married woman deceased

Creditors, next of kin and all other persons having claims against the estate of the said deceased are required by Arthur George Fogarty of 66 Fitzroy Street, Kerang aforesaid, butcher and Terrence Arthur Fogarty of 208 Westblade Avenue, Kerang aforesaid, S.E.C. employee, the executors of the estate of the said deceased, to send particulars of such claims to them in care of the undermentioned solicitors on or before 7 December 1990, after which date they will distribute the assets having regard only to the claims of which they then have notice.

BASILE & CO., barristers and solicitors, 46 Wellington Street, Kerang 12229

DONALD WENTWORTH, formerly of Unit 2, No. 16 Ferguson Avenue, Ferntree Gully but late of 8 Fewster Drive, Wantirna South in the State of Victoria, retired gentleman, deceased

Creditors, next of kin and others having claims in respect of the estate of the deceased (who died

Victoria Government Gazette

on 27 June 1989) are required by National Mutual Trustees Limited of 419 Collins Street, Melbourne to send particulars of their claims to the said company by 1 January 1991, after which date it will convey or distribute the assets having regard only to the claims of which the company then has notice.

POWER & CO., solicitors of 452 Burwood Highway, Wantirna South 12253

Pursuant to the *Trustee Act* 1958 notice is hereby given that all persons having claims against the estate of Alice Mildred Ramsden late of Flat 25, Regent Court, 209 Toorak Road, South Yarra in the State of Victoria, deceased who died on 19 February 1945 and probate of whose will was granted by the Supreme Court of Victoria in its Probate Jurisdiction on 22 May 1945 to Stanley Radcliffe Lewis and Gerald Robert Hicks are hereby required to send particulars of their claims to Messrs. Lewis & Weir at their office hereunder on or before 19 January 1991, after which Lewis & Weir will proceed to distribute the assets of the deceased amongst the persons entitled thereto having regard only to the claims of which they have had notice; and notice is further given that the said Lewis & Weir will not be liable for the assets so distributed or any part thereof to any person of whose claims they shall not have had notice as aforesaid.

Dated 30 October 1990

LEWIS & WEIR, solicitors of 3 Chesterville Road, Cheltenham 12226

The Supreme Court of the State of Victoria

SALE BY THE SHERIFF

On 13 December 1990 at 2.30 p.m. at the Sheriff's Office, 287 Springvale Road, Glen Waverley (unless process be stayed or satisfied).

All the estate and interest (if any) of Peter Mpemlevanas and Anna Mpemlevanas both of lot 147, No. 53 Haverbrack Drive, Wheelers Hill shown on Certificate of Title as Peter Mpehlevanas and Anna Mpehlevanas as joint proprietors of an estate in fee simple in the land described on Certificate of Title Volume 9236 Folio 695 upon which is erected a brick veneer dwelling known as Lot 147 No. 53 Haverbrack Drive, Wheelers Hill.

Registered Mortgage No. 236974Q and Caveats Nos. N667244C and P.331504W affect the said estate and interest.

Terms—Cash only

12270

H. BUETTNER
Sheriff's Officer

The Supreme Court of the State of Victoria
SALE BY THE SHERIFF

On 13 December 1990 at 2.30 p.m. at the Sheriff's Office, 287 Springvale Road, Glen Waverley (unless process be stayed or satisfied).

All the estate and interest (if any) of Gregory Golebiowski of 30 Gish Court, Glenroy shown on Certificate of Title as Gregori Golebiowski as the registered proprietor of an estate in fee simple in the land described on Certificate of Title Volume 8803 Folio 247 as to one equal undivided half part or share upon which is erected a residential dwelling known as 30 Gish Court, Glenroy.

Registered Mortgage No. R8340M affects the said estate and interest.

Terms—Cash only

H. BUETTNER
Sheriff's Officer

12266

The Supreme Court of the State of Victoria
SALE BY THE SHERIFF

On 13 December 1990 at 2.30 p.m. at the Sheriff's Office, 287 Springvale Road, Glen Waverley (unless process be stayed or satisfied).

All the estate and interest (if any) of Negati Yoldas of 34 Talbot Avenue, Thomastown shown on Certificate of Title as joint proprietor with Ismet Yoldas of an estate in fee simple in the land described on Certificate of Title Volume 8822 Folio 034 upon which is erected a dwelling known as 34 Talbot Avenue, Thomastown.

Registered Mortgage Nos. P037654G and P37843D and Caveat L999670N affect the said estate and interest.

Terms—Cash only

H. BUETTNER
Sheriff's Officer

12267

The County Court of the State of Victoria
SALE BY THE SHERIFF

On 13 December 1990 at 2.30 p.m. at the Sheriff's Office, 287 Springvale Road, Glen Waverley (unless process be stayed or satisfied).

All the estate and interest (if any) of Matilda Christine Lo Presti of 91 Highett Street, Richmond shown on Certificate of Title as Matilda Di Fulvio as the registered proprietor of an estate in fee simple in the land described on Certificate of Title Volume 8209 Folio 492 upon which is erected a two-storey brick dwelling known as 91 Highett Street, Richmond.

Registered Mortgage No. N811773A and Caveat No. B833481V affect the said estate and interest.

Terms—Cash only

H. BUETTNER
Sheriff's Officer

12265

The County Court of the State of Victoria
SALE BY THE SHERIFF

On 13 December 1990 at 2.30 p.m. at the Sheriff's Office, 287 Springvale Road, Glen Waverley (unless process be stayed or satisfied).

All the estate and interest (if any) of Raymond Alvin Vorhauer and Mary Vorhauer both of 139 Little Yarra Road, Gilderoy 3797 shown on Certificate of Title as joint proprietors of an estate in fee simple in the land described on Certificate of Title Volume 9517 Folio 401 upon which is erected a ranch-style brick dwelling known as 139 Little Yarra Road, Gilderoy.

Registered Mortgage Nos. N501826Q and P373109J, also Caveat No. P405010V affect the said estate and interest.

Terms—Cash only

H. BUETTNER
Sheriff's Officer

12269

The Supreme Court of the State of Victoria
SALE BY THE SHERIFF

On 18 December 1990 at 2.00 p.m. at the Police Station at Maryborough (unless process be stayed or satisfied).

All the estate and interest (if any) of Bob Lewis of Red Lion Road, Talbot shown on Certificate of Title as Robert Thomas Lewis as joint proprietor with Christine Moore of an estate in fee simple in the land described on Certificate of Title Volume 9340 Folio 317 upon which is erected a log cabin with a partly constructed new mud brick dwelling. The said property is situated approximately 1592 metres from the corner of McCallum Creek Road on the southern side of Red Lion Road. The said land contains approximately 4.036 hectares.

Registered Mortgage No. P133087J affects the said estate and interest.

Terms—Cash only

H. BUETTNER
Sheriff's Officer

12271

The Supreme Court of the State of Victoria
SALE BY THE SHERIFF

On 13 December 1990 at 2.30 p.m. at the Sheriff's Office, 287 Springvale Road, Glen Waverley (unless process be stayed or satisfied).

All the estate and interest (if any) of Hans Lester and Roselyn Kaye Lester both of 4 Upton Court, Ringwood North, shown on Certificate of Title as Joannes Henricus Antonius Liesker and Roselyn Kaye Liesker as joint proprietors of an estate in fee simple in the land described on Certificate of Title Volume 9223 Folio 448 upon which is erected a dwelling known as 4 Upton Court, Ringwood North.

Registered Mortgage No. M5177F and Caveats P607482G and P939108B and unregistered

3434 G 44 8 November 1990

Caveat R036457U and withdrawal of Caveat
R045164Q affect the said estate and interest.

Terms—Cash only

12268

H. BUETTNER
Sheriff's Officer

Victoria Government Gazette

NOTICE OF MAKING OF
STATUTORY RULES
WHICH ARE NOT YET
AVAILABLE

Notice is given of the making of the following
Statutory Rules:

*Conservation, Forests and
Lands Act 1987*

300/1990 Conservation, Forests and
Lands (Infringement
Notice) Regulations
1990

*Magistrates' Court Act
1989*

301/1990 Magistrates' Court (Fees,
Costs and Charges)
(Amendment)
Regulations 1990

*Religious Successory and
Charitable Trusts Act
1958*

302/1990 Religious Successory and
Charitable Trusts (Fees)
Regulations 1990

*Rooming Houses Act
1990*

303/1990 Rooming Houses
Regulations 1990

Food Act 1984

304/1990 Food Standards
(Commonwealth
Amendment No. 6)
Regulations 1990

Dietitians Act 1981

305/1990 Dietitians (Amendment)
Regulations 1990

Dietitians Act 1981

306/1990 Dietitians (Nutritionists)
Regulations 1990

*Chiropractors and
Osteopaths Act 1983*

307/1990 Chiropractors and
Osteopaths (Members'
Fees) (No. 2)
Regulations 1990

*Dental Technicians Act
1972*

308/1990 Advanced Dental
Technicians (Members'
Fees) (No. 2)
Regulations 1990

*Country Fire Authority
Act 1958*

309/1990 Country Fire Authority
(Brigades) Regulations
1990

*Valuation of Land Act
1960*

310/1990 Valuers' Qualification
Board (Fees) Rules
1990

**NOTICE OF MAKING
AND AVAILABILITY OF
STATUTORY RULES**

In pursuance of the provisions of the *Subordinate Legislation Act 1962* and the Regulations made thereunder notice is given of the making and availability of the following Statutory Rules:

Note: The date specified after each Statutory Rule is the date it was first obtainable from—
VGPO Mail and Bulk Order Sales
66-112 Macaulay Rd, North Melbourne, 3051
Tel: 320 0201

	<i>Intellectually Disabled Persons' Services Act 1986</i>	
282/1990	Intellectually Disabled Persons' Services (Fees Amendment) Regulations 1990	
31 October 1990		Code A
	<i>Transport Act 1983</i>	
288/1990	Transport (Consultative Mechanisms) (Consequential Amendments) Regulations 1990	
31 October 1990		Code A
	<i>Transport Act 1983</i>	
289/1990	Transport (Dangerous Goods) (Consequential Amendments) Regulations 1990	
31 October 1990		Code A
	<i>Transport Act 1983</i>	
290/1990	Transport (Timber on Declared Roads) (Consequential Amendments) Regulations 1990	
31 October 1990		Code A
	<i>Transport Act 1983</i>	
292/1990	Transport (Commercial Goods Vehicles) (Consequential Amendments) Regulations 1990	
31 October 1990		Code A

The retail prices and price codes below will apply from 1 October 1990 to the following products: Acts (New, Reissue and Reprint), Statutory Rules (New, Reissue and Reprint), Parliamentary Papers, Bills and Reports, Special and Periodical Gazettes, and Industrial Awards.

Price Code	No. of Pages (Including cover and blank pages)	Price
A	1-16	\$2.50
B	17-32	\$3.75
C	33-48	\$5.00
D	49-96	\$7.50
E	97-144	\$10.00
F	145-192	\$12.00
G	193-240	\$13.50
H	241-288	\$14.50
I	289-352	\$16.00
J	353-416	\$19.00
K	417-480	\$22.00
L	481-544	\$25.00

A set retail price per issue will apply from 1 October 1990 to:

Government Gazette (General)	\$1.50 per issue
Hansard (Weekly)	\$2.50 per issue

Victoria Government Gazette

G 44 8 November 1990 3437

CONTENTS

	Page
Appointments	3411, 3418, 3421
Cemetries—Scale of Fees	3411
Contracts Accepted—Amendments	3407
Government Notices	3393
Melbourne and Metropolitan Board of Works	3395
Notice of Making of Statutory Rules	3435
Orders in Council—	
Acts—Public Service; Cemeteries; Corrections; Crown Land (Reserves); Land; Kew and Heidelberg Lands; Urban Land Authority; Local Government	3409
Police Sale	3404
Private Advertisements	3423
Proclamations	3392
Rural Water Commission	3398
Tenders	3422

A Victorian Government Publication

Published by VGPO
Melbourne Victoria Australia
© State of Victoria 1990

This publication is copyright. No part may be reproduced by any process except in accordance with the provisions of the Copyright Act.

Address all inquiries to the Government Printer for the State of Victoria
PO Box 203 North Melbourne 3051 Victoria Australia
ISSN 0819—5471

L. V. North, Government Printer Melbourne

Counter Sales

Information Victoria Bookshop
318 Lt. Bourke Street Melbourne 3000
Telephone inquiries (03) 651 4100
Fax (03) 651 4111

Mail and Bulk Order Sales

VGPO
PO Box 203 North Melbourne 3051
66—112 Macaulay Road North Melbourne 3051
Telephone inquiries (03) 320 0201

Recommended Retail Price \$1.50