



Victoria Government Gazette

No. G33 Thursday 26 August 1993
By Authority L. V. North, Government Printer Melbourne

GENERAL

Gazette Services

The *Victoria Government Gazette* (VGG) is published by THE LAW PRINTER (PPSV) for the State of Victoria and is produced in three editions.

VGG General is published each Thursday and provides information regarding Acts of Parliament and their effective date of operation; Government notices; requests for tenders; as well as contracts and contracts accepted. Private notices are also published.

VGG Special is published any day when required for urgent or special Government notices. VGG special is made available automatically to subscribers of VGG General.

VGG Periodical is published on Monday when required and includes specialised information eg. Medical, Dental, Pharmacist's Registers, etc.

Government and Outer Budget Sector Agencies Advertising

Publishing Details

The following Guidelines should be forwarded to ensure publication of Government material in the *Victoria Government Gazette*.

- Material submitted to the Executive Council for gazettal will normally be published in the following week's issue.
- Where urgent gazettal is required, contact:
Gerd Gaspar
Gazette Officer
Department of the Premier and Cabinet
1st Floor, 1 Treasury Place
Melbourne 3000
Telephone inquiries (03) 651 5153
Fax No. (03) 651 5147
- Government advertising other than material for the consideration of the Executive Council should be forwarded to the Gazette Office no later than 9.30 a.m. on Tuesday.
- Lengthy or complicated notices should be forwarded several days before publication.
- Proofs will be supplied only when requested or at the direction of the Gazette Officer.
- No additions or amendments to material for publication will be accepted by telephone.
- Outer Budget Sector Agencies are not required to pre-pay.

Advertising Rates and Payment General Gazette

Single column x cm/part cm \$2.65
Double column x cm/part cm \$5.30
Full page \$111.00

Periodical Gazette

Full page \$115.50

Special Gazette

Full page \$233.00.

Private Advertisements

Publishing Details: Send copy to:

VGG Coordinator
Gazette Advertising
THE LAW PRINTER
28 Queensbridge Street, South Melbourne
(PO Box 292 South Melbourne 3205)
DX19, Melbourne
Telephone inquiries (03) 242 4632
Fax No. (03) 242 4630

Advertising Rates and Payment General Gazette

Private Advertisements

- Payment must be received in advance with advertisement details.
30 cents per word—Full page \$180.00
An additional \$3.20 must be included in prepayment if a copy of the gazette is required. Cheques should be made payable to The Law Printer.
These rates apply to advertisements printed on or after 1 January 1993.

Periodical Gazette

Full page \$180.00

Special Gazette

Full page \$360.00

Advertisers should note:

- Signatures (in particular) and proper names must also be in block letters.
- All material should be double spaced.
- Advertisements can be faxed, and a cover sheet should be used, marked to the attention of the Gazette Coordinator. (Private advertisers note: provided credit card details are supplied for payment.)
- Documents not clearly prepared and in the exact format for gazettal will be returned to the sender unpublished.
- Late copy received at THE LAW PRINTER after 11.00 a.m. Monday will be placed in the following issue of VGG, irrespective of any date/s mentioned in the copy (unless otherwise advised).

Copy Deadline

11.00 a.m. Monday

Subscriptions

VGG is available by three subscription services:

General and Special—\$165.00 each year
General, Special and Periodical—\$220.00 each year
Periodical—\$110.00 each year

Subscriptions are payable in advance and accepted for a period of one year. All subscriptions are on a firm basis and refunds for cancellations will not be given.

All payments should be made payable to THE LAW PRINTER.
Subscription inquiries (03) 242 4600
Fax (03) 242 4699

**PRIVATE
ADVERTISEMENTS**

CITY OF BALLAARAT
Council Documents and Information Local Law
Local Law No. 12

Notice is hereby given that the Council of the City of Ballarat at its meeting on 12 August 1993, made Local Law No. 12 pursuant to the provisions of the *Local Government Act 1989*.

The objective and purpose of the Local Law is to protect the confidentiality of certain Council documents and information and to ensure that access to such documents and information is limited to authorised personnel.

The Local Law operates from 18 August 1993.

Copies of the Local Law are available for inspection or purchase at the Town Hall, Sturt Street, Ballarat during office hours.

IAN M. THOMAS
Municipal Clerk

58862

CITY OF BAIRNSDALE

Notice is hereby given that the Council of the City of Bairnsdale proposes to make the following Local Laws:

Local Law No. 2—Environmental Health Local Law

The Local Law is made for the purposes of—

- (a) prohibit the presence of vermin and noxious weeds on land;
- (b) prevent land from becoming unsightly, dangerous or detrimental to the area in which it is located;
- (c) regulate the storage, assembly and dismantling of old or used motor vehicles, machinery or second hand goods;
- (d) regulate the lighting of fires in incinerators and in the open air;
- (e) prevent accidents and illnesses by restricting access to private swimming pools, and requiring these swimming pools to be maintained in a clean and sanitary state;
- (f) regulate camping on private land, Council land and roads;
- (g) regulate the erection, establishment and occupation of temporary dwellings;

- (h) regulate the holding of circuses, carnivals, festivals and like events;
- (i) prevent drains on private land from becoming unsightly or dangerous to health;
- (j) prevent trade premises from becoming offensive, unsanitary or dangerous to health;
- (k) prohibit the deposit of nightsoil on land or in watercourses;
- (l) prohibit the presence of European wasps and European wasp nests on land;
- (m) regulate the keeping of animals (including dogs, cats and horses), poultry and bees;
- (n) regulate activities at the municipal tip;
- (o) regulate the storage and keeping of trade waste;
- (p) regulate the transportation of waste;
- (q) regulate the disposal and collection of household refuse and garbage; and
- (r) regulate the disposal and collection of recyclable material.

Local Law No. 3—Street Management and Protection of Physical Assets Local Law

The purpose of this Local Law is to—

- (a) prevent accidents and damage by regulating the growing of vegetation on land;
- (b) provide for the display of property numbers;
- (c) prohibit the leaving of shopping trolleys in various locations, and provide for the impounding of shopping trolleys found in those locations;
- (d) regulate the placing of signs and goods on roads;
- (e) regulate street trading;
- (f) regulate street collecting;
- (g) regulate the establishment of outdoor eating facilities;
- (h) regulate the distribution of handbills and other materials in various locations;

- (i) provide for the amenity and safety of roads by regulating, the repair of vehicles, and prohibiting the deposit of spoil, on the same;
- (j) prohibit the abandoning of vehicles, and provide for the impounding of abandoned and derelict vehicles;
- (k) regulate the operation and use of motorised vehicles;
- (l) secure the physical assets of Council
- (m) regulate the driving of livestock within the municipal district;
- (n) regulate the grazing of animals on roads;
- (o) provide for and regulate the construction of vehicle crossings; and
- (p) regulate other activities on roads.

A copy of the proposed Local Laws can be obtained from the City of Bairnsdale, Municipal Offices, 273 Main Street, Bairnsdale between 9.00 a.m. and 5.00 p.m. Monday to Friday.

Any person affected by the proposed local laws may make a submission relating to the proposed local laws, in accordance with section 223 of the *Local Government Act 1989*, within fourteen (14) days of the publication of this notice.

Any person requesting to be heard in support of the written submission is entitled to appear before a meeting of the Council (or Committee) either personally or by a person acting on his or her behalf and will be notified of the time and date of the hearing.

A. R. MOORE
47757 Chief Executive Officer

Planning and Environment Act 1987
BENDIGO PLANNING SCHEME
Notice of Amendment to a Planning Scheme
Amendment L39

The City of Bendigo has prepared Amendment L39 to the Bendigo Planning Scheme.

The amendment affects Crown Allotments 10, 11 and part 11, Section 83c, Parish of Sandhurst. It is proposed to rezone this land from Residential to Local Business zone to enable the land to be used and developed for the purpose of supermarket extension and a car park.

The amendment can be inspected at the City of Bendigo, Municipal Offices, Lyttleton Terrace, Bendigo; the Department of Planning and Development, Regional Office, corner Short and Hargreaves Streets, Bendigo; the Department of Planning and Development, Ground Floor, 477 Collins Street, Melbourne and at the Loddon-Campaspe Regional Planning Authority, 261 Hargreaves Street, Bendigo.

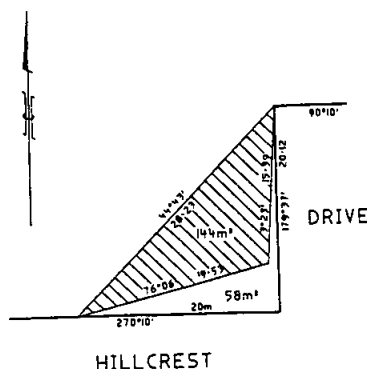
Submissions about the amendment must be sent to the City of Bendigo, PO Box 733, Bendigo 3550 by 16 September 1993.
Dated 11 August 1993

C. C. CAMPBELL
47753 Executive Manager, Development

CITY OF BROADMEADOWS

Discontinuance of Portion of Right-of-Way
Abutting No. 28 Hillcrest Drive, Westmeadows

Pursuant to section 528 (2) of the *Local Government (Miscellaneous) Act 1958*, the Council of the City of Broadmeadows at its Ordinary Meeting of Council held on 5 July 1993, resolved that, as that portion of right-of-way abutting No. 28 Hillcrest Drive, Westmeadows shown hatched on the plan below, is not reasonably required for use as a public highway, it be discontinued and vested in the Council until sold by private treaty.



Dated 12 August 1993

PHILIP SHANAHAN
47754 Chief Executive Officer

2344 G 33 26 August 1993

CITY OF CAMBERWELL

Local Law No. 5

Protection of Roads, Council Land
and Council Assets

Notice is hereby given that the Council of the City of Camberwell pursuant to section 119 of the *Local Government Act* 1989 intends at its ordinary meeting to be held on 27 September 1993, to make a Local Law to be known as the Protection of Roads, Council Land and Council Assets Local Law No. 5.

The purpose of the Local Law are to—

- (1) provide for the peace, order and good government of the municipal district of the City of Camberwell; and
- (2) prohibit, regulate and control activities, events, practices or behaviour which may cause damage to or interference with roads, Council land and Council assets; and
- (3) protect roads, Council land and Council assets:

The general purport of the Local Law is summarised as follows:

1. To prevent damage to or interference with Council land or assets.
2. To recover the cost of reinstatement or repair of any damage done to Council land or assets.
3. To provide for the construction or removal of permanent vehicle crossings, and the recovery of costs.
4. To provide for the provision of temporary vehicle crossings to protect Council assets.
5. To prevent damage to or interference with barriers, lights or other equipment placed on roads or other Council land.
6. To provide for the removal or alteration of structures, plants or other items in easements, when required, to enable works or maintenance to be carried out on drains within the easement by a public authority.
7. To provide for the issue of permits and collection of permit fees, and for the lodging and use of security deposits, in respect to works likely to affect Council land or assets.
8. To provide for penalties upon conviction for an offence against the Local Law.
9. To provide for infringement notices and fixed penalties for offences against the Local Law.

A copy of the proposed Local Law can be obtained from the Municipal Offices, Inglesby Road, Camberwell, during office hours.

Victoria Government Gazette

Any person affected by the proposed Local Law may make a submission to the Council relating to the proposed Local Law in accordance with section 223 of the *Local Government Act* 1989.

Submissions are to be addressed to the undersigned and mailed to the City of Camberwell, Private Bag No. 1, Camberwell 3124, or hand delivered, to reach the Municipal Offices, Inglesby Road, Camberwell, within fourteen (14) days of the publication of this notice.

TONY McILROY

47758

Acting Chief Executive Officer

Planning and Environment Act 1987

COBURG PLANNING SCHEME

Notice of Amendment

Amendment L35

The Coburg City Council has prepared Amendment L35 to the Coburg Planning Scheme.

The amendment affects land at 655 Moreland Road, Coburg (Certificate of Title, Vol. 4689 Fol. 737), former Gas and Fuel Corporation Essendon District Depot.

The amendment proposes to change the Planning Scheme by changing the zoning of the land from Public Purposes Reservation No. 14—Gas and Fuel Corporation to Residential C zone in accordance with the map forming part of this amendment.

The amendment can be inspected at the Municipal Offices, Bell Street, Coburg City Council, and at the Department of Planning and Development, Ground Floor, 477 Collins Street, Melbourne, during office hours.

Submissions about the amendment must be sent to the Coburg City Council, PO Box 113, Coburg, by Friday, 24 September 1993.

Dated 25 August 1993

JOSEPH R. DIFFEN

47759

Chief Executive Officer

CITY OF CHELSEA

Discontinuance of Right of Way

A 15/84—Berry Avenue, Northcliffe Road,
Edithvale

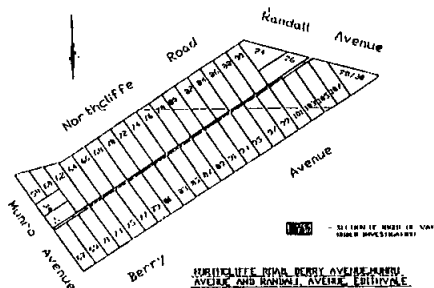
Pursuant to section 528 (2) of the *Local Government (Miscellaneous) Act* 1958, the Council of the City of Chelsea after consultation with Public Authorities and the advertising of its intention and notification of the registered

Victoria Government Gazette

proprietors of the land and owners and occupiers of any land abutting the right of way, resolved at its Ordinary Meeting held on 16 August 1993, Clause G4, Folio 484, Agenda 382 as follows:

- (a) That the right of way between Berry Avenue and Northcliffe Road, Edithvale as shown hatched on the plan hereunder, shall be discontinued upon publication of this resolution in the *Victoria Government Gazette*;
- (b) The land contained in the said right of way shall vest in the City of Chelsea to be retained by it unit sold by private treaty to abutting land owners;
- (c) That notwithstanding the discontinuance, Melbourne Water and City of Chelsea shall have easement rights over all of the subject land for water supply, sewerage and drainage purposes with respect to any drains or pipes laid in or to be laid in or erected in or over such land.

Dated 25 August 1993



58864

MAX BUTLER
Chief Executive Officer

CITY OF ECHUCA

**Notice of Amendment to Local Law No. 5
Environment Local Law**

Notice is hereby given that the Council of the City of Echuca has amended Environment Local Law No. 5

The Local Law has been amended to govern access to public grounds where Council has closed those areas. (Part 6, L6.1 [2] Vehicle Access; and Standard S6[2]).

Amendment to Standard S11 allows for the inclusion of specifications for animal shelters.

G 33 26 August 1993 2345

A copy of the Local Law can be obtained from the City Offices, Heygarth Street, Echuca, during normal office hours.

ROBERT C. WHITE
Chief Executive Officer
47755

CITY OF GREATER GEELONG

Local Law No. 1

Quorums for Meeting of the Council

Notice is hereby given that pursuant to the provisions of the *Local Government Act 1989*, the Council of the City of Greater Geelong, at its meeting of 12 August 1993 made the following Local Laws:

Local Law No. 1—Quorums for Meetings of the Council

The objectives of the Local Law are to—

- (1) Provide a mechanism to facilitate goal government through the Council's formal meeting procedures; and
- (2) Set quorums for ordinary meetings and special meetings of the Council.

A general purpose of the Local Law is as follows:

PART 1—PRELIMINARY

To provide details of the title, objectives, authorising provision, interpretation and date of commencement of the Local Law.

PART 2—QUORUMS

Set requirements for the numbers of Commissioners which constitute a quorum for ordinary and special meetings of the Council. This part also describes processes when:

there is an inability to maintain a quorum;
and

giving notice of an adjourned meeting.

Copies of the Local Law are available for inspection or purchase at any district office.

Location of District Offices are the Bellarine District, Municipal Offices, 40 Collins Street, Drysdale; Geelong District, City Hall, Gheringhap Street, Geelong; South Barwon District, 2 Colac Road, Belmont; Corio District, "Osborne House", Swinburne Street, North Geelong and at the Geelong West District, 10-12 Albert Street, Geelong West.

P. L. WIGNALL
Town Clerk
47756

2346 G 33 26 August 1993

Planning and Environment Act 1987

KNOX PLANNING SCHEME

Notice of Amendment

Amendment L64

The City of Knox has prepared an amendment which proposes to amend the Local Section of the Knox Planning Scheme, as follows:

Land Rezonings

(i) Correct the boundary alignment and zoning of Council's Reserve in Liberty Avenue, Rowville, from Knox Residential Development to Open Space—Public Existing and Proposed.

(ii) Change the zoning of the Boronia Post Office site from Public Purposes to Knox Commercial General.

Ordinance

Change the Lodged Plan number in Clause 130-7 (Knox Residential Development zone), from 147679 to its correct LP.149679.

The amendment can be inspected at the City of Knox, Civic Centre, 511 Burwood Highway, Knoxfield and at the Department of Planning and Development, The Olderfleet Buildings, 477 Collins Street, Melbourne.

Any persons affected by the amendment may make a submission in writing, which must be sent to the City of Knox, Civic Centre, 511 Burwood Highway, Knoxfield, by 27 September 1993.

Dated 19 August 1993

47761

A. P. ATKINS
Town Planner

Planning and Environment Act 1987

KNOX PLANNING SCHEME

Notice of Amendment

Amendment L62

The City of Knox has prepared an amendment which proposes to amend the Local Section of the Knox Planning Scheme, as follows:

Rezonings

(i) Land north of Wellington Road, east of Napoleon Road deviation, Lysterfield, from Knox—Rural A to Residential Development.

(ii) Land south of Wellington Road, generally east of Gearon Avenue, Rowville, from Knox—Rural A to Residential Development.

(iii) Land north-east corner of Napoleon Road/Blackwood Park Road, Lysterfield, from Knox—Rural A to Residential Development.

Victoria Government Gazette

The amendment can be inspected at the City of Knox, Civic Centre, 511 Burwood Highway, Knoxfield and at the Department of Planning and Development, The Olderfleet Buildings, 477 Collins Street, Melbourne.

Any persons affected by the amendment may make a submission in writing, which must be sent to the City of Knox, Civic Centre, 511 Burwood Highway, Knoxfield, by 27 September 1993.

Dated 19 August 1993

47762

A. P. ATKINS
Town Planner

CITY OF MALVERN

Notice of Making Local Law

1/93 Environmental Health (Refuse Collection) and Disposal

Notice is hereby given that the Council of the City of Malvern at its meeting on 5 July 1993, made Local Law 1/93—Environmental Health (Refuse Collection) and Disposal, having the following purposes:

1. Regulate the deposit of refuse and rubbish upon roads and other lands;
2. Provide for the use and control of mobile refuse receptacles for the deposit and collection of household refuse and approved trade wastes;
3. Provide for the collection of other refuse, rubbish and waste by Council;
4. Regulate the placement of waste containers on roads and nature strips;
5. Regulate the storage of trade waste.

The Local Law is generally designed to control and regulate the collection of household refuse and trade waste (excluding building materials) and provide for the placement and use of mobile refuse containers, as directed by Council.

Amongst other things the Local Law provides that a person must not, without first obtaining a permit (for which a fee is payable), and then in accordance with the conditions of the permit, place or allow to be placed any waste container on a road or nature strip. Refuse receptacles of the type issued or approved by Council being either 120 litres or 240 litres in capacity are excluded.

The Local Law provides for offences to be prosecuted either by Court procedure or the issue of infringement notices and sets penalties for breaches of the Local Law.

Victoria Government Gazette

Local Law 1/93 comes into force and effect throughout the municipal district on 27 August 1993.

A copy of the Local Law 1/93 can be obtained from the Council Offices, corner Glenferrie Road and High Street, Malvern during normal office hours.

Dated 26 August 1993

D. A. CARTLEDGE
Town Clerk

58880

Planning and Environment Act 1987
WERRIBEE PLANNING SCHEME
Notice of Amendment to a Planning Scheme
Amendment L64

The City of Werribee has prepared Amendment L64 to the Werribee Planning Scheme.

The amendment proposes to rezone approximately 16 hectares of land located on the north west corner of Point Cook and Dunnings Roads, Laverton from Light Industrial to Werribee Urban Development zone.

The rezoning will facilitate the integrated residential development of the subject land, in accordance with an approved Local Structure Plan.

The amendment can be inspected free of charge during office hours at City of Werribee, 45 Princes Highway, Werribee; Department of Planning and Development, Ground Floor, 477 Collins Street, Melbourne.

Submissions about the amendment must be in writing and sent to the City of Werribee, PO Box 197, Werribee 3030 by 27 September 1993.

ANDY PUSKAS
Director

Planning, Building and Special Projects

CITY OF PRESTON
Road Discontinuance

Pursuant to section 528 (2) of the *Local Government (Miscellaneous) Act 1958*, the Council of the City of Preston at its Ordinary Meeting of Council held on 5 July 1993, resolved that the road shown hatched on the plan below be discontinued and sold by private treaty.

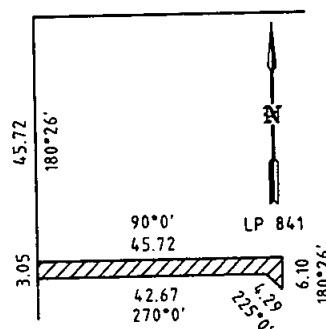
That notwithstanding such discontinuance the Council and Melbourne Water shall continue to have and possess the same right, title, power, authority or interest in or in relation to the whole

G 33 26 August 1993 2347

of the land shown by hatching on the said plan as it has or possessed prior to such discontinuance with respect to or in connection with any drains or pipes laid or erected in on or over such land for the purposes of drainage or sewerage.

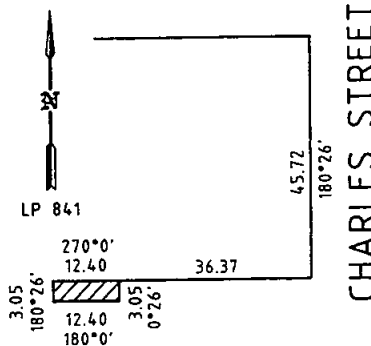
BENAMBRA STREET

CHARLES STREET



BENAMBRA STREET

CHARLES STREET



58861

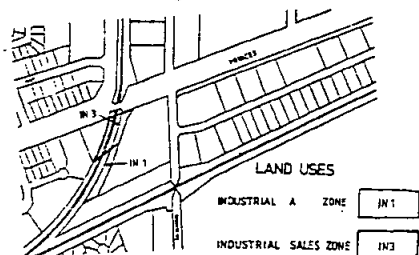
KELVIN SPILLER
General Manager

Planning and Environment Act 1987
TRARALGON (CITY) PLANNING SCHEME
Notice of Amendment
Amendment L47

The City of Traralgon has prepared Amendment L47 to the Traralgon City Planning Scheme.

The amendment affects land at Princes Highway, Traralgon. Part former Traralgon to Heyfield Railway line, Parish of Traralgon, County of Buln Buln.

2348 G 33 26 August 1993



The amendment proposes to change the Planning Scheme by rezoning the land to Part Industrial sales and Part Industrial A zones.

The amendment can be inspected at either the City of Traralgon, Municipal Offices, Kay Street, Traralgon; the office of the Latrobe Regional Commission, 42 Grey Street, Traralgon; the Regional Office of the Department of Planning and Development, 11 Hazelwood Road, Morwell; or at the office of the Department of Planning and Development, The Olderfleet Buildings, 477 Collins Street, Melbourne, and will be open for inspection during office hours by any person free of charge.

Submissions regarding the amendment must be in writing and sent to the Chief Executive Officer, City of Traralgon, Municipal Offices, Kay Street, Traralgon by 27 September 1993. Should you have any enquiries please contact Nick Kearns, Town Planner on telephone (051) 73 1400.

Dated 19 August 1993

58876 JOHN MITCHELL
Chief Executive/Town Clerk

RURAL CITY OF WODONGA
Notice of Intention to amend Local Law
No. 5—Environment

Notice is hereby given in accordance with section 119 of the *Local Government Act* 1989, that the Council of the Rural City of Wodonga at its meeting of 16 August 1993 resolved to amend Local Law No. 5 to allow the introduction of 120 litre mobile garbage disposal units and the type of container used for the temporary storage of putrescible wastes.

Copies of amendment Standard 10 and Standard 11 of Local Law No. 5, are available for inspection at the Municipal Offices, Hovell Street, Wodonga during Office hours.

Any persons affected by the proposed amendment may make a submission to be

Victoria Government Gazette

lodged with Council on or before 4.00 p.m. on Thursday, 9 September 1993 and any submissions received will be considered in accordance with section 223 of the *Local Government Act* 1989.

58859 R. I. O'TOOLE
Chief Executive Officer

Planning and Environment Act 1987
RURAL CITY OF WODONGA

Notice of Amendment to a Planning Scheme

The Rural City of Wodonga has prepared Amendment L48 to the Wodonga Planning Scheme, Local Section, Chapter One.

The amendment is a map and ordinance amendment and affects approximately 18.04 hectares of land located immediately south of McGaffins Road, West Wodonga. The subject land is otherwise known as Part Crown Allotment 13, Section 1 and Part Allotment S LP 219968V in the Parish of Wodonga.

The amendment proposes to change the Planning Scheme Map Nos. 5, 21 and 26 by rezoning the subject land from Rural to Residential 'D' and to incorporate the relevant statutory controls into the Ordinance. The proposal also includes the creation of a Reserve for future water supply storage purposes.

The amendment can be inspected at Rural City of Wodonga, City Offices, Hovell Street, Wodonga; the Regional Office of the Department of Planning and Development, 1 McKoy Street, Wodonga; the Department of Planning and Development, Ground Floor, Olderfleet Building, 477 Collins Street, Melbourne.

Submissions in respect of the amendment must be sent to the Rural City of Wodonga, PO Box 923, Wodonga, by Monday, 27 September 1993.

58860 R. I. O'TOOLE
Chief Executive Officer

SHIRE OF BANNOCKBURN
Local Law No. 5

Siting of Residential Buildings and Outbuildings

Local Law No. 6—Farmland Outbuildings

Notice is given that the Council of the Shire of Bannockburn at its Ordinary Meeting held on 12 August 1993, having received no submissions pursuant to section 223 of the *Local*

Victoria Government Gazette

Government Act 1989 resolved pursuant to section 119 of the Act to pass the following Local Laws:

Local Law No. 5—Siting of Residential Buildings and Outbuildings

Purpose:

- (a) To provide a minimum standard for the size of allotment.
- (b) To provide a minimum standard for siting from boundaries (including streets).
- (c) To enable the construction of Class 1, 2 and 10 buildings on specified allotments.

Local Law No. 6—Farmland Outbuildings Purpose:

- (a) To exempt certain Class 10 buildings constructed on farmland and used for farming purposes from complying with the requirements of the Victoria Building Regulations 1983; and
- (b) To control the locations of such exempted Class 10 buildings on farmland so that the safety of the persons within the municipal district is not adversely affected.

Copies of the Local Laws are available for inspection and purchase during office hours at the Shire Offices, 2 Pope Street, Bannockburn.

E. J. DIXON
Shire Secretary
58858

Planning and Environment Act 1987
SHIRE OF BULLA
Notice of Amendment
Amendment L83

This amendment has been prepared by the Shire of Bulla. It amends the local section of the Bulla Planning Scheme.

The amendment affects a variety of residential allotments extending westward from Bridgewater Road, Craigieburn across to the existing parcels of land to the west of Ramsbury Street, Craigieburn.

The amendment proposes to change the Planning Scheme by rezoning the land from Stream and Floodway to Reserved Living. The land to be rezoned forms part of a natural watercourse and is included in a stream and floodway zone. Due to residential subdivision the provision for drainage and floodway has

G 33 26 August 1993 2349

been met, thus the Stream and Floodway zone is no longer needed.

The amendment can be inspected at the Shire of Bulla, Municipal Offices, 36 Macedon Street, Sunbury or at the Department of Planning and Development, 477 Collins Street, Melbourne.

Submissions about the amendment must be sent to the Chief Executive Officer, Shire of Bulla, PO Box 42, Sunbury 3429, by 27 September 1993.

JOHN W. WATSON
Chief Executive Officer
47763

Planning and Environment Act 1987
BUNGAREE PLANNING SCHEME
Notice of Amendment to a Planning Scheme
Amendment L24

The Bungaree Shire Council has prepared Amendment L24 to the Bungaree Planning Scheme.

The amendment affects land in the Invermay Region—the area affected is delineated on a plan which is proposed to be included as an insert on Planning Scheme Map No. 9A.

The amendment proposes to change the Planning Scheme Ordinance by introducing new controls applicable to the Invermay Land Protection Area, being that land delineated on the above-described Insert Plan.

The amendment can be inspected during office hours at the Shire of Bungaree, Shire Offices, Western Highway, Leigh Creek; the Department of Planning and Development, Central Highlands Regional Office, State Government Offices, corner Mair and Doveton Streets, Ballarat and at the Department of Planning and Development, The Oldfleet Buildings, 477 Collins Street, Melbourne.

Submissions about the amendment must be sent to the Shire of Bungaree, Shire Offices, RSD Western Highway, Leigh Creek 3352 by 27 September 1993.

Dated 16 August 1993
47750 S. CORNISH

Planning and Environment Act 1987
CRANBOURNE PLANNING SCHEME
Notice of Amendment
Amendment L90

The Shire of Cranbourne has prepared Amendment L90 to the Cranbourne Planning Scheme.

2350 G 33 26 August 1993

The amendment affects approximately 4.83 hectares of land at Lot 91 LP 2064, 714 Baxter-Tooradin Road and proposes to rezone it from an Intensive Farming zone to a Township Residential zone.

The amendment can be inspected during office hours at the Department of Planning and Development, Ground Floor, The Olderfleet Buildings, 477 Collins Street, Melbourne.

Submissions about the amendment must be sent to the Town Planner, Shire of Cranbourne, PO Box 4, Cranbourne 3977 by 27 September 1993.

47751

SCOTT TAYLOR
Town Planner

Planning and Environment Act 1987
PHILLIP ISLAND PLANNING SCHEME
Notice of Amendment to a Planning Scheme
Amendment L48

The Council of the Shire of Phillip Island has prepared Amendment L48 to the Phillip Island Planning Scheme.

The amendment affects the land at Part Lot 1 LP 18996, 51-53 Forrest Avenue, Newhaven, owned by Newhaven College.

The amendment proposes to change the Planning Scheme by rezoning the subject land from the Residential A zone to the Special Use (3) Educational Establishment zone.

The amendment can be inspected at the Shire of Phillip Island, 91-97 Thompson Avenue, Cowes, Victoria, (PO Box 44) and at the Department of Planning and Development, The Olderfleet Buildings, 477 Collins Street, Melbourne.

Submissions about the amendment must be sent to the Town Planner, Shire of Phillip Island, PO Box 44, Cowes 3922 by 1 October 1993.
Dated 26 August 1993

47760

AROON JOSHI
Town Planner

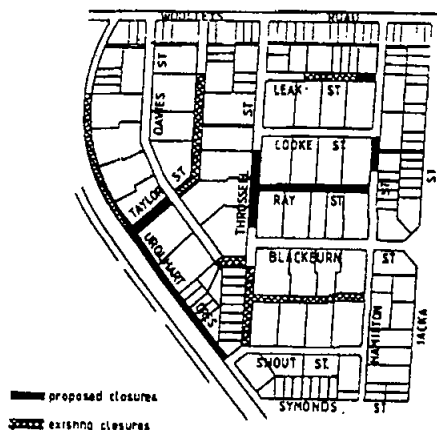
SHIRE OF HASTINGS
Discontinuance Of Roads
Woolleys Estate, Bittern

Pursuant to section 528 (2) (a) of the *Local Government (Miscellaneous) Act 1958*, and after having given notice of the proposed discontinuance in accordance with section 223 of the *Local Government Act 1989*, and considered all written submissions received by

Victoria Government Gazette

it, the Council of the Shire of Hastings resolved at its meeting held on Tuesday, 6 July 1993, that the roads as shown highlighted on the plan herewith will be discontinued subject to:

- (a) Statutory authorities and the President, Councillors and Citizens of the Shire of Hastings continuing to have and possess the same right, title, power, authority or interest in or in relation to the whole of the land shown highlighted on the said plan as it had or possessed prior to such discontinuance with respect to or in connection with any drains or pipes laid or erected in, on or over such land for the purpose of drainage or sewerage and for the supply of water and gas.
- (b) The land in the said road subject to any such right, title, power, authority or interest vesting in the municipality to be retained by it until sold by private treaty.



— proposed closures
--- existing closures

58877

M. KENNEDY
Chief Executive Officer

SHIRE OF KANIVA
Local Law No. 5
Droving of Cattle Local Law

Notice is given that at a meeting of the Council of the Shire of Kaniva held on 17 August 1993, the Council made a Local Law titled "Droving of Cattle Local Law" pursuant to the provisions of the *Local Government Act 1989*.

Victoria Government Gazette

The purpose and general purport of the Local Law is as follows:

- (a) To regulate the droving of cattle through or to a location within the Municipal District.
- (b) To confine the droving of cattle through or to a location in the Municipal District to certain roads within the Municipal District.
- (c) To regulate the droving of cattle within the Municipal District to ensure the safety of members of the public using roads within the Municipal District.
- (d) To prescribe the penalties to be imposed for contravention of certain provisions of the Local Law.

The Local Law will come into operation on 1 September 1993.

A copy of the Local Law can be obtained from the Shire Offices, 25 Baker Street, Kaniva, during office hours.

58879
WAYNE A. WALLIS
Shire Secretary

SHIRE OF ROMSEY
Adoption of Local Laws

Notice is hereby given that at its meeting held on 18 August 1993, Council adopted the following Local Laws pursuant to the provisions of Part 5 of the *Local Government Act 1989*.

- Local Law No. 3—Meeting Procedure
- Local Law No. 4—Environment
- Local Law No. 5—Property Control
- Local Law No. 6—Council Buildings and Reserves

The purpose of these Local Laws is to—

- (a) regulate the proceedings of meetings of Council, Special Committees and Advisory Committees conducted by or on behalf of the Shire of Romsey;
- (b) provide for the peace, order and good government of the Shire of Romsey;
- (c) promote a physical and social environment free of hazards to health in which the residents of the Shire of Romsey can enjoy a quality of life that meets the general expectations of the community;
- (d) prevent and suppress nuisances which may adversely affect the enjoyment of life within the Shire of Romsey or the health, safety and welfare of persons within the Shire of Romsey; and

G 33 26 August 1993 2351

- (e) prohibit, regulate and control activities which may be dangerous, unsafe or detrimental to the quality of life and the environment of the Shire of Romsey.

These Local Laws came into operation on 18 August 1993. A copy of the Local Laws may be inspected at the Shire Offices, 98 Main Street, Romsey during normal office hours, that is 9.00–5.00 p.m. Monday to Friday (except public holidays).

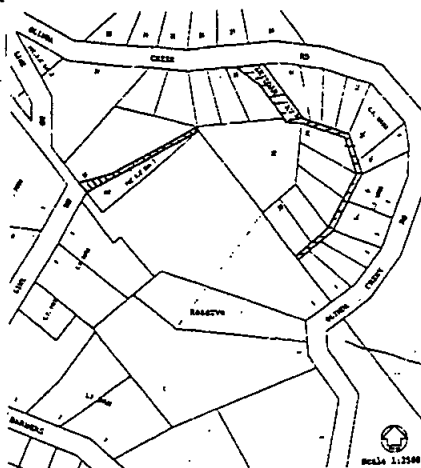
Notice is also given that at the same meeting Council revoked its previous Local Laws including Local Law No. 2 and they ceased to operate on 18 August 1993.

58857
PETER R. JOHNSTON
Shire Secretary

SHIRE OF LILLYDALE

Closure of Laneway off Olinda Creek Road, Kalorama (the Country Place)

The Council of the Shire of Lillydale, at its meeting on 16 August 1993, having complied with the provisions of section 528 (2) of the *Local Government Act 1958*, determined to discontinue the unused roads depicted on the diagram below and to transfer the land by private treaty.



All relevant Authorities shall continue to have and possess same right, title, power, authority or interest in, or in relation to, the whole of this land as they had or possessed prior to the closure.

58863
W. I. HEINE
Chief Executive

2352 G 33 26 August 1993

Land Acquisition and Compensation Act 1986
SHIRE OF ROSEDALE
Notice of Acquisition
Compulsory Acquisition of Interest in Land

The Shire of Rosedale declares that by this notice it acquires the following interest(s) in the land described as Lot/s 1598 and 1599 Edgewater Drive, Golden Beach, described in Certificate of Title Volume 8390 Folio/s 552 and 553 as Lot/s 1598 and 1599 on Plan of Subdivision No. 56681, Parish of Dulungalong.

The interest acquired is the whole of the property.

47764 P. L. TATTERSON
Shire Secretary

Land Acquisition and Compensation Act 1986
SHIRE OF ROSEDALE
Notice of Acquisition
Compulsory Acquisition of Interest in Land

The Shire of Rosedale declares that by this notice it acquires the following interest(s) in the land described as Lot/s 1602 and 1603 Shoreline Drive, Golden Beach, described in Certificate of Title Volume 8390 Folio/s 556 and 557 as Lot/s 1602 and 1603 on Plan of Subdivision No. 56681, Parish of Dulungalong.

The interest acquired is the whole of the property.

47765 P. L. TATTERSON
Shire Secretary

Land Acquisition and Compensation Act 1986
SHIRE OF ROSEDALE
Notice of Acquisition
Compulsory Acquisition of Interest in Land

The Shire of Rosedale declares that by this notice it acquires the following interest(s) in the land described as Lot/s 1571 Shoreline Drive, Golden Beach, described in Certificate of Title Volume 10018 Folio/s 562 as Lot/s 1571 on Plan of Subdivision No. 56681, Parish of Dulungalong.

The interest acquired is the whole of the property.

47766 P. L. TATTERSON
Shire Secretary

Victoria Government Gazette

Land Acquisition and Compensation Act 1986
SHIRE OF ROSEDALE
Notice of Acquisition
Compulsory Acquisition of Interest in Land

The Shire of Rosedale declares that by this notice it acquires the following interest(s) in the land described as Lot/s 1569 Shoreline Drive, Golden Beach, described in Certificate of Title Volume 8390 Folio/s 523 as Lot/s 1569 on Plan of Subdivision No. 56681, Parish of Dulungalong.

The interest acquired is the whole of the property.

47767 P. L. TATTERSON
Shire Secretary

Land Acquisition and Compensation Act 1986
SHIRE OF ROSEDALE
Notice of Acquisition
Compulsory Acquisition of Interest in Land

The Shire of Rosedale declares that by this notice it acquires the following interest(s) in the land described as Lot/s 1609 Edgewater Drive, Golden Beach, described in Certificate of Title Volume 8390 Folio/s 563 as Lot/s 1609 on Plan of Subdivision No. 56681, Parish of Dulungalong.

The interest acquired is the whole of the property.

47768 P. L. TATTERSON
Shire Secretary

Land Acquisition and Compensation Act 1986
SHIRE OF ROSEDALE
Notice of Acquisition
Compulsory Acquisition of Interest in Land

The Shire of Rosedale declares that by this notice it acquires the following interest(s) in the land described as Lot/s 1613 Banksia Court, Golden Beach, described in Certificate of Title Volume 8390 Folio/s 567 as Lot/s 1613 on Plan of Subdivision No. 56681, Parish of Dulungalong.

The interest acquired is the whole of the property.

47769 P. L. TATTERSON
Shire Secretary

Victoria Government Gazette

Land Acquisition and Compensation Act 1986

SHIRE OF ROSEDALE

Notice of Acquisition

Compulsory Acquisition of Interest in Land

The Shire of Rosedale declares that by this notice it acquires the following interest(s) in the land described as Lot/s 1814 Driftwood Avenue, Golden Beach, described in Certificate of Title Volume 8390 Folio/s 769 as Lot/s 1814 on Plan of Subdivision No. 56681, Parish of Dulungalong.

The interest acquired is the whole of the property.

47770

P. L. TATTERSON
Shire Secretary

G 33 26 August 1993 2353

Land Acquisition and Compensation Act 1986

SHIRE OF ROSEDALE

Notice of Acquisition

Compulsory Acquisition of Interest in Land

The Shire of Rosedale declares that by this notice it acquires the following interest(s) in the land described as Lot/s 1580 and 1581 Shoreline Drive, Golden Beach, described in Certificate of Title Volume 8390 Folio/s 534 and 535 as Lot/s 1580 and 1581 on Plan of Subdivision No. 56681, Parish of Dulungalong.

The interest acquired is the whole of the property.

47773

P. L. TATTERSON
Shire Secretary

Land Acquisition and Compensation Act 1986

SHIRE OF ROSEDALE

Notice of Acquisition

Compulsory Acquisition of Interest in Land

The Shire of Rosedale declares that by this notice it acquires the following interest(s) in the land described as Lot/s 1588 Marine Drive, Golden Beach, described in Certificate of Title Volume 8390 Folio/s 542 as Lot/s 1588 on Plan of Subdivision No. 56681, Parish of Dulungalong.

The interest acquired is the whole of the property.

47771

P. L. TATTERSON
Shire Secretary

Land Acquisition and Compensation Act 1986

SHIRE OF ROSEDALE

Notice of Acquisition

Compulsory Acquisition of Interest in Land

The Shire of Rosedale declares that by this notice it acquires the following interest(s) in the land described as Lot/s 1594 and 1595 Edgewater Drive, Golden Beach, described in Certificate of Title Volume 8390 Folio/s 548 and 549 as Lot/s 1594 and 1595 on Plan of Subdivision No. 56681, Parish of Dulungalong.

The interest acquired is the whole of the property.

47774

P. L. TATTERSON
Shire Secretary

Land Acquisition and Compensation Act 1986

SHIRE OF ROSEDALE

Notice of Acquisition

Compulsory Acquisition of Interest in Land

The Shire of Rosedale declares that by this notice it acquires the following interest(s) in the land described as Lot/s 1583 Shoreline Drive, Golden Beach, described in Certificate of Title Volume 8390 Folio/s 537 as Lot/s 1583 on Plan of Subdivision No. 56681, Parish of Dulungalong.

The interest acquired is the whole of the property.

47772

P. L. TATTERSON
Shire Secretary

Land Acquisition and Compensation Act 1986

SHIRE OF ROSEDALE

Notice of Acquisition

Compulsory Acquisition of Interest in Land

The Shire of Rosedale declares that by this notice it acquires the following interest(s) in the land described as Lot/s 1805 and 1806 Golden Beach Drive, Golden Beach, described in Certificate of Title Volume 8390 Folio/s 760 and 761 as Lot/s 1805 and 1806 on Plan of Subdivision No. 56681, Parish of Dulungalong.

The interest acquired is the whole of the property.

47775

P. L. TATTERSON
Shire Secretary

2354 G 33 26 August 1993

Land Acquisition and Compensation Act 1986
SHIRE OF ROSEDALE
Notice of Acquisition
Compulsory Acquisition of Interest in Land

The Shire of Rosedale declares that by this notice it acquires the following interest(s) in the land described as Lot/s 1819 Ti Tree Drive, Golden Beach, described in Certificate of Title Volume 8390 Folio/s 774 as Lot/s 1819 on Plan of Subdivision No. 56681, Parish of Dulungalong.

The interest acquired is the whole of the property.

47776 P. L. TATTERSON
Shire Secretary

Land Acquisition and Compensation Act 1986
SHIRE OF ROSEDALE
Notice of Acquisition
Compulsory Acquisition of Interest in Land

The Shire of Rosedale declares that by this notice it acquires the following interest(s) in the land described as Lot/s 1812 Golden Beach Drive, Golden Beach, described in Certificate of Title Volume 8390 Folio/s 767 as Lot/s 1812 on Plan of Subdivision No. 56681, Parish of Dulungalong.

The interest acquired is the whole of the property.

47777 P. L. TATTERSON
Shire Secretary

Land Acquisition and Compensation Act 1986
SHIRE OF ROSEDALE
Notice of Acquisition
Compulsory Acquisition of Interest in Land

The Shire of Rosedale declares that by this notice it acquires the following interest(s) in the land described as Lot/s 1816 Driftwood Avenue, Golden Beach, described in Certificate of Title Volume 8390 Folio/s 771 as Lot/s 1816 on Plan of Subdivision No. 56681, Parish of Dulungalong.

The interest acquired is the whole of the property.

47778 P. L. TATTERSON
Shire Secretary

Victoria Government Gazette

Land Acquisition and Compensation Act 1986
SHIRE OF ROSEDALE
Notice of Acquisition
Compulsory Acquisition of Interest in Land

The Shire of Rosedale declares that by this notice it acquires the following interest(s) in the land described as Lot/s 1800 Golden Beach Drive, Golden Beach, described in Certificate of Title Volume 8390 Folio/s 755 as Lot/s 1800 on Plan of Subdivision No. 56681, Parish of Dulungalong.

The interest acquired is the whole of the property.

47779 P. L. TATTERSON
Shire Secretary

Land Acquisition and Compensation Act 1986
SHIRE OF ROSEDALE
Notice of Acquisition
Compulsory Acquisition of Interest in Land

The Shire of Rosedale declares that by this notice it acquires the following interest(s) in the land described as Lot/s 1827 Ti Tree Drive, Golden Beach, described in Certificate of Title Volume 8390 Folio/s 782 as Lot/s 1827 on Plan of Subdivision No. 56681, Parish of Dulungalong.

The interest acquired is the whole of the property.

47780 P. L. TATTERSON
Shire Secretary

Land Acquisition and Compensation Act 1986
SHIRE OF ROSEDALE
Notice of Acquisition
Compulsory Acquisition of Interest in Land

The Shire of Rosedale declares that by this notice it acquires the following interest(s) in the land described as Lot/s 1825 Ti Tree Drive, Golden Beach, described in Certificate of Title Volume 8390 Folio/s 780 as Lot/s 1825 on Plan of Subdivision No. 56681, Parish of Dulungalong.

The interest acquired is the whole of the property.

47781 P. L. TATTERSON
Shire Secretary

Victoria Government Gazette

Land Acquisition and Compensation Act 1986

SHIRE OF ROSEDALE

Notice of Acquisition

Compulsory Acquisition of Interest in Land

The Shire of Rosedale declares that by this notice it acquires the following interest(s) in the land described as Lot/s 1803 Golden Beach Drive, Golden Beach, described in Certificate of Title Volume 8390 Folio/s 758 as Lot/s 1803 on Plan of Subdivision No. 56681, Parish of Dulungalong.

The interest acquired is the whole of the property.

47782

P. L. TATTERSON
Shire Secretary

G 33 26 August 1993 2355

Land Acquisition and Compensation Act 1986

SHIRE OF ROSEDALE

Notice of Acquisition

Compulsory Acquisition of Interest in Land

The Shire of Rosedale declares that by this notice it acquires the following interest(s) in the land described as Lot/s 1694 Banksia Avenue, Golden Beach, described in Certificate of Title Volume 8390 Folio/s 649 as Lot/s 1694 on Plan of Subdivision No. 56681, Parish of Dulungalong.

The interest acquired is the whole of the property.

47785

P. L. TATTERSON
Shire Secretary

Land Acquisition and Compensation Act 1986

SHIRE OF ROSEDALE

Notice of Acquisition

Compulsory Acquisition of Interest in Land

The Shire of Rosedale declares that by this notice it acquires the following interest(s) in the land described as Lot/s 1823 Ti Tree Drive, Golden Beach, described in Certificate of Title Volume 8390 Folio/s 778 as Lot/s 1823 on Plan of Subdivision No. 56681, Parish of Dulungalong.

The interest acquired is the whole of the property.

47783

P. L. TATTERSON
Shire Secretary

Land Acquisition and Compensation Act 1986

SHIRE OF ROSEDALE

Notice of Acquisition

Compulsory Acquisition of Interest in Land

The Shire of Rosedale declares that by this notice it acquires the following interest(s) in the land described as Lot/s 1678 Twilight Way, Golden Beach, described in Certificate of Title Volume 8390 Folio/s 633 as Lot/s 1678 on Plan of Subdivision No. 56681, Parish of Dulungalong.

The interest acquired is the whole of the property.

47786

P. L. TATTERSON
Shire Secretary

Land Acquisition and Compensation Act 1986

SHIRE OF ROSEDALE

Notice of Acquisition

Compulsory Acquisition of Interest in Land

The Shire of Rosedale declares that by this notice it acquires the following interest(s) in the land described as Lot/s 1676 Twilight Way, Golden Beach, described in Certificate of Title Volume 10001 Folio/s 587 as Lot/s 1676 on Plan of Subdivision No. 56681, Parish of Dulungalong.

The interest acquired is the whole of the property.

47784

P. L. TATTERSON
Shire Secretary

Land Acquisition and Compensation Act 1986

SHIRE OF ROSEDALE

Notice of Acquisition

Compulsory Acquisition of Interest in Land

The Shire of Rosedale declares that by this notice it acquires the following interest(s) in the land described as Lot/s 1692 Banksia Avenue, Golden Beach, described in Certificate of Title Volume 8390 Folio/s 647 as Lot/s 1692 on Plan of Subdivision No. 56681, Parish of Dulungalong.

The interest acquired is the whole of the property.

47787

P. L. TATTERSON
Shire Secretary

2356 G 33 26 August 1993

Land Acquisition and Compensation Act 1986

SHIRE OF ROSEDALE

Notice of Acquisition

Compulsory Acquisition of Interest in Land

The Shire of Rosedale declares that by this notice it acquires the following interest(s) in the land described as Lot/s 1680 Twilight Way, Golden Beach, described in Certificate of Title Volume 8390 Folio/s 635 as Lot/s 1680 on Plan of Subdivision No. 56681, Parish of Dulungalong.

The interest acquired is the whole of the property.

47788

P. L. TATTERSON
Shire Secretary

Land Acquisition and Compensation Act 1986

SHIRE OF ROSEDALE

Notice of Acquisition

Compulsory Acquisition of Interest in Land

The Shire of Rosedale declares that by this notice it acquires the following interest(s) in the land described as Lot/s 1689 Banksia Avenue, Golden Beach, described in Certificate of Title Volume 8390 Folio/s 644 as Lot/s 1689 on Plan of Subdivision No. 56681, Parish of Dulungalong.

The interest acquired is the whole of the property.

47789

P. L. TATTERSON
Shire Secretary

Land Acquisition and Compensation Act 1986

SHIRE OF ROSEDALE

Notice of Acquisition

Compulsory Acquisition of Interest in Land

The Shire of Rosedale declares that by this notice it acquires the following interest(s) in the land described as Lot/s 1681 Twilight Way, Golden Beach, described in Certificate of Title Volume 8390 Folio/s 636 as Lot/s 1681 on Plan of Subdivision No. 56681, Parish of Dulungalong.

The interest acquired is the whole of the property.

47790

P. L. TATTERSON
Shire Secretary

Victoria Government Gazette

Land Acquisition and Compensation Act 1986

SHIRE OF ROSEDALE

Notice of Acquisition

Compulsory Acquisition of Interest in Land

The Shire of Rosedale declares that by this notice it acquires the following interest(s) in the land described as Lot/s 1829 Ti Tree Drive, Golden Beach, described in Certificate of Title Volume 8390 Folio/s 784 as Lot/s 1829 on Plan of Subdivision No. 56681, Parish of Dulungalong.

The interest acquired is the whole of the property.

47791

P. L. TATTERSON
Shire Secretary

Land Acquisition and Compensation Act 1986

SHIRE OF ROSEDALE

Notice of Acquisition

Compulsory Acquisition of Interest in Land

The Shire of Rosedale declares that by this notice it acquires the following interest(s) in the land described as Lot/s 1648 Anglers Way, Golden Beach, described in Certificate of Title Volume 10062 Folio/s 382 as Lot/s 1648 on Plan of Subdivision No. 56681, Parish of Dulungalong.

The interest acquired is the whole of the property.

47792

P. L. TATTERSON
Shire Secretary

Land Acquisition and Compensation Act 1986

SHIRE OF ROSEDALE

Notice of Acquisition

Compulsory Acquisition of Interest in Land

The Shire of Rosedale declares that by this notice it acquires the following interest(s) in the land described as Lot/s 1646 Anglers Way, Golden Beach, described in Certificate of Title Volume 8390 Folio/s 601 as Lot/s 1646 on Plan of Subdivision No. 56681, Parish of Dulungalong.

The interest acquired is the whole of the property.

47793

P. L. TATTERSON
Shire Secretary

Victoria Government Gazette

Land Acquisition and Compensation Act 1986

SHIRE OF ROSEDALE

Notice of Acquisition

Compulsory Acquisition of Interest in Land

The Shire of Rosedale declares that by this notice it acquires the following interest(s) in the land described as Lot/s 1665 Ti Tree Drive, Golden Beach, described in Certificate of Title Volume 8390 Folio/s 620 as Lot/s 1665 on Plan of Subdivision No. 56681, Parish of Dulungalong.

The interest acquired is the whole of the property.

47794

P. L. TATTERSON
Shire Secretary

G 33 26 August 1993 2357

Land Acquisition and Compensation Act 1986

SHIRE OF ROSEDALE

Notice of Acquisition

Compulsory Acquisition of Interest in Land

The Shire of Rosedale declares that by this notice it acquires the following interest(s) in the land described as Lot/s 1655 Anglers Way, Golden Beach, described in Certificate of Title Volume 8390 Folio/s 610 as Lot/s 1655 on Plan of Subdivision No. 56681, Parish of Dulungalong.

The interest acquired is the whole of the property.

47797

P. L. TATTERSON
Shire Secretary

Land Acquisition and Compensation Act 1986

SHIRE OF ROSEDALE

Notice of Acquisition

Compulsory Acquisition of Interest in Land

The Shire of Rosedale declares that by this notice it acquires the following interest(s) in the land described as Lot/s 1663 Ti Tree Drive, Golden Beach, described in Certificate of Title Volume 8390 Folio/s 618 as Lot/s 1663 on Plan of Subdivision No. 56681, Parish of Dulungalong.

The interest acquired is the whole of the property.

47795

P. L. TATTERSON
Shire Secretary

Land Acquisition and Compensation Act 1986

SHIRE OF ROSEDALE

Notice of Acquisition

Compulsory Acquisition of Interest in Land

The Shire of Rosedale declares that by this notice it acquires the following interest(s) in the land described as Lot/s 1653 Anglers Way, Golden Beach, described in Certificate of Title Volume 8390 Folio/s 608 as Lot/s 1653 on Plan of Subdivision No. 56681, Parish of Dulungalong.

The interest acquired is the whole of the property.

47798

P. L. TATTERSON
Shire Secretary

Land Acquisition and Compensation Act 1986

SHIRE OF ROSEDALE

Notice of Acquisition

Compulsory Acquisition of Interest in Land

The Shire of Rosedale declares that by this notice it acquires the following interest(s) in the land described as Lot/s 1668 and 1669 Twilight Way, Golden Beach, described in Certificate of Title Volume 8390 Folio/s 623 and 624 as Lot/s 1668 and 1669 on Plan of Subdivision No. 56681, Parish of Dulungalong.

The interest acquired is the whole of the property.

47796

P. L. TATTERSON
Shire Secretary

Land Acquisition and Compensation Act 1986

SHIRE OF ROSEDALE

Notice of Acquisition

Compulsory Acquisition of Interest in Land

The Shire of Rosedale declares that by this notice it acquires the following interest(s) in the land described as Lot/s 1626 Edgewater Drive, Golden Beach, described in Certificate of Title Volume 8390 Folio/s 580 as Lot/s 1626 on Plan of Subdivision No. 56681, Parish of Dulungalong.

The interest acquired is the whole of the property.

47799

P. L. TATTERSON
Shire Secretary

2358 G 33 26 August 1993

Land Acquisition and Compensation Act 1986

SHIRE OF ROSEDALE

Notice of Acquisition

Compulsory Acquisition of Interest in Land

The Shire of Rosedale declares that by this notice it acquires the following interest(s) in the land described as Lot/s 1636 Driftwood Avenue, Golden Beach, described in Certificate of Title Volume 8390 Folio/s 591 as Lot/s 1636 on Plan of Subdivision No. 56681, Parish of Dulungalong.

The interest acquired is the whole of the property.

58800 P. L. TATTERSON
Shire Secretary

Land Acquisition and Compensation Act 1986

SHIRE OF ROSEDALE

Notice of Acquisition

Compulsory Acquisition of Interest in Land

The Shire of Rosedale declares that by this notice it acquires the following interest(s) in the land described as Lot/s 1634 Driftwood Avenue, Golden Beach, described in Certificate of Title Volume 8390 Folio/s 589 as Lot/s 1634 on Plan of Subdivision No. 56681, Parish of Dulungalong.

The interest acquired is the whole of the property.

58801 P. L. TATTERSON
Shire Secretary

Land Acquisition and Compensation Act 1986

SHIRE OF ROSEDALE

Notice of Acquisition

Compulsory Acquisition of Interest in Land

The Shire of Rosedale declares that by this notice it acquires the following interest(s) in the land described as Lot/s 1652 Anglers Way, Golden Beach, described in Certificate of Title Volume 8390 Folio/s 607 as Lot/s 1652 on Plan of Subdivision No. 56681, Parish of Dulungalong.

The interest acquired is the whole of the property.

58802 P. L. TATTERSON
Shire Secretary

Victoria Government Gazette

Land Acquisition and Compensation Act 1986

SHIRE OF ROSEDALE

Notice of Acquisition

Compulsory Acquisition of Interest in Land

The Shire of Rosedale declares that by this notice it acquires the following interest(s) in the land described as Lot/s 1651 Anglers Way, Golden Beach, described in Certificate of Title Volume 8390 Folio/s 606 as Lot/s 1651 on Plan of Subdivision No. 56681, Parish of Dulungalong.

The interest acquired is the whole of the property.

58803 P. L. TATTERSON
Shire Secretary

Land Acquisition and Compensation Act 1986

SHIRE OF ROSEDALE

Notice of Acquisition

Compulsory Acquisition of Interest in Land

The Shire of Rosedale declares that by this notice it acquires the following interest(s) in the land described as Lot/s 1616 Banksia Avenue, Golden Beach, described in Certificate of Title Volume 8390 Folio/s 570 as Lot/s 1616 on Plan of Subdivision No. 56681, Parish of Dulungalong.

The interest acquired is the whole of the property.

58804 P. L. TATTERSON
Shire Secretary

Land Acquisition and Compensation Act 1986

SHIRE OF ROSEDALE

Notice of Acquisition

Compulsory Acquisition of Interest in Land

The Shire of Rosedale declares that by this notice it acquires the following interest(s) in the land described as Lot/s 1620 Edgewater Drive, Golden Beach, described in Certificate of Title Volume 8390 Folio/s 574 as Lot/s 1620 on Plan of Subdivision No. 56681, Parish of Dulungalong.

The interest acquired is the whole of the property.

58805 P. L. TATTERSON
Shire Secretary

Victoria Government Gazette

Land Acquisition and Compensation Act 1986

SHIRE OF ROSEDALE

Notice of Acquisition

Compulsory Acquisition of Interest in Land

The Shire of Rosedale declares that by this notice it acquires the following interest(s) in the land described as Lot/s 1559 Shoreline Drive, Golden Beach, described in Certificate of Title Volume 8390 Folio/s 513 as Lot/s 1559 on Plan of Subdivision No. 56681, Parish of Dulungalong.

The interest acquired is the whole of the property.

58806

P. L. TATTERSON
Shire Secretary

G 33 26 August 1993 2359

Land Acquisition and Compensation Act 1986

SHIRE OF ROSEDALE

Notice of Acquisition

Compulsory Acquisition of Interest in Land

The Shire of Rosedale declares that by this notice it acquires the following interest(s) in the land described as Lot/s 1627 Edgewater Drive, Golden Beach, described in Certificate of Title Volume 8390 Folio/s 581 as Lot/s 1627 on Plan of Subdivision No. 56681, Parish of Dulungalong.

The interest acquired is the whole of the property.

58809

P. L. TATTERSON
Shire Secretary

Land Acquisition and Compensation Act 1986

SHIRE OF ROSEDALE

Notice of Acquisition

Compulsory Acquisition of Interest in Land

The Shire of Rosedale declares that by this notice it acquires the following interest(s) in the land described as Lot/s 1622 Edgewater Drive, Golden Beach, described in Certificate of Title Volume 8390 Folio/s 576 as Lot/s 1622 on Plan of Subdivision No. 56681, Parish of Dulungalong.

The interest acquired is the whole of the property.

58807

P. L. TATTERSON
Shire Secretary

Land Acquisition and Compensation Act 1986

SHIRE OF ROSEDALE

Notice of Acquisition

Compulsory Acquisition of Interest in Land

The Shire of Rosedale declares that by this notice it acquires the following interest(s) in the land described as Lot/s 1617 Edgewater Drive, Golden Beach, described in Certificate of Title Volume 8390 Folio/s 571 as Lot/s 1617 on Plan of Subdivision No. 56681, Parish of Dulungalong.

The interest acquired is the whole of the property.

58810

P. L. TATTERSON
Shire Secretary

Land Acquisition and Compensation Act 1986

SHIRE OF ROSEDALE

Notice of Acquisition

Compulsory Acquisition of Interest in Land

The Shire of Rosedale declares that by this notice it acquires the following interest(s) in the land described as Lot/s 1557 Shoreline Drive, Golden Beach, described in Certificate of Title Volume 8390 Folio/s 511 as Lot/s 1557 on Plan of Subdivision No. 56681, Parish of Dulungalong.

The interest acquired is the whole of the property.

58808

P. L. TATTERSON
Shire Secretary

Land Acquisition and Compensation Act 1986

SHIRE OF ROSEDALE

Notice of Acquisition

Compulsory Acquisition of Interest in Land

The Shire of Rosedale declares that by this notice it acquires the following interest(s) in the land described as Lot/s 1832 Banksia Avenue, Golden Beach, described in Certificate of Title Volume 8390 Folio/s 787 as Lot/s 1832 on Plan of Subdivision No. 56681, Parish of Dulungalong.

The interest acquired is the whole of the property.

58811

P. L. TATTERSON
Shire Secretary

2360 G 33 26 August 1993

Land Acquisition and Compensation Act 1986

SHIRE OF ROSEDALE

Notice of Acquisition

Compulsory Acquisition of Interest in Land

The Shire of Rosedale declares that by this notice it acquires the following interest(s) in the land described as Lot/s 1828 Ti Tree Drive, Golden Beach, described in Certificate of Title Volume 8390 Folio/s 783 as Lot/s 1828 on Plan of Subdivision No. 56681, Parish of Dulungalong.

The interest acquired is the whole of the property.

58812 P. L. TATTERSON
Shire Secretary

Victoria Government Gazette

Land Acquisition and Compensation Act 1986

SHIRE OF ROSEDALE

Notice of Acquisition

Compulsory Acquisition of Interest in Land

The Shire of Rosedale declares that by this notice it acquires the following interest(s) in the land described as Lot/s 1824 Ti Tree Drive, Golden Beach, described in Certificate of Title Volume 8390 Folio/s 779 as Lot/s 1824 on Plan of Subdivision No. 56681, Parish of Dulungalong.

The interest acquired is the whole of the property.

58815 P. L. TATTERSON
Shire Secretary

Land Acquisition and Compensation Act 1986

SHIRE OF ROSEDALE

Notice of Acquisition

Compulsory Acquisition of Interest in Land

The Shire of Rosedale declares that by this notice it acquires the following interest(s) in the land described as Lot/s 1802 Golden Beach Drive, Golden Beach, described in Certificate of Title Volume 8390 Folio/s 757 as Lot/s 1802 on Plan of Subdivision No. 56681, Parish of Dulungalong.

The interest acquired is the whole of the property.

58813 P. L. TATTERSON
Shire Secretary

Land Acquisition and Compensation Act 1986

SHIRE OF ROSEDALE

Notice of Acquisition

Compulsory Acquisition of Interest in Land

The Shire of Rosedale declares that by this notice it acquires the following interest(s) in the land described as Lot/s 1807 Golden Beach Drive, Golden Beach, described in Certificate of Title Volume 8390 Folio/s 762 as Lot/s 1807 on Plan of Subdivision No. 56681, Parish of Dulungalong.

The interest acquired is the whole of the property.

58816 P. L. TATTERSON
Shire Secretary

Land Acquisition and Compensation Act 1986

SHIRE OF ROSEDALE

Notice of Acquisition

Compulsory Acquisition of Interest in Land

The Shire of Rosedale declares that by this notice it acquires the following interest(s) in the land described as Lot/s 1804 Golden Beach Drive, Golden Beach, described in Certificate of Title Volume 8390 Folio/s 759 as Lot/s 1804 on Plan of Subdivision No. 56681, Parish of Dulungalong.

The interest acquired is the whole of the property.

58814 P. L. TATTERSON
Shire Secretary

Land Acquisition and Compensation Act 1986

SHIRE OF ROSEDALE

Notice of Acquisition

Compulsory Acquisition of Interest in Land

The Shire of Rosedale declares that by this notice it acquires the following interest(s) in the land described as Lot/s 1808 Golden Beach Drive, Golden Beach, described in Certificate of Title Volume 8390 Folio/s 763 as Lot/s 1808 on Plan of Subdivision No. 56681, Parish of Dulungalong.

The interest acquired is the whole of the property.

58817 P. L. TATTERSON
Shire Secretary

Victoria Government Gazette

Land Acquisition and Compensation Act 1986

SHIRE OF ROSEDALE

Notice of Acquisition

Compulsory Acquisition of Interest in Land

The Shire of Rosedale declares that by this notice it acquires the following interest(s) in the land described as Lot/s 1809 Golden Beach Drive, Golden Beach, described in Certificate of Title Volume 8390 Folio/s 764 as Lot/s 1809 on Plan of Subdivision No. 56681, Parish of Dulungalong.

The interest acquired is the whole of the property.

58818

P. L. TATTERSON
Shire Secretary

G 33 26 August 1993 2361

Land Acquisition and Compensation Act 1986

SHIRE OF ROSEDALE

Notice of Acquisition

Compulsory Acquisition of Interest in Land

The Shire of Rosedale declares that by this notice it acquires the following interest(s) in the land described as Lot/s 1813 Driftwood Avenue, Golden Beach, described in Certificate of Title Volume 8390 Folio/s 768 as Lot/s 1813 on Plan of Subdivision No. 56681, Parish of Dulungalong.

The interest acquired is the whole of the property.

58821

P. L. TATTERSON
Shire Secretary

Land Acquisition and Compensation Act 1986

SHIRE OF ROSEDALE

Notice of Acquisition

Compulsory Acquisition of Interest in Land

The Shire of Rosedale declares that by this notice it acquires the following interest(s) in the land described as Lot/s 1811 Golden Beach Drive, Golden Beach, described in Certificate of Title Volume 8390 Folio/s 766 as Lot/s 1811 on Plan of Subdivision No. 56681, Parish of Dulungalong.

The interest acquired is the whole of the property.

58819

P. L. TATTERSON
Shire Secretary

Land Acquisition and Compensation Act 1986

SHIRE OF ROSEDALE

Notice of Acquisition

Compulsory Acquisition of Interest in Land

The Shire of Rosedale declares that by this notice it acquires the following interest(s) in the land described as Lot/s 1589 and 1590 Edgewater Drive, Golden Beach, described in Certificate of Title Volume 9932 Folio/s 108 and 109 as Lot/s 1589 and 1590 on Plan of Subdivision No. 56681, Parish of Dulungalong.

The interest acquired is the whole of the property.

58822

P. L. TATTERSON
Shire Secretary

Land Acquisition and Compensation Act 1986

SHIRE OF ROSEDALE

Notice of Acquisition

Compulsory Acquisition of Interest in Land

The Shire of Rosedale declares that by this notice it acquires the following interest(s) in the land described as Lot/s 1815 Driftwood Avenue, Golden Beach, described in Certificate of Title Volume 8390 Folio/s 770 as Lot/s 1815 on Plan of Subdivision No. 56681, Parish of Dulungalong.

The interest acquired is the whole of the property.

58820

P. L. TATTERSON
Shire Secretary

Land Acquisition and Compensation Act 1986

SHIRE OF ROSEDALE

Notice of Acquisition

Compulsory Acquisition of Interest in Land

The Shire of Rosedale declares that by this notice it acquires the following interest(s) in the land described as Lot/s 1582 Shoreline Drive, Golden Beach, described in Certificate of Title Volume 8390 Folio/s 536 as Lot/s 1582 on Plan of Subdivision No. 56681, Parish of Dulungalong.

The interest acquired is the whole of the property.

58823

P. L. TATTERSON
Shire Secretary

2362 G 33 26 August 1993

Land Acquisition and Compensation Act 1986

SHIRE OF ROSEDALE

Notice of Acquisition

Compulsory Acquisition of Interest in Land

The Shire of Rosedale declares that by this notice it acquires the following interest(s) in the land described as Lot/s 1596 Edgewater Drive, Golden Beach, described in Certificate of Title Volume 8390 Folio/s 550 as Lot/s 1596 on Plan of Subdivision No. 56681, Parish of Dulungalong.

The interest acquired is the whole of the property.

58824 P. L. TATTERSON
Shire Secretary

Land Acquisition and Compensation Act 1986

SHIRE OF ROSEDALE

Notice of Acquisition

Compulsory Acquisition of Interest in Land

The Shire of Rosedale declares that by this notice it acquires the following interest(s) in the land described as Lot/s 1579 Shoreline Drive, Golden Beach, described in Certificate of Title Volume 8390 Folio/s 533 as Lot/s 1579 on Plan of Subdivision No. 56681, Parish of Dulungalong.

The interest acquired is the whole of the property.

58825 P. L. TATTERSON
Shire Secretary

Land Acquisition and Compensation Act 1986

SHIRE OF ROSEDALE

Notice of Acquisition

Compulsory Acquisition of Interest in Land

The Shire of Rosedale declares that by this notice it acquires the following interest(s) in the land described as Lot/s 1597 Edgewater Drive, Golden Beach, described in Certificate of Title Volume 8390 Folio/s 551 as Lot/s 1597 on Plan of Subdivision No. 56681, Parish of Dulungalong.

The interest acquired is the whole of the property.

58826 P. L. TATTERSON
Shire Secretary

Victoria Government Gazette

Land Acquisition and Compensation Act 1986

SHIRE OF ROSEDALE

Notice of Acquisition

Compulsory Acquisition of Interest in Land

The Shire of Rosedale declares that by this notice it acquires the following interest(s) in the land described as Lot/s 1572 Shoreline Drive, Golden Beach, described in Certificate of Title Volume 8390 Folio/s 526 as Lot/s 1572 on Plan of Subdivision No. 56681, Parish of Dulungalong.

The interest acquired is the whole of the property.

58827 P. L. TATTERSON
Shire Secretary

Land Acquisition and Compensation Act 1986

SHIRE OF ROSEDALE

Notice of Acquisition

Compulsory Acquisition of Interest in Land

The Shire of Rosedale declares that by this notice it acquires the following interest(s) in the land described as Lot/s 1570 Shoreline Drive, Golden Beach, described in Certificate of Title Volume 8390 Folio/s 524 as Lot/s 1570 on Plan of Subdivision No. 56681, Parish of Dulungalong.

The interest acquired is the whole of the property.

58828 P. L. TATTERSON
Shire Secretary

Land Acquisition and Compensation Act 1986

SHIRE OF ROSEDALE

Notice of Acquisition

Compulsory Acquisition of Interest in Land

The Shire of Rosedale declares that by this notice it acquires the following interest(s) in the land described as Lot/s 1568 Shoreline Drive, Golden Beach, described in Certificate of Title Volume 8390 Folio/s 522 as Lot/s 1568 on Plan of Subdivision No. 56681, Parish of Dulungalong.

The interest acquired is the whole of the property.

58829 P. L. TATTERSON
Shire Secretary

Victoria Government Gazette

Land Acquisition and Compensation Act 1986

SHIRE OF ROSEDALE

Notice of Acquisition

Compulsory Acquisition of Interest in Land

The Shire of Rosedale declares that by this notice it acquires the following interest(s) in the land described as Lot/s 1607 and 1608 Edgewater Drive, Golden Beach, described in Certificate of Title Volume 8390 Folio/s 561 and 562 as Lot/s 1607 and 1608 on Plan of Subdivision No. 56681, Parish of Dulungalong.

The interest acquired is the whole of the property.

58830 P. L. TATTERSON
Shire Secretary

Land Acquisition and Compensation Act 1986

SHIRE OF ROSEDALE

Notice of Acquisition

Compulsory Acquisition of Interest in Land

The Shire of Rosedale declares that by this notice it acquires the following interest(s) in the land described as Lot/s 1554 Shoreline Drive, Golden Beach, described in Certificate of Title Volume 8390 Folio/s 508 as Lot/s 1554 on Plan of Subdivision No. 56681, Parish of Dulungalong.

The interest acquired is the whole of the property.

58831 P. L. TATTERSON
Shire Secretary

Land Acquisition and Compensation Act 1986

SHIRE OF ROSEDALE

Notice of Acquisition

Compulsory Acquisition of Interest in Land

The Shire of Rosedale declares that by this notice it acquires the following interest(s) in the land described as Lot/s 1553 Shoreline Drive, Golden Beach, described in Certificate of Title Volume 8390 Folio/s 507 as Lot/s 1553 on Plan of Subdivision No. 56681, Parish of Dulungalong.

The interest acquired is the whole of the property.

58832 P. L. TATTERSON
Shire Secretary

G 33 26 August 1993 2363

Land Acquisition and Compensation Act 1986

SHIRE OF ROSEDALE

Notice of Acquisition

Compulsory Acquisition of Interest in Land

The Shire of Rosedale declares that by this notice it acquires the following interest(s) in the land described as Lot/s 1635 Driftwood Avenue, Golden Beach, described in Certificate of Title Volume 8390 Folio/s 590 as Lot/s 1635 on Plan of Subdivision No. 56681, Parish of Dulungalong.

The interest acquired is the whole of the property.

58833 P. L. TATTERSON
Shire Secretary

Land Acquisition and Compensation Act 1986

SHIRE OF ROSEDALE

Notice of Acquisition

Compulsory Acquisition of Interest in Land

The Shire of Rosedale declares that by this notice it acquires the following interest(s) in the land described as Lot/s 1633 Driftwood Avenue, Golden Beach, described in Certificate of Title Volume 8390 Folio/s 588 as Lot/s 1633 on Plan of Subdivision No. 56681, Parish of Dulungalong.

The interest acquired is the whole of the property.

58834 P. L. TATTERSON
Shire Secretary

Land Acquisition and Compensation Act 1986

SHIRE OF ROSEDALE

Notice of Acquisition

Compulsory Acquisition of Interest in Land

The Shire of Rosedale declares that by this notice it acquires the following interest(s) in the land described as Lot/s 1650 Anglers Way, Golden Beach, described in Certificate of Title Volume 8390 Folio/s 605 as Lot/s 1650 on Plan of Subdivision No. 56681, Parish of Dulungalong.

The interest acquired is the whole of the property.

58835 P. L. TATTERSON
Shire Secretary

2364 G 33 26 August 1993

Land Acquisition and Compensation Act 1986
SHIRE OF ROSEDALE
Notice of Acquisition
Compulsory Acquisition of Interest in Land

The Shire of Rosedale declares that by this notice it acquires the following interest(s) in the land described as Lot/s 1649 Anglers Way, Golden Beach, described in Certificate of Title Volume 8390 Folio/s 604 as Lot/s 1649 on Plan of Subdivision No. 56681, Parish of Dulungalong.

The interest acquired is the whole of the property.

58836 P. L. TATTERSON
Shire Secretary

Land Acquisition and Compensation Act 1986
SHIRE OF ROSEDALE
Notice of Acquisition
Compulsory Acquisition of Interest in Land

The Shire of Rosedale declares that by this notice it acquires the following interest(s) in the land described as Lot/s 1647 Anglers Way, Golden Beach, described in Certificate of Title Volume 8390 Folio/s 602 as Lot/s 1647 on Plan of Subdivision No. 56681, Parish of Dulungalong.

The interest acquired is the whole of the property.

58837 P. L. TATTERSON
Shire Secretary

Land Acquisition and Compensation Act 1986
SHIRE OF ROSEDALE
Notice of Acquisition
Compulsory Acquisition of Interest in Land

The Shire of Rosedale declares that by this notice it acquires the following interest(s) in the land described as Lot/s 1645 Anglers Way, Golden Beach, described in Certificate of Title Volume 8390 Folio/s 600 as Lot/s 1645 on Plan of Subdivision No. 56681, Parish of Dulungalong.

The interest acquired is the whole of the property.

58838 P. L. TATTERSON
Shire Secretary

Victoria Government Gazette

Land Acquisition and Compensation Act 1986
SHIRE OF ROSEDALE
Notice of Acquisition
Compulsory Acquisition of Interest in Land

The Shire of Rosedale declares that by this notice it acquires the following interest(s) in the land described as Lot/s 1664 Ti Tree Drive, Golden Beach, described in Certificate of Title Volume 8390 Folio/s 619 as Lot/s 1664 on Plan of Subdivision No. 56681, Parish of Dulungalong.

The interest acquired is the whole of the property.

58839 P. L. TATTERSON
Shire Secretary

Land Acquisition and Compensation Act 1986
SHIRE OF ROSEDALE
Notice of Acquisition
Compulsory Acquisition of Interest in Land

The Shire of Rosedale declares that by this notice it acquires the following interest(s) in the land described as Lot/s 1662 Ti Tree Drive, Golden Beach, described in Certificate of Title Volume 8390 Folio/s 617 as Lot/s 1662 on Plan of Subdivision No. 56681, Parish of Dulungalong.

The interest acquired is the whole of the property.

58840 P. L. TATTERSON
Shire Secretary

Land Acquisition and Compensation Act 1986
SHIRE OF ROSEDALE
Notice of Acquisition
Compulsory Acquisition of Interest in Land

The Shire of Rosedale declares that by this notice it acquires the following interest(s) in the land described as Lot/s 1659 Anglers Way, Golden Beach, described in Certificate of Title Volume 10062 Folio/s 388 as Lot/s 1659 on Plan of Subdivision No. 56681, Parish of Dulungalong.

The interest acquired is the whole of the property.

58841 P. L. TATTERSON
Shire Secretary

Victoria Government Gazette

Land Acquisition and Compensation Act 1986

SHIRE OF ROSEDALE

Notice of Acquisition

Compulsory Acquisition of Interest in Land

The Shire of Rosedale declares that by this notice it acquires the following interest(s) in the land described as Lot/s 1654 Anglers Way, Golden Beach, described in Certificate of Title Volume 8390 Folio/s 609 as Lot/s 1654 on Plan of Subdivision No. 56681, Parish of Dulungalong.

The interest acquired is the whole of the property.

58842

P. L. TATTERSON
Shire Secretary

G 33 26 August 1993 2365

Land Acquisition and Compensation Act 1986

SHIRE OF ROSEDALE

Notice of Acquisition

Compulsory Acquisition of Interest in Land

The Shire of Rosedale declares that by this notice it acquires the following interest(s) in the land described as Lot/s 1693 Banksia Avenue, Golden Beach, described in Certificate of Title Volume 9975 Folio/s 948 as Lot/s 1693 on Plan of Subdivision No. 56681, Parish of Dulungalong.

The interest acquired is the whole of the property.

58845

P. L. TATTERSON
Shire Secretary

Land Acquisition and Compensation Act 1986

SHIRE OF ROSEDALE

Notice of Acquisition

Compulsory Acquisition of Interest in Land

The Shire of Rosedale declares that by this notice it acquires the following interest(s) in the land described as Lot/s 1695 and 1696 Banksia Avenue, Golden Beach, described in Certificate of Title Volume 8390 Folio/s 650 and 651 as Lot/s 1695 and 1696 on Plan of Subdivision No. 56681, Parish of Dulungalong.

The interest acquired is the whole of the property.

58843

P. L. TATTERSON
Shire Secretary

Land Acquisition and Compensation Act 1986

SHIRE OF ROSEDALE

Notice of Acquisition

Compulsory Acquisition of Interest in Land

The Shire of Rosedale declares that by this notice it acquires the following interest(s) in the land described as Lot/s 1677 Twilight Way, Golden Beach, described in Certificate of Title Volume 8390 Folio/s 632 as Lot/s 1677 on Plan of Subdivision No. 56681, Parish of Dulungalong.

The interest acquired is the whole of the property.

58846

P. L. TATTERSON
Shire Secretary

Land Acquisition and Compensation Act 1986

SHIRE OF ROSEDALE

Notice of Acquisition

Compulsory Acquisition of Interest in Land

The Shire of Rosedale declares that by this notice it acquires the following interest(s) in the land described as Lot/s 1675 Twilight Way, Golden Beach, described in Certificate of Title Volume 8390 Folio/s 630 as Lot/s 1675 on Plan of Subdivision No. 56681, Parish of Dulungalong.

The interest acquired is the whole of the property.

58844

P. L. TATTERSON
Shire Secretary

Land Acquisition and Compensation Act 1986

SHIRE OF ROSEDALE

Notice of Acquisition

Compulsory Acquisition of Interest in Land

The Shire of Rosedale declares that by this notice it acquires the following interest(s) in the land described as Lot/s 1691 Banksia Avenue, Golden Beach, described in Certificate of Title Volume 8390 Folio/s 646 as Lot/s 1691 on Plan of Subdivision No. 56681, Parish of Dulungalong.

The interest acquired is the whole of the property.

58847

P. L. TATTERSON
Shire Secretary

2366 G 33 26 August 1993

Land Acquisition and Compensation Act 1986
SHIRE OF ROSEDALE

Notice of Acquisition

Compulsory Acquisition of Interest in Land

The Shire of Rosedale declares that by this notice it acquires the following interest(s) in the land described as Lot/s 1679 Twilight Way, Golden Beach, described in Certificate of Title Volume 8390 Folio/s 634 as Lot/s 1679 on Plan of Subdivision No. 56681, Parish of Dulungalong.

The interest acquired is the whole of the property.

58848 P. L. TATTERSON
Shire Secretary

Land Acquisition and Compensation Act 1986
SHIRE OF ROSEDALE

Notice of Acquisition

Compulsory Acquisition of Interest in Land

The Shire of Rosedale declares that by this notice it acquires the following interest(s) in the land described as Lot/s 1690 Banksia Avenue, Golden Beach, described in Certificate of Title Volume 8390 Folio/s 645 as Lot/s 1690 on Plan of Subdivision No. 56681, Parish of Dulungalong.

The interest acquired is the whole of the property.

58849 P. L. TATTERSON
Shire Secretary

Land Acquisition and Compensation Act 1986
SHIRE OF ROSEDALE

Notice of Acquisition

Compulsory Acquisition of Interest in Land

The Shire of Rosedale declares that by this notice it acquires the following interest(s) in the land described as Lot/s 1830 Banksia Avenue, Golden Beach, described in Certificate of Title Volume 8390 Folio/s 785 as Lot/s 1830 on Plan of Subdivision No. 56681, Parish of Dulungalong.

The interest acquired is the whole of the property.

58850 P. L. TATTERSON
Shire Secretary

Victoria Government Gazette

Land Acquisition and Compensation Act 1986
SHIRE OF ROSEDALE

Notice of Acquisition

Compulsory Acquisition of Interest in Land

The Shire of Rosedale declares that by this notice it acquires the following interest(s) in the land described as Lot/s 1615 Banksia Avenue, Golden Beach, described in Certificate of Title Volume 8390 Folio/s 569 as Lot/s 1615 on Plan of Subdivision No. 56681, Parish of Dulungalong.

The interest acquired is the whole of the property.

58851 P. L. TATTERSON
Shire Secretary

Land Acquisition and Compensation Act 1986
SHIRE OF ROSEDALE

Notice of Acquisition

Compulsory Acquisition of Interest in Land

The Shire of Rosedale declares that by this notice it acquires the following interest(s) in the land described as Lot/s 1621 Edgewater Drive, Golden Beach, described in Certificate of Title Volume 8390 Folio/s 575 as Lot/s 1621 on Plan of Subdivision No. 56681, Parish of Dulungalong.

The interest acquired is the whole of the property.

58852 P. L. TATTERSON
Shire Secretary

Land Acquisition and Compensation Act 1986
SHIRE OF ROSEDALE

Notice of Acquisition

Compulsory Acquisition of Interest in Land

The Shire of Rosedale declares that by this notice it acquires the following interest(s) in the land described as Lot/s 1560 Shoreline Drive, Golden Beach, described in Certificate of Title Volume 8390 Folio/s 514 as Lot/s 1560 on Plan of Subdivision No. 56681, Parish of Dulungalong.

The interest acquired is the whole of the property.

58853 P. L. TATTERSON
Shire Secretary

Victoria Government Gazette

Land Acquisition and Compensation Act 1986

SHIRE OF ROSEDALE

Notice of Acquisition

Compulsory Acquisition of Interest in Land

The Shire of Rosedale declares that by this notice it acquires the following interest(s) in the land described as Lot/s 1623 Edgewater Drive, Golden Beach, described in Certificate of Title Volume 8390 Folio/s 577 as Lot/s 1623 on Plan of Subdivision No. 56681, Parish of Dulungalong.

The interest acquired is the whole of the property.

58854 P. L. TATTERSON
Shire Secretary

Land Acquisition and Compensation Act 1986

SHIRE OF ROSEDALE

Notice of Acquisition

Compulsory Acquisition of Interest in Land

The Shire of Rosedale declares that by this notice it acquires the following interest(s) in the land described as Lot/s 1558 Shoreline Drive, Golden Beach, described in Certificate of Title Volume 8390 Folio/s 512 as Lot/s 1558 on Plan of Subdivision No. 56681, Parish of Dulungalong.

The interest acquired is the whole of the property.

58855 P. L. TATTERSON
Shire Secretary

Land Acquisition and Compensation Act 1986

SHIRE OF ROSEDALE

Notice of Acquisition

Compulsory Acquisition of Interest in Land

The Shire of Rosedale declares that by this notice it acquires the following interest(s) in the land described as Lot/s 1556 Shoreline Drive, Golden Beach, described in Certificate of Title Volume 8390 Folio/s 510 as Lot/s 1556 on Plan of Subdivision No. 56681, Parish of Dulungalong.

The interest acquired is the whole of the property.

58856 P. L. TATTERSON
Shire Secretary

G 33 26 August 1993 2367

SHIRE OF VIOLET TOWN

Local Law No. 5

Notice is hereby given that the Shire of Violet Town at its meeting on 17 August 1993, made Local Law No. 5 Model Itinerant Traders Local Law for the following purposes:

- (a) To provide for the peace, order and good government of the municipal district; and
- (b) To provide opportunities for itinerant traders to sell goods and services within the municipal district; and
- (c) To balance the interests of itinerant traders with the interests of persons (including those who deal with itinerant traders) who may be affected by nuisances, physical or health risk or other adverse effects of their conduct;
- (d) To control activities which may interfere with other persons' enjoyment of public or other places; and
- (e) To provide free and safe access to itinerant traders in a manner which does not compromise the primary need for the safe passage of people, goods and vehicles; and
- (f) To provide safe and efficient management and control of parking adjacent to or in the vicinity of itinerant traders to avoid confusion, disruption, danger or nuisance; and
- (g) To facilitate the monitoring, control and enforcement of health requirements relevant to itinerant traders; and
- (h) To control, manage and regulate itinerant traders within the municipal district.

A copy of the Local Law is available for inspection at the Shire Office, Cowslip Street, Violet Town during office hours.

58881 COLIN J. SMITH
Shire Secretary

Planning and Environment Act 1987

WIMMERA PLANNING SCHEME

Notice of Amendment to a Planning Scheme

Local Section

Amendment L13

The Shire of Wimmera has prepared an amendment to the Wimmera Planning Scheme, Local Section.

2368 G 33 26 August 1993

The amendment affects land at Finlaysons and Ladlows Roads, Kalkee (part Crown Allotments 107, 108 and 109, Parish of Kalkee).

The amendment rezones the land from Rural (General Farming) (RU1) to Reserved Land—Municipal Purposes (PR—MP (RU1)). The amendment also includes "Municipal Purposes" reserve under the Reserved Land provisions of Clause 23.

Council intends to acquire the land for municipal purposes and is required to reserve the land for public use prior to commencing acquisition proceedings under the *Land Acquisition and Compensation Act 1987*.

The amendment can be inspected free of charge during business hours at the following

Victoria Government Gazette

places: Civic Centre, 26 Urquhart Street, Horsham; Department of Planning and Development, Central Highlands/Wimmera Regional Office, corner Mair and Doveton Streets, Ballarat and Department of Planning and Development, The Olderfleet Buildings, 477 Collins Street, Melbourne.

Submissions about the amendment must be sent to the Shire Secretary, Shire of Wimmera, PO Box 481, Horsham 3402, by 27 September 1993.

Dated 24 August 1993

58882

P. BALDWIN
Shire Secretary

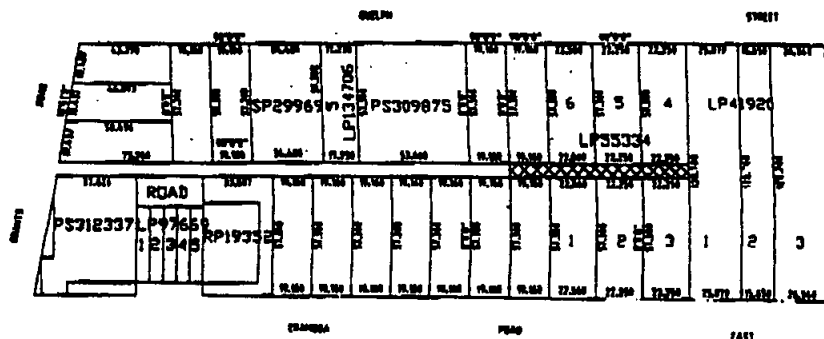
SHIRE OF HASTINGS

Closure of Right-of-Way at rear of Nos 28–34 Eramosa Road East, Somerville

The Council of the Shire of Hastings, having complied with the provisions of section 528 (2) of the *Local Government (Miscellaneous) Act 1958* passed the following resolution at its Council meeting on 3 September 1993.

That Council, being of the opinion that the right-of-way at the rear of Numbers 28–34 Eramosa Road East, Somerville, as indicated on the diagram hereunder, is no longer reasonably required as a road for public use, having consulted with the relevant public statutory authorities, having published and given notice pursuant to section 528 (2) (a) of the *Local Government (Miscellaneous) Act 1958*, hereby resolves and directs that the right-of-way at the rear of Numbers 28–34 Eramosa Road East, Somerville, be discontinued and the land so discontinued shall vest in the municipality and shall be sold by private treaty.

The diagram below illustrates the section of road to be closed.



Notwithstanding such discontinuance Melbourne Water shall continue to have and possess the same right, title, power, authority or interest in or in relation to the whole of the land shown by hatching on the said plan as it had or possessed prior to such discontinuance with respect to or in connection with any pipes laid or erected in, on or over such land for the purposes of sewerage.

The road closure shall become effective upon publication of this resolution in the *Government Gazette*.

58878

M. KENNEDY
Chief Executive Officer

LOCAL LAWS 17 AND 18

Notice is hereby given that the Council of the Shire of Winchelsea at its Ordinary Meeting on 11 August 1993 made and passed Local Laws 17 (Amendment No. 1) and 18 (Amendment No. 1) pursuant to the provisions of Part 5 of the *Local Government Act* 1989 for the following purposes:

Local Law No. 17: Camping
(Amendment No. 1)

The purpose of this Local Law is to amend the Camping Local Law (No. 7) by providing for a new definition of "Authorised Officer"; prohibiting vehicles being left standing on roads and in public places for the purposes of being intentionally slept in; regulate vehicles being left standing on land owned or occupied by another for the purpose of being intentionally slept in; and regulate the intentional and unauthorised sleeping on land owned or occupied by another.

Local Law No. 18: Consumption of Liquor
and Behaviour in Public Places
(Amendment No. 1)

The purpose of this Local Law is to amend the consumption of Liquor and Behaviour in Public Places Local Law (No. 16); provide for a new definition of "Authorised Officer" and extend the hours of prohibition of the consumption of alcohol in public places to twenty-four (24) hours in the Lorne township or any public reserves.

Local Laws are available for inspection or purchase at Council's Municipal Offices at Hesse Street, Winchelsea and Mountjoy Parade, Lorne.

MICHAEL A. COURTNEY
47752 Manager, Administrative Services

MESSRS PETERSEN WESTBROOK &
ASSOCIATES, SOLICITORS, BENDIGO
VICTORIA—ACT 391

I, the Most Reverend Noel Desmond Daly of St Kilians, McCrae Street, Bendigo, head or authorised representative of the denomination known as The Roman Catholic Trusts Corporation for the Diocese of Sandhurst with the consent of the Corporation styled The Roman Catholic Trusts Corporation for the Diocese of Sandhurst of St Kilians, McCrae Street, Bendigo trustees of the land described in the subjoined Statement of Trusts and of Kevin Howarth being the person entitled to minister in

or occupy a building or buildings upon the said land hereby apply to the Governor of the State of Victoria for leave to dispose of the said land by the means and for the purposes mentioned in the said Statement of Trusts and I hereby certify that the said land was temporarily reserved by Order in Council on 20 May 1867 as a site for Roman Catholic Church purposes. That the only trustees of the said land resident in the State of Victoria is the said The Roman Catholic Trusts Corporation for the Diocese of Sandhurst. That the only persons entitled to minister in or occupy any building upon the said land is the Parish Priest for the time being appointed by me in that behalf.

N. D. DALY, Head

We consent to this application.

Dated 16 August 1993

The Common Seal of The Roman Catholic
Trusts Corporation for the Diocese of
Sandhurst was hereto affixed in the
presence of:

N. D. DALY, Chairman

B. M. LONG, Member

D. W. MURPHY, Member

K. HOWARTH, Parish Priest

Statement of Trusts

Description of Land: 4043 square metres,
Parish of El Dorado, County of Bogong being
Crown Allotment 6E, Section 10.

Commencing on Woolshed Road at the northern angle of the site, being a point on the western boundary of allotment 6D, Section 10, Parish of El Dorado, bounded thence by allotment 6D bearing 136°28' 66-99 metres and 226°28' 60-35 metres, by a road bearing 316°28' 66-99 metres, and thence by Woolshed Road bearing 40°28' 60-35 metres to the point of commencement.

Names of Trustees: The Roman Catholic Trusts Corporation for the Diocese of Sandhurst of St Kilians, McCrae Street, Bendigo.

Powers of Disposition: Such powers of disposition including powers of sale, lease or mortgage as are contained in the *Roman Catholic Trusts Act* 1907.

Purposes to which Proceeds of Disposition are to be Applied: To such Roman Catholic Church purposes as shall be approved by the Trustees.

2370 G 33 26 August 1993

Notice is hereby given that the partnership heretofore subsisting between you Janis Rosemary Fraser and myself Bruce John Walter carrying on business as The Soap Box at 105 Gold Reef Mall, Stawell has been dissolved as from 30 June 1993. 58875

In the matter of the Corporations Law; and in the matter of Whitsun Properties Pty Ltd (A.C.N. 010 268 667) (in liquidation)

Notice is hereby given that an extraordinary general meeting of the company duly convened and held on 11 August 1993, the following Special Resolution was passed:

That the company be wound up voluntarily and that Frank Galati be appointed liquidator for the purposes of such winding up.

F. GALATI, liquidator, care of O'Brien & Partners, 537 Malvern Road, Toorak

NOTICE OF APPLICATION TO WIND UP

Notice of application relating to Antler Lodge Pty Limited (ACN 053 213 255). In respect of proceedings commenced on 2 July 1993, application will be made by GIO Workers Compensation (NSW) Limited (ACN 054 523 698) to the Supreme Court of New South Wales, at Sydney, on 26 August 1993 at 11.00 a.m. at the Registrar's Court, Court 7A, Level 7, Supreme Court Building, Queens Square, Sydney, for an order that the company be wound up. Copies of documents filed may be obtained under the rules. Any person intending to appear at the hearing must serve a notice in the prescribed form so as to reach the address below not later than 1.00 p.m. on 25 August 1993

P. E. OOMENS, solicitor of P. W. Turk & Associates, 8th Floor, 7 Macquarie Place, Sydney

NOTICE OF ENTRY INTO POSSESSION IN RESPECT OF PROPERTY OF THIRD CIGBARB PTY LTD ACN 006 083 692

Westpac Banking Corporation ARBN 007 457 141 of 360 Collins Street, Melbourne gives notice that on 15 July 1993 it became

Victoria Government Gazette

controller of the following property of Third Cigbarb Pty Ltd ACN 006 083 692:

The land described in Certificate of Title Volume 8684 Folio 726 at the Victorian Land Titles Office more commonly known as 52 Buchanan Road, Berwick, Victoria, pursuant to Mortgage No. N854820B.

Dated 19 August 1993

DUNHILL MADDEN BUTLER, solicitors, 575 Bourke Street, Melbourne

NOTICE OF ENTRY INTO POSSESSION IN RESPECT OF PROPERTY OF RANTON PTY LTD ACN 006 836 826

Westpac Banking Corporation ARBN 007 457 141 of 360 Collins Street, Melbourne gives notice that on 2 July 1993 it became controller of the following property of Ranton Pty Ltd ACN 006 836 826:

The land described in Certificates of Title Volume 9855 Folios 669 and 678 at the Victorian Land Titles Office more commonly known as Unit 3 and Accessory Unit 12, 6-8 Concord Crescent, Carrum Downs, Victoria, pursuant to Mortgage No. R713915Q.

Dated 19 August 1993

DUNHILL MADDEN BUTLER, solicitors, 575 Bourke Street, Melbourne

NOTICE OF ENTRY INTO POSSESSION IN RESPECT OF PROPERTY OF C. M. KNIGHT BUILDERS PTY LTD ACN 007 135 248

Westpac Savings Bank Limited ACN 000 161 624 of 360 Collins Street, Melbourne gives notice that on 12 August 1993 it became controller of the following property of C. M. Knight Builders Pty Ltd ACN 007 135 248:

The land described in Certificate of Title Volume 9920 Folio 413 at the Victorian Land Titles Office more commonly known as Unit 4, 1 Duff Street, Cranbourne, Victoria, pursuant to Mortgage No. R294222K.

Dated 18 August 1993

DUNHILL MADDEN BUTLER, solicitors, 575 Bourke Street, Melbourne

Unclaimed Moneys Act 1962

Register of Unclaimed Moneys held by the—

| Name of Owner on Books and Last Known Address | Total Amount Due to Owner | Description of Unclaimed Money | Date when Amount first became Payable |
|---|------------------------------------|--------------------------------------|--|
| \$ | | | |
| ROYAL MELBOURNE INSTITUTE OF TECHNOLOGY | | | |
| Derricott, B, 131 Harle St, Abermain, NSW | 22.00 | Refund | 24.10.90 |
| McGowan, K, 32 Roberts Rd, Belmont | 67.00 | " | 28.11.90 |
| Chapman, E M, c/o Ormond College, Parkville | 1 513.75 | Salary | 18.12.91 |
| Wijaya, E, 1/2 Lynhurst St, Richmond | 615.43 | " | " |
| Zegir R, 36 Walerna Rd, Glen Iris | 761.26 | " | 26.11.91 |
| Pitt, T M, 736 Brunswick St, North Fitzroy | 129.40 | " | 23.9.91 |
| Darling, R C, 1/7 Airdrie Rd, Caulfield | 49.64 | " | 4.11.91 |
| Tuck, M J, 2/7 York St, Moonee Ponds | 248.21 | " | 2.12.91 |
| Doukarakos, T, 414 Rathdowne St, North Carlton | 169.06 | " | 15.7.91 |
| Holligan, S, 13 Elphin Gve, Hawthorn | 183.76 | " | 24.6.91 |
| Fu, C, 3/146 Alma Rd, East St Kilda | 243.70 | " | 6.1.92 |
| Ho, S M, 919 Drummond St, Carlton North | 25.31 | " | " |
| Blackburn, J, 1 Orrong Rd, Elsternwick | 12.00 | Refund | 5.2.92 |
| Landrigan, E, 7 Peckville St, North Melbourne | 100.00 | " | 12.2.92 |
| Plant, A, 10 Darling Pl, Glen Iris | 32.00 | " | 26.2.92 |
| Sulimma, G, 188 Normanby Rd, South Melbourne | 257.82 | " | 18.2.92 |
| Cogdon, C, 113 Glenhuntly Rd, Glenhuntly | 120.00 | " | 17.4.91 |
| Sekhon, S, 19 Henry St, Kensington | 72.00 | " | 8.5.91 |
| Brown, D S, 4/604 Nepean Hwy, Carrum | 40.00 | " | 11.12.91 |
| Scalise, F, 9 Morris Dve, Keilor | 50.00 | " | 19.12.91 |
| Duckham, L, PO Box 696, Melton | 45.00 | " | " |
| Yung, Wan A, 4/46 Disraeli St, Kew | 50.00 | " | " |
| Shuk-Yin, F, 6/332 Pascoe Vale Rd, Essendon | 50.00 | " | " |
| Moore, A, 6 Bishops Crt, Laverton | 50.00 | " | " |
| Asquith, S, 47 Lyons St, Port Melbourne | 50.00 | " | 8.1.92 |
| Kwok, J, 6/867 Rathdowne St, Carlton North | 13.00 | " | " |
| Pool, B, 9 Agnes St, Beaumaris | 66.24 | " | " |
| Arvindnath, R, 29 Dods St, Brunswick | 20.00 | " | 15.1.92 |
| Vuong, T L, 12A Albert Ave, Springvale | 18.00 | " | 26.2.92 |
| Clunies-Ross, V, 30 Banoon Rd, Eltham | 15.50 | " | 26.2.92 |
| Long, M L, 99 Argyle Rd, Kew | 80.00 | " | 15.4.92 |
| Richardson, L J, 20 Campbell St, Collingwood | 38.67 | " | " |
| Belcher, B, 15 Alpha St, Balwyn North | 53.00 | " | 13.5.92 |
| Khoo, S, Flat 6/28-30 St Leonards Crt, South Yarra | 54.10 | " | 13.11.92 |
| Olsewski, K, 152 Ellendale Rd, Noble Park | 71.34 | " | 9.10.91 |
| Downward, S, 4/34 Fermanagh St, Camberwell | 94.00 | " | 30.10.91 |
| Tilley, K, 69 Sackville St, Collingwood | 10.00 | " | 8.7.92 |
| Kishore, K, 14/24-26 Dalton St, West Sunshine | 19.33 | " | 16.9.92 |
| Alajbegovic, J, 14/138 Westall Rd, Springvale | 34.97 | Salary | 25.5.92 |
| Dickson, P, c/o Altona Petrochemical Co, Maidstone St, Altona | 85.90 | " | 22.6.92 |
| Lopata, A, 78 McKean St, North Fitzroy | 59.84 | " | 11.5.92 |

FRANCIS MARY FELLOWS, late of 12 Tunaley Parade, Keon Park in the State of Victoria, pensioner, deceased

Creditors, next of kin and others having claims in respect of the estate of the deceased who died on 24 February 1993, are required by the administrator Robert Leonard Vincent Fellows to send particulars to him care of the

solicitors below by a date not later than two months from the date of publication hereof after which date he will distribute the assets having regard only to the claims of which notice has been received.

ARTHUR J. DINES & CO., solicitors, 2A Highlands Road, Thomastown

2372 G 33 26 August 1993

ALEXANDER RAYMOND MACKENZIE,
late of Norris Road, Pakenham, Victoria,
welder, deceased

Creditors, next of kin and others having claims in respect of the estate of the deceased who died on 30 June 1993, are required to send particulars to Trust Company of Australia Limited of 151 Rathdowne Street, Carlton South by 25 October 1993, after which date it may convey or distribute the assets having regard only to the claims of which they then have notice.

Creditors, next of kin and others having claims in respect of the estate of Ida Gwladys Thomson, formerly of 114 Helen Street, Morwell, Victoria, but late of "Mitchell House", 127 Vary Street, Morwell, Victoria, widow, deceased who died on 4 July 1993, are to send their claims to the executor, William James Thomson of 14 Sylvester Avenue, St. Leonards, Victoria, retired gentleman, care of the below mentioned solicitors by 20 October 1993, after which date he will distribute the assets of the deceased having regard only to the claims of which he then has notice.

LITTLETON HACKFORD, solicitors, "Law Chambers", 94 Buckley Street, Morwell

Creditors, next of kin and others having claims in respect of the estate of May Phoebe Mary Caplen late of "Bethany", 440 Camberwell Road, Camberwell, deceased who died on 15 July 1993, are requested to send particulars of their claims to the executor Geoffrey Arthur Park care of the undermentioned solicitors on or before 27 October 1993, after which date they will distribute the assets having regard only to the claims of which they then have notice.

McKEAN & PARK, solicitors, 405 Little Bourke Street, Melbourne 58873

Creditors, next of kin and others having claims in respect of the estate of Nora Florence Law, late of 42 Boneo Road, Rosebud, Victoria, married woman, deceased who died on 1 April 1993 are to send particulars of their claims to The Equity Trustees Executors and Agency Company Limited of 472 Bourke Street, Melbourne by 26 October 1993, after which date it will distribute the assets having regard only to the claims of which it then has notice. 58874

Victoria Government Gazette

Creditors, next of kin and others having claims in respect of the estate of Margaret Eleanor Victoria Bowe, formerly of "The Wolery", Kelso, New South Wales, but late of Bathurst Nursing Home, 61 Boyd Street, Kelso, New South Wales, spinster, deceased who died on 21 November 1992, are to send particulars of their claim to The Equity Trustees Executors and Agency Company Limited of 472 Bourke Street, Melbourne, the executor appointed by the deceased's will by 26 October 1993, after which date the said executor will distribute the assets having regard only to the claims of which it shall then have had notice.

WILLIAM M. SERONG, solicitor, 422 Rathdowne Street, North Carlton

TIMOTHY MAX MASTERS, late of Leitchville, in the State of Victoria, bachelor, deceased

Creditors and next of kin and all other persons having claims against the estate of the said deceased are required by Linda Christine Jones of Queen Mary Avenue, Leitchville in the State of Victoria, aforesaid home duties, the administratrix of the estate of the said deceased to send particulars of such claims to her in care of the undermentioned solicitors on or before 18 October 1993, after which date she will distribute the assets having regard only to the claims to which she then has notice.

BASILE & CO., barristers and solicitors, 1A Cullen Street, Cohuna, Victoria

DOROTHY ANNIE LYDIA PIKE (otherwise known as Dorothy Annie Pike), late of Unit 1, 1 Howship Court, Ringwood East, Victoria, home duties, deceased

Creditors, next of kin and others having claims in respect of the estate of the abovenamed deceased who died on 25 July 1993, are required by the executors Dorothy Coates of Unit 1, 1 Howship Court, Ringwood East, Victoria and John Brincat of 41 Wantirna Road, Ringwood, Victoria, to send particulars thereof to them care of the office of Mr Gordon P. Jacobs of 109 Bedford Road, Ringwood East, within sixty days from the date of publication of this notice after which the executors will distribute the estate having regard only to the claims of which they have notice.

GORDON P. JACOBS, solicitor, 109 Bedford Road, Ringwood East

Victoria Government Gazette

Creditors, next of kin and others having claims in respect of the estate of John Henry Jones, late of 19 Janice Grove, Dandenong in the State of Victoria, pensioner, deceased, who died on 2 March 1993, are required to send particulars of their claims to the Administrators care of the undermentioned solicitors by 25 October 1993, after which date the Administrators will distribute the assets having regard only to the claims for which notice has been received.

BOCHARD & MOORE, solicitors of 44 Douglas Street, Noble Park

EILEEN MONICA DRUMMOND, late of 85 Splatt Street, Swan Hill, Victoria, widow, deceased, who died on 1 June 1993

Creditors, next of kin and all other persons having claims against the estate of the deceased are required by the executors of the will, Beverley Robyn Murray Drummond and Peter George Murray Drummond, to send particulars to them care of the undersigned on or before 13 October 1993, after which date they will distribute the assets having regard only to the claims of which they then have notice.

GARDEN & GREEN, barristers and solicitors, 4 McCallum Street, Swan Hill

Creditors, next of kin and others having claims in respect of the will and estate of Mary Veronica White, late of 300 Bellair Street, Kensington, retired, deceased, who died on 20 July 1993, are requested to send particulars of their claims to the administrator Valerie White, care of the undermentioned solicitor by 28 October 1993, after which date she will distribute the assets having regard only as to the claims of which she then has notice.

JOHN STEWART, solicitor, 290 Racecourse Road, Newmarket

Creditors, next of kin and others having claims in respect of the estate of Reginald Thomas Voegle, late of 21 Sandhurst Road, Eaglehawk, retired teacher, deceased, who died on 25 July 1993, are required to send particulars of their claims to the executors National Mutual Trustees Limited of 46 Queen Street, Bendigo by 31 October 1993, after which date they will distribute the assets having regard only to the claims of which they have notice.

NATIONAL MUTUAL TRUSTEES LIMITED, 46 Queen Street, Bendigo

G 33 26 August 1993 2373

EVA MARTIN, late of Greenways Retirement Village, Frankston-Flinders Road, Seaford, Victoria, widow, deceased

Creditors, next of kin and others having claims in respect of the estate of the deceased, who died on 4 July 1993, are required to send particulars to Trust Company of Australia Limited of 151 Rathdowne Street, Carlton South by 25 October 1993, after which date it may convey or distribute the assets having regard only to the claims of which they then have notice.

Creditors, next of kin and others having claims in respect of the estate of Gary John Harrington, late of 5425 Vernon Walk, Atlanta, Georgia in the United States of America, company director, deceased, who died on 15 November 1991, are required to send particulars of their claims to the undersigned solicitors before 26 October 1993, after which date the assets of the estate will be distributed having regard only to the claims of which they then have notice.

WILDER MOSES BENGASINO, solicitors, Suite 8, 233 Cardigan Street, Carlton

Creditors, next of kin and others having claims in respect of the estate of Ivor Laurie Davidson, late of 51 Hemmings Street, Dandenong, retired (who died on 19 May 1993) are requested to send particulars of their claims in writing to the undermentioned solicitors for the executrix Betty June Rheese by 8 November 1993, after which date the executrix will distribute the assets having regard only to the claims of which she then has notice.

HAMILTON CLARKE & BALKIN, solicitors, 81-83 Nunn Street, Benalla

Creditors, next of kin and others having claims in respect of the estate of William George Alma, late of 21 Sebastopol Street, North Caulfield, magic historian collector and entertainer, deceased, who died on 6 May 1993, are to send particulars of their claims to ANZ Executors & Trustee Company Limited (A.C.N. 006 132 332), 21/530 Collins Street, Melbourne by 3 November 1993, after which date it will distribute the assets having regard only to the claims of which it then has notice.

AITKEN WALKER & STRACHAN, solicitors, 114 William Street, Melbourne

2374 G 33 26 August 1993

NORMA GRACE GARDENER, late of 4 Kyrie Court, Carrum Downs, Victoria, widow, deceased

Creditors, next of kin and others having claims in respect of the estate of the deceased (who died on 30 November 1992) are required by John Frederick Gardener (in the will called John Gardener) of 10 Hansen Court, Ormiston, Queensland and Henry Letson of 16 Shirley Avenue, Seaford, Victoria the legal personal representatives of the estate of the deceased to send particulars of their claims to them care of Henry Letson by 8 November 1993, after which date the personal representatives will convey or distribute the assets having regard only to the claims of which they then have notice.

CORRS CHAMBERS WESTGARTH, solicitors, Bourke Place, 600 Bourke Street, Melbourne 58871

Creditors, next of kin and others having claims in respect to the estate of Doris Isabel May, late of Unit 14, 6 Chauncer Crescent, Canterbury, in the State of Victoria, widow, who died on 23 July 1993, are required to send particulars of such claims to the executor National Mutual Trustees Limited of 65 Southbank Boulevard, South Melbourne by 1 November 1993, after which date the executor will distribute the estate having regard only to the claims of which it then has notice. 58872

MAUD HEALEY, late of 161 Cubitt Street, Richmond, widow, deceased, who died on 14 May 1993

Creditors, next of kin and others having claims in respect of her estate are to send the particulars of their claims to the executor Brian Robert Healey of 358 Maroondah Highway, Croydon, care of Alpess & Associates, solicitors, 511 Mt Dandenong Road, Kilsyth by 22 October 1993, after which date he will distribute the assets having regard only to the claims of which they then have notice.

ALPASS & ASSOCIATES, solicitors, 511 Mt Dandenong Road, Kilsyth

GWENLLIAN RICHARD of 9 Baillieu Street, Point Lonsdale in the State of Victoria, retired deaconess, deceased

Creditors, next of kin and others having claims in respect of the estate of the abovenamed deceased who died on 10 April 1993, are required by the trustees Donald Richard Alasdair Cameron of 8 Balmoral Street,

Victoria Government Gazette

Essendon in the State of Victoria, medical practitioner and John Kilton Andrews of 5 Salmon Avenue, Essendon in the said State, architect, to send particulars of their claims to the trustees care of the undermentioned solicitors by 17 October 1993, after which date the trustees may convey or distribute the assets having regard only to the claims which they then have notice.

INGPEN & BENT, solicitors, 95 Yarra Street, Geelong

Creditors, next of kin and others having claims in respect of the estate of Wayne Alexander Everett, late of 38 Meadowgate Drive, Mooroolbark in the State of Victoria, gentleman, deceased, who died on 6 April 1993, are required to send particulars of claims to the administrator care of the undermentioned solicitors before the expiration of two calendar months after the date of publication of this notice after which date the said administrator will distribute the assets held having regard only to the claims of which they have notice.

EALES AND MACKENZIE, solicitors, 114-116 Main Street, Lilydale

SYLVIA ELSIE MOOG, late of 3 Lothair Street, Pascoe Vale South, widow, deceased

Creditors, next of kin and others having claims in respect of the estate of the abovenamed deceased who died on 10 June 1993, are to send particulars of their claims to the executrix Elaine Hardwick, care of the undermentioned solicitors by 29 October 1993, after which date the said executrix will distribute the assets having regard only to the claims of which she then has notice.

O'BRIEN & GALANTE, solicitors, 27 Norwood Crescent, Moonee Ponds

Creditors, next of kin and others having claims in respect of the estate of Constance Nellie Riddell, late of Margery Cole Hostel, Yallambee Village, Traralgon, widow, deceased, who died on 7 August 1993, are to send particulars of their claims to the executor Donald Arthur Hinson of 54 Hazelwood Road, Traralgon, Victoria, retired gentleman, care of the below mentioned solicitors by 25 October 1993, after which date he will distribute the assets of the deceased having regard only to the claims of which he then has notice.

LITTLETON HACKFORD, solicitors, "Law Chambers", 115-119 Hotham Street, Traralgon

Victoria Government Gazette

After the expiration of fourteen clear days from the publication hereof, application will be made to the Supreme Court of Victoria that probate of the will dated 22 September 1989, of Ella Hazel Violet Simmons, formerly of 25 Hampshire Road, Glen Waverley but at the time of her death of 67 Wave Avenue, Mount Waverley in the State of Victoria, widow and retired school teacher, who died on 23 June 1993, be granted to Rosalind Scott Simmons of 67 Wave Avenue, Mount Waverley in the said State, Library Technician, the executor appointed by the said will by virtue of a Codicil dated 3 April 1991, made to it.

HAYDN COCKAYNE & CO. of 28A Napier Street, South Melbourne, solicitors for the applicant

Creditors, next of kin and others having claims in respect of the estate of Erika Huppert, late of Unit 22, 8 Sydney Street, Prahran East in Victoria, widow, deceased, who died on 6 June 1993 are required to send particulars of their claims to the executor Trust Company of Australia Limited of 151 Rathdowne Street, Carlton South in Victoria by 28 October 1993, after which date the said executor will distribute the assets having regard only to the claims of which the executor then has notice.

ABBOTT STILLMAN & WILSON, solicitors, 575 Bourke Street, Melbourne

The Supreme Court of the State of Victoria
SALE BY THE SHERIFF

On 30 September 1993 at 2.30 p.m. at the Sheriff's Office, 8-20 King Street, Oakleigh (unless process be stayed or satisfied).

All the estate and interest (if any) of Froso Ghionis of 40 McArthur Road, East Ivanhoe as shown on Certificate of Title as Fone Ghionis as joint proprietor with Peter Ghionis of an estate in fee simple in the land described on Certificate of Title Volume 6453 Folio 503 upon which is erected a brick veneer dwelling known as 40 McArthur Road, East Ivanhoe.

Registered Mortgage No. N214921A, Caveat No. P359990G and the Covenant contained in Transfer No. 1805913 affects the said estate and interest.

Terms—Cash only

58867

E. SMIRL
Sheriff's Officer

G 33 26 August 1993 2375

The Supreme Court of the State of Victoria
SALE BY THE SHERIFF

On 30 September 1993 at 2.30 p.m. at the Sheriff's Office, 8-20 King Street, Oakleigh (unless process be stayed or satisfied).

All the estate and interest (if any) of Antonio Gangemi of 140 Wimbledon Avenue, Mt Eliza as registered proprietor of an estate in fee simple in the land described on Certificate of Title Volume 4944 Folio 773 which is vacant land with some fairly extensive brick foundations partially erected on the land known as 82 Maltravers Road, East Ivanhoe.

Registered Mortgage No. P152302K affects the said estate and interest.

Terms—Cash only

58865

E. SMIRL
Sheriff's Officer

The Supreme Court of the State of Victoria
SALE BY THE SHERIFF

On 30 September 1993 at 2.30 p.m. at the Sheriff's Office, 8-20 King Street, Oakleigh (unless process be stayed or satisfied).

All the estate and interest (if any) of Mr Mumby and Mrs L. Mumby of 47 Waverley Park Drive, Cranbourne as shown on Certificate of Title as Leslie Ronald Lang Mumby and Lynda Mumby joint proprietors of an estate in fee simple in the land described on Certificate of Title Volume 9899 Folio 798 upon which is erected a dwelling known as 47 Waverley Park Drive, Cranbourne.

Registered Mortgage No. P762190D, Caveat No. R985433G and Covenant contained in Transfer P762189D affects the said estate and interest.

Terms—Cash only

58866

E. SMIRL
Sheriff's Officer

The Supreme Court of the State of Victoria
SALE BY THE SHERIFF

On 30 September 1993 at 11.00 a.m. at the Sheriff's Office, 1 Feeley Lane, Traralgon (unless process be stayed or satisfied).

All the estate and interest (if any) of Maureen Lilian Helsby of 1 Greenwich Grange, Coronet Bay as registered proprietor of an estate in fee simple in the land described on Certificate of Title Volume 5543 Folio 598 which is vacant land known as Lot 73 Messmate Road,

2376 G 33 26 August 1993

Kilcunda. The property is situated on the south west corner of Hillcrest Avenue and Messmate Road, Kilcunda.

Registered Caveat No. R400057T and S405681A affects the said estate and interest.

Terms—Cash only

58870 E. SMIRL
Sheriff's Officer

The County Court of the State of Victoria
SALE BY THE SHERIFF

On 30 September 1993 at 2.30 p.m. at the Sheriff's Office, 8-20 King Street, Oakleigh (unless process be stayed or satisfied).

All the estate and interest (if any) of Nick Pastras (also known as Nicolaos Pastras and Nicolaous Pastras) and Anna Pastras (also known as Madgalena Pastras and Magdalini Pastras) of 58 Kings Road, St. Albans as shown on Certificate of Title as Nicolaos Pastras and Madgalena Pastras joint proprietors of an estate in fee simple in the land described on Certificate of Title Volume 8394 Folio 722 upon which is erected a double storey brick veneer building used as a bakery shop and private dwelling known as 58 Kings Road, St. Albans.

Registered Mortgage No. H683344 affects the said estate and interest.

Terms—Cash only

58869 E. SMIRL
Sheriff's Officer

The Supreme Court of the State of Victoria
SALE BY THE SHERIFF

On 30 September 1993 at 2.30 p.m. at the Sheriff's Office, 8-20 King Street, Oakleigh (unless process be stayed or satisfied).

All the estate and interest (if any) of Nathan Alan Coles of 49 Lorimer Street, Stony Point as joint proprietor with Wendy Gaye Davies of an estate in fee simple in the land described on Certificate of Title Volume 9586 Folio 439 upon which is erected a residential dwelling known as 49 Lorimer Street, Stony Point.

Registered Mortgage Nos N717654F, P767410P and Unregistered Dealing No. S620215P affects the said estate and interest.

Terms—Cash only

58868 E. SMIRL
Sheriff's Officer

PROCLAMATIONS

Land Act 1958

PROCLAMATION OF ROAD

I, Richard E. McGarvie, Governor of Victoria, acting with the advice of the Executive Council and under section 25 (3) (c) of the *Land Act 1958* proclaim as road the following land:

MUNICIPAL DISTRICT OF THE SHIRE
OF BUNINYONG

DEREEL and LYNCHFIELD—Crown Allotment A 32P, Parish of Dereel and Crown Allotment 12A, Section D, Parish of Lynchfield as shown on Certified Plan No. 109153 lodged in the Central Plan Office—(L3-3731).

Given under my hand and the seal of
Victoria on 24 August 1993.

(L.S.) R. E. MCGARVIE
By His Excellency's Command

M. A. BIRRELL
Minister for Conservation and Environment

Police Regulation (Discipline) Act 1993

PROCLAMATION OF COMMENCEMENT

I, Richard E. McGarvie, Governor of Victoria, acting with the advice of the Executive Council and under section 2 of the *Police Regulation (Discipline) Act 1993*, Act No. 35/1993, fix 26 August 1993 as the day on which all remaining sections of the Act come into operation.

Given under my hand and the seal of
Victoria on 24 August 1993.

(L.S.) R. E. MCGARVIE
By His Excellency's Command

PATRICK McNAMARA
Minister for Police and Emergency Services

GOVERNMENT NOTICES

Department of Finance
SALE OF CROWN LAND BY PUBLIC
AUCTION

Reference No. S311

On Wednesday, 6 October 1993 at 2.00 p.m.
on site.

Location of Land: Watsons Road, Diggers
Rest.

Crown Description: Crown Allotment 4C,
Section 25, Parish of Holden.

Terms of Sale: Deposit 10%, balance 60
days.

Area: 100.3 ha.

Officer Co-ordinating Sale: Mr Dennis
Jurgel, Property Consultant, Asset Management
Division, Department of Finance, 35 Spring
Street, Melbourne 3000.

Selling Agent: L. J. Whorlow & Sons Pty
Ltd, corner Brook and Evans Streets, Sunbury
3429.

IAN SMITH
Minister for Finance

Creditors, next of kin and others having
claims against the estate of any of the
undermentioned deceased persons are required
to send particulars of their claims to the State
Trust Corporation of Victoria, 168 Exhibition
Street, Melbourne Vic. 3000 the personal
representatives, on or before 25 October 1993,
after which date the State Trust Corporation may
convey or distribute the assets having regard
only to the claims of which the State Trust
Corporation then has notice:

Banfield, Eva Edna Jean, late of Jedasa
Private Nursing Home, Lower Plenty Road,
Rosanna, widow, died 18 May 1993.

Bedson, Cecilia Magdalen, late of 55 David
Street, Preston, pensioner, died 18 June 1993.

Boensch, Horst Harry, late of Lot 3 Park
Avenue, Yandoit, gentleman, died 28 April
1993.

Both, Harry, late of 11 Joyhill Avenue, Box
Hill South, retired, died 28 June 1993.

Brown, Ellen Clare, late of 9 High Street,
Sunshine, widow, died 24 February 1993.

Canakis, Nicholas John, late of Unit 2, 5
Childers Street, Mentone, retired, died 6 May
1993.

Carr, John, late of Flat 16, 3 Cowderoy Street,
West St Kilda, retired, died 26 April 1993.

Devereux, John Mark, late of Waikanae, New
Zealand, nurse, died 26 June 1991.

Fraser, Laurence Alexander, also known as
Lawrence Alexander, late of 173 Bluff Road,
Black Rock, retired, died 8 March 1993.

Hodson, Linda Daphne, formerly of 38 Lees
Street, McKinnon, late of Dandenong Private
Nursing Home, 6 Mason Street, Dandenong,
married woman, died 27 September 1992.

Hoey, Ruby Sarah, late of 17 Birdwood
Street, North Essendon, pensioner, died 1
February 1993.

James, David Henry, late of 4 Wilgah Street,
East St. Kilda, pensioner, died 21 June 1993.

Langham, Raymond Arthur, late of 1
Jennings Street, Colac, service pensioner, died
24 May 1993.

Lees, Verna Jannifer, late of 14 Waverley
Road, Chadstone, widow, died 29 June 1993.

Milmanis, Wilma, also known as Wilma
Milmaris, late of Flat 2, 57 Southey Street,
Elwood, pensioner, died 22 February 1993.

Nolan, James Joseph, formerly of 1
Nicholson Street, Nunawading, late of 21
McDonald Street, Morwell, pensioner, died 18
May 1993.

Oxford, Norman David, late of Parkglan
Retirement Community, Cheltenham Road,
Keysborough, pensioner, died 23 May 1993.

Rae, Sydney Gordon, late of Banksia Lodge,
Tarcoola Private Nursing Home, Shepparton,
retired, died 11 June 1993.

Reader, Lilian, late of 150 Dageham Road,
Rush Green, Romford, Essex, England, died 24
July 1989.

Russo, Gaetano, late of 11 Berry Avenue,
Edithvale, retired fruiterer, died 19 July 1990.

Ryan, Mary Eileen, late of 3/42 Richardson
Street, Essendon, home duties, died 11 June
1993.

Sanders, Ernest Francis, late of Jumbuk Road,
Yinnar, pensioner, died 8 May 1993.

Sargent, Florence Mary, late of 15 Claude
Street, Northcote, home duties, died 25 June
1972.

Singh, Asha Kumari, also known as Asha
Kumari Shergill, late of 49 Walsh Street,

Victoria Government Gazette

Broadmeadows, pensioner, died 25 February 1993.

Tipping, Ruth, late of Hallam Private Nursing Home, 47-49 Hallam-Belgrave Road, Hallam, pensioner, died 24 May 1993.

Torpey, John Patrick, formerly of 31 Yorkshire Street, Richmond, late of Stanleigh Lodge Private Nursing Home, 18 Hawthorn Road, Caulfield, retired personnel manager, died 3 December 1992.

Wiseman, Alfred Ernest, also known as Alfred Wiseman, late of Flat 11, 19 Emily Street, Murrumbidgee, gentleman, died 10 September 1989.

Withers, John Victor, late of 9/61 Kooyong Road, Armadale, retired, died 14 March 1993. Dated at Melbourne, 16 August 1993

B. F. CARMODY
Managing Director
State Trust Corporation of Victoria

Employee Relations Act 1992
**NOTICE OF APPLICATION FOR
RECOGNITION AS AN ASSOCIATION**

Notice is hereby given that the Community Child Care has filed an application to be recognised as an association under the *Employee Relations Act 1992* with respect to non-profit children's services in Victoria.

Pursuant to Rule 21 (5) of the Rules of the Commission any recognised association or person interested may on or before 16 September 1993 file in the Commission Administration Office, Level 20, Nauru House, 80 Collins Street, Melbourne an objection to the application.

The objection shall be in, or to the effect of Form C10 prescribed by the Rules.

J. TSOUTSOULIS
Commission Administration Office
Employee Relations Commission of Victoria

Transport Act 1983
ROADS CORPORATION

Commercial Passenger Vehicle Application

Notice is hereby given that the following application will be considered by the Roads Corporation on 29 September 1993.

Notice of any objection to the granting of an application should be forwarded to reach the Regional Manager, Northern Region not later than 23 September 1993.

G 33 26 August 1993 2379

It will not be necessary for interested parties to appear on the date specified, unless advised in writing by the Corporation.

Notification of the date for consideration of applications which are objected to and which require determination by the Road Transport Licensing Tribunal will be published by further notice in this Gazette.

W. J. O'Brien, Harcourt. Application to license one commercial passenger vehicle to be purchased in respect of a 1970 or later model Rolls Royce Sedan with seating capacity for 4 passengers to operate as a special purpose vehicle within a 160 km radius of the Principal Post Office in the City of Bendigo from Lot 2, Belvoir Park Road via Harcourt for the carriage of passengers for any of the following purposes:

Weddings
Parties
Sporting Events
Parades
Promotions
School Socials
Debutante Balls
Theatre Nights
Restaurant Nights
Tours to places of interest throughout the State of Victoria
Any event similar to the above.

Dated 26 August 1993

BRUCE PHILLIPS
Regional Manager
Northern Region

Transport Act 1983
ROADS CORPORATION

Commercial Passenger Vehicle and Tow Truck Applications

Notice is hereby given that the following applications will be considered by the Roads Corporation on 29 September 1993.

Notice of any objection to the granting of an application should be forwarded to reach the Manager, Bairnsdale District Office of the Roads Corporation not later than 23 September 1993.

It will not be necessary for interested parties to appear on the date specified, unless advised in writing by the Corporation.

Notification of the date for consideration of applications which are objected to and which require determination by the Road Transport

2380 G 33 26 August 1993

Licensing Tribunal will be published by further notice in this Gazette.

Basic Power Pty Ltd, Sale. Application to license one commercial passenger vehicle to be purchased in respect of a 1989 or later model Toyota Hiace with seating capacity for 11 passengers to operate a courtesy service for the carriage of guests and patrons between the applicant's Ambassador Hotel/Motel, Princes Highway, Wurruk and the following:

Sale Railway Station

Sale Airport

Sale Interstate Coach Terminals

Traralgon Railway Station.

Basic Power Pty Ltd, Sale. Application to license one commercial passenger vehicle to be purchased in respect of a 1989 or later model Toyota Hiace with seating capacity for 11 passengers to operate for the carriage of guests and patrons of the applicant's Ambassador Hotel/Motel, Princes Highway, Wurruk on various one day tours as follows:

Tour 1—Depart Sale via Princes Highway to Traralgon, Traralgon Creek Road, Balook Road to Balook, Tarra Valley Road to Yarram, return to Sale via Hyland Highway, Gormandale-Stradbroke Road, Rosedale-Stradbroke Road and South Gippsland Highway.

Tour 2—Depart Sale via Princes Highway to Morwell, Strzelecki Highway to Mirboo North, Boolarra South via Boolarra, Grand Ridge Road to Willung South, return to Sale via Highland Highway, Carrabung-Woodside Road, South Gippsland Highway.

Tour 3—Depart Sale via Longford-Lochsport Road to Golden Beach, to Woodside via Seaspray, Giffard and Darriman, Old Sale Road to Tarraville, to Port Albert, Alberton, return to Sale via South Gippsland Highway.

Tour 4—Depart Sale via Princes Highway to Bairnsdale, to Buchan via Bruthen, return via Nowa Nowa, Lakes Entrance, Bairnsdale, Bairnsdale-Dargo Road to Lindenow, Lindenow Road, Princes Highway to Sale.

Tour 5—Depart Sale via Princes Highway to Lakes Entrance, visit Wyanga Winery, Ostrich Farm, Arts and Craft Centre, return to Sale via Nowa Nowa, Bruthen and Bairnsdale.

Tour 6—Depart Sale via Princes Highway to Traralgon, Tyers-Thompson Valley Road to Walhalla, return via Rawson, Erica, Moe, Princes Highway to Sale.

Tour 7—Depart Sale via Maffra-Sale Road, Licola Road to Licola and return, The Crescent

Victoria Government Gazette

and Seymours Lane to Cowwarr Weir, return to Sale via Cowwarr, Sale-Toongabbie Road, Princes Highway.

Tour 8—Depart Sale via Princes Highway to Stratford, to Dargo via Briagolong, Culloden and return to Briagolong, to Sale via Boisdale, Maffra, visiting Wa-de-lok Vineyard.

Tour 9—Depart Sale via Princes Highway to Bairnsdale, Omeo Highway to Omeo and return.

Fares: By agreement with the hirer.

Timetable: As and when required.

Note: Passengers will be picked up/set down from within a 20 km radius of the Sale Post Office.

Dated 26 August 1993

NORM BUTLER
Regional Manager
Eastern Region

Transport Act 1983

ROADS CORPORATION

Commercial Passenger Vehicle and Tow Truck Applications

Notice is hereby given that the following applications will be considered by the Roads Corporation on 29 September 1993.

Notice of any objection to the granting of an application should be forwarded to reach the Section Leader, Vehicle Licensing or any District Office of the Roads Corporation not later than 23 September 1993.

It will not be necessary for interested parties to appear on the date specified, unless advised in writing by the Corporation.

Notification of the date for consideration of applications which are objected to and which require determination by the Road Transport Licensing Tribunal will be published by further notice in this Gazette.

D. C. Bass, Marysville. Application to license one class 2 tow truck to be purchased to operate throughout the State of Victoria from a depot situated at 107 Falls Road, Marysville for the purpose of lifting and carrying of towing damaged or disabled motor cars including the ability to attend the scene of a motor car accident outside the "Controlled Area".

V. Di Nola, Lilydale. Application to license one commercial passenger vehicle in respect of a 1957 Chevrolet sedan with seating capacity for 4 passengers to operate as a special purpose vehicle from 10 Marana Close, Lilydale for the carriage of passengers for wedding parties.

Victoria Government Gazette

A. D. Height, Elwood. Application to license one commercial passenger vehicle to be purchased in respect of a 1968 Bedford bus or similar with seating capacity for 30-36 passengers to operate a restaurant bus for tours to various places situated within a 25 km radius of the Melbourne GPO.

Fares: By agreement with the hirer.

Timetable: As and when required.

Note: (i) Passengers will be picked up/set down within a 25 km radius of the Melbourne GPO; and

(ii) Passengers will be served a meal during the tour.

P. J. Hunter, Box Hill North. Application to license ten commercial passenger vehicles (to be purchased) to operate as non emergency vehicles for the carriage of incapacitated persons between their places of residence and hospitals or any similar institution situated throughout the State of Victoria.

Fares: By agreement with the hirer.

Timetable: As and when required.

P. L. Millard, Bete Bolong. Application to license one commercial passenger vehicle in respect of a 1988 Toyota Commuter bus with seating capacity for 12 passengers to operate a transport service for the carriage of passengers involved in canoeing activities within a 80 km radius of the Orbst Post Office.

Fares: By agreement with the hirer.

Timetable: As and when required.

Note: (i) Passengers will be picked up/set down within a 15 km radius of the Orbst Post Office; and

(ii) a 2 km radius of the Dandenong and Lakes Entrance Post Offices.

C. Rocca, Reservoir. Application to license one commercial passenger vehicle in respect of a 1982 Ferrari coupe with seating capacity for three passengers to operate as a special purpose vehicle from 70 McFadzean Avenue, Reservoir for the carriage of passengers for wedding parties.

Sunbury Taxis Pty Ltd, Sunbury. Application to license one commercial passenger vehicle to be purchased in respect of a 1992-93 Ford LTD sedan with seating capacity for 4 passengers to operate as a metropolitan hire car from 8 Turner Court, Sunbury.

K. E. Wiatrowska, Glenroy. Application to license one commercial passenger vehicle in respect of a 1992 Ford Fairlane sedan with

seating capacity for 4 passengers to operate as a metropolitan hire car from 65 Queens Road, Melbourne.

Dated 26 August 1993

ANDREW BARDEN
Acting Section Leader— Vehicle Licensing

G 33 26 August 1993 2381

Transport Act 1983

ROADS CORPORATION

Commercial Passenger Vehicle and Tow Truck Applications

Notice is hereby given that the following application will be considered by the Roads Corporation on 29 September 1993.

Notice of any objection to the granting of an application should be forwarded to reach the Office Manager, Wodonga or any District Office of the Roads Corporation not later than 23 September 1993.

It will not be necessary for interested parties to appear on the date specified, unless advised in writing by the Corporation.

Notification of the date for consideration of applications which are objected to and which required determination by the Road Transport Licensing Tribunal will be published by further notice in this Gazette.

B. C. & E. J. Ellis Pty Ltd, Wodonga. Application for variation of the conditions of licence TS 1821 which authorises the licenced vehicle to operate a school service under contract to the Public Transport Corporation and charter within a 20 km radius of the Tallangatta Post Office to delete charter of 20 km radius of the Tallangatta Post Office and instead operate under charter conditions from within a 20 km radius of Staghorn Flat Post Office.

Note: The vehicle licensed by TS 1821 holds a 2 star rating for charter purposes.

Dated 24 August 1993

BRUCE COCHRANE
Regional Manager
North East Region, Benalla

Transport Act 1983

ROADS CORPORATION

Commercial Passenger Vehicle Applications

Notice is hereby given that the following applications will be considered by the Roads Corporation on 29 September 1993.

Notice of any objection to the granting of an application should be forwarded to reach the Manager, Registration and Licensing Office,

2382 G 33 26 August 1993

Fyans Street, South Geelong, not later than 23 September 1993.

It will not be necessary for interested parties to appear on the date specified, unless advised in writing by the Corporation.

Notification of the date for consideration of applications which are objected to and which require determination by the Road Transport Licensing Tribunal will be published by further notice in this Gazette.

P. & A. Hockey, Clifton Springs. Application to license two commercial passenger vehicles to be purchased in respect of the following:

| <i>Make</i> | <i>Year of Manufacture</i> | <i>Seating Capacity</i> |
|------------------|----------------------------|-------------------------|
| Jaguar Sedan | 1967 | 4 |
| Jaguar Limousine | 1967 | 7 |

to operate as special purpose vehicles from 8/21 Murradoc Road, Drysdale, for the carriage of passengers for any of the following purposes:

- wedding parties;
- wedding anniversaries;
- debutante balls;
- engagement parties;
- school socials;
- theatre nights;
- restaurant nights;
- birthday celebrations.

P. W. Malloch, Ocean Grove. Application to license one commercial passenger vehicle in respect of a 1992 Harley Davidson motor cycle with seating capacity for 1 passenger and for passengers in a side car to its constructed seating capacity to operate as a special purpose vehicle from 9 Dubourg Court, Ocean Grove, for the carriage of passengers for any of the following purposes:

- weddings;
- parties;
- sporting events;
- parades;
- promotions;
- school socials;
- debutante balls;
- theatre nights;
- restaurant nights;
- tours to places of interest throughout the State of Victoria;
- any other event similar to the above.

Dated 26 August 1993

COLIN KOSKY
Regional Manager—South Western Region

Victoria Government Gazette
Transport Act 1983
ROAD TRANSPORT LICENSING
TRIBUNAL

Commercial Passenger Vehicle and Tow Truck Applications

Notice is hereby given that the applications on the following parties previously gazetted and objected to will be considered by the Road Transport Licensing Tribunal on the following date:

| <i>Applicant</i> | <i>Previous Gazette No.</i> | <i>Date</i> |
|--|-----------------------------|-------------|
| Monday, 20 September 1993 in the Public Hearing Theatre, Ground Floor, North Building, Roads Corporation, corner Lygon and Princes Streets, Carlton commencing at 9.30 a.m. | | |
| G. Lasa | G.12 | 25.3.93 |
| G. D. James | G.9 | 4.3.93 |
| D. G. Peel | G.13 | 1.4.93 |
| M. J. Cappelletti | G.10 | 11.3.93 |
| Wednesday, 22 September 1993 in the Public Hearing Theatre, Ground Floor, North Building, Roads Corporation, corner Lygon and Princes Streets, Carlton commencing at 9.30 a.m. | | |
| K. Balabanis | G.10 | 11.3.93 |
| D. Boag | G.13 | 1.4.93 |
| M. E. Phillips | G.13 | 1.4.93 |
| R. Stefanovski | G.14 | 8.4.93 |

Dated 18 August 1993

A. BARDEN
Registrar

Transport Act 1983
ROADS CORPORATION

Commercial Passenger Vehicle Application

Notice is hereby given that the following application will be considered by the Roads Corporation on 29 September 1993.

Notice of any objection to the granting of an application should be forwarded to reach the Morwell Registration and Licensing Office, PO Box 558, Morwell 3840, or any District Office of the Roads Corporation not later than 23 September 1993.

It will not be necessary for interested parties to appear on the date specified, unless advised in writing by the Corporation.

Notification of the date for consideration of applications which are objected to and which require determination by the Road Transport Licensing Tribunal will be published by further notice in this Gazette.

Victoria Government Gazette

Gerald Williams, Wonthaggi. Application for variation of the conditions of licence TS(P) 2334 which authorises the licenced vehicle to operate a service for the carriage of school children to the exclusion of all other passengers excepting duly authorised teachers between, from the corner of Kilcunda and Cochrane's Road, Korumburra to Bena, Loch via Kernot, Grantville, Corinella, Coronet Bay and Bass to Newhaven under contract to Newhaven College, to delete "from the corner of Kilcunda and Cochrane's Road" and instead include the following: Kongwak to Bena.

NORM BUTLER
Regional Manager
Eastern Region

Co-operation Act 1981
BRENTWOOD HIGH SCHOOL
CO-OPERATIVE SOCIETY LIMITED
BROADMEADOWS TECHNICAL SCHOOL
CO-OPERATIVE LIMITED
COBRAM HIGH SCHOOL
CO-OPERATIVE LIMITED
NOBLE PARK HIGH SCHOOL
CO-OPERATIVE No. 2 LIMITED
PARKDALE SAILING CLUB
CO-OPERATIVE LIMITED

Notice of Dissolution of Societies

Notice is hereby given that I have this day registered the dissolution of the abovenamed societies and cancelled their registration under the abovenamed Act.

Dated at Melbourne 12 August 1993

D. F. HENRY
Deputy Registrar of Co-operatives

Co-operation Act 1981
GEORGE STREET HEYFIELD BOWLS
CLUB CO-OPERATIVE LIMITED
GRACE VALLEY TENNIS CLUB
CO-OPERATIVE LIMITED
MT ELIZA CRICKET CLUB
CO-OPERATIVE LIMITED
OLD FIRE STATION ARTS
CO-OPERATIVE LTD
ORBOST SPORTS CENTRE COMMUNITY
CO-OPERATIVE LTD
PAISLEY HIGH SCHOOL
CO-OPERATIVE LTD

Notice is hereby given in pursuance of section 192 (8) of the *Co-operation Act 1981* and section 572 (2) of the *Corporations Act 1989*

G 33 26 August 1993 2383

that, at the expiration of three months from the date hereof, the names of the aforementioned societies will, unless cause is shown to the contrary, be struck off the register and the societies will be dissolved.

Dated at Melbourne 10 August 1993

D. F. HENRY
Deputy Registrar of Co-operatives

Cattle Compensation Act 1967 (No. 7615)
APPROVED AGENT
Notice under Section 14

I hereby declare G. V. Livestock Buyers Pty Ltd (No. C. S. 212 in the register) being a person carrying on business as a Stock and Station Agent, to be an "Approved Agent" for the purposes of Part II of the *Cattle Compensation Act 1967* with effect from 1 February 1993

B. R. WILKES
Delegate of Commissioner of State Revenue

Cattle Compensation Act 1967 (No. 7615)
APPROVED AGENT
Notice under Section 14

I hereby declare Oxhill Pastoral Company Pty Ltd (No. C. S. 213 in the register) being a person carrying on business as a Stock and Station Agent, to be an "Approved Agent" for the purposes of Part II of the *Cattle Compensation Act 1967* with effect from 1 July 1993

B. R. WILKES
Delegate of Commissioner of State Revenue

MELBOURNE WATER
Proclamation of Water Mains

Notice to the owners of tenements in the undermentioned street and the private streets, lanes, courts and alleys opening thereto. The main pipe in the said streets being laid down, the owners of all tenements situated as under are hereby required on or before 24 September 1993 to cause a proper pipe and stop-cocks to be laid so as to supply water within such tenements from the main pipe.

Bulla

Nunney Court, the whole of.
Bradworth Street, 35 metres north of Banbury Crescent northward for 88 metres.
Ramsbury Street, the whole of.
Surrey Court, the whole of.

2384 G 33 26 August 1993

Newlyn Drive, from Ramsbury Street north-eastward for 153 metres.

Newlyn Drive, from Ramsbury Street westward for 64 metres.

Pembroke Crescent, 22 metres west of Tedburn Court westward for 176 metres.

Diamond Valley

Toorak Court, the whole of.

Beales Road, 46 metres south of Cosham Court southward for 118 metres.

Doncaster and Templestowe

Wiarando Court, the whole of.

Andersons Creek Service Road, 25 metres northeast of Roper Place, north-eastward for 109 metres.

Eltham

Crofton Mews, the whole of.

Heidelberg

Tranquil Winter Court, the whole of.

Bartam Rise, 30 metres south of Walter Withers Court, south-eastward for 105 metres.

Lillydale

Clarkedale Rise, the whole of.

Blanche Place, the whole of.

Vintage Court, the whole of.

Whittlesea

Miller Street, 40 metres north of Mary Court northward for 356 metres.

Burridge Close, the whole of.

Hardiman Court, the whole of.

Hawkes Drive, 25 metres southeast of Moneghetti Way south-eastward for 367 metres.

Carrol Crescent from Hawkes Drive south-eastward for 156 metres.

Carrol Crescent from Hawkes Drive north-westward for 23 metres.

Carrol Crescent from Hawkes Drive north-eastward for 40 metres.

Manna Gum Walk, the whole of.

John Ryan Drive from Wattletree Walk southward for 117 metres.

Wattletree Walk, the whole of.

Further particulars may be ascertained on enquiry at Melbourne Water's Regional Complex, Preston.

By Order of Melbourne Water

BRIAN BAYLEY
Development Manager
Yarra Region—Preston

Victoria Government Gazette

MELBOURNE WATER

General Notice

Melbourne Water having made provision for carrying off the sewage of each and every property which or any part of which is situate in the Sewerage Area hereinafter described doth hereby declare that on and after 23 September 1993 each and every property so situate shall be deemed to be sewered property within the meaning of the *Melbourne and Metropolitan Board of Works Act 1958*.

The Sewerage Area hereinbefore referred to is:

Sewerage Area No. 6431

CITY OF BROADMEADOWS—This area comprises property known and described as lot F on LP 220612 and contains 1 lot.

Sewerage Area No. 6438

SHIRE OF BULLA—This area comprises property known and described as lot 1 on LP 91921 Potter Street and contains 1 lot.

Sewerage Area No. 6440

SHIRE OF BULLA—This area comprises all lots contained in Hursley Court. Lots 619 and 620 on LP 214385, lots 631 to 635 on LP 212310 Banbury Crescent and contains 17 lots.

Sewerage Area No. 6429

SHIRE OF DIAMOND VALLEY—This area comprises all lots contained in Arthur Streton Place, lots 1 to 4, 16 to 21 and 30 to 33 David Hockney Drive, lots 23 to 29 Tom Roberts Glade and a Reserve abutting David Hockney Drive, Tom Roberts Glade and Aqueduct Road all on PS 312896 and contains 35 lots.

Sewerage Area No. 6434

SHIRE OF DIAMOND VALLEY—This area comprises all lots contained in Toorak Court all on PS 301894 and contains 13 lots.

Sewerage Area No. 6436

SHIRE OF DIAMOND VALLEY—This area comprises properties known and described as lot 2 on LP 128191 Penton Court, lot 200 on LP 202373 Hillingdon Drive and contains 2 lots.

Sewerage Area No. 6439

SHIRE OF ELTHAM—This area comprises properties known and described as lots 1 to 3 on LP 222343 Zig Zag Road and contains 3 lots.

Sewerage Area No. 6426

SHIRE OF LILLYDALE—This area comprises property known and described as lot 3 Hereford Road on LP 80806 and contains 1 lot.

Sewerage Area No. 6428

SHIRE OF LILLYDALE—This area comprises all lots contained in Clarkedale Rise, Blanche Place, Vintage Court, and lots 2 to 5 Collier Road all on PS 317608 and contains 47 lots.

Sewerage Area No. 6442

SHIRE OF LILLYDALE—This area comprises all lots contained in Illuminate Court, lots 84 to 86 and also lot 77 Maygrand Close, lot 62 Independance Rise, lots 100 to 117, lot 1, 60 to 61, 73 to 75, 87 to 90 Handasyde Avenue all on PS 322523 and contains 45 lots.

Sewerage Area No. 6427

CITY OF WHITTLESEA—This area comprises properties known and described as lot G on PS 316006 and a municipal reserve on PS 304389 McDonalds Road and contains 2 lots.

Sewerage Area No. 6430

CITY OF WHITTLESEA—This area comprises properties known and described as lots 149 to 156 and lot 122 Ilani Street, lots 133 to 148 Lido Court and a reserve abutting Lido Court and Findon Road and contains 26 lots.

Sewerage Area No. 6432

CITY OF WHITTLESEA—This area comprises properties known and described as lots 1 to 20 Greenview Court and a reserve abutting Greenview Court on PS 319583 and contains 21 lots.

Sewerage Area No. 6433

CITY OF WHITTLESEA—This area comprises properties known and described as lots 123 to 132 Lido Court, lots 121, 13 to 34 Ilani Street, lots 1 to 12, 35 to 40, 55 and 56 Devora Road, all lots in Tova Court, lots 117 to 119 Sahra Court, lots 41, 42, 53, 54, 120, 57 to 72 Eskay Road and contains 89 lots.

Sewerage Area No. 6437

CITY OF WHITTLESEA—This area comprises properties known and described as lots 204 to 219, 226 to 229 Plowman Court, lots 220 to 225 Avon Place and contains 26 lots.

Sewerage Area No. 6435

CITY OF WHITTLESEA—This area comprises properties known and described as lots 1086 to 1099, 1102 to 1104 and 1107 to 1115 Carroll Crescent, lots 1116 to 1121 Warren Close and all lots contained in Hayley Court and contains 38 lots.

Sewerage Area No. 6441

CITY OF WHITTLESEA—This area comprises properties known and described as all lots bounded by Hut Street, Hill Street, Bourke Street and Little River Street. All lots bounded by Bourke Street, Fore Street, Evelyn Street and River Street. All lots bounded by those properties known as Street Address Numbers 37, 43, 45, 47, 49 Bourke Street, 44 Evelyn Street, and also property described as Part Crown Portion A, Section 4 Evelyn Street and contains 62 lots.

Further particulars may be ascertained on enquiry at Melbourne Water's Regional Complex, Preston.

By Order of Melbourne Water

BRIAN BAYLEY
Development Manager
Yarra Region—Preston

Shop Trading Act 1987

ORDER GRANTING APPLICATION TO
PERMIT SHOPS OUTSIDE THE
METROPOLITAN AREA TO BE OPEN ON
A SUNDAY

Whereas—

- (i) I am the Minister for the time being administering the *Shop Trading Act 1987*;
- (ii) Sunday, 19 December 1993, is a day on which a shop in the metropolitan area is permitted to be open under section 7A of the *Shop Trading Act 1987*; and
- (iii) the municipal council of the municipal district listed in the schedule hereto has made application to me for an Order permitting shops in its municipal district to be open between the hours of 10.00 a.m. and 5.00 p.m. on Sunday, 19 December 1993.

Now therefore I, Vin Heffernan, acting pursuant to the power conferred upon me by section 7B (2) of the *Shop Trading Act 1987* by this Order grant this application.

2386 G 33 26 August 1993

SCHEDULE

Name of Applicant
Municipal Council *Municipal District*
City of Shepparton City of Shepparton

Dated 23 August 1993

VIN HEFFERNAN
Minister for Small Business

Shop Trading Act 1987
ORDER GRANTING APPLICATION TO
PERMIT SHOPS OUTSIDE THE
METROPOLITAN AREA TO BE OPEN ON
A SUNDAY

Whereas—

- (i) I am the Minister for the time being administering the *Shop Trading Act 1987*;
- (ii) Sunday, 29 August 1993, is a day on which a shop in the metropolitan area is permitted to be open under section 7A of the *Shop Trading Act 1987*; and
- (iii) the municipal council of the municipal district listed in the schedule hereto has made application to me for an Order permitting shops in its municipal district to be open between the hours of 10.00 a.m. and 5.00 p.m. on Sunday, 29 August 1993.

Now therefore I, Vin Heffernan, acting pursuant to the power conferred upon me by section 7B (2) of the *Shop Trading Act 1987* by this Order grant this application.

SCHEDULE

Name of Applicant
Municipal Council *Municipal District*
Borough of Kerang Borough of Kerang

Dated 23 August 1993

VIN HEFFERNAN
Minister for Small Business

Shop Trading Act 1987
ORDER GRANTING APPLICATION TO
PERMIT SHOPS OUTSIDE THE
METROPOLITAN AREA TO BE OPEN ON
A SUNDAY

Whereas—

- (i) I am the Minister for the time being administering the *Shop Trading Act 1987*;
- (ii) Sundays, 5, 12, 19 December 1993, are days on which a shop in the

Victoria Government Gazette

metropolitan area is permitted to be open under section 7A of the *Shop Trading Act 1987*; and

- (iii) the municipal councils of the municipal districts listed in the schedule hereto have made application to me for an Order permitting shops in their municipal districts to be open between the hours of 10.00 a.m. and 5.00 p.m. on Sundays, 5, 12, 19 December 1993.

Now therefore I, Vin Heffernan, acting pursuant to the power conferred upon me by section 7B (2) of the *Shop Trading Act 1987* by this Order grant this application.

SCHEDULE

Name of Applicant
Municipal Council *Municipal District*
City of Bairnsdale City of Bairnsdale
Shire of Warracknabeal Shire of Warracknabeal

Dated 23 August 1993

VIN HEFFERNAN
Minister for Small Business

Shop Trading Act 1987
ORDER GRANTING APPLICATION TO
PERMIT SHOPS OUTSIDE THE
METROPOLITAN AREA TO BE OPEN ON
A SUNDAY

Whereas—

- (i) I am the Minister for the time being administering the *Shop Trading Act 1987*;
- (ii) Sunday, 29 August 1993 and Sundays, 5, 12, 19 December 1993, are days on which a shop in the metropolitan area is permitted to be open under section 7A of the *Shop Trading Act 1987*; and
- (iii) the municipal councils of the municipal districts listed in the schedule hereto have made application to me for an Order permitting shops in their respective municipal districts to be open between the hours of 10.00 a.m. and 5.00 p.m. on Sunday, 29 August and Sundays, 5, 12, 19 December 1993.

Now therefore I, Vin Heffernan, acting pursuant to the power conferred upon me by section 7B (2) of the *Shop Trading Act 1987* by this Order grant this application.

Victoria Government Gazette
SCHEDULE

| <i>Name of Applicant Municipal Council</i> | <i>Municipal District</i> |
|--|---------------------------|
| Shire of Cobram | Shire of Cobram |
| Shire of Maffra | Shire of Maffra |
| City of Moe | City of Moe |
| City of Morwell | City of Morwell |
| Shire of Rochester | Shire of Rochester |
| Town of St Arnaud | Town of St Arnaud |
| City of Traralgon | City of Traralgon |
| Rural City of Warragul | Rural City of Warragul |
| Rural City of Wodonga | Rural City of Wodonga |
| Borough of Wonthaggi | Borough of Wonthaggi |

Dated 23 August 1993

VIN HEFFERNAN
Minister for Small Business

Planning and Environment Act 1987
BENDIGO PLANNING SCHEME
Notice of Approval of Amendment
Amendment L31

The Minister for Planning has approved Amendment L31 to the Bendigo Planning Scheme.

The amendment comes into operation on the date this notice is published in the *Government Gazette*.

The amendment rezones land at 54-58 Mundy Street, Bendigo, being part of Crown Allotment 10, Section 8C and Lots 1 and 2 H-610 from Residential to a Residential Office zone.

A copy of the amendment can be inspected free of charge during office hours at the offices of the City of Bendigo, Municipal Offices, Lytleton Terrace, Bendigo, the Loddon-Campaspe Regional Planning Authority, 261 Hargreaves Street, Bendigo and at the Department of Planning and Development, The Olderfleet Buildings, 477 Collins Street, Melbourne.

GEOFF CODE
Manager
Planning Co-ordination Branch
Department of Planning and Development

Planning and Environment Act 1987
MORNINGTON PLANNING SCHEME
Notice of Approval of Amendment
Amendment L38

The Minister for Planning has approved Amendment L38 to the Mornington Planning Scheme.

G 33 26 August 1993 2387

The amendment comes into operation on the date this notice is published in the *Government Gazette*.

The amendment zones land occupied by the "Coolstores" on the corner of Eramosa Road and Moorooduc Highway to a Comprehensive Development zone. The amendment allows an additional range of services on the site and provides various controls over its development.

A copy of the amendment can be inspected free of charge during office hours at the offices of the Shire of Mornington, Queen Street, Mornington and at the Department of Planning and Development, 477 Collins Street, Melbourne.

GEOFF CODE
Manager
Planning Co-ordination Branch
Department of Planning and Development

Planning and Environment Act 1987
MELBOURNE PLANNING SCHEME
Notice of Approval of Amendment
Amendment L107 Part 1

The Minister for Planning has approved Amendment L107 Part 1 to the Local Section of the Melbourne Planning Scheme.

The amendment comes into operation on the date this notice is published in the *Government Gazette*.

The amendment updates the Newmarket Saleyards Development Plan No. 3, 1990. Its purpose is to provide a more appropriate location for a shop facility and allow for permit applications to be made under the 1R2 zone of the Melbourne Planning Scheme for buildings or works that do not comply with the Development Plan. The updated Development Plan is referred to as the Newmarket Saleyards Development Plan No. 4, 1992.

A copy of the amendment can be inspected free of charge during office hours at the Department of Planning and Development, Ground Floor, 477 Collins Street, Melbourne and at the offices of the City of Melbourne, Third Floor, Council House, 200 Little Collins Street, Melbourne.

GEOFF CODE
Manager
Planning Co-ordination Branch
Department of Planning and Development

2388 G 33 26 August 1993

Planning and Environment Act 1987
GREATER GEELONG PLANNING SCHEME
Notice of Approval of Amendment
Amendment R20

The Minister for Planning has approved Amendment R20 to the Greater Geelong Planning Scheme.

The amendment comes into operation on the day this notice is published in the *Government Gazette*.

The amendment changes the planning scheme by rezoning No. 1 Evandale Road, Portarlington, from Public Open Space (Existing)—B—Public Park, to Residential A.

A copy of the amendment can be inspected free of charge, during office hours at the Department of Planning and Development, Ground Floor, The Olderfleet Buildings, 477 Collins Street, Melbourne; and at the City of Greater Geelong at the following district offices:

Bellarine District, Collins Street, Drysdale; Corio District, "Osborne House", Swinburne Street, North Geelong; Geelong District, Gheringhap Street, Geelong; Geelong West District, 10-12 Albert Street, Geelong West; Newtown District, 263 Pakington Street, Newtown; South Barwon District, 2 Colac Road, Belmont.

GEOFF CODE
Manager

Planning Co-ordination Branch
Department of Planning and Development

Planning and Environment Act 1987
GREATER GEELONG PLANNING SCHEME
Notice of Approval of Amendment
Amendment RL22

The Minister for Planning has approved Amendment RL22 to the Regional and Local Sections of the Greater Geelong Planning Scheme.

The amendment comes into operation on the day this notice is published in the *Government Gazette*.

The amendment changes the planning scheme by recognise the relocation of the memorial to the dead of the two World Wars from the RSL's former site at Eastern Beach to its new site in Belmont.

A copy of the amendment can be inspected free of charge, during office hours at the Department of Planning and Development,

Victoria Government Gazette

Ground Floor, The Olderfleet Buildings, 477 Collins Street, Melbourne; and at the City of Greater Geelong at the following district offices:

Bellarine District, Collins Street, Drysdale; Corio District, "Osborne House", Swinburne Street, North Geelong; Geelong District, Gheringhap Street, Geelong; Geelong West District, 10-12 Albert Street, Geelong West; Newtown District, 263 Pakington Street, Newtown; South Barwon District, 2 Colac Road, Belmont.

GEOFF CODE
Manager

Planning Co-ordination Branch
Department of Planning and Development

Planning and Environment Act 1987
WODONGA PLANNING SCHEME
Notice of Approval of Amendment
Amendment L53

The Minister for Planning has approved Amendment L53 to the Wodonga Planning Scheme.

The amendment comes into operation on the date this notice is published in the *Government Gazette*.

The amendment introduces ordinance changes in the Residential A and B zones of Chapters 2 and 3 (West Wodonga) to allow the Council to consent to the use of land for a display home.

A copy of the amendment can be inspected free of charge during office hours at the offices of the Rural City of Wodonga, Civic Centre, Hovell Street, Wodonga and at the Department of Planning and Development, 477 Collins Street, Melbourne.

GEOFF CODE
Manager

Planning Co-ordination Branch
Department of Planning and Development

Planning and Environment Act 1987
PRAHRAN PLANNING SCHEME
Notice of Approval of Amendment
Amendment L34

The Minister for Planning has approved Amendment L34 to the Local Section of the Prahran Planning Scheme.

The amendment comes into operation on the date this notice is published in the *Government Gazette*.

The amendment affects land at the rear of 145 Surrey Road North, South Yarra, as described on Certificate of Title Volume 9818 Folio 163.

The amendment introduces a site specific clause in the Residential C zone in the Prahran Planning Scheme which enables the existing building on the site to be used for the purpose of an office subject to the granting of a permit by the Responsible Authority.

A copy of the amendment can be inspected free of charge during office hours at the Department of Planning and Development, Ground Floor, 477 Collins Street, Melbourne and at the offices of the City of Prahran, First Floor, Town Hall, corner of Greville and Chapel Streets, Prahran.

GEOFF CODE
Manager

Planning Co-ordination Branch
Department of Planning and Development

Planning and Environment Act 1987
**WARRNAMBOOL CITY PLANNING
SCHEME**

Notice of Lapsing of Amendment
Amendment L45

The City of Warrnambool has abandoned Amendment L45 to the Warrnambool City Planning Scheme.

The amendment proposed to rezone areas of land Mortlake Road, Warrnambool to Commercial 3 (Neighbourhood Centre) zone, and which included specific plans for the development of the sites.

The amendment lapsed on 4 August 1993.

GEOFF CODE
Manager

Planning Co-ordination Branch
Department of Planning and Development

Planning and Environment Act 1987
BERWICK PLANNING SCHEME

Notice of Amendment
Amendment L65

The Minister for Planning has prepared Amendment L65 to the Berwick Planning Scheme.

The amendment seeks to remove a restrictive covenant at Lot 10, LP60033, William Road, Berwick. (The covenant was created for the benefit of the land contained in LP60033).

The covenant restricts the development of the land to only one main dwelling of not less than 1250 square ft and prohibits the use and development of the land for commercial dog kennels, poultry farms and piggeries (NB: These latter land uses are already prohibited by the Berwick Planning Scheme).

A copy of the amendment can be inspected free of charge during office hours at the offices of the City of Berwick, Princes Highway, Narre Warren and at the Department of Planning and Development, Ground Floor, 477 Collins Street, Melbourne.

Submissions about the amendment must be sent to the Minister for Planning, Attention: Planning Co-ordination Branch, PO Box 2240T, Melbourne 3001 by 27 September 1993.

GEOFF CODE
Manager

Planning Co-ordination Branch
Department of Planning and Development

Planning and Environment Act 1987
KILMORE PLANNING SCHEME

Notice of Lapsing of Amendment
Amendment L66

The Shire of Kilmore has abandoned Amendment L66 to the Kilmore Planning Scheme.

The amendment proposed to alter the existing Outline Development Plan No. 5 by reopening Tootle Street to through traffic and at the same time directing traffic along Mill Road to gain access to the Northern Highway.

The amendment lapsed on 28 July 1993.

GEOFF CODE
Manager

Planning Co-ordination Branch
Department of Planning and Development

Planning and Environment Act 1987
CROYDON PLANNING SCHEME

Notice of Approval of Amendment
Amendment L56

The Minister for Planning has approved Amendment L56 to the Croydon Planning Scheme.

The amendment comes into operation on the date this notice is published in the *Government Gazette*.

The amendment rezones land at 61 Wicklow Avenue, Croydon from Public Purpose Reserve

2390 G 33 26 August 1993

No. 1—Commonwealth Government to Croydon Residential Low zone.

A copy of the amendment can be inspected free of charge during office hours at the offices of the City of Croydon, Civic Centre, Civic Square, Croydon and at the Department of Planning and Development, Ground Floor, 477 Collins Street, Melbourne.

GEOFF CODE
Manager

Planning Co-ordination Branch
Department of Planning and Development

Planning and Environment Act 1987
DONCASTER AND TEMPLESTOWE
PLANNING SCHEME
Notice of Approval of Amendment
Amendment L64

The Minister for Planning has approved Amendment L64 to the Local Section of the Doncaster and Templestowe Planning Scheme.

The amendment comes into operation on the date this notice is published in the *Government Gazette*.

The amendment rezones 2.26 hectares of land, being the former Yarraleen Primary School, Balwyn Road, Bulleen from the existing Public Purposes Reservation (Primary School) to Residential C zone.

A copy of the amendment can be inspected free of charge during office hours at the Department of Planning and Development, Ground Floor, 477 Collins Street, Melbourne and at the offices of the City of Doncaster and Templestowe, 699 Doncaster Road, Doncaster.

GEOFF CODE
Manager

Planning Co-ordination Branch
Department of Planning and Development

Planning and Environment Act 1987
BASS PLANNING SCHEME
Notice of Approval of Amendment
Amendment L22

The Minister for Planning has approved Amendment L22 to the Bass Planning Scheme.

The amendment comes into operation on the date this notice is published in the *Government Gazette*.

The amendment allows the responsible authority to grant a permit to subdivide part of

Victoria Government Gazette

Crown Allotment 114B, Parish of Wonthaggi North, into six allotments, subject to the future management of the land being primarily for the protection and enhancement of remnant native vegetation and to sensitive siting, design and other conditions.

A copy of the amendment can be inspected free of charge during office hours at the offices of the Shire of Bass and at the Department of Planning and Development, 477 Collins Street, Melbourne.

GEOFF CODE
Manager

Planning Co-ordination Branch
Department of Planning and Development

Planning and Environment Act 1987
BASS PLANNING SCHEME
Notice of Approval of Amendment
Amendment L29

The Minister for Planning has approved Amendment L29 to the Bass Planning Scheme.

The amendment comes into operation on the date this notice is published in the *Government Gazette*.

The amendment affects land at Lots 146 to 148 (inclusive) and Lots 162 to 171 (inclusive) LP 51420, Parish of Corinella.

The amendment alters the restructure plan for the Adams Estate, Grantville that is included in Schedule 2 of the Planning Scheme. Restructure lot 53 is enlarged and restructure lots 52 and 54 are correspondingly reduced in size.

A copy of the amendment can be inspected free of charge during office hours at the offices of the Shire of Bass, Archies Creek Road, Archies Creek and at the Department of Planning and Development, 477 Collins Street, Melbourne.

GEOFF CODE
Manager

Planning Co-ordination Branch
Department of Planning and Development

Planning and Environment Act 1987
TRARALGON (SHIRE) PLANNING
SCHEME
Notice of Approval of Amendment
Amendment L43

The Minister for Planning has approved Amendment L43 to the Traralgon (Shire) Planning Scheme.

Victoria Government Gazette

The amendment comes into operation on the date this notice is published in the *Government Gazette*.

The site specific amendment allows a two-lot subdivision of land at Lot 5 Lodged Plan 127549, part Crown Allotment 5C, Parish of Boola Boola at the corner of Bell Drive and Old Boola Road, Tyers.

A copy of the amendment can be inspected free of charge during office hours, at the offices of the Shire of Traralgon, corner Breed and Kay Street, Traralgon and at the Department of Planning and Development, 477 Collins Street, Melbourne.

GEOFF CODE
Manager
Planning Co-ordination Branch
Department of Planning and Development

Planning and Environment Act 1987
MARONG PLANNING SCHEME
Notice of Approval of Amendment
Amendment L34

The Minister for Planning has approved Amendment L34 to the Marong Planning Scheme.

The amendment comes into operation on the date this notice is published in the *Government Gazette*.

The amendment consists of 4 items:

rezones land at Monsants Rises Estate, bounded by Monsants Road, Rathbones Lane and Edwards Road, Maiden Gully from Rural (General Farming) to Rural Residential and Public Open Space;

rezones Crown Allotments 4, 5, 6 and 7 Section 19 Township of Lockwood, Panorama Road, Lockwood South from Rural Low-Lying to Rural Residential;

rezones Part Crown Allotment 8, Section 5, Parish of Mandurang, Calder Highway, Big Hill from Public Purpose Reserve State Government to Rural 'A';

rezones Part Lot 2, L.P. 318047B, Parish of Sandhurst, situated off Crescent at Kangaroo Flat (north of Water Race Reserve) from Rural (General Farming) to Reserved Residential.

G 33 26 August 1993 2391

A copy of the amendment can be inspected free of charge, during office hours at the Rural City of Marong, Municipal Offices, Marong, the Loddon-Campaspe Regional Planning Authority, 261 Hargreaves Street, Bendigo and at the Department of Planning and Development, The Olderfleet Buildings, 477 Collins Street, Melbourne.

GEOFF CODE
Manager
Planning Co-ordination Branch
Department of Planning and Development

Planning and Environment Act 1987
BACCHUS MARSH PLANNING SCHEME
Notice of Approval of Amendment
Amendment L33, Part 1

The Minister for Planning has approved Amendment L33, Part 1 to the Bacchus Marsh Planning Scheme.

The amendment:

Rezones from Rural B to Light Industrial the southern part of Lot 1, LP 114973 located at the south west corner of Fiskin Street/Taverner Street, Maddingley;

Includes a site specific subdivision in the Rural A zone Ordinance provision to allow the:

excision of a lot for a family to construct a dwelling at Lot 1, LP 204271 located on the south side of Mortons Road;

subdivision of Lot 2, LP 149441 located on the west side of Camerons Road south of Seereys Road into three lots, two lots to be used for rural purposes and one lot to be designated as a Road.

The amendment comes into operation on the day this notice is published in the *Government Gazette*.

A copy of the amendment can be inspected free of charge during office hours at the offices of the Shire of Bacchus Marsh, Main Street, Bacchus Marsh and at the Department of Planning and Development, The Olderfleet Buildings, 477 Collins Street, Melbourne.

GEOFF CODE
Manager
Planning Co-ordination Branch
Department of Planning and Development

2392 G 33 26 August 1993

Planning and Environment Act 1987
BUNINYONG PLANNING SCHEME
Notice of Approval of Amendment
Amendment L17

The Minister for Planning has approved Amendment L17 to the Buninyong Planning Scheme.

The amendment comes into operation on the date this notice is published in the *Government Gazette*.

The amendment brings most sections of land currently outside the defined Lal Lal Water Supply Catchment under a common zoning (Agricultural B) and therefore the same controls affecting the use and development of such land. The amendment transfers such land from Chapter 2 to Chapter 1 provisions of the Buninyong Planning Scheme. Two small areas of land are rezoned from Agricultural B to Rural (Residential 1) and transferred from the provisions of Chapter 1 to Chapter 2 of the Buninyong Planning Scheme.

A copy of the amendment can be inspected free of charge during office hours at the offices of the Shire of Buninyong, Learmonth Street, Buninyong, at the Department of Planning and Development, 477 Collins Street, Melbourne and at the Department of Planning and Development, Regional Office, State Government Offices, Ballarat.

GEOFF CODE
Manager
Planning Co-ordination Branch
Department of Planning and Development

Planning and Environment Act 1987
BACCHUS MARSH PLANNING SCHEME
Notice of Approval of Amendment
Amendment L32

The Minister for Planning has approved Amendment L32 to the Bacchus Marsh Planning Scheme.

The amendment:

Rezones from "Rural A" to "Proposed Reserve for Municipal and Water Supply" land defined as a Reserve for Municipal and Water Supply purposes on Plan of Subdivision 218123 together with a water supply balancing tank site located within this Reserve all located on the north east side of Dodemaide Circuit, Coimadai.

Rezones from "Existing Public Purposes—Bacchus Marsh Shire Council

Victoria Government Gazette

Reservation" to "Residential A", land being part of Crown Portion 5, Township of Bacchus Marsh, Parish of Korkuperrimul located on the north side of Bacchus Marsh Road at Stanford Hill adjacent the existing Water Treatment Plant.

Rezones to "Residential A" land shown as "New Road Proposed Reservation" on the south side of Pilmer Street/McGrath Street westerly from Ellerslie Court.

Amends Column 4 in the Table of Uses (Clause 6.4.11) in the Rural (Reserved Mining) zone to correct a drafting error.

Inserts a site specific provision in the Rural A zone to allow the excision of a lot for a family member to erect a dwelling upon at Lot 1 of P.S. 122988 located of the north east side of Lerderderg River Road immediately south east of Goodmans Creek.

Deletes two "site specific" subdivision approvals from the Rural A zone Ordinance provisions which allowed the subdivision of land defined on Title Vol. 9254, Folio 117 located on the north east side of Lerderderg River Road on the north west side of Goodmans Creek and land being defined on Conveyance Memorial 602, Book 803 and being part of Crown Allotments B and C, Section 18, Parish of Merrimu.

Includes the slab hut as "Rosehill" as a building specified as of historic and architectural interest in Part IX of the Ordinance as well as indicating the site of the building on the Scheme Maps.

Includes the building known as "Leahy's former Residence" in the list of Designated and Specified Buildings of historic and architectural interest in Part IX of the Ordinance as well in indicating the site of this building on the Scheme Maps; and inserts a site specific provision in the Rural B zone to allow the excision of this building and surrounds from Lot 2, P.S. 318904G.

The amendment comes into operation on the date this notice is published in the *Government Gazette*.

A copy of the amendment can be inspected free of charge during office hours at the offices of the Shire of Bacchus Marsh, Main Street, Bacchus Marsh and at the Department of

Victoria Government Gazette

Planning and Development, The Oldfleet
Buildings, Ground Floor, 477 Collins Street,
Melbourne.

GEOFF CODE
Manager

Planning Co-ordination Branch
Department of Planning and Development

Planning and Environment Act 1987
OAKLEIGH PLANNING SCHEME
Notice of Amendment to a Planning Scheme
Amendment L30

The City of Oakleigh has prepared
Amendment L30 to the Local Section of the
Oakleigh Planning Scheme.

The amendment proposes the following:

1. The incorporation of a number of
Proposed Widening and Proposed
Main Road Reservation into either the
adjoining Main or Secondary Road
Reservations.
2. The rezoning of 35 Downing Street,
Oakleigh from its current Public
Purpose 13 Reservation to a General
Industrial zone.
3. The rezoning of 5 Greta Street,
Clayton, from a Restricted Light
Industrial zone to a Residential C zone.
4. The rezoning of 46 Burlington Street,
Oakleigh, from Residential C zone to a
Light Industrial zone.
5. The amendment of the provisions of
the Restricted C zone to allow a permit
to be granted for a take away food
premises at 57 McMillan Street,
Clayton.
6. The redesignation of part of Monash
University campus to a Public Purpose
20—Other Public Uses Reservation to
correct an error in the Planning
Scheme.

A copy of the amendment can be inspected
free of charge during office hours at the offices
of the City of Oakleigh, Atherton Road,
Oakleigh and at the Department of Planning and
Development, 477 Collins Street, Melbourne.

Submissions about the amendment must be
sent to the City of Oakleigh, PO Box 21,
Oakleigh 3166 by 1 October 1993.

Dated 26 August 1993

ADRIAN HALLIDAY
Chief Executive Officer

G 33 26 August 1993 2393

Planning and Environment Act 1987
BASS PLANNING SCHEME,
LOCAL SECTION
Notice of Amendment
Amendment L24

The Shire of Bass has prepared Amendment
L24 to the Bass Planning Scheme.

The amendment affects land at:

CORONET BAY—The existing restructure
and Residential Special zones generally
bounded by Lorna Doon Drive, Gellibrand
Street, Bermuda Bend and Agar Road, and the
existing Residential Special zone generally
bounded by Kowloon Crescent, Bountry Court
and Champs Elysees Esplanade.

SAN REMO—Crown Allotments 27, 28 and
Part Crown Allotments 25 and 26 comprising
the existing restructure zone located generally to
the south of Shetland Heights Road and to the
west of Potters Hill Road, San Remo.

The amendment proposes to change the
Planning Scheme by:

CORONET BAY—Rezone the land included
in the amendment from a Residential Special
zone and a Restructure zone (part) to a
Residential zone.

SAN REMO—To rezone the land from a
Restructure zone to part Rural and part Rural
Residential 2 zone.

Other miscellaneous amendments have been
made to the Planning Scheme so as to be
compatible with the above rezonings, including:

1. Schedules 3 and 6 are removed from
the Scheme.
2. Clause 24 (2) (d) is removed from the
Scheme.
3. A new Clause 20 (4) is included in the
Scheme.
4. The wording to the table to Clause 6
for the Restructure zone is altered to
delete reference to Schedule 6.

The amendment can be inspected at the Shire
of Bass, Archies Creek Road, Archies Creek and
at the Department of Planning and
Development, 477 Collins Street, Melbourne.

Submissions about the amendment must be
sent to the Manager, Planning and Development,
Shire of Bass, J. R. Bennett, Archies Creek
Road, Archies Creek 3992 by 28 September
1993.

Dated 17 August 1993

JEFF BENNETT
Manager, Planning and Development

2394 G 33 26 August 1993

Planning and Environment Act 1987
GREATER GEELONG PLANNING SCHEME
Notice of Amendment
Amendment R44

The City of Greater Geelong has prepared Amendment R44 to the Greater Geelong Planning Scheme.

The amendment proposes to change the Regional Section of the Planning Scheme by Rezoning land at 31 Rix Street, Geelong West, from Public Purposes (Existing) 2—Local Government, to Residential A.

The amendment can be inspected at Ministry for Planning and Development, The Olderfleet Buildings, 477 Collins street, Melbourne; the offices of City of Geelong West, Municipal Offices, 12 Albert Street, Geelong West.

Submissions about the amendment must be sent to the Planning Department of the City of Greater Geelong, Geelong District, PO Box 104, Geelong, by 27 September 1993.

ROB DAVIS
Manager of Development,
City of Greater Geelong, Geelong District

NOTICE TO CLAIMANTS

Nell Montague Walker late of Wattle Road, Hawthorn. Creditors, next of kin and others having claims in respect of the estate of the deceased, who died on 26 May 1993, are required by Perpetual Trustees Victoria Limited of 50 Queen Street, Melbourne, to send particulars of their claims to the said Company by 24 October 1993, after which date it will convey or distribute the assets, having regard only to the claims of which the Company then has notice.

Education Act 1958
NOTICE OF AMENDMENT TO SCHOOL
COUNCIL CONSTITUTION

Pursuant to section 13 (4) of the *Education Act 1958*, I give notice that an Order of the Governor in Council was made on 24 August 1993, to amend the Constitution of the Councils of the Bayside Special Developmental School, Furlong Park School for Deaf Children, Baltara Special School, Ewing House School for Deaf Children, Noble Park English Language School and Travencore School.

DON HAYWARD
Minister for Education

Victoria Government Gazette

Education Act 1958
NOTICE OF AMENDMENT TO SCHOOL
COUNCIL CONSTITUTION

Pursuant to section 13 (4) of the *Education Act 1958*, I give notice that an Order of the Governor in Council was made on 24 August 1993, to amend the Constitution of the Council of Mulgrave Primary School.

DON HAYWARD
Minister for Education

Education Act 1958
NOTICE OF AMENDMENT TO SCHOOL
COUNCIL CONSTITUTION

Pursuant to section 13 (4) of the *Education Act 1958*, I give notice that an Order of the Governor in Council was made on 24 August 1993, to amend the Constitution of the Council of St Arnaud Special Developmental School.

DON HAYWARD
Minister for Education

Education Act 1958
NOTICE OF AMENDMENT TO SCHOOL
COUNCIL CONSTITUTION

Pursuant to section 13 (4) of the *Education Act 1958*, I give notice that an Order of the Governor in Council was made on 24 August 1993, to amend the Constitution of the Councils of Banyule High School, Ferntree Gully Special Developmental School, Janefield Special School, Moe Secondary College, Rosanna East High School, Warragul High School, Warragul Secondary College, Warrnambool Secondary College and North Warrnambool Secondary College.

DON HAYWARD
Minister for Education

Education Act 1958
NOTICE OF AMENDMENT TO SCHOOL
COUNCIL CONSTITUTION

Pursuant to section 13 (4) of the *Education Act 1958*, I give notice that an Order of the Governor in Council was made on 24 August 1993, to amend the Constitution of the Council of the Victorian School of Languages.

DON HAYWARD
Minister for Education

Victoria Government Gazette

Education Act 1958

NOTICE OF AMENDMENT TO SCHOOL
COUNCIL CONSTITUTION

Pursuant to section 13 (4) of the *Education Act 1958*, I give notice that an Order of the Governor in Council was made on 24 August 1993, to amend the Constitution of the Council of the North Central Cluster Centre.

DON HAYWARD
Minister for Education

Education Act 1958

NOTICE OF AMENDMENT TO SCHOOL
COUNCIL CONSTITUTION

Pursuant to section 13 (4) of the *Education Act 1958*, I give notice that an Order of the Governor in Council was made on 24 August 1993, to amend the Constitution of the Council of the Wycheproof Education Centre.

DON HAYWARD
Minister for Education

DEPARTMENT OF ENERGY AND
MINERALS

All titles are located on the 1:100 000 mapsheet listed with each title.

APPLICATION FOR EXPLORATION
LICENCE GRANTED

- No. 3441; Gipps Ausx P/L; 225 grats, Bairnsdale.
No. 3458; Macquarie Resources P/L & Denehurst Ltd; 36 grats, Orneo.
No. 3461; Highlake Exploration P/L; 249 grats, Castlemaine.
No. 3467; Zeolite Australia Ltd; 18 grats, Corangamite.

APPLICATION FOR EXPLORATION
LICENCE WITHDRAWN

- No. 3476; Ausminde P/L; 80 grats, Euroa and Whitfield.
No. 3477; Ausminde P/L; 84 grats, Woodend.
No. 3480; Ausminde P/L; 179 grats, Alexandra.
No. 3481; Ausminde P/L; 208 grats, Yea and Alexandra.
No. 3482; Ausminde P/L; 349 grats, Nagambie and Yea.

EXPLORATION LICENCE RENEWED

- No. 3005; BHP Minerals Ltd; 199 grats, Birchip.
No. 3009; CRA Exploration P/L; 168 grats, Grampians.

G 33 26 August 1993 2395

No. 3018; Ballarat Goldfields NL; 34 grats, Ballarat.

No. 3301; T. G. & J. C. Dawes, Tallangalook P/L and Honeydew P/L; 5 grats, Castlemaine.

No. 3303; CRA Exploration P/L; 20 grats, Ballarat.

No. 3327; Bendigo Mining NL; 67 grats, Bendigo.

No. 3430; Continent Resources P/L; 54 grats, Castlemaine.

No. 3431; Continent Resources P/L; 85 grats, Castlemaine.

APPLICATION FOR MINING LICENCE
GRANTED

No. 4677; E. Hyder-Smith; 5 ha, Dunolly.

APPLICATION FOR MINING LICENCE
WITHDRAWN

No. 4656; M. D. Clark; 0.81 ha, Dunolly.

MINING LICENCE RENEWED

No. 4681; N. and K. McCann; 4.85 ha, Kerang.

No. 4693; L. J. Lougoon; 2.8 ha, Bendigo.

S. J. PLOWMAN

Minister for Energy and Minerals

CONTRACT ACCEPTED—SERIES 93/94
VICTORIA POLICE

T423—Supply Division

Supply of uniform overcoats (male and female) on a cut, make and trim basis for the period ending 30 June 1995.

| | |
|----------------------------|---------------|
| Overcoat, uniform, man's | \$106.25 each |
| Overcoat, uniform, woman's | \$94.35 each |

P. HALE

Supply Manager

The Constitution Act Amendment Act 1958
ABOLITION OF POLLING PLACE IN
SUNSHINE DISTRICT AND
DOUTTA GALLA PROVINCE

Pursuant to section 148 (1) (c) of the above Act, I now abolish the Braybrook North polling place in the Electoral District of Sunshine and in the Electoral Province of Doutta Galla.
Dated 19 August 1993

G. P. LYONS

Electoral Commissioner

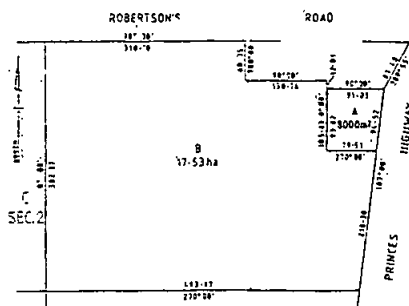
2396 G 33 26 August 1993

Form 7

Section 21, Regulation 16
NOTICE OF ACQUISITION

Compulsory Acquisition of Interest in Land

The Minister for Education declares that by this notice he acquires the freehold interest in 8000 m² of land being part of Crown Allotment C of Section 14 Parish of Bolwarra and comprised in part of Certificate of Title Volume 7708 Folio 099 identified as Lot A on the plan shown below.



Published with the authority of the Minister
for Education.

EXAMINATION FOR LICENCE AS
SHORTHAND WRITER GRADE I

An examination of applicants for licence as Shorthand Writer, Grade I, will be held at the Corporate Training Unit, Department of Justice, 4th Floor, 235 Queen Street, Melbourne on Friday, 24 September 1993 at 10.00 a.m.

The examination comprises tests at both 150 w.p.m. and 180 w.p.m.

Persons seeking admission to the examination must be at least 18 years of age and should apply in writing to the Training Co-ordinator, Victorian Government Reporting Service, Department of Justice, 6th Floor, 167 Queen Street, Melbourne 3000, not later than 10 September 1993.

Applicants must state full name, date of birth and address, and enclose the prescribed fee of \$370.00.

CHERRY WATERBURY
Training Co-ordinator

Victoria Government Gazette
STATE TENDER BOARD
CONTRACTS ACCEPTED
Amendments

| Schedule Number | Item Number | New Rate | Effective Date |
|---|-------------|----------|----------------|
| \$ | | | |
| <i>Motor Spirit, Fuel Oils, Lubricants, etc</i> | | | |
| 1/53 | 9 | 0.6145 | 12.8.93 |
| | 10 | 0.6145 | |

Motor Vehicles (Passenger)

| | | | |
|---------------------------------------|------|------------|---------|
| 1/58 | 4.2 | 19 176.00 | 25.8.93 |
| | 7.1 | 18 121.00 | |
| | 8.1 | 14 430.00 | |
| Options (Item Nos. 4.2, 7.1 and 8.1)— | | | |
| Laser Airconditioning | | 1 246.00 | |
| | 15.2 | 17 082.00* | |
| | 16.1 | 17 470.00* | |

Options (Item Nos. 15.2 and 16.1)—
Metallic Paint 138.00

*Delete: 'EB Model'

Add: 'New Model—ED Falcon'

16.3 18 564.00*

*Rates incorrectly gazetted GG31 12.8.93

17.2 18 338.00*
18.2 18 726.00*
19.1 21 699.00*
20.4 25 780.00*
20.5 27 145.00*

*Delete: 'EB Model'

Add: 'New Model—ED Falcon'

21.2 19 374.00*

*Rates incorrectly gazetted GG31 12.8.93

22.0 18 800.00*

*Delete: 'EB Model'

Add: 'New Model—ED Falcon'

22.2 19 803.00*

*Rates incorrectly gazetted GG31 12.8.93

*Light Commercial Vehicles—Daihatsu
Australia Pty Ltd*

| | | | |
|------|------|-----------|--------|
| 1/59 | 20.1 | 18 025.00 | 6.8.93 |
|------|------|-----------|--------|

Isuzu-General Motors

| | | | |
|------|------|-----------|--------|
| 1/59 | 2.2 | 14 416.00 | 1.9.93 |
| | 5.1 | 19 618.00 | |
| | 7.1 | 14 634.00 | |
| | 8.1 | 19 674.00 | |
| | 11.1 | 19 913.00 | |
| | 12.1 | 21 961.00 | |
| | 15.1 | 16 770.00 | |
| | 16.1 | 18 992.00 | |

N. L. JORDAN
Secretary to the Tender Board

Victoria Government Gazette

G 33 26 August 1993 2397

State Electricity Commission Act 1958
Land Acquisition and Compensation Act 1986
STATE ELECTRICITY COMMISSION OF
VICTORIA

Section 21, Regulation 16
Notice of Acquisition—Easement No. U267
Compulsory Acquisition of Interest in Land

The State Electricity Commission of Victoria
declares that by this notice it acquires by way of
easement an interest over portion of the land
being Lot 1 on Plan of Subdivision No. 147889Q
and more particularly described in Certificate of
Title Volume 9712 Folio 849.

Published with the authority of the State
Electricity Commission of Victoria.

Dated 26 August 1993

J. T. HORGAN
State Electricity Commission of Victoria

APPOINTMENTS

Children and Young Persons Act 1989
**APPOINTMENT OF HONORARY YOUTH
 PROBATION OFFICERS**

I, Ron Tiffen (Regional Director) of Grampians Region of Health and Community Services, under section 226 of the *Children and Young Persons Act 1989* appoint the undermentioned persons as Honorary Parole Officers for the Children's Court in the State of Victoria.

Anna Langley;
 John McDougall;
 Virginia Wellard;
 Ross Weiland.

Dated 9 August 1993

RON TIFFEN
 Regional Director

Children and Young Persons Act 1989
**APPOINTMENT OF HONORARY
 PROBATION OFFICERS**

I, Ron Tiffen (Regional Director) of Grampians Region of Health and Community Services, under section 34 (4) of the *Children and Young Persons Act 1989* appoint the undermentioned persons as Honorary Probation Officers for the Children's Court in the State of Victoria.

Anna Langley;
 Virginia Wellard;
 Ross Weiland;
 Donna Nield.

Dated 9 August 1993

RON TIFFEN
 Regional Director

Children and Young Persons Act 1989
**REVOCATION OF APPOINTMENT OF
 HONORARY PROBATION OFFICERS**

I, Ron Tiffen (Regional Director) of Grampians Region of Health and Community Services, under section 34 (4) of the *Children and Young Persons Act 1989* revoke the appointment of the undermentioned persons as Honorary Probation Officers for the Children's Court in the State of Victoria.

Cathy King;
 Marcia Thompson;
 Anton Leschen.

Dated 9 August 1993

RON TIFFEN
 Regional Director

Children and Young Persons Act 1989
**REVOCATION OF APPOINTMENT OF
 HONORARY YOUTH PAROLE OFFICERS**

I, Ron Tiffen (Regional Director) of Grampians Region of Health and Community Services, under section 226 of the *Children and Young Persons Act 1989* appoint the undermentioned persons as Honorary Probation Officers for the Children's Court in the State of Victoria.

Cathy King;
 Anton Leschen;
 John Macdonald.

Dated 9 August 1993

RON TIFFEN
 Regional Director

Children and Young Persons Act 1989
**APPOINTMENT OF HONORARY
 PROBATION OFFICERS**

I, John Mollett (Regional Director) of Gippsland Region of Health and Community Services, under section 34 (4) of the *Children and Young Persons Act 1989* appoint the undermentioned persons as Honorary Probation Officers for the Children's Court in the State of Victoria for the period ending 31 December 1995:

Merryn Siely;
 Noel Yarram.

Dated 18 August 1993

JOHN MOLLETT
 Regional Director, Gippsland

Children and Young Persons Act 1989
**APPOINTMENT OF HONORARY
 PROBATION OFFICERS**

I, John Mollett (Regional Director) of Gippsland Region of Health and Community Services, under section 34 (4) of the *Children and Young Persons Act 1989* appoint the undermentioned persons as Honorary Probation Officers for the Children's Court in the State of Victoria for the period ending 31 December 1995:

Merryn Siely;
 Noel Yarram.

Dated 18 August 1993

JOHN MOLLETT
 Regional Director, Gippsland

ORDERS IN COUNCIL

Cemeteries Act 1958
SCALE OF FEES

Under section 17 of the *Cemeteries Act 1958*, and on the recommendation of the Minister for Health, the Governor in Council consents to the making of the Scale of Fees in respect of the following Public Cemeteries:

Cemeteries Act 1958
SCALE OF FEES OF THE YEA PUBLIC CEMETERY

In pursuance of the powers conferred upon them by the *Cemeteries Act* the trustees of the Yea Public Cemetery hereby make the following scale of fees, which shall come into operation upon publication in the *Government Gazette*, and from and after such publication every scale of fees heretofore made by the said trustees shall be and is hereby rescinded to the extent to which it conflicts with this scale.

| | |
|----------------------------------|-------|
| | \$ |
| Search fee | 15.00 |
| COUNCILLORS FOR THE SHIRE OF YEA | |

Cemeteries Act 1958
SCALE OF FEES OF THE CASTERTON (NEW) PUBLIC CEMETERY

In pursuance of the powers conferred upon them by the *Cemeteries Act* the trustees of the Casterton (New) Public Cemetery hereby make the following scale of fees, which shall come into operation upon publication in the *Government Gazette*, and from and after such publication every scale of fees heretofore made by the said trustees shall be and is hereby rescinded to the extent to which it conflicts with this scale.

Lawn Cemetery

| | |
|---|--------|
| | \$ |
| 7' Grave such sum including site fee, grave digging and interment fee | 850.00 |
| Selection fee | 75.00 |
| Reservation fee | 75.00 |

J. M. HUGHES, Trustee

W. R. COOPER, Trustee

J. P. KENT, Trustee

Cemeteries Act 1958
SCALE OF FEES OF THE BIRCHIP PUBLIC CEMETERY

In pursuance of the powers conferred upon them by the *Cemeteries Act* the trustees of the Birchip Public Cemetery hereby make the following scale of fees, which shall come into operation upon publication in the *Government Gazette*, and from and after such publication every scale of fees heretofore made by the said trustees shall be and is hereby rescinded to the extent to which it conflicts with this scale.

Lawn Section

| | |
|------------------------------|--------|
| | \$ |
| Grave site | 160.00 |
| Sinking double depth | 230.00 |
| Sinking single depth | 220.00 |
| Maintenance | 75.00 |
| Interment | 60.00 |
| Second interment | 410.00 |
| Second interment fee | 30.00 |
| Plaques—At quote price | |
| Vases—At quote price | |
| Concrete base—At quote price | |
| Postage—At quote price | |

Ashes Niche

| | |
|-----------|--------|
| Interment | 150.00 |
| Fee | 30.00 |

Monumental Section

| | |
|------------------|--------|
| Site | 160.00 |
| Sinking—Double | 230.00 |
| Sinking—Single | 220.00 |
| Maintenance | 75.00 |
| Interment | 60.00 |
| Second interment | 410.00 |
| Second fee | 30.00 |

C. F. RUSSELL, Trustee

G. SHARP, Trustee

D. M. KELLY, Trustee

Cemeteries Act 1958
SCALE OF FEES OF THE KYNETON PUBLIC CEMETERY

In pursuance of the powers conferred upon them by the *Cemeteries Act* the trustees of the Kyneton Public Cemetery hereby make the following scale of fees, which shall come into

2400 G 33 26 August 1993

operation upon publication in the *Government Gazette*, and from and after such publication every scale of fees heretofore made by the said trustees shall be and is hereby rescinded to the extent to which it conflicts with this scale.

Memorial Rose Garden

| | \$ |
|--------------------------|---------|
| Single rose bush | 650.00 |
| Double rose bush | 1100.00 |
| Family rose bush (for 4) | 1800.00 |
| Memorial tree (single) | 700.00 |
| Memorial tree (double) | 1200.00 |

* All costs to include bronze plaque allowing three lines of inscription.

* No tenure.

J. WILLMOTT, Trustee
B. GRAY, Trustee
C. NIELSEN, Trustee
J. SCOTT, Trustee

Cemeteries Act 1958 SCALE OF FEES OF THE UPPER YARRA PUBLIC CEMETERY

In pursuance of the powers conferred upon them by the Cemeteries Act the trustees of the Upper Yarra Public Cemetery hereby make the following scale of fees, which shall come into operation upon publication in the *Government Gazette*, and from and after such publication every scale of fees heretofore made by the said trustees shall be and is hereby rescinded to the extent to which it conflicts with this scale.

Private Graves

| | \$ |
|---|--------|
| Lawn area—Non-denominational. | |
| Bronze plaque memorials only | |
| 2.44 m x 1.22 m allowing two interments | 420.00 |
| Memorial—Denominational area for approved monumental works or bronze plaques. 2.44 m x 1.22 m allowing two interments | 420.00 |
| Children's area—Child's grave including interment and 216 mm x 165 mm bronze plaque | 300.00 |

Interment Fees

| | |
|---------------------------|--------|
| Lawn and monumental areas | 360.00 |
| Ashes in private graves | 70.00 |

Victoria Government Gazette

| | |
|--|--------|
| Interment of cremated remains includes reception of ashes of cremation and placement of 280 mm x 230 mm bronze plaques at a garden bed | 340.00 |
|--|--------|

Plaque Fees

| | |
|---|--------|
| Plaques supplied and set in position by the Trust | |
| Dual conversion decorative plaque to commemorate one or two persons with the same surname. Includes first attachment and inbuilt flower container. Measures 559 mm x 305 mm | 455.00 |
| Second attachment to dual conversion plaque | 75.00 |
| Decorative lawn plaque 381 mm x 279 mm | 315.00 |
| Standard lawn plaque 381 mm x 279 mm | 300.00 |

Miscellaneous Charges

| | |
|--|--------|
| Exhumation fee when authorised | 530.00 |
| Permission to erect, repair or add to any monument | 65.00 |
| Cancellation fee in respect of pre-purchased graves—20% of amount of reservation | |
| Search of records | 10.00 |

P. HILL, Trustee
K. GRAHAM, Trustee
E. COLVERSON, Trustee

Cemeteries Act 1958 SCALE OF FEES OF THE COBRAM PUBLIC CEMETERY

In pursuance of the powers conferred upon them by the Cemeteries Act the trustees of the Cobram Public Cemetery hereby make the following scale of fees, which shall come into operation upon publication in the *Government Gazette*, and from and after such publication every scale of fees heretofore made by the said trustees shall be and is hereby rescinded to the extent to which it conflicts with this scale.

Lawn

| | \$ |
|---|--------|
| Interment | 900.00 |
| Interment (Saturday, Sunday, Public Holidays) | 70.00 |
| Land | 290.00 |
| Second Interment | 360.00 |

Children Under 5 Years of Age

| | |
|--------------------|-----------|
| Interment | No charge |
| Grave digging | No charge |
| Land 1.2 m x 1.2 m | No charge |
| Monument | 220.00 |

General

| | |
|--|--------|
| Land 2.4 m x 1.2 m | 290.00 |
| Own Selection of Site (extra) | 60.00 |
| Sinking grave 1.83 m | 220.00 |
| Each additional .3 m | 35.00 |
| Sinking Oversize Grave (extra) | 60.00 |
| Cancellation of order to sink (if commenced) | 60.00 |
| Re-opening Grave (no cover) | 180.00 |
| Re-opening Grave (with cover) | 230.00 |
| Interment fee | 60.00 |
| Interment fee not in prescribed hours or without due notice | 70.00 |
| Late fee (per 1/2 or part thereof in excess of 15 mins) | 20.00 |
| Certificate of right of burial | 20.00 |
| Number plate or brick | 15.00 |
| Annual maintenance (optional) | 60.00 |
| Permission to erect a headstone or monument 5% of cost or minimum | 25.00 |
| Permission to construct a brick grave or erect any stone kerb, brick tile work or concrete | 35.00 |
| Grave renovations or additional inscription | 25.00 |
| Exhumation of remains (work authorised) | 400.00 |
| Interment of ashes | 50.00 |

Vault

| | |
|--------------|--------|
| Land | 290.00 |
| Gravedigging | 440.00 |
| Backfilling | 150.00 |
| Interment | 60.00 |

Memorial Wall

| | |
|-----------|--------|
| Niche | 300.00 |
| Interment | 170.00 |

COUNCILLORS OF THE
SHIRE OF COBRAM*Cemeteries Act 1958*SCALE OF FEES OF THE PAKENHAM
PUBLIC CEMETERY

In pursuance of the powers conferred upon them by the Cemeteries Act the trustees of the

Pakenham Public Cemetery hereby make the following scale of fees, which shall come into operation upon publication in the *Government Gazette*, and from and after such publication every scale of fees heretofore made by the said trustees shall be and is hereby rescinded to the extent to which it conflicts with this scale.

| | |
|-------------------------------|-----------|
| Niche wall (including plaque) | \$ 450.00 |
| Interment of ashes under tree | 300.00 |

D. DUFFY, Trustee

E. TROTTER, Trustee

M. CARNEY, Trustee

*Cemeteries Act 1958*SCALE OF FEES OF THE WARRNAMBOOL
PUBLIC CEMETERY

In pursuance of the powers conferred upon them by the Cemeteries Act the trustees of the Warrnambool Public Cemetery hereby make the following scale of fees, which shall come into operation upon publication in the *Government Gazette*, and from and after such publication every scale of fees heretofore made by the said trustees shall be and is hereby rescinded to the extent to which it conflicts with this scale.

| | |
|------------------------------------|-----------|
| Rose Garden Memorial (inc. Plaque) | \$ 250.00 |
|------------------------------------|-----------|

R. A. CROTHERS, Trustee

R. K. PATTERSON, Trustee

K. ELLARD, Trustee

*Cemeteries Act 1958*SCALE OF FEES OF THE WARRINGAL
PUBLIC CEMETERY

In pursuance of the powers conferred upon them by the Cemeteries Act the trustees of the Warringal Public Cemetery hereby make the following scale of fees, which shall come into operation upon publication in the *Government Gazette*, and from and after such publication every scale of fees heretofore made by the said trustees shall be and is hereby rescinded to the extent to which it conflicts with this scale.

| | |
|-------------------------|------------|
| Fee for right of burial | \$ 1000.00 |
|-------------------------|------------|

Interment fees:

| | |
|---|--------|
| (a) (i) Weekdays | 700.00 |
| (ii) Child under five years | 400.00 |
| (iii) Saturday morning or public holidays (adult and child) | 900.00 |

2402 G 33 26 August 1993

| | |
|--|--------|
| (iv) Provision for third interment (additional) | 140.00 |
| (v) Additional for oversized grave | 200.00 |
| (b) Interment of cremated remains in private grave | 130.00 |
| Exhumation fee (when authorised) | 750.00 |
| Monumental fees on all monuments erected—10% of the total cost of job with minimum charge of \$25.00 | |

Grave Plaques:

| | |
|---|--------|
| (a) Lawn grave plaque 381 mm x 279 mm— | |
| (i) Single interment | 300.00 |
| (ii) Dual interment—includes first name plate | 375.00 |
| (iii) Additional name plate | 120.00 |

Note: Other miscellaneous charges applicable where cost of request is not specified.

Memorials:

| | |
|---|--------|
| (a) Border position in rose bed | 490.00 |
| (b) Border position in garden feature setting | 490.00 |
| (c) Wall niche | 290.00 |

Memorial Plaques:

| | |
|---|--------|
| (a) Memorial plaque for border position | 120.00 |
| (b) Niche plaque with Omega Vase | 200.00 |

Note: Plaque fee includes cost of fixing. Other miscellaneous charges applicable where cost of request is not specified.

Miscellaneous charges:

| | |
|---|--------|
| (a) Cancellation of order | 110.00 |
| (b) Search of records—\$15 minimum or \$30 per hour | |

All memorials for cremated remains are for a tenure period of 25 years from the date of purchase.

COUNCILLORS FOR
THE CITY OF
HEIDELBERG

Cemeteries Act 1958
SCALE OF FEES OF THE CARNGHAM
PUBLIC CEMETERY

In pursuance of the powers conferred upon them by the Cemeteries Act the trustees of the

Victoria Government Gazette

Carngham Public Cemetery hereby make the following scale of fees, which shall come into operation upon publication in the *Government Gazette*, and from and after such publication every scale of fees heretofore made by the said trustees shall be and is hereby rescinded to the extent to which it conflicts with this scale.

Lawn Section

| | |
|---|--------|
| | \$ |
| Land, 2.44 m x 1.22 m | 500.00 |
| Interment fee, including grave digging | 300.00 |
| Headstone—supplied and affixed by the Trust (Gold lettering at extra \$3.00 per letter) | 210.00 |
| M. CHEESMAN, Trustee | |
| S. GREENBANK, Trustee | |
| J. GARDNER, Trustee | |

Cemeteries Act 1958
SCALE OF FEES OF THE CAMPERDOWN
PUBLIC CEMETERY

In pursuance of the powers conferred upon them by the Cemeteries Act the trustees of the Camperdown Public Cemetery hereby make the following scale of fees, which shall come into operation upon publication in the *Government Gazette*, and from and after such publication every scale of fees heretofore made by the said trustees shall be and is hereby rescinded to the extent to which it conflicts with this scale.

Lawn Cemetery—(Undenominational)

| | |
|------------------------------|--------|
| | \$ |
| Lawn grave, 2.44 m x 1.22 m | 500.00 |
| For each interment therein | 240.00 |
| Babies section land | 180.00 |
| Ashes buried in lawn section | 75.00 |

Monumental Section—(Private Graves)

| | |
|---|--------|
| Land, 2.44 m x 1.22 m | 500.00 |
| Sinking grave, 2.13 m deep | 240.00 |
| Sinking oversize grave for American caskets (extra) | 120.00 |
| Re-opening grave (no cover) | 220.00 |
| Re-opening grave (with cover) | 270.00 |

Niche Wall

| | |
|----------------------------------|-------|
| Interment of ashes in Niche Wall | 50.00 |
|----------------------------------|-------|

Miscellaneous Charges

| | |
|--|--------|
| Exhuming the remains of a body (when authorised) | 700.00 |
| Interment of ashes in a private grave | 75.00 |

Victoria Government Gazette

Extra Charges

| | |
|---|--------|
| Interment not in prescribed hours or on Saturday, Sunday or Public Holidays | 75.00 |
| Sinking or re-opening grave on Saturday, Sunday or Public Holidays | 75.00 |
| Interment of ashes in rose garden (including plaque) | 300.00 |
| Interment of ashes around family tree (including plaque) | 300.00 |
| Additional interment around family tree | 100.00 |
| N. WYND, Trustee | |
| M. RIPON, Trustee | |
| M. KEMPTON, Trustee | |

Cemeteries Act 1958
SCALE OF FEES OF THE TAWONGA
PUBLIC CEMETERY

In pursuance of the powers conferred upon them by the Cemeteries Act the trustees of the Tawonga Public Cemetery hereby make the

G 33 26 August 1993 2403

following scale of fees, which shall come into operation upon publication in the *Government Gazette*, and from and after such publication every scale of fees heretofore made by the said trustees shall be and is hereby rescinded to the extent to which it conflicts with this scale.

| | |
|--------------------------------|--------|
| | \$ |
| Double grave | 220.00 |
| Re-open (no cover) | 180.00 |
| Re-open (with cover) | 190.00 |
| Memorial Wall | 50.00 |
| Permission to erect a monument | 30.00 |
| S. RYDER, Trustee | |
| H. RYDER, Trustee | |
| A. G. GENTILE, Trustee | |

Dated 24 August 1993

Responsible Minister:
MARIE TEHAN
Minister for Health

DAMIEN O'SHEA
Clerk of the Executive Council

Mineral Resources Development Act 1990
DEPARTMENT OF ENERGY AND MINERALS
Revocation of Exemption Order

The Governor in Council under clause 4 (3) of Schedule 2 of the *Mineral Resources Development Act 1990*, revokes in whole the Order in Council dated 12 December 1989, that was published in the *Government Gazette* No. G49, page 3261, dated 13 December 1989, and the exemption order dated 8 December 1989 published in the *Government Gazette* No. G49, page 3255, dated 13 December 1989, which exempted from exploration and mining areas of land in the Bendigo goldfield.

Dated 17 August 1993

Responsible Minister:

S. J. PLOWMAN
Minister for Energy and Minerals

DAMIEN O'SHEA
Clerk of the Executive Council

The boundary AMG co-ordinates of the effected area are as follows:

EXTERNAL BOUNDARY AMG CO-ORDINATES

| <i>Easting</i> | <i>Northing</i> |
|----------------|-----------------|
| A. 250 031.1 | 5 936 351.2 |
| B. 254 708.6 | 5 937 777.5 |
| C. 259 971 | 5 920 563.2 |
| D. 255 192 | 5 919 099.6 |


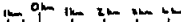
INTERNAL BOUNDARY AMG CO-ORDINATES

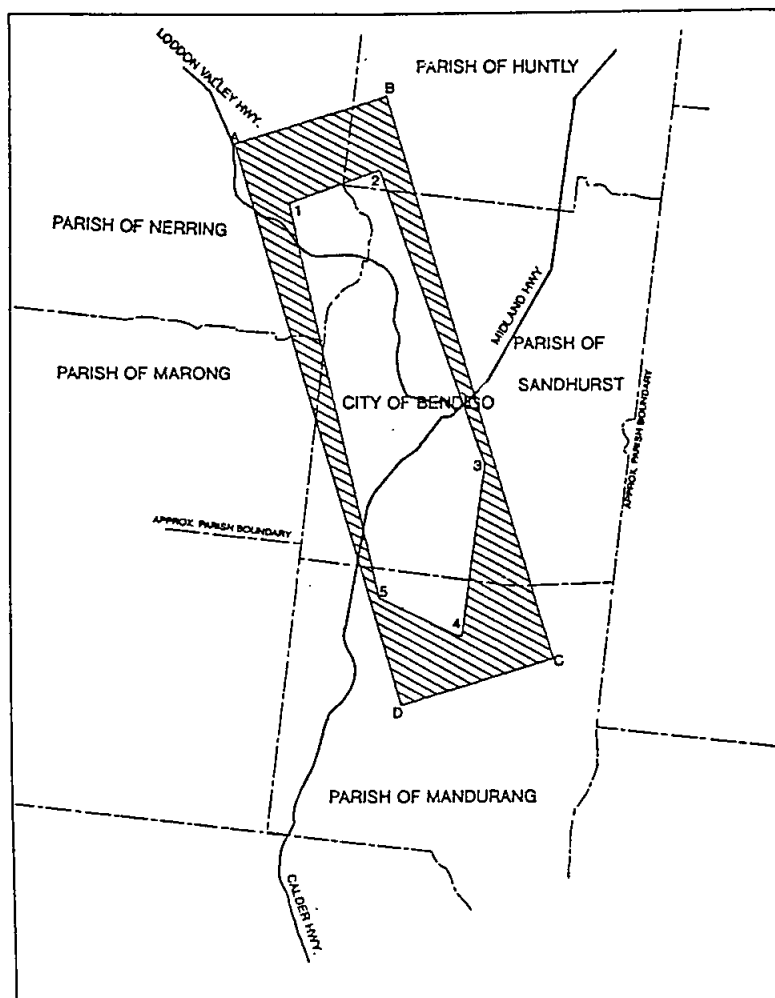
| <i>Easting</i> | <i>Northing</i> |
|----------------|-----------------|
| 1. 251 793.46 | 5 934 554.10 |
| 2. 254 484.66 | 5 935 533.74 |
| 3. 257 775.70 | 5 926 616.22 |
| 4. 257 036.71 | 5 921 234.98 |
| 5. 254 451.74 | 5 922 482.38 |

2404 G 33 26 August 1993

Victoria Government Gazette

and shown hatched on the plan hereunder.

|  | MINERAL RESOURCES DEVELOPMENT ACT 1990 | | |
|---|--|---|-------------|
| | REVOCATION | | |
| | Area 4241.5 Ha |  | AMG ZONE 55 |



S. J. PLOWMAN
Minister for Energy and Minerals

NOTICE OF INTENTION

The Governor in Council under section 10 of the *Crown Land (Reserves) Act 1978* gives notice of intention to revoke the following temporary reservations:

BEAUFORT—The temporary reservation by Order in Council of 4 October 1966 of 1012 square metres of land in Section 24, Township of Beaufort, Parish of Beaufort as a site for Public purposes (Forests Department purposes)—(Rs 3560).

BIRREGURRA—The temporary reservation by Order in Council of 15 February 1949 of 2023 square metres of land in the Township of Birregurra, Parish of Birregurra as a site for Police purposes, so far only as the portion containing 1043 square metres shown as Crown Allotment 9, Section J, Township of Birregurra on Certified Plan No. 112165 lodged in the Central Plan Office—(Rs 6324).

CHARLTON WEST—The temporary reservation by Order in Council of 13 December 1880 of 8094 square metres of land in the Parish of Charlton West as a site for Public purposes (State School)—(L6-8622).

COBRAM—The temporary reservation by Order in Council by 22 March 1983 of 725 square metres of land being Crown Allotment 33B, Parish of Cobram as a site for Police purposes—(Rs 12109).

PORTLAND—The temporary reservation by Order in Council of 24 May 1983 of 690 square metres of land being Crown Allotment 40B, Section D, Township of Portland as a site for Police purposes—(Rs 9366).

PORTLAND—The temporary reservation by Order in Council of 1 September 1970 of 911 square metres of land in Section B, Township of Portland, Parish of Portland as a site for Public purposes (Police purposes)—(Rs 9366).

PORTLAND—The temporary reservation by Order in Council of 1 September 1970 of 784 square metres of land in Section D, Township of Portland, Parish of Portland as a site for Public purposes (Police purposes)—(Rs 9366).

WARRACKNABEAL—The temporary reservation by Order in Council of 21 September 1982 of 2667 square metres of land being Crown Allotment 2, Section 32, Township of Warracknabeal as a site for the purposes of the Department of Crown Grants and Survey—(Rs 12150).

WINCHELSEA—The temporary reservation by Order in Council of 23 October 1945 of 2049 square metres of land in the Township of Winchelsea, Parish of Mirnee as a site for Police purposes, so far only as the portion containing 1517 square metres shown as Crown Allotment 21B, Township of Winchelsea on Certified Plan No. 112164 lodged in the Central Plan Office—(Rs 5708).

Dated 24 August 1993

Responsible Minister:

M. A. BIRRELL

Minister for Conservation and Environment

DAMIEN O'SHEA

Clerk of the Executive Council

Crown Land (Reserves) Act 1978
REVOCATION OF TEMPORARY
RESERVATIONS

The Governor in Council under section 10 of the *Crown Land (Reserves) Act 1978* revokes the following temporary reservations:

BUNGULUKE—The temporary reservation by Order in Council of 22 July 1889 of 4.51 hectares of land being Crown Allotment 39B, Section A, Parish of Bunguluke as a site for a Manure Depot—(Rs 14373).

DOUTTA GALLA—The temporary reservation by Order in Council of 23 June 1964 of 2.23 hectares of land in Section 2, Parish of Doutta Galla as a site for State School purpose—(Rs 8337).

SOUTH MELBOURNE—The temporary reservation by Order in Council of 23 August 1875 of 5590 square metres of land in Section 66, City of South Melbourne, Parish of Melbourne South (formerly at Emerald Hill) as a site for State School purposes—(Rs 5396).

SOUTH MELBOURNE—The temporary reservation by Order in Council of 24 February 1976, of 599 square metres of land being Crown Allotment 12A, Section 66, City of South Melbourne, Parish of Melbourne South, as a site for State School purposes—(Rs 5396).

TOOLLEEN—The temporary reservation by Order in Council of 28 May 1895 of 1.624 hectares of land in the Township of Toolleen as a site for a State School—(P131455).

WAIL—The temporary reservation by Order in Council of 26 March 1990, of 1671 square metres of land being Crown Allotment 5, Section 1, Township of Wail, Parish of Wail, as

2406 G 33 26 August 1993

a site for Public Park, Gardens and Ornamental Plantation—(Rs 2779).

WELLSFORD—The temporary reservation by Order in Council of 20 February 1882 of 8094 square metres of land in the Parish of Wellsford as a site for Public purposes (State School)—(P 125437).

Dated 24 August 1993

Responsible Minister:

M. A. BIRRELL

Minister for Conservation and Environment

DAMIEN O'SHEA
Clerk of the Executive Council

Crown Land (Reserves) Act 1978
CROWN LANDS TEMPORARILY
RESERVED

The Governor in Council under sections 4 and 7 of the *Crown Land (Reserves) Act 1978* temporarily reserves for the purposes mentioned and also nominates as areas for which consent of the person or manager administering or managing the lands is required before work may be done on those lands in accordance with the *Mineral Resources Development Act 1990*, the following Crown lands:

MUNICIPAL DISTRICT OF THE SHIRE OF
WYCHEPROOF

BUNGULUKE—Rubbish Depot, 4.833 hectares being Crown Allotment 39C, Section A, Parish of Bunguluke as shown on Certified Plan No. 111805 lodged in the Central Plan Office—(Rs 14373).

MUNICIPAL DISTRICT OF THE CITY OF
SOUTH BARWON

TORQUAY—Police purposes, 114 square metres being Crown Allotment 13D, Section 5, Township of Torquay, Parish of Puebla as shown on Certified Plan No. 112178 lodged in the Central Plan Office—(Rs 7536).

Dated 24 August 1993

Responsible Minister:

M. A. BIRRELL

Minister for Conservation and Environment

DAMIEN O'SHEA
Clerk of the Executive Council

Victoria Government Gazette

Health Services Act 1988

AMENDMENT TO SCHEDULE 1

Under section 8 (1) (c) of the *Health Services Act 1988* and on the recommendation of the Minister for Health, the Governor in Council amends Schedule 1 of the Act by changing the name of Yarram and District Hospital to the Yarram and District Health Service.

Dated 24 August 1993

Responsible Minister:

MARIE TEHAN

Minister for Health

DAMIEN O'SHEA
Clerk of the Executive Council

State Owned Enterprises Act 1992
DECLARATIONS UNDER DIVISION 1 OF
PART 2 IN RELATION TO THE PORT OF
GEELONG AUTHORITY

Dated: 17 August 1993

Responsible Minister:

ALAN ROBERT STOCKDALE

Treasurer

DAMIEN O'SHEA
Clerk of the Executive Council

The Governor in Council in the exercise of the powers contained in sections 7 and 8 of the *State Owned Enterprises Act 1992*—

- (1) declares the Port of Geelong Authority ("the Authority") to be a reorganising body;
- (2) changes the number of members of the board of management to 5;
- (3) declares that the remuneration of members of the board of management of the Authority is—
 - (a) in the case of the Chairman, \$30 000 per annum; and
 - (b) in every other case, \$15 000 per annum—plus for each member the payment of direct expenses, in accordance with the Authority's approved allowances;
- (4) revokes the appointment of Robert J. Robb as Deputy Chairman and Commissioner of the Authority and Michael P. O'Leary as Commissioner of the Authority;
- (5) appoints—
 - (a) Alexander J. McLeod as Chairman of the Authority; and

- (b) Robert J. Robb as Deputy Chairman of the Authority; and
(c) Penelope M. Leake, Michael P. O'Leary, and Thomas A. Pile as other members of the board of management of the Authority—
for the period of one year from the date of this Order.

State Owned Enterprises Act 1992
**DECLARATIONS UNDER DIVISION 1 OF
PART 2 IN RELATION TO THE PORT OF
PORTLAND AUTHORITY**

Dated: 17 August 1993

Responsible Minister:

ALAN ROBERT STOCKDALE
Treasurer

DAMIEN O'SHEA

Clerk of the Executive Council

The Governor in Council in the exercise of the powers contained in sections 7 and 8 of the *State Owned Enterprises Act 1992*—

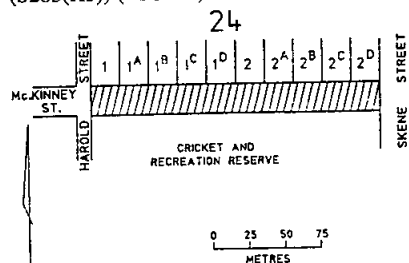
- (1) declares the Port of Portland Authority ("the Authority") to be a reorganising body;
- (2) changes the number of members of the board of management to 4;
- (3) declares that the remuneration of members of the board of management of the Authority is—
 - (a) in the case of the Chairman, \$24 000 per annum; and
 - (b) in every other case, \$12 000 per annum—plus for each member the payment of direct expenses, in accordance with the Authority's approved allowances;
- (4) revokes the appointment of Michael J. Crooks as Deputy Chairman and Commissioner of the Authority and William P. Sharrock as Commissioner of the Authority;
- (5) appoints—
 - (a) John F. Strang as Chairman of the Authority; and
 - (b) Douglas Allen and Trevor Adams as other members of the board of management of the Authority—for the period of one year from the date of this Order.

Land Act 1958
UNUSED ROADS CLOSED

The Governor in Council under section 349 of the *Land Act 1958* and with the consent in writing of the municipalities concerned and the adjoining owners closes the following unused roads:

**MUNICIPAL DISTRICT OF THE CITY OF
SHEPPARTON**

SHEPPARTON—The road in the Township of Shepparton, Parish of Shepparton as indicated by hatching on plan hereunder—
(S283(H3)) (Rs 3521).



**MUNICIPAL DISTRICT OF THE SHIRE OF
ALEXANDRA**

TAGGERTY—The road in the Parish of Taggerty shown as Crown Allotment 1A, Section 2 on Certified Plan No. 112188 lodged in the Central Plan Office—(L7/3989).

Dated 24 August 1993

Responsible Minister:

M. A. BIRRELL

Minister for Conservation and Environment

DAMIEN O'SHEA

Clerk of the Executive Council

Land Act 1958
**LAND VESTED IN MELBOURNE WATER
CORPORATION**

The Governor in Council under section 22A (2) of the *Land Act 1958* vests in Melbourne Water Corporation an area of 6.665 hectares of land in the Cities of Melbourne and South Melbourne as shown on Certified Plan No. 111939 lodged in the Central Plan Office.

Dated 24 August 1993

Responsible Minister:

M. A. BIRRELL

Minister for Conservation and Environment

DAMIEN O'SHEA

Clerk of the Executive Council

2408 G 33 26 August 1993

Melbourne Cricket Ground Act 1984

USE OF FLOODLIGHTS AT MELBOURNE
CRICKET GROUND

The Governor in Council, under section 3 (3) of the *Melbourne Cricket Ground Act 1984*, approves of the use of the floodlights at the Melbourne Cricket Ground after 6 p.m. on Friday, 3 September 1993 or Saturday, 4 September 1993 for the purpose of playing an Australian Football League finals match.

Dated 24 August 1993

Responsible Minister:

M. A. BIRRELL

Minister for Conservation and Environment

DAMIEN O'SHEA

Clerk of the Executive Council

Corrections Act 1986

RE-APPOINTMENT OF MEMBERS
ADULT PAROLE BOARD

The Governor in Council under section 61 of the *Corrections Act 1986*, re-appoints Hilary Stewart Read and Denbigh John Yelland Richards to act as part-time members of the Adult Parole Board from 31 August 1993 to 30 August 1996, both dates inclusive.

Dated 24 August 1993

Responsible Minister:

PATRICK McNAMARA

Minister for Corrections

DAMIEN O'SHEA

Clerk of the Executive Council

Victoria Government Gazette

**NOTICE OF MAKING OF STATUTORY
RULES WHICH ARE NOT YET
AVAILABLE**

Notice is given of the making of the following
Statutory Rules:

- Registration of Births,
Deaths and Marriages
Act 1959*
- 156/1993 Births, Deaths and
Marriages (Prescribed
Fees) Regulations 1993
- Public Sector
Management Act 1992*
- 157/1993 Public Sector Management
(Transitional)
Regulations 1993
- Road Safety Act 1986*
- 158/1993 Road Safety (Procedures)
(Motor Cycles)
Regulations 1993
- Building Control Act
1981*
- 159/1993 Building Control
Qualification Board
(Building Surveyors)
(Amendment)
Regulations 1993

The retail prices and price codes below will
apply from 2 August 1993 to the following
products: Acts (New, Reissue and Reprint),
Statutory Rules (New, Reissue and Reprint),
Parliamentary Papers, Bills and Reports, Special
and Periodical Gazettes, and Industrial Awards.

| Price Code | No. of Pages (Including cover and blank pages) | |
|------------|--|---------|
| | Price | |
| A | 1-16 | \$2.70 |
| B | 17-32 | \$4.00 |
| C | 33-48 | \$5.50 |
| D | 49-96 | \$8.50 |
| E | 97-144 | \$11.00 |
| F | 145-192 | \$13.00 |
| G | 193-240 | \$15.00 |
| H | 241-288 | \$16.00 |
| I | 289-352 | \$18.00 |
| J | 353-416 | \$21.00 |
| K | 417-480 | \$24.00 |
| L | 481-544 | \$28.00 |

A set retail price per issue will apply from
2 August 1993 to:

Government Gazette (General) \$1.65 per issue
Hansard (Weekly) \$2.70 per issue

2410 G 33 26 August 1993

Victoria Government Gazette



2



CONTENTS

| | Page |
|-------------------------------------|------|
| Appointments | 2398 |
| Cemeteries—Scale of Fees | 2399 |
| Contracts | 2395 |
| Contracts Accepted—Amendments | 2396 |
| Estates of Deceased Persons | 2371 |
| Government Notices | 2378 |
| Melbourne Water | 2384 |
| Notice of Making of Statutory Rules | 2409 |
| Orders in Council— | |
| Acts—Cemeteries; Mineral Resources | |
| Development; Crown Land | |
| (Reserves); Health Services; | |
| State Owned Enterprises; Land; | |
| Melbourne Cricket Ground; | |
| Corrections | 2399 |
| Private Advertisements | 2342 |
| Proclamations | 2377 |

A Victorian Government Publication

Published by

THE LAW PRINTER

a business unit of

Printing and Publishing Services Victoria (PPSV)

Melbourne Victoria Australia

© State of Victoria 1993

This publication is copyright. No parts may be reproduced
by any process except in accordance with the provisions
of the Copyright Act.

Address all inquiries to the Government Printer
for the State of Victoria

PO Box 292 South Melbourne 3205 Victoria Australia
ISSN 0819—5471

L. V. North, Government Printer Melbourne

Mail and Bulk Order Sales

The Law Printer

PO Box 292 South Melbourne 3205

28 Queensbridge Street, South Melbourne

Telephone inquiries (03) 242 4600

Fax (03) 242 4699

Counter Sales

The Law Printer Bookshop

28 Queensbridge Street South Melbourne 3205

Information Victoria Bookshop

318 Lt. Bourke Street Melbourne 3000

Telephone inquiries (03) 651 4100

Recommended Retail Price \$1.65

ISBN 0-7306-3918-5



9 780730 639183