

[3513]



VICTORIA
GOVERNMENT GAZETTE.

Published by Authority.

[Registered at the General Post Office, Melbourne, for transmission by post as a newspaper.]

No. 98.]

THURSDAY, JULY 6.

[1911.]

CONTRACTS ACCEPTED.

(SERIES 1911-12.)

SUPPLY OF PROVISIONS

FROM

1st JULY, 1911, TO 30th JUNE, 1912.

CONTRACTS ACCEPTED.—(Series 1911-12.)

No. of Contract.	Particulars of each Tender Accepted.	Amount.	Name of Contractor.	Charged against Vote or Fund.	
PROVISIONS—					
Supply of Provisions for General Stores in such quantities as may be ordered from 1st July, 1911, to 30th June, 1912.					
Melbourne District—					
353	Beer and spirits	Rates as per annex	R. G. Wilson and Co.	Contingencies, 1911-12.	
354	Bread, Kew Asylum	Ditto	J. H. Reith		
355	Bread, Yarra Bend Asylum	Ditto	J. N. Hennessy		
356	Bread, Schools, Royal Park; Receiving Depot, Royal Park; Police Lock-ups, Police Depot, &c.	Ditto	The Civil Service Co-operative Society of Victoria Ltd.		
357	Butter, cheese, and eggs	Ditto	H. McDonough		
358	Flour and maize meal	Ditto	H. McDonough		
359	Groceries	Ditto	Moran and Cato		
360	Jams	Ditto	Cunliff and Paterson Ppy. Ltd.		
361	Meat, Kew Asylum	Ditto	G. R. McKelvey and Co. Ppy. Ltd.		
362	Meat, Yarra Bend Asylum	Ditto	W. Angliss and Co. Ppy. Ltd.		
363	Meat, Pentridge Penal Establishment	Ditto	P. S. Laird		
364	Meat, Melbourne Gaol, &c.	Ditto	T. K. Bennet and Woolcock		
365	Milk, Melbourne Gaol	Ditto	James Murphy		
366	Milk, Pentridge Penal Establishment	Ditto	James Murphy		
367	Potatoes	Ditto	W. H. Maine and Co. Ppy. Ltd.		
368	Sugar	Ditto	J. D. Howie		
369	Tea	Ditto	J. D. Howie		
370	Tobacco	Ditto	Dudgeon and Arnell		
Williamstown—For s.s. Lady Loch and Albert.					
371	Breadstuffs	Ditto	W. J. Elsum		
372	Butter	Ditto	Moran and Cato		
373	Groceries	Ditto	R. G. Wilson and Co.		
374	Candles, soap, and soda	Ditto	James Rice and Sons		
375	Meat	Ditto	G. R. McKelvey and Co. Ppy. Ltd.		
376	Vegetables	Ditto	R. L. Doig		
Ararat District—					
377	Breadstuffs	Ditto	Wm. Bates		
378	Butter and cheese	Ditto	H. McDonough		
379	Groceries	Ditto	Flattely and Lewis		
380	Jams	Ditto	Ballarat Jam Co. Ppy. Ltd.		
381	Meat	Ditto	Arthur Murphy		
382	Potatoes	Ditto	W. H. Maine and Co. Ppy. Ltd.		
383	Sugar	Ditto	J. D. Howie		
384	Tea	Ditto	J. D. Howie		
Beechworth District—					
385	Breadstuffs	Ditto	Wm. Price		
386	Butter and cheese	Ditto	H. McDonough		
387	Groceries	Ditto	J. D. Howie		
388	Meat	Ditto	W. H. Morton		
389	Potatoes	Ditto	W. H. Maine and Co. Ppy. Ltd.		
390	Sugar	Ditto	J. D. Howie		
391	Tea	Ditto	John A. Clements		
Ballarat District—					
392	Breadstuffs	Ditto	Alfred Goddard		
393	Butter and cheese	Ditto	Donald Robinson		
394	Groceries	Ditto	J. D. Howie		
395	Jams	Ditto	Cunliff and Paterson Ppy. Ltd.		
396	Meat	Ditto	H. J. Symons		
397	Potatoes	Ditto	W. H. Maino and Co. Ppy. Ltd.		
Geelong District—					
398	Bread	Ditto	W. H. Marshall		
399	Groceries	Ditto	Moran and Cato		
400	Meat	Ditto	H. McKissock		
401	Milk	Ditto	Thomas Warren		
402	Potatoes	Ditto	W. H. Maine and Co. Ppy. Ltd.		
Lara—					
403	Bread	Ditto	F. Samblebe		
404	Butter	Ditto	W. Angliss and Co. Ppy. Ltd.		
405	Groceries	Ditto	A. V. Strong		
406	Jams	Ditto	Cunliff and Paterson Ppy. Ltd.		
407	Meat	Ditto	W. Angliss and Co. Ppy. Ltd.		
408	Potatoes	Ditto	W. H. Maine and Co. Ppy. Ltd.		
Sunbury District—					
409	Breadstuffs	Ditto	Thomas Clyne and Son		
410	Butter and Cheese	Ditto	J. D. Howie		
411	Groceries	Ditto	J. D. Howie		
412	Jams	Ditto	Cunliff and Paterson Ppy. Ltd.		
413	Meat	Ditto	C. M. Starkie		
414	Potatoes	Ditto	H. McDonough		
415	Sugar	Ditto	J. D. Howie		
416	Tea	Ditto	J. H. Redmond		
Bendigo District—					
417	Bread	Ditto	W. Beischer		
418	Groceries and potatoes	Ditto	Moran and Cato		
419	Meat	Ditto	Sprenger and Unnack		
Castlemaine District—					
420	Bread	Ditto	M. Van Heurck		
421	Groceries and potatoes	Ditto	Mary Frances Elvish		
422	Meat	Ditto	Jane Williamson		
Sale District—					
...	Bread	Ditto	Purchase as required		
...	Groceries and potatoes	Ditto	Purchase as required		
423	Meat	Ditto	E. Cleaver		

STIPULATIONS FOR SUPPLIES OF PROVISIONS.

(Where practicable, all items must be manufactured or prepared within the Commonwealth.)

Under all Sub-schedules particular attention is drawn to Clause 1 of the Condition as to quality.

BEER AND SPIRITS.

For brandy, whisky, and rum, porter in bulk, and for Guinness' porter in case, delivery will be taken at and from the bond, the contractor paying cost of re-gauging when required, and all other charges.

The contractor will be bound to supply such of the brands named in the tender as the departments may order. In cases where delivery from the bond is taken by the Government, the contractor will be required to hand to the secretary to the Tender Board the bond certificate and the locker's order and a copy of the entry, and pay all charges, including re-gauging, before delivery is taken.

English ale, brandy, whisky, and Guinness' porter in case must be delivered as imported; if bottled in the State it will not be accepted.

BREAD.

Samples of the best ordinarily retailed to the public will be considered as test loaves for first quality for fine wheaten and pure wheaten Meal Bread. Third quality (that issued to prisoners of the Crown) to be made of flour, fine sharps, the produce of prime, strong, thin-skinned, good-coloured wheat, to be perfectly free from coarse pollard or other offal. *Pure wheaten Meal Bread of first quality may be substituted, wholly or in part, for fine wheaten Bread at such times and in such quantities as in the opinion of the Medical Superintendent may be deemed necessary, and the contractor will be required to supply such Bread at the contract rate. Reasonable notice, however, of the intention to substitute wheaten Meal Bread must be given to the contractor by the officer ordering the supply.* Bread may be baked at any Government establishment without infringing these contracts. At the Gaols, Beechworth, Ballarat, Geelong, Bendigo, Castlemaine, and Sale, if required, bread must be supplied one day old, due notice to be given to the contractor of such requirement.

Under sub-schedules for Bread no subletting will be allowed; all work must be carried out by the contractor; the hours of employment of any person engaged in the manufacture, preparation, or the delivery of the bread tendered for in these schedules shall not exceed 48 hours per week, and every such person engaged in the delivery of the bread shall be paid a wage of not less than £2 per week, or such other wages and employed subject to such conditions as are or may be determined by the Bread and Bread Carter's Board under the provisions of the Factories and Shops Acts, and every person engaged in the manufacture or preparation of the bread shall be paid such wages and shall be employed subject to such conditions as are or may be determined by the Bread Board, or by the Court of Industrial Appeals, under the provisions of the Factories and Shops Acts; and a copy of these conditions shall be kept conspicuously and continually posted in legible Roman characters in the factory or shop (and in each part of the factory or shop where several rooms are in use) in which bread is prepared or manufactured under these contracts. Any infringement of these conditions, or breach of the said determination, in the opinion of the Treasurer, will subject the contractor, upon report from the Tender Board, to such mulct, not exceeding Fifty pounds (£50), as the Treasurer may direct, and the amount will be deducted from the contractor's account or from the security money, and the Treasurer's decision shall be binding, final, and conclusive as to the fact of infringement, and in all other respects.

In the event of bread being made at any Government establishment in the Melbourne District, during the currency of these contracts, the flour required will be drawn under the flour and maize meal sub-schedule. The maize meal for all the country gaols is included in the sub-schedule for flour and maize meal, and delivery of same will be required to be made at the Victorian Railways, Spencer-street.

Should any article or articles which may be reasonably included in a Baker's Price List, and which is or are not included in the schedule hereunder, be required for the use of attendants and nurses resident at the Hospitals for the Insane during the currency of the contract, the contractor shall supply any such article or articles at the current list rates at which such articles are retailed by the contractor to the public.

GROCERIES, CANDLES, SOAP, TEA, ETC.

Should any article or articles which may be reasonably included in a Grocer's Price List, and which is or are not included in the schedule hereunder, be required for the use of the attendants and nurses resident at the Hospitals for the Insane during the currency of the contract, the contractor shall, with the exception of Ballarat, supply such article or articles at the current list rates at which such articles are retailed by the contractor to the public.

Candles, except those for prison cells, must be supplied in 1-lb. packets. Candles for prison cells must be delivered in boxes containing from 25 to 50 lbs. per box, the boxes for which must be legibly stencilled on one end, showing the estimated burning time and the gross, tare, and net weight of contents. The soap supplied must be hard throughout, ready for immediate use without waste. Soap for Lunatic Asylums is not included in these contracts. When the quantity admits, tea must be supplied in original and unopened packages, labelled, as landed.

For s.s. *Lady Loch* and *Albert* a certain quantity of Biscuits and Preserved Meat are sometimes required in lieu of fresh meat and fresh bread, and are included to meet such contingency only.

BUTTER AND JAMS.

Butter is to be delivered to the s.s. *Lady Loch* and *Albert* in such quantities as may be ordered, and no excess over the quantity ordered will be received.

All Butter supplied, as well as the cases in which it is packed, must bear the impress stamp of the creamery manufacturing the Butter, otherwise it will be rejected. The Butter supplied may be tested at any time by the Government Dairy expert if considered by the officer ordering that the supply is not up to standard quality. The cheese must be fairly matured and packed in boxes for transport.

As regards butter for Ararat, Ballarat, Beechworth, Lara, Sunbury, all supplies must be submitted by the contractor to the Government Dairy Expert in Melbourne for test as to standard quality, and, if found to be satisfactory, shall be forwarded by that officer direct to the Institution ordering, the cost of freight being borne by the contractor in the usual way.

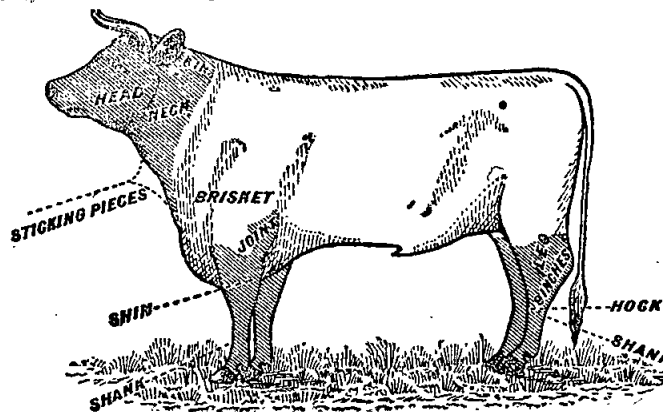
No subletting will be allowed; all work must be carried out by the contractor; the hours of employment of any person engaged in the manufacture of the jam tendered for in this schedule shall not exceed 48 hours per week, and every such person shall be paid such wages and shall be employed subject to such conditions as are or may be determined by the Jam Trade Board under the Factories and Shops Acts; and a copy of these conditions shall be kept conspicuously and continually posted in legible Roman characters in the factory or shop (and in each part of the factory or shop where several rooms are in use) in which jam is prepared under this contract. Any infringement of these conditions, or any breach of the said determination, in the opinion of the Treasurer, will subject the contractor, upon report from the Tender Board, to such mulct, not exceeding Fifty pounds (£50), as the Treasurer may direct, and the amount will be deducted from the contractor's account or from the security money, and the Treasurer's decision shall be binding, final, and conclusive as to the fact of infringement, and in all other respects.

N.B.—Jams.—The weight stamped on the tins in accordance with the regulations under the Commerce Act, as indicating the *minimum* net quantity that each tin contains, shall for the purpose of this contract be taken as the actual contents when computing the quantity supplied.

When Jam is supplied in jars the jars remain the property of the contractor, and must be removed by the contractor at his own expense when empty.

MEAT.

When fore and hind-quarters of beef are ordered for Hospitals for the Insane they must be supplied in the proportion of two of the former to one of the latter, and must be delivered as a whole respectively, also extra buttocks separately when ordered. Meat for other institutions must be supplied as ordered. Where hind-quarters or buttocks are ordered, 9 inches must be cut off from the end of the leg from the hock upwards, *i.e.*, the end of the leg from which the shank has been removed at the abattoirs; and when fore-quarters form a portion of the supply, 6 inches from the



end of the neck and the whole of the shin at the clodbone joint must be removed. The sticking pieces also must be trimmed off, and the point and end of the brisket rendered free from blood and blood stains.

Fore and hind-quarters, for convenience of handling, may be cut into two parts, but each part is to bear evidence of having been cut from the same beast.

Corned beef, rolled or round, as ordered, must be supplied without bone or cartilage and will be received, whether pumped or prepared in the ordinary way by pickling, but in the former case must have been soaked after pumping for at least 48 hours, in a good pickle, and then thoroughly drained before supply. No flank, chuck, sticking piece, shin, leg of beef, or piece under 7 lbs. will be received.

Should the local supply of fresh meat become scarce, or the price of same become abnormally high, frozen or chilled meat may, with the consent of the Tender Board on the recommendation of the head of the Department, be supplied.

In cases of emergency, or on such other occasions as in the opinion of the Inspector-General of the Insane may seem advisable, other forms of meat such as rabbits, tinned meats, &c., may be purchased apart from the contract, in lieu of the meat mentioned in the schedule, and substituted therefor, provided 24 hours' notice (except in cases of emergency) be given to the contractor of such intention.

The parts to be removed by the contractor are indicated by the shaded portions of the annexed diagram.

As regards supplies for s.s. *Lady Loch* and *Albert*, all Meat must be of prime quality, and must be supplied in equal quantities from ribs, sirloin, and thick flanks; mutton to be delivered in sides; all kidney fat to be removed; meat containing an undue proportion of fat will not be accepted.

Should any article or articles which may be reasonably included in a Butcher's Small Goods List, and which is or are not included in the schedule hereunder, be required for the use of attendants and nurses resident at the Hospitals for the Insane during the currency of the contract, the contractor shall supply such article or articles at the current list rates at which such articles are retailed by the contractor to the public.

Under sub-schedules for Meat no subletting will be allowed; no delivery of meat shall be made on Sundays*; all work must be carried out by the contractor; the employment of any person engaged in the cutting up, preparation, or delivery of the meat tendered for in these schedules, and the wages paid to any such person shall be subject to the conditions of and in accordance with the determination of the Butchers Board appointed under the provisions of the Factories and Shops Acts; and a copy of these conditions shall be kept conspicuously and continually posted in legible Roman characters in the factory or shop (and in each part of the factory or shop where several rooms are in use) in which meat is prepared under these contracts. Any infringement of these conditions, or any breach of the said determination, in the opinion of the Treasurer, will subject the contractor, upon report from the Tender Board, to such mulct, not exceeding Fifty pounds (£50), as the Treasurer may direct, and the amount will be deducted from the contractor's account or from the security money, and the Treasurer's decision shall be binding, final, and conclusive as to the fact of infringement, and in all other respects.

* Except when ordered for s.s. *Lady Loch* in cases of emergency only.

MILK.

The milk must be fresh, pure, and of the best quality, and subject to test when required by the department. Should the supply prove to be not of contract quality it will be rejected, and any expense incurred will be charged to the contractor.

Under sub-schedules for Milk no subletting will be allowed; all work must be carried out by the contractor; the hours of employment of any person engaged in the preparation or the delivery of the milk tendered for in these schedules shall not exceed 60 hours per week, and every such person shall be paid at a minimum wage of not less than £1 17s. 6d. per week, or £1 per week with board and lodging; and a copy of these conditions shall be kept conspicuously and continually posted in legible Roman characters in the factory or dairy (and in each part of the factory or dairy where several rooms are in use) in which milk is prepared under these contracts. Any infringement of these conditions, in the opinion of the Treasurer, will subject the contractor, upon report from the Tender Board, to such mulct, not exceeding Fifty pounds (£50), as the Treasurer may direct, and the amount will be deducted from the contractor's account or from the security money, and the Treasurer's decision shall be binding, final, and conclusive as to the fact of infringement, and in all other respects.

POTATOES AND VEGETABLES.

(Potatoes to be dry and free from dirt. Contractor to supply 105 lbs. of potatoes for each cental credited to him, and, in addition, to take back all rejected before being cooked.)

If the price of potatoes becomes abnormally high, the heads of the various departments concerned may, if they think fit, cause rice or any other suitable food to be occasionally substituted in lieu thereof. As regards vegetables for s.s. *Lady Loch* and *Albert*, no subletting will be allowed. Cabbage to be free from outside leaves and stalks.

TOBACCO.

Tobacco for country Hospitals for the Insane is included in the sub-schedule for tobacco, and delivery of same will be required to be made at Spencer-street.

Tobacco for country Gaols is not included in this contract.

No subletting will be allowed; all work must be carried out by the contractor; the hours of employment of any person engaged in the preparation or manufacture of the Tobacco tendered for in this sub-schedule shall not exceed 48 hours per week, and every such person shall be paid at a minimum wage of not less than £2 8s. per week for a man and £1 per week for a woman respectively; and a copy of these conditions shall be kept conspicuously and continually posted in legible Roman characters in the factory (and in each part of the factory where several rooms are in use) in which tobacco is prepared under this contract. Any infringement of these conditions, in the opinion of the Treasurer, will subject the contractor, upon report from the Tender Board, to such mulct, not exceeding Fifty pounds (£50), as the Treasurer may direct, and the amount will be deducted from the contractor's account or from the security money, and the Treasurer's decision shall be binding, final, and conclusive as to the fact of infringement, and in all other respects.

Under sub-schedules for Bread, Meat, Milk, and Tobacco, the contractor shall, before any account is passed for payment for services rendered, furnish a statutory declaration that all the workmen under this contract have been employed in accordance with the above clause of these conditions, and have been paid not less than the minimum rate of wages for such workmen as is provided for under that clause.

Schedule No. 1.
PROVISIONS—MELBOURNE DISTRICT.

Period of Contract—From 1st July 1911, to 30th June, 1912.

ANNEX TO CONTRACT No. 1911/353.

R. G. Wilson and Co., 21 Swanston-street, Melbourne.

Sub-schedule No. 1.

BEER AND SPIRITS.

Security, £50.

		£	s.	d.
1. Ale (pints), English	per doz.	0	6	6
2. " Colonial draught	per qt.			Purchase
3. Brandy—Australian Standard, pure grape, of proof strength, (Joshua's old Standard Grape)	per liq. gal.	0	19	6
4. " bottled—Hennessy's three star, as imported	per bottle	0	6	6
5. Whisky, of proof strength—Loch Dhu, Scotch Cream, or any other brand of equal quality	per liq. gal.	0	18	6
6. Porter—"Guinness," bottled (quarts)—T. B. Hall "Boar's Head"	per doz.	0	10	4½
7. " "Guinness," bottled (pints)—T. B. Hall "Boar's Head"	do.	0	6	9

ANNEX TO CONTRACT No. 1911/354.

J. H. Reith, 35 Lygon-street, Brunswick.

Sub-schedule 2.

BREAD FOR HOSPITALS FOR THE INSANE AT KEW.

Security, £100.

		£	s.	d.
1. Bread—Fine wheaten, first quality	per cental	0	7	3

ANNEX TO CONTRACT No. 1911/355.

J. N. Hennessy, 55 Sydney-road, Brunswick.

Sub-schedule 3.

BREAD FOR HOSPITALS FOR THE INSANE AT YARRA BEND.

Security, £100.

		£	s.	d.
1. Bread—Fine wheaten, first quality	per cental	0	6	9½

ANNEX TO CONTRACT No. 1911/356.

The Civil Service Co-operative Society of Victoria Limited, 114-120 Flinders-street, Melbourne.

Sub-schedule 4.

BREAD FOR DEPARTMENT OF NEGLECTED CHILDREN AND REFORMATORY SCHOOLS, ROYAL PARK; RECEIVING HOUSE AND MENTAL HOSPITAL, ROYAL PARK; POLICE LOCK-UPS; POLICE DEPOT, ETC.

Security, £50.

		£	s.	d.
1. Bread—Fine wheaten, first quality	per cental	0	7	5½
2. " Wheaten, third quality	do.	0	7	5½

ANNEX TO CONTRACT No. 1911/357.

H. McDonough, 518 Flinders-street, Melbourne.

Sub-schedule 5.

BUTTER, CHEESE, AND EGGS.

Security, £120.

		£	s.	d.
1. Butter—First Grade Creamery, to score not less than 92 points Government grade, Commerce Regulations standard	per cwt.	4	18	0
2. Cheese—First Class quality	do.	2	11	4
3. Eggs—Fresh, new laid	per doz.	0	0	9

ANNEX TO CONTRACT No. 1911/358.

H. McDonough, 518 Flinders-street, Melbourne.

Sub-schedule 6.

FLOUR AND MAIZE MEAL.

Security, £100.

		£	s.	d.
1. Flour—Roller, first quality, to sample	per cental	0	8	0
2. " Sharps, to sample	do.	0	6	8
3. Maize meal	do.	0	5	10

ANNEX TO CONTRACT No. 1911/359.

Moran and Cuto, corner of King and Collins streets, Melbourne.

Sub-schedule 7.

GROCERIES, ETC.

Security, £100.

		£	s.	d.
1. Arrowroot—Queensland	per lb.	0	0	4
2. Bicarbonate of Soda	do.	0	0	1½
3. Blue—Of any brand ordered	do.	0	0	6½

GROCERIES, ETC.—continued.

		£	s.	d.
4. Candles—Full weights, Kitchen's "Petrolines," Apollo Co.'s "Apollo," or other make of equal quality, to be supplied in 1-lb. packets, to sample	per lb.	0	0	6½
5. " Kitchen's "Petrolines," Apollo Co.'s "Apollo," or other make of equal quality, for use in prison cells, to burn for 1, 1½, 2, 2½, and 3 hours respectively, as ordered, to sample for quality and size, to be supplied in candle boxes, containing from 25 to 50 lbs. per box	do.	0	0	7
6. " Carriage, equal to Kitchen's No. 8, in 1-lb. packets	do.	0	0	7
7. " Paraffine	do.	0	0	5
8. Cocoa—In ½-lb. packets, of any brand ordered	do.	0	1	0
9. Coffee—Fresh roasted and whole, beans to be thoroughly sound, to sample	do.	0	1	1½
10. " Pure, fresh roasted and ground, to sample	do.	0	1	1½
11. Cornina	do.	0	0	5
12. Cream of Tartar	do.	0	1	0
13. Currants	do.	0	0	6
14. Golden Syrup, in 7-lb. tins	per tin	0	1	5
15. Lemon Peel	per lb.	0	0	6
16. Maizena—Duryea's	do.	0	0	6½
17. Mustard—"Double Superfine," of any Colonial manufacture ordered	do.	0	1	4
18. Oatmeal—Of any brand ordered	per cwt.	0	15	0
19. Pearl barley	per lb.	0	0	13
20. Pease—Split	per cwt.	0	16	9
21. Pepper—Black, ground	per lb.	0	0	7½
22. Pipes—Tobacco, clay	per doz.	0	0	4
23. Raisins—Sultana (Mildura)	per lb.	0	0	6
24. Rice—Dressed, to sample	per cwt.	0	17	0
25. Sago, to sample	do.	1	1	0
26. Salt—Fine	do.	0	3	6
27. " Rock	do.	0	4	0
28. Soap, Toilet—Brown Windsor, in tablets, to sample	per lb.	0	0	5
29. " Carbolic, in half-pound bars, to sample	do.	0	0	5
30. " Glycerine, in tablets, to sample	do.	0	0	5
31. " Sunlight, in tablets	do.	0	0	6
32. " Magic	do.	0	0	3
33. " Velvet	do.	0	0	3½
34. Soap—Extract of, Hudson's, "Best," in 14-lb. boxes	per box	0	4	3
35. Soda—Washing	per cwt.	0	4	6
36. Starch—Of any brand ordered, to sample	per lb.	0	0	4
37. Treacle, in 7-lb. tins	per tin	0	1	2
38. Vinegar	per quart	0	0	3
39. Lime Water	"	0	0	6

ANNEX TO CONTRACT No. 1911/360.

Cunliff and Paterson Pty. Ltd., 410 Swanston-street, Melbourne.

Sub-schedule 8.

JAMS FOR HOSPITALS FOR THE INSANE.

(Including Receiving House, Royal Park.)

Security, £20.

		£	s.	d.
1. Jams—Assorted, of approved kinds in the proportion of half seed and half stone, of the best quality, in tins, as required	per lb. actual net weight	0	0	3½

ANNEX TO CONTRACT No. 1911/361.

G. R. McKelvey and Co., Pty. Ltd., 323 Elizabeth-street, Melbourne.

Sub-schedule 9.

MEAT FOR HOSPITALS FOR THE INSANE, KEW.

Security, £150.

		£	s.	d.
1. Fresh beef—Fore-quarters	per cental	0	16	5
2. " " hind-quarters	do.	0	16	5
3. " " buttock	do.	0	16	5
4. " mutton	do.	0	16	5
5. Corned beef, rolled or round, as ordered, without bone or cartilage	do.	0	16	6
6. Fresh suet—Kidney	per lb.	0	0	2½

ANNEX TO CONTRACT No. 1911/362.

Wm. Angliss and Co. Pty. Ltd., 44 Bourke-street, Melbourne.

Sub-schedule 10.

MEAT FOR HOSPITALS FOR THE INSANE, YARRA BEND.

Security, £120.

		£	s.	d.
1. Fresh beef—Fore-quarters	per cental	0	16	11
2. " " hind-quarters	do.	0	16	11
3. " " buttock	do.	0	16	11
4. " mutton	do.	0	16	11
5. Corned beef, rolled or round, as ordered, without bone or cartilage	do.	0	16	11
6. Fresh suet—Kidney	per lb.	0	0	3

ANNEX TO CONTRACT No. 1911/363.

P. S. Laird, 304 Smith-street, Collingwood.

Sub-schedule 11.

MEAT FOR PENAL ESTABLISHMENT, PENTHRIDGE.

	Security, £100.	£ s. d.
1. Fresh beef	per cental	0 16 6
2. " buttock	do.	0 16 6
3. " corned	do.	0 16 6
4. " mutton	do.	0 16 6

ANNEX TO CONTRACT No. 1911/364.

T. K. Bennet and Woolcock, 534 Collins-street, Melbourne.

Sub-schedule 12.

MEAT FOR MELBOURNE GAOL, POLICE BARRACKS, ST. KILDA-ROAD, DEPARTMENT FOR NEGLECTED CHILDREN AND REFORMATORY SCHOOLS, ROYAL PARK, AND RECEIVING HOUSE, AND MENTAL HOSPITAL, ROYAL PARK.

	Security, £50.	£ s. d.
1. Fresh beef	per cental	0 16 10
2. " buttock	do.	0 16 10
3. " mutton	do.	0 16 10
4. Corned beef, rolled or round, as ordered, without bone or cartilage	do.	0 16 10
5. Fresh suet—Kidney	per lb.	0 0 3

ANNEX TO CONTRACT No. 1911/365.

James Murphy, Geake-street, Coburg.

Sub-schedule 13.

MILK FOR MELBOURNE GAOL, AND RECEIVING HOUSE AND MENTAL HOSPITAL, ROYAL PARK.

	Security, £10.	£ s. d.
1. Milk—Fresh and pure	per gal.	0 1 0

ANNEX TO CONTRACT No. 1911/366.

James Murphy, Geake-street, Coburg.

Sub-schedule 14.

MILK FOR PENAL ESTABLISHMENT, PENTHRIDGE.

	Security £10.	£ s. d.
1. Milk—Fresh and pure	per gal.	0 1 0

ANNEX TO CONTRACT No. 1911/367.

W. H. Maine and Co. Pty. Ltd., 452 Flinders-street, Melbourne.

Sub-schedule 15.

POTATOES.

	Security, £100.	£ s. d.
1. Potatoes	per cental	0 4 6

ANNEX TO CONTRACT No. 1911/368.

John D. Howie, 299 Smith-street, Fitzroy.

Sub-schedule 16.

SUGAR.

	Security, £100.	£ s. d.
1. Sugar—White, to sample	per cwt.	1 0 2
2. " Ration "	do.	0 16 0

ANNEX TO CONTRACT No. 1911/369.

John D. Howie, 299 Smith-street, Fitzroy.

Sub-schedule 17.

TEA.

	Security, £60.	£ s. d.
1. Tea—Best Congou, to sample	per lb.	0 0 8½
2. " Ration, to sample	do.	0 0 4½

ANNEX TO CONTRACT No. 1911/370.

Dudgou and Arnell Pty. Ltd., 524 Lonsdale-street, Melbourne.

Sub-schedule 18.

TOBACCO.

	Security, £20.	£ s. d.
1. Tobacco, in 1-oz. plugs, for gaols—"Starlight," or other make of equal quality, to sample	per lb.	0 2 8
2. Tobacco twist, 21 plugs to the pound, for Hospitals for the Insane, to sample	do.	0 2 8½

Schedule No. 2.

PROVISIONS AT WILLIAMSTOWN.

(For s.s. Lady Loch and Albert.)

(Including Candles, Soap, and Soda for Dockyard.)

(Supplies for Naval Forces are not included in this Schedule.)

Period of Contract—From 1st July, 1911, to 30th June, 1912.

(Supplies to be delivered on board the Vessels.)

ANNEX TO CONTRACT No. 1911/371.

W. J. Elsum, 102 Stevedore-street, North Williamstown.

Sub-schedule 1.

BREADSTUFFS.

	Security, £10.	£ s. d.
1. Bread—Fine wheaton, first quality	per cental	0 10 5
2. Flour—First quality	do.	0 8 6

ANNEX TO CONTRACT No. 1911/372.

Moran and Cato, King and Collins streets, Melbourne.

Sub-schedule 2.

BUTTER.

	Security, £5.	£ s. d.
1. Butter—First-class Creamery, to score not less than 92 points Government grade, Commerce Regulations standard	per lb.	0 1 0½

ANNEX TO CONTRACT No. 1911/373.

R. G. Wilson and Co., Swanston-street, Melbourne.

Sub-schedule 3.

GROCERIES.

	Security, £10.	£ s. d.
1. Chocolate, of any brand ordered	per lb.	0 1 0½
2. Coffee—Fresh roasted and ground, to sample	do.	0 1 0
3. Currants	do.	0 0 5½
4. Flour—Self-raising	do.	0 0 1½
5. Milk—Condensed, of any brand ordered	per tin	0 0 5½
6. Mustard—Double Superfine, of any brand ordered	per lb.	0 1 4
7. Oatmeal	do.	0 0 1½
8. Pearl barley	do.	0 0 1½
9. Pease—Split	do.	0 0 1½
10. Pepper—White, ground	do.	0 0 10½
11. Raisins—Sultana, Mildura	do.	0 0 6
12. Salt—Fine, to sample	do.	0 0 0½
13. Sugar—White, to sample	per cwt.	1 1 0
14. Tea—Best Congou, special sample	per lb.	0 0 9
15. " " Ceylon "	do.	0 1 0
16. Vinegar—Champion's, or other approved brand	per quart	0 0 3
17. Biscuits, kinds as ordered	per lb.	0 0 2½
18. Meat—Preserved	do.	0 0 4½

ANNEX TO CONTRACT No. 1911/374.

James Rice and Sons, 215 Nelson-place, Williamstown.

Sub-schedule 4.

CANDLES, SOAP, AND SODA FOR DOCKYARD.

Security £5.

	£ s. d.	
1. Candles—(full weights) Kitchen's "Petrolines," Apollo Co.'s "Apollo," or other make of equal quality, to be supplied in 1-lb. packets	per lb.	0 0 6½
2. Soap—Household, yellow, dry, to sample	do.	0 0 2½
3. Soda—Washing	do.	0 0 0, 4½

ANNEX TO CONTRACT No. 1911/375.

G. R. McKelvey and Co. P. L., 323 Elizabeth-street, Melbourne.

Sub-schedule 5.

MEAT.

	Security, £10.	£ s. d.
1. Fresh beef	per cental	1 12 10
2. " mutton	do.	1 12 10
3. " suet	per lb.	0 0 4
4. Livesheep	do.	0 14 6

ANNEX TO CONTRACT No. 1911/376.

R. L. Doig, 171 Nelson-place, Williamstown.

Sub-schedule 6.

VEGETABLES.

	Security, £5.	£ s. d.
1. Potatoes	per cental	0 5 6
2. Onions	per lb.	0 0 1
3. Cabbage	do.	0 0 1
4. Other vegetables, including cauliflowers, carrots, turnips, and parsnips, as required	do.	0 0 1½

Schedule No. 3.
PROVISIONS—ARARAT DISTRICT.

Period of Contract—From 1st July, 1911, to 30th June, 1912.

ANNEX TO CONTRACT No. 1911/377.

William Bates, Ararat.

Sub-schedule 1.

BREADSTUFFS.

	£	s.	d.
1. Bread—Fine wheaten, first quality ... per cental	0	8	2
2. " Wheaten, third quality ... do.	0	6	3
3. Flour—First quality ... do.	0	8	0

ANNEX TO CONTRACT No. 1911/378.

H. McDonough, 518 Flinders-street, Melbourne.

Sub-schedule 2.

BUTTER AND CHEESE.

	£	s.	d.
1. Butter—First Grade Creamery, to score not less than 92 points Government grade, Commerce Regulations standard ... per cwt.	5	2	8
2. Cheese—First-class quality ... do.	2	18	4

ANNEX TO CONTRACT No. 1911/379.

Flattely and Lewis, Ararat.

Sub-schedule 3.

GROCERIES.

	£	s.	d.
1. Blue—Of any brand ordered ... per lb.	0	0	6 $\frac{1}{2}$
2. Candles (full weights) — Kitchen's "Patrolines," Apollo Co.'s "Apollo," or other make of equal quality, to sample, to be supplied in 1-lb. packets ... do.	0	0	7
3. Coffee—Fresh roasted and whole—Beans to be thoroughly sound, to sample ... do.	0	1	0 $\frac{1}{2}$
4. Golden Syrup, in 7-lb. tins ... per tin	0	1	8
5. Mustard—"Double Superfine," of any Commonwealth manufacture ordered ... do.	0	1	0
6. Oatmeal—Of any brand ordered ... per cwt.	0	15	9
7. Pease—Split ... do.	0	18	6
8. Pepper—Black, ground ... per lb.	0	0	8
9. Pipes—Tobacco, clay ... per doz.	0	0	4 $\frac{1}{2}$
10. Raisins—Sultana (Mildura) ... per lb.	0	0	6 $\frac{1}{2}$
11. Rice—Dressed, to sample ... per cwt.	0	18	6
12. Sago—To sample ... do.	1	1	9
13. Salt—Fine ... do.	0	3	8
14. Carbonate of ... per lb.	0	0	1 $\frac{1}{2}$
15. Soda—Washing ... per cwt.	0	6	6
16. Starch—Of any brand ordered, to sample ... per lb.	0	0	4 $\frac{1}{2}$
17. Tartar—Cream of ... do.	0	0	11 $\frac{1}{2}$
18. Vinegar ... per pint	0	0	1 $\frac{1}{2}$

ANNEX TO CONTRACT No. 1911/380.

The Ballarat Jam Co. Pty. Ltd., 122 Lydiard-street, Ballarat.

Sub-schedule 4.

JAMS.

(For Hospitals for the Insane.)

	£	s.	d.
1. Jams, assorted, of approved kinds in the proportions of half seed and half stone, of the best quality, in tins as required	0	0	3 $\frac{1}{2}$

ANNEX TO CONTRACT No. 1911/381.

Arthur Murphy, Barkly-street, Ararat.

Sub-schedule 5.

MEAT.

	£	s.	d.
1. Fresh beef—Fore-quarters ... per cental	0	19	0
2. " " hind-quarters ... do.	0	19	0
3. " " buttocks ... do.	0	19	0
4. " mutton ... do.	0	19	0
5. Corned beef—Rolled or round, as ordered, without bone or cartilage ... do.	0	19	0
6. Fresh suet—Kidney ... per lb.	0	0	2 $\frac{1}{2}$

ANNEX TO CONTRACT No. 1911/382.

W. H. Maine and Co. Pty. Ltd., 452 Flinders-street, Melbourne.

Sub-schedule 6.

POTATOES.

	£	s.	d.
1. Potatoes ... per cental	0	5	0

ANNEX TO CONTRACT No. 1911/383.

John D. Howie, 299 Smith-street, Fitzroy.

Sub-schedule 7.

SUGAR.

	£	s.	d.
1. Sugar—White, to sample ... per cwt.	1	1	11

ANNEX TO CONTRACT No. 1911/384.

John D. Howie, 299 Smith-street, Fitzroy.

Sub-schedule 8.

TEA.

	£	s.	d.
1. Tea—Best Congou, to sample ... per lb.	0	0	8 $\frac{1}{2}$

Schedule No. 4.

PROVISIONS—BEECHWORTH DISTRICT.

Period of Contract—From 1st July, 1911, to 30th June, 1912.

ANNEX TO CONTRACT No. 1911/385.

William Price, Black Springs, Beechworth.

Sub-schedule No. 1.

BREADSTUFFS.

	£	s.	d.
1. Bread—Fine wheaten, first quality ... per cental	0	6	11
2. " Wheaten, third quality ... do.	0	5	2
3. Flour—First quality ... do.	0	8	2

ANNEX TO CONTRACT No. 1911/386.

H. McDonough, Flinders-street, Melbourne.

Sub-schedule No. 2.

BUTTER AND CHEESE.

	£	s.	d.
1. Butter—First-grade Creamery, to score not less than 92 points, Government grade, Commerce Regulations standard ... per cwt.	5	2	8
2. Cheese—First-class quality ... do.	2	18	4

ANNEX TO CONTRACT No. 1911/387.

John D. Howie, 299 Smith-street, Fitzroy.

Sub-schedule No. 3.

GROCERIES.

	£	s.	d.
1. Blue—Of any brand required ... per lb.	0	0	6 $\frac{1}{2}$
2. Candles (full weights)—Kitchen's "Patrolines," Apollo Co.'s "Apollo," or other make of equal quality, to sample, to be supplied in 1-lb. packets ... do.	0	0	6 $\frac{1}{2}$
3. Coffee—Fresh roasted and whole, beans to be thoroughly sound, to sample ... do.	0	1	2
4. Coffee—Fresh roasted and ground, to sample ... do.	0	1	2
5. Golden Syrup (in 7-lb. tins) ... per tin	0	1	6 $\frac{1}{2}$
6. Mustard—Double superfine, of any Commonwealth manufacture ordered per lb.	0	1	6
7. Oatmeal—Of any brand ordered ... per cwt.	0	15	8 $\frac{1}{2}$
8. Pearl Barley ... do.	0	15	6
9. Pease—Split ... do.	0	18	6
10. Pepper—Black, ground ... per lb.	0	0	7 $\frac{1}{2}$
11. Pipes—Tobacco, clay ... per doz.	0	0	4 $\frac{1}{2}$
12. Raisins—Sultana (Mildura) ... per lb.	0	0	6 $\frac{1}{2}$
13. Rice—Dressed, to sample ... per cwt.	1	2	0
14. Sago—To sample ... do.	1	3	8 $\frac{1}{2}$
15. Salt—Fine ... do.	0	5	2
16. Soap—(Household), carbolic, dry, to sample ... per lb.	0	0	3
17. Soap—(Household), yellow, dry, to sample ... do.	0	0	3
18. Soda—Carbonate of ... do.	0	0	1 $\frac{1}{2}$
19. " Washing ... per cwt.	0	7	4
20. Starch—Of any brand ordered, to sample ... per lb.	0	0	4 $\frac{1}{2}$
21. Tartar—Cream of ... do.	0	0	11 $\frac{1}{2}$
22. Treacle ... do.	0	0	2 $\frac{1}{2}$
23. Vinegar ... per pint	0	0	3

ANNEX TO CONTRACT No. 1911/388.

W. H. Morton, One Mile, Beechworth.

Sub-schedule No. 4.

MEAT.

	£	s.	d.
1. Fresh beef, fore-quarters ... per cental	0	12	5
2. " " hind-quarters ... do.	0	12	5
3. " " buttocks ... do.	0	12	5
4. " mutton ... do.	0	12	5
5. Corned beef—rolled or round, as ordered, without bone or cartilage ... do.	0	12	5
6. Fresh suet—Kidney ... per lb.	0	0	6

ANNEX TO CONTRACT No. 1911/389.

W. H. Maine and Co. Pty. Ltd., 452 Flinders-street, Melbourne.

Sub-schedule No. 5.

POTATOES.

	£	s.	d.
1. Potatoes ... per cental	0	5	1

ANNEX TO CONTRACT No. 1911/390.
John D. Howie, 299 Smith-street, Fitzroy.
Sub-schedule No. 6.

SUGAR.			
Security, £30.			
		£	s. d.
1. Sugar—White, to sample	per cwt.	1	2 1
2. " Ration	do.	0	19 10

ANNEX TO CONTRACT No. 1911/391.
John A. Clements, Beechworth.
Sub-schedule No. 7.

TEA.			
Security, £20.			
		£	s. d.
1. Tea—Best Congou, to sample	per lb.	0	0 9
2. " Ration, to sample	do.	0	0 4½

Schedule No. 5.
PROVISIONS AT BALLARAT.

ANNEX TO CONTRACT No. 1911/392.
Alfred Goddard, 26 Raglan-street, Ballarat.
Sub-schedule No. 1.

BREADSTUFFS.			
Security, £60.			
		£	s. d.
1. Bread—Fine wheaten, first quality	per cental	0	7 3½
2. " Wheaten, third quality	do.	0	6 9½
3. Flour—First quality	do.	0	8 0

ANNEX TO CONTRACT No. 1911/393.
Donald Robinson, Sturt-street, Ballarat.
Sub-schedule No. 2.

BUTTER AND CHEESE.			
Security, £30.			
		£	s. d.
1. Butter—First-grade Creamery, to score not less than 92 points, Government grade, Commerce Regulations standard	per cwt.	5	2 6
2. Cheese—First-class quality	do.	2	16 0

ANNEX TO CONTRACT No. 1911/394.
John D. Howie, 299 Smith-street, Fitzroy.
Sub-schedule No. 3.

GROCERIES.			
Security, £30.			
		£	s. d.
1. Barley—Pearl	per lb.	0	0 1½
2. Blue—Of any brand required	do.	0	0 6½
3. Candles (full weights)—Kitchen's "Petrolines," Apollo Co.'s "Apollo," or other make of equal quality, to sample, to be supplied in 1-lb. packets	do.	0	0 6½
4. Coffee—Fresh roasted and whole, beans to be thoroughly sound, to sample	do.	0	1 2
5. Cornina	do.	0	0 5
6. Currants	do.	0	0 6½
7. Ginger—Ground	do.	0	0 10
8. Golden syrup, in 7-lb. tins	per tin	0	1 6
9. Maizena—Duryea's	per lb.	0	0 6
10. Milk—Fresh and pure	per quart	0	0 5
11. Mustard—Double superfine, of any Commonwealth manufacture ordered	per lb.	0	1 5
12. Oatmeal—Of any brand ordered	per cwt.	0	14 0
13. Pease—Split	do.	0	16 9
14. Pepper—Black, ground	per lb.	0	0 8
15. Pipes—Tobacco, clay	per doz.	0	0 4½
16. Raisins—Sultana (Mildura)	per lb.	0	0 6½
17. Rice—Dressed, to sample	per cwt.	1	0 0
18. Sago—To sample	per lb.	0	0 2½
19. Salt—Fine	per cwt.	0	4 8
20. Soap—(Household), carbolic, dry, to sample	per lb.	0	0 3
21. Soap—(Household), yellow, dry, to sample	do.	0	0 3
22. Soda—Carbonate of	do.	0	0 1½
23. " Washing	per cwt.	0	5 0
24. Spice—Mixed, in 1-oz. packets	per doz. pkts.	0	0 8
25. Starch—Of any brand ordered, to sample	per lb.	0	0 4½
26. Sugar—White, to sample	per cwt.	1	2
27. " Ration	per lb.	0	0 2
28. Tartar—Cream of	do.	0	1 0
29. Tea—Best Congou, to sample	do.	0	0 8½
30. " Ration	do.	0	0 5
31. Tobacco—"Starlight," or other make of equal quality, as ordered	do.	0	2 8
32. Vinegar	per pint	0	0 3
33. Whiting	per lb.	0	0 0½

ANNEX TO CONTRACT No. 1911/395.
Cuntiff and Paterson Pty. Ltd., Swanston-street, Melbourne.
Sub-schedule No. 4.

JAMS.			
(For Hospitals for the Insane.)			
Security, £10.			
		£	s. d.
1. Jams—Assorted, of approved kinds in proportion of half seed and half stone, of the best quality, in tins as required	per lb. actual net weight	0	0 3½

ANNEX TO CONTRACT No. 1911/396.
Henry J. Symons, 1015 Macarthur-street, Ballarat.
Sub-schedule No. 5.

MEAT.			
Security, £60.			
		£	s. d.
1. Fresh beef—Fore-quarters	per cental	0	16 0
2. " " Hind-quarters	do.	0	16 0
3. " " Buttocks	do.	0	16 0
4. " mutton	do.	0	15 0
5. Corned beef, rolled or round, as ordered, without bone or cartilage	do.	1	0 0
6. Fresh sust—Kidney	per lb.	0	0 3

ANNEX TO CONTRACT No. 1911/397.
W. H. Maine and Co. Pty. Ltd., 452 Flinders-street, Melbourne.

POTATOES.			
Security, £20.			
		£	s. d.
1. Potatoes	per cental	0	5 0

Schedule No. 6.
PROVISIONS AT GEELONG.

Period of Contract—From 1st July, 1911, to 30th June, 1912.
ANNEX TO CONTRACT No. 1911/398.

W. H. Marshall, 138 Malop-street, Geelong.
Sub-schedule No. 1.

BREADSTUFFS.			
Security, £20.			
		£	s. d.
1. Bread—Fine wheaten, first quality	per cental	0	7 9½
2. " Wheaten, third quality	do.	0	7 9½

ANNEX TO CONTRACT No. 1911/399.
Moran and Cato, King and Collins streets, Melbourne.
Sub-schedule No. 2.

GROCERIES.			
Security, £20.			
		£	s. d.
1. Arrowroot—Queensland	per lb.	0	0 4½
2. Candles (full weights)—Kitchen's "Petrolines," Apollo Co.'s "Apollo," or other make of equal quality, to sample, to be supplied in 1-lb. packets	do.	0	0 6
3. Barley—Pearl	do.	0	0 2
4. Currants	do.	0	0 6
5. Eggs—Fresh	per doz.	0	1 2
6. Mustard—"Double Superfine," of any Commonwealth manufacture ordered	per lb.	0	1 3
7. Oatmeal—Of any brand ordered	per cwt.	0	16 6
8. Pepper—Black, ground	per lb.	0	0 3½
9. Pipes—Tobacco, clay	per doz.	0	0 4½
10. Raisins—Sultana (Mildura)	per lb.	0	0 6½
11. Rice—Dressed, to sample	per cwt.	1	0 0
12. Sago—To sample	per lb.	0	0 2½
13. Salt—Fine	do.	0	0 0½
14. Soap—(Household) Carbolic, dry, to sample	do.	0	0 2½
15. Soap—(Household) Yellow, dry, to sample	per cwt.	1	4 0
16. Soda—Washing	do.	0	5 6
17. Sugar—Ration, to sample	do.	0	19 6
18. Tea—Ration	per lb.	0	0 8
19. Tobacco—"Starlight," or other make of equal quality, as ordered	do.	0	2 8

ANNEX TO CONTRACT No. 1911/400.
H. McKissock, 186 Aberdeen-street, Geelong West.
[Sub-schedule No. 3.]

MEAT.			
Security, £20.			
		£	s. d.
1. Fresh beef	per cental	1	0 10
2. " buttocks	do.	1	0 10
3. " mutton	do.	1	0 10

ANNEX TO CONTRACT No. 1911/401.
Thomas Warren, East Geelong.
Sub-schedule No. 4.

MILK.			
Security, £5.			
		£	s. d.
1. Milk—Fresh and pure	per quart	0	0 2½

ANNEX TO CONTRACT No. 1911/402.
W. H. Maine and Co. Pty. Ltd., 514 Flinders-street.
Sub-schedule No. 5.

POTATOES.			
Security, £5.			
		£	s. d.
1. Potatoes	per cental	0	5 3

Schedule No. 7.
PROVISIONS AT LARA.

(For Inebriates' Retreat.)

Period of Contract—From 1st July, 1911, to 30th June, 1912.

ANNEX TO CONTRACT No. 1911/403.

Frank Samblebe, Lara.

Sub-schedule No. 1.

BREADSTUFFS.

	Security, £20.	£	s.	d.
1. Bread—Fine wheaten, first quality	per cental	0	11	5½
2. Flour—First quality	do.	0	9	0

ANNEX TO CONTRACT No. 1911/404.

W. Angliss and Co., Pty. Ltd., 44 Bourke-street, Melbourne.

Sub-schedule No. 2.

BUTTER AND CHEESE.

	Security, £10.	£	s.	d.
1. Butter—First Grade Creamery, to score not less than 92 points Government grade, Commerce Regulations standard	per cwt.	5	2	8
2. Cheese—First-class quality	do.	2	16	0

ANNEX TO CONTRACT No. 1911/405.

A. V. Strong, Lara.

Sub-schedule No. 3.

GROCERIES.

	Security, £20.	£	s.	d.
1. Arrowroot—Queensland	per lb.	0	0	5
2. Bacon. Farmer's or Hutton's, by the side or other approved brand	do.	0	0	8
3. Barley—Pearl	do.	0	0	1½
4. Blue—Of any brand ordered	do.	0	0	5½
5. Candles—(Full weights) Kitchen's "Petrolines," Apollo Co.'s "Apollo," or other make of equal quality, to sample, to be supplied in 1-lb. packets	do.	0	0	6½
6. Cocoa—McKenzie's, or other brand of equal quality	do.	0	1	0½
7. Coffee—Fresh roasted and whole beans, to be thoroughly sound, to sample	do.	0	1	1
8. Currants	do.	0	0	6½
9. Mustard—Double Superfine, of any Commonwealth manufacture ordered	do.	0	1	3
10. Oatmeal—Of any brand ordered	per cwt.	0	15	9
11. Pease—Split	per lb.	0	0	11½
12. Pepper—Black, ground	do.	0	0	9
13. Raisins—Sultana (Mildura)	do.	0	0	6½
14. Rice—Dressed, to sample	do.	0	0	2
15. Sage—To sample	do.	0	0	2½
16. Salmon—Fresh, Brand, as ordered, talls	per tin.	0	0	8½
17. Salt—Fine	per lb.	0	0	0½
18. Soap—(Household) Yellow, dry, to sample	do.	0	0	2½
19. Soap—Toilet, Glycerine, in tablets, to sample	do.	0	0	5½
20. Soda—Washing	do.	0	0	0½
21. Sugar, White, to sample	per cwt.	1	1	3
22. Tea, Best Congou	per lb.	0	0	9

ANNEX TO CONTRACT No. 1911/406.

Cunliff and Paterson, Swanston-street, Melbourne.

Sub-schedule No. 4.

JAMS.

	Security, £5.	£	s.	d.
1. Jams, assorted, of approved kinds in the proportion of half seed and half stone, of the best quality, in tins containing 27 ozs. net	per lb. actual net weight	0	0	3½

ANNEX TO CONTRACT No. 1911/407.

Wm. Angliss and Co. P. L., Bourke-street, Melbourne.

Sub-schedule No. 5.

MEAT.

	Security, £20.	£	s.	d.
1. Fresh Beef	per cental	1	13	4
2. " Mutton	do.	1	5	0
3. " Small Goods—including Tripe, Sausages, Kidney, Liver, as ordered	do.	1	13	4

ANNEX TO CONTRACT No. 1911/408.

W. H. Maine and Co. Pty. Ltd., 452 Flinders-street, Melbourne.

Sub-schedule No. 6.

POTATOES.

	Security, £5.	£	s.	d.
1. Potatoes	per cental	0	5	3

Schedule No. 8.

PROVISIONS—SUNBURY DISTRICT.

Period of Contract—From 1st July, 1911, to 30th June, 1912.

ANNEX TO CONTRACT No. 1911/409.

Thomas Clyne and Son, Sunbury.

Sub-schedule No. 1.

BREADSTUFFS.

	Security, £100.	£	s.	d.
1. Bread—Fine wheaten, first quality	per cental	0	7	10
2. Flour—First quality	do.	0	8	0

ANNEX TO CONTRACT No. 1911/410.

John D. Howie, 299 Smith-street, Fitzroy.

Sub-schedule No. 2.

BUTTER, CHEESE, AND BACON.

	Security, £40.	£	s.	d.
1. Butter—First Grade Creamery, to score not less than 92 points Government grade, Commerce Regulations standard	per cwt.	5	1	6
2. Cheese—First-class quality	do.	2	11	4
3. Bacon—Shoulders	per lb.	0	0	5½

ANNEX TO CONTRACT No. 1911/411.

John D. Howie, 299 Smith-street, Fitzroy.

Sub-schedule No. 3.

GROCERIES.

	Security, £20.	£	s.	d.
1. Blue—Of any brand ordered	per lb.	0	0	6½
2. Candles—(Full weights) Kitchen's "Petrolines," Apollo Co.'s "Apollo," or other make of equal quality, to sample, to be supplied in 1-lb. packets	do.	0	0	6½
3. Coffee—Fresh roasted and whole—Beans to be thoroughly sound, to sample	do.	0	1	1½
4. Cornina	do.	0	0	5
5. Currants	do.	0	0	6½
6. Golden Syrup, in 7-lb. tins	per tin	0	1	5½
7. Maizena—Duryea's	per lb.	0	0	6½
8. Mustard—Double superfine, of any Commonwealth manufacture ordered	do.	0	1	6
9. Oatmeal—Of any brand ordered	per cwt.	0	14	6
10. Pease—Split	do.	0	16	2
11. Pepper—Black, ground	per lb.	0	0	7½
12. Pipes—Tobacco, clay	per doz.	0	0	4½
13. Raisins—Sultana (Mildura)	per lb.	0	0	6½
14. Rice, dressed, to sample	per cwt.	0	19	8
15. Sage—To sample	per lb.	0	0	2½
16. Salt—Fine	per cwt.	0	4	1
17. Soda—Washing	do.	0	5	7
18. Starch—Of any brand ordered, to sample	per lb.	0	0	4½
19. Tartar—Cream of	do.	0	0	11½
20. Vinegar	per pint	0	0	3

ANNEX TO CONTRACT No. 1911/412.

Cunliff and Paterson Pty. Ltd., 410 Swanston-street, Melbourne.

Sub-schedule No. 4.

JAMS.

(For Hospitals for the Insane.)

	Security, £10.	£	s.	d.
1. Jams—Assorted, of approved kinds in the proportion of half seed and half stone, of the best quality, in tins as required	per lb. actual net weight	0	0	3½

ANNEX TO CONTRACT No. 1911/415.

Catherine M. Starkie, Sunbury.

Sub-schedule No. 5.

MEAT.

	Security, £30.	£	s.	d.
1. Fresh Beef—Fore-quarters	per cental	0	15	0
2. " " Hind-quarters	do.	0	15	0
3. " " Buttocks	do.	0	15	0
4. " Mutton	do.	0	15	0
5. Corned Beef—Rolled or round, as ordered, without bone or cartilage	do.	0	14	0
6. Fresh Suet—Kidney	per lb.	0	0	2
7. Rabbits—Not less than 3½ lbs. per pair	per pair Purchase			

ANNEX TO CONTRACT No. 1911/414.

H. McDonough, Flinders-street, Melbourne.

Sub-Schedule No. 6.

POTATOES.

	Security, £30.	£	s.	d.
1. Potatoes	per cental	0	5	2

ANNEX TO CONTRACT No. 1911/415.

John D. Howie, 299 Smith-street, Fitzroy.

Sub-Schedule No. 7.

SUGAR.

	Security, £20.	£	s.	d.
1. Sugar—White, to sample	per cwt.	1	0	8½

ANNEX TO CONTRACT No. 1911/416.
J. H. Redmond, corner of Lygon and Gratton streets, Carlton.
 Sub-Schedule No. 8.

TEA.

	Security, £20.	£ s. d.
1. Tea—Best Congou, to sample	... per lb.	0 0 8½

Schedule No. 9.

PROVISIONS—BENDIGO DISTRICT.

Period of Contract—From 1st July, 1911, to 30th June, 1912.

ANNEX TO CONTRACT No. 1911/417.
Wm. Beischer, 8 Bridge-street, Bendigo.

Sub-schedule No. 1.

BREAD.

	Security, £5.	£ s. d.
1. Bread—Wheaten, third quality	... per cental	0 8 4

ANNEX TO CONTRACT No. 1911/418.

Moran and Cato, corner of King and Collins streets, Melbourne.

Sub-schedule No. 2.

GROCERIES AND POTATOES.

	Security, £5.	£ s. d.
1. Candles (full weights)—Kitchen's "Petrolines," Apollo Co.'s "Apollo," or other make of equal quality, to sample, to be supplied in 1-lb. packets	... per lb.	0 0 6½
2. Milk—Fresh and pure	... per quart	0 0 3½
3. Oatmeal—Of any brand ordered	... per lb.	0 0 2
4. Potatoes	... per cental	0 6 6
5. Rice, dressed, to sample	... per lb.	0 0 2½
6. Salt—Fine	... do.	0 0 0½
7. Soap—Yellow (Household), dry, to sample	... do.	0 0 2½
8. " Carbolic "	... do.	0 0 3
9. Soda—Washing "	... do.	0 0 0½
10. Sugar—Ration, to sample	... do.	0 0 2½
11. " White "	... do.	0 0 2½
12. Tea—Best Congou, to sample	... do.	0 1 0
13. " Ration, to sample	... do.	0 0 10'
14. Tobacco—"Starlight," or other make of equal quality, as ordered	... do.	0 2 8
15. Whiting	... do.	0 0 0½

ANNEX TO CONTRACT No. 1911/419.

Sprengr and Unmack, Bendigo.

Sub-schedule 3.

MEAT.

	Security, £5.	£ s. d.
1. Fresh beef	... per cental	1 8 0

Schedule No. 10.

PROVISIONS AT CASTLEMAINE.

Period of Contract—From 1st July, 1911, to 30th June, 1912.

ANNEX TO CONTRACT No. 1911/420.

Morton Van Heurck, Castlemaine.

Sub-schedule 1.

BREAD.

	Security, £5.	£ s. d.
1. Bread—Wheaten, third quality	... per cental	0 10 5

ANNEX TO CONTRACT No. 1911/421.

Mary F. Elvish, Market Square, Castlemaine.

Sub-schedule 2.

GROCERIES AND POTATOES.

	Security, £5.	£ s. d.
1. Candles (full weights)—Kitchen's "Petrolines," Apollo Co.'s "Apollo," or other make of equal quality, to sample, to be supplied in 1-lb. packets	... per lb.	0 0 9
2. Milk—Fresh and pure	... per quart	0 0 5
3. Potatoes	... per cental	0 7 0
4. Salt—Fine	... per lb.	0 0 1
5. Soap—Yellow (household), dry, to sample	... do.	0 0 4
6. Soda—Washing	... do.	0 0 1
7. Sugar—Ration, to sample	... do.	0 0 3
8. Tea—Ration	... do.	0 1 3

ANNEX TO CONTRACT No. 1911/422.

Jane Williamson, Mostyn-street, Castlemaine.

Sub-schedule 3.

MEAT.

	Security, £5.	£ s. d.
1. Fresh beef	... per lb.	0 0 3
2. " mutton	... do.	0 0 3

Schedule No. 11.

PROVISIONS AT SALE.

Period of Contract—From 1st July, 1911, to 30th June, 1912.

Sub-schedule 1.

BREAD.

1. Bread—Wheaten, third quality	... per lb.	Purchase
---------------------------------	-------------	----------

Sub-schedule 2.

GROCERIES AND POTATOES.

1. Milk—Fresh and pure	... per quart	} Purchase
2. Potatoes	... per lb.	
3. Rice, dressed, to sample	... do.	
4. Salt—Fine	... do.	
5. Soap, yellow (household), dry, to sample	... do.	
6. Soda—Washing	... do.	
7. Sugar—Ration, to sample	... do.	
8. Tea	... do.	
9. Whiting	... do.	

ANNEX TO CONTRACT No. 1911/423.

Edward Cleaver, Raymond-street, Sale.

Sub-schedule 3.

MEAT.

	Security, £5.	£ s. d.
1. Fresh beef	... per lb.	0 0 4

CONTRACTS ACCEPTED.—(Series 1911-12.)

Serial No.	Particulars.	Amount.	Name of Contractor.	Charged against Vote or Fund.
SUPPLY OF PROVISIONS, AT SANATORIUM AT GREENVALE, FROM 1ST JULY, 1911, TO 30TH JUNE, 1912.—				
		Per annex		
424	Bread	...	John Anderson	} Contingencies, 1911-12
425	Butter, &c.	...	Moran and Cato	
426	Groceries, &c.	...	J. D. Howie	
427	Meat	...	G. A. Watkins	
428	Milk	...	A. Millar	
...	Potatoes, &c.	...	Purchase as required	

Schedule No. 17.

PROVISIONS AT GREENVALE.

(Delivery at the Sanatorium.)

Period of Contract—From 1st July, 1911, to 30th June, 1912.

ANNEX TO CONTRACT No. 1911/424.

J. Anderson, Broadmeadows.

Sub-schedule No. 1.

BREADSTUFFS.

Security, £20.

Samples of the best ordinary retailed to the public will be considered as test loaves for first quality.

No subletting will be allowed. All work must be carried out by the Contractor.

Pure Wheaten Meal Bread of first quality may be substituted, wholly or in part, for fine Wheaten Bread at such times and in such quantities as in the opinion of the Medical Superintendent may be deemed necessary, and the Contractor will be required to supply such bread at the Contract rate. Reasonable notice, however, of the intention to substitute Wheaten Meal Bread must be given to the Contractor by the officer ordering the supply.

1. Bread—Fine Wheaten, first quality	... per cental	0 11 6
--------------------------------------	----------------	--------

ANNEX TO CONTRACT No. 1911/425.

Moran and Cato, corner King and Collins streets, Melbourne.

Sub-schedule No. 2.

BUTTER, CHEESE, AND BACON.

Security, £10.

All Butter supplied, as well as the cases in which it is packed for transit under this schedule, must bear the impress stamp of the Creamery manufacturing the Butter, otherwise it will be rejected. The Cheese supplied must be fairly matured and packed in boxes for transport. In the event of Butter being supplied under this Contract from Melbourne, all such Butter shall be submitted by the Contractor to the Government Dairy Expert in Melbourne for test as to standard quality, and if found to be satisfactory shall be forwarded by that officer direct to the Institution ordering, the cost of freight being borne by the Contractor in the usual way.

1. Butter—First Grade Creamery, to score not less than 92 points, Government grade, Commerce Regulations standard	per lb.	0 1 0
2. Cheese—First-class quality	do.	0 0 4
3. Bacon—sides	do.	0 0 8

ANNEX TO CONTRACT No. 1911/426.

John D. Howie, 299 Smith-street, Fitzroy.

Sub-schedule No. 3.

GROCERIES.

Security, £20.

1. Apricots—Dried, Mildura	... per lb.	0 0 8
2. Blue—Of any brand ordered	do.	0 0 6
3. Candles—(Full weights) Kitchen's "Petrolines," Apollo Co.'s "Apollo," or other make of equal quality, to sample, to be supplied in 1-lb. packets	do.	0 0 7
4. Candles—Carriage, equal to Kitchen's No. 8, in 1-lb. packets	do.	0 0 7
5. Chickory—Fresh ground	do.	0 0 4
6. Cocoa—In ½-lb. packets, of any brand ordered	do.	0 1 2
7. Coffee—Fresh roasted and whole, beans to be thoroughly sound	do.	0 1 2
8. Cornina	do.	0 0 6
9. Currants	do.	0 0 6
10. Curry Powder	do.	0 1 3
11. Essence of Lemon—Of any brand ordered	do.	0 0 6
12. Flour—Self-raising, of any brand ordered	do.	0 0 1
13. Golden syrup	do.	0 0 2
14. Honey—Prime garden	do.	0 0 3
15. Jams—Assorted, in 2-lb. tins	doz. tins	0 6 6
16. Lemon peel	per lb.	0 0 7
17. Meal—Digestive	do.	0 0 2
18. Milk—Condensed, 1-lb. tins	per tin	0 0 6
19. Mustard—Double Superfine, of any Commonwealth manufacture ordered	per lb.	0 1 6
20. Oatmeal—Flaked or Plain, of any brand ordered	per cwt.	0 16 4

GROCERIES—continued.

£ s. d.

21. Pearl barley	... per lb.	0 0 1
22. Pease—Split	do.	0 0 2
23. Pepper—White, ground	do.	0 0 10
24. Powder—Baking, of any brand ordered, in 1-lb. tins	per tin	0 0 8
25. Raisins—Sultana (Mildura)	per lb.	0 0 6
26. Rice, dressed, to sample	do.	0 0 2
27. Sago—To sample	do.	0 0 2
28. Salmon—Fresh, in 1-lb. tins, of any brand ordered	per tin	0 0 10
29. Salt—Fine	per lb.	0 0 0
30. Sardines—½'s	per tin	0 0 6
31. Sauce—Tomato, any brand ordered	per bottle	0 0 5
32. Soda—Washing	per lb.	0 0 1
33. Starch—Of any brand ordered, to sample	do.	0 0 4
34. Sugar—White, to sample	per cwt.	1 0 7
35. Tapioca—Pearl	per lb.	0 0 2
36. Tea—Ceylon, special, to sample	do.	0 1 0
37. Treacle	do.	0 0 2
38. Vinegar	per quart	0 0 4

ANNEX TO CONTRACT No. 1911/427.

G. A. Watkins, Moray-street, South Melbourne.

Sub-schedule No. 4.

MEAT.

Security, £20.

£ s. d.

1. Fresh Beef, roast	... per cental	1 17 6
2. " Mutton	do.	1 0 10
3. " Beef steak	per lb.	0 0 2
4. " Suet—Kidney	do.	0 0 2
5. Corned Beef—Rolled or round, as ordered, without bone or cartilage	do.	0 0 4
6. Tripe	do.	0 0 3
7. Pork—Pickled	do.	0 0 6
8. Kidneys—Bullock's	do.	0 0 4

ANNEX TO CONTRACT No. 1911/428.

Annie Millar, Greenvale.

Sub-schedule No. 5.

MILK.

Security, £20.

No subletting will be allowed; all work must be carried out by the contractor; the hours of employment of any person engaged in the preparation or delivery of the milk tendered for in these sub-schedules shall not exceed 60 hours per week, and every such person shall be paid at a minimum wage of not less than £1 17s. 6d. per week, or £1 2s. 6d. per week with board and lodging, except in the case of carters, who will be paid such wages and employed subject to such conditions as are or may be determined by the Carters' Board under the Factories and Shops Acts; and a copy of these conditions shall be kept conspicuously and continually posted in legible Roman characters in the factory or dairy (and in each part of the factory or dairy where several rooms are in use) in which milk is prepared under this contract. Any infringement of these conditions, in the opinion of the Treasurer, will subject the contractor, upon report from the Tender Board, to such mulet, not exceeding Fifty pounds (£50), as the Treasurer may direct, and the amount will be deducted from the contractor's account or from the security money, and the Treasurer's decision shall be binding, final, and conclusive as to the fact of infringement, and in all other respects.

The milk must be fresh, pure, and of the best quality, and subject to test when required by the Department. Should the supply prove to be not of contract quality it will be rejected, and any expense incurred will be charged to the contractor.

The contractor shall, before any account is passed for payment, furnish a statutory declaration that all the workmen under this contract have been employed in accordance with the above clause of these conditions, and have been paid not less than the minimum rate of wages for such workmen as is provided for under that clause.

1. Milk to be supplied in accordance with attached specification	per gallon	0 0 9
--	------------	-------

Sub-schedule No. 6.

POTATOES, ETC.

1. Potatoes	... per cental	} Purchase as required.
2. Onions	do.	
3. Mixed vegetables	do.	

SPECIFICATION AND CONDITIONS OF CONTRACT

FOR THE

SUPPLY OF MILK TO THE GREENVALE SANATORIUM.

SELECTION OF COWS.

1. Milk must be supplied only from cows selected as sound by the Veterinary Inspector of the Board of Public Health. Such cows to be specified by name on a list endorsed on these Conditions.
2. Cows supplying milk must be subjected to the tuberculin test for tuberculosis by the Veterinary Inspector at intervals as he may decide.
3. Milk from any selected cow which develops sores, cracks, or chaps on the teats or udder must not be supplied.
4. Notification must be made, in the first instance, to the Medical Superintendent of the Sanatorium, in the event of any selected cow developing any swelling, hardness, lumpiness, or other abnormality of the udder, and, pending examination and direction of the Veterinary Inspector, the milk of such cow must not be supplied.

BUILDINGS AND YARDS.

5. All cows having very hairy udders must have the excess of hair clipped off, especially at the lower part of the udder near the setting on of the teat.
6. All cows' udders must be made clean by washing with clean tepid water and clean cloth before milking. The flanks and quarters of the cows must be kept free from dirt by washing or grooming.
7. The milkers' hands must be washed in clean water before commencing milking, and between the milking of each cow.
8. Milking must be done with dry hands. On no account are the hands or fingers to be moistened with the milk, either by squirting it on them or dipping them in the drawn milk. If a lubricant is required, the teats to be slightly smeared with clean vaseline.
9. The first half-dozen squirts from each teat must be milked into a separate can and discarded. With this exception, the whole of the milk from each cow must be supplied.
10. When required by the Medical Superintendent of the Sanatorium, "strippings" must be supplied separately, such strippings being the last drawn milk to the amount of about a pint and milked into a separate can.
11. Milk must be strained immediately after milking through a clean piece of muslin, which must not be used for straining at a second milking without having been cleansed by boiling.
12. Milk must be cooled immediately after straining by passing over an approved type of cooler which will be supplied by the Sanatorium.

UTENSILS.

13. Conveying cans must be supplied by the Sanatorium.
14. The cleansing of all cans after use must be carried out by the Contractor in the following manner:—
 - (1) By washing out with clean cold or tepid water.
 - (2) By scrubbing with hot water, to which a little washing soda has been added.
 - (3) By scalding with boiling water.
 After which they must be placed upside down on a rack in approved situation, and allowed to drain and dry. They must not be rinsed with cold water or wiped dry with cloths after scalding.
15. Cans must be kept after washing, until required for use, in an approved room.

TERMS OF SUPPLY.

16. The milk required, in quantity ordered by the Medical Superintendent of the Sanatorium, must be delivered twice a day—the morning's milk before 7.30 a.m., and the evening's milk before 5.30 p.m.
17. Notwithstanding anything to the contrary in the General Conditions, default in any of the above respects, or any departure from a standard quality of milk decided on by the Veterinary Inspector, will be sufficient ground for the immediate termination of the Contract and forfeiture of the security money.

Signature of Tenderer.....

Witness to Signature.....

PROVISIONS FOR ABORIGINES AT THE UNDERMENTIONED STATIONS.

CONTRACTS ACCEPTED.—(Series 1911-12.)

Period of Contract—From 1st July, 1911, to 30th June, 1912.

Serial No.	Particulars.	Amount.	Name of Contractor.	Charged against Vote or Fund.
PROVISIONS—				
Supply of Provisions for Aborigines at the undermentioned Stations as may be required from 1st July, 1911, to 30th June, 1912:—				
	Coranderk—			
429	Bread	Rates as per Annex	Alexr. Schmidt	} Contingencies, 1911-12.
430	Groceries	Ditto	Moran and Cato	
	Lake Tyers—			
...	Bread	Ditto	Purchase	
431	Groceries	Ditto	Moran and Cato	
	Lake Condah—			
432	Bread	Ditto	Joseph Brown	
433	Groceries	Ditto	Righetti and Co.	

Approved.—W. A. WATT, Treasurer. 25th June, 1911.

1911-12.

Schedule No. 15.

PROVISIONS FOR ABORIGINES AT THE UNDERMENTIONED STATIONS.

Period of Contract—From 1st July, 1911, to 30th June, 1912.

Particular attention is drawn to clause 1 of the conditions as to quality.

Where practicable, all items must be manufactured and prepared within the Commonwealth.

Sub-schedule No. 1.

BREAD.

Contract No. 1911/429.—Coranderk—Alexr. Schmidt ... Security, £2.

Lake Tyers—Purchase.

Contract No. 1911/432.—Lake Condah—Joseph Brown ... " £2.

No subletting will be allowed; all work must be carried out by the contractor; the hours of employment of any person engaged in the manufacture, preparation, or delivery of the bread tendered for in this Schedule shall not exceed 48 hours per week, and every such person engaged in the delivery of the bread shall be paid a wage of not less than £2 per week, or such other wages, and shall be employed subject to such conditions as are or may be determined by the Bread Carters Board under the provisions of the Factories and Shops Acts; and every person engaged in the manufacture or preparation of the bread shall be paid such wages, and shall be employed subject to such conditions as are or may be determined by the Bread Board or by the Court of Industrial Appeals under the provisions of the Factories and Shops Acts; and a copy of these conditions shall be kept conspicuously and continually posted in legible Roman characters in the factory or shop (and in each part of the factory or shop where several rooms are in use) in which bread is prepared or manufactured under this contract. Any infringement of these conditions, or any breach of the said determination, in the opinion of the Treasurer, will subject the contractor, upon report from the Tender Board, to such mulct, not exceeding Fifty pounds (£50), as the Treasurer may direct, and the amount will be deducted from the contractor's account or from the security money, and the Treasurer's decision shall be binding, final, and conclusive as to the fact of infringement, and in all other respects.

The contractor shall, before any account is passed for payment, furnish a statutory declaration that all the workmen under this contract have been employed in accordance with the above clause of these conditions, and have been paid not less than the minimum rate of wages for such workmen as is provided under that clause.

Samples of the best ordinary retailed to the public will be considered as test loaves for first quality.

Serial No.	Article.	Contract No. 429. Alexr. Schmidt. Coranderk (Healesville).	Lake Tyers (Cunninghame).	Contract No. 432. Joseph Brown, Lake Condah (Milltown).
1	Bread—Fine Wheaten, first quality ... per cental	£ s. d. 0 9 4½	Purchase	£ s. d. 0 11 5½

Sub-schedule No. 3.

GROCERIES.

Contract No. 1911/430.—Coranderrk—Moran and Cato, Melbourne ... Security, £2.
 " " 1911/431.—Lake Tyers—Moran and Cato, Melbourne ... " £2.
 " " 1911/433.—Lake Condah—Righetti and Co. ... " £2.

Serial No.	Article.	Contract No. 430 Moran and Cato. Coranderrk.		Contract No. 431. Moran and Cato. Lake Tyers.		Contract No. 433. Righetti and Co. Lake Condah.	
		£	s. d.	£	s. d.	£	s. d.
1	Baking Powder, in 1-lb. tins per lb.	0	0 8½	0	0 8½	0	0 9½
2	Candles—(Full weights) Kitchen's "Petrolines," Apollo Co.'s "Apollo," or other make of equal quality, to sample, to be supplied in 1-lb. packets "	0	0 7	0	0 7	0	0 7½
3	Coffee—Fresh roasted and whole—Beans to be thoroughly sound, to sample "	0	1 5½	0	1 3½	0	1 6
4	Cocoa "	0	0 11½	0	0 9	0	0 10
5	Cornina "	0	0 6½	0	0 6½	0	0 5
6	Currants "	0	0 6½	0	0 6½	0	0 7
7	Flour—Best roller per cental	0	9 6	0	10 6	0	9 0
8	Mustard—Double superfine per lb.	0	1 0	0	0 10	0	1 9
9	Oatmeal—Of any brand ordered "	0	0 2	0	0 2	0	0 2
10	Pearl Barley "	0	0 2	0	0 2	0	0 2
11	Pepper—Black, ground, in ¼-lb. tins per tin	0	0 5	0	0 4	0	0 4
12	Raisins—Sultana (Mildura) per lb.	0	0 7½	0	0 7	0	0 8½
13	Rice—Dressed, to sample "	0	0 2½	0	0 2½	0	0 2
14	Sago—To sample "	0	0 3	0	0 2½	0	0 2½
15	Salt—Coarse "	0	0 0½	0	0 0½	0	0 0½
16	" Fine "	0	0 0½	0	0 0½	0	0 0½
17	Soda—Washing "	0	0 0½	0	0 0½	0	0 1
18	Sugar—White, to sample per cwt.	1	2 6	1	2 6	1	3 6
19	Tea—Best Congou, to sample per lb.	0	0 9	0	0 10	0	0 11
20	Tobacco—Twist, to sample "	0	3 2	0	3 0	0	3 3
21	Treacle, in 7-lb. tins per tin	0	1 4	0	1 4	0	1 6
22	Vinegar per quart	0	0 4½	0	0 4	0	0 6

CONTRACTS ACCEPTED.—(Series 1911-12.)

Serial No.	Purpose, No. of Tenders, and Particulars of Contract.	Amount.	Name of Contractor.	Charged against Vote or Fund.	Authorized according to Regulations on the date stated.
	PROVISIONS (SUPPLEMENTARY)— Supply of Provisions; as may be required; from 1st July, 1911, to 30th June, 1912, for Officers, Crew, and Trainees of V. T. S. John Murray, as per Schedule No. 17—				
434	Sub-schedule 1. Breadstuffs... ..	Rates as per Annex	The Civil Service Co-operative Society of Victoria Ltd.	Contingencies, 1911-12	Treasurer, 16.6.1911.
435	" 2. Butter and Cheese	Ditto	Wm. Angliss & Co. P.L.		
436	" 3. Groceries	Ditto	R. G. Wilson and Co.		
437	" 4. Fish	Ditto	W. Angliss and Co. P.L.		
...	" 5. Meat	Ditto	Purchase as required.		
...	" 6. Milk	Ditto			
...	" 6. Vegetables	Ditto			

Melbourne, 16th June, 1911.

Schedule No. 16.

PROVISIONS—FOR OFFICERS, CREW, AND TRAIN-
EES OF THE VICTORIAN TRAINING SHIP JOHN
MURRAY, AT HER ORDINARY MOORINGS AT
PORT MELBOURNE.

(Supplies to be delivered at the Port Melbourne Railway Pier
at times required by the Secretary to the Committee of
Management.)

Period of Contract—From 1st July, 1911, to 30th June, 1912.

These supplies are for the vessel when at her ordinary moorings.
When cruising, if necessary, the supplies required will be
obtained at the port of call.

Particular attention is drawn to clause 1 of the conditions as
to quality.

Where practicable all items must be manufactured and pre-
pared within the Commonwealth.

Under sub-schedules 1, 3, and 5 the contractor shall, before
any account is passed for payment for articles supplied, furnish
a statutory declaration that all the workmen under this contract
have been employed in accordance with the labour clause of the
conditions, and have been paid not less than the minimum rate
of wages for such workmen as is provided for under that clause.

CONTRACT No. 1911/434.

The Civil Service Co-operative Society of Victoria Limited,
Flinders-street, Melbourne.

Sub-schedule No. 1.

BREADSTUFFS.

Security, £20.

Pure Wheaten Meal Bread of first quality may be substituted
wholly or in part for fine Wheaten Bread at such times and in
such quantities as in the opinion of the Captain Superintendent
may be deemed necessary, and the contractor will be required
to supply such bread at the contract rate. Reasonable notice,
however, of the intention to substitute Wheaten Meal Bread
must be given to the contractor by the officer ordering the
supply.

No subletting will be allowed. All work must be carried out
by the contractor; the hours of employment of any person en-
gaged in the manufacture, preparation, or delivery of the bread
tendered for in this schedule shall not exceed 48 hours per week,
and every such person engaged in the delivery of the bread shall
be paid a wage of not less than £2 per week, or such other wages,
and shall be employed subject to such conditions as are or may
be determined by the Bread Carters Board under the provisions
of the Factories and Shops Acts; and every person engaged in
the manufacture or preparation of the bread shall be paid such
wages and shall be employed subject to such conditions as are or
may be determined by the Bread Board or by the Court of In-
dustrial Appeals, under the provisions of the Factories and Shops
Acts; and a copy of these conditions shall be kept conspicuously
and continually posted in legible Roman characters in the factory
or shop (and in each part of the factory or shop where several
rooms are in use) in which bread is prepared or manufactured
under this contract. Any infringement of these conditions, or
any breach of the said determinations, in the opinion of the
Treasurer, will subject the contractor, upon report from the
Tender Board, to such mulct, not exceeding Fifty pounds (£50),
as the Treasurer may direct, and the amount will be deducted
from the contractor's account or from the security money, and
the Treasurer's decision shall be binding, final, and conclusive
as to the fact of infringement, and in all other respects.

A sample of the best ordinarily retailed to the public will be
considered as a test loaf for first quality.

	£	s.	d.
1. Bread—Fine Wheaten, first quality, in			
2-lb. loaves	0	8	4
2. Flour—First quality	0	9	0

ANNEX TO CONTRACT No. 1911/435.

Wm. Angliss and Co. Pty. Ltd., 44 Bourke-street, Melbourne.

Sub-schedule No. 2.

BUTTER.

Security, £1.

NOTE.—All butter supplied, as well as the packages in which
it is packed for transit, must bear the impress stamp of the
creamery manufacturing the butter, otherwise it will be rejected.
Any butter supplied may be tested at any time by the Govern-
ment Dairy Expert if it is considered by the Captain Superin-
tendent that the supply is not up to standard quality. Butter
is to be delivered to each vessel thrice weekly, in such quantities
as may be ordered, and no excess over the quantity ordered will
be received.

	£	s.	d.
1. Butter—Best, Fresh Factory, First-class			
Superfine Creamery, to score from 94			
to 100 points Government grade Com-			
merce Regulations standard, in 1-lb.			
prints	0	0	11½
2. Cheese—First-class quality, fairly ma-			
ured	0	0	6

ANNEX TO CONTRACT No. 1911/436.

R. G. Wilson and Co., Swanston-street, Melbourne.

Sub-schedule No. 3.

GROCERIES.

Security, £30.

	£	s.	d.
1. Baking powder, L. and W., in 1-lb.			
tins, net	0	7	0
2. Barley, Pearl	0	0	1½
3. Biscuits, Cabin	1	7	6
4. Oatmeal	0	0	5
5. Cocoa, in ½-lb. packets of any			
brand ordered	2	10	½
6. Coffee—Fresh roasted and ground,			
pure, to sample	0	1	0
7. Cornflour	0	0	3½
8. Currants	0	0	5½
9. Curry powder, in 1-lb. tins, net	0	12	0
10. Essences	0	5	6
11. Jams, in 27-oz. net tins	0	6	0
12. Marmalade	0	6	1½
13. Meat—Preserved, of approved			
brands, in 2-lb. tins, net	0	8	6
14. Mustard—Double superfine, in 1-lb.			
tins	0	1	4
15. Oatmeal—Of any brand ordered	0	15	0
16. Olive Oil, in 13-oz. bottles, Mildura			
or S.A.	0	1	4
17. Pease—Blue	0	6	0
18. Pease—Split	0	17	0
19. Pepper—White, ground	0	0	10½
20. Peet—Lemon	0	0	6
21. Pickles, of approved brand, equal			
to Ram's Head	0	4	9
22. Raisins—Sultana, Mildura	0	0	6
23. Rice—Japan, dressed, to sample, of			
any brand ordered	1	0	0
24. Sago (Seed Tapioca) to sample	0	19	6
25. Salt—Fine, to sample	0	3	9
26. Sauce—Tomato	0	0	4½
27. Soap (Household)—Yellow, dry,			
to sample, special	1	4	0
28. Soap, Brown Windsor, to sample	0	0	5
29. Spices, mixed, in 1-oz. packets	0	0	0½
30. Sugar—White, to sample	1	0	7½
31. Soda—Washing Crystals	0	5	0
32. Tea—Best Congou, special sample	0	6	9
33. Treacle, in 7-lb. tins	0	1	2
34. Vinegar—Champion's, or other			
approved brand	0	0	4

Sub-schedule No. 4.

MEAT, ETC.

1. Fresh Beef	... per cental	} Purchase
2. " Mutton	... do.	
3. Corned Beef	... do.	
4. Pork—Fresh	... do.	
5. Fresh Suet—Beef, Kidney	... per lb.	
6. Dripping—Best	... do.	
7. Bacon	... do.	

ANNEX TO CONTRACT No. 1911/437.

Wm. Angliss and Co. P. L., Bourke-street, Melbourne.

FISH.

Security, £5.

	£	s.	d.
8. Fish—Fresh, as required—Barracoota,			
Murray Perch, Murray Cod, Flat-			
head, and Salmon Trout	0	0	5
9. Fish—Preserved—Smoked Barracoota,			
Ling, and Blue Cod	0	0	6½

Sub-schedule No. 5.

MILK.

1. Milk—Fresh and pure	... per quart	} Purchase as
2. " Concentrated	... per gal.	

Sub-schedule No. 6.

VEGETABLES.

1. Potatoes	... per cental	} Purchase	
2. Onions	... do.		as re-
3. Vegetables, including Cabbages, Cauli-	... do.		quired
dowers, Carrots, Turnips, and Par-			
snips, as required	... do.		

