

# VICTORIA GOVERNMENT GAZETTE

Published by Authority.

[Registered at the General Post Office, Melbourne, for transmission by post as a newspaper.]

No. 205.]

TUESDAY, DECEMBER 21.

[1915.]

## NOTICE OF INTENTION TO DEDICATE AREAS OF CROWN LANDS AS PERMANENT FORESTS AND TIMBER RESERVES.

NOTICE is hereby given that, after the expiration of one month following the first publication of this notice in the *Victorian Government Gazette*, it is intended, in pursuance of Section 20 of the *Forests Act 1915*, to move His Excellency the Governor in Council to dedicate as Permanent Forests and Timber Reserves the areas of Crown lands described in the accompanying Schedule (No. 18).

T. LIVINGSTON,  
Minister of Forests.

State Forests Department,  
Melbourne, 21st November, 1915.

W. HUTCHINSON,  
Minister of Lands.

### SCHEDULE No. 18.

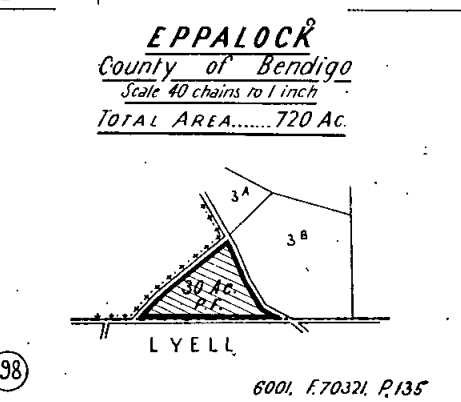
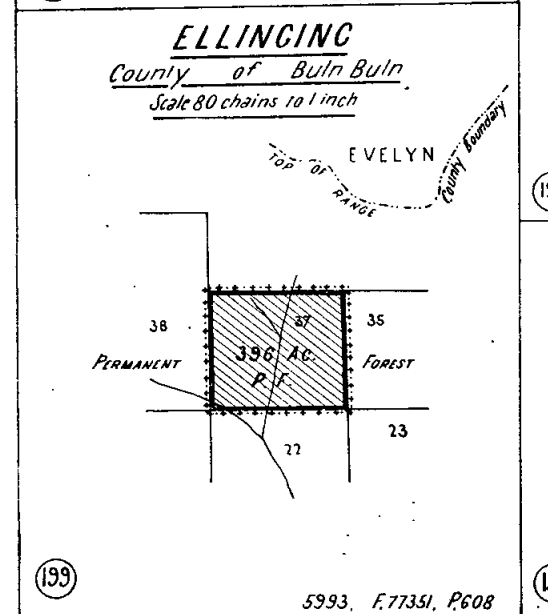
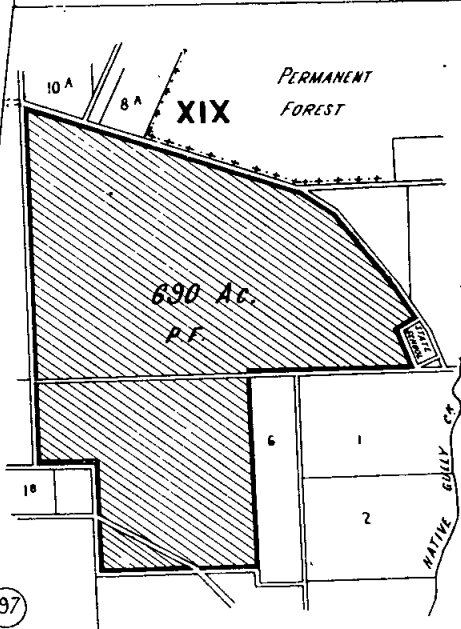
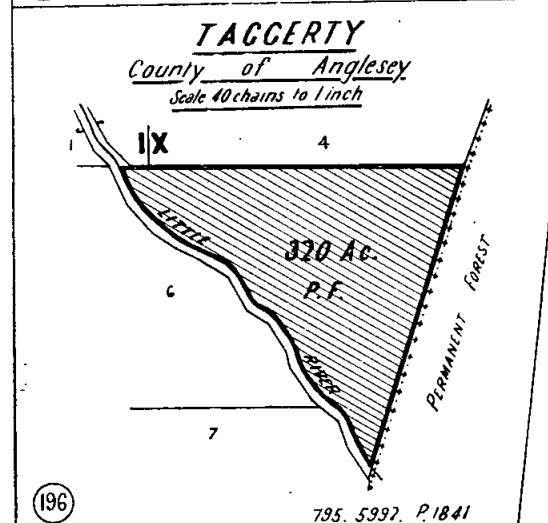
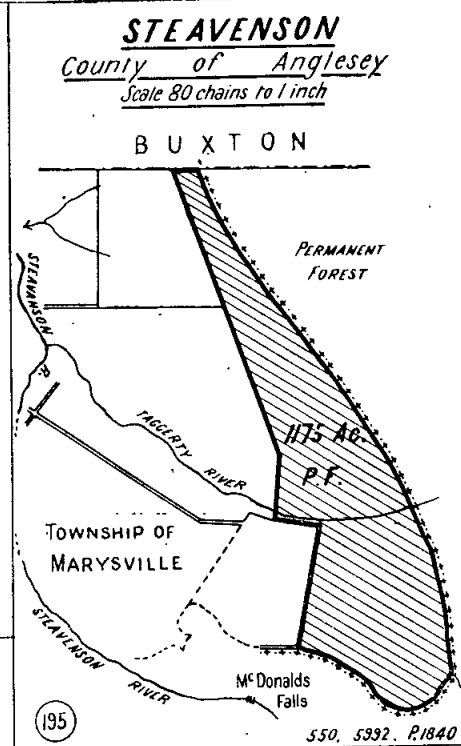
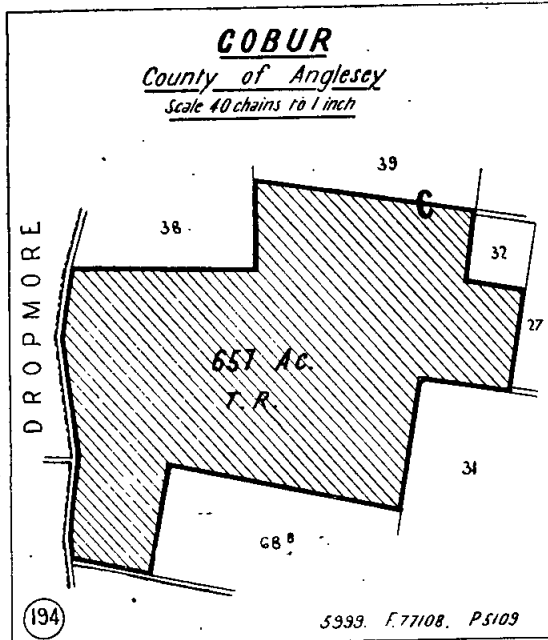
NOTE.—The areas given in the columns and on the diagrams are approximate.

Diagram.	Correspondence Numbers.		Parish.	Plan.	County.	Area in Acres.	
						Permanent Forest.	Timber Reserve.
194	77108	5109	Gobur .. .. .	209A	Anglesey .. .. .	..	657
195	550	1840	Steavenson .. .. .	R <sup>1</sup>	" .. .. .	1,175	
196	795	1841	Taggerty .. .. .	419	" .. .. .	320	
197-8	70321	135	Eppalock .. .. .	185	Bendigo .. .. .	720	
199	77351	608	Ellinging .. .. .	N <sup>4</sup>	Buln Buln .. .. .	396	
200	77346	606	Noojee .. .. .	N <sup>2</sup>	" .. .. .	2,571	
202	77228	5851	Dean .. .. .	158	Grant .. .. .	66	
203-4	70283	6689	St. Arnaud .. .. .	400A	Kara Kara .. .. .	229	117
208	77069	4876	Kentbruck .. .. .	247B	Normanby .. .. .	7,258	
207	77414	1149	Napier .. .. .	346	" .. .. .	..	412
205-6	70664	2244	Narrawong .. .. .	349	" .. .. .	2,360	
209	77413	1147	Weecurra .. .. .	486	" .. .. .	..	743
210	76915	3803	Drik Drik .. .. .	166	" .. .. .	475	
202	77228	5851	Dean .. .. .	158	Talbot .. .. .	544	
201	77228	5851	Bullarook .. .. .	80	" .. .. .	60	
						16,174	1,929

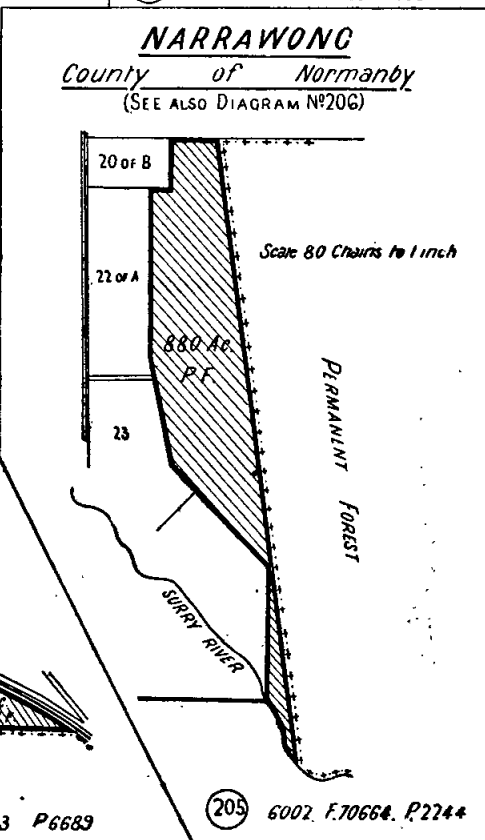
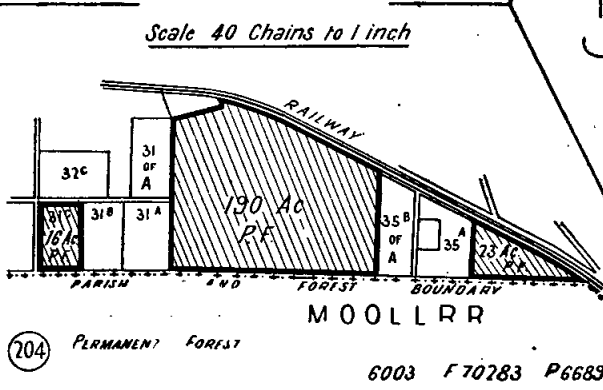
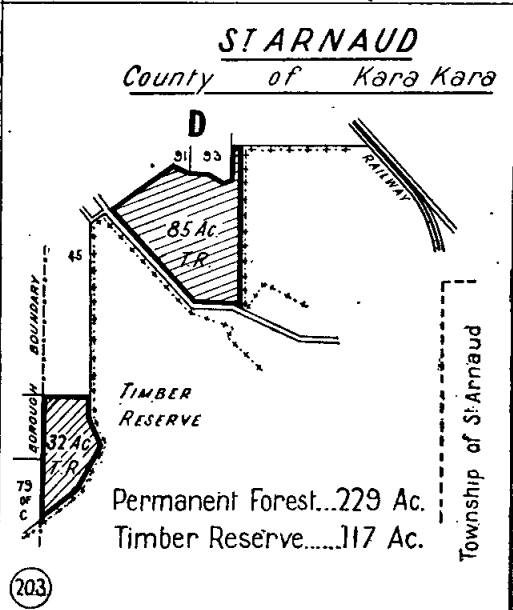
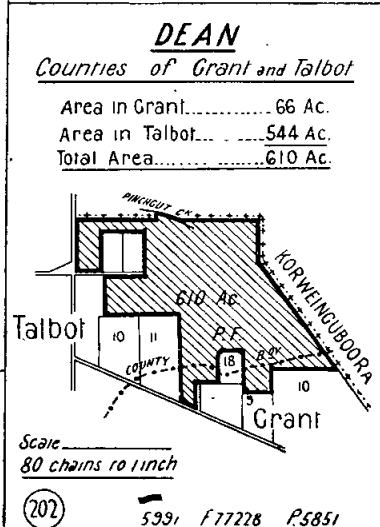
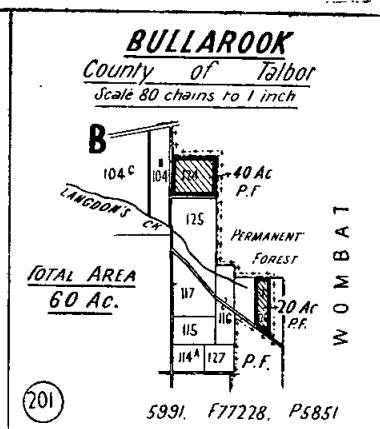
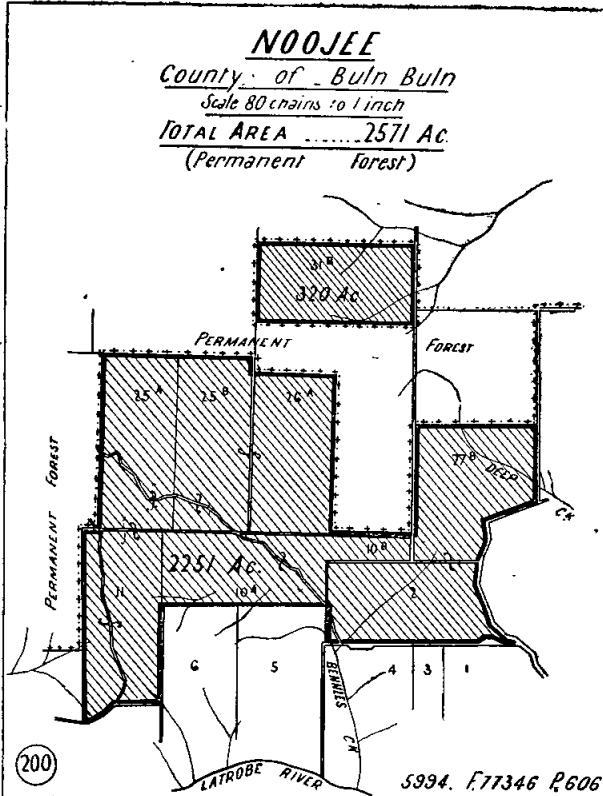
Permanent Forest..	..	Acres.	16,174
Timber Reserve ..	..	..	1,929
Total Area ..	..	..	18,103

First published 30th November, 1915.

PROPOSED ADDITIONS TO STATE FORESTS.—DIAGRAMS TO ACCOMPANY SCHEDULE No. 18.



PROPOSED ADDITIONS TO STATE FORESTS.—DIAGRAMS TO ACCOMPANY SCHEDULES No. 18.—continued.



PROPOSED ADDITIONS TO STATE FORESTS.—DIAGRAMS TO ACCOMPANY SCHEDULE No. 18.—continued.

