

[1969]



VICTORIA
GOVERNMENT GAZETTE.

Published by Authority.

[Registered at the General Post Office, Melbourne, for transmission by post as a newspaper.]

No. 86.]

THURSDAY, JULY 4.

[1918.

CONTRACTS ACCEPTED.

(SERIES 1918-19.)

SUPPLY OF PROVISIONS

FROM

1st JULY, 1918, TO 30th JUNE, 1919.

CONTRACTS ACCEPTED.—(Series 1918-19.)

No. of Contract.	Particulars of each Tender Accepted.	Amount.	Name of Contractor.	Charged against Vote or Fund.
PROVISIONS—				
Supply of Provisions for General Stores, in such quantities as may be ordered, from 1st July, 1918, to 30th June, 1919:—				
Melbourne District—				
	Beer and spirits	Rates as per annex	Purchase	
205	Bread, Kew Asylum	Ditto	J. N. Hennessy	
206	Bread, Yarra Bend Asylum	Ditto	J. N. Hennessy	
207	Bread, Melbourne	Ditto	J. N. Hennessy	
208	Butter	Ditto	Wallace, & Co., Butter Co. Ltd.	
209	Cheese and eggs	Ditto	P. Sheahan and Co.	
210	Flour and maize meal	Ditto	H. R. Rush	
211	Groceries	Ditto	J. D. Howie	
212	Oatmeal, rice, &c.	Ditto	J. D. Howie	
213	Jams	Ditto	Ballarat Jam Co. Ppy. Ltd.	
214	Meat, Kew Asylum	Ditto	Wm. Angliss and Co. Ppy. Ltd.	
215	Meat, Yarra Bend Asylum	Ditto	Wm. Angliss and Co. Ppy. Ltd.	
216	Meat, Pentridge Penal Establishment	Ditto	T. K. Bennet and Woolcock Ppy. Ltd.	
217	Meat, Melbourne Gaol, &c.	Ditto	F. Watkins Ppy. Ltd.	
218	Milk, Melbourne Gaol	Ditto	John Henderson	
	Milk, Richmond House	Ditto	Purchase	
219	Milk, Pentridge Penal Establishment	Ditto	J. F. Murphy	
220	Potatoes	Ditto	Shea, Hood, and Co. Ppy. Ltd.	
221	Soap	Ditto	J. D. Howie	
222	Tea	Ditto	Loftus Moran	
	Tobacco	Ditto	See later <i>Gazette</i>	
Williamstown—For s.s. Lady Loch and Rip.				
223	Breadstuffs	Ditto	W. J. Elsum	
224	Butter	Ditto	Moran and Cato Ppy. Ltd.	
225	Groceries	Ditto	Moran and Cato Ppy. Ltd.	
226	Meat	Ditto	Wm. Angliss and Co. Ppy. Ltd.	
227	Vegetables	Ditto	G. Husking	
Ararat District—				
228	Breadstuffs	Ditto	Wm. Bates	
229	Butter	Ditto	Wallace, & Co., Butter Co. Ltd.	
230	Cheese	Ditto	J. D. Howie	
231	Groceries	Ditto	J. D. Howie	
232	Jams	Ditto	Ballarat Jam Co. Ppy. Ltd.	
233	Meat	Ditto	Arthur Murphy	
234	Potatoes	Ditto	Shea, Hood, and Co. Ppy. Ltd.	
235	Tea	Ditto	Loftus Moran	
Beechworth District—				
236	Breadstuffs	Ditto	Wm. Price	
237	Butter	Ditto	Wallace, & Co., Butter Co. Ltd.	
238	Cheese	Ditto	J. D. Howie	
239	Groceries	Ditto	J. D. Howie	
240	Meat	Ditto	W. H. Morton	
241	Potatoes	Ditto	Shea, Hood, and Co. Ppy. Ltd.	
242	Tea	Ditto	Loftus Moran	
Ballarat District—				
243	Breadstuffs	Ditto	John Davies	
244	Butter	Ditto	Wallace, & Co., Butter Co. Ltd.	
245	Cheese	Ditto	J. D. Howie	
246	Groceries	Ditto	J. D. Howie	
247	Jams	Ditto	Ballarat Jam Co. Ppy. Ltd.	
248	Meat	Ditto	H. J. Symons	
249	Potatoes	Ditto	Shea, Hood, and Co. Ppy. Ltd.	
250	Tea	Ditto	Loftus Moran	
Geelong District—				
251	Breadstuffs	Ditto	W. Marshall	
252	Groceries	Ditto	Moran and Cato Ppy. Ltd.	
253	Meat	Ditto	M. G. O'Brien	
254	Milk	Ditto	Charles Cox	
	Potatoes	Ditto	Purchase	
Lara—				
255	Breadstuffs	Ditto	David Morgan	
256	Butter	Ditto	J. D. Howie	
257	Cheese	Ditto	J. D. Howie	
258	Groceries	Ditto	J. D. Howie	
259	Jams	Ditto	J. D. Howie	
260	Meat	Ditto	Wm. Angliss and Co. Ppy. Ltd.	
261	Potatoes	Ditto	Shea, Hood, and Co. Ppy. Ltd.	
Sunbury District—				
262	Breadstuffs	Ditto	T. Clyne and Son	
263	Butter	Ditto	Wallace, & Co., Butter Co. Ltd.	
264	Cheese	Ditto	J. D. Howie	
265	Groceries	Ditto	J. D. Howie	
266	Jams	Ditto	Ballarat Jam Co. Ppy. Ltd.	
267	Meat	Ditto	S. J. Starkie	
	Rabbits	Ditto	Purchase	
268	Potatoes	Ditto	Shea, Hood, and Co. Ppy. Ltd.	
269	Tea	Ditto	Loftus Moran	
Bendigo District—				
270	Bread	Ditto	F. W. Beischer	
271	Groceries and potatoes	Ditto	Moran and Cato Ppy. Ltd.	
272	Meat	Ditto	Ewing & Kronk	

Contingencies, 1918-19.

CONTRACTS ACCEPTED.—(Series 1918-19)—continued.

No. of Contract	Particulars of each Tender Accepted.	Amount.	Name of Contractor.	Charged against Vote or Fund.
PROVISIONS—continued.				
Supply of Provisions for General Stores, in such quantities as may be ordered, from 1st July, 1918, to 30th June, 1919:—				
Castlemaine District—				
273	Bread	Rates as per annex	Morton Van Heurok	
...	Groceries and potatoes	Ditto	Purchase	
274	Meat	Ditto	John Williamson	
Sale District—				
...	Bread	Ditto	Purchase	
...	Groceries and potatoes	Ditto	Purchase	
275	Meat	Ditto	A. Wray	
Mont Park—				
276	Breadstuffs	Ditto	Henry Hamilton	
277	Butter	Ditto	Wallace, & Co., Butter Co. Ltd.	
278	Cheese	Ditto	P. Sheahan and Co.	
279	Groceries	Ditto	J. D. Howie	
280	Jams	Ditto	Ballarat Jam Co. Pty. Ltd.	
281	Meat (for six months)	Ditto	Wm. Angliss & Co. Pty. Ltd.	
282	Potatoes	Ditto	Shea, Hood, and Co. Pty. Ltd.	
283	Tea	Ditto	Loftus Moran	

Contingencies, 1918-19.

Approved— W. M. McPherson, Treasurer, 7.6.1918.

STIPULATIONS FOR SUPPLIES OF PROVISIONS.

(Where practicable, all items must be manufactured or prepared within the Commonwealth.)

Under all sub-schedules particular attention is drawn to Clause 1 of the Condition as to quality.

BEER AND SPIRITS.

For brandy, whisky, and for Guinness' porter in case, delivery will be taken at and from the bond.

The contractor will be bound to supply such of the brands named in the tender as the departments may order. In cases where delivery from the bond is taken by the Government, the contractor will be required to hand to the secretary to the Tender Board the bond certificate and the locker's order and a copy of the entry, and pay all charges, including re-gauging, before delivery is taken.

English ale, brandy, whisky, and Guinness' porter in case must be delivered as imported; if bottled in the State it will not be accepted.

BREAD.

Samples of the best ordinarily retailed to the public will be considered as test loaves for first quality for fine wheat and pure wheaten Meal Bread. Third quality (that issued to prisoners of the Crown) to be made of flour, fine sharps, the produce of prime, strong, thin-skinned, good-coloured wheat, to be perfectly free from coarse pollard or other offal. *Pure wheaten Meal Bread of first quality may be substituted, wholly or in part, for fine wheaten Bread at such times and in such quantities as in the opinion of the Medical Superintendent may be deemed necessary, and the contractor will be required to supply such Bread at the contract rate. Reasonable notice, however, of the intention to substitute when a Meal Bread must be given to the contractor by the officer ordering the supply.* Bread may be baked at any Government establishment without infringing these contracts. At the Gaols, Beechworth, Ballarat, Geelong, Bendigo, Castlemaine, and Sale, if required, bread must be supplied one day old, due notice to be given to the contractor of such requirement.

Under sub-schedules for Bread no subletting will be allowed; all work must be carried out by the contractor; every person engaged in the manufacture, preparation, or delivery of the bread tendered for in this sub-schedule shall be paid such wages and shall be employed subject to such conditions as are or may be determined by any Wages Board under the provisions of the Factories and Shops Acts to which such persons are subject as employees; and a copy of these conditions shall be kept conspicuously and continually posted in legible Roman characters in the factory or shop (and in each part of the factory or shop where several rooms are in use) in which bread is prepared or manufactured under this contract. Any infringement of these conditions, or any breach of the said determinations in the opinion of the Treasurer, will subject the contractor, upon report from the Tender Board, to such mulct, not exceeding Fifty pounds (£50), as the Treasurer may direct, and the amount will be deducted from the contractor's account or from the security money, and the Treasurer's decision shall be binding, final, and conclusive as to the fact of infringement, and in all other respects.

In the event of bread being made at any Government establishment in the Melbourne District, during the currency of these contracts, the flour required will be drawn under the flour and maize meal sub-schedule. The maize meal for all the country gaols is included in the sub-schedule for flour and maize meal, Melbourne District, and delivery of same will be required to be made at the Victorian Railways, Spencer-street.

Should a supply of any article which may be reasonably included in a Baker's Price List, and which is not included in the schedule hereunder, be required for the use of attendants and nurses resident at the Hospitals for the Insane or for inmates of any Government institution drawing supplies under sub-schedules for Bread during the currency of the contract, the contractor shall, with the exception of Ararat, Ballarat, and Beechworth, supply any such article at the current list rates at which it is retailed by the contractor to the public.

GROCERIES, CANDLES, SOAP, TEA, ETC.

Should the supply of any article which may be reasonably included in a Grocer's Price List, and which is not included in the schedule hereunder, be required for the use of attendants and nurses resident at the Hospitals for the Insane or for inmates of any Government institution drawing supplies under sub-schedules for Groceries during the currency of the contract, the contractor shall with the exception of Ararat, Ballarat, and Beechworth, supply any such article at the current list rates at which it is retailed by the contractor to the public.

Rice, when ordered in quantities of 56 lbs. and over, must be supplied in the original bags, and must be of the brand ordered. Bags containing same must be branded "Rice—Dressed, Best, and must be stencilled with the manufacturer's or dresser's name. Supplies not in conformity with the foregoing conditions will be absolutely rejected.

Candles, except those for prison cells, must be supplied in 1-lb. packets. Candles for prison cells must be delivered in boxes containing from 25 to 50 lbs. per box, the boxes for which must be legibly stencilled on one end, showing the estimated burning time and the gross, tare, and net weight of contents. The soap supplied must be hard throughout, ready for immediate use without waste. Soap for Lunatic Asylums is not included in these contracts. When the quantity admits, tea must be supplied in original and unopened packages, labelled as lauded.

Raisins and currants must, where the quantity admits, be supplied in original boxes labelled 3 crowns.

For s.s. *Lady Loch* and *Rip* a certain quantity of Biscuits and Preserved Meat are sometimes required in lieu of fresh meat and fresh bread, and are included to meet such contingency only.

The contracts are not to be considered broken, infringed, or vitiated by purchase of sugar from any Government Institution at any time during the currency of this contract.

BUTTER AND JAMS.

Butter is to be delivered to the s.s. *Lady Loch* and *Rip*, in 1 lb. pats, in such quantities as may be ordered, and no excess over the quantity ordered will be received.

All Butter supplied, as well as the cases in which it is packed, must bear the impress stamp of the creamery manufacturing the Butter, otherwise it will be rejected. The Butter supplied may be tested at any time by the Government Dairy expert if it is considered by the officer ordering that the supply is not up to standard quality. The cheese must be fairly matured and packed in boxes for transport.

As regards butter for Ararat, Ballarat, Beechworth, Lara, Sunbury, and Mont Park all supplies delivered from Melbourne must be submitted by the contractor to the Government Dairy Expert in Melbourne for test as to standard quality, and, if found to be satisfactory, shall be forwarded by that officer direct to the Institution ordering, the cost of freight being borne by the contractor in the usual way.

N. B.—Jams.—The weight stamped on the tins in accordance with the regulations under the Commerce Act, as indicating the minimum net quantity that each tin contains, shall for the purpose of this contract be taken as the actual contents when computing the quantity supplied.

When Jam is supplied in jars the jars remain the property of the contractor, and must be removed by the contractor at his own expense when empty.

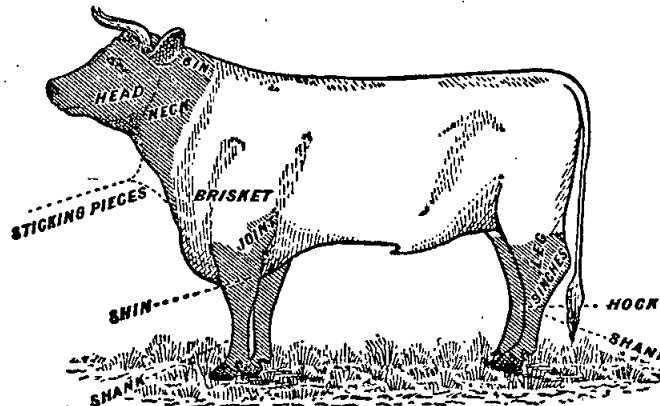
MEAT.

When fore and hind-quarters of beef are ordered for Hospitals for the Insane they must be supplied in the proportion of two of the former to one of the latter, and must be delivered as a whole respectively, also extra butts separately when ordered. Meat for other institutions must be supplied as ordered. Where hind-quarters or butts are ordered, 9 inches must be cut off from the end of the leg from the hock upwards, i.e., the end of the leg from which the shank has been removed at the abattoirs, and when fore-quarters form a portion of the supply, 6 inches from the end of the neck and the whole of the shin at the clubbone joint must be removed. The sticking pieces also must be trimmed off, and the point and end of the brisket rendered free from blood and blood stains.

Fore and hind-quarters, for convenience of handling, may be cut into two parts, but each part is to bear evidence of having been cut from the same beast.

Corned beef, rolled or round, as ordered, must be supplied without bone or cartilage and will be received, whether pumped or prepared in the ordinary way by pickling, but in the former case must have been soaked after pumping for at least 48 hours, in a good pickle, and then thoroughly drained before supply. No flank, chuck, sticking piece, shin, leg of beef, or piece under 7 lbs. will be received.

Should the local supply of fresh meat become scarce, or the price of same become abnormally high, frozen or chilled meat may, with the consent of the Tender Board on the recommendation of the head of the Department, be supplied.



In cases of emergency, or on such other occasions as in the opinion of the Inspector-General of the Insane may seem advisable, other forms of meat such as rabbits, tinned meats, &c., may be purchased apart from the contract for Hospitals for the Insane, in lieu of the meat mentioned in the schedule, and substituted therefor, provided 24 hours' notice (except in cases of emergency) be given to the contractor of such intention.

The parts to be removed by the contractor are indicated by the shaded portions of the annexed diagram.

For Beechworth samples (corresponding to the description given in the schedule) of meat ordinarily retailed to the public will be considered as a test for quality.

As regards supplies for s.s. *Lady Loch* and *Rip*, all Meat must be of prime quality, and must be supplied in equal quantities from ribs, sirloin, and thick flanks; mutton to be delivered in sides; all kidney fat to be removed; meat containing an undue proportion of fat will not be accepted. Chuck ribs will not be accepted in lieu of prime ribs. Live sheep to be supplied when required.

Should a supply of any article which may be reasonably included in a Butcher's Small Goods List, and which is not included in the schedule hereunder, be required for the use of attendants and nurses resident at the Hospitals for the Insane or for inmates of any Government Institution drawing supplies under sub-schedules for Meat during the currency of the contract, the contractor shall, with the exception of Ararat and Ballarat, supply such article at the current list rates at which it is retailed by the contractor to the public.

Under sub-schedules for Meat no subletting will be allowed, no delivery of meat shall be made on Sundays; all work must be carried out by the contractor. Every person engaged in the slaughtering and cutting up, preparation, or delivery of the meat tendered for in this sub-schedule, shall be paid such wages and shall be employed subject to such conditions as are or may be determined by any Wages Board under the provisions of the Factories and Shops Acts to which such persons are subject as employees; and a copy of these conditions shall be kept conspicuously and continually posted in legible Roman characters in the factory or shop (and in each part of the factory or shop where several rooms are in use) in which Meat is prepared under this contract. Any infringement of these conditions, or any breach of the said determination, in the opinion of the Treasurer, will subject the contractor, upon report from the Tender Board, to such mulct, not exceeding Fifty pounds (£50), as the Treasurer may direct, and the amount will be deducted from the contractor's account or from the security money, and the Treasurer's decision shall be binding, final, and conclusive as to the fact of infringement, and in all other respects.

MILK.

The milk must be fresh, pure, and of the best quality, and subject to test when required by the Department, and supplied at such times as the Department may require. Should the contractor fail to supply at the time specified in the order or at such times as may be indicated in any general notice to the

contractor his contract may be cancelled forthwith and his security forfeited, or should the supply prove to be not of contract quality it will be rejected, and any expense incurred will be charged to the contractor.

Under sub-schedules for Milk no subletting will be allowed; all work must be carried out by the contractor; the hours of employment of any person engaged in the preparation or the delivery of the milk tendered for in these schedules shall not exceed 60 hours per week, and every such person, except carters, shall be paid at a minimum wage of not less than £1 17s. 6d. per week, or £1 2s. 6d. per week with board and lodging, unless other wages may be determined by any Special Board under the Factories and Shops Act during the currency of the contract, when every such person shall be paid such wages and shall be employed subject to such conditions as may thus be determined. Carters shall be paid such wages and shall be employed subject to such conditions as are or may be determined by the Carters Board under the Factories and Shops Acts. Should, however, the determination of the aforesaid Board not apply to the district covered by any particular schedule, that determination for carters, or the determination of such other Board as may be appointed for other employees during the currency of this contract shall, for the purpose of this contract, be taken as defining the rate of wages which shall be paid, and the conditions of employment in respect thereto; and a copy of these conditions shall be kept conspicuously and continually posted in legible Roman characters in the factory or dairy (and in each part of the factory or dairy where several rooms are in use) in which milk is prepared under these contracts. Any infringement of these conditions, in the opinion of the Treasurer, will subject the contractor, upon report from the Tender Board, to such mulct, not exceeding Fifty pounds (£50), as the Treasurer may direct, and the amount will be deducted from the contractor's account or from the security money, and the Treasurer's decision shall be binding, final, and conclusive as to the fact of infringement, and in all other respects.

POTATOES AND VEGETABLES.

(Potatoes to be dry and free from dirt. Contractor to supply 100 lbs. of potatoes for each cental credited to him, and, in addition, to take back all rejected before being cooked.)

If the price of potatoes becomes abnormally high, the heads of the various departments concerned may, if they think fit, cause rice or any other suitable food to be occasionally substituted in lieu thereof. As regards vegetables for s.s. *Lady Loch* and *Rip*, no subletting will be allowed. Cabbage to be free from outside leaves and stalks.

TOBACCO.

Tobacco for country Hospitals for the Insane is included in the contract for Melbourne District, and delivery of same will be required to be made at Spencer-street.

Tobacco for country Gaols is not included in the contract for Melbourne District.

Schedule No. 1.
PROVISIONS—MELBOURNE DISTRICT.

Sub-schedule No. 1.

BEER AND SPIRITS.

1. Ale (pints), English	per doz.	Purchase
2. Brandy, Australian, Standard, pure grape, of proof strength, and of approved brand (Manufacturer to be named)	per liq. gal.	
3. " bottled—Hennessy's Three Star, as imported	per bottle	
4. Lime Juice (Imperial quart bottles). Board of Trade Standard	per doz.	
5. Whisky, of proof strength—Loch Dhu, Scotch Cream, or any other brand of equal quality	per liq. gal.	
6. Porter—"Guinness," bottled (quarts) (Bottler to be named)	per doz.	
7. " "Guinness," bottled (pints) (Bottler to be named)	do.	

ANNEX TO CONTRACT No. 1918/205.

J. N. Hennessy, 55 Sydney-road, Brunswick.

Sub-schedule No. 2.

BREAD FOR HOSPITALS FOR THE INSANE AT KEW.

Security, £100. £ s. d.

1. Bread—Fine wheaten, first quality	per cental	0 11 2
--------------------------------------	------------	--------

ANNEX TO CONTRACT No. 1918/206.

J. N. Hennessy, 55 Sydney-road, Brunswick.

Sub-schedule No. 3.

BREAD FOR HOSPITALS FOR THE INSANE AT YARRA BEND.

Security, £100. £ s. d.

1. Bread—Fine wheaten, first quality	per cental	0 10 11
--------------------------------------	------------	---------

ANNEX TO CONTRACT No. 1918/207.

J. N. Hennessy, 55 Sydney road, Brunswick.

Sub-schedule No. 4.

BREAD FOR DEPARTMENT OF NEGLECTED CHILDREN AND REFORMATORY SCHOOLS, ROYAL PARK; RECEIVING HOUSE AND MENTAL HOSPITAL, ROYAL PARK; POLICE LOOK-UPS; POLICE DEPÔT; RICHMOND HOUSE, RICHMOND, ETC.

Security, £50. £ s. d.

1. Bread—Fine wheaten, first quality	per cental	0 11 9
2. " Wheaten, third quality	do.	0 11 6

ANNEX TO CONTRACT No. 1918/208.

The Wallace, Millbrook and District Butter Factory and Creamery Co. Ltd., 208 Mair-street, Ballarat.

Sub-schedule No. 5.

BUTTER.

Security, £80.

1. Butter—First Grade Creamery, to score not less than 90 points Government grade, Commerce Regulations standard	per cwt.	8 6 8
--	----------	-------

ANNEX TO CONTRACT No. 1918/209.

P. Sheahan & Co., 453 Flinders-lane, Melbourne

Sub-schedule No. 6.

CHEESE AND EGGS.

Security, £40.

1. Cheese—First Class quality	per cwt.	5 2 8
2. Eggs—Fresh, new laid	per doz.	0 1 0

ANNEX TO CONTRACT No. 1918/210.

H. R. Rush, 407 Collins-street, Melbourne.

Sub-schedule No. 7.

FLOUR AND MAIZE MEAL.

Security, £100.

1. Flour—Roller, first quality, to sample	per cental	0 10 11½
2. " Sharpe, to sample	do.	0 10 0
3. Maize meal	do.	0 10 9

ANNEX TO CONTRACT No. 1918/211.

John D. Howie, 299 Smith-street, Fitzroy.

Sub-schedule No. 8.

GROCERIES, ETC.

Security, £40.

£ s. d.

1. Arrowroot—Queensland	per lb.	0 0 5
2. Bicarbonate of Soda	do.	0 0 3½
3. Blue—Of any brand ordered	do.	0 2 0
4. Candles—Full weights, Kitchen's "Petrolines," Apollo Co.'s "Apollo," or other make of equal quality, to be supplied in 1-lb. packets to sample	do.	0 0 9½
5. " Kitchen's "Petrolines," Apollo Co.'s "Apollo," or other make of equal quality, for use in prison cells, to burn for 1, 1½, 2, 2½, and 3 hours respectively, as ordered, to sample for quality and size, to be supplied in candle boxes, containing from 25 to 50 lbs. per box	do.	0 0 8½
6. " "Sapon," in boxes of 100 lbs.	do.	0 0 9½
7. " Carriage, equal to Kitchen's No. 8, in 1-lb. packets	do.	0 0 9½
8. " Paraffins	do.	0 0 9½
9. Cocoa—Homœopathic, in ½-lb. packets, of any Commonwealth manufacture ordered	do.	0 1 6
10. " Homœopathic, in 7-lb. cartoons, of any Commonwealth manufacture ordered	do.	0 1 3
11. Coffee—Fresh roasted and whole, beans to be thoroughly sound, Neilgherry A or equal thereto, to sample	do.	0 1 0½
12. " Pure, fresh roasted and ground, to sample	do.	0 1 3
13. Cornina	do.	0 0 5
14. Cornflour	do.	0 0 5
15. Cream of Tartar	do.	0 4 3
16. Currants, 3 crowns	do.	0 0 6½
17. Essence of Lemon, 1-oz. bottles	per bottle	0 0 7
18. Golden Syrup (in 7-lb. tins)	per tin	0 1 10
19. Lemon Peel	per lb.	0 0 9½
20. Maizena—Duryea's	do.	0 0 7½
21. Mustard—"Double Superfine," of any Commonwealth manufacture ordered	do.	0 3 3
22. Nutmegs	do.	0 1 8
23. Pearl barley	per cwt.	0 19 0
24. Pease—Split	do.	1 2 6
25. Pepper—Black, ground	per lb.	0 1 3
26. Pipes—Tobacco, clay	per doz.	0 1 0
27. Raisins—Sultana (Mildura), 3 crowns	per lb.	0 0 7½
28. Salt—Fine	per cwt.	0 5 3
29. " Rock	do.	1 6 0
30. Soap, Toilet—Brown Windsor, in tablets, to sample	per lb.	0 0 8
31. " Carbolic, in half-pound bars, to sample	do.	0 0 8
32. " Glycerine, in tablets, to sample	do.	0 0 8
33. " Sunlight, in doublets	per dbtl.	0 0 5
34. " Magic	per lb.	0 0 4
35. " Velvet	per dbtl.	0 0 4
36. Soap—Extract of, Hudson's, No. 8a, in 14-lb. boxes	per box	0 6 0
37. Soda—Washing	per cwt.	1 3 0
38. Starch—(Of any brand ordered, to sample	per lb.	0 0 5
39. Treacle, in 7-lb. tins	per tin	0 1 6
40. Vinegar	per quart	0 0 3
41. Lime Water	do.	0 0 6
42. Tapioca (Pearl)	per lb.	0 0 4
43. Tomato Sauce (pints)	per bottle	0 0 8

ANNEX TO CONTRACT No. 1918/212.

John D. Howie, 299 Smith-street, Fitzroy.

Sub-schedule No. 9.

OATMEAL, RICE, AND SEED TAPIOCA.

Security, £80.

£ s. d.

1. Oatmeal—Of any brand ordered	per cwt.	1 2 0
2. Rice—Dressed, best to sample	do.	1 3 6
3. Seed Tapioca (Sago), to sample	do.	1 14 0

ANNEX TO CONTRACT No. 1918/213.

The Ballarat Jam Co. Pty. Ltd., Davey-street, Ballarat.

Sub-schedule No. 10.

JAMS (of Commonwealth Manufacture) FOR HOSPITALS FOR THE INSANE.

(Including Receiving House, Royal Park.)

Security, £20.

£ s. d.

1. Jams—Assorted, of approved kinds, in the proportion of half seed and actual net half stone, of the best quality, in tins of about 54 lbs.	per lb. weight	0 0 4½
--	----------------	--------

ANNEX TO CONTRACT No. 1918/214.

W. Angliss and Co. Ppy. Ltd., Bourke-street, Melbourne.
Sub-schedule No. 11.

MEAT (FRESHLY KILLED), FOR HOSPITAL FOR THE INSANE, KEW.
Security, £150.

	£	s.	d.
1. Fresh Beef—Fore-quarters per cental	2	9	9
2. " " Hind-quarters do.	2	9	9
3. " Buttock do.	2	9	9
4. " Mutton do.	2	9	9
5. Corned Beef, rolled or round, as ordered, without bone or cartilage do.	2	9	9
6. Fresh Suet—Kidney do.	2	10	0

ANNEX TO CONTRACT No. 1918/215.

W. Angliss and Co. Ppy Ltd., Bourke-street, Melbourne.
Sub-schedule No. 12.

MEAT (FRESHLY KILLED), FOR HOSPITAL FOR THE INSANE, FARBA BRAND.
Security, £120.

	£	s.	d.
1. Fresh Beef—Fore-quarters per cental	2	9	9
2. " " Hind-quarters do.	2	9	9
3. " Buttock do.	2	9	9
4. " Mutton do.	2	9	9
5. Corned Beef, rolled or round, as ordered, without bone or cartilage do.	2	9	9
6. Fresh Suet—Kidney do.	2	10	0

ANNEX TO CONTRACT No. 1918/216.

T. K. Bennet and Woolcock Ppy. Ltd., 534 Collins-street, Melbourne.

Sub-schedule No. 13.

MEAT (FRESHLY KILLED), FOR PENAL ESTABLISHMENT, PENTRIDGE.
Security, £100.

	£	s.	d.
1. Fresh Beef per cental	2	9	6
2. " Buttock do.	2	9	6
3. Corned Beef do.	2	9	6
4. Fresh Mutton do.	2	9	6
5. Dripping do.	2	10	0

ANNEX TO CONTRACT No. 1918/217.

F. Watkins Ppy. Ltd., 316 Moray-street, South Melbourne.
Sub-schedule No. 14.

MEAT (FRESHLY KILLED), FOR MELBOURNE GAOL; POLICE BARRACKS, ST. KILDA ROAD; DEPARTMENT FOR NEGLECTED CHILDREN AND REFORMATORY SCHOOLS, ROYAL PARK; RECEIVING HOUSE, AND MENTAL HOSPITAL, ROYAL PARK; AND RICHMOND HOUSE, RICHMOND.

Security, £50.

	£	s.	d.
1. Fresh Beef per cental	2	11	0
2. " Buttock do.	2	11	0
3. " Mutton do.	2	11	0
4. Corned Beef, rolled or round, as ordered, without bone or cartilage do.	2	11	0
5. Fresh Suet—Kidney do.	2	11	0

ANNEX TO CONTRACT No. 1918/218.

John Henderson, 183 Macpherson-street, North Carlton.
Sub-schedule No. 15.

MILK FOR MELBOURNE GAOL, AND MENTAL HOSPITAL, ROYAL PARK.

Security £10.

	£	s.	d.
1. Milk—Fresh and pure per gal.	0	1	8

Sub-schedule 16.

MILK FOR RICHMOND HOUSE, RICHMOND.

	£	s.	d.
1. Milk—Fresh and pure per gal.	Purchase		

ANNEX TO CONTRACT No. 1918/219.

J. F. Murphy, 25 Mayfield-street, Coburg.
Sub-schedule No. 17.

MILK FOR PENAL ESTABLISHMENT, PENTRIDGE.

Security, £10.

	£	s.	d.
1. Milk—Fresh and pure per gal.	0	1	4

ANNEX TO CONTRACT No. 1918/220.

Shea, Hood and Co. Pty. Ltd., 512 Flinders-street, Melbourne.
Sub-schedule No. 18.

POTATOES.

Security, £100.

	£	s.	d.
1. Potatoes per cental	0	9	11

Sub-schedule 19.

SUGAR.

	£	s.	d.
1. Sugar—White, to sample per cwt.			
2. " Ration " do.			

{ Purchase from Maffra

ANNEX TO CONTRACT No. 1918/221.

John D. H. nie, 299 Smith-street, Fitzroy.
Sub-schedule No. 20.

SOAP.

(Of Commonwealth Manufacture.)

Security, £10.

	£	s.	d.
1. Soap (household)—Yellow, dry, to sample, equal to Kitchen & Son's "Best Brown" per cwt.	1	14	6
2. Soap (household)—Carbolic, dry, to sample " "	1	16	0

ANNEX TO CONTRACT No. 1918/222.

Loftus Moran, South Melbourne.

Sub-schedule No. 21.

TEA.

Security, £90.

	£	s.	d.
1. Tea—Best Ceylon, to sample per lb.	0	1	2½
2. " Ration, to sample do.	0	1	0

Sub-schedule No. 22.

TOBACCO.

(Of Commonwealth Manufacture.)

1. Tobacco, in 1-oz. plugs, for gaols—"Star-light," or other make of equal quality, to sample per lb.	See later		
2. Tobacco, 21 plugs to the pound, for Hospitals for the Insane, to sample do.	Gazette.		

Schedule No. 2.

PROVISIONS AT WILLIAMSTOWN.

(For s.s. Lady Loch and Rip.)

(Including Candles, Soap, and Soda for Dockyards.)

(Supplies for Naval Forces are not included in this Schedule.)

(Supplies to be delivered on board the Vessels.)

ANNEX TO CONTRACT No. 1918/223.

W. J. Elsum, 162 Stevedore-street, Williamstown.

Sub-schedule No. 1.

BREADSTUFFS.

Security, £10.

	£	s.	d.
1. Bread—Fine wheaten, first quality per cental	0	12	6
2. Flour—First quality do.	0	12	0

ANNEX TO CONTRACT No. 1918/224.

Moran and Cato, Ppy. Ltd., Brunswick-street, Fitzroy.

Sub-schedule No. 2.

BUTTER.

Security, £5.

	£	s.	d.
1. Butter—First-class Creamery, to score not less than 80 points Government grade, Commerce Regulations standard per lb.	0	1	7½

ANNEX TO CONTRACT No. 1918/225.

Moran and Cato Ppy. Ltd., Brunswick-street, Fitzroy.

Sub-schedule No. 3.

GROCERIES.

Security, £10.

	£	s.	d.
1. Candles—(full weights) Kitchen's "Patrolines," Apollo Co's "Apollo," or other make of equal quality, to be supplied in 1-lb. packets per lb.	0	0	9½
2. Cocoa, of any brand ordered do.	0	1	2½
3. Coffee—Fresh roasted and ground, to sample do.	0	1	0
4. Currants—3 crowns do.	0	0	6½
5. Flour—Self-raising do.	0	0	6
6. Jam—Assorted, of approved kinds, in proportion of half seed and half stone, of best quality (in 2-lb tins) per tin	0	1	0
7. Milk—Condensed, of any brand ordered do.	0	0	8½
8. Mustard—double superfine, of any brand ordered per lb.	0	3	6
9. Oatmeal per cwt.	1	7	0
10. Pearl barley do.	1	2	0
11. Pease—Split do.	1	4	0
12. Pepper—White, ground per lb.	0	1	7
13. Raisins—Sultana, Mildura—3 crowns do.	0	0	7½
14. Salt—Fine, to sample do.	0	0	1
15. Soap—Household, yellow, dry, to sample do.	0	0	6
16. Tea—Best Ceylon, special sample do.	0	1	6
17. Vinegar—Champion's, or other approved brand per quart	0	0	3
18. Biscuits, kinds as ordered per lb.	0	9	4
19. Soda—Washing per cwt.	1	8	0

ANNEX TO CONTRACT No. 1918/226.
Wm. Angliss and Co. Pty. Ltd., 42 Bourke-street, Melbourne.
 Sub-schedule No. 4.

MEAT (FRESHLY KILLED).
 Security, £10. £ s. d.

1. Fresh Beef—Joints per cental	3	0	5
2. " Mutton " do.	2	12	1
3. " Suet do.	2	10	0

ANNEX TO CONTRACT No. 1918/227.
G. Hosking, 157 Nelson-place, Williamstown
 Sub-schedule No. 5.

VEGETABLES.
 Security, £5. £ s. d.

1. Potatoes per cental	0	6	3
2. Onions do.	0	11	2
3. Other vegetables, including cauliflowers, carrots, cabbages, turnips, and parsnips, as required do.	0	10	5

Schedule No. 3.

PROVISIONS—ARARAT DISTRICT.

ANNEX TO CONTRACT No. 1918/228.
William Bates, Ararat.
 Sub-schedule No. 1.

BREADSTUFFS.
 Security, £100. £ s. d.

1. Bread—Fine wheaten, first quality ... per cental	0	10	4
2. " Wheaten, third quality do.	0	8	4
3. Flour—First quality do.	0	11	0

ANNEX TO CONTRACT No. 1918/229.
The Wallace, Millbrook and District Butter Factory and Creamery Co. Ltd., Ballarat.
 Sub-schedule No. 2.

BUTTER.
 Security, £20. £ s. d.

1. Butter—First Grade Creamery, to score not less than 90 points Government grade, Commerce Regulations standard ... per cwt.	8	6	8
---	---	---	---

ANNEX TO CONTRACT No. 1918/230.
John D. Howie, 299 Smith-street, Fitzroy.
 Sub-schedule No. 3.

CHEESE.
 Security, £10. £ s. d.

1. Cheese—First-class quality per cwt.	5	2	8
---	---	---	---

ANNEX TO CONTRACT No. 1918/231.
John D. Howie, 299 Smith-street, Fitzroy.
 Sub-schedule No. 4.

GROCERIES.
 Security, £30. £ s. d.

1. Blue—Of any brand ordered per lb.	0	2	0
2. Candles (full weights) — Kitchen's "Petrolines," or other make of equal quality, to be supplied in 1-lb. packets do.	0	0	9½
3. Coffee—"Neigherry A," or equal thereto — Fresh roasted and whole—Beans to be thoroughly sound, to sample ... do.	0	1	1½
4. Curry do.	0	1	0
5. Golden Syrup (in 56-lb. tins) per tin	0	13	6
6. Mustard—"Double Superfine," of any Commonwealth manufacture ordered per lb.	0	3	3
7. Oatmeal—Of any brand ordered ... per cwt.	1	3	6
8. Pease—Split do.	1	4	6
9. Pepper—Black, ground per lb.	0	1	3
10. Pipes—Tobacco, clay per doz.	0	1	0
11. Raisins—Sultana (Mildura), 3 crowns ... per lb.	0	0	7½
12. Rice—Best Dressed, to sample ... per cwt.	1	4	9
13. Seed Tapioca (Sago)—To sample ... do.	1	16	0
14. Salt—Fine do.	0	6	9
15. Soda—Carbonate of per lb.	0	0	3½
16. Soda—Washing per cwt.	1	4	0
17. Starch—Of any brand ordered, to sample ... per lb.	0	0	6
18. Tartar—Cream of do.	0	4	3
19. Vinegar per pint	0	0	3

ANNEX TO CONTRACT No. 1918/232.
The Ballarat Jam Co. Pty. Ltd., Davey-street, Ballarat.
 Sub-schedule No. 5.

JAMS.
 Security, £10. £ s. d.

1. Jams, assorted, of approved kinds in the proportions of half seed and half stone, of the best quality, in tins of about 54 lbs. per lb. actual net weight	0	0	4½
--	---	---	----

ANNEX TO CONTRACT No. 1918/233.
Arthur Murphy, Barkly-street, Ararat.
 Sub-schedule No. 6.

MEAT (FRESHLY KILLED).
 Security, £100. £ s. d.

1. Fresh Beef—Fore-quarters per cental	2	14	2
2. " " Hind-quarters do.	2	14	2
3. " " Buttocks do.	2	14	2
4. " Mutton do.	2	5	10
5. Corned Beef—Rolled or round, as ordered, without bone or cartilage do.	2	14	2
6. Fresh Suet—Kidney do.	2	10	0

ANNEX TO CONTRACT No. 1918/234.
Shea, Hood and Co. Pty. Ltd., 512 Flinders-street, Melbourne.
 Sub-schedule No. 7.

POTATOES.
 Security, £30. £ s. d.

1. Potatoes per cental	0	4	6
-------------------------------	---	---	---

Sub-schedule No. 8.
 SUGAR.

1. Sugar, white, to sample per cwt.	Purchase from Maffra
--	----------------------

ANNEX TO CONTRACT No. 1918/235.
Loftus Moran, South Melbourne.
 Sub-schedule No. 9.

TEA.
 Security, £20. £ s. d.

1. Tea—Best Ceylon, to sample per lb.	0	1	3
--	---	---	---

Schedule No. 4.

PROVISIONS—BEECHWORTH DISTRICT.

ANNEX TO CONTRACT No. 1918/236.
William Price, Neutoun, Beechworth.
 Sub-schedule No. 1.

BREADSTUFFS.
 Security, £100. £ s. d.

1. Bread—Fine wheaten, first quality ... per cental	0	13	0
2. " Wheaten, third quality do.	0	13	0
3. Flour—First quality do.	0	13	0

ANNEX TO CONTRACT No. 1918/237.
The Wallace, Millbrook and District Butter Factory and Creamery Co. Ltd., 208 Mair-street, Ballarat.
 Sub-schedule No. 2.

BUTTER.
 Security, £20. £ s. d.

1. Butter—First Grade Creamery, to score not less than 90 points, Government grade, Commerce Regulations standard per cwt.	8	9	0
--	---	---	---

ANNEX TO CONTRACT No. 1918/238.
J. D. Howie, 299 Smith-street, Fitzroy.
 Sub-schedule No. 3.

CHEESE.
 Security, £20. £ s. d.

1. Cheese—First-class quality per cwt.	5	2	8
---	---	---	---

ANNEX TO CONTRACT No. 1918/239.
J. D. Howie, 299 Smith-street, Fitzroy.
Sub-schedule No. 4.

GROCERIES.

Security, £30. £ s. d.

1. Arrowroot ... per lb. 0 0 5
2. Blue—Of any brand required ... do: 0 2 0
3. Candles (full weights)—Kitchen's "Petrolines," Apollo Co.'s "Apollo," or other make of equal quality, to be supplied in 1-lb. packets ... do. 0 0 9½
4. Coffee—"Neilgherry A," fresh roasted and whole, beans to be thoroughly sound, to sample ... do. 0 1 1
5. Coffee—Fresh roasted and ground, to sample ... do. 0 1 3
6. Golden Syrup (in 7-lb. tins) ... per tin 0 2 0
7. Maizena ... per lb. 0 0 7½
8. Mustard—"Double superfine," of any Commonwealth manufacture ordered ... do. 0 3 0
9. Oatmeal—Of any brand ordered ... per cwt. 1 3 0
10. Pearl Barley ... do. 1 2 0
11. Pease—Split ... do. 1-5 0
12. Pepper—Black, ground ... per lb. 0 1 3
13. Pipes—Tobacco, clay ... per doz. 0 1 0
14. Raisins—Sultana (Mildura), 3 crowns, to be supplied in original boxes, labelled as packed, where quantity admits ... per lb. 0 0 7½
15. Rice—Dressed, Best, to sample ... per cwt. 1 5 0
16. Seed Tapioca (Sago)—To sample ... do. 1 16 0
17. Salt—Fine ... do. 0 6 9
18. Soap—Household, carbolic, dry, to sample ... per lb. 0 0 4
19. Soap—Household, yellow, dry, to sample ... do. 0 0 4
20. Soda—Carbonate of ... do. 0 0 3½
21. " Washing ... per cwt. 1 4 0
22. Starch—Of any brand ordered, to sample ... per lb. 0 0 6
23. Tartar—Cream of ... do. 0 4 3
24. Vinegar ... per pint 0 0 3

ANNEX TO CONTRACT No. 1918/240.
W. H. Morton, One Mile, Beechworth.
Sub-schedule No. 5.

MEAT (FRESHLY KILLED).

Security, £100. £ s. d.

1. Fresh Beef—Fore-quarters ... per cental 2 3 8
2. " Hind-quarters ... do. 2 3 8
3. " Buttocks ... do. 2 3 8
4. " Mutton ... do. 2 3 8
5. Corned Beef—rolled or round, as ordered, without bone or cartilage ... do. 2 3 8
6. Fresh Suet—Kidney ... per lb. 0 0 6

ANNEX TO CONTRACT No. 1918/241.
Shea, Hood and Co. Pty. Ltd., 512 Flinders-street, Melbourne.
Sub-schedule No. 6.

POTATOES.

Security, £30. £ s. d.

1. Potatoes ... per cental 0 4 9

Sub-schedule No. 7.

SUGAR.

Security, £30. £ s. d.

1. Sugar, white, to sample ... per cwt. { Purchase from Maffra
2. " ration, to sample ... do. {

ANNEX TO CONTRACT No. 1918/242.
Loftus Moran, South Melbourne.
Sub-schedule No. 8.

TEA.

Security, £20. £ s. d.

1. Tea—Best Ceylon, to sample ... per lb. 0 1 3½
2. " Ration, to sample ... do. 0 1 0

PROVISIONS AT BALLARAT.

ANNEX TO CONTRACT No. 1918/243.
John Davies, 47 Eureka-street, Ballarat East.
Sub-schedule No. 1.

BREADSTUFFS.

Security, £60. £ s. d.

1. Bread—Fine Wheaten, first quality ... per cental 0 12 3
2. " Wheaten, third quality ... do. 0 12 3
3. Flour—First quality ... do. 0 11 3

ANNEX TO CONTRACT No. 1918/244.
The Wallace, Millbrook and District Butter Factory and Creamery Co. Ltd., 208 Mair-street, Ballarat.
Sub-schedule No. 2.

BUTTER.

Security, £20. £ s. d.

1. Butter—First Grade Creamery, to score not less than 9½ points, Government grade, Commerce Regulations standard per cwt. 8 6 8

ANNEX TO CONTRACT No. 1918/245.
J. D. Howie, Smith-street, Fitzroy.
Sub-schedule No. 3.

CHEESE.

Security £10. £ s. d.

1. Cheese—First-class quality ... per cwt. 5 2 8

ANNEX TO CONTRACT No. 1918/246.
J. D. Howie, Smith-street, Fitzroy.
Sub-schedule No. 4.

GROCERIES.

Security, £30. £ s. d.

1. Barley—Pearl ... per lb. 0 0 2½
2. Blue—Of any brand required ... do. 0 2 0
3. Candles (full weights)—Kitchen's "Petrolines," Apollo Co.'s "Apollo," or other make of equal quality, to be supplied in 1-lb. packets ... do. 0 0 9½
4. Coffee—"Neilgherry A" or equal thereto. Fresh roasted and whole, beans to be thoroughly sound, to sample ... do. 0 1 2½
5. Cornina ... do. 0 0 6
6. Currants, 3 crowns ... do. 0 0 7
7. Ginger—Ground ... do. 0 1 0
8. Golden Syrup (in 7-lb. tins) ... per tin 0 2 0
9. Maizena—Duryea's ... per lb. 0 0 7½
10. Milk—Fresh and pure ... per quart 0 0 6
11. Mustard—Double superfine, of any Commonwealth manufacture ordered ... per lb. 0 3 6
12. Oatmeal—Of any brand ordered ... per cwt. 1 3 9
13. Pease—Split ... do. 1 3 0
14. Pepper—Black, ground ... per lb. 0 1 3
15. Pipes—Tobacco, clay ... per doz. 0 1 1
16. Raisins—Sultana (Mildura), 3 crowns ... per lb. 0 0 7½
17. Rice—Dressed, Best, to sample ... per cwt. 1 4 6
18. Seed Tapioca (Sago), to sample ... do. 1 16 0
19. Salt—Fine ... do. 0 6 9
20. Soap—(Household), Carbolic, dry, to sample ... per lb. 0 0 3
21. Soap—(Household), Yellow, dry, to sample ... do. 0 0 4
22. Soda—Carbonate of ... do. 0 0 3½
23. " Washing ... per cwt. 1 4 0
24. Spice—Mixed, in 1-oz. packets ... per doz. pkts. 0 1 6
25. Starch—Of any brand ordered, to sample ... per lb. 0 0 6
26. Tartar—Cream of ... do. 0 4 3
27. Tobacco—"Starlight, or other make of equal quality, as ordered ... do. 0 3 3
28. Vinegar ... per pint 0 0 3

ANNEX TO CONTRACT No. 1918/247.
The Ballarat Jam Co. Pty. Ltd., Davey-street, Ballarat.
Sub-schedule No. 5.

JAMS.

(For Hospitals for the Insane.)

Security, £10. £ s. d.

1. Jams—Assorted, of approved kinds in proportion of half seed and half stone, of the best quality, in tins of about 54 lbs. ... per lb. actual net weight 0 0 3½

ANNEX TO CONTRACT No. 1918/248.
H. J. Synons, Macarthur-street, Ballarat.
Sub-schedule No. 6.

MEAT (FRESHLY KILLED).

Security, £60. £ s. d.

1. Fresh Beef—Fore-quarters ... per cental 2 4 9
2. " Hind-quarters ... do. 2 4 9
3. " Buttocks ... do. 2 4 9
4. " Mutton ... do. 2 4 9
5. Corned Beef, rolled or round, as ordered, without bone or cartilage ... do. 2 4 9
6. Fresh Suet—Kidney ... do. 2 4 9

ANNEX TO CONTRACT 1918/249.
Shea, Hood and Co. Pty. Ltd., 512 Flinders-street, Melbourne.
Sub-schedule No. 7.

POTATOES.

Security, £20. £ s. d.

1. Potatoes ... per cental 0 4 6

ANNEX TO CONTRACT No. 1918/250.
Loftus Moran, South Melbourne.
Sub-schedule No. 8.

TEA.
Security, £20.

		£	s.	d.
1. Tea—Best Ceylon, to sample	per lb.	0	1	3
2. " Ration	do.	0	1	0

Schedule No. 6.

PROVISIONS AT GEELONG.

ANNEX TO CONTRACT No. 1918/251.
Wm. Marshall, 150 Malop-street, Geelong.
Sub-schedule No. 1.

BREADSTUFFS.
Security, £20.

		£	s.	d.
1. Bread—Fine Wheaten, first quality	per cental	0	12	6
2. " Wheaten, third quality	do.	0	9	9

ANNEX TO CONTRACT No. 1918/252.
Moran and Catp Pty. Ltd., Brunswick-street, Fitzroy.
Sub-schedule No. 2.

GROCERIES.
Security, £20.

		£	s.	d.
1. Arrowroot—Queensland	per lb.	0	0	6
2. Candles (full weights)—Kitchen's "Petrolines," or other make of equal quality, to sample, to be supplied in 1-lb. packets	do.	0	0	10
3. Barley—Pearl	do.	0	0	2½
4. Currants, 3 crowns	do.	0	0	6½
5. Eggs—Fresh	per doz.	0	1	9
6. Mustard—"Double Superfine," of any Commonwealth manufacture ordered	per lb.	0	3	6
7. Oatmeal—Of any brand ordered	per cwt.	1	8	0
8. Pepper—Black, ground	per lb.	0	1	5
9. Pipes—Tobacco, clay	per doz.	0	0	9
10. Raisins—Sultana (Mildura), 3 crowns	per lb.	0	7	0
11. Rice—Dressed, Best, to sample	per cwt.	1	7	0
12. Seed Tapioca (Sago), to sample	per lb.	0	0	4½
13. Salt—Fine	do.	0	0	1
14. Soap—(Household) Carbolic, dry, to sample	do.	0	0	5
15. Soap—(Household) Yellow, dry, to sample	per cwt.	2	2	0
16. Soda—Washing	do.	1	8	0
17. Sugar—Ration, to sample	do.	1	8	6
18. Tea—Ration	per lb.	0	1	3
19. Tobacco—"Starlight," or other make of equal quality, as ordered	do.	0	3	6

ANNEX TO CONTRACT No. 1918/253.
M. G. O'Brien, Moorabool-street, Geelong.
Sub-schedule No. 3.

MEAT (FRESHLY KILLED).
Security, £20.

		£	s.	d.
1. Fresh Beef	per cental	2	10	0
2. " Buttocks	do.	2	18	4
3. " Mutton	do.	2	5	10

ANNEX TO CONTRACT No. 1918/254.
Charles Cox, Bailey-street, Belmont.
Sub-schedule No. 4.

MILK.
Security, £5.

		£	s.	d.
1. Milk—Fresh and pure	per gallon	0	1	4

Sub-schedule No. 5.

POTATOES.

		per cental	Purchase
1. Potatoes

Schedule No. 7.

PROVISIONS AT LARA.

(Delivery at the Inebriates' Retreat.)

Period of Contract—From 1st July, 1918, to 30th June, 1919.

ANNEX TO CONTRACT No. 1918/255.
David Morgan, Lara Lake.
Sub-schedule No. 1.

BREADSTUFFS.
Security, £20.

		£	s.	d.
1. Bread—Fine Wheaten, first quality	per cental	0	12	6
2. Flour—First quality	do.	0	12	4

ANNEX TO CONTRACT No. 1918/256.
John D. Howie, 299 Smith-street, Fitzroy.
Sub-schedule No. 2.

BUTTER.
Security, £10.

		£	s.	d.
1. Butter—First-grade Creamery, to score not less than 90 points, Government grade, Commerce Regulations standard	per cwt.	8	11	4

ANNEX TO CONTRACT No. 1918/257.
John D. Howie, 299 Smith-street, Fitzroy.
Sub-schedule No. 3.

CHEESE.
Security, £10.

		£	s.	d.
1. Cheese—First-class quality	per cwt.	5	12	0

ANNEX TO CONTRACT No. 1918/258.
John D. Howie, 299 Smith-street, Fitzroy.
Sub-schedule No. 4.

GROCERIES.
Security, £20.

		£	s.	d.
1. Arrowroot—Queensland	per lb.	0	0	5
2. Bacon, Farmer's or Hutton's (or other approved brand) by the side	do.	0	1	1
3. Barley—Pearl	do.	0	0	2½
4. Blue—Of any brand ordered	do.	0	2	0
5. Candles—(Full weights) Kitchen's "Petrolines," or other make of equal quality, to be supplied in 1-lb. packets	do.	0	0	9½
6. Cocoa—(Homocopa hic)—McKenzie's, or other brand of equal quality	do.	0	1	3
7. Coffee—"Nielgherry A," or equal thereto, Fresh roasted and whole—Beans to be thoroughly sound, to sample	do.	0	1	0
8. Currants—3 crowns	do.	0	0	7½
9. Mustard—Double Superfine, of any Commonwealth manufacture ordered	do.	0	3	6
10. Oatmeal—Of any brand ordered	per cwt.	1	5	0
11. Pease—Split	per lb.	0	0	3
12. Pepper—Black, ground	do.	0	1	3
13. Raisins—Sultana (Mildura), 3 crowns	do.	0	0	8
14. Rice—Dressed, Best, to sample	do.	0	0	3
15. Seed Tapioca (Sago), to sample	do.	0	0	5
16. Salmon—Fresh, brand as ordered, talls (1-lb tins)	per tin	0	1	3
17. Salt—Fine	per lb.	0	0	0½
18. Soap—(Household) Yellow, dry, to sample	do.	0	0	3½
19. Soap—Foilet, Glycerine, in tablets, to sample	do.	0	0	10
20. Soda—Washing	do.	0	0	3
21. Tea—Best Ceylon, to sample	do.	0	1	4

ANNEX TO CONTRACT No. 1918/259.
John D. Howie, Smith-street, Fitzroy.
Sub-schedule No. 5.

JAMS.
Security, £5.

		£	s.	d.
1. Jams, Assorted, of approved kinds in the proportion of half seed and half stone, of the best quality, in tins containing 27 ozs. net	per doz. tins	0	8	10½

ANNEX TO CONTRACT No. 1918/260.
W. Angliss and Co. Pty. Ltd., 42 Bourke-street, Melbourne.
Sub-schedule No. 6.

MEAT (FRESHLY KILLED).
Security, £20.

		£	s.	d.
1. Fresh Beef Joints	per cental	3	6	9
2. " Mutton Joints	do.	2	12	1
3. " Trips, Sausages, Kidneys, and Liver, as ordered	do.	2	14	2

ANNEX TO CONTRACT No. 1918/261.
Shea, Hood and Co. Pty. Ltd., 512 Flinders-street, Melbourne.
Sub-schedule No. 7.

POTATOES.
Security, £5.

		£	s.	d.
1. Potatoes	per cental	0	4	6

Schedule No. 8.

PROVISIONS—SUNBURY DISTRICT.

ANNEX TO CONTRACT No. 1918/262.

Thos. Clyne and Son, Sunbury.

Sub-schedule No. 1.

BREADSTUFFS.

Security, £100.

	£	s.	d.
1. Bread—Fine Wheaten, first quality ... per cental	0	10	6½
2. Flour—First quality ... do.	0	10	9

ANNEX TO CONTRACT No. 1918/263.

The Wallace, Millbrook and District Butter Factory and Creamery Co. Ltd., 208 Mair-street, Ballarat.

Sub-schedule No. 2.

BUTTER.

Security, £40.

	£	s.	d.
1. Butter—First Grade Creamery, to score not less than 90 points Government grade, Commerce Regulations standard per cwt.	8	6	8

ANNEX TO CONTRACT No. 1918/264.

John D. Howie, Smith-street, Fitzroy.

Sub-schedule No. 3.

CHEESE.

Security, £20.

	£	s.	d.
1. Cheese—First-class quality ... per cwt.	5	2	8

ANNEX TO CONTRACT No. 1918/265.

John D. Howie, Smith-street, Fitzroy.

Sub-schedule No. 4.

GROCERIES.

Security, £20.

	£	s.	d.
1. Blue—Of any brand ordered ... per lb.	0	2	0
2. Candles—(Full weights) Kitchen's "Petrolines," or other make of equal quality, to sample, to be supplied in 1-lb. packets ... do.	0	0	9½
3. Coffee—"Neilgherry A," or equal thereto, Fresh roasted and whole—Beans to be thoroughly sound, to sample ... do.	0	1	1½
4. Cornina ... do.	0	0	5
5. Currants—3 crowns ... do.	0	0	6½
6. Curry Powder ... do.	0	1	0
7. Ginger—Ground ... do.	0	1	0
8. Golden Syrup, in 56-lb. tins ... per tin	0	13	6
9. Maizena—Duryea's ... per lb.	0	0	7½
10. Mustard—Double superfine, of any Commonwealth manufacture ordered ... do.	0	3	3
11. Oatmeal—Of any brand ordered ... per cwt.	1	3	6
12. Pearl Barley ... do.	0	19	0
13. Pease—Split ... do.	1	2	6
14. Pepper—Black, ground ... per lb.	0	1	0
15. Pipes—Tobacco, clay ... per doz.	0	1	0
16. Raisins—Sultana (Mildura), 3 crowns ... per lb.	0	0	7½
17. Rice—Dressed, Best, to sample ... per cwt.	1	3	6
18. Seed Tapioca (Sago), to sample ... do.	1	14	0
19. Salt—Fine ... do.	0	5	9
20. Soda—Washing ... do.	1	4	0
21. Starch—Of any brand ordered, to sample ... per lb.	0	0	3
22. Tartar—Cream of ... do.	0	4	3
23. Vinegar ... per pint	0	0	8

ANNEX TO CONTRACT No. 1918/266.

The Ballarat Jam Co. Pty. Ltd., Davey-street, Ballarat.

Sub-schedule No. 5.

JAMS.

(FOR HOSPITALS FOR THE INSANE.)

Security, £10.

	£	s.	d.
1. Jams—Assorted, of approved kinds in the proportion of half seed and half stone, of the best quality, in tins of about 54 lbs. ... per lb. actual net weight	0	0	4½

ANNEX TO CONTRACT No. 1918/267.

S. J. Starkie, Sunbury.

Sub-schedule No. 6.

MEAT (FRESHLY KILLED).

Security, £80.

	£	s.	d.
1. Fresh Beef—Fore-quarters ... per cental	2	14	6
2. " " Hind-quarters ... do.	2	14	6
3. " " Buttocks ... do.	2	15	6
4. " Mutton ... do.	2	14	9
5. Corned Beef—Rolled or round, as ordered, without bone or cartilage ... do.	2	14	6

Sub-schedule No. 7.

RABBITS (FRESHLY KILLED).

1. Rabbits—Not less than 2½ lbs. per pair per dz. prs.	Purchase from Maffra.
--	-----------------------

ANNEX TO CONTRACT No. 1918/268.

Shea, Hood and Co. Pty. Ltd., 512 Flinders-street, Melbourne.

Sub-schedule No. 8.

POTATOES.

Security, £30.

	£	s.	d.
1. Potatoes ... per cental	0	4	4

Sub-schedule No. 9.

SUGAR.

1. Sugar—White, to sample ... per cwt.	Purchase from Maffra.
--	-----------------------

ANNEX TO CONTRACT No. 1918/269.

Loftus Moran, South Melbourne.

Sub-schedule No. 10.

TEA.

Security, £20.

	£	s.	d.
1. Tea—Best Ceylon, to sample ... per lb.	0	1	3

Schedule No. 9.

PROVISIONS—BENDIGO DISTRICT.

ANNEX TO CONTRACT No. 1918/270.

F. W. Beischer, Bridge-street, Bendigo.

Sub-schedule No. 1.

BREAD.

Security, £5.

	£	s.	d.
1. Bread—Wheaten, third quality ... per cental	0	12	3

ANNEX TO CONTRACT No. 1918/271.

Moran and Cato Pty. Ltd., Brunswick-street, Fitzroy.

Sub-schedule No. 2.

GROCERIES AND POTATOES.

Security, £5.

	£	s.	d.
1. Candles—(full weights) Kitchen's "Petrolines," or other make of equal quality, to sample, to be supplied in 1-lb. packets per lb.	0	1	0
2. Milk—Fresh and pure ... per quart	0	1	0
3. Oatmeal—Of any brand ordered ... per lb.	0	0	3½
4. Potatoes ... per cental	0	9	6
5. Rice, dressed, Best, to sample ... per lb.	0	0	3½
6. Salt—Fine ... do.	0	0	1½
7. Soap—Yellow (Household), dry, to sample ... do.	0	0	6
8. " Carbolic " " " do.	0	0	6
9. Soda—Washing ... do.	0	0	4
10. Tea—Best Ceylon, to sample ... do.	0	1	7
11. " Ration " " " do.	0	1	5
12. Tobacco—"Starlight," or other make of equal quality, as ordered ... do.	0	3	6
13. Whiting ... do.	0	0	1

ANNEX TO CONTRACT No. 1918/272.

Ewing and Kronk, Williamson-street, Bendigo.

Sub-schedule No. 3.

MEAT.

Security, £5.

	£	s.	d.
1. Fresh Beef ... per lb.	0	0	7

Schedule No. 10.
PROVISIONS—CASTLEMAINE DISTRICT.

ANNEX TO CONTRACT 1918/273.
M. Van Heurck, Castlemaine.

Sub-schedule No. 1.

BREAD.

Security, £5.	£ s. d.
1. Bread—Wheaten, third quality ... per cental	0 12 6

Sub-schedule No. 2.

GROCERIES AND POTATOES.

1. Candles—(full weights), Kitchen's "Petrolines," Apollo Co.'s "Apollo," or other make of equal quality, to sample, to be supplied in 1-lb. packets	per lb.	} Purchase
2. Milk—Fresh and pure	... per quart	
3. Potatoes	... per cental	
4. Rice, Dressed, Best, to sample	... per cwt.	
5. Salt—Fine	... per lb.	
6. Soap—Yellow (household), dry, to sample	... do.	
7. Soda—Washing	... do.	
8. Sugar—Ration	... do.	
9. Tea	... do.	

ANNEX TO CONTRACT No. 1918/274.

John Williamson, Mostyn-street, Castlemaine.

Sub-schedule No. 3.

MEAT.

Security, £5.	£ s. d.
1. Fresh Beef ... per lb.	0 0 5½
2. Mutton ... do.	0 0 5½

Schedule No. 11.

PROVISIONS AT SALE.

Sub-schedule No. 1.

BREAD.

1. Bread—Wheaten, third quality ... per lb.	Purchase
---	----------

Sub-schedule No. 2.

GROCERIES AND POTATOES.

1. Milk—Fresh and pure	... per quart	} Purchase
2. Potatoes	... per cental	
3. Rice, dressed, Best, to sample	... per lb.	
4. Salt—Fine	... do.	
5. Soap, yellow (household), dry, to sample	... do.	
6. Soda—Washing	... do.	
7. Tea—Ration, to sample	... do.	
8. Whiting	... do.	

ANNEX TO CONTRACT No. 1918/275.

Alfred Wray, Raymond-street, Sale.

Sub-schedule No. 3.

MEAT.

Security, £5.	£ s. d.
1. Fresh Beef ... per lb.	0 0 7

Schedule No. 18.

PROVISIONS—MONT PARK.

(Delivery at the Hospital for Insane.)

ANNEX TO CONTRACT No. 1918/276.

Henry Hamilton, 194 Heidelberg-road, Alphington

Sub-schedule No. 1.

BREADSTUFFS.

Security, £30.	£ s. d.
1. Bread—Fine Wheaten, first quality ... per cental	0 12 6
2. Flour—First quality ... do.	0 10 10

ANNEX TO CONTRACT No. 1918/277.

The Wallace, Millbrook and District Butter Factory and Creamery Co. Ltd., 208 Mair-street, Ballarat.

Sub-schedule No. 2.

BUTTER.

Security, £10.	£ s. d.
1. Butter—First Grade Creamery, to score not less than 90 points Government grade, Commerce Regulations standard per cwt.	8 9 0

ANNEX TO CONTRACT No. 1918/278.

P. Sheahan and Co. 453 Flinders-lane, Melbourne.

Sub-schedule No. 3.

CHEESE.

Security, £10.	£ s. d.
1. Cheese—First-class quality ... per cwt.	5 0 4

ANNEX TO CONTRACT No. 1918/279.

J. D. Howie, Smith-street, Fitzroy.

Sub-schedule No. 4.

GROCERIES.

Security, £10.	£ s. d.
1. Blue—Of any brand ordered ... per lb.	0 2 0
2. Candles (full weights)—Kitchen's "Petrolines," or other make of equal quality, to be supplied in 1-lb. packets	do. 0 0 9½
3. Coffee—"Nighberry A" or equal thereto—Fresh roasted and Whole—Beans to be thoroughly sound, to sample	do. 0 1 1
4. Cornina	do. 0 0 5
5. Currants, 3 Crowns	do. 0 0 6½
6. Golden Syrup, in 7-lb. tins	per tin 0 1 10
7. Maizena—Durvea's	per lb. 0 0 7½
8. Mustard—"Double Superfine," of any Commonwealth manufacture ordered	do. 0 3 3
9. Oatmeal—Of any brand ordered	per cwt. 1 3 0
10. Pease—Split	do. 1 2 6
11. Pepper—Black, Ground	per lb. 0 1 3
12. Pipes—Tobacco, Clay	per doz. 0 1 0
13. Raisins—Sultana (Mildura), 3 Crowns	per lb. 0 0 7½
14. Rice—Dressed, Best, to sample	per cwt. 1 3 6
15. Scent Tapioca (Sago)—To sample	per lb. 0 0 4
16. Salt—Fine	per cwt. 0 5 3
17. Soda—Washing	do. 1 3 0
18. Starch—Of any brand ordered, to sample	per lb. 0 0 5
19. Tartar—Cream of	do. 0 4 3
20. Vinegar	per pint 0 0 3

ANNEX TO CONTRACT No. 1918/280.

The Ballarat Jam Co. Pty. Ltd., Davey-street, Ballarat.

Sub-schedule No. 5.

JAMS.

(Of Commonwealth Manufacture.)
(FOR HOSPITALS FOR THE INSANE).

Security, £10.	£ s. d.
1. Jams—Assorted, of approved kinds in the proportion of half seed and half stone, of the best quality, in tins of actual net about 54 lbs.	per lb. weight 0 0 4½

ANNEX TO CONTRACT No. 1918/281.

W. Angliss and Co. Pty. Ltd., Bourke-street, Melbourne.

Sub-schedule No. 6.

MEAT (FRESHLY KILLED).

For 6 months only.

Security, £30.	£ s. d.
1. Fresh Beef—Fore-quarters	per cental 2 14 6
2. " " Hind-quarters	do. 2 14 6
3. " " Buttocks	do. 2 14 6
4. " Mutton	do. 2 14 6
5. Corned Beef—Rolled or round as ordered, without bone or cartilage	do. 2 14 6
6. Fresh Beef Suet—Kidney	do. 2 10 0

ANNEX TO CONTRACT No. 1918/282.

Shea, Hood and Co. Pty. Ltd., 512 Flinders-street, Melbourne.

Sub-schedule No. 7.

POTATOES.

Security, £20.	£ s. d.
1. Potatoes	per cental 0 4 3

Sub-schedule No. 8.

SUGAR.

1. Sugar—White, to sample	per cwt. Purchase from Mafra
---------------------------	------------------------------

ANNEX TO CONTRACT No. 1918/283.

Loftus Moran, South Melbourne.

Sub-schedule No. 9.

TEA.

Security, £10.	£ s. d.
1. Tea—Best Ceylon, to sample	per lb. 0 1 2½

CONTRACTS ACCEPTED.—(Series 1918-19.)

Serial No.	Particulars.	Amount.	Name of Contractor.	Charged against Vote or Fund.
	PROVISIONS.—SUPPLY OF PROVISIONS FOR THE UNDERMENTIONED PLACES AS MAY BE REQUIRED FROM 1ST JULY, 1918, TO 30TH JUNE, 1919.			
284	RUTHERGLEN— Bread Groceries	Rates as per annex "	Purchase ... J. D. Howie ...	Contingencies, 1918-19.
285	WAHGUNYAH— Bread Groceries Meat	" " "	G. G. Haig ... see later Gazette ... Purchase ...	
286	WYUNA— Groceries	"	Knight's Big Stores	

Approved.—W. M. McPHERSON, Treasurer. 7.6.1918.

Schedule No. 12.

PROVISIONS AT RUTHERGLEN.

(For Students at Viticultural College. Delivery at the College.)

Particular attention is drawn to Clause 1 of the conditions as to quality.

Where practicable all items must be manufactured or prepared within the Commonwealth.

Sub-schedule No. 1.

BREAD.

No subletting will be allowed; all work must be carried out by the Contractor. Every person engaged in the manufacture, preparation, or delivery of the Bread tendered for in this Sub-schedule shall be paid such wages and shall be employed subject to such conditions as are or may be determined by any Wages Board, under the provisions of the Factories and Shops Acts to which such persons are subject as employees; and a copy of these conditions shall be kept conspicuously and continually posted in legible Roman characters in the factory or shop (and in each part of the factory or shop where several rooms are in use) in which Bread is prepared or manufactured under this contract. Any infringement of these conditions, or any breach of the said determination, in the opinion of the Treasurer, will subject the Contractor, upon report from the Tender Board, to such mulet not exceeding Fifty pounds (£50), as the Treasurer may direct, and the amount will be deducted from the Contractor's account or from the security money; and the Treasurer's decision shall be binding, final, and conclusive as to the fact of infringement, and in all other respects.

Pure Wheaten Meal Bread of first quality may be substituted, wholly or in part, for fine Wheaten Bread at such times as may be deemed necessary, and the contractor will be required to supply such bread at the Contract rate. Reasonable notice, however, of the intention to substitute Wheaten Meal bread must be given to the Contractor by the officer ordering the supply.

Samples of the best ordinarily retailed to the public will be considered as test loaves for first quality.

- i. Bread—Fine Wheaten, first quality ... per cental Purchase

ANNEX TO CONTRACT No. 1918/284.

J. D. Howie, Smith-street, Fitzroy.

Sub-schedule No. 2.

GROCERIES, ETC.
Security, £10.

	£	s.	d.
1. Arrowroot	per lb.	0	0 5
2. Blue	do.	0	2 0
3. Baking Powder, in 1-lb. tins	per tin	0	1 10
4. Baking Soda	per lb.	0	0 3½
5. Bacon, best cured	do.	0	1 2
6. Blacking	per cake	0	0 0½
7. Blacklead	do.	0	0 0½
8. Barley, Pearl	per lb.	0	0 3
9. Candles—(Full weights) Kitchen's "Petrolines," or other make of equal quality, to be supplied in 1-lb. packets	do.	0	0 10
10. Coffee—Whole—Beans to be thoroughly ground, to sample	do.	0	1 4
11. Coffee Essence, 10-oz., of any brand ordered	per bottle	0	1 3
13. Cream of Tartar	per lb.	0	4 3
14. Currants, 3 crowns	do.	0	0 7½
15. Curry Powder	do.	0	1 0
16. Essence of Lemon, 1-oz. bottles	per bottle	0	0 6

GROCERIES, ETC.—continued.

£ s. d.

17. Fish, Preserved, Salmon, Fresh Herrings, Herrings in Tomato, as ordered, in 1-lb. tins	per tin	0	1 3
18. Flour, best Roller	per cental	0	12 6
19. Fruits, Preserved, assorted, of approved brand, in 2-lb. tins	per tin	0	1 0
20. Ginger—Ground or Whole—Jamaica	per lb.	0	1 2
21. Golden Syrup, in 2-lb. tins	per tin	0	0 8½
22. Jams, assorted, any brand ordered, in 2-lb. tins, in proportion of half seed and half stone	do.	0	0 8½
23. Maizena—Duryea's	do.	0	0 8
24. Meat—Preserved, of approved brand, in 2-lb. tins	per tin	0	2 4
25. Macaroni or Vermicelli, as ordered	per lb.	0	0 5
26. Mustard—Double Superfine, of any brand ordered	do.	0	3 6
27. Oatmeal—Flaked or other, of any brand ordered	per cwt.	1	3 0
28. Onions	do.	0	12 0
29. Peel—Mixed	per lb.	0	1 0
30. Pepper—Black or White, Ground	do.	0	1 6
31. Pickles, of approved brand	per bottle	0	0 9½
32. Potatoes	do.	0	5 6
33. Raisins—Sultana, Mildura, 3 Crowns	per lb.	0	0 8
34. Rice—Dressed, Best, to sample	per cwt.	1	5 3
35. Seed Tapioca (Sago)—To sample	per lb.	0	0 5
36. Salt—Coarse	do.	0	0 1
37. " Fine	per cwt.	0	6 9
38. Sauces, Worcester, Tomato, or Chutney, reputed pints, any brand ordered	per bottle	0	0 10
39. Soap—Household, yellow, to sample	per lb.	0	0 4½
40. " Glycerine Tablets	do.	0	0 3
41. " Sand	do.	0	0 3½
42. " Mangle	do.	0	0 4½
43. Soda—Washing	do.	0	0 3
44. Spices, mixed, in 1-oz. packets	per packet	0	0 1
45. Starch, to sample	per lb.	0	0 7
46. Tapioca—Pearl	do.	0	0 5
47. Tea—Best Ceylon, to sample	do.	0	1 2
48. Tracle, in 7-lb. tins	per tin	0	1 8
49. Vinegar, of approved brand	per quart	0	0 4½

Schedule No. 13.

PROVISIONS AT WAHGUNYAH.

FOR STUDENTS AT WAHGUNYAH VINE NURSERY

(Delivery at Nursery.)

Particular attention is drawn to Clause 1 of the Conditions as to quality.

Where practicable all items must be manufactured or prepared within the Commonwealth.

ANNEX TO CONTRACT No. 1918/285.

G. G. Haig, Wahgunyah.

Sub-schedule No. 1.

BREAD.

(Security, £5.)

No subletting will be allowed; all work must be carried out by the Contractor. Every person engaged in the manufacture, preparation, or delivery of the Bread tendered for in this Schedule shall be paid such wages and shall be employed subject to such conditions as are or may be determined by any Board under the provisions of the Factories and Shops Acts to which such persons are subject as employees; and a copy of these conditions shall be kept conspicuously

and continually posted in legible Roman characters in the factory or shop (and in each part of the factory or shop where several rooms are in use) in which bread is prepared or manufactured under this contract. Any infringement of these conditions, or any breach of the said determinations, in the opinion of the Treasurer, will subject the contractor, upon report from the Tender Board, to such mulct, not exceeding Fifty pounds (£50), as the Treasurer may direct, and the amount will be deducted from the contractor's account or from the security money, and the Treasurer's decision shall be binding, final, and conclusive as to the fact of infringement, and in all other respects.

Pure Wheaten Meal Bread of first quality may be substituted, wholly or in part, for fine Wheaten Bread at such times as may be deemed necessary, and the contractor will be required to supply such bread at the contract rate. Reasonable notice, however, of the intention to substitute Wheaten Meal Bread must be given to the contractor by the officer ordering the supply.

Samples of the best ordinarily retailed to the public will be considered as test loaves for first quality.

£ s. d.

1. Bread—Fine Wheaten, first quality ... per cental 0 14 7

Sub-schedule No. 2.

GROCERIES, ETC.

1. Arrowroot	per lb.
2. Blue	do.
3. Baking Powder, in 1-lb. tins...	per tin
4. Baking Soda	per lb.
5. Bacon, best cured	do.
6. Blacking	per doz. cakes
7. Black Lead... ..	do.
8. Barley, Pearl	per lb.
9. Candles—(Full weights) Kitchen's "Petrolines," Apollo Co.'s "Apollo," or other make of equal quality, to be supplied in 1-lb. packets	do.
10. Coffee—Whole—Beans to be thoroughly sound, to sample	do.
11. Coffee Essence, of any brand ordered	per bottle
12. Cream of Tartar	per lb.
13. Currants, 3 Crowns	do.
14. Curry Powder	do.
15. Essence of Lemon, 1-oz. bottles	per bottle
16. Fish, Preserved, Salmon, Fresh Herrings, H-rings in Tomato, as ordered, in 1-lb. tins	per tin
17. Flour, Best Roller	per cental
19. Fruits, Preserved, assorted, of approved brand, in 2-lb. tins	per tin
20. Ginger—Ground or Whole	per lb.
21. Golden Syrup, in 2 lb. tins	per tin
22. Jam, assorted, any brand ordered, in 2-lb. tins, in the proportion of half seed and half stone	do.
23. Maizena—Duryea's	per lb.
24. Meat—Preserved, of approved brand, in 2-lb. tins	per tin
25. Macaroni or Vermicelli, as ordered	per lb.
26. Mustard—Double Superfine, of any brand ordered	do.
27. Oatmeal—Flaked or Other, of any brand ordered	do.
28. Onions	per cwt.
29. Peel—Mixed... ..	per lb.
30. Pepper—Black or White, Ground	do.
31. Pickles, of approved brand	per bottle
32. Potatoes	per cwt.
33. Raisins—Sultana (Mildura), 3 Crowns	per lb.
34. Rice—Dressed, Best, to sample	do.
35. Seed Tapioca (Sago)—To sample	do.
36. Salt—Coarse	do.
37. Salt—Fine	do.
38. Sauces—Worcester, Tomato, or Chutney, any brand ordered, in reputed pints	per bottle
39. Soap—Household, yellow, to sample	per lb.
40. Soap—Glycerine Tablets	do.
41. Soap—Sand	do.
42. Soap—Magic	do.
43. Soda—Washing	do.
44. Spices, mixed, in 1-oz. packets	per packet
45. Starch—To sample	per lb.
46. Tapioca—Pearl	do.
47. Tea—Best Ceylon, to sample	do.
48. Treacle, in 7-lb. tins	per tin
61. Vinegar, of approved brand	per quart

(See later Gazette)

Sub-schedule No. 3.

MEAT.

1. Beef—Fresh	per cental
2. Pork—Fresh	do.
3. Sausages	do.
4. Tongues—Ox	each
5. " Sheep	per dozen
6. Tails—Ox	each
7. Kidneys—Ox	do.
8. Shins—Ox	do.
9. Lambs' fries	do.

Purchase

Schedule No. 14.

PROVISIONS AT WYUNA.

(For the Wyuna Irrigation Farm. Delivery at the Farm.)

ANNEX TO CONTRACT NO. 1918/486.

Knight's Big Stores, Allan-street, Kyabram.

GROCERIES, ETC.

Security, £10.

1. Arrowroot	per lb.	£ s. d.
2. Blue	do.	0 0 6½
3. Baking Powder, in 1-lb. tins	per tin	0 1 6
4. Baking Soda	per lb.	0 0 4½
5. Bacon, best cured	do.	0 1 3
6. Blacking, Nugget	per cake	0 0 5
7. Blacklead	per doz.	0 0 10
8. Barley, Pearl	per lb.	0 0 3
9. Candles (full weights) Kitchen's "Electrine," or other make of equal quality, to be supplied in 1-lb. packets	do.	0 0 10½
10. Candles, Carriage, "Electrine"	do.	0 0 11
11. Caraway Seeds	do.	0 2 6
12. Cheese—Matured Victorian	do.	0 1 2
13. Cinnamon—Ground	do.	0 2 6
14. Coffee—Pure—Ground, to sample	do.	0 1 9
15. Coffee Essence	per bottle	0 1 3
16. Cocoa	per lb.	0 1 6
17. Cornina	do.	0 0 7
19. Currants	do.	0 0 8½
20. Curry Powder	do.	0 1 6
21. Essence of Lemon, 1-oz. bottles	per bottle	0 0 6
22. Fish—Preserved Salmon, best red tails, in 1-lb. tins	per tin	0 1 6
23. Fish—Preserved Herrings, Morton's, in 1-lb. tins	do.	0 1 3
24. Fish—Preserved Herrings in Tomato Sauce	do.	0 1 4
25. Flour, Best Roller	per cental	0 12 0
26. Fruits, preserved, assorted, of approved brand, in 2-lb. tins	per tin	0 1 0
27. Ginger—Ground or Whole, Jamaica	per lb.	0 1 2
28. Golden Syrup, in 7-lb. tins	per tin	0 2 1
29. Honey	per lb.	0 0 5
30. Isinglass	do.	0 3 0
31. Jam, assorted, any brand ordered, in 2-lb. tins, in the proportion of half seed and half stone	per lb. net	0 0 6
32. Jellies (pints)	per pkt.	0 0 4½
33. Meat, pre-served, of approved brand, in 2-lb. tins	per tin	0 1 6
34. Macaroni, or Vermicelli, as ordered	per lb.	0 0 6
35. Mustard, Double Superfine, of any brand ordered	do.	0 4 6
36. Oatmeal—Flaked or other, of any brand ordered	do.	0 0 3½
37. Parlees	per packet	0 0 3
38. Pease—Split	per lb.	0 0 3½
39. Peel, Mixed	do.	0 1 0
40. Pepper—Black or White, ground	do.	0 1 9
41. Pickles, Sutherland's Ran's Head	per bottle	0 0 10½
42. Pollard	per cental	0 6 9
43. Raisins—Sultana (Mildura), 3 Crowns	per lb.	0 0 10
44. Rice—dressed, Best, to sample	do.	0 0 3½
45. Seed Tapioca (Sago), to sample... ..	do.	0 0 4½
46. Salt, Coarse	do.	0 0 1
47. " Fine	do.	0 0 1
48. Sauces—Worcester, Holbrook's, reputed pints	per bottle	0 1 0
49. Sauces—Chutney, best Commonwealth, reputed pints	do.	0 0 10
50. Soap, Household, yellow, to sample	per lb.	0 0 5
51. " Sand	do.	0 0 3
52. " Soft	do.	0 1 0
53. " Velvet, 4 large tabs	per bar	0 0 10½
54. Soda—Washing	per lb.	0 0 3
55. Spices, mixed, in 1-oz. packets	per packet	0 0 1
56. Starch, to sample	per lb.	0 0 7
57. Sugar—White, to sample	per cwt.	1 12 6
58. Tapioca, Pearl	per lb.	0 0 4½
59. Tea—Best Ceylon, to sample	do.	0 1 8
60. Treacle, in 7-lb. tins	per tin	0 1 10
61. Vinegar, Sutherland's best	per quart	0 0 6

CONTRACTS ACCEPTED.—(Series 1918-19.)

Serial No.	Particulars.	Amount.	Name of Contractor.	Charged against Vote or Fund.
	PROVISIONS— Supply of Provisions for Aborigines at the undermentioned Stations as may be required from 1st July, 1918, to 30th June, 1919:—			
	Coranderrk—			
287	Bread	Rates as per Annex	James Lockhart	Contingencies 1918-19.
288	Groceries	Ditto	Moran and Cato Pty. Ltd.	
	Lake Tyers—			
289	Bread	Ditto	Purchase	
	Groceries	Ditto	Williams and Currey	
290	Lake Condah—			
	Bread	Ditto	Purchase	
	Groceries	Ditto	G. C. Lear	

Approved.—W. M. McPHERSON, Treasurer. 7.6.1918.

1918-19.

Schedule No. 15.

PROVISIONS FOR ABORIGINES AT THE UNDERMENTIONED STATIONS.

Particular attention is drawn to clause 1 of the conditions as to quality.
Where practicable, all items must be manufactured and prepared within the Commonwealth.

Sub-schedule No. 1.

BREAD.

Contract No. 1918/287.—Coranderrk—James Lockhart, Healesville Security, £2.
—Lake Tyers—Purchase.
—Lake Condah—Purchase.

No subletting will be allowed; all work must be carried out by the contractor; every person engaged in the manufacture, preparation, or delivery of the bread tendered for in this sub-schedule shall be paid such wages and shall be employed subject to such conditions as are or may be determined by the Bread or Bread Carters Board, or by the Court of Industrial Appeals, as the case may be, under the provisions of the Factories and Shops Acts. Should, however, the determinations of the aforesaid Boards or Court not apply to the district covered by this particular schedule, then those determinations shall, for the purpose of these contracts, be taken as defining the rate of wages which shall be paid and the conditions of employment in respect thereto; and a copy of these conditions shall be kept conspicuously and continually posted in legible Roman characters in the factory or shop (and in each part of the factory or shop where several rooms are in use) in which bread is prepared or manufactured under this contract. Any infringement of these conditions, or any breach of the said determination, in the opinion of the Treasurer, will subject the contractor, upon report from the Tender Board, to such mulct, not exceeding Fifty pounds (£50), as the Treasurer may direct, and the amount will be deducted from the contractor's account or from the security money, and the Treasurer's decision shall be binding, final, and conclusive as to the fact of infringement, and in all other respects.

The contractor shall, before any account is passed for payment, furnish a statutory declaration that all the workmen under this contract have been employed in accordance with the above clause of these conditions, and have been paid not less than the minimum rate of wages for such workmen as is provided under that clause.

Samples of the best ordinary retailed to the public will be considered as test loaves for first quality.

Item No.	Article.	Contract No. 287. James Lockhart, Coranderrk (Healesville).	Lake Tyers.	Lake Condah (Milltown).
1	Bread—Fine Wheaten, first quality	£ s. d. 0 13 0	Purchase	Purchase

Sub-schedule No. 3.

GROCERIES.

Contract No. 1918/288.—Coranderrk—Moran and Cato Pty. Ltd., Melbourne Security, £2.
" " 1918/289.—Lake Tyers—Williams and Currey, Bairnsdale " £2.
" " 1918/290.—Lake Condah—G. C. Lear " £2.

Item No.	Article.	Contract No. 288. Moran and Cato Pty. Ltd., Coranderrk.	Contract No. 289. Williams and Currey, Lake Tyers.	Contract No. 290. G. C. Lear, Lake Condah.
		£ s. d.	£/s. d.	£ s. d.
1	Baking Powder, Snowflake, in 1-lb. tins	0 2 3	0 2 1	0 1 9
2	Candles—(Full weights) Kitchen's "Petrolines," Apollo Co.'s "Apollo," or other make of equal quality, to be supplied in 1-lb. packets	0 0 10½	0 0 10	0 0 11
3	Coffee—Fresh roasted and whole—Beans to be thoroughly sound, to sample	0 1 6	0 1 5	0 1 9
4	Cocoa, in ¼-lb. packets	0 1 6	0 1 6	0 2 9
5	Cornflour	0 0 6½	0 0 6½	0 0 7
6	Currants—3 crowns	0 0 8	0 0 8	0 0 9
7	Curry Powder	0 1 6	0 2 6	0 1 9
8	Flour—Best roller	0 13 6	0 14 6	0 12 6
9	Mustard—Double superfine, of any Commonwealth manufacture ordered	0 3 6	0 3 6	0 3 6
10	Oatmeal—Of any brand ordered	0 0 4	0 0 3½	0 0 3½
11	Pease, Split	0 0 3½	0 0 3	...
12	Pearl Barley	0 0 3	0 0 3	0 0 3
13	Pepper—Black, ground, in ¼-lb. tins	0 0 6	0 0 6	0 0 6
14	Raisins—Sultana (Mildura)—3 Crowns	0 0 8½	0 0 9	0 0 9
15	Rice—Dressed, Best, to sample	0 0 4	0 0 3	0 0 3½
16	Seed Tapioca (Sago), to sample	0 0 4½	0 0 4	0 0 4½
17	Salt—Coarse	0 0 1	0 0 1½	0 0 1
18	" Fine	0 0 1½	0 0 1	0 0 1
19	Soda—Sicilian carbonate	0 0 5½	0 0 4	0 0 4
20	" Washing	0 0 4	0 0 2½	0 0 2½
21	Soap (Household), Yellow, dry, to sample	0 0 6	0 0 4	0 0 4½
24	Tea—Best Ceylon, to sample	0 1 6	0 1 3	0 1 6
25	Tobacco—Twist, to sample	0 3 6	0 3 9	0 4 0
26	Treacle, in 7-lb. tins	0 1 11	0 1 9	0 2 0
27	Vinegar	0 0 4	0 0 4	0 0 7

CONTRACTS ACCEPTED.—(Series 1918-19.)

Serial No.	Particulars.	Amount.	Name of Contractor.	Charged against Vote or Fund.
SUPPLY OF PROVISIONS, AT SANATORIUM AT GREENVALE, FROM 1ST JULY, 1918, TO 30TH JUNE, 1919:—				
291	Breadstuffs	Rates as per annex	John Anderson ...	Contingencies, 1918-19.
292	Butter, &c.	"	J. D. Howie ...	
293	Cheese and Bacon	"	J. D. Howie ...	
294	Groceries	"	J. D. Howie ...	
...	Meat	"	See later Gazette ...	

Approved.—W. M. McPHERSON, Treasurer. 7.6.1918.

Schedule No. 17.

PROVISIONS AT GREENVALE.

(Delivery at the Sanatorium.)

Particular attention is drawn to clause 1 of the conditions as to quality.

Where practicable, all items must be manufactured or prepared within the Commonwealth.

All Foodstuffs sent by train shall be forwarded to Broadmeadows per passenger train, and from thence to the sanatorium without delay. Delay in this respect will subject the contractor to such fine as the Board may recommend under Clause 18 of the conditions of contract.

ANNEX TO CONTRACT No. 1918/291.

John Anderson, Broadmeadows.

Sub-schedule No. 1.

BREAD.

Security, £20.

No subletting will be allowed; all work must be carried out by the contractor; every person engaged in the manufacture, preparation, or delivery of the bread tendered for in this sub-schedule shall be paid such wages and shall be employed subject to such conditions as are or may be determined by any Wages Board, under the provisions of the Factories and Shops Acts, to which such persons are subject as employees; and a copy of these conditions shall be kept conspicuously and continually posted in legible Roman characters in the factory or shop (and in each part of the factory or shop where several rooms are in use) in which bread is prepared or manufactured under this contract. Any infringement of these conditions, or any breach of the said determinations, in the opinion of the Treasurer, will subject the contractor, upon report from the Tender Board, to such mulct, not exceeding Fifty pounds (£50), as the Treasurer may direct, and the amount will be deducted from the contractor's account or from the security money, and the Treasurer's decision shall be binding, final, and conclusive as to the fact of infringement, and in all other respects. The contractor shall, before any account is passed for payment for services rendered, furnish a statutory declaration that all the workmen under this contract have been employed in accordance with the above clause in these conditions, and have been paid not less than the minimum rate of wages for such workmen as is provided for under that clause. Samples of the best ordinary retailed to the public will be considered as test-leaves for first quality. Pure wheaten meal bread of first quality may be substituted wholly or in part for fine wheaten bread at such times and in such quantities as in the opinion of the Medical Superintendent may be deemed necessary, and the contractor will be required to supply such bread at the contract rate. Reasonable notice, however, of the intention to substitute wheaten meal bread must be given to the contractor by the officer ordering the supply.

1. Bread—Fine Wheaten, first quality ... per cental 0 14 7

ANNEX TO CONTRACT No. 1918/292.

John D. Howie, 299 Smith-street, Fitzroy.

Sub-schedule No. 2.

BUTTER.

Security, £10.

All butter supplied, as well as the cases in which it is packed for transit, under this schedule, must bear the impress stamp of the creamery manufacturing the butter, otherwise it will be rejected. In the event of butter being supplied under this contract from Melbourne, all such butter shall be submitted by the contractor to the Government Dairy Expert in Melbourne for test as to standard quality, and if found to be satisfactory shall be forwarded by that officer direct to the institution ordering, the cost of freight being borne by the contractor in the usual way. This contract is not to be considered as being broken, infringed, or vitiated, by the use of butter, &c., produced at the Sanatorium during the currency of same.

1. Butter—First Grade Creamery, to score not less than 90 points, Government grade, Commerce Regulations standard... .. per cwt. 8 11 4

ANNEX TO CONTRACT No. 1918/293.

John D. Howie, 299 Smith-street, Fitzroy.

Sub-schedule No. 3.

CHEESE AND BACON.

Security, £20.

1. Cheese—First-class quality ... per lb. 0 1 0
2. Bacon—sides, Farmer's, Hutton's, or Cation and Hilton's, as ordered ... per cwt. 6 1 4

ANNEX TO CONTRACT No. 1918/294.

John D. Howie, 299 Smith-street, Fitzroy.

Sub-schedule No. 4.

GROCERIES.

Security, £10.

1. Apples—Dried ... per lb. 0 1 0
2. Apricots—Dried, Mildura ... do. 0 1 2
3. Biscuits—Coffee ... do. 0 0 8
4. Blue Of any brand ordered ... do. 0 2 0
5. Candles—(Full weight-) Kitchen's "Petrolines," Apollo Co.'s "Apollo," or other make of equal quality, to be supplied in 1-lb. packets ... do. 0 0 9½
6. Candles—Carriage, equal to Kitchen's No. 8, in 1-lb. packets ... do. 0 0 9½
7. Chicory—Fresh ground ... do. 0 0 5½
8. Cocoa—In ¼-lb. packets, of any brand ordered ... do. 0 1 0
9. Coffee—"Neigherry A," or equal thereto, Fresh roasted and whole, beans to be thoroughly sound ... do. 0 1 6
10. Cornina ... do. 0 0 6
11. Currants, 3 crowns ... do. 0 0 7
12. Curry Powder ... do. 0 1 0
13. Essence of Lemon—In full 1-oz. bottles, of any brand ordered ... per bot. 0 0 7
14. Flour—Self-raising, of any brand ordered per lb. 0 0 4
15. Golden syrup, in 7-lb. tins ... per tin 0 2 0
16. Honey—Prime garden ... per lb. 0 0 6
17. Jams—Assorted, in 2-lb. tins in the proportion of half plum and half assorted quince, peach, black currant, and raspberry ... per doz. tins 0 9 6
18. Lemon peel ... per lb. 0 0 10
19. Meal—Digestive ... per cwt. 0 18 6
20. Milk—Condensed, 1-lb. tins ... per tin 0 0 10
21. Mustard—Double Superfine, of any Commonwealth manufacture ordered ... per lb. 0 3 6
22. Oatmeal—Flaked or Plain, of any brand ordered ... per cwt. 1 4 0
23. Pearl barley ... do. 1 0 0
24. Pease—Split ... do. 1 3 0
25. Pepper—White, ground ... per lb. 0 1 9
26. Pickles—Piccalilli ... per bottle 0 0 10
27. Powder—Baking, of any brand ordered, in 1-lb. tins... .. per tin 0 1 8
28. Raisins—Sultana (Mildura), 3 crowns ... per lb. 0 0 8
29. Rice—Dressed, Best, to sample ... per cwt. 1 4 0
30. Seed Tapioca (Sago)—To sample ... do. 1 16 0
31. Salmon—Fresh, in 1-lb. tins, Falls, of any brand ordered ... per tin 0 1 6
32. Salt—Fine ... per cwt. 0 5 9
33. Sardines—½'s ... per tin 0 0 11
34. Pickled Salmon ... per lb. 0 1 0
35. Sauce—Tomato, pints, any brand ordered per bot. 0 0 8
36. Soda—Washing ... per cwt. 1 4 0
37. Starch—Of any brand ordered, to sample per lb. 0 0 6
38. Tapioca—Pearl ... per cwt. 1 18 0
39. Tea—Ceylon, to sample ... per lb. 0 1 4
40. Treacle, in 7-lb. tins ... do. 0 0 3
41. Vinegar ... per quart 0 0 3

Sub-schedule No. 5.

MEAT (FRESHLY KILLED.)

1. Fresh Ox Beef—Roast ... per cental
2. Fresh Ox Beef Steak, for frying—Buttock and Blade in equal proportions do.
3. Fresh Ox Beef Steak—Stewing do.
4. Corned Ox Beef—Rolled or Round, as ordered, without bone or cartilage ... do.
5. Tripe, Ox (during winter) ... per lb.
6. Pork—Pickled do.
7. Fresh Beef Suet—Kidney do.
8. Sausages—Beef (during winter) do.
9. " Belgium (during summer) ... do.

(See later Gazette)

CONTRACTS ACCEPTED.—(Series 1918-19.)

Serial No.	Particulars.	Amount.	Name for Approval.	Charge against Vote or Fund.
PROVISIONS—				
Supply of Provisions in such quantities as may be ordered for the use of the Students' School of Forestry, Creswick, from 1st July, 1918, to 30th June, 1919—				
295	Breadstuffs	Rates as per annex	C. C. Bowley	Contingencies 1918-19.
296	Butter and Cheese	Ditto	John Tait and Son	
297	Groceries	Ditto	John Tait and Son	
...	Meat	Ditto	Purchase	
298	Milk	Ditto	E. E. Pollard	
...	Potatoes	Ditto	Purchase	

Approved—W. M. McPHERSON, Treasurer. 7.6.1918.

Schedule No. 19.

PROVISIONS AT CRESWICK FOR STUDENTS AT THE SCHOOL OF FORESTRY.

(Delivery at the School.)

Particular attention is drawn to Clause 1 of the Conditions as to quality.

Where practicable all items must be manufactured or prepared within the Commonwealth.

ANNEX TO CONTRACT No. 1918/295.

C. C. Bowley, Albert-street, Creswick.

Sub-schedule No. 1.

BREADSTUFFS.

Security, £10.

No subletting will be allowed; all work must be carried out by the contractor. Every person engaged in the manufacture, preparation, or delivery of the bread tendered for in this sub-schedule shall be paid such wages and shall be employed subject to such conditions as are or may be determined by any Wages Board under the provisions of the Factories and Shops Acts, to which such persons are subject as employees; and a copy of these conditions shall be kept conspicuously and continuously posted in legible Roman characters in the factory or shop (and in each part of the factory or shop where several rooms are in use) in which bread is prepared or manufactured under this contract. Any infringement of these conditions, or any breach of the said determinations, in the opinion of the Treasurer, will subject the contractor, upon report from the Tender Board, to such mulct, not exceeding Fifty pounds (£50), as the Treasurer may direct, and the amount will be deducted from the contractor's account or from the security money, and the Treasurer's decision shall be binding, final, and conclusive as to the fact of infringement, and in all other respects.

The contractor shall, before any account is passed for payment, furnish a statutory declaration that all the workmen under this contract have been employed in accordance with the above clause of these conditions, and have been paid not less than the minimum rate of wages for such workmen as is provided for under that clause.

Pure wheaten meal bread of first quality may be substituted, wholly or in part, for fine wheaten bread at such times as may be deemed necessary, and the contractor will be required to supply such bread at the contract rate. Reasonable notice, however, of the intention to substitute wheaten meal bread must be given to the contractor by the officer ordering the supply.

Samples of the best ordinarily retailed to the public will be considered as test loaves for first quality.

	£	s.	d.
1. Bread—Fine Wheaten, first quality ... per cental	0	15	7
2. Flour—First quality do.	0	12	3

ANNEX TO CONTRACT No. 1918/296.

John Tait and Son, Albert-street, Creswick.

Sub-schedule No. 2.

BUTTER AND CHEESE.

Security, £5.

All butter supplied, as well as the boxes in which it is packed or transit, must bear the impress stamp of the creamery manufacturing the butter, otherwise it will be rejected. The cheese supplied must be fairly matured, and packed in boxes for transport.

In the event of butter being supplied under this contract from Melbourne, all such butter shall be submitted by the contractor to the Government Dairy Expert in Melbourne for test as to

No. 86.—JULY 4, 1918.—9715.—2

standard quality, and, if found to be satisfactory, shall be forwarded by that officer direct to the institution ordering, the cost of freight being borne by the contractor in the usual way.

- Butter—First Grade Creamery, to score not less than 92 points, Government Grade, Commerce Regulations standard per lb. £ s. d. 0 1 5
- Cheese—First-class quality, matured (Victoria) do. 0 0 11
- Eggs, new laid per doz. 0 1 3

ANNEX TO CONTRACT No. 1918/297.

John Tait and Son, Albert street, Creswick.

Sub-schedule No. 3.

GROCERIES.

Security, £10.

The soap supplied must be hard throughout, ready for immediate use without waste. Soap for the Lunatic Asylum is not included in this contract.

When the quantity admits, tea must be supplied in original and unopened packages, labelled, as landed.

Should any article or articles which may be reasonably included in a grocer's price list, and which is or are not included in the schedule hereunder, be required during the currency of the contract, the contractor shall supply any such article or articles at the current list rates at which such articles are retailed by the contractor to the public.

- | | £ | s. | d. |
|---|---|----|----|
| 1. Barley—Pearl per lb. | 0 | 0 | 3 |
| 2. Blue—Of any brand required do. | 0 | 2 | 3 |
| 3. Candles (full weights) Kitchen's "Petrolines," Apollo Co.'s "Apollo," or other make of equal quality, to be supplied in 1-lb. packets do. | 0 | 0 | 9 |
| 4. Coffee—Fresh roasted and whole—Beans to be thoroughly sound, to sample do. | 0 | 1 | 4½ |
| 5. Cornica do. | 0 | 0 | 6 |
| 6. Currants—3 Crowns do. | 0 | 0 | 8 |
| 7. Ginger—Ground Jamaica) do. | 0 | 0 | 11 |
| 8. Golden Syrup, in 7-lb. tins per tin | 0 | 1 | 11 |
| 9. Jams, assorted, any brand ordered, in 2-lb. tins, in the proportion of half seed and half stone per lb. net | 0 | 0 | 5½ |
| 10. Maize—Durum's per lb. | 0 | 0 | 7 |
| 11. Mustard—Double superfine, of any brand ordered do. | 0 | 4 | 0 |
| 12. Oatmeal—Of any brand ordered do. | 0 | 0 | 3½ |
| 13. Pease—Split do. | 0 | 0 | 3 |
| 14. Pepper—Black, ground do. | 0 | 1 | 0 |
| 15. Raisins—Sultana (Mildura), 3 Crowns do. | 0 | 0 | 9 |
| 16. Rice—Dressed, Best, to sample do. | 0 | 0 | 3½ |
| 17. Seed—Tapioca—Sago, to sample do. | 0 | 0 | 3½ |
| 18. Salt—Fine do. | 0 | 0 | 1 |
| 19. Soap (Household)—Lever Bros. "Velvet" do. | 0 | 0 | 8 |
| 20. Soap (Household)—Yellow, dry, to sample do. | 0 | 0 | 5 |
| 21. Carbolic Sand Soap do. | 0 | 0 | 4 |
| 22. Soda—Carbonate of do. | 0 | 0 | 4 |
| 23. " Washing do. | 0 | 0 | 3 |
| 24. Spice—Mixed, in 1-oz. packets per pkt. | 0 | 0 | 1 |

GROCERIES—continued.

25. Starch, of any brand ordered, to sample	per lb.	£	s.	d.
26. Sugar—White, to sample	per cwt.	1	12	8
27. " Ration	per lb.	0	0	3
29. Tea—Best Ceylon, to sample	do.	0	1	4
30. Vinegar	per pint	0	0	2

Sub-schedule No. 4.

MEAT (FRESHLY KILLED).

1. Fresh Beef—Fore-quarter	per lb.	Purchase
2. " " Hind-quarter	do.	
3. " " Buttocks	do.	
4. " Mutton	do.	
5. Corned Beef, rolled or round, as ordered without bone or cartilage	do.	
6. Pork (Leg)	do.	
7. Fresh Suet—Kidney	do.	

ANNEX TO CONTRACT NO. 1918/298.

E. E. Pollard, Creswick.

Sub-schedule No. 5.

MILK.

Security, £5. £ s. d.

1. Milk—Fresh and pure per quart 0 0 5

Sub-schedule No. 6.

POTATOES.

Potatoes to be dry and free from dirt. Contractor to supply 105 lbs. of potatoes for each cental crudded to him, and, in addition, to take back all rejected before being cooked.

If the price of potatoes becomes abnormally high, the heads of the various Departments concerned may, if they think fit, cause rice or any other suitable food to be occasionally substituted in lieu thereof.

1. Potatoes per cental Purchase

CONTRACTS ACCEPTED—(Series 1918-19).

Serial No.	Particulars.	Amount.	Name for Approval.	Charge against Vote or Fund.
PROVISIONS—				
Supply of Provisions in such quantities as may be ordered for the use of the McLeod Settlement, French Island, from 1st July, 1918, to 30th June, 1919—				
299	Breadstuffs	Rates as per annex	H. L. Dainty	Contingencies 1918-19
...	Butter	Ditto	Purchase	
...	Groceries	Ditto	Purchase	
300	Meat	Ditto	E. W. Misson	
...	Milk	Ditto	Purchase	
...	Potatoes	Ditto	Purchase	

Approved—W. M. McPHERSON, Treasurer, 7.6.1918.

Schedule No. 20.

PROVISIONS AT McLEOD SETTLEMENT, FRENCH ISLAND.

Delivery to be made at Lang Lang Jetty.

Particular attention is drawn to Clause 1 of the Conditions as to quality.

Where practicable, all items must be manufactured or prepared within the Commonwealth.

ANNEX TO CONTRACT NO. 1918/299.

Harold L. Dainty, Lang Lang.

Sub-schedule No. 1.

BREAD.

Security, £5.

No subletting will be allowed; all work must be carried out by the Contractor. Every person engaged in the manufacture, preparation, or delivery of the bread tendered for in this Sub-schedule shall be paid such wages and shall be employed subject to such conditions as are or may be determined by any Wages Board under the provisions of the Factories and Shops Acts to which such persons are subject as employees; and a copy of these conditions shall be kept conspicuously and continually posted in legible Roman characters in the factory or shop (and in each part of the factory or shop where several rooms are in use) in which Bread is prepared or manufactured under this contract. Any infringement of these conditions, or any breach of the said determination, in the opinion of the Treasurer, will subject the Contractor, upon report from the Tender Board, to such mulct, not exceeding Fifty pounds (£50), as the Treasurer may direct, and the amount will be deducted from the Contractor's account or from the security money; and the Treasurer's decision shall be binding, final, and conclusive as to the fact of infringement, and in all other respects.

A sample of the best ordinarily retailed to the public will be considered as a test loaf for first quality. Third quality (that issued to prisoners of the Crown) to be made of flour, fine sharps, the produce of prime, strong, thin-skinned, good coloured wheat, to be perfectly free from coarse pollard or other offal. If required, the bread must be delivered one day old, due notice to be given to the Contractor of such requirement.

Pure Wheaten Meal Bread of first quality may be substituted wholly or in part for Fine Wheaten Bread at such times and in such quantities as in the opinion of the Officer in Charge may be deemed necessary, and the Contractor will be required to supply such Bread at the contract rate. Reasonable notice, however, of the intention to substitute Wheaten Meal Bread must be given to the Contractor by the officer ordering the supply.

1. Bread—Fine, Wheaten, first quality	per cental	£	s.	d.
2. " Wheaten, third quality	do.	0	16	8

Sub-schedule No. 2.

BUTTER.

NOTE.—Butter is to be delivered to each vessel as required, in 1-lb. pats, and in such quantities as may be ordered, and no excess over the quantity ordered will be received.

All Butter supplied, as well as the cases in which it is packed, must bear the impress stamp of the Creamery manufacturing the Butter, otherwise it will be rejected. Any Butter supplied may be tested at any time by the Government expert if considered by the officer ordering as not being up to standard quality.

1. Butter—First Class Creamery, to score not less than 92 points Government grade, Commerce Regulations standard per lb. Purchase

Sub-schedule No. 3.

GROCERIES.

The Soap supplied must be hard throughout, ready for immediate use without waste.

When the quantity admits, Tea must be supplied in original and unopened packages, labelled as landed.

Sugar may be obtained from a Government institution without infringing this contract.

Rice, when ordered in quantities of 56 lbs. and over, must be supplied in the original bags, and must be of any brand ordered. Bags containing same must be branded "Rice—Dressed, Best," and must be stencilled with the Manufacturer's or Dresser's name. Supplies not in conformity with the foregoing conditions will be absolutely rejected.

1. Cheese per lb.
2. Jams—Assorted, of approved kinds, in proportion of half seed and half stone, of best quality, in 2-lb. tins per tin
3. Mustard—Double Superfine, of any Commonwealth manufacture ordered per lb.
4. Milk—Condensed, nominal 1-lb. tins per tin
5. Oatmeal—Of any brand ordered per cwt.
6. Pepper—Black, ground per lb.
7. Rice—Dressed, best, to sample
8. Salt—Fine
9. Soap—Toilet, brown Windsor, in tablets, to sample
10. Soap—Household, yellow, dry, to sample
11. Soda—Washing
12. Tea—Best Ceylon
13. Tea—Ration
14. Tobacco—"Starlight," or other make of equal quality, as ordered

ANNEX TO CONTRACT No. 1918/300.

E. W. Mission, Lang Lang.

Sub-schedule No. 4.

MEAT (FRESHLY KILLED.)
Security, £20.

No subletting will be allowed; no delivery of meat shall be made on Sundays; all work must be carried out by the contractor. Every person engaged in the cutting up, preparation, or delivery of the meat tendered for in this sub-schedule shall be paid such wages and shall be employed subject to such conditions as are or may be determined by any Wages Board under the provisions of the Factories and Shops Acts, to which such persons are subject as employees; and a copy of these conditions shall be kept conspicuously and continually posted in legible Roman characters in the factory or shop (and in each part of the factory or shop where several rooms are in use) in which meat is prepared under this contract. Any infringement of these conditions, or any breach of the said determination, in the opinion of the Treasurer, will subject the contractor, upon report from the Tender Board, to such mulct, not exceeding Fifty pounds (£50), as the Treasurer may direct, and the amount will be deducted from the contractor's account or from the security money; and the Treasurer's decision shall be binding, final, and conclusive as to the fact of infringement, and in all other respects.

The meat must be supplied as ordered. Where hindquarters or buttocks are ordered, 9 inches must be cut off from the end of the leg from the hook upwards, i.e., the end of the leg from which the shank has been removed at the abattoirs; and when forequarters form a portion of the supply, 6 inches from the end of the neck, and the whole of the shank at the clodbone joint, must be removed. The sticking pieces also must be trimmed off, and the point and end of the brisket rendered free from blood and blood stains.

Fore and hind quarters, for convenience of handling, may be cut into two parts, but each part is to bear evidence of having been cut from the same beast.

Should the local supply of fresh meat become scarce, or the price of same become abnormally high, frozen or chilled meat may, with the consent of the Tender Board on the recommendation of the Head of the Department, be supplied.

		£	s.	d.
1. Fresh Beef—Forequarters	... per cental	2	18	4
2. " " Hindquarters	... do.	3	6	8
3. " " Buttock			Purchase
4. " " Mutton	... per cental	2	18	4
5. Corned Beef, Rolled or Round, as ordered, without bone or cartilage	... do.			} Purchase
6. Fresh Suet—Kidney	... per lb.			
7. Dripping—Fresh, free from objectionable smell	... do.			

Sub-schedule No. 5.

MILK.

No subletting will be allowed; all work must be carried out by the contractor; the hours of employment of any person engaged in the preparation or delivery of the milk tendered for in this Sub-schedule shall not exceed 60 hours per week, and every such person, except carters, shall be paid at a minimum wage of not less than £1 17s. 6d. per week, or £1 2s. 6d. per week with board and lodging, unless other wages may be determined by any special board under the Factories and Shops Acts during the currency of this contract. When every such person shall be paid such wages and shall be employed subject to such conditions as may thus be determined. Carters shall be paid such wages and shall be employed subject to such conditions as are or may be determined by the Carters Board under the Factories and Shops Acts, and a copy of these conditions shall be kept conspicuously and continually posted in legible Roman characters in the factory or dairy (and in each part of the factory or dairy where several rooms are in use) in which milk is prepared under this contract. Any infringement of these conditions, or any breach of the aforesaid determination, in the opinion of the Treasurer, will subject the contractor, upon report from the Tender Board, to such mulct, not exceeding Fifty pounds (£50), as the Treasurer may direct, and the amount will be deducted from the contractor's account or from the security money, and the Treasurer's decision shall be binding, final, and conclusive as to the fact of infringement, and in all other respects.

The contractor shall, before any account is passed for payment, furnish a statutory declaration that all the workmen under this contract have been employed in accordance with the above clause of these conditions, and have been paid not less than the minimum rate of wages for such workmen as is provided for under that clause.

The milk must be fresh, pure, and of the best quality, and subject to test when required by the Department. Should the supply prove to be not of contract quality it will be rejected, and any expense incurred will be charged to the contractor.

1. Milk—Fresh and pure per gal. Purchase

Sub-schedule No. 6.

POTATOES.

Potatoes to be dry and free from dirt. Contractor to supply 105 lbs. of potatoes for each cental credited to him, and in addition, to take back all rejected before being cooked.

If the price of potatoes becomes abnormally high, the heads of the various departments concerned may, if they think fit, cause rice or any other suitable food to be occasionally substituted in lieu thereof.

1. Potatoes per cental Purchase

