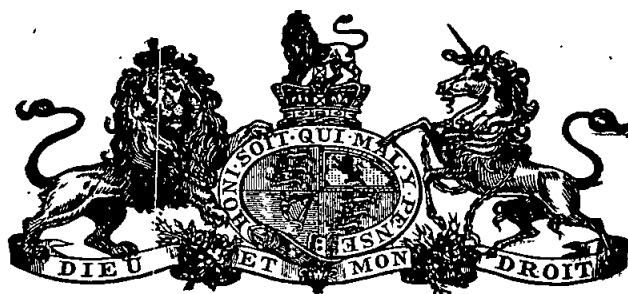


[2573]



VICTORIA
GOVERNMENT GAZETTE.

Published by Authority.

[Registered at the General Post Office, Melbourne, for transmission by post as a newspaper.]

No. 130.]

TUESDAY, JULY 5.

[1921.

CONTRACTS ACCEPTED.

(SERIES 1921-22.)

SUPPLY OF PROVISIONS

FROM

1st JULY, 1921, TO 30th JUNE, 1922, OR AS STATED.

E. T. HOPTON,
Acting Secretary, Tender Board,

No 130.—JULY 5, 1921.—9449.

CONTRACTS ACCEPTED.—(Series 1921-22.)

No. of Contract.	Particulars of each Tender Accepted.	Amount.	Name of Contractor.	Charged against Vote or Fund.
PROVISIONS—				
Supply of Provisions, in such quantities as may be ordered, from 1st July, 1921, to 30th June, 1922, or as otherwise stated:—				
Butter and Potatoes, from 1st July, 1921, to 31st December, 1921—				
Melbourne District—				
...	Beer and spirits	Rates as per annex	Purchase	
175	Bread, Kew Asylum	Ditto	S. G. Hewitt	
176	Bread, Yarra Bend Asylum	Ditto	J. N. Hennessy	
177	Bread, Melbourne	Ditto	J. N. Hennessy	
178	Butter	Ditto	J. E. Handbury and Son Pty. Ltd.	
...	Cheese	Ditto	Purchase	
179	Flour and sharps	Ditto	H. R. Rush	
180	Groceries	Ditto	J. D. Howie	
181	Oatmeal, rice, &c.	Ditto	J. D. Howie	
182	Jams	Ditto	J. D. Howie	
183	Meat, Kew Asylum	Ditto	W. Angliss and Co. Pty. Ltd.	
184	Meat, Yarra Bend Asylum	Ditto	W. Angliss and Co. Pty. Ltd.	
185	Meat, Pentridge Penal Establishment	Ditto	T. K. Bennet & Woolcock Pty. Ltd.	
186	Meat, Melbourne Gaol, &c.	Ditto	T. K. Bennet & Woolcock Pty. Ltd.	
...	Milk, Melbourne Gaol	Ditto	Purchase	
187	Milk, Pentridge Penal Establishment	Ditto	J. F. Murphy	
188	Potatoes	Ditto	H. McDonough	
189	Soap	Ditto	J. D. Howie	
190	Tea	Ditto	J. D. Howie	
191	Tobacco	Ditto	Dudgeon and Arnell Pty. Ltd.	
Greenvale—				
...	Bread	Ditto	Purchase	
192	Butter	Ditto	J. E. Handbury and Son Pty. Ltd.	
...	Cheese and bacon	Ditto	Purchase	
193	Groceries	Ditto	J. D. Howie	
194	Meat	Ditto	F. Watkins Pty. Ltd.	
Mont Park—				
195	Breadstuffs	Ditto	E. J. Callander	
196	Butter	Ditto	J. E. Handbury and Son Pty. Ltd.	
...	Cheese	Ditto	Purchase	
197	Groceries	Ditto	J. D. Howie	
198	Jams	Ditto	J. D. Howie	
199	Meat	Ditto	W. Angliss and Co. Pty. Ltd.	
200	Potatoes	Ditto	H. McDonough	
201	Tea	Ditto	J. D. Howie	
Williamstown District—				
...	Breadstuffs	Ditto	Purchase	
...	Butter	Ditto	Purchase	
202	Groceries	Ditto	Moran and Cato Pty. Ltd.	
203	Meat	Ditto	W. Angliss and Co. Pty. Ltd.	
...	Vegetables	Ditto	Purchase	Contingencies, 1921-22.
Ararat District—				
204	Breadstuffs	Ditto	Wm. Bates	
205	Butter	Ditto	J. E. Handbury and Son Pty. Ltd.	
...	Cheese	Ditto	Purchase	
206	Groceries	Ditto	J. D. Howie	
207	Jams	Ditto	Ballarat Jam Co. Pty. Ltd.	
208	Meat	Ditto	A. Murphy	
209	Potatoes	Ditto	H. McDonough	
210	Tea	Ditto	J. D. Howie	
Beechworth District—				
211	Breadstuffs	Ditto	W. Price	
212	Butter	Ditto	J. E. Handbury and Son Pty. Ltd.	
...	Cheese	Ditto	Purchase	
213	Groceries	Ditto	J. D. Howie	
214	Meat	Ditto	W. H. Morton	
215	Potatoes	Ditto	Collins and Yule	
216	Tea	Ditto	J. D. Howie	
Ballarat District—				
217	Breadstuffs	Ditto	{ J. P. Hutchinson Ballarat Co-operative Distribution Society Ltd.	
218	Butter	Ditto	J. E. Handbury and Son Pty. Ltd.	
...	Cheese	Ditto	Purchase	
219	Groceries	Ditto	J. D. Howie	
220	Jams	Ditto	J. D. Howie	
221	Meat	Ditto	H. J. Symons	
222	Potatoes	Ditto	W. Cochran	
223	Tea	Ditto	{ J. D. Howie Moran and Cato Pty. Ltd.	
Geelong District—				
224	Breadstuffs	Ditto	W. Marshall	
225	Groceries	Ditto	Moran and Cato Pty. Ltd.	
226	Meat	Ditto	M. McCartin & Sons	
227	Milk	Ditto	S. H. Warren	
Lara—				
228	Breadstuffs	Ditto	A. Morgan	
229	Butter	Ditto	J. D. Howie	

CONTRACTS ACCEPTED.—(Series 1921-22)—continued.

No. of Contract	Particulars of each Tender Accepted.	Amount.	Name of Contractor.	Charged against Vote or Fund.
PROVISIONS—continued.				
Supply of Provisions, in such quantities as may be ordered, from 1st July, 1921, to 30th June, 1922, or as otherwise stated:—				
Butter and Potatoes, from 1st July, 1921, to 31st December, 1921—				
Lara—continued—				
230	Cheese	Rates as annex	Purchase	
231	Groceries	Ditto	J. D. Howie	
232	Jams	Ditto	J. D. Howie	
233	Meat	Ditto	W. Angliss and Co. Pty. Ltd.	
233	Potatoes	Ditto	F. Samblebe	
Sarbury District—				
234	Breadstuffs	Ditto	Jane Eadie	
235	Butter	Ditto	J. E. Handbury and Son Pty. Ltd.	
236	Cheese	Ditto	Purchase	
237	Groceries	Ditto	J. D. Howie	
238	Jams	Ditto	J. D. Howie	
239	Meat	Ditto	S. J. Starkie	
240	Potatoes	Ditto	H. McDonough	
240	Tea	Ditto	J. D. Howie	
Berديو District—				
241	Bread	Ditto	F. W. Beischer	
242	Groceries	Ditto	Moran and Cato Pty. Ltd.	
243	Meat	Ditto	H. Gittens	
Castlemaine District—				
244	Bread	Ditto	M. V. Heurck	
245	Groceries and potatoes	Ditto	Moran and Cato Pty. Ltd.	
246	Meat	Ditto	J. Williamson	
Salisbury District—				
247	Bread	Ditto	M. Kiely	
248	Groceries and potatoes	Ditto	Purchase	
248	Meat	Ditto	Ronchi Bros.	
Ruherglan—				
249	Bread	Ditto	P. F. Walker	
250	Groceries	Ditto	J. D. Howie	
Wihgunyah—				
251	Bread	Ditto	Purchase	
252	Groceries	Ditto	J. D. Howie	
252	Meat	Ditto	R. Warren	
School of Forestry, Creswick—				
253	Bread	Ditto	C. C. Bowley	
254	Butter and cheese	Ditto	Purchase	
254	Groceries	Ditto	J. Tait and Son	
255	Meat	Ditto	Wood and Wood	
256	Milk	Ditto	E. E. Pollard	
256	Potatoes	Ditto	Purchase	
McLeod Settlement, French Island—				
257	Bread	Ditto	W. H. Hillbrick	
258	Butter	Ditto	Purchase	
258	Groceries	Ditto	Purchase	
258	Meat	Ditto	E. W. Missen	
258	Milk	Ditto	Purchase	
258	Potatoes	Ditto	Purchase	
Atorigines (Coranderrk)—				
259	Bread	Ditto	E. C. Spalding	
260	Groceries	Ditto	Moran and Cato Pty. Ltd.	
Atorigines (Lake Tyers)—				
261	Bread	Ditto	F. Manners	
262	Groceries	Ditto	L. T. Freeman	

Contingencies, 1921-22.

Approved—H. S. W. Lawson, for Treasurer, 2nd July, 1921.

STIPULATIONS FOR SUPPLIES OF PROVISIONS.

Special attention is drawn to note re Bread and Flour, re varying rates from time to time.

(Where practicable, all items must be manufactured or prepared within the Commonwealth.)

Under all Sub-schedules particular attention is drawn to Clause 1 of the Condition as to quality.

BEER AND SPIRITS.

For brandy, whisky, and for Guinness' porter in case, delivery will be taken at and from the bond.

The contractor will be bound to supply such of the brands named in the tender as the departments may order. In cases where delivery from the bond is taken by the Government, the contractor will be required to hand to the secretary to the Tender Board the bond certificate and the locker's order and a copy of the entry, and pay all charges, including re-gauging, before delivery is taken.

English ale, brandy, whisky, and Guinness' porter in case must be delivered as imported; if bottled in the State it will not be accepted.

BREAD.

In the event of any increase in the price of Flour, consequent upon the increase in the price of Wheat and proportionate thereto, between the date fixed for receiving Tenders and the termination of the Contract period, an allowance will be made—

A—In the case of Bread, at the rate of 9d. per cental for each £1 per ton increase in the price of Flour;

B—In the case of Flour, equal to the increase in the market rate.

Should a decrease take place in the price of Flour, corresponding deductions will be made in the payments for Bread and Flour.

Samples of the best ordinarily retailed to the public will be considered as test loaves for first quality for fine wheaten and pure wheaten Meal Bread. Third quality (that issued to prisoners of the Crown) to be made of flour, fine sharps, the produce of prime, strong, thin-skinned, good-coloured wheat, to be perfectly free from coarse pollard or other offal. *Pure wheaten Meal Bread of first quality may be substituted, wholly or in part, for fine wheaten Bread at such times and in such quantities as in the opinion of the Medical Superintendent may be deemed necessary, and the contractor will be required to supply such Bread at the contract rate. Reasonable notice, however, of the intention to substitute wheaten Meal Bread must be given to the contractor by the officer ordering the supply.* Bread may be baked at any Government establishment without infringing these contracts. At the Gaols, Beechworth, Ballarat, Geelong, Bendigo, Castlemaine, and Sale, if required, bread must be supplied one day old, due notice to be given to the contractor of such requirement.

Under sub-schedules for Bread no subletting will be allowed; all work must be carried out by the contractor; every person engaged in the manufacture, preparation, or delivery of the bread tendered for in these sub-schedules shall be paid such wages and shall be employed subject to such conditions as are or may be determined by any Wages Board under the provisions of the Factories and Shops Acts to which such persons are subject as employees; and a copy of these conditions shall be kept conspicuously and continually posted in legible Roman characters in the factory or shop (and in each part of the factory or shop where several rooms are in use) in which bread is prepared or manufactured under this contract. Any infringement of these conditions, or any breach of the said determinations, in the opinion of the Treasurer, will subject the contractor, upon report from the Tender Board, to such mulct, not exceeding Fifty pounds (£50), as the Treasurer may direct, and the amount will be deducted from the contractor's account or from the security money, and the Treasurer's decision shall be binding, final, and conclusive as to the fact of infringement, and in all other respects.

In the event of bread being made at any Government establishment in the Melbourne District, during the currency of these contracts, the flour required will be drawn under the flour and maize meal sub-schedule. The maize meal for all the country gaols is included in the sub-schedule for flour and maize meal, Melbourne District, and delivery of same will be required to be made at the Victorian Railways, Spencer-street.

Should a supply of any article which may be reasonably included in a Baker's Price List, and which is not included in the schedule hereunder, be required for the use of attendants and nurses resident at the Hospitals for the Insane or for inmates of any Government institution drawing supplies under sub-schedules for Bread during the currency of the contract,

the contractor shall, with the exception of Ararat, Ballarat, and Beechworth, supply any such article at the current list rates at which it is retailed by the contractor to the public.

GROCERIES, CANDLES, SOAP, TEA, ETC.

Should the supply of any article which may be reasonably included in a Grocer's Price List, and which is not included in the schedule hereunder, be required for the use of the attendants and nurses resident at the Hospitals for the Insane or for inmates of any Government institution drawing supplies under sub-schedules for Groceries during the currency of the contract, the contractor shall, with the exception of Ararat, and Ballarat, supply such article at the current list rates at which it is retailed by the contractor to the public.

As a guarantee of quality, Rice, when ordered in quantities of 56 lbs. and over, must be supplied in original bags as delivered by the miller or dresser. Such bags must be branded "Rice, Dressed," and shall also have stencilled thereon the miller or dresser's name. The bags thus stencilled shall contain Rice milled or dressed by the miller or dresser whose name appears thereon. Supplies not in conformity with the foregoing conditions will be absolutely rejected. Oatmeal must be supplied in original bags as delivered by millers.

Candles, except those for prison cells, must be supplied in 1-lb. packets. Candles for prison cells must be delivered in boxes containing from 25 to 50 lbs. per box, the boxes for which must be legibly stencilled on one end, showing the estimated burning time and the gross, tare, and net weight of contents. The soap supplied must be hard throughout, ready for immediate use without waste. Soap for Lunatic Asylums is not included in these contracts. When the quantity admits, tea must be supplied in original and unopened packages, labelled, as landed.

Raisins and currants must be present season's, and where the quantity admits, be supplied in original boxes labelled 3 crowns.

For s.s. *Rip* a certain quantity of Biscuits and Preserved Meat are sometimes required in lieu of fresh meat and fresh bread, and are included to meet such contingency only.

The contracts are not to be considered broken, infringed, or violated by purchase of sugar from any Government Institution at any time during the currency of this contract.

BUTTER, CHEESE, AND JAMS.

Butter is to be delivered to the s.s. *Rip* in 1-lb. pats, in such quantities as may be ordered, and no excess over the quantity ordered will be received.

All Butter supplied, as well as the cases in which it is packed, must bear the impress stamp of the creamery manufacturing the Butter, otherwise it will be rejected. The Butter supplied may be tested at any time by the Government Dairy expert if it is considered by the officer ordering that the supply is not up to standard quality. The cheese must be fairly matured and packed in boxes for transport.

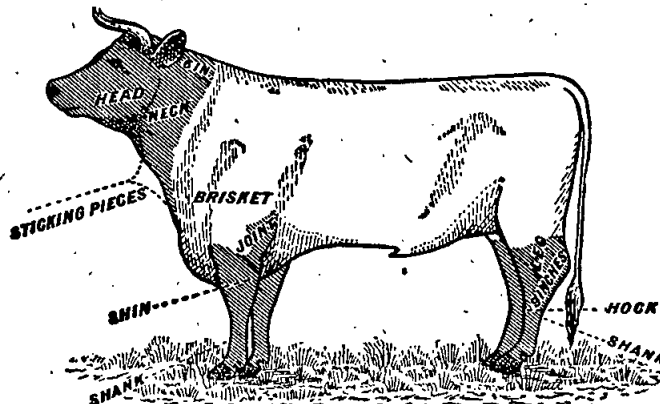
As regards butter for Ararat, Ballarat, Beechworth, Lara, Sunbury, and Mont Park all supplies delivered from Melbourne must be submitted by the contractor to the Government Dairy Expert in Melbourne for test as to standard quality, and, if found to be satisfactory, shall be forwarded by that officer direct to the Institution ordering, the cost of freight being borne by the contractor in the usual way.

N.B.—Jams.—The weight stamped on the tins in accordance with the regulations under the Commerce Act, as indicating the minimum net quantity that each tin contains, shall for the purpose of this contract be taken as the actual contents when computing the quantity supplied.

When Jam is supplied in jars the jars remain the property of the contractor, and must be removed by the contractor at his own expense when empty.

MEAT.

When fore and hind-quarters of beef are ordered for Hospitals for the Insane they must be supplied in the proportion of two of the former to one of the latter, and must be delivered as a whole respectively, also extra buttocks separately when ordered. Meat for other institutions must be supplied as ordered. Where hind-quarters or buttocks are ordered, 9 inches must be cut off from the end of the leg from the hock upwards, *i.e.*, the end of the leg



from which the shank has been removed at the abattoirs; and when fore-quarters form a portion of the supply, 6 inches from the end of the neck and the whole of the shin at the clodbone joint must be removed. The sticking pieces also must be trimmed off, and the point and end of the brisket rendered free from blood and blood stains.

Fore and hind-quarters, for convenience of handling, may be cut into two parts, but each part is to bear evidence of having been cut from the same beast.

Corned Beef, rolled or round, as ordered, must be supplied without bone or cartilage and will be received, whether pumped or prepared in the ordinary way by pickling, but in the former case must have been soaked after pumping for at least 48 hours, in a good pickle, and then thoroughly drained before supply. No flank, chuck, sticking piece, shin, leg of beef, or piece under 7 lbs. will be received.

Should the local supply of fresh meat become scarce, or the price of same become abnormally high, frozen or chilled meats may, with the consent of the Tender Board on the recommendation of the head of the Department, be supplied.

In cases of emergency, or on such other occasions as in the opinion of the Inspector-General of the Insane may seem advisable, other forms of meat such as rabbits, tinned meats, &c., may be purchased apart from the contract for Hospitals for the Insane, in lieu of the meat mentioned in the schedule, and substituted therefor, provided 24 hours' notice (except in cases of emergency) be given to the contractor of such intention.

The parts to be removed by the contractor are indicated by the shaded portions of the annexed diagram.

For Beechworth samples (corresponding to the description given in the schedule) of meat ordinarily retailed to the public will be considered as a test for quality.

As regards supplies for s.s. *Rip*, all Meat must be of prime quality, and must be supplied in equal quantities from ribs, sirloin, and thick flanks; mutton to be delivered in sides; all kidney fat to be removed; meat containing an undue proportion of fat will not be accepted. Chuck ribs will not be accepted, in lieu of prime ribs. Live sheep to be supplied when required.

Should a supply of any article which may be reasonably included in a Butcher's Small Goods List, and which is not included in the schedule hereunder, be required for the use of attendants and nurses resident at the Hospitals for the Insane or for inmates of any Government Institution drawing supplies under sub-schedules for Meat during the currency of the contract, the contractor shall, with the exception of Ararat and Ballarat, supply such article at the current list rates at which it is retailed by the contractor to the public.

Under sub-schedules for Meat no subletting will be allowed, no delivery of meat shall be made on Sundays; all work must be carried out by the contractor. Every person engaged in the slaughtering and cutting up, preparation, or delivery of the meat tendered for in this sub-schedule, shall be paid such wages and shall be employed subject to such conditions as are or may be determined by any Wages Board under the provisions of the Factories and Shops Acts to which such persons are subject as employees; and a copy of these conditions shall be kept conspicuously and continually posted in legible Roman characters in the factory or shop (and in each part of the factory or shop where several rooms are in use) in which Meat is prepared under this contract. Any infringement of these conditions, or any breach of the said determination, in the opinion of the Treasurer, will subject the contractor, upon report from the Tender Board, to such mulct, not exceeding Fifty pounds (£50), as the Treasurer may direct, and the amount will be deducted from the contractor's

account or from the security money, and the Treasurer's decision shall be binding, final, and conclusive as to the fact of infringement, and in all other respects.

MILK.

The milk must be fresh, pure, and of the best quality, and subject to test when required by the Department, and supplied at such times as the Department may require. Should the contractor fail to supply at the time specified in the order or at such times as may be indicated in any general notice to the contractor his contract may be cancelled forthwith and his security forfeited, or should the supply prove to be not of contract quality it will be rejected, and any expense incurred will be charged to the contractor.

Under sub-schedules for Milk no subletting will be allowed; all work must be carried out by the contractor; the hours of employment of any person engaged in the preparation or the delivery of the milk tendered for in these sub-schedules shall not exceed 60 hours per week, and every such person, except carters, shall be paid at a minimum wage of not less than £1 17s. 6d. per week for juveniles, less deduction of 15s. per week for board and lodging, and not less than £2 14s. per week for adults, less deduction of 15s. per week for board and lodging, unless other wages may be determined by any Special Board under the Factories and Shops Acts during the currency of the contract, when every such person shall be paid such wages and shall be employed subject to such conditions as may thus be determined. Carters shall be paid such wages and shall be employed subject to such conditions as are or may be determined by the Carters Board under the Factories and Shops Acts. Should, however, the determination of the aforesaid Board not apply to the district covered by any particular schedule, that determination for carters, or the determination of such other Board as may be appointed for other employees during the currency of this contract shall, for the purpose of this contract, be taken as defining the rate of wages which shall be paid, and the conditions of employment in respect thereto; and a copy of these conditions shall be kept conspicuously and continually posted in legible Roman characters in the factory or dairy (and in each part of the factory or dairy where several rooms are in use) in which milk is prepared under these contracts. Any infringement of these conditions, in the opinion of the Treasurer, will subject the contractor, upon report from the Tender Board, to such mulct, not exceeding Fifty pounds (£50), as the Treasurer may direct, and the amount will be deducted from the contractor's account or from the security money, and the Treasurer's decision shall be binding, final, and conclusive as to the fact of infringement, and in all other respects.

POTATOES AND VEGETABLES.

(Potatoes to be dry and free from dirt. Contractors to supply 117 lbs. of potatoes for each cwt. credited to him, and, in addition, to take back all rejected before being cooked.)

If the price of potatoes becomes abnormally high, the heads of the various departments concerned may, if they think fit, cause rice or any other suitable food to be occasionally substituted in lieu thereof. As regards vegetables for s.s. *Rip*, no subletting will be allowed. Cabbage to be free from outside leaves and stalks.

TOBACCO.

Tobacco for country Hospitals for the Insane is included in the contract for Melbourne District, and delivery of same will be required to be made at Spencer-street.

Tobacco for country Gaols is not included in the contract for Melbourne District.

Schedule No. 1.
PROVISIONS—MELBOURNE DISTRICT.

Sub-schedule No. 1.

BEER AND SPIRITS.

1. Ale (pints), English	per doz.	} Purchase
2. Brandy, Australian, Standard, pure grape, of proof strength, and of approved brand (Manufacturer to be named)	per liq. gal.	
3. " bottled—Hennessy's Three Star, as imported	per bottle	
4. Lime Juice (Imperial quart bottles). Board of Trade Standard	per doz.	
5. Whisky, of proof strength—Loch Dhu, Scotch Cream, or any other brand of equal quality	per liq. gal.	
6. Porter—"Guinness," bottled (quarts) (Bottler to be named)	per doz.	
7. " "Guinness," bottled (pints) (Bottler to be named)	do.	

{ANNEX TO CONTRACT No. 1921/176.

S. G. Hewitt, 131, Church-street, Richmond.

Sub-schedule No. 2.

BREAD FOR THE INSANE AT KRW (AND FOR HOSPITAL, STUDELEY HALL, IF REQUIRED).

Security, £100.

1. Bread—Fine wheaten, first quality	per cental	£ s. d.
		1 0 3½

See note bread and flour, page 2576.

ANNEX TO CONTRACT No. 1921/175.

J. N. Hennessy, 55 Sydney-road, Brunswick.

Sub-schedule No. 3.

BREAD FOR HOSPITALS FOR THE INSANE AT YARRA BRND.

Security, £100.

1. Bread—Fine wheaten, first quality	per cental	£ s. d.
		1 0 3

See note bread and flour, page 2576.

ANNEX TO CONTRACT No. 1921/177.

J. N. Hennessy, 55 Sydney-road, Brunswick.

Sub-schedule No. 4.

BREAD FOR DEPARTMENT OF NEGLECTED CHILDREN AND REFORMATORY SCHOOLS, ROYAL PARK; RECEIVING HOUSE AND MENTAL HOSPITAL, ROYAL PARK; POLICE DEPOT.

Security, £50.

1. Bread—Fine wheaten, first quality	per cental	£ s. d.
		1 1 10

See note bread and flour, page 2576.

ANNEX TO CONTRACT No. 1921/178.

J. E. Handbury and Son Pty. Ltd., 481 Flinders-lane, Melbourne.

Sub-schedule No. 5.

BUTTER.

Security, £40.

1. Butter—First Grade Creamery, to score not less than 90 points Government grade, Commerce Regulations standard	per cwt.	£ s. d.
		9 16 0

See note butter and cheese, page 2576.

Sub-schedule No. 6.

CHEESE AND EGGS.

1. Cheese—First Class quality	per cwt.	} Purchase
2. Eggs—Fresh, new laid	per doz.	

See note butter and cheese, page 2576.

ANNEX TO CONTRACT No. 1921/179.

H. R. Rush, 407 Collins-street, Melbourne.

Sub-schedule No. 7.

FLOUR AND MAIZE MEAL.

Security, £100.

1. Flour—Roller, first quality, to sample	per cental	£ s. d.
		1 1 3
2. " Sharps, to sample	do.	1 0 0
3. Maize Meal, to sample	do.	0 15 0

See note bread and flour, page 2576.

ANNEX TO CONTRACT No. 1921/180.

J. D. Howie, 299 Smith-street, Fitzroy.

Sub-schedule No. 8.

GROCERIES, ETC.

Security, £40.

£ s. d.

1. Arrowroot—Queensland	per lb.	0 0 7
2. Bicarbonate of Soda	do.	0 0 3
3. Blue—Of any brand ordered	do.	0 0 11
4. Candles—Full weights, Kitchen's "Petrolines" or other make of equal quality, to be supplied in 1-lb. packets to sample	do.	0 0 9
5. " Kitchen's "Petrolines" or other make of equal quality, for use in prison cells, to burn for 1, 1½, 2, 2½, and 3 hours respectively, as ordered, to sample for quality and size, to be supplied in candle boxes, containing from 25 to 50 lbs. per box	do.	0 0 9½
6. " Carriage, equal to Kitchen's No. 8, in 1-lb. packets	do.	0 0 10
7. " Paraffine	do.	0 0 9
8. Cocoa—Homeopathic, in ½-lb. packets, of any Commonwealth manufacture ordered	do.	0 2 0
9. " Homeopathic, in 7-lb. cartons, of any Commonwealth manufacture ordered	do.	0 2 0
10. Coffee—Fresh roasted and whole, beans to be thoroughly sound, Neigherry A, to sample	do.	0 1 3
11. " Pure, fresh roasted and ground, to sample	do.	0 1 3
12. Cornina	do.	0 0 8½
13. Cream of Tartar (substitute)	do.	0 1 9
14. Currants, 3 crowns, present season's	do.	0 0 8½
15. Essence of Lemon, 1-oz. bottles	per bottle	0 0 6½
16. Golden Syrup (in 7-lb. tins)	per tin	0 2 9
17. Lemon Peel	per lb.	0 1 0
18. Maizena	do.	0 0 8½
19. Mustard—"Double Superfine," of any Commonwealth manufacture ordered	do.	0 3 0
20. Nutmegs	do.	0 1 0
21. Pearl barley	per cwt.	0 17 0
22. Pease—Split	do.	1 5 0
23. Pepper—Black, ground	per lb.	0 1 0
24. Pipes—Tobacco, clay	per doz.	0 1 2
25. Raisins—Sultana, 3 crowns, present season's	per lb.	0 0 10½
26. Salt—Fine	per cwt.	0 6 6
27. " Rock	do.	0 13 0
28. Soap, Toilet—Brown Windsor, in tablets, to sample	per lb.	0 1 0
29. " Carbolic, in half-pound bars, to sample	do.	0 0 10
30. " Glycerine, in tablets, to sample	do.	0 1 2
31. " Sunlight, in doublets	per dbit.	0 0 6
32. " Magic	per lb.	0 0 4
33. " Velvet	per dbit.	0 0 4
34. Soap—Extract of, Hudson's, No. 8a, in 14-lb. boxes	per box	0 6 6
35. Soda—Washing	per cwt.	0 8 6
36. Starch—Of any brand ordered, to sample	per lb.	0 0 7
37. Treacle, in 7-lb. tins	per tin	0 2 5
38. Vinegar	per quart	0 0 3
39. Lime Water	do.	0 0 6
40. Tapioca (Pearl)	per lb.	0 0 4
41. Tomato Sauce (pints)	per bottle	0 0 10

ANNEX TO CONTRACT No. 1921/181.

J. D. Howie, 299 Smith-street, Fitzroy.

Sub-schedule No. 9.

OATMEAL, RICE, AND SEED TAPIOCA.

Security, £80.

£ s. d.

1. Oatmeal—Of any brand ordered	per cwt.	0 18 0
2. Rice—Dressed, to sample	do.	1 4 0
3. Seed Tapioca (Sago), to sample	do.	1 1 0

ANNEX TO CONTRACT No. 1921/182.

J. D. Howie, 299 Smith-street, Fitzroy.

Sub-schedule No. 10.

JAMS (of Commonwealth Manufacture) FOR HOSPITALS FOR THE INSANE.

(Including Receiving House, Royal Park.)

Security, £20.

£ s. d.

1. Jams—Assorted, of approved kinds, in the proportion of half seed and half stone, of the best quality, in tins	per lb. actual net weight	0 0 4½
--	---------------------------	--------

ANNEX TO CONTRACT No. 1921/183.

W. Angliss and Co. Pty. Ltd., 42 Bourke-street, Melbourne.

Sub-schedule No. 11.

MEAT (FRESHLY KILLED), FOR HOSPITALS FOR THE INSANE, KEW.
Security, £150.

	£	s.	d.
1. Fresh Beef—Fore-quarters per cental	1	18	0
2. " " Hind-quarters do.	1	18	0
3. " " Buttock do.	1	18	0
4. " " Mutton do.	1	18	0
5. Corned Beef, rolled or round, as ordered, without bone or cartilage do.	1	18	0
6. Fresh Suet—Kidney do.	1	18	0

ANNEX TO CONTRACT No. 1921/184.

W. Angliss and Co. Pty. Ltd., 42 Bourke-street, Melbourne.

Sub-schedule No. 12.

MEAT (FRESHLY KILLED), FOR HOSPITALS FOR THE INSANE, YARRA BEND.
Security, £120.

	£	s.	d.
1. Fresh Beef—Fore-quarters per cental	1	18	0
2. " " Hind-quarters do.	1	18	0
3. " " Buttock do.	1	18	0
4. " " Mutton do.	1	18	0
5. Corned Beef, rolled or round, as ordered, without bone or cartilage do.	1	18	0
6. Fresh Suet—Kidney do.	1	18	0

ANNEX TO CONTRACT No. 1921/185.

T. K. Bennet & Woolcock Pty. Ltd. 154 Swanston-st., Melbourne.

Sub-schedule No. 13.

MEAT (FRESHLY KILLED), FOR PENAL ESTABLISHMENT, PENTRIDGE.
Security, £100.

	£	s.	d.
1. Fresh Beef per cental	1	18	6
2. " " Buttock do.	1	18	6
3. Corned Beef do.	1	18	6
4. Fresh Mutton do.	1	18	6
5. Dripping do.	1	18	6

ANNEX TO CONTRACT No. 1921/186.

T. K. Bennet & Woolcock Pty. Ltd., 154 Swanston-st., Melbourne.

Sub-schedule No. 14.

MEAT (FRESHLY KILLED), FOR MELBOURNE GAOL; POLICE BARRACKS, ST. KILDA ROAD; DEPARTMENT FOR NEGLECTED CHILDREN AND REFORMATORY SCHOOLS, ROYAL PARK; RECEIVING HOUSE AND MENTAL HOSPITAL, ROYAL PARK.
Security, £50.

	£	s.	d.
1. Fresh Beef, as ordered per cental	2	0	0
2. " " Buttock do.	2	0	0
3. " " Mutton do.	2	0	0
4. Corned Beef, rolled or round, as ordered, without bone or cartilage do.	2	0	0
5. Fresh Suet—Kidney do.	2	0	0

Sub-schedule No. 15.

MILK FOR MELBOURNE GAOL.

1. Milk—Fresh and pure	Purchase
-------------------------------	-----	-----	-----	----------

ANNEX TO CONTRACT No. 1921/187.

J. F. Murphy, 25 Mayfield-street, Coburg.

Sub-schedule 16.

MILK FOR PENAL ESTABLISHMENT, PENTRIDGE.

	£	s.	d.
1. Milk—Fresh and pure per gal.	0	2	6

ANNEX TO CONTRACT No. 1921/188.

H. McDonough, 518 Flinders-street, Melbourne.

Sub-schedule No. 17.

POTATOES.

Security, £50.

	£	s.	d.
1. Potatoes per cwt.	0	5	3

See note potatoes, page 2577.

Sub-schedule 18.

SUGAR.

1. Sugar—White, to sample per cwt.	Purchase from Maffra
2. " " Ration " do.	

ANNEX TO CONTRACT No. 1921/189.

J. D. Howie, Smith-street, Fitzroy.

Sub-schedule No. 19.

SOAP.

Security, £10.

	£	s.	d.
1. Soap (household)—Yellow, dry, to sample, equal to Kitchen & Son's "Best Brown" per cwt.	1	12	0
2. Soap (household)—Carbolic, dry, to sample " "	2	0	0

ANNEX TO CONTRACT No. 1921/190.

J. D. Howie, 299 Smith-street, Fitzroy.

Sub-schedule No. 20.

TEA.

Security, £60.

	£	s.	d.
1. Tea—Best Ceylon, to sample per lb.	0	1	1
2. " " Ration, to sample do.	0	0	8

ANNEX TO CONTRACT No. 1921/191.

Dudgeon and Arnell Pty. Ltd., 524 Lonsdale-street, Melbourne.

Sub-schedule No. 21.

TOBACCO.

Security, £20.

	£	s.	d.
1. Tobacco, in 1-oz. plugs, for gaols—"Starlight," or other make of equal quality, to sample per lb.	0	5	3
2. Tobacco, 21 plugs to the pound, for Hospitals for the Insane, to sample do.	0	5	5

Schedule No. 15.

PROVISIONS AT GREENVALE.

(Delivery at the Sanatorium.)

Sub-schedule No. 1.

BREAD.

1. Bread—Fine Wheaten, first quality	Purchase
---	-----	-----	-----	----------

ANNEX TO CONTRACT No. 1921/192.

J. E. Handbury and Son Pty. Ltd., Flinders-lane, Melbourne.

Sub-schedule No. 2.

BUTTER.

Security, £5.

	£	s.	d.
1. Butter—First Grade Creamery, to score not less than 90 points, Government grade, Commerce Regulations standard... .. per cwt.	9	16	0

Sub-schedule No. 3.

CHEESE AND BACON.

1. Cheese—First Class quality per lb.	Purchase
2. Bacon—sides, Farmer's, Hutton's, or Cation and Hilton's, as ordered per cwt.	

ANNEX TO CONTRACT No. 1921/193.

J. D. Howie, Fitzroy.

Sub-schedule No. 4.

GROCERIES.

Security, £20.

	£	s.	d.
1. Apples—Dried per lb.	0	1	0
2. Apricots—Dried, Mildura do.	0	1	8
3. Biscuits—Coffee do.	0	0	10
4. Blue—Of any brand ordered do.	0	1	0
5. Candles—(Full weights) Kitchen's "Petrolines," or other make of equal quality, to be supplied in 1-lb. packets do.	0	0	10½
6. Candles—Carriage, equal to Kitchen's No. 8, in 1-lb. packets do.	0	0	10½
7. Chicory—Fresh ground do.	0	1	0
8. Cocoa—In ½-lb. packets, of any brand ordered do.	0	2	0
9. Coffee—"Neigherry A" to sample—Fresh roasted and whole, beans to be thoroughly sound do.	0	1	6

GROCERIES—continued.

	£	s.	d.
10. Cornina ... per lb.	0	0	9
11. Currants, 3 crowns (present season's) ... do.	0	0	9
12. Curry Powder ... do.	0	1	6
13. Essence of Lemon—In full 1-oz. bottles, of any brand ordered ... per bot.	0	0	8
14. Flour—Self-raising, of any brand ordered ... per lb.	0	0	5
15. Golden syrup, in 7-lb. tins ... per tin	0	3	3
16. Honey—Prime garden ... per lb.	0	0	7
17. Jams—Assorted, in 2-lb. tins in the proportion of half plum and half assorted quince, peach, black currant, and raspberry ... per doz. tins	0	10	0
18. Lemon peel ... per lb.	0	1	0
19. Meal—Digestive ... per cwt.	1	8	0
20. Milk—Condensed, 1-lb. tins ... per tin	0	1	3
21. Mustard—Double Superfine, of any Commonwealth manufacture ordered ... per lb.	0	3	6
22. Oatmeal—Flaked or Plain, of any brand ordered ... per cwt.	1	1	0
23. Pearl barley ... do.	1	0	0
24. Pease—Split ... do.	1	8	0
25. Pepper—White, ground ... per lb.	0	1	3
26. Pickles—Picallili ... per bot.	0	1	0
27. Powder—Baking, of any brand ordered, in 1-lb. tins ... per tin	0	2	0
28. Raisins—Sultana, 3 crowns (present season's) ... per lb.	0	0	10
29. Rice—Dressed, to sample ... per cwt.	1	5	6
30. Seed Tapioca (Sago)—To sample ... do.	1	5	0
31. Salmon—Fresh, in 1-lb. tins, Falls, of any brand ordered ... per tin	0	2	0
32. Salt—Fine ... per cwt.	0	7	0
33. Sardines—1's ... per tin	0	0	9½
34. Pickled Salmon ... per lb.	0	1	0
35. Sauce—Tomato, pints, any brand ordered ... per bot.	0	0	10
36. Soda—Washing ... per cwt.	0	10	0
37. Starch—Of any brand ordered, to sample ... per lb.	0	0	8
38. Tapioca—Pearl ... per cwt.	1	5	0
39. Tea—Ceylon, to sample ... per lb.	0	1	1
40. Treacle, in 7-lb. tins ... per tin	0	2	7
41. Vinegar ... per quart	0	0	6

ANNEX TO CONTRACT No. 1921/194.

F. Watkins Pty. Ltd., 316 Moray-street, South Melbourne.

Sub-schedule No. 5.

MEAT (FRESHLY KILLED.)

	£	s.	d.
Security, £20.			
1. Fresh Ox Beef—Roast ... per cental	2	18	4
2. Fresh Ox Beef Steak, for frying—Buttock and Blade in equal proportions ... do.	3	6	8
3. Fresh Ox Beef Steak—Stewing ... do.	2	18	4
4. Corned Ox Beef—Rolled or Round, as ordered, without bone or cartilage ... do.	3	10	10
5. Mutton—Fresh, in carcass ... do.	2	10	0
6. Tripe, Ox (during winter) ... per lb.	0	0	7
7. Pork—Pickled ... do.	0	1	0
8. Fresh Beef Suet—Kidney ... do.	0	0	8
9. Sausages—Beef (during winter) ... do.	0	0	7
10. " Belgium (during summer) ... do.	0	0	10

Schedule No. 16.

PROVISIONS—MONT PARK.

(Delivery at the Hospital for Insane.)

ANNEX TO CONTRACT No. 1921/195.

E. J. Callander, 519 High-street, Preston.

Sub-schedule No. 1.

BREADSTUFFS.

	£	s.	d.
Security, £30.			
1. Bread—Fine Wheaten, first quality ... per cental	1	0	2
2. Flour—First quality ... do.	1	3	0

See note bread and flour, page 2576.

ANNEX TO CONTRACT No. 1921/196.

J. E. Handbury and Son Pty. Ltd., Melbourne.

Sub-schedule No. 2.

BUTTER.

	£	s.	d.
Security, £5.			
1. Butter—First Grade Creamery, to score not less than 90 points Government grade, Commerce Regulations standard per cwt.	9	16	0

See note butter and cheese, page 2576.

Sub-schedule No. 3.

CHEESE.

1. Cheese—First Class quality ... Purchase			
--	--	--	--

See note butter and cheese, page 2576.

ANNEX TO CONTRACT No. 1921/197.

J. D. Howie, 299 Smith-street, Fitzroy.

Sub-schedule No. 4.

GROCERIES:

	£	s.	d.
Security, £10.			
1. Blue—Of any brand ordered ... per lb.	0	0	11½
2. Candles (full weights)—Kitchen's "Petrolines," or other make of equal quality, to be supplied in 1-lb. packets ... do.	0	0	10½
3. Coffee—"Neigherry A"—Fresh roasted and Whole—Beans to be thoroughly sound, to sample ... do.	0	1	1
4. Cornina ... do.	0	0	9
5. Currants, 3 Crowns (present season's) ... do.	0	0	8½
6. Curry Powder ... do.	0	1	6
7. Ginger—Ground ... do.	0	1	3
8. Golden Syrup, in 7-lb. tins ... per tin	0	2	9
9. Haricot Beans ... per lb.	0	0	2
10. Mustard—"Double Superfine," of any Commonwealth manufacture ordered ... do.	0	2	4
11. Oatmeal—Of any brand ordered ... per cwt.	0	18	0
12. Pease—Split ... do.	1	5	6
13. Pepper—Black, Ground ... per lb.	0	0	10
14. Pipes—Tobacco, Clay ... per doz.	0	1	6
15. Raisins—Sultana 3 Crowns (present season's) ... per lb.	0	0	10½
16. Rice—Dressed, to sample ... per cwt.	1	4	6
17. Seed Tapioca (Sago)—To sample ... per lb.	0	0	3
18. Salt—Fine ... per cwt.	0	6	6
19. Soap—Hudson's Extract ... per box	0	6	6
20. Soda—Carbonate of ... per lb.	0	0	3½
21. Soda—Washing ... per cwt.	0	8	0
22. Spice ... per lb.	0	1	6
23. Starch—Of any brand ordered, to sample ... do.	0	0	8
24. Tartar—Cream of (substitute) ... do.	0	1	9
25. Treacle, in 7-lb. tins ... per tin	0	2	4
26. Vinegar ... per pint	0	0	3

ANNEX TO CONTRACT No. 1921/198.

J. D. Howie, Smith-street, Fitzroy.

Sub-schedule No. 5.

JAMS.

(FOR HOSPITALS FOR THE INSANE.)

	£	s.	d.
Security, £10.			
1. Jams—Assorted, of approved kinds in the proportion of half seed and half actual net stone, of the best quality, in tins ... weight	0	0	4½

ANNEX TO CONTRACT No. 1921/199.

W. Angliss and Co. Pty. Ltd., 42 Bourke-street, Melbourne.

Sub-schedule No. 6.

MEAT (FRESHLY KILLED.)

	£	s.	d.
Security, £30.			
1. Fresh Beef—Fore-quarters (February to June) ... per cental	2	0	6
2. Fresh Beef—Hind-quarters (February to June) ... do.	2	0	6
3. Fresh Beef—Buttocks (February to June) ... do.	2	0	6
4. Fresh Mutton (July to November and March to June) ... do.	2	0	6
5. Corned Beef—Rolled or round as ordered, without bone or cartilage ... do.	2	0	6
6. Fresh Beef Suet—Kidney (December, April, May, June) ... do.	2	0	6

ANNEX TO CONTRACT No. 1921/200.

H. McDonough, Flinders-street, Melbourne.

Sub-schedule No. 7.

POTATOES.

	£	s.	d.
Security, £10.			
1. Potatoes ... per cwt.	0	5	9

See note potatoes, page 2577.

Sub-schedule No. 8.

SUGAR.

1. Sugar—White, to sample ... per cwt. Purchase from Maffra			
---	--	--	--

ANNEX TO CONTRACT No. 1921/201.

J. D. Howie, 299 Smith-street, Fitzroy.

Sub-schedule No. 9.

TEA.

	£	s.	d.
Security, £10.			
1. Tea—Best Ceylon, to sample ... per lb.	0	1	1½

Schedule No. 2.
PROVISIONS AT WILLIAMSTOWN.

(For s.s. Rip.)

(Supplies for Naval Forces are not included in this Schedule.)

(Supplies for the "Rip" to be delivered at Dredging Depot, Footscray-road.)

Sub-schedule No. 1.

BREADSTUFFS.

- | | | |
|--------------------------------------|------------|------------|
| 1. Bread—Fine wheaten, first quality | per cental | } Purchase |
| 2. Flour—First quality | do. | |

Sub-schedule No. 2.

BUTTER.

- | | | |
|--|---------|----------|
| 1. Butter—First Class Creamery, to score not less than 90 points Government grade, Commerce Regulations standard | per lb. | Purchase |
|--|---------|----------|

ANNEX TO CONTRACT No. 1921/202.

Moran and Caio Pty. Ltd., Fitzroy.

Sub-schedule No. 3.

GROCERIES.

Security, £10.

- | | | £ | s. | d. |
|---|-----------|---|----|----|
| 1. Candles—(full weights) Kitchen's "Petrolines," or other make of equal quality, to be supplied in 1-lb. packets | per lb. | 0 | 0 | 9½ |
| 2. Chocolate, of any brand ordered | do. | 0 | 1 | 8 |
| 3. Coffee—Fresh roasted and ground, to sample | do. | 0 | 1 | 5 |
| 4. Currants—3 crowns, present season's | do. | 0 | 0 | 9 |
| 5. Flour—Self-raising | do. | 0 | 0 | 4½ |
| 6. Jams—Assorted, of approved kinds, in proportion of half seed and half stone, of best quality (in 2-lb. tins) | per tin | 0 | 1 | 1 |
| 7. Milk—Condensed, of any brand ordered | do. | 0 | 1 | 0 |
| 8. Mustard—double superfine, of any brand ordered | per lb. | 0 | 2 | 6 |
| 9. Oatmeal | per cwt. | 1 | 0 | 0 |
| 10. Pearl barley | do. | 1 | 0 | 0 |
| 11. Pease—Split | do. | 1 | 7 | 6 |
| 12. Pepper—White, ground | per lb. | 0 | 1 | 3 |
| 13. Raisins—Sultana, 3 crowns, present season's | do. | 0 | 0 | 11 |
| 14. Rice—Dressed, to sample | do. | 0 | 0 | 3 |
| 15. Salt—Fine, to sample | do. | 0 | 0 | 0½ |
| 16. Tea—Best Ceylon, special sample | per lb. | 0 | 1 | 2 |
| 17. Vinegar—Champion's, or other approved brand | per quart | 0 | 4 | |
| 18. Biscuits, kinds as ordered | per lb. | 0 | 0 | 7 |

ANNEX TO CONTRACT No. 1921/203.

Wm. Angliss and Co. Pty. Ltd., 42 Bourke-street, Melbourne.

Sub-schedule No. 4.

MEAT (FRESHLY KILLED).

Security, £10.

- | | | £ | s. | d. |
|----------------------|------------|---|----|----|
| 1. Fresh Beef—Joints | per cental | 2 | 10 | 0 |
| 2. " Mutton " | do. | 2 | 10 | 0 |
| 3. " Suet | do. | 2 | 10 | 0 |

Sub-schedule No. 5.

VEGETABLES.

- | | | |
|---|----------|------------|
| 1. Potatoes | per cwt. | } Purchase |
| 2. Onions | do. | |
| 3. Other vegetables, including cauliflower, carrots, cabbages, turnips, and parsnips, as required | do. | |

Schedule No. 3.

PROVISIONS—ARARAT DISTRICT.

ANNEX TO CONTRACT No. 1921/204.

Wm. Bates, Ararat.

Sub-schedule No. 1.

BREADSTUFFS.

Security, £100.

- | | | £ | s. | d. |
|--------------------------------------|------------|---|----|----|
| 1. Bread—Fine wheaten, first quality | per cental | 1 | 3 | 5½ |
| 2. Flour—First quality | do. | 1 | 0 | 9 |

See note bread and flour, page 2576.

ANNEX TO CONTRACT No. 1921/205.

J. E. Handbury and Son Pty. Ltd., 460 Flinders-lane, Melbourne.

Sub-schedule No. 2.

BUTTER.

Security, £20.

- | | | £ | s. | d. |
|--|----------|---|----|----|
| 1. Butter—First Grade Creamery, to score not less than 90 points Government grade, Commerce Regulations standard | per cwt. | 9 | 16 | 0 |
- See note butter and cheese, page 2576.

Sub-schedule No. 3.

CHEESE.

- | | | |
|----------------------------|----------|----------|
| Cheese—First Class quality | per cwt. | Purchase |
|----------------------------|----------|----------|
- See note butter and cheese, page 2576.

ANNEX TO CONTRACT No. 1921/206.

J. D. Howie, Fitzroy.

Sub-schedule No. 4.

GROCERIES.

Security, £30.

- | | | £ | s. | d. |
|---|----------|---|----|-----|
| 1. Blue—Of any brand ordered | per lb. | 0 | 0 | 11½ |
| 2. Candles (full weights) — Kitchen's "Petrolines," or other make of equal quality, to be supplied in 1-lb. packets | do. | 0 | 0 | 10½ |
| 3. Coffee—"Neigherry A"—Fresh roasted and whole—Beans to be thoroughly sound, to sample | do. | 0 | 1 | 3 |
| 4. Curry | do. | 0 | 1 | 6 |
| 5. Golden Syrup (in 56-lb. tins) | per tin | 1 | 1 | 6 |
| 6. Mustard—"Double Superfine," of any Commonwealth manufacture ordered | per lb. | 0 | 2 | 9 |
| 7. Oatmeal—Of any brand ordered | per cwt. | 1 | 0 | 0 |
| 8. Pease—Split | do. | 1 | 8 | 0 |
| 9. Pepper—Black, ground | per lb. | 0 | 1 | 0 |
| 10. Pipes—Tobacco, clay | per doz. | 0 | 1 | 2 |
| 11. Raisins—Sultana, 3 crowns, present season's | per lb. | 0 | 0 | 10½ |
| 12. Rice—Dressed, to sample | per cwt. | 1 | 7 | 3 |
| 13. Seed Tapioca (Sago)—To sample | do. | 1 | 6 | 0 |
| 14. Salt—Fine | do. | 0 | 8 | 0 |
| 15. Soda—Carbonate of | per lb. | 0 | 0 | 3 |
| 16. Soda—Washing | per cwt. | 0 | 10 | 0 |
| 17. Starch—Of any brand ordered, to sample | per lb. | 0 | 0 | 7 |
| 18. Tartar—Cream of (substitute) | do. | 0 | 1 | 9 |
| 19. Vinegar | per pint | 0 | 0 | 3 |

ANNEX TO CONTRACT No. 1921/207.

The Ballarat Jam Co. Pty. Ltd., Davey-street, Ballarat.

Sub-schedule No. 5.

JAMS.

Security, £10.

- | | | £ | s. | d. |
|---|---------------------------|---|----|----|
| 1. Jams, assorted, of approved kinds in the proportions of half seed and half stone, of the best quality, in tins | per lb. actual net weight | 0 | 0 | 5 |

ANNEX TO CONTRACT No. 1921/208.

Arthur Murphy, Barkly-street, Ararat.

Sub-schedule No. 6.

MEAT (FRESHLY KILLED).

Security, £100.

- | | | £ | s. | d. |
|---|------------|---|----|----|
| 1. Fresh Beef—Fore-quarters | per cental | 2 | 9 | 5½ |
| 2. " " Hind-quarters | do. | 2 | 9 | 5½ |
| 3. " " Buttocks | do. | 2 | 9 | 5½ |
| 4. " Mutton | do. | 2 | 7 | 1½ |
| 5. Corned Beef—Rolled or round, as ordered, without bone or cartilage | do. | 2 | 9 | 5½ |
| 6. Fresh Suet—Kidney | do. | 2 | 9 | 5½ |

ANNEX TO CONTRACT No. 1921/209.

H. McDonough, Flinders-street, Melbourne.

Sub-schedule No. 7.

POTATOES.

Security, £30.

- | | | £ | s. | d. |
|-------------|----------|---|----|----|
| 1. Potatoes | per cwt. | 0 | 6 | 0 |
- See note potatoes, page 2577.

Sub-schedule No. 8.

SUGAR.

- | | | |
|----------------------------|----------|------------------------|
| 1. Sugar, white, to sample | per cwt. | } Purchase from Maffra |
|----------------------------|----------|------------------------|

ANNEX TO CONTRACT No. 1921/210.

J. D. Howie, 299 Smith-street, Fitzroy.

Sub-schedule No. 9.

TEA.

Security, £20.

- | | | £ | s. | d. |
|-------------------------------|---------|---|----|----|
| 1. Tea—Best Ceylon, to sample | per lb. | 0 | 1 | 1½ |

Schedule No. 4.
PROVISIONS—BEECHWORTH DISTRICT.

ANNEX TO CONTRACT No. 1921/211.
William Price, Newtown, Beechworth.

Sub-schedule No. 1.

BREADSTUFFS.		£	s.	d.
Security, £100.				
1. Bread—Fine wheaten, first quality	per cental	0	19	0
2. Flour—First quality	do.	1	1	0

See note bread and flour, page 2576.

ANNEX TO CONTRACT No. 1921/212.

J. E. Handbury and Son Pty. Ltd., Flinders-lane, Melbourne.

Sub-schedule No. 2.

BUTTER.		£	s.	d.
Security, £10.				
1. Butter—First Grade Creamery, to score not less than 90 points, Government grade, Commerce Regulations standard	per cwt.	9	18	0

See note butter and cheese, page 2576.

Sub-schedule No. 3:

CHEESE.		Purchase
1. Cheese—First Class quality

See note butter and cheese, page 2576.

ANNEX TO CONTRACT No. 1921/213.

J. D. Howie, 299 Smith-street, Fitzroy.

Sub-schedule No. 4.

GROCERIES.		£	s.	d.
Security, £30.				
1. Arrowroot	per lb.	0	0	6
2. Blue—Of any brand required	do.	0	0	11½
3. Candles (full weights)—Kitchen's "Petrolines," or other make of equal quality, to be supplied in 1-lb. packets	do.	0	0	10½
4. Coffee—"Neigherry A," fresh roasted and whole, beans to be thoroughly sound, to sample	do.	0	1	2
5. Coffee—Fresh roasted and ground, to sample	do.	0	1	2
6. Golden Syrup (in 7-lb. tins)	per tin	0	2	9
7. Maizena	per lb.	0	0	9
8. Mustard—"Double superfine," of any Commonwealth manufacture ordered	do.	0	3	0
9. Oatmeal—Of any brand ordered	per cwt.	0	19	0
10. Pearl Barley	do.	0	19	0
11. Pease—Split	do.	1	6	0
12. Pepper—Black, ground	per lb.	0	1	0
13. Pipes—Tobacco, clay	per doz.	0	1	6
14. Raisins—Sultana, 3 crowns, present season's	per lb.	0	0	10½
15. Rice—Dressed, to sample	per cwt.	1	8	6
16. Seed Tapioca (Sago)—To sample	do.	1	5	0
17. Salt—Fine	do.	0	8	6
18. Soap—Household, yellow, dry, to sample	per cwt.	1	14	0
19. Soda—Carbonate of	per lb.	0	0	3
20. " Washing	per cwt.	0	12	0
21. Starch—Of any brand ordered, to sample	per lb.	0	0	8
22. Tartar—Cream of (substitute)	do.	0	1	9
23. Vinegar	per pint	0	0	3

ANNEX TO CONTRACT No. 1921/214.

W. H. Morton, One Mile, Beechworth.

Sub-schedule No. 5.

MEAT (FRESHLY KILLED).		£	s.	d.
Security, £100.				
1. Fresh Beef—Fore-quarters	per cental	1	15	5
2. " Hind-quarters	do.	1	13	5
3. " Buttocks	do.	1	15	5
4. " Mutton	do.	1	13	5
5. Corned Beef—rolled or round, as ordered, without bone or cartilage	do.	1	15	5
6. Fresh Suet—Kidney (2 months only)	per lb.	0	0	5

ANNEX TO CONTRACT No. 1921/215.

Collins and Yule, Stanley.

Sub-schedule No. 6.

POTATOES.		£	s.	d.
Security, £20.				
1. Potatoes	per cwt.	0	5	3

See note potatoes, page 2577.

Sub-schedule No. 7.

SUGAR.		Purchase from Maffra
1. Sugar, white, to sample	per cwt.	...

ANNEX TO CONTRACT No. 1921/216.

J. D. Howie, 299 Smith-street, Fitzroy.

Sub-schedule No. 8.

TEA.		£	s.	d.
Security, £20.				
1. Tea—Best Ceylon, to sample	per lb.	0	1	1½

Schedule No. 5.

PROVISIONS AT BALLARAT.

ANNEX TO CONTRACT No. 1921/217.

Ballarat Co-operative Distribution Society Ltd., Ballarat.

Sub-schedule No. 1.

BREADSTUFFS.		£	s.	d.
Security, £45.				
1. Bread—Fine Wheaten, first-quality	per cental	1	1	1½

ANNEX TO CONTRACT No. 1921/217.

J. P. Hutchinson, Ballarat.

Sub-schedule No. 1.

BREADSTUFFS.		£	s.	d.
Security, £15.				
2. Bread—Wheaten, third quality	per cental	1	0	19
3. Flour—First quality	do.	1	1	0

See note bread and flour, page 2576.

ANNEX TO CONTRACT No. 1921/218.

J. E. Handbury and Son Pty. Ltd., Melbourne.

Sub-schedule No. 2.

BUTTER.		£	s.	d.
Security, £10.				
1. Butter—First Grade Creamery, to score not less than 90 points, Government grade, Commerce Regulations standard	per cwt.	9	16	0

See note butter and cheese, page 2576.

Sub-schedule No. 3.

CHEESE.		Purchase
1. Cheese—First Class quality

See note butter and cheese, page 2576.

ANNEX TO CONTRACT No. 1921/219.

J. D. Howie, Fitzroy.

Sub-schedule No. 4.

GROCERIES.		£	s.	d.
Security, £30.				
1. Barley—Pearl	per lb.	0	0	2½
2. Blue—Of any brand required	do.	0	0	11½
3. Candles (full weights)—Kitchen's "Petrolines," or other make of equal quality, to be supplied in 1-lb. packets	do.	0	0	10½
4. Coffee—"Neigherry A." Fresh roasted and whole, beans to be thoroughly sound, to sample	do.	0	1	2½
5. Cornina	do.	0	0	9
6. Currants, 3 crowns, present season's	do.	0	0	9
7. Ginger—Ground	per tin	0	1	6
8. Golden Syrup (in 7-lb. tins)	per tin	0	3	0
9. Mustard—"Double superfine, of any Commonwealth manufacture ordered	per lb.	0	2	6
10. Oatmeal—Of any brand ordered	per cwt.	0	19	6
11. Pease—Split	do.	1	6	0
12. Pepper—Black, ground	per lb.	0	1	0
13. Pipes—Tobacco, clay	per doz.	0	1	2
14. Raisins—Sultana, 3 crowns, present season's	per lb.	0	0	10½
15. Rice—Dressed, to sample	per cwt.	1	8	0
16. Seed Tapioca (Sago), to sample	do.	1	3	0
17. Salt—Fine	do.	0	7	6
18. Soap—(Household), Carbolic, dry to sample	per lb.	0	0	5
19. Soup—(Household), Yellow, dry, to sample	do.	0	0	5
20. Soda—Carbonate of	do.	0	0	3
21. " Washing	per cwt.	0	9	0
22. Spice—Mixed, in 1-oz. packets	per doz. pkts.	0	1	0
23. Starch—Of any brand ordered, to sample	per lb.	0	0	7
24. Tartar—Cream of (substitute)	do.	0	1	9
25. Tobacco—"Starlight," or other make of equal quality, as ordered	do.	0	5	6
26. Vinegar	per pint	0	0	3

ANNEX TO CONTRACT No. 1921/220.

J. D. Howie, Fitzroy.

Sub-schedule No. 5.

JAMS.		£	s.	d.
Security, £10.				
1. Jams—Assorted, of approved kinds in proportion of half seed and half stone, of the best quality, in tins as required	per lb. actual net weight	0	0	4½

ANNEX TO CONTRACT No. 1921/221.
H. J. Symons, Macarthur-street, Ballarat.

Sub-schedule No. 6.
MEAT (FRESHLY KILLED).

	Security, £60.	£	s.	d.
1. Fresh Beef—Fore-quarters per cental		2	3	6
2. " " Hind-quarters do.		2	3	6
3. " " Buttocks do.		2	3	6
4. " " Mutton do.		2	3	6
5. Corned Beef, rolled or round, as ordered, without bone or cartilage do.		2	3	6
6. Fresh Suet—Kidney do.		2	3	6

ANNEX TO CONTRACT No. 1921/222.

W. Cochran, Ballarat.

Sub-schedule No. 7.

POTATOES.

	Security, £20.	£	s.	d.
1. Potatoes per cwt.		0	5	3

See note potatoes, page 2577.

ANNEX TO CONTRACT No. 1921/223.

J. D. Howie, Fitzroy.

Sub-schedule No. 8.

TEA.

	Security, £18.	per lb.	0	1	1½
1. Tea—Best Ceylon, to sample					

ANNEX TO CONTRACT No. 1921/223.

Moran and Cato Pty. Ltd., Fitzroy.

Sub-schedule No. 8.

TEA.

	Security, £2.	per lb.	£	s.	d.
2. Tea—Ration, to sample			0	0	9

Schedule No. 6.

PROVISIONS AT GEELONG.

ANNEX TO CONTRACT No. 1921/224.

William Marshall, 150 Malop-street, Geelong.

Sub-schedule No. 1.

BREADSTUFFS.

	Security, £20.	per cental	£	s.	d.
1. Bread—Fine Wheaten, first quality		1	0	0	
2. " " Wheaten, third quality do.		0	19	0	

See note bread and flour, page 2576.

ANNEX TO CONTRACT No. 1921/225.

Moran and Cato Pty. Ltd., Fitzroy.

Sub-schedule No. 2.

GROCERIES.

	Security, £20.	per lb.	£	s.	d.
1. Arrowroot—Queensland		0	0	7½	
2. Candles (full weights)—Kitchen's "Petrolines," or other make of equal quality, to sample, to be supplied in 1-lb. packets do.		0	0	11	
3. Barley—Pearl do.		0	0	3	
4. Currants, 3 crowns, present season's do.		0	0	10	
5. Eggs—Fresh per doz.		0	2	3	
6. Mustard—"Double Superfine," of any Commonwealth manufacture ordered ... per lb.		0	2	6	
7. Oatmeal—Of any brand ordered per cwt.		1	2	0	
9. Pepper—Black, ground per lb.		0	1	3	
10. Pipes—Tobacco, clay per doz.		0	1	2	
11. Raisins—Sultana, 3 crowns, present season's per lb.		0	0	11½	
12. Rice—Dressed, to sample per cwt.		1	8	0	
13. Seed Tapioca (Sago), to sample per lb.		0	0	3	
14. Salt—Fine do.		0	0	0½	
15. Soap—(Household) Carbolic, dry, to sample do.		0	0	6	
16. Soap—(Household) Yellow, dry, to sample per cwt.		1	16	0	
17. Soda—Washing do.		0	11	0	
18. Sugar—Ration, to sample per cwt.		2	6	0	
19. Tea—Ration per lb.		0	1	0	
20. Tobacco—"Starlight," or other make of equal quality, as ordered do.		0	5	2	
Potatoes per cwt.					Purchase

ANNEX TO CONTRACT No. 1921/226.

M. McCartin and Sons, Moorabool-street, Geelong.

Sub-schedule No. 3.

MEAT (FRESHLY KILLED).

	Security, £20.	per cental	£	s.	d.
1. Fresh Beef		1	16	5½	
2. " " Buttocks do.		2	5	10	
3. " " Mutton do.		1	14	4½	

ANNEX TO CONTRACT No. 1921/227.

S. H. Warren, West Moolap.

Sub-schedule No. 4.

MILK.

	Security, £5.	per gallon	£	s.	d.
1. Milk—Fresh and pure		0	2	0	

Schedule No. 7.

PROVISIONS AT LARA.

(Delivery at the Inebriates' Retreat.)

ANNEX TO CONTRACT No. 1921/228.

Annie Morgan, Lara Lake.

Sub-schedule No. 1.

BREADSTUFFS.

	Security, £20.	per cental	£	s.	d.
1. Bread—Fine Wheaten, first quality		1	5	0	
2. Flour—First quality do.		1	2	11	

See note bread and flour, page 2576.

ANNEX TO CONTRACT 1921/229.

J. D. Howie, Fitzroy.

Sub-schedule No. 2.

BUTTER.

	Security, £10.	per cwt.	£	s.	d.
1. Butter—First-grade Creamery, to score not less than 90 points, Government grade, Commerce Regulations standard		10	13	0	

See note butter and cheese, page 2576.

Sub-schedule No. 3.

CHEESE.

1. Cheese—First Class quality Purchase					
---	--	--	--	--	--

See note butter and cheese, page 2576.

ANNEX TO CONTRACT No. 1921/230.

J. D. Howie, Fitzroy.

Sub-schedule No. 4.

GROCERIES.

	Security, £20.	per lb.	£	s.	d.
1. Arrowroot—Queensland		0	0	6	
2. Bacon, Farmer's or Hutton's, by the side (or other approved brand) do.		0	1	3	
3. Barley—Pearl do.		0	0	3	
4. Blue—Of any brand ordered do.		0	0	11½	
5. Candles—(Full weights) Kitchen's "Petrolines," or other make of equal quality, to be supplied in 1-lb. packets do.		0	0	10½	
6. Cocoa—(Homœopathic)—McKenzie's, or other brand of equal quality do.		0	1	6	
7. Coffee—"Neilgherry A." Fresh roasted and whole—Beans to be thoroughly sound, to sample do.		0	1	2	
8. Currants—3 crowns, present season's do.		0	0	8½	
9. Mustard—Double Superfine, of any Commonwealth manufacture ordered do.		0	3	0	
10. Oatmeal—Of any brand ordered per cwt.		0	19	6	
11. Peas—Split per lb.		0	0	3	
12. Pepper—Black, ground do.		0	1	0	
13. Raisins—Sultana, 3 crowns, present season's do.		0	0	11	
14. Rice—Dressed, to sample do.		0	0	3	
15. Seed Tapioca (Sago), to sample do.		0	0	3	
16. Salmon—Fresh, brand as ordered, tins (1-lb. tins) per tin		0	1	2	
17. Salt—Fine per lb.		0	0	1	
18. Soap—(Household) Yellow, dry, to sample do.		0	0	4	
19. Soap—Toilet, Glycerine, in tablets, to sample do.		0	1	6	
20. Soda—Washing do.		0	0	2	
21. Tea—Best Ceylon, to sample do.		0	1	2	

ANNEX TO CONTRACT No. 1921/231.

John D. Howie, 299 Smith-street, Fitzroy.

Sub-schedule No. 5.

JAMS.

	Security, £5.	per doz tins	£	s.	d.
1. Jams, Assorted, of approved kinds in the proportion of half seed and half stone, of the best quality, in tins containing 27 ozs. net		0	12	6	

ANNEX TO CONTRACT No. 1921/232.

W. Angliss and Co. Pty. Ltd., 42 Bourke-street, Melbourne.

Sub-schedule No. 6.

MEAT (FRESHLY KILLED).

	Security, £20.	£ s. d.
1. Fresh Beef Joints per cental		2 16 0
2. " Mutton Joints do.		2 5 0
3. " Tripe, Sausages, Kidneys, and Liver, as ordered do.		2 10 0

ANNEX TO CONTRACT No. 1921/233.

F. Samblee, Lara Lake.

Sub-schedule No. 7.

POTATOES.

	Security, £20.	£ s. d.
1. Potatoes per cwt.		0 6 0

See note potatoes, page 2577.

Schedule No. 8.

PROVISIONS—SUNBURY DISTRICT.

ANNEX TO CONTRACT No. 1921/234.

Jane Eadie, Sunbury.

Sub-schedule No. 1.

BREADSTUFFS.

	Security, £100.	£ s. d.
1. Bread—Fine Wheaten, first quality ... per cental		0 19 9
2. Flour—First quality do.		1 1 6

See note bread and flour, page 2576.

ANNEX TO CONTRACT No. 1921/235.

J. E. Handbury and Son Pty. Ltd., Melbourne.

Sub-schedule No. 2.

BUTTER.

	Security, £20.	£ s. d.
1. Butter—First Grade Creamery, to score not less than 90 points Government grade, Commerce Regulations standard ... per cwt.		9 16 0

See note butter and cheese, page 2576.

Sub-schedule No. 3.

CHEESE.

1. Cheese—First Class quality Purchase		
---	--	--

See note butter and cheese, page 2576.

ANNEX TO CONTRACT No. 1921/236.

J. D. Howie, Smith-street, Fitzroy.

Sub-schedule No. 4.

GROCERIES.

	Security, £20.	£ s. d.
1. Blue—Of any brand ordered per lb.		0 0 1½
2. Candles—(Full weights) Kitchen's "Petrolines," or other make of equal quality, to sample, to be supplied in 1-lb. packets do.		0 0 10½
3. Coffee—"Neilgherry A"—Fresh roasted and whole—Beans to be thoroughly sound, to sample do.		0 1 2½
4. Cornina do.		0 0 8½
5. Currants—3 crowns, present season's do.		0 0 8½
6. Curry Powder do.		0 1 6
7. Ginger—Ground do.		0 1 6
8. Golden Syrup, in 56-lb. tins per tin		0 19 6
9. Maizena—Duryea's per lb.		0 0 9½
10. Mustard—Double superfine, of any Commonwealth manufacture ordered do.		0 3 0
11. Oatmeal—Of any brand ordered per cwt.		0 18 0
12. Pearl Barley do.		0 18 0
13. Pease—Split do.		1 5 0
14. Pepper—Black, ground per lb.		0 1 0
15. Pipes—Tobacco, clay per doz.		0 1 2
16. Raisins—Sultana, 3 crowns, present season's per lb.		0 0 10½
17. Rice—Dressed, to sample per cwt.		1 4 6
18. Seed Tapioca (Sago), to sample do.		1 4 0
19. Salt—Fine do.		0 6 6
20. Soda—Washing do.		0 9 0
21. Starch—Of any brand ordered, to sample per lb.		0 0 7
22. Tartar—Cream of (substitute) do.		0 1 9
23. Vinegar per pint		0 0 3

ANNEX TO CONTRACT No. 1921/237.

J. D. Howie, Smith-street, Fitzroy.

Sub-schedule No. 5.

JAMS.

(FOR HOSPITALS FOR THE INSANE)

	Security, £10.	£ s. d.
1. Jams—Assorted, of approved kinds in the proportion of half seed and half stone, of the best quality, in tins per lb. actual net weight		0 0 4½

ANNEX TO CONTRACT No. 1921/238.

S. J. Starkie, Sunbury.

Sub-schedule No. 6.

MEAT (FRESHLY KILLED).

	Security, £30.	£ s. d.
1. Fresh Beef—Fore-quarters per cental		2 8 0
2. " " Hind-quarters do.		2 8 0
3. " " Buttocks do.		2 8 0
4. " Mutton do.		2 8 0
5. Corned Beef—Rolled or round, as ordered, without bone or cartilage do.		2 8 0

ANNEX TO CONTRACT No. 1921/239.

H. McDonough, Flinders-street, Melbourne.

Sub-schedule No. 8.

POTATOES.

	Security, £30.	£ s. d.
1. Potatoes per cwt.		0 5 9

See note potatoes, page 2577.

Sub-schedule No. 9.

SUGAR.

1. Sugar—White, to sample per cwt.		Purchase from Maffra.
---	--	-----------------------

ANNEX TO CONTRACT No. 1921/240.

J. D. Howie, 299 Smith-street, Fitzroy.

Sub-schedule No. 10.

TEA.

	Security, £20.	£ s. d.
Tea—Best Ceylon, to sample per lb.		0 1 1½

Schedule No. 9.

PROVISIONS—BENDIGO DISTRICT.

ANNEX TO CONTRACT No. 1921/241.

F. W. Beischer, Bridge-street, Bendigo.

Sub-schedule No. 1.

BREAD.

	Security, £5.	£ s. d.
1. Bread—Wheaten, third quality per cental		1 3 0

See note bread and flour, page 2576.

ANNEX TO CONTRACT No. 1921/242.

Moran and Cato Pty. Ltd., Brunswick-street, Fitzroy.

Sub-schedule No. 2.

GROCERIES AND POTATOES.

	Security, £5.	£ s. d.
1. Candles—(full weights) Kitchen's "Petrolines," or other make of equal quality, to sample, to be supplied in 1-lb. packets per lb.		0 1 0
2. Milk—Fresh and pure per quart		0 1 0
3. Oatmeal—Of any brand ordered per lb.		0 0 4
5. Rice, dressed, to sample per lb.		0 0 6
6. Salt—Fine do.		0 0 2
7. Soap—Yellow (Household), dry, to sample do.		0 0 7
8. " Carbolic " " " " do.		0 0 7
9. Soda—Washing do.		0 0 2½
10. Tea—Best Ceylon, to sample do.		0 1 6
11. " Ration do.		0 1 2
12. Tobacco—"Starlight," or other make of equal quality, as ordered do.		0 5 6
13. Whiting do.		0 0 2
Potatoes per cwt.		Purchase

ANNEX TO CONTRACT No. 1921/243.

H. Gittens, Hargreaves-street, Bendigo.

Sub-schedule No. 3.

MEAT (FRESHLY KILLED).

	Security, £6.	£ s. d.
1. Fresh Beef per cental		2 15 0

Schedule No. 10.
PROVISIONS—CASTLEMAINE DISTRICT.

ANNEX TO CONTRACT 1921/244.

M. Van Heurck, Castlemaine.

Sub-schedule No. 1.

BREAD.

1. Bread—Wheaten, third quality	Security, £5.	per cental	£ s. d.
			1 7 1

See note bread and flour, page 2576.

ANNEX TO CONTRACT No. 1921/245.

Moran and Cato Pty. Ltd., Brunswick-street, Fitzroy.

Sub-schedule No. 2.

GROCERIES AND POTATOES.

Security, £5.

1. Candles—(full weights), Kitchen's "Petrolines," Apollo Co.'s "Apollo," or other make of equal quality, to sample, to be supplied in 1-lb. packets	per lb.	0 1 2
2. Oatmeal	per cwt.	1 9 6
3. Rice, Dressed, Best, to sample	do.	2 5 0
4. Salt—Fine	per lb.	0 0 2
5. Soap—Yellow (household), dry, to sample	do.	0 0 6 1/2
6. Soda—Washing	do.	0 0 2 1/2
7. Sugar—Ration	do.	0 0 6
8. Tea	do.	0 1 1
Potatoes	per cwt. Purchase	

ANNEX TO CONTRACT No. 1921/246.

John Williamson, Mostyn-street, Castlemaine.

Sub-schedule No. 3.

MEAT (FRESHLY KILLED).

Security, £5.

1. Fresh Beef	per lb.	0 0 5
2. " Mutton	do.	0 0 5

Schedule No. 11.
PROVISIONS AT SALE.

ANNEX TO CONTRACT No. 1921/247.

Michael Keily, Raymond-street, Sale.

Sub-schedule No. 1.

BREAD.

1. Bread—Wheaten, third quality	Security, £5.	per lb.	£ s. d.
			0 0 3 1/2

See note bread and flour, page 2576.

Sub-schedule No. 2.

GROCERIES AND POTATOES.

1. Potatoes	per cwt.	} Purchase
2. Rice, dressed, Best, to sample	per lb.	
3. Salt—Fine	do.	
4. Soap, yellow (household), dry, to sample	do.	
5. Soda—Washing	do.	
6. Tea—Ration, to sample	do.	
7. Whiting	do.	

ANNEX TO CONTRACT No. 1921/248.

Ronchi Bros., Sale.

Sub-schedule No. 3.

MEAT (FRESHLY KILLED).

Security, £5.

1. Fresh Beef	per lb.	0 0 5
---------------	---------	-------

Schedule No. 12.
PROVISIONS AT RUTHERGLEN.

(For Students at Viticultural Colleges. Delivery at the College.)

ANNEX TO CONTRACT No. 1921/249.

P. E. Walker, Rutherglen.

Sub-schedule No. 1.

BREAD.

1. Bread—Fine Wheaten, first quality	Security £5.	per cental	£ s. d.
			1 7 1

See note bread and flour, page 2576.

ANNEX TO CONTRACT No. 1921/250.

J. D. Howie, Fitzroy.

Sub-schedule No. 2.

GROCERIES, ETC.

Security, £10.

1. Arrowroot	per lb.	0 0 7
2. Blue	do.	0 1 0
3. Baking Powder, in 1-lb. tins	per tin	0 2 0
4. Baking Soda	per lb.	0 0 3
5. Bacon, best cured	do.	0 1 9

GROCERIES, ETC.—continued

6. Blacking	per tin	0 0 3
7. Blacklead	per cake	0 0 1
8. Barley, Pearl	per lb.	0 0 3
9. Candles—(Full weights) Kitchen's "Petrolines," or other make of equal quality, to be supplied in 1-lb. packets	do.	0 1 0
10. Coffee—Whole—Beans to be thoroughly sound, to sample	do.	0 1 6
11. Coffee Essence, 10-oz., of any brand ordered	per bottle	0 1 4
12. Cocoa, of any brand ordered	per lb.	0 2 3
13. Cream of Tartar (substitute)	do.	0 1 9
14. Currants, 3 crown (present season's)	do.	0 0 9
15. Curry Powder	do.	0 1 6
16. Essence of Lemon, 1-oz. bottles	per bottle	0 0 8
17. Fish, Preserved, Salmon, Fresh Herrings, Herrings in Tomato, as ordered, in 1-lb. tins	per tin	0 1 0
18. Flour, best Roller	per cental	1 2 0
19. Fruits, Preserved, assorted, of approved brand, in 2-lb. tins	per tin	0 0 10
20. Ginger—Ground or Whole—Jamaica	per lb.	0 1 2
21. Golden Syrup, in 2-lb. tins	per tin	0 0 10 1/2
22. Jams, assorted, any brand ordered, in 2-lb. tins, in proportion of half seed and half stone	do.	0 1 0
23. Maizena—Duryea's	per lb.	0 0 10
24. Meat—Preserved, of approved brand, in 2-lb. tins	per tin	0 2 2
25. Macaroni or Vermicelli, as ordered	per lb.	0 0 7
26. Mustard—Double Superfine, of any brand ordered	do.	0 3 0
27. Oatmeal—Flaked or other, of any brand ordered	per cwt.	1 3 0
28. Onions	do.	0 6 0
29. Peel—Mixed	per lb.	0 1 0
30. Pepper—Black or White, Ground	do.	0 1 0
31. Pickles, of approved brand	per bottle	0 1 0
32. Potatoes	per cwt.	0 7 0
33. Raisins—Sultana, Mildura, 3 crown	per lb.	0 1 0
34. Rice—Dressed, to sample	per cwt.	1 10 0
35. Seed Tapioca (Sago)—To sample	per lb.	0 0 3
36. Salt—Coarse	do.	0 0 1
37. " Fine	per cwt.	0 9 4
38. Sauces, Worcester, Tomato, or Chutney, reputed pints, any brand ordered	per bottle	0 0 10 1/2
39. Soap—Household, yellow, to sample	per lb.	0 0 4
40. " Glycerine Tablets	do.	0 1 6
41. " Sand	do.	0 0 5
42. " Magic	do.	0 0 5
43. Soda—Washing	do.	0 0 2
44. Spices, mixed, in 1-oz. packets	per packet	0 0 2
45. Starch, to sample	per lb.	0 0 8
46. Tapioca—Pearl	do.	0 0 3
47. Tea—Best Ceylon, to sample	do.	0 1 0
48. Treacle, in 7-lb. tins	per tin	0 3 0
49. Vinegar, of approved brand	per quart	0 0 6

Schedule No. 13.

PROVISIONS AT WAHGUNYAH.

(For Students at Wahgunyah Vine Nursery. Delivery at Nursery.)

Sub-schedule No. 1.

BREAD.

1. Bread—Fine Wheaten, first quality	per cental	Purchase
--------------------------------------	------------	----------

See note bread and flour, page 2576.

ANNEX TO CONTRACT No. 1921/251.

J. D. Howie, Fitzroy.

Sub-schedule No. 2.

GROCERIES, ETC.

Security, £10.

1. Arrowroot	per lb.	£ s. d.
2. Blue	do.	0 0 7
3. Baking Powder, 1-lb. tins	do.	0 1 0
4. Baking Soda	do.	0 2 0
5. Bacon, best cured	do.	0 0 3
6. Blacking	per doz. cakes	0 0 5
7. Black Lead	do.	0 0 7 1/2
8. Barley, Pearl	per lb.	0 0 3
9. Candles—(Full weights) Kitchen's "Petrolines," Apollo Co.'s "Apollo," or other make of equal quality, to be supplied in 1-lb. packets	do.	0 1 0
10. Coffee—Whole—Beans to be thoroughly sound to sample	do.	0 1 6
11. Coffee Essence, of any brand ordered	per bottle	0 1 4
12. Cocoa	per lb.	0 2 3
13. Cream of Tartar (substitute)	do.	0 1 9
14. Currants, 3 crown	do.	0 0 9
15. Curry Powder	do.	0 1 6
16. Essence of Lemon, 1-oz. bottle	per bottle	0 0 7
17. Fish, Preserved, Salmon, Fresh Herrings, Herrings in Tomato, as ordered, in 1-lb. tins	per tin	0 1 0

GROCERIES, ETC.—continued.

	£	s.	d.
18. Flour, Best Roller ...	per cental	1	2 0
19. Fruits, Preserved, assorted, of approved brand, in 2-lb. tins ...	per tin	0	0 10
20. Ginger—Ground or Whole ...	per lb.	0	1 2
21. Golden Syrup, in 2-lb. tins ...	per tin	0	0 10½
22. Jams, assorted, any brand ordered, in 2-lb. tins, in the proportion of half seed and half stone ...	do.	0	1 0
23. Maizena—Duryea's ...	per lb.	0	0 10
24. Meat—Preserved, of approved brand, in 2-lb. tins ...	per tin	0	2 2
25. Macaroni or Vermicelli, as ordered ...	per lb.	0	0 7
26. Mustard—Double Superfine, of any brand ordered ...	do.	0	3 0
27. Oatmeal—Flaked or Other, of any brand ordered ...	do.	0	0 2½
28. Onions ...	per cwt.	0	6 0
29. Peel—Mixed ...	per lb.	0	1 0
30. Pepper—Black or White, Ground ...	do.	0	1 0
31. Pickles, of approved brand ...	per bottle	0	1 0
32. Potatoes ...	per cwt.	0	7 0
33. Raisins—Sultana (Mildura), 3 Crowns ...	per lb.	0	1 9
34. Rice—Dressed, to sample ...	do.	0	0 3
35. Seed Tapioca (Sago)—To sample ...	do.	0	0 3
36. Salt—Coarse ...	do.	0	0 1
37. Salt—Fine ...	do.	0	0 1
38. Sauces—Worcester, Tomato, or Chutney, any brand ordered, in reputed pints ...	per bottle	0	0 10½
39. Soap—Household, yellow, to sample ...	per lb.	0	0 4
40. Soap—Glycerine Tablets ...	do.	0	1 6
41. Soap—Sand ...	do.	0	0 5
42. Soap—Magic ...	do.	0	0 5
43. Soda—Washing ...	do.	0	0 2
44. Spices, mixed, in 1-oz. packets ...	per packet	0	0 2
45. Starch—To sample ...	per lb.	0	0 8
46. Tapioca—Pearl ...	do.	0	0 3
47. Tea—Best Ceylon, to sample ...	do.	0	1 0
48. Treacle, in 7-lb. tins ...	per tin	0	3 0
49. Vinegar, of-approved brand ...	per quart	0	0 6

ANNEX TO CONTRACT No. 1921/252.

Richard Warren, Main-street, Rutherglen.

Sub-schedule No. 3.

MEAT (FRESHLY KILLED).

Security, £10.

	£	s.	d.
1. Beef—Fresh ...	per lb.	0	0 8
2. Mutton ...	do.	0	0 8
3. Sausages ...	do.	0	0 8
4. Pork—Fresh ...	do.	0	0 8
5. Tongues—Ox ...	each	0	0 8
6. " Sheep ...	per dozen	0	0 8
7. Tails—Ox ...	each	0	0 8
8. Kidneys—Ox ...	do.	0	0 8
9. Shins—Ox ...	do.	0	0 8
10. Lambs' fries ...	do.	0	0 8

Purchase

Schedule No. 17.

PROVISIONS AT CRESWICK.

FOR STUDENTS AT THE SCHOOL OF FORESTRY.

(Delivery at the School.)

ANNEX TO CONTRACT No. 1921/253.

C. C. Bowley, Albert-street, Creswick.

Sub-schedule No. 1.

BREADSTUFFS.

Security, £10.

	£	s.	d.
1. Bread—Fine Wheaten, first quality ...	per cental	1	8 2
2. Flour—First quality ...	do.	1	5 10

See note bread and flour, page 2576.

Sub-schedule No. 2.

BUTTER AND CHEESE.

1. Butter—First Grade Creamery, to score not less than 92 points, Government Grade, Commerce Regulations standard ...	per lb.	Purchase
2. Cheese—First-class quality, matured (Victorian) ...	do.	
3. Eggs, new laid ...	per doz.	

ANNEX TO CONTRACT No. 1921/254.

J. Tait and Son, Albert street, Creswick.

Sub-schedule No. 3.

GROCERIES.

Security, £10.

	£	s.	d.
1. Barley—Pearl ...	per lb.	0	0 2½
2. Blue—Of any brand required ...	do.	0	1 1
3. Candles (full weights) Kitchen's "Patrolines," Apollo Co.'s "Apollo," or other make of equal quality, to be supplied in 1-lb. packets ...	do.	0	0 10

GROCERIES—continued.

	£	s.	d.
4. Coffee—Fresh roasted and whole—Beans to be thoroughly sound, to sample ...	per lb.	0	1 9
5. Cornina ...	do.	0	0 8
6. Currants—3 Crowns ...	do.	0	0 10
7. Ginger—Ground (Jamaica) ...	do.	0	1 1
8. Golden Syrup, in 7-lb. tins ...	per tin	0	2 11
9. Jams, assorted, any brand ordered, in 2-lb. tins, in the proportion of half seed and half stone ...	per lb. net	0	0 8
10. Maizena—Duryea's ...	per lb.	0	0 8
11. Mustard—Double superfine, of any brand ordered ...	do.	0	4 3
12. Oatmeal—Of any brand ordered ...	do.	0	0 3½
13. Pease—Split ...	do.	0	0 3½
14. Pepper—Black, ground ...	do.	0	0 11
15. Raisins—Sultana (Mildura), 3 Crowns... ..	do.	0	1 0
16. Rice—Dressed, to sample ...	do.	0	0 3½
17. Seed Tapioca—Sago, to sample ...	do.	0	0 3½
18. Salt—Fine ...	do.	0	0 1
19. Soap (Household)—Lever Bros. "Velvet" ...	do.	0	0 6½
20. Soap (Household)—Yellow, dry, to sample ...	do.	0	0 5
21. Carbohc Sand Soap ...	do.	0	0 4
22. Soda—Carbonate of ...	do.	0	0 2½
23. " Washing ...	do.	0	0 14
24. Spice—Mixed, in 1-oz. packets ...	per pkt.	0	0 1½
25. Starch, of any brand ordered, to sample ...	per lb.	0	0 9
26. Tartar—Cream of ...	do.	0	2 0
27. Tea—Best Ceylon, to sample ...	do.	0	1 6
28. Vinegar ...	per pint	0	0 3

ANNEX TO CONTRACT No. 1921/255.

Wood and Wood, Creswick.

Sub-schedule No. 4.

MEAT (FRESHLY KILLED).

Security, £10.

	£	s.	d.
1. Fresh Beef—Fore-quarter ...	per lb.	0	0 8
2. " " Hind-quarter ...	do.	0	0 8½
3. " " Buttocks ...	do.	0	0 8
4. " Mutton ...	do.	0	0 6
5. Corned Beef, rolled or round, as ordered without bone or cartilage ...	do.	0	0 8
6. Pork (Leg) ...	do.	0	0 7½
7. Fresh Suet—Kidney ...	do.	0	0 3

ANNEX TO CONTRACT No. 1921/256.

E. E. Pollard, Eastern Hill, Creswick.

Sub-schedule No. 5.

MILK.

Security, £5.

	£	s.	d.
1. Milk—Fresh and pure ...	per quart	0	0 7

Sub-schedule No. 6.

POTATOES.

1. Potatoes	Purchase
-----------------	-----	----------

Schedule No. 18.

PROVISIONS AT McLEOD SETTLEMENT, FRENCH ISLAND.

Delivery to be made at Lang Lang Jetty.

ANNEX TO CONTRACT No. 1921/257.

W. H. Hillbrick, Lang Lang.

Sub-schedule No. 1.

BREAD.

Security, £5.

	£	s.	d.
1. Bread—Fine, Wheaten, first quality ...	per cental	1	6 6½

See note bread and flour, page 2576.

Sub-schedule No. 2.

BUTTER.

1. Butter—First Class Creamery, to score not less than 92 points Government grade, Commerce Regulations standard ...	per lb.	Purchase
--	---------	----------

Sub-schedule No. 3.

GROCERIES.

1. Cheese	per lb.	
2. Jams—Assorted, of approved kinds, in proportion of half seed and half stone, of best quality, in 2-lb. tins	per tin	
3. Mustard—Double Superfine, of any Commonwealth manufacture ordered	per lb.	
4. Milk—Condensed, nominal 1-lb. tins	per tin	
5. Oatmeal—Of any brand ordered	per cwt.	
6. Pepper—Black, ground	per lb.	
7. Rice—Dressed, best, to sample	"	Purchase
8. Salt—Fine	"	"
9. Soap—Toilet, brown Windsor, in tablets, to sample	"	"
10. Soap—Household, yellow, dry, to sample	"	"
11. Soda—Washing	"	"
12. Tea—Best Ceylon	"	"
13. Tea—Ration	"	"
14. Tobacco—"Starlight," or other make of equal quality, as ordered	"	"

ANNEX TO CONTRACT No. 1921/258.

Edward W. Missen, Lang Lang.

Sub-schedule No. 4.

MEAT (FRESHLY KILLED).

		Security, £20.	£ s. d.
1. Fresh Beef—Forequarters	per cental		2 18 4
2. " Hindquarters	do.		3 10 10
3. " Buttock	Purchase		
4. " Mutton	per cental		2 18 4
5. Corned Beef, Rolled or Round, as ordered, without bone or cartilage	do.	Purchase	
6. Fresh Suet—Kidney	per lb.		0 0 7
7. Dripping—Fresh, free from objectionable smell	do.	Purchase	

Sub-schedule No. 5.

		MILK	
1. Milk—Fresh and pure	per gal.		Purchase

Sub-schedule No. 6.

		POTATOES.	
1. Potatoes...	per cwt.		Purchase

1921-22.

Schedule No. 14.

PROVISIONS FOR ABORIGINES AT THE UNDERMENTIONED STATIONS.

Sub-schedule No. 1.

BREAD.

See note bread and flour, page 2576.

Contract No. 1921/259.—Coranderk—E. C. Spalding, Healesville	Security, £2.
" " 1921/260.—Lake Tyers—F. Manners, Nowa Nowa	" £2.

Item No.	Article.	Contract No. 259. E. C. Spalding, Coranderk (Healesville).	Contract No. 260. F. Manners, Lake Tyers.
1	Bread—Fine Wheaten, first quality	£ s. d. 1 5 0	£ s. d. per cental 1 3 11½

Sub-schedule No. 2.

GROCERIES.

Contract No. 1921/261.—Coranderk—Moran and Cato Pty. Ltd., Melbourne	Security, £2.
" " 1921/262.—Lake Tyers—L. T. Freeman, Lakes Entrance	" £2.

Item No.	Article.	Contract No. 261. Moran and Cato Pty. Ltd., Coranderk.	Contract No. 262. L. T. Freeman, Lake Tyers.
1	Baking Powder, Snowflake, in 1-lb. tins	£ s. d. 0 2 0	£ s. d. 0 1 7
2	Candles—(Full weights) Kitchen's "Petrolines," Apollo Co.'s "Apollo," or other make of equal quality, to be supplied in 1-lb. packets	"	"
3	Coffee—Fresh roasted and whole—Beans to be thoroughly sound, to sample	0 0 10½	0 0 8½
4	Cocoa, in ½-lb. packets	0 1 5	0 1 9
5	Cornina	0 1 1½	0 1 3
6	Currants—3 crowns	0 0 8½	0 0 8½
7	Curry Powder	0 0 10½	0 0 10½
8	Flour—Best roller	0 1 5	"
9	Mustard—Double superfine, of any Commonwealth manufacture ordered	1 4 0	1 3 0
10	Oatmeal—Of any brand ordered	0 2 6	0 2 6
11	Pease, Split	0 0 3	0 0 3
12	Pearl Barley	0 0 4	"
13	Pepper—Black, ground, in ½-lb. tins	0 0 3	0 0 3
14	Raisins—Sultana (Mildura)—3 crowns	0 0 7½	0 0 5
15	Rice—Dressed, to sample	0 0 11½	0 1 0
16	Seed Tapioca (Sago), to sample	0 0 3½	0 0 3½
17	Salt—Coarse	0 0 3½	0 0 3
18	" Fine	0 0 1	0 0 0½
19	Soap—Household, yellow, to sample	0 0 1½	0 0 1
20	Soda—Ricarbonate	0 0 6	"
21	" Washing	0 0 4	"
22	Tartar, Cream of (substitute)	0 0 2	0 0 1½
23	Tea—Best Ceylon, to sample	0 2 0	"
24	Tobacco—Twist, to sample	0 1 4	0 1 3
25	Treacle, in 7-lb. tins	0 5 1	0 6 0
26	Vinegar	0 2 8	0 2 7
		0 0 6	0 0 5

The first part of the document discusses the importance of maintaining accurate records of all transactions. It emphasizes that every entry, no matter how small, should be recorded to ensure the integrity of the financial data. This includes not only sales and purchases but also expenses and income.

In the second section, the author details the various methods used to collect and analyze data. This involves a combination of manual entry and automated software solutions. The goal is to streamline the process and reduce the risk of human error.

The third section focuses on the security of the data. It outlines the measures taken to protect sensitive information from unauthorized access, including the use of encryption and secure storage protocols.

Finally, the document concludes with a summary of the key findings and recommendations. It stresses the need for ongoing monitoring and updates to the system to ensure it remains effective and secure over time.