

[2055]



VICTORIA
GOVERNMENT GAZETTE.

Published by Authority.

[Registered at the General Post Office, Melbourne, for transmission by post as a newspaper.]

No. 87.]

FRIDAY, JULY 1.

[1927.

CONTRACTS ACCEPTED.

(SERIES 1927-28).

SUPPLY OF PROVISIONS

FROM

1ST JULY, 1927, TO 30TH JUNE, 1928, OR AS STATED.

A. B. STANHOPE.
Secretary, Tender Board.

No. 87.—8411.

CONTRACTS ACCEPTED.—(Series 1927-28.)

No. of Contract.	Particulars of each Tender Accepted.	Amount.	Name of Contractor.	Charged against Vote or Fund.
PROVISIONS—				
Supply of Provisions, in such quantities as may be ordered, from 1st July, 1927, to 30th June, 1928. For contracts for Cheese and Butter at Melbourne, Mont Park, Ararat, Beechworth, Ballarat, Sunbury, and Lara, and for Butter at Greenvale, see <i>Gazette</i> of 29th September, 1926, pages 2124 and 2125.				
Melbourne District—				
1	Bread, Kew Asylum	Rates as per annex	J. N. Hennessy Pty. Ltd.	
2	Bread, Melbourne	Ditto	J. N. Hennessy Pty. Ltd.	
3	Flour and maize meal, &c.	Ditto	H. R. Rush	
4	Groceries	Ditto	Moran and Cato Pty. Ltd.	
5	Eggs	Ditto	Purchase by agreement	
6	Oatmeal, rice, &c.	Ditto	Moran and Cato Pty. Ltd.	
7	Jams	Ditto	G. A. Hardham	
8	Meat, Kew Asylum	Ditto	W. Angliss and Co. Pty. Ltd.	
9	Meat, Pentridge Penal Establishment	Ditto	J. H. Cooke, jun.	
9	Meat, Children's Welfare Depot, Royal Park, and Police Depot	Ditto	J. H. Cooke, jun.	
10	Meat, Royal Park Mental Hospital and Receiving House	Ditto	W. Angliss and Co. Pty. Ltd.	
11	Potatoes	Ditto	Pirrie Bros.	
12	Soap	Ditto	Moran and Cato Pty. Ltd.	
13	Tea	Ditto	H. Berry and Co. Pty. Ltd.	
14	Tobacco	Ditto	Dudgeon and Arnell Pty. Ltd.	
Greenvale—				
15	Bread	Ditto	W. Anderson	
16	Groceries	Ditto	Moran and Cato Pty. Ltd.	
17	Meat	Ditto	W. Angliss and Co. Pty. Ltd.	
18	Potatoes	Ditto	Pirrie Bros.	
Mont Park—				
19	Breadstuffs	Ditto	J. N. Hennessy	
20	Groceries	Ditto	Moran and Cato Pty. Ltd.	
21	Jams	Ditto	G. A. Hardham	
22	Meat	Ditto	F. Watkins Pty. Ltd.	
23	Potatoes	Ditto	Shea, Hood, and Co. Pty. Ltd.	
24	Tea	Ditto	H. Berry and Co. Pty. Ltd.	
*A. Rip and Dredges—				
25	Breadstuffs	Ditto	Purchase	
26	Groceries	Ditto	Moran and Cato Pty. Ltd.	
27	Meat	Ditto	W. Angliss and Co. Pty. Ltd.	
27	Vegetables	Ditto	Pirrie Bros.	
Ararat District—				
28	Breadstuffs	Ditto	Wm. Bates	
29	Groceries	Ditto	Moran and Cato Pty. Ltd.	
30	Jams	Ditto	Fruitgrowers' Preserving Co. Pty. Ltd.	
31	Meat	Ditto	T. Impey	
32	Potatoes	Ditto	Pirrie Bros.	
33	Tea	Ditto	H. Berry and Co. Pty. Ltd.	
Beechworth District—				
34	Breadstuffs	Ditto	Wm. Price	
35	Groceries	Ditto	Moran and Cato Pty. Ltd.	
36	Meat	Ditto	J. R. Newey, jun.	
37	Potatoes	Ditto	W. H. Collins	
38	Tea	Ditto	H. Berry and Co. Pty. Ltd.	
Ballarat District—				
39	Breadstuffs	Ditto	Wm. Haymes	
40	Groceries	Ditto	Moran and Cato Pty. Ltd.	
41	Jams	Ditto	Fruitgrowers' Preserving Co. Pty. Ltd.	
42	Meat	Ditto	H. J. Symons	
43	Potatoes	Ditto	Pirrie Bros.	
44	Tea	Ditto	H. Berry and Co. Pty. Ltd.	
Geelong District—				
45	Breadstuffs	Ditto	J. Fitzgerald	
46	Groceries	Ditto	Moran and Cato Pty. Ltd.	
47	Meat	Ditto	M. G. O'Brien	
48	Milk	Ditto	S. H. Warren	
Lara—				
49	Breadstuffs	Ditto	A. Foote	
50	Groceries	Ditto	Moran and Cato Pty. Ltd.	
51	Jams	Ditto	G. A. Hardham	
52	Meat	Ditto	W. Angliss and Co. Pty. Ltd.	
53	Potatoes	Ditto	Pirrie Bros.	
Sunbury District—				
54	Breadstuffs	Ditto	Exrs. of Jane Eadie (deceased)	
55	Groceries	Ditto	Moran and Cato Pty. Ltd.	
56	Jams	Ditto	G. A. Hardham	
57	Meat	Ditto	S. J. Starkie	
58	Potatoes	Ditto	Pirrie Bros.	
59	Tea	Ditto	H. Berry and Co. Pty. Ltd.	
Bendigo District—				
60	Bread	Ditto	E. Davies	
61	Groceries and potatoes	Ditto	Moran and Cato Pty. Ltd.	
62	Meat	Ditto	H. Gittens	

Contingencies, 1927-8.

CONTRACTS ACCEPTED.—(Series 1927-28)—continued.

No. of Contract.	Particulars of each Tender Accepted.	Amount.	Name of Contractor.	Charged against Vote or Fund.
PROVISIONS—continued.				
Supply of Provisions, in such quantities as may be ordered, from 1st July, 1927, to 30th June, 1928. For contracts for Cheese and Butter at Melbourne, Mont Park, Ararat, Beechworth, Ballarat, Sunbury, and Lara, and for Butter at Creenvale, see Gazette of 29th September, 1926, pages 2124 and 2125—continued.				
Castlemaine District—				
63	Bread	Rates as per annex	S. Barker	
64	Groceries and potatoes	Ditto	Moran and Cato Pty. Ltd.	
65	Meat	Ditto	J. Williamson	
Sale District—				
66	Bread	Ditto	Purchase	
67	Groceries and potatoes	Ditto	D. H. Howard	
67	Meat	Ditto	Ronchi Bros.	
Rutlerghen—				
68	Bread	Ditto	E. E. King	
69	Groceries	Ditto	Moran and Cato Pty. Ltd.	
Wahgunyah—				
70	Bread	Ditto	G. C. Haig	
71	Groceries	Ditto	Moran and Cato Pty. Ltd.	Contingencies, 1927-28.
72	Meat	Ditto	Keegan and Keegan	
School of Forestry, Creswick—				
73	Bread	Ditto	C. C. Bowley	
74	Groceries	Ditto	G. Tait and Son	
75	Meat	Ditto	J. J. Bennett	
76	Milk	Ditto	E. E. Pollard	
McLeod Settlement, French Island—				
77	Bread	Ditto	J. Jackson	
78	Groceries	Ditto	A. G. Glasscock	
79	Meat	Ditto	E. W. Misson	
Aborigines (Lake Tyers)—				
80	Bread	Ditto	J. Rule	
81	Groceries	Ditto	L. T. Freeman	

Approved—E. J. HOGAN, Treasurer. 14.6.1927.

STIPULATIONS FOR SUPPLIES OF PROVISIONS.

(Where practicable, all items must be manufactured or prepared within the Commonwealth.)
No sub-letting allowed.

Under all Sub-schedules particular attention is drawn to Clause 1 of the Condition as to quality.

BREAD.

No sub-letting allowed.

A sample of the best ordinarily retailed to the public will be considered as a test loaf for first quality for fine wheaten and pure wheaten Meal Bread. Third quality (that issued to prisoners of the Crown) to be made of flour, fine sharps, the produce of prime, strong, thin-skinned, good-coloured wheat, to be perfectly free from coarse pollard or other offal. Pure wheaten Meal Bread of first quality may be substituted, wholly or in part, for fine wheaten Bread at such times and in such quantities as in the opinion of the Medical Superintendent may be deemed necessary, and the contractor will be required to supply such Bread at the contract rate. Reasonable notice, however, of the intention to substitute wheaten Meal Bread must be given to the contractor by the officer ordering the supply. Bread may be baked at any Government establishment without infringing these contracts. At the Gaols, Ballarat, Geelong, Bendigo, Castlemaine, and Sale, if required, bread must be supplied one day old, due notice to be given to the contractor of such requirement.

In the event of bread being made at any Government establishment in the Melbourne District during the currency of these contracts, the flour required will be drawn under the flour and maize meal sub-schedule. The maize meal for all the country gaols is included in the sub-schedule for flour and maize meal, Melbourne District, and delivery of same will be required to be made at the Victorian Railways, Spencer-street.

Should a supply of any article which may be reasonably included in a Baker's Price List, and which is not included in the schedule herein, be required for the use of attendants and nurses resident at the Hospitals for the Insane or for inmates of any Government institution during the currency of the contract, the contractor shall, with the exception of Ararat and Ballarat, supply any such article at a price not in excess of the current list rates at which it is retailed by the contractor to the public.

GROCERIES, CANDLES, SOAP, TEA, ETC.

Should the supply of any article which may be reasonably included in a Grocer's Price List, and which is not included in the schedule herein, be required for the use of the attendants and nurses resident at the Hospitals for the Insane or for inmates of any Government institution under sub-schedules for Groceries during the currency of the contract, the contractor shall, with the exception of Ararat and Ballarat, supply such article at a price not in excess of the current list rate at which it is retailed by the contractor to the public.

As a guarantee of quality, Rice, when ordered in quantities of 56 lb. and over, must be supplied in original bags as delivered by the miller or dresser. Such bags must be branded "Rice, Dressed," and shall also have stencilled thereon the miller or dresser's name and the distinguishing mark indicative of the quality or grade. The bags thus stencilled shall contain Rice milled or dressed by the miller or dresser whose name appears thereon. Supplies not in conformity with the foregoing conditions will be rejected. Oatmeal must be supplied in original bags as delivered by millers.

Candles, except those for prison cells, must be supplied in 1-lb. packets. Candles for prison cells must be delivered in boxes containing from 25 to 50 lb. per box, the boxes for which must be legibly stencilled on one end, showing the estimated burning time and the gross, tare, and net weight of contents. The soap supplied must be hard throughout, ready for immediate use without waste. Soap for Hospitals for the Insane is not included in these contracts. When the quantity admits, Tea must be supplied in original and unopened packages, labelled, as landed.

Raisins and currants must be present season's, and where the quantity admits, be supplied in original boxes labelled 3 crowns.

For s.s. Rip a certain quantity of Biscuits are sometimes required in lieu of fresh bread, and are included to meet such contingency only.

BUTTER, CHEESE, AND JAMS.

Butter is to be delivered to the s.s. Rip in 1-lb. pats, in such quantities as may be ordered, and no excess over the quantity ordered will be received.

All Butter supplied, as well as the cases in which it is packed, must bear the impress stamp of the creamery manufacturing the Butter, otherwise it will be rejected. The Butter supplied may be tested at any time by the Government Dairy expert if it is considered by the officer ordering that the supply is not up to standard quality. The cheese must be fairly matured and packed in boxes for transport.

Jams.—The weight stamped on the tins in accordance with the regulations under the Commerce Act, as indicating the minimum net quantity that each tin contains, shall for the purpose of this contract be taken as the actual contents when computing the quantity supplied.

When Jam is supplied in jars the jars remain the property of the contractor, and must be removed by the contractor at his own expense when empty.

MEAT.

Fore and hind quarters of beef for Hospitals for the Insane are to be supplied in equal proportions of each, and must be delivered as a whole respectively, also extra buttocks separately when ordered. Meat for other institutions must be supplied as ordered. Where hind-quarters or buttocks are ordered, 9 inches must be cut off from the end of the leg from the hock upwards, i.e., the end of the leg from which the shank has been removed at the abattoirs; and when fore-quarters form a portion of the supply, 6 inches from the end of the neck and the whole of the shin at the eld-bone joint must be removed. The sticking pieces also must be trimmed off, and the point and end of the brisket tendered free from blood and blood stains.

Fore and hind quarters, for convenience of handling, may be cut into two parts, but each part is to bear evidence of having been cut from the same beast.

Corned beef, rolled or round, as ordered, must be supplied without bone or cartilage and will be received, whether pumped or prepared in the ordinary way by pickling, but in the former case must have been soaked after pumping for at least 48 hours, in a good pickle, and then thoroughly drained before supply. No flank, chuck, sticking piece, shin, leg of beef, or piece under 7 lb. will be received.

Should the local supply of fresh meat become scarce, or the price of same become abnormally high, frozen meat may, with the consent of the Tender Board, on the recommendation of the head of the Department, be supplied.

All meat shall be well fed, good, sound, sweet, and wholesome.

In cases of emergency, or on such other occasions as in the opinion of the Inspector-General of the Insane may seem advisable, other forms of meat such as rabbits, tinned meat, &c., may be purchased apart from the contract for Hospitals for the Insane, in lieu of the meat mentioned in the schedule, and substituted therefor, provided 24 hours' notice (except in cases of emergency) be given to the contractor of such intention.

No sub-letting allowed.

Meat derived from the carcasses of Bulls, Stags, or Rams will not be received, and shall not be tendered for delivery.

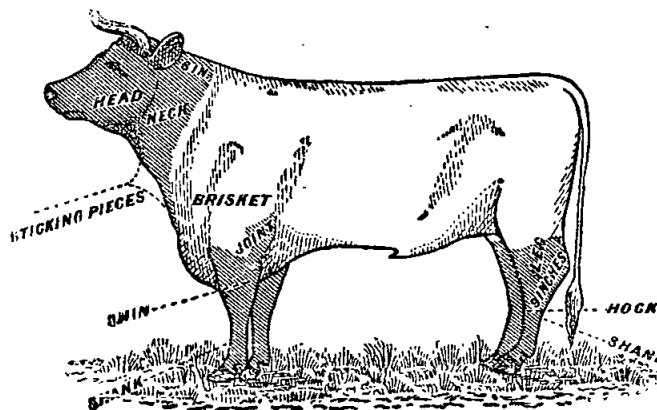
For Sub-schedules 10 and 11, in the Melbourne District, in addition, the following clauses apply:—

The beef must be supplied in quantities as ordered from Ribs, Sirloin, and Thick Flanks. Chuck Ribs, i.e., the first to fourth inclusive, will not be accepted.

Mutton must be delivered in sides. All kidney fat to be removed.

Meat containing an undue proportion of bone or fat will not be accepted.

The parts to be removed by the contractor are indicated by the shaded portions of the annexed diagram.



For Beechworth samples (corresponding to the description given in the schedule) of meat ordinarily retailed to the public will be considered as a test for quality.

As regards supplies for s.s. *Rip*, all Meat must be of prime quality, and must be supplied in equal quantities from ribs, sirloin, and thick flanks; mutton to be delivered in sides; all kidney fat to be removed; meat containing an undue proportion of fat will not be accepted. Chuck ribs will not be accepted in lieu of prime ribs. Live sheep to be supplied when required.

Should a supply of any article which may be reasonably included in a Butcher's Small Goods List, and which is not included in the schedule herein, be required for the use of attendants and nurses resident at the Hospitals for the Insane or for Inmates of any Government Institution drawing supplies under sub-schedules for Meat during the currency of the contract, the contractor shall, with the exception of Ararat and Ballarat, supply such article at a price not in excess of the current list rates at which it is retailed by the contractor to the public.

MILK.

The milk must be fresh, pure, and of the best quality, and subject to test when required by the Department, and supplied at such times as the Department may require. Should the contractor fail to supply

at the time specified in the order or at such times as may be indicated in any general notice to the contractor his contract may be cancelled forthwith and his security forfeited, or should the supply prove to be not of contract quality it will be rejected, and any expense incurred will be charged to the contractor.

POTATOES.

(Potatoes to be dry and free from dirt. Contractors to supply 117 lbs. of potatoes for each cwt. credited to them, and, in addition, to take back all rejected before being cooked.)

If the price of potatoes becomes abnormally high, the heads of the various departments concerned may, if they think fit, cause rice or any other suitable food to be occasionally substituted in lieu thereof.

TOBACCO.

Tobacco for country Hospitals for the Insane is included in the contract for Melbourne District, and delivery of same will be required to be made at Spencer-street.

Tobacco for country Gaols is not included in the contract for Melbourne District.

Schedule No. 1.

PROVISIONS—MELBOURNE DISTRICT.

ANNEX TO CONTRACT No. 1927/1.

J. N. Hennessy Pty. Ltd., Sydney-road, Brunswick.
Sub-schedule No. 1.

BREAD FOR HOSPITALS FOR THE INSANE AT KRW.

	Security, £120.	£	s.	d.
1. Bread—Fine wheaten, first quality	per cental	0	13	4½

ANNEX TO CONTRACT No. 1927/2.

J. N. Hennessy Pty. Ltd., Sydney-road, Brunswick.
Sub-schedule No. 2.

BREAD FOR CHILDREN'S WELFARE DEPOT, ROYAL PARK;
RECEIVING HOUSE AND MENTAL HOSPITAL, ROYAL PARK;
AND POLICE DEPOT.

	Security, £50.	£	s.	d.
1. Bread—Fine wheaten, first quality	per cental	0	13	4½

ANNEX TO CONTRACT No. 1927/3.

H. R. Rush, 386 Flinders-lane, Melbourne.
Sub-schedule No. 3.

FLOUR AND MAIZE MEAL.

	Security, £100.	£	s.	d.
1. Flour—Roller, first quality, to sample	per cental	0	13	9
2. " Sharps, to sample	do.	0	11	9
3. Maize Meal, to sample	do.	0	14	6

ANNEX TO CONTRACT No. 1927/4.

Moran & Cato Pty. Ltd., Brunswick-street, Fitzroy.
Sub-schedule No. 4.

GROCERIES, ETC.

	Security, £80.	£	s.	d.
1. Blue—Of any brand ordered	per lb.	0	0	8
2. Candles—Full weights, Kitchen's "Electrines" or other make of equal quality, to be supplied in 1-lb. packets	do.	0	0	8
3. " Kitchen's "Electrines," or other make of equal quality, for use in prison cells, to burn for 1, 1½, 2, 2½, and 3 hours respectively, as ordered, to be supplied in boxes, containing from 25 to 50 lb. per box	do.	0	0	9½
4. Cocoa—in ½-lb. tins or packets	do.	0	0	10
5. Coffee—Fresh roasted and whole, beans to be thoroughly sound, Neilgherry A, to sample	do.	0	1	8½
6. " Pure, fresh roasted and ground, to sample	do.	0	1	8½
7. Cornina (Corn or Maize Flour), in packets of 1-lb. net	do.	0	0	6½
8. Cream of Tartar	do.	0	1	2½
9. Currants, 3 crowns, present season's	do.	0	0	7½
10. Curry Powder	do.	0	0	9
11. Essence of Lemon, 1-oz. bottles	per bottle	0	0	3½
12. Ginger—Ground	per lb.	0	0	10
13. Golden Syrup (in 7-lb. tins)	per tin	0	2	0
14. Lemon Peel	per lb.	0	0	8½
15. Mustard—Double Superfine	do.	0	2	4
16. Nutmegs	do.	0	1	6
17. Pearl barley	per cwt.	0	17	0
18. Pease—Split	do.	1	2	0
19. Pepper—Black, ground	per lb.	0	1	4½
20. Pipes—Tobacco, clay	per doz.	0	0	9½
21. Raisins—Sultana, 3 crowns, present season's	per lb.	0	0	9

GROCERIES—continued.

	£	s.	d.	
22. Salt—Fine	per cwt.	0	5	9
23. " Rock	do.	0	7	6
24. Soda—Washing	do.	0	6	9
25. " Bicarbonate of	per lb.	0	0	1½
26. Spice—Mixed, in 1-oz. packets	per pkt.	0	0	1
27. Starch	per lb.	0	0	6½
28. Treacle, in 7-lb. tins	per tin	0	1	8½
29. Vinegar (malt)	per quart	0	0	3½
30. Tapioca (Pearl)	per lb.	0	0	2½
31. Tomato Sauce (13-oz. bottles)	per bottle	0	0	7½

Sub-schedule 5.

EGGS. NEW LAID.

1. Eggs	per doz.	} Purchase.

ANNEX TO CONTRACT No. 1927/5.

Moran & Cato Pty. Ltd., Brunswick-street, Fitzroy.

Sub-schedule No. 6.

OATMEAL, RICE, AND SEED TAPIOCA.

	Security, £80.	£	s.	d.
1. Oatmeal	per cwt.	1	5	0
2. Rice—Dressed, to sample	do.	1	5	6
3. Seed Tapioca (Sago), to sample	do.	0	18	0

ANNEX TO CONTRACT No. 1927/6.

G. A. Hardham, Glenferrie-road, Malvern.

Sub-schedule No. 7.

JAMS.

	Security, £20.	£	s.	d.
1. Jams—Assorted, in bulk, of approved kinds, in the proportion of half seed and half stone, of the best quality, in tins, as required	per lb. actual net weight	0	0	4½
2. " " " in 24-oz. tins	per tin	0	0	9

ANNEX TO CONTRACT No. 1927/7.

W. Angliss & Co. Pty. Ltd., Bourke-street, Melbourne.

Sub-schedule No. 8.

MEAT FOR HOSPITAL FOR THE INSANE, KRW.

	Security, £150.	£	s.	d.
1. Fresh Beef—Fore-quarters	per cental	1	15	6
2. " " Hind-quarters	do.	1	15	6
3. " " Buttocks	do.	1	15	6
4. " Mutton	do.	1	15	0
5. Corned Beef, rolled or round, as ordered, without bone or cartilage	do.	1	15	6
6. Fresh Suet—Kidney	do.	2	10	0

ANNEX TO CONTRACT No. 1927/8.

J. H. Cooke Pty. Ltd., Queen's-parade, Clifton Hill.

Sub-schedule No. 9.

MEAT FOR PENAL ESTABLISHMENT (PENTRIDGE), FEMALE PENITENTIARY, AND METROPOLITAN GAOL (COBURG).

	Security, £100.	£	s.	d.
1. Fresh Beef	per cental	1	17	0
2. " " Buttocks	do.	1	17	0
3. Corned Beef, rolled or round, as ordered, without bone or cartilage	do.	1	17	0
4. Fresh Mutton	do.	1	17	0
5. Dripping	do.	1	17	0

ANNEX TO CONTRACT No. 1927/9.

J. H. Cooke Pty. Ltd., Queen's-parade, Clifton Hill.

Sub-schedule No. 10.

MEAT FOR POLICE DEPOT, ST. KILDA-ROAD, AND CHILDREN'S WELFARE DEPOT, ROYAL PARK.

Security, £50.		£	s.	d.
1. Fresh Beef ...	per cental	2	5	0
2. " Mutton ...	do.	1	17	0
3. Corned Beef, rolled or round, as ordered, without bone or cartilage ...	do.	2	5	0
4. Fresh Suet—Kidney ...	per lb.	0	0	5

ANNEX TO CONTRACT No. 1927/10.

W. Angliss and Co. Pty. Ltd., Bourke-street, Melbourne.

Sub-schedule No. 11.

MEAT FOR RECEIVING HOUSE AND MENTAL HOSPITAL, ROYAL PARK.

Security, £50.		£	s.	d.
1. Fresh Beef ...	per cental	2	4	0
2. " " Buttocks ...	do.	2	4	0
3. " Mutton ...	do.	1	16	0
4. Corned Beef, rolled or round, as ordered, without bone or cartilage ...	do.	2	4	0
5. Fresh Suet—Kidney ...	do.	2	10	0

ANNEX TO CONTRACT No. 1927/11.

Pirrie Bros., Exhibition-street, Melbourne.

Sub-schedule No. 12.

POTATOES.

Security £100.

Security £100.		£	s.	d.
1. Potatoes ...	per cwt.	0	6	10½

ANNEX TO CONTRACT No. 1927/12.

Moran and Cato Pty. Ltd., Brunswick-street, Fitzroy.

Sub-schedule No. 13.

SOAPS.

(Of Commonwealth Manufacture.)

Security, £20.

Security, £20.		£	s.	d.
1. Antiseptic, Liquid, of approved make, in 4 gal. tins ...	at per gallon	0	2	6
2. Extract of—Kitchen's, or equal thereto, in boxes of 13 lb., containing 56 packets ...	per box	0	4	6
3* Household, dry, equal to Kitchen's "Best Brown" ...	per cwt.	1	7	6
4* Household, Carbolic, dry ...	do.	1	12	0
5. "Lux" or "Merino," as ordered, in bulk ...	per lb.	0	0	6
6. "Monkey Brand," or equal thereto, in tablets of 5-oz. each ...	per doz.	0	2	0
7. Sand—Carbolic or Borax, as ordered, 12-oz. blocks, of approved brand ...	per doz.	0	2	0
8. Soft, Genuine Potash, Best Amber, in bulk ...	per cwt.	1	13	0
9. Solvol, or other approved brand, in 6-oz. tablets ...	per doz.	0	4	0
10* Toilet, Brown Windsor, 7 tablets to lb., Kitchen's, or equal thereto ...	do.	0	2	0
11* Toilet, "Bath," in 4½-oz. tablets, Kitchen's, or equal thereto ...	do.	0	1	11½
12* Toilet Carbolic, in 4-oz. tablets, Kitchen's, or equal thereto ...	do.	0	1	7½
13* Toilet, Castile, in 6-oz. tablets, Kitchen's, or equal thereto ...	do.	0	2	6
14. "Velvet," or equal thereto ...	per d'blet	0	0	2½

ANNEX TO CONTRACT No. 1927/13.

H. Berry & Co. Pty. Ltd., Collins-street, Melbourne.

Sub-schedule No. 14.

TEA.

Security, £60.

Security, £60.		£	s.	d.
1. Tea—Ceylon, to sample ...	per lb.	0	1	5
2. " Ration, to sample ...	do.	0	0	11½

ANNEX TO CONTRACT No. 1927/14.

Dudgeon and Arnell Pty. Ltd., 524 Lonsdale-street, Melbourne.

Sub-schedule No. 15.

TOBACCO.

Security, £50.

Security, £50.		£	s.	d.
1. Tobacco, in 2-oz. plugs, for gaols—"Starlight," or other make of equal quality, to sample ...	per lb.	0	4	10
2. Tobacco, 1½ plugs to the lb., for Hospitals for the Insane, to sample ...	do.	0	5	2

Schedule No. 15.

PROVISIONS AT GREENVALE.

(DELIVERY AT THE SANATORIUM.)

ANNEX TO CONTRACT No. 1927/15.

Wm. Anderson, Broadmeadows.

Sub-schedule No. 1.

BREAD.

Security, £20.

Security, £20.		£	s.	d.
1. Bread—Fine Wheaten, first quality ...	per cental	1	0	10

ANNEX TO CONTRACT No. 1927/16.

Moran and Cato Pty. Ltd., Brunswick-street, Fitzroy.

Sub-schedule No. 2.

GROCERIES.

Security, £20.

Security, £20.		£	s.	d.
1. Apricots—Dried ...	per lb.	0	1	3
2. Arrowroot, in 1-lb. packets ...	do.	0	0	6
3. Biscuits—Kinds as ordered ...	do.	0	0	9½
4. Beans—Haricot ...	do.	0	0	2
5. Blue—Washing ...	do.	0	0	9
6. Candles—(Full weights) Kitchen's "Electrics," or other make of equal quality, to be supplied in 1-lb. packets ...	do.	0	0	9
7. Cheese—Matured, in 5-lb. loaves ...	do.	0	1	0
8. Cocoa—In ½-lb. packets ...	do.	0	0	6
9. Coconut—De-jiccated ...	do.	0	0	9½
10. Coffee—"Neilgherry A," to sample—Beans to be thoroughly sound, fresh roasted, and whole ...	do.	0	1	9½
11. Cornina (Corn or Maize Flour), in packets of 1-lb. net ...	do.	0	0	7
12. Currants, 3 crowns (present season's) ...	do.	0	0	7½
13. Custard Powders, in 1-lb. packets ...	per pkt.	0	0	8½
14. Essence of Lemon—In full 16 oz. bottles, per bot. ...	per bot.	0	3	9
15. Flour—Best Roller ...	per cental	0	15	0
16. Fruits—Preserved, in 30-oz. tins ...	per tin	0	1	0
17. Ginger—Ground ...	per lb.	0	0	9
18. Golden Syrup, in 7-lb. tins ...	per tin	0	1	9
19. Jams—Assorted, in 14-lb. tins in the proportion of half seed and half stone ...	do.	0	7	0
20. Jelly Crystals, in 4-oz. packets ...	per doz. pkts.	0	3	0
21. Lemon Peel ...	per lb.	0	0	10
22. Mustard—Double Superfine ...	do.	0	2	4
23. Oatmeal—Flaked or Plain, of any Commonwealth brand ordered ...	per cwt.	1	10	0
24. Pearl Barley ...	per lb.	0	0	2
25. Peas—Split ...	do.	0	0	2½
26. Pepper—White, ground ...	do.	0	2	0
27. Pickles—Assorted, 20-oz. bottles ...	per bot.	0	0	8½
28. Powder—Baking, in 1-lb. tins ...	per tin	0	1	0
29. Prunes—Dried ...	per lb.	0	0	9½
30. Raisins—Sultana, 3 crowns (present season's) ...	do.	0	0	9½
31. Rice—Dressed, to sample ...	per cwt.	1	7	0
32. Sago (Sect Tapioca)—to sample ...	do.	0	19	0
33. Salmon—Fresh, in ½-lb. tins, "Sockeye" ...	per tin	0	1	2
34. Salt—Fine ...	per cwt.	0	6	6
35. Sardines—½'a Best ...	per tin	0	0	8
36. Sauce—Worcestershire, 10-oz. bottles, Rosella or Newman's ...	per bot.	0	0	10
37. Sauce—Tomato, 13-oz. bottles ...	do.	0	0	7½
38. Soda—Carbonate of ...	per lb.	0	0	2
39. Soda—Washing ...	per cwt.	0	7	6
40. Spice—Mixed, in 1-oz. packets ...	per pkt.	0	0	1
41. Starch ...	per lb.	0	0	7½
42. Tartar—Cream of ...	do.	0	1	3
43. Tea—Ceylon, to sample, in 25-lb. tins ...	do.	0	1	6½
44. Treacle, in 7-lb. tins ...	per tin	0	2	0
45. Vinegar, Malt ...	per pint	0	0	3

ANNEX TO CONTRACT No. 1927/17.

W. Angliss and Co. Pty. Ltd., Bourke-street, Melbourne.

Sub-schedule No. 3.

MEAT.

Security, £20.

Security, £20.		£	s.	d.
1. Fresh Ox Beef—Roast ...	per cental	2	8	0
2. Fresh Ox Beef Steak—Stewing ...	do.	2	8	0
3. Corned Ox Beef—Rolled or Round, as ordered, without bone or cartilage ...	do.	2	8	0
4. Tripe, Ox (during winter) ...	per lb.	0	0	6
5. Sausages—Mixed ...	do.	0	0	6
6. " Preserved ...	do.	0	0	6

ANNEX TO CONTRACT No. 1927/18.

Pirrie Bros., Exhibition-street, Melbourne.

Sub-schedule No. 4.

POTATOES.

Security, £20.

Security, £20.		£	s.	d.
1. Potatoes ...	per cwt.	0	7	10

Schedule No. 16.

PROVISIONS—MONT PARK.

(Delivery at the Hospital for Insane, Mont Park, to depots as required, and at the Repatriation Mental Hospital, Bundoora.)

ANNEX TO CONTRACT No. 1927/19.

J. N. Hennessy, Sydney-road, Brunswick.

Sub-schedule No. 1.

BREADSTUFFS.

	Security, £100.	£	s.	d.
1. Bread—Fine Wheaten, first quality ... per cental	0 13	4½		
2. Bread—Raisin ... do.	0 15	7½		
3. Flour—First quality ... do.	0 14	0		

ANNEX TO CONTRACT No. 1927/20.

Moran and Cato Pty. Ltd., Brunswick-street, Fitzroy.

Sub-schedule No. 2.

GROCERIES.

	Security, £30.	£	s.	d.
1. Blue ... per lb.	0 0	8½		
2. Candles (full weights)—Kitchen's "Electrics," or other make of equal quality, in 1-lb. packets ... do.	0 0	8½		
3. Cocoa, in 1-lb. packets ... do.	0 0	5½		
4. Coffee—"Neilgherry A"—Fresh roasted and Whole—Beans to be thoroughly sound, to sample ... do.	0 1	5½		
5. Cornina (Corn or Maize Flour) in packets of 1-lb. net (6 months) ... do.	0 0	5½		
6. Currants, 3 Crowns (present season's) ... do.	0 0	7½		
7. Curry Powder ... do.	0 0	10		
8. Castard Powder, 1-lb. pkts. ... do.	0 0	8½		
9. Ginger—Ground ... do.	0 0	10		
10. Golden Syrup, in 7-lb. tins ... per tin	0 1	9		
11. Mustard—Double Superfine, of any Commonwealth manufacture ordered ... per lb.	0 2	4		
12. Oatmeal ... per cwt.	1 3	6		
13. Pearl Barley ... per lb.	0 0	2		
14. Peas—Split ... per cwt.	1 2	0		
15. Pepper—Black, Ground ... per lb.	0 1	5		
16. Pipes—Tobacco, Clay ... per doz.	0 0	9		
17. Prunes—Dried ... per lb.	0 0	9½		
18. Raisins—Sultana, 3 Crowns (present season's) ... do.	0 0	9		
19. Rice—Dressed, to sample ... per cwt.	1 5	6		
20. Sauce—Tomato, in 13-oz. bottles, of any Commonwealth brand ordered ... bots.	0 7	6		
21. Seed Tapioca (Sago)—To sample ... per lb.	0 0	2		
22. Salt—Fine ... per cwt.	0 6	0		
23. Soap—Extract of, Kitchen's, in 13-lb. boxes containing 56 packets ... per box	0 4	9		
24. Soda—Carbonate of ... per lb.	0 0	1½		
25. Soda—Washing ... per cwt.	0 7	0		
26. Spice—mixed, in 1-oz. packets ... per lb.	0 1	3		
27. Starch ... do.	0 0	6½		
28. Tartar—Cream of ... do.	0 1	2½		
29. Vinegar—Malt ... per pint	0 0	1½		

ANNEX TO CONTRACT No. 1927/21.

H. A. Hardham, Glenferrie-road, Mulvern.

Sub-schedule No. 3.

JAMS.

	Security, £10.	£	s.	d.
1. Jams—Assorted, in bulk, of approved kinds; in the proportion of half seed and half stone, of the best quality, actual net in tins, as required ... weight	0 0	4½		

ANNEX TO CONTRACT No. 1927/22.

F. Watkins Pty. Ltd., Bourke-street, Melbourne.

Sub-schedule No. 4.

MEAT.

	Security, £30.	£	s.	d.
1. Fresh Beef—Fore-quarters ... per cental	1 16	6		
2. " " Hind-quarters ... do.	1 16	6		
3. " " Buttocks ... do.	1 16	6		
4. " Mutton ... do.	1 16	6		
5. Corned Beef—Rolled or round as ordered, without bone or cartilage ... do.	1 16	6		
6. Fresh Beef Suet (Kidney) ... do.	12 10	0		
7. Tripe ... per lb.	0 0	6		

ANNEX TO CONTRACT No. 1927/23.

Shea, Hood, and Co. Pty. Ltd., 529 Flinders-lane, Melbourne.

Sub-schedule No. 5.

POTATOES.

	Security, £20.	£	s.	d.
1. Potatoes ... per cwt.	0 7	6		

ANNEX TO CONTRACT No. 1927/24.

H. Berry and Co. Pty. Ltd., Collins-street, Melbourne.

Sub-schedule No. 6.

TEA.

	Security, £10.	£	s.	d.
1. Tea—Best Ceylon, to sample ... per lb.	0 1	5½		

Schedule No. 2.

PROVISIONS FOR S.S. RIP AND DREDGES.

Supplies to be delivered to Dredging Depot, Footscray-road, Victoria Dock, or River Yarra Wharfs, as ordered.

(Supplies for Naval Forces are not included in this schedule.)

Sub-schedule No. 1.

BREADSTUFFS.

	Security, £10.	per cental	Purchase
1. Bread—Fine wheaten, first quality ... do.			
2. Flour—First quality ... do.			

ANNEX TO CONTRACT No. 1927/25.

Moran and Cato Pty. Ltd., Brunswick-street, Fitzroy.

Sub-schedule No. 2.

GROCERIES.

	Security, £10.	£	s.	d.
1. Biscuits—Cabin Bread or the like ... per lb.	0 0	4		
2. Butter—First class creamery, to score not less than 90 points, Government grade, commerce regulations standard ... do.	0 1	7		
3. Coffee—"Neilgherry," fresh roasted and ground, to sample ... do.	0 1	6		
4. Currants—3 crowns, present season's ... do.	0 0	7½		
5. Flour—Self-raising ... do.	0 0	3		
6. Jams—Assorted, of approved kinds, in proportion of half seed and half stone, in 24-oz. tins ... per tin	0 0	9		
7. Meat—Preserved, beef or mutton, in 1-lb. tins ... do.	0 0	9½		
8. Milk—Condensed ... do.	0 0	8½		
9. Mustard—Double Superfine ... per lb.	0 2	4		
10. Oatmeal ... do.	0 0	2½		
11. Pearl barley ... do.	0 0	2		
12. Peas—Split ... do.	0 0	2½		
13. Pepper—White, ground ... do.	0 1	10		
14. Pickles—Assorted, 20-oz. bottles ... per bot.	0 0	8½		
15. Raisins—Sultana, 3 crowns, present season's ... per lb.	0 0	9		
16. Rice—Dressed, to sample ... do.	0 0	2½		
17. Salt—Fine ... do.	0 0	6½		
18. Sauce—Tomato, 13-oz. bottles ... per bot.	0 0	7		
19. " Worcester, 10-oz. bottles ... do.	0 0	4		
20. Tea—Ceylon, to sample ... per lb.	0 1	6		
21. Vinegar—Malt ... per quart	0 0	3½		

ANNEX TO CONTRACT No. 1927/26.

Wm. Angliss and Co. Pty. Ltd., Bourke-street, Melbourne.

Sub-schedule No. 3.

MEAT.

	Security, £10.	£	s.	d.
1. Fresh Beef ... per lb.	0 0	5½		
2. " Mutton ... do.	0 0	5½		
3. " Suet ... do.	0 0	5½		

ANNEX TO CONTRACT No. 1927/27.

Pirrie Bros., Exhibition-street, Melbourne.

Sub-schedule No. 4.

VEGETABLES.

	Security, £5.	£	s.	d.
1. Potatoes ... per cwt.	0 7	6		
2. Onions ... do.	0 7	6		
3. Other vegetables, including cauliflower, carrots, cabbages, turnips, and parsnips, as required ... do.	1 10	0		

Schedule No. 3.
PROVISIONS—ARARAT DISTRICT.

ANNEX TO CONTRACT No. 1927/28.

Wm. Bates, Ararat.

Sub-schedule No. 1.

BREADSTUFFS.

		£	s.	d.
1. Bread—Fine wheaten, first quality	per cental	0	17	8½
2. Flour—First quality	do.	0	14	0

ANNEX TO CONTRACT No. 1927/29.

Moran and Cato Pty. Ltd., Brunswick-street, Fitzroy.

Sub-schedule No. 2.

GROCERIES.

		£	s.	d.
1. Blue	per lb.	0	0	9½
2. Candles (full weights) — Kitchen's "Electrics," or other make of equal quality, to be supplied in 1-lb. packets	do.	0	0	9½
3. Coffee—"Neilgherry A"—Fresh roasted and whole—Beans to be thoroughly sound, to sample	do.	0	1	9½
4. Cornina (Corn or Maize Flour), in packets of 1-lb. net	do.	0	0	7
5. Curry Powder	do.	0	1	0
6. Golden Syrup (in 56-lb. tins)	per tin	0	15	0
7. Mustard—Double Superfine	lb.	0	2	4
8. Oatmeal	per cwt.	1	8	6
9. Peas—Split	per lb.	0	0	3
10. Pepper—Black, ground	do.	0	1	5½
11. Pipes—Tobacco, clay	per doz.	0	0	10
12. Raisins—Sultana, 3 crowns, present season's	per lb.	0	0	9½
13. Rice—Dressed, to sample	per cwt.	1	9	0
14. Seed Tapioca (Sago)—To sample	do.	1	2	0
15. Salt—Fine	do.	0	8	6
16. Soda—Carbonate of	per lb.	0	0	2½
17. " Washing	per cwt.	0	10	6
18. Starch	per lb.	0	0	7
19. Tartar—Cream of	do.	0	1	3
20. Vinegar—Malt	per qt.	0	0	4

ANNEX TO CONTRACT No. 1927/30.

The Fruitgrocers' Preserving Co. Pty. Ltd., Davey-street, Ballarat.

Sub-schedule No. 3.

JAMS.

		£	s.	d.
1. Jams, assorted, of approved kinds in the proportion of half seed and half stone, of the best quality, in tins, actual net as required	per lb. weight	0	0	4½

ANNEX TO CONTRACT No. 1927/31.

T. Inapp, Ararat.

Sub-schedule No. 4.

MEAT.

		£	s.	d.
1. Fresh Beef—Fore-quarters	per cental	0	18	0
2. " " Hind-quarters	do.	1	10	0
3. " " Buttocks	do.	1	12	8
4. " Mutton	do.	1	9	0
5. Corned Beef—Rolled or round, as ordered, without bone or cartilage	do.	1	10	0

ANNEX TO CONTRACT No. 1927/32.

Pirrie Bros., Exhibition-street, Melbourne.

Sub-schedule No. 5.

POTATOES.

		£	s.	d.
1. Potatoes	per cwt.	0	7	10

ANNEX TO CONTRACT No. 1927/33.

H. Berry & Co. Pty. Ltd., Collins-street, Melbourne.

Sub-schedule No. 6.

TEA.

		£	s.	d.
1. Tea—Best Ceylon, to sample	per lb.	0	1	5½

Schedule No. 4.
PROVISIONS—BEECHWORTH DISTRICT.

ANNEX TO CONTRACT No. 1927/34.

Wm. Price, Newtown, Beechworth.

Sub-schedule No. 1.

BREADSTUFFS.

		£	s.	d.
1. Bread—Fine wheaten, first quality	per cental	0	18	6
2. Flour—First quality	do.	0	17	6

ANNEX TO CONTRACT No. 1927/35.

Moran and Cato Pty. Ltd., Brunswick-street, Fitzroy.

Sub-schedule No. 2.

GROCERIES.

		£	s.	d.
1. Blue	per lb.	0	0	9½
2. Candles (full weights)—Kitchen's "Electrics," or other make of equal quality, 1-lb. packets	do.	0	0	9½
3. Coffee—"Neilgherry A," fresh roasted and whole, beans to be thoroughly sound, to sample	do.	0	1	9
4. Cornina (Corn or Maize Flour), in packets of 1-lb. net	do.	0	0	7½
5. Golden Syrup, in 7-lb. tins	per tin	0	2	1½
6. Mustard, Double Superfine	per lb.	0	2	4
7. Oatmeal	per cwt.	1	9	0
8. Pearl Barley	do.	1	2	0
9. Peas—7-lb. tins, Double Superfine, split	do.	1	8	0
10. Pepper—Black, ground	per lb.	0	1	5
11. Pipes—Tobacco, clay	per doz.	0	0	8½
12. Raisins—Sultana, 3 crowns, present season's	per lb.	0	0	9½
13. Rice—Dressed, to sample	per cwt.	1	10	6
14. Seed Tapioca (Sago)—To sample	do.	1	3	6
15. Salt—Fine	do.	0	10	0
16. Soda—Carbonate of	per lb.	0	0	2½
17. " Washing	per cwt.	0	11	0
18. Starch	per lb.	0	0	7½
19. Tartar—Cream of	do.	0	1	3
20. Vinegar—Malt	per qt.	0	0	4

ANNEX TO CONTRACT No. 1927/36.

J. R. Newey, jun., Fovd-street, Beechworth.

Sub-schedule No. 3.

MEAT.

		£	s.	d.
1. Fresh Beef—Fore-quarters	per cental	2	1	8
2. " " Hind-quarters	do.	2	1	8
3. " " Buttocks	do.	2	1	8
4. " Mutton	do.	2	1	8
5. Corned Beef—rolled or round, as ordered, without bone or cartilage	do.	2	1	8
6. Fresh Suet—Kidney (2 months only)	per lb.	0	0	6

ANNEX TO CONTRACT No. 1927/37.

W. H. Collins, Stanley, via Beechworth.

Sub-schedule No. 4.

POTATOES.

		£	s.	d.
1. Potatoes	per cwt.	0	6	6

ANNEX TO CONTRACT No. 1927/38.

H. Berry & Co. Pty. Ltd., Collins-street, Melbourne.

Sub-schedule No. 5.

TEA.

		£	s.	d.
1. Tea—Ceylon, to sample	per lb.	0	1	5½

Schedule No. 5.
PROVISIONS AT BALLARAT.

ANNEX TO CONTRACT No. 1927/39.

Wm. Haymes, 291 Humfray-street, Ballarat.

Sub-schedule No. 1.

BREADSTUFFS.

Security £60.

		£	s.	d.
1. Bread—Fine Wheaten, first quality	... per cental	0	13	6½
2. " " " " " " " " " " " "	... do.	0	13	6½
3. Flour—First quality	... do.	0	15	0

ANNEX TO CONTRACT No. 1927/40.

Moran and Cato Pty. Ltd., Brunswick-street, Fitzroy.

Sub-schedule No. 2.

GROCERIES.

Security, £30.

		£	s.	d.
1. Barley—Pearl	... per lb.	0	0	1½
2. Blue	... do.	0	0	9
3. Candles (full weights)—Kitchen's "Electricines," or other make of equal quality, in 1-lb. packets	... do.	0	0	9½
4. Coffee—"Neigherry A." Fresh roasted and whole, beans to be thoroughly sound, to sample	... do.	0	1	9
5. Cornina—(Corn or maize flour), in packets of 1-lb. net	... do.	0	0	6½
6. Currants, 3 crowns (present season's)	... do.	0	0	7½
7. Golden Syrup (in 7-lb. tins)	... per tin	0	1	11
8. Mustard—Double Superfine	... per lb.	0	2	3
9. Oatmeal	... per cwt.	1	5	6
10. Peas—Split	... do.	1	4	6
11. Pepper—Black, ground	... per lb.	0	1	5
12. Pipes—Tobacco, clay	... per doz.	0	0	10
13. Raisins—Sultana, 3 crowns (present season's)	... per lb.	0	0	9
14. Rice—Dressed, to sample	... per cwt.	1	7	6
15. Seed Tapioca (Sago), to sample	... do.	1	0	0
16. Salt—Fine	... do.	0	7	6
17. Soap—(Household), Carbolic, dry to sample	... per lb.	0	0	4
18. Soap—(Household), Yellow, dry, to sample	... do.	0	0	3½
19. Soda—Carbonate of	... do.	0	0	2
20. " " Washing	... per cwt.	0	8	3
22. Spice—Mixed, in 1-oz. packets	... per doz. pkts.	0	1	1
23. Starch	... per lb.	0	0	7
24. Tartar—Cream of	... do.	0	1	2½
25. Tobacco—"Starlight," or other make of equal quality, as ordered	... do.	0	5	4
26. Vinegar—Malt	... per qt.	0	0	4

ANNEX TO CONTRACT No. 1927/41.

The Fruitgrowers' Preserving Co. Pty. Ltd., Davey-street, Ballarat.

Sub-schedule No. 3.

JAMS.

Security, £10.

		£	s.	d.
1. Jams—Assorted, in bulk, of approved kinds, in proportion of half seal and half stone, of the best quality, in tins as required	... per lb. actual net weight	0	0	4½

ANNEX TO CONTRACT No. 1927/42.

H. J. Symons, Macarthur-street, Ballarat.

Sub-schedule No. 4.

MEAT.

Security, £60.

		£	s.	d.
1. Fresh Beef—Fore-quarters	... per cental	1	19	6
2. " " " " " " " " " " " "	... do.	1	19	6
3. " " " " " " " " " " " "	... do.	1	19	6
4. " " Mutton	... do.	1	19	6
5. Corned Beef, rolled or round, as ordered, without bone or cartilage	... do.	1	19	6
6. Fresh Suet—Kidney	... do.	1	19	6

ANNEX TO CONTRACT No. 1927/43.

Pirrie Bros., Exhibition-street, Melbourne.

Sub-schedule No. 5.

POTATOES.

Security, £20.

		£	s.	d.
1. Potatoes	... per cwt.	0	7	10

ANNEX TO CONTRACT No. 1927/44.

H. Berry & Co. Pty. Ltd., Collins-street, Melbourne.

Sub-schedule No. 6.

TEA.

Security, £20.

		£	s.	d.
1. Tea—Ceylon, to sample	... per lb.	0	1	5½
2. " " Ration	... do.	0	1	0½

Schedule No. 6.

PROVISIONS AT GEELONG.

ANNEX TO CONTRACT No. 1927/45.

J. Fitzgerald, 150 Malop-street, Geelong.

Sub-schedule No. 1.

BREADSTUFFS.

Security, £20.

		£	s.	d.
1. Bread—Fine Wheaten, first quality	... per cental	0	14	0½

ANNEX TO CONTRACT No. 1927/46.

Moran and Cato Pty. Ltd., Brunswick-street, Fitzroy.

Sub-schedule No. 2.

GROCERIES.

Security, £20.

		£	s.	d.
1. Barley—Pearl	... per lb.	0	0	2
2. Eggs—Fresh	... per doz.	0	2	6
3. Oatmeal	... per cwt.	1	5	0
4. Potatoes	... do.	0	10	6
5. Rice—Dressed, to sample	... do.	1	8	0
6. Seed Tapioca (Sago), to sample	... per lb.	0	0	2½
7. Salt—Fine	... do.	0	0	0½
8. Soap—(Household) Carbolic, dry, to sample	... do.	0	0	3½
9. Soap—(Household) Yellow, dry, to sample	... do.	0	0	3½
10. Soda—Washing	... do.	0	0	1
11. Tea—Ration, to sample	... do.	0	1	0
12. Tobacco—"Starlight," or other make of equal quality, as ordered	... do.	0	5	3

ANNEX TO CONTRACT No. 1927/47.

M. G. O'Brien, 491 Moorabool-street, Geelong.

Sub-schedule No. 3.

MEAT.

Security, £20.

		£	s.	d.
1. Fresh Beef	... per cental	1	0	0
2. " " " " " " " " " " " "	... do.	1	19	0
3. " " Mutton	... do.	1	9	0
4. Corned Beef—Rolled or round, without bone or cartilage	... do.	1	17	6

ANNEX TO CONTRACT No. 1927/48.

S. H. Warren, West Moolap.

Sub-schedule No. 4.

MILK.

Security, £5.

		£	s.	d.
1. Milk—Fresh and pure	... per gallon	0	1	7

Schedule No. 7.

PROVISIONS AT LARA.

(DELIVERY AT THE INEBRIATES' INSTITUTION.)

ANNEX TO CONTRACT No. 1927/49.

A. Foote, Lara Lake.

Sub-schedule No. 1.

BREADSTUFFS.

Security, £20.

		£	s.	d.
1. Bread—Fine Wheaten, first quality	... per cental	0	18	9
2. Flour—First quality	... do.	0	14	7

ANNEX TO CONTRACT No. 1927/50.
 Moran and Cato Pty. Ltd., Brunswick-street, Fitzroy.
 Sub-schedule No. 2.

GROCERIES.
 Security, £20. £ s. d.

- Arrowroot—Queensland ... per lb. 0 0 6
- Bacon.—By the side, Farmer's or Hut-ton's (or other approved brand) ... do. 0 1 3
- Barley—Pearl ... do. 0 0 2
- Blue ... do. 0 0 9
- Candles—(Full weights) Kitchen's "Elec-trines," or other make of equal quality, in 1-lb. packets ... do. 0 0 9½
- Cocoa—Of any Commonwealth brand ordered ... do. 0 0 5½
- Coffee—"Neilgherry A." Fresh roasted and whole—Beans to be thoroughly sound, to sample ... do. 0 1 7
- Currants—3 crowns, present season's ... do. 0 0 7½
- Mustard—Double Superfine ... do. 0 2 4
- Oatmeal ... do. 0 0 2½
- Peas—Split ... do. 0 0 2½
- Pepper—Black, ground ... do. 0 1 5
- Raisins—Sultana, 3 crowns, present sea-son's ... do. 0 0 9½
- Rice—Dressed, to sample ... do. 0 0 2½
- Seed Tapioca (Sago), to sample ... do. 0 0 2½
- Salmon—Fresh, brand as ordered, talls (1-lb. tins) ... per tin 0 1 1½
- Salt—Fine ... per lb. 0 0 1
- Soap—(Household) Yellow, dry, to sample ... do. 0 0 3
- Soap—Toilet, "Bath," in 4½ oz. tablets, to sample, Kitchen's or equal thereto ... per doz. 0 2 1½
- Soda—Washing ... per lb. 0 0 1
- Tea—Ceylon, to sample ... do. 0 1 6

ANNEX TO CONTRACT No. 1927/51.
 G. A. Hardham, Glenferrie-road, Malvern.
 Sub-schedule No. 3.

JAMS.
 Security, £5. £ s. d.

- Jams, Assorted, of approved kinds in the proportion of half seed and half stone, of the best quality, in tins containing 24 oz. net ... per tin 0 0 10

ANNEX TO CONTRACT No. 1927/52.
 Angliss and Co. Pty. Ltd., 42 Bourke-street, Melbourne.
 Sub-schedule No. 4.

MEAT.
 Security, £20. £ s. d.

- Fresh Beef ... per cental 2 6 0
- " Mutton ... do. 1 16 0
- " Tripe, Sausages, Kidneys, and Liver, as ordered ... do. 2 6 0

ANNEX TO CONTRACT No. 1927/53.
 Pirrie Bros., Exhibition-street, Melbourne.
 Sub-schedule No. 5.

POTATOES.
 Security, £5. £ s. d.

- Potatoes ... per cwt. 0 8 6

Schedule No. 8.
PROVISIONS—SUNBURY DISTRICT.

ANNEX TO CONTRACT No. 1927/54.
 Exrs. of Jane Eadie (deceased), Sunbury.
 Sub-schedule No. 1.

BREADSTUFFS.
 Security, £100. £ s. d.

- Bread—Fine Wheaten, first quality ... per cental 0 16 2
- Flour—First quality ... do. 0 14 0

ANNEX TO CONTRACT No. 1927/55.
 Moran and Cato Pty. Ltd., Brunswick-street, Fitzroy.
 Sub-schedule No. 2.

GROCERIES.
 Security, £20. £ s. d.

- Blue ... per lb. 0 0 8½
- Candles—(Full weights) Kitchen's "Electrines" or other make of equal quality, to be supplied in 1-lb. packets ... do. 0 0 9
- Cocoa, Commonwealth, in ½-lb. packets ... do. 0 0 9

GROCERIES—continued. £ s. d.

- Coffee—"Neilgherry A."—Fresh roasted and whole—Beans to be thoroughly sound, to sample ... per lb. 0 1 8½
- Cornina (Corn or Maize Flour), in packets of 1-lb. net ... do. 0 0 6½
- Currants—3 crowns, present season's ... do. 0 0 7½
- Curry Powder ... do. 0 0 10½
- Ginger—Ground ... do. 0 0 10½
- Golden Syrup, in 7-lb. tins ... per tin 0 1 9
- Lemon Peel ... per lb. 0 0 9
- Mustard—Double Superfine ... do. 0 2 4
- Oatmeal ... per cwt. 1 4 0
- Pearl Barley ... do. 0 17 0
- Peas—Split ... do. 1 2 6
- Pepper—Black, ground ... per lb. 0 1 5
- Pipes—Tobacco, clay ... per doz. 0 0 9
- Raisins—Sultana, 3 crowns, present season's ... per lb. 0 0 9
- Rice—Dressed, to sample ... per cwt. 1 5 6
- Seed Tapioca (Sago), to sample ... do. 0 19 0
- Salt—Fine ... do. 0 6 3
- Sauces, Tomato, 13 oz. bottles ... per doz. 0 7 3
- Soda—Bicarbonate of ... per lb. 0 0 1½
- " Washing ... per cwt. 0 7 6
- Spice—Mixed ... per lb. 0 1 3
- Starch ... do. 0 0 7
- Tartar—Cream of ... do. 0 1 3
- Vinegar—Malt ... per pint 0 0 1½

ANNEX TO CONTRACT No. 1927/56.
 G. A. Hardham, Glenferrie-road, Malvern.
 Sub-schedule No. 3.

JAMS.
 Security, £10. £ s. d.

- Jams—Assorted, of approved kinds, in the proportion of half seed and half stone, of the best quality, in tins as required ... per lb. actual net weight 0 0 4½

ANNEX TO CONTRACT No. 1927/57.
 S. J. Starkie, Sunbury.

MEAT.
 Security, £30. £ s. d.

- Fresh Beef—Fore-quarters ... per cental 1 19 6
- " " Hind-quarters ... do. 1 19 6
- " " Buttocks ... do. 1 19 6
- " Mutton ... do. 1 18 0
- Corned Beef—Rolled or round, as or-dered, without bone or cartilage ... do. 1 19 6

ANNEX TO CONTRACT No. 1927/58.
 Pirrie Bros., Exhibition-street, Melbourne.
 Sub-schedule No. 5.

POTATOES.
 Security, £30. £ s. d.

- Potatoes ... per cwt. 0 7 6

ANNEX TO CONTRACT No. 1927/59.
 H. Berry and Co. Pty. Ltd., Collins-street, Melbourne.
 Sub-schedule No. 6.

TEA.
 Security, £20. £ s. d.

- Tea—Best Ceylon, to sample ... per lb. 0 1 5½

Schedule No. 9.
PROVISIONS—BENDIGO DISTRICT.

ANNEX TO CONTRACT No. 1927/60.
 E. Davies, 172 Wattle-street, Bendigo.
 Sub-schedule No. 1.

BREAD.
 Security, £5. £ s. d.

- Bread—Wheaten, third quality ... per cental 0 18 9

ANNEX TO CONTRACT No. 1927/61.

Moran and Cato Pty. Ltd., Brunswick-street, Fitzroy.

Sub-schedule No. 2.

GROCERIES AND POTATOES.

Security, £5.		£	s.	d.
1. Candles—(full weights) Kitchen's "Electrines," or other make of equal quality, in 1-lb. packets	per lb.	0	0	11
2. Milk—Fresh and pure	per quart	0	1	0
3. Oatmeal	per lb.	0	0	4
4. Potatoes	per cwt.	0	15	0
5. Rice, dressed, to sample	per lb.	0	0	4
6. Salt—Fine	do.	0	0	2
7. Soap—Yellow (household), dry, to sample	do.	0	0	6
8. " Carbolite "	do.	0	0	6
9. Soda—Washing	do.	0	0	3
10. Tea—Ration, to sample	do.	0	1	6
11. Tobacco—"Starlight," or other make of equal quality, as ordered	do.	0	5	6

ANNEX TO CONTRACT No. 1927/62.

H. Gillett, 350 Hargreaves-street, Bendigo.

Sub-schedule No. 3.

MEAT.

Security, £5.		£	s.	d.
1. Fresh Beef	per cental	2	0	0
2. " Mutton	do.	2	10	0
3. Corned Beef, rolled or round as ordered, without bone or cartilage	do.	2	15	0

Schedule No. 10.

PROVISIONS—CASTLEMAINE DISTRICT.

ANNEX TO CONTRACT No. 1927/63.

S. Barker, Barker-street, Castlemaine.

Sub-schedule No. 1.

BREAD.

Security, £5.		£	s.	d.
1. Bread—Wheaten, third quality	per cental	0	19	9½

ANNEX TO CONTRACT No. 1927/64.

Moran and Cato Pty. Ltd., Brunswick-street, Fitzroy.

Sub-schedule No. 2.

GROCERIES AND POTATOES.

Security, £5.		£	s.	d.
1. Candles—(full weights) Kitchen's "Electrines," or other make of equal quality, in 1-lb. packets	per lb.	0	0	11½
2. Oatmeal	do.	0	0	4
3. Potatoes	per cwt.	0	15	0
4. Rice, Dressed, to sample	per lb.	0	0	5
5. Salt—Fine	do.	0	0	2
6. Soap—Yellow (household), dry, to sample	do.	0	0	6½
7. Tea—Ration, to sample	do.	0	1	6

ANNEX TO CONTRACT No. 1927/65.

John Williamson, Moslyn-street, Castlemaine.

Sub-schedule No. 3.

MEAT.

Security, £5.		£	s.	d.
1. Fresh Beef	per cental	1	13	4
2. " Mutton	do.	1	13	4
3. Corned Beef, rolled or round as ordered, without bone or cartilage	do.	1	13	4

Schedule No. 11.

PROVISIONS AT SALE.

Sub-schedule No. 1.

BREAD.

1. Bread—Wheaten, third quality	per lb.	Purchase
---------------------------------	---------	----------

ANNEX TO CONTRACT No. 1927/66.

D. H. Howard, Raymond-street, Sale.

Sub-schedule No. 2.

GROCERIES AND POTATOES.

Security, £5.		£	s.	d.
1. Potatoes	per cwt.	0	14	6
2. Rice, dressed, to sample	per lb.	0	0	3½
3. Salt—Fine	do.	0	0	1
4. Soap, yellow (household), dry, to sample	per cwt.	2	2	0
5. Soda—Washing	per lb.	0	0	1½
6. Tea—Ration, to sample	do.	0	1	9

ANNEX TO CONTRACT No. 1927/67.

Ronchi Bros., Raymond-street, Sale.

Sub-schedule No. 3.

MEAT.

Security, £5.		£	s.	d.
1. Fresh Beef	per lb.	0	0	5
2. Corned Beef, rolled or round as ordered, without bone or cartilage	do.	0	0	5

Schedule No. 12.

PROVISIONS AT RUTHERGLEN.

(For Students at Viticultural College.)

DELIVERY AT THE COLLEGE.

ANNEX TO CONTRACT No. 1927/68.

E. E. King, Main-street, Rutherglen.

Sub-schedule No. 1.

BREAD.

Security, £5.		£	s.	d.
1. Bread—Fine Wheaten, first quality	per cental	1	2	0

ANNEX TO CONTRACT No. 1927/69.

Moran and Cato Pty. Ltd., Brunswick-street, Fitzroy.

Sub-schedule No. 2.

GROCERIES, ETC.

Security, £10.		£	s.	d.
1. Blue	per lb.	0	0	10
2. Baking Powder, in 1-lb. tins	per tin	0	1	4
3. Bacon, best cured	per lb.	0	1	4
4. Blacking—Boot, ½-lb. tins	per tin	0	0	3
5. Barley, Pearl	per lb.	0	0	3
6. Candles—(Full weights) Kitchen's "Electrines," or other make of equal quality, in 1-lb. packets	do.	0	0	9½
7. Coffee Essence, 10-oz. bottles	per bottle	0	1	3
8. Cocoa	per lb.	0	0	9
9. Cream of Tartar	do.	0	1	5
10. Currants, 3 Crown (present season's)	do.	0	0	8½
11. Curry Powder	do.	0	1	2
12. Essence of Lemon, 1-oz. bottles	per bottle	0	0	7
13. Fish, Preserved, Salmon, Fresh Herrings, Herrings in Tomato, as ordered, in 1-lb. tins	per tin	0	1	1
14. Flour, best Roller	per cental	1	1	0
15. Fruits, Preserved, assorted, in 2-lb. tins	per tin	0	1	1
16. Golden Syrup, in 2-lb. tins	do.	0	0	8½
17. Jams, assorted, in 24-oz. tins, in the proportion of half seed and half stones	do.	0	1	0
18. Cornina (Corn or Maize Flour), in 1-lb. packets	per lb.	0	0	8½
19. Macaroni or Vermicelli, as ordered	do.	0	0	5½
20. Mustard—Double Superfine	do.	0	2	9
21. Oatmeal—Flaked or other	do.	0	0	3½
22. Onions, sound and free from dirt	per cwt.	0	12	6
23. Pepper—Black or White, Ground	per lb.	0	2	0
24. Pickles, 20-oz. bottles	per bottle	0	0	10½
25. Potatoes, dry and free from dirt	per cwt.	0	13	6
26. Raisins—Sultana, 3 Crown, present season's	per lb.	0	0	10
27. Rice—Dressed, to sample	do.	0	0	3½
28. Salt—Coarse	do.	0	0	0½
29. " Fine	do.	0	0	1½
30. Sauce—Chutney, 13-oz. bottles	per bottle	0	1	0
31. " Tomato, 13-oz. bottles	do.	0	1	0
32. " Worcester, 9½-oz. to 10-oz. bottles	do.	0	1	0
33. Soap—Household, yellow, to sample	per lb.	0	0	5
34. " Toilet, "Bath," in 4½-oz. tablets, to sample, Kitchen's, or equal thereto	per doz.	0	2	6
35. " Sand, in 12-oz. blocks	do.	0	0	3
36. Soda—Bicarbonate	per lb.	0	0	3
37. " Washing	do.	0	0	2
38. Spices, mixed, in 1-oz. packets	per packet	0	0	1½
39. Starch	per lb.	0	0	9
40. Tea—Ceylon, to sample	do.	0	1	7

Schedule No. 13.

PROVISIONS AT WAHGUNYAH.

FOR STUDENTS AT WAHGUNYAH VINE NURSERY.

(Delivery at Nursery.)

ANNEX TO CONTRACT No. 1927/70.

G. C. Haig, Ford-street, Wahgunyah.

Sub-schedule No. 1.

BREAD.

Security, £5.		£	s.	d.
1. Bread—Fine Wheaten, first quality	per cental	0	18	9

ANNEX TO CONTRACT No. 1927/71.

Moran and Cato Pty. Ltd., Brunswick-street, Fitzroy.

Sub-schedule No. 2.

GROCERIES, ETC.

Security, £10.

Security, £10.		£	s.	d.
1. Black Lead (1-oz. cakes)	per doz. cakes	0	0	7½
2. Flour, Pearl	per lb.	0	0	3
3. Candles (Full weights) — Kitchen's "Electrine," or other make of equal quality, 1-lb. packets	do.	0	0	11
4. Coffee Essence, 10-oz. bottles	per bottle	0	1	5
5. Cornina (Corn or Maize Flour), in packets of 1-lb. net	per lb.	0	0	7½
6. Cream of Tartar	do.	0	1	4½
7. Currants, 3 crowns, present season's	do.	0	0	8½
8. Fish, Preserved, Salmon, Fresh Herrings, Herrings in Tomato, as required, in 1-lb. tins	per tin	0	1	1
9. Flour, Best Roller	per cental	1	0	0
10. Fruits, Preserved, assorted, in 2-lb. tins	per tin	0	1	1½
11. Ginger—Ground or Whole	per lb.	0	1	3
12. Golden Syrup, in 2-lb. tins	per tin	0	0	9
13. Jams, assorted, in 24-oz. tins, in the proportion of half seed and half stone	do.	0	1	0
14. Macaroni or Vermicelli, as ordered	per lb.	0	0	7
15. Mustard—Double Superfine, 1-lb. tin	per tin	0	3	0
16. Oatmeal—Flaked or Other	per lb.	0	0	3½
17. Onions, sound, and free from dirt	do.	0	0	2
18. Peel—Mixed	do.	0	1	0
19. Pepper—Black or White, Ground	do.	0	2	0
20. Potatoes, dry, and free from dirt	per cwt.	0	14	6
21. Raisins—Sultana, 3 Crowns, present season's	per lb.	0	0	10½
22. Rice—Dressed, to sample	do.	0	0	3½
23. Seed Tapioca (Sago)—To sample	do.	0	0	3½
24. Salt—Fine	do.	0	0	1½
25. Sauce—Chutney, 12-oz. bottles	per bottle	0	1	0
26. " Tomato, 12-oz. bottles	do.	0	1	0
27. " Worcester, 9½-10-oz. bottles	do.	0	0	11
28. Soap—Household, yellow, to sample	per lb.	0	0	4½
29. " Sand, in 12-oz. blocks	each	0	0	4
30. Soda—Bicarbonate	per lb.	0	0	3
31. " Washing	do.	0	0	1½
32. Spices, mixed, in 1-oz. packets	per packet	0	0	1½
33. Tea—Ceylon, to sample	per lb.	0	1	7½

ANNEX TO CONTRACT No. 1927/72.

Keegan and Keegan, Ford-street, Wahgunyah.

Sub-schedule No. 3.

MEAT (FRESHLY KILLED).

Security, £10.		£	s.	d.
1. Beef—Fresh	per lb.	0	0	9
2. Mutton—Fresh	do.	0	0	9

Schedule No. 17.

PROVISIONS AT CRESWICK.

FOR STUDENTS AT THE SCHOOL OF FORESTRY.

(Delivery at the School.)

ANNEX TO CONTRACT No. 1927/73.

C. C. Bouley, Albert-street, Creswick.

Sub-schedule No. 1.

BREADSTUFFS.

Security, £10.

Security, £10.		£	s.	d.
1. Bread—Fine Wheaten, first quality	per cental	1	3	11½
2. Flour—First quality	do.	0	18	0

ANNEX TO CONTRACT No. 1927/74.

G. Tait and Sons, Albert-street, Creswick.

Sub-schedule No. 2.

GROCERIES.

Security, £10.

£ s. d.

1. Barley—Pearl	per lb.	0	0	2½
2. Blue	do.	0	0	11
3. Butter—First grade creamery, to score not less than 90 points, Government grade, commerce regulations standard	do.	0	1	6
4. Cheese—First-class quality, matured	do.	0	0	11
5. Candles (Full weights) — Kitchen's "Electrines," or other make of equal quality, in 1-lb. packets	do.	0	0	10½
6. Coffee—Fresh Roasted and Whole—Beans to be thoroughly sound, to sample	do.	0	1	5
7. Cornina (Corn or Maize Flour), in packets of 1-lb. net	do.	0	0	7½
8. Currants—3 Crowns, present season's	do.	0	0	7½
9. Eggs, new laid	per doz.	0	1	3
10. Ginger—Ground	per lb.	0	1	6
11. Golden Syrup, in 7-lb. tins	per tin	0	2	1
12. Jams, assorted, in 24-oz. tins, nett, in the proportion of half seed and half stone	per lb.	0	0	7½
13. Mustard—Double Superfine	do.	0	3	10
14. Oatmeal	do.	0	0	3½
15. Peas—Split	do.	0	0	3
16. Pepper—Black, ground	do.	0	1	1
17. Raisins—Sultana, 3 Crowns, present season's	do.	0	0	10
18. Rice—Dressed, to sample	do.	0	0	3½
19. Seed Tapioca (Sago)—To sample	do.	0	0	2½
20. Salt—Fine	do.	0	0	1
21. Soap—Household, yellow, dry, and hard, to sample	do.	0	0	4½
22. Soap—Sand, Carbolic, in 12-oz. blocks	each	0	0	3½
23. Soda—Carbonate of	per lb.	0	0	2
24. Soda—Washing	do.	0	0	1
25. Spices—Mixed, in 1-oz. packets	per pkt.	0	0	1½
26. Starch	do.	0	1	3
27. Tartar—Cream of	do.	0	1	10
28. Tea—Ceylon, to sample	per lb.	0	1	3
29. Vinegar—Malt	per pint	0	0	2
30. Potatoes	per cwt.	0	6	6

ANNEX TO CONTRACT No. 1927/75.

J. J. Bennett, Albert-street, Creswick.

Sub-schedule No. 3.

MEAT.

Security, £10.

£ s. d.

1. Fresh Beef—Fore-quarter	per lb.	0	0	8
2. " Hind-quarter	do.	0	0	8
3. " Buttocks	do.	0	0	8
4. " Mutton	do.	0	0	8
5. Corned Beef, rolled or round, as ordered, without bone or cartilage	do.	0	0	8
6. Pork (Leg)	do.	0	0	10
7. Fresh Suet—Kidney	do.	0	0	6

ANNEX TO CONTRACT No. 1927/76.

E. E. Pollard, Eastern Hill, Creswick.

Sub-schedule No. 4.

MILK.

Security, £5.

£ s. d.

1. Milk—Fresh and pure	per quart	0	0	6
------------------------	-----------	---	---	---

Schedule No. 18.

PROVISIONS AT McLEOD SETTLEMENT, FRENCH ISLAND.

DELIVERY TO BE MADE AT LANG LANG JETTY.

ANNEX TO CONTRACT No. 1927/77.

J. Jackson, Westernport-road, Lang Lang.

Sub-schedule No. 1.

BREAD.

Security £10.

£ s. d.

1. Bread—Fine, Wheaten, first quality	per cental	1	1	10½
---------------------------------------	------------	---	---	-----

ANNEX TO CONTRACT NO. 1927/78.

A. G. Glasscock, Lang Lang.

Sub-schedule No. 2.

GROCERIES.

Security, £10.

	£	s.	d.
1. Butter—First grade creamery, to score not less than 90 points, Government grade	0	1	9
2. Cheese—Matured	0	1	3
3. Jams—Assorted, in proportion of half seed and half stone, of best quality, in 24-oz. tins	0	0	11
4. Mustard—Double Superfine	0	2	6
5. Oatmeal	1	8	0
6. Potatoes—Dry and free from dirt	0	6	3
7. Rice—Dressed, to sample	0	0	3
8. Salt—Fine	0	0	1
9. Soap—Toilet, brown Windsor, in tablets, to sample	0	1	6

GROCERIES—continued.

£ s. d.

10. Soda—Washing	do.	0	0	1½
11. Tea—Ceylon, to sample	do.	0	2	0
12. " Ration	do.	0	1	3½
13. Tobacco—"Starlight," or other make of equal quality, as ordered	do.	0		4

ANNEX TO CONTRACT NO. 1927/79.

E. W. Mission, Lang Lang.

Sub-schedule No. 3.

MEAT.

Security £20.

£ s. d.

1. Fresh Beef—Forequarters	per cental	2	10	0
2. " " Hindquarters	do.	2	18	4
3. " Mutton	do.	2	18	4

Schedule No. 14.

PROVISIONS FOR ABORIGINES AT LAKE TYERS.

(Delivery at Lake Tyers Station.)

ANNEX TO CONTRACT NO. 1927/80.

J. Rule, Nowa Nowa.

Sub-schedule No. 1.

BREAD.

Security, £2.

Item No.	Article.	£	s.	d.
1	Bread—Fine Wheaten, first quality	0	18	9

Sub-schedule No. 2.

ANNEX TO CONTRACT NO. 1927/81.

L. T. Freeman, Lakes Entrance.

GROCERIES.

Security, £2.

Item No.	Article.	£	s.	d.	
1	Baking Powder, Snowflake, in 1-lb. tins	per lb.	0	1	4
2	Candles—(Full weights) Kitchen's "Electrines," or other make of equal quality, in 1-lb. packets	"	0	0	9½
3	Coffee—Fresh roasted and whole—Beans to be thoroughly sound, to sample	"	0	1	9
4	Cocoa, in ½-lb. packets	"	0	0	9
5	Cornina (Corn or Maize Flour), in 1-lb. packets	"	0	0	8½
6	Currants—3 crowns (present season's)	"	0	0	7½
7	Curry Powder	"	0	1	2
8	Flour—Best roller	per cental	0	15	6
9	Jams, assorted, in 24-oz. tins (in the proportion of half seed, half stone)	per tin	0	0	10½
10	Mustard—Double Superfine	per lb.	0	2	2
11	Oatmeal	"	0	0	3½
12	Peas, Split	"	0	0	3½
13	Pearl Barley	"	0	0	2½
14	Peel—Mixed	"	0	0	11
15	Pepper—Black, ground, in ½-lb. tins	per tin	0	0	6
16	Raisins—Sultana, 3 crowns (present season's)	per lb.	0	0	10
17	Rice—Dressed, to sample	"	0	0	3
18	Seed Tapioca (Sago), to sample	"	0	0	3
19	Salt—Coarse	"	0	0	0½
20	" Fine	"	0	0	1½
21	Soap—Household, hard and dry, to sample	"	0	0	3½
22	Soda—Bicarbonate	"	0	0	2
23	" Washing	"	0	0	1½
24	Tartar, Cream of	"	0	1	3
25	Tea—Ceylon, to sample	"	0	1	7
26	Tobacco—Twist, to sample	"	0	5	3
27	Treacle, in 7-lb. tins	per tin	0	2	0
28	Vinegar—Malt	per quart	0	0	4½



VICTORIA GOVERNMENT GAZETTE.

Published by Authority.

[Registered at the General Post Office, Melbourne, for transmission by post as a newspaper.]

No. 88.]

FRIDAY, JULY 1.

[1927.]

MINING NOTICES.

RETURN CREEK TIN N. L.

NOTICE is hereby given that a Call (the 7th) of One shilling per share (making shares 10s. paid up) has been made upon the cumulative preference shares in the above company, due and payable at the registered office, Temple Court, 422 Collins-street, Melbourne, on Wednesday, the 13th July, 1927.

By order of the Board,
6203 JAMES L. MOORE, Manager.

UNITED GLEESONS GOLD MINES N. L.

NOTICE is hereby given that a Call (the 23rd) of Threepence per share (making shares 11s. 9d. paid up) has been made upon the whole of the 60,000 shares in the above company, due and payable at the registered office, Temple Court, 422 Collins-street, Melbourne, on Wednesday, the 13th July, 1927.

By order of the Board,
6204 R. W. STRINGER, Manager.

SILENT GROVE TIN N. L.

NOTICE is hereby given that a Call (the 2nd) of One shilling per share (making shares 11s. 6d. paid up) has been made upon the 31,800 contributing shares in the above company, due and payable at the registered office, Temple Court, 422 Collins-street, Melbourne, on Wednesday, the 13th July, 1927.

By order of the Board,
6205 JAMES L. MOORE, Manager.

MARSHALL-LONGTON LUCKNOW GOLD MINING COMPANY N. L.

NOTICE is hereby given that a Call (the 2nd) of One penny per share has been made on the uncalled capital of the company, due and payable at the registered office of the company, 314 Collins-street, Melbourne, on Wednesday, the 13th July, 1927.

M. V. CASEY, Manager.

CENTRAL RED WHITE & BLUE MINING COMPANY NO LIABILITY.

NOTICE.—A Call (the 63rd) of Threepence per share has been made on the capital of this company, due and payable at the company's office, Charing Cross, Bendigo, on Wednesday, 13th July, 1927.

J. J. STANISTREET
6209 (McColl, Rankin, and Stanistreet), Manager.

WALLABY GOLD MINES N. L., GAFFNEY'S CREEK.

NOTICE is hereby given that all shares in arrear of the 43rd (June) Call of Threepence per share will be sold by public auction, at the Stock Exchange, Little Collins-street, Melbourne, on Saturday, 9th July, 1927, at Twelve noon.

6206 S. J. PLAIN, Manager.

NEW RED WHITE AND BLUE CONSOLIDATED COMPANY NO LIABILITY.

POSITIVE SALE.

ALL shares (Nos. 1 to 30,000) upon which the 38th Call of Sixpence per share remains unpaid will be sold by public auction, at the Stock Exchange, Charing Cross, Bendigo, on Tuesday, 12th July, 1927, at half-past Four p.m., unless the call and expenses be previously paid to me.

6207 A. G. PALMER, Manager.

[Faint, illegible text covering the majority of the page, possibly bleed-through from the reverse side.]