

[1747]



VICTORIA  
GOVERNMENT GAZETTE.

Published by Authority.

[Registered at the General Post Office, Melbourne, for transmission by post as a newspaper.]

No. 68]

SATURDAY, JUNE 21.

[1930

CONTRACTS ACCEPTED.

(SERIES 1930-31.)

SUPPLY OF PROVISIONS

FROM

1st JULY, 1930, TO 30th JUNE, 1931. OR AS STATED.

T. A. KEALY,  
Secretary, Tender Board.

CONTRACTS ACCEPTED.—(Series 1930-31).

No. of Contract.	Particulars of each Tender Accepted.	Amount.	Name of Contractor.	Charged against Vote or Fund.	
	<b>PROVISIONS—</b> Supply of Provisions, in such quantities as may be ordered, from 1st July, 1930, to 30th June, 1931.				
	<b>Melbourne District—</b>				
1	Bread, Kew Asylum .. .. .	Rates as per annex	W. Johnson .. .. .	}	
2	Bread, Melbourne, Children's Welfare Dept., &c. .. .	Ditto .. .. .	J. N. Hennessy Pty. Ltd. .. .		
3	Flour and maize meal, &c. .. .. .	Ditto .. .. .	E. R. Rush .. .. .		
4	Groceries .. .. .	Ditto .. .. .	Moran and Cato Pty. Ltd. .. .		
5	Oatmeal, rice, &c. .. .. .	Ditto .. .. .	H. S. K. Ward Pty. Ltd. .. .		
6	Jams .. .. .	Ditto .. .. .	Moran and Cato Pty. Ltd. .. .		
7	Meat, Kew Asylum .. .. .	Ditto .. .. .	W. Angliss and Co. Pty. Ltd. .. .		
8	Meat, Pentridge Penal Establishment .. .. .	Ditto .. .. .	B. Hosking .. .. .		
9	Meat, Children's Welfare Depot, Royal Park, and Police Depot .. .. .	Ditto .. .. .	J. H. Cooke Pty. Ltd. .. .. .		
10	Meat, Royal Park Mental Hospital and Receiving House .. .. .	Ditto .. .. .	W. Angliss and Co. Pty. Ltd. .. .		
11	Potatoes .. .. .	Ditto .. .. .	Shea, Hood and Co. Pty. Ltd. .. .		
12	Soap Mixtures .. .. .	Ditto .. .. .	Moran and Cato Pty. Ltd. .. .		
13	Tea .. .. .	Ditto .. .. .	Moran and Cato Pty. Ltd. .. .		
14	Tobacco .. .. .	Ditto .. .. .	Dudgeon and Arnell Pty. Ltd. .. .		
	<b>Mont Park—</b>				
15	Breadstuffs .. .. .	Ditto .. .. .	J. N. Hennessy Pty. Ltd. .. .	}	
16	Groceries .. .. .	Ditto .. .. .	Moran and Cato Pty. Ltd. .. .		
17	Jams .. .. .	Ditto .. .. .	Moran and Cato Pty. Ltd. .. .		
18	Meat .. .. .	Ditto .. .. .	B. Hosking .. .. .		
19	Potatoes .. .. .	Ditto .. .. .	G. A. Hardham .. .. .		
20	Tea .. .. .	Ditto .. .. .	Moran and Cato Pty. Ltd. .. .		
	<b>Ararat—</b>				
21	Breadstuffs .. .. .	Ditto .. .. .	Wm. Bates .. .. .		}
22	Groceries .. .. .	Ditto .. .. .	Moran and Cato Pty. Ltd. .. .		
23	Jams .. .. .	Ditto .. .. .	Fruitgrowers' Preserving Co. Pty. Ltd. .. .		
24	Meat .. .. .	Ditto .. .. .	Murphy and Wills .. .. .		
25	Potatoes .. .. .	Ditto .. .. .	Purchase, Clause 4 .. .. .		
	<b>Ballarat—</b>				
26	Breadstuffs .. .. .	Ditto .. .. .	Wm. Haymes .. .. .		}
27	Groceries .. .. .	Ditto .. .. .	Moran and Cato Pty. Ltd. .. .		
28	Jams .. .. .	Ditto .. .. .	Fruitgrowers' Preserving Co. Pty. Ltd. .. .		
29	Meat .. .. .	Ditto .. .. .	H. J. Symons .. .. .		
30	Potatoes .. .. .	Ditto .. .. .	Purchase, Clause 4 .. .. .		
	<b>Beechworth—</b>				
31	Breadstuffs .. .. .	Ditto .. .. .	Wm. Price .. .. .	}	
32	Groceries .. .. .	Ditto .. .. .	G. A. Hardham .. .. .		
33	Meat .. .. .	Ditto .. .. .	W. Angliss and Co. Pty. Ltd. .. .		
34	Potatoes .. .. .	Ditto .. .. .	W. H. Collins .. .. .		
35	Tea .. .. .	Ditto .. .. .	Moran and Cato Pty. Ltd. .. .		
	<b>Sunbury—</b>				
36	Breadstuffs .. .. .	Ditto .. .. .	Exors. estate of Jane Eadie (deceased)	}	
37	Groceries .. .. .	Ditto .. .. .	Moran and Cato Pty. Ltd. .. .		
38	Jams .. .. .	Ditto .. .. .	Moran and Cato Pty. Ltd. .. .		
39	Meat .. .. .	Ditto .. .. .	S. J. Starkie .. .. .		
40	Potatoes .. .. .	Ditto .. .. .	G. A. Hardham .. .. .		
41	Tea .. .. .	Ditto .. .. .	Moran and Cato Pty. Ltd. .. .		
	<b>Bendigo—</b>				
42	Bread .. .. .	Ditto .. .. .	Millar Bros. .. .. .	}	
43	Groceries .. .. .	Ditto .. .. .	Moran and Cato Pty. Ltd. .. .		
44	Meat .. .. .	Ditto .. .. .	Ewing and Walsh .. .. .		
	<b>Castlemaine—</b>				
45	Bread .. .. .	Ditto .. .. .	Chapman Bros. .. .. .	}	
46	Groceries .. .. .	Ditto .. .. .	G. A. Hardham .. .. .		
47	Meat .. .. .	Ditto .. .. .	D. and F. McShanag .. .. .		
	<b>Geelong—</b>				
48	Breadstuffs .. .. .	Ditto .. .. .	J. A. Fitzgerald .. .. .	}	
49	Groceries .. .. .	Ditto .. .. .	G. A. Hardham .. .. .		
50	Meat .. .. .	Ditto .. .. .	M. G. O'Brien .. .. .		
51	Milk .. .. .	Ditto .. .. .	S. H. Warren .. .. .		
	<b>McLeod Settlement, French Island—</b>				
52	Bread .. .. .	Ditto .. .. .	J. Jackson .. .. .	}	
53	Groceries .. .. .	Ditto .. .. .	G. A. Hardham .. .. .		
54	Meat .. .. .	Ditto .. .. .	E. W. Misson .. .. .		
	<b>Creswick—</b>				
55	Bread .. .. .	Ditto .. .. .	C. C. Bowley .. .. .	}	
56	Groceries .. .. .	Ditto .. .. .	G. Tait and Sons .. .. .		
57	Meat .. .. .	Ditto .. .. .	J. J. Bennett .. .. .		
58	Milk .. .. .	Ditto .. .. .	E. E. Pollard .. .. .		

Contingencies, 1930-31

CONTRACTS ACCEPTED.—(Series 1930-31)—continued.

No. of Contract.	Particulars of each Tender Accepted.	Amount.	Name of Contractor.	Charged against Vote or Fund.
<b>PROVISIONS—continued.</b>				
<b>Greenvale—</b>				
59	Bread .. .. .	Rates as per annex	C. E. Marshall .. .. .	
60	Groceries .. .. .	Ditto .. .. .	Moran and Cato Pty. Ltd. . . . .	
61	Meat .. .. .	Ditto .. .. .	W. Angliss and Co. Pty. Ltd. . . . .	
62	Potatoes .. .. .	Ditto .. .. .	G. A. Hardham .. .. .	
<b>Lara—</b>				
63	Bread .. .. .	Ditto .. .. .	M. L. Thompson .. .. .	
64	Groceries .. .. .	Ditto .. .. .	Moran and Cato Pty. Ltd. . . . .	
65	Jam .. .. .	Ditto .. .. .	Moran and Cato Pty. Ltd. . . . .	
66	Meat .. .. .	Ditto .. .. .	W. Angliss and Co. Pty. Ltd. . . . .	
67	Potatoes .. .. .	Ditto .. .. .	G. A. Hardham .. .. .	
<b>Rutherglen—</b>				
68	Bread .. .. .	Ditto .. .. .	Rutherglen Co-op. and Distribution Society	
69	Groceries .. .. .	Ditto .. .. .	G. A. Hardham .. .. .	Contingencies, 1930-31
<b>Wahgunyah—</b>				
70	Bread .. .. .	Ditto .. .. .	F. E. Chilton .. .. .	
71	Groceries .. .. .	Ditto .. .. .	G. A. Hardham .. .. .	
..	Meat .. .. .	.. .. .	Purchase by agreement .. .. .	
<b>s.s. Rip and Dredges—</b>				
..	Breadstuffs .. .. .	.. .. .	Purchase by agreement .. .. .	
72	Groceries .. .. .	Rates as per annex	Moran and Cato Pty. Ltd. . . . .	
73	Meat .. .. .	Ditto .. .. .	W. Angliss and Co. Pty. Ltd. . . . .	
74	Vegetables .. .. .	Ditto .. .. .	G. A. Hardham .. .. .	
<b>Aborigines (Lake Tyers)—</b>				
75	Bread .. .. .	Ditto .. .. .	H. E. Whitbourne .. .. .	
76	Groceries .. .. .	Ditto .. .. .	Moran and Cato Pty. Ltd. . . . .	

Approved—E. J. HOGAN, Treasurer. 27.5.1930.

## STIPULATIONS FOR SUPPLIES OF PROVISIONS.

(All items must be manufactured or prepared within the Commonwealth.)

No sub-letting allowed.

*Under all Sub-schedules particular attention is drawn to Clause 1 of the Conditions of Contract as to quality.*

## BREAD.

A sample of the best ordinarily retailed to the public will be considered as a test loaf for first quality for fine wheaten and pure wheaten Meal Bread. *Pure wheaten Meal Bread of first quality may be substituted, wholly or in part, for fine wheaten Bread at such times and in such quantities as, in the opinion of the Medical Superintendent, may be deemed necessary, and the contractor will be required to supply such Bread at the contract rate. Reasonable notice, however, of the intention to substitute wheaten Meal Bread must be given to the contractor by the officer ordering the supply.* Bread may be baked at any Government establishment without infringing these contracts. At the Gaols, Ballarat, Beechworth, Geelong, Bendigo, and Castlemaine, if required, bread must be supplied one day old, due notice to be given to the contractor of such requirement.

In the event of bread being made at any Government establishment in the Melbourne District during the currency of these contracts, the flour required will be drawn under the flour and maize meal sub-schedule. The maize meal for all the country gaols is included in the sub-schedule for flour and maize meal, Melbourne District, and delivery of same will be required to be made at the Victorian Railways, Spencer-street.

## GROCERIES.

As a guarantee of quality, Rice, when ordered in quantities of 56 lb. and over, must be supplied in original bags as delivered by the miller or dresser. Such bags must be branded "Rice, Dressed," and shall also have stencilled thereon the miller or dresser's name and the distinguishing mark indicative of the quality or grade. The bags thus stencilled shall contain Rice milled or dressed by the miller or dresser whose name appears thereon. Supplies not in conformity with the foregoing condition will be rejected. Oatmeal must be supplied in original bags as delivered by millers.

Candles, except those for prison cells, must be supplied in 1-lb. packets. Candles for prison cells must be delivered in boxes containing from 25 to 50 lb. per box, the boxes for which must be legibly stencilled on one end, showing the estimated burning time and the gross, tare, and net weight of contents.

The soap supplied must be hard throughout, ready for immediate use without waste. Soap for Hospitals for the Insane is not included in these contracts.

When the quantity admits, Tea must be supplied in original and unopened packages, labelled, as landed.

Raisins and currants must be present season's, and where the quantity admits, be supplied in original boxes labelled 3 crowns.

For s.s. *Rip* a certain quantity of Biscuits and Preserved Meats are sometimes required in lieu of fresh bread and fresh meat, and are included to meet such contingency only.

## BUTTER, CHEESE, AND JAMS.

Butter is to be delivered to the s.s. *Rip* in 1-lb. pats, in such quantities as may be ordered, and no excess over the quantity ordered will be received.

All supplies of 56 lb., or multiples of 56 lb., must be supplied in boxes as originally packed. The butter as well as the boxes in which it is packed must bear the impress stamp of the creamery where produced, otherwise it will not be accepted.

Where the Store or Butter Factory of the Contractor is situated in the Metropolitan area all Butter to the quantity of 56 lb. and over to be supplied in any one consignment under this contract shall before despatch from the Store or Factory be first examined and passed by the Government Butter Grader, for and on behalf of the officer authorized to accept delivery. The boxes containing butter so examined and found satisfactory in quality and description will be stamped by the Government Butter Grader. No butter from a contractor located in the Metropolitan Area shall be accepted unless the boxes bear the stamp of the Grader. For

the purposes of the foregoing condition the Metropolitan Area is defined as being not outside the radius visited by the Government Grader.

No Butter ex Cool Store will be examined by the Grader until thermally it is in suitable condition therefor.

Where the Store or Factory from which the Butter is despatched is not within the area visited by the Grader a sample of any supplies may be forwarded to the Government Butter Grader for examination, should the supply be considered by the officer authorized to accept delivery as not being equal in quality or description to that contracted for.

The Cheese supplied to be fairly or fully matured, as ordered, and, if the quantity admits, boxed for transport.

Jams.—The weight stamped on the tins in accordance with the regulations under the Commerce Act, as indicating the minimum net quantity that each tin contains, shall for the purpose of this contract be taken as the actual contents when computing the quantity supplied.

When Jam is supplied in jars the jars remain the property of the contractor, and must be removed by the contractor at his own expense when empty.

## MEAT.

Fore and hind quarters of beef for Hospitals for the Insane are to be supplied in equal proportions of each, and must be delivered as a whole respectively, also extra buttocks separately when ordered. Meat for other institutions must be supplied as ordered. Where hind-quarters or buttocks are ordered, 9 inches must be cut off from the end of the leg from the hock upwards, i.e., the end of the leg from which the shank has been removed at the abattoirs; and when fore-quarters form a portion of the supply, 6 inches from the end of the neck and the whole of the shin at the clodbone joint must be removed. The sticking pieces also must be trimmed off, and the point and end of the brisket rendered free from blood and blood stains.

Fore and hind quarters of beef, for convenience of handling, may be cut into two parts, but each part is to bear evidence of having been cut from the same fore or hind quarter.

Corned beef, rolled or round, as ordered, must be supplied without bone or cartilage and will be received, whether pumped or prepared in the ordinary way by pickling, but in the former case must have been soaked after pumping for at least 48 hours, in a good pickle, and then thoroughly drained before supply. No flank, chuck, sticking piece, shin, leg of beef, or piece under 7 lb. will be received.

Should the local supply of fresh meat become scarce, or the price of same become abnormally high, chilled meat may, with the consent of the Tender Board, on the recommendation of the head of the Department, be supplied.

All meat shall have been slaughtered in Victoria, and shall be well fed, good, sound, sweet, and wholesome.

In cases of emergency, or on such other occasions as in the opinion of the Inspector-General of the Insane may seem advisable, other forms of meat such as rabbits, tinned meats, &c., may be purchased apart from the contract for Hospitals for the Insane, in lieu of the meat mentioned in the schedule, and substituted therefor, provided 24 hours' notice (except in cases of emergency) be given to the contractor of such intention.

Meat derived from the carcasses of Bulls, Stags, or Rams will not be received, and shall not be tendered for delivery.

For Sub-schedules 9 and 10, in the Melbourne District, in addition, the following clauses apply:—

The beef must be supplied in quantities as ordered from Ribs, Sirloln, and Thick Flanks. Chuck Ribs, i.e., the first to fourth inclusive, will not be accepted.

Mutton must be delivered in sides. All kidney fat to be removed.

Meat containing an undue proportion of bone or fat will not be accepted.

The parts to be removed by the contractor are indicated by the shaded portions of the annexed diagram.

For Beechworth samples (corresponding to the description given in the schedule) of meat ordinarily retailed to the public will be considered as a test for quality.

As regards supplies for a.s. Rip, all meat must be of prime quality, and must be supplied in equal quantities from ribs, sirloin, and thick flanks; mutton to be delivered in sides; all kidney fat to be removed; meat containing an undue proportion of fat will not be accepted. Chuck ribs will not be accepted in lieu of prime ribs. Live sheep to be supplied when required.

#### MILK.

The milk must be fresh, pure, and of the best quality, and subject to test when required by the Department, and supplied at such times as the Department may require. Should the contractor fail to supply at the time specified in the order or at such times as may be indicated in any general notice to the contractor his contract may be cancelled forthwith and his

security forfeited, or should the supply prove to be not of contract quality it will be rejected, and any expense incurred will be charged to the contractor.

#### POTATOES.

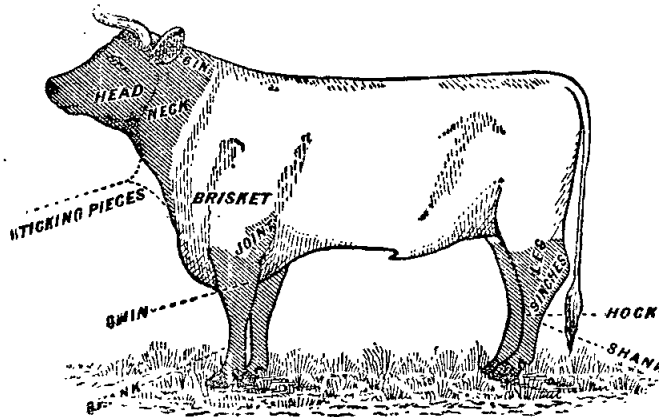
Potatoes to be dry and free from dirt. Contractors to supply 117 lb. of potatoes for each cwt. credited to them, and, in addition, to take back all rejected before being cooked.

If the price of potatoes becomes abnormally high, the heads of the various departments concerned may, if they think fit, cause rice or any other suitable food to be occasionally substituted in lieu thereof.

#### TOBACCO.

Tobacco for country Hospitals for the Insane is included in the contract for Melbourne District, and delivery of same will be required to be made at Victorian Railways, Spencer-street.

Tobacco for Country Gaols is not included in the contract for Melbourne District.



Schedule No. 1.

**PROVISIONS—MELBOURNE DISTRICT.**

ANNEX TO CONTRACT NO. 1930/1.

*W. Johnson, Scotchmer-street, Fitzroy North, N. 7.*

Sub-schedule No. 1.

BREAD FOR HOSPITALS FOR THE INSANE AT KEW.

	Security, £120.	£	s.	d.
1. Bread—Fine wheaten, first quality	per cental	0	13	6

ANNEX TO CONTRACT NO. 1930/2.

*J. N. Hennessy Pty. Ltd., Sydney-road, Brunswick.*

Sub-schedule No. 2.

BREAD FOR CHILDREN'S WELFARE DEPOT, ROYAL PARK RECEIVING HOUSE AND MENTAL HOSPITAL, ROYAL PARK AND POLICE DEPOT.

	Security, £50.	£	s.	d.
1. Bread—Fine wheaten, first quality	per cental	0	13	11

ANNEX TO CONTRACT NO. 1930/3.

*E. R. Rush, 386 Flinders-lane, Melbourne.*

Sub-schedule No. 3.

FLOUR AND MAIZE MEAL.

	Security, £100.	£	s.	d.
1. Flour—Roller, first quality, to sample	per cental	0	11	9
2. " Sharps, to sample	do.	0	10	6
3. Maize Meal, to sample	do.	0	16	0

ANNEX TO CONTRACT NO. 1930/4.

*Moran and Cato Pty. Ltd., Brunswick-street, Fitzroy, N. 6.*

Sub-schedule No. 4.

GROCERIES, ETC.

	Security, £80.	£	s.	d.
1. Biscuits, Coffee, Malt or Milk Arrow-root, as ordered	per lb.	0	0	8½
2. Blue—Washing	do.	0	0	8
3. Candles—Full weights, Kitchen's "Electrines" or other make of equal quality, to be supplied in 1-lb. packets	do.	0	0	9
4. " Kitchen's "Electrines," or other make of equal quality, for use in prison cells, to burn for 1, 1½, 2, 2½, and 3 hours respectively, as ordered, to be supplied in boxes, containing from 25 to 50 lb. per box	do.	0	1	1
5. Cocoa—in ½-lb. tins or packets	do.	0	0	9
6. Coffee—Fresh roasted and whole, beans to be thoroughly sound, Neilgherry A, to sample	do.	0	1	5½
7. " Pure, fresh roasted and ground, Neilgherry A, to sample	do.	0	1	5½
8. Cornina (Corn or Maize Flour), in packets of 1-lb. net	do.	0	0	6
9. Cream of Tartar	do.	0	1	3½
10. Currants, 3 crowns, present season's	do.	0	0	7½
11. Curry Powder	do.	0	0	9
12. Essence of Lemon, 1-oz. bottles	per bottle	0	0	3½
13. Ginger—Ground	per lb.	0	0	9
14. Golden Syrup (in 7-lb. tins)	per tin	0	1	9½
15. Lemon Peel	per lb.	0	0	8½
16. Mustard—Double Superfine	do.	0	2	2
17. Nutmegs	do.	0	1	3
18. Oatmeal—Flaked	do.	0	0	2½
19. Pearl barley	per cwt.	0	16	0
20. Peas—Split	do.	0	19	0
21. Pepper—Black, ground	per lb.	0	1	4½
22. Pipes—Tobacco, clay	per doz.	0	0	9
23. Raisins—Sultana, 3 crowns, present season's	per lb.	0	0	7½

GROCERIES—continued.

	£	s.	d.	
24. Salt—Fine	per cwt.	0	6	0
25. " Rock	do.	0	7	6
26. Soda—Washing	do.	0	6	9
27. " Bicarbonate of	per lb.	0	0	1½
28. Spice—Mixed, in 1-oz. packets	per pkt.	0	0	1
29. Starch, "Silver Star"	per lb.	0	0	8½
30. Treacle, in 7-lb. tins	per tin	0	1	7½
31. Vinegar (malt)	per quart	0	0	3
32. Tapioca (Pearl)	per lb.	0	0	2½
33. Tomato Sauce (13-oz. bottles), "Rosella" brand	per bottle	0	0	8½

ANNEX TO CONTRACT NO. 1930/5.

*H. S. K. Ward Pty. Ltd., 24 Spencer-street, Melbourne.*

Sub-schedule No. 5.

OATMEAL, RICE, AND SEED TAPIOCA.

	Security, £80.	£	s.	d.
1. Oatmeal	per cwt.	1	0	6
2. Rice—Dressed, to sample	do.	1	5	3
3. Seed Tapioca (Sago), to sample	do.	0	17	0

ANNEX TO CONTRACT NO. 1930/6.

*Moran and Cato Pty. Ltd., Brunswick-street, Fitzroy, N. 6.*

Sub-schedule No. 6.

JAMS.

	Security, £20.	£	s.	d.
1. Jams—Assorted, in bulk, of approved kinds, in the proportion of half seed and half stone, of the best quality, in tins, as required	per lb. actual net weight	0	0	3½
2. " " " in 24-oz. tins	per tin	0	0	7½

ANNEX TO CONTRACT NO. 1930/7.

*W. Angliss and Co. Pty. Ltd., Bourke-street, Melbourne.*

Sub-schedule No. 7.

MEAT FOR HOSPITAL FOR THE INSANE, KEW.

	Security, £150.	£	s.	d.
1. Fresh Beef—Fore-quarters	per cental	1	18	6
2. " " Hind-quarters	do.	1	18	6
3. " " Buttocks	do.	1	18	6
4. " Mutton	do.	1	12	0
5. Corned Beef, rolled or round, as ordered, without bone or cartilage	do.	1	18	6
6. Fresh Suet—Kidney	do.	2	10	0

ANNEX TO CONTRACT NO. 1930/8.

*B. Hosking, 354 High-street, Northcote, N. 16.*

Sub-schedule No. 8.

MEAT FOR PENAL ESTABLISHMENT (PENTRIDGE), FEMALE PENITENTIARY, AND METROPOLITAN GAOL (COBURG).

	Security, £100.	£	s.	d.
1. Fresh Beef	per cental	1	15	6
2. " " Buttocks	do.	1	15	6
3. Corned Beef, rolled or round, as ordered, without bone or cartilage	do.	1	15	6
4. Fresh Mutton	do.	1	15	6
5. Dripping	do.	1	15	6
6. Fresh Suet—Kidney	do.	1	15	6

ANNEX TO CONTRACT NO. 1930/9.

*J. H. Cooke Pty. Ltd., Queen's-parade, Clifton Hill.*

Sub-schedule No. 9.

MEAT FOR POLICE DEPOT, ST. KILDA-ROAD, AND CHILDREN'S WELFARE DEPOT, ROYAL PARK.

	Security, £50.	£	s.	d.
1. Fresh Beef	per cental	2	5	0
2. " Mutton	do.	1	15	0
3. Corned Beef, rolled or round, as ordered, without bone or cartilage	do.	2	5	0
4. Fresh Suet—Kidney	per lb.	0	0	5

ANNEX TO CONTRACT No. 1930/10.

*W. Angiss and Co. Pty. Ltd., Bourke-street, Melbourne.*  
Sub-schedule No. 10.

MEAT FOR RECEIVING HOUSE AND MENTAL HOSPITAL, ROYAL PARK.

		Security, £50.		£	s.	d.
1.	Fresh Beef ... ..	per	cental	2	6	0
2.	" " Buttocks ... ..	do.		2	6	0
3.	" " Mutton ... ..	do.		1	12	0
4.	Corned Beef, rolled or round, as ordered, without bone or cartilage ... ..	do.		2	6	0
5.	Fresh Suet—Kidney ... ..	do.		2	10	0

ANNEX TO CONTRACT No. 1930/11.

*Shea, Hood and Co. Pty. Ltd., 535 Flinders-lane, Melbourne.*

Sub-schedule No. 11.

POTATOES.

		Security, £100.		£	s.	d.
1.	Potatoes ... ..	per	cwt.	0	10	0

ANNEX TO CONTRACT No. 1930/12.

*Moran and Cato Pty. Ltd., Brunswick-street, Fitzroy, N. 6.*

Sub-schedule No. 12.

SOAP MIXTURES.

(Of Commonwealth Manufacture.)

		Security, £20.		£	s.	d.	
1.	Antiseptic, Liquid, of approved make, in 4-gal. tins ... ..	at	per	gallon	0	2	6
2.	Extract of—Kitchen's, or equal thereto, in boxes of 13 lb., containing 56 packets ... ..	per	box	0	4	6	
3*	Household, dry, equal to Kitchen's "Best Brown" ... ..	per	cwt.	1	8	0	
4*	Household, Carbolic, dry ... ..	do.		1	11	0	
5.	"Lux" or "Merino," as ordered, in bulk ... ..	per	lb.	0	1	0	
6.	"Monkey Brand," or equal thereto, in tablets of 5-oz. each ... ..	per	doz.	0	1	9	
7.	Sand—Carbolic or Borax, as ordered, 12-oz. blocks, of approved brand ... ..	per	doz.	0	2	0	
8.	Soft, Genuine Potash, Best Amber, in bulk ... ..	per	cwt.	1	15	0	
9.	Solvol, in 6-oz. tablets ... ..	per	doz.	0	3	6	
10*	Toilet, Brown Windsor, 7 tablets to lb., Kitchen's ... ..	do.		0	1	4	
11*	Toilet, "Bath," in 4½-oz. tablets, Kitchen's ... ..	do.		0	2	0	
12*	Toilet Carbolic, in 4-oz. tablets, Kitchen's ... ..	do.		0	2	0	
13*	Toilet, Castola, in 6-oz. tablets, Kitchen's ... ..	do.		0	2	9	
14.	Toilet, Liquid, colored, in 4-gal. tins ... ..	per	gal.	0	3	3	
15.	"Velvet" ... ..	per	doz.	0	9	3½	

ANNEX TO CONTRACT No. 1930/13.

*Moran and Cato Pty. Ltd., Brunswick-street, Fitzroy, N. 6.*

Sub-schedule No. 13.

TEA.

		Security, £60.		£	s.	d.
1.	Tea—Ceylon, to sample ... ..	per	lb.	0	1	½
2.	" " Ration, to sample ... ..	do.		0	0	8

ANNEX TO CONTRACT No. 1930/14.

*Dudgeon and Arnell Pty. Ltd., 524 Lonsdale-street, Melbourne.*

Sub-schedule No. 14.

TOBACCO.

		Security, £50.		£	s.	d.
1.	Tobacco, in 2-oz. plugs, for gaols—To sample ... ..	per	lb.	0	4	10
2.	Tobacco, 11 plugs to the lb., for Hospitals for the Insane, to sample ... ..	do.		0	5	0

Schedule No. 2.

PROVISIONS—MONT PARK.

(Delivery at the Hospital for Insane, Mont Park, to depots as required, at the Repatriation Mental Hospital, Bundoora, and at Home for Mental Defectives, Janefield.)

ANNEX TO CONTRACT No. 1930/15.

*J. N. Hennessy Pty. Ltd., Sydney-road, Brunswick.*

Sub-schedule No. 1.

BREADSTUFFS.

		Security, £100.		£	s.	d.
1.	Bread—Fine Wheaten, first quality ... ..	per	cental	0	13	9
2.	Bread—Raisin ... ..	do.		1	0	0
3.	Flour—First quality ... ..	do.		0	12	11

ANNEX TO CONTRACT No. 1930/16.

*Moran and Cato Pty. Ltd., Brunswick-street, Fitzroy, N. 6.*

Sub-schedule No. 2.

GROCERIES.

		Security, £30.		£	s.	d.
1.	Beans—Haricot ... ..	per	cwt.	0	18	8
2.	Blue—Washing ... ..	per	lb.	0	0	8
3.	Candles (full weights)—Kitchen's "Electrines," or other make of equal quality, in 1-lb. packets ... ..	do.		0	0	9
4.	Cocoa, in 1-lb. packets ... ..	do.		0	0	6½
5.	Coffee—"Neigherry A"—Fresh roasted and Whole—Beans to be thoroughly sound, to sample ... ..	do.		0	1	4
6.	Cornina (Corn or Maize Flour) in packets of 1-lb. net (6 months) ... ..	do.		0	0	6
7.	Currants, 3 Crowns (present season's) ... ..	do.		0	0	7½
8.	Curry Powder ... ..	do.		0	0	9½
9.	Custard Powder, 1-lb. pkts. ... ..	do.		0	0	8½
10.	Ginger—Ground ... ..	do.		0	0	9
11.	Golden Syrup, in 7-lb. tins ... ..	per	tin	0	1	9
12.	Mustard—Double Superfine ... ..	per	cwt.	0	2	2
13.	Oatmeal ... ..	per	lb.	1	1	0
14.	Pearl Barley ... ..	per	lb.	0	0	1½
15.	Peas—Split ... ..	per	doz.	0	19	0
16.	Pepper—Black, Ground ... ..	per	lb.	0	1	4½
17.	Pipes—Tobacco, Clay ... ..	per	doz.	0	0	9
18.	Prunes—Dried (present season's) ... ..	per	lb.	0	0	5½
19.	Raisins—Sultana, 3 Crowns (present season's) (6 months) ... ..	do.		0	0	7½
20.	Rice—Dressed, to sample ... ..	per	cwt.	1	5	6
21.	Sauce—Tomato, in 13-oz. bottles "Victor's" ... ..	per	doz.	0	7	9
22.	Seed Tapioca (Sago)—To sample ... ..	per	lb.	0	0	2
23.	Salt—Fine ... ..	per	cwt.	0	6	0
24.	Soap—Extract of, Kitchen's, in 13-lb. boxes containing 56 packets ... ..	per	box	0	4	6
25.	Soda—Carbonate of ... ..	per	lb.	0	0	1½
26.	Soda—Washing ... ..	per	cwt.	0	6	6
27.	Spice—mixed, in 1-oz. packets ... ..	per	lb.	0	1	3
28.	Starch—"Burford's" ... ..	do.		0	0	6½
29.	Tartar—Cream of ... ..	do.		0	1	3½
30.	Vinegar—Malt ... ..	per	pint	0	0	1½

ANNEX TO CONTRACT No. 1930/17.

*Moran and Cato Pty. Ltd., Brunswick-street, Fitzroy, N. 6.*

Sub-schedule No. 3.

JAMS.

		Security, £10.		£	s.	d.
1.	Jams—Assorted, in bulk, of approved kinds, in the proportion of half seed and half stone, of the best quality, in tins, as required ... ..	per	lb.	0	0	4

ANNEX TO CONTRACT No. 1930/18.

*B. Hosking, 354 High-street, Northcote, N. 16.*

Sub-schedule No. 4.

MEAT.

		Security, £80.		£	s.	d.
1.	Fresh Beef—Fore-quarters ... ..	per	cental	1	17	6
2.	" " Hind-quarters ... ..	do.		1	17	6
3.	" " Buttocks ... ..	do.		1	17	6
4.	" " Mutton ... ..	do.		1	17	6
5.	Corned Beef—Rolled or round as ordered, without bone or cartilage ... ..	do.		1	17	6
6.	Fresh Suet (Kidney) ... ..	do.		1	17	6
7.	Tripe ... ..	per	lb.	0	0	5
8.	Brawn, fresh and pure ... ..	do.		0	0	7





ANNEX TO CONTRACT No. 1930/30.  
*Moran and Cato Pty. Ltd., Brunswick-street, Fitzroy, N. 6.*  
 Sub-schedule No. 6.

TEA.

	Security, £20.	£	s.	d.
1. Tea—Ceylon, to sample	... per lb.	0	1	2½
2. " Ration	... do.	0	0	8½

Schedule No. 5.  
**PROVISIONS—BEECHWORTH DISTRICT.**

ANNEX TO CONTRACT No. 1930/31.  
*Wm. Price, Newtown, Beechworth.*  
 Sub-schedule No. 1.

BREADSTUFFS.

	Security, £100.	£	s.	d.
1. Bread—Fine wheaten, first quality	per cental	0	16	0
2. Flour—First quality	do.	0	15	0

ANNEX TO CONTRACT No. 1930/32.  
*G. A. Hardham, Glenferrie-road, Malvern.*  
 Sub-schedule No. 2.

GROCERIES.

	Security, £30.	£	s.	d.
1. Blue—Washing	per lb.	0	0	6
2. Candles (full weights)—Kitchen's "Electrines," or other make of equal quality, 1-lb. packets	do.	0	0	9½
3. Coffee—"Neilgherry A," fresh roasted and whole, beans to be thoroughly sound, to sample	do.	0	1	5
4. Cornina (Corn or Maize Flour), in packets of 1-lb. net	do.	0	0	7
5. Golden Syrup, in 7-lb. tins	per tin	0	2	1
6. Mustard, Double Superfine	per lb.	0	2	4
7. Oatmeal	per cwt.	1	4	0
8. Pearl Barley	do.	0	18	0
9. Peas—Split	do.	1	4	0
10. Pepper—Black, ground	per lb.	0	1	7
11. Pipes—Tobacco, clay	per doz.	0	0	9
12. Raisins—Sultana, 3 crowns, present season's	per lb.	0	0	8½
13. Rice—Dressed, to sample	per cwt.	1	9	0
14. Seed Tapioca (Sago)—To sample	do.	1	3	0
15. Salt—Fine	do.	0	10	0
16. Soap—"Monkey Brand"—in 5-oz. tablets	per tab.	0	0	2½
17. Soap—Sand, Carbolic, or Borax, in 12-oz. blocks	per block	0	0	3½
18. Soda—Carbonate of	per lb.	0	0	2½
19. " Washing	per cwt.	0	11	0
20. Starch—"Dandy"	per lb.	0	0	7½
21. Tartar—Cream of	do.	0	1	6
22. Vinegar—Malt	per qt.	0	0	4

ANNEX TO CONTRACT No. 1930/33.  
*W. Angliss and Co. Pty. Ltd., Bourke-street, Melbourne.*  
 Sub-schedule No. 3.

MEAT.

	Security, £100.	£	s.	d.
1. Fresh Beef—Fore-quarters	per cental	2	12	0
2. " " Hind-quarters	do.	2	12	0
3. " " Buttocks	do.	2	12	0
4. " Mutton	do.	1	18	0
5. Corned Beef—rolled or round, as ordered, without bone or cartilage	do.	2	12	0
6. Fresh Suet—Kidney	per lb.	0	0	6½

ANNEX TO CONTRACT No. 1930/34.  
*W. H. Collins, Stanley, via Beechworth.*  
 Sub-schedule No. 4.

POTATOES.

	Security, £30.	£	s.	d.
1. Potatoes	per cwt.	0	10	0

ANNEX TO CONTRACT No. 1930/35.  
*Moran and Cato Pty. Ltd., Brunswick-street, Fitzroy, N. 6.*  
 Sub-schedule No. 5.

TEA.

	Security, £20.	£	s.	d.
1. Tea—Ceylon, to sample	per lb.	0	1	2½
2. " Ration	do.	0	0	8½

Schedule No. 6.  
**PROVISIONS—SUNBURY DISTRICT.**

ANNEX TO CONTRACT No. 1930/36.  
*Exors. estate of Jane Eadie (deceased).*  
 Sub-schedule No. 1.

BREADSTUFFS.

	Security, £100.	£	s.	d.
1. Bread—Fine Wheaten, first quality	per cental	0	14	4
2. Flour—First quality	do.	0	12	0

ANNEX TO CONTRACT No. 1930/37.  
*Moran and Cato Pty. Ltd., Brunswick-street, Fitzroy, N. 6.*  
 Sub-schedule No. 2.

GROCERIES.

	Security, £20.	£	s.	d.
1. Blue—Washing	per lb.	0	0	8½
2. Candles—(Full weights) Kitchen's "Electrines," or other make of equal quality, to be supplied in 1-lb. packets	do.	0	0	9½
3. Cocon, in ½-lb. packets	do.	0	0	9
4. Coffee—"Neilgherry A"—Fresh roasted and whole—Beans to be thoroughly sound, to sample	do.	0	1	5½
5. Cornina (Corn or Maize Flour), in packets of 1-lb. net	do.	0	0	6½
6. Currants—3 crowns, present season's	do.	0	0	7½
7. Curry Powder	do.	0	0	10
8. Ginger—Ground	do.	0	0	9½
9. Golden Syrup, in 7-lb. tins	per tin	0	1	9½
10. Lemon Peel	per lb.	0	0	9
11. Mustard—Double Superfine	do.	0	2	4
12. Oatmeal	per cwt.	1	0	0
13. Pearl Barley	do.	0	16	0
14. Peas—Split	do.	0	19	9
15. Pepper—Black, ground	per lb.	0	1	4½
16. Pipes—Tobacco, clay	per doz.	0	0	9
17. Raisins—Sultana, 3 crowns, present season's	per lb.	0	0	7½
18. Rice—Dressed, to sample	per cwt.	1	5	6
19. Seed Tapioca (Sago), to sample	do.	0	19	0
20. Salt—Fine	do.	0	6	9
21. Soap—Soft—Genuine Amber	do.	0	16	0
22. Soda—Bicarbonate of	per lb.	0	0	1½
23. " Washing	per cwt.	0	7	0
24. Spice—Mixed, in 1-oz. packets	per lb.	0	1	3
25. Starch, "Silver Star" (loose)	do.	0	0	9
26. Tartar—Cream of	do.	0	1	3½
27. Vinegar—Malt	per pint	0	0	1½

ANNEX TO CONTRACT No. 1930/38.  
*Moran and Cato Pty. Ltd., Brunswick-street, Fitzroy, N. 6.*

Sub-schedule No. 3.

JAMS.

	Security, £10.	£	s.	d.
1. Jams—Assorted, in bulk, of approved kinds, in the proportion of half seed and half stone, of the best quality, in tins as required	per lb. actual net weight	0	0	4½

ANNEX TO CONTRACT No. 1930/39.  
*S. J. Starke, Sunbury.*

Sub-schedule No. 4.

MEAT.

	Security, £80.	£	s.	d.
1. Fresh Beef—Fore-quarters	per cental	2	3	0
2. " " Hind-quarters	do.	2	3	0
3. " " Buttocks	do.	2	3	0
4. " Mutton	do.	1	13	4
5. Corned Beef—Rolled or round, as ordered, without bone or cartilage	do.	1	2	3

ANNEX TO CONTRACT No. 1930/40.  
*G. A. Hardham, Glenferrie-road, Malvern, S.E. 4.*  
 Sub-schedule No. 5.

POTATOES.

	Security, £30.	£	s.	d.
1. Potatoes	per cwt.	0	8	0

ANNEX TO CONTRACT No. 1930/41.  
*Moran and Cato Pty. Ltd., Brunswick-street, Fitzroy, N. 6.*  
 Sub-schedule No. 6.

TEA.

	Security, £20.	£	s.	d.
1. Tea—Best Ceylon, to sample	per lb.	0	1	2

Schedule No. 7.

PROVISIONS—BENDIGO DISTRICT.

ANNEX TO CONTRACT No. 1930/42.

*Millar Bros., Bond-street, Long Gully.*

Sub-schedule No. 1.

BREAD.

	Security, £5.	£ s. d.
1. Bread—Wheaten, first quality	... per cental	0 16 8

ANNEX TO CONTRACT No. 1930/43.

*Moran and Cato Pty. Ltd., Brunswick-street, Fitzroy, N. 6.*

Sub-schedule No. 2.

GROCERIES AND POTATOES.

	Security, £5.	£ s. d.
1. Oatmeal	... per lb.	0 0 3½
2. Potatoes	... per cwt.	0 12 6
3. Salt—Fine	... per lb.	0 0 1½
4. Soap—Yellow (household), dry, to sample	do.	0 0 5½
5. " Carbolic "	do.	0 0 5½
6. Tea—Ration, to sample	do.	0 1 0
7. Tobacco, to sample	do.	0 5 3

ANNEX TO CONTRACT No. 1930/44.

*Ewing and Walsh, 162 Williamson-street, Bendigo.*

Sub-schedule No. 3.

MEAT.

	Security, £5.	£ s. d.
1. Fresh Beef	... per cental	1 13 0
2. " Mutton	... per lb.	0 0 4
3. Corned Beef, rolled or round as ordered, without bone or cartilage	do.	0 0 4

Schedule No. 8.

PROVISIONS—CASTLEMAINE DISTRICT.

ANNEX TO CONTRACT No. 1930/45.

*Chapman Bros., 32 Johnston-street, Castlemaine.*

Sub-schedule No. 1.

BREAD.

	Security, £5.	£ s. d.
1. Bread—Wheaten, first quality	... per cental	0 19 9½

ANNEX TO CONTRACT No. 1930/46.

*G. A. Hardham, Glenferrie-road, Malvern, S.E. 4.*

Sub-schedule No. 2.

GROCERIES AND POTATOES.

	Security, £5.	£ s. d.
1. Oatmeal	... per cwt.	1 6 6
2. Potatoes	... do.	0 12 0
3. Salt—Fine	... per lb.	0 0 1½
4. Soap—Yellow (household), dry, to sample	do.	0 0 4½
5. Tea—Ration, to sample	do.	0 1 0

ANNEX TO CONTRACT No. 1930/47.

*McShanag Bros., 79 Graham-street, Castlemaine.*

Sub-schedule No. 3.

MEAT.

	Security, £5.	£ s. d.
1. Fresh Beef	... per cental	1 9 2
2. Corned Beef, rolled or round as ordered, without bone or cartilage	do.	1 9 2

Schedule No. 9.

PROVISIONS AT GEELONG.

ANNEX TO CONTRACT No. 1930/48.

*J. A. Fitzgerald, 150 Malop-street, Geelong.*

Sub-schedule No. 1.

BREADSTUFFS.

	Security, £20.	£ s. d.
1. Bread—Fine Wheaten, first quality	... per cental	0 10 5

ANNEX TO CONTRACT No. 1930/49.

*G. A. Hardham, Glenferrie-road, Malvern, S.E. 4.*

Sub-schedule No. 2.

GROCERIES.

	Security, £20.	£ s. d.
1. Barley—Pearl	... per lb.	0 0 2
2. Oatmeal	... per cwt.	1 3 0
3. Potatoes	... do.	0 9 0
4. Rice—Dressed, to sample	do.	1 6 6
5. Seed Tapioca (Sago), to sample	do.	0 19 6
6. Salt—Fine	... per lb.	0 0 0½
7. Soap—(Household) Yellow, dry, to sample	do.	0 0 3½
8. Tea—Ration, to sample	do.	0 0 10½
9. Tobacco, to sample	do.	0 5 2

ANNEX TO CONTRACT No. 1930/50.

*M. G. O'Brien, 491 Moorabool-street, Geelong.*

Sub-schedule No. 3.

MEAT.

	Security, £20.	£ s. d.
1. Fresh Beef	... per cental	1 16 6
2. " Buttocks	... do.	1 16 0
3. " Mutton	... do.	1 4 0
4. Corned Beef—Rolled or round, without bone or cartilage	do.	1 16 0

ANNEX TO CONTRACT No. 1930/51.

*S. H. Warren, West Moolap P.O.*

Sub-schedule No. 4.

MILK.

	Security, £5.	£ s. d.
1. Milk—Fresh and pure	... per gallon	0 1 8

Schedule No. 10.

PROVISIONS AT McLEOD SETTLEMENT, FRENCH ISLAND.

DELIVERY TO BE MADE AT LANG LANG JETTY.

ANNEX TO CONTRACT No. 1930/52.

*J. Jackson, Westernport-road, Lang Lang.*

Sub-schedule No. 1.

BREAD.

	Security, £10.	£ s. d.
1. Bread—Fine, Wheaten, first quality	... per cental	1 1 10½

ANNEX TO CONTRACT No. 1930/53.

*G. A. Hardham, Glenferrie-road, Malvern, S.E. 4.*

Sub-schedule No. 2.

GROCERIES.

	Security, £10.	£ s. d.
1. Butter—First grade creamery, to score not per lb. less than 90 points, Government grade	do.	0 1 8
2. Cheese—Matured	do.	0 1 0
3. Jams—Assorted, in proportion of half seed and half stone, of best quality, in 24-oz. tins	... per tin	0 0 8½
4. Oatmeal	... per cwt.	1 3 6
5. Potatoes—Dry and free from dirt	do.	0 10 0
6. Rice—Dressed, to sample	... per lb.	0 0 3
7. Salt—Fine	... do.	0 0 1
8. Soap—Toilet, brown Windsor, in tabs	do.	0 0 9
9. Soda—Washing	... do.	0 0 1½
10. Tea—Ceylon, to sample	... do.	0 1 6
11. " Ration	... do.	0 0 11

ANNEX TO CONTRACT No. 1930/54.

*E. W. Mison, Lang Lang.*

Sub-schedule No. 3.

MEAT.

	Security £20.	£	s.	d.
1. Fresh Beef—Fore-quarters ... .. per cental		2	10	0
2. " " Hind-quarters ... .. do.		2	18	4
3. " Mutton ... .. do.		2	10	0

Schedule No. 11.

PROVISIONS AT CRESWICK.

FOR STUDENTS AT THE SCHOOL OF FORESTRY.  
(Delivery at the School.)

ANNEX TO CONTRACT No. 1930/55.

*C. C. Bowley, Albert-street, Creswick.*

Sub-schedule No. 1.

BREADSTUFFS.

	Security, £10.	£	s.	d.
1. Bread—Fine Wheaten, first quality ... .. per cental		1	0	10
2. Flour—First quality ... .. do.		0	16	0

ANNEX TO CONTRACT No. 1930/56.

*G. Tait and Sons, Albert-street, Creswick.*

Sub-schedule No. 2.

GROCERIES.

	Security, £10.	£	s.	d.
1. Barley—Pearl ... .. per lb.		0	0	2
2. Blue—Washing ... .. do.		0	0	10½
3. Butter—First grade creamery, to score not less than 90 points, Government grade, commerce regulations standard ... .. do.		0	1	6
4. Cheese—First-class quality, matured ... .. do.		0	0	11
5. Candles (Full weights)—Kitchen's "Electrines," or other make of equal quality, in 1-lb. packets ... .. do.		0	0	10
6. Coffee—Fresh Roasted and Whole—Beans to be thoroughly sound, to sample ... .. do.		0	1	6
7. Cornina (Corn or Maize Flour), in packets of 1-lb. net ... .. do.		0	0	7½
8. Currants—3 Crowns, present season's ... .. do.		0	0	7½
9. Eggs, new laid ... .. per doz.		0	1	4
10. Ginger—Ground ... .. per lb.		0	0	11
11. Golden Syrup, in 7-lb. tins ... .. per tin		0	2	0
12. Jams, assorted, in 24-oz. tins, net, in the proportion of half seed and half stone ... .. per lb.		0	0	6½
13. Mustard—Double Superfine ... .. do.		0	3	9
14. Oatmeal ... .. do.		0	0	3½
15. Peas—Split ... .. do.		0	0	2½
16. Pepper—Black, ground ... .. do.		0	1	8
17. Raisins—Sultana, 3 Crowns, present season's ... .. do.		0	0	8
18. Rice—Dressed, to sample ... .. do.		0	0	3
19. Saeed Tapioca (Sago)—To sample ... .. do.		0	0	2½
20. Salt—Fine ... .. do.		0	0	1
21. Soap—Household, yellow, dry, and hard, to sample ... .. do.		0	0	4
22. Soap—Sand, Carbolic, in 12-oz. blocks ... .. each		0	0	3
23. Soda—Carbonate of ... .. per lb.		0	0	2
24. Soda—Washing ... .. do.		0	0	1
25. Spices—Mixed, in 1-oz. packets ... .. per pkt.		0	0	1
26. Starch ... .. per lb.		0	0	9½
27. Tartar—Cream of ... .. do.		0	1	6
28. Tea—Ceylon, to sample ... .. do.		0	1	10
29. Vinegar—Malt ... .. per pint		0	0	2
30. Potatoes ... .. per cwt		0	6	6

ANNEX TO CONTRACT No. 1930/57.

*J. J. Bennett, Albert-street, Creswick.*

Sub-schedule No. 3.

MEAT.

	Security, £10.	£	s.	d.
1. Fresh Beef—Fore-quarter ... .. per lb.		0	0	8
2. " " Hind-quarter ... .. do.		0	0	8
3. " " Buttocks ... .. do.		0	0	8
4. " Mutton ... .. do.		0	0	8
5. Corned Beef, rolled or round, as ordered, without bone or cartilage ... .. do.		0	0	8
6. Pork (Leg) ... .. do.		0	0	10
7. Fresh Suet—Kidney ... .. do.		0	0	6

ANNEX TO CONTRACT No. 1930/58.

*E. E. Pollard, Eastern Hill, Creswick.*

Sub-schedule No. 4.

MILK.

	Security, £5.	£	s.	d.
1. Milk—Fresh and pure ... .. per quart		0	0	6

Schedule No. 12.

PROVISIONS AT GREENVALE.

(DELIVERY AT THE SANATORJUM.)

ANNEX TO CONTRACT No. 1930/59.

*C. E. Marshall, Broadmeadows.*

Sub-schedule No. 1.

BREAD.

	Security, £20.	£	s.	d.
1. Bread—Fine Wheaten, first quality ... .. per cental		0	16	8

ANNEX TO CONTRACT No. 1930/60.

*Moran and Cato Pty. Ltd., Brunswick-street, Fitzroy, N. G.*

Sub-schedule No. 2.

GROCERIES.

	Security, £20.	£	s.	d.
1. Apricots—Dried ... .. per lb.		0	0	8
2. Biscuits—Kinds as ordered ... .. do.		0	0	9
3. Blue—Washing ... .. do.		0	0	8½
4. Cheese—Matured, in 5-lb. loaves ... .. do.		0	0	11½
5. Cocoa—In ½-lb. packets ... .. do.		0	0	6
6. Coconut—Desiccated ... .. do.		0	0	7½
7. Coffee—"Neigherry A," to sample—Beans to be thoroughly sound, fresh roasted, and whole ... .. do.		0	1	6
8. Cornina (Corn or Maize Flour), in packets of 1-lb. net ... .. do.		0	0	7
9. Currants, 3 crowns (present season's) ... .. do.		0	0	7½
10. Custard Powders, in 1-lb. packets ... .. per pkt.		0	0	8½
11. Dates—Fresh, in packets ... .. per lb.		0	0	9
12. Essence of Lemon—In full 16 oz. bottles ... .. per bot.		0	3	0
13. Flour—Best Roller ... .. per cental		0	11	6
14. Fruits—Preserved, in 4-lb. tins ... .. per tin		0	1	5
15. Ginger—Ground ... .. per lb.		0	0	9
16. Golden Syrup, in 7-lb. tins ... .. per tin		0	1	9
17. Jams—Assorted, in 14-lb. tins in the proportion of half seed and half stone ... .. do.		0	5	10
18. Jelly Crystals, in 4-oz. packets ... .. per doz. pkts.		0	3	0
19. Lemon Peel ... .. per lb.		0	0	8½
20. Mustard—Double Superfine ... .. do.		0	2	2
21. Oatmeal—Flaked or Plain ... .. per cwt.		1	3	6
22. Pearl Barley ... .. per lb.		0	0	2
23. Peas—Split ... .. do.		0	0	2½
24. Pepper—White, ground ... .. do.		0	2	0
25. Pickles—Assorted, 20-oz. bottles ... .. per bot.		0	0	8½
26. Powder—Baking, in 1-lb. tins ... .. per tin		0	0	11
27. Prunes—Dried (present season's) ... .. per lb.		0	0	5½
28. Raisins—Sultana, 3 crowns (present season's) ... .. do.		0	0	7½
29. Rice—Dressed, to sample ... .. do.		0	0	2½
30. Sago (Saeed Tapioca)—to sample ... .. do.		0	0	2½
31. Salmon—Fresh, in ½-lb. tins, "Sockeye" ... .. per tin		0	0	11
32. Salt—Fine ... .. per lb.		0	0	6
33. Sardines—½'s Gabo Spatel ... .. per tin		0	0	10½
34. Sauce—Worcestershire, 10-oz. bottles, Newman's or Harding's ... .. per bot.		0	0	8
35. Sauce—Tomato, 13-oz. bottles, "Victories" or Leggo's ... .. do.		0	0	7½
36. Soda—Carbonate of ... .. per lb.		0	0	11½
37. Soda—Washing ... .. per cwt.		0	7	3
38. Spice—Mixed, in 1-oz. packets ... .. per pkt.		0	0	1
39. Starch—Burford's ... .. per lb.		0	0	6½
40. Tapioca ... .. do.		0	0	2½
41. Tartar—Cream of ... .. do.		0	1	4
42. Tea—Ceylon, to sample, in 25-lb. tins ... .. do.		0	1	2
43. Treacle, in 7 lb tins ... .. per tin		0	1	9
44. Vinegar, Malt ... .. per pint		0	0	2½

ANNEX TO CONTRACT No. 1930/61.

W. Angliss and Co. Pty. Ltd., Bourke-street, Melbourne.

Sub-schedule No. 3.

MEAT.		Security, £20.	£	s.	d.
1.	Fresh Ox Beef—Roast	per cental	2	10	0
2.	Fresh Ox Beef Steak—Stewing	do.	2	10	0
3.	Corned Ox Beef—Rolled or Round, as ordered, without bone or cartilage	do.	2	10	0
4.	Tripe, Ox (during winter)	per lb.	0	0	6
5.	Sausages—Mixed	do.	0	0	6
6.	Preserved	do.	0	0	8

ANNEX TO CONTRACT No. 1930/62.

G. A. Hardham, Glenferrie-road, Malvern, S.E. 4.

Sub-schedule No. 4.

POTATOES.		Security, £20.	£	s.	d.
1.	Potatoes	per cwt.	0	8	0

Schedule No. 13.

PROVISIONS AT LARA.

DELIVERY AT THE INEBRIATES' INSTITUTION.

ANNEX TO CONTRACT No. 1930/63.

M. L. Thompson, Lara Lake.

Sub-schedule No. 1.

BREADSTUFFS.		Security, £20.	£	s.	d.
1.	Bread—Fine Wheaten, first quality	per cental	0	18	9
2.	Flour—First quality	do.	0	14	7

ANNEX TO CONTRACT No. 1930/64.

Moran and Cato Pty. Ltd., Brunswick-street, Fitzroy, N. 6.

Sub-schedule No. 2.

GROCERIES.		Security, £20.	£	s.	d.
1.	Arrowroot—Queensland	per lb.	0	0	5½
2.	Bacon,—By the side, Farmer's or Hut- ton's (or other approved brand)	do.	0	1	0
3.	Barley—Pearl	do.	0	0	1½
4.	Blue—Washing	do.	0	0	8½
5.	Candles—(Full weights) Kitchen's "Elec- trines," or other make of equal quality, in 1-lb. packets	do.	0	0	9
6.	Coena, in ¼-lb. packets	do.	0	0	6
7.	Coffee—"Neigherry A." Fresh roasted and whole—Beans to be thoroughly sound, to sample	do.	0	1	4
8.	Currants—3 crowns, present season's	do.	0	0	7½
9.	Mustard—Double Superfine	do.	0	2	2
10.	Oatmeal	do.	0	0	2½
11.	Peas—Split	do.	0	0	2½
12.	Pepper—Black, ground	do.	0	1	5
13.	Pistachios—Sultana, 3 crowns, present season's	do.	0	0	7½
14.	Rice—Dressed, to sample	do.	0	0	2½
15.	Seed Tapioca (Sage), to sample	do.	0	0	2½
16.	Salmon—Fresh, talls (1-lb. tins) "Con- gress"	per tin	0	0	8
17.	Salt—Fine	per lb.	0	0	0½
18.	Soap—(Household) Yellow, dry, to sample	do.	0	0	3
19.	Soap—Toilet, "Bath," in ¼-oz. tablets, to sample, Kitchen's	per doz.	0	2	1
20.	Soda—Washing	per lb.	0	0	0½
21.	Tea—Ceylon, to sample	do.	0	1	2

ANNEX TO CONTRACT No. 1930/65.

Moran and Cato Pty. Ltd., Brunswick-street, Fitzroy, N. 6.

Sub-schedule No. 3.

JAMS.		Security, £5.	£	s.	d.
1.	Jams, Assorted, of approved kinds in the proportion of half seed and half stone, of the best quality, in tins containing 24 oz. net	per doz. tins	0	7	3

ANNEX TO CONTRACT No. 1930/66.

W. Angliss and Co. Pty. Ltd., 42 Bourke-street, Melbourne.

Sub-schedule No. 4.

MEAT.		Security, £20.	£	s.	d.
1.	Fresh Beef	per cental	2	15	0
2.	Mutton	do.	1	15	0
3.	Tripe, Sausages, Kidneys, and Liver, as ordered	do.	2	10	0

ANNEX TO CONTRACT No. 1930/67.

G. A. Hardham, Glenferrie-road, Malvern, S.E. 4.

Sub-schedule No. 5.

POTATOES.		Security, £5.	£	s.	d.
1.	Potatoes	per cwt.	0	8	6

Schedule No. 14.

PROVISIONS AT RUTHERGLEN.

(For Students at Viticultural College.)

DELIVERY AT THE COLLEGE.

ANNEX TO CONTRACT No. 1930/68.

Rutherglen Co-operative and Distribution Society, Fortune-street, Rutherglen.

Sub-schedule No. 1.

BREAD.		Security, £5.	£	s.	d.
1.	Bread—Fine Wheaten, first quality	per cental	1	1	10

ANNEX TO CONTRACT No. 1930/69.

G. A. Hardham, Glenferrie-road, Malvern, S.E. 4.

Sub-schedule No. 2.

GROCERIES, ETC.		Security, £10.	£	s.	d.
1.	Bacon—Best cured	per lb.	0	1	4
2.	Barley—Pearl	do.	0	0	2½
3.	Candles—(Full weights) Kitchen's "Electrines," or other make of equal quality, in 1-lb. packets	do.	0	0	9½
4.	Coffee Essence, 10-oz. bottles	per bottle	0	0	11½
5.	Cream of Tartar	per lb.	0	1	3
6.	Currants, 3 Crown (present season's)	do.	0	0	7½
7.	Essence of Lemon, 1-oz. bottles	per bottle	0	0	4½
8.	Fish, Preserved, Salmon, Fresh Her- rings, Herrings in Tomato, as ordered, in 1-lb. tins	per tin	0	0	9½
9.	Flour, best Roller	per cental	0	15	0
10.	Fruits, Preserved, assorted, in 2-lb. tins	per tin	0	0	10
11.	Golden Syrup, in 2-lb. tins	do.	0	0	8½
12.	Jams, assorted, in 24-oz. tins, in the proportion of half seed and half stone	do.	0	0	8½
13.	Cornina (Corn or Maiza Flour), in 1-lb. packets	per lb.	0	0	7
14.	Macaroni or Vermicelli, as ordered	do.	0	0	5
15.	Oatmeal—Flaked or other	do.	0	0	3
16.	Pepper—Black or White, Ground	per lb.	0	1	11
17.	Pickles, 20-oz. bottles	per bottle	0	0	10
18.	Potatoes, dry and free from dirt	per cwt.	0	10	6
19.	Raisins—Sultana, 3 Crown, present season's	per lb.	0	0	8½
20.	Rice—Dressed, to sample	do.	0	0	5
21.	Salt—Fine	do.	0	0	1½
22.	Sauce—Chutney, 13-oz. bottles	per bottle	0	0	11
23.	" Tomato, 13-oz. bottles, "Vic- tores"	do.	0	0	8½
24.	" Worcester, 10-oz. bottles, "Vic- tores"	do.	0	0	7½
25.	Soap—Household, yellow, to sample	per lb.	0	0	4
26.	" Toilet, "Bath," in ¼-oz. tablets, to sample, Kitchen's	per doz.	0	2	3
27.	" Sand, in 12-oz. blocks	do.	0	3	0
28.	Soda—Bicarbonate	per lb.	0	0	2
29.	" Washing	do.	0	0	1½
30.	Starch	per lb.	0	0	8
31.	Tea—Ceylon, to sample	do.	0	1	5

Schedule No. 15.

PROVISIONS AT WAHGUNYAH.

FOR STUDENTS AT WAHGUNYAH VINE NURSERY.

(Delivery at Nursery.)

ANNEX TO CONTRACT No. 1930/70.

F. E. Chillon, Foord-street, Wahgunyah.

Sub-schedule No. 1.

BREAD.

	Security, £5.	£	s.	d.
1. Bread—Fine Wheaten, first quality ... per cental.		1	0	10

ANNEX TO CONTRACT No. 1930/71.

G. A. Hardham, Glenferrie-road, Malvern, S.E. 4.

Sub-schedule No. 2.

GROCERIES, ETC.

Security, £10.

		£	s.	d.
1. Barley, Pearl ... per lb.		0	0	2½
2. Cornina (Corn or Maize Flour), in packets of 1-lb. net ... do.		0	0	7
3. Cream of Tartar ... do.		0	1	3
4. Currants, 3 crowns, present season's ... do.		0	0	7½
5. Fish, Preserved, Salmon, Fresh Herrings, Herrings in Tomato, as required, in 1-lb. tins ... per tin		0	9	9½
6. Flour, Best Roller ... per cental		0	15	0
7. Fruits, Preserved, assorted, in 2-lb. tins ... per tin		0	0	10
8. Golden Syrup, in 2-lb. tins ... do.		0	0	8½
9. Jams, assorted, in 24-oz. tins, in the proportion of half seed and half stone ... do.		0	0	8½
10. Macaroni or Vermicelli, as ordered ... per lb.		0	0	5
11. Oatmeal—Flaked or Other ... do.		0	0	3
12. Onions, sound, and free from dirt ... do.		0	0	1
13. Pepper—Black or White, Ground ... do.		0	1	11
14. Potatoes, dry, and free from dirt ... per cwt.		0	10	6
15. Raisins—Sultana, 3 Crowns, present season's ... per lb.		0	0	8½
16. Rice—Dressed, to sample ... do.		0	0	3
17. Seed Tapioca (Sago)—To sample ... do.		0	0	2½
18. Salt—Fine ... do.		0	0	1½
19. Sauce—Tomato, 13-oz. bottles, "Victoree" ... per bottle		0	0	8½
20. Sauce—Worcester, 10-oz. bottles, "Victoree" ... do.		0	0	7½
21. Soap—Household, yellow, to sample ... per lb.		0	0	3½
22. " Sand, in 12-oz. blocks ... each		0	0	2
23. Soda—Bicarbonate ... per lb.		0	0	2
24. " Washing ... do.		0	0	1½
25. Tea—Ceylon, to sample ... do.		0	1	5

Sub-schedule No. 3.

MEAT (FRESHLY KILLED).

1. Beef—Fresh ... per cental	Purchase by agreement
2. Mutton—Fresh ... do.	

Schedule No. 16.

PROVISIONS FOR S.S. R/P AND DREDGES.

Supplies to be delivered to Dredging Depot, Williamstown Victoria Dock, or River Yarra Wharfs, as ordered.

(Supplies for Naval Forces are not included in this schedule.)

Sub-schedule No. 1.

BREADSTUFFS.

Security, £10.

1. Bread—Fine wheaten, first quality per cental	Purchase by agreement
2. Flour—First quality ... do.	

ANNEX TO CONTRACT No. 1930/72.

Moran and Cato Pty. Ltd., Brunswick-street, Fitzroy, N. 6.

Sub-schedule No. 2.

GROCERIES.

Security, £10.

	£	s.	d.
1. Biscuits—Cabin Bread or the like ... per lb.	0	0	3
2. Butter—First class creamery, to score not less than 90 points, Government grade, commerce regulations standard ... do.	0	1	6
3. Coffee—"Neigherry," fresh roasted and ground, to sample ... do.	0	1	4
4. Currants—3 crowns, present season's ... do.	0	0	7½
5. Flour—Self-raising ... do.	0	0	2½
6. Jams—Assorted, of approved kinds, in proportion of half seed and half stone, in 24-oz. tins ... per tin	0	0	7½
7. Meat—Preserved, beef or mutton, in 1-lb. tins ... do.	0	0	7
8. Milk—Condensed, "Beastall" or "Maffco" ... do.	0	0	6½
9. Mustard—Double Superfine ... per lb.	0	2	0
10. Oatmeal ... do.	0	0	2½
11. Pearl barley ... do.	0	0	1½
12. Peas—Split ... do.	0	0	2½
13. Pepper—White, ground ... do.	0	2	0
14. Pickles—Assorted, 20-oz. bottles ... per bot.	0	0	8½
15. Raisins—Sultana, 3 crowns, present season's ... per lb.	0	0	7½
16. Rice—Dressed, to sample ... do.	0	0	2½
17. Salt—Fine ... do.	0	0	0½
18. Sauce—Tomato, 13-oz. bottles, "Victoree" or Leggo's ... per bot.	0	0	7½
19. Sauce—Worcester, 10-oz. bottles, "Lifebuoy" ... do.	0	0	4½
20. Tea—Ceylon, to sample ... per lb.	0	1	1½
21. Vinegar—Malt ... per gal.	0	1	0

ANNEX TO CONTRACT No. 1930/73.

Wm. Angliss and Co. Pty. Ltd., Bourke-street, Melbourne.

Sub-schedule No. 3.

MEAT.

Security, £10.

	£	s.	d.
1. Fresh Beef ... per lb.	0	0	6
2. " Mutton ... do.	0	0	4½
3. " Suet—Kidney ... do.	0	0	6

ANNEX TO CONTRACT No. 1930/74.

G. A. Hardham, Glenferrie-road, Malvern, S.E. 4.

Sub-schedule No. 4.

VEGETABLES.

Security, £5.

	£	s.	d.
1. Potatoes ... per cwt.	0	8	0
2. Onions ... do.	0	6	0
3. Other vegetables, including cauliflower, carrots, cabbages, turnips, and parsnips, as required ... do.	0	18	8

Schedule No. 17.

PROVISIONS FOR ABORIGINES AT LAKE TYERS.

(Delivery at Lake Tyers Station.)

ANNEX TO CONTRACT No. 1930/75.

H. E. Whitbourne, Nova Nova.

Sub-schedule No. 1.

BREAD.

Security, £2.

Item No.	Article.	£	s.	d.
1	Bread—Fine Wheaten, first quality ... per cental	0	16	8

Sub-schedule No. 2.  
ANNEX TO CONTRACT NO. 1930/76.  
*Moran and Oato Pty. Ltd., Brunswick-street, Fitzroy, N. 6.*

GROCERIES.

Security, £2.

Item No.	Article.	£ s. d.
1	Baking Powder, Snowflake, in 1-lb. tins ... .. per lb.	0 1 2
2	Candles—(Full weights) Kitchen's "Electrines," or other make of equal quality, in 1-lb. packets	0 0 9½
3	Coffee—Fresh roasted and whole—Beans to be thoroughly sound, to sample ... .. "	0 1 5
4	Cocoa, in ½-lb. packets ... .. "	0 0 10
5	Cornina (Corn or Maize Flour), in 1-lb. packets ... .. "	0 0 7
6	Currants—3 crowns (present season's) ... .. "	0 0 7½
7	Curry Powder ... .. "	0 1 0
8	Flour—Best roller ... .. per cental	0 13 6
9	Jams, assorted, in 24-oz. tins (in the proportion of half seed, half stone) ... .. per tin	0 0 9
10	Mustard—Double Superfine ... .. per lb.	0 1 10
11	Oatmeal ... .. "	0 0 2½
12	Peas, Split ... .. "	0 0 2½
13	Pearl Barley ... .. "	0 0 2½
14	Peel—Mixed ... .. "	0 0 10
15	Pepper—Black, ground, in ½-lb. tins ... .. per tin	0 0 6
16	Raisins—Sultana, 3 crowns (present season's) ... .. per lb.	0 0 8½
17	Rice—Dressed, to sample ... .. "	0 0 3
18	Seed Tapioca (Sago), to sample ... .. "	0 0 2½
19	Salt—Coarse ... .. "	0 0 0½
20	" Fine ... .. "	0 0 1½
21	Soap—Household, hard and dry, to sample ... .. "	0 0 3½
22	Soda—Bicarbonate ... .. "	0 0 2
23	" Washing ... .. "	0 0 1½
24	Tartar, Cream of ... .. "	0 1 4
25	Tea—Ceylon, to sample ... .. "	0 1 2½
26	Tobacco—Twist, to sample ... .. "	0 5 3
27	Treacle, in 7-lb. tins ... .. per tin	0 2 0
28	Vinegar—Malt ... .. per quart	0 0 4½