

[1887]



VICTORIA
GOVERNMENT GAZETTE.

Published by Authority.

[Registered at the General Post Office, Melbourne, for transmission by post as a newspaper.]

No. 144]

FRIDAY, JULY 14.

[1933

CONTRACTS ACCEPTED.

(SERIES 1933-34.)

SUPPLY OF PROVISIONS

FROM

1st JULY, 1933, TO 30th JUNE, 1934, OR AS STATED.

L. E. TURNER,
Acting-Secretary, Tender Board.

CONTRACTS ACCEPTED.—(Series 1933-34.)

No. of Contract.	Particulars of each Tender Accepted.	Amount.	Name of Contractor.	Charged against Vote or Fund.
	PROVISIONS— Supply of Provisions, in such quantities as may be ordered, from 1st July, 1933, to 30th June, 1934.			
	Melbourne District—			
246	Bread, Kew Asylum	Rates as per annex	W. Johnson	
247	Bread, Melbourne, Children's Welfare Dept., &c. ..	Ditto	A. H. Forrester	
248	Flour	Ditto	Pirrie Bros.	
249	Groceries	Ditto	G. A. Hardham and Co.	
250	Oatmeal, rice, &c.	Ditto	Australian Wholesale Grocery Pty. Ltd.	
251	Jams	Ditto	G. A. Hardham and Co.	
252	Meat, Kew Asylum	Ditto	F. Watkins Pty. Ltd.	
253	Meat, Pentridge Penal Establishment	Ditto	F. Watkins Pty. Ltd.	
254	Meat, Children's Welfare Depot, Royal Park, and Police Depot	Ditto	F. Watkins Pty. Ltd.	
255	Meat, Royal Park Mental Hospital and Receiving House	Ditto	H. Minney, junr.	
..	Potatoes	Purchase under Tender Board quotations	
256	Soap Mixtures	Rates as per annex	Australian Wholesale Grocery Pty. Ltd.	
257	Tea	Ditto	H. Berry and Co. Pty. Ltd.	
..	Tobacco	Purchase under Tender Board quotations	
258	Mont Park— Breadstuffs	Rates as per annex	J. N. Hennessy Pty. Ltd.	
259	Groceries	Ditto	Australian Wholesale Grocery Pty. Ltd.	
260	Jams	Ditto	G. A. Hardham and Co.	
261	Meat	Ditto	F. Watkins Pty. Ltd.	
..	Potatoes	Purchase under Tender Board quotations	
262	Tea	Rates as per annex	H. Berry and Co. Pty. Ltd.	
263	Ararat— Breadstuffs	Ditto	W. Bates	
264	Groceries	Ditto	Australian Wholesale Grocery Pty. Ltd.	
265	Jams	Ditto	G. A. Hardham and Co.	
266	Meat	Ditto	J. H. Plant	
..	Potatoes	Purchase under Tender Board quotations	
267	Tea	Rates as per annex	Australian Wholesale Grocery Pty. Ltd.	
268	Ballarat— Breadstuffs	Ditto	W. Haymes	
269	Groceries	Ditto	Australian Wholesale Grocery Pty. Ltd.	
270	Jams	Ditto	Australian Wholesale Grocery Pty. Ltd.	
271	Meat	Ditto	H. J. Symons	
..	Potatoes	Purchase under Tender Board quotations	
272	Tea	Rates as per annex	Australian Wholesale Grocery Pty. Ltd.	
273	Beechworth— Breadstuffs	Ditto	Wm. Price	
274	Groceries	Ditto	Australian Wholesale Grocery Pty. Ltd.	
275	Jams	Ditto	G. A. Hardham and Co.	
276	Meat	Ditto	J. R. Newey, Jr.	
..	Potatoes	Purchase under Tender Board quotations	
277	Tea	Rates as per annex	Australian Wholesale Grocery Pty. Ltd.	
278	Sunbury— Breadstuffs	Ditto	T. Clyne and Son	
279	Groceries	Ditto	A. C. Shill	
280	Jams	Ditto	G. A. Hardham and Co.	
281	Meat	Ditto	F. Watkins Pty. Ltd.	
..	Potatoes	Purchase under Tender Board quotations	
282	Tea	Rates as per annex	Australian Wholesale Grocery Pty. Ltd.	
283	Bendigo— Bread	Ditto	Millar Bros.	
284	Groceries	Ditto	G. A. Hardham and Co.	
285	Meat	Ditto	H. Gittens	

Contingencies.
1933-34.

CONTRACTS ACCEPTED.—(Series 1933-34)—continued.

No. of Contract.	Particulars of each Tender Accepted.	Amount.	Name of Contractor.	Charged against Vote or Fund.	
PROVISIONS—continued.					
Castlemaine—					
286	Bread	Rates as per annex	Rasmussen Bros.	Contingencies, 1933-34	
287	Groceries	Ditto	G. A. Hardham and Co.		
..	Potatoes	Purchase under Tender Board quotations		
288	Meat	Rates as per annex	P. L. Gill		
Geelong—					
289	Breadstuffs	Ditto	J. A. Fitzgerald		
290	Groceries	Ditto	Australian Wholesale Grocery Pty. Ltd.		
..	Meat	Ditto	See later Gazette		
291	Milk	Ditto	S. H. Warren		
McLeod Settlement, French Island—					
292	Bread	Rates as per annex	J. W. Hade		
293	Groceries	Ditto	Australian Wholesale Grocery Pty. Ltd.		
294	Meat	Ditto	E. W. Misson		
Creswick—					
295	Bread	Ditto	C. C. Bowley		
296	Groceries	Ditto	D. J. Hawkey		
297	Meat	Ditto	G. Hobill		
298	Milk	Ditto	E. E. Pollard		
Greenvale—					
299	Bread	Ditto	D. Bignall		
300	Groceries	Ditto	Australian Wholesale Grocery Pty. Ltd.		
301	Meat	Ditto	F. Watkins Pty. Ltd.		
..	Potatoes	Purchase under Tender Board quotations		
Lara—					
302	Bread	Rates as per annex	R. S. Payne		
303	Groceries	Ditto	Australian Wholesale Grocery Pty. Ltd.		
304	Meat	Ditto	W. Angliss and Co. Pty. Ltd.		
..	Potatoes	Purchase under Tender Board quotations		
Rutherglen—					
305	Bread	Rates as per annex	A. J. Hyland		
..	Flour	Purchase by agreement		
306	Groceries	Rates as per annex	G. A. Hardham and Co.		
307	Meat	Ditto	H. and A. Devers		
s.s. Rip and Dredges—					
..	Breadstuffs	Purchase by agreement		
308	Groceries	Rates as per annex	G. A. Hardham and Co.		
309	Meat	Ditto	F. Watkins Pty. Ltd.		
310	Vegetables	Ditto	G. A. Hardham and Co.		
Aborigines (Lake Tyers)—					
311	Bread	Rates as per annex	L. T. Freeman		
312	Groceries	Ditto	L. T. Freeman		
313	Jam	Ditto	L. T. Freeman		
Teachers' Training College—					
314	Breadstuffs	Rates as per annex	Cahill and Quin		
315	Groceries	Ditto	Australian Wholesale Grocery Pty. Ltd.		
316	Meat	Ditto	F. Watkins Pty. Ltd.		
317	Jam	Ditto	Fowlers Pty. Ltd.		
Gresswell Sanatorium—					
..	Bread	Purchase by agreement		
318	Groceries	Rates as per annex	G. A. Hardham and Co.		
319	Meat	Ditto	F. Watkins Pty. Ltd.		

Approved—IAN MACFARLAN, for Treasurer. 22.6.1933.

STIPULATIONS FOR SUPPLIES OF PROVISIONS.

(All items must be manufactured or prepared within the Commonwealth.)

No sub-letting allowed.

Under all Sub-schedules particular attention is drawn to Clause 1 of the Conditions of Contract as to quality.

BREAD.

A sample of the best ordinarily retailed to the public will be considered as a test loaf for first quality for fine wheaten and pure wheaten Meal Bread. *Pure wheaten Meal Bread of first quality may be substituted, wholly or in part, for fine wheaten Bread at such times and in such quantities as, in the opinion of the Medical Superintendent, may be deemed necessary, and the contractor will be required to supply such Bread at the contract rate. Reasonable notice, however, of the intention to substitute wheaten Meal Bread must be given to the contractor by the officer ordering the supply.* Bread may be baked at any Government establishment without infringing these contracts. At the Gaols, Ballarat, Beechworth, Geelong, Bendigo, and Castlemaine, if required, bread must be supplied one day old, due notice to be given to the contractor of such requirement.

In the event of bread being made at any Government establishment in the Melbourne District during the currency of these contracts, the flour required will be drawn under the flour and maize meal sub-schedule. The maize meal for all the country gaols is included in the sub-schedule for flour and maize meal, Melbourne District, and delivery of same will be required to be made at the Victorian Railways, Spencer-street.

GROCERIES.

As a guarantee of quality, Rice, when ordered in quantities of 56 lb. and over, must be supplied in original bags as delivered by the miller or dresser. Such bags must be branded "Rice, Dressed," and shall also have stencilled thereon the miller or dresser's name and the distinguishing mark indicative of the quality or grade. The bags thus stencilled shall contain Rice milled or dressed by the miller or dresser whose name appears thereon. Supplies not in conformity with the foregoing condition will be rejected. Oatmeal must be supplied in original bags as delivered by millers.

Candles, except those for prison cells, must be supplied in 1-lb. packets. Candles for prison cells must be delivered in boxes containing from 25 to 50 lb. per box, the boxes for which must be legibly stencilled on one end, showing the estimated burning time and the gross, tare, and net weight of contents.

The soap supplied must be hard throughout, ready for immediate use without waste. Soap for Hospitals for the Insane is not included in these contracts.

When the quantity admits, Tea must be supplied in original and unopened packages, labelled, as landed.

Raisins and currants must be present season's, and where the quantity admits, be supplied in original boxes labelled 3 crowns.

For s.s. *Rip* a certain quantity of Biscuits and Preserved Meats are sometimes required in lieu of fresh bread and fresh meat, and are included to meet such contingency only.

BUTTER, CHEESE, AND JAMS.

Butter is to be delivered to the s.s. *Rip* in 1-lb. pats, in such quantities as may be ordered, and no excess over the quantity ordered will be received.

All supplies of 56 lb., or multiples of 56 lb., must be supplied in boxes as originally packed. The butter as well as the boxes in which it is packed must bear the impress stamp of the creamery where produced, otherwise it will not be accepted.

Where the Store or Butter Factory of the Contractor is situated in the Metropolitan area all Butter to the quantity of 56 lb. and over to be supplied in any one consignment under this contract shall before despatch from the Store or Factory be first examined and passed by the Government Butter Grader, for and on behalf of the officer authorized to accept delivery. The boxes containing butter so examined and found satisfactory in quality and description will be stamped by the Government Butter Grader. No butter from a contractor located in the Metropolitan Area shall be accepted unless the boxes bear the stamp of the Grader. For

the purposes of the foregoing condition the Metropolitan Area is defined as being not outside the radius visited by the Government Grader.

No Butter ex Cool Store will be examined by the Grader until thermally it is in suitable condition therefor.

Where the Store or Factory from which the Butter is despatched is not within the area visited by the Grader a sample of any supplies may be forwarded to the Government Butter Grader for examination, should the supply be considered by the officer authorized to accept delivery as not being equal in quality or description to that contracted for.

The Cheese supplied to be fairly or fully matured, as ordered, and, if the quantity admits, boxed for transport.

Jams.—The weight stamped on the tins in accordance with the regulations under the Commerce Act, as indicating the minimum net quantity that each tin contains, shall for the purpose of this contract be taken as the actual contents when computing the quantity supplied.

When Jam is supplied in jars the jars remain the property of the contractor, and must be removed by the contractor at his own expense when empty.

MEAT.

Fore and hind quarters of beef for Hospitals for the Insane are to be supplied in equal proportions of each, and must be delivered as a whole respectively, also extra buttocks separately when ordered. Meat for other institutions must be supplied as ordered. Where hind-quarters or buttocks are ordered, 9 inches must be cut off from the end of the leg from the hock upwards, i.e., the end of the leg from which the shank has been removed at the abattoirs; and when fore-quarters form a portion of the supply, 6 inches from the end of the neck and the whole of the shin at the clodbone joint must be removed. The sticking pieces also must be trimmed off, and the point and end of the brisket rendered free from blood and blood stains.

Fore and hind quarters of beef, for convenience of handling, may be cut into two parts, but each part is to bear evidence of having been cut from the same fore or hind quarter.

Corned beef, rolled or round, as ordered, must be supplied without bone or cartilage and will be received, whether pumped or prepared in the ordinary way by pickling, but in the former case must have been soaked after pumping for at least 48 hours, in a good pickle, and then thoroughly drained before supply. No flank, chuck, sticking piece, shin, leg of beef, or piece under 7 lb. will be received.

Should the local supply of fresh meat become scarce, or the price of same become abnormally high, chilled meat may, with the consent of the Tender Board, on the recommendation of the head of the Department, be supplied.

All meat shall have been slaughtered in Victoria, and shall be well fed, good, sound, sweet, and wholesome.

In cases of emergency, or on such other occasions as in the opinion of the Inspector-General of the Insane may seem advisable, other forms of meat such as rabbits, tinned meats, &c., may be purchased apart from the contract for Hospitals for the Insane, in lieu of the meat mentioned in the schedule, and substituted therefor, provided 24 hours' notice (except in cases of emergency) be given to the contractor of such intention.

Meat derived from the carcasses of Bulls, Stags, or Rams, or Mutton weighing more than 70 lbs. in the carcass, will not be received, and shall not be tendered for delivery.

For Sub-schedules 9 and 10, in the Melbourne District, in addition, the following clauses apply:—

The beef must be supplied in quantities as ordered from Ribs, Sirloin, and Thick Flanks. Chuck Ribs, i.e., the first to fourth inclusive, will not be accepted.

Mutton must be delivered in sides. All kidney fat to be removed.

Meat containing an undue proportion of bone or fat will not be accepted.

The parts to be removed by the contractor are indicated by the shaded portions of the annexed diagram.

For Beechworth samples (corresponding to the description given in the schedule) of meat ordinarily retailed to the public will be considered as a test for quality.

As regards supplies for s.s. *Rip*, all meat must be of prime quality, and must be supplied in equal quantities from ribs, sirloin, and thick flanks; mutton to be delivered in sides; all kidney fat to be removed; meat containing an undue proportion of fat will not be accepted. Chuck ribs will not be accepted in lieu of prime ribs. Live sheep to be supplied when required.

MILK.

The milk must be fresh, pure, and of the best quality, and subject to test when required by the Department, and supplied at such times as the Department may require. Should the contractor fail to supply at the time specified in the order or at such times as may be indicated in any general notice to the contractor his contract may be cancelled forthwith and his

security forfeited, or should the supply prove to be not of contract quality it will be rejected, and any expense incurred will be charged to the contractor.

POTATOES.

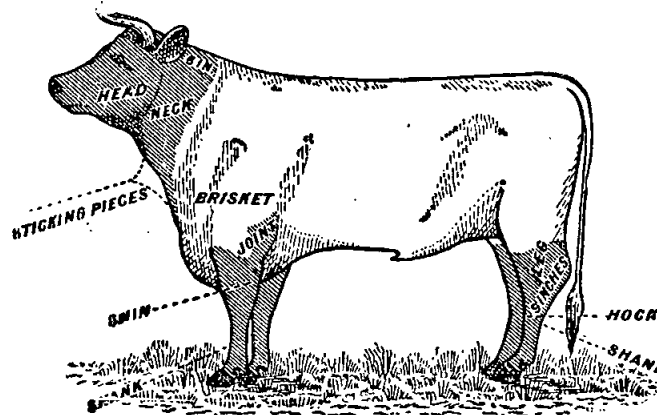
Potatoes to be dry and free from dirt. Contractors to supply 117 lb. of potatoes for each cwt. credited to them, and, in addition, to take back all rejected before being cooked.

If the price of potatoes becomes abnormally high, the heads of the various departments concerned may, if they think fit, cause rice or any other suitable food to be occasionally substituted in lieu thereof.

TOBACCO.

Tobacco for country Hospitals for the Insane is included in the contract for Melbourne District, and delivery of same will be required to be made at Victorian Railways, Spencer-street.

Tobacco for Country Gaols is not included in the contract for Melbourne District.



Schedule No. 1.

PROVISIONS—MELBOURNE DISTRICT.

ANNEX TO CONTRACT No. 1933/246.

W. Johnson, 102 Scotchmer-street, Nth. Fitzroy, N.G.

Sub-schedule No. 1.

BREAD FOR HOSPITALS FOR THE INSANE AT KEW.

	Security, £120.	£ s. d.
1. Bread—Fine wheaten, first quality	per cental	0 9 10½

ANNEX TO CONTRACT No. 1933/217.

A. H. Forrester, 256 Richardson-street, Middle Park.

Sub-schedule No. 2.

BREAD FOR CHILDREN'S WELFARE DEPOT, ROYAL PARK, RECEIVING HOUSE AND MENTAL HOSPITAL, ROYAL PARK, POLICE DEPOT, AND TRAVANCOR SPECIAL SCHOOL, FLEMINGTON.

	Security, £50.	£ s. d.
1. Bread—Fine wheaten, first quality	per cental	0 9 2

ANNEX TO CONTRACT No. 1933/248.

Pirie Bros., Exhibition-street, Melbourne, C.I.

Sub-schedule No. 3.

FLOUR AND MAIZE MEAL.

	Security, £100.	£ s. d.
1. Flour—Roller, first quality, to sample	per cental	0 8 10½
2. " Sharps, to sample	do.	0 8 0

ANNEX TO CONTRACT No. 1933/249.

G. A. Hardham and Co., 36 Glenferrie-road, Malvern, S.E.A.

Sub-schedule No. 4.

GROCERIES, ETC.

	Security, £50.	£ s. d.
1. Biscuits, Coffee, Malt or Milk Arrow-root, as ordered	per lb.	0 0 7½
2. Blue—Washing	do.	0 0 8½
3. Candles—Full weights, Kitchen's "Electrines," or other make of equal quality, to be supplied in 1-lb. packets	do.	0 0 6
4. " Kitchen's "Electrines," or other make of equal quality, for use in prison cells, to burn for 1, 1½, 2, 2½, and 3 hours respectively, as ordered, to be supplied in boxes, containing from 25 to 50 lb. per box	do.	0 0 11½
5. Cocoa—in 1-lb. tins or packets	do.	0 0 6
6. Coffee—Fresh roasted and whole, beans to be thoroughly sound, Neigherry A. to sample	do.	0 1 5
7. " Pure, fresh roasted and ground, Neigherry A. to sample	do.	0 1 5
8. Cornina (Corn or Maize Flour), in packets of 1 lb. net	do.	0 0 5½
9. Cream of Tartar	do.	0 1 0
10. Currants, 3 Crowns (present season's)	do.	0 0 6½
11. Curry Powder	do.	0 0 9
12. Dried Fruits—Apricots, Apples, Peaches, 4 Crowns	do.	0 0 9
13. Essence of Lemon, 1-oz. bottles	per bottle	0 0 2½
14. Ginger—Ground	per lb.	0 0 6
15. Golden Syrup (in 7-lb. tins)	per tin	0 1 8½
16. Honey—First quality	per lb.	0 0 4
17. Lemon Peel	do.	0 0 7½
18. Mustard—Double Superfine	do.	0 2 0
19. Oatmeal—Flaked	per cwt.	0 15 0
20. Pearl barley	do.	0 13 6
21. Peas—Split	do.	0 18 0
22. Pepper—Black, ground	per lb.	0 0 10
23. Pipes—Tobacco, clay	per doz.	0 0 8

GROCERIES—continued.

	£ s. d.
24. Prunes—50-60's	per lb. 0 0 5
25. Raisins—Sultana, 3 Crowns (present season's)	do. 0 0 7
26. Salt—Fine	per cwt. 0 3 9
27. " Rock	do. 0 4 0
28. Soda—Washing	do. 0 7 6
29. " Bicarbonate of	per lb. 0 0 2
30. Spice—Mixed, in 1-oz. packets	per pkt. 0 0 1
31. Starch, "Preservene"	per lb. 0 0 6
32. Treacle, in 7-lb. tins	per tin 0 1 7
33. Vinegar (malt)	per quart 0 0 2
34. Tapioca (Pearl)	per lb. 0 0 2
35. Tomato Sauce (13-oz. bottles), Williams and Son brand	per bottle 0 0 6

ANNEX TO CONTRACT No. 1933/250.

Australian Wholesale Grocery, Ltd., 277 Brunswick-street, Fitzroy, N.G.

Sub-schedule No. 5.

OATMEAL, RICE, AND SEED TAPIOCA.

	Security, £80.	£ s. d.
1. Oatmeal	per cwt.	0 13 6
2. Rice—Dressed, to sample	do.	1 2 0
3. Seed Tapioca (Sago), to sample	do.	0 17 6

ANNEX TO CONTRACT No. 1933/251.

G. A. Hardham and Co., Glenferrie-road, Malvern, S.E.A.

Sub-schedule No. 6.

JAMS.

	Security, £20.	£ s. d.
1. Jams—Assorted, in bulk, of approved kinds, in the proportion of half seed and half stone, of the best quality, in tins, as required	per lb. actual net weight	0 0 3½
2. " " " in 24-oz. tins	per tin	0 0 6½

ANNEX TO CONTRACT No. 1933/252.

F. Watkins, Pty. Ltd., 184 Bourke-street, Melbourne, C.I.

Sub-schedule No. 7.

MEAT FOR HOSPITAL FOR THE INSANE, KEW.

Security, £150.

	£ s. d.
1. Fresh Beef—Fore-quarters	per cental 1 2 4½
2. " " Hind-quarters	do. 1 2 4½
3. " " Buttocks	do. 1 2 4½
4. " Mutton	do. 0 14 0½
5. Corned Beef, rolled or round, as ordered, without bone or cartilage	do. 1 2 4½
6. Fresh Suet—Kidney	per lb. 0 0 2½

ANNEX TO CONTRACT No. 1933/253.

F. Watkins, Pty. Ltd., 184 Bourke-street, Melbourne, C.I.

Sub-schedule No. 8.

MEAT FOR PENAL ESTABLISHMENT (PENTRIDGE), FEMALE PENITENTIARY, AND METROPOLITAN GAOL (COBURG).

	Security, £100.	£ s. d.
1. Fresh Beef	per cental	0 16 1½
2. " " Buttocks	do.	1 3 5½
3. Corned Beef, rolled or round, as ordered, without bone or cartilage	do.	1 3 5½
4. Fresh Mutton	do.	0 15 1½
5. Dripping	do.	1 3 5½
6. Fresh Suet—Kidney	do.	1 3 5½

ANNEX TO CONTRACT No. 1933/254.

F. Watkins, Pty. Ltd., 184 Bourke-street, Melbourne, C.I.

Sub-schedule No. 9.

MEAT FOR POLICE DEPOT, ST. KILDA-ROAD, CHILDREN'S WELFARE DEPOT, ROYAL PARK, AND TRAVANCOR SPECIAL SCHOOL, FLEMINGTON.

	Security, £50.	£ s. d.
1. Fresh Beef	per cental	1 4 5½
2. " Mutton	do.	1 4 5½
3. Corned Beef, rolled or round, as ordered, without bone or cartilage	do.	1 4 5½
4. Fresh Suet—Kidney	per lb.	0 0 2½
5. Tripe—Fresh	do.	0 0 2½
6. Ice	per cwt.	0 2 0

ANNEX TO CONTRACT NO. 1933/255.

H. Minney, Jun., 161 Gertrude-street, Fitzroy, N.6.

Sub-schedule No. 10.

MEAT FOR RECEIVING HOUSE AND MENTAL HOSPITAL, ROYAL PARK.

Security, £50.

		£	s.	d.
1. Fresh Beef ...	per cental	1	2	11
2. " " Buttocks ...	do.	1	2	11
3. " Mutton ...	do.	1	2	11
4. Corned Beef, rolled or round, as ordered, without bone or cartilage ...	do.	1	2	11
5. Fresh Suet—Kidney ...	per lb.	0	0	2½
6. Ice ...	per cwt.	0	2	0

Sub-schedule No. 11.

POTATOES.

1. Potatoes ...	per cwt.	Purchase under Tender Board quotations.
-----------------	----------	---

ANNEX TO CONTRACT NO. 1933/256.

Australian Wholesale Grocery, Pty. Ltd., 277 Brunswick-street, Fitzroy, N.6.

Sub-schedule No. 12.

SOAP MIXTURES.

(Of Commonwealth Manufacture.)

Security, £20.

		£	s.	d.
1. Antiseptic, Liquid, of approved make, in 4-gal. tins ...	at per gallon	0	2	5
2. Extract of—Kitchen's, or equal thereto, in boxes of 18 lb., containing 56 packets ...	per lb.	0	0	2½
3* Household, dry, equal to Kitchen's "Best Brown Brand" ...	per cwt.	1	2	9
4. "Lux" or "Merino," as ordered, in bulk ...	per lb.	0	0	7½
5. "Monkey Brand," or equal thereto, in tablets of 5-oz. each ...	per doz.	0	1	11
6. Sand—Carbolic or Borax, as ordered, 12-oz. blocks, of approved brand ...	per doz.	0	1	9
7. Soft, Genuine Potash, Best Amber, in bulk ...	per cwt.	1	11	6
8* Toilet, Brown Windsor, 7 tablets to lb., Kitchen's ...	per doz.	0	1	3
9* Toilet, "Bath," in 4½-oz. tablets, Kitchen's ...	do.	0	1	10½
10* Toilet, Carbolic, in 4-oz. tablets, Kitchen's ...	do.	0	2	3
11* Toilet, Castola, in 6-oz. tablets, Kitchen's ...	do.	0	2	6½
12. "Velvet" ...	per d'blet	0	0	5

ANNEX TO CONTRACT NO. 1933/257.

H. Berry and Co. Pty. Ltd., 580 Collins-street, Melbourne.

Sub-schedule No. 13.

TEA.

Security, £60.

		£	s.	d.
1. Tea—Ceylon, to sample ...	per lb.	0	1	5½
2. " Ration, to sample ...	do.	0	1	0½

Sub-schedule No. 14.

TOBACCO.

1. Tobacco, in 2-oz. plugs, for gaols—To sample ...	per lb.	Purchase under Tender Board quotations
2. Tobacco, 11 plugs to the lb., for Hospitals for the Insane, to sample ...	do.	

Schedule No. 2.

PROVISIONS—MONT PARK.

(Delivery at the Hospital for Insane, Mont Park, to depots as required, at the Repatriation Mental Hospital, Bundoora, and at Home for Mental Defectives, Janefield.)

ANNEX TO CONTRACT NO. 1933/258.

J. N. Hennessy Pty. Ltd., 55 Sydney-road, Brunswick.

Sub-schedule No. 1.

BREADSTUFFS.

Security, £100.

		£	s.	d.
1. Bread—Fine wheaten, first quality ...	per cental	0	10	10
2. Bread—Raisin ...	do.	0	18	6
3. Flour—First quality ...	do.	0	9	3

ANNEX TO CONTRACT NO. 1933/259.

Australian Wholesale Grocery, Pty. Ltd., 277 Brunswick-street, Fitzroy, N.6.

Sub-schedule No. 2.

GROCERIES.

Security, £30.

		£	s.	d.
1. Blue—Washing ...	per lb.	0	0	8½
2. Candles (full weights)—Kitchen's "Electricines," or other make of equal quality, in 1-lb. packets ...	do.	0	0	8½
3. Cocoa, in 1-lb. packets ...	do.	0	0	5½
4. Coffee—"Neigherry A"—Fresh roasted and whole—Beans to be thoroughly sound, to sample ...	do.	0	1	3½
5. Cornina (Corn or Maize Flour), in packets of 1 lb. net (6 months) ...	do.	0	0	5
6. Currants, 3 Crowns (present season's) ...	do.	0	0	7
7. Curry Powder ...	do.	0	0	8½
8. Custard Powder, 1-lb. pkts. ...	do.	0	0	7½
9. Golden Syrup, in 7-lb. tins ...	per tin	0	1	8½
10. Mustard—Double Superfine ...	per lb.	0	2	0
11. Oatmeal ...	per cwt.	0	13	6
12. Pearl Barley ...	per lb.	0	0	1½
13. Peas—Split ...	per cwt.	0	16	6
14. Pepper—Black, Ground ...	per lb.	0	0	10
15. Pipes—Tobacco, Clay ...	per doz.	0	0	10
16. Prunes—Dried (present season's) ...	per lb.	0	0	4½
17. Raisins—Sultana, 3 Crowns (present season's) (6 months) ...	do.	0	0	7½
18. Rice—Dressed, to sample ...	per cwt.	1	2	0
19. Sauce—Tomato, in 13-oz. bottles, Williams and Son ...	bots.	0	6	3
20. Seed Tapioca (Sago)—To sample ...	per lb.	0	0	1½
21. Salt—Fine ...	per cwt.	0	4	0
22. Soap—Extract of, Kitchen's, in boxes ...	per lb.	0	0	2½
23. Soap—Monkey Brand, or equal thereto, in tablets of 5 oz. each ...	per doz.	0	2	0
24. Soap—Carbolic or Borax, in 12-oz. blocks ...	per doz.	0	1	9
25. Soap—"Velvet" ...	per d'blet	0	0	3
26. Soda—Carbonate of ...	per lb.	0	0	2
27. Soda—Washing ...	per cwt.	0	7	3
28. Spice—Mixed, in 1-oz. packets ...	per lb.	0	1	3
29. Starch—"Preservene" ...	do.	0	0	6
30. Tartar—Cream of ...	do.	0	1	4½
31. Vinegar—Malt ...	per pint	0	0	1½

ANNEX TO CONTRACT NO. 1933/260.

G. A. Hardham, 36 Glenferrie-road, Malvern, S.E.4.

Sub-schedule No. 3.

JAMS.

Security, £10.

		£	s.	d.
1. Jams—Assorted, in bulk, of approved kinds, in the proportion of half seed and half stone, of the best quality, actual net in tins, as required ...	per lb weight	0	0	3½

ANNEX TO CONTRACT NO. 1933/261.

F. Watkins Pty. Ltd., 184 Bourke-street, Melbourne, C.1.

Sub-schedule No. 4.

MEAT.

Security, £80.

		£	s.	d.
1. Fresh Beef—Fore-quarters ...	per cental	1	3	5½
2. " " Hind-quarters ...	do.	1	3	5½
3. " " Buttocks ...	do.	1	3	5½
4. " Mutton ...	do.	0	16	1½
5. Corned Beef—Rolled or round—as ordered, without bone or cartilage ...	do.	1	3	5½
6. Tripe ...	per lb.	0	0	3½
7. Brawn, fresh and pure ...	do.	0	0	6½

Sub-schedule No. 5.

POTATOES.

1. Potatoes	per cwt.	Purchase
under Tender Board quotations		

ANNEX TO CONTRACT No. 1933/262.

H. Berry and Co. Pty. Ltd., 580 Collins-street, Melbourne.

Sub-schedule No. 6.

TEA.

Security, £10. £ s. d.

1. Tea—Best Ceylon, to sample	per lb.	0 1 5½
-------------------------------	---------	--------

Schedule No. 3.

PROVISIONS—ARARAT DISTRICT.

ANNEX TO CONTRACT No. 1933/263.

W. Bates, Ararat.

Sub-schedule No. 1.

BREADSTUFFS.

Security, £100.

1. Bread—Fine wheaten, first quality	per cental	£ s. d.
2. Flour—First quality	do.	0 9 4
		0 7 11

ANNEX TO CONTRACT No. 1933/264.

Aust. Wholesale Grocery Pty. Ltd., 277 Brunswick-street, Fitzroy, N.G.

Sub-schedule No. 2.

GROCERIES.

Security, £30.

1. Beans—Haricot	per cwt.	£ s. d.
2. Blue—Washing	per lb.	1 1 0
3. Candles (full weights)—Kitchen's "Electrines," or other make of equal quality, to be supplied in 1-lb. packets	do.	0 0 9½
4. Coffee—"Neigherry A"—Fresh roasted and whole—Beans to be thoroughly sound, to sample	do.	0 1 5½
5. Cornina (Corn or Maize Flour), in packets of 1 lb. net	do.	0 0 5½
6. Curry Powder	do.	0 0 9½
7. Golden Syrup (in 56-lb. tins)	per tin	0 14 6
8. Mustard—Double Superfine	per lb.	0 2 1
9. Oatmeal	per cwt.	0 16 0
10. Peas—Split	do.	0 19 0
11. Pepper—Black, ground	per lb.	0 0 11
12. Pipes—Tobacco, clay	per doz.	0 0 10½
13. Raisins—Sultana, 3 Crowns (present season's)	per lb.	0 0 7½
14. Rice—Dressed, to sample	per cwt.	1 5 6
15. Seed Tapioca (Sago)—To sample	do.	1 0 0
16. Salt—Fine	do.	0 6 9
17. Soda—Carbonate of	per lb.	0 0 2½
18. " Washing	per cwt.	0 9 3
19. Starch—"Preservene"	per lb.	0 0 7
20. Tartar—Cream of	do.	0 1 5½

ANNEX TO CONTRACT No. 1933/265.

G. A. Hardham and Co., 36 Glenferrie-road, Malvern, S.E.4.

Sub-schedule No. 3.

JAMS.

Security, £10.

1. Jams, assorted, of approved kinds in the proportion of half seed and half stone, of the best quality, in bulk, as required	per lb. actual net weight	£ s. d.
		0 0 4½

ANNEX TO CONTRACT No. 1933/266.

J. H. Plant, Barkly-street, Ararat.

Sub-schedule No. 4.

MEAT.

Security, £100.

1. Fresh Beef—Fore-quarters	per cental	£ s. d.
2. " " Hind-quarters	do.	1 5 0
3. " " Buttocks	do.	1 5 0
4. " " Mutton	do.	1 2 0
5. Corned Beef—Rolled or round, as ordered, without bone or cartilage	do.	1 5 0

Sub-schedule No. 5.

POTATOES.

1. Potatoes	per cwt.	Purchase
under Tender Board quotations		

ANNEX TO CONTRACT No. 1933/267.

Aust. Wholesale Grocery Pty. Ltd., 277 Brunswick-street, Fitzroy, N.G.

Sub-schedule No. 6.

TEA.

Security, £20.

1. Tea—Best Ceylon, to sample	per lb.	£ s. d.
		0 1 5½

Schedule No. 4.

PROVISIONS AT BALLARAT.

ANNEX TO CONTRACT No. 1933/268.

W. Haymes, 291 Humffray-street, Nth. Ballarat.

Sub-schedule No. 1.

BREADSTUFFS.

Security, £60.

1. Bread—Fine wheaten, first quality	per cental	£ s. d.
2. Flour—First quality	do.	0 10 0
		0 8 3

ANNEX TO CONTRACT No. 1933/269.

Aust. Wholesale Grocery Pty. Ltd., 277 Brunswick-street, Fitzroy, N.G.

Sub-schedule No. 2.

GROCERIES.

Security, £30.

1. Barley—Pearl	per lb.	£ s. d.
2. Blue—Washing	do.	0 0 9½
3. Candles (full weights)—Kitchen's "Electrines," or other make of equal quality, in 1-lb. packets	do.	0 0 9
4. Coffee—"Neigherry A"—Fresh roasted and whole, beans to be thoroughly sound, to sample	do.	0 1 5½
5. Cornina (Corn or Maize Flour), in packets of 1 lb. net	do.	0 0 5½
6. Currants, 3 Crowns (present season's)	do.	0 0 7
7. Curry Powder	do.	0 0 9
8. Golden Syrup (in 7-lb. tins)	per tin	0 1 9
9. Mustard—Double Superfine	per lb.	0 2 1
10. Oatmeal	per cwt.	0 14 9
11. Peas—Split	do.	0 18 0
12. Pepper—Black, ground	per lb.	0 0 10½
13. Pipes—Tobacco, clay	per doz.	0 0 10½
14. Raisins—Sultana, 3 Crowns (present season's)	per lb.	0 0 7½
15. Rice—Dressed, to sample	per cwt.	1 3 6
16. Seed Tapioca (Sago), to sample	do.	0 19 0
17. Salt—Fine	do.	0 5 6
18. Soap—"Monkey Brand" or equal thereto	per doz.	0 2 1
19. Soap—Sand, in 12-oz. blocks	per " "	0 2 0
20. Soap—Soft, Genuine Potash, Best Amber	per lb.	0 0 3½
21. Soda—Carbonate of	do.	0 0 2
22. " Washing	per cwt.	0 8 9
23. Spice—Mixed, in 1-oz. packets	per doz. pkts.	0 1 1
24. Starch—"Preservene"	per lb.	0 0 6½
25. Tartar—Cream of	do.	0 1 5
26. Tobacco—"Starlight"	do.	0 6 11
27. Vinegar—Malt	per qt.	0 0 3

ANNEX TO CONTRACT No. 1933/270.

Australian Wholesale Grocery Pty. Ltd.

Sub-schedule No. 3.

JAMS.

Security, £10.

1. Jams—Assorted, in bulk, of approved kinds, in proportion of half seed and half stone, of the best quality, in actual net tins as required	per lb. actual net weight	£ s. d.
		0 0 4½

ANNEX TO CONTRACT No. 1933/271.

H. J. Symons, 1015 Macarthur-street, Ballarat.

Sub-schedule No. 4.

MEAT.

Security, £60.

1. Fresh Beef—Fore-quarters	per cental	£ s. d.
2. " " Hind-quarters	do.	1 6 0
3. " " Buttocks	do.	1 12 0
4. " " Mutton	do.	1 2 9
5. Corned Beef, rolled or round, as ordered, without bone or cartilage	do.	1 12 0
6. Fresh Suet—Kidney	do.	1 12 0

Sub-schedule No. 5.

POTATOES.

1. Potatoes	per cwt.	Purchase
under Tender Board quotations		

ANNEX TO CONTRACT No. 1933/272.
Aust. Wholesale Grocery Pty. Ltd., 277 Brunswick-street,
Fitzroy, N.G.

Sub-schedule No. 6.

TEA.

Security, £20.		£	s.	d.
1. Tea—Ceylon, to sample	per lb.	0	1	5½
2. " Ration	do.	0	1	2½

Schedule No. 5.

PROVISIONS—BEECHWORTH DISTRICT.

ANNEX TO CONTRACT No. 1933/273.

W. Price, Newtown, Beechworth.

Sub-schedule No. 1.

BREADSTUFFS.

Security, £100.		£	s.	d.
1. Bread—Fine wheaten, first quality	per cental	0	13	3
2. Flour—First quality	do.	0	10	0

ANNEX TO CONTRACT No. 1933/274.
Aust. Wholesale Grocery Pty. Ltd., 277 Brunswick-street,
Fitzroy, N.G.

Sub-schedule No. 2.

GROCERIES.

Security, £30.		£	s.	d.
1. Blue—Washing	per lb.	0	0	9
2. Candles (full weights)—Kitchen's "Electrines," or other make of equal quality, 1-lb. packets	do.	0	0	9½
3. Coffee—"Neilgherry A," fresh roasted and whole, beans to be thoroughly sound, to sample	do.	0	1	5½
4. Cornina (Corn or Maize Flour), in packets of 1 lb. net	do.	0	0	5½
5. Golden Syrup, in 7-lb. tins	per tin	0	2	0
6. Mustard, Double Superfine	per lb.	0	2	1
7. Oatmeal	per cwt	0	17	6
8. Pearl Barley	do.	0	17	6
9. Peas—Split	do.	1	0	6
10. Pepper—Black, ground	per lb.	0	0	10½
11. Pipes—Tobacco, clay	per doz.	0	0	10½
12. Raisins—Sultana, 3 Crowns (present season's)	per lb.	0	0	7½
13. Rice—Dressed, to sample	per cwt.	1	6	6
14. Seed Tapioca (Sago)—To sample	do.	1	1	6
15. Salt—Fine	do.	0	7	6
16. Soap—"Monkey Brand"—in 5-oz. tablets	per tab.	0	0	2½
17. Soap—Sand, Carbolic, or Borax, in 12-oz. blocks	per block	0	0	2½
18. Soda—Carbonate of	per lb.	0	0	2½
19. " Washing	per cwt.	0	10	0
20. Solv.-I. in 6-oz. tablets	per tab.	0	0	4½
21. Starch—"Preservene"	per lb.	0	0	6½
22. Tartar—Cream of	do.	0	1	5½
23. Vinegar—Malt	per qt.	0	0	4

ANNEX TO CONTRACT No. 1933/275

G. A. Hardham and Co., Glenferrie-road, Malvern, S.E.A.

Sub-schedule No. 3.

JAMS.

Security, £10.		£	s.	d.
1. Jams Assorted, in bulk, of approved kinds, in the proportion of half seed and half stone, of the best quality, in tins as required	per lb. actual net weight	0	0	4½

ANNEX TO CONTRACT No. 1933/276.

J. R. Newey, jr., Ford-street, Beechworth.

Sub-schedule No. 4.

MEAT.

Security, £100.		£	s.	d.
1. Fresh Beef—Fore-quarters	per cental	1	4	5½
2. " " Hind-quarters	do.	1	4	5½
3. " " Buttocks	do.	1	4	5½
4. " Mutton	do.	1	4	5½
5. Fresh Suet—Kidney (2 months)	per lb.	0	0	6

Sub-schedule No. 5.

POTATOES.

1. Potatoes	per cwt.	Purchase under Tender Board quotations.
-------------	----------	---

ANNEX TO CONTRACT No. 1933/277.

Aust. Wholesale Grocery Pty. Ltd., 277 Brunswick-street,
Fitzroy, N.G.

Sub-schedule No. 6.

TEA.

Security, £20.		£	s.	d.
1. Tea—Ceylon, to sample	per lb.	0	1	5½
2. " Ration "	do.	0	1	2½

Schedule No. 6.

PROVISIONS—SUNBURY DISTRICT.

ANNEX TO CONTRACT No. 1933/278.

T. Clyne and Son, Sunbury.

Sub-schedule No. 1.

BREADSTUFFS.

Security, £100.		£	s.	d.
1. Bread—Fine wheaten, first quality	per cental	0	10	5
2. Flour—First quality	do.	0	8	3

ANNEX TO CONTRACT No. 1933/279.

A. C. Shill, Sunbury.

Sub-schedule No. 2.

GROCERIES.

Security, £20.		£	s.	d.
1. Blue—Washing	per lb.	0	0	9
2. Candles—(Full weights) Kitchen's "Electrines," or other make of equal quality, to be supplied in 1-lb. packets	do.	0	0	8
3. Cocoa, in 1-lb. packets	do.	0	0	5½
4. Coffee—"Neilgherry A"—Fresh roasted and whole—Beans to be thoroughly sound, to sample	do.	0	1	5
5. Cornina (Corn or Maize Flour), in packets of 1 lb. net	do.	0	0	5
6. Currants—3 Crowns (present season's)	do.	0	0	6½
7. Curry Powder	do.	0	0	8½
8. Ginger—Ground	do.	0	0	5½
9. Golden Syrup, in 7-lb. tins	per tin	0	1	8½
10. Lemon Peel	per lb.	0	0	7½
11. Mustard—Double Superfine	do.	0	2	2
12. Oatmeal	per cwt.	0	13	6
13. Pearl Barley	do.	0	12	0
14. Peas—Split	do.	0	16	6
15. Pepper—Black, ground	per lb.	0	0	9
16. Pipes—Tobacco, clay	per doz.	0	0	9
17. Raisins—Sultana, 3 crowns, present season's	per lb.	0	0	7½
18. Rice—Dressed, to sample	per cwt.	1	1	9
19. Seed Tapioca (Sago), to sample	do.	0	17	6
20. Salt—Fine	do.	0	4	0
21. Soap—Soft—Genuine Amber	do.	1	13	0
22. Soda—Bicarbonate of	per lb.	0	0	2
23. " Washing	per cwt.	0	8	0
24. Spice—Mixed, in 1-oz. packets.	per lb.	0	1	2
25. Starch—"Preservene"	do.	0	0	6
26. Tartar—Cream of	do.	0	1	4
27. Vinegar—Malt	per pint	0	0	1

ANNEX TO CONTRACT No. 1933/280.

G. A. Hardham and Co., Glenferrie-road, Malvern, S.E.A.

Sub-schedule No. 3.

JAMS.

Security, £10.		£	s.	d.
1. Jams—Assorted, in bulk, of approved kinds, in the proportion of half seed and half stone, of the best quality, in tins as required	per lb. actual net weight	0	0	4½

ANNEX TO CONTRACT No. 1933/281.

F. Watkins Pty. Ltd., 184 Bourke-street, Melbourne.

Sub-schedule No. 4.

MEAT.

Security, £80.		£	s.	d.
1. Fresh Beef—Fore-quarters	per cental	1	1	10½
2. " " Hind-quarters	do.	1	1	10½
3. " " Buttocks	do.	1	1	10½
4. " Mutton	do.	1	1	10½
5. Corned Beef—Rolled or round, as ordered, without bone or cartilage	do.	1	1	10½

Sub-schedule No. 5.

POTATOES.

1. Potatoes	per cwt.	Purchase under Tender Board quotations.
-------------	----------	---

ANNEX TO CONTRACT No. 1933/282.

Aust. Wholesale Grocery Pty. Ltd., 277 Brunswick-street,
Fitzroy, N.G.

Sub-schedule No. 6.

TEA.

Security, £20.		£	s.	d.
1. Tea—Best Ceylon, to sample	per lb.	0	1	5½

Schedule No. 7.

PROVISIONS—BENDIGO DISTRICT.

ANNEX TO CONTRACT No. 1933/283.

Millar Bros., Bond-street, Long Gully.

Sub-schedule No. 1.

BREAD.

	Security, £5.	£	s.	d.
1. Bread—Wheaten, first quality	... per cental	0	9	10½

ANNEX TO CONTRACT No. 1933/284.

G. A. Hardham and Co., 36 Glenferrie-road, Malvern, S.E. 4.

Sub-schedule No. 2.

GROCERIES AND POTATOES.

	Security, £5.	£	s.	d.
1. Oatmeal	... per lb.	0	0	2½
2. Potatoes	... per cwt.	0	6	6
3. Salt—Fine	... per lb.	0	0	1½
4. Soap—Yellow (household), dry,	do.	0	0	3½
"Supreme," unwrapped	do.	0	1	2½
5. Tea—Ration, to sample	do.	0	1	2½
6. Tobacco, to sample	do.	0	7	6

ANNEX TO CONTRACT No. 1933/285.

H. Gillins, 350 Hargreaves-street, Bendigo.

Sub-schedule No. 3.

MEAT.

	Security, £5.	£	s.	d.
1. Fresh Beef	... per cental	1	4	9
2. " Mutton	do.	1	3	0
3. Corned Beef, rolled or round as ordered, without bone or cartilage	per lb.	0	0	4

Schedule No. 8.

PROVISIONS—CASTLEMAINE DISTRICT.

ANNEX TO CONTRACT No. 1933/286.

Rasmussen Bros., Johnston-street, Castlemaine.

Sub-schedule No. 1.

BREAD.

	Security, £5.	£	s.	d.
1. Bread—Wheaten, first quality	... per cental	0	14	7

ANNEX TO CONTRACT No. 1933/287.

G. A. Hardham and Co., 36 Glenferrie-road, Malvern, S.E. 4.

Sub-schedule No. 2.

GROCERIES.

	Security, £5.	£	s.	d.
1. Oatmeal	... per cwt.	0	17	0
2. Salt—Fine	... per lb.	0	0	1
3. Soap—Yellow (household), dry,	do.	0	0	3½
"Supreme," unwrapped	do.	0	1	2
4. Tea—Ration, to sample	do.	0	1	2

Sub-schedule No. 3.

POTATOES.

1. Potatoes	... per cwt.	Purchase under Tender Board quotations.
-------------	--------------	---

ANNEX TO CONTRACT No. 1933/288.

P. L. Gill, Barker-street, Castlemaine.

Sub-schedule No. 4.

MEAT.

	Security, £5.	£	s.	d.
1. Fresh Beef	... per cental	1	11	3
2. Corned Beef, rolled or round as ordered, without bone or cartilage	do.	1	11	3

Schedule No. 9.

PROVISIONS AT GEELONG.

ANNEX TO CONTRACT No. 1933/289.

J. A. Fitzgerald, 150 Malop-street, Geelong.

Sub-schedule No. 1.

BREADSTUFFS.

	Security, £20.	£	s.	d.
1. Bread—Fine Wheaten, first quality	... per cental	0	8	4

ANNEX TO CONTRACT No. 1933/290.

Australian Wholesale Grocery, Pty. Ltd., 277 Brunswick-street, Fitzroy, N.G.

Sub-schedule No. 2.

GROCERIES.

	Security, £20.	£	s.	d.
1. Oatmeal	... per cwt.	0	14	6
2. Pearl Barley	... per lb.	0	0	1½
3. Rice—Dressed, to sample	... per cwt.	1	3	0
4. Salt—Fine	... per lb.	0	0	0½
5. Soap—(Household) Yellow, dry,	do.	0	0	2½
"Supreme," unwrapped	do.	0	0	2½
6. Tea—Ration, to sample	do.	0	1	2½
7. Tobacco, to sample	do.	0	6	11

Sub-schedule No. 3.

POTATOES.

1. Potatoes	... per cwt.	Purchase under Tender Board quotations
-------------	--------------	--

Sub-schedule No. 4.

MEAT.

	£	s.	d.
1. Fresh Beef	... per cental		
2. " Buttocks	do.		
3. " Mutton	do.		
4. Corned Beef—Rolled or round, without bone or cartilage	do.		

See later Gazette.

ANNEX TO CONTRACT No. 1933/291.

S. H. Warren, West Moolap Post Office.

Sub-schedule No. 4.

MILK.

	Security, £5.	£	s.	d.
1. Milk—Fresh and pure	... per gallon	0	1	2

Schedule No. 10.

PROVISIONS AT McLEOD SETTLEMENT, FRENCH ISLAND.

DELIVERY TO BE MADE AT LANG LANG JETTY.

ANNEX TO CONTRACT No. 1933/292.

John William Hade, Grantville.

Sub-schedule No. 1.

BREAD.

	Security, £10.	£	s.	d.
1. Bread—Fine, Wheaten, first quality	... per cental	0	15	7½

ANNEX TO CONTRACT No. 1933/293.

Australian Wholesale Grocery, Pty. Ltd., 277 Brunswick-street, Fitzroy, N.G.

Sub-schedule No. 2.

GROCERIES.

	Security, £10.	£	s.	d.
1. Butter—First grade creamery, to score not less than 90 points, Government grade	per lb.	0	1	1½
2. Cheese—Matured	do.	0	0	10
3. Jams—Assorted, in proportion of half seed and half stone, of best quality, in 24-oz. tins	... per tin	0	0	7½
4. Oatmeal	... per cwt.	0	15	6
5. Rice—Dressed, to sample	... per lb.	0	0	2½
6. Salt—Fine	do.	0	0	0½
7. Soda—Washing	do.	0	0	1½
8. Tea—Ceylon, to sample	do.	0	1	6½
9. " Ration	do.	0	1	2½

ANNEX TO CONTRACT No. 1933/294.

E. W. Misson, Lang Lang.

Sub-schedule No. 3.

MEAT.

Security £20.	£	s.	d.
1. Fresh Beef—Hind-quarters ...	per cental	2	1 8
2. " Mutton ...	do.	1	13 4
3. Corned Beef (boned and rolled)	1	13 4

Schedule No. 11.

PROVISIONS AT CRESWICK.

FOR STUDENTS AT THE SCHOOL OF FORESTRY.

(Delivery at the School.)

ANNEX TO CONTRACT No. 1933/295.

C. C. Bowley, Albert-street, Creswick.

Sub-schedule No. 1.

BREADSTUFFS.

Security, £10.	£	s.	d.
1. Bread—Fine wheaten, first quality ...	per cental	0	16 8

ANNEX TO CONTRACT No. 1933/296.

D. J. Hawkey, Albert-street, Creswick.

Sub-schedule No. 2.

GROCERIES.

Security, £10.	£	s.	d.
1. Barley—Pearl ...	per lb.	0	0 1½
2. Blue—Washing ...	do.	0	0 9
3. Butter—First grade creamery, to score not less than 90 points, Government grade, commerce regulations standard	do.	0	1 1
4. Cheese—First-class quality, matured	do.	0	0 7½
5. Candles (Full weights)—Kitchen's "Electrines," or other make of equal quality, in 1-lb. packets	do.	0	0 9½
6. Coffee—Fresh Roasted and Whole—Beans to be thoroughly sound, to sample	do.	0	1 4
7. Cornina (Corn or Maize Flour), in packets of 1 lb. net	do.	0	0 6½
8. Eggs, new laid	per doz.	0	1 0
9. Ginger—Ground	per lb.	0	0 6
10. Golden Syrup, in 7-lb. tins	per tin	0	1 10
11. Flour	per lb.	0	0 1½
12. Jams, assorted, in 24-oz. tins, net, in the proportion of half seed and half stone	per lb.	0	0 8
13. Mustard—Double Superfine	do.	0	1 10
14. Oatmeal	do.	0	0 2
15. Peas—Split	do.	0	0 2½
16. Pepper—Black, ground	do.	0	0 10
17. Raisins—Sultana, 3 Crowns (present season's)	do.	0	0 7½
18. Rice—Dressed, to sample	do.	0	0 3
19. Salt—Fine	do.	0	0 1
20. Soap—Household, yellow, dry, and hard, unwrapped	do.	0	0 3
21. Soap—Sand, Carbolic, in 12-oz. blocks	each	0	0 2
22. Soda—Carbonate of	per lb.	0	0 2
23. Soda—Washing	do.	0	0 1
24. Starch	per lb.	0	0 7
25. Tartar—Cream of	do.	0	1 5
26. Tea—Ceylon, to sample	do.	0	1 3½
27. Vinegar—Malt	per pint	0	0 1
28. Potatoes	per cwt	0	5 0

ANNEX TO CONTRACT No. 1933/297.

G. Hobill, Broomfield.

Sub-schedule No. 3.

MEAT.

Security, £10.	£	s.	d.
1. Fresh Beef—Fore-quarter	per lb.	0	0 4
2. " Mutton (leg)	do.	0	0 4
(sides)	do.	0	0 3
3. Corned Beef, rolled or round, as ordered, without bone or cartilage	do.	0	0 6
4. Pork (Leg)	do.	0	0 6
5. Fresh Suet—Kidney	do.	0	0 3

ANNEX TO CONTRACT No. 1933/298.

E. E. Pollard, Eastern Hill, Creswick.

Sub-schedule No. 4.

MILK.

Security, £5.	£	s.	d.
1. Milk—Fresh and pure	per quart	0	0 5

Schedule No. 12.

PROVISIONS AT GREENVALE.

(DELIVERY AT THE SANATORIUM.)

ANNEX TO CONTRACT No. 1933/299.

David Bignell, Campbellfield.

Sub-schedule No. 1.

BREAD.

Security, £20.	£	s.	d.
1. Bread—Fine wheaten, first quality	per cental	0	12 3
2. Flour—First quality	do.	0	8 ½

ANNEX TO CONTRACT No. 1933/300.

Australian Wholesale Grocery Pty. Ltd., 277 Brunswick-street, Fitzroy, N.6.

Sub-schedule No. 2.

GROCERIES.

Security, £20.	£	s.	d.
1. Apricots—Dried	per lb.	0	0 1½
2. Biscuits—Kinds as ordered	do.	0	0 8½
3. Blue—Washing	do.	0	0 9½
4. Cheese—Matured, in 5-lb. loaves	do.	0	0 9
5. Cocoa—In ½ lb. packets	do.	0	0 6
6. Coconut—Desiccated	do.	0	0 7½
7. Coffee—"Neilgherry A." to sample—Beans to be thoroughly sound, fresh roasted, and whole	do.	0	1 5½
8. Cornina (Corn or Maize Flour), in packets of 1 lb. net	do.	0	0 5½
9. Currants, 3 Crowns (present season's)	do.	0	0 7
10. Custard Powders, in 1-lb. packets	per pkt.	0	0 7½
11. Dates—Fresh, in packets	per lb.	0	0 5½
12. Essence of Lemon—In full 16 oz. bottles	per bot.	0	2 6
13. Fruits—Preserved, in 4-lb. tins	per tin	0	1 5
14. Ginger—Ground	per lb.	0	0 7½
15. Golden Syrup, in 7-lb. tins	per tin	0	1 9
16. Jams—Assorted, in 10-lb. tins in the proportion of half seed and half stone	do.	0	4 0
17. Jelly Crystals, in 4-oz. packets	per doz. pkts.	0	2 6
18. Lemon Peel	per lb.	0	0 7½
19. Mustard—Double Superfine	do.	0	2 0
20. Oatmeal—Flaked or Plain	per cwt.	0	16 6
21. Pearl Barley	per lb.	0	0 1½
22. Peas—Split	do.	0	0 2
23. Pepper—White, ground	do.	0	0 11
24. Pickles—Assorted, 20-oz. bottles	per bot.	0	0 8
25. Powder—Baking, in 1-lb. tins	per tin	0	1 1
26. Prunes—Dried (present season's)	per lb.	0	0 5½
27. Raisins—Sultana, 3 Crowns (present season's)	do.	0	0 7½
28. Rice—Dressed, to sample	do.	0	0 2½
29. Sago (Seed Tapioca)—to sample	do.	0	0 1½
30. Salmon—Fresh, in ½ lb. tins, "Sockeye"	per tin	0	0 10½
31. Salt—Fine	per lb.	0	0 0½
32. Sauce—Worcestershire, 10-oz. bottles, Healesville	per bot.	0	0 7½
33. Sauce—Tomato, 13-oz. bottles, Williams and Sons	do.	0	0 6½
34. Soda—Carbonate of	per lb.	0	0 2
35. Soda—Washing	per cwt.	0	7 6
36. Spice—Mixed, in 1-oz. packets	per pkt.	0	0 1
37. Tapioca	do.	0	0 2½
38. Tartar—Cream of	do.	0	1 5
39. Tea—Ceylon, to sample, in 25-lb. tins	do.	0	1 5½
40. Treacle, in 7-lb. tins	per tin	0	1 7½
41. Vinegar, Malt	per pint	0	0 1½

ANNEX TO CONTRACT No. 1933/301.

F. Watkins, Pty. Ltd., Bourke-street, Melbourne.

Sub-schedule No. 3.

MEAT.

Security, £20.	£	s.	d.
1. Fresh Ox Beef—Roast ... per cental	1	13	10½
2. Fresh Ox Beef Steak—Stewing ... do.	1	13	10½
3. Corned Ox Beef—Rolled or Round, as ordered, without bone or cartilage ... do.	1	13	10½
4. Tripe, Ox (during winter) ... per lb.	0	0	4 ⅞
5. Sausages—Mixed ... do.	0	0	4 ⅞
6. „ Preserved ... do.	0	0	6 ⅞

Sub-schedule No. 4.

POTATOES.

1. Potatoes ...	per cwt.	Purchase under Tender Board quotations.
-----------------	----------	---

Schedule No. 13.

PROVISIONS AT LARA.

DELIVERY AT THE INEBRIATES' INSTITUTION.

ANNEX TO CONTRACT No. 1933/302.

R. S. Payne, Lara Lake.

Sub-schedule No. 1.

BREADSTUFFS.

Security, £5.	£	s.	d.
1. Bread—Fine wheaten, first quality ... per cental	0	14	7
2. Flour—First quality ... do.	0	13	0

ANNEX TO CONTRACT No. 1933/303.

Australian Wholesale Grocery, Pty. Ltd., 277 Brunswick-street, Fitzroy, N.6.

Sub-schedule No. 2.

GROCERIES.

Security, £20.	£	s.	d.
1. Arrowroot—Queensland ... per lb.	0	0	5½
2. Bacon.—By the side, Farmer's or Hut-ton's (or other approved brand) ... do.	0	0	9½
3. Barley—Pearl ... do.	0	0	1½
4. Blue—Washing ... do.	0	0	9
5. Candles—(Full weights) Kitchen's "Electrines," or other make of equal quality, in 1-lb. packets ... do.	0	0	8½
6. Cocoa, in ½-lb. packets ... do.	0	0	5½
7. Coffee—"Neigherry A." Fresh roasted and whole—Beans to be thoroughly sound, to sample ... do.	0	1	3½
8. Currants—3 Crowns (present season's) ... do.	0	0	7
9. Herrings—Fresh (in 14-oz. tins) ... per tin	0	0	8½
10. Jam, Assorted, in 24-oz. tins ... per doz. tins	0	6	9
11. Mustard—Double Superfine ... per lb.	0	2	1
12. Oatmeal ... do.	0	0	1½
13. Peas—Split ... do.	0	0	2
14. Pepper—Black, ground ... do.	0	0	11
15. Raisins—Sultana, 3 Crowns (present season's) ... do.	0	0	7½
16. Rice—Dressed, to sample ... do.	0	0	2½
17. Seed Tapioca (Sago), to sample ... do.	0	0	2
18. Salmon—Fresh, talls (1-lb. tins), "Neo" ... per tin	0	0	8
19. Salt—Fine ... per lb.	0	0	0½
20. Soap—Borax, in 9-oz. bars ... per bar	0	0	4
21. " Household, yellow, to sample ... do.	0	0	3
22. " Sand, in 12-oz. block ... per block	0	0	2
23. " Toilet, "Bath," in 4½-oz. tablets, to sample, Kitchen's ... per doz.	0	2	0
24. Soda—Washing ... per lb.	0	0	0½
25. Starch—Silver Star ... do.	0	0	5½
26. Tea—Ceylon, to sample ... do.	0	1	5½
27. Tartar—Cream of ... do.	0	1	5

ANNEX TO CONTRACT No. 1933/304.

W. Angliss and Co. Pty. Ltd., 42 Bourke-street, Melbourne.

Sub-schedule No. 3.

MEAT.

Security, £20.	£	s.	d.
1. Fresh Beef ... per cental	1	19	6
2. " Mutton ... do.	1	2	0
3. " Tripe, Sausages, Kidneys, and Liver, as ordered ... do.	1	12	0

Sub-schedule No. 4.

POTATOES.

1. Potatoes ...	per cwt.	Purchase under Tender Board quotations.
-----------------	----------	---

Schedule No. 14.

PROVISIONS AT RUTHERGLEN.

(For Students at Viticultural College.)

DELIVERY AT THE COLLEGE.

ANNEX TO CONTRACT No. 1933/305.

Alex. John Hyland, Main-street, Rutherglen.

Sub-schedule No. 1.

BREAD.

Security, £5.	£	s.	d.
1. Bread—Fine wheaten, first quality ... per cental	0	17	2½
2. Flour—First quality ... do.	Purchase by agree-ment.		

ANNEX TO CONTRACT No. 1933/306.

G. A. Hardham and Co., 36 Glenferrie-road, Malvern, S.E.4.

Sub-schedule No. 2.

GROCERIES, ETC.

Security, £10.	£	s.	d.
1. Barley—Pearl ... do.	0	0	2
2. Candles—(Full weights) Kitchen's "Electrines," or other make of equal quality, in 1-lb. packets ... do.	0	0	0
3. Cornina (Corn or Maize Flour), in packets of 1-lb. net ... per lb.	0	0	6½
4. Cream of Tartar ... do.	0	1	4
5. Currants, 3 Crowns (present season's) ... do.	0	0	7½
6. Essence of Lemon, 1-oz. bottles ... per bottle	0	0	4½
7. Fish, Preserved, Salmon, Fresh Herrings, Herrings in Tomato, as ordered, in 1-lb. tins ... per tin	0	0	9½
8. Fruits, Preserved, assorted, in 2-lb. tins ... per tin	0	0	9
9. Golden Syrup, in 2-lb. tins ... do.	0	0	7
10. Jams, assorted, in 24-oz. tins, in the proportion of half seed and half stone ... do.	0	0	8
11. Macaroni or Vermicelli, as ordered ... do.	0	0	4½
12. Oatmeal—Flaked or other ... do.	0	0	2½
13. Pepper—Black or White, ground ... per lb.	0	1	0
14. Potatoes, dry and free from dirt ... per cwt.	0	6	6
15. Rice—Dressed, to sample ... do.	0	0	3
16. Salt—Fine ... do.	0	0	1½
17. Sauce—Chutney, 13-oz. bottles ... per bottle	0	0	1½
18. " Tomato, 13-oz. bottles ... do.	0	0	7
19. " Worcester, 10-oz. bottles ... do.	0	0	7
20. Soap—Household, yellow, to sample ... per lb.	0	0	3½
21. " Toilet, "Bath," in 4½-oz. tablets, to sample, Kitchen's ... per doz.	0	2	3
22. " Sand, in 12-oz. blocks ... per block	0	0	2
23. Soda—Bicarbonate ... per lb.	0	0	2
24. " Washing ... do.	0	0	1½
25. Starch ... per lb.	0	0	8
26. Tea—Ceylon, to sample ... do.	0	1	8

ANNEX TO CONTRACT No. 1933/307.

H. and A. Devers, Main-street, Rutherglen.

Sub-schedule No. 3.

MEAT (FRESHLY KILLED).

Security, £10.	£	s.	d.
1. Beef—Fresh, 2½ centsals ... per lb.	0	0	7

Schedule No. 16.
PROVISIONS FOR S.S. RIP AND DREDGES.

Supplies to be delivered to Dredging Depot, Williamstown, Victoria Dock, or River Yarra Wharfs, as ordered.
 (Supplies for Naval Forces are not included in this schedule.)

Sub-schedule No. 1.

BREADSTUFFS.

Security, £10.

1. Bread—Fine wheaten, first quality per cental } Purchase by
 2. Flour—First quality ... do. } agreement

ANNEX TO CONTRACT No. 1933/305.

G. A. Hardham and Co., 36 Glenferrie-road, Malvern, S.E.4.

Sub-schedule No. 2.

GROCERIES.

Security, £10.

- | | | £ | s. | d. |
|---|---------|---|----|----|
| 1. Biscuits—Cabin Bread or the like | per lb. | 0 | 0 | 2½ |
| 2. Butter—First class creamery, to score not less than 90 points, Government grade, commerce regulations standard | do. | 0 | 1 | 1½ |
| 3. Coffee—"Neilgherry," fresh roasted and ground, to sample | do. | 0 | 1 | 3 |
| 4. Currants—3 Crowns (present season's) | do. | 0 | 0 | 4½ |
| 5. Flour—Self-raising | do. | 0 | 0 | 1½ |
| 6. Jams—Assorted, of approved kinds, in proportion of half seed and half stone, in 24-oz. tins | per tin | 0 | 0 | 6½ |
| 7. Meat—Preserved, beef or mutton, in 1-lb. tins | do. | 0 | 0 | 5 |
| 8. Milk—Condensed, "Full Cream" | do. | 0 | 0 | 7½ |
| 9. Mustard—Double Superfine | per lb. | 0 | 1 | 0 |

- | | | £ | s. | d. |
|--|----------------------|---|----|----|
| 10. Oatmeal | per lb. | 0 | 0 | 2 |
| 11. Pearl barley | do. | 0 | 0 | 1½ |
| 12. Peas—Split | do. | 0 | 0 | 2 |
| 13. Pepper—White, ground | do. | 0 | 1 | 0 |
| 14. Pickles—Assorted, 20-oz. bottles | per bot. | 0 | 0 | 8 |
| 15. Raisins—Sultana, 3 Crowns (present season's) | per lb. | 0 | 0 | 6 |
| 16. Rice—Dressed, to sample | do. | 0 | 0 | 2½ |
| 17. Salt—Fine | do. | 0 | 0 | 0½ |
| 18. Sauce—Tomato, 13-oz. bottles | per bot. | 0 | 0 | 6 |
| 19. Sauce—Worcester, 10-oz. bottles | Williams and Son do. | 0 | 0 | 5 |
| 20. Tea—Ceylon, to sample | per lb. | 0 | 1 | 6 |
| 21. Vinegar—Malt | per gal. | 0 | 0 | 0 |

ANNEX TO CONTRACT No. 1933/309.

F. Watkins Pty. Ltd., Bourke-street, Melbourne.

Sub-schedule No. 3.

MEAT.

Security, £10.

- | | | £ | s. | d. |
|------------------|---------|---|----|----|
| 1. Fresh Beef | per lb. | 0 | 0 | 4½ |
| 2. " Mutton | do. | 0 | 0 | 3½ |
| 3. " Suet—Kidney | do. | 0 | 0 | 3½ |

ANNEX TO CONTRACT No. 1933/310.

G. A. Hardham and Co., 36 Glenferrie-road, Malvern, S.E.4.

Sub-schedule No. 4.

VEGETABLES.

Security, £5

- | | | £ | s. | d. |
|--|----------|---|----|----|
| 1. Potatoes | per cwt. | 0 | 5 | 6 |
| 2. Onions | do. | 0 | 5 | 6 |
| 3. Other vegetables, including cauliflower, flowers, carrots, cabbages, turnips, and parsnips, as required | do. | 0 | 7 | 0 |

Schedule No. 17.

PROVISIONS FOR ABORIGINES AT LAKE TYERS.

(Delivery at Lake Tyers Station.)

ANNEX TO CONTRACT No. 1933/311.

L. T. Freeman, Lakes Entrance.

Sub-schedule No. 1.

BREAD.

Security, £2.

Item No.	Article.	£	s.	d.
1	Bread—Fine wheaten, first quality	0	14	0½
2	Flour—First quality	0	9	6

Sub-schedule No. 2.

ANNEX TO CONTRACT No. 1933/312.

L. T. Freeman, Lakes Entrance.

GROCERIES.

Security, £2.

Item No.	Article.		£	s.	d.
1	Baking Powder, Snowflake, in 1-lb. tins ...	per lb.	0	1	1
2	Candles—(Full weights) Kitchen's "Electrines," or other make of equal quality, in 1-lb. packets	"	0	0	9
3	Coffee—Fresh roasted and whole—Beans to be thoroughly sound, to sample ...	"	0	1	5
4	Cocoa, in ½-lb. packets ...	"	0	0	7
5	Cornina (Corn or Maize Flour), in 1-lb. packets ...	"	0	0	6½
6	Currants—3 Crowns (present season's) ...	"	0	0	7½
7	Curry Powder ...	"	0	0	10
8	Matches, Safety ...	per gross	0	5	6
9	Mustard—Double Superfine ...	per lb.	0	1	10
10	Oatmeal ...	"	0	0	2½
11	Peas, Split ...	"	0	0	3
12	Pearl Barley ...	"	0	0	2
13	Peel—Mixed ...	"	0	0	9
14	Pepper—Black, ground, in ½-lb. tins ...	per tin	0	0	5
15	Raisins—Sultana, 3 Crowns (present season's) ...	per lb.	0	0	8½
16	Rice—Dressed, to sample ...	"	0	0	3
17	Seed Tapioca (Sago), to sample ...	"	0	0	2½
18	Salt—Coarse ...	per cwt.	0	7	0
19	" Fine ...	"	0	7	0
20	Soap—Household, hard and dry, unwrapped ...	"	1	9	0
21	Soda—Bicarbonate ...	per lb.	0	0	2
22	" Washing ...	"	0	0	1½
23	Tartar, Cream of ...	"	0	1	3
24	Tea—Ceylon, to sample ...	"	0	1	4
25	Tobacco—Twist, to sample ...	"	0	7	3
26	Treacle, in 7-lb. tins ...	per tin	0	2	0
27	Vinegar—Malt ...	per quart	0	0	4

ANNEX TO CONTRACT No. 1933/313.

L. T. Freeman, Lakes Entrance.

Sub-schedule No. 3.

JAMS.

Security, £10.

1	Jams, assorted, in 24-oz. tins (in the proportion of half seed, half stone)	per tin	0	0	8½
---	---	---------	---	---	----

Schedule No. 18.
**PROVISIONS AT TEACHERS' TRAINING
 COLLEGE.**

(Delivery at the College.)

ANNEX TO CONTRACT No. 1933/314.

Cahill and Quin, 11 Eastment-street, Northcote.

Sub-schedule No. 1.

BREADSTUFFS.

Security, £20.

Bread.—A sample of the best ordinarily retailed to the public will be considered as a test loaf for First Quality.

No subletting will be allowed; all work must be carried out by the Contractor.

		£	s.	d.
1. Bread—Fine wheat, first quality	per cental	0	9	11
2. Bread—Brown	do.	0	9	11
3. Bread—Raisin	do.	0	14	11
4. Bread—Vienna (quarter loaves), first quality	do.	0	11	11
5. Flour—First quality	do.	0	9	3

ANNEX TO CONTRACT No. 1933/315.

Australian Wholesale Grocery Pty. Ltd., 277 Brunswick-street, Fitzroy, N.6.

Sub-schedule No. 2.

GROCERIES.

Security, £20.

		£	s.	d.
1. Asparagus, in 1-lb. tins (Brand—A.J.C.) ..	per tin	0	1	5½
2. Barley—Pearl	per lb.	0	0	1½
3. Beans—Haricot	do.	0	0	2
4. Candles—(Full weights) Kitchen's "Electrics" or other make of equal quality, in 1-lb. packets	do.	0	0	8½
5. Castor Sugar	do.	0	0	4
6. Cheese—Matured	do.	0	0	10
7. Coffee—Ground, Neilgherry, A, to sample ..	do.	0	1	4
8. Cornina (Corn or Maize Flour), in 1-lb. packets	do.	0	0	5½
9. Currants—3 Crowns (present season's) ..	do.	0	0	7
10. Custard Powder, in 1-lb. packets	do.	0	0	7½
11. Dried Fruits—Assorted (present season's) ..	do.	0	0	9
12. Essences—Assorted, in 1-oz. bottles (Brand—"Sousia")	per bot.	0	0	3
13. Fish—Salmon, in 1-lb. tins, talls, (Brand—"Ever Ready or Blue Ribbon")	per tin	0	1	2
14. Flour—Self-raising (Brand—B.B.B.)	per lb.	0	0	1½
15. Fruit—Preserved, Assorted, in 2-lb. tins ..	per tin	0	0	8½
16. Ginger—Ground	per lb.	0	0	7½
17. Golden Syrup, in 7-lb. tins	per tin	0	1	9
18. Honey	per lb.	0	0	4½
19. Jelly Crystals, in 4-oz. packets	per pkt.	0	0	3
20. Mustard—Double Superfine, in 1-lb. tins (Brand—	per lb.	0	2	7
21. Oatmeal—Flaked	do.	0	0	1½
22. Oatmeal—Plain	do.	0	0	1½
23. Pease—Split	do.	0	0	1½
24. Pepper—White, Ground	do.	0	0	11
25. Pickles—Assorted, in 20-oz. bottles (Brand—"Pride of Victoria")	per bot.	0	0	8½
26. Raisins—Sultana, 3 crowns (present season's) ..	per lb.	0	0	7½
27. Rice—Dressed, to sample	do.	0	0	2½
28. Salt—Fine	do.	0	0	0½
29. Sauce—Tomato, in 13-oz. bottles (Brand—Williams')	per bot.	0	0	6½
30. Sauce—Worcestershire, in 10-oz. bottles (Brand—Lifebuoy)	do.	0	0	6
31. Seed Tapioca (Sago), to sample	per lb.	0	0	2
32. Soda—Carbonate of	do.	0	0	2
33. Soda—Washing	do.	0	0	0½
34. Soup—Assorted, in 8-lb. tins (Brand—Jones Millers)	per tin	0	3	4
35. Soup—Assorted, in 1-lb. tins (Brand—Williams')	do.	0	0	7
36. Spice—Mixed, in 1-oz. packets	per pkt.	0	0	1
37. Starch—Rice (Brand—"Preservene")	per lb.	0	0	6½
38. Tartar—Cream of	do.	0	1	5
39. Tea—Ceylon, to sample	do.	0	1	5½
40. Treacle, in 5-lb. tins	per tin	0	1	3
41. Vinegar—Malt	per pint	0	0	1½
42. "Weeties" (or equal thereto), in packets (Brand—Flakees)	per 8-oz. pkt.	0	0	3½

ANNEX TO CONTRACT No. 1933/316.

F. Watkins Pty. Ltd., 184 Bourke-street, Melbourne, C.1.

Sub-schedule No. 3.

MEAT.

Security, £20.

Fresh Beef must be supplied from prime ribs or sirloin; ribs of beef to be cut clear of the plate bone, and sirloin to be cut clear of the wing ribs, excess of brisket or flank will be rejected, chuck ribs, i.e., 1st to 4th inclusive will not be accepted. Meat containing an undue proportion of fat will not be accepted. Corned Beef to be supplied from silverside (round) and brisket; cow, bull, or stag beef or frozen meat, or mutton derived from the carcasses of rams will not be accepted, and must not be tendered for delivery.

All surplus bone and fat must be removed by the Contractor prior to delivery, and only net weights will be paid for.

All meat supplied under this contract must have been slaughtered in Victoria, freshly killed, and must be well-fed, good, sound, sweet, and wholesome.

No subletting will be allowed; all work (not usually performed at the Abattoirs) must be carried out by the Contractor.

		£	s.	d.
1. Beef—Prime ribs	per lb.	0	0	3½
2. " Sirloin	do.	0	0	4½
3. " Steak—Bladebone	do.	0	0	3½
4. " " Rump	do.	0	0	6½
5. " Corned—Round, as ordered, without bone or cartilage	do.	0	0	4½
5A. " Corned—Rolled, as ordered, without bone or cartilage	do.	0	0	3½
6. Mutton—Chops (forequarter)	per lb.	0	0	3½
7. " Legs	do.	0	0	3½
8. Lamb—Cutlets	do.	0	0	4½
9. " Legs	do.	0	0	4½
10. Pork—Legs	do.	0	0	6½
11. Veal—Cutlets	do.	0	0	5½
12. Lambs' Fries	do.	0	0	3
13. Kidneys—Sheep's	do.	0	0	6½
14. Sausages—Best (Pork or Beef-mixed)	do.	0	0	3½
15. Sausage Meat	do.	0	0	3½
16. Suet, Fresh Kidney	do.	0	0	3½

ANNEX TO CONTRACT No. 1933/317.

Fowlers Pty. Ltd., 257 Burwood-road, Hawthorn, E.2.

Sub-schedule No. 4.

JAM.

Security, £10.

1. Jam—Assorted, in 5-lb. tins (Brand—"Fowlers")	per tin	0	1	10½
--	---------	---	---	-----

Schedule No. 19.

PROVISIONS AT GRESSWELL.

(Delivery at the Sanatorium.)

Sub-schedule No. 1.

BREAD.

1. Bread—Fine wheat, first quality	per cental	Purchase by agreement
------------------------------------	------------	-----------------------

ANNEX TO CONTRACT No. 1933/318.

G. A. Hardham and Co., 36 Glenferrie-road, Malvern.

Sub-schedule No. 2.

GROCERIES.

Security, £20.

		£	s.	d.
1. Apricots—Dried	per lb.	0	0	10½
2. Biscuits—Kinds as ordered	do.	0	0	8
3. Blue—Washing	do.	0	0	8
4. Cheese—Matured, in 5-lb. loaves	do.	0	0	8

Sub-schedule No. 2—continued.

GROCERIES—continued.

Sub-schedule No. 2—continued.					£	s.	d.		
GROCERIES—continued.					£	s.	d.		
					£	s.	d.		
5. Cocoa, in $\frac{1}{4}$ -lb. packets	per lb.	0	0	6	36.*Soda—Carbonate of	per lb.	0	0	2
6. Coconut—Desiccated	do.	0	0	6	37. Soda—Washing	do.	0	0	0 $\frac{1}{2}$
7. Coffee—"Neigherry A," to sample—Beans to be thoroughly sound, fresh roasted, and whole	do.	0	1	5	38. Spice—Mixed, in 1-oz. packets	per pkt.	0	0	1
8. Cornina (Maize or Corn Flour), in packets of 1-lb. net	do.	0	0	6	39. Starch (Brand—"Preservene")	per lb.	0	0	6
9. Currants—3 Crowns (present season's)	do.	0	0	6 $\frac{1}{2}$	40. Tapioca	do.	0	0	2
10. Custard Powder, in 1-lb. packets	per pkt.	0	0	7 $\frac{1}{2}$	41. Tartar—Cream of	do.	0	1	4
11. Dates—Fresh in packets	per lb.	0	0	6	42. Tea—Ceylon, to sample, in 25-lb. tins	do.	0	1	6 $\frac{1}{2}$
12. Essence of Lemon, in full 16-oz. bottles	per bot.	0	2	6	43. Treacle, in 7-lb. tins	per tin	0	1	8
13. Flour—Best Roller	per cental	0	9	0	44. Vinegar—Malt	per pint	0	0	1 $\frac{1}{2}$
14. Fruits—Preserved, in 4-lb. tins	per tin	0	1	5					
15. Ginger—Ground	per lb.	0	0	8					
16. Golden Syrup, in 7-lb. tins	per tin	0	1	9					
17. Jams—Assorted, in 14-lb. tins, in the proportion half seed and half stone	do.	0	4	10					
18. Jelly Crystals, in 4-oz. packets	per doz. pkts.	0	2	9					
19. Lemon Peel	per lb.	0	0	7					
20. Mustard—Double Superfine	do.	0	2	0					
21. Oatmeal—Flaked or Plain, of any Commonwealth brand ordered	per cwt.	0	16	0					
22. Pearl Barley	per lb.	0	0	1 $\frac{1}{2}$					
23. Peas—Split	do.	0	0	2					
24. Pepper—White, Ground	do.	0	1	0					
25. Pickles—Assorted, 20-oz. bottles	per bot.	0	0	8					
26. Powder—Baking, in 1-lb. tins	per tin	0	0	9					
27. Prunes—Dried (present season's)	per lb.	0	0	6					
28. Raisins—Sultana, 3 Crowns (present season's)	per lb.	0	0	7 $\frac{1}{2}$					
29. Rice—Dressed, to sample	do.	0	0	2 $\frac{1}{2}$					
30. Sago (Seed Tapioca), to sample	do.	0	0	2					
31. Salmon—Fresh, in $\frac{1}{4}$ -lb. tins (Brand—"Sockeye" (Cloverdale))	per tin	0	0	10					
32. Salt—Fine	per lb.	0	0	0 $\frac{1}{2}$					
33.*Sardines— $\frac{1}{4}$'s, Best (not sild)	per tin	0	0	8					
34. Sauce—Worcestershire, in 10-oz. bottles (Brand—Williams and Son)	per bot.	0	0	5					
35.*Sauce—Tomato, 13-oz. bottles (Brand—Williams and Son)	do.	0	0	6					

36.*Soda—Carbonate of	per lb.	0	0	2
37. Soda—Washing	do.	0	0	0 $\frac{1}{2}$
38. Spice—Mixed, in 1-oz. packets	per pkt.	0	0	1
39. Starch (Brand—"Preservene")	per lb.	0	0	6
40. Tapioca	do.	0	0	2
41. Tartar—Cream of	do.	0	1	4
42. Tea—Ceylon, to sample, in 25-lb. tins	do.	0	1	6 $\frac{1}{2}$
43. Treacle, in 7-lb. tins	per tin	0	1	8
44. Vinegar—Malt	per pint	0	0	1 $\frac{1}{2}$

ANNEX TO CONTRACT NO. 1933/319.

F. Watkins Pty. Ltd., 184 Bourke-street, Melbourne, C.I.

Sub-schedule No. 3.					£	s.	d.			
MEAT.					£	s.	d.			
Security, £20.					£	s.	d.			
1. Fresh Ox Beef—Roast	per cental	1	5	6 $\frac{1}{2}$	1.	Fresh Ox Beef—Roast	per cental	1	5	6 $\frac{1}{2}$
2. Fresh Ox Beef Steak—Stewing	do.	1	5	6 $\frac{1}{2}$	2.	Fresh Ox Beef Steak—Stewing	do.	1	5	6 $\frac{1}{2}$
3. Mutton	do.	0	17	2 $\frac{1}{2}$	3.	Mutton	do.	0	17	2 $\frac{1}{2}$
4. Corned Ox Beef—Rolled or Round, as ordered, without bone or cartilage	do.	1	5	6 $\frac{1}{2}$	4.	Corned Ox Beef—Rolled or Round, as ordered, without bone or cartilage	do.	1	5	6 $\frac{1}{2}$
5. Tripe—Ox (during winter)	per lb.	0	0	3 $\frac{1}{2}$	5.	Tripe—Ox (during winter)	per lb.	0	0	3 $\frac{1}{2}$
6. Sausages—Mixed	do.	0	0	3 $\frac{1}{2}$	6.	Sausages—Mixed	do.	0	0	3 $\frac{1}{2}$
7. „ Preserved	do.	0	0	6 $\frac{1}{2}$	7.	„ Preserved	do.	0	0	6 $\frac{1}{2}$

Sub-schedule No. 4.

POTATOES.

1. Potatoes	per cwt.	Purchased under Tender Board quotations
---------------------	----------	---

ANNEX TO CONTRACT No. 1933/319.

F. Watkins Pty. Ltd., 184 Bourke-street, Melbourne, C.I.

Sub-schedule No. 3.

MEAT.

Security, £20.

		£	s.	d.
1. Fresh Ox Beef—Roast	per cental	1	5	6 $\frac{1}{2}$
2. Fresh Ox Beef Steak—Stewing	do.	1	5	6 $\frac{1}{2}$
3. Mutton	do.	0	17	2 $\frac{1}{2}$
4. Corned Ox Beef—Rolled or Round, as ordered, without bone or cartilage	do.	1	5	6 $\frac{1}{2}$
5. Tripe—Ox (during winter)	per lb.	0	0	3 $\frac{1}{2}$
6. Sausages—Mixed	do.	0	0	3 $\frac{1}{2}$
7. " Preserved	do.	0	0	6 $\frac{1}{2}$

Sub-schedule No. 4.

POTATOES.

1. Potatoes	per cwt.	Purchased under Tender Board quotations
---------------------	----------	---

