

[1891]



# VICTORIA GOVERNMENT GAZETTE.

Published by Authority.

[Registered at the General Post Office, Melbourne, for transmission by post as a newspaper.]

No. 108]

FRIDAY, JUNE 29.

[1934

CONTRACTS ACCEPTED.

(SERIES 1934-35.)

## SUPPLY OF PROVISIONS

FROM

1st JULY, 1934, TO 30th JUNE, 1935, OR AS STATED.

J. M. DOOLEY,  
Secretary, Tender Board.

## CONTRACTS ACCEPTED. (Series 1934-35.)

No. of Contract.	Particulars of each Tender Accepted.	Amount.	Name of Contractor.	Charged against Vote or Fund.
	<b>PROVISIONS—</b> Supply of Provisions, in such quantities as may be ordered, from 1st July, 1934, to 30th June, 1935.			
	<b>Melbourne District—</b>			
1	Bread, Kew Mental Hospital .. ..	Rates as per annex	Taylor and McMillan Pty. Ltd. ..	
2	Bread, Melbourne, Children's Welfare Dept., &c.	Ditto .. ..	Taylor and McMillan Pty. Ltd. ..	
3	Flour .. ..	Ditto .. ..	J. Minifie and Co. .. ..	
4	Groceries .. ..	Ditto .. ..	Moran and Cato Pty. Ltd. .. ..	
5	*Oatmeal, &c. .. ..	Ditto .. ..	H. S. K. Ward Pty. Ltd. .. ..	
6	Jams .. ..	Ditto .. ..	Moran and Cato Pty. Ltd. .. ..	
7	Meat, Kew Mental Hospital .. ..	Ditto .. ..	F. Watkins Pty. Ltd. .. ..	
8	Meat, Pentridge Penal Establishment .. ..	Ditto .. ..	F. Watkins Pty. Ltd. .. ..	
9	Meat, Children's Welfare Depot, Royal Park, and Police Depot .. ..	Ditto .. ..	F. Watkins Pty. Ltd. .. ..	
10	Meat, Royal Park Mental Hospital and Receiving House .. ..	Ditto .. ..	F. Watkins Pty. Ltd. .. ..	
..	Potatoes .. ..	.. ..	Purchase under Tender .. Board quotations	
11	Soap Mixtures .. ..	Rates as per annex	Moran and Cato Pty. Ltd. .. ..	
12	Tea .. ..	Ditto .. ..	H. Berry and Co. Pty. Ltd. .. ..	
..	Tobacco .. ..	.. ..	Purchase under Tender .. Board quotations	
	<b>Mont Park—</b>			
13	Breadstuffs .. ..	Rates as per annex	Cahill and Quin .. ..	
14	Groceries .. ..	Ditto .. ..	Moran and Cato Pty. Ltd. .. ..	
15	Jams .. ..	Ditto .. ..	G. A. Hardham and Co. .. ..	
16	Meat .. ..	Ditto .. ..	F. Watkins Pty. Ltd. .. ..	
..	Potatoes .. ..	.. ..	Purchase under Tender .. Board quotations	
	<b>Ararat—</b>			
17	Breadstuffs .. ..	Rates as per annex	W. Bates .. ..	
18	Groceries .. ..	Ditto .. ..	G. A. Hardham and Co. .. ..	
19	Jams .. ..	Ditto .. ..	G. A. Hardham and Co. .. ..	
20	Meat .. ..	Ditto .. ..	H. T. Impey .. ..	
..	Potatoes .. ..	.. ..	Purchase under Tender .. Board quotations	
	<b>Ballarat—</b>			
21	Breadstuffs .. ..	Rates as per annex	W. E. Longhurst and Sons Pty. Ltd. ..	
22	Groceries .. ..	Ditto .. ..	Craig's Grocery Pty. Ltd. .. ..	
23	Jams .. ..	Ditto .. ..	Moran and Cato Pty. Ltd. .. ..	
24	Meat .. ..	Ditto .. ..	H. J. Symons .. ..	
..	Potatoes .. ..	.. ..	Purchase under Tender .. Board quotations	Contingencies, 1934-35
	<b>Beechworth—</b>			
25	Breadstuffs .. ..	Rates as per annex	Wm. Price .. ..	
26	Groceries .. ..	Ditto .. ..	G. A. Hardham and Co. .. ..	
27	Jams .. ..	Ditto .. ..	Moran and Cato Pty. Ltd. .. ..	
28	Meat .. ..	Ditto .. ..	Molony Bros. .. ..	
..	Potatoes .. ..	.. ..	Purchase under Tender .. Board quotations	
	<b>Sunbury—</b>			
29	Breadstuffs .. ..	Rates as per annex	T. Clyne and Son .. ..	
30	Groceries .. ..	Ditto .. ..	A. C. Shill .. ..	
31	Jams .. ..	Ditto .. ..	Moran and Cato Pty. Ltd. .. ..	
32	Meat .. ..	Ditto .. ..	F. Watkins Pty. Ltd. .. ..	
..	Potatoes .. ..	.. ..	Purchase under Tender .. Board quotations	
	<b>Bendigo—</b>			
33	Bread .. ..	Rates as per annex	Millar Bros. Hygienic Bakery Pty. Ltd. ..	
34	Meat .. ..	Ditto .. ..	H. Gittins .. ..	
	<b>Castlemaine—</b>			
35	Bread .. ..	Rates as per annex	Rasmussen Bros. .. ..	
..	Potatoes .. ..	.. ..	Purchase under Tender .. Board quotations	
36	Meat .. ..	Rates as per annex	D. McShanag .. ..	
	<b>Geelong—</b>			
37	Breadstuffs .. ..	Ditto .. ..	J. A. Fitzgerald .. ..	
38	Meat .. ..	Ditto .. ..	M. G. O'Brien .. ..	
39	Milk .. ..	Ditto .. ..	R. H. Clowes .. ..	
	<b>McLeod Settlement, French Island—</b>			
40	Bread .. ..	Rates as per annex	J. Jackson .. ..	
41	Groceries .. ..	Ditto .. ..	G. A. Hardham and Co. .. ..	
42	Meat .. ..	Ditto .. ..	E. W. Misson .. ..	

\* Excluding rice, dressed, but including rice, ground.

## CONTRACTS ACCEPTED.—(Series 1934-35)—continued.

No. of Contract.	Particulars of each Tender Accepted.	Amount.	Name of Contractor.	Charged against Vote or Fund.
<b>PROVISIONS—continued.</b>				
<b>Creswick—</b>				
43	Bread .. .. .	Ditto .. .. .	C. C. Bowley .. .. .	
44	Groceries .. .. .	Ditto .. .. .	D. J. Hawkey .. .. .	
45	Meat .. .. .	Ditto .. .. .	C. Hobill .. .. .	
46	Milk .. .. .	Ditto .. .. .	E. E. Pollard .. .. .	
<b>Greenvale—</b>				
47	Bread .. .. .	Ditto .. .. .	D. Bignell .. .. .	
48	Groceries .. .. .	Ditto .. .. .	Moran and Cato Pty. Ltd. .. .. .	
49	Meat .. .. .	Ditto .. .. .	F. Watkins Pty. Ltd. .. .. .	
..	Potatoes .. .. .	.. .. .	Purchase under Tender Board quotations	
<b>Lara—</b>				
50	Bread .. .. .	Rates as per annex	R. S. Payne .. .. .	
51	Groceries .. .. .	Ditto .. .. .	Moran and Cato Pty. Ltd. .. .. .	
52	Meat .. .. .	Ditto .. .. .	W. Angliss and Co. Pty. Ltd. .. .. .	
..	Potatoes .. .. .	.. .. .	Purchase under Tender Board quotations	
<b>Rutherglen—</b>				
53	Bread .. .. .	Rates as per annex	F. M. Hyland .. .. .	
..	Flour .. .. .	.. .. .	Purchase by agreement .. .. .	
54	Groceries .. .. .	Rates as per annex	Moran and Cato Pty. Ltd. .. .. .	
55	Meat .. .. .	Ditto .. .. .	Warren Bros. .. .. .	
<b>s.s. Rip and Dredges—</b>				
..	Breadstuffs .. .. .	.. .. .	Purchase by agreement .. .. .	
56	Groceries .. .. .	Rates as per annex	G. A. Hardham and Co. .. .. .	
57	Meat .. .. .	Ditto .. .. .	B. Hosking .. .. .	
58	Vegetables .. .. .	Ditto .. .. .	G. A. Hardham and Co. .. .. .	
<b>Aborigines (Lake Tyers)—</b>				
59	Bread .. .. .	Rates as per annex	J. Rule .. .. .	
60	Groceries .. .. .	Ditto .. .. .	Moran and Cato Pty. Ltd. .. .. .	
61	Jam .. .. .	Ditto .. .. .	Moran and Cato Pty. Ltd. .. .. .	
<b>Teachers' Training College—</b>				
62	Breadstuffs .. .. .	Rates as per annex	Cahill and Quin .. .. .	
63	Groceries .. .. .	Ditto .. .. .	Moran and Cato Pty. Ltd. .. .. .	
64	Meat (also for Travancore) .. .. .	Ditto .. .. .	H. Minney, jun. .. .. .	
65	Jam .. .. .	Ditto .. .. .	G. A. Hardham and Co. .. .. .	
<b>Gresswell Sanatorium—</b>				
66	Bread .. .. .	Rates as per annex	Cahill and Quin .. .. .	
67	Groceries .. .. .	Ditto .. .. .	Moran and Cato Pty. Ltd. .. .. .	
..	Meat .. .. .	Ditto .. .. .	F. Watkins Pty. Ltd. .. .. .	

Contingencies,  
1934-35

Approved—H. COHEN, for Treasurer. 24.5.34.

## STIPULATIONS FOR SUPPLIES OF PROVISIONS.

(All items must be manufactured or prepared within the Commonwealth.)

No sub-letting allowed.

*Under all Sub-schedules particular attention is drawn to Clause 1 of the Conditions of Contract as to quality.*

## BREAD.

A sample of the best ordinarily retailed to the public will be considered as a test loaf for first quality for fine wheaten and pure wheaten Meal Bread. *Pure wheaten Meal Bread of first quality may be substituted wholly or in part, for fine wheaten Bread at such times and in such quantities as, in the opinion of the Medical Superintendent, may be deemed necessary, and the contractor will be required to supply such Bread at the contract rate. Reasonable notice, however, of the intention to substitute wheaten Meal Bread must be given to the contractor by the officer ordering the supply. Bread may be baked at any Government establishment without infringing these contracts.* At the Gaols, Ballarat, Beechworth, Geelong, Bendigo, and Castlemaine, if required, bread must be supplied one day old, due notice to be given to the contractor of such requirement.

In the event of bread being made at any Government establishment in the Melbourne District during the currency of these contracts, the flour required will be drawn under the flour and maize meal sub-schedule. The maize meal for all the country gaols is included in the sub-schedule for flour and maize meal, Melbourne District, and delivery of same will be required to be made at the Victorian Railways, Spencer-street.

## GROCERIES.

As a guarantee of quality, Rice, when ordered in quantities of 56 lb. and over, must be supplied in original bags as delivered by the miller or dresser. Such bags must be branded "Rice, Dressed," and shall also have stencilled thereon the miller or dresser's name and the distinguishing mark indicative of the quality or grade. The bags thus stencilled shall contain Rice milled or dressed by the miller or dresser whose name appears thereon. Supplies not in conformity with the foregoing condition will be rejected. Oatmeal must be supplied in original bags as delivered by millers.

Candles, except those for prison cells, must be supplied in 1-lb. packets. Candles for prison cells must be delivered in boxes containing from 25 to 50 lb. per box, the boxes for which must be legibly stencilled on one end, showing the estimated burning time and the gross, tare, and net weight of contents.

The soap supplied must be hard throughout, ready for immediate use without waste. Soap for Hospitals for the Insane is not included in these contracts.

When the quantity admits, Tea must be supplied in original and unopened packages, labelled, as landed.

Raisins and currants must be present season's, and where the quantity admits, be supplied in original boxes labelled 3 crowns.

For s.s. *Rip* a certain quantity of Biscuits and Preserved Meats are sometimes required in lieu of fresh bread and fresh meat, and are included to meet such contingency only.

## BUTTER, CHEESE, AND JAMS.

Butter is to be delivered to the s.s. *Rip* in 1-lb. pats, in such quantities as may be ordered, and no excess over the quantity ordered will be received.

All supplies of 56 lb., or multiples of 56 lb., must be supplied in boxes as originally packed. The butter as well as the boxes in which it is packed must bear the impress stamp of the creamery where produced, otherwise it will not be accepted.

Where the Store or Butter Factory of the Contractor is situated in the Metropolitan area all Butter to the quantity of 56 lb. and over to be supplied in any one consignment under this contract shall before despatch from the Store or Factory be first examined and passed by the Government Butter Grader, for and on behalf of the officer authorized to accept delivery. The boxes containing butter so examined and found satisfactory in quality and description will be stamped by the Government Butter Grader. No butter from a contractor located in the Metropolitan Area shall be accepted unless the boxes bear the stamp of the Grader. For

the purposes of the foregoing condition the Metropolitan Area is defined as being not outside the radius visited by the Government Grader.

No Butter ex Cool Store will be examined by the Grader until thermally it is in suitable condition therefor.

Where the Store or Factory from which the Butter is despatched is not within the area visited by the Grader a sample of any supplies may be forwarded to the Government Butter Grader for examination, should the supply be considered by the officer authorized to accept delivery as not being equal in quality or description to that contracted for.

The Cheese supplied to be fairly or fully matured, as ordered, and, if the quantity admits, boxed for transport.

Jams.—The weight stamped on the tins in accordance with the regulations under the Commerce Act, as indicating the minimum net quantity that each tin contains, shall for the purpose of this contract be taken as the actual contents when computing the quantity supplied.

When Jam is supplied in jars the jars remain the property of the contractor, and must be removed by the contractor at his own expense when empty.

## MEAT.

Fore and hind quarters of beef for Hospitals for the Insane are to be supplied in equal proportions of each, and must be delivered as a whole respectively, also extra buttocks separately when ordered. Meat for other institutions must be supplied as ordered. Where hind-quarters or buttocks are ordered, 9 inches must be cut off from the end of the leg from the hock upwards, i.e., the end of the leg from which the shank has been removed at the abattoirs; and when fore-quarters form a portion of the supply, 6 inches from the end of the neck and the whole of the shin at the clodbone joint must be removed. The sticking pieces also must be trimmed off, and the point and end of the brisket rendered free from blood and blood stains.

Fore and hind quarters of beef, for convenience of handling, may be cut into two parts, but each part is to bear evidence of having been cut from the same fore or hind quarter.

Corned beef, rolled or round, as ordered, must be supplied without bone or cartilage and will be received, whether pumped or prepared in the ordinary way by pickling, but in the former case must have been soaked after pumping for at least 48 hours, in a good pickle, and then thoroughly drained before supply. No flank, chuck, sticking piece, shin, leg of beef, or piece under 7 lb. will be received.

Should the local supply of fresh meat become scarce, or the price of same become abnormally high, chilled meat may, with the consent of the Tender Board, on the recommendation of the head of the Department, be supplied.

All meat shall have been slaughtered in Victoria, and shall be well fed, good, sound, sweet, and wholesome.

In cases of emergency, or on such other occasions as in the opinion of the Inspector-General of the Insane may seem advisable, other forms of meat such as rabbits, tinned meats, &c., may be purchased apart from the contract for Hospitals for the Insane, in lieu of the meat mentioned in the schedule, and substituted therefor, provided 24 hours' notice (except in cases of emergency) be given to the contractor of such intention.

Meat derived from the carcasses of Bulls, Stags, or Rams, or Mutton weighing more than 70 lbs. in the carcass, will not be received, and shall not be tendered for delivery.

For Sub-schedules 9 and 10, in the Melbourne District, in addition, the following clauses apply:—

The beef must be supplied in quantities as ordered from Ribs, Sirloin, and Thick Flanks. Chuck Ribs, i.e., the first to fourth inclusive, will not be accepted.

Mutton must be delivered in sides. All kidney fat to be removed.

Meat containing an undue proportion of bone or fat will not be accepted.

The parts to be removed by the contractor are indicated by the shaded portions of the annexed diagram

For Beechworth samples (corresponding to the description given in the schedule) of meat ordinarily retailed to the public will be considered as a test for quality.

As regards supplies for *s.s. Rip*, all meat must be of prime quality, and must be supplied in equal quantities from ribs, sirloin, and thick flanks; mutton to be delivered in sides; all kidney fat to be removed; meat containing an undue proportion of fat will not be accepted. Chuck ribs will not be accepted in lieu of prime ribs. Live sheep to be supplied when required.

#### MILK.

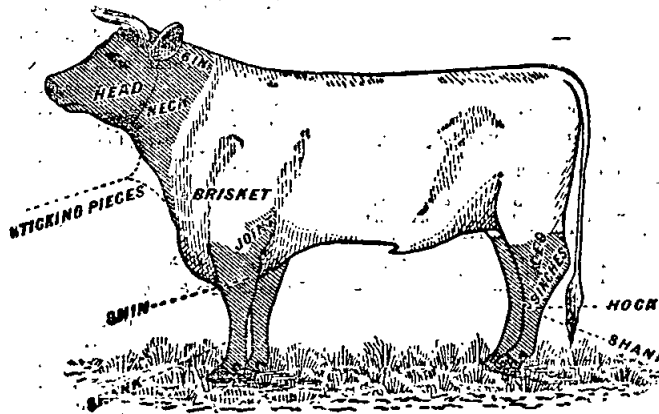
The milk must be fresh, pure, and of the best quality, and subject to test when required by the Department, and supplied at such times as the Department may require. Should the

contractor fail to supply at the time specified in the order or at such times as may be indicated in any general notice to the contractor his contract may be cancelled forthwith and his security forfeited, or should the supply prove to be not of contract quality it will be rejected, and any expense incurred will be charged to the contractor.

#### POTATOES.

Potatoes to be dry and free from dirt. Contractors to supply 117 lb. of potatoes for each cwt. credited to them, and, in addition, to take back all rejected before being cooked.

If the price of potatoes becomes abnormally high, the heads of the various departments concerned may, if they think fit, cause rice or any other suitable food to be occasionally substituted in lieu thereof.



Schedule No. 1  
**PROVISIONS—MELBOURNE DISTRICT.**

ANNEX TO CONTRACT No. 1934/1.

*Taylor & McMillan, 24 Clarke-street, Northcote, N.16.*

Sub-schedule No. 1.

BREAD FOR MENTAL HOSPITAL AT KEW.

Security, £120. £ s. d.

1. Bread—Fine wheaten, first quality per cental 0 8 3

ANNEX TO CONTRACT No. 1934/2.

*Taylor & McMillan, 24 Clarke-street, Northcote, N.16.*

Sub-schedule No. 2.

BREAD FOR CHILDREN'S WELFARE DEPOT, ROYAL PARK, RECEIVING HOUSE AND MENTAL HOSPITAL, ROYAL PARK, POLICE DEPOT, AND TRAVANCOORE SPECIAL SCHOOL, FLEMINGTON.

Security, £50. £ s. d.

1. Bread—Fine wheaten, first quality ...per cental 0 8 3

ANNEX TO CONTRACT No. 1934/3.

*Jas. Minifie & Co., 422 Collins-street, Melbourne, C.1.*

Sub-schedule No. 3.

FLOUR AND SHARPS.

Security, £100.

1. Flour—Roller, first quality, to sample ...per cental 0 7 1½  
2. " Sharps, to sample ... do. 0 6 0

ANNEX TO CONTRACT No. 1934/4.

*Moran & Cato Pty. Ltd., 277 Brunswick-street, Fitzroy, N.B.*

Sub-schedule No. 4.

GROCERIES, ETC.

Security, £60. £ s. d.

1. Biscuits, Coffee, Malt or Milk Arrow-root, as ordered ... per lb. 0 0 7½  
2. Blue—Washing ... do. 0 0 8½  
3. Breakfast Food—Flakees ... do. 0 0 6  
4. Candles—Full weights, Kitchen's "Electrines," or other make of equal quality, to be supplied in 1-lb. packets ... do. 0 0 8½  
5. " Kitchen's "Electrines," or other make of equal quality, for use in prison cells, to burn for 1, 1½, 2, 2½, and 3 hours respectively, as ordered, to be supplied in boxes, containing from 25 to 50 lb. per box ... do. 0 1 0  
6. Cocoa—in ½ lb. tins or packets ... do. 0 0 6  
7. Corn or Maize Flour, in packets of 1 lb. net ... do. 0 0 5½  
8. Cream of Tartar ... do. 0 1 2½  
9. Currants, 3 Crowns (present season's) ... do. 0 0 7½  
10. Curry Powder ... do. 0 0 8  
11. Dried Fruits—Apricots, Apples, Peaches, 4 Crowns ... do. 0 0 9  
12. Essence of Lemon, 1-oz. bottles ... per bottle 0 0 2½  
13. Ginger—Ground ... per lb. 0 0 6  
14. Golden Syrup (in 7-lb. tins) ... per tin 0 1 8½  
15. Honey—First quality ... per lb. 0 0 5  
16. Lemon Peel ... do. 0 0 7  
17. Mustard—Double Superfine ... do. 0 2 0  
18. Oatmeal—Flaked ... per cwt. 0 17 0  
19. Pepper—Black, ground ... per lb. 0 0 11  
20. Pipes—Tobacco, clay ... per doz. 0 0 10  
21. Prunes—50-60's ... per lb. 0 0 6½  
22. Raisins—Sultana, 3 Crowns (present season's) ... do. 0 0 7

GROCERIES—continued.

23. Salt—Fine ... per cwt. 0 3 9  
24. " Rock ... per lb. 0 0 1  
25. Soda—Washing ... do. 0 0 0½  
26. " Bicarbonate of ... per lb. 0 0 2  
27. Spice—Mixed, in 1-oz. packets ... per pkt. 0 0 1  
28. Starch, "Preservens" ... per lb. 0 0 6  
29. Treacle, in 7-lb. tins ... per tin 0 1 7  
30. Vinegar (malt) ... per quart 0 0 3  
31. Tapioca (Pearl) ... per lb. 0 0 2½  
32. Tomato Sauce (13-oz. bottles), "Clipper" brand ... per bottle 0 0 6½

ANNEX TO CONTRACT No. 1934/5.

*H. S. K. Ward Pty. Ltd., 24 Spencer-street, Melbourne, C.1.*

Sub-schedule No. 5.

OATMEAL, RICE, AND SEED TAPIOCA.

Security, £50. £ s. d.

1. Oatmeal ... per cwt. 0 14 0  
2. Rice—Ground, to sample ... per cwt. 0 18 6  
3. Seed Tapioca (Sago), to sample ... do. 1 0 6  
4. Pearl barley ... do. 0 10 0  
5. Peas—Split ... do. 0 13 0  
Rice, Dressed... apply Tender Board

ANNEX TO CONTRACT No. 1934/6.

*Moran & Cato Pty. Ltd., 277 Brunswick-street, Fitzroy, N.B.*

Sub-schedule No. 6.

JAMS.

Security, £20. £ s. d.

1. Jams—Assorted, in bulk, of approved kinds, in the proportion of half seed and half stone, of the best quality, in tins, as required ... per lb. weight 0 0 3½  
2. " " in 2½-oz. tins ... per tin 0 0 6½

ANNEX TO CONTRACT No. 1934/7.

*F. Watkins, Pty. Ltd., 184 Bourke-street, Melbourne, C.1.*

Sub-schedule No. 7.

MEAT FOR MENTAL HOSPITAL, KEW.

Security, £150.

1. Fresh Beef—Fore-quarters ... per cental 0 17 2½  
2. " " Hind-quarters ... do. 0 17 2½  
3. " " Buttocks ... do. 0 17 2½  
4. " Mutton ... do. 0 14 0½  
5. Corned Beef, rolled or round, as ordered, without bone or cartilage... do. 0 10 1½  
6. Fresh Suet—Kidney ... per lb. 0 0 2½

ANNEX TO CONTRACT No. 1934/8.

*F. Watkins, Pty. Ltd., 184 Bourke-street, Melbourne, C.1.*

Sub-schedule No. 8.

MEAT FOR PENAL ESTABLISHMENT (PENTRIDGE), FEMALE PENITENTIARY, AND METROPOLITAN GAOL (DOOBURG).

Security, £100. £ s. d.

1. Fresh Beef ... per cental 0 12 6  
2. Corned Beef, rolled or round, as ordered, without bone or cartilage ... do. 0 17 2½  
3. Fresh Mutton ... do. 1 4 5½  
4. Dripping ... do. 0 17 2½  
5. Fresh Suet—Kidney ... do. 0 17 2½

ANNEX TO CONTRACT No. 1934/9.

*F. Watkins, Pty. Ltd., 184 Bourke-street, Melbourne, C.1.*

Sub-schedule No. 9.

MEAT FOR POLICE DEPOT, ST. KILDA-ROAD, CHILDREN'S WELFARE DEPOT, ROYAL PARK.

Security, £50. £ s. d.

1. Fresh Beef ... per cental 0 19 3½  
2. " Mutton ... do. 0 17 2½  
3. Sausages—Mixed ... do. 1 5 6½  
4. Fresh Suet—Kidney ... per lb. 0 0 3½  
5. Tripe—Fresh ... do. 0 0 3½  
6. Ice ... per cwt. 0 2 0

## ANNEX TO CONTRACT No. 1934/10.

*F. Watkins Pty. Ltd., 184 Bourke-street, Melbourne, C.I.*

## Sub-schedule No. 10.

## MEAT FOR RECEIVING HOUSE AND MENTAL HOSPITAL, ROYAL PARK.

Security, £50.

		£	s.	d.
1. Fresh Beef...	per cental	0	13	2½
2. " " Buttocks ...	do.	1	5	6½
3. " " Mutton ...	do.	0	17	2½
4. Corned Beef, rolled or round, as ordered, without bone or cartilage ...	do.	1	5	6½
5. Fresh Suet—Kidney ...	per lb.	0	0	2½
6. Ice ...	per cwt.	0	2	0

## ANNEX TO CONTRACT No. 1934/11.

*Moran & Cato Pty. Ltd., 277 Brunswick-street, Fitzroy, N.6.*

## Sub-schedule No. 11.

## SOAP MIXTURES.

(Of Commonwealth Manufacture.)

Security, £20.

		£	s.	d.
1. Antiseptic, Liquid, of approved make, in 4-gal. tins ...	per gallon	0	2	5
2. Extract of "Kitchen's, or equal thereto, in boxes of 13 lb., containing 56 packets ...	per lb.	0	0	2½
3* Household, dry, equal to Kitchen's "Best Brown Brand" ...	per cwt.	1	3	6
4. "Lux" or "Merino," as ordered, in bulk ...	per lb.	0	0	7½
5. "Monkey Brand," or equal thereto, in tablets of 5-oz. each ...	per doz.	0	1	11
6. Sand—Carbolic or Borax, as ordered, 12-oz. blocks, of approved brand ...	per doz.	0	1	3
7. Soft, Genuine Potash, Best Amber, in bulk ...	per cwt.	1	11	6
8* Toilet, Brown Windsor, 7 tablets to lb., Kitchen's, or equal thereto ...	per doz.	0	1	3
9* Toilet, "Bath," in 4-oz. tablets, Kitchen's, or equal thereto ...	do.	0	1	11
10* Toilet, Carbolic, in 4-oz. tablets, Kitchen's, or equal thereto ...	do.	0	2	1½
11* Toilet, Castola, in 6-oz. tablets, Kitchen's, or equal thereto ...	do.	0	2	6½
12. "Velvet," or equal thereto ...	per doz.	0	0	3

## ANNEX TO CONTRACT No. 1934/12.

*H. Berry and Co. Pty. Ltd., 580 Collins-street, Melbourne.*

## Sub-schedule No. 12.

## TEA.

Security, £100.

		£	s.	d.
1. Tea—To sample ...	per lb.	0	1	7
2. " " Ration, to sample ...	do.	0	1	3½
3. Coffee—Fresh roasted and whole—Beans to be thoroughly sound, "Neil-gerry A" (or ground) ...	do.	0	1	4

## Sub-schedule No. 14.

## TOBACCO.

1. Tobacco, in 2-oz. plugs, for gaols—To sample ...	per lb.	Purchase under Tender Board quotations
2. Tobacco, 11 plugs to the lb., for Hospitals for the Insane, to sample ...	do.	

## Schedule No. 2.

## PROVISIONS—MONT PARK.

(Delivery at the Mental Hospital, Mont Park, to depots as required, at the Repatriation Mental Hospital, Bundoora, and at Home for Mental Defectives, Janefield.)

## ANNEX TO CONTRACT No. 1934/13.

*Cahill and Quin, 11 Eastment-street, Northcote, N.16.*

## Sub-schedule No. 1.

## BREADSTUFFS.

Security, £100.

		£	s.	d.
1. Bread—Fine wheaten, first quality ...	per cental	0	8	9½
2. Bread—Raisin ...	do.	0	14	11
3. Flour—First quality ...	do.	0	8	3

## ANNEX TO CONTRACT No. 1934/14.

*Moran & Cato Pty. Ltd., 277 Brunswick-street, Fitzroy, N.6.*

## Sub-schedule No. 2.

## GROCERIES.

Security, £20.

		£	s.	d.
1. Blue—Washing ...	per lb.	0	0	8½
2. Candles (full weights)—Kitchen's "Electrics," or other make of equal quality, in 1-lb. packets ...	do.	0	0	9
3. Cocoa, in 1-lb. packets ...	do.	0	0	5½
4. Corn, or Maize Flour, in packets of 1 lb. net ...	do.	0	0	5½
5. Currants, 3 Crowns (present season's) ...	do.	0	0	7½
6. Curry Powder ...	do.	0	0	8
7. Custard Powder, 1-lb. pkts. ...	do.	0	0	7½
8. Golden Syrup, in 7-lb. tins ...	per tin	0	1	8½
9. Mustard—Double Superfine ...	per lb.	0	2	0
10. Pepper—Black, Ground ...	per lb.	0	11	1
11. Pipes—Tobacco, Clay ...	per doz.	0	10	0
12. Prunes—Dried (present season's) ...	per lb.	0	0	5
13. Raisins—Sultana, 3 Crowns (present season's) (6 months) ...	do.	0	0	7
14. Sauce—Tomato, in 13-oz. bottles; per doz. Williams or Clipper ...	bots.	0	6	3
15. Salt—Fine ...	per cwt.	0	3	19
16. Soap—Extract of, Kitchen's, in boxes of 13 lb., containing 56 packets ...	per lb.	0	0	2½
17. Soap—Monkey Brand, or equal thereto, in tablets of 5 oz. each ...	per doz.	0	2	0
18. Soap—Sand, Carbolic, or Borax, in 12-oz. blocks ...	per doz.	0	1	3
19. Soap—"Velvet" ...	per doz.	0	0	3
20. Soda—Bicarbonate of ...	per lb.	0	0	2
21. Soda—Washing ...	per cwt.	0	7	0
22. Spice—Mixed, in 1-oz. packets ...	per lb.	0	1	3
23. Starch—"Preservene" ...	do.	0	0	6
24. Tartar—Cream of ...	do.	0	1	3
25. Vinegar—Malt ...	per pint	0	0	1½

## ANNEX TO CONTRACT No. 1934/15.

*G. A. Hardham & Co., 36 Glenferrie-road, Malvern, S.E.4.*

## Sub-schedule No. 3.

## JAMS.

Security, £10.

		£	s.	d.
1. Jams—Assorted, in bulk, of approved kinds, in the proportion of half seed and half stone, of the best quality, actual net in tins, as required ...	weight	0	0	3½

## ANNEX TO CONTRACT No. 1934/16.

*F. Watkins Pty. Ltd., 184 Bourke-street, Melbourne, C.I.*

## Sub-schedule No. 4.

## MEAT.

Security, £80.

		£	s.	d.
1. Fresh Beef—Fore-quarters ...	per cental	0	17	2½
2. " " Hind-quarters ...	do.	0	17	2½
3. " " Buttocks ...	do.	0	17	2½
4. " " Mutton ...	do.	0	14	0½
5. Corned Beef—Rolled or round as ordered; without bone or cartilage ...	do.	1	4	½
6. Tripe ...	per lb.	0	0	3½
7. Brawn, fresh and pure ...	do.	0	0	6½
8. Livers—Calves ...	each	0	0	4
9. Ice ...	per cwt.	0	3	0

## Sub-schedule No. 5.

## POTATOES.

1. Potatoes ...	per cwt.	Purchase under Tender Board quotations
-----------------	----------	--

Schedule No. 3.  
**PROVISIONS—ARARAT DISTRICT.**

ANNEX TO CONTRACT No. 1934/17.

*W. Bates, Ararat.*

Sub-schedule No. 1.

BREADSTUFFS.

Security, £100.

		£	s.	d.
1. Bread—Fine wheaten, first quality	per cental	0	10	11
2. Flour—First quality	do.	0	10	0

ANNEX TO CONTRACT No. 1934/18.

*G. A. Hardham and Co., 36 Glenferrie-road, Malvern, S.E.A.*

Sub-schedule No. 2.

GROCERIES.

Security, £20.

		£	s.	d.
1. Beans—Haricot	per cwt.	0	19	0
2. Blue—Washing	per lb.	0	0	9
3. Candles (full weights)—Kitchen's "Electrines," or other make of equal quality, to be supplied in 1-lb. packets	do.	0	0	9
4. Corn or Maize Flour, in packets of 1 lb. net	do.	0	0	6
5. Curry Powder	do.	0	0	9
6. Golden Syrup (in 56-lb. tins)	per tin	0	14	6
7. Mustard—Double Superfine	per lb.	0	12	0
8. Pepper—Black, ground	per lb.	0	0	11
9. Pipes—Tobacco, clay	per doz.	0	0	10
10. Raisins—Sultana, 3 Crowns (present season's)	per lb.	0	0	7
11. Salt—Fine	per cwt.	0	6	6
12. Soda—Bicarbonate of	per lb.	0	0	2½
13. " Washing	per cwt.	0	9	3
14. Starch—"Preservens"	per lb.	0	0	6½
15. Tartar—Cream of	do.	0	1	3½

ANNEX TO CONTRACT No. 1934/19.

*G. A. Hardham and Co., 36 Glenferrie-road, Malvern, S.E.A.*

Sub-schedule No. 3.

JAMS.

Security, £10.

		£	s.	d.
1. Jams, assorted, of approved kinds in the proportion of half seed and half stone, of the best quality, in bulk, as required	per lb. actual net weight	0	0	4½

ANNEX TO CONTRACT No. 1934/20.

*H. T. Impey, 139 Barkly-street, Ararat.*

Sub-schedule No. 4.

MEAT.

Security, £100.

		£	s.	d.
1. Fresh Beef—Fore-quarters	per cental	0	17	6
2. " " Hind-quarters	do.	1	1	6
3. " " Buttocks	do.	1	1	6
4. " Mutton	do.	0	19	10
5. Corned Beef—Rolled or round, as ordered, without bone or cartilage	do.	0	17	6

Sub-schedule No. 5.

POTATOES.

1. Potatoes	per cwt.	Purchase under Tender Board quotations
-------------	----------	--

Schedule No. 4.

**PROVISIONS AT BALLARAT.**

ANNEX TO CONTRACT No. 1934/21.

*Longhurst and Sons Pty. Ltd., Mair and Yuille streets, Ballarat.*

Sub-schedule No. 1.

BREADSTUFFS.

Security, £60.

		£	s.	d.
1. Bread—Fine wheaten, first quality	per cental	0	8	4
2. Flour—First quality	do.	0	7	3½

ANNEX TO CONTRACT No. 1934/22.

*Craigs Grocery Pty. Ltd., 202 Armstrong-street, Ballarat.*

Sub-schedule No. 2.

GROCERIES.

Security, £30.

		£	s.	d.
1. Blue—Washing	per lb.	0	0	9
2. Candles (full weights)—Kitchen's "Electrines," in 1-lb. packets	do.	0	0	9
3. Corn or Maize Flour, in packets of 1 lb. net	do.	0	0	5½
4. Currants, 3 Crowns (present season's)	do.	0	0	7½
5. Curry Powder	do.	0	0	9
6. Golden Syrup (in 7-lb. tins)	per tin	0	1	9
7. Mustard—Double Superfine	per lb.	0	2	0
8. Pepper—Black, ground	per lb.	0	0	10
9. Pipes—Tobacco, clay	per doz.	0	1	0
10. Raisins—Sultana, 3 Crowns (present season's)	per lb.	0	0	7
11. Salt—Fine	per cwt.	0	4	0
12. Soda—Bicarbonate of	per lb.	0	0	1½
13. " Washing	per cwt.	0	8	9
14. Spice—Mixed, in 1-oz. packets	per doz. pkts.	0	1	1
15. Starch—"Preservens"	per lb.	0	0	6
16. Tartar—Cream of	do.	0	1	5
17. Vinegar—Malt	per qt.	0	0	3

ANNEX TO CONTRACT No. 1934/23.

*Moran and Gato Pty. Ltd., 277 Brunswick-street, Fitzroy, N.B.*

Sub-schedule No. 3.

JAMS.

Security, £10.

		£	s.	d.
1. Jams—Assorted, in bulk, of approved kinds, in proportion of half seed and half stone, of the best quality, in actual net tins as required	per lb. weight	0	0	4½

ANNEX TO CONTRACT No. 1934/24.

*H. J. Symons, 1015 Macarthur-street, Ballarat.*

Sub-schedule No. 4.

MEAT.

Security, £60.

		£	s.	d.
1. Fresh Beef—Fore-quarters	per cental	1	4	6
2. " " Hind-quarters	do.	1	4	6
3. " " Buttocks	do.	1	4	6
4. " Mutton	do.	1	4	6
5. Corned Beef, rolled or round, as ordered, without bone or cartilage	do.	1	4	6
6. Fresh Suet—Kidney	do.	1	4	6

Sub-schedule No. 5.

POTATOES.

1. Potatoes	per cwt.	Purchase under Tender Board quotation.
-------------	----------	--

Schedule No. 5.

**PROVISIONS—BEECHWORTH DISTRICT.**

ANNEX TO CONTRACT No. 1934/25.

*W. Price, Newtown, Beechworth.*

Sub-schedule No. 1.

BREADSTUFFS.

Security, £60.

		£	s.	d.
1. Bread—Fine wheaten, first quality	per cental	0	12	0
2. Flour—First quality	do.	0	9	0



## ANNEX TO CONTRACT No. 1934/26.

G. A. Hardham &amp; Co., 36, Glenferrie-road, Malvern, S.E.A.

## Sub-schedule No. 2.

## GROCERIES.

Security, £20.		£	s.	d.
1. Blue—Washing	per lb.	0	0	9
2. Candles (full weights)—Kitchen's "Electrines," or other make of equal quality; 1-lb. packets	do.	0	0	9
3. Corn or Maize Flour, in packets of 1 lb. net	do.	0	0	5½
4. Golden Syrup, in 7-lb. tins	per tin	0	2	0
5. Mustard, Double Superfine	per lb.	0	2	2
6. Pepper—Black, ground	per lb.	0	1	0
7. Pipes—Tobacco, clay	per doz.	0	0	10½
8. Raisins—Sultana, 3 Crowns (present season's)	per lb.	0	0	7½
9. Salt—Fine	per cwt.	0	7	3
10. Soap—"Monkey Brand," or equal thereto—in 5-oz. tablets	per tab.	0	0	2½
11. Soap—Sand, Carbolic, or Borax, in 12-oz. blocks	per block	0	0	2½
12. Soda—Bicarbonate of	per lb.	0	0	2½
13. " Washing	per cwt.	0	10	0
14. Solvol, in 6-oz. tablets	per tab.	0	0	4½
15. Starch—"Preservene"	per lb.	0	0	6½
16. Tartar—Cream of	do.	0	1	4
17. Vinegar—Malt	per qt.	0	0	4½

## ANNEX TO CONTRACT No. 1934/27.

Moran and Cato Pty. Ltd., 277 Brunswick-street, Fitzroy, N.B.

## Sub-schedule No. 3.

## JAMS.

## Security, £10.

	£	s.	d.
1. Jams—Assorted, in bulk, of approved kinds in the proportion of half seed and half stone, of the best quality, in tins as required	per lb.	0	0 4½

## ANNEX TO CONTRACT No. 1934/28.

## Sub-schedule No. 4.

Molony Bros., Rowan-street, Wangaratta.

## MEAT.

## Security, £50.

	£	s.	d.
1. Fresh Beef—Fore-quarters	} per cental	1	4 8½
2. " " Hind-quarters			
3. " " Buttocks			
4. " Mutton			

## Sub-schedule No. 5.

## POTATOES.

1. Potatoes	per cwt.	Purchase under Tender Board quotations.
-------------	----------	---

## Schedule No. 6.

## PROVISIONS—SUNBURY DISTRICT.

## ANNEX TO CONTRACT No. 1934/29.

T. Clyde and Son, Sunbury.

## Sub-schedule No. 1.

## BREADSTUFFS.

Security, £100.		£	s.	d.
1. Bread—Fine wheaten, first quality	per cental	0	9	0
2. Flour—First quality	do.	0	6	10

## ANNEX TO CONTRACT No. 1934/30.

A. C. Shill, Sunbury.

## Sub-schedule No. 2.

## GROCERIES.

## Security, £20.

	£	s.	d.
1. Blue—Washing	per lb.	0	0 9
2. Candles—(Full weights) Kitchen's "Electrines," or other make of equal quality, to be supplied, in 1-lb. packets	do.	0	0 6
3. Cocoa, in 1-lb. packets	do.	0	0 4
4. Corn or Maize Flour, in packets of 1 lb. net	do.	0	0 5
5. Currants—3 Crowns (present season's)	do.	0	0 6½
6. Curry Powder	do.	0	0 8½
7. Ginger—Ground	do.	0	0 5
8. Golden Syrup, in 7-lb. tins	per tin	0	1 8½
9. Lemon Peel	per lb.	0	0 6
10. Mustard—Double Superfine	do.	0	1 11
11. Pepper—Black, ground	per lb.	0	0 9
12. Pipes—Tobacco, clay	per doz.	0	0 9
13. Raisins—Sultana, 3 crowns; present season's	per lb.	0	0 7
14. Salt—Fine	per cwt.	0	3 6
15. Soap—Soft—Genuine Amber	do.	1	13 0
16. Soda—Bicarbonate of	per lb.	0	0 2
17. " Washing	per cwt.	0	7 3
18. Spice—Mixed, in 1-oz. packets	per lb.	0	1 1
19. Starch—"Preservene"	do.	0	0 6
20. Tartar—Cream of	do.	0	1 2
21. Vinegar—Malt	per pint	0	0 1½

## ANNEX TO CONTRACT No. 1934/31.

Moran and Cato Pty. Ltd., 277 Brunswick-street, Fitzroy, N.B.

## Sub-schedule No. 3.

## JAMS.

## Security, £10.

	£	s.	d.
1. Jams—Assorted, in bulk, of approved kinds, in the proportion of half seed and half stone, of the best quality, in tins as required	per lb.	0	0 4½

## ANNEX TO CONTRACT No. 1934/32.

F. Watkins Pty. Ltd., 184 Bourke-street, Melbourne, C.1.

## Sub-schedule No. 4.

## MEAT.

## Security, £80.

	£	s.	d.
1. Fresh Beef—Fore-quarters	per cental	0	17 2½
2. " " Hind-quarters	do.	0	17 2½
3. " " Buttocks	do.	0	17 2½
4. " Mutton	do.	1	1 10½
5. Corned Beef—Rolled or round, as ordered, without bone or cartilage	do.	0	17 2½

## Sub-schedule No. 5.

## POTATOES.

1. Potatoes	per cwt.	Purchase under Tender Board quotations.
-------------	----------	---

## Schedule No. 7.

## PROVISIONS—BENDIGO DISTRICT.

## ANNEX TO CONTRACT No. 1934/33.

Millar Bros. Hygienic Bakery Pty. Ltd., Bond-street, Long Gully.

## Sub-schedule No. 1.

## BREAD.

## Security, £5.

	£	s.	d.
1. Bread—Wheaten, first quality	per cental	0	10 6

## ANNEX TO CONTRACT No. 1934/34.

H. Gittins, 350 Hargreaves-street, Bendigo.

## Sub-schedule No. 3.

## MEAT.

## Security, £5.

	£	s.	d.
1. Fresh Beef	per cental	1	0 0
2. " Mutton	do.	1	5 0
3. Corned Beef, rolled or round as ordered, without bone or cartilage	per lb.	0	0 3

Schedule No. 8.  
**PROVISIONS—CASTLEMAINE DISTRICT.**

ANNEX TO CONTRACT No. 1934/35.

*Rasmussen Bros., Johnston-street, Castlemaine.*

Sub-schedule No. 1.

BREAD.

Security, £5.

1. Bread—Wheaten, first quality ... per cental 0 12 0

ANNEX TO CONTRACT No. 1934/36.

*D. McShanag, Graham-street, Castlemaine.*

Sub-schedule No. 2.

MEAT.

Security, £5.

1. Fresh Beef ... per cental 1 2 9 2  
 2½ per cent. discount to be allowed for payment before 10th day of the month following that of delivery of goods.

Schedule No. 9.

**PROVISIONS AT GEELONG.**

ANNEX TO CONTRACT No. 1934/37.

*J. A. Fitzgerald, 115 Malop-street, Geelong.*

Sub-schedule No. 1.

BREADSTUFFS.

Security, £20.

1. Bread—Fine Wheaten, first quality ... per cental 0 8 4

ANNEX TO CONTRACT No. 1934/38.

*M. G. O'Brien, 491 Moorabool-street, South Geelong.*

Sub-schedule No. 2.

MEAT.

Security, £20.

1. Fresh Beef ... per cental 1 8 6  
 2. " Buttocks ... do. 1 8 6  
 3. Corned Beef—Rolled or round, without bone or cartilage ... do. 1 8 6

ANNEX TO CONTRACT No. 1934/39.

*R. H. Clowes, Lara.*

Sub-schedule No. 3.

MILK.

Security, £5.

1. Milk—Fresh and pure ... per gallon 0 9 11½

Schedule No. 10.

**PROVISIONS AT McLEOD SETTLEMENT, FRENCH ISLAND.**

DELIVERY TO BE MADE AT LANG LANG JETTY.

ANNEX TO CONTRACT No. 1934/40.

*J. Jackson, Lang Lang.*

Sub-schedule No. 1.

BREAD.

Security, £10.

1. Bread—Fine, Wheaten, first quality ... per cental 0 14 7

ANNEX TO CONTRACT No. 1934/41.

*G. A. Hardham & Co., 36 Glenferrie-road, Malvern, S.E.A.*

Sub-schedule No. 2.

GROCERIES.

Security, £10.

1. Butter—First grade creamery, to score not less than 90 points, Government grade ... per lb. 0 1 3  
 2. Cheese—Matured ... do. 0 0 10  
 3. Jams—Assorted, in proportion of half seed and half stone, of best quality, in 24-oz. tins ... per tin 0 0 7  
 4. Oatmeal ... per cwt. 0 17 0  
 5. Rice—Dressed, to sample ... per lb. 0 0 3  
 6. Salt—Fine ... do. 0 0 0 0 3  
 7. Soda—Washing ... do. 0 0 1  
 8. Tea—To sample ... do. 0 1 7  
 9. " Ration ... do. 0 1 4

ANNEX TO CONTRACT No. 1934/42.

*E. W. Misson, Lang Lang.*

Sub-schedule No. 3.

MEAT.

Security £20.

1. Fresh Beef—Hind-quarters ... per cental 2 1 8  
 2. " Mutton ... do. 1 13 4

Schedule No. 11.

**PROVISIONS AT CRESWICK.**

FOR STUDENTS AT THE SCHOOL OF FORESTRY.

(Delivery at the School.)

ANNEX TO CONTRACT No. 1934/43.

*G. G. Bowley, Albert-street, Creswick.*

Sub-schedule No. 1.

BREADSTUFFS.

Security, £10.

1. Bread—Fine wheaten, first quality ... per cental 0 16 8  
 2. Flour—First quality ... do. Purchase clause 4

ANNEX TO CONTRACT No. 1934/44.

*D. J. Hawkey, Albert-street, Creswick.*

Sub-schedule No. 2.

GROCERIES.

Security, £10.

1. Barley—Pearl ... per lb. 0 0 1½  
 2. Blue—Washing ... do. 0 0 9  
 3. Butter—First grade creamery, to score not less than 90 points, Government grade, commerce regulations standard ... do. 0 1 2  
 4. Cheese—First-class quality, matured ... do. 0 0 7½  
 5. Coffee—Fresh Roasted and Whole—Beans to be thoroughly sound, to sample ... do. 0 1 4  
 6. Corn or Maize Flour, in packets of 1 lb. net ... do. 0 0 6½  
 7. Eggs, new laid ... per doz. 0 10 1  
 8. Ginger—Ground ... per lb. 0 0 6  
 9. Golden Syrup, in 7-lb. tins ... per tin 0 1 10  
 10. Jams, assorted, in 24-oz. tins, net, in the proportion of half seed and half stone ... per lb. 0 0 8  
 11. Mustard—Double Superfine ... do. 0 1 10  
 12. Oatmeal ... do. 0 0 2  
 13. Peas—Split ... do. 0 0 2  
 14. Pepper—Black, ground ... do. 0 0 10  
 15. Potatoes ... per cwt. 0 5 0 1  
 16. Raisins—Sultana, 3 Crowns (present season's) ... per lb. 0 0 7  
 17. Rice—Dressed, to sample ... do. 0 0 3  
 18. Salt—Fine ... do. 0 0 1  
 19. Soap—Household, yellow, dry, and hard, unwrapped ... do. 0 0 3  
 20. Soap—Sand, Carbolic, in 12-oz. blocks ... each 0 0 1½  
 21. Soda—Bicarbonate of ... per lb. 0 0 2  
 22. Soda—Washing ... do. 0 0 1  
 23. Starch ... per lb. 0 0 7  
 24. Tartar—Cream of ... do. 0 1 5  
 25. Tea—Ceylon, to sample ... do. 0 1 9  
 26. Vinegar—Malt ... per pint 0 0 1½

## ANNEX TO CONTRACT No. 1934/45.

G. Hobill, Broomfield.

## Sub-schedule No. 3.

## MEAT.

	Security, £10.	£	s.	d.
1. Fresh Beef—Fore-quarter	per lb.	0	0	4
2. " Mutton (leg)	do.	0	0	4
3. Corned Beef, rolled or round, as ordered, without bone or cartilage	do.	0	0	6
4. Pork (Leg)	do.	0	0	6
5. Fresh Suet—Kidney	do.	0	0	3

## ANNEX TO CONTRACT No. 1934/46.

E. E. Pollard, Eastern Hill, Creswick.

## Sub-schedule No. 4.

## MILK.

	Security, £5.	£	s.	d.
1. Milk—Fresh and pure	per quart	0	0	5

## Schedule No. 12.

## PROVISIONS AT GREENVALE.

(DELIVERY AT THE SANATORIUM.)

## ANNEX TO CONTRACT No. 1934/47.

David Bignell, Campbellfield.

## Sub-schedule No. 1.

## BREAD.

	Security, £20.	£	s.	d.
1. Bread—Fine wheaten, first quality	per cental	0	12	3
2. Flour—First quality	do.	0	8	6½

## ANNEX TO CONTRACT No. 1934/48.

Moran and Cato Pty. Ltd., 277 Brunswick-street, Fitzroy, N.6.

## Sub-schedule No. 2.

## GROCERIES.

	Security, £20.	£	s.	d.
1. Apricots—Dried	per lb.	0	0	9
2. Biscuits—Kinds as ordered	do.	0	0	8½
3. Blue—Washing	do.	0	0	9
4. Cheese—Matured, in 5-lb. loaves	do.	0	0	9
5. Cocoa—In ½-lb. packets	do.	0	0	6
6. Coconut—Desiccated	do.	0	0	7
7. Corn or Maize Flour, in packets of 1 lb. net	do.	0	0	5½
8. Currants, 3 Crowns (present season's)	do.	0	0	7½
9. Custard Powders, in 1-lb. packets	per pkt.	0	0	7½
10. Essence of Lemon—in full 16-oz. bottles	per bot.	0	2	6
11. Essence of Vanilla, in full 16-oz. bottles	do.	0	2	6
12. Flour—Self-raising, brand "Rono"	per lb.	0	0	2
13. Fruits—Preserved, in 4-lb. tins...	per tin	0	1	2
14. Flakes, in packets	per pkt.	0	0	3
15. Ginger—Ground	per lb.	0	0	6½
16. Golden Syrup, in 7-lb. tins	per tin	0	1	9½
17. Jams—Assorted, in 5-lb. tins in the proportion of half seed and half stone	do.	0	1	10½
18. Jelly Crystals, in 4-oz. packets...	per pkt.	0	0	2½
19. Lemon Peel	per lb.	0	0	7
20. Mustard—Double Superfine	do.	0	2	0
21. Nutmeg	do.	0	1	3
22. Pepper—White, ground	do.	0	1	2
23. Powder—Baking, in 1-lb. tins	per tin	0	1	1
24. Prunes—Dried (present season's)	per lb.	0	0	5½
25. Raisins—Sultana, 3 Crowns (present season's)	do.	0	0	7
26. Salmon—Fresh, in 1-lb. tins, "Sockeye"	per tin	0	0	10½
27. Salt—Fine	per lb.	0	0	0½
28. Sauce—Worcestershire, 10-oz. bottles, "Healesville" brand	per bot.	0	0	7½
29. Sauce—Tomato, 13-oz. bottles, "Williams" or "Clipper"	do.	0	0	6½
30. Soda—Bicarbonate of	per lb.	0	0	2
31. Soda—Washing	per cwt.	0	7	3
32. Spice—Mixed, in 1-oz. packets	per pkt.	0	0	1
33. Tartar—Cream of	do.	0	1	4
34. Treacle, in 7-lb. tins	per tin	0	1	7½
35. Vinegar, Malt	per pint	0	0	1½

## ANNEX TO CONTRACT No. 1934/49.

F. Watkins, Pty. Ltd., 184 Bourke-street, Melbourne.

## Sub-schedule No. 3.

## MEAT.

	Security, £20.	£	s.	d.
1. Fresh Ox Beef—Roast	per lb.	0	0	4½
2. Mutton	per cwt.	0	17	2½
3. Fresh Ox Beef Steak—Stewing	per lb.	0	0	3½
4. Corned Ox Beef—Rolled or Round, as ordered, without bone or cartilage	do.	0	0	4½
5. Tripe, Ox (during winter)	do.	0	0	4½
6. Sausages—Mixed	do.	0	0	4½
7. Steak—Minced	do.	0	0	3½
8. Frys—Lamb	do.	0	0	4

## Sub-schedule No. 4.

## POTATOES.

1. Potatoes	per cwt.	Purchase under Tender Board quotations.
-------------	----------	---

## Schedule No. 13.

## PROVISIONS AT LARA.

DELIVERY AT THE INEBRIATES' INSTITUTION.

R. S. Payne, Forest-road, Lara, Lake.

## ANNEX TO CONTRACT No. 1934/50.

## Sub-schedule No. 1.

## BREADSTUFFS.

	Security, £5.	£	s.	d.
1. Bread—Fine wheaten, first quality	per cental	0	14	7
2. Flour—First quality	do.	0	13	0

## ANNEX TO CONTRACT No. 1934/51.

Moran and Cato Pty. Ltd., 277 Brunswick-street, Fitzroy, N.6.

## Sub-schedule No. 2.

## GROCERIES.

	Security, £20.	£	s.	d.
1. Arrowroot—Queensland	per lb.	0	10	4½
2. Bacon—By the side, Farmer's or Hutson's (or other approved brand)	do.	0	0	10½
3. Barley—Pearl	do.	0	0	1½
4. Blue—Washing	do.	0	0	9
5. Candles—(Full weights) Kitchen's "Electric" or other make of equal quality, in 1-lb. packets	do.	0	0	8½
6. Cocoa, in ½-lb. packets	do.	0	0	5½
7. Coffee—"Neigherry A." Fresh roasted and whole—Beans to be thoroughly sound, to sample	do.	0	1	4½
8. Currants—3 Crowns (present season's)	do.	0	0	7½
9. Herrings—Fresh (in 14-oz. tins)	per tin	0	0	8½
10. Jam, Assorted, in 24-oz. tins	per doz. tins	0	6	9
11. Mustard—Double Superfine	per lb.	0	2	1
12. Oatmeal	do.	0	0	1½
13. Peas—Split	do.	0	0	1½
14. Pepper—Black, ground	do.	0	0	1½
15. Raisins—Sultana, 3 Crowns (present season's)	do.	0	0	7
16. Rice—Dressed, to sample	do.	0	0	2½
17. Seed Tapioca (Sago), to sample	do.	0	0	2½
18. Salmon—Fresh, talls (1-lb. tins), "Neo"	per tin	0	0	8
19. Salt—Fine	per lb.	0	0	0½
20. Soap—Borax, in 9½-oz. bars	per bar	0	0	4
21. " Household, yellow to sample	do.	0	0	3
22. " Sand, in 12-oz. block	per block	0	0	1½
23. " Toilet, " Bath," in 4½-oz. tablets, to sample, Kitchen's	per doz.	0	2	0
24. Soda—Washing	per lb.	0	0	0½
25. Starch—Silver Star	do.	0	0	8½
26. Tea—Ceylon, to sample	do.	0	0	1
27. Tartar—Cream of	do.	0	0	1
28. Vinegar	per gal.	0	1	0

## ANNEX TO CONTRACT No. 1934/52.

W. Ingliss and Co. Pty. Ltd., 42 Bourke-street, Melbourne.

## Sub-schedule No. 3.

## MEAT.

	Security, £20.	£ s. d.
1. Fresh Beef ... ..	per cental	1 18 6
2. " Mutton ... ..	do.	1 0 0
3. " Tripe, Sausages, Kidneys, and Liver, as ordered ... ..	do.	1 10 0

## Sub-schedule No. 4.

## POTATOES.

1. Potatoes ... ..	per cwt.	Purchase under Tender Board quotations
--------------------	----------	--

## Schedule No. 14.

## PROVISIONS AT RUTHERGLEN.

(For Students at Viticultural College.)

## DELIVERY AT THE COLLEGE.

## ANNEX TO CONTRACT No. 1934/53.

F. M. Hyland, Main-street, Rutherglen.

## Sub-schedule No. 1.

## BREAD.

	Security, £5.	£ s. d.
1. Bread—Fine wheaten, first quality ... ..	per cental	0 17 3
2. Flour—First quality ... ..	do.	Purchase by agreement.

## ANNEX TO CONTRACT No. 1934/54.

Moran and Cato Pty. Ltd., 277 Brunswick-street, Fitzroy, N.6.

## Sub-schedule No. 2.

## GROCERIES, ETC.

	Security, £10.	£ s. d.
1. Candles—(Full weights) Kitchen's "Electrines" or other make of equal quality, in 1-lb. packets ... ..	per lb.	0 0 9½
2. Corn or Maize Flour, in packets of 1-lb. net ... ..	do.	0 0 6
3. Fish, Preserved, Salmon, Fresh Herrings, Herrings in Tomato, as ordered, in 1-lb. tins ... ..	per tin	0 0 9½
4. Fruits, Preserved, assorted, in 2-lb. tins ... ..	per tin	0 0 8
5. Golden Syrup, in 2-lb. tins ... ..	do.	0 0 7
6. Jams, assorted, in 24-oz. tins, in the proportion of half seed and half stone ... ..	do.	0 0 7½
7. Macaroni or Vermicelli, as ordered ... ..	do.	0 0 4
8. Oatmeal—Flaked or other ... ..	do.	0 0 2½
9. Pepper—Black or White, ground ... ..	per lb.	0 1 2
10. Potatoes, dry and free from dirt ... ..	per cwt.	0 7 6
11. Rice—Dressed, to sample ... ..	do.	0 0 3
12. Salt—Fine ... ..	do.	0 0 1½
13. Sauce, Tomato, "Clipper" or "Williams," 13-oz. bottles ... ..	do.	0 0 7
14. " Worcester, 10-oz. bottles "Life-buoy" ... ..	do.	0 0 6½
15. Soap—Household, yellow, to sample ... ..	per lb.	0 0 3½
16. " Toilet, "Bath," in 4½-oz. tablets, to sample, Kitchen's ... ..	per doz.	0 3 3
17. " Sand, in 12-oz. blocks ... ..	per block	0 0 1½
18. Soda—Bicarbonate ... ..	per lb.	0 0 2
19. " Washing ... ..	do.	0 0 1½
20. Tea—Ceylon, to sample ... ..	do.	0 1 8½

## ANNEX TO CONTRACT No. 1934/55.

Warren Bros., Main-street, Rutherglen.

## Sub-schedule No. 3.

## MEAT (FRESHLY KILLED).

	Security, £10.	£ s. d.
1. Beef—Fresh ... ..	per cental	2 7 6

## Schedule No. 15.

## PROVISIONS FOR S.S. RIP AND DREDGES.

Supplies to be delivered to Dredging Depot, Williamstown, Victoria Dock, or River Yarra Wharfs, as ordered.  
(Supplies for Naval Forces are not included in this schedule.)

## Sub-schedule No. 1.

## BREADSTUFFS.

## Security, £10.

1. Bread—Fine wheaten, first quality ... ..	per cental	Purchase by agreement
2. Flour—First quality ... ..	do.	

## ANNEX TO CONTRACT No. 1934/56.

G. A. Hardham and Co., 36 Glenferrie-road, Malvern, S.E.4.

## Sub-schedule No. 2.

## GROCERIES.

	Security, £10.	£ s. d.
1. Biscuits—Cabin Bread or the like ... ..	per lb.	0 0 5½
2. Butter—First class creamery, to score not less than 90 points, Government grade, commerce regulations standard ... ..	do.	0 1 2½
3. Coffee—"Neigherry," fresh roasted and ground, to sample ... ..	do.	0 1 3
4. Currants—3 Crowns (present season's) ... ..	do.	0 0 4½
5. Flour—Self-raising ... ..	do.	0 0 1½
6. Jams—Assorted, of approved kinds, in proportion of half seed and half stone, in 24-oz. tins ... ..	per tin	0 0 6½
7. Meat—Preserved, beef or mutton, in 1-lb. tins ... ..	do.	0 0 5
8. Milk—Condensed, "Full Cream" ... ..	do.	0 0 6
9. Mustard—Double Superfine ... ..	per lb.	0 2 0
10. Oatmeal ... ..	do.	0 0 2
11. Pearl barley ... ..	do.	0 0 1½
12. Peas—Split ... ..	do.	0 0 1½
13. Pepper—White, ground ... ..	do.	0 1 0
14. Pickles—Assorted, 20-oz. bottles ... ..	per bot.	0 0 8
15. Raisins—Sultana, 3 Crowns (present season's) ... ..	per lb.	0 0 4½
16. Rice—Dressed, to sample ... ..	do.	0 0 2½
17. Salt—Fine ... ..	do.	0 0 0½
18. Sauce—Tomato, 13-oz. bottles ... ..	per bot.	0 0 5½
19. Sauce—Worcester, 10-oz. bottles ... ..	do.	0 0 5
20. Tea—Ceylon, to sample ... ..	per lb.	0 1 7
21. Vinegar—Malt ... ..	per gal.	0 1 0

## ANNEX TO CONTRACT No. 1934/57.

B. Hosking, 429 High-street, Northcote, N.16.

## Sub-schedule No. 3.

## MEAT.

	Security, £10.	£ s. d.
1. Fresh Beef ... ..	per cental	1 4 6
2. " Mutton ... ..	do.	1 4 6
3. " Suet—Kidney ... ..	do.	1 4 6

## ANNEX TO CONTRACT No. 1934/58.

G. A. Hardham and Co., 36 Glenferrie-road, Malvern, S.E.4.

## Sub-schedule No. 4.

## VEGETABLES.

	Security, £5.	£ s. d.
1. Potatoes ... ..	per cwt.	0 5 0
2. Onions ... ..	do.	0 5 0
3. Other vegetables, including cauliflower, carrots, cabbages, turnips, and parsnips, as required ... ..	do.	0 7 0

## Schedule No. 16.

## PROVISIONS FOR ABORIGINES AT LAKE TYERS.

(Delivery at Lake Tyers Station.)

ANNEX TO CONTRACT No. 1934/59.

John Rule, Noma Noma.

Sub-schedule No. 1.

BREAD.

Security, £2.

Item No.	Article.	—
		£ s. d.
1	Bread—Fine wheaten, first quality ... .. per cental	0 11 11 <sup>1</sup> / <sub>2</sub>
2	Flour—First quality ... .. "	0 8 3

Sub-schedule No. 2.

ANNEX TO CONTRACT No. 1934/60.

Moran and Cato Pty. Ltd., 277 Brunswick-street, Fitzroy, N.6.

GROCERIES.

Security, £2.

Item No.	Article.	—
		£ s. d.
1	Baking Powder, Snowflake, in 1-lb. tins ... .. per lb.	0 1 1
2	Candles—(Full weights) Kitchen's "Electrines," or other make of equal quality, in 1-lb. packets ... .. "	0 0 9
3	Cocoa, in 1-lb. packets ... .. "	0 0 6
4	Corn or Maize Flour, in 1-lb. packets ... .. "	0 0 6
5	Currants—3 Crowns (present season's) ... .. "	0 0 7 <sup>1</sup> / <sub>2</sub>
6	Curry Powder ... .. "	0 0 9 <sup>1</sup> / <sub>2</sub>
7	Matches, Safety ... .. per gross	0 5 6
8	Mustard—Double Superfine ... .. per lb.	0 1 10
9	Peel—Mixed ... .. "	0 0 8
10	Pepper—Black, ground, in 1-lb. tins ... .. per tin	0 0 5
11	Raisins—Sultana, 3 Crowns (present season's) ... .. per lb.	0 0 7 <sup>1</sup> / <sub>2</sub>
12	Salt—Coarse ... .. per cwt.	0 7 0
13	" Fine ... .. "	0 7 0
14	Soap—Household, hard and dry, unwrapped ... .. "	1 8 6
15	Soda—Bicarbonate ... .. per lb.	0 0 2
16	" Washing ... .. "	0 0 1 <sup>1</sup> / <sub>2</sub>
17	Tartar, Cream of ... .. "	0 1 4
18	Treacle, in 7-lb. tins ... .. per tin	0 2 0
19	Vinegar—Malt ... .. per quart	0 0 4

ANNEX TO CONTRACT No. 1934/61.

Moran and Cato Pty. Ltd., 277 Brunswick-street, Fitzroy, N.6.

Sub-schedule No. 3.

JAMS.

Security, £10.

1	Jams, assorted, in 24-oz. tins (in the proportion of half seed, half stone) ... .. per tin	0 0 8
---	--	-------

Schedule No. 17.

## PROVISIONS AT TEACHERS' TRAINING COLLEGE.

(Delivery at the College.)

ANNEX TO CONTRACT No. 1934/62.

Cahill and Quin, 11 Eastment-street, Northcote, N.16.

Sub-schedule No. 1.

BREADSTUFFS.

Security, £20.

Bread.—A sample of the best ordinarily retailed to the public will be considered as a test loaf for First Quality.

No subletting will be allowed; all work must be carried out by the Contractor.

1.	Bread—Fine wheaten, first quality	per cental	£ s. d.
2.	Bread—Brown .. ..	do.	0 9 7 <sup>1</sup> / <sub>2</sub>
3.	Bread—Raisin .. ..	lb.	0 0 1 <sup>7</sup> / <sub>8</sub> <sup>100</sup> / <sub>100</sub>
4.	Bread—Vienna (quarter loaves), first quality	do.	0 0 1 <sup>11</sup> / <sub>100</sub> <sup>100</sup> / <sub>100</sub>
5.	Flour—First quality .. ..	per cental	0 8 3

ANNEX TO CONTRACT No. 1934/63.

Moran and Cato Pty. Ltd., 277 Brunswick-street, Fitzroy, N.6.

Sub-schedule No. 2.

GROCERIES.

Security, £20.

1.	Beans—Haricot .. ..	per lb.	£ s. d.
2.	Candles—(Full weights) Kitchen's "Electrines" or other make of equal quality, in 1-lb. packets .. ..	do.	0 0 8 <sup>1</sup> / <sub>2</sub>
3.	Castor Sugar .. ..	do.	0 0 4 <sup>1</sup> / <sub>2</sub>
4.	Cheese—Matured .. ..	do.	0 0 9 <sup>1</sup> / <sub>2</sub>
5.	Corn or Maize Flour, in 1-lb. packets .. ..	do.	0 0 5 <sup>1</sup> / <sub>2</sub>
6.	Currants—3 Crowns (present season's) .. ..	do.	0 0 7 <sup>1</sup> / <sub>2</sub>
7.	Curstard Powder, in 1-lb. packets .. ..	do.	0 0 7 <sup>1</sup> / <sub>2</sub>
8.	Dried Fruits—Assorted (present season's) .. ..	do.	0 0 9
9.	Essences—Assorted, in 8-oz. bottles .. ..	per bot.	0 1 6
10.	Fish—Salmon, in 1-lb. tins, talls (Brand—"Ever Ready or Blue Ribbon") .. ..	per tin	0 1 2
11.	Flour—Self-raising (Brand—B.B.B.) .. ..	per lb.	0 0 1 <sup>1</sup> / <sub>2</sub>
12.	Fruit—Preserved, Assorted, in 2-lb. tins .. ..	per tin	0 0 7
13.	Ginger—Ground .. ..	per lb.	0 0 6

## Sub-schedule No. 2—continued.

## GROCERIES—continued.

		£	s.	d.
14. Golden Syrup, in 7-lb. tins	per tin	0	1	8½
15. Honey	per lb.	0	0	5
16. Jelly Crystals, loose	do.	0	0	10½
17. Mustard—Double Superfine, in 1-lb. tins	do.	0	2	7
18. Oatmeal—Flaked	do.	0	0	2
19. Pepper—White, Ground	do.	0	1	2
20. Pickles—Assorted, in 20-oz. bottles (Brand—“Rono”)	per bot.	0	0	7
21. Raisins—Sultana, 3 crowns (present season's)	per lb.	0	0	7
22. Salt—Fine	do.	0	0	0½
23. Sauce—Tomato, in 13-oz. bottles (Brand—Williams' or Clipper)	per bot.	0	0	6½
24. Sauce—Worcestershire, loose (Brand—Lifebuoy)	per gal.	0	3	0
25. Soda—Bicarbonate of	per lb.	0	0	0½
26. Soda—Washing	do.	0	0	0½
27. Soup—Assorted, in 8-lb. tins (Brand—Jones Millers)	per tin	0	3	4
28. Soup—Assorted, in 1-lb. tins (Brand—Williams')	do.	0	0	7
29. Spice—Mixed, loose	per lb.	0	1	2
30. Starch—Rice (Brand—“Preservene”)	do.	0	0	6½
31. Tartar—Cream of	do.	0	1	4
32. Treacle, in 5-lb. tins	per tin	0	1	3
33. Vinegar—Malt	per gal.	0	1	0
34. “Weeties” (or equal thereto), in packets (Brand—Flakes)	per 8-oz. pkt.	0	0	3

## ALSO TRAVANCORE SPECIAL SCHOOL, FLEMINGTON.

## ANNEX TO CONTRACT No. 1934/64.

H. Minney, Jun., 161 Gertrude-street, Fitzroy, N.6.

## Sub-schedule No. 3.

## MEAT.

## Security, £20.

Fresh Beef must be supplied from prime ribs or sirloin; ribs of beef to be cut clear of the plate bone, and sirloin to be cut clear of the wing ribs, excess of brisket or flank will be rejected, chuck ribs, i.e., 1st to 4th inclusive will not be accepted. Meat containing an undue proportion of fat will not be accepted. Corned Beef to be supplied from silverside (round) and brisket; cow, bull, or stag beef or frozen meat, or mutton derived from the carcasses of rams will not be accepted, and must not be tendered for delivery.

All surplus bone and fat must be removed by the Contractor prior to delivery, and only net weights will be paid for.

All meat supplied under this contract must have been slaughtered in Victoria, freshly killed, and must be well-fed, good, sound, sweet, and wholesome.

No subletting will be allowed; all work (not usually performed at the Abattoirs) must be carried out by the Contractor.

		£	s.	d.
1. Beef—Prime Ribs	per lb.	0	0	3
2. “ Sirloin	do.	0	0	3½
3. “ Steak—Bladebone	do.	0	0	3
4. “ “ Rump	do.	0	0	5½
5. “ “ Stewing (when required Minced)	do.	0	0	2½
6. “ Corned—Round or rolled, as ordered, without bone or cartilage	do.	0	0	3
7. “ Silver Side	do.	0	0	3½
8. Mutton—Chops (forequarter)	do.	0	0	2
9. “ “ Legs	do.	0	0	3
10. “ “ in sides	do.	0	0	2½
11. Lamb—Cutlets	do.	0	0	4
12. “ “ Legs	do.	0	0	3½
13. Pork—Legs	do.	0	0	6
14. Veal—Cutlets and Legs	do.	0	0	4
15. Lamb's Fries	do.	0	0	2½
16. Kidneys—Sheep's	each	0	0	0½
17. Sausages—Best (Pork or Beef-mixed)	per lb.	0	0	3
18. Sausage Meat	do.	0	0	2½
19. Suet—Fresh—Kidney	do.	0	0	2
20. Tripe	do.	0	0	0½
21. Ice	per cwt.	0	2	0

## ANNEX TO CONTRACT No. 1934/65.

G. A. Hardham and Co., 38 Glenferrie-road, Malvern, S.E.4.

## Sub-schedule No. 4.

## JAM.

## Security, £10.

		£	s.	d.
1. Jam—Assorted, in 8-lb. tins (Brand—“Williams”)	per tin	0	2	9

## Schedule No. 18.

## PROVISIONS AT GRESSWELL.

(Delivery at the Sanatorium.)

ANNEX TO CONTRACT No. 1934/66.

Cahill and Quin, 11 Eastment-street, Northcote, N.16.

## Sub-schedule No. 1.

## BREAD.

## Security, £20.

		£	s.	d.
1. Bread—Fine wheaten, first quality	per cental	0	8	9½

## ANNEX TO CONTRACT No. 1934/

Moran and Cato Pty. Ltd., 277 Brunswick-street, Fitzroy, N.6.

## Sub-schedule No. 2.

## GROCERIES.

## Security, £20.

		£	s.	d.
1. Apricots—Dried	per lb.	0	0	9
2. Biscuits—Kinds as ordered	do.	0	0	8
3. Cheese—Matured, in 5-lb. loaves	do.	0	0	8
4. Cocoa, in ½-lb. packets	do.	0	0	6
5. Coconut—Desiccated	do.	0	0	6½
6. Maize or Corn Flour, in packets of 1-lb. net	do.	0	0	5½
7. Currants—3 Crowns (present season's)	do.	0	0	7½
8. Custard Powder, in 1-lb. packets	per pkt.	0	0	7½
9. Dates—Fresh in packets	per lb.	0	0	6
10. Essence of Lemon, in full 16-oz. bottles	per bot.	0	2	6
11. Flour—Best Roller	per cental	0	7	6
12. Fruits—Preserved, in 1-lb. 14-oz. tins	per tin	0	0	7
13. Ginger—Ground	per lb.	0	0	6½
14. Golden Syrup, in 7-lb. tins	per tin	0	1	9
15. Jams—Assorted, in 5-lb. tins, in the proportion half seed and half stone	do.	0	1	7½
16. Jelly Crystals, in 4-oz. packets	per doz. pkts.	0	2	6
17. Lemon Peel	per lb.	0	0	7
18. Mustard—Double Superfine	do.	0	2	0
19. Pepper—White, Ground	do.	0	1	2
20. Pickles—Assorted, 20-oz. bottles	per bot.	0	0	7
21. Powder—Baking, in 1-lb. tins	per tin	0	1	1
22. Prunes—Dried (present season's)	per lb.	0	0	5½
23. Raisins—Sultana, 3 Crowns (present season's)	do.	0	0	7
24. Salmon—Fresh, in ½-lb. tins (Brand—“Sockeye”)	per tin	0	0	10½
25. Salt—Fine	per lb.	0	0	0½
26. Sauce—Worcestershire, in 10-oz. bottles (Brand—Lifebuoy)	per bot.	0	0	5
27. Sauce—Tomato, 13-oz. bottles (Brand—Williams' or Clipper)	do.	0	0	6
28. Soda—Bicarbonate of	per lb.	0	0	2
29. Soda—Washing	do.	0	0	0½
30. Spice—Mixed, in 1-oz. packets	per pkt.	0	0	1
31. Starch (Brand—“Preservene”)	per lb.	0	0	6
32. Tartar—Cream of	do.	0	1	3½
33. Treacle, in 7-lb. tins	per tin	0	1	8
34. Vinegar—Malt	per pint	0	0	1½

## ANNEX TO CONTRACT No. 1934/67.

F. Watkins Pty. Ltd., 184 Bourke-street, Melbourne, C.1.

## Sub-schedule No. 3.

## MEAT.

## Security, £20.

		£	s.	d.
1. Beef, Fresh—Roast	per lb.	0	0	3½
2. “ “ Shin	do.	0	0	2
3. “ “ Topside	do.	0	0	4½
4. “ “ Corned	do.	0	0	3½
5. Brains—Sheep's	per set	0	0	2
6. Chops—Loin	per lb.	0	0	4½
7. Fries—Lamb's	do.	0	0	4
8. Kidneys—Ox	do.	0	0	6
9. Mutton—Forequarter	do.	0	0	1½
10. “ “ Leg	do.	0	0	3½
11. Pork—Loin	do.	0	0	7½
12. Pig's Head	each	0	0	6
13. Sausages—Pork	per lb.	0	0	5½
14. “ “ Best Mixed	do.	0	0	3½
15. Steak—Minced	do.	0	0	3½
16. “ “ Rump	do.	0	0	8
17. Tripe—Ox	do.	0	0	3½
18. Veal—Boned	do.	0	0	3½

## Sub-schedule No. 4.

## POTATOES.

1. Potatoes	per cwt.	Purchased under Tender Board quotations



# VICTORIA GOVERNMENT GAZETTE.

Published by Authority.

[Registered at the General Post Office, Melbourne, for transmission by post as a newspaper.]

No. 109]

FRIDAY, JUNE 29.

[1934

## MINING NOTICES.

### MAUDE AND YELLOW GIRL GOLD MINING COMPANY NO LIABILITY.

ALL shares in the above company on which the 18th Call of Threepence per share (due 13th June, 1934) is unpaid are forfeited, and will be sold by public auction, in the hall of the Stock Exchange of Melbourne, 428 Little Collins-street, Melbourne, on Monday, the 9th day of July, 1934, at a quarter to Twelve a.m., unless previously redeemed.

CLARENCE E. BRADSHAW, manager, 99 Queen-street, Melbourne. 7347

### SHEEPSHEAD GOLD MINING COMPANY NO LIABILITY.

NOTICE is hereby given that all shares forfeited for non-payment of the 4th (May) Call of Threepence per share and previous calls will be sold by public auction, at the Stock Exchange Hall, 428 Little Collins-street, Melbourne, on Monday, 9th July, 1934, at a quarter to Twelve o'clock a.m., unless previously redeemed.

F. L. SMYTH, Manager.  
Commercial Union Buildings, 413 Collins-street. 7349

### VIRGINIA SOUTH EXTENDED GOLD NO LIABILITY.

#### FINAL NOTICE.

NOTICE is hereby given that all shares forfeited for non-payment of the 2nd (May) and previous calls, each of Threepence per share, will be sold by public auction, at the Stock Exchange Hall, 428 Little Collins-street, Melbourne, on Monday, 9th July, 1934, at a quarter to Twelve o'clock a.m., unless previously redeemed.

F. L. SMYTH, Manager.  
Commercial Union Buildings, 413 Collins-street, Melbourne. 7350

### SOUTH VIRGINIA GOLD MINING COMPANY NO LIABILITY.

NOTICE is hereby given that all shares forfeited for non-payment of the 1st (June) Call, upon the increased capital of the company, of Threepence per share, will be sold by public auction, at the Stock Exchange Hall, 428 Little Collins-street, Melbourne, on Monday, 9th July, 1934, at a quarter to Twelve o'clock a.m., unless previously redeemed.

F. L. SMYTH, Manager.  
Commercial Union Buildings, 413 Collins-street, Melbourne. 7351

No. 109.—7139.

### CENTRAL BLUE GOLD MINES NO LIABILITY.

NOTICE is hereby given that all shares forfeited for non-payment of the 23rd (June) and previous calls, each of Threepence per share, will be sold by public auction, at the Stock Exchange Hall, 428 Little Collins-street, Melbourne, on Monday, 9th July, 1934, at a quarter to Twelve o'clock a.m., unless previously redeemed.

F. L. SMYTH, Manager.  
Commercial Union Buildings, 413 Collins-street, Melbourne. 7352

### NORTH HERCULES EXTENDED GOLD MINING COMPANY NO LIABILITY.

NOTICE is hereby given that all shares forfeited for non-payment of the 21st (June) and previous calls, each of Threepence per share, will be sold by public auction, at the Stock Exchange Hall, 428 Little Collins-street, Melbourne, on Monday, 9th July, 1934, at a quarter to Twelve o'clock a.m., unless previously redeemed.

F. L. SMYTH, Manager.  
Commercial Union Buildings, 413 Collins-street, Melbourne. 7353

### EAST CLARENCE GOLD MINING COMPANY NO LIABILITY.

NOTICE.—All shares in the above-named company (included in Nos. 1 to 40,000) on which the 17th Call of Threepence per share remains unpaid will be sold by public auction, at the Stock Exchange, Bendigo, on Tuesday, 10th July, 1934, at half-past Four o'clock p.m.

J. J. STANISTREET  
7354 (McColl, Rankin, and Stanistreet), Manager.

### EAST MOON GOLD MINING COMPANY NO LIABILITY.

NOTICE.—All shares in the above-named company (included in Nos. 1 to 40,000) on which the 8th Call of Threepence per share remains unpaid will be sold by public auction, at the Stock Exchange, Bendigo, on Tuesday, 10th July, 1934, at half-past Four o'clock p.m.

J. J. STANISTREET  
7355 (McColl, Rankin, and Stanistreet), Manager.

NORTH VIRGINIA GOLD MINING COMPANY  
NO LIABILITY.

NOTICE.—All shares in the above-named company (included in Nos. 1 to 40,000) on which the 8th Call of Three-pence per share remains unpaid will be sold by public auction, at the Stock Exchange, Bendigo, on Tuesday, 10th July, 1934, at half-past Four o'clock p.m.

7356 J. J. STANISTREET  
(McColl, Rankin, and Stanistreet), Manager.

SOUTH RED WHITE AND BLUE GOLD MINING  
COMPANY NO LIABILITY.

NOTICE.—All shares in the above-named company (included in Nos. 1 to 40,000) on which the 3rd Call of Sixpence per share remains unpaid will be sold by public auction, at the Stock Exchange, Bendigo, on Tuesday, 10th July, 1934, at half-past Four o'clock p.m.

7357 J. J. STANISTREET  
(McColl, Rankin, and Stanistreet), Manager.

CENTRAL NELL GWYNNE GOLD MINING COMPANY  
NO LIABILITY.

NOTICE.—All shares in the above-named company (included in Nos. 1 to 40,000) on which the 15th Call of Three-pence per share remains unpaid will be sold by public auction, at the Stock Exchange, Bendigo, on Tuesday, 10th July, 1934, at half-past Four o'clock p.m.

7358 J. J. STANISTREET  
(McColl, Rankin, and Stanistreet), Manager.

VIRGINIA CONSOLS GOLD MINING COMPANY  
NO LIABILITY.

NOTICE.—All shares in the above-named company (included in Nos. 1 to 40,000) on which the 2nd Call of Three-pence per share remains unpaid will be sold by public auction, at the Stock Exchange, Bendigo, on Tuesday, 10th July, 1934, at half-past Four o'clock p.m.

7359 J. J. STANISTREET  
(McColl, Rankin, and Stanistreet), Manager.

SOUTH NEW CUM SYNCLINE GOLD MINES  
NO LIABILITY.

NOTICE.—All shares in the above-named company (included in Nos. 1 to 40,000) on which the 10th Call of One penny per share remains unpaid will be sold by public auction, at the Stock Exchange, Bendigo, on Tuesday, 10th July, 1934, at half-past Four o'clock p.m.

7360 J. J. STANISTREET  
(McColl, Rankin, and Stanistreet), Manager.

COMPANIES ACT 1928.—SECTION 306.

WAHGUNYAH and Rutherglen Mining Syndicate No Liability hereby gives notice that the registered office of the above company is situated at Commercial Union Buildings, 413 Collins-street, Melbourne, and that Frederick Leopold Smyth has been appointed legal manager.

Given under the seal of the company this twenty-second day of June, One thousand nine hundred and thirty-four.

7348 A. G. CAMPBELL, Director.  
A. J. TAYLOR, Director.  
F. L. SMYTH, Manager.