

[2387]



VICTORIA GOVERNMENT GAZETTE.

Published by Authority.

[Registered at the General Post Office, Melbourne, for transmission by post as a newspaper.]

No. 246]

TUESDAY, JUNE 18.

[1940

CONTRACTS ACCEPTED.

(SERIES 1940-41.)

SUPPLY OF PROVISIONS

FOR

STATE DEPARTMENTS

FROM

1st JULY, 1940, to 30th JUNE, 1941,
or as stated.

Conditions of Contract and Stipulations are shown herein for the guidance
of Officers ordering and receiving supplies.

H. E. JOHNSON,
Secretary to the Tender Board.

18th June, 1940.
No. 246.—7286/40.

CONTRACTS ACCEPTED.—(Series 1940-41.)

PROVISIONS.

No. of Contracts	Particulars of each Tender Accepted.	Amount.	Name of Contractor.	Charged against Vote or Fund.
	PROVISIONS— Supply of Provisions, in such quantities as may be ordered, from 1st July, 1940, to 30th June, 1941, or as stated.			
	Schedule No. 1.—Melbourne District—			
1	Bread, Kew Mental Hospital	Rates as per annex	E. J. Callander	
2	Bread, Melbourne, Royal Park, Teachers' College, Carlton, &c.	Ditto	J. N. Hennessy Pty. Ltd.	
3	Flour	Ditto	Jas. Minifio and Co.	
4	Sharps	Ditto	Pirrie Bros.	
5	Groceries, &c.	Ditto	Moran and Cato Pty. Ltd.	
6	Cereals (Contract from 1st July, 1940, to 31st December, 1940)	Ditto	H. S. K. Ward Pty. Ltd.	
7	Jams	Ditto	Moran and Cato Pty. Ltd.	
8	Meat, Kew Mental Hospital	Ditto	F. Watkins Pty. Ltd.	
9	Meat, Pentridge Penal Establishment	Ditto	F. Watkins Pty. Ltd.	
10	Meat, Children's Welfare Depot, Royal Park, and Police Hospital	Ditto	J. H. Cooke Pty. Ltd.	
11	Meat, Royal Park Mental Hospital and Receiving House	Ditto	J. H. Cooke Pty. Ltd.	
12	Soap Mixtures	Ditto	Moran and Cato Pty. Ltd.	
13	Tea, Ration Tea, and Coffee	Ditto	Henry Berry and Co. (A/asia.) Ltd.	
..	Potatoes	Purchase under Tender Board quotations	
	Schedule No. 2.—Mont Park; Sanatorium, Greswell, &c.—			
14	Bread	Rates as per annex	E. J. Callander	
15	Groceries	Ditto	Moran and Cato Pty. Ltd.	
16	Jams	Ditto	Model Preserving Co. Pty. Ltd.	
17	Meat	Ditto	B. Hosking	
..	Potatoes	Purchase under Tender Board quotations	
	Schedule No. 3.—SS. Rip and Dredges—			
18	Bread	Rates as per annex	Taylor and McMillan Pty. Ltd.	
19	Groceries	Ditto	Moran and Cato Pty. Ltd.	
20	Meat	Ditto	Wm. E. Glendenning	
..	Vegetables	Purchase by Agreement	
..	Potatoes	Purchase under Tender Board quotations	
	Schedule No. 4.—Teachers' College, Carlton—			
21	Groceries	Rates as per annex	Moran and Cato Pty. Ltd.	
22	Meat (also for Travancore)	Ditto	B. Hosking	
23	Jams	Ditto	Moran and Cato Pty. Ltd.	
..	Potatoes	Purchase under Tender Board quotations	
	Schedule No. 5.—Ararat District—			
24	Breadstuffs	Rates as per annex	Bates Bros.	
25	Groceries	Ditto	John MacLeod and Co. Pty. Ltd.	
26	Jams	Ditto	John MacLeod and Co. Pty. Ltd.	
27	Meat	Ditto	Best, Spalding, and Bell	
..	Potatoes	Purchase under Tender Board quotations	
	Schedule No. 6.—Ballarat District—			
28	Breadstuffs	Rates as per annex	Brogden Bros.	
29	Groceries	Ditto	John MacLeod and Co. Pty. Ltd.	
30	Jams	Ditto	John MacLeod and Co. Pty. Ltd.	
31	Meat	Ditto	H. J. Symons Pty. Ltd.	
..	Potatoes	Purchase under Tender Board quotations	
	Schedule No. 7.—Beechworth District—			
32	Breadstuffs	Rates as per annex	Wm. Price	
33	Groceries	Ditto	Moran and Cato Pty. Ltd.	
34	Jams	Ditto	Moran and Cato Pty. Ltd.	
35	Meat	Ditto	J. R. Newey	
..	Potatoes	Purchase under Tender Board quotations	
	Schedule No. 8.—Castlemaine District—			
36	Bread	Rates as per annex	Rasmussen Bros.	
37	Meat	Ditto	H. J. Robertson	
..	Potatoes	Purchase under Tender Board quotations	

Contingencies,
1940-41

CONTRACTS ACCEPTED.—(Series 1940-41)—continued.

PROVISIONS—continued.

No. of Contract.	Particulars of each Tender Accepted.	Amount.	Name of Contractor.	Charged against Vote or Fund.
PROVISIONS—continued.				
Schedule No. 9.—School of Forestry, Creswick—				
38	Breadstuffs	Rates as per annex	R. C. Bowley	}
39	Groceries	Ditto	J. Tait and Son	
40	Meat	Ditto	Eric Coughlan	
41	Milk	Ditto	Emma E. Pollard	
Schedule No. 10.—McLeod Settlement, French Island—				
42	Bread	Rates as per annex	James Jackson	}
43	Groceries	Ditto	A. G. Glasscock	
44	Meat	Ditto	E. W. Misson	
..	Potatoes	Purchase under Tender Board quotations	
Schedule No. 11.—Geelong District—				
45	Bread	Rates as per annex	E. S. Potter Pty. Ltd.	}
46	Meat	Ditto	J. J. Pigott	
47	Milk	Ditto	E. P. Mayes	
..	Potatoes	Purchase under Tender Board quotations	
Schedule No. 12.—Sanatorium, Greenvale—				
48	Breadstuffs	Rates as per annex	Jessie McInness	}
49	Groceries	Ditto	Moran and Cato Pty. Ltd.	
50	Meat	Ditto	F. Watkins Pty. Ltd.	
..	Potatoes	Purchase under Tender Board quotations	
Schedule No. 13.—Cooriemungle Prison Camp, Heytesbury Forest—				
51	Bread	Rates as per annex	H. and C. Thorne and Co.	}
52	Groceries	Ditto	E. L. McDowall and Co.	
53	Meat	Ditto	Waterfall and Son	
Schedule No. 14.—Aboriginal Station, Lake Tyers—				
54	Breadstuffs	Rates as per annex	H. E. Donnelly	}
55	Groceries	Ditto	Coate and Symmons Pty. Ltd.	
56	Jams	Ditto	Coate and Symmons Pty. Ltd.	
Schedule No. 15.—Experiment Farm, Rutherglen—				
57	Bread	Rates as per annex	A. F. Parrott	}
58	Groceries	Ditto	Moran and Cato Pty. Ltd.	
Schedule No. 16.—Sale Gaol—				
..	Bread	Purchase by Agreement	}
59	Meat	Rates as per annex	Ronchi Bros.	
Schedule No. 17.—Pleasant Creek Special School, Stawell—				
60	Breadstuffs	Rates as per annex	C. Hunt and Sons	}
61	Groceries	Ditto	John MacLeod and Co. Pty. Ltd.	
62	Meat	Ditto	Ada J. West	
63	Milk	Ditto	R. S. Andrews	
..	Potatoes	Purchase under Tender Board quotations	
Schedule No. 18.—Sunbury District—				
64	Breadstuffs	Rates as per annex	J. N. Hennessy Pty. Ltd.	}
65	Groceries	Ditto	A. C. Shill	
..	Cereals	Order under Melbourne District contract	}
66	Jams	Rates as per annex	A. C. Shill	
67	Meat	Ditto	F. Watkins Pty. Ltd.	
..	Potatoes	Purchase under Tender Board quotations	
Contingencies, 1940-41				

Contingencies,
1940-41

Approved—A. A. DUNSTAN, Treasurer. 6.6.1940.

CONDITIONS OF CONTRACT FOR PROVISIONS, 1940-41, ETC.

(Published in the *Victoria Government Gazette*, of 24th April, 1940, pages 1626 and 1627).

1. All the articles are to be of the best quality of the several kinds, in the best condition, and in conformity with the Health Acts, and to be delivered in sound packages, free from all charges for cartage, freight, &c. The goods shall be delivered as may be directed by the officer ordering the supply.

2. As the exact quantity of any article which may be required cannot be stated, the estimate being approximate only, the Government will not be bound by the quantity stated in the schedule, but will be at liberty to order more or less, according to circumstances, and the contractor will be bound to supply the same as ordered.

3. Supplies for country districts for which no local contract may have been taken, or for which the contract has been terminated, may be ordered under the Melbourne contract.

4. The Melbourne District will include places within a radius of 6 miles from the Elizabeth-street Post Office, with the exception of places for which separate contracts are provided; the Ararat, Ballarat, Beechworth, and Sunbury Districts will include the Mental Hospitals, Gaols, and Police Gaols at those places; and the Bendigo and Castlemaine Districts will include the Gaols. The Geelong District embraces a radius of 2 miles from the Geelong Post Office. Delivery must be made at the places, institutions, &c., named in the schedules, or as directed by the officer ordering the supply.

5. Packages suitable for transport of goods supplied must be provided by the contractor free of expense, and the value of these packages, whether in bulk or otherwise, is to be included in the rate tendered, except butter boxes and soap boxes (not including fancy soaps), jam jars, flour, meal, and potato bags, which will remain the property of the contractor, and only the actual net weight or quantity received will be paid for; the empties to be removed from the place of delivery at the contractor's expense.

6. The meat supplied under these conditions must, if practicable, be slaughtered at abattoirs which are under authorized inspection and supervision. Any infringement of this condition will subject the contractor, on report from the Tender Board, to such mulct, not exceeding Fifty pounds, as the Treasurer may direct, and the amount will be deducted from the contractor's account, or from the security money.

7. The supplies coming under the head of Rations and Medical Comforts are to be delivered direct to the establishment entitled thereto on the written order of the officer in charge. All other supplies will be ordered by the head of the Department concerned or any officer authorized by him, and shall be delivered as may be directed by the officer ordering the supply.

8. At the time of delivering the supplies, the contractor shall produce the order for the same to the officer authorized to accept delivery, and such officer shall acknowledge thereon the receipt of the stores accepted, and shall return the order to the contractor, who shall render his account as soon as possible after the delivery of the supplies, accompanied by the receipted delivery order. The rates or quantities quoted in the orders cannot be exceeded.

9. Where practicable, the contractor shall use the Railways for the transport of the goods. When a contractor is required to make delivery of goods at a railway station for transmission by rail, except for Commonwealth Departments, he shall obtain a receipt for the goods in duplicate on the Stores and Transport consignment note, at the same time handing in the triplicate and quadruplicate of the form as an authority for the Railways to act as agent for, and charge the freight to, the Stores and Transport Office. He shall as soon as possible, and not later than twenty-four hours thereafter, deliver at the Tender Board Offices the original, the duplicate to be forwarded to the consignee and the quintuplicate retained by himself. Should the goods thus forwarded be rejected, the contractor must bear the cost of replacing such goods, for which services the departmental consignment note is not to be used. Any infringement of this condition may subject the contractor to such mulct as the Tender Board may recommend under clause 18 of these conditions.

10. Orders must receive prompt execution; in the event of the goods not being delivered at the time mentioned in the order or within such other time as the officer ordering the supply may specify for delivery, it will be competent for such officer, or the head of the Department to whom the goods are to be supplied, on giving the contractor twenty-four hours' notice, to purchase the supplies, or any like supplies that are suitable for the service, at the contractor's risk, and the extra expense incurred over and above the contract price (if any) will be deducted from the contractor's account or from the security money.

11. The acceptance of the supplies shall be subject to the approval of the officer authorized to take delivery of the stores, or such other officer as shall be named in the conditions.

12. If the officer in charge of stores be not satisfied as to the quantity or quality of the stores, or if, after taking delivery of any stores or material, he shall discover any deficiency or defect therein, he may return such deficient or defective stores or material to the contractor, and shall report the same to the head of his Department and to the Tender Board.

13. In the event of a difference of opinion between the contractor and the officer receiving the supplies as to the quality, the same is to be decided, in cases where the article is not of a perishable nature, by a Board of Survey composed of persons named by the Treasurer of the State for the time being; and the decision of the Board is to be considered final. In the event of the decision being against the contractor, the survey fees and expenses (if any) will be deducted as in clause 10.

14. In cases where the article is of a perishable nature, or when from some other cause injury would be sustained either by the person to whom the rations or stores are due or by the contractor in waiting for a Board to survey, the head of the Department or officer authorized to take delivery will have power to reject such article or articles as are obviously of inferior quality, it being understood that he will be responsible to the Government for so doing, and that the contractor must take back the rejected article and supply good in its stead; failing which it, or any like supply suitable for the Service, will be obtained by the officer requiring it as in clause 10. In case of the rejection or return of any supplies, the contractor shall bear the whole cost of replacing the supplies so rejected or returned.

15. If the Board shall decide that the article is not of proper quality it must be immediately replaced by the contractor; failing which it, or any like supply suitable for the Service, will be procured by the officer requiring it, and the expense charged as in clause 10.

16. In the case of supplies for Mental Hospitals, it will be competent for a Board of Survey, consisting of the medical superintendent (or, in his absence, of the medical officer) and any two officers named by him, to examine and reject any supplies that may be objected to. It must be distinctly understood, however, that the contractor will have a right of appeal to the Treasurer of the State for the time being, such appeal to be made in writing within 24 hours of the rejection; but, pending such appeal, he must at once supply others of approved quality; failing which, the supplies required, or any like supplies suitable for the Service, may be obtained by the officer concerned, and the expense charged as in clause 10.

17. In the case of supplies for Mental Hospitals, it will also be competent for two or more of the official visitors, in conjunction with the medical superintendent, to reject any supplies that they may consider not in accordance with contract; and in such cases the reference to a Board of Survey will not be deemed to be necessary.

18. A refusal to execute orders, irregularity in the quantity or quality of the supplies, or delay in delivering or replacing them when required, will subject the contractor, upon report from the Tender Board, to such mulct, not exceeding Fifty pounds, as the said Treasurer may direct, and the amount may be deducted as in clause 10. It will also be in the power of the said Treasurer, upon such refusal, irregularity, or delay, to terminate the contract forthwith, and forfeit the whole or any part of the security money; and, in addition, the contractor will be disqualified from tendering or holding any future contract or contracts for a period of twelve months from the date of such disqualification.

19. Contractors are not at liberty to transfer their contracts under cover of power of attorney, coupled with an interest or otherwise, and no such transfer will be recognized by the Government. *If it is found during the currency of the contract that the contractor has not conformed to the condition of advertisement—which stipulates that if a tenderer be a member of a firm and such firm be interested in the contract, the tender shall be in the name of the firm and not in that of the individual—then the Treasurer may, on the recommendation of the Tender Board, determine the contract, and forfeit the security money.*

20. It will be competent for the Tender Board to terminate the contract, without notice, should there be reason to know that the contractor takes advantage of his contract to communicate with a prisoner.

21. The contract entered into under these conditions is not to be considered as being broken, infringed, or vitiated by the importation of stores for the Government service, or by any contracts or purchases made by the Imperial Commissariat; or by the consumption of the produce or surplus stock of any Government establishment, or by any article being made at and supplied for the use of any Government establishment.

22. Notwithstanding anything contained to the contrary in section 152 of the *Customs Act 1901-36*, it is hereby expressly provided that upon any alteration of the duty collected affecting the goods included in this contract, the contract price shall not be altered, and the contract may be terminated at the option of either party by two months' notice in writing from the first day of the calendar month next ensuing, and within the period for which the contract is made. The

contract for the unaffected items shall remain in full force and effect. Any notice to be served under this condition shall be deemed to have been duly served if sent to the contractor in a registered letter to his last-known place of business or abode.

23. Under no circumstances other than those mentioned in clause 22 will a contractor be permitted to abandon his contract. In the event of the contractor failing to carry on the contract, the contract security money will in that case be absolutely forfeited; and, in addition, the contractor will be held liable for any loss which the Government may sustain in consequence of such failure.

24. For the purposes of these contracts the word "Government" shall mean the Government of the State of Victoria; and the word "Treasurer" shall mean the Treasurer of the said State.

STIPULATIONS FOR SUPPLIES OF PROVISIONS.

SUPPLIES GENERALLY.

For supplies under all sub-schedules, particular attention is drawn to clause 1 of the Conditions of Contract as to quality. No sub-letting is allowed, and all work must be carried out by the contractor.

Where practicable, all items must be manufactured or prepared within the Commonwealth.

Where no brand of Commonwealth manufacture or production is specifically set out in the respective sub-schedules, such Commonwealth brand as may be ordered must be supplied.

For Schedule No. 3 supplies must be delivered when ordered and, in cases of emergency, on Sundays, holidays, or half-holidays, as required.

BREAD AND FLOUR.

A sample of the best ordinarily retailed to the public will be considered as a test loaf for first quality for fine wheaten and pure wheaten Meal Bread. *Pure wheaten Meal Bread of first quality may be substituted, wholly or in part, for fine wheaten Bread at such times and in such quantities as, in the opinion of the Medical Superintendent, may be deemed necessary, and the contractor will be required to supply such Bread at the contract rate. Reasonable notice, however, of the intention to substitute wheaten Meal Bread must be given to the contractor by the officer ordering the supply.* Bread may be baked at any Government establishment without infringing these contracts. At the Gaols, Ballarat, Beechworth, Geelong, Castlemaine, and Sale, and the Coorimungie Prison Camp, if required, bread must be supplied one day old, due notice to be given to the contractor of such requirement.

In the event of bread being made at any Government establishment in the Melbourne District during the currency of these contracts, the flour required will be drawn under the flour and sharps sub-schedule. The sharps for all the country gaols is included in the sub-schedule for flour and sharps, Melbourne District, and delivery of same will be required to be made f.o.r. Melbourne.

Flour for Districts for which no local contracts have been taken may be ordered under the Melbourne District contract, for delivery f.o.r. Melbourne.

GROCERIES.

As a guarantee of quality, Rice, when ordered in quantities of 56 lb. and over, must be supplied in original bags as delivered by the miller or dresser. Such bags must be branded "Rice, Dressed" or "Unpolished," and shall also have stencilled thereon the miller or dresser's name and the distinguishing mark indicative of the quality or grade. The bags thus stencilled shall contain Rice milled or dressed by the miller or dresser whose name appears thereon. Supplies not in conformity with the foregoing condition will be rejected.

Oatmeal must be supplied in original bags as delivered by millers.

Candles, except those for prison cells, must be supplied in 1-lb. packets. Candles for prison cells must be delivered in boxes containing from 25 to 50 lb. per box, the boxes for which must be legibly stencilled on one end showing the estimated burning time and the gross, tare, and net weight of contents.

The soap supplied must be hard throughout, ready for immediate use without waste, and shall have been manufactured at least seven weeks before leaving contractor's hands.

When the quantity admits, Tea must be supplied in original and unopened packages, labelled, and lashed.

Raisins and currants must be present season's, and where the quantity admits, be supplied in original and unopened boxes, labelled as packed.

For Schedule No. 3 a certain quantity of Biscuits and Preserved Meats are sometimes required in lieu of fresh bread and fresh meat, and are included to meet such contingency only.

OATMEAL, RICE, SEED TAPIOCA, ETC.

Supplies of these items for Districts for which no local contracts have been taken may be ordered under the Melbourne District contract, for delivery f.o.r. Melbourne.

BUTTER, CHEESE, AND JAMS.

Butter is to be delivered to the s.s. *Rip* in 1-lb. pats; in such quantities as may be ordered, and no excess over the quantity ordered will be received.

All supplies of 56 lb. or multiples of 56 lb. must be supplied in boxes as originally packed. The boxes must bear the impress stamp of the creamery where the butter is produced; otherwise it will not be accepted. All supplies must be in new boxes.

Where the Store or Butter Factory of the Contractor is situated in the Metropolitan area all Butter to the quantity of 56 lb. and over to be supplied in any one consignment under this contract shall before despatch from the Store or Factory be first examined and passed by the Government Butter Grader, for and on behalf of the officer authorized to accept delivery. The boxes containing butter so examined and found satisfactory in quality and description will be stamped by the Government Butter Grader and the date of such examination marked thereon. No butter from a contractor located in the Metropolitan Area will be accepted unless the boxes bear the stamp of the Grader. For the purposes of the foregoing condition the Metropolitan Area is defined as being not outside the radius visited by the Government Grader. The officer authorized to accept delivery may, within 48 hours of the receipt of any supply, require the Contractor to have same re-examined by the Grader, and, if not passed by him, it shall be returned to the Contractor, who shall forthwith replace the same with freshly-examined butter.

No Butter ex Cool Store will be examined by the Grader until thermally it is in suitable condition therefor.

Where the Store or Factory from which the Butter is despatched is not within the area visited by the Grader a sample of any supplies may be forwarded to the Government Butter Grader for examination, should the supply be considered by the Officer authorized to accept delivery as not being equal in quality or description to that contracted for.

The Cheese supplied to be semi or fully matured, as ordered, and, if the quantity admits, boxed for transport.

Jams.—The weight stamped on the tins in accordance with the regulations under the Commerce Act, as indicating the minimum net quantity that each tin contains, shall for the purpose of this contract be taken as the actual contents when computing the quantity supplied.

When Jam is supplied in jars the jars remain the property of the contractor, and must be removed by the contractor at his own expense when empty.

SOAP AND SOAP MIXTURES.

Supplies of these items for Districts for which no local contracts have been taken may be ordered under the Melbourne District contract, for delivery f.o.r. Melbourne.

MEAT.

Fore and hind quarters of beef for Mental Hospitals are to be supplied in equal proportions of each, and must be delivered as a whole respectively, also extra buttocks separately when ordered. Meat for other institutions must be supplied as ordered. Where hind-quarters or buttocks are ordered, 9 inches must be cut off from the end of the leg from the hock upwards, i.e., the end of the leg from which the shank has been removed at the abattoirs; and when fore-quarters form a portion of the supply, 6 inches from the end of the neck and the whole of the shin at the clodbone joint must be removed. The sticking pieces also must be trimmed off, and the point and end of the brisket rendered free from blood and blood stains.

Fore and hind quarters of beef, for convenience of handling, may be cut into two parts, but each part is to bear evidence of having been cut from the same carcass.

Corned beef, rolled or round, as ordered, must be supplied without bone or cartilage and will be received, whether pumped or prepared in the ordinary way by pickling, but in the former case must have been soaked after pumping for at least 48 hours, in a good pickle, and then thoroughly drained before supply. No flank, chuck, sticking piece, shin, leg of beef, or piece under 7 lb. will be received.

All meat shall have been slaughtered in Victoria, freshly killed, and shall be well fed, good, sound, sweet, and wholesome.

Should the local supply of fresh meat become scarce or the market prices of same rise by not less than 25 per cent. above those ruling at the date of closing of tenders, chilled meat may, on the recommendation of the Permanent Head of the Department concerned and subject to the consent of the Tender Board being obtained, be supplied by the contractor in lieu of fresh meat on such occasions or during such periods as the Tender Board may determine. "Market prices" shall mean the prices ruling at the Metropolitan Meat Market as published in the *Argus* newspaper.

In cases of emergency, or on such other occasions as in the opinion of the Director of Mental Hygiene, or Heads of other institutions, may seem advisable, other forms of meat such as rabbits, tinned meats, &c., may be purchased apart from the contract in lieu of the meat mentioned in the schedule, and substituted therefor, provided 24 hours' notice (except in cases of emergency) be given to the contractor of such intention.

Meat derived from the carcasses of Bulls, Stags, or Rams, or Mutton weighing more than 70 lbs. in the carcass, will not be received, and shall not be tendered for delivery.

Meat containing an undue proportion of bone or fat will not be accepted.

The parts to be removed by the contractor are indicated by the shaded portions of the annexed diagram. This work must be carried out in the factory or shop of the contractor, excepting those parts usually removed at the abattoirs.

With respect to the schedules enumerated hereunder, the following stipulations shall also apply:—

For sub-schedules 9 and 10 of Schedule No. 1, the Beef must be supplied in quantities as ordered from Ribs, Sirloin, and thick Flanks. Where the quantity permits, mutton must be delivered in sides; all kidney fat to be removed.

For Schedules Nos. 1 (sub-schedules 9 and 10), 3, 4, 8, 10, 13, 16 and 17, chuck ribs of Beef, i.e., 1st to 4th inclusive, will not be accepted.

For Schedule No. 3, fresh Beef must be supplied in equal quantities from prime ribs, sirloin, or thick flanks; ribs of Beef to be cut clear of the plate bone, and sirloin to be cut clear of the wing ribs; excess of brisket or flank will be rejected; Mutton to be delivered in sides; all kidney fat to be removed; live sheep to be supplied when required. Corned Beef to be supplied in equal quantities from silverside (round) and brisket; cow, bull, or stag beef or frozen or chilled meat will not be accepted and must not be tendered for delivery.

For Schedule No. 4, fresh Beef must be supplied from prime ribs or sirloin; ribs of Beef to be cut clear of the plate bone, and sirloin to be cut clear of the wing ribs; excess of brisket or flank will be rejected. Corned beef to be supplied from silverside (round) and brisket; cow, bull, or stag beef, or frozen or chilled meat, or Mutton derived from the carcasses of rams will not be accepted and must not be tendered for delivery. All surplus bone and fat must be removed by the contractor prior to delivery and only net weights will be paid for.

For Schedule No. 7, samples (corresponding to the description given in the schedule) of meat ordinarily retailed to the public will be considered as a test for quality.

TEA AND COFFEE.

Tea must be supplied in original and unopened packages, labelled as landed.

Tea and Coffee for Districts for which no local contracts have been taken may be ordered under the Melbourne District contract, for delivery f.o.r. Melbourne.

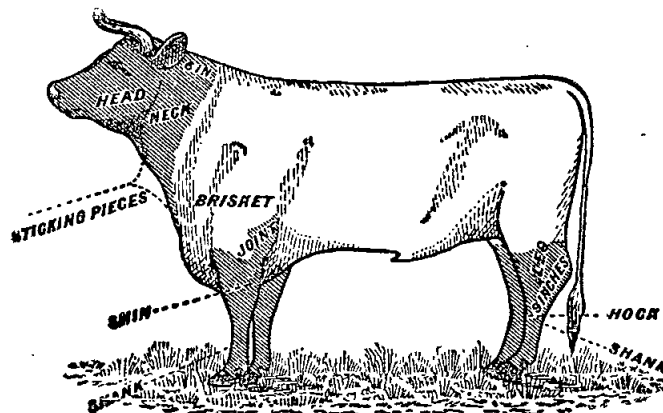
MILK.

The milk must be fresh, pure, and of the best quality, and subject to test when required by the Department, and supplied at such times as the Department may require. Should the contractor fail to supply at the time specified in the order or at such times as may be indicated in any general notice to the contractor his contract may be cancelled forthwith and his security forfeited, or should the supply prove to be not of contract quality it will be rejected, and any expense incurred will be charged to the contractor.

POTATOES.

Potatoes to be dry and free from dirt. Contractors to take back all rejected before being cooked. Bags to remain the property of the contractor. Weight of bags (approx. 2½ lb.) to be deducted.

If the price of potatoes becomes abnormally high, the heads of the various departments concerned may, if they think fit, cause rice or any other suitable food to be occasionally substituted in lieu thereof.



ANNEX TO CONTRACTS.

ADJUSTMENT OF CONTRACT RATES.

FLOUR AND BREAD.

The contract rates, set out hereunder, are based on a price of £12 17s. 6d. for 2,000 lb. of Flour (being the maximum price fixed for wheaten flour delivered on buyer's premises at Melbourne under the *Wheat Products Prices Act 1938* by Proclamation on 25th October, 1939).

If before or during the contract period the maximum price so fixed is increased or decreased by Proclamation under the said Act, the prices to be paid under the contract shall be increased or decreased as follows:—

For deliveries of Flour made after such Proclamation comes into operation—at the rate of 1s. per cental for every £1 of increase or decrease;

For deliveries of Bread made not less than 24 hours after such Proclamation comes into operation—at the rate of 9d. per cental for every £1 of increase or decrease.

If at any time before or during the contract period there is no Proclamation in force fixing such maximum price, the prices to be paid under the contract shall, from time to time, be increased or decreased at the rates aforementioned according to whether the wholesale market price of Flour, delivered Melbourne or suburbs, published in the *Argus* Newspaper is greater or less than £12 17s. 6d.

GROCERIES, SOAP MIXTURES, ETC.

The rates shown in the Sub-schedules marked (R) are subject to quarterly revision in respect of Soaps, Candles, and Washing Soda and also of items of imported origin and/or items wholly or partly manufactured or prepared from imported ingredients.

Particulars of adjustment of rates will be gazetted as and when required.

SCHEDULE No. 1.

PROVISIONS—MELBOURNE DISTRICT.

ANNEX TO CONTRACT No. 1940/1.

E. J. Cullander, 597 High-street, Preston, N.18.

Sub-schedule No. 1.

BREAD FOR MENTAL HOSPITAL AT KEW.

Security, £125.

	£	s.	d.
1. Bread—Fine wheaten, first quality .. per centl.	0	12	1

ANNEX TO CONTRACT No. 1940/2.

J. N. Hennessy, Pty. Ltd., 55 Sydney-road, Brunswick.

Sub-schedule No. 2.

BREAD FOR CHILDREN'S WELFARE DEPOT, ROYAL PARK, RECEIVING HOUSE AND MENTAL HOSPITAL, ROYAL PARK, POLICE HOSPITAL, TRAVANCORE DEVELOPMENTAL CENTRE, FLEMINGTON, AND TEACHERS' COLLEGE, CARLTON.

Security, £40.

	£	s.	d.
1. Bread—Fine wheaten, first quality .. per centl.	0	11	11

ANNEX TO CONTRACT No. 1940/3.

Jas. Minifie and Co., 422 Collins-street, Melbourne. C.1.

Sub-schedule No. 3.

FLOUR.

Security, £72.

	£	s.	d.
1. Flour—Roller, first quality, to sample .. per centl.	0	11	3½

ANNEX TO CONTRACT No. 1940/4.

Pirie Bros., 136 Exhibition-street, Melbourne, C.1.

SHARPS.

Security, £18.

	£	s.	d.
2. Flour Sharps, to sample per centl.	0	11	3

ANNEX TO CONTRACT No. 1940/5.

Moran and Cato Pty. Ltd., 277 Brunswick-street, Fitzroy, N.6.

Sub-schedule No. 4.

GROCERIES, ETC.

Security, £65.

	(R)	£	s.	d.
1. Beans—Haricot per lb.	0	0	3	
2. Biscuits—Coffee, Malt, or Milk Arrowroot, as ordered .. do.	0	0	9½	
3. „ Granose do.	0	0	6½	
4. Blue—Washing do.	0	0	9	
5. Breakfast Food, Cereal—“Pipers” .. do.	0	0	6½	
6. Candles—Full weights, Kitchen's “Electrines,” or other make of equal quality, to be supplied in 1-lb. packets .. do.	0	0	8½	
7. „ Kitchen's “Electrines,” or other make of equal quality, for use in prison cells, to burn for 1, 1½, 2, 2½, and 3 hours respectively, as ordered, to be supplied in boxes, containing from 25 to 50 lb. per box .. do.	0	1	1	

Sub-schedule No. 4—continued.

GROCERIES, ETC.—continued

	£	s.	d.
8. Cocoa—in 1-lb. tins or cardboard cartons .. per lb.	0	0	6½
9. Corn or Maize Flour—in packets of 1 lb. not .. do.	0	0	5
10. Cream of Tartar do.	0	1	6½
11. Currants—3 Crowns (present season's) .. do.	0	0	8
12. Curry Powder do.	0	0	7½
13. Essence of Lemon—8-oz. bottles .. per bot.	0	1	2½
14. Essence of Vanilla—8-oz. bottles .. do.	0	1	2½
15. Fruits—Dried (present season's), apples .. per lb.	0	0	9½
16. „ „ „ „ apricots, (slabs) .. do.	0	1	0
17. Ginger—Ground do.	0	0	11½
18. Golden Syrup—in 7-lb. tins .. per tin	0	1	8½
19. Honey—First quality per lb.	0	0	7
20. Jelly Crystals, 4-oz. packets, “D.P.S.” .. per doz.	0	3	0
21. Lemon Peel (cut) per lb.	0	0	8½
22. Mustard—“Double Superfine” .. do.	0	1	10
23. Oatmeal—Flaked per cwt.	1	1	0
24. Popper—Black, ground per lb.	0	0	9
25. Pipes—Tobacco, clay per doz.	0	0	10½
26. Prunes—Dried, 50-60's (present season's) .. per lb.	0	0	7½
27. Raisins—Sultans, 3 Crowns (present season's) .. do.	0	0	8½
28. Rice—Ground do.	0	0	2½
29. Salt—Fine per cwt.	0	4	3
30. Soda—Washing per lb.	0	0	1½
31. „ Bicarbonate of do.	0	0	2½
32. Spice—Mixed, in 1-oz. packets .. per pkt.	0	0	1½
33. Starch (Rice)—“Preservene” .. per lb.	0	0	6½
34. Treacle—in 7-lb. tins per tin	0	1	7
35. Vinogar (Malt) per quart	0	0	3½
36. Tomato Sauce—13-oz. bottles, “Clipper” brand .. per bot.	0	0	7½

ANNEX TO CONTRACT No. 1940/6.

Contract from 1.7.40 to 31.12.40.

T. S. K. Ward Pty. Ltd., 24-38 Spencer-street, Melbourne, C.1.

Sub-schedule No. 5.

CEREALS.

Security, £100.

	£	s.	d.
1. Oatmeal per cwt.	0	12	0
2. Rice—Dressed, to sample .. do.	1	3	3
3. „ Unpolished do.	1	3	3
4. Seed Tapioca (Sago), to sample .. do.	1	6	0
5. Pearl Barley do.	0	13	6
6. Peas—Split do.	1	0	0

ANNEX TO CONTRACT No. 1940/7.

Moran and Cato Pty. Ltd., 277 Brunswick-street, Fitzroy, N.6.

Sub-schedule No. 6.

JAMS.

Security, £20.

	£	s.	d.
1. Jams—Assorted, in bulk, of approved kinds, in the proportion of half actual net seed and half stone, of the best quality, in tins, as required—Brand “Blue Bird” .. per lb.	0	0	4½
2. „ Assorted, in bulk, of approved kinds, in the proportion of half seed and half stone, of the best quality, in 24-oz. tins—Brand “Blue Bell” .. per tin	0	0	8½

ANNEX TO CONTRACT NO. 1940/8.

F. Watkins Pty. Ltd., 184 Bourke-street, Melbourne, C.1.

Sub-schedule No. 7.

MEAT FOR MENTAL HOSPITAL, KEW.
Security, £125.

		£	s.	d.
1. Fresh Beef—Fore-quarters	per cwt.	1	15	0
2. " " Hind-quarters	do.	1	15	0
3. " " Buttocks	per lb.	0	0	5
4. " Mutton	do.	0	0	4
5. Corned Beef—Rolled or round, as ordered, without bone or cartilage	do.	0	0	5½
6. Fresh Suet—Kidney	do.	0	0	3
7. Sausage Meat	do.	0	0	4

ANNEX TO CONTRACT NO. 1940/9.

F. Watkins Pty. Ltd., 184 Bourke-street, Melbourne, C.1.

Sub-schedule No. 8.

MEAT FOR PENAL ESTABLISHMENT (PENTRIDGE), FEMALE
PENITENTIARY, AND METROPOLITAN GAOL (GOBURG).
Security, £115.

		£	s.	d.
1. Fresh Beef—Fore-quarters	per cwt.	1	13	9
2. Corned Beef—Rolled or round, as ordered, without bone or cartilage	per lb.	0	0	5½
3. Fresh Mutton (whole sheep)	do.	0	0	4
4. Dripping	do.	0	0	3½
5. Fresh Suet—Kidney	do.	0	0	3½
6. Beef Sausage	do.	0	0	5
7. Tripe—Fresh	do.	0	0	4
8. Rabbits—Fresh	per pair	0	1	9

ANNEX TO CONTRACT NO. 1940/10.

J. H. Cooke Pty. Ltd., 378 Queens-parade, Clifton Hill, N.8.

Sub-schedule No. 9.

MEAT FOR POLICE HOSPITAL, ST. KILDA-ROAD, CHILDREN'S
WELFARE DEPOT, ROYAL PARK.
Security, £30:

		£	s.	d.
1. Fresh Beef	per cwt.	2	1	8
2. Corned Beef—Rolled or round, as ordered, without bone or cartilage	per lb.	0	0	5
3. Fresh Mutton	do.	0	0	4
4. " " Loin	do.	0	0	5
5. " " Leg	do.	0	0	5
6. Sausages—Mixed	do.	0	0	5
7. Tripe—Fresh	do.	0	0	3½
8. Steak—Rump	do.	0	0	10
9. Brains	per set	0	0	2
10. Chops—Mid Loin	per lb.	0	0	6½
11. Rabbits—Fresh	per pair	0	1	3
12. Ice	per cwt.	0	2	6

ANNEX TO CONTRACT NO. 1940/11.

J. H. Cooke Pty. Ltd., 378 Queens-parade, Clifton Hill, N.8.

Sub-schedule No. 10.

MEAT FOR RECHIVING-HOUSE AND MENTAL HOSPITAL, ROYAL PARK.
Security, £35.

		£	s.	d.
1. Fresh Beef	per cwt.	2	1	8
2. " " Buttocks	do.	2	1	8
3. " Mutton	per lb.	0	0	4
4. Corned Beef—Rolled or round, as ordered, without bone or cartilage	do.	0	0	5
5. Fresh Suet—Kidney	do.	0	0	3½
6. Ice	per cwt.	0	2	6

ANNEX TO CONTRACT NO. 1940/12.

Moran and Cato Pty. Ltd., 277 Brunswick-street, Fitzroy, N.6.

Sub-schedule No. 11.

SOAP MIXTURES.

(Of Commonwealth Manufacture.)

Security, £50.

		£	s.	d.
* To Samples at Tender Board Offices.				(R)
1. Antiseptic—Liquid, of approved make, in 4-gal. tins	per gal.	0	2	5
2. Extract of—Kitchen's, or equal thereto, in 1-lb. packets	per lb.	0	0	2½
3. *Household—Dry, equal to Kitchen's "Best Brown" Brand	per cwt.	1	2	6
4. "Lux" or "Merino," as ordered, in bulk	per lb.	0	0	8½
5. "Monkey Brand"—or equal thereto, in tablets of 5 oz. each	per doz.	0	2	0½
6. Sand—Carbolic, 12 oz. blocks, of approved brand	per doz.	0	1	6
7. "Lux" Borax, 12 oz. blocks, of approved brand	do.	0	2	0
8. Soft—Genuine Potash, best amber, in bulk	per lb.	0	0	6½

Sub-schedule No. 11—continued.

SOAP MIXTURES—continued.

		£	s.	d.
9. *Toilet—Brown Windsor, seven tablets to 1 lb., Kitchen's, or equal thereto	per doz.	0	1	3
10. *Toilet—"Bath," in 4½-oz. tablets, Kitchen's, or equal thereto	do.	0	1	5½
11. *Toilet—Carbolic, in 4-oz. tablets, Kitchen's, or equal thereto	do.	0	1	10½
12. *Toilet—"Castola," in 6-oz. tablets, Kitchen's, or equal thereto	do.	0	2	0
13. "Velvet"—or equal thereto	per doublet	0	0	3
14. Lifebuoy	per doz.	0	3	0

ANNEX TO CONTRACT NO. 1940/13.

Henry Berry and Co. (A/asia) Ltd., 580 Collins-street, Melbourne, C.1.

Sub-schedule No. 12.

TEA AND COFFEE.

Security, £240.

		£	s.	d.
1. Tea—To sample	per lb.	0	1	8½†
2. Tea—Ration, to sample	per lb.	0	1	7½
3. Coffee—Fresh, roasted, and whole, beans to be thoroughly sound, to sample	per lb.	0	1	4½

† Rate subject to adjustment after 31.12.40.

SCHEDULE No. 2.

PROVISIONS—MONT PARK, SANATORIUM,
GRESWELL, ETC.

(Delivery at the Mental Hospital, Mont Park, to depots as required, the Repatriation Mental Hospital, Bundoora, Janefield Colony, and Sanatorium, Greswell.)

ANNEX TO CONTRACT NO. 1940/14.

E. J. Callander, 597 High-street, Preston, N.18.

Sub-schedule No. 1.

BREADSTUFFS.

Security, £176.

		£	s.	d.
1. Bread—Fine wheaten, first quality	per cwt.	0	11	10
2. " Raisin,	do.	1	1	0
3. Flour—First quality	do.			*

* Order under Melbourne District Contract.

ANNEX TO CONTRACT NO. 1940/15.

Moran and Cato Pty. Ltd., 277 Brunswick-street, Fitzroy, N.6.

Sub-schedule No. 2.

GROCERIES.

Security, £60.

		£	s.	d.
1. Bacon—In sides "Watson and Pater-son"	per lb.	0	1	1½
2. Beans—Haricot	do.	0	0	3
3. Blue—Washing	do.	0	0	9½
4. Biscuits—Coffee, Malt, Marie, or equal, as ordered	do.	0	0	10
5. Camp Pie—in 1-lb. tins, "Rex"	per tin	0	0	8½
6. Candles (full weights)—Kitchen's "Electrines," or other make of equal quality in 1-lb. packets	per lb.	0	0	9½
7. Cocoa, in 1-lb. tins or cardboard cartons	do.	0	0	6½
8. Coconut—Desiccated	do.	0	0	7
9. Coffee Essence in 8oz. bots.—Brand, "Lifebuoy"	per bot.	0	0	10
10. Corn or Maize Flour—in 1-lb. packets, Brand, "Blue Ribbon"	per lb.	0	0	5½
11. Currants—3 Crowns (present season's)	do.	0	0	8
12. Curry Powder	do.	0	0	8
13. Custard Powder—1-lb. packets	per pkt.	0	0	8
14. Dates—Fresh, loose	per lb.	0	0	7½
15. Essence of Vanilla—in full 16-oz. bottles	per bot.	0	2	4½
16. Flour—Self-raising, Brand, "Golden Crust"	per lb.	0	0	3½
17. Fruits—Dried (Present season's), Apricots, Slabs	per lb.	0	1	0½
18. Fruits—Preserved, assorted, in 1-lb. 14-oz. tins (excluding Pines)	per tin	0	0	9½
19. Gelatine—Ground	per lb.	0	1	10
20. Ginger—Ground	do.	0	0	11
21. Golden Syrup—in 7-lb. tins	per tin	0	1	8½
22. Herrings—Fresh, and in Tomato Sauce, 14-oz. tins, Brand, "Gosse Millard"	per tin	0	0	10
23. Honey, first quality	per lb.	0	0	7
24. Jelly Crystals—in 4-oz. packets	per doz. packets	0	3	0

Sub-schedule No. 2—continued.

GROCERIES—continued.

		£	s.	d.
25. Lemon Peel—cut	per lb.	0	0	8½
26. Macaroni	do.	0	0	3½
27. Mustard—"Double Superfine"	do.	0	1	10
28. Nutmeg—Whole	per oz.	0	0	1½
29. Pepper—White, ground	per lb.	0	0	11
30. Pickles—Assorted, 20-oz. bottles, Brand, "Pride of Victoria"	per bot.	0	0	10
31. Pipes—Tobacco, clay	per doz.	0	0	10½
32. Prunes—Dried, 50–60's (present season's)	per lb.	0	0	7½
33. Raisins—Lexias, 3 Crowns (present season's)	do.	0	0	6½
34. „ Sultana, 3 Crowns (present season's)	do.	0	0	8½
35. Rice—Ground	per lb.	0	0	2½
36. Salmon—Fresh, in 1-lb. tins, tails, fancy pink	per tin	0	1	2
37. Salt—Fine	per cwt.	0	4	6
38. Sauce—Tomato, in 13-oz. bottles, Brand, "Clipper"	per doz. bottles	0	7	3
39. Soda—Bicarbonate of	per lb.	0	0	2½
40. „ Washing	per cwt.	0	10	3
41. Spice—Mixed, in 1-oz. packets	per pkt.	0	0	1½
42. Starch (Rice)—Brand, "Preservene"	per lb.	0	0	6½
43. Sugar—Caster	do.	0	0	4
44. „ Icing	do.	0	0	4
45. Tartar—Cream of	do.	0	1	6½
46. Treacle—in 7-lb. tins	per tin	0	1	8
47. Vermicelli—in 16-oz. packets	per pkt.	0	0	4
48. Vinegar—Malt	per pint	0	0	2
49. Cereal—"Granbits," 16-oz. packets	per pkt.	0	0	7½

ANNEX TO CONTRACT No. 1940/16.

Model Preserving Co. Pty. Ltd., cr Campbell and Perry streets, Colingwood, N.5.

Sub-schedule No. 3.

JAMS.

Security, £23.

		£	s.	d.
1. Jams—Assorted, in bulk, of approved kinds, in the proportion of half actual net seed and half stone, of the best quality, in tins, as required, Brand, "M.P."	per lb.	0	0	4½
2. „ Assorted, in 5-lb. tins, in the proportion of half seed and half stone, of the best quality, Brand, "M.P."	per tin	0	2	4
3. „ Marmalade, in 5-lb. tins, Brand, "M.P."	do.	0	2	3

ANNEX TO CONTRACT No. 1940/17.

B. Hosking, 429 High-street, Northcote, N.16.

Sub-schedule No. 4:

MEAT.

Security, £253.

		£	s.	d.
1. Fresh Beef—Fore-quarters	per cwt.	1	11	0
2. „ Hind-quarters	do.	1	11	0
3. „ Buttocks	per lb.	0	0	4½
4. „ Roast, rolled ribs	do.	0	0	4½
5. „ Rump	do.	0	0	8
6. „ Shin	do.	0	0	2
7. „ Thick flank	do.	0	0	5
8. Beef, Corned—Rolled or round, as ordered, without bone or cartilage	do.	0	0	4½
9. Mutton, Fresh—Sides	do.	0	0	3½
10. „ Tripe—Ox	do.	0	0	3½
11. Brains—Sheep	per set.	0	0	2
12. Chops—Loin	per lb.	0	0	4½
13. „ Forequarters	do.	0	0	3½
14. „ Cutlet	do.	0	0	5½
15. Frys—Lambs	do.	0	0	3½
16. Pork—Loin	do.	0	0	9
17. Sausage—Pork	do.	0	0	6
18. Steak—Minced	do.	0	0	4½
19. Livers—Calves	do.	0	0	3½
20. Pork German	do.	0	0	7
21. Pig's Cheek	do.	0	0	3
22. Kidneys—Ox	each	0	0	6
23. „ Saveloy	per doz.	0	0	9
24. Rabbits—Fresh	per pair	0	1	3

SCHEDULE No. 3.

PROVISIONS FOR S.S. R/P AND DREDGES.

(Supplies to be delivered to Dredging Depot, Williamstown, Victoria Dock, or River Yarra Wharfs, as ordered.)

ANNEX TO CONTRACT No. 1940/18.

Taylor and McMillan Pty. Ltd., 24 Clarke-street, Northcote, N.16.

Sub-schedule No. 1.

BREAD.

Security, £5.

		£	s.	d.
1. Bread—Fine wheaten, first quality	per cwt.	1	2	11

ANNEX TO CONTRACT No. 1940/19.

Moran and Cato Pty. Ltd., 277 Brunswick-street, Fitzroy, N.6.

Sub-schedule No. 2.

GROCERIES.

Security, £20.

		£	s.	d.
1. Bacon Rashers—Farmer's or Hutton's or equal thereto—Shoulder	per lb.	0	1	3
„ Middle	do.	0	1	6
2. Biscuits—Cabin bread, or the like	do.	0	0	6
3. Butter—First grade creamery, to score not less than 91 points, Government grade, commerce regulations standard	do.	0	1	5½
4. Coffee—Fresh roasted and ground, for sample	per lb.	0	1	8
5. Currants—3 Crowns (present season's)	do.	0	0	8
6. Eggs—New laid	per doz.	7		
7. Flour—First quality	per lb.	0	0	1½
8. „ Self-raising	do.	0	0	2½
9. Jams—Assorted, of approved kinds, in proportion of half seed and half stone, in 24-oz. tins, "Blue Bell"	per tin	0	0	8½
10. Meat—Preserved, beef or mutton, in 1-lb. tins	per tin	0	0	8½
11. Milk—Condensed, full cream	do.	0	0	8
12. Mustard—"Double Superfine"	per lb.	0	1	10
13. Oatmeal	do.	0	0	2½
14. Oatmeal—Flaked	do.	0	0	3
15. Pearl Barley	do.	0	0	2½
16. Peas—Split	do.	0	0	3
17. Pepper—White, ground	do.	0	0	11
18. Pickles—Assorted, 20-oz. bottles	per bot.	0	0	8
19. Raisins—Sultana, 3 Crowns (present season's)	per lb.	0	0	8½
20. Rice—Dressed, to sample	do.	0	0	2½
21. Salt—Fine	do.	0	0	6½
22. Sauce—Tomato, 13-oz. bottles, "Dyna-son's"	per bot.	0	0	6
23. „ Worcestershire 10-oz. bottles, "Life-buoy"	do.	0	0	5
24. Vinegar—Malt	per gal.	0	1	1

† At Market Rates, as published in Argus on Wednesdays, plus 1d. per doz.

ANNEX TO CONTRACT No. 1940/20.

Wm. E. Glendenning, 14 Nicholson-street, Footscray, W.11.

Sub-schedule No. 3.

MEAT.

Security, £16.

		£	s.	d.
1. Fresh Beef	per cwt.	2	6	0
2. „ Silverside	per lb.	0	0	5
3. „ Mutton	do.	0	0	4½
4. „ Legs	do.	0	0	5½
5. „ Chops, fore-quarter	do.	0	0	6
6. „ Suet, kidney	do.	0	0	2½
7. Sausages	do.	0	0	5½
8. Pork—Leg	do.	0	0	10
9. Frys—Lambs	do.	0	0	2
10. Steak—Frying	do.	0	0	5½
11. Ice	per cwt.	0	2	0

Sub-schedule No. 4.

VEGETABLES.

1. Onions				
2. Other vegetables, including beetroot, cauliflower, flowers, carrots, cabbages, turnips, parsnips, rhubarb, swedes, and pumpkin, as required				

Purchase by agree-
ment.

SCHEDULE No. 4.
PROVISIONS—TEACHERS' COLLEGE,
CARLTON.

(Delivery at the College.)

ANNEX TO CONTRACT No. 1940/21.

Moran and Cato Pty. Ltd., 277 Brunswick-street, Fitzroy, N.6.

Sub-schedule No. 1.

GROCERIES.

Security, £10.

			(R)	£	s.	d.
1. Barley	per lb.	0	0	2½		
2. Beans—Haricot	do.	0	0	3		
3. Candles (full weights)—Kitchen's "Electrics," or other make of equal quality, in 1-lb. packets	do.	0	0	9½		
4. Castor Sugar	do.	0	0	4½		
5. Cheese—Kraft	do.	0	1	1½		
6. Corn or Maize Flour, in 1-lb. packets	do.	0	0	5½		
7. Currants—3 Crowns (present season's)	do.	0	0	8		
8. Custard Powder—in 1-lb. packets	do.	0	0	8		
9. Essences—Assorted, in 8-oz. bottles	per bot.	0	1	6		
10. Fish—Salmon, in 1-lb. tins, talls, red, Brand, "Gold Standard" or equal	per tin	0	1	8		
11. " Sardine, Brand, "Silver King" or equal	do.	0	0	4½		
12. Flour—Self-raising, Brand, "Rono"	per lb.	0	0	2½		
13. Fruits—Dried (present season's)— Apples	do.	0	0	9½		
Apricots (slabs)	do.	0	1	0		
14. Fruit—Preserved, assorted, in 2-lb. tins (excluding Pines)	per tin	0	0	9½		
15. Golden Syrup—in 7-lb. tins	do.	0	1	8½		
16. Honey, first quality	per lb.	0	0	7		
17. Jolly Crystals—Loose	do.	0	0	10½		
18. Mustard—"Double Superfine"	do.	0	1	10		
19. Macaroni	do.	0	0	3½		
20. Pepper—White, ground	do.	0	0	11		
21. Pickles—Assorted, in 20-oz. bottles, Brand, "Pride of Victoria"	per bot.	0	0	10		
22. Raisins—Sultana, 3 Crowns (present season's)	per lb.	0	0	8½		
23. Rice—Dressed, to sample	do.	0	0	2½		
24. Salt—Fine	do.	0	0	0½		
25. Sauce—Tomato, in 13-oz. bottles, Brand, "Clipper"	per bot.	0	0	7½		
26. " Worcestershire, in 26-oz. bottles, Brand, "Brookes"	do.	0	0	11½		
27. Soda—Bicarbonate of	per lb.	0	0	2½		
28. " Washing	do.	0	0	1½		
29. Spaghetti	per pkt.	0	0	4½		
30. Spice—Mixed, loose	per lb.	0	1	1		
31. Starch—Rice, Brand, "Preservene"	do.	0	0	6½		
32. Tartar—Cream of	do.	0	1	6½		
33. Tomatoes—Tinned, "A.J.C."	per tin	0	0	9		
34. Vinegar—Malt	per gal.	0	1	1		
35. Cereal—"Pipors," in 24-oz. packets	per pkt.	0	0	9½		
"Wooties," in 24-oz. packets	do.	0	0	10½		
36. Wheatbix—Large	do.	0	0	10½		

ANNEX TO CONTRACT No. 1940/22.

B. Hosking, 429 High-street, Northcote, N.16.

Sub-schedule No. 2.

MEAT.

ALSO FOR TRAVANCORE DEVELOPMENTAL CENTRE, FLEMINGTON.

Security, £25.

		£	s.	d.
1. Fresh Beef—Prime Ribs	per lb.	0	0	6½
2. Beef—Silverside, Corned	do.	0	0	6½
3. Fresh Beef—Shin, meat and bone	do.	0	0	2½
4. " " Sirloin	do.	0	0	6½
5. " " " Round or Topside	do.	0	0	6
6. " " " Steak	do.	0	0	5
7. " " " Stewing (when required, minced)	do.	0	0	5
8. " " " Mutton—Chops (leg)	do.	0	0	5½
9. " " " " (loin)	do.	0	0	5½
10. " " " " (outlets)	do.	0	0	8
11. " " " Leg	do.	0	0	5½
12. " " " Loin	do.	0	0	5½
13. " " " In sides	do.	0	0	3½
14. Pork—Pickled	do.	0	0	11
15. Veal—Cutlets and Leg	do.	0	0	8
16. Frys—Lambs'	do.	0	0	3
17. Kidneys—Sheeps'	each	0	0	1½
18. Sausages—Best (Pork or Beef-mixed)	per lb.	0	0	5
19. Sausage Meat	do.	0	0	3
20. Liver—Calves	do.	0	0	4
21. Tripe	do.	0	0	3
22. Black Puddings	do.	0	0	4

ANNEX TO CONTRACT No. 1940/23.

Moran and Cato Pty. Ltd., 277 Brunswick-street, Fitzroy, N.6.

Sub-schedule No. 3.

JAMS.

Security, £10.

1. Jams—Assorted, of approved kinds, in the proportion of half seed and half stone, of the best quality, in 5-lb. tins, Brand, "Blue Bell"

£ s. d.
0 2 2½

SCHEDULE No. 5.**PROVISIONS—ARARAT DISTRICT.**

ANNEX TO CONTRACT No. 1940/24.

Bates Bros., Ararat.

Sub-schedule No. 1.

BREADSTUFFS.

Security, £75.

1. Bread—Fine wheaten, first quality
2. Flour—First quality

£ s. d.
0 11 11½
0 13 4

ANNEX TO CONTRACT No. 1940/25.

John MacLeod and Co. Pty. Ltd., 122 Lydiard-street, Ballarat.

Sub-schedule No. 2.

GROCERIES.

Security, £15.

1. Beans—Haricot, fresh and clean
2. Blue—Washing
3. Candles—(full weights) Kitchen's "Electrics," or other make of equal quality, to be supplied in 1-lb. packets
4. Cocoa—in 1-lb. tins or cardboard cartons
5. Corn or Maize Flour—in packets of 1 lb. net
6. Curry Powder
7. Golden Syrup in 56-lb. tins
8. Mustard—"Double Superfine"
9. Pepper—Black, ground
10. Pipes—Tobacco, clay
11. Raisins—Sultana, 3 Crowns (present season's)
12. Salt—Fine
13. Soda—Bicarbonate of
14. " Washing
15. Starch (Rice)—"Preservene"
16. Tartar—Cream of

£ s. d.
1 3 4
0 0 10
0 0 9
0 0 10
0 0 5
0 0 8
0 14 0
0 1 7
0 0 8
0 1 0
0 0 8½
0 6 0
0 0 2
0 10 0
0 0 7
0 1 7

ANNEX TO CONTRACT No. 1940/26.

John MacLeod and Co. Pty. Ltd., 122 Lydiard-street, Ballarat.

Sub-schedule No. 3.

JAMS.

Security, £6.

1. Jams—Assorted, in bulk of approved kinds, in the proportion of half seed and actual net half stone of the best quality, in tins, as weight required, Brand, "W. H. Johnston Pty."

£ s. d.
0 0 4½

ANNEX TO CONTRACT No. 1940/27.

Best, Spalding, and Bell, Barkly-street, Ararat.

Sub-schedule No. 4.

MEAT.

Security, £100.

1. Fresh Beef—Fore-quarters
2. " " Hind-quarters
3. " " Buttocks
4. " Mutton
5. Corned Beef—Rolled or round, as ordered, without bone or cartilage

£ s. d.
1 15 0†
1 18 6†
1 18 6†
1 11 6†
1 15 0†

† Rates subject to adjustment in accordance with Meat Export Parity Prices.

SCHEDULE No. 6.**PROVISIONS—BALLARAT DISTRICT.**

ANNEX TO CONTRACT No. 1940/28.

Brogden Bros., Lal Lal-street, Ballarat.

Sub-schedule No. 1.

BREADSTUFFS.

Security, £75.

1. Bread—Fine wheaten, first quality
2. Flour—First quality

£ s. d.
0 10 10
0 13 2

ANNEX TO CONTRACT No. 1940/29.

John MacLeod and Co. Pty. Ltd., 122 Lydiard-street, Ballarat.

Sub-schedule No. 2.

GROCERIES.

Security, £15.

		£	s.	d.
1. Blue—Washing	per lb.	0	0	9
2. Candles (full weights)—Kitchen's "Electrics," or other make of equal quality, in 1-lb. packets	do.	0	0	9
3. Corn or Maize Flour—in packets of 1 lb. net	do.	0	0	5
4. Currants—3 Crowns (present season's)	do.	0	0	7½
5. Curry Powder	do.	0	0	7½
6. Golden Syrup—in 7-lb. tins	per tin	0	1	9
7. Mustard—"Double Superfine"	per lb.	0	1	6
8. Pepper—Black, ground	do.	0	0	8
9. Pipes—Tobacco, clay	per doz.	0	1	0
10. Raisins—Sultana, 3 Crowns (present season's)	per lb.	0	0	8½
11. Salt—Fine	per cwt.	0	5	0
12. Soda—Bicarbonate of	per lb.	0	0	2
13. .. Washing	per cwt.	0	10	0
14. Spice—Mixed, in 1-oz. packets	per doz.	0	0	11
15. Starch (Rice)—"Preservene"	per lb.	0	0	7
16. Tartar—Cream of	do.	0	1	6
17. Vinegar—Malt	per quart	0	0	3

ANNEX TO CONTRACT No. 1940/30.

John MacLeod and Co. Pty. Ltd., 122 Lydiard-street, Ballarat.

Sub-schedule No. 3.

JAMS.

Security, £8.

		£	s.	d.
1. Jams—Assorted, in bulk, of approved kinds, in proportion of half seed actual net and half stone, of the best quality, in tins as required, Brand, "W. H. Johnston Pty."	per lb.	0	0	4½
2. .. Assorted, in 24-oz. tins, in the proportion of half seed and half stone, of the best quality, Brand, "S.P.C."	per tin	0	0	9
3. .. Assorted, in 5-lb. tins, in the proportion of half seed and half stone, of the best quality, Brand, "S.P.C."	do.	0	2	2

ANNEX TO CONTRACT No. 1940/31.

H. J. Symons Pty. Ltd., 1015 Macarthur-street, Ballarat.

Sub-schedule No. 4.

MEAT.

Security, £125.

		£	s.	d.
1. Fresh Beef—Fore-quarters	per cntl.	1	19	6½
2. .. Hind-quarters	do.	1	19	6½
3. .. Buttocks	do.	1	19	6½
4. .. Mutton	do.	1	11	3½
5. Corned Beef—Rolled or round, as ordered, without bone or cartilage	do.	1	19	6½
6. Fresh Suet—Kidney	do.	1	19	6½

† Rates subject to adjustment in accordance with Meat Export Parity Prices.

SCHEDULE No. 7.

PROVISIONS—BEECHWORTH DISTRICT.

ANNEX TO CONTRACT No. 1940/32

Wm. Price, Newtown, Beechworth.

Sub-schedule No. 1.

BREADSTUFFS.

Security, £100.

		£	s.	d.
1. Bread—Fine wheaten, first quality	per cntl.	0	16	0
2. Flour—First quality	do.	0	15	0

ANNEX TO CONTRACT No. 1940/33.

Moran and Cato Pty. Ltd., 277 Brunswick-street, Fitzroy, N.G.

Sub-schedule No. 2.

GROCERIES.

Security, £10.

		£	s.	d.
1. Blue—Washing	per lb.	0	0	10
2. Candles (full weights)—Kitchen's "Electrics," or other make of equal quality, 1-lb. packets	do.	0	0	9½
3. Cocoa—in 1-lb. tins or cardboard cartons	do.	0	0	7½
4. Corn or Maize Flour—in packets of 1 lb. net	do.	0	0	6
5. Golden Syrup—in 7-lb. tins	per tin	0	2	0
6. Mustard—"Double Superfine"	per lb.	0	2	0
7. Pepper—Black, ground	do.	0	0	10½

Sub-schedule No. 2—continued.

GROCERIES—continued

		£	s.	d.
8. Pipes—Tobacco, clay	per doz.	0	1	0
9. Raisins—Sultana, 3 Crowns (present season's)	per lb.	0	0	9
10. Salt—Fine	per cwt.	0	8	0
11. Soap—"Monkey Brand," or equal thereto, in 5-oz. tablets	per tab.	0	0	2½
12. .. Sand, Carbolic, or Borax, in 12-oz. blocks	per blk.	0	0	2½
13. Soda—Bicarbonate of	per lb.	0	0	3½
14. .. Washing	per cwt.	0	12	6
15. Starch (Rice)—"Preservene"	per lb.	0	0	7½
16. Tartar—Cream of	do.	0	1	7½
17. Vinegar—Malt	per qt.	0	0	5

ANNEX TO CONTRACT No. 1940/34.

Moran and Cato Pty. Ltd., 277 Brunswick-street, Fitzroy, N.G.

Sub-schedule No. 3.

JAMS.

Security, £8.

		£	s.	d.
1. Jams—Assorted, in bulk, of approved kinds, in the proportion of half seed actual and half stone, of the best quality, in tins as required, Brand, "Blue Bird"	per lb.	0	0	5

ANNEX TO CONTRACT No. 1940/35.

J. R. Newey, Ford-street, Beechworth.

Sub-schedule No. 4.

MEAT.

Security, £90.

		£	s.	d.
1. Fresh Beef—Fore-quarters	per cntl.	1	15	5
2. .. Hind-quarters	do.	1	15	5
3. .. Buttocks	do.	1	15	5
4. .. Mutton	do.	1	15	5
5. Corned Beef—Rolled or round, as ordered, without bone or cartilage	do.	2	0	0

SCHEDULE No. 8.

PROVISIONS—CASTLEMAINE DISTRICT.

ANNEX TO CONTRACT No. 1940/36.

Rasmussen Bros., Johnston-street, Castlemaine.

Sub-schedule No. 1.

BREAD.

Security, £14.

		£	s.	d.
1. Bread—Fine wheaten, first quality	per cntl.	0	18	9

ANNEX TO CONTRACT No. 1940/37.

H. J. Robertson, Castlemaine.

Sub-schedule No. 2.

MEAT.

Security, £16.

		£	s.	d.
1. Fresh Beef, boneless	per cntl.	2	14	2
2. Corned Beef—Rolled or Round, without bone or cartilage	do.	2	14	2

SCHEDULE No. 9.

PROVISIONS—SCHOOL OF FORESTRY, CRESWICK.

For Students at the School of Forestry.

(Delivery at the School.)

ANNEX TO CONTRACT No. 1940/38.

R. C. Bowley, Albert-street, Creswick.

Sub-schedule No. 1.

BREADSTUFFS.

Security, £3.

		£	s.	d.
1. Bread—Fine wheaten, first quality	per cntl.	1	2	11
2. Flour—First quality	per lb.	0	0	2½

ANNEX TO CONTRACT No. 1940/39.

J. Tait and Son, Albert-street, Creswick.

Sub-schedule No. 2.

GROCERIES.

Security, £5.

		£	s.	d.
1. Barley—Pearl	per lb.	0	0	1½
2. Blue—Washing	do.	0	0	9½
3. Butter—First grade creamery, to score not less than 91 points, Government grade, commerce regulations standard	do.	0	1	5½
4. Cheese—First-class quality, matured	do.	0	0	11½
5. Coffee—Fresh roasted and whole, Beans to be thoroughly sound, to sample	do.	0	1	0

Sub-schedule No. 2—continued.

GROCERIES—continued.

		£	s.	d.
6. Corn or Maize Flour—in packets of 1 lb. net	per lb.	0	0	6½
7. Eggs—New laid	per doz.	0	1	2
8. Ginger—Ground	per lb.	0	0	11
9. Golden Syrup—in 7-lb. tins	per tin	0	1	10
10. Jams—Assorted, in 5-lb. tins, net, in the proportion of half seed and half stone, Brand, "Red Feather"	do.	0	2	6½
11. Mustard—"Double Superfine"	per lb.	0	1	11
12. Oatmeal	do.	0	0	2
13. Peas—Split	do.	0	0	3
14. Pepper—Black, ground	do.	0	0	8
15. Raisins—Sultana, 3 Crowns (present season's)	do.	0	0	8½
16. Rice—Dressed, to sample	do.	0	0	2½
17. Salt—Fine	do.	0	0	0½
18. Soap—Household, yellow, dry, and hard, to sample	do.	0	0	3
19. " Sand, Carbolic, in 12-oz. blocks	each	0	0	1½
20. Soda—Bicarbonate of	per lb.	0	0	2½
21. " Washing	do.	0	0	1½
22. Starch—(Rice)—Brand, "Preservene"	do.	0	0	6
23. Tartar—Cream of	do.	0	1	8
24. Tea—To sample	do.	0	2	2½
25. Vinegar—Malt	per pint	0	0	1½
26. Potatoes—Dry and free from dirt	per cwt.	0	13	6

ANNEX TO CONTRACT No. 1940/40.

Eric Coughlan, Cresswick.

Sub-schedule No. 3.

MEAT.

Security, £4.

		£	s.	d.
1. Fresh Beef—Fore-quarter	per lb.	0	0	7
2. " Mutton	do.	0	0	7
3. Corned Beef—Rolled or round, as ordered, without bone or cartilage	do.	0	0	8
4. Pork (Leg)	do.	0	0	10
5. Fresh Suet—Kidney	do.	0	0	2

ANNEX TO CONTRACT No. 1940/41.

Emma E. Pollard, Eastern Hill, Cresswick.

Sub-schedule No. 4.

MILK.

Security, £3.

		£	s.	d.
1. Milk—Fresh and pure	per qt.	0	0	5

SCHEDULE No. 10.

PROVISIONS—MCLEOD SETTLEMENT, FRENCH ISLAND.

Delivery to be made at Lang Lang Jetty.

ANNEX TO CONTRACT No. 1940/42.

James Jackson, Lang Lang.

Sub-schedule No. 1.

BREAD.

Security, £12.

		£	s.	d.
1. Bread—Fine, wheaten, first quality	per cntl.	1	0	10½

ANNEX TO CONTRACT No. 1940/43.

A. G. Glasscock, Lang Lang.

Sub-schedule No. 2.

GROCERIES.

Security, £3.

		£	s.	d.
1. Butter—First grade creamery, to score not less than 91 points, Government grade, Commerce Regulations Standard	per lb.	0	1	5½
2. Cheese—Matured	do.	0	1	0
3. Jams—Assorted, in proportion of half seed and half stone, of best quality, in 24-oz. tins, "Victoriee"	per tin	0	0	10

ANNEX TO CONTRACT No. 1940/44.

E. W. Misson, Lang Lang.

Sub-schedule No. 3.

MEAT.

Security, £20.

		£	s.	d.
1. Fresh Beef—Hind-quarters	per cntl.	2	18	4
2. " Mutton	per lb.	0	0	6
3. Corned Beef—Rolled or round, as ordered, without bone or cartilage	do.	0	0	7

SCHEDULE No. 11.

PROVISIONS—GEEELONG DISTRICT.

ANNEX TO CONTRACT No. 1940/45.

E. S. Potter Pty. Ltd., National Mutual Buildings, Geelong.

Sub-schedule No. 1.

BREAD.

Security, £25.

		£	s.	d.
1. Bread—Fine, wheaten, first quality	per cntl.	0	17	9

ANNEX TO CONTRACT No. 1940/46.

J. J. Pigott, Market Buildings, Geelong.

Sub-schedule No. 2.

MEAT.

Security, £40.

		£	s.	d.
1. Fresh Beef	per cntl.	1	17	6
2. " Buttocks	per lb.	0	0	4½
3. Corned Beef—Rolled or round, without bone or cartilage	do.	0	0	5

ANNEX TO CONTRACT No. 1940/47.

E. P. Mayes, 47 Little Ryrie-street, Geelong.

Sub-schedule No. 3.

MILK.

Security, £3.

		£	s.	d.
Milk—Fresh and pure	per gal.	0	1	3

SCHEDULE No. 12.

PROVISIONS—SANATORIUM, GREEN-VALE.

(Delivery at the Sanatorium.)

ANNEX TO CONTRACT No. 1940/48.

Jessie McInness, Sydney-road, Campbellfield.

Sub-schedule No. 1.

BREADSTUFFS.

Security, £7.

		£	s.	d.
1. Bread—Fine, wheaten, first quality	per cntl.	0	15	2
2. Flour—First quality	do.	0	12	11
3. " Wholemeal	per lb.	0	0	1½
4. " Wheatmeal	do.	0	0	1½

ANNEX TO CONTRACT No. 1940/49.

Moran and Cato Pty. Ltd., 277 Brunswick-street, Fitzroy, N.6.

Sub-schedule No. 2.

GROCERIES.

Security, £5.

		£	s.	d.
1. Bacon—in sides, "Watson and Paterson"	per lb.	0	1	2
2. Beans—Lima	per lb.	0	0	7
3. Biscuits—Malt, Marie, Coffee, &c., as ordered, in approximately 3-lb. tins	per tin	0	2	6
4. Blue—Washing	per lb.	0	0	9½
5. Borax	do.	0	0	4
6. Camp Pie—1-lb. tins	do.	0	0	8
7. Capers—in 16-oz. bottles	per bot.	0	1	6
8. Cheese—Matured, in 10-lb. loaves	per lb.	0	1	4
9. Cinnamon	do.	0	1	6
10. Cocoa—in 1-lb. tins or cardboard cartons	do.	0	0	7½
11. Coconut—Desiccated	do.	0	0	7½
12. Corn or Maize Flour—in packets of 1 lb. net	per lb.	0	0	6
13. Curry Powder	do.	0	0	9
14. Currants—3 Crowns (present season's)	do.	0	0	8
15. Custard Powders—in 1-lb. packets	per pkt.	0	0	8
16. Dates	per lb.	0	0	7½
17. Essence of Lemon—in full 8-oz. bottles	per bot.	0	1	5½
18. " " Vanilla—in full 8-oz. bottles	do.	0	1	5½
19. Fish—Sardine, ½ tins, "Banquet" or "Silver King"	per tin	0	0	4½
20. " Herrings in Sauce, 14-oz. tin	do.	0	0	10
21. Flour—Self-raising, Brand, "Golden Crust"	per lb.	0	0	3½
22. Fruits—Dried (present season's)— Apricots (slabs)	do.	0	1	0½
23. " Preserved (excluding Pines)	per tin	0	0	9½
24. Gelatine—Powdered	per lb.	0	1	10
25. Ginger—Ground	do.	0	0	11
26. Golden Syrup—in 7-lb. tins	per tin	0	1	8½
27. Honey—First quality	per lb.	0	0	7
28. Jams—Assorted, in 5-lb. tins, in the proportion of half seed and half stone, Brand, "Moran and Cato's."	per tin	0	2	6
29. Jelly Crystals—Loose	per lb.	0	0	10½

Sub-schedule No. 2—continued.

GROCERIES—continued.			£	s.	d.
30. Junket Tablets	per doz.	0	5	0	
31. Lemon Peel—Cut	per lb.	0	0	8½	
32. Macaroni	do.	0	0	3½	
33. Mustard—"Double Superfine"	do.	0	1	10	
34. Nutmeg—Ground	do.	0	1	10	
35. Oatmeal—Flaked	do.	0	0	2½	
36. Spice—Mixed, in 1-oz. packets	per pkt.	0	0	1½	
37. Pepper—White, ground	per lb.	0	0	11½	
38. Pickles—Assorted, in 20-oz. bottles, "Pride of Victoria"	per bot.	0	0	10	
39. Prunes—Dried, 50-60's (present season's)	per lb.	0	0	7½	
40. Raisins—3 Crowns (present season's)	do.	0	0	6½	
41. "Sultana, 3 Crowns (present season's)	do.	0	0	8½	
42. Rice—Dressed, to sample	do.	0	0	2½	
43. Salmon—Fresh, in 1lb. tins, "Red," "Gold Standard" or equal	per tin	0	1	8	
44. Salt—Fine	per lb.	0	0	0½	
45. Sauce—Worcestershire, 10-oz. bottles, Brand, "Hardings"	per bot.	0	0	9	
46. "Tomato, 13-oz. bottles, Brand, "Clipper"	do.	0	0	7½	
47. Soda—Bicarbonate of	per lb.	0	0	2½	
48. "Washing	per cwt.	0	10	3	
49. Spaghetti	per lb.	0	0	4½	
50. Starch (Rice)—"Preservene"	do.	0	0	6½	
51. Sugar—Castor	do.	0	0	4	
52. Tapioca—Pearl	do.	0	0	3½	
53. "Seed (Sago)	do.	0	0	3½	
54. Tartar—Cream of	do.	0	1	6½	
55. Tomatoes—Preserved, in 2-lb. tins	per tin	0	0	8½	
56. Treacle—in 7-lb. tins	do.	0	1	8½	
57. Vermicelli	per lb.	0	0	4	
58. Vinegar—Malt	per pint	0	0	2	
59. Cereal—"Pipers," in 24-oz. packets "Weeties," in 24-oz. packets	per pkt.	0	0	9½	

ANNEX TO CONTRACT No. 1940/50.

F. Watkins Pty. Ltd., 184 Bourke-street, Melbourne, C.I.

Sub-schedule No. 3.

MEAT. (cuts as ordered.)

Security, £20.

		£	s.	d.
1. Beef, Fresh—Roast	per cntl.	2	6	0
2. " " Topside	per lb.	0	0	5½
3. " " Rump	do.	0	0	9
4. " " Corned Silverside	do.	0	0	6½
5. Mutton—Fresh (sides)	do.	0	0	4½
6. Tripe—Ox (during winter)	do.	0	0	4
7. Sausages—Mixed	do.	0	0	5½
8. " Pork	do.	0	0	8
9. Steak—Minced	do.	0	0	6
10. Frys—Lamb's	do.	0	0	6
11. Chops—Mid Loin	do.	0	0	6½
12. " " Cutlet	do.	0	0	6½
13. " " Leg	do.	0	0	5½
14. Pork—Loin	do.	0	0	9
15. Suet—Kidney, fresh	do.	0	0	4
16. Veal Cutlets	do.	0	0	7
17. Veal—Leg, Boned	do.	0	0	7
18. Kidneys—Ox	each	0	0	9
19. Pigs' Cheeks	per lb.	0	0	3
20. Ox Tails	do.	0	0	7
21. Tongues—Ox	do.	0	0	7
22. " Sheep	per doz.	0	3	0
23. Savelloys	do.	0	1	0
24. Brains	per set	0	0	2
25. Pork German	per lb.	0	0	9
26. Rabbits—Fresh	per pair	0	1	9
27. Poultry—First Quality	do.	0	6	9

SCHEDULE No. 13.

PROVISIONS—COORIEMUNGLE PRISON CAMP, HEYTESBURY FOREST.

(Delivery to be made at the Camp.)

ANNEX TO CONTRACT No. 1940/51.

H. and C. Thorne and Co., Timboon.

Sub-schedule No. 1.

BREAD.

Security, £5.

	£	s.	d.
1. Bread—Fine, Wheaten, first quality .. per cwtl.	1	3	11½

ANNEX TO CONTRACT No. 1940/52.

E. L. McDowall and Co., Timboon.

Sub-schedule No. 2.

GROCERIES.

Security, £5.

		£	s.	d.
1. Butter—First grade creamery, to score not less than 91 points, Government grade	per lb.	0	1	6½
2. Cheese—Matured, first class quality	do.	0	1	3
3. Golden Syrup—in 7-lb. tins	per tin	0	2	0½
4. Jams—Assorted, in bulk, of approved kinds, in the proportion of half seed and half stone, of the best quality, in tins as required, "Melray" and "Blue-Bird"	per lb.	0	0	6
5. Oatmeal	do.	0	0	2½
6. Rice—Dressed, to sample	do.	0	0	3½
7. Salt—Fine	do.	0	0	0½
8. Tea—To sample	do.	0	2	2
9. Treacle—in 7-lb. tins	per tin	0	1	10½
10. Potatoes—Dry and free from dirt	per cwt.	0	10	0

ANNEX TO CONTRACT No. 1940/53.

Waterfall and Son, Timboon.

Sub-schedule No. 3.

MEAT.

Security, £4.

		£	s.	d.	
1. Fresh Beef—Ribs	per lb.	0	0	7½	
2. „ Mutton—Legs	do.	0	0	8½	
3. Corned Beef—Without bone or cartilage, rolled	do.	0	0	7½	
	round	do.	0	0	9
4. Dripping	do.	0	0	5	

SCHEDULE No. 14.

PROVISIONS—ABORIGINAL STATION, LAKE TYERS.

(Delivery at Lake Tyers Station.)

ANNEX TO CONTRACT No. 1940/54.

H. E. Donnelly, Buchan.

Sub-schedule No. 1.

BREADSTUFFS.

Security, £25.

		£	s.	d.
1. Bread—Fine, wheaten, first quality	.. per cntl.	0	19	9½
2. Flour—First quality do.	0	14	3

ANNEX TO CONTRACT No. 1940/55.

Coale and Symmons Pty. Ltd., Lakes Entrance.

Sub-schedule No. 2.

GROCERIES.

Security, £12.

	Security, £12.		£	s.	d.
1. Baking Powder—Snowflake, or equal thereto, in 1-lb. tins	per lb.	do	0	1	1½
2. Candles (full weights)—Kitchen's "Electrines," or other make of equal quality, in 1-lb. packets	do.	do.	0	0	9½
3. Coffee—Fresh, roasted, and whole, beans to be thoroughly sound, to sample	do.	do.	0	1	3
4. Cocoa—in 1-lb. tins or cardboard cartons	do.	do.	0	0	6
5. Corn or Maize Flour—in 1-lb. packets	do.	do.	0	0	6½
6. Currants—3 Crowns (present season's)	do.	do.	0	0	8½
7. Curry Powder	do.	do.	0	1	1
8. Matches—Safety, 60 in a box	per gross	do.	0	4	10
9. Mustard—"Double Superfine"	per lb.	do.	0	1	9
10. Pepper—Black, ground, in ½-lb. tins	per tin	do.	0	0	3½
11. Raisins—Sultana, 3 Crowns (present season's)	per lb.	do.	0	0	9
12. Salt—Coarse	per cwt.	do.	0	5	0
13. " Fine	do.	do.	0	5	6
14. Soap—Household, hard and dry, to sample	do.	do.	1	3	0
15. Soda—Bicarbonate of	per lb.	do.	0	0	3
16. " Washing	do.	do.	0	0	1½
17. Tartar—Cream of	do.	do.	0	2	0
18. Treacle—in 7-lb. tins	per tin	do.	0	1	10
19. Vinegar—Malt	per qt.	do.	0	0	3½

ANNEX TO CONTRACT No. 1940/56.

Coale and Symmons Pty. Ltd., Lakes Entrance.

Sub-schedule No. 3.

JAMS.

Security, £3.

	Security, £3.	£	s.	d.
1. Jams—Assorted, in 24-oz. tins, in the proportion of half seed and half stone, Brand, "O.K." and "Leggo's"	per tin	0	0	10

SCHEDULE No. 15.
PROVISIONS—EXPERIMENT FARM,
RUTHERGLEN.

Delivery at the Farm.

ANNEX TO CONTRACT No. 1940/57.

A. F. Parrott, Main-street, Rutherglen.

Sub-schedule No. 1.

BREAD.

	Security, £3.	£	s.	d.
1. Bread—Fine wheaten, first quality .. per cntl.		1	2	11

ANNEX TO CONTRACT No. 1940/58.

Moran and Cato Pty. Ltd., 277 Brunswick-street, Fitzroy, N.6.

Sub-schedule No. 2.

GROCERIES, ETC.

	Security, £3.	(R)	£	s.	d.
1. Blue—Washing per lb.		0	0	10½	
2. Candles (full weights)—Kitchen's "Electrics," or other make of equal quality, in 1-lb. packets do.		0	0	9½	
3. Cornflakes—"Kellogg's," in 16-oz. packets per pkt.		0	1	1	
4. Corn or Maize Flour—in packets of 1-lb. not per lb.		0	0	6	
5. Coconut—Desiccated do.		0	0	7	
6. Currants—3 Crowns (present season's) do.		0	0	8½	
7. Fish—Preserved, Salmon, Fresh Herrings, as required, in ½-lb. tins, "Chumm" per tin		0	0	7½	
8. Fruits—Preserved, assorted, in 2-lb. tins (excluding Pineapple) do.		0	0	10	
9. Jams—Assorted, of approved kinds, in proportion of half seed and half stone, in 24-oz. tins, Brand, "Blue Bell" per tin		0	0	9½	
10. " Assorted, of approved kinds, in proportion of half seed and half stone, in 5-lb. tins, Brand, "Blue Bell" do.		0	2	6	
11. Jelly Crystals—in 4-oz. packets per pkt.		0	0	3½	
12. Macaroni or Vermicelli—as ordered per lb.		0	0	4	
13. Matches—Safety per gross		0	5	3	
14. Oatmeal—Flaked per lb.		0	0	3	
15. Pepper—Black or white, ground do.		0	1	0	
16. Potatoes—Dry and free from dirt per cwt.		0	15	0	
17. Rice—Dressed, to sample per lb.		0	0	3	
18. Salt—Fine do.		0	0	1½	
19. Sauce—Tomato, "Dyasons," 13-oz. bottles per bot.		0	0	7	
20. Soap—Household, yellow, to sample per lb.		0	0	3½	
21. " "Monkey Brand," or equal thereto, in 5-oz. tablets per tab.		0	0	2½	
22. " Toilet, "Bath," in 4½-oz. tablets, to sample, Kitchen's, or equal thereto per doz.		0	2	3	
23. " Sand, in 12-oz. blocks per block		0	0	2	
24. Soda—Washing per lb.		0	0	1½	
25. Starch (Rice)—"Preservone" do.		0	0	6½	
26. Tea—To sample do.		0	2	0	

SCHEDULE No. 16.

PROVISIONS AT SALE.

(Delivery at the Gaol.)

Sub-schedule No. 1.

BREAD.

1. Bread—Fine wheaten, first quality .. per cntl.	Purchase by Agreement
---	-----------------------

ANNEX TO CONTRACT No. 1940/59.

Ronchi Bros., 87 Raymond-street, Sale.

Sub-schedule No. 2.

MEAT.

Security, £3.

	£	s.	d.
1. Fresh Beef—Stowing per lb.	0	0	6
2. " Mutton do.	0	0	6
3. Corned Beef—Rolled or round, without bone or cartilage do.	0	0	6

SCHEDULE No. 17.

PROVISIONS—PLEASANT CREEK
SPECIAL SCHOOL, STAWELL.

(Delivery at the School.)

ANNEX TO CONTRACT No. 1940/60.

C. Hunt and Sons, P.O. Box, Stawell.

Sub-schedule No. 1.

BREADSTUFFS.

Security, £10.

	£	s.	d.
1. Bread—Fine wheaten, first quality .. per cntl.	0	13	0
2. Flour—First quality do.	0	14	0

ANNEX TO CONTRACT No. 1940/61.

John MacLeod and Co. Pty. Ltd., 122 Lydiard-street, Ballarat.

Sub-schedule No. 2.

GROCERIES.

Security, £10.

	£	s.	d.
1. Barley—Pearl per lb.	0	0	2
2. Blue—Washing per lb.	0	0	9
3. Cereal—"Kornies" and "Weeties", large .. per pkt.	0	0	10
4. Cheese—Matured per lb.	0	1	3
5. Cocoa—in 1-lb. tins or cardboard cartons .. do.	0	0	10
6. Coffee—Ground, to sample do.	0	1	2
7. Corn or Maize Flour—in 1-lb. packets .. do.	0	0	5½
8. Curry Powder do.	0	0	8
9. Dates do.	0	0	7
10. Ginger—Ground do.	0	0	9
11. Golden Syrup—in 7-lb. tins per tin	0	1	11
12. Honey, first quality per lb.	0	0	6
13. Jams—Assorted, of approved kinds, in proportion of half seed and half stone, in tins containing 24 oz. not, Brand, "S.P.C." per tin	0	0	10
14. Lemon Peel per lb.	0	0	7
15. Oatmeal do.	0	0	2
16. Pepper—Black, ground do.	0	0	7
17. Prunes—Dried, 50-60's (present season's) .. do.	0	0	8
18. Raisins—Sultana, 3 Crowns (present season's) do.	0	0	8½
19. Rice—Dressed, to sample per cwt.	1	6	0
20. Salt—Fine do.	0	5	6
21. Seed Tapioca—Sago, to sample do.	1	6	0
22. Soap—Extract of, Kitchen's, or equal thereto .. per lb.	0	0	3½
23. " "Lifebuoy," or equal thereto .. per cake	0	0	3
24. " "Monkey" Brand, or equal thereto, in 5-oz. tablets .. per tab.	0	0	3
25. " Sand, in 12-oz. blocks per block	0	0	2
26. " "Velvet," or equal thereto .. per doublet	0	0	3½
27. Soda—Bicarbonate of per lb.	0	0	2
28. " Washing per cwt.	0	10	0
29. Spice—Mixed, in 1-oz. packets per pkt.	0	0	1
30. Starch (Rice)—Brand, "Preservone" .. per lb.	0	0	7
31. Tartar—Cream of do.	0	1	6
32. Tea—To sample do.	0	1	8
33. Treacle—in 7-lb. tins per tin	0	1	9

ANNEX TO CONTRACT No. 1940/62.

Ada J. West, 65 Main-street, Stawell.

Sub-schedule No. 3.

MEAT.

Security, £15.

	£	s.	d.
1. Fresh Beef—Primo ribs per lb.	0	0	7
2. " " Sirloin do.	0	0	7½
3. " " Stewing (minced when required) do.	0	0	6½
4. Beef—Corned, Silverside do.	0	0	7
5. Fresh Mutton—Chops (loin) do.	0	0	7
6. " Leg do.	0	0	6½
7. " In sides do.	0	0	6
8. Frys—Lambs' each	0	0	2
9. Sausages—Best (pork- or beef-mixed) .. per lb.	0	0	5
10. Saveloys per doz.	0	1	1
11. Tripe do.	0	0	6

ANNEX TO CONTRACT No. 1940/63.

R. S. Andrews, Stawell.

Sub-schedule No. 4.

MILK.

Security, £10.

	£	s.	d.
1. Milk—Fresh and pure per gal.	0	1	4½

SCHEDULE No. 18. **PROVISIONS—SUNBURY DISTRICT.**

ANNEX TO CONTRACT No. 1940/64.

*J. N. Hennessy Pty. Ltd., 55 Sydney-road, Brunswick, N.10.***Sub-schedule No. 1.**

BREADSTUFFS.

Security, £112.

		£	s.	d.
1. Bread—Fine wheaten, first quality	per cwt.	0	11	9
2. Flour—First quality	do.	0	12	9

ANNEX TO CONTRACT No. 1940/65.

*A. C. Skill, Sunbury.***Sub-schedule No. 2.**

GROCERIES.

Security, £20.

		£	s.	d.
1. Blue—Washing	per lb.	0	0	8½
2. Beans—Haricot	per cwt.	1	5	6
3. Candles—Full weight, in 1-lb. packets, Kitchen's "Electrines"	per lb.	0	0	6
4. Cocoa—in 1-lb. tins or cardboard cartons	do.	0	0	4½
5. Corn or Maize Flour—in packets of 1-lb. net	do.	0	0	4½
6. Currants—3 Crowns (present season's)	do.	0	0	6½
7. Curry Powder	do.	0	1	0
8. Ginger—Ground	do.	0	0	7
9. Golden Syrup—in 7-lb. tins	per tin	0	1	8½
10. Lemon Peel	per lb.	0	0	6
11. Mustard—"Double Superfine"	do.	0	1	4
12. Pepper—Black, ground	do.	0	0	5½
13. Pipes—Tobacco, clay	per doz.	0	0	11
14. Raisins—Sultana, 3 Crowns (present season's)	per lb.	0	0	7½
15. Salt—Fine	per cwt.	0	4	0
16. Soda—Bicarbonate of	per lb.	0	0	2
17. "Washing	per cwt.	0	9	0
18. Spice—Mixed, loose	per lb.	0	1	2
19. Starch (Rice)—"Preservene"	do.	0	0	5½
20. Tartar—Cream of	do.	0	1	5
21. Vinegar—Malt	per pint	0	0	1½
22. Yolkine	per lb.	0	2	9

Sub-schedule No. 3.

CEREALS.

1. Oatmeal	per cwt.	Order under Mel-bourne District Contract.
2. Rice—Dressed to sample	do.	
3. Rice—Unpolished	do.	
4. Seed Tapioca—(Sago), to sample	do.	
5. Pearl Barley	do.	
6. Peas—Split	do.	

ANNEX TO CONTRACT No. 1940/66.

*A. C. Skill, Sunbury.***Sub-schedule No. 4.**

JAMS.

Security, £13.

		£	s.	d.
1. Jams—Assorted, in bulk, of approved kinds, in the proportion of half seed and half stone, of the best quality, in tins as required, Brands, "Victorice" and "Blue Bird"	per lb.	0	0	4½

ANNEX TO CONTRACT No. 1940/67.

*F. Watkins Pty. Ltd., 184 Bourke-street, Melbourne, C.1.***Sub-schedule No. 5.**

MEAT.

Security, £150.

		£	s.	d.
1. Fresh Beef—Fore-quarters	per cwt.	1	17	6
2. "Hindquarters	do.	1	17	6
3. "Buttocks	per lb.	0	0	5½
4. "Mutton	do.	0	0	4½
5. Corned Beef—Rolled or round, as ordered, without bone or cartilage	do.	0	0	5½

