



VICTORIA GOVERNMENT GAZETTE.

Published by Authority.

[Registered at the General Post Office, Melbourne, for transmission by post as a newspaper.]

No. 1022]

FRIDAY, NOVEMBER 28.

[1952

Factories and Shops Acts.

DETERMINATION OF A WAGES BOARD ADJUSTED PURSUANT TO SECTION 21 OF THE FACTORIES AND SHOPS ACT 1934 (No. 4275).

I, Raymond Henry Beers, Secretary for Labour, in pursuance of the powers conferred by the Factories and Shops Acts, hereby make and issue the following adjusted Determination of the Wages Board referred to hereunder showing adjusted rates and prices to operate from the beginning of the first pay period to commence in November, 1952.

Dated at Melbourne, this

24th day of November, 1952.

RAY. H. BEERS.

Secretary for Labour.

SCIENTIFIC AND TECHNICAL WORKERS BOARD.

Clause 2 of the Determination published in *Government Gazette* No. 515 of the 20th June, 1952, shall be replaced by the following clause:—

WAGES PER WEEK OF 40 HOURS.

| 2. (a) | | <i>Trainees.</i> | | |
|------------------|---------|--------------------------------|--------------|---------|
| Age. | | * Percentage of Basic Wage. | Weekly Wage. | |
| | | | Male. | Female. |
| | | | £ s. d. | £ s. d. |
| 16 years | | 45 | 5 2 6 | 3 17 0 |
| 17 years | | 60 | 6 17 0 | 5 2 6 |
| 18 years | | 75 | 8 11 0 | 6 8 0 |
| 19 years | | 90 | 10 5 0 | 7 14 0 |
| 20 years | | 100 plus 5s. | 11 13 0 | 8 16 0 |
| 21 years | | 100 plus 27s. 6d. | 12 15 6 | 9 18 6 |
| 22 years | | 100 plus 42s. 6d. | 13 10 6 | 10 13 6 |
| 23 years or over | | 100 plus 57s. 6d. | 14 5 6 | 11 8 6 |

* The percentages set out in the case of male trainees are related to the male basic wage, and in the case of female trainees to the female basic wage.

Proportion:—The proportion of trainees in any establishment shall not exceed one trainee to every three or fraction of three chemists who are at least graduate chemists.

Notwithstanding anything contained in this Determination, any person who on the 1st November, 1951 was employed and whose engagement or continued employment as a trainee, is by this Determination forbidden, shall be entitled to be employed, and shall be paid the scale of wages prescribed for a trainee of like age.

(b) *Female Technical Assistants.*

| Age. | Percentage of Female Basic Wage. | Weekly Wage. |
|--------------------------|----------------------------------|--------------|
| | | £ s. d. |
| 16 years | 45 | 3 17 0 |
| 17 years | 60 | 5 2 6 |
| 18 years | 75 | 6 8 0 |
| 19 years | 90 | 7 14 0 |
| 20 years | 100 plus 5s. | 8 16 0 |
| 21 years or over | 100 plus 27s. 6d. | 9 18 6 |

(c) *Other Employees.*

| | Weekly Wage. | |
|---|--------------|---------|
| | Male. | Female. |
| | £ s. d. | £ s. d. |
| (i) Graduate chemist (as defined)— | | |
| 1st year of experience as such | 14 18 0 | 12 1 0 |
| Thereafter | 15 13 0 | 12 16 0 |
| (ii) Qualified chemist (as defined)— | | |
| 1st year of experience as such | 16 8 0 | 13 11 0 |
| Thereafter | 17 3 0 | 14 6 0 |
| (iii) Adult male technical assistant (as defined) | 13 11 0 | |

Clauses, other than clause 2, of the said Determination shall remain in force.



VICTORIA
GOVERNMENT GAZETTE.

Published by Authority.

[Registered at the General Post Office, Melbourne, for transmission by post as a newspaper.]

No. 1023]

FRIDAY, NOVEMBER 28.

[1952

Factories and Shops Acts.

**DETERMINATION OF A WAGES BOARD ADJUSTED PURSUANT TO SECTION
21 OF THE FACTORIES AND SHOPS ACT 1934 (No. 4275).**

I, Raymond Henry Beers, Secretary for Labour, in pursuance of the powers conferred by the Factories and Shops Acts, hereby make and issue the following adjusted Determination of the Wages Board referred to hereunder showing adjusted rates and prices to operate from the beginning of the first pay period to commence in November, 1952.

Dated at Melbourne, this
21st day of November, 1952.

RAY H. BEERS,
Secretary for Labour.

UNDERTAKERS BOARD.

Clauses 2 and 20 of the Determination published in *Government Gazette* No. 606 of the 1st June, 1951, shall be replaced by the following clauses:—

2. WAGES PER WEEK OF 40 HOURS.*

| Apprentices. | | | Improvers. | | | Other Employees. | | Within the Metropolitan District. | Outside the Metropolitan District. |
|---|---------------------------|-------|---|---------------------------|-------|---|-------|-----------------------------------|------------------------------------|
| WAGES. | | | WAGES. | | | WAGES. | | s. d. | s. d. |
| — | Percentage of Basic Wage. | s. d. | Age. | Percentage of Basic Wage. | — | | | | |
| | | | | | | | | | |
| 1st year .. | 39 | 89 0 | Under 18 | 58 | 132 0 | Workers engaged in making coffins of wrought timber for either polishing or varnishing .. | 288 6 | 285 6 | |
| 2nd " .. | 54 | 123 0 | 18 .. | 77 | 175 6 | Workers engaged in making other coffins, trimming or polishing coffins, or conducting funerals | 275 6 | 272 6 | |
| 3rd " .. | 68 | 155 0 | 19 .. | 99 | 225 6 | Chauffeurs who make adjustments and attend to actual running repairs to motor hearses, coaches, or wagons .. | 275 0 | 272 0 | |
| 4th " .. | 90 | 205 0 | 20 .. | 100 + | 253 6 | Other chauffeurs who drive and may be required to change tyres, oil and/or plugs, or grease, clean and/or polish a motor vehicle .. | 265 0 | 262 0 | |
| 5th " .. | 100 + | 245 6 | | 25/6 | | All others .. | 265 0 | 262 0 | |
| | 17/6 | | | | | Provided that employees who live at either principal or branch establishments shall receive 20s. per week extra and shall be charged not more than a weekly rental of 1s. | | | |
| PROPORTION (within any factory or place). One apprentice to every two or fraction of two workers receiving not less than 262s. per week. An amended indenture of apprenticeship prescribed by the Board was approved on 9th November, 1915. | | | PROPORTION (within any factory or place). One improver to every seven or fraction of seven employees receiving not less than 262s. per week. | | | | | | |

* The hours fixed above for the week's work are to be taken as including time occupied in attending to horses on Sundays (not exceeding two hours) Allowances.—For allowances under this Determination see clause 10.

PIECEWORK.

20. That the lowest piecework prices to be paid to persons for doing work of the kinds specified in the following Schedule shall be :—

SCHEDULE.

| All Inside Measurements (Head to Heel). | If Made Throughout by Hand— | | | If Made with the Aid of Machinery Actually Installed on Employer's Premises, and Driven by Steam, Gas, Oil, Water, or Electric Power— | | |
|--|-------------------------------|---|---------------------------|---|---|---------------------------|
| | Not Exceeding 20 Inches Wide. | Over 20 Inches, but not Exceeding 22 Inches Wide. | Exceeding 22 Inches Wide. | Not Exceeding 20 Inches Wide. | Over 20 Inches, but not Exceeding 22 Inches Wide. | Exceeding 22 Inches Wide. |
| | Each. | Each. | Each. | Each. | Each. | Each. |
| | <i>s. d.</i> | <i>s. d.</i> | <i>s. d.</i> | <i>s. d.</i> | <i>s. d.</i> | <i>s. d.</i> |
| Best oak, maple, myrtle, or other wrought hardwood coffins, over 4 ft. 9 in. long | 103 0 | 109 4 | 115 6 | 90 1 | 97 0 | 104 8 |
| Plain oak, maple, myrtle, or other wrought hardwood coffins, over 4 ft. 9 in. long (with or without a plinth) | 92 0 | 98 9 | 104 11 | 81 1 | 87 1 | 93 6 |
| Kauri, cedar, white pine, or other wrought soft-wood coffins, best, over 4 ft. 9 in. long | 77 6 | 80 3 | 86 4 | 68 0 | 72 4 | 76 0 |
| Kauri, cedar, white pine, or other wrought soft-wood coffins, plain, with or without a plinth, over 4 ft. 9 in. long | 62 1 | 66 8 | 72 3 | 55 2 | 59 7 | 62 3 |
| Common coffins, over 4 ft. 9 in. long | 13 11 | 15 7 | 17 4 | 12 1 | 13 8 | 15 7 |
| Common coffins, over 4 ft. 9 in. long, over 1 inch in thickness | 15 7 | 17 4 | 19 5 | 13 8 | 15 7 | 17 4 |
| | <i>s. d.</i> | | | <i>s. d.</i> | | |
| Oak, maple, myrtle, or other wrought hardwood coffins, up to 4 ft. 9 in. long | 57 5 each | | | 48 7 each | | |
| Kauri, cedar, white pine, or other wrought soft-wood coffins, up to 4 ft. 9 in. long | 47 3 " | | | 37 11 " | | |
| Common coffins, up to 2 feet long | 62 1 per dozen | | | 47 11 per dozen | | |
| Common coffins, over 2 feet and up to 3 feet long | 83 10 " | | | 66 9 " | | |
| Common coffins, over 3 feet and up to 4 ft. 9 in. long | 113 7 " | | | 89 4 " | | |
| Inside shells for lead coffins | 41 4 each | | | 27 11 each | | |
| Cover lids, up to 2 feet wide | 57 7 per dozen | | | 39 1 per dozen | | |
| Cover lids, over 2 feet wide | 62 10 " | | | 62 0 " | | |
| | <i>s. d.</i> | | | | | |
| Extra for common coffins or coverlids if glued | 3 4 each | | | | | |
| Extra for lids made with two or three decks | 22 0 " | | | | | |

Clauses, other than clauses 2 and 20, of the said Determination shall remain in force.



VICTORIA GOVERNMENT GAZETTE.

Published by Authority.

[Registered at the General Post Office, Melbourne, for transmission by post as a newspaper.]

No. 1024]

FRIDAY, NOVEMBER 28.

[1952

Factories and Shops Acts.

DETERMINATION OF A WAGES BOARD ADJUSTED PURSUANT TO SECTION 21 OF THE FACTORIES AND SHOPS ACT 1934 (No. 4275).

I, Raymond Henry Beers, Secretary for Labour, in pursuance of the powers conferred by the Factories and Shops Acts, hereby make and issue the following adjusted Determination of the Wages Board referred to hereunder showing adjusted rates and prices to operate from the beginning of the first pay period to commence in November, 1952.

Dated at Melbourne, this
24th day of November, 1952.

RAY H. BEERS,
Secretary for Labour.

THEATRE MANAGERS BOARD.

Clause 2 of the Determination published in *Government Gazette* No. 1226 of the 29th November, 1951, shall be replaced by the following clause:—

2.

WAGERS.

(a) *Weekly Employees.*

| First Schedule. | | Per Week. |
|---|---------|-----------|
| | | £ s. d. |
| *Zone Manager | | 19 12 0 |
| Manager | | 19 12 0 |
| Manager of two theatrettes or manager of one theatre and one theatrette | | 23 12 0 |
| (Provided that one manager of two such establishments shall be permitted only in cases in which the businesses carried on in both establishments are owned by one proprietor; the expression "one proprietor" to include separate companies in which the majority of shareholders of one are the majority of shareholders in the other) | | |
| Assistant Manager (legitimate or vaudeville theatre and/or concert hall) | | 17 2 0 |
| Assistant Manager (picture theatre) | | 16 2 0 |
| Trainee Manager | | 13 2 0 |
| Treasurer (legitimate or vaudeville and/or concert hall) | | 16 2 0 |
| Treasurer (picture theatre) | | 14 12 0 |
| Second Schedule. | | |
| *Zone Manager | | 18 12 0 |
| Manager | | 18 12 0 |
| Assistant Manager | | 14 12 0 |
| Trainee Manager | | 13 2 0 |
| Third Schedule. | | |
| *Zone Manager | | 17 12 0 |
| Manager | | 17 12 0 |
| Assistant Manager | | 14 12 0 |
| Trainee Manager | | 13 2 0 |
| Fourth Schedule. | | |
| *Zone Manager | | 15 12 0 |
| Manager | | 15 12 0 |
| Manager intermittently employed shall be paid:— | | |
| (i) For two days per week of not more than 13 hours 20 minutes | | 6 10 8 |
| (ii) For three days per week of not more than 20 hours | | 9 13 4 |
| (iii) For four days per week of not more than 26 hours 40 minutes | | 12 6 4 |
| (iv) For five days per week of not more than 33 hours 20 minutes | | 13 19 2 |

* Additional Allowances.

A Zone Manager shall, in addition to his ordinary wage, be entitled to the following allowance for each additional theatre, theatreette, or concert hall supervised :—

- First Schedule.
£1 per week with a maximum of £4 per week.
- Second Schedule.
15s. per week with a maximum of £3 per week.
- Third Schedule.
10s. per week with a maximum of £2 per week.
- Fourth Schedule.
7s. 6d. per week with a maximum of £1 10s. per week.

(b) Casual Employees.

A casual employee is one engaged and paid as such. A casual employee for working ordinary time shall be paid per hour one-fortieth of the appropriate weekly wage with the addition of 20 per cent. with a minimum payment as for 4 hours. Clauses, other than clause 2, of the said Determination shall remain in force.



VICTORIA GOVERNMENT GAZETTE.

Published by Authority.

[Registered at the General Post Office, Melbourne, for transmission by post as a newspaper.]

No. 1025]

FRIDAY, NOVEMBER 28.

[1952

Factories and Shops Acts.

DETERMINATION OF A WAGES BOARD ADJUSTED PURSUANT TO SECTION 21 OF THE FACTORIES AND SHOPS ACT 1934 (No. 4275).

I, Raymond Henry Beers, Secretary for Labour, in pursuance of the powers conferred by the Factories and Shops Acts, hereby make and issue the following adjusted Determination of the Wages Board referred to hereunder showing adjusted rates and prices to operate from the beginning of the first pay period to commence in November, 1952.

Dated at Melbourne, this
26th day of November, 1952.

RAY H. BEERS,
Secretary for Labour.

CEMENT ARTICLES BOARD.

Clause 2 of the Determination made on the 26th September, 1952, and in force as from the beginning of the first pay period to commence on or after the 11th October, 1952, shall be replaced by the following clause:—

| 2. | | | | | | | | |
|---|----------------------------|-------------------|-------------------------------------|-------------|---|------------------|------------------------------------|-------------|
| (a) APPRENTICES AND IMPROVERS. | | | | | (b) OTHER EMPLOYEES. | | | |
| Wages per Week of 40 Hours. | | | | | Wages per Week of 40 Hours. | | | |
| | Per-centage of Basic Wage. | Ad-justable Rate. | Plus War Loading (Non-ad-justable). | Total Wage. | | Adjustable Rate. | Plus War Loading (Non-adjustable). | Total Wage. |
| | | | | | s. d. | s. d. | s. d. | s. d. |
| Under 16 years of age | 31 | 70 6 | 0 9 | 71 3 | <i>Group No. 1.</i> | | | |
| 16 years of age | 42 | 96 0 | 1 0 | 97 0 | Moulder on centrifugal or vibrator pipe machines | 257 0 | 3 0 | 260 0 |
| 17 " " | 53 | 121 0 | 1 6 | 122 6 | <i>Group No. 2.</i> | | | |
| 18 " " | 66 | 150 6 | 1 9 | 152 3 | Man operating a machine mixing cement or concrete | 253 0 | 3 0 | 256 0 |
| 19 " " | 76 | 173 6 | 2 0 | 175 6 | Other moulder of cement or concrete articles, including operator of any machines not elsewhere included .. | 253 0 | 3 0 | 256 0 |
| 20 " " | 88 | 200 6 | 2 3 | 202 9 | Repairer or renderer of cement or concrete articles | 253 0 | 3 0 | 256 0 |
| PROPORTION (in any Factory or Place). | | | | | Operator of machine making concrete or cinder-concrete blocks or bricks | 253 0 | 3 0 | 256 0 |
| <i>Apprentices.</i> | | | | | Crusher feeder or attendant where bricks are crushed | 253 0 | 3 0 | 256 0 |
| One apprentice to every three or fraction of three workers receiving not less than 24s. per week of 40 hours. | | | | | Hand Vibrator Attendant | 253 0 | 3 0 | 256 0 |
| An indenture of apprenticeship prescribed by the Board was approved on 30th July, 1930. | | | | | <i>Group No. 3.</i> | | | |
| <i>Improvers.</i> | | | | | Tile or ridge maker and the taker off of same | 250 0 | 3 0 | 253 0 |
| Cement Tilemakers' Section. | | | | | Other mixer of cement or concrete .. | 250 0 | 3 0 | 253 0 |
| Three improvers to four workers | | | | | Mould assembler | 250 0 | 3 0 | 253 0 |
| Four improvers to five or six workers | | | | | Operator of cement sprayer | 250 0 | 3 0 | 253 0 |
| Five improvers to seven workers | | | | | Other crusher feeder or attendant or mill feeder or attendant or crusher screen attendant, other than persons engaged in crushing spalls .. | 250 0 | 3 0 | 253 0 |
| Six improvers to eight workers, and thereafter one improver to every two workers .. | | | | | Stripper | 250 0 | 3 0 | 253 0 |
| All Other Sections. | | | | | Pipe tester (i.e., person operating a pump or pressure apparatus) .. | 250 0 | 3 0 | 253 0 |
| One improver to every three or fraction of three workers receiving not less than 24s. per week of 40 hours. | | | | | Employee carrying away from any concrete or cinder-concrete block or brick-making machine | 250 0 | 3 0 | 253 0 |
| Apprentices and improvers operating a cement sprayer shall be paid 1s. 6d. per week extra in addition to the prescribed rate. | | | | | Where the load carried per man is of a greater average weight than 70 lb.:— | | | |
| NOTE.—"Renderer" means a skilled employee facing concrete articles with float and trowel. | | | | | (a) Lumper of cement or concrete articles (in and out of tanks) .. | 250 0 | 3 0 | 253 0 |
| Clauses, other than clause 2, of the said Determination shall remain in force. | | | | | (b) Loader, unloader, or stacker (by hand) of cement or concrete articles | 250 0 | 3 0 | 253 0 |
| By Authority: J. J. GOURLEY, Government Printer, Melbourne. | | | | | Trucker or stacker of concrete or cinder-concrete blocks or bricks .. | 250 0 | 3 0 | 253 0 |
| No. 1025.—10265/52.—PRICE 3d. | | | | | Person fabricating or preparing reinforcements for portable concrete products | 250 0 | 3 0 | 253 0 |
| | | | | | <i>Group No. 4.</i> | | | |
| | | | | | All others | 245 0 | 3 0 | 248 0 |

| OTHER EMPLOYEES. | | Wages Per Week of 40 Hours. |
|--|---------|--------------------------------|
| <i>Males.</i> | | |
| <i>(a) Employees in Warehouses.</i> | | <i>s. d.</i> |
| Foreman of any Department in which six or more workers are employed | | 292 0 |
| Foreman of any Department in which three to five workers are employed | | 283 0 |
| First Assistant i.e. a person in a Department who is required to keep official records and in addition is required to weigh, measure, check, wrap or label drugs | | 281 0 |
| Drug Department employee engaged in weighing, measuring, checking, wrapping and/or labelling under supervision | | 274 0 |
| Drug Department employee who is required only to weigh and/or measure under supervision | | 268 0 |
| Salesman in any Department under supervision | | 265 6 |
| All others | | 261 0 |
| <i>(b) Employees (other than in Warehouses).</i> | | |
| <i>(i) In Alkaloid Extraction Department.</i> | | |
| Foreman in charge of one or more persons | | 294 0 |
| First assistant | | 276 0 |
| Second assistant | | 270 0 |
| <i>(ii) In Alkaloid Refining Department.</i> | | |
| Person in charge of refining operations and records | | 284 0 |
| Refinery operator purifying alkaloids | | 276 0 |
| Refinery operator (other) | | 270 0 |
| <i>(iii) In Other Places.</i> | | |
| Foreman capable of manufacturing from given formulae, under supervision, and who is in charge of six or more workers | | 292 0 |
| Foreman capable of manufacturing from given formulae, under supervision, and who is in charge of one to five workers | | 283 0 |
| First Assistant where five or more workers are employed | | 275 0 |
| Ether stillman | | 273 0 |
| Assistant including operators of machines engaged in any of the following processes under supervision :— | | |
| (a) Manufacturing Galenical or Chemical Compounds, Pills, Tablets, Toilet Preparations and Perfumery | | } 268 0 |
| (b) Granulating | | |
| (c) Pill and Tablet Coating | | |
| All others | | 261 0 |
| <i>Females.</i> | | |
| <i>Alkaloid Refinery Department.</i> | | |
| Person in charge of refining operations and records | | 235 0 |
| Person filling and wrapping | | 204 6 |
| <i>Other Places.</i> | | |
| Forewoman in charge of one to five workers | | 200 0 |
| Forewoman in charge of six or more workers | | 204 9 |
| Other adults | | 181 6 |

Clauses, other than clause 2, of the said Determination shall remain in force.



VICTORIA
GOVERNMENT GAZETTE.

Published by Authority.

[Registered at the General Post Office, Melbourne. for transmission by post as a newspaper.]

No. 1027]

FRIDAY, NOVEMBER 28.

[1952

Factories and Shops Acts.

**DETERMINATION OF A WAGES BOARD ADJUSTED PURSUANT TO SECTION 21 OF THE
FACTORIES AND SHOPS ACT 1934 (No. 4275).**

I, Raymond Henry Beers, Secretary for Labour, in pursuance of the powers conferred by the Factories and Shops Acts, hereby make and issue the following adjusted Determination of the Wages Board referred to hereunder showing adjusted rates and prices to operate from the beginning of the first pay period to commence in November, 1952.

Dated at Melbourne, this
26th day of November, 1952.

RAY H. BEERS,
Secretary for Labour.

GENERAL BOARD.

(Carbon Articles Section.)

Clause 2 of the Determination for this Section published in *Government Gazette*, No 141 of the 9th February, 1951, shall be replaced by the following clause:—

2. WAGES PER WEEK OF 40 HOURS.

| (a) Improvers. | | | (b) Other Employees. | | |
|---|---------------------------|-------|---|--|-------|
| | Percentage of Basic Wage. | s. d. | | | s. d. |
| Under 16 years of age | 24 | 54 6 | Foreman in charge | | 257 0 |
| 16 years of age and under 17 years | 34 | 77 6 | (i) All others of three months' or more experience | | 242 0 |
| 17 years of age and under 18 years | 61 | 130 0 | (ii) All others of less than three months' experience | | 231 0 |
| 18 years of age and under 19 years | 77 | 175 6 | | | |
| 19 years of age and under 21 years | 92 | 210 0 | | | |
| PROPORTION (in any place.) | | | | | |
| One improver to the first fully paid worker; thereafter one additional improver to every two additional fully paid workers. | | | | | |

Clause, other than clause 2, of the said Determination for this Section as amended on the 16th February, 1951, shall remain in force.

By Authority: J. J. GOURLEY, Government Printer, Melbourne.



VICTORIA GOVERNMENT GAZETTE.

Published by Authority.

[Registered at the General Post Office, Melbourne, for transmission by post as a newspaper.]

No. 1028]

FRIDAY, NOVEMBER 28.

[1952

Factories and Shops Acts.

DETERMINATION OF A WAGES BOARD ADJUSTED PURSUANT TO SECTION 21 OF THE FACTORIES AND SHOPS ACT 1934 (No. 4275).

I, Raymond Henry Beers, Secretary for Labour, in pursuance of the powers conferred by the Factories and Shops Acts, hereby make and issue the following adjusted Determination of the Wages Board referred to hereunder showing adjusted rates and prices to operate from the beginning of the first pay period to commence in November, 1952.

Dated at Melbourne, this
26th day of November, 1952.

RAY H. BEERS,
Secretary for Labour.

GENERAL BOARD.

(Gold Beating Section.)

Clause 2 of the Determination for this Section published in *Government Gazette* No. 156 of the 9th February, 1951, shall be replaced by the following clause:—

2.

. WAGES PER WEEK OF 40 HOURS.

| (a) IMPROVERS. | | | | | (b) ADULTS. | | | |
|------------------------------------|------------------------------|-------|----------------------------|--|-------------|--|-----|-------|
| Males. | | | Females. | | | Males. | | s. d. |
| | Percentage of Basic Wage. | s. d. | | Percentage of Female Basic Wage. | s. d. | | | s. d. |
| 1st year's experience | 22 | 50 0 | 1st six months' experience | 23 | 39 6 | Beaters | 253 | 0 |
| 2nd " " | 31 | 70 6 | 2nd " " | 30 | 51 6 | All Others | 231 | 0 |
| 3rd " " | 48 | 109 6 | 3rd " " | 34 | 58 0 | | | |
| 4th " " | 77 | 175 6 | 4th " " | 41 | 70 0 | <i>Females.</i> | | |
| 5th " " | | | 5th " " | 45 | 77 0 | Welding gold-leaf | 171 | 0 |
| and until 21 years of age | 97 | 221 0 | 6th " " | 52 | 89 0 | Cutting and/or booking gold- leaf | 171 | 0 |
| | | | 7th " " | 57 | 97 6 | All Others | 171 | 0 |
| | | | 8th " " | 65 | 111 0 | | | |
| | | | 9th " " | 70 | 119 6 | | | |
| | | | 10th " " | 75 | 128 0 | | | |

and thereafter the rate prescribed for adults.

NOTE.—The rates prescribed for improvers shall apply only to such employees as are under 21 years of age, or who, being over 21 years of age, are the holders of improvers' licences.

PROPORTION (IN ANY PLACE).

Males.

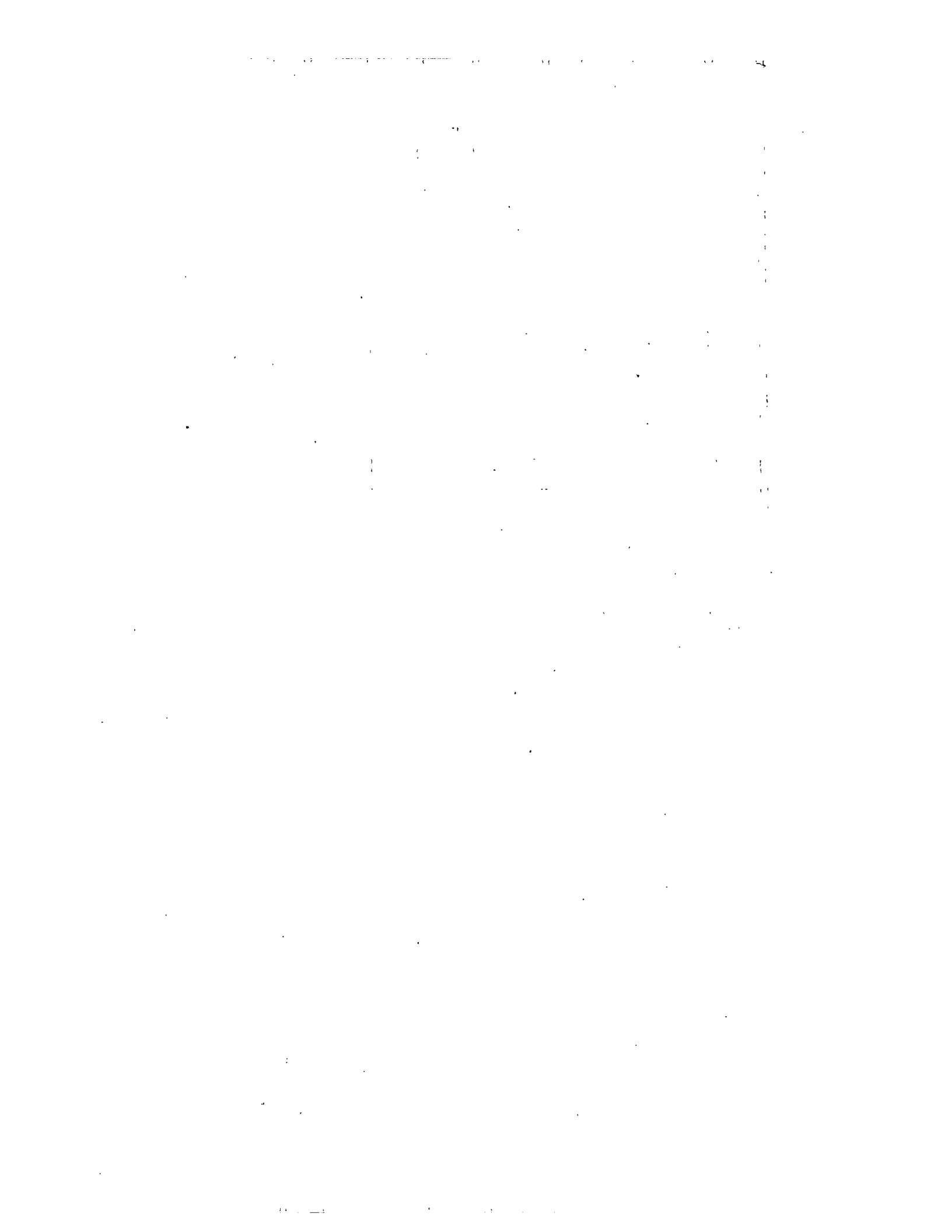
Two male improvers to the first adult male employed and thereafter one male improver to each adult male.

Females.

Three female improvers to every two female workers receiving the adult rate.

Clauses, other than clause 2, of the said Determination for this Section as amended on the 16th February, 1951, shall remain in force.

By Authority: J. J. GOURLEY, Government Printer, Melbourne.



11

12

13

14

15

16

17

18

19

20

21

22

23

24

25

26

27

28

29

30

31

32

33

34

35

36

37

38

39



VICTORIA GOVERNMENT GAZETTE.

Published by Authority.

[Registered at the General Post Office, Melbourne, for transmission by post as a newspaper.]

No. 1030]

FRIDAY, NOVEMBER 28.

[1952

Factories and Shops Acts.

DETERMINATION OF A WAGES BOARD ADJUSTED PURSUANT TO SECTION 21 OF THE FACTORIES AND SHOPS ACT 1934 (No. 4275).

I, Raymond Henry Beers, Secretary for Labour, in pursuance of the powers conferred by the Factories and Shops Acts, hereby make and issue the following adjusted Determination of the Wages Board referred to hereunder showing adjusted rates and prices to operate from the beginning of the first pay period to commence in November, 1952.

Dated at Melbourne, this
26th day of November, 1952.

RAY H. BEERS,
Secretary for Labour.

GENERAL BOARD.

(Lampshade Section.)

Clause 2 of the Determination for this Section published in *Government Gazette* No. 154 of the 9th February, 1951, shall be replaced by the following clause:—

2. WAGES PER WEEK OF 40 HOURS.

| (a) IMPROVERS. | | | (b) OTHER EMPLOYEES. | | | | |
|--|---------------------------|--------------|----------------------|----------------------------------|--------------|---|-------|
| Males. | | | Females. | | | Males. | |
| Experience. | Percentage of Basic Wage. | Amount. | Experience. | Percentage of Female Basic Wage. | Amount. | <i>s. d.</i> | |
| | | <i>s. d.</i> | | | <i>s. d.</i> | | |
| 1st year .. | 22 | 50 0 | 1st six months | 23 | 39 6 | Persons engaged in cutting out material for parts of lampshades | 233 0 |
| 2nd year .. | 30 | 68 6 | 2nd six months | 29 | 49 6 | All others | 231 0 |
| 3rd year .. | 41 | 93 6 | 3rd six months | 34 | 58 0 | <i>Females.</i> | |
| 4th year .. | 56 | 127 6 | 4th six months | 41 | 70 0 | Persons engaged in sketching, painting or decorating by free-hand or stencils | 171 0 |
| 5th year .. | 71 | 162 0 | 5th six months | 45 | 77 0 | Persons engaged in assembling and attaching parts of lampshades (including trimming and sewing) | 171 0 |
| 6th year .. | 82 | 187 0 | 6th six months | 52 | 89 0 | All others | 171 0 |
| 7th year .. | 87 | 198 6 | 7th six months | 57 | 97 6 | | |
| | | | 8th six months | 65 | 111 0 | | |
| PROPORTION. | | | | | | | |
| Two male improvers to the first male person receiving not less than the minimum wage, and thereafter one additional male improver to each additional male person receiving not less than the minimum wage. | | | | | | | |
| Three female improvers to each female person receiving not less than the minimum wage. | | | | | | | |

Clauses, other than clause 2, of the said Determination for this Section as amended on the 16th February, 1951, shall remain in force.

By Authority: J. J. GOURLEY, Government Printer, Melbourne.



VICTORIA GOVERNMENT GAZETTE.

Published by Authority.

[Registered at the General Post Office, Melbourne, for transmission by post as a newspaper.]

No. 1031]

FRIDAY, NOVEMBER 28.

[1952

Factories and Shops Acts.

DETERMINATION OF A WAGES BOARD ADJUSTED PURSUANT TO SECTION 21 OF THE FACTORIES AND SHOPS ACT 1934 (No. 4275).

I, Raymond Henry Beers, Secretary for Labour, in pursuance of the powers conferred by the Factories and Shops Acts, hereby make and issue the following adjusted Determination of the Wages Board referred to hereunder showing adjusted rates and prices to operate from the beginning of the first pay period to commence in November, 1952.

Dated at Melbourne, this

26th day of November, 1952.

RAY H. BEERS,

Secretary for Labour.

GENERAL BOARD.

(Paper Articles (not elsewhere included) Section.)

Clause 2 of the Determination for this Section published in *Government Gazette* No. 153 of the 9th February, 1951, shall be replaced by the following clause:—

2.

WAGES PER WEEK OF 40 HOURS.

| (a) IMPROVERS. | | | | (b) ADULTS. | | | | |
|-----------------------|---------------------------|-------|----------------|----------------------------------|-------|--|-------|--|
| Males. | | | Females. | | | Males. | | |
| | Percentage of Basic Wage. | s. d. | | Percentage of Female Basic Wage. | s. d. | | s. d. | |
| 1st year's experience | 22 | 50 0 | 1st six months | 23 | 39 6 | Adults (i) Of three months' or more experience | 235 0 | |
| 2nd " | 31 | 70 6 | 2nd " | 30 | 51 6 | (ii) Of less than three months' experience | 231 0 | |
| 3rd " | 42 | 96 0 | 3rd " | 34 | 58 0 | | | |
| 4th " | 57 | 130 0 | 4th " | 41 | 70 0 | | | |
| 5th " | 73 | 166 6 | 5th " | 45 | 77 0 | | | |
| 6th " | 84 | 191 6 | 6th " | 52 | 89 0 | | | |
| 7th " | | | 7th " | 57 | 97 6 | | | |
| and until 21 | 90 | 205 0 | 8th " | 65 | 111 0 | | | |
| | | | 9th " | 70 | 119 6 | | | |
| | | | 10th " | | | | | |
| | | | and until 21 | 76 | 130 0 | | | |

NOTE.—The rates prescribed for improvers shall apply only to such employees as are under 21 years of age, or who, being over 21 years of age, are the holders of improvers' licences.

PROPORTION (IN ANY PLACE).

Males.
One male improver to each male person receiving not less than the minimum wage.

Females.
Three female improvers to the first female person receiving not less than the minimum wage; thereafter one additional improver to each additional female person receiving not less than the minimum wage.

| <i>Females.</i> | | |
|--|----|-------|
| | | s. d. |
| (a) Designer of patterns to be used for producing articles of wearing apparel | .. | 257 3 |
| (b) Assistant to (a) above | .. | 205 9 |
| (c) Designers of patterns used for the production of transfers as applied to fabrics | .. | 205 9 |
| (d) Assistants to (c) above | .. | 178 9 |
| (e) Operator of perforating machine | .. | 171 0 |
| (f) Any other adult | .. | 171 0 |

Clauses, other than clause 2, of the said Determination for this Section as amended on the 16th February, 1951, shall remain in force.

By Authority: J. J. GOURLEY, Government Printer, Melbourne.

