

[2685]



VICTORIA GOVERNMENT GAZETTE.

Published by Authority.

[Registered at the General Post Office, Melbourne, for transmission by post as a newspaper.]

No. 486]

FRIDAY, MAY 29.

[1953

Prices Regulation Acts.

PRICES REGULATION ORDER No. 535.

AERATED WATERS, AERATED FRUIT DRINKS, MINERAL WATERS AND
TABLE WATERS—RETAIL—NORTH CENTRAL AREA.

IN pursuance of the powers conferred upon me by the Prices Regulation Acts, I, John Francis Waldron, Prices Commissioner, hereby make the following Order:—

Citation.

1. This Order may be cited as Prices Regulation Order No. 535.

Revocation.

2. Prices Regulation Order No. 487 is hereby revoked.

Non-Application of Prior Order.

3. Nothing contained in Prices Regulation Order No. 217, insofar as it relates to Sales by retail, shall apply to any goods, the prices of which are fixed by or under this Order.

Definitions.

4. In this Order, unless the contrary intention appears—
"North central area" means all that area of Victoria comprised in—

- | | |
|--------------------|--------------------|
| the City of— | |
| Bendigo | |
| the Boroughs of— | |
| Castlemaine | Inglewood |
| Eaglehawk | Maryborough |
| Echuca | |
| and the Shires of— | |
| Bet Bet | Melvor |
| Broadford | Maldon |
| Cohuna | Marong |
| Deakin | Metcalfe |
| East Loddon | Newham and Woodend |
| Gordon | Pyalong |
| Huntly | Rochester |
| Kerang | Romsey |
| Kilmore | Strathfieldsaye |
| Korong | Tullaroop |
| Kyneton | Waranga. |

“Town of manufacture” means—

- (a) where the manufacturer is named in the first column of the First, Second, or Third Schedules hereto—the town or city specified in the second column of the said Schedules;
- (b) where the manufacturer is not named in the First, Second, or Third Schedules hereto—
 - (i) if the goods are produced in Victoria—the actual town of manufacture;
 - (ii) if the goods are produced outside Victoria—the town in Victoria nearest to the place of manufacture.

“Oz.” means fluid ounce or ounces as the case may be.

*Bottled Aerated Waters, Aerated Fruit Drinks and Mineral Waters—
Sales by the Bottle.*

5. I fix and declare the maximum price at which bottled aerated waters, aerated fruit drinks and mineral waters of the description set out in the third column of the First Schedule to this Order and manufactured by the persons set out in the first column of such Schedule may be sold by retail in the north central area to be the prices specified in the fourth column of such Schedule.

6. I fix and declare the maximum price at which the description of bottled goods manufactured by the persons set out in the first column of the Second Schedule to this Order and described in the third column thereto may be sold in the north-central area to be—

- (a) in all that area comprised within a radius of 15 miles from the principal post office of the town of manufacture stated in the second column of the said Schedule, the price set out in the fourth column of such Schedule;
- (b) in all that area comprised within a radius of 30 miles from the principal post office of the town of manufacture stated in the second column of the said Schedule, but outside a radius of 15 miles of the said post office, the price set out in the fifth column of such Schedule;
- (c) in all that area comprised within a radius of 50 miles from the principal post office of the town of manufacture stated in the second column of the said Schedule but outside of a radius of 30 miles from the said post office, the price set out in the sixth column of such Schedule;
- (d) in all areas outside of a radius of 50 miles from the principal post office of the town of manufacture stated in the second column of the said Schedule, the price set out in the seventh column of such Schedule.

7. I fix and declare the maximum price at which the description of bottled goods manufactured by the persons set out in the first column of the Third Schedule to this Order, and described in the third column thereto may be sold in the north central area to be—

- (a) in all that area comprised within a radius of 15 miles from the principal post office in Echuca, the price set out in the fourth column of such Schedule;
- (b) in all that area comprised within a radius of 30 miles from the principal post office in Bendigo, but outside of a radius of 15 miles from the said post office, the price set out in the fifth column of such Schedule;
- (c) in all that area comprised within a radius of 50 miles from the principal post office in Bendigo, but outside of a radius of 30 miles from the said post office and excluding all that area comprised within a radius of 15 miles from the principal post office in Echuca, the price set out in the sixth column of such Schedule;
- (d) in all areas outside of a radius of 50 miles from the principal post office in Bendigo, but excluding all that area comprised within a radius of 15 miles from the principal post office in Echuca, the price set out in the seventh column of such Schedule.

Sales in Areas other than the North-Central Area.

8. I fix and declare the maximum price at which bottled aerated waters, aerated fruit drinks, table waters and mineral waters of the descriptions set out in the third column of the First, Second, or Third Schedules to this Order and manufactured by the persons specified in the first column of the said Schedules, may be sold by retail in any area in Victoria not included in the north-central area to be—

- (a) when manufactured by any of the persons specified in the first column of the First Schedule the price set out in the fourth column of that Schedule; and
- (b) when manufactured by any of the persons, specified in the first column of the Second and Third Schedules, the price set out in the seventh column of such Schedules.

9. I fix and declare the maximum retail prices at which bottled aerated waters, aerated fruit drinks, table waters and mineral waters manufactured by Schweppes Ltd., Abbotsford, Melbourne, and Rowlands Pty. Ltd., Melbourne and Ballarat, may be sold in the north-central area to be the sum of—

- (i) the price paid or payable for such aerated waters or drinks;
- (ii) fifty per centum of such price;
- (iii) the cost to the vendor, of rail freight actually incurred in transporting the goods from Melbourne to the railway station nearest to the vendor's premises—such sum to be computed to the nearest upward half-penny.

10. Notwithstanding anything contained in the foregoing provisions of this Order, where at the request of the purchaser a bottle of capacity not exceeding 13 oz. is opened for the purpose of consumption on the premises of the vendor thereof, and a glass or straw is provided by the vendor, to the price applicable thereto in accordance with the foregoing provisions of this Order, there may be added one half-penny.

Refund of Deposits on Bottles.

11. Where any sum lodged as a deposit on a bottle or bottles or other containers of any goods, the maximum price of which is fixed by or under the provisions of this Order, is accepted by the vendor of such goods, the vendor shall, upon the return of such bottle or bottles or other containers in respect of which such deposit was lodged, refund such deposit in full to the person who lodged such deposit.

Variation of Maximum Prices by Notice.

12. Notwithstanding anything contained in the foregoing provisions of this Order, I declare the maximum price at which any aerated waters, mineral waters, table waters or fruit drinks specified in a notice given in pursuance of this clause may be sold by any person to whom such notice is given to be such price as is fixed by the Commissioner by notice in writing to that person.

Exhibition of Price List.

13. Every person who sells or has for sale by retail any goods, the maximum price of which is fixed by or under the provisions of this Order, shall exhibit and keep exhibited in a prominent position in his place of business, or if he has more than one place of business, in each of his places of business, in the form of a price list and in such a manner as to be easily legible to persons contemplating making any purchase or conducting any business, at his place or places of business, particulars of the maximum prices fixed by or under the provisions of this Order for the sale by him of those goods, such notice to show separately the deposit charge (if any) for any container included in the selling price so exhibited.

THE FIRST SCHEDULE.

SALES BY THE BOTTLE—CONTENTS ONLY.

Manufacturer.	Town of Manufacture.	Description.	Maximum Price per Bottle.
First Column.	Second Column.	Third Column.	Fourth Column.
			<i>s. d.</i>
B. O'Connell and Sons	Bendigo	Aerated Grapefruit, 24 oz. or over	1 1
		Aerated Waters other than grape fruit, 24 oz. or over	1 0
		Aerated Waters, 12 oz. or over, but less than 24 oz.	0 8
		Aerated Grape Fruit, 12 oz. or over, but less than 24 oz.	0 8½
		Aerated Grape Fruit, 6½ oz. or over, but less than 12 oz.	0 7
		Aerated Soda Water, 6½ oz. or over, but less than 12 oz.	0 5½
		Aerated Waters other than grape fruit and soda water, 6½ oz. or over, but less than 12 oz.	0 6½
		Aerated Soda Water Syphons	1 10
		Aerated Waters and Fruit Drinks, 24 oz. or over	1 0
		Aerated Waters other than soda water, 6½ oz. or over, but less than 12 oz.	0 6½
Les Bray and Sons	St. Arnaud	Aerated Soda Water, 6½ oz. or over, but less than 12 oz.	0 5
		Aerated Lime Coola or Passiona, 6½ oz. or over, but less than 12 oz.	0 7½
		Aerated Soda Water Syphons	1 7
		Aerated fruit drinks, Orange, Lemon, Grape Fruit, Pineapple, Mandarin, Citrus Cocktail, 24 oz. or over	1 1
		Burnley Ale, 24 oz. or over	1 1
		Aerated Waters, other than as above, 24 oz. or over	1 0
		Aerated Waters and fruit drinks, 12 oz. or over, but less than 24 oz.	0 7½
		Aerated Waters and fruit drinks (other than Passiona and Soda Water), 6½ oz. or over, but less than 12 oz.	0 6½
		Passiona, 6½ oz. or over, but less than 12 oz.	0 7½
		Soda Water, 6½ oz. or over, but less than 12 oz.	0 5½
Lowery Bros.	Maryborough	Soda Water, Syphons	1 10
		Aerated fruit drinks (Spun Lemon, Orange Sparkling Cocktail), 24 oz. or over	1 0½
		Aerated fruit drinks, Grape Fruit, 24 oz. or over	1 1½
		Aerated Waters, 24 oz. or over	1 0
		Aerated Waters (other than Soda Water), 6½ oz. or over, but less than 12 oz.	0 6½
		Aerated fruit drinks, 6½ oz. or over, but less than 12 oz.	0 6½
		Aerated Soda Water, 6½ oz. or over, but less than 12 oz.	0 5½
		Aerated Soda Water Syphons	1 10
		Aerated Waters and fruit drinks, 24 oz. or over	1 0
		Aerated Waters and fruit drinks, 12 oz. or over, but less than 24 oz.	0 7
S. G. and L. S. Williams	Kyneton	Aerated Waters, other than Soda Water, 6½ oz. or over, but less than 12 oz.	0 6½
		Aerated Soda Water, 6½ oz. or over, but less than 12 oz.	0 5½
		Aerated Soda Water Syphons	1 8
		Aerated Waters and fruit drinks, 24 oz. or over	1 0
		Aerated Waters and fruit drinks, 12 oz. or over, but less than 24 oz.	0 7
		Aerated Waters, other than Soda Water, 6½ oz. or over, but less than 12 oz.	0 6½
		Aerated Soda Water, 6½ oz. or over, but less than 12 oz.	0 5½
		Aerated Soda Water Syphons	1 8
		Aerated Waters and fruit drinks, 24 oz. or over	1 0
		Aerated Waters and fruit drinks, 12 oz. or over, but less than 24 oz.	0 7
T. Hellwege.	Campbells Creek	Aerated Waters, other than Soda Water, 6½ oz. or over, but less than 12 oz.	0 6½
		Aerated fruit drinks, 6½ oz. or over, but less than 12 oz.	0 6½
		Aerated Soda Water, 6½ oz. or over, but less than 12 oz.	0 5½
		Aerated Soda Water Syphons	1 10
		Aerated Waters and fruit drinks, 24 oz. or over	1 0
		Aerated Waters and fruit drinks, 12 oz. or over, but less than 24 oz.	0 7
		Aerated Waters, other than Soda Water, 6½ oz. or over, but less than 12 oz.	0 6½
		Aerated Soda Water, 6½ oz. or over, but less than 12 oz.	0 5½
		Aerated Soda Water Syphons	1 8
		Aerated Waters and fruit drinks, 24 oz. or over	1 0

THE FIRST SCHEDULE—continued.
SALES BY THE BOTTLE—CONTENTS ONLY—continued.

Manufacturer.	Town of Manufacture.	Description.	Maximum Price per Bottle.
First Column.	Second Column.	Third Column.	Fourth Column.
			<i>s. d.</i>
Charlton Ice and Cordial Works Pty. Ltd.	Charlton	Aerated Grape Fruit, 24 oz. or over	1 1
		Aerated Waters and fruit drinks, other than grape fruit, 24 oz. or over	1 0
		Aerated Waters (other than Soda Water), 6½ oz. or over, but less than 12 oz.	0 6½
		Aerated fruit drinks, other than grape fruit, 6½ oz. or over, but less than 12 oz.	0 6½
		Aerated Grape Fruit, 6¼ oz. or over, but less than 12 oz.	0 7
		Aerated Soda Water, 6½ oz. or over, but less than 12 oz.	0 5½
		All manufacturers not herein specified (other than Schweppes Ltd. and Rowlands Pty. Ltd., Melbourne), and other than any manufacturer whose name appears in the Second Schedule to this Order	
Aerated fruit drinks, 24 oz. or over	1 0		
Aerated Waters, 12 oz. or over, but less than 24 oz.	0 7		
Aerated fruit drinks, 12 oz. or over, but less than 24 oz.	0 7		
Aerated Waters (other than Soda Water), 6½ oz. or over, but less than 12 oz.	0 6		
Aerated Soda Water, 6¼ oz. or over, but less than 12 oz.	0 5½		
Aerated fruit drinks, 6¼ oz. or over, but less than 12 oz.	0 6		
Aerated Soda Water (Syphons)	1 7		

THE SECOND SCHEDULE.
SALES BY THE BOTTLE—CONTENTS ONLY.

Manufacturer.	Town of Manufacture	Description.	Maximum Price per Bottle.			
			Within a Radius of 15 Miles from the Principal Post Office, Bendigo.	Outside of a Radius of 15 Miles, but Within a Radius of 30 Miles from the Principal Post Office, Bendigo.	Outside of a Radius of 30 Miles, but Within a Radius of 50 Miles from the Principal Post Office, Bendigo.	Outside of a Radius of 50 Miles from the Principal Post Office, Bendigo.
First Column.	Second Column.	Third Column.	Fourth Column.	Fifth Column.	Sixth Column.	Seventh Column.
			<i>s. d.</i>	<i>s. d.</i>	<i>s. d.</i>	<i>s. d.</i>
Cohn Bros., Ltd.	Bendigo	Aerated Waters, 24 oz. or over (other than Soda Water Syphons)	1 0	1 1	1 1	1 1½
		Grape Fruit, Pine Quench, 24 oz. or over	1 1½	1 2	1 2½	1 3
		Aerated Waters, 12-13 oz.	0 8	0 8½	0 8½	0 9
		Grape Fruit, Pine Quench, 12-13 oz.	0 8½	0 9	0 9½	0 10
		Aerated Waters (other than Soda Water), 6½-8 oz.	0 6½	0 7	0 7½	0 7½
		Aerated Soda Water, 6¼-8 oz.	0 5½	0 6	0 6½	0 6½
		Grape Fruit, Pine Quench, 6¼-8 oz.	0 7	0 7½	0 8	0 8
		Soda Water Syphons	1 10	1 11	1 11	1 11

THE SECOND SCHEDULE—continued.
SALES BY THE BOTTLE—CONTENTS ONLY—continued.

Manufacturer.	Town of Manufacture	Description.	Maximum Price per Bottle.			
			Within a Radius of 15 Miles from the Principal Post Office, Bendigo.	Outside of a Radius of 15 Miles, but Within a Radius of 30 Miles from the Principal Post Office, Bendigo.	Outside of a Radius of 30 Miles, but Within a Radius of 50 Miles from the Principal Post Office, Bendigo.	Outside of a Radius of 50 Miles from the Principal Post Office, Bendigo.
First Column.	Second Column.	Third Column.	Fourth Column.	Fifth Column.	Sixth Column.	Seventh Column.
			<i>s. d.</i>	<i>s. d.</i>	<i>s. d.</i>	<i>s. d.</i>
B.C.X. Pure Fruit Drinks Pty. Ltd. Glover and Son ..	Bendigo	Aerated Waters (other than Soda Water Syphons, 24 oz. or over	1 0	1 1	1 1	1 1½
		Aerated Grape Fruit, 24 oz. or over	1 1	1 2	1 2	1 2½
		Aerated Waters (other than grape fruit), 12-13 oz.	0 8	0 8½	0 8½	0 9
		Aerated Grape Fruit, 12-13 oz.	0 8½	0 9	0 9½	0 10
		Aerated Waters (other than grape fruit and Soda Water), 6½-8 oz.	0 6½	0 7	0 7½	0 7½
	Bendigo	Aerated Waters, Soda Water, 6½-8 oz.	0 5½	0 6	0 6½	0 6½
		Aerated Grape Fruit, 6½-8 oz.	0 7	0 7½	0 8	0 8
		Aerated Soda Water Syphons	1 10	1 11	1 11	1 11
		Aerated Waters (other than Soda Water Syphons), 24 oz. or over	1 0	1 1	1 1	1 1½
		Aerated Grape Fruit, Claret Cup, 24 oz. or over	1 1	1 2	1 2	1 2½
Reed Bros. ..	Bendigo	Aerated Waters, 12-13 oz. . .	0 8	0 8½	0 8½	0 9
		Aerated Grape Fruit, Claret Cup, 12-13 oz.	0 8½	0 9	0 9½	0 10
		Aerated Waters (other than Grape Fruit, Claret Cup, Trupash, Soda Water), 6½-8 oz.	0 6½	0 7	0 7½	0 7½
		Aerated Grape Fruit, Claret Cup, 6½-8 oz.	0 7	0 7½	0 8	0 8
		Aerated Soda Water, 6½-8 oz.	0 5½	0 6	0 6½	0 6½
	Bendigo	Trupash, 6½-8 oz. . .	0 7½	0 7½	0 8	0 8½
		Aerated Soda Water Syphons	1 10	1 11	1 11	1 11

THE THIRD SCHEDULE.
SALES BY THE BOTTLE—CONTENTS ONLY.

Manufacturer.	Town of Manufacture.	Description.	Maximum Price per Bottle—			
			Within a Radius of 15 Miles from the Principal Post Office at Echuca.	Outside of a Radius of 15 Miles, but within a Radius of 30 Miles from the Principal Post Office at Bendigo.	Outside of a Radius of 30 Miles but within a Radius of 50 Miles from the Principal Post Office at Bendigo but not within a Radius of 15 Miles from the Principal Post Office at Echuca.	Outside of a Radius of 50 Miles from the Principal Post Office at Bendigo, but not within a Radius of 15 Miles from the Principal Post Office at Echuca.
First Column.	Second Column.	Third Column.	Fourth Column.	Fifth Column.	Sixth Column.	Seventh Column.
			<i>s. d.</i>	<i>s. d.</i>	<i>s. d.</i>	<i>s. d.</i>
Manger and O'Neill	Echuca	Aerated Waters (other than Soda Water Syphons), 24 oz. or over	1 0	1 1	1 1	1 1½
		Aerated Grape Fruit, Joy's Ale, 24 oz. or over	1 1	1 2	1 2	1 2½
		Aerated Waters (other than Grape Fruit and Soda Water), 12-13 oz.	0 8	0 8½	0 8½	0 9
		Aerated Grape Fruit, 12-13 oz.	0 8½	0 9	0 9½	0 10
		Aerated Soda Water, 12-13 oz.	0 7½	0 7½	0 8	0 8½
		Aerated Waters (other than Grape Fruit, Joy's Ale, and Soda Water, 6½-8 oz.	0 6½	0 7	0 7½	0 7½
		Aerated Grape Fruit, Joy's Ale, 6½-8 oz.	0 7	0 7½	0 8	0 8
		Aerated Soda Water, 6½-8 oz.	0 5½	0 6	0 6½	0 6½
		Aerated Soda Water Syphons	1 10	1 11	1 11	1 11

Dated this 21st day of May, 1953.

J. F. WALDRON,
Prices Commissioner.

Prices Regulation Acts.

PRICES REGULATION ORDER NO. 536.

BREAD—SLICED AND WRAPPED.

IN pursuance of the powers conferred upon me by the Prices Regulation Acts, I, John Francis Waldron, Prices Commissioner, hereby make the following Order:—

Citation.

1. This Order may be cited as Prices Regulation Order No. 536.

Definitions.

2. (1) In this Order, unless the contrary intention appears—
 - “Bread” includes bread of all kinds and descriptions, plain or fancy, whether in the form of loaves, buns, or rolls, and whether or not made in accordance with the requirements of the *Bakers and Millers Act 1928*, and whether or not sold or offered for sale under any trade name, description, or brand.
 - “Starch reduced bread” means starch reduced bread known and sold under any of the following trade names, descriptions, or brands:—“Borina”, “Bon Era”, “Broadway”, “Cenera”, “Ceralia”, “Conway”, “Denera”, “Dieteen”, “Eclipse”, “Glyx”, “Golden Rayceri”, “Maltine”, “New Era”, “New Way”, “New Process”, “Nucera”, “Nutrena”, “Nutty Loaf”, “Nu Vitera”, “Oslo's Starch Reduced”, “Peerless”, “Pitrone's Starch Reduced”, “Procera”, “Progress”, “Prolita”, “Promax”, “Provena”, “Provita”, “Reform”, “Semola”, “Sta-fresh”, “Tricerum”, “Vita Loaf”, “Vitin”, “Wonderloaf.”
 - “Metropolitan area” means—
 - (i) the municipal districts of the municipalities of Box Hill, Brighton, Brunswick, Camberwell, Caulfield, Chelsea, Coburg, Collingwood, Dandenong, Essendon, Fitzroy, Footscray, Hawthorn, Heidelberg (but not including the Greensborough ward), Kew, Malvern, Melbourne, Moorabbin, Mordialloc, Northcote, Oakleigh, Port Melbourne, Prahran, Preston, Richmond, Sandringham, South Melbourne, St. Kilda, Sunshine, Williamstown;
 - (ii) that part of the municipal district of the Shire of Mulgrave which lies west of Bayview-road; and
 - (iii) that part of the municipal district of the Shire of Broadmeadows, which lies within the following boundaries:—

Commencing at a point on the easterly boundary at its intersection with Jukes-road; thence westerly along Jukes-road, to its intersection with Sydney-road; thence southerly along Sydney-road, to its intersection with Hilton-street; thence westerly along Hilton-street, and a line to the Melbourne-Seymour railway line; thence along such railway line to its intersection with the Broadmeadows-Albion railway line; thence south-westerly along such railway line to its intersection with Anselm-grove; thence along Anselm-grove, westerly to its intersection with Augustine-terrace; thence along Augustine-terrace, southerly to its intersection with the Broadmeadows-Albion railway line; thence along that railway line south-westerly to its intersection with the Bulla-road; thence south-easterly, easterly, northerly, easterly, and northerly by the municipal boundary back to the commencing point;
 - (iv) the Shire of Keilor, south-east of the Broadmeadows-Albion railway; and
 - (v) that portion of the municipal district of the Shire of Werribee known as Altona, bounded by the Melbourne-Geelong railway on the north, the Williamstown municipal boundary on the east, Port Phillip bay on the south, and Maidstone-street, and the Explosives reserve on the west.
- “Provincial cities” means the Cities of Ballarat, Bendigo, and Geelong.

“Main towns” means—

- (i) the Towns or Cities of Ararat, Bayswater, Benalla, Boronia, Camperdown, Castlemaine, Colac, Croydon, Echuca, Eltham, Epping, Frankston, Hamilton, Horsham, Kyneton, Maryborough, Mildura, Moe, Montmorency, Morwell, Nunawading, Ringwood, Seaford, Shepparton, St. Arnaud, Stawell, Swan Hill, Thomas-town, Wangaratta, Warragul, Warrnambool, Wonthaggi, Yallourn; and
- (ii) the Greensborough ward of the City of Heidelberg and (to the extent that they are excluded from the metropolitan area) the municipal districts of the Shires of Broadmeadows, Doncaster and Templestowe, Keilor, Mulgrave, and Werribee; but excludes the Shire of Mildura.

“Mountain towns” means the towns of Buchan, Cann River, Corryong, Cudgewa, Erica, Eskdale, Icy Creek, Nayook, Noojee, Nowa Nowa, Omeo, Orbost, Swift’s Creek, Tanjil Bren, Tintaldra, Walhalla, Walwa, and Wood’s Point.

“By wholesale” includes, in relation to any sale of bread, a sale by a retailer to a person to whom that retailer has, on the day of sale, sold a quantity of bread (including that comprised in such first-mentioned sale), totalling not less than 12 lb. of bread; and for the purposes of this definition, Vienna bread shall be reckoned as 2 lb. for each 24-oz. loaf and bread rolls as weighing 2 oz. each.

“Booked sale” means in relation to any sale of bread, a sale where payment for the bread is not made by the purchaser within 30 days of the date of delivery of that bread.

“Midget roll” means a roll or bun weighing less than 2 oz.

“Wrapped” means in relation to the sale of any bread, that such bread was wrapped prior to sale in waxed or grease-proof paper bearing in print the brand of that bread and the name of the manufacturer or person who so wrapped that bread, and that such bread was so wrapped when sold.

(2) Premises fronting on either side of any road or street which forms a boundary of any part of the metropolitan area shall be deemed to be within the metropolitan area.

Maximum Prices.

3. I fix and declare the maximum price at which bread specified in the Schedule to this Order may be sold in Victoria by any person to be the appropriate price specified in that Schedule.

Fixation of Maximum Price by Notice.

4. Notwithstanding the foregoing provisions of this Order, I declare the maximum price at which bread specified in a notice given in pursuance of this clause may be sold in Victoria by any person to whom such notice is given to be such price as is fixed by the Commissioner by notice in writing to that person.

THE SCHEDULE.

	Maximum Prices.	
	Sales by Wholesale Delivered.	Sales by Retail.
	Per dozen. <i>s. d.</i>	Each. <i>s. d.</i>
Sliced and Wrapped Bread—		
: For Sales in—		
Metropolitan Area—		
White, brown, or wholemeal per 2-lb. loaf	14 6	1 4½
Vienna per 1½-lb. loaf	14 6	1 4½
Starch-reduced per 1-lb. loaf	11 3	1 1
Provincial Cities—		
White, brown, or wholemeal per 2-lb. loaf	15 0	1 5
Vienna per 1½-lb. loaf	15 0	1 5
Starch-reduced per 1-lb. loaf	11 9	1 1½

For the purposes of this Schedule—

- (a) a loaf (not being a Vienna loaf) which weighs 1 lb. or more, but less than 2 lb., shall be deemed to be a 1-lb. loaf;

- (b) a Vienna loaf weighing less than 24 oz. shall be deemed to be a 1-lb. loaf, and a Vienna loaf weighing 24 oz. or more shall be deemed to be a 2-lb. loaf;
- (c) in respect of a booked sale outside the metropolitan area, the price shall be the appropriate price specified in the Schedule to this Order, plus—
- (i) ½d. per 1-lb. loaf;
 - (ii) ½d. per 2-lb. loaf.

Dated this 21st day of May, 1953.

J. F. WALDRON,
Prices Commissioner.

Prices Regulation Acts.
PRICES REGULATION ORDER No. 537.

BRICKS.

IN pursuance of the powers conferred upon me by the Prices Regulation Acts, I, John Francis Waldron, Prices Commissioner, hereby make the following Order:—

Citation.

1. This Order may be cited as Prices Regulation Order No. 537.

Revocation.

2. Prices Regulation Order No. 465 is hereby revoked.

Definitions:

3. In this Order unless the contrary intention appears—
“Metropolitan area” means all that area within the State of Victoria, comprised within a radius of twenty-five (25) miles of the General Post Office, Spencer-street, Melbourne.
“Bricks” means bricks which have not been previously used.

Maximum Prices.—Bricks.

4. (1) I fix and declare the maximum prices at which bricks of the descriptions set out in the second column of the Schedule to this Order and manufactured by the persons set out in the first column of such Schedule may be sold to be the prices specified in the third column of such Schedule.

(2) I declare that in the case of sales by a brick manufacturer such maximum prices are for delivery *ex kiln* or at the place of manufacture.

Fixation of Maximum Prices by Notice.

5. (1) Notwithstanding the foregoing provisions of this Order, I declare the maximum price at which bricks specified in a notice given in pursuance of this clause may be sold by any person to whom such notice is given to be such price as is fixed by the Prices Commissioner by notice in writing to that person.

(2) All notices in writing given in pursuance of any Prices Regulation Order issued prior to this Order, which operate to fix a maximum price for the sale by any person of any bricks lower than the maximum price fixed by the provisions of this Order and which are in force at the commencement of this Order shall be deemed to have been given under this Order.

Issue of Dockets or Invoice.

6. Every person who sells bricks, a maximum price for the sale of which is fixed by or under this Order, shall deliver to the purchaser at the time of sale a docket or invoice, containing the following particulars:—

- (a) name of the purchaser;
- (b) number and description of bricks;
- (c) rate per one thousand charged for such bricks; and
- (d) total price charged for such bricks.

THE SCHEDULE.
PART 1.—CONTINUOUS HOFFMANN KILN BURNED BRICKS.

Manufacturer.	Description.	Maximum Price per 1,000.
<i>£ s. d.</i>		
All manufacturers whose place of manufacture is within the Metropolitan Area and all manufacturers whose place of manufacture is within a radius of Ten (10) miles of the Principal Post Office at Ballarat	Ordinary Bricks—	
	Firsts	12 11 0
	Seconds	12 9 0
	Clinkers	12 9 0
	Blues	15 3 0
	Red Specials—	
	Shaped Bricks, Bull-nosed, Squints, &c.	31 12 0
	Returns, 9" x 4½"	0 2 0 each
	Returns, 9" x 9"	0 4 0 each
	Stops	0 1 0 each
	Coloured Specials—	
	Shaped Bricks, Bull-nosed, Squints, &c.—	
	Pink or Cream	34 12 0
	Manganese	35 14 6
	Heclers—	
	Red	20 2 0
	Pink or Cream	26 2 0
	Manganese	27 4 6
	Pink or Cream Bricks—	
	Firsts	16 18 6
Seconds	15 3 6	
Manganese Bricks—		
Firsts	17 10 6	
Seconds	16 5 6	
<i>Intermittent Kiln Burnt Bricks.</i>		
Ararat Brick Co. Pty. Ltd., Ararat; Western Brick and Tile Co., Ararat	Cream Bricks	17 3 6
Benalla Brick Works, Benalla	Ordinary Red Bricks	12 4 3
	Wire-cut Red Bricks	15 9 3
	Blue Bricks	12 19 3
<i>Continuous Kiln Burnt Bricks.</i>		
Sandhurst Brick Co. Ltd., Bendigo	Ordinary Red Bricks	12 16 0
	Second Red Bricks	12 14 0
	Clinker Bricks	12 16 0
	Blue Bricks	15 2 0
	Red Bull-nose or Splay Bricks	20 2 0
	Cream or Buff Bricks	15 13 6
<i>Intermittent Kiln Burnt Bricks.</i>		
McIvor Brick Co. Ltd., Bendigo	Cream Bricks, Firsts	17 10 0
	Cream Bricks, Seconds	15 15 0
	Wire-cut Red Bricks	14 19 3
Castlemaine Ceramic Industries, Castlemaine	Ordinary Red Bricks	12 4 3
	Pink Bricks	13 2 6
	Blue Bricks	13 2 6
	Blue Clinker Bricks	13 2 6
Lucknow Brick Co., Lucknow	Special Red Bricks	15 9 3
	Special Red Bricks	15 9 3
Maffra Brick Co., Maffra	Ordinary Red Bricks	12 4 3
	Special Red Bricks	15 9 3
Shepparton Brick Works Pty. Ltd., Shepparton	Ordinary Red Bricks	12 4 3
	Red Bricks	14 9 3
	Blue Bricks	17 1 3
St. Arnaud Brick Co. Pty. Ltd., St. Arnaud	Cream Bricks, 2"	17 9 3
	Cream Bricks, 3"	18 9 3
	Cream Bricks	17 1 0
Wangaratta Brick Works Pty. Ltd., Wangaratta	Ordinary Red Bricks	12 4 3
	Blue Bricks	12 19 3
	Special Red Bricks	15 9 3
Sale Brick Works, Sale	Ordinary Red Bricks	10 4 3
Horsham Brick Co., Horsham	Ordinary Red Bricks	10 12 3
	Ordinary Red Bricks	11 7 0
Stawell Brick Co. Pty. Ltd., Stawell	Cream Bricks, Firsts	16 10 0
	Cream Bricks, Seconds	14 15 0
	Ordinary Red Bricks	15 16 11
The Hoffman Brick and Potteries Ltd., Latrobe Brick Works, Yallourn	Blue Bricks	18 8 11
	Ordinary Red Bricks	17 15 0
Sunraysia Brick Kilns Pty. Ltd., Mildura	Blue Bricks	19 5 0
	Cream Bricks	18 5 0
Glenthompson Brickworks Pty. Ltd., Glenthompson	Cream Bricks	18 5 0
	Cream Bricks, Firsts	16 10 0
Maryborough Brick Works, Maryborough	Cream Bricks, Seconds	15 0 0
	Red Bricks, Firsts	13 0 0
	Red Bricks, Seconds	12 15 0
	Ordinary Red Bricks	14 18 3
Traralgon Brick Works, Traralgon	Ordinary Red Bricks	14 18 3
Wedderburn Brick Co. Pty. Ltd., Wedderburn	Ordinary Red Bricks	14 5 0
All other manufacturers	Bricks	10 4 3

PART 2.—SILICA LIME BRICKS.

Manufacturer.	Description.	Maximum Price
		per 1,000.
		£ s. d.
Colortone Brick Ltd., Frankston	White Bricks	12 0 0
	Coloured Bricks	14 15 0
Great Eastern Brick Co. Pty. Ltd., Traralgon	White Bricks	14 0 0
	Coloured Bricks	14 15 0
All other manufacturers ..	Bricks	10 4 3

Dated this 21st day of May, 1953.

J. F. WALDRON,
Prices Commissioner.

Prices Regulation Acts.
PRICES REGULATION ORDER No. 538.

TOBACCO AND CIGARETTES.

IN pursuance of the powers conferred upon me by the Prices Regulation Acts, I, John Francis Waldron, Prices Commissioner, hereby make the following Order:—

Citation.

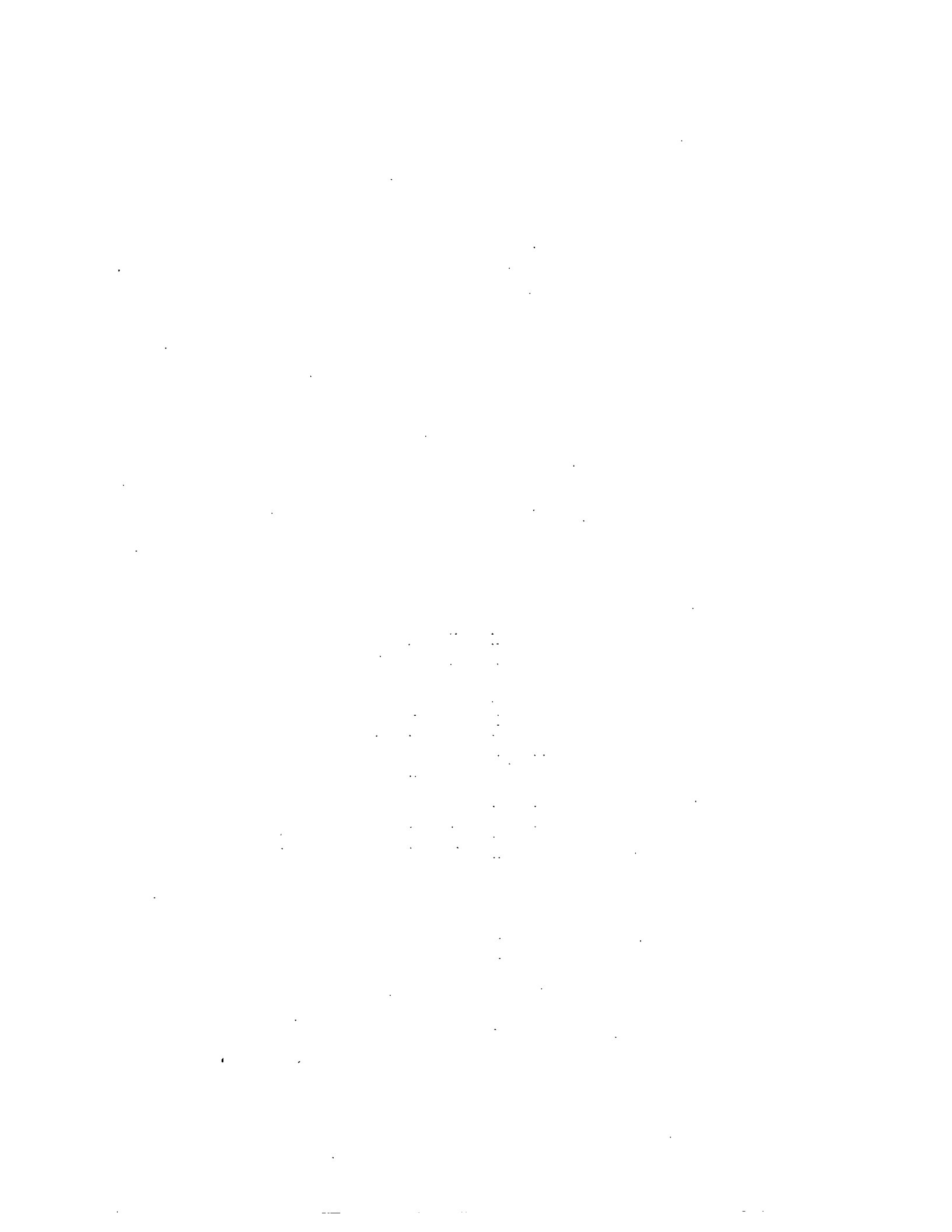
1. This Order may be cited as Prices Regulation Order No. 538.
2. Prices Regulation Order No. 518 is hereby amended by inserting in the Schedule thereto the items appearing in the Schedule to this Order.

THE SCHEDULE.

Kind of Brand.	Maximum Retail
	Price.
	s. d.
Cut Tobacco—	
American Manufacture—	
Half and Half	1½-oz. tin 6 1
Prince Albert	8-oz. tin 21 9
United Kingdom Manufacture—	
Capstan	8-oz. tin 29 6
Dutch Manufacture—	
Amateur Tabac Pipe	8-oz. packet 21 9
Anchor	100-gr. tin 9 8
John Tiedemann Cigarette Tobacco	250-gr. tin 32 6
Sterling Shag	2-oz. packet 4 6
Sunday Mixture	100-gr. tin 9 8
Zilver Shag	2-oz. packet 4 6
Italian Manufacture—	
Trinciad Q'Forte F.C.	¾-oz. packet 2 2
South African Manufacture—	
Tortoiseshell	4-oz. packet 14 11
Cigarettes—	
American Manufacture—	
All brands	packet of 20 3 7½
Dutch Manufacture—	
Bond Street	packet of 20 3 2
King Louis	box of 50 7 11
King's Cross	packet of 20 3 2
Old Mose	packet of 20 3 2
Italian Manufacture—	
Tre Stelle	packet of 20 3 0
Colombo	packet of 20 3 0
Stop	packet of 20 3 0
United Kingdom Manufacture—	
Capstan	tin of 50 7 11
Carlton	tin of 50 8 1½
Chief Whip	tin of 50 8 1½
Churchmen's No. 1	tin of 50 8 1½
Craven A	packet of 20 3 4
Embassy	tin of 25 4 1
Gold Flake (Wills)	box of 50 8 1½
Miss Blanche	packet of 20 3 2
Players	packet of 20 3 4
State Express 555's	tin of 25 5 1
State Express 555's	tin of 50 10 1½
Triumph	packet of 10 1 7
Triumph	packet of 20 3 2

Dated this 21st day of May, 1953.

J. F. WALDRON,
Prices Commissioner.





VICTORIA GOVERNMENT GAZETTE.

Published by Authority.

[Registered at the General Post Office, Melbourne, for transmission by post as a newspaper.]

No. 487]

FRIDAY, MAY 29.

[1953

Factories and Shops Acts.

DETERMINATION OF A WAGES BOARD ADJUSTED PURSUANT TO SECTION 21 OF THE FACTORIES AND SHOPS ACT 1934 (No. 4275).

I, Raymond Henry Beers, Secretary for Labour, in pursuance of the powers conferred by the Factories and Shops Acts, hereby make and issue the following adjusted Determination of the Wages Board referred to hereunder showing adjusted rates and prices to operate from the beginning of the first pay period to commence in May, 1953.

Dated at Melbourne, this
26th day of May, 1953.

RAY H. BEERS,
Secretary for Labour.

PLATE GLASS BOARD.

Clauses 2, 3, 4 and 5, of the Determination made on the 16th March, 1953, and in force as from the beginning of the first pay period to commence on or after the 1st April, 1953, shall be replaced by the following clauses:

2. WAGES.

Adults, Journeymen, or Journeywomen.	Within 20 Miles of G.P.O., Melbourne; 10 Miles of G.P.O., Geelong; at Warrnambool, and in the Mildura and Gippsland Districts.	Elsewhere in Victoria.
	£ s. d.	£ s. d.
PART I.—ADULT MALES.		
Section "A"—Glass.		
Hand painter or designer on or for glass	14 9 0	14 6 0
Pencil hand-embosser	14 2 0	13 19 0
Tradesman, i.e., an employee who has completed an indenture of apprenticeship or an adult employee who has been trained for not less than 4 years as a Beveller, Silverer, Glass Bender, Sand Blaster, Spray Painter, Glazier, Glass Cutter, Scratch Polisher, and Glass Blocker	14 2 0	13 19 0
Tradesman's Assistant, i.e., an adult employee other than a tradesman, who assists a tradesman but does not do a tradesman's work, or is employed in checking, recording, packing, or unpacking glass	13 2 0	12 19 0
Rubber-out embosser	13 2 0	12 19 0
Cementer	13 2 0	12 19 0
Employee turning out lead from mill for leadlight glazier	13 2 0	12 19 0
Silk Screen maker	13 2 0	12 19 0
Silk Screen operator	12 14 0	12 11 0
Assistant to Silverer employed lifting and/or painting and/or cleaning silvered glass	12 10 0.	12 7 0

WAGES—continued.

Adults, Journeymen, or Journeywomen.	Within 20 Miles of G.P.O., Melbourne; 10 Miles G.P.O. Geelong; at Warrnambool, and in the Mildura and Gippsland Districts.	Elsewhere in Victoria.
	£ s. d.	£ s. d.
PART I.—ADULT MALES—continued.		
<i>Section "B"—Safety Glass.</i>		
Cutter	14 2 0	13 19 0
Beveller	14 2 0	13 19 0
Employee in charge of laminating room	14 2 0	13 19 0
Edge grinders (including allowance for wet work)	14 2 0	13 19 0
Autoclave attendant	13 12 0	13 9 0
Furnace operator—		
(a) First three months	13 12 0	13 9 0
(b) After three months' service	14 2 0	13 19 0
Furnace operator's assistant	13 12 0	13 9 0
Employees on cornering	13 12 0	13 9 0
Scratch polisher	13 2 0	12 19 0
Edge workers employed on automatic or semi-automatic machines	13 2 0	12 19 0
Edge sealer	13 2 0	12 19 0
Employee packing, unpacking, or issuing glass	13 2 0	12 19 0
Employee working automatic cutting machine	13 2 0	12 19 0
Employee breaking out after automatic cutting machine	13 2 0	12 19 0
PART II.—ADULT FEMALES.		
<i>Safety Glass.</i>		
Females engaged on scratch polishing machines	9 6 0	9 3 6
Females engaged on inspecting and testing	9 2 0	8 19 6
All other work	8 18 0	8 15 6

Provided that all other adult females employed on work for which a male margin of 40s. or over is prescribed shall receive a margin equal to 50 per centum of the male margin, but if the male margin is less than 40s., they shall receive a margin equal to 25 per centum of the male margin. Where there is no male margin prescribed for their work they shall be paid a margin of 4s. per week.

PART III.—SAVING.

No employee shall have his or her rate reduced merely as a result of this Determination.

SPECIAL RATES.

3. (a) *Leading Hands.*—In addition to the wages prescribed in clause 2 herein leading hands shall be paid the following allowances:—

1. 9s. per week if in charge of not less than three and not more than ten employees including apprentices;
2. 18s. per week if in charge of not less than ten and not more than twenty employees including apprentices;
3. 27s. per week if in charge of more than twenty employees including apprentices.

(b) In addition to the rates set out in clause 2 herein, the following additional rates shall be paid:—

- (i) 10s. per week to employees in the Glass Section required to work at a height of 50 feet or more above the nearest horizontal plane;
- (ii) 6d. per hour to employees working in confined spaces;
Confined space means a compartment, space, or place the dimensions of which necessitate an employee working in a stooped or otherwise cramped position or without proper ventilation.
- (iii) 4d. per hour to employees working in any place where clothing or boots become saturated, whether by water, oil, or otherwise. Provided that this extra rate shall not be payable to an employee who is provided by the employer with suitable and effective protective clothing and/or footwear. And provided further that any employee who becomes entitled to this extra rate shall be paid such extra rate for such part of the day or shift as he is required to work in wet clothing or boots;
- (iv) 6d. per hour to employees handling loose slag wool, loose insul wool, or other loose material of a like nature used for providing insulation against heat, cold, or noise;
- (v) 4d. per hour where a foreman and workman shall agree that the work is of an unusually dirty or offensive nature.

In case of disagreement between the foreman and workman, the workman or a shop steward on his behalf shall be entitled within 24 hours, to ask for a decision on the workman's claim by the employers' Industrial Officer, if there be one, or otherwise, by the employer or the executive officer responsible for the management or superintendence of the plant concerned. In such case a decision shall be given on the workman's claim within 48 hours of its being asked for (unless that time expires on a non-working day, in which case it shall be given during the next working day) or else the said allowance shall be paid;

- (vi) 25 per centum to employees working on replacement of surface of urinals and lavatories where structural glass is used.

SPECIAL RATES NOT CUMULATIVE.

(c) Where more than one of the disabilities entitling a workman to extra rates exist on the same job, the employer shall be bound to pay only one rate, namely, the highest rate for the disabilities so prevailing.

RATES NOT SUBJECT TO PENALTY ADDITIONS.

(d) The special rates herein prescribed shall be paid irrespective of the times at which the work is performed, and shall not be subject to any premium or penalty additions.

MIXED FUNCTIONS.

4. Where an employee is engaged in any one week for more than half of such week at work in a higher class than he or she is employed to perform, he or she shall be paid for the full week at the highest rate payable for any such work under this Determination; but, if he or she is engaged for more than half of any one day, he or she shall be so paid for the whole day. If the period on the higher class of work is half or less than half a week or half or less than half a day, then he or she shall be paid at the rate fixed for the work he or she actually performs.

APPRENTICES AND IMPROVERS—RATES OF PAY.

5. The following shall be the rates of pay for apprentices and improvers:—

	Within 20 Miles of G.P.O., Melbourne; 10 Miles of G.P.O., Geelong; at Warrnambool; and in the Eildura and Gippsland Districts.	Elsewhere in Victoria.
<i>Apprentices.</i>		
£ s. d.		
£ s. d.		
Five-year Term—		
1st year's experience	3 14 0	3 13 6
2nd year's experience	5 0 0	4 18 6
3rd year's experience	6 5 6	6 3 6
4th year's experience	9 12 6	9 10 0
5th year's experience	11 18 0	11 15 0
Four-year Term—		
1st year's experience	3 19 0	3 18 0
2nd year's experience	6 5 6	6 3 6
3rd year's experience	9 12 6	9 10 0
4th year's experience	11 18 0	11 15 0
<i>Improvers (Males).</i>		
Under 16 years of age	2 15 6	2 15 0
16 and under 17	3 8 0	3 7 0
17 and under 18	4 11 6	4 10 6
18 and under 19	6 2 0	6 0 6
19 and under 20	9 12 6	9 10 0
20 and under 21	11 17 0	11 14 0
<i>Female Apprentices.</i>		
1st year's experience	4 0 0	3 19 0
2nd year's experience	5 14 6	5 13 0
3rd year's experience	7 13 6	7 11 0
4th year's experience	8 15 6	8 13 0
<i>Female Improvers.</i>		
16 years and under	2 17 6	2 16 6
17 years	4 0 0	3 19 0
18 years	5 14 6	5 13 0
19 years	7 13 6	7 11 0
20 years	8 15 6	8 13 0

Clauses, other than clauses 2, 3, 4 and 5, of the said Determination shall remain in force.

The first part of the document discusses the importance of maintaining accurate records of all transactions. It emphasizes that every entry should be supported by a valid receipt or invoice. This ensures transparency and allows for easy verification of the data.

In the second section, the author details the various methods used to collect and analyze the data. This includes both manual data entry and the use of specialized software tools. The goal is to ensure that the data is both accurate and easy to interpret.

The third section provides a detailed breakdown of the results. It shows that there is a significant correlation between the variables being studied. This finding is supported by statistical analysis and is consistent with previous research in the field.

Category	Sub-category	Value 1	Value 2	Value 3	Value 4
Group A	Item 1	12	15	18	20
	Item 2	10	12	14	16
	Item 3	8	10	12	14
	Item 4	6	8	10	12
Group B	Item 1	15	18	20	22
	Item 2	12	15	18	20
	Item 3	10	12	15	18
	Item 4	8	10	12	15

The final part of the document discusses the implications of the findings. It suggests that the results could be used to inform future research and to develop more effective strategies. The author also acknowledges the limitations of the study and provides suggestions for how these could be addressed in future work.

In conclusion, the study has provided valuable insights into the relationship between the variables being studied. The findings are supported by a robust set of data and statistical analysis. This work contributes to the existing body of knowledge in the field and provides a foundation for further research.