

[3151]



VICTORIA
GOVERNMENT GAZETTE.

Published by Authority.

[Registered at the General Post Office, Melbourne, for transmission by post as a newspaper]

No. 521]

THURSDAY, JUNE 25.

[1953

CONTRACTS ACCEPTED.

(SERIES 1953-54.)

SUPPLY OF PROVISIONS

FOR

STATE DEPARTMENTS

FROM

1st JULY, 1953, to 30th JUNE, 1954,
or as stated.

Conditions of Contract and Stipulations are shown herein for the guidance
of Officers ordering and receiving supplies.

W. H. RUTHERFORD,
Secretary to the Tender Board.

CONTRACTS ACCEPTED—(Series 1953-54.)

PROVISIONS.

No. of Contract.	Particulars of each Tender Accepted.	Amount.	Name of Contractor or Supplier.	Charge against Vote or Fund.
	PROVISIONS—			
	Supply of Provisions, in such quantities as may be ordered, from 1st July, 1953, to 30th June, 1954, or as stated.			
	Schedule No. 1.—Melbourne District—			
1	Bread, Kew Mental Hospital	Rates as per annex	Capitol Bakeries Pty. Ltd.	
2	Bread, Melbourne, Royal Park, and Travancore Developmental Centre, Flemington ..	Ditto	Universal Bakeries	
3	Bread, Teachers' College, and Hostel, Carlton, Henry Watson House, South Yarra and Police Hospital, Melbourne ..	Ditto	Capitol Bakeries Pty. Ltd.	
4	Flour	Ditto	Pirie Bros.	
..	Groceries	Ditto	<i>Moran and Cato Pty. Ltd. (A)</i>	
..	Cereals	Purchase under Tender Board quotations	
5	Jams	Rates as per annex	W. H. Johnsons Jams Pty. Ltd.	
6	†Meat, Kew Mental Hospital	Ditto	F. Watkins Pty. Ltd.	
7	†Meat, Pentridge Penal Establishment	Ditto	F. Watkins Pty. Ltd.	
8	†Meat, Children's Welfare Depot, Royal Park, Police Hospital and Henry Watson House, South Yarra ..	Ditto	J. H. Cooke Pty. Ltd.	
9	†Meat, Royal Park Mental Hospital and Receiving House ..	Ditto	Jackson's United Meat Co. Pty. Ltd. ..	
..	Soap Mixtures	Ditto	<i>Moran and Cato Pty. Ltd. (A)</i>	
10	Tea	Ditto	Bushells Ltd.	
11	Coffee	Ditto	Henry Berry and Co. (A'sia.) Ltd. ..	
..	Potatoes	Purchase under Tender Board quotations ..	
	Schedule No. 2.—Mont Park; Sanatorium, Greswell, &c.—			
12	Bread	Rates as per annex	E. J. Callander	
..	Groceries	Ditto	<i>Henry Berry and Co. (A'sia.) Ltd. (A)</i> ..	
13	Jams	Ditto	W. H. Johnsons Jams Pty. Ltd.	
14	†Meat	Ditto	Jackson's United Meat Co. Pty. Ltd. ..	
..	Potatoes	Purchase under Tender Board quotations ..	
	Schedule No. 3.—SS. Rip and Dredges—			
..	Bread	Purchase by agreement	
..	Groceries	Rates as per annex	<i>Moran and Cato Pty. Ltd. (A)</i>	
15	†Meat	Ditto	J. H. Cooke Pty. Ltd.	
..	Vegetables	Purchase by agreement	
..	Potatoes	Purchase under Tender Board quotations ..	
	Schedule No. 4.—Teachers' College, Carlton—			
..	Groceries	Rates as per annex	<i>Moran and Cato Pty. Ltd. (A)</i>	
16	†Meat (also for Travancore Developmental Centre, Flemington) ..	Ditto	Jackson's United Meat Co. Pty. Ltd. ..	
..	Potatoes	Purchase under Tender Board quotations ..	
	Schedule No. 5.—Ararat District—			
17	Breadstuffs	Rates as per annex	M. L. & R. M. Bates	
..	Groceries	Ditto	<i>John MacLeod and Co. Pty. Ltd. (A)</i> ..	
..	Jams	Ditto	
18	†Meat	Ditto	A. I. Ahpee	
..	Potatoes	Purchase under Tender Board quotations ..	
	Schedule No. 6.—Ballarat District—			
19	Breadstuffs	Rates as per annex	Brogden Bros.	
..	Groceries	Ditto	<i>John MacLeod and Co. Pty. Ltd. (A)</i> ..	
..	Jams	Ditto	
20	†Meat	Ditto	H. J. Symons Pty. Ltd.	
..	Potatoes	Purchase under Tender Board quotations ..	
	Schedule No. 7.—Beechworth District—			
21	Bread	Rates as per annex	P. A. Taylor	
..	Groceries	Ditto	<i>Moran and Cato Pty. Ltd. (A)</i>	
..	Jams	Ditto	
22	†Meat	Ditto	E. Spencer	
..	Potatoes	Purchase under Tender Board quotations ..	

Contingencies,
1953-54

Names shown in italics denote suppliers under agreement. † Contract for period 1st July, 1953, to 30th September, 1953, only.

CONTRACTS ACCEPTED—(Series 1953-54)—continued.

PROVISIONS—continued.

No. of Contract.	Particulars of each Tender Accepted.	Amount.	Name of Contractor or Supplier.	Charge against Vote or Fund.
	PROVISIONS—continued.			
23	Schedule No. 8.—Langi Kal Kal Training Centre—			
24	Bread	Rates as per annex	O. Nicholls and W. J. Hoskin ..	
..	†Meat	Ditto	H. T. Slee	
..	Potatoes	Purchase under Tender Board quotations	
25	Schedule No. 9.—School of Forestry, Creswick—			
..	Breadstuffs	Rates as per annex	R. C. Bowley	
26	Groceries	Ditto	<i>J. Tait and Son (A)</i>	
27	Milk	Ditto	E. J. Keon	
..	†Meat	Ditto	H. J. Symons Pty. Ltd.	
28	Schedule No. 10.—McLeod Settlement, French Island—			
..	Bread	Rates as per annex	H. H. Bird	
29	Groceries	Ditto	<i>E. V. Peters (A)</i>	
..	†Meat	Ditto	George Hayman	
..	Potatoes	Purchase under Tender Board quotations	
30	Schedule No. 11.—Heatherton Sanatorium, Cheltenham—			
..	Bread	Rates as per annex	T. D. Callander Pty. Ltd.	
31	Groceries	Ditto	<i>Moran and Cato Pty. Ltd. (A)</i>	
32	†Meat	Ditto	W. Angliss and Co. (Aust.) Pty. Ltd. ..	
..	Milk	Ditto	L. J. A. Henderson	
33	Schedule No. 12.—Sanatorium, Greenvale—			
..	Breadstuffs	Rates as per annex	Bessell's Pty. Ltd.	
34	Groceries	Ditto	<i>Henry Berry and Co. (A'sia.) Ltd. (A)</i> ..	
..	†Meat	Ditto	Jackson's United Meat Co. Pty. Ltd. ..	
..	Potatoes	Purchase under Tender Board quotations	
35	Schedule No. 13.—Gooriemungle Prison Camp Heytesbury Forest—			
..	Bread	Rates as per annex	<i>E. L. McDowall (A)</i>	
..	Groceries	<i>M. L. Hose (A)</i>	
..	†Meat	Rates as per annex	Heytesbury Butchery	
36	Schedule No. 14.—Aboriginal Station, Lake Tyers—			
..	Breadstuffs	Rates as per annex	R. Hodder	
..	Groceries	Ditto	<i>R. Hodder (A)</i>	Contingencies, 1953-54.
..	Jams	Ditto	
37	Schedule No. 15.—Research Station, Rutherglen—			
..	Bread	Rates as per annex	W. S. Amore	
..	Groceries	Ditto	<i>Aitken and Fullerton (A)</i>	
38	Schedule No. 16.—Salo Gaol—			
39	Bread	Rates as per annex	F. J. Hennessy	
..	†Meat	Ditto	W. Wright	
40	Schedule No. 17.—Pleasant Creek Special School, Stawell—			
..	Breadstuffs	Rates as per annex	Keith Lawson	
41	Groceries	Ditto	<i>John MacLeod and Co. Pty. Ltd. (A)</i> ..	
42	Milk	Ditto	E. G. Waldron	
..	†Meat	Ditto	Newton Bros.	
..	Potatoes	Purchase under Tender Board quotations	
43	Schedule No. 18.—Sunbury District—			
..	Breadstuffs	Rates as per annex	Bessell's Pty. Ltd.	
..	Groceries	Ditto	<i>K. N. Tidswell (A)</i>	
..	Cereals	Purchase under Tender Board quotations	
44	Jams	Rates as per annex	<i>K. N. Tidswell (A)</i>	
..	†Meat	Ditto	F. Watkins Pty. Ltd.	
..	Potatoes	Purchase under Tender Board quotations	
45	Schedule No. 19.—Agricultural College, Dookie—			
..	Breadstuffs	Rates as per annex	L. G. Clark	
..	Groceries	Ditto	<i>W. A. Thompson (A)</i>	
..	Jam	Ditto	
46	Schedule No. 20.—Agricultural College, Longerenong—			
..	Breadstuffs	Rates as per annex	Omant Bros.	
..	Groceries	Ditto	<i>A. E. and E. M. Woolman (A)</i>	
..	Jam	Ditto	
..	Potatoes	Purchase under Tender Board quotations	
47	Schedule No. 21.—Geelong District—			
48	Bread	Rates as per annex	J. A. Fitzgerald	
..	†Meat	Ditto	O'Brien's Butchery	

Names shown in italics denote suppliers under agreement. † Contract for period 1st July, 1953, to 30th September, 1953, only

Approved—L. W. GALVIN, Acting Treasurer, 23.6.1953.

CONDITIONS OF CONTRACT FOR PROVISIONS, 1953-54, ETC.

(Published in the *Victoria Government Gazette* No. 263, dated 22nd April, 1953, pages 1648 to 1650.)

1. All the articles are to be of the best quality of the several kinds, in the best condition, and in conformity with the Health Acts, and to be delivered in sound packages, free from all charges for cartage, freight, &c. The goods shall be delivered as may be directed by the officer ordering the supply.

2. As the exact quantity of any article which may be required cannot be stated, the estimate being approximate only, the Government will not be bound by the quantity stated in the schedule, but will be at liberty to order more or less, according to circumstances, and the contractor will be bound to supply the same as ordered.

The Government reserves the right to purchase otherwise than from the contractor any of the articles specified in the schedule in the event of emergency.

3. Supplies for country districts for which no local contract may have been taken, or for which the contract has been terminated, may be ordered under the Melbourne contract.

4. The Melbourne District will include places within a radius of 6 miles from the Elizabeth-street Post Office, with the exception of places for which separate contracts are provided; the Mont Park District will include the Mental Hospitals, Janefield Colony, and the Sanatorium, Gresswell; the Ballarat, Beechworth, and Sunbury Districts will include the Mental Hospitals, Gaols, and Police Gaols at those places. Delivery must be made at the places, institutions, &c., named in the schedules, or as directed by the officer ordering the supply.

5. Packages suitable for transport of goods supplied must be provided by the contractor free of expense, and the value of these packages, whether in bulk or otherwise, is to be included in the rate tendered, except butter boxes and soap boxes (not including fancy soaps), jam jars, flour, meal, and potato bags, which will remain the property of the contractor, and only the actual net weight or quantity received will be paid for; the empties to be removed from the place of delivery at the contractor's expense.

6. The meat supplied under these conditions must, if practicable, be slaughtered at abattoirs which are under authorized inspection and supervision. Any infringement of this condition will subject the contractor, on report from the Tender Board, to such mulct, not exceeding Fifty pounds, as the Treasurer may direct, and the amount will be deducted from the contractor's account, or from the security money.

7. The supplies coming under the head of Rations and Medical Comforts are to be delivered direct to the establishment entitled thereto on the written order of the officer in charge. All other supplies will be ordered by the head of the Department concerned or any officer authorized by him, and shall be delivered as may be directed by the officer ordering the supply.

8. At the time of delivering the supplies, the contractor shall produce the order for the same to the officer authorized to accept delivery, and such officer shall acknowledge thereon the receipt of the stores accepted, and shall return the order to the contractor, who shall render his account as soon as possible after the delivery of the supplies, accompanied by the receipted delivery order. The rates or quantities quoted in the orders cannot be exceeded.

9. Where railway facilities are available, the contractor shall use the Railways for the transport of the goods. When a contractor is required to make delivery of goods at a railway station for transmission by rail, except for Commonwealth Departments, he shall obtain a receipt for the goods in duplicate on the Stores and Transport consignment note, at the same time handing in the triplicate and quadruplicate of the form as an authority for the Railways to act as agent for, and charge the freight to, the Stores and Transport Office. He shall as soon as possible, and not later than twenty-four hours thereafter, deliver at the Tender Board Offices the original, the duplicate to be forwarded to the consignee and the quintuplicate retained by himself. Should the goods thus forwarded be rejected, the contractor must bear the cost of replacing such goods, for which services the departmental consignment note is not to be used. Any infringement of this condition may subject the contractor to such mulct as the Tender Board may recommend under clause 18 of these conditions.

10. Orders must receive prompt execution; in the event of the goods not being delivered at the time mentioned in the order or within such other time as the officer ordering the supply may specify for delivery, it will be competent for such officer, or the head of the Department to whom the goods are to be supplied, on giving the contractor twenty-four hours' notice, to purchase the supplies, or any like supplies that are suitable for the service, at the contractor's risk, and the extra expense incurred over and above the contract price (if any)

will be deducted from the contractor's account or from the security money.

11. The acceptance of the supplies shall be subject to the approval of the officer authorized to take delivery of the stores, or such other officer as shall be named in the conditions.

12. If the officer in charge of stores be not satisfied as to the quantity or quality of the stores, or if, after taking delivery of any stores or material, he shall discover any deficiency or defect therein, he may return such deficient or defective stores or material to the contractor, and shall report the same to the head of his Department and to the Tender Board.

13. In the event of a difference of opinion between the contractor and the officer receiving the supplies as to the quality, the same is to be decided, in cases where the article is not of a perishable nature, by a Board of Survey composed of persons named by the Treasurer of the State for the time being; and the decision of the Board is to be considered final. In the event of the decision being against the contractor, the survey fees and expenses (if any) will be deducted as in clause 10.

14. In cases where the article is of a perishable nature, or when from some other cause injury would be sustained either by the person to whom the rations or stores are due or by the contractor in waiting for a Board to survey, the head of the Department or officer authorized to take delivery will have power to reject such article or articles as are obviously of inferior quality, it being understood that he will be responsible to the Government for so doing, and that the contractor must take back the rejected article and supply good in its stead; failing which it, or any like supply suitable for the Service, will be obtained by the officer requiring it as in clause 10. In case of the rejection or return of any supplies, the contractor shall bear the whole cost of replacing the supplies so rejected or returned.

15. If the Board shall decide that the article is not of proper quality it must be immediately replaced by the contractor; failing which it, or any like supply suitable for the Service, will be procured by the officer requiring it, and the expense charged as in clause 10.

16. In the case of supplies for Mental Hospitals, it will be competent for a Board of Survey, consisting of the medical superintendent (or, in his absence, of the medical officer) and any two officers named by him, to examine and reject any supplies that may be objected to. It must be distinctly understood, however, that the contractor will have a right of appeal to the Treasurer of the State for the time being, such appeal to be made in writing within 24 hours of the rejection; but, pending such appeal, he must at once supply others of approved quality; failing which, the supplies required, or any like supplies suitable for the Service, may be obtained by the officer concerned, and the expense charged as in clause 10.

17. In the case of supplies for Mental Hospitals, it will also be competent for two or more of the official visitors, in conjunction with the medical superintendent, to reject any supplies that they may consider not in accordance with contract; and in such cases the reference to a Board of Survey will not be deemed to be necessary.

18. A refusal to execute orders, irregularity in the quantity or quality of the supplies, or delay in delivering or replacing them when required, will subject the contractor, upon report from the Tender Board, to such mulct, not exceeding Fifty pounds, as the said Treasurer may direct, and the amount may be deducted as in clause 10. It will also be in the power of the said Treasurer, upon such refusal, irregularity, or delay, to terminate the contract forthwith, and forfeit the whole or any part of the security money; and, in addition, the contractor will be disqualified from tendering or holding any future contract or contracts for a period of twelve months from the date of such disqualification.

19. Contractors are not at liberty to transfer their contracts under cover of power of attorney, coupled with an interest or otherwise, and no such transfer will be recognized by the Government. *If it is found during the currency of the contract that the contractor has not conformed to the condition of advertisement—which stipulates that if a tenderer be a member of a firm and such firm be interested in the contract, the tender shall be in the name of the firm and not in that of the individual—then the Treasurer may, on the recommendation of the Tender Board, determine the contract, and forfeit the security money.*

20. It will be competent for the Tender Board to terminate the contract, without notice, should there be reason to know

that the contractor takes advantage of his contract to communicate with a prisoner.

21. The contract entered into under these conditions is not to be considered as being broken, infringed, or vitiated by the importation of stores for the Government service, or by any contracts or purchases made by the Imperial Commissariat; or by the consumption of the produce or surplus stock of any Government establishment, or by any article being made at and supplied for the use of any Government establishment.

22. Notwithstanding anything contained to the contrary in section 152 of the *Customs Act* 1901-52, it is hereby expressly provided that upon any alteration of the duty collected affecting the goods included in this contract, the contract price shall not be altered, and the contract may be terminated at the option of either party by two months' notice in writing from the first day of the calendar month next ensuing,

and within the period for which the contract is made. The contract for the unaffected items shall remain in full force and effect. Any notice to be served under this condition shall be deemed to have been duly served if sent to the contractor in a registered letter to his last-known place of business or abode.

23. Under no circumstances other than those mentioned in clause 22 will a contractor be permitted to abandon his contract. In the event of the contractor failing to carry on the contract, the contract security money will in that case be absolutely forfeited; and, in addition, the contractor will be held liable for any loss which the Government may sustain in consequence of such failure.

24. For the purposes of these contracts the word "Government" shall mean the Government of the State of Victoria; and the word "Treasurer" shall mean the Treasurer of the said State.

STIPULATIONS FOR SUPPLIES OF PROVISIONS.

SUPPLIES GENERALLY.

For supplies under all sub-schedules, particular attention is drawn to clause 1 of the Conditions of Contract as to quality. No sub-letting is allowed, and all work must be carried out by the contractor.

Where practicable, all items must be manufactured or prepared within the Commonwealth.

Where no brand of Commonwealth manufacture or production is specifically set out in the respective sub-schedules, such Commonwealth brand as may be ordered must be supplied.

For Schedule No. 3 supplies must be delivered when ordered and, in cases of emergency, on Sundays, holidays, or half-holidays, as required.

BREAD AND FLOUR.

A sample of the best ordinarily retailed to the public will be considered as a test loaf for first quality for fine wheaten and pure wheaten Meal Bread. *Pure wheaten Meal Bread of first quality may be substituted, wholly or in part, for fine wheaten Bread at such times and in such quantities as, in the opinion of the Medical Superintendent, may be deemed necessary, and the contractor will be required to supply such Bread at the contract rate. Reasonable notice, however, of the intention to substitute wheaten Meal Bread must be given to the contractor by the officer ordering the supply.* Bread may be baked at any Government establishment without infringing these contracts. At the Gaols, Ballarat, Beechworth, Geelong, and Sale, and the Coorie-mungle Prison Camp, McLeod Settlement, and Langi Kal Kal Training Centre, if required, bread must be supplied one day old, due notice to be given to the contractor of such requirement.

In the event of bread being made at any Government establishment in the Melbourne District during the currency of these contracts, the flour required will be drawn under the flour sub-schedule.

Flour for Districts for which no local contracts have been taken may be ordered under the Melbourne District contract, for delivery f.o.r. Melbourne.

GROCERIES.

As a guarantee of quality, Rice, when ordered in quantities of 56 lb. and over, must be supplied in original bags as delivered by the miller or dresser. Such bags must be branded "Rice, Dressed" or "Unpolished," and shall also have stencilled thereon the miller or dresser's name and the distinguishing mark indicative of the quality or grade. The bags thus stencilled shall contain Rice milled or dressed by the miller or dresser whose name appears thereon. Supplies not in conformity with the foregoing condition will be rejected.

Oatmeal must be supplied in original bags as delivered by millers.

Candles, except those for prison cells, must be supplied in 1-lb. packets. Candles for prison cells must be delivered in boxes containing from 25 to 50 lb. per box, the boxes for which must be legibly stencilled on one end showing the estimated burning time and the gross, tare, and net weight of contents.

The soap supplied must be hard throughout, ready for immediate use without waste, and shall have been manufactured at least seven weeks before leaving contractor's hands.

Raisins and currants must be present season's, and where the quantity admits, be supplied in original and unopened boxes, labelled as packed.

OATMEAL, RICE, SEED, TAPIOCA, ETC.

Supplies of these items for Districts for which no local contracts have been taken may be ordered under the Melbourne District contract, for delivery f.o.r. Melbourne.

BUTTER AND CHEESE.

All supplies of 56 lb. or multiples of 56 lb. must be supplied in boxes as originally packed. The boxes must bear the impress stamp of the creamery where the butter is produced, otherwise it will not be accepted. All supplies must be in new boxes.

Where the Store or Butter Factory of the Contractor is situated in the Metropolitan area all Butter to the quantity of 56 lb. and over to be supplied in any one consignment under this contract shall before despatch from the Store or Factory be first examined and passed by the Government Butter Grader, for and on behalf of the officer authorized to accept delivery. The boxes containing butter so examined and found satisfactory in quality and description will be stamped by the Government Butter Grader and the date of such examination marked thereon. No butter from a contractor located in the Metropolitan Area will be accepted unless the boxes bear the stamp of the Grader. For the purposes of the foregoing condition the Metropolitan Area is defined as being not outside the radius visited by the Government Grader. The officer authorized to accept delivery may, within 48 hours of the receipt of any supply, require the Contractor to have same re-examined by the Grader, and, if not passed by him, it shall be returned to the Contractor, who shall forthwith replace the same with freshly-examined butter.

No Butter ex Cool Store will be examined by the Grader until thermally it is in suitable condition therefor.

Where the Store or Factory from which the Butter is despatched is not within the area visited by the Grader a sample of any supplies may be forwarded to the Government Butter Grader for examination, should the supply be considered by the Officer authorized to accept delivery as not being equal in quality or description to that contracted for.

The Cheese supplied must be first-class quality, semi or fully matured, as ordered, and not less than 3 months old. If the quantity admits, it shall be boxed for transport.

JAM.

The weight stamped on the tins in accordance with the regulations under the Commerce Act, as indicating the minimum net quantity that each tin contains, shall for the purpose of this contract be taken as the actual contents when computing the quantity supplied.

When Jam is supplied in jars the jars remain the property of the contractor, and must be removed by the contractor at his own expense when empty.

SOAP AND SOAP MIXTURES.

Supplies of these items for Districts for which no local contracts have been taken may be ordered under the Melbourne District contract, for delivery f.o.r. Melbourne.

MEAT.

All meat supplied under this contract shall have been slaughtered in Victoria and shall be freshly killed, well-conditioned, of good quality, healthy, clean, wholesome, free from bone-taint, putrefaction or fly larvae, and shall not have been frozen.

The beef shall be of ox not under three nor more than six years old or heifer or cow not under three nor more than five years old. Carcass beef for Mental Hospitals shall be delivered in quarters of equal proportions of hinds and fores and the corresponding hinds and fores must be supplied, also extra buttocks separately when ordered. Meat for other Institutions shall be supplied as ordered. Where hindquarters or buttocks are ordered 9 inches shall be cut off from the end of the leg

from the hock upwards, i.e., the end of the leg from which the shank has been removed at the abattoirs; when forequarters form a portion of the supply, 6 inches from the end of the neck and the whole of the shin at the clodbone joint shall be removed. The sticking pieces also shall be trimmed off and the point and end of the brisket rendered free from blood and blood stains.

The mutton shall be wether or maiden ewe not more than four years old and the weight of a carcass shall be not less than 40 lb. nor more than 60 lb. The mutton shall be delivered in sides when so ordered. All kidney fat to be removed for Mental Hospitals.

Corned Beef (rolled or round as ordered) shall be supplied without bone or cartilage and will be received whether pumped or prepared in the ordinary way of pickling but, in the former case, it shall have been soaked, after pumping, for at least 48 hours in a good pickle and then thoroughly drained before supply. No flank, chuck, sticking-piece, shin, leg of beef, or piece under 7 lb. will be received.

Meat derived from the carcasses of Bulls, Stags or Rams or meat containing an undue proportion of bone or fat will not be received and shall not be tendered for delivery. Net weight only will be paid for.

In cases of emergency, or on such other occasions as in the opinion of the Director of Mental Hygiene or Heads of other Institutions may seem advisable, other forms of meat, such as Rabbits, Tinned Meats, &c., may be purchased, apart from the contract, in lieu of the meat specified in the Schedule, and substituted therefor, provided 24 hours' notice—except in cases of emergency—be given to the Contractor of such intention.

The parts to be removed by the contractor are indicated in the shaded portion of the annexed diagram. This work shall be carried out in the factory or shop of the Contractor, except those parts usually removed at the abattoirs.

With respect to the schedules enumerated hereunder, the following stipulations shall also apply:—

For sub-schedules 10 and 11 of Schedule No. 1, fresh beef shall be supplied, as ordered, from ribs, sirloin, and thick flanks and for Schedule No. 2, from prime ribs, sirloin, and

thick flanks; ribs of beef to be cut clear of the plate bone, and sirloin to be cut clear of the wing ribs; excess of brisket or thin flank will be rejected. Mutton must be delivered in sides when so ordered.

For Schedules Nos. 1 (sub-schedules 10 and 11), 3, 4, 2, 11, 12, 13 and 17, chuck ribs of Beef, i.e., 1st to 4th inclusive will not be accepted.

For Schedules Nos. 4, 11, 12 and 17, fresh Beef must be supplied, as ordered, from prime ribs or sirloin; ribs of Beef to be cut clear of the plate bone, and sirloin to be cut clear of the wing ribs; excess of brisket or flank will be rejected.

TEA AND COFFEE.

Tea and Coffee for Districts for which no local contracts have been taken may be ordered under the Melbourne District contract, for delivery f.o.r. Melbourne.

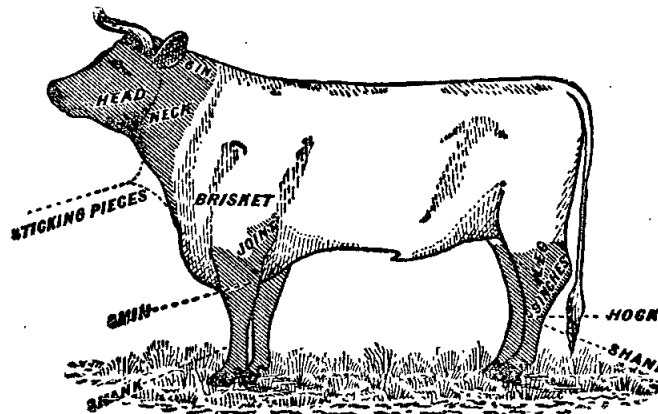
MILK.

The milk must be fresh, pure, and of the best quality, and subject to test when required by the Department, and supplied at such times as the Department may require. Should the contractor fail to supply at the time specified in the order or at such times as may be indicated in any general notice to the contractor his contract may be cancelled forthwith and his security forfeited, or should the supply prove to be not of contract quality it will be rejected, and any expense incurred will be charged to the contractor.

POTATOES.

Potatoes to be dry and free from dirt. Contractors to take back all rejected before being cooked. Bags to remain the property of the contractor. Weight of bags (approx. 2½ lb.) to be deducted.

If the price of potatoes becomes abnormally high, the heads of the various departments concerned may, if they think fit, cause rice or any other suitable food to be occasionally substituted in lieu thereof.



ANNEX TO CONTRACTS.

FLOUR AND BREAD.

The contract rates shown are subject to adjustment for any variation in the proclaimed price of flour.

MEAT.

Contracts marked † operate for the period 1st July, 1953, to 30th September, 1953, only.

AGREEMENTS.

For the Sub-schedules marked (Agreement), no contract has been let nor security lodged. Requirements thereunder are to be purchased from the suppliers named, under Tender Board Agreement. The rates shown are subject to variation from time to time, particulars of which will be gazetted as required. In all cases, supply is subject to stocks being available.

AVAILABILITY OF SUPPLIES.

Owing to existing difficulties in obtaining supplies of various items, the penal provisions of Clause 10 of the Conditions of Contract are not to be enforced without reference to the Tender Board.

SCHEDULE No. 1. PROVISIONS—MELBOURNE DISTRICT.

ANNEX TO CONTRACT No. 1953/1.

Capitol Bakeries Pty. Ltd., 257 Toorak-road, South Yarra.

Sub-schedule No. 1.

BREAD FOR MENTAL HOSPITAL AT KEW.

Security, £125.

	£	s.	d.
1. Bread—Fine wheaten, first quality .. per cwtl.	1	9	2

ANNEX TO CONTRACT No. 1953/2.

Universal Bakeries, 20 Grattan-street, Carlton.

Sub-schedule No. 2.

BREAD FOR CHILDREN'S WELFARE DEPOT, ROYAL PARK, RECEIVING HOUSE AND MENTAL HOSPITAL, ROYAL PARK, AND TRAVANCORE DEVELOPMENTAL CENTRE, FLEMINGTON.

Security, £35.

	£	s.	d.
1. Bread—Fine wheaten, first quality .. per cwtl.	1	12	9½

ANNEX TO CONTRACT No. 1953/3.

Capitol Bakeries Pty. Ltd., 257 Toorak-road, South Yarra.

Sub-schedule No. 3.

TEACHERS' COLLEGE, AND HOSTEL, CARLTON, HENRY WATSON HOUSE, SOUTH YARRA, AND POLICE HOSPITAL, MELBOURNE.

Security, £5.

	£	s.	d.
1. Bread—Fine wheaten, first quality .. per cwtl.	1	11	3

ANNEX TO CONTRACT No. 1953/4.

Pirrie Bros., 136 Exhibition-street, Melbourne, C.I.

Sub-schedule No. 4.

FLOUR.

Security, £90.

	£	s.	d.
1. Flour—Roller, first quality .. per cwtl.	1	6	6

(AGREEMENT.)

Moran and Cato Pty. Ltd., 271 Brunswick-street, Fitzroy, N.B.

Sub-schedule No. 5.

GROCERIES.

	£	s.	d.
1. Bacon—Sides .. per lb.	0	4	2
2. " Rashers, Middle—Huttons .. do.	0	5	2
3. Biscuits—Coffee, Malt or Milk Arrowroot .. do.	0	1	6½
4. " Dry .. do.	0	1	6½
5. Blue—Washing, powdered in 7-lb. packets .. do.	0	1	11½
6. Cereal—Pipers, or equal 24-oz. packets .. per pkt.	0	1	8½
7. " Biscuit—West Biks, or equal 24-oz. packets .. do.	0	1	9½
8. Cocoa—{ " Bournville" .. per lb.	0	4	3½
{ Loose .. do.	0	3	2
9. Corn Flour—{ " Kream" .. do.	0	1	5
{ Loose .. do.	0	0	7½
10. Curry Powder—Bulk .. do.	0	3	6
11. Custard Powder—{ Loose .. do.	0	1	0½
{ " Clipper" .. do.	0	1	3½
12. Coffee (Essence) 8-oz. bottles "Turban" .. per bot.	0	2	5½
13. " 40-oz. bottles "M & C" .. do.	0	13	6
14. Essence—Lemon—8-oz. bottles—"Summa-gold" .. do.	0	5	2
15. " Vanilla—8-oz. bottles—"Allens" .. do.	0	6	3½
16. Fish—Tinned Herrings—14-oz.—Fresh .. per tin	0	2	3
17. " " " " in Tomato Sauce—14-oz. .. do.	0	2	3½
18. Flour—Self-raising .. per lb.	0	0	5½
19. Fruit—Dried—apples .. do.	0	2	10
20. " " apricots—3 crown .. do.	0	3	7

* Supplies not available. † Charge 3s. for jars not returned. ‡ 22-lb. cartons, 19s. 9d. each.
§ 12-oz. tins, "Trufood" £1 13s. 3d. and "Sunshine" £1 14s. 9d. per doz.

Sub-schedule No. 5—continued.

GROCERIES—continued.

	£	s.	d.
21. Fruit—Dried—peaches—2 crown .. per lb.	0	2	8½
22. " " pears—2 crown .. do.	0	2	1½
23. " " prunes—70-80's—7-lb. tins .. do.	0	2	5½
24. " " currants—2 crown .. do.	0	1	5
25. " " raisins—lexias—2 crown .. do.	0	1	4½
26. " " sultanas—2 crown .. do.	0	1	5½
27. Fruit—Tinned—assorted—30-oz. tins .. per tin	0	2	5½
28. " " apricot—No. 10 Cans .. do.	0	9	6
29. " " peaches— .. do.	0	10	7
30. " " pie apple—6½-lb. tins .. do.	0	7	7
31. " " tomato pulp—4-gal. tins (M.P.) .. do.	0	18	10
32. " " tomatoes—30-oz. tins .. do.	0	2	1½
33. " " "Cohn" 4-gal. tins .. do.	0	2	1½
34. Golden Syrup—2-lb. tins .. per doz.	0	16	0
35. Honey—60-lb. tins .. per lb.	0	1	0½
36. Jelly Crystals—4-oz. packets—"Clipper" .. per doz.	0	6	2
37. Junket Tablets—Tubes—"Merry Widow" .. each	0	0	11½
38. Macaroni—56-lb. bags—"Rinoldi" .. per lb.	0	0	10½
39. Meat—Tinned—Camp Pie—16-oz. tins .. per tin	0	1	10½
40. " " Beef—6-lb. tins—"Imp." .. do.	0	18	0
41. Milk—Dried—3-lb. tins—"Trufood" .. do.	0	10	7½
42. Mustard—Bulk .. per lb.	0	4	9
43. Peel—Mixed—cut .. do.	0	1	5½
44. Pepper—Black—ground .. do.	0	18	4
45. Pickles—Assorted—20-oz. bottles .. per bot.	0	1	9½
46. Salt—Fine—"Imperial" .. per cwt.	0	15	6
47. Sauces—Tomato—20-oz. bottles — .. per bot.	0	2	5½
" Raleigh" .. do.	0	2	6½
" Leggo" .. do.	0	2	6½
48. " 1-gal. jars—"M.P." .. per jar	0	13	2½
49. " Worcestershire—10-oz. bottles — .. per bot.	0	1	4½
" Hardings" .. do.	0	10	6
50. Soda—Bi-carbonate .. per lb.	0	0	6
51. " Washing .. do.	0	0	3½
52. Spice—Mixed—loose .. do.	0	3	2
53. Tartar—Cream of .. do.	0	3	2
54. Treacle—2-lb. tins .. per tin	0	1	3½
55. Vermicelli—22-lb. boxes .. per box	1	1	0
56. Vinegar (Malt) .. per quart	0	0	6½

Sub-schedule No. 6.

CEREALS.

	£	s.	d.	
1. Oatmeal .. per cwt.	0	0	0	Purchase
2. Rice—Dressed .. do.	0	0	0	under
3. " Unpolished .. do.	0	0	0	Tender
4. Seed Tapioca (Sago) .. do.	0	0	0	Board
5. Pearl Barley .. do.	0	0	0	Quota-
6. Peas—Split .. do.	0	0	0	tions

ANNEX TO CONTRACT No. 1953/5

W. H. Johnsons Jams Pty. Ltd., 42 Meaden-street, South Melbourne, S.C.5.

Sub-schedule No. 7.

JAMS.

Security, £20.

	£	s.	d.
1. Jams—Assorted, in bulk, of approved kinds, in the proportion of half actual net seed and half stone, of the best weight quality, in tins .. per lb.	0	0	9½
2. " Assorted, in bulk, of approved kinds, in the proportion of half seed and half stone, of the best quality, in 24-oz. tins .. per tin	0	1	7½
3. " Assorted, in 5-lb. tins, in the proportion of half seed and half stone of the best quality .. per tin	0	5	2

ANNEX TO CONTRACT No. 1953/6.†
F. Watkins Pty. Ltd., 184 Bourke-street, Melbourne, C.I.

Sub-schedule No. 8.

MEAT FOR MENTAL HOSPITAL, KEW.

		£	s.	d.
1. Fresh Beef—Rolled Ribs, boneless	per cwt.	8	6	8
2. " " Steak, Stewing	per lb.	0	1	4
3. " " Minced	do.	0	1	2
4. Corned Beef—Rolled or Round, as ordered without bone or cartilage	do.	0	1	7
5. Fresh Mutton—(Whole Sheep—Kidney fat removed)	per lb.	0	0	6½
6. Chops—Fore-quarter	do.	0	0	10½
7. Saveloys	per doz.	0	2	3
8. Sausages—Mixed	per lb.	0	1	0
9. Sausage—Belgium	do.	0	2	0
10. Beef Loaf	do.	0	2	6
11. Ham Loaf	do.	0	2	3
12. Veal Loaf	do.	0	2	6
13. Tripe, Fresh	do.	0	0	6
14. Livers, Sheep	do.	0	1	0
15. Livers, Ox	do.	0	1	0
16. Brains, Sheep	per set	0	0	3½
17. Rabbits, Fresh (Fillets)	per lb.	0	1	9
18. Gravy Beef	do.	0	1	3

ANNEX TO CONTRACT No. 1953/7.†
F. Watkins Pty. Ltd., 184 Bourke-street, Melbourne, C.I.

Sub-schedule No. 9.

MEAT FOR PENAL ESTABLISHMENT (PENTRIDGE), FEMALE PENITENTIARY, AND METROPOLITAN GAOL (COBURG).

		£	s.	d.
1. Fresh Beef—Fore-quarters	per cwt.	3	15	0
2. Fresh Beef—Minced	do.	6	13	4
3. Corned Beef—Rolled or round, as ordered, without bone or cartilage	do.	7	10	0
4. Fresh Mutton (whole sheep)	per lb.	0	0	6½
5. Sausages—Mixed	do.	0	1	0
6. Fresh Suet—Kidney	do.	0	0	5
7. Dripping—Beef	do.	0	0	9
8. Sausage Meat	do.	0	0	9
9. Tripe—Fresh	do.	0	0	6

ANNEX TO CONTRACT No. 1953/8.†
J. H. Cooke Pty. Ltd., 378 Queen's-parade, Clifton Hill.

Sub-schedule No. 10.

MEAT FOR POLICE HOSPITAL, ST. KILDA-ROAD, CHILDREN'S WELFARE DEPOT, ROYAL PARK, AND HENRY WATSON HOUSE, SOUTH YARRA.

		£	s.	d.
1. Fresh Beef	per cwt.	6	5	0
2. " Mutton	do.	2	18	4
3. Steak—Rump	per lb.	0	2	6
4. " Stewing	do.	0	2	0
5. Beef—Corned Silverside	do.	0	2	6
6. Fresh Mutton—Loin	do.	0	1	0
7. " " Leg	do.	0	1	0
8. Chops—Middle Loin	do.	0	1	0
9. Shanks—Sheep	each	0	0	6
10. Sausages—Mixed	per lb.	0	1	3
11. Tripe—Fresh	do.	0	0	7½
12. Livers—Sheep	do.	0	0	11
13. Ox—Tail	do.	0	0	10½
14. Sausage—Strasbourg, Pork	do.	0	2	6
15. Rabbits—Fresh	do.	0	1	6
16. Frankfurts	do.	0	1	0
17. Brains—Sheep	per set	0	0	3½
18. Kidneys—Sheep	per lb.	0	1	10

ANNEX TO CONTRACT No. 1953/9.†
Jackson's United Meat Co. Pty. Ltd., 546 Racecourse-road Newmarket

Sub-schedule No. 11.

MEAT FOR RECEIVING HOUSE AND MENTAL HOSPITAL, ROYAL PARK.

		£	s.	d.
1. Fresh Beef	per cwt.	6	13	4
2. " " Buttocks	do.	6	5	0
3. " " Mutton (Kidney fat removed)	per lb.	0	0	8½
4. Corned Beef—Rolled or round, as ordered, without bone or cartilage	do.	0	1	7
5. Fresh Suet—Kidney	do.	0	0	5
6. Sausages—Mixed	do.	0	1	3

(AGREEMENT.)

Moran and Cato Pty. Ltd., 277 Brunswick-street, Fitzroy, N.6.

Sub-schedule No. 12.

SOAP MIXTURES.

(Of Commonwealth Manufacture.)

		£	s.	d.
1. Antiseptic—Liquid, of approved make, in 4-gal. tins—Pinex Floor Wash (Tins 8s. each)	per gal.	0	8	7

* Supplies not available. †† Market rates, plus 1d. per lb. ¶ As supply of 20-oz. bottles is irregular, rate is shown on per lb. basis. §§ Bag—150-lb. bag—50-lb. bag, £1 4s. 2d. ‡ Lots under 1 case, 1s. 4½d. per lb. ○ 1-oz. knobs in calico, 3s. 5d. doz.

Sub-schedule No. 12—continued.

SOAP MIXTURES—continued.

SOAP MIXTURES—continued.		£	s.	d.
2.	Extract of—Kitchen's—or equal, Bulk bags, per "Stella" 80 lb. bags cwt.	3	11	3
3.	Household—Dry, Brand, "Marnockvale" per case 35 2-lb. bars to case —Unwrapped. (Pental—wrapped £1 17s. 1d. per case.)	2	3	0
4.	Lifebuoy		0	5
5.	"Lux" or "Merino," as ordered, in bulk per doz. per lb.		*	
6.	Sand—Borax, 12-oz. blocks, of approved brand per doz.		*	
7.	Sand—Carbolic, 12-oz. blocks—wrapped "Letric" do.	0	4	7½
8.	Soft—Genuine Potash, best amber, 40-lb. tins per tin		*	
9.	Toilet—"Daublays" in 3½-oz tablets per doz.	0	4	1
10.	"Velvet"—or equal thereto { "Quads" do. "Quints" do.	0	19	8½
		1	11	6

ANNEX TO CONTRACT No. 1953/10.
Bushells Ltd., 452 Flinders St. Melbourne.

Sub-schedule No. 13.

TEA.

Security, £180.

		£	s.	d.
1. Tea, First Grade—To sample	per lb.	0	3	10

ANNEX TO CONTRACT No. 1953/11.

Henry Berry and Co. (A/asia) Ltd., 568 Collins-street, Melbourne, C.I.

Sub-schedule No. 13.

COFFEE.

Security, £70.

		£	s.	d.
2. Coffee—Fresh roasted, and whole, beans to be thoroughly sound—To sample	per lb.	0	5	8

SCHEDULE No. 2.

PROVISIONS—MONT PARK, SANATORIUM, GRESSWELL, ETC.

(Delivery at the Mental Hospital, Mont Park, to depots as required, the Repatriation Mental Hospital, Bundoora, Janefield Colony and Sanatorium, Gresswell.)

ANNEX TO CONTRACT No. 1953/12.

E. J. Callander, 597 High-street, Preston, N.18.

Sub-schedule No. 1.

BREADSTUFFS.

Security, £190.

		£	s.	d.
1. Bread—Fine wheaten, first quality	per cwt.	2	4	6
2. " Raisin, " "	do.	3	6	8

(AGREEMENT.)

Henry Berry and Co. (A/asia) Ltd., 568 Collins-street, Melbourne, C.I.

Sub-schedule No. 2.

GROCERIES.

		£	s.	d.
1. Bacon—In sides	per lb.	††		
2. Beans—Haricot	do.	0	1	7
3. " Butter	do.	0	2	0
4. Blue—Washing—1 oz. Knobs "Reckitts"	per doz.	0	2	3○
5. Biscuits—Coffee, Malt, Milk Arrowroot, or equal, as ordered. (Tins 4s. each.)	per lb.	0	1	7½
6. Camp Pie—in 12-oz. tins	per doz.	0	19	2
7. Candles (full weights)—Kitchen's "Elec-trines," or other make of equal quality in sets of 6	per set	0	2	11½
8. Cereal, in 24-oz. packets, "Malties"	per doz.	1	1	3
9. Cinnamon	per lb.	0	2	6
10. Cocoa—in 1-lb. bags	do.	0	3	4
11. Coconut—Desiccated—Ceylon (Papuan 2/9½)	do.	0	2	2
12. Coffee Essence—Brand, "Club"—in 8-oz. bots. per bot. 0 2 0½ in 1-gal. jars (Jars 3s. 6d.) per jar 1 7 6				
13. Corn or Maize Flour—in 1-lb. packets, Brand, "Kream"	per lb.	0	1	5½
14. Currants—1 Crown (present season's)	do.	0	1	5½
15. Curry Powder—Brand, "Atlas"	do.	0	2	11
16. Custard Powder—1-lb. packets	per doz.	0	18	0
17. Dates—Fresh, loose—case lots	per lb.	0	1	4½
18. Essence of Vanille—in full 20-oz. bottles	¶ do.	0	8	0
19. Flour—Self-raising, Brand, "Cookwell"	per bag	3	8	2½§

Sub-schedule No. 2—continued.

GROCERIES—continued.

		£	s.	d.
20. Fruits, Dried (present season's)	per lb.	11	11	
21. Fruits—Preserved, assorted, in 1-lb. 14-oz. tins (excluding Pines)	per tin	11	11	
22. Gelatine—Ground	per lb.	0	6	3
23. Ginger—Ground	do.	0	4	0
24. Golden Syrup—in 2-lb. tin	per ctn.	1	12	0
25. Herrings { 14-oz. tins, Fresh	per doz.	1	5	6
26. Honey, first quality	per lb.	*		
27. Jelly Crystals—in 4-oz. packets "Invicta"	per gross	4	9	0
28. Jun ket Tablets, "Berry's"	per tube	0	0	11
29. Mix'd Peel—cut	per lb.	0	1	7
30. Macaroni in 22-lb. boxes	per box	1	1	3½
31. Margarine, Cake, Pastry	per lb.	0	1	4½
32. Meat—Tinned—Beef Luncheon, 12-oz. tins	per doz.	1	5	6
33. Milk—Dried, Full Cream—				
"Sunshine" { 12-oz. tins—3 doz.	per case	5	6	6
"Trufood" { 3-lb., —1 doz.	do.	6	14	6
"Trufood" { 12-oz. tins—3 doz.	do.	5	2	0
"Trufood" { 3-lb., —1 doz.	do.	6	10	3
34. Mustard—"Colonial"	per lb.	0	4	9
35. Nutmeg—Ground	do.	0	5	6
36. Pepper { White, ground	do.	1	3	0
Black,	do.	0	18	0
37. Pickles—Assorted, 20-oz. bottles	per doz.	1	2	0
38. Prunes—Dried, 50–60's (present season's)	per lb.	1	1	1
39. Raisins — Lexias, 4 Crowns (present season's)	do.	0	1	4½
40. " Sultana, 3 Crowns (present season's)	do.	0	1	6½
41. Rice—Ground—1-lb. packets	do.	0	0	10
42. Salmon—Fresh, in 1½-oz. tins, tall, fancy pink	per tin	*		
43. Salt—Fine (Bag—approx 1 cwt.)	per bag	0	15	10
44. Sauce—Tomato { in 26-oz. bottles, "Victo-	per doz.	1	16	0
tores" (Cartons 2s.)	bottles			
{ in 1-gal. jars (Jars 3s. 6d.)	per gal.	0	14	6
45. Soda—Bicarbonate of	per lb.	0	0	6
46. " Washing	per cwt.	1	15	0
47. Spice—Mixed, loose	per lb.	0	3	6
48. Starch—Powdered "Acme" 14-oz. pkts., 40's	per case	2	7	10
49. Sugar—Castor	per cwt.	4	2	6
50. " Icing	do.	4	2	6
51. Tartar—Cream of—Substitute—Sodium Phosphate—Brand, "Antelope"	per lb.	0	2	3
52. Treacle—in 2-lb. tins	per ctn.	1	11	2
{ in 16-oz. packets	per doz.	0	12	3
53. Vermicelli { in 22-lb. cartons	per carton	1	1	6
{ in 22-lb. boxes	per box	1	2	6
54. Vinegar—Malt { in gallon jars (Jars 3s. 6d.)	per gall.	0	2	3
{ in 9 gallon kegs (Kegs 60s.)	do.	0	2	1½

ANNEX TO CONTRACT No. 1953/13.

W. H. Johnsons Jams Pty. Ltd., 42 Meaden-street, South Melbourne, S.C.S.

Sub-schedule No. 3.

JAMS.

		£	s.	d.
1. Jams—Assorted, in bulk, of approved kinds, in the proportion of half actual net seed and half stone, of the best quality, in tins.	per lb.	0	0	9½
2. " Assorted, in 5-lb. tins, in the proportion of half seed and half stone, of the best quality.	per tin	0	5	2
3. " Marmalade, in 5-lb. tins.	do.	0	5	2

ANNEX TO CONTRACT No. 1953/14.†

Jackson's United Meat Co. Pty. Ltd., 546 Racecourse-road, Newmarket.

Sub-schedule No. 4.

MEAT.

		£	s.	d.
1. Fresh Beef, Buttocks	per ctn.	5	16	8
2. " Roast	do.	7	10	0
3. Beef, Corned—Rolled or Round, as ordered, without bone or cartilage	do.	7	18	4
4. " Silverside (Gresswell Sanatorium)	do.	9	3	4
5. Mutton, Fresh (Kidney fat to be removed)	per lb.	0	0	8½
6. " Legs	do.	0	1	0
7. " Fore-quarter	do.	0	0	9
8. Chops—Fore-quarter	do.	0	0	10
9. " Loin	do.	0	1	3
10. Steak—Thick Flank	do.	0	1	9

Sub-schedule No. 4—continued.

MEAT—continued.

		£	s.	d.
11. Steak Rump	per lb.	0	3	0
12. " Minced	do.	0	1	6
13. Sausage Meat	do.	0	1	0
14. Sausages—Mixed	do.	0	1	4
15. Shanks—Sheep	each	0	0	6
16. Tripe—Fresh	per lb.	0	0	6½
17. Brains—Sheep	per set	0	0	4½
18. Kidneys—Ox	per lb.	0	1	3
19. Livers—Sheep	do.	0	0	11
20. Livers—Calves	do.	0	1	1
21. Sausage—Strasbourg, Pork	do.	0	2	5
22. Rabbits—Fresh	do.	0	1	10
23. Saveloys	per doz.	0	3	0
24. Tongues—Ox	per lb.	0	1	0
25. Ham Loaf	do.	0	2	6
26. Pressed Veal and Pork Loaf	do.	0	3	6
27. " Shoulder Ham	do.	0	5	0
28. Potted Meat	do.	0	1	9

SCHEDULE No. 3.

PROVISIONS FOR S.S. R/P AND DREDGES.

Sub-schedule No. 1.

BREAD.

1. Bread—Fine wheaten, first quality	..	Purchase by agreement
--------------------------------------	----	-----------------------

(AGREEMENT.)

Moran and Cato Pty. Ltd., 277 Brunswick-street, Fitzroy.

Sub-schedule No. 2.

GROCERIES.

		£	s.	d.
1. Bacon Rashers Middle	per lb.	0	5	2
2. Beans—Butter	do.	0	1	5½
3. " Haricot	do.	0	1	5½
4. Biscuits—Coffee, Marie, Malt	(Tins 4s. each)	do.	0	1
5. " Dry	" "	do.	0	1
6. Gravox { in 4-oz. packets	per doz.	0	5	8
{ in 8-oz.	pks.	0	11	4
7. Chutney—in 13-oz. bottles "Rosella"	per doz.	1	2	3
8. Cocoa—in 1-lb. tins or cartons, "Bourn-	per doz.	2	11	6
ville"	bot.			
9. Coconut—Desiccated	per lb.	0	2	0½
10. Coffee—Fresh Roasted and Ground	do.	0	6	9½
11. Corn or Maize Flour in 1-lb. packets, per doz.	0	17	0	
12. " Kream"				
11A Corn or Maize Flour, loose	per lb.	0	0	7½
12. Currants—2 crown (present season's)	do.	0	1	5
13. Custard Powder—in 1-lb. packets, Brand, "Clipper"	per doz.	0	15	6
14. Dates	per lb.	0	1	1½
15. Eggs, New Laid	per doz.	1	1	1
16. Essence—Vanilla, in 16-oz. bottles "Allens"	per bot.	0	11	9½
17. " Cochineal, Substitute—Red Coloring—"Summagold", in 4-oz. bottles	do.	0	1	2½
18. Fish { Herrings, in 14-oz. tins, Fresh	per doz.			
{ "Tyne"	tins	1	7	0
{ Herrings, in Tomato Sauce	do.	1	7	6
{ "Tyne"				
19. " Salmon, Fresh, in 12-oz. tins, "Greenseas"	do.	1	13	6
20. " Sardines, in ½ tins, "Norwegian Pack"	do.	0	14	6
21. Flour—First quality—150-lb.	per lb.	0	0	5½
22. " Self-raising, Brand, "M & C" 150-lb.	per bag	3	8	2
23. Fruits—Preserved, in 1-lb. 14-oz. { Pears	per doz.	1	9	6
{ tins	tins	1	9	6
{ Apricots	do.	1	9	6
24. " Preserved, pines, in 20-oz. tins	do.	1	8	3
25. Gelatine—Ground { 8-oz. pkts.	per doz.	1	17	4
{ 16-oz. pkts.	pkts.			
26. Golden Syrup—in 2-lb. tins	do.	3	12	3
27. Honey, in 20-oz. jars "Clipper"	per doz.	0	16	0
28. Jams—Assorted kinds, in 24-oz. tins	do.	1	13	3
half seed, half stone	tins	1	5	6
29. Jelly Crystals in 4-oz. packets "Clipper"	per doz.	0	6	2
30. Mixed Peel—Cut	per lb.	0	1	5½
31. Macaroni { in 22-lb. boxes	per box	1	0	9
{ in 22-lb. cartons	per carton	0	19	9
32. Margarine—Cooking Quality	per lb.	0	1	6
33. Meat—Preserved, Camp Pie, 12-oz.	per doz.	0	18	9
Sausages and vegetables, 16-oz.	do.	1	2	3
"Rosella"				
Irish Stew, 16-oz.	do.	1	5	0
Steak and Kidney Pudding, 16-oz.	do.	1	3	3

* Supplies not available. †† Apply Tender Board. § Cartons, 20s. 3d. each. ‡ Australian Dried Fruits Association rates.
 × Carton 2 dozen 2lb. tins. † Market rates plus 3d. per dozen.

Sub-schedule No. 2—continued.

GROCERIES—continued.		£	s.	d.
34. Milk—Dried, Full Cream, in f "Trufood" ..	per doz.	1	13	3
12-oz. tins .. { "Sunshine" ..	do.	1	14	9
35. " Condensed, full cream, 14-oz. tins ..	do.	0	19	6
36. Mustard—Loose, "McKenzie's" ..	per lb.	0	4	9
37. Nutmeg—Whole ..	do.	0	5	6½
38. Oatmeal—Flaked ..	per cwt.	2	18	3
39. Pearl Barley ..	per lb.	0	0	7
40. Peas—Split ..	per cwt.	4	1	3
41. Pepper—Black, ground ..	per lb.	0	18	4
White, ground ..	do.	1	2	0
42. Pickles—Mustard, in 20-oz. bottles ..	per doz.	1	1	6
43. Prunes—Dried (present season's), 70/80 ..	per lb.	0	2	5½
44. Raisins—Seeded (present season's) "M & C" ..	per doz.	1	3	6
or "Summagold" 1-lb packets				
45. Raisins—Sultana, 2 Crowns (present season's) ..	per lb.	0	1	5½
46. Rice—Dressed ..	do.	0	0	10
47. Salt—Fine ..	per cwt.	0	15	6
48. Sauce—Mustard, in 8-oz. bottles, "Holbrook's" ..	per doz.	1	0	0
49. " Tomato, in 26-oz. bottles { "Raleigh" ..	do.	1	0	6
" " { "Leggo" ..	do.	1	10	3
50. " Worcestershire, in 10-oz. bottles, "Hardings" ..	do.	0	16	9
51. Soda—Bi-carbonate of ..	per lb.	0	0	6
52. Spice—Mixed, 1-oz. packets—"Parsons" ..	per doz.	0	4	4½
53. Sugar { Brown 160-lb. bags ..	per bag	4	16	8
White 70-lb. bags ..	do.	2	7	4
54. " Castor, ..	per lb.	0	0	8½
55. " Icing ..	do.	0	0	9½
56. Vinegar—Malt, 28-oz. ..	per doz.	0	13	2
57. Yolaine—in 4-oz. bottles (yellow coloring) ..	do.	0	14	9

ANNEX TO CONTRACT No. 1953/15.†

J. H. Cooke Pty. Ltd., 378 Queen's-parade, Clifton Hill.

Sub-schedule No. 3.

MEAT.

(Delivery at River Yarra Wharfs.)

Security, £5.		£	s.	d.
1. Fresh Beef—Roast ..	per lb.	0	1	6
2. Beef, Corned—Silverside ..	do.	0	2	0
3. " Rolled ..	do.	0	1	6
4. Fresh Mutton—Forequarter ..	do.	0	0	4
5. " Legs ..	do.	0	1	0
6. Chops—Forequarter ..	do.	0	0	10
7. " Loin ..	do.	0	1	0
8. Steak—Rump ..	do.	0	2	6
9. " Stewing ..	do.	0	2	0
10. " Topside ..	do.	0	2	0
11. Sausages—Mixed ..	do.	0	1	3
12. Tripe—Fresh ..	do.	0	0	7½
13. Livers—Sheep ..	do.	0	0	11
14. Suet—Kidney ..	do.	0	0	5
15. Rabbits—Fresh ..	do.	0	1	6
16. Ice ..	per cwt.	0	4	6

Sub-schedule No. 4.

VEGETABLES.

1. Onions ..
2. Other vegetables, including beetroot, cauliflower, carrots, cabbages, turnips, parsnips, rhubarb, swedes, and pumpkin, as required ..
- Purchase by agreement

SCHEDULE No. 4.

PROVISIONS—TEACHERS' COLLEGE, CARLTON.

(Delivery at the College.)

(AGREEMENT.)

Moran and Cato Pty. Ltd., 277 Brunswick-street, Fitzroy, N.G.

Sub-schedule No. 1.

GROCERIES.

		£	s.	d.
1. Barley ..	per lb.	0	0	7
2. Cereal—"Piper's", in 24-oz. packets ..	per pkt.	0	1	8½
3. " "Weetbix," large ..	do.	0	1	9½
4. Cheese—Kraft, 5-lb. loaves ..	per lb.	0	3	6½
in 1-lb. packets, per pkt. ..		0	1	3½
5. Custard Powder { "Clipper" ..				
loose ..	per lb.	0	1	0½
6. Essence—in 8-oz. bottles, Lemon pure ..	per bot.	0	5	2
7. Flour—Self-raising, Brand, "Macs" ..	per lb.	0	0	5½
8. Fruit—Preserved, assorted, in 1-lb. 14-oz. tins (excluding Fines) ..	per tin	0	2	5½
9. Golden Syrup—in 2-lb. tins ..	per doz.	0	16	0

* Supplies not available. ○ Charge for drums if not returned. †† Small quantities at rate of 2s. 1½d. per 14 lb.

‡ 12-oz. tins, £1 14s. 4d. per doz.

Sub-schedule No. 1—continued.

GROCERIES—continued.

		£	s.	d.
10. Honey, first quality—in 60-lb. tins only ..	per lb.	0	1	0½
11. Jelly Crystals, 7-lb. packets ..	do.	0	2	1
12. Mustard ..	do.	0	4	9
13. Macaroni—1-lb. packets—"Rinoldi" ..	do.	0	0	11
14. Pepper—Black, ground ..	do.	0	18	4
15. Pickles—Assorted, in 20-oz. bottles, per doz. ..		1	1	6
16. Raisins—Sultana, 2 Crowns (present season's) ..	per lb.	0	1	5½
17. Salmon—Fresh, "Australian," in 12-oz. tins, talls, "Greenseas" ..	per tin	0	2	9½
18. Salt—Fine †† ..	per cwt.	0	15	6
19. Sauce, Tomato, in 26-oz. bots. { "Leggos" ..	per doz.	1	10	3
" " { "Raleigh" ..	do.	1	9	6
13-oz. ..		0	19	1
20. " Worcestershire, in 10-oz. bottles, Brand, "Hardings" ..	per bot.	0	1	4½
21. Soda—Bicarbonate of ..	per lb.	0	0	6
22. " Washing ..	do.	0	0	3½
23. Spaghetti—"Rinoldi" ..	per pkt.	0	1	0
24. Spice—Mixed, in 1-oz. pkts.—"Parsons" ..	per doz.	0	4	4½
25. Starch—loose ..	per lb.	0	0	7
26. Sugar—Castor ..	do.	0	0	8½
27. Vinegar—Malt ..	per gal.	0	2	2

ANNEX TO CONTRACT No. 1953/16.†

Jackson's United Meat Co. Pty. Ltd., 546 Racecourse-road, Newmarket.

Sub-schedule No. 3.

MEAT.

(Also for delivery to Travancore Developmental Centre, Flemington.)

Security, £8.

		£	s.	d.
1. Fresh Beef—Sirloin ..	per lb.	0	1	10
2. Fresh Mutton ..	do.	0	0	6
3. " " Cutlets ..	do.	0	1	3
4. " " Chops—Mid. Loin ..	do.	0	1	3
5. " " Forequarter ..	do.	0	0	10
6. " " Legs ..	do.	0	1	0
7. Beef—Corned—Silverside ..	do.	0	1	8
8. Veal—Shoulder, Boned ..	do.	0	1	1
9. Steak—Blade ..	do.	0	1	10
10. " (when required, minced) ..	do.	0	1	8
11. " Stewing ..	do.	0	1	10
12. Mince Meat ..	do.	0	1	0
13. Sausages—Mixed ..	do.	0	1	4
14. Sausage Meat ..	do.	0	0	9
15. " Beef, German ..	do.	0	2	1
16. Livers—Sheep ..	do.	0	0	9
17. Tripe—Fresh ..	do.	0	0	6
18. Suet—Kidney ..	do.	0	0	5
19. Bones—Soup ..	do.	0	0	1
20. Frankfurts ..	do.	0	1	10
21. Kidney—Ox ..	do.	0	1	0
22. Tongues—Ox ..	do.	0	1	0
23. Pig's Cheek ..	do.	0	0	6

SCHEDULE No. 5.

PROVISIONS—ARARAT DISTRICT.

(Delivery into Institutions.)

ANNEX TO CONTRACT No. 1953/17.

M. L. and R. M. Bates, 52 Vincent-street, Ararat.

Sub-schedule No. 1.

BREADSTUFFS.

Security, £75.		£	s.	d.
1. Bread—Fine wheat, first quality ..	per ont.	2	8	11
2. Flour—First quality ..	do.	1	9	11

(AGREEMENT.)

John MacLeod and Co. Pty. Ltd., 122 Lydiard-street, Ballarat.

Sub-schedule No. 2.

GROCERIES.

		£	s.	d.
1. Blue—Washing (Rock Square) ..	per gross	1	7	2½
2. Candles—(full weights) Kitchen's "Elec. trines," or other make of equal quality, to be supplied in 1-lb. packets ..	per lb.	0	2	2½
3. Cocoa—in 28-lb. bags ..	do.	*		
4. Corn Flour—in packets of 1 lb. net "Kream" ..	do.	0	1	6½
5. Curry Powder, loose ..	do.	0	4	0½
6. Custard Powder—Bulk ..	do.	0	1	2
7. Golden Syrup { 70-lb. tins or drums ..	each	2	8	11
" " { 2-lb. tins ..	per doz.	0	18	1
8. Jelly Crystals—"Gold Seal" ..	do.	0	7	4½
9. Milk, Powdered—"Sunshine", 3-lb. tins ..	do.	6	9	10½
10. Mustard—Loose ..	per lb.	0	4	3½

Sub-schedule No. 2—continued.

GROCERIES—continued.		£	s.	d.
11. Peas—Blue Boiling	per bush.	2	2	6
12. Pepper—Black, ground	per lb.	0	18	9½
13. Raisins—Sultana (present season's)—				
Plain	do.	0	1	5½
1 Crown	do.	0	1	6
2 "	do.	0	1	6½
3 "	do.	0	1	6½
4 "	do.	0	1	6½
14. Salt—Fine—Imperial	per cwt.	1	2	0
15. Sauce—Tomato—1-gallon jars (Jars 5s.) ..	per gal.	0	15	4½
16. Soda—Bicarbonate of	per lb.	0	0	6½
17. " Washing	per cwt.	1	6	7½
18. Starch (Rice)—"Silver Star" 14-oz. packets	per doz.	0	19	5
19. Tartar—Cream of—Substitute—"Antelope"	per lb.	0	2	4

(AGREEMENT.)

John MacLeod and Co. Pty. Ltd., 122 Lydiard-street, Ballarat.

Sub-schedule No. 3.

JAMS.		£	s.	d.
1. Jams—Assorted, in bulk, of approved	per lb.	0	1	0½
kinds, in the proportion of half seed and actual net				
half stone, of the best quality, in tins, as weight				
required, Brand, "J. MacLeod and Co.				
Pty. Ltd."				

ANNEX TO CONTRACT No. 1953/18.†

A. I. Ahpee, 172 Barkly-street, Ararat.

Sub-schedule No. 4.

MEAT.

Security, £30.		£	s.	d.
1. Fresh Beef—Fore-quarters	per cwt.	9	0	0
2. " " Buttocks	do.	9	0	0
3. " Mutton (Kidney Fat removed) ..	do.	5	0	0
4. Corned Beef—Rolled or round, as ordered,	do.	9	0	0
without bone or cartilage				
5. Sausages—Mixed (summer months) ..	per lb.	0	1	6
6. Sausage—Beef German (summer months) ..	do.	0	2	6
7. Saveloys (winter months)	per doz.	0	3	6

SCHEDULE No. 6.

PROVISIONS—BALLARAT DISTRICT.

(Delivery into Institutions.)

ANNEX TO CONTRACT No. 1953/19.

Brogden Bros., Lal Lal-street, Ballarat.

Sub-schedule No. 1.

BREADSTUFFS.

Security, £75.		£	s.	d.
1. Bread—Fine wheaten, first quality ..	per cwt.	1	12	6
2. Flour—First quality	do.	1	8	6

(AGREEMENT.)

John MacLeod and Co. Pty. Ltd., 122 Lydiard-street, Ballarat.

Sub-schedule No. 2.

GROCERIES.

		£	s.	d.
1. Blue—Washing (Reck Square)	per gross	1	6	9½
2. Candles (full weights)—Kitchen* "Eloc-	per lb.	0	2	2
trines," or other make of equal quality,				
in 1-lb. packets				
3. Cocoa—Loose—28-lb. bags	do.	*		
4. Corn—Flour—in packets of 1 lb. net—	do.	0	1	6
"Kream"				
5. Currants—				
M.F. (present season's)	do.	0	1	4½
1 Crown	do.	0	1	4½
2 "	do.	0	1	5½
3 "	do.	0	1	5½
6. Curry Powder—loose	do.	0	4	0
7. Golden Syrup—in { 2-lb. tins ..	per doz.	0	17	0
{ 70-lb. tins or drums ††	each	0	5	9
8. Jelly Crystals—"Gold Seal"—in 4-oz. pkts.	per doz.	0	7	3
9. Macaroni—Bulk, 56-lb. bags	per lb.	0	0	10½
10. Meats—Tinned—				
"Tom Piper" Sausages and Vege-	per doz.	1	3	5
tables (16-oz.)				
"Champion," { Irish Stew (16-oz.) ..	do.	1	2	3
{ Lamb and Green ..	do.	1	3	0
{ Peas (16-oz.) ..				

* Supplies not available.

†† Charge for drums if not returned.

Sub-schedule No. 2—continued.

GROCERIES—continued.		£	s.	d.
Meats—Tinned—continued.				
"Imperial," { Beef Steak Pudding ..	per doz.	*		
16-oz. tins	tins			
"Smorgan's," { Minced Beef	do.	*		
12-oz. tins				
"Champion," { Camp Pie	do.	0	19	2
12-oz. tins				
11. Milk—Full Cream Powdered Milk—				
3-lb. tins	do.	6	8	0½
12. Mustard—Loose	per lb.	0	4	3
13. Pepper—Black, ground	do.	0	18	9
14. Raisins—Sultana (present season's)—				
Plain	do.	0	1	5½
1 Crown	do.	0	1	5½
2 "	do.	0	1	5½
3 "	do.	0	1	6
15. Salt—Fine—Imperial	per cwt.	0	17	4½
16. Soda—Bicarbonate of	per lb.	0	0	6
17. " Washing	per cwt.	1	12	0
18. Spaghetti—Bulk 22-lb. cartons {				
No. 1	per carton	1	2	6
No. 2	do.	1	5	3
19. Spice—Mixed, in 1-oz. packets ..	per pkt.	0	0	6½
20. Starch "Silver Star" 14-oz. ..	per doz.	0	18	10½
21. Tartar—Cream of—Substitute—	per lb.	0	2	3½
"Antelope"				
22. Vinegar—Malt	per quart	0	0	7½

(AGREEMENT.)

John MacLeod and Co. Pty. Ltd., 122 Lydiard-street, Ballarat.

Sub-schedule No. 3.

JAMS.

		£	s.	d.
1. Jams—Assorted, in bulk, of approved	per lb.	0	1	0
kinds, in proportion of half seed actual net				
and half stone, of the best weight				
quality, in tins as required,				
Brand, "J. MacLeod and Co.				
Pty. Ltd."				
2. " Assorted, in 24-oz. tins, in the	per doz.	1	6	9
proportion of half seed and half	tins			
stone, of the best quality, Brand,				
"Victoree"				
3. " Assorted, in 5-lb. tins, in the	do.	*		
proportion of half seed and half				
stone, of the best quality, Brand,				
"Victoree"				

ANNEX TO CONTRACT No. 1953/20.†

H. J. Symons Pty. Ltd., 1015 Macarthur-street, Ballarat.

Sub-schedule No. 4.

MEAT.

Security, £35.		£	s.	d.
1. Fresh Beef, Forequarters	per cwt.	7	16	3
2. " " Hindquarters	do.	8	12	11
3. " " Buttocks	do.	8	17	1
4. " " Roast	do.	8	12	11
5. Beef, Corned	do.	9	1	3
6. Mutton, Fresh (Kidney Fat removed—				
Mental Hospital)	do.	4	11	8
7. " " Chops, Forequarter	per lb.	0	1	5
8. Mincedmeat	do.	0	1	1½
9. Sausages	do.	0	1	8
10. Sausage, Beef, German	do.	0	2	4
11. Saveloys (April to September) ..	per doz.	0	3	3
12. Tripe	per lb.	0	1	0
13. Ham Loaf (October to March) ..	do.			
14. Black Puddings	do.	0	1	0
15. Livers—Sheep	do.	0	1	3

SCHEDULE No. 7.

PROVISIONS—BEECHWORTH DISTRICT.

(Delivery into Institutions.)

ANNEX TO CONTRACT No. 1953/21.

P. A. Taylor, Camp-street, Beechworth.

Sub-schedule No. 1.

BREADSTUFFS.

Security, £100.		£	s.	d.
1. Bread—Fine Wheaten, first quality ..	per cwt.	2	7	6
2. " Raisin	do.	3	0	0
3. Flour—First quality	do.	1	8	6

|| 12 oz. tins, £1 13s. 9d. per doz.

(AGREEMENT.)

Moran and Cato Pty. Ltd., 277 Brunswick-street, Fitzroy, N.G.

Sub-schedule No. 2.

GROCERIES.		£	s.	d.
1. Biscuit—Cereal "Vitabrit"—24-oz.	per pkt.	0	2	0½
2. Blue—Washing, powdered in 7-lb. pkts.	per lb.	0	2	1
3. Cocoa { "Bournville"—in 1-lb. pkts	do.	0	4	5
Loose ..	do.	0	3	3½
4. Corn or Maize Flour—				
Loose ..	do.	0	0	9½
"Kream"—in packets of 1-lb.	do.	0	1	6½
5. Curry Powder ..	do.	0	3	7½
6. Custard Powder—Loose ..	do.	0	1	2½
7. Dried Fruits { Apricots—3 Crown	do.	0	3	8½
Pears—2 Crown ..	do.	0	2	2½
8. Fish—Cape Cod or Shredded ..	do.	*		
9. Fruit Juices—16-oz. tins, Orange and Grapefruit, Mildura ..	per doz.	1	10	0
10. Golden Syrup—in 2-lb. tins ..	per tin	0	1	7
11. Jelly Crystals—in 7-lb. packets ..	per lb.	0	2	2½
12. Macaroni—in 22-lb. boxes ..	per box	1	2	6
in 56-lb. bags ..	per lb.	0	0	11½
13. Milk—Powdered—3-lb. tins ..	per doz.	6	11	6
" " —12-oz. tins { "Sunshine"	do.	1	16	0
" " " " "Trufood"	do.	1	14	6
14. Mustard ..	per lb.	0	4	10½
15. Pepper—Black, ground ..	do.	0	18	5½
16. Raisins—Sultana, 2 Crowns (present season's)	do.	0	1	7
17. Salt—Fine ..	per cwt.	1	1	6
18. Sauce—Tomato—26-oz. bottles { "Raleigh"	per doz.	1	17	0
" " " " "Leggos"	do.	1	17	9
19. Soap—Sand, Carbolie, in 12-oz. blocks, "Lectric"	do.	0	5	0
20. " Lifebuoy ..	do.	0	5	6
21. Soda—Bicarbonate of ..	per lb.	0	0	7½
22. " Washing ..	per cwt.	2	5	9
23. Spaghetti—22-lb. boxes—"Rinoldi"—No. 1 ..	per box	1	3	9
24. Spice—Mixed, "Parsons" ..	per doz.	0	4	9
25. Starch—"Lustre" ..	pkts.	0	0	8½
26. Tartar—Cream of—Substitute—"Aerophos"	do.	0	2	2
27. Tomatoes—tinned, 28-oz. tins "Cohn" ..	per doz.	1	9	0
28. Vinegar—Malt ..	tins	0	0	11

(AGREEMENT.)

Moran and Cato Pty. Ltd., 277 Brunswick-street, Fitzroy, N.G.

Sub-schedule No. 3.

JAMS.		£	s.	d.
1. Jams—Assorted, in bulk—Apricot	per lb.	0	1	1
Peach ..	actual	0	1	1
Apple & Rasp.	net	0	1	0
flavour	weight			
Dark Plum ..		0	1	0
2. " Assorted, in 5-lb. tins, in the proportion of half seed and half stone, of the best quality, Brand, "M.P."	per tin	0	7	8½

Charge for cases 2s., if not returned.

ANNEX TO CONTRACT No. 1953/22.†

E. Spencer, Camp-street, Beechworth.

Sub-schedule No. 4

MEAT.		£	s.	d.
Security, £30.				
1. Fresh Beef, Roast ..	per cntl.	8	10	10
2. Corned Beef, Rolled ..	do.	8	6	8
3. Mutton, Fresh (Kidney fat removed—Mental Hospital)	per lb.	0	0	9½
4. Minced Meat ..	do.	0	1	9
5. Sausages, Mixed ..	do.	0	1	3
6. Sausage Meat ..	do.	0	1	1
7. Saveloys ..	per doz.	0	3	0

* Supplies not available

SCHEDULE No. 8.

PROVISIONS—LANGI KAL KAL TRAINING CENTRE.

ANNEX TO CONTRACT No. 1953/23.

O. Nicholls and W. J. Hoskin, Neil-street, Beaufort.

Sub-schedule No. 1.

BREAD.		£	s.	d.
Security, £3.				
1. Bread—Fine wheaten, first quality ..	per cntl.	3	0	5

ANNEX TO CONTRACT No. 1953/24.†

H. T. Stee, Laurence-street, Beaufort.

Sub-schedule No. 2.

MEAT.		£	s.	d.
Security, £3.				
1. Fresh Beef—Boneless ..	per lb.	0	2	9
2. Sausages—Mixed ..	do.	0	1	6
3. Sausage—Meat ..	do.	0	1	0

SCHEDULE No. 9.

PROVISIONS—SCHOOL OF FORESTRY, CRESWICK.

(Delivery at the School.)

ANNEX TO CONTRACT No. 1953/25.

R. C. Bowley, Albert-street, Creswick.

Sub-schedule No. 1.

BREADSTUFFS.		£	s.	d.
Security, £3.				
1. Bread—Fine wheaten, first quality ..	per cntl.	2	18	4
2. Flour—First quality ..	per lb.	0	0	4

(AGREEMENT.)

J. Tait and Son, Albert-street, Creswick.

Sub-schedule No. 2.

GROCERIES.		£	s.	d.
1. Barley—Pearl ..	per lb.	0	0	8
2. Blue—Washing ..	do.	0	2	6
3. Butter—First grade creamery, to score not less than 91 points, Government grade, Commerce Regulations Standard	do.	0	4	0
4. Cheese—First-class quality, matured ..	do.	0	2	11
5. Coffee—Fresh roasted and whole, beans to be thoroughly sound	do.	0	6	6
6. Corn or Maize Flour—in packets of 1 lb.	do.	0	1	6
7. Eggs—New laid ..	per doz.	0	4	0
8. Ginger—Ground ..	per lb.	0	5	6
9. Golden Syrup—in 2-lb. tins ..	per tin	0	1	6
10. Jams—Assorted, in 5-lb. tins, not, in the proportion of half seed and half stone, Brand, "Red Feather"	do.	0	6	11
11. Mustard—"Double Superfine" ..	per lb.	0	4	9
12. Oatmeal ..	do.	0	0	8
13. Peas—Split ..	do.	0	0	10½
14. Pepper—Black, ground ..	do.	1	3	6
15. Potatoes—Dry and free from dirt ..	per cwt.	0		
16. Raisins—Sultana, 3 Crowns (present season's)	per lb.	0	1	8
17. Rice—Dressed ..	do.	*		
18. Salt—Fine ..	do.	0	0	2
19. Soap—"Velvet," yellow, dry, and hard, per doz.		1	3	6
20. " Sand, Carbolie, in 12-oz. blocks ..	each	0	0	7½
21. Soda—Bicarbonate of ..	per lb.	0	0	7
22. " Washing ..	do.	0	0	4
23. Starch (Rice)—Brand, "Preservene" ..	do.	0	1	5
24. Tartar—Cream of—Substitute—"Calcium Phosphate"	do.	0	2	5
25. Tea—1st Grade ..	do.	0	4	4
26. Vinegar—Malt ..	per pint	0	0	4
27. Honey—Yellow Box ..	per lb.	0	1	0
28. Flour—Self Raising ..	do.	0	0	6½

ANNEX TO CONTRACT No. 1953/26.

E. J. Keen, Jory-street, Creswick.

Sub-schedule No. 3.

MILK.		£	s.	d.
Security, £3.				
1. Milk—Fresh and pure ..	per qt.	0	1	3

○ Cost price plus 10%.

ANNEX TO CONTRACT No. 1953/27.†
H. J. Symons, Pty. Ltd., 1015 Macarthur-street, Ballarat.

Sub-schedule No. 4.

MEAT.

Security, £3.

			£	s.	d.
1. Fresh Beef—Fore-quarters	..	per lb.	0	2	4
2. „ Mutton	..	do.	0	1	3
3. Sausages—Mixed	..	do.	0	1	9
4. Steak—Minced	..	do.	0	2	0
5. Livers—Sheep	..	do.	0	1	3
6. Dripping—Beef	..	do.	0	1	0

SCHEDULE No. 10.

PROVISIONS—MCLEOD SETTLEMENT,
FRENCH ISLAND.

(Delivery to be made at Corinella Jetty.)

ANNEX TO CONTRACT No. 1953/28.

H. H. Bird, Grantville.

Sub-schedule No. 1.

BREAD.

Security, £12.

			£	s.	d.
1. Bread—Fine wheaten, first quality	..	per cntl.	2	13	1½

(AGREEMENT.)

E. V. Peters, Corinella.

Sub-schedule No. 2.

GROCERIES.

			£	s.	d.
1. Butter—First grade creamery, to score not less than 91 points, Government grade, Commerce Regulations Standard	..	per lb.	0	3	11
2. Cheese—Matured	..	do.	0	2	8½
3. Jams—Assorted, in proportion of half seed and half stone, of best quality, in 24-oz. tins, "Victoree" and "Rego"	..	per doz.	1	7	0

ANNEX TO CONTRACT No. 1953/29.†

George Hayman, Lang Lang.

Sub-schedule No. 3.

MEAT.

Security, £5.

			£	s.	d.
1. Fresh Beef	..	per lb.	0	1	6
2. Corned Beef—Rolled or Round, as ordered, without bone or cartilage	..	do.	0	1	9
3. Mutton, Sides	..	do.	0	1	3

SCHEDULE No. 11.

PROVISIONS—HEATHERTON SANATOR-
TORIUM, CHELTENHAM.

(Delivery at the Sanatorium.)

ANNEX TO CONTRACT No. 1953/30.

T. D. Callander Pty. Ltd., 86 Broadway-parade, Oakleigh.

Sub-schedule No. 1.

BREAD.

Security, £10.

			£	s.	d.
1. Bread—Fine wheaten, first quality	..	per centl.	1	11	2

(AGREEMENT.)

Moran and Cato Pty. Ltd., 277 Brunswick-street, Fitzroy, N.6.

Sub-schedule No. 2.

GROCERIES.

			£	s.	d.
1. Bacon—Sides	..	per lb.	0	4	2
2. Biscuits—Coffee, Malt, Milk Arrowroot, as ordered— "Sunshine"	..	do.	0	1	6½
3. Cereal—Malties (or equal thereto) in 24-oz. "Pipers"	..	per pkt.	0	1	8½
4. Cocoa—"Bournville"	..	per lb.	0	4	3½
Loose	..	do.	0	3	2

Sub-schedule No. 2—continued.

GROCERIES—continued.

£ s. d.

5. Corn or Maize Flour—					
Loose	..	do.	0	0	7½
"Kream" in 1-lb. packets	..	do.	0	1	5
6. Custard Powder—1-lb. packets "Clipper"	..	do.	0	1	3½
7. Essence of Vanilla—in 16-oz. bottles—"Allens"	..	per bot.	0	11	9½
8. Flour—Self-raising—Brand "Mac's"	..	per lb.	0	0	5½
9. Fruit—Preserved—in 30-oz. tins (excluding pines)	..	per tin	0	2	5½
10. Herrings—Fresh	..	per doz.	1	7	0
In Tomato Sauce, 14-oz. tins	..	tins	1	7	6
11. Honey—First quality in 60-lb tins	..	per lb.	0	1	0½
12. Jams—Assorted, in 5-lb. tins, in the proportion of half seed and half stone, of the best quality—Brand "M.P."	..	per tin	0	7	3
13. „ Marmalade in 5-lb. tins—Brand "M.P."	..	do.	0	6	1½
14. Jelly Crystals—4-oz. packets "Clipper"	..	per doz.	0	6	2
15. Junket Tablets "Merry Widow"—flav.	..	per tube	0	0	11½
16. Macaroni—1lb. packets, "Rinoldi"	..	per lb.	0	0	11
17. Mustard	..	do.	0	4	9
18. Pepper—Black, ground	..	do.	0	18	4
19. Pickles—Assorted, in 20-oz. bottles	..	per doz.	1	1	6
20. Prunes—Dried, 70-80's (present season's)	..	per lb.	0	2	5½
21. Raisins—Sultana, 2 Crowns (present season's)	..	do.	0	1	5½
22. Salmon—Fresh, in 12-oz. tins, tall—Australian "Greenseas"	..	per tin	0	2	9½
23. Salt—Fine	..	per cwt.	0	15	6
24. Sauce—Tomato, in 26-oz. bottles—Brand "Raleigh"	..	per doz.	1	9	6
"Leggos"	..	do.	1	10	3
25. Soda—Bicarbonate of	..	per lb.	0	0	6
26. „ Washing	..	per cwt.	1	15	0
27. Spice—Mixed, in 1-oz. packets "Parsons"	..	per doz.	0	4	4½
28. Starch—Loose	..	per lb.	0	0	7
29. Vinegar—Malt	..	per gal.	0	2	2

ANNEX TO CONTRACT No. 1953/31.†

W. Angliss and Co. (Aust.), Pty. Ltd., 42 Bourke-street, Melbourne, C.1.

Sub-schedule No. 3.

MEAT.

Security, £5.

			£	s.	d.
1. Beef, Fresh Roast	..	per lb.	0	1	3
2. „ Corned—Silverside	..	do.	0	2	6
3. Mutton, Fresh	..	do.	0	0	4½
4. Chops—Forequarter	..	do.	0	0	10
5. „ Middle Loin	..	do.	0	1	3
6. Veal—Leg	..	do.	0	0	9
7. Pork, Fresh—Loin	..	do.	0	2	0
8. Steak—Rump	..	do.	0	2	10
9. „ Blade Bone	..	do.	0	2	3
10. „ Minced	..	do.	0	1	4
11. „ Topside	..	do.	0	2	5
12. Tripe—Fresh	..	do.	0	0	5½
13. Sausages—Mixed	..	do.	0	1	3
14. Kidneys—Ox	..	do.	0	1	4
15. Tails—Ox	..	do.	0	0	10½
16. Tongues—Ox	..	do.	0	1	0½
17. „ Sheep	..	each	0	0	4
18. Brains—Sheep	..	per set	0	0	4
19. Ham Loaf	..	per lb.	0	2	5
20. Fowls—First Quality	..	do.	0	2	6

ANNEX TO CONTRACT No. 1953/32.

L. J. A. Henderson, 863 Nepean Highway, Moorabbin.

Sub-schedule No. 4.

MILK.

Security, £3.

			s.	d.
1. Milk—Fresh and pure	..	per gal.	4	7½

SCHEDULE No. 12. **PROVISIONS—SANATORIUM, GREEN-VALE.**

(Delivery at the Sanatorium.)

ANNEX TO CONTRACT No. 1953/33.

Bessell's Pty. Ltd., 275 Buckley-street, Essendon.

Sub-schedule No. 1.

BREADSTUFFS.

Security, £7.

	£	s.	d.
1. Bread—Fine wheaten, first quality .. per cwt.	1	18	0
2. Flour—First quality .. do.	††		

†† Order under Melbourne District.

(AGREEMENT.)

Henry Berry and Co. (A/asia) Ltd., 568 Collins-street, Melbourne.

Sub-schedule No. 2.

GROCERIES.

	£	s.	d.
1. Beetroot—30-oz. tins .. per doz.	1	10	6
2. Biscuits—Malt, Milk Arrowroot, Coffee { Dry (Tins 4s.) .. per lb.	0	1	7½
as ordered, in approximately 7-lb. tins			
3. Blue—Washing, 1-oz. knobs "Reckitts" .. per doz.	0	2	3½
4. Borax .. per lb.	0	0	7½
5. Camp Pie—12 oz. tins .. per doz.	0	19	2
6. Cereal—"Weetie's," in 24-oz. packets .. per pkt.	0	1	9½
7. Cheese—Semi-matured, in 10-lb. loaves .. per lb.	*		
8. Cocoa in 1-lb. bags .. do.	0	3	4
9. Coconut—Desiccated Ceylon (Papuan 2/9½) .. do.	0	2	2
10. Corn or Maize Flour—in packets of 1 lb. .. do.	0	1	5½
11. Corn or Maize Flour, loose .. do.	0	0	8½
12. Curry Powder—"Atlas" .. do.	0	2	11
13. Currants—2 Crowns (present season's) .. do.	0	1	5½
14. Custard Powder—in 1-lb. packets—"Dainty Maid" .. per doz.	0	18	0
15. Dates—in case lots .. per lb.	0	1	4†
16. Essence of Lemon—in 18-oz. bottles .. do.	0	12	6
17. " " Vanille—in 20-oz. bottles .. do.	0	8	0
18. " " Parisian (Jar 3/6) .. per gal.	0	19	0
19. Fish—Sardine, 4-oz. tins, double layer per doz. tins	0	15	6
20. Fish—Herrings in Sauce, 14-oz. tins—do.	1	6	0
21. Flour—Self-raising—"Cookwell" { 150-lb. per bag 3 8 2			
50-lb. do.	1	4	2
22. Fruits—Dried (present season's)—Apples and Peaches .. per lb.	††		
23. " Preserved (excluding Pines) .. per tin	††		
24. Gelatine—Powdered .. per lb.	0	6	3
25. Ginger—Ground .. do.	0	4	0
26. Golden Syrup—in 2-lb. tins \$.. per carton	1	12	0
27. Honey—First quality .. per lb.	*		
28. Jams—Assorted, in 24-oz. tins, Brand, per doz.	×		
"M.P."			
29. Jelly Crystals—in { 7-lb. packets .. per pkt.	0	16	6
4-oz. " in 2 doz. cartons	per gross	4	9 0
30. Junket Tablets "Berry's" .. per doz.	0	11	0
31. Mixed Peel—Cut .. per lb.	0	1	7
in 22-lb. boxes .. per box	1	1	3
32. Macaroni—in 22-lb. cartons .. per carton	1	0	3
33. Mustard, "Colonial" .. per lb.	0	4	9
34. Nutmeg—Ground .. do.	0	5	6
35. Oatmeal—Flaked .. per cwt.	3	0	0
36. Spice—Loose .. per lb.	0	3	6
37. Pepper—Ground, White (Black, 18/-) .. do.	1	3	0
38. Pickles—Assorted, in 20-oz. bottles .. per doz.	1	2	0
39. Prunes—Dried, 50-60's (present season's) .. per lb.	†		
40. Raisins—4 Crowns (present season's) (lexias) .. do.	1	4½	
41. Raisins—Sultana, 2 Crowns (present season's) .. do.	0	1	6
42. " Seeded .. do.	1	9	
43. Rice—Dressed .. per cwt.	4	16	0
44. Salmon—Fresh in 1-lb. tins .. per tin	*		
45. Salt—Fine (Bags approx. 1 cwt.) .. per bag	0	15	10
46. Sauce—Worcestershire, 10-oz. bottles, Brand, "Hardings" .. per doz.	0	17	9
47. Sauce { Tomato, 28-oz. bottles, Brand, do.	1	16	0
"Victoree" (cartons 2s.)			
48. Soda—Bicarbonate of .. per jar	0	14	6
49. Soda—Washing .. per lb.	0	0	6
in 22-lb. boxes .. per cwt.	1	15	0

* Supplies not available. \$ Cartons—2 doz. 2-lb. tins. †† Apply Tender Board. × Assorted, £1 5s.; apricot, £1 5s.; melon, £1 2s. 6d.; marmalade, £1 4s. 9d.; blackberry, £1 9s.; peach, £1 5s.; plum £1 2s. 9d.; quince, £1 2s. 9d.; raspberry, £1 12s. 9d.; and raspum, £1 6s. 3d. © As supply of 18-oz. and 20-oz. bottles is irregular rate is shown on per lb. basis. \$ 12-oz. tins, 3 dozen per case, and 3-lb. tins, 1 dozen per case. † Lots under 1 case 1s. 4½d. per lb. †† 1-oz. knobs in calico, 3s. 5d. per doz.

Sub-schedule No. 2—continued.

GROCERIES—continued.

	£	s.	d.
50. Spaghetti { in 22-lb. boxes No. 1 .. per box	1	2	6
in 22-lb. cartons .. per carton	1	1	6
51. Starch—Powdered, "Aeme"—14-oz. packets, 40's .. do.	2	7	10
52. Sugar—Castor .. per cwt.	4	2	6
53. Tapioca—Pearl .. per lb.	*		
54. " Seed (Sago) .. do.	0	1	4
55. Tartar—Cream of—Substitute "Antelope" .. do.	0	2	3
56. Tomatoes—Preserved, in 30-oz. tins .. per doz.	1	10	6
57. Tomato Soup—16-oz. tins .. do.	0	17	6
58. Treacle—in 2-lb. tins (24 tins in box) .. per box	1	11	2
59. Vermicelli { in 22-lb. boxes .. do.	1	2	6
in 22-lb. cartons .. per carton	1	1	6
60. Vinegar { Malt—in 9-gallon kegs (Kegs 60s.) per gal.	0	2	1½
" —in 1-gallon jars (Jars 3/6) .. do.	0	2	3
61. Powdered Milk Full Cream "Sunshine"—12-oz. tins .. per case	5	6	6½
3-lb. tins .. do.	6	14	6½

ANNEX TO CONTRACT No. 1953/34.†

Jackson's United Meat Co. Pty. Ltd., 546 Racecourse-road, Newmarket.

Sub-schedule No. 3.

MEAT (cuts as ordered).

	£	s.	d.
Security, £7.			
1. Beef, Fresh—Roast .. per lb.	0	1	4
2. " " Rump .. do.	0	1	11
3. " —Corned, Silverside .. do.	0	1	10
4. Mutton, Fresh—Sides .. do.	0	0	8½
5. Cutlets—Veal .. do.	0	1	10
6. Chops—Middle Loin .. do.	0	1	3
7. " Leg .. do.	0	1	0
8. Steak—Minced .. do.	0	1	6
9. Tripe, Fresh .. do.	0	0	7
10. Pork, Fresh—Sides .. do.	0	2	10½
11. Tongues—Ox .. do.	0	1	0
12. Sausages—Pork .. do.	0	1	3
13. Sausage—Strasbourg, Pork .. do.	0	2	4
14. Kidneys—Ox .. do.	0	1	1
15. Fowls—First Quality .. do.	0	3	9

SCHEDULE No. 13.

PROVISIONS—COORIEMUNGLE PRISON CAMP, HEYTESBURY FOREST.

(Delivery to be made at the Camp.)

(AGREEMENT.)

E. L. McDowall, Timboon.

Sub-schedule No. 1.

BREAD.

	£	s.	d.
1. Bread—Fine Wheaton, first quality .. per cwt.	3	0	5

(AGREEMENT.)

M. L. Hose, Timboon.

Sub-schedule No. 2.

GROCERIES.

	£	s.	d.
1. Oatmeal .. per lb.	0	0	9
2. Rice—Dressed .. do.	*		
3. Salt—Fine .. do.	0	0	2

ANNEX TO CONTRACT No. 1953/35.†
Heytesbury Butchery, Timboon.

Sub-schedule No. 3.

MEAT.

Security, £4.

		£	s.	d.
1. Fresh Beef	per lb.	0	2	8
2. Sausage Minco	do.	0	1	4
3. Fresh Mutton	do.	0	1	6
4. Corned Beef—Rolled or round, as ordered without bone or cartilage	do.	0	2	4
5. Sausages	do.	0	1	8

SCHEDULE No. 14.

PROVISIONS—ABORIGINAL STATION,
LAKE TYERS.

(Delivery at Lake Tyers Station.)

ANNEX TO CONTRACT No. 1953/36.

R. Hodder, Nowa Nowa.

Sub-schedule No. 1.

BREADSTUFFS.

Security, £25.

		£	s.	d.
1. Bread—Fine wheaten, first quality	per cntl.	2	10	3
2. Flour—First quality	do.	1	9	7½

(AGREEMENT.)

R. Hodder, Nowa Nowa.

Sub-schedule No. 2

GROCERIES.

		£	s.	d.
1. Baking Powder—Snowflake, or equal thereto, in 1-lb. tins	per lb.			
2. Candles (full weights)—Kitchen's "Electrics," or other make of equal quality, in 1-lb. packets	do.			
3. Coffee—Fresh roasted, and whole, beans to be thoroughly sound	do.			
4. Cocoa—Bulk	do.			
5. Corn or Maize Flour—in 1-lb. packets	do.			
6. Currants—2 Crowns (present season's)	do.			
7. Curry Powder—bulk	do.			
8. Matches—Safety, 60 in a box, "Yacht"	per gross			
9. Mustard—"Double Superfine"	per lb.			
10. Pepper—Black, ground, in 2-oz. tins	per tin			
11. Raisins—Sultana, 3 Crowns (present season's)	per lb.			
12. Salt—Coarse	per cwt.			
13. " Fine	do.			
14. Soap—Household, hard and dry, to sample	do.			
15. Soda—Bicarbonate of	per lb.			
16. " Washing	do.			
17. Tartar—Cream of—Substitute—Calcium Phosphate	do.			
18. Treacle—in 2-lb. tins	per tin			
19. Vinegar—Malt	per qt.			

(AGREEMENT.)

R. Hodder, Nowa Nowa.

Sub-schedule No. 3.

JAMS.

		£	s.	d.
1. Jams—Assorted, in 24-oz. tins, Brand in the proportion of half seed and half stone	per tin			

** The rates to be paid for all items under these Sub-schedules shall be the wholesale prices charged to the contractor, plus 12½ per cent. Wholesaler's invoices to be submitted with contractors' accounts.

SCHEDULE No. 15.

PROVISIONS—RESEARCH STATION,
RUTHERGLEN.

(Delivery at the Station.)

ANNEX TO CONTRACT No. 1953/37

W. S. Amore, Main-street, Rutherglen.

Sub-schedule No. 1.

BREAD.

Security, £3.

		£	s.	d.
1. Bread—Fine wheaten, first quality	per cntl.	2	14	2

* Supplies not available.

(AGREEMENT.)

Aitken and Fullerton, Rutherglen.

Sub-Schedule No. 2.

GROCERIES, ETC.

		£	s.	d.
1. Biscuits—Marie	per lb.	0	2	0
2. Cornflakes—"Kellogg's," in 16oz. packets	per pkt.	0	2	9
3. Corn or Maize Flour—in packets of 1-lb. net "Fielder's"	per lb.	0	1	9
4. Coconut—Desiccated	do.	0	2	6
5. Currants—2 Crowns (present season's)	do.	0	1	9
6. Fish—Salmon, in ½-lb. tins	per tin			*
7. Fruits—Preserved, assorted, in 1-lb. 14-oz. tins (Pineapple 3s. 6d.)	do.	0	2	11
8. Jams—Assorted, of approved kinds, in proportion of half seed and half stone, in 24-oz. tins, Brand, "M.P."	do.	0	2	6½
9. Jelly Crystals—in 4-oz. packets	per pkt.	0	0	10
10. Macaroni or Vermicelli—as ordered	per lb.	0	1	3
11. Matches—Safety	per pkt.	0	2	1
12. Oatmeal—Flaked "JB"	per lb.	0	0	11
13. Pepper—Black, ground	per oz.	0	2	0
14. Potatoes—Dry and free from dirt	per cwt.	2	0	0
15. Raisins—5 crown (present season's) lexias	per lb.			*
16. " Sultana, 3 crown (present season's)	do.	0	1	9
17. Rice—Dressed	do.	0	1	0
18. Salt—Fine	do.	0	0	2
19. Sauce—Tomato, "Dysons," 13-oz. bottles	per bot.	0	1	10
20. Soap—Household, yellow	per lb.	0	1	0
21. " "Monkey Brand," or equal thereto, in 5-oz. tablets	per tab.			*
22. " Sand, in 16-oz. blocks	per block	0	0	6
23. " Toilet, "Bath," in 4-oz. tablets, to sample, Kitchen's, or equal thereto	per doz.	0	5	6
24. Tea—1st Grade	per lb.	0	4	7

SCHEDULE No. 16.

PROVISIONS AT SALE.

(Delivery at the Gaol.)

ANNEX TO CONTRACT No. 1953/38.

F. J. Hennessy, 102 Raymond-street, Sale.

Sub-schedule No. 1.

BREAD.

Security, £3.

		£	s.	d.
1. Bread—Fine wheaten, first quality	per cntl.	2	10	0

ANNEX TO CONTRACT No. 1953/39.†

W. Wright, 80 Raymond-street, Sale.

Sub-schedule No. 2.

MEAT.

Security, £3.

		£	s.	d.
1. Fresh Beef—Stewing	per lb.	0	2	4
2. Fresh Mutton	do.	0	1	4
3. Corned Beef—Rolled or Round as ordered, without bone or cartilage	do.	0	2	5
4. Sausages	do.	0	1	7

SCHEDULE No. 17.

PROVISIONS—PLEASANT CREEK
SPECIAL SCHOOL, STAWELL.

(Delivery at the School.)

ANNEX TO CONTRACT No. 1953/40.

Keith Lawson, 26 Main-street, Stawell.

Sub-schedule No. 1.

BREADSTUFFS.

Security, £10.

		£	s.	d.
1. Bread—Fine wheaten, first quality	per cntl.	2	18	0
2. Flour—First quality	do.	1	10	0
3. Flour—Wheatmeal	per lb.	0	0	3

§ No seed available.

(AGREEMENT.)

John MacLeod and Co. Pty. Ltd., 122 Lydiard-street, Ballarat.

Sub-schedule No. 2.

GROCERIES.		£	s.	d.
1. Baking Powder—"Excelsior" ..	per lb.	0	2	2½
2. Barley—Pearl ..	do.	0	0	7½
3. Blue—Washing, "Rock Square" ..	per gross	1	7	3½
4. Cereal—"Wheat flakes," in 24 oz. packets per dz. pkt.	1	1	1	11
5. Cheese—Matured ..	per lb.	*		
6. Cocoa—in 28-lb. bags ..	do.	*		
7. Coffee and Chicory "Gold Seal" ..	do.	0	5	6½
8. Corn Flour—in 1-lb. packets "Kream" ..	do.	0	1	6½
9. Currants (present season's)—				
M.F. ..	do.	0	1	5
1 Crown ..	do.	0	1	5½
2 " ..	do.	0	1	5½
3 " ..	do.	0	1	6½
10. Curry Powder—Loose "Gold Seal" ..	do.	0	4	0½
11. Custard Powder (loose) ..	do.	0	1	2½
12. Dates ..	do.	0	1	5½
13. Ginger—Ground ..	do.	*		
14. Golden Syrup { in 2-lb. tins .. per doz.	0	18	4	
{ in 70-lb. " .. each	2	9	7	
15. Gravox—1-lb. tins ..	per doz.	1	1	1½
16. Honey, first quality ..	per lb.	*		
17. Jams—Assorted, of approved kinds, in proportion of half seed and half stone, in tins containing 24 oz. net, Brand, "Victories" ..	per doz.	1	7	11
18. Jelly Crystals ..	per doz.	0	7	5
19. Junket Tablets { "Gold Seal" .. do.	0	5	0	
{ "Merry Widow," Flavoured .. do.	0	11	9½	
20. Macaroni—22-lb. cartons ..	per cart.	1	2	5
21. Oatmeal ..	per lb.	*		
22. Peel—Cut, Mixed ..	do.	0	1	8½
23. Pepper—Black, ground ..	do.	0	18	9½
24. Prunes—Dried, 80-90's (present season's) ..	do.	0	2	6½
25. Raisins—Sultana (present season's)—				
Plain ..	do.	0	1	5½
1 Crown ..	do.	0	1	6½
2 " ..	do.	0	1	6½
3 " ..	do.	0	1	6½
26. Rice—Dressed ..	per cwt.	*		
27. Salt—Fine "Imperial" ..	do.	1	3	0
28. Sauce—Tomato—26-oz. bottles ..	per doz.	1	14	1
29. Soap—Preserve Foam, or equal thereto ..	per doz.	0	14	0
30. " "Lifebuoy," or equal thereto ..	per cake	0	0	5½
31. " "Sand," "Preserve" ..	per doz.	0	6	10½
32. " "Velvet," or equal thereto { quads .. per doz.	1	1	2	
{ quints. .. do.	1	14	0	
33. Soda—Bicarbonate of ..	per lb.	0	0	6½
34. " "Washing ..	per cwt.	1	17	7½
35. Spice—Mixed—1-oz. packets ..	per pkt.	0	0	6½
36. Starch—Brand "Silver Star"—14-oz. packets ..	per doz.	0	19	6½
37. Tartar—Cream of—Substitute—"Antelope" ..	per lb.	0	2	4½
38. Tapioca Pearl ..	per cwt.	*		
39. Tea—First Grade—loose special blend ..	per lb.	0	4	11½
40. Treacle—in 2-lb. tins ..	per doz.	0	17	11

ANNEX TO CONTRACT No. 1953/41.

E. G. Waldron, Stawell.

Sub-schedule No. 3.

MILK.

Security, £10.		£	s.	d.
Milk—Fresh and pure ..	per gal.	0	5	9

ANNEX TO CONTRACT No. 1953/42.†

Newton Bros., 121 Main-street, Stawell.

Sub-schedule No. 4.

MEAT.

Security, £3.		£	s.	d.
1. Fresh Beef—Prime ribs ..	per lb.	0	1	9
2. " " " Stewing (minced when required) ..	do.	0	1	9
3. Beef—Corned, Silverside ..	do.	0	1	9
4. Fresh Mutton—Chops (loin) ..	do.	0	1	3
5. " " " in sides (Kidney fat removed) ..	do.	0	1	3
6. Sausages—Mixed ..	do.	0	1	6
7. Livers—Sheep ..	do.	0	0	6
8. Tripe—Fresh ..	do.	0	0	6
9. Saveloys ..	per doz.	0	2	0

* Supplies not available.

SCHEDULE No. 18.

PROVISIONS—SUNBURY DISTRICT.

(Delivery into Institutions.)

ANNEX TO CONTRACT No. 1953/43.

Bessell's Pty. Ltd., 275 Buckley-street, Essendon.

Sub-schedule No. 1.

BREADSTUFFS.

Security, £112.

		£	s.	d.
1. Bread—Fine wheaten, first quality ..	per cntl.	1	15	0
2. Flour—First quality ..	do.	1	9	11

(AGREEMENT.)

K. N. Tidswell, Sunbury.

Sub-schedule No. 2.

GROCERIES.

		£	s.	d.
1. Blue—Washing—"Reckitts" 1-oz. knobs ..	per gr.	1	9	6
2. Beans—Lima ..	per lb.	*		
3. Candles—Full weight, in 1-lb. packets, Kitchen's "Electrics", or equal thereto ..	do.	0	2	4
4. Cinnamon ..	do.	0	2	6
5. Cloves (whole) ..	do.	*		
6. Cocoa—"Bournville"—16-oz. packets ..	do.	0	4	9
7. Corn or Maize Flour—in packets of 1-lb. net ..	do.	0	1	6
8. Currants—2 Crowns (present season's) ..	do.	0	1	7½
9. Curry Powder ..	do.	0	4	6
10. Custard Powder—30-lb. tins ..	do.	0	1	4½
11. Dates—Stoneless ..	do.	0	1	6
12. Ginger—Ground ..	do.	*		
13. Golden Syrup { in 5-cwt. drums .. per cwt.	*			
{ in 2-lb. tins .. per doz.	0	18	0	
14. Jelly Crystals—in 4-oz. packets ..	do.	0	7	10½
15. Lemon Peel—in 8-oz. packets ..	per pkt.	0	1	7
16. Macaroni ..	per lb.	0	0	11½
17. Milk, Powdered ..	do.	0	1	2½
18. Mustard—Loose—"Keen's" ..	do.	0	6	6
19. Nutmeg—Ground ..	do.	0	9	6
20. Pepper—Black, ground ..	do.	1	5	0
21. Raisins—Sultana, 2 Crowns (present season's) ..	do.	0	1	8
22. Salt—Fine ..	per cwt.	0	16	0
23. Sauce { Tomato—26-oz. bottles .. per doz.	1	15	0	
{ Worcestershire—20-oz. bottles .. bottles	1	14	0	
24. Soda—Bicarbonate of ..	per lb.	0	0	7
25. " "Washing ..	per cwt.	2	0	0
26. Spice—Mixed, loose ..	per lb.	0	3	7½
27. Starch—"Silver Star", loose ..	do.	0	1	9½
28. Tartar—Cream of—Substitute, "Antelope" ..	do.	0	2	5½
29. Vermicelli ..	do.	0	1	1½
30. Vinegar—Malt ..	per gal.	0	2	6

Sub-schedule No. 3.

CEREALS.

		per cwt.	Purchase under Tender Board quotations.
1. Oatmeal ..	do.		
2. Rice—Dressed to sample ..	do.		
3. Rice—Unpolished ..	do.		
4. Seed Tapioca—(Sago), to sample ..	do.		
5. Pearl Barley ..	do.		
6. Peas—Split ..	do.		

(AGREEMENT.)

K. N. Tidswell, Sunbury.

Sub-schedule No. 4.

JAMS.

		£	s.	d.
1. Jams—Assorted, in bulk, of approved kinds, in the proportion of half seed and half stone, of the best quality, in tins as required, Brand, "M.P." ..	per lb.	0	1	1

ANNEX TO CONTRACT No. 1953/44.†

F. Watkins Pty. Ltd., 184 Bourke-street, Melbourne, C.1.

Sub-schedule No. 5.

MEAT.

Security, £40.

		£	s.	d.
1. Fresh Beef, Forequarters ..	per cntl.	3	17	1
2. " " " Buttocks ..	per lb.	0	1	2
3. " " " Mutton (Kidney fat removed) ..	do.	0	0	6½
4. Corned Beef—Rolled or Round, as ordered without bone or cartilage ..	do.	0	1	6
5. Sausages, mixed ..	do.	0	1	0½

SCHEDULE No. 19.

PROVISIONS—AGRICULTURAL COLLEGE,
DOOKIE.

(Delivery at the College.)

ANNEX TO CONTRACT No. 1953/45.

Lindsay G. Clark, Mary-street, Dookie.

Sub-schedule No. 1.

BREADSTUFFS.

Security, £15.

	£	s.	d.
1. Bread—Fine wheaten, first quality .. per centil.	2	14	2
2. Flour—First quality do.	1	15	0

(AGREEMENT.)

W. A. Thompson, 192 High-street, Shepparton.

Sub-schedule No. 2.

GROCERIES.

(Delivery "F.O.R." Shepparton.)

	£	s.	d.
1. Baking Powder—1-lb. tins per doz.			
2. Beans—Lima per lb.			
3. " Haricot do.			
4. Biscuits—Coffee, Malt or Arrowroot (as ordered) do.			
5. Blue—Washing, square—in 8-lb. parcels do.			
6. Candles—full weight, Kitchen's Electricines in lots of 30—loose do.			
7. Cereal—Piper's (or equal thereto) in 24-oz. packets per doz.			
8. Cinnamon per lb.			
9. Chutney—13-oz. bottles per doz.			
10. Cocoa—bulk per lb.			
11. Coconut-desiccated do.			
12. Coffee Essence—in 1-gal. jars per gal.			
13. Cordial—Lemon, in 1-gal. jars s.c. do.			
14. Corn or Maize Flour—in 1-lb. packets per doz.			
15. Currants—2 Crowns (present season) per lb.			
16. Curry Powder—bulk do.			
17. Custard Powder in 1-lb. packets "McK." per doz.			
18. Essence—Almond, 8-oz. bottles do.			
19. " Cochineal—8oz. bottles do.			
20. " Lemon—8-oz. bottles do.			
21. " Vanilla—8-oz. bottles do.			
22. Fish—tinned, Herrings in sauce, 14-oz. tins do.			
23. Fish—tinned, Salmon, 2-lb. tins do.			
24. Fish—tinned, Sardines, 4-oz. tins do.			
25. Flour—Self-raising—150 lb. bags per bag			
26. Fruits—Dried (present season) per lb.			
27. " Preserved, 30-oz. tins—Peaches per doz.			
28. " Preserved, 30-oz. tins—Pears, Apricots do.			
29. " Preserved—6-lb. tins—Apples per tin			
30. " Preserved, 7-lb. tins—Blackberries, Blackcurrants, Gooseberries, and Raspberries do.			
31. Gelatine—Ground per lb.			
32. Ginger—Ground do.			
33. Golden Syrup—in 2-lb. tins per doz.			
34. Gravox—in 1-lb. tins do.			
35. Herbs—mixed—in 2-oz. pkts. do.			
36. Honey—first quality—60-lb. tins per tin			
37. Jelly Crystals—in 7-lb. packets per lb.			
38. Junket Tablets—"Hansens" per doz.			
39. Lemon Peel—Cut per lb.			
40. Macaroni—Bulk, in 22-lb. boxes per box			
41. Margarine—Cake per lb.			

Sub-schedule No. 2—continued.

GROCERIES—continued.

£ s. d.

Matches—Safety (60 in a box) per gross			
42. Meat Extract—"Bouox" "Boefine", per jar			
43. " &c., in 2-lb. jars do.			
44. Meat—tinned—Camp Pio—12-oz. tins .. per doz.			
45. " " Meat and Vogs.—16-oz. tins .. do.			
46. " " Hampe—12-oz. tins .. do.			
47. " " Sausages—16-oz. tins .. do.			
48. " " Steak and Kidney—16-oz. tins .. do.			
49. Milk—Condensed, full cream, 14-oz. tins .. do.			
50. Mustard per lb.			
51. Oatmeal, flaked, bulk per cwt.			
52. Pastes—Marmite, 4-oz. jars per doz.			
53. " Salmon and Shrimp, 4-oz. jars .. do.			
54. " Bloaters, 4-oz. jars do.			
55. Peas, Green, boiling per lb.			
56. " Green, tinned, 14-lb. tins .. per tin			
57. Pepper, black, ground per lb.			
58. Pickles—Assorted, in 20-oz. bottles .. per doz.			
59. Prunes—Dried 50-60's (present season) loose per lb.			
60. Prunes—Dried 50-60's (present season)—in 7-lb. tins .. per tin			
61. Raisins—Sultana, 3 crowns (present season's) .. per lb.			
62. " Seeded do.			
63. Rice—ground per doz. lbs.			
64. Salt—Table (16-oz. packets) per doz. pkts.			
65. " Fine do.			
66. Sauce—Tomato, in 1-gal. jars—"Grannys" .. per gal.			
67. " Worcester, in 1-gal. jars .. do.			
68. Soap—"Bon Ami," in 12-oz. tins or cakes as ordered .. per doz.			
69. " flakes, in 28 lb. bags per cwt.			
70. " "Lux" { Packets per doz.			
71. " "Palmolive" do.			
72. " "Persil," in 8-oz. packets do.			
73. " "Rinso," in 17-oz. packets do.			
74. Soda—Bicarbonate of per cwt.			
75. " Washing do.			
76. Soup—Tomato, in 20-oz. tins per doz.			
77. Spaghetti, in 1-lb. packets do.			
78. Spice, in 4-lb. packets do.			
79. Starch—"Dandy" (14-oz. pkts.) .. per doz. pkts.			
80. Sugar—Castor per cwt.			
81. " Icing do.			
82. Tartar—Cream of (Aust.) per lb.			
83. Treacle—in 2-lb. tins per doz.			
84. Vinegar—Malt, bulk per gal.			
85. Yolking—Essence (or equal thereto) in 8-oz. bottles .. per doz.			

(AGREEMENT.)

W. A. Thompson, 192 High-street, Shepparton.

Sub-schedule No. 3.

JAM.

(Delivery "F.O.R." Shepparton) £ s. d.

1. Jam—Assorted, of approved kinds, in per doz. the proportion of half seed and half stone, of the best quality, in 5-lb. tins—Brands, "Golden Bells," "Golden Bar," or "S.P.C."			
2. Jam—Assorted, of approved kinds, in per lb. the proportion of half seed and half stone, of the best quality, in 32-lb. tins			

** The rates to be paid for all items under these Sub-schedules shall be the wholesale price ruling on the day of delivery.

SCHEDULE No. 20.

PROVISIONS—AGRICULTURE COLLEGE,
LONGERENONG.

(Delivery at the College.)

ANNEX TO CONTRACT No. 1953/46.

Omant Bros., 20 Firebrace-street, Horsham.

Sub-schedule No. 1.

BREADSTUFFS.

Security, £5.

		£	s.	d.
1. Bread—Fine wheaten, first quality	per centl.	3	0	0
2. Flour—First quality	do.	††		

(AGREEMENT.)

A. E. and E. M. Woolman, Doon.

Sub-schedule No. 2.

GROCERIES.

		£	s.	d.
1. Bacon, Rashers, Middle — Brand, "J. C. Foord"	per lb.	0	5	9
2. Beans—Haricot	do.	0	1	11
3. Biscuits—Coffee, Malt or Milk Arrowroot, as ordered	do.	0	2	1
4. Cereal—"Weeties" (or equal thereto) in 24-oz. packets	per pkt.	0	2	0
5. Cheese {Tasty New	per lb.	0	3	3
6. Chutney—13-oz. bottles—Brand, "Rosella"	per bot.	0	2	5
7. Cloves—Loose	per lb.	0	10	0
8. Cocoa—"Bournville" 1-lb. pkt.	do.	0	5	3
9. Coconut—Desiccated	do.	0	3	3
10. Corn or Maize Flour—1-lb. packets	do.	0	2	1
11. Custard Powder, in 1-lb. packets, "Parson's"	do.	0	2	3
12. Currants, 3 Crown (present season's), "S. & A."	do.	0	1	11
13. Curry Powder, bulk, "McLeod's"	do.	0	5	6
14. Essence—Lemon—in 8-oz. btls. } "McLeod's"	per bot.	0	7	0
15. "Vanilla—in 8-oz. btls. }	do.	0	7	0
16. Flour—Self-raising Brand—in 28-lb. bags—"McAlpin's"	per bag	0	16	9
17. Fruits—Preserved, in 30-oz. tins (excluding Pines)—"S.P.C."	per tin	0	2	10
18. Fish—Salmon—Fresh, in 16-oz. tins	do.	0	4	3
19. Gelatine—Ground—"Davis"	per lb.	0	8	6
20. Ginger—Ground	do.	0	5	3
21. Golden Syrup, in 2-lb. tins	per tin	0	1	10
22. Honey, first quality, in 60-lb. tins, Yellow Box	do.	3	5	0
23. Jelly Crystals, in 1-lb. packets	per lb.	0	3	4
24. Junket Tablets, "Hansens"	per tube	0	1	11
25. Peel, Mixed—Cut, "Brookes"	per lb.	0	3	9
26. Macaroni—"Rinoldi"—1-lb. packets	do.	0	1	4
27. Matches—Safety (60 in a box) B & M.	per pkt.	0	2	1
28. Mustard—"Keen's" Loose	per lb.	0	4	9
29. Mustard Pickles, 20-oz. bottles—Brand, "Reed's"	per bot.	0	2	10
30. Oatmeal—Flaked—Bulk McKenzie's	per lb.	0	0	11
31. Pepper—White, ground	do.	1	18	6
32. Prunes—Dried, 60-70's (present season's)	do.	0	3	2
33. Raisins—Sultanas, 4 crowns (present season's)	do.	0	1	11½
34. Rice—Ground—in lb. packet	do.	0	1	2
35. Salt—fine, in bags	per cwt.	1	5	0
36. "table, "Mermaid"	per lb.	0	0	7½

†† Order under Melbourne District Contract.

○ Apple jelly, 7s. 6d.; apricot, 8s. 6d.; black currant, 10s. 9d.; fig, 8s. 8d.; gooseberry, 9s.; loganberry, 10s. 6d.; marmalade (sweet orange, grapefruit), 8s. 1d.; melon (assorted), 7s. 8½d.; peach, 8s. 6d.; plum (assorted), 7s. 8½d.; quince, 7s. 8d.; quince jelly, 8s. 0d. and raspberry, 11s. 0d.

Sub-schedule No. 2—continued.

GROCERIES—continued.

		£	s.	d.
37. Sauce—Tomato—in 26-oz. bottles—Brand, "Reed's"	per bot.	0	3	0
38. Soda—Bicarbonate of	per lb.	0	0	9
39. "Washing	per lb.	0	0	6
40. Soup—Tomato—in 16-oz. tins, "Leggo's"	per tin	0	1	11
41. Spaghetti, "Rinoldi"	per lb.	0	1	5
42. Spice—Mixed—in 1-oz. packets	per oz.	0	0	6
43. Sugar—Icing	per lb.	0	1	1
44. Tartar {Cream of "Antelope" (Substitute)	do.	0	4	3
45. Treacle—in 2-lb. tins	per tin	0	1	9½
46. Vermicelli—in 1-lb. packets	per lb.	0	1	5
47. Vinegar—Malt	per gal.	0	3	3
48. Yol kine Essence (or equal thereto)—in 20-oz. bottles	per bot.	0	5	9

(AGREEMENT.)

J. Langlands and Sons Pty. Ltd., 122 Firebrace Street, Horsham.

Sub-schedule No. 3.

JAM.

		£	s.	d.
1. Jam—Assorted, of approved kinds, in the proportion of half seed and half stone, of the best quality, in 5-lb. tins—Brand, "Rosella"	per tin	0		

SCHEDULE No. 21.

PROVISIONS—GEELONG.

(Delivery at the Gaol.)

ANNEX TO CONTRACT No. 1953/47.

J. A. Fitzgerald, 150 Malop Street, Geelong.

Sub-schedule No. 1.

BREAD.

Security, £8.

		£	s.	d.
1. Bread—Fine Wheaten, First quality	per cental	2	3	9

ANNEX TO CONTRACT No. 1953/48.†

O'Brien's Butchery, 491 Moorabool-street, Geelong.

Sub-schedule No. 2.

MEAT.

Security, £10.

		£	s.	d.
1. Fresh Beef	per lb.	0	1	3
2. Corned Beef, Rolled or Round, without bone on cartilage	do.	0	1	3
3. Fresh mutton	do.	0	1	0