

[5771]



VICTORIA
GOVERNMENT GAZETTE.

Published by Authority.

[Registered at the General Post Office, Melbourne, for transmission by post as a newspaper.]

No. 766]

FRIDAY, AUGUST 27.

[1954

Prices Regulation Acts.

PRICES REGULATION ORDER No. 646.

HAIRDRESSING CHARGES.

I N pursuance of the powers conferred upon me by the Prices Regulation Acts, I, John Francis Waldron, Prices Commissioner, hereby make the following Order:—

Citation.

1. This Order may be cited as Prices Regulation Order No. 646.

Revocation.

2. Prices Regulation Order No. 328 is hereby revoked.

Maximum Rates.

3. I fix and declare the maximum rates at which the services specified in the Schedule to this Order may be supplied in Victoria to be the rates specified therein.

Exhibition of Price List.

4. Every person who supplies any of the services specified in the Schedule to this Order, the maximum rate for which is fixed by or under the provisions of this Order, shall exhibit and keep exhibited in a prominent position in his place of business, or if he has more than one place of business, in each of his places of business, particulars of the maximum rates fixed by or under the provisions of this Order for the supply by him of those services.

Fixation of Maximum Rates by Notice.

5. Notwithstanding the foregoing provisions of this Order, I declare the maximum rate at which any service, a maximum rate for the supply of which is fixed by the foregoing provisions of this Order, and which is specified in a notice given in pursuance of this clause may be supplied in Victoria by any person to whom such notice is given to be such rate as is fixed by the Prices Commissioner by notice in writing to that person.

THE SCHEDULE.

CLASS OR KIND OF SERVICE.	<i>Maximum Rates.</i>	
	<i>s.</i>	<i>d.</i>
Haircut—		
Males—14 years and over	3	3
Males—under 14 years	2	3

Dated this 24th day of August, 1954.

J. F. WALDRON,
Prices Commissioner.





VICTORIA GOVERNMENT GAZETTE.

Published by Authority.

[Registered at the General Post Office, Melbourne, for transmission by post as a newspaper.]

No. 767]

FRIDAY, AUGUST 27.

[1954

Labour and Industry Act 1953.

DETERMINATION OF A WAGES BOARD ADJUSTED PURSUANT TO SECTION 33 OF THE LABOUR AND INDUSTRY ACT 1953.

I, Henry Norman Jones, Acting Secretary for Labour and Industry, in pursuance of the powers conferred by the Labour and Industry Act, hereby make and issue the following adjusted Determination of the Wages Board referred to hereunder showing adjusted rates and prices to operate from the beginning of the first pay period to commence in August, 1954.

Dated at Melbourne, this
26th day of August, 1954.

H. N. JONES,
Acting Secretary for Labour and Industry.

WOODWORKERS BOARD.

Clauses 2, 3 and 4 of the Determination published in *Government Gazette* No. 750 of the 3rd August, 1951, shall be replaced by the following clauses:—

2.

WAGES PER WEEK.

(a) *Adult Male Employees (except males engaged in the manufacture of plywood and veneers or in the making of sporting goods).*

	Employed at Yallourn.	Employed—(a) Within 20 Miles of G.P.O., Melbourne; (b) Within 10 Miles of G.P.O., Geelong; (c) in Mildura and Gippsland Districts; (d) at Warrnambool.	Elsewhere in the State.
	£ s. d.	£ s. d.	£ s. d.
(1) Axeman employed using chopping axe taking off bark and bumps from logs for use in veneer mills	13 1 6	12 15 0	12 12 0
(2) Blacksmith	14 16 0	14 9 6	14 6 6
(3) Blacksmith's striker	13 5 6	12 19 0	12 16 0
(4) Boxes, crates and/or cases—			
(a) Cleaning and/or steaming	13 1 0	12 14 6	12 11 6
(b) Breaking up	13 1 0	12 14 6	12 11 6
(c) Spraying machinist	13 1 0	12 14 6	12 11 6
(d) Splicing machinist	13 1 0	12 14 6	12 11 6
(e) Printing machinist	13 1 0	12 14 6	12 11 6
(f) Munitions—ammunition box manufacture—employees not elsewhere included	13 4 6	12 18 0	12 15 0
(g) Lacing and wiring machinist	13 4 6	12 18 0	12 15 0
(h) Nailing machinist	13 4 6	12 18 0	12 15 0
(i) Cleating machinist	13 4 6	12 18 0	12 15 0
(j) Finishing	13 7 6	13 1 0	12 18 0
(k) Wire bound box making machinist	13 10 6	13 4 0	13 1 0
(l) Hoop ironing and/or wiring (bench hand)	13 12 6	13 6 0	13 3 0
(m) Making and/or repairing manual	13 12 6	13 6 0	12 3 0

WAGES PER WEEK.

(a) Adult Male Employees (except males engaged in the manufacture of plywood and veneers or in the making of sporting goods)—continued.

	Employed at	Employed—(a)	Elsewhere in
	Yallourn.	Within 20 Miles of G.P.O., Melbourne; (b) Within 10 Miles of G.P.O. Geelong; (c) in Mildura and Gippsland Districts; (d) at Warrnambool.	
	£ s. d.	£ s. d.	£ s. d.
(5) Brakesman on log or timber truck	13 9 6	13 3 0	13 0 0
(6) Broad axeman and/or adzeman	14 15 0	14 8 6	14 5 6
(7) Cable drum and/or reel maker, assembler and/or finisher	13 14 0	13 7 6	13 4 6
(8) Carpenter, bush (as defined)	13 18 6	13 12 0	13 9 0
(9) Crane attendant or dogman—			
(a) working up to a height of 40 feet	13 4 6	12 18 0	12 15 0
(b) working at a height of over 40 feet	13 7 6	13 1 0	12 18 0
(10) Driver—			
(i) Bullock team, bush	14 10 0	14 3 6	14 0 6
(ii) Caterpillar or similar type of logging tractor	14 10 0	14 3 6	14 0 6
(iii) Horse (bush)—			
(a) Driver of one or two horses	13 16 6	13 10 0	13 7 0
(b) Driver of three horses	14 1 0	13 14 6	13 11 6
(c) Driver of more than three horses	14 4 0	13 17 6	13 14 6
(d) Driver grooming and feeding one or two horses outside ordinary hours—1s. 6d. per day extra and 1s. 6d. for Sunday
(e) Driver grooming and feeding more than two horses outside ordinary hours—3s. per day extra and 3s. for Sunday
(11) Elevator and/or piler man in connexion with stacking or unstacking timber	13 3 6	12 17 0	12 14 0
(12) Faller	14 2 6	13 16 0	13 13 0
(13) Faller, head (as defined)	14 15 0	14 8 6	14 5 6
(14) Grinder, whose principal duty is grinding knives and cutters	14 9 0	14 2 6	13 19 6
(15) Guard (as defined)	13 18 6	13 12 0	13 9 0
(16) Kiln attendant (as defined)	13 9 6	13 3 0	13 0 0
(17) Kiln operator (as defined)	13 16 0	13 9 6	13 6 6
(18) Kiln supervisor (as defined)	14 11 0	14 4 6	14 1 6
(19) Labourer, experienced (as defined)	12 16 6	12 10 0	12 7 0
(20) Landing builder or repairer	13 5 0	12 18 6	12 15 6
(21) Landing builder or repairer (man in charge of)	13 15 6	13 9 0	13 6 0
(22) Loading or turning sleepers over 5 feet long	13 4 6	12 18 0	12 15 0
(23) Loading logs	13 4 6	12 18 0	12 15 0
(24) Log chuteman	13 4 6	12 18 0	12 15 0
(25) Log conveyorman	13 5 0	12 18 6	12 15 6
(26) Log yardman or skidman	13 5 0	12 18 6	12 15 6
(27) Machinists as set out hereunder—			
(i) "A" Grade	14 9 0	14 2 6	13 19 6
<p>A wood machinist "A" Grade shall mean a tradesman wood machinist who has served the prescribed apprenticeship to wood machining as set out in this or previous Determinations or an adult who by reason of training for four years or more and experience is at the time of engagement or subsequent thereto deemed by the employer to be capable and is willing to perform the work of tradesman wood machinist which work shall include the work of operating and setting up and/or grinding the knives and cutters of any of the following machines upon which he is employed notwithstanding that he may not be called upon to perform all such work—</p> <p>(a) Boul't's carver;</p> <p>(b) Buzzer and/or jointer (using other than straight knives and cutters);</p> <p>(c) Cross grainer;</p> <p>(d) Drum sander (four or more drums);</p> <p>(e) General joiner;</p> <p>(f) Linderman, gluer and joiner;</p> <p>(g) Lock angle machine;</p> <p>(h) Moulder;</p> <p>(i) Planer—3 heads or more (other than box);</p> <p>(j) Planer, box (four heads or more);</p> <p>(k) Router—working freehand;</p> <p>(l) Shaper (other than grooving and/or slotting in box and case making);</p> <p>(m) Spoke throater;</p> <p>(n) Tenoner—(using scribing irons) other than an automatic tenoner;</p> <p>(o) Trusser crozier;</p> <p>(p) Variety turning or automatic lathe—revolving head.</p> <p>An employee operating any of the machines prescribed in (a), (b), (e), (f), (k), (l) shall be an "A" Grade machinist notwithstanding such employee does not set up and/or grind the knives and cutters.</p>			
(ii) "B" Grade	13 14 0	13 7 6	13 4 6
<p>A wood machinist "B" Grade shall mean an adult employee, other than a tradesman, operating and setting up and/or grinding the knives or cutters of any of the following machines—</p> <p>(a) Automatic lathe (other than revolving heads);</p> <p>(b) Borer (three or more spindles);</p>			

WAGES PER WEEK.

(a) Adult Male Employees (except males engaged in the manufacture of plywood and veneers or in the making of sporting goods)—continued.

	Employed at	Employed—(a)	Elsewhere in
	Yallourn.	Within 20 Miles of G.P.O., Melbourne; (b) Within 10 Miles of G.P.O., Geelong; (c) in Mildura and Gippsland Districts; (d) at Warrnambool.	the State.
	£ s. d.	£ s. d.	£ s. d.
(c) Buzzer and/or jointer (using straight knives or cutters);			
(d) Copying lathe;			
(e) Drum sander (double or triple drums);			
(f) Dovetailer;			
(g) End matcher;			
(h) Morticer (chain or hollow chisel of any kind or any other);			
(i) Planer (one or two heads) other than box;			
(j) Planer box (less than four heads);			
(k) Relisher;			
(l) Router (working from templates, dies, jigs or fences);			
(m) Shaper (grooving and/or slotting in box and case making);			
(n) Slicer (box);			
(o) Tenoner (other than as provided in "A" Grade above);			
(p) Wood wool machine.			
(iii) "C" Grade— A wood machinist "C" Grade shall mean an adult employee, other than a tradesman, operating any of the following machines:—			
(a) Sander, belt polisher	13 11 6	13 5 0	13 2 0
(b) Moulder (excluding the feeder on automatic feed table)	13 9 0	13 2 6	12 19 6
(c) All other machines prescribed in "A" and "B" Grades except the machines referred to in (a), (b), (e), (f), (k), and (l) of "A" Grade	13 4 0	12 17 6	12 14 6
(d) Boring machine (less than three spindles)	13 4 0	12 17 6	12 14 6
(28) Meal grinder	13 2 0	12 15 6	12 12 6
(29) Millwright (as defined)	14 14 6	14 8 0	14 5 0
(30) Offsider to ropeman or shoeman	13 2 6	12 16 0	12 13 0
(31) Offsider to logging tractor or bull-dozer driver	13 12 6	13 6 0	13 3 0
(32) Operator employed on glueing jigs and/or cramps for the laminating of veneers or timber for ribs, frames, or spars for aircraft or marine work and for girders, beams, and trusses for constructional work (except employees covered by Clause 2 (b))	14 6 0	13 19 6	13 16 6
(33) Orderman (as defined)	13 16 0	13 9 6	13 6 6
(34) Pine plantation employees—			
(a) Faller	13 13 6	13 7 0	13 4 0
(b) Loaders, trimmers, and employees cutting logs	13 3 6	12 17 0	12 14 0
(35) Plate layer	13 4 6	12 18 0	12 15 0
(36) Pulp wood cutter and/or splitter	13 6 6	13 0 0	12 17 0
(37) Rigger or tree climber	14 15 0	14 8 6	14 5 6
(38) River logman (as defined)	13 4 0	12 17 6	12 14 6
(39) Ropeman or shoeman	14 2 6	13 16 0	13 13 0
(40) Sawing employees—			
(1) Sawyers—			
(a) Log band sawyer	14 14 6	14 8 0	14 5 0
(b) Sawyer who breaks down logs and cuts planks to finished sizes	14 14 6	14 8 0	14 5 0
(c) Stave cutting sawyer	14 4 6	13 18 0	13 15 0
(d) Sawyer who breaks down logs but does not cut planks to size	14 1 6	13 15 0	13 12 0
(e) Flitching frame sawyer	13 19 6	13 11 0	13 8 0
(f) No. 1 benchman	14 14 6	14 8 0	14 5 0
(g) No. 2 benchman	14 4 6	13 18 0	13 15 0
(h) No. 3 benchman	13 12 6	13 6 0	13 3 0
(i) No. 4 benchman	13 3 6	12 17 0	12 14 0
(j) Gang frame sawyer	13 13 6	13 7 0	13 4 0
(k) Steam or other power-driven crosscut sawyer (other than dockerman)	13 10 6	13 4 0	13 1 0
(l) Ripper or crosscut, cutting wood blocks	13 2 6	12 16 0	12 13 0
(m) Roller re-cut band sawyer using blade over 3 inches in width	14 6 0	13 19 6	13 16 6
(n) Roller re-cut band sawyer using blade not over 3 inches in width if the sawyer is ever required to braze or sharpen his own saw and then only from such time as he is required so to act	14 5 6	13 19 0	13 16 0
(o) Roller re-cut band sawyer using blade not over 3 inches in width, if not brazing or sharpening his own saw	13 14 6	13 8 0	13 5 0
(p) Circular sawyer if cutting a depth of or over 7½ inches	14 7 0	14 0 6	13 17 6
(g) Circular sawyer if cutting a depth of under 7½ inches	13 14 6	13 8 0	13 5 0
(r) Edger sawyer to log band sawyer	14 4 6	13 18 0	13 15 0

WAGES PER WEEK.

(a) Adult Male Employees (except males engaged in the manufacture of plywood and veneers or in the making of sporting goods)—continued.

	Employed at	Employed—(a)	Elsewhere in
	Yallourn.	Within 20 Miles of G.P.O., Melbourne; (b) Within 10 Miles of G.P.O., Geelong; (c) in Mildura and Gippsland Districts; (d) at Warramboul.	the State.
	£ s. d.	£ s. d.	£ s. d.
(s) (i) Sawyer who breaks down small logs over 30 inches but under 9 feet in length and not over 12 inches in diameter but who does not cut planks to finished sizes for use in the manufacture of boxes and cases	14 1 6	13 15 0	13 12 0
(ii) Sawyer cutting timber 3 inches or over received from sawyer in (s) (i) above	14 1 6	13 15 0	13 12 0
(iii) Sawyer cutting timber of less than 3 inches received from sawyers in (s) (i) and (s) (ii) above	13 14 6	13 8 0	13 5 0
(t) Breaking down small logs not over 30 inches long and not over 12 inches in diameter for use in the manufacture of boxes	13 13 6	13 7 0	13 4 0
(u) Frame sawyer	13 15 0	13 8 6	13 5 6
(v) Detail hand or jig sawyer if the sawyer is ever required to braze or sharpen his own saw and then only from such time as he is required so to act	14 4 6	13 18 0	13 15 0
(w) Detail hand or jig sawyer if not brazing or sharpening his own saw	13 13 6	13 7 0	13 4 0
(x) Sawyer cutting detail work	14 4 6	13 18 0	13 15 0
(y) Sawyer preparing timber for moulding machines (other than vertical flat or deep cutting)	13 15 0	13 8 6	13 5 6
(z) Cross-cut sawyer, cabinet furniture or joinery work	13 13 6	13 7 0	13 4 0
(aa) Cross-cut sawyer in box and case factories	13 2 6	12 16 0	12 13 0
(ab) Cross-cut sawyer, not provided for elsewhere herein	13 3 6	12 17 0	12 14 0
(ac) Case or box-bench sawyer flattening off up to 2 inches in thickness	13 1 0	12 14 6	12 11 6
(2) Dockermen and/or tallyman—			
(a) Dockerman and/or tallyman where two or more docking saws—			
(i) At main docking saw (as defined)	13 7 6	13 1 0	12 18 0
(ii) At docking saw, other than main	13 1 6	12 15 0	12 12 0
(iii) Responsible man at main docking saw	13 14 0	13 7 6	13 4 6
(iv) Responsible man at docking saw other than main docking saw	13 4 6	12 18 0	12 15 0
(b) Dockerman and/or tallyman where only one docking saw	13 4 6	12 18 0	12 15 0
(3) Handlemen—			
(a) Handleman, No. 1 bench	13 8 6	13 2 0	12 19 0
(b) Handleman, No. 2 bench	13 3 6	12 17 0	12 14 0
(c) Handleman operating manual windlass hauling breaking down carriage	13 3 6	12 17 0	12 14 0
(4) Header-in re-cut band saw	13 0 6	12 14 0	12 11 0
(5) Levermen—			
(a) Leverman, No. 1 bench	13 5 6	12 19 0	12 16 0
(b) Leverman, No. 2 bench	13 2 0	12 15 6	12 12 6
(6) Pullers-out—			
(a) Puller-out, No. 1 bench or breast bench on which logs are broken down and timber sawn to finished sizes—			
(i) Single-handed on dead or manually operated roller	14 2 6	13 16 0	13 13 0
(ii) On dead or manually operated roller where not single-handed	13 12 6	13 6 0	13 3 0
(iii) Power-driven (other than manual power) or friction feed	13 9 6	13 3 0	13 0 0
(b) Puller-out, No. 2 bench—			
(i) Single-handed on dead or manually operated roller	13 12 6	13 6 0	13 3 0
(ii) On dead or manually operated roller where not single-handed	13 3 6	12 17 0	12 14 0
(iii) Power-driven (other than manual power) or friction feed	13 3 6	12 17 0	12 14 0
(c) Puller-out or assistant, No. 3 bench	13 0 6	12 14 0	12 11 0
(d) Puller-out on log-band saw, edging saw, roller re-cut band saw using blade of or over 3 inches in width or circular saw cutting depth of or over 7½ inches	13 6 6	13 0 0	12 17 0
(e) Puller-out, dogger, or wedger-up—any breaking-down saw	13 6 6	13 0 0	12 17 0
(7) Setters—			
(a) Setter on log band saw carriage	13 5 0	12 18 6	12 15 0
(b) Setter on other saw carriages	13 3 6	12 17 0	12 14 0
(41) Saw doctor	15 7 6	15 1 0	14 18 0
(42) Saw sharpener (exclusively employed as such)	13 18 6	13 12 0	13 9 0
(43) Spar or plank road builder	13 3 6	12 17 0	12 14 0
(44) Splitter packing	13 2 6	12 16 0	12 13 0
(45) Splitter of billets for staves	13 3 6	12 17 0	12 14 0

WAGES PER WEEK.

(a) Adult Male Employees (except males engaged in the manufacture of plywood and veneers or in the making of sporting goods)—continued.

	Employed at	Employed—(a)	Elsewhere in the State.
	Yallourn.	Within 20 Miles of G.P.O., Melbourne; (b) Within 10 Miles of G.P.O., Geelong; (c) In Mildura and Gippsland Districts; (d) at Warrnambool.	
	£ s. d.	£ s. d.	£ s. d.
(46) Splitter, spoke, stove, and piling	13 6 6	13 0 0	12 17 0
(47) Splitter, pulp wood	13 6 6	13 0 0	12 17 0
(48) Spotter, at spot mills	14 1 6	13 15 0	13 12 0
(49) Stacker, block, of timber and/or plywood and/or veneer to a height of over 6 feet	12 19 6	12 13 0	12 10 0
(50) Stacker, for seasoning by means of stripping or other recognized method	13 6 6	13 0 0	12 17 0
(51) Storeman and packer (inclusive of war loading)	13 8 6	13 2 0	12 19 0
(52) Tallyman and/or measurer (as defined)	13 14 0	13 7 6	13 4 6
(53) Timber bender—			
(a) By hand	13 11 6	13 5 0	13 2 0
(b) Operating machine	13 17 6	13 11 0	13 8 0
(c) Who selects timber, improvises own forms and equipment and operates machine	14 7 6	14 1 0	13 18 0
(54) Timber grader (as defined)	13 5 6	12 19 0	12 16 0
(55) Tramway builder or repairer (as defined)	13 3 6	12 17 0	12 14 0
(56) Tramway builder or repairer (man in charge of)	13 14 0	13 7 6	13 4 6
(57) Trucker—Timber or log, on haulage by winch on tramline	13 8 6	13 2 0	12 19 0
(58) Trucker—Timber or log, on haulage by winch on tramline (where permanently employed as such)	13 11 6	13 5 0	13 2 0
(59) Water dogman (as defined)	13 10 6	13 4 0	13 1 0
(60) Wood turner, using hand tools	14 9 0	14 2 6	13 19 6
(61) Crane drivers—			
Lofty cranes (as defined)	14 5 0	13 18 6	13 15 6
(62) All others	12 2 6	11 16 0	11 13 0

Special Allowances.

In addition to the rates set out in Clause 2 (a) hereof the following allowances shall be paid:—

- (a) Leading hand having under his supervision two to six employees .. 6s. per week
- (b) Leading hand having under his supervision over six employees .. 12s. per week
- (c) Submerged timber—regular employees carrying off rafts or sunken punts or carrying or handling on any raft, punt, wharf, or dump, timber which has recently been submerged and is in a wet condition therefrom .. 6d. per hour

(b) Adult Male Employees engaged in the manufacture of plywood and veneers.

	Employed at	Employed—(a)	Elsewhere in the State.
	Yallourn.	Within 20 Miles of G.P.O., Melbourne; (b) Within 10 Miles of G.P.O., Geelong; (c) In Mildura and Gippsland Districts; (d) at Warrnambool.	
	£ s. d.	£ s. d.	£ s. d.
<i>" A " Grade.</i>			
(a) Casein or adhesive solution mixer where he is required to mix, test, control and check in operation and is responsible for its proper use	14 9 0	14 2 6	13 19 6
(b) Veneer matcher responsible for selecting and setting out fancy sliced veneers to design or specification			
(c) Operator on veneer edge truing or trimming machine (cutter block or guillotine type) required to perform any operation necessary to the working of the machine cutting fancy or sliced veneer to design or specification			
(d) Man in charge of hot press who is responsible for calculating areas and pressures and controlling temperatures			
(e) Rotary veneer peeling lathe or slicing machine operator who sharpens knives and/or sets up his machine			

WAGES PER WEEK.

(b) Adult Male Employees engaged in the manufacture of plywood and veneers—continued.

	Employed at Yallourn.	Employed—(a) Within 20 Miles of G.P.O., Melbourne; (b) Within 10 Miles of G.P.O., Geelong; (c) In Mildura and Ovensland Districts; (d) at Warrnambool.	Elsewhere in the State.
	£ s. d.	£ s. d.	£ s. d.
(f) Plywood scarfing machinist where the machinist is ever required to set up his machine and grind his knives and cutters, and then only from such time as he is required so to act.	14 0 0	14 2 6	13 19 6
(g) Man in charge of veneer kiln drier or re-drier (plate roller or conveyor type) who is required to adjust temperatures, humidity, conditions, calculate moisture contents, test and control			
(h) Immunising plant operator who is required to control temperatures, preservative contents in solution and analyse treated timbers and/or veneer samples			
<i>" B " Grade.</i>			
(u) Centre layer and/or corelayer and/or coremaker building up solid timber and/or veneer centres	13 14 0	13 7 6	13 4 6
(v) Veneer joiners and/or repairers where the work is done by hand—with one year's experience			
(w) Tapeless veneer joining machinist with more than one year's experience			
(x) Operator on power operated veneer edge truing or trimming machine (cutter block or guillotine) where the machinist has not been required to grind his knives and cutters but is at any time required to set up his machine and then only from such time as he is required so to act			
(y) Pneumatic, vacuum or autoclave press operator			
(z) Operator of hot press who is not required to calculate areas and pressures and control temperatures			
(aa) Operator of rotary veneer peeling lathe or slicing veneer machine			
(ab) Plywood scarfing machinist where the machinist has not been required to grind his knives and cutters but is at any time required to set up his machine, and then only from such time as he is required so to act			
(ac) Veneer kiln drier or re-drier operator who operates a drying kiln drier or re-drier or who may be required to make temperature readings and records thereof			
(ad) Veneer clipper operator in conjunction with rotary peeling lathe or slicing machine			
(ae) Operator of log de-barking machine			
(af) Taping machinist with more than one year's experience			
(ag) Band sawyer using band saw up to 36 inches capacity, rough cutting and trimming veneer			
(ah) Belt sander in sanding of plywood faced with fancy sliced veneer			
(ai) Operator employed on glueing jigs and/or cramps for the laminating, fabricating or assembling of veneers, timber or plywood			
<i>Miscellaneous Grade.</i>			
(aj) Casein or adhesive solution mixer	13 4 0	12 17 6	12 14 6
(ak) Centre feeder and/or core feeder and/or coverlayer and/or assistants in glue spreading			
(al) Veneer joiners and/or repairers where the work is done by hand—with less than one year's experience			
(am) Tapeless veneer joining machine—with less than one year's experience			
(an) Operator on power operated veneer edge truing or trimming machine (saw cutter, block or guillotine) where the machinist is never required to set up his machine nor to grind his knives and cutters but is merely an operator or feeder of the machine			
(ao) Assembling veneers with film glue			
(ap) Plywood and veneer grader grading into 3 or more classes			
(aq) Press operators not elsewhere specified			
(ar) Assistants to above presses			
(as) Assistant to lathe or slicer operator			
(at) Plywood scarfing machine where the machinist is never required to set up his machine nor to grind his knives and cutters but is merely an operator			
(au) Assistant to veneer kiln drier or re-drier operator who operates a drying kiln.			
(av) Other operators of immunising plant			
(aw) Assistant on veneer clipper machine			
(ax) Taping machinist with less than one year's experience			
(ay) Operator of plywood trimming machine using parallel saws			
(az) Belt sander in sanding of plywood faced with rotary peel veneer			
(ba) Edge Glueing veneer by hand or roller for tapeless veneer joining machine			
(bb) Veneer splicing machine			
(bc) Guillotine operator, not elsewhere included			
Provided that notwithstanding anything herein contained females are not to be employed on any power driven machine other than taping or tapeless machines.			

WAGES PER WEEK.

(c) Adult Males engaged in the making of sporting goods (see Appendix "A" Clause 38).

	Employed at Yallourn.	Employed—(a) Within 20 Miles of G.P.O., Melbourne; (b) Within 10 Miles of G.P.O., Geelong; (c) In Mildura and Gippsland Districts; (d) at Warrnambool.	Elsewhere in the State.
	£ s. d.	£ s. d.	£ s. d.
(i) Group 1.			
(a) Tennis Frame Operations—Spindle machinists and router machinists and all operations performed on either router or spindle, lining, cutting grips by hand from sides, tennis racquet stringing, and/or re-stringing, and tennis racquet repairing	14 9 0	14 2 6	13 19 6
(b) Golf Club Operations—			
(i) Iron Heads—Shaping on grinder, checking and re-setting, and final buffing			
(ii) Wood Heads—Club making throughout, cutting grips by hand from sides			
(c) Cricket Bat Operations—Spindle machinists, wood turning with hand tools, and handles fitted by hand			
(d) Rifle Operations—Inletters, automatic shaping machinists, spindle machinists, and router machinists			
(e) General—Maker and/or repairer of sporting goods in wholesale or retail establishments			
(ii) Group 2.			
(a) Tennis Frame Operations—Circular sawyers, band sawyers, jig sawyers, glueing machine operators, jointer and/or buzzer machinists, bobbin sander machinists to dimensions, gauges or templates, marking machinists, disc sander machinists to dimensions, gauges or templates, bench hands using hand tools on final finishing, cone sander machinists, gripping, cane stripper machinists who grade and sort, and cylinder or barrel saw machinists	13 17 6	13 11 0	13 8 0
(b) Golf Club Operations—			
(i) Iron Heads—First buffing, face marking, stamping by hand hammer, and gripping			
(ii) Wood Heads—Band sawyers, copying lathe machinists, sander machinists, sprayers and gripping			
(c) Cricket Bat Operations—Jointer and/or buzzer machinists, circular sawyers, copying lathe machinists, twin sawyers, lathe machinists, sand belt machinists, buffing, stamping machinists, and bench hands i.e., employees using draw knife, spokeshave and plane for work other than fitting handles			
(d) Rifle Operations—Circular sawyers, five spindle profiler machinists, bench hands except as to hand papering, and gun and ammunition box makers			
(iii) Group 3.			
(a) Tennis Frame Operations—Cross cut sawyers, thicknesser machinists, lamination bending on forms, bridge bending, bobbin sander machinists, pneumatic sander machinists glueing clamps, glueing jigs, boring machinists, slotting machinists, cane stripping machinists, overlay bending, glueing overlays, spraying, weighing and balancing, grip cutting, skiving by machine, and outlining	13 6 6	13 0 0	12 17 0
(b) Golf Club Operations—			
(i) Iron Heads—Lathe machinists, disc grinder machinists, and bench drill and hand reamer machinists			
(ii) Shaping Irons—Sheathing, buffing machinists, shafting, vulcanising, fibroloiding, capping, sand blasting and finishing			
(iii) Wood Heads—Drillers, single spindle profiler machinists, sheathing, buffing, vulcanising, fibroloiding, capping, stamping, scoring, polishing, finishing, grip cutting, and skiving by machine			
(c) Cricket Bat Operations—Thicknesser machinists, roller press operators, buff machinists, gripping machinists, bench hands on papering, taping, binding, labelling and packing, case machinists, cross-cut sawyers, glueing slips, preparing rubber and cork, and handle glueing			
(d) Rifle Operations—Single spindle profiler machinists, boring machinists, and machinists not elsewhere included			
(iv) Group 4—Miscellaneous.			
Classification—			
(a) Saw doctor	15 7 6	15 1 0	14 18 0
(b) Saw sharpener	13 19 6	13 13 0	13 10 0
(c) Storeman and/or packer	13 8 6	13 2 0	12 19 0
(d) Orderman and/or tallyman	13 16 0	13 9 6	13 6 6
(e) Kiln operator	13 15 6	13 9 0	13 6 0
(f) Leading hand 6s. per week above employees supervised			
(v) Group 5.			
Assistants to glueing machinists, assistants to operators of any machine abovementioned, and employees engaged on any operation not mentioned above	13 2 6	12 16 0	12 13 0

WAGES PER WEEK.

(c) Adult Males engaged in the making of sporting goods (see Appendix "A" Clause 38)—continued.

	Employed at Yallourn.	Employed—(a) Within 20 Miles of G.P.O., Melbourne; (b) Within 10 Miles of G.P.O., Geelong; (c) in Mildura and Gippsland Districts; (d) at Warrnambool.	Elsewhere in the State.
(vi) Other Classes of Work. The wages payable for the making of other classes of sporting goods for badminton, lacrosse, hockey, and squash shall be the nearest appropriate wages under the scale set out above			
(vii) Notwithstanding anything herein contained the rates for employees (other than woodworking machinists) who are being trained for work under this appendix shall be as follows:— (a) For work referred to in Group 1 for the first twelve months, 11s. 6d. less than the prescribed rate (b) For work referred to in Group 2 for the first nine months, 11s. less than the prescribed rate			

RATES FOR APPRENTICES, JUNIORS, AND FEMALES (OTHER THAN IN THE MAKING OF SPORTING GOODS).

(a) Apprentices.

3. (i) The minimum rates of weekly wage to be paid to apprentices shall be as follows:—

(a) Five Year Term.	Percentage of Basic Wage for Adult Males.	War Loading.	Total Wage.		
			Employed at Yallourn.	Employed—(a) Within 20 Miles of G.P.O., Melbourne; (b) Within 10 Miles of G.P.O., Geelong; (c) in Mildura and Gippsland Districts, (d) at Warrnambool.	Elsewhere in the State.
	%	s. d.	s. d.	s. d.	s. d.
First Year	28	0 9	68 6	67 0	66 0
Second Year	39	1 0	95 6	93 0	92 0
Third Year	52	1 6	127 6	124 0	122 6
Fourth Year	82	2 3	201 0	196 0	193 6
Fifth Year	100 plus 3s.	3 0	248 6	242 0	239 0

(b) Four Year Term.	Percentage of Basic Wage for Adult Males.	War Loading.	Total Wage.		
			Employed at Yallourn.	Employed—(a) Within 20 Miles of G.P.O., Melbourne; (b) Within 10 Miles of G.P.O., Geelong; (c) in Mildura and Gippsland Districts; (d) at Warrnambool.	Elsewhere in the State.
	%	s. d.	s. d.	s. d.	s. d.
First Year	32	0 9	78 6	76 6	75 6
Second Year	52	1 6	127 6	124 0	122 6
Third Year	82	2 3	201 0	196 0	193 6
Fourth Year	100 plus 3s.	3 0	248 6	242 0	239 0

(ii) Where an apprentice is under the age of twenty-one years on the expiry of his apprenticeship he shall be paid at not less than the adult rate prescribed for the classification on which he is employed.

(b) *Unapprenticed Male Juniors.*

The minimum rates of weekly wage to be paid to unapprenticed male juniors shall be as follows:—

Age.	Percentage of Basic Wage for Adult Males.	Total Wage.			
		Industry Loading.	Employed at Yallourn.	Employed—(a) Within 20 Miles of G.P.O., Melbourne, (b) Within 10 Miles of G.P.O., Geelong; (c) in Mildura and Gippsland Districts; (d) at Warrnambool.	Elsewhere in the State.
	%	s. d.	s. d.	s. d.	s. d.
Under 16 years of age	24	2 0	60 0	58 6	58 0
16 years of age	34	3 0	85 6	83 0	82 0
17 years of age	46	4 0	115 6	112 6	111 0
18 years of age	58	5 0	145 6	142 0	140 0
19 years of age	73	6 0	183 0	178 6	176 0
20 years of age	88	7 0	220 6	214 6	212 0

(c) *Females.*

The minimum rates of weekly wage to be paid to females shall be as follows:—

Age.	Percentage of Basic Wage for Adult Females.	Total Wage.		
		Employed at Yallourn.	Employed—(a) Within 20 Miles of G.P.O., Melbourne; (b) Within 10 Miles of G.P.O., Geelong; (c) in Mildura and Gippsland Districts; (d) at Warrnambool.	Elsewhere in the State.
	%	s. d.	s. d.	s. d.
17 years of age and under	52	94 6	92 0	90 6
18 years of age	62	113 0	109 6	108 0
19 years of age	72	131 0	127 6	125 6
20 years of age	82	149 0	145 0	143 0
Adult females—	Percentage of Basic Wage for Adult Males.			
Under three month's experience	75	182 0	177 0	174 6
All others	75 plus 14s.	196 0	191 0	188 6

(iii) The basic wage referred to in this clause shall be the basic wage for the area in which the apprentices and juniors (male or female) are employed.

(iv) The total rates of apprentices and juniors (male and female) shall be adjusted to the nearest 6d., any broken part of 6d. in the result not exceeding 3d. to be disregarded.

RATES FOR MALE JUNIORS AND FEMALES EMPLOYED IN THE MAKING OF SPORTING GOODS.

Rates for Juniors (Male).

4. (a) The minimum rates of wages for junior male employees shall be as follows:—

Age.	Percentage of Basic Wage for Adult Males.	Total Wage.		
		Employed at Yallourn.	Employed—(a) Within 20 Miles of G.P.O., Melbourne; (b) Within 10 Miles of G.P.O., Geelong; (c) in Mildura and Gippsland Districts; (d) at Warrnambool.	Elsewhere in the State.
	%	s. d.	s. d.	s. d.
Under 16 years	35	85 0	82 6	81 6
At 16 years	45	109 0	106 0	105 0
At 16½ years	54	131 0	127 6	126 0
At 17 years	63	153 0	148 6	147 0
At 17½ years	70	169 6	165 0	163 0
At 18 years	80	194 0	189 0	186 6
At 19 years	85	206 0	200 6	198 0
At 20 years	90	218 0	212 6	209 6

The rates prescribed above are to be calculated to the nearest 6d., half or less than half of 6d. to be disregarded.

The above rates shall be adjusted quarterly at the same time and in the same manner as the adult male basic wage adjusted and such adjustment shall be to the nearest 6d.

Rates for Females.

(b) The minimum rates of wages for female employees shall be as follows:—

Age.	Percentage of Basic Wage for Adult Females.	Total Wage.		
		Employed at Yallourn.	Employed—(a) Within 20 Miles of G.P.O., Melbourne ; (b) Within 10 Miles of G.P.O., Geelong ; (c) in Mildura and Gippsland Districts ; (d) at Warrnambool.	Elsewhere in the State.
	%	s. d.	s. d.	s. d.
Under 16 years	47	85 6	83 0	82 0
At 16 years	60	109 0	106 0	104 6
At 16½ years	67	122 0	118 6	117 0
At 17 years	73	133 0	129 0	127 6
At 17½ years	80	145 6	141 6	139 6
At 18 years	88	160 0	156 0	153 6
At 19 years	93	169 6	164 6	162 6
At 20 years and thereafter	100 plus 14s.	196 0	191 0	188 6

The rates prescribed above are to be calculated to the nearest 6d., half or less than half of 6d. to be disregarded.

The above rates shall be adjusted quarterly at the same time as the adult male basic wage is adjusted but the amount of such adjustment for females shall be 75 per cent. of that for males.

Clauses, other than clauses 2, 3 and 4, of the said Determination shall remain in force.



VICTORIA GOVERNMENT GAZETTE.

Published by Authority.

[Registered at the General Post Office, Melbourne, for transmission by post as a newspaper.]

No. 766]

FRIDAY, AUGUST 27.

[1954

Labour and Industry Act 1953.

DETERMINATION OF A WAGES BOARD ADJUSTED PURSUANT TO SECTION 33 OF THE LABOUR AND INDUSTRY ACT 1953.

I, Henry Norman Jones, Acting Secretary for Labour and Industry, in pursuance of the powers conferred by the Labour and Industry Act, hereby make and issue the following adjusted Determination of the Wages Board referred to hereunder showing adjusted rates and prices to operate from the beginning of the first pay period to commence in August, 1954.

Dated at Melbourne, this

18th day of August, 1954.

H. N. JONES,

Acting Secretary for Labour and Industry.

PHOTOGRAPHIC GOODS BOARD.

Clause 2 of the Determination published in *Government Gazette* No. 182 of the 6th April, 1954, shall be replaced by the following clause:—

2.

WAGES PER WEEK OF 40 HOURS.

(a) Apprentices or Improvers.					(b) Other Employees.	
Age.	Per-centage of Basic Wage.	Males.	Per-centage of Female Basic Wage.	Females.		
		<i>s. d.</i>		<i>s. d.</i>		
16 years of age and under ..	45	106 0	60	106 0	Adult Males— Emulsion mixers, emulsion washers, finishers, melters, preparers of emulsion for coating, coaters, and employees in coating room 263 6	
17 years of age ..	54	127 6	66	117 0	All others 255 6	
18 years of age ..	67	153 0	72	127 6	Adult males employed on afternoon shift shall be paid 7½ per cent. in addition to existing rates of pay.	
19 years of age ..	81	191 0	78	138 0	Adult males employed on night shift shall be paid 10 per cent. in addition to existing rates of pay.	
20 years of age ..	96	226 6	90	159 6	If an afternoon shift should overlap a night shift the rate for night shift shall be paid for the whole of such afternoon shift.	
Apprentices or improvers who are employed in a dark room shall be paid 2s. per week in addition to the rates fixed above.					<i>s. d.</i>	
Female apprentices or improvers who are employed in the emulsion rooms or film coating rooms shall be paid a further 2s. a week in addition to the rates fixed above.					Adult females 180 6	
PROPORTION (in any place). <i>Apprentices or Improvers</i>					Females employed in the emulsion rooms or film coating rooms shall be paid 5s. per week in addition to the rate fixed for "adult females".	
Such number of apprentices and improvers as shall not in the aggregate exceed three to every two weekly workers receiving not less than the minimum wage.					Females employed examining portrait film, X-ray film, dry plates, and assisting in the plate coating room, shall be paid 3s. 6d. per week in addition to the rate fixed for "adult females".	
An indenture of apprenticeship has been prescribed by the Board.					Females employed in any other dark rooms shall be paid 2s. 6d. per week in addition to the rate fixed for "adult females".	

Clause, other than clause 2, of the said Determination shall remain in force.

By Authority: W. M. HOUSTON, Government Printer, Melbourne.



VICTORIA GOVERNMENT GAZETTE.

Published by Authority.

[Registered at the General Post Office, Melbourne, for transmission by post as a newspaper.]

No. 769]

FRIDAY, AUGUST 27.

[1954

Labour and Industry Act 1953.

DETERMINATION OF A WAGES BOARD ADJUSTED PURSUANT TO SECTION 33 OF THE LABOUR AND INDUSTRY ACT 1953.

I, Henry Norman Jones, Acting Secretary for Labour and Industry, in pursuance of the powers conferred by the Labour and Industry Act, hereby make and issue the following adjusted Determination of the Wages Board referred to hereunder showing adjusted rates and prices to operate from the beginning of the first pay period to commence in August, 1954.

Dated at Melbourne, this
20th day of August, 1954.

H. N. JONES,
Acting Secretary for Labour and Industry.

PLASTERERS BOARD.

Clauses 1 and 2 of Part I., and clauses 1 and 2 of Part II. of the Determination published in *Government Gazette* No. 190 of the 6th April, 1954, shall be replaced by the following clauses:—

PART I.

1. This Part applies only in respect of the employment of persons on the construction renovation alteration repair or demolition of buildings performed on the site thereof, and in particular it shall have no application—

- (i) to employment by an employer in any industry where the work performed by the employee is subsidiary or auxiliary to the chief and principal purpose and business of such industry; or
(ii) to employment in workshops.

2.

WAGES.

Apprentices.					Improvers.				
Per Week.					Per Week.				
—	Percentage of Basic Wage.	Adjustable Wage.	Loading.	Total Wage.	—	Percentage of Basic Wage.	Adjustable Wage.	Loading.	Total Wage
	<i>s. d.</i>	<i>s. d.</i>	<i>s. d.</i>	<i>s. d.</i>		<i>s. d.</i>	<i>s. d.</i>	<i>s. d.</i>	<i>s. d.</i>
1st year ..	29	68 6	2 8	71 2	15 years of age	29	68 6	2 8	71 2
2nd year ..	38	89 6	5 4	94 10	16 years of age	38	89 6	5 4	94 10
3rd year ..	53	125 0	8 0	133 0	17 years of age	53	125 0	8 0	133 0
4th year ..	76	179 6	10 8	190 2	18 years of age	76	179 6	10 8	190 2
5th year ..	98	231 6	13 4	244 10	19 years of age	98	231 6	13 4	244 10
6th year ..	100 plus 27s.	263 0	16 0	279 0	20 years of age	100 plus 27s.	263 0	16 0	279 0

PROPORTION (by any employer).

One apprentice to every three or fraction of three workers receiving not less than 32s. 6d. per week of 40 hours.

PROPORTION (by any employer).

One improver to the first five workers, and thereafter one to every seven additional workers receiving not less than 32s. 6d. per week of 40 hours.

OTHER EMPLOYEES.

	Per Hour.	Per Week.
	<i>s. d.</i>	<i>s. d.</i>
Men employed on swings, bosun's chairs, lifts, or any other suspended platform	8 4½	334 2
All other plasterers	8 0½	322 6

Foreman, i.e., a plasterer in charge of two others, but not exceeding ten men, 2s. a day extra; where the number exceeds ten he shall be paid 4s. a day extra. On each job where there are three or more plasterers employed one shall be deemed to be and shall be paid as a foreman.

PART II.

1. This Part applies in respect of the employment of all persons coming within the ambit of the Determination, other than those provided for in Part I. hereof.

2. WAGES.

Apprentices.					Improvers.				
Per Week.					Per Week.				
	Percentage of Basic Wage.	Adjustable Wage.	Loading.	Total Wage.		Percentage of Basic Wage.	Adjustable Wage.	Loading.	Total Wage.
		<i>s. d.</i>	<i>s. d.</i>	<i>s. d.</i>			<i>s. d.</i>	<i>s. d.</i>	<i>s. d.</i>
1st year ..	29	68 6	2 8	71 2	15 years of age	29	68 6	2 8	71 2
2nd year ..	38	89 6	5 4	94 10	16 years of age	38	89 6	5 4	94 10
3rd year ..	53	125 0	8 0	133 0	17 years of age	53	125 0	8 0	133 0
4th year ..	76	179 6	10 8	190 2	18 years of age	76	179 6	10 8	190 2
5th year ..	98	231 6	13 4	244 10	19 years of age	98	231 6	13 4	244 10
6th year ..	100 plus 27s.	263 0	16 0	279 0	20 years of age	100 plus 27s.	263 0	16 0	279 0

PROPORTION (by any employer).

One apprentice to every three or fraction of three workers receiving not less than 315s. 10d. per week.

PROPORTION (by any employer).

One improver to the first five workers, and thereafter one to every seven additional workers receiving not less than 315s. 10d. per week.

OTHER EMPLOYEES.

	Per Hour.	Per Week.
	<i>s. d.</i>	<i>s. d.</i>
Men employed on under-ground sewer or tunnel plastering	8 0	319 8*
All other plasterers	7 10½	315 10*

Foreman, i.e., a plasterer in charge of two others, but not exceeding ten men, 2s. a day extra; where the number exceeds ten he shall be paid 4s. a day extra. On each job where there are three or more plasterers employed one shall be deemed to be and shall be paid as a foreman.

* Rates include 6s. war loading.

Clauses, other than clauses 1 and 2 of Part I., and clauses 1 and 2 of Part II. of the said Determination shall remain in force.



VICTORIA
GOVERNMENT GAZETTE

Published by Authority.

[Registered at the General Post Office, Melbourne, for transmission by post as a newspaper.]

No. 770]

FRIDAY, AUGUST 27.

[1954

Labour and Industry Act 1953.

**DETERMINATION OF A WAGES BOARD ADJUSTED PURSUANT TO SECTION 33 OF THE
LABOUR AND INDUSTRY ACT 1953.**

I, Henry Norman Jones, Acting Secretary for Labour and Industry, in pursuance of the powers conferred by the Labour and Industry Act, hereby make and issue the following adjusted Determination of the Wages Board referred to hereunder showing adjusted rates and prices to operate from the beginning of the first pay period to commence in August, 1954.

Dated at Melbourne, this
20th day of August, 1954.

H. N. JONES,
Acting Secretary for Labour and Industry.

QUARRY BOARD.

Clause 2 of the Determination published in *Government Gazette* No. 40 of the 4th February, 1954, shall be replaced by the following clause:—

2. (a)

<i>Apprentices.*</i>					<i>Improvers.*</i>				
Wages Per Week.					Wages Per Week.				
	Percentage of Basic Wage.	Adjustable Rate.	Plus War Loading (Non- adjustable).	Total Wage.		Percentage of Basic Wage.	Adjustable Rate.	Plus War Loading (Non- adjustable).	Total Wage.
	%	s. d.	s. d.	s. d.		%	s. d.	s. d.	s. d.
1st year ..	48	113 6	2 3	115 9	Carting and Driving—				
2nd year ..	58	137 0	2 6	139 6	Under 18 years ..	90	212 6	4 0	216 6
3rd year ..	66	156 0	3 0	159 0	18 and under 19 years ..	100 + 5/6	241 6	4 6	246 0
					19 and under 20 years ..	100 + 17/6	253 6	5 0	258 6
					20 and under 21 years ..	100 + 26/-	262 0	5 6	267 6
					All other improvers—				
					1st year ..	72	170 0	3 3	173 3
					2nd year ..	76	179 6	3 3	182 9
					3rd year ..	87	205 6	3 9	209 3
					4th year ..	100 + 5/6	241 6	4 6	246 0

And thereafter the minimum wage.

PROPORTION (within any place).

One apprentice to every three or fraction of three workers receiving not less than 273s. per week.

An indenture of apprenticeship prescribed was approved on 6th August, 1923.

(b) <i>Other Employees.*</i>				
Day Shift.				
Wages Per Week.				
	Adjustable	Plus War	Total Wage.	Wages
	Rate.	Loading (Non- adjustable).		
	s. d.	s. d.	s. d.	s. d.
Powder monkey †	299 6	6 0	305 6	7 7 ¹³ / ₂₀
Assistant powder monkey ‡ .. .	278 0	6 0	284 0	7 11 ¹⁷ / ₂₀
Hammerman	290 6	6 0	296 6	7 4 ¹⁹ / ₂₀
Dresser of pitchers or cubes, or scabblers .. .	285 6	6 0	291 6	7 3 ⁹ / ₂₀
Spaller	280 0	6 0	286 0	7 1 ¹ / ₂
Faceman	279 6	6 0	285 6	7 11 ¹³ / ₂₀
Feeder of a stone crushing machine .. .	282 0	6 0	288 0	7 2 ² / ₅
Dust hole man	277 0	6 0	283 0	7 0 ⁸ / ₁₀
Persons boring holes by hand or machine .. .	275 0	6 0	281 0	7 0 ⁸ / ₁₀
Borer's assistant	275 0	6 0	281 0	7 0 ⁸ / ₁₀
Blacksmith	294 6	6 0	300 6	7 6 ³ / ₂₀
Tool sharpener	278 0	6 0	284 0	7 1 ¹ / ₂
Loader	270 0	6 0	276 0	6 10 ¹ / ₂
Carters or drivers driving—				
One horse	267 6	6 0	273 6	6 10 ¹ / ₂₀
Two horses	275 0	6 0	281 0	7 0 ⁸ / ₁₀
Three horses	281 0	6 0	287 0	7 2 ¹ / ₁₀
Four or five horses	284 0	6 0	290 0	7 3
And 6d. extra per day for each additional horse.				
Drivers of motor vehicles of the following carrying capacity:—				
Not exceeding 25 cwt.	272 0	6 0	278 0	6 11 ² / ₅
Exceeding 25 cwt., but not exceeding 3 tons .. .	273 3	6 0	279 3	6 11 ²¹ / ₂₀
Exceeding 3 tons	280 9	6 0	286 9	7 2 ¹ / ₂₀
Dumper driver	285 0	6 0	291 0	7 3 ³ / ₁₀
All others	267 0	6 0	273 0	6 9 ⁷ / ₁₀

* See clause 3 re hours.

† See clause 10 re definition.

‡ See clause 11 re definition.

When an employee is working in water to a depth of 2 inches or more, he shall, in addition to the ordinary rate of pay, receive 1s. 6d. extra per day or portion of a day whilst he is so employed.

The wages rates herein prescribed for a "Feeder of a stone crushing machine" and a "Dust hole man" were determined after due consideration had been given to the dirty and dusty conditions of the work.

(c) Employees on afternoon and/or night shift shall be paid at the appropriate rate prescribed in sub-clause (b) hereof plus 20 per cent.

Clauses, other than clause 2, of the said Determination shall remain in force.



VICTORIA GOVERNMENT GAZETTE.

Published by Authority.

[Registered at the General Post Office, Melbourne, for transmission by post as a newspaper.]

No. 771]

FRIDAY, AUGUST 27.

[1954

Labour and Industry Act 1953.

DETERMINATION OF A WAGES BOARD ADJUSTED PURSUANT TO SECTION 33 OF THE LABOUR AND INDUSTRY ACT 1953.

I, Henry Norman Jones, Acting Secretary for Labour and Industry, in pursuance of the powers conferred by the Labour and Industry Act, hereby make and issue the following adjusted Determination of the Wages Board referred to hereunder showing adjusted rates and prices to operate from the beginning of the first pay period to commence in August, 1954.

Dated at Melbourne, this
20th day of August, 1954.

H. N. JONES,
Acting Secretary for Labour and Industry.

SHOPS BOARD No. 1 (BOOT DEALERS).

Clause 2 of the Determination made on the 10th December, 1953, and in force as from that date, shall be replaced by the following clause:—

2.

Apprentices or Improvers.					Other Employers.		
Wages per Week of 40 Hours.					Wages per Week of 40 Hours.		
	Males.		Females.			Within the Metropolitan District, the Cities of Geelong and Geelong West, and the Town of Newtown and Chilwell.	All other parts of Victoria where this Determination applies.
	Per-centage of Basic Wage.		Per-centage of Female Basic Wage.				
		<i>s. d.</i>		<i>s. d.</i>	MALES.	<i>s. d.</i>	<i>s. d.</i>
Under 16 years ..	30	71 0	34	60 0	Manager of a shop or head salesman, i.e., the principal employee in any shop, branch shop, or boot and/or shoe department in any establish- ment in which are sold goods other than those sold by boot dealers, notwithstanding he may be under the orders of another person who does not devote his whole time to the supervision of such shop, branch shop, or department ..		
16 years ..	47	111 0	45	79 6			
17 years ..	63	148 6	55	97 6			
18 years ..	80	189 0	64	113 6			
19 years ..	96	226 6	75	132 6			
20 years ..	100 plus 13s.	249 0	85	150 6			
Provided that any apprentice or improver without previous experience entering the trade at 17, 18, 19, or 20 years of age may be paid for his or her first year's service 12½ per cent. and for his or her second year's service 10 per cent. less than the rates fixed above.					298 0	295 0	
PROPORTION (IN ANY SHOP OR PLACE). APPRENTICES. <i>Males.</i> One male apprentice to every three or fraction of three male persons receiving not less than 270s. per week of 40 hours.					273 0	270 0	
<i>Females.</i> One female apprentice to every three or fraction of three female persons receiving not less than 187s. 6d. per week of 40 hours. An indenture of apprenticeship prescribed by the Board was approved on 28th March, 1923.					273 0	270 0	

Improvers.	Other Employees.		
	Wages per Week of 40 Hours.		
		Within the Metropolitan District the Cities of Geelong and Geelong West; and the Town of Newtown and Chilwell.	All other parts of Victoria where this Determination applies.
PROPORTION (IN ANY SHOP OR PLACE).	FEMALES.		
<p><i>Males.</i></p> <p>Two male improvers to one Four " " " two Five " " " three Six " " " four Seven " " " five Eight " " " six Nine " " " seven Ten " " " eight</p> <p>} male persons receiving not less than 270s. per week of 40 hours.</p> <p>and thereafter one additional male improver to every two or fraction of two additional.</p>	<p>Managers of a shop or head saleswoman, i.e., the principal employee in any shop, branch shop, or boot and/or shoe department in any establishment in which are sold goods other than those sold by boot dealers, notwithstanding she may be under the orders of another person who does not devote his whole time to the supervision of such shop, branch shop, or department</p>	<p>s. d.</p> <p>298 0</p>	<p>s. d.</p> <p>295 0</p>
<p><i>Females</i></p> <p>Two female improvers to one Four " " " two Five " " " three Six " " " four Seven " " " five Eight " " " six Nine " " " seven Ten " " " eight</p> <p>} female persons receiving not less than 187s. 6d. per week of 40 hours.</p> <p>and thereafter one additional female improver to every two or fraction of two additional.</p>	<p>Saleswomen</p>	<p>192 6</p>	<p>187 6</p>
<p>Provided that one female improver in lieu of one male improver, or one male improver in lieu of one female improver, may be employed.</p>			

Clauses, other than clause 2, of the said Determination shall remain in force.



VICTORIA GOVERNMENT GAZETTE.

Published by Authority.

[Registered at the General Post Office, Melbourne, for transmission by post as a newspaper.]

No. 772]

FRIDAY, AUGUST 27.

[1954

Labour and Industry Act 1953.

DETERMINATION OF A WAGES BOARD ADJUSTED PURSUANT TO SECTION 33 OF THE LABOUR AND INDUSTRY ACT 1953.

I, Henry Norman Jones, Acting Secretary for Labour and Industry, in pursuance of the powers conferred by the Labour and Industry Act, hereby make and issue the following adjusted Determination of the Wages Board referred to hereunder showing adjusted rates and prices to operate from the beginning of the first pay period to commence in August, 1954.

Dated at Melbourne, this
20th day of August, 1954.

H. N. JONES,
Acting Secretary for Labour and Industry.

SHOPS BOARD No. 2 (BOOT REPAIRERS).

Clauses 2 and 3 of the Determination published in *Government Gazette* No. 33 of the 29th January, 1954, shall be replaced by the following clauses:—

2. APPRENTICES OR IMPROVERS.

Males.					Females (see clause 4).				
Wages per Week of 40 Hours.					Wages per Week of 40 Hours.				
	Commencing Age.								
	Under 16 years.	16 years.	17 years.	18 years or over.		s.	d.	s.	d.
1st year	80 0	115 6	115 6	141 6	Under 16 years of age			90 6	
2nd year	115 6	141 6	141 6	177 0	16 and under 17 years of age			101 0	
3rd year—					17 and under 18 years of age			109 6	
1st 6 months	141 6	177 0	177 0	229 0	18 and under 19 years of age			120 6	
2nd 6 months	165 0	189 0	189 0	241 0	19 and under 20 years of age			132 6	
4th year—					20 and under 21 years of age			143 6	
1st 6 months	177 0	200 6	229 0	Minimum wage	PROPORTION (BY ANY EMPLOYEE).				
2nd 6 months	189 0	212 6	241 0	Minimum wage	<i>Apprentices.</i>				
5th year—					One female apprentice to every three or fraction of three female adult workers receiving not less than the minimum wage.				
1st 6 months	200 6	229 0	Minimum wage	Minimum wage	<i>Improvers.</i>				
2nd 6 months	212 6	241 0	Minimum wage	Minimum wage	Two female improvers to every female adult worker receiving not less than the minimum wage.				
6th year—									
1st 6 months	229 0	Minimum wage	Minimum wage	Minimum wage					
2nd 6 months	241 0	Minimum wage	Minimum wage	Minimum wage					
Thereafter	Minimum wage	Minimum wage	Minimum wage	Minimum wage					

3.

OTHER EMPLOYEES.

Wages per Week of 40 Hours		Wages per Week of 40 Hours.			
			Adjustable Rate.	Emergency Loadings (Non-adjustable).	Total Weekly Wage.
<i>Females (see Clause 4).</i>		<i>Males.</i>			
	<i>s. d.</i>		<i>s. d.</i>	<i>s. d.</i>	<i>s. d.</i>
Adult females	184 0	Males	276 0	3 0	279 0

Clauses, other than clauses 2 and 3, of the said Determination shall remain in force.



VICTORIA GOVERNMENT GAZETTE.

Published by Authority.

[Registered at the General Post Office, Melbourne, for transmission by post as a newspaper.]

No. 773]

FRIDAY, AUGUST 27.

[1954

Labour and Industry Act 1953.

DETERMINATION OF A WAGES BOARD ADJUSTED PURSUANT TO SECTION 33 OF THE LABOUR AND INDUSTRY ACT 1953.

I, Henry Norman Jones, Acting Secretary for Labour and Industry, in pursuance of the powers conferred by the Labour and Industry Act, hereby make and issue the following adjusted Determination of the Wages Board referred to hereunder showing adjusted rates and prices to operate from the beginning of the first pay period to commence in August, 1954.

Dated at Melbourne, this
26th day of August, 1954.

H. N. JONES,
Acting Secretary for Labour and Industry.

SHOPS BOARD No. 14 (FURNITURE DEALERS).

Clause 2 of the Determination published in Government Gazette No. 181 of 6th April, 1954, shall be replaced by the following clause:—

2.

WAGES PER WEEK OF 40 HOURS.

Apprentices and Improvers.			Other Employees.		
	Percentage of Basic Wage.	s. d.			
Under 15 years of age	33	78 0	—	Within the Metro- politan District.	Outside the Metro- politan District wherever this Determi- nation applies.
15 years of age	37	87 6			
16 years of age	48	113 6			
17 years of age	58	137 0			
18 years of age	78	184 0			
19 years of age	97	229 0			
20 years of age	100 + 11/-	247 0			
PROPORTION (within any shop).					
APPRENTICES.					
One apprentice to every three or fraction of three workers receiving not less than 273s. per week.					
IMPROVERS.					
One improver to every two or fraction of two workers receiving not less than 273s. per week.					
			s. d.	s. d.	
			287 0	284 0	
			276 0	273 0	
			267 6	264 6	
			263 0	260 0	
			259 0	256 0	

Clauses, other than clause 2, of the said Determination shall remain in force.

By Authority: W. M. HOUSTON, Government Printer, Melbourne.



VICTORIA GOVERNMENT GAZETTE.

Published by Authority.

[Registered at the General Post Office, Melbourne, for transmission by post as a newspaper.]

No. 774]

FRIDAY, AUGUST 27.

[1954

Labour and Industry Act 1953.

DETERMINATION OF A WAGES BOARD ADJUSTED PURSUANT TO SECTION 33 OF THE LABOUR AND INDUSTRY ACT 1953.

I, Henry Norman Jones, Acting Secretary for Labour and Industry, in pursuance of the powers conferred by the Labour and Industry Act, hereby make and issue the following adjusted Determination of the Wages Board referred to hereunder showing adjusted rates and prices to operate from the beginning of the first pay period to commence in August, 1954.

Dated at Melbourne, this
26th day of August, 1954.

H. N. JONES,
Acting Secretary for Labour and Industry.

SHOPS BOARD No. 16 (HARDWARE).

Clause 2 of the Determination published in *Government Gazette* No. 163 of the 2nd April, 1954, shall be replaced by the following clause:—

Apprentices or Improvers. (The Masculine to include the Feminine.)			Other Employees. (The Masculine to include the Feminine.)		Metropolitan District.	Outside Metropolitan District where Determination Applies.
WAGES.			WAGES.		Per week of 40 hours.	Per week of 40 hours.
					£ s. d.	£ s. d.
	Percentage of Basic Wage.	Per week of 40 hours. s. d.	Departmental managers, or branch managers having under their control— 3 or more salesmen, 21 years of age or over		15 11 0	15 8 0
Under 16 years of age	25	59 0	Other Branch Managers		14 13 0	14 10 0
16 years of age	33	78 0	Outside salesmen		13 16 6	13 13 6
17	42	99 0	Salesmen or Buyers		13 13 0	13 10 0
18	56	132 0	Assemblers of Ordered Goods		13 6 0	13 6 0
19	72	170 0	NOTE.—See Clause 20 re Definitions.			
20	94	222 0				
<p>PROPORTION (in any shop or place).</p> <p>One apprentice to every three workers or fraction of three workers employed, and receiving not less than the minimum wage.</p> <p>One improver to one worker Two improvers to two, three or four workers Three improvers to five, six or seven workers Four improvers to eight workers Five improvers to nine or ten workers and thereafter one improver to every two or fraction of two workers.</p> <p>Receiving not less than the rates fixed for assemblers of ordered goods.</p>						

Clauses, other than clause 2, of the said Determination shall remain in force.

By Authority: W. M. HOUSTON, Government Printer, Melbourne.





VICTORIA GOVERNMENT GAZETTE.

Published by Authority.

[Registered at the General Post Office, Melbourne, for transmission by post as a newspaper.]

No. 775]

FRIDAY, AUGUST 27.

[1954

Labour and Industry Act 1953.

DETERMINATION OF A WAGES BOARD ADJUSTED PURSUANT TO SECTION 33 OF THE LABOUR AND INDUSTRY ACT 1953.

I, Henry Norman Jones, Acting Secretary for Labour and Industry, in pursuance of the powers conferred by the Labour and Industry Act, hereby make and issue the following adjusted Determination of the Wages Board referred to hereunder showing adjusted rates and prices to operate from the beginning of the first pay period to commence in August, 1954.

Dated at Melbourne, this
26th day of August, 1954.

H. N. JONES,
Acting Secretary for Labour and Industry.

SHOPS BOARD No. 17 (TOBACCONISTS).

Clause 2 of the Determination published in *Government Gazette* No. 44 of the 4th February, 1954, shall be replaced by the following clause:—

Apprentices or Improvers.					Other Employees.		
WAGES.	Per Week of 40 Hours.				WAGES.	Per Week of 40 Hours.	
	Males.		Females.				s. d.
	Percentage of Basic Wage.	s. d.	Percentage of Female Basic Wage.	s. d.			
15 years of age or under ..	33	78 0	41	72 6			
16 years of age ..	42	99 0	51	90 6			
17 years of age ..	60	141 6	69	122 0			
18 years of age ..	74	174 6	81	143 6			
19 years of age ..	90	212 6	100 plus 1/6	178 6			
20 years of age ..	100 plus 6/6	242 6	100 plus 25/6	202 6			
					Departmental Manager or Manageress, i.e., the principal employee in charge of a tobacco Department in any store, notwithstanding he or she may be under the orders of another person who does not devote his or her whole time to the management of such Department ..	283 0	
					First assistant male or female, 25 years of age, where two or more persons over the age of 19 years are employed ..	283 0	
					*All others { Male ..	273 0	
					{ Female ..	204 6	

Provided that any apprentice or improver without previous experience entering the trade at 17, 18, 19, or 20 years of age may be paid for his first and second year's service 20 per cent. less than the rates fixed above.

PROPORTION (IN ANY PLACE).

Apprentices.

One apprentice to three or fraction of three workers receiving not less than the minimum wage.

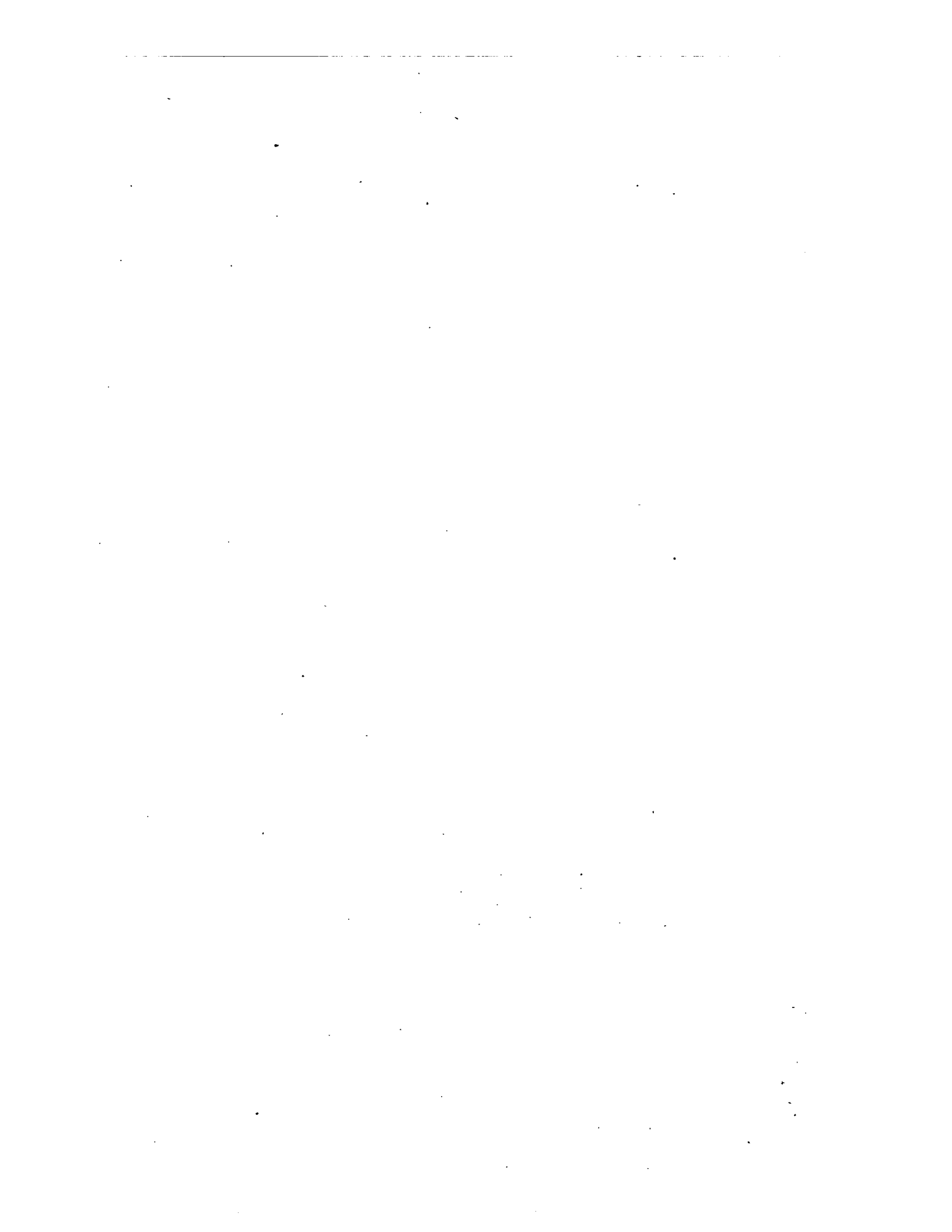
Improvers.

One improver to every two or fraction of two workers receiving not less than the minimum wage.

* Provided that any employee in charge of a kiosk, or stall, notwithstanding he or she may be under the orders of another person who does not devote his or her whole time to the management of such kiosk, or stall, shall be paid the rates herein provided with an addition of 10 per cent.

Clauses, other than clause 2, of the said Determination shall remain in force.

By Authority: W. M. HOUSTON, Government Printer, Melbourne.





VICTORIA GOVERNMENT GAZETTE.

Published by Authority.

(Registered at the General Post Office, Melbourne, for transmission by post as a newspaper.)

No. 776]

FRIDAY, AUGUST 27.

[1954

Labour and Industry Act 1953.

DETERMINATION OF A WAGES BOARD ADJUSTED PURSUANT TO SECTION 33 OF THE LABOUR AND INDUSTRY ACT 1953.

I, Henry Norman Jones, Acting Secretary for Labour and Industry, in pursuance of the powers conferred by the Labour and Industry Act, hereby make and issue the following adjusted Determination of the Wages Board referred to hereunder showing adjusted rates and prices to operate from the beginning of the first pay period to commence in August, 1954.

Dated at Melbourne, this

26th day of August, 1954.

H. N. JONES,

Acting Secretary for Labour and Industry.

SHOPS BOARD No. 19 (CONFECTIONERY, PASTRY, FRUIT AND VEGETABLE).

Clause 2 of the Determination published in *Government Gazette* No. 179 of the 6th April, 1954, shall be replaced by the following clause:—

2.

Apprentices and Improvers.						Other Employees.	
Males.			Females.			Wages per Week of 40 Hours.	
—	Per-centage of Basic Wage.	Weekly Wage.	—	Per-centage of Female Basic Wage.	Weekly Wage.		
<i>s. d.</i>			<i>s. d.</i>				
15 years of age or under ..	30	71 0	15 years of age or under ..	37	65 6	(a) Manager or Departmental Manager ..	<i>s. d.</i> .. 274 6
16 years of age	39	92 0	16 years of age	43	76 0	(b) Manageress or Departmental Manageress 201 9
17 years of age	48	113 6	17 years of age	53	94 0	(c) Shop Assistants—	
18 years of age	60	141 6	18 years of age	63	111 6	(i) Males 264 3
19 years of age	73	172 6	19 years of age	74	131 0	(ii) Females 188 6
20 years of age	87	205 6	20 years of age	85	150 6		

PROPORTION (in any Shop or Place).
One apprentice and one improver to every three or fraction of three workers receiving not less than the minimum wage.

Clauses, other than clause 2 of the said Determination shall remain in force.

By Authority: W. M. HOUSTON, Government Printer, Melbourne.





VICTORIA GOVERNMENT GAZETTE.

Published by Authority.

[Registered at the General Post Office, Melbourne, for transmission by post as a newspaper.]

No. 777]

FRIDAY, AUGUST 27.

[1954

Labour and Industry Act 1953.

DETERMINATION OF A WAGES BOARD ADJUSTED PURSUANT TO SECTION 33 OF THE LABOUR AND INDUSTRY ACT 1953.

I, Henry Norman Jones, Acting Secretary for Labour and Industry, in pursuance of the powers conferred by the Labour and Industry Act, hereby make and issue the following adjusted Determination of the Wages Board referred to hereunder showing adjusted rates and prices to operate from the beginning of the first pay period to commence in August, 1954.

Dated at Melbourne, this
26th day of August, 1954.

H. N. JONES,
Acting Secretary for Labour and Industry.

SHOPS BOARD No. 21 (BOOKSELLERS AND NEWSAGENTS).

Clause 2 of the Determination published in *Government Gazette* No. 180 of the 6th April, 1954, shall be replaced by the following clause:—

2.

Apprentices or Improvers.					Other Employees.				
Wages.	Per Week of 40 Hours.				Wages.	Per Week of 40 Hours.			
	Per-centage of Basic Wage.	Males.	Per-centage of Female Basic Wage.	Females.		Within the Metropolitan District.		All other parts of Victoria where this Determination applies.	
						Males.	Females.	Males.	Females.
		<i>s. d.</i>		<i>s. d.</i>		<i>s. d.</i>	<i>s. d.</i>	<i>s. d.</i>	<i>s. d.</i>
15 years of age or under	31	73 0	36	63 6	DEPARTMENTAL MANAGER, i.e., a person in control of two or more persons (not including bookstall employees) receiving not less than the minimum wage— Where two such persons are under his or her control .. Where three or more such persons are under his or her control ..				
16 years of age	38	89 6	46	81 6		286 6	218 0	286 6	218 0
17 years of age	48	113 6	56	99 0		297 0	232 0	297 0	232 0
18 years of age	62	146 6	65	115 0					
19 years of age	76	179 6	75	132 6					
20 years of age	91	215 0	84	148 6					
PROPORTIONS (by any employer).					<i>All Others.</i>				
<i>Apprentices.</i>					(a) Employed in connexion with the sale or distribution of newspapers				
One apprentice to every three or fraction of three workers receiving not less than the minimum wage.					263 6 177 6 260 6 177 0				
An indenture of apprenticeship has been prescribed by the Board.					(b) Employed at any other work ..				
<i>Improvers.</i>					271 0 181 6 268 0 177 0				
Two improvers to each adult worker receiving not less than 260s. 6d. per week of 40 hours in the case of a male adult and 177s. per week of 40 hours in the case of a female adult.									

Clauses, other than clause 2, of the said Determination shall remain in force.

By Authority: W. M. HOUSTON, Government Printer, Melbourne.



VICTORIA GOVERNMENT GAZETTE.

Published by Authority.

[Registered at the General Post Office, Melbourne, for transmission by post as a newspaper.]

No. 778]

FRIDAY, AUGUST 27.

[1954

Labour and Industry Act 1953.

DETERMINATION OF A WAGES BOARD ADJUSTED PURSUANT TO SECTION 33 OF THE LABOUR AND INDUSTRY ACT 1953.

I, Henry Norman Jones, Acting Secretary for Labour and Industry, in pursuance of the powers conferred by the Labour and Industry Act, hereby make and issue the following adjusted Determination of the Wages Board referred to hereunder showing adjusted rates and prices to operate from the beginning of the first pay period to commence in August, 1954.

Dated at Melbourne, this
26th day of August, 1954.

H. N. JONES,
Acting Secretary for Labour and Industry.

SHOPS BOARD No. 22 (MOTOR REQUISITES).

Clause 2 of the Determination published in *Government Gazette* No. 128 of the 26th March, 1954, shall be replaced by the following clause:—

2.

APPRENTICES OR IMPROVERS.

WAGES PER WEEK OF 40 HOURS.			PROPORTION (in any Shop).	
<i>Male or Female.</i>				
	Percentage of Basic Wage.	<i>s. d.</i>		
15 years of age or under	28	66 0	<i>Apprentices.</i> One apprentice to every three or fraction of three persons receiving not less than the minimum wage.	
16 years of age	38	89 6		
17 years of age	52	122 6		
18 years of age	66	156 0	<i>Improvers.</i> Two improvers to every worker receiving not less than the minimum wage.	
19 years of age	86	203 0		
20 years of age	100 + 5s.	241 0		

ALL OTHER EMPLOYEES.

	Wages per Week of 40 Hours.	
	<i>s. d.</i>	<i>s. d.</i>
Males.	Females.	
Manager of a shop, branch shop, or department (i.e., the principal employee in any shop, branch shop, or department, notwithstanding he may be under the orders of another person who does not devote his whole time to the supervision of such shop, branch shop, or department)	273 0	250 0
Employee solely engaged in the sale of lubricating oil, petrol, benzine, or other motor spirit	253 0	215 0
Other salesman or saleswoman	273 0	250 0

Clauses, other than clause 2, of the said Determination shall remain in force.

By Authority: W. M. HOUSTON, Government Printer, Melbourne.



VICTORIA GOVERNMENT GAZETTE.

Published by Authority.

(Registered at the General Post Office, Melbourne, for transmission by post as a newspaper.)

No. 779]

FRIDAY, AUGUST 27.

[1954

Labour and Industry Act 1953.

DETERMINATION OF A WAGES BOARD ADJUSTED PURSUANT TO SECTION 33 OF THE LABOUR AND INDUSTRY ACT 1953.

I, Henry Norman Jones, Acting Secretary for Labour and Industry, in pursuance of the powers conferred by the Labour and Industry Act, hereby make and issue the following adjusted Determination of the Wages Board referred to hereunder showing adjusted rates and prices to operate from the beginning of the first pay period to commence in August, 1954.

Dated at Melbourne, this
26th day of August, 1954.

H. N. JONES,
Acting Secretary for Labour and Industry.

SHOPS BOARD No. 23 (ELECTRICAL AND RADIO GOODS).

Clause 2 of the Determination published in *Government Gazette* No. 184 of the 6th April, 1954, shall be replaced by the following clause:

2. WAGES PER WEEK OF 40 HOURS.

Apprentices and Improvers.			Other Employees.		
MALES.	Percentage of Basic Wage.	<i>s. d.</i>	MALES.	<i>s. d.</i>	<i>s. d.</i>
Under 16 years of age	27	63 6	(a) Person in charge of a shop		
16 years of age	36	85 0	<i>Or,</i>		
17 "	46	108 6	(b) Manager in charge of one or more	} 288 6	} 284 6
18 "	64	151 0	persons in an electrical and/or radio		
19 "	81	191 0	department of a departmental store,		
20 "	99	233 6	the business of which is not confined		
			to the sale of radio or electrical goods		
FEMALES.	Percentage of Female Basic Wage.		(c) Canvassers, travellers, collectors, in-		
Under 16 years of age	36	63 6	stallers, and all others who are in any		
16 years of age	45	79 6	way connected with the sale of goods		
17 "	51	90 6	on a merchant's premises, but exclud-		
18 "	59	104 6	ing those selling off such premises if		
19 "	67	118 6	they are paid exclusively by commis-		
20 "	76	134 6	sion and have the right to sell goods	} 273 0	} 269 6
			for more than one merchant		
PROPORTION (WITHIN ANY SHOP).			FEMALES.		
<i>Apprentices.</i>			Females	214 6	210 6
MALES.					
One male apprentice to every three or fraction of three workers receiving not less than 269s. per week.					
FEMALES.					
One female apprentice to every three or fraction of three workers receiving not less than 210s. 6d. per week.					
<i>Improvers.</i>					
MALES.					
One male improver to every two or fraction of two workers receiving not less than 269s. per week.					
FEMALES.					
One female improver to every two or fraction of two workers receiving not less than 210s. 6d. per week.					

Clauses, other than clause 2, of the said Determination shall remain in force.

By Authority: W. M. HOUSTON, Government Printer, Melbourne.



VICTORIA
GOVERNMENT GAZETTE.

Published by Authority.

[Registered at the General Post Office, Melbourne, for transmission by post as a newspaper.]

No. 780]

FRIDAY, AUGUST 27.

[1954

Labour and Industry Act 1953.

**DETERMINATION OF A WAGES BOARD ADJUSTED PURSUANT TO SECTION 33 OF THE
LABOUR AND INDUSTRY ACT 1953.**

I, Henry Norman Jones, Acting Secretary for Labour and Industry, in pursuance of the powers conferred by the Labour and Industry Act, hereby make and issue the following adjusted Determination of the Wages Board referred to hereunder showing adjusted rates and prices to operate from the beginning of the first pay period to commence in August, 1954.

Dated at Melbourne, this
26th day of August, 1954.

H. N. JONES,
Acting Secretary for Labour and Industry.

SLATERS AND TILERS BOARD.

Clauses 2 and 19 of the Determination made on the 12th February, 1954, and in force as from the beginning of the first pay period to commence on or after the 27th February, 1954, shall be replaced by the following clauses:—

2. **WAGES.**

Apprentices.			Improvers.			Other Employees.		
—	Percentage of Basic Wage.	Per Week of 40 Hours. <i>s. d.</i>	—	Percentage of Basic Wage.	Per Week of 40 Hours. <i>s. d.</i>	—	Per Hour. <i>s. d.</i>	Per Week of 40 Hours. <i>s. d.</i>
1st year ..	50	118 0	1st year ..	50	118 0	Slaters or Tilers ..	8 0½	322 6
2nd year ..	60	141 6	2nd year ..	60	141 6			
3rd year ..	90	212 6	3rd year ..	90	212 6			
4th year ..	100 + 32s.	268 0	4th year ..	100 + 32s.	268 0			
PROPORTION (by any employer). Two apprentices to every five or fraction of five workers receiving at wages rates or piecework prices not less than 322s. 6d. per week. An amended indenture of apprenticeship has been prescribed by the Board.			PROPORTION (by any employer). One improver to the first twenty workers and thereafter one improver to every twenty or fraction of twenty workers receiving not less than the minimum wage of 322s. 6d. per week.			Persons employed stripping or repairing roofs or recovering with second-hand materials or using battens that have been treated, painted, sprayed, or dipped in any anti-corrosive, anti-boreant, or such like solution shall be paid 1s. 6d. per day or portion of a day in addition to the rates set out above.		

NOTE.—No person under the age of 16 years shall be employed as an apprentice or improver.

PIECEWORK PRICES.

19. The lowest piecework prices payable to any person engaged in the following kinds of work shall be:—

Slating, 20' x 10' and larger	£1 17s. 10½d. per 100 square feet, slater's measurement, (including 1s. 4d. as payment for two weeks' annual holidays.)
Slating, under 20' x 10'	8d. per 100 square feet, slater's measurement, more for every size smaller.
Terra Cotta or Cement Tiling	Ridging extra. £1 4s. 9d. per 100 square feet, tiler's measurement, (including 8d. as payment for two weeks' annual holidays.)
Sarking or Undercovering	Ridging extra. 5s. per 100 square feet, tiler's measurement, with 1s. extra per 100 square feet where tiles are wired.
For buildings of more than one story	8d. per 100 square feet, tiler's measurement, extra for each story after the first.
Fixing Terra Cotta Ridging	5d. per foot.
Fixing Cement Ridging	6d. per foot.
For buildings of more than one story	1d. per foot extra for each story after the first.
Mitring on slate roofs	Nailed, 1s. 4d. per foot, screwed, 1s. 8d. per foot.

1s. per square extra shall be paid for work done on roofs where double batten is used.

The following additional amounts on all above prices shall be payable:—

- For work done on roofs of a pitch over 35° and up to 40°—10 per cent.
- For work done on roofs of a pitch over 40° and up to 45°—33½ per cent.
- For work done on roofs of a pitch over 45°—50 per cent.

Clauses, other than clauses 2 and 19, of the said Determination shall remain in force.