

[3735]



# VICTORIA GOVERNMENT GAZETTE.

Published by Authority.

[Registered at the General Post Office, Melbourne, for transmission by post as a newspaper.]

---

No. 706]

FRIDAY, JUNE 29.

[1956

---

CONTRACTS ACCEPTED.

(SERIES 1956-57.)

SUPPLY OF PROVISIONS

FOR

STATE DEPARTMENTS

FROM

1st JULY, 1956, to 30th JUNE, 1957,  
or as stated.

Conditions of Contract and Stipulations are shown herein for the guidance  
of Officers ordering and receiving supplies.

W. H. RUTHERFORD,  
*Secretary to the Tender Board.*

## CONTRACTS ACCEPTED—(Series 1956-57.)

## PROVISIONS.

No. of Contract.	Particulars of each Tender Accepted.	Amount.	Name of Contractor or Supplier.	Charge against Vote or Fund.
	PROVISIONS—  Supply of Provisions, in such quantities as may be ordered, from 1st July, 1956, to 30th June, 1957, or as stated.			
	Schedule No. 1.—Melbourne District—			
24	Bread, Kew Mental Hospital .. .. .	Rates as per annex	Capitol Bakeries Pty. Ltd. . . . .	
25	Bread, Children's Welfare Depot and Receiving House and Mental Hospital, Royal Park, and Travancore Developmental Centre, Flemington .. .. .	Ditto .. .. .	Northern Bakeries (Coburg) Pty. Ltd. . . . .	
26	Bread, Teachers' College and Hostels at Grattan-street, 93 Drummond-street, Carlton; 470 and 481 St. Kilda-road, Melbourne; 1 Walsh-street, South Yarra; and Frank Tate House, 373 Dandenong-road, Armadale; "Larnook," 13 Orrong-road, Armadale; 11 Patterson-street, Hawthorn and 17 Moule-avenue, Brighton; Henry Watson House, 260 Domain-road, South Yarra; Stonington, 336 Glenferrie-road, Malvern; and Police Hospital, St. Kilda-road, Melbourne .. .. .	Ditto .. .. .	Capitol Bakeries Pty. Ltd. . . . .	
27	Flour .. .. .	Ditto .. .. .	Pirie Bros. . . . .	
	Groceries .. .. .	Ditto .. .. .	Moran and Cato Pty. Ltd. (A) .. .. .	
	Cereals .. .. .	.. .. .	Purchase under Tender Board quotations .. .. .	
28	Jams .. .. .	Rates as per annex	W. H. Johnsons Jams Pty. Ltd. . . . .	
29	†Meat, Kew Mental Hospital .. .. .	Ditto .. .. .	F. Watkins Pty. Ltd. . . . .	
30	†Meat, Pentridge Penal Establishment and "Fairlea" Female Prison, Fairfield .. .. .	Ditto .. .. .	Jackson's United Meat Co. Pty. Ltd. . . . .	
31	†Meat, Children's Welfare Depot, Royal Park, and Travancore Developmental Centre, Flemington .. .. .	Ditto .. .. .	J. H. Cooke Pty. Ltd. . . . .	
32	†Meat, Royal Park Mental Hospital and Receiving House .. .. .	Ditto .. .. .	J. H. Cooke Pty. Ltd. . . . .	Contingencies, 1956-57
	Soap Mixtures .. .. .	Ditto .. .. .	Moran and Cato Pty. Ltd. (A) .. .. .	
33	Tea .. .. .	Ditto .. .. .	Bushells Ltd. . . . .	
34	Coffee .. .. .	Ditto .. .. .	Bushells Ltd. . . . .	
	Potatoes .. .. .	.. .. .	Purchase under Tender Board quotations .. .. .	
	Schedule No. 2.—Mont Park, Bundoora, Larundel, Janefield, Gresswell, and Pleasant View, Wood-street, Preston—			
35	Bread .. .. .	Rates as per annex	Northern Bakeries Pty. Ltd. . . . .	
	Groceries .. .. .	Ditto .. .. .	Henry Berry and Co. (Asia) Ltd. (A) .. .. .	
36	Jams .. .. .	Ditto .. .. .	W. H. Johnsons Jams Pty. Ltd. . . . .	
37	†Meat—Mont Park District .. .. .	Ditto .. .. .	W. Anglias and Co. (Aust.) Pty. Ltd. . . . .	
38	†Meat—Preston .. .. .	Ditto .. .. .	W. Anglias and Co. (Aust.) Pty. Ltd. . . . .	
	Potatoes .. .. .	.. .. .	Purchase under Tender Board quotations .. .. .	
	Schedule No. 3.—SS. Rip and Dredges—			
39	Groceries .. .. .	Rates as per annex	Moran and Cato Pty. Ltd. (A) .. .. .	
	†Meat .. .. .	Ditto .. .. .	J. H. Cooke Pty. Ltd. . . . .	
	Vegetables .. .. .	.. .. .	Purchase by agreement .. .. .	
	Potatoes .. .. .	.. .. .	Purchase under Tender Board quotations .. .. .	
	Schedule No. 4.—Teachers' College and Hostels at Grattan-street, 93 Drummond-street, Carlton; 470 and 481 St. Kilda-road, Melbourne; 1 Walsh-street, South Yarra; and Frank Tate House, 373 Dandenong-road, Armadale; "Larnook," 13 Orrong-road, Armadale; 11 Patterson-street, Hawthorn and 17 Moule-avenue, Brighton; Henry Watson House, 260 Domain-road, South Yarra; Stonington, 336 Glenferrie-road, Malvern; and Police Hospital, St. Kilda-road, Melbourne—			
40	Groceries .. .. .	Rates as per annex	Order under Melbourne District .. .. .	
	†Meat .. .. .	Ditto .. .. .	J. H. Cooke Pty. Ltd. . . . .	
	Potatoes .. .. .	.. .. .	Purchase under Tender Board quotations .. .. .	

Names shown in italics denote suppliers under agreement. † Contract for period 1st July, 1956, to 30th September, 1956 only.

CONTRACTS ACCEPTED—(Series 1956-57)—continued.  
PROVISIONS—continued.

No. of Contract.	Particulars of each Tender Accepted.	Amount.	Name of Contractor or Supplier.	Charge against Vote or Fund.
	PROVISIONS—continued.			
41	Schedule No. 5.—Heatherton Sanatorium, Cheltenham— Bread .. .. .	Rates as per annex	T. D. Callander Pty. Ltd. ..	
	Groceries .. .. .	Ditto .. .. .	<i>Moran and Cato Pty. Ltd. (A)</i> ..	
42	†Meat .. .. .	Ditto .. .. .	W. Angliss and Co. (Aust.) Pty. Ltd.	
43	Milk .. .. .	Ditto .. .. .	Moule's Model Dairy .. ..	
	Schedule No. 6.—Ararat District— Breadstuffs .. .. .	Rates as per annex	M. L., R. M. & M. N. Bates ..	
44	Groceries .. .. .	Ditto .. .. .	} <i>McKay MacLeod Pty. Ltd. (A)</i> ..	
	Jams .. .. .	Ditto .. .. .		
45	†Meat .. .. .	Ditto .. .. .	H. A. Morris .. .. .	
	Potatoes .. .. .	.. .. .	Purchase under Tender Board quotations	
	Schedule No. 7.—Ballarat District— Breadstuffs .. .. .	Rates as per annex	W. Dick and Sons .. .. .	
46	Groceries—Teachers' Hostels .. .. .	Ditto .. .. .	} <i>McKay MacLeod Pty. Ltd. (A)</i> ..	
	Groceries—Mental Hospital .. .. .	Ditto .. .. .		
	Jams .. .. .	Ditto .. .. .	H. A. Morris .. .. .	
47	†Meat—Gaol and Mental Hospital .. .. .	Ditto .. .. .	Victorian Inland Meat Authority ..	
48	†Meat—Teachers' Hostels .. .. .	Ditto .. .. .	The Ballarat Modern Dairy Pty. Ltd. ..	
49	Milk—Teachers' Hostels .. .. .	Ditto .. .. .	The Ballarat Modern Dairy Pty. Ltd. ..	
	Milk—Mental Hospital .. .. .	.. .. .	Purchase under Tender Board quotations	
	Potatoes .. .. .	.. .. .	.. .. .	
	Schedule No. 8.—Beechworth District— Bread .. .. .	Rates as per annex	P. A. Taylor, Model Bakery ..	
50	Groceries .. .. .	Ditto .. .. .	} <i>Moran and Cato Pty. Ltd. (A)</i> ..	
	Jams .. .. .	Ditto .. .. .		
51	†Meat .. .. .	Ditto .. .. .	E. Spencer .. .. .	
52	Milk—Mental Hospital .. .. .	Ditto .. .. .	C. F. Godde .. .. .	
	Potatoes .. .. .	.. .. .	Purchase under Tender Board quotations	
	Schedule No. 9.—Bendigo District— Bread—For Gaol and Mental Hygiene Training Centre .. .. .	Rates as per annex	C. H. Jeffrey Pty. Ltd. .. ..	
53	Bread—For Teachers' Hostels "Sandhurst" and "Lancewood" .. .. .	Ditto .. .. .	A. Hardeman Pty. Ltd. .. ..	
54	Bread—For Teachers Hostel "Comersdale" .. .. .	Ditto .. .. .	Roy Raggatt .. .. .	
55	Groceries .. .. .	Ditto .. .. .	<i>Pulfer, Cox and Hargreaves, Wholesalers Ltd. (A)</i> .. ..	Contingencies, 1956-57
56	†Meat—For Gaol .. .. .	Ditto .. .. .	Alan H. Gittins .. .. .	
57	†Meat—For Mental Hygiene Training Centre .. .. .	Ditto .. .. .	Alan H. Gittins .. .. .	
58	†Meat—For Teachers' Hostels .. .. .	Ditto .. .. .	Frank Wade .. .. .	
	Potatoes .. .. .	.. .. .	Purchase under Tender Board quotations	
	Schedule No. 10.—Castlemaine District— Bread .. .. .	Rates as per annex	A. J. Rasmussen .. .. .	
59	Meat .. .. .	Ditto .. .. .	Ewings "W. K. and H. S." .. ..	
	Schedule No. 11.—School of Forestry, Creswick— Breadstuffs .. .. .	Rates as per annex	D. H. Moar .. .. .	
61	Groceries .. .. .	Ditto .. .. .	<i>J. Tait and Son (A)</i> .. ..	
62	Milk .. .. .	Ditto .. .. .	E. J. Keen .. .. .	
63	†Meat .. .. .	Ditto .. .. .	H. J. Symons Pty. Ltd. .. ..	
	Schedule No. 12.—Agricultural College, Dookie— Breadstuffs .. .. .	Rates as per annex	F. G. Dixon .. .. .	
64	Groceries .. .. .	Ditto .. .. .	} <i>W. A. Thompson (A)</i> .. ..	
	Jam .. .. .	Ditto .. .. .		
	Schedule No. 13.—McLeod Settlement, French Island— Bread .. .. .	Rates as per annex	H. H. Bird .. .. .	
65	Groceries .. .. .	Ditto .. .. .	<i>E. V. Peters (A)</i> .. .. .	
66	†Meat .. .. .	Ditto .. .. .	George Hayman .. .. .	
	Potatoes .. .. .	.. .. .	Purchase under Tender Board quotations	
	Schedule No. 14.—Geelong District— Bread .. .. .	Rates as per annex	J. A. Fitzgerald .. .. .	
67	Groceries .. .. .	Ditto .. .. .	<i>Beacon Trading Co., (Wholesalers Ltd.) (A)</i> ..	
68	†Meat—Gaol .. .. .	Ditto .. .. .	A. R. Bubb .. .. .	
69	†Meat—Teachers' College Hostels .. .. .	Ditto .. .. .	A. R. Bubb .. .. .	

Names shown in italics denote suppliers under agreement.

† Contract for period 1st July, 1956, to 30th September, 1956, only.

## CONTRACTS ACCEPTED—(Series 1956-57)—continued.

## PROVISIONS—continued.

No. of Contract.	Particulars of each Tender Accepted.	Amount.	Name of Contractor or Supplier.	Charge against Vote or Fund.
	PROVISIONS—continued.			
	Schedule No. 15.—Coorimungle Prison Camp, Heytesbury Forest—			
70	Bread .. .. .	Rates as per annex	M. and J. V. Church .. ..	
	Groceries .. .. .	.. .. .	<i>M. L. Rose (A)</i> .. ..	
71	†Meat .. .. .	Rates as per annex	Heytesbury Butchery .. ..	
	Schedule No. 16.—Aboriginal Station, Lake Tyers—			
72	Breadstuffs .. .. .	Rates as per annex	R. Hodder .. ..	
	Groceries .. .. .	Ditto .. ..	} <i>R. Hodder (A)</i> .. ..	
	Jams .. .. .	Ditto .. ..		
	Schedule No. 17.—Langi Kal Kal Training Centre—			
73	Bread .. .. .	Rates as per annex	O. Nicholls and W. J. Hosken .. ..	
74	†Meat .. .. .	Ditto .. ..	H. T. Slee and Co. .. ..	
	Potatoes .. .. .	.. .. .	Purchase under Tender Board quotations	
	Schedule No. 18.—Agricultural College, Longerenong—			
75	Breadstuffs .. .. .	Rates as per annex	Schwarz Breads .. ..	
	Groceries .. .. .	Ditto .. ..	} <i>W. Cook and Son (A)</i> .. ..	
	Jam .. .. .	Ditto .. ..		
	Potatoes .. .. .	.. .. .	Purchase under Tender Board quotations	Contingencies, 1956-57
	Schedule No. 19.—Research Station, Rutherglen—			
76	Bread .. .. .	Rates as per annex	E. M. and G. A. Dwyer .. ..	
	Groceries .. .. .	Ditto .. ..	<i>Aitken and Fullerton (A)</i> .. ..	
	Schedule No. 20.—Sale Gaol—			
77	Bread .. .. .	Rates as per annex	F. J. Hennessy .. ..	
78	†Meat .. .. .	Ditto .. ..	H. L. G. Laws .. ..	
	Schedule No. 21.—Pleasant Creek Special School, Stawell—			
79	Breadstuffs .. .. .	Rates as per annex	Keith Lawson .. ..	
	Groceries .. .. .	Ditto .. ..	<i>McKay MacLeod Pty. Ltd. (A)</i> .. ..	
80	Milk .. .. .	Ditto .. ..	Stawell Modern Dairy Pty. Ltd. .. ..	
81	†Meat .. .. .	Ditto .. ..	Newton Bros. .. ..	
	Potatoes .. .. .	.. .. .	Purchase under Tender Board quotations	
	Schedule No. 22.—Sunbury District—			
82	Breadstuffs .. .. .	Rates as per annex	J. N. Hennessy Pty. Ltd. .. ..	
	Groceries .. .. .	Ditto .. ..	<i>K. N. Tidswell (A)</i> .. ..	
	Cereals .. .. .	.. .. .	Purchase under Tender Board quotations	
	Jams .. .. .	Rates as per annex	<i>K. N. Tidswell (A)</i> .. ..	
83	†Meat .. .. .	Ditto .. ..	F. Watkins Pty. Ltd. .. ..	
	Potatoes .. .. .	.. .. .	Purchase under Tender Board quotations	

Names shown in italics denote suppliers under agreement. † Contract for period 1st July, 1956, to 30th September, 1956, only.

Approved—G. L. Chandler, for Acting Treasurer, 27th June, 1956.

## CONDITIONS OF CONTRACT FOR PROVISIONS, 1956-57, ETC.

(Published in the *Victoria Government Gazette*, No. 485, dated 16th May, 1956, pages 2,684 to 2,686.)

1. All the articles are to be of the best quality of the several kinds, in the best condition, and in conformity with the Health Acts, and to be delivered in sound packages, free from all charges for cartage, freight, &c. The goods shall be delivered as may be directed by the officer ordering the supply.

2. As the exact quantity of any article which may be required cannot be stated, the estimate being approximate only, the Government will not be bound by the quantity stated in the schedule, but will be at liberty to order more or less, according to circumstances, and the contractor will be bound to supply the same as ordered.

The Government reserves the right to purchase otherwise than from the contractor any of the articles specified in the schedule in the event of emergency.

3. Supplies for country districts for which no local contract may have been taken, or for which the contract has been terminated, may be ordered under the Melbourne contract.

4. The Melbourne District will include places within a radius of 10 miles from the Elizabeth-street Post Office, with the exception of places for which separate contracts are provided; the Mont Park District will include the Mental Hospitals, Janefield Colony, the Sanatorium, Gresswell, and Pleasant View, Preston; the Ararat, Ballarat, Beechworth, Bendigo, Castlemaine, Geelong and Sunbury Districts will include Mental Hospitals, Penal Institutions and Teachers' Hostels at any of those places. Delivery must be made at the places, institutions, &c., named in the Schedules, or as directed by the officer ordering the supply.

5. Packages suitable for transport of goods supplied must be provided by the contractor free of expense, and the value of these packages, whether in bulk or otherwise, is to be included in the rate tendered, except butter boxes and soap boxes (not including fancy soaps), jam jars, flour, meal, and potato bags, which will remain the property of the contractor, and only the actual net weight or quantity received will be paid for; the empties to be removed from the place of delivery at the contractor's expense.

6. The meat supplied under these conditions must, if practicable, be slaughtered at abattoirs which are under authorized inspection and supervision. Any infringement of these conditions will subject the contractor, on report from the Tender Board, to such mulct, not exceeding Fifty pounds, as the Treasurer may direct, and the amount will be deducted from the contractor's account, or from the security money.

7. The supplies coming under the head of Rations and Medical Comforts are to be delivered direct to the establishment entitled thereto on the written order of the officer in charge. All other supplies will be ordered by the head of the Department concerned or any officer authorized by him, and shall be delivered as may be directed by the officer ordering the supply.

8. At the time of delivering the supplies, the contractor shall produce the order for the same to the officer authorized to accept delivery, and such officer shall acknowledge thereon the receipt of the stores accepted, and shall return the order to the contractor, who shall render his account as soon as possible after the delivery of the supplies, accompanied by the receipted delivery order. The rates or quantities quoted in the orders cannot be exceeded.

9. Where railway facilities are available, the contractor shall use the Railways for the transport of the goods. When a contractor is required to make delivery of goods at a railway station for transmission by rail, except for Commonwealth Departments, he shall obtain a receipt for the goods in duplicate on the Stores and Transport consignment note, at the same time handing in the triplicate and quadruplicate of the form as an authority for the Railways to act as agent for, and charge the freight to, the Stores and Transport Office. He shall as soon as possible, and not later than twenty-four hours thereafter, deliver at the Tender Board Offices the original, the duplicate to be forwarded to the consignee and the quintuplicate retained by himself. Should the goods thus forwarded be rejected, the contractor must bear the cost of replacing such goods, for which services the departmental consignment note is not to be used. Any infringement of this condition may subject the contractor to such mulct as the Tender Board may recommend under clause 18 of these conditions.

10. Orders must receive prompt execution; in the event of the goods not being delivered at the time mentioned in the order or within such other time as the officer ordering the supply may specify for delivery, it will be competent for such officer, or the head of the Department to whom the goods are to be supplied, on giving the contractor twenty-four hours' notice, to purchase the supplies, or any like supplies that are suitable for the service, at the contractor's risk, and the extra expense incurred over and above the contract price (if any) will be deducted from the contractor's account or from the security money.

11. The acceptance of the supplies shall be subject to the approval of the officer authorized to take delivery of the stores, or such other officer as shall be named in the conditions.

12. If the officer in charge of stores be not satisfied as to the quantity or quality of the stores, or if, after taking delivery of any stores or material, he shall discover any deficiency or defect therein, he may return such deficient or defective stores or material to the contractor, and shall report the same to the head of his Department and to the Tender Board.

13. In the event of a difference of opinion between the contractor and the officer receiving the supplies as to the quality, the same is to be decided, in cases where the article is not of a perishable nature, by a Board of Survey composed of persons named by the Treasurer of the State for the time being; and the decision of the Board is to be considered final. In the event of the decision being against the contractor, the survey fees and expenses (if any) will be deducted as in clause 10.

14. In cases where the article is of a perishable nature, or when from some other cause injury would be sustained either by the person to whom the rations or stores are due or by the contractor in waiting for a Board to survey, the head of the Department or officer authorized to take delivery will have power to reject such article or articles as are obviously of inferior quality, it being understood that he will be responsible to the Government for so doing, and that the contractor must take back the rejected article and supply good in its stead; failing which it, or any like supply suitable for the Service, will be obtained by the officer requiring it as in clause 10. In case of the rejection or return of any supplies, the contractor shall bear the whole cost of replacing the supplies so rejected or returned.

15. If the Board shall decide that the article is not of proper quality it must be immediately replaced by the contractor; failing which it, or any like supply suitable for the Service, will be procured by the officer requiring it, and the expense charged as in clause 10.

16. In the case of supplies for Mental Hospitals, it will be competent for a Board of Survey, consisting of the medical superintendent (or, in his absence, of the medical officer) and any two officers named by him, to examine and reject any supplies that may be objected to. It must be distinctly understood, however, that the contractor will have a right of appeal to the Treasurer of the State for the time being, such appeal to be made in writing within 24 hours of the rejection; but, pending such appeal, he must at once supply others of approved quality; failing which, the supplies required, or any like supplies suitable for the Service, may be obtained by the officer concerned, and the expense charged as in clause 10.

17. In the case of supplies for Mental Hospitals, it will also be competent for two or more of the official visitors, in conjunction with the medical superintendent, to reject any supplies that they may consider not in accordance with contract; and in such cases the reference to a Board of Survey will not be deemed to be necessary.

18. A refusal to execute orders, irregularity in the quantity or quality of the supplies, or delay in delivering or replacing them when required, will subject the contractor, upon report from the Tender Board, to such mulct, not exceeding Fifty pounds, as the said Treasurer may direct, and the amount may be deducted as in clause 10. It will also be in the power of the said Treasurer, upon such refusal, irregularity, or delay, to terminate the contract forthwith, and forfeit the whole or any part of the security money; and, in addition, the contractor will be disqualified from tendering or holding any future contract or contracts for a period of twelve months from the date of such disqualification.

19. Contractors are not at liberty to transfer their contracts under cover of power of attorney, coupled with an interest or otherwise, and no such transfer will be recognized by the Government. *If it is found during the currency of the contract that the contractor has not conformed to the condition of advertisement—which stipulates that if a tenderer be a member of a firm and such firm be interested in the contract, the tender shall be in the name of the firm and not in that of the individual—then the Treasurer may, on the recommendation of the Tender Board, determine the contract, and forfeit the security money.*

20. It will be competent for the Tender Board to terminate the contract, without notice, should there be reason to know that the contractor takes advantage of his contract to communicate with a prisoner.

21. The contract entered into under these conditions is not to be considered as being broken, infringed, or vitiated by the importation of stores for the Government service, or by any contracts or purchases made by the Imperial Commissariat; or by the consumption of the produce or surplus stock of any Government establishment, or by any article being made at and supplied for the use of any Government establishment.

22. Notwithstanding anything contained to the contrary in section 152 of the *Customs Act* 1901-52, it is hereby expressly provided that upon any alteration of the duty collected affecting the goods included in this contract, the contract price shall not be altered, and the contract may be terminated at the option of either party by two months' notice in writing from the first day of the calendar month next ensuing, and within the period for which the contract is made. The contract for the unaffected items shall remain in full force and effect. Any notice to be served under this condition shall be deemed to have been duly served if sent to the contractor in a registered letter to his last-known place of business or abode.

23. Under no circumstances other than those mentioned in clause 22 will a contractor be permitted to abandon his contract. In the event of the contractor failing to carry on the contract, the contract security money will in that case be absolutely forfeited; and, in addition, the contractor will be held liable for any loss which the Government may sustain in consequence of such failure.

24. For the purposes of these contracts the word "Government" shall mean the Government of the State of Victoria; and the word "Treasurer" shall mean the Treasurer of the said State.

#### STIPULATIONS FOR SUPPLIES OF PROVISIONS.

##### SUPPLIES GENERALLY.

For supplies under all sub-schedules, particular attention is drawn to clause 1 of the Conditions of Contract as to quality.

No sub-letting is allowed, and all work must be carried out by the contractor.

Where practicable, all items must be manufactured or prepared within the Commonwealth.

Where no brand of Commonwealth manufacture or production is specifically set out in the respective sub-schedules, such Commonwealth brand as may be ordered must be supplied.

For Schedule No. 3 supplies must be delivered when ordered and, in cases of emergency, on Sundays, holidays, or half-holidays, as required.

##### BREAD AND FLOUR.

A sample of the best ordinarily retailed to the public will be considered as a test loaf for first quality for fine wheaten and pure wheaten Meal Bread. *Pure wheaten Meal Bread of first quality may be substituted, wholly or in part, for fine wheaten Bread at such times and in such quantities as, in the opinion of the Medical Superintendent, may be deemed necessary, and the contractor will be required to supply such Bread at the contract rate. Reasonable notice, however, of the intention to substitute wheaten Meal Bread must be given to the contractor by the officer ordering the supply. Bread may be baked at any Government establishment without infringing these contracts. At the Gaols, Ballarat, Beechworth, Bendigo, Castlemaine, Geelong, and Sale, and the Coorimungie Prison Camp, McLeod Settlement, and Langi Kal Kal Training Centre, if required, bread must be supplied one day old, due notice to be given to the contractor of such requirement.*

In the event of bread being made at any Government establishment in the Melbourne District during the currency of these contracts, the flour required will be drawn under the flour sub-schedule.

Flour for Districts for which no local contracts have been taken may be ordered under the Melbourne District contract, for delivery f.o.r. Melbourne.

##### GROCERIES.

As a guarantee of quality, Rice, when ordered in quantities of 56 lb. and over, must be supplied in original bags as delivered by the miller or dresser. Such bags must be branded "Rice, Dressed," and shall also have stencilled thereon the miller or dresser's name and the distinguishing mark indicative of the quality or grade. The bags thus stencilled shall contain Rice milled or dressed by the miller or dresser whose name appears thereon. Supplies not in conformity with the foregoing condition will be rejected.

Oatmeal must be supplied in original bags as delivered by millers.

Candles, except those for prison cells, must be supplied in 1-lb. packets. Candles for prison cells must be delivered in boxes containing from 25 to 50 lb. per box, the boxes for which must be legibly stencilled on one end showing the estimated burning time and the gross, tare, and net weight of contents.

The soap supplied must be hard throughout, ready for immediate use without waste, and shall have been manufactured at least seven weeks before leaving contractor's hands.

Raisins and currants must be present season's, and where the quantity admits, be supplied in original and unopened boxes, labelled as packed.

##### OATMEAL, RICE, BARLEY AND SPLIT PEAS.

Supplies of these items for Districts for which no local contracts have been taken may be ordered under the Melbourne District contract, for delivery f.o.r. Melbourne.

##### BUTTER AND CHEESE.

All supplies of 56 lb. or multiples of 56 lb. must be supplied in boxes as originally packed. The boxes must bear the impress stamp of the creamery where the butter is produced, otherwise it will not be accepted. All supplies must be in new boxes.

Where the Store or Butter Factory of the Contractor is situated in the Metropolitan area all Butter to the quantity of 56 lb. and over to be supplied in any one consignment under this contract shall before despatch from the Store or Factory be first examined and passed by the Government Butter Grader, for and on behalf of the officer authorized to accept delivery. The boxes containing butter so examined and found satisfactory in quality and description will be stamped by the Government Butter Grader and the date of such examination marked thereon. No butter from a contractor located in the Metropolitan Area will be accepted unless the boxes bear the stamp of the Grader. For the purposes of the foregoing condition the Metropolitan Area is defined as being not outside the radius visited by the Government Grader. The officer authorized to accept delivery may, within 48 hours of the receipt of any supply, require the Contractor to have same re-examined by the Grader, and, if not passed by him, it shall be returned to the Contractor, who shall forthwith replace the same with freshly-examined butter.

No Butter *ex* Cool Store will be examined by the Grader until thermally it is in suitable condition therefor.

Where the Store or Factory from which the Butter is despatched is not within the area visited by the Grader a sample of any supplies may be forwarded to the Government Butter Grader for examination, should the supply be considered by the Officer authorized to accept delivery as not being equal in quality or description to that contracted for.

The Cheese supplied must be first-class quality, semi or fully matured, as ordered, and not less than three months old. If the quantity admits, it shall be boxed for transport.

##### JAM.

The weight stamped on the tins in accordance with the regulations under the Commerce Act, as indicating the *minimum* net quantity that each tin contains, shall for the purpose of this contract be taken as the actual contents when computing the quantity supplied.

When Jam is supplied in jars the jars remain the property of the contractor, and must be removed by the contractor at his own expense when empty.

**SOAP AND SOAP MIXTURES.**

Supplies of these items for Districts for which no local contracts have been taken may be ordered under the Melbourne District contract, for delivery f.o.r. Melbourne.

**MEAT.**

All meat supplied under this contract shall have been slaughtered in Victoria and shall be freshly killed, well-conditioned, of good quality, healthy, clean, wholesome, free from bone-taint, putrefaction or fly larvae, and shall not have been frozen.

The beef shall be of ox not under three nor more than six years old or heifer or cow not under three nor more than five years old. Carcass beef for Mental Hospitals shall be delivered in quarters of equal proportions of hinds and fores and the corresponding hinds and fores must be supplied, also extra buttocks separately when ordered. Meat for other Institutions shall be supplied as ordered. Where hindquarters or buttocks are ordered 9 inches shall be cut off from the end of the leg from the hock upwards, i.e., the end of the leg from which the shank has been removed at the abattoirs; when fore-quarters form a portion of the supply, 6 inches from the end of the neck and the whole of the shin at the clodbone joint shall be removed. The sticking pieces also shall be trimmed off and the point and end of the brisket rendered free from blood and blood stains.

The mutton shall be wether or maiden ewe not more than four years old and the weight of a carcass shall be not less than 40 lb. nor more than 60 lb. The mutton shall be delivered in sides when so ordered. All kidney fat to be removed for Mental Hospitals.

Corned Beef (rolled or round as ordered) shall be supplied without bone or cartilage and will be received whether pumped or prepared in the ordinary way of pickling but, in the former case, it shall have been soaked, after pumping, for at least 48 hours in a good pickle and then thoroughly drained before supply. No flank, chuck, sticking-piece, shin, leg of beef, or piece under 7 lb. will be received.

Meat derived from the carcasses of Bulls, Stags or Rams or meat containing an undue proportion of bone or fat will not be received and shall not be tendered for delivery. Net weight only will be paid for.

In cases of emergency, or on such other occasions as in the opinion of the Director of Mental Hygiene or Heads of other Institutions may seem advisable, other forms of meat, such as Rabbits, Tinned Meats, &c., may be purchased, apart from the contract, in lieu of the meat specified in the Schedule, and substituted therefor, provided 24 hours' notice—except in cases of emergency—be given to the Contractor of such intention.

The parts to be removed by the contractor are indicated in the shaded portion of the annexed diagram. This work shall be carried out in the factory or shop of the Contractor, except those parts usually removed at the abattoirs.

With respect to the schedules enumerated hereunder, the following stipulations shall also apply:—

For sub-schedules 10 and 11 of Schedule No. 1, fresh beef shall be supplied, as ordered, from ribs, sirloin, and thick flanks and for Schedule No. 2, from prime ribs, sirloin, and thick flanks; ribs of beef to be cut clear of the plate bone, and sirloin to be cut clear of the wing ribs; excess of brisket or thin flank will be rejected. Mutton must be delivered in sides when so ordered.

For Schedules Nos. 1 (sub-schedules 10 and 11), 3, 4, 5, 9, 14, and 21, chuck ribs of Beef, i.e., 1st to 4th inclusive will not be accepted.

For Schedules Nos. 4, 5, and 21, fresh Beef must be supplied, as ordered, from prime ribs or sirloin; ribs of Beef to be cut clear of the plate bone, and sirloin to be cut clear of the wing ribs; excess of brisket or flank will be rejected.

**TEA AND COFFEE.**

Tea and Coffee for Districts for which no local contracts have been taken may be ordered under the Melbourne District contract, for delivery f.o.r. Melbourne.

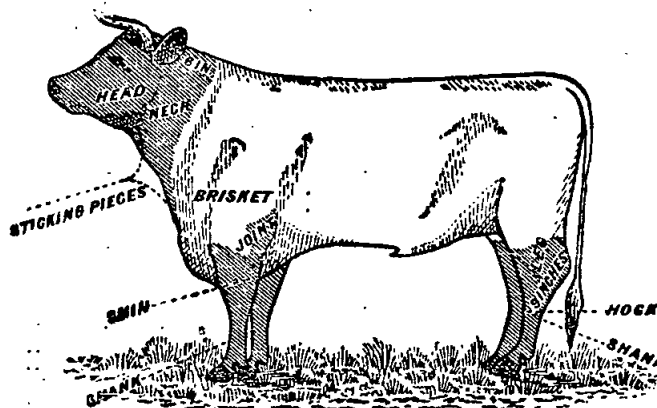
**MILK.**

The milk must be fresh, pure, and of the best quality, and subject to test when required by the Department, and supplied at such times as the Department may require. Should the contractor fail to supply at the time specified in the order or at such times as may be indicated in any general notice to the contractor his contract may be cancelled forthwith and his security forfeited, or should the supply prove to be not of contract quality it will be rejected, and any expense incurred will be charged to the contractor.

**POTATOES.**

Potatoes to be dry and free from dirt. Contractors to take back all rejected before being cooked. Bags to remain the property of the contractor. Weight of bags (approx. 2½ lb.) to be deducted.

If the price of potatoes becomes abnormally high, the heads of the various departments concerned may, if they think fit, cause rice or any other suitable food to be occasionally substituted in lieu thereof.



## ANNEX TO CONTRACTS.

## FLOUR AND BREAD.

The contract rates shown are subject to adjustment for any variation in the proclaimed price of flour.

## MEAT.

Contracts marked † operate for the period 1st July, 1956, to 30th September, 1956, only.

## AGREEMENTS.

For the Sub-schedules marked (Agreement), no contract has been let nor security lodged. Requirements thereunder are to be purchased from the suppliers named, under Tender Board Agreement. The rates shown are subject to variation from time to time, particulars of which will be gazetted as required. In all cases, supply is subject to stocks being available.

## AVAILABILITY OF SUPPLIES.

Owing to existing difficulties in obtaining supplies of various items, the penal provisions of Clause 10 of the Conditions of Contract are not to be enforced without reference to the Tender Board.

## SCHEDULE No. 1.

## PROVISIONS—MELBOURNE DISTRICT.

ANNEX TO CONTRACT No. 1956/24.

Capitol Bakeries Pty. Ltd., 257 Toorak-road, South Yarra.

## Sub-schedule No. 1.

BREAD FOR MENTAL HOSPITAL AT KEW.

Security, £125.

	£	s.	d.
1. Bread—Fine wheaten, first quality .. per cntl.	1	9	6

ANNEX TO CONTRACT No. 1956/25.

Northern Bakeries (Coburg) Pty. Ltd., 2 Allen-street, Coburg.

## Sub-schedule No. 2.

BREAD FOR CHILDREN'S WELFARE DEPOT, ROYAL PARK, RECEIVING HOUSE AND MENTAL HOSPITAL, ROYAL PARK, AND TRAVANCORE DEVELOPMENTAL CENTRE, FLEMINGTON.

Security, £30.

	£	s.	d.
1. Bread—Fine wheaten, first quality .. per cntl.	1	11	3

ANNEX TO CONTRACT No. 1956/26.

Capitol Bakeries Pty. Ltd., 257 Toorak-road, South Yarra.

## Sub-schedule No. 3.

TEACHERS' COLLEGES AND HOSTELS AT GRATTAN-STREET, 93 DRUMMOND-STREET, CARLTON; 470 AND 481 ST. KILDA-ROAD, MELBOURNE; 1 WALSH-STREET, SOUTH YARRA; AND TATE HOUSE, 373 DANDENONG-ROAD, ARMADALE; "LARNOOK," 13 ORRONG-ROAD, ARMADALE; 11 PATTERSON-STREET, HAWTHORN; AND 17 MOULE-AVENUE, BRIGHTON; HENRY WATSON HOUSE, 260 DOMAIN-ROAD, SOUTH YARRA; STONNINGTON, 336 GLEN-FERRIE-ROAD, MALVERN; AND POLICE HOSPITAL, ST. KILDA-ROAD, MELBOURNE—

Security, £20.

	£	s.	d.
1. Bread—Fine wheaten, first quality .. per cntl.	1	15	5

ANNEX TO CONTRACT No. 1956/27.

Pirrie Bros., 136 Exhibition-street, Melbourne.

## Sub-schedule No. 4.

## FLOUR.

Security, £90.

	£	s.	d.
1. Flour—Roller, first quality .. per cntl.	1	8	3

(AGREEMENT.)

Moran and Cato Pty. Ltd., 277 Brunswick-street, Fitzroy, N.6.

## Sub-schedule No. 5.

## GROCERIES.

	£	s.	d.
Bacon—			
1. { Sides .. .. . per lb.	0	5	0
{ Rashers, middle .. .. . do.	0	5	11
2. Barley—Pearl .. .. . do.	0	0	6½
Beans—			
3. Butter .. .. . do.	*		
4. Haricot .. .. . do.	0	1	6
5. Lima .. .. . do.	0	1	7
6. Biscuits (Tins 4s. each, returnable)—			
Dry (Thin Captain, Unecda, Cenovis) .. .. . do.	0	1	9
7. Coffee, Malt, Arrowroot, Gingernuts, Marie, Holsum. .. .. . do.	0	1	9
8. Assorted—Vanilla Curls, Nice, Rice, Fruit Cookies, Devon Shortbreads Butter Crisps .. .. . do.	0	1	11
Blue—			
9. { 1-oz. knobs, "Reckitts," paper .. per doz.	0	2	2
{ 7-lb. packets, bulk .. .. . per lb.	0	1	11½
10. Borax .. .. . do.	0	0	8½
11. Cake Containers—Paper "Tiger" 90's .. per doz.	0	5	7
Cereals—			
12. Pipers, Kornies, Weeties or equal, 24-oz. per doz.	1	3	6
13. Cornflakes or equal, "Kellogs," 16-oz. packets .. do.	1	7	8
14. Weetbix or equal, 24-oz. packets .. do.	1	3	6
15. All Bran or equal, "Kellogs" .. do.	0	17	11
16. Cheese—5-lb. boxes, "Kraft" .. per pkt.	0	18	9
17. Chutney—"Rosella," Fruit .. per doz.	1	2	0
18. Cloves—Whole .. per lb.	0	5	10
19. Coconut—Desiccated, "Ceylon" .. do.	0	1	9½
Coffee Essence—			
20. { 8-oz. bottles, "Turban" .. per doz.	1	10	6
{ 40-oz. jars = 1 quart, "Moran and Cato" .. per jar	0	12	6
21. Curry Powder—Bulk .. per lb.	0	2	5½
Custard Powder—			
22. { Bulk .. do.	0	1	1
{ 1-lb. packets, "Medallion" .. do.	0	1	6½
23. Dates .. do.	0	1	4½
Essences—			
24. Almond, 4-oz., "Summagold" .. per bot.	0	1	7½
25. Lemon, 8-oz., "Summagold" .. do.	0	4	4½
26. Vanilla, 8-oz., "Summagold" .. do.	0	3	6½
27. Cochineal (red colouring), 16-oz., "Summagold" .. do.	0	3	5½
28. Parisian, 26-oz., "Greigs" .. do.	0	3	7½
29. Yolkine (yellow colouring), 16-oz., "Summagold" .. do.	0	3	5½
Cocoa—			
30. { Tins, 1-lb., "Bournville" .. per tin	0	5	8½
{ Loose .. per lb.	*		
Extracts and Pastes, &c., or equals—			
31. Marmite, 4-oz. jars .. per jar	0	2	2½
32. Vegemite, 4-oz. jars .. do.	0	2	2½
33. Peanut Butter, 12-oz. jars, "Cottees" .. do.	0	3	2½
34. Bonox, 4-oz. jar .. do.	0	2	8½
35. Bloater, 2½-oz. jars, "Pecks" .. do.	0	1	3½
36. Salmon and Shrimp, 2½-oz. jars, "Pecks" .. do.	0	1	5½
Fish—Tinned (Flair or equal)—			
37. Salmon (Aust.), 16-oz., "Kingsound" .. per doz.	2	1	3
38. Fish Cutlets, 12-oz., "Seacape" .. do.	1	8	6
39. { Herrings, in sauce, 14-oz., "Tyne" .. do.	1	5	3
{ Herrings, fresh, 14-oz., "Tyne" .. do.	1	4	9
40. Sardines (½'s) .. do.	0	15	0
Flour—Corn or Maize—			
41. Packets, 1-lb., "Medallion" .. per lb.	0	1	3½
42. Bulk .. do.	0	0	8½
Flour—Self Raising—			
43. { 25-lb., "A.W.G." .. per bag	0	14	3
{ 50-lb., "A.W.G." .. do.	1	7	9
Fruits—Dried—			
44. Apples .. per lb.	*		
45. Apricots, 2-crown, "Choice" .. do.	0	3	3½
46. Nectarines, 3-crown, "Choice" .. do.	0	3	1
47. Peaches, 1-crown, Unpeeled .. do.	0	1	9½
48. Pears, 3-crown, "Choice" .. do.	*		
49. Prunes, 70-80, 7-lb. tin (80-90-1/10) .. do.	0	2	0½
50. Currants, 1-crown .. do.	0	1	5½
51. Raisins, Seeded, loose .. do.	0	1	4½
52. Sultanas, 1-crown .. do.	0	1	6
Fruits, in 30-oz., 4-lb., and 7-lb. tins—			
53. Apricots, Halves, 30-oz., "Rosella," "S.P.C." &c. .. per doz.	1	10	0
54. Apricots, Whole, 4-lb. tins, "Camms" .. do.	*		
55. Peaches, Halves and Sliced, 30-oz., "Rosella," "S.P.C." &c. .. do.	1	10	6
56. Pears, 30-oz., "Rosella," "S.P.C." .. do.	1	12	0
57. Apples, Solid Pack, 6½-lb. tins, "Camms" .. do.	5	1	0
58. Apricots, Solid Pack, 7-lb. tins, "Berri" .. do.	4	15	6
59. Peaches, Solid Pack, 7-lb. tins, "Berri" .. do.	5	12	0
60. Gelatine—Ground, 1-lb. packets, "Davis" .. each	0	6	9½
61. Ginger—Ground .. per lb.	0	7	3
62. Golden Syrup—2-lb. tins .. per doz.	0	17	9

\* Supplies not available.



## Sub-schedule No. 5—continued.

GROCERIES—continued.		£	s.	d.
63. Gravox—1-lb. tins	per doz.	0	18	9
64. Herbs—Mixed, 1-oz. packet, "Modern"	do.	0	3	0
65. Honey—60-lb. tins	per tin	4	7	6
Jelly Crystals—				
66. 4-oz. packets, "Sparkling" or "Clipper"	per doz.	0	4	11
67. 7-lb. packets, "Sparkling" or "Clipper"	per pkt.	0	15	3
68. Junket Tablets—Flavoured, "Merry Widow"	per doz. tubes	0	15	0
69. Lentils	per lb.	0	1	6
Macaroni—				
70. 1-lb. packets, "Rinoldi"	do.	0	1	1
71. Bulk, 56-lb. bags, "Forex"	do.	0	0	8½
72. Margarine—Cake, Pastry	do.	0	1	7
73. Matches—Safety, packets	per gross	0	19	6
74. Mayonnaise—5-lb. jars, "Kraft"	per jar	0	17	0
Meat—Tinned—				
75. Beef Luncheon, 12-oz. tins, "Tom Piper"	per doz.	1	5	9
76. Beef Steak Pudding, 16-oz. tins, "Tom Piper"	do.	1	5	3
77. Camp Pie, 16-oz. tins, "Imperial"	do.	1	2	4
78. Irish Stew, 16-oz. tins, "Tom Piper"	do.	1	6	9
79. Lamb and Green Peas, 16-oz. tins	do.	*		
80. Sausages and Vegetables, 16-oz. tins, "Tom Piper"	do.	1	5	9
Milk—				
81. Dried, 12-oz. tins, "Sunshine"	do.	1	15	3
82. Dried, 3-lb. tins, "Sunshine"	do.	6	10	9
83. Condensed, 14-oz. tins, "Nestles"	do.	1	0	0
84. Ideal or equal, 12-oz. tins, "Ideal"	do.	0	15	6
85. Mustard—Bulk	per lb.	0	4	9
86. Nutmeg—Ground	do.	0	6	7
87. Oatmeal—Flaked	do.	0	0	6½
88. Pastry Mixture, "Maxam"	per doz.	0	14	3
89. Peel—Mixed, cut	per lb.	0	1	10
90. Pepper—White, ground	do.	0	5	1
91. Pickles—Assorted, 20-oz. bottles, "Sutherland"	per doz.	1	3	3
Rice—				
92. Dressed	per lb.	0	0	9½
93. Ground, 1-lb. packets	do.	0	0	10½
94. Sago—(Seed Tapioca)	do.	0	1	0
Salt—				
Fine, bulk	per cwt.	0	14	3
95. Table, 1-lb. packets, "Mermaid"	per lb.	0	0	4½
Sauce—				
96. Tomato, 26-oz. bottles, "Raleigh"	per doz.	1	17	6
97. { Tomato, 1-gal. jars, "Raleigh."	per jar	0	14	6
{ Tomato, 1-gal. jars "White Crow"	per jar	0	14	3
(Jars 3s. each, returnable)				
98. Worcestershire, 10-oz. bottles, "Hardings"	per doz.	0	18	9
99. Worcestershire, 1-gal. jars, "Hardings"	per jar	0	11	9
(Jars 3s. 6d. each, returnable)				
100. Mustard, 8-oz. bottles, "Hollbrooks"	per doz.	1	1	4
Soda—				
101. Bicarbonate of	per lb.	0	0	6
102. Washing	do.	0	0	4
Soups—Tomato—				
103. 16-oz. tins, "Kia Ora"	per doz.	1	0	6
104. 4-lb. tins, "Model Pres. Co."	do.	3	5	6
Spaghetti—				
105. 1-lb. packets, "No. 1 Rinoldi"	per lb.	0	1	2
106. Bulk, 22-lb. cartons, "No. 1 Forex"	per ctn.	0	18	3
107. Spice—Mixed	per lb.	0	2	8
Starch—Rice—				
108. { Bulk, "Parsons"	do.	0	0	8½
{ 12-oz. packets, "Silver Star"	per pkt.	0	1	4
Sugar—				
109. Icing (56-lb. bags, 47s. 7d.)	per lb.	0	0	10½
110. Castor (70-lb. bag, 57s. 0d.)	do.	0	0	10
111. Raw	do.	0	0	9
112. White, 70-lb. bags	per bag	2	12	9
113. Tapioca—Pearl	per lb.	0	1	1½
114. Treacle—2-lb. tins	per doz.	0	17	6
Vegetables—Dried—				
115. Peas, Green, "Dewerisp" or equal	per lb.	0	9	2
116. Peas, Split (Yellow)	do.	0	0	7½
Vegetables—Tinned—				
117. Baked Beans, 16-oz., "Kia Ora"	per doz.	1	0	6
118. Baked Beans, No. 10 cans, "Kia Ora"	do.	5	15	0
119. Beans, Green, 16-oz., "Gartside"	do.	1	4	3
120. Beetroot, 30-oz., "Raleigh"	do.	1	12	0
121. Carrots, 19-oz., "Mortons"	do.	0	16	0
122. Peas, 30-oz., "Biddy" Processed	do.	1	7	0
123. Peas, 30-oz., "Raleigh" Garden	do.	*		
124. Sweetcorn, 16-oz., "Rosella"	do.	1	8	3

## Sub-schedule No. 5—continued.

GROCERIES—continued.		£	s.	d.
125. Tomatoes, 30-oz., "M.O.N."	per doz.	1	10	6
Vermicelli—				
126. { 1-lb. packets, "Rinoldi"	do.	0	14	0
{ Bulk, 22-lb. cartons, "Forex"	per ctn.	0	18	3
127. Vinegar—Malt, 1-gal. jars (Jars 3s. 6d., returnable)	per gal.	0	2	11

## Sub-schedule No. 6.

CEREALS.		£	s.	d.
1. Oatmeal—Plain	per cwt.			
2. Rice—Dressed	do.			
3. Pearl Barley	do.			
4. Peas—Split—Yellow	do.			
5. Sago	do.			

Purchase  
under  
Tender  
Board  
Quota-  
tions.

## ANNEX TO CONTRACT No. 1956/28.

W. H. Johnsons Jams Pty. Ltd., 42 Meaden-street, South Melbourne S.C.5.

## Sub-schedule No. 7.

JAMS.		£	s.	d.
Security, £20.				
Jams—				
1. Assorted, in bulk, of approved kinds, in the proportion of half seed and half actual net stone, of the best quality, in tins	per lb.	0	0	10½
2. Assorted, in bulk, of approved kinds, in the proportion of half seed and half stone, of the best quality, in 24-oz. tins	per tin	0	1	11
3. Marmalade, 24-oz. tins	do.	0	1	10
4. Assorted, 5-lb. tins, in the proportion of half seed and half stone of the best quality	do.	0	6	1

## ANNEX TO CONTRACT No. 1956/29.†

F. Watkins Pty. Ltd., 184 Bourke-street, Melbourne, C.1.

## Sub-schedule No. 8.

MEAT FOR MENTAL HOSPITAL, KEW.		£	s.	d.
Security, £35.				
Fresh Beef—				
1. Rolled Roast boneless (Brisket excluded)	per cwt.	10	0	0
2. Fresh Beef—Steak, Stewing	do.	9	11	8
3. " " Topside	do.	10	8	4
4. " " Minced	do.	8	6	8
5. Corned Beef—Rolled or Round, as ordered, without bone or cartilage	do.	10	8	4
6. Fresh Mutton—(Whole Sheep) (Kidney fat to be removed)	do.	4	7	6
7. Fresh Mutton—Legs	do.	8	6	8
8. Chops—Fore quarter	do.	5	16	8
9. Saveloys	per doz.	0	3	6
10. Sausages—Mixed	per lb.	0	1	11
11. Sausage—Belgium	do.	0	2	3
12. Beef Loaf	do.	0	2	11
13. Ham Loaf	do.	0	2	11
14. Veal Loaf	do.	0	2	11
15. Tripe, Fresh	do.	0	0	10
16. Livers—Sheep	do.	0	2	6
17. " Ox	do.	0	1	6
18. Gravy Beef and Shin Beef, boneless	do.	0	1	10
19. Sausage Meat	do.	0	1	3
20. Kidneys, Sheep	do.	0	3	0
21. " Pigs	do.	0	2	6
22. " Ox	do.	0	3	3
23. Veal—boned	do.	0	2	8
24. Brains—Sheep	per set	0	0	9
25. Fowls, First quality	per lb.	0	5	0

## ANNEX TO CONTRACT No. 1956/30.†

Jackson's United Meat Co. Pty. Ltd., 546 Racecourse-road, Newmarket.

## Sub-schedule No. 9.

MEAT FOR FENTRIDGE PENAL ESTABLISHMENT, COBURG AND "FAIRLEA" FEMALE PRISON, FAIRFIELD.		£	s.	d.
Security, £35.				
Fresh Beef—				
1. Fore-quarters	per cwt.	5	8	4
2. Minced	do.	8	6	8
3. Corned Beef—Rolled or Round, as ordered, without bone or cartilage	do.	10	16	8
4. Fresh Mutton (whole sheep)	per lb.	0	0	11½
5. Sausages—Mixed	do.	0	1	11
6. Fresh Suet—Kidney	do.	0	0	8
7. Dripping—Beef	do.	0	0	11½
8. Sausage Meat	do.	0	1	0
9. Saveloys	do.	0	1	3
10. Sausage—Beef German	do.	0	2	7

## ANNEX TO CONTRACT No. 1956/31.†

J. H. Cooke Pty. Ltd., 378 Queen's-parade, Clifton Hill.

## Sub-schedule No. 10.

MEAT FOR CHILDREN'S WELFARE DEPOT, ROYAL PARK, AND  
TRAVANCORE DEVELOPMENTAL CENTRE, FLEMINGTON.

Security; £8.

£ s. d.

1. Fresh Beef—Rolled Roast Sirloin—Boneless	per lb.	0	2	6
2. Beef—Corned—Silverside	do.	0	2	9
3. Fresh Mutton	do.	0	1	0
4. Legs	do.	0	1	8
5. Legs (Two tooth)	do.	0	1	10
6. Chops—Mid Loin (Two tooth)	do.	0	1	8
7. Rib Chops as Cutlets (Two tooth)	do.	0	2	0
Steak—				
8. Rump	do.	0	3	6
9. Blade	do.	0	2	6
10. Minced	do.	0	2	0
11. Skirt	do.	0	2	0
12. Veal—Fillet, boneless	do.	0	3	6
13. Pickled Pork	do.	0	3	6
14. Sausages—Mixed	do.	0	1	10
15. Sausage Meat	do.	0	0	9
16. Sausage—Strasbourg, Pork	do.	0	3	0
17. Ham Loaf (summer months mainly)	do.	0	3	0
18. Tripe—Fresh	do.	0	0	10
19. Frys—Lamb	do.	0	2	6
20. Livers—Sheep	do.	0	2	0
21. Kidneys—Sheep	do.	0	2	6
22. Brains—Sheep	per set.	0	0	8
23. Shanks—Sheep	each	0	0	6
24. Ox Tongue	per lb.	0	2	0
25. Frankfurts	do.	0	2	0
26. Rabbits—Fresh	do.	0	2	3

## ANNEX TO CONTRACT No. 1956/32.†

J. H. Cooke Pty. Ltd., 378 Queen's-parade, Clifton Hill.

## Sub-schedule No. 11.

MEAT FOR RECEIVING HOUSE AND MENTAL HOSPITAL, ROYAL PARK

Security, £10.

£ s. d.

Fresh Beef—				
1. Rolled Roast, boneless (Brisket excluded)	per cwt.	0	2	6
2. Thick Flank	do.	0	2	0
3. Topside	do.	0	2	9
4. Fresh Mutton (Legs)	do.	0	1	8
5. Corned Beef—Rolled or Round, as ordered, without bone or cartilage	do.	0	2	0
6. Chops—Middle Loin	do.	0	1	8
7. Forequarter	do.	0	1	0
8. Sausages—Mixed	do.	0	1	10
9. Sausage—Mince	do.	0	0	9
10. Veal, fillets	do.	0	3	0
11. Livers—Calves	do.	0	1	0
12. Tripe—Fresh	do.	0	0	10
13. Brains—Sheep	per set	0	0	8
14. Rabbits—Fresh	per lb.	0	2	3
15. Fowls—First quality	do.	0	5	0

(AGREEMENT.)

Moran and Cato Pty. Ltd., 277 Brunswick-street, Fitzroy, N.G.

## Sub-schedule No. 12.

SOAP MIXTURES.

(Of Commonwealth Manufacture.)

£ s. d.

1. Extract of "Kitchens" or equal "Stella"	per cwt.	3	15	9
Soap Powder, 80-lb. bags				
2. Household—Dry, "Pental" wrapped, cases of 3 dozen	per case	2	9	6
3. "Lux"—Large packets	per doz.	0	14	3
"Rinso"—				
4. { Standard packets	do.	0	17	9
{ Economy packets	do.	1	12	6
"Persil"—				
5. { Large packets	do.	0	17	9
{ Giant packets	do.	1	12	6
6. Sandsoap—"Electric" 12-oz. blocks	do.	0	4	11
7. Toilet Soap—"Kitchens" or equal, "Doub-lays," 3½-oz.	do.	0	4	5½
"Velvet"—				
8. "Quads," standard	do.	1	1	6
"Quints," economy	do.	1	14	5

## ANNEX TO CONTRACT No. 1956/33.

Bushells Ltd., 452 Flinders-street, Melbourne.

## Sub-schedule No. 13.

TEA.

Security, £180.

£ s. d.

1. Tea—First Grade—To sample	per lb.	0	4	2½
------------------------------	---------	---	---	----

‡ 56-lb. bags—1 s. 1½d. per lb.

†† Cartons—2 doz. 2-lb. tins.

○ 50 lb. Bags—29s. 0d. each.

## ANNEX TO CONTRACT No. 1956/34.

Bushells Ltd., 452 Flinders-street, Melbourne.

## Sub-schedule No. 14.

COFFEE.

Security, £70.

£ s. d.

1. Coffee—Fresh roasted, and whole, beans to be thoroughly sound—To sample	per lb.	0	4	2½
--	---------	---	---	----

## SCHEDULE No. 2.

## PROVISIONS—MONT PARK, ETC.

(For delivery at the Mental Hospital, Mont Park, to Depots as required, the Repatriation Mental Hospital, Bundoora, Larundel Mental Hospital, Pleasant View Receiving House, Wood-street, Preston, Janefield Colony, and the Sanatorium, Gresswell.)

## ANNEX TO CONTRACT No. 1956/35.

Northern Bakeries Pty. Ltd., 170 Edward-street, East Brunswick.

## Sub-schedule No. 1.

BREADSTUFFS.

Security, £190.

£ s. d.

Bread—

1. Fine wheaten, first quality	per cwt.	1	13	10½
2. Raisin, first quality	do.	3	13	10½
3. Rolls	per doz.	0	1	11½

(AGREEMENT.)

Henry Berry and Co. (A'sia) Ltd., 212 King-street, Melbourne, C.I.

## Sub-schedule No. 2.

GROCERIES.

£ s. d.

1. Bacon—middles	per lb.	0	5	2
Beans—				
2. Haricot (White Arroz)	do.	0	1	4
3. Butter	do.	0	1	6
4. Blue—Washing—1oz. knobs "Reckitts"	per doz.	0	2	3½
5. Biscuits—Coffee, Malt, Milk Arrowroot, or equal, as ordered. (Tins 4s. each)	per lb.	0	1	10½
6. Camp Pie—12-oz. tins	per doz.	0	18	9
7. Candles (full weights)—Kitchen's "Electrics," or other make of equal quality in sets of 6	per set	0	2	3½
8. Cereal—24-oz. packets, "Malties"	per doz.	1	4	3
9. Cinnamon	per lb.	0	2	1
10. Cloves	per lb.	0	6	0
11. { Cocoa—1-lb. bags Bournville	per doz.	3	10	5
{ 1-lb. bags Berrys	per lb.	2	14	0
12. Coconut—Desiccated "Ceylon"	per lb.	0	1	8
13. { 8-oz. bottles	per bot.	0	2	4
{ 1-gal. jars (Jars 3s. 6d.)	per jar	1	9	6
14. Corn or Maize Flour—1-lb. packets, "Kream"	per lb.	0	1	5½
15. Currants (1-crown (present season's) Less than case lots	do.	0	1	6½
16. Curry Powder—"Atlas"	do.	0	2	11
17. Custard Powder—1-lb. packets (7-lb. packets 8s. 9d. each)	per doz.	0	18	6½
18. Dates—Fresh, loose—case lots	per lb.	\$0	1	3½
19. Essence of Vanille—in full 20-oz. bottles ‡	do.	0	10	6
20. Essence—Lemon—4-oz. bottles	each	0	2	9½
21. Flour—Self-raising, "Cookwell" (150 lb.)	per bag	0	17	0
22. Gelatine—Ground	per lb.	0	7	0
23. Ginger—Ground	do.	0	6	9
24. Golden Syrup—2-lb. tins	†† per ctn.	1	16	8
Herrings—				
25. { 14-oz. tins, Fresh	per doz.	1	5	0
{ in Tomato Sauce	do.	1	5	6
26. Honey—First quality	per lb.	0	1	6
27. Jelly Crystals—4-oz. packets "Invicta"	per gross	3	14	0
28. Jelly Crystals—7-lb. packets	per pkt.	0	16	6
29. Junket Tablets—"Berry's"	per tube	0	1	1
30. Macaroni—22-lb. boxes	per box	1	0	0
31. Margarine—Cake, Pastry	per lb.	0	1	5½
Meat—Beef Luncheon—				
32. { 12-oz. round tins	per doz.	0	18	3
{ 12-oz. taper tins	do.	1	9	6
Milk—Dried, Full Cream—				
33. { 12-oz. tins, 3 dozen, "Sunshine"	per case	5	8	0
{ 3-lb. tins, 1 dozen, "Sunshine"	do.	6	14	6
{ 12-oz. tins, 3 dozen, "Trufood"	do.	5	2	0
{ 3-lb. tins, 1 dozen, "Trufood"	do.	6	10	3
34. Milk—Malted "Horlicks"—1-lb. tins	per doz.	2	12	2
35. Mustard—"Colonial"	per lb.	0	4	9
36. Peel—Mixed	per lb.	0	1	7
37. Nutmeg—Ground	do.	0	7	0
Pepper—				
38. { White, ground	do.	0	5	3½
{ Black, ground	do.	0	4	9
39. Pepper—Cayenne	do.	0	5	6
40. Pickles—Assorted, 20-oz. bottles	per doz.	1	4	0

§ Lots under 1 case, 1s. 4d. per lb.

¶ As supply of 20-oz. bottles is irregular, rate is shown on per lb. basis.

|| 1-oz. knobs in calico, 3s. 5d. per doz.

## Sub-schedule No. 2—continued.

## GROCERIES—continued.

		£	s.	d.
41.	{ Prunes—Dried, 50-60's .. per lb. 0 2 7½			
	{ In case lots of 7lb. tins { 60-70's .. do. 0 2 4½			
	{ .. 70-80's .. do. 0 2 1½			
42.	Raisins, Seeded { Bulk, 4-crown §§ .. per lb. 0 1 5½			
	{ 1lb. packets .. per doz. pkts. 1 0			
43.	{ Sultanina, 1-crown .. §§ .. per lb. 0 1 7			
	{ (present season's) 2-crown .. §§ .. do. 0 1 7½			
44.	Rice—Ground, 1-lb. packets .. do. 0 0 10			
45.	Salt—Fine (Bag, approx. 1 cwt.) .. per bag 0 14 9			
	Sauce—Tomato—			
	{ 26-oz. bottles, "Leggos" (Cartons 2s.) .. per doz. 1 17 0			
46.	{ 26-oz. bottles "Kia Ora" .. per doz. 1 18 4			
	{ 1-gal. jars (Jars 3s. 6d.) .. per gal. 0 18 0			
47.	Sauce—Worcestershire, 1-gal jars .. each 0 9 0			
	(Jars 3s. 6d.)			
48.	Soda—Bicarbonate of .. per lb. 0 0 6			
49.	Washing .. per cwt. 1 15 0			
50.	Spaghetti—22-lb. cartons "Rinoldi" .. do. 1 0 0			
51.	Spice—Mixed, loose .. per lb. 0 2 11			
	Starch—			
52.	Coral Rice, 14-oz. packets (12-oz. .. per doz. 0 17 6			
	16s. 8d.)			
	Sugar—			
53.	Castor .. per cwt. 4 12 6			
54.	Icing .. do. 4 12 6			
55.	Tartar—Cream of—Substitute, Sodium .. per lb. 0 2 3			
	Phosphate, "Antelope"			
56.	Treacle—2-lb. tins .. per ctn. 1 15 10½			
	Vermicelli—			
57.	{ 16-oz. packets .. per doz. 0 13 9			
	{ 22-lb. cartons .. per ctn. 1 0 0			
	Vinegar—Malt—			
58.	{ gallon jars (Jars 3s. 6d.) .. per gall. 0 3 0			
	{ 9-gallon kegs (Kegs £5.) .. do. 0 2 11			

## ANNEX TO CONTRACT No. 1956/36.

W. H. Johnsons Jams Pty. Ltd., 42 Meaden-street, South Melbourne, S.C.5.

## Sub-schedule No. 3.

## JAMS.

		£	s.	d.
	Security, £23.			
1.	Jams—			
	Assorted, in bulk, of approved kinds, in .. per lb. 0 0 10½			
	the proportion of half seed and half actual net			
	stone, of the best quality, in tins .. weight			
2.	Assorted, in 5-lb. tins, in the proportion of .. per tin 0 6 1			
	half seed and half stone, of the best			
	quality			
3.	Marmalade, 5-lb. tins .. do. 0 5 11			

## ANNEX TO CONTRACT No. 1956/37†

W. Anglies and Co. (Aust.) Pty. Ltd., 42 Bourke-street, Melbourne.

## Sub-schedule No. 4.

## MEAT.

		£	s.	d.
	(For Mont Park Mental Hospital, &c.)			
	Security, £50.			
	Fresh Beef—			
1.	Buttocks .. per cwt. 7 5 10			
2.	Roast .. do. 6 5 0			
3.	Rolled Roast—Boneless (Brisket excluded) .. do. 11 5 0			
	Beef, Corned—			
4.	Rolled or Round, as ordered, without bone .. do. 10 0 0			
	or cartilage			
5.	Corned—Silverside .. do. 12 10 0			
	Mutton, Fresh—			
6.	Carcass or Sides (Kidney fat to be removed) .. do. 4 7 6			
7.	Legs .. per lb. 0 1 8			
8.	Fore-quarter .. do. 0 0 7			
	Chops—			
9.	Fore-quarter .. do. 0 1 3			
10.	Loin .. do. 0 1 10			
	Steak—			
11.	Thick Flank .. do. 0 2 9			
12.	Rump .. do. 0 3 6			
13.	Minced .. do. 0 2 0			
14.	Topside .. do. 0 2 9			
15.	Sausages—Meat .. do. 0 1 0			
16.	Sausages—Mixed .. do. 0 1 11			
17.	Shanks—Sheep .. each 0 0 6			
18.	Tripe—Fresh .. per lb. 0 0 10			
19.	Brains—Sheep .. per set 0 0 7			
20.	Kidneys—Ox .. per lb. 0 3 0			
21.	Livers—Sheep .. do. 0 2 6			
22.	Livers—Calves .. do. 0 1 6			
23.	Sausage—Strasbourg, Pork .. do. 0 2 9			
24.	Rabbits—Fresh (Gresswell only) .. do. 0 2 7			
25.	Saveloys .. per doz. 0 3 2			
26.	Tongues—Ox .. per lb. 0 1 8			
27.	Ham Loaf .. do. 0 2 10			
28.	Fillet Veal .. do. 0 2 7			
29.	Pressed Veal and Pork Loaf .. do. 0 4 3			
30.	Pressed Shoulder Ham .. do. 0 6 6			
31.	Potted Meat .. do. 0 1 3			
32.	Fowls—First quality .. do. 0 5 3			

\* Supplies not available. § Carton 2 dozen 2-lb. tins.

○ Less than carton lots—6 tins—additional 1d. per lb.

† Apricot—£1 5 9, Marmalade—£1 4 6, Peach—£1 5 9, Plum—£1 3 6, Melon &amp; Lemon—£1 3 3,

Raspberry—£2 1 6, Gooseberry—£1 8 0, Blackcurrant—£2 1 3.

## ANNEX TO CONTRACT No. 1956/38.†

W. Anglies and Co. (Aust.) Pty. Ltd., 42 Bourke-street, Melbourne.

## Sub-schedule No. 5.

## MEAT.

(For Pleasant View Receiving House, Wood-street, Preston.

Security, £5.

		£	s.	d.
1.	Fresh Beef—Roast—Boneless (Brisket .. per lb. 0 2 0			
	excluded)			
2.	Corned Beef—Silverside .. do. 0 2 9			
3.	Fresh Mutton—Legs .. do. 0 1 4			
	Steak—			
4.	Bladebone .. do. 0 2 7			
5.	Minced .. do. 0 2 0			
	Chops—			
6.	Loin—Lamb .. do. 0 4 4			
7.	Fore-quarter—Mutton .. do. 0 1 2			
8.	Livers—Lambs .. do. 0 2 6			
9.	Sausages—Pork .. do. 0 1 11			
10.	Dripping—Beef .. do. 0 0 11½			
11.	Kidneys—Ox .. do. 0 3 0			
12.	Brains—Sheep .. per set 0 0 9			
13.	Frankfurts .. per lb. 0 2 3			

## SCHEDULE No. 3.

## PROVISIONS FOR S.S. R/P AND DREDGES.

## Sub-schedule No. 1.

## BREAD.

Purchase by agreement.

## (AGREEMENT.)

Moran and Cato Pty. Ltd., 277 Brunswick-street, Fitzroy, N.6.

## Sub-schedule No. 2.

## GROCERIES.

		£	s.	d.
1.	Bacon Rashers—Middle .. per lb. 0 5 11			
	Beans—			
2.	Butter .. do. *			
3.	Haricot .. do. 0 1 6			
	Biscuits—			
4.	Coffee, Marie, Malt (Tins 4s. each) .. do. 0 1 9			
5.	Dry (Tins 4s. each) .. do. 0 1 9			
	Gravox—			
6.	{ 4-oz. packets .. per doz. 0 6 2			
	{ 8-oz. packets .. do. 0 11 4			
7.	Chutney—13-oz. bottles "Rosella" .. do. 1 2 0			
8.	Cocoa—1-lb. tins or cartons, "Bournville" .. do. 3 8 3			
9.	Coconut—Desiccated .. per lb. 0 1 9½			
10.	Coffee—Fresh Roasted and Ground .. do. 0 7 4			
11.	Corn or Maize Flour—1-lb. packets "Medal- .. per doz. 0 16 0			
	lion"			
11a.	Corn or Maize Flour—Loose .. per lb. 0 0 8½			
12.	Currants—1-crown (present season's) .. do. 0 1 5½			
13.	Custard Powder—1-lb. packets, .. per doz. 0 17 3			
	"Medallion"			
14.	Dates .. per lb. 0 1 4½			
15.	Eggs—New Laid .. per doz.			
	Essence—			
16.	Vanilla, 16-oz. bottles, "Summagold" .. per bot. 0 6 5			
17.	Cochineal, Substitute—Red Colouring, .. do. 0 1 0½			
	4-oz. bottles, "Summagold"			
	Fish—			
18.	{ Herrings, 14-oz. tins, Fresh, "Tyne" .. per doz. 1 4 9			
	{ Herrings in Tomato Sauce, "Tyne" .. do. 1 5 3			
19.	Salmon, Fresh, 16-oz. tins, "King Sound" .. do. 2 1 3			
20.	Sardines, ½-tins, "Norwegian Pack" .. do. 0 15 0			
	Flour—			
21.	First quality .. per lb. 0 0 5			
22.	Self-raising, 50-lb. bag, "M & C" .. per bag 1 7 9			
	Fruits—Preserved—30-oz. tins—			
23.	{ Pears .. per doz. 1 12 0			
	{ Peaches .. do. 1 10 6			
	{ Apricots .. do. 1 10 0			
24.	Pines .. do. 1 17 0			
	Gelatine—Ground			
25.	{ 8-oz. packets .. do. 2 2 3			
	{ 16-oz. packets .. do. 4 1 3			
26.	Golden Syrup—2-lb. tins .. do. 0 17 9			
27.	Honey—24-oz. jars, "Blue Ribbon" .. do. 1 18 9			
28.	Jams—Assorted kinds, 24-oz. tins, .. do. †			
29.	Jelly Crystals—4-oz. packets, "Clipper" or .. do. 0 4 11			
	"Sparkling"			
30.	Mixed Peel—Cut .. per lb. 0 1 10			
31.	Macaroni—22-lb. cartons .. per ctn. 0 18 3			
32.	Margarine—Cooking Quality .. per lb. 0 1 7			

|| Market rates plus 3d. per dozen.

¶ 25-lb. bags, 14s. 3d.

§§ Less than case lots additional 1d. per lb.

## Sub-schedule No. 2—continued.

## GROCERIES—continued.

		£	s.	d.
Meat—Preserved—				
33.	Camp Pie, 12-oz., "Imperial" .. per doz.	0	18	9
	Sausages and Vegetables, 16-oz., "Rosella" .. do.	1	5	0
	Irish Stew, 16-oz., "Tom Piper" .. do.	1	6	9
	Steak and Kidney Pudding, 16-oz., "Tom Piper" .. do.	1	5	3
Milk—				
34.	Dried, Full Cream, 12-oz. tins, "Sunshine" .. do.	1	15	3
35.	Condensed, Full Cream, 14-oz. tins .. do.	1	0	0
36.	Mustard—Loose, "McKenzies" .. per lb.	0	4	9
37.	Nutmeg—Whole .. do.	0	4	10
38.	Oatmeal—Flaked .. do.	0	0	6½
39.	Pearl Barley .. per cwt.	3	3	0
40.	Peas—Split .. do.	3	7	9
41.	Pepper—White, ground .. per lb.	0	5	1
42.	Pickles—Mustard, 20-oz. bottles .. per doz.	1	3	3
43.	Prunes—Dried (present season's), 70/80 (80/90-1/10 per lb.—7lb. tins) .. per lb.	0	2	0½
Raisins—				
44.	Seeded (present season's), "M & C" or "Summagold", 1-lb. packets .. per doz.	1	1	0
45.	Sultana, 1-crown (present season's) .. per lb.	0	1	6
46.	Rice—Dressed .. do.	0	0	9½
47.	Salt—Fine .. per cwt.	0	14	3
Sauce—				
48.	Mustard, 8-oz. bottles, "Holbrooks" .. per doz.	1	1	4
49.	Tomato, 26-oz. bottles, "Raleigh" .. do.	1	17	6
50.	Worcestershire, 10-oz. bottles, "Hardings" .. do.	0	18	9
51.	Soda—Bi-carbonate of .. per lb.	0	0	6
52.	Spice—Mixed, 1-oz. packets, "Parsons" .. per doz.	0	4	10
Sugar—				
53.	Brown, 160-lb. bags .. per lb.	0	0	9
	White, 70-lb. bags .. per bag	2	12	9
54.	Castor .. per lb.	0	0	10
55.	Icing .. do.	0	0	10½
56.	Vinegar—Malt, 26-oz., "Blue Ribbon" .. per doz.	0	16	3
57.	Yolkine—4-oz. bottles (yellow colouring) .. do.	0	12	9

## ANNEX TO CONTRACT No. 1956/39.†

J. H. Cooke Pty. Ltd., 378 Queen's-parade, Clifton Hill.

## Sub-schedule No. 3.

## MEAT.

(Delivery at River Yarra Wharfs.)

	Security, £5.	£	s.	d.
1. Fresh Beef—Roast .. per lb.		0	1	9
Beef—Corned—				
2. Silverside .. do.		0	2	9
3. Rolled .. do.		0	2	0
Fresh Mutton—				
4. Fore-quarter .. do.		0	0	6
5. Legs .. do.		0	1	8
Chops—				
6. Fore-quarter .. do.		0	1	0
7. Loin .. do.		0	1	8
Steak—				
8. Rump .. do.		0	3	6
9. Stewing .. do.		0	2	0
10. Topside .. do.		0	2	9
11. Sausages—Mixed .. do.		0	1	10
12. Tripe—Fresh .. do.		0	0	10
13. Livers—Sheep .. do.		0	2	6
14. Suet—Kidney .. do.		0	0	8
15. Rabbits—Fresh .. do.		0	2	3
16. Ice .. per cwt.		0	4	0

## Sub-schedule No. 4.

## VEGETABLES.

1. Onions ..	} Purchase by agreement
2. Other vegetables, including beetroot, cauliflower, carrots, cabbages, turnips, parsnips, rhubarb, swedes, and pumpkin, as required ..	

## SCHEDULE No. 4.

## PROVISIONS—TEACHERS' COLLEGE, HOSTELS, POLICE HOSPITAL, ETC.

(Delivery at Institutions.)

TEACHERS' COLLEGES AND HOSTELS AT GRATTAN-STREET, 93 DRUMMOND-STREET, CARLTON; 470 AND 481 ST. KILDA-ROAD, MELBOURNE; 1 WALSH-STREET, SOUTH YARRA; AND TATE HOUSE, 373 DANDENONG-ROAD, ARMADALE; "LARNOOK," 13 ORRONG-ROAD, ARMADALE; 11 PATTERSON-STREET, HAWTHORN; AND 17 MOULE-AVENUE, BRIGHTON; HENRY WATSON HOUSE, 260 DOMAIN-ROAD, SOUTH YARRA; STONNINGTON, 330 GLENFERRIE-ROAD, MALVERN; AND POLICE HOSPITAL, ST. KILDA-MELBOURNE—

## GROCERIES.

Order under Melbourne District, Schedule No. 1, Sub-schedule No. 5.

\* Supplies not available.

## ANNEX TO CONTRACT No. 1956/40.†

J. H. Cooke Pty. Ltd., 378 Queen's-parade, Clifton Hill.

## Sub-schedule No. 2.

## MEAT.

	Security, £15.	£	s.	d.
Fresh Beef—				
1. Rolled Prime Ribs, boneless .. per lb.		0	2	6
2. Topside .. do.		0	2	9
3. Sirloin, boneless .. do.		0	3	0
Fresh Mutton—				
4. Legs .. do.		0	1	8
5. Legs, pickled .. do.		0	1	8
6. Sides, Two-tooth .. do.		0	1	1
7. Legs, Two-tooth .. do.		0	1	9
8. Cutlets .. do.		0	2	0
9. Chops, Middle Loin .. do.		0	1	10
10. Chops, Fore-quarter .. do.		0	1	0
11. Chops, Chump .. do.		0	1	8
12. Beef—Corned, Silverside .. do.		0	2	9
Veal—				
13. Shoulder, boned .. do.		0	2	6
14. Fillet, boneless .. do.		0	3	0
Steak—				
15. Blade .. do.		0	2	3
16. Minced Blade .. do.		0	2	0
17. Stewing .. do.		0	2	0
18. Rump .. do.		0	3	6
19. Minced Steak .. do.		0	2	0
20. Sausages—Mixed .. do.		0	1	10
Sausage—				
21. Meat .. do.		0	0	9
22. Beef, German .. do.		0	2	3
23. Strasburg .. do.		0	3	0
24. Livers—Sheep .. do.		0	2	6
Kidneys—				
25. Sheep .. do.		0	2	6
26. Ox .. do.		0	2	6
27. Tongues—Ox .. do.		0	2	0
28. Ox Tails .. do.		0	1	9
29. Pigs Cheek .. do.		0	1	0
Brains—				
30. Sheep .. per set		0	0	8
31. Calves .. do.		0	0	6
32. Tripe—Fresh .. per lb.		0	0	10
33. Frankfurts .. do.		0	2	0
34. Black Puddings .. do.		0	1	6
35. Bones—Soup .. do.		0	0	1
36. Suet—Kidney .. do.		0	0	6
37. Rabbits—Fresh .. do.		0	2	3
38. Fowls—First quality .. do.		0	5	0

## SCHEDULE No. 5.

## PROVISIONS—HEATHERTON SANATORIUM, CHELTENHAM.

(Delivery at the Sanatorium.)

ANNEX TO CONTRACT No. 1956/41.

T. D. Cullander Pty. Ltd., 86 Broadway-parade, Oakleigh.

## Sub-schedule No. 1.

## BREAD.

	Security, £15.	£	s.	d.
1. Bread—Fine wheaten, first quality .. per cwt.		1	10	0

## (AGREEMENT.)

Moran and Cato Pty. Ltd., 277 Brunswick-street, Fitzroy, N.6.

## Sub-schedule No. 2.

## GROCERIES.

	£	s.	d.
1. Bacon—Sides .. per lb.	0	5	0
2. Biscuits—Coffee, Malt, Milk Arrowroot, as ordered, "Sunshine" (tins, 4s. each, returnable) .. do.	0	1	9
3. Cereal—Malties (or equal thereto) 24-oz. packet, "Pipers" .. per doz.	1	3	6
Cocoa—			
4. "Bournville" .. per lb.	0	5	8½
Loose .. do.	*		
Corn or Maize Flour—			
5. Loose .. do.	0	0	8½
"Medallion" 1-lb. packets .. do.	0	1	4
6. Custard Powder—1-lb. packets, "Medallion" .. do.	0	1	5½
7. Essence of Vanilla—16-oz. bottles, "Summagold" .. per bot.	0	6	5
Flour—			
8. Self-raising—50-lb. bag .. per bag	1	7	9
Self-raising—25-lb. bag .. do.	0	14	3
Herrings—			
9. Fresh .. per doz.	1	4	9
In Tomato Sauce, 14-oz. tins .. tins	1	5	3

## Sub-schedule No. 2—continued.

## GROCERIES—continued.

		£	s.	d.
10. Honey—First quality, 60-lb. tins	per lb.	0	1	5½
Jams—				
11. Assorted, 5-lb. tins, of the best quality, "M.P."	per doz.	†		
12. Marmalade, 5-lb. tins, "M.P."	do.	0	6	1½
13. Jelly Crystals—4-oz. packets, "Clipper" or "Sparkling"	per doz.	0	4	11
14. Junket Tablets—"Merry Widow," flav.	per tube	0	1	3
15. Macaroni—1-lb. packets, "Rinoldi"	per lb.	0	1	1
16. Mustard	do.	0	4	9
17. Peas—Dehydrated, 22-lb. tins	do.	0	9	2
18. Pepper—White, ground	do.	0	5	1
29. Pickles—Assorted, 20-oz. bottles	per doz.	1	3	3
20. Prunes—Dried, 70–80's (present season's) (80–90's—1/10 per lb.—7-lb. tins.)	per lb.	0	2	0½
21. Raisins—Sultana, 2-crown (present season's)	do.	0	1	6
22. Salmon—Fresh, 12-oz. tins, "Greenseas"	per tin	0	2	11
23. Salt—Fine	per cwt.	0	14	3
24. Sauce—Tomato, 26-oz. bottles, "Raleigh"	per doz.	1	17	6
Soda—				
25. Bicarbonate of	per lb.	0	0	6
26. Washing	per cwt.	1	17	6
27. Spice—Mixed, 1-oz. packets, "Parsons"	per doz.	0	4	10
Starch—				
28. { "Silver Star" 12-oz. packets	per pkt.	0	1	4
Loose	per lb.	0	0	8½
29. Vinegar—Malt (jars 3s. 6d. each, returnable)	per gal.	0	2	11

## ANNEX TO CONTRACT No. 1956/42.†

W. Angliss and Co. (Aust.), Pty. Ltd., 42 Bourke-street, Melbourne, C.I.

## Sub-schedule No. 3.

## MEAT.

## Security, £5.

		£	s.	d.
Beef—				
1. Fresh Roast—Sirloin—Boneless	per lb.	0	3	3
2. Corned, Silverside	do.	0	3	0
Mutton—Fresh				
3. Legs	do.	0	1	7
Lamb—Fresh				
4. Legs	do.	0	2	9
Chops—				
5. Chops—Mid Loin	do.	0	3	6
6. Chops—Chump	do.	0	3	3
7. Chops—Forequarter	do.	0	1	8
8. Cutlets	do.	0	4	8
Pork—Fresh—				
9. Legs	do.	0	4	6
10. Loin	do.	0	2	9
Veal—				
11. Shoulder—Boned	do.	0	2	6
12. Cutlets	do.	0	3	6
Steak—				
13. Rump	do.	0	3	6
14. Blade	do.	0	2	7
15. Topside	do.	0	2	9
16. Minced	do.	0	2	0
17. Tripe—Fresh	do.	0	0	10
18. Brains—Sheep	per set	0	0	8
19. Livers—Sheep	per lb.	0	2	6
20. Tongues—Sheep	do.	0	0	10
21. Kidneys—Ox	do.	0	3	0
22. Tails—Ox	do.	0	1	9
23. Sausages—Mixed	do.	0	1	11
24. Frankfurts	do.	0	2	3
25. Beef German—Sausage	do.	0	2	3
26. Ham Loaf	do.	0	2	10
27. Rabbits—Fresh	do.	0	2	7
28. Fowls—First quality	do.	0	5	3

## ANNEX TO CONTRACT No. 1956/43.

Moule's Model Dairy, Station-street, Cheltenham.

## Sub-schedule No. 4.

## MILK.

## Security, £20.

		£	s.	d.
1. Milk—Fresh and pure	per gal.	0	4	5½

## SCHEDULE No. 6.

## PROVISIONS—ARARAT DISTRICT.

(Delivery into Institutions.)

## ANNEX TO CONTRACT No. 1956/44.

M. L., R. M. and M. N. Bates, 52 Vincent-street, Ararat.

## Sub-schedule No. 1.

## BREADSTUFFS.

## Security, £75.

		£	s.	d.
1. Bread—Fine wheaten, first quality	per cntl.	2	17	3½
2. Flour—First quality	do.	1	14	4

† Charge for drums if not returned. ‡ 12-oz. tins, £1 14s. 10d. per doz. \* Supplies not available.

† Apricot—£4 0 6, Blackcurrant—£5 19 0, Blackberry—£5 16 6, Gooseberry—£4 8 6, Melon and Lemon—£3 12 0, Loganberry—£5 14 6, Peach—£4 2 6, Dark Plum—£3 11 6, Plum and Raspberry—£4 6 0, Quince—£3 12 6, Raspberry—£5 19 0.

## (AGREEMENT.)

McKay MacLeod Pty. Ltd., 122 Lydiard-street, Ballarat.

## Sub-schedule No. 2.

## GROCERIES.

		£	s.	d.
1. Blue—Washing (Reck Square)	per gross	1	7	2½
2. Candles—(full weights) Kitchen's "Electrines," or other make of equal quality, to be supplied in 1-lb. packets	per lb.	0	2	4½
3. Cocoa—"Bournville" 1-lb. tins, (50-lb. bags not available)	per doz.	3	9	9
4. Corn Flour—packets of 1 lb. net "Kream"	do.	0	1	6½
5. Curry Powder, loose	do.	0	4	0½
6. Custard Powder—Bulk	do.	0	1	2
Golden Syrup—				
7. { 70-lb. tins or drums†	each	2	16	3
2-lb. tins	per doz.	1	0	7
8. Jelly Crystals—"McKays" packets	per doz.	0	8	9
9. Milk—Powered, "Sunshine," 3-lb. tins	do.	6	9	10½
10. Mustard—Loose	per lb.	0	4	9
11. Peas—Blue, boiling	per bush.	4	7	6
12. Pepper—Black, ground	per lb.	0	4	0½
Raisins—Sultanas (present season's)—				
{ Plain	per lb.	0	1	6½
1-crown	do.	0	1	7
2-crown	do.	0	1	7½
3-crown	do.	0	1	7½
14. Salt—Fine, Imperial	per cwt.	0	19	7½
15. Sauce—Tomato, 1-gallon jars (Jars 3s. 6d.)	per gal.	0	14	4½
16. Soap—"Pearlite" Sand	per doz.	0	7	9
Soda—				
17. Bicarbonate of	per lb.	0	0	6½
18. Washing	per cwt.	1	18	7½
19. Starch (Rice)—"Silver Star," 12-oz. packets	per doz.	0	17	4
20. Tartar—Cream of, Substitute, "Antelope"	per lb.	0	2	4

## (AGREEMENT.)

McKay MacLeod Pty. Ltd., 122 Lydiard-street, Ballarat.

## Sub-schedule No. 3.

## JAMS.

		£	s.	d.
1. Jams—Assorted, in bulk, of approved kinds, in the proportion of half seed and half actual net stone, of the best quality, in tins, as weight required, "J. MacLeod and Co. Pty. Ltd."	per lb.	0	1	1½

## ANNEX TO CONTRACT No. 1956/45.†

H. A. Morris, 107 Victoria-street, Ballarat.

## Sub-schedule No. 4.

## MEAT.

## Security, £30.

		£	s.	d.
Fresh Beef—				
1. Rolled Roast (boneless, brisket excluded)	per cntl.	8	0	5
2. Buttocks	do.	7	10	0
Fresh Mutton—				
3. Kidney fat to be removed	do.	4	3	4
4. Middle Loin Chops	do.	5	0	0
5. Corned Beef—Rolled or Round as ordered, without bone or cartilage	do.	7	18	4
6. Beef Steak	per lb.	0	1	8½
7. Kidneys—Ox	do.	0	1	6
8. Tongues—Ox	do.	0	1	3
9. Veal—Filletted	do.	0	1	10
10. Sausages—Mixed	do.	0	1	5
11. Livers—Sheep	do.	0	0	9
12. Tripe—Fresh	do.	0	0	6

## SCHEDULE No. 7.

## PROVISIONS—BALLARAT DISTRICT.

(Delivery into Institutions.)

## ANNEX TO CONTRACT No. 1956/46.

W. Dick and Sons, 314 Drummond-street South, Ballarat.

## Sub-schedule No. 1.

## BREADSTUFFS.

## Security, £100.

		£	s.	d.
1. Bread—Fine wheaten, first quality	per cntl.	2	8	11½
2. Flour—First quality	do.	1	11	5

## (AGREEMENT.)

McKay MacLeod Pty. Ltd., 122 Lydiard-street, Ballarat.

## Sub-schedule No. 2.

## GROCERIES FOR TEACHERS' COLLEGE HOSTELS.

		£	s.	d.
Bacon—				
1. { Sides	per lb.	0	4	5
Rashers, Middle	do.	0	6	4
2. Barley—Pearl	do.	0	0	6
Beans—				
3. Butter	do.	*		
4. Haricot	do.	0	1	7½
5. Lima	do.	0	1	10

## Sub-schedule No. 2—continued.

## GROCERIES—continued.

		£	s.	d.
Biscuits—				
6. Dry—Iva, Captain, Saybon, Uneeda.	do.	0	1	10
7. Coffee, Malt, Arrowroot	do.	0	1	8½
Blue—				
8. 1-oz. knobs, paper, "Reckitts," (calico	per gross	1	6	9½
£1 19s. 4½d.)	knobs			
9. 8-lb. packets, "Reckitts," square	do.	1	6	9½
10. Cake Containers—paper, "Barkers" 120's	per gross	4	13	0
	pkts.			
12. Cereals—				
"Sunflakes"	per doz.	1	1	9
"Kornies"	pkts.	1	6	2
13. "Cornflakes," large	do.	1	7	0
"Weetbix," 24-oz.	do.	1	6	0
"All-Bran"	do.	0	17	9
Cheese—				
14. 5-lb. boxes, "Kraft" or equal	per pkt.	0	19	0
½-lb. packets	per doz.	1	4	6
15. Chutney—"Rosella," Fruit	do.	1	5	0
16. Cloves	per lb.	0	6	0
Cocoa—				
17. ½-lb. tins, "Bournville" (1-lb., 69s. 3d.	per doz.	1	14	8
doz.)				
18. Loose	per lb.	*		
19. Coconut—Desiccated (Ceylon)	do.	0	1	9½
Coffee and Chicory Essence—				
20. 8-oz. bottles, "McKays"	per doz.	1	7	0
21. 1-gallon jars (Jars 3s. 6d. each)	per jar	1	11	6
22. Curry Powder—Bulk	per lb.	0	4	0
Custard Powder—				
23. Bulk	do.	0	1	1½
24. 1-lb. packets, "Gold Seal"	per doz.	1	1	0
25. Dates—Box lots "Sair"	per lb.	0	1	4½
Essences, &c.—				
26. Almond, 8-oz.	per bot.	0	6	8
27. Lemon, 8-oz.	do.	0	6	8
28. Vanilla, 8-oz.	do.	0	8	0
29. Cochineal, 8-oz.	do.	0	6	8
30. Parisian 4-oz. bottles	per doz.	0	14	0
26-oz. bottles	do.	2	5	0
31. Yolking, "Yolko"	each	0	2	6
Extracts, Pastes, &c., or equal—				
32. Marmite 16-oz. tin	per tin	0	6	11
8-oz. tin	do.	0	4	3½
33. Vegemite 16-oz. tin	per tin	0	6	11
8-oz. tin	do.	0	3	11½
34. Peanut Butter, 12-oz. tin, "Eta"	do.	0	3	7
35. Bonox, 8-oz. tin	do.	0	5	1½
36. Bloater, "Pecks"	do.	0	1	3½
37. Salmon and Shrimp	do.	0	1	6
Fish—Tinned				
38. "Baas," 12-oz. tin	per doz.	1	8	0
39. Salmon, "Greenscas," 16-oz. tin	do.	2	3	0
Fresh, 7-oz. tin	do.	0	17	4
40. Herrings				
Fresh, 14-oz. tin	do.	1	5	9
In sauce, 7-oz. tin	do.	0	17	7
In sauce, 14-oz. tin	do.	1	6	1
41. Sardines, 4-oz. tin	do.	0	16	3
Pilchards, (1-lb. tins)	do.	1	3	6
Flour—Corn or Maize—				
42. Packets, "Kream"	per lb.	0	1	6
43. Bulk	do.	0	0	9½
44. Self-Raising 25-lb. bags, "McKays"	per bag	0	14	8
6-lb. packets, "McKays"	per doz.	2	4	3
Fruits—Dried—				
45. Apples	per lb.	*		
46. Apricots 3-crown	do.	0	3	9½
2-crown	do.	0	3	5
47. Peaches, peeled, 3-crown, standard	do.	0	2	7½
48. Pears, 3-crown, standard	do.	0	2	3
49. Prunes, 80/90's (70/80's, 2s. 2½d.)	do.	0	1	11½
50. Currants, 1-crown	do.	0	1	5½
51. Raisins				
Seeded, 1-lb. packets	per doz.	1	0	6
Loose	per lb.	0	1	6½
52. Sultanias				
1-crown	do.	0	1	6½
2-crown	do.	0	1	6½
Fruits—Tinned—				
53. Apricots, 30-oz. tin	per doz.	1	10	6
54. Peaches—1 gal. tins	do.	*		
55. Peaches, 30-oz. tin	per doz.	1	12	4
56. Pears, 30-oz. tin	do.	1	13	10
57. Mixed Fruits, "Fruit Cocktail," 16-oz.	do.	1	5	3
28-oz. tin	do.	1	18	8
58. Solid Pack Apples 6½-lb. tin	each	0	9	6½
59. Solid Pack Apricots, 7-lb. tins	do.	0	9	0
60. Gelatine—Ground, "Davis"	per lb.	0	7	2
61. Ginger—Ground	do.	0	6	10
62. Golden Syrup—2-lb. tins (70-lb. drums, per doz.	per doz.	0	19	6
53s.)				

## Sub-schedule No. 2—continued.

## GROCERIES—continued.

		£	s.	d.
63. Gravox—1-lb. tins	do.	1	0	5
64. Herbs—Mixed, packets	do.	0	4	0
65. Honey—60-lb. tins	per lb.	0	1	5
Jelly Crystals—				
66. packets, McKays	per doz.	0	8	7½
67. 7-lb. packets	per lb.	0	2	2
Junket Tablets—				
68. "Gold Seal", tubes	per doz.	0	5	0
"Merry Widow", flavoured, tubes	do.	0	15	6
69. Lentils	per lb.	0	1	6
Macaroni—				
70. 1-lb. packets	per doz.	0	13	3
71. Bulk				
22-lb. cartons	each	1	1	0
56-lb. bags	per lb.	0	1	0
72. Margarine—Cake, pastry	do.	0	1	0½
73. Matches—Safety, packets	per gross	1	0	4½
74. Mayonnaise—1-gallon jars (Jars 3s. 6d. per jar	per jar	1	9	6
each)				
Meat—Tinned, or equal—				
75. Beef Luncheon				
Taper tins "Swifts"	per doz.	1	11	0
Square tins, "Piper"	do.	1	7	3
76. Beef Steak Pudding, "Piper"	do.	1	7	0
77. Camp Pic, 12-oz. tins, "Champion"	do.	0	17	6
78. Irish Stew, "Piper"	do.	1	8	0
79. Braised Beef Stew, "Imperial"	do.	1	4	10
80. Sausages and Vegetables, 16-oz. tin.	do.	1	6	0
"Piper"				
Milk—Dried—				
81. "Sunshine," 12-oz. tins	do.	1	14	3
"Sunshine," 3-lb. tins	do.	6	8	0
Milk—Condensed—				
82. "Nestles"	do.	1	0	5
83. "Ideal"	do.	0	15	10½
84. Mustard—Bulk	per lb.	0	4	8½
85. Nutmeg—Ground	do.	0	7	6
86. Oatmeal—Flaked, 56-lb. bags	per cwt.	3	12	4
87. Pastry—Mix, 1-lb. packets, "Maxam"	per doz.	0	14	0
88. Peel—Mixed, cut	per lb.	0	2	0
89. Pepper—White, ground	do.	0	4	6
90. Pickles—Assorted, 20-oz. bottles, per doz.	per doz.	1	4	9
"McKays"				
Rice—				
91. Dressed	per cwt.	4	13	6
92. Ground—1-lb. packets	per lb.	0	0	10½
93. Sago (Seed Tapioca)	do.	0	0	11½
Salt—				
94. Fine, bulk, "Imperial"	per cwt.	0	15	0
95. Table, 1-lb. packets, "I.C.I."	per doz.	0	4	11
Sauce—				
96. Tomato, 26-oz. bottles	per doz.	1	16	0
97. Tomato, 1-gal jars (Jars, 3s. 6d. each)	per jar	0	13	6
98. Worcestershire, 10-oz. bottles, "Sirdar"	per doz.	0	18	0
99. Worcestershire, 1-gal. jars (Jars, 3s. 6d. each)	per jar	0	10	6
100. Mustard, 8-oz. bottles	per doz.	1	0	0
Soaps—				
101. Borax, (powdered)	per lb.	0	0	9½
102. Extract of "Pental," 56-lb. bags	per cwt.	4	15	0
103. Household, Dry, "Pental" (cases of 36)	per case	2	13	2
104. "Lux," 16-oz. packets	per doz.	1	9	0
105. "Rinsol," Economy packet	do.	1	14	6
106. "Persil," Economy packet	do.	1	14	6
107. Sand soap, 12-oz. blocks, "Pearlite"	do.	0	7	6
108. Toilet soap, 3½-oz. tabs, "Kitchens"	do.	0	5	6
109. "Velvet"—"Quads" "Standard"	do.	1	2	8
110. "Velvet"—"Quints," "Economy"	do.	1	16	3
Soda—				
111. Bicarbonate of	per lb.	0	0	6
112. Washing	per cwt.	1	14	0
Soups—Tomato—				
113. 16-oz. tins, "Kia Ora"	per doz.	1	1	1
114. No. 10 tins	do.	5	17	7
Spaghetti—				
115. 1-lb. packets	per doz.	0	14	3
116. Bulk, 22-lb. cartons	each	1	1	0
117. Spice—Mixed, loose (1-oz. pkts., 5d. each)	per lb.	0	3	4
118. Starch—Rice, 12-oz. pkts., "Silver Star"	per doz.	0	16	10
Sugar—				
Icing Mixture	per cwt.	5	3	6
119. Castor	do.	5	0	0
Raw	per lb.	0	0	9½
White (70 lb. bag)	per bag	2	15	11
120. Tapioca—Pearl	per lb.	0	1	2
121. Tartar—Cream of, "Antelope Phos.	do.	0	2	3½
Acetator" (Cream of Tartar 3s. 1½d.)				
122. Treacle—2-lb. tins	per doz.	0	19	1
Vegetables—Dried—				
123. Soup Vegetables 3 lb. tins	per tin	1	4	9
20 lb. do.	do.	6	18	6
124. Peas, Green "Dew Crisp" in 22 lb. tins	per lb.	0	1	0
125. Peas—Split, yellow	do.	0	0	7
Vegetables—Tinned—				
126. Baked Beans, 16-oz. tins, "Kia Ora"	per doz.	1	1	1

⊙ Less than case lots, 1s. 4½d. per lb. \* Not available.

## Sub-schedule No. 2—continued.

## GROCERIES—continued.

127. Baked Beans, No. 10 can .. ..	per doz.	5 19 1
128. Beans, Green, 16-oz. tins, "Harvest" ..	do.	1 4 8
129. Beetroot, 30-oz. tins, "Edgells" ..	do.	1 13 5
130. Carrots, 30-oz. tins, "Edgells" ..	do.	1 6 1
131. Celery, 30-oz. tins .. ..	do.	*
132. Parsnips, 30-oz. tins .. ..	do.	*
133. Peas, 30-oz. tins, "Monbulk" ..	do.	2 1 3
134. Sweetcorn, 16-oz. tins, "Rosella" ..	do.	1 9 6
135. Tomatoes, 30-oz. tins, "McKays" ..	do.	1 11 6
136. Tomatoes, 4-gal. tins .. ..	each	*
Vernicelli—		
137. 1-lb. packets .. ..	per doz.	0 14 3
138. Bulk, 22-lb. cartons .. ..	each	1 1 0
139. Vinegar—Malt—1-gal. jars (Jars 3s. 6d.) ..	per jar	0 3 3

## (AGREEMENT.)

McKay MacLeod Pty. Ltd., 122 Lydiard-street, Ballarat.

## Sub-schedule No. 2a

## GROCERIES FOR MENTAL HOSPITAL.

1. Beans—Haricot .. ..	per lb.	0 1 7½
2. Biscuits { Dry-Iva, Captain, Zephyr, Saybon. ..	do.	0 1 10
{ Uneeda .. ..	do.	0 1 8½
{ Sweet-Arrowroot, Buttercrunch, Malt. ..	do.	0 1 8½
{ Marie, Coffee .. ..	do.	0 1 8½
3. Blue (Washing), "Rockliffe Square" ..	per gross	1 6 9½
4. Candles, "Kitchen's Electrine" .. ..	per lb.	0 2 4
{ Sunflakes, .. ..	per doz.	1 1 9
5. Cereals { Crispies .. ..	do.	1 5 11
{ Kornies (packets) .. ..	do.	1 6 2
6. Cocoa, 1-lb. tins, "Bourville" (loose not available) ..	per doz.	3 9 3
7. Cornflour { 1-lb. packets, "Kream" ..	per lb.	0 1 6
{ Bulk .. ..	do.	0 0 9½
{ Plain .. ..	do.	0 1 4½
8. Currants { 1-crown .. ..	do.	0 1 5½
{ 2-crown .. ..	do.	0 1 6½
9. Curry Powder—Bulk .. ..	do.	0 4 0
10. Custard Powder—Bulk .. ..	do.	0 1 1½
11. Dates—Case Lots .. ..	do.	0 1 4½
12. Essence—4-oz. Bottles { Lemon ..	each	0 13 0
{ Vanilla .. ..	do.	0 15 6
13. Flour—Selfraising 150 lbs. bags ..	do.	3 18 0
14. Gelatine—1-lb. packets, "Davis" ..	per doz.	4 6 0
15. Golden Syrup—2-lb. tins (70-lb. tins or drums, 53s.) ..	per doz.	0 19 6
16. Herbs—Mixed .. ..	do.	0 4 0
17. Jelly Crystals { "McKay's Packets" ..	do.	0 8 7½
{ Bulk 7 lb. .. ..	per lb.	0 2 2
18. Macaroni—Bulk—56-lb. bags .. ..	per lb.	0 1 0
19. Margarine—Cake, Pastry .. ..	do.	0 1 6½
20. Meats (Tinned)—		
"Tom Piper"—		
Sausages and Vegetables, 16-oz. ..	per doz.	1 6 0
Irish Stew, 16-oz. .. ..	do.	1 8 0
Beef Steak Pudding, 16-oz. .. ..	do.	1 7 0
Beef Lunch, 12-oz. square .. ..	do.	1 7 3
"Swifts"—Camp Pie, 12-oz. tins ..	do.	0 18 9
21. Milk F.C. Powdered, "Sunshine" { 3-lb. tins ..	do.	6 8 0
{ 12-oz. tins .. ..	do.	1 14 3
22. Mustard—Bulk .. ..	per lb.	0 4 8
23. Peel—Mixed loose .. ..	do.	0 2 0
24. Pepper—Ground, Black .. ..	do.	0 4 0
25. Raisins—Case Lots—		
Sultanas { Plain .. ..	do.	0 1 6½
{ 1-crown .. ..	do.	0 1 6½
{ 2-crown .. ..	do.	0 1 6½
{ 3-crown .. ..	do.	0 1 7
26. Salt—Imperial, Fine .. ..	per cwt.	0 15 0
27. Sauce—Tomato—26-oz. bottles (Gal. Jars 13s. 6d.) ..	per doz.	1 16 0
28. " Worcestershire—1-gal. jars ..	each	0 10 6
29. Soda—Carbonate .. ..	per lb.	0 0 6
30. Soda—Washing .. ..	per cwt.	1 14 0
31. Spaghetti—Bulk—22-lb. Cartons { No. 1 ..	each	1 1 0
{ No. 2 .. ..	do.	1 1 0
32. Spice, Mixed, 1-oz. packets .. ..	per pkt.	0 0 5
33. Starch, "Silver Star", 12-oz. .. ..	per doz.	0 16 10
34. Icing .. ..	per cwt.	5 3 6
35. Caster .. ..	do.	5 0 0
36. Tartar, Cream of—Substitute "Antelope" ..	per lb.	0 2 3½
37. Tomato Soup—No. 10 cans .. ..	per doz.	5 17 7
38. Vinegar—Malt .. ..	per gal.	0 3 3

## (AGREEMENT.)

McKay MacLeod Pty. Ltd., 122 Lydiard-street, Ballarat.

## Sub-schedule No. 3.

## JAMS FOR TEACHERS' COLLEGE HOSTELS AND MENTAL HOSPITALS.

Jams—Assorted—	£ s. d.	
1. In bulk, of approved kinds, in proportion of half seed and half stone, of the best actual net quality, in tins, as required, "J. weight MacLeod and Co. Pty. Ltd. †	per lb.	0 1 1
2. 24-oz. tins, in the proportion of half seed and half stone, of the best quality, "Victoree" §	per doz.	1 7 4
3. 5-lb. tins, in the proportion of half seed and half stone, of the best quality, "Victoree" §	do.	4 7 5

† Jars—3s. 6d. each.

\* Supplies not available.

† Apricot, Bakers Raspberry, Dark plum, Gooseberry, Quince, Loganberry, Melon &amp; Lemon, Rasp. § Apricot, Plum, Quince, Melon &amp; Lemon, Loganberry, Plum &amp; Raspberry, Gooseberry.

ANNEX TO CONTRACT No. 1956/47.†  
H. A. Morris, 107 Victoria-street, Ballarat.

## Sub-schedule No. 4.

## MEAT.

(For Gaol and Mental Hospital.)

Security, £35.

£ s. d.

Fresh Beef—		
1. Fore-quarters .. ..	per cntl.	5 0 0
2. Buttocks .. ..	do.	7 10 0
3. Roast—Rolled (Brisket excluded) ..	do.	7 18 4
4. Beef, Corned—Rolled or Round ..	do.	7 10 0
Mutton—Fresh—		
5. Kidney fat removed (Mental Hospital) ..	do.	4 3 4
6. Chops, Fore-quarter .. ..	per lb.	0 1 0
7. Mince-meat .. ..	do.	0 0 11
8. Sausages .. ..	do.	0 1 4
9. Sausage, Beef, German .. ..	do.	0 1 10
10. Veal, Filleted .. ..	do.	0 1 11
11. Tripe .. ..	do.	0 0 5
12. Ham Loaf .. ..	do.	0 2 3
13. Tongues—Sheep .. ..	do.	0 0 10
14. Livers—Sheep .. ..	do.	0 0 9
15. Fowls—First Quality .. ..	do.	0 4 0

ANNEX TO CONTRACT No. 1956/48.†

Victorian Inland Meat Authority, 54 Market-street, Melbourne.

## Sub-schedule No. 5.

## MEAT.

For delivery to Teachers' College Hostels as under:—

Beaufort House, Beaufort-avenue, Ballarat.

1415 Sturt-street, Ballarat.

130 Victoria-street, Ballarat.

126 Webster-street, Ballarat.

Security, £5.

£ s. d.

Fresh Beef—		
1. Rolled Rost, boneless (Brisket excluded) ..	per lb.	0 1 6
2. Topside .. ..	do.	0 2 3
3. Sirloin .. ..	do.	0 2 9
4. Beef—Corned—Silverside .. ..	do.	0 2 6
Fresh Mutton—		
5. Legs .. ..	do.	0 1 9
6. Forequarter Chops .. ..	do.	0 1 3
7. Legs Pickled .. ..	do.	0 1 9
Veal—		
8. Shoulder, Boned .. ..	do.	0 2 0
9. Fillet, Boneless .. ..	do.	0 2 6
Steak—		
10. Blade .. ..	do.	0 2 0
11. Minced .. ..	do.	0 1 6
12. Sausages—Mixed .. ..	do.	0 1 5
13. Sausage Meat .. ..	do.	0 0 11
14. Livers—Claves .. ..	do.	0 0 9
15. Kidneys—Ox .. ..	do.	0 1 6
16. Frankfurts .. ..	do.	0 1 7

ANNEX TO CONTRACT No. 1956/49.

The Ballarat Modern Dairy Pty. Ltd., 817 Sturt-street, Ballarat

## Sub-schedules No. 6 and 7.

## MILK.

For delivery to Mental Hospital and Teachers' College Hostels as under—

Beaufort House, Beaufort-avenue, Ballarat.

1415 Sturt-street, Ballarat.

130 Victoria-street, Ballarat.

126 Webster-street, Ballarat

Security, £36.

£ s. d.

1. Milk—Fresh and pure, pasteurised. ..	per gal.	0 4 6
---	----------	-------

## SCHEDULE No. 8.

## PROVISIONS—BEECHWORTH DISTRICT.

ANNEX TO CONTRACT No. 1956/50.

P. A. Taylor, Model Bakery, Camp-street, Beechworth.

(Delivery into Institutions.)

## Sub-schedule No. 1.

## BREADSTUFFS.

Security, £100.

£ s. d.

1. Bread—Fine Wheat, first quality ..	per cntl.	2 14 0
2. Flour—First quality .. ..	do.	1 13 7

## (AGREEMENT.)

Moran and Cato Pty. Ltd., 277 Brunswick-street, Fitzroy, N.G.

## Sub-schedule No. 2.

## GROCERIES.

£ s. d.

1. Bean—Haricot .. ..	per lb.	0 1 7½
2. Biscuits { Coffee, Malt, Arrowroot, Gingersnut, ..	do.	0 1 10½
{ Marie, Holsam .. ..	do.	0 1 10½
{ Vanilla Curis, Nice, Devon, Shortbread, ..	do.	0 1 11½
{ Rice, Fruit Cookies .. ..	do.	0 2 0½
{ Butter Crisps .. ..	do.	0 1 10½
{ Dry—Thin Captain, Cenovis ..	do.	0 1 10½
3. Blue—Washing, powdered, 7-lb. pkts. ..	per lb.	0 2 1½

## Sub-schedule No. 2—continued.

## GROCERIES—continued.

Cereals—					
4. { "Pipers," "Kornies," "Weeties," or per pkt.	0	2	2½		
equal					
Vitabrit or equal—24-oz. pkts.	do.	0	2	2½	
Cocoa—					
5. { 1-lb. packets, "Bournville"	do.	0	5	10½	
Loose	per lb.	0	4	3	
Corn or Maize Flour—					
6. { Loose	do.	0	0	10½	
1-lb. packets, "Medallion"	do.	0	1	5½	
7. Curry Powder	do.	0	2	7	
8. Custard Powder—Loose	do.	0	1	2½	
9. Gelatine	do.	0	6	10½	
10. Golden Syrup—2-lb. tins	per tin	0	1	10	
11. Jelly Crystals—7-lb. packets	per lb.	0	2	5	
Macaroni—					
12. { 22-lb. cartons	per ctn.	1	2	0	
56-lb. bags	per lb.	0	0	10½	
13. Margarine—Cake, Pastry	do.	0	1	8½	
Milk—Powdered—					
14. { 3-lb. tins, "Sunshine"	per doz.	6	17	0	
12-oz. tins, "Sunshine"	do.	1	17	0	
15. Mustard	per lb.	0	4	11	
16. Peas—Dehydrated, 22-lb. tins	do.	0	9	4	
17. Pepper—White, ground	do.	0	5	3	
18. Raisins—Sultana, 1-crown (present season's)	do.	0	1	7½	
19. Salt—Fine	per cwt.	1	0	3	
20. Sauce—Tomato, 26-oz. bottles, "Raleigh"	per doz.	2	5	0	
Soap—					
21. Sand, 12-oz. blocks, "Lectric"	do.	0	6	0	
22. Lifebuoy	do.	0	6	3	
Soda—					
23. Bicarbonate of	per lb.	0	0	8	
24. Washing	per cwt.	2	8	0	
25. Spaghetti—22-lb. cartons, "Forex," No. 1	per ctn.	1	2	0	
26. Spice—Mixed, "Parsons"	per doz. pkts.	0	5	10	
27. Starch—"Parsons"	per lb.	0	0	10½	
28. Tartar—Cream of, Substitute, "Antelope"	do.	0	2	5	
29. Tomatoes—Tinned, 28-oz. tins, "M.O.N."	per doz.	1	13	6	
30. Vegamite in 1-lb. jars	do.	4	10	0	
31. Vinegar—Malt	per gal.	0	4	4	

## (AGREEMENT.)

Moran and Cato Pty. Ltd., 277 Brunswick-street, Fitzroy, N.6.

## Sub-schedule No. 3.

## JAMS.

		£	s.	d.
Jams—Assorted, in bulk—				
1. { Apricot	per lb.	0	1	2½
Peach	actual	0	1	2½
Apple and Raspberry flavour	net	0	1	3
Dark Plum	weight	0	1	1½
2. Jams—Assorted, 5-lb. tins, of the best quality, "M.P."	per doz. tins			

ANNEX TO CONTRACT No. 1956/51.†  
E. Spencer, Camp-street, Beechworth.

## Sub-schedule No. 4.

## MEAT.

## Security, £30.

		£	s.	d.
1. Fresh Beef (Gaol)	per cwt.	8	10	10
2. Fresh Beef—Rolled Roast, boneless, brisket excluded	do.	9	11	8
3. Corned Beef, Rolled or Round as ordered, without bone or cartilage	do.	9	7	6
4. Shins of Beef (bone in)	do.	5	0	0
5. Mutton—Fresh (kidney fat to be removed for Mental Hospitals)	do.	4	7	6
6. Beef Steak, Minced	do.	8	15	0
7. Sausage Meat	per lb.	0	1	0
8. Sausages—Mixed	do.	0	1	9
9. Saveloys	per doz.	0	3	3
10. Sausage—German	per lb.	0	2	0
11. Tripe—Fresh	do.	0	0	11
12. Tongues—Sheep	do.	0	1	6
13. Dripping—Beef	do.	0	1	0
14. Veal—Boned	do.	0	2	3
15. Mutton, Minced	do.	0	1	2
16. Pork—Belly	do.	0	2	3
17. Livers—Sheep	do.	0	1	10
18. Ox Tail	do.	0	1	3

\* Supplies not available.

† List prices, wholesale rates, less 10 per cent.

‡ Rates, except where marked otherwise, subject to 3 %, 7 days or 2½ % monthly, settlement discount.

○ Apricot, £4/7/3; Blackcurrant, £6/5/9; Blackberry, £6/3/3; Gooseberry, £4/15/3; Melon &amp; Lemon, £3/18/9; Loganberry, £6/1/3; Peach, £4/9/3; Dark Plum, £3/18/3; Plum &amp; Raspberry, £4/2/9; Quince, £3/19/3; Raspberry, £6/5/9.

## ANNEX TO CONTRACT No. 1956/52.

C. F. Godde, Newtown, Beechworth.

## Sub-schedule No. 5.

## MILK.

		£	s.	d.
Security, £12.				
1. Milk—Fresh and pure	per gal.	0	4	6

## SCHEDULE No. 9.

## PROVISIONS—BENDIGO DISTRICT.

(For Delivery into Institutions.)

## ANNEX TO CONTRACT No. 1956/53.

C. H. Jeffrey Pty. Ltd., 172 Wattle-street, Bendigo.

## Sub-schedule No. 1.

## BREAD

For Gaol and Mental Hygiene Training Centre.

		£	s.	d.
Security, £7.				
1. Bread—Fine Wheaten, first quality	per cwt.	2	0	7½
2. Flour—First quality	do.	1	15	0

## ANNEX TO CONTRACT No. 1956/54.

A. Hardeman Pty. Ltd., 326 Lyttleton-terrace, Bendigo.

## Sub-schedule No. 2.

## BREAD.

For Teachers' College Hostels—  
"Sandhurst" 108 Mitchell-street, Bendigo, and  
"Lancewood," McLaren-street, Bendigo.

		£	s.	d.
Security, £4.				
1. Bread—Fine Wheaten, first quality	per cwt.	2	19	4½
2. Flour—First quality	do.	1	11	6

## ANNEX TO CONTRACT No. 1956/55.

Roy Raggatt, 132 Lily-street, Bendigo.

## Sub-schedule No. 3.

## BREAD.

For Teachers' College Hostel—"Comersdale," Pantom-street,  
Golden Square, Bendigo.

		£	s.	d.
Security, £3.				
1. Bread—Fine Wheaten, first quality	per cwt.	2	10	4½
2. Flour—First quality	do.	1	11	6

## (AGREEMENT.)

Pulfer, Cox, and Hargreaves, Wholesalers Limited, 200 Hargreaves-street, Bendigo. §

## Sub-schedule No. 4.

## GROCERIES.

		£	s.	d.
Bacon—				
1. { Sides	per lb.	*		
Rashers, middle	do.			
2. Barley—Pearl, 56-lb. bags (Smaller lots 7½d. per lb.)	per cwt.	2	15	6
Beans—				
3. Butter	do.	*		
4. Haricot	per lb.	0	1	6
5. Lima	do.	0	1	6
Biscuits and cake—"Phoenix" or "Besta"—				
6. Dry	do.	†		
7. Coffee, Malt, Arrowroot	do.	0	2	3
8. Assorted	do.	0	2	3
Blue—				
9. { 1-oz. knobs, "Reckitts"	per gross	1	7	0
7-lb. packets	per pkt.	*		
10. Borax	per lb.	0	0	9
11. Cake Containers—Paper, "Barkers" 150's	per gross	4	10	0
Cereals—				
12. "Kornies," "Weeties," packets	per doz.	1	6	9
13. "Cornflakes," packets	do.	1	8	9
14. Biscuit—"Weetbix," "Granose," and "Vitabrits," packets	do.	1	6	5
15. "All-Bran," packets	do.	0	18	5
16. Cheese—5-lb. boxes, "Kraft"	per box	0	19	0
17. Chutney—"A.J.C."	per doz.	1	4	3
18. Cloves	per lb.	0	7	1
19. Coconut—Desiccated, Ceylon	do.	0	1	8½
Cocoa—				
20. { 1-lb. tins, "Bournville"	per doz.	3	11	3
Loose	per lb.	0	3	11



## Sub-schedule No. 4—continued.

GROCERIES—continued.				£	s.	d.
Coffee Essence—						
21.	8-oz. bottles, "Excelsior" ..	per doz.	1	13	0	
22.	1-gal. jars (Jars 3s.) ..	per jar	2	0	6	
23. Curry Powder—{ "Parsons"—4-oz. pkt.		per doz.	0	19	0	
{ "Indian" ..		do.	0	19	6	
Custard Powder—						
24.	Bulk, 7-lb. parcels, "Beacon" ..	per lb.	0	1	4	
25.	1-lb. packets, "Parsons" ..	per doz.	1	0	5	
26.	Dates—Loose ..	per lb.	0	1	6	
Essences, &c.—						
27. Almond { 1-oz. ..		per bot.	0	0	11½	
{ 8-oz. ..		do.	0	6	5½	
{ 16-oz. ..		do.	0	13	0	
28. Lemon { 1-oz. ..		per bot.	0	0	11½	
{ 8-oz. ..		do.	0	6	5½	
{ 16-oz. ..		do.	0	13	0	
29. Vanilla { 8-oz. ..		do.	0	7	6	
{ 16-oz. ..		do.	0	15	3	
30. Cochineal { 1-oz. ..		do.	0	0	11½	
{ 16-oz. ..		do.	0	13	0	
31.	Parisian, 26-oz. "Dicksons" ..	do.	0	3	2½	
32. Yolkine { 1-oz. "Rego" ..		do.	0	0	8½	
{ 16-oz. ..		do.	0	9	0	
Extracts and Pastes—						
33.	"Marmite," 4-oz. tins ..	per doz.	1	7	9	
34. "Vegemite" { 4-oz. tin ..		do.	1	6	6	
{ 8-oz. tin ..		do.	2	6	9	
{ 16-oz. tin ..		do.	4	6	0	
35. Peanut Butter { 6-oz. tin ..		do.	1	6	11	
{ 12-oz. tin ..		do.	2	1	6	
36. "Bonox" { 4-oz. tin ..		do.	1	13	6	
{ 8-oz. tin ..		do.	3	1	0	
{ 16-oz. tin ..		do.	5	17	0	
37.	Bloater, 2½-oz. tins, "Pecks" ..	do.	0	15	10	
38.	Salmon and Shrimp, 2½-oz. tin ..	do.	0	17	10	
Fish—Tinned—						
39.	"Flair," 12-oz. ..	do.	1	8	4	
40.	Salmon, 16-oz., "Kingsound" ..	do.	2	5	4	
41.	Pilchards, 8-oz., South African ..	do.	0	18	0	
42. Herrings, 14-oz. { Fresh ..		do.	1	6	3	
{ In sauce ..		do.	1	6	9	
43. Sardines { 4-oz., "Commodore" ..		do.	0	14	6	
{ 8-oz., "Commodore" ..		do.	1	7	4	
Flour—Corn or Maize—						
44. { 1-lb. packets, "Kream" ..		do.	0	18	3	
{ Bulk ..		per lb.	0	1	3	
Flour—Self-raising—						
45. { 25-lb., "Rego" ..		each	0	14	10	
{ 150-lb., "Rego" ..		do.	3	17	6	
Fruits—Dried—						
46.	Apples ..	per lb.	*			
47.	Apricots ..	do.	0	3	9	
48.	Peaches ..	do.	*			
49.	Pears ..	do.	*			
50.	Prunes, 80/90's ..	do.	0	2	7	
51.	Currants ..	do.	0	1	6½	
52. Raisins, Seeded { 16-oz. pkts, "Rego" ..		per doz.	1	1	6	
{ Loose ..		per lb.	0	1	6	
53.	Sultanas ..	do.	0	1	7½	
Fruits—Tinned—						
54. Apricots { Halves, 30-oz. tins, "S.P.C." ..		per doz.	1	10	0	
{ Wholes, 30-oz. tins, "S.P.C." ..		do.	1	8	6	
55.	Peaches, 30-oz. tins, "S.P.C." ..	do.	1	9	6	
56.	Pears, 30-oz. tins, "S.P.C." ..	do.	1	11	0	
57.	Mixed Fruits, 16-oz. tins, "Fruit Cock-tail" ..	do.	1	4	6	
58. Solid Pack Apples { 30-oz. tins ..		do.	1	17	0	
{ 6½-lb. ..		each	0	9	3	
59.	Solid Pack Apricots ..	do.	*			
60.	Gelatine—Ground, 16-oz. pkts, "Davis" ..	per doz.	3	15	7	
61.	Ginger—Ground ..	per lb.	0	7	0	
62.	Golden Syrup—2-lb. tins ..	per doz.	1	0	6	
63.	Gravox—1-lb. tins ..	do.	1	0	1	
64.	Herbs—Mixed, packets ..	do.	0	4	0	
65.	Honey—60-lb. tins (Return of 2s. 6d. per tin) ..	per tin	4	2	0	
66. Jams—"Rego" and "Monbulk," tins ..		per doz.	††			
Jelly Crystals—						
67. { 4-oz. packets, "Rego" ..		per gross	4	3	0	
{ 7-lb. packets ..		per lb.	0	2	0	

†† In 1½-lb. tins—Apricot, £1 6s. 3d.; Apple Jelly, £1 3s. 8d.; Blackberry, £1 18s. 6d.; Blackcurrant, £2 0s. 6d.; Gooseberry, £1 8s. 5d.; Loganberry, £1 17s. 6d.; Melon and Lemon, £1 4s. 0d.; Melon and Pineapple, £1 4s. 8d.; Dark Plum, £1 6s. 3d.; Light Plum, £1 6s. 3d.; Marmalade, £1 4s. 6d.; Peach, £1 7s. 6d.; Plum and Raspberry, £1 9s. 0d.; Quince, £1 3s. 11d.; and Raspberry, £2 0s. 6d.

In 5-lb. tins—Apricot, £4 6s. 8d.; Apple Jelly, £3 13s.; Melon and Lemon, £3 16s. 0d.; Melon and Pineapple, £3 15s. 5d.; Dark Plum, £3 17s. 0d.; Light Plum, £3 17s. 0d.; Marmalade, £4 0s. 9d.; Peach, £4 6s. 8d.; Plum and Raspberry, £4 13s. 6d.; Quince, £3 17s. 0d.; and Raspberry, £6 11s. 6d.

In 28-lb. tins—Blackberry, 1s. 1½d. per lb.

In 56-lb. tins—Apricot, 1s. 1½d. per lb.; and Plum and Raspberry, 1s. 1½d. per lb.

\* Supplies not available. § Rates, except where marked otherwise, subject to 3%, 7 days or 2½% monthly, settlement discount.

## Sub-schedule No. 4—continued.

GROCERIES—continued.				£	s.	d.
Junket Tablets—						
68.	{ "Merry Widow," flavoured	..	per doz.	0	18	6
	{ "Hansens," plain	..	tubes	1	1	0
69.	Lentils	..	per lb.	*		
Macaroni—						
70.	1-lb. packets, "Rinoldi"	..	per doz.	0	13	6
71.	Bulk—22-lb. boxes	..	per box	1	5	3
72.	Margarine—Cake, pastry, "E.O.I."	..	per lb.	0	1	5½
(Freight case, 3s. 6d.)						
73.	Matches—Safety, packets	..	per gross	1	0	8
74.	Mayonnaise—12-oz. jars, "Kraft"	..	per doz.	1	12	4
Meat—Tinned, or equal—						
75.	Beef Luncheon { 12-oz., "Tom Piper"	..	do.	1	6	9
	{ 6-lb., "Swifts"	..	each	0	18	0
76.	Beef Steak Pudding, 16-oz., "Piper"	..	per doz.	1	5	1
77.	Camp Pie { 12-oz., "Imperial"	..	do.	0	19	6
	{ 16-oz., "Imperial"	..	do.	1	3	5
78.	Irish Stew, "Tom Piper"	..	do.	1	7	5
79.	Lamb and Green Pens, 16-oz., "Champion"	..	do.	0	19	11
80.	Sausages and Vegetables, 16-oz., "Rosella"	..	do.	1	5	8
Milk—						
81.	Dried { 12-oz. tin, "Sunshine"	..	do.	1	17	0
	{ 3-lb. tins, "Sunshine"	..	do.	6	17	0
82.	Condensed, cases of 4 doz., "Nestles"	..	per case	4	1	6
83.	"Ideal"	..	per doz.	0	16	4
84.	Mustard—Bulk, 4-lb. boxes	..	per lb.	0	5	9
85.	Nutmeg—Ground	..	do.	0	7	7
86.	Oatmeal—Flaked { 7-lb. bags	..	per doz.	3	11	0
	{ Loose	..	per cwt.	3	16	0
87.	Pastry—Mix, "Bakeo," "Maxam"	..	per doz.	0	15	6
Peel—Mixed, Cut—						
88.	{ 8-oz. packets, "Brookes"	..	per doz.	0	17	11
	{ 7-lb., "Seppelts"	..	per lb.	0	1	10
Pepper—White, Ground—						
89.	{ Loose	..	do.	0	6	0
	{ 2-oz. packets, "Rego"	..	per doz.	0	14	0
90.	Pickles—Assorted, 20-oz. bottles, "Sutherland's"	..	do.	1	8	5
Rice—						
91.	Dressed, 56-lb. bags	..	per bag	2	7	6
92.	Ground, 1-lb. packets, "McKenzies"	..	per doz.	0	10	9
93.	Sago	..	per lb.	0	1	0
Salt—						
94.	Fine, bulk, "Imperial"	..	per cwt.	0	18	9
95.	Table { 1-lb. packets, "Mermaid"	..	per doz.	0	5	0
	{ 1-lb. packets, "Saxa"	..	do.	0	8	0
Sauces—						
96.	Tomato, 26-oz. bottles { "White Crow"	..	do.	2	0	0
	{ "Rosella"	..	do.	2	3	3
97.	Tomato, 1-gal. jars, "Leggo's" (Jars, 3s.)	..	per jar	0	13	6
Worcestershire—						
98.	{ 10-oz. bottles, "Holbrooks"	..	per doz.	1	5	0
	{ 10-oz. bottles, "Rego"	..	do.	0	19	3
	{ 26-oz. bottles, "Rego"	..	do.	1	17	0
99.	Mustard—8-oz. bottles, "Holbrooks"	..	do.	1	2	6
Soaps—						
100.	Extract of, "Nu-Wash," 56-lb. bags	..	per bag	2	5	0
101.	Household, dry	..	per case	*		
102.	"Rinso," Economy packet	..	per doz.	1	15	4
103.	"Persil," Giant packet	..	do.	1	5	6
104.	"Lux," Flakes, packets, Family Size	..	do.	1	9	4
105.	Sand Soap—6-oz. blocks, "Preservene"	..	do.	0	6	6
106.	Toilet Soap, 3½-oz. tablets, "Palmolive"	..	do.	0	6	1
107.	Toilet Soap, 3½-oz. tablets, "Lux"	..	do.	0	5	9
108.	"Velvet" or equal { Quads, 3-doz. ctn.	..	per ctn.	3	8	5
	{ Quints, 1½-doz. ctn.	..	do.	4	2	6
Soda—						
109.	Bicarbonate of	..	per lb.	0	0	8
110.	Washing	..	do.	0	0	5½
Soups—						
	Tomato, 16-oz. tins { "Kia Ora"	..	per doz.	0	19	4
	{ "Rego"	..	do.	0	18	6
	{ "Tom Piper"	..	do.	0	19	5
112.	Tomato, 6-lb. tins, "Kia Ora"	..	each	0	9	6
113.	Tomato, 1-gal. jars	..	per jar	*		
Spaghetti—						
114.	1-lb. packets, "Rinoldi"	..	per doz.	0	14	6

## Sub-schedule No. 4—continued.

## GROCERIES—continued.

			£	s.	d.
115.	Bulk, 22-lb. boxes ..	each	1	5	3
	Spice—Mixed—				
116.	{ 1-oz. packets ..	per doz.	0	5	3
	{ Loose ..	per lb.	0	3	3
117.	Starch—Rice, "Silver Star," packets 14-oz	per doz.	0	17	6
	Sugar—				
118.	Icing mixture, 56-lb. bag ..	per bag	2	13	0
119.	Castor, 70-lb. bag ..	do.	3	0	6
120.	Raw ..	per lb.	0	0	9½
121.	White, 70-lb. bag, (net) ..	per bag	2	15	0
	Tapioca—				
122.	{ Seed ..	per lb.	0	1	0
	{ Pearl ..	do.	0	1	2
123.	Tartar—Cream of ..	do.	0	3	1
124.	Treacle—2 lb. tins ..	per doz.	1	0	1
	Vegetables—Dried—Peas—				
125.	Green, "Dew Crisp" { 8-oz. packets ..	do.	2	10	6
	{ 3½-lb. packets ..	per lb.	0	8	8
126.	Split (yellow) { 56-lb. bags ..	per cwt.	3	4	0
	{ Broken bags ..	per lb.	0	0	8
	Vegetables—Tinned—				
127.	Baked Beans, 16-oz., "Kia Ora" ..	per doz.	1	0	6
128.	Baked Beans, No. 10 Can, "Kia Ora" ..	per can	0	9	9
129.	Beans, green, 30-oz., "Harvest" ..	per doz.	1	17	0
130.	Beetroot, 30-oz., "Aunt Mary" ..	do.	1	6	9
131.	Carrots, 30-oz. ..	do.	*		
132.	Celery, 30-oz. ..	do.	*		
133.	Peas, 30-oz. { "Harvest" ..	do.	1	14	10
	{ "Biddy's" ..	do.	1	8	0
134.	Sweetcorn, 16-oz., "Rosella" ..	do.	1	9	5
135.	Tomatoes, 30-oz., "Rego" ..	do.	1	5	6
	Vermicelli—				
136.	1-lb. packets, "Rinoldi" ..	do.	0	14	9
137.	Bulk, 22-lb. boxes ..	each	1	5	3
138.	Vinegar—Malt, 1-gal. jars (Jars 3s.) ..	per jar	0	3	4

ANNEX TO CONTRACT No. 1956/56.

Alan H. Gittins, 350 Hargreaves-street, Bendigo.

## Sub-schedule No. 5.

## MEAT.

For Gaol.

Security, £5.

			£	s.	d.
1.	Fresh Beef ..	per lb.	0	1	6
2.	Corned Beef—Rolled, without bone or cartilage ..	do.	0	1	6
3.	Fresh Mutton ..	do.	0	0	11
4.	Sausages—Mixed ..	do.	0	1	0
5.	Minced meat ..	do.	0	1	0

ANNEX TO CONTRACT No. 1956/57.†

Alan H. Gittins, 350 Hargreaves-street, Bendigo

## Sub-schedule No. 6.

## MEAT.

For Mental Hygiene Training Centre, Bendigo.

Security, £5.

			£	s.	d.
1.	Fresh Beef, Rolled Roast, boneless, brisket excluded ..	per lb.	0	2	8
2.	Corned Beef, rolled or round, as ordered, without bone or cartilage ..	do.	0	2	0
	Fresh Mutton—				
3.	Legs ..	do.	0	1	11
4.	Chops, Middle Loin ..	do.	0	2	0
	Steak—				
5.	Stewing ..	do.	0	2	0
6.	Minced ..	do.	0	2	0
7.	Livers—Sheep ..	do.	0	1	0
8.	Tripe—Fresh ..	do.	0	0	7
9.	Veal—Boneless ..	do.	0	2	6
10.	Kidney—Ox ..	do.	0	1	0
11.	Tongues—Sheep ..	do.	0	0	10
12.	Sausages—Mixed ..	do.	0	1	6
13.	Rabbits, Filleted ..	do.	0	2	9

ANNEX TO CONTRACT No. 1956/58.

Frank Wade, 193 Williamson-street, Bendigo.

## Sub-schedule No. 7.

## MEAT.

For Teachers' College Hostels as under—

"Sandhurst," 108 Mitchell-street, Bendigo.

"Lancewood," McLaren-street, Bendigo.

"Comersdale," Pantom-street, Golden Square, Bendigo.

Security, £5.

			£	s.	d.
	Fresh Beef—				
1.	Sirloin ..	per lb.	0	2	9
2.	Topside ..	do.	0	2	9

\* Supplies not available.

## Sub-schedule No. 7—continued.

## MEAT—continued.

			£	s.	d.
3.	Corned Beef—Rolled or Round, as ordered, without bone or cartilage ..	do.	0	2	0
	Fresh Mutton—				
4.	Rib Chops—Two tooth ..	do.	0	1	6
5.	Chops—Fore-quarter ..	do.	0	1	3
6.	Legs—Two tooth ..	do.	0	1	8
	Veal—				
7.	Shoulder, boned ..	do.	0	2	9
8.	Legs ..	do.	0	2	6
	Steak—				
9.	Blade (Minced) ..	do.	0	2	9
10.	Stewing—Chuck ..	do.	0	2	3
11.	Sausages—Mixed ..	do.	0	1	6
12.	Sausage Meat ..	do.	0	1	4
13.	Sausage—Beef German ..	do.	*		
14.	Livers—Sheep ..	do.	0	1	3
15.	Saveloys ..	per doz.	*		

## SCHEDULE No. 10.

## PROVISIONS—CASTLEMAINE GAOL.

(Delivery at the Gaol.)

ANNEX TO CONTRACT No. 1956/59.

A. J. Rasmussen, Johnston-street, Castlemaine.

## Sub-schedule No. 1.

## BREADSTUFFS.

Security, £5.

			£	s.	d.
1.	Bread—Fine wheaten, first quality ..	per cwt.	2	10	0

ANNEX TO CONTRACT No. 1956/60.†

Ewings "W. K. &amp; H. S." 91 Mostyn-street, Castlemaine.

## Sub-schedule No. 2.

## MEAT.

Security, £5.

			£	s.	d.
1.	Fresh Beef ..	per lb.	0	1	9½
2.	Fresh Mutton ..	do.	0	1	4½
3.	Corned Beef—Rolled or Round, as ordered, without bone or cartilage ..	do.	0	2	3
4.	Minced Meat ..	do.	0	2	3
5.	Sausage Meat ..	do.	0	1	4
6.	Dripping—Beef ..	do.	0	0	9
7.	Saveloys ..	per doz.	0	4	6

## SCHEDULE No. 11.

## PROVISIONS—SCHOOL OF FORESTRY, CRESWICK.

(Delivery at the School.)

ANNEX TO CONTRACT No. 1956/61.

D. H. Moar, Albert-street, Creswick.

## Sub-schedule No. 1.

## BREADSTUFFS.

Security, £3.

			£	s.	d.
1.	Bread—Fine wheaten, first quality ..	per cwt.	3	4	7
2.	Flour—First quality ..	per lb.	0	0	4½

(AGREEMENT.)

J. Tail and Son., Albert-street, Creswick.

## Sub-schedule No. 2.

## GROCERIES.

£ s. d.

			£	s.	d.
1.	Bacon ..	per lb.	0	5	0
2.	Barley—Pearl ..	do.	0	0	6½
3.	Blue—Washing ..	do.	0	2	6
4.	Butter—First grade creamery, to score not less than 91 points, Government grade, Commerce Regulations Standard ..	do.	0	4	3
5.	Cereals—"Weeties" ..	per doz. pkts.	1	5	6
		per lb.			
6.	Cheese—First class quality, matured ..	do.	0	3	3
7.	Coffee—Fresh roasted and whole, beans to be thoroughly sound ..	do.	0	7	0
8.	Corn or Maize Flour—1-lb. packets ..	do.	0	1	6
9.	Eggs—New laid ..	per doz.	0	4	0
10.	Flour—Self-raising ..	do.	0	0	7½
11.	Ginger—Ground ..	per lb.	0	7	9
12.	Golden Syrup—2-lb. tins ..	per tin	0	1	8

## Sub-schedule No. 2—continued.

GROCERIES—continued.		£	s.	d.
13. Honey—Yellow Box .. ..	per lb.	0	1	4
14. Jams—Assorted, 5-lb. tins, net, in the proportion of half seed and half stone, "Red Feather" .. ..	per tin	0	7	3
15. Mustard—"Double Superfine" .. ..	per lb.	0	5	0
16. Oatmeal .. ..	do.	0	0	8
17. Peas—Split .. ..	do.	0	0	7
18. Pepper—White, ground .. ..	do.	0	6	6
19. Potatoes—Dry and free from dirt .. ..	per cwt.	£		
20. Raisins—Sultana, 3-crown (present season's)	per lb.	0	1	8
21. Rice—Dressed .. ..	do.	0	0	10½
22. Salt—Fine .. ..	do.	0	0	2
23. Soap— "Velvet," yellow, dry, and hard .. ..	per doz.	1	5	0
24. Sand, Carbolite, 12-oz. blocks .. ..	each	0	0	8½
25. Soda— Bicarbonate of .. ..	per lb.	0	0	7
27. Washing .. ..	do.	0	0	4
28. Starch (Rice)—"Preservene" .. ..	do.	0	1	5
29. Tartar—Cream of, Substitute, "Calcium Phosphate" .. ..	do.	0	2	5
30. Tea—First grade .. ..	do.	0	6	6½
31. Vinegar—Malt .. ..	per pint	0	0	5½

ANNEX TO CONTRACT No. 1956/62.

E. J. Keen, Jory-street, Creswick.

## Sub-schedule No. 3.

## MILK.

Security, £3.

	£	s.	d.
1. Milk—Fresh and pure .. ..	per qt.	0	1 3

ANNEX TO CONTRACT No. 1956/63.†

H. J. Symons Pty. Ltd., 1015 Macarthur-street, Ballarat.

## Sub-schedule No. 4.

## MEAT.

Security, £3.

	£	s.	d.
1. Fresh Beef—Fore-quarters .. ..	per lb.	0	1 10
2. Mutton .. ..	do.	0	0 11
3. Sausages—Mixed .. ..	do.	0	1 6
4. Steak—Minced .. ..	do.	0	1 9
5. Livers—Sheep .. ..	do.	0	0 10
6. Dripping—Beef .. ..	do.	0	0 10

## SCHEDULE No. 12.

## PROVISIONS—AGRICULTURAL COLLEGE, DOOKIE.

(Delivery at the College.)

ANNEX TO CONTRACT No. 1956/64.

F. G. Dixon, Mary-street, Dookie.

## Sub-schedule No. 1.

## BREADSTUFFS.

Security, £15.

	£	s.	d.
1. Bread—Fine wheat, first quality .. ..	per cntl.	3	6 8
2. Flour—First quality .. ..	do.	1	17 6

(AGREEMENT.)

W. A. Thompson, 192 High-street, Shepparton.

## Sub-schedule No. 2.

## GROCERIES.

(Delivery "F.O.R." Shepparton.)

	£	s.	d.
1. Baking Powder—1-lb. tins .. ..	per doz.		
Beans— 2. Lima .. ..	per lb.		
3. Haricot .. ..	do.		
4. Biscuits—Coffee, Malt or Arrowroot (as ordered) .. ..	do.		
5. Blue—Washing, square, 8-lb. parcels .. ..	do.		
6. Candles—full weight, Kitchen's Electrines in lots of 30, loose .. ..	do.		
7. Cereal—24-oz. packets, "Piper's" (or equal thereto) .. ..	per doz.		
8. Cinnamon .. ..	per lb.		
9. Chutney—13-oz. bottles .. ..	per doz.		
10. Cocoa—Bulk .. ..	per lb.		
11. Coconut—Dessicated .. ..	do.		
12. Coffee Essence—1-gal. jars .. ..	per gal		
13. Cordial—Lemon, 1-gal. jars s.c. .. ..	do.		
14. Corn or Maize Flour—1-lb. packets .. ..	per doz.		
15. Currants—2-crown (present season's) .. ..	per lb.		
16. Curry Powder—Bulk .. ..	do.		
17. Custard Powder, 1-lb. packets, "McK." Essence— .. ..	per doz.		
18. Almond, 8-oz. bottles .. ..	do.		
19. Cochineal, 8-oz. bottles .. ..	do.		
20. Lemon, 8-oz. bottles .. ..	do.		
21. Vanilla, 8-oz. bottles .. ..	do.		
Fish—Tinned— 22. Herrings in Sauce, 14-oz. tins .. ..	do.		
23. Salmon, 2-lb. tins .. ..	do.		
24. Sardines, 4-oz. tins .. ..	do.		
25. Flour—Self-raising, 150-lb. bags .. ..	per bag		
Fruits— 26. Dried (present season's) .. ..	per lb.		
27. Preserved, 30-oz. tins, Peaches .. ..	per doz.		
28. Preserved, 30-oz. tins, Pears, Apricots .. ..	do.		
29. Preserved, 6-lb. tins, Apples .. ..	per tin		
30. Preserved, 7-oz. tins, Blackberries, Blackcurrants, Gooseberries, and Raspberries .. ..	do.		
31. Gelatine—Ground .. ..	per lb.		
32. Ginger—Ground .. ..	do.		
33. Golden Syrup—2-lb. tins .. ..	per doz.		
34. Gravox—1-lb. tins .. ..	do.		
35. Herbs—Mixed, 2-oz. packets .. ..	do.		
36. Honey—First quality, 60-lb. tins .. ..	per tin		
37. Jelly Crystals—7-lb. packets .. ..	per lb.		
38. Junket Tablets—"Hansens" .. ..	per doz.		
39. Lemon Peel—Cut .. ..	per lb.		
40. Macaroni—Bulk, 22-lb. boxes .. ..	per box		
41. Margarine—Cake .. ..	per lb.		
42. Matches—Safety (60 in a box) .. ..	per gross		
43. Meat Extract—"Bonox," "Beefine," &c., 2-lb. jars .. ..	per jar		
Meat—Tinned— 44. Camp Pie—12-oz. tins .. ..	per doz.		
45. Meat and Vegetables, 16-oz. tins .. ..	do.		
46. Hampe, 12-oz. tins .. ..	do.		
47. Sausages, 16-oz. tins .. ..	do.		
48. Steak and Kidney, 16-oz. tins .. ..	do.		
49. Milk—Condensed, full cream, 14-oz. tins .. ..	do.		
50. Mustard .. ..	per lb.		
51. Oatmeal—Flaked, bulk .. ..	per cwt.		
Pastes— 52. Marmite, 4-oz. jars .. ..	per doz.		
53. Salmon and Shrimp, 4-oz. jars .. ..	do.		
54. Bloater, 4-oz. jars .. ..	do.		
Peas—Green— 55. Boiling .. ..	per lb.		
56. Tinned, 14-oz. tins .. ..	per tin		
57. Pepper—Black, ground .. ..	per lb.		
58. Pickles—Assorted, 20-oz. bottles .. ..	per doz.		
Prunes—Dried—50-60's— 59. Loose (present season's) .. ..	per lb.		
60. 7-lb. tins (present season's) .. ..	per tin		
Raisins— 61. Sultana, 3-crown (present season's) .. ..	per lb.		
62. Seeded .. ..	do.		
63. Rice—Ground .. ..	per doz. lb.		
Salt— 64. Table, 16-oz. packets .. ..	per doz.		
65. Fine .. ..	per cwt.		
Sauce— 66. Tomato, 1-gal. jars, "Granny's" .. ..	per gal.		
67. Worcester, 1-gal. jars .. ..	do.		
Soap— 68. "Bon Ami," 12-oz. tins or cakes, (as ordered) .. ..	per doz.		
69. Flakes, 28-lb. bags .. ..	per cwt.		

\* The rates to be paid for all items under these Sub-schedules shall be the wholesale price ruling on the day of delivery.  
 † Cost plus 10%.

## Sub-schedule No. 2—continued.

## GROCERIES—continued.

			£	s.	d.
70.	"Lux" { Packets .. .. .	per doz.			
	{ Cakes .. .. .	do.			
71.	"Palmolive" .. .. .	do.			
72.	"Persil," 8-oz. packets .. .. .	do.			
73.	"Rinso," 17-oz. packets .. .. .	do.			
	Soda—				
74.	Bicarbonate of .. .. .	per cwt.			
75.	Washing .. .. .	do.			
76.	Soup—Tomato, 20-oz. tins .. .. .	per doz.			
77.	Spaghetti, 1-lb. packets .. .. .	do.			
78.	Spice, ½-lb. packets .. .. .	do.			
79.	Starch—14-oz. packets, "Dandy" .. .. .	per doz.			
	Sugar—				
80.	Castor .. .. .	per cwt.			
81.	Icing .. .. .	do.			
82.	Tartar—Cream of (Aust.) .. .. .	per lb.			
83.	Treacle—2-lb. tins .. .. .	per doz.			
84.	Vinegar—Malt, bulk .. .. .	per gal.			
85.	Yokine—Essence (or equal thereto) in 8-oz. bottles	per doz.			

## (AGREEMENT.)

W. A. Thompson, 192 High-street, Shepparton.

## Sub-schedule No. 3.

## JAM.

(Delivery "F.O.R." Shepparton.) £ s. d.

Jam—					
1.	Assorted, of approved kinds, in the proportion of half seed and half stone, of the best quality, 5-lb. tins, "Golden Bells," "Golden Bar," or "S.P.C."	per doz.			
2.	Assorted, of approved kinds, in the proportion of half seed and half stone, of the best quality, in 32-lb. tins	per lb.			

## SCHEDULE No. 13.

PROVISIONS—MCLEOD SETTLEMENT,  
FRENCH ISLAND.

(Delivery to be made at Corinella Jetty.)

ANNEX TO CONTRACT No. 1956/65.

H. H. Bird, Grantville.

## Sub-schedule No. 1.

## BREAD.

Security, £12. £ s. d.

1.	Bread—Fine wheaten, first quality ..	per cntl.	3	2	6
----	--------------------------------------	-----------	---	---	---

## (AGREEMENT.)

E. V. Peters, Corinella.

## Sub-schedule No. 2.

## GROCERIES.

£ s. d.

1.	Butter—First grade creamery, to score not less than 91 points, Government grade, Commerce Regulations Standard	per lb.	0	4	3½
2.	Cheese—Matured .. .. .	do.	0	3	0
3.	Jams—Assorted, Seed .. .. .	per doz.	1	11	0
	Stone, of best quality, in 24-oz. tins, "Monbulk" and "Rego"	do.	1	7	0

ANNEX TO CONTRACT No. 1956/66.†

George Hayman, Lang Lang.

## Sub-schedule No. 3.

## MEAT.

Security, £5. £ s. d.

1.	Fresh Beef .. .. .	per lb.	0	2	0
2.	Mutton .. .. .	do.	0	1	2
3.	Sausages—Mixed .. .. .	do.	0	1	10

\* The rates to be paid for all items under these sub-schedules shall be the wholesale price ruling on the day of delivery.

## SCHEDULE No. 14.

## PROVISIONS—GEELONG DISTRICT.

(Delivery into Institutions.)

ANNEX TO CONTRACT No. 1956/67.

J. A. Fitzgerald, 150 Malop-street, Geelong.

## Sub-schedule No. 1.

## BREAD.

Security, £30. £ s. d.

1.	Bread—Fine wheaten, first quality ..	per cntl.	2	7	11
2.	Bread—Wholemeal, first quality ..	do.	2	7	11

## (AGREEMENT.)

Beacon Trading Company (Wholesalers Ltd.), McKillop-street, Geelong

## Sub-schedule No. 2.

## GROCERIES.

The rates to be paid under this Sub-schedule shall be the wholesale price ruling on the day of delivery.

ANNEX TO CONTRACT No. 1956/68.†

A. R. Bubb, 147 Moorabool-street, Geelong.

## Sub-schedule No. 3.

## MEAT.

For Gaol.

Security, £5. £ s. d.

1.	Fresh Beef .. .. .	per lb.	0	1	2
2.	Corned Beef—Rolled or Round, without bone or cartilage	do.	0	1	0
3.	Fresh Mutton .. .. .	do.	0	1	0
4.	Beef Minced .. .. .	do.	0	1	11
5.	Sausages Mixed .. .. .	do.	0	1	5
6.	Sausage Meat .. .. .	do.	0	0	9
7.	Saveloys .. .. .	do.	0	1	5
8.	Dripping Beef .. .. .	do.	0	0	10
9.	Suet .. .. .	do.	0	0	5

ANNEX TO CONTRACT No. 1958/69.†

A. R. Bubb, 147 Moorabool-street, Geelong.

## Sub-schedule No. 4.

## MEAT.

For delivery to Teachers' College Hostels as under—

"Lauriston," 23 Aberdeen-street, Geelong.  
 "Forty-Five," The Esplanade, Western Beach, Geelong.  
 "Hawthorne," Aberdeen-street, Geelong.  
 "Ariston," Packington-street, Geelong.  
 "Warrain," 56 Western Beach, Geelong.

Security, £5. £ s. d.

	Fresh Beef—				
1.	Sirloin, boneless .. .. .	per lb.	0	2	10
2.	Topside Roast .. .. .	do.	0	2	11
3.	Corned Beef—Rolled or Round, as ordered, without bone or cartilage	do.	0	2	8
	Mutton—				
4.	Legs, Two-tooth .. .. .	do.	0	1	10
5.	Fore-quarters, boned, rolled, and pickled	do.	0	1	2
6.	Chops, fore-quarter .. .. .	do.	0	1	2
7.	Rib Chops .. .. .	do.	0	1	8
8.	Chops, Loin .. .. .	do.	0	1	9
	Steak—				
9.	Chuck .. .. .	do.	0	2	3
10.	Skirt .. .. .	do.	0	2	6
11.	Bladebone .. .. .	do.	0	2	6
12.	Thick Flank—sliced .. .. .	do.	0	2	9
13.	Minced .. .. .	do.	0	2	0
14.	Minced—for rissoles .. .. .	do.	0	2	0
15.	Fillet—Veal .. .. .	do.	0	3	3
16.	Livers—Sheep .. .. .	do.	0	1	0
17.	Tongues—Ox .. .. .	do.	0	1	6
18.	Kidneys—Ox .. .. .	do.	0	1	8

## Sub-schedule No. 4—continued.

## MEAT—continued.

£ s. d.

Usages—			
19. Mixed, thin	.. ..	do.	0 1 6
20. Pork, thick	.. ..	do.	0 1 10
21. Sausage—Pork, German	.. ..	do.	0 3 6
22. Sausage Mince	.. ..	do.	0 1 2
23. Bacon—Shoulder	.. ..	do.	0 4 10

## SCHEDULE No. 15.

PROVISIONS—COORIEMUNGLE PRISON  
CAMP, HEYTESBURY FOREST.

(Delivery to be made at the Camp.)

ANNEX TO CONTRACT No. 1956/70.

M. and J. V. Church, Recreation-road, Timboon.

## Sub-schedule No. 1.

## BREAD.

£ s. d.

1. Bread—Fine wheaten, first quality	.. per cntl.	3 15 0
--------------------------------------	--------------	--------

## (AGREEMENT.)

M. L. Hose, Timboon.

## Sub-schedule No. 2.

## GROCERIES.

£ s. d.

1. Oatmeal	.. ..	per lb.	0 0 10
2. Rice—Dressed	.. ..	do.	0 1 2
3. Salt—Fine	.. ..	do.	0 0 3

ANNEX TO CONTRACT No. 1956/71.†

Heytesbury Butchery, Timboon.

## Sub-schedule No. 3.

## MEAT.

Security, £4.

£ s. d.

1. Fresh Beef	.. ..	per lb.	0 3 0
2. Mutton Fresh	.. ..	do.	0 2 0
3. Corned Beef—Rolled or Round, as ordered	.. ..	do.	0 2 10
without bone or cartilage	.. ..	do.	0 1 11
2. Sausages	.. ..	do.	0 1 6
5. Sausage Mince	.. ..	do.	0 1 6
6. Dripping, Beef	.. ..	do.	0 1 0

## SCHEDULE No. 16.

PROVISIONS—ABORIGINAL STATION,  
LAKE TYERS.

(Delivery at Lake Tyers Station.)

ANNEX TO CONTRACT No. 1956/72.

R. Hodder, Nowa Nowa.

## Sub-schedule No. 1.

## BREADSTUFFS.

Security, £25.

£ s. d.

1. Bread—Fine wheaten, first quality	.. per cntl.	2 14 0
2. Flour—First quality	.. ..	do. 1 14 0

## (AGREEMENT.)

R. Hodder, Nowa Nowa.

## Sub-schedule No. 2.

## GROCERIES.

£ s. d.

1. Baking Powder—"Snowflake," or equal	per lb.	thereto, 1-lb. tins	do.
2. Candles—Full weights, Kitchen's "Elec- trines," or other make of equal quality,	do.	1-lb. packets	do.
3. Coffee—Fresh roasted, and whole, beans to be thoroughly sound	do.		do.
4. Cocoa—Bulk	per lb.		do.
5. Corn or Maize Flour—1-lb. packets	do.		do.
6. Currants—2-crown (present season's)	do.		do.
7. Curry Powder—Bulk	do.		do.
8. Matches—Safety, 60 per box, "Yacht"	per gross		do.
9. Mustard—"Double Superfine"	per lb.		do.
10. Pepper—Black, ground, 2-oz. tins	per tin		do.
11. Raisins—Sultans, 3-crown (present season's)	per lb.		do.
Salt—			
12. Coarse	per cwt.		do.
13. Fine	do.		do.
14. Soap—Household, hard and dry, to sample	do.		do.
Soda—			
15. Bicarbonate of	per lb.		do.
16. Washing	do.		do.
17. Tartar—Cream of, substitute, Calcium Phos- phate	do.		do.
18. Treacle—2-lb. tins	per tin		do.
19. Vinegar—Malt	per qt.		do.

§ Order under Melbourne District Contract.

\*\* The rates to be paid for all items under these Sub-schedules shall be the wholesale prices charged to the contractor, plus 12½ per cent. Wholesaler's invoices to be submitted with contractors' accounts.

## (AGREEMENT.)

R. Hodder, Nowa Nowa.

## Sub-schedule No. 3.

## JAMS.

£ s. d.

1. Jams—Assorted, 24-oz. tins, in the propor- tion of half seed and half stone	per tin	**
---	---------	----

## SCHEDULE No. 17.

PROVISIONS—LANGI KAL KAL  
TRAINING CENTRE.

ANNEX TO CONTRACT No. 1956/73.

O. Nicholls and W. J. Hosken, Neil-street, Beaufort.

## Sub-schedule No. 1.

## BREAD.

Security, £3.

£ s. d.

1. Bread—Fine wheaten, first quality	.. per cntl.	2 14 2
--------------------------------------	--------------	--------

ANNEX TO CONTRACT No. 1956/74.†

H. T. Slee and Co., Laurence-street, Beaufort.

## Sub-schedule No. 2.

## MEAT.

Security, £5.

£ s. d.

1. Fresh Beef—Boneless	.. ..	per lb.	0 3 0
2. Sausage Meat	.. ..	do.	0 1 6
3. Sausages—Mixed	.. ..	do.	0 1 10

## SCHEDULE No. 18.

PROVISIONS—AGRICULTURAL COLLEGE,  
LONGERENONG.

(Delivery at the College.)

ANNEX TO CONTRACT No. 1956/75.

Schwarz Breads, 58 Firebrace-street, Horsham.

## Sub-schedule No. 1.

## BREADSTUFFS.

Security, £5.

£ s. d.

1. Bread—Fine wheaten, first quality	.. per cntl.	3 2 6
2. Flour—First quality	.. ..	do. §

## (AGREEMENT.)

W. Cook and Son, Horsham.

## Sub-schedule No. 2.

## GROCERIES.

£ s. d.

Bacon—			
1. { Sides	.. ..	per lb.	0 4 6
{ Rashers, middle	.. ..	do.	0 6 6
2. Barley—Pearl	.. ..	do.	0 0 8
Beans—			
3. Butter	.. ..	do.	*
4. Haricot	.. ..	do.	0 1 6
5. Lima	.. ..	do.	0 1 9
Biscuits—			
6. Dry	.. ..	per lb.	0 1 9
7. Coffee, Malt, Arrowroot	.. ..	do.	0 1 9
8. Assorted { "A" assortment	.. ..	do.	0 1 11
{ "B" assortment	.. ..	do.	0 2 3
Blue—			
9. { 1-oz. knobs (Calico bags, 2s. 6d. doz.)	.. ..	do.	0 2 0
{ 7-lb. packets	.. ..	per pkt.	*
10. Borax	.. ..	per lb.	0 0 10
11. Cake Containers—Paper, 200's..	.. per gross		*
Cereals—			
12. Cornflakes, or equals, packets	.. per doz.		1 9 0
13. Biscuit, { "Weetbix" or equal, packets	do.		1 4 0
{ "Vita Brits"	.. ..	do.	1 9 0
14. "All-Bran," or equal, packets	.. ..	do.	0 16 0
15. Cheese—5-lb. boxes, "Kraft"	.. ..	per doz.	1 1 0
16. Chutney—"White Crow"	.. ..	per lb.	0 9 6
17. Cloves	.. ..	do.	0 1 9
18. Coconut—Desiccated	.. ..	do.	0 1 9
Coffee Essence—			
19. 8-oz. bottles "Melray"	.. ..	per doz.	1 10 0
20. 40-oz. jars	.. ..	per jar	0 8 6
Curry Powder—Bulk—			
21. { "Hamee"	.. ..	per lb.	0 3 6
{ "Cox" (Indian)	.. ..	do.	0 4 6

\* Supplies not available.

## Sub-schedule No. 2—continued.

GROCERIES—continued.		£	s.	d.
Custard Powder—				
22.	Bulk { "Renown" .. .. .	do.	0	1 3
	do. { "Melray" .. .. .	do.	0	1 7
23.	1-lb. packets { "Renown" .. .. .	do.	0	1 4
	do. { "Melray" .. .. .	do.	0	1 8
Dates—				
24.	{ "Sair," 1-lb. packets .. .. .	do.	0	1 5½
	{ "Khadrawi," 1-lb. packets .. .. .	do.	0	1 7½
Essences, &c.—				
25.	Almond, 1-oz., "Triple Strength" .. .. .	per bot.	0	1 0
26.	Lemon, 8-oz., "Melray" ("Burnside," 3s. 11d.) .. .. .	do.	0	7 6
27.	Vanilla, 8-oz., "Melray" ("Burnside," 4s. 3d.) .. .. .	do.	0	9 6
28.	Cochineal, 1-oz. .. .. .	do.	0	1 0
29.	Parisian, 4-oz. .. .. .	do.	0	1 3
30.	Yolkine, 1-oz. .. .. .	do.	0	0 9
Cocoa—				
31.	8-oz. tins, "Bournville" .. .. .	per tin	0	3 3
32.	Loose .. .. .	per lb.	0	3 0
Extracts and Pastes, &c., or equal—				
33.	"Marmite," 8oz. .. .. .	per tin	0	4 3
34.	"Vegemite," 8oz. .. .. .	do.	0	4 3
35.	Peanut Butter, 8oz. .. .. .	do.	0	1 6
36.	"Bonox," 2oz. .. .. .	per bot.	0	1 8
37.	Bloater .. .. .	per tin	0	0 6
38.	Salmon and Shrimp .. .. .	do.	0	0 7½
Fish—Tinned—				
39.	"Flair" .. .. .	per doz.	1	4 0
40.	Salmon { "King Sound" .. .. .	do.	2	4 0
	do. { "Deep Seas" .. .. .	do.	1	19 6
41.	Pilchards, 16-oz. .. .. .	do.	1	4 0
42.	Herrings, 14-oz. .. .. .	do.	1	6 0
43.	Sardines, 4-oz. .. .. .	do.	0	14 0
Flour—Corn or Maize—				
44.	Packets .. .. .	per lb.	0	1 6
45.	Bulk .. .. .	do.	0	1 1
46.	Flour—Self-raising—"Crusader" "McAlpins," 9d.) .. .. .	or do.	0	0 8
Fruits—Dried—				
47.	Apples .. .. .	do.	0	3 0
48.	Apricots { 5-crown .. .. .	do.	0	4 3
	do. { Plain .. .. .	do.	0	3 3
49.	Peaches { 4-crown .. .. .	do.	0	3 0
	do. { Plain .. .. .	do.	0	2 6
50.	Pears { 4-crown .. .. .	do.	0	2 6
	do. { Plain .. .. .	do.	0	1 11
51.	Prunes, 60-70's .. .. .	do.	0	2 4
52.	Currants { 4-crown .. .. .	do.	0	1 10
	do. { Plain .. .. .	do.	0	1 7
53.	Raisins—Seeded { "Melray," packets	do.	0	2 0
	do. { Loose .. .. .	do.	0	1 8
54.	Sultanas { 4-crown .. .. .	do.	0	1 10
	do. { Plain .. .. .	do.	0	1 8
Fruits—Tinned—				
55.	Apricots { Halves, 30-oz. .. .. .	per doz.	1	14 0
	do. { Halves, 7-lb. .. .. .	do.	5	2 0
	do. { Whole, 30-oz. .. .. .	do.	1	10 0
56.	Peaches { 30-oz. .. .. .	do.	1	14 0
	do. { 7-lb. .. .. .	do.	5	0 0
57.	Pears { 30-oz. .. .. .	do.	1	15 0
	do. { 7-lb. .. .. .	do.	5	5 6
58.	Mixed Fruits, 30-oz. .. .. .	do.	1	13 0
59.	Solid Pack Apples { 30-oz. .. .. .	do.	1	17 6
	do. { 7-lb. .. .. .	do.	5	12 0
60.	Solid Pack Apricots, pie, 30-oz. .. .. .	do.	1	6 0
61.	Gelatine—Ground, "Davis" .. .. .	per lb.	0	6 9
62.	Ginger—Ground .. .. .	do.	0	4 6
63.	Golden Syrup—2-lb. tins .. .. .	per doz.	1	2 0
64.	Gravox—1-lb. tins .. .. .	do.	1	2 6
65.	Herbs—Mixed, "Melray," packets .. .. .	per doz.	0	3 6
66.	Honey—60-lb. tins (less 2s. 6d. returned tins), "Yellow Box" .. .. .	per tin	*	
Jelly Crystals—				
67.	4-oz. packets, "Melray" .. .. .	per doz.	0	8 6
68.	7-lb. packets, "Melray" .. .. .	per pkt.	0	17 6
69.	Junket Tablets, tubes .. .. .	per doz.	0	17 0
70.	Lentils .. .. .	per lb.	0	1 9
Macaroni—				
71.	1-lb. packets .. .. .	do.	0	1 4
72.	Bulk, 22-lb. cartons .. .. .	each	1	2 0
73.	Margarine—Cake, pastry .. .. .	per lb.	0	1 7
74.	Matches—Safety, packets .. .. .	per gross	0	19 0
75.	Mayonaise—1-gal. jars, "Kraft" .. .. .	per jar	1	5 0
Meat—Tinned—				
76.	Beef Luncheon .. .. .	per doz.	1	5 0
77.	Beef Steak Pudding .. .. .	do.	1	2 6
78.	Camp Pie .. .. .	do.	0	19 6
79.	Irish Stew .. .. .	do.	1	1 0
80.	Lamb and Green Peas .. .. .	do.	1	1 0

## Sub-schedule No. 2—continued.

GROCERIES—continued.		£	s.	d.
81.	Minced Beef .. .. .	do.	0	18 6
82.	Sausages and Vegetables .. .. .	do.	1	5 0
Milk—Tinned—				
83.	Dried, "Sunshine" .. .. .	do.	1	14 6
84.	Condensed, "Mont Blanc" .. .. .	do.	1	0 0
85.	"Ideal" or equal .. .. .	do.	0	16 6
Mustard—				
86.	{ Bulk, "McKenzie's" .. .. .	per lb.	0	4 11
	do. { "Keens" .. .. .	do.	0	7 6
87.	Nutmeg—Ground .. .. .	do.	0	8 6
Oatmeal—Flaked—				
88.	{ "Wards," 5-lb. packets .. .. .	per pkt.	0	5 0
	do. { "Parsons" .. .. .	per lb.	0	0 9½
89.	Pastry—Mix .. .. .	per pkt.	0	1 1
Peel—				
90.	Mixed, cut .. .. .	per lb.	0	1 8
91.	Lemon, cut .. .. .	do.	0	1 8
92.	Pepper—White, ground .. .. .	do.	0	7 6
93.	Pickles—Assorted, 20-oz. bottles, "Melray" .. .. .	per doz.	1	4 0
Rice—				
94.	Dressed .. .. .	per lb.	0	0 11
95.	Ground, 1-lb. packets .. .. .	do.	0	0 11
96.	Sago .. .. .	do.	0	0 9½
Salt—				
97.	Fine, bulk, "Imperial" .. .. .	per cwt.	1	2 6
98.	Table .. .. .	per lb.	0	0 6
Sauces—				
99.	Tomato, 26-oz. bottles, { "White Crow" .. .. .	per doz.	2	3 0
	do. { "Fowlers" .. .. .	do.	2	7 0
100.	Tomato, 1-gal. jars, "White Crow" .. .. .	per jar	0	14 0
Worcestershire—				
101.	{ 10-oz. bottles, "Holbrooks" .. .. .	per doz.	1	5 6
	do. { 10-oz. bottles, "Bonita" .. .. .	do.	0	17 6
	do. { 1-gal. jars .. .. .	per jar	0	10 6
102.	Mustard, 8-oz. bottles .. .. .	per doz.	1	1 0
Soaps—				
103.	Extract of "Kitchens" or equal .. .. .	per lb.	0	0 7
104.	Household, dry .. .. .	per case	2	0 0
105.	"Lux," "Rinso," "Persil," or equal (large packets) .. .. .	per case	0	16 0
106.	Sand Soap, 12-oz. blocks .. .. .	do.	0	7 6
107.	Toilet Soap, "Kitchens" or equal, 3½-oz. tablets .. .. .	do.	0	4 0
108.	"Velvet" or equal { Quads .. .. .	do.	1	2 6
	do. { Quints .. .. .	do.	1	17 0
Soda—				
109.	Bicarbonate of .. .. .	per lb.	0	0 7
110.	Washing .. .. .	do.	0	0 5
Soups—Tomato—				
111.	16-oz. tins { "Fowlers" .. .. .	per doz.	0	15 0
	do. { "Melray" .. .. .	do.	1	0 0
112.	6-lb. tins .. .. .	do.	3	0 0
113.	1-gal. jars .. .. .	per jar	0	10 0
Spaghetti—				
114.	1-lb. packets .. .. .	per doz.	0	16 0
115.	Bulk, 22-lb. cartons .. .. .	each	1	2 6
116.	Spice—Mixed .. .. .	per lb.	0	4 6
Starch—Rice—				
117.	{ "White Ray" .. .. .	per pkt.	0	1 3
	do. { "Silver Star" .. .. .	do.	0	1 7
Sugar—				
118.	Icing .. .. .	per lb.	0	1 0
119.	Castor .. .. .	do.	0	0 11
120.	White, 70's .. .. .	per bag	2	18 6
121.	Raw, 70's .. .. .	do.	2	10 0
122.	Tapioca .. .. .	per lb.	0	1 0
123.	Tartar—Cream of .. .. .	do.	0	3 8
124.	Treacle—2-lb. tins .. .. .	per doz.	1	1 6
Vegetables—Dried—Peas—				
125.	Green, "Dew Crisp" .. .. .	per lb.	0	7 11
126.	Split, yellow .. .. .	do.	0	0 9
Vegetables—Tinned—				
127.	Baked Beans, 16-oz. { "Robinhood" .. .. .	per doz.	0	15 0
	do. { "White Crow" .. .. .	do.	1	1 0
128.	Baked Beans, No. 10 can { "Robinhood" .. .. .	per can	0	8 6
	do. { "Vacola" .. .. .	do.	0	9 6
129.	Beans, green, 30-oz., "Raleigh" .. .. .	per doz.	1	17 0
130.	Beetroot, 30-oz. .. .. .	do.	1	4 0
131.	Carrots, 30-oz. .. .. .	do.	0	16 0
132.	Celery, 30-oz. .. .. .	do.	1	12 0
133.	Parsnips, 30-oz. .. .. .	do.	1	5 0
134.	Peas, 30-oz., "Raleigh" .. .. .	do.	1	16 0
135.	Sweetcorn, 30-oz. .. .. .	do.	1	17 6
136.	Tomatoes, 30-oz. .. .. .	do.	1	6 0
Vermicelli—				
137.	1-lb. packets .. .. .	do.	0	16 0
138.	22-lb. cartons .. .. .	per ctn.	1	2 0
Vinegar—Malt—				
139.	{ 1-gal. jars, "Sutherland" .. .. .	per jar	0	4 6
	do. { 1-gal. jars, "Reeds" .. .. .	do.	0	3 0

\* Rates available in mid July.

## (AGREEMENT.)

W. Cook and Son, Horsham.

## Sub-schedule No. 3.

## JAM.

## 1. Jams—

Varieties available—Apricot Conserve, Apple Jelly, Blackberry, Black Currant, Gooseberry, Loganberry, Melon and Lemon, Melon and Pineapple, Dark Plum, Light Plum, Marmalade, Peach, Plum and Raspberry, Quince and Raspberry, in the proportion of half seed and half stone.

			£	s.	d.
In 24-oz. tins	{ "S.P.C." ..	per doz.	1	4	11
	{ "White Crow" ..	do.	1	10	0
In 5-lb tins	{ "S.P.C." ..	do.	3	14	6
	{ "White Crow" ..	do.	4	4	0
In Bulk	{ Plum ..	per lb.	0	1	1
	{ Apricot ..	do.	0	1	2

## SCHEDULE No. 19.

PROVISIONS—RESEARCH STATION,  
RUTHERGLEN.

(Delivery ex Bakery and Grocery Store.)

ANNEX TO CONTRACT No. 1956/76.

E. M. and G. A. Dwyer, Main-street, Rutherglen.

## Sub-schedule No. 1.

## BREAD.

Security, £3.

	£	s.	d.
1. Bread—Fine wheaten, first quality .. per cntl.	3	4	7

## (AGREEMENT.)

Aitken and Fullerton, Rutherglen.

## Sub-schedule No. 2.

## GROCERIES, ETC.

supplement No. 2.  
GROCERIES, ETC.

		£	s.	d.
1. Biscuits	{ Marie, Coffee, Arrowroot ..	per lb.	0	2 3
	{ Dry ..	do.	0	2 3
	{ Sweet ..	do.	0	2 6
2. Chutney	—“ Rosella ” ..	per bot.	0	2 3
3. Cocoa	—“ Bournville ”—1-lb. tins ..	each	0	5 9
4. Coconut—desiccated ..		per lb.	0	2 0
5. Cornflakes—“ Kellogg’s ” ..		per pkt.	0	2 5
6. Cornflour ..		do.	0	1 8
7. Custard Powder ..		do.	0	2 1
8. Dried Fruits	{ Currants ..	per lb.	0	1 9
	{ Raisins ..	do.	0	2 3
	{ Sultanas ..	do.	0	1 9
9. Essence of Lemon—Pure—4-oz. bottles ..		each	0	4 6
10. Gelatine ..		per lb.	0	7 3
11. Gravox (16-oz.) ..		each	0	2 0
12. Jams (Berries excluded) 24-oz. ..		per tin	0	2 8
13. Jelly Crystals ..		per pkt.	0	0 8
14. Macaroni ..		per lb.	0	1 3
15. Matches ..		per pkt.	0	1 9
16. Meat—Tinned	{ Camp Pie ..			
	{ Sausages and Vegetables ..			
	{ Corn Beef ..			
	{ Lamb and Green Peas ..			
	{ Irish Stew ..			
	{ Steak and Onions ..			
		per tin	0	2 6
17. Oatmeal—5-lb. packets ..		each	0	5 3
18. Pepper—2-oz. tins ..		do.	0	1 5
19. Pickles ..		per bot.	0	2 3
20. Flour	{ White ..	per lb.	0	0 5
	{ Self-raising—7-lb. bags ..	each	0	5 3
21. Sauce—Tomato—“ Mons,” 26-oz. ..		each	0	3 6
22. Soup—Tomato—“ Rosella ” or “ Kia Ora ” ..		per tin	0	1 8
23. Soaps	{ Lux, 16-oz. ..	each	0	2 11
	{ Rinso—Economy ..	do.	0	3 6
	{ Toilet ..	per doz.	0	9 6
	{ Sand—Pearsons ..	do.	0	10 6
	{ Velvet—“ Quads ” ..	do.	1	6 0
24. Salmon—Australian, 1-lb. tins—“ Greenseas ” ..		each	0	3 9
25. Salt ..		per lb.	0	0 3
26. Spaghetti ..		per lb.	0	1 4
27. Sugar—70-lb. bags ..		per bag	2	18 3
28. Tea ..		per lb.	0	7 0
29. Vinegar—26-oz. bottles ..		per bot.	0	1 6

## SCHEDULE No. 20.

## PROVISIONS AT SALE.

(Delivery at the Gaol.)

ANNEX TO CONTRACT No. 1956/77.

F. J. Hennessy, 102 Raymond-street, Sale.

## Sub-schedule No. 1.

## BREAD.

Security, £3.

	£	s.	d.
1. Bread—Fine wheaten, first quality .. per cntl.	2	15	1½

## ANNEX TO CONTRACT No. 1956/78.†

H. L. G. Laws, 111 Raymond-street, Sale.

## Sub-schedule No. 2.

## MEAT.

Security, £3.

	£	s.	d.
1. Fresh Beef—Stewing .. per lb.	0	2	3
2. Fresh Mutton .. do.	0	1	3
3. Corned Beef—Rolled or Round, as ordered, without bone or cartilage .. do.	0	2	3
4. Sausages .. do.	0	1	10

## SCHEDULE No. 21.

PROVISIONS—PLEASANT CREEK  
SPECIAL SCHOOL, STAWELL.

(Delivery at the School.)

ANNEX TO CONTRACT No. 1956/79.

Keith Lawson, 26 Main Street, Stawell

## Sub-schedule No. 1.

## BREADSTUFFS.

Security, £10.

	£	s.	d.
1. Bread—Fine wheaten, first quality .. per cntl.	3	2	6
2. Flour—First quality .. do.	2	0	0
3. Flour—Wheatmeal .. per lb.	0	0	5

## (AGREEMENT.)

McKay MacLeod Pty. Ltd., 122 Lydiard-street, Ballarat.

## Sub-schedule No. 2.

## GROCERIES.

GROCERIES.			£	s.	d.
1.	Baking Powder—"Excelsior" ..	per lb.	0	2	6½
2.	Barley—Pearl ..	do.	0	0	6½
3.	Blue—Washing, "Reck Square" ..	per gross	1	7	3½
4.	Cereal { "Wheat flakes," 24-oz. packets ..	per doz.	1	2	11
	{ Weet Harts, 28-oz. packet ..	do.	1	13	6
5.	Cocoa—(1-lb. "Bournville" ..	do.	3	0	4½
	28-lb. bags *				
6.	Coffee and Chicory "Gold Seal" ..	per lb.	0	6	0½
7.	Corn Flour—1-lb. packets, "Kream" ..	do.	0	1	6½
	Currants (present season's)—				
8.	{ M.F. ..	do.	0	1	5½
	{ 1-crown ..	do.	0	1	6½
	{ 2-crown ..	do.	0	1	6½
9.	Curry Powder—Loose, "Gold Seal" ..	do.	0	4	0½
10.	Custard Powder—Loose ..	do.	0	1	2½
11.	Dates (under box lots, 1s. 5d. per lb.) ..	do.	0	1	4½
12.	Ginger—Ground ..	do.	0	6	10½
	Golden Syrup—				
13.	{ 2-lb. tins ..	per doz.	1	0	10
	{ 70-lb. tins ..	each	2	16	10
14.	Gravox—1-lb. tins ..	per doz.	1	1	1½
15.	Honey—First quality ..	per lb.	0	1	5½
16.	Jams—Assorted, of approved kinds, in proportion of half seed and half stone, in tins containing 24 oz. net, "Victoree" ..	per doz.	1	8	6
17.	Jelly Crystals—pkts. "McKays" ..	do.	0	8	9½
	Junket Tablets—				
18.	{ "Gold Seal" ..	per dz. tbs.	0	5	0
	{ "Merry Widow," flavoured ..	do.	0	15	7
19.	Macaroni—22-lb. cartons ..	per ctn.	1	2	2
20.	Margarine—Cake, Pastry ..	per lb.	0	1	6½
	Oatmeal—				
20.	{ Flake ..	per lb.	0	0	8½
	{ Fine ..	do.	0	0	7½
22.	Peel—Cut, mixed ..	do.	0	2	0½
23.	Pepper—Black, ground ..	do.	0	4	0½
24.	Prunes—Dried { 50-60's (present season) ..	do.	0	2	8½
	{ 70-80's ..	do.	0	2	3
	Raisins—Sultana (present season's)—				
25.	{ Plain ..	do.	0	1	6½
	{ 1-crown ..	do.	0	1	7½
	{ 2-crown ..	do.	0	1	7½
26.	Rice—Dressed ..	per cwt.	4	19	0
27.	Salt—Fine "Imperial" ..	per cwt.	1	0	7½
28.	Sauce—Tomato, 26-oz. bottles "Mc K." ..	per doz.	1	18	10
	Soap—				
29.	Preservene Foam ..	per doz.	0	14	9
		pkts.			
30.	"Lifebuoy"—Regular ..	per cake	0	0	5½
31.	Sand, "Pearlite" ..	per doz.	0	7	10½
		cakes			
32.	"Velvet," or equal thereto { Quads ..	per doz.	1	3	7
	{ Quints ..	do.	1	18	0
	Soda—				
33.	Bicarbonate of ..	per lb.	0	0	6½

\* Supplies not available.

## Sub-schedule No. 2—continued.

## GROCERIES—continued.

34. Washing .. .. .	per cwt.	1 19 7½
35. Spaghetti—22-lb. cartons .. .. .	per ctn.	1 2 2½
36. Spice—Mixed, 1-oz. packets .. .. .	per pkt.	0 0 5½
37. Starch—12-oz. packets, "Silver Star" .. .. .	per doz.	0 17 6
38. Sweets, boiled .. .. .	per lb.	0 1 5½
39. Tartar—Cream of, substitute, "Antelope" .. .. .	per lb.	0 2 4½
40. Tapioca—Pearl .. .. .	do.	0 1 2½
41. Tea—First grade, loose, special blend .. .. .	do.	0 6 5½
42. Treacle—2-lb. tins .. .. .	per doz.	1 0 5
43. Vinegar, Malt, 1 gal jars (Jars 3s. 6d. each) each .. .. .		0 3 9

ANNEX TO CONTRACT No. 1956/80.

Stawell Modern Dairy Pty. Ltd., 7 Seaby-street, Stawell.

## Sub-schedule No. 3.

## MILK.

Security, £10.

1. Milk—Fresh and pure, pasteurised .. .. .	per gal.	0 5 6
---	----------	-------

ANNEX TO CONTRACT No. 1956/81.†

Newton Bros., 121 Main-street, Stawell.

## Sub-schedule No. 4.

## MEAT.

Security, £3.

Fresh Beef—		
1. Rolled Roast Boneless (Brisket excluded) .. .. .	per lb.	0 1 6
Steak—		
2. Topside .. .. .	do.	0 1 6
3. Stewing (Minced when required) .. .. .	do.	0 1 6
4. Beef, Corned Silverside .. .. .	do.	0 1 6
Fresh Mutton—		
5. Forequarters .. .. .	do.	0 1 0
6. Leg .. .. .	do.	0 1 9
7. Loin .. .. .	do.	0 1 8
Chops—		
8. Middle Loin .. .. .	do.	0 1 6
9. Forequarter .. .. .	do.	0 1 0
10. Frankfurts (April to September) .. .. .	do.	0 2 0
Kidneys—		
11. Sheep (April to September) .. .. .	each.	0 0 2
12. Ox .. .. .	do.	0 1 6
13. Sausages—Mixed (April to September) .. .. .	per lb.	0 1 6
14. Tripe (April to September) .. .. .	do.	0 1 0
Livers—		
15. Sheep .. .. .	do.	0 1 0
16. Ox .. .. .	do.	0 1 0
17. Ham and Beef Loaf (October to March) .. .. .	do.	..
18. Sausage—Beef—German .. .. .	do.	..

## SCHEDULE No. 22.

## PROVISIONS—SUNBURY DISTRICT.

(Delivery into Institutions.)

ANNEX TO CONTRACT No. 1956/82.

J. N. Hennessy Pty. Ltd. 55 Sydney-road, Brunswick.

## Sub-schedule No. 1.

## BREADSTUFFS.

Security, £112.

1. Bread—Fine wheaten, first quality .. .. .	per cntl.	1 14 4
2. Flour—First quality .. .. .	do.	1 12 3

(AGREEMENT.)

K. N. Tidswell, Sunbury.

## Sub-schedule No. 2.

## GROCERIES.

1. Beans—		
Biscuits—		
2. Dry .. .. .	do.	0 2 3
3. Sweet .. .. .	do.	0 2 4
4. Blue—Washing, 1-oz. knobs, "Reckitts" .. .. .	per gross	1 9 6
5. Candles—Full weight, in 1-lb. packets, Kitchen's "Electrines," or equal there-to .. .. .	do.	0 2 4
6. Cereals—Weeties—24-oz. pkts. .. .. .	per doz.	1 0 0
7. Cinnamon .. .. .	pkts.	0 2 6
8. Cloves—Whole .. .. .	do.	..
9. Cocoa—16-oz. packets, "Bournville" .. .. .	do.	0 6 6
10. Cordials .. .. .	per doz.	2 0 0
1-gal. jars (Jars 3/- each) .. .. .	each.	0 15 6

## Sub-schedule No. 2—continued.

## GROCERIES—continued.

11. Corn or Maize Flour—1-lb. packets, net.. .. .	do.	0 1 6
12. Currants—2-crown (present season's) .. .. .	per lb.	0 1 8
13. Curry Powder .. .. .	do.	0 4 6
14. Custard Powder—30-lb. tins .. .. .	do.	0 1 4½
15. Dates—Stoneless .. .. .	do.	0 1 6
16. Essences—16-oz. { Lemon "Triangle" .. .. .	each	3 13 0
{ Vanilla do. .. .. .	do.	3 13 0
Flour—Self-raising—		
17. { 6-lb. bags .. .. .	each	0 4 0
{ 25-lb. bags .. .. .	do.	0 16 0
18. Gelatine 16 oz. pkts—"Davis" .. .. .	per doz	4 16 0
19. Ginger—Ground .. .. .	do.	..
Golden Syrup—		
20. { 5-cwt. drums .. .. .	per cwt.	..
{ 2-lb. tins .. .. .	per doz.	1 0 0
21. Gravox—1-lb. .. .. .	do.	1 3 0
22. Honey—Pure .. .. .	per lb.	0 1 7
23. Jelly Cristals { 4-oz. packets .. .. .	do.	0 7 10½
{ Bulk .. .. .	per lb.	0 2 5
24. Lemon Peel—8-oz. packets .. .. .	per pkt.	0 1 8
25. Macaroni .. .. .	per lb.	0 0 11½
26. Margarine—Cake, Pastry .. .. .	do.	0 1 9
27. Meat—Tinned { 12-oz. Camp Pie "Imperial" .. .. .	per doz.	1 1 0
{ 16-oz. .. .. .	do.	1 5 6
28. Milk—Powdered .. .. .	do.	0 1 2½
29. Mustard—Loose, "Keen's" .. .. .	do.	0 6 6
30. Nutmeg—Ground .. .. .	do.	0 9 6
31. Peel—Mixed (8-oz pkt) .. .. .	each.	0 1 8
32. Pepper—Black, ground .. .. .	per lb.	0 8 3
33. Pickles—Mustard .. .. .	per doz.	1 8 6
34. Raisins—Sultans, 2-crown (present season's) .. .. .	per lb.	0 1 8½
35. Salt—Fine .. .. .	per cwt.	0 16 0
Sauce—		
36. { Tomato, 26-oz. bottles .. .. .	per doz.	1 15 6
{ Worcestershire, 20-oz. bottles .. .. .	do.	1 10 6
Soda—		
37. Bicarbonate of .. .. .	per lb.	0 0 9
38. Washing .. .. .	per cwt.	2 0 0
39. Spaghetti in Tomato Sauce—4-lb. jars .. .. .	per doz.	3 7 6
40. Spice—Mixed, loose .. .. .	per lb.	0 4 6
41. Starch—Loose, "Silver Star" .. .. .	do.	0 1 9½
42. Sugar .. .. .	per bag	..
43. Tartar—Cream of .. .. .	do.	0 4 4
44. Vermicelli .. .. .	do.	0 1 1
45. Vinegar—Malt .. .. .	per gal.	0 4 0

## Sub-schedule No. 3.

## CEREALS.

1. Oatmeal—Plain .. .. .	per cwt.	..	Purchase
2. Rice—Dressed to sample .. .. .	do.	..	under
3. Pearl Barley .. .. .	do.	..	Tender
4. Peas Barley .. .. .	do.	..	Board
5. Sago .. .. .	do.	..	quotations.

(AGREEMENT)

K. N. Tidswell, Sunbury.

## Sub-schedule No. 4.

## JAMS.

1. Jams—Assorted, in bulk, of approved kinds, in the proportion of half seed and half actual stone, of the best quality, in tins as required, "M.P." .. .. .	per lb.	0 1 1
2. Marmalade .. .. .	do.	0 1 5½

ANNEX TO CONTRACT No. 1956/83.†

F. Watkins Pty. Ltd., 184 Bourke-street, Melbourne, C.1.

## Sub-schedule No. 5.

## MEAT.

Security, £48.

Fresh Beef—		
1. Rolled Roast, Boneless, (Brisket excluded) .. .. .	per cntl.	10 0 0
2. Buttocks .. .. .	do.	7 10 0
Fresh Mutton		
3. Kidney fat to be removed .. .. .	do.	4 11 8
4. Loin Chops .. .. .	do.	8 6 8
5. Corned Beef—Rolled or Round, as ordered, without bone or cartilage .. .. .	do.	10 8 4
6. Sausages—Mixed .. .. .	per lb.	0 1 10
7. Sausage—Beef—German .. .. .	do.	0 2 3
8. Veal Legs .. .. .	do.	0 2 6
9. Tripe Fresh .. .. .	do.	0 0 10
10. Livers—Sheep .. .. .	do.	0 2 6
11. Ox Tails .. .. .	do.	0 1 9
12. Beef Loaf .. .. .	do.	0 3 0
13. Ham Loaf .. .. .	do.	0 3 0
14. Veal Loaf .. .. .	do.	0 3 0
15. Pickled Pork .. .. .	do.	0 3 3
16. Saveloys .. .. .	per doz.	0 3 6
17. Fowls—First quality .. .. .	per lb.	0 5 0

\* Supplies not available.