

(2577)



VICTORIA
GOVERNMENT GAZETTE

Published by Authority

[Registered at the General Post Office, Melbourne, for transmission by post as a newspaper.]

No. 73]

Thursday, July 31.

[1958

CONTRACTS ACCEPTED.

(SERIES 1958-59.)

SUPPLY OF PROVISIONS

FOR

STATE DEPARTMENTS

FROM

1st JULY, 1958, to 30th JUNE, 1959,
or as stated.

Conditions of Contract and Stipulations are shown herein for the guidance
of Officers ordering and receiving supplies.

W. H. RUTHERFORD,
Secretary to the Tender Board.

CONTRACTS ACCEPTED—(Series 1958-59.)

PROVISIONS.

No. of Contract.	Particulars of each Tender Accepted.	Amount.	Name of Contractor or Supplier.	Charge against Vote or Fund.
PROVISIONS—				
Supply of Provisions, in such quantities as may be ordered, from 1st July, 1958, to 30th June, 1959, or as stated.				
Schedule No. 1.—Melbourne District—				
232	Bread, Kew Mental Hospital	Rates as per annex	Austral Bakeries Pty. Ltd.	
233	Bread, Children's Welfare Depot and Receiving House and Mental Hospital, Royal Park, and Travancore Developmental Centre, Flemington	Ditto	J. N. Hennessy Pty. Ltd.	
234	Bread, "Winlton" Juvenile School, 186 Springvale-road, Nunawading	Ditto	M. F. Conlan Pty. Ltd.	
235	Bread, Teachers' College and Hostels at Grattan-street, 93 Drummond-street, Carlton; 470 and 481 St. Kilda-road, Melbourne; 152 Toorak-road, South Yarra; and Frank Tate House, 373 Dandenong-road, Armadale; "Redcourt" No. 6 and "Larnook", 13 Orrong-road, Armadale; 11 Patterson-street, Hawthorn, 221 Burwood-road, Burwood, and John Cannon House, 32 Belmont-avenue, Kew, and 17 Moule-avenue, Brighton; and Police Hospital, St. Kilda-road, Melbourne	Ditto	Capitol Bakeries Pty. Ltd.	
236	Flour	Ditto	Jas. Minifie and Co. Pty. Ltd.	
	Groceries	Ditto	<i>Moran and Cato Pty. Ltd. (A)</i>	
	Cereals	Purchase under Tender Board quotations	
237	Jams	Rates as per annex	W. H. Johnsons Jams Pty. Ltd.	
238	†Meat, Kew Mental Hospital	Ditto	F. Watkins Pty. Ltd.	
239	†Meat, Pentridge Penal Establishment and "Fairlea" Female Prison, Fairfield	Ditto	Jackson's United Meat Co. Pty. Ltd.	
240	†Meat, Children's Welfare Depot, Royal Park, and Travancore Developmental Centre, Flemington	Ditto	J. F. Clementson Pty. Ltd.	
241	†Meat, "Winlton" Juvenile School, 186 Springvale-road, Nunawading	Ditto	J. C. Hutton Pty. Ltd.	
242	†Meat, Royal Park Mental Hospital and Receiving House	Ditto	Jackson's United Meat Co. Pty. Ltd.	
243	Soap Mixtures	Ditto	<i>Moran and Cato Pty. Ltd. (A)</i>	
	Tea	Ditto	Bushells Ltd.	
244	Coffee	Ditto	Griffiths Bros. Ltd.	
	Potatoes	Purchase under Tender Board quotations	Contingencies, 1958-59
Schedule No. 2.—Mont Park, Bundoora, Larundel, Janefield, Gresswell, and Pleasant View, Wood-street, Preston—				
245	Bread	Rates as per annex	Northern Bakeries (Preston) Pty. Ltd.	
	Groceries	Ditto	<i>Henry Berry and Co. (A'asia) Ltd. (A)</i>	
246	Jams	Ditto	W. H. Johnsons Jams Pty. Ltd.	
247	†Meat—Mont Park District	Ditto	W. Angliss and Co. (Aust.) Pty. Ltd.	
248	†Meat—Preston	Ditto	W. Angliss and Co. (Aust.) Pty. Ltd.	
	Potatoes	Purchase under Tender Board quotations	
Schedule No. 3.—SS. Rip and Dredges—				
249	Groceries	Rates as per annex	<i>Moran and Cato Pty. Ltd. (A)</i>	
	†Meat	Ditto	Jackson's United Meat Co. Pty. Ltd.	
	Vegetables	Purchase by agreement	
	Potatoes	Purchase under Tender Board quotations	
Schedule No. 4.—Teachers' College and Hostels at Grattan-street, 93 Drummond-street, Carlton; 470 and 481 St. Kilda-road, Melbourne; 152 Toorak-road, South Yarra; and Frank Tate House, 373 Dandenong-road, Armadale; "Redcourt" 6 and "Larnook", 13 Orrong-road, Armadale; 11 Patterson-street, Hawthorn; 221 Burwood-road, Burwood; John Cannon House, 32 Belmont-avenue, Kew; 17 Moule-avenue, Brighton; and Police Hospital, St. Kilda-road, Melbourne—				
250	Groceries	Rates as per annex	Order under Melbourne District	
	†Meat	Ditto	J. H. Cooke Pty. Ltd.	
	Potatoes	Purchase under Tender Board quotations	

Names shown in italics denote suppliers under agreement. † Contract for period 1st July, 1958, to 30th September, 1958, only.

CONTRACTS ACCEPTED—(Series 1958-59)—continued.

PROVISIONS—continued.

No. of Contract.	Particulars of each Tender Accepted.	Amount.	Name of Contractor or Supplier.	Charge against Vote or Fund.	
PROVISIONS—continued.					
Schedule No. 5.—Heatherton Sanatorium, Cheltenham—					
251	Bread	Rates as per annex	Austral Bakeries Pty. Ltd.		
	Groceries	Ditto	<i>Moran and Cato Pty. Ltd. (A)</i>		
252	†Meat	Ditto	W. Angliss and Co. (Aust.) Pty. Ltd.		
253	Milk	Ditto	Moule's Model Dairy		
Schedule No. 6.—Ararat District—					
254	Breadstuffs	Rates as per annex	Mark Forsyth Pty. Ltd.		
	Groceries	Ditto	} <i>McKay MacLeod Pty. Ltd. (A)</i>		
	Jams	Ditto			
255	†Meat	Ditto	H. A. Morris		
	Potatoes	Purchase under Tender Board quotations		
Schedule No. 7.—Ballarat District—					
256	Breadstuffs	Rates as per annex	W. Dick and Sons		
	Groceries—Teachers' Hostels	Ditto	} <i>McKay MacLeod Pty. Ltd. (A)</i>		
	Groceries—Mental Hospital	Ditto			
	Jams	Ditto	} H. A. Morris		
257	†Meat—Gaol and Mental Hospital	Ditto			
258	†Meat—Teachers' Hostels	Ditto	H. A. Morris		
259	Milk—Mental Hospital and Teachers' Hostels	Ditto	The Ballarat Modern Dairy Pty. Ltd.		
	Potatoes	Purchase under Tender Board quotations		
Schedule No. 8.—Beechworth District—					
260	Bread	Rates as per annex	P. A. Taylor, Model Bakery		
	Groceries	Ditto	} <i>Moran and Cato Pty. Ltd. (A)</i>		
	Jams	Ditto			
261	†Meat	Ditto	E. Spencer		
262	Milk—Mental Hospital	Ditto	C. E. Boys		
	Potatoes	Purchase under Tender Board quotations		
Schedule No. 9.—Bendigo District—					
263	Bread—For Gaol and Mental Hygiene Training Centre	Rates as per annex	C. H. Jeffrey Pty. Ltd.		
264	Bread—For Teachers' Hostels "Sandhurst" and "Lancewood"	Ditto	A. Hardeman Pty. Ltd.		
265	Bread—For Teachers' Hostel "Comersdale"	Ditto	Roy Raggatt Pty. Ltd.		
	Groceries	Ditto	<i>Pulfer, Cox and Hargreaves, Wholesalers Ltd. (A)</i>		
266	†Meat—For Gaol	Ditto	Alan H. Gittins		
267	†Meat—For Mental Hygiene Training Centre	Ditto	Alan H. Gittins		
268	†Meat—For Teachers' Hostels	Ditto	Frank Wade		
	Potatoes	Purchase under Tender Board quotations		
Schedule No. 10.—Castlemaine District—					
269	Bread	Rates as per annex	Roy J. Brown		
270	†Meat	Ditto	McQueen Bros.		
Schedule No. 11.—School of Forestry, Croswick—					
271	Breadstuffs	Rates as per annex	M. C. and L. M. Bennett		
	Groceries	Ditto	<i>J. Tail and Son (A)</i>		
272	Milk	Ditto	E. J. Keen		
273	†Meat	Ditto	H. J. Symons Pty. Ltd.		
Schedule No. 12.—Agricultural College, Dookie—					
274	Breadstuffs	Rates as per annex	Herman and Wilson		
	Groceries	Ditto	} <i>W. A. Thompson (A)</i>		
	Jam	Ditto			
Schedule No. 13.—McLeod Settlement, French Island—					
275	Bread	Rates as per annex	H. H. Bird		
	Groceries	Ditto	<i>E. V. Peters (A)</i>		
276	†Meat	Ditto	George Hayman		
	Potatoes	Purchase under Tender Board quotations		
Schedule No. 14.—Geelong District—					
277	Bread	Rates as per annex	J. A. Fitzgerald		
	Groceries	Ditto	<i>Beacon Trading Co., (Wholesalers Ltd.) (A)</i>		
278	†Meat—Gaol	Ditto	A. R. Bubb		
279	†Meat—Teachers' College Hostels	Ditto	A. C. Knight		

Contingencies.
1958-59

Names shown in italics denote suppliers under agreement.

† Contract for period 1st July, 1958, to 30th September, 1958, only.

CONTRACTS ACCEPTED—(Series 1958-59)—continued.

PROVISIONS—continued.

No. of Contract.	Particulars of each Tender Accepted.	Amount.	Name of Contractor or Supplier.	Charge against Vote or Fund.
PROVISIONS—continued.				
Schedule No. 15.—Coorimunglo Prison Camp, Heytesbury Forest—				
280	Bread	Rates as per annex	<i>M. and J. V. Church</i>	
	Groceries	<i>Robert Swinton and Co. (A)</i>	
281	†Meat	Rates as per annex	Heytesbury Butchery	
Schedule No. 16.—Aboriginal Station, Lake Tyers—				
282	Breadstuffs	Rates as per annex	R. Hodder	
	Groceries	Ditto	} <i>R. Hodder (A)</i>	
	Jams	Ditto	
Schedule No. 17.—Langi Kal Kal Training Centre—				
283	Bread	Rates as per annex	<i>O. L. and B. M. Nicholls</i>	
284	†Meat	Ditto	<i>F. P. Haintz and Son</i>	
	Potatoes	Purchase under Tender Board quotations	
Schedule No. 18.—Agricultural College, Longerenong—				
285	Breadstuffs	Rates as per annex	<i>Schwarz Breads</i>	
	Groceries	Ditto	} <i>W. Cook and Son (A)</i>	
	Jam	Ditto	
	Potatoes	Purchase under Tender Board quotations	
Schedule No. 19.—Research Station, Rutherglen—				
286	Bread	Rates as per annex	<i>E. M. and G. A. Dwyer</i>	
	Groceries	Ditto	<i>Aitken and Fullerton (A)</i>	
Schedule No. 20.—Sale Gaol				
287	Bread	Rates as per annex	<i>F. J. Hennessy</i>	
288	†Meat	Ditto	<i>H. L. G. Laws</i>	
Schedule No. 21.—Pleasant Creek Special School, Stawell				
289	Breadstuffs	Rates as per annex	<i>Stawell Bakeries Pty. Ltd.</i>	
	Groceries	Ditto	<i>McKay MacLeod Pty. Ltd. (A)</i>	
290	Milk	Ditto	<i>Stawell Modern Dairy</i>	
291	†Meat	Ditto	<i>H. A. Morris</i>	
	Potatoes	Purchase under Tender Board quotations	
Schedule No. 22.—Sunbury District				
292	Breadstuffs	Rates as per annex	<i>Bessell's Pty. Ltd.</i>	
	Groceries	Ditto	<i>K. N. Tidwell (A)</i>	
	Cereals	Purchase under Tender Board quotations	
293	†Meat	Rates as per annex	<i>F. Watkins Pty. Ltd.</i>	
294	Jams	Ditto	<i>W. H. Johnsons Jams Pty. Ltd.</i>	
	Potatoes	Purchase under Tender Board quotations	
Schedule No. 23.—Warrnambool District—				
295	Breadstuffs	Rates as per annex	<i>Ray Barnes Bakery</i>	
	Groceries	Ditto	<i>Swintons Pty. Ltd. (A)</i>	
296	Milk	Ditto	<i>Sungold Dairies Pty. Ltd.</i>	
297	†Meat	Ditto	<i>A. Struth..</i>	

Contingencies, 1958-59

Names shown in italics denote suppliers under agreement. † Contract for period 1st July, 1958, to 30th September, 1958, only.

Approved—H. E. Bolte, Treasurer, 30th June, 1958.

CONDITIONS OF CONTRACT FOR PROVISIONS, 1958-59, ETC.

(Published in the *Victoria Government Gazette*, No. 33, dated 30th April, 1958, pages 1161 to 1163.)

1. All the articles are to be of the best quality of the several kinds, in the best condition, and in conformity with the Health Acts, and to be delivered in sound packages, free from all charges for cartage, freight, &c. The goods shall be delivered as may be directed by the officer ordering the supply.

2. As the exact quantity of any article which may be required cannot be stated, the estimate being approximate only, the Government will not be bound by the quantity stated in the schedule, but will be at liberty to order more or less, according to circumstances, and the contractor will be bound to supply the same as ordered.

The Government reserves the right to purchase otherwise than from the contractor any of the articles specified in the schedule in the event of emergency.

3. Supplies for country districts for which no local contract may have been taken, or for which the contract has been terminated, may be ordered under the Melbourne contract.

4. The Melbourne District will include places within a radius of 12 miles from the Elizabeth-street Post Office, with the exception of places for which separate contracts are provided; the Mont Park District will include the Mental Hospitals, Janefield Colony, the Sanatorium, Gresswell, and Pleasant View, Preston; the Ararat, Ballarat, Beechworth, Bendigo, Castlemaine, Geelong and Sunbury Districts will include Mental Hospitals, Penal Institutions and Teachers' Hostels at any of those places. Delivery must be made at the places, institutions, &c., named in the Schedules, or as directed by the officer ordering the supply.

5. Packages suitable for transport of goods supplied must be provided by the contractor free of expense, and the value of these packages, whether in bulk or otherwise, is to be included in the rate tendered, except butter boxes and soap boxes (not including fancy soaps), jam jars, flour, meal, and potato bags, which will remain the property of the contractor, and only the actual net weight or quantity received will be paid for; the empties to be removed from the place of delivery at the contractor's expense.

6. The meat supplied under these conditions must, if practicable, be slaughtered at abattoirs which are under authorized inspection and supervision. Any infringement of these conditions will subject the contractor, on report from the Tender Board, to such mulct, not exceeding Fifty pounds, as the Treasurer may direct, and the amount will be deducted from the contractor's account, or from the security money.

7. The supplies coming under the head of Rations and Medical Comforts are to be delivered direct to the establishment entitled thereto on the written order of the officer in charge. All other supplies will be ordered by the head of the Department concerned or any officer authorized by him, and shall be delivered as may be directed by the officer ordering the supply.

8. At the time of delivering the supplies, the contractor shall produce the order for the same to the officer authorized to accept delivery, and such officer shall acknowledge thereon the receipt of the stores accepted, and shall return the order to the contractor, who shall render his account as soon as possible after the delivery of the supplies, accompanied by the receipted delivery order. The rates or quantities quoted in the orders cannot be exceeded.

9. Where railway facilities are available, the contractor shall use the Railways for the transport of the goods. When a contractor is required to make delivery of goods at a railway station for transmission by rail, except for Commonwealth Departments, he shall obtain a receipt for the goods in duplicate on the Stores and Transport consignment note, at the same time handing in the triplicate and quadruplicate of the form as an authority for the Railways to act as agent for, and charge the freight to, the Stores and Transport Office. He shall as soon as possible, and not later than twenty-four hours thereafter, deliver at the Tender Board Offices the original, the duplicate to be forwarded to the consignee and the quintuplicate retained by himself. Should the goods thus forwarded be rejected, the contractor must bear the cost of replacing such goods, for which services the departmental consignment note is not to be used. Any infringement of this condition may subject the contractor to such mulct as the Tender Board may recommend under clause 18 of these conditions.

10. Orders must receive prompt execution; in the event of the goods not being delivered at the time mentioned in the order or within such other time as the officer ordering the supply may specify for delivery, it will be competent for such officer, or the head of the Department to whom the goods are to be supplied, on giving the contractor twenty-four hours' notice, to purchase the supplies, or any like supplies that are suitable for the service, at the contractor's risk, and the extra expense incurred over and above the contract price (if any) will be deducted from the contractor's account or from the security money.

11. The acceptance of the supplies shall be subject to the approval of the officer authorized to take delivery of the stores, or such other officer as shall be named in the conditions.

12. If the officer in charge of stores be not satisfied as to the quantity or quality of the stores, or if, after taking delivery of any stores or material, he shall discover any deficiency or defect therein, he may return such deficient or defective stores or material to the contractor, and shall report the same to the head of his Department and to the Tender Board.

13. In the event of a difference of opinion between the contractor and the officer receiving the supplies as to the quality, the same is to be decided, in cases where the article is not of a perishable nature, by a Board of Survey composed of persons named by the Treasurer of the State for the time being; and the decision of the Board is to be considered final. In the event of the decision being against the contractor, the survey fees and expenses (if any) will be deducted as in clause 10.

14. In cases where the article is of a perishable nature, or when from some other cause injury would be sustained either by the person to whom the rations or stores are due or by the contractor in waiting for a Board to survey, the head of the Department or officer authorized to take delivery will have power to reject such article or articles as are obviously of inferior quality, it being understood that he will be responsible to the Government for so doing, and that the contractor must take back the rejected article and supply good in its stead; failing which it, or any like supply suitable for the Service, will be obtained by the officer requiring it as in clause 10. In case of the rejection or return of any supplies, the contractor shall bear the whole cost of replacing the supplies so rejected or returned.

15. If the Board shall decide that the article is not of proper quality it must be immediately replaced by the contractor; failing which it, or any like supply suitable for the Service, will be procured by the officer requiring it, and the expense charged as in clause 10.

16. In the case of supplies for Mental Hospitals, it will be competent for a Board of Survey, consisting of the medical superintendent (or, in his absence, of the medical officer) and any two officers named by him, to examine and reject any supplies that may be objected to. It must be distinctly understood, however, that the contractor will have a right of appeal to the Treasurer of the State for the time being, such appeal to be made in writing within 24 hours of the rejection; but, pending such appeal, he must at once supply others of approved quality; failing which, the supplies required, or any like supplies suitable for the Service, may be obtained by the officer concerned, and the expense charged as in clause 10.

17. In the case of supplies for Mental Hospitals, it will also be competent for two or more of the official visitors, in conjunction with the medical superintendent, to reject any supplies that they may consider not in accordance with contract; and in such cases the reference to a Board of Survey will not be deemed to be necessary.

18. A refusal to execute orders, irregularity in the quantity or quality of the supplies, or delay in delivering or replacing them when required, will subject the contractor, upon report from the Tender Board, to such mulct, not exceeding Fifty pounds, as the said Treasurer may direct, and the amount may be deducted as in clause 10. It will also be in the power of the said Treasurer, upon such refusal, irregularity, or delay, to terminate the contract forthwith, and forfeit the whole or any part of the security money; and, in addition, the contractor will be disqualified from tendering or holding any future contract or contracts for a period of twelve months from the date of such disqualification.

19. Contractors are not at liberty to transfer their contracts under cover of power of attorney, coupled with an interest or otherwise, and no such transfer will be recognized by the Government. *If it is found during the currency of the contract that the contractor has not conformed to the condition of advertisement—which stipulates that if a tenderer be a member of a firm and such firm be interested in the contract, the tender shall be in the name of the firm and not in that of the individual—then the Treasurer may, on the recommendation of the Tender Board, determine the contract, and forfeit the security money.*

20. It will be competent for the Tender Board to terminate the contract, without notice, should there be reason to know that the contractor takes advantage of his contract to communicate with a prisoner.

21. The contract entered into under these conditions is not to be considered as being broken, infringed, or vitiated by the importation of stores for the Government service, or by any contracts or purchases made by the Imperial Commissariat; or by the consumption of the produce or surplus stock of any Government establishment, or by any article being made at and supplied for the use of any Government establishment.

22. Notwithstanding anything contained to the contrary in section 152 of the *Customs Act 1901-52*, it is hereby expressly provided that upon any alteration of the duty collected affecting the goods included in this contract, the contract price shall not be altered, and the contract may be terminated at the option of either party by two months' notice in writing from the first day of the calendar month next ensuing, and within the period for which the contract is made. The contract for the unaffected items shall remain in full force and effect. Any notice to be served under this condition shall be deemed to have been duly served if sent to the contractor in a registered letter to his last-known place of business or abode.

23. Under no circumstances other than those mentioned in clause 22 will a contractor be permitted to abandon his contract. In the event of the contractor failing to carry on the contract, the contract security money will in that case be absolutely forfeited; and, in addition, the contractor will be held liable for any loss which the Government may sustain in consequence of such failure.

24. For the purposes of these contracts the word "Government" shall mean the Government of the State of Victoria; and the word "Treasurer" shall mean the Treasurer of the said State.

STIPULATIONS FOR SUPPLIES OF PROVISIONS.

SUPPLIES GENERALLY.

For supplies under all sub-schedules, particular attention is drawn to clause 1 of the Conditions of Contract as to quality.

No sub-letting is allowed, and all work must be carried out by the contractor.

Where practicable, all items must be manufactured or prepared within the Commonwealth.

Where no brand of Commonwealth manufacture or production is specifically set out in the respective sub-schedules, such Commonwealth brand as may be ordered must be supplied.

For Schedule No. 3 supplies must be delivered when ordered and, in cases of emergency, on Sundays, holidays, or half-holidays, as required.

BREAD AND FLOUR.

A sample of the best ordinarily retailed to the public will be considered as a test loaf for first quality for fine wheaten and pure wheaten Meal Bread. *Pure wheaten Meal Bread of first quality may be substituted, wholly or in part, for fine wheaten Bread at such times and in such quantities as, in the opinion of the Medical Superintendent, may be deemed necessary, and the contractor will be required to supply such Bread at the contract rate. Reasonable notice, however, of the intention to substitute wheaten Meal Bread must be given to the contractor by the officer ordering the supply.* Bread may be baked at any Government establishment without infringing these contracts. At the Gaols, Ballarat, Beechworth, Bendigo, Castlemaine, Geelong, and Sale, and the Coorimungie Prison Camp, McLeod Settlement, and Langi Kal Kal Training Centre, if required, bread must be supplied one day old, due notice to be given to the contractor of such requirement.

In the event of bread being made at any Government establishment in the Melbourne District during the currency of these contracts, the flour required will be drawn under the flour sub-schedule.

Flour for Districts for which no local contracts have been taken may be ordered under the Melbourne District contract, for delivery f.o.r. Melbourne.

GROCERIES.

As a guarantee of quality, Rice, when ordered in quantities of 56 lb. and over, must be supplied in original bags as delivered by the miller or dresser. Such bags must be branded "Rice, Dressed," and shall also have stencilled thereon the miller or dresser's name and the distinguishing mark indicative of the quality or grade. The bags thus stencilled shall contain Rice milled or dressed by the miller or dresser whose name appears thereon. Supplies not in conformity with the foregoing condition will be rejected.

Oatmeal must be supplied in original bags as delivered by millers.

Candles, except those for prison cells, must be supplied in 1-lb. packets. Candles for prison cells must be delivered in boxes containing from 25 to 50 lb. per box, the boxes for which must be legibly stencilled on one end showing the estimated burning time and the gross, tare, and net weight of contents.

The soap supplied must be hard throughout, ready for immediate use without waste, and shall have been manufactured at least seven weeks before leaving contractor's hands.

Raisins and currants must be present season's, and where the quantity admits, be supplied in original and unopened boxes, labelled as packed.

BARLEY, BEANS-HARICOT, OATMEAL, PEAS-SPLIT, RICE AND SEED TAPIOCA.

Supplies of these items for Districts for which no local contracts have been taken may be ordered under the Melbourne District contract, for delivery f.o.r. Melbourne.

BUTTER AND CHEESE.

All supplies of 56 lb. or multiples of 56 lb. must be supplied in boxes as originally packed. The boxes must bear the impress stamp of the creamery where the butter is produced, otherwise it will not be accepted. All supplies must be in new boxes.

Where the Store or Butter Factory of the Contractor is situated in the Metropolitan area all Butter to the quantity of 56 lb. and over to be supplied in any one consignment under this contract shall before despatch from the Store or Factory be first examined and passed by the Government Butter Grader, for and on behalf of the officer authorized to accept delivery. The boxes containing butter so examined and found satisfactory in quality and description will be stamped by the Government Butter Grader and the date of such examination marked thereon. No butter from a contractor located in the Metropolitan Area will be accepted unless the boxes bear the stamp of the Grader. For the purposes of the foregoing condition the Metropolitan Area is defined as being not outside the radius visited by the Government Grader. The officer authorized to accept delivery may, within 48 hours of the receipt of any supply, require the Contractor to have same re-examined by the Grader, and, if not passed by him, it shall be returned to the Contractor, who shall forthwith replace the same with freshly-examined butter.

No Butter *ex Cool Store* will be examined by the Grader until thermally it is in suitable condition therefor.

Where the Store or Factory from which the Butter is despatched is not within the area visited by the Grader a sample of any supplies may be forwarded to the Government Butter Grader for examination, should the supply be considered by the Officer authorized to accept delivery as not being equal in quality or description to that contracted for.

The Cheese supplied must be first-class quality, semi or fully matured, as ordered, and not less than three months old. If the quantity admits, it shall be boxed for transport.

JAM.

The weight stamped on the tins in accordance with the regulations under the Commerce Act, as indicating the *minimum* net quantity that each tin contains, shall for the purpose of this contract be taken as the actual contents when computing the quantity supplied.

When Jam is supplied in jars the jars remain the property of the contractor, and must be removed by the contractor at his own expense when empty.

SOAP AND SOAP MIXTURES.

Supplies of these items for Districts for which no local contracts have been taken may be ordered under the Melbourne District contract, for delivery f.o.r. Melbourne.

MEAT.

All meat supplied under this contract shall have been slaughtered in Victoria and shall be freshly killed, well-conditioned, of good quality, healthy, clean, wholesome, free from bone-taint, putrefaction or fly larvae, and shall not have been frozen.

The beef shall be of ox not under three nor more than six years old or heifer or cow not under three nor more than five years old. Carcass beef for Mental Hospitals shall be delivered in quarters of equal proportions of hinds and fores and the corresponding hinds and fores must be supplied, also extra buttocks separately when ordered. Meat for other Institutions shall be supplied as ordered. Where hindquarters or buttocks are ordered 9 inches shall be cut off from the end of the leg from the hock upwards, i.e., the end of the leg from which the shank has been removed at the abattoirs; when fore-quarters form a portion of the supply, 6 inches from the end of the neck and the whole of the shin at the clodbone joint shall be removed. The sticking pieces also shall be trimmed off and the point and end of the brisket rendered free from blood and blood stains.

The mutton shall be wether or maiden ewe not more than four years old and the weight of a carcass shall be not less than 40 lb. nor more than 60 lb. The mutton shall be delivered in sides when so ordered. All kidney fat to be removed for Mental Hospitals.

Corned Beef (rolled or round as ordered) shall be supplied without bone or cartilage and will be received whether pumped or prepared in the ordinary way of pickling but, in the former case, it shall have been soaked, after pumping, for at least 48 hours in a good pickle and then thoroughly drained before supply. No flank, chuck, sticking-piece, shin, leg of beef, or piece under 7 lb. will be received.

Meat derived from the carcasses of Bulls, Stags or Rams or meat containing an undue proportion of bone or fat will not be received and shall not be tendered for delivery. Net weight only will be paid for.

In cases of emergency, or on such other occasions as in the opinion of the Director of Mental Hygiene or Heads of other Institutions may seem advisable, other forms of meat, such as Rabbits, Tinned Meats, &c., may be purchased, apart from the contract, in lieu of the meat specified in the Schedule, and substituted therefor, provided 24 hours' notice—except in cases of emergency—be given to the Contractor of such intention.

The parts to be removed by the contractor are indicated in the shaded portion of the annexed diagram. This work shall be carried out in the factory or shop of the Contractor, except those parts usually removed at the abattoirs.

With respect to the schedules enumerated hereunder, the following stipulations shall also apply:—

For sub-schedules 9, 11, 12 and 13 of Schedule No. 1, fresh beef shall be supplied, as ordered, from ribs, sirloin, and thick flanks and for Schedule No. 2, from prime ribs, sirloin, and thick flanks; ribs of beef to be cut clear of the plate bone, and sirloin to be cut clear of the wing ribs; excess of brisket or thin flank will be rejected. Mutton must be delivered in sides when so ordered.

For Schedules Nos. 1 (sub-schedules 9, 11, 12 and 13), 3, 4, 5, 11, 14, and 21, chuck ribs of Beef, i.e., 1st to 4th inclusive will not be accepted.

For Schedules Nos. 4, 5, and 21, fresh Beef must be supplied, as ordered, from prime ribs or sirloin; ribs of Beef to be cut clear of the plate bone, and sirloin to be cut clear of the wing ribs; excess of brisket or flank will be rejected.

TEA AND COFFEE.

Tea and Coffee for Districts for which no local contracts have been taken may be ordered under the Melbourne District contract.

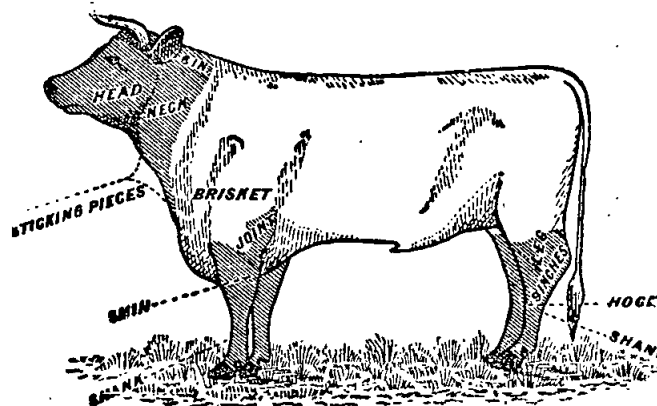
MILK.

The milk must be fresh, pure, and of the best quality, and subject to test when required by the Department, and supplied at such times as the Department may require. Should the contractor fail to supply at the time specified in the order or at such times as may be indicated in any general notice to the contractor his contract may be cancelled forthwith and his security forfeited, or should the supply prove to be not of contract quality it will be rejected, and any expense incurred will be charged to the contractor.

POTATOES.

Potatoes to be dry and free from dirt. Contractors to take back all rejected before being cooked. Bags to remain the property of the contractor. Weight of bags (approx. 2½ lb.) to be deducted.

If the price of potatoes becomes abnormally high, the heads of the various departments concerned may, if they think fit, cause rice or any other suitable food to be occasionally substituted in lieu thereof.



ANNEX TO CONTRACTS.

FLOUR AND BREAD.

The contract rates shown are subject to adjustment for any variation in the proclaimed price of flour.

MEAT.

Contracts marked † operate for the period 1st July, 1958, to 30th September, 1958, only.

AGREEMENTS.

For the Sub-schedules marked (Agreement), no contract has been let nor security lodged. Requirements thereunder are to be purchased from the suppliers named, under Tender Board Agreement. The rates shown are subject to variation from time to time, particulars of which will be gazetted as required. In all cases, supply is subject to stocks being available.

AVAILABILITY OF SUPPLIES.

Owing to existing difficulties in obtaining supplies of various items, the penal provisions of Clause 10 of the Conditions of Contract are not to be enforced without reference to the Tender Board.

SCHEDULE No. 1. PROVISIONS—MELBOURNE DISTRICT.

ANNEX TO CONTRACT No. 1958/232.
Austral Bakeries Pty. Ltd., Queens-avenue, Clayton.

Sub-schedule No. 1.

BREAD FOR MENTAL HOSPITAL AT KEW.

	£	s.	d.
Security, £125.			
1. Bread—Fine wheaten, first quality .. per cntl. 1 11 3			

ANNEX TO CONTRACT No. 1958/233.
J. N. Hennessy Pty. Ltd., 55 Sydney-road, Brunswick.

Sub-schedule No. 2.

BREAD FOR CHILDREN'S WELFARE DEPOT, ROYAL PARK; RECEIVING HOUSE AND MENTAL HOSPITAL, ROYAL PARK; AND TRAVANCORE DEVELOPMENTAL CENTRE, FLEMINGTON.

	£	s.	d.
Security, £30.			
1. Bread—Fine wheaten, first quality .. per cntl. 1 11 11			

ANNEX TO CONTRACT No. 1958/234.
M. F. Conlan Pty. Ltd., 410 Canterbury-road, Surrey Hills.

Sub-schedule No. 3.

BREAD FOR "WINLATON" JUVENILE SCHOOL, 186 SPRINGVALE-ROAD, NUNAWADING.

	£	s.	d.
Security, £5.			
1. Bread—Fine wheaten, first quality .. per cntl. 1 13 4			
2. Yeast Buns per doz. 0 2 0			

ANNEX TO CONTRACT No. 1958/235.
Capitol Bakeries Pty. Ltd., 257 Toorak-road, South Yarra.

Sub-schedule No. 4.

TEACHERS' COLLEGES AND HOSTELS AT GRATTAN-STREET, 93 DRUMMOND-STREET, CARLTON; 470 AND 481 ST. KILDA-ROAD, MELBOURNE; 152 TOORAK-ROAD WEST, SOUTH YARRA; AND TATE HOUSE, 373 DANDENONG-ROAD, ARMADALE; "REDCOURT" NO. 6, AND "LARNOOK" 13 ORRONG-ROAD, ARMADALE; 11 PATTERSON-STREET, HAWTHORN; 221 BURWOOD-ROAD, BURWOOD; JOHN CANNON HOUSE, 32 BELMONT-AVENUE, KEW; AND 17 MOULE-AVENUE, BRIGHTON; AND POLICE HOSPITAL, ST. KILDA-ROAD, MELBOURNE—

	£	s.	d.
Security, £20.			
1. Bread—Fine wheaten, first quality .. per cntl. 1 18 4			

ANNEX TO CONTRACT No. 1958/236.
Jas. Minifie and Co. Pty. Ltd., 422 Collins-street, Melbourne.

Sub-schedule No. 5.

FLOUR.

	£	s.	d.
Security, £90.			
1. Flour—Roller, first quality per cntl. 1 9 8			

(AGREEMENT.)

Moran and Cato Pty. Ltd., 277 Brunswick-street, Fitzroy, N.6.

Sub-schedule No. 6.

GROCERIES.

	£	s.	d.
Bacon—			
1. { Sides per lb. 0 4 11			
{ Rashers, middle do. 0 5 10			
2. Barley—Pearl do. 0 0 6½			
Beans—			
3. Butter do. *			
4. Haricot do. 0 1 7			
5. Lima do. 0 2 2½			

Sub-schedule No. 6—continued.

GROCERIES—continued.

	£	s.	d.
6. Biscuits (Tins 4s. each, returnable)—			
Dry (Thin Captain, Genovis) [Unseeded			
Is. 1½d.] do. 0 1 9½			
7. Coffee, Malt, Arrowroot, Gingernuts,			
Marie, Holsum do. 0 1 9½			
8. Assorted—Vanilla Curls, Nice, Rice,			
Fruit Cookies, Devon Shortbreads			
Butter Crisps do. 0 1 11½			
Blue—			
9. { 1-oz. knobs, "Reckitts," paper .. per doz. 0 3 0			
{ 7-lb. packets, bulk per lb. 0 1 11½			
10. Borax do. 0 0 9			
11. Cake Containers—Paper "Bulldog" 90's			
per doz. 0 5 10			
Cereals—			
12. Pipers, Kornies, Weeties or equal, 24-oz.			
packets do. 1 5 11			
13. Cornflakes or equal, "Kellogs," 16 oz.			
packets do. 1 10 9			
14. Weetbix or equal, 24-oz. packets ..			
do. 1 5 11			
15. All Bran or equal, "Kellogs"			
do. 0 19 6			
16. Cheese—5-lb. boxes, "Kraft"			
per pkt. 0 19 1			
17. Chutney—"Rosella," Fruit			
per doz. 1 2 0			
18. Cloves—Whole per lb. 0 5 10			
19. Coconut—Desiccated, "Ceylon" ..			
do. 0 2 0½			
Coffee Essence—			
20. { 8-oz. bottles, "Turban" per doz. 1 7 6			
{ 26-oz. bottles "Greigs" do. 3 12 9			
21. Curry Powder—Bulk per lb. 0 2 4½			
Custard Powder—			
22. { Bulk do. 0 1 0			
{ 1-lb. packets, "Cameo" do. 0 1 7½			
23. Dates do. 0 2 0½			
Essences—			
24. Almond, 4-oz., "Allens" per bot. 0 3 3½			
25. Lemon, 8-oz., "Allens" do. 0 6 1½			
26. Vanilla, 8-oz., "Allens" do. 0 8 4			
27. Cochineal (red colouring), 16-oz.,			
"Allens" do. 0 3 10½			
28. Parisian, 26-oz., "Greigs"			
do. 0 3 10½			
29. Yolkine (yellow colouring), 16-oz.,			
"Allens" do. 0 3 10½			
Cocoa—			
30. { Tins, 1-lb., "Bournville" per doz. 3 8 4			
{ Loose per lb. *			
Extracts and Pastes, &c., or equals—			
31. Marmite 4-oz. jars per jar 0 2 2½			
32. Vegemite, 4-oz. jars do. 0 2 2½			
33. Peanut Butter, 12-oz. jars, "Cottees"			
do. 0 3 8½			
34. Bonox, 4-oz. jar do. 0 2 10			
35. Bloaters, 2½-oz. jars, "Pecks" ..			
do. 0 1 3½			
36. Salmon and Shrimp, 2½-oz. jars,			
"Pecks" do. 0 1 5½			
Fish—Tinned (Flair or equal)—			
37. Salmon (Aust.) { 16-oz., "Greenseas" per doz. 2 1 9			
{ 12-oz. tins do. 1 16 10			
38. Fish Cutlets, 12-oz., "Sea Cape" ..			
do. 1 5 3			
39. { Herrings, in sauce, 14-oz., "Morton" do. 1 8 3			
{ Herrings, fresh, 14-oz., "Morton" .. do. 1 7 9			
40. Sardines (½'s) do. 0 14 4			
Flour—Corn or Maize—			
41. Packets, 1-lb., "Medallion"			
per lb. 0 1 3½			
42. Bulk do. 0 0 10½			
Flour—Self Raising—			
43. { 25-lb., "McAlpin" per bag 0 15 10			
{ 50-lb., "McAlpin" do. 1 10 10			
Fruits—Dried—			
44. Apples per lb. *			
45. Apricots, 3-crown, "Choice"			
do. 0 4 2½			
46. Nectarines, 3-crown, "Choice" ..			
do. *			
47. Peaches, 1-crown, Unpeeled			
do. *			
48. Pears, 3-crown, "Choice"			
do. *			

* Supplies not available.

Sub-schedule No. 6—continued.

GROCERIES—continued.		£	s.	d.
Fruits—Dried—continued.				
49.	Prunes, 40-50, 7-lb. tin (90-100-2/1½)	per lb.	0	2 8
50.	Currants, 2-crown (3-crown-1/8½)	do.	0	1 8
51.	Raisins, Seeded, loose	do.	0	1 8½
52.	Sultanas, 3-crown (2-crown-1/8½)	do.	0	1 8½
Fruits, in 30-oz., 4-lb., and 7-lb. tins—				
53.	Apricots, Halves, 30-oz., "Rosella" "S.P.C." &c.	per doz.	1	12 6
54.	Apricots, Whole, 4-lb. tins, "Camms"	do.	*	
55.	Peaches, Halves and Sliced, 30-oz., "Rosella," "S.P.C." &c.	do.	1	16 0
56.	Pears, 30-oz., "Rosella," "S.P.C."	do.	1	15 6
57.	Apples, Solid Pack, 6½-lb. tins, "Camms"	do.	5	1 0
58.	Apricots, Solid Pack, 7-lb. tins, "Camms"	do.	5	13 6
59.	Peaches, Solid Pack, 7-lb. tins, "Berri"	do.	6	2 3
60.	Gelatine—Ground, 1-lb. packets, "Davis"	each	0	8 1½
61.	Ginger—Ground	per lb.	0	4 10
62.	Golden Syrup—2-lb. tins	per doz.	0	18 3
63.	Gravox—1-lb. tins	do.	0	19 8
64.	Herbs—Mixed, 1-oz. packet, "Modern"	do.	0	3 0
65.	Honey—60-lb. tins	per tin	4	7 6
Jelly Crystals—				
66.	4-oz. packets, "Sparkling"	per doz.	0	5 10
67.	7-lb. packets, "Sparkling"	per pkt.	0	15 10
68.	Junket Tablets—Flavoured, "Merry Widow"	per doz.	0	17 3
69.	Lentils	per lb.	0	1 10½
Macaroni—				
70.	1-lb. packets, "Rinoldi"	do.	0	1 2½
71.	Bulk, 56-lb. bags, "Forex"	do.	0	0 9½
72.	Margarine—Cake, Pastry	do.	0	1 8
73.	Matches—Safety, packets	per gross	1	0 0
74.	Mayonnaise, 5-lb. jars, "Eta"	per jar	0	12 6
Meat—Tinned—				
75.	Beef Luncheon, 12-oz. tins, "Tom Piper"	per doz.	1	6 9
76.	Beef Steak Pudding, 16-oz. tins, "Tom Piper"	do.	1	7 3
77.	Camp Pie, 16-oz. tins, "Imperial"	do.	1	2 4
78.	Irish Stew, 16-oz. tins, "Tom Piper"	do.	1	6 9
79.	Lamb and Green Peas, 16-oz. tins	do.	*	
80.	Sausages and Vegetables, 16-oz. tins, "Tom Piper"	do.	1	6 6
Milk—				
81.	Dried, 12-oz. tins, "Sunshine"	do.	1	16 3
82.	Dried, 3-lb. tins, "Sunshine"	do.	6	13 10
83.	Condensed, 14-oz. tins, "Nestles"	do.	1	1 2
84.	Ideal or equal, 12-oz. tins, "Ideal"	do.	0	16 6
85.	Mustard—Bulk	per lb.	0	4 9
86.	Nutmeg—Ground	do.	0	19 0
87.	Oatmeal—Flaked	do.	0	0 9½
88.	Pastry Mixture, "Maxam"	per doz.	0	15 3
89.	Peel—Mixed, cut	per lb.	0	1 11½
90.	Pepper—White, ground	do.	0	4 8
91.	Pickles—Assorted, 20-oz. bottles, "Sutherland"	per doz.	1	6 8
Rice—				
92.	Dressed	per lb.	0	0 10½
93.	Ground, 1-lb. packets	do.	0	1 2½
94.	Sago—(Seed Tapioca)	do.	0	0 10
Salt—				
95.	Fine, bulk	per cwt.	0	15 6
96.	Table, 1-lb. packets, "Mermaid"	per doz.	0	4 8
Sauce—				
97.	Tomato, 26-oz. bottles, "Rosella"	per doz.	2	2 3
98.	{ Tomato, 1-gal. jars, "Tom Piper" .. per jar 0 15 6 { Tomato and apple, 1-gal. jars, "Healesville" (Jars 3s. 6d. each, returnable) .. do. 0 12 10			
99.	Worcestershire, 10-oz. bottles, "Hardings"	per doz.	1	0 10
100.	Worcestershire, 1-gal. jars, "Hardings" (Jars 3s. 6d. each, returnable)	per jar	0	14 1
101.	Mustard, 8-oz. bottles, "Holbrooks"	per doz.	1	4 3
Soda—				
102.	Bicarbonate of	per lb.	0	0 7½
103.	Washing	do.	0	0 4½
Soups—Tomato—				
104.	16-oz. tins, "Kia Ora"	per doz.	1	1 0
105.	7-lb. tins, "Kia Ora"	do.	5	18 6
Spaghetti—				
106.	1-lb. packets, "No. 1 Rinoldi"	per lb.	0	1 3½
107.	Bulk, 22-lb. cartons, "No. 1 Forex"	per ctn.	0	19 5

* Supplies not available.

Sub-schedule No. 6—continued.

GROCERIES—continued.		£	s.	d.
108.	Spice—Mixed	per lb.	0	3 6
Starch—Rice—				
109.	{ Bulk, "Parsons" .. do. 0 0 10½ { 12-oz. packets, "Silver Star" .. per pkt. 0 1 4½			
Sugar—				
110.	icing (56-lb. bags, 46s. 9d.)	per lb.	0	0 10½
111.	Castor (70-lb. bag, 57s. 0d.)	do.	0	0 10
112.	Raw	do.	0	0 9
113.	White, 70-lb. bags	per bag	2	12 9
114.	Tapioca—Pearl	per lb.	0	1 0½
115.	Teacale—2-lb. tins	per doz.	0	17 11
Vegetables—Dried—				
116.	Peas, Green, "Dewcrisp" or equal	per lb.	0	9 2
117.	Peas, Split (Yellow)	per cwt.	3	12 3
Vegetables—Tinned—				
118.	Baked Beans, 16-oz., "Kia Ora"	per doz.	1	2 3
119.	Baked Beans, No. 10 cans, "Kia Ora"	do.	5	15 0
120.	Beans, Green, 16-oz., "Gartside"	do.	1	4 3
121.	Beetroot, 12-oz., "Gartside"	do.	0	15 6
122.	Carrots, 10-oz., "Gartside"	do.	0	18 0
123.	Peas, 30-oz., "Bidly" Processed	do.	1	6 8
124.	Peas, 30-oz., "Harvest" Garden	do.	1	19 6
125.	Sweetcorn, 16-oz., "Rosella"	do.	1	8 3
126.	Tomatoes, 30-oz., "Cohn"	do.	1	11 0
Vermicelli—				
127.	{ 1-lb. packets, "Rinoldi" .. do. 0 15 3 { Bulk, 22-lb., cartons, "Forex" .. per ctn. 0 19 5			
128.	Vinegar—Malt, 1-gal. jars (Jars 3s. 6d., returnable)	per gal.	0	3 6

Sub-schedule No. 7.

CEREALS.

	per cwt.	Purchase under Tender Board Quotations
1. Barley—pearl	
2. Beans, Haricot	
3. Oatmeal—plain	
4. Oatmeal—flaked	
5. Peas, split—Yellow	
6. Rice—dressed	
7. Rice—unpolished	
8. Seed Tapioca	

ANNEX TO CONTRACT No. 1958/237.

W. H. Johnsons Jams Pty. Ltd., 42 Meaden-street, South Melbourne, S.C.5.

Sub-schedule No. 8.

JAMS.

Security, £20.

£ s. d.

Jams—	per lb.	per tin
1. Assorted, in bulk, of approved kinds, in the proportion of half seed and half actual net stone, of the best quality, in 54-lb. tins	0 0 11½	0 2 0
2. Assorted, of approved kinds, in the proportion of half seed and half stone, of the best quality, in 24-oz. tins	0 1 11	0 6 4
3. Marmalade, 24-oz. tins	do.	0 1 11
4. Assorted, 5-lb. tins, in the proportion of half seed and half stone of the best quality	do.	0 6 4

○ In 27-lb. tins, rate increased by 1d. per lb.

ANNEX TO CONTRACT No. 1958/238.†

F. Watkins Pty. Ltd., 184 Bourke-street, Melbourne, C.1.

Sub-schedule No. 9.

MEAT FOR MENTAL HOSPITAL, KEW.

Security, £35.

£ s. d.

Fresh Beef—	per cwt.	per lb.
1. Rolled Roast boneless (Brisket excluded)	7 10 0	0 1 7
2. Buttocks	6 13 4	0 0 11
3. Shin and Gravy Beef (boneless)	6 13 4	0 1 5
4. Corned Beef—Rolled or Round, as ordered, without bone or cartilage	7 10 0	0 1 9
5. Fresh Mutton—(Whole Sheep) (Kidney fat to be removed)	3 15 0	0 1 0
6. Veal—boned	per lb. 0 1 7	
7. Sausage Meat	do. 0 0 11	
8. Sausages—Mixed	do. 0 1 5	
9. Livers—Sheep	do. 0 1 9	
10. " Ox	do. 0 1 0	

Sub-schedule No. 9—continued.
MEAT—continued

	£	s.	d.
11. Kidneys, Ox	per lb.	0	3 6
12. " Sheep	do.	0	3 4
13. " Pigs	do.	0	3 4
14. Tripe, Fresh	do.	0	0 7
15. Tongues—Ox	do.	0	1 3
16. Sausage—Belgium	do.	0	1 10
17. Beef Loaf	do.	0	2 2
18. Ham Loaf	do.	0	2 6
19. Veal Loaf	do.	0	2 6
20. Saveloys	per doz.	0	3 0
21. Brains, Sheep	per set	0	0 7
22. Fowls, First quality	per lb.	0	4 6
23. Bacon Sides	do.	0	4 2

Sub-schedule No. 12—continued.
MEAT—continued

	£	s.	d.
7. Steak—Rump	per lb.	0	3 0
8. " Stewing	do.	0	1 6
9. " Minced	do.	0	1 6
10. Sausages—Mixed	do.	0	1 9
11. Sausage Meat	do.	0	1 4
12. Frys—Lamb	do.	0	2 6
13. Veal—Fillet—Boneless	do.	0	2 6
14. Pork—Pickled	do.	0	3 0
15. Kidneys—Ox	do.	0	2 6
16. Tongues—Ox	do.	0	1 8
17. Tripe—Fresh	do.	0	0 8
18. Brains—Sheep	do.	0	3 0
19. Shanks—Sheep	each	0	0 6
20. Sausage—Strasburg—Pork	per lb.	0	3 1
21. Frankfurts	do.	0	2 0
22. Rabbits—Fresh	do.	0	2 6

ANNEX TO CONTRACT NO. 1958/239.†

Jackson's United Meat Co. Pty. Ltd., New Footscray-road, Footscray.

Sub-schedule No. 10.

MEAT FOR PENTRIDGE PENAL ESTABLISHMENT, COBURG; AND "FAIRLEA" FEMALE PRISON, FAIRFIELD. Security, £35.

	£	s.	d.
Fresh Beef—			
1. Fore-quarters	per cntl.	3	15 0
2. Minced	do.	7	10 0
3. Corned Beef—Rolled or Round, as ordered, without bone or cartilage	do.	7	10 0
4. Fresh Mutton (whole sheep)	per lb.	0	0 9
5. Sausages—Mixed	do.	0	1 6
6. Fresh Suet—Kidney	do.	0	0 7
7. Saveloys	do.	0	1 6
8. Sausage—Beef German	do.	0	1 11
9. Sausage Mince	do.	0	1 0
10. Dripping Beef	do.	0	0 11
11. Frankfurts	do.	0	2 0

ANNEX TO CONTRACT NO. 1958/240.†

J. F. Clementson Pty. Ltd., 436 Toorak-road, Toorak.

Sub-schedule No. 11.

MEAT FOR CHILDREN'S WELFARE DEPOT, ROYAL PARK, AND TRAVANCORE DEVELOPMENTAL CENTRE, FLEMINGTON. Security, £8.

	£	s.	d.
1. Fresh Beef—Rolled Roast Sirloin—Boneless	per lb.	0	1 9
2. Beef—Corned—Silverside	do.	0	2 0
Fresh Mutton—			
3. Legs	do.	0	1 3
4. Legs (Two tooth)	do.	0	1 6
5. Chops—Mid Loin (Two tooth)	do.	0	1 4
6. Rib Chops as Cutlets (Two tooth)	do.	0	1 6
Steak—			
7. Rump	do.	0	3 6
8. Blade	do.	0	1 6
9. Minced	do.	0	1 6
10. Skirt	do.	0	1 6
11. Veal—Fillet, boneless	do.	0	3 0
12. Pickled Pork	do.	0	1 6
13. Sausages—Mixed	do.	0	3 0
14. Sausage—Strasburg, Pork	do.	0	3 0
15. Ham Loaf (summer months mainly)	do.	0	3 0
16. Tripe—Fresh	do.	0	0 8
17. Frys—Lamb	do.	0	2 0
18. Brains—Sheep	per set	0	0 8
19. Shanks—Sheep	each	0	0 6
20. Ox Tongue	per lb.	0	1 6
21. Frankfurts	do.	0	2 0
22. Rabbits—Fresh	do.	0	2 3

ANNEX TO CONTRACT NO. 1958/241.†

J. C. Hutton Pty. Ltd., 65 High-street, Preston.

Sub-schedule No. 12.

FOR "WINLATON" JUVENILE SCHOOL, 186 SPRINGVALE-ROAD, NUNAWADING. Security, £5.

	£	s.	d.
Fresh Beef—			
1. Rolled Roast Sirloin, Boneless	per lb.	0	1 10
2. Corned—Silverside	do.	0	2 0
3. Mutton Fresh—Fore-quarters	do.	0	0 8
4. " " Legs	do.	0	1 3
5. " " Legs (Two tooth)	do.	0	1 5
6. " " Chops—Mid Loin (Two tooth)	do.	0	1 6

ANNEX TO CONTRACT NO. 1958/242.†

Jackson's United Meat Co. Pty. Ltd., New Footscray-road, Footscray.

Sub-schedule No. 13.

MEAT FOR RECEIVING HOUSE AND MENTAL HOSPITAL, ROYAL PARK—Security, £10.

	£	s.	d.
Fresh Beef—			
1. Rolled Roast, boneless (Brisket excluded)	per lb.	0	1 8
2. Thick Flank	do.	0	1 6
3. Topside	do.	0	1 11
4. Fresh Mutton (Legs)	do.	0	1 3
5. Corned Beef—Rolled or Round, as ordered, without bone or cartilage	do.	0	1 9
6. Chops—Middle Loin	do.	0	1 4
7. " Fore-quarters	do.	0	10 10
8. Sausages—Mixed	do.	0	1 8
9. Sausages—Mince	do.	0	0 11
10. Veal, filets	do.	0	2 6
11. Livers—Calves	do.	0	1 0
12. Tripe—Fresh	do.	0	0 7
13. Brains—Sheep	per set	0	0 8
14. Rabbits—Fresh	per lb.	0	2 3
15. Fowls—First quality	do.	0	5 3

(AGREEMENT.)

Moran and Cato Pty. Ltd. 277 Brunswick-street, Fitzroy, N.6.

Sub-schedule No. 14.

SOAP MIXTURES.

(Of Commonwealth Manufacture.)

	£	s.	d.
1. Extract of "Kitchens" or equal "Stella" per cwt.	4	2	3
Soap Powder, 80-lb. bags			
2. Household—Dry, "Pental" wrapped, cases of 3 dozen	per case	2	14 6
3. "Lux"—Family size packets	per doz.	1	9 1
"Rinso"—			
4. { Standard packets	do.	0	18 6
{ Economy packets	do.	1	14 2
"Persil"—			
5. { Large packets	do.	0	18 6
{ Giant packets	do.	1	14 2
6. Sandsoap—"Leetric" 12-oz blocks	do.	0	5 5½
7. Toilet Soap—"Kitchens" or equal, "Doub-lays," 3½-oz.	do.	0	5 6
"Velvet"—			
8. { "Quads," standard	do.	1	2 3
{ "Quints," economy	do.	1	15 8

ANNEX TO CONTRACT NO. 1958/243.

Bushells Ltd., 452 Flinders-street, Melbourne.

Sub-schedule No. 15.

TEA.

Security, £180.

	£	s.	d.
1. Tea—First Grade—To sample	per lb.	0	4 4

ANNEX TO CONTRACT NO. 1958/244.

Griffiths Bros. Ltd., 331 Hoddle-street, Collingwood.

Sub-schedule No. 16.

COFFEE.

Security, £70.

	£	s.	d.
1. Coffee—Fresh roasted, and whole, beans to be thoroughly sound—To sample	per lb.	0	4 6½

SCHEDULE No. 2.

PROVISIONS—MONT PARK, ETC.

(For delivery at the Mental Hospital, Mont Park, to Depots as required, the Repatriation Mental Hospital, Bundoora, Larundel Mental Hospital, Pleasant View Receiving House, Wood-street, Preston, Janefield Colony, and the Sanatorium, Gresswell.)

ANNEX TO CONTRACT No. 1958/245.

Northern Bakeries (Preston) Pty. Ltd., 597 High-street, Preston.

Sub-schedule No. 1.

BREADSTUFFS.
Security, £190.

	£	s.	d.
Bread—			
1. Fine wheaten, first quality	per cwtl.	1	12 6
2. Rasins, first quality	do.	3	19 2
3. Rolls	per doz.	0	2 3

(AGREEMENT.)

Henry Berry and Co. (A'asia) Ltd., 212 King-street, Melbourne, C.I.

Sub-schedule No. 2.

GROCERIES.

	£	s.	d.
1. Bacon—middles	per lb.	0	5 0
Beans—			
2. Haricot (White Arroz)	do.	0	1 7
3. Butter	do.	0	2 0
4. Blue—Washing—1-oz. knobs "Reckitts"	per doz.	0	2 11½
5. Biscuits—Coffee, Malt, Milk Arrowroot, or equal, as ordered (Tins 4s. each)	per lb.	0	1 10½
6. Camp Pic—12-oz. tins	per doz.	1	1 3
7. Candles (full weights)—Kitchen's "Electrines," or other make of equal quality in sets of 6	per set	0	2 8½
8. Cereal—24-oz. packets, "Malties"	per doz.	1	6 8
9. Cinnamon	per lb.	0	2 9
10. Cloves	do.	0	6 3
11. Cocoa—1-lb. bags "Bournville"	per doz.	3	10 5
12. Coconut—Desiccated "Ceylon"	per lb.	0	2 5½
Coffee Essence—"Club Brand"—			
13. { 8-oz. bottles	per bot.	0	2 4
{ 1-gal. jars (Jars 3s. 6d.)	per jar	1	9 6
14. Corn or Maize Flour—1-lb. packets, "Kream"	per lb.	0	1 5½
15. Currants { 1-crown (present season's)§§	do.	0	1 8½
{ 2-crown (present season's)§§	do.	0	1 9½
16. Curry Powder—"Atlas"	do.	0	2 11
17. Custard Powder—1-lb. packets (7-lb. packets 8s. 3d. each)	per doz.	0	18 0½
18. Dates—Fresh, loose—case lots	per lb.	0	2 1½
19. Essence of Vanilix—in full 20-oz. bottles ¶	do.	0	11 6
20. Essence—Lemon—4-oz. bottles	each	0	2 9½
21. Flour—Self-raising, "Cookwell" (150 lb.)§	per bag	4	1 0
22. Gelatine—Ground	per lb.	0	7 9
23. Ginger—Ground	do.	0	7 3
24. Golden Syrup—2-lb. tins ††	per ctn.	1	16 8
Herrings—			
25. { 14-oz. tins, Fresh	per doz.	1	7 9
{ in Tomato Sauce	tins	1	8 0
26. Honey—First quality	per lb.	0	1 8
27. Jelly Crystals—4-oz. packets, "Invicta"	per gross	4	0 9
28. Jelly Crystals—7-lb. packets	per pkt.	0	16 6
29. Junket Tablets—"Berry's"	per tube	0	1 1
30. Macaroni—22-lb. boxes	per box	1	0 0
31. Margarine—Cake, Pastry	per lb.	0	1 7
32. Meat—Beef Luncheon—12-oz. taper tins	per doz.	1	10 6
Milk—Dried, Full Cream—			
33. { 12-oz. tins, 3 dozen, "Sunshine"	per case	5	10 6
{ 3-lb. tins, 1 dozen, "Sunshine"	do.	6	17 0
{ 12-oz. tins, 3 dozen, "Trufood"	do.	5	7 0
{ 3-lb. tins, 1 dozen, "Trufood"	do.	6	16 3
34. Milk—Malted "Horlicks"—1-lb. tins	per doz.	2	19 0
35. Mustard—"Colonial"	per lb.	0	4 9
36. Peel—Mixed	do.	0	1 7
37. Nutmeg—Ground	do.	0	15 3
Pepper—			
38. { White, ground	do.	0	4 9
{ Black, ground	do.	0	4 0
39. Pepper—Cayenne	do.	0	5 6
40. Pickles—Assorted, 20-oz. bottles	per doz.	1	7 6
41. { Prunes—Dried, { 50-60's	per lb.	0	2 9
{ in case lots of 7-lb. tins { 60-70's	do.	0	2 8
{ 70-80's	do.	0	2 7
42. Raisins, Seeded { Bulk, 4-crown §§	do.	0	1 10½
{ 1-lb. packets	per doz. pkts.	1	5 9
43. { Sultanas, 1-crown §§	per lb.	0	1 9½
{ (present season's) 2-crown §§	do.	0	1 9½
{ 3-crown §§	do.	0	1 10½

¶ As supply of 20-oz. bottles is irregular, rate is shown on per lb. basis.

§ 50 lb. bags—30s. 10d. each.

†† Cartons—2 doz. 2-lb. tins.

§§ Less than case lots additional 1d. per lb.

‡ 56-lb. bags—1s. 1d. per lb.

Sub-schedule No. 2.—continued.

GROCERIES—continued.

£ s. d.

44. Rice—Ground, 1-lb. packets	per lb.	0	1 2½
45. Salt—Fine (Bag, approx. 1 cwt.)	per bag	0	15 3
Sauce—Tomato—			
{ 26-oz. bottles, "Leggos" (Cartons 2s.)	per doz.	2	3 0
{ 26-oz. bottles "Kia Ora" (Rosella do. 42s. 6d.)	do.	2	4 0
46. { 1-gal. jars (Jars 3s. 6d.)	per gal.	0	17 0
47. Sauce—Worcestershire, 1-gal. jars (Jars 3s. 6d.)	per gal.	0	10 0
48. Soda—Bicarbonate of	per lb.	0	0 6½
49. Washing	per cwt.	1	15 0
50. Spaghetti—22-lb. cartons "Rinoldi"	per ctn.	1	0 0
51. Spice—Mixed, loose	per lb.	0	4 3
Starch—			
52. Coral Rice, 12-oz. packets	per doz.	0	16 8
Sugar—			
53. Castor	per cwt.	4	12 6
54. Icing	do.	4	12 6
55. Tartar—Cream of—Substitute, Sodium Phosphate, "Antelope"	per lb.	0	2 6½
56. Treacle—2-lb. tins ††	per ctn.	1	15 10
Vermicelli—			
57. { 16-oz. packets	per doz.	0	15 3
{ 22-lb. cartons	per ctn.	1	0 0
Vinegar—Malt—			
58. { gallon jars (Jars 3s. 6d.)	per gall.	0	3 6
{ 9-gallon kegs (Kegs £5.)	do.	0	3 5

ANNEX TO CONTRACT No. 1958/246.

W. H. Johnsons Jams Pty. Ltd., 42 Meaden-street, South Melbourne, S.C.5.

Sub-schedule No. 3.

JAMS.

Security, £23.

£ s. d.

Jams—			
1. Assorted, in bulk, of approved kinds, in the proportion of half seed and half stone, of the best quality, in 24-lb. tins	per lb.	0	11½
2. Assorted, in 5-lb. tins, in the proportion of half seed and half stone, of the best quality	per tin	0	6 4
3. Marmalade, 5-lb. tins	do.	0	6 3

○ In 27-lb. tins, rate increased by 1d. per lb.

ANNEX TO CONTRACT No. 1958/247.†

W. Angliss and Co. (Aust.) Pty. Ltd., 42 Bourke-street, Melbourne.

Sub-schedule No. 4.

MEAT.

(For Mont Park Mental Hospital, &c.)

Security, £50.

£ s. d.

Fresh Beef—			
1. Buttocks	per cwtl.	6	3 11½
2. Roast	do.	5	16 8
3. Rolled Roast—Boneless (Brisket excluded)	do.	10	16 8
Beef, Corned—			
4. Rolled or Round, as ordered, without bone or cartilage	do.	10	0 0
5. Corned—Silverside	do.	11	5 0
Mutton, Fresh—			
6. Carcass or Sides (Kidney fat to be removed)	do.	3	5 7½
7. Legs	per lb.	0	1 5
8. Fore-quarter	do.	0	0 3
Chops—			
9. Fore-quarter	do.	0	0 8½
10. Loin	do.	0	1 5
Steak—			
11. Thick Flank	do.	0	1 10
12. Rump	do.	0	3 3
13. Minced	do.	0	1 5
14. Topside	do.	0	2 6
15. Sausage—Meat	do.	0	0 10
16. Sausages—Mixed	do.	0	1 8
17. Shanks—Sheep	each	0	0 3
18. Tripe—Fresh	per lb.	0	0 7½
19. Brains—Sheep	per set	0	0 7
20. Kidneys—Ox	per lb.	0	3 0
21. Livers—Sheep	do.	0	2 3
22. Livers—Calves	do.	0	1 10
23. Sausage—Strasburg, Pork	do.	0	2 10
24. Rabbits—Fresh (Gresswell only)	do.	0	2 10

Sub-schedule No. 4—continued.

MEAT—continued

	£	s.	d.
25. Saveloys	per doz.	0	3 4
26. Tongues—Ox	per lb.	0	1 3
27. Tongues—Sheep	each	0	0 8
28. Ham Loaf	per lb.	0	2 11
29. Fillet Veal	do.	0	2 6
30. Pressed Veal and Pork Loaf	do.	0	4 5
31. Pressed Shoulder Ham	do.	0	6 0
32. Potted Meat	do.	0	1 6
33. Fowls—First quality	do.	0	5 6

ANNEX TO CONTRACT No. 1958/248.†

W. Angliss and Co. (Aust.) Pty. Ltd., 42 Bourke-street, Melbourne.

Sub-schedule No. 5.

MEAT.

(For Pleasant View Receiving House, Wood-street, Preston.)
Security, £5.

	£	s.	d.
1. Fresh Beef—Roast—Boneless (Brisket excluded)	per lb.	0	1 1½
2. Corned Beef—Silverside	do.	0	2 3
3. Fresh Mutton—Legs	do.	0	0 11
4. Steak—Bladebone	do.	0	1 9
5. Minced	do.	0	1 3
6. Chops—Loin—Lamb	do.	0	3 6
7. Fore-quarter—Mutton	do.	0	0 4
8. Livers—Lams	do.	0	2 3
9. Sausages—Pork	do.	0	1 8
10. Dripping—Beef	do.	0	1 1½
11. Kidneys—Ox	do.	0	2 6
12. Brains—Sheep	per set	0	0 7
13. Frankfurts	per doz.	0	4 4

SCHEDULE No. 3.

PROVISIONS FOR S.S. RIP AND DREDGES

Sub-schedule No. 1.

BREAD.

Purchase by agreement.

(AGREEMENT.)

Moran and Cato Pty. Ltd., 277 Brunswick-street, Fitzroy, N.6.

Sub-schedule No. 2.

GROCERIES.

	£	s.	d.
1. Bacon Rashers—Middle	per lb.	0	5 10
2. Beans—Butter	do.	*	
3. Haricot	do.	0	1 7
4. Biscuits—Coffee, Marie, Malt (Tins 4s. each)	do.	0	1 9½
5. Dry (Tins 4s. each) {Thin Captain	do.	0	1 9½
{Genovia	do.	0	1 9½
{Unocda	do.	0	1 11½
6. Gravox— {4-oz. packets	per doz.	0	6 9½
{8-oz. packets	do.	0	11 8
7. Chutney—13-oz. bottles "Rosella"	do.	1	2 0
8. Coconut—1-lb. tins or cartons, "Bournville"	do.	3	8 4
9. Coconut—Desiccated	per lb.	0	2 6½
10. Coffee—Fresh Roasted and Ground	do.	0	7 4
11. Corn or Maize Flour—1-lb. packets "Modallion"	per doz.	0	15 6
11A Corn or Maize Flour—Loose	per lb.	0	0 10½
12. Currants— {2-crown (present season's)	do.	0	1 8
{3 "	do.	0	1 8½
13. Custard Powder—1-lb. packets, "Cameo"	per doz.	0	19 3
14. Dates	per lb.	0	2 0½
15. Eggs—New Laid	per doz.		
16. Essence—Vanilla, 16-oz. bottles, "Modallion"	per bot.	0	4 1½
17. Cochineal, Substitute—Red Colouring, 4-oz. bottles, "Allens"	do.	0	1 4
18. Fish— {Herrings, 14-oz. tins, Fresh, "Morton"	per doz.	1	7 9
{Herrings in Tomato Sauce, "Morton"	do.	1	8 3
19. {Salmon, Fresh, 12-oz. tins "Greenseas"	do.	1	16 10
{Salmon, Fresh, 16-oz. tins, "Greenseas"	do.	2	1 9
20. Sardines, ½-tins, "Norwegian Pack"	do.	0	14 4

* Supplies not available.

† Apricot, £1 8s. 3d.; Marmalade, £1 6s. 3d.; Plum, £1 6s. 9d.; Melon and Lemon, £1 5s. 3d.; Raspberry, £2 2s. 3d.; Blackcurrant—£2 2s. 3d.

Sub-schedule No. 2—continued.

GROCERIES—continued.

	£	s.	d.
21. Flour—First quality—Plain "Macs" 4-lb. packets	per pkt.	0	2 2½
22. Self-raising {50-lb. bag, "Macs"	per bag	1	10 10
{25-lb. bag, "Macs"	do.	0	15 10
23. Fruits—Preserved—30-oz. tins— {Pears	per doz.	1	15 0
{Peaches	do.	1	16 0
{Apricots	do.	1	12 6
24. Pines	do.	2	1 3
25. Gelatine—Ground {8-oz. packets	do.	2	9 6
{16-oz. packets	do.	4	17 3
26. Golden Syrup—2-lb. tins	do.	0	18 3
27. Honey—24-oz. jars, "Greigs"	do.	2	2 6
28. Jams—Assorted kinds, 24-oz. tins	do.	†	
29. Jelly Crystals—4-oz. packets, "Sparkling"	do.	0	5 10
30. Mixed Peel—Cut	per lb.	0	1 11½
31. Macaroni—22-lb. cartons	per ctn.	0	19 5
32. Margarine—Cooking Quality	per lb.	0	1 8
33. Meat—Preserved— {Camp Pie, 12-oz., "Imperial"	per doz.	0	19 3
{Sausages and Vegetables, 16-oz., "Tom Piper"	do.	1	6 6
{Irish Stew, 16-oz., "Tom Piper"	do.	1	6 9
{Steak and Kidney Pudding, 16-oz., "Tom Piper"	do.	1	7 3
34. Milk—Dried, Full Cream, 12-oz. tins, "Sunshine"	do.	1	16 3
35. Condensed, Full Cream, 14-oz. tins	do.	1	1 2
36. Mustard—Loose, "McKenzies"	per lb.	0	4 9
37. Nutmeg—Whole	do.	0	17 9
38. Oatmeal—Flaked	do.	0	0 9½
39. Pearl Barley	do.	0	0 6½
40. Peas—Split	per cwt.	3	12 3
41. Pepper—White, ground	per lb.	0	4 8
42. Pickles—Mustard, 20-oz. bottles	per doz.	1	6 8
43. Prunes—Dried (present season's) 40/50 (90/100, 2s. 1½d. per lb.—7-lb. tins)	per lb.	0	2 8
44. Raisins—Seeded (present season's), "M & C" or "Summagold", 1-lb. packets	per doz.	1	4 3
45. Sultana {2-crown (present season's)	per lb.	0	1 8½
{3-crown (present season's)	do.	0	1 8½
46. Rice—Dressed	do.	0	0 10½
47. Salt—Fine	per cwt.	0	15 6
48. Sauce—Mustard, 8-oz. bottles, "Holbrooks"	per doz.	1	4 3
49. Tomato, 26-oz. bottles, "Rosella"	do.	2	2 3
50. Worcestershire, 10-oz. bottles, "Hardings"	do.	1	0 10
51. Soda—Bicarbonate of	per lb.	0	0 7½
52. Spice—Mixed, 1-oz. packets, "Parsons"	per doz.	0	5 1
53. Sugar— {Brown, 160-lb. bags	per lb.	0	0 9
{White, 70-lb. bags	per bag	2	12 9
54. Castor	per lb.	0	0 10
55. Icing	do.	0	0 10½
56. Vinegar—Malt, 24-oz., "Vines"	per doz.	0	13 1
57. Yolking—4-oz. bottles (yellow colouring)	do.	0	16 0

ANNEX TO CONTRACT No. 1958/249.†

Jackson's United Meat Co. Pty. Ltd., New Footscray-road, Footscray.

Sub-schedule No. 3.

MEAT.

(Delivery at River Yarra Wharfs.)

	£	s.	d.
1. Fresh Beef—Roast	per lb.	0	1 4
2. Beef—Corned—Silverside	do.	0	2 0
3. Rolled	do.	0	1 2
4. Fresh Mutton—Fore-quarter	do.	0	0 6
5. Legs	do.	0	1 2
6. Chops—Fore-quarter	do.	0	0 11
7. Loin	do.	0	1 3
8. Steak—Rump	do.	0	3 6
9. Stewing	do.	0	1 6
10. Topside	do.	0	2 0
11. Sausages—Mixed	do.	0	1 9
12. Tripe—Fresh	do.	0	0 8
13. Livers—Sheep	do.	0	2 9
14. Suet—Kidney	do.	0	0 7
15. Rabbits—Fresh	do.	0	2 3
16. Ice	per cwt.	0	4 0

|| Market rates plus 3d. per doz.

Sub-schedule No. 4.

VEGETABLES.

- | | |
|--|------------------------------------|
| 1. Onions | } Purchase
by
agree-
ment |
| 2. Other vegetables, including beetroot, cauliflowers, carrots, cabbages, turnips, parsnips, rhubarb, swedes, and pumpkin, as required | |

SCHEDULE No. 4.

PROVISIONS—TEACHERS' COLLEGE, HOSTELS, POLICE HOSPITAL, ETC.

(Delivery at Institutions.)

TEACHERS' COLLEGES AND HOSTELS AT GRATTAN-STREET, 93 DRUMMOND-STREET, CARLTON; 470 AND 481 ST. KILDA-ROAD, MELBOURNE; 152 TOORAK-ROAD WEST, SOUTH YARRA; TATE HOUSE, 373 DANDENONG-ROAD, ARMADALE; "REDCOURT" NO. 6, AND "LARNOOK," 13 ORRONG-ROAD, ARMADALE; 11 PATTERSON-STREET, HAWTHORN; 221 BURWOOD-ROAD, BURWOOD, AND JOHN CANNON HOUSE, 32 BELMONT-AVENUE, KEW, AND 17 MOULE-AVENUE, BRIGHTON; AND POLICE HOSPITAL, ST. KILDA-ROAD, MELBOURNE—

GROCERIES.

Order under Melbourne District, Schedule No. 1, Sub-schedule No. 5.

ANNEX TO CONTRACT No. 1958/250.†

J. H. Cooke Pty. Ltd., 378 Queens-parade, Clifton Hill.

Sub-schedule No. 2.

MEAT.

	Security, £15.	£	s.	d.
Fresh Beef—				
1. Rolled Prime Ribs, boneless	per lb.	0	2	0
2. Topside	do.	0	2	3
3. Sirloin, boneless	do.	0	2	6
Fresh Mutton—				
4. Legs	do.	0	1	3
5. Legs, pickled	do.	0	1	3
6. Sides, Two-tooth	do.	0	0	9
7. Legs, Two-tooth	do.	0	1	3
8. Cutlets	do.	0	1	9
9. Chops, Middle Loin	do.	0	1	6
10. Chops, Fore-quarter	do.	0	1	0
11. Chops, Chump	do.	0	1	6
12. Beef—Corned, Silverside	do.	0	2	3
Veal—				
13. Shoulder, boned	do.	0	2	6
14. Fillet, boneless	do.	0	2	6
Steak—				
15. Blade	do.	0	2	0
16. Minced Blade	do.	0	2	0
17. Stewing	do.	0	1	10
18. Rump	do.	0	3	3
19. Mince Steak	do.	0	1	8
20. Sausages—Mixed	do.	0	1	8
Sausage—				
21. Meat	do.	0	1	0
22. Beef, German	do.	0	2	2
23. Strasburg	do.	0	2	10
24. Livers—Sheep	do.	0	2	0
Kidneys—				
25. Sheep	do.	0	2	6
26. Ox	do.	0	2	6
27. Tongues—Ox	do.	0	1	0
28. Ox Tails	do.	0	1	3
29. Pigs Cheek	do.	0	0	9
Brains—				
30. Sheep	per set	0	0	7
31. Calves	do.	0	0	6
32. Tripe—Fresh	per lb.	0	0	8
33. Frankfurts	do.	0	2	0
34. Black Puddings	do.	0	1	6
35. Bones—Soup	do.	0	0	1
36. Suet—Kidney	do.	0	0	6
37. Rabbits—Fresh	do.	0	2	6
38. Fowls—First quality	do.	0	5	3

* Supplies not available.

† Apricot, £4 9s. 3d.; Blackcurrant, £8 8s. 0d.; Blackberry, £8 6s. 0d.; Gooseberry, £5 3s. 0d.; Melon and Lemon, £3 16s. 8d. Loganberry, £8 0s. 0d.; Peach, £4 7s. 7d.; Quince, £3 16s. 6d.; Raspberry, £8 5s. 0d.; Dark Plum, £4 5s. 3d.; Plum and Raspberry, £4 12s. 6d.

SCHEDULE No. 5.

PROVISIONS—HEATHERTON SANATORIUM, CHELTENHAM.

(Delivery at the Sanatorium.)

ANNEX TO CONTRACT No. 1958/251.

Austral Bakeries Pty. Ltd., Queen-avenue, Clayton.

Sub-schedule No. 1.

BREAD.

Security, £15. £ s. d.

- | | | | | |
|--|----------|---|----|---|
| 1. Bread—Fine wheaten, first quality | per cwt. | 1 | 11 | 3 |
|--|----------|---|----|---|

(AGREEMENT.)

Moran and Cato Pty. Ltd., 277 Brunswick-street, Fitzroy, N.6.

Sub-schedule No. 2.

GROCERIES.

£ s. d.

1. Bacon—Sides	per lb.	0	4	11
2. Biscuits—Coffee, Malt, Milk Arrowroot, as ordered, "Sunshine" (Tins, 4s. each, returnable)	do.	0	1	9½
3. Cereal—Malties (or equal thereto) 24-oz. packet, "Pipers"	per doz.	1	5	11
Cocoa—				
4. { "Bournville"	per lb.	0	5	8½
{ Loose	do.			*
Corn or Maize Flour—				
5. { Loose	do.	0	0	10½
{ "Medallion" 1-lb. packets	do.	0	1	3½
6. Custard Powder—1-lb. packets, "Cameo"	do.	0	1	7½
7. Essence of Vanilla—16-oz. bottles, "Medallion"	per bot.	0	4	1½
Flour—				
8. { Self-raising—50-lb. bag	per bag	1	10	10
{ Self-raising—25-lb. bag	do.	0	15	10
Herrings—				
9. { Fresh	per doz.	1	7	9
{ In Tomato Sauce, 14-oz. tins	tins	1	8	3
10. Honey—First quality, 60-lb. tins	per lb.	0	1	5½
Jams—				
11. Assorted, 5-lb. tins, of the best quality, "M.P."	per doz.			‡
12. Marmalade, 5-lb. tins, "M.P."	do.	0	6	3½
13. Jelly Crystals—4-oz. packets, "Sparkling"	do.	0	5	10
14. Junket Tablets—"Merry Widow," flav. ..	per tube	0	1	5½
15. Macaroni—1-lb. packets, "Rinoldi"	per lb.	0	1	2½
16. Mustard	do.	0	4	9
17. Peas—Dehydrated, 21-lb. tins	do.	0	9	2
18. Pepper—White, ground	do.	0	4	8
19. Pickles—Assorted, 20-oz. bottles	per doz.	1	6	8
20. Prunes—Dried, 40-50's (present season's) (90-100's—2s. 1½d. per lb.—7-lb. tins)	per lb.	0	2	8
21. Raisins { Sultana, 2-crown (present season's)	do.	0	1	8½
{ Sultana, 3-crown (present season's)	do.	0	1	8½
22. Salmon { Fresh, 12-oz. tins, "Greenseas"	per doz.	1	16	10
{ Fresh, 16-oz. tins, "Greenseas"	do.	2	1	9
23. Salt—Fine	per cwt.	0	15	6
24. Sauce—Tomato, 26-oz. bottles, "Rosella"	per doz.	2	2	3
Soda—				
25. Bicarbonate of	per lb.	0	0	7½
26. Washing	per cwt.	1	15	0
27. Spice—Mixed, 1-oz. packets, "Parsons"	per doz.	0	5	1
Starch—				
28. { "Silver Star" 12-oz. packets	per pkt.	0	1	4½
{ Loose	per lb.	0	0	10½
29. Vinegar—Malt (jars 3s. 6d. each, returnable)	per gal.	0	3	6

ANNEX TO CONTRACT No. 1958/252.†

W. Anglias and Co. (Aust.) Pty. Ltd., 42 Bourke-street, Melbourne C.1.

Sub-schedule No. 3.

MEAT.

Security, £5. £ s. d.

Beef—				
1. Fresh Roast—Sirloin—Boneless	per lb.	0	1	3
2. Corned—Silverside	do.	0	2	3
Mutton—Fresh				
3. Legs	do.	0	1	6
Lamb—Fresh				
4. Legs	do.	0	3	2

Sub-schedule No. 3—continued.

MEAT—continued.

		£	s.	d.
Chops—				
5. Chops—Middle Loin	per lb.	0	2	0
6. Chops—Chump	do.	0	1	6
7. Chops—Forequarter	do.	0	1	6
8. Cutlets	do.	0	4	3
Pork—Fresh—				
9. Legs	do.	0	3	9
10. Loin	do.	0	1	9
Veal—				
11. Shoulder—Boned	do.	0	0	10
12. Cutlets	do.	0	2	3
Steak—				
13. Rump	do.	0	3	6
14. Blade	do.	0	1	10
15. Topside	do.	0	1	8
16. Minced	do.	0	1	8
17. Tripe—Fresh	do.	0	0	8
18. Brains—Sheep	per set	0	0	7
19. Livers—Sheep	per lb.	0	2	3
20. Tongues—Sheep	do.	0	1	9
21. Kidneys—Ox	do.	0	3	0
22. Tails—Ox	do.	0	1	3
23. Sausages—Mixed	do.	0	1	8
24. Frankfurts	do.	0	2	3
25. Beef German—Sausage	do.	0	2	0
26. Ham Loaf	do.	0	2	9
27. Rabbits—Fresh	do.	0	2	10
28. Fowls—First quality	do.	0	4	0

ANNEX TO CONTRACT No. 1958/253.

Moule's Model Dairy, 16 Station-road, Cheltenham.

Sub-schedule No. 4.

MILK.

		£	s.	d.
1. Milk—Fresh and pure	per gal.	0	4	6½

SCHEDULE No. 6.

PROVISIONS—ARARAT DISTRICT.

(Delivery into Institutions.)

ANNEX TO CONTRACT No. 1958/254.

Mark Forsyth Pty. Ltd., 49 Moore-street, Ararat.

Sub-schedule No. 1.

BREADSTUFFS.

		£	s.	d.
1. Bread—Fine wheaten, first quality	per cntl.	2	19	5
2. Flour—First quality	do.	1	16	11

(AGREEMENT.)

McKay MacLeod Pty. Ltd., 122 Lydiard-street, Ballarat.

Sub-schedule No. 2.

GROCERIES.

		£	s.	d.
1. Blue—Washing (Reck Square)	per gross	1	14	8½
2. Candles—(full weights) Kitchen's "Electrines," or other make of equal quality, to be supplied in 1-lb. packets	per lb.	0	2	9
3. Cocoa—"Bournville" 1-lb. tins, (50-lb. bags not available)	per doz.	3	9	2
4. Corn Flour—packets of 1-lb. net "Kream"	per lb.	0	1	6½
5. Curry Powder, Loose	do.	0	4	0½
6. Custard Powder—Bulk	do.	0	1	2½
7. Fish—Tinned—Salmon, "Greenseas"—16-oz. tins	per doz.	2	1	8
Golden Syrup—				
8. { 70-lb. tins or drums†	each	2	16	3
{ 2-lb. tins	per doz.	1	0	7
9. Jelly Crystals—"McKays" packets	do.	0	8	9
10. Milk—Powdered, "Sunshine," 3-lb. tins	do.	6	17	11½
11. Mustard—Loose	per lb.	0	4	9
12. Peas—Blue, boiling	per bush.	2	16	0
13. Pepper—Black, ground	per lb.	0	3	8½
{ 70-80's	do.	0	2	7½
{ 80-90's	do.	0	2	5½

† Charge for drums if not returned. § 12-oz. tins, £1 17s. 8d. per doz.

Sub-schedule No. 2—continued.

GROCERIES—continued.

		£	s.	d.
Raisins—Sultanas (present season's)—				
15. { 1-crown	per lb.	0	1	9
{ 2-crown	do.	0	1	9½
{ 3-crown	do.	0	1	10
{ 4-crown	do.	0	1	10½
16. Salt—Fine, Imperial	per cwt.	1	0	2
17. Sauce—Tomato, 1-gallon jars (Jars 3s. 6d.)	per gal.	0	16	4½
18. Soap—"Preservene" Sand	per doz.	0	8	1
Soda—				
19. Bicarbonate of	per lb.	0	0	6½
20. Washing	per cwt.	1	18	8
21. Starch (Rice)—"Silver Star," 12-oz. pkts.	per doz.	0	17	9
22. Tapioca—Seed	do.	0	0	9½
23. Tartar—Cream of, Substitute, "Antelope"	per lb.	0	2	6
24. Tomatoes—Tinned "McKay"—29-oz.	per doz.	1	9	2

(AGREEMENT.)

McKay MacLeod Pty. Ltd., 122 Lydiard-street, Ballarat.

Sub-schedule No. 3.

JAMS.

		£	s.	d.
1. Jams—Assorted, in bulk, of approved kinds, in the proportion of half seed and half actual stone, of the best quality, in tins, as required, "J. MacLeod and Co. Pty. Ltd."	per lb.	0	1	3

ANNEX TO CONTRACT No. 1958/255.†

H. A. Morris, 107 Victoria-street, Ballarat.

Sub-schedule No. 4.

MEAT.

Security, £30.

		£	s.	d.
Fresh Beef—				
1. Rolled Roast (Boneless, brisket excluded)	per cntl.	8	6	8
2. Buttocks	do.	7	18	4
Fresh Mutton—				
3. Kidney fat to be removed	do.	5	8	4
4. Middle Loin Chops	do.	5	8	4
5. Corned Beef—Rolled or Round, as ordered, without bone or cartilage	do.	8	6	8
6. Beef Steak	per lb.	0	1	8
7. Veal—Filletted	do.	0	1	9
8. Sausages—Mixed	do.	0	1	5
9. Livers—Sheep	do.	0	0	8
10. Tripe—Fresh	do.	0	0	6

SCHEDULE No. 7.

PROVISIONS—BALLARAT DISTRICT.

(Delivery into Institutions.)

ANNEX TO CONTRACT No. 1958/256.

W. Dick and Sons, 314 Drummond-street, Ballarat.

Sub-schedule No. 1.

BREADSTUFFS.

		£	s.	d.
1. Bread—Fine wheaten, first quality	per cntl.	2	12	1
2. Flour—First quality	do.	1	15	0

(AGREEMENT.)

McKay MacLeod Pty. Ltd., 122 Lydiard-street, Ballarat.

Sub-schedule No. 2.

GROCERIES FOR TEACHERS' COLLEGE HOSTELS.

		£	s.	d.
Bacon—				
1. { Sides	per lb.	0	4	6½
{ Rashers, Middle	do.	0	6	0
2. Barley—Pearl	do.	0	0	6
Beans—				
3. Butter	do.	0	1	8½
4. Haricot	do.	0	1	8
5. Lima	do.	0	1	9½
Biscuits—				
6. Dry—Salada, Savoy and Crispo	do.	0	1	10
7. Coffee, Malt, Arrowroot, Marie	do.	0	1	8½

Sub-schedule No. 2—continued.

GROCERIES—continued.

	£	s.	d.
Blue—			
8. 1-oz. knobs, paper, "Reckitts," (calico per gross £2 3s. 0d.) knobs	1	14	4
9. 8-lb. packets, "Reckitts," square .. do.	1	14	4
10. Cake Containers—paper, "Barkers" 120's per gross pkts.	4	13	0
Cereals—			
11. { "Sunflakes" per doz.	1	3	3
{ "Kornies" pkts.	1	7	8
{ "Cornflakes," large do.	1	10	5
{ "Weetbix," 24-oz. do.	1	7	8
{ "All-Bran" do.	0	19	0
Cheese—			
12. { 5-lb. boxes, "Kraft" or equal .. per pkt.	0	19	4
{ 1-lb. packets per doz.	1	4	11
13. Chutney—"Rosella," Fruit do.	1	5	0
14. Cloves per lb.	0	5	11
Cocoa—			
15. 1/2-lb. tins, "Bournville" (1-lb., 68s. 8d. doz.)	1	14	4
16. Loose per lb.	*		
17. Coconut—Desiccated (Ceylon) do.	0	2	6
Coffee and Chicory Essence—			
18. 8-oz. bottles, "McKays" per doz.	1	8	6
19. 1-gallon jars (Jars 3s. 6d. each) .. per jar	1	13	3
20. Curry Powder—Bulk per lb.	0	4	0
Custard Powder—			
21. Bulk do.	0	1	2
22. 1-lb. packets "McK" per doz.	1	2	6
23. Dates—Box lots "Sair" per lb.	0	1	10
Essences, &c.—			
24. Almond, 16-oz. per bot.	0	10	0
25. Lemon, 16-oz. do.	0	10	0
26. Vanilla, 16-oz. do.	0	12	9
27. Cochineal, 8-oz. do.	0	7	0
28. Parisian { 4-oz. bottles per doz.	0	14	0
{ 26-oz. bottles do.	2	5	0
29. Yolking, "Yolko" each	0	2	6
Extracts, Pastes, &c., or equal—			
30. Marmite { 16-oz. tin per tin	0	6	11
{ 8-oz. tin do.	0	4	3 1/2
{ 16-oz. tin do.	0	7	2
31. Vegemite { 8-oz. tin do.	0	3	10 1/2
{ 16-oz. tin do.	0	3	10 1/2
32. Peanut Butter, 12-oz. tin, "Eta" .. do.	0	3	10 1/2
33. Bonox, 8-oz. tin do.	0	5	3
34. Bloater, "Pecks" do.	0	1	3 1/2
35. Salmon and Shrimp, "Pecks" do.	0	1	6
Fish—Tinned—			
36. "Sea Cape," 12-oz. tin per doz.	1	8	10
37. Salmon, "Groenseas" 16-oz. tin .. do.	2	1	0
{ Fresh, 7-oz. tin do.	0	18	3
{ Fresh, 14-oz. tin do.	1	7	9
38. Herrings { in sauce, 7-oz. tin do.	0	18	3
{ in sauce, 14-oz. tin do.	1	7	9
39. Sardines, 4-oz. tin, "D.L." do.	0	17	7
40. Pilchards, 1-lb. tins do.	*		
Flour—Corn or Maize—			
41. Packets, "Kream" per lb.	0	1	6
42. Bulk do.	0	0	9 1/2
43. Self-Raising { 25-lb. bags, "McKays" per bag	0	16	1
{ 6-lb. packets, "McKays" per doz.	2	9	9
Fruits—Dried—			
44. Apples per lb.	*		
45. Apricots, 3-crown do.	0	4	4 1/2
46. Peaches, peeled, 2-crown, choice .. do.	0	3	0 1/2
47. Pears, 3-crown, standard do.	*		
48. Prunes, (70/80's) do.	0	2	6 1/2
49. Currants, 2-crown do.	0	1	8 1/2
50. Raisins { Seeded, 1-lb. packets .. per doz.	1	5	0
{ Loose per lb.	0	1	9 1/2
51. Sultanas { 2-crown do.	0	1	9
{ 3-crown do.	0	1	9 1/2
Fruits—Tinned—			
52. Apricots, 30-oz. tin per doz.	1	13	0
53. Peaches, 1-gallon tins do.	*		
54. Peaches, 30-oz. tin do.	1	16	3
55. Pears, 30-oz. tin do.	1	11	6
56. Pineapple, pieces, 30-oz. tin do.	2	0	6
57. Mixed Fruits, "Fruit Cocktail," 16-oz. do.	1	6	9
58. Solid Pack Apples { 28-oz. tin do.	2	1	10
{ 6 1/2-lb. tin each	0	9	10 1/2
59. Solid Pack Apricots, 7-lb. tins .. do.	0	10	4
60. Gelatine—Ground, "Davis", loose ○ .. per lb.	0	7	10
61. Ginger—Ground do.	0	4	6
62. Golden Syrup, 2-lb. tins (70-lb. drums, 53s.) † per doz.	0	19	6

○ 16 oz. tins, £5 0s. 3d. per doz.

* Supplies not available.

† Charge for drums if not returned.

Sub-schedule No. 2—continued.

GROCERIES—continued.

£ s. d.

63. Gravox—1-lb. tins per doz.	1	0	10
64. Herbs—Mixed, packets do.	0	4	0
65. Honey—60-lb. tins per lb.	0	1	7
Jelly Crystals—			
66. 4 oz. packets, "McKays" per doz.	0	8	7 1/2
67. 7-lb. packets per lb.	0	2	2
Junket Tablets—			
68. "Merry Widow" flavoured, tubes .. per doz.	0	17	9
69. Lentils per lb.	0	1	11
Macaroni—			
70. 1-lb. packets per doz.	0	14	9
71. Bulk { 22-lb. cartons each	1	1	0
{ 56-lb. bags per lb.	0	1	0
72. Margarine—Cake, pastry do.	0	1	7
73. Matches—Safety, packets per gross	1	0	10
74. Mayonnaise—1/2-gallon jars (Jars 3s. 6d. each)	0	15	0
Meat—Tinned, or equal—			
75. Beef Luncheon { Taper tins, "Swifts" per doz.	1	10	6
{ Square tins, "Piper" do.	1	7	8
76. Beef Steak Pudding, "Piper" do.	1	8	2
77. Camp Pie, 12-oz. tins, "Swifts" .. do.	1	1	3
78. Irish Stew, 16-oz. tins, "Piper" .. do.	1	7	8
79. Braised Steak and Vegetables, 16-oz. tins, "Piper" do.	1	4	8
80. Sausages and Vegetables, 16-oz. tin, "Piper" do.	1	7	4
Milk—Dried—			
81. { "Sunshine," 12-oz. tins do.	1	17	1
{ "Sunshine," 3-lb. tins do.	6	15	10
Milk—Condensed—			
82. "Nestles" do.	1	1	0
83. "Ideal" do.	0	16	4
84. Mustard—Bulk per lb.	0	4	8 1/2
85. Nutmeg—Ground do.	0	18	6
86. Oatmeal—Flaked, 56-lb. bags per cwt.	4	7	4
87. Pastry—Mix, 1-lb. packets, "Maxam" .. per doz.	0	15	0
88. Peel—Mixed, cut per lb.	0	2	0
89. Pepper—White, ground do.	0	4	7
90. Pickles—Assorted, 20-oz. bottles, per doz. "McKays"	1	6	3
Rice—			
91. Dressed per cwt.	4	13	6
92. Ground—1-lb. packets per lb.	0	1	3
93. Sago (Seed Tapioca) do.	0	0	9 1/2
Salt—			
94. Fine, bulk, "Imperial" per cwt.	0	15	6
95. Table, 1-lb. packets, "Mermaid" .. per doz.	0	5	4
Sauce—			
96. Tomato, 26-oz. bottles, "McK's" .. do.	1	18	10
97. Tomato, 1-gal. jar (Jars, 3s. 6d. each) per jar	0	15	6
98. Worcestershire, 10-oz. bottles, "Sirdar" per doz.	0	18	0
99. Worcestershire, 1-gal. jar (Jars, 3s. 6d. each)	0	13	0
100. Mustard, 8-oz. bottles per doz.	1	0	0
Soaps—			
101. Borax (powdered) per lb.	0	0	9
102. Extract of "Pental" 56-lb. bags .. per cwt.	4	15	0
103. Household, Dry, "Pental" (cases of 36) per case	2	18	11
104. "Lux," 16-oz. packets per doz.	1	10	7
105. "Rinso," Economy packet do.	1	16	0
106. "Persil," Economy packet do.	1	16	0
107. Sand soap, 12-oz. blocks, "Preservene" do.	0	7	6
108. Toilet soap, 3 1/2-oz. tabs., "Palmolive" do.	0	6	8
109. "Velvet"—"Quads," "Standard" .. do.	1	3	5
110. "Velvet"—"Quints," "Economy" .. do.	1	17	5
Soda—			
111. Bicarbonate of per lb.	0	0	6 1/2
112. Washing per cwt.	1	14	0
Soups—Tomato—			
113. 16-oz. tins, "Kia Ora" per doz.	1	1	7
114. No. 10 tins do.	6	2	7
Spaghetti—			
115. 1-lb. packets do.	0	15	9
116. Bulk, 22-lb. cartons each	1	1	0
117. Spice—Mixed, loose (1-oz. pkt., 5 1/2d. each) per lb.	0	17	3
118. Starch—Rice, 12-oz. pkts., "Silver Star" per doz.	0	3	3
Sugar—			
119. { Icing Mixture per cwt.	5	5	0
{ Castor do.	5	4	0
{ Raw per lb.	0	0	9 1/2
{ White (70-lb. bag) per bag	2	15	11
120. Tapioca—Pearl per lb.	0	0	9 1/2
121. Tartar—Cream of, "Antelope Phos. Aerator" .. do.	0	2	5 1/2
122. Treacle—2-lb. tins per doz.	0	19	1

Sub-schedule No. 2—continued.

GROCERIES—continued.

Vegetables—Dried—		£	s.	d.
123.	Soup Vegetables { 3-lb. tins, "Dew per tin 1 8 8 Crisp " } 20-lb. do. 8 1 0			
124.	Peas, Green, "Dew Crisp" in 21-lb. tins do. 9 18 0			
125.	Peas—Split, yellow .. per lb. 0 0 9			
Vegetables—Tinned—		£	s.	d.
126.	Baked Beans, 16-oz. tins, "Kia Ora" per doz. 1 2 10			
127.	Baked Beans, No. 10 can do. 5 19 1			
128.	Beans, Green, 16-oz. tins, "Edgells" do. 1 5 2			
129.	Beetroot, 30-oz. tins "Vacola" do. 1 12 2			
130.	Carrots, (Split), 30-oz. tins "Edgells" do. 1 3 4			
131.	Celery, 30-oz. tins .. do. *			
132.	Parsnips, 30-oz. tins .. do. *			
133.	Peas, 30-oz. tins, "Edgells" do. 2 1 11			
134.	Sweetcorn, 16-oz. tins, "Rosella" .. do. 1 9 6			
135.	Tomatoes, 29-oz. tins, "McKays" .. do. 1 8 0			
136.	Tomatoes, 4-gallon tins .. each *			
Vermicelli—		£	s.	d.
137.	1-lb. packets .. per doz. 0 15 9			
138.	Bulk, 22-lb. cartons .. each 1 1 0			
139.	Vinegar—Malt—1-gal. jar (Jars 3s. 6d.) per jar 0 4 0			

(AGREEMENT.)

McKay MacLeod Pty. Ltd., 122 Lydiard-street, Ballarat.

Sub-schedule No. 2a.

GROCERIES FOR MENTAL HOSPITAL.

		£	s.	d.
1.	Beans—Haricot .. per lb. 0 1 6			
2.	Biscuits { Salada Crackers, Savoy Crackers, Thin Captains, Crispo Crackers } do. 0 1 10			
	{ Milk Arrowroot, Malt, Marie, Coffee } do. 0 1 8½			
3.	Blue (Washing), "Reckitts Square" .. per gross 1 14 4			
4.	Candles, "Kitchen's Electrine" .. per lb. 0 2 8½			
5.	Cereals { Sunflakes .. per doz. 1 3 3 Crispies .. do. 1 7 8 Kornies (packets) .. do. 1 7 8			
6.	Cocoa, 1-lb. tins, "Bournville" (loose not available) do. 3 8 8			
7.	Cornflower { 1-lb. packets, "Kream" .. per lb. 0 1 6 Bulk .. do. 0 0 9½			
8.	Currants { 1-crown .. do. 0 1 8 2-crown .. do. 0 1 8½			
9.	Curry Powder—Bulk .. do. 0 4 0			
10.	Custard Powder—Bulk .. do. 0 1 2			
11.	Dates—Case Lots .. do. 0 1 10			
12.	Essence—16-oz. bottles { Lemon .. each 0 10 0 Vanilla .. do. 0 12 9			
13.	Fish—Tinned, Salmon, "Greensens", 16-oz. tins per doz. 2 1 0			
14.	Flour—Self-raising (150-lb. bags) .. each 4 2 6			
15.	Gelatine—1-lb. packets, "Davis" (loose per doz. 7s. 10d. per lb.) do. 5 0 3			
16.	Golden Syrup—2-lb. tins (70-lb. tins or drums, 53s.) do. 0 19 6			
17.	Herbs—Mixed, 1 oz. pkts. .. do. 0 4 0			
18.	Jelly Crystals { "McKays Packets" .. do. 0 8 7½ Bulk—7-lb. .. per lb. 0 2 2			
19.	Macaroni—Bulk—56-lb. bags .. do. 0 1 0			
20.	Margarine—Cake, Pastry .. do. 0 1 7			
Meats—Tinned—		£	s.	d.
	"Tom Piper"—			
	Sausages and Vegetables, 16-oz. .. per doz. 1 7 4			
	Irish Stew, 16-oz. .. do. 1 7 8			
	Beef Steak Pudding, 16-oz. .. do. 1 8 2			
	Beef Lunch, 12-oz. square .. do. 1 7 8			
	"Swifts"—			
	Camp Pie, 12-oz. tins .. do. 1 1 3			
22.	Milk F.C. Powdered, "Sunshine" { 3-lb. tins do. 6 15 10 12-oz. ,, do. 1 17 1			
23.	Mustard—Bulk .. per lb. 0 4 8½			
24.	Peel—Mixed loose .. do. 0 2 0			
25.	Pepper—Ground, black .. do. 0 3 8			
26.	Raisins—Case Lots—			
	1-crown .. do. 0 1 8½			
	2-crown .. do. 0 1 9			
	3-crown .. do. 0 1 9½			
	4-crown .. do. 0 1 10			
27.	Salt—Imperial, Fine .. per cwt. 0 15 6			
28.	Sauce—Tomato—26-oz. bottles (gal. jars 15s. 6d.) per doz. 1 18 10			
29.	Sauce—Worcestershire—1-gal. jars ○ .. each 0 13 0			
30.	Soda—Carbonate .. per lb. 0 0 6½			

○ Jars—3s. 6d. each.

† Apricot, Bakers Raspberry, Dark Plum, Gooseberry, Quince, Loganberry, Melon and Lemon, Raspplum.
‡ Apricot, Plum, Quince, Melon and Lemon, Loganberry, Plum and Raspberry, Gooseberry.

Sub-schedule No. 2a—continued

GROCERIES—continued.

		£	s.	d.
31.	Soda—Washing .. per cwt. 1 14 0			
32.	Spaghetti—Bulk—22-lb. cartons { No. 1 .. each 1 1 0 No. 2 .. do. 1 1 0			
33.	Spice, Mixed, 1-oz. packets .. per pkt. 0 0 5½			
34.	Starch, "Silver Star," 12-oz. .. per doz. 0 17 3			
Sugar—		£	s.	d.
35.	{ Icing .. per cwt. 5 5 0 Castor .. do. 5 4 0			
36.	Tapioca—Seed .. per lb. 0 0 9½			
37.	Tartar, Cream of—Substitute "Antelope" .. do. 0 2 5½			
38.	Tomato Soup—No. 10 cans .. per doz. 6 2 7			
39.	Tomatoes—Tinned—"McKays" 29-oz. tins do. 1 8 0			
40.	Vinegar—Malt ○ .. per gal. 0 4 0			

(AGREEMENT.)

McKay MacLeod Pty. Ltd., 122 Lydiard-street, Ballarat.

Sub-schedule No. 3.

JAMS FOR TEACHERS' COLLEGE HOSTELS AND MENTAL HOSPITALS.

Jams—Assorted—		£	s.	d.
1.	In bulk, of approved kinds, in proportion of half seed and half stone, of the best actual quality, in tins, as required, "J. net MacLeod and Co. Pty. Ptd." † weight per lb. 0 1 2½			
2.	24-oz. tins, in the proportion of half seed and half stone, of the best quality, "Victoree" ‡ per doz. 1 8 9			
3.	5-lb. tins, in the proportion of half seed and half stone, of the best quality, "Victoree" § do. 4 16 3			

ANNEX TO CONTRACT NO. 1958/257.†

H. A. Morris, 107 Victoria-street, Ballarat.

Sub-schedule No. 4.

MEAT.

(For Gaol and Mental Hospital.)

Security, £35.

		£	s.	d.
Fresh Beef—		£	s.	d.
1.	Forequarters .. per cntl. 4 3 4			
2.	Buttocks .. do. 7 10 0			
3.	Roast—Rolled (Brisket excluded) .. do. 7 18 4			
4.	Beef, Corned, Rolled or Round, as ordered, without bone or cartilage do. 7 18 4			
Mutton—Fresh—		£	s.	d.
5.	Kidney fat removed (Mental Hospital) do. 5 0 0			
6.	Chops, Forequarter .. per lb. 0 1 0			
7.	Mince-meat .. do. 0 0 11			
8.	Sausages .. do. 0 1 5			
9.	Sausage, Beef, German .. do. 0 1 7			
10.	Tripe .. do. 0 0 6			
11.	Ham Loaf .. do. 0 0 1 10			
12.	Saveloys .. do. 0 1 8			

ANNEX TO CONTRACT NO. 1958/258.†

H. A. Morris, 107 Victoria-street, Ballarat.

Sub-schedule No. 5.

MEAT.

For delivery to Teachers' College Hostels as under—

Beaufort House, Beaufort-avenue, Ballarat.
1415 Sturt-street, Ballarat.
130 Victoria-street, Ballarat.
126 Webster-street, Ballarat.

Security, £5.

		£	s.	d.
Fresh Beef—		£	s.	d.
1.	Rolled Roast, boneless (Brisket excluded) per lb. 0 1 8			
2.	Topside .. do. 0 2 1			
3.	Sirloin .. do. 0 2 1			
4.	Beef—Corned—Silverside .. do. 0 2 3			
Fresh Mutton—		£	s.	d.
5.	Legs .. do. 0 1 7			
6.	Forequarter Chops .. do. 0 1 0			
7.	Legs Pickled .. do. 0 1 7			
Veal—		£	s.	d.
8.	Shoulder, Boned .. do. 0 1 6			
9.	Fillet, Boneless .. do. 0 1 10			

* Supplies not available.

Sub-schedule No. 5—continued.

MEAT—continued.		£	s.	d.
Steak—				
10. Blade	per lb.	0	1	11
11. Minced	do.	0	1	6
12. Sausages—Mixed	do.	0	1	6
13. Sausage Meat	do.	0	0	11
14. Livers—Calves	do.	0	0	8
15. Kidneys—Ox	do.	0	1	3
16. Frankfurts	do.	0	1	6

ANNEX TO CONTRACT No. 1958/259.

The Ballarat Modern Dairy Pty. Ltd., 817 Sturt-street, Ballarat.

Sub-schedule No. 6.

MILK.

For delivery to Mental Hospital and Teachers' College Hostels as under:—

Beaufort House, Beaufort-avenue, Ballarat.
1415 Sturt-street, Ballarat.
130 Victoria-street, Ballarat.
126 Webster-street, Ballarat.

	£	s.	d.
1. Milk—Fresh and pure, pasteurised	per gal.	0	4 6

SCHEDULE No. 8.

PROVISIONS—BEECHWORTH DISTRICT.

ANNEX TO CONTRACT No. 1958/260.

P. A. Taylor, Model Bakery, Camp-street, Beechworth.

(Delivery into Institutions.)

Sub-schedule No. 1.

BREADSTUFFS.

	£	s.	d.
Security, £100.			
1. Bread—Fine wheaten, first quality	per cntl.	2	19 3
2. Flour—First quality	do.	1	17 0

(AGREEMENT.)

Moran and Cato Pty. Ltd., 277 Brunswick-street, Fitzroy, N.6.

Sub-schedule No. 2.

GROCERIES.

	£	s.	d.
1. Beans—Haricot	per lb.	0	1 8½
{ Coffee, Malt, Arrowroot, Ginger-nut, Marie, Holsum	do.	0	1 11
2. Biscuits	do.	0	2 0
{ Vanilla Curls, Nice, Devon, Short-bread, Rice, Fruit Cookies	do.	0	2 1
{ Butter Crisps	do.	0	1 10½
{ Dry—Thin Captain, Cenovis	do.	0	2 0½
3. Blue—Washing, powdered, 7-lb. pkts.	do.	0	2 0½
Cereals—			
4. { "Pipers," "Kornies," "Weeties," or equal	per doz. packets	1	8 8
{ Vitabrit or equal—24-oz. pkts.	do.	1	8 8
Cocoa—			
5. { 1-lb. packets, "Bournville"	each	0	5 9½
{ Loose	per lb.	*	
Corn or Maize Flour—			
6. { 1-lb. packets, "Medallion"	do.	0	1 4½
{ Loose	do.	0	1 0
7. Curry Powder	do.	0	2 5½
8. Custard Powder—Loose	do.	0	1 1½
9. Gelatine	do.	0	8 2½
10. Golden Syrup—2-lb. tins	per tin	0	1 9½
11. Jelly. Crystals—7-lb. packets	per lb.	0	2 4½
Macaroni—			
12. { 22-lb. cartons	per ctn.	1	1 8
{ 56-lb. bags	per lb.	0	0 10½
13. Margarine—Cake, pastry	do.	0	1 9½
Milk—Powdered—			
14. { 3-lb. tins, "Sunshine"	per doz.	6	18 10
{ 12-oz. tins, "Sunshine"	do.	1	17 9
15. Mustard	per lb.	0	4 10½
16. Peas—Dehydrated, 21-lb. tins	do.	0	9 4
17. Pepper—White, ground	do.	0	4 9½

* Supplies not available.

○ Apricot, £4 15s. 11d.; Blackcurrant, £6 14s. 8d.; Blackberry, £6 11s. 8d.; Gooseberry, £5 9s. 9d.; Melon and Lemon, £4 2s. 6d.; Loganberry, £6 6s. 8d.; Peach, £4 14s. 4d.; Quinco, £4 3s. 2d.; Raspberry, £6 11s. 8d.; Dark Plum, £4 12s. 0d.; Plum and Raspberry, £4 10s. 3d.

Sub-schedule No. 2—continued.

GROCERIES—continued.

	£	s.	d.
18. Raisins { Sultana, 2-crown (present season's)	per lb.	0	1 9½
{ Sultana, 3-crown (present season's)	do.	0	1 10
19. Salt—Fine	per cwt.	1	1 5
20. Sauce—Tomato, 26-oz. bottles, "Rosella"	per doz.	2	7 0
Soap—			
21. Sand, 12-oz. blocks, "Lectric"	do.	0	6 6½
22. Lifebuoy	do.	0	7 5
Soda—			
23. Bicarbonate of	per lb.	0	0 8½
24. Washing	per cwt.	2	6 6
25. Spaghetti—22-lb. cartons, "Forex," No. 1	per ctn.	1	1 8
26. Spice—Mixed, "Parsons"	per doz. pkts.	0	6 1
27. Starch—"Parsons"	per lb.	0	0 11½
28. Tartar—Cream of, Substitute, "Antelope"	do.	0	3 0½
29. Tomatoes—Tinned, 28-oz. tins, "M.O.N."	per doz.	1	13 9
30. Vegemite—1-lb. jars	do.	4	10 0
31. Vinegar—Malt	per gal.	0	4 11

(AGREEMENT.)

Moran and Cato Pty. Ltd., 277 Brunswick-street, Fitzroy, N.6.

Sub-schedule No. 3.

JAMS.

	£	s.	d.
Jams—Assorted, in bulk—			
1. { Apricot	per lb.	0	1 3½
{ Peach	actual	*	
{ Apple and Raspberry flavour	net	0	1 3½
{ Dark Plum	weight	0	1 4½
2. Jams—Assorted, 5-lb. tins, of the best quality, "M.P."	per doz. tins	0	1 4½

ANNEX TO CONTRACT No. 1958/261†

E. Spencer, Camp-street, Beechworth.

Sub-schedule No. 4.

MEAT.

	£	s.	d.
Security, £30.			
1. Fresh Beef (Gael)	per cntl.	8	15 0
2. Fresh Beef—Rolled Roast, boneless, brisket excluded	do.	9	11 8
3. Corned Beef, Rolled or Round as ordered, without bone or cartilage	do.	9	7 6
4. Shins of Beef (bone in)	do.	5	0 0
5. Mutton—Fresh (kidney fat to be removed for Mental Hospitals)	do.	4	3 4
6. Beef Steak, m.need	do.	9	3 4
7. Sausage Meat	per lb.	0	1 0
8. Sausages—Mixed	do.	0	1 9
9. Sausage—German	do.	0	2 3
10. Tripe—Fresh	do.	0	0 11
11. Tongues—Sheep	do.	0	2 0
12. Dripping—Beef	do.	0	1 0
13. Veal—Boned	do.	0	2 3
14. Livers—Sheep	do.	0	1 10
15. Mutton Chops	do.	0	1 3
16. Saveloys	do.	0	1 9
17. Kidney—Ox	do.	0	2 0

ANNEX TO CONTRACT No. 1958/262.

C. E. Boys, Ford-street, Beechworth.

Sub-schedule No. 5.

MILK.

	£	s.	d.
Security, £12.			
1. Milk—Fresh and pure—pasteurised	per gal.	0	5 3

SCHEDULE No. 9.

PROVISIONS—BENDIGO DISTRICT.

(For Delivery into Institutions.)

ANNEX TO CONTRACT No. 1958/263.

C. H. Jeffrey Pty. Ltd., 172 Wattle-street, Bendigo.

Sub-schedule No. 1.

BREAD.

For Gaol and Mental Hygiene Training Centre.

	Security, £4.	£	s.	d.
1. Bread—Fine wheaten, first quality.	per cwt.	2	3	9
2. Flour—First quality.	do.	1	16	6

ANNEX TO CONTRACT No. 1958/264.

A. Hardeman Pty. Ltd., 326 Lytleton-terrace, Bendigo.

Sub-schedule No. 2.

BREAD.

For Teachers' College—Hostels—
"Sandhurst," 108 Mitchell-street, Bendigo, and
"Lancewood," McLaren-street, Bendigo.

	Security, £4.	£	s.	d.
1. Bread—Fine wheaten, first quality	per cwt.	3	2	6
2. Flour—First quality	do.	1	16	0

ANNEX TO CONTRACT No. 1958/265.

Roy Raggatt, 132 Lily-street, Bendigo.

Sub-schedule No. 3.

BREAD.

For Teachers' College Hostel—"Comersdale," Panton-street,
Golden Square, Bendigo.

	Security, £3.	£	s.	d.
1. Bread—Fine wheaten, first quality	per cwt.	3	2	6
2. Flour—First quality	do.	1	16	0

(AGREEMENT.)

Pulfer, Cox, and Hargreaves, Wholesalers Limited, 200 Hargreaves-street, Bendigo.

Sub-schedule No. 4.

GROCERIES.

	£	s.	d.
Bacon—			
1. Sides	per lb.	*	
2. Rashers, middle	do.	*	
2. Barley—Pearl, 56-lb. bags (Smaller lots 7d. per lb.)	per cwt.	2	17 0
Beans—			
3. Butter	per lb.	*	
4. Haricot	do.	0	1 11½
5. Lima	do.	0	1 6
Biscuits and Cake—"Phoenix" or "Besta"			
6. Dry	do.	†	
7. Coffee, Malt, Arrowroot	do.	†	
8. Assorted	do.	†	
Blue—			
9. 1-oz. knobs, "Reckitts"	per gross	2	5 9
7-lb. packets	per pkt.	*	
10. Borax	per lb.	0	0 10½
11. Cake Containers—Paper, "Barkers" 150's	per gross	4	12 1
Cereals—			
12. "Kornies," "Weeties," packets	per doz.	1	6 10
13. "Cornflakes," packets	do.	1	9 6
14. Biscuit—"Weetbix," "Granose," and "Vitabrits," packets	do.	1	6 10

Sub-schedule No. 4—continued.

GROCERIES—continued.

	£	s.	d.
15. "All-Bran," packets	do.	0	18 8
16. Cheese—5-lb. boxes, "Kraft"	per box	0	18 9
17. Chutney—"A.J.C."	per doz.	1	3 0
18. Cloves	per lb.	0	5 7
19. Coconut—Desiccated, Ceylon	do.	0	2 4
Cocoa—			
20. 1-lb. tins, "Bournville"	per doz.	3	6 3
Loose	per lb.	0	4 4
Coffee Essence—			
21. 8-oz. bottles, "Excelsior"	per doz.	1	6 6
22. 1-gal. jars (Jars 3s.)	per jar	2	0 6
23. Curry Powder—"Indian"—4-oz. packets	per doz.	1	8 0
Custard Powder—			
24. Bulk, 7-lb. parcels, "Beacon"	per lb.	0	1 2
25. 1-lb. packets, "Parsons"	per doz.	0	19 11
26. Dates—Loose	per lb.	0	2 1
Essences, &c.—			
27. Almond { 1-oz. per bot. 0 0 10½			
{ 8-oz. do. 0 5 11			
{ 16-oz. do. 0 11 11			
28. Lemon { 1-oz. do. 0 0 10½			
{ 8-oz. do. 0 5 11			
{ 16-oz. do. 0 11 11			
29. Vanilla { 8-oz. do. 0 6 11			
{ 16-oz. do. 0 13 11			
30. Cochineal { 1-oz. do. 0 0 10½			
{ 16-oz. do. 0 11 11			
31. Parisian, 26-oz. "Dicksons"	do.	0	3 6
32. Yolking { 1-oz. "Rego" do. 0 0 8			
{ 16-oz. do. 0 7 10			
Extracts and Pastes—			
33. "Marmite," 4-oz. tins	per doz.	1	6 0
do.	do.	1	5 10
34. "Vegemite" { 4-oz. tin do. 2 4 6			
{ 8-oz. tin do. 4 2 5			
{ 16-oz. tin do. 1 7 4			
35. Peanut Butter { 6-oz. tin do. 2 3 6			
{ 12-oz. tin do. 1 11 5			
36. "Bonox" { 4-oz. tin do. 2 17 9			
{ 8-oz. tin do. 5 9 6			
{ 16-oz. tin do. 0 14 10			
37. BLOATER, 2½-oz. tins, "Pecks"	do.	0	15 9
38. Salmon and Shrimp, 2½-oz. tin	do.	0	15 9
Fish—Tinned—			
39. "Flair," 12-oz. do. 1 10 0			
40. Salmon, 16-oz., "Kingsound" do. 2 1 6			
41. Pilchards, 8-oz., South African do. 0 18 11			
42. Herrings, 14-oz. { Fresh do. 1 5 2			
{ In sauce do. 1 5 8			
43. Sardines { 4-oz., "Commodore" do. 0 13 7			
{ 8-oz., "Rego" do. 1 4 7			
Flour—Corn or Maize—			
44. { 1-lb. packets, "Kream" do. 0 17 0			
{ Bulk per lb. 0 0 11			
Flour—Self-raising—			
45. { 25-lb., "Mammy" each 0 15 8			
{ 150-lb., "Mammy" do. 3 17 6			
Fruits—Dried—			
46. Apples per lb. *			
47. Apricots do. *			
48. Peaches do. *			
49. Pears do. *			
50. Prunes, 60/70's do. 0 2 9			
51. Currants do. 0 1 9½			
52. Raisins, Seeded { 16-oz. pkts., "Rego" per doz. 1 6 0			
{ Loose per lb. 0 2 0			
53. Sulatanas do. 0 1 10½			
54. Apricots { Halves, 30-oz. tins, "S.P.C." per doz. 1 10 4			
{ Wholes, 30-oz. tins, "S.P.C." do. *			
55. Peaches, 30-oz. tins, "S.P.C." do. 1 14 5			
56. Pears, 30-oz. tins, "S.P.C." do. 1 12 7			
57. Mixed Fruits, 16-oz. tins, "Fruit Cock-tail" do. *			
58. Solid Pack Apples { 30-oz. tins do. 1 18 2			
{ 6½-lb. each 0 9 1			
59. Solid Pack Apricots do. *			
60. Gelatine—Ground, 16-oz. pkts., "Davis" per doz. 4 11 11			
61. Ginger—Ground per lb. 0 9 6			
62. Golden Syrup—2-lb. tins per doz. 0 19 0			
63. Gravox—1-lb. tins do. 0 19 3			
64. Herbs—Mixed, packets do. 0 3 0			
65. Honey—60-lb. tins (Return of 2s. 6d. per tin) per tin 4 0 0			

* Supplies not available.

† List prices, wholesale rates, less 10 per cent.

‡ Rates except for sugar—white, are on "Pay and Pick-up Basis" ex warehouse, but for delivery and credit, plus 5 per cent surcharge. Invoices paid on delivery subject to 2½ per cent. discount and for monthly settlement by 15th of the month following delivery, prices net.

Sub-schedule No. 4—continued.

GROCERIES—continued.		£	s.	d.
66.	Jams—"Rego" and "Monbulk," tins .. per doz.	††		
	Jelly Crystals—			
67.	{ 4-oz. packets, "Rego" .. per gross	4	5	8
	{ 7-lb. packets .. per lb.	0	2	0
	Junket Tablets—			
68.	{ "Merry Widow," flavoured .. per doz.	0	16	3
	{ "Hansens," plain .. tubes	1	0	0
69.	Lentils .. per lb.	*		
	Macaroni—			
70.	1-lb. packets, "Rinoldi" .. per doz.	0	14	3
71.	Bulk—22-lb. boxes .. per box	1	3	6
72.	Margarine—Cake, pastry, (net) "E.O.I." per lb.	0	1	6½
	(Freight case, 3s. 6d.)			
73.	Matches—Safety, packets .. per gross	1	0	0
74.	Mayonnaise—10-oz. jars, "Kraft" .. per doz.	1	8	6
	Meat—Tinned, or equal—			
75.	Beef Luncheon { 12-oz., "Tom Piper" .. do.	1	6	4
	{ 6-lb., "Swifts" .. each	0	18	0
76.	Beef Steak Pudding, 16-oz., pp Piper" per doz.	1	10	2
77.	Camp Pie { 12-oz., "Imperial" .. do.	0	19	0
	{ 16-oz., "Imperial" .. do.	1	2	4
78.	Irish Stew, "Tom Piper" .. do.	1	6	6
79.	Lamb and Green Peas, 16-oz., "Champion" .. do.	1	7	3
80.	Sausages and Vegetables, 16-oz., "Rosella" .. do.	1	4	6
	Milk—			
81.	Dried { 12-oz. tin, "Sunshine" .. do.	1	15	2
	{ 3-lb. tins, "Sunshine" .. do.	6	9	9
82.	Condensed, cases of 4 doz., "Nestles" per case	3	19	0
83.	"Ideal" .. per doz.	0	15	10
84.	Mustard—Bulk, 4-lb. boxes .. per lb.	0	5	9
85.	Nutmeg—Ground .. do.	0	18	4
86.	Oatmeal—Flaked { 7-lb. bags .. per doz.	3	18	0
	{ Loose .. per cwt.	3	1	0
87.	Pastry—Mix, "Bakeo," "Maxam" 1 lb. per doz.	0	16	11
	Peel—Mixed, Cut—			
88.	{ 8-oz. packets, "Brookes" .. do.	0	16	4
	{ 7-lb. "Seppelts" .. per lb.	0	1	10
	Pepper—White, Ground—			
89.	{ Loose .. do.	0	4	4
	{ 2-oz. packets, "Rego" .. per doz.	0	12	0
90.	Pickles—Assorted, 20-oz. bottles, "Rego" .. do.	1	7	10
	Rice—			
91.	Dressed, 56-lb. bags .. per bag	2	4	2
92.	Ground, 1-lb. packets, "McKenzies" per doz.	0	14	9
93.	Sago .. per lb.	0	1	0
	Salt—			
94.	Fine, bulk, "Imperial" .. per cwt.	0	17	9
95.	Table { 1-lb. packets, "Mermaid" .. per doz.	0	5	11
	{ 1-lb. packets, "Saxa" .. do.	0	9	4
	Sauces—			
96.	Tomato, 26-oz. bottles { "White Crow" .. do.	2	0	0
	{ "Rosella" .. do.	2	2	10
97.	Tomato, 1-gal. jars, "Piper" (Jars 3s.) per jar	0	17	2
	Worcestershire—			
98.	{ 10-oz. bottles, "Holbrooks" .. per doz.	1	6	2
	{ 10-oz. bottles, "Rego" .. dc.	1	2	1
	{ 26-oz. bottles, "Rego" .. dc.	1	17	6
99.	Mustard—8-oz. bottles, "Holbrooks" .. do.	1	5	0
	Soaps—			
100.	Extract of, "Nu-Wash," 56-lb. bags .. per bag	2	2	0
101.	Household, dry .. per case	*		
102.	"Rinso" Economy packet .. per doz.	1	13	6
103.	"Persil" Giant packet .. do.	1	13	6
104.	"Lux" Flakes, packets, Family Size .. do.	1	8	0
105.	Sand Soap—6-oz. blocks, "Preservene" .. do.	0	7	10
106.	Toilet Soap, 3¼-oz. tablets, "Palm-olive" .. do.	0	6	4
107.	Toilet Soap, 3¼-oz. tablets, "Lux" .. do.	0	6	4
108.	"Velvet" or equal { Quads, 3-doz. ctn. per ctn.	3	4	10
	{ Quints, 2½-doz. ctn. do.	3	18	2

†† In 1½-lb. tins—Apricot, £1 7s. 10d.; Apple Jelly, £1 8s. 6d.; Blackberry, £1 18s. 3d.; Blackcurrant, £2 0s. 3d.; Gooseberry, £1 10s. 0d.; Loganberry, £1 18s. 3d.; Melon and Lemon, £1 4s. 2d.; Melon and Pineapple, £1 5s. 0d.; Dark Plum, £1 7s. 6d.; Light Plum, £1 7s. 6d.; Marmalade, £1 5s. 0d.; Peach, £1 7s. 8d.; Plum and Raspberry, £1 9s. 10d.; Quince, £1 4s. 3d.; and Raspberry, £1 19s. 0d.
 In 5-lb. tins—Apricot, £4 9s. 4d.; Apple Jelly, *; Melon and Lemon, £3 19s. 6d.; Melon and Pineapple, £4 2s. 6d.; Dark Plum, £4 8s. 6d.; Light Plum, £4 3s. 6d.; Marmalade, £3 15s. 6d.; Peach, £4 9s. 6d.; Plum and Raspberry, £4 13s. 6d.; Quince, £3 11s. 6d.; and Raspberry, £6 5s. 9d.
 In 28-lb. tins—Blackberry, *
 In 56-lb. tins—Apricot, 1s. 2½d. per lb.; and Plum and Raspberry, 1s. 1½d. per lb.
 * Supplies not available.

‡ Rates, except for sugar—white, are on "Pay and Pick-up Basis" ex warehouse; but for delivery and credit, plus 5 per cent. surcharge. Invoices paid on delivery subject to 2½ per cent. discount, and for monthly settlement by 15th of the month following delivery, prices net.

Sub-schedule No. 4—continued.

GROCERIES—continued.		£	s.	d.
	Soda—			
109.	Bicarbonate of .. per lb.	0	0	8
110.	Washing .. do.	0	10	5½
	Soups—			
111.	Tomato, 16-oz. tins { "Kia Ora" .. per doz.	0	19	6
	{ "Rego" .. do.	0	19	6
112.	Tomato, 6-lb. tins, "Kia Ora" .. each	0	9	6
113.	Tomato, 1-gal. jars .. per jar	*		
	Spaghetti—			
114.	1-lb. packets, "Rinoldi" .. per doz.	0	15	3
115.	Bulk, 22-lb. boxes .. each	1	3	6
	Spice—Mixed—			
116.	{ 1-oz. packets .. per doz.	0	5	1
	{ Loose .. per lb.	*		
117.	Starch—Rice, "Silver Star," packets, 14-oz. per doz.	0	16	4
	Sugar—			
118.	Iceing mixture, 56-lb. bags .. per bag	2	8	4
119.	Castor, 70-lb. bag .. do.	2	18	0
120.	Raw .. per lb.	0	0	9
121.	White, 70-lb. bag (net) .. per bag	2	15	0
	Tapioca—			
122.	{ Seed .. per lb.	0	1	1
	{ Pearl .. do.	*		
123.	Tartar—Cream of .. do.	0	3	3
124.	Treacle—2-lb. tins .. per doz.	0	18	2
	Vegetables—Dried—Peas—			
125.	Green, "Dew Crisp" { 8-oz. packets .. do.	*		
	{ 3½-lb. packets .. per lb.	*		
126.	Split (yellow) { 56-lb. bags .. per cwt.	4	6	0
	{ Broken bags .. per lb.	0	0	11
	Vegetables—Tinned—			
127.	Baked Beans, 16-oz., "Kia Ora" .. per doz.	1	1	6
128.	Baked Beans, No. 10 Can, "Kia Ora" .. per can	0	9	6
129.	Beans, green, 30-oz., "Harvest" .. per doz.	*		
130.	Beetroot, 30-oz. .. do.	*		
131.	Carrots, 30-oz. .. do.	*		
132.	Celery, 30-oz. .. do.	*		
133.	Peas, 30-oz. { "Harvest" .. do.	1	19	0
	{ "Biddy's" .. do.	1	7	0
134.	Sweetcorn, 16-oz., "Rosella" .. do.	1	8	0
135.	Tomatoes, 30-oz., "Rego" .. do.	1	7	0
	Vermicelli—			
136.	1-lb. packets, "Rinoldi" .. do.	0	15	3
137.	Bulk, 22-lb. boxes .. each	1	3	6
138.	Vinegar—Malt, 1-gal. jars (Jars 3s.) .. per jar	0	3	11

ANNEX TO CONTRACT NO. 1958/266.†

Alan H. Gittins, 350 Hargreaves-street, Bendigo.

Sub-schedule No. 5.

MEAT.

For Gaol.

Security, £5.

	£	s.	d.
1. Fresh Beef .. per lb.	0	1	6
2. Corned Beef—Rolled, without bone or cartilage .. do.	0	1	6
3. Fresh Mutton .. do.	0	0	11
4. Sausages—Mixed .. do.	0	1	6
5. Mincedmeat .. do.	0	1	0

ANNEX TO CONTRACT NO. 1958/267.†

Alan H. Gittins, 350 Hargreaves-street, Bendigo.

Sub-schedule No. 6.

MEAT.

For Mental Hygiene Training Centre, Bendigo.

Security, £5.

	£	s.	d.
1. Fresh Beef, Rolled Roast, boneless, brisket excluded .. per lb.	0	2	8
2. Corned Beef, rolled or round, as ordered, without bone or cartilage .. do.	0	2	6

Sub-schedule No. 6—continued.

MEAT—continued.				£	s.	d.
Fresh Mutton—						
3.	Legs	per lb.	0	1 11
4.	Chops, Middle Loin	do.	0	2 0
Steak—						
5.	Stewing	do.	0	2 0
6.	Sausage Meat	do.	0	1 0
7.	Livers—Sheep	do.	0	1 0
8.	Kidney—Ox	do.	0	1 3
9.	Sausages—Mixed	do.	0	1 6
10.	Sausage—Beef German	do.	0	2 6

ANNEX TO CONTRACT No. 1958/268.†

Frank Wade, 193 Williamson-street, Bendigo.

Sub-schedule No. 7.

MEAT.				£	s.	d.
For Teachers' College Hostels as under—						
"Sandhurst," 103 Mitchell-street, Bendigo.						
"Lancewood," McLaren-street, Bendigo.						
"Comersdale," Pantons-street, Golden Square, Bendigo.						
Security, £5.				£	s.	d.
Fresh Beef—						
1.	Sirloin	per lb.	0	2 9
2.	Topside	do.	0	2 9
3.	Corned Beef—Rolled or Round, as ordered, without bone or cartilage	do.	0	2 0
Fresh Mutton—						
4.	Rib Chops—Two tooth	do.	0	1 6
5.	Chops—Forequarter	do.	0	1 3
6.	Legs—Two tooth	do.	0	1 8
Veal—						
7.	Shoulder, boned	do.	0	2 9
8.	Legs	do.	0	2 6
Steak—						
9.	Blade (Minced)	do.	0	2 9
10.	Stewing—Chuck	do.	0	2 3
11.	Sausages—Mixed	do.	0	1 9
12.	Sausage Meat	do.	0	1 4
13.	Sausage—Beef German	do.	*	
14.	Livers—Sheep	do.	0	1 4
15.	Saveloys	per doz.	*	

SCHEDULE No. 10.

PROVISIONS—CASTLEMAINE GAOL.

(Delivery at the Gaol.)

ANNEX TO CONTRACT No. 1958/269.

Roy J. Brown, 319 Barker-street, Castlemaine.

Sub-schedule No. 1.

BREADSTUFFS.				£	s.	d.
Security, £5.				£ <td>s. <td>d. </td></td>	s. <td>d. </td>	d.
1.	Bread—Fine wheaten, first quality	per cntl.	2	16 3

ANNEX TO CONTRACT No. 1958/270.†

McQueen Bros., Hargreaves-street, Castlemaine.

Sub-schedule No. 2.

MEAT.				£	s.	d.
Security, £5.				£ <td>s. <td>d. </td></td>	s. <td>d. </td>	d.
1.	Fresh Beef	per lb.	0	1 9
2.	Fresh Mutton	do.	0	1 4
3.	Corned Beef—Rolled or Round, as ordered, without bone or cartilage	do.	0	2 0
4.	Minced Meat	do.	0	2 0
5.	Sausage Meat	do.	0	1 0
6.	Dripping—Beef	do.	0	0 8
7.	Saveloys	per doz.	0	4 6

* Supplies not available.

SCHEDULE No. 11.

PROVISIONS—SCHOOL OF FORESTRY, CRESWICK.

(Delivery at the School.)

ANNEX TO CONTRACT No. 1958/271.

M. C. and L. M. Bennett, Albert-street, Creswick.

Sub-schedule No. 1.

BREADSTUFFS.				£	s.	d.
Security, £3.				£ <td>s. <td>d. </td></td>	s. <td>d. </td>	d.
1.	Bread—Fine wheaten, first quality	per cntl.	3	8 9
2.	Flour—First quality	do.	1	15 4

(AGREEMENT.)

J. Tait and Son, Albert-street, Creswick.

Sub-schedule No. 2.

GROCERIES.				£	s.	d.
1.	Bacon	per lb.	0	5 0
2.	Barley—Pearl	do.	0	0 6½
3.	Blue—Washing	do.	0	2 0
4.	Butter—First grade creamery, to score not less than 91 points, Government grade, Commerce Regulations Standard	do.	0	4 5½
5.	Cereals—"Weeties"	per doz. pkts.	1	6 6
6.	Cheese—First class quality, matured	per lb.	0	3 3
7.	Coffee—Fresh roasted and whole, beans to be thoroughly sound	do.	0	7 6
8.	Corn or Maize Flour—1-lb. packets	do.	0	1 6
9.	Eggs—New Laid	per doz.	0	4 3
10.	Flour—Self-raising	do.	0	0 8
11.	Ginger—Ground	per lb.	0	8 6
12.	Golden Syrup—2-lb. tins	per tin	0	1 8½
13.	Honey—Yellow Box	per lb.	0	1 5
14.	Jams—Assorted, 5-lb. tins, net, in the proportion of half seed and half stone, "Red Feather"	per tin	0	8 0
15.	Mustard—"Double Superfine"	per lb.	0	5 0
16.	Oatmeal	do.	0	0 9½
17.	Peas—Split	do.	0	0 9½
18.	Pepper—White, ground	do.	0	6 6
19.	Potatoes—Dry and free from dirt	per cwt.	§	
20.	Raisins—Sultana, 3-crown (present season's)	per lb.	0	1 9
21.	Rice—Dressed	do.	0	0 10½
22.	Salt—Fine	do.	0	0 2
23. Soap—						
"Velvet," yellow, dry, and hard						
24.	Sand, Carboric, 12-oz. blocks	per doz.	1	5 6
Soda—						
25.	Bicarbonate of	per lb.	0	0 8½
26.	Washing	do.	0	0 4½
27.	Starch (Rice)—"Preservene"	do.	0	1 5½
28.	Tartar—Cream of, Substitute, "Calcium Phosphate"	do.	0	2 6
29.	Tea—First grade	do.	0	6 3
30.	Vinegar—Malt	per pint	0	0 5½

ANNEX TO CONTRACT No. 1958/272.

E. J. Keen, Jory-street, Creswick.

Sub-schedule No. 3.

MILK.				£	s.	d.
Security, £3.				£ <td>s. <td>d. </td></td>	s. <td>d. </td>	d.
1.	Milk—Fresh and pure	per qt.	0	1 3

ANNEX TO CONTRACT No. 1958/273.†

H. J. Symons Pty. Ltd., 1015 Macarthur-street, Ballarat.

Sub-schedule No. 4.

MEAT.				£	s.	d.
Security, £3.				£ <td>s. <td>d. </td></td>	s. <td>d. </td>	d.
1.	Fresh Beef—Forequarters	per lb.	0	1 8
2.	Mutton	do.	0	1 0
3.	Sausages—Mixed	do.	0	1 3
4.	Steak—Minced	do.	0	1 8
5.	Livers—Sheep	do.	0	0 6

§ Cost plus 10 per cent.

(AGREEMENT.)
E. V. Peters, Corinella.

Sub-schedule No. 2.

GROCERIES.		£	s.	d.
1. Butter—First grade creamery, to score not less than 91 points, Government grade, Commerce Regulations Standard	per lb.	0	4	6
2. Cheese—Matured	do.	0	3	2
3. Jams—Assorted, Seed	per doz.	1	19	0
Stone, of best quality, in 24-oz. tins, "Monbulk"	do.	1	9	3

ANNEX TO CONTRACT No. 1958/276.†
George Hayman, Lang Lang.

Sub-schedule No. 3.

MEAT.		£	s.	d.
Security, £5.				
1. Fresh Beef	per lb.	0	2	0
2. Mutton	do.	0	1	2
3. Sausages—Mixed	do.	0	1	10

SCHEDULE No. 14.

PROVISIONS—GEELONG DISTRICT.

(Delivery into Institutions.)

ANNEX TO CONTRACT No. 1958/277.
J. A. Fitzgerald, 150 Malop-street, Geelong.

Sub-schedule No. 1.

BREAD.		£	s.	d.
Security, £30.				
1. Bread—Fine wheaten, first quality	per cntl.	2	8	11½
2. Bread—Wholemeal, first quality	do.	2	8	11½

(AGREEMENT.)

Beacon Trading Company (Wholesalers Ltd.), McKillop-street, Geelong.

Sub-schedule No. 2.

GROCERIES.
The rates to be paid under this Sub-schedule shall be the wholesale price ruling on the day of delivery.

ANNEX TO CONTRACT No. 1958/278.†
A. R. Bubb, 147 Moorabool-street, Geelong.

Sub-schedule No. 3.

MEAT.		£	s.	d.
For Gaol.				
Security, £5.				
1. Fresh Beef	per lb.	0	1	4
2. Corned Beef—Rolled or Round, without bone or cartilage	do.	0	1	6
3. Fresh Mutton—Forequarters	do.	0	0	9
4. " "—Legs	do.	0	1	6
5. Beef—Minced	do.	0	1	6
6. Sausages—Mixed	do.	0	1	4
7. Sausage Meat	do.	0	0	9

ANNEX TO CONTRACT No. 1958/279.†
A. C. Knight, 11 Melbourne-road, Drumcondra, Geelong.

Sub-schedule No. 4.

MEAT.
For delivery to Teachers' College Hostels as under—
"Lauriston," 23 Aberdeen-street, Geelong.
"Forty-Five," The Esplanade, Western Beach, Geelong.
"Hawthorne," Aberdeen-street, Geelong.
"Ariston," Packington-street, Geelong.
"Warrain," 56 Western Beach, Geelong.

Security, £5.		£	s.	d.
Fresh Beef—				
1. Sirloin, boneless	per lb.	0	2	9
2. Topside Roast	do.	0	2	7
3. Corned Beef—Rolled or Round, as ordered, without bone or cartilage	do.	0	2	9
Mutton—				
4. Legs, Two-tooth	do.	0	1	6
5. Forequarters, boned, rolled, and pickled	do.	0	0	11
6. Chops, Forequarter	do.	0	1	0
7. Rib Chops	do.	0	1	2
8. Chops, Loin	do.	0	1	8
Steak—				
9. Chuck	do.	0	1	11
10. Skirt	do.	0	1	2
11. Bladebone	do.	0	2	2
12. Thick Flank—sliced	do.	0	2	3
13. Minced	do.	0	1	11
14. Minced—for rissoles	do.	0	1	11
15. Fillet—Veal	do.	0	2	4
16. Livers—Sheep	do.	0	1	0
17. Tongues—Ox	do.	0	1	4
18. Kidneys—Ox	do.	0	1	4
Sausages—				
19. Mixed, thin	do.	0	1	4
20. Pork, thick	do.	0	1	4
21. Sausage—Pork, German	do.	0	3	6
22. Sausage Mince	do.	0	0	11
23. Bacon—Shoulder	do.	0	4	6

SCHEDULE No. 15.

PROVISIONS—COORIEMUNGLE PRISON CAMP, HEYTESBURY FOREST.

(Delivery to be made at the Camp.)

ANNEX TO CONTRACT No. 1958/280.
M. and J. V. Church, Recreation-road, Timboon.

Sub-schedule No. 1.

BREAD.		£	s.	d.
1. Bread—Fine wheaten, first quality	per cntl.	3	17	1

(AGREEMENT.)

Robert Swinton and Co., Curdie-street, Cobden.

Sub-schedule No. 2.

GROCERIES.		£	s.	d.
1. Oatmeal	per lb.	0	0	10
2. Rice—Dressed	do.	0	1	1
3. Salt—Fine	do.	0	0	3

ANNEX TO CONTRACT No. 1958/281.†
Heytesbury Butchery, Timboon.

Sub-schedule No. 3.

MEAT.		£	s.	d.
Security, £4.				
1. Fresh Beef	per lb.	0	3	2
2. Mutton—Fresh	do.	0	2	2
3. Corned Beef—Rolled or Round, as ordered, without bone or cartilage	do.	0	2	11
4. Sausages	do.	0	2	0
5. Sausage Mince	do.	0	1	8
6. Dripping—Beef	do.	0	1	0

SCHEDULE No. 16.

**PROVISIONS—ABORIGINAL STATION,
LAKE TYERS.**

(Delivery at Lake Tyers Station.)
ANNEX TO CONTRACT No. 1958/282.
R. Hodder, Nowa Nowa.

Sub-schedule No. 1.

BREADSTUFFS.		£	s.	d.
Security, £25.				
1. Bread—Fine wheaten, first quality	per cntl.	2	15	0
2. Flour—First quality	do.	1	16	0

(AGREEMENT.)

R. Hodder, Nowa Nowa.

Sub-schedule No. 2.

GROCERIES.		£	s.	d.
1. Baking Powder—"Snowflake," or equal thereto, 1-lb. tins	per lb.			
2. Candles—Full weights, Kitchen's "Electrics," or other make of equal quality, 1-lb. packets	do.			
3. Coffee—Fresh roasted, and whole, beans to be thoroughly sound	do.			
4. Cocoa—Bulk	per lb.			
5. Corn or Maize Flour—1-lb. packets	do.			
6. Currants—2-crown (present season's)	do.			
7. Curry Powder—Bulk	do.			
8. Matches—Safety, 60 per box, "Yacht"	per gross			
9. Mustard—"Double Superfine"	per lb.			
10. Pepper—Black, ground, 2-oz. tins	per tin			
11. Raisins—Sultanas, 3-crown, (present season's)	per lb.			
Salt—				
12. Coarse	per cwt.			
13. Fine	do.			
14. Soap—Household, hard and dry, to sample	do.			
Soda—				
15. Bicarbonate of	per lb.			
16. Washing	do.			
17. Tartar—Cream of, Substitute, Calcium Phosphate	do.			
18. Treacle—2-lb. tins	per tin			
19. Vinegar—Malt	per qt.			

(AGREEMENT.)

R. Hodder, Nowa Nowa.

Sub-schedule No. 3.

JAMS.		£	s.	d.
1. Jams—Assorted, 24-oz. tins, in the proportion of half seed and half stone	per tin			

SCHEDULE No. 17.

**PROVISIONS—LANGI KAL KAL
TRAINING CENTRE.**

ANNEX TO CONTRACT No. 1958/283.
O. L. and B. M. Nicholls, Neil-street, Beaufort.

Sub-schedule No. 1.

BREAD.		£	s.	d.
Security, £3.				
1. Bread—Fine wheaten, first quality	per cntl.	2	18	4

ANNEX TO CONTRACT No. 1958/284.†

F. P. Haintz and Son, Havelock-street, Beaufort.

Sub-schedule No. 2.

MEAT.		£	s.	d.
Security, £5.				
1. Fresh Beef—Boneless	per lb.	0	2	11
2. Sausages—Mixed	do.	0	1	6
3. Sausage Meat	do.	0	1	0

SCHEDULE No. 18.

**PROVISIONS—AGRICULTURAL COLLEGE,
LONGERENONG.**

(Delivery at the College.)
ANNEX TO CONTRACT No. 1958/285.
Schwarz Breads, 58 Firebrace-street, Horsham.

Sub-schedule No. 1.

BREADSTUFFS.		£	s.	d.
Security, £5.				
1. Bread—Fine wheaten, first quality	per cntl.	3	8	6
2. Flour—First quality	do.			§

(AGREEMENT.)

W. Cook and Son, Horsham.

Sub-schedule No. 2.

GROCERIES.		£	s.	d.
1. Barley—Pearl	per lb.	0	0	7½
2. Lima Beans	do.	0	1	7
3. Biscuits—Coffee, Malt, Nice	do.	0	2	2
4. " — Assorted Creams, &c.	do.	0	2	9
5. Cereals—Cornflakes—"Kelloggs" (large)	per pkt.	0	2	8
6. Cheese—Bulk { Mild	per lb.	0	2	11
7. Coconut—Desiccated	do.	0	3	11
8. Coffee Essence—26-oz.—"Bushells"	per bot.	0	6	9
9. Curry Powder "Cox" (Indian)	per lb.	0	4	6
10. Custard Powder—7-lb. packets—"Cameo"	do.	0	1	7
11. Dates—"Khadrawi," 1-lb. packets	do.	0	1	11
Essence—				
12. Lemon—8-oz. "Harpers" { Pure	per bot.	0	6	0
13. Vanilla—8-oz. "Harpers" { Imitation	do.	0	2	11
14. Cocoa—"Bournville" 1-lb. packets	per lb.	0	6	6
15. Flour—7-lb. packets—"Cameo"	do.	0	2	11
16. Self-raising, "Golden Crust" in 25-lb. bags	per tin	0	1	6
17. Fruits—Dried—				
18. Currants—"Sunray" or "Swallow and Ariel"	do.	0	0	8½
19. Raisins—seeded—"Sunray" or "Swallow and Ariel"	do.	0	2	1
20. Sultanas—2-crown—"Sunray" or "Swallow and Ariel"	do.	0	2	6
Fruits—Tinned—				
21. Apricots—30-oz., (Halves)—"S.P.C."—Kyabram	per doz.	1	15	0
22. Peaches—30-oz., (Halves)—"S.P.C."—Kyabram	do.	1	17	6
23. Pears—30-oz., (Halves)—"S.P.C."—Kyabram	do.	1	12	6
24. Mixed Fruits—30-oz., "S.P.C."—Kyabram	do.	2	1	0
25. Solid Pack Apples—7-lb.	do.	5	19	0
26. Gelatine—Ground "Davis" { 1-lb. pkts.	per lb.	0	9	11
27. Golden Syrup—2-lb. tins	do.	0	7	6
28. Gravox—1-lb. tins	per doz.	1	1	0
29. Honey—60-lb. tins, Yellow Box (2nd Grade—£2 10s.)	per lb.	0	1	11
30. Jelly, Crystals, 7-lb. packets, "Renown"	per tin	4	17	6
31. Macaroni—1-lb. packets "Renoldi"	per pkt.	0	17	11
32. Mustard—"Keens"	per lb.	0	1	4
33. Oatmeal Flaked—"Wards" and "John Bull"—5-lb. packets	do.	0	6	11
34. Peel—Mixed—Cut—	per lb.	0	5	11
35. Bakers loose—(¼-lb. packets—1s. 9d. each)	per doz.	1	10	0
36. Pepper—White, ground	do.	0	5	11
37. Pickles—Assorted, 20-oz. bottles, "Leggo," "Wimmera"	per doz.	1	10	0

§ Order under-Melbourne District Contract.

** The rates to be paid for all items under these Sub-schedules shall be the wholesale prices charged to the contractor, plus 12½ per cent. Wholesaler's invoices to be submitted with contractor's accounts.

GROCERIES—continued.

		£	s.	d.
36. Rice—Dressed	per lb.	0	1	0
Salt—				
37. { Fine, bulk	do.	0	0	2
{ Table, 1-lb. packets	per doz.	0	7	11
Sauces—Tomato—				
38. { "White Crow" 26-oz. bottles	do.	2	7	0
{ "Reeds" 26-oz. bottles	do.	2	1	0
39. Tomato—1-gal. jars—"Reeds"	per jar	0	17	6
40. Worcestershire—1-gal. jars—"Greigs"	do.	0	16	6
41. Parsil { Regular	per pkt.	0	1	10
{ Economy	do.	0	3	5
42. Sand Soap—12-oz. blocks, "Melray"	per doz.	0	10	6
43. Toilet Soap—3½-oz., "Palmolive"	do.	0	7	11
44. Velvet { Quads	do.	1	5	6
{ Quints	do.	2	3	6
45. Soup—Tomato, 60-oz. "Leggos"	per tin	0	6	3
46. Spaghetti—1-lb. packets—"Rinoldi"	per pkt.	0	1	5
Sugar—				
47. Icing	per lb.	0	1	0
48. Castor	do.	0	0	10
49. White, 70's	per bag	2	18	0
50. Treacle—2-lb. tins	per doz.	0	19	0
51. Peas—Split—Yellow	per lb.	0	0	10½
52. Vegetables—Tinned—Baked Beans, 30-oz.	per doz.	1	13	6
"Vacola"				
53. Peas, 30-oz. "Biddy"	do.	1	12	6
54. Vim Cleaner	do.	0	15	0
55. Vinegar—1-gal. jars—"Sutherland"	per gal.	0	4	6

(AGREEMENT.)

W. Cook and Son, Horsham.

Sub-schedule No. 3.

JAM.

1. Jams—in 5-lbs tins—"Monbulk"—Assortment as ordered				
		£	s.	d.
Apricot	per doz.	5	0	7
Marmalade	do.	4	16	6
Melons	do.	4	15	0
Peach	do.	5	7	0
Plum	do.	5	2	9
Plum and Raspberry	do.	5	11	0
Quince	do.	4	5	6

SCHEDULE No. 19.

PROVISIONS—RESEARCH STATION, RUTHERGLEN.

(Delivery ex Bakery and Grocery Store.)

ANNEX TO CONTRACT No. 1958/286.

E. M. and G. A. Dwyer, Main-street, Rutherglen.

Sub-schedule No. 1.

BREAD.

Security, £3.

1. Bread—Fine wheaten, first quality	per cntl.	3	5	8½
--	-----------	---	---	----

(AGREEMENT.)

Aitken and Fullerton, Rutherglen.

Sub-schedule No. 2.

GROCERIES.

		£	s.	d.
1. Biscuits { Sweet—Creams	per lb.	0	3	0
{ Dry Ryethin	do.	0	3	1
{ Savoy	do.	0	2	7
{ True-Bake	do.	0	2	9
2. Cocoa—½-lb. packets	each	0	3	0
3. Coconut—desiccated	per lb.	0	3	3
4. Cornflakes—"Kelloggs"	per pkt.	0	2	10
5. Cornflower—1-lb. packets	do.	0	1	9
6. Custard Powder—1-lb. packets	do.	0	2	1
7. Coffee { Pure	per lb.	0	9	0
{ Nescafe—½-lb. tins	per tin	0	17	6
{ Essence	per bot.	0	2	8
8. Cheese—"Kraft"—½-lb. packets	per pkt.	0	2	3
9. Dates	per lb.	0	1	10
10. Essences { Vanilla—4-oz. bottles	each	0	3	0
{ Lemon—4-oz. bottles	do.	0	2	9
{ Cochineal—2-oz. bottles	do.	0	1	9
Extracts and Pastes—				
11. { Marmite—16-oz.	per jar	0	7	6
{ Peanut Butter—12-oz.	do.	0	3	11

		£	s.	d.
12. Fish { Tinned Salmon "Greenseas"	per tin	0	3	9
{ Sardines	do.	0	1	6
Flour—				
13. { Self-raising, 25-lb. bags, "McAlpina"	per bag	0	19	6
{ Plain	per lb.	0	0	6
Fruits—Dried—				
Cherries	do.	0	9	0
Currants	do.	0	1	10
14. { Mixed	do.	0	2	5
{ Raisins (Seeded)	do.	0	2	6
{ Sultanas	do.	0	2	0
Fruits—Preserved—30-oz. tins—				
Fruit Salad	per tin	0	3	5
Peaches	do.	0	3	2
15. { Pears	do.	0	2	11
{ Pineapple	do.	0	3	10
{ Raspberry	do.	0	3	5
16. Gelatine—¼-lb. packets	per pkt.	0	5	3
17. Gravox	per lb.	0	2	1
18. Herbs—Mixed—1-oz. packets	per pkt.	0	0	4
19. Honey { Creamed	per jar	0	3	9
{ Pure	do.	0	4	6
Jams—24-oz. tins—				
Apricot	per tin	0	2	10
Blackberry and Plum	do.	0	3	0
Fig	do.	0	2	9
Marmalade	do.	0	3	0
20. { Peach	do.	0	2	9
{ Plum, dark	do.	0	2	7
{ Raspberry	do.	0	4	0
{ Raspberry and Plum	do.	0	3	9
{ Strawberry	do.	0	4	6
21. Jelly Crystals	per pkt.	0	0	10½
22. Junket Tablets	do.	0	1	9
23. Lard	per lb.	0	2	3
24. Margarine	do.	0	2	9
25. Matches—Safety	per pkt.	0	1	10
26. Mayonnaise—"Kraft"	per jar	0	2	5
Meat—Tinned—				
Camp Pie	per tin	0	2	0
27. { Irish Stew	do.	0	2	6
{ Sausages and Vegetables	do.	0	2	6
{ Beef Steak Pudding	do.	0	2	6
28. Milk—Condensed	do.	0	1	10
29. Oatmeal { Plain—5-lb. packets	per pkt.	0	6	3
{ Creamoata—2-lb. packets	do.	0	2	9
30. Pepper—White—4-oz. tins	per tin	0	2	3
31. Potatoes	per cwt.	1	4	0
32. Salt { Table	per pkt.	0	0	9
{ Cooking	per lb.	0	0	3
33. Sauce { Barbacue	per bot.	0	2	3
{ Tomato	do.	0	3	3
Soaps—				
"Rinso"—Economy	per pkt.	0	3	8
34. { "Lux" Flakes	do.	0	2	11
{ "Surf"	do.	0	2	9
{ Toilet	per cake	0	0	11½
35. Soup—Tomato	per tin	0	1	9
36. Tea—½-lb. packets	per pkt.	0	3	5
Vegetables—Tinned—				
37. { Baked Beans	per tin	0	1	11
{ Sweet Corn	do.	0	3	0
38. Vinegar	per bot.	0	1	9

SCHEDULE No. 20.

PROVISIONS AT SALE.

(Delivery at the Gaol.)

ANNEX TO CONTRACT No. 1958/287.

F. J. Hennessy, 102 Raymond-street, Sale.

Sub-schedule No. 1.

BREAD.

Security, £3.

1. Bread—Fine wheaten, first quality	per cntl.	3	6	8
--	-----------	---	---	---

ANNEX TO CONTRACT No. 1958/288.†

H. L. G. Laws, 111 Raymond-street, Sale.

Sub-schedule No. 2.

MEAT.

Security, £3.

		£	s.	d.
1. Fresh Beef—Stewing	per lb.	0	2	5
2. Fresh Mutton	do.	0	1	3
3. Corned Beef—Rolled or Round, as ordered, without bone or cartilage	do.	0	2	5
4. Sausages	do.	0	2	0

SCHEDULE No. 21.

**PROVISIONS—PLEASANT CREEK
SPECIAL SCHOOL, STAWELL.**

(Delivery at the School.)

ANNEX TO CONTRACT No. 1958/289.

Stawell Bakeries Pty. Ltd., 26 Main-street, Stawell.

Sub-schedule No. 1.

BREADSTUFFS.

Security, £10. £ s. d.

1. Bread—Fine wheaten, first quality	per ctn.	3 6 6
2. Flour—First quality	do.	2 2 0
3. Flour—Wheatmeal	per lb.	0 0 2

(AGREEMENT.)

McKay MacLeod Pty. Ltd., 122 Lydiard-street, Ballarat.

Sub-schedule No. 2.

GROCERIES.

£ s. d.

1. Baking Powder—"Excelsior"	per lb.	0 3 0½
2. Barley—Pearl	do.	0 0 6½
3. Blue—Washing, "Reck Square"	per gross	1 14 11
4. Cereal { "Sunflakes," "Wheatflakes" 24-oz. packets	per doz.	1 4 8
5. Cocoa—1-lb. "Bournville" 28-lb. bags *	do.	1 17 6
6. Coffee and Chicory "Gold Seal"	per lb.	3 9 5
7. Corn Flour—1-lb. packets, "Kream" Currants (present season's)—	do.	0 5 0½
8. { 1-crown	do.	0 1 8½
9. Curry Powder—Loose, "Gold Seal"	do.	0 1 9½
10. Custard Powder—Loose	do.	0 4 0½
11. Dates—box lots	do.	0 1 2½
12. Fish—Tinned Salmon, "Green seas," 16-oz. tins	per doz.	0 1 10½
13. Ginger—Ground Golden Syrup—	per lb.	2 1 0
14. { 2-lb. tins	per doz.	1 1 0
15. { 70-lb. drums	each	2 17 1
16. Gravox—1-lb. tins	per doz.	1 1 8
17. Honey—First quality—Bulk	per lb.	0 1 7½
18. Jams—Assorted, of approved kinds, in proportion of half seed and half stone. in tins containing 24-oz. net. "Victoree"	per doz.	1 10 0
19. Jelly Crystals—packets, "McKays" Junket Tablets—	do.	0 8 9½
20. "Merry Widow," flavoured	do.	0 17 10
21. Macaroni—22-lb. cartons	per ctn.	1 2 4
22. Margarine—Cake, Pastry Oatmeal—	per lb.	0 1 7½
23. { Flake	do.	0 0 11½
24. { Fine	do.	0 0 11½
25. Peol—Cut, mixed	do.	0 2 0½
26. Pepper—Black, ground	do.	0 3 8½
27. Prunes—Dried—70-80's Raisins—Sultana (present season's)—	do.	0 2 7½
28. { 1-crown	do.	0 1 9½
29. { 2-crown	do.	0 1 9½
30. { 3-crown	do.	0 1 10½
31. Rice—Dressed	per cwt.	4 19 6
32. Salt—Fine "Imperial"	do.	1 1 6
33. Sauce—Tomato, 26-oz. bottles "McK."	per doz.	2 3 0
34. Soap—		
35. Preservene Foam	per doz.	0 15 6
36. "Lifebuoy"—Regular	per doz.	0 6 11½
37. Sand, "Pearlite"	per doz.	0 8 3
38. "Velvet," or equal thereto { Quads	per doz.	1 4 5
39. { Quints	do.	1 19 2
40. Soda—		
41. Bicarbonate of	per lb.	0 0 7
42. Washing	per cwt.	2 0 1½
43. Spaghetti—22-lb. cartons	per ctn.	1 2 4
44. Spice—Mixed, 1-oz. packets	per pkt.	0 0 5½
45. Starch—12-oz. packets, "Silver Star"	per doz.	0 17 11
46. Sweets, boiled	per lb.	0 1 11½
47. Tartar—Cream of, substitute, "Antelope"	do.	0 2 8½
48. Tapioca—Pearl	do.	0 0 10½
49. Tea—First grade	do.	0 0 10½
50. Tomatoes—Tinned, "McKays" 29-oz. tins	per doz.	1 9 4
51. Treacle—2-lb. tins	per doz.	1 0 7
52. Vinegar—Malt—1-gallon jar (Jars 3s. 6d.)	each	0 4 6

ANNEX TO CONTRACT No. 1958/290.
Stawell Modern Dairy, 7 Seaby-street, Stawell.

Sub-schedule No. 3.

MILK.

Security, £10. £ s. d.

1. Milk—Fresh and pure, pasteurised	per gal.	0 5 6
-------------------------------------	----------	-------

ANNEX TO CONTRACT No. 1958/291.†

H. A. Morris, 107 Victoria-street, Ballarat.

Sub-schedule No. 4.

MEAT.

Security, £3. £ s. d.

Steak—		
1. Topside (Grilling)	per lb.	0 1 8
2. Stewing (Minced when required)	do.	0 1 7
3. Beef, Corned Silverside	do.	0 2 0
Fresh Mutton—		
4. Forequarters	do.	0 0 11
5. Leg	do.	0 1 7
6. Loins	do.	0 1 1
Chops—		
7. Middle Loins	do.	0 1 3
8. Forequarter	do.	0 1 0
Kidneys—		
9. Ox	do.	0 1 3
10. Sausages—Pork	do.	0 1 9
Livers—		
11. Sheep	do.	0 0 9
12. Sausage—Pork—German	do.	0 2 3
13. Veal—Fillet—Boneless	do.	0 1 10
14. Tongues—Ox	do.	0 0 11
15. Frankfurts—First quality	do.	0 1 8
16. Suet—Beef	do.	No. charge

SCHEDULE No. 22.

PROVISIONS—SUNBURY DISTRICT.

(Delivery into Institutions.)

ANNEX TO CONTRACT No. 1958/292.

Bessel's Pty. Ltd., 275 Buckley-street, Essendon.

Sub-schedule No. 1.

BREADSTUFFS.

Security, £112. £ s. d.

1. Bread—Fine wheaten, first quality	per ctn.	1 14 2
2. Flour—First quality	do.	1 15 4½

(AGREEMENT.)

K. N. Tidswell, Sunbury.

Sub-schedule No. 2.

GROCERIES.

£ s. d.

1. Beans—Haricot	per lb.	0 1 9
Biscuits—		
2. Dry (Tins 4s. each)	do.	0 2 4
3. Sweet	do.	0 2 5
4. Blue—Washing, 1-oz. knobs, "Reckitts"	per gross	1 15 0
5. Candles—Full weight, in 1-lb. packets, Kitchen's "Electrics," or equal thereto	per pkt.	0 2 9½
6. Cereals—Weeties—24-oz. packets	per doz.	1 4 0
7. Cinnamon	per lb.	0 3 1
8. Cloves—Whole	do.	0 7 3
9. Cocoa—16-oz. packets, "Bournville"	do.	0 6 6
10. Cordials { 26-oz. bottles—"Kia Ora"	per doz.	2 1 0
11. { 1-gal. jars (Jars 3s. each)	each	0 16 6
12. Corn or Maize Flour—1-lb. packets, net	do.	0 1 6
13. Currants—2-crown (present season's)	per lb.	0 1 11½
14. Curry Powder	do.	0 4 6
15. Custard Powder—30-lb. tins	do.	0 1 4½
16. Dates—Stoneless	do.	0 2 5
17. Essences—16-oz. { Lemon "Triangle"	per doz.	3 13 0
{ Vanilla "Triangle"	do.	3 13 0
Flour—Self-raising—		
{ 6-lb. bags	each	0 4 5
{ 25-lb. bags	do.	0 17 0

⊙ Order under Melbourne District Contract.

GROCERIES.—continued

		£	s.	d.
18. Gelatine—16-oz. packets, "Davis"	per doz.	5	5	0
19. Ginger—Ground	per lb.	0	11	0
Golden Syrup—				
20. { 5-cwt. drums	per cwt.	*		
{ 2-lb. tins	per doz.	1	0	0
21. Gravox—1-lb.	do.	1	3	0
22. Gravy Salt—1-lb. packets	do.	0	19	0
23. Honey—Pure	per lb.	0	1	9
24. Jelly Crystals { 4-oz. packets	per doz.	0	8	0
{ Bulk	per lb.	0	2	5
25. Jex	per doz.	0	8	0
26. Lemon Peel—8-oz. packets	per pkt.	0	1	8
27. Macaroni	per lb.	0	0	11½
28. Margarine—Cake, Pastry	do.	0	1	9
29. Meat, Tinned { 12-oz. Camp Pie "Imperial"	per doz.	1	1	0
{ 16-oz.	do.	1	5	6
30. Meat Tenderizer—2-oz. tins	do.	1	0	0
31. Milk—Powdered	per lb.	0	1	3½
32. Mustard—Loose, "Keen's"	do.	0	6	6
33. Nutmeg—Ground	do.	1	1	0
34. Peel—Mixed—3-oz. packet	each	0	1	8
35. Pepper—Black, ground	per lb.	0	8	3
36. Pickles—Mustard	per doz.	1	12	6
37. Raisins, Sultanas, 2-crown (present season's)	per lb.	0	2	0½
38. Salt—Fine	per cwt.	0	16	0
Sauce—				
39. { Tomato, 26-oz. bottles	per doz.	1	17	0
{ Worcestershire, 20-oz. bottles	do.	1	10	6
Soda—				
40. Bicarbonate of	per lb.	0	0	9
41. Washing	per cwt.	2	0	0
42. Spaghetti in Tomato Sauce—4-lb. tins	per doz.	3	7	0
43. Spice—Mixed, loose	per lb.	0	4	6
44. Starch—Loose, "Silver Star"	do.	0	1	9½
45. Sugar	per bag	*		
46. Tartar, Cream of	per lb.	0	4	4
47. Vermicelli	do.	0	1	1
48. Vinegar—Malt	per gal.	0	5	0

Sub-schedule No. 3.

CEREALS.

1. Barley—Pearl	per cwt.	} Purchase under Tender Board quotations
2. Beans—Haricot	do.	
3. Oatmeal—plain	do.	
4. Oatmeal—flaked	do.	
5. Peas, split—yellow	do.	
6. Rice—dressed	do.	
7. Rice—unpolished	do.	
8. Seed Tapioca	do.	

ANNEX TO CONTRACT No. 1958/293.†

F. Watkins Pty. Ltd., 184 Bourke-street, Melbourne, C.1.

Sub-schedule No. 5.

MEAT.

		£	s.	d.
Security, £48.				
Fresh Beef—				
1. Rolled Roast, boneless, (brisket excluded)	per cent.	7	10	0
2. Buttocks	do.	6	13	4
Fresh Mutton—				
3. Kidney fat to be removed	do.	3	15	0
4. Corned Beef—Rolled or Round, as ordered, without bone or cartilage	do.	7	10	0
5. Sausages—Mixed	per lb.	0	1	6
6. Sausage—Beef—German	do.	0	1	10
7. Veal—Legs	do.	0	1	10
8. Tripe—Fresh	do.	0	0	8
9. Livers—Sheep	do.	0	1	9
10. Ox Tails	do.	0	1	3
11. Beef Loaf	do.	0	1	10
12. Ham Loaf	do.	0	2	9
13. Veal Loaf	do.	0	2	6
14. Pickled Pork	do.	0	2	9
15. Saveloys	per doz.	0	3	0
16. Sheep Tongues	per lb.	0	1	9

* Supplies not available.

ANNEX TO CONTRACT No. 1958/294.

W. H. Johnsons Jams Pty. Ltd., 42 Meaden-street, South Melbourne, S.C.5.

Sub-schedule No. 6.

JAMS.

		£	s.	d.
Security, £20.				
Jams—(in 54-lb. tins)				
1. Assorted, in bulk, of approved kinds, in the proportion of half seed and half stone, of the best quality. ⊙	per lb.	0	1	0½
2. Marmalade—bulk ⊙	do.	0	0	11½
⊙ For 27-lb. tins, rate increased 1d. per lb.				

SCHEDULE No. 23.

PROVISIONS—WARRNAMBOOL DISTRICT,

(Delivery into Institutions.)

ANNEX TO CONTRACT No. 1958/295.

May Burns Bakery, 140 Liebig-street, Warrnambool.

Sub-schedule No. 1.

BREADSTUFFS.

		£	s.	d.
Security, £5.				
1. Bread—Fine wheaten, first quality	per centl.	3	8	9
2. Flour—First quality	do.	1	15	5

(AGREEMENT.)

Scintons Pty. Ltd., Timor-street, Warrnambool.

Sub-schedule No. 2.

GROCERIES.

		£	s.	d.
1. Bacon Rashers, middle	per lb.	0	6	6
2. Cereals, whole—Large Packets	per doz.	1	9	0
3. Cloves, whole	per lb.	0	8	0
4. Custard Powder—1-lb. packets, "Medallion"	per pkt.	0	1	9
5. Essance, Vanilla—1-lb. bottles, "Medallion"	per bot.	0	1	2
6. Flour—Corn or Maize—1-lb. packets, "Medallion"	per pkt.	0	1	7
Fruits—Dried—				
7. { Apricots	per lb.	0	4	9
{ Currants and Sultanas	do.	0	2	0
Fruits—Preserved—30-oz. tins—				
8. { Apricots, halves	per tin	0	3	1
{ Peaches, halves	do.	0	3	4
{ Pears	do.	0	3	3
9. Gelatine—Ground, 1-lb. packets, "Davis"	per lb.	0	8	6
10. Honey { 2-lb. jars	per jar	0	4	6
{ 60-lb. tins	per lb.	0	1	9
11. Jams—24-oz. tins (Apricot, Apple Jelly, Melon "A.J.C." or "S.P.C." Plum, Poach, Quince and Marmalade) Jelly Crystals, "Medallion" or "Harpers"	per tin	0	2	7
12. { 4-oz. packets	per pkt.	0	0	10
{ 7-lb. packets	per lb.	0	2	8
13. Margarine { Table, "Eta"	do.	0	2	9
{ Cake and Pastry, "Marville"	do.	0	2	6
14. Meat, Tinned—"Camp Pie," "Tom Piper" 16-oz. tins (12-oz. tins 1s. 8d.)	per tin	0	2	0
15. Mustard—"Keens"	per lb.	0	6	6
16. Pepper, White, ground	do.	0	6	0
17. Pickles—20-oz. bottles "Leggos"	each	0	2	5
18. Rice—Dressed	per lb.	0	0	11
19. Sago, Seed Tapioca	do.	0	1	6
20. Salt—Fine—"Imperial"	do.	0	0	3
21. Sauce—Tomato, 26-oz. bottles "A.J.C."	per bot.	0	3	8
22. Sugar, white (10½d. per lb.)	per cwt.	4	15	8
23. Vinegar	per qt.	0	1	0½

ANNEX TO CONTRACT No. 1958/296.

Sungold Dairies Pty. Ltd., 66 Kepler-street, Warrnambool

Sub-schedule No. 3.

MILK.

		£	s.	d.
Security, £3.				
1. Milk—Fresh and pure	per gal.	0	4	0

† Containers charged for, credited on return.

ANNEX TO CONTRACT No. 1958/297.†

A. Struth, T. and G. Buildings, Lava-street.

Sub-schedule No. 4.

MEAT.

Security, £5.

		£	s.	d.
1. Fresh Beef—Rolled Roast (brisket excluded)	per lb.	0	3	0
2. Fresh Beef—Buttock	do.	0	3	0
3. Corned Beef—Rolled or Round, as ordered	do.	0	3	0

				£	s.	d.
Fresh Mutton—						
4.	{	Forequarters	per lb.	0 1 9
		Legs	do.	0 2 6
		Chops—Middle Loin	do.	0 2 6
Steak—						
5.	{	Topside	do.	0 3 0
		Stewing	do.	0 2 6
6.	Sausage—Beef German	do.	0 3 9
7.	Sausages—Mixed	do.	0 1 9
8.	Veal—Boneless	do.	0 3 0
9.	Livers—Sheep	do.	0 1 3
10.	Tongues—Sheep	per doz.	0 4 0

