

[2397]



VICTORIA GOVERNMENT GAZETTE

Published by Authority

[Registered at the General Post Office, Melbourne, for transmission by post as a newspaper.]

No. 49]

THURSDAY, JULY 7

[1966

CONTRACTS ACCEPTED.

(SERIES 1966-67)

SUPPLY OF PROVISIONS

FOR

STATE DEPARTMENTS

FROM

1st JULY, 1966, to 30th JUNE, 1967

or as stated.

Conditions of Contract and Stipulations are shown herein for the guidance
of Officers ordering and receiving supplies.

H. COUTTS,
Secretary to the Tender Board.

CONTRACTS ACCEPTED—(Series 1966-1967.)

PROVISIONS.

No. of Contract.	Particulars of each Tender Accepted.	Amount.	Name of Contractor or Supplier.	Charge against Vote or Fund.
	PROVISIONS—			
	Supply of Provisions, in such quantities as may be ordered, from 1st July, 1966, to 30th June, 1967, or as stated.			
	Schedule No. 1.—Melbourne District—			
47	Bread, Kew Mental Hospital	Rates as per annex	} Johnson and Riches Pty. Ltd. Associated Bakeries Deliveries Pty. Ltd.	
48	Bread, Children's Cottages, Kew	Ditto		
49	Bread, "Turana" Youth Training Centre and Psychiatric Hospital, Royal Park, and Travancore Developmental Centre, Flemington	Ditto		
50	Bread, "Winlaton" Girls' Training Centre, 186 Springvale-road, Nunawading and "Allambie" Reception Centre, 70 Elgar-road, Burwood	Ditto	Harrington's Bakeries Pty. Ltd.	
51	Bread, Teachers' College and Hostels at Grattan-street, 93 Drummond-street, Carlton; 470, 481, and 572 St. Kilda-road, Melbourne; 19 Queens-road, Melbourne, 152 Toorak-road west, South Yarra; Frank Tate House, 373 Dandenong-road, Armadale; "Redcourt", No. 6, "Larnook", 13 and No. 10A Orrong-road, Armadale; 11 Patterson-street, Hawthorn; 174 Punt-road, Prahran; 221 Burwood-road, Burwood, John Cannon House, 32 Belmont-avenue, Kew, 17 Moule-avenue, Brighton, and Hastings-road, Frankston; and Police Hospital, St. Kilda-road, Melbourne; Mental Hygiene Clinic, 321 Glenferrie-road, Malvern; St. Nicholas Hospital.	Ditto	Capitol Bakeries Pty. Ltd.	
52	Flour	Ditto	Jas. Minifie and Co. Pty. Ltd.	General Expenses 1966-67
	Groceries	Ditto	<i>Terra Self Service Pty. Ltd. (A)</i>	
	Cereals	Ditto	Purchase under Tender Board quotations	
53	Jams	Rates as per annex	W. H. Johnsons Jams Pty. Ltd.	
	Soap Mixtures	Ditto	<i>Terra Self Service Pty. Ltd. (A)</i>	
54	Tea	Ditto	Bushells Pty. Ltd.	
55	Coffee	Ditto	Griffiths Bros. Products Ltd.	
	Potatoes	Purchase under Tender Board quotations	
	Schedule No. 2.—Mont Park, Bundoora, Larundel, Janefield, Gresswell, and Pleasant View, Wood-street, Preston—			
56	Bread	Rates as per annex	Johnson and Riches Pty. Ltd.	
	Groceries	Ditto	<i>Terra Self Service Pty. Ltd. (A)</i>	
57	Jams	Ditto	W. H. Johnsons Jams Pty. Ltd.	
	Potatoes	Purchase under Tender Board quotations	
	Schedule No. 3.—S.S. Rip and Dredges—			
	Groceries	Rates as per annex	<i>Terra Self Service Pty. Ltd. (A)</i>	
	Vegetables	Purchase by agreement	
	Potatoes	Purchase under Tender Board quotations	
	Schedule No. 4.—Teachers' College and Hostels at Grattan-street, 93 Drummond-street, Carlton; 470, 481 and 572 St. Kilda-road, Melbourne; 19 Queens-road, Melbourne; 152 Toorak-road west, South Yarra; Frank Tate House, 373 Dandenong-road, Armadale; "Redcourt" 6, "Larnook", 13 and No. 10A Orrong-road, Armadale; 11 Patterson-street, Hawthorn; 174 Punt-road, Prahran; 221 Burwood-road, Burwood; John Cannon House, 32 Belmont-avenue, Kew; 17 Moule-avenue, Brighton; and Hastings Road, Frankston; and Police Hospital, St. Kilda-road, Melbourne; Mental Hygiene Clinic, 321 Glenferrie-road, Malvern—			
	Groceries	Rates as per annex	Order under Melbourne District	
	Potatoes	Purchase under Tender Board quotations	
	Schedule No. 5.—Heatherton Sanatorium, Cheltenham—			
58	Bread	Rates as per annex	Capitol Bakeries Pty. Ltd.	
	Groceries	Ditto	<i>Terra Self Service Pty. Ltd. (A)</i>	
59	Milk	Ditto	B. L. Coram and Sons Pty. Ltd.	

Names shown in italics denote suppliers under agreement.

CONTRACTS ACCEPTED—(Series 1966-67)—continued.

PROVISIONS—continued.

No. of Contract.	Particulars of each Tender Accepted.	Amount.	Name of Contractor or Supplier.	Charge against Vote or Fund.
	PROVISIONS—continued.			
60	Schedule No. 6.—Ararat District— Breadstuffs Groceries Jams Potatoes	Rates as per annex Ditto Ditto	Bates Bros. } <i>McKay MacLeod Pty. Ltd. (A)</i> Purchase under Tender Board quotations	
61	Schedule No. 7.—Ballarat District— Breadstuffs Groceries—Teachers' Hostels Groceries—Mental Hospital Jams	Rates as per annex Ditto Ditto Ditto	Local Maid Bread Pty. Ltd. } <i>McKay MacLeod Pty. Ltd. (A)</i>	
62	Milk—Mental Hospital and Teachers' Hostels Potatoes	Ditto	The Ballarat Modern Dairy Pty. Ltd. Purchase under Tender Board quotations	
63	Schedule No. 8.—Beechworth District— Bread	Rates as per annex	P. A. Taylor Model Bakery	
64	Groceries Jams Potatoes	Ditto Ditto	<i>Terra Self Service Pty. Ltd. (A)</i> W. H. Johnsons Jams Pty. Ltd. Purchase under Tender Board quotations	
65	Schedule No. 9.—Bendigo District— Bread—For Goal and Sandhurst Boys' Centre and Teachers' Hostel, "Lancewood", McLaren-street	Rates as per annex	C. H. Jeffrey Pty. Ltd.	
66	Bread—For Teachers' College Hostel, Osborne-street, Pleasant Vale	Rates as per annex	C. H. Jeffrey Pty. Ltd.	
67	Bread—For Teachers' Hostel, "Comersdale"	Ditto	Roy Raggatt Pty. Ltd.	
68	Milk—For Sandhurst Boys' Centre	Ditto	Sandhurst Dairies Ltd.	
69	Milk—Teachers' Hostels Groceries Potatoes	Ditto Ditto	} <i>Wholesalers Ltd. (A)</i> Purchase under Tender Board quotations	
70	Schedule No. 10.—Castlemaine District— Bread	Rates as per annex	The Castlemaine Bakery	
71	Schedule No. 11.—School of Forestry, Creswick— Breadstuffs	Rates as per annex	Creswick Bakery	General Expenses 1966-67
72	Groceries Milk	Ditto Ditto	Tait's Licenced Grocery (A) E. L. and C. N. Wrigley	
73	Schedule No. 12.—Agricultural College, Dookie— Breadstuffs Groceries Jam	Rates as per annex Ditto Ditto	K. H. and H. L. Hutchins Pty. Ltd. } Fair Save Pty. Ltd. (A)	
74	Schedule No. 13.—McLeod Settlement, French Island— Bread Groceries Potatoes	Rates as per annex Ditto	G. A. and A. H. Van Der Craats <i>E. V. Peters (A)</i> Purchase under Tender Board quotations	
75	Schedule No. 14.—Geelong District— Bread Groceries	Rates as per annex Ditto	Fitzgerald Sunicrust Bakeries Pty. Ltd. <i>McKay MacLeod Pty. Ltd. (A)</i>	
76	Schedule No. 15.—Coorimungie Prison Camp Heytesbury Forest— Bread	Rates as per annex	B. T. and N. Wright	
77	Schedule No. 17.—Langi Kal Kal Training Centre— Bread Potatoes	Rates as per annex	Local Maid Bread Pty. Ltd. Purchase under Tender Board quotations	
78	Schedule No. 18.—Agricultural College, Longerenong— Breadstuffs Groceries Jams Potatoes	Rates as per annex Ditto Ditto	Schwarz Breads Pty. Ltd. } <i>Permewan's (Horsham) Pty. Ltd. (A)</i> Purchase under Tender Board quotations	

Names shown in italics denote suppliers under agreement.

CONTRACTS ACCEPTED—(Series 1966-67)—continued.

PROVISIONS—continued.

No. of Contract.	Particulars of each Tender Accepted.	Amount.	Name of Contractor or Supplier.	Charge against Vote or Fund.
	PROVISIONS—continued.			
79	Schedule No. 19.—Research Station, Rutherglen— Bread Groceries	Rates as per annex Ditto	Rutherglen Bakery Pty. Ltd. <i>N. P. Haberecht (A)</i>	General Expenses 1966-67
80	Schedule No. 20.—Sale Goal— Bread	Rates as per annex	Sale Dutch Bakery Pty. Ltd. ..	
81	Schedule No. 21.—Pleasant Creek Special School, Stawell— Breadstuffs Groceries	Rates as per annex Ditto	Stawell Bakeries Pty. Ltd. .. <i>McKay MacLeod Pty. Ltd. (A)</i> ..	
82	Milk Potatoes	Ditto	Stawell Model Dairy .. Purchase under Tender Board quotations	
83	Schedule No. 22.—Sunbury District— Breadstuffs Groceries	Rates as per annex Ditto	Associated Bakeries Deliveries Pty. Ltd. <i>H. Paterakis (A)</i>	
84	Cereals Jams Potatoes	Ditto Ditto	Purchase under Tender Board quotations W. H. Johnsons Jams Pty. Ltd. .. Purchase under Tender Board quotations	
85	Schedule No. 23.—Warrnambool District— Breadstuffs Groceries	Rates as per annex Ditto	Twites Bakeries Pty. Ltd. .. <i>Swintons Pty. Ltd. (A)</i>	
86	Milk	Ditto	Sungold Dairies Pty. Ltd. ..	
87	Schedule No. 24.—Hobson Park Hospital— Traralgon— Breadstuffs Groceries Milk	Purchase by Agreement .. <i>Terra Self Service Pty. Ltd. (A)</i> .. <i>J. G. and E. McEntee</i>	
88	Schedule No. 25.—Malmsbury— Youth Training Centre— Bread Groceries	Rates as per annex Ditto Ditto	Coe's Kyneton Bakery .. B. Pleiter (A) H. Willis and Sons	
89	Milk	Ditto		

Names shown in italics denote suppliers under agreement.

Approved—A. G. Rylah, Acting Treasurer, 27th June, 1966.

CONDITIONS OF CONTRACT FOR PROVISIONS, 1966-67, ETC.

(Published in the *Victoria Government Gazette* No. 17, dated 16th March, 1966, pages 866-868.)

1. All the articles are to be of the best quality of the several kinds, in the best condition, and in conformity with the Health Acts, and to be delivered in sound packages, free from all charges for cartage, freight, &c. The goods shall be delivered as may be directed by the officer ordering the supply.

2. As the exact quantity of any article which may be required cannot be stated, the estimate being approximate only, the Government will not be bound by the quantity stated in the schedule, but will be at liberty to order more or less, according to circumstances, and the contractor will be bound to supply the same as ordered.

The Government reserves the right to purchase otherwise than from the contractor any of the articles specified in the schedule in the event of emergency.

3. Supplies for country districts for which no local contract may have been taken, or for which the contract has been terminated, may be ordered under the Melbourne contract.

4. The Melbourne District will include places within a radius of 12 miles from the Elizabeth-street Post Office, with the exception of places for which separate contracts are provided; the Mont Park District will include the Mental Hospitals, Janefield Colony, the Sanatorium, Gresswell, and Pleasant View, Preston; the Ararat, Ballarat, Beechworth, Bendigo, Castlemaine, Geelong, Sunbury, Warrnambool, Stawell and Traralgon Districts will include Mental Hospitals, Penal Institutions and Teachers' Hostels at any of those places. Delivery must be made at the places, institutions, &c., named in the schedules, or as directed by the officer ordering the supply.

5. Packages suitable for transport of goods supplied must be provided by the contractor free of expense, and the value of these packages, whether in bulk or otherwise, is to be included in the rate tendered, except butter boxes and soap boxes (not including fancy soaps), jam jars, flour, meal, and potato bags, which will remain the property of the contractor, and only the actual net weight or quantity received will be paid for; the empties to be removed from the place of delivery at the contractor's expense.

6. The meat supplied under these conditions must, if practicable, be slaughtered at abattoirs which are under authorized inspection and supervision. Any infringement of these conditions will subject the contractor, on report from the Tender Board, to such mulct, not exceeding One hundred dollars, as the Treasurer may direct, and the amount will be deducted from the contractor's account, or from the security money.

7. The supplies coming under the head of Rations and Medical Comforts are to be delivered direct to the establishment entitled thereto on the written order of the officer in charge. All other supplies will be ordered by the head of the Department concerned or any officer authorized by him, and shall be delivered as may be directed by the officer ordering the supply.

8. At the time of delivering the supplies, the contractor shall produce the order for the same to the officer authorized to accept delivery, and such officer shall acknowledge thereon the receipt of the stores accepted, and shall return the order to the contractor, who shall render his account as soon as possible after the delivery of the supplies, accompanied by the receipted delivery order. The rates or quantities quoted in the orders cannot be exceeded.

9. Where railway facilities are available, the contractor shall use the Railways for the transport of the goods. When a contractor is required to make delivery of goods at a railway station for transmission by rail, except for Commonwealth Departments, he shall obtain a receipt for the goods in duplicate on the Stores and Transport consignment note, at the same time handing in the triplicate and quadruplicate of the form as an authority for the Railways to act as agent for, and charge the freight to, the Stores and Transport Office. He shall as soon as possible, and not later than twenty-four hours thereafter, deliver at the Tender Board Offices the original, the duplicate to be forwarded to the consignee and the quintuplicate retained by himself. Should the goods thus forwarded be rejected, the contractor must bear the cost

of replacing such goods, for which services the departmental consignment note is not to be used. Any infringement of this condition may subject the contractor to such mulct as the Tender Board may recommend under clause 18 of these conditions.

10. Orders must receive prompt execution; in the event of the goods not being delivered at the time mentioned in the order or within such other time as the officer ordering the supply may specify for delivery, it will be competent for such officer, or the head of the Department to whom the goods are to be supplied, on giving the contractor twenty-four hours' notice, to purchase the supplies, or any like supplies that are suitable for the service, at the contractor's risk, and the extra expense incurred over and above the contract price (if any) will be deducted from the contractor's account or from the security money.

11. The acceptance of the supplies shall be subject to the approval of the officer authorized to take delivery of the stores, or such other officer as shall be named in the conditions.

12. If the officer in charge of stores be not satisfied as to the quantity or quality of the stores, or if, after taking delivery of any stores or material, he shall discover any deficiency or defect therein, he may return such deficient or defective stores or material to the contractor, and shall report the same to the head of his Department and to the Tender Board.

13. In the event of a difference of opinion between the contractor and the officer receiving the supplies as to the quality, the same is to be decided, in cases where the article is not of a perishable nature, by a Board of Survey composed of persons named by the Treasurer of the State for the time being; and the decision of the Board is to be considered final. In the event of the decision being against the contractor, the survey fees and expenses (if any) will be deducted as in clause 10.

14. In cases where the article is of a perishable nature, or when from some other cause injury would be sustained either by the person to whom the rations or stores are due or by the contractor in waiting for a Board to survey, the head of the Department or officer authorized to take delivery will have power to reject such article or articles as are obviously of inferior quality, it being understood that he will be responsible to the Government for so doing, and that the contractor must take back the rejected article and supply good in its stead; failing which it, or any like supply suitable for the Service, will be obtained by the officer requiring it as in clause 10. In case of the rejection or return of any supplies, the contractor shall bear the whole cost of replacing the supplies so rejected or returned.

15. If the Board shall decide that the article is not of proper quality it must be immediately replaced by the contractor; failing which it, or any like supply suitable for the Service, will be procured by the officer requiring it, and the expense charged as in clause 10.

16. In the case of supplies for Mental Institutions, it will be competent for a Board of Survey, consisting of the psychiatrist superintendent (or, in his absence, of the medical officer) and any two officers named by him, to examine and reject any supplies that may be objected to. It must be distinctly understood, however, that the contractor will have a right of appeal to the Treasurer of the State for the time being, such appeal to be made in writing within 24 hours of the rejection; but, pending such appeal, he must at once supply others of approved quality; failing which, the supplies required, or any like supplies suitable for the Service, may be obtained by the officer concerned, and the expense charged as in clause 10.

17. In the case of supplies for Mental Institutions, it will also be competent for two or more of the official visitors, in conjunction with the psychiatrist superintendent, to reject any supplies that they may consider not in accordance with contract; and in such cases the reference to a Board of Survey will not be deemed to be necessary.

18. A refusal to execute orders, irregularity in the quantity or quality of the supplies, or delay in delivering or replacing them when required, will subject the contractor, upon report from the Tender Board, to such mulct, not exceeding One hundred dollars, as the said Treasurer may direct, and the amount may be deducted as

in clause 10. It will also be in the power of the said Treasurer, upon such refusal, irregularity, or delay, to terminate the contract forthwith, and forfeit the whole or any part of the security money; and, in addition, the contractor will be disqualified from tendering or holding any future contract or contracts for a period of twelve months from the date of such disqualification.

19. Contractors are not at liberty to transfer their contracts under cover of power of attorney, coupled with an interest or otherwise, and no such transfer will be recognized by the Government. *If it is found during the currency of the contract that the contractor has not conformed to the condition of advertisement—which stipulates that if a tenderer be a member of a firm and such firm be interested in the contract, the tender shall be in the name of the firm and not in that of the individual—then the Treasurer may, on the recommendation of the Tender Board, determine the contract, and forfeit the security money.*

20. It will be competent for the Tender Board to terminate the contract, without notice, should there be reason to know that the contractor takes advantage of his contract to communicate with a prisoner.

21. The contract entered into under these conditions is not to be considered as being broken, infringed, or vitiated by the importation of stores for the Government service, or by any contracts or purchases made by the Agent

General; or by the consumption of the produce or surplus stock of any Government establishment, or by any article being made at and supplied for the use of any Government establishment.

22. Notwithstanding anything contained to the contrary in section 152 of the Customs Act 1901-52, it is hereby expressly provided that upon any alteration of the duty collected affecting the goods included in this contract, the contract price shall not be altered, and the contract may be terminated at the option of either party by two months' notice in writing from the first day of the calendar month next ensuing, and within the period for which the contract is made. The contract for the unaffected items shall remain in full force and effect. Any notice to be served under this condition shall be deemed to have been duly served if sent to the contractor in a registered letter to his last-known place of business or abode.

23. Under no circumstances other than those mentioned in clause 22 will a contractor be permitted to abandon his contract. In the event of the contractor failing to carry on the contract, the contract security money will in that case be absolutely forfeited; and, in addition, the contractor will be held liable for any loss which the Government may sustain in consequence of such failure.

24. For the purposes of these contracts the word "Government" shall mean the Government of the State of Victoria; and the word "Treasurer" shall mean the Treasurer of the said State.

STIPULATIONS FOR SUPPLIES OF PROVISIONS.

SUPPLIES GENERALLY.

For supplies under all sub-schedules, particular attention is drawn to clause 1 of the Conditions of Contract as to quality.

No sub-letting is allowed, and all work must be carried out by the contractor.

Where practicable, all items must be manufactured or prepared within the Commonwealth.

Where no brand of Commonwealth manufacture or production is specifically set out in the respective sub-schedules, such Commonwealth brand as may be ordered must be supplied.

For Schedule No. 3 supplies must be delivered when ordered and, in cases of emergency, on Sundays, holidays, or half-holidays, as required.

BREAD AND FLOUR.

A sample of the best ordinarily retailed to the public will be considered as a test loaf for first quality for fine wheaten and pure wheaten Meal Bread. *Pure wheaten Meal Bread of first quality may be substituted, wholly or in part, for fine wheaten Bread at such times and in such quantities as, in the opinion of the Psychiatrist Superintendent, may be deemed necessary, and the contractor will be required to supply such Bread at the contract rate. Reasonable notice, however, of the intention to substitute wheaten Meal Bread must be given to the contractor by the officer ordering the supply. Bread may be baked at any Government establishment without infringing these contracts. At the Gaols, Beechworth, Bendigo, Castlemaine, Geelong, and Sale, and the Cooriemungle Prison Camp, McLeod Settlement, and Langi Kal Kal Training Centre, if required, bread must be supplied one day old, due notice to be given to the contractor of such requirement.*

In the event of bread being made at any Government establishment in the Melbourne District during the currency of these contracts, the flour required will be drawn under the flour sub-schedule.

Flour for Districts for which no local contracts have been taken may be ordered under the Melbourne District contract, for delivery f.o.r., Melbourne.

GROCERIES.

As a guarantee of quality, Rice, when ordered in quantities of 56 lb. and over, must be supplied in original bags as delivered by the miller or dresser. Such bags must be branded "Rice, Dressed," and shall also have stencilled thereon the miller or dresser's name and the distinguishing mark indicative of the quality or grade. The bags thus stencilled shall contain Rice milled or dressed by the miller or dresser whose name appears thereon. Supplies not in conformity with the foregoing condition will be rejected.

Oatmeal must be supplied in original bags as delivered by millers.

Candles, except those for prison cells, must be supplied in 1-lb. packets. Candles for prison cells must be delivered in boxes containing from 25 to 50 lb. per box, the boxes for which must be legibly stencilled on one end showing the estimated burning time and the gross, tare, and net weight of contents.

The soap supplied must be hard throughout, ready for immediate use without waste, and shall have been manufactured at least seven weeks before leaving contractor's hands.

Raisins and currants must be present season's, and where the quantity admits, be supplied in original and unopened boxes, labelled as packed.

BARLEY, OATMEAL, PEAS-SPLIT, RICE AND SEED TAPIOCA.

Supplies of these items for Districts for which no local contracts have been taken may be delivered under the Melbourne District contract, for delivery f.o.r., Melbourne.

BUTTER AND CHEESE.

All supplies of 56 lb. or multiples of 56 lb. must be supplied in boxes as originally packed. The boxes must bear the impress stamp of the creamery where the butter is produced, otherwise it will not be accepted. All supplies must be in new boxes.

Where the Store or Butter Factory of the contractor is situated in the Metropolitan area all Butter to the quantity of 56 lb. and over to be supplied in any one consignment under this contract shall before despatch from the Store or Factory be first examined and passed by the Government Butter Grader, for and on behalf of the officer authorized to accept delivery. The boxes containing butter so examined and found satisfactory in quality and description will be stamped by the Government Butter Grader and the date of such examination marked thereon. No butter from a contractor located in the Metropolitan area will be accepted unless the boxes bear the stamp of the Grader. For the purposes of the foregoing condition the Metropolitan Area is defined as being not outside the radius visited by the Government Grader. The officer authorized to accept delivery may, within 48 hours of the receipt of any supply, require the Contractor to have same re-examined by the Grader, and, if not passed by him, it shall be returned to the Contractor, who shall forthwith replace the same with freshly-examined butter.

No Butter ex Cool Store will be examined by the Grader until thermally it is in suitable condition therefor.

Where the Store or Factory from which the Butter is despatched is not within the area visited by the Grader a sample of any supplies may be forwarded to the Government Butter Grader for examination, should the supply

be considered by the Officer authorized to accept delivery as not being equal in quality or description to that contracted for.

The Cheese supplied must be first-class quality, semi- or fully matured, as ordered, and not less than three months old. If the quantity admits, it shall be boxed for transport.

JAM.

The weight stamped on the tins in accordance with the regulations under the Commerce Act, as indicating the minimum net quantity that each tin contains, shall for the purpose of this contract be taken as the actual contents when computing the quantity supplied.

When Jam is supplied in jars the jars remain the property of the contractor, and must be removed by the contractor at his own expense when empty.

SOAP AND SOAP MIXTURES.

Supplies of these items for Districts for which no local contracts have been taken may be ordered under the Melbourne District contract, for delivery f.o.r., Melbourne.

MEAT.

All meat supplied under this contract shall have been slaughtered in Victoria and shall be freshly killed, well-conditioned, of good quality, healthy, clean, wholesome, free from bone-taint, putrefaction or fly larvae, and shall not have been frozen.

The beef shall be of ox not under three nor more than six years old or heifer or cow not under three nor more than five years old. Carcass beef for Mental Institutions shall be delivered in quarters of equal proportions of hinds and fores and the corresponding hinds and fores must be supplied, also extra buttocks separately when ordered. Meat for other Institutions shall be supplied as ordered. Where hindquarters or buttocks are ordered 9 inches shall be cut off from the end of the leg from the hock upwards, i.e., the end of the leg from which the shank has been removed at the abattoirs; when fore-quarters form a portion of the supply, 6 inches from the end of the neck and the whole of the shin at the clodbone joint shall be removed. The sticking pieces also shall be trimmed off and the point and end of the brisket rendered free from blood and blood stains.

The mutton shall be wether or maiden ewe not more than four years old and the weight of a carcass shall be not less than 40 lb. nor more than 60 lb. The mutton shall be delivered in sides when so ordered. All kidney fat to be removed for Mental Institutions.

Corned Beef (rolled or round as ordered) shall be supplied without bone or cartilage and will be received whether pumped or prepared in the ordinary way of pickling but, in the former case, it shall have been soaked, after pumping, for at least 48 hours in a good pickle and then thoroughly drained before supply. No flank, chuck, sticking-piece, shin, leg of beef, or piece under 7 lb. will be received.

Meat derived from the carcasses of Bulls, Stags or Rams or meat containing an undue proportion of bone or fat will not be received and shall not be tendered for delivery. Net weight only will be paid for.

In cases of emergency, or on such other occasions as in the opinion of the Mental Health Authority or Heads of other Institutions may seem advisable, other forms of meat, such as Rabbits, Tinned Meats, &c., may be purchased, apart from the contract, in lieu of the meat specified in the Schedule, and substituted therefor, provided 24 hours' notice—except in cases of emergency—be given to the Contractor of such intention.

The parts to be removed by the contractor are indicated in the shaded portion of the annexed diagram. This work shall be carried out in the factory or shop of the Contractor, except those parts usually removed at the abattoirs.

With respect to the schedules enumerated hereunder, the following stipulations shall also apply:—

For sub-schedules 1, 2, 4 and 6 of Schedule No. 1, fresh beef shall be supplied, as ordered, from ribs, sirloin, and thick flanks and for Schedule No. 2, from prime ribs, sirloin, and thick flanks; ribs or beef to be cut clear of the plate bone, and sirloin to be cut clear of the wing ribs; excess of brisket or thin flank will be rejected. Mutton must be delivered in sides when so ordered.

For Schedules Nos. 1 (sub-schedules 1, 2, 4 and 6), 3, 4, 5, 11, 14, and 21, chuck ribs of Beef, i.e., 1st to 4th inclusive will not be accepted.

For Schedules Nos. 4, 5, and 21, fresh Beef must be supplied, as ordered, from prime ribs or sirloin; ribs of Beef to be cut clear of the plate bone, and sirloin to be cut clear of the wing ribs; excess of brisket or flank will be rejected.

TEA AND COFFEE.

Tea and Coffee for Districts for which no local contracts have been taken may be ordered under the Melbourne District contract.

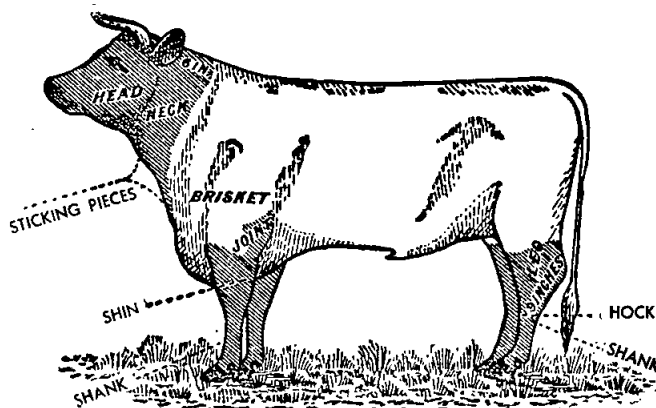
MILK.

The milk must be fresh, pure, and of the best quality, and subject to test when required by the Department, and supplied at such times as the Department may require. Should the contractor fail to supply at the time specified in the order or at such times as may be indicated in any general notice to the contractor his contract may be cancelled forthwith and his security forfeited, or should the supply prove to be not of contract quality it will be rejected, and any expense incurred will be charged to the contractor.

POTATOES.

Potatoes to be dry and free from dirt. Contractors to take back all rejected before being cooked. Bags to remain the property of the contractor. Weight of bags (approx. 2½ lb.) to be deducted.

If the price of potatoes becomes abnormally high, the heads of the various departments concerned may, if they think fit, cause rice or any other suitable food to be occasionally substituted in lieu thereof.



ANNEX TO CONTRACTS.

FLOUR AND BREAD.

The contract rates shown are subject to adjustment for any variation in the proclaimed price of flour.

AGREEMENTS.

For the Sub-schedules marked (Agreement), no contract has been let nor security lodged. Requirements thereunder are to be purchased from the suppliers named, under Tender Board Agreement. The rates shown are subject to variation from time to time. In all cases, supply is subject to stocks being available.

AVAILABILITY OF SUPPLIES.

Owing to existing difficulties in obtaining supplies of various items, the penal provisions of Clause 10 of the Conditions of Contract are not to be enforced without reference to the Tender Board.

SCHEDULE No. 1.

PROVISIONS—MELBOURNE DISTRICT.

ANNEX TO CONTRACT No. 1966/47.

Johnson and Riches Pty. Ltd., 469 Heidelberg-road, Fairfield.

Sub-schedule No. 1.

BREAD FOR MENTAL HOSPITAL AT KEW.

Security, \$150.

		\$
1. Bread—Fine wheaten, first quality	per cntl.	4.43
2. " Special formula	do.	4.48
Less 2½ per cent.—30 days.		

ANNEX TO CONTRACT No. 1966/48.

Johnson and Riches Pty. Ltd., 469 Heidelberg-road, Fairfield.

Sub-schedule No. 2.

BREAD FOR CHILDREN'S COTTAGES, KEW.

Security, \$100.

		\$
1. Bread—Fine wheaten, first quality	per cntl.	4.43
Less 2½ per cent.—30 days.		

ANNEX TO CONTRACT No. 1966/49.

Associated Bakeries Deliveries Pty. Ltd., 275 Buckley-street, Essendon.

Sub-schedule No. 3.

BREAD FOR "TURANA" YOUTH TRAINING CENTRE, ROYAL PARK; PSYCHIATRIC HOSPITAL, ROYAL PARK; AND TRAVANCORE DEVELOPMENTAL CENTRE, FLEMINGTON.

Security, \$60.

		\$
1. Bread—Fine wheaten, first quality	per cntl.	3.97
2. " Wholemeal, first quality	do.	3.97
*3. " Wrapped and sliced, first quality	do.	4.97
*(For Royal Park.)		

ANNEX TO CONTRACT No. 1966/50.

Harrington's Bakeries Pty. Ltd., 497 Canterbury-road, Vermont.

Sub-schedule No. 4.

BREAD FOR "WINLATON" GIRLS' TRAINING CENTRE, 186 SPRINGVALE-ROAD, NUNAWADING, AND "ALLAMBIE" RECEPTION CENTRE 70 ELGAR-ROAD, BURWOOD.

Security, \$10.

		\$
1. Bread—Fine wheaten, first quality	per cntl.	4.50
2. " Wholemeal, first quality	do.	4.50
3. " Rolls	per doz.	0.18

ANNEX TO CONTRACT No. 1966/51.

Capitol Bakeries Pty. Ltd., 257 Toorak-road, South Yarra.

Sub-schedule No. 5.

TEACHERS' COLLEGES AND HOSTELS AT GRATTAN-STREET, 93 DRUMMOND-STREET, CARLTON; 470, 481 AND 572 ST. KILDA-ROAD, MELBOURNE; 19 QUEENS-ROAD, MELBOURNE; 152 TOORAK-ROAD WEST, SOUTH YARRA; FRANK TATE HOUSE, 373 DANDENONG-ROAD, ARMADALE; "REDCOURT" NO. 6, "LARNOOK" 13 AND NO. 10A ORRONG-ROAD, ARMADALE; 11 PATTERSON-STREET, HAWTHORN; 174 PUNT-ROAD, PRAHRAN; 221 BURWOOD-ROAD, BURWOOD; JOHN CANNON HOUSE, 32 BELMONT-AVENUE, KEW; 17 MOULE-AVENUE, BRIGHTON, AND HASTINGS-ROAD, FRANKSTON; POLICE HOSPITAL, ST. KILDA-ROAD, MELBOURNE; AND MENTAL HYGIENE CLINIC, 321 GLENFERRIE-ROAD, MALVERN; ST. NICHOLAS HOSPITAL, PELHAM-STREET, CARLTON.

Security, \$40.

		\$
1. Bread—Fine wheaten, first quality	per cntl.	4.75
2. " Wholemeal, first quality	do.	4.75
3. " Rolls	per doz.	0.20

ANNEX TO CONTRACT No. 1966/52.

Jas. Minifie and Co. Pty. Ltd., Lennon-street, South Kensington.

Sub-schedule No. 6.

FLOUR.

Security, \$180.

		\$
1. Flour—Roller, first quality (150-lb. bag)	per cntl.	3.51
2. " " " " (50-lb. bag)	per bag	1.87

ANNEX TO CONTRACT No. 1966/53.

W. H. Johnsons Jams Pty. Ltd., 42 Meaden-street, South Melbourne.

Sub-schedule No. 9.

JAMS.

Security, \$40.

		\$
Jams—"Alva" Brand		
1. Assorted, in bulk, of approved kinds, in the proportion of half seed and half actual stone, of the best quality, in 54-lb. tins net	per lb.	0.099
2. Assorted, of approved kinds, in the weight proportion of half seed and half stone, of the best quality, in 24-oz. tins	per tin	0.195
3. Marmalade, 24-oz. tins	do.	0.180
4. Assorted, 5-lb. tins, in the proportion of half seed and half stone of the best quality	do.	0.650
5. Assorted, 27-lb. tins, in the proportion of half seed and half stone of the best quality	do.	2.900

ANNEX TO CONTRACT No. 1966/54.

Sub-schedule No. 11.

Bushells Pty. Ltd., 452 Flinders-street, Melbourne.

TEA.

Security, \$300.

		\$
1. Tea—First Grade—To sample	per lb.	0.395

ANNEX TO CONTRACT No. 1966/55.

Griffiths Bros. Products Ltd., 16 Goodwood-street, Richmond.

Sub-schedule No. 12.

COFFEE.

Security, \$200.

- | | | |
|--|---------|---------|
| 1. Coffee—Fresh roasted, and whole, beans to | per lb. | \$ 0.42 |
| be thoroughly sound—To sample | | |
| 2. Coffee—Fresh roasted, beans to be | do. | □ |
| thoroughly sound—To sample—Ground | | |

Sub-schedule No. 10.

CEREALS.

- | | | |
|--------------------------|----------|--|
| 1. Barley—pearl .. | per cwt. | } Purchase under Tender Board Quotations |
| 2. Oatmeal—Plain .. | do. | |
| 3. Oatmeal—Flaked .. | do. | |
| 4. Peas, split—Yellow .. | do. | |
| 5. Rice—Dressed .. | do. | |
| 6. Rice—Unpolished .. | do. | |
| 7. Seed Tapioca .. | do. | |

(AGREEMENT.)

Terra Self Service Pty. Ltd., 42 Elizabeth-street, South Yarra.

Sub-schedule No. 7.

GROCERIES, METROPOLITAN DISTRICTS.

- | | | |
|---|-------------------------------|---------|
| 1. Bacon—Sides .. | per lb. | \$ 0.56 |
| 2. " middles .. | do. | 0.62 |
| 3. " Rashers, middle .. | do. | 0.77 |
| 4. Baking powder—1-lb. McKenzies' .. | per doz. | 3.69 |
| 5. Barley—Pearl .. | per lb. | 0.06 |
| 6. " 56-lb. bags .. | per cwt. | 5.50 |
| 7. Beans—Haricot .. | per lb. | 0.17 |
| 8. " Lima .. | do. | 0.20 |
| Biscuits (tins 40c returnable)— | | |
| 9. Thin Captain .. | do. | 0.22 |
| 10. Uneda .. | do. | 0.26 |
| 11. Rice .. | do. | □ |
| 12. Nice .. | do. | 0.22 |
| 13. Sweet Assorted .. | do. | 0.23 |
| 14. Butter Crisps, Vanilla Curls .. | do. | 0.23 |
| 15. Shortbreads .. | do. | 0.22 |
| 16. Sunflakes .. | do. | 0.23 |
| Blue—1-oz. knobs— | | |
| 17. " Ricketts" paper .. | per doz. | 0.34 |
| 18. Bulk—7-lb. pkts. .. | per lb. | 0.29 |
| 19. Borax .. | do. | 0.07 |
| 20. Boiled Sweets (14-lb. cartons) .. | do. | 0.20 |
| 21. Bread Crumbs—"Golden Crust" .. | per doz. | 1.28 |
| 22. " Loose .. | per lb. | 0.08 |
| 23. Cake containers—"Paper Family" 120's .. | per doz. | 0.63 |
| 24. Candles, Electrine .. | do. | 0.50 |
| Cereals— | | |
| 24A. Kornies, or equal—24-oz. .. | do. | 2.89 |
| 25. Cornflakes or equal—16 oz. .. | do. | 3.62 |
| 26. Weet Hearts—24-oz. .. | do. | 3.58 |
| 27. Weetbix or equal—24-oz. .. | do. | 3.10 |
| 28. Allbran or equal .. | do. | 2.36 |
| 29. Rice Bubbles—8-oz. .. | do. | 2.36 |
| Cheese—Kraft— | | |
| 30. 5-lb. boxes .. | per box | 2.04 |
| 31. 8-oz. pkts. .. | per doz. | 2.65 |
| 32. Matured—Tasty .. | per lb. | 0.36 |
| 33. Grated, 6-lb. polythene bags .. | do. | 0.43 |
| 34. Chutney—Fruit—"Rosella" .. | per doz. | 2.30 |
| 35. Cloves—Whole .. | per lb. | 0.49 |
| 36. Cocoa—Loose, 28-lb. bags .. | do. | 0.25 |
| 37. " 14-oz. packets—Bournville .. | per doz. | 5.25 |
| 38. Coconut—Desiccated—"Ceylon" .. | per lb. | 0.20 |
| Coffee Essence— | | |
| 39. 8-oz., "Turban" .. | per doz. | 2.88 |
| 40. 26-oz., "Excelsior" .. | do. | 8.24 |
| 41. 1-gal. "Bushells", sweetened .. | per gal. | 3.60 |
| 42. Nescafe—1-lb. tin .. | per lb. | 2.94 |
| 43. " 2-oz. tin .. | per doz. | 4.82 |
| 44. " 6-oz. jar .. | do. | 13.46 |
| 45. Curry Powder—Loose .. | per lb. | 0.225 |
| 46. Custard Powder—Loose (7-lb.) .. | do. | 0.095 |
| 47. " 1-lb., "Cameo" .. | per doz. | 2.07 |
| 48. Cream of Tartar—Loose .. | per lb. | 0.335 |
| 49. Eggs—New laid, large .. | V.E.B. price plus 2c per doz. | |
| Essences, &c.— | | |
| 50. Almond, 4-oz., "Allens" .. | per bot. | 0.23 |
| 51. 16-oz. (red colouring) .. | do. | 0.34 |
| 52. Lemon, 8-oz. "Allens" .. | do. | 0.42 |

Sub-schedule No. 7—continued.

GROCERIES—continued.

- | | | |
|--|-----------|---------|
| 53. Parisian 26-oz., "Greigs" .. | do. | \$ 0.42 |
| 54. Vanilla, 8-oz. "Allens" .. | do. | 0.55 |
| 55. Yorkline, 16-oz., "Allens" .. | do. | 0.34 |
| Extracts and Pastes— | | |
| 56. Gravox, 1-lb. packets .. | per doz. | 2.32 |
| 57. Marmite, 2-oz. .. | per jar | 0.12 |
| 58. Vegemite, 4-oz. .. | do. | 0.24 |
| 59. " 8-oz. .. | do. | 0.42 |
| 60. " 16-oz. .. | do. | 0.76 |
| 61. " 6-lb. .. | do. | 4.00 |
| 62. Peanut Butter, 40-oz. "Eta" .. | do. | 0.98 |
| 63. " 12-oz. "Cottees" .. | do. | 0.34 |
| 64. Bonox, 4-oz. .. | do. | 0.30 |
| 65. " 8-oz. .. | do. | 0.55 |
| 66. Bloater, 24-oz. .. | do. | 0.17 |
| 67. Salmon and Shrimp, 24-oz. jars .. | do. | 0.17 |
| 68. Anchovy, 2-oz. .. | per doz. | 0.17 |
| Fish—Tinned— | | |
| 69. Salmon, 16-oz., "Greenseas" .. | do. | 3.85 |
| 70. Cutlets, 16-oz., "Perler" .. | do. | 2.67 |
| 71. Herrings in Sauce, 14-oz. .. | do. | 2.65 |
| 72. Herrings—Fresh, 14-oz. .. | do. | 2.65 |
| 73. Sardines—½'s, Norwegian .. | do. | 1.28 |
| Flour—Corn or Maize— | | |
| 74. Bulk, 140-lb. sacks .. | per cwt. | 7.90 |
| 75. 1-lb. packets, "Medallion" .. | per doz. | 1.71 |
| 76. Loose .. | per lb. | 0.08 |
| 77. Self raising—25-lb. bag, "McAlpin" .. | per bag | 1.76 |
| 78. " 50-lb. bag, "McAlpin" .. | do. | 3.47 |
| 79. Plain, 4-lb. .. | per pkt. | 0.27 |
| Fruits—Dried— | | |
| 80. Apricots—Large, case lots .. | per lb. | 0.435 |
| 81. " less than case lots .. | do. | 0.44 |
| 82. Peaches—Large .. | do. | 0.31 |
| 83. " less than case lots .. | do. | 0.315 |
| 84. Pears—Large, case lots .. | do. | 0.23 |
| 85. " less than case lots .. | do. | 0.235 |
| 86. Cherries—Crystallized .. | do. | 0.40 |
| 87. Prunes—80-90's, 7-lb. tins .. | do. | 0.23 |
| 88. " 40-50 .. | do. | 0.29 |
| 89. Currants—3-crown, case lots .. | do. | 0.21 |
| 90. " less than case lots .. | do. | 0.215 |
| 91. Raisins—Seeded, case lots .. | do. | 0.23 |
| 92. " less than case lots .. | do. | 0.235 |
| 93. " 1-lb. packets .. | per doz. | 3.11 |
| 94. Sultanas—5-crown, case lots .. | per lb. | 0.225 |
| 95. " less than case lots .. | do. | 0.23 |
| 96. Dates—Case lots .. | do. | 0.14 |
| 97. " less than case lots .. | do. | 0.15 |
| Fruits—Preserved, 29-oz. tins— | | |
| 98. Apricots—Halves .. | per doz. | 3.12 |
| 99. Peaches—Halves and sliced .. | do. | 3.12 |
| 100. Pears—Halves .. | do. | 3.12 |
| 101. Fruit Salad "G.C." .. | do. | 3.85 |
| 102. Pineapple Pieces "G.C." .. | do. | 3.85 |
| Fruits—Solid Pack— | | |
| 103. Apples, 64-lb. tins, "Camms" .. | do. | 9.89 |
| 104. Apricots, 7-lb. tins, "Berri" .. | do. | 11.20 |
| 105. Peaches, 7-lb. tins, "Berri" .. | do. | 11.20 |
| 106. Gelatine—Ground, 1-lb. packets .. | per lb. | 0.96 |
| 107. Ginger—Ground .. | do. | 0.62 |
| 108. Golden Syrup, 2-lb. tins .. | per doz. | 1.90 |
| 109. Herbs—Mixed, loose .. | per lb. | 0.25 |
| 110. " 1-oz. packets .. | per doz. | 0.36 |
| 111. Honey, 60-lb. tins .. | per tin | 7.65 |
| 112. " 5-lb. tins "Lunchtime" .. | do. | 1.09 |
| 113. " 2-lb. jars, "Greigs" .. | each | 0.45 |
| 114. Jams (Order Sub-Schedule No. 9) | | |
| Jelly Crystals— | | |
| 115. 4-oz. packets "Sparkling" .. | per doz. | 0.55 |
| 116. 7-lb. packets .. | per pkt. | 1.42 |
| 117. Junket Tablets—"Merry Widow", flavoured, tubes .. | per doz. | 2.02 |
| 118. Lemon Butter "Cottees" .. | do. | 2.30 |
| 119. Lentils .. | per lb. | 0.18 |
| 120. Macaroni, 1-lb. packets, "Rinaldi" .. | per doz. | 1.80 |
| 121. " Bulk, 56-lb. bags, "Rinaldi" .. | per lb. | 0.09 |
| 122. Margarine—Cake or Pastry "Imperial" .. | do. | 0.19 |
| 123. Matches—Safety, dozens .. | per gross | 1.88 |
| 124. Mayonnaise, 5-lb. jars, "Eta" † .. | per jar | 1.17 |
| Meat—tinned— | | |
| 125. Beef Luncheon, 12-oz. tins, "T.P." .. | per doz. | 3.12 |
| 126. Beef Steak Pudding, 16-oz. tins "T.P." .. | do. | 3.30 |
| 127. Camp Pie—16-oz. tins, "Imp" .. | do. | 2.45 |
| 128. Irish Stew, 16-oz. tins, "T.P." .. | do. | 2.95 |
| 129. Sausages and Vegetables, 16-oz. tins, "T.P." .. | do. | 2.95 |

* See Sub-schedule No. 9. † Jars, 30c each. ‡ Jars, 35c each. § Jars, 60c each. || Jars, 50c each. All returnable.
□ Supplies not available.

Sub-schedule No. 7—continued.
GROCERIES—continued.

			\$
Milk—			
130.	Dried, 56-lb. bag, "Tooralac"	per bag	14.50
131.	Dried, 3-lb. tins, "Sunshine"	per doz.	14.25
132.	Condensed, 14-oz. tins, "Nestle"	do.	2.32
133.	Condensed, 12-oz. tins, "Ideal"	do.	1.60
134.	Malted, "Horlicks"	per lb.	0.46
135.	Skimmed, 12-oz.	per doz.	2.02
136.	Mustard—Loose	per lb.	0.45
137.	Oatmeal—Flaked, loose	do.	0.065
138.	Oatmeal, Flaked, 110-lb. sacks	per cwt.	6.16
139.	Pastry Mix—"Swifts"	per doz.	1.30
140.	Sponge Mix—"McAlpins"	do.	2.02
141.	Peel—Mixed, cut, loose	per lb.	0.17
142.	Pepper—White, ground	do.	0.67
143.	"Black,"	do.	0.50
144.	"Cayenne, No. 1"	per doz.	0.82
145.	Pickles—Mustard, 18-oz. "Harvest"	do.	2.72
146.	"1-gal. jars	per jar	0.67
147.	Rice—Dressed, 56-lb. sacks (Order Sub-Schedule No. 10)		
148.	"Dressed	per lb.	0.10
149.	"Ground, 1-lb. packet	do.	0.13
150.	Sago—Seed Tapioca (Order Sub-Schedule No. 10)		
151.	Salt—Fine, bulk	per cwt.	1.68
152.	Salt—Table, 1-lb. packets, "Mermaid"	per doz.	0.77
153.	Sauce—Tomato, 26-oz., "Rosella"	do.	4.48
154.	"1-gal. jars, "Tom Piper" †	per gal.	1.52
155.	"Tomato and Apple, 1-gal. jars †	do.	1.30
156.	"Worcestershire, 10-oz. "Hardings"	per doz.	2.35
157.	"1-gal. jars †	per gal.	1.35
158.	"Mustard, 8-oz., "Holbrooks"	per doz.	2.57
159.	Soda—Bicarbonate	per lb.	0.06
160.	"Washing, 1-cwt. bags	per cwt.	3.94
161.	"loose	per lb.	0.04
162.	Soups—Asparagus, 16-oz., "K.O."	per doz.	□
163.	"Tomato, 16-oz., "K.O."	do.	1.65
164.	"5-lb. "Maggi"	per tin	3.60
165.	"5-lb. "Continental"	do.	3.60
166.	"7-lb. "Kia Ora"	per doz.	□
167.	"7-lb. "Heinz"	do.	9.68
168.	"Chicken Noodle, packets	do.	1.40
169.	"Cream of Chicken, 5-lb. "Maggi"	per tin	3.90
170.	"5-lb. "Continental"	do.	3.90
171.	"Vegetable, 7-lb., "A.J.C."	per doz.	9.60
172.	Spaghetti, 1-lb. packets, No. 1 "Rinoldi"	do.	1.80
173.	"Bulk, 22-lb. "Rinoldi"	per carton	1.92
Spices, &c.—			
174.	Mixed—Loose	per lb.	0.35
175.	"1-oz. packets	per doz.	0.49
176.	Cloves, whole	per lb.	0.49
177.	Paprika	do.	0.62
178.	Cinnamon	do.	0.26
179.	Bay Leaves	do.	0.29
180.	Nutmeg—ground	do.	1.51
181.	Arrowroot, 12-oz., "Parsons"	per pkt.	0.23
182.	Starch—Rice, bulk, "Parsons"	per lb.	0.11
183.	"Silver Star", 12-oz.	per doz.	2.02
184.	Sugar—Icing	per lb.	0.10
185.	"Castor	do.	0.09
186.	"No. 3, Brown	do.	0.09
187.	"White, 70-lb. bags	per bag	5.78
Sweet Toppings—			
188.	Chocolate, 13-oz., "K.O."	per doz.	3.25
189.	Raspberry, 13-oz., "K.O."	do.	3.25
190.	Strawberry, 13-oz., "K.O."	do.	3.25
191.	Tapioca—Pearl	per lb.	0.09
192.	Treacle, 2-lb. tins	per doz.	1.83
Vegetables—Dried—			
193.	Peas—Green, "Dewcrisp", 21-lb. tins	per tin	17.98
194.	"Split, yellow (Order Sub-Schedule No. 10)		
Vegetables—Tinned—			
195.	Asparagus Tips, "Wattys"	per doz.	4.20
196.	Baked Beans, 16-oz., "K.O."	do.	1.74
197.	"No. 10 cans "K.O."	do.	□
198.	"16-oz., "P.M.U."	do.	1.52
199.	"No. 10 cans "Biddy"	do.	10.18
200.	Beans—Green, 16-oz., "Harvest"	do.	2.20
201.	Beetroot, 15-oz., "Golden Circle"	do.	1.42
202.	Carrots, 16-oz., "Edgells"	do.	2.30
203.	Spaghetti, 16-oz., "K.O."	do.	1.74
204.	"16-oz., "P.M.U."	do.	1.52
205.	Gherkins, Sweet, 5-oz. "Holly"	do.	2.45
206.	"Biddy", 30-oz.	do.	2.45
207.	"Mountain Maid", 30-oz.	do.	3.85
208.	Sweetcorn, 16-oz., "Rosella"	do.	2.34
209.	Tomatoes, 30-oz., "Mon"	do.	3.20
210.	Vermicelli, 1-lb., "Rinoldi"	do.	1.80
211.	"Bulk, 22-lb., "Rinoldi"	per carton	1.92
Vinegar—Malt—			
212.	26-oz. bottles, "Vines"	per doz.	1.60
213.	1-gal. jars	per gal.	0.49

* Apply Tender Board.

† Jars, 30c each.

‡ Jars, 35c each.

|| Jars, 50c each.

§ Jars, 60c each.

□ Supplies not available.

(AGREEMENT).

Terra Self Service Pty. Ltd., 42 Elizabeth-street, South Yarra.

Sub-schedule No. 8.

SOAP MIXTURES.

(Of Commonwealth Manufacture.)

			\$
1.	Extract of "Kitchens" or equal "Stella"	per cwt.	9.40
	Soap Powder, 56-lb. bags		
2.	Household—Dry, "Pental" wrapped, cases	per case	6.07
	of 3 dozen		
3.	"Lux"—Economy size packets	per doz.	4.05
	"Rinso"—		
4.	{ Standard packets ..	do.	2.38
	{ Economy packets ..	do.	4.38
	"Persil"—		
5.	{ Standard packets ..	do.	2.38
	{ Economy packets ..	do.	4.38
6.	Sandsoap { Pearsons, 14 oz. ..	per doz.	1.15
	{ "Lectric", 12-oz. blocks ..	do.	0.96
7.	Toilet Soap—"Kitchens" or equal,	do.	0.58
	"Doublays", 3½-oz.		
8.	Toilet Soap—"Lifebuoy" cakes, regular..	do.	1.16
9.	"Palmolive"	do.	1.08
10.	Soap—"Solvot"	do.	1.38
	"Velvet"		
11.	{ "Quads", standard ..	do.	3.32
	{ "Quints", economy ..	do.	4.95
12.	Washing Soda, 1-cwt. bags	per cwt.	3.94

SCHEDULE No. 2.

PROVISIONS—MONT PARK, ETC.

(For delivery at the Mental Hospital, Mont Park, to Depots as required, the Repatriation Mental Hospital, Bundoora, Larundel Mental Hospital, Pleasant View Receiving House, Wood-street, Preston, Janefield Colony, and the Sanatorium, Gresswell.

ANNEX TO CONTRACT No. 1966/56.

Johnson and Riches Pty. Ltd., 469 Heidelberg-road, Fairfield.

Sub-schedule No. 1.

BREADSTUFFS.

Security, \$380.

			\$
Bread—			
1.	Fine wheaten, first quality	per cntl.	4.83
2.	Raisin, first quality	do.	12.00
3.	Wrapped and sliced, first quality	do.	6.81
	Less 2½ per cent.—30 days.		

(AGREEMENT.)

Terra Self Service Pty. Ltd., 42 Elizabeth-street, South Yarra.

Sub-schedule No. 2.

GROCERIES.

Order under Metropolitan Districts, Schedule No. 1,

Sub-schedule No. 7.

ANNEX TO CONTRACT No. 1966/57.

W. H. Johnsons Jams Pty. Ltd., 42 Meaden-street, South Melbourne.

Sub-schedule No. 3.

JAMS.

Security, \$46.

			\$
1.	Assorted, in bulk, of approved kinds, in the proportion of half seed and half stone, of the best quality, in 54-lb. tins "Alva"	per lb. actual net weight	0.099
2.	Assorted, in 5-lb. tins, in the proportion of half seed and half stone, of the best quality "Alva"	per tin	0.650
3.	Marmalade, 5-lb. tins "Alva"	do.	0.600
4.	Assorted, in 27-lb. tins, in the proportion of half seed and half stone, of the best quality "Alva"	do.	2.900

SCHEDULE No. 3. PROVISIONS FOR S.S. RIP AND DREDGES.

Sub-schedule No. 1.

BREAD.

Purchase by agreement.

(AGREEMENT.)

Terra Self Service Pty. Ltd., 42 Elizabeth-street, South Yarra.

Sub-schedule No. 2.

GROCERIES.

Order under Metropolitan Districts, Schedule No. 1,
Sub-schedule, No. 7.

Sub-schedule No. 3.

VEGETABLES.

- | | |
|--|------------------------------------|
| 1. Onions | } Purchase
by
agree-
ment |
| 2. Other vegetables, including beetroot, cauliflowers,
carrots, cabbages, turnips, parsnips, rhubarb,
swedes, and pumpkin, as required | |

SCHEDULE No. 4.

PROVISIONS—TEACHERS' COLLEGE, HOSTELS, POLICE HOSPITAL, ETC.

(Delivery at Institutions.)

TEACHERS' COLLEGE AND HOSTELS AT GRATTAN-STREET, 93
DRUMMOND-STREET, CARLTON; 470, 481 AND 572 ST. KILDA-
ROAD, MELBOURNE; 19 QUEENS-ROAD, MELBOURNE; 152
TOORAK-ROAD WEST, SOUTH YARRA; FRANK TATE HOUSE,
373 DANDENONG-ROAD, ARMADALE; "REDCOURT" NO. 6,
"LARNOOK", 13 AND NO. 10A ORRONG-ROAD, ARMADALE;
11 PATTERSON-STREET, HAWTHORN; 174 PUNT-ROAD, PRAHRAN;
221 BURWOOD-ROAD, BURWOOD; JOHN CANNON HOUSE, 32
BELMONT-AVENUE, KEW; 17 MOULE-AVENUE, BRIGHTON; AND
HASTINGS-ROAD, FRANKSTON; POLICE HOSPITAL, ST. KILDA-
ROAD, MELBOURNE; AND MENTAL HYGIENE CLINIC, GLENFERRIE-
ROAD, MALVERN; ST. NICHOLAS HOSPITAL, PELHAM-STREET,
CARLTON.

GROCERIES.

Order under Metropolitan District, Schedule No. 1,
Sub-schedule No. 7.

SCHEDULE No. 5.

PROVISIONS—HEATHERTON SANATORIUM,

(Delivery at the Sanatorium.)

ANNEX TO CONTRACT No. 1966/58.

Capitol Bakeries Pty. Ltd., 257 Toorak-road, South Yarra.

Sub-schedule No. 1.

BREAD.

Security, \$30.

- | | | |
|--------------------------------------|--------------|---------|
| 1. Bread—Fine wheaten, first quality | .. per cntl. | \$ 4.25 |
|--------------------------------------|--------------|---------|

(AGREEMENT.)

Terra Self Service Pty. Ltd., 42 Elizabeth-street, South Yarra.

Sub-schedule No. 2.

GROCERIES.

Order under Metropolitan Districts Schedule No. 1,
Sub-schedule No. 7.

ANNEX TO CONTRACT No. 1966/59.

B. L. Coram and Sons Pty. Ltd., 49 Kangaroo-road, Murrumbidgee.

Sub-schedule No. 3.

MILK.

Security, \$40.

- | | | |
|-------------------------------|-------------|----------|
| 1. Milk—Fresh and pure (bulk) | .. per gal. | \$ 0.532 |
|-------------------------------|-------------|----------|

SCHEDULE No. 6. PROVISIONS—ARARAT DISTRICT.

(Delivery into Institution.)

ANNEX TO CONTRACT No. 1966/60.

Bates Bros., 52 Vincent-street, Ararat.

Sub-schedule No. 1.

BREADSTUFFS.

Security, \$150.

- | | | |
|--|--------------|---------|
| 1. Bread—Fine wheaten, first quality | .. per cntl. | \$ 5.89 |
| 2. " " Wrapped and sliced, first quality | .. do. | 6.09 |
| 3. Flour—First quality | .. do. | 4.20 |

(AGREEMENT.)

McKay MacLeod Pty. Ltd., 63 Mair-street, Ballarat.

Sub-schedule No. 2.

GROCERIES.

- | | | |
|---|-------------------|---------|
| 1. Baking Powder, 16-oz. | .. per doz. | \$ 3.97 |
| 2. Blue—Washing, 1-oz., "Reckitts" | .. per gross | 5.09 |
| 3. Bonox, 1-lb. jars | .. per doz. | 10.68 |
| 4. Bournvita, 14-oz. | .. do. | 5.45 |
| 5. Candles—Full weight, "Electrine" | .. per lb. | 0.32 |
| 6. Cereals (Weeties), 16-oz. | .. per doz. | 2.92 |
| 7. " (Crispies), 24-oz. | .. do. | 3.06 |
| 8. Cocoa, 14-oz., "Bournville" | .. do. | 5.43 |
| 9. Coffee Essence—8-oz. bottles | .. do. | 2.85 |
| 10. " " 26-oz. | .. do. | 4.38 |
| 11. Curry Powder—Loose | .. per lb. | 0.34 |
| 12. Custard Powder—Loose | .. do. | 0.16 |
| 13. Essences—Cochineal, 16-oz. | .. per doz. | 18.70 |
| 14. " Lemon, 4-oz. | .. per doz. | 4.45 |
| 14. " Parisian, 26-oz. | .. do. | 5.05 |
| 16. " Vanilla, 16-oz. | .. do. | 14.50 |
| 17. " Yolkine, 16-oz. | .. do. | 6.18 |
| 18. Flour—Corn or Maize, 1-lb. pkts. | .. do. | 2.10 |
| 19. " Self Raising, 25-lb. bag | .. bag | 1.97 |
| 20. Fruit—Dried—Currants, 3-crown, 30-lb. | .. carton | 6.42 |
| 21. " " Sultanias, { 3-crown, 35-lb. | .. do. | 7.68 |
| | { 4-crown, 35-lb. | 7.86 |
| 22. Dates less than case lots | .. per lb. | 0.18 |
| 23. Golden Syrup, 2-lb. tins | .. per doz. | 2.18 |
| 24. " 70-lb. drums | .. each | 5.95 |
| 25. Jelly Crystals "McKays" | .. per doz. | 0.99 |
| 26. Macaroni, 1-lb., "Rinoldi" | .. do. | 1.90 |
| 27. " 22-lb., "Rinoldi" | .. per ctn. | 2.22 |
| 28. Marmite, 1-lb. jars | .. per doz. | 8.22 |
| 29. Margarine—Cake or Pastry | .. per lb. | 0.21 |
| 30. Mustard—Tins, 4-lb. | .. per tin | 3.10 |
| 31. Milk—Dried—"Tooralac" (non-fat), 3-lb. | .. per doz. | 7.20 |
| 32. " " "Sunshine" 3-lb. | .. do. | 15.00 |
| 33. Pepper—Ground—White | .. per lb. | 0.79 |
| 34. " Black | .. do. | 0.72 |
| 35. Salt—Fine, "Imperial" | .. per cwt. | 2.40 |
| 36. " Table, 1-lb., "Mermaid" | .. per doz. | 0.95 |
| 37. Sauce—Tomato, 26-oz. bottle | .. per doz. | 4.38 |
| 38. " " 1-gal. jars (jars 35c) | .. per gal. | 1.85 |
| Soap— | | |
| 39. { Sand "Preservene" | .. per doz. | 1.02 |
| " Velvet " Standard | .. do. | 3.52 |
| " Economy | .. do. | 5.26 |
| " Solvol | .. do. | 1.36 |
| 40. Spaghetti—22-lb., "Rinoldi" | .. per ctn. | 2.22 |
| 41. Spices—Mixed—1-oz. | .. per doz. | 0.52 |
| 42. " loose | .. per lb. | 0.51 |
| 43. Soda—Bicarbonate | .. do. | 0.10 |
| 44. " Washing, 50-lb. bag | .. per bag | 1.60 |
| 45. Starch—12-oz., "Silver Star" | .. per doz. | 2.20 |
| 46. " Loose, 50-lb. each | .. per bag | 4.35 |
| 47. Tartar, Cream of—Substitute, "Antelope" | .. do. | 0.29 |
| 48. Vinegar—malt, 1-gal. jars (jars 35c) | .. per gal. | 0.60 |
| 49. Mixed fruit, 56-lb. | .. per lb. | 0.32 |
| 50. Sugar icing | .. per cwt. | 11.95 |
| 51. Coconut desiccated | .. per lb. | 0.28 |

(AGREEMENT.)

McKay MacLeod Pty. Ltd., 63 Mair-street, Ballarat.

Sub-schedule No. 3.

JAMS.

- | | | |
|---|---|---------|
| 1. Jams—Assorted, in bulk, of approved kinds, 28-lb. tins | .. in the proportion of half seed and half stone, of the best quality, in tins, as required, "J. MacLeod and Co. Pty. Ltd." | \$ 4.32 |
|---|---|---------|

Schedule No. 7.
PROVISIONS—BALLARAT DISTRICT.

(Delivery into Institutions.)

ANNEX TO CONTRACT No. 1966/61.

Local Maid Bread Pty. Ltd., 314 Drummond-street, Ballarat.

Sub-schedule No. 1.

BREADSTUFFS.

Security, \$200.

1. Bread—Fine wheaten, first quality .. per cntl.	6.20
2. " " Wrapped and sliced, first quality .. do.	7.20
3. Flour—First quality .. do.	4.30

(AGREEMENT.)

McKay MacLeod Pty. Ltd., 63 Mair-street, Ballarat.

Sub-schedule No. 2.

GROCERIES FOR TEACHERS' COLLEGE HOSTELS.

	\$
Bacon—	
1. { Sides per lb.	0.59
{ Middles do.	0.65
{ Rashers do.	0.86
2. Barley—Pearl, 14-lb. bags each	1.17
Beans—	
3. Haricot per lb.	0.18
Biscuits—	
4. { Trubake do.	0.25
{ Sao do.	0.24
{ Thin Captain do.	0.25
{ Malt, Marie, Coffee do.	0.23
Blue—	
5. 1-oz. knobs, paper, "Reckitts" .. per gross knobs	5.02
6. 1-oz. knobs, square do.	*
7. Cake Containers—paper, "Barkers" 120's .. per doz. pkts.	0.73
Cereals—	
8. { "Weeties," 16-oz. per doz.	2.85
{ "Cornflakes," large do.	3.70
{ "Weetbix," 24-oz. do.	3.25
{ "All-bran" do.	2.42
Cheese—	
9. { 6-lb. boxes, "Kraft" per pkt.	2.49
{ 4-lb. packets per doz.	2.79
10. Chutney—"Rosella," Fruit do.	2.42
Cocoa—	
11. 14-oz. tins, "Bournville" per doz.	5.35
12. Loose, 28-lb. per lb.	0.35
13. Coconut—Desiccated (loose) do.	0.27
14. 8-oz. bottles, "McKays" per doz.	2.70
15. 1-gallon jars (jars 35c each) per jar	3.40
16. Curry Powder—Bulk per lb.	0.33
Custard Powder—	
17. Bulk do.	0.15
18. 4-lb. packets, "McKays" per doz.	2.00
19. Dates—Slabs, 14-lb., "Sair" per lb.	0.18
Essences, &c.—	
20. Almond, 16-oz. per bot.	1.20
21. Lemon, 16-oz. do.	1.20
22. Vanilla, 16-oz. do.	1.20
23. Cochineal { 1-oz. per doz.	2.02
{ 16-oz. per bot.	1.54
24. Parisian { 5-oz. bottles per doz.	1.85
{ 26-oz. bottles do.	4.90
25. Yolking, "Yolko," 16-oz. do.	6.10
Extracts, Pastes, &c., or equal—	
26. Marmite { 16-oz. jar do.	8.10
{ 8-oz. jar do.	4.42
27. Vegemite { 16-oz. jar do.	9.40
{ 8-oz. jar do.	5.15
28. Peanut Butter, 12-oz., "Eta" do.	4.40
29. Bonox, 8-oz. do.	6.60
30. Bloater, "Pecks" do.	2.05
31. Salmon and Shrimp, "Pecks" do.	2.05
Fish—Tinned—	
32. 16-oz. tin "Safcol" cutlets do.	2.80
{ Fresh, 7-oz. tin do.	1.87
{ Fresh, 14-oz. tin do.	2.85
33. Herrings { In sauce, 7-oz. tin do.	1.87
{ In sauce, 14-oz. tin do.	2.85
34. Sardines, 4-oz. tin, "D.L." do.	1.68

* Supplies not available.

Sub-schedule No. 2—continued.

GROCERIES—continued

\$

Flour—Corn or Maize—	
35. Packets, "Kream" per doz.	2.03
36. Bulk per lb.	0.13
37. Self-Raising { 25-lb. bags, "McKays" .. per bag	1.85
{ 6-lb. packets, "McKays" .. per doz.	5.40
Fruits—Dried—	
38. Apples per lb.	*
39. Apricot, 28-lb. carton each	12.18
40. Peaches, peeled, choice, 28-lb. carton .. do.	8.61
41. Pears, standard, 25-lb. carton do.	5.44
42. Prunes (70/80's), 7-lb. tins per tin	1.65
43. Currants, 3-crown, 30-lb. carton each	6.30
44. Raisins—Seeded, 1-lb. packets per doz.	3.11
45. Sultanas—4-crown, 35-lb. carton each	7.71
5-crown, 35-lb. carton do.	7.88
Fruits—Tinned—	
46. Solid Pack Peaches, 7-lb. tins .. per doz.	10.60
47. Solid Pack Apples { 28-oz. tin do.	3.95
{ 64-lb. tin do.	11.38
48. Solid Pack Apricots, 7-lb. tins do.	10.60
49. Gelatine—Ground, "Davis," loose (7-lb.) .. each	6.55
50. Ginger—Ground per lb.	0.75
51. Golden Syrup, 2-lb. tins (70-lb. drums, \$5.50) † .. per doz.	2.05
52. Gravox—1-lb. tins do.	2.48
53. Herbs—Mixed, packets, 1-oz. do.	0.40
54. Honey—60-lb. tins each	8.65
Jelly Crystals—	
55. 4-oz. packets, "McKays" per doz.	0.97
56. 7lb. packets per lb.	0.27
Junket Tablets—	
57. "Merry Widow" flavoured, tubes .. per doz.	1.97
58. Lentils per lb.	0.22
Macaroni—	
59. 1-lb. packets per doz.	1.85
60. Bulk—22-lb. cartons each	2.12
61. Margarine { Table per lb.	0.37
{ Cake, pastry do.	0.21
62. Matches—Safety, packets per gross	1.95
63. Mayonnaise—4-gallon jars (jars 35c each) .. per jar	1.40
Meat—Tinned, or equal—	
64. Beef Luncheon, square tins, "Piper" .. per doz.	3.20
65. Beef Steak Pudding, "Piper" do.	3.47
66. Camp Pie, 12-oz. tins, "Piper" do.	2.15
67. Irish Stew, 16-oz. tins, "Piper" do.	2.92
68. Braised Steak and Vegetables, 16-oz. tins, "Piper" do.	3.13
69. Sausages and Vegetables, 16-oz. tin, "Piper" do.	3.02
Milk—Dried—	
70. { "Sunshine," 12-oz. tins do.	4.22
{ "Sunshine," 3-lb. tins do.	7.80
Milk—Condensed—	
71. "Nestles" do.	2.42
72. "Ideal" do.	1.70
73. Mustard—Loose (4-lb.) each	3.10
74. Nutmeg—Ground per lb.	1.50
75. Oatmeal—Flaked, 56-lb. bags per cwt.	7.70
76. Pastry—Mix, 1-lb. packets, "Bakeo" .. per doz.	1.35
77. Peel—Mixed, cut, 8-oz. do.	1.80
78. Pepper—White, ground per lb.	0.79
79. Pickles—Assorted, 18-oz. bottles, "McKays" .. per doz.	3.02
Rice—	
80. Dressed per cwt.	10.50
81. Ground—12-oz. packets per doz.	1.55
82. Sago (Seed Tapioca) per lb.	0.12
Salt—	
83. Fine, bulk, "Imperial" per cwt.	1.85
84. Table, 1-lb. packets, "Mermaid" .. per doz.	0.88
Sauce—	
85. Tomato, 26-oz. bottles, "McKays" .. do.	4.18
86. Tomato, 1-gal., jar (jars 35c each) .. per jar	1.72
87. Worcestershire, 10-oz. bottles per doz.	1.90
88. Worcestershire, 1-gal. jar (jars 35c each) .. per jar	1.70
89. Mustard, 8-oz. bottles per doz.	1.98
Soaps—	
90. Borak (powdered) per cwt.	8.34
91. Extract of "Pental" 56-lb. bags .. per bag	4.92
92. "Lux," Economy packets per doz.	4.15
93. "Rinso," Economy packet do.	4.55
94. "Persil," Economy packet do.	4.55
95. Sand soap, 12-oz. blocks, "Preservene" .. do.	0.98
96. Toilet soap, 34-oz. tabs., "Palmolive" .. do.	1.10
97. "Velvet"—"Quads," "Standard" do.	3.45
98. "Velvet"—"Quints," "Economy" do.	5.12

† Charge for drums if not returned.

Sub-schedule No. 2—continued.

GROCERIES—continued.

			\$
Soda—			
99. Bicarbonate	per lb.	0.09	
100. Washing, 50-lb. bags	per bag	1.37	
Soups—Tomato—			
101. 16-oz. tins, "Kia Ora"	per doz.	1.53	
102. No. 10 tins, "Rosella"	do.	11.28	
Spaghetti—			
103. 1-lb. packets	do.	1.85	
104. Bulk, 22-lb. cartons	each	2.10	
105. Spice—Mixed, loose (1-oz. pkts., 52c doz.)	per lb.	0.50	
106. Starch—Rice, 12-oz. pkts., "Silver Star"	per doz.	2.15	
Sugar—			
107. { Icing Mixture	per cwt.	11.50	
Castor	do.	11.50	
White (70-lb. bag)	per bag	6.02	
108. Tapioca—Pearl	per lb.	0.12	
109. Tartar—Cream of, "Antelope Aerator"	Phos. do.	0.28	
110. Tea, 1st quality, loose	per lb.	*	
111. Treacle—2-lb. tins	per doz.	2.00	
Vegetables—Dried—			
112. Soup Vegetables { 3-lb. tins, "Dew Crisp"	per tin	2.70	
20-lb.	do.	15.20	
113. Peas, Green, "Dew Crisp", in 21-lb. tins	per tin	20.65	
114. Peas, Split, yellow, 7-lb. bag	per bag	1.70	
Vegetables—Tinned—			
115. Baked Beans, 16-oz., tins, "Kia Ora"	per doz.	1.80	
116. Baked Beans, No. 10 can, "Rosella"	do.	10.75	
117. Beans, Green, 16-oz. tins, "Edgells"	do.	2.48	
118. Beetroot, 30-oz. tins "Edgells"	do.	3.05	
119. Peas, 30-oz. tins, "Edgells"	do.	4.00	
120. Sweetcorn, 16-oz. tins, "Rosella"	do.	2.72	
Vermicelli—			
121. 1-lb. packets	per doz.	1.85	
122. Bulk, 22-lb. cartons	each	2.10	
123. Vinegar—Malt, 1-gal. jars (jars 35c)	per jar	0.50	

(AGREEMENT.)

McKay McLeod Pty. Ltd., 63 Mair-street, Ballarat.

Sub-schedule No. 2a.

GROCERIES FOR MENTAL HOSPITAL.

			\$
1. Beans—Haricot	per lb.	0.18	
Biscuits—			
{ Trubake	do.	0.25	
Thin Captains,	do.	0.25	
2. { Sao	do.	0.24	
Malt, Marie, Coffee	do.	0.23	
3. Blue (Washing), "Reckitts Square"	per gross	5.02	
4. Candles, "Kitchen's Electrine"	per lb.	0.31	
5. Cereals—Weeties, 16-oz.	per doz.	2.85	
6. Cocoa, 14-oz. tins, "Bournville"	do.	5.35	
7. Cornflour—Bulk	per cwt.	8.00	
8. Currants { 3-crown, 30-lb. ctn.	per ctn.	6.30	
4-crown, 30-lb. ctn.	do.	6.45	
9. Curry Powder—Loose	per lb.	0.33	
10. Custard Powder—Bulk (sack lots)	do.	0.15	
11. Dates—Case lots	do.	0.14	
12. Essence—4 oz. bottles, vanilla	do.	4.40	
13. Flour—Self-raising (150-lb. bags)	per bag	4.30	
14. Gelatine—1-lb. packets, "Davis" (loose 7-lb., \$6.55 each)	doz.	11.53	
15. Golden Syrup—2-lb. tins (70-lb. tins or drums, \$5.50)	do.	2.05	
16. Herbs—Mixed, 1-oz. packets	do.	0.40	
17. Jelly Crystals—Bulk, 7-lb.	per lb.	0.27	
18. Macaroni—22-lb.	each	2.12	
19. Margarine—Cake, Pastry	per lb.	0.21	
20. Meats—Tinned—			
Camp Pie, 12-oz. tins	per doz.	*	
21. Milk F. C. Powdered, "Sunshine", 12-oz. tins	do.	4.22	
22. Mustard—Loose—4-lb. tins	per tin	3.10	
23. Peel—Mixed, loose	per lb.	0.19	
24. Pepper—Ground, black	do.	0.71	
25. Pickles, Mustard—18-oz. bottle	per doz.	3.02	
26. Raisins—Loose, 35-lb. carton	per ctn.	8.06	
27. Sultanias { 3-crown, 35-lb. ctn.	do.	7.53	
4-crown, 35-lb. ctn.	do.	7.71	
28. Salt—Imperial, Fine	per cwt.	1.85	
29. Sauce—Tomato, 26-oz. bottles (gal. jars per \$1.72)⊙	per doz.	4.18	
30. Sauce—Worcestershire, 1-gal. jars ⊙	each	1.70	

* Order under Melbourne Contract. ⊙ Jars, 35c each.

Sub-schedule No. 2—continued.

GROCERIES—continued.

			\$
31. Soda—Bicarbonate	per lb.	0.10	
32. Soda—Washing, 50-lb. bags	per bag	1.37	
33. Soap—Powder, "Pental", 12-oz.	per doz.	1.45	
34. Spaghetti—Bulk, 22-lb. cartons { No. 1	each	2.12	
No. 2	do.	2.12	
35. Spice, Mixed, 1-oz. packets	per doz.	0.52	
36. Starch, "Silver Star", 12-oz.	do.	2.15	
Sugar—			
37. { Icing	per cwt.	11.50	
Castor	do.	11.50	
38. Tapioca—Seed	per lb.	0.12	
39. Tartar, Cream of—Substitute, "Antelope"	do.	0.28	
40. Tomato Soup—No. 10 cans	per doz.	11.28	
41. Vinegar—Malt (1 gal. jars)⊙	per gal.	0.50	
42. Soap Bars, Velvet or similar	per doz.	3.43	

(AGREEMENT.)

McKay MacLeod Pty. Ltd., 63 Mair-street, Ballarat.

Sub-schedule No. 3.

JAMS FOR TEACHERS' COLLEGE HOSTELS AND MENTAL HOSPITALS.

Jams—Assorted—

1. In bulk, of approved kinds, in proportion of half seed and half stone, of the best quality, in tins, as required 28-lb. tins 4.20
2. 24-oz. tins, in the proportion of half seed and half stone, of the best quality per doz. 3.20
3. 5-lb. tins in the proportion of half seed and half stone, of the best quality Plum and Raspberry, Apricot, Plum do. 9.90

ANNEX TO CONTRACT No. 1966/62.

The Ballarat Modern Dairy Pty. Ltd., 819 Sturt-street, Ballarat.

Sub-schedule No. 4.

MILK.

For delivery to Mental Hospital and Teachers' College Hostel as under :—

Gillies-street, Ballarat,
Beaufort House, Beaufort-avenue, Ballarat.
1415 Sturt-street, Ballarat.
130 Victoria-street, Ballarat.
126 Webster-street, Ballarat.

Security, \$60.

- | | | |
|--|----------|--------|
| 1. Milk—Fresh and pure, pasteurized Bulk | per gal. | 0.5340 |
| Bottled | do. | 0.5721 |

SCHEDULE No. 8.

PROVISIONS—BEECHWORTH DISTRICT.

ANNEX TO CONTRACT No. 1966/63.

P. A. Taylor Model Bakery, Camp-street, Beechworth.

(Delivery into Institutions.)

Sub-schedule No. 1.

BREADSTUFFS.

Security, \$200.

- | | | |
|--|-----------|------|
| 1. Bread—Fine wheaten, first quality | per cntl. | 8.04 |
| 2. Flour—First quality | do. | 4.64 |

(AGREEMENT.)

Terra Self Service Pty. Ltd., 42 Elizabeth-street, South Yarra,

Sub-schedule No. 2.

Order under Metropolitan Districts, Schedule No. 1

Sub-schedule No. 7.

ANNEX TO CONTRACT No. 1966/64.

Sub-schedule No. 3.

W. H. Johnsons Jams Pty. Ltd., 42 Meaden Street, South Melbourne.

Order under Melbourne District—Schedule No. 1

Sub-schedule No. 9.

SCHEDULE No. 9.
PROVISIONS—BENDIGO DISTRICT.

(For Delivery into Institutions.)

ANNEX TO CONTRACT No. 1966/65.

*C. H. Jeffrey, Pty. Ltd., 172 Wattle-street, Bendigo.***Sub-schedule No. 1.****BREAD.**For Goal and Sandhurst Boys' Centre and Teachers Hostel
"Lancewood," McLaren-street, Bendigo.

Security, \$14.

1. Bread—Fine wheaten, first quality	per cntl.	4.75
2. Flour—First quality	do.	4.50

ANNEX TO CONTRACT No. 1966/66.

*C. H. Jeffrey Pty. Ltd., 172 Wattle-street, Bendigo.***Sub-schedule No. 2.****BREAD.**For Teachers' College Hostel—
Osborne-street, Pleasant Vale, Bendigo.

Security, \$8.

1. Bread—Fine wheaten, first quality	per cntl.	4.75
2. Flour—First quality	do.	4.50

ANNEX TO CONTRACT No. 1966/67.

*Roy Raggatt Pty. Ltd., 132 Lily-street, Bendigo.***Sub-schedule No. 3.****BREAD.**For Teachers' College Hostel—"Comersdale", Pantton-street,
Golden Square, Bendigo.

Security, \$6.

1. Bread—Fine wheaten, first quality	per cntl.	7.50
2. Flour—First quality	do.	†

ANNEX TO CONTRACT No. 1966/68.

*Sandhurst Dairies Ltd., P.O. Box 233, Bendigo.***Sub-schedule No. 4.****MILK.**For Sandhurst Boys' Centre.
Security, \$10.

1. Milk—Fresh and pure—Bulk	per gal.	0.541
-----------------------------	----------	-------

ANNEX TO CONTRACT No. 1966/69.

*Sandhurst Dairies Ltd., P.O. Box 233, Bendigo.***Sub-schedule No. 5.****MILK.**For Teachers' College Hostels "Comersdale", Pantton-street,
Golden Square; "Lancewood", McLaren-street, Bendigo,
and Osborne-street, Pleasant Vale.

Security, \$10.

1. Milk—Fresh and pure—Bulk	per gal.	0.56
-----------------------------	----------	------

(AGREEMENT.)

*Wholesalers Limited, 114-126 Bridge-street, Bendigo.***Sub-schedule No. 6.****GROCERIES.**

1. Barley—Pearl, loose	per lb.	0.06
Beans—		
2. Butter	per lb.	*
3. Haricot	do.	0.17
4. Lima	do.	0.22

* Supplies not available.

† Order Melbourne District Contract.

§ Rates except for sugar—white, are on "Pay and Pick-up Basis" ex warehouse, but for delivery and credit, plus 2½ per cent. surcharge.

GROCERIES—continued.**\$**

Biscuits and Cake—"Phoenix"			
5. Dry	do.	0.27	
6. Coffee, Mali, Arrowroot	do.	0.22	
7. Assorted	do.	0.25	
Blue—			
8. 1-oz. knobs, "Reckitts"	per gross	5.60	
9. Borax	per lb.	0.08	
10. Cake Containers—Paper, "Barkers" 150's	per gross	9.60	
Cereals—			
11. "Weeties", 16-oz.	per doz.	2.80	
12. "Kornies", packets 24-oz.	do.	2.95	
13. "Cornflakes", packets	do.	3.60	
14. "Weetbix", "Granose", "Vitabrits", packets	do.	3.15	
15. Wheat Germ	do.	*	
16. "All-bran", packets	per doz.	2.33	
17. Cheese—5-lb. boxes, "Kraft"	per box	1.98	
18. Matured	per lb.	0.37	
19. Chutney—"A.J.C."	per doz.	2.35	
20. Cloves	per lb.	0.55	
21. Coconut—Desiccated, Ceylon	do.	0.22	
Cocoa—			
22. { 14-oz. tins, "Bournville"	per doz.	5.20	
23. { Loose	per lb.	0.30	
Coffee Essence—			
24. 8-oz. bottles, "Excelsior"	per doz.	3.10	
25. 1-gal. jars (jars 30c)	per jar	3.42	
26. Curry Powder—"Indian"—4-oz. pkts.	per doz.	2.63	
Custard Powder—			
27. Bulk, 7-lb. parcels, "Beacon"	per lb.	0.10	
28. 1-lb. packets, "Parsons"	per doz.	2.00	
29. Dates—Loose	per lb.	0.16	
Essences, &c.—			
30. Almond { 1-oz.	per doz.	1.02	
31. { 8-oz.	do.	4.18	
32. { 16-oz.	bot.	0.75	
33. Lemon { 1-oz.	doz.	1.20	
34. { 8-oz.	do.	5.00	
35. { 16-oz.	bot.	0.75	
36. Vanilla { 8-oz.	doz.	6.85	
37. { 16-oz.	bot.	1.18	
38. Cochineal { 1-oz.	doz.	1.02	
39. { 16-oz.	bot.	0.75	
40. Parisian, 26-oz. "Dicksons"	doz.	5.10	
41. Yolkine { 1-oz. "Rego"	do.	0.75	
42. { 16-oz.	do.	4.20	
Extracts and Pastes—			
43. "Marmite", 4-oz. jar	per doz.	3.45	
44. "Vegemite" { 8-oz. jar	do.	4.25	
45. { 16-oz. jar	do.	8.50	
46. { 7-lb. tin	each	4.32	
47. Peanut Butter { 6-oz. jar	per doz.	2.85	
48. { 40-oz. jar	each	1.25	
49. "Bonox" { 4-oz. jar	per doz.	3.59	
50. { 8-oz. jar	do.	6.25	
51. { 1-lb. tin	do.	*	
52. Bloater, 2½-oz. tins, "Pecks"	per doz.	1.95	
53. Salmon and Shrimp, 2½-oz. tin	do.	1.95	
Fish—Tinned—			
54. "Flair", 12-oz.	do.	2.05	
55. Salmon, 16-oz., "Kingsound"	do.	4.30	
56. Pilchard, 8-oz.	do.	1.70	
57. Herrings, 14-oz. { Fresh	do.	2.70	
58. { In sauce	do.	2.70	
59. Sardines { 4-oz., "Commodore"	do.	1.25	
60. { 8-oz. "Rego"	do.	2.50	
Flour—			
61. Corn or Maize—{ 1-lb. packets,	do.	2.00	
62. { Bulk	per lb.	0.09	
Flour—Self-raising—			
63. { 25-lb. "Mammy"	each	1.70	
64. { 150-lb., "Mammy"	do.	8.60	
Fruits—Dried—			
65. Apples	per lb.	*	
66. Apricots	do.	0.43	
67. Peaches	do.	*	
68. Pears	do.	*	
69. Prunes, 40/50's	do.	0.27	
70. Currants	do.	0.22	
71. Raisins, Seeded { 16-oz. pkts., "Rego"	per doz.	3.02	
72. { Loose	per lb.	0.24	
73. Sultanas	do.	0.22	
74. Apricots, Halves, 30-oz. tins, "S.P.C."	per doz.	3.08	
75. Peaches, 30-oz. tins, "S.P.C."	do.	3.08	
76. Pears, 30-oz. tins, "S.P.C."	do.	3.08	

Sub-schedule No. 6.—continued.

GROCERIES—continued.

Fruits—Dried—continued.		\$
57. Mixed Fruits, 16-oz. tins "Fruit Salad"	do.	*
58. Solid Pack Apples { 30-oz. tins .. do.	3.90	
59. Solid Pack Apricots, No. 10 cans .. each	0.83	
60. Gelatine—Ground, 16-oz. pkts., "Davis"	per doz.	10.35
61. Ginger—Ground .. per lb.	0.68	
62. Golden Syrup—2-lb. tins .. per doz.	2.00	
63. Gravox—1-lb. tins .. do.	2.45	
64. Herbs—Mixed, packets .. do.	0.38	
65. Honey—60-lb. tins (Return of 25c per tin)	per tin	8.20
66. Jams—"Rego" and "Monbulk", tins	per doz.	††
Jelly Crystals—		
67. { 4-oz. packets. "Parsons" .. per gross	9.00	
67. { 7-lb. packets .. per lb.	0.22	
Junket Tablets—		
68. { "Merry Widow" flavoured .. per doz.	1.95	
68. { "Hansens" plain .. tubes	2.40	
69. Lentils .. per lb.	0.20	
Macaroni—		
70. 1-lb. packets "Rinoldi" .. per doz.	1.85	
71. Bulk 22-lb. boxes .. per box	2.25	
72. Margarine—Cake, pastry (net), "E.O.I."	per lb.	0.21
73. Matches—Safety, packets .. per gross	1.90	
74. Mayonnaise, 10-oz. jars, "Kraft"	per doz.	3.00
Meat—Tinned—		
75. Beef Luncheon { 12-oz., "Tom Piper" .. do.	3.10	
76. Beef Steak Pudding, 16-oz., "Tom Piper"	per doz.	3.45
77. Camp Pie { 12-oz., "Imperial" .. do.	2.05	
78. Irish Stew, "Tom Piper" .. do.	2.40	
79. Lamb and Green Peas, 16-oz. "Champion"	do.	*
80. Sausages and Vegetables, 16-oz.	do.	2.95
Milk—		
81. Dried { 12-oz. tin "Sunshine" .. do.	4.08	
82. Condensed, cases of 4-doz., "Nestles"	per case	9.00
83. "Ideal" .. per doz.	1.52	
84. Mustard, 1-lb. tin .. per lb.	*	
85. Nutmeg—Ground .. do.	1.25	
86. Oatmeal—Flaked { 7-lb. bags .. per doz.	9.80	
87. Pastry—Mix, 1-lb. packets .. Loose, 90-lb. bags .. each	6.10	
88. Peanut Butter, 40-oz. .. per doz.	2.55	
88. Peel—Mixed, Cut .. each	1.25	
89. { 8-oz. packets, "Piper" .. per doz.	1.75	
90. { 7-lb. "Seppelts" .. per lb.	0.16	
91. Pepper—White, Ground, loose .. do.	0.72	
92. Pickles—Assorted, 20-oz. bottles .. per doz.	1.40	
93. Dressed, 56-lb. bags .. per bag	5.00	
94. Ground, 1-lb. packets "McKenzies"	per doz.	1.70
95. Sago .. per lb.	0.08	
Salt—		
96. Fine, bulk, "Imperial" .. per cwt.	2.10	
97. Table { 1-lb. packets, "Mermaid" .. per doz.	0.85	
97. Table { 1-lb. packets, "Saxa" .. do.	0.95	
Sauces—		
98. Tomato, 26-oz. bot. { "White Crow" .. per doz.	4.40	
99. Tomato, 1-gal. tins, { "Rosella" .. do.	4.40	
99. Worcestershire— { "White Crow" .. per tin	1.01	
100. { 10-oz. bottles, "Holbrooks" .. per doz.	2.80	
100. { 10-oz. bottles, "Rego" .. do.	*	
100. { 26-oz. bottles, "Rego" .. do.	*	
101. Mustard, 8-oz. bottles, "Holbrooks"	do.	2.60
Soaps—		
102. Extract of, "Nu-Wash", 56-lb. bags .. per bag	5.30	
103. "Rinso" Economy packet .. per doz.	4.95	
104. "Persil" Giant packet .. do.	4.95	
105. "Lux" Flakes, packets, Family size .. do.	6.40	
106. Sand Soap, 6-oz. blocks, "Preservene" .. do.	0.98	
107. Toilet Soap, 3½-oz. tablets, "Palmolive" .. do.	1.75	
108. Toilet Soap, 3½-oz. tablets, "Lux" .. do.	1.75	
109. "Velvet" or equal { Quads, 3-doz. ctn. per ctn.	11.20	
109. "Velvet" or equal { Quints, 2½-doz. ctn. do.	12.60	

Sub-schedule No. 6.—continued.

GROCERIES—continued.

Soda—		\$
110. Bicarbonate .. per lb.	0.06	
111. Washing .. do.	0.05	
Soups—		
112. Pea, No. 10 tins .. each	0.88	
113. Tomato, 16-oz. tins { "Kia Ora" .. per doz.	1.90	
113. Tomato, 16-oz. tins { "Heinz" .. do.	*	
114. Tomato, 6-lb. tins, "Heinz" .. each	0.88	
Spaghetti—		
115. 1-lb. packets, "Rinoldi" .. per doz.	1.85	
116. Bulk, 22-lb. boxes .. each	2.20	
Spice—Mixed—		
117. { 1-oz. packets .. per doz.	0.52	
117. { Loose .. per lb.	0.38	
118. Starch—Rice, "Silver Star", packets, 14-oz.	per doz.	2.25
Sugar—		
119. Icing mixture .. per lb.	0.10	
120. Castor .. do.	0.10	
121. Raw .. do.	0.09	
122. White, 70-lb. bag .. per bag	5.97	
Tapioca—		
123. { Seed .. per lb.	0.09	
123. { Pearl .. do.	0.12	
124. Tartar—Cream of .. do.	0.33	
125. Treacle, 2-lb. tins .. per doz.	1.95	
126. Peas, Split (yellow) { 56-lb. bags .. per cwt.	8.60	
126. Peas, Split (yellow) { Broken bags .. per lb.	0.09	
Vegetables—Tinned—		
127. Baked Beans, 16-oz., "Kia Ora" .. per doz.	1.70	
128. Baked Beans, No. 10 cans, "Kia Ora" .. each	0.85	
129. Beans, green, 30-oz., "Harvest" .. per doz.	3.70	
130. Beetroot, 30-oz. .. do.	2.86	
131. Peas, 30-oz. { "Harvest" .. do.	3.65	
131. Peas, 30-oz. { "Biddy's" .. do.	2.65	
132. Sweetcorn, 16-oz., "Rosella" .. do.	2.32	
133. Tomatoes, 30-oz. .. do.	3.05	
Vermicelli—		
134. 1-lb. packets, "Rinoldi" .. do.	1.85	
135. Bulk, 22-lb. boxes .. each	2.25	
136. Vinegar—Malt, 1-gal. jars (jars 60c) .. per gal.	0.55	

SCHEDULE No. 10.

PROVISIONS—CASTLEMAINE GOAL.

(Delivery at the Gaol).

ANNEX TO CONTRACT No. 1966/70.

The Castlemaine Bakery, 319 Barker-street, Castlemaine.

Sub-schedule No. 1.

BREADSTUFFS.

Security, \$10.

	\$
1. Bread—Fine wheaten, first quality .. per cntl.	5.25

SCHEDULE No. 11.

PROVISIONS—SCHOOL OF FORESTRY, CRESWICK.

(Delivery at the School.)

ANNEX TO CONTRACT No. 1966/71.

Creswick Bakery, Albert-street, Creswick.

Sub-schedule No. 1.

BREADSTUFFS.

Security, \$6.

	\$
1. Bread—Fine wheaten, first quality .. per cntl.	9.00
2. Flour—First quality .. do.	4.20

* Supplies not available.

†† In 1½-lb. tins—Apricot, \$3.05; Apple Jelly, \$2.85; Blackberry, \$3.70; Blackcurrent, \$4.35; Gooseberry, \$3.40; Loganberry, \$3.85; Melon and Lemon, \$2.65; Melon and Pineapple, \$2.78; Dark Plum, \$2.70; Marmalade, \$2.70; Peach, \$2.85; Plum and Raspberry, \$2.98; Quince, \$1.65; and Raspberry, \$4.00.

In 5-lb. tins—Apricot, \$9.95; Melon and Lemon, \$8.60; Melon and Pineapple, \$9.00; Dark Plum, \$8.75; Marmalade, \$8.85; Peach, \$9.75; Plum and Raspberry, \$9.80; Quince, \$8.85; and Raspberry, \$13.25.

In 28-lb. tins—Blackberry, 19c per lb.

In 56-lb. tins—Apricot, 13c per lb.; and Plum and Raspberry, 12c per lb.

(AGREEMENT.)

Tait's Licenced Grocery, Albert-street, Creswick.

Sub-schedule No. 2.

GROCERIES.

		\$
1. Bacon	per lb.	0.68
2. Barley—Pearl	do.	0.07
3. Blue—Washing	per doz.	0.35
4. Biscuits—Dry	per lb.	0.29
5. " Sweet	do.	0.28
6. Butter, First-grade creamery, to score not less than 91 points, Government grade Commerce Regulations standard	do.	0.49
7. Cereals—"Weeties", 16-oz.	per doz.	2.80
8. Cheese—Kraft, 5-lb.	per box	1.95
9. " Matured	per lb.	0.39
10. Coffee Essence, 8-oz.	per doz.	2.81
11. " Beans, roasted	per lb.	○
12. Cocoa, 14-oz., "Bournville"	per doz.	5.80
13. Coconut—Desiccated	per lb.	0.23
14. Chutney—Fruit	per doz.	2.40
15. Custard Powder	per lb.	1.83
16. Eggs—New laid	per doz.	□
17. Fish—Tinned—Herrings in Sauce, 14-oz.	do.	3.00
18. " Sardines, 4-oz.	do.	1.00
19. Flour—Corn or Maize, 1-lb.	do.	1.80
20. " Self-raising, 25-lb. bag	per bag	1.90
Fruit—Preserved, 30-oz.—		
21. Peaches, sliced	per doz.	3.10
22. Pears, halves	do.	3.10
23. Apricots, halves	do.	3.10
24. Cherries, Glace, 4-oz. packet	per lb.	0.80
25. Fruit—Dried—Sultanas, 3-crown	do.	0.23
26. Gelatine—Ground, 4-oz.	per doz.	2.95
27. Ginger—Ground	per lb.	0.75
28. Golden Syrup, 2-lb. tin	per doz.	2.10
29. Honey, 60-lb. tin	per tin	7.75
30. Jams, assorted, 5-lb. tins in the proportion of half seed and half stone	do.	0.85
31. Jelly Crystals, 4-oz. packets	per doz.	0.82
32. Milk—Powdered, 3-lb. tins	per tin	1.22
33. " Condensed, "Nestles"	per doz.	2.40
34. Mustard	per lb.	0.65
35. Oatmeal—Flaked	do.	0.09
36. Pepper—Ground, white	do.	0.75
37. Potatoes—Dry and free from dirt	per cwt.	\$
38. Peanut Butter, 12-oz. jars	per doz.	4.56
39. Salt—Fine	per lb.	0.03
40. " Table, 1-lb. packets, "Mermaid"	do.	0.08
41. Curry Powder	do.	0.38
42. Soap—Sand, Carbollic, 12-oz.	per doz.	0.85
43. " Velvet, yellow, dry and hard	do.	3.70
44. " Toilet, cakes bath	do.	1.63
45. " Rinso, large packets	do.	4.92
46. Sauce—Tomato, 1-gal. jars	per gal.	1.77
47. " Worcestershire, 26-oz.	per doz.	3.72
48. Soda—Bicarbonate	per lb.	0.08
49. " Washing	do.	0.05
50. Starch—Rice, loose	do.	0.19
51. Sugar—Castor	do.	0.10
52. " White, 70-lb. bag	per bag	6.10
53. Tartar, Cream of substitute	per lb.	0.28
54. Tea—First grade	do.	○
55. Vegemite, 1-lb. jars	per doz.	8.76
56. Vegetables—Tinned—Baked Beans, 16-oz.	do.	1.85
57. " Sweet Corn, 16-oz.	do.	2.90
58. Vinegar, Malt	per pint	0.05
59. Rice, polished	per lb.	0.10

ANNEX TO CONTRACT No. 1966/72.

E. L. and C. N. Wrigley, Albert-street, Creswick.

Sub-schedule No. 3.

MILK.

Security, \$6.

	\$
1. Milk—Fresh and pure	per qt. 0.15

SCHEDULE No. 12.

PROVISIONS—AGRICULTURAL COLLEGE, DOOKIE.

(Delivery at the College.)

ANNEX TO CONTRACT No. 1966/73.

K. H. and H. L. Hutchins Pty. Ltd., Main-street, Mooroopna.

Sub-schedule No. 1.

BREADSTUFFS.

Security, \$30.

	\$
1. Bread—Fine wheaten, first quality	per cntl. 5.25
2. Flour—First quality	do. 4.00

(AGREEMENT.)

Fair Save Pty. Ltd., Benalla-road, Shepparton.

GROCERIES. ††

(Delivery "F.O.R." Shepparton.)

	\$
1. Baking, Powder 1-lb. tins	per doz. 3.90
2. Biscuits, assorted, 8½-lb. tins (40c deposit returnable)	per tin 2.03
3. Blue—Washing, "Reckitts", paper	per gross 5.08
4. Candles—full weight, "Electrine"	per lb. 0.30
5. Cereals, 24-oz. packets—	
Weeties	per doz. 2.90
Rice Krinkles	do. 3.20
Vita Brits	do. 3.30
Corn Flakes	do. 3.60
6. Chutney, 10-oz. "Rosella"	do. 2.43
7. Cloves, ground, 4-oz.	per doz. 3.20
8. Cocoa—14-oz. "Bournville"	do. 5.38
9. Coconut—desiccated	per lb. 0.23
10. Coffee Essence—1-gal. jars (jars 30c)	per gal. 3.76
11. Cordial—Lemon, &c., 1-gal. jars (jars 30c)	do. 1.65
Curry Powder—Loose	per lb. 0.36
13. Custard Powder—1-lb., "Parsons"	per doz. 2.22
14. Essence—Cochineal, 8-oz.	do. 5.10
15. " Lemon, 8-oz.	do. 5.10
16. " Vanilla, 8-oz.	do. 6.10
17. Fish, Salmon, 16-oz. tin	per doz. 4.15
18. Fruit—Dried—Currants, 2-crown	per 12-lb. 3.30
19. " Sultanas, 3-crown	do. 3.40
20. " Raisins, seeded, 1-lb.	per doz. 3.49
Fruits—Preserved, 30-oz. tin—	
21. Peaches—Sliced	do. 3.12
22. Apricot—halves	do. 3.12
23. Pears—halves	do. 3.12
24. Apples—6-lb. tins	per tin 0.89
25. Flour—Corn or Maize, 1-lb.	per doz. 2.14
26. " Self-raising, 150-lb. bags	per bag 9.80
27. Gelatine—Ground, 4-oz.	per doz. 3.15
28. Golden Syrup, 2-lb. tins	do. 2.08
29. Gravox, 1-lb.	do. 2.48
30. Ground Ginger, 4-oz.	per doz. 2.60
31. Herbs—Mixed, 2-oz. pkts.	do. 1.17
32. Honey, 60-lb. tin	per tin 8.65
33. Jelly Crystals, 7-lb. pkts.	each 1.84
34. Junket Tablets—Tubes, "Merry Widow"	per doz. 2.03
35. Margarine { "Cake"	per lb. 0.2225
"Pastry"	do. 0.2225
36. Macaroni, 22-lb. ctns.	per ctn. 2.29
37. Matches—Safety	per gross 1.98
38. Meat—Tinned—Camp Pie, 12-oz.	per doz. 2.15
39. " Steak and Kidney, 16-oz.	do. 3.50
40. Milk—Powdered, 3-lb. tin	do. 14.97
41. Mixed Peel, 8-oz. pkts.	do. 1.80
42. Mustard—Loose	per lb. 0.58
43. Oats—rolled, 5-lb. bag "John Bull"	per bag 0.68
44. Oatmeal—flaked, 112-lb. bag	do. ○
45. Pepper—Ground, white	per lb. 0.80
46. Pickles—Assorted, 20-oz.	per doz. 2.88
47. Prunes, 7-lb. tins	per tin 2.15
48. Sago	per lb. 0.10
49. Salt—Fine	per cwt. 2.23
50. " table, 16-oz. pkts. "Mermaid"	per doz. 0.89
51. Sauce—Tomato—26-oz. bottles "Cohn's"	do. 4.25
52. " 1-gal. jars (jars 30c)	per gal. 2.00
53. " Worcestershire—10-oz.	per doz. 2.10
54. " 1-gal. jars (jars 30c)	per gal. 1.98

§ Cost price plus 10 per cent.

○ Order under Melbourne Contract.

□ V.E.B. price plus 3 cents per doz.

†† The rates to be paid for all items under these Sub-schedules shall be the wholesale price ruling on the day of delivery; where rates are shown, they are for the wholesale rates at date of publication of this Gazette. * Supplies not available.

Rates are subject to payment within 30 days except sugar for which payment within 10 days is required. A surcharge of 2½ per cent. will be added to invoices outstanding beyond these terms.

Sub-schedule No. 2—continued.

GROCERIES—continued.

			\$
55. Soups—Tomato—No. 10 cans "Cohn's"	per can	0.83	
56. " " 16-oz., "Rosella"	per doz.	2.02	
57. " Celery, 16-oz., "Rosella"	do.	2.02	
58. " Pea, 16-oz., "Rosella"	do.	2.02	
59. Soda—Bicarbonate	per lb.	0.08	
60. " Washing, 56-lb. bag	per bag	2.20	
61. Spaghetti—22-lb., "Rinoldi"	per ctn.	2.29	
62. Spices Mixed 1-oz.	per doz.	0.55	
63. " Cloves—Whole, 4-oz.	do.	2.65	
64. " Nutmeg—ground, 2-oz. pkts.	do.	2.45	
65. Starch—14-oz., "Silver Star"	do.	2.12	
66. " Loose	per lb.	*	
67. Sugar—Castor, 70-lb. bags	per bag	6.30	
68. " Icing, 56-lb. bags	do.	5.90	
69. " White, 70-lb. bags	do.	6.10	
70. " Brown, 70-lb. bags	do.	5.90	
71. Soft Drinks, "Cohn's"	per doz.	1.10	
72. Tomato Paste, No. 10 cans	each	1.79	
73. Treacle, 2-lb. tins	do.	2.03	
Vegetables—Tinned—			
74. Tomatoes, 30-oz.	do.	3.60	
75. Beans—Baked, 16-oz., "Kia Ora"	do.	1.72	
76. " No. 5 can (Baked) "Heinz"	each	0.64	
77. " Green, 30-oz. tins	per doz.	3.98	
78. Peas—Green, 30-oz. tins	do.	3.95	
79. Vinegar—Malt, Casks (\$6 deposit refundable)	per gal.	0.52	
80. Vegemite { 4-oz. jars	per doz.	2.88	
16-oz. jars	do.	9.98	
6-lb. tins	each	4.12	

(AGREEMENT.)

Fair Save Pty. Ltd., Benalla-road, Shepparton.

Sub-schedule No. 3.

JAM.

(Delivery "F.O.R." Shepparton.)

		\$
Jam—Bulk—		
1. Assorted, of approved kinds	per lb.	††
2. Assorted, of approved kinds, in the proportion of half seed and half stone, of the best quality, in 28-lb. tin	per lb.	††

SCHEDULE No. 13.

PROVISIONS—MCLEOD SETTLEMENT, FRENCH ISLAND.

(Delivery to be made at Corinella Jetty.)

ANNEX TO CONTRACT No. 1966/74.

G. A. and A. H. Van der Craats, Grantville.

Sub-schedule No. 1.

BREAD.

Security, \$24.

1. Bread—Fine wheaten, first quality	per cntl.	6.95
--------------------------------------	-----------	------

(AGREEMENT.)

E. V. Peters, Corinella.

Sub-schedule No. 2.

GROCERIES.

		\$
1. Butter—First grade creamery, to score not less than 91 points, Government grade, Commerce Regulations standard	per lb.	0.49
2. Cheese—Matured Tasty	do.	0.39
3. James—Assorted, Seed	per doz.	3.90
" " Stone, of best quality, in 24-oz. tins, "Monbulk"	do.	3.10

* Supplies not available.

†† Plum and Raspberry, \$3.85 per tin; Apricot, \$3.85 per tin; Dark Plum, \$2.92 per tin; Quince, \$2.92 per tin; Peach, \$3.35 per tin; Marmalade, \$3.35 per tin; Blackberry, \$4.62 per tin; Apple Jelly, \$2.58 per tin; Raspberry, \$5.38 per tin.

SCHEDULE No. 14.

PROVISIONS—GEELONG DISTRICT.

(Delivery into Institutions.)

ANNEX TO CONTRACT No. 1966/75.

Fitzgerald Sunicrust Bakeries Pty. Ltd., Thompson-road, North Geelong.

Sub-schedule No. 1.

BREAD.

Security, \$60.

1. Bread—Fine wheaten, first quality	per cntl.	6.50
2. Bread—Wholemeal, first quality	do.	6.50
3. " Rolls	per doz.	0.32

(AGREEMENT.)

McKay MacLeod Pty. Ltd., 17 Cavendish-street, Geelong.

Sub-schedule No. 2.

GROCERIES.

The rates to be paid under this Sub-schedule shall be the wholesale self-service prices ruling on the day of delivery, plus 2 per cent. service charge, net monthly. Delivery free to hostels. No surcharge on dried fruits or C.S.R. Co's. sugar.

SCHEDULE No. 15.

PROVISIONS—COORIEMUNGLE PRISON CAMP, HEYTESBURY FOREST.

(Delivery to be made at the Camp.)

ANNEX TO CONTRACT No. 1966/76.

B. T. and N. Wright, Recreation-road, Timboon.

Sub-schedule No. 1.

BREAD.

Security, \$6.

1. Bread—Fine wheaten, first quality	per cntl.	8.75
--------------------------------------	-----------	------

SCHEDULE No. 17.

PROVISIONS—LANGI KAL KAL TRAINING CENTRE.

ANNEX TO CONTRACT No. 1966/77.

Local Maid Bread Pty. Ltd., 314 Drummond-street south, Ballarat.

Sub-schedule No. 1.

BREAD.

Security, \$6.

1. Bread—Fine wheaten, first quality	per cntl.	6.50
--------------------------------------	-----------	------

SCHEDULE No. 18.

PROVISIONS—AGRICULTURAL COLLEGE, LONGERENONG.

(Delivery at the College.)

ANNEX TO CONTRACT No. 1966/78.

Schwarz Breads Pty. Ltd., 58 Firebrace-street, Horsham.

Sub-schedule No. 1.

BREADSTUFFS.

Security, \$10.

1. Bread—Fine wheaten, first quality	per cntl.	6.25
2. Flour—First quality	do.	§

§ Order under Melbourne District Contract.

(AGREEMENT.)

Permewans (Horsham) Pty. Ltd., Box 34, Abbotsford.

Sub-schedule No. 2.

GROCERIES.

			\$
1. Barley—Pearl	per lb.	0.08	
2. Baked Beans	per doz.	2.05	
3. Biscuits—Coffee, Malt, Nice	per lb.	0.25	
4. " Assorted Creams, &c.	do.	0.35	
5. Cereals—Cornflakes—" Kelloggs," 16-oz.	per pkt.	0.31	
6. Cheese—Bulk { Mild	per lb.	0.32	
7. " Kraft, 8-oz.	do.	0.38	
8. Cinnamon	per doz.	2.75	
9. Citric Acid	per lb.	0.42	
10. Coconut—Desiccated	do.	0.55	
11. Coffee Essence—26-oz., " Bushells "	per bot.	0.23	
12. Curry Powder (Indian) Madras	per lb.	0.55	
13. Custard Powder—7-lb. packets " Cameo "	do.	0.44	
14. Dates—" Khadrawi " 1-lb. packets	do.	0.14	
Essence—			
15. Lemon—8-oz., " Harpers," Pure	per bot.	0.21	
16. Parisian—26-oz.	do.	0.47	
17. Vanilla—8-oz., " Harpers," Pure	do.	0.48	
18. Yoko—8-oz.	do.	0.68	
19. Cocoa—" Bournville," 14-oz. packets	per pkt.	0.59	
20. Cordial, Lemon, 1-gal. jars*	per gal.	0.48	
21. Fish—Tinned—Salmon, 16-oz.	per doz.	1.58	
22. Flour—corn, 1-lb. packets, " Cameo "	per lb.	2.50	
23. " Loose	per lb.	0.18	
24. " Self-raising, " McAlpins " or " Crusader " in 25-lb. bags	per bag	0.10	
1.68			
Fruits—Dried—			
25. Currants—" Sunray " or " Swallow and Ariel " 3-crown	per lb.	0.25	
26. Raisins—seeded—" Sunray " or " Swallow and Ariel "	do.	0.27	
27. Sultanas—3-crown—" Sunray " or " Swallow and Ariel "	do.	0.26	
Fruits—Tinned—			
28. Apricots—30-oz., (Halves)—" S.P.C."	per doz.	3.30	
29. Peaches—30-oz., (Halves)—" S.P.C."	do.	3.30	
30. Pears—30-oz., (Halves)—" S.P.C."	do.	3.30	
31. Mixed Fruits—30-oz., " S.P.C."—Kyabram	do.	3.30	
32. Prunes—7-lb.	do.	2.38	
33. Solid Pack Apples—7-lb.	do.	11.65	
34. Solid Pack Apricots, No. 10 cans	do.	12.90	
35. Gelatine—Ground, " Davis," 1-lb. packets	per lb.	1.02	
36. Ginger—Ground, 2-oz.	per tin	0.13	
37. Golden Syrup—2-lb. tins	per doz.	2.30	
38. Gravox—1-lb. tins	per lb.	0.23	
39. Honey—60-lb. tins, Yellow Box	per tin	8.90	
40. Jelly Crystals, 7-lb. packets, " Renown "	per pkt.	1.80	
41. Junket Tablets	per doz.	2.10	
42. Macaroni—1-lb. packets, " Rinoldi "	per lb.	0.17	
43. Mustard—" Keens "	do.	0.59	
44. Nutmeg—Ground, 2-oz.	per tin	0.23	
45. Oatmeal Flaked—" John Bull," 7-lb. packets	per pkt.	0.68	
46. Peas—Split, yellow	per lb.	0.10	
47. " Green, No. 10 cans	per doz.	9.86	
Peel—Mixed—Cut—			
48. Bakers loose—(½-lb. packets—18c. each)	each	0.18	
49. Pepper—White, ground	per lb.	0.85	
50. Pickles—Assorted 20-oz. bottles, " Leggo "	per doz.	3.55	
51. " 7-lb. tins	per tin	1.05	
52. Rice—Dressed	per lb.	0.11	
Salt—			
53. { Fine, bulk	do.	0.02	
53. { Table, 1-lb. packets	per doz.	1.00	
Sauces—Tomato—			
54. " Reeds," 26-oz. bottles	do.	4.28	
55. Tomato—1-gal. jars—" Reeds "†	per jar	1.68	
56. Worcestershire—1-gal. jars—" P.M.U."†	do.	1.50	
57. Spice—Mixed, 1-oz.	per doz.	0.55	
58. Persil, Economy	per pkt.	0.41	
59. Sand Soap—12-oz. blocks, " Pearsons "	per doz.	1.25	
60. Toilet Soap—5-oz., " Palmolive "	do.	1.20	
61. Velvet—Quads	do.	3.95	
61. Velvet—Quints	do.	5.70	
62. Soup—Tomato, 112-oz., " Fowlers "	per tin	0.99	
63. Spaghetti—1-lb. packets—" Rinoldi "	per pkt.	0.17	
Sugar—			
64. Icing	per lb.	0.11	
65. Castor	do.	0.11	
66. White, 70's	per bag	6.28	

* Jars, 30c each, returnable.

Sub-schedule No. 2—continued.

GROCERIES—continued.

		\$
67. Treacle—2-lb. tins	per doz.	2.17
68. Peas, 30-oz., " Raleigh " or " Biddy "	do.	2.68
69. Vegemite, 6-oz.	do.	3.98
70. Vim Cleaner	do.	2.18
71. Vinegar—1-gal. jars—" Sutherland "†	per gal.	0.48

(AGREEMENT.)

Permewans (Horsham) Pty. Ltd., Box 34, Abbotsford.

Sub-schedule No. 3.

JAM.

1. Jams—" Monbulk "—Assorted as ordered.

	in 5-lb. tins per doz.	in 56-lb. tins per lb.
	\$	\$
Apricot	9.65	0.16
Apricot and Pine	0.17
Marmalade	9.90	0.15
Melon	9.00	..
Melon and Lemon	0.13
Peach	10.25	0.16
Plum	9.20	..
Plum—Dark	0.13
Plum and Raspberry	10.40	0.16
Quince	8.75	..

SCHEDULE No. 19.

PROVISIONS—RESEARCH STATION
RUTHERGLEN.

(Delivery ex Bakery and Grocery Store.)

ANNEX TO CONTRACT No. 1966/79.

Rutherglen Bakery Pty. Ltd., Main-street, Rutherglen.

Sub-schedule No. 1.

BREAD.

Security, \$6.

	\$
1. Bread—Fine wheaten, first quality	per cntl. 9.00

(AGREEMENT.)

N. P. Haberecht, Rutherglen.

Sub-schedule No. 2.

GROCERIES.

		\$
1. Biscuits { Sweet—Creams	per lb.	0.35
1. Biscuits { Dry Ryethin	do.	0.30
1. Biscuits { " Savoy	do.	0.34
1. Biscuits { " True-Bake	do.	0.32
2. Cocoa—½-lb. packets	each	0.31
3. Coconut—Desiccated	per lb.	0.31
4. Cornflakes—" Kelloggs "	per pkt.	0.35
5. Cornflower—1-lb. packets	do.	0.18
6. Custard Powder—1-lb. packets	do.	0.19
7. Coffee { Pure	per lb.	0.68
7. Coffee { Nescafe—½-lb. tins	per tin	1.25
7. Coffee { Essence	per bot.	0.25
8. Cheese—" Kraft," ½-lb. packets	per pkt.	0.23
9. " Matured	per lb.	0.45
9. Curry Powder, Loose	do.	0.40
10. Dates	do.	0.19
11. Essences { Vanilla—4-oz. bottles	each	0.48
11. Essences { Lemon—4-oz. bottles	do.	0.34
11. Essences { Cochineal—2-oz. bottles	do.	0.15
Extracts and Pastes—		
12. { Marmite—16-oz.	per jar	0.75
12. { Peanut Butter—12-oz.	do.	0.42
12. { Bonox—16-oz.	do.	1.15
12. { Tinned Salmon "Greenseas"	per doz.	4.70
13. Fish { Sardines	per tin	0.12
13. Fish { Herrings, in sauce, 14-oz.	do.	0.28
13. Fish { Tuna	per doz.	5.10
Flour—		
14. { Self-raising, 25-lb. bags, "McAlpins"	per bag	2.30
14. { Plain	per lb.	0.05

† 1-gal. jars 30c each, credited on return.

Sub-schedule No. 2.—continued.

GROCERIES—continued.

			\$
Fruits—Dried—			
15.	{ Currants	per lb.	0.28
	{ Mixed	do.	0.25
	{ Raisins (Seeded)	do.	0.28
	{ Sultanas	do.	0.28
Fruits—Preserved—30-oz. tins—			
16.	{ Apricot, halves	per tin	0.27
	{ Fruit Salad	do.	0.35
	{ Peaches	do.	0.27
	{ Pears	do.	0.27
	{ Pineapple	do.	0.35
17.	{ Raspberries, 1-lb. tin	do.	0.35
	{ Gelatine	per lb.	0.95
18.	Gravox	do.	0.24
19.	Herbs—Mixed, 1-oz. packets	per pkt.	0.04
20.	{ Honey { Creamed, 1-lb.	per jar	0.28
	{ Pure, 2-lb. jar	do.	0.34
Jams—24-oz. tins—			
21.	{ Apricot	per doz.	3.50
	{ Blackberry and Plum	do.	3.60
	{ Fig	do.	3.90
	{ Marmalade	do.	3.30
	{ Peach	do.	3.20
	{ Plum, dark	do.	3.30
	{ Raspberry	do.	4.70
	{ Raspberry and Plum	do.	3.60
22.	{ Strawberry	do.	5.60
	{ Jelly Crystals	per pkt.	0.08
23.	Junket Tablets	do.	0.18
24.	Lard	per lb.	0.30
25.	Maize Oil	per bot.	0.68
26.	Margarine	per lb.	0.35
27.	Matches—Safety	per pkt.	0.17
28.	Mayonnaise—"Kraft"	per jar	0.28
Meat—Tinned—			
29.	{ Camp Pie	per doz.	2.20
	{ Irish Stew	do.	3.20
	{ Sausages and Vegetables	do.	3.40
	{ Beef Steak Pudding	do.	3.30
	{ Beef Luncheon	do.	3.60
30.	Milk—Condensed	do.	2.70
31.	Mustard—Loose	per lb.	0.58
32.	{ Oatmeal { Plain—5-lb. packets, "John Bull"	per pkt.	0.68
	{ "Creamota"—2-lb. packets	do.	0.29
33.	Pepper—White, 4-oz. tins	per tin	0.31
34.	Potatoes	per cwt.	3.00
35.	{ Rice { Polished	per lb.	0.11
	{ Ground	do.	0.12
36.	{ Salt { Table	per pkt.	0.08
	{ Cooking	per lb.	0.02
37.	{ Sauce { Barbecue	per bot.	0.20
	{ Tomato, 26-oz.	do.	0.37
	{ Worcestershire, 10-oz.	per doz.	2.70
Soaps—			
38.	{ "Rinso"—Economy	per pkt.	0.58
	{ "Lux"—Flakes	do.	0.40
	{ "Surf"	do.	0.50
	{ Toilet	per cake	0.08
39.	{ Soda—Washing	per lb.	0.08
	{ Soups—Tomato	per tin	0.18
	"Chicken Noodle, packets	per doz.	1.60
40.	{ Sugar { Icing	per lb.	0.10
	{ Castor	do.	0.11
41.	Tea—1-lb. packets	per lb.	0.57
Vegetables—Tinned—			
42.	{ Baked Beans	per tin	0.18
	{ Sweet Corn	do.	0.29
	{ Spaghetti in sauce	per doz.	2.20
	{ Peas	do.	1.95
	{ Sauerkraut	do.	1.80
43.	Vinegar—Seppelts White	per bot.	0.28
44.	Wheat Grist	per pkt.	0.22

SCHEDULE No. 20.

PROVISIONS AT SALE.

(Delivery at the Gaol.)

ANNEX TO CONTRACT No. 1966/80.

Sale Dutch Bakery Pty. Ltd., 124 Raymond-street, Sale.

Sub-schedule No. 1.

BREAD.

Security, \$6.

	\$
1. Bread—Fine wheaten, first quality .. per cntl.	6.00

SCHEDULE No. 21.

PROVISIONS—PLEASANT CREEK
SPECIAL SCHOOL, STAWELL.

(Delivery at the School.)

ANNEX TO CONTRACT No. 1966/81.

Stawell Bakeries Pty. Ltd., 46 Main-street, Stawell.

Sub-schedule No. 1.

BREADSTUFFS.

Security, \$20.

	\$
1. Bread—Fine wheaten, first quality .. per cntl.	8.75
2. Flour—First quality	4.75

(AGREEMENT.)

McKay MacLeod Pty. Ltd., 63 Mair-street, Ballarat.

Sub-schedule No. 2.

GROCERIES.

			\$
1.	Baked Beans in Tomato Sauce, No. 10 cans	per doz.	11.30
2.	Baking Powder—"Excelsior," 1-lb. tins	do.	3.99
3.	Blue—Washing, "Reckitts "	per gross	5.10
4.	Cherries, Crystallized, 5-lb.	each	3.09
5.	Cereals—		
	Weet Harts, 24-oz. packets	per doz.	3.98
	Weeties—16 oz.	do.	2.93
6.	Coconut, Desiccated	per lb.	0.28
7.	Cocoa, 14-oz., "Bournville "	per doz.	5.42
8.	Corn Flour, loose	do.	0.12
9.	Currants (present season's)—		
	3-crown, 30-lb. cartons	per ctn.	6.52
	4-crown, 30-lb. cartons	do.	6.67
10.	Curry Powder—Loose	per lb.	0.33
11.	Custard Powder—Loose	do.	0.16
12.	Dates—Box lots	do.	0.16
13.	Essence of Vanilla, 16-oz. bottles	per doz.	14.50
14.	Essence of Lemon, 16-oz. bottles	do.	14.50
15.	Golden Syrup—		
	2-lb. tins	do.	2.21
16.	Gravox, 1-lb. tins	do.	2.55
17.	Herbs, Mixed, 1-oz. packets	do.	0.41
18.	Jelly Crystals—Packets, "McKays ", 7-lb. packets	each	0.28
19.	Junket Tablets, " Merry Widow ", flavoured	per doz.	1.98
20.	Macaroni, 22-lb. cartons	per ctn.	2.25
21.	Nutmeg, Ground	per lb.	1.51
22.	Peel—Cut, mixed, 8-oz.	per doz.	1.85
23.	Pepper—Black, ground.	per lb.	0.72
24.	Sultanas (present season's)		
	4-crown, 35-lb. cartons	per ctn.	7.94
25.	Salt—Fine, " Imperial "	per cwt.	2.52
26.	Sauce—Tomato, 26-oz. bottles, "McKays"	per doz.	4.45
27.	" Worcestershire, 20-oz. bottles	do.	4.05
	Soap—		
28.	Preservene Foam	do.	1.82
29.	Spaghetti with cheese and tomato sauce in No. 10 cans	do.	11.30
	Sugar—		
30.	Icing, 6-lb. bags	per lb.	0.12
	Soda—		
31.	Bicarbonate	per lb.	0.10
32.	Washing, 50-lb. bags	per bag	1.69
33.	Spaghetti, 22-lb. cartons	per ctn.	2.25
34.	Spice—Mixed, 1-oz. packets	per doz.	0.53
35.	Starch, 12-oz. packets, "Silver Star "	do.	2.18
36.	Sweets, Boiled	per lb.	0.22
37.	Syrup—Milk Flavouring, " B.C.X. "	per gal.	1.93
38.	Vinegar—Malt, Bulk { (casks, \$10)	per gal.	0.52

ANNEX TO CONTRACT No. 1966/82.

Stawell Modern Dairy, 11 Seaby-street, Stawell.

Sub-schedule No. 3.

MILK.

Security, \$10.

	\$
1. Milk—Fresh and pure	per gal. 0.56

SCHEDULE No. 22.
PROVISIONS—SUNBURY DISTRICT.

(Delivery into Institutions.)

ANNEX TO CONTRACT No. 1966/83.

*Associated Bakeries Deliveries Pty. Ltd., 275 Buckley-street,
Essendon.***Sub-schedule No. 1.**

BREADSTUFFS.

Security, \$224.

		\$
1. Bread—Fine wheaten, first quality	per cntl.	4.07
2. Flour—First quality	do.	4.30

(AGREEMENT.)

*H. Paterakis, Sunbury.***Sub-schedule No. 2.**

GROCERIES.

		\$
1. Beans—Haricot	per lb.	0.17
2. Blue—Washing, 1-oz. knobs, "Reckitts"	per gross	4.13
3. Cereals—Weeties, 16-oz. packets	per doz.	2.60
4. Coconut, desiccated	per lb.	0.21
5. Cinnamon	do.	0.28
6. Cloves—whole	do.	0.59
7. Cocoa, 14-oz. packets, "Bournville"	per pkt.	0.44
8. Corn or Maize Flour, 1-lb. packets	per doz.	1.95
9. Currants 4-crown (present season's)	per lb.	0.22
10. Curry Powder	do.	0.32
11. Custard Powder, 28-lb. bags	do.	0.11
12. Dates—Stoneless	do.	0.15
13. Essences, 16-oz.—		
Lemon	per doz.	5.05
Vanilla	do.	5.05
14. Flour Self-raising 50-lb. bag	per bag	3.47
15. "6-lb. packet	per pkt.	0.44
16. Gelatine, 16-oz. packets, "Davis"	per doz.	10.78
17. Golden Syrup, 2-lb. tins	do.	2.00
18. Gravox, 1-lb.	do.	2.25
19. Gravy Salt, 8-oz., packets	do.	*
20. Herbs—Mixed, 1-oz.	do.	0.36
21. Honey—Pure—30-lb. tins	per lb.	0.16
22. Jelly Crystals—		
4-oz. packets	do.	0.73
Bulk	do.	0.23
23. Junket Tablets—Tubes	per doz.	2.03
24. Jex	do.	0.70
25. Lemon Peel, 8-oz. packets	per pkt.	*
26. Macaroni	per lb.	0.09
27. Margarine—Cake, Pastry	do.	0.18
28. Meat Tenderizer, 3-oz. tins	per doz.	1.55
29. Milk—Powdered, 56-lb. bag	per lb.	0.14
30. Mustard—Loose, "Keen's"	do.	0.58
31. Nutmeg—Ground	do.	1.40
32. Peel—Mixed, 8-oz. packet	each	0.15
33. Pepper—Black, ground	per lb.	0.65
34. "Cayenne	do.	0.70
35. Pickles—Mustard, 18-oz.	per doz.	2.99
36. Sultanas, 4-crown (present season's)	per lb.	0.22
37. Salt Fine	per cwt.	1.80
Sauce—		
{ Tomato, 26-oz. bottles	per doz.	3.40
{ Worcestershire, 20-oz. bottles	do.	2.85
Soda—		
39. Bicarbonate	per lb.	0.09
40. Washing	per cwt.	3.56
41. Spice—Mixed, loose	per lb.	0.36
42. Spaghetti, 22-lb. Forex No. 2	per ctn.	2.00
43. Sugar—Icing	per lb.	0.10
44. Starch—Loose, "Silver Star"	do.	0.19
45. Vinegar—Malt, 1-gal. jars	per gal.	0.44

Sub-schedule No. 3.

CEREALS.

1. Barley—Pearl	per cwt.		Purchase under Tender Board quotations
2. Oatmeal—Plain	do.		
3. Oatmeal—Flaked	do.		
4. Peas, split—yellow	do.		
5. Rice—Dressed	do.		
6. Rice—Unpolished	do.		
7. Seed Tapioca	do.		

○ Order under Melbourne District Contract.

* Supplies not available.

□ Purchase under Tender Board Agreement.

ANNEX TO CONTRACT No. 1966/84.

*W. H. Johnsons Jams Pty. Ltd., 42 Meaden-street,
South Melbourne.***Sub-schedule No. 4.**

JAMS.

Security, \$40.

\$

Jams—(in 54-lb. tins) "Alva"			
1. Assorted—In bulk, of approved kinds, in the proportion of half seed and half stone, of the best quality	per lb. actual net weight	0.099	
In 5-lb. tins	per tin	0.650	
In 27-lb. tins	do.	2.900	
2. Marmalade—Bulk †	per lb. actual net weight	0.096	
In 5-lb. tins	per tin	0.600	
In 27-lb. tins	do.	2.850	
In 54-lb. tins	do.	5.180	

SCHEDULE No. 23.**PROVISIONS—WARRNAMBOOL DISTRICT.**

(Delivery into Institutions.)

ANNEX TO CONTRACT No. 1966/85.

*Twites Bakeries Pty. Ltd., 164 Timor-street, Warrnambool.***Sub-schedule No. 1.**

BREADSTUFFS.

Security, \$10.

\$

1. Bread—Fine wheaten, first quality	per cntl.	8.00
2. "Wrapped and sliced, first quality	do.	9.25
3. Flour—First quality	do.	4.40

(AGREEMENT.)

*T. O. Wells, 181 Liebig-street, Warrnambool.***Sub-schedule No. 2.**

GROCERIES.

\$

1. Bacon Rashers—Middle	per lb.	0.80
2. "Bones (When available)	do.	0.12
3. Baking Powder, 1-lb. tins	do.	0.36
4. Beans—Haricot	do.	0.18
5. Cereals—Whole, large packets	per doz.	2.80
6. Cloves—Whole	per lb.	0.64
7. Cinnamon	do.	0.33
8. Cocoa—"Bournville", 14-oz.	per pkt.	0.40
9. Curry Powder	per lb.	0.37
10. Custard Powder—1-lb. packets, "Medallion"	do.	0.15
11. Essences—Vanilla, 1-oz. bots, "Medallion"	per bot.	0.10
12. "16-oz.	do.	1.36
13. "Parisian, 26-oz. bottles	do.	0.28
14. "Yolkine, 4-oz. bottles	do.	0.27
15. Flour—Corn or Maize, 12-oz. packets, "Medallion"	per lb.	0.15
16. "Self-raising, 25-lb. bags	per bag	1.90
Fruits—Dried—		
17. Apricots—3-crown, loose	per lb.	0.49
18. Currants and Sultanas—5-crown	do.	0.29
19. Dates—Loose	do.	0.19
1-lb. pkt.	per pkt.	0.19
20. Raisins—Seeded	per lb.	0.29
Fruits—Preserved, 29-oz. tins—		
21. Apricots—Halves	per tin	□
22. Peaches—Halves or sliced	do.	□
23. Pears—Halves	do.	□
24. Two fruits	do.	□
25. Gelatine—Ground, 1-lb. pkts., "Davis"	per lb.	0.90
26. Golden Syrup, 2-lb. tins	per tin	0.20
27. Herbs—Mixed, 4-oz.	each	0.15
28. Honey—2-lb. jars	per jar	0.44
29. "60-lb. tins	per tin	8.40
30. Jams—24-oz. tins "A.J.C." or "S.P.C." (Apricot, Apple Jelly, Melon, Plum, Peach, Quince, Marmalade, Plum, and Raspberry)	do.	0.28
31. Jelly Crystals—"Medallion", 4-oz. pkts.	per pkt.	0.08
32. "Harper's", 7-lb. pkts.	per lb.	0.28
33. Macaroni	do.	0.14
34. Margarine—Table "Eta"	do.	0.37
Cake and Pastry "Marville"	do.	0.28
35. Meat—Tinned "Camp Pie" 12-oz. tins	per tin	0.17

Sub-schedule No. 2—continued.
GROCERIES—continued.

		\$
35. Mustard—"Keens"	per lb.	0.75
36. Nutmeg	do.	1.60
37. Pepper—White, ground	do.	0.80
38. Pickles—20-oz. bottles, "Leggos"	per bot.	0.29
39. Rice—Dressed	per lb.	0.11
40. Sago—Seed Tapioca	do.	0.10
41. Salt—Fine, "Cheetham"	do.	0.04
42. Sauce—Tomato, 26-oz. bottles, "Cohn's"	per bot.	0.35
43. "Worcestershire, 19-oz. bottles, "P.M.U."	do.	0.24
44. Soda—Bicarbonate	per lb.	0.07
45. Spaghetti—22-lb. carton	per ctn.	2.00
46. Spice, mixed	per lb.	0.60
47. Sugar—White, 70-lb. bag	per bag	6.45
48. Cream of Tartar, "Antelope", substitute	per lb.	0.29
49. Vegemite—6-oz. jars	per jar	0.28
50. Vinegar—26-oz. bottles	per bot.	0.18

ANNEX TO CONTRACT No. 1966/86.

Sungold Dairies Pty. Ltd., Allansford-road, Warrnambool.

Sub-schedule No. 3.

MILK.

Security, \$6.

		\$
Milk—Fresh and pure—		
1. Bulk	per gal.	0.514
2. Bottled	do.	0.720

SCHEDULE No. 24.

PROVISIONS—HOBSON PARK HOSPITAL, TRARALGON.

(Delivery to Hospital.)

Sub-schedule No. 1.

BREADSTUFFS.

		\$	
1. Bread—Fine Wheaten, first quality	per cntl.	Purchase by Agreement	
2. Flour—First quality	do.		

(AGREEMENT.)

Terra Self Service Pty. Ltd., 42 Elizabeth-street, South Yarra.

Sub-schedule No. 2.

GROCERIES.

Order under Melbourne District—Schedule No. 1.
Sub-schedule No. 7. Prices F.O.R. Melbourne.

ANNEX TO CONTRACT No. 1966/87.

J. G. and E. McEntee, 91 Hotham-street, Traralgon.

Sub-schedule No. 3.

MILK.

Security, \$6.

		\$
1. Milk—Fresh and Pure, Bulk	per gal.	0.5270
2. " " " Bottled	do.	0.5721

SCHEDULE No. 25.

PROVISIONS—MALMSBURY YOUTH TRAINING CENTRE, MALMSBURY.

ANNEX TO CONTRACT No. 1966/88.

Coe's Kyneton Bakery, Kyneton.

Sub-schedule No. 1.

BREAD.

Security, \$6.

		\$
1. Bread, fine wheaten, first quality	per 2-lb. loaf	0.16

* Plus 40c per jar.

(AGREEMENT.)

B. Pleiter, General Store, Malmsbury.

Sub-schedule No. 2.

GROCERIES.

		\$
1. Bacon—Middles	per lb.	0.77
2. Barley—Pearl, "Parsons"	do.	0.08
Biscuits (tins 40c, returnable)—		
3. Thin Captain, "Brockhoffs"	do.	0.27
4. Nice, "Brockhoffs"	do.	0.29
5. Sweet Assorted, "Sunshine"	do.	0.29
6. Butter Crisps, Vanilla Curis	do.	0.09
7. Bread Crumbs, loose, "Tip Top"	do.	0.24
8. Weeties	per pkt.	0.31
9. Cornflakes, "Kelloggs", 16-oz.	do.	2.20
10. Cheese—"Kraft", 5-lb. boxes	per box	0.48
11. Cocoa, loose, "Cadbury-Fry", 14-oz. pkts.	per lb.	0.28
12. Coconut, Desiccated, "Foremost"	per gal.	3.75
13. Coffee Essence, "Bushells"	do.	1.70
14. Cordials, "Cottees"	per lb.	0.45
15. Curry Powder, loose	do.	0.12
16. Custard Powder, "Parsons"	do.	0.42
Essences, &c.		
17. Almond, 4-oz.	per bot.	0.57
18. Lemon, 8-oz.	do.	0.75
19. Vanilla, 8-oz., "Medallion"	do.	0.47
20. Yorkline, 16-oz.	per jar	0.86
21. Vegemite, 16-oz., "Kraft"		
Fish—Tinned—		
22. Salmon, 16-oz., "Greenseas"	per tin	0.36
23. Herrings in Sauce, 14-oz.	do.	0.25
Flour—Corn or Maze—		
24. Bulk, 140-lb. sacks, "McAlpin"	per cwt.	8.95
25. Plain, 50-lb. bag, "McAlpin"	per bag	2.40
26. Self Raising, 50-lb. bag	do.	3.70
Fruits—Dried—		
27. Apricots, large, case lots, "Australian Sunrayset"	per lb.	0.49
28. Currants, 3-crown, case lots, "Australian Sunrayset"	do.	0.28
29. Raisins, seeded, case lots, "Australian Sunrayset"	do.	0.26
30. Sultanias, 5-crown, case lots, "Australian Sunrayset"	do.	0.26
Fruits—Solid Pack—		
31. Apples, 64-lb. tins	per tin	10.20
32. Apricots, 7-lb. tins	do.	12.50
33. Gelatine—Ground 1-lb. pkts.	per lb.	0.95
34. Golden Syrup, 1-lb. tins	per tin	0.20
35. Green Peas, 7-lb. tins, "Kraft"	per doz.	14.00
36. Herbs, mixed, loose	per lb.	0.85
37. Honey, 5-lb. tins	per tin	1.25
38. Jams, Assorted, 5-lb. tins	per doz.	9.50
39. Jelly Crystals, 7-lb. pkt., "Cottees"	per pkt	1.58
40. Junket Tablets, flavoured, tubes, "Merry Widow"	per doz.	2.00
41. Macaroni, 1-lb. pkts., "Rinoldi"	do.	1.95
42. Margarine, Cake or Pastry "Fairy"	per lb.	0.30
43. Matches, safety, dozens, "Redheads"	per gr.	1.85
44. Milk, Condensed, 14-oz. tins, "Nestles"	per doz.	2.45
45. Oatmeal, 110 lb. bag	per bag	4.10
46. Peel, mixed, cut, loose, "Parsons"	per lb.	0.20
47. Pepper, white, ground "Parsons"	do.	0.70
48. Pickles, 1-gal. jars	per jar	0.75*
49. Rice, 56-lb. bag	each	5.10
50. Sago—Seed Tapioca, "Foremost"	per lb.	0.14
51. Salt, bulk, cooking	per cwt.	1.70
52. " table, 1-lb. pkts, "Mermaid"	per pkt.	0.96
53. Sauce, Tomato, 1-gal. jars	per gal.	1.75*
54. Soup, Tomato, 9-lb., "A.J.C."	per doz.	10.65
55. " Vegetable, 7-lb., "A.J.C."	do.	10.00
56. Spaghetti, bulk, 22-lb., "Rinoldi"	per ctn.	2.00
57. Split Peas, dried, 56-lb. bag "Foremost"	per bag	3.95
Spices, &c.—		
58. Mixed, loose, "Parsons"	per lb.	0.38
59. Nutmeg, ground, "Parsons"	do.	1.55
60. Sugar, white, 70-lb. bags	per bag	6.10
61. Baked Beans, No. 10 cans, "Tom Piper"	per doz.	10.50
62. Sweetcorn, 16-oz., "Rosella"	do.	2.64
63. Tomatoes, 30-oz., "Bendigo"	do.	3.40
64. Vinegar, 1 gal. jars, "Skipping Girl"	per gal.	0.55*

ANNEXE TO CONTRACT No. 1966/89.

H. Willis and Sons, 38 Baynton-street, Kyneton.

Sub-schedule No. 3.

MILK.

Security, \$6.

		\$
1. Milk, fresh and pure, bulk	per gal.	0.67